



Title	2,3,7,8-Tetrachlorodibenzo-p-dioxin (TCDD) suppresses spheroids attachment on endometrial epithelial cells through the down-regulation of the Wnt-signaling pathway
Author(s)	Tsang, H; Cheung, TY; Kodithuwakku, SP; Chai, J; Yeung, WSB; Wong, CKC; Lee, KF
Citation	Reproductive Toxicology, 2012, v. 33 n. 1, p. 60-66
Issued Date	2012
URL	http://hdl.handle.net/10722/173372
Rights	NOTICE: this is the author's version of a work that was accepted for publication in Reproductive Toxicology. Changes resulting from the publishing process, such as peer review, editing, corrections, structural formatting, and other quality control mechanisms may not be reflected in this document. Changes may have been made to this work since it was submitted for publication. A definitive version was subsequently published in Reproductive Toxicology, 2012, v. 33 n. 1, p. 60-66. DOI: 10.1016/j.reprotox.2011.11.002

1 **2,3,7,8-Tetrachlorodibenzo-p-dioxin (TCDD) suppresses spheroids**
2 **attachment on endometrial epithelial cells through the**
3 **down-regulation of the Wnt-signaling pathway**

4

5 Hilda Tsang^a, Tsz-Yan Cheung^a, Suranga P Kodithuwakku^{a,c}, Joyce Chai^a, William SB
6 Yeung^{a,b}, Chris KC Wong^d, and Kai-Fai Lee^{a,b,*}

7

8 ^aDepartment of Obstetrics and Gynaecology, ^bCentre for Reproduction, Development
9 and Growth, Faculty of Medicine, The University of Hong Kong, Hong Kong

10 ^c Department of Animal Science, The University of Peradeniya, Peradeniya 20400, Sri
11 Lanka

12 ^d Department of Biology, Faculty of Science, Hong Kong Baptist University, Hong
13 Kong

14

15 Hilda Tsang and Tsz-Yan Cheung contributed equally to the work.

16

17 *Corresponding author: Tel.: +852 2819 9369; fax: +852 2816 1947; E-mail address:
18 ckflee@hku.hk (K.F.Lee).

19

20

21

1 **ABSTRACT**

2 The environmental toxicant 2,3,7,8-tetrachlorodibenzo-p-dioxin (TCDD) affects
3 embryo development, implantation and fertility in humans. The underlying molecular
4 mechanism by which TCDD suppresses implantation remains largely unknown. We
5 used the trophoblastic spheroids (embryo surrogate)-endometrial cells co-culture
6 assay to study the attachment of trophoblastic spheroids (BeWo and Jeg-3) onto the
7 endometrial epithelial (RL95-2 and Ishikawa) cells. TCDD dose-dependently
8 induced cytochrome P450 1A1 (Cyp1A1) expression in trophoblastic and endometrial
9 epithelial cells. Moreover, TCDD at 1 and 10 nM suppressed β -catenin (a
10 Wnt-signaling molecule) and E-cadherin expression, as well as spheroids attachment
11 onto endometrial cells. Interestingly, activation of the canonical Wnt-signaling
12 pathway via Wnt3a or lithium chloride reverted the suppressive effect of TCDD on
13 β -catenin and E-cadherin expressions in the BeWo and RL95-2 cells, and restored the
14 spheroids attachment rate to be comparable to the untreated controls. **Taken together,**
15 **TCDD induces Cyp1A1 expression, modulates the Wnt-signaling pathway and**
16 **suppresses spheroids attachment onto endometrial cells.**

17

18 **Key Words:** TCDD; Spheroids; Endometrium; canonical Wnt-signaling; Attachment;
19 Implantation

20

1 1. INTRODUCTION

2 Endocrine disruptors (EDs) are naturally occurring compounds or manufactured
3 chemicals that interfere with the production or activity of hormones inside our bodies
4 leading to adverse health effects. EDs can be anti-androgenic, androgenic,
5 estrogenic, aryl hydrocarbon receptor (AhR) agonists, inhibitors of steroidogenesis,
6 anti-thyroid substances, and retinoid agonists [1]. EDs have been linked with
7 developmental, reproductive, immune and other problems in wildlife and laboratory
8 animals. In humans, EDs have been associated with spontaneous abortion, early
9 puberty, alterations of sex ratios, cancers, declining semen quality, male reproductive
10 tract abnormalities and immune system disorders [2]. Moreover, EDs affect
11 embryonic development starting from fertilization. They reduce the developmental
12 rate of farm animal embryos [3], disrupt morphogenesis of rat preimplantation
13 embryos [4] and reduce the numbers of implanted embryos and pups born [5].

14 2,3,7,8-Tetrachlorodibenzo-p-dioxin (TCDD) is an ED in laboratory species,
15 wildlife and humans [6, 7]. TCDD is produced as an unintentional by-product of
16 many industrial processes that involve chlorine-based chemicals such as
17 waste-burning incineration of various sorts, chemicals and pesticides manufacturing,
18 for example production of polyvinyl chloride plastics (PVPs), as well as pulp and
19 paper mills that use chlorine for bleaching. TCDD is a highly lipophilic, fat-soluble
20 and semi-volatile chemical that is highly persistent in the environment. The
21 tolerable intake of TCDD is about 1 to 4 pg per kilogram of body weight per day [8].
22 It has been reported that the body TCDD levels can be up to 100,000 times higher
23 than that of the surrounding environment [9]. In China, accumulation of TCDD and
24 estrogen-like pollutants occurs in marine and freshwater fishes cultivated in the Pearl
25 River Delta [10]. Yet, the elimination half-life of TCDD in humans is estimated to be
26 7 to 9 years [11]. TCDD can damage the immune system and interfere with the

1 hormonal system. It lowers testosterone levels and cause reproductive and
2 developmental problems in vertebrates [12]. In fact, TCDD elicits a number of toxic
3 and biochemical responses in humans. The most well-known symptom of severe
4 acute intoxication is chloracne, which is a persistent disturbance of epithelial cell
5 differentiation in the skin. Other toxic responses are porphyria, hepatotoxicity [13],
6 and peripheral and central neurotoxicity. Long-term persistence of TCDD in the
7 body can cause teratogenicity, innate and adaptive immune suppression,
8 atherosclerosis, carcinogenesis, hypo- and hyperplasia, diabetes, vascular ocular
9 changes, and neural system damage, including neuropsychological impairment.

10 The receptor for TCDD, aryl hydrocarbon receptor (AhR) in mammalian
11 tissues, functions as a sensor for a wide range of xenobiotics [14]. The ligand-bound
12 AhR forms a heterodimeric complex with the resident aryl hydrocarbon nuclear
13 translocator (ARNT) that regulates the expression of target genes such as
14 cytochromes P450 (CYP1A1) by interacting with dioxin-responsive elements (DREs)
15 [14, 15]. Yet, AhR activation can inhibit or promote steroid hormone signaling in
16 reproductive tissues, causing estrogenic or anti-estrogenic effects [16].
17 Environmental AhR ligands have been implicated in promoting endometriosis and
18 endometrial cancer in various species. TCDD was found to inhibit implantation [17]
19 initiated by estrone in animals [18], suggesting that this anti-estrogenic action is a
20 possible interference mechanism of TCDD on blastocyst-uterine interactions.

21 The Wnt-signaling pathway plays an important role in implantation. A number
22 of microarray studies identified that DKK molecules (Wnt-signaling molecules) were
23 differentially regulated in the human endometrium during implantation [19-22]. These
24 molecules regulate the canonical Wnt-signaling pathway in *Xenopus* embryos [23].
25 Wnt-singaling pathway is critical for estrogen-mediated uterine growth [24] and
26 implantation in mice [25, 26]. In fact, suppression of the pathway by GSK-3 β

1 phosphorylation on β -catenin affects the implantation process in mice [25]. Yet, how
2 TCDD affects implantation and the signaling pathway(s) involved remains largely
3 unknown. In the present study, we investigated the mechanism of TCDD in
4 regulating implantation with the use of the spheroids-endometrial epithelial cells
5 co-culture assay, and delineated the role of canonical Wnt-signaling in regulating the
6 spheroids attachment process.

7

8

1 **2. Materials and methods**

2 **2.1. Cell culture**

3 Choriocarcinoma Jeg-3 (HTB-36, ATCC, Manassas, VA) and BeWo (CCL-98,
4 ATCC), and endometrial adenocarcinoma Ishikawa (ECACC 99040201, Sigma, St
5 Louis, MO) and RL95-2 (CRL-1671, ATCC) cells were cultured at 37°C in a humid
6 atmosphere with 5% CO₂. Jeg-3 and RL95-2 cells were maintained in DMEM/F12
7 (Sigma), supplemented with 10% fetal bovine serum (FBS, Invitrogen, Carlsbad, CA,
8 USA), 2 mM L-glutamine and penicillin/streptomycin (100 U/ml and 0.1 mg/ml,
9 Gibco). Ishikawa was cultured in Minimal Essential Medium (Sigma) supplemented
10 with 10% FBS, L-glutamine and penicillin/streptomycin, while BeWo cells were
11 cultured in RPMI 1640 (Sigma) containing the same supplements. TCDD (Cambridge
12 Isotope Laboratories, USA) with 99% chromatographic purity was dissolved in
13 dimethyl sulfoxide (DMSO). In TCDD exposure experiments including quantitative
14 PCR validation and protein analysis, 1x 10⁵ cells/well were seeded in 12-well tissue
15 culture plates (IWAKI, Japan) in cell culture medium as described above. The cells
16 were then cultured in TCDD containing culture medium for 24 hours. TCDD
17 concentrations ranging from 0.01 to 10 nM in DMSO (0.1% final concentration) were
18 prepared and 0.1% DMSO was used as a negative control. All treatments and
19 controls were repeated 5 times in duplicate.

20

21 **2.2. RNA extraction and quantitative PCR**

22 Total RNAs from cell lines were extracted using the Absolutely RNA Microprep
23 Kit (Stratagene, La Jolla, CA) according to the manufacturer's instructions. RNA
24 samples (300 ng) were reverse-transcribed into cDNA using TaqMan® Reverse
25 Transcription Reagents (PE Applied Biosystems, Foster City, CA). A multiplex
26 real-time polymerase chain reaction using 18S as an internal control for the

1 normalization of RNA loading was performed in a 20 µl reaction mixture with
2 Assays-on-Demand Gene Expression Assay for human AhR (Hs01054797_g1),
3 Cyp1A1 (Hs00169233_m1) and ribosomal 18S (Hs99999901_s1) TaqMan probes (PE
4 Applied Biosystems). A standard PCR cycling protocol was performed: 1 cycle at
5 95°C for 10 minutes; and 40 cycles at 95°C for 15 seconds, 60°C for 35 seconds and
6 72°C for 45 seconds. The house-keeping 18S gene was chosen as the internal control
7 for sample normalization. Relative mRNA expression was quantified using the $2^{-\Delta\Delta ct}$
8 method as described elsewhere [27].

9

10 **2.3. Protein extraction and Western blotting**

11 Total protein from the cell lysates was dissolved in RIPA solution (1X PBS,
12 1% Nonidet P-40, 0.5% sodium deoxycholate, 0.1% SDS) containing protease
13 inhibitors. Antibodies specific for AhR (sc-8088, Santa Cruz, Santa Cruz, CA),
14 CYP1A1 (sc-20772, Santa Cruz), β -catenin (1:2500, BD Bioscience, San Jose, CA),
15 E-cadherin (1:1000, Abcam, Cambridge, MA) and GSK-3 β (BD Bioscience) obtained
16 from different sources were used for Western blot analysis. The anti-rabbit or
17 anti-mouse antibody conjugated with horseradish peroxidase (1:5000, GE Healthcare,
18 Pittsburgh, PA) was used secondary antibody. After thorough washing, proteins on the
19 blotted membrane were visualized by an enhanced chemiluminescence reagent (Santa
20 Cruz). To normalize protein loading, the membranes were stripped and detected for
21 β -actin using anti- β -actin antibody (Sigma).

22

23 **2.4. Cell proliferation assay**

24 Ninety-six well plates were seeded with 3×10^3 cells per well in triplicate. The
25 cells were cultured for 3 days with different concentrations of TCDD. CyQUANT®
26 Cell Proliferation Assays were performed to determine the cell number in terms of

1 DNA content. Briefly, CyQUANT® NF dye reagent was mixed with the 1X Hank's
2 balanced salt solution (HBSS), and 100 µL of 1X dye binding solution was dispensed
3 into each microplate well for DNA binding. After 1 hour of incubation at 37°C, the
4 fluorescent signal was measured at 535 nm.

5

6 **2.5. Spheroids-endometrial cell attachment assay**

7 Human choriocarcinoma cells (Jeg-3 and BeWo) and endometrial
8 adenocarcinoma cells (Ishikawa and RL95-2) were cultured at 37°C in a humid
9 atmosphere with 5% CO₂. Adhesion of choriocarcinoma Jeg-3 spheroids to
10 endometrial Ishikawa cells was quantified using an adhesion assay as described [22,
11 28, 29]. In the co-culture study, Jeg-3 and BeWo cells were treated with 0.1–10 nM
12 TCDD, 50% Wnt3a conditioned medium and 40 mM LiCL for 24 hours. The cell
13 differentiation reagent methotrexate (MTX, 5 µM) was used as positive control [28]
14 and solvent alone (DMSO) was used as negative control in the experiments.
15 Spheroids cells were generated by rotating the trypsinized cells at 4 g for 24 hours.
16 Spheroids ranging in size from 60–200 µm were selected and transferred onto the
17 confluent monolayer of endometrial cells under a dissection microscope. Then, the
18 co-cultures were maintained in the respective medium for 1 hour at 37°C in a
19 humidified atmosphere with 5% CO₂. Non-adherent spheroids were removed by
20 centrifugation at low g-force (10 g) for 10 minutes in media. Attached spheroids were
21 counted under a dissecting microscope and the attachment rate was expressed as a
22 percentage of the total number of spheroids transferred (% adhesion). Images of the
23 cultures were taken by a Nikon Eclipse TE300 inverted microscope (Nikon, Tokyo,
24 Japan).

25

1 **2.6. *Wnt-signaling activation***

2 Wnt3a conditioned medium was obtained from culturing mouse L cells stably
3 secreting Wnt3a protein as described [30]. Briefly, Wnt3a over expressing mouse
4 fibroblast L cells (CRL-2647, ATCC) were cultured in DMEM medium supplemented
5 with 10% FBS, L-glutamine and penicillin/streptomycin. The conditioned medium
6 was collected after 48 hour of confluent culture and the presence of Wnt3a protein
7 was confirmed with specific Wnt3a antibody by Western blotting. The conditioned
8 medium was filter sterilized and stored at -20°C until used.

9

10 **2.7. *Statistical analysis***

11 All the data were analyzed by statistical softwares (SigmaPlot 11.0 and
12 SigmaStat 2.03; Jandel Scientific, San Rafael, CA). The non-parametric analysis of
13 variance on rank test for multiple comparisons followed by the Mann-Whitney U test
14 was used when the data were not normally distributed. A probability value <0.05
15 was considered to be statistically significant.

16

17

1 **3. Results**

2 **3.1. Effect of TCDD on AhR and CYP1A1 expression in trophoblastic and**
3 **endometrial cell lines**

4 The effects of TCDD on AhR and Cyp1A1 expression in trophoblastic (BeWo
5 and Jeg-3) and endometrial epithelial (RL95-2 and Ishikawa) cells were studied.
6 TCDD at 0.01-10 nM did not change AhR expression in the trophoblastic (BeWo and
7 Jeg-3) and endometrial epithelial (RL95-2 and Ishikawa) cells (Figure 1A & B), but
8 strongly induced their transcript and protein expression of CYP1A1 (Figure 1C & D).
9 At 1 and 10 nM of TCDD, there were significant increases ($p<0.05$) of CYP1A1
10 transcripts in the four cell lines tested.

11

12 **3.2. TCDD suppresses spheroids attachment onto endometrial cells**

13 To study how TCDD modulates the attachment process in vitro, we used the
14 spheroids-endometrial cells co-culture assay to study the attachment of trophoblastic
15 spheroids onto endometrial epithelial cells. BeWo and Jeg-3 spheroids of 60–200
16 μm in size were generated from the trypsinized cells with shaking for 1 day. The
17 spheroids were transferred onto either an RL95-2 or Ishikawa monolayer and
18 co-cultured for an hour and the number of spheroids attached was determined (Figure
19 2A). TCDD (0.1–10 nM) dose-dependently suppressed BeWo and Jeg-3 spheroids
20 attachment onto the RL95-2 and Ishikawa cells (Figure 2B). At 10 nM TCDD, the
21 attachment rate of BeWo onto RL95-2 and Jeg-3 spheroids onto Ishikawa decreased
22 significantly ($p<0.05$) from 86% to 50% and 95% to 75%, respectively when
23 compared with the untreated controls. MTX at 5 μM strongly suppressed ($p<0.05$)
24 spheroids attachment. The average viability of the cell lines in all the groups was
25 $>90\%$ as determined by the CyQuant cell proliferation assay (data not shown).

26

1 ***3.3. TCDD suppresses E-cadherin and β -catenin expression in the BeWo and***
2 ***RL95-2 cells***

3 To study whether TCDD regulated canonical Wnt-signaling and extracellular
4 matrix molecule expression in BeWo and RL95-2 cells, the expression levels of
5 β -catenin and E-cadherin were determined. Treatment of the BeWo or RL95-2 cells
6 with TCDD at 1 and 10 nM for 24 hours significantly suppressed ($p < 0.05$) E-cadherin
7 and β -catenin expression (Figure 3A & B) relative to that β -actin. The expression of
8 β -actin protein was used as the loading control.

9

10 ***3.4. Activation of the canonical Wnt-signaling pathway nullifies the suppressive***
11 ***effect of TCDD on spheroids attachment and restores E-cadherin and β -catenin***
12 ***expression***

13 Wnt3a and LiCl treatments were used to activate the Wnt-signaling pathway.
14 Addition of Wnt3a conditioned medium or LiCl (40 μ M) restored TCDD-induced
15 reduction of β -catenin and E-cadherin expression, but had no effect on GSK-3 β
16 expression in BeWo and RL95-2 cells (Figure 4A). The expression of β -actin
17 protein was used as the loading control. Both Wnt3a and LiCl restored the spheroids
18 attachment rate suppressed by TCDD when compared with the untreated control.
19 Interestingly, Wnt3a but not LiCl itself had a stimulatory effect on spheroids
20 attachment in vitro.

21

22

1 **4. Discussion**

2 The present study suggests a possible suppressive mechanism of TCDD on the
3 embryo attachment process by down-regulation of the Wnt-signaling pathway and
4 adhesion molecules. TCDD induced CYP1A1 but not AhR expression in
5 trophoblastic and endometrial epithelial cells. It suppressed spheroids attachment
6 onto endometrial epithelial cells in vitro by reducing β -catenin and E-cadherin protein
7 expression in trophoblastic cells. The effect of TCDD on decreased spheroids
8 attachment could be reversed by Wnt-agonist (Wnt3a and LiCl) treatments,
9 suggesting that the down-regulation of the Wnt-signaling pathway by TCDD could be
10 one of the molecular pathways leading to suppression of spheroids attachment onto
11 the endometrial cells.

12 TCDD induced CYP1A1 but not AhR expression in all the four cell lines tested.
13 Similarly, TCDD induces CYP1A1 mRNA expression in preimplantation mouse
14 embryos [31] as well as protein expression in explant cultures of human endometrium
15 [32]. Moreover, TCDD causes a significant increase in the secretion of
16 immunoreactive (I) but not bioactive (B) chorionic gonadotropin (CG) from the
17 differentiated but not the undifferentiated human trophoblast cultures [33], suggesting
18 that TCDD-induced pregnancy loss may be associated with a decrease of B/I ratio of
19 CG. Furthermore, TCDD also affects ovarian steroidogenesis and follicle
20 development [34], and has been associated with an increase in spontaneous abortion
21 in animals [35] and implantation loss of fertilized oocytes in humans [17].

22 To study how TCDD affects the initial attachment of embryos during the
23 implantation process, we used an in vitro spheroids-endometrial epithelial cells cell
24 culture model to simulate this process [22, 28, 29]. It was found that TCDD
25 dose-dependently suppressed trophoblastic spheroids (BeWo and Jeg-3) attachment
26 onto the endometrial epithelial cell lines (RL95-2 and Ishikawa). Although TCDD

1 at 0.2 nM had been reported to decrease viability of JAr cells [36], we did not observe
2 a significant change in viability of the cell lines studied even after treatment with 10
3 nM of TCDD in the present study. Similarly, TCDD at 10 nM does not enhance
4 proliferation of Jeg-3 cells as demonstrated by thymidine incorporation [37].
5 Although TCDD accelerates the differentiation of the blastocyst, it neither alters the
6 development of early mouse morula to blastocysts [38] nor induces apoptosis of
7 preimplantation embryos [31, 39]. A recent study suggested that maternal TCDD
8 exposure disrupts embryo morphogenesis at the compaction stage (8-16 cell), but does
9 not compromise development of the embryo to blastocyst [4]. However, TCDD
10 exposure increases early fetal loss in *Cynomolgus macaque* [40].

11 The canonical Wnt-signaling pathway is involved in embryo implantation and
12 early embryonic development [25, 26]. But how the disruption of the Wnt-signaling
13 pathway via reduced β -catenin and E-cadherin expression after exposure to TCDD
14 affects embryo attachment remains largely unknown. In this study, TCDD treatment
15 suppressed E-cadherin and β -catenin expression in the trophoblastic and endometrial
16 cell lines, and addition of Wnt-activator (Wnt3a or LiCl) restored E-cadherin and
17 β -catenin expressions and reversed these suppressive effects on spheroids attachment.
18 In line with this, exposure to TCDD during pregnancy reduced the expression of
19 E-cadherin in the mammary gland [41] and E-cadherin has been identified as an
20 essential molecule for endometrial receptivity [42].

21 In mice, inactivation of the canonical Wnt-signaling pathway via a reduced level
22 of β -catenin significantly blocked the implantation competency of the embryo [26].
23 As E-cadherin/ β -catenin complexes are important for formation of adherens junctions
24 in endometrial epithelial cells [43], it is likely that the decrease in
25 E-cadherin/ β -catenin levels affects spheroid attachment in vitro. To study the role of
26 E-cadherin on spheroid attachment, we used anti-E-cadherin antibody to study the

1 role of E-cadherin protein in the spheroid attachment assay. Addition of the
2 anti-E-cadherin antibody (1-4 $\mu\text{g/ml}$) significantly ($p<0.05$) suppressed spheroid
3 attachment in vitro (unpublished data), consistent with the inhibition of implantation
4 by injection of anti-E-cadherin antibody into the mouse uterine horn [44]. Although
5 E-cadherin null mouse embryos fail to develop to the blastocyst stage, heterozygous
6 mutant mice are fertile [45], indicating that a reduced expression of E-cadherin does
7 not affect implantation. The present study showed that TCDD reduced E-cadherin
8 expression by ~50% and suppressed spheroid attachment at the same time. These
9 observations suggest that other genes, apart from E-cadherin, are mediating the
10 suppressive action of TCDD on spheroid attachment [46].

11 Taken together, TCDD induces CYP1A1, but not AhR expression in the
12 trophoblastic and endometrial cell lines. Our in vitro co-culture model suggests that
13 aberrant expression of Wnt-signaling and adhesion molecules is one of the underlying
14 molecular mechanisms through which TCDD affects spheroid (blastocyst surrogate)
15 attachment. These initial findings on TCDD action are being confirmed with the use
16 of human primary endometrial epithelial cells in our laboratory.

17

18 **5. Conflict of interest**

19 The author declares that there is no conflict of interest.

20

21 **Acknowledgments**

22 This work was supported in part by a CRCG grant, HKU to KFL and a
23 Collaborative Research Fund (HKBU 1/CRF/08), University Grants Committee to
24 CKCW. The authors are grateful to Ms Vicki Geall (the university's technical writer)
25 for commenting on our manuscript.

1 **References**

- 2 [1] Skinner MK, Manikkam M, Guerrero-Bosagna C. Epigenetic transgenerational
3 actions of endocrine disruptors. *Reprod Toxicol* 2010 Nov 3. [Epub ahead of
4 print]
- 5 [2] Diamanti-Kandarakis E, Bourguignon JP, Giudice LC, Hauser R, Prins GS, Soto
6 AM, et al. Endocrine-disrupting chemicals: an Endocrine Society scientific
7 statement. *Endocr Rev* 2009;30:293-342.
- 8 [3] Brevini TA, Cillo F, Antonini S, Gandolfi F. Effects of endocrine disruptors on
9 the oocytes and embryos of farm animals. *Reprod Domest Anim* 2005;40:291-9.
- 10 [4] Hutt KJ, Shi Z, Albertini DF, Petroff BK. The environmental toxicant
11 2,3,7,8-tetrachlorodibenzo-p-dioxin disrupts morphogenesis of the rat
12 pre-implantation embryo. *BMC Dev Biol* 2008;8:1.
- 13 [5] Wolf CJ, Ostby JS, Gray LE Jr. Gestational exposure to
14 2,3,7,8-tetrachlorodibenzo-p-dioxin (TCDD) severely alters reproductive
15 function of female hamster offspring. *Toxicol Sci* 1999;51:259-64.
- 16 [6] Fingerhut MA, Halperin WE, Marlow DA, Piacitelli LA, Honchar PA, Sweeney
17 MH, et al. Cancer mortality in workers exposed to
18 2,3,7,8-tetrachlorodibenzo-p-dioxin. *N Engl J Med* 1991;324:212-8.
- 19 [7] Pelclová D, Urban P, Preiss J, Lukás E, Fenclová Z, Navrátil T, et al. Adverse
20 health effects in humans exposed to 2,3,7,8-tetrachlorodibenzo-p-dioxin
21 (TCDD). *Rev Environ Health* 2006;21:119-38.
- 22 [8] van Leeuwen FX, Feeley M, Schrenk D, Larsen JC, Farland W, Younes M.
23 Dioxins: WHO's tolerable daily intake (TDI) revisited. *Chemosphere*
24 2000;40:1095-101.
- 25 [9] Schecter A, Birnbaum L, Ryan JJ, Constable JD. Dioxins: an overview. *Environ*
26 *Res* 2006;101:419-28.

- 1 [10] Wei X, Ching LY, Cheng SH, Wong MH, Wong CK. The detection of dioxin-
2 and estrogen-like pollutants in marine and freshwater fishes cultivated in Pearl
3 River Delta, China. *Environ Pollut* 2010;158:2302-9.
- 4 [11] Aylward LL, Brunet RC, Carrier G, Hays SM, Cushing CA, Needham LL, et al.
5 Concentration-dependent TCDD elimination kinetics in humans: toxicokinetic
6 modeling for moderately to highly exposed adults from Seveso, Italy, and
7 Vienna, Austria, and impact on dose estimates for the NIOSH cohort. *J Expo
8 Anal Environ Epidemiol* 2005;15:51-65.
- 9 [12] White SS, Birnbaum LS. An overview of the effects of dioxins and dioxin-like
10 compounds on vertebrates, as documented in human and ecological
11 epidemiology. *J Environ Sci Health C Environ Carcinog Ecotoxicol Rev*
12 2009;27:197-211.
- 13 [13] Niittynen M, Tuomisto JT, Auriola S, Pohjanvirta R, Syrjälä P, Simanainen U, et
14 al. 2,3,7,8-tetrachlorodibenzo-p-dioxin (TCDD)-induced accumulation of
15 biliverdin and hepatic peliosis in rats. *Toxicol Sci* 2003;71:112-23.
- 16 [14] Mandal PK. Dioxin: a review of its environmental effects and its aryl
17 hydrocarbon receptor biology. *J Comp Physiol B* 2005;175:221-30.
- 18 [15] Nebert DW, Dalton TP, Okey AB, Gonzalez FJ. Role of aryl hydrocarbon
19 receptor-mediated induction of the CYP1 enzymes in environmental toxicity and
20 cancer. *J Biol Chem* 2004;279:23847-50.
- 21 [16] Pocar P, Fischer B, Klonisch T, Hombach-Klonisch S. Molecular interactions of
22 the aryl hydrocarbon receptor and its biological and toxicological relevance for
23 reproduction. *Reproduction* 2005;129:379-89.
- 24 [17] Kitajima M, Khan KN, Fujishita A, Masuzaki H, Koji T, Ishimaru T. Expression
25 of the arylhydrocarbon receptor in the peri-implantation period of the mouse
26 uterus and the impact of dioxin on mouse implantation. *Arch Histol Cytol*

- 1 2004;67:465-74.
- 2 [18] Johnson DC, Sen M, Dey SK. Differential effects of
3 dichlorodiphenyltrichloroethane analogs, chlordecone, and
4 2,3,7,8-tetrachlorodibenzo-p-dioxin on establishment of pregnancy in the
5 hypophysectomized rat. *Proc Soc Exp Biol Med* 1992;199:42-8.
- 6 [19] Horcajadas JA, Riesewijk A, Martin J, Cervero A, Mosselman S, Pellicer A, et al.
7 Global gene expression profiling of human endometrial receptivity. *J Reprod*
8 *Immunol* 2004;63:41-9.
- 9 [20] Mirkin S, Arslan M, Churikov D, Corica A, Diaz JI, Williams S, et al. In search
10 of candidate genes critically expressed in the human endometrium during the
11 window of implantation. *Hum Reprod* 2005;20:2104-17.
- 12 [21] Liu Y, Lee KF, Ng EH, Yeung WS, Ho PC. Gene expression profiling of human
13 peri-implantation endometria between natural and stimulated cycles. *Fertil Steril*
14 2008;90:2152-64.
- 15 [22] Liu Y, Kodithuwakku SP, Ng PY, Chai J, Ng EH, Yeung WS, et al. Excessive
16 ovarian stimulation up-regulates the Wnt-signaling molecule DKK1 in human
17 endometrium and may affect implantation: an in vitro co-culture study. *Hum*
18 *Reprod* 2010;25:479-90.
- 19 [23] Wu W, Glinka A, Delius H, Niehrs C. Mutual antagonism between dickkopf1
20 and dickkopf2 regulates Wnt/beta-catenin signalling. *Curr Biol* 2000;10:1611-4.
- 21 [24] Hou X, Tan Y, Li M, Dey SK, Das SK. Canonical Wnt signaling is critical to
22 estrogen-mediated uterine growth. *Mol Endocrinol* 2004;18:3035-49.
- 23 [25] Mohamed OA, Jonnaert M, Labelle-Dumais C, Kuroda K, Clarke H, Dufort D.
24 Uterine Wnt/beta-catenin signaling is required for implantation. *Proc Natl Acad*
25 *Sci USA* 2005;102:8579-84.
- 26 [26] Xie H, Tranguch S, Jia X, Zhang H, Das SK, Dey SK, et al. Inactivation of

- 1 nuclear Wnt-beta-catenin signaling limits blastocyst competency for
2 implantation. *Development* 2008;135:717-27.
- 3 [27] Livak, KJ, Schmittgen, TD. Analysis of relative gene expression data using
4 real-time quantitative pcr and the $2(-\Delta\Delta C_t)$ method. *Methods*
5 2001;25:402-8.
- 6 [28] Hohn HP, Linke M, Denker HW. Adhesion of trophoblast to uterine epithelium
7 as related to the state of trophoblast differentiation: in vitro studies using cell
8 lines. *Mol Reprod Dev* 2000;57:135-45.
- 9 [29] Kodithuwakku SP, Ng PY, Liu Y, Ng EH, Yeung WS, Ho PC, et al. Hormonal
10 regulation of endometrial olfactomedin expression and its suppressive effect on
11 spheroids attachment onto endometrial epithelial cells. *Hum Reprod*
12 2011;26:167-75.
- 13 [30] Kishida S, Yamamoto H, Kikuchi A. Wnt-3a and Dvl induce neurite retraction
14 by activating Rho-associated kinase. *Mol Cell Biol* 2004;24:4487-501.
- 15 [31] Wu Q, Ohsako S, Baba T, Miyamoto K, Tohyama C. Effects of
16 2,3,7,8-tetrachlorodibenzo-p-dioxin (TCDD) on preimplantation mouse embryos.
17 *Toxicology* 2002;174:119-29.
- 18 [32] Bofinger DP, Feng L, Chi LH, Love J, Stephen FD, Sutter TR, et al. Effect of
19 TCDD exposure on cyp1a1 and cyp1b1 expression in explant cultures of human
20 endometrium. *Toxicol Sci* 2001;62:299-314.
- 21 [33] Chen J, Thirkill TL, Overstreet JW, Lasley BL, Douglas GC. Effect of
22 2,3,7,8-tetrachlorodibenzo-p-dioxin (TCDD) on chorionic gonadotropin
23 secretion by human trophoblasts. *Reprod Toxicol* 2003;17:87-93.
- 24 [34] Heiden TK, Carvan MJ 3rd, Hutz RJ. Inhibition of follicular development,
25 vitellogenesis, and serum 17beta-estradiol concentrations in zebrafish following
26 chronic, sublethal dietary exposure to 2,3,7,8-tetrachlorodibenzo-p-dioxin.

- 1 Toxicol Sci 2006;90:490-9.
- 2 [35] Li B, Liu HY, Dai LJ, Lu JC, Yang ZM, Huang L. The early embryo loss caused
3 by 2,3,7,8-tetrachlorodibenzo-p-dioxin may be related to the accumulation of
4 this compound in the uterus. *Reprod Toxicol* 2006;21:301-6.
- 5 [36] Chen SC, Liao TL, Wei YH, Tzeng CR, Kao SH. Endocrine disruptor, dioxin
6 (TCDD)-induced mitochondrial dysfunction and apoptosis in human
7 trophoblast-like JAR cells. *Mol Hum Reprod* 2010;16:361-72.
- 8 [37] Zhang L, Shiverick KT. Benzo(a)pyrene, but not
9 2,3,7,8-tetrachlorodibenzo-p-dioxin, alters cell proliferation and c-myc and
10 growth factor expression in human placental choriocarcinoma JEG-3 cells.
11 *Biochem Biophys Res Commun* 1997;231:117-20.
- 12 [38] Blankenship AL, Suffia MC, Matsumura F, Walsh KJ, Wiley LM.
13 2,3,7,8-Tetrachlorodibenzo-p-dioxin (TCDD) accelerates differentiation of
14 murine preimplantation embryos in vitro. *Reprod Toxicol* 1993;7:255-61.
- 15 [39] Matthews M, Heimler I, Fahy M, Radwanska E, Hutz R, Trewin A, et al. Effects
16 of dioxin, an environmental pollutant, on mouse blastocyst development and
17 apoptosis. *Fertil Steril* 2001;75:1159-62.
- 18 [40] Guo Y, Hendrickx AG, Overstreet JW, Dieter J, Stewart D, Tarantal AF, et al.
19 Endocrine biomarkers of early fetal loss in cynomolgus macaques (*Macaca*
20 *fascicularis*) following exposure to dioxin. *Biol Reprod* 1999;60:707-13.
- 21 [41] Collins LL, Lew BJ, Lawrence BP. TCDD exposure disrupts mammary
22 epithelial cell differentiation and function. *Reprod Toxicol* 2009;28:11-7.
- 23 [42] Rahnema F, Thompson B, Steiner M, Shafiei F, Lobie PE, Mitchell MD.
24 Epigenetic regulation of E-cadherin controls endometrial receptivity.
25 *Endocrinology* 2009;150:1466-72.
- 26 [43] Thie M, Fuchs P, Butz S, Sieckmann F, Hoschützky H, Kemler R, Denker HW.

1 Adhesiveness of the apical surface of uterine epithelial cells: the role of
2 junctional complex integrity. *Eur J Cell Biol.* 1996;70:221-32.

3 [44] Liu G, Zhang X, Lin H, Wang H, Li Q, Ni J, Zhu C. Effects of E-cadherin on
4 mouse embryo implantation and expression of matrix metalloproteinase-2 and -9.
5 *Biochem Biophys Res Commun.* 2006;343:832-8.

6 [45] Larue L, Ohsugi M, Hirchenhain J, Kemler R. E-cadherin null mutant embryos
7 fail to form a trophectoderm epithelium. *Proc Natl Acad Sci USA*
8 1994;91:8263-7.

9 [46] Mueller MD, Vigne JL, Streich M, Tee MK, Raio L, Dreher E, Bersinger NA,
10 Taylor RN. 2,3,7,8-Tetrachlorodibenzo-p-dioxin increases glycodeilin gene and
11 protein expression in human endometrium. *J Clin Endocrinol Metab.*
12 2005;90:4809-15.

13
14
15

1 **Figure Legend**

2 **Figure 1 Effect of TCDD on AhR and Cyp1A1 expression in trophoblastic**
3 **(BeWo and Jeg-3) and endometrial epithelial (RL95-2 and Ishikawa) cells.** (A)

4 Western blotting on the expression of AhR in TCDD (0.01-10nM)-treated RL95-2
5 cells. (B) The expression of AhR transcript levels in TCDD-treated trophoblastic
6 and endometrial epithelial cells were determined by quantitative PCR. (C) Western
7 blotting on the expression of Cyp1A1 in TCDD (0.01-10nM)-treated RL95-2 cells.
8 (D) The expression of Cyp1A1 transcript levels in TCDD-treated trophoblastic and
9 endometrial epithelial cells was determined by real-time PCR.

10

11 **Figure 2 Effect of TCDD on the attachment of trophoblastic spheroids to**
12 **endometrial epithelial cells.** (A) BeWo cells treated with TCDD were trypsinized

13 and shaken for 24 hours to obtain spheroids of 60–200µm in size. The spheroids were
14 put onto an RL95-2 monolayer for an hour and the number of spheroids attached was
15 determined as a percentage of the number of spheroids added. Spheroids derived
16 from JAr cells treated with MTX (5µM) and DMSO (solvent control) were used as
17 positive and negative controls, respectively. (B) The effect of TCDD treatment on
18 spheroids attachment onto endometrial cells was determined at 1 hour after co-culture.
19 TCDD (0.1-10nM) dose-dependently suppresses BeWo and Jeg-3 attachment onto
20 RL95-2 and Ishikawa cells, respectively. The results were pooled from at least 4
21 independent experiments using more than 2000 spheroids. *, ** denotes significant
22 difference ($p < 0.05$) from the control.

23

24 **Figure 3 Effect of TCDD on the expression of E-cadherin and β-catenin in BeWo**
25 **and RL95-2 cells.** (A) BeWo and (B) RL95-2 cells were treated with 0.1-10nM

26 TCDD for 24 hours and the expression levels of E-cadherin and β-catenin proteins

1 were determined by Western blotting. The protein loading was normalized by β -actin
2 expression. * denotes significant difference ($p < 0.05$) from the control.

3

4 **Figure 4 Wnt3a and lithium chloride induced the Wnt-signaling pathway,**
5 **restored β -catenin and E-cadherin expressions and spheroids attachment.** (A)

6 Wnt3A conditioned medium and LiCl ($40\mu\text{M}$) restores β -catenin and E-cadherin, ~~but~~
7 ~~not GSK-3 β~~ expressions in the TCDD treated BeWo and RL95-2 cells. The

8 expression of β -actin protein was used as a loading control. (B) Both Wnt3A and

9 LiCl restored the suppressed spheroids attachment rate by TCDD onto endometrial

10 epithelial cells. Wnt3a alone has a stimulatory effect on spheroids attachment in

11 BeWo and RL95-2 cells. *, ** denotes significant difference ($p < 0.05$ and < 0.01 ,

12 respectively) from the control.

13

Figure 1

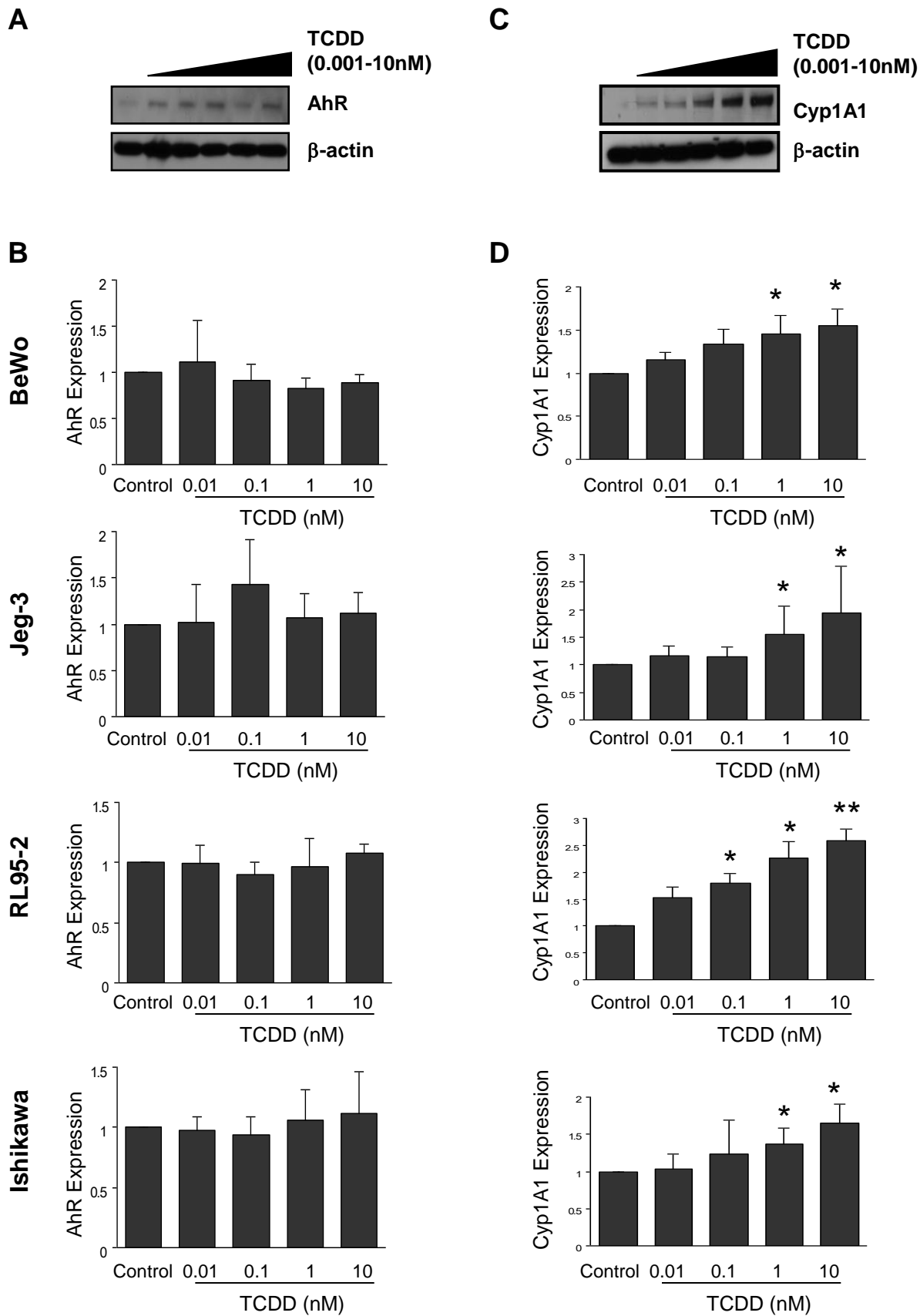
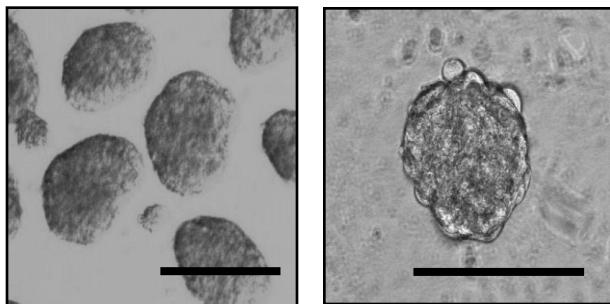


Figure 2

A



Spheroids

**Spheroid on
RL95-2 cells**

B

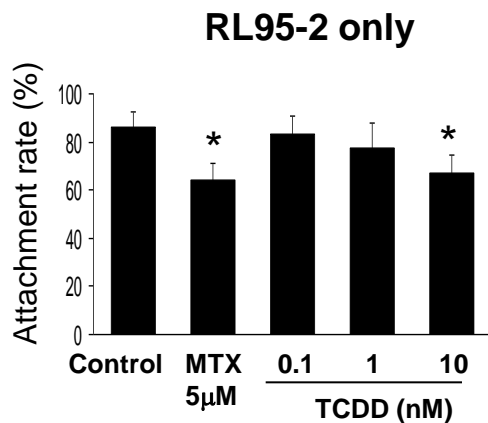
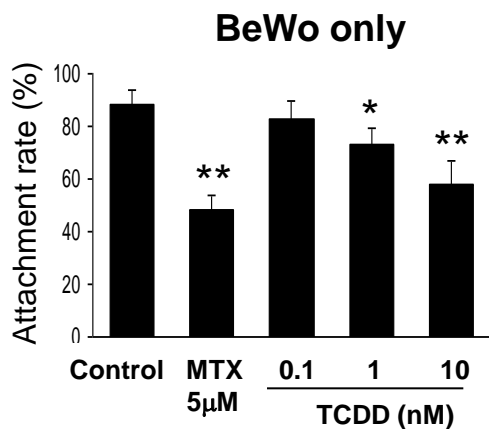
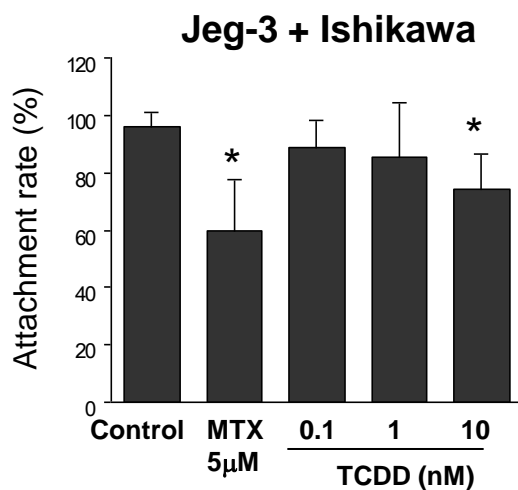
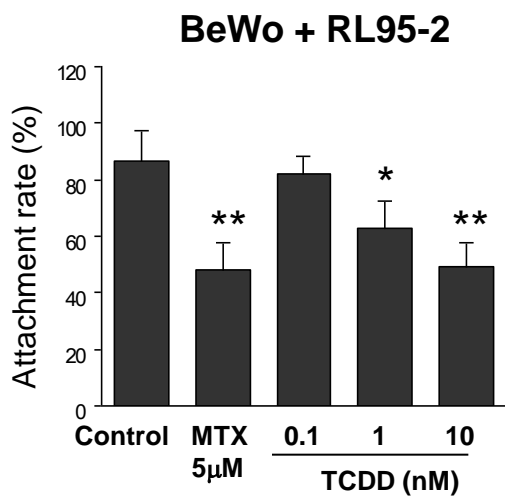
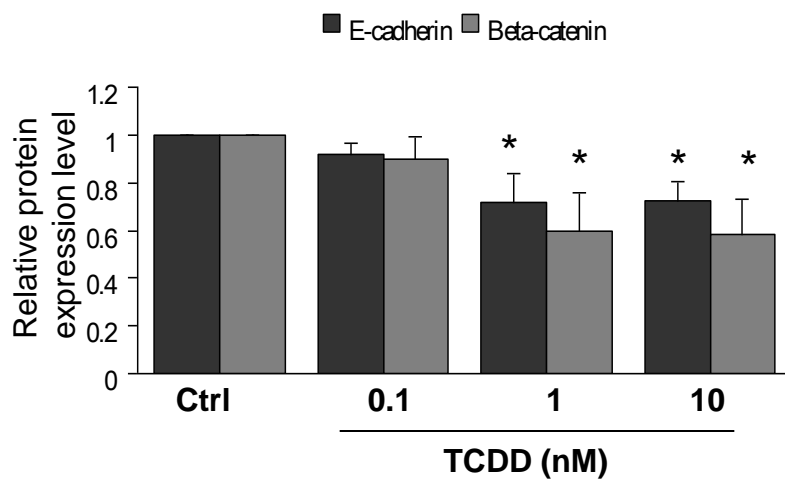
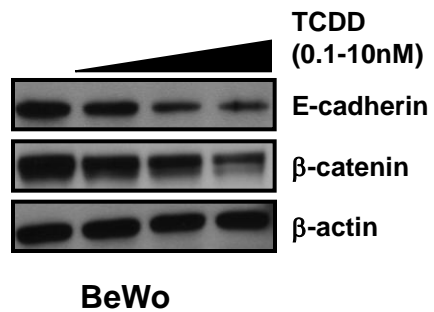


Figure 3

A



B

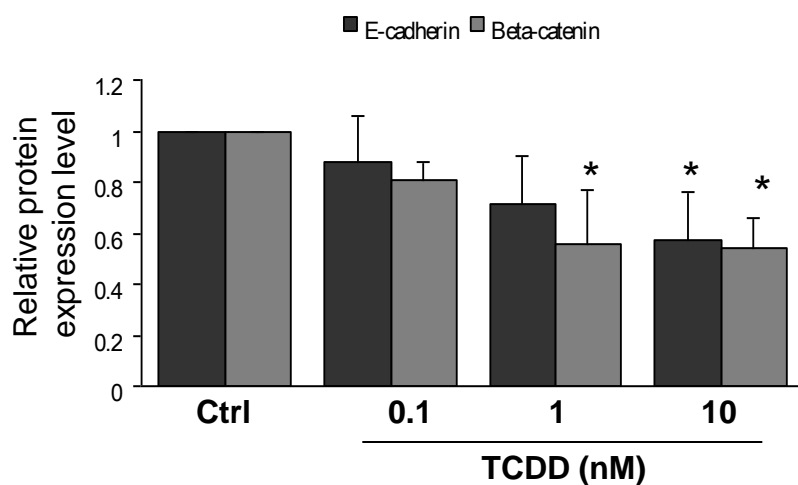
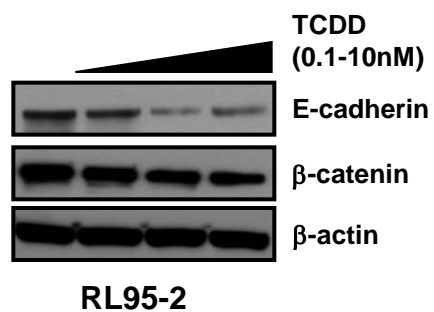
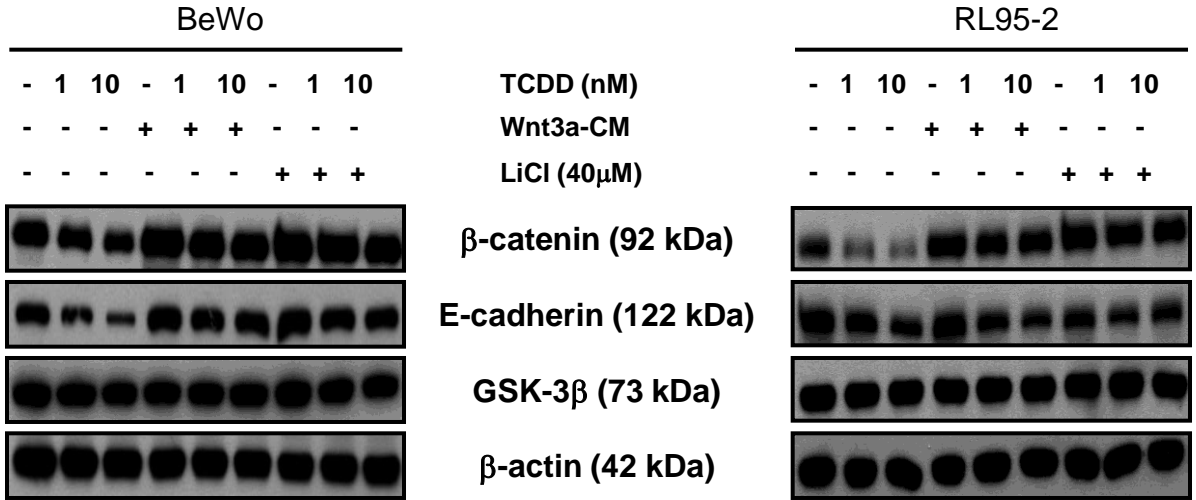


Figure 4

A



B

