



<b>Title</b>	<b>A bootstrap-based regression method for comprehensive discovery of differential gene expressions: An application to the osteoporosis study</b>
<b>Author(s)</b>	<b>Lu, Y; Liu, YZ; Liu, PY; Dvornyk, V; Deng, HW</b>
<b>Citation</b>	<b>European Journal Of Medical Genetics, 2011, v. 54 n. 6, p. e560-e564</b>
<b>Issued Date</b>	<b>2011</b>
<b>URL</b>	<b><a href="http://hdl.handle.net/10722/140927">http://hdl.handle.net/10722/140927</a></b>
<b>Rights</b>	<b>Creative Commons: Attribution 3.0 Hong Kong License</b>

# **A bootstrap-based regression method for comprehensive discovery of differential gene expressions: an application to the osteoporosis study**

Yan Lu<sup>1,2</sup>, Yao-Zhong Liu<sup>3</sup>, Peng-Yuan Liu<sup>2</sup>,  
Volodymyr Dvornyk<sup>4</sup>, and Hong-Wen Deng<sup>1,3</sup>

1. College of Life Sciences and Bioengineering, Beijing Jiaotong University, Beijing 100044, P. R. China
2. Department of Physiology and the Cancer Center, Medical College of Wisconsin, Milwaukee, WI 53226, USA
3. Department of Biostatistics and Bioinformatics & Center for Bioinformatics and Genomics, Tulane University School of Public Health, New Orleans, LA 70112, USA
4. School of Biological Sciences, University of Hong Kong, Pokfulam Rd., Pokfulam, Hong Kong, P.R. China

**Running title:** Bootstrap-based regression method for microarray analysis

**Key words:** microarray, bootstrap, regression, osteoporosis

**Corresponding author:**

Hong-Wen Deng, Ph. D.

Department of Biostatistics and Bioinformatics & Center for Bioinformatics and Genomics,  
Tulane University School of Public Health, 1440 Canal Street, Suite 2001, New Orleans, LA  
70112

Tel: 504-988-1310

Email: [hdeng2@tulane.edu](mailto:hdeng2@tulane.edu)

## **Abstract**

A common purpose of microarray experiments is to study the variation in gene expression across the categories of an experimental factor such as tissue types and drug treatments. However, it is not uncommon that the studied experimental factor is a quantitative variable rather than categorical variable. Loss of information would occur by comparing gene-expression levels between groups that are factitiously defined according to the quantitative threshold values of an experimental factor. Additionally, lack of control for some sensitive clinical factors may bring serious false positive or negative findings.

In the present study, we described a bootstrap-based regression method for analyzing gene expression data from the non-categorical microarray experiments. To illustrate the utility of this method, we applied it to our recent gene-expression study of circulating monocytes in subjects with a wide range of variations in bone mineral density (BMD). This method allows a comprehensive discovery of gene expressions associated with osteoporosis-related traits while controlling other common confounding factors such as height, weight and age. Several genes identified in our study are involved in osteoblast and osteoclast functions and bone remodeling and/or menopause-associated estrogen-dependent pathways, which provide important clues to understand the etiology of osteoporosis.

Availability: SAS code is available from the authors upon request.

# Introduction

DNA microarrays are a powerful tool to provide a comprehensive picture of cell function as they can assay expression of tens of thousands of genes simultaneously. A typical microarray experiment may involve a comparison between disease and normal tissues, or a comparison between a strain grown under an experimental treatment and the same strain under a control condition. Various fold-change algorithms or  $t$  statistics were used for statistical analyses of this kind of two-sample experiment designs (1, 2). More complex experimental designs, in contrast, may comprise more than two samples as characterized by their genotypes, environments or developmental stages (3-5). A common purpose of these microarray experiments is to study the variation in gene expression across the categories of an experimental factor such as the above mentioned tissue types and drug treatments. However, an experimental factor is often a quantitative variable rather than a categorical variable. Loss of information would occur by comparing gene-expression levels between groups that are factitiously defined according to quantitative threshold values of an experimental factor. Additionally, lack of control for some sensitive clinical factors such as height, weight and age may yield serious false positive or negative findings.

In the present study, we described a bootstrap-based regression method for analyzing DNA expression data from the non-categorical microarray experiments. Bootstrap is an interesting method to select covariables in multivariable models. It allows increasing internal validity of models (6) and has been used widely in biology (7, 8). To illustrate the utility of this method, we applied it to our recent gene-expression study of circulating monocytes in subjects with a wide range of variations in bone mineral density (BMD). BMD, a quantitative clinical phenotype, is a major risk factor for osteoporosis in the elderly especially in the postmenopausal women (9). BMD has a large genetic determinant while is significantly affected by height, weight, age, and life-style factors such as smoking, exercise and alcohol consumption (10-14). Menopause is a major physiological event associated with accelerated bone loss in females (15). Using the proposed

method, we attempted to identify differentially expressed genes associated with BMD variation and menopausal events while controlling other confounding factors such as height, weight and age.

## **Methods**

### *Subjects and measurement*

The study subjects came from an expanding database being created for genetic studies of osteoporosis, which are underway in the Osteoporosis Research Center of Creighton University. Since our major goal is to find genes related to osteoporosis, the exclusion criteria to exclude diseases or medications known to affect bone metabolism were used. Given that monocytes were used in this study, the additional exclusion criteria were also implemented to exclude those diseases/conditions, which may lead to gene expression changes of blood monocytes. All the exclusion criteria were detailed earlier by Liu et al. (16).

We analyzed gene expressions of blood monocytes using Affymetrix HG-U133A GeneChip®, containing probes for 14,500 genes. The raw fluorescence intensity data within CEL files were processed with Robust Multichip Average (RMA) algorithm (17), as implemented with R packages from Bioconductor ([www.bioconductor.org](http://www.bioconductor.org)). Blood monocytes were obtained from 19 otherwise healthy women, each woman had total hip BMD, lumbar spine BMD (L1-L4), weight and height measurements, and completed a questionnaire with age, menopause status and years since menopause for postmenopausal women. Hip and spine BMD were measured with Hologic 4500 dual energy X ray absorptiometry (DXA) scanners (Hologic Corporation, Waltham, Massachusetts, USA). The machine was calibrated daily. The coefficient of variation (CV) values of the DXA measurements for BMD is 0.9%. Weight was measured using a calibrated balance beam scale; height was measured using a calibrated stadiometer. Table 1 presents the basic characteristics of the study subjects.

### *Statistical methods*

Let  $y_n$  be the expression level for gene  $n$  and  $x$  be a vector of experimental factors of interest (such as BMD, menopause status and years since menopause) and potential clinical covariates (such as height, weight and age). Then, the model for a multiple linear regression takes the form,

$$y_n = \alpha + \beta x + \varepsilon$$

where  $\alpha$  is regression intercept,  $\beta$  are regression coefficients and  $\varepsilon$  is residual. Note that the years since menopause for premenopausal women were set to zero. The stepwise method was used for choosing independent variables in this multiple regression model. The selection  $p$  value for both inclusion and exclusion of a variable in the regression model was set as 0.05. In our preliminary data, there were 6363 genes for each of which at least one independent variable was selected in the model. To obtain a robust list of important genes in relation to the independent variables, 1000 bootstrap resampling was used to estimate bootstrap frequencies of each variable selected in the regression model for each gene. We observed that the random sampling errors are very low when using 1000 bootstrap samples. If a variable has strong bootstrap support (frequency greater than 80%), this variable is regarded to be related with the tested gene. Although 80% bootstrap frequency was an empirical threshold, we believe this threshold is very stringent for choosing BMD-related genes. All statistical analyses were implemented in the SAS 8.0e (SAS Institute, Cary, N.C., USA).

## Results and Discussion

Using the standard of bootstrap frequency greater than 80%, we found 75 hip BMD-related genes, 173 spine BMD-related genes, 221 menopause-related genes, and 139 years since menopause-related genes (Supplemental Table 1).

Among BMD-related genes, 37.4% of them were associated with cellular protein metabolisms based on the inference of gene ontology (GO). Particularly, *BMPRIA*, *TNFRSF10C*, *TNF*, *FIP2*, *TGFBRI*, *CCL11*, *PTHBI*, *CXCL3* and *MTHFR* are potentially involved in osteoblast and osteoclast functions and bone

remodeling according to the currently available literatures. *BMPR1A* is bone morphogenetic protein receptor (BMP), type 1A. A recent mouse mutation study demonstrated essential and age-dependent roles for BMP signaling mediated by *BMPRIA* in osteoblasts for bone remodeling (18). *BMPRIA* is located on the human chromosome 10q22.3. Klein et al. reported two mouse QTLs for whole body BMD in the genomic regions homologous to human 10q21-24 and 10q23-26 (19, 20). *TNFRSF10C*, *TNF* and *FIP2* are members of tumor necrosis factor (TNF) superfamily. *TNF* is a proinflammatory cytokine that promotes osteoclastic bone resorption and inhibits osteoblast differentiation (21-23). *CCL11* is another proinflammatory cytokine important to osteoarthritis. The *CCL11* expresses eotaxin-1 induced by treatment with interleukin-1 $\beta$  and TNF- $\alpha$  and plays an important role in cartilage degradation in osteoarthritis. *TGFBRI* is a transforming growth factor (TGF) beta receptor whose expression is important in mediating 1 $\alpha$ , 25(OH) 2D3-associated changes in the growth rate of osteoblasts (24). *PTHBI* (parathyroid hormone-responsive B1) is downregulated by parathyroid hormone in osteoblastic cells, and therefore, is thought to be involved in parathyroid hormone action in bones. *CXCL3* is a chemokine (C-X-C motif) ligand. *CXCL3* is potentially involved in chemokine activity based on the NCBI GO inference, which is known to participate in bone monocyte recruitment (25, 26). *MTHFR* (5,10-methylenetetrahydrofolate reductase) can affect the methylation of homocysteine to methionine and high serum homocysteine concentrations have adverse effects on bone (27, 28). A polymorphism of the *MTHFR* gene, C677T, which causes an alanine to valine substitution and gives rise to a thermolabile variant of the MTHFR protein with reduced activity (29), was associated with elevated levels of circulating homocysteine (30) and lumbar spine BMD (31). During the past two years, a number of association studies appeared with regard to its relevance to osteoporosis (32-35). It is worth noting that several osteoblast-related genes such as *BMPRIA* and *PTHBI* were found in circulating monocytes which are early precursors of osteoclasts. Bone loss in osteoporosis is due to the persistent excess of bone resorption over bone formation. Osteoblasts play a central role in bone formation by synthesizing multiple bone matrix proteins, while they also regulate osteoclast maturation by soluble factors and cognate interactions, resulting in bone resorption. For example, while FGF-2 induces *RANKL* expression by

osteoblasts, it also inhibits osteoclast differentiation directly by interfering with the action of M-CSF (36). Thus, osteoclast differentiation, formation, and, to a lesser degree, activation depend upon the proximity and products of the osteoblast. Therefore, it is not unexpected to identify osteoblast-related genes differentially expressed in monocytes in the present study. These genes may regulate the balance between osteoblast and osteoclast activity that is important for bone remodeling and health.

Among genes that are related to menopausal status or years since menopause, several are upstream and downstream targets of estrogen receptors, including *MAPK1*, *U29725*, laminin  $\alpha 2$ , laminin  $\beta 1$ , *PLAU*, *PRKD3*, *ALPP*, *ADAM2*, *ADAM21*, *ADAM22*, *ADAMTS2*, *ADAMTS6*, *TNFSF13*, *TNFRSF13B*, *TNFRSF25*, *TRADD*, *TNFAIP6* and *IL22R*. The expression changes of these genes may be due to the fact that ovaries reduce and stop producing estrogen in postmenopausal women. In our data, the status of menopause had effects on *MAPK1* gene expression (bootstrap frequency=83.5%) and years since menopause affected *U29725* (*MAPK7*) gene expression (bootstrap frequency=93.5%). Estrogen can activate the MAPK family member extracellular regulated kinase-1 (*ERK-1*). Increases in ERK activation coincided with increased ER- $\alpha$  phosphorylation. Reduced availability of this pathway when estrogen levels are reduced could explain diminished effectiveness of mechanically related control of bone architecture after the menopause (37). Two laminin genes, laminin  $\alpha 2$  and laminin  $\beta 1$ , were detected to be associated with menopausal status and years since menopause, which were potentially involved in maintenance of estrogen receptor alpha expression (38). *PLAU* (urokinase-type plasminogen activator) was shown to be downregulated by ovariectomy but restored with estrogen during fracture healing (39). *PRKD3* is a member of protein kinase C (PKC) family. Recent data revealed a direct PKC $\alpha$ -c-Src-ER $\alpha$  interaction, which may be crucial in the modulation of estrogen responsiveness and the differentiation process in osteoblasts (40). *ALPP* (alkaline phosphatase) is a bone formation marker. Bone alkaline phosphatase was significantly increased in postmenopausal women (41). Interestingly, we found three genes (*ADAM2*, *ADAM21* and *ADAM22*) that encode a member of the ADAM (a disintegrin and metalloprotease domain) family and two genes (*ADAMTS2* and *ADAMTS6*) that encode a



member of the ADAM with thrombospondin motifs (ADAMTS) protein family. Both ADAM and ADAMTS gene families have been shown to play a role in bone osteoblast function in several recent studies (42-45). It has been suggested that one of the mechanisms by which estrogen protects against postmenopausal osteoporosis is by modulating the production of cytokines, such as tumor necrosis factors (TNF), interleukin-1 (IL-1) and interleukin-6 (IL-6), in the bone microenvironment (46). In our data, five TNF superfamily genes (*TNFSF13*, *TNFRSF13B*, *TNFRSF25*, *TRADD* and *TNFAIP6*) and one interleukin cytokine (*IL22R*) were associated with menopausal female events.

Figure 1 shows hierarchical clustering for 19 samples using differential expression associated with BMD variation, menopausal status, and years since menopause. According to the results of the cluster analysis, women with hip BMD value greater than 0.9 were classified into one group and those smaller than 0.9 were classified into another group. Pre- and postmenopausal women also had quite distinct patterns of gene expression and therefore were clearly clustered into two well-defined groups. Based on the expression data associated with years since menopause, those women who have not experienced or recently experienced menopause were classified into one group, while those women who have experienced menopause for a long time (at least more than 4 years) were classified into another group.

## Conclusions

In summary, we described a bootstrap-based regression method for handling expression data from the non-categorical microarray experiments. This method allows a comprehensive discovery of gene expressions associated with osteoporosis-related traits while controlling other common confounding factors such as height, weight and age. We prioritized a small list of candidate genes for future confirmation studies in terms of their functional relevance to osteoblast and osteoclast functions and bone remodeling and/or menopause-associated estrogen-dependent pathways. These gene expression data provide important clues to understand the etiology of osteoporosis.

## **Acknowledgments**

Investigators of this work were partially supported by grants from NIH, State of Nebraska and CNSF. The study was also benefited by grants from Huo Ying Dong Education Foundation, the Ministry of Education of China, and Xi'an Jiaotong University.

## Reference List

- (1) Chen Y, Kamat V, Dougherty ER, Bittner ML, Meltzer PS, Trent JM. Ratio statistics of gene expression levels and applications to microarray data analysis. *Bioinformatics* 2002 Sep,**18**(9), 1207-1215.
- (2) Dudoit S, Yang YH, Callow MJ, Speed TP. Statistical methods for identifying differentially expressed genes in replicated cDNA microarray experiments. *Stat Sin* 2000,**11**, 111-139.
- (3) Kerr MK, Martin M, Churchill GA. Analysis of variance for gene expression microarray data. *J Comput Biol* 2000,**7**(6), 819-837.
- (4) Kerr MK, Churchill GA. Experimental design for gene expression microarrays. *Biostatistics* 2001 Jun,**2**(2), 183-201.
- (5) Lu Y, Zhu J, Liu P. A two-step strategy for detecting differential gene expression in cDNA microarray data. *Curr Genet* 2005 Feb,**47**(2), 121-131.
- (6) Steyerberg EW, Bleeker SE, Moll HA, Grobbee DE, Moons KG. Internal and external validation of predictive models: a simulation study of bias and precision in small samples. *J Clin Epidemiol* 2003 May,**56**(5), 441-447.
- (7) Azoulay E, Alberti C, Legendre I, Buisson CB, Le G, Jr. Post-ICU mortality in critically ill infected patients: an international study. *Intensive Care Med* 2005 Jan,**31**(1), 56-63.
- (8) Azoulay E, Recher C, Alberti C, et al. Changing use of intensive care for hematological patients: the example of multiple myeloma. *Intensive Care Med* 1999 Dec,**25**(12), 1395-1401.
- (9) Liu YZ, Liu YJ, Recker RR, Deng HW. Molecular studies of identification of genes for osteoporosis: the 2002 update. *J Endocrinol* 2003 May,**177**(2), 147-196.
- (10) Deng HW, Xu FH, Davies KM, Heaney R, Recker RR. Differences in bone mineral density, bone mineral content, and bone areal size in fracturing and non-fracturing women, and their interrelationships at the spine and hip. *J Bone Miner Metab* 2002,**20**(6), 358-366.

- (11) Gilsanz V, Loro ML, Roe TF, Sayre J, Gilsanz R, Schulz EE. Vertebral size in elderly women with osteoporosis. Mechanical implications and relationship to fractures. *J Clin Invest* 1995 May,**95**(5), 2332-2337.
- (12) Ruff CB, Hayes WC. Sex differences in age-related remodeling of the femur and tibia. *J Orthop Res* 1988,**6**(6), 886-896.
- (13) Seeman E. The structural basis of bone fragility in men. *Bone* 1999 Jul,**25**(1), 143-147.
- (14) Stein MS, Thomas CD, Feik SA, Wark JD, Clement JG. Bone size and mechanics at the femoral diaphysis across age and sex. *J Biomech* 1998 Dec,**31**(12), 1101-1110.
- (15) Recker R, Lappe J, Davies K, Heaney R. Characterization of perimenopausal bone loss: a prospective study. *J Bone Miner Res* 2000 Oct,**15**(10), 1965-1973.
- (16) Liu YZ, Dvornyk V, Lu Y, et al. A novel pathophysiological mechanism for osteoporosis suggested by an in vivo gene expression study of circulating monocytes. *J Biol Chem* 2005 Aug 12,**280**(32), 29011-29016.
- (17) Irizarry RA, Bolstad BM, Collin F, Cope LM, Hobbs B, Speed TP. Summaries of Affymetrix GeneChip probe level data. *Nucleic Acids Res* 2003 Feb 15,**31**(4), e15.
- (18) Mishina Y, Starbuck MW, Gentile MA, et al. Bone morphogenetic protein type IA receptor signaling regulates postnatal osteoblast function and bone remodeling. *J Biol Chem* 2004 Jun 25,**279**(26), 27560-27566.
- (19) Klein RF, Mitchell SR, Phillips TJ, Belknap JK, Orwoll ES. Quantitative trait loci affecting peak bone mineral density in mice. *J Bone Miner Res* 1998 Nov,**13**(11), 1648-1656.
- (20) Klein RF, Turner RJ, Skinner LD, et al. Mapping quantitative trait loci that influence femoral cross-sectional area in mice. *J Bone Miner Res* 2002 Oct,**17**(10), 1752-1760.
- (21) Bertolini DR, Nedwin GE, Bringman TS, Smith DD, Mundy GR. Stimulation of bone resorption and inhibition of bone formation in vitro by human tumour necrosis factors. *Nature* 1986 Feb 6,**319**(6053), 516-518.

- (22) Nguyen L, Dewhirst FE, Hauschka PV, Stashenko P. Interleukin-1 beta stimulates bone resorption and inhibits bone formation in vivo. *Lymphokine Cytokine Res* 1991 Apr,**10**(1-2), 15-21.
- (23) Stashenko P, Dewhirst FE, Rooney ML, Desjardins LA, Heeley JD. Interleukin-1 beta is a potent inhibitor of bone formation in vitro. *J Bone Miner Res* 1987 Dec,**2**(6), 559-565.
- (24) Nagel D, Kumar R. 1 alpha,25-dihydroxyvitamin D3 increases TGF beta 1 binding to human osteoblasts. *Biochem Biophys Res Commun* 2002 Feb 8,**290**(5), 1558-1563.
- (25) Graves DT, Jiang Y, Valente AJ. The expression of monocyte chemoattractant protein-1 and other chemokines by osteoblasts. *Front Biosci* 1999 Jul 1,**4**, D571-D580.
- (26) Kimura S, Wang KY, Tanimoto A, Murata Y, Nakashima Y, Sasaguri Y. Acute inflammatory reactions caused by histamine via monocytes/macrophages chronically participate in the initiation and progression of atherosclerosis. *Pathol Int* 2004 Jul,**54**(7), 465-474.
- (27) Hak AE, Polderman KH, Westendorp IC, et al. Increased plasma homocysteine after menopause. *Atherosclerosis* 2000 Mar,**149**(1), 163-168.
- (28) Passaro A, Vanini A, Calzoni F, et al. Plasma homocysteine, methylenetetrahydrofolate reductase mutation and carotid damage in elderly healthy women. *Atherosclerosis* 2001 Jul,**157**(1), 175-180.
- (29) Goyette P, Sumner JS, Milos R, et al. Human methylenetetrahydrofolate reductase: isolation of cDNA mapping and mutation identification. *Nat Genet* 1994 Aug,**7**(4), 551.
- (30) Frosst P, Blom HJ, Milos R, et al. A candidate genetic risk factor for vascular disease: a common mutation in methylenetetrahydrofolate reductase. *Nat Genet* 1995 May,**10**(1), 111-113.
- (31) Miyao M, Morita H, Hosoi T, et al. Association of methylenetetrahydrofolate reductase (MTHFR) polymorphism with bone mineral density in postmenopausal Japanese women. *Calcif Tissue Int* 2000 Mar,**66**(3), 190-194.
- (32) Abrahamsen B, Madsen JS, Tofteng CL, et al. A common methylenetetrahydrofolate reductase (C677T) polymorphism is associated with low bone mineral density and increased fracture incidence

after menopause: longitudinal data from the Danish osteoporosis prevention study. *J Bone Miner Res* 2003 Apr,**18**(4), 723-729.

- (33) Jacques PF, Bostom AG, Williams RR, et al. Relation between folate status, a common mutation in methylenetetrahydrofolate reductase, and plasma homocysteine concentrations. *Circulation* 1996 Jan 1,**93**(1), 7-9.
- (34) Macdonald ND, Salvesen HB, Ryan A, et al. Molecular differences between RER+ and RER- sporadic endometrial carcinomas in a large population-based series. *Int J Gynecol Cancer* 2004 Sep,**14**(5), 957-965.
- (35) McLean RR, Karasik D, Selhub J, et al. Association of a common polymorphism in the methylenetetrahydrofolate reductase (MTHFR) gene with bone phenotypes depends on plasma folate status. *J Bone Miner Res* 2004 Mar,**19**(3), 410-418.
- (36) Troen BR. Molecular mechanisms underlying osteoclast formation and activation. *Exp Gerontol* 2003 Jun,**38**(6), 605-614.
- (37) Jessop HL, Sjoberg M, Cheng MZ, Zaman G, Wheeler-Jones CP, Lanyon LE. Mechanical strain and estrogen activate estrogen receptor alpha in bone cells. *J Bone Miner Res* 2001 Jun,**16**(6), 1045-1055.
- (38) Novaro V, Radisky DC, Ramos Castro NE, Weisz A, Bissell MJ. Malignant mammary cells acquire independence from extracellular context for regulation of estrogen receptor alpha. *Clin Cancer Res* 2004 Jan 1,**10**(1 Pt 2), 402S-409S.
- (39) Hatano H, Siegel HJ, Yamagiwa H, et al. Identification of estrogen-regulated genes during fracture healing, using DNA microarray. *J Bone Miner Metab* 2004,**22**(3), 224-235.
- (40) Longo M, Brama M, Marino M, et al. Interaction of estrogen receptor alpha with protein kinase C alpha and c-Src in osteoblasts during differentiation. *Bone* 2004 Jan,**34**(1), 100-111.
- (41) Schurman L, Sedlinsky C, Mangano A, et al. Estrogenic status influences nitric oxide-regulated TNF-alpha release from human peripheral blood monocytes. *Exp Clin Endocrinol Diabetes* 2001,**109**(6), 340-344.

- (42) Mandelin J, Li TF, Hukkanen MV, et al. Increased expression of a novel osteoclast-stimulating factor, ADAM8, in interface tissue around loosened hip prostheses. *J Rheumatol* 2003 Sep,**30**(9), 2033-2038.
- (43) Miles RR, Sluka JP, Halladay DL, et al. ADAMTS-1: A cellular disintegrin and metalloprotease with thrombospondin motifs is a target for parathyroid hormone in bone. *Endocrinology* 2000 Dec,**141**(12), 4533-4542.
- (44) Stone AL, Kroeger M, Sang QX. Structure-function analysis of the ADAM family of disintegrin-like and metalloproteinase-containing proteins (review). *J Protein Chem* 1999 May,**18**(4), 447-465.
- (45) Zhou HM, Weskamp G, Chesneau V, et al. Essential role for ADAM19 in cardiovascular morphogenesis. *Mol Cell Biol* 2004 Jan,**24**(1), 96-104.
- (46) Ralston SH. Analysis of gene expression in human bone biopsies by polymerase chain reaction: evidence for enhanced cytokine expression in postmenopausal osteoporosis. *J Bone Miner Res* 1994 Jun,**9**(6), 883-890.

## Figure legend

**Figure 1** Hierarchical clustering for 19 samples using differential expression associated with (A) BMD variation, (B) menopausal status, and (C) years since menopause. Red indicates upregulated genes, and green represents down-regulated genes. At the top of panel A, the numbers represent hip BMD value of each woman. At the top of panel B, the letter “pre” represents premenopausal women and “post” represents postmenopausal women. At the top of panel C, the numbers represents years since menopause for each woman. Note that the years since menopause for premenopausal women were set to zero.

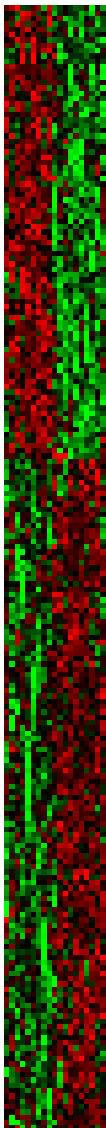
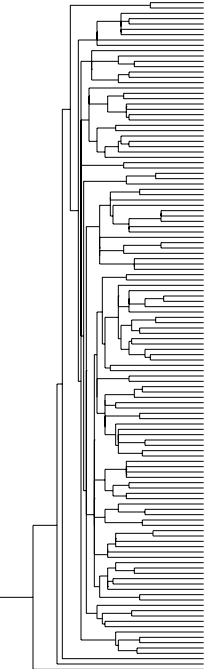
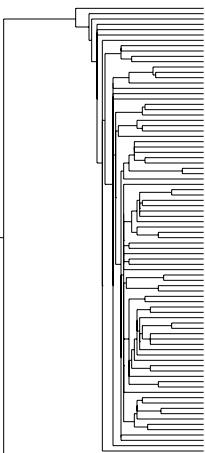
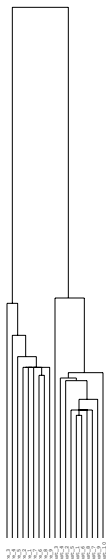


Table 1 Basic characteristics of the study subjects

Trait	Mean $\pm$ SD	Range
Hip BMD (g/cm <sup>2</sup> )	0.932 $\pm$ 0.169	0.721-1.339
Spine BMD (g/cm <sup>2</sup> )	1.023 $\pm$ 0.234	0.748-1.428
Age (years)	51 $\pm$ 2.54	47-55
Height (cm)	167.0 $\pm$ 7.5	154.8-177.4
Weight (kg)	77.0 $\pm$ 21.7	48.7-126.1
Years since menopause (years)	6.4 $\pm$ 4.7	1-15



B



PLD2001  
PLD2  
PLD3  
PLD4  
PLD5  
PLD6  
PLD7  
PLD8  
PLD9  
PLD10  
PLD11  
PLD12  
PLD13  
PLD14  
PLD15  
PLD16  
PLD17  
PLD18  
PLD19  
PLD20  
PLD21  
PLD22  
PLD23  
PLD24  
PLD25  
PLD26  
PLD27  
PLD28  
PLD29  
PLD30

