



| | |
|--------------------|--|
| Title | Single nucleotide polymorphisms of complement component 5 and periodontitis |
| Author(s) | Chai, L; Song, YQ; Zee, KY; Leung, WK |
| Citation | Journal of Periodontal Research, 2010, v. 45 n. 3, p. 301-308 |
| Issued Date | 2010 |
| URL | http://hdl.handle.net/10722/129097 |
| Rights | The definitive version is available at www3.interscience.wiley.com |

1
2
3
4
5
6
7
8
9
10
11
12
13
14
15
16
17
18
19
20
21
22
23
24
25
26
27
28
29
30
31
32
33
34
35
36
37
38
39
40
41
42
43
44
45
46
47
48
49
50
51
52
53
54
55
56
57
58
59
60

Single nucleotide polymorphisms of complement component 5 and periodontitis

L. Chai¹, Y.-Q. Song², K.-Y. Zee^{1,3} and W. K. Leung¹

¹Faculty of Dentistry, The University of Hong Kong, ²Department of Biochemistry, Li Ka Shing Faculty of Medicine, The University of Hong Kong, Hong Kong SAR, China, ³Current address: Periodontics, Westmead Centre for Oral Health, Westmead Hospital, New South Wales, Australia

Key words: Complement C5; Periodontitis; Polymorphism, Genetic; Smoking

Running title: SNPs of complement C5 and periodontitis

Date of resubmission: May 11, 2009

Corresponding author:

W. Keung Leung

Faculty of Dentistry, The University of Hong Kong, Room 3B39, Prince Philip Dental Hospital, 34 Hospital Road, Hong Kong SAR, China.

Tel: +852 28590417;

Fax: +852 28587874;

e-mail: ewkleung@hkucc.hku.hk

1
2
3 Chai L, Song Y-Q, Zee K-Y and Leung WK. Single nucleotide polymorphisms of
4 complement component 5 and periodontitis. *J Periodontal Res*
5
6
7
8
9

10 *Background and Objective:* Polymorphisms of host defence genes might increase
11 one's risks for periodontitis. This study investigated whether tagging single-nucleotide
12 polymorphisms (SNPs) of the gene encoding complement component 5 (C5) are
13 associated with periodontitis in a Hong Kong Chinese population.
14
15
16
17
18
19

20
21
22 *Material and Methods:* Eleven tagging SNPs of 229 patients with at least moderate
23 periodontitis and 207 control subjects without periodontitis were genotyped with an
24 i-plexGOLD MassARRAY mass-spectrometry system (Sequenom, San Diego, CA,
25 USA).
26
27
28
29
30
31
32
33

34 *Results:* Genotype AG of SNP rs17611 was more prevalent in the periodontitis patient
35 group than in the controls (54.6% vs. 41.7%, $p = 0.007$). The haplotype CGCA of the
36 haplotype block consisting of rs1035029, rs17611, rs25681, and rs992670 was
37 significantly associated with periodontitis in a dominant model ($p = 0.001$). The SNP
38 rs17611 showed high linkage disequilibrium with rs1035029, rs25681, and rs992670.
39 Smoking was also significantly associated with periodontitis ($p = 0.006$).
40
41
42
43
44
45
46
47
48
49

50
51 *Conclusion:* The tagging SNP rs17611 of the C5 gene and smoking may be associated
52 with periodontitis among the Hong Kong Chinese population.
53
54
55
56
57
58
59
60

1
2
3
4 Periodontitis is a complex human inflammatory disease that is caused by dental
5
6
7 plaque, and its clinical manifestations are determined by both environmental
8
9
10 influences on and genetic makeup of affected individuals. Polymorphisms of host
11
12
13 defence genes might also increase the risk of periodontitis (1).
14
15

16
17 The complement system is a lytic effector system that protects the host against
18
19 microbial pathogens and acts as a key link between innate and specific immune
20
21 responses (2, 3), and has been implicated in the pathogenesis of periodontitis. The
22
23 complement components have been detected in the gingival cervical fluid collected
24
25
26 from the periodontitis patients (4, 5). It has been reported that the increased
27
28
29 complement cleavage was associated with increased severity of inflammation and
30
31
32 periodontal destruction (6). The complement component deficiencies seemed
33
34
35 associated with severe chronic periodontitis (7). Complement component 5 (C5) is a
36
37
38 pivotal element in the complement system therefore could take part in the
39
40
41 pathogenesis of periodontitis. It is cleaved by C5 convertase to yield the C5b fragment
42
43
44 and the anaphylatoxin C5a. The latter binds to the G protein-coupled receptor C5aR to
45
46
47 trigger intracellular signalling, which results in chemotaxis, respiratory burst, and
48
49
50 release of proinflammatory mediators from granulocytes (8, 9). The C5b fragment
51
52
53 combines with complement components C6 and C7 to initiate the formation of the
54
55
56 membrane attack complex (MAC) in the membrane of invading microorganisms (10).
57
58
59
60

1
2
3
4 Because haplotype and tagging polymorphisms of C5 may be associated with some
5
6
7 chronic inflammatory diseases such as liver fibrosis, rheumatoid arthritis, and
8
9
10 bronchial asthma (11-16), C5 polymorphisms may also be important in chronic
11
12
13 inflammatory oral diseases such as periodontitis. Yet, published data on the relevance
14
15
16 of C5 polymorphisms in periodontitis are not yet available.
17

18
19 The objective of this study was to screen tagging single-nucleotide
20
21
22 polymorphisms (SNPs) of the C5 gene in Hong Kong Chinese patients with moderate
23
24
25 to severe periodontitis and in periodontitis-free controls. We investigated whether there
26
27
28 were any genetic variations in the C5 genes of these two groups and tested whether
29
30
31 such variations, together with other possible risk factors such as smoking status, age
32
33
34 and sex, were associated with periodontitis.
35
36
37
38
39
40
41
42
43

44 **Materials and methods**

45
46
47
48
49
50 This case-control study was approved by the Ethics Committee of the Faculty of
51
52
53 Dentistry, The University of Hong Kong. Written informed consent was obtained from
54
55
56 all participants.
57
58
59
60

Study participants

Participants were recruited from new patients attending the Primary Care Clinic, Prince Philip Dental Hospital (PPDH), Faculty of Dentistry, The University of Hong Kong, from May 2005 to August 2007. Patients' records and radiographs were screened within 1 month of first attendance and potentially eligible patients were invited to attend a clinical examination. Demographic information and medical and dental histories were obtained from patients' records, supplemented by information obtained during the day of the clinical examination. Race and ethnicity were self-reported, with a participant being considered Chinese if his or her biological parents, grandparents, and great grandparents were all reported to be ethnic Chinese. Smoking history was self-reported; patients who currently smoked or who had quit within 12 months were considered to be smokers and those who had never smoked or who had quit for more than 12 months were considered to be non-smokers. All participants needed to be systemically healthy, so those with systemic conditions including cardiovascular diseases, hypertension, liver diseases, kidney diseases, blood disorders, diabetes mellitus, autoimmune diseases, and malignant tumours were excluded, as were pregnant females.

Periodontitis-free and periodontitis groups were defined on the basis of both radiographs and findings of clinical examinations. Cases or periodontitis subjects

1
2
3
4 were Chinese patients aged 18 to 60 years with radiographic evidence of at least
5
6
7 moderate periodontitis, according to the following criteria: the orthopantomogram
8
9
10 (OPG) taken at the first visit to PPDH before recruitment showed more than 50%
11
12
13 alveolar bone loss at more than 30% of sites, as measured with a Schei ruler without
14
15
16 using the 1mm space (each tooth contributed to a mesial and a distal site) (17), and
17
18
19 subsequent clinical periodontal examination showed at least two teeth in each
20
21
22 quadrant that had a probing depth of ≥ 5 mm and that bled on probing. All the
23
24
25 periodontitis subjects showed clinical and radiographic signs of attachment loss and
26
27
28 bone loss, respectively, and were further classified into aggressive periodontitis or
29
30
31 chronic periodontitis as described follows. According to the 1999 periodontal disease
32
33
34 classification criteria (18), patients ≤ 35 years of age and systemic healthy but
35
36
37 experiencing over 30% sites with over 5 mm clinical attachment loss were classified
38
39
40 as aggressive periodontitis (AP) while the remaining subjects over 35 years old who
41
42
43 fulfilled our case recruitment criteria and self-reported nil periodontal disease history
44
45
46 before 35 years were classified as chronic periodontitis (CP). Controls were Chinese
47
48
49 patients aged 18 to 60 years without periodontitis, according to the following criteria:
50
51
52 the OPG taken at recruitment showed no sites with more than 15% bone loss or any
53
54
55 radiographic evidence of furcation involvement (each tooth contributed to a mesial
56
57
58 and a distal site), subsequent clinical periodontal examination confirmed there were
59
60

1
2
3
4 no sites with a probing depth of more than 4 mm and gingival recession of more than
5
6
7 2 mm, and there was no history of tooth loss due to periodontal diseases. Control or
8
9
10 periodontitis-free subjects included individuals periodontally health and those with
11
12
13 gingivitis. Bleeding on probing (BOP) was not recorded in the control group.
14
15
16
17
18
19

20 **DNA isolation and genotyping**

21
22
23 Ten millilitres of venous blood was obtained from each participant and stored in
24
25
26 ethylene-diamine-tetra-acetic acid at -70°C until DNA extraction. QIAamp DNA
27
28
29 blood mini-kits (Qiagen, Hilden, Germany) were used to extract genomic DNA.
30
31
32 Tagging SNPs of the C5 gene were selected by using the SNP Tagging Wizard of
33
34
35 SNPbrowser software version 3.5 (Applied Biosystems, Foster City, CA, USA). The
36
37
38 reason to choose tagging SNPs was to select a minimum informative subset of SNPs
39
40
41 and eliminate redundant information due to strong linkage disequilibrium among the
42
43
44 SNPs in the region. Therefore the SNPs studied here can provide some level of
45
46
47 information of the SNPs not selected in this study. Tagging SNPs were those left after
48
49
50 eliminating all the SNPs with reported minor allele frequencies under 10% and
51
52
53 reported 100% linked with other SNPs in the same region. SNP sequences were
54
55
56 checked in the RealSNP Assay Database (Sequenom, San Diego, CA, USA).
57
58
59 Genotyping was performed with the i-plexGOLD genotyping assay of the
60

1
2
3
4 MassARRAY mass-spectrometry system, following the protocol recommended by the
5
6
7 manufacturer (Sequenom).
8
9

10 11 12 13 **Quality control** 14

15
16 As recommended in the genotyping protocol, all template DNA samples needed to
17
18 have a ratio of spectrophotometer readings at 260 nm and 280 nm (A_{260}/A_{280}) of
19
20 between 1.7 and 2.0. Samples were then aliquoted in 96-well plates. For each well of
21
22 DNA to be tested, five duplicate wells and one water well served as internal and
23
24 negative controls, respectively. Before genotyping, DNA samples and randomly
25
26 selected positive controls were subjected to electrophoresis in 1% agarose gel to
27
28 confirm the quality and quantity of genomic DNA. After genotyping by iPLEX, 25
29
30 random samples of selected SNPs were subjected to concordance testing by direct
31
32 sequencing to ensure that the genotyping data were reliable.
33
34
35
36
37
38
39
40
41
42
43
44
45
46
47
48
49

50 51 52 53 **Statistical analyses** 54

55
56 Statistical analysis was performed with the Statistical Package for the Social Sciences
57
58 15.0 (SPSS, Chicago, IL, USA). Differences between the distributions of sex, and
59
60 reported smoking habit among periodontitis and periodontitis-free individuals were
tested with the chi-square test. Differences between cases and controls in number of

1
2
3
4 standing teeth and age were assessed with the *t* test.
5
6

7
8 Three screening steps were adopted for genetic data processing. First, the
9
10 genotype distribution and allele-type of each SNP among AP or CP and
11
12 periodontitis-free subjects were calculated. Secondly, those SNPs with call rate over
13
14 80% and minor allele frequencies (MAFs) over 10% were put into the second step:
15
16 Hardy-Weinberg Equilibrium (HWE) test. Thirdly, those SNPs in the
17
18 periodontitis-free group with HWE test *p* values ≥ 0.01 were subjected to final
19
20 statistical analysis. Multiple comparison of genotype and allele-type of AP, CP and
21
22 control groups were initially screened by Chi square test. SNPs fulfilling criteria for
23
24 final statistical analysis was put under stepwise logistic regression analysis together
25
26 with other possible risk indicators of periodontitis—namely, age, sex, and reported
27
28 smoking habit. The alpha level was set at 0.05, unless otherwise specified. Risk
29
30 alleles, odds ratios (ORs), and 95% confidence intervals for each SNP were also
31
32 determined. Linkage disequilibrium (LD) analysis and haplotype association analysis
33
34 were performed with Haploview 3.32 (<http://www.broad.mit.edu/mpg/haploview/>).
35
36 Haplotype effects in different genetic models were tested by HAPSTAT 3.0
37
38 (<http://www.bios.unc.edu/~lin/hapstat/>).
39
40
41
42
43
44
45
46
47
48
49
50
51
52
53
54
55
56
57
58
59
60

Results

1
2
3
4 A total of 436 participants were recruited: 229 patients with at least moderate
5
6
7
8
9
10
11
12
13
14
15
16
17
18
19
20
21
22
23
24
25
26
27
28
29
30
31
32
33
34
35
36
37
38
39
40
41
42
43
44
45
46
47
48
49
50
51
52
53
54
55
56
57
58
59
60
A total of 436 participants were recruited: 229 patients with at least moderate
periodontitis defined earlier and 207 periodontitis-free controls. The mean age (\pm SD)
age of the participants was 43.1 ± 7.7 years; 249 (57.1%) subjects were women. There
were no differences in mean age and sex distributions between patient and control
groups. The case group had about twice the proportion of smokers as did the control
group and significantly fewer standing teeth (Table 1). Clinical parameters such as
probing pocket depth (PPD) ≥ 5 mm, probing attachment level (PAL) ≥ 5 mm, and
BOP% were also summarized in Table 1.

Eleven tagging SNPs of the C5 gene were identified as candidate SNPs by the
SNP Tagging Wizard of SNPbrowser 3.5. Most of them were intronic SNPs. Ten of
the 11 SNPs were genotyped successfully by the iPLEX assay and seven were found
to have more than one genotype (minor allele frequency > 0.001) with an average call
rate of 99.2%. One SNP (rs10818491) was found not fulfilling the Hardy-Weinberg
Equilibrium ($p < 0.01$) (Table 2), hence analyze of the genotype and allele-type
distribution differences of the remaining six SNPs among subgroups like AP, CP and
controls was carried out. None of the 6 SNPs showed significant allele or genotype
distribution difference between either patient group vs control group (adjusted p -value
0.008) (Table 3), which indicated there was no difference between AP, CP and control
groups. Therefore, in the following stepwise logistic regression analysis, AP and CP

1
2
3
4 data were combined.
5
6

7 The six C5 SNPs fulfilling criteria for genetic analysis (Table 3), together with age,
8 sex and smoking habit were selected for stepwise logistic regression analysis
9
10 regarding the association between these possible risk indicators and periodontitis.
11
12
13

14 After the adjustment of age, sex and smoking, only rs17611 and smoking habit
15
16 remained to be significantly associated with periodontitis ($p = 0.023$ and 0.006 ,
17
18 respectively, Table 4), genotype AG of rs17611 seemed more frequent in periodontitis
19
20 ($p = 0.007$, OR = 6.08, **95% CI = 1.31-28.22**). Smoking was also significantly
21
22 associated with periodontitis in this Hong Kong Chinese sample with OR = 2.84
23
24 (**95% CI = 1.31-6.14**, Table 4).
25
26
27
28
29
30
31
32
33

34 Haploview 3.32 was used to detect any LD block and the association between
35
36 haplotypes and periodontitis (19) for the six SNPs that had a Hardy-Weinberg
37
38 Equilibrium test p value of larger than 10^{-5} , a call rate of > 0.8 , and a minor allele
39
40 frequency of > 0.001 . The pairwise comparisons were designed to identify markers
41
42 within 500 kb from each other, and one LD block including SNPs rs1035029, rs17611,
43
44 rs25681 and rs992670 were detected (Figure 1). The haplotype CGCA in this block
45
46 was found to be marginal significantly associated with periodontitis ($p = 0.038$; Table
47
48
49
50
51
52
53
54
55
56
57 5). Then HAPSTAT 3.0 was used to estimate haplotype effects and
58
59
60 haplotype–environment interactions (age, sex and smoking habit in particular in this

1
2
3
4 study) under different genetic models such as dominant and additive models (20).
5
6

7 While dominant genetic model means heterozygote has the same increased risk as
8
9
10 minor homozygous genotypes (21), additive model is a statistical model modified
11
12 from several regression models (22). No environment or haplotype – environmental
13
14 interaction was found significantly associated with periodontitis. Haplotype CGCA
15
16 was found significantly associated with periodontitis in the dominant model ($p =$
17
18
19
20
21
22
23 0.001, OR = 4.85, 95% CI = 1.85-12.71) (Table 5). Other genetic models were not
24
25
26 suitable for our dataset therefore were not calculated.
27
28
29
30
31

32 Discussion

33
34 It is well-known that complement system is a biochemical cascade helping clear
35
36
37 pathogens from an organism. Humoral activation of the complement system by the
38
39
40 classical, alternative, or lectin pathway results in the cleavage of C3 into C3a and C3b
41
42
43 fragments. Subsequent downstream cleavage of C5 generates the anaphylatoxin C5a
44
45
46 and fragment C5b, which acts as a nucleus for the MAC (23) by anchoring the
47
48
49 assembly of a molecule each of C6, C7, and C8, to guide the polymerization of C9
50
51
52 into a membrane channel in the target cell (24). Not only does pore formation cause
53
54
55 direct cell injury and necrosis (25), but it may also amplify the inflammatory response
56
57
58 by promoting the expression of pro-inflammatory mediators (26). Additionally, the
59
60

1
2
3
4 MAC can influence the recruitment of inflammatory cells and leukocyte adhesion to
5
6
7 endothelium (27, 28), thereby promoting the release of cell stimulants, such as
8
9
10 hydrolytic enzymes, reactive oxygen species, and cytokines (29, 30). Hence,
11
12
13 mutations in any of the MAC complement components might modify this
14
15
16 inflammatory response to pathogens. In this study of Hong Kong Chinese patients
17
18
19 with and without periodontitis, genotype AG of non-synonymous SNP rs17611 in the
20
21
22 C5 gene and the haplotype containing rs17611 were found to be significantly
23
24
25 associated with periodontitis, indicating that this genetic variation and haplotype
26
27
28 might play a role in the pathogenesis of periodontitis.
29
30
31

32 The C5 gene is located on chromosome 9q34.1. Eleven SNPs were selected in
33
34
35 this study. **Although most of the SNPs selected were in intron and their biological**
36
37
38 **function was unclear, but nature of other regional SNPs can be obtained through**
39
40
41 **investigation of their linkage and haplotype status with those tagging SNPs.**
42
43
44 **Therefore information about SNPs searching range and hence the true causative**
45
46
47 **variation(s) could potentially be identified in subsequent experiments.** The
48
49
50 haplotype and tagging polymorphisms of C5 have been studied in diseases such as
51
52
53 liver fibrosis, rheumatoid arthritis, and asthma (11-16). Haplotype included the
54
55
56 non-synonymous SNP rs17611 (A/G) in exon 19 was reported to associate with
57
58
59 bronchial asthma and liver fibrosis (12, 14). The A to G variation that was found to be
60

1
2
3
4 associated with periodontitis in this study causes an amino acid change from
5
6
7 isoleucine to valine at position 802. Because these two amino acids are both aliphatic
8
9
10 and their structures are similar except for an extra center of asymmetry in the
11
12
13 isoleucine side chain, the change from isoleucine to valine can be considered to be a
14
15
16 conservative one.
17

18
19
20 Classically, it has been assumed that a mutant protein is unstable and leads to a
21
22
23 functional defect, so subjects carrying a homozygous mutant genotype would be more
24
25
26 susceptible than others to disease. However, a mutated gene may also encode a stable
27
28
29 mutant protein that interferes with the formation of a functional form of the wild-type
30
31
32 protein especially for structure proteins or proteins forming dimers (31). An individual
33
34
35 carrying a heterozygous genotype in this situation would be more susceptible than one
36
37
38 carrying homozygous genotypes (31, 32) because products from both genotypes are
39
40
41 stable. In this way, the protein with the conservative mutation for valine in position
42
43
44 802, which is expected to be stable, might theoretically affect the wild-type protein.
45
46
47 The amino acid mutation in rs17611 is in the MG6 domain of C5, which forms a
48
49
50 conserved large cavity with other domains (33). Although the amino acid is far from
51
52
53 the cleavage site, this cavity area may be involved in recognition of C5 by the
54
55
56 cleavage enzyme C5 convertase, which is a large macromolecular complex that could
57
58
59 conceivably interact with this domain (34). The alteration in rs17611 could also
60

1
2
3
4 potentially affect the formation of the C5b-9 MAC because the substituted amino acid
5
6
7 would theoretically be situated within the C5b peptide after cleavage. Further studies
8
9
10 on the functions of this gene variant and its effect on periodontitis risk are required.
11
12
13 Additionally, the significant association in dominant model of haplotype consisting of
14
15
16 SNPs rs1035029, rs17611, rs25681, and rs992670 indicates that SNPs within this
17
18
19 gene region could be associated with periodontitis, and further investigation should
20
21
22 focus on this particular region.
23
24
25

26 Smoking is a well-established risk factor in the incidence and progression of
27
28
29 periodontal diseases (35-39). One community study conducted among the Hong Kong
30
31
32 population showed that heavy smoking is the major risk factor of periodontitis (odds
33
34
35 ratio, OR = 4.61), and that moderate and light smoking are also significant risk factors
36
37
38 (OR = 2.69 and 2.33, respectively) (40). These values are similar to the OR (95% CI)
39
40
41 of 2.84 (1.31-6.14) calculated in our study. Nevertheless, we could not subcategorize
42
43
44 the small number of smokers as heavy, moderate, light, and very light smokers, which
45
46
47 may explain why the OR for smoking is lower than the published value for heavy
48
49
50 smoking. The value is also lower than the OR (95% CI) of 6.08 (1.31-28.22)
51
52
53 calculated for the rs17611 genetic variant in this study. It must be noted, however, that
54
55
56 our strict criterion for a case was any patient with at least moderate periodontitis, and
57
58
59 smoking and the rs17611 genetic variant could have a different influence on mild to
60

1
2
3
4 moderate periodontitis. Finally, other factors such as age and sex have been reported
5
6
7 to be associated with periodontitis in Hong Kong Chinese patients (40), but the effects
8
9
10 of these two factors were removed by our case-control study design.
11

12
13 It is noticed that in our study we used extra-oral radiographs instead of intraoral
14
15 radiograph although OPG had only a sensitivity of 79% for periodontal pathology
16
17 (41). Nevertheless, OPG has reported a specificity of 92% for periodontal pathology,
18
19 and studies have confirmed that bone loss measured on OPG is in close correlated
20
21 with periodontal status (42, 43). In our study, a simple and robust method must be
22
23 adopted in order to screen a large number of subjects and to eliminate any ambiguous
24
25 subjects whose periodontal condition did not fulfill recruitment criteria of either
26
27 groups, therefore OPG was selected for assessing bone loss level of the subjects. We
28
29 used Schei ruler without using the 1 mm space or what was referred to be the
30
31 “normal” distance from alveolar crest to CEJ, instead a certain level or fraction of
32
33 “bone loss” was allowed for the control group, reason being that OPG typically
34
35 magnify tooth length ranges from 15-30% (44, 45). Considering average permanent
36
37 tooth root length is about 11 mm to 17 mm (46), 1 mm equals to about 5-9% root
38
39 length from CEJ to radiographic apex. In order to provide some leeway for
40
41 measurement, we used 15% root length as the cut off when some other study
42
43 considered 2 mm as the “normal” distance between the alveolar crest to CEJ (47). All
44
45
46
47
48
49
50
51
52
53
54
55
56
57
58
59
60

1
2
3
4 these subjects selected by OPG screening were subsequently periodontally examined
5
6
7 to confirm their eligibility as per our inclusion criteria.
8
9

10 In conclusion, our study showed that genotype AG of non-synonymous SNP
11
12 rs17611 of the C5 gene was more prevalent in the periodontitis patient group than in
13
14 periodontitis-free controls and together with smoking may be associated with
15
16 periodontitis among the Hong Kong Chinese population. In addition, one haplotype
17
18 including SNP rs17611 was associated with periodontitis. An association study with a
19
20 large sample size and other ethnic populations are needed to confirm this finding.
21
22
23 Further studies should also investigate how genetic variation may alter the structure
24
25 and biological function of C5 and its fragments, and how these alterations modify
26
27 humoral immune responses and susceptibility to periodontitis among the Hong Kong
28
29 Chinese population, and possibly other populations.
30
31
32
33
34
35
36
37
38
39
40
41
42
43
44
45
46
47
48
49

50 **Acknowledgements**

51 This study was supported by University Research Committee grants 10206094 and
52
53 10207348. We thank Trevor Lane for manuscript editing, Alan Wong for technical
54
55 assistance during sequencing and Bernard Liang for orthopantomographs screening.
56
57
58
59
60

References

- (1) Yoshie H, Kobayashi T, Tai H, Galicia JC. The role of genetic polymorphisms in periodontitis. *Periodontol 2000* 2007; **43**: 102-132.
- (2) Carroll MC. The complement system in regulation of adaptive immunity. *Nat Immunol* 2004; **5**: 981-986.
- (3) Kohl J, Wills-Karp M. Complement regulates inhalation tolerance at the dendritic cell/T cell interface. *Mol Immunol* 2007; **44**: 44-56.
- (4) Schenkein HA, Genco RJ. Gingival fluid and serum in periodontal diseases. II. Evidence for cleavage of complement components C3, C3 proactivator (factor B) and C4 in gingival fluid. *J Periodontol* 1977; **48**: 778-784.
- (5) Niekrash CE, Patters MR. Simultaneous assessment of complement components C3, C4, and B and their cleavage products in human gingival fluid. I. Reliability of the method. *J Periodontal Res* 1985; **20**: 260-267.
- (6) Niekrash CE, Patters MR. Assessment of complement cleavage in gingival fluid in humans with and without periodontal disease. *J Periodontal Res* 1986; **21**: 233-242.
- (7) Seppanen M, Lokki ML, Notkola IL, *et al.* Complement and C4 null alleles in severe chronic adult periodontitis. *Scand J Immunol* 2007; **65**: 176-181.
- (8) Gerard NP, Gerard C. The chemotactic receptor for human C5a anaphylatoxin. *Nature* 1991; **349**: 614-617.
- (9) Gerard C, Gerard NP. C5a anaphylatoxin and its seven transmembrane-segment receptor. *Annu Rev Immunol* 1994; **12**: 775-808.
- (10) Podack ER, Esser AF, Biesecker G, Muller-Eberhard HJ. Membrane attack complex of complement: a structural analysis of its assembly. *J Exp Med* 1980; **151**: 301-313.
- (11) Karp CL, Grupe A, Schadt E, *et al.* Identification of complement factor 5 as a susceptibility locus for experimental allergic asthma. *Nat Immunol* 2000; **1**: 221-226.

- 1
2
3
4 (12) Hasegawa K, Tamari M, Shao C, *et al.* Variations in the C3, C3a receptor, and
5 C5 genes affect susceptibility to bronchial asthma. *Hum Genet* 2004; **115**:
6 295-301.
7
8
9 (13) Hillebrandt S, Wasmuth HE, Weiskirchen R, *et al.* Complement factor 5 is a
10 quantitative trait gene that modifies liver fibrogenesis in mice and humans.
11 *Nat Genet* 2005; **37**: 835-843.
12
13
14 (14) Gressner O, Meier U, Hillebrandt S, *et al.* Gc-globulin concentrations and C5
15 haplotype-tagging polymorphisms contribute to variations in serum activity of
16 complement factor C5. *Clin Biochem* 2007; **40**: 771-775.
17
18
19 (15) Kurreeman FA, Padyukov L, Marques RB, *et al.* A candidate gene approach
20 identifies the TRAF1/C5 region as a risk factor for rheumatoid arthritis. *PLoS*
21 *Med* 2007; **4**: e278.
22
23
24 (16) Plenge RM, Seielstad M, Padyukov L, *et al.* TRAF1-C5 as a risk locus for
25 rheumatoid arthritis--a genomewide study. *N Engl J Med* 2007; **357**:
26 1199-1209.
27
28
29 (17) Bassiouny MA, Grant AA. The accuracy of the Schei ruler: a laboratory
30 investigation. *J Periodontol* 1975; **46**: 748-752.
31
32
33 (18) Armitage GC. Development of a classification system for periodontal diseases
34 and conditions. *Ann Periodontol* 1999; **4**: 1-6.
35
36
37 (19) Teo YY, Fry AE, Clark TG, Tai ES, Seielstad M. On the usage of HWE for
38 identifying genotyping errors. *Ann Hum Genet* 2007; **71**: 701-703; author
39 reply 704.
40
41
42 (20) Lin DY, Zeng D, Millikan R. Maximum likelihood estimation of haplotype
43 effects and haplotype-environment interactions in association studies. *Genet*
44 *Epidemiol* 2005; **29**: 299-312.
45
46
47 (21) Demchuk E, Yucesoy B, Johnson VJ, *et al.* A statistical model for assessing
48 genetic susceptibility as a risk factor in multifactorial diseases: lessons from
49 occupational asthma. *Environ Health Perspect* 2007; **115**: 231-234.
50
51
52 (22) Hastie T, Tibshirani R. *Generalized Additive Models*: Chapman & Hall/CRC,
53 1990.
54
55
56 (23) Schmidt RE, Gessner JE. Fc receptors and their interaction with complement
57
58
59
60

1
2
3
4
5
6
7
8
9
10
11
12
13
14
15
16
17
18
19
20
21
22
23
24
25
26
27
28
29
30
31
32
33
34
35
36
37
38
39
40
41
42
43
44
45
46
47
48
49
50
51
52
53
54
55
56
57
58
59
60

in autoimmunity. *Immunol Lett* 2005; **100**: 56-67.

- (24) Fondevila C, Shen XD, Tsuchihashi S, *et al.* The membrane attack complex (C5b-9) in liver cold ischemia and reperfusion injury. *Liver Transpl* 2008; **14**: 1133-1141.
- (25) Biancone L, David S, Della Pietra V, Montrucchio G, Cambi V, Camussi G. Alternative pathway activation of complement by cultured human proximal tubular epithelial cells. *Kidney Int* 1994; **45**: 451-460.
- (26) Schonermark M, Deppisch R, Riedasch G, Rother K, Hansch GM. Induction of mediator release from human glomerular mesangial cells by the terminal complement components C5b-9. *Int Arch Allergy Appl Immunol* 1991; **96**: 331-337.
- (27) Hattori R, Hamilton KK, McEver RP, Sims PJ. Complement proteins C5b-9 induce secretion of high molecular weight multimers of endothelial von Willebrand factor and translocation of granule membrane protein GMP-140 to the cell surface. *J Biol Chem* 1989; **264**: 9053-9060.
- (28) Kilgore KS, Shen JP, Miller BF, Ward PA, Warren JS. Enhancement by the complement membrane attack complex of tumor necrosis factor-alpha-induced endothelial cell expression of E-selectin and ICAM-1. *J Immunol* 1995; **155**: 1434-1441.
- (29) Seeger W, Suttorp N, Hellwig A, Bhakdi S. Noncytolytic terminal complement complexes may serve as calcium gates to elicit leukotriene B4 generation in human polymorphonuclear leukocytes. *J Immunol* 1986; **137**: 1286-1293.
- (30) Hansch GM, Seitz M, Betz M. Effect of the late complement components C5b-9 on human monocytes: release of prostanoids, oxygen radicals and of a factor inducing cell proliferation. *Int Arch Allergy Appl Immunol* 1987; **82**: 317-320.
- (31) Sidransky E. Heterozygosity for a Mendelian disorder as a risk factor for complex disease. *Clin Genet* 2006; **70**: 275-282.
- (32) Sanders CR, Ismail-Beigi F, McEnery MW. Mutations of peripheral myelin protein 22 result in defective trafficking through mechanisms which may be common to diseases involving tetraspan membrane proteins. *Biochemistry* 2001; **40**: 9453-9459.

- 1
2
3
4 (33) Fredslund F, Laursen NS, Roversi P, *et al.* Structure of and influence of a tick
5 complement inhibitor on human complement component 5. *Nat Immunol* 2008;
6 **9**: 753-760.
7
8
9 (34) Sandoval A, Ai R, Ostresh JM, Ogata RT. Distal recognition site for classical
10 pathway convertase located in the C345C/netrin module of complement
11 component C5. *J Immunol* 2000; **165**: 1066-1073.
12
13
14 (35) Grossi SG, Zambon JJ, Ho AW, *et al.* Assessment of risk for periodontal
15 disease. I. Risk indicators for attachment loss. *J Periodontol* 1994; **65**:
16 260-267.
17
18
19 (36) Grossi SG, Genco RJ, Machtei EE, *et al.* Assessment of risk for periodontal
20 disease. II. Risk indicators for alveolar bone loss. *J Periodontol* 1995; **66**:
21 23-29.
22
23
24 (37) Johnson GK. Position paper: tobacco use and the periodontal patient. Research,
25 Science and Therapy Committee of the American Academy of Periodontology.
26 *J Periodontol* 1999; **70**: 1419-1427.
27
28
29 (38) Johnson GK, Hill M. Cigarette smoking and the periodontal patient. *J*
30 *Periodontol* 2004; **75**: 196-209.
31
32
33 (39) Ryder MI. The influence of smoking on host responses in periodontal
34 infections. *Periodontol 2000* 2007; **43**: 267-277.
35
36
37 (40) Ng SK, Leung WK. A community study on the relationship between stress,
38 coping, affective dispositions and periodontal attachment loss. *Community*
39 *Dent Oral Epidemiol* 2006; **34**: 252-266.
40
41
42 (41) Balis S. Error and accuracy rates of panoramic radiography as a screening
43 method for mass surveying of children. *J Public Health Dent* 1981; **41**:
44 220-234.
45
46
47 (42) Walsh TF, al-Hokail OS, Fosam EB. The relationship of bone loss observed on
48 panoramic radiographs with clinical periodontal screening. *J Clin Periodontol*
49 1997; **24**: 153-157.
50
51
52 (43) Persson RE, Tzannetou S, Feloutzis AG, Bragger U, Persson GR, Lang NP.
53 Comparison between panoramic and intra-oral radiographs for the assessment
54 of alveolar bone levels in a periodontal maintenance population. *J Clin*
55 *Periodontol* 2003; **30**: 833-839.
56
57
58
59
60

- 1
2
3
4 (44) Thanyakarn C, Hansen K, Rohlin M, Akesson L. Measurements of tooth
5 length in panoramic radiographs. 1. The use of indicators. *Dentomaxillofac*
6 *Radiol* 1992; **21**: 26-30.
7
8
9 (45) Thanyakarn C, Hansen K, Rohlin M. Measurements of tooth length in
10 panoramic radiographs. 2: Observer performance. *Dentomaxillofac Radiol*
11 1992; **21**: 31-35.
12
13
14 (46) Ash M, Wheeler R, Nelson S. *Wheeler's dental anatomy, physiology and*
15 *occlusion*, 8th edn. Philadelphia, Pa.: London: Saunders, 2003.
16
17
18 (47) Lanning SK, Best AM, Temple HJ, Richards PS, Carey A, McCauley LK.
19 Accuracy and consistency of radiographic interpretation among clinical
20 instructors in conjunction with a training program. *J Dent Educ* 2006; **70**:
21 545-557.
22
23
24
25
26
27
28
29
30
31
32
33
34
35
36
37
38
39
40
41
42
43
44
45
46
47
48
49
50
51
52
53
54
55
56
57
58
59
60

Legend

Fig. 1. Pairwise linkage disequilibrium (LD) in the C5 gene. All SNPs of C5 assessed in this study. The horizontal bar represents the relative location of each SNP along the chromosome 9, 9q33-q34, and the numbers above the bar are corresponding chromosome positions; SNPs highlighted in green are coding SNPs. Diamonds in the haplotype blocks represent pairwise linkage disequilibrium between all SNPs assessed; the darker the diamond is, the stronger the linkage disequilibrium is between the two SNPs.

Manuscript proof

Table 1. Demography and clinical profile of study participants

| Characteristic | Categories | Periodontitis-free | Periodontitis | Test | Statistics | p-value |
|-------------------|-----------------------|--------------------|---------------|----------|------------|---------|
| | | (n=207) | (n=229) | | | |
| Age (years) | Mean ± SD | 42.4 ± 8.1 | 43.7 ± 7.4 | t | -1.69 | NS |
| Gender | Male | 87 (42.0) | 100 (43.7) | χ^2 | 0.27 | NS |
| | Female | 120 (58.0) | 129 (56.3) | | | |
| Smoking habit | Non-smoker | 191 (92.3) | 193 (84.3) | χ^2 | 7.15 | <0.005 |
| | Smoker | 16 (7.7) | 36 (15.7) | | | |
| | Pack-year (mean ± SD) | 4.7 ± 6.7 | 16.0 ± 10.2 | t | -3.80 | <0.05 |
| Teeth remain | Mean ± SD | 27.0 ± 1.8 | 24.7 ± 3.4 | t | 5.46 | <0.001 |
| % sites PPD ≥ 5mm | Mean ± SD | 0 ± 0 | 30.3 ± 18.1 | | | |
| % sites PAL ≥ 5mm | Mean ± SD | 0 ± 0 | 47.2 ± 27.2 | | | |
| BOP % | Mean ± SD | ND | 72.6 ± 25.0 | | | |

Results are no. (%) unless otherwise indicated. ND: not determined.

Table 2. Candidate C5 single nucleotide polymorphisms (SNPs) of study participants

| SNP ID | Type | Variation | Call rate (%) | MAF ^a | HWE <i>p</i> -value ^b |
|------------|----------------|-----------|---------------|--------------------------|----------------------------------|
| rs2300930 | Intronic | A/C | 98.9 | 0.197 | 0.73 |
| rs10818491 | Intronic | C/T | 98.7 | 0.406 | <10 ⁻⁵ |
| rs7035682 | Intronic | C/T | 99.3 | single genotype detected | |
| rs7026551 | Intronic | A/C | 98.4 | single genotype detected | |
| rs2269066 | Intronic | A/G | 98.2 | 0.237 | 0.20 |
| rs2269067 | Intronic | C/G | 99.1 | single genotype detected | |
| rs1035029 | Intronic | C/T | 99.1 | 0.409 | 0.93 |
| rs17611 | Non-synonymous | A/G | 99.8 | 0.409 | 0.73 |
| rs25681 | Synonymous | C/T | 99.8 | 0.409 | 0.96 |
| rs992670 | Intronic | A/G | 99.1 | 0.230 | 0.24 |
| rs2300934 | Intronic | A/C | 0 | ND | |

HWE: Hardy-Weinberg Equilibrium; MAF: Minor Allele Frequency; ND: not determined

^aMAF not determined when call rate <80.0% or only one genotype detected.

^bFor periodontitis-free group; HWE *p*-value not determined if call rate <80.0% or only one genotype detected; only SNPs with HWE *p*-value ≥ 0.01 are subjected to further analysis.

Table 3. Genotype and allele-type of C5 SNPs selected for stepwise logistic regression analysis

| SNP ID | Genotype/ Allele- type | Count ^a (%) | | | <i>p</i> -value ^b |
|-----------|------------------------------|---------------------------------|----------------|-----------------|------------------------------|
| | | Periodontitis-free (n = 207) | AP (n = 32) | CP (n = 197) | |
| rs2300930 | AA | 7 (3.4) | 1 (3.1) | 7 (3.6) | 0.278 |
| | AC | 57 (27.9) | 8 (25.0) | 73 (37.4) | |
| | CC | 140 (68.6) | 23 (71.9) | 115 (59.0) | |
| | A | 71 (17.4) | 10(15.6) | 87 (22.3) | |
| rs2269066 | C | 337 (82.6) | 54(84.4) | 303 (79.7) | 0.156 |
| | AA | 118 (57.6) | 19 (59.4) | 110 (56.4) | |
| | AG | 75 (36.6) | 11 (34.4) | 80 (41.0) | |
| | GG | 12 (5.9) | 2 (6.2) | 5 (2.6) | |
| rs1035029 | A | 311 (75.9) | 49 (76.6) | 300 (76.9) | 0.487 |
| | G | 99 (24.1) | 15 (23.4) | 90 (23.1) | |
| | CC | 36 (17.6) | 5 (15.6) | 30 (15.4) | |
| | CT | 87 (42.6) | 13 (40.6) | 110 (56.4) | |
| rs17611 | TT | 81 (39.7) | 14 (43.8) | 55 (28.2) | 0.055 |
| | C | 159 (39.0) | 23 (35.9) | 170 (43.6) | |
| | T | 249 (61.0) | 41 (64.1) | 220 (56.4) | |
| | AA | 82 (40.2) | 13 (40.6) | 56 (28.7) | |
| rs25681 | AG | 85 (41.7) | 14 (43.8) | 110 (56.4) | 0.430 |
| | GG | 37 (18.1) | 5 (15.6) | 29 (14.9) | |
| | A | 249 (61.0) | 40 (62.5) | 222 (56.9) | |
| | G | 159 (39.0) | 24 (37.5) | 168 (43.1) | |
| rs25681 | CC | 37 (18.1) | 6 (18.8) | 28 (14.4) | 0.033 |
| | CT | 86 (42.2) | 12 (37.5) | 111 (56.9) | |
| | TT | 81 (39.7) | 14 (43.8) | 56 (28.7) | |

| | | | | | |
|----------|----|------------|-----------|------------|-------|
| | C | 160 (39.2) | 24 (37.5) | 167 (42.8) | 0.685 |
| | T | 248 (61.8) | 40 (62.5) | 223 (57.2) | |
| rs992670 | AA | 117 (57.1) | 19 (59.4) | 115 (59.0) | 0.178 |
| | AG | 75 (36.6) | 11 (34.4) | 77 (39.5) | |
| | A | 309 (75.4) | 49 (76.6) | 307 (78.7) | 0.529 |
| | G | 101 (24.6) | 15 (23.4) | 83 (21.3) | |

AP: Aggressive periodontitis; CP: Chronic periodontitis

^aTotal not adding up because call rates are <100%.

^bThe level of significance was set at 0.008 after adjustment for multiple comparison

Table 4. Odds ratios for study participants with periodontitis

| Variable | Categories | Unadjusted (univariate) ^a | | | Adjusted ^b | | |
|-----------------------|------------|--------------------------------------|-----------------|-------------|-----------------------|-----------------|--------------|
| | | OR | <i>p</i> -value | 95% CI | OR | <i>p</i> -value | 95% CI |
| Age | | 1.02 | 0.072 | 0.99 - 1.05 | | | |
| Gender | Female | 1.00 | 0.601 | | | | |
| | Male | 0.90 | | 0.62 - 1.32 | | | |
| Smoking habit | Non-smoker | 1.00 | 0.003 | | 1.00 | 0.006 | |
| | Smoker | 2.57 | | 1.34 - 4.92 | 2.84 | | 1.31 - 6.14 |
| <i>Genotype (SNP)</i> | | | | | | | |
| rs2300930 | AA | 1.00 | 0.220 | | | | |
| | AC | 1.24 | 0.690 | 0.43 - 3.62 | | | |
| | CC | 0.86 | 0.781 | 0.30 - 2.44 | | | |
| rs2269066 | AA | 1.00 | 0.338 | | | | |
| | AG | 1.11 | 0.605 | 0.75 - 1.65 | | | |
| | GG | 0.53 | 0.202 | 0.20 - 1.40 | | | |
| rs1035029 | TT | 1.00 | 0.051 | | | NS | |
| | CT | 1.66 | 0.024 | 1.09 - 2.53 | | | |
| | CC | 1.14 | 0.667 | 0.68 - 2.01 | | | |
| rs17611 | AA | 1.00 | 0.026 | | 1.00 | 0.023 | |
| | AG | 1.73 | 0.014 | 1.14 - 2.65 | 6.08 | 0.007 | 1.31 - 28.22 |
| | GG | 1.09 | 0.775 | 0.62 - 1.92 | 1.15 | 0.707 | 0.63 - 1.97 |
| rs25681 | TT | 1.00 | 0.044 | | | NS | |

| | | | | |
|--------------------|----|------|-------|-------------|
| | CT | 1.65 | 0.024 | 1.08 - 2.52 |
| | CC | 1.06 | 0.886 | 0.60 - 1.87 |
| rs992670 | AA | 1.00 | 0.120 | |
| | AG | 1.02 | 0.905 | 0.69 - 1.52 |
| | GG | 0.34 | 0.044 | 0.12 - 0.97 |
| <i>Allele-type</i> | | | | |
| rs2300930 | C | 1.00 | | |
| | A | 1.28 | 0.147 | 0.91 - 1.8 |
| rs2269066 | G | 1.00 | | |
| | A | 0.93 | 0.663 | 0.68 - 1.28 |
| rs1035029 | C | 1.00 | | |
| | T | 0.86 | 0.291 | 0.66 - 1.13 |
| rs17611 | A | 1.00 | | |
| | G | 1.15 | 0.307 | 0.88 - 1.51 |
| rs25681 | C | 1.00 | | |
| | T | 0.92 | 0.531 | 0.70 - 1.20 |
| rs992670 | A | 1.00 | | |
| | G | 0.84 | 0.288 | 0.61 - 1.16 |

OR = odds ratio; CI = confident interval; NS = not significant.

^aOR for each factor was computed from logistic regression

^bAdjusted ORs were computed with stepwise logistic regression with variables that were significant in the univariate analysis

Table 5. Haplotype association results in different genetic models (n = 872)

| Haplotype ^a | Count Ratio ^b (Frequencies) | | | Haplotype effects and haplotype–environment interactions ^{c,d} | |
|------------------------|--|---------------------|---------------------------------------|---|--------------------|
| | Periodontitis-free | Periodontitis | χ^2 <i>p</i> -value ^c | Additive model | Dominant model |
| TATA | 240.9/169.1 (0.588) | 245.9/201.1 (0.599) | 0.395 | 0.194 | 0.078 |
| CGCG | 95.7/314.3 (0.233) | 93.6/362.4 (0.205) | 0.319 | 0.308 | 0.323 |
| CGCA | 59.3/350.7 (0.145) | 90.3/365.7 (0.198) | 0.038 | 0.029 | 0.001 ^e |
| TACA | 4.8/405.2 (0.012) | 5.1/450.9 (0.011) | 0.950 | 0.216 | 0.845 |

^aTwo haplotypes are not listed due to low frequencies (fractional likelihood frequency < 0.01)

^bCounts were obtained by summing the fractional likelihoods of each individual for each haplotype.

^cThe level of significance was set at 0.0125 after adjustment for multiple comparison

^dLogistic regression analysis, shown are *p*-values

^eOdds Ratio and 95% confident interval: 4.85 (1.85-12.71)

1
2
3
4
5
6
7
8
9
10
11
12
13
14
15
16
17
18
19
20
21
22
23
24
25
26
27
28
29
30
31
32
33
34
35
36
37
38
39
40
41
42
43
44
45
46
47
48
49
50
51
52
53
54
55
56
57
58
59
60

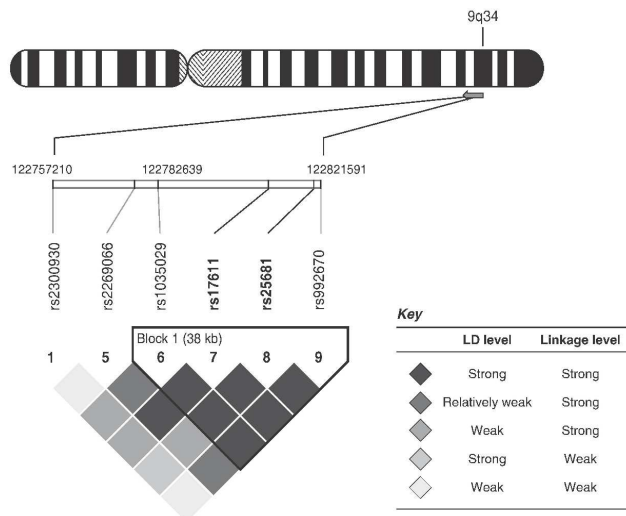


Figure 1
210x297mm (600 x 600 DPI)