



Title	Precise radiolarian age constraints on the timing of ophiolite generation and sedimentation in the Dazhuqu terrane, Yarlung-Tsangpo suture zone, Tibet
Author(s)	Ziabrev, SV; Aitchison, JC; Abrajevitch, AV; Badengzhu; Davis, AM; Luo, H
Citation	Journal Of The Geological Society, 2003, v. 160 n. 4, p. 591-599
Issued Date	2003
URL	http://hdl.handle.net/10722/44698
Rights	Journal of Geological Society. Copyright © Geological Society Publishing House.

Precise radiolarian age constraints on the timing of ophiolite generation and sedimentation in the Dazhuqu terrane, Yarlung–Tsangpo suture zone, Tibet

SERGEY V. ZIABREV¹, JONATHAN C. AITCHISON¹,
ALEXANDRA V. ABRAJEVITCH¹, BADENGZHU², AILEEN M. DAVIS¹ & HUI LUO^{1,3}

¹*Tibet Research Group, Department of Earth Sciences, University of Hong Kong, Pokfulam Road, Hong Kong SAR, P.R. China (e-mail: email: jona@hku.hk)*

²*Geological Team # 2, Tibet Geological Survey, Lhasa, Tibet, P.R. China*

³*Present address: Nanjing Institute of Geology and Palaeontology, Laboratory of Palaeobiology & Stratigraphy, Academia Sinica, Nanjing 210008, P.R. China*

Abstract: Well-preserved, abundant radiolarians provide high-precision biostratigraphic age constraints on the timing of the eruption of ophiolitic basalts exposed along the Yarlung–Tsangpo suture zone in southern Tibet. Dazhuqu terrane ophiolites were generated in an intra-oceanic supra-subduction zone setting within a relatively short (<10 Ma) interval from late Barremian to late Aptian. Accumulation of sediments upon the newly generated ophiolite initially occurred in a series of discrete rift-controlled sub-basins associated with various spreading centres. An increasing flux of arc-derived volcanoclastic sediment up-section indicates nearby volcanic arc activity. The Dazhuqu terrane developed in an intra-oceanic setting within Tethys where it was isolated from any continental influence.

Keywords: Radiolaria, Yarlung–Tsangpo suture, Tibet, ophiolites, biostratigraphy.

The Yarlung–Tsangpo suture zone in Tibet marks the tectonic boundary between Eurasia and India. The previously vast Tethys ocean finally closed along the suture during their Cenozoic collision. Most of this ocean was lost through subduction during convergence or was overridden during collision. All that remains now occurs within a suture zone of a few kilometres width. A belt of ophiolitic bodies is the most traceable feature along the Yarlung–Tsangpo suture zone, in south Tibet and beyond. Several ophiolitic massifs form a nearly continuous exposure that stretches east–west over a distance of *c.* 150 km near Xigaze, 250 km SW of Lhasa. These rocks are assigned to the Dazhuqu terrane and interpreted as having originated in an intra-oceanic supra-subduction zone setting (Aitchison *et al.* 2000, 2002a). This interpretation of the origin of the Dazhuqu ophiolite is supported by detailed mineralogical and geochemical studies in the Xigaze area (Hébert *et al.* 2000; 2001). The presence of these rocks together with other intra-oceanic terranes along the suture led to the suggestion of Aitchison *et al.* (2000) that a south-facing intra-oceanic subduction system once lay within the Tethys.

Knowledge of the timing of generation of the Dazhuqu ophiolite is a significant issue for understanding regional geology and has implications for development of models for Tethys evolution. Marine sedimentary cover on mafic volcanic rocks was previously dated as late Albian to possibly early Cenomanian (Marcoux *et al.* 1982) or early Cenomanian (Wu 1986) on the basis of radiolarians reported from the Xigaze district. These ages appeared to be some 20 Ma younger than a radiometric age of 120 ± 10 Ma inferred from U–Pb whole-rock analyses of gabbros, dolerites and basaltic lavas reported from the same area (Göpel *et al.* 1984). Until now, no further biostratigraphic study of the Dazhuqu terrane has been published. Meanwhile, Cretaceous radiolarian biostratigraphy for the Tethyan regions has developed significantly (Jud 1994; O’Dogherty 1994; Baumgartner *et al.* 1995). This opens the possibility for obtaining

more accurate biostratigraphic information that will permit better recognition of any sequence of events related to development of the ophiolite. In the course of our study of the Dazhuqu terrane, we obtained new data on the lithostratigraphy and radiolarian biostratigraphy of the sedimentary succession overlying the ophiolite. These results constrain the timing of ophiolite formation and permit a better understanding of the development of sedimentary basins on this newly generated supra-subduction zone crust.

Regional tectonic framework

Six tectonostratigraphic units (terrane) that developed before India–Eurasia collision are recognized (Aitchison *et al.* 2000) within and bounding the Yarlung–Tsangpo suture zone (Fig. 1). The northern side of the suture is delineated by the Lhasa terrane, a microcontinental block that had detached from the northern periphery of Gondwana and docked with Asia by the Late Jurassic (Allègre *et al.* 1984; Yin & Harrison 2000).

A 5000–8000 m succession of volcanoclastic turbidites (Xigaze terrane) lies to the south of the Lhasa terrane. The Xigaze terrane is thrust northwards over upper Oligocene–lower Miocene Gangrinboche facies conglomerates (Aitchison *et al.* 2002b). At its southern boundary the terrane lies in the footwall of another north-directed thrust with Dazhuqu terrane ophiolitic rocks or Palaeogene Liuqu Conglomerate (Davis *et al.* 2002) in the hanging wall. Rare fossils indicate that the turbidites have a late Albian to Coniacian stratigraphic range (Wiedmann & Dürr 1995; Wan *et al.* 1998). As the oldest known fossils are not from the base of the section it is possible that sedimentation may have commenced before the late Albian. The top of the Xigaze turbidite sequence is truncated by erosion. Xigaze terrane rocks are interpreted as a forearc succession that developed in association with north-directed subduction beneath the Lhasa terrane (Shackleton 1981; Burg & Chen 1984; Girardeau *et al.* 1984;

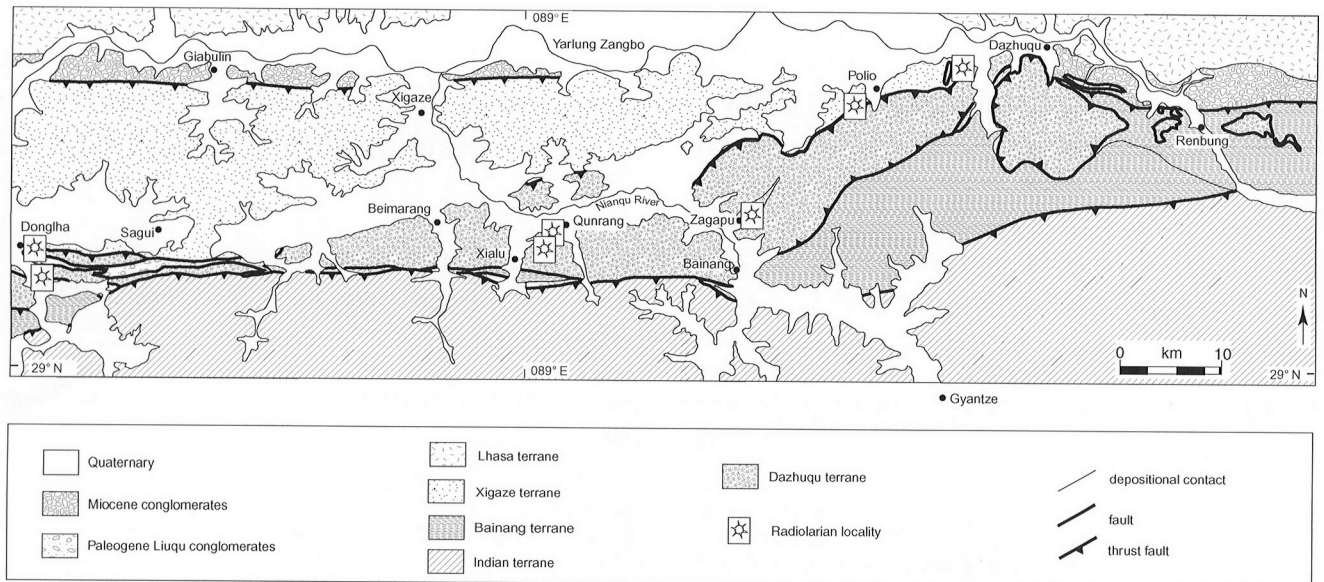


Fig. 1. Simplified geological map showing distribution of Dazhuqu terrane rocks near Xigaze (modified from Wang *et al.* 1987) and localities of the sections studied.

Einsle *et al.* 1994; Dürr 1996). Development of the terrane was related to evolution of the magmatic arc along the southern edge of the Lhasa terrane (Einsle *et al.* 1994; Dürr 1996). Although the Xigaze terrane is conventionally regarded as being floored by the Dazhuqu ophiolite (e.g. Burg & Chen 1984; Girardeau *et al.* 1984; Einsle *et al.* 1994; Dürr 1996), these two units are ubiquitously in tectonic contact and have recently been interpreted as separate terranes (Aitchison *et al.* 2000, 2002a).

A tectonic sliver of intra-oceanic island arc rocks (Zedong terrane) crops out between Lhasa and Dazhuqu terranes near Zedong and Luobusa. This terrane is bounded by north-directed thrusts related to the Renbu–Zedong thrust system of Yin *et al.* (1994). The basal contact of the section lies at a fault and begins with a thin (several metres) succession of arc tholeiitic lavas overlain by a *c.* 15 m sequence of red ribbon-bedded chert followed by 1000 m or more of volcanoclastic breccias. The succession is cut by numerous basaltic–andesite dykes and minor intrusions of diorite and leucogranite (McDermid *et al.* 2001a). Both radiometric and biostratigraphic data indicate the onset of magmatism in late Mid-Jurassic time. Radiometric ages determined by U/Pb ion microprobe zircon analysis together with $^{40}\text{Ar}/^{39}\text{Ar}$ ages for hornblende (McDermid *et al.* 2001b, 2002) are in accord with radiolarian faunas of Bajocian–early Callovian age in the underlying chert. The terrane is interpreted as remnants of intra-oceanic magmatic arc (Aitchison *et al.* 2000, 2002a; McDermid *et al.* 2001a) similar to other terranes known from elsewhere along the suture in NW India and Pakistan.

The Dazhuqu terrane consists of a series of ophiolitic bodies traceable along the Yarlung–Tsangpo suture zone with a major zone of outcrops near Xigaze (Aitchison *et al.* 2003). In this area the ophiolite is thrust northwards over the Xigaze terrane (Burg 1983; Wang *et al.* 1987). The southern margin of the terrane is defined, in many areas, by the Miocene north-directed Renbu–Zedong thrust (Yin *et al.* 1994, 1999), which places Indian Plate rocks over the ophiolite. In the Bainang district, where there is a sigmoidal bend in the Yarlung–Tsangpo suture zone, earlier contacts with the Bainang terrane can be observed at south-directed thrusts that are in places truncated by strike-slip faults (Girardeau *et al.* 1985a; Ratschbacher *et al.* 1994).

Several ophiolitic massifs in the Xigaze area form a nearly continuous belt over 175 km long and up to 25 km wide. Ophiolitic sections are mostly north-side up with the sequence repeated across dextral strike-slip faults. Although tectonically disrupted and heavily attenuated, sections locally display a complete ophiolitic sequence from fresh Cr diopside-rich harzburgites to marine sedimentary cover on mafic volcanic rocks (Nicolas *et al.* 1981; Girardeau *et al.* 1984, 1985a, 1985b). Aitchison *et al.* (2000, 2002a) interpreted the Dazhuqu terrane ophiolite as having originated in an intra-oceanic supra-subduction zone setting and this is supported by detailed mineralogical and geochemical studies in the Xigaze area (Hébert *et al.* 2000, 2001). Palaeomagnetic study of the sedimentary succession overlying mafic rocks of the Dazhuqu terrane indicates its deposition in an equatorial area, 1000–1500 km south of Asia's margin (Abrajevitch *et al.* 2001).

The Bainang terrane, on the southern side of the suture zone, was recently discriminated by Aitchison *et al.* (2000), who interpreted it as a subduction complex. The terrane lies between ophiolitic rocks of the Dazhuqu terrane to the north and the Indian terrane to the south. It contains units previously referred to as infra-ophiolitic thrust sheets of radiolarites (Burg & Chen 1984) or Upper Jurassic to Lower Cretaceous red radiolarites (Girardeau *et al.* 1984). Good exposures exist near Donglha, Xialu and Bainang. In most sections studied the terrane is chert dominated and is characterized by an overall south-younging tectonic pile of oceanic lithologies in which north-younging successions are stacked by a series of south-verging thrusts. Radiolarians reported from siliceous rocks near Xialu range in age from Mid-Jurassic to Early Cretaceous (Aptian) (Wu 1993; Matsuoka *et al.* 2001, 2002). Our detailed geological mapping and investigations of radiolarian biostratigraphy elucidate the structure, stratigraphy and evolution of the terrane (Ziabrev *et al.* 2000; Ziabrev 2002). Radiolarians allow reconstruction of a relict stratigraphy that records a long history of sedimentation in different portions of Tethys since the Late Triassic. Stratigraphy within the terrane records the northward travel of an oceanic plate and its approach towards a south-facing intra-oceanic subduction zone where accretion occurred from late Aptian to at

least the Campanian (Ziabrev 2002). Variations in structural style across the terrane indicate deformation at different depths and vertical growth of the wedge dominant over lateral accretion. Tectonostratigraphic features specific to the Bainang terrane reflect its development in a remote intra-oceanic setting (Ziabrev 2002).

Passive margin rocks of the Indian terrane or Tethyan (Tibetan) Himalaya lie south of the suture. Thick Permian to Palaeogene continental rise deposits (Liu & Einsele 1994) merge southward into a continuous Ordovician to Eocene shelf sedimentary succession of marine carbonates, sandstone, siltstone and shale (Bureau of Geology and Mineral Resources of Xizang Autonomous Region 1993; Jadoul *et al.* 1998). Disruption of northern Indian margin rocks into widespread regional mélange zones accompanied Palaeogene collision between an intra-oceanic island arc and the northern margin of India (Liu *et al.* 2000; Liu & Aitchison 2002). Passive margin sedimentation finally ceased with the Cenozoic India–Asia collision.

The original disposition of terranes within the suture zone has been greatly disrupted and former relations between terranes are not well constrained, making reconstruction of the tectonic evolution of the area difficult. Most early models (Allègre *et al.* 1984; Searle *et al.* 1987) invoked the existence of a single Andean-type convergent plate margin along the northern side of Tethys, although the possibility of additional subduction zones was considered by some workers (Proust *et al.* 1984). The co-occurrence and north–south distribution of the Zedong (magmatic arc), Dazhuqu (forearc ophiolite) and Bainang (subduction complex) terranes led to their interpretation as evidence for a south-facing intra-oceanic subduction system that lay within the Tethys (Aitchison *et al.* 2000), and the existence of more than one convergent margin. Analogy with the modern western Pacific and SE Asia suggests that reality may have been even more complex. As more details and constraints on the evolution of terranes within the Yarlung–Tsangpo suture zone become available the complexity and sophistication of models for this zone is likely to increase.

Previous work

Most of the marine siliceous and fine-grained clastic deposits that cover the ophiolite crop out along the northern margin of the Dazhuqu terrane. These deposits are referred to as the Chongdu Formation (Cao (1981) cited by Bureau of Geology and Mineral Resources of Xizang Autonomous Region 1993). The first litho- and biostratigraphic information became available in reports of Sino-French expeditions to this area in the early 1980s (Marcoux *et al.* 1982; Girardeau *et al.* 1984, 1985a, 1985b). Previously the cherts as well as fine-grained clastic deposits have been accorded late Albian and possibly early Cenomanian ages based on radiolarians (Marcoux *et al.* 1982). Other radiolarian fossils described from these deposits were interpreted as being of late Albian to early Cenomanian age (Li & Wu 1985) or of early Cenomanian age (Wu 1986) based on correlation with the *Archaeospongoprimum techamaensis* Zone (Pessagno 1976) of California. As the precision of Upper Mesozoic radiolarian biostratigraphy has greatly improved since these pioneering studies it is now possible to reassess the biostratigraphy and sedimentary evolution of the Dazhuqu ophiolitic terrane. Radiolarian ages from deposits immediately overlying the ophiolite should constrain the timing and duration of the ophiolite generation event.

Methods

The sedimentary cover of the ophiolite has been studied at seven sections (Fig. 2) in the Xigaze area, most of which were reported by Sino-French expeditions to this area in the early 1980s (Girardeau *et al.* 1984). A detailed log was made of each section. Special attention was paid to the nature of contacts between pillow basalt or breccia and overlapping deposits, to recognize any tectonic disruption. Seventy-five samples were collected for micropalaeontological investigation and treated in dilute HF ± HCl to extract radiolarians. Species identification and age assignments are chiefly based on recent taxonomic studies and biostratigraphic zonation of Mid-Cretaceous Tethyan radiolarians (Jud 1994; O'Dogherty 1994). The first and last occurrences of some species are derived from an unpublished composite range chart of O'Dogherty and Jud (O'Dogherty & Guex, pers. comm.). These range charts utilize the Unitary Association (UA) method (Guex 1991), and numerical UA ages calibrated to the Gradstein *et al.* (1994) time scale are applied herein. Over 50 radiolarian-based ages were thus acquired in the course of this study. To test the appropriateness of the western Tethys Mid-Cretaceous radiolarian range chart (O'Dogherty 1994) to our far eastern Tethyan study area as many taxa as possible were identified from each sample. The absence of unexpected co-occurrences indicates no detectable diachroneity in the distribution of taxa between western and eastern Tethys regions, suggesting that the range chart of O'Dogherty (1994) is applicable all along the Tethys.

Stratigraphy

Sedimentary sections exposed along 175 km strike length of the ophiolite were examined in detail. The sections are either situated along the northern boundary of the Dazhuqu terrane (Donglha-1, Polio and Dazhuqu) or tectonically interleaved within the ophiolite (Donglha-2, Qunrang and Zagapu) (Fig. 2). Various marine sedimentary lithologies overlie the ophiolite and include chert, siliceous mudstone and fine-grained volcanoclastic rocks. Exposure is near-continuous, with the uppermost levels of sections truncated by faults. Minor normal faulting within sections has locally eliminated small portions of some sections. Undisturbed depositional contacts with underlying pillow lavas or pillow breccias were recognized in most sections, although some minor shearing locally occurs near the contact. Sections adjacent to the Xigaze terrane are everywhere in fault contact with turbiditic rocks of the Xigaze Group.

Near the village of Donglha, 50 km SW of Xigaze a well-exposed section (Donglha-1, 29°08.392'N, 088°24.575'E) crops out on a hill slope beside an irrigation canal. Purplish red bedded (4–12 cm) chert is the dominant lithology although some intercalated (2–5 cm) chert and siliceous mudstone occurs at the top of the section. Sparse tuffaceous laminae and thin (0.5–4 cm) layers of felsic tuff become more abundant up-section. The chert positionally overlies basaltic pillow breccia, the uppermost 20 cm of which is encrusted by massive chert. Two thin (5 cm) chert layers occur within the pillow breccia, 3 m and 6 m below the contact. The lower portion (14 m) of the chert crops out in a steeply north-dipping to vertical east–west-trending succession. Small-scale (tens of centimetres) south-verging intrafolial asymmetric folds indicate south-directed thrusting with a dextral strike-slip component. The upper portion of the sequence is folded and separated from lower parts of the section by 10 m of non-exposure. Many samples yielded abundant and well-preserved radiolarians (Table 1; Fig. 3) that allow precise age determination. The lower chert (samples 2–7) ranges from upper Barremian (UA1 *H. asseni* Zone) to lower Aptian (UA5/6 *H. verbeeki* Subzone) and both the upper and folded cherts (samples 7–20) are upper Aptian (UA6/7 to UA8 *T. costata* Subzone). The total range of the Donglha-1 section (c. 16 m thick) is upper Barremian to upper Aptian.

A tectonic sliver (100 m thick) of purplish red and greenish grey siliceous mudstones with minor greenish grey chert (Donglha-2, 29°06.954'N, 088°25.518'E) crops out 4 km SE of Donglha-1. This section is bounded by north-directed thrusts and structure is complicated by folds and shear zones with the possibility of tectonic repetitions, making it difficult to establish the original stratigraphy. Ten samples were collected and most possess similar radiolarian assemblages. Three assemblages with the widest stratigraphic range are used for correlation.

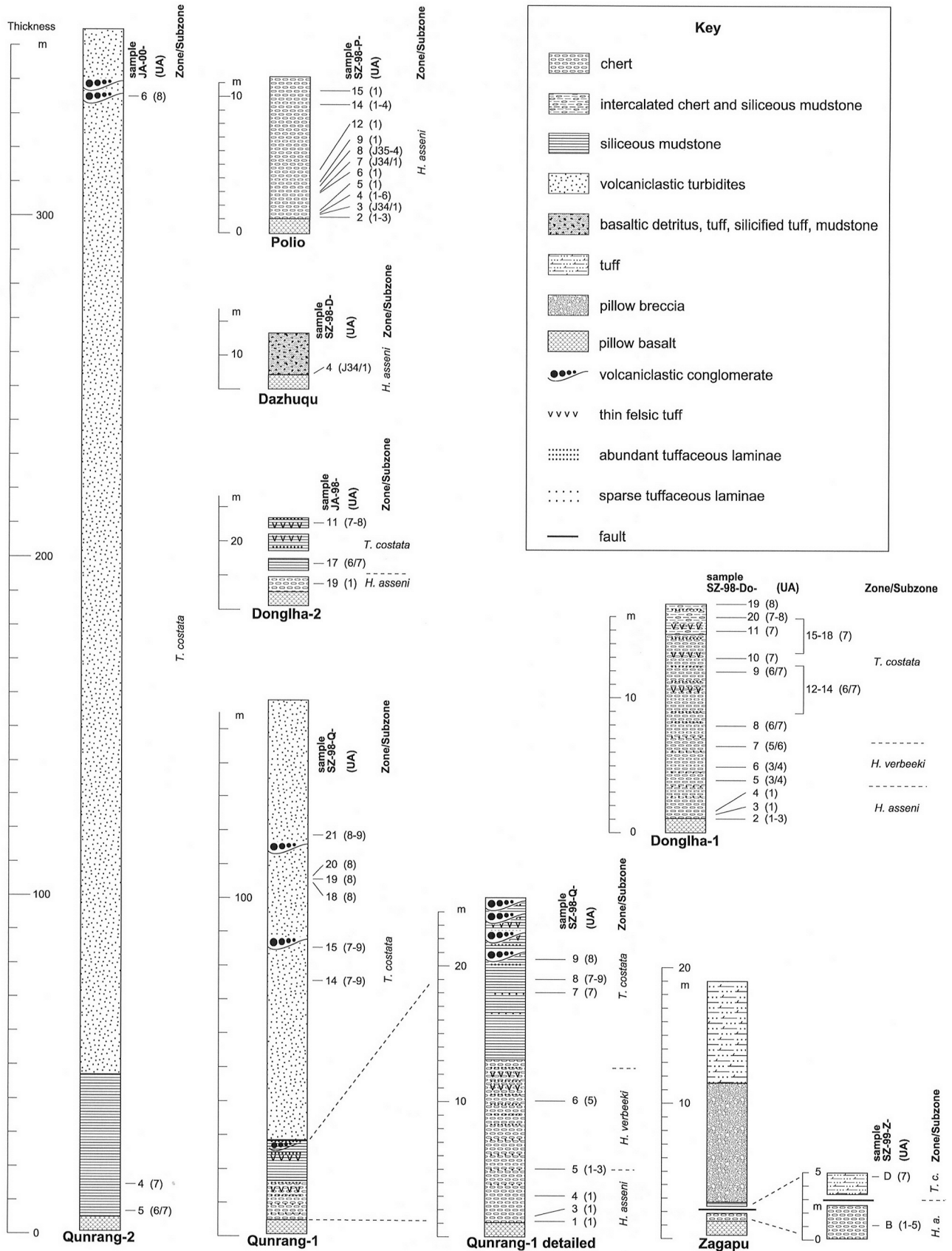
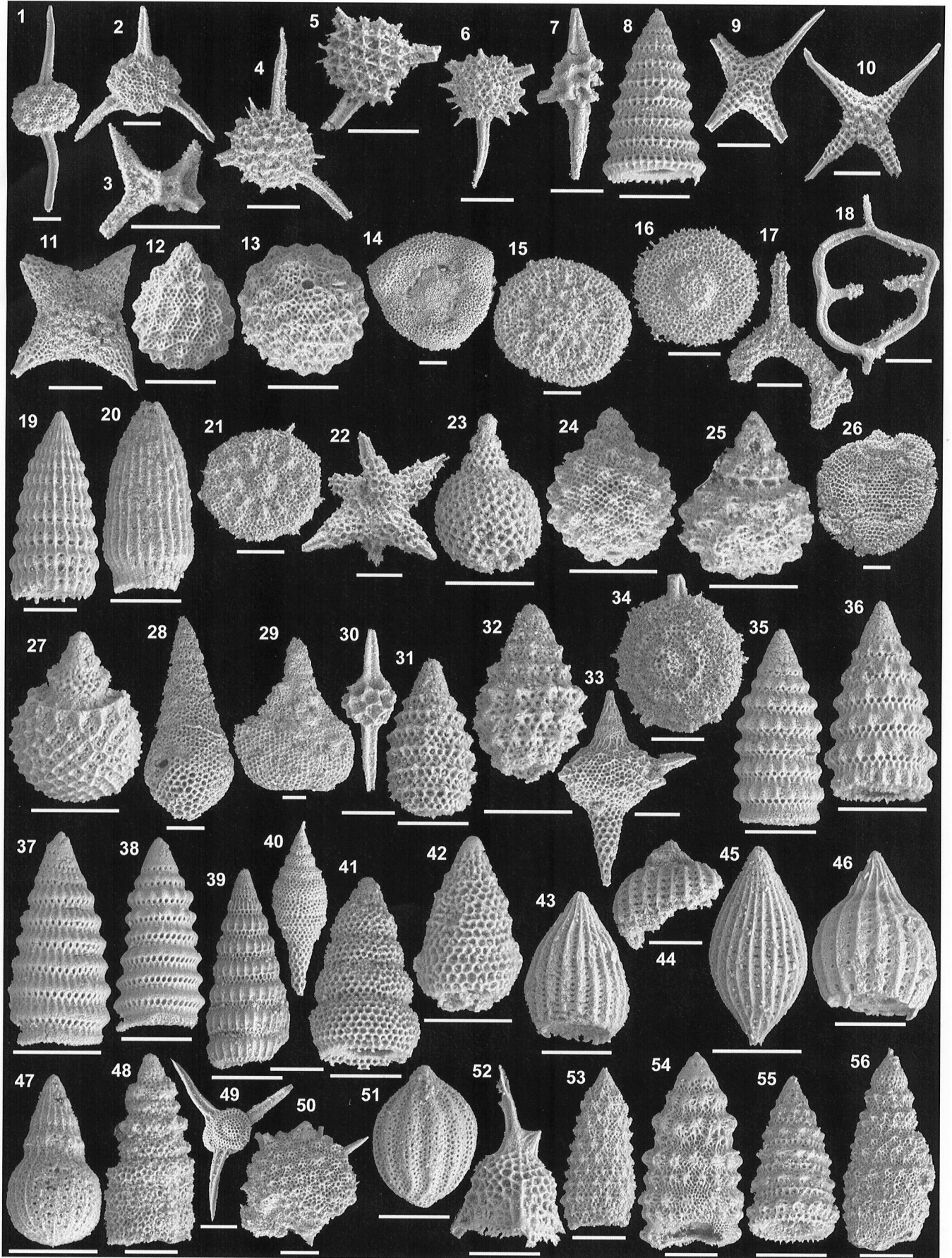


Fig. 2. Lithological columns of the sedimentary sections overlying pillow breccia of the Dazhuqu terrane, with the positions of samples and their correlation with Unitary Associations (UA) and zones or subzones. Details of some sections or their lower portions are shown at a larger scale on the right.



The succession ranges from upper Barremian (chert, sample 19; UA1 *H. asseni* Zone) to upper Aptian (sample 11; UA7-8 *T. costata* Subzone).

A steeply dipping north-younging sedimentary succession (Qunrang-1, 29°09.303'N, 089°02.702'E) conformably overlies pillow breccias within the ophiolite section on the hillside above the village of Qunrang. Three lithostratigraphic units are recognizable: purplish red bedded (2–7 cm) chert (12 m), purplish red siliceous mudstone (12 m) and thin-bedded (5–20 cm) fine- to medium-grained volcanoclastic turbidites (130 m). Chert and siliceous mudstone contain tuffaceous laminae and thin (0.5–3 cm) layers of felsic tuff, sparse at the bottom and abundant at the top (Fig. 2). Sand-sized lithic fragments in the turbidites are mostly of basaltic to andesitic composition. Four matrix-supported conglomerates (0.2–1.3 m) composed mostly of basalt and less abundant chert clasts sourced from underlying rocks occur in the upper portion of siliceous mudstone. Two clast-supported conglomerates (tens of centimetres) of similar composition lie within turbidites. Outcrop-scale asymmetric folds indicate south-directed thrusting with a sinistral strike-slip component. Rare layer-parallel shear zones traverse the section. To the north, the succession is faulted against a further section of ophiolitic basalt. Abundant well-preserved radiolarians indicate that the Qunrang-1 section ranges from uppermost Barremian to upper Aptian. Chert samples range from upper Barremian (UA1 *H. asseni* Zone) to lower Aptian (UA5 *H. verbeeki* Subzone). Overlying siliceous mudstones and volcanoclastic turbidites are upper Aptian (*T. costata* Subzone).

The thickest section (Qunrang-2, 29°08.750'N, 089°01.723'E) of purplish red siliceous mudstone (40 m) and overlying thinly bedded, fine- to medium-grained volcanoclastic turbidites (310 m) crops out 2 km SW of Qunrang-1. It rests conformably on basaltic pillow breccia and dips 55° SSW. Turbiditic sandstones are lighter in colour and appear more felsic than in the previous section. Some volcanoclastic conglomerates and thick devitrified tuffs occur near the top of the turbidites. The section above the conglomerates is intensely disturbed and folded in the footwall of a north-directed thrust where it is in contact with ultramafic rocks to the south. The entire sequence is assigned to the upper Albian (*T. costata* Subzone).

A thin sequence (Zagapu, 29°09.113'N, 089°15.419'E) of chert, tuff and siliceous mudstone within a pile of pillow breccia (>300 m thick) conformably overlain by 30 m of tuff is exposed near Zagapu village along the road from Bainang to Zagapu. Siliceous rocks (4 m thick) occur 40 m below the tuff and dip 70–85° NW. Dark grey to purplish red thinly bedded chert (2.5 m) conformably overlies pillow breccia. Above a shear surface, the chert is overlain by tuff (1.35 m) covered by thin (0.2 m) red siliceous mudstone, which is succeeded by pillow breccia. Two radiolarian assemblages recovered indicate that the chert (sample B) is upper Barremian–lower Aptian (UA1–5 *H. asseni* Zone to *H. verbeeki* Subzone) and the siliceous mudstone (sample D) is upper Aptian (UA7 *T. costata* Subzone).

Four kilometres south of the road from Lhasa to Xigaze in a creek near the village of Polio, a steeply south-dipping overturned sequence (Polio, 29°17.096'N, 089°25.286'E) of cherts (10.5 m) depositionally overlies pillow breccia. Although minor layer-parallel shearing is present it does not affect the contact. The northern limit of the sequence is tectonically juxtaposed against strongly sheared turbidites of the Xigaze terrane. Black and dark grey chert (0.9 m) above pillow breccia becomes pale

grey up-section where individual chert beds (2–10 cm) are commonly separated by sepiolitic layers (3–10 cm), especially abundant between 4 and 9 m above the base. Abundant and moderately well-preserved radiolarians indicate that the lower 2.1 m of chert (samples 1–7) is upper Barremian (UA J34/J35 or J34/1).

Four hundred metres upslope from Dazhuqu village, 3 km south of the road from Lhasa to Xigaze, a 10–12 m thick sequence (Dazhuqu, 29°18.828'N, 089°32.058'E) of laminated greenish grey tuffs and reworked basaltic material (3–15 cm) depositionally overlies pillow breccia. Minor silicified tuff and mudstone (2–4 cm) and scarce bluish green chert (4 cm) occur together with fine-grained reworked basaltic detritus. The section is overturned and dips 65–80° south. No top to the sequence is exposed but nearby turbidites of the Xigaze terrane to the north are strongly sheared and folded, suggesting a tectonic contact with the Xigaze terrane. A radiolarian assemblage from the base of the sequence is upper Barremian (UA J34/J35 or UA J34/1).

Discussion

Well-preserved radiolarian faunas, thorough sampling and enhanced resolution of radiolarian biostratigraphy (Jud 1994; O'Dogherty 1994) allow reassessment of the ages of the sedimentary successions overlying the ophiolite and the accurate dating of sedimentary packages within these successions. This places important temporal constraints on the generation of the Dazhuqu terrane ophiolite and provides a basis for detailed sequence correlation (Fig. 4). The oldest deposits are well constrained as upper Barremian in sections at Polio, Dazhuqu, Donghla-1, Donghla-2 and Qunrang-1. The base of the Qunrang-2 section is upper Aptian. This indicates that eruption of ophiolitic basalt occurred before the late Barremian (*c.* 123 Ma in the Gradstein *et al.* (1994) time scale) to the late Aptian (*c.* 117 Ma). Although the pillow basalt–chert contact is diachronous throughout the terrane over a 175 km long zone of outcrop it appears that the sediments intercalated with, and immediately overlying, the ophiolitic basalts were deposited within a relatively short (*i.e.* <10 Ma) interval. With the exception of younger ages for sediments associated with basalts at Qunrang-2 and probably Zagapu, this event, along the length of the terrane, was completed within an even shorter (1–2 Ma) interval.

Investigation of supra-ophiolite deposits in the Yarlung Tsangpo suture zone provides a picture of the patterns of early sedimentation upon a newly built oceanic floor within an extensional zone that was part of an intra-oceanic subduction system. While the ophiolite was being generated deposition began with accumulation of pillow breccia several hundreds of metres thick. Development of pillow breccia probably occurred along the scarps of normal faults in this extensional setting. A few thin (5 cm) chert layers were deposited towards the end of pillow breccia accumulation. Background biogenic pelagic sedi-

Fig. 3. Radiolarians from the Dazhuqu terrane (scale bars represent 100 μ m). 1, *Acaeniotyle umbilicata* (Rüst); 2, *A. diaphorogona* Foreman; 3, *Aurisaturnalis carinatus* (Foreman); 4, *Becus gemmatus* Wu; 5, *B. helena* (Schaaf); 6, *B. horridus* (Squinabol); 7, *Cecrops* sp. cf. *C. septemporatus* (Parona); 8, *Crolanium puga* (Schaaf); 9, *Crucella euganea* (Squinabol); 10, *C. gavalai* O'Dogherty; 11, *C. hispana* O'Dogherty; 12, *Cryptamphorella clivosa* (Aliciev); 13, *C. crepida* O'Dogherty; 14, *Cyclastrum infundibuliforme* Rüst; 15, *Dactylodiscus lenticulatus* Jud; 16, *Dactylisphaera maxima* (Pessagno); 17, *Deviatius diamphidius* (Foreman); 18, *Dicerosaturnalis amissus* (Squinabol); 19, *Dictyomitra communis* (Squinabol); 20, *D. excellens* (Tan); 21, *Godia decora* (Li & Wu); 22, *Hexapyramis pantanellii* Squinabol; 23, *Hiscocapsa asseni* (Tan); 24, *H. gruterinki* (Tan); 25, *H. kaminogogensis* (Aita); 26, *H. orca* Foreman; 27, *H. uterulus* (Parona); 28, *Obeliscoites perspicuus* (Squinabol); 29, *O. vinassa* (Squinabol); 30, *Pantanellium lanceola* (Parona); 31, *Parvicingula boesii* (Parona); 32, *P. usotanensis* Tumanda; 33, *Podobursa tythopora* (Foreman); 34, *Pseudoaulophucus (?) florealis* Jud; 35, *Pseudodictyomitra carpatica* (Lozyniak); 36, *P. hornatissima* (Squinabol); 37, *P. leptocnica* (Foreman); 38, *P. lilyae* (Tan); 39, *P. pentacolaensis* Pessagno; 40, *Pseudoeucyrtis hanni* (Tan); 41, *Stichomitra communis* Squinabol; 42, *S. mediocris* (Tan); 43, *Thanarla brouweri* (Tan); 44, *T. carboneroensis* O'Dogherty; 45, *T. lacrimula* (Foreman); 46, *T. pacifica* Nakasako & Nishimura; 47, *T. pseudodecora* (Tan); 48, *Torculum bastetani* O'Dogherty; 49, *Triactoma hybum* Foreman; 50, *Trisyringium capellinii* Vinassa; 51, *Turbocapsula costata* (Wu); 51, *Ultranapora praespinifera* Pessagno; 53, *Xitus alievi* (Foreman); 54, *X. clava* (Parona); 55, *X. elegans* (Squinabol); 56, *X. spicularius* (Aliciev).

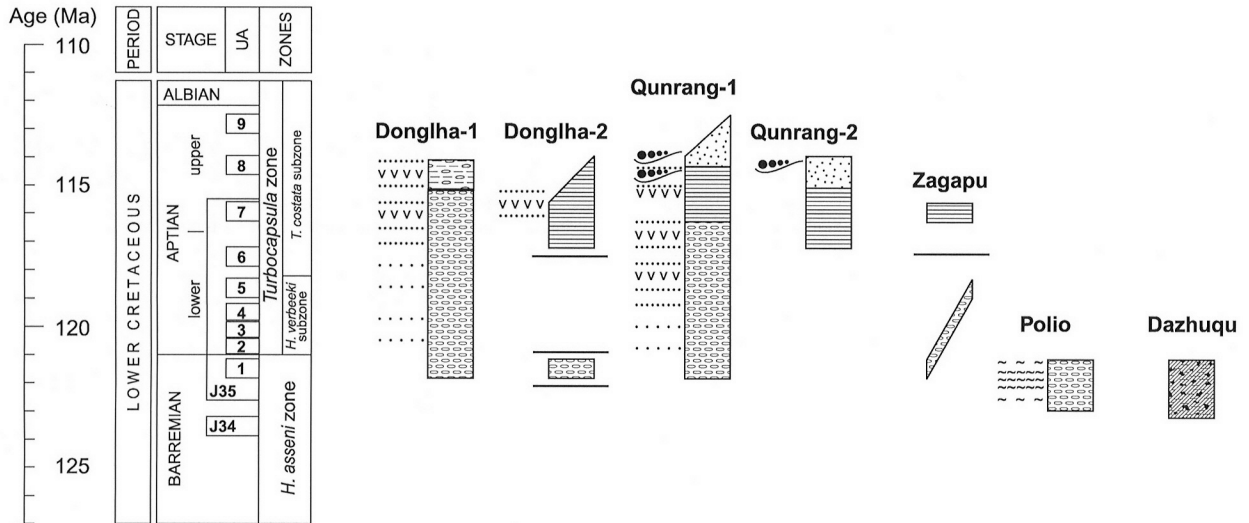


Fig. 4. Correlation chart of the Dazhuqu terrane radiolarian-bearing deposits with lithologies plotted against biostratigraphic (after O'Dogherty 1994; Jud 1994) and chronostratigraphic (after Gradstein *et al.* 1994) scales. Non-horizontal boundaries indicate uncertainties in age. (For key see Fig. 2.)

mentation was established along the terrane by the late Barremian after the cessation of pillow breccia development. In the easternmost sections, the earliest (late Barremian) accumulation of pelagic chert was swamped by deposition of glassy basaltic detritus that is now locally altered to sepiolite. In the central and western portions of the terrane, chert deposition continued until the late Aptian (Donglha-1) or had terminated by then (other sections). It was interrupted by ash falls from an adjacent volcanic arc and bottom traction currents that reworked tuffaceous materials. Pelagic sedimentation progressed into accumulation of hemipelagic siliceous mudstone in the late Aptian at Donglha-2, Qunrang-1 and Zagapu. At Qunrang-2, sedimentation started with deposition of siliceous mudstones in the late Aptian. The frequency of ash falls and activity of bottom traction currents varied through space and time. Hemipelagic sedimentation at Qunrang-1 was interrupted by deposition, from mudflows, of several matrix-supported conglomerates composed of basalt and chert clasts sourced from stratigraphically lower rocks. During the late Aptian, development of pillow breccia resumed at Zagapu, and later switched to thick tuff accumulation. At Qunrang, volcanoclastic turbidite sedimentation took over from hemipelagic sedimentation in the beginning of the late Aptian, when up to 300 m of fine- to medium-grained turbidites were deposited during a short period. The absence of carbonate deposits in the marine sedimentary veneer on the ophiolite indicates sedimentation below the carbonate compensation depth.

Sequences and ages of lithologies in the sedimentary succession vary between sections even where they are only separated by a few kilometres. We interpret such variations as a result of sediment accumulation in small semi-isolated basins on the ophiolitic basement. This is in accord with the interpretation of the ophiolite belt in the Xigaze area as a tectonic collage of individual massifs genetically related to locally different settings within an overall supra-subduction zone environment (Hébert *et al.* 2000, 2001). Sections in the western and central parts of the study area exhibit coarsening-upward tendencies, which is especially clear at Qunrang-1. The upper portion of this section (above the pillow breccia) documents a change from pelagic (chert) to hemipelagic (siliceous mudstone) and finally to volcanoclastic turbidite sedimentation. This marked coarsening-up-section tendency probably reflects development of a sediment

dispersal system associated with a volcanic arc and its progradation onto a zone of newly built supra-subduction zone oceanic floor. The basaltic to andesitic source of volcanoclastic turbidites in the Dazhuqu terrane differs from the source of the Xigaze terrane sandstones, which are considerably more felsic (Dürr 1996). Examinations of the sedimentology and radiolarian assemblages in sections overlying pillow basalts of the Dazhuqu terrane ophiolite indicate the rapid development of the ophiolite over a short mid-Cretaceous interval in a Tethyan intra-oceanic island arc setting isolated from any continental landmass such as that inferred to have existed within Tethys in the model of Aitchison *et al.* (2000).

We thank members of the Tibetan Geological Survey (Team # 2) and Tibetan Geological Society, whose efforts have helped to make this research possible. Many of these friends have assisted with arranging logistics and permission. We thank L. O'Dogherty, R. Jud and J. Guex for their kind permission to use their unpublished data and for fruitful discussions of the nature and applications of Unitary Associations and discrete biostratigraphic scales. This work was supported by grants (to J.C.A.) from the Research Grants Council of the Hong Kong Special Administrative Region, China (Projects HKU7102/98P, 7299/99P and 7069/01P). The constructive reviews of T. Danelian and T. Argles helped to improve the manuscript and are gratefully acknowledged.

References

- ABRAJEVITCH, A., AITCHISON, J.C. & ALI, J.R. 2001. Palaeomagnetism of the Dazhuqu Terrane, Yarlung Zangbo Suture Zone, Southern Tibet. *EOS Transactions, American Geophysical Union*, **82**(47), F314.
- AITCHISON, J.C., BADENGZHU, & DAVIS, A.M. *ET AL.* 2000. Remnants of a Cretaceous intra-oceanic subduction system within the Yarlung–Zangbo suture (southern Tibet). *Earth and Planetary Science Letters*, **183**, 231–244.
- AITCHISON, J.C., ABRAJEVITCH, A. & ALI, J.R. *ET AL.* 2002a. New insights into the evolution of the Yarlung Tsangpo suture zone, Xizang (Tibet), China. *Episodes*, **25**, 90–94.
- AITCHISON, J.C., DAVIS, A.M., BADENGZHU, & LUO, H. 2002b. New constraints on the India–Asia collision: the Lower Miocene Gangrinboche conglomerates, Yarlung Tsangpo suture zone, SE Tibet. *Journal of Asian Earth Sciences*, **21**(3), 253–265.
- AITCHISON, J.C., DAVIS, A.M. & ALI, J.R. *ET AL.* 2003. Stratigraphic and sedimentological constraints on the age and tectonic evolution of the Neotethyan ophiolites along the Yarlung Tsangpo suture zone, Tibet. In: DILEK, Y. & ROBINSON, P.T. (eds) *Ophiolites in Earth History*. Geological Society, London, Special Publications, in press.

- ALLÈGRE, C.J., COURTILOTT, V. & TAPPONNIER, P. *ET AL.* 1984. Structure and evolution of the Himalaya–Tibet orogenic belt. *Nature*, **307**, 17–22.
- BAUMGARTNER, P.O., O'DOGHERTY, L., GORIGAN, S., URQUIHART, E., PILLEVIUIT, A., DE WEVER, P. (eds) 1995. *Middle Jurassic to Lower Cretaceous Radiolaria of Tethys: Occurrence, Systematics, Biochronology*. Mémoires de Géologie, Université de Lausanne, **23**.
- BUREAU OF GEOLOGY AND MINERAL RESOURCES OF XIZANG AUTONOMOUS REGION 1993. *Regional Geology of Xizang (Tibet) Autonomous Region*. People's Republic of China, Ministry of Geology and Mineral Resources Geological Memoirs Series 1, **31**.
- BURG, J.P. 1983. *Carte Géologique du Sud du Tibet*, scale 1:500,000. CNRS, Paris.
- BURG, J.P. & CHEN, G.M. 1984. Tectonics and structural zonation of southern Tibet, China. *Nature*, **311**, 219–223.
- DAVIS, A.M., AITCHISON, J.C., BADENGZHU, LUO, H. & ZYABREV, S. 2002. Paleogene island arc collision-related conglomerates, Yarlung–Tsangpo suture zone, Tibet. *Sedimentary Geology*, **150**, 247–273.
- DÜRR, S.B. 1996. Provenance of Xigaze fore-arc basin clastic rocks (Cretaceous, South Tibet). *Geological Society of America Bulletin*, **108**, 669–684.
- EINSELE, G., LIU, B. & DÜRR, S. *ET AL.* 1994. The Xigaze forearc basin; evolution and facies architecture (Cretaceous, Tibet). *Sedimentary Geology*, **90**, 1–32.
- GIRARDEAU, J., MARCOUX, J. & ZAO, Y. 1984. Lithologic and tectonic environment of the Xigaze ophiolite (Yarlung Zangbo suture zone, southern Tibet, China), and kinematics of its emplacement. *Eclogae Geologicae Helveticae*, **77**, 153–170.
- GIRARDEAU, J., MERCIER, J.C.C. & ZAO, Y. 1985a. Structure of the Xigaze Ophiolite, Yarlung Zangbo suture zone, southern Tibet, China; genetic implications. *Tectonics*, **4**, 267–288.
- GIRARDEAU, J., MERCIER, J.C.C. & ZAO, Y. 1985b. Origin of the Xigaze Ophiolite, Yarlung Zangbo suture zone, southern Tibet. *Tectonophysics*, **119**, 407–433.
- GÖPEL, C., ALLÈGRE, C.J. & RONG, H.X. 1984. Lead isotopic study of the Xigaze ophiolite (Tibet); the problem of the relationship between magmatites (gabbros, dolerites, lavas) and tectonites (harzburgites). *Earth and Planetary Science Letters*, **69**, 301–310.
- GRADSTEIN, F.M., AGTERBERG, F.P., OGG, J.G., HARDENBOL, J., VAN VEEN, P., THIERRY, J. & HUANG, Z. 1994. A Mesozoic time scale. *Journal of Geophysical Research*, **99**, B24051–B24074.
- GUEX, J. 1991. *Biochronological Correlations*. Springer, Berlin.
- HÉBERT, R., BEAUDOIN, G., VARFALVY, V., HUOT, F., WANG, C.S. & LIU, Z.F. 2000. Yarlung Zangbo ophiolites, southern Tibet revisited, 15th Himalaya–Karakorum–Tibet workshop, Chengdu. *Earth Science Frontiers*, **7**, 124–126.
- HÉBERT, R., WANG, C. & VARFALVY, V. *ET AL.* 2001. Yarlung Zangbo ophiolites, southern Tibet revisited, 16th Himalaya–Karakorum–Tibet workshop, Graz, Austria 16th HKT abstracts. *Journal of Asian Earth Sciences*, **19**(3a), 27–28.
- JADOUL, F., BERRA, F. & GARZANTI, E. 1998. The Tethys Himalayan passive margin from Late Triassic to Early Cretaceous (South Tibet). *Journal of Asian Earth Sciences*, **16**, 173–194.
- JUD, R. 1994. *Biochronology and Systematics of Early Cretaceous Radiolaria of the Western Tethys*. Mémoires de Géologie, Université de Lausanne, **19**.
- LI, H.-S. & WU, H.-R. 1985. Radiolaria from the Cretaceous Congdu Formation in southern Xizang (Tibet). *Acta Micropalaeontologica Sinica*, **2**, 61–76.
- LIU, G. & EINSELE, G. 1994. Sedimentary history of the Tethyan basin in the Tibetan Himalayas. *Geologische Rundschau*, **83**, 32–61.
- LIU, J.B. & AITCHISON, J.C. 2002. Upper Paleocene radiolarians from the Yamdrok mélange, south Xizang (Tibet), China. *Micropaleontology*, **48**(Suppl. 1), 145–154.
- LIU, J.B., AITCHISON, J.C., BADENGZHU, DAVIS, A.M., ZIABREV, S.V., LUO, H. & McDERMID, I. Badengzhu, Davis, A.M., Ziabrev, S.V., Luo, H. & McDermid, I. 2000. Yamdrok Melange, South Tibet, 15th Himalaya–Karakorum–Tibet workshop, Chengdu. *Earth Science Frontiers*, **7**, 127.
- MARCOUX, J., DE WEVER, P. & NICOLAS, A. *ET AL.* 1982. Preliminary report of depositional sediments on top of volcanic member; Xigaze Ophiolite (Yarlung Zangbo suture zone); South Xingang (Tibet). *Ophioliti*, **2/3**, 395–396.
- MATSUOKA, A., KOBAYASHI, K., NAGAHASHI, T., YANG, Q., WANG, Y.J., TAKEI, M. & ZENG, Q.G. 2001. Early Middle Jurassic (Aalenian) radiolarian fauna from the Xialu chert in the Yarlung Zangbo Suture Zone, southern Tibet. In: METCALFE, I., SMITH, J.M.B., MORWOOD, M. & DAVIDSON, I. (eds) *Faunal and Floral Migrations and Evolution in SE Asia–Australasia*. Balkema, Lisse, 105–110.
- MATSUOKA, A., YANG, Q., KOBAYASHI, K., TAKEI, M., NAGAHASHI, T., ZENG, Q.G. & WANG, Y.J. 2002. Jurassic–Cretaceous radiolarian biostratigraphy and sedimentary environments of the Ceno-Tethys: records from the Xialu Chert in the Yarlung–Zangbo Suture Zone, southern Tibet. *Journal of Asian Earth Sciences*, **20**, 277–287.
- McDERMID, I., AITCHISON, J.C., BADENGZHU, & DAVIS, A.M. 2001a. The Zedong Terrane: an intra-oceanic magmatic arc assemblage Tibet, 16th Himalaya–Karakorum–Tibet workshop, Graz, Austria 16th HKT abstracts. *Journal of Asian Earth Sciences*, **19**(3a), 44.
- McDERMID, I., AITCHISON, J.C., DAVIS, A.M., HARRISON, T.M. & GROVE, M. 2001b. The Zedong Terrane: a Jurassic intra-oceanic magmatic arc within the Yarlung Zangbo Suture Zone of Southeastern Tibet, 16th Himalaya–Karakorum–Tibet workshop, Graz, Austria 16th HKT abstracts. *Journal of Asian Earth Sciences*, **19**(3a), 44–45.
- McDERMID, I., AITCHISON, J.C., DAVIS, A.M., HARRISON, T.M. & GROVE, M. 2002. The Zedong terrane: a Late Jurassic intra-oceanic magmatic arc within the Yarlung–Zangbo suture zone, southeastern Tibet. *Chemical Geology*, **187**, 267–277.
- NICOLAS, A., GIRARDEAU, J. & MARCOUX, J. *ET AL.* 1981. The Xigaze ophiolite (Tibet); a peculiar oceanic lithosphere. *Nature*, **294**, 414–417.
- O'DOGHERTY, L. 1994. *Biochronology and Paleontology of Mid-Cretaceous Radiolarians from Northern Apennines (Italy) and Betic Cordillera (Spain)*. Mémoires de Géologie, Université de Lausanne, **21**.
- PESAGNO, E.A. 1976. Radiolarian zonation and stratigraphy of the Upper Cretaceous portion of the Great Valley Sequence, California Coast Ranges. *Micropaleontology. Special Publication*, **2**, 1–95.
- PROUST, F., BURG, J.P., MATTE, P., TAPPONNIER, P., LI, T., LI, G. & CHEN, G. 1984. Succession des phases de plissement sur une transversale du Tibet méridional, implication géodynamiques. In: MERCIER, J.L. & GUANGCEN, L. (eds) *Mission Franco-Chinoise au Tibet 1980. Étude géologique et géophysique de la Croûte terrestre et du Manteau supérieur du Tibet et de l'Himalaya*. CNRS, Paris, 385–392.
- RATSCHBACHER, L., FRISCH, W. & LIU, G. 1994. Distributed deformation in southern and western Tibet during and after the India–Asia collision. *Journal of Geophysical Research*, **99**, 19917–19945.
- SEARLE, M.P., WINDLEY, B.F. & COWARD, M.P. *ET AL.* 1987. The closing of Tethys and the tectonics of the Himalaya. *Geological Society of America Bulletin*, **98**, 678–701.
- SHACKLETON, R.M. 1981. Structure of southern Tibet; report on a traverse from Lhasa to Khatmandu organised by Academia Sinica. *Journal of Structural Geology*, **3**, 97–105.
- WAN, X., WANG, L., WANG, C. & JANSÁ, L. 1998. Discovery and significance of Cretaceous fossils from the Xigaze forearc basin, Tibet. *Journal of Asian Earth Sciences*, **16**, 217–223.
- WANG, X.B., BAO, P.S., DENG, W.M. & WANG, F.G. (eds) 1987. *Tectonic Evolution of the Lithosphere of the Himalayas: Xizang (Tibet) Ophiolite*. People's Republic of China Ministry of Geology and Mineral Resources Geological Memoirs Series 3, **8**.
- WIEDMANN, J. & DÜRR, S.B. 1995. First ammonites from the Mid- to Upper Cretaceous Xigaze Group, South Tibet, and their significance. *Newsletters on Stratigraphy*, **32**, 17–26.
- WU, H.R. 1986. Some new genera and species of Cenomanian Radiolaria from southern Xizang (Tibet). *Acta Micropalaeontologica Sinica*, **3**, 347–360.
- WU, H.R. 1993. Upper Jurassic and Lower Cretaceous radiolarians of Xialu chert, Yarlung Zangbo ophiolite belt, southern Tibet. In: BLUEFORD, J.R. & MURCHEY, B.L. (eds) *Radiolaria of Giant and Subgiant Fields of Asia, Nazarov Memorial Volume*. Micropaleontology Special Paper, **6**, 115–136.
- YIN, A. & HARRISON, T.M. 2000. Geologic Evolution of the Himalayan Tibetan Orogen. *Annual Review of Earth and Planetary Sciences*, **28**, 211–280.
- YIN, A., HARRISON, T.M., RYERSON, F.J., CHEN, W.J., KIDD, W.S.F. & COPELAND, P. 1994. Tertiary structural evolution of the Gangdese thrust system in southeastern Tibet. *Journal of Geophysical Research*, **99**, 18175–18201.
- YIN, A., HARRISON, T.M. & MURPHY, M.A. *ET AL.* 1999. Tertiary deformation history of southeastern and southwestern Tibet during the Indo-Asian collision. *Geological Society of America Bulletin*, **111**, 1644–1664.
- ZIABREV, S.V. 2002. *Tectonic evolution of Dachuqi and Bainang terranes, Yarlung–Zangbo suture, Tibet as constrained by radiolarian biostratigraphy*. PhD thesis, University of Hong Kong.
- ZIABREV, S.V., AITCHISON, J.C. & BADENGZHU, *ET AL.* 2000. Oceanic deposits in the Yarlung–Tsangpo suture zone: structural setting, radiolarian ages and their tectonic implications, 15th Himalaya–Karakorum Tibet workshop, Chengdu 15th HKT abstracts. *Earth Science Frontiers*, **7**, 118.

Received 2 September 2002; revised typescript accepted 7 March 2003.

Scientific editing by Anthony Cohen