



<b>Title</b>	<b>Two patients with cystic fibrosis, nonsense mutations in each cystic fibrosis gene, and mild pulmonary disease</b>
<b>Author(s)</b>	<b>Cutting, GR; Kasch, LM; Rosenstein, BJ; Tsui, LC; Kazazian Jr, HH; Antonarakis, SE</b>
<b>Citation</b>	<b>New England Journal Of Medicine, 1990, v. 323 n. 24, p. 1685-1689</b>
<b>Issued Date</b>	<b>1990</b>
<b>URL</b>	<b><a href="http://hdl.handle.net/10722/42296">http://hdl.handle.net/10722/42296</a></b>
<b>Rights</b>	<b>Creative Commons: Attribution 3.0 Hong Kong License</b>

## TWO PATIENTS WITH CYSTIC FIBROSIS, NONSENSE MUTATIONS IN EACH CYSTIC FIBROSIS GENE, AND MILD PULMONARY DISEASE

GARRY R. CUTTING, M.D., LAURA M. KASCH, B.S.,  
 BERYL J. ROSENSTEIN, M.D., LAP-CHEE TSUI, PH.D.,  
 HAIG H. KAZAZIAN, JR., M.D.,  
 AND STYLIANOS E. ANTONARAKIS, M.D.

**C**YSTIC fibrosis is the most common lethal inherited disorder in the white population. It is manifested by viscous secretions in the lungs and pancreas and abnormal electrolyte composition of sweat.<sup>1</sup> Epithelial cells from patients with cystic fibrosis have abnormal conductance of chloride ions across apical membranes due to defective regulation of a particular chloride channel.<sup>2-4</sup> Inadequate secretion of chloride is believed to cause the insufficient hydration of mucus in the airways and pancreatic ducts.<sup>1</sup> The cystic fibrosis gene has recently been identified, and it is predicted to encode a 1480-amino-acid protein termed the cystic fibrosis transmembrane conductance regulator (CFTR).<sup>5,6</sup> The deduced amino acid sequence of CFTR suggests that this protein has several functionally important regions, including two ATP-binding domains, two areas that interact with cell membranes, and a highly charged domain with several potential sites for phosphorylation by protein kinases. The structure of CFTR is similar to the multidrug-resistance proteins and several other membrane-associated ATP-binding proteins.<sup>6</sup> The latter proteins are known to transport small molecules (drugs, carbohydrates, and amino acids) across cell membranes in a process that appears to be coupled with ATP hydrolysis.<sup>7,8</sup> Structural similarities between CFTR and this family of proteins raise the possibility that CFTR may be involved in the regulation of secretory chloride channels.<sup>6,9</sup>

The identification of naturally occurring deleterious gene mutations has provided insight into the functionally important regions of several proteins.<sup>10,11</sup> The most common mutation of the cystic fibrosis gene,  $\Delta F_{508}$ , leads to the omission of a phenylalanine residue in the putative first ATP-binding domain of CFTR, indicating that this region is crucial for function.<sup>6-12</sup>

A number of missense and nonsense mutations have been discovered in the first and second ATP-binding domains, confirming the importance of these regions.<sup>13,14</sup> In this report, we describe two unrelated American black patients with nonsense mutations in

each cystic fibrosis chromosome. Nonsense mutations frequently cause severe illness, since premature termination of translation creates truncated proteins that are usually unstable. Each patient had severe pancreatic disease but mild pulmonary illness. This discrepancy is a remarkable finding and indicates that truncation or even the absence of CFTR is not lethal and may have a greater effect on pancreatic function than on lung function.

## METHODS

### Patients

Seventeen American black patients and 25 American white patients with cystic fibrosis, carrying 23 and 29 unknown cystic fibrosis mutations, respectively, were available for study. All patients had two positive sweat chloride tests (>60 mmol per liter) and clinical features consistent with the diagnosis of cystic fibrosis. Exons 10, 11, 20, and 21 were investigated in these patients as part of a systematic search for mutations in the proposed functionally important regions of CFTR.

### Nucleotide Sequencing of Cystic Fibrosis Gene Exons

Exons 20 and 21 in the second putative ATP-binding domain were amplified from the genomic DNA of each patient with the polymerase chain reaction (PCR).<sup>15</sup> Primers for the PCR were selected from the flanking intron sequence of each exon as follows: 20i-5 (5'GGTCAGGATTGAAAGTGTGCA3') and 20i-3 (5'CTATGAGAAAAGTGCCTGCA3') for exon 20, and 21i-5 (5'AATGTTTACAAGGACTCCA3') and 21i-3 (5'CAAAGTACTGTTTGTCTCCA3') for exon 21. The PCR was performed in a volume of 100  $\mu$ l containing 500 to 1000 ng of genomic DNA, 2.5 units of *Taq* polymerase (Cetus), 0.02  $\mu$ mol of each 2'-deoxynucleotide 5'-triphosphate (Pharmacia), and 2  $\mu$ l of a 10  $\mu$ M solution of the 5' and 3' primers for each exon in *Taq* polymerase buffer (50 mM potassium chloride; 10 mM TRIS, pH 8.3; 1.5 mM magnesium chloride; and 0.01 percent [wt/vol] gelatin). The genomic DNA was amplified by denaturation at 94°C for 6 minutes, followed by 30 cycles consisting of annealing at 58°C for 30 seconds, extension at 72°C for 1 minute, denaturation at 94°C for 30 seconds, and a final extension at 72°C for 10 minutes. Amplification of genomic DNA with primers 20i-5 and 20i-3 produces a fragment of 472 base pairs (bp), whereas primers 21i-5 and 21i-3 produce a fragment of 475 bp. The nucleotide sequence of each exon was determined by sequencing the PCR-amplified DNA with a third primer selected from an intron sequence 40 bp from the 5' splice site of each exon. Sequencing primers 20s-5 (5'TATTATGGCATGGTACC3') for exon 20 and 21s-5 (5'TTACAATAAGGGA3') for exon 21 were end-labeled with [<sup>32</sup>P]ATP and T4 kinase, as described elsewhere.<sup>12</sup> Direct sequencing of double-stranded DNA amplified by PCR was performed as previously described.<sup>16,17</sup>

### Detection of Exon 11 Mutations

The previously described nonsense mutations, replacing a glycine at codon 542 (G542Stop) and an arginine at codon 553 (R553Stop) were detected in each family by direct sequencing of DNA amplified by PCR from exon 11 of the CFTR gene.<sup>13,14</sup> The presence of the G542Stop mutation was confirmed by allele-specific oligonucleotide hybridization as described elsewhere.<sup>14</sup> The R553Stop mutation causes the loss of a *HincII* site in exon 11.<sup>13</sup> The lack of digestion of PCR-amplified exon 11 DNA with *HincII* confirmed the presence of this mutation.

## RESULTS

Nucleotide sequencing of exons 20 and 21 from the cystic fibrosis genes from 17 blacks and 25 whites

From the Center for Medical Genetics (G.R.C., L.M.K., H.H.K., S.E.A.) and the Department of Pediatrics (G.R.C., B.J.R., H.H.K., S.E.A.), Johns Hopkins University School of Medicine, Baltimore, and the Department of Genetics, Hospital for Sick Children, Toronto (L.-C.T.). Address reprint requests to Dr. Cutting at CMSC 1007, Johns Hopkins Hospital, 600 N. Wolfe St., Baltimore, MD 21205.

Supported by grants from the National Institutes of Health, the Cystic Fibrosis Foundation, and the Canadian Cystic Fibrosis Foundation.

revealed two nonsense mutations. One mutation ( $C_{3896} \rightarrow A$ ) changing serine to a stop at codon 1255 (S1255Stop) was present in exon 20 in a black patient (Patient 271) (Fig. 1, left panel). This mutation creates a *Hind*III recognition site in exon 20. Digestion of the 472-bp DNA fragment amplified from exon 20 with *Hind*III produced fragments of 214 and 258 bp when the  $C_{3896} \rightarrow A$  mutation was present (Fig. 2A). The mutation was inherited from the patient's father (Fig. 2A) and was associated with the XV2c/KM19 DNA polymorphism haplotype D.<sup>18</sup> The discovery of a nonsense mutation in exon 20 in this patient was surprising, since he inherited another nonsense mutation, G542Stop, from his mother (Fig. 2A). Detailed description of the G542Stop mutation has been presented elsewhere.<sup>14</sup> This patient was an 11-year-old boy with serious pancreatic disease but only mild pulmonary involvement (Table 1). With the exception of minimal digital clubbing, his physical examination was unremarkable. He is fully active and has never been hospitalized for treatment of a pulmonary infection.

A second black patient (Patient 246) had a substitution of G for A at nucleotide 4079 in exon 21, replacing the tryptophan residue at codon 1316 with a termination signal (W1316Stop) (Fig. 1, right panel). This mutation appears to have been inherited from the patient's father, although he was not available for study. The presence of the mutation in the patient was confirmed by allele-specific oligonucleotide hybridization (Fig. 2B).<sup>13</sup> The patient also carried the exon 11 nonsense mutation R553Stop on her other cystic fibrosis chromosome, which was inherited from her mother (Fig. 2B). Like Patient 271, this 21-year-old woman had substantial pancreatic disease but mild pulmonary involvement (Table 1). She is fully active and has never been hospitalized for treatment of a

pulmonary infection. With the exception of minimal digital clubbing, her physical examination was unremarkable.

## DISCUSSION

Rapid advances in our understanding of the basic defect in cystic fibrosis have occurred in the past five years. Altered chloride conduction in epithelial cells has been reported, and this abnormality is thought to be due to a failure of protein kinases to activate chloride channels in the apical membrane.<sup>3,4,21,22</sup> Furthermore, the gene responsible for cystic fibrosis was identified by a reverse genetic approach.<sup>5,6</sup> Although the role of the putative protein (CFTR) in chloride secretion is unknown, the identification of naturally occurring deleterious mutations and the characterization of the associated phenotypes have provided some insight into the function of CFTR.<sup>13,23,24</sup>

In this report we describe two patients who have nonsense mutations in each of their cystic fibrosis genes. Nonsense mutations in human genes have been associated with decreased levels of mutant messenger RNA.<sup>25-28</sup> The truncated protein produced by the nonsense mutation is difficult to isolate, presumably because of instability and rapid degradation.<sup>29</sup> This type of mutation is usually associated with more severe disease than that caused by missense mutations.<sup>30,31</sup> The presence of nonsense mutations in both cystic fibrosis genes might be expected to lead to a complete loss of the CFTR protein and the severest form of the disorder. Each patient had severe pancreatic disease, as evidenced by meconium ileus at birth in both patients and the development of diabetes mellitus in Patient 246. Each patient, however, had excellent nutritional status and mild pulmonary disease. Objective clinical scoring and laboratory testing

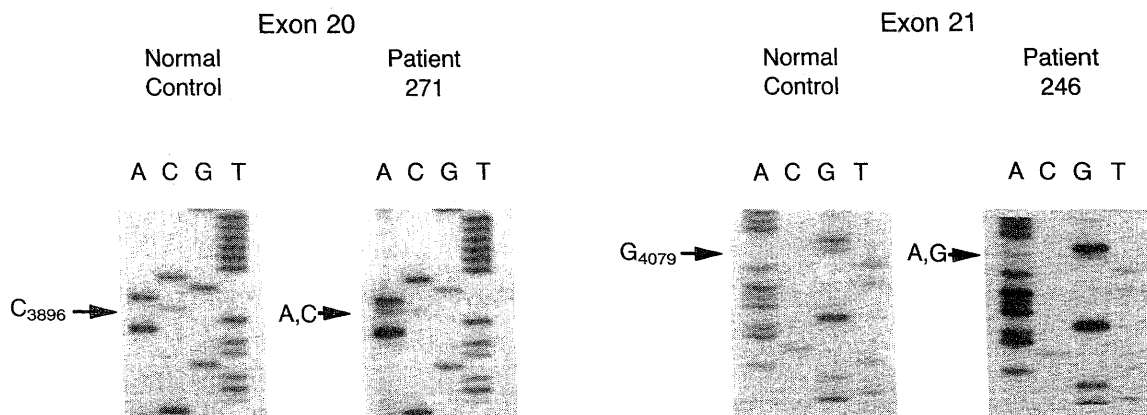


Figure 1. Nucleotide Sequencing of PCR-Amplified Genomic DNA from Exons 20 and 21 from Each CFTR Gene with Primers 20s-5 and 21s-5, Respectively.

The normal sequence extending from nucleotide positions 3887 to 3906 in exon 20 is shown beside the abnormal sequence in Patient 271. The normal sequence extending from nucleotide positions 4065 to 4083 in exon 21 is shown beside the abnormal sequence in Patient 246. Patient 271 had a C-to-A mutation at position 3896 in one of his cystic fibrosis genes, whereas Patient 246 had the substitution of A for G at position 4079 in one of her cystic fibrosis genes.

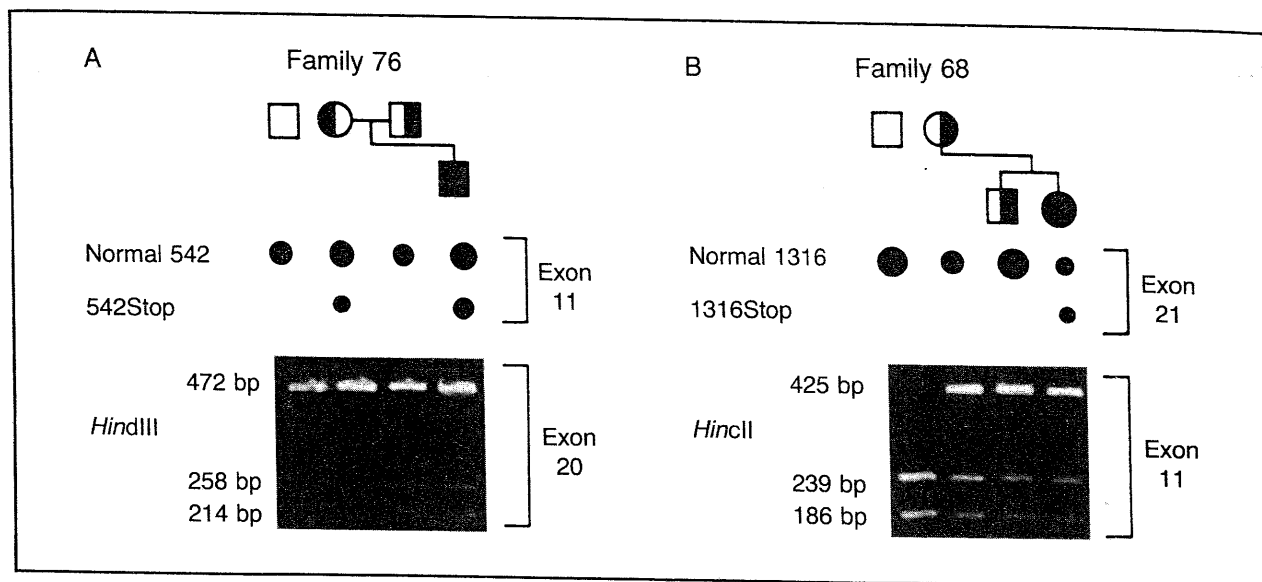


Figure 2. Detection of Nonsense Mutations in the Family (Family 76) of Patient 271 (Panel A) and Mutation Analysis of Patient 246 and Her Family (Family 68) (Panel B).

In Panel A, the patient's mother carries the exon 11 nonsense mutation G542Stop, as shown by hybridization of the 542Stop oligonucleotide to DNA amplified from exon 11. Digestion of PCR-amplified exon 20 DNA with *Hind*III revealed that the patient's father has the 214-bp and 258-bp fragments, indicating that he is heterozygous for the S1255Stop mutation.

In Panel B, the patient and her brother have inherited the exon 11 mutation R553Stop from their mother, as demonstrated by the presence of the 425-bp fragment after *Hinc*II digestion of exon 11 DNA. The father in this family was not available for study; however, the presence of the second nonsense mutation, W1316Stop, was confirmed by hybridization of the 1316Stop oligonucleotide to DNA amplified from exon 21. A normal male control ( $\square$ ) is shown in both panels.

confirmed the mildness of the lung involvement. The common cystic fibrosis mutation,  $\Delta F_{508}$ , has been associated with pancreatic insufficiency and variable severity of pulmonary disease.<sup>32</sup> American black patients with cystic fibrosis who attend the Johns Hopkins Cystic Fibrosis Clinic and are homozygous for the  $\Delta F_{508}$  mutation have clinical disease that is indistinguishable from that in white patients with the same genotype. Therefore, the strikingly similar phenotype observed in the two patients described here is probably the result of nonsense mutations in both cystic fibrosis genes of each patient and not due to differences in the genetic background of the black patients and white patients in North America.

Three hypotheses are presented to explain the unexpected mild pulmonary involvement in these patients. Alternative splicing of messenger RNA is a mechanism used by a cell to produce different forms of a protein (isoforms) from a single gene.<sup>33-35</sup> This process can occur in a tissue-specific manner.<sup>36,37</sup> The effect of a gene mutation can therefore be minimized if the mutation occurs in an exon that is not included in a mature transcript encoding a functional isoform. If a CFTR isoform lacking an amino acid sequence encoded by exon 11 or exons 20 and 21 is normally produced, then the patients described in this study could have some functional CFTR. Expression of this

CFTR isoform only in airway epithelia could explain the difference in the severity of pulmonary and pancreatic disease in these patients.

The nonsense mutations in exons 20 and 21 are

Table 1. Clinical and Laboratory Features of Patients with Cystic Fibrosis and Nonsense Mutations in Each Cystic Fibrosis Gene.

CHARACTERISTIC	PATIENT 271	PATIENT 246
Clinical features	Meconium ileus; several episodes of hyponatremic dehydration; mild pulmonary disease	Meconium ileus; diabetes mellitus; recurrent episodes of distal intestinal obstruction; mild pulmonary disease
Sweat chloride (mmol/liter)*	118, 111	103, 130
Height — cm (percentile)	140.3 (25–50)	154 (10)
Weight — kg (percentile)	32.2 (25–50)	53.9 (25)
Brasfield chest radiograph score†	23	23
Forced vital capacity — liters (% predicted)	1.82 (82)	2.43 (78)
Forced expiratory volume in 1 second — liters (% predicted)	1.48 (66)	2.09 (82)
Shwachman–Kulczycki clinical score‡	96	89

\*Two measurements were made to confirm that the sweat chloride level was elevated.

†According to the scoring system of Brasfield et al.,<sup>19</sup> in which 25 is the best score.

‡According to the scoring system of Shwachman and Kulczycki,<sup>20</sup> in which 100 is the best score.

predicted to produce a protein missing only the second ATP-binding domain. This shortened protein would contain both transmembrane segments, the regulatory region, and the first ATP-binding domain. It is possible that this protein is not degraded and is integrated into the cell membrane. In this case, the truncated protein could be partially functional in certain tissues. Previous studies have shown that truncated receptors for low-density lipoprotein cholesterol are produced by genes with premature termination signals in the COOH-terminal cytoplasmic domain.<sup>38</sup> These proteins bind low-density lipoprotein cholesterol but cannot transport it into cells.

If the nonsense mutations in these patients produce unstable proteins that are rapidly degraded, then one can conclude that the complete CFTR protein is not essential for cell viability. The CFTR protein may be necessary for a highly specialized function only in epithelial cells. The mutation  $\Delta F_{508}$  causes the omission of a single residue in the first ATP-binding domain. In cells homozygous for this mutation, the CFTR messenger RNA is present and is believed to produce an altered protein.<sup>6</sup> Since the majority of patients homozygous for the  $\Delta F_{508}$  mutation have more severe pulmonary disease than the two patients described here,<sup>32</sup> the presence of an altered CFTR protein may be more deleterious to airway epithelial cells than its total absence. In osteogenesis imperfecta, the production of an abnormal pro- $\alpha$  collagen chain interferes with the triple-helix formation of Type I collagen, leading to extreme fragility of connective tissue.<sup>39</sup> Missense mutations allow an altered protein to be produced, causing severe disease (Type II), whereas nonsense mutations have a much milder phenotype (Type I).<sup>39</sup> In osteogenesis imperfecta, however, a nonsense mutation acts in an autosomal dominant fashion, whereas cystic fibrosis is an autosomal recessive disorder.

Studies with CFTR antibodies will determine the presence or absence of the CFTR protein on apical membranes of epithelial cells from these patients. These results coupled with detailed studies of chloride conductance should provide considerable insight into the function of the CFTR protein in different epithelial tissues and the pathophysiology of cystic fibrosis.

We are indebted to Dr. P. Maloney for helpful discussion, to J. Zielinski for intron sequences, and to B. Shaffer for secretarial assistance.

## REFERENCES

1. Boat TF, Welsh MJ, Beaudet AL. Cystic fibrosis. In: Scriver CL, Beaudet AL, Sly WS, Valle D, eds. *The metabolic basis of inherited disease*. 6th ed. New York: McGraw-Hill, 1989:2649-80.
2. Frizzell RA, Rechkemmer G, Shoemaker RL. Altered regulation of airway epithelial cell chloride channels in cystic fibrosis. *Science* 1986; 233:558-60.
3. Schoumacher RA, Shoemaker RL, Halm RM, Tallant EA, Wallace RW, Frizzell RA. Phosphorylation fails to activate chloride channels from cystic fibrosis airway cells. *Nature* 1987; 330:752-4.
4. Hwang T-C, Lu L, Zeitlin PL, Gruenert DC, Haganir R, Guggino WB. Cl<sup>-</sup> channels in CF: lack of activation by protein kinase C and cAMP-dependent protein kinase. *Science* 1989; 244:1351-3.
5. Rommens JM, Iannuzzi MC, Kerem B, et al. Identification of the cystic fibrosis gene: chromosome walking and jumping. *Science* 1989; 245:1059-65.
6. Riordan JR, Rommens JM, Kerem B, et al. Identification of the cystic fibrosis gene: cloning and characterization of complementary DNA. *Science* 1989; 245:1066-73.
7. Higgins CF. Export-import family expands. *Nature* 1989; 340:342.
8. Mimmack ML, Gallagher MP, Pearce SR, Hyde SC, Booth IR, Higgins CF. Energy coupling to periplasmic binding protein-dependent transport systems: stoichiometry of ATP hydrolysis during transport in vivo. *Proc Natl Acad Sci U S A* 1989; 86:8257-61.
9. Hyde SC, Emsley P, Hartshorn MJ, et al. Structural and functional relationships of ATP-binding proteins associated with cystic fibrosis, multidrug resistance and bacterial transport. *Nature* 1990; 346:362-5.
10. Davis CG, Lehman MA, Russell DW, Anderson RG, Brown MS, Goldstein JL. The J.D. mutation in familial hypercholesterolemia: amino acid substitution in cytoplasmic domain impedes internalization of LDL receptors. *Cell* 1986; 45:15-24.
11. Gitschier J, Kogan S, Levinson B, Tuddenham EG. Mutations of factor VIII cleavage sites in hemophilia A. *Blood* 1988; 72:1022-8.
12. Kerem B, Rommens JM, Buchanan JA, et al. Identification of the cystic fibrosis gene: genetic analysis. *Science* 1989; 245:1073-80.
13. Cutting GR, Kasch LM, Rosenstein BJ, et al. A cluster of cystic fibrosis mutations in the first nucleotide-binding fold of the cystic fibrosis conductance regulator protein. *Nature* 1990; 346:366-9.
14. Kerem B, Zielinski J, Markiewicz D, et al. Identification of mutations in regions corresponding to the 2 putative nucleotide (ATP)-binding folds of the cystic fibrosis gene. *Proc Natl Acad Sci U S A* (in press).
15. Saiki RK, Scharf S, Faloona F, et al. Enzymatic amplification of  $\beta$ -globin genomic sequences and restriction site analysis for diagnosis of sickle cell anemia. *Science* 1985; 230:1350-4.
16. Wong C, Dowling CE, Saiki RK, Higuchi RG, Erlich HA, Kazazian HH Jr. Characterization of  $\beta$ -thalassaemia mutations using direct genomic sequencing of amplified single copy DNA. *Nature* 1987; 330:384-6.
17. Higuchi R, von Beroldingen CH, Sensabaugh GF, Erlich HA. DNA typing from single hairs. *Nature* 1988; 332:543-6.
18. Beaudet AL, Spence JE, Montes M, et al. Experience with new DNA markers for the diagnosis of cystic fibrosis. *N Engl J Med* 1988; 318:50-1.
19. Brasfield D, Hicks G, Soong S, Tiller RE. The chest roentgenogram in cystic fibrosis: a new scoring system. *Pediatrics* 1979; 63:24-9.
20. Shwachman H, Kulczycki LL. Long-term study of one hundred five patients with cystic fibrosis. *Am J Dis Child* 1958; 96:6-15.
21. Li M, McCann JD, Liedtke CM, Nairn AC, Greengard P, Welsh MJ. Cyclic AMP-dependent protein kinase opens chloride channels in normal but not cystic fibrosis airway epithelium. *Nature* 1988; 331:358-60.
22. Li M, McCann JD, Anderson MP, et al. Regulation of chloride channels by protein kinase C in normal and cystic fibrosis airway epithelia. *Science* 1989; 244:1353-6.
23. Dean M, White MB, Amos J, et al. Multiple mutations in highly conserved residues are found in mildly affected cystic fibrosis patients. *Cell* 1990; 61:863-70.
24. White MB, Amos J, Hsu JMC, Gerrard B, Finn P, Dean M. A frame-shift mutation in the cystic fibrosis gene. *Nature* 1990; 344:665-7.
25. Globerman H, Amor M, Parker KL, New MI, White PC. Nonsense mutation causing steroid 21-hydroxylase deficiency. *J Clin Invest* 1988; 82:139-44.
26. Baserga SJ, Benz EJ Jr. Nonsense mutations in the human beta-globin gene affect mRNA metabolism. *Proc Natl Acad Sci U S A* 1988; 85:2056-60.
27. Daar IO, Maquat LE. Premature translation termination mediates triosephosphate isomerase mRNA degradation. *Mol Cell Biol* 1988; 8:802-13.
28. Lim S, Mullins JJ, Chen CM, Gross KW, Maquat LE. Novel metabolism of several beta zero-thalassaemic beta-globin mRNAs in the erythroid tissues of transgenic mice. *EMBO J* 1989; 8:2613-9.
29. Adams JG III, Coleman MB. Structural hemoglobin variants that produce the phenotype of thalassemia. *Semin Hematol* 1990; 27:229-38.
30. White PC. Analysis of mutations causing steroid 21-hydroxylase deficiency. *Endocr Res* 1989; 15:239-56.
31. Gitschier J, Wood WI, Shuman MA, Lawn RM. Identification of a missense mutation in the factor VIII gene of a mild hemophilic. *Science* 1986; 232:1415-6.
32. Kerem E, Corey M, Kerem B-s, et al. The relation between genotype and phenotype in cystic fibrosis — analysis of the most common mutation ( $\Delta F_{508}$ ). *N Engl J Med* 1990; 323:1517-22.
33. Early P, Rogers J, Davis M, et al. Two mRNAs can be produced from a single immunoglobulin mu gene by alternative RNA processing pathways. *Cell* 1980; 20:313-9.

34. Moore KW, Rogers J, Hunkapillar T, et al. Expression of IgD may use both DNA rearrangement and RNA splicing mechanisms. *Proc Natl Acad Sci U S A* 1981; 78:1800-4.
35. de Ferra F, Engh H, Hudson L, et al. Alternative splicing accounts for the four forms of myelin basic protein. *Cell* 1985; 43:721-7.
36. Helfman DM, Cheley S, Kuismanen E, Finn LA, Yamawaki Kataoka Y. Nonmuscle and muscle tropomyosin isoforms are expressed from a single gene by alternative RNA splicing and polyadenylation. *Mol Cell Biol* 1986; 6:3582-95.
37. Feener CA, Koenig M, Kunkel LM. Alternative splicing of human dystrophin mRNA generates isoforms at the carboxy terminus. *Nature* 1989; 338:509-11.
38. Lehrman MA, Goldstein JL, Brown MS, Russell DW, Schneider WJ. Internalization-defective LDL receptors produced by genes with nonsense and frameshift mutations that truncate the cytoplasmic domain. *Cell* 1985; 41:735-43.
39. Byers PH. Inherited disorders of collagen gene structure and expression. *Am J Med Genet* 1989; 34:72-80.

## CASE RECORDS OF THE MASSACHUSETTS GENERAL HOSPITAL



### Weekly Clinicopathological Exercises

FOUNDED BY RICHARD C. CABOT

ROBERT E. SCULLY, M.D., *Editor*

EUGENE J. MARK, M.D., *Associate Editor*

WILLIAM F. MCNEELY, M.D., *Associate Editor*

BETTY U. MCNEELY, *Assistant Editor*

### CASE 50-1990

#### PRESENTATION OF CASE

A 65-year-old man was admitted to the hospital because of an obstructing nasopharyngeal mass and lymphadenopathy.

The patient was well until one month earlier, when a sore throat and dysphagia developed, and he became unable to breathe through his nose. He was seen by a physician, who prescribed penicillin, ciprofloxacin, and amoxicillin-clavulanate potassium in sequence, without improvement. The patient began to notice enlarging lumps in the submental region and in both groins, with thickening of the skin over his shoulders. One day before admission a computed tomographic (CT) scan of the head and neck, obtained elsewhere, showed a large nasopharyngeal mass and cervical lymphadenopathy (Fig. 1 and 2). Adrenocorticosteroid medication was administered by vein and by mouth, and he was admitted to another hospital.

The patient was a retired furnace worker of a glass factory. Previous surgical procedures included an operation for a ruptured appendix and a lumbar fusion. He had smoked two or three packs of cigarettes daily from the age of 13 years until one year before admis-

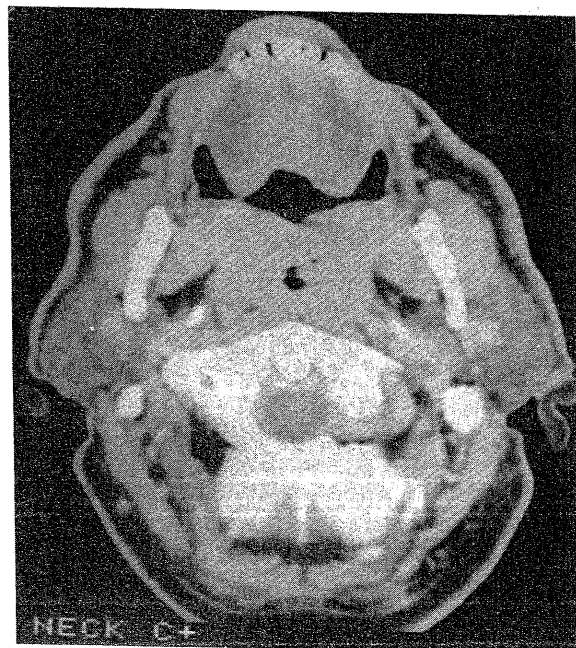
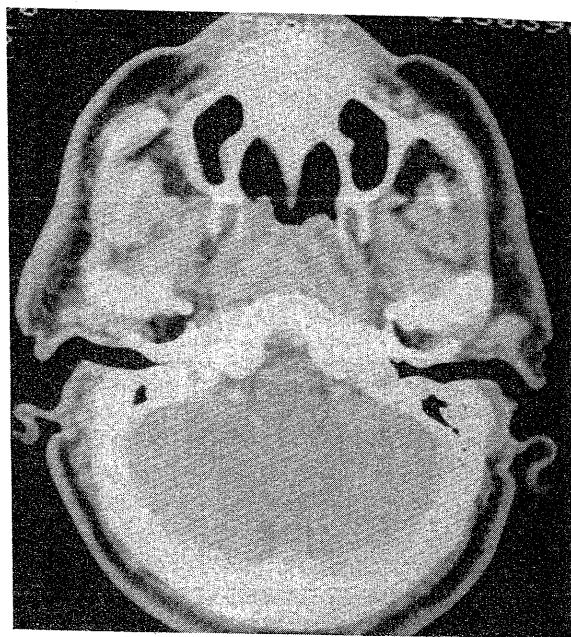


Figure 1. CT Scan of the Upper Neck, Showing Mass-like Thickening of the Nasopharynx (Top) and Tonsils (Bottom).