

**UCC Library and UCC researchers have made this item openly available.
Please [let us know](#) how this has helped you. Thanks!**

Title	Tools for experimental and computational analyses of off-target editing by programmable nucleases
Author(s)	Bao, X. Robert; Pan, Yidan; Lee, Ciaran M.; Davis, Timothy H.; Bao, Gang
Publication date	2020-12-07
Original citation	Bao, X. R., Pan, Y., Lee, C. M., Davis, T. H. and Bao, G. (2020) 'Tools for experimental and computational analyses of off-target editing by programmable nucleases', Nature Protocols, 16, pp. 10-26. doi: 10.1038/s41596-020-00431-y
Type of publication	Article (peer-reviewed)
Link to publisher's version	http://dx.doi.org/10.1038/s41596-020-00431-y Access to the full text of the published version may require a subscription.
Rights	© 2020, Springer Nature Limited. This is a post-peer-review, pre-copyedit version of an article published in Nature Protocols on 7 December 2020. The final authenticated version is available online at: https://doi.org/10.1038/s41596-020-00431-y
Embargo information	Access to this article is restricted until 6 months after publication by request of the publisher.
Embargo lift date	2021-06-07
Item downloaded from	http://hdl.handle.net/10468/10901

Downloaded on 2021-11-27T15:29:53Z

NOT READY FOR PRODUCTION

Editorial SUMMARY:

Off-target effects of programmable nucleases remain a critical issue for therapeutic applications of genome editing. This review compares experimental and computational tools for off-target analysis, providing recommendations for better assessments of off-target effects.

Tweet: Experimental and Computational Analyses of Off-target Editing by Programmable Nucleases

Experimental and Computational Analyses of Off-target Editing by Programmable Nucleases

X. Robert Bao^{1*}, Yidan Pan^{2*}, Ciaran M. Lee^{3*}, Timothy H. Davis² and Gang Bao²⁺

¹ILISATech, Houston, TX 77030, USA

²Department of Bioengineering, Rice University, Houston, TX 77030, USA

³APC Microbiome Ireland, University College Cork, Ireland

*These authors have contributed equally to this work

+Corresponding Author: Gang Bao, gang.bao@rice.edu

ABSTRACT

Genome editing using programmable nucleases is revolutionizing life science and medicine. Off-target editing by these nucleases remains a significant concern, especially in therapeutic applications. Here we review tools developed for identifying potential off-target editing sites and compare the ability of these tools to properly analyze off-target effects. Recent advances in both *in silico* and experimental tools for off-target analysis have generated remarkably concordant results for sites with high off-target editing activity. However, no single tool is able to accurately predict low-frequency off-target editing, presenting a bottleneck in therapeutic genome editing, since even a small number of cells with off-target editing can be detrimental. Therefore, we recommend that at least one *in silico* tool and one experimental tool should be used together to identify potential off-target sites, and amplicon-based next-generation sequencing (NGS) should be used as the gold-standard assay for assessing the true off-target effects at these candidate sites. Future work to improve off-target analysis includes expanding the true off-target editing dataset to evaluate new experimental techniques and to train machine learning algorithms; performing analysis using the particular genome of the cells in question rather than the reference genome; and applying novel NGS techniques to improve the sensitivity of amplicon-based off-target editing quantification.

INTRODUCTION

Over the past few decades, the emergence of programmable nucleases has revolutionized the field of genome editing. Programmable nucleases, including Zinc Finger Nucleases (ZFNs)¹⁻³, Transcription Activator-like (TAL) Effector Nucleases (TALENs)⁴⁻⁶, Clustered Regularly Interspaced Short Palindromic Repeats (CRISPR) / CRISPR-associated protein 9 (Cas9) (CRISPR/Cas9) systems and their derivatives such as Base Editors⁷⁻¹¹, allow for site-specific and permanent alterations to the genomes of a wide variety of organisms. Most of the programmable nucleases function by creating a DNA double-strand break (DSB) at the intended target locus in a cell, which is subsequently repaired by the non-homologous end joining (NHEJ) pathway, resulting in insertion/deletion (indel) mutations at the target site; or by the homology-directed repair (HDR) pathway, leading to the targeted integration of a donor sequence. A glossary of abbreviations used in our review is provided in **Box 1**.

Figure 1 shows four major classes of programmable nucleases: ZFNs, TALENs, CRISPR/Cas9 and Base Editors. For ZFNs and TALENs, a pair of nucleases is required to generate a DSB at a specific (predetermined) target locus. In the case of ZFNs (**Figure 1A**), each ZFN contains a DNA binding domain (zinc finger protein) fused to the FokI non-specific DNA cleavage domain. With each zinc finger binding to 3 DNA bases, a zinc finger protein typically consists of an array of 3-6 zinc fingers to recognize 9-18 DNA bases, thus a ZFN pair targets a DNA sequence of 18-36 bases. For TALENs, the nuclease is formed by fusing a transcription activator-like effector (TALE) DNA binding domain to the FokI nuclease domain (**Figure 1B**). Each DNA-binding domain of TALE contains a variable number of 33–35 amino acid repeats that specify the DNA-binding sequence primarily through their 12-th and 13-th repeat-variable di-residues (RVDs). As illustrated in **Figure 1C**, the CRISPR/Cas9 system targets the site of interest using a single guide RNA (gRNA). The gRNA sequence typically comprises a 5' 17-20 nucleotide sequence complementary to the target DNA sequence and a 3' end sequence that interacts with the Cas9 protein. A protospacer-associated motif (PAM) of 2 – 5 nucleotides on the target DNA is required for Cas9 binding, which is located directly downstream of the target sequence on the non-target DNA strand. Cas9 is guided by the gRNA to the target site and cleaves the DNA sequence it binds, giving rise to a DSB. Base Editors generate single-nucleotide changes in DNA¹². A Base Editor typically consists of a

Cas9 nickase (nCas9) fused to an Adenosine or Cytosine deaminase, which is capable of converting A to G or C to T respectively in genomic DNA¹² (**Figure 1D**). Base editing has the potential to make genome editing more versatile and safer. A new class of gene editors, Prime Editors, uses nCas9 fused to an engineered reverse transcriptase, programmed with a prime editing guide RNA (pegRNA) that both specifies the target site and encodes the desired base editing¹¹. While Prime Editing has the potential to expand the scope and capability of genome editing¹³, it is still in an early stage of development and is thus not included in our discussion here.

Programmable nucleases have a wide range of applications, including genetic modification of bacteria, plants, and animals; enhancing our understanding of, and regulating, gene functions; establishing human disease models for basic research and drug discovery; and targeted therapeutic intervention¹⁴⁻¹⁷. In particular, the potential of programmable nuclease-based genome editing in therapeutic applications has been broadly recognized, and to date there are 53 genome editing-based clinical trials registered at clinicaltrials.gov: 15 with ZFNs, 6 with TALENs, and 32 with CRISPR/Cas9 systems. However, several major challenges currently affect clinical translation of programmable nuclease based gene editing, including pre-existing immunity¹⁸⁻²¹, *in vivo* delivery efficiency²², and potential off-target effects²³⁻²⁵.

This review article focuses on the analysis of off-target effects, which remain a major safety concern in therapeutic applications of genome editing. An off-target event can be defined as programmable nuclease-induced DNA cleavage at a site anywhere in the genome other than the intended target site. When an off-target cutting event occurs, it can be repaired via the NHEJ pathway, potentially resulting in an indel mutation; or, if it occurs simultaneously with an on-target or a second off-target cutting event, the off-target cutting activity can generate a chromosomal rearrangement such as an inversion or translocation, or a large deletion between the two break points²⁶.

A number of tools, both *in silico* and experimental, have been developed to identify potential off-target sites for programmable nucleases (**Tables 1-4**). For researchers performing genome editing experiments with programmable nucleases, it can be difficult to choose among these methods for off-target analysis. Here we outline and analyze the most commonly used

methods developed for the identification of off-target sites, evaluating their strengths and weaknesses, and highlighting the challenges in accurately identifying off-target sites and quantifying off-target effects. We focus on tools designed for CRISPR/Cas9 systems due to their widespread use, although methods for ZFNs and TALENs are also briefly reviewed. After discussing both the experimental and computational methods available for off-target site identification, we will present a performance comparison of off-target analysis techniques and recommend best practices for evaluating off-target effects of CRISPR/Cas9 based gene editing. Future directions for improving off-target analysis methodologies are also discussed.

WORKFLOW FOR ANALYSIS OF OFF-TARGET EDITING

In general, the off-target cutting activity at a particular sequence in a genome depends on its homology with the target sequence, molecular interaction with the programmable nuclease, and accessibility. To analyze the off-target effects, it is necessary to first identify potential off-target sites in the genome of interest using an *in silico* tool and/or an experimental genome-wide off-target identification method such as GUIDE-seq²⁷, then to quantify the indel rates at the predicted sites using a quantitative assay. Specifically, the loci of interest are amplified from genomic DNA extracted from a pool of cells using PCR, and the resulting amplicons can be analyzed for sequence mismatch incorporations by a variety of methods, including the Surveyor nuclease assay²⁸, digestion by T7 Endonuclease I²⁹, Sanger sequencing trace decomposition (TIDE³⁰, ICE³¹) or direct detection of mutations using next-generation sequencing (NGS).

DIRECT DETECTION OF MUTATIONS USING NGS

NGS on PCR amplicons (hereafter referred to as Amp-NGS) remains the gold standard for confirming off-target cutting by programmable nucleases, due to its high sensitivity and applicability to any sample that has been subjected to gene editing by programmable nucleases. The sensitivity of Amp-NGS is limited by PCR and NGS errors, which confound the detection of true cutting events. NGS read errors are dominated by base substitution errors, whereas NHEJ repair of nuclease-induced DSBs leads to short indels, so Amp-NGS results are typically quantitated on the basis of indel frequency rather than base mutation frequency.

The generally recognized sensitivity limit of Amp-NGS is around 0.1%, dictated by the rate at which indels arise during both target amplification and the NGS read process³². For many sites, this 0.1% of off-target cutting activity may be an overestimate, since at these potential off-target sites the NGS reads with indels could be a result of PCR and NGS errors. Furthermore, a small number of sites may exhibit apparent indel rates of more than 0.1% even without treatment with programmable nucleases. Therefore, negative controls need to be performed for each off-target site being analyzed using Amp-NGS to determine its true background signal. Typical negative controls comprise cells subjected to mock delivery conditions in the absence of Cas9 protein. However we have previously observed significant off-target events *in vivo* using a non-targeting gRNA³³, so the optimal negative control consists of matched cells treated with Cas9 protein in the absence of any gRNA to rule out non-specific Cas9 cutting activity.

EXPERIMENTAL TOOLS FOR OFF-TARGET SITE IDENTIFICATION

A number of experimental tools have been developed to detect off-target activity of programmable nucleases (**Figure 2**). For clarity, we group experimental techniques into three broad categories: (1) detection of nuclease binding, (2) detection of nuclease-induced DSBs, and (3) detection of repair products arising from nuclease-induced DSBs. Since all of these techniques are intended to be as unbiased as possible, they are in general applicable across all the different programmable nuclease families. Among the techniques surveyed here, several approaches were pioneered in the study of ZFNs, the first truly engineered nuclease platform, and subsequently refined for use with TALENs and CRISPR/Cas9 systems. The performance evaluation for these techniques and best practice recommendations will be given in later sections (see “PERFORMANCE COMPARISONS” and “BEST PRACTICES” sections below).

Detection of nuclease binding

Initial efforts at analyzing off-target cutting of ZFNs relied on the characterization of the binding specificity of monomeric zinc finger proteins to DNA using assays such as SELEX and its derivatives³⁴⁻³⁶, Bacteria-1-hybrid screening³⁷, ELISA³⁸, and microarrays³⁹. Sequences bound by individual zinc finger proteins could then be used to search the genome of interest for

homodimeric or heterodimeric off-target ZFN sites. Similarly, binding of Cas9 to DNA targets has been characterized both *in vitro*⁴⁰ and *in vivo*^{41,42} using sequencing techniques.

While nuclease binding is the most straightforward to detect, it is the least informative, since nuclease binding is necessary but not sufficient for cutting. This appears to be true for ZFNs, TALENs and CRISPR/Cas9 systems. Off-target detection techniques that rely solely on nuclease binding thus tend to yield large numbers of false positive sites and are not in common use.

Detection of Nuclease Activity

Instead of detecting the binding of nucleases, another approach to discovering nuclease off-target effect is to detect the cutting activity directly. For instance, Pattanayak et al. used DNA substrates generated by rolling circle amplification of a random library to directly determine the sequences that could be cleaved *in vitro* by a pair of ZFNs⁴³. These were then used to build a statistical model whereby off-target cutting of genomic locations could be predicted. *In vitro* off-target sequence identification using synthetic DNA substrates was also used to determine the specificity of CRISPR/Cas9 systems⁴⁴⁻⁴⁶.

Early work to discover DSBs generated *in vitro* by Cas9 looked at fragmentation patterns in libraries generated from purified genomic DNA (Digenome-seq)⁴⁷. Recently, two techniques, SITE-seq⁴⁸ and CIRCLE-seq⁴⁹, have been developed where sequencing adapters are ligated to the DSBs resulting from nuclease activity. These adapters are used to enrich for the fragments that arise from the DSBs to facilitate sequencing. In the case of SITE-seq, the adapters are also biotinylated, and further enrichment is achieved by performing a pulldown of ligated fragments using streptavidin-coated beads. CHANGE-seq, a high-throughput method based on DNA circularization, has just been developed to analyze the genome-wide off-target activities of CRISPR–Cas9 nucleases *in vitro*.⁵⁰

All of the aforementioned techniques start with purified DNA as the substrate, with the drawback that the chromatin state of the substrate is not considered. Similar to the *in vitro* nuclease binding assays, inability to consider the chromatin state in a living cell thus cut-site accessibility in the assay gives rise to a large number of false positive events. DIG-seq, an

updated version of Digenome-seq, was developed to perform the same fragmentation pattern assay in nuclease-digested chromatin⁵¹. Several additional techniques attempt to detect DSBs being produced in cells. BLESS ligates biotinylated adapters to DSBs in fixed cells and then uses these adapters to capture DNA proximal to DSBs^{52,53}. BLISS ligates indexed adapters to DSBs in fixed cells and then performs *in vitro* transcription from those adapters, followed by NGS⁵⁴. DISCOVER-seq enriches DSBs by immunoprecipitation of MRE11, a protein that specifically binds to DSBs in cells and *in vivo*⁵⁵.

Detection of DSB Repair Products

Detection of DSBs generated in living cells may have limited sensitivity since cells can efficiently repair these DSBs. A potentially more sensitive approach would be to specifically enrich the repair products containing mutated sequences, which are expected to accumulate over time. This approach was initially demonstrated for ZFNs using an integrase deficient lentiviral vector (IDLV). However, IDLV capture is only able to reliably detect off-target sites with >1% activity⁵⁶ and underperforms compared to the *in vitro* ZFN cutting assay⁵⁷. A newer technique, GUIDE-seq, increases the sensitivity by flooding cells with short (34 bp) double-stranded oligodeoxynucleotides (dsODNs) that can be inserted at the DSB sites when nuclease cutting occurs. Detection of dsODN insertion events provides improved sensitivity, and GUIDE-seq is currently the preferred experimental technique by many groups for identifying potential off-target sites. A major drawback of GUIDE-seq is that it requires delivery of dsODN into cells and not all cell types, especially primary cells, are amenable to dsODN delivery⁴⁹. In cases where GUIDE-seq is unfeasible for the cell type of interest, a substitute cell type such as U2OS is often used. This, however, may lead to false positives and/or false negatives since some off-target effects can be cell type-specific.

Instead of detecting exogenous DNA insertion events, HTGTS²⁶ and LAM-HTGTS⁵⁸ look for endogenous repair products in the form of chromosomal rearrangements with known cutting loci. This allows off-target cutting detection in most cell types.

BIOINFORMATIC PREDICTION OF OFF-TARGET SITES

The bioinformatic analysis for identifying off-target sites of programmable nuclease can be divided into two steps. In the first step, site detection, the target genome is scanned for potential sites based on homology to the on-target sequence. A number of studies, especially those performed early on, used simple homology search programs like BLAST for off-target screening^{59,60}. Many bioinformatic off-target prediction tools utilized read mapping programs like Bowtie⁶¹ (e.g. implemented in CHOPCHOP⁶² and GT-Scan⁶³) and Bowtie2⁶⁴ (e.g. implemented in E-CRISP website⁶⁵ and CRISPRscan⁶⁶) to perform site detection. However, these screening algorithms should be avoided since they were not designed for locating homologous sequences that are short (12-24 bp) and can contain relatively large numbers of sequence mismatches (up to 6) or short indels. More recent tools such as CRISPRitz⁶⁷ are specifically designed to accomplish this task efficiently and thus should be used instead.

A site detection program typically yields tens to hundreds of potential off-target cut-sites. Thus, in the second step, site scoring/ranking, potential off-target sites detected in the first step are scored and/or ranked based on either the degree of homology to the target sequence, or the expected cutting activity of the programmable nuclease. This allows users to focus on the top-ranked sites for experimental validation using, for example, targeted deep sequencing. In some cases, scoring is accomplished by the application of a pre-defined formula, and in other cases the scoring algorithm is obtained using machine learning (ML) based on existing off-target cleavage data as the training set. However, due to limited data sets of experimentally validated true off-target sites, neither formula-based nor ML-based scoring/rankings are very accurate, and true off-target sites can be missed when taking the top-ten or top-twenty sites from the ranked list for validation. This has been a major issue in the off-target analysis of CRISPR/Cas9 systems.

Unlike experimental techniques developed for identifying potential off-target sites, which can be applied to different nucleases that generate DSBs, bioinformatic techniques are typically specific to the nuclease class of interest. We therefore discuss different nuclease classes separately, considering heterodimeric programmable nucleases (ZFNs and TALENs) first, then CRISPR/Cas9 systems.

Bioinformatic Approaches for Off-target Evaluation of ZFNs and TALENs

Both ZFNs and TALENs are designed as heterodimers, with two DNA recognition domains (**Figure 1**) flanking a short spacer (5-7 nucleotide) that contains the cut site. Off-target sites reflect this design strategy, with perfect and imperfect matches of each domain spaced by a range of distance intervals. Homodimerization has also been observed with both ZFNs and TALENs, and this also contributes to off-target cutting.

Early analyses of potential off-target sites for ZFNs and TALENs, performed for small sets of nuclease designs, used general sequence mapping programs such as BLAST and Bowtie to generate lists of candidate sites, and performed ranking of off-target sites using the number of mismatches within recognition domains⁶⁸⁻⁷⁴. A number of the top-ranked sites were then assessed experimentally. Strategies for off-target site detection were later codified into ZFN and TALEN design tools, as well as standalone tools that assess off-target specificity. Computational tools capable of identifying potential off-target sites for ZFNs and TALENs are listed in **Table 1**.

In addition to performing more thorough site detection, some design tools also incorporated new knowledge arising from more thorough characterizations of the programmable nucleases to enable more sophisticated site prioritization. For TALENs, binding specificities of natural TAL effectors were first mined to generate binding frequency matrices between RVDs in TAL effectors and nucleotides at the corresponding positions of the recognition domain. This allowed the Paired Target Finder feature of TALE-NT⁷⁵ to sum up the relative score of each RVD-nucleotide association using the frequency matrix for potential target sites. The search tool TALENoffer⁷⁶ further incorporates the contributions of different RVDs to TALEN cutting activity⁷⁷.

The off-target prediction tool PROGNOS⁷⁸ incorporated molecular features of nuclease–DNA interactions and used experimentally confirmed off-target sites as the training set to obtain scoring algorithms for off-target site identification of both ZFNs and TALENs. PROGNOS also factors in “polarity” effects, whereby the location of mismatches within the nuclease target site affects the DNA-protein binding affinity⁷⁹. PROGNOS has relatively low false positive rates and

its false negative rates are comparable to experiment-based predictions, making it a robust off-target search method for ZFNs and TALENs.

CRISPR/Cas9 Off-target Site Identification and Ranking

Many tools have been developed to identify potential CRISPR/Cas9 off-target sites⁸⁰. Some of the tools, such as Cas-OFFinder⁸¹, Crisflash⁸² and CasOT⁸³, identify off-target sites without ranking them, thus can only be used for screening gRNA designs. Details of screening algorithms designed for CRISPR/Cas9 off-target identification are listed in **Table 2**. Other tools have the capability of scoring and ranking the potential off-target sites identified (**Table 3**). For example, E-CRISP⁶⁵, one of the early approaches for off-target identification, ranks off-target hits by alignment scores. CCTOP⁸⁴ and COSMID⁷⁸, on the other hand, rank the potential off-target sites by considering the position of mismatches relative to the PAM sequence, based on the observation that mismatches closer to the PAM are more likely to prevent Cas9 cutting^{23,85}. COSMID also allows input of one-base insertion (DNA bulge) and one-base deletion (RNA bulge) relative to the perfectly matched sequence, since these can be tolerated by Cas9⁷⁸.

Further improvements to ranking potential off-target sites use experimental Cas9 binding and cutting data. CROP-IT⁸⁶ divides the protospacer sequence into three regions with different weights for mismatches, using Cas9 ChIP-seq data from previous studies⁸⁷ for weight parameter optimization. CROP-IT further adds a location-based, cell-type-specific accessibility score derived from genome-wide DNase I-seq data⁸⁸. The MIT score (also known as crispr.mit.edu or Hsu score) attempts to estimate the off-target cutting rate using a mismatch weight matrix derived from detailed studies of gRNA variants, and rescales the final score according to the minimum distance between mismatches²³. The original paper by Hsu et al²³ provided several ways of calculating the scores for ranking, and the normalized aggregate frequencies method performed the best⁸⁰. Finally, CFD (Cutting Frequency Determination)⁸⁹ uses a position- and base change-specific scoring matrix derived from systematically altering gRNAs targeting the CD33 gene.

The availability of large CRISPR/Cas9 activity data sets, as well as computational tools, has led to the development of ML-based algorithms for off-target prediction. Details of each of these ML-based algorithms such as structures and training sets are listed in **Supplementary**

Table 1. CRISTA models off-target cutting data derived from three different genome-wide assays (GUIDE-seq, HTGTS, and BLESS)⁹⁰ with a Random Forest algorithm using a broad range of features spanning six categories: nucleotide identities; alignment related features (including bulges); RNA thermodynamics; genomic locations; features from experimental databases (such as DNase I hypersensitivity and gene expression level); and DNA enthalpy and geometry features. Another machine learning approach, predictCRISPR⁹¹, tested a Support-Vector Machine (SVM) model with a validated dataset. A more recent machine learning approach, Elevation⁹², uses a two-layer regression model in which the first layer predicts the off-target activity of a single mismatch between the target DNA and gRNA, and the second layer combines the contribution of each single mismatch to the gRNA-target score with that of multiple mismatches. Deep learning has also been applied to off-target prediction. CNN_std⁹³ and deepCRISPR⁹⁴ are two convolutional neural network (CNN)-based models for CRISPR/Cas9 off-target site prediction. deepCRISPR also integrates several modalities of epigenetic information. However, the architecture of these deep learning models precludes the consideration of insertions and deletions relative to the gRNA target sequence. Finally, SynergizingCRISPR takes a different approach to using machine learning, whereby prediction scores from five other tools (MIT website, MIT/Hsu score, CFD, Cropit and CCTop) rather than the gRNA and potential off-target sequences are used as inputs to the model⁹⁵.

While most of the bioinformatic off-target search tools are designed for CRISPR/Cas9, a recent study established a CNN based classifier for CRISPR/Cpf1 activity and specificity prediction⁹⁶. As the first Cpf1 (i.e., Cas12a) off-target predicting algorithm, the algorithm was trained using the dataset of a lentiviral library-based AsCpf1 gRNA-target pairs established by Kim et al⁹⁷, and compared the performance of 9 different sophisticated learning and deep learning models.

OFF-TARGET ANALYSES OF BASE EDITORS

Base Editors use a Cas9 nickase (nCas9) fused to a deaminase or glycosylase inhibitor to directly convert one DNA base or base pair into another without making DSBs⁹⁸. Whole-genome sequencing (WGS) revealed that third-generation Base Editors (BE3) could induce genome-wide off-target effects in mice⁹⁹ and rice¹⁰⁰, showing a significant amount of gRNA-independent single-nucleotide mutations with high frequency in transcribed regions of the

genome, suggesting that the off-target effects were caused by the fused rAPOBEC1 deaminase of BE3. Investigation of transcriptome-wide RNA off-target mutations showed that both adenine Base Editors (ABEs) and cytosine Base Editors (CBEs) could generate gRNA-independent off-target mutations¹⁰¹⁻¹⁰³. In addition, gRNA-dependent off-target editing has been observed^{104,105}. Novel *in vitro* genome-wide off-target detection assays for ABEs and CBEs were established by capturing dCas9-induced DNA nicks using NGS^{97,106,107}. The specificity of BE3 was analyzed using modified USER-Digenome-seq¹⁰⁸, indicating that BE3 could tolerate mismatches in gRNA-DNA base pairing, with a different off-target efficiency pattern compared with that of active Cas9.

Two recent studies established EndoV-seq¹⁰⁷ and Endo-Digenome-seq¹⁰⁶ assays respectively to assess the specificity of ABEs, using EndoV/EndoVIII to generate the second nick after ABE editing and WGS to identify the resulting DSBs. Both studies showed lower gRNA-dependent off-target effects than that of wildtype SpCas9, although gRNA-independent off-target editing remains a critical issue. More recently, gRNA-independent off-target base editing was studied, including the use of sensitive R-loop assays without requiring whole-genome sequencing^{109,110}. Bioinformatics-based algorithms need to be established in order to better predict the gRNA-dependent off-target effects, and the mechanisms of gRNA-independent off-target effects need to be better established before accurate predictions could be made.

PERFORMANCE COMPARISONS FOR CRISPR/CAS9-BASED TECHNIQUES

To guide the reader towards a better understanding of the relative strengths and weaknesses of the CRISPR/Cas9 off-target analysis tools, both experimental and *in silico*, we compared the performance of these techniques. The ideal dataset for these comparisons is difficult to obtain, especially for experimental techniques, which need to be performed under conditions as comparable as possible for the same Cas9 and gRNA. Our performance comparison, therefore, comprises a number of *ad hoc* analyses intended to discern gross differences between the different approaches.

Comparison of Experimental Techniques

We assessed the performance of a selection of experimental techniques, including Digenome-seq⁴⁷, DIG-seq⁵¹, CIRCLE-seq⁴⁹, SITE-seq⁴⁸, HTGTS²⁶, GUIDE-seq¹¹¹, DISCOVER-seq⁵⁵, and BLISS⁵⁴, in two different ways, and summarize the results in **Table 4**. First, we attempted to determine the relative sensitivities of these techniques, i.e. how often these techniques are able to detect true-positive off-target editing events. We found it difficult to define “gold standard” lists of off-target cutting sites to directly determine false negative rates for these methods, since they were generally performed for disparate gRNA sequences in disparate experimental systems. To sidestep this issue, we used on-target read enrichment as a proxy for sensitivity. We reasoned that each of the experimental techniques considered here relies on some sort of enrichment for the nuclease cut sites, including enrichment for genomic DNA bearing the cut sites, as in HTGTS; enrichment for the precise locations of the cut sites, as in Digenome-seq; or enrichment for both, as in GUIDE-seq. The degree of enrichment over background, i.e. what is expected of randomly fragmented genomic reads, should therefore be correlated with how well a given technique is able to detect the rare cutting events that give rise to off-target editing. Since none of the techniques treats on-target editing events differently from off-target events, enrichment over background can be assessed readily for the on-target editing events, and extrapolated to off-target editing.

To accomplish this, we downloaded raw reads from entries in the Sequence Read Archive associated with each technique using the SRA Toolkit (entries listed in **Supplementary Table 2**). We mapped these reads to the hg38 reference genome using BWA-MEM, and counted reads within 400 bp of the expected on-target cut sites using SAMtools¹¹². Read counts were then divided by how many random genomic reads would be expected within the same region, given the total number of reads that mapped to the human genome, to yield the on-target enrichment. For the cases of Digenome-seq¹¹³ and DIG-seq, where enrichment is for fragment ends rather than fragments themselves, we counted reads whose 5' ends fell precisely on the on-target cut site and compared those counts to what was expected given random genomic fragmentation.

Second, we assessed the relative specificities of each technique. In general, false-positive rates can be determined by performing Amp-NGS on DNA extracted from gene-edited cells, using primers flanking sites discovered by the technique in question. We therefore use Amp-NGS data from the publications reporting each discovery technique to assess their respective specificities, applying the standard 0.1% indel threshold to distinguish true from false positives. As with the sensitivity comparison, this assessment is inevitably imperfect since the underlying datasets are not all directly comparable. The situation is further complicated by the fact that roughly half of the techniques being considered here are performed on purified DNA, which lacks the chromatin structure that can potentially prevent cutting by programmable nucleases within cells. However, the purpose of performing off-target site identification is usually to generate predictions as to which sites will likely be edited in cells. We therefore believe that the degree to which these predictions are validated as true off-target activity in cells should be used as the measure of specificity, even when that technique is not itself performed with living cells. We have labeled the corresponding column in **Table 4**, “Cellular false positives”, to highlight the fact that the false positive rate is for validation with living cells and may not be relevant to other applications of Cas9 and other programmable nucleases. As noted above, defining false negatives for experimental methods in a way that can be consistently applied is not currently feasible given the paucity of data derived from comparable experiments.

Results of these assessments suggest that GUIDE-seq is the best-performing experimental technique: it shows the highest on-target enrichment with a moderate number of false positives. Some caution needs to be taken in interpreting these results: on-target enrichment can be correlated with the number of PCR cycles and is thus an imperfect readout of sensitivity, and variations in the gRNAs and cells used to perform off-target identification and validation can potentially cause biases in the observed false negative rates. Still, the status of GUIDE-seq as the most commonly-used experimental off-target technique would appear to be well-justified.

Comparison of Computational Techniques

We used a list of experimentally validated true off-target editing sites to assess the performance of computational techniques. Here, our manually curated true off-target list includes sites having editing rates of >0.1% quantified by Amp-NGS and processed by

CRISPResso2¹¹⁴. Not all sites so generated yielded scores in all ranking algorithms. For instance, only COSMID and CRISTA were able to score sites with base insertions (DNA bulge) and deletions (RNA bulge). In cases where an algorithm gave no score, we used a score of zero instead (see below). **Supplementary Table 3**, and references therein, contain all the information used in this performance assessment. Specifically, experimentally validated off-target sites were collected from 9 different studies with true editing rate > 0.1% as measured by Amp-NGS (8 studies)^{47,56,115-120} or T7 Endonuclease I (1 study)²⁴. For each gRNA, off-target sites were screened by Cas-OFFinder allowing up to 4 mismatches and 1 base DNA/RNA bulge (**Supplementary Table 4**). As shown in **Table 3** and **Supplementary Table 1**, gRNAs in the training datasets of most of the machine-learning based algorithms had some overlap with our testing set in the performance comparison. To mitigate the potential for overfitting, we identified gRNAs tested by Amp-NGS in 4 studies¹¹⁷⁻¹²⁰ that were not included in any training or testing set of machine-learning based-algorithms (listed in **Supplementary Table 5**), and additionally assessed algorithm performances with only these gRNAs. Standard Receiver-Operator Characteristic (ROC) curves and Precision-Recall Curves (PRCs) were generated using Scikit-learn¹²¹ and are shown in **Supplementary Figures 1** and **2**. In addition to these curves, which can be difficult to use directly in designing experiments, we used the same underlying data to compute the true positive rates as a function of the total number of sites (**Figure 3**). That is, for each technique and sample size n , we determined the fraction of experimentally validated off-target sites ranked among the top n candidate sites by that technique. This curve, then, can be used to estimate the number of top-ranked sites that need to be assessed experimentally to detect true off-target sites with a given sensitivity.

To determine off-target scores, CCTOP⁸⁴ off-target scores were computed based on the formula in the original paper. Code for the MIT score (Hsu score)²³, and CROP-IT⁸⁶ score was adapted from the CRISPOR review⁸⁰. Code for CFD score⁸⁹ was obtained from the authors. Elevation⁹², predictCRISPR⁹¹, CNN_std⁹³, and CRISTA⁹⁰ were implemented based on instructions provided by original authors. Code for COSMID⁷⁸ was adapted from source code obtained from Dr. Peng Qiu at Georgia Institute of Technology. To keep all the scores positively correlated to editing efficiency, we used 48.4 to subtract the original COSMID score, making zero correlated to no editing efficiency. Default models were used for all machine

learning algorithms without re-training. Algorithms requiring cell-line specific information were not included due to the lack of relevant data.

From the plots shown in **Figure 3A** and **Supplementary Figure 1**, it appears that Elevation is the best performer, both by Area Under the Curve (AUC) of ROC and PRC, and by the true positive rate for reasonable numbers (< 200) of top-ranked sites. One caveat here is that Elevation is an ML-based technique whose training dataset overlaps extensively with the assessment dataset that we have collected in this study. The risk of over-fitting here is somewhat mitigated by the fact that Elevation's training dataset incorporates all sites identified by unbiased techniques, instead of only those sites that were validated by Amp-NGS. We further mitigate this risk by re-doing the sensitivity analysis using targeted Amp-NGS data from four gRNAs in our dataset not present in the training sets of any of the machine learning approaches (**Figure 3B** and **Supplementary Figure 2**). In this re-analysis, Elevation is still among the top three performers (the other two being CFD and CRISTA). Interestingly, this is true despite the fact that Elevation does not consider sites containing DNA or RNA bulges. This is likely because the number of validated true CRISPR/Cas9 off-target sites containing DNA or RNA bulges is still small. Whether the paucity of true off-target sites containing indels reflects the biology of CRISPR/Cas9, or the lack of studies focusing on bulge-containing off-target sites remains to be seen. Given its ability to rank off-target sites with DNA/RNA bulges and its overall performance, CRISTA can be a good alternative for scoring potential off-target sites.

Best Practices

As an example of determining off-target effects of programmable nucleases, we describe in **Box 2** the analysis of a CRISPR/Cas9 system designed to correct the single-base mutation in β -globin gene that causes sickle cell disease (SCD)¹¹⁷. The original off-target site prediction was performed using both COSMID and GUIDE-seq, and the NGS quantification of off-target activity was carried out using genomic DNA from gene-edited CD34⁺ hematopoietic stem and progenitor cells (HSPCs) from patients with SCD. Here we further performed off-target prediction and ranking using Elevation and CRISTA for the same gRNA, and compared the results with that using GUIDE-seq and COSMID, as shown in **Box 2**.

As can be seen in **Box 2**, analysis of any given programmable nuclease can be complex, with each different technique giving different results. In our own CRISPR/Cas9 gene editing work, these observations have driven us to follow several principles for the analysis of off-target effects by programmable nucleases. An overview of the recommended workflow, from gRNA design to off-target validation is shown in **Figure 4**. Prior to extensive off-target analysis as outlined below, the first step is to confirm efficient on-target editing in the cell type of interest. TIDE³⁰ and ICE³¹ are common tools that quickly estimate the level of editing by analyzing Sanger sequencing traces from CRISPR treated cells. Once a lead candidate of efficient gRNA(s) has been identified the following steps give an overview of current best practices for assaying off-target effects.

1. **Combine experimental and in silico analyses to assemble a list of potential off-target editing sites.** Any given methodology has the possibility of missing true off-target editing. Using at least one bioinformatics based tool and one experimental tool allows these approaches to complement each other. The experimental tool provides an independent assessment of off-target editing rates, allowing one to discern and reject nuclease designs, such as the gRNA designed to target VEGFA site 2¹²², that cuts in a promiscuous fashion. On the other hand, the *in silico* tool can be useful in picking up the potential off-target sites that were missed by the experimental tool, especially in cases where the true off-target sites missed by the experimental tool affect the final product for a therapeutic application (e.g., edited stem cells for clinical use). From the above performance comparisons, Elevation is recommended for *in silico* prediction, and the top ~100 potential off-target sites should be retained for downstream validation. GUIDE-seq is recommended as the experimental tool, especially when it can be performed using the cell type of interest. For well-behaved CRISPR/Cas9 protospacer sequences, GUIDE-seq typically yields 5-10 potential off-target sites, many of which may overlap with computationally identified sites. The inclusion of sites identified by GUIDE-seq, therefore, is not expected to significantly increase the burden of downstream experimental validation.
2. **Use Amp-NGS as the gold standard assay for determining true off-target sites.** As many potential off-target sites should be assessed as is practical, to minimize the likelihood of missing important *bona fide* off-target editing events, since to date none of

the ranking algorithms is accurate. The decreasing costs of NGS and fluid-handling robotics allows a laboratory of even modest means to assay tens to hundreds of potential off-target sites for any given gRNA. Matched negative control assays must also be performed using unedited cells, since detection limits vary across different genomic loci. A recent review¹²³ compared three web-based Amp-NGS data analysis tools (CRISPResso2¹¹⁴, Cas-Analyzer¹²⁴ and CRISPR-GA¹²⁵), among which CRISPResso2 was recommended because of its detailed output report, functionality of batch analysis and capability to be utilized in base editing applications.

CONCLUDING REMARKS

Much progress has been made in both experimental and computational approaches to analyzing off-target effects of programmable nucleases, especially for CRISPR/Cas9-based systems. As the field matures, several key areas of research will improve the accuracy and relevance of off-target editing detection and quantitation technologies.

Clinical consequences. As far as we are aware, to date no clinical trials have reported adverse events arising from off-target effects of gene editing using any programmable nuclease. While this can partly be ascribed to the attention paid to off-target editing in pre-clinical studies, it also likely reflects the fact that few such studies have been completed, and that these studies typically enroll small numbers of patients.

A simple calculation suggests that the risk of adverse events arising from off-target editing is not necessarily small. For curing sickle cell disease, for example, 2-5 million gene-edited CD34⁺ HSPCs per kilogram of body weight may constitute a potentially curative dose¹²⁶. Off-target editing at a rate of 0.1% is thus expected to give rise to many thousands of cells bearing an off-target edit. Since rare gain-of-function and loss-of-function mutations have led to clonal expansion within virally transduced therapy products^{127,128}, the technological detection limit of 0.1% might be insufficient to identify all potentially dangerous off-target editing events, and the long-term consequences of off-target editing remain largely unknown. More molecular biology, bioinformatics and clinical research will be required to determine what the detection limit

should be, and more technology development will be needed to achieve it. Furthermore, to date most of the off-target analyses focus on small indel mutations at the off-target cut sites; however, due to simultaneous on- and off-target cutting, intra- and inter-chromosomal rearrangements such as inversions, large deletions and translocations may occur¹¹⁷. Although chromosomal rearrangements are likely rare events, even a very small number of stem cells harboring these detrimental events could clonally expand *in vivo* and cause diseases such as cancer.

Improving quantitation. The 0.1% detection limit for amplicon sequencing reflects current practices and can be improved upon in several ways. Miller et al¹²⁹ used oversampling and rigorous statistical analyses to improve upon this limit by ~10-fold. Further improvements should be possible using UMI tagging in initial rounds of PCR, followed by oversampled NGS.

More data, better data. At the moment, experimental data on true off-target effects are scattershot. Each experimental method published so far has been performed on different sets of gRNAs, and often in different cell types. This has prevented the field from obtaining a systematic understanding of how these experimental methods compare with each other, and necessitated our use of on-target enrichment as an imperfect proxy for how sensitive each method is. More, and better, data sets will improve our understanding of the relative merits of each experimental and computational technique, and will also improve the performance of machine learning tools in predicting potential off-target sites.

Future studies should be performed on consistent sets of programmable nucleases in consistent cell types, and the existing methods should be re-evaluated by “back-filling” the analysis to give a more consistent set of data. As much as possible, data for these methods should also be obtained for therapeutically-relevant cell types such as HSCs. A recently created NIST genome editing consortium (see **Box 1**) will develop measurements and standards to increase confidence in the use of these technologies.

Machine learning (ML). Two main factors have facilitated the development of ML-based algorithms for off-target prediction. The evolution of NGS made it affordable for researchers to screen larger numbers of potential off-target sites with much greater sensitivity resulting in datasets sufficient for model training, while in-depth research into the mechanism of

CRISPR/Cas9 editing provided more potential features affecting cutting efficiency and specificity for consideration during model development. With further increases in the amount of off-target data and the rapid progress of basic research in ML, it is expected that ML-based off-target scoring algorithms will aid both off-target prediction and the gRNA design process.

Personalized off-target analysis. One major limitation of most existing off-target analysis tools concerns mapping of sequencing reads. This is currently done using the reference human genome which is mostly comprised of a single individual with 70% of the reference derived from donor RP11¹³⁰. A recent study of 910 African genomes revealed 300 million bases of new DNA spread across 120,000 contigs not found in the reference genome, with 40% of this new DNA shared with Korean and Chinese genomes¹³¹. This large variability across genomes raises the possibility that distinct human populations or individuals may harbor novel off-target sites and events that will go undetected by *in silico* tools that search the reference genome and by experimental assays since sequence reads are filtered out when mapping to the reference genome. This is especially important considering that clinical trials are underway for sickle cell disease patients of African descent. Future studies of off-target effects in gene editing using programmable nucleases for therapeutic application should take into account the genome of the patient, reflecting a truly personalized medicine approach.

Acknowledgments

This work was supported by the National Institutes of Health (UG3HL151545, R01HL152314 and OT2HL154977 to G.B.) and the Cancer Prevention and Research Institute of Texas (RR140081 to G.B.).

Author Contributions Statement

G.B. and X.R.B. designed the study. X.R.B. and C.M.L. performed the evaluation of experimental methods. Y.P. and X.R.B. performed the evaluation of computational methods. All authors contributed to the discussion and writing of the manuscript.

Competing Interests

The authors declare no competing interests.

Data Availability statement

The data sources are available through <https://github.com/baolab-rice/OT-review>. **Supplementary Tables 3, 4 and 5** contain the data used in the computational techniques performance assessment.

Code availability statement

The processing scripts are available through <https://github.com/baolab-rice/OT-review>

REFERENCES

- 1 Kim, Y. G., Cha, J. & Chandrasegaran, S. Hybrid restriction enzymes: zinc finger fusions to Fok I cleavage domain. *Proc Natl Acad Sci U S A* **93**, 1156-1160, doi:10.1073/pnas.93.3.1156 (1996).
- 2 Porteus, M. H. & Baltimore, D. Chimeric nucleases stimulate gene targeting in human cells. *Science* **300**, 763, doi:10.1126/science.1078395 (2003).
- 3 Urnov, F. D. *et al.* Highly efficient endogenous human gene correction using designed zinc-finger nucleases. *Nature* **435**, 646-651, doi:10.1038/nature03556 (2005).
- 4 Cermak, T. *et al.* Efficient design and assembly of custom TALEN and other TAL effector-based constructs for DNA targeting (vol 39, pg e82, 2011). *Nucleic Acids Research* **39**, 7879-7879, doi:10.1093/nar/gkr739 (2011).
- 5 Miller, J. C. *et al.* A TALE nuclease architecture for efficient genome editing. *Nat Biotechnol* **29**, 143-148, doi:10.1038/nbt.1755 (2011).
- 6 Mussolino, C. *et al.* A novel TALE nuclease scaffold enables high genome editing activity in combination with low toxicity. *Nucleic Acids Res* **39**, 9283-9293, doi:10.1093/nar/gkr597 (2011).
- 7 Gasiunas, G., Barrangou, R., Horvath, P. & Siksnys, V. Cas9-crRNA ribonucleoprotein complex mediates specific DNA cleavage for adaptive immunity in bacteria. *P Natl Acad Sci USA* **109**, E2579-E2586, doi:10.1073/pnas.1208507109 (2012).
- 8 Jinek, M. *et al.* A programmable dual-RNA-guided DNA endonuclease in adaptive bacterial immunity. *Science* **337**, 816-821, doi:10.1126/science.1225829 (2012).
- 9 Cobb, R. E., Wang, Y. J. & Zhao, H. M. High-Efficiency Multiplex Genome Editing of *Streptomyces* Species Using an Engineered CRISPR/Cas System. *Acs Synthetic Biology* **4**, 723-728, doi:10.1021/sb500351f (2015).
- 10 Gaudelli, N. M. *et al.* Programmable base editing of A.T to G.C in genomic DNA without DNA cleavage. *Nature* **551**, 464-+, doi:10.1038/nature24644 (2017).
- 11 Anzalone, A. V. *et al.* Search-and-replace genome editing without double-strand breaks or donor DNA. *Nature* **576**, 149-157, doi:10.1038/s41586-019-1711-4 (2019).
- 12 Rees, H. A. & Liu, D. R. Base editing: precision chemistry on the genome and transcriptome of living cells. *Nat Rev Genet* **19**, 770-788, doi:10.1038/s41576-018-0059-1 (2018).
- 13 Anzalone, A. V., Koblan, L. W. & Liu, D. R. Genome editing with CRISPR-Cas nucleases, base editors, transposases and prime editors. *Nat Biotechnol*, doi:10.1038/s41587-020-0561-9 (2020).
- 14 Sander, J. D. & Joung, J. K. CRISPR-Cas systems for editing, regulating and targeting genomes. *Nat Biotechnol* **32**, 347-355, doi:10.1038/nbt.2842 (2014).

- 15 Carroll, D. Genome engineering with zinc-finger nucleases. *Genetics* **188**, 773-782, doi:10.1534/genetics.111.131433 (2011).
- 16 Joung, J. K. & Sander, J. D. TALENs: a widely applicable technology for targeted genome editing. *Nat Rev Mol Cell Biol* **14**, 49-55, doi:10.1038/nrm3486 (2013).
- 17 Cox, D. B., Platt, R. J. & Zhang, F. Therapeutic genome editing: prospects and challenges. *Nat Med* **21**, 121-131, doi:10.1038/nm.3793 (2015).
- 18 Wagner, D. L. *et al.* High prevalence of *Streptococcus pyogenes* Cas9-reactive T cells within the adult human population. *Nat Med* **25**, 242-248, doi:10.1038/s41591-018-0204-6 (2019).
- 19 Charlesworth, C. T. *et al.* Identification of preexisting adaptive immunity to Cas9 proteins in humans. *Nat Med* **25**, 249-254, doi:10.1038/s41591-018-0326-x (2019).
- 20 Simhadri, V. L. *et al.* Prevalence of Pre-existing Antibodies to CRISPR-Associated Nuclease Cas9 in the USA Population. *Mol Ther Methods Clin Dev* **10**, 105-112, doi:10.1016/j.omtm.2018.06.006 (2018).
- 21 Li, A. *et al.* AAV-CRISPR Gene Editing Is Negated by Pre-existing Immunity to Cas9. *Mol Ther* **28**, 1432-1441, doi:10.1016/j.ymthe.2020.04.017 (2020).
- 22 Tong, S., Moyo, B., Lee, C. M., K., L. & Bao, G. Engineered materials for in vivo delivery of genome-editing machinery. *Nature Reviews Materials* **4**, 726–737 (2019).
- 23 Hsu, P. D. *et al.* DNA targeting specificity of RNA-guided Cas9 nucleases. *Nat Biotechnol* **31**, 827-832, doi:10.1038/nbt.2647 (2013).
- 24 Fu, Y. *et al.* High-frequency off-target mutagenesis induced by CRISPR-Cas nucleases in human cells. *Nat Biotechnol* **31**, 822-826, doi:10.1038/nbt.2623 (2013).
- 25 Cradick, T. J., Fine, E. J., Antico, C. J. & Bao, G. CRISPR/Cas9 systems targeting beta-globin and CCR5 genes have substantial off-target activity. *Nucleic Acids Res* **41**, 9584-9592, doi:10.1093/nar/gkt714 (2013).
- 26 Frock, R. L. *et al.* Genome-wide detection of DNA double-stranded breaks induced by engineered nucleases. *Nat Biotechnol* **33**, 179-186, doi:10.1038/nbt.3101 (2015).
- 27 Tsai, S. Q. *et al.* GUIDE-seq enables genome-wide profiling of off-target cleavage by CRISPR-Cas nucleases. *Nature Biotechnology*, doi:10.1038/nbt.3117 (2015).
- 28 Qiu, P. *et al.* Mutation detection using Surveyor nuclease. *Biotechniques* **36**, 702-707, doi:10.2144/04364pf01 (2004).
- 29 Kim, H. J., Lee, H. J., Kim, H., Cho, S. W. & Kim, J. S. Targeted genome editing in human cells with zinc finger nucleases constructed via modular assembly. *Genome Res* **19**, 1279-1288, doi:10.1101/gr.089417.108 (2009).
- 30 Brinkman, E. K., Chen, T., Amendola, M. & van Steensel, B. Easy quantitative assessment of genome editing by sequence trace decomposition. *Nucleic Acids Res* **42**, e168, doi:10.1093/nar/gku936 (2014).

- 31 Hsiau, T. *et al.* Inference of CRISPR Edits from Sanger Trace Data. *bioRxiv*, 251082, doi:10.1101/251082 (2019).
- 32 Potapov, V. & Ong, J. L. Examining Sources of Error in PCR by Single-Molecule Sequencing. *PLoS One* **12**, e0169774, doi:10.1371/journal.pone.0169774 (2017).
- 33 Jarrett, K. E. *et al.* Somatic genome editing with CRISPR/Cas9 generates and corrects a metabolic disease. *Sci Rep* **7**, 44624, doi:10.1038/srep44624 (2017).
- 34 Zykovich, A., Korf, I. & Segal, D. J. Bind-n-Seq: high-throughput analysis of in vitro protein-DNA interactions using massively parallel sequencing. *Nucleic Acids Res* **37**, e151, doi:10.1093/nar/gkp802 (2009).
- 35 Perez, E. E. *et al.* Establishment of HIV-1 resistance in CD4+ T cells by genome editing using zinc-finger nucleases. *Nat Biotechnol* **26**, 808-816, doi:10.1038/nbt1410 (2008).
- 36 Segal, D. J. *et al.* Evaluation of a modular strategy for the construction of novel polydactyl zinc finger DNA-binding proteins. *Biochemistry* **42**, 2137-2148, doi:10.1021/bi026806o (2003).
- 37 Gupta, A., Meng, X., Zhu, L. J., Lawson, N. D. & Wolfe, S. A. Zinc finger protein-dependent and -independent contributions to the in vivo off-target activity of zinc finger nucleases. *Nucleic Acids Res* **39**, 381-392, doi:10.1093/nar/gkq787 (2011).
- 38 Segal, D. J., Dreier, B., Beerli, R. R. & Barbas, C. F., 3rd. Toward controlling gene expression at will: selection and design of zinc finger domains recognizing each of the 5'-GNN-3' DNA target sequences. *Proc Natl Acad Sci U S A* **96**, 2758-2763, doi:10.1073/pnas.96.6.2758 (1999).
- 39 Bulyk, M. L., Huang, X., Choo, Y. & Church, G. M. Exploring the DNA-binding specificities of zinc fingers with DNA microarrays. *Proc Natl Acad Sci U S A* **98**, 7158-7163, doi:10.1073/pnas.111163698 (2001).
- 40 Zhang, L., Rube, H. T., Bussemaker, H. J. & Pufall, M. A. The effect of sequence mismatches on binding affinity and endonuclease activity are decoupled throughout the Cas9 binding site. *bioRxiv*, 176255, doi:10.1101/176255 (2017).
- 41 Kuscu, C., Arslan, S., Singh, R., Thorpe, J. & Adli, M. Genome-wide analysis reveals characteristics of off-target sites bound by the Cas9 endonuclease. *Nat Biotechnol* **32**, 677-683, doi:10.1038/nbt.2916 (2014).
- 42 Wu, X. *et al.* Genome-wide binding of the CRISPR endonuclease Cas9 in mammalian cells. *Nat Biotechnol* **32**, 670-676, doi:10.1038/nbt.2889 (2014).
- 43 Pattanayak, V., Ramirez, C. L., Joung, J. K. & Liu, D. R. Revealing off-target cleavage specificities of zinc-finger nucleases by in vitro selection. *Nat Methods* **8**, 765-770, doi:10.1038/nmeth.1670 (2011).
- 44 Pattanayak, V. *et al.* High-throughput profiling of off-target DNA cleavage reveals RNA-programmed Cas9 nuclease specificity. *Nat Biotechnol* **31**, 839-843, doi:10.1038/nbt.2673 (2013).
- 45 Fu, B. X., St Onge, R. P., Fire, A. Z. & Smith, J. D. Distinct patterns of Cas9 mismatch tolerance in vitro and in vivo. *Nucleic Acids Res* **44**, 5365-5377, doi:10.1093/nar/gkw417 (2016).

- 46 Huston, N. C. *et al.* Identification of Guide-Intrinsic Determinants of Cas9 Specificity. *Crispr j* **2**, 172-185, doi:10.1089/crispr.2019.0009 (2019).
- 47 Kim, D. *et al.* Digenome-seq: genome-wide profiling of CRISPR-Cas9 off-target effects in human cells. *Nat Methods* **12**, 237-243, 231 p following 243, doi:10.1038/nmeth.3284 (2015).
- 48 Cameron, P. *et al.* Mapping the genomic landscape of CRISPR-Cas9 cleavage. *Nat Methods* **14**, 600-606, doi:10.1038/nmeth.4284 (2017).
- 49 Tsai, S. Q. *et al.* CIRCLE-seq: a highly sensitive in vitro screen for genome-wide CRISPR-Cas9 nuclease off-targets. *Nat Methods* **14**, 607-614, doi:10.1038/nmeth.4278 (2017).
- 50 Lazzarotto, C. R. *et al.* CHANGE-seq reveals genetic and epigenetic effects on CRISPR-Cas9 genome-wide activity. *Nat Biotechnol*, doi:10.1038/s41587-020-0555-7 (2020).
- 51 Kim, D. & Kim, J. S. DIG-seq: a genome-wide CRISPR off-target profiling method using chromatin DNA. *Genome Res* **28**, 1894-1900, doi:10.1101/gr.236620.118 (2018).
- 52 Crosetto, N. *et al.* Nucleotide-resolution DNA double-strand break mapping by next-generation sequencing. *Nat Methods* **10**, 361-365, doi:10.1038/nmeth.2408 (2013).
- 53 Ran, F. A. *et al.* In vivo genome editing using *Staphylococcus aureus* Cas9. *Nature* **520**, 186-191, doi:10.1038/nature14299 (2015).
- 54 Yan, W. X. *et al.* BLISS is a versatile and quantitative method for genome-wide profiling of DNA double-strand breaks. *Nat Commun* **8**, 15058, doi:10.1038/ncomms15058 (2017).
- 55 Wienert, B. *et al.* Unbiased detection of CRISPR off-targets in vivo using DISCOVER-Seq. *Science* **364**, 286-289, doi:10.1126/science.aav9023 (2019).
- 56 Wang, X. *et al.* Unbiased detection of off-target cleavage by CRISPR-Cas9 and TALENs using integrase-defective lentiviral vectors. *Nat Biotechnol* **33**, 175-178, doi:10.1038/nbt.3127 (2015).
- 57 Gabriel, R. *et al.* An unbiased genome-wide analysis of zinc-finger nuclease specificity. *Nat Biotechnol* **29**, 816-823, doi:10.1038/nbt.1948 (2011).
- 58 Hu, J. *et al.* Detecting DNA double-stranded breaks in mammalian genomes by linear amplification-mediated high-throughput genome-wide translocation sequencing. *Nat Protoc* **11**, 853-871, doi:10.1038/nprot.2016.043 (2016).
- 59 Hruscha, A. *et al.* Efficient CRISPR/Cas9 genome editing with low off-target effects in zebrafish. *Development* **140**, 4982-4987, doi:10.1242/dev.099085 (2013).
- 60 Zhu, X. *et al.* An efficient genotyping method for genome-modified animals and human cells generated with CRISPR/Cas9 system. *Sci Rep* **4**, 6420, doi:10.1038/srep06420 (2014).
- 61 Langmead, B., Trapnell, C., Pop, M. & Salzberg, S. L. Ultrafast and memory-efficient alignment of short DNA sequences to the human genome. *Genome Biol* **10**, R25, doi:10.1186/gb-2009-10-3-r25 (2009).

- 62 Montague, T. G., Cruz, J. M., Gagnon, J. A., Church, G. M. & Valen, E. CHOPCHOP: A CRISPR/Cas9 and TALEN web tool for genome editing. *Nucleic Acids Research*, doi:10.1093/nar/gku410 (2014).
- 63 O'Brien, A. & Bailey, T. L. GT-Scan: identifying unique genomic targets. *Bioinformatics* **30**, 2673-2675, doi:10.1093/bioinformatics/btu354 (2014).
- 64 Langdon, W. B. Performance of genetic programming optimised Bowtie2 on genome comparison and analytic testing (GCAT) benchmarks. *BioData Min* **8**, 1, doi:10.1186/s13040-014-0034-0 (2015).
- 65 Heigwer, F., Kerr, G. & Boutros, M. E-CRISP: Fast CRISPR target site identification. *Nature Methods* **11**, 122-123, doi:10.1038/nmeth.2812 (2014).
- 66 Moreno-Mateos, M. A. *et al.* CRISPRscan: designing highly efficient sgRNAs for CRISPR-Cas9 targeting in vivo. *Nat Methods* **12**, 982-988, doi:10.1038/nmeth.3543 (2015).
- 67 Cancellieri, S., Canver, M. C., Bombieri, N., Giugno, R. & Pinello, L. CRISPRitz: rapid, high-throughput, and variant-aware in silico off-target site identification for CRISPR genome editing. *Bioinformatics* **36**, 2001-2008, doi:10.1093/bioinformatics/btz867 (2019).
- 68 Zschemisch, N. H. *et al.* Zinc-finger nuclease mediated disruption of Rag1 in the LEW/Ztm rat. *BMC Immunology* **13**, 60, doi:10.1186/1471-2172-13-60 (2012).
- 69 Watanabe, T. *et al.* Non-transgenic genome modifications in a hemimetabolous insect using zinc-finger and TAL effector nucleases. *Nature Communications* **3**, 1017, doi:10.1038/ncomms2020 (2012).
- 70 Sebastiano, V. *et al.* In situ genetic correction of the sickle cell anemia mutation in human induced pluripotent stem cells using engineered zinc finger nucleases. *Stem Cells* **29**, 1717-1726, doi:10.1002/stem.718 (2011).
- 71 Huang, P. *et al.* Heritable gene targeting in zebrafish using customized TALENs. *Nature Biotechnology* **29**, 699-700, doi:10.1038/nbt.1939 (2011).
- 72 Lei, Y. *et al.* Efficient targeted gene disruption in *Xenopus* embryos using engineered transcription activator-like effector nucleases (TALENs). *Proc Natl Acad Sci U S A* **109**, 17484-17489, doi:10.1073/pnas.1215421109 (2012).
- 73 Heigwer, F. *et al.* E-TALEN: A web tool to design TALENs for genome engineering. *Nucleic Acids Research* **41**, e190, doi:10.1093/nar/gkt789 (2013).
- 74 Kim, Y. *et al.* A library of TAL effector nucleases spanning the human genome. *Nature Biotechnology* **31**, 251-258, doi:10.1038/nbt.2517 (2013).
- 75 Doyle, E. L. *et al.* TAL Effector-Nucleotide Targeter (TALE-NT) 2.0: Tools for TAL effector design and target prediction. *Nucleic Acids Research* **40**, W117-122, doi:10.1093/nar/gks608 (2012).
- 76 Grau, J., Boch, J. & Posch, S. TALENoffer: Genome-wide TALEN off-target prediction. *Bioinformatics* **29**, 2931-2932, doi:10.1093/bioinformatics/btt501 (2013).

- 77 Streubel, J., Blücher, C., Landgraf, A. & Boch, J. TAL effector RVD specificities and efficiencies. *Nature Biotechnology* **30**, 593-595, doi:10.1038/nbt.2304 (2012).
- 78 Fine, E. J., Cradick, T. J., Zhao, C. L., Lin, Y. & Bao, G. An online bioinformatics tool predicts zinc finger and TALE nuclease off-target cleavage. *Nucleic Acids Research* **42**, e42, doi:10.1093/nar/gkt1326 (2014).
- 79 Meckler, J. F. *et al.* Quantitative analysis of TALE-DNA interactions suggests polarity effects. *Nucleic Acids Res* **41**, 4118-4128, doi:10.1093/nar/gkt085 (2013).
- 80 Haeussler, M. *et al.* Evaluation of off-target and on-target scoring algorithms and integration into the guide RNA selection tool CRISPOR. *Genome Biology* **17**, 148, doi:10.1186/s13059-016-1012-2 (2016).
- 81 Bae, S., Park, J. & Kim, J. S. Cas-OFFinder: A fast and versatile algorithm that searches for potential off-target sites of Cas9 RNA-guided endonucleases. *Bioinformatics* **30**, 1473-1475, doi:10.1093/bioinformatics/btu048 (2014).
- 82 Jacquin, A. L. S., Odom, D. T. & Lukk, M. Crisflash: Open-source software to generate CRISPR guide RNAs against genomes annotated with individual variation. *Bioinformatics* **35**, 3146-3147, doi:10.1093/bioinformatics/btz019 (2019).
- 83 Xiao, A. *et al.* CasOT: A genome-wide Cas9/gRNA off-target searching tool. *Bioinformatics* **30**, 1180-1182, doi:10.1093/bioinformatics/btt764 (2014).
- 84 Stemmer, M., Thumberger, T., Del Sol Keyer, M., Wittbrodt, J. & Mateo, J. L. CCTop: An intuitive, flexible and reliable CRISPR/Cas9 target prediction tool. *PLoS ONE* **10**, e0124633, doi:10.1371/journal.pone.0124633 (2015).
- 85 Sternberg, S. H., Redding, S., Jinek, M., Greene, E. C. & Doudna, J. A. DNA interrogation by the CRISPR RNA-guided endonuclease Cas9. *Nature* **507**, 62-67, doi:10.1038/nature13011 (2014).
- 86 Singh, R., Kuscu, C., Quinlan, A., Qi, Y. & Adli, M. Cas9-chromatin binding information enables more accurate CRISPR off-target prediction. *Nucleic Acids Research* **43**, e118, doi:10.1093/nar/gkv575 (2015).
- 87 Kuscu, C., Arslan, S., Singh, R., Thorpe, J. & Adli, M. Genome-wide analysis reveals characteristics of off-target sites bound by the Cas9 endonuclease. *Nature Biotechnology* **32**, 677-683, doi:10.1038/nbt.2916 (2014).
- 88 Thurman, R. E. *et al.* The accessible chromatin landscape of the human genome. *Nature* **489**, 75-82, doi:10.1038/nature11232 (2012).
- 89 Doench, J. G. *et al.* Optimized sgRNA design to maximize activity and minimize off-target effects of CRISPR-Cas9. *Nature Biotechnology* **34**, 184-191, doi:10.1038/nbt.3437 (2016).
- 90 Abadi, S., Yan, W. X., Amar, D. & Mayrose, I. A machine learning approach for predicting CRISPR-Cas9 cleavage efficiencies and patterns underlying its mechanism of action. *PLoS Computational Biology* **13**, e1005807, doi:10.1371/journal.pcbi.1005807 (2017).

- 91 Peng, H., Zheng, Y., Zhao, Z., Liu, T. & Li, J. Recognition of CRISPR/Cas9 off-target sites through ensemble learning of uneven mismatch distributions. *Bioinformatics* **34**, i757-i765, doi:10.1093/bioinformatics/bty558 (2018).
- 92 Listgarten, J. *et al.* Prediction of off-target activities for the end-to-end design of CRISPR guide RNAs. *Nature Biomedical Engineering* **2**, 38-47, doi:10.1038/s41551-017-0178-6 (2018).
- 93 Lin, J. & Wong, K. C. Off-target predictions in CRISPR-Cas9 gene editing using deep learning. *Bioinformatics* **34**, i656-i663, doi:10.1093/bioinformatics/bty554 (2018).
- 94 Chuai, G. *et al.* DeepCRISPR: Optimized CRISPR guide RNA design by deep learning. *Genome Biology* **19**, 80, doi:10.1186/s13059-018-1459-4 (2018).
- 95 Zhang, S. X., Li, X. T., Lin, Q. Z. & Wong, K. C. Synergizing CRISPR/Cas9 off-target predictions for ensemble insights and practical applications. *Bioinformatics* **35**, 1108-1115, doi:10.1093/bioinformatics/bty748 (2019).
- 96 Luo, J. S., Chen, W., Xue, L. & Tang, B. Prediction of activity and specificity of CRISPR-Cpf1 using convolutional deep learning neural networks. *Bmc Bioinformatics* **20**, doi:10.1186/s12859-019-2939-6 (2019).
- 97 Kim, D. *et al.* Genome-wide target specificities of CRISPR RNA-guided programmable deaminases. *Nature Biotechnology* **35**, 797-797, doi:DOI 10.1038/nbt0817-797d (2017).
- 98 Rees, H. A. & Liu, D. R. Publisher Correction: Base editing: precision chemistry on the genome and transcriptome of living cells. *Nat Rev Genet* **19**, 801, doi:10.1038/s41576-018-0068-0 (2018).
- 99 Zuo, E. W. *et al.* Cytosine base editor generates substantial off-target single-nucleotide variants in mouse embryos. *Science* **364**, 289-292, doi:10.1126/science.aav9973 (2019).
- 100 Jin, S. *et al.* Cytosine, but not adenine, base editors induce genome-wide off-target mutations in rice. *Science* **364**, 292-295, doi:10.1126/science.aaw7166 (2019).
- 101 Grunewald, J. *et al.* Transcriptome-wide off-target RNA editing induced by CRISPR-guided DNA base editors. *Nature* **569**, 433-437, doi:10.1038/s41586-019-1161-z (2019).
- 102 Rees, H. A., Wilson, C., Doman, J. L. & Liu, D. R. Analysis and minimization of cellular RNA editing by DNA adenine base editors. *Sci Adv* **5**, eaax5717, doi:10.1126/sciadv.aax5717 (2019).
- 103 Zhou, C. Y. *et al.* Off-target RNA mutation induced by DNA base editing and its elimination by mutagenesis. *Nature* **571**, 275-278, doi:10.1038/s41586-019-1314-0 (2019).
- 104 Komor, A. C., Kim, Y. B., Packer, M. S., Zuris, J. A. & Liu, D. R. Programmable editing of a target base in genomic DNA without double-stranded DNA cleavage. *Nature* **533**, 420-424, doi:10.1038/nature17946 (2016).
- 105 Nishida, K. *et al.* Targeted nucleotide editing using hybrid prokaryotic and vertebrate adaptive immune systems. *Science* **353**, aaf8729, doi:10.1126/science.aaf8729 (2016).

- 106 Kim, D., Kim, D. E., Lee, G., Cho, S. I. & Kim, J. S. Genome-wide target specificity of CRISPR RNA-guided adenine base editors. *Nature Biotechnology* **37**, 430-435, doi:10.1038/s41587-019-0050-1 (2019).
- 107 Liang, P. P. *et al.* Genome-wide profiling of adenine base editor specificity by EndoV-seq. *Nature Communications* **10**, 67, doi:10.1038/s41467-018-07988-z (2019).
- 108 Kim, D. *et al.* Digenome-seq: Genome-wide profiling of CRISPR-Cas9 off-target effects in human cells. *Nature Methods* **12**, 237-243, doi:10.1038/nmeth.3284 (2015).
- 109 Yu, Y. *et al.* Cytosine base editors with minimized unguided DNA and RNA off-target events and high on-target activity. *Nat Commun* **11**, 2052, doi:10.1038/s41467-020-15887-5 (2020).
- 110 Doman, J. L., Raguram, A., Newby, G. A. & Liu, D. R. Evaluation and minimization of Cas9-independent off-target DNA editing by cytosine base editors. *Nat Biotechnol* **38**, 620-628, doi:10.1038/s41587-020-0414-6 (2020).
- 111 Tsai, S. Q. *et al.* GUIDE-seq enables genome-wide profiling of off-target cleavage by CRISPR-Cas nucleases. *Nat Biotechnol* **33**, 187-197, doi:10.1038/nbt.3117 (2015).
- 112 Li, H. *et al.* The Sequence Alignment/Map format and SAMtools. *Bioinformatics* **25**, 2078-2079, doi:10.1093/bioinformatics/btp352 (2009).
- 113 Kim, D., Luk, K., Wolfe, S. A. & Kim, J. S. Evaluating and Enhancing Target Specificity of Gene-Editing Nucleases and Deaminases. *Annu Rev Biochem* **88**, 191-220, doi:10.1146/annurev-biochem-013118-111730 (2019).
- 114 Clement, K. *et al.* CRISPResso2 provides accurate and rapid genome editing sequence analysis. *Nature Biotechnology* **37**, 224-226, doi:10.1038/s41587-019-0032-3 (2019).
- 115 Cho, S. W. *et al.* Analysis of off-target effects of CRISPR/Cas-derived RNA-guided endonucleases and nickases. *Genome Res* **24**, 132-141, doi:10.1101/gr.162339.113 (2014).
- 116 Kim, D., Kim, S., Kim, S., Park, J. & Kim, J. S. Genome-wide target specificities of CRISPR-Cas9 nucleases revealed by multiplex Digenome-seq. *Genome Res* **26**, 406-415, doi:10.1101/gr.199588.115 (2016).
- 117 Park, S. H. *et al.* Highly efficient editing of the beta-globin gene in patient-derived hematopoietic stem and progenitor cells to treat sickle cell disease. *Nucleic Acids Res* **47**, 7955-7972, doi:10.1093/nar/gkz475 (2019).
- 118 Gomez-Ospina, N. *et al.* Human genome-edited hematopoietic stem cells phenotypically correct Mucopolysaccharidosis type I. *Nat Commun* **10**, 4045, doi:10.1038/s41467-019-11962-8 (2019).
- 119 Pavel-Dinu, M. *et al.* Gene correction for SCID-X1 in long-term hematopoietic stem cells. *Nat Commun* **10**, 1634, doi:10.1038/s41467-019-09614-y (2019).
- 120 Vaidyanathan, S. *et al.* High-Efficiency, Selection-free Gene Repair in Airway Stem Cells from Cystic Fibrosis Patients Rescues CFTR Function in Differentiated Epithelia. *Cell Stem Cell* **26**, 161-171 e164, doi:10.1016/j.stem.2019.11.002 (2020).

- 121 Pedregosa, E. *et al.* Scikit-learn: Machine Learning in Python. *J. Machine Learning Res* **12**, 2825-2830 (2011).
- 122 Tsai, S. Q. *et al.* CIRCLE-seq: A highly sensitive in vitro screen for genome-wide CRISPR-Cas9 nuclease off-targets. *Nature Methods* **14**, 607-614, doi:10.1038/nmeth.4278 (2017).
- 123 Sledzinski, P., Nowaczyk, M. & Olejniczak, M. Computational Tools and Resources Supporting CRISPR-Cas Experiments. *Cells* **9**, 1288, doi:10.3390/cells9051288 (2020).
- 124 Park, J., Lim, K., Kim, J. S. & Bae, S. Cas-analyzer: an online tool for assessing genome editing results using NGS data. *Bioinformatics* **33**, 286-288, doi:10.1093/bioinformatics/btw561 (2017).
- 125 Guell, M., Yang, L. & Church, G. M. Genome editing assessment using CRISPR Genome Analyzer (CRISPR-GA). *Bioinformatics* **30**, 2968-2970, doi:10.1093/bioinformatics/btu427 (2014).
- 126 DiGiusto, D. L. *et al.* Preclinical development and qualification of ZFN-mediated CCR5 disruption in human hematopoietic stem/progenitor cells. *Mol Ther Methods Clin Dev* **3**, 16067, doi:10.1038/mtm.2016.67 (2016).
- 127 Fraietta, J. A. *et al.* Disruption of TET2 promotes the therapeutic efficacy of CD19-targeted T cells. *Nature* **558**, 307-312, doi:10.1038/s41586-018-0178-z (2018).
- 128 Hacein-Bey-Abina, S. *et al.* LMO2-associated clonal T cell proliferation in two patients after gene therapy for SCID-X1. *Science* **302**, 415-419, doi:10.1126/science.1088547 (2003).
- 129 Miller, J. C. *et al.* Enhancing gene editing specificity by attenuating DNA cleavage kinetics. *Nat Biotechnol* **37**, 945-952, doi:10.1038/s41587-019-0186-z (2019).
- 130 Schneider, V. A. *et al.* Evaluation of GRCh38 and de novo haploid genome assemblies demonstrates the enduring quality of the reference assembly. *Genome Res* **27**, 849-864, doi:10.1101/gr.213611.116 (2017).
- 131 Sherman, R. M. *et al.* Assembly of a pan-genome from deep sequencing of 910 humans of African descent. *Nat Genet* **51**, 30-35, doi:10.1038/s41588-018-0273-y (2019).
- 132 Cradick, T. J., Ambrosini, G., Iseli, C., Bucher, P. & McCaffrey, A. P. ZFN-site searches genomes for zinc finger nuclease target sites and off-target sites. *Bmc Bioinformatics* **12**, 152, doi:10.1186/1471-2105-12-152 (2011).
- 133 Iseli, C., Ambrosini, G., Bucher, P. & Jongeneel, C. V. Indexing strategies for rapid searches of short words in genome sequences. *PLoS One* **2**, e579, doi:10.1371/journal.pone.0000579 (2007).
- 134 Mandell, J. G. & Barbas, C. F., 3rd. Zinc Finger Tools: custom DNA-binding domains for transcription factors and nucleases. *Nucleic Acids Res* **34**, W516-523, doi:10.1093/nar/gkl209 (2006).
- 135 Montague, T. G., Cruz, J. M., Gagnon, J. A., Church, G. M. & Valen, E. CHOPCHOP: a CRISPR/Cas9 and TALEN web tool for genome editing. *Nucleic Acids Res* **42**, W401-407, doi:10.1093/nar/gku410 (2014).
- 136 Altschul, S. F., Gish, W., Miller, W., Myers, E. W. & Lipman, D. J. Basic local alignment search tool. *J Mol Biol* **215**, 403-410, doi:10.1016/S0022-2836(05)80360-2 (1990).

- 137 Liu, G., Zhang, Y. & Zhang, T. Computational approaches for effective CRISPR guide RNA design and evaluation. *Comput Struct Biotechnol J* **18**, 35-44, doi:10.1016/j.csbj.2019.11.006 (2020).
- 138 McKenna, A. & Shendure, J. FlashFry: a fast and flexible tool for large-scale CRISPR target design. *BMC Biol* **16**, 74, doi:10.1186/s12915-018-0545-0 (2018).

FIGURE LEGENDS

Figure 1. Schematics showing four major classes of programmable nucleases.

Programmable nucleases for genome editing include (a) zinc-finger nuclease (ZFN), Fn, FokI nuclease domain (b) transcription activator-like effector nuclease (TALEN), Fn, FokI nuclease domain (c) clustered regularly interspaced short palindromic repeats (CRISPR) and CRISPR-associated protein 9 (Cas9) systems. (d) A Base Editor is a CRISPR/Cas9 system that directly converts one DNA base or base pair into another without making a DSB. It consists of a Cas9 nickase (nCas9) fused to an Adenosine or Cytosine deaminase, which is capable of converting A to G or C to T respectively in genomic DNA.

Figure 2. Schematics showing *in vitro* and *in vivo* experimental techniques most commonly used to characterize off-target cutting by CRISPR/Cas9.

These techniques include those for detection of (i) *in vitro* (biochemical) tagging of Cas9 cut-sites, (ii) *in vivo* (cellular) tagging of Cas9 cut-sites, and (iii) targeted sequencing of PCR amplicons. Cas9 binding techniques are not commonly used to characterize off-target cutting and are therefore not shown. Targeted amplicon sequencing is routinely used to verify off-target sites identified by these experimental techniques.

Figure 3. The ability of various off-target site identification algorithms to correctly rank experimentally confirmed true off-target sites.

For each algorithm, we plot the fraction of true off-target sites found in the set of top-ranked sites as a function of the size of that set, averaged across 27 gRNAs for which validated off-target cutting data exist. These results can be interpreted as estimates of how many computationally-predicted off-target sites need to be experimentally assayed to achieve a given level of coverage for true off-target cutting events. Algorithms that are more useful for this task, then, yield curves that are further to the left, since they allow the user to assay fewer sites to achieve the same level of sensitivity for true-positive off-target events. (a) Potential off-target sites for each of the 27 gRNAs were computed by Cas-OFFinder and separately ranked by each algorithm. (b) Same as in (a), except only for the 4 novel gRNAs whose results were not present in the training datasets of any of the machine learning algorithms to mitigate potential risk of over-fitting.

Figure 4. Recommended workflow for identifying CRISPR/Cas9 off-target editing. 1) gRNA designs for the target gene are screened using an *in silico* tool e.g. Elevation to identify candidate gRNAs with limited potential for off-target editing. 2) Candidate gRNAs are delivered to cells and 3) Editing efficiency is assessed via Sanger sequencing trace analysis and used to confirm lead candidate gRNAs with high on-target editing. 4) Identification of off-target sites using an experimental tool e.g. GUIDE-seq with 5) detection of off-target sites by NGS. 6) PCR amplification of bioinformatically predicted and experimentally identified off-target sites for 7) NGS and bioinformatic analysis to generate a 8) Final off-target report for lead candidate gRNAs.

BOXES

Box 1: Glossary

Base Editor Cas9 nickase fused to an active deaminase for targeted conversion of cytosine to thymine or adenine to guanine without the generation of a DNA double strand break.

Cas9 (CRISPR associated protein 9) Nuclease capable of generating DNA double strand breaks in a sequence-specific manner in combination with a gRNA.

CNN (Convolutional Neural Networks) A specific type of artificial neural networks that uses convolution for supervised learning and data classifications. Typically used for image recognition.

CRISPR (Clustered Regularly-Interspaced Short Palindromic Repeats) DNA sequences in prokaryotes that play a key role in antiviral defense.

dCas9 (Nuclease-dead Cas9) A modified Cas9 enzyme where both nuclease domains have been inactivated to create a DNA binding protein that does not cut DNA.

DSB (Double strand break) DNA lesion where both strands of the DNA duplex are cleaved.

FokI Nuclease domain Non-specific DNA cleavage domain from the type IIS restriction enzyme *FokI*.

gRNA (Single guide RNA) A short RNA sequence (100 nucleotides) that interacts with Cas9 to generate ribonucleoprotein complexes capable of sequence-specific DNA cleavage.

HDR (Homology-directed repair) A DNA repair pathway which requires a DNA donor template, resulting in the targeted integration of a donor sequence.

ICE (Inference of CRISPR Edits) Python script and webtool for analyzing Sanger sequence files of CRISPR edited cells.

Indel (Insertion or deletion) DNA sequence mutations arising from imperfect repair of DNA double strand breaks where bases are inserted or removed.

nCas9 (Nickase Cas9) A modified Cas9 where one of two nuclease domains is disrupted resulting in a Cas9 protein capable of cleaving one strand of a DNA duplex resulting in DNA nicks.

NHEJ (Non-homologous end joining) A DNA repair pathway which results in the direct ligation of DNA break ends in the absence of a homologous template for repair.

NIST (National Institute of Standards and Technology) A measurement standards laboratory that supplies Standard Reference Materials. The NIST Genome Editing Consortium is tasked with establishing Standards in Genome Editing.

PAM (Protospacer Adjacent Motif) A short DNA sequence recognized by Cas9 and essential for DNA binding and cleavage by Cas9.

PRC (Precision-Recall Curve) A plot of the precision (y-axis) and the recall (x-axis) where the precision is calculated as the ratio of the number of true positives divided by the sum of the true positives and false positives and recall is calculated as the ratio of the number of true positives divided by the sum of the true positives and the false negatives.

PWM (Position Weight Matrix) A matrix of weights for distinguishing between true binding sites from non-target sites with similar sequences. This matrix can be used to scan genomes for potential off-target site discovery.

ROC curve (Receiver-Operator Characteristic curve) A plot of the true positive rate (y-axis) versus the false positive rate (x-axis). The true positive rate is calculated as the number of true positives divided by the sum of the number of true positives and the number of false negatives. The false positive rate is calculated as the number of false positives divided by the sum of the number of false positives and the number of true negatives. The area under the curve (AUC) can be used as a summary of the model performance.

RVD (Repeat Variable Diresidue) TAL effectors consist of repeated highly conserved domains of 33-34 amino acids with divergent amino acid residues at the 12th and 13th positions known as the Repeat Variable Diresidue. These RVDs determine the DNA binding specificity of the TAL effector with one RVD binding to one nucleotide.

TAL Effector Nuclease (TALEN) Engineered TAL effectors consisting of 12-31 repeats fused to the *FokI* nuclease domain. Since the *FokI* domain requires dimerization to cleave DNA a pair of TALENs must bind with appropriate spacing and orientation to successfully cleave the DNA target.

TIDE (Tracking of Indels by Decomposition) R code and webtool for analyzing Sanger sequence files of CRISPR edited cells.

Zinc Finger Small protein motif first identified as DNA-binding motifs in transcription factors. Each Zinc finger typically recognizes 3bp of DNA and tandem arrays of zinc fingers allow for longer sequences of DNA to be recognized.

Zinc Finger Nuclease (ZFN) Engineered zinc finger proteins consisting of 3-6 Zinc Finger repeats fused to the *FokI* nuclease domain. Since the *FokI* domain requires dimerization to cleave DNA a pair of ZFNs must bind with appropriate spacing and orientation to successfully cleave the DNA target.

GUIDE-seq was nevertheless able to discover the top three off-target sites for R66SCD gRNA. Further, all off-target sites at which the indel rate was $>0.5\%$ were ranked among the top 10 by both Elevation and CRISTA. However, these methods start to diverge at sites with lower off-target editing rates. Therefore, we cannot be assured that any approach to off-target site discovery, either experimental or computational, can predict all off-target sites for which the true editing rate is at least 0.1% without introducing a large number of false positives. As even this low off-target editing rate can potentially compromise the safety of gene-edited therapeutic products (see “CLINICAL CONSEQUENCES” section), much work remains to improve the quality of off-target prediction.

TABLES

Table 1. Comparison of *in silico* off-target site search tools for ZFNs and TALENs

	Name	Screening approach or algorithm	Off-target ranking/scoring basis	Strengths	Weaknesses
ZFN Tools	PROGNOS ⁷⁸ (Website)	Base by base	Weighted homology, conserved G score, polarity effects	Allows user-defined spacing, ZF homo-dimerization, ambiguous bases. Analyzes ZF subunits. Relatively low false-positive ratios	Limited training set
	ZFN-site ¹³² (Website)	TagScan ¹³³	Sequence homology	Allows user-defined spacing, ZF homo-dimerization, ambiguous bases	No scoring algorithm
	Zinc Finger Tools ¹³⁴ (Website)	Search in <10kb user-defined sequence	N/A	Screens ZF targets in user-supplied DNA sequences	Screens limited to 49 triplets with validated ZF domains
TALEN Tools	PROGNOS ⁷⁸ (Website)	Base by base	Modular Position Weight Matrix, binding energy compensation, polarity effects	Allows up to 20 mismatches. Relatively low false-positive ratios (~11:1)*	Limited training set
	CHOPCHOP ¹³⁵ (Website)	Bowtie	Weighed off-target site number	Allows up to 2 mismatches	Potentially misses off-target sites
	TALENgetter/ TALENofter ⁷⁶ (Website, command line)	Base by base with threshold-based speed-up strategy	Machine-learning-based Modular Position Weight Matrix	Allows up to 10 mismatches, Allows the use of rare RVDs	The scoring algorithm was overperformed by PROGNOS ⁷⁸
	TALE-NT 2.0 ⁷⁵ (Website)	Base by base	Modular Position Weight Matrix	The first scoring tool for TALEN off-target analysis	Potential worse performance if using custom RVD designs

*The false-positive ratios are defined as “the number of screened sites with no detectable activity to the number with detectable activity measured by experimental prediction methods”⁷⁸

Table 2. Comparison of *in silico* off-target site screening tools for CRISPR/Cas9 systems

Name	Strengths	Weaknesses
BLAST ¹³⁶ (Website, Command line)	A time optimized sequence alignment tool (seeding based algorithm), bulges allowed	Less accurate (can miss potential off-target sites), limited mismatch numbers, no custom PAM
TagScan ¹³³ (Website, Command line)	A time optimized sequence screening tool for queries <60 bases, web support	Limited mismatch numbers, no custom PAM, no bulges allowed
Bowtie ⁶¹ (Command line)	A time optimized alignment tool for queries <50 bases	Less accurate (can miss potential off-target sites), limited mismatch numbers, no custom PAM, no bulges allowed
Bowtie2 ⁶⁴ (Command line)	A time optimized alignment tool, bulges allowed	Misses off-target sites with low mismatch numbers ⁸⁰ , limited mismatch numbers, no custom PAM
CasOT ⁸³ (Command line)	A sequence screening tool for CRISPR/Cas9 system, custom PAM, user-defined mismatch number in seed/non-seed region, paired-gRNA mode allowed	Time-consuming ¹³⁷ , no bulges allowed
Cas-OFFinder ⁸¹ (Website, Command line)	A commonly used sequence screening tool for CRISPR/Cas systems, web support, custom PAM, user-defined mismatch number, bulges allowed	Can miss potential off-target sites with complex DNA/RNA bulges ⁶⁷ , moderate speed ¹³⁷
dsNickFury ⁹² (Command line)	A sequence screening tool for CRISPR/Cas9 system, custom PAM, user-defined mismatch number	No bulges allowed
FlashFry ¹³⁸ (Command line)	A time optimized sequence screening tool for CRISPR/Cas systems, custom PAM, user-defined mismatch number. Good for large datasets.	No bulges allowed
Crisflash ⁸² (Command line)	A sequence screening tool for CRISPR/Cas9 system, custom PAM, user-defined mismatch number, accepts genetic variation data on haplotype level	No bulges allowed
CRISPRitz ⁶⁷ (Command line)	A time optimized sequence screening tool for CRISPR/Cas9 system, custom PAM, user-defined mismatch number, bulges allowed, accepts genetic variation data	Cannot process genetic variation data on haplotype level

Table 3. Comparison of *in silico* off-target site ranking and scoring tools for CRISPR/Cas9

Name	Main features reported	Strengths	Weaknesses
E-CRISP ⁶⁵ (Website) Formula based	Mismatch numbers	An early approach for CRISPR/Cas9 off-target identifications	Rankings were outperformed by other algorithms
CCTOP ⁸⁴ (Website) Formula based	Mismatch positions and numbers	Web support	Scorings were outperformed by other algorithms
COSMID ⁷⁸ (Website) Formula based	Mismatch positions and numbers	Web support, bulges allowed	Scorings were outperformed by other algorithms
Cropit ⁸⁶ (Website) Formula based	Mismatch numbers and continuities (Optional: chromatin states)	Web support. Better performance than other formula-based algorithms on ChIP-seq data	Scores did not correlate well with cleavage-based genome-wide experimental data
MIT ²³ (Website*) Formula based Modular PWM (see Box 1)	Mismatch positions, numbers and mean distances	Web support. The most popular formula-based algorithm. Good ranking performance ⁸⁰	Scorings were outperformed by CFD ⁸⁹ , no bulges allowed
Hsu score ²³ (Command line*) Normalized Modular PWM	Mismatch positions and numbers	A simplified version of MIT	Scores did not correlate with experimental data as well as the MIT score
CFD ⁸⁹ (Command line) Modular PWM	Mismatch positions, numbers and identities	Based on the biggest cleavage dataset to date, Good ranking performance ⁸⁰	No bulges allowed
predictCRISPR ⁹¹ (Command line) Machine learning	281 sequence-related features	All the machine-learning-based tools showed comparable to better performances than the algorithms in other categories. However, since most of these models were trained by genome-wide experiment data, which were largely overlapped to most of the training sets, a potential over-fitting issue exists in the comparison (as described in detail in the "PERFORMANCE COMPARISONS" section and shown in Supplementary Table 1). Elevation is recommended for <i>in silico</i> prediction, and CRISTA is the only option that allows bulges.	
CRISTA ⁹⁰ (Website, Command line) Machine learning	Nucleotide identities, alignment, thermodynamics and genomic contents		
Elevation ⁹² (Website, Command line) Machine learning	gRNA spacer sequence and off-target sequence		
CNN_std ⁹³ (Command line) Deep learning	gRNA spacer sequence and off-target sequence		
deepCRISPR ⁹⁴ (Command line) Deep learning	gRNA spacer sequence and off-target sequence, cell-type specific features		
Synergizing CRISPR ⁹⁵ (Command line) Deep learning	Scores from 5 other algorithms (CFD, MIT Website, MIT score, Cropit, CCTop) and evolutionary conservation		

*Implemented in the CRISPOR website and reviewed in reference⁸⁰.

Table 4. Comparison of experimental off-target site search tools with estimated performance characteristics

	Name	Method	What is detected?	Setting	Cut site enrichment	Cellular false positives
<i>In Vitro</i>	Digenome-seq ⁴⁷	NGS fragment end statistics	DSB	DNA	170*	65%
	CIRCLE-seq ⁴⁹	DSB end enrichment	DSB	DNA	821	88%
	SITE-seq ⁴⁸	DSB end enrichment	DSB	DNA	178	95%
	DIG-seq ⁵¹	NGS fragment end statistics	DSB	Chromatin	289*	64%
<i>In Vivo</i>	HTGTS ²⁶	Rearrangement detection	Repair product	Cells	4,700	n.d.
	GUIDE-seq ²⁷	Oligonucleotide integration	Repair product	Cells	29,000	20%
	DISCOVER-seq ⁵⁵	DSB end enrichment	DSB	Cells/tissue	233	~0%
	BLISS ⁵⁴	DSB end tagging	DSB	Cells/tissue	160	20%

Summary of experimental techniques for off-target cutting by programmable nucleases. Since all methods rely on specific enrichment of either DNA close to cut sites, or DNA ends close to cut sites, we use the degree to which they achieve enrichment of DNA fragments near the on-target editing site (“Cut site enrichment”) as a proxy for their sensitivity. For “Cellular false positives”, we use the fraction of sites identified by each technique that fail to be edited (indels < 0.1%) in the accompanying cellular validation studies; see main text for details. *Cut site enrichment for Digenome-seq and DIG-seq was assessed by enrichment of sequencing fragments whose ends are precisely at the on-target editing site. n.d., not determined.

Supplementary Information

Supplementary Figures

Supplementary Figure 1: ROC and PRC of various off-target scoring algorithms based on the true off-target sites identified.

Supplementary Figure 2: ROC and PRC of various off-target scoring algorithms based on novel gRNA off-target datasets

Supplementary Tables

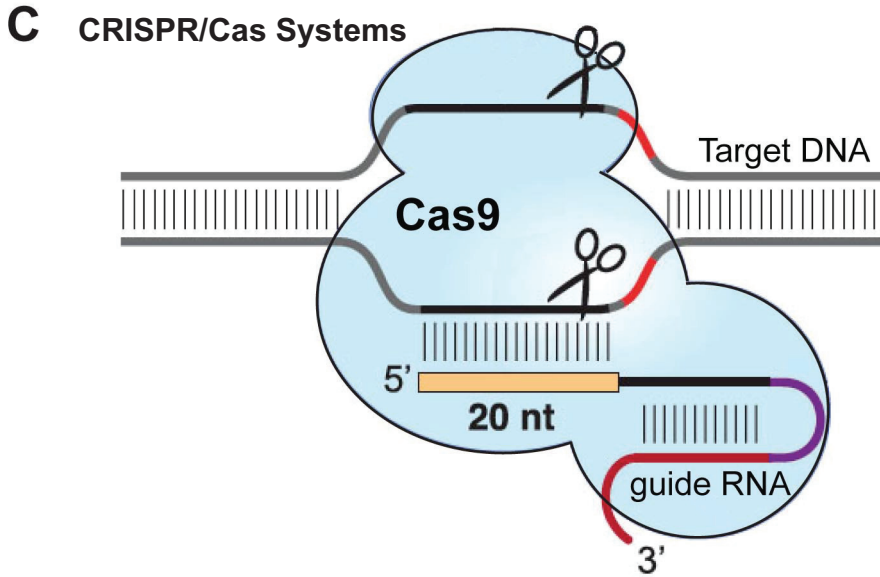
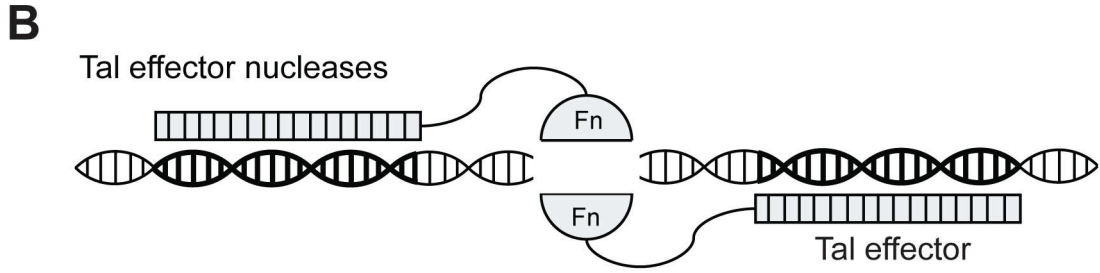
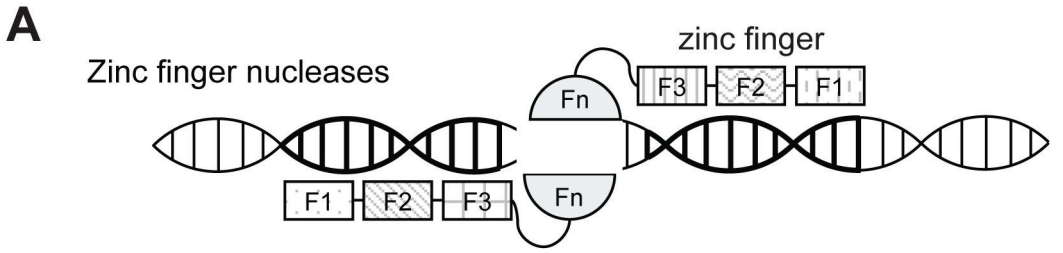
Supplementary Table 1: Structures and training sets of machine-learning-based algorithms for off-target prediction.

Supplementary Table 2: List of datasets from the Sequence Read Archive used to calculate on-target enrichment for performance comparison of experimental techniques. All genomic coordinates reference the hg38 human genome assembly.

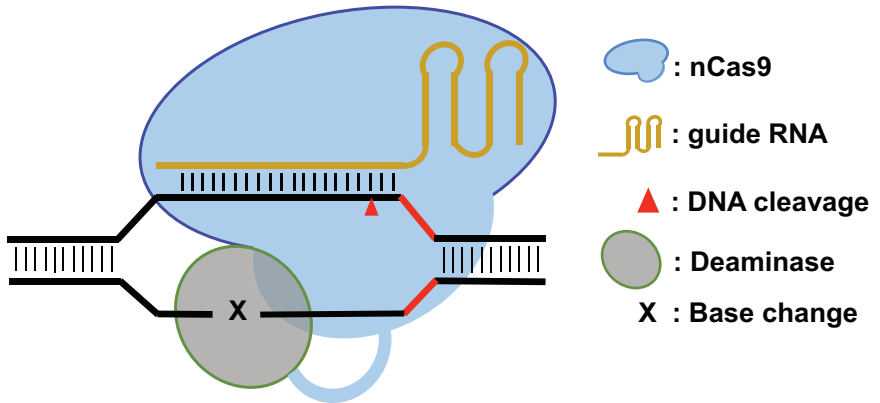
Supplementary Table 3: Components of the true positive list used in the analysis for performance comparison of computational techniques, taken from nine studies that used amplicon-specific experimental techniques to detect off-target editing rates. “OT” in this table stands for off-target.

Supplementary Table 4: The full off-target dataset used in the performance assessment.

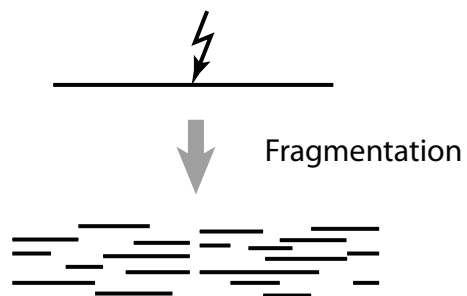
Supplementary Table 5: The off-target dataset of novel gRNAs used in the performance assessment.



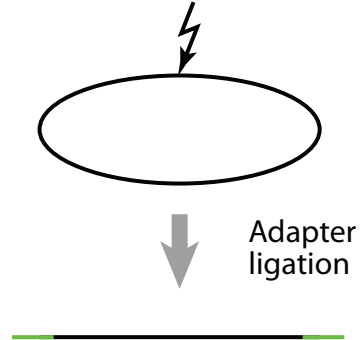
D Base Editors



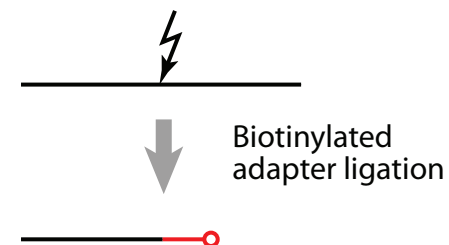
In vitro tagging of CRISPR cut sites



Digenome-seq
DIG-seq

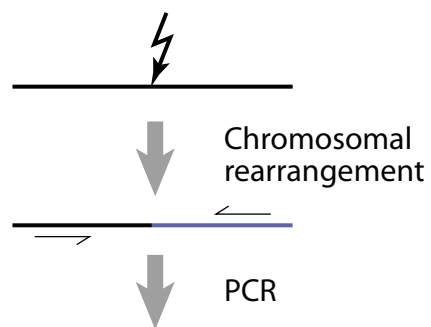


CIRCLE-seq
CHANGE-seq

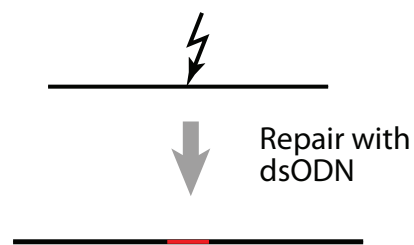


SITE-seq

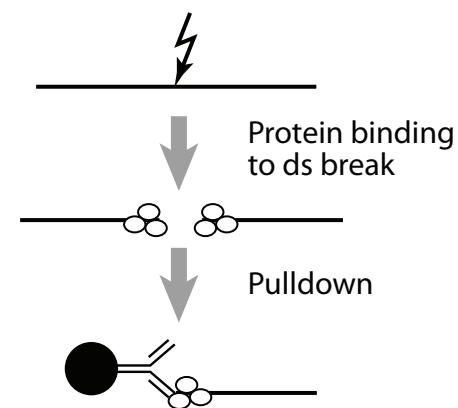
In vivo tagging of CRISPR cut sites



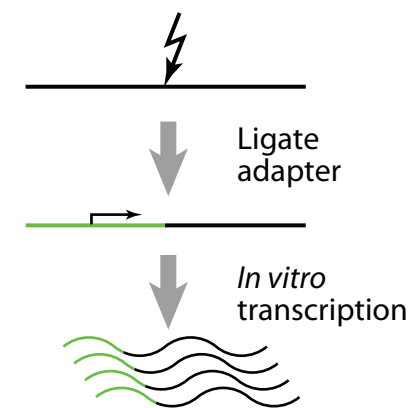
HTGTS
LAM-HTGTS



GUIDE-seq

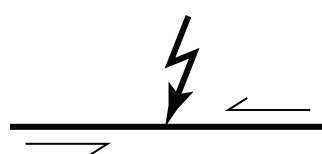


DISCOVER-seq

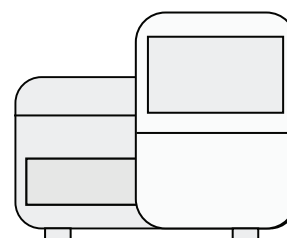


BLISS

Targeted amplicon sequencing



PCR



NGS

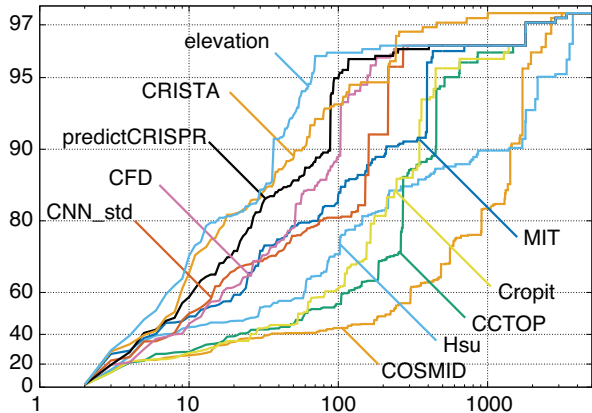


**Sequence alignment,
indel quantification**

A

27 gRNAs

% true positive recall

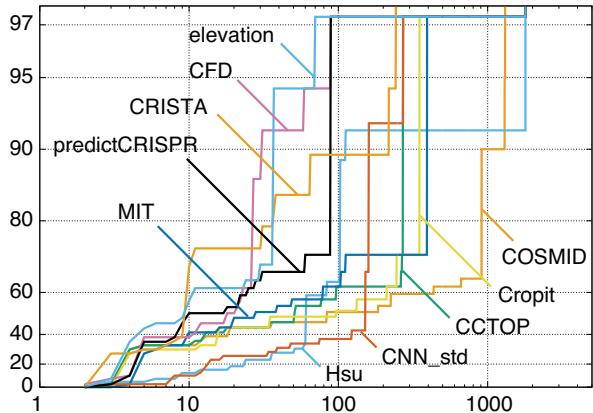


Number of top ranked sites per gRNA

B

4 novel gRNAs

% true positive recall

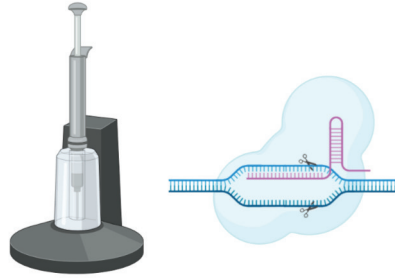


Number of top ranked sites per gRNA

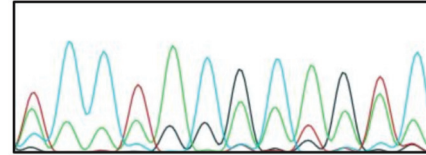
① In silico design and off-target screening



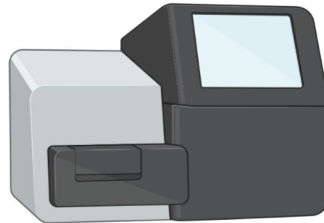
② Genome editing



③ Confirm editing by ICE/TIDE



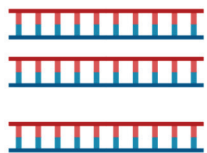
⑤ NGS for site detection



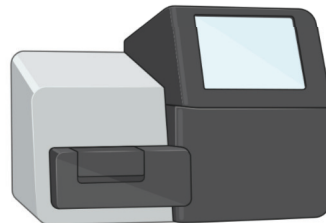
④ GUIDE-Seq



⑥ PCR amplification of predicted sites



⑦ NGS for site validation



⑧ Off-target Report

