



THE UNIVERSITY *of* EDINBURGH

## Edinburgh Research Explorer

# Statistical evidence of transitioning open-vent activity towards a paroxysmal period at Volcán Santiaguito (Guatemala) during 2014–2018

### Citation for published version:

Carter, W, Rietbrock, A, Lavallée, Y, Gottschämmer, E, Moreno, AD, Kendrick, JE, Lamb, OD, Wallace, PA, Chigna, G & De Angelis, S 2020, 'Statistical evidence of transitioning open-vent activity towards a paroxysmal period at Volcán Santiaguito (Guatemala) during 2014–2018', *Journal of Volcanology and Geothermal Research*, vol. 398, pp. 106891. <https://doi.org/10.1016/j.jvolgeores.2020.106891>

### Digital Object Identifier (DOI):

[10.1016/j.jvolgeores.2020.106891](https://doi.org/10.1016/j.jvolgeores.2020.106891)

### Link:

[Link to publication record in Edinburgh Research Explorer](#)

### Document Version:

Publisher's PDF, also known as Version of record

### Published In:

Journal of Volcanology and Geothermal Research

### Publisher Rights Statement:

© 2020 The Authors. Published by Elsevier B.V. This is an open access article under the CC BY license (<http://creativecommons.org/licenses/by/4.0/>).

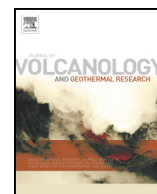
### General rights

Copyright for the publications made accessible via the Edinburgh Research Explorer is retained by the author(s) and / or other copyright owners and it is a condition of accessing these publications that users recognise and abide by the legal requirements associated with these rights.

### Take down policy

The University of Edinburgh has made every reasonable effort to ensure that Edinburgh Research Explorer content complies with UK legislation. If you believe that the public display of this file breaches copyright please contact [openaccess@ed.ac.uk](mailto:openaccess@ed.ac.uk) providing details, and we will remove access to the work immediately and investigate your claim.





# Statistical evidence of transitioning open-vent activity towards a paroxysmal period at Volcán Santiaguito (Guatemala) during 2014–2018

William Carter<sup>a,\*</sup>, Andreas Rietbrock<sup>b</sup>, Yan Lavallée<sup>a</sup>, Ellen Gottschämmer<sup>b</sup>, Alejandro Díaz Moreno<sup>a</sup>, Jackie E. Kendrick<sup>a</sup>, Oliver D. Lamb<sup>c</sup>, Paul A. Wallace<sup>a</sup>, Gustavo Chigna<sup>d</sup>, Silvio De Angelis<sup>a</sup>

<sup>a</sup> Department of Earth, Ocean and Ecological Sciences, University of Liverpool, 4 Brownlow Street, Liverpool L69 3GP, United Kingdom

<sup>b</sup> Geophysical Institute, Karlsruhe Institute of Technology, Karlsruhe, Germany

<sup>c</sup> Department of Geological Sciences, University of North Carolina at Chapel Hill, Chapel Hill, NC, United States

<sup>d</sup> Instituto Nacional de Sismología, Vulcanología, Meteorología, e Hidrología (INSIVUMEH), Guatemala City, Guatemala

## ARTICLE INFO

### Article history:

Received 28 January 2020

Received in revised form 6 April 2020

Accepted 15 April 2020

Available online 21 April 2020

### Keywords:

Santiaguito

Volcanic explosions

Seismic

Infrasound

Eruptive phases

Magnitude-frequency analysis

## ABSTRACT

Long-term eruptive activity at the Santiaguito lava dome complex, Guatemala, is characterised by the regular occurrence of small-to-moderate size explosions from the active Caliente dome. Between November 2014 and December 2018, we deployed a seismo-acoustic network at the volcano, which recorded several changes in the style of eruption, including a period of elevated explosive activity in 2016. Here, we use a new catalogue of explosions to characterise changes in the eruptive regime during the study period. We identify four different phases of activity based on changes in the frequency and magnitude of explosions. At the two ends of the spectrum of repose times we find pairs of explosions with near-identical seismic and acoustic waveforms, recorded within 1–10 min of one another, and larger explosions with recurrence times on the order of days to weeks. The magnitude–frequency relationship for explosions at Santiaguito is well described by a power-law; we show that changes in  $b$ -value between eruptive regimes reflect temporal and spatial changes in rupture mechanisms, likely controlled by variable magma properties. We also demonstrate that the distribution of inter-explosion repose times between and within phases is well represented by a Poissonian process. The Poissonian distribution describing repose times changes between and within phases as the source dynamics evolve. We find that changes in source properties restrict the extrapolation of explosive behaviour to within a given eruptive phase, limiting the potential for long-term assessments of anticipated eruptive behaviour at Santiaguito.

© 2020 The Authors. Published by Elsevier B.V. This is an open access article under the CC BY license (<http://creativecommons.org/licenses/by/4.0/>).

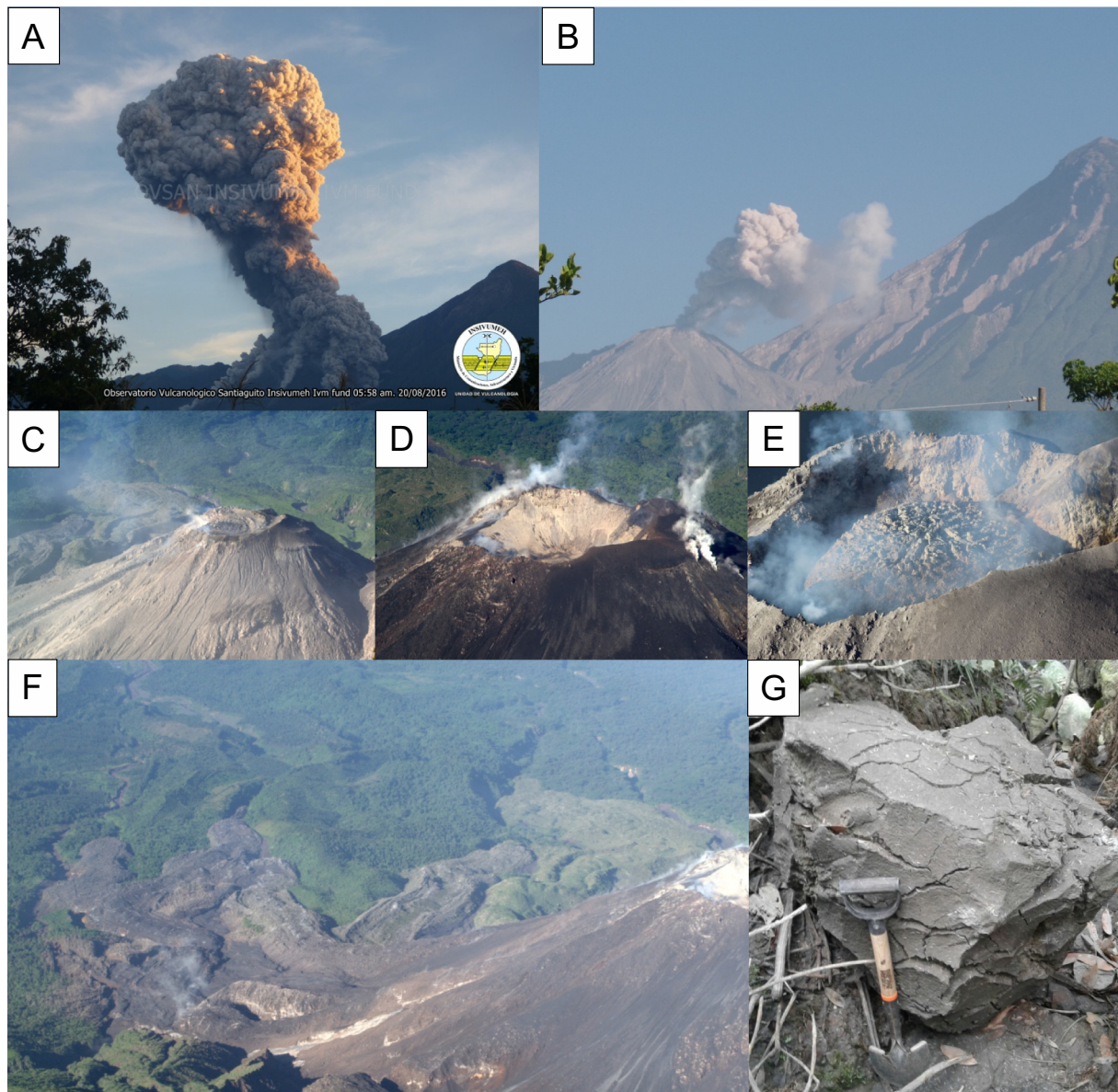
## 1. Introduction

The Santiaguito lava dome complex, situated in the Western Highlands of Guatemala, has been continually active since 1922 (Harris et al., 2003). The complex consists of four domes, Caliente, La Mitad, El Monje and El Brujo, which formed along an East–West trending fracture at the southern foot of the collapse amphitheatre formed by the 1902 plinian eruption of Santa Maria Volcano (Rose, 1972). Since 1975 activity at Santiaguito has been centred at Caliente, mostly characterised by effusion of blocky lava flows and small-to-moderate gas-rich explosions (Harris et al., 2003). The Instituto Nacional de Sismología, Vulcanología, Meteorología e Hidrología (INSIVUMEH), responsible for monitoring the activity at Santiaguito, issues regular activity reports including information on the rates of occurrence of explosions and the height of the associated plumes. During ‘normal’ eruptive behaviour, as revealed by decades of monitoring, explosion plumes have been observed to reach heights between 0.5 and 1 km above the active vent (e.g. Global

Volcanism Program, 1980; Global Volcanism Program, 1985; Global Volcanism Program, 1990; Global Volcanism Program, 1996; Global Volcanism Program, 2003; Bluth and Rose, 2004; Global Volcanism Program, 2007; Sahetapy-Engel et al., 2008; Johnson et al., 2014; Global Volcanism Program, 2015; Fig. 1). The volume fractions of ash during the brief (seconds-long) initial momentum-driven phase of plume ejection at Santiaguito has been calculated at  $\phi = 2.3\text{--}4.5 \cdot 10^{-5}$  (when  $\rho_{\text{ash}} = 2650 \text{ kg/m}^3$ ), with the remaining fraction of the plume, gas (De Angelis et al., 2016). In contrast, during the period of heightened activity in 2016, the majority of plumes rose approximately 1.5 km above the active vent, whilst some exceptional explosions generated plumes reaching up to 7 km (e.g. Global Volcanism Program, 2016a; Global Volcanism Program, 2016b; Fig. 1A). ‘Normal’ gas-and-ash explosions have been documented to occur at intervals with repose times varying from periods as low as ~30 min (e.g. Rose, 1987; Scharff et al., 2014; Lavallée et al., 2015) to several hours (e.g. Global Volcanism Program, 2017a), with the period of heightened activity displayed more erratic recurrence patterns (e.g., Lamb et al., 2019; Wallace et al., 2020). We analyse this characteristic across the eruptive phase transitions herein.

\* Corresponding author.

E-mail address: [w.carter@liverpool.ac.uk](mailto:w.carter@liverpool.ac.uk) (W. Carter).



**Fig. 1.** Images of activity at Santiaguito over the four-year recording period. A) Explosion in August 2016, characteristic of the large explosions during this time. B) Explosion in January 2018, characteristic of the small-to-moderate explosions in the effusive regime. C) Lava dome in the vent of Caliente in November 2014. D) Excavated vent of Caliente in June 2016. E) New lava dome growing in the vent of Caliente in December 2016. F) Lava flows on the South East flank of the Caliente dome. G) Large bomb ejected from Caliente during a large explosion in 2016, located 1.5 km from the vent. Image A was provided by INSIVUMEH. Images C, D and E are adapted from Lamb et al. (2019). Image G is provided courtesy of A. Pineda.

Due to its protracted eruption, which has lasted for nearly 100 years, and the unique vantage point offered by the summit of Santa Maria overlooking the active caliente vent, the explosions at Santiaguito have been the focus of many multi-disciplinary investigations. Previous studies have included the use of optical imagery, thermographic cameras (e.g. Sahetapy-Engel et al., 2004; Johnson et al., 2004; Sahetapy-Engel et al., 2008; De Angelis et al., 2016; Lamb et al., 2019), tiltmeter (e.g. Johnson et al., 2004; Johnson et al., 2014; Lavallée et al., 2015), infrasound (e.g. Sahetapy-Engel et al., 2008; Jones and Johnson, 2011; Scharff et al., 2014; De Angelis et al., 2016; Lamb et al., 2019), seismic (e.g. Johnson et al., 2004; Sahetapy-Engel et al., 2008; Sanderson et al., 2010; Johnson et al., 2014; Scharff et al., 2014; Lavallée et al., 2015; Lamb et al., 2019; Hornby et al., 2019), doppler radar (Scharff et al., 2014) and UV imaging (e.g. Holland et al., 2011; Esse et al., 2018). Bluth and Rose (2004) proposed that the primary mechanism of the small-to-moderate gas-and-ash explosions at Caliente is shear-induced fragmentation of dacitic magma near the margins of the conduit. This shearing is induced by the increased flow velocity brought

on by closed system degassing as the ascending magma undergoes decompression, causing the magma viscosity to increase and prompting brittle deformation at the high strain rate experienced in the shallow conduit (Holland et al., 2011). The shearing events are thought to generate many small connected cracks (Rhodes et al., 2018), which are held open during release of the gas-and-ash mixture (cf. Kendrick et al., 2016). After the explosion the fracture pathways shut and begin to heal, resetting the system, leading to the cyclic nature of the explosive activity observed at Santiaguito (Holland et al., 2011). This mechanism is supported by the observations that 1) volcanic ash and gas are released along active fractures which can be seen on the dome surface at the onset of the explosions, 2) volcanic ash associated with these small explosions shows textural disequilibrium resulting from rapid frictional heating (i.e., unhomogenised melt schlieren containing fresh vesicles) associated with faulting events, and 3) more pronounced tilt signals and very long period (VLP) seismicity occur as a result of increased shear traction when ash is generated (Lavallée et al., 2015). The explosion source has been constrained to depths between 100



and 620 m below the vent through the comparison of acoustic and seismic signal onsets (Sahetapy-Engel et al., 2008), between depths of 100 and 600 m though the analysis of rock samples taken from the lava flow units (Scott et al., 2012), and at about 300 m depth below the vent via Mogi source modelling of VLP signals (Johnson et al., 2014). Yet, these models proposed for the small-to-moderate gas-and-ash explosions do not apply to the large explosions during the period of heightened activity of 2016, which were sufficiently powerful to excavate the lava dome (Lamb et al., 2019).

Protracted volcano monitoring provides us with datasets, which may be scrutinised to understand eruptive behaviour with the aim to find ways to predict recurrence in activity (e.g., Papale, 2018). The monitored datasets of open-vent volcanic systems are different to those of volcanoes ending a period of quiescence, where unrest can indicate an impending eruption. For open-vent systems such as Santiaguito, where activity has persisted for nearly 100 years, changes in the eruption style may be signalled in a more subtle way (Sparks, 2003). Therefore, understanding the day-to-day 'baseline' behaviour and associated trends and statistical attributes of geophysical signals during different phases of eruption is crucial in efforts to provide accurate forecasting of paroxysmal activity, which pose great hazards to the surrounding areas. In systems that produce many self-similar events which display a range of magnitudes, magnitude-frequency analysis can be used to determine the relationship between small and large events via the so-called seismic *b*-value. Magnitude-frequency analysis, most commonly used in seismic studies (e.g. Schorlemmer et al., 2005; Chen et al., 2006; Tsukakoshi and Shimazaki, 2008; Farrell et al., 2009; El-Isa and Eaton, 2014; Huang and Beroza, 2015), often refers to the Gutenberg-Richter (GR) relationship (Gutenberg and Richter, 1944) and Ishimoto-lida's formula (Ishimoto and lida, 1939), but has also been applied to explosive volcanic eruptions (e.g. Deligne et al., 2010; Nishimura et al., 2016; Sheldrake and Caricchi, 2017; Rougier et al., 2018). These studies have characterised the magnitude-frequency relationships for global volcanism as well as for individual volcanoes, and have shown how these distributions carry information on the explosion sources and eruption style. Repose time analysis has also become an important tool at open-vent systems (e.g. Connor et al., 2003; Watt et al., 2007; Lamb et al., 2014; Varley et al., 2018) in establishing relationships between source processes. Changes in the repose time between explosions have been used as an indicator of changes within volcanic systems, and differences in repose times between events has been used to show differences in the physics controlling eruptive processes (Varley et al., 2018).

Between November 2014 and December 2018, the University of Liverpool (UK) and the Karlsruhe Institute of Technology (Germany) deployed a permanent seismo-acoustic network around Santiaguito to continuously record the activity of the volcano. During this period multiple phases of activity were observed including effusive behaviour interspersed with small-to-moderate explosions, characteristic of the normal baseline behaviour as defined by Harris et al. (2003), and a period of heightened activity defined by large gas rich explosions during 2016 (Lamb et al., 2019; Wallace et al., 2020). In the initial 12 months following our installation at Santiaguito, activity consisted primarily of the extrusion of blocky lava flow from the summit of Caliente along with regular explosions emitting weak gas-and-ash plumes between 0.5 and 1.5 km above the vent (Global Volcanism Program, 2016b; Lamb et al., 2019; Wallace et al., 2020). During late 2015 and 2016 however, the activity was observed to shift in style and magnitude, as we noted a gradual decline in the number of explosions from its peak occurrence rate in early 2015, with explosions producing larger plumes (Lamb et al., 2019; Wallace et al., 2020). The explosions occurred with greater repose times, with large explosions occurring at a rate of less than once per day, and weak to moderate explosions occurring up to 4 times per day (Global Volcanism Program, 2017a). The large explosions generated larger proportions of pyroclasts as plumes rose up to 7 km above the vent (Fig. 1A). The largest explosions, which occurred in

April–June 2016, excavated a large crater in the caliente dome structure (Fig. 1D; Global Volcanism Program, 2016a). During this period of heightened explosive activity, there was no extrusion of lava flows (Global Volcanism Program, 2016a). The explosions instead triggered pyroclastic density currents from column collapse and ejected large bombs up to 3 m in diameter to distances of 3 km (Fig. 1G; Global Volcanism Program, 2016a). During October 2016 the explosive regime came to an abrupt end, and the effusive regime resumed, accompanied with frequent smaller explosions at a rate of 25–35 per day (Global Volcanism Program, 2017a), similar to pre-2014 activity (Rose, 1987; Johnson et al., 2014). A lava dome emerged in the vent of Caliente in October 2016 (Fig. 1E; Global Volcanism Program, 2017a). During 2017 new lava continued to fill the excavated crater inside Caliente, leading to over-spill that caused block-and-ash flows (Global Volcanism Program, 2017b). Similarly to 2014/15, gas-and-ash plumes rose to heights of up to 800 m above the active vent, at a rate between 9 and 36 times per day (Global Volcanism Program, 2017b). By the end of 2017 the lava dome had appeared to be fully re-established its original (pre 2016) shape and INSIVUMEH reported that there was little change in activity between November 2017 and April 2018 with plumes rising approximately 500 m above the vent of Caliente (Global Volcanism Program, 2018a). During this time, between 15 and 21 explosions were commonly recorded per day. This level of activity decreased slightly until the end of the year, with explosions occurring between 11 and 15 times per day, producing plume heights of 500–800 m above the vent (Global Volcanism Program, 2018b).

Early work conducted on the data collected by the seismo-acoustic network can be found in De Angelis et al. (2016), Lamb et al. (2019), Hornby et al. (2019), and Wallace et al. (2020). Lamb et al. (2019) analysed the seismic activity complemented by visual and thermal infrared observations to produce an early catalogue of 6101 explosions between 2014 and 2017. They presented a description of the types of volcanic processes and associated signals, and characterised the cumulative seismic energy which highlighted the increase in explosivity associated with the period of heightened activity recorded in 2016. A more recent study by Wallace et al. (2020) went further by constraining seismic energy, variable time delays between seismic and acoustic arrivals, thermal evolution and petrological changes associated with the increased explosivity. Characterisation of ash samples and ballistic bombs collected between 2014 and 2017 showed that changes in the chemical composition, mineralogy and groundmass texture throughout different eruptive phases occurred due to the fresh injection of a deep-sourced, volatile-rich magma into the shallow magmatic mush leftover from protracted activity in the last decades, causing mingling and intensification of the explosive activity in 2016 (Wallace et al., 2020).

We have aimed to refine the identification of explosive events which led to the generation of a catalogue of explosions with improved completeness with respect to that used in Lamb et al. (2019). Algorithms used in the catalogue production constrained the occurrence of 18,895 explosions for the period between November 2014 and December 2018 (see Section 2.3). This dataset provides new insights into the volcanic and magmatic processes leading to shifts in eruptive style at Santiaguito. In this study we assess the seismic energy associated with individual explosions -a proxy for magnitude- and their variable occurrence rates; we exploit these measurements to investigate the magnitude-frequency relationship of explosions across different phases of eruptive behaviour with the aim of constraining four years of activity at Santiaguito.

## 2. Dataset and analyses

### 2.1. Data acquisition

Between November 2014 and December 2018, we deployed and maintained a network of seismic and infrasound stations at the Santiaguito lava dome complex. The seismic network consisted of six

Nanometrics Trillium T120 compact broadband seismometers ( $T = 120$  s) and six Lennartz 3DLite short-period seismometers ( $T = 1$  s). All instruments recorded with a sampling frequency of 100 Hz at a resolution of 24-bit. The twelve stations in the network (Fig. 2), were located between 810 and 7700 m from the active Caliente vent, and were deployed to achieve the best possible azimuthal coverage. Seven iTEM prs100 infrasound sensors were also deployed, co-located with all broadband seismometers, as well as with the short-period seismometer at station LS01. Over the four years between 2014 and 2018 we conducted ten field campaigns in November 2014, April 2015, December 2015, January 2016, June 2016, February 2017, May 2017, January 2018, June 2018 and January 2019. Due to variable access to specific locations, and equipment malfunctioning, the stations in the network did not always operate simultaneously; however, with the exception of four data gaps, the network provided a quasi-continuous record of the activity over the four-year period (Fig. 2B).

## 2.2. Visual observations

Throughout the network deployment visual observations were routinely conducted by INSIVUMEH staff based at the local Santiaguito Volcano Observatory (OVSAN). These are documented in the Smithsonian Institution Global Volcanism Programme's weekly reports and monthly bulletins (published at: <http://volcano.si.edu/volcano.cfm?vn=342030> last accessed 23/12/2019). Visual observations are frequently hindered by cloud coverage, and at night-time the local observatory is not manned. Furthermore, it is sometimes difficult to visually distinguish between passive degassing and small explosions. The observations made by INSIVUMEH were complemented by regular visits of the volcano of the Liverpool and KIT teams during the past 5 years. Despite the irregular nature of visual observations, they provide important information to link geophysical data to the ongoing volcanic activity. Visual observations were made throughout the recording period, making note of explosion frequency, plume heights, plume descriptions, lava dome appearance, and the presence of active lava flows.

## 2.3. Explosion catalogue

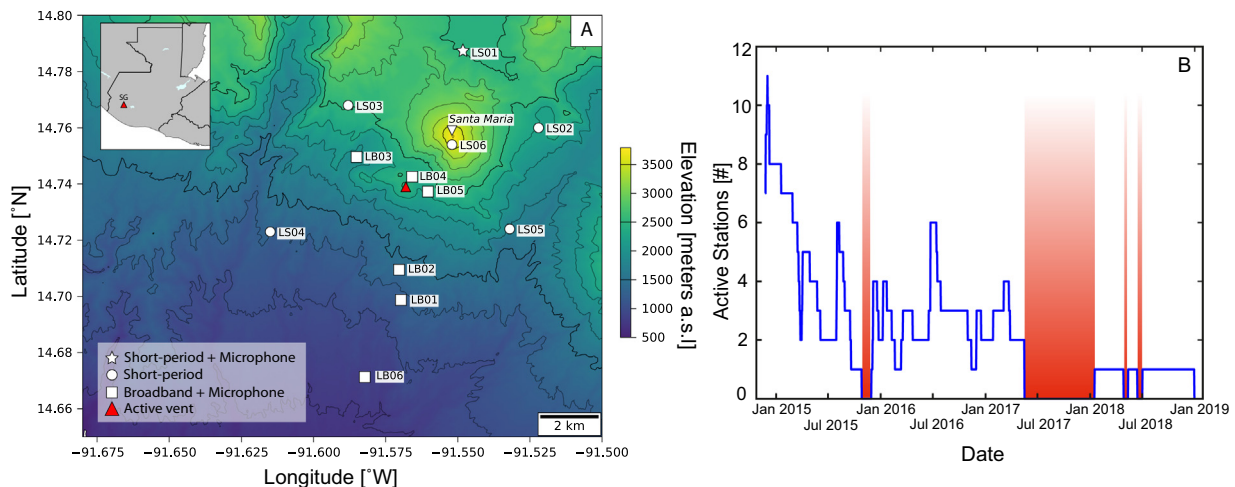
We designed and applied a detection and classification algorithm to extract and catalogue explosion signals from the continuous seismic

data streams recorded across the network at Santiaguito between 2014 and 2018. The automatic algorithm consists of three main steps:

- 1) Pre-processing: Rapid signal detection at individual stations across the network based on signal to noise ratio (SNR) thresholding. To detect event waveforms in the continuous data streams, waveforms which had a SNR above 1.1 were extracted for the later processing steps. We fixed the noise level at a manually selected time void of signals. Although slower than a traditional STA/LTA, this ensured waveforms in periods of high noise, induced by non-explosive signals such as human activity, were also detected. To assist the detection of only explosions, the raw data streams were initially filtered between 0.1 and 10 Hz to remove noise in different frequency bands than explosions.

- 2) Processing: Producing a list of candidate explosion signals based on pre-selected waveform attributes. The detected waveforms were first compared to a preset group of frequency attributes. These attributes included the central and dominant frequencies, as well as the bandwidth at 50% of the dominant frequencies amplitude in the frequency spectrum. The envelope of waveforms which met the frequency criteria were then cross-correlated with an envelope of a template waveform, which consisted of a stack of manually detected waveforms. A cross-correlation coefficient threshold of 0.6 was set, with all waveforms correlating above the threshold labelled as candidate waveforms.

- 3) Post-processing: Using network association to determine if a candidate waveform can be catalogued as a true explosion. An explosion, originating within the network, should radiate seismic energy in all directions and be detected across the network by multiple stations. Noise however, could either be local to one station, or sweep across the network from one side to the other. The only noise which would be expected to behave in the same way as explosions is other volcanically generated events such as rockfalls, VT events or tremor. These events contain different frequency information, and therefore were removed during the processing steps. Candidate waveform detection times were compared across the network to determine if it was sufficiently detected to be classified as an explosion. Due to the changing station configuration, the criteria for sufficient network association to classify an event as an explosion changed accordingly. As the more reliable instrument, when multiple broadband stations were active, an explosion had to be detected at a minimum of 2 broadband stations. If only one broadband station was available, a detection had to be made by this station. In cases where no broadband station was active, an explosion had to be detected by 2 or more short-period stations. In the most extreme



**Fig. 2.** A) Station map of the Santiaguito Volcano network of seismic and infrasound stations deployed between 2014 and 2018 with station names given. Red triangle marks the location of the active Caliente Vent, while Santa Maria is marked with an inverted triangle. Thick and thin contour lines mark 500 and 100 m intervals in elevation from sea level, respectively. Inset: Map of Guatemala with the location of Santiaguito (SG, red triangle). B) Network activity through time. The number of active stations in the network is displayed with the blue line, and the red bars indicate times where there were no stations active, causing data blackouts.

case when only one short-period station was active, the algorithm accepted all detections. However, to account for the change in criteria for a detection to be classified as an explosion, a 'trust' value was automatically assigned to catalogued events based on the number and type of stations which detected the event. If only one short period seismometer detected an event, a trust of 1 was assigned; if only one broadband or multiple short period seismometers detected an explosion, a trust value of 2 was assigned; a trust of 3 was assigned when one broadband seismometer and one or more short period seismometers detected an event; and a trust value of 4 was assigned when two or more broadband seismometers detected an explosion, with any number of short period seismometers.

Following this post-processing step, an initial catalogue was produced, which was further refined through manual checks of events with a trust value of 1 and event clustering using cross-correlations. Events which did not cluster with other explosions, were manually checked.

The resulting catalogue contained 18,895 explosion signals, expanding the previous record (Lamb et al., 2019) by a factor of approximately 3. The new catalogue includes a further 18 months of recording and separates explosions with smaller repose intervals, which were considered as one event in Lamb et al. (2019). For the range between November 2014 and May 2017, the two catalogues exhibit the same trends. Quality control on four weeks of our new catalogue of explosions was performed from January 2015, September 2015, February 2017 and September 2018 against the raw data streams and found the catalogue contained 90.5% of manually detectable events (610 out of 674), with fewer than 0.5% false detections in these periods. The four weeks contained high levels of noise, and with further checks on individual days throughout the recording period which maintained a comparable quality level, we believe the data checked in these weeks are representative of the most challenging conditions in the dataset. We checked for the influence of network configuration during a period of high-density station coverage in January 2015. We found that with a reduction of 50% of the available stations, and with the same criteria set for explosion detections, a drop of 15% in the detection rate is observed. Despite this drop we find that the trends in the data, and the results from the calculations made with this reduced data set vary minimally.

We calculated the size of all explosions in terms of their seismic radiated energy (SRE) and their associated energy magnitudes ( $M_e$ ). The SRE and  $M_e$  will be used to investigate the variability of the source dynamics for the different eruptive phases in the recording period, determine diagnostic features for these phases, and constrain relationships for the inter-explosion repose times.

#### 2.4. Explosion energy calculation

The SRE was calculated for each event, defined as the elastic energy generated from an isotropic source at the surface of a homogeneous half space (Boatwright, 1980; Johnson and Aster, 2005). The equation is given as:

$$E_s = 2\pi r^2 \rho_{\text{earth}} c_{\text{earth}} \frac{S^2}{A} \int U(t)^2 dt \quad (1)$$

where  $E_s$  is the SRE,  $\rho_{\text{earth}}$  is the rock density,  $c_{\text{earth}}$  is the wave velocity,  $r$  is the radial distance from source to receiver,  $U$  is the ground velocity at the receiver,  $S$  is the site response and  $A$  is the attenuation. The integral is taken over a two-minute window which contains the full explosion waveform. Background noise included in the window is considered negligible to the calculation. Energy calculations vary from station to station due to unknown site effects, attenuation, and differences in the low frequency content between the short-period and broadband sensors. Therefore, relative station corrections were determined to obtain a consistent energy calculation of SRE from the network, so that all

stations would obtain the same results irrespective of these differences. Station specific correction factors were calculated by determining the amplitude ratios for each station with LB03, which was used as the reference station. This is similar to the method of Lamb et al. (2019), who used LB01 as the reference station. LB03 was chosen as the new reference site to ensure consistency throughout the whole observation period. With variability between events, mean amplitude ratios were used as the relative station corrections for each station, taking into account re-deployments over the observation time span. Station correction factors used are shown in supplementary material, S1. To obtain robust energy values, SRE calculations were made using catalogued data from the station most active across the recording period to maintain consistency between calculations.

The energy magnitude ( $M_e$ ) for seismically observed volcanic explosions, based on ground motion velocity data, is a useful metric to assess the size of explosions at Santiaguito. Choy and Boatwright (1995) derived  $M_e$  as:

$$M_e = (2/3) \log_{10}(E_s) - 2.9 \quad (2)$$

where  $E_s$  is the seismically radiated energy, calculated from Eq. (1) (with constants later refined). We have calculated the energy magnitude for all events. As in all seismic catalogues, the smallest events may suffer from incomplete detection rates due to low SNR. The magnitude of completeness of a catalogue is defined as the minimum magnitude above which all events are reliably recorded. Using cumulative magnitude distributions, we calculated the magnitude of completeness for the catalogue to be  $0.76 M_e$ .

### 3. Evolution of explosive activity between 2014 and 2018

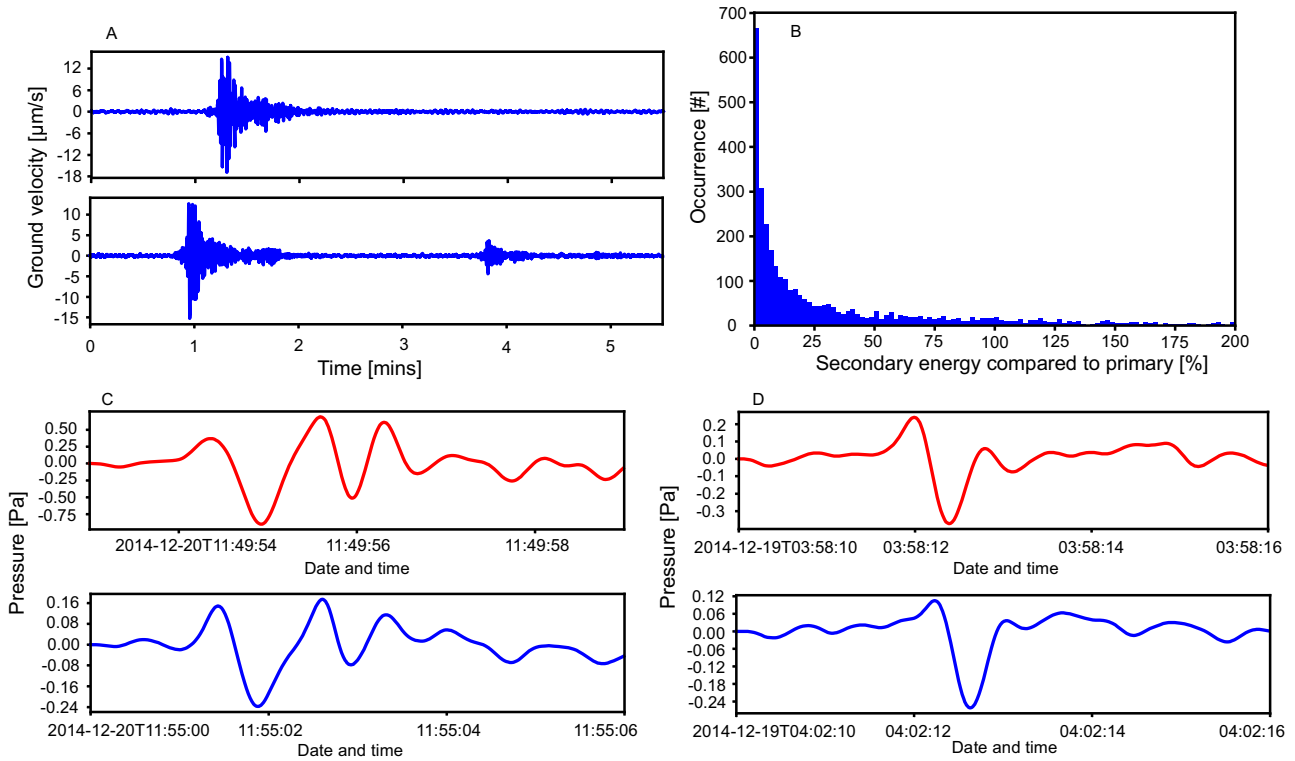
Eruptive activity, and in particular the nature and characteristics of explosions, evolved significantly at Santiaguito throughout the monitoring period; analysis of the new catalogue allows for tracking of the evolution of explosive activity during 2014–2018.

#### 3.1. Explosion rates

The new catalogue provides a robust quantitative description of the rate at which explosions occurred during the four-year period. The catalogue shows highly variable activity, with explosions occurring over 500 times per week in January 2015, and <5 times a week in May 2016. Between these two dates, the rate of explosions decreased almost linearly. This decrease coincided with a shift from frequent small-to-moderate explosions to erratic and violent, ash-rich events (Global Volcanism Program, 2016a). Following return to a dominantly effusive regime in October 2016, our data indicate a rapid increase in the number of weekly explosions. By 2018 the rate of explosions became more consistent from week to week, with a steady level of detections recorded in the catalogue.

#### 3.2. Secondary explosions

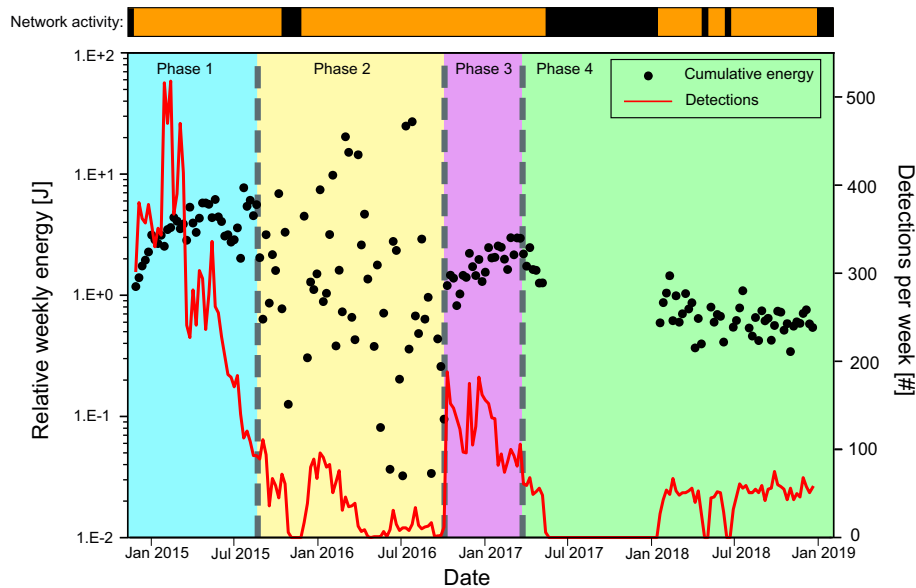
Over extended periods of time (~days to weeks), the explosions at Santiaguito often display an expected repose interval, statistically constrained at ca. 30–300 min; however, certain explosions are rapidly followed by a second, separate pulse of momentum-driven gas-and-ash with identical acoustic signals within 10 min from the leading event (Fig. 3). We term these pairs as 'primary' and 'secondary' explosions. Secondary explosions commonly release less energy than the associated primary event, with 85% radiating <25% of the energy relative to the primary explosion (Fig. 3B). These paired explosions were commonly observed during 'normal' eruptive activity. Between 2014 and 2018, 4520 secondary explosions were found in the catalogue, making up 24% of all events. However, during the



**Fig. 3.** A) Seismic record of explosion events. Top: Isolated Explosive event consisting of only one explosion. Bottom: Explosive event with a primary and secondary explosion. Both explosions are recorded at LB01 on 28th December 2014. B) Histogram of relative seismic energy release by a secondary explosion compared to its associated primary explosion. 85% of secondaries release less than a quarter of the energy compared to its associated primary explosion. C) and D) Example pairs of primary and secondary infrasound waveforms, filtered between 0.2 and 2 Hz. Primary explosions are shown in red, while secondary explosions are shown below in blue. The primary and secondary explosions have a significantly higher correlation than the correlation between two independent explosions.

period of heightened explosivity in 2016, only 8% of the explosions were found to have repose times <10 min. We also observe no major difference between the seismic waveforms of primary

explosions and isolated explosions that are not followed by a secondary explosion, as they display a high degree of similarity (Fig. 3A).



**Fig. 4.** Cumulative weekly seismic radiated energy and explosion rate trends indicating eruption phases. Coloured boxes represent phases of the volcanic energy release as described in the text. Blue = phase 1, Yellow = phase 2, Purple = phase 3, Green = phase 4. The boundaries between phases were determined through the combination of the SRE trends observed and the visual observations made on the eruptive behaviour. As transitions are not instantaneous, grey dashed bars separate the phases. The number of detections per week is shown by the red line. Network activity is shown by the orange and black bar, where black indicates data blackouts and orange indicates that the network has at least one active station.



## 4. Catalogue Analysis

### 4.1. Energy trends

We used the weekly cumulative SRE to characterise different eruptive phases at Santiaguito (Fig. 4), calculated by summing the network SRE over consecutive 7-day periods. Although there may be bias introduced into the absolute values of SRE by the assumptions made in the site and path effects, our procedure ensures that relative changes are trustworthy. Changes in SRE, assisted by visual observations made during 2014–2018 indicate four distinct phases of eruptive behaviour. Phase 1 (November 2014–September 2015) is characterised by a high number of small-to-moderate explosions during a dominantly effusive eruption regime, with an increase in the cumulative weekly explosion energy observed. Towards the end of phase 1 explosions became less frequent but larger. During phase 2 (September 2015–October 2016), explosions are much less frequent and contain higher magnitude events which account for much of the weekly energy release. Phase 3 (October 2016–March 2017), which initiated when effusion of lava resumed at Caliente to fill the summit crater, is accompanied by an increase in SRE, caused by an high rates of occurrence of small-to-moderate explosions. Phase 4 (April 2017–December 2018) is characterised by continued effusion after a lava dome had become established within the crater. SRE remained low and slowly decreased due to a low but consistent number of small-to-moderate explosions. Although phase 4 contains a large gap in seismic data, visual observations do not indicate any additional change in behaviour during this time period.

### 4.2. Magnitude-frequency

Magnitude-frequency analysis is traditionally used to assess the ratio of small to large events within self-similar systems. Although most commonly used to analyse earthquakes, the GR relationship (Gutenberg and Richter, 1944) and Ishimoto–Iida's formula (Ishimoto and Iida, 1939), which link magnitude of earthquakes to their frequency of occurrence, have also been applied to explosive volcanic events (e.g. Deligne et al., 2010; Nishimura et al., 2016; Sheldrake and Caricchi, 2017; Rougier et al., 2018). Over the four-year recording period at Santiaguito, the energy magnitude of explosions varied over several orders of magnitude. We find a power-law dependency in our datasets between the magnitude of explosions and their rate of occurrence (Fig. 5), similar to the GR. In the logarithmic-logarithmic space (Fig. 5) the linear fit to a power law relationship follows:

$$\log_{10}(f) = a - b(M_e) \quad (3)$$

where  $f$  is the frequency of explosion occurrence,  $M_e$  is the energy of an event,  $b$  is a parameter akin to the traditional  $b$ -value in the GR and  $a$  is a constant describing event productivity; the linear fit is performed only in the region above the magnitude of completeness of the catalogue.

Over the entire four-year observation period the  $b$ -value is found to be  $1.55 \pm 0.06$  (Fig. 5A). We investigated the variability of the magnitude-frequency relationship over the four phases of activity. We find that the  $b$ -value decreased from  $1.84 \pm 0.11$  in phase 1 to  $0.94 \pm 0.06$  in phase 2 (Fig. 5), reflecting the transition from small-to-moderate explosions in the effusive regime to large explosions in the explosive regime. In phase 3 the  $b$ -value increased to  $2.28 \pm 0.69$  and remained high in phase 4 with a  $b$ -value of  $2.40 \pm 0.58$  as the eruption regime produced fewer events during stable effusive behaviour. For all calculations only events over the magnitude of completeness are included, which we constrain as 0.73, 0.76, 0.90 and 0.77  $M_e$  for phases 1 to 4, respectively.

### 4.3. Repose times

Inter-explosion repose times indicate the occurrence and regularity of the explosions, and are commonly used to determine the statistical models which describe the probabilistic estimates which form the basis for eruption forecasting models (e.g. Connor et al., 2003; Watt et al., 2007; Lamb et al., 2014; Varley et al., 2018). We find that for the whole catalogue and for all phases of activity at Santiaguito repose times follow exponential distributions (Fig. 6). The linear slope of the repose time against the logarithm of occurrence for each repose time represents the rate parameter for the phase, that is the inverse of the mean repose time. The best fit to the repose times was made using an automatic piecewise regression function which tested the fit of two regression slopes at different breakpoints with a single regression line to find the best fitting slopes. The function compared the best fit with two regression lines with the best fitting single regression, if the regression of two slopes provided a significant improvement over a single slope, they were selected. We observe different rate parameters in each eruptive phase at Santiaguito, with phase 1 displaying two different rate parameters, indicated by a break in slope at a repose time of 0.17 days (i.e. 4 h). A break in slope is also observed over the whole catalogue, showing two dominant rate parameters over the four-year recording period (Fig. 6A). The rate parameters vary between 1.80 and 11.58, which occur in phases 4 and 1, respectively. The colorbar in Fig. 6a shows that the repose times in phases 1 and 3 have a time dependency, and do not exhibit a randomness of repose intervals, as observed in phases 2 and 4. The repose times in the overall catalogue also shows a time dependency.

## 5. Discussion

### 5.1. Eruption phases and styles

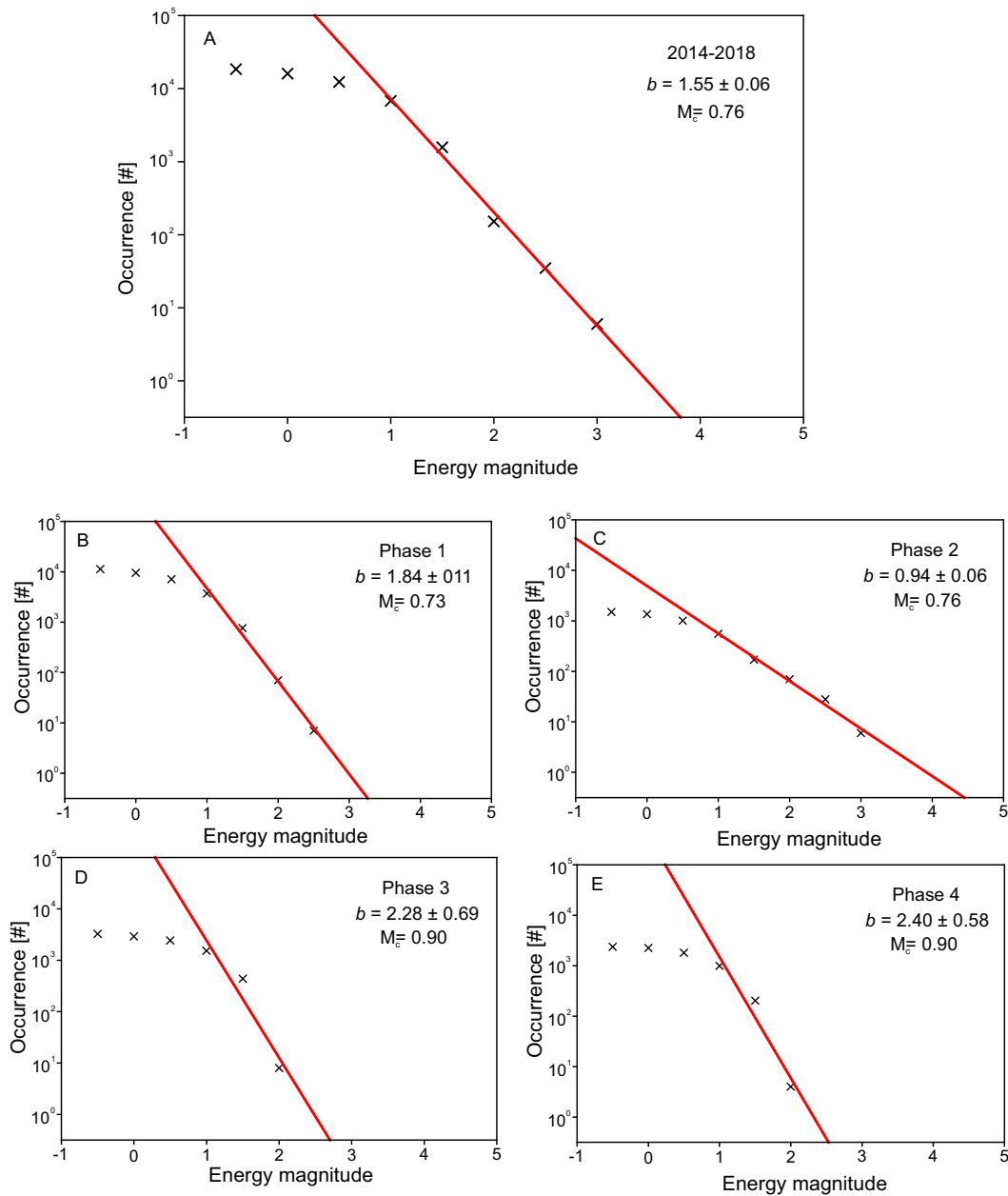
Our observations agree with Harris et al. (2003) that the behaviour of Santiaguito is commonly characterised by effusion of blocky lava flows from Caliente lava dome, punctuated by small-to-moderate sized explosions reaching up to 1.5 km above the vent (Global Volcanism Program, 2016b), as seen in phases 1, 3 and 4. Previous studies at Santiaguito have stated that the explosions are regular in their occurrence with a repeatable source, generating explosions between 0.5 and 2 times per hour (e.g. Harris et al., 2003; Bluth and Rose, 2004; Sahetapy-Engel et al., 2004; Yamamoto et al., 2008). Over the four years of this study we see that the repose times are not so consistent, with event rates which varied between 500 times a week (3 times per hour) in January 2015 to <5 times a week (0.03 times per hour) in May 2016.

The combination of visual and seismic observations at Santiaguito revealed four eruptive phases; this builds on previous studies by Lamb et al. (2019) and Wallace et al. (2020), as we present for the first time a description of phase 4.

Eruptive phase 1 is characterised by the effusive eruption regime observed between November 2014 and September 2015, with high occurrence rates of small-to-moderate explosions. We attribute the progressive increase in energy observed in this phase, along with the decrease in explosion occurrence to the system preparing to transition into the explosive phase 2.

Phase 2 began in September 2015 with the emergence of larger magnitude explosions, which resulted in increased hazard to the surrounding population. These explosions were characterised by plumes which rose to heights of up to 7 km above the vent, and collapsed to generate pyroclastic density currents, while also ejecting pyroclasts of size up to 3 m diameter to distances of 3 km from the vent (Global Volcanism Program, 2016a). The large explosions excavated a deep crater in the Caliente lava dome. Wallace et al. (2020) split phase 2 into two phases, before and after March 2016, based on the componentry of collected volcanic ash which showed a progression from the dominance of





**Fig. 5.** Magnitude–frequency plots of the explosions occurring at Santiaguito. A) Full catalogue, B) Phase 1, C) Phase 2, D) Phase 3, E) Phase 4. A linear trend in log–log space shows that the explosions follow a power-law relationship. For all times, the  $b$ -value (gradient) and its standard error is displayed, fit through all points above the magnitude of completeness, which is indicated in each panel.

dense brown clasts to porous and transparent glassy particles. For the purposes of this study, based on the lack of distinction in geophysical signals, these brief phases are simply combined in our analysis of explosion energy vs repose time (Figs. 4 and 6C).

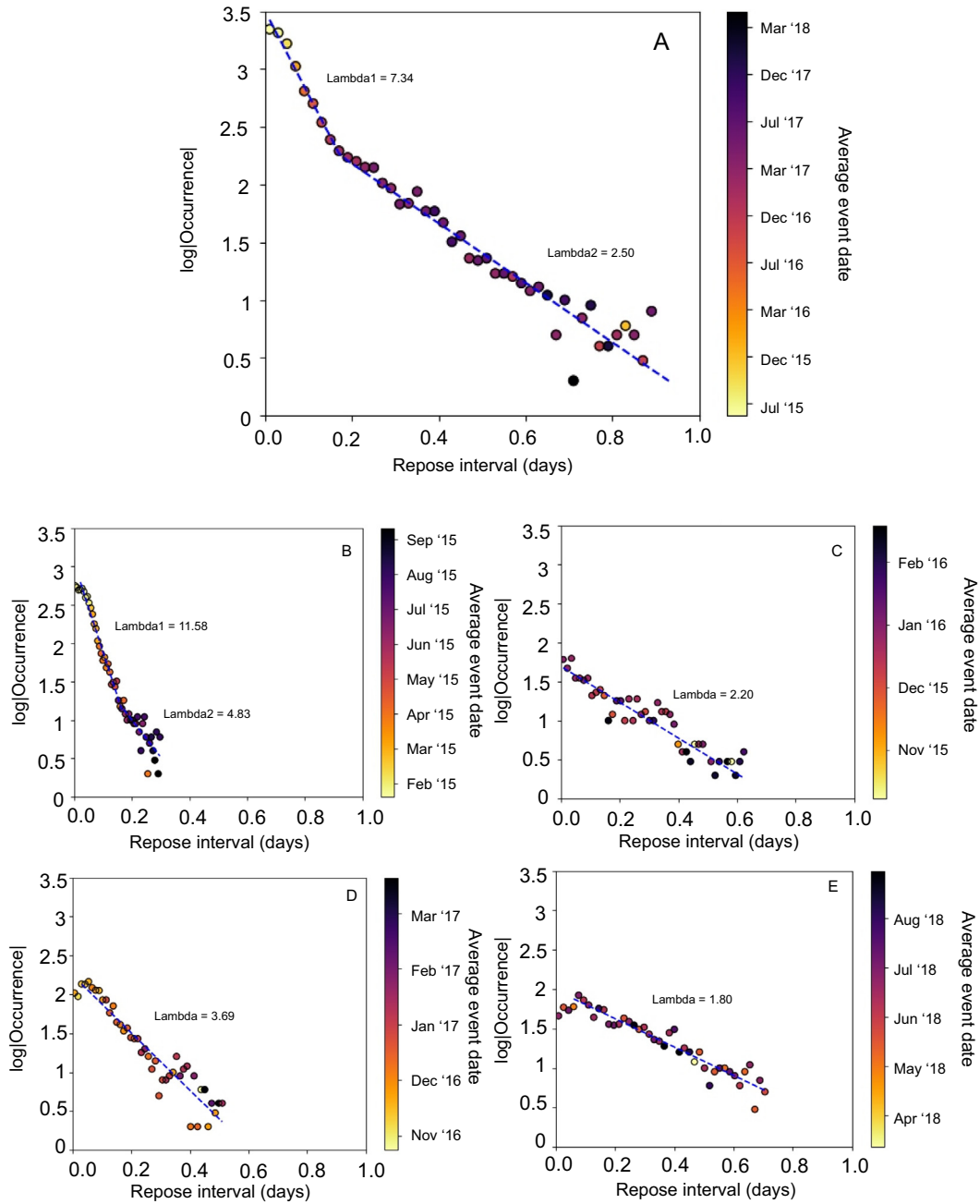
Phase 3 saw the occurrence of effusive activity, interspersed with up to 200 small-to-moderate explosions per week, beginning in October 2016. SRE is observed to gradually increase during phase 3, which we associate with lava extrusion and dome growth throughout this phase (Fig. 4).

Phase 4 began after the lava dome had filled the excavated vent of Caliente in April 2017, and is characterised by attainment of a stable effusive regime. Throughout phase 4 the number and magnitude of explosions remained consistent at approximately 50 explosions per week with magnitudes up to 1.5  $M_e$ , which is reflected in the SRE trends. We note however, that statistically phase 3 and phase 4 are almost identical, as observed by their comparable  $b$ -values. We separate these

phases through the observations of dome growth and upward trending weekly energy in phase 3, and continued effusion with an established dome and slowly decreasing weekly energy produced by a more consistent eruption rate in phase 4.

Phases 1–3 largely align with the phases outlined by Lamb et al. (2019), describing the same activity styles in each of the three phases. The differences between the phases here and those described by Lamb et al. (2019) are the boundaries between each phase. These differences are likely due to the methodology used to select the boundary times. In Lamb et al. (2019) the phase boundaries were chosen based on visual observations of the activity alone, whereas here, we use the SRE trends as a primary indicator, with visual observations used to corroborate the boundary choices.

From the observed trends in explosion rates and SRE, as well as the temporal distribution of repose times, we see that transitions between eruptive phases have occurred over different timescales, with gradual



**Fig. 6.** Exponential distributions of inter-explosion repose times. A) Full catalogue, B) Phase 1, C) Phase 2, D) Phase 3, E) Phase 4. The colour scale displays the average date-time of the events contributing to each point. For phase 1 and the whole catalogue, more than one rate parameter is observed, indicating multiple controlling processes. Only events above the magnitude of completeness are included in the analysis of each phase.

transitions occurring between phases 1 and 2 and phases 3 and 4, as well as a more abrupt transition between phases 2 and 3. The visual observations made throughout the four years again helped constrain these transitions and their timescales.

The duration of the explosions, automatically calculated as the time between 2.5% and 90% of the cumulative seismic energy of the associated waveform, increased during the explosive behaviour in phase 2 to have a mean length of 25.8 s, compared to a mean of 18.9 s during the dominantly effusive regime of phases 1, 3 and 4. The duration of the explosions measured from the seismic waveforms matches closely with the visual observations of 30–60 s made by Bluth and Rose (2004) of the momentum-driven phase of gas release at Caliente. We speculate therefore, that it is likely that the seismic waveforms are a record of the vigorous gas venting phase while the fracture pathways

remain open. The increased duration of the explosive events in phase 2 is possibly caused in-part by signal overprint from pyroclastic density current activity, and by larger gas overpressure developed over longer timescales in deeper parts of the magmatic column (cf. Wallace et al., 2020). Larger overpressures would enhance fragmentation efficiency (e.g. Kueppers et al., 2006), and deepen fragmentation, lengthening the travel distance in the conduit for gas and ash to erupt.

At the time of writing this paper, the activity at Santiaguito appears to be entering a new phase, with explosions becoming visibly larger, rising up to 1.3 km above the vent, occurring at increased rates of 35–40 explosions per day (Global Volcanism Program, 2019). This suggests that a transition into a fifth eruptive phase may have occurred since the end of our monitoring period in December 2018. Visual observations report that the size of the dome is currently larger than before the May

2014 dome collapse episode. From these visual observations, it is thought that the possibility of a dome collapse presents a significant risk, and such an episode could be hazardous should one occur at Santiaguito in the near future.

## 5.2. Source stability

We have noted through magnitude–frequency analysis that the explosions at Santiaguito obey a power-law relationship similar to the Gutenberg–Richter relationship used in earthquake seismology (Fig. 5). The power-law relationship depends on the  $b$ -value, which describes the magnitude of faulting events (i.e., ratio of small to large magnitude seismicity; Aki, 1967). In this paper we use the energy magnitude  $M_e$  to describe the magnitude of explosion. We infer that the observed  $b$ -values reflect, in part, the state of the magma in the conduit system, which has controls on fragmentation. However, we argue that magma properties can vary both spatially and temporally, which makes it difficult to relate changes in  $b$ -values to specific properties and thermo-kinetic conditions within the system (Roberts et al., 2015). Despite energy magnitudes spanning over 5 orders of magnitude, the power-law relationship indicates self-similarity between explosions at a mechanistic level (cf. Nishimura et al., 2016; Papale, 2018). Over the four-year period, Santiaguito expressed a  $b$ -value of  $1.55 \pm 0.06$ . However, across the four different eruptive phases we observed variations in the  $b$ -value. The variations represent the evolution of spacing and size of events between phases; in other words, each phase may be considered as a discrete “experiment” with the sum of events defining its mechanistic character. The evolution from high  $b$ -value during phases 1, 3 & 4 (with frequent small events) to low  $b$ -value during phase 2 (with less frequent and larger events) suggests that the properties of the explosion source mechanism varied through time. Changes in source properties can involve differences in both the applied stress accumulation within the system as well as the scale and architecture of rupture, in part dictated by material properties.

The rupture and “strength” of magmas is controlled by several factors, including the fraction of heterogeneities (i.e., crystallinity and porosity), the viscosity of the silicate melt phase, and strain rate (Lavallée et al., 2019). As magmas are viscoelastic bodies (e.g., Dingwell and Webb, 1989), understanding magmatic fragmentation and resultant seismicity requires careful consideration of thermo-kinetic conditions (e.g., Papale, 1999; Zhang, 1999; Lavallée et al., 2012). The rupture of silicate melts results from an inability of the melt structure to relax an applied stress, provoking structural breakdown. The rate of structural relaxation of silicate melts is proportional to their viscosity, regulated by its chemistry and temperature (Dingwell and Webb, 1989); i.e. at low temperature, a melt’s viscosity is higher and requires lower strain rate to rupture. So, understanding the rupture of silicate melts, or magmas (additionally hosting pores and crystals), requires knowledge of both viscosity and strain rates (e.g., Lavallée et al., 2008, 2013; Cordonnier et al., 2009; Kendrick et al., 2013; Hornby et al., 2019). Material rupture results from the nucleation of micro-cracks, which propagate and coalesce in the build-up to system-size failure (Voight, 1989; Kilburn, 2003, 2012), and magma rupture ensues accordingly (Lavallée et al., 2013). Heterogeneities, commonly present in magmas, act as stress concentrators that focus the nucleation of micro-fractures (Sammis and Ashby, 1986); thus their presence lowers the strength of silicate melts (Vasseur et al., 2013; Cordonnier et al., 2012) and facilitates failure via characteristic acceleration in microseismic events that may be monitored to forecast rupture with increasing accuracy (Vasseur et al., 2015, 2017).

Zobin et al. (2014) speculated that a change in  $b$ -value associated with volcanic activity at different volcanoes may result from differences in magma crystallinity, which affected the viscosity of magmas and the stress required to failure. Whilst an increase in crystallinity may provoke changes in  $b$ -values of magma rupture, such a

generalisation may be tenuous as the physico-chemical properties and stress conditions of magmas can vary widely between volcanic systems. As porosity generally has a greater impact on material strength than crystallinity (e.g., Coats et al., 2018), we anticipate that it would likely provide stronger controls on the development of material rupture and resultant seismic  $b$ -value, if other considerations (i.e., the viscosity of the melt phase and strain rate experienced) remained the same; this is supported by laboratory observations that single-phase melts rupture rapidly through localised fractures with large stress drops, whereas porous melts break slowly via multiple distributed small fractures with small associated stress drops (e.g., Vasseur et al., 2013). Likewise, a complementary study showed that the  $b$ -value resulting from magma rupture (under equivalent strain rates) generally increases with porosity (Vasseur et al., 2015). The development of porosity (Mueller et al., 2011) and pore pressure (e.g., Castro and Gardner, 2008) have previously been linked to changes in explosivity. Considering a single volcanic centre, as in our study, it is common to note a wide range of porosity in eruptive products (e.g., Lavallée et al., 2012; Mueller et al., 2011), yet only moderate changes in crystallinity within a given eruptive period (e.g., Bain et al., 2019), although magma viscosity may evolve regardless due to interstitial melt sensitivity to changes in temperature (e.g., Mastin, 2005; Blundy et al., 2006; Lavallée et al., 2015) and dissolved volatile content (e.g., Hess and Dingwell, 1996; Castro and Dingwell, 2009; Castro et al., 2005; Edmonds and Herd, 2007), and changes in ascent rate. Discharge rate and ascent rates can vary widely during volcanic eruptions; as a result, and crucial for the present seismic analysis, this implies that shear rates can vary by several orders of magnitude during explosions at lava dome eruptions (e.g., Quane and Russell, 2005). At Santiaguito, magma fragmentation has previously been linked to the rate of shear traction experienced in the magmatic column leading to explosions (Lavallée et al., 2015). Complementarily, laboratory testing has shown that shear rate plays a key role in the development of damage and associated  $b$ -value (Lavallée et al., 2013). In particular, laboratory experiments have shown that an increase in applied strain rate results in an increased localisation of fracture propagation during material rupture, which results in a decrease in  $b$ -value (Lavallée et al., 2013).

Thus, one needs to exert caution in inferring reasons for fluctuations in seismic  $b$ -values as many factors compete and in-situ magma properties and local thermo-kinetic conditions vary both spatially and temporally. Wallace et al. (2020) showed that changes in crystal textures, silica content and temperature (and thus viscosities) took place in the eruptive period studied here at Santiaguito. Hornby et al. (2019) demonstrated that magma porosity, temperature and applied strain rates were key controls on the tensile strength of Santiaguito magma, thus it is likely that some or all of these controlling factors have conspired to generate the  $b$ -values we resolved during the 4-year eruptive period studied at Santiaguito. Yet, it remains that small explosions which cause little-to-no damage of the lava dome result from small pressure releases, whilst large explosions on the other hand, release larger stresses in the system and tend to have ruptures with increased length-scales (Lavallée et al., 2013). If we return to our analogy that an eruptive phase represents an experiment, involving a material deformed within a bounding set of conditions (as identified by the seismic signatures and event spacing that define each phase) then the shifts in  $b$ -value between different eruptive phases demonstrate that explosions evolved from small, frequent events (high  $b$ -value) akin to the slow accumulation of damage during material deformation, to periods of larger scale, less frequent events which caused significant damage (low  $b$ -value), akin to wholesale failure during material deformation, driven by greater pressure accumulation. Thus, we must also stress that for meaningful interpretation,  $b$ -value must be considered over restricted and constrained time-periods, rather than considered as a stable, system-specific value.



### 5.3. Secondary explosions

The data highlighted the occurrence of explosion duets. We define secondary explosions as explosions which occur within 10 min of an initial explosion, where the infrasound waveforms for both explosions are near identical yet separated by a period at a background level of activity. We observe that secondary explosions account for 24% of the explosion catalogue, making up a significant proportion of the explosive activity at Santiaguito. However, during the period of heightened explosivity in phase 2, the secondary explosions made up only 8% of explosions, predominantly following the smaller magnitude events during this phase, indicating that secondary explosions are a common feature of lava dome effusion at Caliente, occurring when the explosion fractures are more restricted. We also observe that over 85% of the secondary events radiate <25% of the energy compared to the primary event (Fig. 3B). We compared the infrasound signals of the primary and secondary explosions to investigate the relationship between the two events and show that the infrasound signals associated with primary and secondary explosions show a high degree of similarity (Fig. 3C and D). *T*-tests on the time domain cross-correlations between all explosions infrasound waveforms show that the similarity between primary explosions and their secondary explosions is significantly higher than the cross-correlation between any randomly chosen pair of explosions to a significance level of 0.1%. Example waveforms are shown in Fig. 4 C and D, where the waveforms of the 2 primary events show different shapes, yet the secondary events show high similarity to the primary events they follow. These observations indicate that the secondary events are somehow linked to the primary event, with a time dependence which cuts off at approximately 10 min. We speculate that the high correlation between primary and secondary explosions requires magmatic fragmentation under the same conditions; i.e. magma would likely fragment at the same depth, and the gas-and-ash products would be released via the same vent (geometry and size). We advance that this may be the case if the gas-and-ash are erupted from the same fracture pathways, as occasionally observed. Therefore, the repose interval may reflect the state of the fractures present in the lava dome. Due to the limitations in our observations however, we cannot validate these assertions.

### 5.4. Assessing future eruptive potential

The frequency of the inter-explosion repose times follows exponential distributions (Fig. 6), where the fit to the exponential distributions represents the rate parameter, which is the inverse of the mean return time. The rate parameters described by the exponential distributions are observed to change between eruptive phases as a result of the changes in source conditions and mechanisms between phases. Across the whole catalogue, two robust rate parameters are observed which relate to the mechanisms producing frequent low magnitude events during the effusive eruption regime, and infrequent large events in the explosive regime in phase 2 (Fig. 6A). The occurrence rate of different repose times is shown to correlate with time (colorbar - Fig. 6), which is a consequence of the explosion mechanisms and source conditions transitioning through time. During phases 1 and 3, there is also a transition from low to high repose duration through time, suggesting that the source behaviour is gradually transitioning (Fig. 6B,D). In contrast, phases 2 and 4 displays no correlation between repose duration and time, indicating that the source is more stable (Fig. 6C,E).

Above the cut-off magnitude (set at the magnitude of completeness), the stochastic explosion process can be represented by a Poisson distribution. Poissonian processes in explosion repose times are seen on both a global scale (De la Cruz-Reyna, 1991; Papale, 2018) and at specific volcanoes (e.g. at Volcán de Colima, Mexico; De la Cruz-Reyna, 1993). Marzocchi and Papale (2019) used the Poisson relationship for volcanic events of different sizes worldwide to determine the probability of events across varying magnitudes occurring within different time

periods. However, on local scales at different volcanoes, inter-explosion repose times are commonly described by different statistical models such as Weibull and log-logistic, as well as Poissonian, which show variability in how explosions evolve within a system (Watt et al., 2007). Watt et al. (2007) showed that over time the statistical model describing the inter-explosion repose times can also change as the system evolves. On a global scale, only one exponential relationship is observed (Papale, 2018), however, we show that different phases are characterised by distinct frequency scaling of explosivity, which is likely caused by different source parameters and perhaps triggering mechanisms, which leads to the different rate parameters observed. Due to the nature of Poissonian processes, when an explosion has occurred, it is impossible to predict when the next event will occur, although probabilistic estimates can be given for the expected return time. Yet, probabilistic estimates of the expected return time are phase dependent (as each phase displayed different activity) and therefore change frequently on the timescale of several months. Other proxies may thus be necessary to enable the development of tools to ensure long-term assessments of eruptive behaviour at Santiaguito.

The maximum explosion magnitude expected within an eruptive phase can be estimated by extrapolating the linear fit of the magnitude-frequency distribution to a value of 1 event occurrence within the phase. For the entire catalogue, we obtain an estimate for the largest explosion to have an energy magnitude of 3.49, where the largest event recorded had an energy magnitude of 3.46. As with the overall catalogue, the estimates for each of the individual phases are overestimates. We calculated the largest events as 3.00, 3.92, 2.48, and 2.32  $M_c$  for phases 1 to 4, respectively, while the largest events observed had energy magnitudes of 2.82, 3.46, 2.11, 2.12 for phases 1 to 4, respectively. The level of caution in these estimates can easily be adapted; decreasing the event occurrence rate at which the estimation is taken increases the likelihood that the estimate of the largest possible event magnitude will be an overestimate. A caveat to this method is that the estimation assumes that the volcano will remain in the same eruptive regime, whereas the system has been shown to evolve rapidly, as observed between the dominantly explosive and effusive regimes in phase 2 and phase 3, respectively. Furthermore, the estimates made here are performed in hindsight; in real time, it may not be possible to determine which phase of activity is being exhibited, and for this reason we do not give errors in these calculations. Finally, changes in a volcano's eruptive behaviour affect the upper estimates of explosion magnitude, thus caution must be exerted when using it as a predictive tool.

## 6. Conclusions

Long-term seismic and acoustic monitoring at Santiaguito has revealed details on the changing nature of the explosivity at the active Caliente vent and revealed relationships between explosion energy and recurrences. Explosions occur at different intervals, ranging from a few minutes up to ~6 days. On the shorter end of the scale, many explosions are followed within 10 min by secondary explosions (accounting for 24% of the total recorded explosions) with near identical acoustic signals to their primary explosion, and lower energy release. On the longer end of the scale, repose times between explosions however lead to contrasting signals and behaviour. Trends in the seismically radiated energy have provided an effective indicator of eruptive phase changes at Santiaguito, enabling the discrimination between one phase and the next. Magnitude-frequency analysis has shown that the *b*-value changes between eruptive phases. While the source mechanism of the explosions show a level of self-similarity, the changes in *b*-value suggest that the properties which control magma fracturing vary, thus local conditions cannot easily be reconciled. Yet, we infer that phases characterised by small, frequent events, resulting from small stress drops, have high *b*-values and more restricted damage, whilst phases characterised by large events, representing larger stress drops, resulted

in lower  $b$ -values and more wholesale damage. Changes in the source properties between phases also influences the characteristic magnitudes and repose times, restricting extrapolation of behaviour to within a single phase and limiting the potential for long-term assessments of future trends in eruptive activity at Santiaguito.

Supplementary data to this article can be found online at <https://doi.org/10.1016/j.jvolgeores.2020.106891>.

### CRediT authorship contribution statement

**William Carter:** Conceptualization, Methodology, Investigation, Software, Formal analysis, Writing - original draft, Visualization. **Andreas Rietbrock:** Supervision, Methodology, Investigation, Project administration, Writing - review & editing. **Yan Lavallée:** Supervision, Writing - review & editing. **Ellen Gottschämmer:** Investigation. **Alejandro Díaz Moreno:** Supervision. **Jackie E. Kendrick:** Writing - review & editing. **Oliver D. Lamb:** Validation, Investigation. **Paul A. Wallace:** Validation. **Gustavo Chigna:** Resources, Data curation, Investigation. **Silvio De Angelis:** Supervision, Resources, Methodology, Investigation, Funding acquisition, Writing - review & editing.

### Declaration of competing interest

The authors declare that they have no known competing financial interests or personal relationships that could have appeared to influence the work reported in this paper.

### Acknowledgements

The authors acknowledge the support of the Instituto Nacional de Sismología, Vulcanología, Meteorología e Hidrología (INSIVUMEH), Guatemala, and the staff of the Santiaguito Volcano Observatory (OVSAN). We are grateful to our local guide and network manager in Guatemala, A. Pineda.

The work contained in this paper contains work conducted during a PhD study supported by the Natural Environment Research Council (NERC) EAO Doctoral Training Partnership which is fully funded by NERC, and whose support is gratefully acknowledged (NE/L002469/1). YL would additionally like to acknowledge the support of an ERC starting grant SLiM (306488). JEK was funded by an Early Career Fellowship of the Leverhulme Trust (ECF 2016–325).

### References

- Aki, K., 1967. Scaling law of seismic spectrum. *J. Geophys. Res.* 72, 1217–1231. <https://doi.org/https://doi.org/10.1029/jz072i004p01217>.
- Bain, A.A., Lamur, A., Kendrick, J.E., Lavallée, Y., Calder, E.S., Cortés, J.A., Butler, I.B., Cortés, G.P., 2019. Constraints on the porosity, permeability and porous micro-structure of highly-crystalline andesitic magma during plug formation. *J. Volcanol. Geotherm. Res.* 379, 72–89. <https://doi.org/https://doi.org/10.1016/j.jvolgeores.2019.05.001>.
- Blundy, J., Cashman, K., Humphreys, M., 2006. Magma heating by decompression-driven crystallization beneath andesite volcanoes. *Nature*. 443, 78–80. <https://doi.org/https://doi.org/10.1038/nature05100>.
- Bluth, G.J.S., Rose, W.I., 2004. Observations of eruptive activity at Santiaguito volcano, Guatemala. *J. Volcanol. Geotherm. Res.* 136, 297–302. <https://doi.org/https://doi.org/10.1016/j.jvolgeores.2004.06.001>.
- Boatwright, J., 1980. A spectral theory for circular seismic sources; simple estimates of source dimension, dynamic stress drop, and radiated seismic energy. *Bull. Seismol. Soc. Am.* 70 (1), 1–27.
- Castro, J.M., Dingwell, D.B., 2009. Rapid ascent of rhyolitic magma at Chaitén volcano, Chile. *Nature*. 461, 780–783. <https://doi.org/https://doi.org/10.1038/nature08458>.
- Castro, J.M., Gardner, J.E., 2008. Did magma ascent rate control the explosive-effusive transition at the Inyo volcanic chain, California? *Geology*. 36(4), 279–282. <https://doi.org/https://doi.org/10.1130/G24453A.1>.
- Castro, J.M., Manga, M., Martin, M.C., 2005. Vesiculation rates of obsidian domes inferred from H<sub>2</sub>O concentration profiles. *Geophys. Res. Lett.* 32, L21307. <https://doi.org/https://doi.org/10.1029/2005GL024029>.
- Chen, C.C., Wang, W.C., Chang, Y.F., Wu, Y.M., Lee, Y.H., 2006. A correlation between the  $b$ -value and the fractal dimension from the aftershock sequence of the 1999 Chi-Chi, Taiwan, earthquake. *Geophys. J. Int.* 167(3), 1215–1219. <https://doi.org/https://doi.org/10.1111/j.1365-246X.2006.03230.x>.
- Choy, G.L., Boatwright, J.L., 1995. Global patterns of radiated seismic energy and apparent stress. *J. Geophys. Res.* 100, 18205–18228. <https://doi.org/https://doi.org/10.1029/95jb01969>.
- Coats, R., Kendrick, J.E., Wallace, P.A., Miwa, T., Hornby, A.J., Ashworth, J.D., Matsushima, T., Lavallée, Y., 2018. Failure criteria for porous dome rocks and lavas: a study of Mt. Unzen, Japan. *Solid Earth* 9, 1299–1328. <https://doi.org/10.5194/se-9-1299-2018>.
- Connor, C.B., Sparks, R.S.J., Mason, R.M., Bonadonna, C., Young, S.R., 2003. Exploring links between physical and probabilistic models of volcanic eruptions: the Soufrière Hills Volcano, Montserrat. *Geophys. Res. Lett.* 30, 1701. <https://doi.org/https://doi.org/10.1029/2003GL017384>.
- Cordonnier, B., Hess, K.U., Lavallée, Y., Dingwell, D.B., 2009. Rheological properties of dome lavas: Case study of Unzen volcano. *Earth Planet. Sci. Lett.* 279, 263–272. <https://doi.org/https://doi.org/10.1016/j.epsl.2009.01.014>.
- Cordonnier, B., Caricchi, L., Pistone, M., Castro, J., Hess, K.U., Gottschaller, S., Manga, M., Dingwell, D.B., Burlini, L., 2012. The viscous-brittle transition of crystal-bearing silicic melt: Direct observation of magma rupture and healing. *Geology* 40, 611–614. <https://doi.org/https://doi.org/10.1130/G3914.1>.
- De Angelis, S., Lamb, O.D., Lamur, A., Hornby, A.J., von Aulock, F.W., Chigna, G., Lavallée, Y., Rietbrock, A., 2016. Characterization of moderate ash-and-gas explosions at Santiaguito volcano, Guatemala, from infrasound waveform inversion and thermal infrared measurements. *Geophys. Res. Lett.* 43, 6220–6227. <https://doi.org/https://doi.org/10.1002/2016GL069098>.
- De la Cruz-Reyna, S., 1991. Poisson-distributed patterns of explosive eruptive activity. *Bull. Volcanol.* 54, 57–67. <https://doi.org/https://doi.org/10.1007/BF00278206>.
- De la Cruz-Reyna, S., 1993. Random patterns of occurrence of explosive eruptions at Colima Volcano, Mexico. *J. Volcanol. Geotherm. Res.* 55, 51–68. [https://doi.org/https://doi.org/10.1016/0377-0273\(93\)90089-A](https://doi.org/https://doi.org/10.1016/0377-0273(93)90089-A).
- Deligne, N.I., Coles, S.G., Sparks, R.S.J., 2010. Recurrence rates of large explosive volcanic eruptions. *J. Geophys. Res. Solid Earth* 115, B06203. <https://doi.org/https://doi.org/10.1029/2009JB006554>.
- Dingwell, D.B., Webb, S.L., 1989. Structural relaxation in silicate melts and non-Newtonian melt rheology in geologic processes. *Phys. Chem. Miner.* 16, 508–516. <https://doi.org/https://doi.org/10.1007/BF00197020>.
- Edmonds, M., Herd, R.A., 2007. A volcanic degassing event at the explosive-effusive transition. *Geophys. Res. Lett.* 34, L21310. <https://doi.org/https://doi.org/10.1029/2007GL031379>.
- El-Isa, Z.H., Eaton, D.W., 2014. Spatiotemporal variations in the  $b$ -value of earthquake magnitude-frequency distributions: Classification and causes. *Tectonophysics*. 615, 1–11. <https://doi.org/https://doi.org/10.1016/j.tecto.2013.12.001>.
- Esse, B., Burton, M., Varnam, M., Kazahaya, R., Wallace, P.A., Von-Aulock, F., Lavallée, Y., Salerno, G., Scollo, S., Coe, H., 2018. Quantification of ash sedimentation dynamics through depolarisation imaging with AshCam. *Sci. Rep.* 8, 15680. <https://doi.org/https://doi.org/10.1038/s41598-018-34110-6>.
- Farrell, J., Husen, S., Smith, R.B., 2009. Earthquake swarm and  $b$ -value characterization of the Yellowstone volcano-tectonic system. *J. Volcanol. Geotherm. Res.* 188, 260–176. <https://doi.org/https://doi.org/10.1016/j.jvolgeores.2009.08.008>.
- Global Volcanism Program, 1980. Report on Santa Maria (Guatemala). In: Squires, D. (Ed.), Scientific Event Alert Network Bulletin, 5:12. Smithsonian Institution <https://doi.org/10.5479/si.GVP.SEAN198012-342030>.
- Global Volcanism Program, 1985. Report on Santa Maria (Guatemala). In: McClelland, L. (Ed.), Scientific Event Alert Network Bulletin, 10:2. Smithsonian Institution <https://doi.org/10.5479/si.GVP.SEAN198502-342030>.
- Global Volcanism Program, 1990. Report on Santa Maria (Guatemala) (McClelland, L., Ed.). Bulletin of the Global Volcanism Network, 15:6. Smithsonian Institution. <https://doi.org/10.5479/si.GVP.BGVN199006-342030>.
- Global Volcanism Program, 1996. Report on Santa Maria (Guatemala). In: Wunderman, R. (Ed.), Bulletin of the Global Volcanism Network, 21:12. Smithsonian Institution <https://doi.org/10.5479/si.GVP.BGVN199612-342030>.
- Global Volcanism Program, 2003. Report on Santa Maria (Guatemala). In: Venzke, E. (Ed.), Bulletin of the Global Volcanism Network, 28:5. Smithsonian Institution <https://doi.org/10.5479/si.GVP.BGVN200305-342030>.
- Global Volcanism Program, 2007. Report on Santa Maria (Guatemala). In: Wunderman, R. (Ed.), Bulletin of the Global Volcanism Network, 32:10. Smithsonian Institution <https://doi.org/10.5479/si.GVP.BGVN200710-342030>.
- Global Volcanism Program, 2015. Report on Santa Maria (Guatemala). In: Sennert, S.K. (Ed.), Weekly Volcanic Activity Report, 20 May–26 May 2015. Smithsonian Institution and US Geological Survey.
- Global Volcanism Program, 2016a. Report on Santa Maria (Guatemala). In: Venzke, E. (Ed.), Bulletin of the Global Volcanism Network, 41:9. Smithsonian Institution.
- Global Volcanism Program, 2016b. Report on Santa Maria (Guatemala). In: Sennert, S.K. (Ed.), Weekly Volcanic Activity Report, 2 March–8 March 2016. Smithsonian Institution and US Geological Survey.
- Global Volcanism Program, 2017a. Report on Santa Maria (Guatemala). In: Venzke, E. (Ed.), Bulletin of the Global Volcanism Network, 42:7. Smithsonian Institution.
- Global Volcanism Program, 2017b. Report on Santa Maria (Guatemala). In: Venzke, E. (Ed.), Bulletin of the Global Volcanism Network, 42:12. Smithsonian Institution.
- Global Volcanism Program, 2018a. Report on Santa Maria (Guatemala). In: Venzke, E. (Ed.), Bulletin of the Global Volcanism Network, 43:05. Smithsonian Institution.
- Global Volcanism Program, 2018b. Report on Santa Maria (Guatemala). In: Venzke, E. (Ed.), Bulletin of the Global Volcanism Network, 43:12. Smithsonian Institution.
- Global Volcanism Program, 2019. Report on Santa Maria (Guatemala). In: Sennert, S.K. (Ed.), Weekly Volcanic Activity Report, 26 June–2 July 2019 (Smithsonian Institution and US Geological Survey).
- Gutenberg, B., Richter, C.F., 1944. Frequency of earthquakes in California. *Bull. Seismol. Soc. Am.* 34, 185–188.

- Harris, A.J.L., Rose, W.I., Flynn, L.P., 2003. Temporal trends in lava dome extrusion at Santiaguito 1922–2000. *Bull. Volcanol.* 65, 77–89. <https://doi.org/https://doi.org/10.1007/s00445-002-0243-0>.
- Hess, K.-U., Dingwell, D.B., 1996. Viscosities of hydrous leucogranitic melts: a non-Arrhenian model. *Am. Mineral.* 81, 1297–1300.
- Holland, A.S.P., Watson, I.M., Phillips, J.C., Caricchi, L., Dalton, M.P., 2011. Degassing processes during lava dome growth: Insights from Santiaguito lava dome, Guatemala. *J. Volcanol. Geotherm. Res.* 202, 153–166. <https://doi.org/10.1016/j.jvolgeores.2011.02.004>.
- Hornby, A., Lavallée, Y., Kendrick, J.E., De Angelis, S., Lamur, A., Lamb, O.D., Rietbrock, A., Chigna, G., 2019. Brittle-ductile deformation and tensile rupture of dome lava during inflation at Santiaguito, Guatemala. *J. Geophys. Res. Solid Earth* 124, 10107–10131. <https://doi.org/10.1029/2018jb017253>.
- Huang, Y., Beroza, G.C., 2015. Temporal variation in the magnitude-frequency distribution during the Guy-Greenbrier earthquake sequence. *Geophys. Res. Lett.* 42 (16), 6639–6646. <https://doi.org/10.1002/2015GL065170>.
- Ishimoto, M., Iida, I., 1939. Observations of earthquakes registered with the microseismograph constructed recently. *Bull. Earthq. Res. Inst.* 17, 443–478.
- Johnson, J.B., Aster, R.C., 2005. Relative partitioning of acoustic and seismic energy during Strombolian eruptions. *J. Volcanol. Geotherm. Res.* 148, 334–354. <https://doi.org/10.1016/j.jvolgeores.2005.05.002>.
- Johnson, J.B., Harris, A.J.L., Sahetapy-Engel, S.T.M., Wolf, R., Rose, W.I., 2004. Explosion dynamics of pyroclastic eruptions at Santiaguito Volcano. *Geophys. Res. Lett.* 31, L06610. <https://doi.org/https://doi.org/10.1029/2003GL019079>.
- Johnson, J.B., Lyons, J.J., Andrews, B.J., Lees, J.M., 2014. Explosive dome eruptions modulated by periodic gas-driven inflation. *Geophys. Res. Lett.* 41, 6689–6697. <https://doi.org/10.1002/2014GL061310>.
- Jones, K.R., Johnson, J.B., 2011. Mapping complex vent eruptive activity at Santiaguito, Guatemala using network infrasound semblance. *J. Volcanol. Geotherm. Res.* 199, 15–24. <https://doi.org/10.1016/j.jvolgeores.2010.08.006>.
- Kendrick, J.E., Lavallée, Y., Hess, K.U., Heap, M.J., Gaunt, H.E., Meredith, P.G., Dingwell, D.B., 2013. Tracking the permeable porous network during strain-dependent magmatic flow. *J. Volcanol. Geotherm. Res.* 260, 117–126. <https://doi.org/10.1016/j.jvolgeores.2013.05.012>.
- Kendrick, J.E., Lavallée, Y., Varley, N.R., Wadsworth, F.B., Lamb, O.D., Vasseur, J., 2016. Blowing off steam: Tuffsite formation as a regulator for lava dome eruptions. *Front. Earth Sci.* 4, 41. <https://doi.org/10.3389/feart.2016.00041>.
- Kilburn, C., 2012. Precursory deformation and fracture before brittle rock failure and potential application to volcanic unrest. *J. Geophys. Res. Solid Earth* 117, B02211. <https://doi.org/10.1029/2011JB008703>.
- Kilburn, C.R.J., 2003. Multiscale fracturing as a key to forecasting volcanic eruptions. *J. Volcanol. Geotherm. Res.* 125, 271–289. [https://doi.org/10.1016/S0377-0273\(03\)00117-3](https://doi.org/10.1016/S0377-0273(03)00117-3).
- Kueppers, U., Scheu, B., Spieler, O., Dingwell, D.B., 2006. Fragmentation efficiency of explosive volcanic eruptions: a study of experimentally generated pyroclasts. *J. Volcanol. Geotherm. Res.* 153, 125–135. <https://doi.org/10.1016/j.jvolgeores.2005.08.006>.
- Lamb, O.D., Varley, N.R., Mather, T.A., Pyle, D.M., Smith, P.J., Liu, E.J., 2014. Multiple timescales of cyclical behaviour observed at two dome-forming eruptions. *J. Volcanol. Geotherm. Res.* 284, 106–121. <https://doi.org/10.1016/j.jvolgeores.2014.07.013>.
- Lamb, O.D., Lamur, A., Díaz-Moreno, A., De Angelis, S., Hornby, A.J., von Aulock, F.W., Kendrick, J.E., Wallace, P.A., Gottschämmer, E., Rietbrock, A., Alvarez, I., Chigna, G., Lavallée, Y., 2019. Disruption of Long-Term Effusive-Explosive activity at Santiaguito, Guatemala. *Front. Earth Sci.* 6, 253. <https://doi.org/10.3389/feart.2018.00253>.
- Lavallée, Y., Meredith, P.G., Dingwell, D.B., Hess, K.U., Wassermann, J., Cordonnier, B., Gerik, A., Kruhl, J.H., 2008. Seismogenic lavas and explosive eruption forecasting. *Nature* 453, 507–510. <https://doi.org/10.1038/nature06980>.
- Lavallée, Y., Varley, N.R., Alatorre-Ibargüengoitia, M.A., Hess, K.U., Kueppers, U., Mueller, S., Richard, D., Scheu, B., Spieler, O., Dingwell, D.B., 2012. Magmatic architecture of dome-building eruptions at Volcán de Colima, Mexico. *Bull. Volcanol.* 74, 249–260. <https://doi.org/10.1007/s00445-011-0518-4>.
- Lavallée, Y., Benson, P.M., Heap, M.J., Hess, K.U., Flaws, A., Schillinger, B., Meredith, P.G., Dingwell, D.B., 2013. Reconstructing magma failure and the degassing network of domebuilding eruptions. *Geology* 41, 515–518. <https://doi.org/10.1130/G33948.1>.
- Lavallée, Y., Dingwell, D.B., Johnson, J.B., Cimarelli, C., Hornby, A.J., Kendrick, J.E., Von Aulock, F.W., Kennedy, B.M., Andrews, B.J., Wadsworth, F.B., Rhodes, E., Chigna, G., 2015. Thermal vesiculation during volcanic eruptions. *Nature* 528, 544–547. <https://doi.org/10.1038/nature16153>.
- Lavallée, Y., Heap, M.J., Kendrick, J.E., Kueppers, U., Dingwell, D.B., 2019. The Fragility of Volcán de Colima—A Material Constraint. In: Varley N., Connor C., Komorowski J.C. (eds) Volcán de Colima. Active Volcanoes of the World. Springer, Berlin, Heidelberg. 241–266. [https://doi.org/https://doi.org/10.1007/978-3-642-25911-1\\_7](https://doi.org/https://doi.org/10.1007/978-3-642-25911-1_7).
- Marzocchi, W., Papale, P., 2019. Volcanic threats to global society. *Science* 363, 1275–1276. <https://doi.org/10.1126/science.aaw7201>.
- Mastin, L.G., 2005. The controlling effect of viscous dissipation on magma flow in silicic conduits. *J. Volcanol. Geotherm. Res.* 143, 17–28. <https://doi.org/10.1016/j.jvolgeores.2004.09.008>.
- Mueller, S., Scheu, B., Kueppers, U., Spieler, O., Richard, D., Dingwell, D.B., 2011. The porosity of pyroclasts as an indicator of volcanic explosivity. *J. Volcanol. Geotherm. Res.* 203, 168–174. <https://doi.org/10.1016/j.jvolgeores.2011.04.006>.
- Nishimura, T., Iguchi, M., Hendrasto, M., Aoyama, H., Yamada, T., Ripepe, M., Genco, R., 2016. Magnitude-frequency distribution of volcanic explosion earthquakes 5. *Volcanology. Earth, Planets Sp* 125, 68. <https://doi.org/10.1186/s40623-016-0505-2>.
- Papale, P., 1999. Strain-induced magma fragmentation in explosive eruptions. *Nature* 398, 425–428. <https://doi.org/https://doi.org/10.1038/17109>.
- Papale, P., 2018. Global time-size distribution of volcanic eruptions on Earth. *Sci. Rep.* 8, 6838. <https://doi.org/10.1038/s41598-018-25286-y>.
- Quane, S.L., Russell, J.K., 2005. Welding: Insights from high-temperature analogue experiments. *J. Volcanol. Geotherm. Res.* 142, 67–87. <https://doi.org/10.1016/j.jvolgeores.2004.10.014>.
- Rhodes, E., Kennedy, B.M., Lavallée, Y., Hornby, A., Edwards, M., Chigna, G., 2018. Textural insights into the evolving lava dome cycles at Santiaguito Lava Dome, Guatemala. *Front. Earth Sci.* 6, 30. <https://doi.org/10.3389/feart.2018.00030>.
- Roberts, N., Bell, A., Main, I., 2015. Are volcanic seismic b-values high, and if so when? *J. Volcanol. Geotherm. Res.* 308. <https://doi.org/10.1016/j.jvolgeores.2015.10.021>.
- Rose, W.I., 1972. Santiaguito volcanic dome, Guatemala. *Bull. Geol. Soc. Am.* 83, 1413–1434. [https://doi.org/10.1130/0016-7606\(1972\)83\[1413:SVDG\]2.0.CO;2](https://doi.org/10.1130/0016-7606(1972)83[1413:SVDG]2.0.CO;2).
- Rose, W.I., 1987. Volcanic activity at Santiaguito volcano, 1976–1984. *Geol. Soc. Am.* 212, 17–27. <https://doi.org/10.1130/SPE212-p17>.
- Rougier, J., Sparks, R.S.J., Cashman, K.V., Brown, S.K., 2018. The global magnitude-frequency relationship for large explosive volcanic eruptions. *Earth Planet. Sci. Lett.* 482, 621–629. <https://doi.org/https://doi.org/10.1016/j.epsl.2017.11.015>.
- Sahetapy-Engel, S.T., Harris, A.J.L., Marchetti, E., 2008. Thermal, seismic and infrasound observations of persistent explosive activity and conduit dynamics at Santiaguito lava dome, Guatemala. *J. Volcanol. Geotherm. Res.* 173, 1–14. <https://doi.org/10.1016/j.jvolgeores.2007.11.026>.
- Sahetapy-Engel, S.T.M., Flynn, L.P., Harris, A.J.L., Bluth, G.J., Rose, W.I., Matias, O., 2004. Surface temperature and spectral measurements at Santiaguito lava dome, Guatemala. *Geophys. Res. Lett.* 31, L19610. <https://doi.org/10.1029/2004GL020683>.
- Sammis, C.G., Ashby, M.F., 1986. The failure of brittle porous solids under compressive stress states. *Acta Metall.* 34, 511–526. [https://doi.org/10.1016/0001-6160\(86\)90087-8](https://doi.org/10.1016/0001-6160(86)90087-8).
- Sanderson, R.W., Johnson, J.B., Lees, J.M., 2010. Ultra-long period seismic signals and cyclic deflation coincident with eruptions at Santiaguito volcano, Guatemala. *J. Volcanol. Geotherm. Res.* 198, 35–44. <https://doi.org/10.1016/j.jvolgeores.2010.08.007>.
- Scharff, L., Hort, M., Gerst, A., 2014. The dynamics of the dome at Santiaguito volcano, Guatemala. *Geophys. J. Int.* 197, 926–942. <https://doi.org/10.1093/gji/ggu069>.
- Schorlemmer, D., Wiemer, S., Wyss, M., 2005. Variations in earthquake-size distribution across different stress regimes. *Nature* 437, 539–542. <https://doi.org/10.1038/nature04094>.
- Scott, J.A.J., Mather, T.A., Pyle, D.M., Rose, W.I., Chigna, G., 2012. The magmatic plumbing system beneath Santiaguito Volcano, Guatemala. *J. Volcanol. Geotherm. Res.* 237–238, 54–68. <https://doi.org/10.1016/j.jvolgeores.2012.05.014>.
- Sheldrake, T., Caricchi, L., 2017. Regional variability in the frequency and magnitude of large explosive volcanic eruptions. *Geology* 45 (2), 111–114. <https://doi.org/10.1130/G38372.1>.
- Sparks, R.S.J., 2003. Forecasting volcanic eruptions. *Earth Planet. Sci. Lett.* 210, 1–15. [https://doi.org/10.1016/S0012-821X\(03\)00124-9](https://doi.org/10.1016/S0012-821X(03)00124-9).
- Tsukahoshi, Y., Shimazaki, K., 2008. Decreased b-value prior to the M 6.2 Northern Miyagi, Japan, earthquake of 26 July 2003. *Earth, Planets Sp* 60, 915–924. <https://doi.org/10.1186/BF03352847>.
- Varley, N., Johnson, J., Ruiz, M., Reyes, G., Martin, K., 2018. Applying statistical analysis to understanding the dynamics of volcanic explosions. In: Mader, H.M., Coles, S.G., Connor, C.B., Connor, L.J. (Eds.), *Statistics in Volcanology* <https://doi.org/10.1144/iavcei001.6>.
- Vasseur, J., Wadsworth, F.B., Lavallée, Y., Hess, K.U., Dingwell, D.B., 2013. Volcanic sintering: Timescales of viscous densification and strength recovery. *Geophys. Res. Lett.* 40, 5658–5664. <https://doi.org/10.1002/2013GL058105>.
- Vasseur, J., Wadsworth, F.B., Lavallée, Y., Bell, A.F., Main, I.G., Dingwell, D.B., 2015. Heterogeneity: the key to failure forecasting. *Sci. Rep.* 5, 13259. <https://doi.org/10.1038/srep13259>.
- Vasseur, J., Wadsworth, F.B., Heap, M.J., Main, I.G., Lavallée, Y., Dingwell, D.B., 2017. Does an inter-flaw length control the accuracy of rupture forecasting in geological materials? *Earth Planet. Sci. Lett.* 475, 181–189. <https://doi.org/10.1016/j.epsl.2017.07.011>.
- Voight, B., 1989. A relation to describe rate-dependent material failure. *Science* 243, 200–203. <https://doi.org/10.1126/science.243.4888.200>.
- Wallace, P.A., Lamb, O.D., De Angelis, S., Kendrick, J.E., Hornby, A.J., Díaz-Moreno, A., González, P.J., Von Aulock, F.W., Lamur, A., Utley, J.E.P., Rietbrock, A., Chigna, G., Lavallée, Y., 2020. Integrated constraints on explosive eruption intensification at Santiaguito dome complex, Guatemala. *Earth Planet. Sci. Lett.* 536, 116139. <https://doi.org/https://doi.org/10.1016/j.epsl.2020.116139>.
- Watt, S.F.L., Mather, T.A., Pyle, D.M., 2007. Vulcanian explosive cycles: patterns and predictability. *Geology* 35 (9), 839–842. <https://doi.org/10.1130/G23562A.1>.
- Yamamoto, H., Watson, I.M., Phillips, J.C., Bluth, G.J., 2008. Rise dynamics and relative ash distribution in vulcanian eruption plumes at Santiaguito Volcano, Guatemala, revealed using an ultraviolet imaging camera. *Geophys. Res. Lett.* 35. <https://doi.org/10.1029/2007GL032008>.
- Zhang, Y., 1999. A criterion for the fragmentation of bubbly magma based on brittle failure theory. *Nature* 402, 648–650. <https://doi.org/10.1038/45210>.
- Zobin, V.M., Bretón, J.M., Navarro, C., 2014. Similarity in seismic source scaling relations for tectonic and volcanic processes. *Phys. Earth Planet. Inter.* 231, 65–73. <https://doi.org/10.1016/j.pepi.2014.03.007>.