

# Distances to PHANGS Galaxies: New Tip of the Red Giant Branch Measurements and Adopted Distances

Gagandeep S. Anand<sup>1,2\*</sup>†, Janice C. Lee<sup>1</sup>, Schuyler D. Van Dyk<sup>1</sup>, Adam K. Leroy<sup>3</sup>, Erik Rosolowsky<sup>4</sup>, Eva Schinnerer<sup>5</sup>, Kirsten Larson<sup>1</sup>, Ehsan Kourkchi<sup>2</sup>, Kathryn Kreckel<sup>6</sup>, Fabian Scheuermann<sup>6</sup>, Luca Rizzi<sup>7</sup>, David Thilker<sup>8</sup>, R. Brent Tully<sup>2</sup>, Frank Bigiel<sup>9</sup>, Guillermo A. Blanc<sup>10,11</sup>, Médéric Boquien<sup>12</sup>, Rupali Chandar<sup>13</sup>, Daniel Dale<sup>14</sup>, Eric Emsellem<sup>15,16</sup>, Sinan Deger<sup>1</sup>, Simon C.O. Glover<sup>17</sup>, Kathryn Grasha<sup>18</sup>, Brent Groves<sup>18,19</sup>, Ralf S. Klessen<sup>17,20</sup>, J. M. Diederik Kruijssen<sup>21</sup>, Miguel Querejeta<sup>22</sup>, Patricia Sánchez-Blázquez<sup>23</sup>, Andreas Schruba<sup>24</sup>, Jordan Turner<sup>14</sup>, Leonardo Ubeda<sup>25</sup>, Thomas G. Williams<sup>5</sup>, Brad Whitmore<sup>25</sup>

*Affiliations are listed at the end of the paper.*

3 December 2020

## ABSTRACT

PHANGS-HST is an ultraviolet-optical imaging survey of 38 spiral galaxies within ~20 Mpc. Combined with the PHANGS-ALMA, PHANGS-MUSE surveys and other multiwavelength data, the dataset will provide an unprecedented look into the connections between young stars, H II regions, and cold molecular gas in these nearby star-forming galaxies. Accurate distances are needed to transform measured observables into physical parameters (e.g., brightness to luminosity, angular to physical sizes of molecular clouds, star clusters and associations). PHANGS-HST has obtained parallel ACS imaging of the galaxy halos in the F606W and F814W bands. Where possible, we use these parallel fields to derive tip of the red giant branch (TRGB) distances to these galaxies. In this paper, we present TRGB distances for 11 galaxies from ~4 to ~15 Mpc, based on the first year of PHANGS-HST observations. Five of these represent the first published TRGB distance measurements (IC 5332, NGC 2835, NGC 4298, NGC 4321, and NGC 4328), and eight of which are the best available distances to these targets. We also provide a compilation of distances for the 118 galaxies in the full PHANGS sample, which have been adopted for the first PHANGS-ALMA public data release.

**Key words:** galaxies: fundamental parameters – galaxies: stellar content – distance scale

## 1 INTRODUCTION

The observed velocity of a galaxy consists of two components. The first is its recessional velocity due to the expansion of the universe, i.e., the Hubble flow. This portion of the observed velocity is simply given by the Hubble constant times its distance ( $H_0D$ ). The second component of the observed velocity is due to gravitational interactions with other objects, which is referred to as a galaxy’s peculiar velocity ( $v_{\text{pec}}$ ). Taken together, the observed velocity of a galaxy is given by

$$v_{\text{obs}} = H_0D + v_{\text{pec}}. \quad (1)$$

In the nearby universe (i.e., within a few tens of Mpc), the

peculiar velocity can be a substantial component of the observed velocity. This means distances based solely on the recessional velocity are subject to large systematic errors. This issue necessitates the use of redshift-independent distances, such as those based on standard candles and rulers, for study of galaxies in the nearby Universe.

In this paper, we present a curated set of redshift-independent distances for galaxies in the PHANGS<sup>1</sup> (Physics at High Angular Resolution in Nearby Galaxies) sample (A. K. Leroy et al, in preparation). The distances presented in this paper are a combination of new tip of the red giant branch (TRGB) measurements based on *Hubble Space Telescope* (HST) imaging obtained by the PHANGS-HST survey (J.C. Lee et al., in preparation) in its first

\* E-mail: gsanand@hawaii.edu

† IPAC Visiting Graduate Student Fellow

<sup>1</sup> [www.phangs.org](http://www.phangs.org)

year of observations (which began in 2019 April) and best available distances compiled from the literature.

The goal of the PHANGS programme is to elucidate the physics that control the multi-scale process of star formation in galaxies. The effort is built around PHANGS-ALMA (P.I. E. Schinnerer; A. K. Leroy et al. in preparation), an ALMA survey of  $N=74$  galaxies that includes all southern ( $-75^\circ < \text{Dec} < 20^\circ$ ), face-on, massive, star-forming galaxies at distances ( $< 20$  Mpc) where ALMA can resolve the molecular interstellar medium into individual molecular clouds (50–150 pc). This sample was observed via a Cycle 5 Large Programme (PI: E Schinnerer), and several smaller programs in Cycles 2-6. Extensions of the programme to additional galaxies that expand the covered parameter space are ongoing, and bring the current sample observed by ALMA to 89. In addition, the broader PHANGS collaboration has studied a number of other nearby targets, including some northern (beyond the reach of ALMA) and edge-on targets. In total, PHANGS currently includes 118 targets of interest, and it is for this greater sample of galaxies that we provide “best-available” distances adopted for PHANGS analysis in this paper.

Distances to the PHANGS galaxies are essential to the main science goals of the PHANGS collaboration. Nearly every derived parameter depends on the adopted distance, and robust distances are required for the basic transformation of angular size and brightness into physical sizes and absolute luminosities. Inaccurate distances will bias other quantities of interest, including star cluster and molecular cloud mass functions, luminosity functions, and dynamical mass-to-light ratios. Distances are also needed as inputs for producing ALMA products at specified physical (e.g., 60 pc, 150 pc) resolutions, which are vital for consistent galaxy-to-galaxy comparisons.

In this paper, we use parallel imaging from PHANGS-HST to derive TRGB estimates to 11 galaxies, and also provide a careful literature compilation of best distances for the full PHANGS sample of interest ( $N=118$ ). Prior to this work, accurate distances, based on standard candles, were available for  $\sim 45\%$  of the full PHANGS sample of 118 galaxies. To this we add the first TRGB distance measurements for 5 galaxies, and additional TRGB measurements for 6 galaxies based on our *HST* parallel observations. Eight of these new TRGB measurements represent the best available distances for these targets. In Section 2 we describe the parallel PHANGS-HST observations used in this work. In Section 3, we describe the TRGB methodology for measuring distances from our parallel imaging, and then present our results. We present our selection of literature distances in Section 4, and end with a brief summary and future outlook in Section 5.

## 2 PHANGS-HST OBSERVATIONS

A subset of the overall PHANGS sample best suited for joint *HST*-ALMA studies of resolved young stellar populations and clouds ( $N=38$ ) were targeted by the Cycle 26 PHANGS-HST Treasury Programme (PI: J.C. Lee, programme GO-15654). The PHANGS-HST sample was selected to be

- Relatively face-on ( $i < 70^\circ$ ), to minimise source blending and projected dust attenuation.
- Avoid the Galactic plane ( $|b| \gtrsim 15^\circ$ ), to minimise the effects of Milky Way reddening and foreground stars.
- Have sufficient star formation activity (star formation rates  $> 0.3M_\odot/\text{yr}$ ) to ensure widespread CO detections for joint analysis of clusters/associations and clouds.

- Nearby ( $D \lesssim 17$  Mpc) to ensure high levels of spatial resolution (though in this paper we find several of the PHANGS-HST targets to likely lie beyond this initial criterion).

The combination of ALMA observations with those from *HST* and MUSE (E. Emsellem et al., in preparation) allows PHANGS to chart, for the first time, the connections between cold (molecular) gas and young stars on the fundamental scales of molecular clouds, young star clusters, and H II regions, over a broad range of galactic environments in the nearby Universe (Sun et al. 2018; Utomo et al. 2018; Schinnerer et al. 2019; Kreckel et al. 2019; Chevance et al. 2020).

The primary goal of the PHANGS-HST observations (to be fully described in J.C. Lee, in preparation) was to obtain UV-optical imaging of the resolved stellar populations within the star-forming disk. However, the observations also provide an incidental opportunity to observe the galaxy halo with the Advanced Camera for Surveys Wide Field Channel (ACS/WFC) in “parallel” mode. Our observations were designed so that ACS imaging in the F606W (a “wide” V-band) and F814W (approximately I-band) filters accompanies each corresponding PHANGS-HST “primary” observation with the Wide Field Camera 3 Ultraviolet/Visible (WFC3/UVIS) channel.

For the range of distances and angular sizes of the spiral galaxies in the PHANGS-HST sample, the ACS field-of-view generally falls on the halo of the target galaxy when WFC3 is centered on the galaxy itself, though there is a range of potential outcomes. For galaxies with relatively large angular sizes, the parallel observations may include portions of the outer disk. For galaxies with much smaller sizes, the parallels may lie too far to detect any sizeable halo population, which limits the usefulness of the field for TRGB analysis. Given that the science requirements of PHANGS-HST constrain the placement of the primary pointings, optimizing placement of the parallel fields, as would be pursued by a focused TRGB programme, is secondary, and is limited by the fixed focal plane and spatial offset of the two cameras of *HST*.

Figures A1 and A2 illustrate the positioning of the ACS field-of-view on each galaxy. Orientation (ORIENT) constraints were imposed, when possible, to prevent the parallel observation from sampling the galaxy disk, nearby galaxy neighbours, and/or extremely bright foreground stars. For some targets with large angular sizes for which it would be impossible to entirely avoid a large disk, we placed the parallels along the major axis to aid in disentangling the disk and halo. In several cases, such orient constraints needed to be lifted or considerably relaxed to enable enough guide stars to be acquired with the Fine Guidance Sensors.

The 5-band primary observations with WFC3/UVIS were sequenced in each orbit to optimize exposure time in the parallel observations without impacting the primary observations. Each pointing of the telescope spanned 2 or 3 orbits, depending on whether archival observations of the inner galaxy (targeted by ALMA) were available from prior *HST* programmes which matched the PHANGS-HST science requirements. For pointings spanning a two-orbit duration, the total exposure times in the ACS parallel V and I images are about 2100 s each, whilst for the three-orbit pointings they are about 3500 s and 3200 s, respectively. Exposure times for each pointing are provided in Table A1.

PHANGS-HST observations began in 2019 April and are expected to continue until 2021 May. The analyses presented in this paper are based on the first year of observations through 2020 July, and include 37 pointings in 30 galaxies. We will present the TRGB analysis based on parallel observations of the remaining 7 pointings

(in six galaxies) in a future paper. All of these remaining pointings are observations which have been executed but failed, due to guide star acquisition issues, and are scheduled to be re-observed.

### 3 TIP OF THE RED GIANT BRANCH MEASUREMENTS

Low-mass stars ( $<2 M_{\odot}$ ) ascending the red giant branch (RGB) eventually reach a state when helium begins to fuse in the degenerate core via the triple- $\alpha$  process. At the end of this runaway process, the star rearranges itself, becomes less luminous, and appears on the horizontal branch. The maximum degenerate core mass is a constant, resulting in stars at the TRGB sharing the same maximum luminosity, modulo a colour-dependent term. This colour-dependence is largely the result of the effects of line-blanketing (dependent on metallicity), and to a lesser extent, age. In the best case scenarios, distances can be measured with the TRGB to accuracies of  $\sim 5\%$ .

The standardizable candle nature of the TRGB has made it a powerful tool for determining extragalactic distances (Lee et al. 1993; Madore & Freedman 1995; Beaton et al. 2018), and its popularity in the literature has been steadily increasing (Tollerud et al. 2016; McQuinn et al. 2017; Karachentsev et al. 2018; Anand et al. 2018b; Danieli et al. 2020). At present, the CMDs/TRGB catalog on the Extragalactic Distance Database<sup>2</sup> (EDD) hosts colour-magnitude diagrams and TRGB distances to nearly 500 galaxies (Jacobs et al. 2009).

#### 3.1 Methodology

There are two main techniques used in the literature to determine the location of the TRGB in a colour-magnitude diagram (CMD). Both involve constructing a luminosity function for stars above and below the TRGB, namely asymptotic giant branch (AGB) and RGB stars, respectively. The first popular method (Sakai et al. 2000; Crnojević et al. 2014; Müller et al. 2018; Van Dyk et al. 2019) uses an edge detection algorithm (often a Sobel filter) to highlight the point of greatest discontinuity, which corresponds to the sharp change in the luminosity function occurring at the TRGB. The luminosity function may first be smoothed to suppress false edges arising from noise (Beaton et al. 2019).

The second method commonly found in the literature involves fitting the luminosity function of the RGB and AGB population, typically with a broken-power law (Méndez et al. 2002; Makarov et al. 2006; McQuinn et al. 2016). This method allows for the straightforward incorporation of results from artificial star experiments to account for photometric errors, incompleteness, and bias. Due to this benefit, we use this latter technique for our analysis, with the specific methodology described in detail by Makarov et al. (2006), and with updates provided by Wu et al. (2014). This overall procedure is the same as the one previously described in Jacobs et al. (2009). In the rest of this subsection, we briefly summarise our methodology.

We obtain the individual charge transfer efficiency (CTE)-corrected *\*.flc* frames from the Mikulski Archive for Space Telescopes<sup>3</sup>. We perform PSF photometry on these individual exposures with DOLPHOT (Dolphin 2000, 2016), which uses Tiny Tim PSFs (Krist 1993) and includes aperture corrections based on measurements of bright, isolated stars in each frame. We use the drizzled

F814W (*\*.drc*) image as the reference frame for the alignment of the individual (*\*.flc*) images. In some instances the relative astrometry between individual frames is not good enough for DOLPHOT to obtain successful alignments between all the frames. For these cases, we first run the images through STScI's *tweakreg* package until a satisfactory alignment (typical root-mean-square, rms, uncertainty of  $\sim 0''.01$ ) is reached. Note that we do not pay attention to *absolute* astrometry, but only *relative* astrometry.

DOLPHOT outputs photometry for each individual exposure, as well as a set of photometry for the combination of individual *\*.flc* exposures. For our work, we use this combined photometry after applying a series of quality cuts for parameters including signal-to-noise ratio (SNR), crowding, and sharpness. For this paper, we use quality cuts adopted from McQuinn et al. (2017), except we increase the baseline total SNR cutoff in F606W from 2 to 5. For a few of our more distant targets (e.g., NGC 4321), we lower the SNR cutoff in F606W from 5 back to 2, and the F814W cutoff from 5 to 4, in order to increase the depth of the CMD below the TRGB. The specific crowding cuts adopted select for stars with  $(Crowd_{F606W} + Crowd_{F814W}) < 0.8$ , and for sharpness with  $(Sharp_{F606W} + Sharp_{F814W})^2 < 0.075$ .

We also use DOLPHOT to perform artificial star experiments for each of the target fields. For each field, we insert and attempt to recover 100,000 artificial stars spanning the full range of magnitudes and colours seen in the measured photometry. These results allow us to quantify the true levels of error, completeness, and photometric bias present in the observed photometry. This is especially important, as it has been shown that DOLPHOT systematically underestimates its reported errors (Williams et al. 2014).

We proceed to fit a broken-power law to the luminosity function of the AGB and RGB populations, with the break denoting the location of the TRGB. The physical basis for this parameterization is the abrupt change in the observed luminosity function brought upon by stars undergoing the helium flash once they reach the TRGB. The results of the artificial stars are incorporated here by convolving the luminosity function with the completeness, error, and bias, as described in detail by Makarov et al. (2006) and Wu et al. (2014). For some galaxies, we use the blue upper-main sequence stars as a proxy for all young stars to remove parts of the field before we perform our analysis. This is to reduce contamination from regions with large amounts of Population I stars, including red supergiants whose sharp feature lies on the blue edge of the RGB (see the galaxies presented in Anand et al. (2019a,b) for detailed examples). To further reduce contaminant stars in our sample, we limit the F606W–F814W of stars used in our fits—these ranges are shown in Figures 1–4 as the break between the red horizontal lines.

With the observed quantities in hand, we turn to the calibration for the TRGB obtained by Rizzi et al. (2007). In addition to a zero-point TRGB calibration (anchored to a geometric calibration of the horizontal branch provided by Carretta et al. (2000)), they provide a colour calibration for both WFPC2 and ACS flight filter systems for *HST*. Combined together and in our choice of filters, these take the form of:

$$M_{ACS}^{F814W} = -4.06 + 0.20[(F606W - F814W) - 1.23]. \quad (2)$$

We calculate the (F606W–F814W) term by taking the median color of stars within 0.05 mag below the measured TRGB, with the associated uncertainty determined via 1000 bootstrap resampling trials (as laid out in Wu et al. 2014). Before applying this calibration, the observed magnitude and colour of the TRGB are corrected for foreground extinction (Schlafly & Finkbeiner 2011). We do not account for any potential reddening intrinsic to the halos of these

<sup>2</sup> [edd.ifa.hawaii.edu](http://edd.ifa.hawaii.edu)

<sup>3</sup> <https://mast.stsci.edu/>

galaxies, though we note that previous studies (Ménard et al. 2010) have shown this effect to be quite small ( $A_I \sim 0.01$  mag, Yuan et al. 2019). Data taken in additional filters (e.g. near-infrared passbands with WFC3) could be used to determine the exact reddening to the TRGB stars themselves, as recently outlined by Madore & Freedman (2020).

The effects of line blanketing are minimised in the F814W filter for RGB stars, hence its use here and elsewhere in the literature. Over typical F606W–F814W colours seen in galaxy halos, the absolute magnitude of the TRGB varies by  $\leq 0.1$  mag. In bluer or redder bands, the effects can change the absolute magnitude by over one magnitude, increasing the dependence on the quality of the underlying calibration, and heightening the potential of systematic errors. The final errors on our reported distances combine in quadrature the statistical uncertainties in the measured quantities (including the dust maps, Schlafly & Finkbeiner 2011) with an adopted 0.07 mag systematic uncertainty (Rizzi et al. 2007; McQuinn et al. 2017) in the underlying absolute calibration. We note that there are several other calibrations available for the absolute magnitude of the TRGB (Jang & Lee 2017; Freedman et al. 2019; Yuan et al. 2019; Jang et al. 2020), which differ from our adopted calibration (and from each other) at the 0–5% level (depending on the underlying metallicity and age of the RGB). At present, the source of the disagreement is under debate. We adopt the Rizzi et al. (2007) calibration to retain consistency with the Extragalactic Distance Database, and reserve further discussion for future planned work on the matter.

The underlying photometry and complete list of derived parameters for the galaxies presented here are publicly available under the CMDs/TRGB catalog of EDD (Jacobs et al. 2009). This procedure has been developed and matured with many years of work, and TRGB distances from the CMDs/TRGB catalog have served as key components for many results including the definition of our home supercluster Laniakea (Tully et al. 2014), the realization of the effects of the neighbouring Local Void on the motions of nearby galaxies (Tully et al. 2008; Rizzi et al. 2017; Anand et al. 2019b), and the determination of the extragalactic distance scale and the Hubble constant from the larger Cosmicflows programme (Tully et al. 2013, 2016; Kourkchi et al. 2020b).

### 3.2 Range of Distances

In Figures 1 and 2, we highlight the data for the closest (NGC 4826,  $D=4.4$  Mpc) and furthest (NGC 4321,  $D=15.4$  Mpc) PHANGS-HST targets for which we are successfully able to derive TRGB distances. In the top-left panels of these two figures, we show our HST parallel imaging (red) overlaid on *gri* footprints from the Sloan Digital Sky Survey (SDSS, York et al. 2000), with  $D_{25}$  from RC3 (de Vaucouleurs et al. 1991) shown in dashed blue. Our main purpose in showing these figures is to draw attention to the quality of the data at these two extremes. At the near end, the stars are bright, well-resolved, and unambiguous. At the far end, we are approaching the limits of what can be achieved given the depth of the data, and the uncertainties involved become large.

In the top-right panels, we show F814W cutouts of a selection of a dozen stars within  $\pm 0.1$  mag of the measured TRGB, along with their DOLPHOT measured F814W magnitudes and errors. We note that as shown by previous studies (Williams et al. 2014), the error measurements from DOLPHOT are systematically underestimated. We emphasize that this does not affect our results. As previously discussed, the photometric errors that propagate into our final results are determined by the injection and recovery of artificial stars, which give proper estimates for photometric error.

The stars shown in the top-right panels are highlighted in green on the CMDs, along with the measured TRGB in the bottom-left panels. In the bottom-right panels, we show the observed luminosity function of stars, along with our best-fit from which we determine  $m_{\text{TRGB}}$  (with uncertainties indicated by the dotted-dashed lines). For purposes of comparison, we also provide the results of a Sobel filter (with a kernel of  $[-2, 0, 2]$ ) on the same observed luminosity function. For the case of NGC 4826, the Sobel filter measurement is rather noisy (i.e., several peaks) due to the sparseness of the upper RGB, whereas our luminosity function fit is clean. For NGC 4321, both methods measure the same value of  $m_{\text{TRGB}}$  to within  $\sim 0.02$  mag.

### 3.3 Measurements

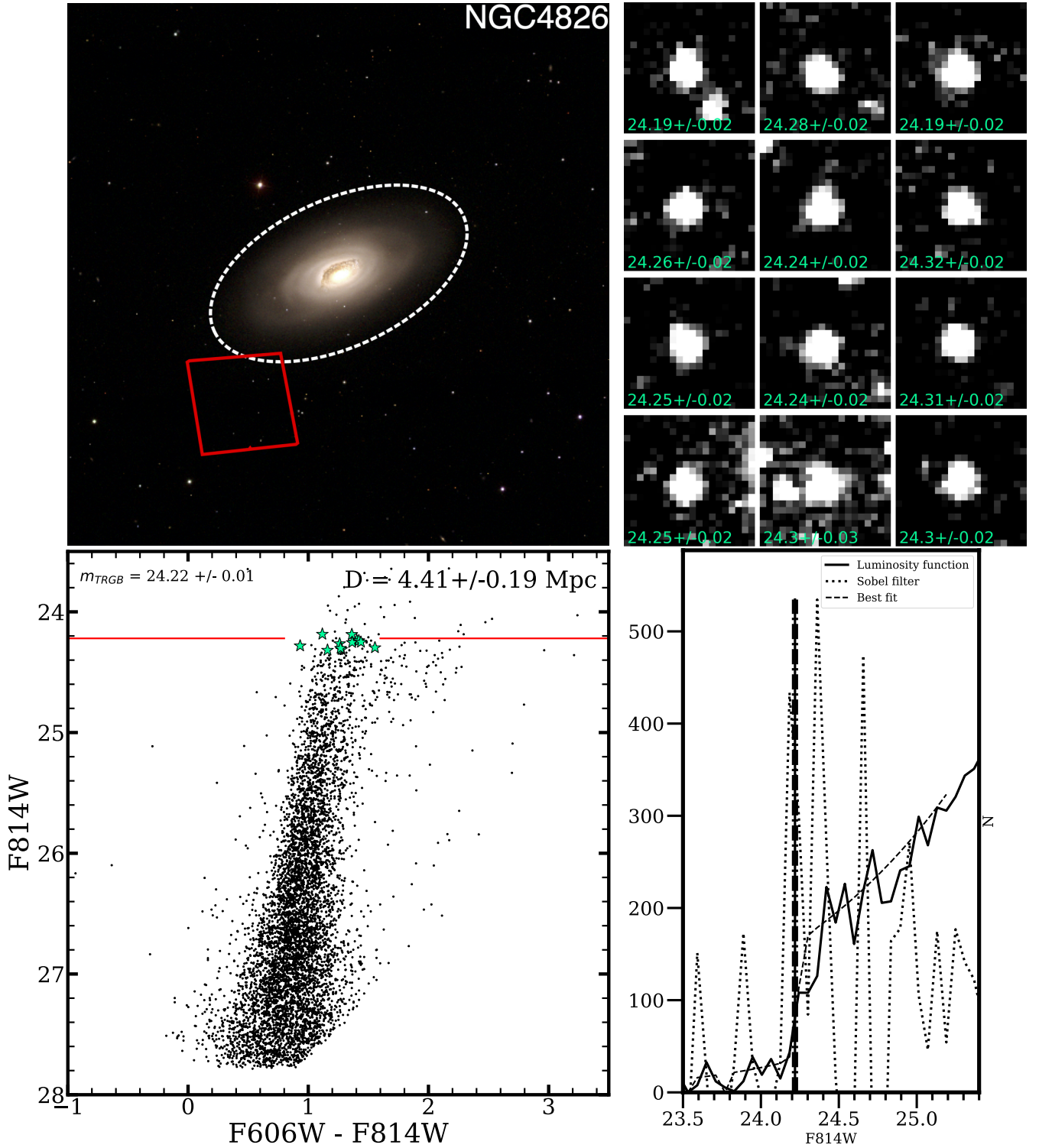
We now present the results of our TRGB analysis. Six of the galaxies for which we measure results already have existing TRGB distances in the literature. However, given the multi-orbit depth of the PHANGS parallel data, in four of these cases our measurements are improvements upon the existing work. In all of these cases, our new measurements agree very well with the existing literature measurements (typically within  $\sim 2\%$ ). We also present the first TRGB measurements for five galaxies, four of which represent the most precise distances to these galaxies to date.

#### 3.3.1 Galaxies with Existing TRGB Measurements

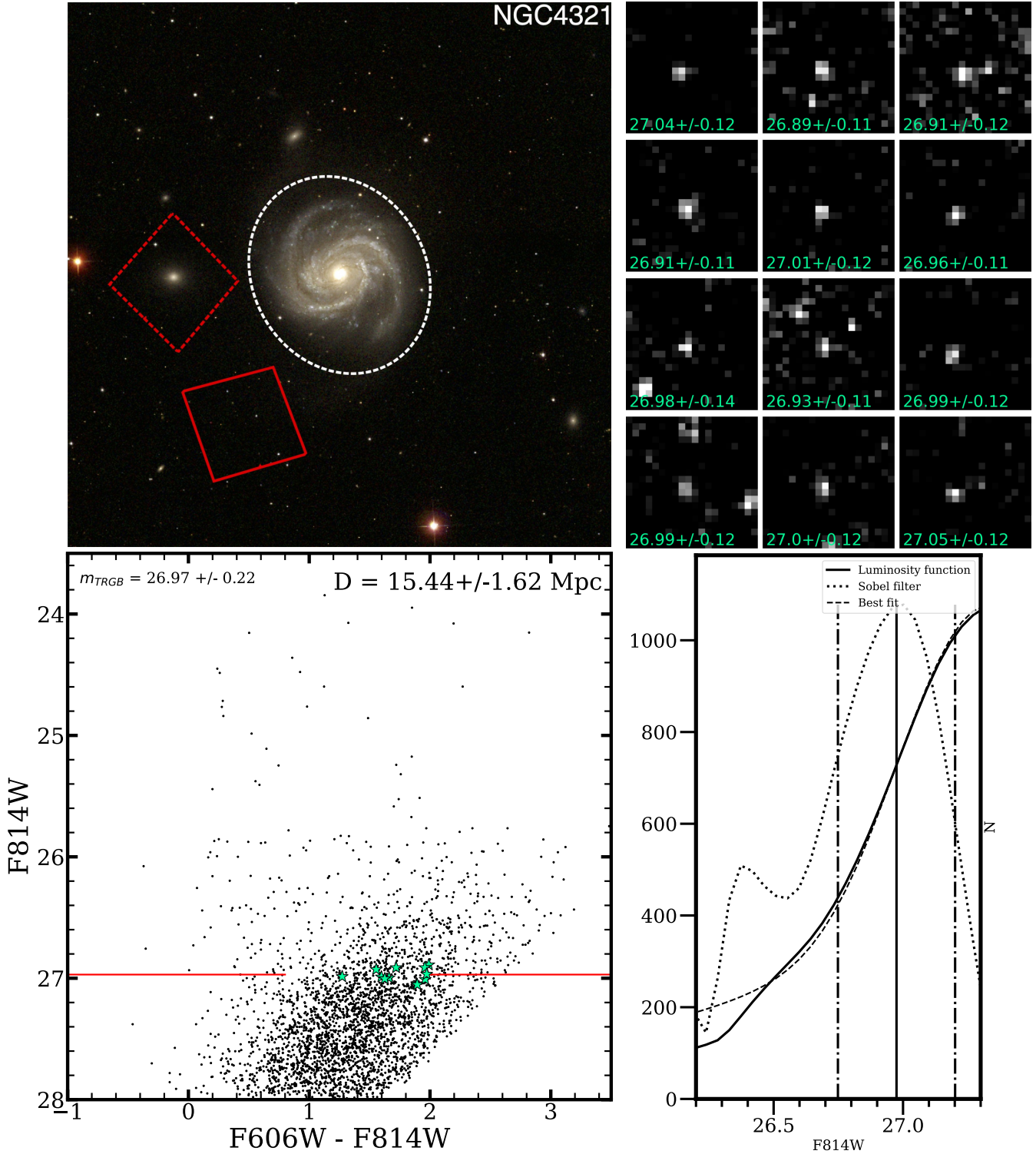
- NGC 3351 (M95) is a member of the Leo I group of galaxies, which includes the brighter NGC 3368 (M96) and NGC 3379 (M105). The CMDs/TRGB catalog’s present TRGB measurement of  $D = 9.96 \pm 0.33$  Mpc for NGC 3351 was obtained from older, HST Wide Field and Planetary Camera 2 (WFPC2) observations of the galaxy’s outer disk (GO-8584, PI: R. Kennicutt). The new PHANGS-HST parallel data, whilst less contaminated with Pop I stars, has a sparser upper RGB—we measure  $m_{\text{TRGB}} = 26.12 \pm 0.05$  mag. The relative sparseness may inflate the measured distance to the target, which we find to be  $D = 10.44 \pm 0.49$  Mpc. Due to the better population statistics in the archival data, we adopt the existing CMDs/TRGB catalog distance ( $D = 9.96 \pm 0.33$  Mpc) to this galaxy, which is very close to the Cepheid determination of  $D = 10.05 \pm 0.42$  Mpc (Freedman et al. 2001).

- NGC 3621 is an isolated spiral galaxy and member of the Leo Spur, a filamentary structure whose members have, on average, relatively high negative peculiar velocities towards us. This observed effect is due to the expansion of the Local Void pushing galaxies residing in the Local Sheet (including the Milky Way) down towards the Leo Spur, which then imprints the negative peculiar velocities onto members of the Leo Spur (Karachentsev et al. 2015; Anand et al. 2019b). The existing CMDs/TRGB catalog measurement for NGC 3621 of  $6.65 \pm 0.18$  Mpc was obtained from data taken by GO-9492 (PI: F. Bresolin), with observations in the F555W and F814W bands. The usage of the F555W is less optimal, due to many of the higher metallicity (redder) RGB stars being pushed off to the right of the observable CMD.

PHANGS-HST provides two parallel fields, which are both deeper than other existing data. Both fields cover part of the outer disk, which we isolate to reduce contamination from Pop I stars. From the two fields (only the outermost one is shown in Figure 3), we find  $m_{\text{TRGB}} = 25.31 \pm 0.03$  and  $m_{\text{TRGB}} = 25.27 \pm 0.02$  mag, which result in  $D = 7.10 \pm 0.30$  Mpc and  $D = 7.02 \pm 0.28$  Mpc, respectively. The results from these two fields agree very well, and



**Figure 1.** **Top Left:** PHANGS-HST parallel footprint (red) for NGC 4826 overlaid onto a *gri* image of NGC 4826 from SDSS.  $D_{25}$  from RC3 (de Vaucouleurs et al. 1991) is shown in the dashed white lines. **Bottom Left:** CMD and TRGB determination (red line) from the portion of the field selected for analysis. The gap in the red line denotes the color range of stars used to measure the TRGB. **Top Right:** Cutouts of a sampling of 12 stars from within  $\pm 0.1$  mag of the measured TRGB, with measured DOLPHOT magnitudes and errors. These stars are highlighted as green stars on the CMD. **Bottom Right:** Luminosity function (solid line), Sobel filter measurement (dotted line, shown only for comparison), and best-fit luminosity function (dashed line, with errors shown as the vertical dash-dotted lines) from our analysis.

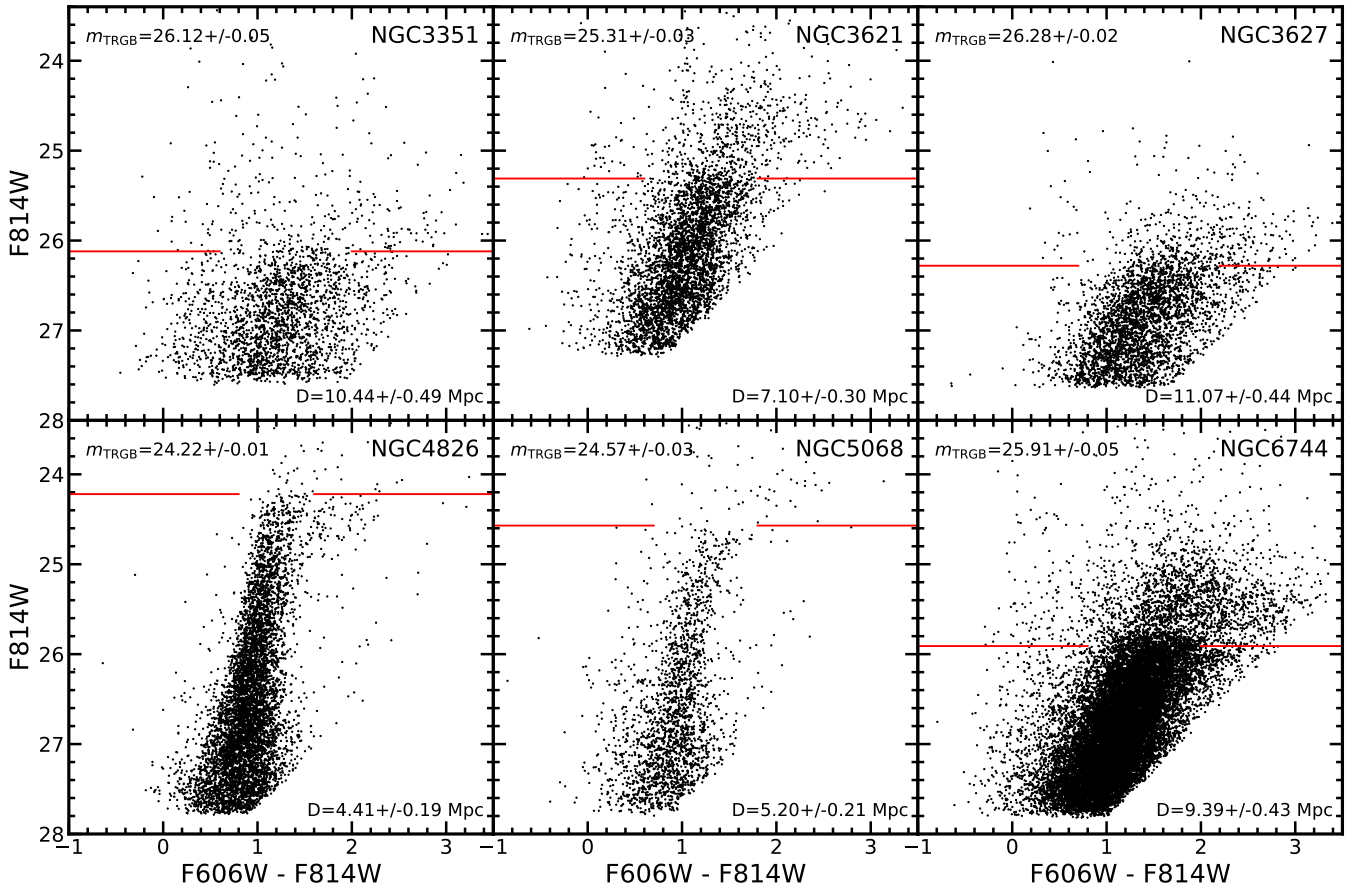


**Figure 2.** Same as Figure 1, but for NGC 4321, which is at the far limit of our detection threshold for the TRGB with the PHANGS-HST parallel imaging. The parallel field highlighted with the dashed white square in the top-left panel falls on NGC 4328, a dwarf galaxy that is likely a satellite of NGC 4321. The analysis for this second parallel field is presented separately.

we take an average of these two measurements with a conservative error estimate ( $D = 7.06 \text{ Mpc} \pm 0.28 \text{ Mpc}$ ) as the adopted distance to this galaxy.

- NGC 3627 is the brightest member of a group colloquially known as the Leo Triplet, though there are fifteen likely group

members (Kourkchi & Tully 2017). There are several existing *HST* observations that allow for the determination of a TRGB distance to this target, due to its nature as a host to SN1989B, a type Ia supernova. The most ideal data is from the Carnegie-Chicago Hubble Programme (CCHP, GO-13691, PI: W. Freedman). The CCHP



**Figure 3.** CMDs and TRGB measurements for the six PHANGS-HST galaxies with existing TRGB distances. The photometry (as plotted) has not been corrected for foreground reddening, and does not include the excluded regions with high levels of Population I stars. The gaps in the red lines denote the color ranges of stars used to measure the TRGB.

group, with their distinct methodology, has determined a distance to NGC 3627 of  $11.06 \pm 0.30$  Mpc (Hoyt et al. 2019; Freedman et al. 2019). The existing determination on the CMDs/TRGB catalog from this same CCHP field is  $11.32 \pm 0.48$  Mpc, implying the two measurements are consistent to within  $\sim 2\%$  of each other, though  $\sim 8\%$  offset from the Cepheid determination of Freedman et al. (2001) ( $D = 10.05 \pm 0.37$  Mpc).

The PHANGS-HST field partially overlaps with the southern edge of the main disk, introducing some contamination from Pop I stars. We select the outer  $\sim 30\%$  of the observed field for our analysis. Within this region, we find  $m_{\text{TRGB}} = 26.28 \pm 0.02$  mag, from which we determine a distance of  $11.07 \pm 0.44$  Mpc. We choose to adopt the existing CMDs/TRGB catalog distance over the new PHANGS-HST determination due to the greater number of detected stars in the selected regions of the field in the former, though we note that the difference between the adopted measurement and the PHANGS-HST determination is quite small ( $\sim 2\%$ ).

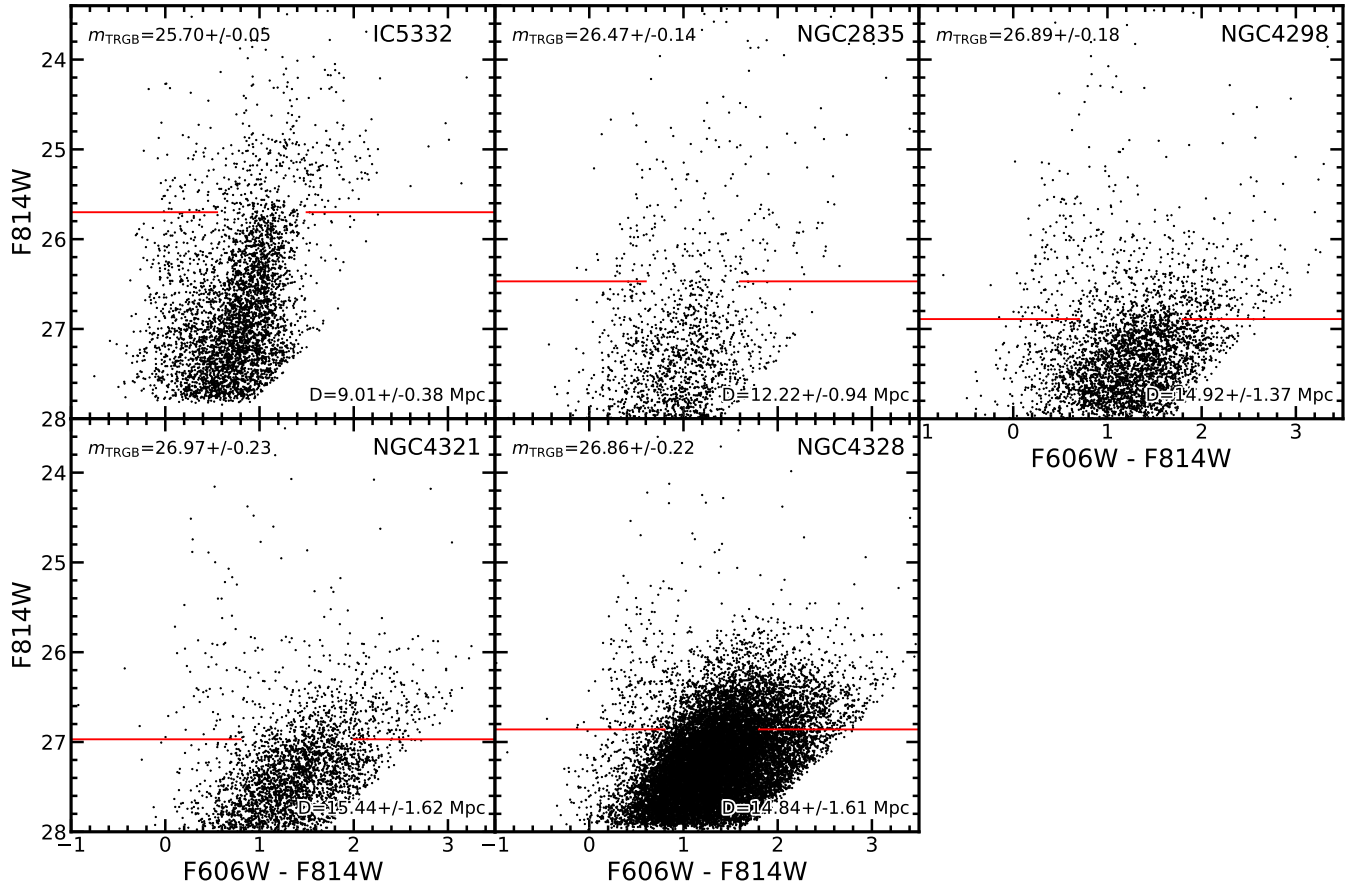
- NGC 4826, also known as the Black Eye galaxy due to its prominent dust lanes, is the closest PHANGS-HST target with a previously determined TRGB distance of  $D = 4.40 \pm 0.18$  Mpc on the CMDs/TRGB catalog (from GO-10905, PI: R. Tully). The PHANGS-HST data samples a region of the galaxy where there are two distinct RGBs. This includes a low-metallicity population within the halo of the galaxy, as well as a high-metallicity population from the outer disk. There is evidence of a Type-III anti-truncation component (Kang et al. 2020), and this new parallel field will allow

us to trace this component at further galactocentric radii (to be presented in a later work).

For our TRGB analysis, we select the lower metallicity red giant population by limiting the analysis to the far half of the field. We find  $m_{\text{TRGB}} = 24.22 \pm 0.01$  mag. From this, we determine  $D = 4.41 \pm 0.19$  Mpc, which is nearly identical to the existing determination on the CMDs/TRGB catalog. We note that our measurement of the TRGB is consistent within the small uncertainties with the recent determination of Kang et al. (2020), who measure  $m_{\text{TRGB}} = 24.21 \pm 0.03$  mag from archival *HST* data. We adopt the new PHANGS-HST TRGB determination for the distance to this galaxy.

- NGC 5068 is an isolated flocculent spiral, and the second-nearest PHANGS-HST target, with the existing CMDs/TRGB catalog measurement situating it at  $D = 5.16 \pm 0.19$  Mpc. The PHANGS-HST field is nicely placed in the outer halo, from which we measure  $m_{\text{TRGB}} = 24.57 \pm 0.03$  mag. This equates to a distance of  $D = 5.20 \pm 0.21$  Mpc. We choose to adopt the new PHANGS-HST measurement for the distance to NGC 5068, although the two measurements are within less than 1% of each other.

- NGC 6744 is a Milky-Way like spiral and the brightest member of its group. The CMDs/TRGB catalog measurement from data taken by SNAP-12546 (PI: R. Tully) shows  $D = 9.50 \pm 0.63$  Mpc. The PHANGS-HST parallel is deeper, and when limited to regions with fewer Pop I stars, provides a higher confidence measurement of  $m_{\text{TRGB}} = 25.91 \pm 0.05$  mag, resulting in a distance of  $D = 9.39$



**Figure 4.** Same as Figure 3, but for the five galaxies for which our TRGB measurements are the first.

$\pm 0.43$  Mpc. We adopt the new PHANGS distance measurement for NGC 6744.

### 3.3.2 Galaxies with First-Ever TRGB Measurements

We now turn to galaxies which do not have prior TRGB measurements. Based on distance measures from other methods, these targets are on average further than those described in the previous subsection.

- IC 5332 is a face-on spiral galaxy in the Sculptor constellation, but lying beyond the Sculptor group of galaxies. There was previously no reliable distance to this galaxy, with estimates relying on a tenuous group linkage with NGC 7713, or based on its recessional velocity. Our PHANGS-HST parallel is well-placed, with only a small portion of the field experiencing contamination from a young star cluster (which we remove). Based on this data, we measure  $m_{\text{TRGB}} = 25.70 \pm 0.05$  mag, which gives us  $D = 9.01 \pm 0.38$  Mpc.

- NGC 2835 is the brightest member of a small galaxy group in the southern hemisphere. Most previous distances were based on the Tully-Fisher (TF) relation (Tully & Fisher 1977), though with a nearly factor of 3 spread in the reported values. The numerical action method (NAM, Shaya et al. 2017) distance (see Section 4 for more details) to this target is  $12.38 \pm 1.86$  Mpc, which in the absence of a TRGB measurement represented the best distance estimate to this target. The PHANGS-HST parallel imaging for NGC 2835 lies far enough out into the halo of the galaxy that we do not need to trim the field for analysis due to the lack of a substantial population

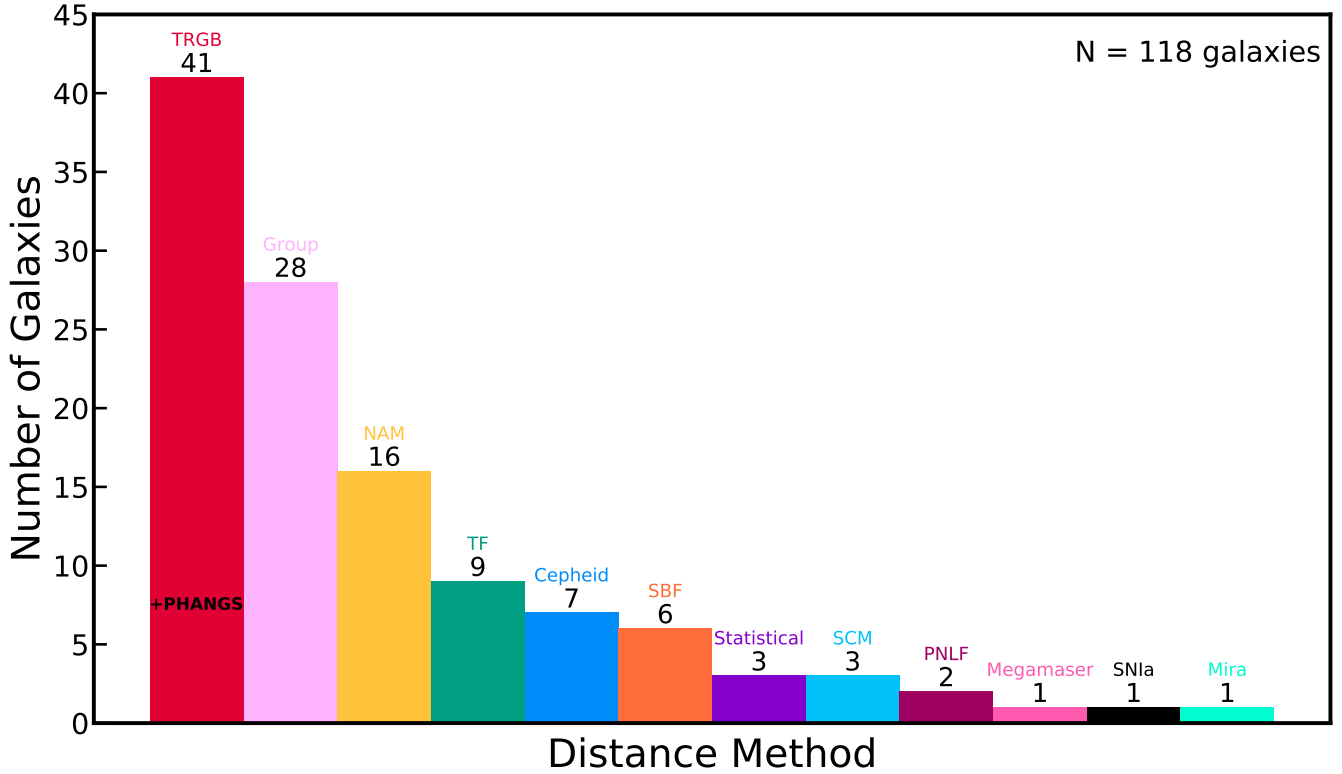
of young stars. From the entire field, we determine  $m_{\text{TRGB}} = 26.47 \pm 0.14$  mag, which results in our adopted distance of  $D = 12.22 \pm 0.94$  Mpc.

- NGC 4298 is a spiral galaxy that is a member of the Virgo Cluster. Previous best distance estimates relied on the TF relation, and measurements from Cosmicflows-3 found  $D = 13.0 \pm 3.0$  Mpc. The PHANGS-HST parallel field lies in the combined halo of NGC 4298 and NGC 4302, a neighbouring edge-on spiral galaxy. The 21-cm HI maps for two galaxies show strong evidence for a bridge connecting the two galaxies (Zschaechner et al. 2015), though optical signatures of interaction are not obvious. We link the two galaxies together, and assume that they lie at the same distance. We use the stars in this parallel field to measure  $m_{\text{TRGB}} = 26.89 \pm 0.18$  mag, providing us with a new distance of  $D = 14.92 \pm 1.37$  Mpc.

- NGC 4321 (M100) is a large spiral galaxy located within the Virgo Cluster. Its location within Virgo, as well as the fact that it has been host to seven observed supernovae (including SN2006X, a type Ia) makes it an extremely important target for which to have an accurate distance. PHANGS-HST has two parallel fields for this target, one of which lies right on top of the nearby dwarf galaxy NGC 4328, which we discuss separately. The other parallel is relatively well-placed, and we use the outer portion of this field to determine  $m_{\text{TRGB}} = 26.97 \pm 0.23$  mag. From this, we derive  $D = 15.44 \pm 1.62$  Mpc. Given the relatively large uncertainty in our distance, we adopt the Cepheid distance of  $D = 15.21 \pm 0.49$  Mpc (Freedman et al. 2001) to this galaxy, though we note that our own determination is very close to this value.

- NGC 4328 is a dwarf galaxy that lies  $\sim 6'$  away from NGC 4321.





**Figure 5.** Histogram of adopted distances to PHANGS galaxies. New contributions from this paper are shown as the overlapping region on the TRGB bar.

Unlike NGC 4321’s other satellite (NGC 4323), it is not clearly connected to NGC 4321, and thus could be physically unrelated. One of the two parallel fields for NGC 4321 fully covers this dwarf galaxy, and we are able to use the entire field (which lacks young stars) to measure  $m_{\text{TRGB}} = 26.86 \pm 0.22$  mag. From this we find  $D = 14.84 \pm 1.61$  Mpc. With this distance, we confirm that NGC 4328 is likely a satellite of NGC 4321. Note that NGC 4328 is not a member of the PHANGS sample, and is included here only because one of the two parallels for NGC 4321 falls directly onto this satellite.

### 3.3.3 Galaxies with Marginal/Null Results

For the remainder of the PHANGS-HST sample, we are unable to determine a robust TRGB distance from the parallel data. The lack of results stems from the underlying data being too sparse (i.e., at too large a galactocentric radius), too shallow for the likely distance to the galaxy, or a combination of both. Here we briefly describe the marginal or null results from our data.

- NGC 1317<sup>4</sup>, NGC 1365, and NGC 4536 all have precise measurements of the TRGB (Jacobs et al. 2009) obtained with much deeper *HST* data (GO-13691, PI: W. Freedman) than available from PHANGS-HST. Similarly, NGC 1559, NGC 4535, NGC 4548, and NGC 4654<sup>5</sup> have precise distance measurements from Cepheid (Freedman et al. 2001) or Mira (Huang et al. 2020) variables. These galaxies are all found to lie beyond  $\sim 16$  Mpc, which is beyond what is obtainable with the dataset presented in this paper.

- The remainder of the PHANGS-HST targets have too few resolved stars in their targeted fields, and/or do not reach a sufficient depth below the TRGB, and are thus not suitable for our purposes. These targets are NGC 1087, NGC 1097, NGC 1300, NGC 1385, NGC 1672, NGC 1792, NGC 2775, NGC 4254, NGC 4303, NGC 4569, NGC 4571, NGC 4689, and NGC 5248. Some of these galaxies (e.g., NGC 1087) have angular sizes small enough that their parallel fields simply lie too far out into the halo to be useful. For other targets (e.g., NGC 1300), the parallels fall at an appropriate galactocentric radius, but the galaxies are likely just too distant to detect enough RGB stars with the data.

## 4 LITERATURE DISTANCES

### 4.1 Distance Selections

The PHANGS-HST galaxies make up a small but important subset (39/118) of the full PHANGS sample. To obtain distances to the larger sample, as well as the remainder of the PHANGS-HST galaxies, we carefully combed through the available literature, a task aided by galaxy databases such as EDD and the NASA/IPAC Extragalactic Database (NED)<sup>6</sup>. A summary figure with a histogram of our selected distances is presented in Figure 5.<sup>7</sup>

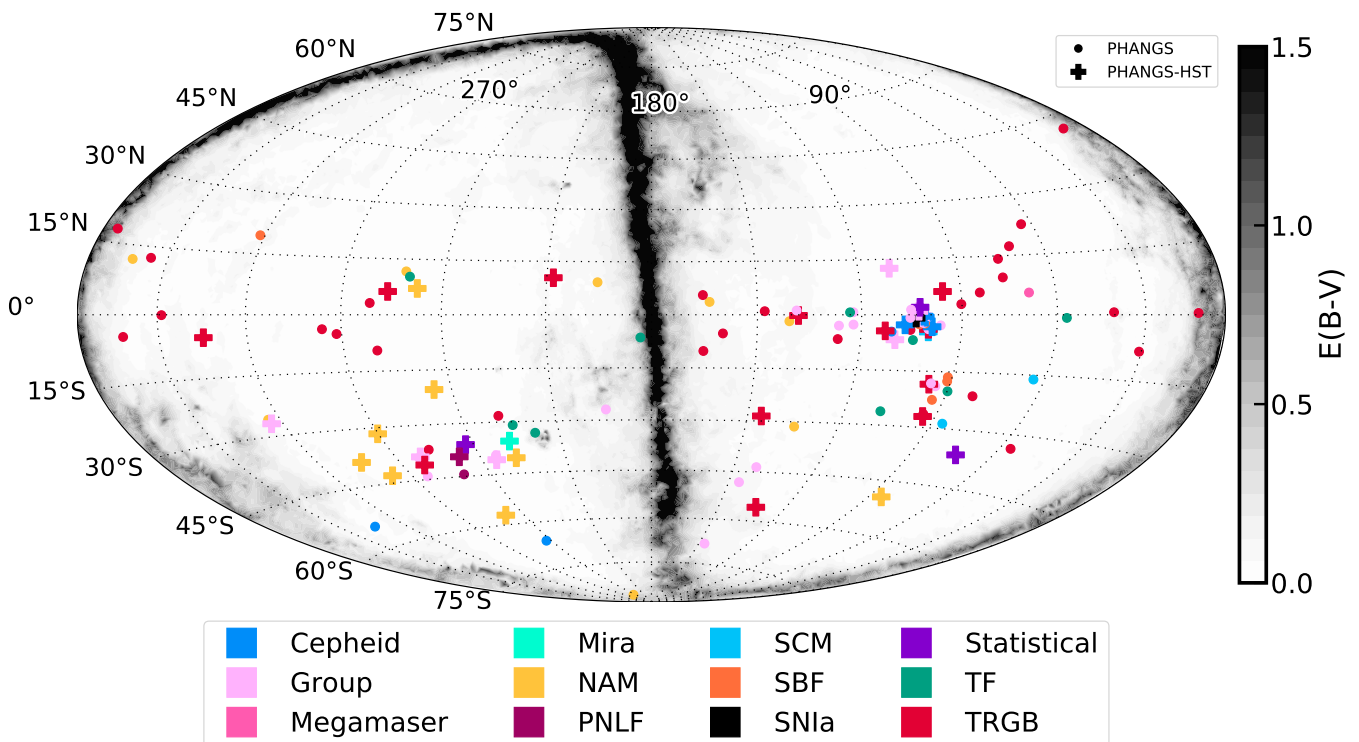
Due to the varying quality of individual measurements, we

<sup>4</sup> Tied to measurements of its larger, interacting neighbour, NGC 1316.

<sup>5</sup> Tied to measurements of its likely interacting neighbour, NGC 4639.

<sup>6</sup> <http://ned.ipac.caltech.edu/>

<sup>7</sup> 12-color colorblind friendly palette modified from “Designing for Color Blindness”.



**Figure 6.** A plot of the on-sky distribution of PHANGS galaxies, colour-coded by their adopted distance methods. We use the supergalactic coordinate system (de Vaucouleurs et al. 1991). All of the 118 PHANGS targets of interest are shown, with those part of PHANGS-HST highlighted with a “+” symbol. The foreground extinction is plotted to highlight the location of the Galactic plane, and is capped at a value of  $E(B-V) = 1.5$  for clarity.

choose to not implement a strict hierarchy for the selection of distances. For instance, we rejected a couple of our TRGB measurements (NGC 1097 and NGC 1792) due to the possibility that they were actually measuring the onset of the AGB instead (see Anand et al. (2019a) for more details). In other cases, TF distances to galaxies with low inclinations (i.e., close to face-on) are often subject to large errors. Nearly every method of determining distances is subject to similar pitfalls, which necessitates a careful selection of the adopted distances.

We prioritise measurements from different distance techniques based on relative accuracy as has been demonstrated throughout the literature. Our first preference is for distances obtained from either the TRGB or Cepheid variables (Leavitt & Pickering 1912). Both of these techniques have been used extensively to find distances to nearby galaxies (Freedman et al. 2001; McConnachie et al. 2005; Jacobs et al. 2009; Riess et al. 2016; Freedman et al. 2019), and their overall accuracies (including systematic uncertainties) are  $\sim 4\text{--}10\%$  (based on quality of data, etc.). All of the archival TRGB measurements and errors are taken from the CMDs/TRGB Catalog of EDD (Jacobs et al. 2009), with the errors standardised to include a 0.07 mag systematic error term added in quadrature to the measured statistical error (Rizzi et al. 2007; McQuinn et al. 2017). In this work, we have employed the same methodology as the TRGB measurements from the CMDs/TRGB catalog on EDD, hence minimizing internal systematic differences between the archival ( $N=33$ ) and new PHANGS-HST ( $N=8$ ) TRGB measurements. All but one (Pierce et al. 1994) of the Cepheid variable measurements ( $N=7$ ) are obtained from work done by the *HST* Key Project (Freedman et al. 2001)—we choose to adopt their metallicity-corrected values and reported errors.

In the absence of highly accurate distances from either

Cepheids or the TRGB, we turn to our next set of distance indicators. These include the standardizable candle method (SCM) for Type II supernovae (Nugent et al. 2006; Polshaw et al. 2015), surface brightness fluctuations (SBF, Tonry & Schneider 1988), the planetary nebula luminosity function (PNLF, Ciardullo et al. 1989; Feldmeier et al. 1997), and the TF relation. As with the Cepheid and TRGB measurements, we aim to draw distances from larger, homogenised samples to minimise competing systematic errors. There are only 3 adopted distance measurements from the SCM, each from different sources. For these, we adopt the reported errors for each measurement. The PNLF distances ( $N=2$ ) are obtained from MUSE observations of PHANGS galaxies (F. Scheuermann et al., in preparation), and we adopt a preliminary error on each measurement of 10%. All but one (Karachentsev et al. 2004) of the TF distances ( $N=9$ ) are obtained from measurements from the Cosmicflows-3 programme (Tully et al. 2016), and the SBF distances ( $N=6$ ) are from a single large SBF programme (Tonry et al. 2001), obtained through the Cosmicflows-3 catalog on EDD. For the TF and SBF distances, we adopt the error values as reported in Cosmicflows-3.

Finally, for galaxies without distance measurements from any of the above methods, we turn to distances from galaxy groups and numerical modeling of their orbits. For determining distances via galaxy groups ( $N=28$ ), we use two different methods. The majority of group distances are obtained from the Kourkchi-Tully group catalog (Kourkchi & Tully 2017), which provides a robust catalog of galaxy groups within  $\sim 3,500 \text{ km s}^{-1}$ , or  $D = 45 \text{ Mpc}$ . The catalog includes distances to groups, as well as errors on the *group* distance measurement. To estimate our uncertainties for these group distances to *individual* galaxies, we take the error in the group distance and multiply by the square root of the number of galaxies in the group with measured distances. This allows us to account for

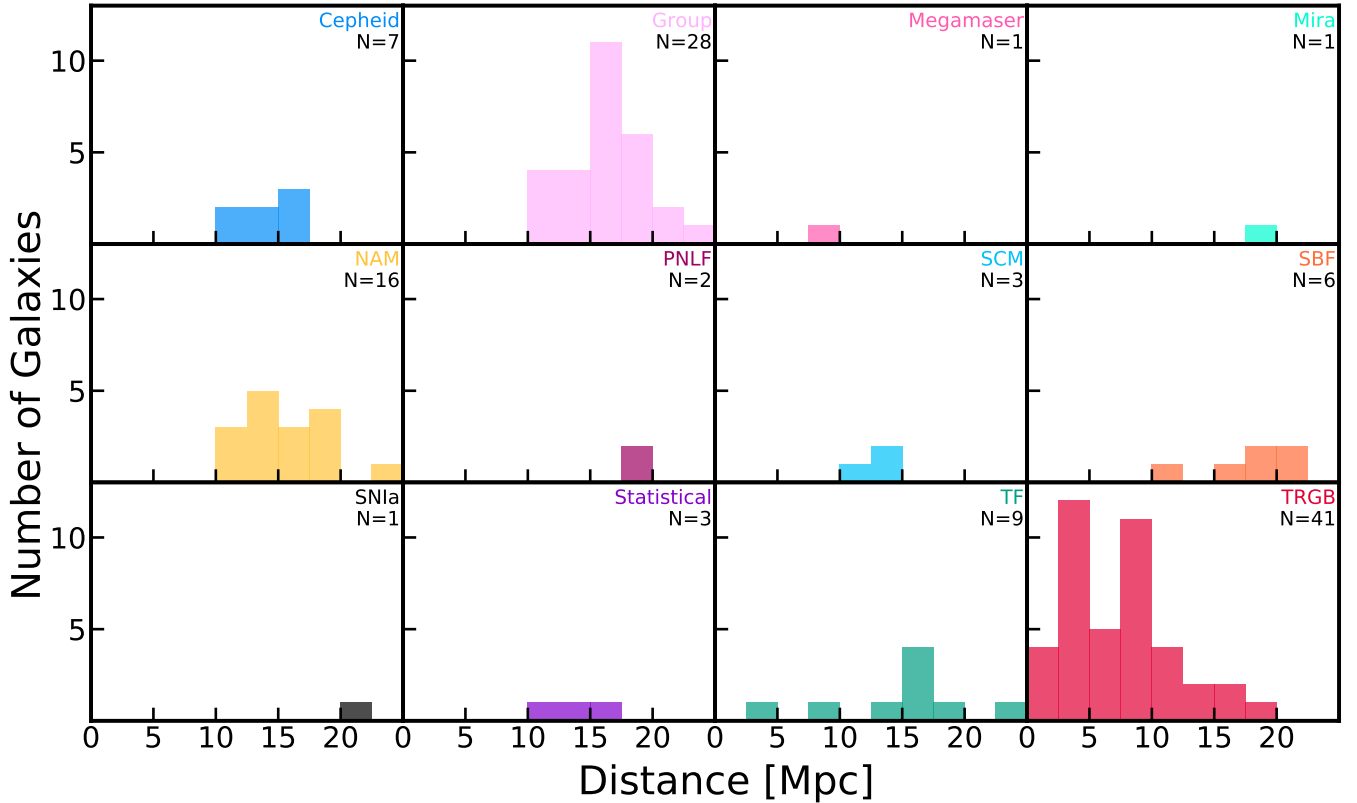


Figure 7. Histograms of each individual distance technique used in our compilation, highlighting the range of distances used for each method.

the varying physical sizes of different galaxy groups, since galaxies residing in physically larger groups will have larger uncertainties associated with their individual distances. In a few other cases, we tie PHANGS galaxy distances to individual galaxies with high-quality distances (e.g., from TRGB measurements). For instance, our adopted distance to NGC 1317 is a TRGB distance from a very deep *HST* pointing (Hatt et al. 2018) of the halo of its likely interacting companion, NGC 1316. In these instances, we simply adopt the reported error on the original distance.

The last major distance indicator we use involves the usage of a numerical action methods (NAM) model (Shaya et al. 2017). NAM is a non-linear model that attempts to reconstruct the 3-D orbits of galaxies from  $z = 4$  to the present day. The present iteration of NAM provides such information for nearly 1400 halos within 38 Mpc (which are embedded within a tidal field extending out to 100 Mpc). Kourkchi et al. (2020a) provides a smoothed velocity field derived from NAM, as well as an online distance-velocity calculator<sup>8</sup> to obtain either a distance or velocity given one of the two quantities, as well as a position on the sky. As much as possible, we avoid using NAM in heavily crowded galaxy environments due to the chaotic nature of the underlying velocity field and its poor correlation with distance. The most extreme example of this is in the Virgo Cluster, as galaxies in such a rich environment are heavily decoupled from the Hubble flow. For the galaxies with reported NAM distances ( $N=16$ ), we report an uncertainty of 15% on the distance. For three galaxies where the TF measurements are less precise but similar to NAM, we choose to adopt a weighted average (referred to as “statistical”).

<sup>8</sup> <http://edd.ifa.hawaii.edu/NAMcalculator/>

It is possible to directly compare galaxies with existing distance measurements from other methods, and the predicted value given by NAM. Figure 5 in Shaya et al. (2017) shows a comparison of NAM distances and Hubble flow distances for 286 halos with high-quality distance measurements—NAM provides better distance estimates in most cases. However, given that these 286 distances served as inputs for NAM, an independent test of the reliability of NAM can only be performed in cases for which the distance to a galaxy was *not* used as an input. Our new PHANGS-*HST* TRGB measurements provide two key new distances which can be used for this purpose. For instance, NAM predicts a distance to IC 5332 of 8.18 Mpc, with a nominal error of 15% ( $\pm 1.23$  Mpc). In this paper, we find the first accurate distance to this galaxy with a TRGB measurement of  $9.01 \pm 0.41$  Mpc, or only  $\sim 9\%$  higher than the value predicted by NAM. In the case of NGC 2835, NAM predicts a value of 12.38 Mpc, whereas our measured TRGB distance is  $12.22 \pm 0.94$  Mpc, a difference of only  $\sim 1\%$ . These two cases, whilst limited, illustrate the predictive power of NAM to determine distances in cases where there are no other suitable measurements.

In addition to the above methods, we note the selection of three additional distance measurement techniques, each of which was adopted for a single target.

- NGC 1559 has a recently published distance obtained from a newly derived period-luminosity relation for Mira variables (Huang et al. 2020). We adopt their distance of  $D = 19.44 \pm 0.44$  Mpc.
- NGC 4258 is host to a water megamaser which allows the determination of a geometrical distance to the galaxy. We adopt the recent, highly-precise distance of  $D = 7.58 \pm 0.11$  Mpc (Reid et al. 2019).
- NGC 4579 is host to a type Ia supernova (SN 1989M), but has

no corresponding Cepheid or TRGB distance. The lack of Cepheid distance is likely due to the fact that this is an older supernova with a somewhat poorly sampled light curve. Here we adopt a distance of  $D = 21 \pm 2$  Mpc derived from observations of the SN 1989M (Ruiz-Lapuente 1996).

## 4.2 Compilation

Our list of selected distances can be seen in Table A2. Along with the PHANGS designation for the galaxy, we also provide the PGC number for each target (Makarov et al. 2014), which allows for easier tracking between galaxy databases such as EDD and HyperLeda<sup>9</sup>. For each galaxy, we specify whether it is one of the PHANGS-HST galaxies. Along with the adopted distance, we specify the distance error, distance method, and all references (original determination and any subsequent catalogs) from which the distance was obtained. For cases where the error is Gaussian on the distance modulus ( $\mu$ ), we simply provide the larger error value as the reported error bar.

We show in Figure 6 (inspired by figure 12 from Kourkchi & Tully 2017) the distribution of the entire PHANGS sample on the sky in supergalactic coordinates. Foreground extinction from Schlafly & Finkbeiner (2011) is plotted in grey-scale, highlighting the location of the Galactic plane in these coordinates. Three different subsets of galaxies (archival ALMA, PHANGS-ALMA, or PHANGS-ALMA+HST) are denoted with different symbols, and galaxies are colour-coded by the final method used for selected distance. It can be seen from this plot that galaxies within this distance range are not uniformly distributed throughout the sky. The dearth of galaxies towards the north supergalactic pole corresponds to the location of the Local Void (Anand et al. 2018a; Tully et al. 2019). Two main clusters of galaxies are also seen. One is loosely centered near  $(250^\circ, -40^\circ)$ , and the other near  $(100^\circ, -5^\circ)$ . These correspond to the Fornax and Virgo clusters, respectively.

We show in Figure 5 a histogram of the adopted distances to galaxies in the PHANGS sample, and in Figure 7 histograms for each individual distance method to highlight their distance distributions. A few general observations can be drawn from these figures and our sample:

- The distance to nearly every PHANGS galaxy within 10 Mpc has been measured with the TRGB, highlighting our increasingly complete understanding of galaxy distances within the Local Volume. At present, most galaxies thought to lie within 10 Mpc without TRGB distances are small dwarfs, observations for many of which are currently being obtained and analyzed (Karachentsev et al. 2020) through a *HST* Cycle 27 Snapshot programme (SNAP-15922, PI: R. Tully). One key exception here is the Circinus Galaxy (ESO 097-G13), which is likely very nearby ( $\sim 4$  Mpc) and potentially crucial to the evolution of the Local Group (McCall 2014; Neuzil et al. 2020). Unfortunately, the galaxy is heavily obscured (the circle closest to the galactic plane in Figure 6) and would benefit from near-infrared observations with WFC3/IR to secure a robust TRGB distance.

- Distances obtained from observations of Cepheid variables as part of the Hubble Key Project (Freedman et al. 2001) are still the best distances for many galaxies at intermediate ( $\sim 10$ – $16$  Mpc) distances, highlighting the long-lasting impact of this work.

- With the increasing completeness of standard candle-based distances (e.g., Cepheid, TRGB) in the nearby universe, the reliance

on less accurate techniques (e.g., SBF, TF) has decreased. Instead, these techniques are becoming increasingly popular (Cantiello et al. 2018; Kourkchi et al. 2020b) at much larger distances (out to  $\sim 200$  Mpc) and with much greater efficiency (many thousands of galaxies). This level of performance is simply not feasible for Cepheids/TRGB, which require much deeper, targeted observations with *HST* (or future facilities).

- Distance estimates from NAM are valuable for many galaxies beyond 10 Mpc, especially since some of these targets lack *any* velocity-independent distance. In instances for which there are only measurements from less precise methods (e.g., TF), NAM results provide an important reference point for cross-check.

## 5 SUMMARY

We have successfully measured TRGB distances to 11 galaxies from the PHANGS-HST survey, from  $\sim 4$  to  $\sim 15$  Mpc, using imaging observations taken in parallel mode with ACS in the V and I bands (F606W, F814W). Five of these represent the first published TRGB distance measurements (Figure 4), and eight are the best available distances to the targets (Table A2).

Our analyses are based on the first year of observations through 2020 July, and include 37 ACS pointings in 30 galaxies. Lack of TRGB measurement is due to the sparseness of the imaging (i.e., pointing at too large a galactocentric radius), insufficient depth of the 2-3 orbit observations given the likely distance to the galaxy, or a combination of both. Results based on the remaining seven parallel fields (in six galaxies) will be presented in a short follow-up paper after the completion of the programme, which is anticipated in mid-2021. These parallel observations represent a valuable augmentation of the main PHANGS-HST science programme with no negative impact on the primary goals of the survey, and have provided a set of accurate distances without requiring a separate allocation of time on *HST*. We recommend that future *HST* programmes observing the disks of nearby galaxies to comparable or greater depths implement parallel halo observations for similar use.

In addition to the newly determined TRGB distances, we provide a compilation of the best available distances for the full sample of 118 PHANGS galaxies (Table A2). These are the distances adopted by the first public PHANGS-ALMA data release (version 1.6). Updates will be made as improved distances become available, and will coincide with future public ALMA data releases (A. K. Leroy et al., in preparation).

We note that only about half of the PHANGS galaxies currently have distance measurements from highly reliable methods (e.g., Cepheids, TRGB), and that the majority of the remaining targets likely lie beyond 15 Mpc (Figure 7). To obtain reliable distances to that large of a sample of galaxies with current facilities would require significant *HST* time. For instance, accurate ( $\sim 5\%$ ) TRGB observations for galaxies at  $\sim 20$  Mpc require substantial time investments with *HST*, such as the case for the type Ia supernova host NGC 1316 (16 orbits, Hatt et al. 2018). It is unlikely that such expensive *HST* observations for the sole purpose of distance determination would be approved for *every* PHANGS galaxy expected to lie at the far edge of our sample.

Instead, future facilities such as the *James Webb Space Telescope* (*JWST*) will allow for much more efficient observations of the TRGB, due to a combination of its larger aperture and the brighter absolute magnitude of the TRGB in the near-infrared (Wu et al. 2014; Beaton et al. 2018; McQuinn et al. 2019; Durbin et al. 2020). Similar strategies to the PHANGS-HST survey which employ ob-

<sup>9</sup> <http://leda.univ-lyon1.fr/>

servations of the disk in primary instrument and the halo in parallel can be applied to *JWST*. Ideally, the role of WFC3 is replaced with the Mid-Infrared Instrument (MIRI) to obtain longer wavelength observations of the star-forming disk, and the job of observing halo stars would be accomplished with the Near Infrared Camera (NIR-Cam), instead of ACS.

## ACKNOWLEDGEMENTS

This work was carried out as part of the PHANGS collaboration. Based on observations made with the NASA/ESA Hubble Space Telescope, obtained from the data archive at the Space Telescope Science Institute. STScI is operated by the Association of Universities for Research in Astronomy, Inc. under NASA contract NAS 5-26555. Support for Programme number 15654 was provided through a grant from the STScI under NASA contract NAS5-26555. We thank the anonymous referee for their useful comments which helped improve this manuscript.

G.A. acknowledges support from the IPAC Visiting Graduate Fellowship programme and from an award from the Space Telescope Science Institute in support of programme SNAP-15922. The work of AKL is partially supported by the National Science Foundation under Grants No. 1615105, 1615109, and 1653300. ES acknowledges funding from the European Research Council (ERC) under the European Union's Horizon 2020 research and innovation programme (grant agreement No. 694343). K.K. and F.S. gratefully acknowledge funding from the German Research Foundation (DFG) in the form of an Emmy Noether Research Group (grant number KR4598/2-1, PI Kreckel). ER acknowledges the support of the Natural Sciences and Engineering Research Council of Canada (NSERC), funding reference number RGPIN-2017-03987. FS gratefully acknowledges funding from the German Research Foundation (DFG) Emmy Noether Research Group (grant number KR4598/2-1, PI Kreckel). FB acknowledges funding from the European Union's Horizon 2020 research and innovation programme (grant agreement No 726384/EMPIRE). MB acknowledges FONDECYT regular grant 1170618. RSK and SCOG acknowledge financial support from the German Research Foundation (DFG) via the Collaborative Research Center (SFB 881, Project-ID 138713538) 'The Milky Way System' (subprojects A1, B1, B2, and B8). He also thanks for funding from the Heidelberg Cluster of Excellence STRUCTURES in the framework of Germany's Excellence Strategy (grant EXC-2181/1 - 390900948) and for funding from the European Research Council via the ERC Synergy Grant ECOGAL (grant 855130). JMDK gratefully acknowledges funding from the Deutsche Forschungsgemeinschaft (DFG, German Research Foundation) through an Emmy Noether Research Group (grant number KR4801/1-1) and the DFG Sachbeihilfe (grant number KR4801/2-1), as well as from the European Research Council (ERC) under the European Union's Horizon 2020 research and innovation programme via the ERC Starting Grant MUSTANG (grant agreement number 714907). PSB acknowledges financial support from grant PID2019-107427GB-C31 from the Spanish Ministry of Economy and Competitiveness (MINECO). MQ acknowledges support from the research project PID2019-106027GA-C44 from the Spanish Ministerio de Ciencia e Innovación. TGW acknowledges funding from the European Research Council (ERC) under the European Union's Horizon 2020 research and innovation programme (grant agreement No. 694343).

This research has made use of the NASA/IPAC Extragalactic Database (NED) which is operated by the Jet Propulsion Laboratory,

California Institute of Technology, under contract with the National Aeronautics and Space Administration. This research has made use of the NASA/IPAC Infrared Science Archive, which is funded by the National Aeronautics and Space Administration and operated by the California Institute of Technology.

## DATA AVAILABILITY

The data underlying this article are available at the Mikulski Archive for Space Telescopes at [https://archive.stsci.edu/hst/search\\_retrieve.html](https://archive.stsci.edu/hst/search_retrieve.html) under proposal GO-15654. The photometry and list of derived parameters for the TRGB analysis are available under the CMDs/TRGB catalog of the Extragalactic Distance Database at [edd.ifa.hawaii.edu](http://edd.ifa.hawaii.edu).

## REFERENCES

- Anand G. S., Rizzi L., Tully R. B., 2018a, *AJ*, **156**, 105  
 Anand G. S., Tully R. B., Karachentsev I. D., Makarov D. I., Makarova L., Rizzi L., Shaya E. J., 2018b, *ApJ*, **861**, L6  
 Anand G. S., Tully R. B., Rizzi L., Karachentsev I. D., 2019a, *ApJ*, **872**, L4  
 Anand G. S., Tully R. B., Rizzi L., Shaya E. J., Karachentsev I. D., 2019b, *ApJ*, **880**, 52  
 Barbarino C., et al., 2015, *MNRAS*, **448**, 2312  
 Beaton R. L., et al., 2018, *Space Sci. Rev.*, **214**, 113  
 Beaton R. L., et al., 2019, *ApJ*, **885**, 141  
 Cantiello M., et al., 2018, *ApJ*, **854**, L31  
 Carretta E., Gratton R. G., Clementini G., Fusi Pecci F., 2000, *ApJ*, **533**, 215  
 Chevance M., et al., 2020, *MNRAS*, **493**, 2872  
 Ciardullo R., Jacoby G. H., Ford H. C., Neill J. D., 1989, *ApJ*, **339**, 53  
 Crnojević D., et al., 2014, *ApJ*, **795**, L35  
 Danieli S., van Dokkum P., Abraham R., Conroy C., Dolphin A. E., Romanowsky A. J., 2020, *ApJ*, **895**, L4  
 Dolphin A. E., 2000, *PASP*, **112**, 1383  
 Dolphin A., 2016, DOLPHOT: Stellar photometry (ascl:1608.013)  
 Durbin M. J., Beaton R. L., Dalcanton J. J., Williams B. F., Boyer M. L., 2020, *ApJ*, **898**, 57  
 Feldmeier J. J., Ciardullo R., Jacoby G. H., 1997, *ApJ*, **479**, 231  
 Freedman W. L., et al., 2001, *ApJ*, **553**, 47  
 Freedman W. L., et al., 2019, *ApJ*, **882**, 34  
 Hatt D., et al., 2018, *ApJ*, **866**, 145  
 Hoyt T. J., et al., 2019, *ApJ*, **882**, 150  
 Huang C. D., et al., 2020, *ApJ*, **889**, 5  
 Jacobs B. A., Rizzi L., Tully R. B., Shaya E. J., Makarov D. I., Makarova L., 2009, *AJ*, **138**, 332  
 Jang I. S., Lee M. G., 2017, *ApJ*, **835**, 28  
 Jang I. S., et al., 2020, arXiv e-prints, p. [arXiv:2008.04181](https://arxiv.org/abs/2008.04181)  
 Kang J., Kim Y. J., Lee M. G., Jang I. S., 2020, *ApJ*, **897**, 106  
 Karachentsev I. D., Karachentseva V. E., Huchtmeier W. K., Makarov D. I., 2004, *AJ*, **127**, 2031  
 Karachentsev I. D., Tully R. B., Makarova L. N., Makarov D. I., Rizzi L., 2015, *ApJ*, **805**, 144  
 Karachentsev I. D., Makarova L. N., Tully R. B., Rizzi L., Shaya E. J., 2018, *ApJ*, **858**, 62  
 Karachentsev I. D., Makarova L. N., Brent Tully R., Anand G. S., Rizzi L., Shaya E. J., Afanasiev V. L., 2020, *A&A*, **638**, A111  
 Kourkchi E., Tully R. B., 2017, *ApJ*, **843**, 16  
 Kourkchi E., Courtois H. M., Graziani R., Hoffman Y., Pomarède D., Shaya E. J., Tully R. B., 2020a, *AJ*, **159**, 67  
 Kourkchi E., Tully R. B., Anand G. S., Courtois H. M., Dupuy A., Neill J. D., Rizzi L., Seibert M., 2020b, *ApJ*, **896**, 3  
 Kreckel K., et al., 2019, *ApJ*, **887**, 80

- Krist J., 1993, in Hanisch R. J., Brissenden R. J. V., Barnes J., eds, *Astronomical Society of the Pacific Conference Series Vol. 52, Astronomical Data Analysis Software and Systems II*. p. 536
- Leavitt H. S., Pickering E. C., 1912, *Harvard College Observatory Circular*, [173, 1](#)
- Lee M. G., Freedman W. L., Madore B. F., 1993, [ApJ, 417, 553](#)
- Leonard D. C., Kanbur S. M., Ngeow C. C., Tanvir N. R., 2003, [ApJ, 594, 247](#)
- Madore B. F., Freedman W. L., 1995, [AJ, 109, 1645](#)
- Madore B. F., Freedman W. L., 2020, [AJ, 160, 170](#)
- Makarov D., Makarova L., Rizzi L., Tully R. B., Dolphin A. E., Sakai S., Shaya E. J., 2006, [AJ, 132, 2729](#)
- Makarov D., Prugniel P., Terekhova N., Courtois H., Vauglin I., 2014, [A&A, 570, A13](#)
- McCall M. L., 2014, [MNRAS, 440, 405](#)
- McConnachie A. W., Irwin M. J., Ferguson A. M. N., Ibata R. A., Lewis G. F., Tanvir N., 2005, [MNRAS, 356, 979](#)
- McQuinn K. B. W., Skillman E. D., Dolphin A. E., Berg D., Kennicutt R., 2016, [ApJ, 826, 21](#)
- McQuinn K. B. W., Skillman E. D., Dolphin A. E., Berg D., Kennicutt R., 2017, [AJ, 154, 51](#)
- McQuinn K. B. W., Boyer M., Skillman E. D., Dolphin A. E., 2019, [ApJ, 880, 63](#)
- Ménard B., Scranton R., Fukugita M., Richards G., 2010, [MNRAS, 405, 1025](#)
- Méndez B., Davis M., Moustakas J., Newman J., Madore B. F., Freedman W. L., 2002, [AJ, 124, 213](#)
- Müller O., Rejkuba M., Jerjen H., 2018, [A&A, 615, A96](#)
- Neuzil M. K., Mansfield P., Kravtsov A. V., 2020, [MNRAS, 494, 2600](#)
- Nugent P., et al., 2006, [ApJ, 645, 841](#)
- Olivares E. F., et al., 2010, [ApJ, 715, 833](#)
- Pierce M. J., Welch D. L., McClure R. D., van den Bergh S., Racine R., Stetson P. B., 1994, [Nature, 371, 385](#)
- Polshaw J., et al., 2015, [A&A, 580, L15](#)
- Reid M. J., Pesce D. W., Riess A. G., 2019, [ApJ, 886, L27](#)
- Riess A. G., et al., 2016, [ApJ, 826, 56](#)
- Rizzi L., Tully R. B., Makarov D., Makarova L., Dolphin A. E., Sakai S., Shaya E. J., 2007, [ApJ, 661, 815](#)
- Rizzi L., Tully R. B., Shaya E. J., Kourkchi E., Karachentsev I. D., 2017, [ApJ, 835, 78](#)
- Ruiz-Lapuente P., 1996, [ApJ, 465, L83](#)
- Sakai S., Zaritsky D., Kennicutt Robert C. J., 2000, [AJ, 119, 1197](#)
- Schinnerer E., et al., 2019, [ApJ, 887, 49](#)
- Schlafly E. F., Finkbeiner D. P., 2011, [ApJ, 737, 103](#)
- Shaya E. J., Tully R. B., Hoffman Y., Pomarède D., 2017, [ApJ, 850, 207](#)
- Sun J., et al., 2018, [ApJ, 860, 172](#)
- Tollerud E. J., Geha M. C., Greivich J., Putman M. E., Weisz D. R., Dolphin A. E., 2016, [ApJ, 827, 89](#)
- Tonry J., Schneider D. P., 1988, [AJ, 96, 807](#)
- Tonry J. L., Dressler A., Blakeslee J. P., Ajhar E. A., Fletcher A. B., Luppino G. A., Metzger M. R., Moore C. B., 2001, [ApJ, 546, 681](#)
- Tully R. B., Fisher J. R., 1977, [A&A, 54, 661](#)
- Tully R. B., Shaya E. J., Karachentsev I. D., Courtois H. M., Kocevski D. D., Rizzi L., Peel A., 2008, [ApJ, 676, 184](#)
- Tully R. B., et al., 2013, [AJ, 146, 86](#)
- Tully R. B., Courtois H., Hoffman Y., Pomarède D., 2014, [Nature, 513, 71](#)
- Tully R. B., Courtois H. M., Sorce J. G., 2016, [AJ, 152, 50](#)
- Tully R. B., Pomarède D., Graziani R., Courtois H. M., Hoffman Y., Shaya E. J., 2019, [ApJ, 880, 24](#)
- Utomo D., et al., 2018, [ApJ, 861, L18](#)
- Van Dyk S. D., et al., 2019, [ApJ, 875, 136](#)
- Williams B. F., et al., 2014, [ApJS, 215, 9](#)
- Wu P.-F., Tully R. B., Rizzi L., Dolphin A. E., Jacobs B. A., Karachentsev I. D., 2014, [AJ, 148, 7](#)
- York D. G., et al., 2000, [AJ, 120, 1579](#)
- Yuan W., Riess A. G., Macri L. M., Casertano S., Scolnic D. M., 2019, [ApJ, 886, 61](#)
- Zschaechner L. K., Rand R. J., Waltherbos R., 2015, [ApJ, 799, 61](#)
- de Vaucouleurs G., de Vaucouleurs A., Corwin Herold G. J., Buta R. J., Paturel G., Fouque P., 1991, *Third Reference Catalogue of Bright Galaxies*

<sup>1</sup>IPAC, California Institute of Technology, Pasadena, CA 91125, USA

<sup>2</sup>Institute for Astronomy, University of Hawaii, 2680 Woodlawn Drive, Honolulu, HI 96822, USA

<sup>3</sup>Department of Astronomy, The Ohio State University, 4055 McPherson Laboratory, 140 West 18th Ave, Columbus, OH 43210, USA

<sup>4</sup>Department of Physics, University of Alberta, 4-183 CCIS, Edmonton, Alberta, T6G 2E1, Canada

<sup>5</sup>Max Planck Institut für Astronomie, Königstuhl 17, Heidelberg D-69117, Germany

<sup>6</sup>Astronomisches Rechen-Institut, Zentrum für Astronomie der Universität Heidelberg, Mönchhofstraße 12-14, 69120 Heidelberg, Germany

<sup>7</sup>W.M. Keck Observatory, 65-1120 Mamalahoa Highway, Kamuela, HI 96743, USA

<sup>8</sup>Department of Physics and Astronomy, The Johns Hopkins University, Baltimore, MD 21218, USA

<sup>9</sup>Argelander-Institut für Astronomie, Universität Bonn, Auf dem Hügel 71, 53121 Bonn, Germany

<sup>10</sup>Observatories of the Carnegie Institution for Science, Pasadena, CA, USA

<sup>11</sup>Departamento de Astronomía, Universidad de Chile, Santiago, Chile

<sup>12</sup>Centro de Astronomía (CITEVA), Universidad de Antofagasta, Avenida Angamos 601, Antofagasta 1270300, Chile

<sup>13</sup>Department of Physics & Astronomy, The University of Toledo, Toledo, OH 43606, USA

<sup>14</sup>Department of Physics and Astronomy, University of Wyoming, Laramie, WY, USA

<sup>15</sup>European Southern Observatory, Karl-Schwarzschild Straße 2, D-85748 Garching bei München, Germany

<sup>16</sup>Univ Lyon, Univ Lyon, ENS de Lyon, CNRS, Centre de Recherche Astrophysique de Lyon UMR5574, F-69230 Saint-Genis-Laval, France

<sup>17</sup>Universität Heidelberg, Zentrum für Astronomie, Institut für Theoretische Astrophysik, Albert-Ueberle-Str. 2, 69120 Heidelberg, Germany

<sup>18</sup>Research School of Astronomy and Astrophysics, Australian National University, Weston Creek, ACT 2611, Australia

<sup>19</sup>International Centre for Radio Astronomy Research, The University of Western Australia, 35 Stirling Hwy, 6009 Crawley, WA, Australia

<sup>20</sup>Universität Heidelberg, Interdisziplinäres Zentrum für Wissenschaftliches Rechnen, Im Neuenheimer Feld 205, 69120 Heidelberg, Germany

<sup>21</sup>Astronomisches Rechen-Institut, Zentrum für Astronomie der Universität Heidelberg, Mönchhofstraße 12-14, 69120 Heidelberg, Germany

<sup>22</sup>Observatorio Astronómico Nacional (IGN), C/Alfonso XII 3, Madrid E-28014, Spain

<sup>23</sup>Facultad de CC Físicas, Universidad Complutense de Madrid, 28040, Madrid, Spain

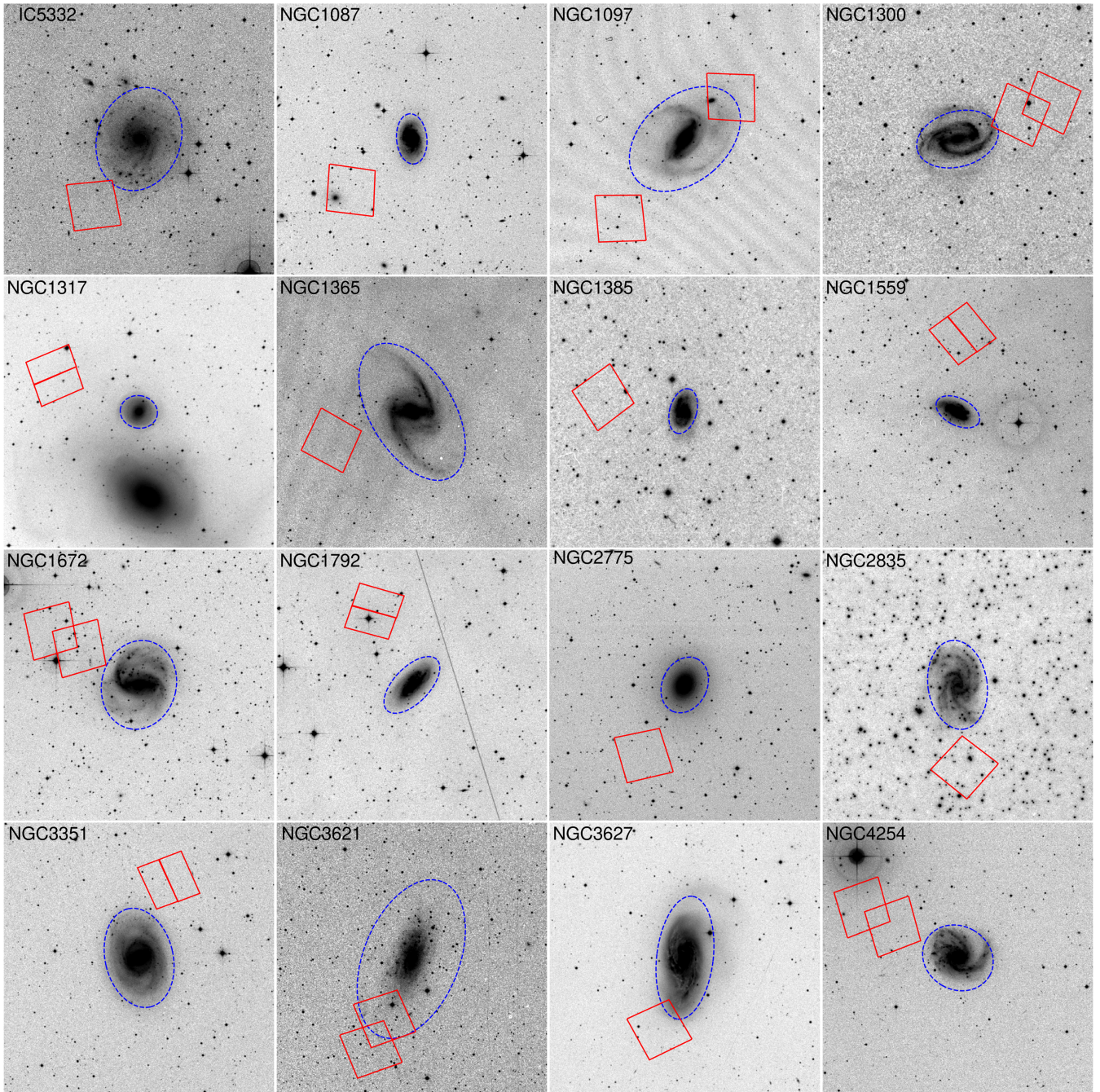
<sup>24</sup>Max-Planck-Institut für Extraterrestrische Physik, Giessenbachstraße 1, D-85748 Garching bei München, Germany

<sup>25</sup>Space Telescope Science Institute, 3700 San Martin Drive, Baltimore, MD 21218, USA

**Table A1.** Exposure times for all parallel fields from PHANGS-HST through 2020 July. Galaxies with two fields are denoted with F1 & F2 in order of increasing right ascension.

Target	F606W [s]	F814W [s]
IC 5332	3554	3215
NGC 1087	3536	3206
NGC 1097 (F1)	2051	2109
NGC 1097 (F2)	2051	2063
NGC 1300 (F1)	2017	2111
NGC 1300 (F2)	2053	2111
NGC 1317	3554	3215
NGC 1365	3556	3213
NGC 1385	3558	3217
NGC 1559	2070	2140
NGC 1672 (F1)	3063	3775
NGC 1672 (F2)	3063	3775
NGC 1792	3554	3215
NGC 2775	3544	3210
NGC 2835	3558	3217
NGC 3351	3554	3215
NGC 3621 (F1)	2051	2109
NGC 3621 (F2)	2051	2109
NGC 3627	3554	3215
NGC 4254 (F1)	3397	3348
NGC 4254 (F2)	3554	3215
NGC 4298	3419	3350
NGC 4303	3536	3206
NGC 4321 (F1)	3558	3217
NGC 4321 (F2)	3558	3217
NGC 4535	3554	3210
NGC 4536 (F1)	3536	3206
NGC 4536 (F2)	3531	3211
NGC 4548	3554	3215
NGC 4569	3554	3215
NGC 4571	3554	3215
NGC 4654	3554	3215
NGC 4689	3554	3215
NGC 4826	3558	3217
NGC 5068	3558	3217
NGC 5248	3554	3210
NGC 6744	3616	3246

## APPENDIX A: EXPOSURE TIMES, FOOTPRINTS, AND DISTANCES



**Figure A1.** DSS footprints ( $20' \times 20'$ ) for the first 16 galaxies observed in the first year of PHANGS-HST. The blue dashed lines indicate the location of  $D_{25}$  from RC3, and the red regions show the locations of the ACS parallel imaging from PHANGS-HST.



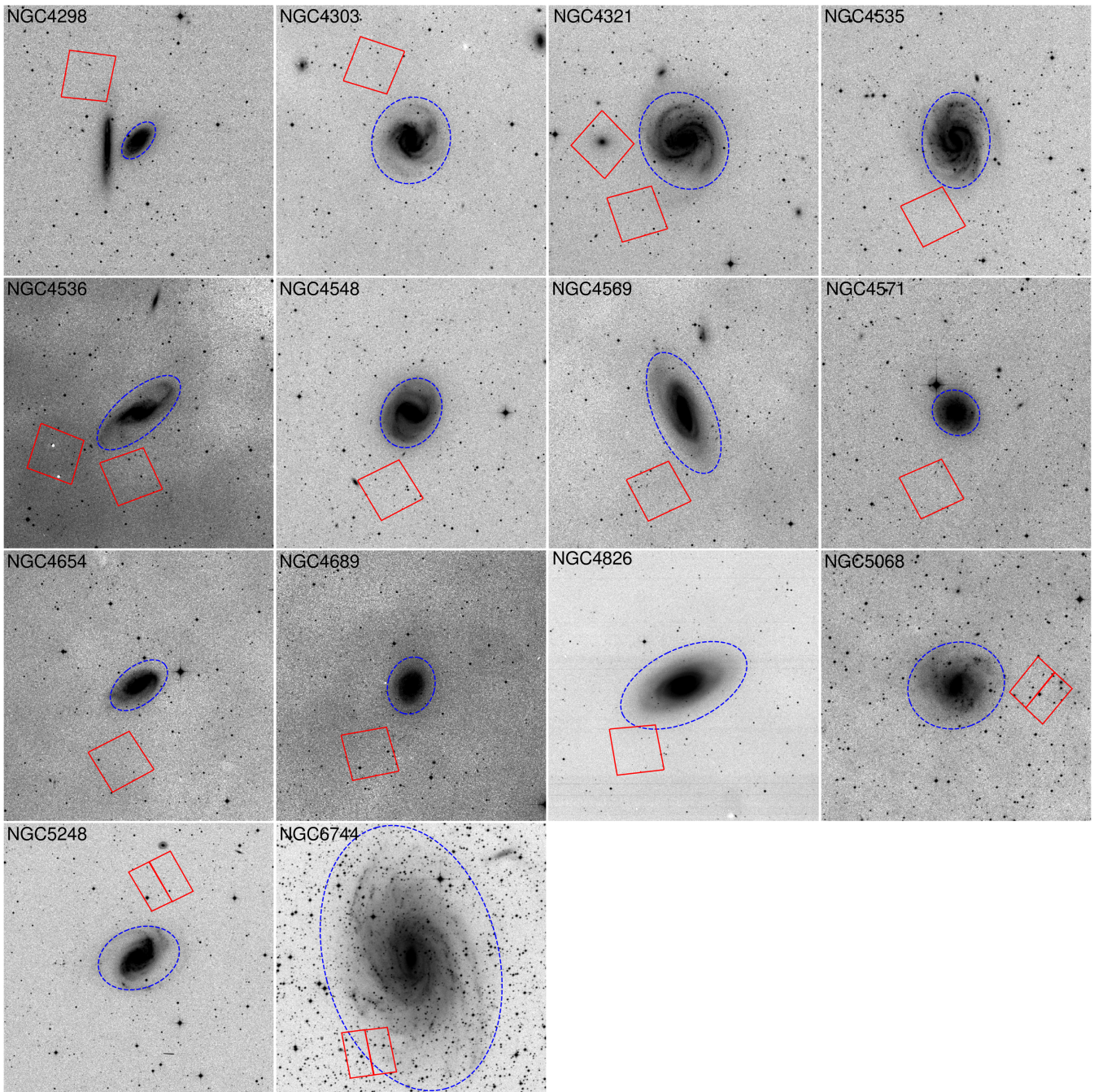


Figure A2. Same as figure A1, for the remainder of the sample.

Table A2: Distance compilation for the entire PHANGS galaxy sample ( $N=118$ ). Galaxies with Y\* in the PHANGS-HST column indicate that the *HST* data for those is archival, and will be processed in the same way as the main PHANGS-HST sample. \*We note that NGC 4328 is not part of the PHANGS sample, but is included in this table for completeness.

**References:** 1) Karachentsev et al. (2004) 2) Jacobs et al. (2009) 3) Tully et al. (2016) 4) Shaya et al. (2017) 5) Kourkchi et al. (2020a) 6) Kourkchi & Tully (2017) 7) F. Scheuermann et al., in preparation 8) Huang et al. (2020) 9) Leonard et al. (2003) 10) Freedman et al. (2001) 11) Olivares E. et al. (2010) 12) Barbarino et al. (2015) 13) Tonry et al. (2001) 14) Nugent et al. (2006) 15) Reid et al. (2019) 16) Pierce et al. (1994) 17) Ruiz-Lapuente (1996)

Galaxy	PGC Number	PHANGS-HST	Distance [Mpc]	Error [Mpc]	Method	Reference
ESO 097-013	50779		4.20	0.77	TF	1
IC 10	1305		0.79	0.05	TRGB	2
IC 342	13826		3.45	0.13	TRGB	2
IC 1954	13090	Y	12.8	2.05	NAM+TF	3+4+5
IC 1993	13840		18.09	2.71	Group	6
IC 5273	70184		14.18	2.13	NAM	4+5
IC 5332	71775	Y	9.01	0.41	TRGB	This Work
NGC 224	2557		0.82	0.05	TRGB	2
NGC 247	2758		3.71	0.13	TRGB	2
NGC 253	2789		3.70	0.12	TRGB	2
NGC 278	3051		11.50	1.73	NAM	4+5
NGC 300	3238		2.09	0.09	TRGB	2
NGC 598	5818		0.94	0.04	TRGB	2
NGC 628	5974	Y*	9.84	0.63	TRGB	2
NGC 685	6581	Y	19.94	2.99	NAM	4+5
NGC 891	9031		9.97	0.45	TRGB	2
NGC 1068	10266		13.97	2.10	NAM	4+5
NGC 1087	10496	Y	15.85	2.24	Group	6
NGC 1097	10488	Y	13.58	2.04	NAM	4+5
NGC 1291	12209		9.08	0.52	TRGB	2
NGC 1300	12412	Y	18.99	2.85	NAM	4+5
NGC 1313	12286		4.32	0.17	TRGB	2
NGC 1317	12653	Y	19.11	0.84	Group	2
NGC 1326	12709		18.34	1.83	Group	6
NGC 1365	13179	Y	19.57	0.78	TRGB	2
NGC 1385	13368	Y	17.22	2.58	NAM	4+5
NGC 1433	13586	Y*	18.63	1.86	PNLF	7
NGC 1511	14236		15.28	2.26	TF	3
NGC 1512	14391		18.83	1.88	PNLF	7
NGC 1546	14723		17.69	2.00	Group	6
NGC 1559	14814	Y	19.44	0.44	Mira	8
NGC 1566	14897	Y*	17.69	2.00	Group	6
NGC 1637	15821		11.70	1.0	Cepheid	9
NGC 1672	15941	Y	19.40	2.91	NAM	4+5
NGC 1792	16709	Y	16.20	2.43	NAM	4+5
NGC 1809	16599		19.95	5.63	TF	3
NGC 2090	17819		11.75	0.84	Cepheid	10
NGC 2283	19562		13.68	2.05	NAM	4+5
NGC 2403	21396		3.19	0.13	TRGB	2
NGC 2566	23303		23.44	3.52	Group	6
NGC 2683	24930		9.81	0.43	TRGB	2
NGC 2775	25861	Y	23.15	3.47	NAM	4+5
NGC 2835	26259	Y	12.22	0.94	TRGB	This Work
NGC 2903	27077	Y	10.0	2.5	NAM+TF	3+4+5
NGC 2997	27978		14.06	2.81	Group	6
NGC 3031	28630		3.69	0.21	TRGB	2
NGC 3059	28298		20.23	4.05	Group	6
NGC 3137	29530		16.37	2.32	Group	6
NGC 3184	30087		12.58	1.74	SCM	11
NGC 3239	30560		10.86	1.05	SCM	12

NGC 3344	31968		9.83	1.27	TRGB	2
NGC 3351	32007	Y	9.96	0.33	TRGB	2
NGC 3368	32192		11.21	0.49	TRGB	2
NGC 3489	33160		11.86	1.62	SBF	3+13
NGC 3507	33390		23.55	4.0	TF	3
NGC 3511	33385		13.94	2.09	NAM	4+5
NGC 3521	33550		13.24	1.97	TF	3
NGC 3556	34030		9.55	1.41	TF	3
NGC 3596	34298		11.3	1.1	Group	2
NGC 3599	34326		19.86	2.73	SBF	3+13
NGC 3621	34554	Y	7.06	0.28	TRGB	This Work
NGC 3623	34612		11.3	1.1	Group	2
NGC 3626	34684		20.05	2.34	SBF	3+13
NGC 3627	34695	Y	11.32	0.48	TRGB	2
NGC 3628	34697		11.3	1.1	Group	2
NGC 4207	39206		15.78	2.33	TF	3
NGC 4254	39578	Y	13.1	2.8	SCM	14
NGC 4258	39600		7.58	0.11	Megamaser	15
NGC 4293	39907		15.76	2.36	Group	6
NGC 4298	39950	Y	14.92	1.37	TRGB	This Work
NGC 4302	39974		14.92	1.37	Group	This Work
NGC 4303	40001	Y	16.99	3.04	Group	6
NGC 4321	40153	Y	15.21	0.49	Cepheid	10
NGC 4328*	40209		14.84	1.61	TRGB	This Work
NGC 4424	40809		16.20	0.70	TRGB	2
NGC 4457	41101		15.1	2.3	Group	3+13
NGC 4459	41104		15.85	2.18	SBF	3+13
NGC 4476	41255		17.54	2.42	SBF	3+13
NGC 4477	41260		15.76	2.36	Group	6
NGC 4496A	41471		14.86	1.06	Cepheid	10
NGC 4535	41812	Y	15.77	0.37	Cepheid	10
NGC 4536	41823	Y	16.25	1.13	TRGB	2
NGC 4540	41876		15.76	2.36	Group	6
NGC 4548	41934	Y	16.22	0.38	Cepheid	10
NGC 4565	42038		12.06	0.43	TRGB	2
NGC 4569	42089	Y	15.76	2.36	Group	6
NGC 4571	42100	Y	14.9	1.2	Cepheid	16
NGC 4579	42168	Y*	21.0	2	SN1a	17
NGC 4594	42407		9.33	0.47	TRGB	2
NGC 4596	42401		15.76	2.36	Group	6
NGC 4631	42637		7.34	0.27	TRGB	2
NGC 4654	42857	Y	21.98	1.16	Group	10
NGC 4689	43186	Y	15.0	2.25	NAM+TF	3+4+5
NGC 4694	43241		15.76	2.36	Group	6
NGC 4731	43507		13.28	2.12	Group	6
NGC 4736	43495		4.41	0.16	TRGB	2
NGC 4781	43902		11.31	1.18	Group	6
NGC 4826	44182	Y	4.41	0.19	TRGB	This Work
NGC 4941	45165		15.0	5.00	Group	6
NGC 4945	45279		3.47	0.12	TRGB	2
NGC 4951	45246		15.0	4.20	TF	3
NGC 5042	46126		16.78	2.52	NAM	4+5
NGC 5055	46153		9.02	0.33	TRGB	2
NGC 5068	46400	Y	5.20	0.21	TRGB	This Work
NGC 5128	46957		3.69	0.13	TRGB	2
NGC 5134	46938		19.92	2.67	Group	6
NGC 5194	47404		8.56	0.28	TRGB	2
NGC 5236	48082		4.89	0.18	TRGB	2

NGC 5248	48130	Y	14.87	1.34	Group	6
NGC 5457	50063		6.65	0.27	TRGB	2
NGC 5530	51106		12.27	1.84	NAM	4+5
NGC 5643	51969		12.68	0.53	TRGB	2
NGC 6300	60001		11.58	1.74	NAM	4+5
NGC 6744	62836	Y	9.39	0.43	TRGB	This Work
NGC 6946	65001		7.34	0.68	TRGB	2
NGC 7456	70304		15.70	2.33	TF	3
NGC 7496	70588	Y	18.72	2.81	NAM	4+5
NGC 7743	72263		20.32	2.80	SBF	3+13
NGC 7793	73049		3.62	0.15	TRGB	2

This paper has been typeset from a  $\text{\TeX/L\TeX}$  file prepared by the author.