

## Supporting Information

### **Study on performance degradation and damage modes of thin-film photovoltaic cell subjected to particle impact**

Kailu Xiao<sup>a, b</sup>, Xianqian Wu<sup>a, \*</sup>, Xuan Song<sup>a, b</sup>, Jianhua Yuan<sup>c</sup>, Wenyu Bai<sup>d</sup>, Chenwu Wu<sup>a, \*</sup> and Chenguang Huang<sup>a</sup>

*a Institute of Mechanics, Chinese Academy of Sciences, Beijing, 100190, China*

*b School of Engineering Science, University of Chinese Academy of Sciences, Beijing, 100049, China*

*c College of Electrical Engineering & Renewable Energy, Three Gorges University, Yichang, 443002, China*

*d Department of Medical Engineering, California Institute of Technology, Pasadena, CA 91125, USA*

---

\* Corresponding authors. Institute of Mechanics, Chinese Academy of Sciences. No.15 Beisihuanxi Road, Haidian District, Beijing 100190, China. Email: wuxianqian@imech.ac.cn (X. Wu) & chenwuwu@imech.ac.cn (C. Wu).

### 1. Three fitted probability distributions and the MSE value

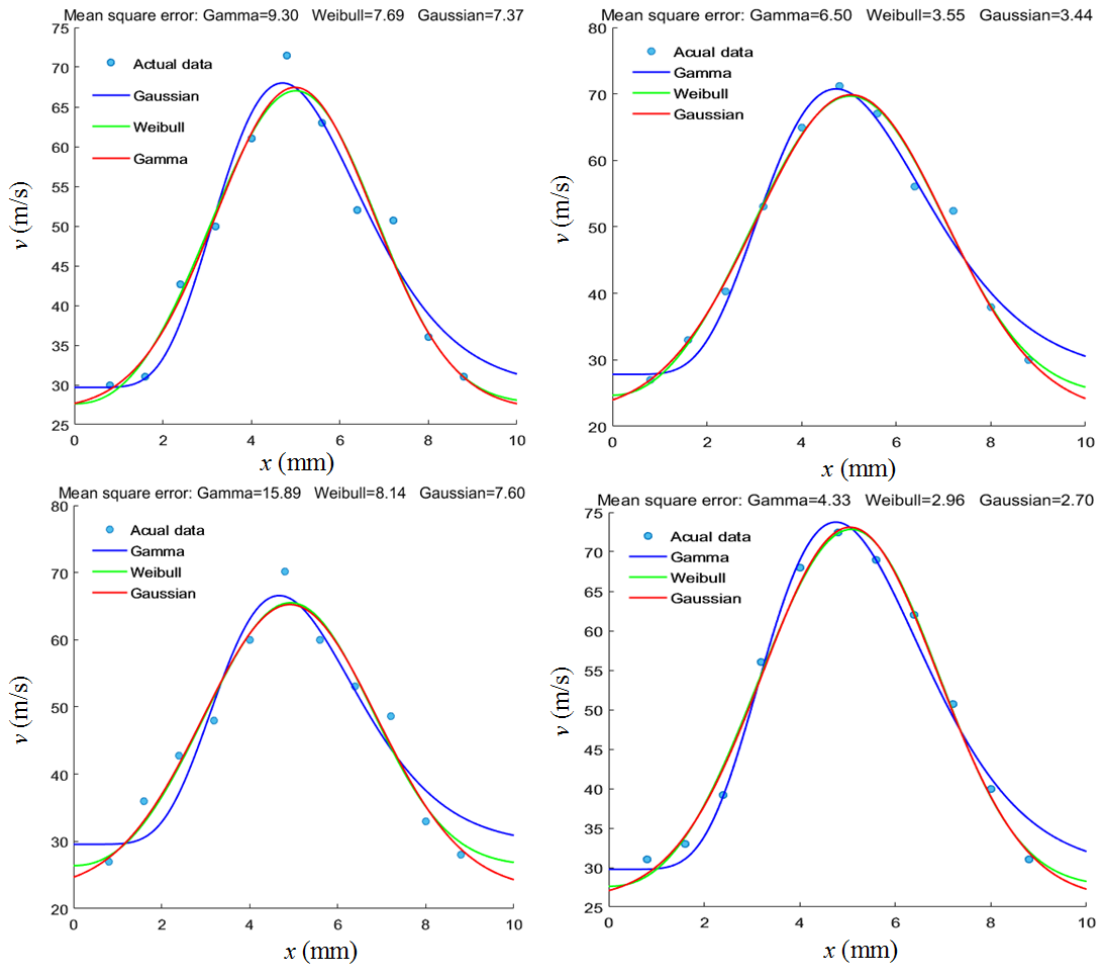


Fig. S1 Four sets of impact velocity data fitted by three probability distributions and their MSE values.