

## RESEARCH ARTICLE

# The World's Most Isolated and Distinct Whale Population? Humpback Whales of the Arabian Sea



CrossMark  
click for updates

 OPEN ACCESS

**Citation:** Pomilla C, Amaral AR, Collins T, Minton G, Findlay K, et al. (2014) The World's Most Isolated and Distinct Whale Population? Humpback Whales of the Arabian Sea. *PLoS ONE* 9(12): e114162. doi:10.1371/journal.pone.0114162

**Editor:** Sean Rogers, University of Calgary, Canada

**Received:** March 28, 2014

**Accepted:** November 4, 2014

**Published:** December 3, 2014

**Copyright:** © 2014 Pomilla et al. This is an open-access article distributed under the terms of the [Creative Commons Attribution License](http://creativecommons.org/licenses/by/4.0/), which permits unrestricted use, distribution, and reproduction in any medium, provided the original author and source are credited.

**Data Availability:** The authors confirm that all data underlying the findings are fully available without restriction. Data are available at GenBank under the Accession Numbers GQ913691-GQ913852.

**Funding:** Funding and other in-kind support for the work was provided by: The Environment Society of Oman, Shell Oman Marketing, Petroleum Development Oman, The UK Foreign and Commonwealth Office, Ford Middle East, Veritas Geophysical, Salalah Port Services, Five Oceans LLC, Tawoos LLC, The Peter Scott Trust for Education Research in Conservation, Marina Bandar al Rowdha, DHL, Mustafa Sultan Communications, The ABA School Muscat, The British School Muscat, The Sultan School Muscat, The Embassy of the United States in Muscat, Emirates Airlines, Oman Air, Cathay Pacific, KPMG, Muscat Pharmacy, OHI Marine, Truck Oman, W.J. Towell and Co., Han Padron Associates, Mark Rental Cars, WS Atkins and the Wildlife Conservation Society. The funders of this study had no role in study design, data collection and analysis, decision to publish, or preparation of the manuscript.

**Competing Interests:** Funding and other in-kind support for the work was provided by: Shell Oman Marketing, Petroleum Development Oman, Ford Middle East, Veritas Geophysical, Salalah Port Services, Five Oceans LLC, Tawoos LLC, Marina Bandar al Rowdha, DHL, Mustafa Sultan

**Cristina Pomilla**<sup>1,3<sup>¶a</sup></sup>, **Ana R. Amaral**<sup>1,2,9</sup>, **Tim Collins**<sup>3,4\*</sup>, **Gianna Minton**<sup>4,5</sup>, **Ken Findlay**<sup>6</sup>, **Matthew S. Leslie**<sup>1,3<sup>¶b</sup></sup>, **Louisa Ponnampalam**<sup>4,7</sup>, **Robert Baldwin**<sup>4</sup>, **Howard Rosenbaum**<sup>1,3\*</sup>

**1.** Sackler Institute for Comparative Genomics, American Museum of Natural History, New York, New York, United States of America, **2.** Centro de Biologia Ambiental, Faculdade de Ciências Universidade de Lisboa, Lisboa, Portugal, **3.** Ocean Giants Program, Wildlife Conservation Society, Bronx, New York, United States of America, **4.** Environment Society of Oman, Ruwi, Sultanate of Oman, **5.** World Wide Fund for Nature, Gabon, Libreville, Gabon, **6.** Mammal Research Institute, Department of Zoology and Entomology, University of Pretoria, Pretoria, South Africa, **7.** Institute of Ocean and Earth Sciences, University of Malaya, Kuala Lumpur, Malaysia

\*[tcollins@wcs.org](mailto:tcollins@wcs.org) (TC); [hrosenbaum@wcs.org](mailto:hrosenbaum@wcs.org) (HR)

¶ These authors contributed equally to this work.

¶a Current address: Wellcome Trust Sanger Institute, Wellcome Trust Genome Campus, Hinxton, Cambridge, United Kingdom; and Department of Medicine, University of Cambridge, Cambridge, United Kingdom

¶b Current address: Scripps Institution of Oceanography, La Jolla, California, United States of America; and Marine Mammal and Turtle Division, Southwest Fisheries Science Center, National Marine Fisheries Service, NOAA, La Jolla, California, United States of America

## Abstract

A clear understanding of population structure is essential for assessing conservation status and implementing management strategies. A small, non-migratory population of humpback whales in the Arabian Sea is classified as “Endangered” on the IUCN Red List of Threatened Species, an assessment constrained by a lack of data, including limited understanding of its relationship to other populations. We analysed 11 microsatellite markers and mitochondrial DNA sequences extracted from 67 Arabian Sea humpback whale tissue samples and compared them to equivalent datasets from the Southern Hemisphere and North Pacific. Results show that the Arabian Sea population is highly distinct; estimates of gene flow and divergence times suggest a Southern Indian Ocean origin but indicate that it has been isolated for approximately 70,000 years, remarkable for a species that is typically highly migratory. Genetic diversity values are significantly lower than those obtained for Southern Hemisphere populations and signatures of ancient and recent genetic bottlenecks were identified. Our findings suggest this is the world's most isolated humpback whale population, which, when combined with low population abundance estimates and anthropogenic threats, raises concern for

Communications, Emirates Airlines, Oman Air, Cathay Pacific, KPMG, Muscat Pharmacy, OHI Marine, Truck Oman, W.J.Towell and Co., Han Padron Associates and Mark Rental Cars. The private enterprises listed as having provided funding or support to the study almost all provided support in kind rather than monetary support or funding for the project. Support in kind included, for example, month-long loans of Thuraya telephones during fieldwork (Mustafa Sultan Communications), provision of 4WD vehicles for fieldwork (Mark Rental Cars, Veritas Geophysical), transportation and berthing of our 6 m-long rib for short periods of fieldwork (TruckOman, Salalah Port Services), free or discounted flights for researchers visiting Oman or those based in Oman attending international meetings (Cathay Pacific, Emirates Airlines, Oman Air), and long-life food for extended periods of fieldwork (Tawoos LLC). The only monetary donations made to the project include a grant from Ford Environmental Grants (Middle East). There are no patents, products in development or marketed products to declare. This does not alter the authors' adherence to all the PLoS ONE policies on sharing data and materials.

its survival. We recommend an amendment of the status of the population to "Critically Endangered" on the IUCN Red List.

## Introduction

Understanding the patterns underlying the division of natural populations into smaller units is essential for the conservation and management of biodiversity. This is particularly relevant for species and populations that have been extensively exploited and require specific recovery measures. Many baleen whale populations were dramatically reduced by whaling [1, 2], with important consequences for their distribution, connectivity and genetic diversity. Some populations show signs of recovery (e.g. [3, 4]) whilst others, e.g. Northern Hemisphere right whales, remain very small [5, 6, 7, 8, 9]). Their lack of recovery is due in part to modern anthropogenic threats, including entanglement in fishing gears and ship strikes (e.g. [10, 11]).

Humpback whales (*Megaptera novaeangliae*) were among those species heavily impacted by whaling, particularly in the Southern Hemisphere [12]. Distributed worldwide, they typically undertake long migrations between high latitude feeding grounds and low latitude breeding grounds, to which they show a high degree of site fidelity (e.g. [13]). Frequently coastal in their distribution, they were a preferred whaling target with all populations heavily impacted [6, 12]. Following the International Whaling Commission's (IWC) 1966 ban on commercial hunting of this species, many populations have begun to recover. Recent work has identified significant population structure among breeding concentrations in the North Pacific, North Atlantic and Southern Oceans [14, 15, 16]. Patterns of differentiation have been extensively studied in Northern (e.g. [14, 17]) and some Southern Hemisphere populations (e.g. [16]), but understanding of population structure and gene flow in the Indian Ocean remains limited, particularly for humpback whales in the Arabian Sea (Figure S1).

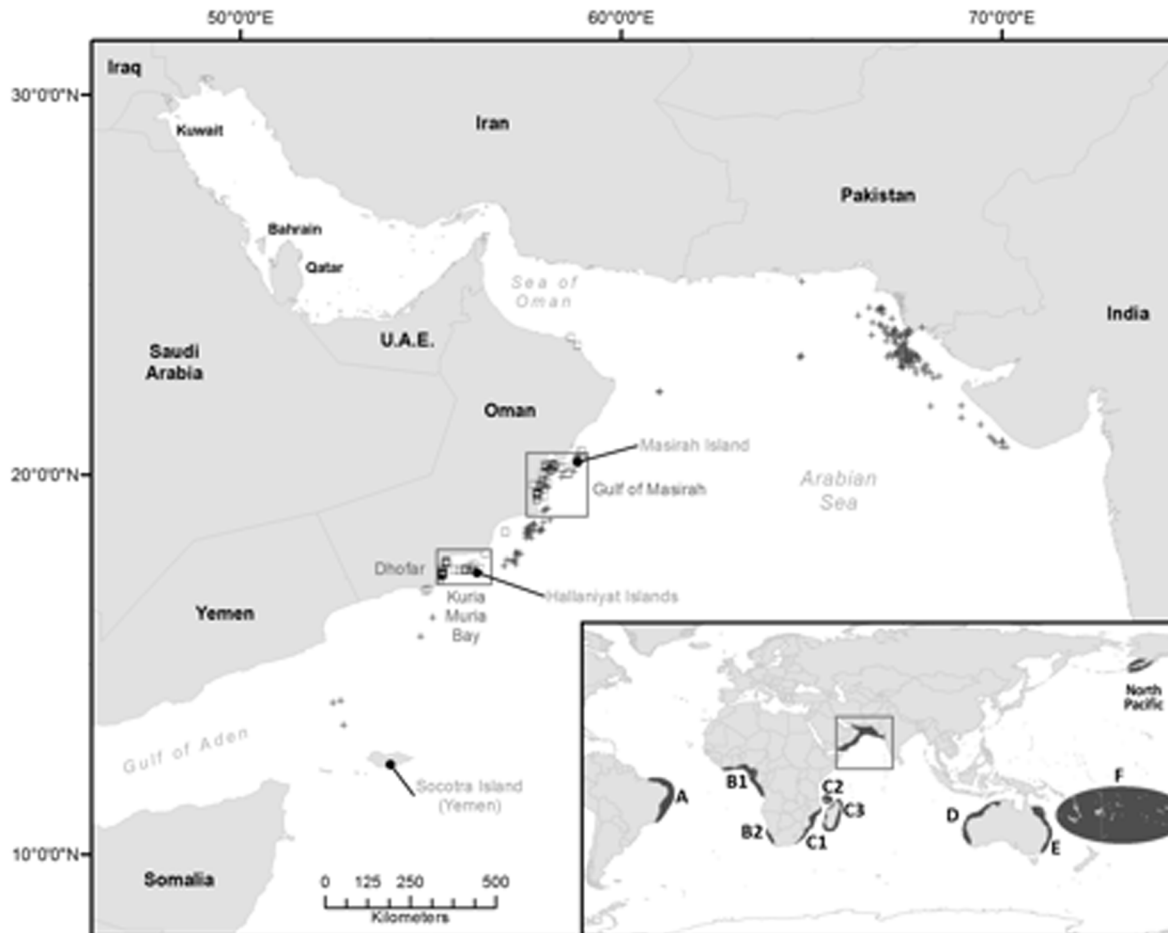
Historical records of Arabian Sea humpback whales (ASHW) indicate a distribution extending from Iraq [18, 19], to Iran, Pakistan, India, Oman and Yemen [20]. Gervais [19] believed that a damaged skeletal specimen from the Arabian Gulf was from a new species of *Megaptera* (*M. indica*) based on morphology. Other observers believed that ASHW were Southern hemisphere migrants [21, 22] whilst Slijper *et al.* [23] suggested they might be from the North Pacific [24]. Recent research efforts in the area confirm the continued presence of humpback whales in waters of Oman, Iran and Pakistan with highest reported encounter rates in the Gulf of Masirah and Kuria Muria Bay (both in Oman) [25, 26, 27], reflecting recent research efforts in the region. With the exception of whaling records [28], published observations in waters other than Oman are limited [29, 30].

Several lines of evidence indicate that ASHW form a discrete, small population: 1) their breeding cycle is more typical of Northern Hemisphere populations with observations of singing between January and March and peak calving in March [26, 28, 31]; 2) no whales photo-identified in Oman have been matched to research catalogues from Madagascar, South Africa, Mozambique or Zanzibar (suggesting little or no current migration) [26, 32]; 3) ASHW carry fewer and smaller barnacles and barnacle scars than whales in other localities and 4) do not exhibit cookie cutter shark (*Isistius brasiliensis*) bites, commonly seen on some Southern Hemisphere whales [31]; 5) whale songs recorded in Oman between 2000–2003 are highly distinct from those recorded concurrently in Madagascar ([26, 33]; S. Cerchio, Pers. Comm.) and 6) photographic mark-recapture (MR) data for whales sighted in Oman indicated seasonal movements for some individuals between Dhofar (Hallaniyat Islands, Kuria Muria Bay) in late winter/spring and the Gulf of Masirah (and probably Sea of Oman) in autumn [26] indicating a likely year-round residence off the coast of Oman. The same MR data, collected between 2000 and 2004, yielded an abundance estimate of 82 individuals (95% CI=60–111), although numerous caveats were noted [26].

The species is globally classified as “Least Concern” on the IUCN Red List of Threatened Species, but the ASHW population is classified as “Endangered”, an assessment based on contemporary scientific evidence and information on regional threats [20]. The small MR abundance estimate was insufficient to justify an assessment of “Critically Endangered” as sample sizes were small and much of the putative range was not surveyed (introducing considerable potential downward biases to the abundance estimate across the region).

The extent to which ASHW are related to whales in other populations is not well understood. The IWC has defined seven Southern Hemisphere humpback whale breeding ‘Stocks’ (A–G, see Figure 1 inset), and we use these designations hereafter to describe them. Recent mitochondrial DNA (mtDNA) analyses found strong genetic structure between the ASHW and IWC breeding Stocks A and B in the South Atlantic Ocean and IWC Breeding Stock C in the south-western Indian Ocean (pair-wise  $F_{ST}$  range between Oman and other Indian Ocean breeding populations 0.11–0.15, 33) [16]. This study however did not test connections between ASHW and the eastern Indian Ocean, or investigate Northern Hemisphere links.

In this paper we combine mtDNA and nuclear microsatellite data with traditional and coalescent-based statistical analyses of population structure to: i) comprehensively test hypotheses on the origin and inter-population connections, if any, of ASHW; and ii) assess population status from a conservation genetics point of view. To address these objectives we used data from four Indo-Pacific Breeding Stocks (IWC Breeding Stocks C, D, E, F, see Figure 1 inset), the North Pacific, and two South Atlantic Breeding Stocks (A and B), regions with the most ‘feasible’ migration links to the Arabian Sea. We found that the ASHW population is genetically highly differentiated from Southern Hemisphere populations. This evidence, coupled with a lack of current migrants and a small population size, make this population the world’s most isolated and distinct humpback whale



**Figure 1. Main panel: the Arabian Sea region showing sampling locations in Oman (boxed regions) as well as locations of Soviet catches from the 1960's (crosses) and modern sightings from Oman (squares). Inset: sampling locations used in this study, including six Southern Hemisphere breeding Stocks (A–F), the North Pacific and the Arabian Sea (boxed region).**

doi:10.1371/journal.pone.0114162.g001

population. We believe its conservation status should be raised to “Critically Endangered” on the IUCN Red List of Threatened Species.

This study not only contributes to our understanding of the demographic and evolutionary patterns that have shaped population structure and gene flow in this highly migratory species but also has important implications for its conservation and management.

## Materials and Methods

### Ethics statement

All research undertaken followed local regulations and guidelines. The project was also approved by the American Museum of Natural History Institutional Animal Care and Use Committee (IACUC). Biopsies were taken under permits numbers

10/2000, 6/2002 and 07/2004, issued by the Directorate - General of Nature Conservation of the Ministry of Regional Municipalities, Environment and Water Resources of the Sultanate of Oman. CITES permits were issued by the same institution (permit numbers 3/2002, 13/2002, 1/2003 and 7/2003).

### Sample collection and DNA extraction

Tissue samples were collected during small-boat surveys between 1999 and 2004. Surveys were conducted in the Gulf of Masirah and the Dhofar coast of Oman ([Figure 1](#)). Surveys occurred between October and March and targeted areas where published [[28](#)] and unpublished records indicated the presence of whales. Tissue samples ( $n=67$ ) were mostly obtained using the biopsy dart procedure [[34](#)], as sloughed skin ( $n=14$ , including two from net-entangled whales that were released) and from stranded animals ( $n=5$ ). Samples were preserved in salt saturated 20% Dimethyl Sulfoxide solution (DMSO) and stored at  $-20^{\circ}\text{C}$  until processed. Total genomic DNA was extracted from the epidermal layer using the DNAeasy tissue kit (Qiagen).

### Mitochondrial DNA and microsatellite molecular analyses

A 520 bp fragment within the mtDNA control region was amplified with primers Dlp-1.5 and Dlp-5 [[35](#)]. Polymerase Chain Reaction (PCR) products were cycle-sequenced (forward and reverse) with dye-labelled terminators using manufacturers recommendations. Sequence reactions were analysed using an ABI-Prism 3700 or 3730 DNA Analyser (Applied Biosystems). Sequence variation and polymorphism analyses are detailed in the Supporting Information.

Eleven cetacean di-, tri- and tetra- nucleotide microsatellite loci were selected: 199/200, 417/418 and 464/465 [[36](#)], EV1Pm, EV37Mn, EV94Mn and EV96Mn [[37](#)], and GATA028, TAA031, GATA053 and GATA417 [[38](#)]. One primer of each pair was labelled with a fluorescent tag (HEX, 6-FAM and TET, Qiagen-Operon; NED, Applied Biosystems) on the 5' end. Polymerase chain reactions (PCRs) were carried out in a 20 $\mu\text{l}$  or 10 $\mu\text{l}$  volume with the following conditions: 50 mM KCl, 10 mM Tris-HCl pH8.8, 2.5–3.5 mM MgCl<sub>2</sub>, 200 $\mu\text{M}$  of each dNTP, 0.4 $\mu\text{M}$  of each primer, 0.025 U/ $\mu\text{l}$  *Taq* Gold polymerase (Perkin-Elmer). Amplifications were completed in either a Perkin-Elmer 9600 thermal cycler or an Eppendorf Gradient Mastercycler, after optimization of published annealing temperatures and profiles. Pooled PCR products were loaded with the addition of an internal standard ladder (Genscan-500 TAMRA or ROX, Applied Biosystems) on a 3700 or 3730 DNA analyzer (Applied Biosystems). The allele size in base pairs was identified with the software GENESCAN ANALYSES and GENOTYPER 2.1 or GENEMAPPER (Applied Biosystems). Hardy-Weinberg equilibrium (HWE) and linkage disequilibrium (LD) at microsatellite loci were evaluated with a probability test [[39](#)] implemented in GENEPOP v.3.4 [[40](#)].

## Statistical analysis

Duplicate samples were detected using genotype identity with the Excel add-in MS\_TOOLKIT package [41]; they were then eliminated. The average probability of different random individuals sharing the same genotype by chance (Probability of Identity, PI) was estimated using API-CALC 1.0 [42].

From the 520 bp mtDNA fragment, a 486 bp consensus region that contains the majority of variable nucleotide positions in the mtDNA control region of humpback whales was examined for all samples [43]. Sequences were aligned and edited using SEQUENCHER v. 4.5 (Gene Codes Corp. Ann Arbor, MI). Comparisons of sequences to identify polymorphic sites and haplotypes were performed using MACCLADE v. 4.01 [44].

## Origin of the ASHW population

To infer possible relationships of ASHW with other populations we analysed mtDNA control region sequences for 740 individuals sampled from across IWC Breeding Stock C. We obtained sequences for 174 samples (464 bp) from GenBank for IWC Breeding Stock D [45], 605 samples (464 bp) for IWC Breeding Stock E, 230 samples (464 bp) for IWC Breeding Stock F [45] and 54 samples (425 bp) from the North Pacific [46]. Eleven microsatellite markers obtained for 1531 individuals sampled from IWC Breeding Stocks A and B (Brazil, Gabon, Angola and West South Africa) and IWC Breeding Stocks C1, C2 and C3 (East South Africa, Mozambique, Mayotte, Madagascar) were also analysed, in order to understand the level of genetic differentiation in populations geographically closer to ASHW (Figure 1 inset).

A phylogeny of the humpback whale mtDNA haplotypes identified from all sequences listed above was constructed using the Bayesian Inference method as implemented in MrBayes v. 3.2. [47]. The sequences were adjusted for multiple substitutions using the Kimura 2-parameter model [48]. A fin whale sequence from GenBank was used as an outgroup. Four simultaneous Markov chain Monte Carlo (MCMC) chains were run for  $7 \times 10^6$  generations, with trees sampled at intervals of 1,000 generations. The first 5,000 trees were discarded as burn-in after examining the variation in log-likelihood scores over time.

The differentiation between the Arabian Sea and the other areas was quantified using pairwise  $F$ -statistics, implemented in ARLEQUIN v 3.11 [49]. These were calculated for mtDNA nucleotide differentiation ( $\Phi_{ST}$ ) and haplotype frequency differences ( $F_{ST}$ ), as well as for microsatellite allele frequency differences ( $F_{ST}$ ). The significance of the observed  $\Phi_{ST}$  and  $F_{ST}$  values was tested using 10,000 random permutations of the data matrix. No correction for simultaneous tests was applied to significance levels of pairwise comparisons [50].

Population subdivisions were tested using microsatellite data and a Bayesian model-based clustering method implemented in STRUCTURE v.2.3.4. [51]. This method assumes the presence of  $K$  populations, where  $K$  may be unknown and uses a MCMC procedure for its estimation. We used the 'correlated frequencies' model, excluding admixture and using prior information on sample origin

(‘locprior option) (these models are more powerful at detecting subtle population structure [52]) and also without supplying prior information on sample origin ( $2 \times 10^5$  “burn in” and  $2 \times 10^6$  chain iterations). The true number of populations was estimated in STRUCTURE HARVESTER [53] as the highest averaged posterior probability ( $\ln \Pr(X|K)$ ) of the data. CLUMPP V.1.1.2 [54] was used to summarize parameters across the 10 runs and *distruct* v.1.1 [55] was used to produce the corresponding graphical output.

In order to estimate effective migration rates and divergence times between ASHW and other areas we analysed mtDNA data using the program MDIV [56], which uses a MCMC method within a likelihood framework to estimate the posterior distributions of the migration rate per gene per generation [ $M=(2 N_e m)$ ], the time in generations since the two populations diverged scaled by the effective population size [ $T=(t/2 N_e)$ ], and the parameter theta ( $\theta$ ), which is a product of the effective population size and the mutation rate per generation of the studied gene region [ $\theta=(4 N_e \mu)$ ]. Default maximum values for Mmax and Tmax were used. A minimum of five runs was carried out for each comparison and results were averaged between runs ( $10^6$  dememorization iterations,  $5 \times 10^6$  chain iterations). Terminal ends of sequences were truncated as they contained gaps, which MDIV is unable to handle.

### Status of the ASHW population

The diversity of humpback whale mtDNA sequences was estimated as haplotype diversity ( $Hd$ ), and mean number of pairwise nucleotide differences ( $k$ ) [57, 58] using ARLEQUIN v.3.11 [59]. For nuclear microsatellites the mean number of alleles per locus ( $K$ ), the observed heterozygosity ( $H_o$ ), and heterozygosity expected ( $H_e$ ) under Hardy-Weinberg assumptions [57] were calculated in FSTAT v.2.9.3 [60].

To test for population size reduction we used two approaches. We calculated the value  $M$ , the ratio between the number of alleles and the range of the allelic array, using the software M-RATIO [61].  $M$  declines after a population reduces in size and the magnitude of the decrease is positively correlated with the severity and duration of the reduction. A simulation approach was used to calculate a critical value for the ratio  $M$  ( $M_c$ ) in an equilibrium population, below which one can assume that a data set is a sample from a population that has experienced a recent size reduction. We ran the simulation under a conservative two-phase mutation model where the proportion of one-step mutations is  $p_s=90\%$  and the average size of nonone-step mutations is  $\Delta_g=3.5$ , as well as a realistic model obtained from published data ( $p_s=88\%$ ,  $\Delta_g=2.8$ ) [61]. The simulations were repeated for different values (from 0.004 to 5) of historical diversity  $\theta$  ( $4 N_e \mu$ ), representing different equilibrium population sizes if we assume a constant  $\mu$  (e.g.  $5 \times 10^{-4}$ , [61]). The recovery rate of  $M$  is positively correlated with post-reduction population size, but that recovery occurs in both small and large populations, indicating that  $M$  can distinguish between populations that have been recently reduced in size and those that have been small for a long time. In addition we used BOTTLENECK v. 1.2.02 [62] to test for allele frequency mode shifts

(variation from the typical L-shape distribution). For this test, observed genetic diversity was compared with expected equilibrium gene diversity (10,000 simulations) by means of a one-tailed Wilcoxon test.

To further investigate population stability we applied three tests of the neutral theory of molecular evolution to the mtDNA data. The raggedness statistic  $rg$  analyses the distribution of pairwise differences, or mismatch distribution [63, 64]; Tajima's  $D$  [65] and  $R_2$  statistics [66] are both based on the distribution of mutation frequencies. Test significance was assessed with coalescent simulations. All tests and simulations were conducted with DNASP v.4.10.9 [59]. In addition we constructed Bayesian Skyline Plots (BSP), which use the coalescent theory to infer changes in effective population size through time [67]. The BSP was constructed using BEAST v. 1.7.4 [68], with MCMC runs of up to 10 million steps that yielded effective sample sizes (ESS) of at least 200. A mutation rate of 5.2% per million years was used [69].

In order to estimate contemporary effective population size ( $N_e$ ) for the ASHW using the microsatellite data, we used two methods as implemented in the program NeEstimator V2 [70]: a method based on linkage disequilibrium (LD) [71] and the heterozygote-excess method [72]. While the first method is based on random linkage disequilibrium that arises by chance each generation in finite population, the second method is based on the observation that when the number of breeders is very small, an excess of heterozygotes is expected in the progeny. Both these methods have proved to be quite powerful in estimating effective population sizes of small populations, as is the case of the ASHW. For comparison purposes, we have also estimated  $N_e$  for the other humpback whale populations analysed in the study, acknowledging that for larger populations, these estimates are not as accurate [71].

## Results

### Sample size and mtDNA and microsatellite variation

A total of 67 ASHW samples collected from Oman were included in the study. Four samples did not yield amplifiable DNA and were excluded, and for the remaining 63 samples the average Probability of Identity was small enough to exclude 16 re-samples with confidence; 47 individuals were included in the subsequent analyses. A consensus region of 486 bp of the mtDNA control region was assembled in which a total of 7 maternal haplotypes was detected from 24 polymorphic sites (GenBank Accession Numbers GQ913845, GQ913846, GQ913848, GQ913701, GQ913706, GQ913709, GQ913715). The 1,798 samples analysed from other populations yielded 167 haplotypes (GenBank Accession Numbers GQ913691-GQ913852). For microsatellites, missing allelic data averaged 0.3% across all loci, the largest number of alleles (12) was found at EV37Mn, the smallest (3) was recorded at locus EV1Pm. Deviation from Hardy-Weinberg equilibrium was rejected for all single loci and across loci ( $p=0.79$ ) and



no significant heterozygote deficiency was found. In the same way there was no evidence of Linkage Disequilibrium.

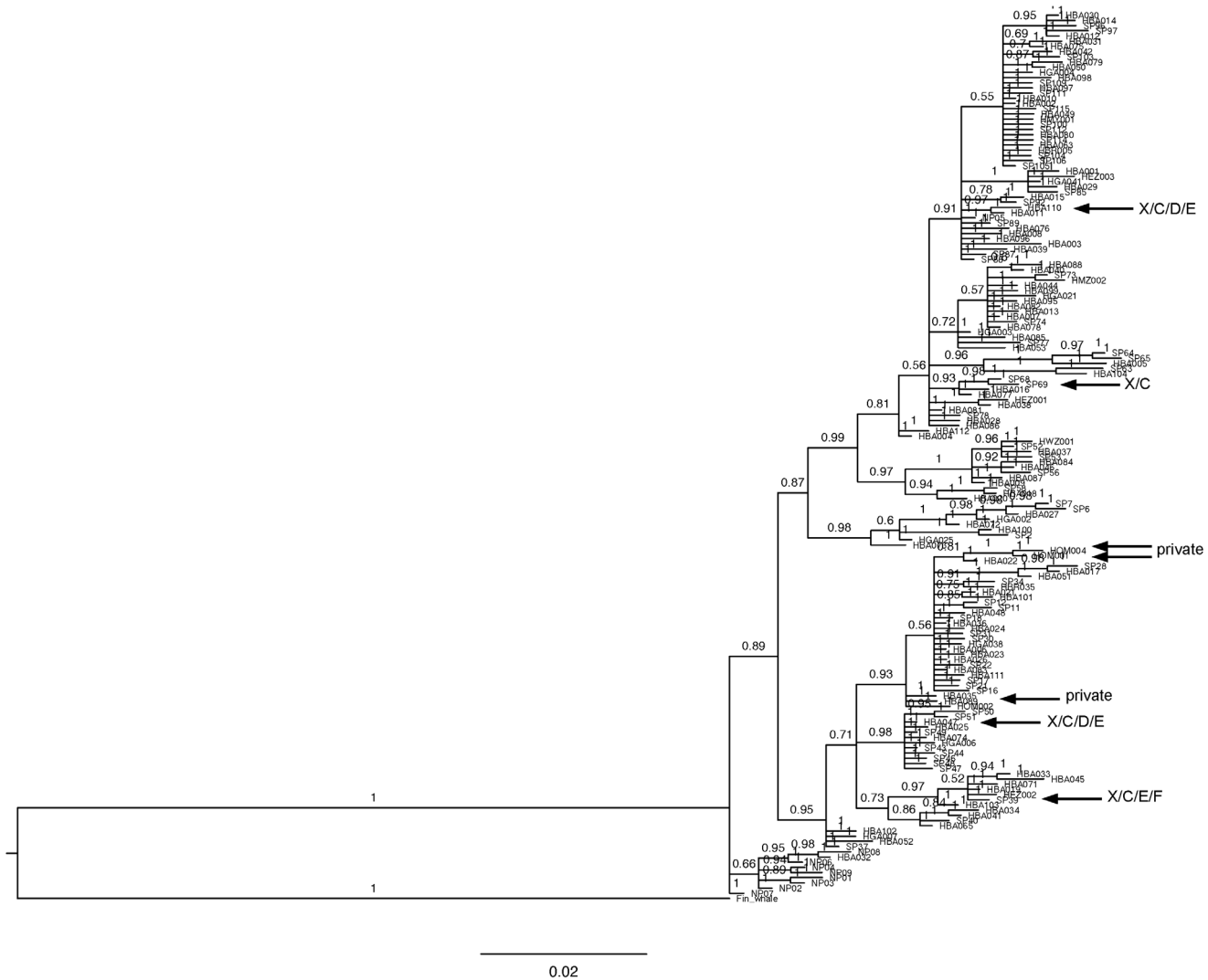
### Origin of the ASHW population

Of the seven mtDNA haplotypes identified in the ASHW samples, one was shared with Stock C, one was shared with Stocks C and D, one was shared with Stocks C, D and E, one was shared with Stocks C, E and F, and three were private. In the phylogenetic tree ([Figure 2](#)) constructed from all 170 haplotypes plus the outgroup, the private ASHW haplotypes were placed in separate clades together with Southern Hemisphere haplotypes, the closest of which were from Stocks C and D. The North Pacific haplotypes formed a separate clade with the exception of one haplotype, which was shared with Southern Hemisphere samples (SP88).

Pairwise  $F$ -statistics showed high levels of differentiation for ASHW for both nuclear and mitochondrial markers and is the highest recorded for population differentiation of any humpback whale population worldwide [16]. For mtDNA ([Figure 3a](#)) the highest divergence was with the North Pacific, while comparisons with Southern Hemisphere Stocks showed a differentiation gradient related to geographic distance (C lowest, F highest). For microsatellites, comparisons between ASHW and five locations within Stock C showed strong structure, with the highest divergence from Sub-Stocks C2/C3 ( $F_{ST}$  = 0.046–0.048) and the lowest from Sub-Stock C1 ( $F_{ST}$  = 0.040). No genotypic matches were identified.

For STRUCTURE computations, the highest posterior probability of the data was obtained when the individuals were partitioned in three clusters when the ‘locprior’ option was used and in two clusters when it was not ([Table S1](#)). In both scenarios, all ASHW individuals were assigned to a distinct cluster ([Figure 4a–b](#)). The use of sampling origin prior is recommended to achieve better results when the amount of data is limited or the population structure is weak [52]. If we consider  $K=3$  as the most likely number of clusters in our dataset [52] all ASHW individuals have probabilities above 0.90 of belonging to the same cluster ([Figure 4a](#)). The two other clusters suggested by this analysis divide the remaining populations into two clear distinct groups comprising respectively most individuals from the Atlantic (Stocks A and B) and Indian Oceans (Stock C). Cluster identity is less clear where the two groups come in close contact (West and Eastern South Africa) and in Southern Madagascar, suggesting some degree of admixture for these populations ([Figure 4a](#)). If we consider  $K=2$  as the most likely number of clusters in our dataset, within the Arabian Sea population only a few individuals have probabilities around 0.5 of being assigned to the other cluster ([Figure 4b](#)). For all other sampling locations individuals have equal probabilities of belonging to any of the two clusters.

MDIV coalescent analyses showed that ASHW diverged first from the North Pacific ( $T>0.2$ ), and then from Southern Hemisphere Stocks. The closest divergence time is between ASHW and Stock C ([Figure 3b](#),  $T=0.1684$ ). However given similar  $T$  values it cannot be excluded that ASHW diverged from C and D at about the same time. Using  $T$ , an average estimate for  $\theta=17.291$ , a mutation rate

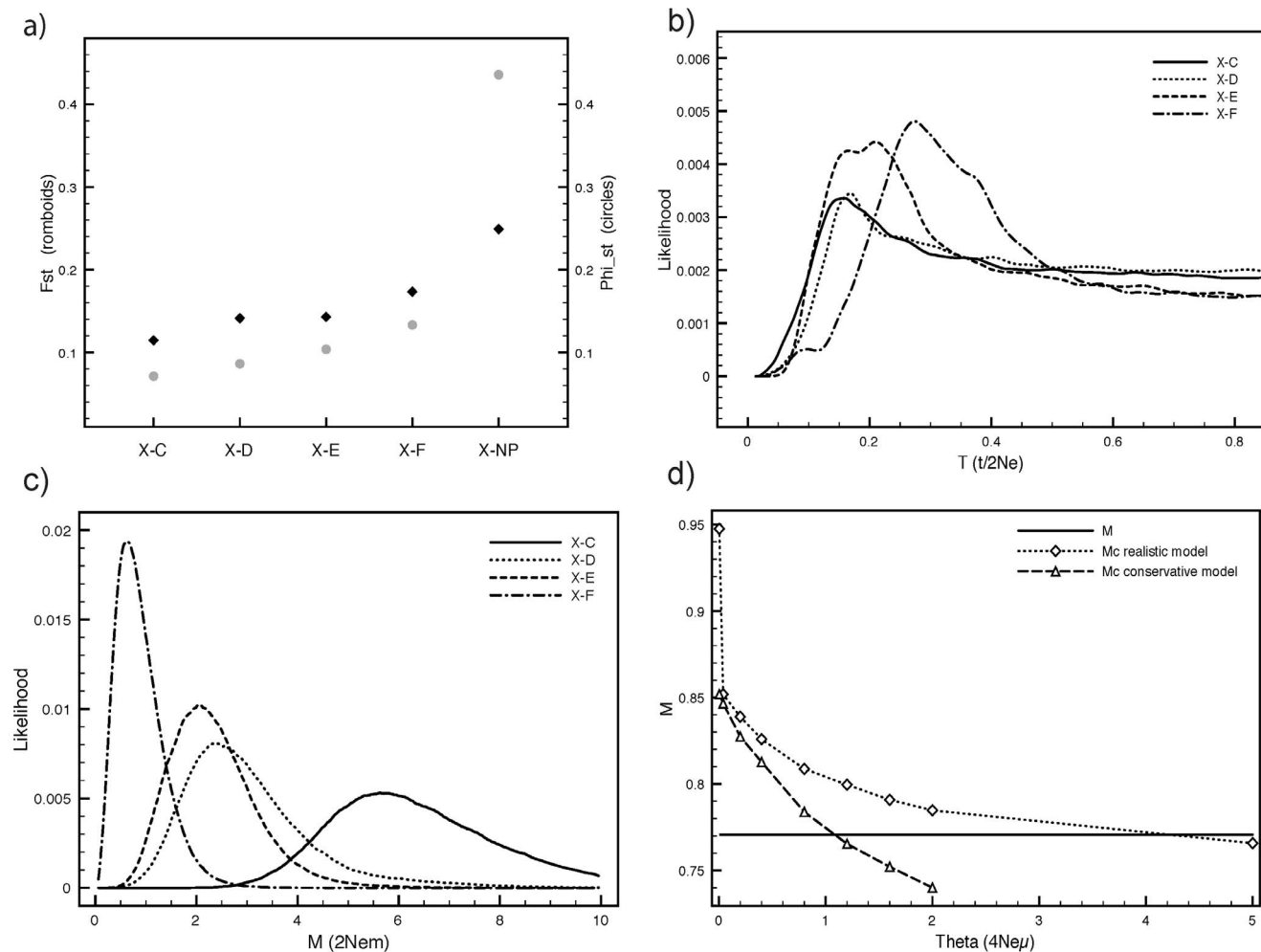


**Figure 2. Bayesian phylogenetic tree constructed from 170 haplotypes from Stocks X, C, D, E, F and North Pacific. Stock X haplotypes are indicated by arrows.**

doi:10.1371/journal.pone.0114162.g002

of 5.2% per million years [70, 74], a generation time of 21.5 years [73], and the analyzed sequence length (477 bp) we obtained a divergence time of ~70,000 years ago.

The posterior distributions of migration rates showed that since divergence, gene flow between ASHW and the Southern Hemisphere has been limited. The highest exchange has been with Stock C ( $M=5.67$ , Figure 3c). It is useful to note that  $M$  values between distinct contiguous stocks in the Southern Hemisphere are 5–6 times larger [16].

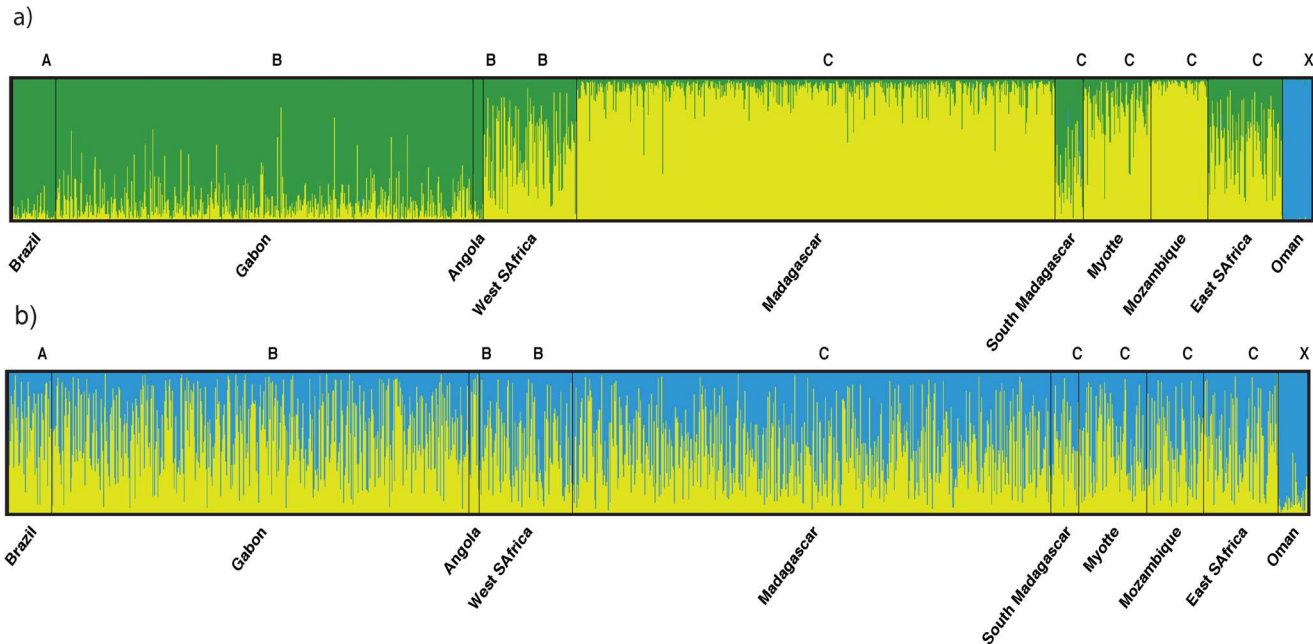


**Figure 3.** a) top left: pairwise measures of mtDNA differentiation between Stock X (Arabian Sea) and Stocks C to F in the Southern Hemisphere, and two sampling location in the North Pacific (grouped as NP). Rhomboids refer to  $F_{ST}$ , while circles to  $\Phi_{ST}$ ; b) top right: MDIV estimates of divergence time; c) bottom left: MDIV estimates of migration rates; d) bottom right: Bottleneck analyses [61]. M is the ratio between number of alleles and range of the allelic array. Mc is the minimum critical value for the ratio in an equilibrium population and for different historical diversity values (theta) calculated through simulations. The conservative two-phase mutation model assumes the proportion of one-step mutations to be  $ps=90\%$  and the average size of non one-step mutations  $\Delta g=3.5$ . The realistic model is based on literature data ( $ps=88\%$ ,  $\Delta g=2.8$ ).

doi:10.1371/journal.pone.0114162.g003

### Status of the ASHW population

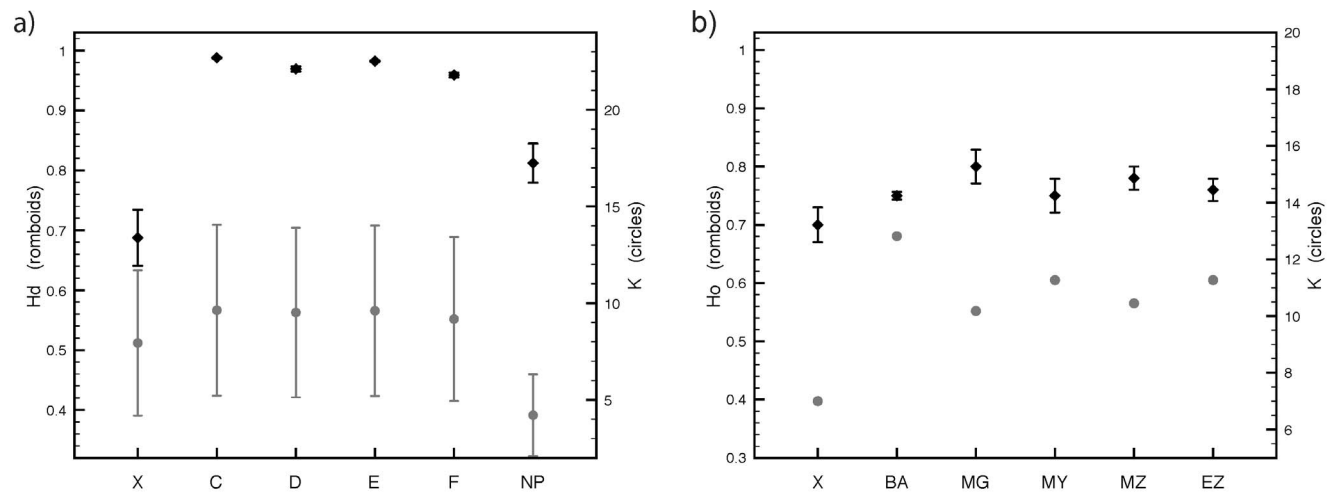
Reduced genetic diversity for ASHW was confirmed by both mtDNA and microsatellite analyses (Figure 5). The mtDNA haplotype diversity ( $H_d$ ) was lower than in any of the other areas analyzed. The average number of pairwise nucleotide differences ( $k$ ) was larger only when compared to the North Pacific. Reduced diversity for Northern Hemisphere whales compared to Southern Hemisphere whales has been previously described [74]. For microsatellites both observed heterozygosity ( $H_o$ ) and mean number of alleles per locus ( $K$ ) were smaller for ASHW than for five Stock C sampling locations.



**Figure 4. Results from STRUCTURE showing ancestry estimates for: a)  $K = 3$  (with 'locprior' option; and b)  $K = 2$  (without 'locprior' option).** Each individual in the data set is represented by a single vertical line, which is partitioned into  $K$  colored segments that represent the estimated membership fraction of that individual in each of the  $K$  inferred clusters.

doi:10.1371/journal.pone.0114162.g004

The observed ratio between the number of alleles and the range of the allelic array was  $M=0.7706$  (Figure 3d). Coalescent simulations of the data at equilibrium were carried out under a realistic mutation model for different historical diversity values ( $\theta=0.004$  to  $\theta=5$ ). The  $M$ -ratio produced by coalescent



**Figure 5. a) mtDNA diversity: rhomboids refer to haplotype diversity ( $H_d$ ), and circles to the mean number of pairwise differences ( $k$ ); b) microsatellite diversity: rhomboids refer to the observed heterozygosity ( $H_o$ ), and circles to the mean number of alleles per locus ( $K$ ).** Bars represent the standard deviation.

doi:10.1371/journal.pone.0114162.g005

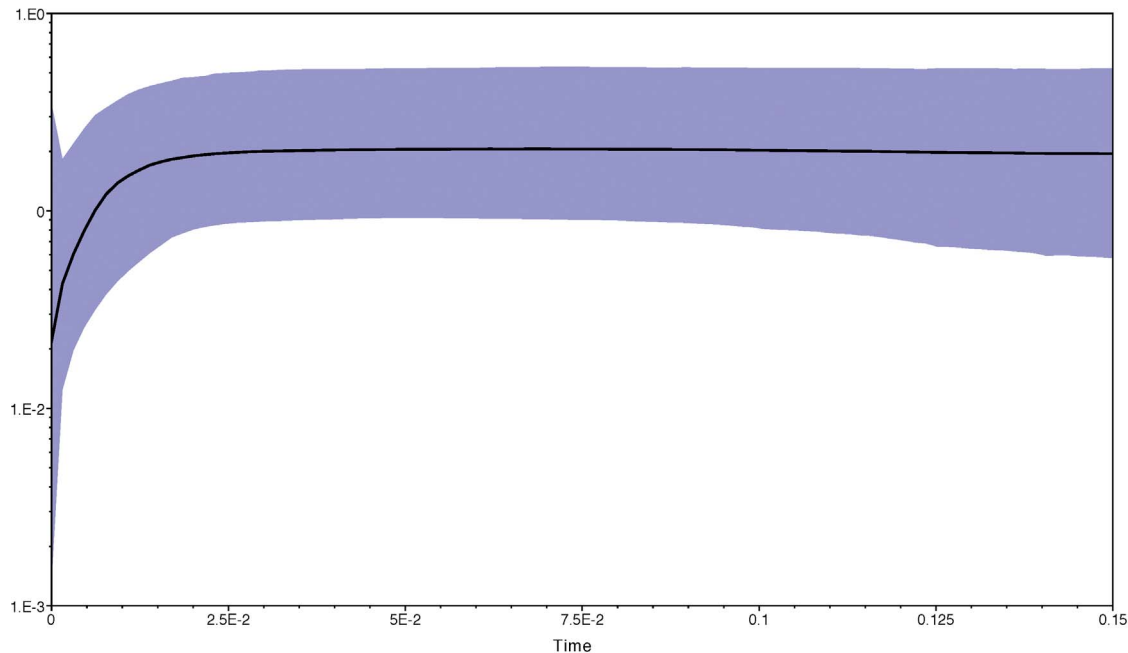
simulations ( $M_c$ ) was higher than that produced by the current data for  $\theta < 4.2$ , which corresponds to a pre-bottleneck effective population size of  $\sim 2,100$  animals ( $\mu = 5 \times 10^{-4}$ ) (Figure 3d). When the conservative mutation model was applied, this yielded an estimated cut-off value of  $\theta \sim 1.1$ , which corresponds to a pre-bottleneck effective population size of  $\sim 550$  animals. If the pre-bottleneck  $N_e$  was larger than these cut-off values there would be no evidence of a bottleneck (i.e.  $M_c$  is smaller than  $M$ ). Considering that effective population sizes correspond to  $\sim 10\%$  of census sizes [75], both these estimates are large enough to justify the assumption that the population experienced a bottleneck.  $M$  starts to decline immediately, within 1–2 generations after the bottleneck. Additionally, if a population stays small after a bottleneck event, it takes  $\sim 300$  generations for  $M$  to increase to normal levels [61]. This means that ASHW may have experienced a bottleneck as recently as 20 years ago, or as early as  $\sim 6,450$  years ago (using a generation time of 21.5 years).

In support of the above result, significant Tajima's  $D$  [ $D = 1.8574$ ,  $P(D \geq 1.8574) = 0.023$ ] and Ramos-Onsins and Rozas'  $R_2$  ( $R_2 = 0.1763$ ,  $P(R_2 \geq 0.1763) = 0.017$ ) indicated that the population is not currently at equilibrium. These statistics generally test for population expansion, but when the observed value falls in the upper tail of the distribution, as it does for both tests, it may indicate population decline (J. Rozas, Pers. Comm.). Raggedness statistics ( $rg = 0.2566$   $p = 0.009$ ) significantly rejected a population expansion.

Results from BOTTLENECK indicate an excess of heterozygosity (one-tailed Wilcoxon test for heterozygosity excess,  $P < 0.05$ ), which suggests a recent reduction in effective population size of the ASHW. However, an analysis of the allele frequency distribution revealed an L-shaped distribution, which is expected for a population that has not experienced a recent bottleneck that affected genetic variability [76].

The Bayesian skyline plot obtained in BEAST with the mitochondrial DNA shows a decline of effective population size through time, which according to the molecular clock used, may have started at around 15,000 y.a until the present day (Figure 6).

Estimates of contemporary effective population size ( $N_e$ ) for the ASHW resulted in values that range from 90.4 to 142.6 if we consider the method based on LD and different allele frequencies (Table S1). The number of breeders ( $N_b$ ) estimated with the heterozygote excess method ranged from 26.1 to 29.9 (Table S1). These figures are of the same order of magnitude as the estimate based on mark-recapture data. All other Southern Hemisphere humpback whale populations had much larger estimates of effective population size (Table S2), although these results should be interpreted with caution given the possible violation of assumptions due to the larger size of these populations, which may compromise the methods.



**Figure 6. Bayesian skyline plot obtained with the mitochondrial DNA dataset, showing changes in effective population size through time (Ma).**

doi:10.1371/journal.pone.0114162.g006

## Discussion

ASHW show strikingly high levels of genetic differentiation from Southern Hemisphere and North Pacific populations using mitochondrial and nuclear molecular markers. Our results suggest that this population likely originated as a consequence of a range expansion of whales from the Southern Indian Ocean dating ca. 70 kya. This timing also corresponds to the estimated radiation of a second clade from the Southern Hemisphere to the North Pacific [77] and we can speculate that these events were connected to the ongoing glaciation [78]. Similarities of the temperature histories of the last 65 kyr in the western Indian Ocean and Antarctica suggest a thermal coupling between the two regions on millennial timescales, conducive to an increased thermal stratification during southern hemisphere cold periods [79]. Although gene flow seems to have occurred after divergence, we consider it unlikely that migrants are currently being exchanged between the Arabian Sea and the Southern Indian Ocean stocks and shared mtDNA haplotypes may simply be the result of shared ancestry. An out-of-phase breeding cycle also acts as an effective barrier to interbreeding [24, 31, 80].

The switching of a non-migratory population to a Northern Hemisphere breeding cycle is an interesting biological conundrum and while this is beyond the scope of our research, it is tempting to hypothesize an adaptive response of the ASHW to the Arabian Sea seasonal cycle of temperature and productivity in connection to the monsoon seasons. Colder surface water, upwelling and primary productivity in the Arabian Sea is linked to the southwest (or 'summer') monsoon

(May-September) while convective mixing and slightly warmer water is connected to the northeast (or 'winter') monsoon (October-March) [81]. Interestingly, evidence suggests that at the time of the estimated expansion from the Southern Indian Ocean, the Arabian Sea was entering a period of variable climatology (60–18 kya) in connection to the Last Glacial Age [82]. The shift of most productivity to the winter months during this period, due to significant weakened summer monsoons, but enhanced winter upwelling and nutrient supply from surrounding land caused by intense winter winds [82], would have suited the breeding cycle of whales from the Southern Hemisphere [85, 86] [24, 31, 82].

Our results further suggest that ASHW is constituted of remnant animals from a declining population. Reduced genetic diversity in both mtDNA and nuclear microsatellites, and evidence of recent bottlenecks support this hypothesis. Different bottleneck estimates were obtained with microsatellites (20–6,450 ya) and with mtDNA (15,000 ya), which may reflect marker characteristics; mtDNA is likely showing an older signal than the microsatellites. A primary productivity collapse occurred ~15,000 ya, coinciding with the apparent signal of population decline in the mtDNA BSP. ASHW feed in monsoon-driven upwelling areas of Oman, Pakistan and India [28, 80], and a decline in food availability could be responsible for initiating a population decline.

Another minimum in primary productivity, consistent with the microsatellites bottleneck estimate (20–6,450 ya), is reported to have occurred 1,500–2,000 ya in correspondence to a weak summer monsoon [83]. Alternatively, the dating of the bottleneck could also be compatible with an episode of illegal Soviet whaling in the 1960's, despite the large confidence interval. Soviet records indicate that 242 ASHW were captured during brief episodes in both 1965 and 1966 (Figure 1). Soviet scientists estimated (subjectively) that this represented ~60% of the whales they found [31]. A more recent bottleneck is further supported by tests of population expansion, which suggest the population may still be in decline, as is clearly seen in the BSP plot. This finding is of special concern if we consider several lines of evidence that suggest this population is spatially, genetically and demographically isolated from other breeding populations.

Scenarios of slow or no population recovery following whaling are seen in other whales species such as the Critically Endangered North Atlantic right whale (*Eubalaena glacialis* e.g. [7]) and Western gray whale (*Eschrichtius robustus*, [9]). However, populations of these species have larger estimated population sizes (~500 North Atlantic right whales [84] and ~130 Western gray whales [85]) and migrate between feeding and breeding grounds. The effective population size estimate for the ASHW obtained in this study suggests a population size of around 100 animals, which is in agreement with the census estimate of 82 individuals obtained for the area off Oman using mark-recapture data [20]. Estimates of effective population size using genetic data are prone to several errors due to sampling bias, variability of the genetic markers used and violation of assumptions such as that only drift is responsible for the signal in the data. Nevertheless, these effects are less likely to bias estimates of small populations like ASHW [71]. The small size of this population, the lack of migration and high level

of genetic differentiation (the highest  $F_{ST}$  comparisons of any humpback whale population), make the ASHW the world's most isolated and most distinct population of humpback whales. Its uniqueness is comparable to another relict population, the eastern North Pacific right whale [8], a population that was drastically reduced by illegal Soviet whaling during the same period as potentially the ASHW and whose effective population size has remained low or declined over the last few decades [86].

Scarring analyses for ASHW identified in Oman in 2003 indicated that ~30–40% of examined whales were likely to have been entangled in fishing gear [80]. This is a concern as fishing effort in Oman and the wider Arabian Sea is increasing rapidly (Ministry of National Economy, 2009; FAO, 2007). Furthermore, industrial ports, fast-ferry terminals and coastal resorts are under construction in Oman, with consequences for inshore ASHW habitats, including favoured breeding and feeding sites [80]. A further threat faced by ASHW is disease, which may be of particular concern given their low genetic diversity. A recent analysis showed a persistent occurrence of Tattoo Skin Disease (TSD) in 25.6% of 43 whales examined [87]. While not thought to be lethal, TSD infections may decrease overall fitness and increase vulnerability to other impacts [88, 89].

It is widely assumed that limited genetic diversity in small populations results in inbreeding depression; this can be manifest as the expression of deleterious alleles, or in a reduction of the genetic diversity that would normally provide immunity to epizootics or other threats [90, 91]. Amos [92] argues that human exploitation is unlikely to have significantly impacted genetic variability in cetaceans, but also that effects of inbreeding depression may be manifest in populations deemed from their levels of variability to be genetically 'healthy'. Genetic diversity may well be relative; consequently, the critical level of diversity for a given population is often difficult to assess. Sufficient evidence confirms that if genetic factors are ignored, extinction risks can be underestimated and inappropriate conservation management strategies may be used [93]. However, there is also evidence to suggest that effective management and the reduction of threats to individual survival may reverse population decline, even if genetic variability is low [91].

All evidence collected and analyzed suggests that ASHW are genetically and demographically unique, and exhibit atypical behaviour for humpback whales. The implementation of conservation and management measures for the ASHW population is of paramount importance and we recommend that the conservation status of ASHW be revised to "Critically Endangered" on the IUCN Red List of Threatened Species based on fulfilment of two criteria: 1) an estimated/suspected population size reduction of  $\geq 80\%$  over the last three generations, where the reduction or its causes may not have ceased or may not be understood; 2) population size estimated to number fewer than 250 mature individuals and an estimated continuing decline of at least 25% within one generation. According to the observations of the Soviet whalers the ASHW population size may have been at least 400 individuals 50 years (2–3 generations) ago. The current estimates for population size (82 individuals using mark-recapture data and 90–142 individuals using genetic data) and bottleneck timing are compatible with an 80% reduction.



Additionally, our evidences of ongoing population decline indicate that while whaling has ceased, other underlying, and less understood causes of decline are still continuing.

Burgeoning anthropogenic threats in the Arabian Sea, including entanglement in fishing gear and ship strikes [6, 94], are known limitations to demographic recovery (e.g. [11]). Future studies should be aimed at understanding in detail which processes have led (or are leading) to the high observed genetic differentiation and more importantly, to the decline of this unique whale population.

## Supporting Information

**Figure S1. Arabian Sea Humpback whales photographed in Dhofar, Southern Oman.** Photo credits: T. Collins and D. MacDonald.

[doi:10.1371/journal.pone.0114162.s001](https://doi.org/10.1371/journal.pone.0114162.s001) (TIF)

**Table S1. Statistical values obtained in the Bayesian population structure analysis implemented in STRUCTURE using different priors: a) No admixture and prior information on origin of population; b) No admixture and no prior information on origin of population.**

[doi:10.1371/journal.pone.0114162.s002](https://doi.org/10.1371/journal.pone.0114162.s002) (XLSX)

**Table S2. Estimated contemporary effective population size and number of breeders obtained with the linkage disequilibrium and heterozygote excess methods in the program NeEstimator V2 for Southern Hemisphere humpback whale populations.**

[doi:10.1371/journal.pone.0114162.s003](https://doi.org/10.1371/journal.pone.0114162.s003) (XLSX)

## Acknowledgments

We thank the Oman Ministry of Environment and Climate Affairs for relevant permits and the support of its staff, the Environment Society of Oman ([www.eso.org.om](http://www.eso.org.om)) for its continued support of cetacean research and conservation in Oman and the many people that assisted with fieldwork, data entry and analyses, particularly Andrew Wilson, Peter Ersts, Fergus Kennedy, Brenda Rone and Vic Cockcroft. We are grateful to our donors: The Ford Environmental Grants, The UK Foreign and Commonwealth Office, Shell Marketing Oman, Petroleum Development Oman, Veritas Geophysical, The Peter Scott Trust, Emirates, Salalah Port Services, DHL, Truck Oman, Oman Air, Muscat Pharmacy, KPMG, Han-Padron and Marina Bandar al Rowdah. George Amato and Rob DeSalle of the American Museum of Natural History provided logistical and funding support. Genetic analyses detailed in this paper were supported by several grants to HCR. We would also like to thank the Sackler Institute for Comparative Genomics and its lab managers and research technicians.

## Author Contributions

Conceived and designed the experiments: TC GM RB KF HCR. Performed the experiments: CP TC KF GM RB LP. Analyzed the data: CP ARA ML HCR. Contributed reagents/materials/analysis tools: TC RB HCR. Wrote the paper: ARA CP TC GM RB KF ML LP HCR.

## References

1. Baker CS, Clapham PJ (2004) Modelling the past and future of whales and whaling. *Trends in Ecology & Evolution* 19: 365–371.
2. Best PB (1993) Increase rates in severely depleted stocks of baleen whales. *ICES Journal of Marine Science* 50: 169–186.
3. George JCC, Zeh J, Suydam R, Clark C (2004) Abundance and population trend (1978–2001) of western Arctic bowhead whales surveyed near Barrow, Alaska. *Marine Mammal Science* 20: 755–773.
4. Rugh DJ, Hobbs RC, Lerczak JA, Breiwick JM (2005) Estimates of abundance of the eastern North Pacific gray whales (*Eschrichtius robustus*) 1997 to 2002. *Journal of Cetacean Research and Management* 7: 1–12.
5. Bradford AL, Wade PR, Weller DW, Burdin AM, Ivashchenko YV, et al. (2006) Survival estimates of western gray whales *Eschrichtius robustus* incorporating individual heterogeneity and temporary emigration. *Marine Ecology Progress Series* 315: 293–307.
6. Clapham PJ, Young SB, Brownell RL (1999) Baleen whales: conservation issues and the status of the most endangered populations. *Mammal Review* 29: 35–60.
7. Kraus SD, Brown MW, Caswell H, Clark CW, Fujiwara M, et al. (2005) North Atlantic right whales in crisis. *Science* 309: 561–562.
8. Wade PR, Kennedy A, LeDuc R, Barlow J, Carretta J, et al. (2011) The world's smallest whale population? *Biology Letters* 7: 83–85.
9. Weller D, Burdin A, Wursig B, Taylor BL, Brownell RL (2002) The western gray whale: a review of past exploitation, current status and potential threats. *Journal of Cetacean Research and Management* 4: 7–12.
10. Clapham PJ, Aguilar A, Hatch LT (2008) Determining spatial and temporal scales for management: lessons from whaling. *Marine Mammal Science* 24: 183–201.
11. Mullen KA, Peterson ML, Todd SK (2013) Has designating and protecting critical habitat had an impact on endangered North Atlantic right whale ship strike mortality? *Marine Policy* 42: 293–304.
12. Findlay KP (2001) A review of humpback whale catches by modern whaling operations in the Southern Hemisphere. *Memoirs of the Queensland Museum* 47: 411–420.
13. Baker CS, Steel D, Calambokidis J, Falcone E, Gonzalez-Peral U, et al. (2013) Strong maternal fidelity and natal philopatry shape genetic structure in North Pacific humpback whales. *Marine Ecology Progress Series* 494: 291–306.
14. Baker CS, Medrano-Gonzalez L, Calambokidis J, Perry A, Pichler F, et al. (1998) Population structure of nuclear and mitochondrial DNA variation among humpback whales in the North Pacific. *Molecular Ecology* 7: 695–707.
15. Palsboll PJ, Clapham PJ, Mattila DK, Larsen F, Sears R, et al. (1995) Distribution of mtDNA haplotypes in North Atlantic humpback whales - the influence of behaviour on population structure. *Marine Ecology-Progress Series* 116: 1–10.
16. Rosenbaum HC, Pomilla C, Mendez M, Leslie MS, Best PB, et al. (2009) Population Structure of Humpback Whales from Their Breeding Grounds in the South Atlantic and Indian Oceans. *Plos One* 4: e7318.
17. Ruegg K, Rosenbaum HC, Anderson EC, Engel M, Rothschild A, et al. (2013) Long-term population size of the North Atlantic humpback whale within the context of worldwide population structure. *Conservation Genetics* 14: 103–114.

18. **Cheesman RE** (1926) In *Unknown Arabia*: Macmillan and Company, Limited.
19. **Gervais P** (1888) Sur une nouvelle espece de Megaptera (*Megaptera indica*) provenant du golfe Persique. Nouvelle archives du Museum d'Histoire Naturelle, Paris: 199–218.
20. **Minton G, Collins T, Pomilla C, Findlay KP, Rosenbaum HC, et al.** (2008) *Megaptera novaengliae* (Arabian Sea sub-population). In: IUCN, editor. 2009 IUCN Red List of threatened species: IUCN.
21. **Brown SG** (1957) Whales observed in the Indian Ocean: notes on their distribution. *Marine Observer* 27: 157–165.
22. **Tomilin AG** (1967) Mammals of the USSR and adjacent countries, Vol IX, Cetacea: Israeli Program for Scientific Translations, Jerusalem.
23. **Slijper EJ, van Utrecht WL, Naaktgeboren C** (1964) Remarks on the distribution and migration of whales, based on observations from Dutch ships. *Bijdragen Tot De Dierkunde* 34: 4–86.
24. **Reeves RR, Leatherwood S, Papastavrou V** (1991) Possible stock affinities of humpback whales in the Northern Indian Ocean. 259–269 p.
25. **Baldwin R** (2000) Oman's humpback whales (*Megaptera novaeangliae*). *Journal of Oman Studies* 11: 11–18.
26. **Minton G, Collins T, Findlay KP, Ersts PJ, Rosenbaum HC, et al.** (In Press) Seasonal distribution, abundance, habitat use and population identity of humpback whales in Oman. *Journal of Cetacean Research and Management, Special Issue on Southern Hemisphere Humpback Whales*.
27. **Minton G** (2004) Ecology and Conservation of Cetaceans in Oman with particular reference to humpback whales, *Megaptera novaeangliae* (Borowski 1781) [D.Phil.]. Millport: University of London. 250 p.
28. **Mikhalev YA** (2000) Whaling in the Arabian Sea by the whaling fleets *Slava* and *Sovetskaya Ukraina*. In: Yablokov AV, Zemsky VA, Tormosov DD, editors. *Soviet Whaling Data (1949–1979)*. Moscow: Centre for Russian Environmental Policy. pp. 408.
29. **Braulik GT, Ranjbar S, Owfi F, Aminrad T, Dakhtek SMH, et al.** (In Press) Marine Mammal Records from Iran. *Journal of Cetacean Research and Management*.
30. **Al-Robaee K** (1974) *Tursiops aduncus* bottlenosed dolphin: a new record for Arab Gulf, with notes on Cetacea of the region. *Bulletin of the Basrah Natural History Museum* 1: 7–15.
31. **Mikhalev YA** (1997) Humpback whales, *Megaptera novaeangliae*, in the Arabian Sea. *Marine Ecology Progress Series* 149: 13–21.
32. **Minton G, Cerchio S, Collins T, Ersts P, Findlay KP, et al.** (2009) A note on the comparison of humpback whale tail fluke catalogues from the Sultanate of Oman with Madagascar and the East African mainland. *Journal of Cetacean Research and Management* 11: 67–70.
33. **Whitehead H** (1985) Humpback whale songs from the Northern Indian Ocean. *Investigations on Cetacea* 17: 157–162.
34. **Lambertsen RH** (1987) A biopsy system for large whales and its use for cytogenetics. *Journal of Mammalogy* 68: 443–445.
35. **Baker CS, Flórez-González L, Abernethy B, Rosenbaum HC, Slade RW, et al.** (1998) Mitochondrial DNA variation and maternal gene flow among humpback whales of the Southern Hemisphere. *Marine Mammal Science* 14: 721–737.
36. **Schlötterer C, Amos B, Tautz D** (1991) Conservation of polymorphic simple sequence loci in cetacean species. *Nature* 354: 63–65.
37. **Valsecchi E, Amos W** (1996) Microsatellite markers for the study of cetacean populations. *Molecular Ecology* 5: 151–156.
38. **Palsbøll PJ, Bérubé M, Larsen AH, Jørgensen H** (1997) Primers for the amplification of tri- and tetramer microsatellite loci in baleen whales. *Molecular Ecology* 6: 893–895.
39. **Guo SW, Thompson EA** (1992) Performing the exact test of Hardy-Weinberg proportion for multiple alleles. *Biometrics* 48: 361–372.
40. **Raymond M, Rousset F** (1995) GENEPOP (Version 1.2) - Population genetics software for exact tests and ecumenicism. *Journal of Heredity* 86: 248–249.

41. **Park S** (2001) MS\_Toolkit: Excel add-in tool package for microsatellite data. Dublin: Genetics Department, Trinity College.
42. **Ayres KL, Overall DJ** (2004) api-calc 1.0: a computer program for calculating the average probability of identity allowing for substructure, inbreeding and the presence of close relatives. *Molecular Ecology Notes* 4: 315–318.
43. **Baker CS, Perry A, Bannister JL, Weinrich MT, Abernethy RB, et al.** (1993) Abundant mitochondrial DNA variation and worldwide population structure in humpback whales. *Proceedings of the National Academy of Sciences USA* 90: 8239–8243.
44. **Maddison WP, Maddison DR** (1992) *MacClade: Analysis of Phylogeny and Character Evolution*. 3.0 ed. Sunderland, Massachusetts: Sinauer Associates.
45. **Olavarria C, Baker CS, Garrigue C, Poole M, Hauser N, et al.** (2007) Population structure of South Pacific humpback whales and the origin of the eastern Polynesian breeding grounds. *Marine Ecology Progress Series* 330: 257–268.
46. **Witteveen BH, Straley JM, Von Ziegesar O, Steel D, Baker CS** (2004) Abundance and mtDNA differentiation of humpback whales (*Megaptera novaeangliae*) in the Shumagin Islands, Alaska. *Canadian Journal of Zoology* 82: 1352–1359.
47. **Ronquist F, Teslenko M, van der Mark P, Ayres DL, Darling A, et al.** (2012) MrBayes 3.2: Efficient Bayesian Phylogenetic Inference and Model Choice Across a Large Model Space. *Systematic Biology* 61: 539–542.
48. **Kimura M** (1980) A simple method for estimating rate of base substitutions through comparative studies of nucleotide sequences. *Journal of Molecular Evolution* 16: 111–120.
49. **Excoffier L, Laval G, Schneider S** (2005) Arlequin ver. 3.0: An integrated software package for population genetics data analysis. *Evolutionary Bioinformatics Online* 1: 47–50.
50. **Perneger TV** (1998) What's wrong with Bonferroni adjustments. *British Medical Journal* 316: 1236–1238.
51. **Pritchard JK, Stephens M, Donnelly P** (2000) Inference of population structure using multilocus genotype data. *Genetics* 155: 945–959.
52. **Hubisz MJ, Falush D, Stephens M, Pritchard JK** (2009) Inferring weak population structure with the assistance of sample group information. *Molecular Ecology Resources* 9: 1322–1332.
53. **Earl DA, vonHoldt BM** (2012) STRUCTURE HARVESTER: a website and program for visualizing STRUCTURE output and implementing the Evanno method. *Conservation Genetics Resources* 4: 359–361.
54. **Jakobsson M, Rosenberg NA** (2007) CLUMPP: a cluster matching and permutation program for dealing with label switching and multimodality in analysis of population structure. *Bioinformatics* 23: 1801–1806.
55. **Rosenberg NA** (2004) distruct: a program for the graphical display of population structure. *Molecular Ecology Notes* 4: 137–138.
56. **Nielsen R, Wakeley J** (2001) Distinguishing Migration From Isolation: A Markov Chain Monte Carlo Approach. *Genetics* 158: 885–896.
57. **Nei M** (1987) *Molecular Evolutionary Genetics*. New York: Columbia University Press.
58. **Tajima F** (1993) Measurement of DNA polymorphism. In: Takahata N, Clark AG, editors. *Mechanisms of molecular evolution Introduction to molecular paleopopulation biology*. Tokyo: Japan Scientific Societies Press, Sinauer Associates. pp. 37–59.
59. **Rozas J, Sánchez-DelBarrio JC, Messegyer X, Rozas R** (2003) DnaSP, DNA polymorphism analyses by the coalescent and other methods. *Bioinformatics* 19: 2496–2497.
60. **Goudet J** (1995) FSTAT (Version 1.2): a computer program to calculate *F*-statistics. *Journal of Heredity* 86: 485–486.
61. **Garza JC, Williamson EG** (2001) Detection of reduction in population size using data from microsatellite loci. *Molecular Ecology* 10: 305–318.
62. **Piry S, Luikart G, Cornuet JM** (1999) BOTTLENECK: A computer program for detecting recent reductions in the effective population size using allele frequency data. *Journal of Heredity* 90: 502–503.

63. **Rogers AR, Harpending H** (1992) Population growth makes waves in the distribution of pairwise genetic differences. *Molecular Biology and Evolution* 9: 552–569.
64. **Harpending HC, Sherry ST, Rogers AR, Stoneking M** (1993) Genetic structure of ancient human populations. *Current Anthropology* 34: 483–496.
65. **Tajima F** (1989) The effect of change in population size on DNA polymorphism. *Genetics* 123: 597–601.
66. **Ramos-Onsins SE, Rozas J** (2002) Statistical Properties of New Neutrality Tests Against Population Growth. *Molecular Biology and Evolution* 19: 2092–2100.
67. **Drummond AJ, Rambaut A, Shapiro B, Pybus OG** (2005) Bayesian coalescent inference of past population dynamics from molecular sequences. *Molecular Biology and Evolution* 22: 1185–1192.
68. **Drummond AJ, Suchard MA, Xie D, Rambaut A** (2012) Bayesian Phylogenetics with BEAUti and the BEAST 1.7. *Molecular Biology and Evolution* 29: 1969–1973.
69. **Alter SE, Rynes E, Palumbi SR** (2007) DNA evidence for historic population size and past ecosystem impacts of gray whales. *Proceedings of the National Academy of Sciences of the United States of America* 104: 15162–15167.
70. **Do C, Waples RS, Peel D, Macbeth GM, Tillett BJ, et al.** (2014) NeEstimator v2: re-implementation of software for the estimation of contemporary effective population size ( $N_e$ ) from genetic data. *Molecular Ecology Resources* 14: 209–214.
71. **Waples RS, Do CHI** (2008) lndne: a program for estimating effective population size from data on linkage disequilibrium. *Molecular Ecology Resources* 8: 753–756.
72. **Zhdanova OL, Pudovkin AI** (2008) Nb\_HetEx: A Program to Estimate the Effective Number of Breeders. *Journal of Heredity* 99: 694–695.
73. **Taylor BL, Chivers SJ, Larese J, Perrin WF** (2007) Generation length and percent mature estimates for IUCN assessments of cetaceans. Administrative report LJ-07-01. National Marine Fisheries Service, Southwest Fisheries Science Center.
74. **Baker CS, Medrano-Gonzalez L** (2002) World-wide distribution and diversity of humpback whale mitochondrial DNA lineages. In: Pfeiffer CJ, editor. *Cell and Molecular Biology of Marine Mammals*: Krieger Publishing Co. pp. 84–99.
75. **Frankham R** (1995) Effective population size/adult population size ratios in wildlife: a review. *Genetical Research* 66: 95–107.
76. **Luikart G, Allendorf FW, Cornuet JM, Sherwin WB** (1998) Distortion of allele frequency distributions provides a test for recent population bottlenecks. *Journal of Heredity* 89: 238–247.
77. **Jackson JA, Steel DJ, Beerli P, Congdon BC, Olavarria C, et al.** (2014) Global diversity and oceanic divergence of humpback whales (*Megaptera novaeangliae*). *Proceedings of the Royal Society B: Biological Sciences* 281.
78. **Ehlersa J, Gibbard PL, editors** (2004) Quaternary Glaciations—Extent and Chronology, Part III: South America, Asia, Africa, Australasia, Antarctica. Amsterdam: Elsevier.
79. **Kiefer T, McCave IN, Elderfield H** (2006) Antarctic control on tropical Indian Ocean sea surface temperature and hydrography. *Geophysical Research Letters* 33: L24612.
80. **Minton G, Collins T, Findlay KP, Ersts PJ, Rosenbaum HC, et al.** (2011) Seasonal distribution, abundance, habitat use and population identity of humpback whales in Oman. *Journal of Cetacean Research and Management* 3: 185–195.
81. **Singh AD, Jung SJA, Darling K, Ganeshram R, Ivanochko T, et al.** (2011) Productivity collapses in the Arabian Sea during glacial cold phases. *Paleoceanography* 26.
82. **Banakar VK, Mahesh BS, Burr G, Chodankar AR** (2010) Climatology of the Eastern Arabian Sea during the last glacial cycle reconstructed from paired measurement of foraminiferal  $\delta^{18}O$  and Mg/Ca. *Quaternary Research* 73: 535–540.
83. **Gupta AK, Anderson DM, Overpeck JT** (2003) Abrupt changes in the Asian southwest monsoon during the Holocene and their links to the North Atlantic Ocean. *Nature* 421: 354–357.
84. **Fujiwara M, Caswell H** (2001) Demography of the endangered North Atlantic right whale. *Nature* 414: 537–541.

85. **Lang AR** (2010) The population genetics of gray whales (*Eschrichtius robustus*) in the North Pacific [PhD Dissertation]: University of California, San Diego. 222 p.
86. **Ivashchenko YV, Clapham PJ** (2012) Soviet catches of right whales *Eubalaena japonica* and bowhead whales *Balaena mysticetus* in the North Pacific Ocean and the Okhotsk Sea. *Endangered Species Research* 18: 201–217.
87. **Baldwin R** (2000) Oman's humpback whales (*Megaptera novaengliae*). *Journal of Oman Studies* 11: 11–18.
88. **Van Bresseem M-F, Antonio Raga J, Di Guardo G, Jepson PD, Daignan PJ, et al.** (2009) Emerging infectious diseases in cetaceans worldwide and the possible role of environmental stressors. *Diseases of Aquatic Organisms* 86: 143–157.
89. **VanBresseem MF, VanWaerebeek K** (1996) Epidemiology of poxvirus in small cetaceans from the Eastern South Pacific. *Marine Mammal Science* 12: 371–382.
90. **Bouzat JL** (2010) Conservation genetics of population bottlenecks: the role of chance, selection, and history. *Conservation Genetics* 11: 463–478.
91. **Lacy RC** (1997) Importance of genetic variation to the viability of mammalian populations. *Journal of Mammalogy* 78: 320–335.
92. **Amos B** (1996) Levels of variability in cetacean populations have probably changed little as a result of human activities. *Report of the International Whaling Commission* 46: 657–658.
93. **Frankham R** (2005) Genetics and extinction. *Biological Conservation* 126: 131–140.
94. **Gilpin ME** (1986) Minimum viable populations: The processes of species extinctions. In: Soulé M, editor. *Conservation Biology: The science of scarcity and diversity*. Sunderland Mass: Sinauer Associates. pp. 13–34.