

The Plant Cell, Vol. 14, 559–574, March 2002, [www.plantcell.org](http://www.plantcell.org) © 2002 American Society of Plant Biologists

# Expression Profile Matrix of Arabidopsis Transcription Factor Genes Suggests Their Putative Functions in Response to Environmental Stresses <sup>[W]</sup>

Wenqiong Chen,<sup>a</sup> Nicholas J. Provart,<sup>a</sup> Jane Glazebrook,<sup>a</sup> Fumiaki Katagiri,<sup>a</sup> Hur-Song Chang,<sup>a</sup> Thomas Eulgem,<sup>b</sup> Felix Mauch,<sup>c</sup> Sheng Luan,<sup>d</sup> Guangzhou Zou,<sup>a</sup> Steve A. Whitham,<sup>a,1</sup> Paul R. Budworth,<sup>a</sup> Yi Tao,<sup>a</sup> Zhiyi Xie,<sup>a,2</sup> Xi Chen,<sup>e</sup> Steve Lam,<sup>e</sup> Joel A. Kreps,<sup>a</sup> Jeffery F. Harper,<sup>f</sup> Azzedine Si-Ammour,<sup>c</sup> Brigitte Mauch-Mani,<sup>c</sup> Manfred Heinlein,<sup>g</sup> Kappei Kobayashi,<sup>g</sup> Thomas Hohn,<sup>g</sup> Jeffery L. Dangl,<sup>b</sup> Xun Wang,<sup>a</sup> and Tong Zhu<sup>a,3</sup>

<sup>a</sup> Torrey Mesa Research Institute, Syngenta Research and Technology, 3115 Merryfield Row, San Diego, California 92121

<sup>b</sup> Department of Biology, University of North Carolina, Chapel Hill, North Carolina 27599

<sup>c</sup> Department of Biology, University of Fribourg, CH-1700 Fribourg, Switzerland

<sup>d</sup> Department of Plant and Microbial Biology, University of California, Berkeley, California 94720

<sup>e</sup> Syngenta Biotechnology, Inc., 3054 Cornwallis Road, Research Triangle Park, North Carolina 27709

<sup>f</sup> Scripps Research Institute, 3528 General Atomics Court, San Diego, California 92121

<sup>g</sup> Friedrich Miescher Institute, Maulbeerstrasse 66, CH-4058 Basel, Switzerland

Numerous studies have shown that transcription factors are important in regulating plant responses to environmental stress. However, specific functions for most of the genes encoding transcription factors are unclear. In this study, we used mRNA profiles generated from microarray experiments to deduce the functions of genes encoding known and putative Arabidopsis transcription factors. The mRNA levels of 402 distinct transcription factor genes were examined at different developmental stages and under various stress conditions. Transcription factors potentially controlling downstream gene expression in stress signal transduction pathways were identified by observed activation and repression of the genes after certain stress treatments. The mRNA levels of a number of previously characterized transcription factor genes were changed significantly in connection with other regulatory pathways, suggesting their multifunctional nature. The expression of 74 transcription factor genes responsive to bacterial pathogen infection was reduced or abolished in mutants that have defects in salicylic acid, jasmonic acid, or ethylene signaling. This observation indicates that the regulation of these genes is mediated at least partly by these plant hormones and suggests that the transcription factor genes are involved in the regulation of additional downstream responses mediated by these hormones. Among the 43 transcription factor genes that are induced during senescence, 28 of them also are induced by stress treatment, suggesting extensive overlap responses to these stresses. Statistical analysis of the promoter regions of the genes responsive to cold stress indicated unambiguous enrichment of known conserved transcription factor binding sites for the responses. A highly conserved novel promoter motif was identified in genes responding to a broad set of pathogen infection treatments. This observation strongly suggests that the corresponding transcription factors play general and crucial roles in the coordinated regulation of these specific regulons. Although further validation is needed, these correlative results provide a vast amount of information that can guide hypothesis-driven research to elucidate the molecular mechanisms involved in transcriptional regulation and signaling networks in plants.

## INTRODUCTION

Plants have evolved a number of mechanisms to cope with different biotic and abiotic stresses. One important step in the control of stress responses appears to be the transcrip-

tional activation or repression of genes. Many genes induced by stress challenges, including those encoding transcription factors, have been identified, and some of them have been

<sup>1</sup> Current address: Department of Plant Pathology, Iowa State University, Ames, IA 50011.

<sup>2</sup> Current address: Diversa Corp., 4955 Directors Place, San Diego, CA 92121.

<sup>3</sup> To whom correspondence should be addressed. E-mail [tong.zhu@syngenta.com](mailto:tong.zhu@syngenta.com); fax 858-812-1097.

<sup>[W]</sup> Online version contains Web-only data.

Article, publication date, and citation information can be found at [www.plantcell.org/cgi/doi/10.1105/tpc.010410](http://www.plantcell.org/cgi/doi/10.1105/tpc.010410).

shown to be essential for stress tolerance. In Arabidopsis, a number of families of transcription factors, each containing a distinct type of DNA binding domain, such as AP2/EREBP, bZIP/HD-ZIP, Myb, and several classes of zinc finger domains, have been implicated in plant stress responses because their expression is induced or repressed under different stress conditions (Shinozaki and Yamaguchi-Shinozaki, 2000). Altering the expression of certain transcription factors can greatly influence plant stress tolerance. For example, overexpression of two Arabidopsis AP2/EREBP genes, *CBF1/DREB1B* and *DREB1A*, results in enhanced tolerance to drought, salt, and freezing (Jaglo-Ottosen et al., 1998; Kasuga et al., 1999). These two transcription factors have been shown to bind to the cold-responsive *cis* element CRT/DRE and to activate the expression of target genes. In another example in which plant response to UV irradiation was studied, knockout mutants for the Arabidopsis *AtMyb4* gene were found to produce a higher level of UV light-protective compounds, such as sinapate esters, and to be more tolerant to UV-B light, whereas transgenic plants overexpressing *AtMyb4* were found to contain reduced levels of sinapate esters and to be more sensitive to UV-B light (Jin et al., 2000). The expression of *AtMyb4* itself was found to be repressed by UV-B light treatment. It has been proposed that *AtMyb4* functions as a negative regulator in controlling genes involved in the synthesis of protective sinapate esters.

Another well-characterized stress response is the response to various biotic stresses. The response depends on whether the interaction between the pathogen and the plant is compatible or incompatible—that is, whether the pathogen is virulent and the plant is susceptible or the pathogen is avirulent and the plant is resistant. Members of the recently identified family of WRKY transcription factors have been implicated in the control of some stress responses (Eulgem et al., 2000). The WRKY family is defined by a DNA binding domain that contains the strictly conserved amino acid sequence WRKY. Upon binding to their cognate W box binding motif (TTGACC/T), members of this family have been shown to activate transcription (Eulgem et al., 1999). *WRKY* genes have been found to be upregulated in response to a diverse set of stresses, including infection by pathogens and wounding, as well as during senescence. The induced accumulation of WRKY mRNA often is extremely rapid and appears not to require the *de novo* synthesis of regulatory factors (Eulgem et al., 2000). Recently, the expression of *NPR1*, which encodes a key regulator of defense responses in Arabidopsis, has been shown to be controlled by WRKY factors (Yu et al., 2001).

The Arabidopsis genome encodes >1500 transcription factors (Riechmann et al., 2000), the majority of which are members of large families. It is a challenge to understand and discriminate the function of closely related members within each family. To meet this challenge, we took a genomics approach and monitored their regulation at the

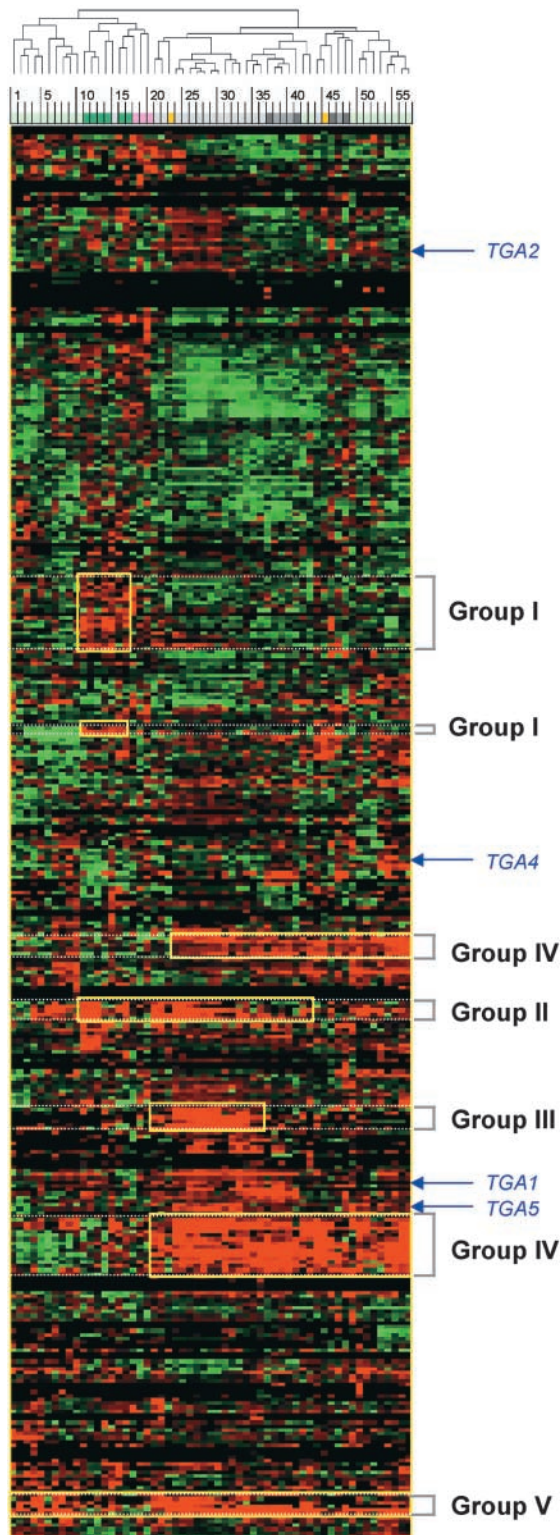
mRNA level in 81 developmental stages, genetic backgrounds, and environmental conditions using the Arabidopsis GeneChip system (Zhu and Wang, 2000). Here, we report the expression profiles and the potential functions of 402 genes coding for known and putative transcription factors based on our observations.

## RESULTS

### Building an Expression Profile Matrix for Genes Encoding Known and Putative Transcription Factors

A total of 402 potential stress-related genes that encode known or putative transcription factors were selected for this study from ~8300 genes (corresponding to approximately one-third of the genome) covered by the Arabidopsis GeneChip (see supplemental data). The detailed selection criteria for these genes are described in Methods. These genes include 63 *AP2/EREBP* genes, 121 *AtMyb* genes, 34 *bZIP* genes, 152 members of the diverse zinc finger gene classes, 12 AtHD-ZIP genes, and 21 *IAA/AXR* genes. The complex zinc finger gene classes can be divided further into distinct zinc finger gene families based on their structural features. These families include plant-specific WRKY (Eulgem et al., 2000) and Dof proteins (Yanagisawa and Schmidt, 1999), GATA-type zinc finger proteins, and RING zinc finger proteins (Jensen et al., 1998). Although some zinc finger proteins, such as the RING zinc finger proteins, might be involved in protein-protein interactions rather than direct DNA binding, they were included in this study because some studies have shown that they too can be involved in the transcriptional regulation of gene expression (Borden, 2000; Capili et al., 2001).

Expression levels of these 402 transcription factor genes were monitored in various organs, at different developmental stages, and under various biotic and abiotic stresses. A two-dimensional transcription matrix (genes versus treatments or developmental stages/tissues) describing the changes in the mRNA levels of the 402 transcription factor genes was constructed for these experiments. The data represent 19 independent experiments, with samples derived from different organs such as roots, leaves, inflorescence stems, flowers, and siliques and at different developmental stages (Zhu et al., 2001a) and >80 experiments representing 57 independent treatments with cold, salt, osmoticum, wounding, jasmonic acid, and different types of pathogens at different time points (see supplemental data for a detailed sample description). To make results comparable across all of the experiments in the study of stress response, transcript levels of the stress-treated samples were compared with those of the corresponding mock-treated samples, and fold change values were used for further clustering analysis.



**Figure 1.** Expression Profiles of the Arabidopsis Transcription Factor Genes under Different Stress Conditions.

**Transcription Factor Genes Apparently Involved in Stress Responses Exhibit Nonspecific and Specific Alterations in Expression Profiles**

The majority of the transcription factor genes analyzed are expressed differentially after various stress treatments (Figure 1). With the intention of identifying transcription factor genes that are regulated by specific types of stress treatments and/or coregulated by combinations of different types of stress treatments, five groups (groups I to V) with distinct expression patterns were created based on the results of cluster analysis; these are highlighted in Figure 1. The members of each group are listed in the supplemental data.

Group I contains 21 genes that are induced preferentially by abiotic stress—that is, 3 and 27 hr after treatment with cold and/or high salt and/or osmoticum, and 2 and 12 hr after jasmonic acid treatment. This group includes the genes encoding the DRE/CRT binding factors *DREB1B/CBF1*, *DREB1C/CBF2*, and *DREB1A/CBF3* that were shown previously to be activated transcriptionally by cold stresses (Liu et al., 1998; Medina et al., 1999). Other known genes in this group are *CCA1* and *Athb-8*, which are regulated by the circadian clock and the hormone auxin, respectively (Wang and Tobin, 1998; Baima et al., 2001). In addition, a number of genes encoding putative zinc finger proteins, Myb proteins, bZIP/HD-ZIPs, and AP2/EREBP domain-containing proteins, also were found in this group.

Group II contains five genes that are activated preferentially by both abiotic stress and bacterial infection. Several isogenic pairs of strains of virulent or avirulent bacteria were included in this study, such as *Pseudomonas syringae* pv *tomato* DC3000 with (avirulent) or without (virulent) different *avr* genes and *P. syringae* pv *maculicola* ES4326 with (avirulent) or without (virulent) *avrRpt2*, and mRNA level changes were monitored over time. Genes encoding different types of leucine zipper DNA binding proteins, the bZIPs, such as

The fold change values for each sample, relative to untreated control samples, were log<sub>2</sub> transformed and subjected to complete linkage hierarchical clustering, as described in Methods. Expression values higher and lower than those of the control are shown in red and green, respectively. The higher the absolute value of a fold difference, the brighter the color. The yellow rectangles indicate five potentially interesting groups as discussed in the text. The arrows indicate four genes that belong to the Arabidopsis TGA subfamily. The numbered color bar at the top indicates the type of stress applied for each experiment: light gray indicates bacterial; medium gray indicates fungal; dark gray indicates oomycetic; light green indicates viral; dark green indicates abiotic; pink indicates chemical; and light orange indicates wounding (see supplemental data for details). The horizontal dendrogram (top) indicates the relationship among experiments across all of the genes included in the cluster analysis.

*GBF3*, and HD-ZIPs, such as *Athb-7* and *Athb-12*, belong to this group. *GBF3* is thought to play a role in light regulation and in plant response to abscisic acid (Lu et al., 1996). The expression of both *Athb-7* and *Athb-12* is induced by abscisic acid and water stress (Soderman et al., 1996; Lee and Chun, 1998). The other two genes included in this group encode putative bZIP and Myb transcription factors.

Group III contains six genes that are activated mainly by bacterial infection. This group contains genes that belong to various types of transcription factor superfamilies, including AP2/EREBP, Myb proteins, WRKY type, and other types of zinc finger proteins. We were surprised to find that none of the genes in this group has been characterized with regard to plant stress responses.

Group IV contains 20 genes that are activated by infection with different types of pathogens, including bacteria, fungi, oomycetes, and viruses. Genes such as *AtERF1*, *AtERF2*, and *ERF1* are in this group. Although their functions in other pathways are known, none of these transcription factor genes has been shown to be activated by pathogen infections. *ERF1* plays a role in the ethylene signaling pathway (Solano et al., 1998). Transcription of *AtERF1* and *AtERF2* is induced by ethylene and wounding, and these factors are able to activate gene expression through the GCC box (Fujimoto et al., 2000). In addition to the genes that belong to the AP2/EREBP gene family (five genes in total in this group, including two additional putative AP2/EREBP genes), we found three genes encoding WRKY-type transcription factors, 10 genes encoding various other types of zinc finger proteins, and two genes encoding Myb proteins.

Group V contains five genes that also are activated by all types of pathogens but differ from those in group IV in their response to viral attack. Genes in group IV appear to be repressed by virus infection at an early time point, whereas genes in group V are activated under viral attack at these same time points (Figure 1; see supplemental data). *AtWRKY6* and *RAP2.6* belong to this group. This extends the previous finding that *AtWRKY6* is induced by virulent and avirulent bacterial pathogens (Robatzek and Somssich, 2002). The expression of the *RAP2.6* gene was not well characterized, although it has been shown to contain the highly conserved AP2/EREBP domain (Okamuro et al., 1997).

Although genes that are induced specifically by one or several particular type(s) of stress treatment(s) could be identified, a number of genes that are repressed by different conditions also were found; these are shown in green in Figure 1. Thirty-five genes that were not expressed at a detectable level under any conditions used in this study also were identified; these genes are not included in Figure 1 (data not shown).

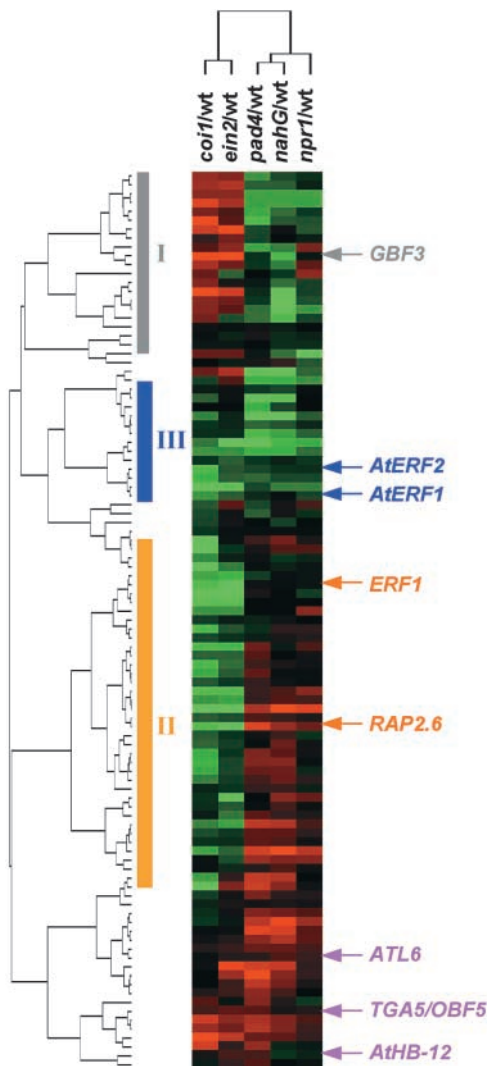
In addition to classifying different genes according to their specific expression patterns under various stress conditions, we also distinguished the putative functions among genes in the same gene family. For example, the Arabidopsis TGA subfamily of bZIP transcription factors was found previously to contain six closely related members (Kawata

et al., 1992; Schindler et al., 1992; Zhang et al., 1993; Miao et al., 1994; Xiang et al., 1997). Despite the high similarity (>72%) at the amino acid level, the expression characteristics of these four genes are quite different (Figure 1). *TGA1* is induced preferentially by infection with *Cauliflower mosaic virus* and *Botrytis cinerea* at later time points (60 and 84 hr). *TGA2* is repressed after a 27-hr cold treatment. *TGA4* is repressed by a number of stresses, including 27 hr of cold treatment, 9 hr after infection with the bacterium *P. syringae* pv *tomato* DC3000, and 1 day after infection with *Cucumber mosaic virus*. *TGA5* is induced mainly by infections with several different bacteria, such as *P. syringae* pv *tomato* DC3000/*avrRpt2* and *P. syringae* pv *maculicola* ES4326/*avrRpt2*, and by infection with *Cauliflower mosaic virus*. Distinct expression patterns of closely related genes imply that these genes would play different roles in the regulation of plant responses to biotic and/or abiotic stress.

### Transcription Factor Genes Apparently Are Involved in Salicylic Acid, Jasmonic Acid, and Ethylene Signaling Pathways

To gain information on how or through which signaling pathways transcription factor genes function in plant defense responses, we studied their expression in response to pathogen infection in different mutants and transgenic plants, namely *nahG* transgenic plants and the *pad4-1*, *npr1-1*, *coi1-1*, and *ein2-1* mutants, in which different signaling pathways controlling plant defense responses are blocked (Delaney et al., 1994; Feys et al., 1994; Cao et al., 1997; Zhou et al., 1998; Alonso et al., 1999). Because of the defects in different signaling pathways, all of the mutants or transgenic plants included in this study are more susceptible to some pathogen infections than are wild-type plants (Penninckx et al., 1998; Zhou et al., 1998; Thomma et al., 1999). Among the 95 genes that are activated by *P. syringae* pv *maculicola* ES4326 infection in wild-type plants, 80% of them are either less activated or not activated in at least one of the mutants (Figure 2; see supplemental data). On the basis of the altered expression patterns in the mutant and transgenic plants, we categorized the transcription factor genes into three groups (groups I to III).

Group I contains genes whose expression relative to wild-type plants is reduced in *nahG*, *pad4*, and/or *npr1* mutant plants (Figure 2; see supplemental data). *GBF3* is in this group. As shown in supplemental data, the expression of *GBF3* is induced by both abiotic stress and bacterial pathogens. The abolished induction of *GBF3* in response to pathogen infection in the mutant backgrounds suggests that *GBF3* functions downstream of salicylic acid and NPR1 in salicylic acid-dependent signaling. Group II contains the genes whose expression is reduced in *coi1* and/or *ein2* mutant backgrounds relative to wild-type plants (Figure 2; see supplemental data). Genes in this group include *ERF1*, which has been shown to play a role in ethylene responses.



**Figure 2.** Expression of Transcription Factor Genes during Interactions with a Bacterial Pathogen in Mutant and Transgenic Plants That Are Deficient in Salicylic Acid, Jasmonic Acid, and Ethylene Signaling.

Transcription factor genes that were induced more than twofold 30 hr after inoculation with *P. syringae* pv *maculicola* ES4326 in wild-type plants were selected. Hierarchical clustering was performed as described in Figure 1, except that the fold change was calculated as average difference in a *P. syringae* pv *maculicola* ES4326-infected mutant relative to the infected wild type. Vertical bars at left indicate the clusters of genes that are discussed in the text. Expression of the genes in group I was reduced in the mutant or transgenic plants that are deficient in salicylic acid signaling. Expression of the genes in group II was reduced in the mutants that are deficient in jasmonic acid and/or ethylene signaling. Expression of the genes in group III was reduced in all of the mutants and transgenic plants. Examples of genes in each group are indicated. wt, wild type.

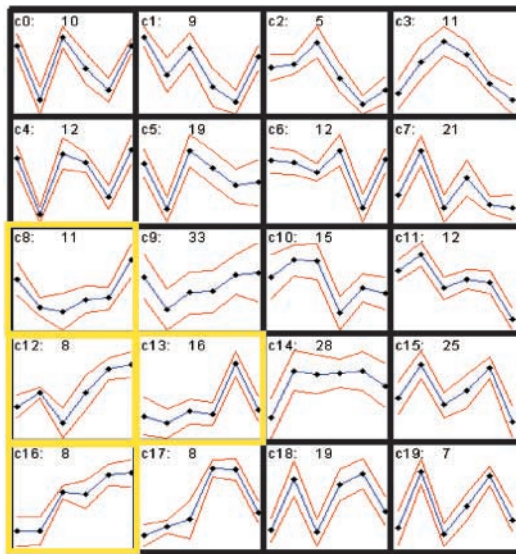
*ERF1* is induced by a number of pathogen treatments (see supplemental data). In addition, *RAP2.6*, a gene that is induced by almost all pathogen treatments (see supplemental data), also belongs to this group. Because the induced expression of these genes is either reduced or abolished in *coi1* and *ein2* mutants, genes such as *ERF1* and *RAP2.6* may function in ethylene/jasmonic acid-dependent signaling. Group III contains the genes whose expression is reduced in all mutant and transgenic plant backgrounds relative to wild-type plants (Figure 2; see supplemental data). *AtERF1* and *AtERF2* are in this group. The presence of *ERF1* and *AtERF1/2* in different regulons is another example of differences in the regulation of highly homologous transcription factor gene family members.

Some genes are induced by pathogen treatment but appear not to be affected strongly in any of the mutants tested in this study, such as *TGA5*, *Athb-12*, and *ATL6*, a gene that encodes a RING-H2 zinc finger protein and has been shown to be induced rapidly by elicitor (Salinas-Mondragon et al., 1999), and several genes encoding putative transcription factors (Figure 2; see supplemental data). Expression of these genes may be controlled by defense-related signaling pathways that have not yet been identified.

### Stress Response and Senescence May Share Overlapping Signaling Pathways

Recent studies suggest that the signaling pathways for leaf senescence and plant defense responses may overlap because several genes are activated both during senescence and by pathogen infection (Quirino et al., 2000). It will be interesting to determine to what extent the pathway activated by senescence shows similarity to the pathway involved in plant defense response and which transcription factors are involved in transcriptional regulation during leaf senescence and plant defense responses.

We clustered the transcription factor genes according to their expression profiles at different stages of leaf development. The two-dimensional self-organizing map algorithm (Tamayo et al., 1999) was used to gain an overview of the behavior of each gene relative to the others during the course of leaf development. Genes in clusters c8, c12, c13, and c16 are activated to various degrees in 8-week-old and/or 11-week-old senescent leaves (Figure 3, yellow boxes), suggesting that these genes are associated with senescence. These include the *WRKY* transcription factor genes *AtWRKY4*, *AtWRKY6*, and *AtWRKY7*, consistent with the previous observation that the expression of these genes is highly induced during senescence (Eulgem et al., 2000). In addition, the expression of genes encoding other types of transcription factors, such as *ERF3*, *AtMyb2*, and zinc finger proteins, also is induced during senescence (Table 1). Among the 43 genes in the c8, c12, c13, and c16 clusters, more than two-thirds also are induced after various stress treatments (see supplemental data), including the previously



**Figure 3.** Expression Patterns of the Transcription Factor Genes during Leaf Development.

The average difference was  $\log_2$  transformed, mean centered for each gene, and subjected to the self-organization map algorithm using a  $5 \times 4$  two-dimensional matrix and 100,000 epochs. The mean expression patterns for 20 distinct gene clusters (blue lines) and the standard deviation for each mean expression level (red lines) are shown. The y axis indicates the relative expression for all of the genes in that cluster, and the x axis indicates the stages during leaf development, following the order of 2-week-old leaf,<sup>a</sup> 2-week-old leaf,<sup>b</sup> 5-week-old leaf,<sup>a</sup> 6.5-week-old leaf,<sup>b</sup> 8-week-old leaf,<sup>b</sup> and 11-week-old leaf<sup>a</sup> (<sup>a</sup>, samples were collected in the afternoon; <sup>b</sup>, samples were collected in the morning) (see supplemental data for detailed information). The number of genes in each cluster is indicated at the top center of each cluster graph. The clusters for the genes that were expressed at higher levels at 8 and/or 11 weeks are indicated by yellow boxes. c, cluster.

characterized *AtWRKY6*, *ERF3*, and *AtMyb2*. This finding suggests that the signaling pathway activated by senescence may overlap substantially with stress signaling pathways.

### Roots Express Higher Levels of Some Stress-Related Transcription Factor Genes

The developmental and organ-specific regulation of the 402 transcription factor genes was examined. As shown in Figure 4, the majority of genes exhibit temporal and spatial variations in expression level. Using clustering analysis, organ-specific genes can be identified within each family of transcription factor genes. For most of the known transcription factor genes, the results from our GeneChip analyses for developmental and organ-specific regulation are consistent with the gene expression patterns identified previously

using techniques such as RNA gel blot analysis. For example, among the 63 genes in the *AP2/EREBP* superfamily, the expression patterns of 22 have been reported previously. These genes include *AP2*, *ANT*, *TINY*, *ERF1*, *ABI4*, *DREB1A*, *DREB1B*, *AtERF-1* to *AtERF-5*, and *AP2*-related (*RAP2*) genes (Jofuku et al., 1994; Elliott et al., 1996; Klucher et al., 1996; Wilson et al., 1996; Okamoto et al., 1997; Stockinger et al., 1997; Finkelstein et al., 1998; Liu et al., 1998; Solano et al., 1998; Medina et al., 1999; Fujimoto et al., 2000).

Expression profiles for well-characterized genes such as *AP2*, *ANT*, *ABI4*, and *RAP2* are in good agreement with previous reports in terms of tissue-specific expression patterns. However, *TINY* gene expression is an exception. It is expressed at relatively high levels in 2-week-old roots but not in other vegetative and floral tissues (Figure 4). *TINY* is required for both vegetative and floral organogenesis (Wilson et al., 1996), so it ought to be expressed in these tissues. We cannot exclude the possibility that a low expression level of *TINY* (below the GeneChip detection limit) might be sufficient for its cellular function. The remaining 41 genes identified here have not yet been characterized. Thirty-eight of these genes showed diverse expression patterns in this set of experiments. There are three genes for which no transcripts could be detected in any of the experiments. These three genes showed sequence similarity to the previously identified *AtERF4* and *RAP2.8* from Arabidopsis and *EREBP3* from tobacco. Similar to the *AP2/EREBP* gene family, sets of organ-specific genes from the *AtMyb* protein family and the zinc finger transcription factor family also were identified (data not shown). Clustering analysis with genes from each individual (super)family of transcription factors gave a similar experimental classification, supporting the classification generated with all 402 transcription factor genes shown in Figure 4.

The most striking finding from the clustering analysis is that  $\sim 15\%$  of the 402 transcription factor genes are expressed at relatively high levels in roots, compared with 6% that are leaf specific and 3% that are flower/silique specific (Figure 4; see supplemental data). These root-specific/preferential genes belong to different families of transcription factors, including members of the *AP2/EREBP* family, the *Myb* family, the *HD-ZIP* and *bZIP* families, the *IAA/AXR* gene family, and the zinc finger family. More than half of these genes also can be induced after attack by different pathogens (data not shown). Because the root samples analyzed were grown under several different conditions, including sterile liquid culture medium and soil mix, it is unlikely that the upregulation of such a large number of genes is attributable to either biotic or abiotic stress.

### Identification of Putative Downstream Target Genes for Transcription Factors

In an attempt to identify putative downstream targets for transcription factors, we examined the promoters of genes

**Table 1.** Transcription Factors Induced during the Senescence Process

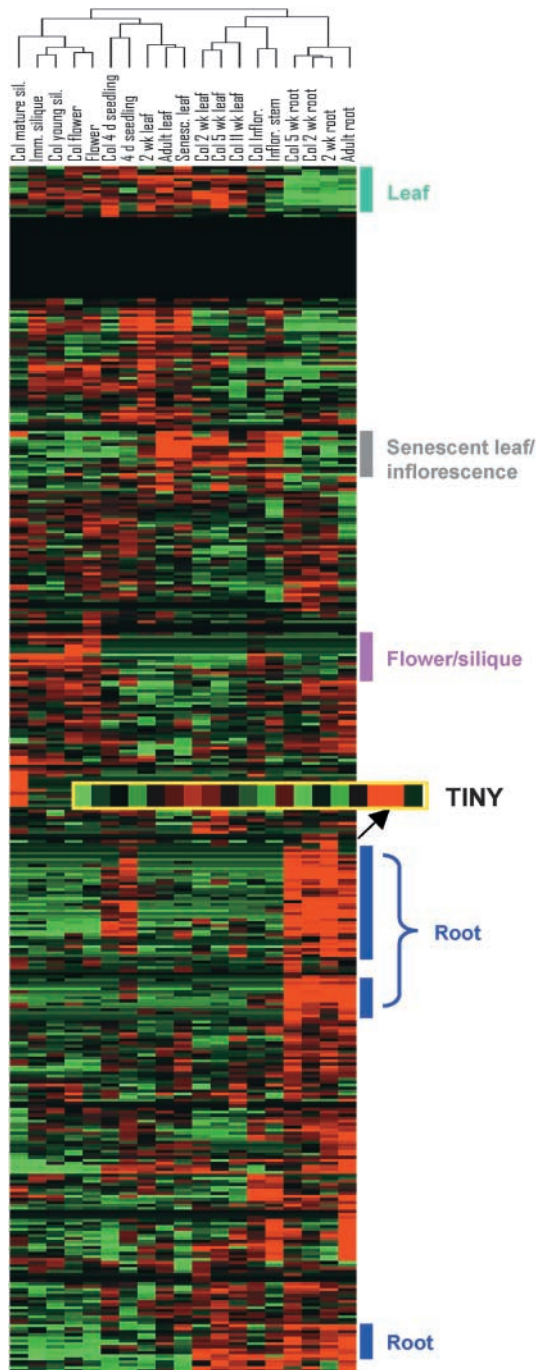
Probe Set <sup>a</sup>	SOM <sup>b</sup> Cluster	Accession Numbers and Description <sup>c</sup>	Induced by Other Stress Treatments
<b>12737_f_at</b>	8	emb CAA74603.1  (Y14207) <sup>d</sup> R2R3-MYB transcription factor	Bacteria, viruses, cold
<b>12908_s_at</b>	8	dbj BAA32422.1  (AB008107) ethylene-responsive element binding factor 5	Bacteria, oomycetes, fungi
<b>13015_s_at</b>	8	emb CAA67232.1  (X98674) zinc finger protein	Bacteria, oomycetes, fungi, viruses
<b>13115_at</b>	8	gb AAB60774.1  (AC000375) identical to At.WRKY6	Bacteria, oomycetes, fungi, viruses
<b>14751_at</b>	8	gb AAC72869.1  (AF104919) contains similarity to wild oat DNA binding protein ABF2 (GB:Z48431)	Bacteria, viruses
15638_s_at	8	gb AAC83582.1  (AF062860) putative transcription factor (similar to MYB4)	
<b>16198_at</b>	8	gb AAD24362.1 AC007184_2 (AC007184) putative C2H2-type zinc finger protein	Bacteria, viruses
<b>16638_s_at</b>	8	gb AAD37511.1 AF139098_1 (AF139098) putative zinc finger protein	Bacteria, oomycetes, fungi, viruses
<b>17426_at</b>	8	gb AAC49770.1  (AF003097) AP2 domain containing protein RAP2.4	Bacteria
<b>18121_s_at</b>	8	gb AAB63819.1  (AC002337) MYB transcription factor (AtMyb2)	Bacteria, viruses, high salt, cold, osmoticum
19696_at	8	emb CAB45059.1  (AL078637) Arabidopsis WRKY7	
<b>12736_f_at</b>	12	emb CAA90748.1  (Z50869) MYB-related protein	Fungi, cold
<b>13722_at</b>	12	Contains multiple zinc finger domains: PF00096: zinc finger, C2H2 type	Viruses
14079_at	12	emb CAB39939.1  (AL049500) similar to RING zinc finger protein, human AF037204	
14852_s_at	12	gb AAC05340.1  (AC002521) putative MYB family transcription factor	
15445_at	12	emb CAB41316.1  (AL049711) similar to transcription factor PERIANTHIA from Arabidopsis	
<b>17514_s_at</b>	12	gb AAD03545.1  (AF076278) ethylene response factor 1	Bacteria, fungi, viruses
<b>18738_f_at</b>	12	emb CAB09173.1  (Z95741) R2R3-MYB transcription factor	Bacteria, oomycetes, fungi
18746_f_at	12	emb CAB09189.1  (Z95757) R2R3-MYB transcription factor	
<b>12522_at</b>	13	emb CAA18764.1  (AL022605) similar to AP2 domain transcription factor	Bacteria
13293_s_at	13	gb AAB80649.1  (AC002332) auxin-regulated protein (IAA13)	
<b>14043_at</b>	13	gb AAD39282.1 AC007576_5 (AC007576) Arabidopsis WRKY4	Viruses, cold, high salt, jasmonic acid
<b>14243_s_at</b>	13	emb CAA49525.1  (X69900) ocs element binding factor 5	Bacteria
14802_at	13	gb AAD20087.1  (AC006532) putative C2H2-type zinc finger protein	
<b>15214_s_at</b>	13	gb AAB06611.1  (U51850) G-box factor 3	Bacteria, viruses, cold, high salt, osmoticum
16909_at	13	emb CAA49524.1  (X69899) ocs element binding factor 4	
17424_at	13	gb AAC49768.1  (AF003095) AP2 domain containing protein RAP2.2	
<b>17490_s_at</b>	13	gb AAF01532.1 AC009325_2 (AC009325) homeobox-leucine zipper protein HAT5	Viruses
17833_at	13	gb AAD22653.1 AC007138_17 (AC007138) putative CHP-rich zinc finger protein	
18386_at	13	gb AAB86455.1  (AC002409) putative TGACG sequence-specific bZIP DNA binding protein	
<b>18745_f_at</b>	13	emb CAB09188.1  (Z95756) R2R3-MYB transcription factor	Bacteria, cold
<b>18751_f_at</b>	13	gb AAA33067.1  (L04497) putative MYB A from cotton	Bacteria, fungi, viruses
<b>18939_at</b>	13	emb CAA71854.1  (Y10922) similar to Athb-14 HD-Zip protein	Viruses, cold, high salt, osmoticum
20456_at	13	gb AAB87098.1  (AC002391) putative AP2 domain transcription factor	
<b>20586_i_at</b>	13	gb AAC73042.1  (AC005824) putative zinc finger protein	Bacteria
12709_f_at	16	emb CAB09204.1  (Z95772) R2R3-MYB transcription factor	
<b>13432_at</b>	16	gb AAD23013.1 AC006585_8 (AC006585) putative WRKY-type DNA binding protein	Viruses, oomycetes, wounding
<b>16073_f_at</b>	16	gb AAC83630.1  (AF062908) putative Myb DNA binding transcription factor	Bacteria, viruses, cold, high salt, osmoticum
<b>16483_at</b>	16	emb CAA48189.1  (X68053) Arabidopsis TGA1	Bacteria, fungi
17791_s_at	16	emb CAA18200.1  (AL022198) similar to parsley WRKY1	
<b>19611_s_at</b>	16	gb AAC83596.1  (AF062874) Myb-related protein Y49	Bacteria, cold
<b>19646_s_at</b>	16	gb AAC69925.1  (AC005819) homeodomain transcription factor (Athb-7)	Bacteria, cold, high salt, osmoticum
<b>20471_at</b>	16	gb AAC49767.1  (AF003094) AP2 domain containing protein RAP2.1	Bacteria, viruses, wounding, cold

<sup>a</sup> Genes in boldface are induced by senescence and various stress treatments as indicated at right.

<sup>b</sup> SOM, self-organizing map.

<sup>c</sup> emb, EMBL; dbj, DDBJ; gb, GenBank.

<sup>d</sup> Numbers in parentheses are the actual GenBank numbers.



**Figure 4.** Expression Profiles for the Arabidopsis Transcription Factor Genes in Different Organs and at Different Developmental Stages.

Clustering was performed as described in Figure 1, except that the expression values, rather than fold changes, were used for cluster analysis. The color for each gene indicates its expression level relative to its mean across all of the experiments. Expression greater than mean level is represented by red, expression less than mean

that are induced at late time points upon cold stress and pathogen attack for potential and known binding sites for these transcription factors.

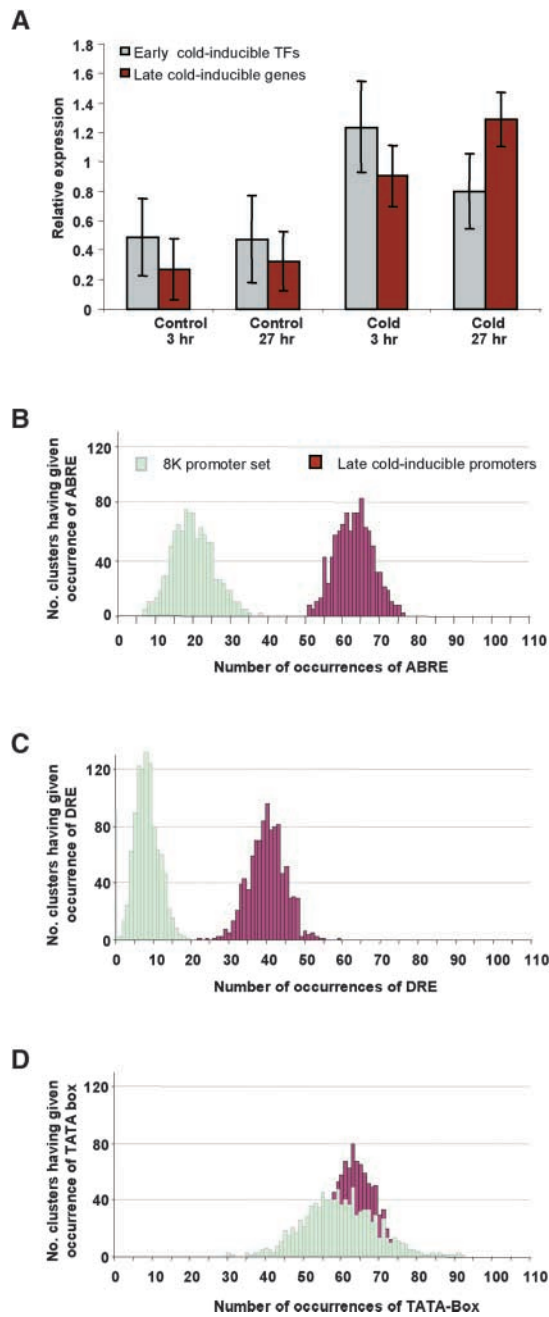
In the case of cold response, we first identified those transcription factors whose expression is activated by cold stress at an early time point (3-hr cold treatment) (Figure 5A). The early transcription factor gene cluster comprises 18 genes that encode bZIPs (GBF3), AP2/EREBP (DREB1A, DREB1B), Myb proteins (AtMyb2), zinc finger proteins, and IAA12 (see supplemental data). The previously defined conserved binding sites for some of these transcription factors are listed in Table 2. We then identified genes that are activated after a 27-hr cold treatment (late-response genes) from all of the genes on the Arabidopsis GeneChip using the hierarchical clustering methods of Eisen et al. (1998), as described in Methods. One cluster was found that includes *Cor15b*, *Cor47*, *Cor78*, *RD29a/RD29b* (the GeneChip probes cannot distinguish these genes), *Iti29*, and *Kin1*, some of which are known to be induced by cold (Figure 5A; supplemental data) (Shinozaki and Yamaguchi-Shinozaki, 2000). The available sequences 1.2 kb upstream from known or predicted translation start sites (<ftp://ftp.tigr.org>) for the 57 genes in the late-response cluster were searched for the occurrence of the *cis* elements listed in Table 2.

Two elements, the ABRE-like element and the DRE-like element (Shinozaki and Yamaguchi-Shinozaki, 2000, and references therein), occur at significantly higher frequencies in the promoters from genes in this cluster than their average frequency in all of the promoters of the genes on the Arabidopsis GeneChip (Table 2). To confirm that the differences shown in Table 2 are statistically significant, a bootstrapping analysis (Efron and Tibshirani, 1994) was performed with 1000 control promoter sets, each of which contains 57 promoters from genes that were selected randomly from the Arabidopsis GeneChip. In parallel, the late cold response cluster also was bootstrapped to generate 1000 late cold response promoter sets. A histogram then was generated to visualize the frequency distribution for the ABRE-like element and the DRE-like element in each promoter set.

As shown in Figures 5B and 5C, the frequency for the DRE-like element in each of 1000 control promoter sets ranged from 0 to 19 times, whereas the frequency for the ABRE-like element ranged from six to 40 times. We found that the frequencies for the DRE-like element and the ABRE-

level is represented by green, and expression close to mean level is represented by black. Genes that are expressed preferentially in root, leaf, flower/silique, and senescent leaf/inflorescence are indicated. Genes that do not show detectable expression in any of the experiments are shown as a stretch of black across all experiments. The expression pattern for TINY is enlarged as indicated. Col, Columbia; d, day-old; Imm, immature; Inflo, inflorescence; Sil, silique; wk, week-old.





**Figure 5.** ABRE-like and DRE-like Elements Are Enriched among the Promoters for Late Cold Response Genes.

**(A)** Expression of transcription factor genes and other genes that are induced by cold treatment. Transcription factor genes and other genes that are induced during 4°C cold treatment were selected based on self-organizing map analysis and hierarchical cluster analysis as described in Methods. The cluster shown contains transcription factor genes and the genes on the Arabidopsis GeneChip that are activated by cold treatment at either 3 hr (early) or 27 hr (late). The y axis indicates the relative expression for the genes in each cluster, with SD values indicated at the top of each bar.

like element in the promoters of 57 genes in the late cold response cluster was 40 and 63 times, with a bootstrapped value for each of 1000 promoter sets from 22 to 59 and from 48 to 82, respectively. Given a 99.9% confidence interval, the DRE-like element and the ABRE-like element both are significantly overrepresented among the promoters for the late cold response cluster. As a comparison, we applied this same statistical analysis to the TATA box. As shown in Figure 5D, the frequency for the TATA box in 1000 promoter sets ranged from 30 to 92 times in each control promoter set and from 41 to 80 times in each of the 1000 bootstrapped late cold response promoters.

It is clear that there is no significant difference in the frequency of the TATA box between the control and late cold response promoter sets. So it is likely that the ABRE-like element and the DRE-like element are two major elements that are important for the transcriptional regulation of genes in the late cold response cluster. Proteins that bind to these two elements belong to the bZIP and AP2/EREBP transcription factor families, and we have found these types of known or putative transcription factor genes within the cluster of early cold-inducible genes (see supplemental data). Thus, it is possible that genes in the early transcription factor gene cluster may participate in the regulation of genes that belong to the late response gene cluster through binding to specific *cis* elements, which is consistent with the results reported by Stockinger et al. (1997) and Liu et al. (1998).

A similar approach was used to identify target genes in plant defense responses, including those to bacteria, fungi, oomycetes, and viruses (see supplemental data). Cluster analysis of all of the genes on the Arabidopsis GeneChip identified a cluster of 41 genes that are pathogen inducible and that encode proteins involved in metabolism, transportation, and transcription (see Methods and supplemental data). We scanned 1.2-kb upstream sequences from the known or predicted translation start sites for all of the genes within the pathogen-inducible cluster for the known *cis* elements listed in Table 2 and found that none of these *cis* elements occurs at a frequency that is statistically different from that occurring in randomly selected promoters. However, with MotifSampler (<http://sphinx.rug.ac.be:8080/PlantCARE/cgi/index.html>), we found that the (T/C/G) (T/C/G) (A/T)G-AC(C/T)T sequence occurs at a much higher frequency in our pathogen-inducible cluster.

**(B) to (D)** Occurrences of the ABRE-like element **(B)**, the DRE-like element **(C)**, and the TATA box **(D)** among the bootstrapped sets of late cold response promoters (brown bars) were compared with those among the bootstrapped control promoter sets (light green bars).

TFs, transcription factors.

**Table 2.** Conserved Binding Motifs and Their Percentage of Occurrence for Different Types of Transcription Factors in the Promoter Region of Cold-Inducible, Pathogen-Inducible, and Randomly Selected Gene Clusters

Type of Transcription Factor	Name of the <i>cis</i> Element	Sequence of the <i>cis</i> Element	Percentage of Occurrence in Cold-Inducible Cluster of Interest	Percentage of Occurrence in Pathogen-Inducible Cluster of Interest	Percentage of Occurrence in 8K GeneChip	Reference
AP2/EREBP	GCC-box	GCCGCC	5.26	4.87	7.53	Shinozaki and Yamaguchi-Shinozaki, 2000
AP2/EREBP	DRE-like	(A/G/T)(A/G) CCGACN(A/T)	45.60	26.83	12.76	Shinozaki and Yamaguchi-Shinozaki, 2000
Myb	AtMyb1	(A/C)TCC(A/T)ACC	5.26	9.76	6.31	Martin and Paz-Ares, 1997
Myb	AtMyb2	TAAC(G/C)GTT	3.51	2.44	4.87	Martin and Paz-Ares, 1997
Myb	AtMyb3	TAACAAAC	14.04	12.20	5.28	Martin and Paz-Ares, 1997
Myb	AtMyb4	A(A/C)C(A/T)A(A/C)C	71.93	85.36	74.78	Rushton and Somssich, 1998
bZIP, TGA type	<i>as-1/ocs</i> element-like	TGACG	56.14	63.41	54.50	Schindler et al., 1992
bZIP, GBF type	G-box	CACGTG	43.86	12.20	17.11	Schindler et al., 1992
bZIP	ABRE-like	(C/G/T)ACGTG(G/T) (A/C)	68.40	17.07	23.68	Shinozaki and Yamaguchi-Shinozaki, 2000
WRKY	W-box	TTGAC(C/T)	73.68	80.49	67.24	Eulgem et al., 2000

As shown in the histogram in Figure 6, the frequency for this element among 1000 control promoter sets ranged from 18 to 60, whereas the frequency for this element in the promoters of the pathogen-inducible cluster was 66, with a bootstrapped value from 49 to 85. The nonparametric *U* test delivers a *P* value < 0.001, meaning that the frequency for this element in the pathogen-inducible cluster was statistically different from that of the randomly selected cluster. When we examined this element in more detail, we found that a part of it is quite similar to the consensus binding site of WRKY transcription factors (*W* box). However, in *W* box elements, the third position is always a T, whereas in the case of the element we have identified through MotifSampler, the nucleotide at the corresponding position may be either A or T. Although the core TGAC sequence has been shown to be conserved absolutely in WRKY binding sites (Eulgem et al., 2000), it is not clear if the change from T to A would affect *W* box activity. It is possible that this element could be a degenerate binding site for WRKY proteins. However, it is possible as well that another type of transcription factor might recognize this site.

## DISCUSSION

Microarrays have been shown to be powerful tools for generating large amounts of data for parallel gene expression analysis. However, controlling the data quality remains a challenge. In this study, we analyzed the GeneChip data obtained from experiments performed under multiple conditions. To improve data quality and comparability, the

following strategies were used. (1) To control the biological variation that can interfere with data interpretation, all of the samples included in the study were pooled from at least eight individual plants receiving the same treatment or from plants receiving the same treatment in replicate experiments. Therefore, the detected gene expression will be the common (average) response of the biological replicates. (2) To test the biological reproducibility of the samples used here, 11 experiments with biological replicates were performed (see supplemental data). The results demonstrated high correlations between members of each pair, with correlation coefficients > 0.90 for each pair (see supplemental data).

(3) Relatively stringent criteria were used to select differentially expressed genes. In most cases, differentially expressed genes were selected based on multiple time points of the same treatment or multiple similar treatments (such as infection by different pathogens), as illustrated in Figure 1. The twofold cutoff was chosen because when the same sample was hybridized to two chips, the false-positive rate at twofold was 0.2% (Zhu and Wang, 2000). (4) Although it is nearly impossible to confirm the measurement for each gene and each condition included in this study by other means, RNA gel analyses have confirmed GeneChip data for a limited number of genes under several different conditions studied (Zhu et al., 2001b). The strategies mentioned above are valid, because our GeneChip results are consistent with the expression patterns of several stress-inducible genes studied previously. However, confirmation of the data by other means is recommended to overcome the technical limitations of the microarrays (such as cross-hybridization between closely related genes) as well as biological variance.

It has been estimated that the Arabidopsis genome codes

for at least 1533 transcription factors, ~5.9% of its total estimated genes (Riechmann et al., 2000). Among these, ~800 genes encode AP2/EREBP, bZIP, Myb proteins, zinc finger proteins, HD-ZIP, and AUX/IAA types of transcription factors. Because the GeneChip used covers only approximately one-third of the Arabidopsis genome (Zhu and Wang, 2000), the overall number of transcription factor genes included in this study is smaller than predicted. In spite of incomplete coverage, the expression profile matrix provides detailed information on the expression pattern of a large number of transcriptional factor genes in response to various signals. Compared with conventional methods for RNA-level analysis, such as RNA gel blot analysis, global RNA profiling methods such as GeneChip analysis represent a powerful approach to assigning possible functions to different members in each gene family. As exemplified by the case of the TGA subfamily, the matrix distinguishes genes by their expression patterns from other genes closely related at the sequence level, which normally presents a serious challenge when using other approaches, because the Arabidopsis genome contains many large gene families.

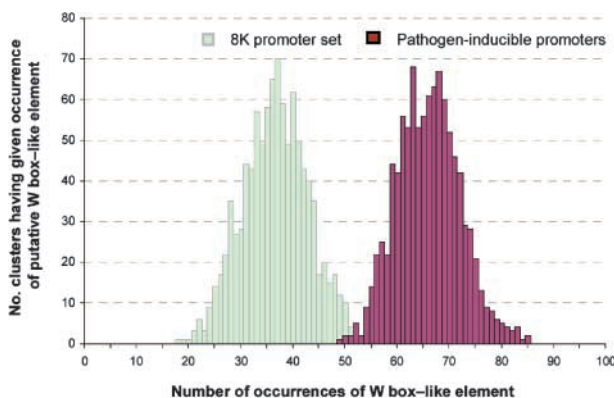
We did not apply any expression threshold to the selection of transcription factors for the data analysis because the expression levels of a number of transcription factors are not high enough to be detected with a high degree of confidence under certain conditions, although they may be expressed at a high level in other conditions. As a result of the inclusion of such low expression levels, some of our conclusions may require further validation. The expression of 18 genes that show similarity to genes encoding Myb proteins, AP2/EREBPs, or zinc finger proteins could not be

detected (called “absent”) in all of the samples used in this study (Table 3). Although the samples used in this study cover broad developmental stages and various stress conditions, it is possible that these genes are expressed at a high level only in very specific situations not covered in this analysis. It also is possible that the mRNA levels of these transcription factors are very low or limited to a small number of cells in the tissue samples. In addition, we cannot exclude the possibility of gene prediction errors.

Overlap among different signaling pathways is implied by the upregulation of common transcription factor genes. A number of transcription factor genes characterized previously as being activated by abiotic stress also were found to be activated after pathogen infection (Figures 1 and 2). These genes include *GBF3*, *Athb-12*, *AtERF1*, and *AtWRKY6*. These observations support the hypothesis that different stress signaling pathways may overlap or converge at specific points (Ingram and Bartels, 1996). It is possible that some transcription factors could represent those points of convergence. For example, the overexpression of tobacco *Tsi*, which encodes an AP2/EREBP-type transcription factor, enhances resistance to a bacterial pathogen as well as salt tolerance by activating genes such as *PR-1* and *RD29a* (Park et al., 2001).

The importance of transcription factors in plant–pathogen interactions was further implied by the altered expression of transcription factor genes in mutants that have defects in salicylic acid, jasmonic acid, and ethylene signal transduction pathways. Mutant analysis of the transcription factors with reduced or abolished expression strongly suggests their participation in the salicylic acid and/or jasmonic acid/ethylene signaling network. Although ethylene has been shown to act synergistically with jasmonic acid in activating defense gene expression in many cases (Penninckx et al., 1998), the interaction of the ethylene/jasmonic acid signaling pathway with the salicylic acid signaling pathway remains controversial. Both agonistic and antagonistic interactions have been reported previously (for review, see Glazebrook, 2001). Nevertheless, communication among different signaling pathways is thought to render plants capable of defending themselves against a variety of pathogen infections (Glazebrook, 2001). Indeed, we have observed both negative and positive interactions between ethylene/jasmonic acid and salicylic acid signaling pathways in this study. For example, the expression of genes in group I in Figure 2, such as *GBF3*, is induced after pathogen infection and is reduced by mutations in salicylic acid signaling but is enhanced by mutations in both ethylene and jasmonic acid signaling. Conversely, the expression of genes in group II, such as *RAP2.6*, is reduced by mutations in both ethylene and jasmonic acid signaling but is enhanced by mutations in salicylic acid signaling.

Although this observation illustrates a negative interaction between ethylene/jasmonic acid and salicylic acid signaling, we also have identified a number of genes whose expression is reduced by all of the tested mutations that block the



**Figure 6.** A W Box-like Element Is Overrepresented among the Promoters of Genes in the Pathogen-Inducible Gene Cluster.

The pathogen-inducible gene cluster was selected based on self-organizing map analysis and hierarchical clustering as described in Methods. Histograms were generated as described in Figure 5 for the control promoters of all of the genes on the Arabidopsis GeneChip (light green bars) and the promoters of all of the genes within the pathogen-inducible gene cluster (brown bars).

**Table 3.** Genes Whose Expression Could Not Be Detected in This Study

Probe Set	Accession Numbers and Modified Description <sup>a</sup>
12445_at	gb AAC83076.1  (AC002328) <sup>b</sup> similar to transcription factor NtWRKY4
12462_at	gb AAC83632.1  (AF062910) Myb-like transcription factor
12663_at	gb AAD32295.1 AC006533_19 (AC006533) putative ARI-like RING zinc finger protein
12715_f_at	gb AAC83612.1  (AF062890) Myb-like transcription factor
12717_i_at	emb CAB09211.1  (Z95779) R2R3-MYB transcription factor
12729_r_at	gb AAF20989.1 AF207991_1 (AF207991) MYB-like transcription factor
12731_f_at	gb AAF18615.1 AC005623_2 (AC005623) putative MYB family transcription factor
15019_at	gb AAC62776.1  (AF096370) contains similarity to Arabidopsis AP2 domain containing protein RAP2.8 (GB:AF003101)
15313_at	emb CAA17135.1 (AL021889) zinc finger protein, Arabidopsis PATCHX:G2340088
16291_at	gb AAD17351.1  (AF128395) contains similarity to retrovirus-related polyproteins and to CCHC zinc finger protein (Pfam: PF00098)
16694_s_at	gb AAC23643.1  (AC004684) putative zinc finger protein
17602_i_at	gb AAD53091.1 AF175986_1 (AF175986) Myb-related putative transcription factor
18545_s_at	gb AAD22638.1 AC007138_2 (AC007138) putative CHP-rich zinc finger protein
18737_f_at	emb CAB09170.1  (Z95738) R2R3-MYB transcription factor
18741_f_at	emb CAB09179.1  (Z95747) R2R3-MYB transcription factor
19269_at	gb AAC28238.1  (AF076274) contains similarity to CCHC-type zinc finger proteins (Pfam: zf-CCHC.hmm)
19485_at	gb AAD10654.1  (AC005223) similar to putative CHP-rich zinc finger protein GB:CAB77744
19585_at	gb AAD31052.1 AC007357_1 (AC007357) similar to EREBP-3 from tobacco

<sup>a</sup>gb, GenBank; emb, EMBL.

<sup>b</sup>Numbers in parentheses are the actual GenBank numbers.

salicylic acid, jasmonic acid, and ethylene signaling pathways (group III; Figure 2). Similar results from microarray experiments were obtained in the study of Arabidopsis response to the fungal pathogen *Alternaria brassicicola* (Schenk et al., 2000). These results suggest that the plant defense signaling network is quite complex, and both positive and negative interactions among different signaling pathways may contribute to resistance to different types of pathogens. The existence of genes whose expression is not affected strongly by any of the mutations (Figure 2) may suggest additional pathways to salicylic acid and ethylene/jasmonic acid through which the corresponding encoded proteins function in response to pathogen infection. Alternatively, the pathways may play redundant roles in the regulation of these genes.

Recently, some of the Arabidopsis WRKY proteins, such as AtWRKY4, -6, -7, and -11, have been suggested to play a role in leaf senescence, because the expression of these genes is increased in senescent leaves (Eulgem et al., 2000). However, reports of transcription factors that have been suggested to be involved in leaf senescence are limited. Previous studies have shown that signals such as pathogen infection and ethylene can induce senescence, and similar sets of genes have been identified as being induced during both senescence and defense responses (for review, see Quirino et al., 2000, and references therein). We found that leaf senescence is correlated with the expression of a number of different types of transcription factor genes, including genes encoding AP2/EREBP, Myb proteins, and bZIPs as well as some of the WRKY genes (Table 1, Figure 3). Interestingly, an analysis of the promoter regions for the 23

genes that are induced during leaf senescence (Zhu et al., 2001a) showed that the consensus WRKY protein binding site is enriched significantly within the promoters of these genes (data not shown), suggesting that some of the transcription factors in this group may play a role during senescence by regulating the expression of senescence-related genes.

The majority (88%) of the 402 transcription factor genes studied here are expressed at different levels in different organs and/or at different developmental stages, suggesting that their expression is regulated at the transcriptional level. Among them, ~15% are expressed highly in roots, and some of them are root specific (Figure 4). Although the exact biological meaning of this expression localization is unclear, the high relative expression levels of these genes in roots suggests an evolutionary adaptation of roots in response to continuous exposure to various stresses. Thus, a steady transcription level of these transcription factor genes is required to fulfill a number of requirements such as detoxification and defense response in roots. In support of this hypothesis, 50% of known or putative transcription factor genes that are highly expressed in all of the root samples tested also are induced after different types of stress treatments. In addition to the transcription factor genes, many root-specific genes identified in previous GeneChip analyses also are defense related (Zhu et al., 2001a). The fact that all types of transcription factors examined are present in this cluster expressed preferentially in roots suggests that they are required to function coordinately to control the spatial expression of root-specific genes.

In an attempt to identify downstream genes that could be

possible targets for known or putative transcription factors in the plant stress response, we examined genes that are activated by different stresses at later time points compared with genes encoding various transcription factors that are upregulated at earlier time points. Several known or putative transcription factors that belong to the AP2/EREBP family, the bZIP family, the Myb family, and the zinc finger protein family are induced rapidly after cold treatment (Figure 5A; see supplemental data). Two *cis* elements, the ABRE-like element and the DRE-like element, which are the likely binding sites for bZIP-type and AP2/EREBP-type transcription factors, occur at significantly higher frequencies within the promoters of a cluster of genes that are activated by cold treatment at a later time point (Figures 5B and 5C). Genes in this late cold response cluster could be potential targets for the transcription factor genes in the early cold response cluster. ABRE and DRE are two elements that have been well characterized previously and that have been demonstrated to be critical for the expression of genes such as *Rd* or *Cor* in response to cold treatment (Shinozaki and Yamaguchi-Shinozaki, 2000, and references therein).

Recently, a cDNA microarray experiment with 1300 full-length Arabidopsis cDNA clones showed that the DRE-like element, including the CCGAC sequence, occurs within the promoters of 11 of 12 DREB1A target genes, and the ABRE element was found in the promoters of six of 12 DREB1A target genes (Seki et al., 2001). The statistical significance for the frequency of either of these two elements among the 1300 cDNAs was not tested, and whether or not these two elements are overrepresented in the DREB1A target gene cluster, which contains only 12 genes, is not known. Through a bootstrapping approach, we demonstrated that both the DRE-like element and the ABRE-like element are overrepresented in our late cold response gene cluster. However, 26 genes (of 57) included in this cluster contain the DRE-like element, 39 genes contain the ABRE-like element, and 46 genes contain either one, suggesting that there could be other variations of these elements. The hexanucleotide CCGAAA, which is very similar to the CCGAC core sequence of the DRE-like element, has been shown to be important in mediating low-temperature response of the barley *blt4.9* gene (Dunn et al., 1998). We also identified a cluster of genes whose expression is induced by cold treatment at an early time point (3 hr) (early cold response gene cluster) and analyzed the promoters of genes in this cluster. Although the ABRE-like element was found to be enriched slightly (at a 95% confidence interval, the enrichment was not statistically significant), the DRE-like element is not enriched in this early cold response cluster.

A number of *cis* elements have been shown previously to be important in the plant defense response to pathogens, including the TGA binding site (*as-1/ocs* element) and the WRKY binding site (*W* box) (Rushton and Somssich, 1998). We found that although TGA and WRKY binding sites occur at relatively higher frequencies in the promoters for the pathogen-inducible gene cluster, the frequencies are not

statistically greater than those occurring in randomly selected clusters. One explanation is that none of the elements listed in Table 2 is the common element that confers the response to various pathogen infections, so some other as yet unidentified element(s) could serve this function. Indeed, using the MotifSampler program, we were able to identify a sequence that occurs at a frequency significantly greater than that in control promoter sets (Figure 6). It is possible that this element could serve as a common element for plants in response to all types of pathogen infections and that the specificity for each pathogen is achieved by the combinatorial interactions among this element and other *cis* elements and their corresponding transcription factors (for review, see Singh, 1998). Alternatively, distinct permutations of this consensus sequence, which may be enriched in more strictly defined subclusters, may be recognized by specific members of a transcription factor family. Interestingly, this element is quite similar to the WRKY binding site found to be important in the plant stress response and to be a common element in systemic acquired resistance (Maleck et al., 2000). It needs to be determined if the element we have identified acts as a WRKY binding site and is important for plant defense responses.

In conclusion, we have identified a number of genes encoding known or putative transcription factors that are expressed specifically in particular organs, expressed at particular developmental stages, and/or induced under particular stress conditions. These genes were classified according to their expression in response to various stress treatments. The potential involvement of a number of transcription factors in different stress pathways has been illustrated by the induced expression of genes during stress treatments. Furthermore, their importance was further implied by their reduced or abolished induction in mutants that are defective in plant defense signaling. However, the roles they play in development and in plant stress responses need to be verified using other approaches, such as reverse genetics. With the blossoming of Arabidopsis functional genomics, the role for each transcription factor suggested through this expression profiling analysis can be tested rapidly.

## METHODS

### Identification of 402 Known and Putative Transcription Factors

Potential stress-related genes that encode known or putative transcription factors on the Arabidopsis GeneChip (Affymetrix, Santa Clara, CA) were identified based on the annotation associated with probe sets on the chip. Additional genes were identified by searching for conserved domains. The nucleotide and amino acid sequences from conserved domains for AP2/EREBPs, Myb proteins, bZIPs, and WRKY zinc finger proteins were used to blast against the TIGR *Arabidopsis thaliana* database ([ftp://ftp.tigr.org/pub/data/a\\_thaliana/ath1/PSEUDOMOLECULES/](ftp://ftp.tigr.org/pub/data/a_thaliana/ath1/PSEUDOMOLECULES/)), using the BLASTN, BLASTX, and

BLASTP programs (Altschul et al., 1997), to generate the entire list of known or putative transcription factor genes of these families. Homologs ( $E$  value  $< 1E - 20$ ) of the list members represented on the GeneChip were included in the analysis.

#### Data Set Collection, Data Processing, and Data Analysis

All of the RNA samples used in this study are described in the supplemental data. For Arabidopsis GeneChip experiments, RNA samples were extracted and subsequent cDNA synthesis, array hybridization, and overall intensity normalization for all of the arrays for the entire probe sets were performed as described by Zhu et al. (2001a). The average difference (expression level) for the selected 402 genes then was extracted from the data. Any average difference that was  $< 5$  was floored to 5. Then, to generate Figure 1, the fold change was calculated for each gene by dividing the average difference from various stress-treated samples by the average difference from the corresponding mock-treated control samples. Genes with average differences equal to 5 (which were called "absent") across all of the experiments were eliminated from further analysis. In these stress response experiments, the logarithms (base 2) of the fold change values for each gene were subjected to normalization across all of the samples. In the case of studying developmental control and organ-specific gene expression (Figures 3 and 4), the floored average difference, rather than the fold change, was subjected directly to  $\log_2$  transformation followed by mean centering across each gene. All of the processed data then were subjected to the self-organizing map algorithm followed by complete linkage hierarchical clustering of both genes and experiments, using Cluster/Treeview (Eisen et al., 1998) (Figures 1, 2, and 4), or to the self-organizing maps algorithm for genes, using GeneCluster 1.0 (Tamayo et al., 1999) (Figure 3).

#### Mutant Analysis

Four-week-old Arabidopsis Columbia wild-type plants and various mutant and transgenic plants were infected with *Pseudomonas syringae* pv *maculicola* ES4326 ( $10^6$  colony-forming units) for 30 hr. The infected leaf samples then were collected and subjected to GeneChip analysis. Transcription factor genes that are induced by at least twofold in wild-type plants after infection with *P. syringae* pv *maculicola* ES4326 (with an Affymetrix present call) were identified. To generate Figure 2, the fold change was calculated by dividing the average difference from mutant or transgenic plant samples by the average difference from the wild-type plant sample. Then, the logarithms (base 2) of the fold change values were subjected to cluster analysis as described above.

#### Identification of the Cold Response Cluster and the Pathogen-Inducible Cluster

The cluster of cold-inducible genes was selected based on only one time point, either early or late cold treatment. Three-week-old Columbia wild-type plants grown on sterilized Murashige and Skoog (1962) (MS) agar medium at 22°C under a 12-hr/12-hr light/dark cycle were transferred to fresh MS liquid medium for several days of equilibration before treatment. Salt, osmotic, and cold stresses then were applied by replacing the medium with new MS medium containing 100 mM NaCl or 200 mM mannitol or incubating at 4°C. Tissues from the aerial or root portions of control and treated plants were col-

lected, RNA purified, and subjected to GeneChip analysis. Genes from the Arabidopsis GeneChip that were induced by at least twofold after any stress treatment described above (with an Affymetrix present call) were selected. Then, the average differences of these genes were  $\log_2$  transformed, mean centered, and subjected to the Cluster/Treeview program as described above. Clusters of genes whose expression was induced preferentially by 3-hr (early transcription factor gene cluster) and 27-hr (late response gene cluster) cold treatments were identified; they are described in the supplemental data.

Genes within the pathogen-inducible cluster were identified as follows. First, genes from the Arabidopsis GeneChip that were induced by at least twofold after any pathogen infection and at any time point (with an Affymetrix present call) were selected. Then, the fold change was calculated for each gene by dividing the average difference from various pathogen-treated samples by the average difference from the corresponding mock-treated samples, followed by  $\log_2$  transformation. The processed data were subjected directly to the Cluster/Treeview program as described above. Clusters of genes whose expression was induced by all pathogens at all time points were identified; they are described in the supplemental data.

#### Statistical Analysis of Frequency for Elements That Occur within Promoters

Arabidopsis genomic sequence was obtained from TIGR (<ftp://ftp.tigr.org>). Sequences 1.2 kb upstream from known or predicted coding sequences that are present on the chip were extracted and used to search for the *cis* elements listed in Table 2 using a custom Perl script. Then, bootstrapping was performed by generating 1000 control promoter sets from genes on the chip and 1000 bootstrapped promoter sets from genes either in the late cold response gene cluster or in the pathogen-inducible gene cluster. Bootstrapped sets were generated using another custom Perl script.

#### ACKNOWLEDGMENTS

We thank Devon Brown and Bin Han for technical assistance with preparing samples used in the microarray experiments, Bin Han for help in conducting the microarray experiments, and Dr. Rongling Wang for providing the Perl script for searching for elements within the promoters of genes from the Arabidopsis GeneChip and for the suggestion of using the bootstrap method for promoter analysis. T.E. is a recipient of a Deutsche Forschungsgemeinschaft postdoctoral fellowship.

Received September 24, 2001; accepted December 7, 2001.

#### REFERENCES

- Alonso, J.M., Hirayama, T., Roman, G., Nourizadeh, S., and Ecker, J.R. (1999). EIN2, a bifunctional transducer of ethylene and stress responses in *Arabidopsis*. *Science* **284**, 2148–2152.
- Altschul, S.F., Madden, T.L., Schaeffer, A.A., Zhang, J., Zhang, Z., Miller, W., and Lipman, D.J. (1997). Gapped BLAST and PSI-BLAST: A new generation of protein database search programs. *Nucleic Acids Res.* **25**, 3389–3402.

- Baima, S., Possenti, M., Matteucci, A., Wisman, E., Altamura, M.M., Ruberti, I., and Morelli, G.** (2001). The *Arabidopsis* atb8-hd-zip protein acts as a differentiation-promoting transcription factor of the vascular meristems. *Plant Physiol.* **126**, 643–655.
- Borden, K.L.** (2000). RING domains: Master builders of molecular scaffolds? *J. Mol. Biol.* **295**, 1103–1112.
- Cao, H., Glazebrook, J., Clarke, J.D., Volko, S., and Dong, X.** (1997). The *Arabidopsis* NPR1 gene that controls systemic acquired resistance encodes a novel protein containing ankyrin repeats. *Cell* **88**, 57–63.
- Capili, A.D., Schultz, D.C., Rauscher, I.F., and Borden, K.L.** (2001). Solution structure of the PHD domain from the KAP-1 corepressor: Structural determinants for PHD, RING and LIM zinc-binding domains. *EMBO J.* **20**, 165–177.
- Delaney, T.P., Uknes, S., Vernooij, B., Friedrich, L., Weymann, K., Negrotto, D., Gaffney, T., Gut-Rekka, M., Kessmann, H., Ward, E., and Ryals, J.** (1994). A central role of salicylic acid in plant disease resistance. *Science* **266**, 1247–1250.
- Dunn, M.A., White, A.J., Vural, S., and Hughes, M.A.** (1998). Identification of promoter elements in a low-temperature-responsive gene (bt4.9) from barley (*Hordeum vulgare* L.). *Plant Mol. Biol.* **38**, 551–564.
- Efron, B., and Tibshirani, R.J.** (1994). Random samples and probability. In *An Introduction to the Bootstrap: Monographs on Statistics and Applied Probability* No. 57, pp. 17–28.
- Eisen, M.B., Spellman, P.T., Brown, P.O., and Botstein, D.** (1998). Cluster analysis and display of genome-wide expression patterns. *Proc. Natl. Acad. Sci. USA* **95**, 14863–14868.
- Elliott, R.C., Betzner, A.S., Huttner, E., Oakes, M.P., Tucker, W.Q., Gerentes, D., Perez, P., and Smyth, D.R.** (1996). AINTEGUMENTA, an APETALA2-like gene of *Arabidopsis* with pleiotropic roles in ovule development and floral organ growth. *Plant Cell* **8**, 155–168.
- Eulgem, T., Rushton, P.J., Schmelzer, E., Hahlbrock, K., and Somssich, I.E.** (1999). Early nuclear events in plant defence signalling: Rapid gene activation by WRKY transcription factors. *EMBO J.* **18**, 4689–4699.
- Eulgem, T., Rushton, P.J., Robatzek, S., and Somssich, I.E.** (2000). The WRKY superfamily of plant transcription factors. *Trends Plant Sci.* **5**, 199–206.
- Feys, B., Benedetti, C.E., Penfold, C.N., and Turner, J.G.** (1994). *Arabidopsis* mutants selected for resistance to the phytotoxin coronatine are male sterile, insensitive to methyl jasmonate, and resistant to a bacterial pathogen. *Plant Cell* **6**, 751–759.
- Finkelstein, R.R., Wang, M.L., Lynch, T.J., Rao, S., and Goodman, H.M.** (1998). The *Arabidopsis* abscisic acid response locus ABI4 encodes an APETALA2 domain protein. *Plant Cell* **10**, 1043–1054.
- Fujimoto, S.Y., Ohta, M., Usui, A., Shinshi, H., and Ohme-Takagi, M.** (2000). *Arabidopsis* ethylene-responsive element binding factors act as transcriptional activators or repressors of GCC box-mediated gene expression. *Plant Cell* **12**, 393–404.
- Glazebrook, J.** (2001). Genes controlling expression of defense responses in *Arabidopsis*: 2001 status. *Curr. Opin. Plant Biol.* **4**, 301–308.
- Ingram, J., and Bartels, D.** (1996). The molecular basis of dehydration tolerance in plants. *Annu. Rev. Plant Physiol. Plant Mol. Biol.* **47**, 377–403.
- Jaglo-Ottosen, K.R., Gilmour, S.J., Zarka, D.G., Schabenberger, O., and Thomashow, M.F.** (1998). *Arabidopsis* CBF1 overexpression induces COR genes and enhances freezing tolerance. *Science* **280**, 104–106.
- Jensen, R.B., Jensen, K.L., Jespersen, H.M., and Skriver, K.** (1998). Widespread occurrence of a highly conserved RING-H2 zinc finger motif in the model plant *Arabidopsis thaliana*. *FEBS Lett.* **436**, 283–287.
- Jin, H., Cominelli, E., Bailey, P., Parr, A., Mehrrens, F., Jones, J., Tonelli, C., Weisshaar, B., and Martin, C.** (2000). Transcriptional repression by AtMYB4 controls production of UV-protecting sunscreens in *Arabidopsis*. *EMBO J.* **19**, 6150–6161.
- Jofuku, K.D., den Boer, B.G., Van Montagu, M., and Okamoto, J.K.** (1994). Control of *Arabidopsis* flower and seed development by the homeotic gene APETALA2. *Plant Cell* **6**, 1211–1225.
- Kasuga, M., Liu, Q., Miura, S., Yamaguchi-Shinozaki, K., and Shinozaki, K.** (1999). Improving plant drought, salt, and freezing tolerance by gene transfer of a single stress-inducible transcription factor. *Nat. Biotechnol.* **17**, 287–291.
- Kawata, T., Imada, T., Shiraishi, H., Okada, K., Shimura, Y., and Iwabuchi, M.** (1992). A cDNA clone encoding HBP-1b homologue in *Arabidopsis thaliana*. *Nucleic Acids Res.* **20**, 1141.
- Klucher, K.M., Chow, H., Reiser, L., and Fischer, R.L.** (1996). The AINTEGUMENTA gene of *Arabidopsis* required for ovule and female gametophyte development is related to the floral homeotic gene APETALA2. *Plant Cell* **8**, 137–153.
- Lee, Y.H., and Chun, J.Y.** (1998). A new homeodomain-leucine zipper gene from *Arabidopsis thaliana* induced by water stress and abscisic acid treatment. *Plant Mol. Biol.* **37**, 377–384.
- Liu, Q., Kasuga, M., Sakuma, Y., Abe, H., Miura, S., Yamaguchi-Shinozaki, K., and Shinozaki, K.** (1998). Two transcription factors, DREB1 and DREB2, with an EREBP/AP2 DNA binding domain separate two cellular signal transduction pathways in drought- and low-temperature-responsive gene expression, respectively, in *Arabidopsis*. *Plant Cell* **10**, 1391–1406.
- Lu, G., Paul, A.L., McCarty, D.R., and Ferl, R.J.** (1996). Transcription factor veracity: Is GBF3 responsible for ABA-regulated expression of *Arabidopsis* Adh? *Plant Cell* **8**, 847–857.
- Maleck, K., Levine, A., Eulgem, T., Morgan, A., Schmid, J., Lawton, K.A., Dangl, J.L., and Dietrich, R.A.** (2000). The transcriptome of *Arabidopsis thaliana* during systemic acquired resistance. *Nat. Genet.* **26**, 403–410.
- Martin, C., and Paz-Ares, J.** (1997). MYB transcription factors in plants. *Trends Genet.* **13**, 67–73.
- Medina, J., Bagues, M., Terol, J., Perez-Alonso, M., and Salinas, J.** (1999). The *Arabidopsis* CBF gene family is composed of three genes encoding AP2 domain-containing proteins whose expression is regulated by low temperature but not by abscisic acid or dehydration. *Plant Physiol.* **119**, 463–470.
- Miao, Z.H., Liu, X., and Lam, E.** (1994). TGA3 is a distinct member of the TGA family of bZIP transcription factors in *Arabidopsis thaliana*. *Plant Mol. Biol.* **25**, 1–11.
- Murashige, T., and Skoog, F.** (1962). A revised medium for rapid growth and bioassays with tobacco tissue culture. *Physiol. Plant.* **15**, 473–497.
- Okamoto, J.K., Caster, B., Villarroel, R., Van Montagu, M., and Jofuku, K.D.** (1997). The AP2 domain of APETALA2 defines a

- large new family of DNA binding proteins in *Arabidopsis*. Proc. Natl. Acad. Sci. USA **94**, 7076–7081.
- Park, J.M., Park, C.J., Lee, S.B., Ham, B.K., Shin, R., and Paek, K.H.** (2001). Overexpression of the tobacco *Tsi1* gene encoding an EREBP/AP2-type transcription factor enhances resistance against pathogen attack and osmotic stress in tobacco. Plant Cell **13**, 1035–1046.
- Penninckx, I.A., Thomma, B.P., Buchala, A., Metraux, J.P., and Broekaert, W.F.** (1998). Concomitant activation of jasmonate and ethylene response pathways is required for induction of a plant defense gene in *Arabidopsis*. Plant Cell **10**, 2103–2113.
- Quirino, B.F., Noh, Y.S., Himelblau, E., and Amasino, R.M.** (2000). Molecular aspects of leaf senescence. Trends Plant Sci. **5**, 278–282.
- Riechmann, J.L., et al.** (2000). *Arabidopsis* transcription factors: Genome-wide comparative analysis among eukaryotes. Science **290**, 2105–2110.
- Robatzek, S., and Somssich, I.E.** (2002). A new member of the *Arabidopsis* WRKY transcription factor family, AtWRKY6, is associated with both senescence and defense related processes. Plant J., in press.
- Rushton, P.J., and Somssich, I.E.** (1998). Transcriptional control of plant genes responsive to pathogens. Curr. Opin. Plant Biol. **1**, 311–315.
- Salinas-Mondragon, R.E., Garciduenas-Pina, C., and Guzman, P.** (1999). Early elicitor induction in members of a novel multigene family coding for highly related RING-H2 proteins in *Arabidopsis thaliana*. Plant Mol. Biol. **40**, 579–590.
- Schenk, P.M., Kazan, K., Wilson, I., Anderson, J.P., Richmond, T., Somerville, S.C., and Manners, J.M.** (2000). Coordinated plant defense responses in *Arabidopsis* revealed by microarray analysis. Proc. Natl. Acad. Sci. USA **97**, 11655–11660.
- Schindler, U., Beckmann, H., and Cashmore, A.R.** (1992). TGA1 and G-box binding factors: Two distinct classes of *Arabidopsis* leucine zipper proteins compete for the G-box-like element TGACGTGG. Plant Cell **4**, 1309–1319.
- Seki, M., Narusaka, M., Abe, H., Kasuga, M., Yamaguchi-Shinozaki, K., Carninci, P., Hayashizaki, Y., and Shinozaki, K.** (2001). Monitoring the expression pattern of 1300 *Arabidopsis* genes under drought and cold stresses by using a full-length cDNA microarray. Plant Cell **13**, 61–72.
- Shinozaki, K., and Yamaguchi-Shinozaki, K.** (2000). Molecular responses to dehydration and low temperature: Differences and cross-talk between two stress signaling pathways. Curr. Opin. Plant Biol. **3**, 217–223.
- Singh, K.B.** (1998). Transcriptional regulation in plants: The importance of combinatorial control. Plant Physiol. **118**, 1111–1120.
- Soderman, E., Mattsson, J., and Engstrom, P.** (1996). The *Arabidopsis* homeobox gene ATHB-7 is induced by water deficit and by abscisic acid. Plant J. **10**, 375–381.
- Solano, R., Stepanova, A., Chao, Q., and Ecker, J.R.** (1998). Nuclear events in ethylene signaling: A transcriptional cascade mediated by ETHYLENE-INSENSITIVE3 and ETHYLENE-RESPONSE-FACTOR1. Genes Dev. **12**, 3703–3714.
- Stockinger, E.J., Gilmour, S.J., and Thomashow, M.F.** (1997). *Arabidopsis thaliana* CBF1 encodes an AP2 domain-containing transcriptional activator that binds to the C-repeat/DRE, a *cis*-acting DNA regulatory element that stimulates transcription in response to low temperature and water deficit. Proc. Natl. Acad. Sci. USA **94**, 1035–1040.
- Tamayo, P., Slonim, D., Mesirov, J., Zhu, Q., Kitareewan, S., Dmitrovsky, E., Lander, E.S., and Golub, T.R.** (1999). Interpreting patterns of gene expression with self-organizing maps: Methods and application to hematopoietic differentiation. Proc. Natl. Acad. Sci. USA **96**, 2907–2912.
- Thomma, B.P., Eggermont, K., Tierens, K.F., and Broekaert, W.F.** (1999). Requirement of functional ethylene-insensitive 2 gene for efficient resistance of *Arabidopsis* to infection by *Botrytis cinerea*. Plant Physiol. **121**, 1093–1102.
- Wang, Z.Y., and Tobin, E.M.** (1998). Constitutive expression of the CIRCADIAN CLOCK ASSOCIATED 1 (CCA1) gene disrupts circadian rhythms and suppresses its own expression. Cell **93**, 1207–1217.
- Wilson, K., Long, D., Swinburne, J., and Coupland, G.** (1996). A dissociation insertion causes a semidominant mutation that increases expression of TINY, an *Arabidopsis* gene related to APETALA2. Plant Cell **8**, 659–671.
- Xiang, C., Miao, Z., and Lam, E.** (1997). DNA-binding properties, genomic organization and expression pattern of TGA6, a new member of the TGA family of bZIP transcription factors in *Arabidopsis thaliana*. Plant Mol. Biol. **34**, 403–415.
- Yanagisawa, S., and Schmidt, R.J.** (1999). Diversity and similarity among recognition sequences of Dof transcription factors. Plant J. **17**, 209–214.
- Yu, D., Chen, C., and Chen, Z.** (2001). Evidence for an important role of WRKY DNA binding proteins in the regulation of NPR1 gene expression. Plant Cell **13**, 1527–1539.
- Zhang, B., Foley, R.C., and Singh, K.B.** (1993). Isolation and characterization of two related *Arabidopsis* ocs-element bZIP binding proteins. Plant J. **4**, 711–716.
- Zhou, N., Tootle, T.L., Tsui, F., Klessig, D.F., and Glazebrook, J.** (1998). PAD4 functions upstream from salicylic acid to control defense responses in *Arabidopsis*. Plant Cell **10**, 1021–1030.
- Zhu, T., and Wang, X.** (2000). Large-scale profiling of the *Arabidopsis* transcriptome. Plant Physiol. **124**, 1472–1476.
- Zhu, T., Budworth, P., Han, B., Brown, D., Chang, H.S., Zou, G., and Wang, X.** (2001a). Toward elucidating the global gene expression patterns of developing *Arabidopsis*: Parallel analysis of 8300 genes by high-density oligonucleotide probe array. Plant Physiol. Biochem. **39**, 221–242.
- Zhu, T., Chang, H.-S., Schmeits, J., Gil, P., Shi, L., Budworth, P., Zou, G., Chen, X., and Wang, X.** (2001b). Gene expression microarrays: Improvements and applications towards agricultural gene discovery. J. Assoc. Lab. Automat. **6**, 95–98.