



University of Dundee

Development of intra-oral automated landmark recognition (ALR) for dental and occlusal outcome measurements

Woodsend, Brenainn ; Koufoudaki, Eirini; Lin, Ping; McIntyre, Grant; El-Angbawi, Ahmed; Aziz, Azad

Published in:
European Journal of Orthodontics

DOI:
[10.1093/ejo/cjab012](https://doi.org/10.1093/ejo/cjab012)

Publication date:
2021

Document Version
Publisher's PDF, also known as Version of record

[Link to publication in Discovery Research Portal](#)

Citation for published version (APA):

Woodsend, B., Koufoudaki, E., Lin, P., McIntyre, G., El-Angbawi, A., Aziz, A., Shaw, W., Semb, G., Reesu, G. V., & Mossey, P. A. (2021). Development of intra-oral automated landmark recognition (ALR) for dental and occlusal outcome measurements. *European Journal of Orthodontics*. <https://doi.org/10.1093/ejo/cjab012>

General rights

Copyright and moral rights for the publications made accessible in Discovery Research Portal are retained by the authors and/or other copyright owners and it is a condition of accessing publications that users recognise and abide by the legal requirements associated with these rights.

- Users may download and print one copy of any publication from Discovery Research Portal for the purpose of private study or research.
- You may not further distribute the material or use it for any profit-making activity or commercial gain.
- You may freely distribute the URL identifying the publication in the public portal.

Take down policy

If you believe that this document breaches copyright please contact us providing details, and we will remove access to the work immediately and investigate your claim.

Original article

Development of intra-oral automated landmark recognition (ALR) for dental and occlusal outcome measurements

Brénainn Woodsend¹, Eirini Koufoudaki², Ping Lin¹, Grant McIntyre², Ahmed El-Angbawi³, Azad Aziz³, William Shaw³, Gunvor Semb³, Gowri Vijay Reesu³ and Peter A. Mossey²

¹Mathematics Department, School of Science and Engineering, University of Dundee, Nethergate, Dundee, UK

²Orthodontic Department, School of Dentistry, University of Dundee, Nethergate, Dundee, UK

³School of Medical Sciences, Division of Dentistry, The University of Manchester, Greater Manchester, UK

Correspondence to: Peter A. Mossey, Orthodontic Department, School of Dentistry, University of Dundee, Nethergate, Dundee, DD1 4HR Scotland, UK.

E-mail: p.a.mossey@dundee.ac.uk

Summary

Background: Previous studies embracing digital technology and automated methods of scoring dental arch relationships have shown that such technology is valid and accurate. To date, however there is no published literature on artificial intelligence and machine learning to completely automate the process of dental landmark recognition.

Objectives: This study aimed to develop and evaluate a fully automated system and software tool for the identification of landmarks on human teeth using geometric computing, image segmenting, and machine learning technology.

Methods: Two hundred and thirty-nine digital models were used in the automated landmark recognition (ALR) validation phase, 161 of which were digital models from cleft palate subjects aged 5 years. These were manually annotated to facilitate qualitative validation. Additionally, landmarks were placed on 20 adult digital models manually by 3 independent observers. The same models were subjected to scoring using the ALR software and the differences (in mm) were calculated. All the teeth from the 239 models were evaluated for correct recognition by the ALR with a breakdown to find which stages of the process caused the errors.

Results: The results revealed that 1526 out of 1915 teeth (79.7%) were correctly identified, and the accuracy validation gave 95% confidence intervals for the geometric mean error of [0.285, 0.317] for the humans and [0.269, 0.325] for ALR—a negligible difference.

Conclusions/implications: It is anticipated that ALR software tool will have applications throughout clinical dentistry and anthropology, and in research will constitute an accurate and objective tool for handling large datasets without the need for time intensive employment of experts to place landmarks manually.

Introduction

Dentistry, like many other medical disciplines, is moving towards a more digital approach, using technology to the advantage of higher

quality diagnostics and therapeutics to enhance patient care (1). Digital imaging and 3D imaging reconstruction play a greater role than ever in both diagnosis and treatment planning in a range of disciplines and

applications in the fields of medicine and dentistry (2, 3). The challenge is to utilize the developments in digital imaging and computing technology to create software to automate and improve certain procedures such as diagnostics and outcome measurements.

In the dental field, clefts of the lip and palate (CLP) are orofacial conditions with many different subgroups and of varying severity. The subphenotypes are accompanied by complications from birth which include feeding and swallowing difficulties, speech impairment, hearing problems, and dentofacial growth and development (4). The last of these, facial growth disturbance is an important outcome as it affects the quality of life has a significant psychosocial impact, especially during adolescence (5, 6) and it is important that it is measured accurately and objectively if possible.

Ongoing research in the field of CLP seeks to determine the optimal timing in relation to orofacial development for primary surgery, and which surgical method(s) should be employed (7). Robust and reliable assessment of treatment is an essential part of modern clinical governance, to allow for the development of better surgical protocols for those treated in the future. One key 'core' outcome measure of primary surgery of the palate is facial and maxillary growth and this is measured by the degree of maxillary arch constriction which may be affected by a range of factors including timing and surgical technique (8). Several scoring systems have been developed to quantify the degree of maxillary arch constriction by examination of the dental arches relationships. Some scoring systems such as the GOSLON (9) and 5-Year-old index (10) are subjective, categorical and require examiner calibration and elements of clinical judgement, while others are designed to be objective and quantitative e.g., the modified Huddart–Bodenham (MHB) index (4) (Figure 1).

The latter system where scoring is quantified using an ordinal scale lends itself to digital analysis, and the scoring has been shown to be suitable for fully automated software (11). Furthermore, it can be used for all cleft types, does not require calibration, is systematic

and is objective (Figure 1). The MHB scoring system has also been validated on plaster models, photographs, and digital models that can be captured using intra-oral scanning (12, 13).

The process of optical scanning to produce digital impressions is the preferred technique when compared with traditional impression taking as this is more comfortable for the patient (1). Intra-oral scanners produce a 3D model of the scanned arch that can be saved and analysed on a computer, and in addition to many other advantages, they do not require physical storage space, making it easier for clinics to store and archive patient data for clinical and research purposes (1). Digital storage space must of course be considered, and a dental model (maxillary or mandible) STL file is around 30 MB. However, the STL format is easy to compress—and a zip archive reduces it to about 35% of its original size with negligible loss of information. However, this was not done for this study and we estimated that for 1000 patients 200 GB of storage was required.

A useful additional feature of the digital models is that they lend themselves to computer manipulation, and automated data analysis techniques to produce objective outcome scoring tools. In the field of CLP outcome measurement using MHB on digital models, a semi-automated software tool programmed by Rhino 5C++ SDK was developed by Ma *et al.* (14). This enabled objective scoring, eliminated the need for calibrated examiners and anchor study models and was found to be accurate and reliable. However, it still requires the manual identification of landmarks on the dental arches which is time consuming and is adversely affected by human error.

In developing automatic scoring software, accurate landmark identification is crucial and currently landmarking dental tissues is manual. And so, despite the potential benefits that come with the 3D information capture, this new technology also introduces new challenges, in data capturing, data manipulation, and efficiencies in time and labour saving (15, 16). This is particularly so when the analyses of multiple cases are required, despite its reliability, manual handling becomes impractical and difficult to complete. Manual identification has been prone to errors such as landmark inaccuracies and varying degrees of subjectivity from different professionals thus making it hard to cross-compare and analyse (17). This motivates the importance of automatic landmarking and an automatic scoring software based on it, and places significant value on the development of an automated software tool that is based on automated landmark recognition (ALR).

Software for automatic landmarking and for an objective outcome measure using the MHB scoring system is required. This would replace the need for time-consuming manual scoring and eliminate human error and revolutionize outcome-based cleft research, ultimately resulting in an objective outcome measure of primary surgery. The aim of automated scoring is increased efficiency, standardization of the scoring of surgical outcomes allowing inter-centre comparisons of treatment protocols and the ultimate aim is to produce objective evidence of where and how improvements in standards of care can be achieved for individual cleft phenotypes.

The overall aim of this study was to create and validate the accuracy of a fully automated ALR algorithm and to use MHB (4) as an exemplar outcome measure, and in the process to test the following null hypothesis. 'ALR as used on digital models is no less accurate than manual landmarking'.

Materials and methods

Dental models (Table 1) processed by the ALR software are represented in the STL format, a common open-source 3D file format.

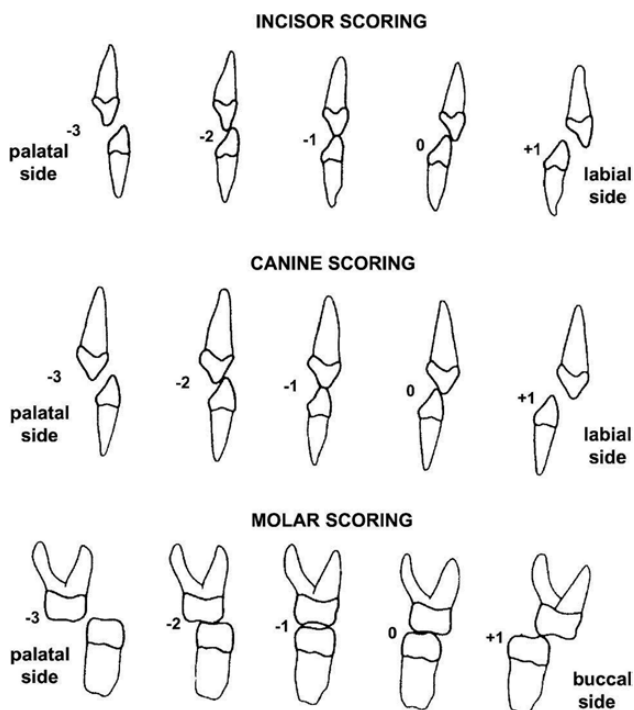


Figure 1. The modified Huddart–Bodenham (MHB) scoring system for CLP outcome measurement. CLP, clefts of the lip and palate.

The models were acquired with the use of an intra-oral scanner (in Dundee a 3 shape TRIOS scanner and in Manchester a Sirona InEos X5 scanner and Inlab 18.1 software), either directly from the patients mouth or indirectly, by scanning patients' study models created after taking conventional impressions. Ethical permission for the use of these study models was obtained through the East of Scotland Research Ethics Service "Craniofacial database" archive (EoSRES REC reference: 15/ES/0186). Within an STL file, only the surface of the object is described. STL files contain no colour or texture information. While STL files generally contain no scale information and the units are arbitrary, scanned dental arches are measured in millimetres.

Typically, the surface of the object displayed is referred to as a mesh. A mesh is hollow and is constituted by small triangles. The constituents of the mesh are defined by the 3D (x , y , and z) values of its three vertices. In the initial feasibility studies and experimentation on automation of landmark recognition on various dental anatomical features in both maxillary and mandibular arches and various characteristics of dental occlusion, a wide range of models were used. Forty-five were digital images from scanned plaster study models of permanent dentitions of subjects with a variety of malocclusions who attended the Orthodontic department of Dundee Dental Hospital, 24 were maxillary arches and 21 mandibular; 33 were derived from direct intra-oral digital scans that were recorded for a forensic odontology research project, and were also of permanent dentitions, while 80 sets were from a 5-year-old cleft lip and/or palate cohort that were recorded for audit and research purposes. All subjects whose models were used had given their consent for the use of their models for research purposes and all were anonymous at the point of access to the researchers. The upper and lower mismatch can be explained by an occasional model being unusable or unavailable. The groups and number of models per group are listed in Table 1.

Methods

An algorithm was developed to convert the landmarks identified by ALR in 3D space to a horizontal measurement of the relationship between the maxillary and mandibular dental arches. A feature of an intra-oral scanner is that, after scanning the two arches individually, the models are scanned in occlusion and the coordinates in one of scans automatically adjusts to match the occlusion. By opening of the maxillary and mandibular STL files in the same viewer they will appear in the correct occlusion and the process of comparing landmarks from opposite arches is identical to comparing landmarks from the same arch.

The algorithm is broken down into steps. The flow diagram in Figure 2 gives an overview of the process. Before analysis of the file, the software specified whether the model represented mandibular or maxillary arch and deciduous or permanent dentition. The ALR software then enabled the automatic recognition of the teeth using the information from the STL filename.

Orientation

Because different scanners use different orientation conventions, the mesh's orientation needs to be registered by the software to ensure accurate analysis. The appropriate orientation is calculated primarily by using the *Principal Component Analysis* (PCA) method. PCA checks the covariance from the centre of mass in all directions. It provides unit-vectors to represent left, right, backwards, forwards, down, up, and occlusal. The vertical directions (up, down, and occlusal) need to be particularly accurate, whereas horizontal directions can be more approximate. In simple terms, PCA finds the shortest, middle-length, and longest dimensions of the object.

A digital dental model is wider (transverse direction) than it is long (antero-posterior dimension) and longer than its height. Accordingly, the output of PCA on a dental model should yield transverse as the principal (longest) dimension, anterior or posterior as the second and vertical the third. The vertical directions are further refined by fitting a plane to the tooth tips. PCA's key advantage is that the model can be positioned and orientated anywhere and PCA will track it as easily as if the model were already positioned ideally.

Peak points identification

The next step is to identify all the 'peak points' (local maxima) of the mesh. As mentioned earlier, the landmarks that need to be identified are located on the tips and cusps of teeth, which tend to be the highest parts of teeth. Mathematically these can be translated as local maxima in the occlusal direction. These highest points will be referred to as 'peak points' or 'peaks' (see Figure 3). In this stage, peak points are identified, but at this stage it is not clear yet what each peak point represents. To reduce the number of non-tooth features found, only the top (occlusal) part of the model is searched. A height threshold of 6 mm below the highest point is used to avoid irrelevant information being included. This threshold is low enough to capture teeth that are worn down or only partially erupted. Some points identified will be of no importance, and some may be duplicated, but they are filtered out by the software at a later stage by more sophisticated means. The successful completion of this step simply requires the software to identify at least one peak point per tooth on the mesh.

Tooth partition

The software then *partitions* the model into individual teeth. The identification of individual tooth boundaries is based on curvature. The curvature value of a particular surface point is a quantitative measure of its deviation from a flat surface. The definition of curvature in the ALR software uses positive values for outside corners (a bump, cap, or tip) and negative values for inside corners (a slot, groove, or crease). The joint between each tooth and the gingivae is a

Table 1. Types and counts of the 239 scanned models used in this study.

Count	Arch	Type	Dentition	Characteristics
24	Maxillary	Digital model	Permanent	Orthodontic subject
21	Mandibular	Digital model	Permanent	Orthodontic subject
16	Maxillary	Intra-oral scan	Permanent	Forensic research archive
17	Mandibular	Intra-oral scan	Permanent	Forensic research archive
81	Maxillary	Digital model	Deciduous	5-Year OFC audit archive
80	Mandibular	Digital model	Deciduous	5-Year OFC audit archive

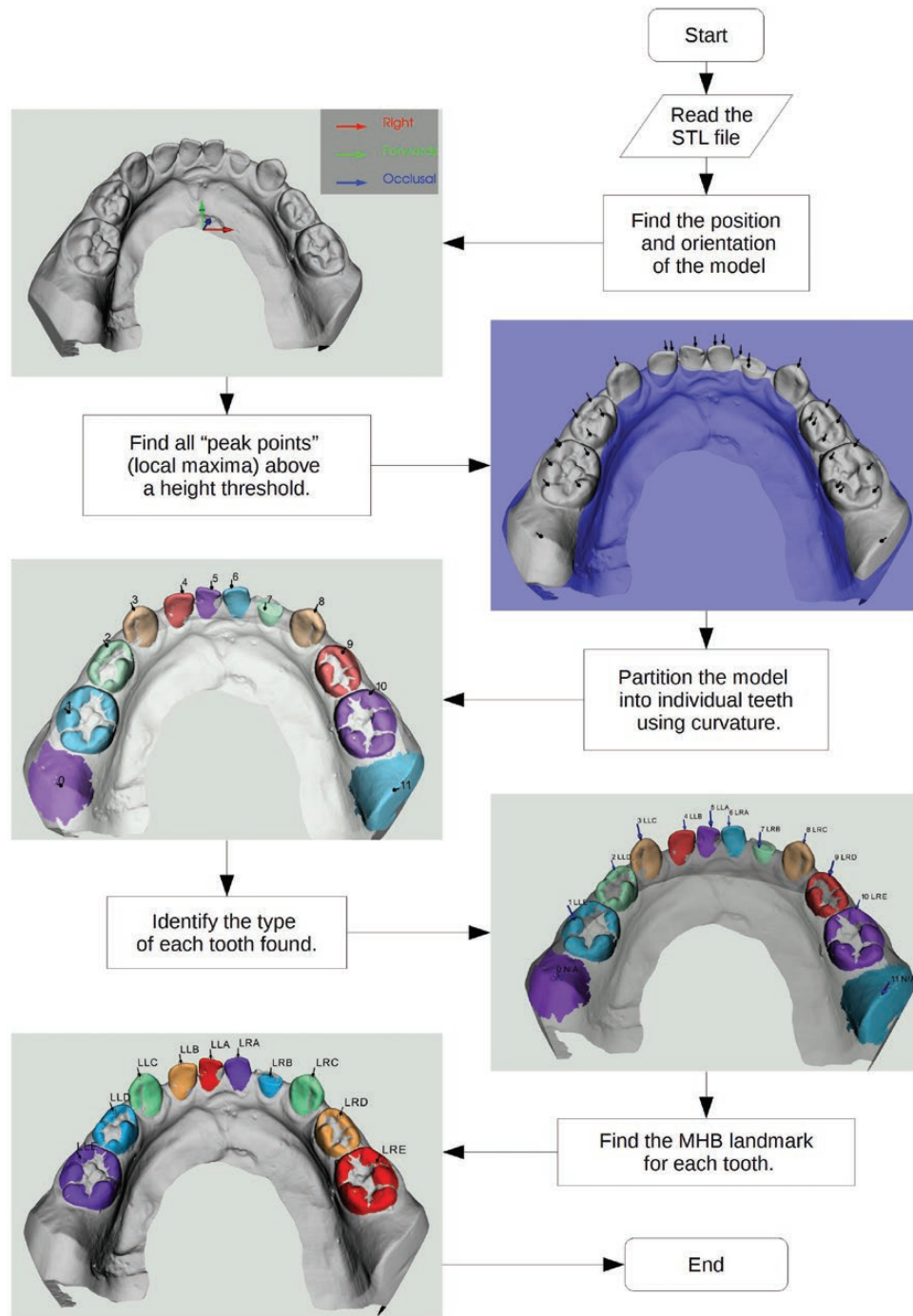


Figure 2. The stepwise process used for automated landmark recognition (ALR) in the deciduous dentition.

crease and therefore the curvature along it is negative. The software starts the scan at the top of a tooth and recursively includes adjacent mesh triangles until an edge of considerable negative curvature is detected, indicating the boundary between tooth and gingivae. The region covered will be referred to as the starting point's area. Each peak point found in the previous step is used as a starting point for curvature analysis. Peaks included on the same tooth will have areas that overlap. By testing for and merging overlapping areas, one tooth is identified and duplication of teeth in the software is avoided. Any detected peaks that were not located on a tooth will not be bounded by the creases of tooth–gingival joints. As a result,

the software might incorrectly include a large part of the model as a single partition. By imposing the rule 'stop if travelled more than a tooth's width away from the starting point', and testing if that rule was actually used, non-tooth peaks and their corresponding areas can be identified. These non-tooth areas are labelled 'spilled' and are discarded.

The scenarios above are demonstrated in [Figure 4](#). The simplest case is the LR3 (green) with one peak on one tooth meaning no further work is required. The red dot is a *spilled* peak, it encountered no tooth boundary below it and would have tried to fill most of the base without the maximum traversal rule. Multiple peaks are on the

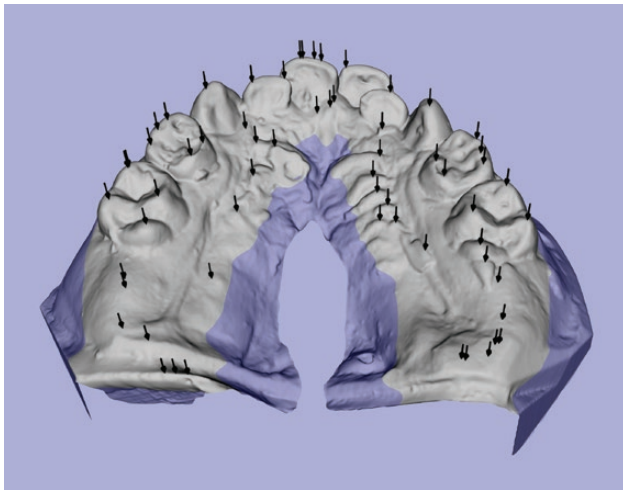


Figure 3. Peak points found (black arrows) and height threshold (blue) on dental model.



Figure 4. A few different tooth partition scenarios demonstrating peaks (balls) and their areas on a dental model of a permanent dentition.

LL5 (cyan) but because their areas overlap, they can be merged thus avoiding duplicity. The buccal (blue) and lingual (yellow) halves of the LR6 do not overlap but are at the same point round the jawline and can therefore be merged. The jawline, being a quadratic curve does not rely on any landmarks and is fitted to the horizontal components of the peak points (see Figure 3) which were not labelled as *spilled* as defined in the section entitled tooth partition above.

Tooth assignment

The successful completion of this step results in the partitioning of each tooth, without any duplication and with almost all the non-tooth structures removed. At this stage, no information regarding the delineation of each tooth is available, and the next step is tooth assignment. The partitions identified within the mesh by the software will be referred to as blobs. Each blob represents either a whole tooth, a mesial or distal half of a molar, or in rare instances a non-tooth feature. The software sorts and enumerates the blobs from left to right round the jaw. The end goal and final output of the tooth assignment method are to correctly label each originally unknown tooth with the appropriate tooth type. In labelling the tooth types,

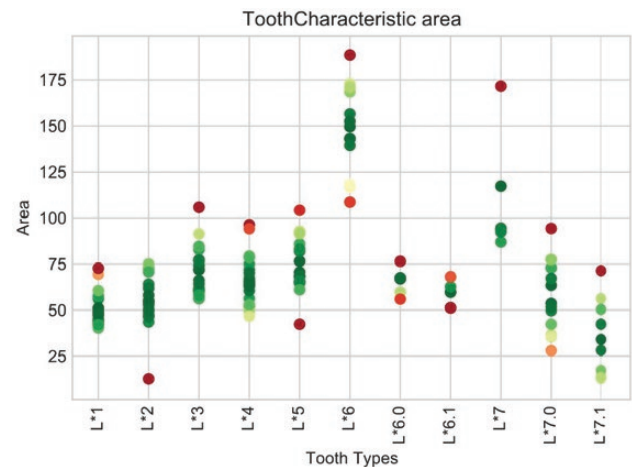


Figure 5. Surface area tooth characteristic chart showing surface areas from the training set by tooth type during tooth assignment.

the software uses machine learning techniques on various tooth characteristics, such as total surface area. Each unknown blob in the model is compared with a gold-standard database of manually labelled blobs (training set, see Figure 5). The tooth characteristics cover all tooth types and yield single value per blob. The objective is to minimize the total mismatch between the characteristic values of each blob with the training values of the tooth type it is assigned. There is no limit to how many characteristics can be used, and in general it was considered that the more the better. It transpired, however, that only a few basic dimensional measurements are needed to give robust results.

The tooth types searched for are referenced using Palmer shorthand (e.g. UR2 for an upper right second incisor) with a slight extension to include half-molars. UR6.0 and UR6.1 represent the mesial and distal halves of an UR6, respectively. The software generates a list of potential tooth types based on the model's jaw type (mandibular or maxillary) as specified at the beginning of the process.

After tooth assignment, the ALR system is then primed for use on whatever system it is applied to. In this context, it was applied to the measurement of maxillary arch constriction in a cohort of subjects who had surgical correction for cleft lip and palate. To do this the points on maxillary teeth and mandibular teeth were mapped and the buccal segment teeth crossbites and incisor overjets were given MHB scores.

Validation

Finally, the software validation was conducted by comparing ALR landmark placement, to landmark identification of the same models manually by dental professionals, using comparison to the consensus x , y , and z coordinate of each landmark in 3D space.

During the validation process, 20 models (10 pairs of mandibular and maxillary arches) were scored by the ALR system. The same models were also scored by professionals in the field of dentistry individually after they were given the same instructions. The results of the validation process are displayed in the results section (Tables 2 and 3) and analysed in the discussion.

Results

After the creation of the software, it is important to be able to quantify its performance so we can assess the level of reliability. During the refinement process for the ALR, after arch orientation, tooth

partition and tooth assignment were conducted, and the quality of each ALR step was assessed separately to ensure validity of the final landmarking.

A qualitative assessment of the software's ability to identify teeth was performed on all the models listed in Table 1. Teeth were labelled by hand and by the machine and compared per tooth. Table 2 provides summary statistics as raw counts and as percentages. The totals in Table 2 include all teeth (recognized by the software or otherwise) that were present on the model. So, for example, looking at the adult cast models, there are 45 models giving a theoretical maximum number of teeth of $45 \times 16 = 720$ but only 588 are listed in the adult cast total cell. The remaining 132 were missing from the patient due to extractions, impactions or hypodontia or, in some cases, the impression did not go back far enough to include 7s and 8s.

To summarize the row headers: *OK* means the software found and correctly labelled the tooth. *Partition Error* means that the tooth was not found (see section Tooth partition). *Wrong Assignment* means that the tooth was found but mislabelled (most of which were lower incisors) (see section Tooth assignment). *Wrong Kind* is a subset of *Wrong Assignment* where the software also chose incorrectly from incisor, canine, premolar, and molar. In addition to the mistakes above, 1 deciduous model failed at the *orientation* step. The *find peaks points* process has provided accurate results every time. It is important to note that in MHB ignores 7s and 8s are not included, and scores first permanent molars, premolars, canines and central incisor giving only 12 landmarks per model. There was no difference in ALR performance between incisors and any of the other tooth classes.

For the ALR validation, 20 cast models (213 teeth) were processed automatically by the software and manually by 3 experts to independently identify the assigned landmarks. From a maximum of $20 \times 12 = 240$ teeth, some of the remaining 27 were missing from the patients and a few were unrecognized. The results of the landmark accuracy validation, comparing the coordinates of landmarks placed by experts to landmarks placed by the machine, are shown in Table 3. When comparing the coordinates of the landmarks indicated by the software and the mean coordinates of the manual examinations, the results are similar, with similar levels of deviation from consensus landmarks.

As demonstrated in Table 3, the overall landmark placing of the software averages out at 0.389 mm and the landmark placing by

humans at 0.376 mm. This represents very accurate landmark placement by the software with the mean difference being 0.013 mm. That table also demonstrates that manual landmark placement by different users can have considerable inter-user variation, and yet this is currently the gold standard. There was a definite difference in the level of experience of the 3 examiners with A being a student novice, and for any future high stakes study this has highlighted the need to exercise caution. When investigating the reason, it was felt that differences are likely due to 1. level of experience and 2. the time and carefulness put into the landmarks' placement. Examiner C in particular put several hours into getting them precise. So, the advent of automated software placement of the landmarks will have the same diagnostic value and will eliminate any intra- or inter-rater variations.

The 95% confidence intervals for the geometric mean error of the humans are [0.285, 0.317] and for ALR are [0.269, 0.325]. The difference between humans and ALR shown in Figure 6 is negligible.

Discussion

The work described in this paper builds on the successful development of a plug-in on an open 3D development platform digital technology by Ma *et al.* in 2017 (14) using Rhinoceros software, version 5. Clinicians selected pre-defined landmarks on cusps of mandibular and maxillary teeth on 3D digital models. A three-dimensional cubic spline was used to generate a mandibular curve, and a best-fit horizontal mandibular reference plane was produced using a least-squares method. Their project was aimed towards an automated scoring of cleft lip and palate outcomes and used horizontal distances projected from the shortest three-dimensional distances between the maxillary cusps and the mandibular curve to calculate the modified Huddart and Bodenham (MHB) score. This automated scoring of digital models using the MHB system produced similar results to manual scoring by experienced experts, the current 'gold standard' thus validating its use.

However, one major drawback remained, the fact that the visual and manual identification of the dental landmarks that are selected to enable the MHB score to be allocated still required operator intervention. The Ma *et al.*, development (14) was proof of concept that the digital system with an MHB algorithm was a valid, reproducible

Table 2. Qualitative evaluation of tooth identification errors expressed per-tooth and as percentages.

	Cast adult		Intra-oral adult		Cast deciduous		Overall	
OK	475	80.8%	157	74.8%	894	80.0%	1526	79.7%
Partition Error	46	7.8%	28	13.3%	136	12.2%	210	11.0%
Wrong Assignment	67	11.4%	25	11.9%	87	7.8%	179	9.3%
<i>Wrong Kind</i>	22	3.7%	9	4.3%	32	2.9%	63	3.3%
Total	588		210		1117		1915	

'Wrong kind' is a subset of Wrong assignment.

Table 3. Average deviation (mm) from the consensus co-ordinates for landmark location on different teeth by the ALR software and for each of the 3 examiners (A, B, C).

Deviation (mm)	Software	Humans			Mean
		A	B	C	
Incisors	0.454	0.565	0.387	0.349	0.434
Canines	0.369	0.630	0.322	0.291	0.414
Premolars	0.402	0.472	0.313	0.296	0.360
Molars	0.334	0.382	0.269	0.310	0.320
Overall	0.389	0.517	0.310	0.300	0.376

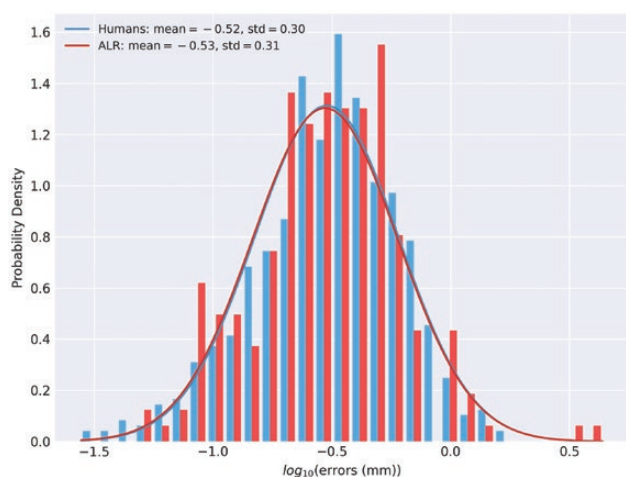


Figure 6. The distribution of placement errors (bar graphs) from the humans' and ALR's landmarks and best-fit Gaussian distributions (lines) for each. ALR, automated landmark recognition.

and accurate substitute for manual scoring. The ALR software described here aims to overcome this drawback by removing the element of human error through machine learning and thereby improve both diagnosis and assessment of treatment outcomes across many fields of dentistry. It facilitates research and data collection, improving speed, accuracy, and standardization of data analysis, beyond what is feasible with manual methods, and is particularly suited to 'big' data.

One of the main challenges faced during the development of ALR was training the software to discriminate between different tooth types. There were several particularly hard to distinguish types, some of which we have overcome, giving a good degree of discrimination, but others such as discrimination between first and second premolars still need improving. The machine learning model is designed to be easily extendable and could later include other known (to humans) distinctive properties which would greatly improve this. A larger training dataset would likely help as the model should be usable as an outcome measure with smaller as well as larger datasets.

Another drawback is that ALR only supports exclusively deciduous or permanent dentition. One of the next additions to the software would be to enable support for mixed dentition. The barrier to this feature lies solely in the Tooth Assignment step (see above). Using this, MMMPPCIIIICPPMMM denotes an adult arch or mmciiicmm for deciduous. Mixed dentition would have to replace this constraint with a more relaxed one allowing with adult or deciduous teeth throughout. This will require coding to be done to provide the freedom for *a premolar to replace a deciduous molar as both could be present in the same quadrant*. A side-effect of giving machine learning more freedom is loss of accuracy and increase in computation time (because it now has more intermediate decisions to make). To counter this better tooth characteristics to make the distinction between tooth types more obvious. The tooth characteristic machine learning model is extendable to include other known properties of each tooth type. One area that still requires work is making the ALR software more user-friendly. Currently, only parts of ALR even have a user interface. A simple, intuitive user interface, not requiring extensive training, will lead to a reduction of human error in using the software.

ALR is an example of a technological advancement made possible by collaboration of Dentistry and Mathematics, it is a valuable tool that can change the way that many dental related problems are

approached. The automated system facilitates quicker and more reliable outcome assessments by minimizing human errors. By standardizing outcome assessment in cleft care, multi-centre comparisons for audit and research can be simplified, allowing centres throughout the world to upload three-dimensional digital models or intra-oral scans of the dental arches for remote scoring. Thereafter, these data can feed back into the global database on orofacial clefting as part of the World Health Organization's international collaborative 'Global Burden of Disease' research project for craniofacial anomalies.

Validation of the ALR software means that this can be used to identify landmarks with greater consistency than human identification. ALR enables analysis of large quantities of patient models to provide more accurate predictions for different therapies. That will result in the creation of more specific guidelines that will facilitate the best possible results for the patients, so they can have the best quality of life they possibly could. The fact that ALR obtained results will always be consistent will make collaboration and cross-comparison between researching bodies across the world possible without expert clinicians having to travel from site to site, making such research faster, cheaper, and easier. The method and software are found to be a valid, reproducible and consistent for identifying landmarking points and through algorithms providing for the first time a fully automated system.

Conclusions

This paper is the first report to describe the development of an automated dental landmarking and scoring software via a combination of geometric computing, data fitting, tooth image segmenting, and machine learning. This fully automatic landmark recognition can be adapted for a range of applications in the field of clinical dentistry, dental research, and associated disciplines. One example, cleft lip and palate outcome measurement using MHB is used here to illustrate the use of the technology.

The utilization of numerical methods for computational geometry and image segmentation on digital dental models and associated algorithm software were key to the development of the first fully automatic landmarking recognition and outcome assessment scoring tool. The machine learning ALR was found to be reproducible and the most accurate and objective method of carrying out dental analyses in the future.

ALR can be applied to both deciduous and permanent dentitions, has widespread applications throughout dentistry, dental anthropology, forensic odontology and in research can constitute an invaluable tool for handling large datasets, eliminating human error, and time intensive employment of experts to place landmarks manually. Its implementation promises to provide significant savings in terms of cost and time and an improved patient experience when compared with traditional diagnostic methods.

Funding

This research was supported for a period through the TOPS trial. TOPS trial is funded by a grant (U01DE018664) from the National Institute of Dental and Craniofacial Research (NIDCR). Its contents are solely the responsibility of the authors and do not necessarily represent the official views of the NIDCR.

Conflicts of interest

None to declare.

Data availability

I have read the journal's requirements for reporting the data underlying this submission and on behalf of my co-authors declare that all of the data reported in this manuscript was original data generated in the course of this study and will be fully available and can be obtained directly from the corresponding author by e-mailing Needs completion by author.

References

- Chalmers, E.V., McIntyre, G.T., Wang, W., Gillgrass, T., Martin, C.B. and Mossey, P.A. (2016) Intraoral 3D scanning or dental impressions for the assessment of dental arch relationships in cleft care: which is superior? *The Cleft Palate-Craniofacial Journal*, 53, 568–577.
- Swennen, G.R., Mollemans, W. and Schutyser, F. (2009) Three-dimensional treatment planning of orthognathic surgery in the era of virtual imaging. *Journal of Oral and Maxillofacial Surgery*, 67, 2080–2092.
- Jyothikiran, H., Shanthara, J.R., Subbiah, P. and Thomas, M. (2014) Craniofacial imaging in orthodontics—past present and future. *International Journal of Orthodontics (Milwaukee, Wis.)*, 25, 21–26.
- Mossey, P.A., Clark, J.D. and Gray, D. (2003) Preliminary investigation of a modified Huddart/Bodenham scoring system for assessment of maxillary arch constriction in unilateral cleft lip and palate subjects. *European Journal of Orthodontics*, 25, 251–257.
- Watkins, S.E., Meyer, R.E., Strauss, R.P. and Aylsworth, A.S. (2014) Classification, epidemiology, and genetics of orofacial clefts. *Clinics in Plastic Surgery*, 41, 149–163.
- Mossey, P.A., Little, J., Munger, R.G., Dixon, M.J. and Shaw, W.C. (2009) Cleft lip and palate. *Lancet (London, England)*, 374, 1773–1785.
- Shaw, W. and Semb, G. (2017) The Scandcleft randomised trials of primary surgery for unilateral cleft lip and palate: 11. What next? *Journal of Plastic Surgery and Hand Surgery*, 51, 88–93.
- Shaw, W., et al. (2019) Timing Of Primary Surgery for cleft palate (TOPS): protocol for a randomised trial of palate surgery at 6 months versus 12 months of age. *BMJ Open*, 9, e029780.
- Mars, M., Plint, D.A., Houston, W.J., Bergland, O. and Semb, G. (1987) The Goslon Yardstick: a new system of assessing dental arch relationships in children with unilateral clefts of the lip and palate. *The Cleft Palate Journal*, 24, 314–322.
- Atack, N., Hathorn, I., Mars, M. and Sandy, J. (1997) Study models of 5 year old children as predictors of surgical outcome in unilateral cleft lip and palate. *European Journal of Orthodontics*, 19, 165–170.
- Martin, C.B., Ma, X., McIntyre, G.T., Wang, W., Lin, P., Chalmers, E.V. and Mossey, P.A. (2016) The validity and reliability of an automated method of scoring dental arch relationships in unilateral cleft lip and palate using the modified Huddart-Bodenham scoring system. *European Journal of Orthodontics*, 38, 353–358.
- Gray, D. and Mossey, P.A. (2005) Evaluation of a modified Huddart/Bodenham scoring system for assessment of maxillary arch constriction in unilateral cleft lip and palate subjects. *European Journal of Orthodontics*, 27, 507–511.
- Dobbyn, L.M., Weir, J.T., Macfarlane, T.V. and Mossey, P.A. (2012) Calibration of the modified Huddart and Bodenham scoring system against the GOSLON/5-year-olds' index for unilateral cleft lip and palate. *European Journal of Orthodontics*, 34, 762–767.
- Ma, X., Martin, C., McIntyre, G., Lin, P. and Mossey, P. (2017) Digital three-dimensional automation of the modified Huddart and Bodenham scoring system for patients with cleft lip and palate. *The Cleft Palate-Craniofacial Journal*, 54, 481–486.
- Giordano, D., Leonardi, R., Maiorana, F., Cristaldi, G. and Distefano ML. (2005) Automatic landmarking of cephalograms by cellular neural networks. In Miksch, S., Hunter, J. and Keravnou, E.T. (eds.), *Artificial Intelligence in Medicine*. Springer Berlin Heidelberg, Berlin, Heidelberg, pp. 333–342.
- Gupta, A., Kharbanda, O.P., Sardana, V., Balachandran, R. and Sardana, H.K. (2015) A knowledge-based algorithm for automatic detection of cephalometric landmarks on CBCT images. *International Journal of Computer Assisted Radiology and Surgery*, 10, 1737–1752.
- Chen, Y.J., Chen, S.K., Chang, H.F. and Chen, K.C. (2000) Comparison of landmark identification in traditional versus computer-aided digital cephalometry. *The Angle Orthodontist*, 70, 387–392.