

Using online exemplars as a critical intersection: Moving from generic to discipline-specific writing at the university

Florence Ma and Ann Walker

12th Biennial Conference of the AALL, University of Wollongong, 25-27 Nov 2015



THE EXEMPLAR



Worthy of Imitation

WHY EXEMPLARS ?

Model texts have long been used
as teaching tools



PROBLEMS ...

Exemplars from academic experts - not always *achievable* or *realistic* targets for novice writers



PROBLEMS ...

What *is* quality work ?

Assessment criteria often too abstract and difficult to understand



A SOLUTION: Annotated student exemplars

Some Benefits:

Demonstrate textual
structures and linguistic
features

Reinforce discipline-
specific requirements

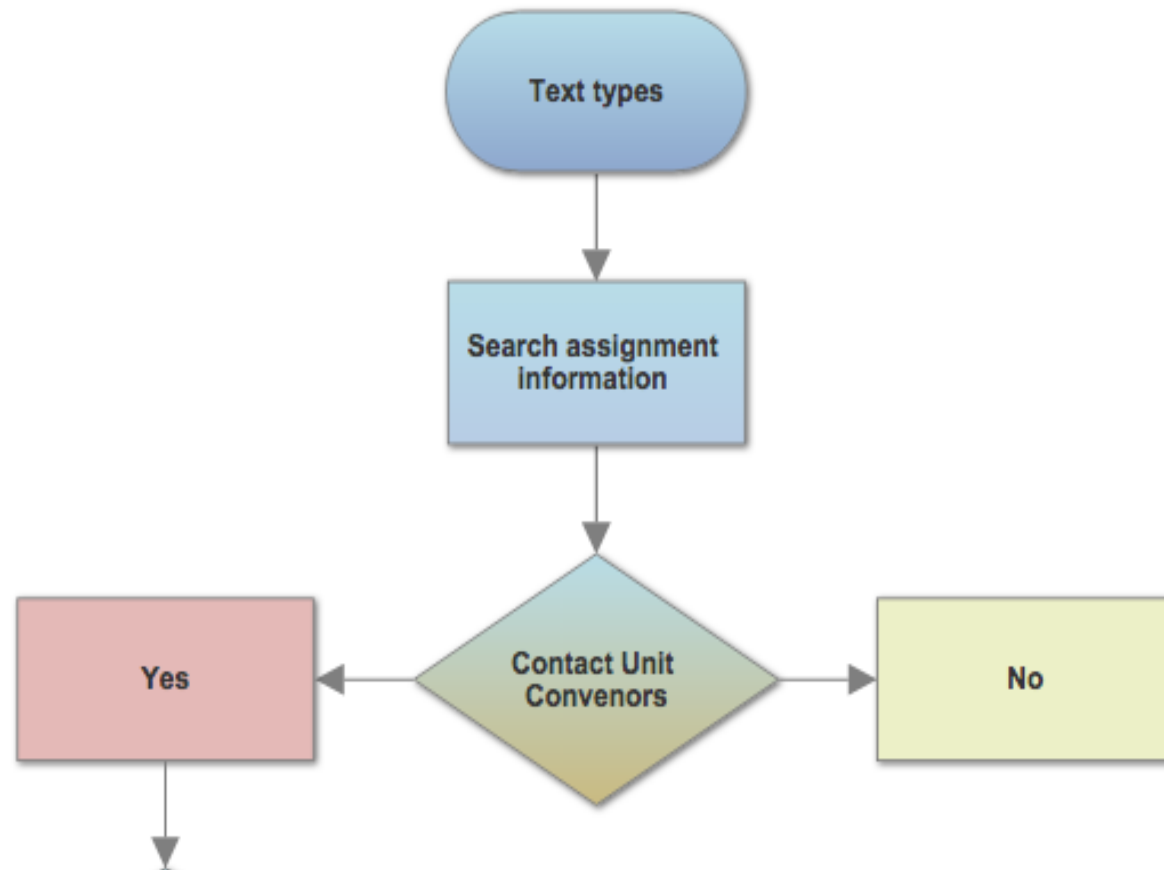
Make marking criteria
concrete

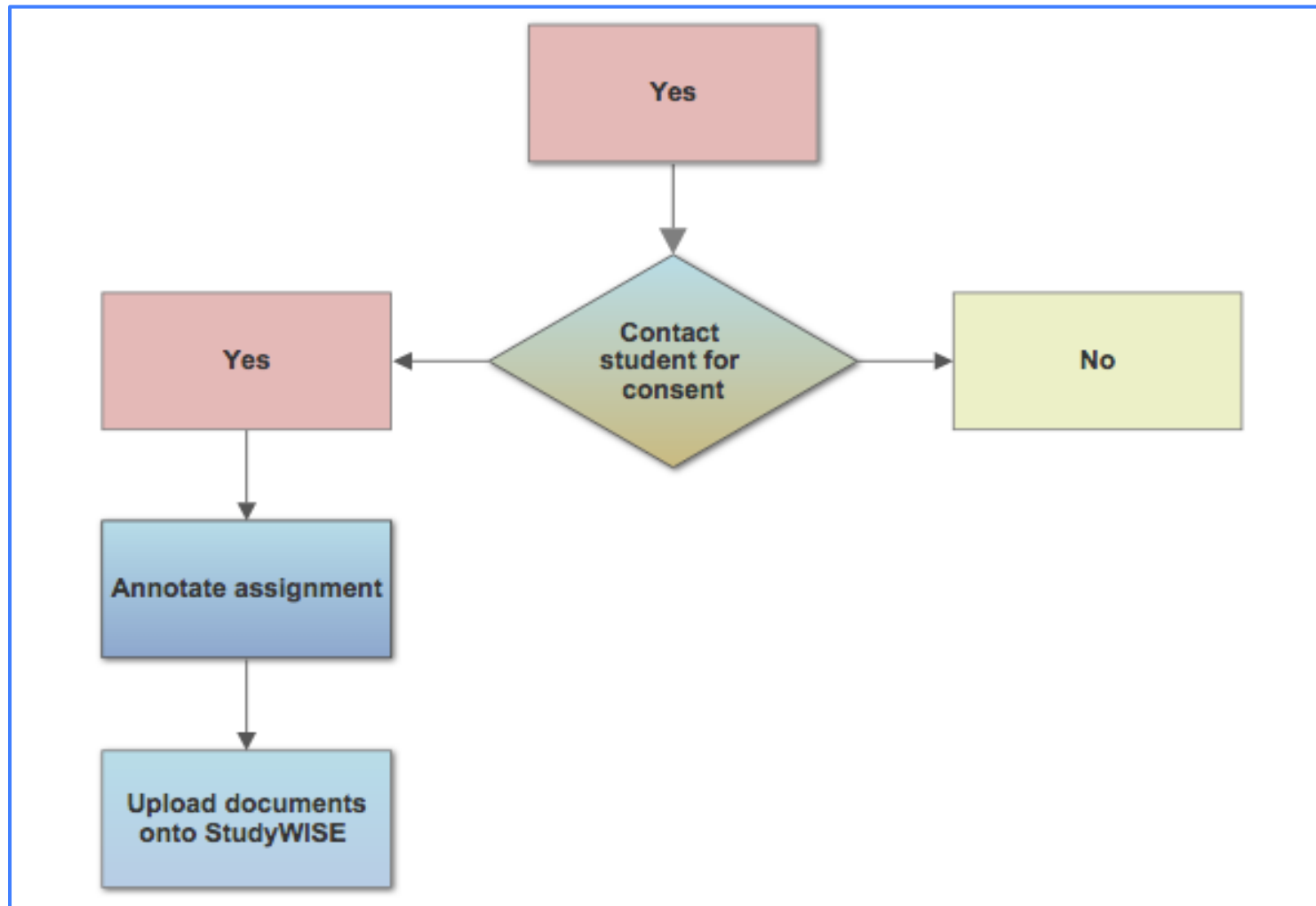
Provide a standard for
comparison

SOME MORE BENEFITS:

Authentic	Accessible
<ul style="list-style-type: none">• Real student examples• University specific examples• Discipline specific examples	<ul style="list-style-type: none">• Online• 24/7• Timely

Exemplar Collection Process





The Contribution of Shame to Posttraumatic Stress Disorder in Combat Veterans

For some, the severity of combat experience is traumatic enough to leave a lasting psychological injury known as posttraumatic stress disorder (PTSD; Dorahy, Corry, Shannon, Webb, McDermott, Ryan & Dyer, 2013; Wong & Cook, 1992). PTSD is classified as an anxiety disorder involving symptoms such as a sense of current threat; intrusive flashbacks and disturbed affect systems (Ehlers & Clark, 2000). Combat veterans may experience profound responses to the trauma they witness during combat and engage in maladaptive coping strategies designed to help escape stimuli that evoke trauma memories or trigger affectual responses such as shame (Harman & Lee, 2010; Stern, 2014). It has been proposed that shame plays a pivotal role in the pathology of PTSD, and theoretical examinations explore shame in terms of the internal and external (Brewer, 1991). Internal shame occurs when there is disparity between the actual self and the internal standards of the individual (Harman & Lee, 2010). External shame refers to the response to threat of rejection in the social context as the individual's social self is thought to be unacceptable (Kemeny, Gruenewald & Dickerson, 2004).

The ability to have a relationship with oneself developed with self-consciousness and this relationship enables individuals to shame themselves without external others (Harman & Lee, 2010). Internal shame occurs when individuals engage in critical comparisons of themselves

Watch starting sentences with abbreviation

Great intro. I would also have liked some stats on prevalence

Identification of topic and definition of key term

Points out the role of shame in PTSD and explains two types of shame

Paragraph moves from general to specific topic focus

A lead-in sentence to the concept of internal shame



StudyWISE

My home / StudyWISE

StudyWISE homepage



Taking control for academic success

Starting at uni	Skills and strategies for success	Writing your assignment	Types of assignment	English language resources
Getting off to a good start	Thinking critically	The assignment process	Essay	Quiz: Find the English grammar errors
University 'culture'	Taking notes	The assignment task	Professional and technical report	Quiz: Academic writing conventions
Academic study	Reading and writing	Reading for your assignment	Research report	Common grammar mistakes
Lectures and tutorials	How do I manage my time?	Strategies for good writing	Case study	Strategies to improve your English Grammar
Learning online	What is research?	Writing drafts	Critical review	Vocabulary in academic writing
Communicating with lecturers and tutors	Doing research	Referencing your sources	Annotated bibliography	Word order
Working in groups	Quantitative and Qualitative Research	Editing and proofreading	Literature review	Spoken vs written English
	Preparing for exams		Oral presentation	
	Preparing for LAW		Example assignments	

Undergraduate	Postgraduate
Essay <ul style="list-style-type: none"> ◦ Anthropology (100 level) ◦ Environmental Geography (100 level) ◦ International Studies (100 level) ◦ Media studies (100 level) ◦ Ancient History (200 level) ◦ Psychology (200 level) 	Critical review Research literacy <ul style="list-style-type: none"> ◦ Accounting
Report <ul style="list-style-type: none"> ◦ Academic Communication business report (100 level) ◦ Physics laboratory report (100 level) ◦ Accounting technical report (200 level) ◦ Health Sciences post placement report (300 level) ◦ Psychology placement report - critical experience (300 level) ◦ Psychology placement report - standard (300 level) 	Annotated bibliography <ul style="list-style-type: none"> ◦ Applied Linguistics
Case study <ul style="list-style-type: none"> ◦ Political Science (100 level) 	Case analysis/Case study <ul style="list-style-type: none"> ◦ Accounting (900 level)
Literature review <ul style="list-style-type: none"> ◦ Psychology (300 level) 	Literature review <ul style="list-style-type: none"> ◦ Applied Linguistics
Commentary <ul style="list-style-type: none"> ◦ Biological Sciences (100 level) 	Research proposal Academic Communication <ul style="list-style-type: none"> ◦ Linguistics ◦ Biological Sciences ◦ Ancient History
Oral presentation <ul style="list-style-type: none"> ◦ Psychology (200 level) 	
Lesson plan / teaching evaluation <ul style="list-style-type: none"> ◦ Education (400 level) 	

24 exemplars
 10 text types
 15 disciplines

Post-placement report (Health Science)

Example of 300 level unit assignment

Click on each of the buttons below to see the content

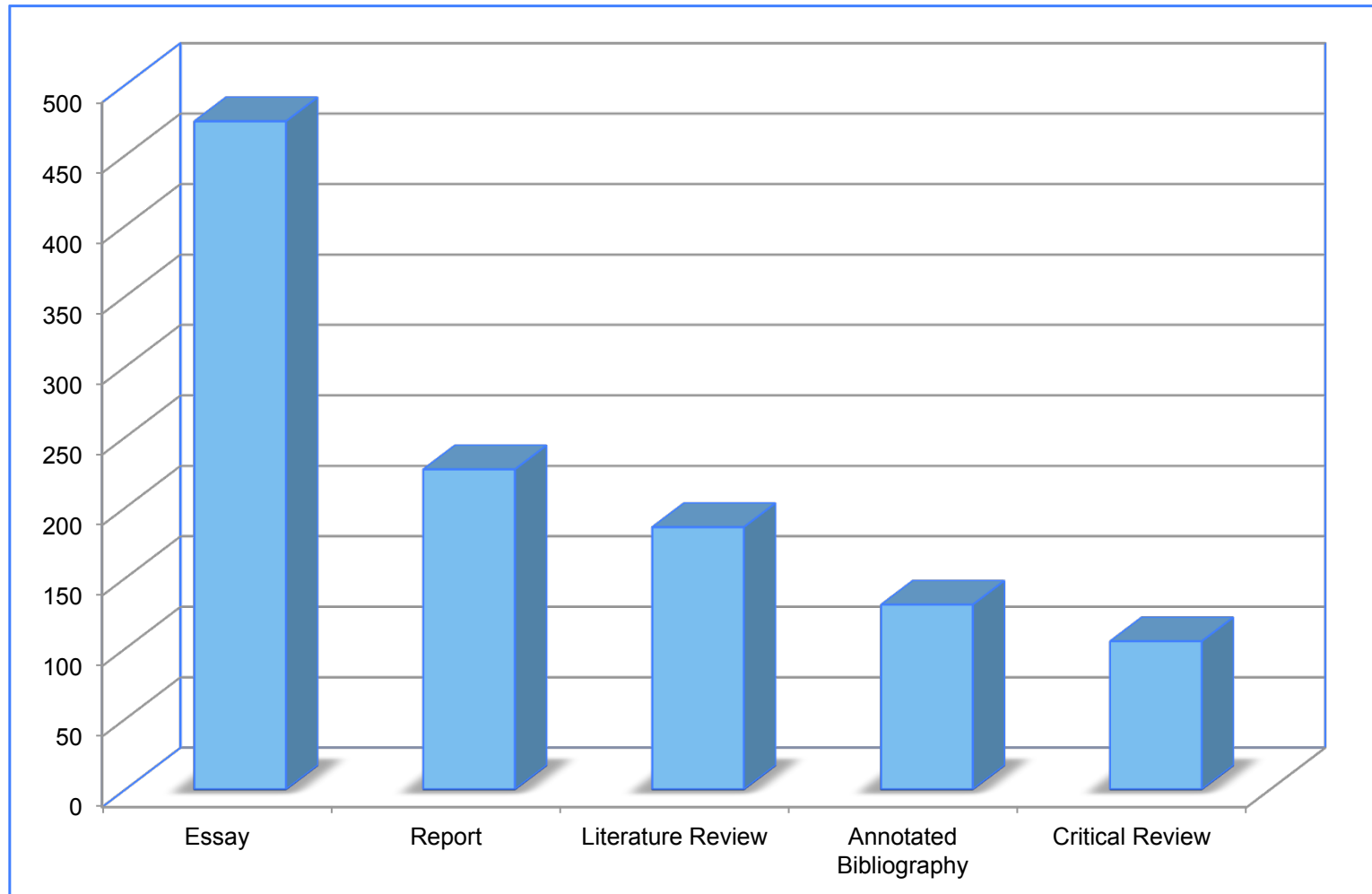
Assignment instructions

Marking criteria

Example student text

Marker's comments

Top 5 exemplars





References

-
- Bell, A., Mladenovic, R., & Price, M. (2013). Students' perceptions of the usefulness of marking guides, grade descriptors and annotated exemplars. *Assessment & Evaluation in Higher Education*, 38 (7), 769–788. doi: 10.1080/02602938.2012.714738.
- Handley, K., & Williams, L. (2011). From copying to learning: Using exemplars to engage students with assessment criteria and feedback. *Assessment Evaluation in Higher Education*, 36 (1), 95–108. doi: 10.1080/02602930903201669.
- Hendry, G.D., Bromberger, N., & Armstrong, S. (2011). Constructive guidance and feedback for learning: The usefulness of exemplars, marking sheets and different types of feedback in first year law subject. *Assessment & Evaluation in Higher Education*, 36 (1), 1-11.
- Nicol, D. & Milligan, C. (2006). Rethinking technology-supported assessment practices in relation to the seven principles of good feedback practice. In C. Bryan and K. Clegg (Eds.) *Innovative Assessment in Higher Education*. Abingdon: Routledge, 64-77.
- To, J., & Carless, D. (2015). Making productive use of exemplars: Peer discussion and teacher guidance for positive transfer of strategies. *Journal of Further and Higher Education*, 1-19. doi: 10.1080/0309877X.2015.1014317.