



2014

Climate refugia: Joint inference from fossil records, species distribution models and phylogeography

Daniel G. Gavin
University of Oregon

Matthew C. Fitzpatrick
University of Maryland

Paul F. Gugger
University of California

Katy D. Heath
University of Illinois

Francisco Rodriguez-Sanchez
University of Cambridge

See next page for additional authors

Publication Details

Gavin, D. G., Fitzpatrick, M. C., Gugger, P. F., Heath, K. D., Rodriguez-Sanchez, F., Dobrowski, S. Z., Hampe, A., Hu, F., Ashcroft, M. B., Bartlein, P. J., Blois, J. L., Carstens, B. C., Davis, E. B., de Lafontaine, G., Edwards, M. E., Fernandez, M., Henne, P. D., Herring, E. M., Holden, Z. A., Kong, W., Liu, J., Magri, D., Matzke, N. J., McGlone, M. S., Saltre, F., Stigall, A. L., Tsai, Y. & Williams, J. W. (2014). Climate refugia: Joint inference from fossil records, species distribution models and phylogeography. *New Phytologist*, 204 (1), 37-54.
© Copyright 2014. *New Phytologist* - reproduced with permission.

Climate refugia: Joint inference from fossil records, species distribution models and phylogeography

Abstract

Climate refugia, locations where taxa survive periods of regionally adverse climate, are thought to be critical for maintaining biodiversity through the glacial-interglacial climate changes of the Quaternary. A critical research need is to better integrate and reconcile the three major lines of evidence used to infer the existence of past refugia - fossil records, species distribution models and phylogeographic surveys - in order to characterize the complex spatiotemporal trajectories of species and populations in and out of refugia. Here we review the complementary strengths, limitations and new advances for these three approaches. We provide case studies to illustrate their combined application, and point the way towards new opportunities for synthesizing these disparate lines of evidence. Case studies with European beech, Qinghai spruce and Douglas-fir illustrate how the combination of these three approaches successfully resolves complex species histories not attainable from any one approach. Promising new statistical techniques can capitalize on the strengths of each method and provide a robust quantitative reconstruction of species history. Studying past refugia can help identify contemporary refugia and clarify their conservation significance, in particular by elucidating the fine-scale processes and the particular geographic locations that buffer species against rapidly changing climate.

Disciplines

Medicine and Health Sciences | Social and Behavioral Sciences

Publication Details

Gavin, D. G., Fitzpatrick, M. C., Gugger, P. F., Heath, K. D., Rodriguez-Sanchez, F., Dobrowski, S. Z., Hampe, A., Hu, F., Ashcroft, M. B., Bartlein, P. J., Blois, J. L., Carstens, B. C., Davis, E. B., de Lafontaine, G., Edwards, M. E., Fernandez, M., Henne, P. D., Herring, E. M., Holden, Z. A., Kong, W., Liu, J., Magri, D., Matzke, N. J., McGlone, M. S., Saltre, F., Stigall, A. L., Tsai, Y. & Williams, J. W. (2014). Climate refugia: Joint inference from fossil records, species distribution models and phylogeography. *New Phytologist*, 204 (1), 37-54. © Copyright 2014. *New Phytologist* - reproduced with permission.

Authors

Daniel G. Gavin, Matthew C. Fitzpatrick, Paul F. Gugger, Katy D. Heath, Francisco Rodriguez-Sanchez, Solomon Z. Dobrowski, Arndt Hampe, Feng Sheng Hu, Michael B. Ashcroft, Patrick J. Bartlein, Jessical L. Blois, Bryan C. Carstens, Edward B. Davis, Guillaume de Lafontaine, Mary E. Edwards, Matias Fernandez, Paul D. Henne, Erin M. Herring, Zachary A. Holden, Woo-Seok Kong, Jianquan Liu, Donatella Magri, Nicholas J. Matzke, Matt S. McGlone, Frederik Saltre, Alycia L. Stigall, Yi-Hsin Erica Tsai, and John W. Williams



Tansley review

Climate refugia: joint inference from fossil records, species distribution models and phylogeography

Author for correspondence:
Daniel G. Gavin
Tel: +1 541 3465787
Email: dgavin@uoregon.edu

Received: 4 February 2014
Accepted: 6 June 2014

Daniel G. Gavin¹, Matthew C. Fitzpatrick², Paul F. Gugger³, Katy D. Heath⁴, Francisco Rodríguez-Sánchez⁵, Solomon Z. Dobrowski⁶, Arndt Hampe^{7,8}, Feng Sheng Hu⁴, Michael B. Ashcroft⁹, Patrick J. Bartlein¹, Jessica L. Blois¹⁰, Bryan C. Carstens¹¹, Edward B. Davis¹², Guillaume de Lafontaine¹³, Mary E. Edwards¹⁴, Matias Fernandez⁴, Paul D. Henne¹⁵, Erin M. Herring¹, Zachary A. Holden¹⁶, Woo-seok Kong¹⁷, Jianquan Liu¹⁸, Donatella Magri¹⁹, Nicholas J. Matzke²⁰, Matt S. McGlone²¹, Frédérik Saltré²², Alycia L. Stigall²³, Yi-Hsin Erica Tsai²⁴ and John W. Williams²⁵

¹Department of Geography, University of Oregon, Eugene, OR 97403, USA; ²Appalachian Laboratory, University of Maryland Center for Environmental Science, Frostburg, MD 21532, USA; ³Ecology and Evolutionary Biology, University of California, Los Angeles, CA 90095, USA; ⁴Department of Plant Biology, University of Illinois, Urbana, IL 61801, USA; ⁵Department of Plant Sciences, University of Cambridge, Downing Street, Cambridge CB2 3EA, UK; ⁶Department of Forest Management, College of Forestry and Conservation, University of Montana, Missoula, MT 59812, USA; ⁷INRA, BIOGECO, UMR 1202, 33610 Cestas, France; ⁸BIOGECO, UMR 1202, University of Bordeaux, 33400 Talence, France; ⁹Australian Museum, 6 College Street, Sydney, NSW 2010, Australia; ¹⁰School of Natural Sciences, University of California, Merced, CA 95343, USA; ¹¹Department of Evolution, Ecology & Organismal Biology, The Ohio State University, Columbus, OH 43210, USA; ¹²Department of Geological Sciences, University of Oregon, Eugene, OR 97403, USA; ¹³Canada Research Chair in Forest and Environmental Genomics, Centre for Forest Research, Institute for Systems and Integrative Biology, Université Laval, Québec City, QC, G1V 0A6, Canada; ¹⁴Geography and Environment, University of Southampton, Southampton SO17 1BJ, UK; ¹⁵Oeschger Centre for Climate Change Research, Institute of Plant Sciences, University of Bern, 3013 Bern, Switzerland; ¹⁶USDA Forest Service Region 1, Missoula, MT 59807, USA; ¹⁷Department of Geography, Kyung Hee University, Seoul 130-701, Korea; ¹⁸College of Life Science, Lanzhou University, Lanzhou 730000, China; ¹⁹Dipartimento di Biologia Ambientale, Sapienza University, Piazzale Aldo Moro 5, 00185 Rome, Italy; ²⁰Department of Ecology and Evolutionary Biology, National Institute for Mathematical and Biological Synthesis, University of Tennessee, Knoxville, TN 37996, USA; ²¹Landcare Research, Lincoln 7640, New Zealand; ²²Environment Institute, School of Earth and Environmental Sciences, University of Adelaide, Adelaide, SA 5005, Australia; ²³Department of Geological Sciences, OHIO Center for Ecology and Evolutionary Studies, Ohio University, Athens, OH 45701, USA; ²⁴Department of Biological Sciences, University of Notre Dame, Notre Dame, IN 46556, USA; ²⁵Department of Geography, Nelson Center for Climatic Research, University of Wisconsin, Madison, WI 53706, USA

Contents

Summary	2	V. How can historical refugia inform us about future refugia?	12
I. Climate refugia: biogeographical and conservation significance	2	VI. Concluding thoughts	13
II. Approaches for reconstructing refugia: strengths, limitations and recent advances	3	Acknowledgements	13
III. Climate refugia of the past: three case studies	10	References	13
IV. New integrative approaches to reconstructing refugia	11		

New Phytologist (2014)
doi: 10.1111/nph.12929

Key words: climate change, Last Glacial Maximum, migration, paleoecology, phylogeography, range dynamics, species distribution modeling.

Summary

Climate refugia, locations where taxa survive periods of regionally adverse climate, are thought to be critical for maintaining biodiversity through the glacial–interglacial climate changes of the Quaternary. A critical research need is to better integrate and reconcile the three major lines of evidence used to infer the existence of past refugia – fossil records, species distribution models and phylogeographic surveys – in order to characterize the complex spatiotemporal trajectories of species and populations in and out of refugia. Here we review the complementary strengths, limitations and new advances for these three approaches. We provide case studies to illustrate their combined application, and point the way towards new opportunities for synthesizing these disparate lines of evidence. Case studies with European beech, Qinghai spruce and Douglas-fir illustrate how the combination of these three approaches successfully resolves complex species histories not attainable from any one approach. Promising new statistical techniques can capitalize on the strengths of each method and provide a robust quantitative reconstruction of species history. Studying past refugia can help identify contemporary refugia and clarify their conservation significance, in particular by elucidating the fine-scale processes and the particular geographic locations that buffer species against rapidly changing climate.

I. Climate refugia: biogeographical and conservation significance

Rapidly growing concern about contemporary climate change impacts on biodiversity has renewed interest in understanding biotic responses to past shifts in climate, and in applying that knowledge to guide current land management (Dawson *et al.*, 2011; Dietl & Flessa, 2011; McMahon *et al.*, 2011). The climates of the glacial cycles of the Pleistocene, in particular the cold period of the Last Glacial Maximum (LGM, from 26 000 to 19 000 calendar yr before present, but cold conditions also prevailed until 14 500 yr ago; Clark *et al.*, 2009), re-organized ecosystems, altered species abundances and forced large-scale movements of taxa, thereby changing biodiversity distribution patterns (Davis, 1976; Huntley & Webb, 1989). At the same time, some locations functioned as climate refugia, preserving local habitats that enabled species to persist in an otherwise inhospitable region, from which they expanded when conditions improved (Box 1; Provan & Bennett, 2008; Keppel *et al.*, 2012). Identifying and characterizing climate refugia provides an important context for understanding the development of modern distributions of species, traits and local adaptation (Davis & Shaw, 2001; Jansson & Dynesius, 2002; Hewitt, 2004; Petit *et al.*, 2005).

Phytogeographers have long speculated that centers of endemism and isolated disjunctions are the legacy of species persistence in Pleistocene refugia (Hultén, 1937; Braun, 1955; Whittaker, 1961; Daubenmire, 1975). More recently, high species richness and endemism were found to be partly explained by local climatic stability (Araújo *et al.*, 2008; Médail & Diadema, 2009; Sandel *et al.*, 2011). However, current species distributions in the absence of other evidence provide only limited insight into past range dynamics, as modern patterns of disjunction and endemism alone cannot discriminate

Box 1 Defining climate refugia

Several recent reviews provide useful conceptual discussions and definitions of refugia (Bennett & Provan, 2008; Holderegger & Thiel-Egenter, 2009; Rull, 2009; Ashcroft, 2010; Hampe & Jump, 2011; Dobrowski, 2011; Mosblech *et al.*, 2011; Keppel *et al.*, 2012; Tzedakis *et al.*, 2013; Hampe *et al.*, 2013). Here we restate an emerging consensus on the application of the term 'refugia' and include a few important modifiers of the term. Bennett & Provan (2008) provided a conceptual classification of refugia, and emphasize that a refugium represents a bottleneck of a population. More recent discussions emphasize the geographic context of refugia. Ashcroft (2010) and Dobrowski (2011) take a bottom-up approach by identifying refugia as physiographic locations that sustain a climate that has become, or is becoming, lost due to climate change. Keppel *et al.* (2012) defined refugia as locations to which taxa retreat during periods of regionally adverse climate and expand from when conditions become more suitable for the taxa. Tzedakis *et al.* (2013) state that refugia are locations that provide habitats for the long-term persistence of populations. Thus, a location is classified as a refugium only if the supported population persists to the present. The refugium may represent the entire distribution of a species and be the last holdout before extinction or be an isolated population that is disjunct from a more extensive distribution elsewhere. Refugia may be located within a former distribution as a result of a range contraction (*in situ* refugia or climate relicts); such populations persisting through several glacial cycles are long-term refugia (Tzedakis, 1993). By contrast, refugia may be located distant from a former distribution (*ex situ* refugia) as a result of a migration out of a distribution that later is extirpated (Holderegger & Thiel-Egenter, 2009). A refugium that is highly spatially restricted (e.g. limited to a local topographic feature) may be considered a microrefugium (Rull, 2009). 'Cryptic refugia' has also been applied to microrefugia because of the improbability of detecting their specific locations from the fossil record (Provan & Bennett, 2008). The various biogeographic scenarios involving refugia from glacial to interglacial, and onwards to a super-interglacial climate, are shown in Fig. 1.

among alternative histories (e.g. Reid, 1899; MacArthur, 1972). Pioneering paleoecologists (e.g. Deevey, 1949; Van der Hammen *et al.*, 1971; Davis, 1976) had proposed a central role of low-latitude refugia as locations where species survived through the LGM. However, more recent paleoecological and genetic research has provided support for a long-suspected alternative model (McGlone, 1985) in which certain species persisted through glacial periods in high-latitude refugia that contributed to post-glacial expansion (McLachlan *et al.*, 2005; Stewart *et al.*, 2010; Mosblech *et al.*, 2011). Present-day species distributions also support this view of historical refugia, although the specific geographic context may differ for glacial vs interglacial refugia. High elevations offer locally benign conditions under interglacial conditions for many cold-adapted species, whereas south-exposed and particularly protected areas could have offered benign conditions for warm-adapted species under glacial conditions (Birks & Willis, 2008). Although the emergence of broad acceptance of high-latitude glacial refugia may appear to constitute a paradigm shift, a recent review (Tzedakis *et al.*, 2013) has claimed that in Europe evidence of glacial refugia has been too readily accepted and that all forms of evidence require careful scrutiny.

High-latitude refugia may help resolve the ‘Quaternary conundrum’ (Botkin *et al.*, 2007) – namely, that species distribution models that map ecological niches onto future climate surfaces often suggest high rates of extinction in coming decades (e.g. Thuiller *et al.*, 2005); by contrast, there are few recorded cases of species extinction during the late Quaternary that are clearly attributable to climate change (Jackson & Weng, 1999; Barnosky *et al.*, 2004; Birks, 2008; Magri & Palombo, 2013). This apparent contradiction between future projections and past evidence suggests that we may have underestimated the role of (micro)refugia, local adaptation and/or inherent tolerance to environmental change (e.g. through phenotypic plasticity; Pearson *et al.*, 2006; Aitken *et al.*, 2008; Willis & Bhagwat, 2009; Hof *et al.*, 2011).

Recognizing the location and effectiveness of a refugium requires the passage of time, and thus historical evidence provides much of what we understand about refugia today. Evidence for past climate refugia comes from three independent but highly complementary lines of research: fossil records, phylogeography and species distribution modeling. Paleoecologists, geneticists and species distribution modelers all have well-developed methods for identifying past refugia (Jackson, 2006; Petit *et al.*, 2008; Hu *et al.*, 2009; Nogués-Bravo, 2009). The approaches are potentially synergistic and the breadth of information available from them is immense. However, there exists a need for improved quantitative tools that can harness the joint power of these independent lines of evidence. More dialog among disciplines is necessary to better understand their respective strengths and limitations, and to reconcile the sometimes contradictory inferences (Rodríguez-Sánchez *et al.*, 2010; Fig. 2). Moreover, understanding ecological processes that maintain refugial ecosystems requires a challenging crossover of long timescales (i.e. the late Quaternary) and fine spatial scales (i.e. the spatial reality of where refugia occurred). There is, then, considerable potential to bridge the gaps between

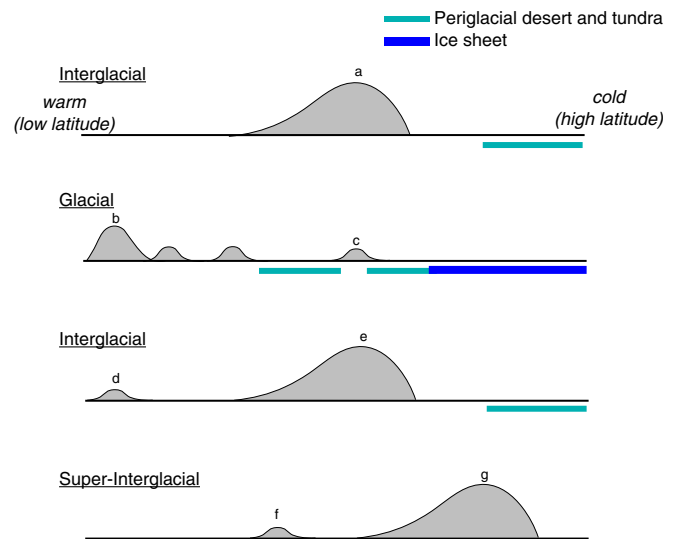


Fig. 1 There are several possible biogeographic scenarios of the response of a temperate or boreal species to glacial–interglacial climatic variations and to a projected super-interglacial climate. These schematic diagrams represent one-dimensional views of the latitudinal distribution of a species at a continental scale. A single main distribution associated with a previous interglacial climate (a) migrated to form patchy *ex-situ* refugia (b) during a glacial period, but also possibly remained *in-situ* forming a high-latitude refugium (c) in a climatically buffered area within a mostly tundra landscape. The populations during the modern interglacial comprised climate relicts (d) and a main distribution (e) that may have been colonized by low-latitude (b) or high-latitude (c) refugia. A current area of research addresses whether such high-latitude refugia were occupied by warm-temperate species in addition to boreal species. A projected future super-interglacial, as shown here, is marked by extinction of the climate-relict population (d), establishment of a new climate-relict population (f) and poleward migration of the main distribution (g).

paleoecology, phylogeography and species distribution modeling by integrating paleoecological analyses that span the LGM, using new genomic tools that reveal genetic variation at unprecedented resolution, and climate modeling that highlights the fine-grained spatial context for refugia and migration. Publication trends clearly show that researchers are increasingly using a combination of approaches to reconstruct refugia: among the publications addressing refugia, the proportion that refer to more than a single approach has more than doubled over the last 15 yr (Fig. 3).

In this paper we review the strengths, limitations and approaches commonly used to reconstruct species distributions with respect to refugia. We then present three examples that demonstrate how integrating across two or more approaches has led to important new insights about refugia. We conclude with a discussion of potential new integrative approaches, and the relevance of studying past glacial refugia for informing future climate refugia.

II. Approaches for reconstructing refugia: strengths, limitations, and recent advances

Below we provide a brief review of the three major approaches used to identify past refugia. We focus on the sensitivity and reliability of each approach, and the potential for false-positive and false-negative inferences regarding the presence of a species in a refugium (Table 1).

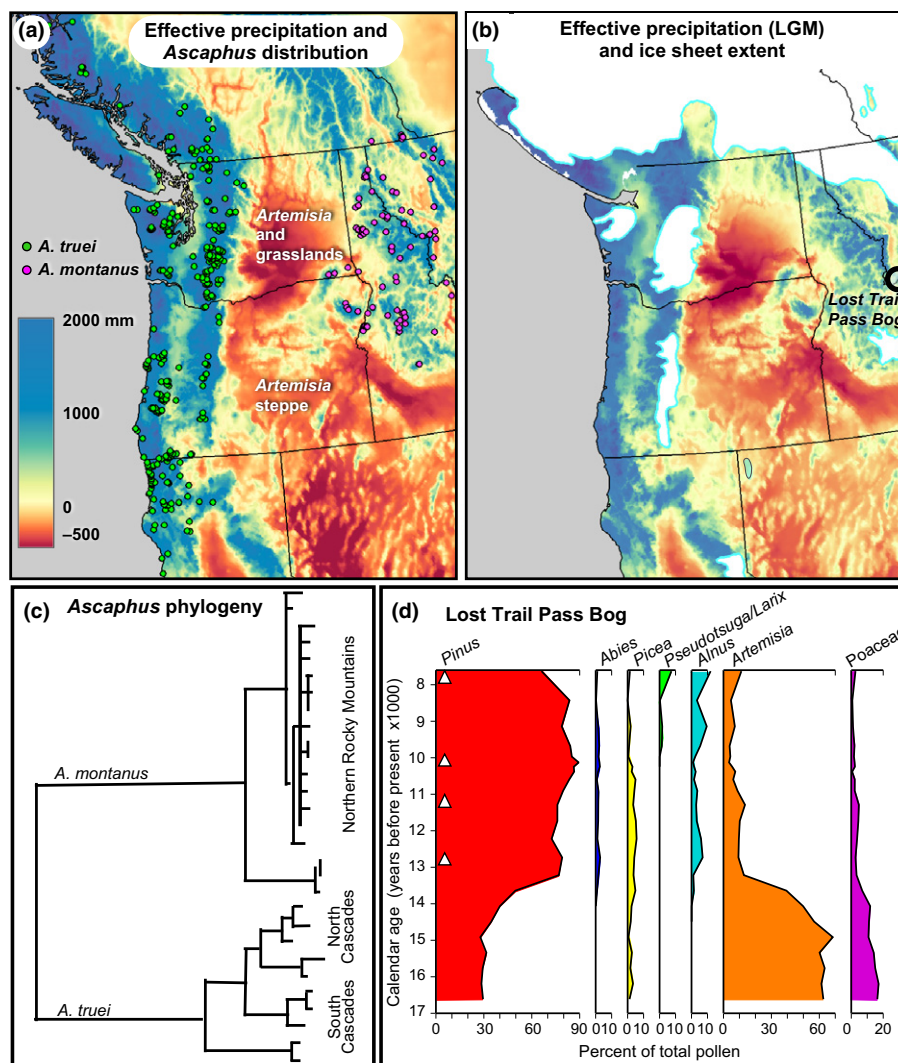


Fig. 2 The need to bridge diverse forms of information on past species distribution is exemplified by the Clearwater Refugium of northern Idaho, USA. These figures show that some lines of evidence, but not others, support the inference of a mesic refugium in northern Idaho through the Last Glacial Maximum (LGM). (a) The distribution of the coastal and Rocky Mountain tailed frog (*Ascapthus truei* (green circles) and *A. montanus* (red circles), respectively) shows the clade's association with mountain streams in areas with high effective precipitation (annual precipitation–potential evapotranspiration) and disassociation with *Artemisia* steppe and grasslands (red areas). (b) During the LGM, the UKMO climate simulation (Johns *et al.*, 1997) predicted a slightly wetter climate compared to present and the maintenance of an arid barrier between the coast and interior, and species distribution modeling (SDM) for *Ascapthus* (not shown) showed its continued presence in Idaho and the Cascade Range (Carstens & Richards, 2007). The circle indicates the location of the pollen record in (d). (c) *Ascapthus* phylogeny from mtDNA indicating an ancient divergence of > 2 million yr between these species and suggesting the long-term isolation of the Rocky Mountain lineage (Nielson *et al.*, 2001). (d) Selected pollen taxa from a post-glacial pollen record from northern Idaho (Mehringer *et al.*, 1977). Triangles indicate radiocarbon dates. The high *Artemisia* and low tree pollen percentages in the late-glacial period (> 14 500 yr ago) suggest a vast treeless steppe of much greater extent than today, suggesting a drier regional climate than indicated by the climate simulation. The extensive *Artemisia*, specifically, indicates a habitat too cold and dry to support the mesic species in the Clearwater Refugium. It remains unknown whether fine-grained topoclimates could accommodate both lines of evidence. Taken from fig. 9 (in part) of Mehringer *et al.* (1977) and redrafted. Used with permission. Copyright Regents of the University of Colorado. See Supporting Information Notes S1 for data sources.

1. Fossil records

Fossil records of Quaternary plants and animals have been collected over several decades of research by paleoecologists. There is a standing tradition of assembling paleoecological data into spatial databases used to study glacial and post-glacial species dynamics (Davis, 1976; Bernabo & Webb, 1977; Huntley & Birks, 1983; Williams *et al.*, 2004). This process has been accelerated by recent advances in data management and paleoecoinformatics (Brewer *et al.*, 2012). Fossils and sediments are being physically

archived and increasingly tracked through digital curation (e.g. LacCore: <http://lrc.geo.umn.edu/laccore> and IEDA: <http://www.iedadata.org>) and raw data are being organized into georeferenced databases (Uhen *et al.*, 2013).

Strengths Fossils provide the best evidence for the presence of a species within a past window of space and time. In many cases, corroboration of fossil evidence at multiple sites and careful analyses of taphonomy (i.e. processes leading to fossil preservation) can overcome many of the false positives and negatives associated

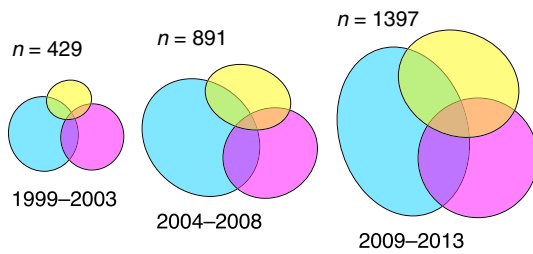


Fig. 3 Area-proportional Euler diagrams showing the intersection of three search results from Thomson Reuters Web of Science (search on 18 January 2014). Blue, *refugi** and *phylogeograph**; pink, *refugi** and (*fossil** or *pollen*); yellow, *refugi** and (*distribution model* or *niche model*). Asterisks indicate wild card characters. The percentage of publications referring to more than one method (the area of overlap in the diagrams) has increased from 17% in 1999–2003 to 36% in 2009–2013. In 2013 alone, the overlap was 44%.

with fossil data (Table 1). Some fossils are found *in situ*, such as megafossil trees in a rooted position. For smaller fossils (e.g. conifer needles, macroscopic charcoal and large seeds or bones) in low-

energy depositional environments and for limnological microfossils (e.g. ostracodes, diatoms), source areas are usually constrained to scales of 10^1 – 10^2 m. Microfossils that are formed from the degradation of macrofossils, such as leaf stomata, can also indicate local occurrence (Ammann *et al.*, 2014). Aerially dispersed microfossils such as pollen have larger source radii (usually on the order of 10^{-1} – 10^2 km), but local presence can be inferred from high abundances or consistent presence in a record especially for heavy pollen types (Lisitsyna *et al.*, 2011). If datable by radiocarbon (i.e. within the last 50 000 yr), temporal precision is often very good (ranging from 10^2 yr for Holocene samples and 10^3 yr for older samples; Bronk Ramsey, 2008). Other absolute dating methods extend through the Quaternary (Walker, 2005), although the error increases markedly. During the earlier Pleistocene, global climate fluctuations reflected by marine isotopic stages and other chronostratigraphic events (e.g. volcanic tephra) can constrain fossil age.

Critically, fossils often reveal the presence of populations of a species that existed outside its present range. The detection of such

Table 1 Sources of error associated with determining occupancy of a species in a refugium under previous climatic periods

Method	False-positive errors	False-negative errors	Both types of error
Fossil records	Fossil with extra-local provenance (e.g. long-distance pollen dispersal) Redeposited fossils from earlier time periods With respect to environmental DNA, a potential for laboratory contamination	Low detection probability (e.g. due to small populations and/or poor fossilization potential)	Misidentification of fossils Chronological error and re-working of sediments
Phylogeography	Areas of high diversity interpreted as refugia are the result of phalanx colonization, past hybridization, or secondary contact zones ¹ Apparently endemic alleles not yet discovered in other parts of geographic range Endemic alleles at colonizing front are the result of leading-edge dynamics or allele surfing	Low genetic variation or poor resolution of genetic variation interpreted as recent colonization Sampling is limited to extant populations	Center of genetic diversity shifts through time (range shifts)
Species distribution modeling	Dispersal limitation (potential habitat identified by SDM is unoccupied)		Incorrect niche model (variables chosen and/or mathematical expression, insufficient species occurrences to characterize full niche parameters, inclusion of biotic interactions and dispersal processes) Incorrect paleoclimate characterization (errors in reconstructed or simulated climate) Imprecise characterization of microscale spatial variability Realized niche changes over time (due to no-analog climates, biotic interactions, phenotypic plasticity, and/or niche evolution)

¹False-positive errors in phylogeography are summarized from Tzedakis *et al.* (2013).

populations is perhaps the most important way by which fossil data complement phylogeographic approaches, which rely on DNA collected from extant species distributions. Such populations were widespread during the LGM. For example, in eastern North America, species of an extensive boreal flora existed hundreds of kilometers south of their modern southern limits (e.g. Jackson *et al.*, 1997). Arctic sea mammals occurred as far south as San Francisco and New England (Harrington, 2008). Similarly, the unglaciated headlands and lowlands, which currently lie below current sea level on the coast of western Canada, formed an LGM refugium for many taxa (Heaton *et al.*, 1996; Lacourse *et al.*, 2003).

Continuous time-series of fossils can provide direct evidence of species persistence and the dynamics of species turnover within a refugium. A 130 000-yr late-Pleistocene pollen record from western Greece, for example, indicated a muted response to the abrupt climatic changes recorded in the North Atlantic, suggesting a refugium characterized by a buffered local environment (Tzedakis *et al.*, 2002). Similarly, a 48 000-yr pollen record from a biodiversity hotspot in the western Amazon revealed 30 000 yr of compositional similarity followed by a slow warming that would have accommodated elevational habitat tracking (Bush *et al.*, 2004).

Targeted sampling within putative glacial refugia can increase the spatial specificity of refugial populations and data from multiple sites can strengthen the interpretation of rare fossil occurrences (Kaltenrieder *et al.*, 2009). Brubaker *et al.* (2005) synthesized multiple sites in Beringia to show that trace amounts of pollen of boreal trees existed continuously during late-glacial times in Beringia, which could best be explained by the continuous persistence at low abundances of those species within Beringia, contrasting with single-site interpretations suggesting that trees were eliminated from Beringia in the LGM. Macrofossils, such as wood and charcoal in soil or plant leaves in sediment, can provide strong evidence of species presence (Hopkins *et al.*, 1981, 1993; de Lafontaine & Payette, 2011). Such soil charcoal and macrofossil data have shown boreal tree taxa existing in central Europe and northern Eurasia close to ice sheets before and during the LGM (Willis & van Andel, 2004; Binney *et al.*, 2009). The mammal fossil record supports a similar environmental interpretation (Sommer & Nadachowski, 2006).

Limitations and recent advances The fossil record is discontinuous in space and time, and is limited to species that fossilize. Taxa that were rare in the past are unlikely to occur as macrofossils and therefore the absence of fossils usually provides little information about the absence of a species (i.e. a high false-negative rate; Birks, 2014). Even within a spatial network of fossil sites, small populations in areas far from fossil sites may remain undetected (McLachlan & Clark, 2004; Lesser & Jackson, 2011). Moreover, by their nature, microrefugial populations are spatially restricted and small and will leave correspondingly sparse representation in the fossil record. Fossil-bearing deposits may be absent or impossible to locate in the areas where a refugium putatively existed. In particular, old land surfaces and unglaciated mountains tend to have few sedimentary basins (Hutchinson, 1957). The settings for potential glacial refugia, such as steep south-facing

slopes (north-facing in the southern hemisphere) or coastal shelves exposed during the last glaciation, may also be the least-suited for preserving fossils (Bisconti *et al.*, 2011; Beatty & Provan, 2013).

Fossil data will mislead if fossils were misidentified, incorrectly dated or transported between death and deposition (e.g. through long-distance pollen dispersal or fluvial transport of macrofossils; Behrensmeyer *et al.*, 2000). Wood charcoal in soil contexts, for example, is easily mixed over glacial–interglacial timescales and therefore identified pieces must be directly dated (Carcaillet & Talon, 1996). However, identified and dated charcoal can provide robust evidence for species presence (de Lafontaine *et al.*, 2014). In tundra environments the highly dispersible pollen of taxa such as *Betula* and *Pinus* occurs far beyond their source limits; even moderate percentages may not indicate local presence and thus generate false-positive errors (Table 1; Birks, 2003). Unambiguous species-level identification is often difficult or impossible.

New detection techniques – particularly in the arena of molecular and ancient DNA approaches – may offer new opportunities to identify formerly cryptic refugia (Willerslev *et al.*, 2003). Small quantities of environmental DNA (i.e. extracellular, degraded DNA in sediments) are retrievable for a range of organismal groups, including mammals, vascular plants and fungi. They are identified from short but robust sequences (metabar-codes), usually to genus and often to species (Willerslev *et al.*, 2003; Yoccoz *et al.*, 2012). Using this approach, Parducci *et al.* (2012) identified chloroplast DNA of spruce (*Picea* sp.) from sediments dating to just after the LGM at 17 700 yr ago on Andøya Island in northwest Norway at a site > 100 km from the nearest *Picea* trees. This particular study has been criticized on the grounds of potential contamination for the aDNA, the lack of supporting pollen data and the problem of re-worked sediments (Birks *et al.*, 2012; Vorren *et al.*, 2013). Should the technique be validated, however, it would offer a powerful approach.

2. Species distribution models

Species distribution modeling (SDM) refers to statistical and/or mechanistic approaches to assess the determinants of species ranges and predict species occurrence across space and/or time. SDM methods span from purely correlative methods (i.e. statistical assessments of relationships between species presence and a set of environmental variables; Guisan & Zimmermann, 2000; Elith & Leathwick, 2009; Franklin, 2009) to purely process-based methods (i.e. explicit ecological relationships between environmental conditions and organism performance; Kearney & Porter, 2009). The accessibility and benign data requirements of correlative SDMs, coupled with the improved availability of paleoclimate simulations, account for their increasing application to paleobiology (Nogués-Bravo, 2009; Svenning *et al.*, 2011), including the study of glacial refugia.

Strengths Correlation-based SDMs have been widely applied because of their simplicity and the accessibility of software such as Maxent (Phillips *et al.*, 2006) and BIOMOD for ensemble modeling (Thuiller *et al.*, 2009). Although these models have been criticized because of their reliance on correlative relationship (e.g.

Woodward & Beerling, 1997; Birks *et al.*, 2010), process-based approaches also have limitations because of demanding parameterization (Morin & Thuiller, 2009). SDMs may be used in conjunction with paleoclimate simulations to hindcast species occurrence across large regions. This approach is cheaper and easier than those that rely strictly on fossil or genetic data for inference. Therefore, the greatest strength of SDMs is as an exploratory tool for generating spatial hypotheses regarding the past locations (Porto *et al.*, 2013) and dynamics (Graham *et al.*, 2010) of species, communities and/or refugia. An additional notable strength is the ability of SDMs to accommodate species-specific responses to climatic change, which is important because a single refugium is unlikely to be suitable for all taxa. Of the three approaches discussed in this paper, only SDMs can be used to project future distributions and potential refugia, so it is particularly critical to check their predictions against the paleorecord (Williams *et al.*, 2013).

Limitations and recent advances Despite these practical strengths, a number of assumptions and uncertainties limit the utility of SDMs and complicate their interpretation (Guisan & Thuiller, 2005). Foremost is the assumption that the species–climate relationships identified by SDMs, and upon which their mapped predictions are based, reflect causal relationships that remain static despite changes in the environment and biotic interactions. Although assumptions of niche stability may hold for some species under some circumstances (as shown by comparison with fossil data; Martínez-Meyer & Peterson, 2006; Rodríguez-Sánchez & Arroyo, 2008), multiple lines of evidence suggest that species–climate relationships can change over time due to niche evolution (Pearman *et al.*, 2008), changing biotic interactions (Ackerly, 2003; Colwell & Rangel, 2009; Stigall, 2012), human impacts (Tinner *et al.*, 2013; Henne *et al.*, 2013), the emergence of novel climates (Williams & Jackson, 2007) and changing CO₂ concentrations that affect water relations in plants (Cowling & Sykes, 1999). A recent analysis of fossil pollen records in eastern North America suggests that shifting realized niches during periods of no-analog climates leads to low predictive ability of SDMs when projected across time (Veloz *et al.*, 2012). The use of SDMs to locate historic refugia in regions with no-analog climates may be problematic (Williams *et al.*, 2007; Fitzpatrick & Hargrove, 2009; Feeley & Silman, 2010).

Given the ongoing need for relatively simple and general models, perhaps the greatest advances will come from improved understanding of community dynamics, and incorporation of the influence of biotic interactions on species distributions and responses to climate change (Kissling *et al.*, 2012; Wisz *et al.*, 2013; Svenning *et al.*, 2014). ‘Community-level’ models (also known as multiresponse models) use species co-occurrence patterns to infer biotic interactions (Ovaskainen *et al.*, 2010) or simultaneously model community structure and the functional responses of individual species to environmental gradients (Ferrier & Guisan, 2006; Olden *et al.*, 2006; Elith & Leathwick, 2007). Community-level models are only now being applied to paleobiology (Blois *et al.*, 2013a) and hold promise for inferring the location of refugia. For example, they may identify regions where temporal turnover in

community composition is predicted to remain low (Fitzpatrick *et al.*, 2011), assuming space-for-time substitutions are valid (Blois *et al.*, 2013b).

The second major limitation is that SDMs typically do not accommodate population- and metapopulation-level processes. For instance, they do not recognize ontogenetic niche differences (e.g. the regeneration niche), nor do they routinely consider relevant population and dispersal dynamics or intraspecific variation in climatic tolerances (Holt, 2009). For example, when populations are small and scattered, dispersal among populations may be critical for ensuring regional metapopulation persistence (Stacey & Taper, 1992). Without explicitly modeling dispersal processes or intraspecific niche differentiation, predictions from SDMs largely reflect potential distributions that assume all populations are instantaneously able to track their optimum climate (Araújo & Peterson, 2012).

Progress has been made in incorporating processes such as dispersal, population dynamics and biotic interactions into SDMs and multispecies landscape models (Midgley *et al.*, 2010; Schurr *et al.*, 2012; Thuiller *et al.*, 2013), with numerous studies describing the application of such methods to modeling changes in species distributions in response to climate change (e.g. Fitzpatrick *et al.*, 2008; Pagel & Schurr, 2012; Dullinger *et al.*, 2012; Fordham *et al.*, 2013). However, relatively few studies have used dynamic species-level models in paleoecological contexts (Saltré *et al.*, 2013; Henne *et al.*, 2013). As these techniques continue to improve and as paleoecological datasets accumulate, there will be greater opportunities for the application of dynamic models to identify refugia and for much-needed model validation and inter-model comparisons. Although dynamic simulations have the potential to address many of the limitations of correlation-based SDMs (Schurr *et al.*, 2012), some process-based models likely will always remain inherently limited by their complexity and therefore will be primarily useful for a handful of relatively well-studied species and sites.

The third major limitation is that most SDMs use spatially- and temporally-smoothed climate data that fail to capture climatic variance and the effects of topography on microclimate. Even when high-resolution downscaled datasets are created, they often use simple assumptions about the effects of topography on climate (e.g. applying lapse-rate corrections for temperature) that do not represent the full set of processes affecting microclimates (Dobrowski, 2011; Holden & Jolly, 2011; Ashcroft *et al.*, 2012). In mountainous regions, precipitation, solar radiation, wind speed, temperature and humidity all vary with topographic position and interact to create complex mosaics of available moisture and energy that, among other factors, mediate the distribution of species. Microclimates may vary dramatically from regional climate due to distinctive water and substrate features that would be difficult to account for in coarsely gridded climate data, but may maintain viable populations over millennia. For example, talus slopes (which would not be distinguished on digital elevation data) may store ice throughout warm seasons, thereby creating pronounced local cooling that support cool-adapted species (Kong & Watts, 1999; Edenborn *et al.*, 2012). Such sites may effectively buffer against regional climate change. Increasing the realism of modeled

topoclimates should (1) increase the spatial heterogeneity of climate on the landscape resulting in greater overlap in climatic values through time (Ackerly *et al.*, 2010; Dobrowski, 2011), (2) reduce estimates of the velocity of climate change through time (Dobrowski *et al.*, 2013), (3) result in a more precise definition of the climatic niche of a species (Franklin *et al.*, 2013), and (4) reveal locations that are potentially buffered from regional climate change which serve as *in situ* refugia (Ashcroft *et al.*, 2009; Patsiou *et al.*, 2014).

Compared to the development and testing of new modeling techniques, relatively little attention has been given to developing microclimatic datasets that capture these critical aspects of the environment at the scale relevant to populations. Recent studies have addressed this challenge by deploying dense networks of inexpensive temperature sensors to develop high-resolution climate datasets (Holden *et al.*, 2011; Ashcroft *et al.*, 2012) suitable for mapping potential microrefugia. Topoclimatic grids are now being produced over large and diverse regions (Ashcroft & Gollan, 2012), but to date they have not been extended to past climates. The lack of such datasets currently limits SDM studies of LGM distributions to macrorefugia rather than microrefugia, although recent attempts to link fine-scale climate with global or regional climate models offer a promising approach to project topoclimatic models back to the LGM (Dobrowski *et al.*, 2009; Holden *et al.*, 2011; Kearney *et al.*, 2014). If successful, such approaches could identify refugia at a spatial scale that is in many situations inherently inaccessible to paleoecological or phylogeographical reconstructions (for the

reasons stated in the corresponding sections). The task of developing such datasets also requires a focus on the climate variables that most proximally relates to species occurrence. For plants, a climatic water balance approach has the advantage of integrating physical and environmental variables into the key limiting factors of evapotranspiration and moisture deficits (Lutz *et al.*, 2010; Crimmins *et al.*, 2011).

When applied to a paleoclimatic context (i.e. paleo-SDMs that hindcast potential distributions under past climate), issues related to modeling topoclimates are magnified due to the uncertainty in the regional paleoclimate estimates (Bonfils *et al.*, 2004; Varela *et al.*, 2011; McGuire & Davis, 2013). Our comparison of eight recent paleoclimate simulations produced by the PMIP3 project (Fig. 4) revealed that the standard deviation of the anomaly (LGM–present) of growing degree-days or annual precipitation is comparable to the average anomaly itself. For example, eight simulations may indicate a mean temperature anomaly of -8°C for a single grid cell, but individual simulations range from -2 to -14°C . In addition, there may be a warm bias in some General Circulation Model simulations of LGM climate, leading to an overestimation of potential refugia (Harrison *et al.*, 2013). This uncertainty in coarse-scale paleoclimate simulations is being addressed by comparing and assimilating simulated climates with quantitative paleoclimate reconstructions from the paleoecological and geologic record (Bartlein *et al.*, 2011; Schmittner *et al.*, 2011; Braconnot *et al.*, 2012). Regardless of future improvements in paleoclimate reconstruction, there is slowly increasing awareness that SDM projections should always account

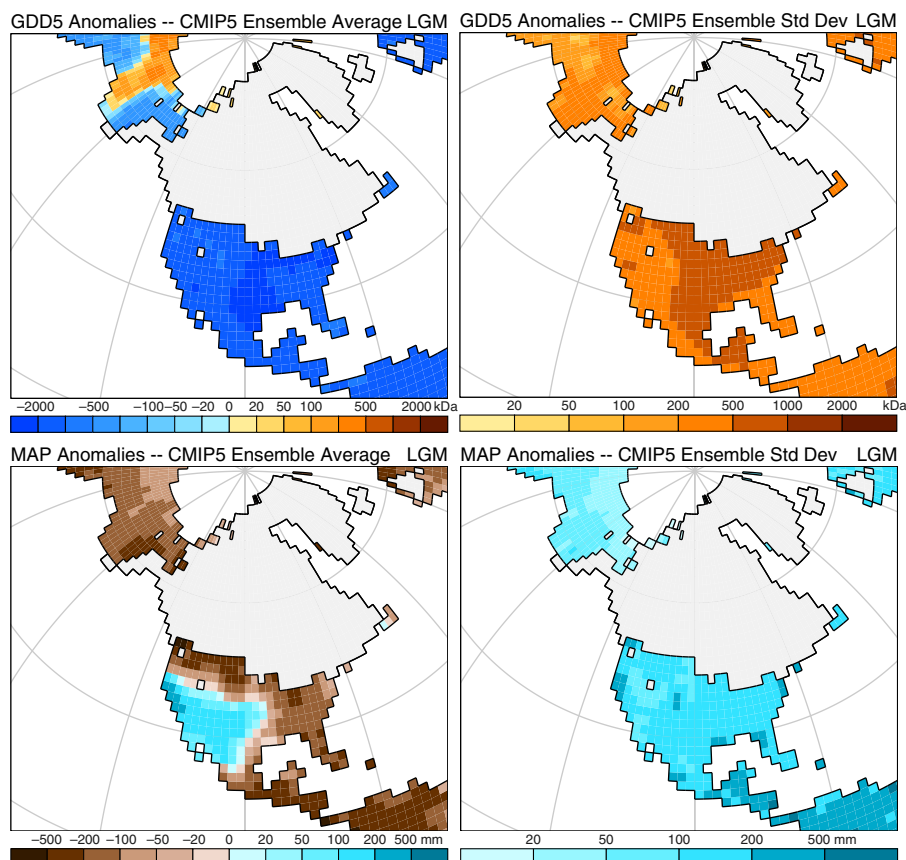


Fig. 4 Ensemble average and standard deviation of eight coupled ocean–atmosphere simulation runs for the Last Glacial Maximum (LGM). For both growing degree-days on a 5°C base (GDD5) and mean annual precipitation (MAP), the mean anomaly (LGM–modern) is similar in magnitude to the standard deviation of the anomalies. The climate simulations were produced for the Paleoclimate Modelling Intercomparison Project (PMIP3; Braconnot *et al.*, 2012).

for this and other sources of uncertainty, hence producing ‘maps of ignorance’ together with the standard potential distribution maps (Rocchini *et al.*, 2011).

3. Phylogeography

Molecular phylogeographic approaches to locating refugia use spatial patterns of genetic polymorphism sampled from present-day populations to infer population dynamics (Hickerson *et al.*, 2010). In general, one expects higher genetic diversity, increased relative abundance of endemic and ancestral alleles, and less spatial genetic structure despite higher genetic differentiation within refugia relative to recently colonized areas, together with genetic divergence among refugia (Hewitt, 2000; Petit *et al.*, 2003; de Lafontaine *et al.*, 2013). As summarized by Bloomquist *et al.* (2010), three primary phylogeographic approaches have been applied to the identification of refugia. First, the comparative approach constructs a gene genealogy, identifies nested sets of clades, and finally tests the geographical associations of those clades (Cruzan & Templeton, 2000). Second, the population genetic approach – also known as statistical phylogeography (Knowles, 2004) – typically identifies discrete gene pools and uses coalescent models to infer the demographic processes (e.g. population size, migration, divergence) underlying the observed molecular variation within and among populations (e.g. Hey, 2010). Third, spatial diffusion approaches model geographic spread across the landscape using continuous spatial information and random walk models. The first approach was strongly questioned, with good reasons (e.g. Nielsen & Beaumont, 2009; Panchal & Beaumont, 2010), and has now been progressively replaced by the second approach, whereas the third approach still presents major challenges (see Section IV New integrative approaches to reconstructing refugia; Lemey *et al.*, 2010).

Strengths Phylogeographic methods provide at least three important strengths relative to fossil records and SDMs. First, these methods provide insight into historical migration patterns, historical population sizes and even natural selection, all of which add nuance to our understanding of Quaternary biogeography. Coalescent simulations under the discrete population genetic approach allow direct testing of alternative biogeographic hypotheses derived from species distribution models or fossil data (e.g. Carstens *et al.*, 2005; Gugger *et al.*, 2010; Tsai & Manos, 2010). Second, molecular methods address among-population (within-species) differences – variation that is typically ignored in SDMs or cannot be detected through paleoecological reconstruction (Scoble & Lowe, 2010; Leites *et al.*, 2012). This intraspecific resolution has suggested the widespread existence of so-called cryptic LGM refugia for numerous taxa (Carstens *et al.*, 2005; Hu *et al.*, 2009). Third, identifying genetic hotspots or shared refugia across taxa is possible by sampling several partially co-distributed species (Carnaval *et al.*, 2009). Although species responses to past climate change have been individualistic rather than in lockstep (Davis, 1986; Stewart *et al.*, 2010), large changes in climate may drive coarsely similar biogeographic histories of some unrelated species and result in congruent phylogenetic patterns.

Limitations and recent advances Many phylogeographic studies are based on mitochondrial or chloroplast DNA, which do not recombine but have a slow mutation rate such that nucleotide polymorphisms likely predate the LGM. Hence, phylogeographic studies may be limited by a mismatch between the timescale represented by the observed genetic variation and the period of interest (e.g. the past 21 000 yr). For long-lived species, genetic mutations may be insufficient to identify long-term isolation over 10 000 to 100 000 yr, resulting in too little discriminatory power to select among alternative models of glacial refugia. By contrast, if a recent genetic bottleneck occurred, drastic declines in population size cause nonrandom sampling of, and drastic decreases in, nucleotide diversity, and thus leave an uninformative picture of the variation that existed beforehand. Marked genetic variation may date to events that occurred either before (Marske *et al.*, 2011) or after (Knowles & Alvarado-Serrano, 2010) the LGM, reducing the power to draw inferences about LGM species distributions. A potentially powerful means to address some of these limitations is to recover aDNA from fossil samples (Parducci *et al.*, 2012). Placing fossil data in a phylogenetic framework can add power to analyses that connect extant populations with their glacial refugia (Ramakrishnan & Hadly, 2009), or help test and refine alternate models of glacial refugia and post-glacial expansion. However, population genetics models of temporal samples needed for the analysis of aDNA are still in their infancy (Barton *et al.*, 2010).

A major advance in recent years has been a shift from studies using single-locus mitochondrial or chloroplast DNA toward ever-increasing numbers of nuclear loci that are more representative of genome-wide genetic variation. This trend is driven partly by the reduced cost of high-throughput sequencing methods, but also by the recognition that a better representation of the genome is necessary for robust inference. The individual history of any particular locus is highly stochastic, which means that each gene can yield only limited confidence in reconstructing a species history. Population genetic data from many loci, each giving some independent insight, offer more power to infer the common demographic events that have shaped genetic variation across the entire genome, such as population size changes and migration history (Hare, 2001). These inferences allow examination of more spatially and temporally refined hypotheses about refugia and responses to environmental change. Advances in next-generation sequencing have yielded a wealth of techniques that enable the resolution of thousands of single-nucleotide polymorphism (SNP) markers distributed throughout the genome even in nonmodel organisms (Gnrirke *et al.*, 2009; Wang *et al.*, 2009; Davey *et al.*, 2011). These methods are cost-effective and resolve individual-level genetic variants necessary for population genomics and phylogeography (Emerson *et al.*, 2010). Another benefit of these approaches is the reduction of ascertainment bias, which can inflate estimates of genetic variation and exclude geographically informative variation (reviewed by Rosenblum & Novembre, 2007).

A difficult step in any statistical phylogeographical study involves the generation of alternative demographic hypotheses; this is due to insufficient previous knowledge about species’ history. Both fossil records (e.g. Gugger *et al.*, 2010) and, especially, SDMs

(Carstens & Richards, 2007; Waltari *et al.*, 2007; Peterson & Nyari, 2008; Chan *et al.*, 2011) have been used to suggest alternative scenarios that include different configurations in terms of number and size of refugia. These hypotheses are then tested through coalescent simulations. Importantly, the dependence on paleo-SDMs or fossils to generate alternative demographic hypotheses implies that these tend to be affected by all the inherent limitations of the other approaches. Care must be taken to detect whether biases of some particular data (i.e. SDM output or fossil records) could override the signal present in the complementary genetic data. Considering more scenarios can acknowledge the uncertainty in SDM hindcasts and increase the chance that the true species history is included as a candidate hypothesis, but it would also greatly increase the number of demographic hypotheses to be tested (Carstens *et al.*, 2009; Collevatti *et al.*, 2013).

Phylogeography has traditionally focused on reconstructing neutral evolutionary processes that accompany the demographic processes involved in species' range dynamics, and thus has sought out putatively neutral loci to avoid the confounding force of natural selection. The genome carries both neutral and adaptive signatures of historical events, and provides the code for the ecologically relevant phenotypic variation upon which natural selection acts. As genomic data become available for nonmodel species, adaptation can be studied along with post-glacial demography (Orsini *et al.*, 2013). Population expansion out of refugia adds additional difficulties to differentiate adaptive from neutral genetic variation (Excoffier & Ray, 2008), but information about the location of refugia from nongenetic data will facilitate these investigations. Such integrative approaches have been demonstrated in a number of recent studies that combine a phylogeographic perspective with quantitative trait mapping, genome scans for selected loci, or both (Keller *et al.*, 2010; Eckert *et al.*, 2010; Bradshaw *et al.*, 2012). By setting patterns of adaptive genetic variation in an historical context, there is potential to infer the role of adaptation to climate change – a factor commonly neglected in Quaternary paleoecological studies (Davis & Shaw, 2001).

III. Climate refugia of the past: three case studies

Below we highlight three species for which the important role of refugia has been investigated extensively. We chose these examples to illustrate the power of the combined interpretation of fossil records, SDMs and phylogeography. Taxa most suitable for such interdisciplinary studies are normally tree species due to their good representation in the fossil record. Some megafauna species have also been studied quite thoroughly (Lorenzen *et al.*, 2011; Metcalf *et al.*, 2014).

European beech (*Fagus sylvatica*) distribution since the LGM has been studied in several ways (Fig. 5a). Extensive paleoecological data (pollen and macrofossils) show that beech dating to the LGM or the late-glacial occurred in southern Italy and Greece (Tzedakis *et al.*, 2013), northern Spain and Slovenia (Magri *et al.*, 2006), northeast Italy (Kaltenrieder *et al.*, 2009) and southwest France (deLafontaine *et al.*, 2014). Magri *et al.* (2006) combined the fossil data with genetic data (nuclear and chloroplast markers) to infer locations and extent of refugia and their role in the Holocene range expansion of

beech. The fossil sites show a general correspondence with refugia inferred from molecular data, suggesting multiple refugia within an areal extent two orders of magnitude smaller than today (Magri, 2008; deLafontaine *et al.*, 2013). Genetic markers indicate that the colonization of central and northern Europe originated mainly from the northern periphery of Mediterranean refugia (e.g. eastern and western Alps). An SDM supported the presence of beech in most of these refugia and its absence from northern Europe (Svenning *et al.*, 2008), whereas another SDM that incorporated post-glacial dispersal supported a northern refugium in the Carpathian Mountains (marked as '?' in Fig. 5a; Saltré *et al.*, 2013). Together, these findings suggest that the northern edge of Mediterranean refugia played a disproportionately important role in the post-glacial colonization of Europe by beech, with implications for understanding the origin of the species' modern genetic variability.

The Qinghai spruce (*Picea crassifolia*) of northern China provides an example of how multiple methods together can reconstruct a complex history of repeated fragmentation and dispersal (Fig. 5b). The scattered distribution of this species across alpine meadows and deserts of the Qinghai-Tibet Plateau and the adjacent highlands was suggested to have derived from *in situ* survival of large populations followed by gradual replacement of these forests by alpine meadow ecosystems from the late Pliocene onwards (Wu, 1980; Chang, 1983; Shi *et al.*, 1998). Although phylogeographic analyses supported a long-term isolation of a northern disjunction in the Helan Shan region, the remaining populations on the plateau shared a common haplotype suggesting a population bottleneck in a single glacial refugium, possibly in the southeast (Meng *et al.*, 2007). In line with this conclusion, palynological data indicated spruce presence before the LGM, very rare spruce pollen during the LGM, a marked increase of spruce pollen during the late Glacial period (16 000–12 000 yr ago), and finally a rapid decline *c.* 8000 yr ago (Herzschuh *et al.*, 2006, 2010). The fragmentation of these forests and their replacement by alpine meadows may have been caused by increased fire through natural means or human activity (Meng *et al.*, 2007). This possibility was supported by the presence of spruce charcoal, dated to between 8900 and 4000 yr ago, in the soil layers under existing alpine meadow vegetation (Kaiser *et al.*, 2007). Furthermore, SDMs suggested that the modern distribution of spruce is 40% of its potential distribution at the northern end of its range, possibly indicating late-Holocene deforestation (Xu *et al.*, 2012). Thus, this combination of studies revealed a complex history of not only climate change, but also changing disturbance and land use in the Holocene, which gave rise to the modern disjunctions and genetic diversity of this species (Miehe *et al.*, 2009; Zhao *et al.*, 2011).

Statistical phylogeography may also assess whether the fragmented modern distribution of a taxon results from a single refugium or multiple refugia, and thus help understand dispersal history across discontinuous habitat. For example, Gugger *et al.* (2010) used the fossil record of Douglas-fir (*Pseudotsuga menziesii*) to generate a set of alternative hypotheses on population subdivision during the LGM and routes of post-glacial expansion or contraction (Fig. 5c). Coalescent simulations were used to predict patterns of DNA sequence variation in each of these alternative scenarios, and then empirical data were compared to these

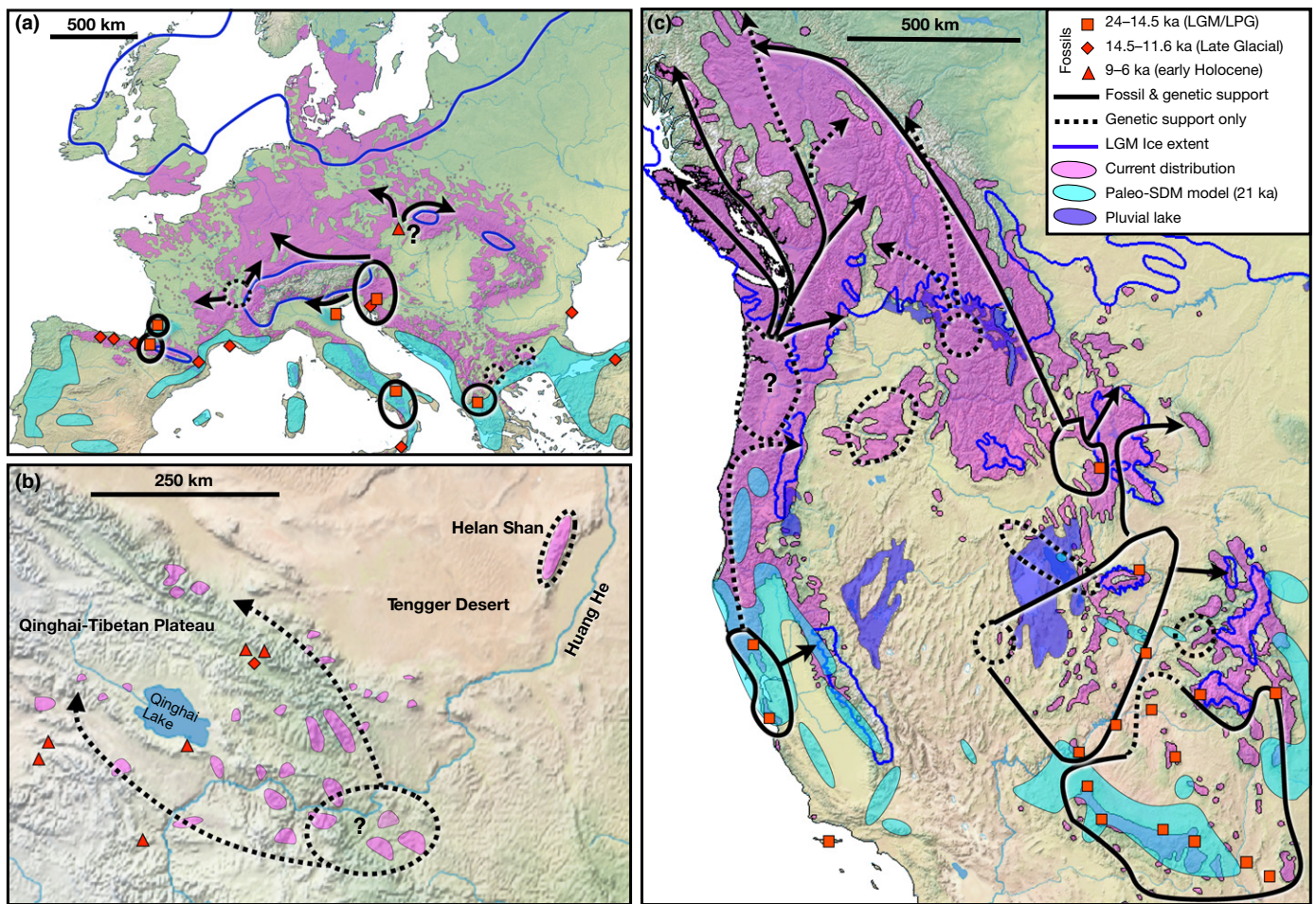


Fig. 5 Reconstructions of Last Glacial Maximum (LGM) refugia and post-LGM dispersal routes of (a) European beech (*Fagus sylvatica*), (b) Qinghai spruce (*Picea crassifolia*), and (c) Douglas-fir (*Pseudotsuga menziesii*). For fossil data, the LGM is merged with the Late Pleniglacial (LPG) period (up to 14 500 yr ago) to encompass the full period of cold and dry climate. Note that fossil locations are limited to the earliest dated fossils, and notably old or disjunct fossils that are relevant to interpreting dispersal history. Pre-LGM fossils are excluded. No paleo-species distribution modeling (SDM) exists for Qinghai spruce. Data sources are listed in the text and in the Supporting Information Notes S1. ka, thousand years.

simulations to determine which scenarios of population subdivision could be rejected. These analyses suggested that the modern range of Douglas-fir resulted from both expansion from multiple refugia (some only inferred from molecular data) and contraction in other regions. Paternally-inherited chloroplast markers and maternally-inherited mitochondrial markers revealed asymmetric histories of seed vs pollen dispersal. An SDM for Douglas-fir during the LGM agrees with most of the fossil locations and with several of the phylogeographically inferred refugia, supporting separate interior and coastal southern refugia (Roberts, 2013). Another notable finding was phylogeographic support for a cryptic northern refugium in the Rocky Mountains, although we note that this contrasts with paleoecological data indicating a very cold and dry climate near the ice sheet (Fig. 2).

IV. New integrative approaches to reconstructing refugia

Despite the clear advantages of combined integrative approaches as illustrated in our case studies, disagreement between different data

types or lines of evidence is common (Martínez-Meyer & Peterson, 2006; Giesecke *et al.*, 2007; Waltari *et al.*, 2007; Pearman *et al.*, 2008; Marske *et al.*, 2011; Mellick *et al.*, 2012; Saltré *et al.*, 2013; Williams *et al.*, 2013). These debates inevitably raise questions about data uncertainties and the validity of assumptions (Hampe, 2004; Dormann, 2007; Jackson, 2012). In short, predicting the locations of small populations on a heterogeneous landscape, whether under past or future climate, remains a significant challenge.

Increasing recognition of the benefits of integrative reconstructions has stimulated the development of methodological frameworks that pursue joint inferences of species history while addressing drawbacks of existing approaches. Most efforts have emphasized a tighter integration of paleodistribution models and statistical phylogeography. For instance, Knowles & Alvarado-Serrano (2010) and Brown & Knowles (2012) developed a spatially-explicit framework that translates paleo-SDM output into demographic models that account for spatially and temporally variable carrying capacities and migration rates across the landscape. These models can produce maps of past distributions

to assess refugial dynamics. However, the transformation of SDM-based suitability into demographic parameters (i.e. carrying capacities and migration rates) is not straightforward: choices regarding functional relationships can influence reconstructed species histories (Brown & Knowles, 2012). Hence, the integration of SDMs with phylogeography must be carefully applied (Collevatti *et al.*, 2013; Alvarado-Serrano & Knowles, 2014). Espíndola *et al.* (2012) used a different approach combining paleo-SDMs and genetic data to reconstruct the late Quaternary range dynamics of a perennial plant in Europe by simulating a spatial diffusion process for each of the four genetic clusters currently identified for the species.

Other approaches avoid using paleo-SDMs as templates to reconstruct species range dynamics in the past. In continuous statistical phylogeography (Lemmon & Lemmon, 2008; Lemey *et al.*, 2009, 2010), a gene tree of georeferenced genetic samples forms the data to be modeled using a spatial diffusion process. Thus, ancestral locations and range shifts are estimated together with the genealogy, providing a spatially explicit reconstruction of species range dynamics (Marske *et al.*, 2012). Another approach uses a phylogeographic clustering method to estimate ancestral locations (Manolopoulou & Emerson, 2012). Finally, dynamic range models (Pagel & Schurr, 2012; Schurr *et al.*, 2012) may be applied to reconstruct past range dynamics. These process-based models, usually built in a Bayesian framework (Marion *et al.*, 2012; Schurr *et al.*, 2012), can assimilate multiple types of data (e.g. current distributions, fossil occurrences, genetic-based inferences of past population presence) to infer population presence at different times, including the location of refugia. Together with the automatic production of rigorous uncertainty estimates, the main advantage of the Bayesian approach is that the limitations of each method or dataset taken alone may be compensated for by strengths in other methods and datasets. For example, genetic data from extant organisms may never be able to underpin the inference of a refugium outside of the current range, but paleoclimatic or fossil data may well indicate that possibility. If the genetic data are included in the analysis in a joint inference, then the plausibility of this refugium is checked automatically via the influence of the geographic scenario on the likelihood of the genetic data. If the datasets are congruent, then one scenario will emerge with a high posterior probability; if they conflict, then the posterior probability density will be spread out amongst several options, indicating that the available data do not have enough power to favor any one scenario. Hence, although more data-hungry and computationally challenging than static SDM hindcasting, these models promise to enable a quantitative synthesis or true joint inference of species past distributions, including the location of refugia, based on multiple lines of evidence.

V. How can historical refugia inform us about future refugia?

Investigating species and population persistence in historical refugia can illuminate two broad aspects of climate-change biogeography. First, they inform the autecology and history of a species and populations in a changing environment. This research may reveal the role of refugia in species persistence and range

dynamics, and which functional traits are important. The occurrence of disjunct refugia also influences rates of migration necessary for species to track a changing climate, and thus help close the gap between observed migration rate and that inferred from paleorecords (Feurdean *et al.*, 2013). Second, persistence in a refugium suggests some combination of a moderated refugial environment buffered against the regional climate and tolerance to climate change, by pronounced phenotypic plasticity and/or adaptive capacity. Knowledge of where refugia were located in the past can thus inform us about the geographic features that tend to facilitate population persistence through extreme events (Hannah *et al.*, 2002; Avice, 2008; Hampe & Jump, 2011). Complex topographic controls, for example, could buffer local populations against rapid climate shifts and allow species to persist despite regionally unfavorable environments. Conversely, species in low-relief regions may be particularly sensitive to climate change. Knowing which aspects of climate permitted species persistence within a refugium, how the refugium was spatially organized, and whether there were other suitable but unoccupied areas on the landscape due to dispersal limitation or biotic interactions may also help predict whether species might be able to utilize refugia in the future.

Paleoecology, phylogeography and SDMs all underscore the importance of refugia for the persistence of biota in rapidly changing environments. Past experience tells us that many species manage to find suitable spots for persistence even in extremely unsuitable environments at regional scales, especially in heterogeneous regions. This ability could go a long way in explaining the Quaternary conundrum (Botkin *et al.*, 2007) and partially moderate the most alarmist forecasts of future species loss. A critical need is to improve our mechanistic understanding of what makes a refugium: specifically how species traits and landscape features interact to influence persistence (Bhagwat & Willis, 2008; Hampe *et al.*, 2013), and how this information may be used to improve probabilistic forecasts of future refugia (Eckert, 2011). Even if climatically suitable sites could be predicted, dispersal limitations and the likely influence of biotic interactions will add further uncertainty to species distributions forecasts (Blois *et al.*, 2013c).

Conservation organizations are currently identifying potential climate refugia for modern populations at risk from ongoing climate change (Shoo *et al.*, 2011; Olson *et al.*, 2012; Groves *et al.*, 2012). Will current refugia survive into the future? For species in long-term refugia that have persisted for at least one glacial–interglacial cycle, their existence suggests that they are tolerant of major climate change (Hampe & Petit, 2005; Dobrowski, 2011); hence, they may be more likely to remain as refugia in the future by buffering future changes in local climate (Ashcroft, 2010; Ashcroft *et al.*, 2012). Importantly, however, the direction of this effect is now reversed; historical refugia protected species from the cold, whereas contemporary and future refugia must protect species from a warming world (Bennett *et al.*, 1991). Indeed, projected climate changes may produce a ‘super-interglacial’ that resembles the Pliocene or Miocene rather than any other period in the Pleistocene (Moritz & Agudo, 2013). For a species migrating under ongoing climate warming, its trailing-edge populations (i.e. those currently in warmer climates), which are also the most likely to be genetically unique relicts of former glacial refugia, may actually be the first to

suffer local extirpation (Fig. 1; Razgour *et al.*, 2013). Thus, it seems that long-term refugia might be either the most resistant, or the most susceptible, to future climate change – further supporting the need for quantitative future predictions based on a mechanistic understanding of historical refugia.

VI. Concluding thoughts

New integrative, multi-faceted, approaches should facilitate using knowledge about the past to project future refugia. The accumulation of data and development of novel methods are accelerating our understanding of species distributions, both in the past and into the future. Continuing paleontological sampling and database development is producing a dense array of fossil data. Genome-wide genetic markers are becoming more affordable and more easily attainable, and analytical methods are improving rapidly – making it increasingly possible to uncover the historical processes encoded in the patterns of genomic variation for a wide range of nonmodel species. The next generation of SDMs that include increased biological realism (e.g. accounting for dispersal limitation, biotic interactions or populations' demographic inertia) has begun to play a prominent role (e.g. Dullinger *et al.*, 2012). Uncertainty in climate projections is also continually decreasing. Furthermore, ongoing climate change provides the opportunity to calibrate SDMs with field observation. For instance, field surveys can inform where recruitment and mortality are actually occurring, which could signal where future populations are more likely to establish (McLaughlin & Zavaleta, 2012; Zhu *et al.*, 2012). The heterogeneity of responses of locally adapted populations also may be observed or quantified experimentally (Davis & Shaw, 2001; Leites *et al.*, 2012). A myriad of complementary approaches is thus recommended, and perhaps the best complement to models is good natural history knowledge and high-quality field data (Ricklefs, 2012).

Acknowledgements

This paper emerged from a workshop 'Climate Refugia: Joint Inference from Fossils, Genetics, and Models' in Eugene, Oregon, August 2012. The authors thank the PAGES project of the International Geosphere-Biosphere Program (IGBP) and the College of Arts and Sciences at the University of Oregon for supporting the workshop. Gordon Bettles and The Many Nations Longhouse at the University of Oregon graciously provided meeting space. D.G.G., S.Z.D., K.D.H. and F.S.H. were supported by the National Science Foundation (grant DEB 1146017). F.R.S was supported by the European Union Seventh Framework Programme (FP7/2007–2013) under grant agreement 275094. A.L.S. was supported by the National Science Foundation (grant EAR-0922067). We are grateful for detailed comments from Chronis Tzedakis and three anonymous referees.

References

Ackerly DD. 2003. Community assembly, niche conservatism, and adaptive evolution in changing environments. *International Journal of Plant Sciences* 164: S165–S184.

- Ackerly DD, Loarie SR, Cornwell WK, Weiss SB, Hamilton H, Branciforte R, Kraft NJB. 2010. The geography of climate change: implications for conservation biogeography. *Diversity and Distributions* 16: 476–487.
- Aitken SN, Yeaman S, Holliday JA, Wang T, Curtis-McLane S. 2008. Adaptation, migration or extirpation: climate change outcomes for tree populations. *Evolutionary Applications* 1: 95–111.
- Alvarado-Serrano DF, Knowles LL. 2014. Ecological niche models in phylogeographic studies: applications, advances and precautions. *Molecular Ecology Resources* 14: 233–248.
- Ammann B, van der Knaap WO, Lang G, Gaillard M-J, Kaltenrieder P, Rösch M, Finsinger W, Wright HE, Tinner W. 2014. The potential of stomata analysis in conifers to estimate presence of conifer trees: examples from the Alps. *Vegetation History and Archaeobotany* 23: 249–264.
- Araújo MB, Nogués-Bravo D, Diniz-Filho JAF, Haywood AM, Valdes PJ, Rahbek C. 2008. Quaternary climate changes explain diversity among reptiles and amphibians. *Ecography* 31: 8–15.
- Araújo MB, Peterson AT. 2012. Uses and misuses of bioclimatic envelope modeling. *Ecology* 93: 1527–1539.
- Ashcroft MB. 2010. Identifying refugia from climate change. *Journal of Biogeography* 37: 1407–1413.
- Ashcroft MB, Chisholm LA, French KO. 2009. Climate change at the landscape scale: predicting fine-grained spatial heterogeneity in warming and potential refugia for vegetation. *Global Change Biology* 15: 656–667.
- Ashcroft MB, Gollan JR. 2012. Fine-resolution (25 m) topoclimatic grids of near-surface (5 cm) extreme temperatures and humidities across various habitats in a large (200 × 300 km) and diverse region. *International Journal of Climatology* 32: 2134–2148.
- Ashcroft MB, Gollan JR, Warton DI, Ramp D. 2012. A novel approach to quantify and locate potential microrefugia using topoclimate, climate stability, and isolation from the matrix. *Global Change Biology* 18: 1866–1879.
- Avise JC. 2008. Colloquium paper: three ambitious (and rather unorthodox) assignments for the field of biodiversity genetics. *Proceedings of the National Academy of Sciences, USA* 105: 11 564–11 570.
- Barnosky AD, Koch PL, Feranec RS, Wing SL, Shabel AB. 2004. Assessing the causes of late Pleistocene extinctions on the continents. *Science* 306: 70–75.
- Bartlein PJ, Harrison SP, Brewer S, Connor S, Davis BAS, Gajewski K, Guiot J, Harrison-Prentice TI, Henderson A, Peyron O, *et al.* 2011. Pollen-based continental climate reconstructions at 6 and 21 ka: a global synthesis. *Climate Dynamics* 37: 775–802.
- Barton NH, Kelleher J, Etheridge AM. 2010. A new model for extinction and recolonization in two dimensions: quantifying phylogeography. *Evolution* 64: 2701–2715.
- Beatty GE, Provan J. 2013. Post-glacial dispersal, rather than *in situ* glacial survival, best explains the disjunct distribution of the Lusitanian plant species *Daboecia cantabrica* (Ericaceae). *Journal of Biogeography* 40: 335–344.
- Behrensmeyer AK, Kidwell SM, Gastaldo RA. 2000. Taphonomy and paleobiology. *Paleobiology* 26: 103–147.
- Bennett KD, Provan J. 2008. What do we mean by 'refugia'? *Quaternary Science Reviews* 27: 2449–2455.
- Bennett KD, Tzedakis PC, Willis KJ. 1991. Quaternary refugia of north European trees. *Journal of Biogeography* 18: 103–115.
- Bernabo JC, Webb TI. 1977. Changing patterns in the Holocene pollen record of northeastern North America: a mapped summary. *Quaternary Research* 8: 64–96.
- Bhagwat SA, Willis KJ. 2008. Species persistence in northerly glacial refugia of Europe: a matter of chance or biogeographical traits? *Journal of Biogeography* 35: 464–482.
- Binney HA, Willis KJ, Edwards ME, Bhagwat SA, Anderson PM, Andreev AA, Blaauw M, Damblon F, Haesaerts P, Kienast F, *et al.* 2009. The distribution of late-Quaternary woody taxa in northern Eurasia: evidence from a new macrofossil database. *Quaternary Science Reviews* 28: 2445–2464.
- Birks HH. 2003. The importance of plant macrofossils in the reconstruction of Lateglacial vegetation and climate: examples from Scotland, western Norway, and Minnesota, USA. *Quaternary Science Reviews* 22: 453–473.
- Birks HH. 2008. The Late-Quaternary history of arctic and alpine plants. *Plant Ecology & Diversity* 1: 135–146.

- Birks HH, Giesecke T, Hewitt GM, Tzedakis PC, Bakke J, Birks HJB. 2012. Comment on 'Glacial survival of boreal trees in northern Scandinavia'. *Science* 338: 742.
- Birks HJB. 2014. Challenges in the presentation and analysis of plant-macrofossil stratigraphical data. *Vegetation History and Archaeobotany* 23: 309–330.
- Birks HJB, Heiri O, Seppä H, Björne AE. 2010. Strengths and weaknesses of quantitative climate reconstructions based on late-Quaternary biological proxies. *The Open Ecology Journal* 3: 68–110.
- Birks HJB, Willis KJ. 2008. Alpines, trees, and refugia in Europe. *Plant Ecology & Diversity* 1: 147–160.
- Bisconti R, Canestrelli D, Colangelo P, Nascetti G. 2011. Multiple lines of evidence for demographic and range expansion of a temperate species (*Hyla sarda*) during the last glaciation. *Molecular Ecology* 20: 5313–5327.
- Blois JL, Williams JW, Fitzpatrick MC, Ferrier S, Veloz SD, He F, Liu Z, Manion G, Otto-Bliesner B. 2013a. Modeling the climatic drivers of spatial patterns in vegetation composition since the Last Glacial Maximum. *Ecography* 36: 460–473.
- Blois JL, Williams JW, Fitzpatrick MC, Jackson ST, Ferrier S. 2013b. Space can substitute for time in predicting climate-change effects on biodiversity. *Proceedings of the National Academy of Sciences, USA* 110: 9374–9379.
- Blois JL, Zarnetske PL, Fitzpatrick MC, Finnegan S. 2013c. Climate change and the past, present, and future of biotic interactions. *Science* 341: 499–504.
- Bloomquist EW, Lemey P, Suchard MA. 2010. Three roads diverged? Routes to phylogeographic inference. *Trends in Ecology & Evolution* 25: 626–632.
- Bonfils C, de Noblet-Ducoudre N, Guiot J, Bartlein P. 2004. Some mechanisms of mid-Holocene climate change in Europe, inferred from comparing PMIP models to data. *Climate Dynamics* 23: 79–98.
- Botkin DB, Saxe H, Araujo MB, Betts R, Bradshaw RHW, Cedhagen T, Chesson P, Dawson TP, Etterson JR, Faith DP, et al. 2007. Forecasting the effects of global warming on biodiversity. *BioScience* 57: 227–236.
- Braconnot P, Harrison SP, Kageyama M, Bartlein PJ, Masson-Delmotte V, Abe-Ouchi A, Otto-Bliesner B, Zhao Y. 2012. Evaluation of climate models using palaeoclimatic data. *Nature Climate Change* 2: 417–424.
- Bradshaw WE, Emerson KJ, Catchen JM, Cresko WA, Holzapfel CM. 2012. Footprints in time: comparative quantitative trait loci mapping of the pitcher-plant mosquito, *Wyeomyia smithii*. *Proceedings of the Royal Society B* 279: 4551–4558.
- Braun EL. 1955. Phytogeography of the unglaciated eastern United States and its interpretation. *Botanical Review* 21: 297–375.
- Brewer S, Jackson ST, Williams JW. 2012. Paleoecoinformatics: applying geohistorical data to ecological questions. *Trends in Ecology & Evolution* 27: 104–112.
- Bronk Ramsey C. 2008. Radiocarbon dating: revolutions in understanding. *Archaeometry* 50: 249–275.
- Brown JL, Knowles LL. 2012. Spatially explicit models of dynamic histories: examination of the genetic consequences of Pleistocene glaciation and recent climate change on the American Pika. *Molecular Ecology* 21: 3757–3775.
- Brubaker LB, Anderson PM, Edwards ME, Lozhkin AV. 2005. Beringia as a glacial refugium for boreal trees and shrubs: new perspectives from mapped pollen data. *Journal of Biogeography* 32: 833–848.
- Bush MB, Silman MR, Urrego DH. 2004. 48,000 years of climate and forest change in a biodiversity hot spot. *Science* 303: 827–829.
- Carcaillat C, Talon B. 1996. Aspects taphonomiques de la stratigraphie et de la datation de charbons de bois dans les sols: exemple de quelques sols des Alpes. *Géographie Physique et Quaternaire* 50: 233–244.
- Carnaval AC, Hickerson MJ, Haddad CFB, Rodrigues MT, Moritz C. 2009. Stability predicts genetic diversity in the Brazilian Atlantic Forest hotspot. *Science* 323: 785–789.
- Carstens BC, Brunfeldt SJ, Demboski JR, Good JM, Sullivan J. 2005. Investigating the evolutionary history of the Pacific Northwest mesic forest ecosystem: hypothesis testing within a comparative phylogeographic framework. *Evolution* 59: 1639–1652.
- Carstens BC, Richards CL. 2007. Integrating coalescent and ecological niche modeling in comparative phylogeography. *Evolution* 61: 1439–1454.
- Carstens BC, Stoute HN, Reid NM. 2009. An information-theoretical approach to phylogeography. *Molecular Ecology* 18: 4270–4282.
- Chan LM, Brown JL, Yoder AD. 2011. Integrating statistical genetic and geospatial methods brings new power to phylogeography. *Molecular Phylogenetics and Evolution* 59: 523–537.
- Chang DHS. 1983. The Tibetan plateau in relation to the vegetation of China. *Annals of the Missouri Botanical Garden* 70: 564–570.
- Clark PU, Dyke AS, Shakun JD, Carlson AE, Clark J, Wohlfarth B, Mitrovica JX, Hostetler SW, McCabe AM. 2009. The Last Glacial Maximum. *Science* 325: 710–714.
- Collevatti RG, Telles MPC, Nabout JC, Chaves LJ, Soares TN. 2013. Demographic history and the low genetic diversity in *Dipteryx alata* (Fabaceae) from Brazilian Neotropical savannas. *Heredity* 111: 97–105.
- Colwell RK, Rangel TF. 2009. Hutchinson's duality: the once and future niche. *Proceedings of the National Academy of Sciences, USA* 106: 19 651–19 658.
- Cowling SA, Sykes MT. 1999. Physiological significance of low atmospheric CO₂ for plant–climate interactions. *Quaternary Research* 52: 237–242.
- Crimmins SM, Dobrowski SZ, Greenberg JA, Abatzoglou JT, Mynsberge AR. 2011. Changes in climatic water balance drive downhill shifts in plant species' optimum elevations. *Science* 331: 324–327.
- Cruzan MB, Templeton AR. 2000. Paleoecology and coalescence: phylogeographic analysis of hypotheses from the fossil record. *Trends in Ecology & Evolution* 15: 491–496.
- Daubenmire R. 1975. Floristic plant geography of eastern Washington and northern Idaho. *Journal of Biogeography* 2: 1–18.
- Davey JW, Hohenlohe PA, Etter PD, Boone JQ, Catchen JM, Blaxter ML. 2011. Genome-wide genetic marker discovery and genotyping using next-generation sequencing. *Nature Reviews. Genetics* 12: 499–510.
- Davis MB. 1976. Pleistocene biogeography of temperate deciduous forests. *Geoscience and Man* 13: 13–26.
- Davis MB. 1986. Climatic instability, time lags, and community disequilibrium. In: Diamond J, Chase TJ, eds. *Community ecology*. New York, NY, USA: Harper and Row, 269–284.
- Davis MB, Shaw RG. 2001. Range shifts and adaptive responses to Quaternary climate change. *Science* 292: 673–679.
- Dawson TP, Jackson ST, House JI, Prentice IC, Mace GM. 2011. Beyond predictions: biodiversity conservation in a changing climate. *Science* 332: 53–58.
- Deevey ES. 1949. Biogeography of the Pleistocene. *Bulletin of the Geological Society of America* 60: 1315–1416.
- Dietl GP, Flessa KW. 2011. Conservation paleobiology: putting the dead to work. *Trends in Ecology & Evolution* 26: 30–37.
- Dobrowski SZ. 2011. A climatic basis for microrefugia: the influence of terrain on climate. *Global Change Biology* 17: 1022–1035.
- Dobrowski SZ, Abatzoglou JT, Greenberg JA, Schladow SG. 2009. How much influence does landscape-scale physiography have on air temperature in a mountain environment? *Agricultural and Forest Meteorology* 149: 1751–1758.
- Dobrowski SZ, Abatzoglou J, Swanson AK, Greenberg JA, Mynsberge AR, Holden ZA, Schwartz MK. 2013. The climate velocity of the contiguous United States during the 20th century. *Global Change Biology* 19: 241–251.
- Dormann CF. 2007. Promising the future? Global change projections of species distributions. *Basic and Applied Ecology* 8: 387–397.
- Dullinger S, Gatttringer A, Thuiller W, Moser D, Zimmermann NE, Guisan A, Willner W, Plutzar C, Leitner M, Mang T, et al. 2012. Extinction debt of high-mountain plants under twenty-first-century climate change. *Nature Climate Change* 2: 619–622.
- Eckert AJ. 2011. Seeing the forest for the trees: statistical phylogeography in a changing world. *New Phytologist* 189: 894–897.
- Eckert AJ, van Heerwaarden J, Wegrzyn JL, Nelson CD, Ross-Ibarra J, González-Martínez SC, Neale DB. 2010. Patterns of population structure and environmental associations to aridity across the range of loblolly pine (*Pinus taeda* L., Pinaceae). *Genetics* 185: 969–982.
- Edenborn HM, Sams JJ, Kite JS. 2012. Thermal regime of a cold air trap in central Pennsylvania, USA: the Trough Creek Ice Mine. *Permafrost and Periglacial Processes* 23: 187–195.
- Elith J, Leathwick J. 2007. Predicting species distributions from museum and herbarium records using multiresponse models fitted with multivariate adaptive regression splines. *Diversity and Distributions* 13: 265–275.

- Elith J, Leathwick JR. 2009. Species distribution models: ecological explanation and prediction across space and time. *Annual Review of Ecology, Evolution, and Systematics* 40: 677–697.
- Emerson KJ, Merz CR, Catchen JM, Hohenlohe PA, Cresko WA, Bradshaw WE, Holzapfel CM. 2010. Resolving postglacial phylogeography using high-throughput sequencing. *Proceedings of the National Academy of Sciences, USA* 107: 16 196–16 200.
- Espíndola A, Pellissier L, Maiorano L, Hordijk W, Guisan A, Alvarez N. 2012. Predicting present and future intra-specific genetic structure through niche hindcasting across 24 millennia. *Ecology Letters* 15: 649–657.
- Excoffier L, Ray N. 2008. Surfing during population expansions promotes genetic revolutions and structuration. *Trends in Ecology and Evolution* 23: 347–351.
- Feeley KJ, Silman MR. 2010. Biotic attrition from tropical forests correcting for truncated temperature niches. *Global Change Biology* 16: 1830–1836.
- Ferrier S, Guisan A. 2006. Spatial modelling of biodiversity at the community level. *Journal of Applied Ecology* 43: 393–404.
- Feurdean A, Bhagwat SA, Willis KJ, Birks HJB, Lischke H, Hickler T. 2013. Tree migration-rates: narrowing the gap between inferred post-glacial rates and projected rates. *PLoS ONE* 8: e71797.
- Fitzpatrick MC, Gove AD, Sanders NJ, Dunn RR. 2008. Climate change, plant migration, and range collapse in a global biodiversity hotspot: the *Banksia* (Proteaceae) of Western Australia. *Global Change Biology* 14: 1337–1352.
- Fitzpatrick MC, Hargrove WW. 2009. The projection of species distribution models and the problem of non-analog climate. *Biodiversity and Conservation* 18: 2255–2261.
- Fitzpatrick MC, Sanders NJ, Ferrier S, Longino JT, Weiser MD, Dunn R. 2011. Forecasting the future of biodiversity: a test of single- and multi-species models for ants in North America. *Ecography* 34: 836–847.
- Fordham DA, Akçakaya HR, Brook BW, Rodríguez A, Alves PC, Civantos E, Triviño M, Watts MJ, Araújo MB. 2013. Adapted conservation measures are required to save the Iberian lynx in a changing climate. *Nature Climate Change* 3: 899–903.
- Franklin J. 2009. *Mapping species distributions: spatial inference and prediction*. Cambridge, UK: Cambridge University Press.
- Franklin J, Davis FW, Ikegami M, Syphard AD, Flint LE, Flint AL, Hannah L. 2013. Modeling plant species distributions under future climates: how fine scale do climate projections need to be? *Global Change Biology* 19: 473–483.
- Giesecke T, Hickler T, Kunkel T, Sykes MT, Bradshaw RHW. 2007. Towards an understanding of the Holocene distribution of *Fagus sylvatica* L. *Journal of Biogeography* 34: 118–131.
- Gnirke A, Melnikov A, Maguire J, Rogov P, LeProust EM, Brockman W, Fennell T, Giannoukos G, Fisher S, Russ C, et al. 2009. Solution hybrid selection with ultra-long oligonucleotides for massively parallel targeted sequencing. *Nature Biotechnology* 27: 182–189.
- Graham CH, VanDerWal J, Phillips SJ, Moritz C, Williams SE. 2010. Dynamic refugia and species persistence: tracking spatial shifts in habitat through time. *Ecography* 33: 1062–1069.
- Groves CR, Game ET, Anderson MG, Cross M, Enquist C, Ferdana Z, Girvetz E, Gondor A, Hall KR, Higgins J, et al. 2012. Incorporating climate change into systematic conservation planning. *Biodiversity and Conservation* 21: 1651–1671.
- Gugger PF, Sugita S, Cavender-Bares J. 2010. Phylogeography of Douglas-fir based on mitochondrial and chloroplast DNA sequences: testing hypotheses from the fossil record. *Molecular Ecology* 19: 1877–1897.
- Guisan A, Thuiller W. 2005. Predicting species distribution: offering more than simple habitat models. *Ecology Letters* 8: 993–1009.
- Guisan A, Zimmermann NE. 2000. Predictive habitat distribution models in ecology. *Ecological Modelling* 135: 147–186.
- Hampe A. 2004. Bioclimate envelope models: what they detect and what they hide. *Global Ecology and Biogeography* 13: 469–471.
- Hampe A, Jump AS. 2011. Climate relicts: past, present, future. *Annual Review of Ecology, Evolution, and Systematics* 42: 313–333.
- Hampe A, Petit RJ. 2005. Conserving biodiversity under climate change: the rear edge matters. *Ecology Letters* 8: 461–467.
- Hampe A, Rodríguez-Sánchez F, Dobrowski S, Hu FS, Gavin DG. 2013. Climate refugia: from the Last Glacial Maximum to the twenty-first century. *New Phytologist* 197: 16–18.
- Hannah L, Midgley GF, Lovejoy T, Bond WJ, Bush M, Lovett JC, Scott D, Woodward FI. 2002. Conservation of biodiversity in a changing climate. *Conservation Biology* 16: 264–268.
- Hare MP. 2001. Prospects for nuclear gene phylogeography. *Trends in Ecology & Evolution* 16: 700–706.
- Harington CR. 2008. The evolution of arctic marine mammals. *Ecological Applications* 18: S23–S40.
- Harrison SP, Bartlein PJ, Brewer S, Prentice IC, Boyd M, Hessler I, Holmgren K, Izumi K, Willis K. 2013. Climate model benchmarking with glacial and mid-Holocene climates. *Climate Dynamics* 1–18. doi: 10.1007/s00382-013-1922-6.
- Heaton TH, Talbot SL, Shields GF. 1996. An Ice Age refugium for large mammals in the Alexander Archipelago, Southeastern Alaska. *Quaternary Research* 46: 186–192.
- Henne PD, Elkin C, Colombaroli D, Samartin S, Bugmann H, Heiri O, Tinner W. 2013. Impacts of changing climate and land use on vegetation dynamics in a Mediterranean ecosystem: insights from paleoecology and dynamic modeling. *Landscape Ecology* 28: 819–833.
- Herzschuh U, Birks HJB, Ni J, Zhao Y, Liu H, Liu X, Grosse G. 2010. Holocene land-cover changes on the Tibetan Plateau. *The Holocene* 20: 91–104.
- Herzschuh U, Kürschner H, Mischke S. 2006. Temperature variability and vertical vegetation belt shifts during the last ~50,000 yr in the Qilian Mountains (NE margin of the Tibetan Plateau, China). *Quaternary Research* 66: 133–146.
- Hewitt G. 2000. The genetic legacy of the Quaternary ice ages. *Nature* 405: 907–913.
- Hewitt GM. 2004. Genetic consequences of climatic oscillations in the Quaternary. *Philosophical Transactions of the Royal Society B* 359: 183–195.
- Hey J. 2010. Isolation with migration models for more than two populations. *Molecular Biology and Evolution* 27: 905–920.
- Hickerson MJ, Carstens BC, Cavender-Bares J, Crandall KA, Graham CH, Johnson JB, Rissler L, Victoriano PF, Yoder AD. 2010. Phylogeography's past, present, and future: 10 years after Avise, 2000. *Molecular Phylogenetics and Evolution* 54: 291–301.
- Hof C, Levinsky I, Araújo MB, Rahbek C. 2011. Rethinking species' ability to cope with rapid climate change. *Global Change Biology* 17: 2987–2990.
- Holden ZA, Abatzoglou JT, Luce CH, Baggett LS. 2011. Empirical downscaling of daily minimum air temperature at very fine resolutions in complex terrain. *Agricultural and Forest Meteorology* 151: 1066–1073.
- Holden ZA, Jolly WM. 2011. Modeling topographic influences on fuel moisture and fire danger in complex terrain to improve wildland fire management decision support. *Forest Ecology and Management* 262: 2133–2141.
- Holderregger R, Thiel-Egenter C. 2009. A discussion of different types of glacial refugia used in mountain biogeography and phylogeography. *Journal of Biogeography* 36: 476–480.
- Holt RD. 2009. Bringing the Hutchinsonian niche into the 21st century: ecological and evolutionary perspectives. *Proceedings of the National Academy of Sciences, USA* 106: 19 659–19 665.
- Hopkins DM, Smith PA, Matthews JV. 1981. Dated wood from Alaska and the Yukon – implications for forest refugia in Beringia. *Quaternary Research* 15: 217–249.
- Hopkins MS, Ash J, Graham AW, Head J, Hewett RK. 1993. Charcoal evidence of the spatial extent of the eucalyptus woodland expansions and rainforest contractions in North Queensland during the late Pleistocene. *Journal of Biogeography* 20: 357–372.
- Hu FS, Hampe A, Petit RJ. 2009. Paleoecology meets genetics: deciphering past vegetational dynamics. *Frontiers in Ecology and the Environment* 7: 371–379.
- Hultén E. 1937. *Outline of the history of Arctic and boreal biota during the Quaternary Period: their evolution during and after the glacial period as indicated by the equiformal progressive areas of present plant species*. Stockholm, Sweden: Bokförlags aktiebolaget Thule.
- Huntley B, Birks HJB. 1983. *An atlas of past and present pollen maps for Europe: 0–13,000 years ago*. Cambridge, UK: Cambridge University Press.
- Huntley B, Webb T. 1989. Migration – species response to climatic variations caused by changes in the Earth's orbit. *Journal of Biogeography* 16: 5–19.

- Hutchinson GE. 1957. *A treatise on limnology volume 1: geography, physics, and chemistry*. New York, NY, USA: Wiley.
- Jackson ST. 2006. Forest genetics in space and time. *New Phytologist* 171: 1–3.
- Jackson ST. 2012. Representation of flora and vegetation in Quaternary fossil assemblages: known and unknown knowns and unknowns. *Quaternary Science Reviews* 49: 1–15.
- Jackson ST, Overpeck JT, Webb T, Keatts SE, Anderson KH. 1997. Mapped plant-macrofossil and pollen records of Late Quaternary vegetation change in eastern North America. *Quaternary Science Reviews* 16: 1–70.
- Jackson ST, Weng C. 1999. Late Quaternary extinction of a tree species in eastern North America. *Proceedings of the National Academy of Sciences, USA* 96: 13 847–13 852.
- Jansson R, Dynesius M. 2002. The fate of clades in a world of recurrent climatic change: Milankovitch oscillations and evolution. *Annual Review of Ecology and Systematics* 33: 741–777.
- Johns TC, Carnell RE, Crossley JF, Gregory JM, Mitchell JFB, Senior CA, Tett SFB, Wood RA. 1997. The second Hadley Centre coupled ocean-atmosphere GCM: model description, spinup and validation. *Climate Dynamics* 13: 103–134.
- Kaiser K, Schoch WH, Miede G. 2007. Holocene paleosols and colluvial sediments in Northeast Tibet (Qinghai Province, China): properties, dating and paleoenvironmental implications. *Catena* 69: 91–102.
- Kaltenrieder P, Belis CA, Hofstetter S, Ammann B, Ravazzi C, Tinner W. 2009. Environmental and climatic conditions at a potential Glacial refugial site of tree species near the Southern Alpine glaciers. New insights from multiproxy sedimentary studies at Lago della Costa (Euganean Hills, Northeastern Italy). *Quaternary Science Reviews* 28: 2647–2662.
- Kearney M, Porter W. 2009. Mechanistic niche modelling: combining physiological and spatial data to predict species' ranges. *Ecology Letters* 12: 334–350.
- Kearney MR, Shamakhy A, Tingley R, Karoly DJ, Hoffmann AA, Briggs PR, Porter WP. 2014. Microclimate modelling at macro scales: a test of a general microclimate model integrated with gridded continental-scale soil and weather data. *Methods in Ecology and Evolution* 5: 273–286.
- Keller SR, Olson MS, Silim S, Schroeder W, Tiffin P. 2010. Genomic diversity, population structure, and migration following rapid range expansion in the Balsam Poplar, *Populus balsamifera*. *Molecular Ecology* 19: 1212–1226.
- Keppel G, Van Niel KP, Wardell-Johnson GW, Yates CJ, Byrne M, Mucina L, Schut AGT, Hopper SD, Franklin SE. 2012. Refugia: identifying and understanding safe havens for biodiversity under climate change. *Global Ecology and Biogeography* 21: 393–404.
- Kissling WD, Dormann CF, Groeneveld J, Hickler T, Kuehn I, McNerny GJ, Montoya JM, Roemermann C, Schifffers K, Schurr FM, et al. 2012. Towards novel approaches to modelling biotic interactions in multispecies assemblages at large spatial extents. *Journal of Biogeography* 39: 2163–2178.
- Knowles LL. 2004. The burgeoning field of statistical phylogeography. *Journal of Evolutionary Biology* 17: 1–10.
- Knowles LL, Alvarado-Serrano DF. 2010. Exploring the population genetic consequences of the colonization process with spatio-temporally explicit models: insights from coupled ecological, demographic and genetic models in montane grasshoppers. *Molecular Ecology* 19: 3727–3745.
- Kong WS, Watts D. 1999. Distribution of arboreal arctic-alpine plants and environments in NE Asia and Korea. *Geographical Review of Japan* 72: 122–134.
- Lacourse T, Mathewes R, Fedje D. 2003. Paleocology of late-glacial terrestrial deposits with *in situ* conifers from the submerged continental shelf of western Canada. *Quaternary Research* 60: 180–188.
- de Lafontaine G, Amasifuen Guerra CA, Ducouso A, Petit RJ. 2014. Cryptic no more: soil macrofossils uncover Pleistocene forest microrefugia within a periglacial desert. *New Phytologist*. doi: 10.1111/nph.12833.
- de Lafontaine G, Ducouso A, Lefèvre S, Magnanou E, Petit RJ. 2013. Stronger spatial genetic structure in recolonized areas than in refugia in the European beech. *Molecular Ecology* 22: 4397–4412.
- de Lafontaine G, Payette S. 2011. Shifting zonal patterns of the southern boreal forest in eastern Canada associated with changing fire regime during the Holocene. *Quaternary Science Reviews* 30: 867–875.
- Leites LP, Robinson AP, Rehfeldt GE, Marshall JD, Crookston NL. 2012. Height-growth response to climatic changes differs among populations of Douglas-fir: a novel analysis of historic data. *Ecological Applications* 22: 154–165.
- Lemey P, Rambaut A, Drummond AJ, Suchard MA. 2009. Bayesian phylogeography finds its roots. *PLoS Computational Biology* 5: e1000520.
- Lemey P, Rambaut A, Welch JJ, Suchard MA. 2010. Phylogeography takes a relaxed random walk in continuous space and time. *Molecular Biology and Evolution* 27: 1877–1885.
- Lemmon AR, Lemmon EM. 2008. A likelihood framework for estimating phylogeographic history on a continuous landscape. *Systematic Biology* 57: 544–561.
- Lesser MR, Jackson ST. 2011. Reliability of macrofossils in woodrat (*Neotoma*) middens for detecting low-density tree populations. *Paleobiology* 37: 603–615.
- Lisitsyna OV, Giesecke T, Hicks S. 2011. Exploring pollen percentage threshold values as an indication for the regional presence of major European trees. *Review of Palaeobotany and Palynology* 166: 311–324.
- Lorenzen ED, Noguez-Bravo D, Orlando L, Weinstock J, Binladen J, Marske KA, Ugan A, Borregaard MK, Gilbert MTP, Nielsen R, et al. 2011. Species-specific responses of Late Quaternary megafauna to climate and humans. *Nature* 479: 359–364.
- Lutz JA, van Wagtenonk JW, Franklin JF. 2010. Climatic water deficit, tree species ranges, and climate change in Yosemite National Park. *Journal of Biogeography* 37: 936–950.
- MacArthur RH. 1972. *Geographical ecology: patterns in the distribution of species*. Princeton, NJ, USA: Princeton University Press.
- Magri D. 2008. Patterns of post-glacial spread and the extent of glacial refugia of European beech (*Fagus sylvatica*). *Journal of Biogeography* 35: 450–463.
- Magri D, Palombo MR. 2013. Early to Middle Pleistocene dynamics of plant and mammal communities in South West Europe. *Quaternary International* 288: 63–72.
- Magri D, Vendramin GG, Comps B, Dupanloup I, Geburek T, Gomory D, Latalowa M, Litt T, Paule L, Roure JM, et al. 2006. A new scenario for the Quaternary history of European beech populations: palaeobotanical evidence and genetic consequences. *New Phytologist* 171: 199–221.
- Manolopoulou I, Emerson BC. 2012. Phylogeographic ancestral inference using the coalescent model on haplotype trees. *Journal of Computational Biology* 19: 745–755.
- Marion G, McNerny GJ, Pagel J, Catterall S, Cook AR, Hartig F, O'Hara RB. 2012. Parameter and uncertainty estimation for process-oriented population and distribution models: data, statistics and the niche. *Journal of Biogeography* 39: 2225–2239.
- Marske KA, Leschen RAB, Buckley TR. 2011. Reconciling phylogeography and ecological niche models for New Zealand beetles: looking beyond glacial refugia. *Molecular Phylogenetics and Evolution* 59: 89–102.
- Marske KA, Leschen RAB, Buckley TR. 2012. Concerted versus independent evolution and the search for multiple refugia: comparative phylogeography of four forest beetles. *Evolution* 66: 1862–1877.
- Martínez-Meyer E, Peterson AT. 2006. Conservatism of ecological niche characteristics in North American plant species over the Pleistocene-to-Recent transition. *Journal of Biogeography* 33: 1779–1789.
- McGlone MS. 1985. Plant biogeography and the late Cenozoic history of New Zealand. *New Zealand Journal of Botany* 23: 723–749.
- McGuire JL, Davis EB. 2013. Using the palaeontological record of *Microtus* to test species distribution models and reveal responses to climate change. *Journal of Biogeography* 40: 1490–1500.
- McLachlan JS, Clark JS. 2004. Reconstructing historical ranges with fossil data at continental scales. *Forest Ecology and Management* 197: 139–147.
- McLachlan JS, Clark JS, Manos PS. 2005. Molecular indicators of tree migration capacity under rapid climate change. *Ecology* 86: 2088–2098.
- McLaughlin BC, Zavaleta ES. 2012. Predicting species responses to climate change: demography and climate microrefugia in California valley oak (*Quercus lobata*). *Global Change Biology* 18: 2301–2312.
- McMahon SM, Harrison SP, Armbruster WS, Bartlein PJ, Beale CM, Edwards ME, Kattge J, Midgley G, Morin X, Prentice IC. 2011. Improving assessment and modelling of climate change impacts on global terrestrial biodiversity. *Trends in Ecology & Evolution* 26: 249–259.
- Médail F, Diadema K. 2009. Glacial refugia influence plant diversity patterns in the Mediterranean Basin. *Journal of Biogeography* 36: 1333–1345.
- Mehring PJ, Arno SF, Petersen KL. 1977. Postglacial history of Lost Trail Pass Bog, Bitterroot Mountains, Montana. *Arctic and Alpine Research* 9: 345–368.

- Mellick R, Lowe A, Allen C, Hill RS, Rossetto M. 2012. Palaeodistribution modelling and genetic evidence highlight differential post-glacial range shifts of a rain forest conifer distributed across a latitudinal gradient. *Journal of Biogeography* 39: 2292–2302.
- Meng L, Yang R, Abbott RJ, Miede G, Hu T, Liu J. 2007. Mitochondrial and chloroplast phylogeography of *Picea crassifolia* Kom. (Pinaceae) in the Qinghai-Tibetan Plateau and adjacent highlands. *Molecular Ecology* 16: 4128–4137.
- Metcalf JL, Prost S, Nogués-Bravo D, DeChaine EG, Anderson C, Batra P, Araújo MB, Cooper A, Guralnick RP. 2014. Integrating multiple lines of evidence into historical biogeography hypothesis testing: a *Bison bison* case study. *Proceedings of the Royal Society B* 281: 20132782.
- Midgley GF, Davies ID, Albert CH, Altwegg R, Hannah L, Hughes GO, O'Halloran LR, Seo C, Thorne JH, Thuiller W. 2010. BioMove – an integrated platform simulating the dynamic response of species to environmental change. *Ecography* 33: 612–616.
- Miede G, Miede S, Kaiser K, Reudenbach C, Behrendes L, Duo L, Schlütz F. 2009. How old is pastoralism in Tibet? An ecological approach to the making of a Tibetan landscape. *Palaeogeography Palaeoclimatology Palaeoecology* 276: 130–147.
- Morin X, Thuiller W. 2009. Comparing niche- and process-based models to reduce prediction uncertainty in species range shifts under climate change. *Ecology* 90: 1301–1313.
- Moritz C, Agudo R. 2013. The future of species under climate change: resilience or decline? *Science* 341: 504–508.
- Mosblech NAS, Bush MB, van Woesik R. 2011. On metapopulations and microrefugia: palaeoecological insights. *Journal of Biogeography* 38: 419–429.
- Nielsen R, Beaumont MA. 2009. Statistical inferences in phylogeography. *Molecular Ecology* 18: 1034–1047.
- Nielson M, Lohman K, Sullivan J. 2001. Phylogeography of the Tailed Frog (*Ascaphus truei*): implications for the biogeography of the Pacific Northwest. *Evolution* 55: 147–160.
- Nogués-Bravo D. 2009. Predicting the past distribution of species climatic niches. *Global Ecology and Biogeography* 18: 521–531.
- Olden JD, Joy MK, Death RG. 2006. Rediscovering the species in community-wide predictive modeling. *Ecological Applications* 16: 1449–1460.
- Olson D, DellaSala DA, Noss RF, Strittholt JR, Kass J, Koopman ME, Allnutt TF. 2012. Climate change refugia for biodiversity in the Klamath-Siskiyou Ecoregion. *Natural Areas Journal* 32: 65–74.
- Orsini L, Schwenk K, Meester LD, Colbourne JK, Pfrender ME, Weider LJ. 2013. The evolutionary time machine: using dormant propagules to forecast how populations can adapt to changing environments. *Trends in Ecology & Evolution* 28: 274–282.
- Ovaskainen O, Hottola J, Siitonen J. 2010. Modeling species co-occurrence by multivariate logistic regression generates new hypotheses on fungal interactions. *Ecology* 91: 2514–2521.
- Pagel J, Schurr FM. 2012. Forecasting species ranges by statistical estimation of ecological niches and spatial population dynamics. *Global Ecology and Biogeography* 21: 293–304.
- Panchal M, Beaumont MA. 2010. Evaluating nested clade phylogeographic analysis under models of restricted gene flow. *Systematic Biology* 59: 415–432.
- Parducci L, Jørgensen T, Tollefsrud MM, Elverland E, Alm T, Fontana SL, Bennett KD, Haile J, Matetovici I, Suyama Y, et al. 2012. Glacial survival of boreal trees in northern Scandinavia. *Science* 335: 1083–1086.
- Patsiou TS, Conti E, Zimmermann NE, Theodoridis S, Randin CF. 2014. Topo-climatic microrefugia explain the persistence of a rare endemic plant in the Alps during the last 21 millennia. *Global Change Biology* 20: 2286–2300.
- Pearman PB, Guisan A, Broennimann O, Randin CF. 2008. Niche dynamics in space and time. *Trends in Ecology & Evolution* 23: 149–158.
- Pearson RG, Thuiller W, Araújo MB, Martínez-Meyer E, Brotons L, McClean C, Miles L, Segurado P, Dawson TP, Lees DC. 2006. Model-based uncertainty in species range prediction. *Journal of Biogeography* 33: 1704–1711.
- Peterson AT, Nyari AS. 2008. Ecological niche conservatism and Pleistocene refugia in the thrush-like mourner, *Schiffornis* sp., in the neotropics. *Evolution* 62: 173–183.
- Petit RJ, Aguinagalde I, de Beaulieu JL, Bittkau C, Brewer S, Cheddadi R, Ennos R, Fineschi S, Grivet D, Lascoux M, et al. 2003. Glacial refugia: hotspots but not melting pots of genetic diversity. *Science* 300: 1563–1565.
- Petit RJ, Hampe A, Cheddadi R. 2005. Climate changes and tree phylogeography in the Mediterranean. *Taxon* 54: 877–885.
- Petit RJ, Hu FS, Dick CW. 2008. Forests of the past: a window to future changes. *Science* 320: 1450–1452.
- Phillips SJ, Anderson RP, Schapire RE. 2006. Maximum entropy modeling of species geographic distributions. *Ecological Modelling* 190: 231–259.
- Porto TJ, Carnaval AC, da Rocha PLB. 2013. Evaluating forest refugial models using species distribution models, model filling and inclusion: a case study with 14 Brazilian species. *Diversity and Distributions* 19: 330–340.
- Provan J, Bennett KD. 2008. Phylogeographic insights into cryptic glacial refugia. *Trends in Ecology & Evolution* 23: 564–571.
- Ramakrishnan U, Hadly EA. 2009. Do complex population histories drive higher estimates of substitution rate in phylogenetic reconstructions? *Molecular Ecology* 18: 4341–4343.
- Razgour O, Juste J, Ibáñez C, Kiefer A, Rebelo H, Puechmaile SJ, Arlettaz R, Burke T, Dawson DA, Beaumont M, et al. 2013. The shaping of genetic variation in edge-of-range populations under past and future climate change. *Ecology Letters* 16: 1258–1266.
- Reid C. 1899. *The origin of the British flora*. London, UK: Dulau.
- Ricklefs RE. 2012. Naturalists, natural history, and the nature of biological diversity. *The American Naturalist* 179: 423–435.
- Roberts DR. 2013. *Biogeographic histories and genetic diversity of western North American tree species: implications for climate change*. PhD thesis, University of Alberta, Edmonton, AB, Canada.
- Rocchini D, Hortal J, Lengyel S, Lobo JM, Jiménez-Valverde A, Ricotta C, Bacaro G, Chiarucci A. 2011. Accounting for uncertainty when mapping species distributions: the need for maps of ignorance. *Progress in Physical Geography* 35: 211–226.
- Rodríguez-Sánchez F, Arroyo J. 2008. Reconstructing the demise of Tethyan plants: climate-driven range dynamics of *Laurus* since the Pliocene. *Global Ecology and Biogeography* 17: 685–695.
- Rodríguez-Sánchez F, Hampe A, Jordano P, Arroyo J. 2010. Past tree range dynamics in the Iberian Peninsula inferred through phylogeography and palaeodistribution modelling: a review. *Review of Palaeobotany and Palynology* 162: 507–521.
- Rosenblum EB, Novembre J. 2007. Ascertainment bias in spatially structured populations: a case study in the Eastern Fence Lizard. *Journal of Heredity* 98: 331–336.
- Rull V. 2009. Microrefugia. *Journal of Biogeography* 36: 481–484.
- Saltré F, Saint-Amant R, Gritti ES, Brewer S, Gaucherel C, Davis BAS, Chuine I. 2013. Climate or migration: what limited European beech post-glacial colonization? *Global Ecology and Biogeography* 22: 1217–1227.
- Sandel B, Arge L, Dalsgaard B, Davies RG, Gaston KJ, Sutherland WJ, Svenning J-C. 2011. The influence of Late Quaternary climate-change velocity on species endemism. *Science* 334: 660–664.
- Schmittner A, Urban NM, Shakun JD, Mahowald NM, Clark PU, Bartlein PJ, Mix AC, Rosell-Melé A. 2011. Climate sensitivity estimated from temperature reconstructions of the Last Glacial Maximum. *Science* 334: 1385–1388.
- Schurr FM, Pagel J, Cabral JS, Groeneveld J, Bykova O, O'Hara RB, Hartig F, Kissling WD, Linder HP, Midgley GF, et al. 2012. How to understand species' niches and range dynamics: a demographic research agenda for biogeography. *Journal of Biogeography* 39: 2146–2162.
- Scoble J, Lowe AJ. 2010. A case for incorporating phylogeography and landscape genetics into species distribution modelling approaches to improve climate adaptation and conservation planning. *Diversity and Distributions* 16: 343–353.
- Shi YF, Li JJ, Li BY. 1998. *Uplift and environmental changes of Qinghai-Tibetan Plateau in the Late Cenozoic*. Guangzhou, China: Guangdong Science and Technology Press.
- Shoo LP, Storlie C, Vanderwal J, Little J, Williams SE. 2011. Targeted protection and restoration to conserve tropical biodiversity in a warming world. *Global Change Biology* 17: 186–193.
- Sommer RS, Nadachowski A. 2006. Glacial refugia of mammals in Europe: evidence from fossil records. *Mammal Review* 36: 251–265.
- Stacey PB, Taper M. 1992. Environmental variation and the persistence of small populations. *Ecological Applications* 2: 18–29.

- Stewart JR, Lister AM, Barnes I, Dalen L. 2010. Refugia revisited: individualistic responses of species in space and time. *Proceedings of the Royal Society B* 277: 661–671.
- Stigall AL. 2012. Using ecological niche modelling to evaluate niche stability in deep time. *Journal of Biogeography* 39: 772–781.
- Svenning J-C, Flojgaard C, Marske KA, Nogués-Bravo D, Normand S. 2011. Applications of species distribution modeling to paleobiology. *Quaternary Science Reviews* 30: 2930–2947.
- Svenning J-C, Gravel D, Holt RD, Schurr FM, Thuiller W, Münkemüller T, Schifffers KH, Dullinger S, Edwards TC, Hickler T, et al. 2014. The influence of interspecific interactions on species range expansion rates. *Ecography*. doi: 10.1111/j.1600-0587.2013.00574.x.
- Svenning J-C, Normand S, Kageyama M. 2008. Glacial refugia of temperate trees in Europe: insights from species distribution modelling. *Journal of Ecology* 96: 1117–1127.
- Thuiller W, Lafourcade B, Engler R, Araújo MB. 2009. BIOMOD—a platform for ensemble forecasting of species distributions. *Ecography* 32: 369–373.
- Thuiller W, Lavorel S, Araújo MB, Sykes MT, Prentice IC. 2005. Climate change threats to plant diversity in Europe. *Proceedings of the National Academy of Sciences, USA* 102: 8245–8250.
- Thuiller W, Münkemüller T, Lavergne S, Mouillot D, Mouquet N, Schifffers K, Gravel D. 2013. A road map for integrating eco-evolutionary processes into biodiversity models. *Ecology Letters* 16: 94–105.
- Tinner W, Colombaroli D, Heiri O, Henne PD, Steinacher M, Untenecker J, Vescovi E, Allen JRM, Carraro G, Conedera M, et al. 2013. The past ecology of *Abies alba* provides new perspectives on future responses of silver fir forests to global warming. *Ecological Monographs* 83: 419–439.
- Tsai Y-HE, Manos PS. 2010. Host density drives the postglacial migration of the tree parasite, *Epifagus virginiana*. *Proceedings of the National Academy of Sciences, USA* 107: 17 035–17 040.
- Tzedakis PC. 1993. Long-term tree populations in northwest Greece through multiple Quaternary climatic cycles. *Nature* 364: 437–440.
- Tzedakis PC, Emerson BC, Hewitt GM. 2013. Cryptic or mystic? Glacial tree refugia in northern Europe. *Trends in Ecology & Evolution* 28: 696–704.
- Tzedakis PC, Lawson IT, Frogley MR, Hewitt GM, Preece RC. 2002. Buffered tree population changes in a Quaternary refugium: evolutionary implications. *Science* 297: 2044–2047.
- Uhen MD, Barnosky AD, Bills B, Blois J, Carrano MT, Carrasco MA, Erickson GM, Eronen JT, Fortelius M, Graham RW, et al. 2013. From card catalogs to computers: databases in vertebrate paleontology. *Journal of Vertebrate Paleontology* 33: 13–28.
- Van der Hammen T, Wijmstra TA, Zagwijn WH. 1971. The floral record of the Late Cenozoic of Europe. In: Turekian KK, ed. *The Late Cenozoic glacial ages*. New Haven, CT, USA: Yale University Press, 391–424.
- Varela S, Lobo JM, Hortal J. 2011. Using species distribution models in paleobiogeography: a matter of data, predictors and concepts. *Palaeogeography Palaeoclimatology Palaeoecology* 310: 451–463.
- Veloz SD, Williams JW, Blois JL, He F, Otto-Bliesner B, Liu Z. 2012. No-analog climates and shifting realized niches during the late Quaternary: implications for 21st-century predictions by species distribution models. *Global Change Biology* 18: 1698–1713.
- Vorren TO, Vorren K-D, Aasheim O, Dahlgren KIT, Forwick M, Hassel K. 2013. Palaeoenvironment in northern Norway between 22.2 and 14.5 cal. ka BP. *Boreas* 42: 876–895.
- Walker MJC. 2005. *Quaternary dating methods*. Hoboken, NJ, USA: John Wiley & Sons.
- Waltari E, Hijmans RJ, Peterson AT, Nyári ÁS, Perkins SL, Guralnick RP. 2007. Locating Pleistocene refugia: comparing phylogeographic and ecological niche model predictions. *PLoS ONE* 2: e563.
- Wang Z, Gerstein M, Snyder M. 2009. RNA-Seq: a revolutionary tool for transcriptomics. *Nature Reviews Genetics* 10: 57–63.
- Whittaker RH. 1961. Vegetation history of the Pacific coast states and the central significance of the Klamath region. *Madroño* 16: 5–23.
- Willerslev E, Hansen AJ, Binladen J, Brand TB, Gilbert MTP, Shapiro B, Bunce M, Wiuf C, Gilichinsky DA, Cooper A. 2003. Diverse plant and animal genetic records from Holocene and Pleistocene sediments. *Science* 300: 791–795.
- Williams J, Shuman B, Webb T, Bartlein P, Leduc P. 2004. Late-Quaternary vegetation dynamics in North America: scaling from taxa to biomes. *Ecological Monographs* 74: 309–334.
- Williams JW, Jackson ST. 2007. Novel climates, no-analog communities, and ecological surprises. *Frontiers in Ecology and the Environment* 5: 475–482.
- Williams JW, Jackson ST, Kutzbach JE. 2007. Projected distributions of novel and disappearing climates by 2100 AD. *Proceedings of the National Academy of Sciences, USA* 104: 5738–5742.
- Williams JW, Kharouba HM, Veloz S, Vellend M, McLachlan J, Liu Z, Otto-Bliesner B, He F. 2013. The ice age ecologist: testing methods for reserve prioritization during the last global warming. *Global Ecology and Biogeography* 22: 289–301.
- Willis KJ, Bhagwat SA. 2009. Biodiversity and climate change. *Science* 326: 806–807.
- Willis KJ, van Andel TH. 2004. Trees or no trees? The environments of central and eastern Europe during the Last Glaciation. *Quaternary Science Reviews* 23: 2369–2387.
- Wisn MS, Pottier J, Kissling WD, Pellissier L, Lenoir J, Damgaard CF, Dormann CF, Forchhammer MC, Grytnes J-A, Guisan A, et al. 2013. The role of biotic interactions in shaping distributions and realised assemblages of species: implications for species distribution modelling. *Biological Reviews* 88: 15–30.
- Woodward FI, Beerling DJ. 1997. The dynamics of vegetation change: health warnings for equilibrium 'dodo' models. *Global Ecology and Biogeography Letters* 6: 413.
- Wu CY. 1980. *Vegetation of China*. Beijing, China: Science Press.
- Xu Z, Zhao C, Feng Z. 2012. Species distribution models to estimate the deforested area of *Picea crassifolia* in arid region recently protected: Qilian Mts. National Natural Reserve (China). *Polish Journal of Ecology* 60: 515–524.
- Yoccoz NG, Bråthen KA, Gielly L, Haile J, Edwards ME, Goslar T, Von Stedingk H, Brysting AK, Coissac E, Pompanon F, et al. 2012. DNA from soil mirrors plant taxonomic and growth form diversity. *Molecular Ecology* 21: 3647–3655.
- Zhao Y, Yu Z, Zhao W. 2011. Holocene vegetation and climate histories in the eastern Tibetan Plateau: controls by insolation-driven temperature or monsoon-derived precipitation changes? *Quaternary Science Reviews* 30: 1173–1184.
- Zhu K, Woodall CW, Clark JS. 2012. Failure to migrate: lack of tree range expansion in response to climate change. *Global Change Biology* 18: 1042–1052.

Supporting Information

Additional supporting information may be found in the online version of this article.

Notes S1. Data sources for Figs 2 and 5.

Please note: Wiley Blackwell are not responsible for the content or functionality of any supporting information supplied by the authors. Any queries (other than missing material) should be directed to the *New Phytologist* Central Office.