

Zixu Wang, 2020
Adaptive Reuse Program
Department of Interior Architecture
Rhode Island School of Design



**"WE MUST ALL WORK TOGETHER TO END
YOUTH HOMELESSNESS IN AMERICA. "**

- JEWEL KILCHER

LIVING AND ALIVE
HOMELESS SHELTER DESIGN

Zixu Wang, 2020
Adaptive Reuse Program
Department of Interior Architecture
Rhode Island School of Design

Living and Alive
Homeless Shelter Design

A thesis submitted in partial fulfillment of the requirements
for the degree
Master of Design in Interior Studies [Adaptive Reuse]
in the Department of Interior Architecture of the Rhode Island
School of Design

By
Zixu Wang

2020

Approved by Master's Examination Committee:

Heinrich Hermann

Critic, Department of Interior Architecture, Primary Thesis Advisor & Thesis Chair

Francesca Liuni

Critic, Department of Interior Architecture, Secondary Thesis Advisor

Markus Berger

Associate Professor, Department of Interior Architecture, Thesis Advisor

Julia Bernert

Critic, Department of Interior Architecture, Thesis Advisor

Liliane Wong

Department Head, Department of Interior Architecture, Thesis Advisor

Acknowledgments:

Ernesto Aparicio

Critic, Department of Graphic Design, Consultant, Graphic Design

Nick Heywood

Critic, Department of Interior Architecture, Adviser, Writing and Thesis Book

Paul Mayencourt

Critic, MIT Department of Architecture, Consultant, Structural Engineering

Stephen Turner

Critic, Department of Interior Architecture, Consultant, Energy, Systems and Sustainability

TABLE OF CONTENTS

12	INTRODUCTION
	Abstract
	Thesis Motivation
16	BACKGROUND RESEARCH
	Homelessness in US
	Homeless Youth
	Challenges
	Shelter Types
38	SITE DOCUMENTATION
	Host Structure - Why this Site?
	Original Floor Plans
	Original Sections
48	DESIGN CONCEPT
	Emotional Concept
	Design Strategy
54	SHELTER DOCUMENTATION
	Shelter Tour
	Section Tour
84	SPECIALIST ADVISER
86	IMAGE CREDITS
88	ANNOTATED BIBLIOGRAPHY

ABSTRACT

Homelessness is a major social problem in the United States. The number of people who are living without a decent shelter is rising daily throughout the country. The problem of homelessness affects various groups in society, including the elderly, children, youths, and middle-aged adults. Recent studies have shown that the percentage of teens and youths who are experiencing homelessness has reached an alarming rate. The homeless adolescent group is defined as teens aged between 13 and 19 years. This rise in homelessness in this population group demands immediate attention, particularly older teens from 15 to 18 years of age. This study seeks to create a new model of shelter through a combination of spatial arrangements and special programs.

For those teens who are born with low-income family

conditions or housing pressure who have no choice but to be homeless, it is our society's responsibility to give them a better choice and brighter future. There are many ways to help homeless teenagers and change their lives now. The model will be based on the analysis of the specific housing needs of young people facing homelessness. Existing shelter models most often concentrate on the housing problem of the broadest group of the homeless population. This solution, however, will use a space layout that suits the way of life of the teens, by meeting, all the daily needs of teenagers in a limited space, such as housing, diet, activities, health consultation.

The most important of these is mental health in this user group. Through research on teenagers, it is found that in addition to the conditions needed

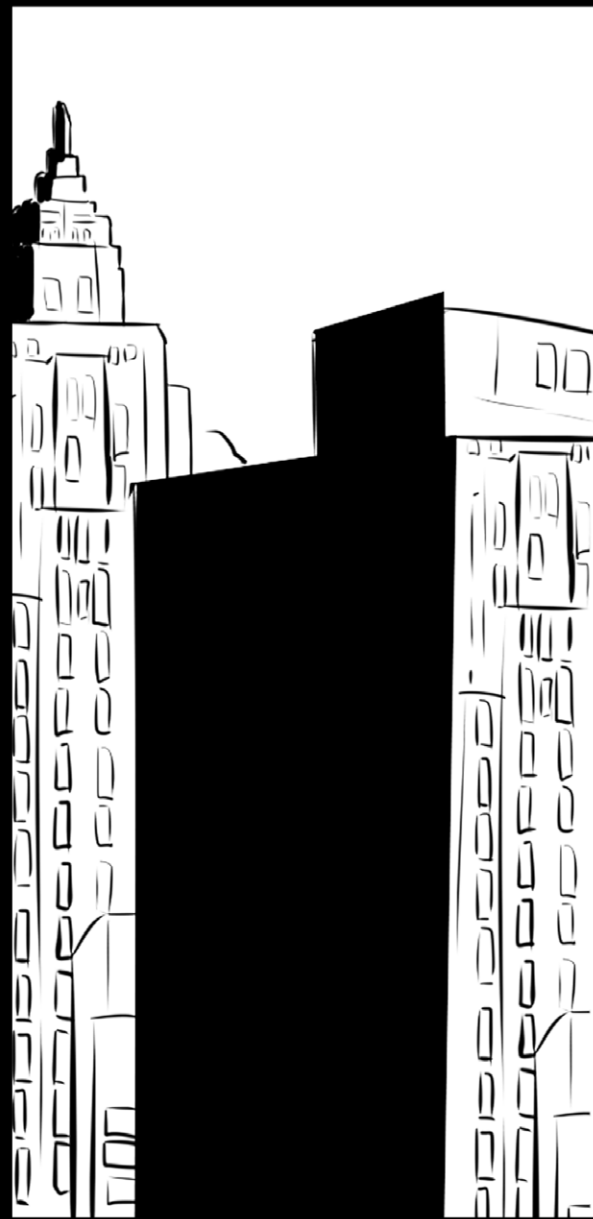
for shelter, what they need most is related to psychological counseling. Housing is only the first step. In the existing shelter, it is more about just helping homeless people solve their housing problems. This project is to create a new model of shelter through a combination of reasonable spatial arrangements and special programs. The special arrangement provides a very highly utilized space with the limitation of the square footage, helps them with their mental and physical health, and also respects the relationship between personal space and public. The program of the exhibition will take place in the public area on the first floor. In this way, the teen will regain the respect and understanding of society by showing the public their valuable and creative works.

THESIS MOTIVATION

Homelessness is recognized as one of the largest problems facing society, but what has not acknowledged is the growing rate of youth homelessness. It is generally believed those teens are born with poor family conditions or housing pressure and have no choice but to be homeless; it's our society's responsibility to give them a better choice and brighter future. In the existing shelters, the focus is on helping homeless people solve their housing problems. This project proposes a new model of shelter through a combination of spatial arrangements and special programs. A reassuring, positive shelter experience will help residents re-enter society. There are many ways for a homeless teenager to help change their lives now. Housing is only the first step. In the existing shelter, it is more about helping homeless people solve their housing problems. This

project is to create a new model of shelter through a combination of reasonable spatial arrangements and special programs. Let these groups get the respect and understanding of people before they enter society by showing their positive attitude.

BACKGROUND RESEARCH



HOMELESSNESS

THE LITTLE BOY IN THE COMIC IS THE MAIN CHARACTER OF THIS STORY. HIS NAME IS X. HE IS SIXTEEN YEARS OLD. TWO YEARS AGO, HIS FAMILY WENT BANKRUPT BECAUSE OF ECONOMIC PRESSURE.

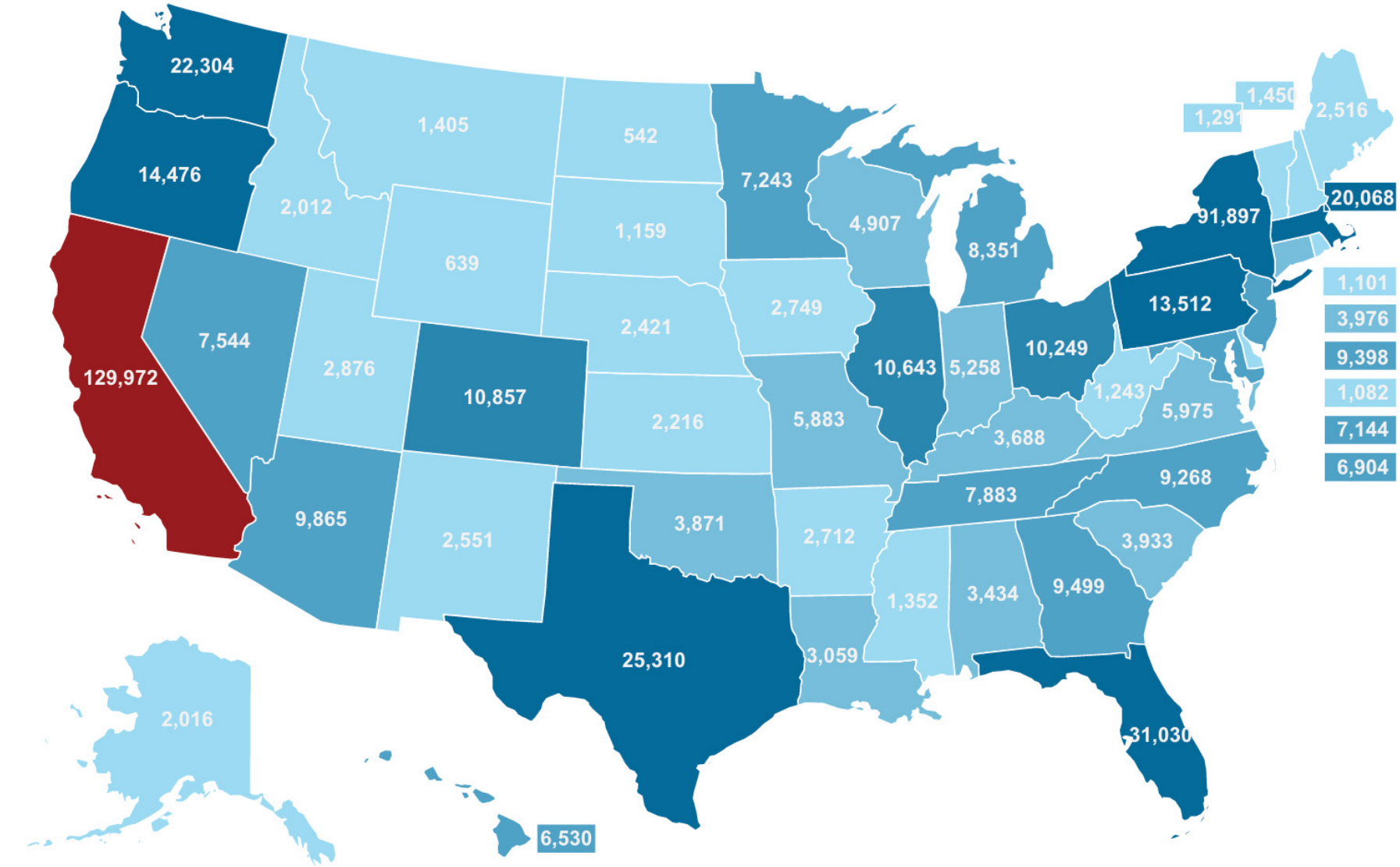
HE WAS FORCED TO LIVE ON THE STREETS AND BECAME HOMELESS.

X EVEN CAN'T REMEMBER HOW MANY TIMES HE HAS BEEN BULLIED RECENTLY BECAUSE OF HIS HOMELESSNESS.

HE LIVES BY BEGGING FOR CHANGE FROM OTHERS EVERY DAY TO SUPPORT HIS BASIC LIVING REQUIREMENTS.

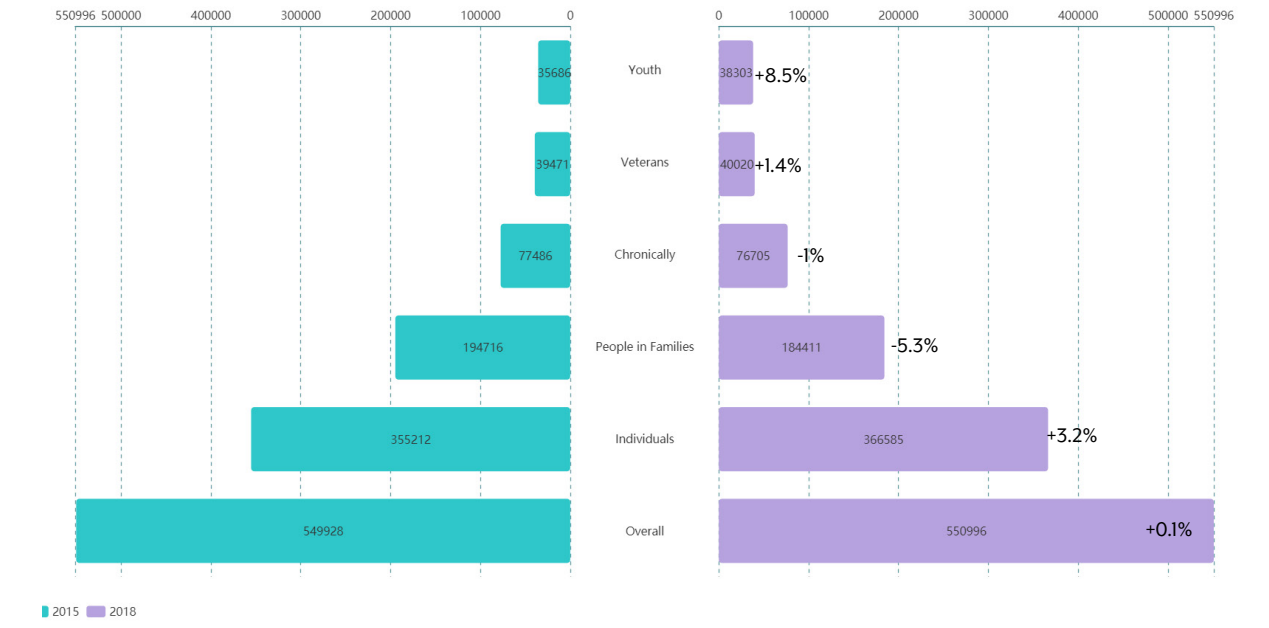
WHEN WE ARE SLEEPING ON THE SOFT MATTRESS AND WARM BEDS, X IS SUFFERING EXTREMELY POOR LIVING ENVIRONMENT, AND LIVING CHALLENGES.

HOMELESSNESS IN THE UNITED STATES



1, "Homeless In California Statistics 2018. Homeless Estimation By State | US Interagency Council On Homelessness". 2019. Usich.Gov. <https://www.usich.gov/homelessness-statistics/ca/>.

Total Number of People Experiencing Homelessness per Year by Type, 2015-2018



"As of January 2018, California had an estimated 129,972 experiencing homelessness on any given day, as reported by Continuums of Care to the U.S. Department of Housing and Urban Development (HUD). Of that Total, 6,702 were family households, 10,836 were Veterans, 12,396 were unaccompanied young adults (aged 18-24), and 34,332 were individuals experiencing chronic homelessness.¹"

According to the statistics of "National Alliance to End Homelessness", in 2015, "70 percent of people in the shelter were in major cities. 46.7 percent of sheltered homeless persons came into shelter from an unsheltered location." This population has increased by nearly 50 percent since 2007. This means that "homelessness" is a major issue, and the numbers are still increasing. So far, recorded community housing and homeless shelter businesses in the US is 10355.

Compared with earlier numbers, it is slowly decreasing. The increasing number of people and the decreasing number of housing will become an even bigger social problem.²

According to the statistics of "National Alliance to End Homelessness", in 2015, "70 percent of people in the shelter were in major cities. 46.7 percent of sheltered homeless persons came into shelter from an unsheltered location." This population has increased by nearly 50 percent since 2007. This means that "homelessness" is a major issue, and the numbers are still increasing. So far, recorded community housing and homeless shelter businesses in the US is 10355. Compared with earlier numbers, it is slowly decreasing. The increasing number of people and the decreasing number of housing will become an even bigger social problem.³

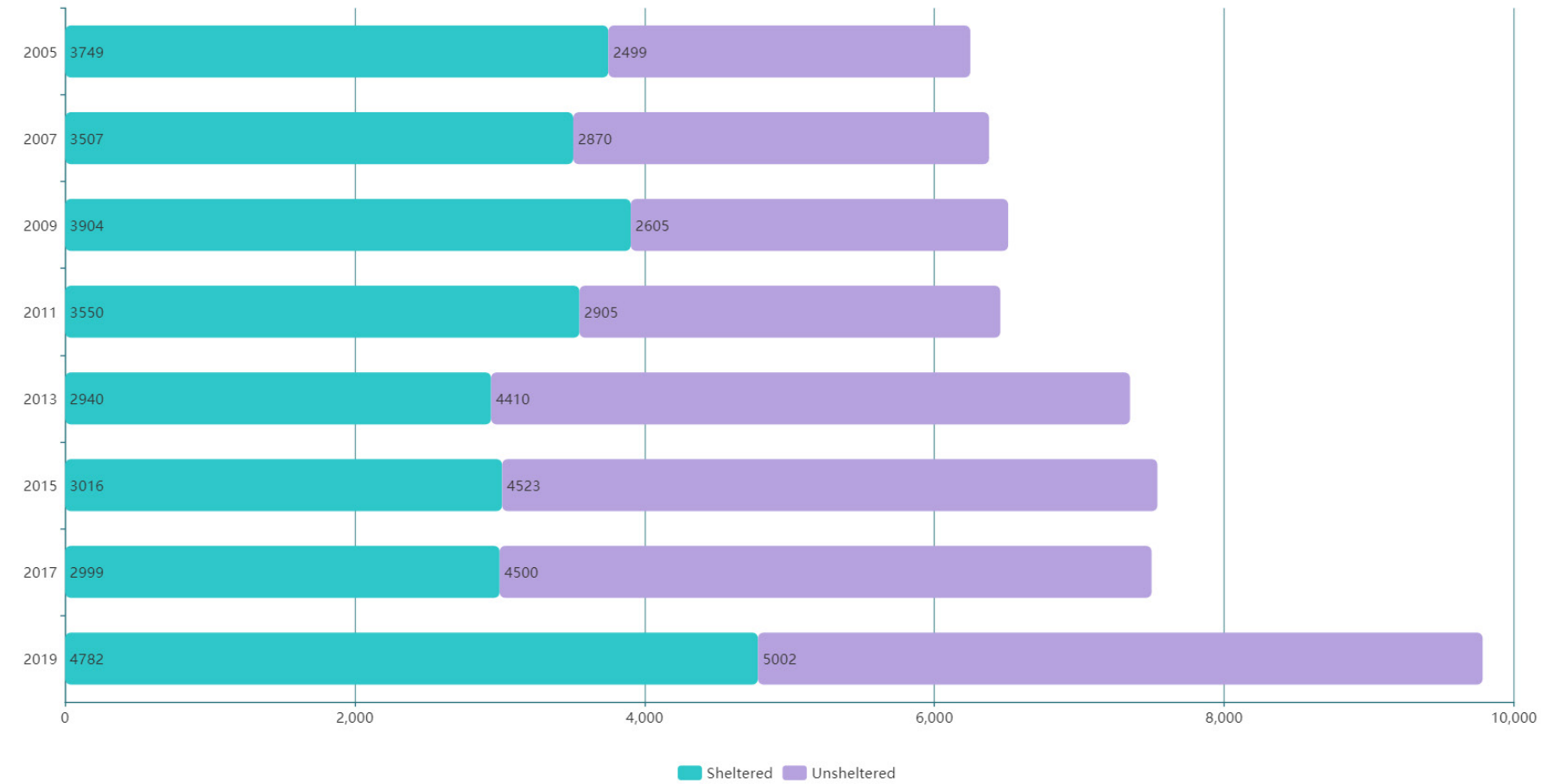
1, "Homeless In California Statistics 2018. Homeless Estimation By State | US Interagency Council On Homelessness". 2019. Usich.Gov. <https://www.usich.gov/homelessness-statistics/ca/>.

2, "Here are 10 New Facts About Sheltered Homelessness in America", *NAEH*, Nov 10, 2015 <https://endhomelessness.org/here-are-10-new-facts-about-sheltered-homelessness-in-america/>

3, "Homeless In California Statistics 2018. Homeless Estimation By State | US Interagency Council On Homelessness". 2019. Usich.Gov. <https://www.usich.gov/homelessness-statistics/ca/>.

HOMELESSNESS IN SAN FRANCISCO

Point-in-time Homeless Count of San Francisco Standard(Conducted in January)



"Homeless Population | City Performance Scorecards". 2019. Sfgov.Org.
<https://sfgov.org/scorecards/safety-net/homeless-population>.

9784

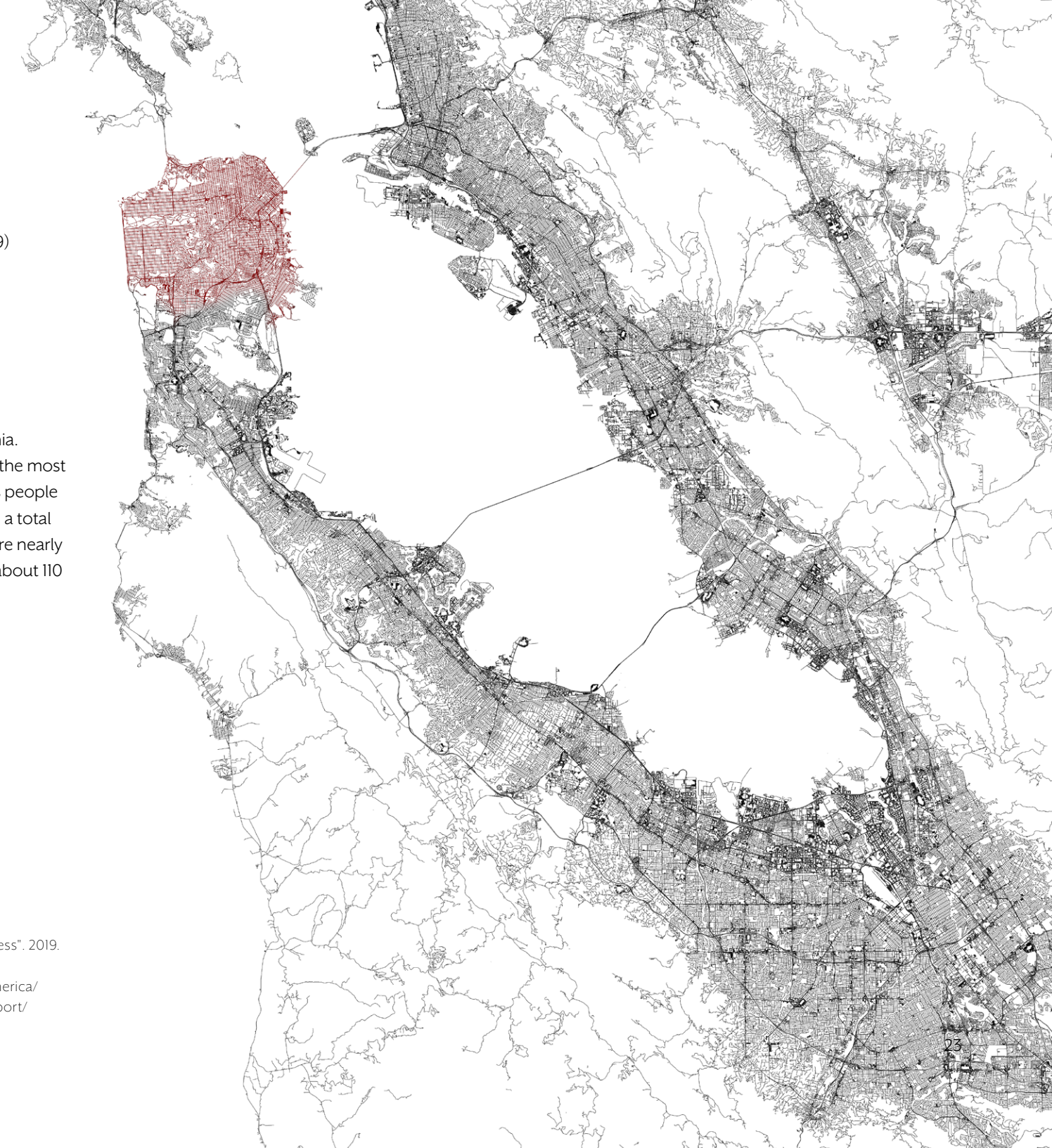
People Homeless on a given night (Jan, 2019)

108.7

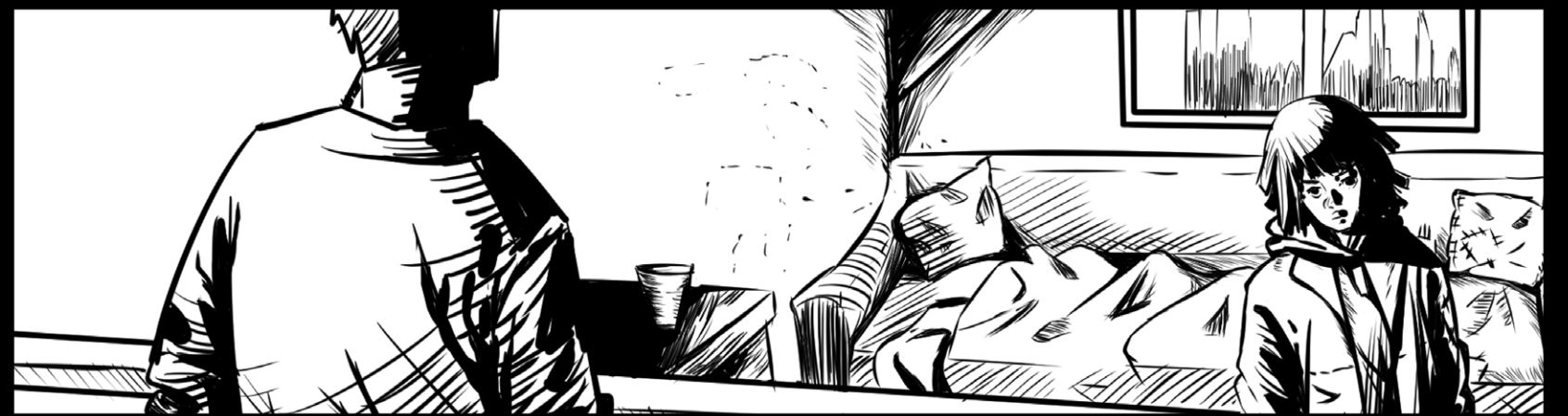
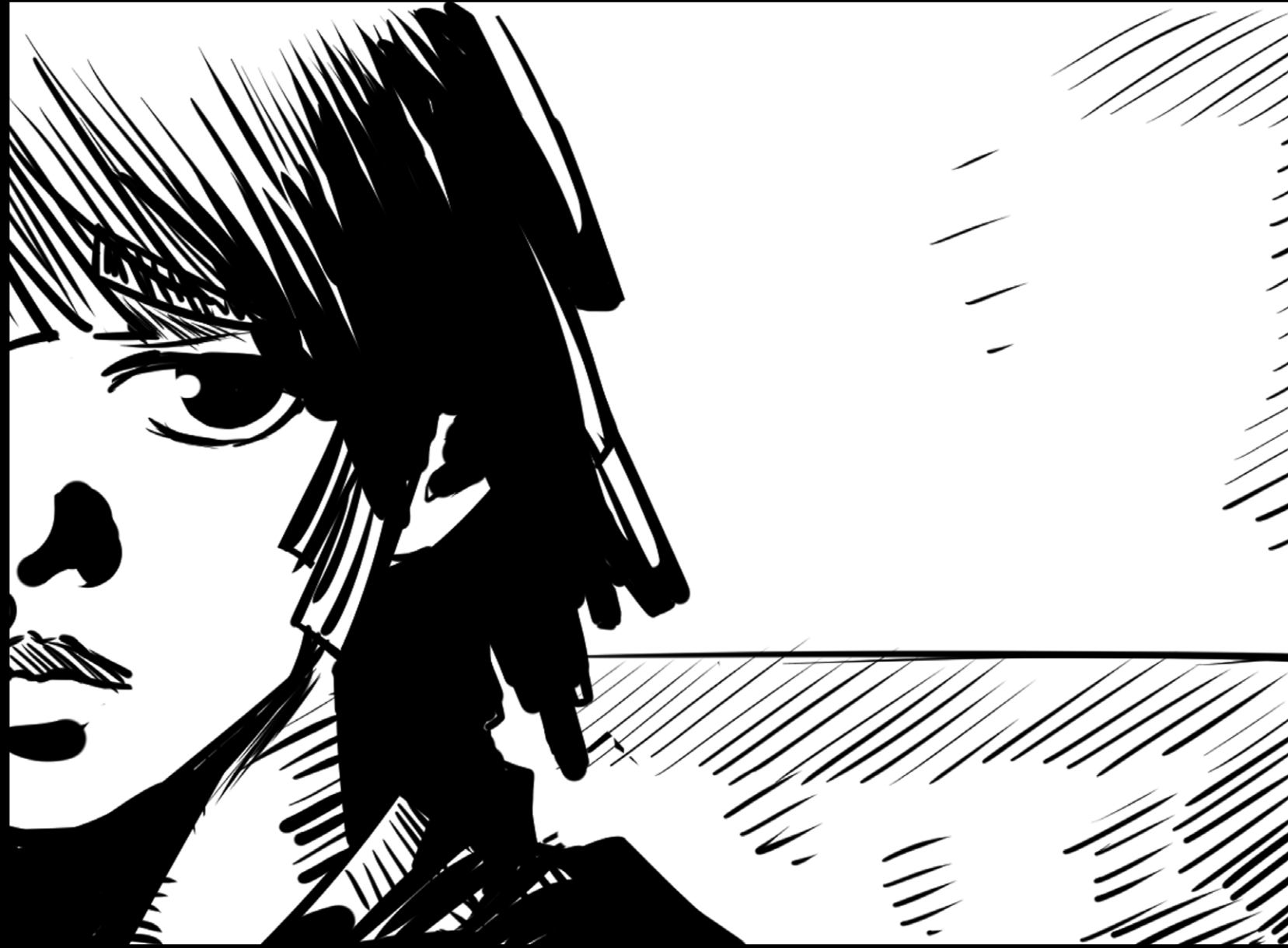
homeless per 10,000 people in the general population

San Francisco is a representative of California. Although San Francisco is not the city with the most homelessness, the proportion of homeless people in San Francisco is the highest. In a city with a total population of 900 thousand(2019), there are nearly 10,000 homeless people. This means that about 110 people sleep in the street every night.¹

¹, "California - National Alliance To End Homelessness". 2019. National Alliance To End Homelessness.
<https://endhomelessness.org/homelessness-in-america/homelessness-statistics/state-of-homelessness-report/california/>.



BACKGROUND RESEARCH



HOMELESS YOUTH

X ALSO ASKED THE HOMELESS SHELTER NEARBY ONCE, HE HAS LIVED IN A FEW TEMPORARILY, BUT ONLY TEMPORARY, AND SHORT-TERM TRANSITION HOUSING THAT CANNOT SOLVE THE FUNDAMENTAL PROBLEM, WHICH MEANS HE MUST MOVE OUT OF THE SHELTER BEFORE REACHING THE DEADLINE.

TODAY, X WAKES UP FROM ANOTHER SOFA, TRYING TO REMEMBER WHERE HE IS RIGHT NOW.

WHERE WILL HE SLEEP TOMORROW, WHAT ABOUT THE FUTURE? WHAT WOULD IT BE LIKE? THE FUTURE IS SLIM.

THE OWNER OF THE HOUSE GIVE HIM THE LAST WARNING, HE MUST MOVE OUT HERE TODAY.

YOUTH VS. GENERAL COUNT

POINT-IN-TIME HOMELESS COUNT Youth vs. General Count



"Homeless Population | City Performance Scorecards". 2019. Sfgov.Org. <https://sfgov.org/scorecards/safety-net/homeless-population>.

The Reason of Youth Homelessness

For many homeless children, they are not really homeless. Not all homeless children will eventually live in the open air on the street. Many homeless children will eventually choose to live in an invisible place. For example, friends or strangers on the floor, or sofa surfing. The reasons for child living or working on the street are complicated. There are many street children in the world, and there are many reasons for them on the streets. Every child has his own unique story. For example, poverty, natural disasters, and wars can lead to an increase in the number of street children in specific areas.¹

On the other hand,

- SEXUAL**
- PHYSICAL**
- EMOTIONAL ABUSE**
- AIDS**
- FAMILY EXPULSION**
- MENTAL HEALTH PROBLEMS**
- DRUG ABUSE**
- SEXUAL ORIENTATION**
- GENDER IDENTITY**

are among the reasons for homelessness.

Through the analysis of the data chart, the number of youth homelessness has decreased since 2013. But this does not mean that this will be a good start.

The number of homelessness began to increase dramatically in 2019. According to the University of Chicago report, about 3% of youth (13-17) families reported youthless homelessness during the 12-month period. (including running away or being asked to leave)

For many youth, instability in their homes forces them out onto the streets before they are adults. Common family experiences include child abuse and/or neglect, domestic violence, parental substance use, and family conflict. Ninety percent of youth accessing youth shelters for minors through the federally funded Basic Center programs state that they experience difficulty at home, such as constant fighting or screaming.²

1, Lander, L., Howsare, J., & Byrne, M. (2013). The impact of substance use disorders on families and children: from theory to practice. *Social work in public health, 28*(3-4), 194-205. doi:10.1080/19371918.2013.759005, <https://www.ncbi.nlm.nih.gov/pmc/articles/PMC3725219/>

2, U.S. Department of Health and Human Services. (2013). Report to Congress on the Runaway and Homeless Youth Programs Fiscal Years 2010 and 2011. Washington DC: U. S. Department of Health and Human Services.

BACKGROUND RESEARCH



CHALLENGES

WHO IS AT RISK?

- **Youth lacking a high school diploma or GED** had a **346% higher risk** of homelessness than did young people who completed high school.
- **Youth in households making less than \$24,000 a year** had a **162% higher risk** of homelessness.
- **Unmarried parenting youth** had a **200% higher risk** of homelessness.
- **LGBTQ youth** are at **more than double the risk** of homelessness than their non-LGBTQ peers, and had **over twice the rate of early death** among all youth experiencing homelessness.
- **Black or African American youth** had an **83% higher risk** of homelessness.
- **Hispanic, nonwhite youth** had a **33% higher risk** of homelessness.

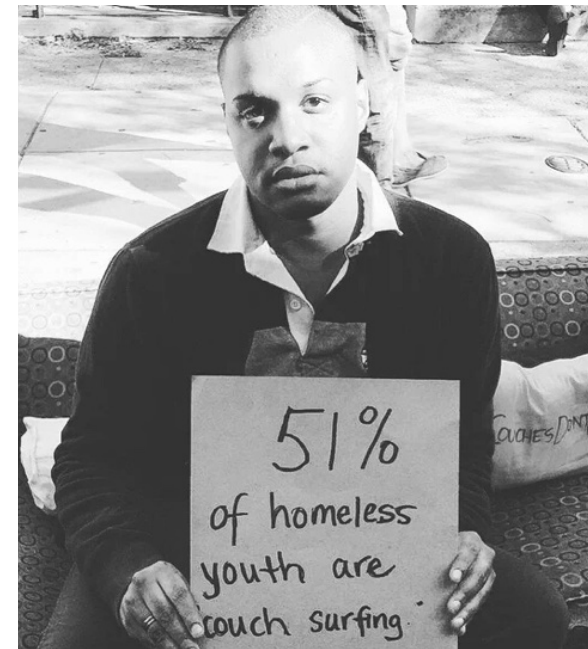
"Youth Homelessness in America." Voices of Youth Count. <https://voicesofyouthcount.org/brief/national-estimates-of-youth-homelessness/>.

"LGBTQ Youth Homelessness in America." Voices of Youth Count. <https://voicesofyouthcount.org/brief/lgbtq-youth-homelessness/>.

"Pregnant and Parenting Youth Experiencing Homelessness in America." Voices of Youth Count. <http://voicesofyouthcount.org/brief/pregnant-and-parenting-youth-experiencing-homelessness/>.

"Counting Youth Experiencing Homelessness in America." Voices of Youth Count. <http://voicesofyouthcount.org/brief/misled-opportunities-counting-youth-experiencing-homelessness-in-america/>.

"Youth Homelessness in Rural America." Voices of Youth Count. <http://voicesofyouthcount.org/brief/misled-opportunities-youth-homelessness-in-rural-america/>.



ABOUT HOMELESS YOUTH

- **More than 3.5 million young adults ages 18 to 25** experience a form of homelessness in the course of a year — that's **1 of every 10 young adults**.
- **At least 700,000 adolescent minors ages 13 to 17** experience a form of homelessness in the course of a year — that's **1 of every 30 adolescent minors**.
- **In total, at least 4.2 million young people experience a form of homelessness in a given year**, from couch surfing to living on the streets.
- **Half** of the youth who experienced homelessness in the past year did so for the first time.
- **About 42%** experienced **two or more episodes** of homelessness.
- **Youth homelessness affects urban and rural youth** at similar levels.

"Youth Homelessness in America." Voices of Youth Count. <https://voicesofyouthcount.org/brief/national-estimates-of-youth-homelessness/>.

"LGBTQ Youth Homelessness in America." Voices of Youth Count. <https://voicesofyouthcount.org/brief/lgbtq-youth-homelessness/>.

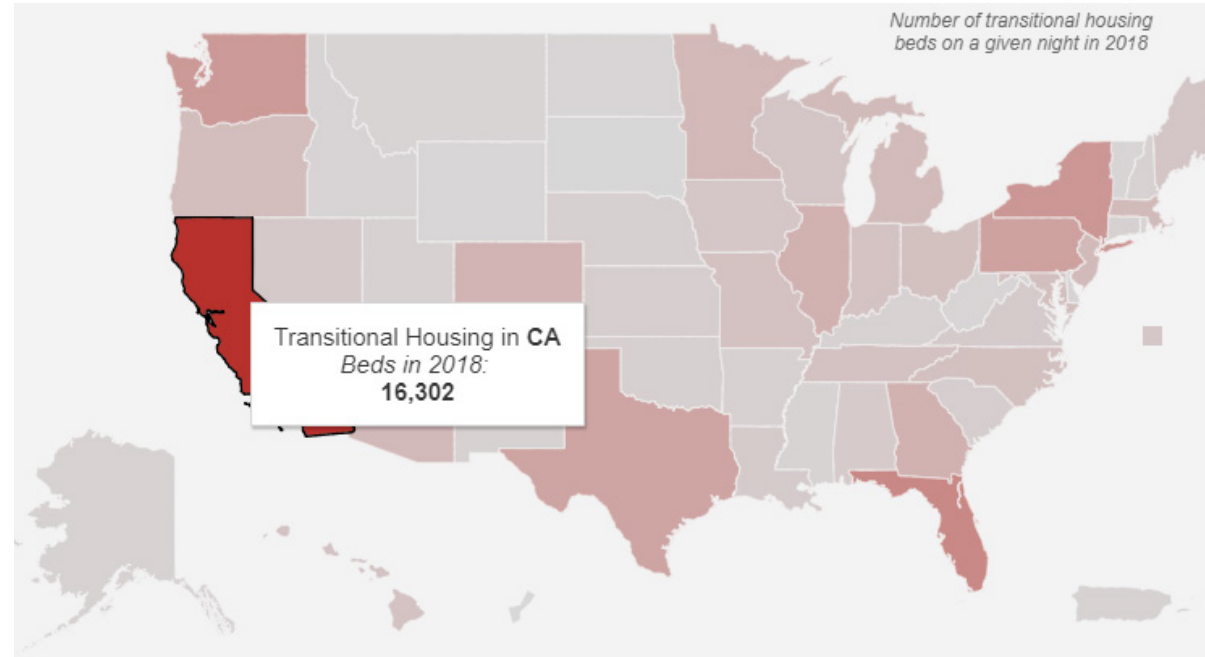
"Pregnant and Parenting Youth Experiencing Homelessness in America." Voices of Youth Count. <http://voicesofyouthcount.org/brief/pregnant-and-parenting-youth-experiencing-homelessness/>.

"Counting Youth Experiencing Homelessness in America." Voices of Youth Count. <http://voicesofyouthcount.org/brief/misled-opportunities-counting-youth-experiencing-homelessness-in-america/>.

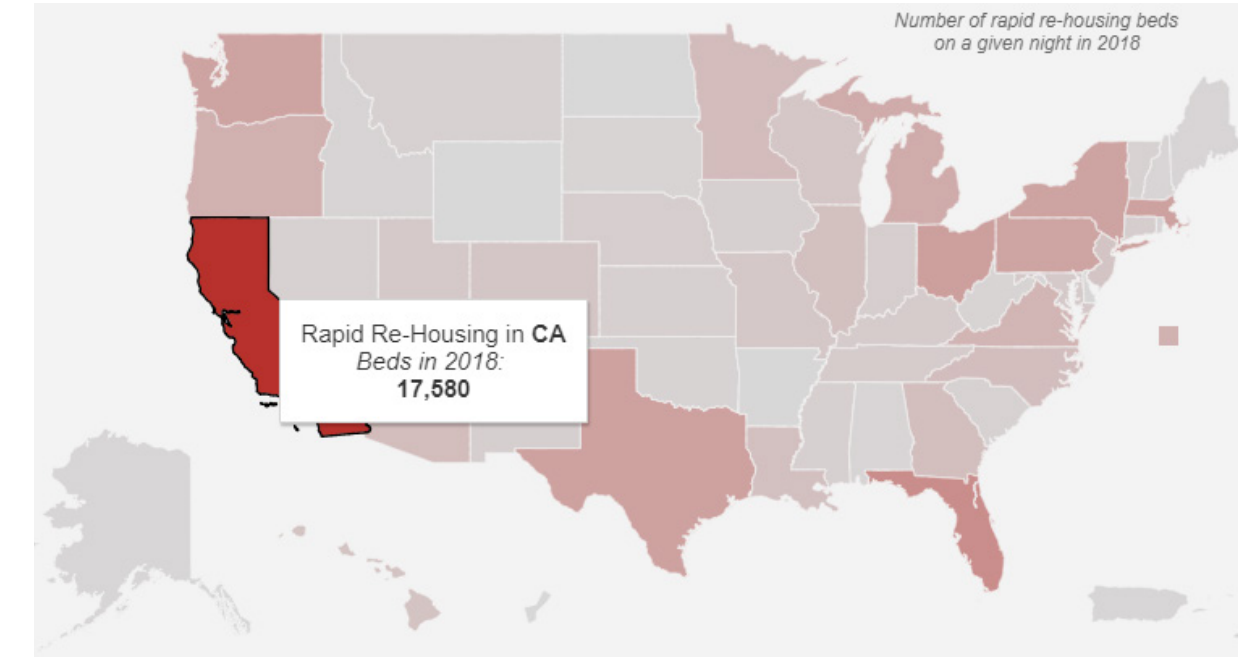
"Youth Homelessness in Rural America." Voices of Youth Count. <http://voicesofyouthcount.org/brief/misled-opportunities-youth-homelessness-in-rural-america/>.



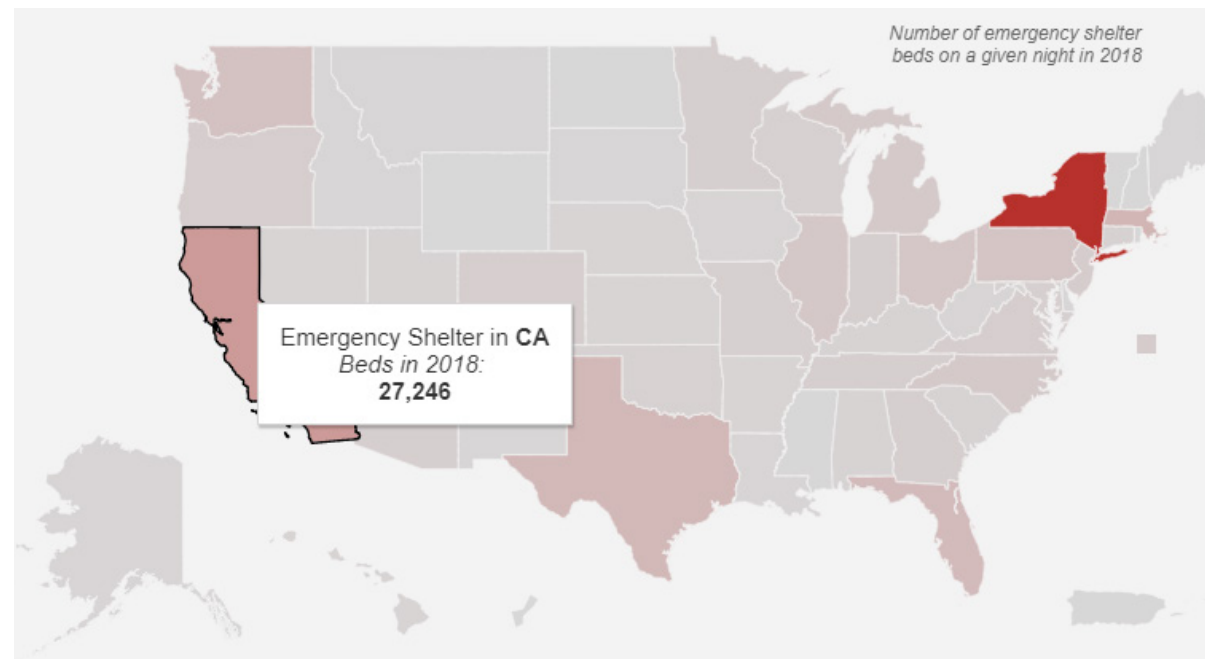
Transitional Housing



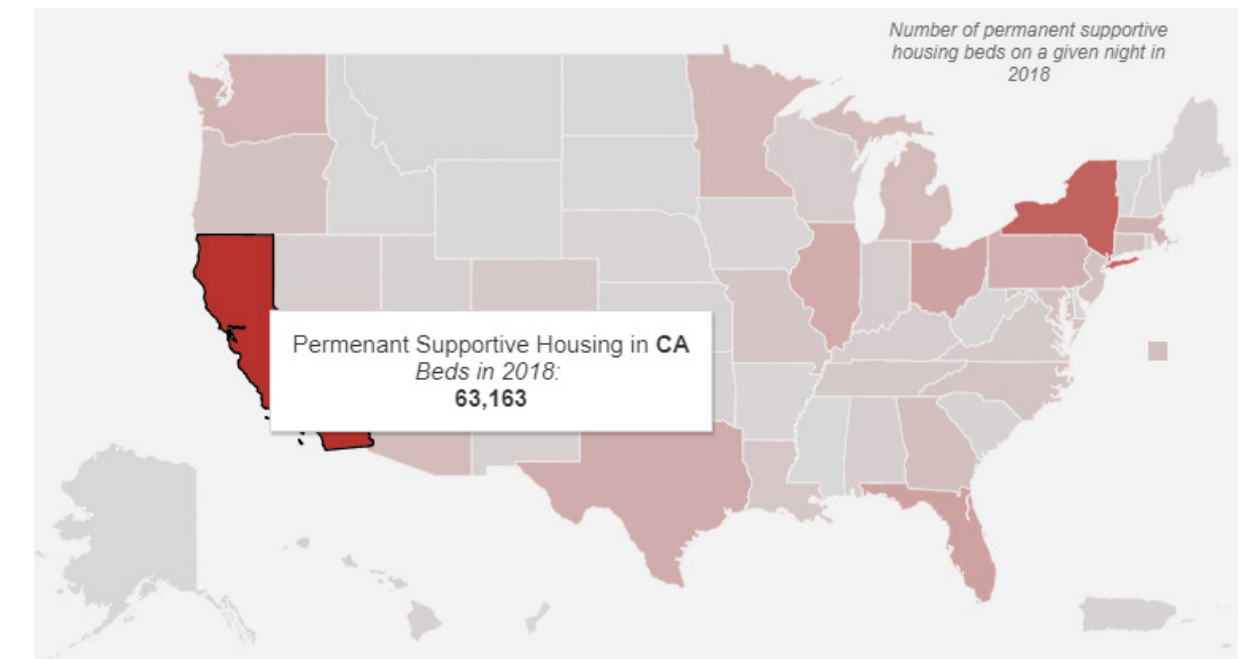
Rapid Re-Housing



Emergency Shelter



Permanent Supportive Housing



Transitional Housing

Transitional housing refers to a supportive – yet temporary – type of accommodation that is meant to bridge the gap from homelessness to permanent housing by offering structure, supervision, support, life skills, and in some cases, education and training. Historically, transitional housing programs were situated within dedicated, building-specific environments, where there was more common space and less private space than might be the case in permanent housing environments.

Covenant house is a shelter for youth homelessness. Their main services are nutritious meals, bathing, clean clothes, medical care and safe housing. It can meet the basic requirements of any homeless shelter. Covenant house is for all youth homelessness, so they only provide basic needs.



"Our Houses | Covenant House". 2019. Covenanthouse.Org. https://www.covenanthouse.org/homeless-shelters."Transitional Housing."

Transitional Housing | The Homeless Hub. Accessed March 1, 2020. <https://www.homelesshub.ca/solutions/housing-accommodation-and-supports/transitional-housing>.

Emergency Shelter

An emergency shelter is a place for people to live temporarily when they cannot live in their previous residence, similar to homeless shelters.

The main difference is that an emergency shelter typically specializes in people fleeing a specific type of situation, such as natural or man-made disasters, domestic violence, or victims of sexual abuse.

The Night Ministry compassionately provides housing, health care, outreach, spiritual care, and social services to adults and youth who struggle with homelessness, poverty, and loneliness. We accept individuals as they are and offer support as they seek to improve their lives. We invite others to join this hope-filled work.



User, Super. 2019. "Home". Thenightministry.Org. <https://www.thenightministry.org/>.

"Emergency Shelter." Wikipedia. Wikimedia Foundation, February 9, 2020. https://en.wikipedia.org/wiki/Emergency_shelter.

Rapid Re-Housing

Rapid re-housing provides short-term rental assistance and services. The goals are to help people obtain housing quickly, increase self-sufficiency, and stay housed.

It is offered without preconditions (such as employment, income, absence of criminal record, or sobriety) and the resources and services provided are typically tailored to the needs of the person.

Established in 1985, Hamilton Families is San Francisco's leading service provider to families experiencing homelessness, with carefully designed programs to prevent homelessness, provide shelter and stability, return families to permanent housing and support the well-being of children experiencing homelessness.



"Hamilton Families". 2019. Hamilton Families. <https://www.hamiltonfamilies.org/>.

"Rapid Re-Housing." National Alliance to End Homelessness. Accessed March 1, 2020. https://endhomelessness.org/ending-homelessness/solutions/rapid-re-housing/?emailsignup&gclid=EAlaQobChMijM2zuY365wIVjZQzCh2yXAsVEAAyASAAEgKN4vD_BwE.

Permanent Supportive Housing

Permanent supportive housing is an intervention that combines affordable housing assistance with voluntary support services to address the needs of chronically homeless people.

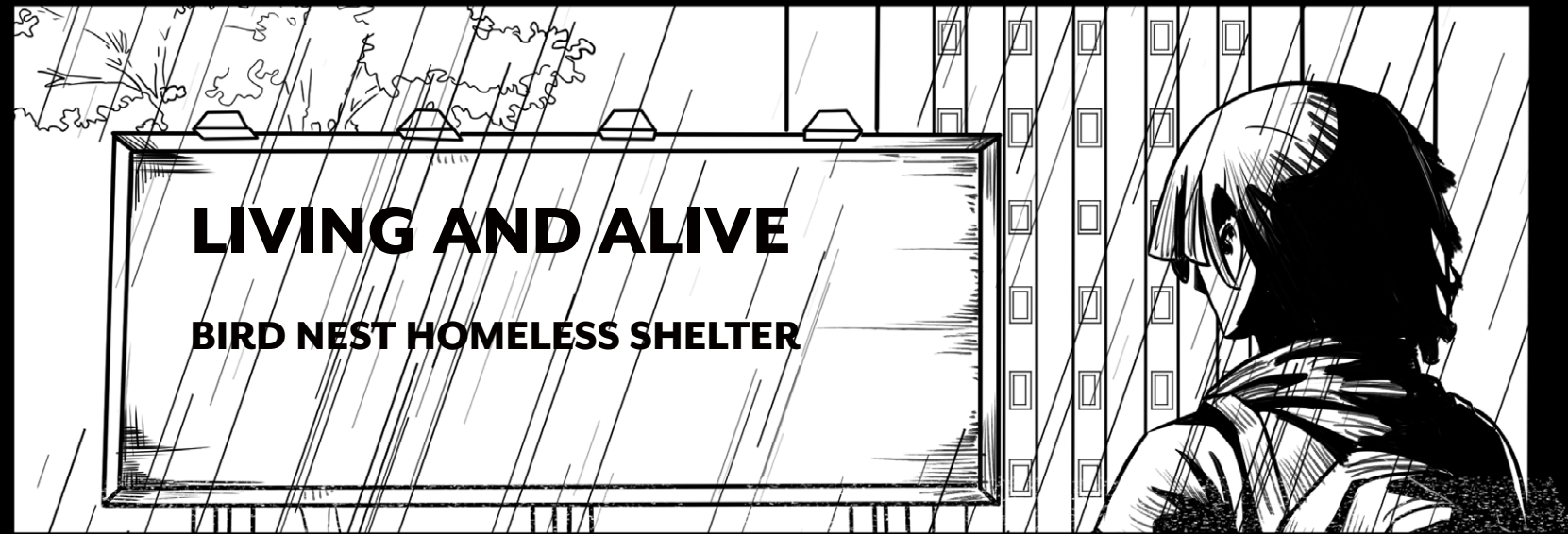
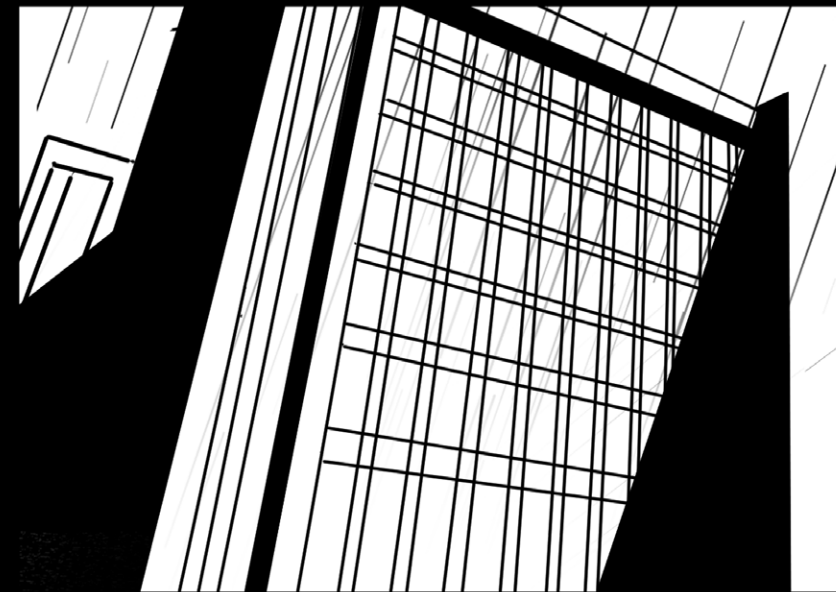
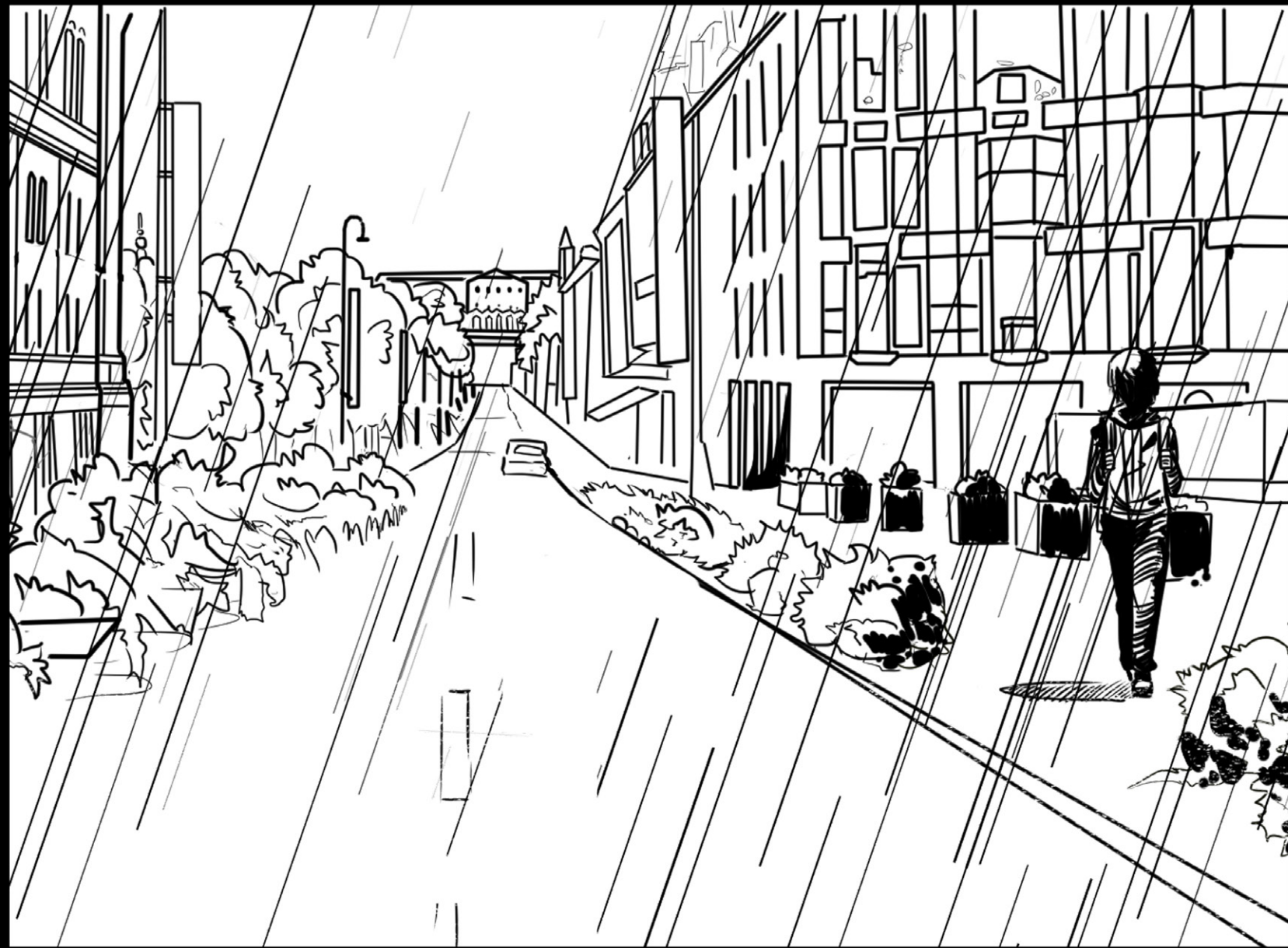
The services are designed to build independent living and tenancy skills and connect people with community-based health care, treatment and employment services.

Pine Street Inn began its journey in 1969, offering a safe alternative to the streets of Boston to approximately 200 men suffering from alcoholism.

Pine Street Inn Ending Homelessness

"Pine Street Inn | History". 2019. Pinestreetinn.Org. <https://www.pinestreetinn.org/about-us/history>.

"Permanent Supportive Housing." National Alliance to End Homelessness. https://endhomelessness.org/ending-homelessness/solutions/permanent-supportive-housing/?emailsignup&gclid=EAlaQobChMlPpfHDn5D65wIVjrblCh2JmQryEAAYA_SAAEgKlzfD_BwE.

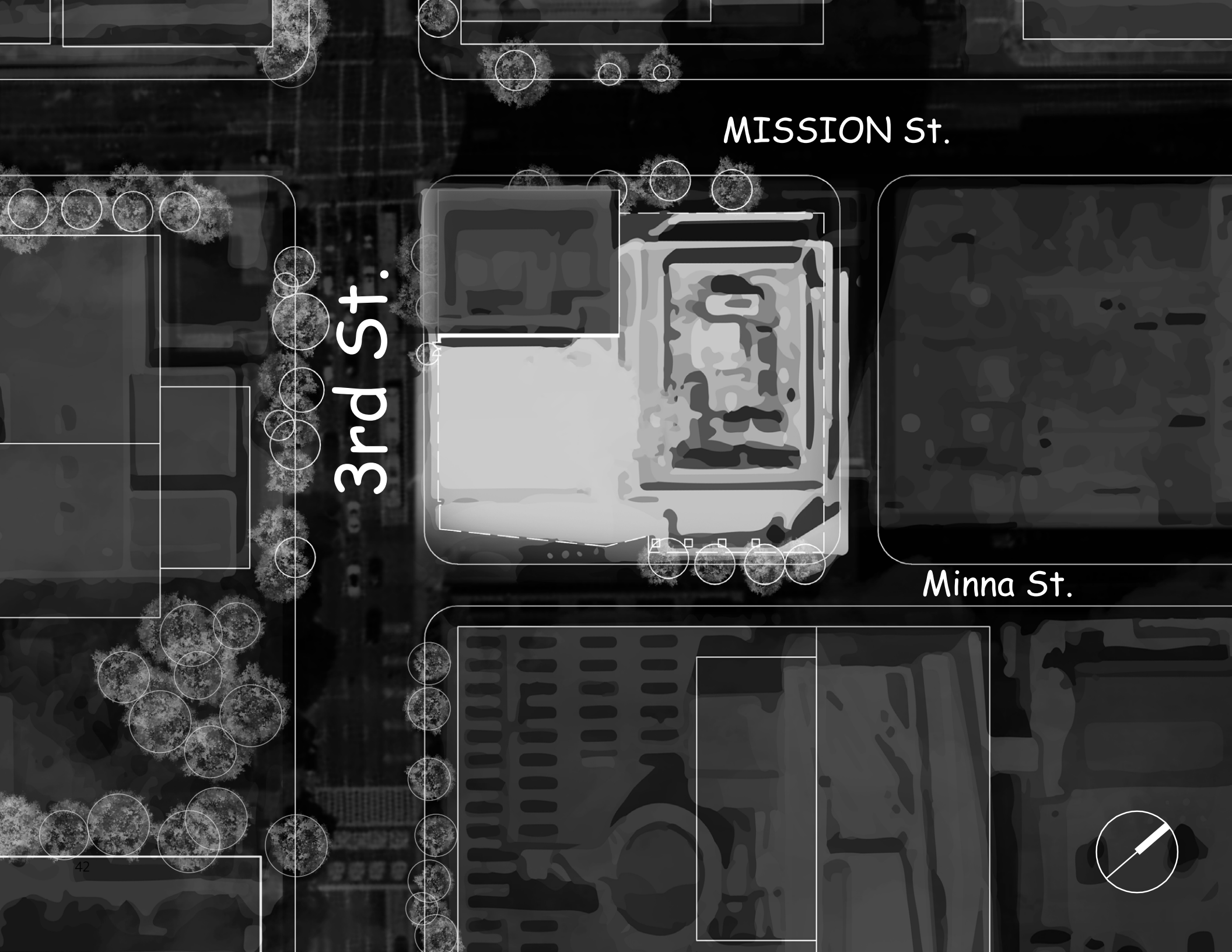


HE WALKED ON THE 3RD STREET,
AND THE HOT CALIFORNIA RAINED UNEXPECTEDLY,
HOT STEAM RUSHED UP FROM THE GROUND.

LOOKING AT THE OTHER
HOPELESS EYES SIT ON THE
BUSY STREET, WHICH CREATES
A DISTINCTIVE METAPHOR
WITH THE GINORMOUS
SKYSCRAPERS LUXURY HOTELS.

THEY WILL COST YOU NEARLY \$ 400 FOR A NIGHT,
X CANNOT EVEN IMAGINE THAT. AT THE CORNER
OF THE STREET, HE SEES A BILLBOARD THAT
CALLED LIVING AND ALIVE.

THIS LOOKS LIKE A NEW
SHELTER FOR YOUTHS
HOMELESS AGED THIRTEEN TO
EIGHTEEN 13-18. X HAS NO
CHOOSE, THIS IS HIS ONLY
WAY TO SURVIVE.



THESIS SITE:

Meeting Area and lobby of St. Regis Museum Tower

LOCATION: St. Regis Museum Tower. (125 3rd St, San Francisco, CA)



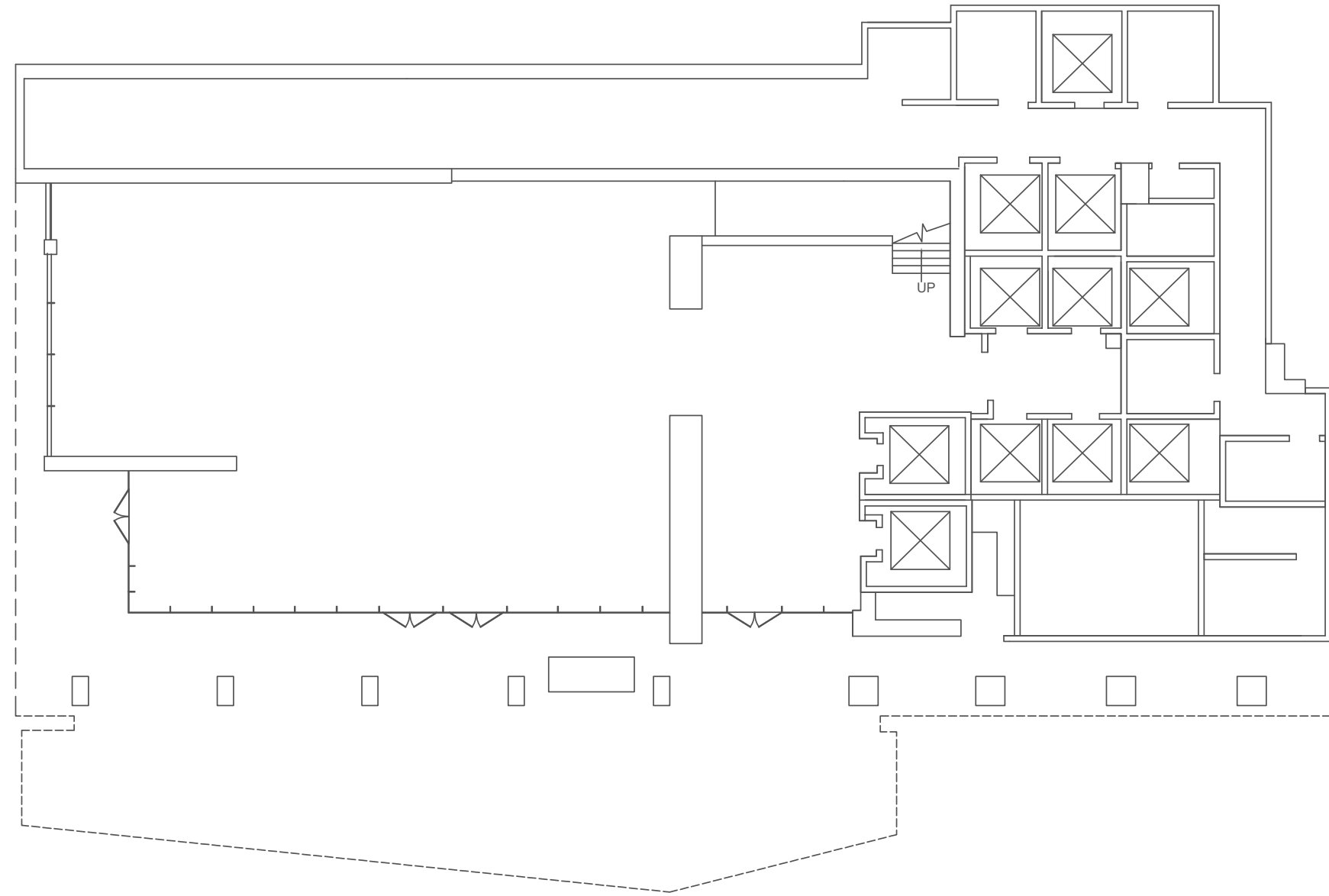
Why this site?

For most homeless people, the economic structure is at the bottom level of the pyramid, which caused by under economic pressure, that make them lost their homes and live on the streets.

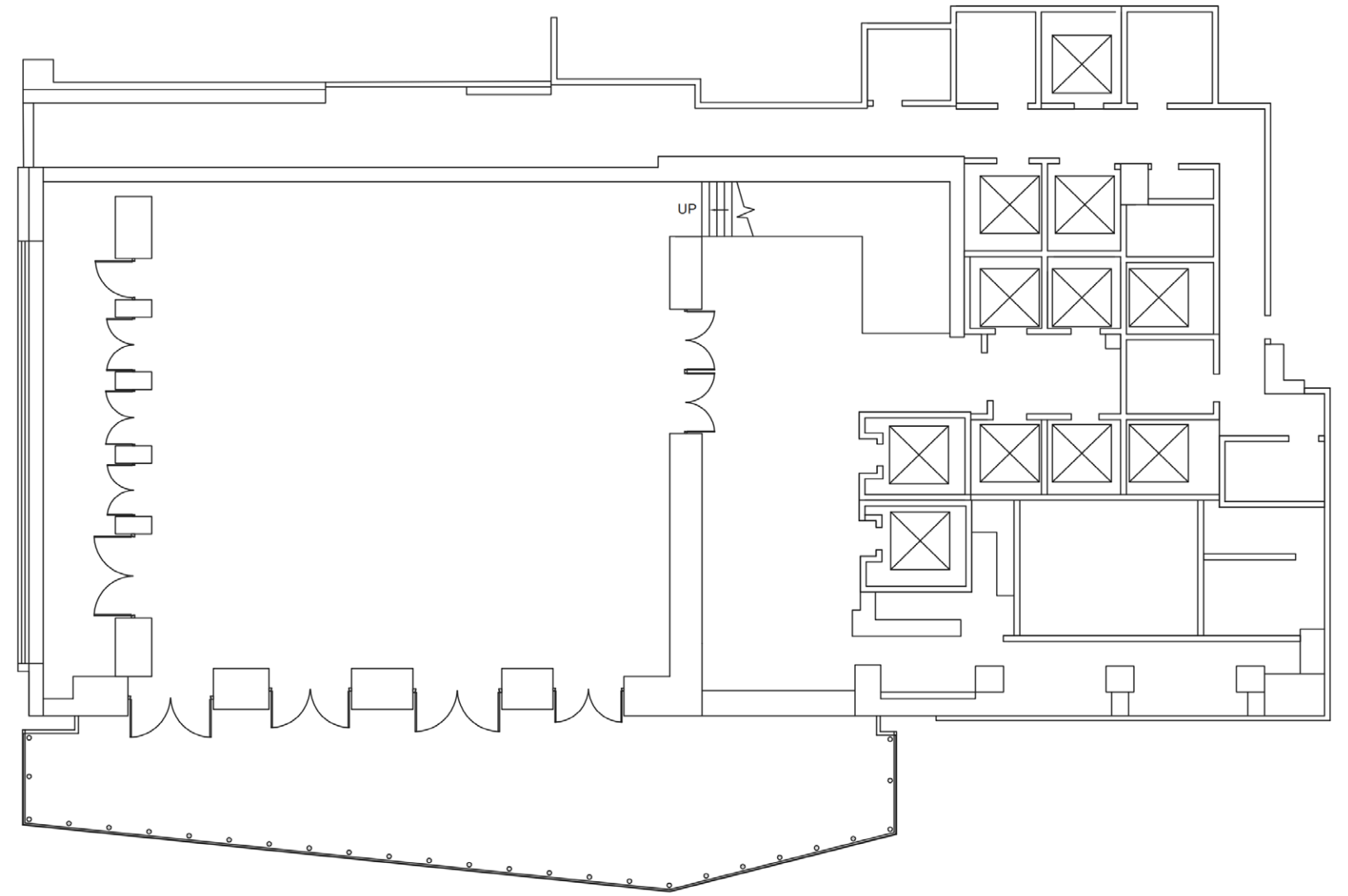
"Power" should pay for such an outcome. The person currently living in the higher level of the pyramid with the most resources should take their responsibilities, helping the person who are drowning. Unlike other existing shelters, only meet the basic requirements of living, such as housing or other functions, but this is only temporary and does not provide any help for the future, which means they might not alive.

"St Regis 26E | San Francisco Properties : Luxury Homes And Real Estate Of San Francisco California : Malin Giddings : 415.531.5033". 2019. Sfproperties.Com. <http://www.sfproperties.com/properties/st-regis-26e>.

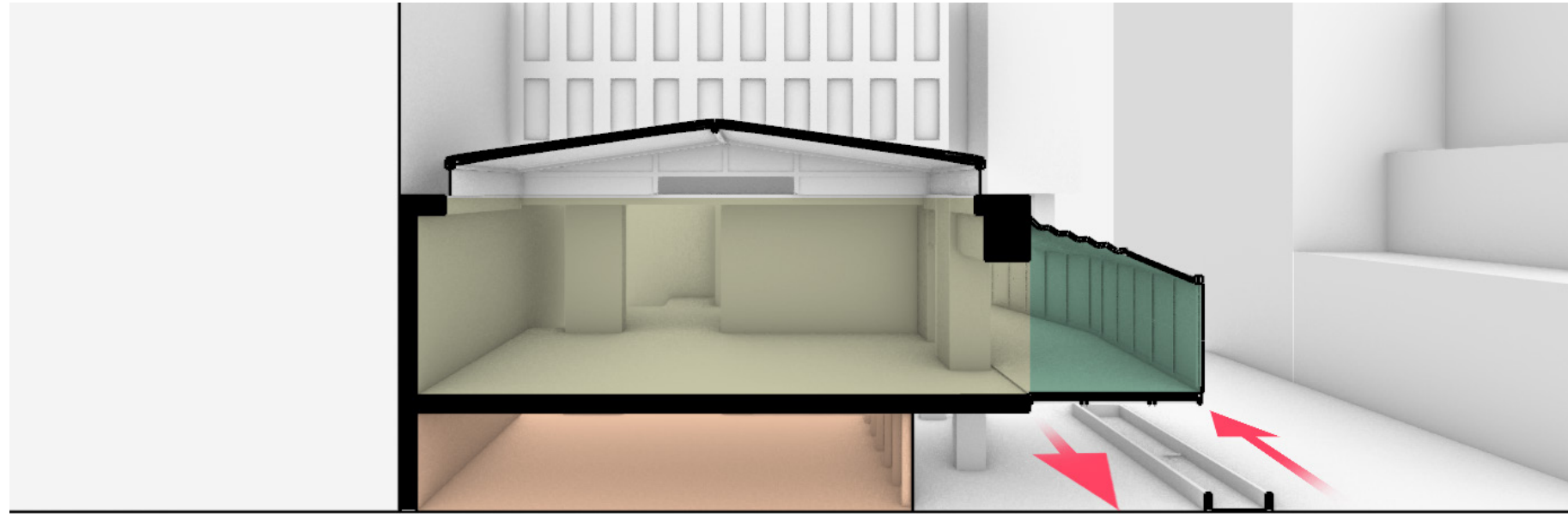
ORIGINAL FLOOR PLAN - FIRST FLOOR



ORIGINAL FLOOR PLAN - SECOND FLOOR

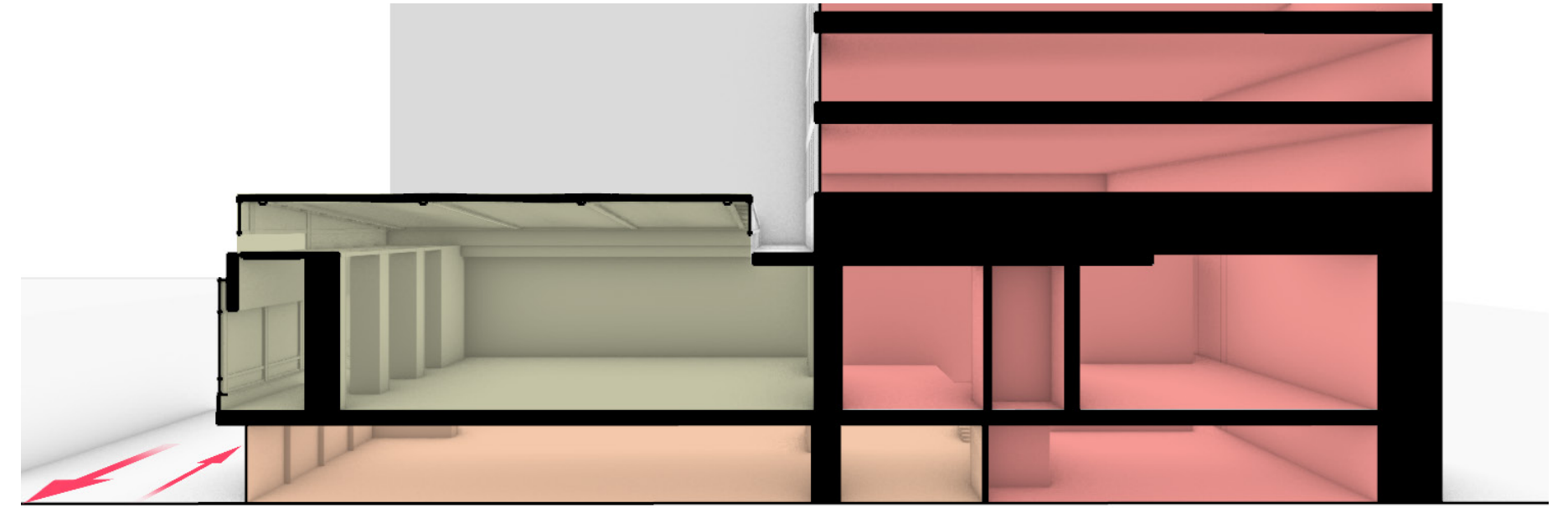


ORIGINAL BUILDING - SECTION



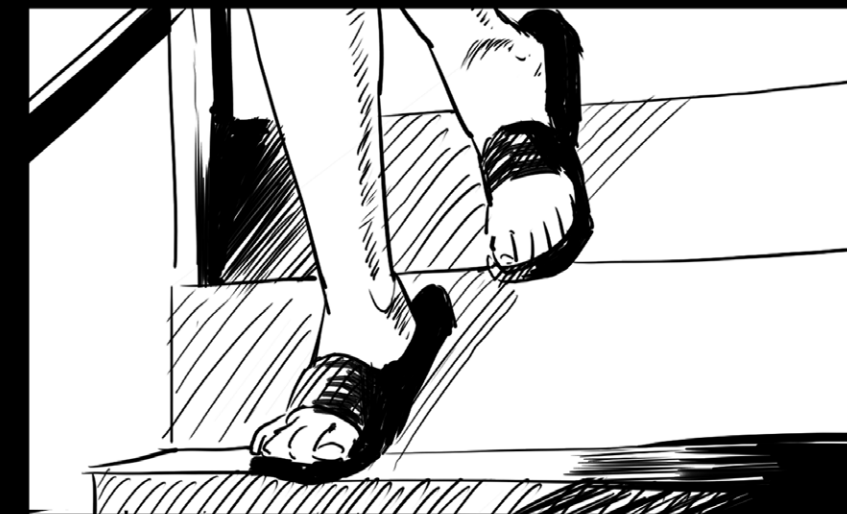
● Meeting Area A ● Hotel Lobby ● Meeting Area B

ORIGINAL BUILDING - SECTION



● Meeting Area A ● Hotel Lobby ● Hotel

SHELTER DOCUMENTATION



DESIGN CONCEPT

X STANDS DOWNSTAIRS OF SHELTER,
WHICH WAS ORIGINALLY ONE OF NINE MEETING
ROOMS AND LOBBY OF THIS HOTEL.

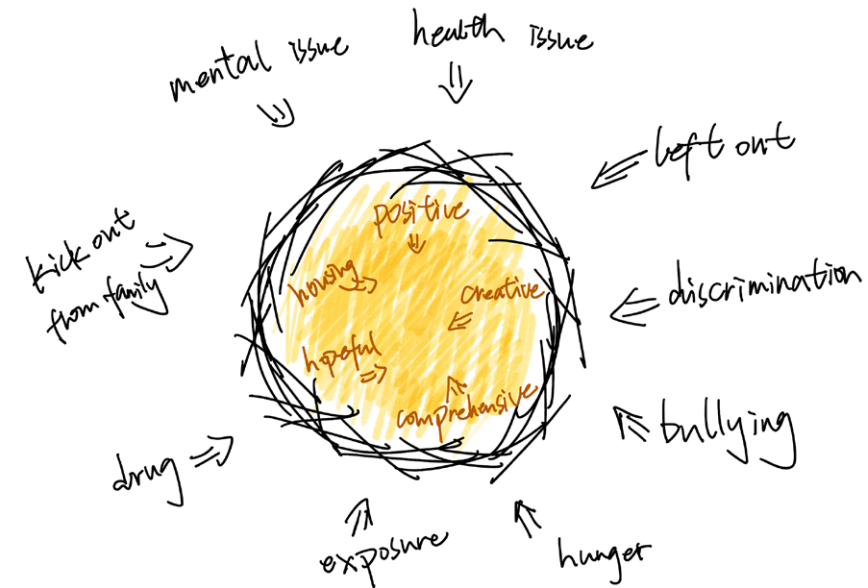
X FOLLOWS THE
INSTRUCTIONS AND COMES
TO SHELTER TO COMPLETE
THE CHECK-IN PROCESS. THE
DORMITORY MANAGER WHO
IS ON DUTY TODAY DECIDES
TO TAKE X TO VISIT HIS NEW
HOME.

"WELCOME TO BIRD NEST YOUTH HOMELESS SHELTER"

BIRD NEST HOMELESS SHELTER

Emotional Concept

Bird nest is the meaning and emotional concept support behind the shelter. It creates a nest for them as a teenager to protect and teach them how to face the storm before their wings are fully grown, the bird nest weakens the original negative impact from society and build up a healthier environment for them.

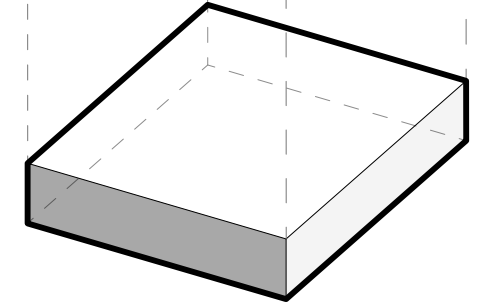
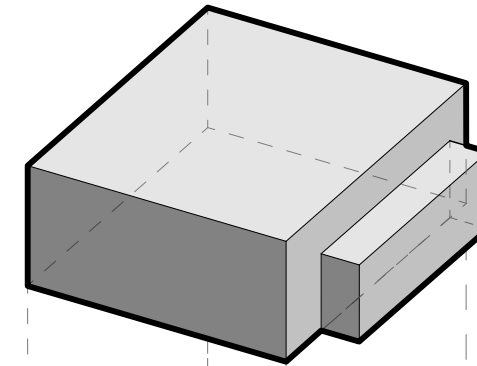
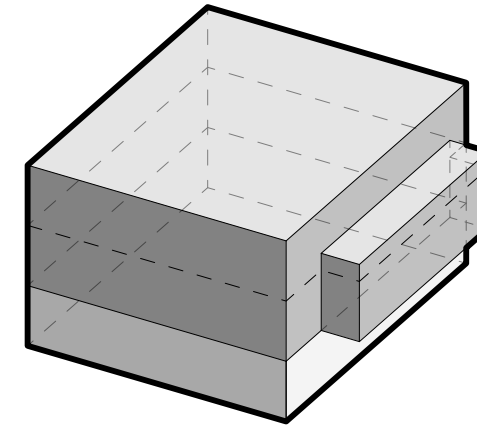


Design Strategy

Through renovation, the double-height second floor was changed to the current second and third floors. The first floor is focusing more about the exhibition area for the shelter, and the second floor contains more public areas. The third floor is the private living area. The designer wants to break the gap between people in different social classes.

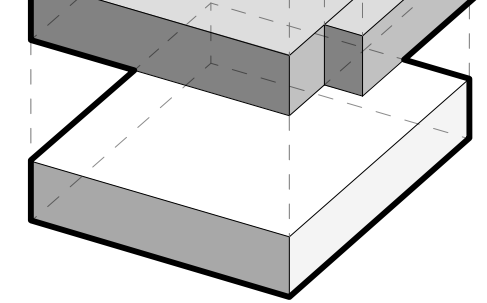
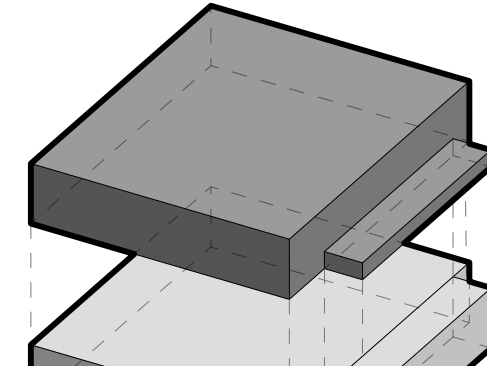
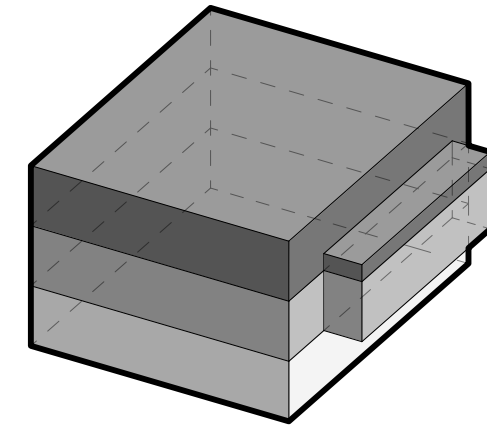


HOST BUILDING



VS.

DESIGNED BUILDING



MEETING AREA

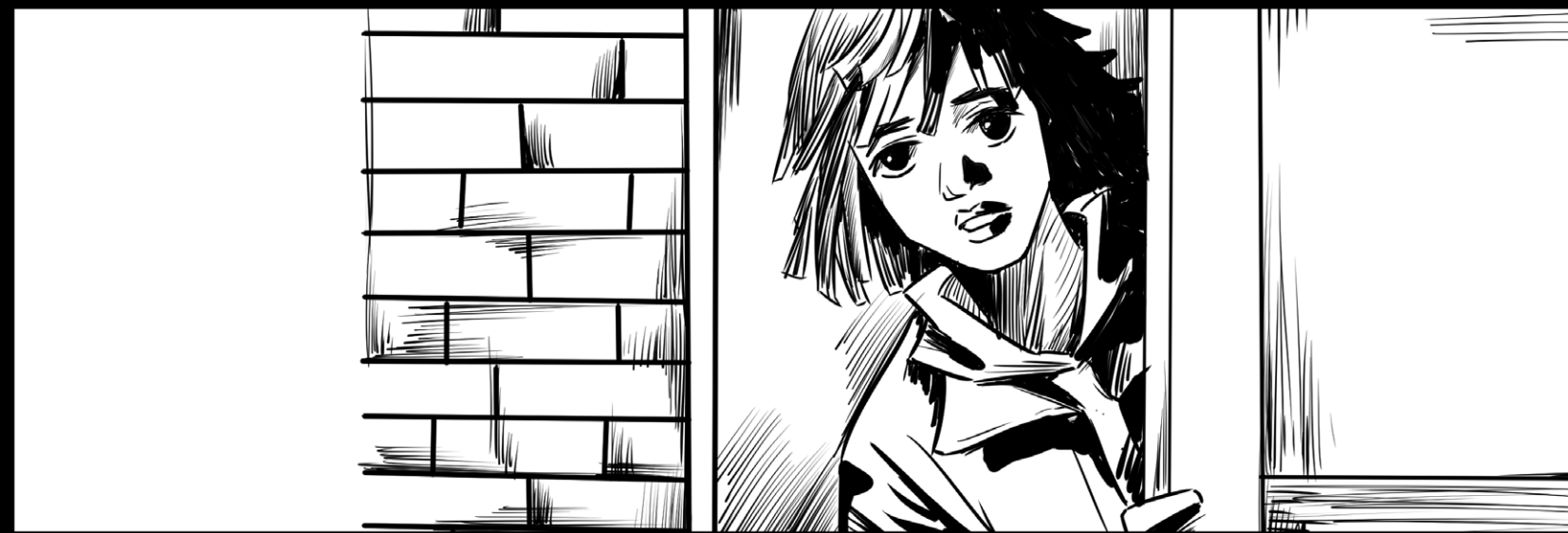
HOTEL LOBBY

PRIVATE SPACE

PUBLIC SPACE

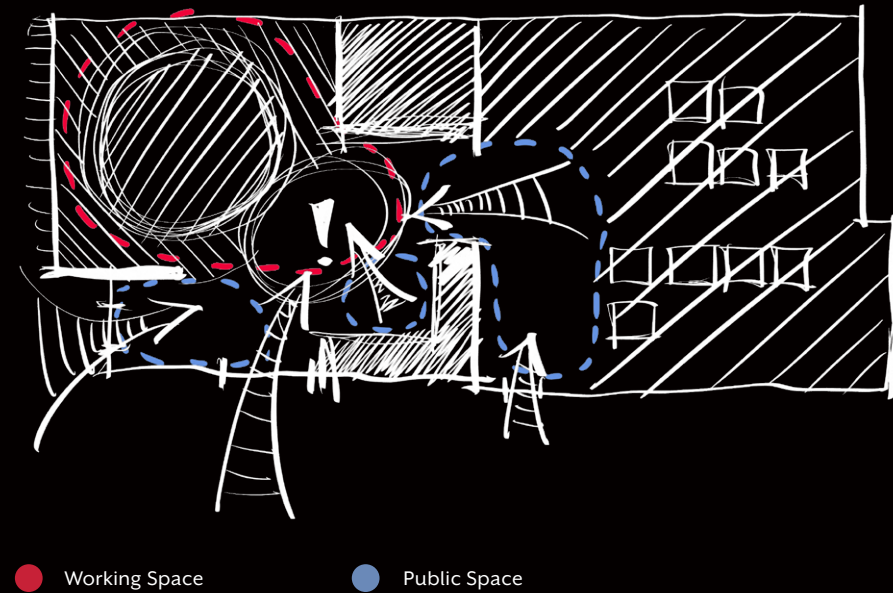
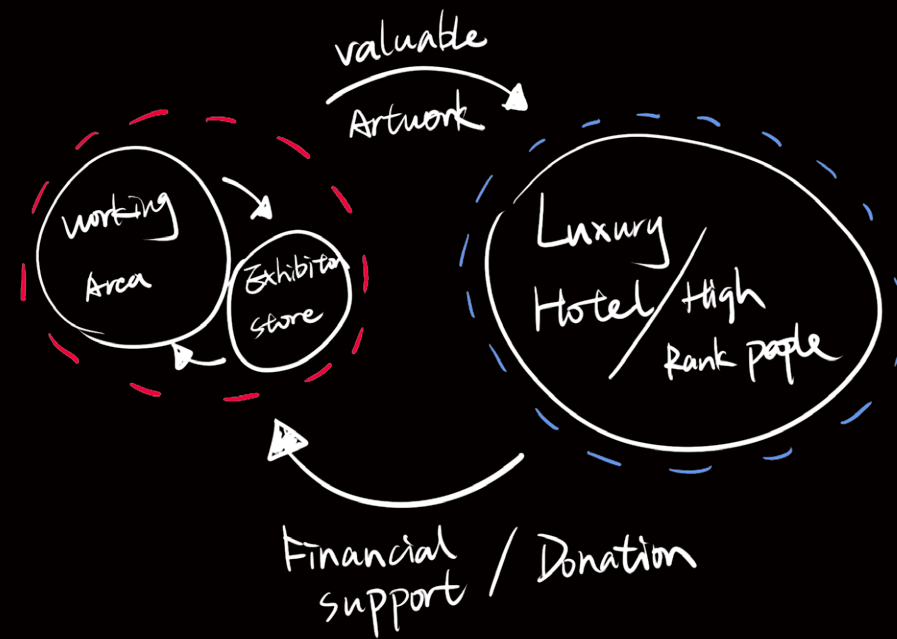
EXHIBITION SPACE

SHELTER DOCUMENTATION



DESIGN - SHELTER TOUR

FIRST FLOOR



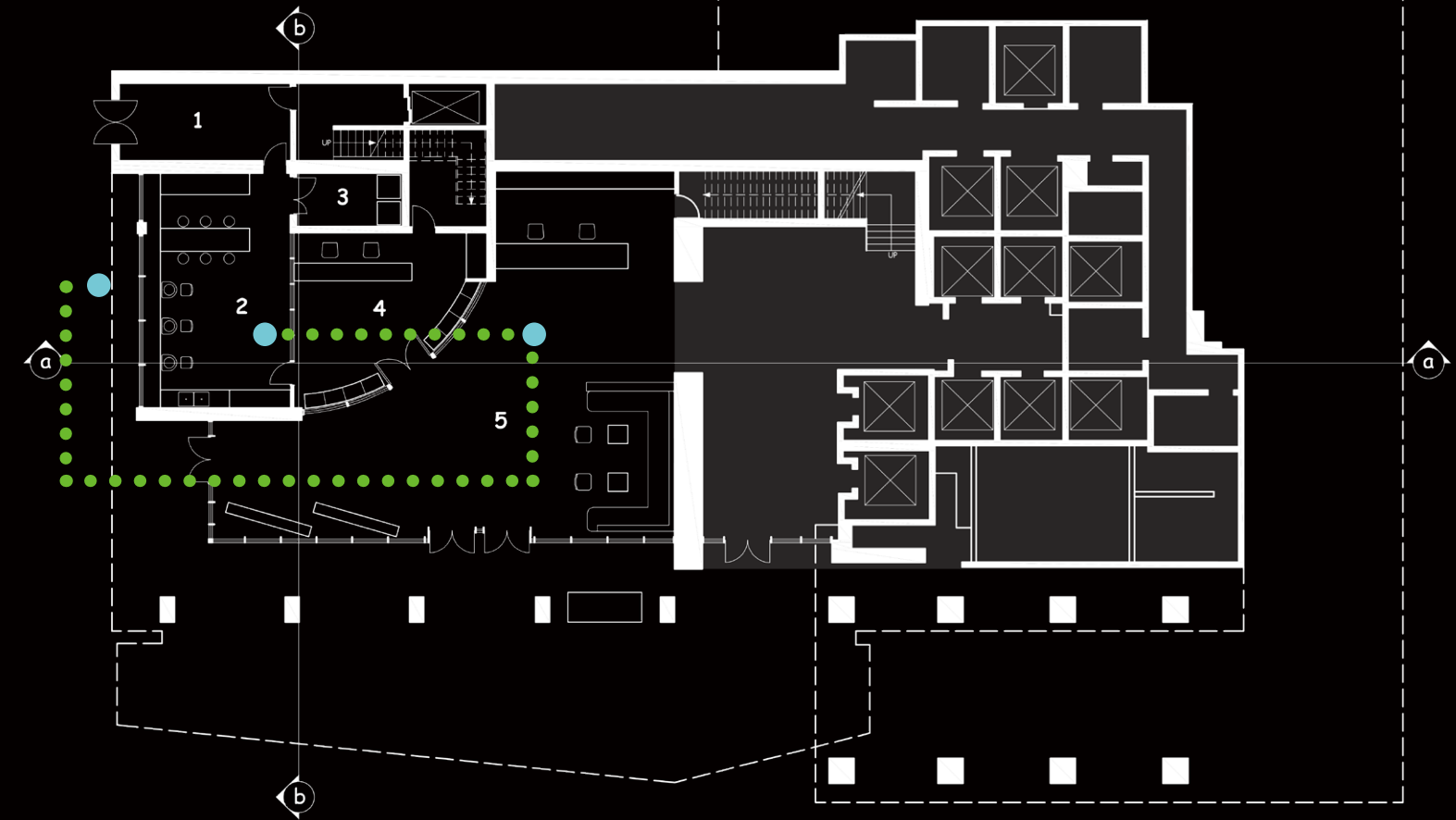
● Working Space ● Public Space

The main functions on the first floor are exhibition space and Ceramic studio. They are here for providing hand-made places and teaching handicraft techniques. At the same time, the shelter can sell valuable crafts they made during their hard work through the pop-up store and the fundamental financial support for the shelter, so the location of

the store is very important, the hotel has two main entrances and exits, the secondary entrance is for guest's luggage. There is a common intersection point between the check-in and checkout circulation for hotel guests, which is the most central point, and that is the best location to draw people's attention.

LEVEL 1

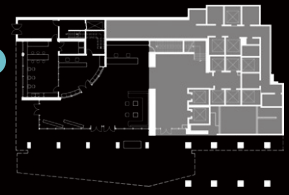
- 1 ENTRANCE
- 2 CERAMIC STUDIO
- 3 OVEN ROOM
- 4 POP-UP STORE
- 5 HOTEL RECEPTION



● Tour ● View Point

0 20FT 6M

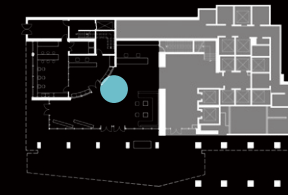
STREET VIEW



The ceramic studio is visually open to 3rd street, this is the display wall facing the street to tell people what they are learning and making here. The entire area is surrounded by glass, which is visually transparent, and the glass can also provide good natural light, with psychological pleasants.



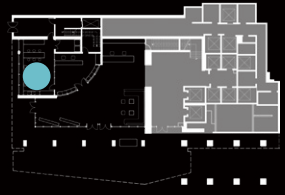
RECEPTION VIEW



The curved glass facade provides inclusiveness at any angle, which means you can see what the store looks like from all angles. In the middle of the customized display shelf is the support made of glass, which also ensures visual transparency.



CERAMIC STUDIO VIEW

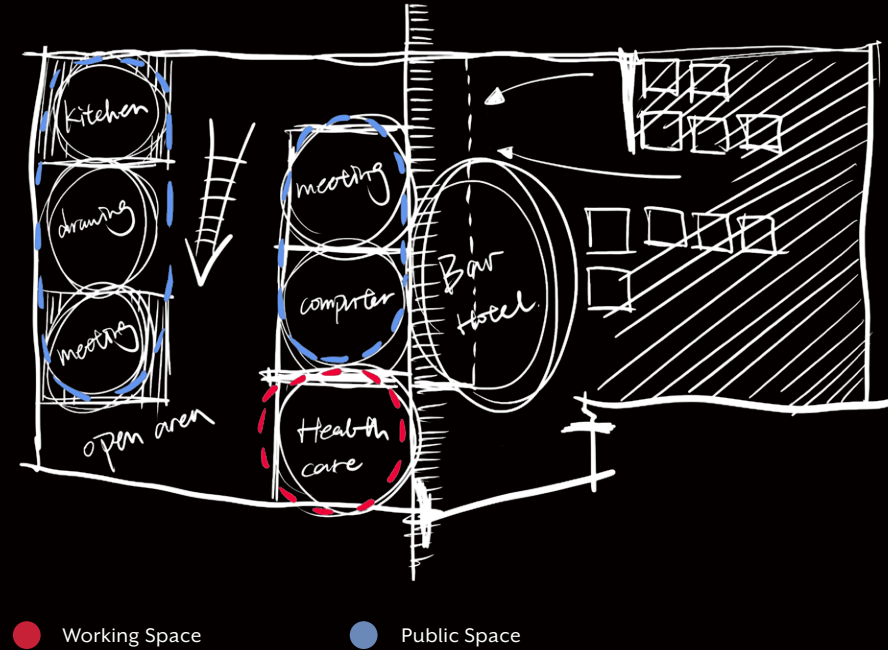
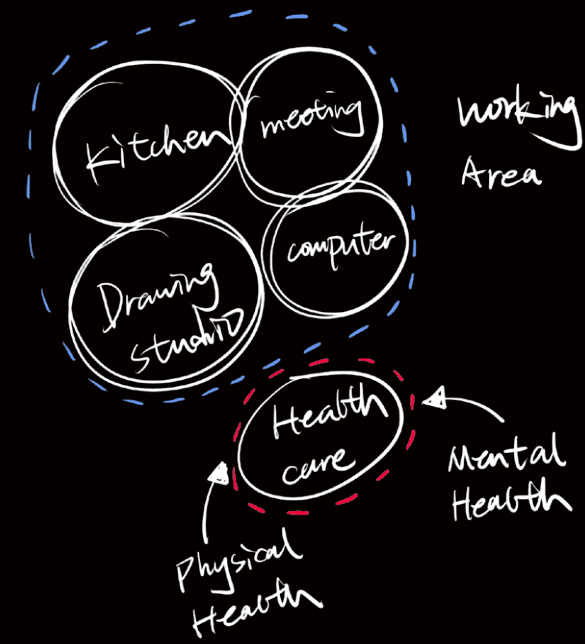


Yellow is the main color of the studio, Other main functional activity areas also have some yellow accents, because yellow is the best color to represent youth, hope, and bright future, and as well as it cheers people. The artificial light in the interior are also

warm light, the shelter wishes to provide a warm and inclusive environment. Dark furniture gives a strong contrast to the entire space to make a bright color even pops more.



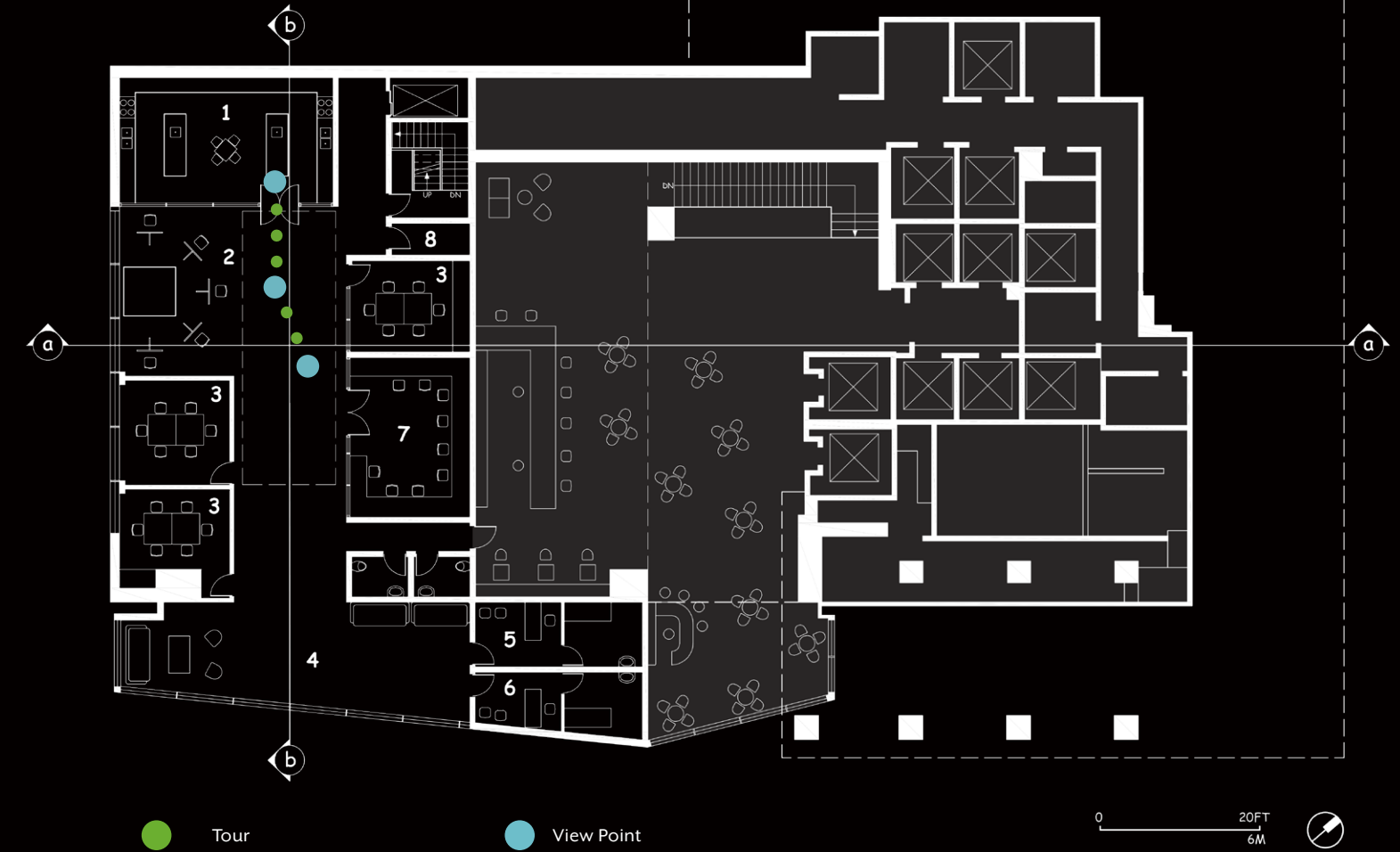
SECOND FLOOR



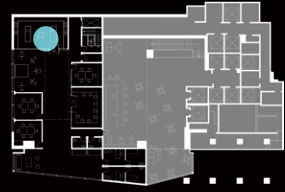
The second floor was mainly divided into the working space and healthcare area. A pre-work program is provided in the working area, including culinary arts, drawing studio, computer center, private meeting area, and other types of courses. Healthcare includes mental care and physical care, which provides health assistance to minors in the shelter. On the other side of the second floor, the bar on the first floor is moved to

LEVEL 2

- 1 CULINARY ARTS STUDIO
- 2 DRAWING STUDIO
- 3 PRIVATE MEETING ROOM
- 4 LOUNGE
- 5 MENTAL HEALTH CARE
- 6 PHYSICAL HEALTH CARE
- 7 COMPUTER ROOM
- 8 STORAGE



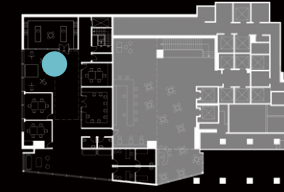
KITCHEN VIEW



In the kitchen, there are courses in culinary art. At the same time, this is where they usually eat. The geometric lights on the ceiling are also derived from the emotional concept.



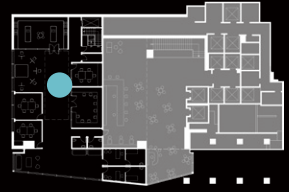
DRAWING STUDIO VIEW



In the drawing space, the original windows on the facade provide natural light. Blackout curtains also provide help for the need for artificial light and shadow when drawing and photographing.



SECOND FLOOR VIEW

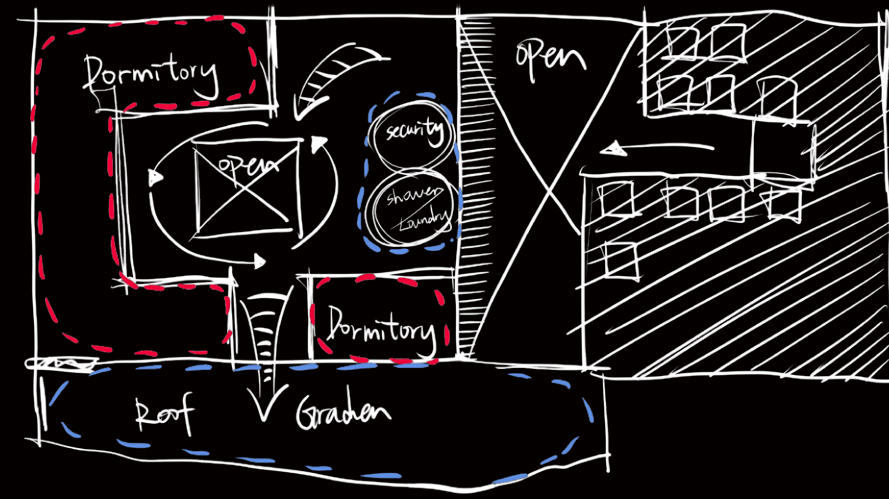


The middle space of the second floor is open to above, which allows the skylight on the top level provides natural light for the public space and the housing space. This also increases the visual and spatial connection between the living area and the

learning area and allows more homeless children to develop the interest in learning.



THIRD FLOOR

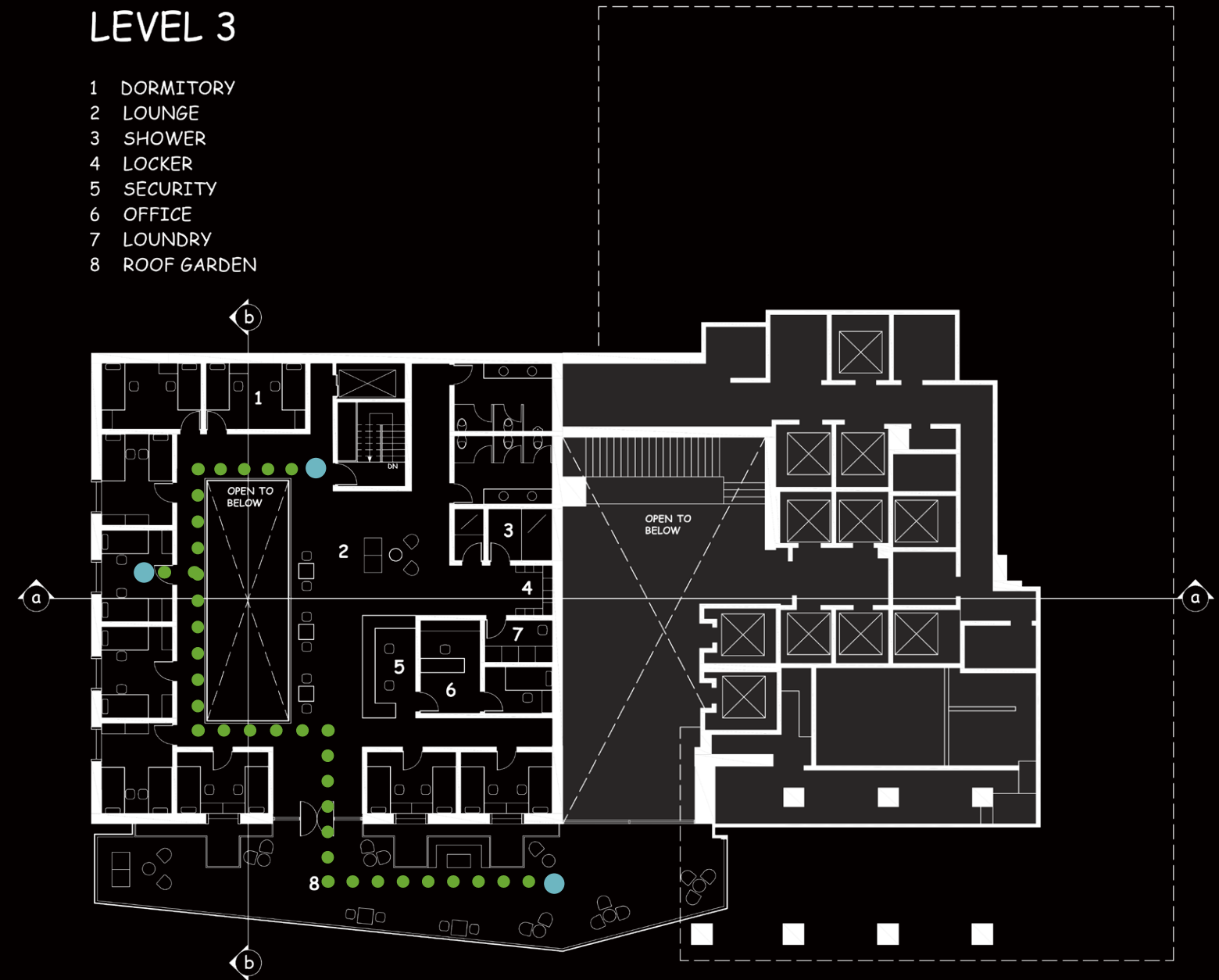


● Working Space ● Public Space

The third floor is where homeless youth live. The living area is mainly divided into two parts, the first one is rooms for every two people, and the other one is the supporting areas, such as laundry and showers, toilets, and roof gardens for public activities.

LEVEL 3

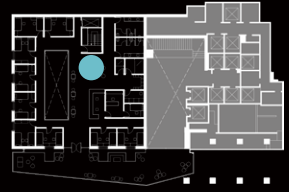
- 1 DORMITORY
- 2 LOUNGE
- 3 SHOWER
- 4 LOCKER
- 5 SECURITY
- 6 OFFICE
- 7 LAUNDRY
- 8 ROOF GARDEN



● Tour ● View Point

0 20FT 6M

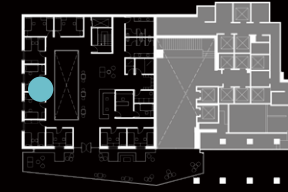
THIRD FLOOR VIEW



The security office is where people are on duty every day to ensure the safety of the teens and make sure the order in the shelter. Behind the security, the desk is an independent office and rest area for security persons. At night there will be two security guards on duty.



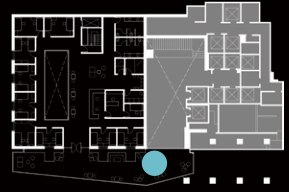
DORMITORY VIEW



In their room, everyone has a table, bed, and wardrobe. The table and bed are in the same piece. It saved a lot of space for more housing space. Yellow walls make the interior space very warm. The bed against the wall also makes children feel more secure when sleeping at night.



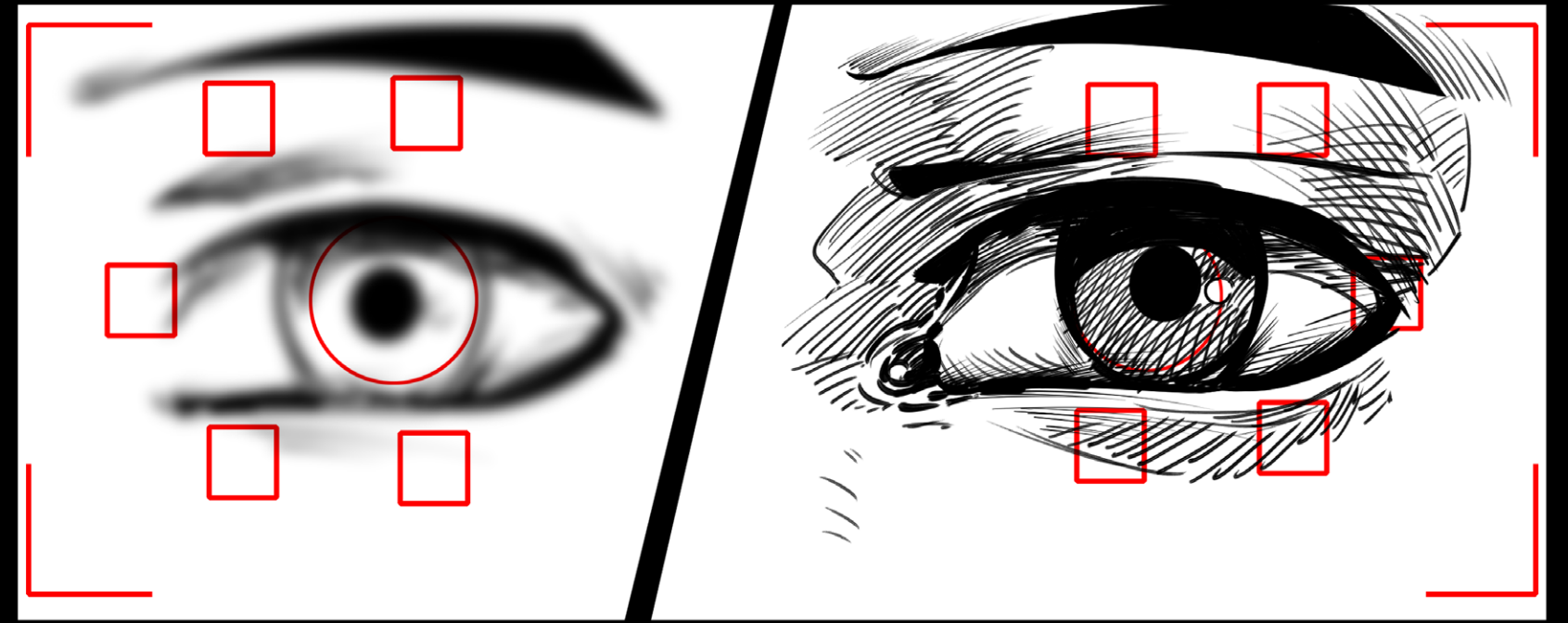
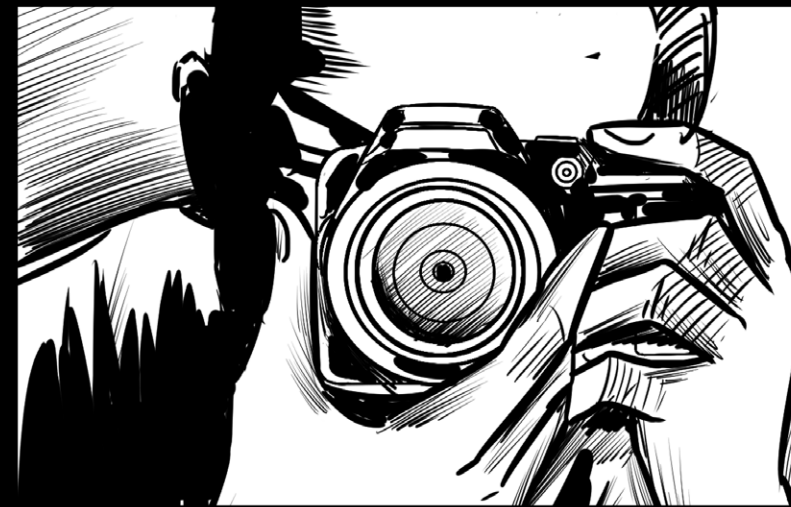
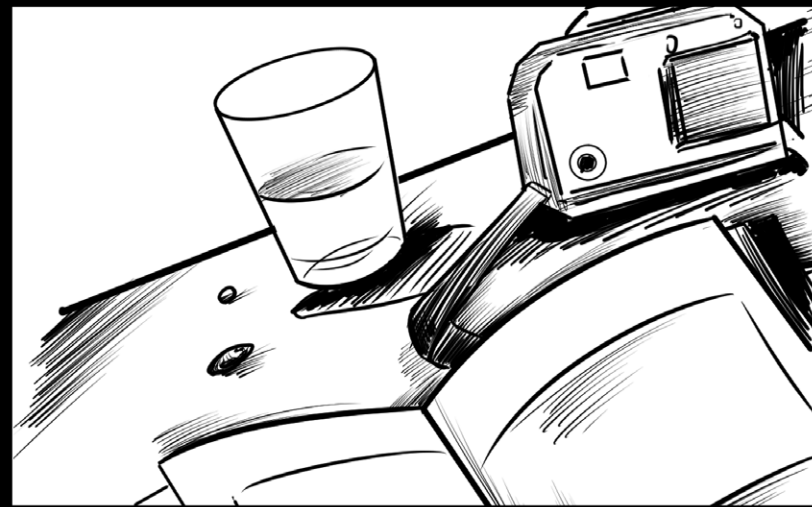
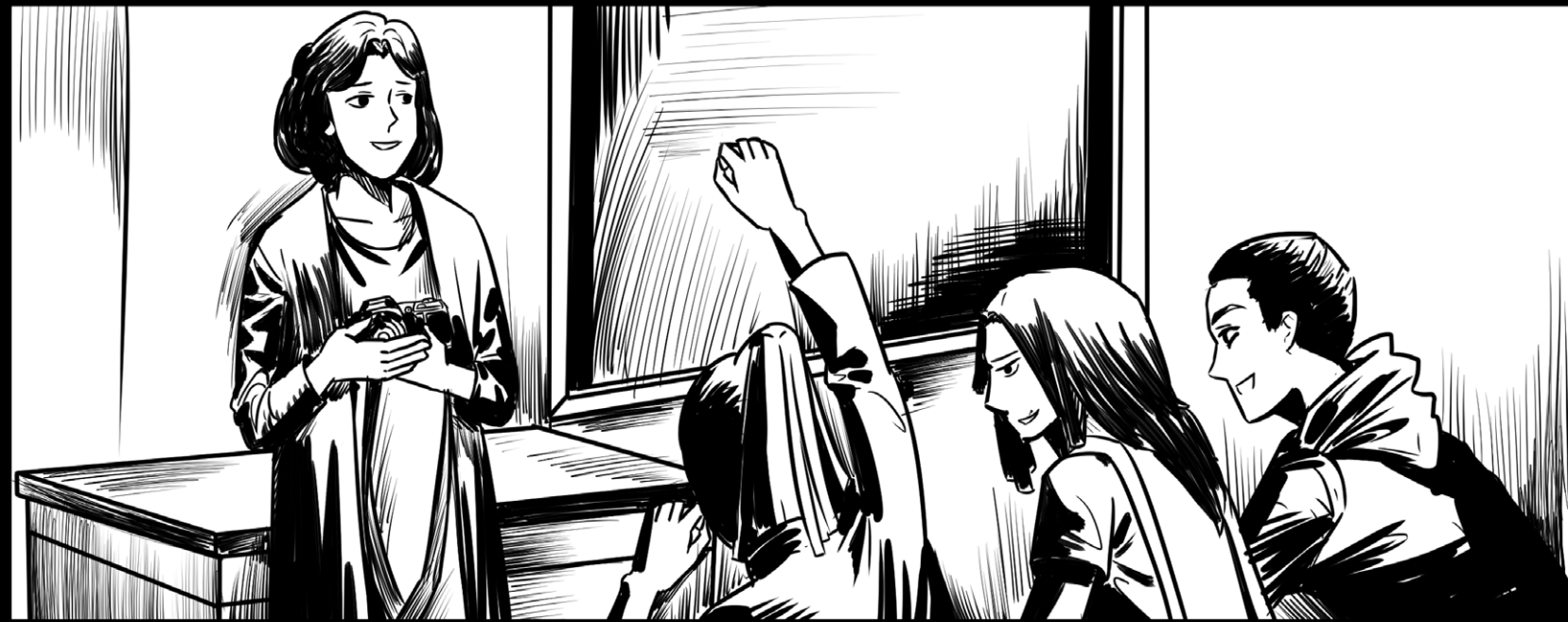
ROOF GARDEN VIEW



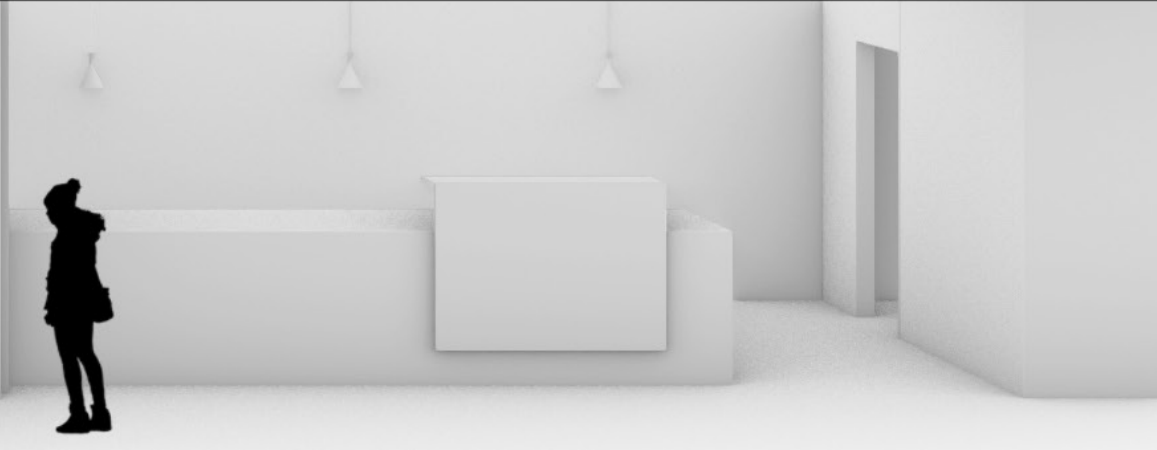
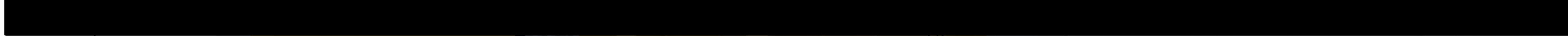
The roof garden on the third floor and the new bar on the second floor is visually connected. The double-height bar creates a display wall for space. The content on this wall can be changed seasonally to let people realize how serious the problem is.

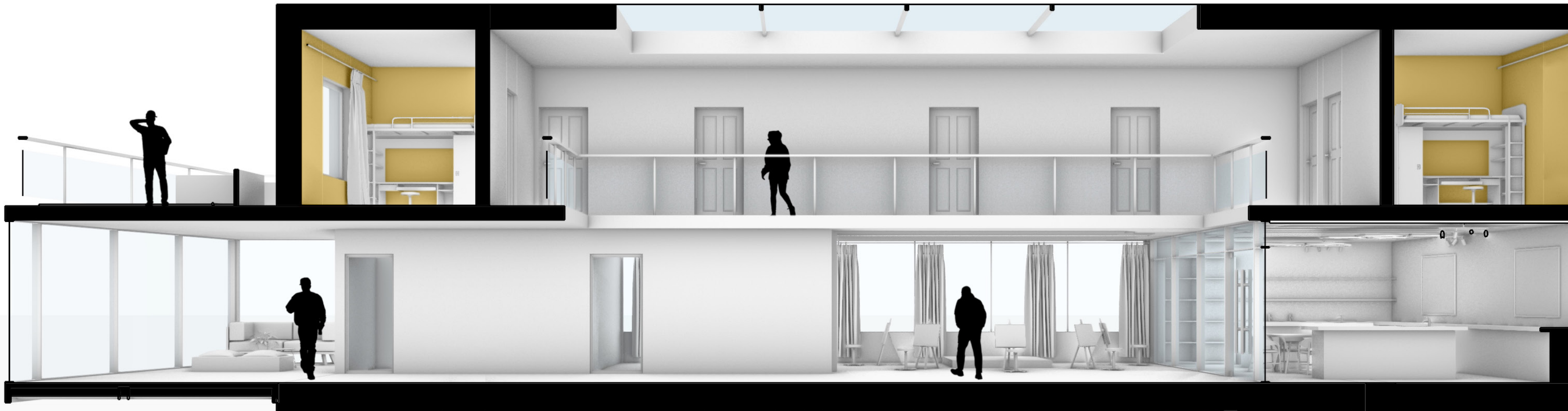


SHELTER DOCUMENTATION

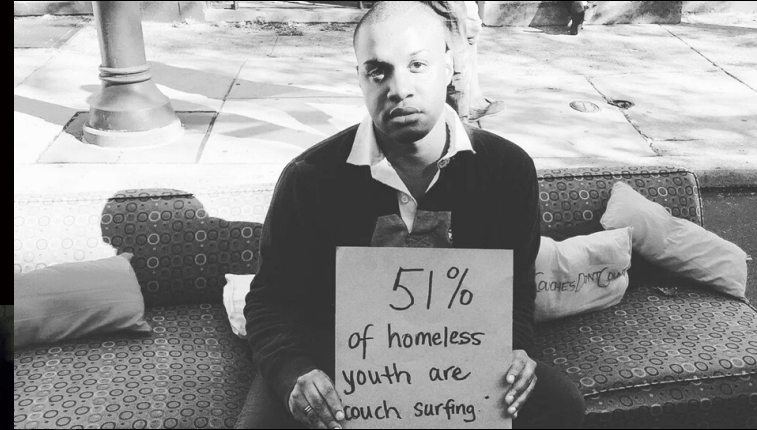


DESIGN - SECTION TOUR





X WOKE UP IN HIS BED AND TIME SLIPS AWAY.
TODAY IS HIS LAST DAY IN THE SHELTER.
HE CUTS HIS HAIR AND GOES TO HIS LAST
PHOTOGRAPHY CLASS. WHEN HE TURNED ON THE
CAMERA, HE ADJUSTED THE FOCUS SKILLFULLY,
AND HIS EYES GRADUALLY SHIFTED FROM BLUR TO
CLEAR, AND HE SEE HIS SHINING FUTURE.



X



X CAN REPRESENT ANY YOUTH HOMELESS TEENAGER, WE CAN SOLVE ANY PROBLEM BY USING THE POWER OF DESIGN AND MAKE OUR SOCIETY STRONGER.

SPECIALIST ADVISOR



Marijoan Bull

PhD, Brown University, Urban Studies

In the interview with Professor Marijoan, I learned that housing has always been an urgent problem for the US government, not only housing for the homeless group but also housing for anyone who does not have a permanent place to live. The first step to solve the housing problem is to encourage people to buy houses. When you buy a house, the amount of money you need to repay every month is constant. Although the house price is rising, the wage level of the whole society is also rising. In this way, people will find a fixed place to live faster. As for the homeless group, they have no source of income, so this plan won't work for them. Homeless shelter plays a very important role in this aspect. The homeless shelter is a community that exists like social welfare.

IMAGE CREDITS

Leroy Skalstad,

July 10, 2017, Digital,

<https://pixabay.com/photos/homeless-man-b-w-poverty-male-845752/>

David Mcnew,

June 13, 2016,

Digital, <https://www.newsweek.com/mandatory-lgbt-history-lessons-school-children-illinois-senate-909329>

Joeli Katz,

June 11, 2014, Digital,

<https://www.glaad.org/blog/video-meet-some-lgbt-homeless-youth-and-help-give-them-hand>

Skaggs, Cal, director. A Road to Home.

2016. Amazon,

https://www.amazon.com/dp/B079Y8MZN?pf_rd_p=845752

"California - National Alliance To End Homelessness".

2019. National Alliance To End Homelessness.

<https://endhomelessness.org/homelessness-in-america/homelessness-statistics/state-of-homelessness-report/california/>.

"St Regis 26E | San Francisco Properties : Luxury Homes And Real Estate Of San Francisco California

2019. Sfproperties.Com.

<http://www.sfproperties.com/properties/st-regis-26e>.

ANNOTATED BIBLIOGRAPHY

"Homeless In California Statistics 2018. Homeless Estimation By State | US Interagency Council On Homelessness". 2019. Usich.Gov. <https://www.usich.gov/homelessness-statistics/ca/>.

"Here are 10 New Facts About Sheltered Homelessness in America", NAEH, 2015 <https://endhomelessness.org/here-are-10-new-facts-about-sheltered-homelessness-in-america/>

"Homeless Population | City Performance Scorecards". 2019. Sfgov.Org. <https://sfgov.org/scorecards/safety-net/homeless-population>.

"California - National Alliance To End Homelessness". 2019. National Alliance To End Homelessness. <https://endhomelessness.org/homelessness-in-america/homelessness-statistics/state-of-homelessness-report/california/>.

Lander, L., Howsare, J., & Byrne, M. (2013). The impact of substance use disorders on families and children: from theory to practice. *Social work in public health*, <https://www.ncbi.nlm.nih.gov/pmc/articles/PMC3725219/>

U.S. Department of Health and Human Services. (2013). Report to Congress on the Runaway and Homeless Youth Programs Fiscal Years 2010 and 2011. Washington DC: U. S. Department of Health and Human Services.

National Alliance to End Homelessness. (2009). Incidence and vulnerability of LGBTQ homeless youth. Washington DC: National Alliance to End Homelessness.

Ray, N. (2007). Lesbian, gay, bisexual and transgender youth: An epidemic of homelessness. National Gay and Lesbian Task Force Policy Institute & National Coalition for the Homeless.

Quintana, N. S., Rosenthal, J., & Krehely, J. (2010). On the streets: The federal response to gay and transgender homeless youth. Washington, DC: Center for American Progress.

"True Colors United | Our Issue". 2019. True Colors United. https://truecolorsunited.org/our-issue/?gclid=EAlalQobChMlq9uvmjR45QlVAZSzChlJUwevEAAYASAAEglKZPD_BwE.

"Our Houses | Covenant House". 2019. Covenanthouse.Org. <https://www.covenanthouse.org/homeless-shelters>.

User, Super. 2019. "Home". Thenightministry.Org. <https://www.thenightministry.org/>.

"Hamilton Families". 2019. Hamilton Families. <https://www.hamiltonfamilies.org/>.

"Pine Street Inn | History". 2019. Pinestreetinn.Org. <https://www.pinestreetinn.org/about-us/history>.

