

Changes in Natural Killer Cell Activation and Function during Primary HIV-1 Infection

Vivek Naranbhai^{1,2,3a}, Marcus Altfeld^{2,3}, Salim S. Abdool Karim^{1,4}, Thumbi Ndung'u^{2,3}, Quarraisha Abdool Karim^{1,4}, William H. Carr^{2,3,3a,b}

1 CAPRISA – Centre for the AIDS Programme of Research in South Africa, Doris Duke Medical Research Institute, Nelson R Mandela School of Medicine, University of KwaZulu-Natal, Durban, South Africa, **2** HIV Pathogenesis Programme, Doris Duke Medical Research Institute, Nelson R Mandela School of Medicine, University of KwaZulu-Natal, Durban, South Africa, **3** Ragon Institute of Massachusetts General Hospital, Massachusetts Institute of Technology and Harvard, Boston, Massachusetts, United States of America, **4** Department of Epidemiology, Mailman School of Public Health, Columbia University, New York, New York, United States of America

Abstract

Background: Recent reports suggest that Natural Killer (NK) cells may modulate pathogenesis of primary HIV-1 infection. However, HIV dysregulates NK-cell responses. We dissected this bi-directional relationship to understand how HIV impacts NK-cell responses during primary HIV-1 infection.

Methodology/Principal Findings: Paired samples from 41 high-risk, initially HIV-uninfected CAPRISA004 participants were analysed prior to HIV acquisition, and during viraemic primary HIV-1 infection. At the time of sampling post-infection five women were seronegative, 11 women were serodiscordant, and 25 women were seropositive by HIV-1 rapid immunoassay. Flow cytometry was used to measure NK and T-cell activation, NK-cell receptor expression, cytotoxic and cytokine-secretory functions, and trafficking marker expression (CCR7, $\alpha_4\beta_7$). Non-parametric statistical tests were used. Both NK cells and T-cells were significantly activated following HIV acquisition ($p=0.03$ and $p<0.0001$, respectively), but correlation between NK-cell and T-cell activation was uncoupled following infection (pre-infection $r=0.68$; $p<0.0001$; post-infection, during primary infection $r=0.074$; $p=0.09$). Nonetheless, during primary infection NK-cell and T-cell activation correlated with HIV viral load ($r=0.32$; $p=0.04$ and $r=0.35$; $p=0.02$, respectively). The frequency of Killer Immunoglobulin-like Receptor-expressing (KIR_{pos}) NK cells increased following HIV acquisition ($p=0.006$), and KIR_{pos} NK cells were less activated than KIR_{neg} NK cells amongst individuals sampled while seronegative or serodiscordant ($p=0.001$; $p<0.0001$ respectively). During HIV-1 infection, cytotoxic NK cell responses evaluated after IL-2 stimulation alone, or after co-culture with 721 cells, were impaired ($p=0.006$ and $p=0.002$, respectively). However, NK-cell IFN- γ secretory function was not significantly altered. The frequency of CCR7+ NK cells was elevated during primary infection, particularly at early time-points ($p<0.0001$).

Conclusions/Significance: Analyses of immune cells before and after HIV infection revealed an increase in both NK-cell activation and KIR expression, but reduced cytotoxicity during acute infection. The increase in frequency of NK cells able to traffic to lymph nodes following HIV infection suggests that these cells may play a role in events in secondary lymphoid tissue.

Citation: Naranbhai V, Altfeld M, Karim SSA, Ndung'u T, Karim QA, et al. (2013) Changes in Natural Killer Cell Activation and Function during Primary HIV-1 Infection. *PLoS ONE* 8(1): e53251. doi:10.1371/journal.pone.0053251

Editor: Aftab A. Ansari, Emory University School of Medicine, United States of America

Received: August 29, 2012; **Accepted:** November 28, 2012; **Published:** January 9, 2013

This is an open-access article, free of all copyright, and may be freely reproduced, distributed, transmitted, modified, built upon, or otherwise used by anyone for any lawful purpose. The work is made available under the Creative Commons CC0 public domain dedication.

Funding: This work was supported by the South African HIV/AIDS Research Platform (SHARP), and US National Institutes for Health FIC K01-TW007793. This study was part of the CAPRISA TRAPS (Tenofovir gel Research for AIDS Prevention Science) Program, which is funded by CONRAD, Eastern Virginia Medical School (USAID co-operative grant #GP00-08-00005-00, subproject agreement # PPA-09-046). The views expressed by the authors do not necessarily reflect the views of USAID, Gilead Sciences, Eastern Virginia Medical School or CONRAD. The authors thank the US National Institutes for Health's Comprehensive International Program of Research on AIDS (CIPRA grant # AI51794) for the research infrastructure. VN was supported by LIFELab and the Columbia University-South Africa Fogarty AIDS International Training and Research Program (AITRP, grant #D43 TW000231). MA is a Distinguished Clinical Scientist of the Doris Duke Charitable Foundation. WHC was supported by a Massachusetts General Hospital Physician Scientist Development Award. TN holds the South African Research Chair in Systems Biology of HIV/AIDS and is a Howard Hughes Medical Institute International Early Career Scientist. Additional training was supported by the South African National Research Foundation KISC Award. Gilead Sciences did not fund this project, however the drug used in the clinical trial from which samples were used for this study belongs to Gilead Sciences. The funders had no role in study design, data collection and analysis, decision to publish, or preparation of the manuscript.

Competing Interests: The authors have read the journal's policy and have the following conflicts: Salim Abdool Karim and Quarraisha Abdool Karim were the co-Principal Investigators of the CAPRISA 004 trial of tenofovir gel. QAK is co-Principal Investigator of the HIV Prevention Trials Network, which is undertaking HPTN 052 trial of treatment for prevention. SSAK is an executive committee member of the Microbicide Trials Network, which is undertaking the VOICE trial of oral and topical PrEP. Salim and Quarraisha Abdool Karim are also co-inventors of two pending patents (61/354,050 and 61/357,892) of tenofovir gel against HSV-1 and HSV-2 with scientists from Gilead Sciences. Gilead Sciences did not fund this project, however the drug used in the clinical trial from which samples were used for this study belongs to Gilead Sciences. This does not alter the authors' adherence to all the PLOS ONE policies on sharing data and materials.

* E-mail: wcarr@mec.cuny.edu

^{3a} Current address: Nuffield Department of Medicine, University of Oxford, Oxford, United Kingdom

^{3b} Current address: Department of Biology, Medgar Evers College, The City University of New York, Brooklyn, New York, United States of America

Introduction

Understanding immunological responses that modulate HIV-1 pathogenesis is important for vaccine and immunotherapy development. Events that occur during the earliest period of HIV-1 infection disproportionately influence the outcome and course of disease. In particular, generalized activation of CD8 T-cells is associated with faster disease progression [1], whilst HIV-specific CD8+ and CD4+ T-cell responses during primary infection are associated with slower disease progression and lower set point viral load [2,3,4]. Although the effects of HIV-1 infection on adaptive immune cells, particularly T-cells have been well described, the impact on innate immune responses are less well understood. Natural Killer (NK) cells, are part of the innate immune defense against viral infections and modulate subsequent adaptive immune responses [5]. *In vitro* and animal studies suggest a possible role of NK cells in controlling viral replication during primary HIV-1 infection [6]. NK cells can limit HIV replication through direct killing of infected cells as well as the secretion of anti-viral cytokines. However, HIV can also impair immune responses by NK cells [7,8,9]. By examining the responses of NK cells prior to infection and at the earliest time points following infection, we may better unravel cause-effect relationships of HIV impact on immune responses and vice-versa.

During chronic HIV-1 infection NK-cell cytotoxicity and cytokine secretion are impaired, but these deficiencies likely start earlier in the course of disease [10]. The impairments are associated with expansion of an “anergic” NK cell subset that expresses CD16 and relatively low levels of CD56 (CD56_{neg}CD16_{pos}). Some investigators have also proposed that this subset functionally impairs the total NK cell population [11]. *In vitro* models of HIV infection suggest that HIV viraemia contributes to this impairment [9]. Viraemia peaks early following acquisition, during primary HIV infection. Thus, NK cell dysregulation *in vivo* likely begins during primary infection. This hypothesis is supported by the findings of Alter and colleagues [7]. In a study of 10 acutely infected individuals, they reported quantitative expansion of NK cell populations during the seronegative phase of primary HIV-1 infection that rapidly returned to baseline, but remained qualitatively different from 14 healthy HIV-uninfected individuals, or 45 individuals with chronic HIV. They observed NK cell expansion prior to the development of adaptive (CD8+ T-cell) responses. They also found that NK-cell degranulation and interferon-gamma (IFN- γ) secretion were elevated in the seronegative phase of infection but declined subsequently independent of antiretroviral treatment status. However the lack of blood samples from the same individuals prior to HIV acquisition limited the conclusions from this study [12].

Few studies have quantified immune responses before and after HIV infection among the same individuals. Most previous studies compare immune responses in HIV acutely infected individuals to uninfected individuals [13]. Here we extend the findings of previous studies by characterizing innate immune responses in the same individuals before and after HIV acquisition. To better understand the kinetics of NK-cell responses in primary HIV-1 infection we compared innate immune responses in paired blood specimens collected prior to and during primary infection among women who acquired HIV whilst enrolled in a randomized, controlled clinical trial of 1% Tenofovir microbicide gel. Our findings provide new insights into the effects of HIV on NK-cell responses.

Methods

Study Subjects

This prospective cohort study was nested in the CAPRISA 004 Tenofovir gel trial of coitally-related use of 1% Tenofovir gel [14]. The trial enrolled 889 sexually active (defined as >2 sex acts in preceding 30 days) women 18–40 years of age, who were resident in high-prevalence rural and urban communities. For this study, 41 consenting adult women, who acquired HIV whilst in the trial, were selected based on sample availability. Incident HIV infection was established by two rapid HIV antibody tests and confirmed by negative qualitative HIV PCR testing of pre-infection samples. In cases of diagnostic uncertainty, Western blots and/or an HIV-1 ELISA were performed. To characterize changes in NK cells in women who acquired HIV-1, and whether these were associated with changes in T-cell activation or function, we examined NK cell and T-cell responses at the last sampling time point before infection and during primary HIV-1 infection.

Participants gave informed consent for their samples to be stored and used for this study. This study was approved by the University of KwaZulu-Natal Biomedical Research Ethics Committee (#BE073/010). The clinical trials registration number of parent trial was NCT00441298.

Natural Killer cell and T-cell activation

Activation, CD107a expression and intracellular cytokine production were measured in cryopreserved peripheral blood mononuclear cells (PBMC) in batch analyses using optimized flow cytometry methods as previously described [15]. Cryopreserved PBMC were rapidly thawed in warm media (RPMI 1640; Gibco), washed and rested for two hours. Sample viability and cell counts were determined by staining with Viacount (Millipore) and run on a Guava PCA (Millipore). PBMC were stained with Yellow Viability Dye (Invitrogen), anti-CD14 (clone Tuk4, Invitrogen) and -CD20 (clone HI47, Invitrogen) antibodies (to exclude nonviable cells, monocytes and B-cells, respectively). In addition, the cells were stained with anti-CD3 (clone SP34-2, BD Biosciences),-CD16 (clone 3G8, BD Biosciences),-CD38 (clone HIT2, BD Biosciences),-CD56 (clone B159, BD Biosciences),-CD69 (clone FN50, BD Biosciences),-CD158a (clone HP-3E4, BD Biosciences),-CD158b (clone CH-L, BD Biosciences), -HLA-DR (clone L243, BD Biosciences) and anti-CD158e1/e2 (clone Z27, Beckman Coulter) antibodies. Flow cytometry data were collected on a BD LSRII and analyzed using FlowJo v9.3.1 (Treestar). NK cells were defined as viable, CD14_{neg}, CD20_{neg}, CD3_{neg}, CD16/56_{pos} lymphocytes. The frequency of NK cells that were HLA-DR_{pos} was determined using fluorescence minus one (FMO) gates. The frequency of T-cells, defined as viable, CD14_{neg}, CD20_{neg}, CD3_{pos} cells, expressing both CD38 and HLA-DR, was similarly determined. The gating strategy is shown in Figure S1.

NK-cell effector functions

Using cryopreserved PBMCs in batched analyses each of the following three NK-cell effector functions were quantified following IL-2 stimulation (100 U/ml R+D Systems) alone, IL-2 plus 721 cells or PMA/Ionomycin: degranulation (using CD107a expression as a surrogate [16]), cytokine secretion (IFN- γ), and recent cell division (using Ki-67 as a surrogate [17]). Cryopreserved PBMC were rapidly thawed in warm media, washed and rested for 12 hours in IL-2 enriched culture medium (RPMI 1640 media containing 50 U/ml IL-2 and 10% fetal calf serum). For experiments in which cells were stimulated with 721 cells, the NK cells were cultured with equal numbers of 721 cells. Cells were washed, resuspended in culture medium containing an antibody

directed against CD107a, and cultured for a further 6 hours. Samples were processed for flow cytometry as detailed above with the following modification. Cells were surface stained with anti-CD3 (clone SP34-2, BD Biosciences), -CD8 (clone 3B5, Invitrogen), -CD56 (clone B159, BD Biosciences), -CD69 (clone FN50, BD Biosciences) and anti-CD7 (clone 8H8.2, Beckman Coulter) antibodies, then washed, fixed and permeabilised before staining with anti-Ki-67 (clone B56, BD Biosciences) and -IFN- γ (clone 4S.B3, BD Biosciences) antibodies, respectively. To account for NK cells that have lost CD16 expression due to activation and to exclude monocyte/DC-like cells, anti-CD7 antibody was used as described [18]. FMO gates were used to determine the proportion of cells responding with one or more effector functions (i.e., CD107a, IFN- γ or Ki-67). The gating strategy is shown in Figure S2.

Statistical methods

Assays were conducted blinded to time point of sampling. For comparisons between paired specimens at pre- and post-infection time points from the same individual, a non-parametric Wilcoxon signed rank test was performed. For comparisons between different time points post-infection, a Kruskal-Wallis test was performed. Statistical analyses were conducted in GraphPad Prism v5 (GraphPad).

Results

To characterize the earliest changes in innate and adaptive immune responses induced by HIV-1, we examined NK-cell and T-cell responses, respectively, prior to HIV acquisition and during primary infection. Unlike most prior studies these responses were measured in the same individuals over time.

Study cohort

A total of 41 recently infected women were included in this study, (mean age 23.3 years). Thirty-one were in the tenofovir arm and eight in the placebo arm. To take into account differences between post-infection sampling time points in this cohort, the results were stratified by stage of HIV-1 infection at the time of sample collection. Blood samples collected at the last visit prior to HIV acquisition (hereafter referred to as pre-infection) were collected at a median of 119 days prior to HIV acquisition, IQR 67.25–169.25). The samples collected from these women at the first visit following HIV infection were designated as post-infection samples. HIV serostatus (seronegative versus seropositive) of the samples was only used in reference to samples collected after HIV acquisition (i.e., post-infection). Five participants were sampled during the seronegative stage of primary infection based on two HIV rapid tests (*seronegative* group), 11 whilst having indeterminate or discordant antibody responses (*discordant* group) and 25 during the seropositive stage of infection (*seropositive* group). Due to limited cell numbers, we were unable to assess NK-cell degranulation, proliferation or cytokine secretion in two seronegative, two discordant, and three seropositive individuals.

Based on estimates of the date of infection confirmed by BEAST analysis of viral sequences, seronegative, discordant and seropositive individuals were sampled at a median (IQR) of 14 (13.5–14), 15 (13–25) and 131 (105.5–157) days post-infection respectively. The median viral load (\log_{10} copies/ml) (IQR) was 4.95 (4.39–5.29), 4.63 (4.19–5.34) and 3.86 (3.38–4.80) for seronegative, discordant and seropositive groups respectively. The corresponding probable Fiebig staging was based on a combination of the estimated time post-infection at sampling and ancillary HIV PCR, Western blot and/or ELISA results, where available, were I/II/

early III; III/IV, and V/VI for seronegative, discordant and seropositive groups, respectively.

Consistent with a previous report on this cohort by Mureithi et al. [19] we did not observe any significant differences in any of the measured parameters between women who acquire HIV whilst receiving 1% Tenofovir gel compared with women on placebo gel. For this reason the groups were combined in further analyses.

NK-cell and T-cell activation were uncoupled by primary HIV-1 infection, but both were positively correlated with HIV viral load

The proportions of activated T-cells and NK cells were significantly increased during primary HIV-1 infection ($p < 0.0001$ and $p = 0.03$, Figures 1A and 1B, respectively). Prior to HIV acquisition, the proportions of activated NK cells and T-cells were positively correlated ($r = 0.68$, $p < 0.0001$, Figure 1C), whereas following infection, they were uncoupled ($r = 0.074$, $p = 0.09$, Figure 1D). Nevertheless, the proportions of activated T-cells and NK cells correlated independently with HIV viral load ($r = 0.32$, $p = 0.04$ and $r = 0.35$, $p = 0.02$, respectively; Figures 1E and 1F) but not with CD4+ T-cell counts (Figure 1G and H).

As a proportion of lymphocytes, NK cells were not significantly expanded during primary infection (Figure S3A). To take into account differences between post-infection sampling time points in this cohort the results were stratified by stage of HIV-1 infection when samples were collected. We observed no significant difference in frequencies of NK cells during primary infection between seronegative, serodiscordant and seropositive individuals ($p = 0.41$; Figure S3B) although a weak trend to greater frequencies in seronegative individuals was present. Similarly, there was no difference in the frequencies of recently divided NK cells as measured by expression of Ki-67 (Figure S3C and 3D). Although the difference in proportions of activated NK cells was not statistically significant, there was a tendency for greater activation during later stages of primary infection (Figure S3E). The frequencies of the CD56_{neg} (anergic), CD56_{dim} and CD56^{hi} NK cell subsets did not differ between pre-infection and post-infection time points, nor amongst the stages of primary infection (Figure S4A and 4B). In contrast, the proportion of recently divided CD8+ T-cells increased following HIV-1 infection ($p < 0.0001$, Figure S5A).

The frequency of Killer Immunoglobulin-like Receptor expressing NK cells (KIR_{pos}) increased following HIV-1 infection with KIR_{pos} NK cells being less activated than KIR_{neg} NK cells

Next, to explore whether KIRs contributed to the observed changes in activation profiles of NK cells, KIR expression was evaluated by flow cytometry. For this analysis commercial antibodies, which detected the most commonly expressed KIRs (KIR2DL1, KIR2DS1, KIR2DL2, KIR2DL3, KIR3DL1 and KIR3DS1), were used. A significant expansion in the proportion of KIR_{pos} NK cells was evident following HIV-1 infection ($p = 0.006$, Figure 2A) and appeared higher in individuals with seronegative primary HIV-1 infection but this was not significant (Figure 2B). Since KIR modulate NK cell activation, activation on KIR_{pos} and KIR_{neg} cells was compared in each category of samples. Prior to HIV infection, the proportion of KIR_{pos} NK cells that were activated was significantly lower than KIR_{neg} NK cells ($p < 0.0001$, Figure 2C). During primary HIV-1 infection, KIR_{pos} NK cells were similarly less activated than KIR_{neg} NK cells amongst those with discordant or seropositive primary HIV-1 infection ($p = 0.001$, $p < 0.0001$ respectively, Figure 2C). This did

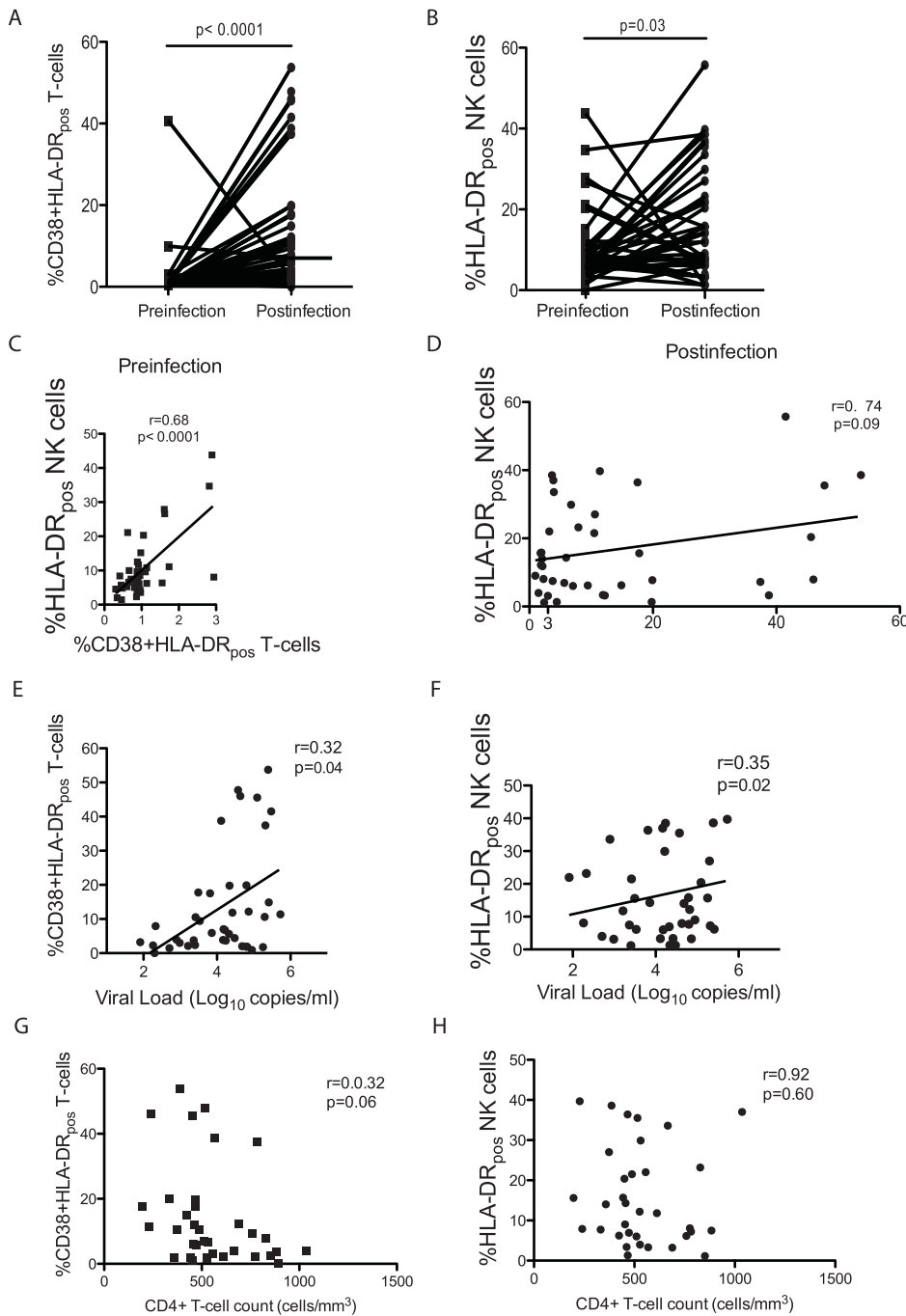


Figure 1. Primary HIV-1 infection was associated with differential T-cell and NK-cell activation. T-cells (A) and NK cells (B) were activated following HIV infection. The proportion of activated T-cells and NK cells was significantly correlated before (C), but not following HIV-1 infection (D). In contrast, during primary infection, both T-cell (E) and NK-cell (F) activation were positively correlated with HIV viral load (log₁₀ copies/ml) but not CD4+ T-cell counts (G and H respectively). doi:10.1371/journal.pone.0053251.g001

not achieve statistical significance in the smaller group with seronegative primary HIV-1 infection ($p = 0.13$, Figure 2C).

NK cell function was impaired during primary HIV-1 infection

To quantify the effects of HIV on NK-cell function, we assessed NK cell degranulation and interferon-gamma (IFN- γ) secretion in paired blood samples collected prior to HIV acquisition and after

infection, during the early stages of primary infection. The samples were analyzed after *ex vivo* culture in media containing Interleukin-2 (IL-2) alone, or after exposure to 721 cells (a B-cell line deficient in HLA class 1 expression) and IL-2, or PMA/Ionomycin and IL-2. For this assay NK cells were defined as CD3_{neg} cells expressing CD7, as done previously by Milush and colleagues [18].

Following *ex vivo* culture in media containing IL-2 stimulation alone, the proportion of degranulating NK cells was elevated

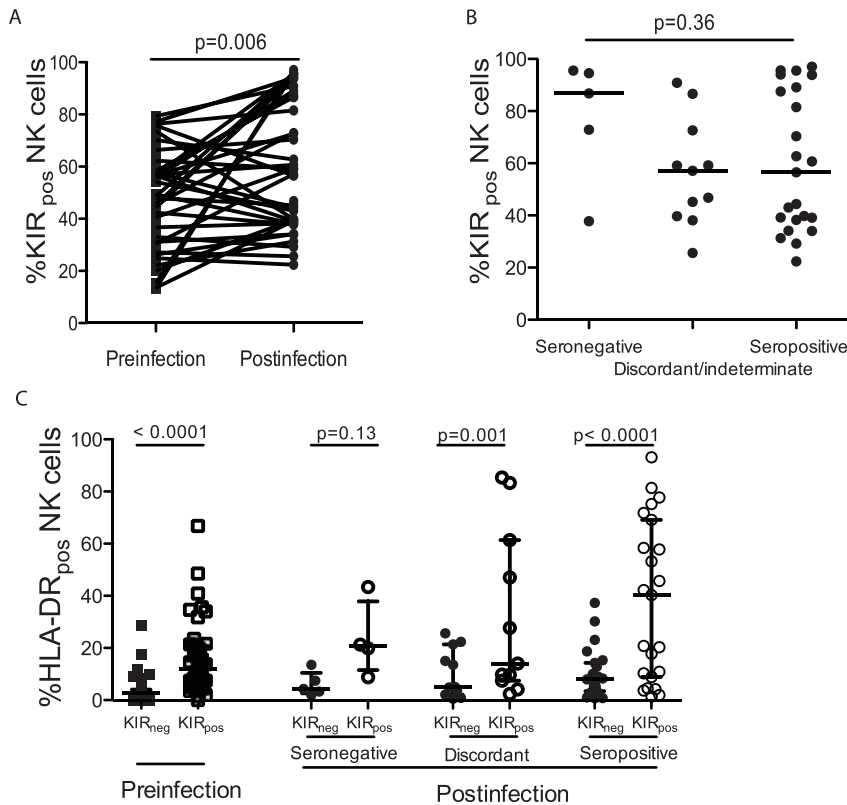


Figure 2. Following infection, an increased proportion of activated NK cells in blood expressed Killer Immunoglobulin-like Receptors (KIR). The proportion of KIR_{pos} NK cells in blood increased following HIV infection (A). The proportion of KIR_{pos} NK cells did not differ between stages of primary HIV infection (seronegative, sero-discordant or seropositive stages) (B). KIR_{pos} NK cells were more activated than KIR_{neg} NK cells (C).

doi:10.1371/journal.pone.0053251.g002

during primary HIV-1 infection compared to prior to HIV acquisition, ($p = 0.006$, Figure 3A). In contrast, the degranulation response of NK cells to 721 cells, (a model of “missing self”) [20], was significantly reduced during primary HIV-1 infection ($p = 0.002$, Figure 3A). Similarly, stimulation by PMA/Ionomycin showed the same tendency, but this difference did not reach statistical significance ($p = 0.06$, Figure 3A). There was no difference in the proportion of NK cells secreting IFN- γ following *ex vivo* IL-2 stimulation alone (Figure 3B). Following stimulation with 721 cells there was a tendency of fewer NK cells secreting IFN- γ after HIV acquisition ($p = 0.09$, Figure 3B). Likewise, the proportion of NK cells secreting IFN- γ following stimulation with PMA/Ionomycin was significantly lower after infection ($p = 0.03$). In contrast to NK cells, the proportion of degranulating CD8+ T was increased following HIV-1 infection ($p = 0.02$, Figure S5B) and there was no change in the proportion of IFN- γ _{pos} CD8+ T-cells (Figure S5C).

The frequency of NK cells expressing markers for homing to lymphoid tissues is increased during primary HIV-1 infection

Finally, to measure the impact of HIV acquisition on NK cell trafficking we quantified the expression of receptors for lymphoid and gastrointestinal tissue homing. We quantified the frequency of NK cells expressing either CCR7, which enables trafficking to lymphoid tissues [21], or α_4 and β_7 integrins, which enable homing to the gut [22]. After infection the frequency of CCR7+ cells increased markedly ($p < 0.0001$, Figure 4A). The propor-

tion of CCR7+ NK cells was decreased with later category of primary HIV-1 infection but did not return to baseline ($p < 0.0001$, Figure 4A). In contrast, the proportion of NK cells expressing both the α_4 and β_7 integrin subunits remained unchanged (Figure 4B).

Discussion

Primary HIV-1 infection is associated with differential NK cell and T-cell activation, expansion of NK cells expressing KIR, impairment of cytotoxic NK cell function in the absence of significant increase in anergic subsets, and NK cells equipped to home to secondary lymphoid tissues. These data offer insight into the impact of primary HIV-1 infection on NK cells.

Unlike prior studies that cross-sectionally analysed acutely infected and uninfected individuals [7,12], this study was unique in following immune responses over-time before and after HIV acquisition. The relatively small sample size of samples collected during the seronegative phase of infection limited our ability to compare responses during the seronegative versus seropositive stages of acute infection. Nevertheless, our finding that both NK cells and T-cells were activated early following HIV infection was consistent with previous findings by Alter and colleagues [12]. However, during primary infection we did not observe a significant expansion in the frequency of NK cells amongst total lymphocytes that has been described previously [12]. Alter and colleagues noted an expansion of NK cells among HIV-infected, seronegative individuals compared to uninfected individuals. Since most of the post-infection samples used in this study were collected during the seropositive phase of primary infection, we speculate

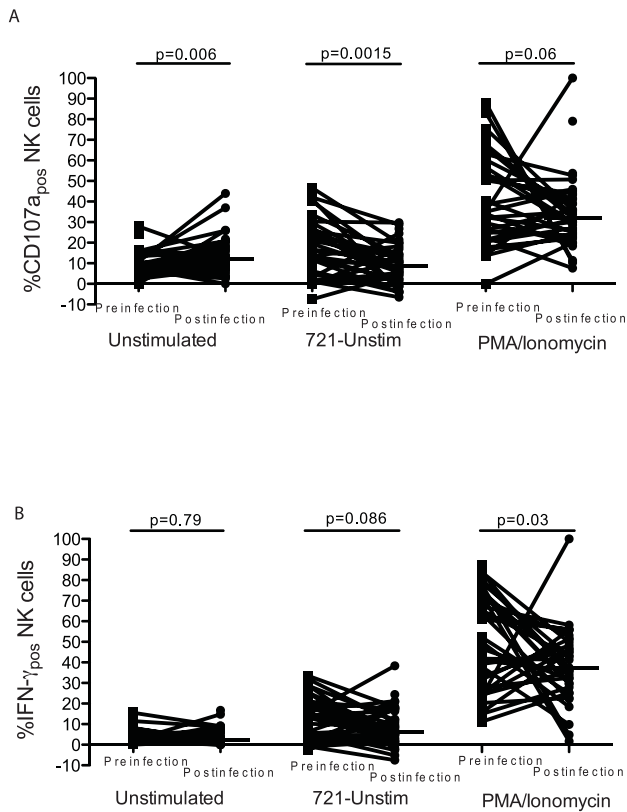


Figure 3. Following HIV infection NK-cell responses to stimulation were diminished. Natural Killer cell degranulation (A) and IFN- γ secretion (B) responses after stimulation with IL-2 alone or with IL-2 and 721 cells (adjusted for background) or with PMA/Ionomycin. Data are adjusted for background responses to media alone. doi:10.1371/journal.pone.0053251.g003

that NK-cell expansion may have occurred prior to our sampling time points. In addition, the relatively low number of seronegative individuals limited our statistical power to detect these differences. Therefore, our results are consistent with other reports that suggest that NK cell population expansion occurs early in primary infection but may be transient [7,12].

In this study NK cell and T-cell activation were uncoupled by primary HIV-1 infection illustrating the differential effects of HIV on NK cells and T-cells. This finding appears to be mostly explained by the relatively greater increase in T-cell activation. Alter and colleagues have previously shown that T-cell responses occur after NK-cell responses and are inversely correlated with the magnitude of NK cell activity during primary infection [23]. Primary HIV-1 infection was associated with expansion of KIR_{pos} NK cells, consistent with a previous study, but was not associated with enhanced KIR_{neg} NK cell activation. We speculate that this may be due to either expansion of NK cells able to detect HIV-1-infected cells that down-regulate HLA expression, or a regulatory response that diminishes NK cell reactivity. Fogli and colleagues have previously demonstrated that KIR_{pos} NK cells are incompletely activated in individuals with chronic HIV infection [8], which implies that this may be a regulatory mechanism. In this study we were not able to delineate which specific KIR (inhibitory versus activating) were expressed on the surface of NK cells. Further studies using newer reagents that can distinguish specific KIR are needed to understand the regulation of KIR expression in NK cells during primary infection.

Consistent with previous studies, NK cell function following stimulation with 721 cells or PMA/Ionomycin was impaired as early as primary HIV-1 infection even in the absence of significant expansion of anergic NK cells (CD56_{neg}CD16_{pos}) [7]. After infection, a higher proportion of NK cells degranulated in the presence of only IL-2 than before infection. This suggests that HIV may prime responses or that NK cells are degranulating *in vivo* in response to HIV. However, their response to culture with 721 cells was diminished. Similarly, their responses to non-specific stimulation with PMA/Ionomycin were reduced. These results suggest that NK cell functional deficiencies during primary infection might be attributed to impaired or incomplete activation rather than the accumulation of anergic NK cells.

Finally, we observed an increase in the frequency of blood NK cells expressing CCR7, a receptor for homing to lymphoid tissues. We did not observe a similar expansion of NK cells expressing $\alpha_4\beta_7$ integrins for homing to the gut. In contrast to our findings, Luteijn and colleagues did not observe a higher frequency of CCR7⁺ NK cells in blood from HIV-infected compared to uninfected individuals in their cross-sectional analysis [24]. One difference between these studies is that the participants in the study by Luteijn et al. were beyond the acute phase, but within the first year of HIV infection. Thus, the changes in CCR7 expression that we observed may be transient and limited to the acute phase of infection. In a previous study we found that chemokine receptor expression on NK cells changes rapidly [15]. In addition, the wide variation between individuals in the magnitude of change may also explain differences in the outcomes. In this study we noted a relatively large increase in the proportion of CCR7⁺ NK cells among some individuals and a much more subtle increase among others. Longitudinal assessment of changes in the frequency of CCR7⁺ NK cells within individuals would take some of this variability into account, and thus enable the detection of differences not apparent in a cross-sectional analysis. We propose that the increase in the frequency of KIR_{pos} NK cells in blood may also increase the proportion of NK cells that are able to traffic to lymphoid tissues. In support of this model, Marcenaro and colleagues previously showed that KIR-ligand mismatch was required for the *ex vivo* up-regulation of CCR7 expression by human NK cells interacting with either monocyte-derived dendritic cells or Epstein Barr Virus (EBV)-transformed B-cell lines [25]. It has been well-described that HIV decreases the expression of selected HLAs, which are ligands for KIRs [26]. Based on these observations, we speculate that the expansion of KIR-expressing NK cells concurrent with relative reduction in HLA-ligand expression simulates KIR-ligand mismatch and may facilitate NK cell CCR7 up-regulation and homing to lymphoid tissues. But Luteijn and colleagues observed relatively few KIR_{pos} NK cells in the lymph nodes of HIV-infected individuals [24] suggesting that these events may be transitory. Additional studies are needed to determine if changes in NK-cell compartmentalization occur *in vivo* and whether it influences the viral load set point in the acute phase of HIV infection. Studies may also need to track NK cell homing longitudinally in order to determine whether, for example, the observation of lack of $\alpha_4\beta_7$ _{pos} NK cell expansion is because NK cells home to the gut earlier than we were able to observe.

Several factors limit our conclusions. Firstly, we previously found that women in this cohort, who acquired HIV-1, had higher activation and lower NK cell responses prior to infection than women who remained uninfected [27,28]. Hence, these results may be generalizable to South African women who subsequently acquire HIV heterosexually, but they may not be generalizable to other populations. Future studies should consider whether pre-

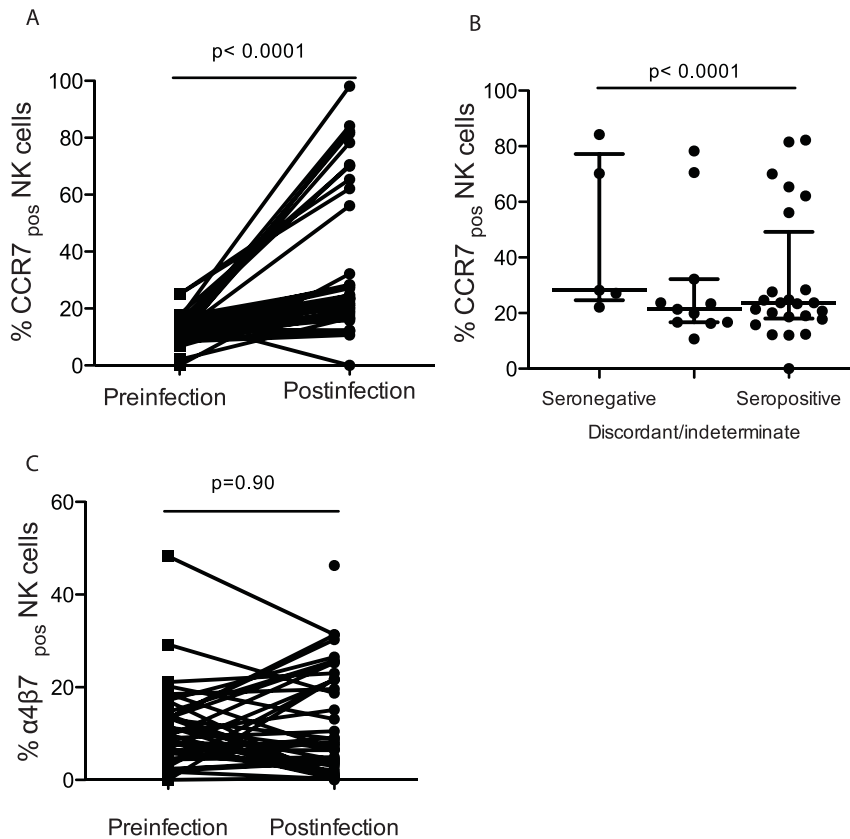


Figure 4. Early after HIV infection blood NK cells increased their expression of lymphoid, but not gut homing receptors. The proportion of NK cells expressing CCR7 was increased following HIV infection (A). The proportion of NK cells expressing CCR7 was reduced during later stages of primary infection (B). The proportion of NK cells that expressed $\alpha 4\beta 7$, was not changed during primary HIV-1 infection (C). doi:10.1371/journal.pone.0053251.g004

infection immune responses confound inferences about immune responses in the early post-infection period. Secondly, most women in this study were studied after the earliest phase of primary HIV-1 infection, as most had either discordant or positive serology at the time of first sampling. Thus transient events that occur very early infection may have been missed.

Overall, we found that primary HIV-1 infection was associated with activation of NK cells, potentially modulated by KIR expression. We observed functional impairment of NK cells early after HIV acquisition in the absence of anergic NK cell expansion. Further, during primary infection NK cells acquired the ability to home to secondary lymphoid tissues. This implies that they may play a role in early events outside the peripheral blood compartment. This study of matched blood specimens obtained before HIV-1 acquisition and during the stages of primary infection has helped delineate directionality in the relationship between NK cells and HIV during primary HIV-1 infection.

Supporting Information

Figure S1 The gating strategy for defining NK cells that expressed HLA-DR, a marker of activation, in matched samples obtained pre-infection (A) or post-infection (B), included (clockwise from top left for A and B) the gating of singlets, with forward (FSC) and side-scatter (SSC) properties consistent with lymphocytes, that were not monocytes ($CD14_{neg}$), B-cells ($CD20_{neg}$) or dead cells

(Viability dye $_{neg}$) and that were CD3 negative and expressed CD16/CD56. Figure shows a single donor at each timepoint. (EPS)

Figure S2 The gating strategy for defining NK cells expressing CD107a or IFN- γ and obtained pre-infection (A) or post-infection (B) were evaluated by multiparametric flow cytometry. NK cells were defined (shown clockwise for A and B) after gating on singlets, lymphocytes, non monocytes ($CD14_{neg}$), non B-cells ($CD20_{neg}$) or dead cells (Viability dye $_{neg}$) and that were CD3 negative but expressed CD7 (as described [18]). For each donor, both pre-infection and post-infection responses were evaluated following stimulation with media containing rhIL-2 alone, or with 721 cells or PMA/Ionomycin. (EPS)

Figure S3 The frequency of NK cells (A), and the frequency of recently divided NK cells ($Ki-67_{pos}$, C) was not altered by HIV infection (B) nor during the stages of primary HIV infection (D). The proportion of activated NK cells was not altered during primary infection (E). (EPS)

Figure S4 The proportion of anergic ($CD56_{neg}$), cytotoxic ($CD56_{dim}$) or cytokine-secreting ($CD56_{hi}$) NK cells was not significantly altered by HIV infection (A) nor by stage of primary infection (B). (EPS)

Figure S5 The proportion of recently divided CD8+ T-cells (A), and degranulating CD8+ T-cells (B) was increased in primary HIV infection but the proportion of CD8_{pos} T-cells secreting IFN- γ was not significantly altered (C). (EPS)

Acknowledgments

We pay tribute to the participants of CAPRISA 004; women whose dedication and commitment to improving their and their peers' health and kindly donating samples during the conduct of the trial make this research

References

- Giorgi JV, Ho HN, Hirji K, Chou CC, Hultin LE, et al. (1994) CD8+ lymphocyte activation at human immunodeficiency virus type 1 seroconversion: development of HLA-DR+ CD38- CD8+ cells is associated with subsequent stable CD4+ cell levels. The Multicenter AIDS Cohort Study Group. *The Journal of infectious diseases* 170: 775–781.
- Borrow P, Lewicki H, Hahn BH, Shaw GM, Oldstone MB (1994) Virus-specific CD8+ cytotoxic T-lymphocyte activity associated with control of viremia in primary human immunodeficiency virus type 1 infection. *Journal of virology* 68: 6103–6110.
- Koup RA, Safrit JT, Cao Y, Andrews CA, McLeod G, et al. (1994) Temporal association of cellular immune responses with the initial control of viremia in primary human immunodeficiency virus type 1 syndrome. *Journal of virology* 68: 4650–4655.
- Soghoian DZ, Jessen H, Flanders M, Sierra-Davidson K, Cutler S, et al. (2012) HIV-specific cytolytic CD4 T cell responses during acute HIV infection predict disease outcome. *Science translational medicine* 4: 123ra125.
- Lodoen MB, Lanier LL (2006) Natural killer cells as an initial defense against pathogens. *Current opinion in immunology* 18: 391–398.
- Alter G, Altfeld M (2009) NK cells in HIV-1 infection: evidence for their role in the control of HIV-1 infection. *Journal of internal medicine* 265: 29–42.
- Alter G, Teigen N, Davis BT, Addo MM, Suscovich TJ, et al. (2005) Sequential deregulation of NK cell subset distribution and function starting in acute HIV-1 infection. *Blood* 106: 3366–3369.
- Fogli M, Costa P, Murdaca G, Setti M, Mingari MC, et al. (2004) Significant NK cell activation associated with decreased cytolytic function in peripheral blood of HIV-1-infected patients. *European journal of immunology* 34: 2313–2321.
- Kottlilil S, Chun TW, Moir S, Liu S, McLaughlin M, et al. (2003) Innate immunity in human immunodeficiency virus infection: effect of viremia on natural killer cell function. *The Journal of infectious diseases* 187: 1038–1045.
- Brunetta E, Hudspeth KL, Mavilio D (2010) Pathologic natural killer cell subset redistribution in HIV-1 infection: new insights in pathophysiology and clinical outcomes. *Journal of leukocyte biology* 88: 1119–1130.
- Mavilio D, Lombardo G, Benjamin J, Kim D, Follman D, et al. (2005) Characterization of CD56-/CD16+ natural killer (NK) cells: a highly dysfunctional NK subset expanded in HIV-infected viremic individuals. *Proceedings of the National Academy of Sciences of the United States of America* 102: 2886–2891.
- Alter G, Teigen N, Ahern R, Strecek H, Meier A, et al. (2007) Evolution of innate and adaptive effector cell functions during acute HIV-1 infection. *The Journal of infectious diseases* 195: 1452–1460.
- Cohen MS, Shaw GM, McMichael AJ, Haynes BF (2011) Acute HIV-1 Infection. *The New England journal of medicine* 364: 1943–1954.
- Abdool Karim Q, Abdool Karim SS, Frohlich JA, Grobler AC, Baxter C, et al. (2010) Effectiveness and safety of tenofovir gel, an antiretroviral microbicide, for the prevention of HIV infection in women. *Science* 329: 1168–1174.
- Naranbhai V, Bartman P, Ndlovu D, Ramkalawan P, Ndung'u T, et al. (2011) Impact of blood processing variations on natural killer cell frequency, activation, chemokine receptor expression and function. *J Immunol Methods* 366: 28–35.
- Alter G, Malenfant JM, Altfeld M (2004) CD107a as a functional marker for the identification of natural killer cell activity. *J Immunol Methods* 294: 15–22.
- Soares A, Govender L, Hughes J, Mavakla W, de Kock M, et al. (2010) Novel application of Ki67 to quantify antigen-specific in vitro lymphoproliferation. *J Immunol Methods* 362: 43–50.
- Milush JM, Long BR, Snyder-Cappione JE, Cappione AJ, 3rd, York VA, et al. (2009) Functionally distinct subsets of human NK cells and monocyte/DC-like cells identified by coexpression of CD56, CD7, and CD4. *Blood* 114: 4823–4831.
- Murcithi MW, Poole D, Naranbhai V, Reddy S, Mkhwanazi NP, et al. (2012) Preservation HIV-1-specific IFN γ + CD4+ T-cell responses in breakthrough infections after exposure to tenofovir gel in the CAPRISA 004 microbicide trial. *Journal of acquired immune deficiency syndromes* 60: 124–127.
- Karre K (2008) Natural killer cell recognition of missing self. *Nature immunology* 9: 477–480.
- Robertson MJ (2002) Role of chemokines in the biology of natural killer cells. *Journal of leukocyte biology* 71: 173–183.
- Rivera-Nieves J, Olson T, Bamias G, Bruce A, Solga M, et al. (2005) L-selectin, alpha 4 beta 1, and alpha 4 beta 7 integrins participate in CD4+ T cell recruitment to chronically inflamed small intestine. *Journal of immunology* 174: 2343–2352.
- Alter G, Martin MP, Teigen N, Carr WH, Suscovich TJ, et al. (2007) Differential natural killer cell-mediated inhibition of HIV-1 replication based on distinct KIR/HLA subtypes. *J Exp Med* 204: 3027–3036.
- Luteijn R, Sciaranghella G, van Lunzen J, Nolting A, Dugast AS, et al. (2011) Early viral replication in lymph nodes provides HIV with a means by which to escape NK-cell-mediated control. *European journal of immunology* 41: 2729–2740.
- Marcenaro E, Cantoni C, Pesce S, Prato C, Pende D, et al. (2009) Uptake of CCR7 and acquisition of migratory properties by human KIR+ NK cells interacting with monocyte-derived DC or EBV cell lines: regulation by KIR/HLA-class I interaction. *Blood* 114: 4108–4116.
- Cohen GB, Gandhi RT, Davis DM, Mandelboim O, Chen BK, et al. (1999) The selective downregulation of class I major histocompatibility complex proteins by HIV-1 protects HIV-infected cells from NK cells. *Immunity* 10: 661–671.
- Naranbhai V, Abdool Karim SS, Altfeld M, Samsunder N, Durgiah R, et al. (2012) Innate Immune activation enhances HIV acquisition in women, diminishing the effectiveness of tenofovir microbicide gel. *Journal of Infectious Diseases* Epub Jul 24.
- Naranbhai V, Altfeld M, Karim QA, Ndung'u T, Karim SS, et al. (2012) Natural killer cell function in women at high risk for HIV acquisition: Insights from the CAPRISA004 microbicide trial. *AIDS* Epub Jul 7.

possible. We gratefully acknowledge Lise Werner for advice on the statistical analysis and Galit Alter for advice on design and conduct of experiments.

Author Contributions

Conceived and designed the experiments: VN MA WHC. Performed the experiments: VN. Analyzed the data: VN MA QAK TN SSAK WHC. Contributed reagents/materials/analysis tools: VN MA QAK TN SSAK WHC. Wrote the paper: VN MA QAK TN SSAK WHC.

Copyright of PLoS ONE is the property of Public Library of Science and its content may not be copied or emailed to multiple sites or posted to a listserv without the copyright holder's express written permission. However, users may print, download, or email articles for individual use.