

A&amp;A 626, A117 (2019)

<https://doi.org/10.1051/0004-6361/201935171>

© ESO 2019

# Search for transient optical counterparts to high-energy IceCube neutrinos with Pan-STARRS1

Pan-STARRS: E. Kankare<sup>1,2,\*</sup>, M. Huber<sup>3</sup>, S. J. Smartt<sup>1</sup>, K. Chambers<sup>3</sup>, K. W. Smith<sup>1</sup>, O. McBrien<sup>1</sup>, T.-W. Chen<sup>4</sup>, H. Flewelling<sup>3</sup>, T. Lowe<sup>3</sup>, E. Magnier<sup>3</sup>, A. Schultz<sup>3</sup>, C. Waters<sup>3</sup>, R. J. Wainscoat<sup>3</sup>, M. Willman<sup>3</sup>, D. Wright<sup>5</sup>, D. Young<sup>1</sup>, IceCube collaboration<sup>\*\*</sup>: M. G. Aartsen<sup>21</sup>, M. Ackermann<sup>57</sup>, J. Adams<sup>21</sup>, J. A. Aguilar<sup>17</sup>, M. Ahlers<sup>25</sup>, M. Ahrens<sup>49</sup>, C. Alispach<sup>31</sup>, D. Altmann<sup>29</sup>, K. Andeen<sup>40</sup>, T. Anderson<sup>54</sup>, I. Anseau<sup>17</sup>, G. Anton<sup>29</sup>, C. Argüelles<sup>19</sup>, J. Auffenberg<sup>6</sup>, S. Axani<sup>19</sup>, P. Backes<sup>6</sup>, H. Bagherpour<sup>21</sup>, X. Bai<sup>46</sup>, A. Barbano<sup>31</sup>, S. W. Barwick<sup>33</sup>, V. Baum<sup>39</sup>, R. Bay<sup>13</sup>, J. J. Beatty<sup>24,23</sup>, K.-H. Becker<sup>56</sup>, J. Becker Tjus<sup>16</sup>, S. BenZvi<sup>48</sup>, D. Berley<sup>22</sup>, E. Bernardini<sup>57</sup>, D. Z. Besson<sup>34</sup>, G. Binder<sup>14,13</sup>, D. Bindig<sup>56</sup>, E. Blaufuss<sup>22</sup>, S. Blot<sup>57</sup>, C. Boehm<sup>49</sup>, M. Börner<sup>26</sup>, S. Böser<sup>39</sup>, O. Botner<sup>55</sup>, E. Bourbeau<sup>25</sup>, J. Bourbeau<sup>38</sup>, F. Bradascio<sup>57</sup>, J. Braun<sup>38</sup>, H.-P. Bretz<sup>57</sup>, S. Bron<sup>31</sup>, J. Brostean-Kaiser<sup>57</sup>, A. Burgman<sup>55</sup>, R. S. Busse<sup>38</sup>, T. Carver<sup>31</sup>, C. Chen<sup>11</sup>, E. Cheung<sup>22</sup>, D. Chirkin<sup>38</sup>, K. Clark<sup>35</sup>, L. Classen<sup>41</sup>, G. H. Collin<sup>19</sup>, J. M. Conrad<sup>19</sup>, P. Coppin<sup>18</sup>, P. Correa<sup>18</sup>, D. F. Cowen<sup>54,53</sup>, R. Cross<sup>48</sup>, P. Dave<sup>11</sup>, J. P. A. M. de André<sup>27</sup>, C. De Clercq<sup>18</sup>, J. J. DeLaunay<sup>54</sup>, H. Dembinski<sup>42</sup>, K. Deoskar<sup>49</sup>, S. De Ridder<sup>32</sup>, P. Desiati<sup>38</sup>, K. D. de Vries<sup>18</sup>, G. de Wasseige<sup>18</sup>, M. de With<sup>15</sup>, T. DeYoung<sup>27</sup>, J. C. Díaz-Vélez<sup>38</sup>, H. Dujmovic<sup>51</sup>, M. Dunkman<sup>54</sup>, E. Dvorak<sup>46</sup>, B. Eberhardt<sup>38</sup>, T. Ehrhardt<sup>39</sup>, P. Eller<sup>54</sup>, P. A. Evenson<sup>42</sup>, S. Fahey<sup>38</sup>, A. R. Fazely<sup>12</sup>, J. Felde<sup>22</sup>, K. Filimonov<sup>13</sup>, C. Finley<sup>49</sup>, A. Franckowiak<sup>57</sup>, E. Friedman<sup>22</sup>, A. Fritz<sup>39</sup>, T. K. Gaisser<sup>42</sup>, J. Gallagher<sup>37</sup>, E. Ganster<sup>6</sup>, S. Garrappa<sup>57</sup>, L. Gerhardt<sup>14</sup>, K. Ghorbani<sup>38</sup>, T. Glauch<sup>30</sup>, T. Glüsenskamp<sup>29</sup>, A. Goldschmidt<sup>14</sup>, J. G. Gonzalez<sup>42</sup>, D. Grant<sup>27</sup>, Z. Griffith<sup>38</sup>, M. Gündüz<sup>16</sup>, C. Haack<sup>6</sup>, A. Hallgren<sup>55</sup>, L. Halve<sup>6</sup>, F. Halzen<sup>38</sup>, K. Hanson<sup>38</sup>, D. Hebecker<sup>15</sup>, D. Heereman<sup>17</sup>, K. Helbing<sup>56</sup>, R. Hellauer<sup>22</sup>, F. Henningsen<sup>30</sup>, S. Hickford<sup>56</sup>, J. Hignight<sup>27</sup>, G. C. Hill<sup>7</sup>, K. D. Hoffman<sup>22</sup>, R. Hoffmann<sup>56</sup>, T. Hoinka<sup>26</sup>, B. Hokanson-Fasig<sup>38</sup>, K. Hoshina<sup>38,58</sup>, F. Huang<sup>54</sup>, M. Huber<sup>30</sup>, K. Hultqvist<sup>49</sup>, M. Hünnefeld<sup>26</sup>, R. Hussain<sup>38</sup>, S. In<sup>51</sup>, N. Iovine<sup>17</sup>, A. Ishihara<sup>20</sup>, E. Jacobi<sup>57</sup>, G. S. Japaridze<sup>10</sup>, M. Jeong<sup>51</sup>, K. Jero<sup>38</sup>, B. J. P. Jones<sup>9</sup>, P. Kalaczynski<sup>6</sup>, W. Kang<sup>51</sup>, A. Kappes<sup>41</sup>, D. Kappesser<sup>39</sup>, T. Karg<sup>57</sup>, M. Karl<sup>30</sup>, A. Karle<sup>38</sup>, U. Katz<sup>29</sup>, M. Kauer<sup>38</sup>, A. Keivani<sup>54</sup>, J. L. Kelley<sup>38</sup>, A. Kheirandish<sup>38</sup>, J. Kim<sup>51</sup>, T. Kintscher<sup>57</sup>, J. Kiryluk<sup>50</sup>, T. Kittler<sup>29</sup>, S. R. Klein<sup>14,13</sup>, R. Koirala<sup>42</sup>, H. Kolanoski<sup>15</sup>, L. Köpke<sup>39</sup>, C. Kopper<sup>27</sup>, S. Kopper<sup>52</sup>, D. J. Koskinen<sup>25</sup>, M. Kowalski<sup>15,57</sup>, K. Krings<sup>30</sup>, G. Krücl<sup>39</sup>, N. Kulacz<sup>28</sup>, S. Kunwar<sup>57</sup>, N. Kurahashi<sup>45</sup>, A. Kyriacou<sup>7</sup>, M. Labare<sup>32</sup>, J. L. Lanfranchi<sup>54</sup>, M. J. Larson<sup>22</sup>, F. Lauber<sup>56</sup>, J. P. Lazar<sup>38</sup>, K. Leonard<sup>38</sup>, M. Leuermann<sup>6</sup>, Q. R. Liu<sup>39</sup>, E. Lohfink<sup>39</sup>, C. J. Lozano Mariscal<sup>41</sup>, L. Lu<sup>20</sup>, F. Lucarelli<sup>31</sup>, J. Lünemann<sup>18</sup>, W. Luszczak<sup>38</sup>, J. Madsen<sup>27</sup>, G. Maggi<sup>18</sup>, K. B. M. Mahn<sup>27</sup>, Y. Makino<sup>20</sup>, K. Mallot<sup>38</sup>, S. Mancina<sup>38</sup>, I. C. Mariş<sup>17</sup>, R. Maruyama<sup>43</sup>, K. Mase<sup>20</sup>, R. Maunu<sup>22</sup>, K. Meagher<sup>38</sup>, M. Medici<sup>25</sup>, A. Medina<sup>24</sup>, M. Meier<sup>26</sup>, S. Meighen-Berger<sup>30</sup>, T. Menne<sup>26</sup>, G. Merino<sup>38</sup>, T. Meures<sup>17</sup>, S. Miarecki<sup>14,13</sup>, J. Micallef<sup>27</sup>, G. Momenté<sup>39</sup>, T. Montaruli<sup>31</sup>, R. W. Moore<sup>28</sup>, M. Moulai<sup>19</sup>, R. Nagai<sup>20</sup>, R. Nahnauer<sup>57</sup>, P. Nakarmi<sup>52</sup>, U. Naumann<sup>56</sup>, G. Neer<sup>27</sup>, H. Niederhausen<sup>30</sup>, S. C. Nowicki<sup>28</sup>, D. R. Nygren<sup>14</sup>, A. Obertacke Pollmann<sup>56</sup>, A. Olivas<sup>22</sup>, A. O'Murchadha<sup>17</sup>, E. O'Sullivan<sup>49</sup>, T. Palczewski<sup>14,13</sup>, H. Pandya<sup>42</sup>, D. V. Pankova<sup>54</sup>, N. Park<sup>38</sup>, P. Peiffer<sup>39</sup>, C. Pérez de los Heros<sup>55</sup>, D. Pieloth<sup>26</sup>, E. Pinat<sup>17</sup>, A. Pizzuto<sup>38</sup>, M. Plum<sup>40</sup>, P. B. Price<sup>13</sup>, G. T. Przybylski<sup>14</sup>, C. Raab<sup>17</sup>, A. Raissi<sup>21</sup>, M. Rameez<sup>25</sup>, L. Rauch<sup>57</sup>, K. Rawlins<sup>8</sup>, I. C. Rea<sup>30</sup>, R. Reimann<sup>6</sup>, B. Relethford<sup>45</sup>, G. Renzi<sup>17</sup>, E. Resconi<sup>30</sup>, W. Rhode<sup>26</sup>, M. Richman<sup>45</sup>, S. Robertson<sup>14</sup>, M. Rongen<sup>6</sup>, C. Rott<sup>51</sup>, T. Ruhe<sup>26</sup>, D. Ryckbosch<sup>32</sup>, D. Rysewyk<sup>27</sup>, I. Safa<sup>38</sup>, S. E. Sanchez Herrera<sup>28</sup>, A. Sandrock<sup>26</sup>, J. Sandroos<sup>39</sup>, M. Santander<sup>52</sup>, S. Sarkar<sup>44</sup>, S. Sarkar<sup>28</sup>, K. Satalecka<sup>57</sup>, M. Schaufel<sup>6</sup>, P. Schlunder<sup>26</sup>, T. Schmidt<sup>22</sup>, A. Schneider<sup>38</sup>, J. Schneider<sup>29</sup>, L. Schumacher<sup>6</sup>, S. Sclafani<sup>45</sup>, D. Seckel<sup>42</sup>, S. Seunarine<sup>47</sup>, M. Silva<sup>38</sup>, R. Snihur<sup>38</sup>, J. Soedingrekso<sup>26</sup>, D. Soldin<sup>42</sup>, M. Song<sup>22</sup>, G. M. Spiczak<sup>47</sup>, C. Spiering<sup>57</sup>, J. Stachurska<sup>57</sup>, M. Stamatikos<sup>24</sup>, T. Stanev<sup>42</sup>, A. Stasik<sup>57</sup>, R. Stein<sup>57</sup>, J. Stettner<sup>6</sup>, A. Steuer<sup>39</sup>, T. Stezelberger<sup>14</sup>, R. G. Stokstad<sup>14</sup>, A. Stöbl<sup>20</sup>, N. L. Strotjohann<sup>57</sup>, T. Stuttard<sup>25</sup>, G. W. Sullivan<sup>22</sup>, M. Sutherland<sup>24</sup>, I. Taboada<sup>11</sup>, F. Tenholt<sup>16</sup>, S. Ter-Antonyan<sup>12</sup>, A. Terliuk<sup>57</sup>, S. Tilav<sup>42</sup>, L. Tomankova<sup>16</sup>, C. Tönnis<sup>51</sup>, S. Toscano<sup>18</sup>, D. Tosi<sup>38</sup>, M. Tselengidou<sup>29</sup>, C. F. Tung<sup>11</sup>, A. Turcati<sup>30</sup>, R. Turcotte<sup>6</sup>, C. F. Turley<sup>54</sup>, B. Ty<sup>38</sup>, E. Unger<sup>55</sup>, M. A. Unland Elorrieta<sup>41</sup>, M. Usner<sup>57</sup>, J. Vandenbroucke<sup>38</sup>, W. Van Driessche<sup>32</sup>, D. van Eijk<sup>38</sup>, N. van Eijndhoven<sup>18</sup>, S. Vanheule<sup>32</sup>, J. van Santen<sup>57</sup>, M. Vraeghe<sup>32</sup>, C. Walck<sup>49</sup>, A. Wallace<sup>7</sup>, M. Wallraff<sup>6</sup>, N. Wandkowsky<sup>38</sup>, T. B. Watson<sup>9</sup>, C. Weaver<sup>28</sup>, M. J. Weiss<sup>54</sup>, J. Weldert<sup>39</sup>, C. Wendt<sup>38</sup>, J. Werthebach<sup>38</sup>, S. Westerhoff<sup>38</sup>, B. J. Whelan<sup>7</sup>, N. Whitehorn<sup>36</sup>, K. Wiebe<sup>39</sup>, C. H. Wiebusch<sup>6</sup>, L. Wille<sup>38</sup>, D. R. Williams<sup>52</sup>, L. Wills<sup>45</sup>, M. Wolf<sup>40</sup>, J. Wood<sup>38</sup>, T. R. Wood<sup>28</sup>, K. Woschnagg<sup>13</sup>, G. Wrede<sup>29</sup>, D. L. Xu<sup>38</sup>, X. W. Xu<sup>12</sup>, Y. Xu<sup>50</sup>, J. P. Yanez<sup>28</sup>, G. Yodh<sup>33</sup>, S. Yoshida<sup>20</sup>, T. Yuan<sup>38</sup>, and J. Nordin<sup>15</sup>

*(Affiliations can be found after the references)*

Received 30 January 2019 / Accepted 3 May 2019

**ABSTRACT**

In order to identify the sources of the observed diffuse high-energy neutrino flux, it is crucial to discover their electromagnetic counterparts. To increase the sensitivity of detecting counterparts of transient or variable sources by telescopes with a limited field of view, IceCube began releasing alerts for single high-energy ( $E_\nu > 60$  TeV) neutrino detections with sky localisation regions of order  $1^\circ$  radius in 2016. We used Pan-STARRS1 to follow-up five of these alerts during 2016–2017 to search for any optical transients that may be related to the neutrinos. Typically 10–20 faint

\* e-mail: e.kankare@qub.ac.uk

\*\* e-mail: analysis@icecube.wisc.edu

( $m_{i_{p1}} \lesssim 22.5$  mag) extragalactic transients are found within the Pan-STARRS1 footprints and are generally consistent with being unrelated field supernovae (SNe) and AGN. We looked for unusual properties of the detected transients, such as temporal coincidence of explosion epoch with the IceCube timestamp, or other peculiar light curve and physical properties. We found only one transient that had properties worthy of a specific follow-up. In the Pan-STARRS1 imaging for IceCube-160427A (probability to be of astrophysical origin of  $\sim 50\%$ ), we found a SN PS16cgx, located at  $10.0'$  from the nominal IceCube direction. Spectroscopic observations of PS16cgx showed that it was an H-poor SN at redshift  $z = 0.2895 \pm 0.0001$ . The spectra and light curve resemble some high-energy Type Ic SNe, raising the possibility of a jet driven SN with an explosion epoch temporally coincident with the neutrino detection. However, distinguishing Type Ia and Type Ic SNe at this redshift is notoriously difficult. Based on all available data we conclude that the transient is more likely to be a Type Ia with relatively weak Si II absorption and a fairly normal rest-frame  $r$ -band light curve. If, as predicted, there is no high-energy neutrino emission from Type Ia SNe, then PS16cgx must be a random coincidence, and unrelated to the IceCube-160427A. We find no other plausible optical transient for any of the five IceCube events observed down to a  $5\sigma$  limiting magnitude of  $m_{i_{p1}} \approx 22$  mag, between 1 day and 25 days after detection.

**Key words.** astroparticle physics – neutrinos – supernovae: general

## 1. Introduction

High-energy neutrinos are produced in hadronic interactions in the most violent sources in the Universe and hence provide a smoking-gun signature for the origin of cosmic rays. Furthermore, neutrinos are capable of escaping even the densest environments such as stellar cores and black hole accretion discs. Along with gravitational waves (Abbott et al. 2016, 2017), they carry information of these environments that neither photons or charged particles can provide. After the first detection of a diffuse flux of high-energy astrophysical neutrinos (Aartsen et al. 2013a), the most pressing question in the field of neutrino astronomy is the astrophysical origin of the particles. No significant cluster in space or time has been found in un-triggered searches of neutrino data yet (Aartsen et al. 2017a) and the isotropic distribution of the neutrinos points to an extragalactic origin. Multi-wavelength observations are the key to identify neutrino sources through the detection of an electromagnetic counterpart. Recently, the high-energy 290 TeV neutrino event IceCube-170922A has been associated with a flare in the blazar TXS 0506+056 at  $3\sigma$  significance (Aartsen et al. 2018a,b). Photo-hadronic processes in the cores of active galaxies have previously been proposed as the sources of these high-energy neutrinos (Padovani & Resconi 2014; Petropoulou et al. 2015) and the IceCube-170922A association is an intriguing development in the field. The only other identified extragalactic source of neutrinos is the core-collapse supernova (CCSN) 1987A. Undisputed detection of 20 neutrinos were made by two experiments in the energy range of 7.5–40 MeV (Hirata et al. 1987; Bionta et al. 1987), corresponding to the thermal regime in the collapsing core of the massive star that produced SN 1987A.

Gamma-ray bursts (GRB) have also been suggested as source candidates for the highest-energy cosmic rays and high-energy neutrinos (Waxman 1995; Waxman & Bahcall 1997). Aartsen et al. (2016) suggest that the bulk of the known population of bright GRBs can be excluded as the main contributor to IceCube’s diffuse neutrino flux. However, a large population of low-luminosity GRBs might contribute significantly to the observed flux (Murase et al. 2006; Murase & Ioka 2013). While highly-relativistic jets can explain gamma-ray bright bursts, “choked” jets within the star may explain relativistic SNe and low-luminosity GRBs, giving a unified picture of GRBs and GRB-SNe (Meszaros & Waxman 2001; Senno et al. 2016). In choked-jet SNe, the jet fails to penetrate the surface of the progenitor star. Neutrinos and gamma rays can be produced by hadronic processes in the jet. While neutrinos can leave the dense environment, gamma rays are absorbed. This scenario could be physically probed by the detection of high-energy neutrinos in coincidence with SNe that could harbour relativistic jets (Kowalski & Mohr 2007; Esmaili & Murase 2018). Such

neutrino emission is expected in a relatively short time window ( $\sim 100$  s) after core collapse. The signature of a choked-jet SN could therefore be a high-energy neutrino signal followed by a young CCSN. Explosions of CCSNe originate from stars more massive than  $M \approx 8 M_{\odot}$  and are classified based on their spectroscopic features (Filippenko 1997). Type II SNe are H-rich and Type Ib/c SNe H-poor. Furthermore, Type Ib SNe show He in their spectra whereas Type Ic SNe lack these features. Type Ic SNe are thought to originate from massive stars that have lost their outer envelopes (Wolf-Rayet stars, e.g. Crowther 2007) or less massive stars in binary systems (e.g. Podsiadlowski et al. 1992). High-energy neutrino production in Type Ic SNe has been postulated to be possible, as a result of diffusive shock acceleration of protons in relativistic jets powered by a central engine (Razzaque et al. 2005; Ando & Beacom 2005; Tamborra & Ando 2016; Senno et al. 2016). Those protons can produce pions in interactions with ambient photon or matter fields. Charged pions produce neutrinos in their decay chain. The mechanism follows the GRB-fireball phenomenology (Piran 1999), but unlike conventional long GRBs with  $\Gamma$  factors of  $10^2$ – $10^3$ , the culprit SNe are assumed to harbour fewer relativistic jets. Such jets can be either choked or emerge, thereby producing low-luminosity or long-duration GRBs (potentially undetected by current facilities). Furthermore, it is expected that Type IIn SNe may also produce high-energy neutrinos arising from the shock interaction of the expanding SN ejecta and circumstellar medium. A Type IIn SN PTF12csy was discovered within the confidence region of two high-energy neutrinos detected by IceCube on 2012 March 30. However, the Pan-STARRS1 data showed the SN to be at least 158 days old and therefore likely unrelated (Aartsen et al. 2015). Contrary to CCSNe, Type Ia SNe are thermonuclear explosions of white dwarf stars and are not expected to produce high-energy neutrinos.

In the following sections, we briefly introduce the IceCube realtime neutrino search in Sect. 2 followed by a detailed discussion of the neutrino event IceCube-160427A in Sect. 3. Section 4 presents the observations and interpretation of a young SN PS16cgx discovered in the confidence region of the neutrino event. Summary of Pan-STARRS1 observations of other IceCube alerts is provided in Sect. 5. The probability to associate neutrino emitters with Pan-STARRS1 is discussed in Sect. 6 and the results of the paper are summarised in Sect. 7. In all cases we adopt a calibration to standard cosmology with  $H_0 = 70 \text{ km s}^{-1} \text{ Mpc}^{-1}$ ,  $\Omega_m = 0.3$ , and  $\Omega_{\Lambda} = 0.7$ .

## 2. The IceCube realtime neutrino search

The IceCube neutrino Observatory is a  $1 \text{ km}^3$  water Cherenkov detector located in the clear glacial ice at the geographic South Pole. 5160 digital optical modules (DOMs) detect light emission

in the ice at a depth ranging from 1450 to 2450 m (Abbasi et al. 2009; Aartsen et al. 2013b, 2017c). Charged-current interactions of muon neutrinos in the ice produce muons, which are detected using emitted Cherenkov light, and which – at TeV energies – travel long distances of several kilometres in the Antarctic ice (Chirkin & Rhode 2004). The resulting long lever arm of those “track events” gives a good reconstruction performance with median angular resolution of  $\Delta\Psi \lesssim 1^\circ$ . Charged-current interactions of electron or tau neutrinos, as well as neutral-current interactions of any neutrino type, produce “shower events” with almost spherically symmetric light emission resulting in an angular resolution of only about  $10^\circ$ .

The IceCube realtime programme selects neutrinos with a high probability of being of astrophysical origin, reconstructs their direction and notifies ground and space-based observatories with a median latency of 33 s to perform multi-wavelengths follow-up observations aiming for the detection of an electro-magnetic counterpart (see Aartsen et al. 2017b, for a detailed description).

Starting in late 2008, IceCube implemented an optical follow-up programme on multiplets. In order to suppress the background from atmospheric neutrinos, a multiplet of at least two neutrinos within 100 s and angular separation of  $3:5$  or less was required to trigger an alert (Abbasi et al. 2012; Aartsen et al. 2017b). A number of alerts were sent to the Palomar Transient Factory (PTF) and *Swift* (Evans 2015) and which has not resulted in a compelling coincidence with an electromagnetic source (Aartsen et al. 2015). In 2016, IceCube began releasing single neutrinos in two neutrino candidate streams (Aartsen et al. 2017b) called High-Energy Starting Events (HESE) and Extremely High-energy Events (EHE), which are the focus of this paper.

The HESE sample consists of events which have their interaction vertices inside the detector volume and are selected by using the outer layers of the detector as a veto to suppress the background of atmospheric muons, which are produced in cosmic-ray air showers and enter the detector from above (Aartsen et al. 2014). The veto is only efficient at high energies and is therefore combined with a requirement on the charge deposited in the detector of  $Q > 6000$  photoelectrons, which roughly corresponds to an energy deposited in the detector of 60 TeV. On average, four HESE tracks are detected per year, of which one is expected to be of astrophysical origin. Since April 2016, these have been made public in realtime using the Astrophysical Multimessenger Observatory Network (AMON; Smith et al. 2013; Aartsen et al. 2017b) and via the Gamma-Ray Coordinates Network<sup>1</sup> (GCN).

EHE events, which do not have to start inside the detector but can be through-going, are selected by a combination of energy and zenith angle (see Aartsen et al. 2017b, for a detailed description). These neutrinos typically have energies  $>200$  TeV. The public EHE stream was activated in July 2016 and is expected to produce four alerts per year with an average signal purity of 50%. In this paper we introduce the neutrino detection electro-magnetic counterpart search with Pan-STARRS1 with a focus on the first publicly released event IceCube-160427A.

### 3. IceCube-160427A

The first HESE event after the start of the programme was detected on 2016 April 27 at 05:52:32 UT (MJD 57 505.24481)

<sup>1</sup> <https://gcn.gsfc.nasa.gov/>, [https://gcn.gsfc.nasa.gov/amon\\_hese\\_events.html](https://gcn.gsfc.nasa.gov/amon_hese_events.html) and [https://gcn.gsfc.nasa.gov/amon\\_ehe\\_events.html](https://gcn.gsfc.nasa.gov/amon_ehe_events.html)

**Table 1.** Coordinate revisions of IceCube-160427A.

Time <sup>(a)</sup>	$\alpha_{J2000}$ ( $^\circ$ )	$\delta_{J2000}$ ( $^\circ$ )	50% error <sup>(b)</sup> ( $^\circ$ )	90% error ( $^\circ$ )	$\Delta\Psi_{16\text{cgx}}$ <sup>(c)</sup> ( $^\circ$ )
81 s	239.7	6.9	1.6	8.9	3.03
17.5 h	240.6	9.3	–	0.6	0.63
Final	240.3	9.7	0.22–0.34	0.45–0.54	0.17

**Notes.** <sup>(a)</sup> Time relative to the neutrino detection. <sup>(b)</sup> The range for the error radius in the last row gives the range between major and minor semi-axis when fitting the likelihood landscape with an ellipse. <sup>(c)</sup> Distance of the neutrino position to PS16cgx.

and released to the public via a GCN notice<sup>2</sup>. A summary was published as a GCN circular a few days later (Blaufuss 2016).

Several instruments followed-up the IceCube event searching for a counterpart in various wavelengths. In gamma ray, observations were performed by the First G-APD Cherenkov Telescope (FACT; Biland & Dorner 2016), the Interplanetary Network (IPN<sup>3</sup>; Svinkin et al. 2016), the Very Energetic Radiation Imaging Telescope Array System (VERITAS; Mukherjee 2016), the High-Altitude Water Cherenkov Gamma-Ray Observatory (HAWC; Taboada 2016), the *Fermi* Large Area Telescope (*Fermi*-LAT; Vianello et al. 2016) and the *Fermi* Gamma-Ray Burst Monitor (*Fermi*-GBM; Blackburn et al. 2016), and in optical wavelength by the Intermediate Palomar Transient Factory (iPTF; Singer et al. 2016a), the Panoramic Survey Telescope and Rapid Response System 1 (Pan-STARRS1; Smartt et al. 2016a) and the Mobile Astronomical System of Telescope-Robots (MASTER; Lipunov et al. 2016a). Except a young SN discovered by Pan-STARRS1, no compelling counterpart detection was reported.

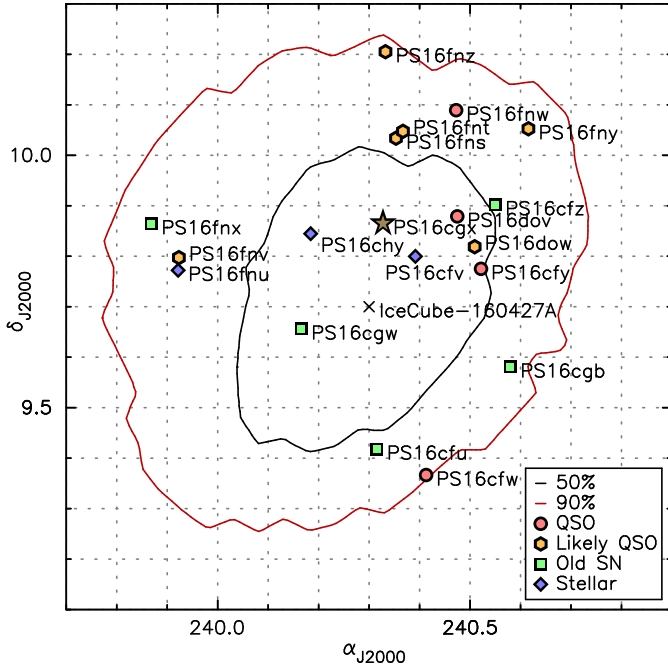
#### 3.1. Direction

An angular reconstruction is applied to the HESE events at the South Pole, which is used to send a first notification. More time consuming reconstructions are applied, once the event data arrive in the north and provide a more accurate estimate on the neutrino direction within a few hours. A full likelihood scan is applied on a narrow grid with about  $0:06$  distance between the grid points. The resulting map of the likelihood landscape allows us to find the global minimum and the error contours at a given confidence level. The calculation of the updated direction was not fully automated yet when the first public HESE track was detected, which led to an additional delay. Table 1 shows the initially published direction 81 s after the detection of the neutrino compared to the updated position 17.5 h later. The position moved by  $2:6$ .

The likelihood scan was repeated after cleaning out late photomultiplier hits from afterpulsing, an effect not currently described by the track likelihood hypothesis. This improves the likelihood description and leads to a better fit. The final best fit position and the 50 and 90% confidence regions are shown in Fig. 1. The positions of the contour lines were determined using re-simulations of similar events while also varying the allowed models of the optical properties of the deep glacial ice in order to obtain a conservative range. The minimum yields our best estimate of the event direction:  $\alpha_{J2000} = 240:3$  and  $\delta_{J2000} = 9:7$ ,

<sup>2</sup> [https://gcn.gsfc.nasa.gov/notices\\_amon/67093193\\_127853.amon](https://gcn.gsfc.nasa.gov/notices_amon/67093193_127853.amon)

<sup>3</sup> [www.ssl.berkeley.edu/ipn3/](http://www.ssl.berkeley.edu/ipn3/)



**Fig. 1.** Black (red) line: 50% (90%) confidence region. The confidence region likelihood ratios were determined using Monte Carlo re-simulations of the event, taking into account uncertainties in the optical properties of the deep glacial ice. The best fit position is shown as a  $\times$  mark and the position of PS16cgx is indicated with a star symbol. Furthermore, the other faint transients discovered within the final 90% probability containment by Pan-STARRS1 are also shown and contextually classified based on their host or precursor information as labeled in the legend.

with a 90% error ellipse contour with semi major (minor) axis of  $0^{\circ}54$  ( $0^{\circ}45$ ).

### 3.2. Energy

The total charge deposited in the detector amounts to  $1.9 \times 10^4$  photoelectrons, corresponding to a deposited energy of 134 TeV. Using Monte Carlo simulations, we estimate a lower bound on the true energy of the primary neutrino. In the following we assume a spectral index of  $-2.58$  for the astrophysical flux (Kopper et al. 2015), which is the best fit value obtained from the 4 yr HESE sample. We then simulate events with the same starting position in the detector (within  $\pm 30$  m horizontally and  $\pm 15$  m vertically), direction (within  $2^{\circ}$ ) and deposited energy (within  $\pm 20\%$ ). By comparison of IceCube-160427A to the simulated events we estimate the true neutrino energy to be larger than 130 TeV (230 TeV) at 90% (50%) confidence (which, as expected, is similar to the deposited energy of the event). The result is only weakly dependent on the chosen spectral index (see Aartsen et al. 2018b).

### 3.3. Signal purity

On average 25% of the events in the HESE realtime stream are expected to be astrophysical neutrinos. The HESE events are characterised by the signal-trackness parameter, which is a number between 0 and 1, characterising how likely the event is both astrophysical as well as track-like, opposed to shower-like (see Aartsen et al. 2017b, for more details). For IceCube-160427A, the signal-trackness parameter is 0.92. We

estimate the fraction of astrophysical signal events in the alert sample for events with a similar or larger deposited charge and which enter the detector from a similar zenith direction. We assume a power-law signal spectrum. We find a fraction of 46–58% depending on the assumed spectral index ranging from  $\gamma = -2.19$ , found in the analysis of the diffuse muon neutrino flux (Haack et al. 2017), to  $\gamma = -2.92$ , obtained in an analysis of high-energy starting-tracks (Kopper & IceCube Collaboration 2017). The fraction is similar to that of IceCube-170922A, which had a higher reconstructed energy but passed the EHE instead of the HESE stream selection criteria. The HESE event selection uses the outer detector layers as veto to select track events starting inside the instrumented detector volume.

### 3.4. Offline neutrino search

We investigate whether the HESE event was accompanied by an excess of low-energy neutrino events. We applied a maximum likelihood analysis following the procedure in Meagher & IceCube Collaboration (2017) to search for neutrino emission from a point source in the direction of PS16cgx on various time scales of 10, 100, 1000, 10 000 and 100 000 s centred on the time of the HESE event. The chosen time windows cover the shock propagation and shock breakout times scales estimated by Kistler et al. (2013). The HESE event was removed from the likelihood analysis to avoid a bias in the p-value calculation. No significant excess was found in any of the tested time windows leading to a 90% energy flux upper limit of  $3.7 \times 10^{-5}$  TeV cm $^{-2}$  over the 100 000 s time window in an approximate energy range of 1 TeV to 1 PeV assuming a neutrino spectrum following an  $E^{-2}$  dependence. The non-detection of additional neutrinos is not surprising, since we expect sources of two detectable neutrinos at a median redshift of 0.06 (see Fig. 8 of Aartsen et al. 2017d) assuming the sources follow redshift evolution of the star-formation rate.

## 4. Pan-STARRS1 observations of IceCube EHE and HESE alerts

The 1.8 m Pan-STARRS1 telescope (Chambers et al. 2016) is located at Haleakala Observatory, Hawaii, USA. It is equipped with a 1.4 gigapixel mosaic CCD camera, called Gigapixel Camera 1 (GPC1). The field of view of GPC1 is  $\sim 7$  deg $^2$  and has a pixel size of  $0.25''$  pix $^{-1}$ . The Pan-STARRS1 data are processed automatically by the real-time Pan-STARRS1 Image Processing Pipeline (IPP; Magnier et al. 2016a). The photometric calibration of the Pan-STARRS1 images is described in Magnier et al. (2016b). Each image has a reference sky subtracted from it to produce a calibrated difference image. After this reduction, calibration and image subtraction in Hawaii, the catalogues of all detections are transferred to Queen’s University Belfast where they are ingested into a MySQL database, assimilated into objects, and undergo a series of filters to produce a clean stream of real astrophysical transients (Wright et al. 2015). They are cross-matched with a large custom-built database of star and galaxy catalogues and annotated with associations to known sources. The processing is described in more detail in Smartt et al. (2016b) for searches for optical signatures of gravitational wave sources. Similar techniques were employed here. The diameter of the field of view of Pan-STARRS1 is  $3^{\circ}$  (Chambers et al. 2016) and hence one pointing typically encloses the full 90% confidence area estimated by IceCube, which tend to have radii of around  $\sim 0^{\circ}5$ – $1^{\circ}$ . We have typically

**Table 2.** 19 transients discovered within the final 90% probability containment of the IceCube-160427A neutrino detection.

Transient	$\alpha_{J2000}$ (hh:mm:ss.ss)	$\delta_{J2000}$ (dd:mm:ss.s)	Disc. epoch (MJD)	$m_{disc,i}$ (mag)	Type	$z^{(a)}$	$m_{host,i}$ (mag)	$\Delta\Psi^{(b)}$ ( $^\circ$ )
PS16cfv	16:01:34.00	+09:47:59.1	57 508.49664	21.76	Stellar	–	21.21	0.13
PS16cgw	16:00:39.69	+09:39:21.2	57 508.49664	21.80	Old SN	$0.5792 \pm 0.1889$	20.58	0.14
PS16cgx	16:01:18.60	+09:51:53.1	57 508.49664	21.84	Young SN	$0.2895 \pm 0.0001$	19.40	0.17
PS16chy	16:00:44.22	+09:50:40.8	57 508.49664	21.73	Stellar	–	20.45	0.18
PS16cfy	16:02:05.21	+09:46:30.4	57 508.49664	21.67	QSO	$2.3438 \pm 0.0004$	21.20	0.23
PS16dow	16:02:02.19	+09:49:07.7	57 509.47942	22.26	Likely QSO	$1.325^{+0.205}_{-0.285}$	21.05	0.23
PS16dov	16:01:53.91	+09:52:44.2	57 508.49664	22.25	QSO	$2.2818 \pm 0.0012$	21.33	0.25
PS16cfu	16:01:15.66	+09:25:04.7	57 508.49664	21.14	Old SN	$0.2809 \pm 0.0655$	19.25	0.28
PS16cgb	16:02:19.12	+09:34:50.1	57 508.49664	22.03	Old SN	$0.7546 \pm 0.1647$	21.52	0.29
PS16cfz	16:02:11.96	+09:54:07.9	57 508.49664	21.27	Old SN	$0.1694 \pm 0.0244$	17.95	0.31
PS16fns	16:01:24.78	+10:02:01.6	57 508.49664	21.49	Likely QSO	$1.955^{+0.175}_{-0.335}$	20.21	0.34
PS16cfw	16:01:39.10	+09:21:59.5	57 508.49664	21.27	QSO	$0.8623 \pm 0.0002$	19.52	0.35
PS16fnt	16:01:28.08	+10:02:51.0	57 508.49664	21.10	Likely QSO	$0.975^{+0.465}_{-0.145}$	20.19	0.35
PS16fnu	15:59:41.19	+09:46:19.7	57 508.49664	22.56	Stellar	–	21.41	0.37
PS16fnv	15:59:41.54	+09:47:50.1	57 508.49664	21.11	Likely QSO	$1.575^{+0.205}_{-0.155}$	20.45	0.38
PS16fnw	16:01:53.38	+10:05:21.7	57 508.49664	21.59	QSO	$2.2851 \pm 0.0004$	20.04	0.42
PS16fnx	15:59:28.46	+09:51:51.7	57 508.49664	22.70	Old SN	$0.5790 \pm 0.1304$	22.27	0.45
PS16fny	16:02:27.75	+10:03:09.1	57 508.49664	22.11	Likely QSO	$0.375^{+0.135}_{-0.135}$	21.31	0.47
PS16fnz	16:01:19.78	+10:12:18.7	57 508.49664	21.72	Likely QSO	$0.225^{+0.245}_{-0.065}$	20.69	0.51

**Notes.** The time of detection of IceCube-160427A was MJD = 57 505.24482. <sup>(a)</sup> Spectroscopic redshifts for QSOs and photometric redshifts for likely old SNe are from SDSS DR12 (Alam et al. 2015). Photometric redshifts for likely QSOs are from Richards et al. (2009). <sup>(b)</sup> Angular distance to the final revised coordinates of IceCube-160427A.

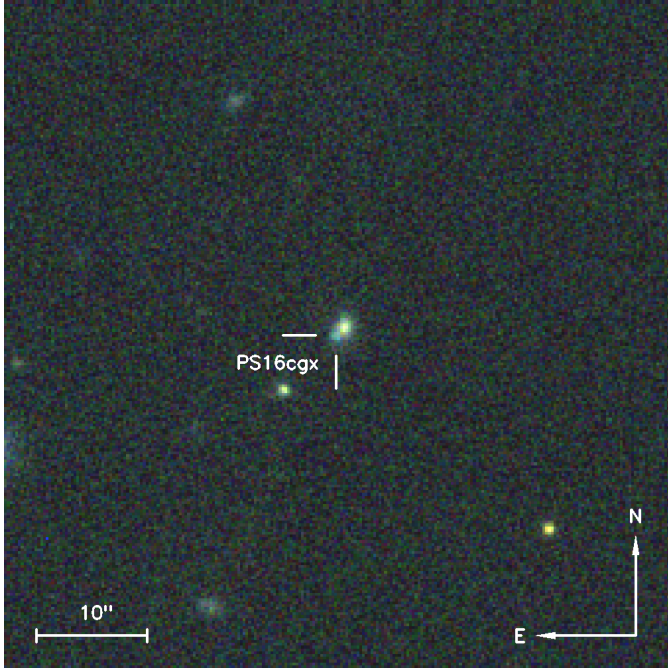
employed a strategy of multiple dithered exposures in  $i_{P1}$  or  $r_{P1}$  filters as were done in the Pan-STARRS1 Science Consortium Medium Deep Fields (for details see Rest et al. 2014; McCrum et al. 2015; Lunnan et al. 2018; Scolnic et al. 2018). These dithered exposures are usually  $8 \times 240$  s long. They are stacked together to make one 1920 s exposure although we also process the individual 8 exposures. We carried out a concerted campaign to observe the error boxes of EHE and HESE events in 2016 and 2017 with Pan-STARRS1, and observed five in total (IceCube-160427A, IceCube-160731A, IceCube-161103A, IceCube-170321A, and IceCube-171106A). We focus here on details of the first event released (IceCube-160427A) since that was the only event in which we found a young, rising extragalactic transient with a possible temporal coincidence with the neutrino detection time. The results from the rest of the events are summarised in Sect. 5.

The Pan-STARRS1 telescope began observing the field of IceCube-160427A in the  $i_{P1}$ -band on MJD 57 508.5 (2016 April 30.5 UT), 3.3 d after the IceCube detection, and the observations were repeated in the  $i_{P1}$ -band on 4 subsequent nights. Individual dithered images were stacked together and the  $3\pi$  Steradian Survey reference sky (see Chambers et al. 2016) was subtracted from these nightly stacked images. The  $3\pi$  reference sky is constructed from the median combination of multiple individual exposures that are of length 43 (in filter  $g_{P1}$ ), 40 ( $r_{P1}$ ), 45 ( $i_{P1}$ ), 40 ( $z_{P1}$ ) and 30 ( $y_{P1}$ ) s. Typically there are around 12 individual exposures in each filter at each point in the sky that are combined to form the reference sky, which were taken over the period between 2009–2014. However, the number of exposures per point on the sky is a distribution covering the range between 5 and 25 (see Fig. 16 of Chambers et al. 2016). For follow-up of IceCube neutrino alerts, the  $i_{P1}$  filter was typically used and, in most cases, the number of exposures in the  $i_{P1}$  reference sky is around 16. The typical depth of the reference sky

is  $m_{i_{P1}} \approx 23.1$  mag (see Table 11 and Fig. 17 of Chambers et al. 2016).

After subtraction, the stacked images typically had a  $5\sigma$  point-source image depth of  $m_{i_{P1}} \approx 22.5$  mag. The initial results, based on the first revision, of the IceCube-160427A coordinates were reported by Smartt et al. (2016a). In this paper, we revise these results with the final IceCube-160427A position. As an important null result, we report that no persistent bright ( $m_i \lesssim 20$  mag) transients were found in the IceCube-160427A field over a period of +3.3–45 days. While we did not cover the first 3 days, we rule out any relatively bright SN-like transient that exploded at a time coincident with IceCube-160427A. Other optical surveys by our team and others have found a similar null result for IceCube events, in that there are no bright candidates with SN-like light curves in the field (e.g. Lipunov et al. 2016a,b; Singer et al. 2016a,b).

For IceCube-160427A, we found 19 faint optical transients within the 90% probability containment of the IceCube-160427A position: 4 variable known quasi-stellar objects (QSOs), that is, extremely luminous active galactic nuclei (AGNs), based on the Sloan Digital Sky Survey (SDSS) Data Release 12 (DR12; Alam et al. 2015) archival spectra; 6 likely QSOs based on the host colour; 6 SN candidates; and 3 faint sources that are likely either faint Galactic variable stars or QSO variability, see Table 2. The SN candidates are transients that are either offset from or coincident with an apparent host galaxy which is not a known QSO or AGN. Five of the SN candidates show flat or declining light curves, consistent with SNe at peak or post maximum. However, one of the candidates, PS16cgx, shows a rising light curve of 0.4 mag over 2 days suggesting that it is a young SN and therefore possibly having an explosion epoch that is temporally consistent with IceCube-160427A. PS16cgx was located at  $\alpha_{J2000} = 240^\circ 32' 75''$  and  $\delta_{J2000} = +9^\circ 86' 47.8''$  ( $16^h 01^m 18^s 61 + 09^\circ 51' 53.7''$ ),  $10.0'$  from the



**Fig. 2.** Pan-STARRS1 *riz*-band false-colour  $1' \times 1'$  subsection of the field of PS16cgx at MJD 57 525.5. North is *up*, east is *left*.

best-fit IceCube-160427A direction and consistent with the neutrino position within the uncertainties at 50% confidence.

#### 4.1. Follow-up of PS16cgx

The field of PS16cgx is shown in Fig. 2. We continued to observe the field with Pan-STARRS1 until MJD = 57 550, or 45 days after discovery of the neutrino. These follow-up images were primarily carried out in the  $i_{p1}$ -band and the nightly stacked images of the field typically reached  $22 \lesssim m_{ip1} \lesssim 22.5$  (AB mag,  $5\sigma$ ). One epoch of  $r_{p1}$  and two epochs of  $z_{p1}$ -band imaging were also obtained. Furthermore, two epochs of  $i$ -band late-time imaging were obtained with the Canada France Hawaii Telescope (CFHT), using the MegaCam instrument (Boulade et al. 2003). The automatically calibrated level 2 data products were downloaded for the analysis. The CFHT observations were obtained at MJD 57 575.3 (2016 July 6.3 UT) suggesting  $m_i = 23.649 \pm 0.153$  mag, and MJD 57 637.2 (2016 September 6.2 UT), with the latter epoch used as a reference template image for the first CFHT epoch. However, it is possible that the latter epoch contains some contamination from the SN. Assuming that PS16cgx is a Type Ia SN, we estimate the magnitude of the SN to be  $m_i \approx 24.5$  mag during this epoch. Adding this contribution mathematically to the template subtracted magnitude at the MJD 57 575.3 epoch results in a magnitude of  $m_i = 23.2$  mag. The resulting photometry of PS16cgx is reported in Table 3.

Spectra of PS16cgx (see Table 4) were obtained with the following instruments: the 2.2 m University of Hawaii (UH) telescope with SuperNovae Integral Field Spectrograph (SNIFS; Lantz et al. 2004), the 8.1 m Gemini-North Telescope with Gemini Multi-Object Spectrograph (GMOS; Hook et al. 2004), and the 8.2 m Very Large Telescope (VLT) with Focal Reducer and low dispersion Spectrograph 2 (FOR2; Appenzeller et al. 1998). The SNIFS spectrum was reduced using a dedicated calibration pipeline for the instrument (see also Smartt et al. 2016b,

**Table 3.** Photometry of PS16cgx.

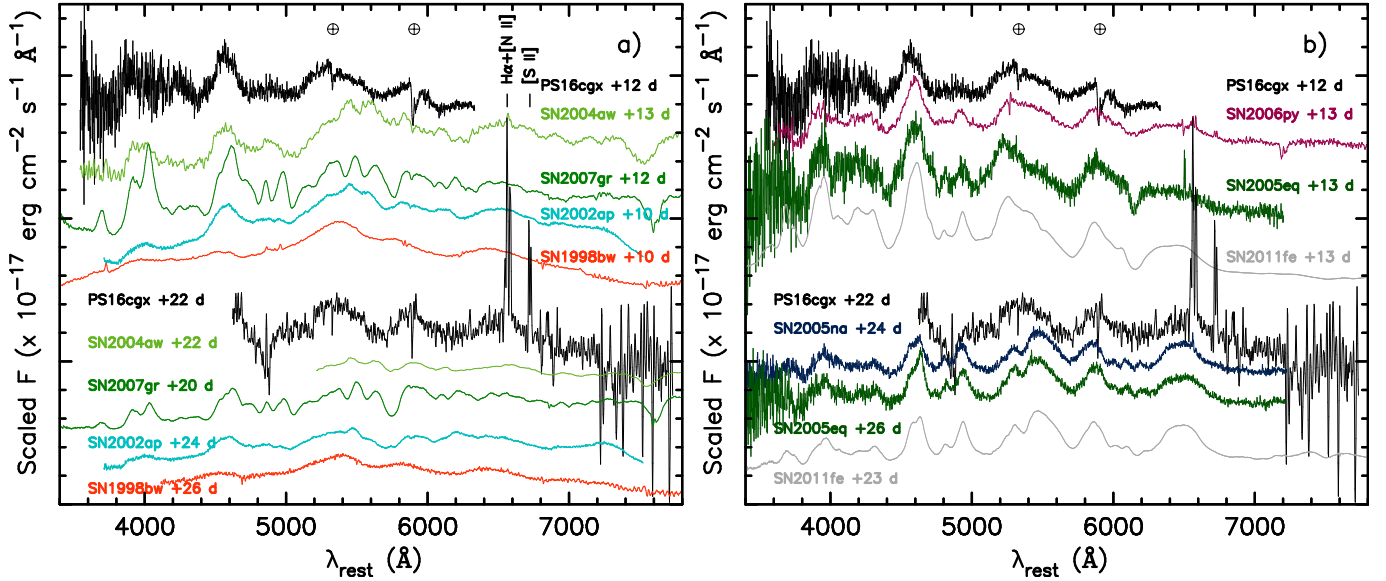
Epoch (MJD)	$m$ (mag)	$m_{\text{err}}$ (mag)	Band	Telescope
57 525.48829	21.7502	0.1878	<i>r</i>	PS1
57 508.49664	21.8533	0.0903	<i>i</i>	PS1
57 510.47903	21.9087	0.3446	<i>i</i>	PS1
57 511.46505	21.5033	0.1409	<i>i</i>	PS1
57 512.49131	21.6155	0.1726	<i>i</i>	PS1
57 520.39154	21.3547	0.0832	<i>i</i>	PS1
57 521.47973	21.3772	0.0731	<i>i</i>	PS1
57 523.42637	21.3453	0.0990	<i>i</i>	PS1
57 525.49056	21.6267	0.1527	<i>i</i>	PS1
57 527.47447	21.5686	0.1447	<i>i</i>	PS1
57 528.42873	21.6453	0.3949	<i>i</i>	PS1
57 532.26348	22.0882	0.4259	<i>i</i>	PS1
57 537.38608	21.9893	0.0751	<i>i</i>	PS1
57 540.37896	22.0893	0.0954	<i>i</i>	PS1
57 542.41169	22.0684	0.1335	<i>i</i>	PS1
57 544.41986	22.2661	0.0745	<i>i</i>	PS1
57 546.37147	22.1868	0.0942	<i>i</i>	PS1
57 548.46014	22.2848	0.1472	<i>i</i>	PS1
57 550.46312	22.3504	0.1179	<i>i</i>	PS1
57 575.34358	23.649	0.153	<i>i</i>	CFHT
57 525.49283	22.2165	0.4003	<i>z</i>	PS1
57 537.41392	22.8827	0.3978	<i>z</i>	PS1

**Table 4.** Spectroscopy of PS16cgx.

Epoch (MJD)	$t_{\text{rest}}$ (d)	Setup	Exp. time (s)	Telescope
57 515.49	-3.0	R-channel	$2 \times 2420$	2.2 m UH
57 535.42	+12.4	R400+1.0''	$4 \times 900$	Gemini-N
57 547.19	+21.6	300I+1.0''	2700	VLT-UT1
57 548.18	+22.3	300I+1.0''	$2 \times 2400$	VLT-UT1

Sect. 2 for details of Pan-STARRS follow-up with SNIFS). The GMOS spectrum was reduced using the gemini IRAF<sup>4</sup> package. The FOR2 spectra were processed using standard IRAF tasks and reduction steps, and combined for higher signal-to-noise ratio. The redshift of PS16cgx is constrained by the narrow host galaxy emission lines of H $\alpha$  and [S II] 6716.4, 6730.8 Å to  $z = 0.2895 \pm 0.0001$ . This yields a luminosity distance of  $D_l = 1490$  Mpc ( $\mu = 40.87$ ). The Galactic extinction towards PS16cgx is  $A_i = 0.073$  mag based on the dust map calibration of Schlafly & Finkbeiner (2011), which is also the calibration system we adopt for all comparisons. Unfortunately, the Na I D feature at the rest wavelength of PS16cgx is redshifted in our observer frame to overlap with the heavily contaminating telluric A band around 7615 Å, and cannot be used to estimate the host galaxy reddening. For the analysis no host galaxy extinction is adopted. The  $K$ -corrections for the PS16cgx photometry are calculated from the GMOS spectrum with the SNAKE code (Inserra et al. 2018) yielding  $K_{rg} = -0.32$ ,  $K_{ir} = -0.28$ , and  $K_{zi} = -0.29$  mag.

<sup>4</sup> IRAF is distributed by the National Optical Astronomy Observatory, which is operated by the Association of Universities for Research in Astronomy (AURA) under a cooperative agreement with the National Science Foundation.



**Fig. 3.** *Panel a:* spectra of PS16cgx compared to a selection of Type Ic SNe. The comparison events include the GRB associated Type Ic-BL event SN 1998bw (Patat et al. 2001); non-GRB associated Type Ic-BL event SN 2002ap (Modjaz et al. 2014); and normal Type Ic events, SN 2007gr (Hunter et al. 2009), and SN 2004aw (Taubenberger et al. 2006). The strong host galaxy emission lines of PS16cgx are labelled. *Panel b:* spectra of PS16cgx compared to a selection of Type Ia SNe. The comparison events include SN 2005eq, SN 2005na (Blondin et al. 2012), SN 2006py (Folatelli et al. 2013), and SN 2011fe (Pereira et al. 2013). In both panels the spectra have been corrected for line-of-sight reddening and to the rest-frame wavelength. The wavelengths of the main telluric bands in the spectra of PS16cgx are indicated with a  $\oplus$  symbol. Comparison data were obtained via WISEREP (Yaron & Gal-Yam 2012).

#### 4.2. Nature of PS16cgx

Due to the faint observed brightness of PS16cgx around 21–22 mag in *i*-band, it is challenging to obtain high signal-to-noise spectra of such an event even with an 8 m class telescope. Due to this, the nature of PS16cgx is ambiguous between a Type Ia and a Type Ic SN based solely on spectroscopic classification (Fig. 3). A Type Ic origin of PS16cgx would be extremely interesting, since both GRB associated Type Ic SNe and also some normal Type Ic SNe (e.g. Paragi et al. 2010) are associated with relativistic jets immediately after the core collapse. These jets are expected to produce a short ( $\sim 10$  s) burst of neutrinos; a detection of such neutrinos could produce valuable insights into the physics of these jets (e.g. Ando & Beacom 2005) and identify the class of choked-jet SNe as neutrino emitters.

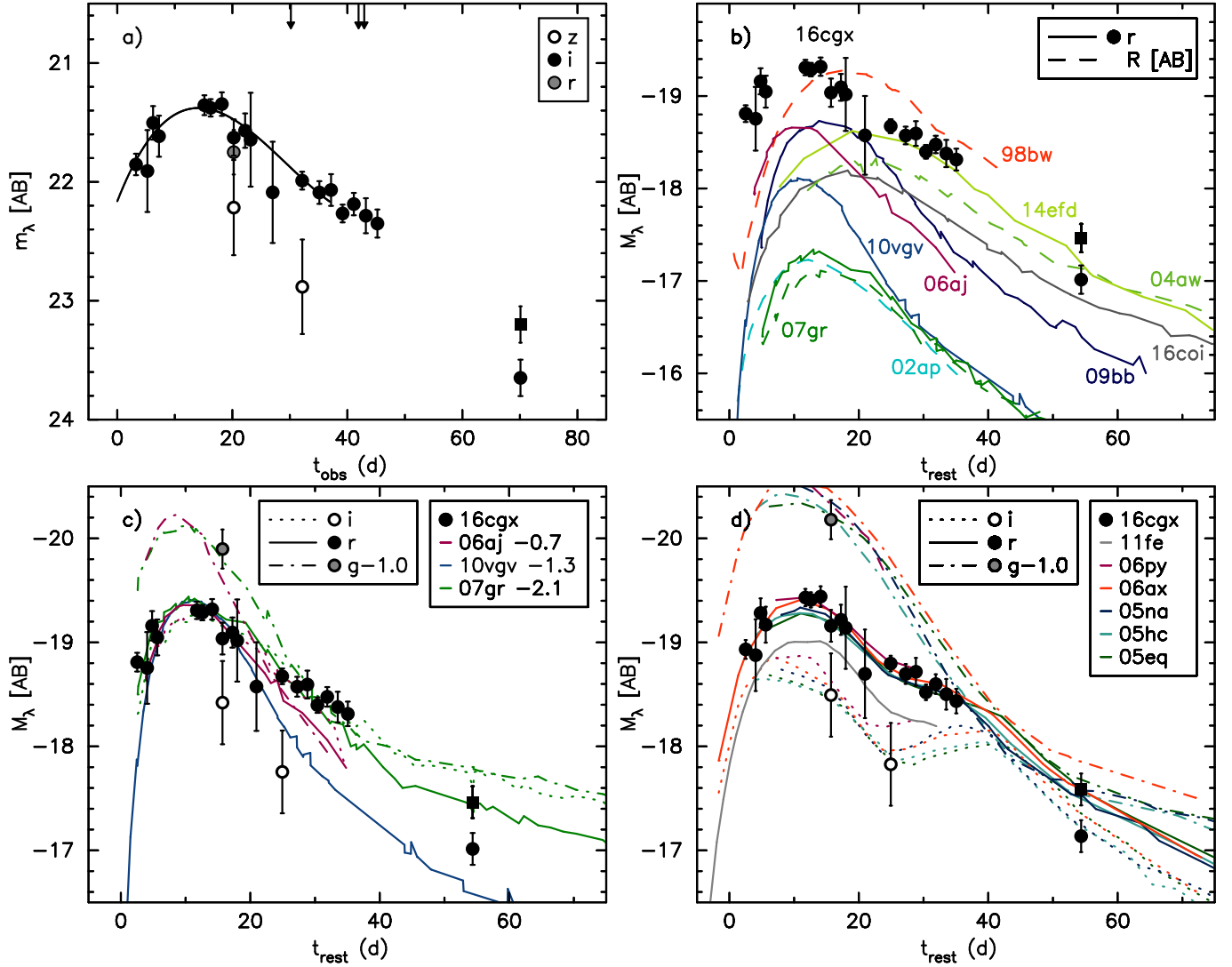
The lack of very broad features in the spectra of PS16cgx suggest that it is not a broad-line Type Ic (Type Ic-BL) SN such as SN1998bw (Patat et al. 2001). While the spectra of PS16cgx do not exactly resemble those of the normal Type Ic SN 2007gr (Hunter et al. 2009) either, there is some similarity for example with the Type Ic SN 2004aw (Taubenberger et al. 2006). The main difference in comparison of PS16cgx to normal Type Ia SNe is the shallow absorption feature that could be associated with the Si II line. Nonetheless, the early spectrum of PS16cgx shares significant similarity to that of Type Ia SNe, such as SN 2006py (Folatelli et al. 2013).

Based on a third order polynomial fit to the Pan-STARRS1  $i_{P1}$ -band observations near maximum light, we estimate that the PS16cgx light curve peaked at 11 rest-frame days after the neutrino detection (corresponding to MJD 57 519.4) and at  $M_r \approx -19.3$  mag (Fig. 4a). Such an approach is often used to estimate the peak magnitudes of a SN (e.g. Suntzeff et al. 1999). Compared to the absolute peak magnitude ranges (corrected for host galaxy line-of-sight extinction) yielded by Drout et al. (2011), PS16cgx is brighter than normal Type Ic SNe with a peak magnitude of  $M_R = -18.1 \pm 0.6$  mag, but consistent with Type Ic-

BL SNe peaking at  $M_R = -18.8 \pm 1.1$  mag (*R*-band magnitudes scaled to AB system). For comparison, Taddia et al. (2018) obtain an average peak magnitude of  $M_r = -17.66 \pm 0.21$  mag for Type Ic SNe. This is also reflected in our comparison of the absolute light curve of PS16cgx to a variety of nearby Type Ic SNe with well estimated explosion dates based on observational constraints or modelling (Fig. 4b). The comparison events include the GRB associated Type Ic-BL events SN 2006aj (Bianco et al. 2014) and SN 1998bw (Galama et al. 1998); non-GRB associated Type Ic-BL events SN 2016coi (Prentice et al. 2018), PTF10vgv (Corsi et al. 2012), SN 2009bb (Pignata et al. 2011), and SN 2002ap (Foley et al. 2003); and normal Type Ic events LSQ14efd (Barbarino et al. 2017), SN 2007gr (Hunter et al. 2009), and SN 2004aw (Taubenberger et al. 2006). The Johnson-Cousins light curves of SN 2007gr are also converted to the SDSS system using the transformations of Jester et al. (2005) in the comparison. Virgo and Great Attractor corrected host luminosity distances (via the NASA/IPAC Extragalactic Database) are used in comparisons if relevant.

Furthermore, most of the Type Ic SNe in our comparisons have slower rise times than PS16cgx would have to be associated with the IceCube-160427A event (assuming that neutrino emission is temporally coincident with core collapse or shock breakout). While some of the normal Type Ic SN light curves could be arbitrarily shifted to match the overall shape of the rest-frame *r*-band evolution of PS16cgx, the *r* – *i* colour evolution of events like SN 2006aj (Bianco et al. 2014) and SN 2007gr (Hunter et al. 2009) do not appear to be consistent with that of PS16cgx (Fig. 4c).

Contrary to the Type Ic SN comparisons, the absolute light curve evolution of PS16cgx is similar to that of many normal Type Ia SNe (Fig. 4d), for example SN 2005eq, 2005hc, 2005na, 2006ax, and 2006py from the Carnegie Supernova Project (CSP; Contreras et al. 2010; Burns et al. 2014; Krisciunas et al. 2017). In particular, this is the case, if a small



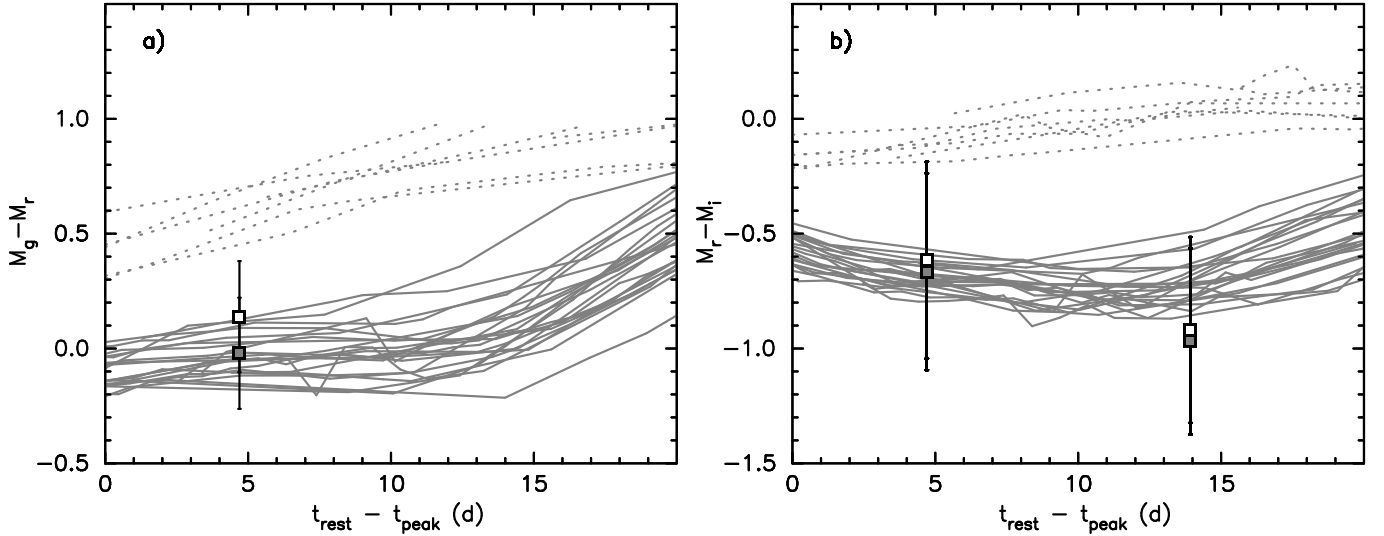
**Fig. 4.** *Panel a:* observed light curves of PS16cgx. Zero epoch is set to the IceCube-160427A detection. A low-order polynomial light-curve fit is shown with a solid curve. Spectroscopic GMOS (30 days) and FORS2 (42 and 43 days) observations are indicated with vertical arrows. *Panel b:* PS16cgx *r*-band absolute light-curve comparison to a selection of nearby Type Ic SNe including the GRB associated Type Ic-BL events (SNe 2006aj and 1998bw); non-GRB associated Type Ic-BL events (PTF10vgv, and SNe 2016coi, 2009bb, and 2002ap); and normal Type Ic events (LSQ14efd, and SNe 2007gr and 2004aw). *Panel c:* selection of rapidly rising Type Ic SNe arbitrarily shifted as indicated in the figure legend. The comparison indicates an inconsistent spectrophotometric evolution of PS16cgx with Type Ic SNe which cannot be explained with extinction effects. *Panel d:* PS16cgx *gri* absolute light-curve comparison to a selection of similar Type Ia SNe. In addition, the slightly fainter *r*-band light curve of the canonical Type Ia SN 2011fe (Guillochon et al. 2017) is also included in the comparison. Furthermore, as a difference to the previous panels, the light curves of PS16cgx have been arbitrarily corrected for a modest host galaxy extinction of  $A_V = 0.2$  mag with  $R_V = 1.27$  derived by Burns et al. (2014) as an average value for their Type Ia sample. Assuming that the CFHT template reference image contains contamination from a Type Ia SN at  $m_i = 24.5$  mag, the final photometry point is also shown corrected for this effect with a square symbol in all panels.

host galaxy extinction is assumed. Another approach to illustrate this is to compare the rest-frame colour curves of Type Ia and Ic SNe to the observations of PS16cgx (Fig. 5); this comparison suggests that the colours of PS16cgx are consistent Type Ia SNe, but bluer than normal Type Ic SNe. This discrepancy with Type Ic events cannot be explained with an underestimated host galaxy extinction of PS16cgx. Furthermore, while multi-band observations of PS16cgx are consistent with Type Ia SNe in the literature within errors, the match would be improved assuming a moderate host galaxy extinction of around  $A_V \approx 0.2$  mag.

To further quantify the compatibility of PS16cgx with the Type Ia SN hypothesis, we fit the *riz*-band light curve with the

4-parameter SALT2 template (Guy et al. 2005, 2007), assuming a Galactic extinction of  $E(B - V) = 0.054$  mag derived from Finkbeiner et al. (1999) and a host redshift of  $z = 0.2895$ . The best-fit parameters were  $t_0 = 57517.55 \pm 0.59$  (MJD, i.e. 2016 May 9.15 UT) for peak,  $x_0 = (4.39 \pm 0.71) \times 10^{-5}$ ,  $x_1 = -0.48 \pm 0.61$ , and  $c = -0.04 \pm 0.13$ . The allowed range for the  $x_0$  parameter corresponds to a distance modulus of  $\mu = 40.89 \pm 0.18$ , perfectly compatible with the  $\Lambda$ CDM prediction of 40.89 at  $z = 0.2895$ . Similarly, the  $x_1$  (stretch) and  $c$  (colour) parameters are compatible with the mean values (0) for Type Ia SNe. Furthermore, we studied the impact of colour information by testing the agreement between the data and template in each band. Since 19 of the 22 observations were taken in the *i* band,





**Fig. 5.** Panel a: rest-frame  $M_g - M_r$  and Panel b:  $M_r - M_i$  colours of PS16cgx compared to the evolution of Type Ia SNe (solid curves; Burns et al. 2014; Krisciunas et al. 2017) including both normal and 91T-like events, and normal Type Ic SNe (dotted curves; Stritzinger et al. 2018a,b; Taddia et al. 2018) from CSP. Colour points assuming no host galaxy extinction are shown with open symbols, and assuming an arbitrary host extinction of  $A_V = 0.2$  mag in grey symbols.

this band anchors the fit. However, the photometric points in both the  $r$  and  $z$  band fall slightly below the model expectation, which is an effect that cannot be explained with a simple reddening law. Quantitatively, the  $\chi^2/\text{d.o.f.}$  for the fit is 19.7/18 ( $p = 0.35$ ), and the  $riz$  light curve can be considered compatible with the template to within photometric errors. To summarize, we conclude that there are no specific arguments to support a Type Ic classification of PS16cgx based on the available data. However the observations are in reasonable agreement with the expected Type Ia SN light curve and colour evolution. While some theoretical models (Wright et al. 2016, 2017) predict that MeV neutrinos from a nearby Type Ia SN would be detectable by IceCube, no neutrino emission is expected at TeV energies and above. Therefore, we find no plausible physical scenario where the neutrino event could be related to PS16cgx if it were indeed a Type Ia SN and conclude that in that case the two detections must be unrelated.

The host galaxy SDSS J160118.56+095153.7 of PS16cgx is an extended source in our images, however, no clear structure is resolved. Based on the Pan-STARRS1 DR1, the host has  $K$ -corrected absolute magnitudes of  $M_g \approx -20.7$  and  $M_r \approx -21.2$  mag. The luminosity-metallicity relation of Tremonti et al. (2004) suggests  $12 + \log(\text{O}/\text{H}) \approx 9$ . The metallicity using Pettini & Pagel (2004) N2 method is  $12 + \log(\text{O}/\text{H}) \approx 8.7$  yielded from the VLT spectrum, consistent with the mass-luminosity relation. Therefore, the host has relatively normal, solar-like, metallicity.

#### 4.3. Probabilities

The probability of a chance detection of PS16cgx with the IceCube-160427A event can be estimated following a similar approach to that of Aartsen et al. (2015) and Smartt et al. (2016c). Both cases of a Type Ia or Type Ic SN are considered. Assuming that a young and very distant SN can be discovered and that it can be identified to be in rise, the detection would likely have to take place roughly 0.5 mag below the peak. The brightest events we consider are the Type Ic-BL SNe which could peak roughly at  $M = -22.1$  mag assuming a  $3\sigma$  deviation from an average magnitude (Drout et al. 2011). There-

fore, with the Pan-STARRS1 survey limit of  $\sim 22.5$  mag, such events could be discovered at rise up to a luminosity distance of  $D_1 \approx 6610$  Mpc (or  $z \approx 1.00$ ). However, the majority of the events within this volume are too faint to be discovered. The review on the cosmic star formation rate by Madau & Dickinson (2014) yields a CCSN rate of  $R_{\text{CCSN}} = 2.0 \times 10^{-4} \text{ Mpc}^{-3} \text{ yr}^{-1}$  scaled to the redshift of PS16cgx, which very roughly corresponds also to a comoving mid-volume distance from within an average magnitude Type Ic-BL or a normal Type Ia SN could be discovered with this survey. We adopt this CCSN rate as a rough average for the calculations. An intrinsic number of exploding CCSNe can be roughly estimated from

$$N_{\text{SN}} = \frac{4}{3} \pi D_m^3 R_{\text{SN}} \frac{A}{41253 \text{ deg}^2} \frac{t}{365 \text{ d}} \text{ yr}, \quad (1)$$

where  $D_m$  is the comoving radial distance  $D_m = D_1/(1+z)$ . With a sky area given by the neutrino error region of  $A = 0.78 \text{ deg}^2$  and a survey time window of  $t = 5$  d, this suggests  $N_{\text{CCSN}} = 7.8$ . For the fractions of normal Type Ic and Type Ic-BL SNe from all CCSNe in a volume-limited sample, Li et al. (2011) derive  $f_{\text{Ic}} = 14\%$  and  $f_{\text{Ic-BL}} = 2\%$ , respectively (see also Smith et al. 2011), suggesting  $N_{\text{Ic}} = 1.1$  and  $N_{\text{Ic-BL}} = 0.16$ . To estimate which fraction of the events are bright enough to be discovered with the survey, two effects have to be taken into account. Firstly, Mattila et al. (2012) estimates that only 77% of CCSNe at the redshift of PS16cgx are observable by optical surveys. This is due to a missing fraction of CCSNe with very high localised host galaxy extinctions way above the ‘normal’ extinction distribution in high star formation rate environments. Such correction reduces the discrepancy between the directly observed CCSN rates and the predicted star formation rates (Horiuchi et al. 2011), and has been applied by CCSN rate studies (e.g. Dahlen et al. 2012; Melinder et al. 2012). Secondly, a transient that is possibly associated with a neutrino detection is a young SN discovered at  $>0.5$  mag below the following peak magnitudes:  $M_{\text{Ic}} = -18.1$  mag and  $1\sigma$  deviation  $\sigma_{\text{Ic}} = 0.6$  mag, or  $M_{\text{Ic-BL}} = -18.8$  mag and  $\sigma_{\text{Ic-BL}} = 1.1$  mag (Drout et al. 2011). Furthermore, we assume a normal rest-frame  $r$ -band host extinction distribution for SNe based by Riello & Patat (2005) and scaled as in Mattila et al. (2012). Using

**Table 5.** Adopted and yielded values of the probability calculations of a chance discovery for the IceCube-160427A error region.

Type	$f_{\text{relative}}$ (%)	$N_{\text{intrinsic}}$	$f_{\text{missing}}$ (%)	$M_{\text{peak,AB}}$ (mag)	$\sigma$ (mag)	$f_{\text{detection}}$ (%)	$N_{\text{observed}}$	$p$ (%)
CCSN	100	7.8	77	–	–	–	–	–
Ic	14	1.1	77	–18.1	0.6	1.4	0.012	1.2
Ic-BL	2	0.16	77	–18.8	1.1	4.7	0.006	0.6
Ia	100	1.6	–	–	–	4.4	0.070	6.8
Ia-normal	62	0.99	–	–19.1	0.5	4.7	0.047	4.6
Ia-91T	12	0.19	–	–19.4	0.3	6.1	0.012	1.2
Ia-91bg	6	0.10	–	–17.6	0.5	0.9	0.001	0.1
Ia-faint	20	0.32	–	–18.8	0.5	3.4	0.011	1.1

the aforementioned limiting magnitude of  $\sim 22.5$  mag, this yields a detection of only 1.4% of normal Type Ic SNe within the comoving volume. Combining the detection and missing fraction corrections results in an observable  $N_{\text{Ic}} = 0.012$ , corresponding to a Poisson probability  $p = 1 - e^{-N}$  of  $p_{\text{Ic}} = 1.2\%$ . Similarly, a normal detection efficiency of 4.7% can be yielded for Type Ic-BL SNe, which results in an observable  $N_{\text{Ic-BL}} = 0.006$  and  $p_{\text{Ic-BL}} = 0.6\%$  for a chance detection.

The Type Ia SN rate at the redshift of PS16cgx is  $R_{\text{Ia}} = 0.4 \times 10^{-4} \text{ Mpc}^{-3} \text{ yr}^{-1}$  (Dilday et al. 2010). For the aforementioned large comoving volume this suggests  $N_{\text{Ia}} = 1.6$ . The host galaxy extinction distribution for Type Ia SNe is adopted from (Dilday et al. 2010). No additional missing fraction is assumed for Type Ia SNe that are rising from old stellar population. Luminosity functions at peak for Type Ia SNe are adopted from Melinder et al. (2011) assuming  $B-R = 0$  mag and shifted to the AB system (see Table 5). These result in detection efficiencies at  $>0.5$  mag below peak of 4.7, 6.1, 0.9, and 3.4% for normal, 91T-like, 91bg-like, and faint Type Ia SNe, respectively. This yields a total detection efficiency of 4.4% within the volume and thus a number of detectable Type Ia SNe of  $N_{\text{Ia}} = 0.070$  corresponding to a chance detection of  $p_{\text{Ia}} = 7\%$ . Therefore, a chance detection of a young and unrelated Type Ia SN in the Pan-STARRS1 follow up of an IceCube neutrino alert sky region is not that unlikely. The adopted and yielded values of all the above probability calculations including different Type Ia subtypes are shown for clarity in Table 5.

## 5. Summary of other Pan-STARRS1 observations of IceCube alerts

Over the two-year period 2016 April 1–2018 March 31, IceCube released 13 alerts of either EHE or HESE events. Of these thirteen, ten were visible in the night time sky (the other three were in solar conjunction) and with Pan-STARRS1 we observed the field of 5 of them (see Table 6 for a summary). Since usually the initially released neutrino direction changes slightly after application of more time consuming reconstructions, we will use the latest available reconstruction results as our final set of coordinates. We typically observed with a similar observing strategy as discussed here in Sect. 4 with dithered exposures stacked together to make a night stack (as for the Pan-STARRS1 Medium Deep Fields). The size of the Pan-STARRS1 camera field of view and typical sky localisation regions from the EHE and HESE tracks from IceCube are well matched and we typically covered the neutrino error region to a depth of  $m_{\text{ip1}} \approx 22$  mag. Observations of the field started between a few hours to a few days after the IceCube alert and continued for 3 to 30 days

afterwards. We were motivated to look both for rapidly evolving transients (timescales of order 24–48 h) and SN-like transients (timescales of order a few to 10 days). As listed in Table 6, we typically found 10–20 transients per field, with magnitude ranges and light curves broadly similar to those detailed for IceCube-160427A in Sect. 4. However, we found no clear candidate for a SN-like transient with a rising light curve (or indeed any other characteristic) that would point towards a temporal coincidence. PS16cgx was the best candidate for a SN with an explosion epoch coincident with the neutrino time, and we consider that to be disfavoured due to its likely thermonuclear origin. The numbers of transients that we found are entirely consistent with the typical SN field population in a Pan-STARRS1 footprint at this depth (the vast majority are old SNe) and variable QSOs and AGNs (see Appendix A).

We cannot make a definitive statement that all transients discovered can be discounted as counterparts. We can only say that none of them show any unusual characteristics in their light curves or absolute magnitudes (when a host galaxy redshift exists) or in spectral characteristics (when a spectrum has been taken, see Appendix A) that suggest they are candidate sources for the counterparts of any of the HESE or EHE neutrinos. In other words, we are confusion limited within the  $\sim 1-2 \text{ deg}^2$  localisation regions of IceCube. Given the number of sources detected, we have only the option of searching for an unusual observation characteristic or implied temporal coincidence. Either of these significantly impact the probability calculation of coincidence as shown in Sect. 4.3.

We can make a qualitative statement that we find no evidence of transients above  $m_{\text{ip1}} \approx 22$  mag in the error regions. However the purity of the neutrino alerts is between 25–50% and we have not been able to cover all five events from 1 h to 10 days uniformly. Therefore we cannot rule out fast transients of timescales  $\sim \text{min}$  to 24 h or fainter transients with longer timescales.

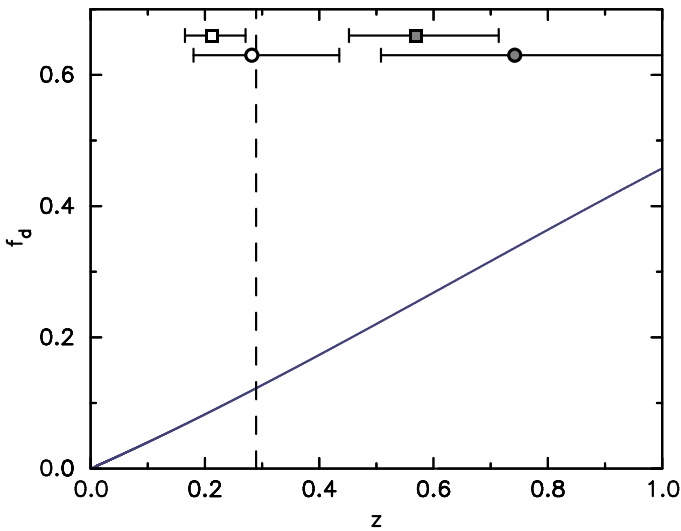
## 6. Discussion

The distance distribution of CCSNe follow the star-formation rate. If we assume those are the sources of the diffuse neutrino signal, the median redshift of sources of high-energy neutrino singlets is at  $z \sim 1$ . For example, with Pan-STARRS1 image depth of  $\sim 22.5$  mag typical normal Type Ic and Type Ic-BL SNe can be detected in rise up to  $z = 0.2-0.4$ . However, superluminous Type Ic events could be detected up to  $z \approx 1$ . Out of the source, which produce a single detectable high-energy neutrino alert in IceCube, only 13% are closer than redshift of  $z = 0.29$  (see Fig. 6). Finding a distant neutrino source is therefore not surprising. Due to the Eddington bias we cannot estimate the neutrino flux from the detection of a single high-energy

**Table 6.** IceCube HESE and EHE events and Pan-STARRS1 observations from 2016–2017.

Neutrino event	Epoch (MJD)	Energy alert type	$\alpha_{J2000}$ (°)	$\delta_{J2000}$ (°)	90% error (°)	Pan-STARRS1 observations Start	Pan-STARRS1 observations End	$m_{\text{depth},i_{p1}}$ (mag)	Number of transients
IceCube-160427A	57 505.24481	HESE	240.3	9.7	0.45 – 0.54	57 508.50	57 550.46	22.5	19
IceCube-160731A	57 600.07990	HESE+EHE	214.5	−0.3	0.75	57 600.32	57 626.28	22	11
IceCube-160806A	57 606.51496	EHE	122.8	−0.8	0.5	Not visible	–	–	–
IceCube-160814A	57 614.90688	HESE	200.3	−32.4	1.2–3.0	Not visible	–	–	–
IceCube-161103A	57 695.38022	HESE	40.8	12.6	0.65–1.1	57 695.47	57 702.36	22	7
IceCube-161210A	57 732.83797	EHE	46.6	15.0	0.4–1.1	Not observed	–	–	–
IceCube-170312A	57 824.57615	HESE	305.2	−26.6	0.5	Not observed	–	–	–
IceCube-170321A	57 833.31413	EHE	98.3	−15.0	1.2	57 834.27	57 859.27	22	2
IceCube-170506A	57 879.52565	HESE	221.8	−26.0	2.0–3.0	Not observed	–	–	–
IceCube-170922A	58 018.87118	EHE	77.4	5.7	0.3–0.95	Not observed	–	–	–
IceCube-171015A	58 041.06562	HESE	162.9	−15.4	1.6 – 2.6	Not visible	–	–	–
IceCube-171028A	58 054.35295	HESE	67.5	−69.8	>7–28	Not observed	–	–	–
IceCube-171106A	58 063.77754	EHE	340.0	7.4	0.25 – 0.7	58 065.34	58 075.34	22.5	2

**Notes.** The events labelled “Not visible” have IceCube positions in the daytime sky. Events marked “Not observed” were either due to weather, Moon encroachment or other reasons not to observe the field. The information on the final reconstructed sky locations of the IceCube neutrinos are taken from the IceCube catalogue of alert events up through IceCube-170922A ([https://icecube.wisc.edu/science/data/TXS0506\\_alerts](https://icecube.wisc.edu/science/data/TXS0506_alerts)), or from the IceCube Collaboration (2017a,b,c). The number of transients are those within the 90% error localisation.



**Fig. 6.** Cumulative fraction,  $f_d$ , of astrophysical neutrino sources with a single high-energy neutrino detection in IceCube, accumulated as a function of source redshift, assuming they follow the SFR (Madau & Dickinson 2014) given standard cosmology. The redshift of PS16cgx is marked with a vertical line. The maximum distance ranges where a normal Type Ic (squares) and Type Ic-BL (circles) SNe can be detected in rise are indicated assuming negligible line-of-sight extinction, ignoring  $K$ -corrections, and adopting  $1\sigma$  distribution of the SN peak magnitudes, for image depths of 22.5 and 25 mag (white and grey symbols, respectively).

neutrino event by using Poisson statistics. As a consequence of the Eddington bias, the detection of a single high-energy neutrino implies an expectation value much smaller than one (Strotjohann et al. 2019). Unlike previous searches for neutrino multiplets (Abbasi et al. 2012), the observation of single neutrinos do not constrain the distance or luminosity of the source very much. Therefore a deep optical follow-up is necessary to catch the counterparts of distant sources. In the following we calculate the probability to find an optical counterpart in the follow-up of single high-energy neutrinos as a function of the survey depth.

We focus on HESE and EHE track-like alerts for which we can assume that their location in the sky will be confined to within  $1 \text{ deg}^2$  uncertainty. The rate of HESE/EHE neutrinos produced in a redshift shell is nearly independent of the redshift up to  $z \sim 0.6$  if we assume that the redshift distribution of the sources (SN of some sort) follow the star-formation rate (SFR). Figure 6 shows the accumulated fraction of sources as a function of redshift. We expect about four HESE and another four EHE events per year, of which on average about one and two, respectively, should be of true astrophysical origin. With a rate of  $R_v = 3 \text{ yr}^{-1}$  astrophysical track-like events we can expect to detect a true association with a rate  $R_v \cdot f_d \sim 0.4 \text{ yr}^{-1}$  up to a redshift 0.3 assuming that all IceCube alerts can be followed up.

Accordingly, a deeper search for optical counterparts is well motivated<sup>5</sup>. Extending the redshift range, for instance from 0.3 to 0.6 will nearly double the number of source identifications.

## 7. Conclusion

We presented the properties of the first IceCube high-energy starting event distributed to the public, IceCube-160427A. The neutrino direction was observed by various instruments in gamma-ray and optical wavelengths. The only compelling optical counterpart found was PS16cgx. Our detailed investigations show some ambiguity in the classification of this SN. While the optical spectra could be explained by both Type Ia and Ic scenarios, the light curve and colour evolution points to PS16cgx being a Type Ia SNe and therefore likely unrelated to IceCube-160427A. The higher chance probability for Type Ia SNe supports this scenario. Therefore, we report a Pan-STARRS1 follow-up non-detection of an optical counterpart for IceCube-160427A within the 90% confidence region down to a  $5\sigma$  limit of  $m_{i_{p1}} \approx 22.5$  mag.

Our findings show that spectroscopic follow-up and multi-colour photometric coverage of the light curves of candidate neutrino sources are crucial. Especially, spectral coverage dur-

<sup>5</sup> We note that his argument holds for sources with positive evolution. In the rare case of negative evolution, for example for tidal disruption events, a deeper search might not be beneficial.

ing the SNe peak would have made a classification easier, since at late times Type Ic and Type Ia spectra look somewhat similar.

We also find no other plausible candidate for an optical transient coincident with four IceCube EHE/HESE triggers down to the  $5\sigma$  limit of  $m_{i_{p1}} \approx 22$  mag. A large fraction of potential CCSN counterparts of high-energy neutrino detections are not accessible by shallow surveys. Assuming that high-energy neutrinos are produced by transients that trace the star-formation rate and have an optical counterpart, we suggest to extend follow-up observations to surveys reaching redshifts of up to 0.6 to ensure that the volume encloses a high probability of detection of at least one counterpart per year.

**Acknowledgements.** **Pan-STARRS:** Pan-STARRS is supported by the University of Hawaii and the NASA's Planetary Defense Office under Grant No NNX14AM74G and the Pan-STARRS Multi-messenger science collaboration is supported by Queen's University Belfast. The Pan-STARRS1 Surveys (PS1) have been made possible through contributions of the Institute for Astronomy, the University of Hawaii, the Pan-STARRS Project Office, the Max-Planck Society and its participating institutes, the Max Planck Institute for Astronomy, Heidelberg and the Max Planck Institute for Extraterrestrial Physics, Garching, The Johns Hopkins University, Durham University, the University of Edinburgh, Queen's University Belfast, the Harvard-Smithsonian Center for Astrophysics, the Las Cumbres Observatory Global Telescope Network Incorporated, the National Central University of Taiwan, the Space Telescope Science Institute, the National Aeronautics and Space Administration under Grant No. NNX08AR22G issued through the Planetary Science Division of the NASA Science Mission Directorate, the National Science Foundation under Grant No. AST-1238877, the University of Maryland, and Eotvos Lorand University (ELTE). **IceCube:** The IceCube collaboration acknowledges the significant contributions to this manuscript from Anna Franckowiak, Claudio Kopper and Jakob van Santen. The IceCube collaboration gratefully acknowledge the support from the following agencies: USA – U.S. National Science Foundation-Office of Polar Programs, U.S. National Science Foundation-Physics Division, Wisconsin Alumni Research Foundation, Center for High Throughput Computing (CHTC) at the University of Wisconsin-Madison, Open Science Grid (OSG), Extreme Science and Engineering Discovery Environment (XSEDE), U.S. Department of Energy-National Energy Research Scientific Computing Center, Particle astrophysics research computing center at the University of Maryland, Institute for Cyber-Enabled Research at Michigan State University, and Astroparticle physics computational facility at Marquette University; Belgium – Funds for Scientific Research (FRS-FNRS and FWO), FWO Odysseus and Big Science programmes, and Belgian Federal Science Policy Office (Belspo); Germany – Bundesministerium für Bildung und Forschung (BMBF), Deutsche Forschungsgemeinschaft (DFG), Helmholtz Alliance for Astroparticle Physics (HAP), Initiative and Networking Fund of the Helmholtz Association, Deutsches Elektronen Synchrotron (DESY), and High Performance Computing cluster of the RWTH Aachen; Sweden – Swedish Research Council, Swedish Polar Research Secretariat, Swedish National Infrastructure for Computing (SNIC), and Knut and Alice Wallenberg Foundation; Australia – Australian Research Council; Canada – Natural Sciences and Engineering Research Council of Canada, Calcul Québec, Compute Ontario, Canada Foundation for Innovation, WestGrid, and Compute Canada; Denmark – Villum Fonden, Danish National Research Foundation (DNRF), Carlsberg Foundation; New Zealand – Marsden Fund; Japan – Japan Society for Promotion of Science (JSPS) and Institute for Global Prominent Research (IGPR) of Chiba University; Korea – National Research Foundation of Korea (NRF); Switzerland – Swiss National Science Foundation (SNSF). **Others:** We thank the anonymous referee for useful comments. EK, SJS and KS acknowledge support from the Science and Technology Facilities Council (STFC; ST/P000312/1, ST/N002520/1). SJS acknowledges funding from the European Research Council under the European Union's Seventh Framework Programme (FP7/2007-2013)/ERC Grant agreement n° [291222]. TWC acknowledges the funding provided by the Alexander von Humboldt Foundation. AF thanks Irene Tamborra for fruitful discussions on neutrino production in supernovae. AF is supported by the Initiative and Networking Fund of the Helmholtz Association. This work is based (in part) on observations collected at the European Organisation for Astronomical Research in the Southern Hemisphere, Chile as part of PESSTO, (the Public ESO Spectroscopic Survey for Transient Objects Survey) ESO program 188.D-3003 and the DDT programme 297.D-5024. Based on observations obtained at the Gemini Observatory, which is operated by the Association of Universities for Research in Astronomy, Inc., under a cooperative agreement with the NSF on behalf of the Gemini partnership: the National Science Foundation (United States), the National Research Council (Canada), CONICYT (Chile), Ministerio de Ciencia, Tecnología e Innovación Productiva (Argentina), and Ministério da Ciência, Tecnologia e Inovação (Brazil). Observations were carried

out under programme GN-2016A-DD-9. Based on observations obtained with MegaPrime/MegaCam, a joint project of CFHT and CEA/IRFU, at the Canada-France-Hawaii Telescope (CFHT) which is operated by the National Research Council (NRC) of Canada, the Institut National des Science de l'Univers of the Centre National de la Recherche Scientifique (CNRS) of France, and the University of Hawaii. This work is based in part on data products produced at Terapix available at the Canadian Astronomy Data Centre as part of the Canada-France-Hawaii Telescope Legacy Survey, a collaborative project of NRC and CNRS. We have made use of the Weizmann interactive supernova data repository – (<http://wiserep.weizmann.ac.il>). This research has made use of the NASA/IPAC Extragalactic Database (NED) which is operated by the Jet Propulsion Laboratory, California Institute of Technology, under contract with the National Aeronautics and Space Administration. Funding for SDSS-III has been provided by the Alfred P. Sloan Foundation, the Participating Institutions, the National Science Foundation, and the U.S. Department of Energy Office of Science. The SDSS-III web site is (<http://www.sdss3.org/>). SDSS-III is managed by the Astrophysical Research Consortium for the Participating Institutions of the SDSS-III Collaboration including the University of Arizona, the Brazilian Participation Group, Brookhaven National Laboratory, Carnegie Mellon University, University of Florida, the French Participation Group, the German Participation Group, Harvard University, the Instituto de Astrofísica de Canarias, the Michigan State/Notre Dame/JINA Participation Group, Johns Hopkins University, Lawrence Berkeley National Laboratory, Max Planck Institute for Astrophysics, Max Planck Institute for Extraterrestrial Physics, New Mexico State University, New York University, Ohio State University, Pennsylvania State University, University of Portsmouth, Princeton University, the Spanish Participation Group, University of Tokyo, University of Utah, Vanderbilt University, University of Virginia, University of Washington, and Yale University.

## References

- Aartsen, M. G., Abbasi, R., Abdou, Y., et al. 2013a, *Science*, **342**, 1242856  
Aartsen, M. G., Abbasi, R., Abdou, Y., et al. 2013b, *Nucl. Instrum. Meth. A*, **711**, 73  
Aartsen, M. G., Ackermann, M., Adams, J., et al. 2014, *Phys. Rev. Lett.*, **113**, 101101  
Aartsen, M. G., Abraham, K., Ackermann, M., et al. 2015, *ApJ*, **811**, 52  
Aartsen, M. G., Abraham, K., Ackermann, M., et al. 2016, *ApJ*, **824**, 115  
Aartsen, M. G., Abraham, K., Ackermann, M., et al. 2017a, *ApJ*, **835**, 151  
Aartsen, M. G., Ackermann, M., Adams, J., et al. 2017b, *Astropart. Phys.*, **92**, 30  
Aartsen, M. G., Ackermann, M., Adams, J., et al. 2017c, ArXiv e-prints [arXiv:[astro-ph.HE/1710.01191](https://arxiv.org/abs/1710.01191)]  
Aartsen, M. G., Ackermann, M., Adams, J., et al. 2017d, *A&A*, **607**, A115  
Aartsen, M. G., Ackermann, M., Adams, J., et al. 2018a, *Science*, **361**, 147  
Aartsen, M. G., Ackermann, M., Adams, J., et al. 2018b, *Science*, **361**, eaat1378  
Abbasi, R., Ackermann, M., Adams, J., et al. 2009, *Nucl. Instrum. Meth. A*, **601**, 294  
Abbasi, R., Abdou, Y., Abu-Zayyad, T., et al. 2012, *A&A*, **539**, A60  
Abbott, B. P., Abbott, R., Abbott, T. D., et al. 2016, *Phys. Rev. Lett.*, **116**, 061102  
Abbott, B. P., Abbott, R., Abbott, T. D., et al. 2017, *ApJ*, **848**, L12  
Alam, S., Albareti, F. D., Allende Prieto, C., et al. 2015, *ApJS*, **219**, 12  
Ando, S., & Beacom, J. F. 2005, *Phys. Rev. Lett.*, **95**, 061103  
Appenzeller, I., Fricke, K., Fürtig, W., et al. 1998, *The Messenger*, **94**, 1  
Barbarino, C., Botticella, M. T., Dall'Orta, M., et al. 2017, *MNRAS*, **471**, 2463  
Bianco, F. B., Modjaz, M., Hicken, M., et al. 2014, *ApJS*, **213**, 19  
Biland, A., & Dorner, D. 2016, *GRB Coord. Netw.*, 19427, 1  
Bionta, R. M., Blewitt, G., Bratton, C. B., et al. 1987, *Phys. Rev. Lett.*, **58**, 1494  
Blackburn, L., Briggs, M. S., Burns, E., et al. 2016, *GRB Coord. Netw.*, 19364, 1  
Blaufuss, E. 2016, *GRB Coord. Netw.*, 19363, 1  
Blondin, S., Matheson, T., Kirshner, R. P., et al. 2012, *AJ*, **143**, 126  
Botticella, M. T., Trundle, C., Pastorello, A., et al. 2010, *ApJ*, **717**, L52  
Boulade, O., Charlot, X., Abbon, P., et al. 2003, *Proc. SPIE*, **4841**, 72  
Burns, C. R., Stritzinger, M., Phillips, M. M., et al. 2014, *ApJ*, **789**, 32  
Chambers, K. C., Magnier, E. A., Metcalfe, N., et al. 2016, ArXiv e-prints [arXiv:[1612.05560](https://arxiv.org/abs/1612.05560)]  
Chirkin, D., & Rhode, W. 2004, ArXiv e-prints [arXiv:[hep-ph/0407075](https://arxiv.org/abs/hep-ph/0407075)]  
Contreras, C., Hamuy, M., Phillips, M. M., et al. 2010, *AJ*, **139**, 519  
Corsi, A., Ofek, E. O., Gal-Yam, A., et al. 2012, *ApJ*, **747**, L5  
Crowther, P. A. 2007, *ARA&A*, **45**, 177  
Dahlen, T., Strolger, L.-G., Riess, A. G., et al. 2012, *ApJ*, **757**, 70  
Dilday, B., Smith, M., Bassett, B., et al. 2010, *ApJ*, **713**, 1026  
Drout, M. R., Soderberg, A. M., Gal-Yam, A., et al. 2011, *ApJ*, **741**, 97  
Esmaili, A., & Murase, K. 2018, *JCAP*, **1812**, 008  
Evans, P. A., Osborne, J. P., Kennea, J. A., et al. 2015, *MNRAS*, **448**, 2210

- Filippenko, A. V. 1997, *ARA&A*, 35, 309
- Flesch, E. W. 2015, *PASA*, 32, e010
- Finkbeiner, D. P., Davis, M., & Schlegel, D. J. 1999, *ApJ*, 524, 867
- Folatelli, G., Morrell, N., Phillips, M. M., et al. 2013, *ApJ*, 773, 53
- Foley, R. J., Papenkova, M. S., Swift, B. J., et al. 2003, *PASP*, 115, 1220
- Galama, T. J., Vreeswijk, P. M., van Paradijs, J., et al. 1998, *Nature*, 395, 670
- Guillochon, J., Parrent, J., Kelley, L. Z., & Margutti, R. 2017, *ApJ*, 835, 64
- Guy, J., Astier, P., Nobili, S., Regnault, N., & Pain, R. 2005, *A&A*, 443, 781
- Guy, J., Astier, P., Baumont, S., et al. 2007, *A&A*, 466, 11
- Haack, C., Wiebusch, C., & IceCube Collaboration. 2017, *Int. Cosmic Ray Conf.*, 301, 1005
- Hirata, K., Kajita, T., Koshiba, M., et al. 1987, *Phys. Rev. Lett.*, 58, 1490
- Hook, I. M., Jørgensen, I., Allington-Smith, J. R., et al. 2004, *PASP*, 116, 425
- Horiuchi, S., Beacom, J. F., Kochanek, C. S., et al. 2011, *ApJ*, 738, 154
- Hunter, D. J., Valenti, S., Kotak, R., et al. 2009, *A&A*, 508, 371
- IceCube Collaboration 2017a, *GRB Coord. Netw.*, 22016, 1
- IceCube Collaboration 2017b, *GRB Coord. Netw.*, 22065, 1
- IceCube Collaboration 2017c, *GRB Coord. Netw.*, 22105, 1
- Inserra, C., Smartt, S. J., Gall, E. E. E., et al. 2018, *MNRAS*, 475, 1046
- Jester, S., Schneider, D. P., Richards, G. T., et al. 2005, *AJ*, 130, 873
- Kistler, M. D., Haxton, W. C., & Yuksel, H. 2013, *ApJ*, 778, 81
- Kopper, C., & IceCube Collaboration 2017, *Int. Cosmic Ray Conf.*, 301, 981
- Kopper, C., Giang, W., & Kurahashi, N. 2015, *34th Int. Cosmic Ray Conf. (ICRC2015)*, 34, 1081
- Kowalski, M., & Mohr, A. 2007, *Astropart. Phys.*, 27, 533
- Krisciunas, K., Contreras, C., Burns, C. R., et al. 2017, *AJ*, 154, 211
- Lantz, B., Aldering, G., Antilogus, P., et al. 2004, *Proc. SPIE*, 5249, 146
- Li, W., Leaman, J., Chornock, R., et al. 2011, *MNRAS*, 412, 1441
- Lipunov, V., Gorbvskoy, E., Kornilov, V., et al. 2016a, *GRB Coord. Netw.*, 19362, 1
- Lipunov, V., Gorbvskoy, E. S., Tyurina, N., et al. 2016b, *GRB Coord. Netw.*, 19748, 1
- Lunnan, R., Chornock, R., Berger, E., et al. 2018, *ApJ*, 852, 81
- Madau, P., & Dickinson, M. 2014, *ARA&A*, 52, 415
- Magnier, E. A., Chambers, K. C., Flewelling, H. A., et al. 2016a, ArXiv e-prints [arXiv:1612.05240]
- Magnier, E. A., Schlafly, E. F., Finkbeiner, D. P., et al. 2016b, ArXiv e-prints [arXiv:1612.05242]
- Mattila, S., Dahlen, T., Efstathiou, A., et al. 2012, *ApJ*, 756, 111
- McBrien, O., Smith, K. W., Smartt, S. J., et al. 2017, *GRB Coord. Netw.*, 22173, 1
- McCrum, M., Smartt, S. J., Rest, A., et al. 2015, *MNRAS*, 448, 1206
- Meagher, K., & IceCube Collaboration 2017, *Int. Cosmic Ray Conf. Proc.*, 35, 1007
- Melinder, J., Dahlen, T., Mencia-Trinchant, L., et al. 2011, *A&A*, 532, A29
- Melinder, J., Dahlen, T., Mencia-Trinchant, L., et al. 2012, *A&A*, 545, A96
- Mészáros, P., & Waxman, E. 2001, *Phys. Rev. Lett.*, 87, 171102
- Modjaz, M., Blondin, S., Kirshner, R. P., et al. 2014, *AJ*, 147, 99
- Mukherjee, R. 2016, *GRB Coord. Netw.*, 19377, 1
- Murase, K., & Ioka, K. 2013, *Phys. Rev. Lett.*, 111, 121102
- Murase, K., Ioka, K., Nagataki, S., & Nakamura, T. 2006, *ApJ*, 651, L5
- Padovani, P., & Resconi, E. 2014, *MNRAS*, 443, 474
- Paragi, Z., Taylor, G. B., Kouveliotou, C., et al. 2010, *Nature*, 463, 516
- Patat, F., Cappellaro, E., Danziger, J., et al. 2001, *ApJ*, 555, 900
- Pereira, R., Thomas, R. C., Aldering, G., et al. 2013, *A&A*, 554, A27
- Petropoulou, M., Dimitrakoudis, S., Padovani, P., Mastichiadis, A., & Resconi, E. 2015, *MNRAS*, 448, 2412
- Pettini, M., & Pagel, B. E. J. 2004, *MNRAS*, 348, L59
- Pignata, G., Stritzinger, M., Soderberg, A., et al. 2011, *ApJ*, 728, 14
- Piran, T. 1999, *Phys. Rep.*, 314, 575
- Podsiadlowski, P., Joss, P. C., & Hsu, J. J. L. 1992, *ApJ*, 391, 246
- Prentice, S. J., Ashall, C., Mazzali, P. A., et al. 2018, *MNRAS*, 478, 4162
- Razzaque, S., Mészáros, P., & Waxman, E. 2005, *Mod. Phys. Lett. A*, 20, 2351
- Rest, A., Scolnic, D., Foley, R. J., et al. 2014, *ApJ*, 795, 44
- Reynolds, T., Fraser, M., Mattila, S., et al. 2016, *ATel*, 9337, 1
- Richards, G. T., Myers, A. D., Gray, A. G., et al. 2009, *ApJS*, 180, 67
- Riello, M., & Patat, F. 2005, *MNRAS*, 362, 671
- Scalzo, R. A., Yuan, F., Childress, M. J., et al. 2017, *PASA*, 34, e030
- Schlafly, E. F., & Finkbeiner, D. P. 2011, *ApJ*, 737, 103
- Scolnic, D. M., Jones, D. O., Rest, A., et al. 2018, *ApJ*, 859, 101
- Senno, N., Murase, K., & Mészáros, P. 2016, *Phys. Rev. D*, 93, 083003
- Singer, L. P., Kasliwal, M. M., Cenko, S. B., et al. 2016a, *GRB Coord. Netw.*, 19392, 1
- Singer, L. P., Kasliwal, M. M., Bhalerao, V., et al. 2016b, *GRB Coord. Netw.*, 19760, 1
- Smartt, S. J., Valenti, S., Fraser, M., et al. 2015, *A&A*, 579, A40
- Smartt, S., Chambers, K. C., Smith, K. W., et al. 2016a, *GRB Coord. Netw.*, 19381, 1
- Smartt, S. J., Chambers, K. C., Smith, K. W., et al. 2016b, *MNRAS*, 462, 4094
- Smartt, S. J., Chambers, K. C., Smith, K. W., et al. 2016c, *ApJ*, 827, L40
- Smith, N., Li, W., Filippenko, A. V., & Chornock, R. 2011, *MNRAS*, 412, 1522
- Smith, M. W. E., Fox, D. B., Cowen, D. F., et al. 2013, *Astropart. Phys.*, 45, 56
- Stritzinger, M. D., Anderson, J. P., Contreras, C., et al. 2018a, *A&A*, 609, A134
- Stritzinger, M. D., Taddia, F., Burns, C. R., et al. 2018b, *A&A*, 609, A135
- Strotzjohann, N., Kowalski, M., Burns, C. R., et al. 2019, *A&A*, 622, L9
- Suntzeff, N. B., Phillips, M. M., Covarrubias, R., et al. 1999, *AJ*, 117, 1175
- Svinkin, D., Golenetskii, S., Aptekar, R., et al. 2016, *GRB Coord. Netw.*, 19426, 1
- Taboada, I. 2016, *GRB Coord. Netw.*, 19361, 1
- Taddia, F., Stritzinger, M. D., Bersten, M., et al. 2018, *A&A*, 609, A136
- Tamborra, I., & Ando, S. 2016, *Phys. Rev. D*, 93, 053010
- Taubenberger, S., Pastorello, A., Mazzali, P. A., et al. 2006, *MNRAS*, 371, 1459
- Tremonti, C. A., Heckman, T. M., Kauffmann, G., et al. 2004, *ApJ*, 613, 898
- Vianello, G., Magill, J. D., Omodei, N., et al. 2016, *GRB Coord. Netw.*, 19360, 1
- Waxman, E. 1995, *Phys. Rev. Lett.*, 75, 386
- Waxman, E., & Bahcall, J. 1997, *Phys. Rev. Lett.*, 78, 2292
- Wright, D. E., Smartt, S. J., Smith, K. W., et al. 2015, *MNRAS*, 449, 451
- Wright, W. P., Nagaraj, G., Kneller, J. P., et al. 2016, *Phys. Rev. D*, 94, 025026
- Wright, W. P., Kneller, J. P., Ohlmann, S. T., et al. 2017, *Phys. Rev. D*, 95, 043006
- Yaron, O., & Gal-Yam, A. 2012, *PASP*, 124, 668

<sup>1</sup> Astrophysics Research Centre, School of Mathematics and Physics, Queen's University Belfast, Belfast BT7 1NN, UK  
e-mail: e.kankare@qub.ac.uk

<sup>2</sup> Tuorla Observatory, Department of Physics and Astronomy, University of Turku, 20014 Turku, Finland

<sup>3</sup> Institute of Astronomy, University of Hawaii, 2680 Woodlawn Drive, Honolulu, HI 96822, USA

<sup>4</sup> Max-Planck-Institut für Extraterrestrische Physik, Giessenbachstrasse 1, 85748 Garching, Germany

<sup>5</sup> Minnesota Institute for Astrophysics, University of Minnesota, Minneapolis, MN 55454, USA

<sup>6</sup> III. Physikalisches Institut, RWTH Aachen University, 52056 Aachen, Germany

<sup>7</sup> Department of Physics, University of Adelaide, Adelaide 5005, Australia

<sup>8</sup> Dept. of Physics and Astronomy, University of Alaska Anchorage, 3211 Providence Dr., Anchorage, AK 99508, USA

<sup>9</sup> Dept. of Physics, University of Texas at Arlington, 502 Yates St., Science Hall Rm 108, Box 19059, Arlington, TX 76019, USA

<sup>10</sup> CTSPS, Clark-Atlanta University, Atlanta, GA 30314, USA

<sup>11</sup> School of Physics and Center for Relativistic Astrophysics, Georgia Institute of Technology, Atlanta, GA 30332, USA

<sup>12</sup> Dept. of Physics, Southern University, Baton Rouge, LA 70813, USA

<sup>13</sup> Dept. of Physics, University of California, Berkeley, CA 94720, USA

<sup>14</sup> Lawrence Berkeley National Laboratory, Berkeley, CA 94720, USA

<sup>15</sup> Institut für Physik, Humboldt-Universität zu Berlin, 12489 Berlin, Germany

<sup>16</sup> Fakultät für Physik & Astronomie, Ruhr-Universität Bochum, 44780 Bochum, Germany

<sup>17</sup> Université Libre de Bruxelles, Science Faculty CP230, 1050 Brussels, Belgium

<sup>18</sup> Vrije Universiteit Brussel (VUB), Dienst ELEM, 1050 Brussels, Belgium

<sup>19</sup> Dept. of Physics, Massachusetts Institute of Technology, Cambridge, MA 02139, USA

<sup>20</sup> Dept. of Physics and Institute for Global Prominent Research, Chiba University, Chiba 263-8522, Japan

<sup>21</sup> Dept. of Physics and Astronomy, University of Canterbury, Private Bag 4800, Christchurch, New Zealand

<sup>22</sup> Dept. of Physics, University of Maryland, College Park, MD 20742, USA

<sup>23</sup> Dept. of Astronomy, Ohio State University, Columbus, OH 43210, USA

- <sup>24</sup> Dept. of Physics and Center for Cosmology and Astro-Particle Physics, Ohio State University, Columbus, OH 43210, USA
- <sup>25</sup> Niels Bohr Institute, University of Copenhagen, 2100 Copenhagen, Denmark
- <sup>26</sup> Dept. of Physics, TU Dortmund University, 44221 Dortmund, Germany
- <sup>27</sup> Dept. of Physics and Astronomy, Michigan State University, East Lansing, MI 48824, USA
- <sup>28</sup> Dept. of Physics, University of Alberta, Edmonton, Alberta T6G 2E1, Canada
- <sup>29</sup> Erlangen Centre for Astroparticle Physics, Friedrich-Alexander-Universität Erlangen-Nürnberg, 91058 Erlangen, Germany
- <sup>30</sup> Physik-department, Technische Universität München, 85748 Garching, Germany
- <sup>31</sup> Département de physique nucléaire et corpusculaire, Université de Genève, 1211 Genève, Switzerland
- <sup>32</sup> Dept. of Physics and Astronomy, University of Gent, 9000 Gent, Belgium
- <sup>33</sup> Dept. of Physics and Astronomy, University of California, Irvine, CA 92697, USA
- <sup>34</sup> Dept. of Physics and Astronomy, University of Kansas, Lawrence, KS 66045, USA
- <sup>35</sup> SNOLAB, 1039 Regional Road 24, Creighton Mine 9, Lively, ON P3Y 1N2, Canada
- <sup>36</sup> Department of Physics and Astronomy, UCLA, Los Angeles, CA 90095, USA
- <sup>37</sup> Dept. of Astronomy, University of Wisconsin, Madison, WI 53706, USA
- <sup>38</sup> Dept. of Physics and Wisconsin IceCube Particle Astrophysics Center, University of Wisconsin, Madison, WI 53706, USA
- <sup>39</sup> Institute of Physics, University of Mainz, Staudinger Weg 7, 55099 Mainz, Germany
- <sup>40</sup> Department of Physics, Marquette University, Milwaukee, WI 53201, USA
- <sup>41</sup> Institut für Kernphysik, Westfälische Wilhelms-Universität Münster, 48149 Münster, Germany
- <sup>42</sup> Bartol Research Institute and Dept. of Physics and Astronomy, University of Delaware, Newark, DE 19716, USA
- <sup>43</sup> Dept. of Physics, Yale University, New Haven, CT 06520, USA
- <sup>44</sup> Dept. of Physics, University of Oxford, Parks Road, Oxford OX1 3PQ, UK
- <sup>45</sup> Dept. of Physics, Drexel University, 3141 Chestnut Street, Philadelphia, PA 19104, USA
- <sup>46</sup> Physics Department, South Dakota School of Mines and Technology, Rapid City, SD 57701, USA
- <sup>47</sup> Dept. of Physics, University of Wisconsin, River Falls, WI 54022, USA
- <sup>48</sup> Dept. of Physics and Astronomy, University of Rochester, Rochester, NY 14627, USA
- <sup>49</sup> Oskar Klein Centre and Dept. of Physics, Stockholm University, 10691 Stockholm, Sweden
- <sup>50</sup> Dept. of Physics and Astronomy, Stony Brook University, Stony Brook, NY 11794-3800, USA
- <sup>51</sup> Dept. of Physics, Sungkyunkwan University, Suwon 16419, Korea
- <sup>52</sup> Dept. of Physics and Astronomy, University of Alabama, Tuscaloosa, AL 35487, USA
- <sup>53</sup> Dept. of Astronomy and Astrophysics, Pennsylvania State University, University Park, PA 16802, USA
- <sup>54</sup> Dept. of Physics, Pennsylvania State University, University Park, PA 16802, USA
- <sup>55</sup> Dept. of Physics and Astronomy, Uppsala University, Box 516, 75120 Uppsala, Sweden
- <sup>56</sup> Dept. of Physics, University of Wuppertal, 42119 Wuppertal, Germany
- <sup>57</sup> DESY, 15738 Zeuthen, Germany
- <sup>58</sup> Earthquake Research Institute, University of Tokyo, Bunkyo, Tokyo 113-0032, Japan

## Appendix A: Details of Pan-STARRS1 observations of other IceCube Events

In the tables that follow, we provide the information on the most probable type for each transient found:

- Stellar: the transient is spatially coincident with a faint source likely to be a star.
- QSO: the transient is spatially coincident with the core of a galaxy that has previously been catalogued as an AGN or QSO.
- SN: the transient is associated with a host galaxy at a plausible physical or angular separation.
- NT: nuclear transient. The transient is coincident with the core of a galaxy that has not been previously catalogued as an AGN or QSO. These could be AGN, or nuclear SNe or even tidal disruption events.
- Orphan: there is no plausible host galaxy or stellar counterpart detected either in the Pan-STARRS reference images or any known catalogue.

There were no transients that we found that had characteristics that made them peculiar from any others in the field and would lead to further investigation as to their association with the neutrinos. Typically, the IceCube sky locations have a 90% confidence region given by a likelihood scan with a radius of  $0^{\circ}5-1^{\circ}2$ . However, these values depend on the sophistication of the IceCube track analysis. Therefore, for consistency and completeness, we report all transients in the tables below that were found within the Pan-STARRS1 camera footprint of around  $1^{\circ}4$  radius.

### A.1. IceCube-160427A

The SN PS16cgx has been extensively discussed in the main manuscript. The rest of the transients discovered within the 90% confidence region of IceCube-160427A are shortly summarised below.

PS16cfv is associated with SDSS J160133.99+094759.0. This is a stellar object in SDSS.

PS16cgw is offset from the host SDSS J160039.70+093919.6 by  $1^{\circ}6$  N and  $0^{\circ}2$  E.

PS16chy is associated with a stellar object SDSS J160044.22+095040.6.

PS16cfy is matched with SDSS J160205.21+094630.3, which is a spectroscopic QSO at  $z = 2.344$ .

PS16dow is offset from the host SDSS J160202.18+094907.6 core by  $0^{\circ}1$  which is Milliquas source at a photometric redshift of  $z = 1.325$ .

PS16dov is coincident with the spectroscopic QSO SDSS J160153.91+095244.3 at  $z = 2.282$ .

PS16cfu is offset by  $0^{\circ}1$  N and  $0^{\circ}2$  E from the host SDSS J160115.65+092504.8.

PS16cgb is coincident with a host SDSS J160219.12+093450.2 at a photometric redshift of  $z = 0.755$ . The transient light curve is flat; it could be an old SN or AGN variability.

PS16cfz is closely matched with the nucleus of SDSS J160211.95+095407.7 at a photometric redshift of  $z = 0.169$ . It is either a SN or AGN variability with a flat light curve.

PS16fns is coincident with SDSS J160124.77+100201.5; an AGN in Milliquas at a photometric redshift of  $z = 1.955$ .

PS16cfw is matched with the spectroscopic QSO SDSS J160139.09+092159.5 at  $z = 0.862$ .

PS16fnt is matched with the Milliquas AGN SDSS J160128.08+100250.9 at a photometric redshift  $z = 0.975$ .

PS16fnu is consistent with SDSS J155941.20+094619.4. This is a stellar object in SDSS.

PS16fnv is associated with SDSS J155941.54+094749.8. This is a source in the Milliquas catalogue at a photometric redshift of  $z = 1.575$ .

PS16fnw is coincident with SDSS J160153.37+100521.7, a spectroscopic QSO at  $z = 2.285$ .

PS16fnx is located  $0^{\circ}3$  N and  $0^{\circ}2$  W from SDSS J155928.45+095151.4. This is a faint galaxy in SDSS at a photometric redshift of  $z = 0.579$ .

PS16fny host SDSS J160227.74+100309.0 is a source in Milliquas at a photometric redshift of  $z = 0.375$ .

PS16fnz is coincident with SDSS J160119.77+101218.7, which is a Milliquas source at a photometric redshift of  $z = 0.225$ .

### A.2. IceCube-160731A

IceCube-160731A was discovered on 31 July 2016 01:55:04.00 UT (MJD = 57 600.07990). Pan-STARRS1 began observing the field 31 July 2016 07:41:39 UT (MJD = 57 600.32) and continued to observe every night until 7 August 2016, and then took another 6 epochs up until 26 August 2016. This gave an observing baseline of 26 days. Table A.1 contains the candidate counterparts identified by the Pan-STARRS1 follow-up campaign, out to a  $1^{\circ}45$  radius. Three transient were spectroscopically classified.

PS16dpm was discovered on the first epoch of observing and was observed to have a rising light curve. A spectrum was taken with the University of Hawaii SNIFS spectrometer on 3 August 2016, showing it to be a convincing Type Ia at  $z = 0.12$  around 6 days before maximum light. A PESSTO spectrum confirmed this result (Smartt 2015; Reynolds et al. 2016). The Pan-STARRS1 light curve and these two spectra imply a peak of MJD = 57 610 and an explosion epoch of MJD = 57 592  $\pm$  2, or 8 days before IceCube-160731A.

PS16dpl was also discovered on the first epoch of observing and the light curve stayed flat for 7 days in the  $i_{p1}$  band. The host galaxy SDSS J142303.54+000552.1 has a spectroscopic redshift of  $z = 0.141$ . It was observed by SNIFS on 7 August 2016 when it was still  $m_{i_{p1}} = 20.8 \pm 0.1$  mag and shows features consistent with a Type Ia at this redshift.

PS16dpi was a known, old SN discovered by the SkyMapper transient survey as SMT16ojf (Scalzo 2017), it was an old Type Ia at  $z = 0.085115$  (Reynolds et al. 2016) which exploded about 30 days before IceCube-160731A.

The rest of the transients are summarised below and none had any characteristic to make it appear possibly related to IceCube-160731A.

PS16cxe is not matched to any known or catalogued source. PS16dpu has a SDSS host which is stellar.

6H3Ghhv is associated with SDSS J141721.29–003050.5. This is a faint and stellar object in SDSS.

6H3Ghhn is a marginal candidate, being faint and low signal-to-noise in  $z_{p1}$  and absent in  $i_{p1}$ .

6H3Ghik is associated with SDSS J141718.86–003927.2 and is offset from the host core by  $0^{\circ}2$ .

PS16dqg is not matched to any known or catalogued source. 6H3Ghhq is associated with SDSS J141843.68–005204.3. This is a faint and stellar object in SDSS.

PS16dpe is not matched to any known or catalogued source, but appears to be a SN at peak.

PS16dpc is not matched to any known or catalogued source, but appears to be a genuine orphaned SN.

PS16dpv is not matched to any known source and has a flat light curve.

PS16dpd is coincident with a stellar like source that was classified in SDSS DR12 as a star, but Milliquas catalogue (Flesch 2015) suggests it is a QSO. In any event, it is not a SN candidate.

PS16dpf is not matched to any known source and has a flat light curve. There appears to be a faint host in the Pan-STARRS1 reference image making this a potential SN candidate.

6H3Ghbx is associated with SDSS J141445.76–002739.7 but has a projected offset of only 0.3 kpc, at the host redshift, implying it may be a nuclear transient.

PS16cyu is of offset from SDSS J141953.14–010041.5 and shows a declining light curve. It was previously discovered by Pan-STARRS on 28 June 2016 and is therefore an old SN.

6H3Ghhk is matched to SDSS J142101.10–004537.9. This is a faint and stellar object in SDSS.

PS16dpk, although not matched to a known source, showed a rising light curve after discovery marking it as a plausible SN candidate.

6H3Ghis is associated with SDSS J141506.06+001806.3, a stellar source at a photometric redshift of  $z \sim 0.3$ .

PS16dpt has a SDSS host which is stellar.

6H3Ghhu is not matched to any known or catalogued source.

6H3Ghia is associated with SDSS J141417.75+000207.8 and is offset from the host by 0′:10 N and 0′:20 W

PS16dps is not matched to any known source, but does appear near an extended source in the Pan-STARRS1 footprint. This is a plausible SN candidate.

6H3Ghet is matched to SDSS J142152.68–004016.9 and is located 0′:03 S and 0′:08 W of the host core. At a redshift of 0.072, this gives a projected offset of approximately 10 kpc.

6H3Ghjd is associated with SDSS J141600.56–011920.2 and is offset from the host by 0′:2, or a projected offset of 0.5 kpc at a redshift of 0.171.

PS16dpj is not matched to any catalogued source and has a relatively flat light curve, making discerning the nature of this transient difficult.

6H3Ghib is associated with SDSS J141318.12–002527.8 and is offset from the host by 0′:16 S and 0′:09 W.

6H3Ghij is possibly associated with SDSS J141442.38+004325.7, a stellar source, or a QSO in Milliquas at a redshift of  $z = 0.5$ .

PS16dqf appears to be a nuclear transient.

PS16dpr is associated with a host catalogued in Milliquas, making it a likely QSO at a photometric redshift of  $z = 2.043$ .

### A.3. *IceCube-161103A*

*IceCube-161103A* was discovered on 3 November 2016 09:07:31.12 (MJD 57 695.38022). Pan-STARRS1 follow-up observations began the same night on 3 November 2016 11:09:55 UT (MJD 57 695.47) and proceeded for a subsequent 9 nights. Of these, 2 nights were lost due to weather. A total of 7 transients were found while searching the confidence region in this time, detailed in Table A.2. None of these events were spectroscopically classified.

PS16exc is not associated with any known or catalogued source and is faint, at  $\sim 22$  mag in  $i_{P1}$ . The light curve remains relatively flat for almost 25 days.

PS16exd is not associated with any known or catalogued sources. The transient was observed for several days in the  $i_{P1}$  band before fading and it is a potential SN candidate at maximum. The host is a faint object, either a compact galaxy or star.

PS16exh has no associated catalogued host but a faint point source is visible in the Pan-STARRS1 reference stacks. This is a potential stellar source but appears more as a variable QSO.

PS16exi has no associated catalogued host but a faint point source is visible in the Pan-STARRS1 reference stacks. This is a potential stellar source but appears more as a variable QSO.

PS16exf has no associated catalogued host but a faint point source is visible in the Pan-STARRS1 reference stacks. This is likely a stellar source or variable QSO.

PS16exg is not associated with any known or catalogued sources. The Pan-STARRS1 exposures show a point source, coupled with a relatively flat light curve (declining  $<0.5$  mag in 44 days) suggests this may be an AGN/QSO or a stellar source.

6K3Ghjo is not associated with any known or catalogued source. It was observed initially in  $i_{P1}$  but also in  $z_{P1}$  from +40 days from discovery. Typically, these  $z_{P1}$  band observations were one magnitude brighter than the  $i_{P1}$  band data, but both sets were relatively flat, implying a stellar source. There is a clear point source at the transient position.

PS16fhi was found outside the 90% radius (at  $\alpha_{J2000} = 02^{\text{h}}38^{\text{m}}35^{\text{s}}.74$ ,  $\delta_{J2000} = +13^{\circ}05′06″.2$ ) and is not listed in Table A.2. However it initially caught our attention as it began quickly rising. A Gemini GMOS spectrum and its rising light curve showed it to be a bright Type II at  $z = 0.085$ , resembling SN 2009kf (Botticella et al. 2010). We rule it out as being related as a combination of these data implied it exploded significantly after (up to 10–12 days) *IceCube-161103A*.

### A.4. *IceCube-170321A*

*IceCube-170321A* was discovered on 21 March 2017 07:32:20.69 UT (MJD 57 833.31413). Pan-STARRS1 began following this event the next night on 22 March 2017 05:44:56 UT (MJD 57 834.24) and proceeded for a subsequent 3 nights. From the night of 27 March 2017 to 31 March 2017, observations were performed on alternate nights. Following this, a final night was dedicated to observing on 6 April 2017. Table A.3 contains the candidate counterparts identified by the Pan-STARRS1 follow-up campaign while searching the confidence region. A total of 7 transients were identified, though none were observed spectroscopically.

PS17ceb is not matched to any known or catalogued source, but does appear to be within a faint, extended source. This is most likely a galaxy, making this transient a SN candidate.

PS17cdy appears as a point source but is not matched to any known source. It is likely an uncatalogued stellar source.

PS17cdz is not matched to any known or catalogued source.

7C3Gjfw is not matched to any known or catalogued sources.

PS17cea is not matched to any known or catalogued source.

PS17byo is not matched to any known sources, but does show a faint potential host in the reference images. As such, this is likely a SN candidate.

PS17byn is not matched to any known or catalogued source, but its light curve shows evidence of some decline. It is possible that this is a SN candidate.

### A.5. *IceCube-171106A*

The field of *IceCube-171106A* was observed starting from 8 November 2017 08:09:36.0 UT (MJD 58 065.34), some 37.44 hours following the detection and proceeded for the subsequent 10 nights. Observations were made using the  $i_{P1}$  and  $z_{P1}$  bands, with difference imaging being performed with respect to the



**Table A.1.** 31 transients discovered within the local vicinity of the IceCube-160731A neutrino detection (MJD 57 600.07990).

Transient	$\alpha_{J2000}$ (hh:mm:ss.ss)	$\delta_{J2000}$ (dd:mm:ss.s)	Disc. epoch (MJD)	$m_{disc,ip_1}$ (mag)	Type	$z^{(a)}$	$m_{host,i}^{(b)}$ (mag)	$\Delta\Psi^{(c)}$ ( $^\circ$ )
PS16cxe	14:18:00.02	-00:14:35.3	57 600.56667	21.11	Orphan	–	–	0.06
PS16dpu	14:17:43.93	-00:33:28.5	57 602.57778	21.62 <sup>(d)</sup>	Stellar	–	21.49	0.27
6H3Ghhv	14:17:21.30	-00:30:50.4	57 600.56667	22.26	Old SN	–	21.48	0.27
6H3Ghhn	14:17:40.06	-00:37:59.9	57 601.57500	20.84 <sup>(d)</sup>	NT	$0.19801 \pm 0.00004^{(e)}$	17.31	0.34
6H3Ghhk	14:17:18.89	-00:39:27.2	57 601.57500	21.37 <sup>(d)</sup>	NT	$0.143 \pm 0.026$	18.00	0.40
PS16dqg	14:16:02.51	-00:02:55.1	57 603.59792	22.15 <sup>(d)</sup>	Old SN	$0.60742 \pm 0.00016^{(e)}$	19.71	0.55
6H3Ghhq	14:18:31.87	-00:50:39.0	57 601.57500	22.09 <sup>(d)</sup>	Old SN	–	22.64	0.56
PS16dpe	14:17:12.43	+00:17:23.0	57 600.56667	22.04	Old SN	$0.293 \pm 0.103$	19.89	0.62
PS16dpc	14:15:14.83	-00:21:15.7	57 600.56667	21.58	Orphan	–	–	0.69
PS16dpv	14:20:13.30	-00:45:52.3	57 601.57500	22.51	Old SN	–	23.58	0.72
PS16dpd	14:16:31.15	-00:56:56.2	57 600.56667	20.67	Likely QSO	$1.300^{(f)}$	20.54	0.75
PS16dpf	14:18:32.97	+00:30:40.7	57 600.56667	21.86	Old SN	$0.679 \pm 0.140$	21.00	0.82
6H3Ghhx	14:14:45.75	-00:27:39.9	57 601.57500	21.24 <sup>(d)</sup>	NT	$0.159 \pm 0.023$	17.45	0.83
PS16cyu	14:19:53.22	-01:00:39.6	57 600.56667	20.97	Old SN	$0.135 \pm 0.034$	18.53	0.85
6H3Ghhk	14:21:01.11	-00:45:38.0	57 601.57500	22.00 <sup>(d)</sup>	Old SN	–	21.92	0.88
PS16dpk	14:21:22.51	-00:47:02.9	57 600.56667	22.00	Stellar	–	22.51	0.97
6H3Ghis	14:15:06.08	+00:18:05.9	57 602.57708	21.26 <sup>(d)</sup>	NT	$0.319 \pm 0.053$	19.42	0.94
PS16dpt	14:17:19.09	+00:37:43.2	57 602.57778	22.07	Stellar	–	21.90	0.94
6H3Ghhu	14:16:31.86	+00:34:52.8	57 602.57778	22.28 <sup>(d)</sup>	Orphan	–	–	0.95
6H3Ghia	14:14:17.77	+00:02:07.8	57 601.57500	21.51 <sup>(d)</sup>	Old SN	$0.424 \pm 0.055$	20.49	0.98
PS16dps	14:13:57.45	-00:10:43.4	57 600.56667	21.96	Old SN	$0.152 \pm 0.074$	19.92	1.02
6H3Ghet	14:21:52.69	-00:40:16.9	57 601.57500	22.04 <sup>(d)</sup>	Old SN	$0.07247 \pm 0.00003^{(e)}$	17.33	1.04
PS16dpi	14:21:13.16	+00:25:41.6	57 600.56667	19.26	SN Ia	$0.085115 \pm 0.000297^{(g)}$	16.52	1.09
6H3Ghjd	14:16:00.58	-01:19:20.4	57 602.57708	21.30 <sup>(d)</sup>	NT	$0.17135 \pm 0.00003^{(e)}$	17.10	1.14
PS16dpj	14:21:16.17	-01:05:54.4	57 600.56667	21.39	Old SN	$0.141 \pm 0.116$	21.49	1.14
6H3Ghib	14:13:18.14	-00:25:27.6	57 600.56667	21.26	Old SN	$0.542 \pm 0.154$	19.95	1.18
6H3Ghij	14:14:42.39	+00:43:25.7	57 600.56667	21.65	Likely QSO	$0.5^{(f)}$	20.07	1.31
PS16dpl	14:23:03.19	+00:05:54.5	57 600.56667	20.83	SN Ia	$0.14129 \pm 0.00002^{(e)}$	18.21	1.32
PS16dpm	14:23:20.15	-00:32:16.5	57 600.56667	20.35	SN Ia	$0.12^{(h)}$	21.01	1.35
PS16dqf	14:14:37.64	+00:46:05.8	57 603.59792	21.68 <sup>(d)</sup>	Old SN	$0.464 \pm 0.078$	20.35	1.36
PS16dpr	14:12:29.06	-00:36:12.7	57 600.56667	20.41	Likely QSO	$2.043^{(f)}$	19.66	1.41

**Notes.** All transients reported appear within  $1^\circ 45'$  of the final best-fit neutrino localization. All transient object magnitudes are reported in the  $i_{p_1}$  band unless otherwise noted. The separating line at 0:75 indicates the transients within the Pan-STARRS1 footprint that are within the IceCube 90% error location (see Table 6). <sup>(a)</sup> Redshifts presented are photometric redshifts to host galaxies taken from SDSS DR12 unless otherwise noted. <sup>(b)</sup> Host magnitudes presented are taken from SDSS DR12. <sup>(c)</sup> Angular distance to the final revised coordinates of IceCube-160731A. <sup>(d)</sup> Magnitudes are from discovery in the  $z_{p_1}$  band. <sup>(e)</sup> Spectroscopic redshift to host galaxy taken from SDSS DR12. <sup>(f)</sup> Photometric redshift from Milliquas. <sup>(g)</sup> Spectroscopic redshift to host galaxy taken from NED. <sup>(h)</sup> Spectroscopic redshift of the SN.

Pan-STARRS1  $3\pi$  stacked reference sky.  $5\sigma$  limiting magnitudes of  $m_{ip_1} \approx 22.5$  mag were achieved. Table A.4 contains the candidate counterparts identified by the Pan-STARRS1 follow-up campaign. The initial results of the IceCube-171106A Pan-STARRS1 follow-up were reported by [McBrien et al. \(2017\)](#).

PS17eym is a SN candidate associated with SDSS J223922.20+071638.0. It is located  $1^\circ 80'$  S and  $0^\circ 97'$  W from the galaxy core, or a projected offset of 10.7 kpc.

PS17fcc is a SN candidate that was found associated with the galaxy SDSS J224158.66+074653.2, being located  $0^\circ 59'$  N and  $0^\circ 28'$  W from the galaxy core, or a projected offset of 1.9 kpc.

PS17eyn is a SN candidate associated with the galaxy SDSS J224224.58+065502.1. It is located  $0^\circ 58'$  N and  $0^\circ 84'$  E from the galaxy core, or a projected offset of 1.8 kpc.

PS17fem is a SN candidate associated with the galaxy SDSS J224219.29+064237.5. It is offset from the galaxy core by  $0^\circ 57'$  N and  $0^\circ 41'$  E or a projected offset of 2.1 kpc.

PS17eyo is a SN candidate that is not associated with any known or catalogued host.

PS17eyl is a nuclear transient, being associated with the galaxy SDSS J223902.90+062526.6. It is offset from the galaxy core by  $0^\circ 28'$  S and  $0^\circ 04'$  E, a projected offset of 1.1 kpc.

PS17fcd is a nuclear transient located in the galaxy SDSS J224401.85+081327.5,  $0^\circ 37'$  N and  $0^\circ 13'$  W from the core. This is a projected offset of 2.1 kpc. This transient was first discovered in the  $z_{p_1}$  band on MJD 58 066.20450 at magnitude 20.53.

**Table A.2.** 7 transients discovered within the local vicinity of the IceCube-161103A neutrino detection (MJD 57 695.38022).

Transient	$\alpha_{J2000}$ (hh:mm:ss.ss)	$\delta_{J2000}$ (dd:mm:ss.s)	Disc. epoch (MJD)	$m_{\text{disc},i_{p1}}$ (mag)	Type	$z$	$m_{\text{host},i_{p1}}$ (mag)	$\Delta\Psi^{(a)}$ ( $^{\circ}$ )
PS16exc	02:41:05.69	+12:55:59.3	57 695.46875	21.52	Orphan	–	–	0.61
PS16exd	02:41:08.05	+13:03:59.2	57 695.48961	21.81	Old SN	–	21.21	0.69
PS16exh	02:44:56.02	+13:15:50.7	57 695.46875	21.25	Likely QSO	–	21.57	0.79
PS16exi	02:45:02.51	+11:52:00.5	57 695.48961	22.30	Likely QSO	–	21.55	0.86
PS16exf	02:44:02.89	+13:30:45.7	57 695.47489	21.61	Likely QSO	–	21.37	0.94
PS16exg	02:44:14.42	+11:37:18.7	57 695.47489	21.70	Likely QSO	–	21.31	1.01
6K3Ghjo	02:47:45.09	+12:46:20.8	57 695.48961	22.66	Stellar	–	21.10	1.12

**Notes.** All transients reported appear within  $1^{\circ}1$  of the final best-fit neutrino localization. <sup>(a)</sup> Angular distance to the final revised coordinates of IceCube-161103A.

**Table A.3.** 7 transients discovered within the local vicinity of the IceCube-170321A neutrino detection (MJD 57 805.31413).

Transient	$\alpha_{J2000}$ (hh:mm:ss.ss)	$\delta_{J2000}$ (dd:mm:ss.s)	Disc. epoch (MJD)	$m_{\text{disc},i_{p1}}$ (mag)	Type	$z$	$m_{\text{host},i_{p1}}$ (mag)	$\Delta\Psi^{(a)}$ ( $^{\circ}$ )
PS17ceb	06:36:32.74	–15:15:51.9	57 834.27474	20.90	Old SN	–	19.18	0.85
PS17cdy	06:29:00.76	–15:27:28.7	57 834.24305	20.55	Stellar	–	20.13	1.11
PS17cdz	06:27:59.29	–15:09:06.1	57 843.26768	20.58	Orphan	–	–	1.27
7C3Gjfw	06:37:41.71	–14:17:43.7	57 834.26376	21.99	Orphan	–	–	1.29
PS17cea	06:34:43.80	–13:41:48.8	57 834.26376	22.29	Orphan	–	–	1.35
PS17byo	06:27:54.74	–14:26:07.5	57 834.24922	21.61	Old SN	–	21.86	1.40
PS17byn	06:27:58.43	–15:59:18.9	57 834.25582	21.42	Orphan	–	–	1.60

**Notes.** The separating line at  $1^{\circ}2$  indicates the transients within the Pan-STARRS1 footprint that are within the IceCube 90% error location (see Table 6). <sup>(a)</sup> Angular distance to the final revised coordinates of IceCube-170321A.

**Table A.4.** 7 transients discovered within the local vicinity of the IceCube-171106A neutrino detection (MJD 58 063.77754).

Transient	$\alpha_{J2000}$ (hh:mm:ss.ss)	$\delta_{J2000}$ (dd:mm:ss.s)	Disc. epoch (MJD)	$m_{\text{disc},i_{p1}}$ (mag)	Type	$z^{(a)}$	$m_{\text{host},i}^{(b)}$ (mag)	$\Delta\Psi^{(c)}$ ( $^{\circ}$ )
PS17eym	22:39:22.13	+07:16:36.4	58 065.37269	21.48	Old SN	$0.380 \pm 0.106$	20.14	0.20
PS17fcc	22:41:58.65	+07:46:53.6	58 065.37269	21.54	Old SN	$0.172 \pm 0.032$	19.04	0.62
PS17eyn	22:42:24.63	+06:55:02.7	58 065.34415	20.62	Old SN	$0.095 \pm 0.022$	17.23	0.77
PS17fem	22:42:19.29	+06:42:38.0	58 066.25399	21.95	Old SN	$0.178 \pm 0.016$	17.79	0.90
PS17eyo	22:40:40.92	+06:26:29.6	58 065.37269	22.16	Orphan	–	–	0.97
PS17eyl	22:39:02.90	+06:25:26.3	58 065.37269	21.23	Old SN	$0.237 \pm 0.095$	22.14	1.00
PS17fcd	22:44:01.84	+08:13:27.6	58 066.20450	20.53 <sup>(d)</sup>	Old SN	$0.403 \pm 0.092$	19.62	1.30

**Notes.** All transient object magnitudes are reported in the  $i_{p1}$  band unless otherwise noted. The separating line at  $0^{\circ}7$  indicates the transients within the Pan-STARRS1 footprint that are within the IceCube 90% error location (see Table 6). <sup>(a)</sup> Redshifts presented are photometric redshifts to host galaxies taken from SDSS DR12. <sup>(b)</sup> Host magnitudes presented are taken from SDSS DR12. <sup>(c)</sup> Angular distance to the final revised coordinates of IceCube-171106A. <sup>(d)</sup> Discovered in the  $z_{p1}$  band. The earliest  $i_{p1}$  band observation was on MJD 58 067.22367 at magnitude 21.15.