



This is a repository copy of *Phylogenomics and species delimitation for effective conservation of manta and devil rays*.

White Rose Research Online URL for this paper:  
<http://eprints.whiterose.ac.uk/169009/>

Version: Published Version

---

**Article:**

Hosegood, J., Humble, E., Ogden, R. et al. (21 more authors) (2020) Phylogenomics and species delimitation for effective conservation of manta and devil rays. *Molecular Ecology*, 29 (24). pp. 4783-4796. ISSN 0962-1083

<https://doi.org/10.1111/mec.15683>

---

**Reuse**

This article is distributed under the terms of the Creative Commons Attribution (CC BY) licence. This licence allows you to distribute, remix, tweak, and build upon the work, even commercially, as long as you credit the authors for the original work. More information and the full terms of the licence here:  
<https://creativecommons.org/licenses/>

**Takedown**

If you consider content in White Rose Research Online to be in breach of UK law, please notify us by emailing [eprints@whiterose.ac.uk](mailto:eprints@whiterose.ac.uk) including the URL of the record and the reason for the withdrawal request.



[eprints@whiterose.ac.uk](mailto:eprints@whiterose.ac.uk)  
<https://eprints.whiterose.ac.uk/>



# Phylogenomics and species delimitation for effective conservation of manta and devil rays

Jane Hosegood<sup>1,2,3</sup> | Emily Humble<sup>2,4</sup> | Rob Ogden<sup>4,5</sup> | Mark de Bruyn<sup>1,6</sup> | Simon Creer<sup>1</sup> | Guy M. W. Stevens<sup>2</sup> | Mohammed Abudaya<sup>7</sup> | Kim Bassos-Hull<sup>8</sup> | Ramon Bonfil<sup>9</sup> | Daniel Fernando<sup>2,10,11</sup> | Andrew D. Foote<sup>1,12</sup> | Helen Hipperson<sup>3</sup> | Rima W. Jabado<sup>13</sup> | Jennifer Kaden<sup>14</sup> | Muhammad Moazzam<sup>15</sup> | Lauren R Peel<sup>2,16,17,18</sup> | Stephen Pollett<sup>2</sup> | Alessandro Ponzo<sup>19</sup> | Marloes Poortvliet<sup>20</sup> | Jehad Salah<sup>21</sup> | Helen Senn<sup>14</sup> | Joshua D. Stewart<sup>2</sup> | Sabine Wintner<sup>22,23</sup> | Gary Carvalho<sup>1</sup>

<sup>1</sup>Molecular Ecology and Fisheries Genetics Laboratory, Bangor University, Bangor, UK

<sup>2</sup>The Manta Trust, Catenwood House, Norwood Lane, Corscombe, Dorset DT2 0NT, UK

<sup>3</sup>NERC Biomolecular Analysis Facility, Department of Animal and Plant Sciences, University of Sheffield, Sheffield, UK

<sup>4</sup>Royal (Dick) School of Veterinary Studies and the Roslin Institute, University of Edinburgh, Edinburgh, UK

<sup>5</sup>TRACE Wildlife Forensics Network, Edinburgh, UK

<sup>6</sup>School of Life and Environmental Sciences, The University of Sydney, Sydney, NSW, Australia

<sup>7</sup>National Research Center, Gaza City, Palestine

<sup>8</sup>Mote Marine Laboratory, The Center for Shark Research, Sarasota, FL, USA

<sup>9</sup>Océanos Vivientes A. C., Mexico City, Mexico

<sup>10</sup>Department of Biology and Environmental Science, Linnaeus University, Kalmar, Sweden

<sup>11</sup>Blue Resources Trust, Colombo, Sri Lanka

<sup>12</sup>Department of Natural History, Norwegian University of Science and Technology (NTNU), University Museum, Trondheim, Norway

<sup>13</sup>Elasmo Project, Dubai, UAE

<sup>14</sup>RZSS WildGenes Lab, Royal Zoological Society of Scotland, Edinburgh, UK

<sup>15</sup>WWF Pakistan, Karachi, Pakistan

<sup>16</sup>School of Biological Sciences, University of Western Australia, Crawley, WA, Australia

<sup>17</sup>The Australian Institute of Marine Science, Crawley, WA, Australia

<sup>18</sup>Save Our Seas Foundation – D'Arros Research Centre, Geneva, Switzerland

<sup>19</sup>Large Marine Vertebrates Research Institute Philippines, Jagna, Philippines

<sup>20</sup>Tolheksbos 57, Hoofddorp, 2134 GH, The Netherlands

<sup>21</sup>Ministry of Agriculture Directorate General of Fisheries, Gaza City, Palestine

<sup>22</sup>KwaZulu-Natal Sharks Board, Umhlanga Rocks, South Africa

<sup>23</sup>School of Life Sciences, University of KwaZulu-Natal, Durban, South Africa

## Correspondence

Emily Humble, Royal (Dick) School of Veterinary Studies and the Roslin Institute, University of Edinburgh, Edinburgh, UK  
Email: emily.humble@ed.ac.uk

## Abstract

Practical biodiversity conservation relies on delineation of biologically meaningful units. Manta and devil rays (Mobulidae) are threatened worldwide, yet morphological

Jane Hosegood and Emily Humble are joint first authors.

This is an open access article under the terms of the Creative Commons Attribution License, which permits use, distribution and reproduction in any medium, provided the original work is properly cited.

© 2020 The Authors. *Molecular Ecology* published by John Wiley & Sons Ltd

**Funding information**

Natural Environment Research Council; Marine Conservation Action Fund; Fisheries Society of the British Isles; Mote Scientific Foundation; People's Trust for Endangered Species; National Geographic Society; Genetics Society; Disney Conservation Foundation; National Marine Sanctuary Foundation; Save Our Seas Foundation; Marie Skłodowska-Curie, Grant/Award Number: 663830

similarities and a succession of recent taxonomic changes impede the development of an effective conservation strategy. Here, we generate genome-wide single nucleotide polymorphism (SNP) data from a geographically and taxonomically representative set of manta and devil ray samples to reconstruct phylogenetic relationships and evaluate species boundaries under the general lineage concept. We show that nominal species units supported by alternative data sources constitute independently evolving lineages, and find robust evidence for a putative new species of manta ray in the Gulf of Mexico. Additionally, we uncover substantial incomplete lineage sorting indicating that rapid speciation together with standing variation in ancestral populations has driven phylogenetic uncertainty within Mobulidae. Finally, we detect cryptic diversity in geographically distinct populations, demonstrating that management below the species level may be warranted in certain species. Overall, our study provides a framework for molecular genetic species delimitation that is relevant to wide-ranging taxa of conservation concern, and highlights the potential for genomic data to support effective management, conservation and law enforcement strategies.

**KEYWORDS**

ddRAD, management, mobulids, single nucleotide polymorphism, taxonomy

## 1 | INTRODUCTION

Biodiversity conservation relies on the delimitation of species units, particularly with respect to global conventions and regulatory frameworks. Advances in sequencing technologies now make it possible to uncover fine-scale patterns of genetic variation with unprecedented resolution (Helyar et al., 2012; Morin et al., 2004). However, there is concern this could lead to over-splitting of species, and therefore constrain management options while artificially increasing extinction events (Frankham et al., 2012; Isaac et al., 2004; Mace, 2004; Zachos, 2013; Zachos et al., 2013). On the other hand, under-splitting species has the potential to leave novel evolutionary genetic lineages unrecognized (Gipoliti et al., 2018; Morrison et al., 2009). When using genomic data, it has therefore been recommended that a robust discovery and validation framework is applied, employing multiple methods (Carstens et al., 2013) and taking additional lines of evidence and expert opinion into account (Coates et al., 2018; Dayrat, 2005; Padial et al., 2010; Stanton et al., 2019). Such an approach provides an objective yet conservative evidence base to differentiate within and among species of conservation concern.

Alongside recent developments in genome sequencing, analytical methods in phylogenetics have also advanced (Fujita et al., 2012). In particular, relationships among lineages, and the membership of individuals within these groups, can now be evaluated probabilistically under the multispecies coalescent (Degnan & Rosenberg, 2009; Knowles & Carstens, 2007; Rannala & Yang, 2003). Thereby, long-standing issues associated with gene-tree discordance, including incomplete lineage sorting and introgression, can now be

explored in detail (Degnan & Rosenberg, 2009; Maddison, 1997; Maddison & Knowles, 2006; Pamilo & Nei, 1988). Crucially, within this framework, it is possible to evaluate empirical support for alternative species delimitation hypotheses using methods such as Bayes factor delimitation (BFD\*, Leaché et al., 2014). Consequently, a growing number of studies are combining these approaches together with reduced representation sequencing to characterize biodiversity units across a range of wild taxa (Abdelkrim et al., 2018; Ewart et al., 2020; Herrera & Shank, 2016; Newton et al., 2020; O'Connell & Smith, 2018; Pinto et al., 2019; Reyes-Velasco et al., 2020; Tonzo et al., 2019).

Nevertheless, multispecies coalescent approaches have a tendency to delimit population structure over speciation (Sukumaran & Knowles, 2017) and when used in isolation, a distinction between these two scenarios is often not possible (Chambers & Hillis, 2020). This runs the risk of assigning species to the smallest diagnosable unit and is particularly problematic both for taxa where gene flow is restricted by environmental or geographical barriers (Sukumaran & Knowles, 2017), and for taxa with high levels of gene flow but for which limited geographical sampling has taken place (Chambers & Hillis, 2020; Pante et al., 2015). Under the general lineage concept, species represent independently evolving lineages that remain intact when in contact with close relatives (de Queiroz, 1998, 2007). Accordingly, when it is possible to sample from regions where individuals come into geographical contact, a distinction between independently evolving lineages and population-level variation can be made (Chambers & Hillis, 2020; Leaché et al., 2019). Analysing samples from regions such as these, together with consideration of

morphological, behavioural and ecological evidence, should therefore provide a robust framework for testing species hypotheses (Carstens et al., 2013; Chambers & Hillis, 2020).

The importance of judiciously defined species and conservation units is particularly apparent in fisheries management, where overexploitation has led to population declines worldwide (Agnew et al., 2009; Burgess et al., 2013; Hutchings & Reynolds, 2004; Worm et al., 2009). One group of heavily targeted fishes are the manta and devil rays (*Mobula* spp.; family Mobulidae; collectively, mobulids). Despite substantial economic value through tourism (O'Malley et al., 2013), these highly mobile, circumglobally distributed megafauna are threatened by targeted and bycatch fishing often driven by a demand for their gill plates (Couturier et al., 2012; O'Malley et al., 2017). Mobulids have among the most conservative life history traits of all fishes, including low fecundity, long gestation periods and late maturation (Couturier et al., 2012; Dulvy et al., 2014), and as a result, current levels of exploitation are considered unsustainable (Croll et al., 2016). To alleviate these threats, all mobulid species are listed on Appendix II of the Convention on International Trade in Endangered Species of Wild Fauna and Flora (CITES), and on Appendices I and II of the Convention on the Conservation of Migratory Species of Wild Animals (CMS). However, mobulids are poorly studied, with marked trans-species similarity in morphology, a lack of population-level data and ongoing taxonomic debate (Notarbartolo di Sciara, Adnet, et al., 2020; Stewart et al., 2018). To develop effective conservation measures, there is an urgent need for both species and intraspecies boundaries within mobulids to be resolved.

The first major taxonomic revision of the genus *Mobula* was undertaken in 1987, where a total of nine extant species were described (Notarbartolo di Sciara, 1987). Over two decades later, the genus *Manta* was revised, where a second species, *Manta alfredi*, was resurrected based on morphological and meristic data (Marshall et al., 2009). In 2018, a reclassification of the family Mobulidae was carried out using sequence data from mitogenomes and over 600 nuclear exons (White et al., 2018). White et al., (2018) proposed the genus *Manta* (manta rays; previously *Manta alfredi* and *Manta birostris*) to be subsumed into *Mobula* (devil rays), and for the total number of species to be reduced to eight, by recognizing *M. japonica*, *M. rochebrunei* and *M. eregoodootenkee* as junior synonyms of *M. mobular*, *M. hypostoma* and *M. kuhlii*, respectively. Both the synonymization of *M. japonica* and *M. mobular*, and the monophyly of the genus *Mobula* are supported by additional studies (Adnet et al., 2012; Naylor et al., 2012; Notarbartolo di Sciara, Stevens, et al., 2020; Paig-Tran et al., 2013), including an independent phylogenetic analysis using mitogenome data and two nuclear markers (Poortvliet et al., 2015). Nevertheless, as previous work has been geographically restricted and reliant on few samples, the relationships between other species groups remain problematic and patterns of intraspecific variation are largely unknown. Indeed, *M. eregoodootenkee* has since been resurrected and redescribed as *M. eregoodoo* on the basis of morphological and ecological evidence (Notarbartolo di Sciara, Adnet, et al., 2020).

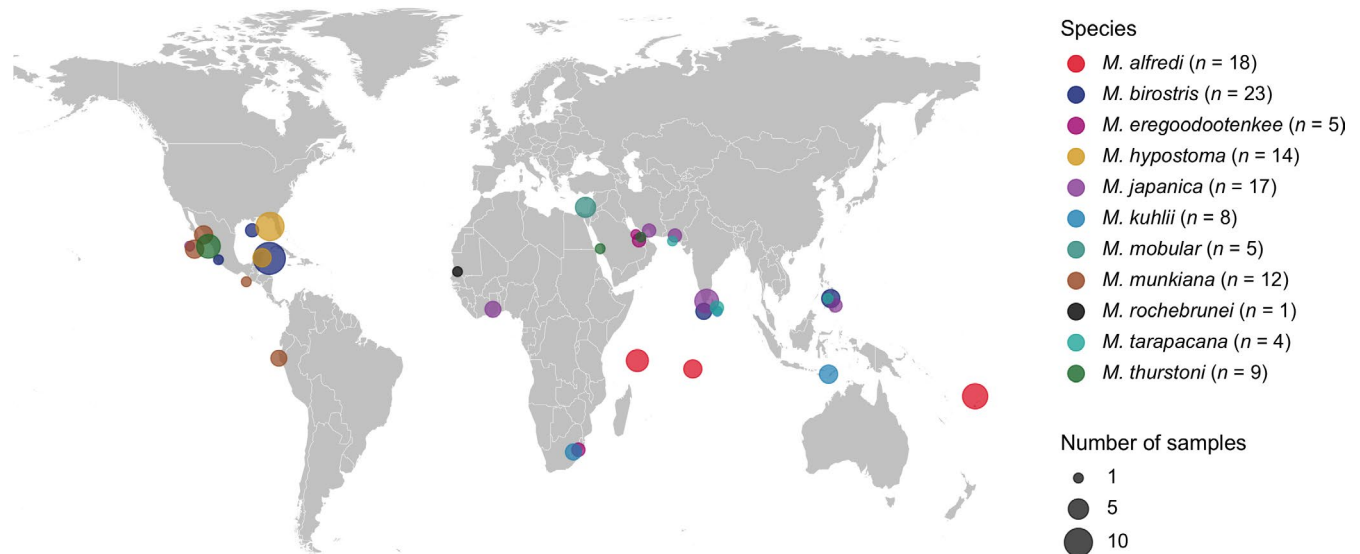
Furthermore, for over a decade, a third putative species of manta ray has been hypothesized to occur in the Atlantic and Caribbean (Hinojosa-Alvarez et al., 2016; Marshall et al., 2009). However, molecular support has remained inconclusive due to reliance on relatively few genetic markers displaying conflicting evolutionary signals (Hinojosa-Alvarez et al., 2016). Similar patterns of discordance have been observed between *M. alfredi* and *M. birostris*, which despite showing evidence of separation at nuclear markers, are indistinguishable based on mitochondrial DNA (Kashiwagi et al., 2012; White et al., 2018). Through using phylogeographical analysis and coalescent models across multiple populations of manta rays, Kashiwagi et al. (2012) attributed these observations to recent speciation and post-divergence gene flow. To explore the extent of such phenomena across the entire genus, there is a need to apply similar coalescent-based approaches to additional species groups. Moreover, by employing genome-wide markers in a comprehensive set of samples, it should be possible to resolve problematic species boundaries and determine classifications that encapsulate the full extent of diversity across devil rays.

Here, we use double-digest restriction site-associated DNA (ddRAD) sequencing to generate a dataset of genome-wide markers in an extensive geographically and taxonomically representative set of mobulid individuals. The resulting data were used to: (a) reconstruct phylogenetic relationships within Mobulidae, (b) evaluate support for nominal species boundaries using coalescent-based approaches and (c) explore patterns of intra-specific variation across taxa. We examine our results in light of recent morphological and ecological evidence, and in doing so, demonstrate utility in delimiting units for conservation, detecting cryptic diversity, and improving our understanding of associated evolutionary processes in a global radiation of socio-economically important marine megafauna.

## 2 | METHODS

### 2.1 | Sampling and DNA extraction

Tissue samples were obtained from existing collections and sampling initiatives of researchers and organizations worldwide, yielding a total of 116 samples from all nominal species (Figure 1 and Table S1). These included *Mobula japonica* and *M. rochebrunei*, currently considered junior synonyms of *M. mobular* and *M. hypostoma* respectively (White et al., 2018), and *M. eregoodoo*, previously *M. eregoodootenkee* and *M. kuhlii* cf. *eregoodootenkee* (Notarbartolo di Sciara, Adnet, et al., 2020). An additional five samples from *Rhinoptera bonasus* were obtained as an outgroup. Samples were identified to species based on characteristics described by Stevens et al. (2018), using species names valid at the time of collection. To distinguish between original species names and those currently recognized, we refer to the recently synonymized species *M. japonica* and *M. rochebrunei* using the abbreviated expression “cf.” throughout the paper. Genomic DNA was extracted using the Qiagen DNeasy Blood and Tissue Kit and DNA yield was measured using a Qubit 3.0 Broad Range Assay. Extracts were quality



**FIGURE 1** Geographic locations of samples used in this study. Samples were identified to species based on characteristics described by Stevens et al. (2018), using species names valid at the time of collection. Species are represented by coloured circles, scaled for number of samples. Total numbers of samples for each species is provided in the legend. Further details are provided in Table S1. A small amount of variation was applied to the location of each sampling site to avoid over-plotting and improve interpretation. [Colour figure can be viewed at [wileyonlinelibrary.com](http://wileyonlinelibrary.com)]

assessed on 1% agarose gels stained with SafeView. The single sample of *M. hypostoma* cf. *rochebrunei* was from a museum specimen stored in formalin and yielded no detectable DNA.

## 2.2 | ddRAD library preparation and sequencing

ddRAD libraries were prepared using the Peterson protocol (Peterson et al., 2012) with minor modifications described in Palaiokostas et al. (2015). Briefly, genomic DNA from each individual was separately digested with *SbfI* and *SphI* (NEB). The choice of enzymes was informed by the estimated genome size for *M. mobular* cf. *japonica* and *M. tarapacana* (Asahida et al., 1993; Chang et al., 1995), together with our required sequencing coverage. Unique P1 and P2 barcode combinations were ligated to resulting DNA fragments, which were then size-selected between 400 and 700 bp using gel electrophoresis and then PCR (polymerase chain reaction)-amplified. A pilot ddRAD library was sequenced on an Illumina MiSeq at the Institute of Aquaculture, University of Stirling. Subsequent ddRAD libraries were sequenced by Edinburgh Genomics on an Illumina HiSeq High Output version 4 using the 2 × 125PE read module.

## 2.3 | Data quality control and filtering

Data was quality assessed using FASTQC and processed in STACKS version 1.46 (Catchen et al., 2011). The PROCESS\_RADTAGS.PL module in STACKS was used to demultiplex the data, filter for adaptor sequences (allowing two mismatches), remove low-quality sequence reads (99% probability) and discard reads with any uncalled bases. To minimize linkage disequilibrium in the single nucleotide polymorphism (SNP)

data, only forward reads were retained for subsequent analyses. Short fragments not removed through size-selection were filtered out using a custom bash script (8.5% of reads).

The DENOVOMAP.PL program in STACKS was then used to assemble loci and call SNPs. We selected the three main assembly parameter values that generated the largest number of new polymorphic loci shared across 80% of individuals, following Paris et al. (2017). Four identical reads were required to build a stack (-m), stacks differing by up to four nucleotides were merged into putative loci (-M) and putative loci across individuals differing by up to five nucleotides were written to the catalogue (-n), giving an average locus coverage of 105X. To examine the effect of missing data on phylogenomic inference we used the POPULATIONS.PL program in STACKS to generate two datasets with varying levels of missing data. The first contained SNPs present in at least 10 individuals (Dataset A), and the second contained SNPs present in at least 90 individuals (Dataset B). The former reflects a more relaxed filter resulting in a higher genotyping rate, while the latter represents a stricter threshold. To remove paralogous loci and mitigate for allelic dropout (Arnold et al., 2015; Gautier et al., 2013), loci sequenced at greater than twice or less than one-third the standard deviation of coverage, respectively, were identified and excluded from both datasets using VCFTOOLS (Danecek et al., 2011). The remaining loci were then assessed for excess heterozygosity using VCFTOOLS, and those exhibiting a significant probability of heterozygote excess were excluded. Next, because STACKS ignores indels, SNPs in the last five nucleotide positions were assumed erroneous and excluded. Finally, the remaining loci in each dataset were written to a whitelist and filtered for a single random SNP per locus to minimize linkage using the POPULATIONS.PL program in STACKS. This resulted in 7,926 SNPs with 47.1% missing data in Dataset A, and

1,762 SNPs with 14% missing data in Dataset B (Table S2). The sequences in which SNPs were observed were concatenated for each individual and used as input for phylogenetic analysis.

## 2.4 | Phylogenetic reconstruction and clustering

To infer relationships among individuals and examine the extent of monophyly, we first carried out maximum likelihood phylogenetic analysis using concatenated ddRAD Datasets A and B. A maximum likelihood phylogeny was estimated using *RAXML* version 8.2.11 (Stamatakis, 2014) under the GTRGAMMA model of rate heterogeneity. This model was selected following an assessment of best fit using both Akaike's and Bayesian information criterion (AIC and BIC) in *JMODELTEST2* (Darriba et al., 2012). Branch support was assessed with 1,000 bootstrap replicates. *RAXML* identified four highly supported clades separated by long branches. We next calculated  $F_{ST}$  values among these inferred clusters using the *POPULATIONS.PL* program in *STACKS*. To further assess how individuals clustered within groups and investigate possible cases of population structure, we also performed a principal components analysis (PCA) using the R package *ADEGENET* (Jombart, 2008) on Datasets A and B. To improve visualization, this was carried out separately for each clade (Table S3). After assessment of 10 PCs, three were retained in all cases.

## 2.5 | Coalescent-based species delimitation

To objectively compare alternative species delimitation models against the taxonomy proposed by White et al. (2018), we used Bayes factor delimitation (BFD\*, Leaché et al., 2014). This method allows for direct comparison of marginal likelihood estimates (MLEs) for alternative species delimitation hypotheses, or models, under the multispecies coalescent. BFD\* was conducted using the modified version of *SNAPP* (Bryant et al., 2012), implemented as a plug-in to *BEAST* version 2.4.8 (Bouckaert et al., 2014). Due to computational constraints, we ran this analysis separately for each clade, as previously described, using Dataset B only. However, to evaluate support for interaction from higher phylogenetic levels, we included four random individuals from a sister species. Our null model matched the taxonomy proposed by White et al. (2018) and alternative models were informed by the literature and analyses herein. Full descriptions of our species delimitation models are described in Tables S4–S7. For each clade, we also assessed a model in which individuals were randomly assigned to two or three species.

For all models, path sampling involved 10 steps (1,000,000 MCMC [Monte Carlo Markov chain] iterations, 20% burn-in), implementing the log-likelihood correction. Because MLEs are affected by improper prior distributions, a gamma distribution was implemented on the lambda (tree height) parameter. To assess the effect of priors on the ranking order of models, models were also assessed retaining

the default 1/X distribution on lambda, implementing upper and lower bounds (10,000 and 0.00001 respectively), for a proper prior. Bayes factors ( $2\log_e BF$ ) were calculated from the MLE for each model for comparison (Kass & Raftery, 1995; Leaché et al., 2014), as follows:

$$2\log_e BF = 2 * (MLE_{null} - MLE_{test})$$

Positive  $2\log_e BF$  values indicate support for the null model (>10 is decisive; Leaché et al., 2014) and negative values favour the tested model. The best supported species units were then used to build consensus sequences and generate maximum likelihood consensus trees for Datasets A and B. For this, we provided a population map to the *POPULATIONS.PL* program in *STACKS* where each individual was assigned a species based on the results from our BFD\* analysis and individual-based phylogeny. Phylogenetic analysis was then performed on the resulting consensus sequences using *RAXML* (Stamatakis, 2014) as described above.

## 2.6 | Species tree analysis

To test tree topology and evaluate uncertainty due to incomplete lineage sorting, we estimated species trees using *SNAPP* based on the species units best supported by both BFD\* and our individual-based phylogeny (Bryant et al., 2012). This method allows each SNP to have its own history under the multispecies coalescent, while bypassing the need to sample individual gene trees. Due to the computational capacity required to run *SNAPP*, three individuals per species were randomly selected from Dataset B while maximizing geographical coverage within species. Random sampling of individuals with replacement was repeated a further three times, resulting in four subsampled alignments (Table S8). MCMC chains consisted of 5,000,000 iterations, sampling every 1,000 and retaining default priors on lambda and theta for each independent analysis. Convergence to stationary distributions was observed after 20% burn-in in *TRACER* (Rambaut et al., 2018). The distribution of trees was visualized in *DENSITREE* version 2.2.6 (Bouckaert, 2010) and maximum clade credibility (MCC) trees were drawn using *TREEANNOTATOR* version 2.4.7 (Bouckaert et al., 2014). Alternative prior combinations produced highly concordant results.

Multispecies coalescent-based approaches assume that any discordance of topologies among loci results from incomplete lineage sorting, and do not consider introgression as a source. We therefore used *TREEMIX* on Dataset A to evaluate evidence for significant introgression events within the *Mobulidae*. This method examines the extent to which variation between user-defined groups is explained by a single bifurcating tree. Given the topological uncertainty identified using *SNAPP*, specifically regarding the placement of *M. mobular*, the three-population test (Reich et al., 2009) was additionally used to test for "treeness" between clades. Like *TREEMIX*, the three-population test estimates covariance of allele frequencies among groups



but is simpler and less parameterized and therefore potentially more powerful for identifying introgression. For this analysis, *M. mobular*, *M. alfredi* and *M. thurstoni* were randomly selected to represent their respective clades.

### 3 | RESULTS

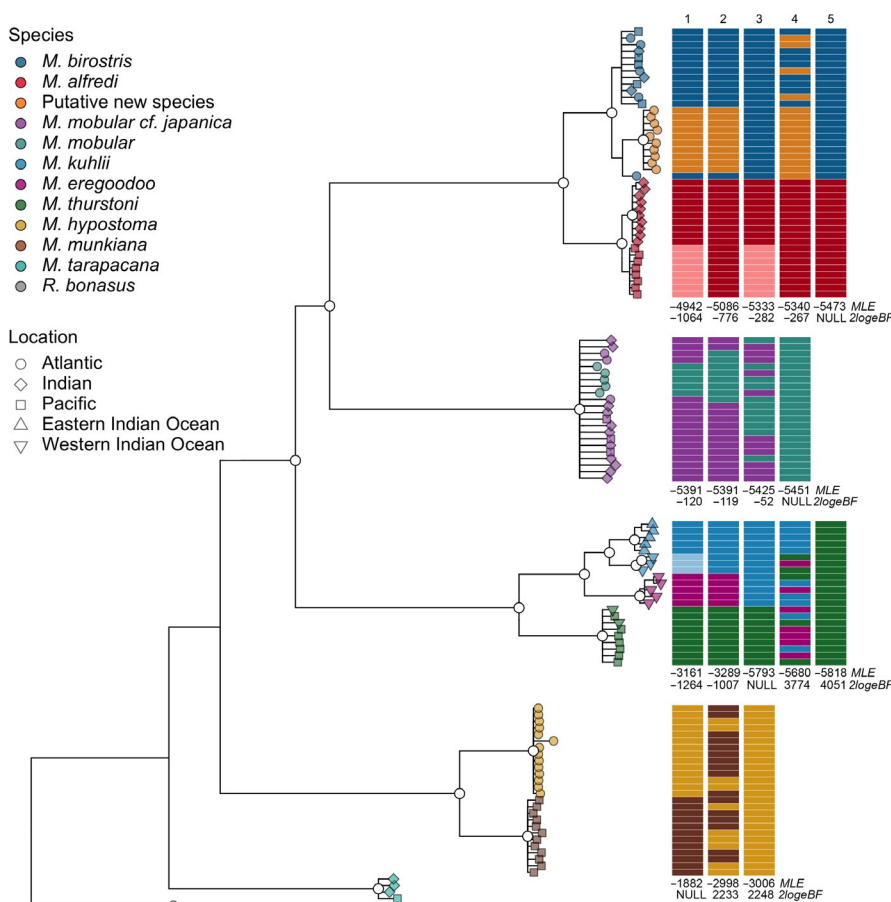
#### 3.1 | Phylogenetic reconstruction and clustering

To infer relationships among individuals and examine the extent of monophyly and clustering, we carried out maximum likelihood phylogenetic analysis and PCA. Phylogenetic trees based on ddRAD Datasets A and B were highly congruent, with species groups forming well-supported clades separated by long branches indicating that missing data had little effect on our results (Figure 2; Figure S1). PCAs based on Datasets A and B were also highly similar, and revealed clustering within each clade that mirrored patterns in both phylogenetic trees (Figure 3; Figure S2).

*Mobula alfredi* and *M. birostris*, *M. hypostoma* and *M. munkiana*, and *M. kuhlii* and *M. eregoodoo* all formed reciprocally monophyletic groups with high bootstrap support (Figure 2; Figure S1). These groups were also visible as tight clusters on the PCA, separated along axes explaining large portions of variance (63%–74%; Figure 3; Figure S2). Interestingly, two reciprocally monophyletic groups were

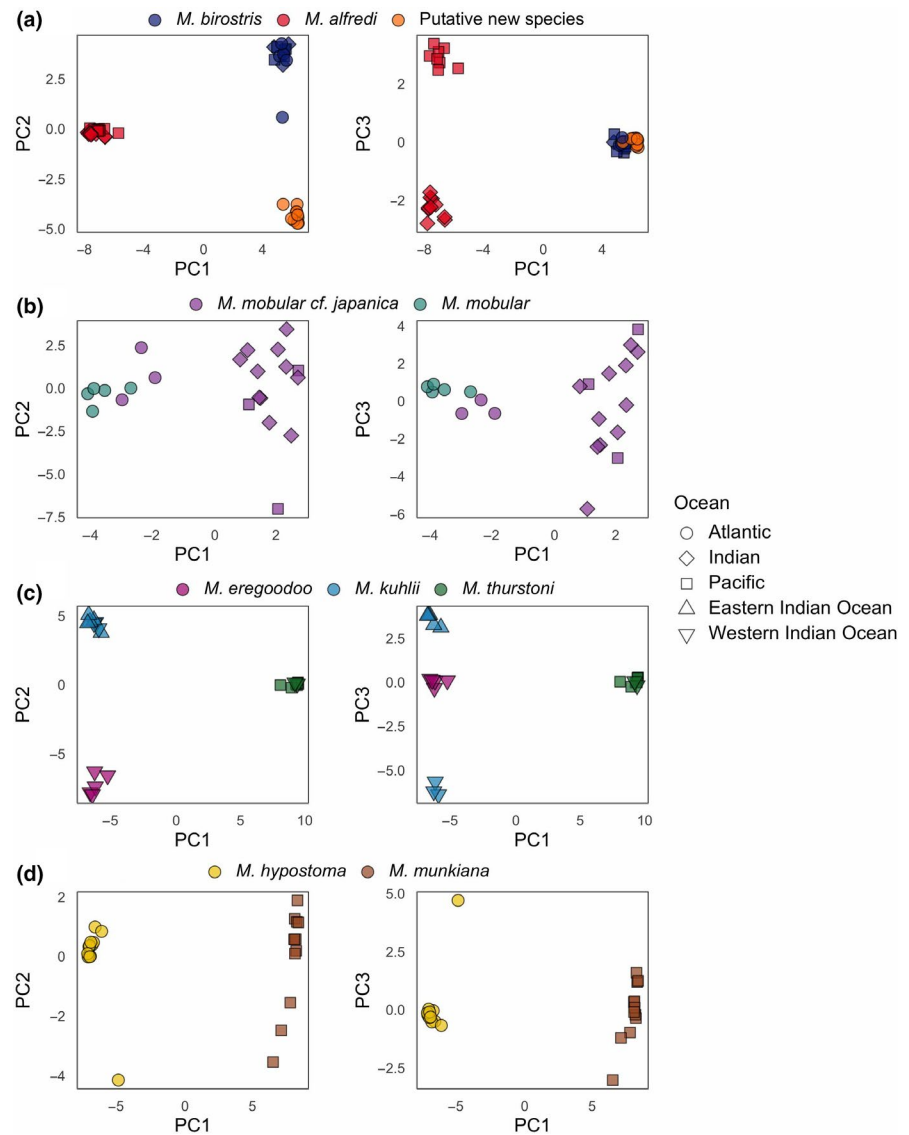
also detected within *M. birostris*. The first comprised a subset of individuals originating only from the Gulf of Mexico in the Atlantic, and the second comprised individuals collected from multiple locations across the globe, including the Gulf of Mexico (Figure 2; Figure S1). In other words, individuals originating from within the Gulf of Mexico were present in both monophyletic groups. Both lineages received high bootstrap support and were also visible as tight clusters on the PCA (orange and blue points on Figure 3a; Figure S2a). However, one individual was located between groups in the phylogenetic analyses of Datasets A and B (Figure 2; Figure S1) and was also located in an intermediate position along PC2 of Dataset A (Figure 3a).

In contrast, *M. mobular cf. japonica* and *M. mobular* formed a single monophyletic group with 100% bootstrap support (Figure 2; Figure S1), with no clear taxonomic separation through PCA (Figure 3b; Figure S2b). Nevertheless, PC1 provided some evidence to suggest geographical clustering of individuals into Indo-Pacific and Atlantic (including Mediterranean) groups. However, this explained only 8.6% of the variance (Figures S3 and S4), and only limited differentiation was apparent between clusters ( $F_{ST} = 0.061$ ). Evidence for finer scale clustering was also evident in *M. alfredi* and *M. kuhlii*. Here, geographically separated populations in both taxa formed monophyletic groups (Figure 2; Figure S1) and distinct clusters along PC3 (Figure 3a,c; Figure S2a,c). These groups also showed a high degree of differentiation with  $F_{ST}$  values of 0.16 and 0.32, respectively.



**FIGURE 2** (Left) Maximum likelihood tree of mobulid individuals based on 7926 SNPs from Dataset A. Filled coloured symbols indicate species assigned upon collection, and shape indicates geographic origin of samples as specified in the legend. White circles show nodes with at least 95% bootstrap support and nodes with less than 50% support are collapsed. (Right) Bayes factor delimitation (BFD\*) models. Individuals were assigned to species groups as indicated by the coloured bars. Models are ranked in decreasing order of performance from left to right. Marginal likelihood estimates (MLEs) and Bayes factors relative to the null model ( $2\log_e BF$ ) are shown beneath each model. Models including individuals from a sister clade are not shown, as these consistently performed poorly. [Colour figure can be viewed at [wileyonlinelibrary.com](http://wileyonlinelibrary.com)]

**FIGURE 3** Principal components (PCs) 1–3 plotted for each mobulid clade derived from a principal components analysis conducted using Dataset A. Individuals are represented by a symbol, colour indicates species, and shape indicates geographic origin of samples as specified in the legend. (a) PCs one and two, and one and three for *M. birostris*, *M. alfredi* and the putative new mobulid species; (b) PCs one and two, and one and three for *M. mobular cf. japonica* and *M. mobular*; (c) PCs one and two, and one and three for *M. eregoodoo*, *M. kuhlii* and *M. thurstoni*; (d) PCs one and two, and one and three for *M. hypostoma* and *M. munkiana* [Colour figure can be viewed at [wileyonlinelibrary.com](http://wileyonlinelibrary.com)]



### 3.2 | Coalescent-based species delimitation

To compare alternative species delimitation models against the taxonomy proposed by White et al. (2018), we used BFD\*. We find decisive support for models recognizing the subset of *M. birostris* individuals originating from the Gulf of Mexico, and that cluster separately in the phylogenetic analysis, as an independently evolving lineage ( $2\log_e \text{BF} = -775.82$ , Figure 2; Models 1 and 2). Similarly, we find that models recognizing individuals identified as *M. eregoodoo* as a separate species to *M. kuhlii* ( $2\log_e \text{BF} = -1,007.04$ , Figure 2; Models 1 and 2) were better supported than the null model in which they were recognized as a single unit. As expected, and in line with the results from our phylogenetic analysis and PCA, we find that the null model recognizing *M. hypostoma* and *M. munkiana* as separate species was strongly favoured over alternative models (Figure 2).

Interestingly, we find that the model recognizing *M. mobular* and *M. mobular cf. japonica* as separate species, and the model splitting all individuals based on Atlantic versus Indo-Pacific origin both marginally out-performed the null model. Similarly, geographically informed

models involving *M. alfredi* and *M. kuhlii* also performed well, achieving decisive support over alternative scenarios ( $2\log_e \text{BF} = -1,063.58$  and  $-1,263.8$ , respectively, Figure 2; Model 1). However, because these groupings directly correspond to geographical segregation of populations, we attribute model support to population-level structuring (Chambers & Hillis, 2020; Sukumaran & Knowles, 2017, see Discussion for further details). We therefore considered the single species models to be the most reasonable, in line with the results of our maximum likelihood phylogenetic analysis. In all cases, models assessing interaction from higher phylogenetic levels and random individual assignments performed comparatively poorly (Tables S4–S7). Furthermore, marginal likelihood estimates were unaffected by lambda priors, with no change in the rank order of models (Tables S4–S7).

### 3.3 | Species tree analysis

To examine relationships among species, we estimated species trees based on the best supported species groups from our maximum



likelihood and BFD\* analysis. Consensus species trees estimated under the multispecies coalescent exhibited broadly consistent topologies and theta estimates across independent runs, indicating that subsampling did not significantly bias the tree topology inferred with SNAPP (Figure S5). Therefore, the species tree for individual subsample one is presented here (Figure 4; see Figure S5 for all subsets). Relationships between sister species within clades remained particularly stable across alternative topologies. However, some uncertainty with respect to the placement of the putative new mobulid species was observed, although a sister relationship with *M. birostris* was the most common. This is in line with the maximum likelihood consensus trees produced using RAXML, where the putative new species is sister to *M. birostris*, with 100% bootstrap support (Figure S6). Interestingly, *M. tarapacana* was consistently sister to the clade containing *M. hypostoma* and *M. munkiana* (highest posterior density, HPD = 1.0 Figure 4; Figures S5 and S7). This is in contrast to the maximum likelihood and consensus trees, where *M. tarapacana* is basal to all other mobulid lineages (Figure 2; Figures S1 and S6).

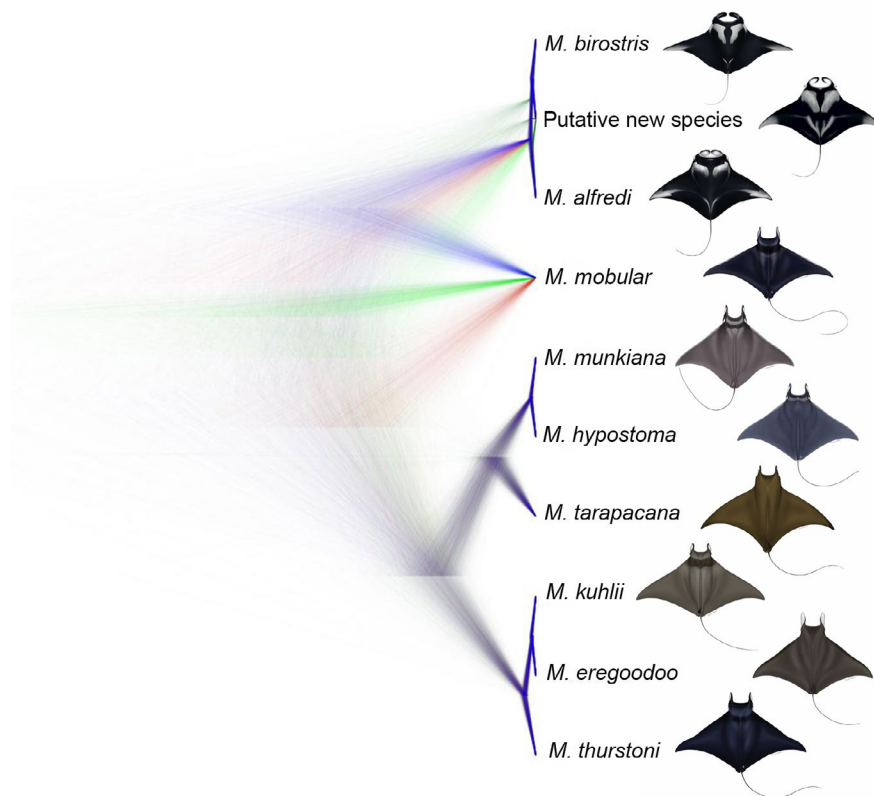
Topological uncertainty was found at other nodes, and this is apparent from the cloudogram of posterior gene trees (Figure 4; Figure S5). In particular, we observed large discrepancies in the placement of *M. mobular*, including *M. mobular* cf. *japanica*, relative to other clades, suggesting incomplete lineage sorting. This is despite it being sister to the manta rays with  $\geq 95\%$  bootstrap support in our maximum likelihood phylogenetic analyses (Figure 2; Figures S1 and S6). Theta estimates inferred from the SNAPP analysis varied across lineages, where they tended to be larger for deeper branches of the tree (Figure S7). TREEMIX inferred an admixture graph

similar to trees produced with RAXML (Figure S8), explaining 99.86% of the variance, indicating mobulid species placement is unaffected by admixture. Furthermore, we found no evidence of introgression between clades containing *M. alfredi*, *M. mobular* and *M. thurstoni*, through three-population tests (Table S9).

## 4 | DISCUSSION

Conservation management relies on the classification of diversity into species units. Phylogenetic inference and species delimitation are therefore of fundamental importance to biodiversity conservation in assigning strategies to the appropriate level of biological integrity. In this study, we combined ddRAD sequencing together with coalescent-based species delimitation to evaluate species boundaries and explore intraspecific patterns of variation among the globally threatened Mobulidae. Our study has broad-reaching implications for practical conservation and provides a framework for carrying out molecular genetic species delimitation in wide-ranging taxa of conservation concern.

The phylogenetic relationships and species boundaries that we infer in this study largely support those proposed in a recent revision of Mobulidae by White et al. (2018). However, we find compelling evidence to refute the synonymization of *M. eregoodoo* and *M. kuhlii*. Our findings coincide with morphological, ecological and behavioural evidence reported in a recent study by Notarbartolo di Sciarra, Adnet, et al., (2020). Here, distinct differences in coloration, cephalic fin length, and tooth and branchial filter plate



**FIGURE 4** Tree clouds of sampled species trees from SNAPP analysis to visualise the range of alternative topologies. The tree presented here is based on 30 individuals from subsample one and 1242 SNPs from Dataset B. Individuals were assigned to the ten species units supported by our analyses herein. See Figure S5 for tree clouds based on individual subsamples two–four and Table S8 for further details on individual subsets. Illustrations © Marc Dando, Wild Nature Press, and are not to scale. The illustration of the putative new mobulid species is based on images of hundreds of individuals off the Yucatan Peninsula, Gulf of Mexico [Colour figure can be viewed at [wileyonlinelibrary.com](http://wileyonlinelibrary.com)]

morphology were characterized using specimens collected globally. Our results, together with this morphological evidence, therefore strongly suggest these taxa should be considered distinct species under an integrative taxonomic framework. *Mobula eregoodoo* and *M. kuhlii* partially share a geographical range across a region with intense fishing pressure (Notarbartolo di Sciara, Fernando, Adnet, Cappetta, & Jabado, 2017). It is therefore critical that they are monitored and managed as separate units, to avoid both overstating abundance estimates and underestimating perceived extinction risk (Coates et al., 2018; Isaac et al., 2004; Mace, 2004).

In contrast to this species split between *M. eregoodoo* and *M. kuhlii*, our results support the synonymization of *M. mobular* and *M. mobular* cf. *japanica* as described by White et al. (2018). Such an assertion is also in line with a previous study of mitogenome and nuclear data of this species (Poortvliet et al., 2015), as well as morphological similarities that have been documented in these taxa for several decades (Notarbartolo di Sciara, 1987; Notarbartolo di Sciara, Stevens, et al., 2020). However, through analysing a larger number of geographically representative samples and genome-wide molecular markers, our work addresses the constraints of previous studies, and therefore provides the most robust genetic evidence to date that *M. mobular* should be considered a single species unit for conservation. Unfortunately, we were unable to assess the taxonomic status of *M. hypostoma* cf. *rochebrunei*, as the museum sample we had access to yielded no detectable DNA. Given the extent of illegal, unreported and unregulated fishing pressure in the West African region (Agnew et al., 2009) combined with the scarcity of *M. hypostoma* cf. *rochebrunei* sightings, there is a risk that the synonymization outlined by White et al. (2018) could lead to an underestimate of extinction vulnerability. We therefore recommend that high priority be given to a comprehensive evaluation of mobulid diversity in West Africa (see Stewart et al., 2018).

Another important outcome of our study is support for a putative new species of manta ray in the Gulf of Mexico based on multilocus nuclear SNP markers. Importantly, samples from both *M. birostris* and the putative new species were collected from within sites in the Gulf of Mexico, suggesting that these independent lineages co-occur in sympatry. This work adds to the growing body of morphological, ecological and mitochondrial DNA evidence that this unique genetic lineage may constitute an undescribed species worthy of independent management. Nevertheless, although we did not formally test for hybridization among manta ray species, we identified one individual that could be considered genetically intermediate between *M. birostris* and the putative new species. This indicates that, as in *M. birostris* and *M. alfredi* (Walter et al., 2014), hybridization may be occurring. Management of these taxa as independent units will therefore be challenging, potentially requiring blanket protection in regions where sympatry and/or hybridization occur. To develop suitable protective measures, it is critical that a formal description of the putative new species is carried out. This will allow researchers to confidently determine its full range, which may extend into international waters or span areas with high fishing pressure.

Recent studies have demonstrated that caution must be applied when using the multispecies coalescent as it has a tendency to over-split taxa into the lowest possible denomination (Chambers & Hillis, 2020; Leaché et al., 2019; Sukumaran & Knowles, 2017). This is particularly true when factors including population structure, isolation by distance and sampling design are not taken into account (Chambers & Hillis, 2020). Consequently, the approach can make it difficult to disentangle species boundaries from population-level processes, presenting a genuine risk to conservation, where over-splitting can negatively impact assignment of management units and estimates of extinction vulnerability (Frankham et al., 2012; Isaac et al., 2004; Mace, 2004; Zachos, 2013; Zachos et al., 2013). Nevertheless, under the general lineage concept, there is little controversy in assigning species status to genetically distinct populations that occur in sympatry (Leaché et al., 2019; Rannala et al., 2020), such as the case here for *M. birostris* and the putative new mobulid species, and for *M. kuhlii* and *M. eregoodoo*. For the former, samples from both species were collected from the same site in the Gulf of Mexico, while for the latter, samples from both species were collected from within the same ~120km stretch of South African coastline. The patterns we uncover are therefore unlikely to be attributable to population structure, and we can be confident that these taxa reflect genetically distinct and separately evolving lineages.

For *M. alfredi*, *M. kuhlii* and *M. mobular*, models containing splits below the species level received the highest level of support in our comparison of species delimitation hypotheses. However, because these groupings reflected geographical separation in sample origin, attributing these patterns to species boundaries is less clear cut. In particular, it has been shown that limited geographical sampling in widely distributed species can give rise to the appearance of distinct lineages (Chambers & Hillis, 2020). This pattern can occur regardless of whether a species is made up of fragmented populations with limited gene flow or exhibits isolation by distance (Barley et al., 2018; Hedin et al., 2015). Although we analysed samples from multiple populations of *M. alfredi*, *M. kuhlii* and *M. mobular*, large areas of their geographic range remain under-represented. Together with the fact that support for models recognizing geographically separated species only marginally out-performed those that did not, we interpret such patterns as evidence for population-level processes as opposed to speciation events.

Nevertheless, these BFD\* results, alongside the geographical clusters characterized in the PCA, indicate that isolated populations represent unique genetic diversity and that management below the species level may be warranted (Coates et al., 2018; Stanton et al., 2019). In line with this, the geographic signal we have uncovered lays the foundation for developing tools to support fisheries traceability and population monitoring (Ogden, 2008, 2011). For example, diagnostic markers with the power to discriminate between populations could be employed for determining the geographic origin of devil ray samples. Such traceability tools could be used to understand the impact of fisheries on individual populations or to identify geographic regions that may be routinely supplying the gill

plate trade (Fields et al., 2020; O'Malley et al., 2017). The extent of population structuring described within *M. alfredi*, *M. kuhlii* and *M. mobular* indicates that future traceability studies will be feasible in these species. Interestingly, for *M. thurstoni* and *M. birostris*, both of which are circumglobally distributed, no evidence for population structure was found, despite samples originating from across ocean basins. This was in some respects surprising given the reproductive biology of mobulids and localized movement patterns that have been reported in certain species (Braun et al., 2015; Deakos et al., 2011; Jaïne et al., 2014; Stewart et al., 2016). However, both *M. thurstoni* and *M. birostris* occupy more pelagic and offshore habitats than their coastal counterparts, and are hypothesized to exhibit highly migratory behaviour, presenting opportunities for gene flow across ocean basins. To understand the biological significance of these patterns in more detail, and contribute further information to support management, a more comprehensive assessment of population structure within Mobulidae using high-density markers is required.

We used the outcomes of our species delimitation and maximum likelihood phylogenetic analysis to provide insights into the evolutionary history of devil rays. A common problem when inferring species relationships is the impact of conflicting phylogenetic signal across the genome on gene-tree discordance (Degnan & Rosenberg, 2009; Schrempf & Szöllösi, 2020). Fortunately, the multispecies coalescent model provides a framework with which to incorporate topological uncertainty in phylogenetic reconstruction (Rannala et al., 2020). Through employing an extension of the multispecies coalescent developed for SNP datasets (Bryant et al., 2012), we find evidence for discordance among tree topologies in manta and devil rays. In particular, we find substantial uncertainty in the placement of *M. mobular*, with this species shifting position relative to the manta rays and the other species. This is in contrast to both our maximum likelihood phylogeny and consensus species trees, where *M. mobular* was sister to the manta rays with  $\geq 95\%$  bootstrap support. Nevertheless, when taken together, our results are in line with those of White et al. (2018) suggesting the previously recognized genus *Manta* is nested within *Mobula*, and therefore provide further justification for the associated change in nomenclature. We also uncovered uncertainty with respect to the placement of *M. tarapacana*. While our maximum likelihood analysis identified this species as the earliest branching mobulid lineage, SNAPP analysis consistently placed *M. tarapacana* sister to *M. hypostoma* and *M. munkiana*, a previously unreported phylogenetic placement (Poortvliet et al., 2015; White et al., 2018).

The two primary biological causes of gene-tree discordance are introgression and incomplete lineage sorting (Hahn, 2018; Mallet et al., 2016). In the case of *M. mobular*, we find no evidence for admixture and therefore attribute the topological uncertainty to incomplete lineage sorting. This phenomenon is more likely to occur when the time between speciation events is small, because there is reduced opportunity for lineages to coalesce (Maddison, 1997; Pamilo & Nei, 1988). Mobulidae have undergone a recent and rapid burst of speciation (Poortvliet et al., 2015) that is likely to have increased the level of incomplete lineage sorting. Similarly, levels of

lineage sorting are proportional to ancestral population size, given that the rate of coalescence is lower when effective population size ( $N_e$ ) is large. Interestingly, we find that  $N_e$ , as inferred from theta estimates, is larger for deeper branches of the mobulid tree. Thus, it is also possible that standing genetic variation in ancestral populations may have led to lower levels of lineage sorting in mobulid rays. Similar patterns have been identified across a wide range of taxa (Brawand et al., 2014; Pollard et al., 2006; Suh et al., 2015; Thompson et al., 2019; Wang et al., 2018) and our results highlight how the use of multilocus approaches within a coalescent framework can improve our understanding of the evolutionary processes shaping genomic variation.

## 5 | CONCLUSIONS

In summary, we combine genome-wide data together with multiple methods to characterize lineage diversity and examine species units in globally threatened manta and devil rays. We find that two recently synonymized species constitute independently evolving lineages and uncover robust support for a putative new species of manta ray in the Gulf of Mexico. We further characterized differences between geographically separate populations, highlighting the need for management below the species level. Our findings have important implications for practical conservation and are relevant to the enforcement of CITES and CMS regulations by laying the groundwork for species identification and regional traceability of products in trade. Furthermore, we demonstrate the power of genomic data to resolve and identify diversity within organismal radiations and improve our understanding of the evolutionary processes generating biodiversity. Consequently, we provide a framework for molecular genetic species delimitation of relevance to wide-ranging taxa of conservation concern, and endorse the value of genomic research to inform conservation, management and law enforcement when integrated with complementary biological data.

## ACKNOWLEDGEMENTS

We are very grateful to the Save Our Seas Foundation (SOSF) and The People's Trust for Endangered Species (PTES) for providing financial support for this work. J.H. was supported by a Natural Environment Research Council (NERC) CASE studentship through the ENVISION DTP (CASE partner - Royal Zoological Society of Scotland) and received additional grants from the Fisheries Society of the British Isles and the Genetics Society. Data analysis was supported by the UK NERC Biomolecular Analysis Facility at the University of Sheffield. The authors are very grateful to the following people and organizations for their help and support sourcing and collecting tissue samples: Julia L. Y. Spaet, Alec Moore, Rachel Brittain, Akazul, Grace Phillips, Jon Slayer, Framadou Doumbouya, West Africa Musee de la mer a Dakar, Dan Bowling, Heather Pacey, the Barefoot Collection, Dr Bernard Seret, Prof. Dr D. A. Croll, Kelly Newton, Mr Hamid Badar Osmany (Marine Fisheries Department), Silvia Hinojosa, Karen Fuentes and Manta Caribbean Project, Bruno

Macena, Florencia Cerutti, Ixchel García, Ximena Arvizu, Planeta Océano, all LAMAVE staff and volunteers and field team Captains Dean Dougherty, Captain Peter Hull, Captain Greg Byrd, Krystan Wilkinson and Breanna DeGroot. We would also like to thank all the staff at Atlantis-The Palm Dubai for providing access to specimens brought in by fishermen and for their valuable help with data collection and dissections. The authors would also like to thank Marc Dando from Wild Nature Press for the use of his illustrations in this publication. Blue Resources Trust (BRT) would like to thank the Department of Wildlife Conservation and the Department of Fisheries and Aquatic Resources for all their support provided to the fieldwork carried out in Sri Lanka. BRT also acknowledges the generous support provided by the SOSF and the Marine Conservation and Action Fund (MCAF) that enabled field work in Sri Lanka. We thank Disney Conservation Fund, Save Our Seas Foundation and Mote Scientific Foundation for supporting sample collection in Florida. Special thanks also to the Local Government Unit of Jagna, the Philippines Bureau of Fisheries and Aquatic Resources Region 7. The SOSF D'Arros Research Centre is a main affiliate of the Seychelles Manta Ray Project, which is funded by the SOSF. Sample collection in Seychelles was approved by, and conducted with the knowledge of the Ministry of Environment, Energy, and Climate Change, Seychelles. The National Commission for Fisheries and Aquaculture of Mexico (CONAPESCA) allowed R.B. to collect samples in Mexico through research permit PPF/DGOPA-091/15; the National Commission for Natural Protected Areas (CONANP) of Mexico and authorities of the Biosphere Reserve of Whale Sharks kindly gave permission for work in the reserve. The Save Our Seas Foundation, the MCAF, the Disney Conservation Fund and the National Geographic Society provided funding for research in Mexico. The Perfect World Foundation generously funded R.B. for the replacement of a drone used to locate manta rays. The Mexican CITES authority, Secretary of Environment and Natural Resources (SEMARNAT), provided a CITES export permit for tissue samples through permit MX 80544. Sample collection in the northern Gulf of Mexico was facilitated by the Flower Garden Banks National Marine Sanctuary under permit no. FGBNMS-2015-001 and supported by the National Marine Sanctuary Foundation. We also thank Dr John Taggart for his support with the ddRAD library preparation protocol, and for his help sequencing a pilot ddRAD library. Gustavo Colucci assisted with DNA extractions and COI amplifications. A.F. was funded by the Welsh Government and Higher Education Funding Council for Wales through the Sêr Cymru National Research Network for Low Carbon, Energy and Environment, and from the European Union's Horizon 2020 research and innovation programme under the Marie Skłodowska-Curie grant agreement no. 663830.

#### AUTHOR CONTRIBUTIONS

J.H., E.H., G.C., M.d.B., R.O., S.C., D.F. and G.S. designed and conceived of the study and secured funding for consumables relating to laboratory work. E.H., G.S., D.F., A.P., M.A., J.S., S.P., S.W., R.J., M.P., M.M., K.B.H., R.B., J.S. and L.P. were responsible for sourcing and collecting samples. J.H. and J.K. carried out laboratory work. J.H.,

E.H., G.C., M.d.B., R.O., S.C., H.H., A.F. and H.S. contributed to analysis of genome-wide SNP data. Figures were designed by E.H. and J.H. and produced by E.H. J.H. and E.H. wrote the paper. All authors commented on and approved the final manuscript.

#### DATA AVAILABILITY STATEMENT

Demultiplexed ddRAD sequencing reads have been deposited in the European Nucleotide Archive (<https://www.ebi.ac.uk/ena>) under study accession no. PRJEB40372. Tree topologies contained within the 95% highest posterior density from the SNAPP analysis are available from the Dryad Digital Repository, <https://doi.org/10.5061/dryad.bk3j9kd8x>. Analysis code used to generate the figures in this manuscript is available at [https://github.com/elhumble/mobul\\_id\\_phylo](https://github.com/elhumble/mobul_id_phylo).

#### ORCID

Emily Humble  <https://orcid.org/0000-0001-6841-1269>  
 Rob Ogden  <https://orcid.org/0000-0002-2831-0428>  
 Mark de Bruyn  <https://orcid.org/0000-0003-1528-9604>  
 Simon Creer  <https://orcid.org/0000-0003-3124-3550>  
 Guy M W Stevens  <https://orcid.org/0000-0002-2056-9830>  
 Kim Bassos-Hull  <https://orcid.org/0000-0003-2169-9626>  
 Ramon Bonfil  <https://orcid.org/0000-0002-5753-464X>  
 Daniel Fernando  <https://orcid.org/0000-0003-2163-1832>  
 Andrew D. Foote  <https://orcid.org/0000-0001-7384-1634>  
 Helen Hipperson  <https://orcid.org/0000-0001-7872-105X>  
 Rima W. Jabado  <https://orcid.org/0000-0001-6239-6723>  
 Lauren R Peel  <https://orcid.org/0000-0001-6960-5663>  
 Alessandro Pozzo  <https://orcid.org/0000-0003-1289-397X>  
 Sabine Wintner  <https://orcid.org/0000-0001-7350-5999>  
 Gary Carvalho  <https://orcid.org/0000-0002-9509-7284>

#### REFERENCES

- Abdelkrim, J., Aznar-Cormano, L., Buge, B., Fedosov, A., Kantor, Y., Zaharias, P., & Puillandre, N. (2018). Delimiting species of marine gastropods (Turridae, Conoidea) using RAD sequencing in an integrative taxonomy framework. *Molecular Ecology*, 27(22), 4591–4611. <https://doi.org/10.1111/mec.14882>
- Adnet, S., Cappetta, H., Guinot, G., & Notarbartolo Di Sciarra, G. (2012). Evolutionary history of the devilrays (Chondrichthyes: Myliobatiformes) from fossil and morphological inference. *Zoological Journal of the Linnean Society*, 166(1), 132–159. <https://doi.org/10.1111/j.1096-3642.2012.00844.x>
- Agnew, D. J., Pearce, J., Pramod, G., Peatman, T., Watson, R., Beddington, J. R., & Pitcher, T. J. (2009). Estimating the worldwide extent of illegal fishing. *PLoS One*, 4(2), e4570. <https://doi.org/10.1371/journal.pone.0004570>
- Arnold, B., Kim, S.-T., & Bomblies, K. (2015). Single geographic origin of a widespread autotetraploid arabidopsis arenosa lineage followed by interploidy admixture. *Molecular Biology and Evolution*, 32(6), 1382–1395. <https://doi.org/10.1093/molbev/msv089>
- Asahida, T., Tohoku, N. F. R. I., Ida, H., Terashima, H., & Chang, H. Y. (1993). The karyotype and cellular DNA content of a ray, *Mobula japonica*. *Japanese Journal of Ichthyology (Japan)*, 40(3), 317–322. <https://agris.fao.org/agris-search/search.do?recordID=JP9700898>
- Barley, A. J., Brown, J. M., & Thomson, R. C. (2018). Impact of model violations on the inference of species boundaries under the



- multispecies coalescent. *Systematic Biology*, 67(2), 269–284. <https://doi.org/10.1093/sysbio/syx073>
- Bouckaert, R. (2010). DENSITREE: Making sense of sets of phylogenetic trees. *Bioinformatics*, 26(10), 1372–1373. <https://doi.org/10.1093/bioinformatics/btq110>
- Bouckaert, R., Heled, J., Kühnert, D., Vaughan, T., Wu, C.-H., Xie, D., Suchard, M. A., Rambaut, A., & Drummond, A. J. (2014). BEAST 2: A software platform for bayesian evolutionary analysis. *PLOS Computational Biology*, 10(4), e1003537. <https://doi.org/10.1371/journal.pcbi.1003537>
- Braun, C. D., Skomal, G. B., Thorrold, S. R., & Berumen, M. L. (2015). Movements of the reef manta ray (*Manta alfredi*) in the Red Sea using satellite and acoustic telemetry. *Marine Biology*, 162(12), 2351–2362. <https://doi.org/10.1007/s00227-015-2760-3>
- Brawand, D., Wagner, C. E., Li, Y. I., Malinsky, M., Keller, I., Fan, S., Simakov, O., Ng, A. Y., Lim, Z. W., Bezault, E., Turner-Maier, J., Johnson, J., Alcazar, R., Noh, H. J., Russell, P., Aken, B., Alföldi, J., Amemiya, C., Azzouzi, N., ... Di Palma, F. (2014). The genomic substrate for adaptive radiation in African cichlid fish. *Nature*, 513(7518), 375–381. <https://doi.org/10.1038/nature13726>
- Bryant, D., Bouckaert, R., Felsenstein, J., Rosenberg, N. A., & RoyChoudhury, A. (2012). Inferring species trees directly from biallelic genetic markers: Bypassing gene trees in a full coalescent analysis. *Molecular Biology and Evolution*, 29(8), 1917–1932. <https://doi.org/10.1093/molbev/mss086>
- Burgess, M. G., Polasky, S., & Tilman, D. (2013). Predicting overfishing and extinction threats in multispecies fisheries. *Proceedings of the National Academy of Sciences of the United States of America*, 110(40), 15943–15948. <https://doi.org/10.1073/pnas.1314472110>
- Carstens, B. C., Pelletier, T. A., Reid, N. M., & Satler, J. D. (2013). How to fail at species delimitation. *Molecular Ecology*, 22(17), 4369–4383. <https://doi.org/10.1111/mec.12413>
- Catchen, J. M., Amores, A., Hohenlohe, P., Cresko, W., & Postlethwait, J. H. (2011). STACKS: Building and genotyping loci *de novo* from short-read sequences. *G3: Genes, Genomes, Genetics*, 1(3), 171–182.
- Chambers, E. A., & Hillis, D. M. (2020). The multispecies coalescent over-splits species in the case of geographically widespread taxa. *Systematic Biology*, 69(1), 184–193. <https://doi.org/10.1093/sysbio/syz042>
- Chang, H.-Y., Sang, T.-K., Jan, K.-Y., & Chen, C.-T. (1995). Cellular DNA contents and cell volumes of batoids. *Copeia*, 1995(3), 571–576. <https://doi.org/10.2307/1446754>
- Coates, D. J., Byrne, M., & Moritz, C. (2018). Genetic diversity and conservation units: Dealing with the species-population continuum in the age of genomics. *Frontiers in Ecology and Evolution*, 6, 165. <https://doi.org/10.3389/fevo.2018.00165>
- Couturier, L. I. E., Marshall, A. D., Jaine, F. R. A., Kashiwagi, T., Pierce, S. J., Townsend, K. A., Weeks, S. J., Bennett, M. B., & Richardson, A. J. (2012). Biology, ecology and conservation of the Mobulidae. *Journal of Fish Biology*, 80(5), 1075–1119. <https://doi.org/10.1111/j.1095-8649.2012.03264.x>
- Croll, D. A., Dewar, H., Dulvy, N. K., Fernando, D., Francis, M. P., Galván-Magaña, F., Hall, M., Heinrichs, S., Marshall, A., Mccauley, D., Newton, K. M., Notarbartolo-Di-Sciara, G., O'Malley, M., O'Sullivan, J., Poortvliet, M., Roman, M., Stevens, G., Tershy, B. R., & White, W. T. (2016). Vulnerabilities and fisheries impacts: The uncertain future of manta and devil rays. *Aquatic Conservation: Marine and Freshwater Ecosystems*, 26(3), 562–575. <https://doi.org/10.1002/aqc.2591>
- Danecek, P., Auton, A., Abecasis, G., Albers, C. A., Banks, E., DePristo, M. A., Handsaker, R. E., Lunter, G., Marth, G. T., Sherry, S. T., McVean, G., & Durbin, R. (2011). The variant call format and VCFtools. *Bioinformatics*, 27(15), 2156–2158. <https://doi.org/10.1093/bioinformatics/btr330>
- Darriba, D., Taboada, G. L., Doallo, R., & Posada, D. (2012). JMODELTEST 2: More models, new heuristics and parallel computing. *Nature Methods*, 9(8), 772. <https://doi.org/10.1038/nmeth.2109>
- Dayrat, B. (2005). Towards integrative taxonomy. *Biological Journal of the Linnean Society*, 85(3), 407–415. <https://doi.org/10.1111/j.1095-8312.2005.00503.x>
- de Queiroz, K. (1998). The general lineage concept of species, species criteria, and the process of speciation. In *Endless forms: Species and speciation*. Oxford University Press. <http://repository.si.edu/xmlui/handle/10088/4652>
- de Queiroz, K. (2007). Species concepts and species delimitation. *Systematic Biology*, 56(6), 879–886. <https://doi.org/10.1080/10635150701701083>
- Deakos, M. H., Baker, J. D., & Bejder, L. (2011). Characteristics of a manta ray *Manta alfredi* population off Maui, Hawaii, and implications for management. *Marine Ecology Progress Series*, 429, 245–260. <https://doi.org/10.3354/meps09085>
- Degnan, J. H., & Rosenberg, N. A. (2009). Gene tree discordance, phylogenetic inference and the multispecies coalescent. *Trends in Ecology & Evolution*, 24(6), 332–340. <https://doi.org/10.1016/j.tree.2009.01.009>
- Dulvy, N. K., Pardo, S. A., Simpfendorfer, C. A., & Carlson, J. K. (2014). Diagnosing the dangerous demography of manta rays using life history theory. *PeerJ*, 2, e400. <https://doi.org/10.7717/peerj.400>
- Ewart, K. M., Lo, N., Ogden, R., Joseph, L., Ho, S. Y. W., Frankham, G. J., Eldridge, M. D. B., Schodde, R., & Johnson, R. N. (2020). Phylogeography of the iconic Australian red-tailed black-cockatoo (*Calyptorhynchus banksii*) and implications for its conservation. *Heredity*, 125(3), 85–100. <https://doi.org/10.1038/s41437-020-0315-y>
- Fields, A. T., Fischer, G. A., Shea, S. K. H., Zhang, H., Feldheim, K. A., & Chapman, D. D. (2020). DNA Zip-coding: Identifying the source populations supplying the international trade of a critically endangered coastal shark. *Animal Conservation*. <https://doi.org/10.1111/acv.12585>
- Frankham, R., Ballou, J. D., Dudash, M. R., Eldridge, M. D. B., Fenster, C. B., Lacy, R. C., Mendelson, J. R., Porton, I. J., Ralls, K., & Ryder, O. A. (2012). Implications of different species concepts for conserving biodiversity. *Biological Conservation*, 153, 25–31. <https://doi.org/10.1016/j.biocon.2012.04.034>
- Fujita, M. K., Leaché, A. D., Burbrink, F. T., McGuire, J. A., & Moritz, C. (2012). Coalescent-based species delimitation in an integrative taxonomy. *Trends in Ecology & Evolution*, 27(9), 480–488. <https://doi.org/10.1016/j.tree.2012.04.012>
- Gautier, M., Gharbi, K., Cezard, T., Foucaud, J., Kerdelhué, C., Pudlo, P., Cornuet, J.-M., & Estoup, A. (2013). The effect of RAD allele dropout on the estimation of genetic variation within and between populations. *Molecular Ecology*, 22(11), 3165–3178. <https://doi.org/10.1111/mec.12089>
- Gippoliti, S., Cotterill, F. P. D., Zinner, D., & Groves, C. P. (2018). Impacts of taxonomic inertia for the conservation of African ungulate diversity: An overview. *Biological Reviews of the Cambridge Philosophical Society*, 93(1), 115–130. <https://doi.org/10.1111/brv.12335>
- Hahn, M. (2018). *Molecular population genetics*. Oxford University Press.
- Hedin, M., Carlson, D., & Coyle, F. (2015). Sky island diversification meets the multispecies coalescent—Divergence in the spruce-fir moss spider (*Microhexura montivaga*, Araneae, Mygalomorphae) on the highest peaks of southern Appalachia. *Molecular Ecology*, 24(13), 3467–3484. <https://doi.org/10.1111/mec.13248>
- Helyar, S. J., Limborg, M. T., Bekkevold, D., Babbucci, M., van Houdt, J., Maes, G. E., Bargelloni, L., Nielsen, R. O., Taylor, M. I., Ogden, R., Cariani, A., Carvalho, G. R., Consortium, F. P. T., & Panitz, F. (2012). SNP discovery using next generation transcriptomic sequencing in Atlantic herring (*Clupea harengus*). *PLoS One*, 7(8), e42089. <https://doi.org/10.1371/journal.pone.0042089>
- Herrera, S., & Shank, T. M. (2016). RAD sequencing enables unprecedented phylogenetic resolution and objective species delimitation



- in recalcitrant divergent taxa. *Molecular Phylogenetics and Evolution*, 100, 70–79. <https://doi.org/10.1016/j.ympev.2016.03.010>
- Hinojosa-Alvarez, S., Walter, R. P., Diaz-Jaimes, P., Galván-Magaña, F., & Paig-Tran, E. M. (2016). A potential third Manta Ray species near the Yucatán Peninsula? Evidence for a recently diverged and novel genetic Manta group from the Gulf of Mexico. *PeerJ*, 4, e2586. <https://doi.org/10.7717/peerj.2586>
- Hutchings, J. A., & Reynolds, J. D. (2004). Marine fish population collapses: Consequences for recovery and extinction risk. *BioScience*, 54(4), 297–309. [https://doi.org/10.1641/0006-3568\(2004\)054\[0297:MF-PCCF\]2.0.CO;2](https://doi.org/10.1641/0006-3568(2004)054[0297:MF-PCCF]2.0.CO;2)
- Isaac, N. J. B., Mallet, J., & Mace, G. M. (2004). Taxonomic inflation: Its influence on macroecology and conservation. *Trends in Ecology & Evolution*, 19(9), 464–469. <https://doi.org/10.1016/j.tree.2004.06.004>
- Jaine, F. R. A., Rohner, C. A., Weeks, S. J., Couturier, L. I. E., Bennett, M. B., Townsend, K. A., & Richardson, A. J. (2014). Movements and habitat use of reef manta rays off eastern Australia: Offshore excursions, deep diving and eddy affinity revealed by satellite telemetry. *Marine Ecology Progress Series*, 510, 73–86. <https://doi.org/10.3354/meps10910>
- Jombart, T. (2008). ADEGENET: A R package for the multivariate analysis of genetic markers. *Bioinformatics*, 24(11), 1403–1405. <https://doi.org/10.1093/bioinformatics/btn129>
- Kashiwagi, T., Marshall, A. D., Bennett, M. B., & Ovenden, J. R. (2012). The genetic signature of recent speciation in manta rays (*Manta alfredi* and *M. birostris*). *Molecular Phylogenetics and Evolution*, 64(1), 212–218. <https://doi.org/10.1016/j.ympev.2012.03.020>
- Kass, R. E., & Raftery, A. E. (1995). Bayes factors. *Journal of the American Statistical Association*, 90(430), 773–795. <https://doi.org/10.1080/01621459.1995.10476572>
- Knowles, L. L., & Carstens, B. C. (2007). Delimiting species without monophyletic gene trees. *Systematic Biology*, 56(6), 887–895. <https://doi.org/10.1080/10635150701701091>
- Leaché, A. D., Fujita, M. K., Minin, V. N., & Bouckaert, R. R. (2014). Species delimitation using genome-wide SNP data. *Systematic Biology*, 63(4), 534–542. <https://doi.org/10.1093/sysbio/syu018>
- Leaché, A. D., Zhu, T., Rannala, B., & Yang, Z. (2019). The spectre of too many species. *Systematic Biology*, 68(1), 168–181. <https://doi.org/10.1093/sysbio/syy051>
- Mace, G. M. (2004). The role of taxonomy in species conservation. *Philosophical Transactions of the Royal Society B: Biological Sciences*, 359(1444), 711–719.
- Maddison, W. P. (1997). Gene trees in species trees. *Systematic Biology*, 46(3), 523–536. <https://doi.org/10.1093/sysbio/46.3.523>
- Maddison, W. P., & Knowles, L. L. (2006). Inferring phylogeny despite incomplete lineage sorting. *Systematic Biology*, 55(1), 21–30. <https://doi.org/10.1080/10635150500354928>
- Mallet, J., Besansky, N., & Hahn, M. W. (2016). How reticulated are species? *BioEssays*, 38(2), 140–149. <https://doi.org/10.1002/bies.20150149>
- Marshall, A. D., Compagno, L. J. V., & Bennett, M. B. (2009). Redescription of the genus *Manta* with resurrection of *Manta alfredi* (Krefft, 1868) (Chondrichthyes; Myliobatoidei; Mobulidae). *Zootaxa*, 2301(1), 1–28. <https://doi.org/10.11646/zootaxa.2301.1.1>
- Morin, P. A., Luikart, G., Wayne, R. K., & The SNP Workshop Group (2004). SNPs in ecology, evolution and conservation. *Trends in Ecology & Evolution*, 19(4), 208–216. <https://doi.org/10.1016/j.tree.2004.01.009>
- Morrison, W. R., Lohr, J. L., Duchon, P., Wilches, R., Trujillo, D., Mair, M., & Renner, S. S. (2009). The impact of taxonomic change on conservation: Does it kill, can it save, or is it just irrelevant? *Biological Conservation*, 142(12), 3201–3206. <https://doi.org/10.1016/j.biocon.2009.07.019>
- Naylor, G. J. P., Caira, J. N., Jensen, K., Rosana, K. A. M., White, W. T., & Last, P. R. (2012). A DNA sequence-based approach to the identification of shark and ray species and its implications for global elasmobranch diversity and parasitology. *Bulletin of the American Museum of Natural History*, 367, 1–262.
- Newton, L. G., Starrett, J., Hendrixson, B. E., Derkarabetian, S., & Bond, J. E. (2020). Integrative species delimitation reveals cryptic diversity in the southern Appalachian *Antrodiaetus unicolor* (Araneae: Antrodiaetidae) species complex. *Molecular Ecology*, 29(12), 2269–2287. <https://doi.org/10.1111/mec.15483>
- Notarbartolo di Sciarra, G. (1987). A revisionary study of the genus *Mobula Rafinesque*, 1810 (Chondrichthyes: Mobulidae) with the description of a new species. *Zoological Journal of the Linnean Society*, 91(1), 1–91. <https://doi.org/10.1111/j.1096-3642.1987.tb01723.x>
- Notarbartolo di Sciarra, G., Adnet, S., Bennett, M., Broadhurst, M. K., Fernando, D., Jabado, R. W., & Stevens, G. (2020). Taxonomic status, biological notes, and conservation of the longhorned pygmy devil ray *Mobula eregoodoo* (Cantor, 1849). *Aquatic Conservation: Marine and Freshwater Ecosystems*, 30(1), 104–122. <https://doi.org/10.1002/aqc.3230>
- Notarbartolo di Sciarra, G., Fernando, D., Adnet, S., Cappetta, H., & Jabado, R. W. (2017). Devil rays (Chondrichthyes: *Mobula*) of the Arabian Seas, with a redescription of *Mobula kuhlii* (Valenciennes in Müller and Henle, 1841). *Aquatic Conservation: Marine and Freshwater Ecosystems*, 27(1), 197–218. <https://doi.org/10.1002/aqc.2635>
- Notarbartolo di Sciarra, G., Stevens, G., & Fernando, D. (2020). The giant devil ray *Mobula mobular* (Bonnaterra, 1788) is not giant, but it is the only spinetail devil ray. *Marine Biodiversity Records*, 13(1), 4. <https://doi.org/10.1186/s41200-020-00187-0>
- O'Connell, K. A., & Smith, E. N. (2018). The effect of missing data on co-alescent species delimitation and a taxonomic revision of whipsnakes (Colubridae: *Masticophis*). *Molecular Phylogenetics and Evolution*, 127, 356–366. <https://doi.org/10.1016/j.ympev.2018.03.018>
- O'Malley, M., Townsend, K. A., Hilton, P., Heinrichs, S., & Stewart, J. D. (2017). Characterization of the trade in manta and devil ray gill plates in China and South-east Asia through trader surveys. *Aquatic Conservation: Marine and Freshwater Ecosystems*, 27(2), 394–413. <https://doi.org/10.1002/aqc.2670>
- Ogden, R. (2008). Fisheries forensics: The use of DNA tools for improving compliance, traceability and enforcement in the fishing industry. *Fish and Fisheries*, 9, 462–472. <https://doi.org/10.1111/j.1467-2979.2008.00305.x>
- Ogden, R. (2011). Unlocking the potential of genomic technologies for wildlife forensics. *Molecular Ecology Resources*, 11(Suppl. 1), 109–116. <https://doi.org/10.1111/j.1755-0998.2010.02954.x>
- O'Malley, M., Lee-Brooks, K., & Medd, H. B. (2013). The global economic impact of manta ray watching tourism. *PLoS One*, 8(5), e65051. <https://doi.org/10.1371/journal.pone.0065051>
- Padial, J. M., Miralles, A., De la Riva, I., & Vences, M. (2010). The integrative future of taxonomy. *Frontiers in Zoology*, 7(1), 16. <https://doi.org/10.1186/1742-9994-7-16>
- Paig-Tran, E. W. M., Kleinteich, T., & Summers, A. P. (2013). The filter pads and filtration mechanisms of the devil rays: Variation at macro and microscopic scales. *Journal of Morphology*, 274(9), 1026–1043. <https://doi.org/10.1002/jmor.20160>
- Palaikostas, C., Bekaert, M., Khan, M. G., Taggart, J. B., Gharbi, K., McAndrew, B. J., & Penman, D. J. (2015). A novel sex-determining QTL in Nile tilapia (*Oreochromis niloticus*). *BMC Genomics*, 16(1), 171. <https://doi.org/10.1186/s12864-015-1383-x>
- Pamilo, P., & Nei, M. (1988). Relationships between gene trees and species trees. *Molecular Biology and Evolution*, 5(5), 568–583. <https://doi.org/10.1093/oxfordjournals.molbev.a040517>
- Pante, E., Puillandre, N., Viricel, A., Arnaud-Haond, S., Aurelle, D., Castelin, M., Chenuil, A., Destombe, C., Forcioli, D., Valero, M., Viard, F., & Samadi, S. (2015). Species are hypotheses: Avoid connectivity assessments based on pillars of sand. *Molecular Ecology*, 24(3), 525–544. <https://doi.org/10.1111/mec.13048>

- Paris, J. R., Stevens, J. R., & Catchen, J. M. (2017). Lost in parameter space: A road map for stacks. *Methods in Ecology and Evolution*, 8(10), 1360–1373.
- Peterson, B. K., Weber, J. N., Kay, E. H., Fisher, H. S., & Hoekstra, H. E. (2012). Double Digest RADseq: An inexpensive method for de novo snp discovery and genotyping in model and non-model species. *PLoS One*, 7(5), e37135. <https://doi.org/10.1371/journal.pone.0037135>
- Pinto, B. J., Colli, G. R., Higham, T. E., Russell, A. P., Scantlebury, D. P., Vitt, L. J., & Gamble, T. (2019). Population genetic structure and species delimitation of a widespread, Neotropical dwarf gecko. *Molecular Phylogenetics and Evolution*, 133, 54–66. <https://doi.org/10.1016/j.ympev.2018.12.029>
- Pollard, D. A., Iyer, V. N., Moses, A. M., & Eisen, M. B. (2006). Widespread discordance of gene trees with species tree in drosophila: Evidence for incomplete lineage sorting. *PLoS Genetics*, 2(10), <https://doi.org/10.1371/journal.pgen.0020173>
- Poortvliet, M., Olsen, J. L., Croll, D. A., Bernardi, G., Newton, K., Kollias, S., O'Sullivan, J., Fernando, D., Stevens, G., Galván Magaña, F., Seret, B., Wintner, S., & Hoarau, G. (2015). A dated molecular phylogeny of manta and devil rays (Mobulidae) based on mitogenome and nuclear sequences. *Molecular Phylogenetics and Evolution*, 83, 72–85. <https://doi.org/10.1016/j.ympev.2014.10.012>
- Rambaut, A., Drummond, A. J., Xie, D., Baele, G., & Suchard, M. A. (2018). Posterior summarization in bayesian phylogenetics using TRACER 1.7. *Systematic Biology*, 67(5), 901–904. <https://doi.org/10.1093/sysbio/syy032>
- Rannala, B., Edwards, S. V. S. V., Leaché, A., & Yang, Z. (2020). The multi-species coalescent model and species tree inference. In C. Scornavacca, F. Delsuc, & N. Galtier (Eds.), *Phylogenetics in the Genomic Era* (pp. 3.3:1–3.3:21).
- Rannala, B., & Yang, Z. (2003). Bayes estimation of species divergence times and ancestral population sizes using DNA sequences from multiple loci. *Genetics*, 164(4), 1645–1656.
- Reich, D., Thangaraj, K., Patterson, N., Price, A. L., & Singh, L. (2009). Reconstructing Indian population history. *Nature*, 461(7263), 489–494. <https://doi.org/10.1038/nature08365>
- Reyes-Velasco, J., Adams, R. H., Boissinot, S., Parkinson, C. L., Campbell, J. A., Castoe, T. A., & Smith, E. N. (2020). Genome-wide SNPs clarify lineage diversity confused by coloration in coralsnakes of the *Micrurus diastema* species complex (Serpentes: Elapidae). *Molecular Phylogenetics and Evolution*, 147, 106770. <https://doi.org/10.1016/j.ympev.2020.106770>
- Schrenpf, D., & Szöllösi, G. (2020). The sources of phylogenetic conflicts. In C. Scornavacca, F. Delsuc, & N. Galtier (Eds.), *Phylogenetics in the Genomic Era* (pp. 3.1:1–3.1:23).
- Stamatakis, A. (2014). RAxML version 8: A tool for phylogenetic analysis and post-analysis of large phylogenies. *Bioinformatics (Oxford, England)*, 30(9), 1312–1313. <https://doi.org/10.1093/bioinformatics/btu033>
- Stanton, D. W. G., Frandsen, P., Waples, R. K., Heller, R., Russo, I.-R., Orozco-terWengel, P. A., Pedersen, C.-E., Siegismund, H. R., & Bruford, M. W. (2019). More grist for the mill? Species delimitation in the genomic era and its implications for conservation. *Conservation Genetics*, 20(1), 101–113. <https://doi.org/10.1007/s10592-019-01149-5>
- Stevens, G., Fernando, D., Dando, M., & Notarbartolo di Sciarra, G. (2018). *Guide to the Manta and Devil Rays of the World*. Princeton University Press.
- Stewart, J. D., Beale, C. S., Fernando, D., Sianipar, A. B., Burton, R. S., Semmens, B. X., & Aburto-Oropeza, O. (2016). Spatial ecology and conservation of *Manta birostris* in the Indo-Pacific. *Biological Conservation*, 200, 178–183. <https://doi.org/10.1016/j.biocon.2016.05.016>
- Stewart, J. D., Jaine, F. R. A., Armstrong, A. J., Armstrong, A. O., Bennett, M. B., Burgess, K. B., Couturier, L. I. E., Croll, D. A., Cronin, M. R., Deakos, M. H., Dudgeon, C. L., Fernando, D., Froman, N., Germanov, E. S., Hall, M. A., Hinojosa-Alvarez, S., Hosegood, J. E., Kashiwagi, T., Laglbauer, B. J. L., ... Stevens, G. M. W. (2018). Research priorities to support effective manta and devil ray conservation. *Frontiers in Marine Science*, 5, 314. <https://doi.org/10.3389/fmars.2018.00314>
- Suh, A., Smeds, L., & Ellegren, H. (2015). The dynamics of incomplete lineage sorting across the ancient adaptive radiation of neoavian birds. *PLOS Biology*, 13(8), e1002224. <https://doi.org/10.1371/journal.pbio.1002224>
- Sukumaran, J., & Knowles, L. L. (2017). Multispecies coalescent delimits its structure, not species. *Proceedings of the National Academy of Sciences of the United States of America*, 114(7), 1607–1612. <https://doi.org/10.1073/pnas.1607921114>
- Thompson, E., Baumsteiger, J., & Hill, R. I. (2019). Phylogenomic analyses clarify true species within the butterfly genus *Speyeria* despite evidence of a recent adaptive radiation. *Insects*, 10(7), 209. <https://doi.org/10.3390/insects10070209>
- Tonzo, V., Papadopoulou, A., & Ortego, J. (2019). Genomic data reveal deep genetic structure but no support for current taxonomic designation in a grasshopper species complex. *Molecular Ecology*, 28(17), 3869–3886. <https://doi.org/10.1111/mec.15189>
- Walter, R. P., Kessel, S. T., Alhasan, N., Fisk, A. T., Heath, D. D., Chekchak, T., Klaus, R., Younis, M., Hill, G., Jones, B., Braun, C. D., Berumen, M. L., DiBattista, J. D., Priest, M. A., & Hussey, N. E. (2014). First record of living *Manta alfredi* × *Manta birostris* hybrid. *Marine Biodiversity*, 44(1), 1–2. <https://doi.org/10.1007/s12526-013-0183-2>
- Wang, K., Lenstra, J. A., Liu, L., Hu, Q., Ma, T., Qiu, Q., & Liu, J. (2018). Incomplete lineage sorting rather than hybridization explains the inconsistent phylogeny of the wisent. *Communications Biology*, 1(1), 1–9. <https://doi.org/10.1038/s42003-018-0176-6>
- White, W. T., Corrigan, S., Yang, L., Henderson, A. C., Bazinet, A. L., Swofford, D. L., & Naylor, G. J. P. (2018). Phylogeny of the manta and devilrays (Chondrichthyes: Mobulidae), with an updated taxonomic arrangement for the family. *Zoological Journal of the Linnean Society*, 182(1), 50–75. <https://doi.org/10.1093/zoolinnean/zlx018>
- Worm, B., Hilborn, R., Baum, J. K., Branch, T. A., Collie, J. S., Costello, C., Fogarty, M. J., Fulton, E. A., Hutchings, J. A., Jennings, S., Jensen, O. P., Lotze, H. K., Mace, P. M., McClanahan, T. R., Minto, C., Palumbi, S. R., Parma, A. M., Ricard, D., Rosenberg, A. A., ... Zeller, D. (2009). Rebuilding global fisheries. *Science*, 325(5940), 578–585. <https://doi.org/10.1126/science.1173146>
- Zachos, F. E. (2013). Species splitting puts conservation at risk. *Nature*, 494(7435), 35. <https://doi.org/10.1038/494035c>
- Zachos, F. E., Apollonio, M., Bärmann, E. V., Festa-Bianchet, M., Göhlich, U., Habel, J. C., Haring, E., Kruckenhauser, L., Lovari, S., McDevitt, A. D., Pertoldi, C., Rössner, G. E., Sánchez-Villagra, M. R., Scandura, M., & Suchentrunk, F. (2013). Species inflation and taxonomic artefacts—A critical comment on recent trends in mammalian classification. *Mammalian Biology*, 78(1), 1–6. <https://doi.org/10.1016/j.mambio.2012.07.083>

## SUPPORTING INFORMATION

Additional supporting information may be found online in the Supporting Information section.

**How to cite this article:** Hosegood J, Humble E, Ogden R, et al. Phylogenomics and species delimitation for effective conservation of manta and devil rays. *Mol Ecol*. 2020;29:4783–4796. <https://doi.org/10.1111/mec.15683>