



University of
Zurich^{UZH}

Zurich Open Repository and
Archive

University of Zurich
Main Library
Strickhofstrasse 39
CH-8057 Zurich
www.zora.uzh.ch

Year: 2020

Clinical outcomes after anterior cruciate ligament injury: Panther Symposium ACL Injury Clinical Outcomes Consensus Group

Svantesson, Eleonor ; Hamrin Senorski, Eric ; Webster, Kate E ; Karlsson, Jón ; Diermeier, Theresa ; Rothrauff, Benjamin B ; Meredith, Sean J ; Rauer, Thomas ; Irrgang, James J ; Spindler, Kurt P ; Ma, C Benjamin ; Musahl, Volker

Abstract: Purpose A stringent outcome assessment is a key aspect for establishing evidence-based clinical guidelines for anterior cruciate ligament (ACL) injury treatment. The aim of this consensus statement was to establish what data should be reported when conducting an ACL outcome study, what specific outcome measurements should be used and at what follow-up time those outcomes should be assessed. Methods To establish a standardised assessment of clinical outcome after ACL treatment, a consensus meeting including a multidisciplinary group of ACL experts was held at the ACL Consensus Meeting Panther Symposium, Pittsburgh, PA, USA, in June 2019. The group reached consensus on nine statements by using a modified Delphi method. Results In general, outcomes after ACL treatment can be divided into four robust categories—early adverse events, patient-reported outcomes, ACL graft failure/recurrent ligament disruption, and clinical measures of knee function and structure. A comprehensive assessment following ACL treatment should aim to provide a complete overview of the treatment result, optimally including the various aspects of outcome categories. For most research questions, a minimum follow-up of 2 years with an optimal follow-up rate of 80% is necessary to achieve a comprehensive assessment. This should include clinical examination, any sustained re-injuries, validated knee-specific patient-reported outcomes and Health-Related Quality of Life questionnaires. In the mid-term to long-term follow-up, the presence of osteoarthritis should be evaluated. Conclusion This consensus paper provides practical guidelines for how the aforementioned entities of outcomes should be reported and suggests the preferred tools for a reliable and valid assessment of outcome after ACL treatment. Level of Evidence Level V.

DOI: <https://doi.org/10.1136/jisakos-2020-000494>

Posted at the Zurich Open Repository and Archive, University of Zurich

ZORA URL: <https://doi.org/10.5167/uzh-193135>

Journal Article

Published Version



The following work is licensed under a Creative Commons: Attribution-NonCommercial 4.0 International (CC BY-NC 4.0) License.

Originally published at:

Svantesson, Eleonor; Hamrin Senorski, Eric; Webster, Kate E; Karlsson, Jón; Diermeier, Theresa; Rothrauff, Benjamin B; Meredith, Sean J; Rauer, Thomas; Irrgang, James J; Spindler, Kurt P; Ma,

C Benjamin; Musahl, Volker (2020). Clinical outcomes after anterior cruciate ligament injury: Panther Symposium ACL Injury Clinical Outcomes Consensus Group. *Journal of ISAKOS*, 5(5):281-294.
DOI: <https://doi.org/10.1136/jisakos-2020-000494>



OPEN ACCESS

Clinical outcomes after anterior cruciate ligament injury: Panther Symposium ACL Injury Clinical Outcomes Consensus Group

Eleonor Svantesson ,^{1,2} Eric Hamrin Senorski ,^{2,3} Kate E Webster,⁴ Jón Karlsson,^{1,2,5} Theresa Diermeier,⁶ Benjamin B Rothrauff ,⁷ Sean J Meredith ,^{7,8} Thomas Rauer,^{7,9} James J Irrgang,^{10,11} Kurt P Spindler,¹² C Benjamin Ma,¹³ Volker Musahl,¹⁰ The Panther Symposium ACL Injury Clinical Outcomes Consensus Group

► Additional material is published online only. To view please visit the journal online (<http://dx.doi.org/10.1136/jisakos-2020-000494>).

For numbered affiliations see end of article.

Correspondence to

Dr Eleonor Svantesson, Department of Orthopedics, Institute of Clinical Sciences, Sahlgrenska Academy, Göteborg, Sweden; eleonor.svantesson@outlook.com

This article has been co-published in *Orthopaedic Journal of Sports Medicine and Knee Surgery Sports Traumatology Arthroscopy*.

Received 3 June 2020
Accepted 10 June 2020
Published Online First
22 July 2020



© International Society of Arthroscopy, Knee Surgery and Orthopaedic Sports Medicine 2020. Re-use permitted under CC BY-NC. No commercial re-use. Published by BMJ.

To cite: Svantesson E, Hamrin Senorski E, Webster KE, et al. *J ISAKOS* 2020;**5**:281–294.

ABSTRACT

Purpose A stringent outcome assessment is a key aspect for establishing evidence-based clinical guidelines for anterior cruciate ligament (ACL) injury treatment. The aim of this consensus statement was to establish what data should be reported when conducting an ACL outcome study, what specific outcome measurements should be used and at what follow-up time those outcomes should be assessed.

Methods To establish a standardised assessment of clinical outcome after ACL treatment, a consensus meeting including a multidisciplinary group of ACL experts was held at the ACL Consensus Meeting Panther Symposium, Pittsburgh, PA, USA, in June 2019. The group reached consensus on nine statements by using a modified Delphi method.

Results In general, outcomes after ACL treatment can be divided into four robust categories—early adverse events, patient-reported outcomes, ACL graft failure/recurrent ligament disruption, and clinical measures of knee function and structure. A comprehensive assessment following ACL treatment should aim to provide a complete overview of the treatment result, optimally including the various aspects of outcome categories. For most research questions, a minimum follow-up of 2 years with an optimal follow-up rate of 80% is necessary to achieve a comprehensive assessment. This should include clinical examination, any sustained re-injuries, validated knee-specific patient-reported outcomes and Health-Related Quality of Life questionnaires. In the mid-term to long-term follow-up, the presence of osteoarthritis should be evaluated.

Conclusion This consensus paper provides practical guidelines for how the aforementioned entities of outcomes should be reported and suggests the preferred tools for a reliable and valid assessment of outcome after ACL treatment.

Level of Evidence Level V.

INTRODUCTION

The evolution of evidence-based medicine is considered as one of the most important paradigm shifts in modern medicine,^{1,2} for which conduction of high-quality research is fundamental. Anterior cruciate ligament (ACL) injuries are among the most studied in the field of orthopaedics and sports medicine, with over 25 000 publications available

in the PubMed database up to mid-2019. Despite ongoing research and advancements in treatment regimens for ACL injuries over the past decades, the goal of restored knee function and preserved long-term knee-related health remains a challenge. Re-injury rates are high, especially among the young and active,^{3,4} and the high rate of subsequent development of post-traumatic osteoarthritis (OA) is worrying.^{5–8} In the best interest of our patients, a deepened understanding of how to optimise an individualised approach to ACL injury treatment is needed. One important part of this process is to strive for a standardised and homogeneous research methodology of clinical outcome assessment after ACL treatment.

A rigorous outcome assessment after ACL injury is a key aspect for determining the clinical efficacy and effectiveness of treatment. It can also identify modifiable and non-modifiable predictors of good and poor outcome, which provide valuable insights for the patient's prognosis and should be discussed in the context of shared decision-making for the treatment choice after ACL injury. Moreover, a standardised outcome assessment and reporting of data is required for comparisons between studies and for pooling of data in meta-analyses to provide the highest level of evidence-based medicine. Current literature related to ACL treatment is limited by the fact that no consensus exists on how to assess and report clinical outcome. There is a wide range of validated outcomes assessment tools for ACL treatment. Although each of these outcome measures may offer certain advantages and the patient's perspective of outcome should always be evaluated, caution must be taken to ensure that outcome measures accurately capture patient-centred and clinically relevant outcomes for an ACL injured patient. Another debated area in ACL outcome assessment is the use of 'ACL graft failure' as an endpoint for research. This is highly relevant to the patient; however, there is no universally accepted definition of graft failure used in the literature. Moreover, the lack of a consistent approach as to the timing of when outcomes should be measured following treatment and how such measures are reported makes appraisal of the current literature challenging, which limits the recommendations for the patient's best possible care.

As the body of evidence on ACL treatment grows, there is an urgent need to reach consensus on how clinical outcome should be assessed and reported. Surgeons and researchers should strive to create optimal conditions for appraisal of the cumulative evidence regarding ACL treatment, thereby promoting an evidence-based approach by using outcome measures that are reliable, valid, responsive over time and comparable. Therefore, a multidisciplinary group of experts was assembled for an international consensus meeting aiming to establish a standardised approach to clinical outcome assessment for patients receiving ACL treatment, that is, both operative and non-operative treatment.⁹ The purpose of this article is to provide the results from the consensus meeting in terms of what outcomes should be reported when conducting an ACL outcome study, the recommended outcome measurements and at which follow-up time points those measurements should be used.

METHODS

A multidisciplinary panel of national and international experts in ACL injury, including orthopaedic surgeons, physical medicine and rehabilitation physicians, physical therapists and scientists, were convened in a 1-year consensus-building effort, which culminated in the ACL Consensus Meeting Panther Symposium held at the University of Pittsburgh and University of Pittsburgh Medical Center in Pittsburgh, PA, USA, in June 2019. The symposium included delegates from 18 countries encompassing 6 continents. The working group of this topic consisted of 25 participants.

A list of 13 statements on clinical outcomes was drafted by the steering committee of the meeting based on current literature and controversies in clinical outcome assessment. The consensus group members completed an online survey addressing the 13 statements prior to the ACL consensus meeting. The initial statements and corresponding responses are found in online supplementary appendix 1.

A modified Delphi consensus discussion for each of the 13 statements was subsequently held at the in-person consensus meeting. The session was moderated by two senior researchers (KEW and JK). Each statement was discussed and revised by the working group, after which a vote on agreement with the statement was performed. No count was held on the number of roundtables, but discussion was continued until consensus was met for each statement. A majority of 80% agreement was determined a priori as being a satisfactory level of consensus. Opposing views were documented and it was determined that those statements for which 80% agreement was not achieved should be discussed in the paper, noting the percentage of agreement and accompanied with the discussion held during the meeting. Statements that the panel determined as irrelevant, redundant or overlapping with another statement were either excluded or combined with the overlapping statement. Statement 2 in this consensus paper was combined from two original statements (originally statement 10 and 11 in the online survey, online supplementary appendix 1) because these were considered as overlapping. There was 100% agreement for the original statement 10, and when proceeding to discussion and voting on the original statement 11, the panel instead agreed to combine statements 10 and 11 into one. However, no formal voting was undertaken for the finalised combination of the two. Thus, the percentage of agreement for statement 2 in this consensus paper could not be reported.

This working group was assigned two liaisons (ES and EHS) who were responsible for amending each statement as requested over the course of the discussion. Liaisons transcribed the

discussion, performed data analyses and subsequently completed a MEDLINE literature review for each finalised statement. To reduce the potential for bias in the data analysis and/or literature review, liaisons did not submit answers to the online questionnaire, nor did they partake in the voting process. A description of the consensus process is presented in figure 1 and a list of definitions used at the consensus meeting for the specific statements is provided in table 1.

CONSENSUS STATEMENTS AND DISCUSSION

Of the 13 statements discussed by the working group, 9 achieved consensus, and 4 were excluded since these were considered to include information similar to one or more of the other statements. Thus, some of the nine statements achieving consensus were slightly modified to include aspects from the four excluded statements. The nine final statements, with supporting literature review, are presented below. These statements are presented in three main sections for readability purposes: (1) Planning for outcome assessment; (2) Clinical outcome assessment; (3) Patient-reported outcome (PRO). An overview of the consensus statements is presented in box 1.

Section 1: Planning for outcome assessment

1. A priori power calculation of sample size in relation to the primary endpoint must be performed and reported to avoid under-powered studies

(25/25, 100% agreement)

Sample size is key to avoiding underpowered studies—We should always try to perform high-quality research, and power calculation is part of this.

A critical point when evaluating a study outcome is to ensure that the sample size is large enough to detect a difference when a true difference in fact exists. Otherwise, the study may be under-powered and subject to Beta error (type II error). This can have serious consequences on clinical practice if no difference in outcome is concluded to exist between, for example, two interventions even though one of the interventions is truly inferior, or superior, compared with the other. Ultimately, under-powered studies fail to identify the best possible care for our patients. Approximately two-thirds of randomised controlled trials related to ACL reconstruction failed to report an a priori sample size calculation.^{10 11} Although a more recent assessment of the literature shows that these numbers have substantially improved since 2009,¹² improvements can be made. A study should have a power of at least 80% (1-β), which means that the risk of a type II error, or false-negative result, is 20%. A priori power calculation helps to ensure that the sample size will be large enough to minimise the risk of type II error. The power calculation should be determined for the primary patient-centred endpoint, meaning that if an endpoint is chosen that has a low event rate, the study sample size will need to be larger than if one expects that many patients will reach the endpoint. The sample size calculation therefore aids in the determination of feasibility and will help reduce the rate of incomplete studies and wasted resources. It is also an ethical responsibility to perform a sample size calculation since it is unethical to include substantially more patients than necessary. In relation to large registry studies, a power calculation may be redundant, but this can depend on the outcome. It is therefore recommended that a statement on power always should be included. A sample size calculation should be performed whenever possible prior to the start of the study. However, a post hoc power calculation to test

ACL Consensus Meeting Panther Symposium 2019

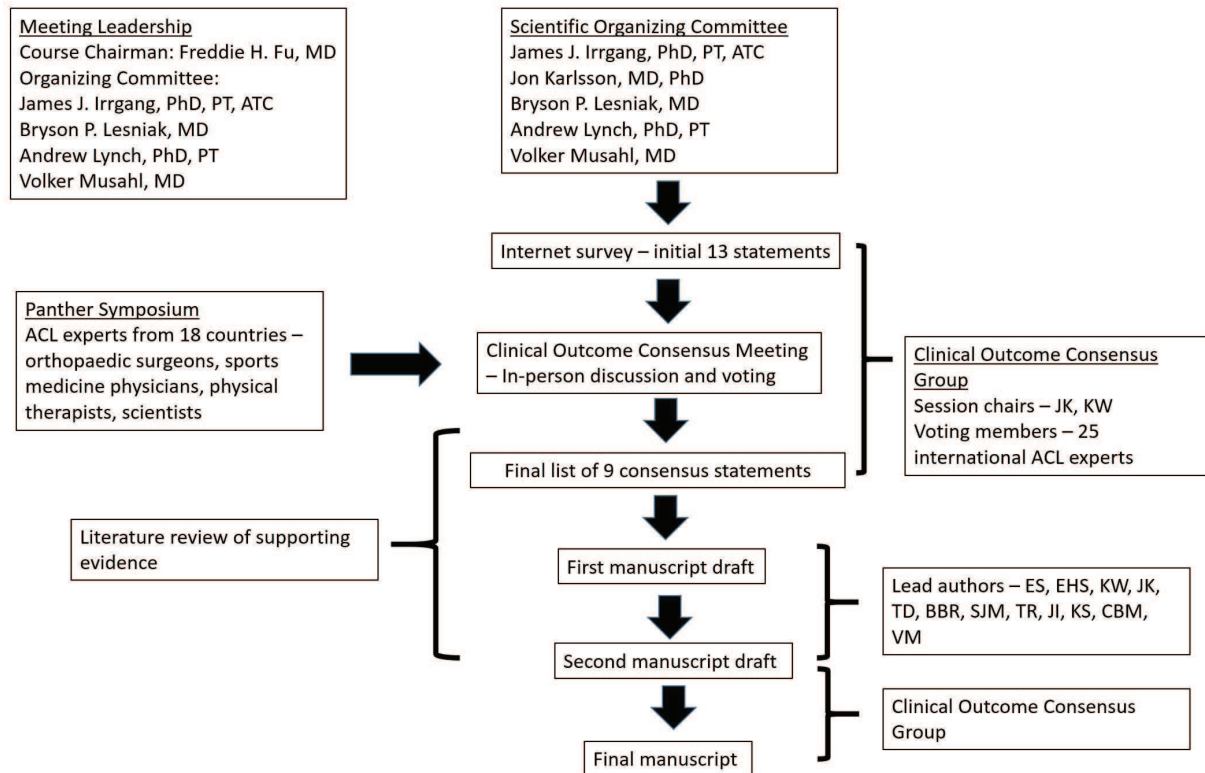


Figure 1 The process of the consensus project.

the validity of the study results can be an acceptable method under certain conditions, for instance in the case of a retrospective study, but caution must be given to the high risk of overestimating power.^{13 14}

CONCLUSION: Researchers must report the power of the study in order to ensure that the sample size is sufficient to detect a difference if one truly existed and to give readers of the paper an understanding of the strength and generalisability of the results.

2. Improvement from pre-treatment status is the outcome of interest. Minimum description of pre-treatment status should include demographic data, validated knee-specific PRO assessment, HRQoL and measure of type and level of pre-injury sport/activity

We must know where we started in order to determine whether the treatment was effective.

The goal of all available treatments for an ACL injury is to improve the outcome from the pre-treatment status. Hence, without assessment of the pre-treatment status, the relative improvement cannot be measured and reported. Assessment of the pre-treatment status is also important in order to identify baseline variables that may confound or explain a given study result. When comparative trials are conducted, variables known to influence the outcome of interest should be equally distributed between the groups or otherwise adjusted for by using appropriate statistical methods. Adjustments can be planned a priori based on previous studies or assessed by adjusting for variables that correlate with both the predictor and outcome. Researchers should thoroughly plan data collection prior to the study start while considering their study population and their research question.

The demographic data should give an overview of the characteristics of the investigated population, which aids to determine the generalisability of the study results. Demographic data should at a minimum include patient sex, age, anthropometric data, relevant medical history and prior knee joint injuries. Family history of ACL injuries may also be relevant since a heritable component of ACL injuries appears to exist.^{15 16} Moreover, the type and level of pre-injury sport or activity should be reported to determine whether the treatment successfully returned the patients to their pre-injury activity level. The recommended tool for sport and activity assessment is the Marx activity scale,¹⁷ which has been validated and has high reliability. The Marx activity scale enables an evaluation of both the type of activity and the exposure time, which are both crucial aspects when reporting on activity. In this aspect, it differs from other measures of activity, for example, the Tegner activity scale¹⁸ which enables grading of activity level but

Table 1 Operational definitions

Chronic ACL injury	A non-operatively treated ACL injury with persistent complaints of instability more than 6 months after initial injury
Acute ACL reconstruction	An ACL reconstruction taking place within 3 months from injury
Delayed ACL reconstruction	An ACL injury that is planned to be treated with reconstruction and take place after 6 months from injury, or an ACL reconstruction that takes place after non-operative treatment has been tried without a satisfactory outcome
Instability	A patient's perception of the knee not feeling stable
Laxity	The passive displacement of the knee joint when an external force or torque is applied

ACL, anterior cruciate ligament.

Box 1 Summary of the consensus statements for clinical outcome assessment after ACL injury

Planning for outcome assessment

1. A priori power calculation of sample size in relation to the primary endpoint must be performed and reported to avoid under-powered studies.
2. Improvement from pre-treatment status is the outcome of interest. Minimum description of pre-treatment status should include demographic data, validated knee-specific PRO assessment, HRQoL and measure of type and level of pre-injury sport/activity.

Clinical outcome assessment

3. Minimal length of follow-up when reporting outcomes depends on the outcome being assessed and should optimally include 80% of the entire cohort.
4. Comprehensive assessment after ACL surgery (minimum 2 years) should include adverse events, clinical measures of knee function and structure, PRO, activity level and recurrent ligament disruption.
5. Comprehensive assessment after ACL surgery in the medium to long term (5+ years) should also include measures of post-traumatic osteoarthritis.
6. Clinical assessment of ACL injury treatment should include measures of anteroposterior and rotatory knee laxity.

Patient-reported outcome

7. Assessment of PRO should optimally include at least one knee-specific outcome tool, one activity rating scale and one measure of HRQoL.
8. The IKDC Subjective Knee Form is the recommended knee-related outcome measure for ACL injury and treatment.
9. Measurement of the PASS is valuable in the assessment of outcome of ACL injury and treatment.

ACL, anterior cruciate ligament; HRQoL, health-related quality of life; PASS, Patient Acceptable Symptom State; PRO, patient-reported outcome.

does not account for activity exposure. Other validated tools for activity include, for example, the International Knee Documentation Committee Subjective Knee Form (IKDC-SKF)¹⁹ which includes one item (item 8) related to the activity level which the patient performs on a regular basis. The item is answered by choosing one out of five responses ranging from very strenuous activity to unable to perform light activities. Classification of activity and sports participation can also be rated according to Level I–IV activity, which was included in the original version of the IKDC Knee Ligament Standard Evaluation form²⁰ and is still frequently used in ACL research.^{21–23} Another example of a tool for activity assessment is the Cincinnati sports activity scale.²⁴ The tools for activity assessment are presented in table 2. It is of importance to further distinguish between pre-injury and pre-surgery activity level. Since a pre-surgery activity level has a risk of being representative of the patient’s activity while injured, pre-injury activity should always be reported.

Pre-treatment assessment of PROs is particularly valuable for patients with chronic ACL injuries or as a pre-surgical treatment baseline for patients undergoing delayed ACL reconstruction. This is because patients with chronic ACL injury may have had the time to live with and try to cope with the potential limitations of their ACL deficient status, as opposed to the acutely injured patients who are impaired due to injury-related factors

(eg, pain and hemarthrosis). There is, however, no strict definition for what should be regarded as early and delayed ACL reconstruction, and the timing of ACL reconstruction varies considerably between geographical regions.²⁵ Surgery within 3 weeks has been defined as an early ACL reconstruction,^{26 27} although this definition is not consistent and a recent literature review found that the definition of early ACL reconstruction ranged from 2 days to 7 months among the included trials.²⁸ For correct interpretation of the pre-treatment assessment, it is important that the time from injury to pre-treatment assessment is always reported, as outcomes may be very different for a patient who is completing such an assessment soon after injury compared with a patient who was injured many years previously.

The impact of the ACL injury on the patient’s overall well-being and quality of life before treatment should also be measured.^{29 30} A Health-Related Quality of Life (HRQoL) measure covers a larger picture of how an ACL injury affects a patient in terms of physical, social and emotional health, which must not be overlooked among patients sustaining an ACL injury.³¹ Pre-treatment assessment of HRQoL allows for evaluation of health status over time and whether the treatment restores the patient to better, similar or worse health. Most measures of HRQoL also have the advantage of providing the possibility to determine utilities that are used in estimating the economic impact of the injury and allow for comparison between many other conditions and treatments. A list of HRQoL measures is provided in table 3.

CONCLUSION: Description of the sample in terms of demographic characteristics, pre-injury activity level and pre-treatment PROs is necessary to interpret the results of treatment and generalisability of the study.

Section 2: Clinical outcome assessment

3. Minimal length of follow-up when reporting outcomes depends on the outcome being assessed and should optimally include 80% of the entire cohort (25/25, 100% agreement)

80% follow-up rate or more is optimal. Follow-up time should reflect the primary outcome, be based upon the purpose of the study and be stated a-priori.

The follow-up time of a study should be defined depending on what is relevant in relation to the primary investigated outcome. In general, outcomes after ACL treatment can be divided into four categories—early adverse events, PROs, ACL failure/recurrent ligament disruption and clinical measures of knee function and structure (box 2), all of which could be further stratified in specific outcomes necessitating different considerations for follow-up time as exemplified in table 4.

Evidence provided by previous research as well as clinical experience is the foundation to determine what a relevant follow-up time is. For example, the rates of ACL re-rupture and ACL revision peaks at 1 to 2 years after an ACL reconstruction and with return to sport (RTS).^{16 32–35} Therefore, a study with a shorter follow-up than this is not relevant if the primary outcome is re-rupture or ACL revision, and a study aiming to make conclusions about ACL treatment failure should not have a follow-up time of less than 2 years and should report RTS as a proxy of risk exposure. In contrast, the outcome of septic arthritis or hardware failure can manifest soon after an ACL reconstruction,^{36 37} and a follow-up time of 6 months or less is sufficient to collect data that will represent a true estimation of such outcomes. Thus, it is important that the follow-up time is defined and based on the study aims and outcomes.

Table 2 Tools for activity assessment

Assessment tool	Description
IKDC-SKF ¹⁹	<ul style="list-style-type: none"> ▶ 4—Very strenuous activities like jumping or pivoting as in basketball or soccer ▶ 3—Strenuous activities like heavy physical work, skiing or tennis ▶ 2—Moderate activities like moderate physical work, running or jogging ▶ 1—Light activities like walking, housework or yard work ▶ 0—Unable to perform any of the above activities due to knee
Tegner Activity Scale ¹⁸	<ul style="list-style-type: none"> ▶ Level 10 Competitive sports—soccer, football, rugby (national elite) ▶ Level 9 Competitive sports—soccer, football, rugby (lower divisions), ice hockey, wrestling, gymnastics, basketball ▶ Level 8 Competitive sports—racquetball or bandy, squash or badminton, track and field athletics (jumping, etc), down-hill skiing ▶ Level 7 Competitive sports—tennis, running, motorcars speedway, handball. Recreational sports—soccer, football, rugby, bandy, ice hockey, basketball, squash, racquetball, running ▶ Level 6 Recreational sports—tennis and badminton, handball, racquetball, down-hill skiing, jogging at least 5 times per week ▶ Level 5 Work—heavy labour (construction, etc). Competitive sports—cycling, cross-country skiing. Recreational sports—jogging on uneven ground at least twice weekly ▶ Level 4 Work—moderately heavy labour (eg, truck driving, etc) ▶ Level 3 Work—light labour (nursing, etc) ▶ Level 2 Work—light labour. Walking on uneven ground possible, but impossible to backpack or hike ▶ Level 1 Work—sedentary (secretarial, etc) ▶ Level 0 Sick leave or disability pension because of knee problems
Marx Activity Rating Scale ¹⁷	<p>Patient is asked how often the activities <i>running, cutting, deceleration</i> and pivoting have been performed during the last year in your healthiest and most active state. Each activity is scored on a 0–4 scale as follows:</p> <ul style="list-style-type: none"> ▶ 0—Less than one time in a month ▶ 1—One time in a month ▶ 2—One time in a week ▶ 3—Two to three times in a week ▶ 4—Four or more times in a week
Cincinnati Sports Activity Scale ²⁴	<p>Divided into four major levels, with subcategories.</p> <ul style="list-style-type: none"> ▶ Level I (participates 4–7 days/week) ▶ Level II (participates 1–3 days/week) ▶ Level III (participates 1–3 times/month) ▶ Level IV (no sports) <p>Subcategories for level I–III (5-point decline for every step downwards, starting from 100 p):</p> <ul style="list-style-type: none"> ▶ Jumping, hard pivoting, cutting (basketball, volleyball, football, gymnastics, soccer) ▶ Running, twisting, turning (tennis, racquetball, handball, ice hockey, field hockey, skiing, wrestling) ▶ No running, twisting jumping (cycling, swimming) <p>Level IV with the following subcategories and points for each:</p> <ul style="list-style-type: none"> ▶ 40—Activities of daily living without problems ▶ 20—Moderate problems with activities of daily living ▶ 0—Severe problems with activities of daily living; on crutches, full disability
IKDC Knee Ligament Standard Evaluation Form ²⁰	<ul style="list-style-type: none"> ▶ Level I—jumping, pivoting, hard cutting, football, soccer ▶ Level II—heavy manual work, skiing, tennis ▶ Level III—light manual work, jogging, running ▶ Level IV—activities of daily living, sedentary work

IKDC, International Knee Documentation Committee; IKDC-SKF, International Knee Documentation Committee Subjective Knee Form.

Table 3 Health-related quality of life outcome measures

Instrument	Developer	Number of items	Response options
KOOS ⁶¹	Roos <i>et al</i>	42 items of which 5 are related to QoL	Each item scored 0–4
ACL-QOL ⁹⁹	Mohtadi <i>et al</i>	32 items	A 100 mm VAS for each item
SF-8 ¹¹²	Quality Metric	8 items	Each item scored on a 6-point scale
EQ-5D ¹¹³	EuroQoL	6 items	Item specific
SF-36 ¹¹⁴	Ware and Sherbourne	36 items	Item specific
SIP ¹¹⁵	Bergner <i>et al</i>	136 items	Yes/no
QWB ¹¹⁶	Anderson <i>et al</i>	71 items	Via interview

ACL-QOL, Quality of Life Outcome Measure for Chronic Anterior Cruciate Ligament Deficiency; EQ-5D, European Quality of Life-5 dimensions; KOOS, Knee injury and Osteoarthritis Outcome Score; QWB, Quality of Well-Being; SF-8, Short-Form-8 Health Survey; SF-36, Short-Form-36 Health Survey; SIP, Sickness Impact Profile.

In most studies, especially with increasing length of follow-up time, a certain degree of patients lost to follow-up is inevitable. Even a small proportion of patients lost to follow-up can lead to considerable study bias,³⁸ although a common opinion is that a drop-out rate of more than 20% is associated with a serious threat to the internal and external validity and power of the study.^{39 40} A study is therefore recommended to optimally

Box 2 Four robust outcome categories after ACL injury treatment

- ▶ Adverse events
 - ▶ Patient-reported outcome measurements
 - ▶ ACL failure or recurrent ligament disruption
 - ▶ Clinical measures of knee function and structure
- ACL, anterior cruciate ligament.

Table 4 Examples of outcome measurements and considerations for follow-up time

Outcome category	Example of specific outcome	Comment follow-up time
Adverse events	<ul style="list-style-type: none"> ▶ Intraoperative complications ▶ Surgery- or device-related complications ▶ Infections ▶ VTE ▶ Re-operation 	Usually less than 1-year follow-up required to detect these outcomes. When identifying adverse events, these should be reported as soon as possible, regardless of the minimum time lapsed from treatment start
PRO	<ul style="list-style-type: none"> ▶ Validated knee-specific outcome scores ▶ Psychological measures ▶ HRQoL ▶ Activity level ▶ Return to sport 	Depending on study purpose, population and the specific outcome tool used. Generally, at least 1-year follow-up is required to obtain meaningful measures for interpretation of treatment effect, preferably 2 years. However, for the IKDC-SKF and the KOOS, the 1- and 2-year results have been reported equivalent. ^{94,117} Patients could be followed over several years to detect changes over time and to compare short-, mid- and long-term results
ACL failure and recurrent ligament disruption	<ul style="list-style-type: none"> ▶ Graft rupture/failure ▶ ACL revision ▶ Contralateral ACL injury 	The follow-up time must allow for sufficient time to detect events such as re-rupture and ACL revision. These events tend to occur after the patient returns to knee-strenuous activities, which means that a 2-year follow-up should be a minimum
Clinical measures of knee function and structure	<ul style="list-style-type: none"> ▶ Strength testing ▶ Hop testing ▶ Performance testing ▶ Knee joint laxity ▶ Range of motion ▶ Imaging ▶ Osteoarthritis ▶ Concomitant knee joint injuries 	Largely depending on the specific outcome and the study purpose. However, care should be taken not to draw conclusion about the short-term treatment result until a 2-year follow-up is obtained. Functional performance tests, knee joint laxity and range of motion assessments are preferably performed in multiple follow-ups prior to the 2-year follow-up for changes over time. Osteoarthritis assessment should have at least 5-year follow-up. Concomitant knee joint injuries should be reported whenever identified

ACL, anterior cruciate ligament; HRQoL, health-related quality of life; IKDC-SKF, International Knee Documentation Committee Subjective Knee Form; KOOS, Knee injury and Osteoarthritis Outcome Score; PRO, patient-reported outcome; VTE, venous thromboembolism.

include at least an 80% follow-up rate. However, the possibility of drop-out/retention bias should always be considered when patients are lost to follow-up, that is, is it possible that the patients who completed the follow-up are different from the patients dropping out? Data should be presented such that the drop-out rate is accurately reported. A strict adherence to the use of checklists is encouraged to facilitate complete data reporting, such as the CONSORT statement⁴¹ for randomised controlled trials and the STROBE statement⁴² checklist for cohort studies. Clear step-by-step flow charts are encouraged. Whenever drop-outs are present, the authors are recommended to perform a drop-out sensitivity analysis to enable interpretation of the possible drop-out effects. This should include a comparison of

the baseline characteristics of those that completed versus those that did not complete the study.

It should be emphasised that there can be circumstances where an acceptable follow-up rate for a study is determined by weighing the disadvantages of loss to follow-up against certain advantages, for example, a long-term follow-up or a considerable amount of data in a study. In such cases, a lower threshold for follow-up rate is acceptable. Large registry studies can be used to exemplify this, where the patient response rates to PROs are a challenge.⁴³ Registries comprise data on large number of patients and include multiple follow-up occasions, sometimes over more than a decade.^{43,44} Hence, they are important sources for determining the effectiveness of ACL treatment and for providing hypotheses-generating results.² Nonetheless, a large drop-out rate increases the importance of a stringent data reporting and a statistical analysis of patients lost to follow-up also needs to be considered.

CONCLUSION: Follow-up time should be determined by the purpose of the study and primary outcome, and should be stated a priori. The follow-up rate should optimally exceed 80% and data must be reported so that the possible effects of patients lost to follow-up can be considered.

4. Comprehensive assessment after ACL surgery (minimum 2 years) should include adverse events, clinical measures of knee function and structure, PRO, activity level and recurrent ligament disruption (25/25, 100% agreement)

The comprehensive assessment needs to cover both clinical assessment and the patient's perspective, and should optimally also include return to sport.

A comprehensive assessment following ACL reconstruction should aim to provide a complete picture of outcome related to different dimensions of limitations, which involves numerous aspects of knee-related health and function, objective assessment of hard endpoints (table 4), as well as technical aspects of the surgery (graft choice, fixation, tunnel placement, meniscus/cartilage assessment and treatment). A minimum follow-up of 2 years is likely necessary to enable a comprehensive assessment. Multiple follow-ups during the first 2 years could certainly fulfil the purpose of evaluating for example the progress such as in the early-, mid- and end-state of the rehabilitation. However, the final assessment should be withheld until 2 years postoperatively since a substantial number of outcomes require that this time has been given for the ACL reconstruction to completely heal,⁴⁵⁻⁴⁸ and for the patient to complete rehabilitation and progress from testing the knee in more demanding activities including full participation in sport or activity. A follow-up of 2 years should allow for determining the patient's capability of a successful RTS⁴⁹ and, importantly, it will include a period when patients are participating at high-risk exposure for ACL failures and re-injuries.^{16,32-35} An optimal 2-year outcome assessment should therefore include reporting of the rate and time of RTS. A consensus statement related to assessment and reporting of RTS was similarly reached at the ACL Consensus Meeting Panther Symposium 2019 and is provided in a separate publication.⁵⁰

A comprehensive assessment also implies that the contralateral knee should be examined and assessed for each outcome. Outcome tools such as the IKDC Knee Ligament Standard Evaluation Form²⁰ require a comparison with the contralateral knee for the standardised reporting. The uninjured contralateral knee serves as a reference for the ACL injured knee in terms of range of motion, laxity and functional performance,⁵¹ which helps to

account for differences between individuals. It should also be noted that the contralateral limb/leg/knee might also be affected by an ACL injury such as altered kinematics^{52,53} and a decrease in muscle strength,⁵¹ which underscores the importance to ensure that the function of the contralateral limb is optimised before allowing the patient to return to knee strenuous activities by assessing it likewise. It is therefore recommended that the standard practice is to assess the contralateral knee and report such data, which ultimately will contribute to increased knowledge of risk factors for a patient sustaining a subsequent contralateral ACL injury.

Failure of ACL reconstruction is a non-specific term that is commonly used without a stringent definition in the literature. It is therefore recommended that well-defined outcome assessments are used and that the authors, if choosing to use the term failure, report an a priori definition of what a failure is in detail. To define failure as reoperation is verifiable and clear; however, it introduces a risk of underestimating the true failure rate. Other examples of definitions for ACL graft failure include recurrent/persistent instability, pathological anterior or rotatory laxity or evidence of graft failure assessed by MRI or arthroscopy. In overall terms, reasons for ACL failure may be classified as traumatic (eg, re-injury), technical (eg, surgical errors) and patient related (eg, compliance to rehabilitation, recovery of neuromuscular function or generalised hyperlaxity). Technical errors account for a great amount of all graft failures, with femoral tunnel malposition being a common cause.^{54,55} It has also been reported that previous tibial tunnel malposition is a significant predictor for worse 2-year PRO after ACL revision.⁵⁶ It is therefore recommended that reporting of ACL reconstruction failure is complemented by reporting of details with regard to the surgical technique. A useful tool is the Anatomic ACL Reconstruction Scoring Checklist,⁵⁷ which enables grading of surgical variables that define ACL tunnel position in an anatomical manner.

CONCLUSION: A minimum of 2-year follow-up is necessary for a comprehensive and reliable determination of outcome. The comprehensive assessment should include outcomes provided by clinical examination, PROs, activity level and verified re-injuries.

5. Comprehensive assessment after ACL surgery in the medium to long-term (5+ years) should also include measures of post-traumatic osteoarthritis (25/25, 100% agreement)

A common methodology of outcome assessment for osteoarthritis is needed and should be included in mid- to long-term follow-up studies.

It is well known that sustaining an ACL injury entails a high risk of developing post-traumatic OA in the mid- to long term, especially if concomitant intra-articular injuries are present.⁵⁻⁸ Reducing the risk of OA is a clinical priority, which means that the mid- to long-term follow-up assessment should include measures of OA to monitor and evaluate the degenerative changes in the knee joint. This is necessary for developing therapeutic interventions aiming to counter the high rate of OA after an ACL injury.

Measures of OA may include clinical examination, PROs and imaging modalities. Clinical examination findings that may indicate OA are joint line tenderness or crepitus, which previously have been found to be strong predictors for OA.⁵⁸ Good inter-observer reliability for joint line tenderness and crepitus has been reported when a standardised approach is used.⁵⁹ The IKDC Knee Ligament Standard Evaluation Form includes a

grading system for such an examination and should be used for standardised reporting.²⁰

The use of PROs is valuable to capture the patients' perception of impairments caused by OA. Questionnaires specifically developed and validated for assessment of OA are the WOMAC⁶⁰ and the KOOS.⁶¹ However, the WOMAC was developed for evaluation of established OA, as such the KOOS may be a more appropriate assessment for patients following ACL injury. This is because the KOOS is more likely to detect early development of OA compared with WOMAC since the KOOS was developed in order to cover a broader spectrum, from knee injury to manifest OA.^{61,62}

Imaging modalities still provide the most sensitive assessment of OA although not without limitations. One should remember that radiographic findings of OA are not necessarily accompanied by symptomatic OA,^{63,64} and other intra-articular pathologies may give similar symptoms as OA. It is therefore recommended to combine radiographic imaging assessment with PROs for decision-making when it comes to symptomatic OA. Radiographic findings should be described in a standardised manner using validated tools, where the Kellgren-Lawrence⁶⁵ perhaps is the most commonly used tool, taking into account osteophyte formation, sclerosis, joint space narrowing and bone deformity.⁶⁵ Although plain radiography has long been the established method for imaging of OA it must be acknowledged that the modality has a limited capacity to visualise early stages of OA and to grade OA progression.⁶⁶

The rapid evolution of MRI techniques enables a much more comprehensive assessment of knee joint structure, such as early morphological and biochemical changes of articular and peri-articular structures. Quantitative measurements of cartilage thickness on MRI have a higher sensitivity for knee OA compared with traditional radiological measures.⁶⁷ In addition, MRI detects characteristic OA signs, earlier and with a greater sensitivity compared with radiography.⁶⁸ Structural intra-articular changes are indicative for OA and can be seen as early as 2 years after an ACL reconstruction with MRI, which is earlier than these changes can be seen on radiographs.^{69,70} In addition, MRI can also rule out other intra-articular injuries that may explain symptoms perceived by patients. Thus, although plain radiography has an established role in assessment of OA and is favourable from an availability and cost perspective, its main role is to assess the development of OA in the long term and for already established OA. For early- or mid-term assessment of OA, attempts should be made to include MRI to detect early changes with greater validity and sensitivity.⁶⁸

It is not known when clinically relevant post-traumatic OA occurs, or when in this process the structural changes of the knee joint start to appear. With advancement in imaging techniques, there is a risk of over-diagnosis of OA since structural changes without clinical significance might be detected. Future research will hopefully provide a clearer picture of this, as well as methods to distinguish between what are pathological changes and what changes are related to normal ageing.⁷¹ Until then, an assessment of knee OA should always be made in relation to a 'control knee' in order to provide a reference for such variables. A synthesis of current literature shows that the contralateral knee is most commonly used for this purpose, followed by using an age-matched and sex-matched control group.⁶ The latter methodology, using a separate comparison group, is the preferred method since degeneration can occur in the contralateral knee although it was not part of the original injury. Some studies have used baseline imaging of the acute ACL injured knee as the control,⁵ which cannot be recommended since this

method does not take into account the impact of natural ageing occurring between the injury and the long-term follow-up.

CONCLUSION: Outcome assessment of OA should include clinical examination, PROs and imaging modalities, for which MRI is the preferred modality for increased accuracy. Imaging findings should always be set in context with the patient's perception and the clinical examination for decision-making. Hence, these outcome assessments are equally important for determining the outcome of OA.

6. Clinical assessment of ACL injury treatment should include measures of anteroposterior and rotatory knee laxity (25/25, 100% agreement)

Evaluation of knee joint laxity is a cornerstone for evaluating the outcome of ACL treatment. Quantitative measures of knee joint laxity increase the reliability and validity.

The anatomical properties of the ACL make it a primary passive restraint to both anteroposterior (AP) and rotatory forces of the knee joint.⁷² Valid assessment of knee joint laxity is therefore key in the evaluation of the outcome of surgical treatment after ACL injury, preferably at multiple follow-ups to detect any changes over time. Failure to eliminate knee joint laxity with ACL reconstruction could indicate treatment failure, while patients undergoing non-operative treatment should be assessed for excessive laxity or propagation of knee joint laxity. The latter scenario might be an indication for subsequent operative treatment, although the term laxity should be distinguished from instability or stability. Knee joint laxity is defined as the passive response of the knee joint when an external force or torque is applied, while instability is the patient's perception of symptoms during functional movement independent of laxity.⁷³ Hence, knee joint laxity can be reliably measured and reported, which makes it the preferred metric for clinical outcome assessment. To minimise the risk of bias, every attempt should be made to blind the assessors and all participating assessors should be trained in using a standardised execution technique of the laxity test.

Laxity assessment consists of static and dynamic examinations, and methods for both grading by the examiner and quantification of laxity have been developed. Laxity assessments should always include a side-to-side comparison with the contralateral knee. Static AP knee laxity tests consider a single degree of freedom of motion and includes application of a unidirectional force in a single plane, such as the Lachman test and the anterior drawer test. The IKDC Knee Ligament Standard Evaluation Form provides a standardised classification of the degree of AP translation.²⁰ For instrumented quantitative assessment of AP laxity, the KT-1000/2000 arthrometer (MEDmetric corp)⁷⁴ and the Rolimeter (Aircast)⁷⁵ provide among the most accurate measurements, although the intraclass correlation coefficient (ICC) is variable according to the literature and the results are examiner dependent.⁷⁶ Another instrument is the GNRB (Genourob, Laval, France), which is a robotic arthrometer developed to alleviate the difficulties with examiner-dependent measurements. The patient's leg is placed in the robotic system and a pre-defined force is applied to the proximal calf, while the relative displacement of the anterior tibial tubercle with respect to the patella is recorded by a displacement sensor. The GNRB also offers the advantage of using electromyography sensors to record hamstring activity, in order to detect incomplete hamstring relaxation that affect the result.⁷⁷ Static AP measurements do not necessarily correlate with clinical outcome and function,^{78–80} which indicates that laxity assessment should not



Figure 2 KiRa inertial sensor system for quantifying lateral tibial acceleration during the pivot-shift test.

solely rely on static AP translation since it fails to capture the more complex knee kinematics.

The pivot shift (PS) test is considered to simulate a more physiological multiaxial loading of the knee joint since it is a dynamic test of laxity that evaluates both AP and rotatory laxity.⁸¹ It has been reported as the most specific test for ACL deficiency.⁸² On the other hand, the PS is characterised by a large variability in execution techniques,^{83,84} which may lead to a variation in clinical grading between examiners. To overcome this, a standardised PS test has been described, which has led to an improved accuracy of the test.⁸⁴ Moreover, user-friendly devices for non-invasive quantitative PS have been developed and determined to be valid for objective assessment of the PS.⁸⁵ Such devices may include an inertial sensor system (KiRa; Orthokey LLC, USA)^{86,87} to quantify the tibial acceleration during the PS and an image analysis system⁸⁸ which enables a quantification of the lateral tibial translation during the PS. Both devices have been shown to be able to validly detect differences between clinically high-grade and low-grade PS (figures 2 and 3).⁸⁵ Example of devices for quantitative AP and rotatory knee laxity that are easily applicable in the clinical setting are summarised in table 5.

CONCLUSION: Knee joint laxity should be assessed after ACL treatment and reported in a standardised manner using the IKDC Knee Ligament Standard Evaluation Form when clinical grading is used. The use of quantitative measures is encouraged to increase the reliability and validity of the assessment.

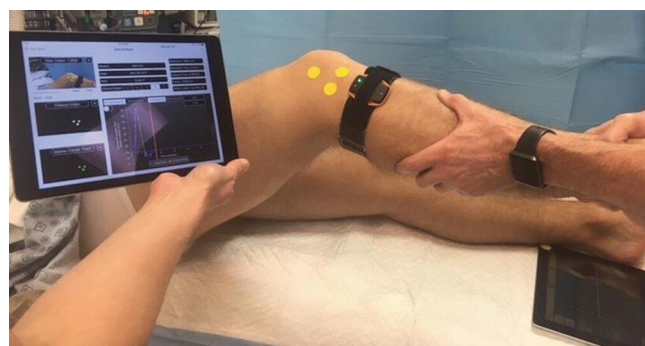


Figure 3 Image analysis system on iPad for quantifying lateral tibial translation during the pivot-shift test.

Table 5 Devices for quantitative assessment of knee joint laxity

Device	Accuracy	Comments
KT-1000/2000	The majority of studies show at least a fair reproducibility (inter-tester ICC range 0.14–0.92, intra-tester ICC range 0.47–0.95) ⁷⁶	Measure anterior tibial displacement in mm Different reliability depending on examiner experience ⁷⁶ Dependent on dominant hand of the examiner ⁷¹⁸ The maximal manual force testing is the most reliable ⁷⁶
Rolimeter	The literature shows an inter-tester correlation ranging between 0.39 and 0.89 and intra-tester ranging between 0.55 and 1.0 ^{119 120}	Measure anterior tibial displacement in mm Not as crucial with examiner experience compared with the KT-1000 ¹¹⁹ Might be easier to apply in the clinical setting compared with the KT-1000 due to the lighter design At least as reliable as the KT-1000 ⁷⁶
GNRB	Sensitivity and specificity for an ACL tear ranging between 62%–92% and 76%–99%, respectively ^{77 121 122} The inter-tester ICC has been reported ranging between 0.220 and 0.424 ¹²³	Measure anterior tibial displacement in mm Robotic testing meaning a less examiner-dependent measurement. Several studies reporting the GNRB as reliable or superior to other arthrometers ¹²⁴ Possible to account for patient guarding with hamstring activation ⁷⁷
Pivot App	Excellent inter- and intra-tester reliability reported. Inter-tester ICC 0.95 (95% CI 0.54 to 1.00), intra-tester ICC ranging between 0.91 and 0.99 (95% CI 0.319 to 1.000) ⁸⁸	Lateral tibial translation during the pivot shift test is calculated (in mm) by a software program analysing the movement of three markers placed on the skin during video recording of the pivot shift test using a commercial tablet. Been proved valid to detect differences between clinically high- and low-grade pivot shift. ⁸⁵
KiRa	Mean intra-rater ICC 0.79. Reproducibility is good to excellent across all different parameters being quantified (minimum, maximum and range of tibial acceleration) ¹²⁵	An inertial sensor system quantifies the tibial acceleration (m/s^2) during the pivot shift test. An elastic strap is used to position the sensor on the patient's leg when executing the pivot-shift test Has been proved to be valid to detect differences between clinically high- and low-grade pivot shift ⁸⁵

ACL, anterior cruciate ligament; ICC, intraclass correlation coefficient.

Section 3: Patient-reported outcome

7. Assessment of patient-reported outcome (PRO) should optimally include at least one knee-specific outcome tool, one activity rating scale and one measure of health-related quality of life (25/25, 100% agreement)

There is a fine balance between multiple outcome assessments and the responder burden in clinical outcome assessment.

The use of PROs has become a cornerstone for researchers to understand the patients' perspective of the impact of ACL injury and treatment. During recent decades, technical development has facilitated the use of PROs as patients can report and researcher can collect responses electronically. The time efficient collection has tempted researchers to burden patients with more PROs in studies. Responder burden is an important term in research and is defined as the time to complete items as well as the physical energy and cognitive demands placed on those responding. In addition, all clinical testing of patients is part of the burden placed on our patients. Because of the risk of excessive responder burden, which threatens the validity of an individual's responses and thus their score, researchers are advised to wisely choose PROs specific for the study purpose.

Similar to statement number 2 of this consensus paper on baseline information to collect, it is recommended to use at least one knee-specific tool, one HRQoL tool and one activity rating scale. This provides the researcher with a comprehensive picture of the patients' perception of outcome after treatment.

CONCLUSION: To give a comprehensive assessment of the patients' perception of the impact of ACL injury and outcome of treatment, validated knee-specific PRO assessment, HRQoL and measure of type and level of pre-injury sport/activity should be collected before and after treatment.

8. The IKDC Subjective Knee Form is the recommended knee-related outcome measure for ACL injury and treatment (24/25, 96% agreement)

It is important to find a universal metric—the IKDC-SKF is currently the optimal scale, but we should be careful not to neglect the other scores.

The evaluation of treatment outcome started historically with use of objective measurements as proxies for what clinicians and patient really cared about. For instance, both rating scales and measures of ROM, strength and laxity were frequently used; however, these measures are limited by inter-rater and intra-rater variability and alone failed to determine symptoms and limitations perceived important by the patient. Failure to report and quantify the patients' perspective of treatment outcome after ACL injury led to the development of knee-related PROs during the late 1990s and early 2000s. The two most commonly used PROs after ACL injury are the KOOS and the IKDC-SKF, which were both developed during this time period. Measurement properties of the IKDC-SKF and KOOS are presented in table 6.

These PROs have advantages and disadvantages, and when choosing between them, one should evaluate what the population is and what it is that you want to capture. Most importantly, measurements should consist of those that are relevant to the patient and capture the full range of symptoms, activity limitations and participation restrictions to increase the relevance and validity in results attained from PROs.⁸⁹ It is essential that the PROs have undergone rigorous validation to the target condition to be able to differentiate better from worse treatment outcome. The inappropriate use of a PROs can distort results from a study and cause difficulties to detect differences as items may not be relevant for the given population. This can be the case when a questionnaire aimed to assess outcome in patients with OA is used to assess patients with an ACL injury.

The KOOS is an extension of the WOMAC⁹⁰ (covers the subscales of pain, symptom and limitations in ADL) and was validated for patients with OA of the knee. The initial idea of the KOOS was to develop a region-specific outcome to capture the progression of knee-related symptoms across the lifespan of a patient, from knee injury to the development of OA. Despite the

Table 6 Psychometric properties of the IKDC-SKF and the KOOS¹²⁶

	IKDC-SKF	KOOS
PASS	75.9	Pain=88.9 Symptoms=57.1 ADL=100 Sport=75.0 QoL=62.5
MCID	11.5	N/A
MIC	10.9	Pain=2.5 Symptoms=-1.2 ADL=2.4 Sport=12.1 QoL=18.3
MDC	11.5	Pain=6.0 to 6.1 Symptoms=5.0 to 8.5 ADL=7.0 to 8.0 Sport=5.8 to 12.0 QoL=7.0 to 7.2
Content validity	Poor	No evidence
Structural validity	No evidence	No evidence
Internal consistency	0.77 to 0.97	Pain=0.84 to 0.91 Symptoms=0.25 to 0.75 ADL=0.94 to 0.96 Sport=0.85 to 0.89 QoL=0.64 to 0.9
Measurement error	3.2 to 5.6	Pain=2.2 to 10.1 Symptoms=3.1 to 9.0 ADL=2.9 to 11.7 Sport=2.1 to 24.6 QoL=2.6 to 10.8
Test re-test reliability	0.85 to 0.99	Pain=0.85 to 0.93 Symptoms=0.83 to 0.95 ADL=0.75 to 0.91 Sport=0.61 to 0.89 QoL=0.83 to 0.95
Responsiveness	Good	Poor
Cross-cultural validity	Fair	No evidence

ADL, activities of daily living; IKDC-SKF, International Knee Documentation Committee Subjective Knee Form; KOOS, Knee injury and Osteoarthritis Outcome Score; MCID, minimal clinically important difference; MDC, minimum detectable change; MIC, minimally important change; N/A, Not available; PASS, patient acceptable symptom state; QoL, quality of life.

inclusion of the sport and recreation and quality of life subscales, the KOOS has limited measurement properties in the three original WOMAC subscales when used for patients after ACL reconstruction.^{89 91} It is also worth mentioning that the hybrid version of the KOOS, the KOOS₄ (a modified version where the items related to activities in daily living have been excluded in order to avoid ceiling effects),⁹² has not undergone a validation.^{89 93} This is problematic as the ability to detect differences between treatments will be limited with the KOOS used in patients with an ACL injury.⁹¹ Using PRO measurements that include items that are not relevant or do not cover important limitations of the target condition is not optimal. Using such PROs entails a potential wash-out of treatment effects, inadequate measurement properties and risk of false-negative findings.^{89 94 95} In terms of the KOOS, several questions are at risk for a ceiling effect when used in patients after ACL reconstruction, that is, the item is too 'easy' for the patient. In addition, the KOOS does not include specific items relating to instability, which is one of the most common symptoms and one of the strongest indications for an ACL reconstruction. The KOOS consists of 42 items entailing higher responder burden compared with other outcomes such as the IKDC-SKF. Awareness of the limitations of the KOOS for

the patients after an ACL injury or reconstruction is important in order to avoid missing the effects of treatment results.

The IKDC-SKF was developed as a region-specific outcome relevant for a variety of conditions including ligament and intra-articular pathologies.¹⁹ This PRO underwent rigorous testing during its development including a reduction from 42 to 18 items and an exploratory factor analysis suggesting that it was reasonable to combine the items into a single overall score. In order to test the relevance of the IKDC-SKF for patients with an ACL injury, Rasch analysis was performed separately for patients with and without knee ligament injury.^{19 96} The analysis supported the premise that the items of the IKDC performed similarly in terms of difficulty for individuals with or without a ligament injury. The results from the primary testing of the IKDC-SKF also indicated that the IKDC-SKF items performed the same regardless of age, sex and a variety of diagnoses including ligament, meniscal, articular cartilage injury and patellofemoral pain.^{19 97}

The IKDC-SKF is recommended as the knee-related PRO to use for patients after ACL reconstruction because of its quick-to-use 18 items.¹⁹ The IKDC-SKF shows adequate internal consistency and has no floor or ceiling effects across mixed groups of patients with knee conditions.⁹⁷ It also has high levels of test re-test reliability construct validity and responsiveness. Moreover, normative data have been determined, which is valuable for comparisons, as well as cut-offs for what the patients consider as an acceptable symptom state.⁹⁸

There are also other promising PROs used to cover different aspects of recovery after ACL reconstruction, including the Quality of Life Outcome Measure for Chronic Anterior Cruciate Ligament Deficiency (ACL-QoL)⁹⁹ and the Knee Numeric-Entity Evaluation Score (KNEES-ACL).¹⁰⁰ The ACL-QoL is used to determine the effectiveness of ACL reconstruction, or any other treatment, and is a 32-item condition-specific quality-of-life scale for patients with ACL deficiency.⁹⁹ The KNEES-ACL was developed in 2013,¹⁰⁰ and the thorough development process and dimensionality assessment resulted in 42 items across 7 latent constructs. There is strong positive evidence given to content validity.^{100 101}

The ACL-QoL and the KNEES-ACL are promising outcome measurements and likely will help us to better understand patients who have sustained an ACL injury. However, these PROs have mainly been used in comparative studies and are yet to be compared with the established IKDC and KOOS to prove their respective strengths of constructs.

CONCLUSION: The IKDC Subjective Knee Form (IKDC-SKF) is the recommended knee-related outcome measure for ACL injury and treatment.

9. Measurement of the patient acceptable symptom state (PASS) is valuable in the assessment of outcome of ACL injury and treatment (25/25, 100% agreement)

One question can carry the advantage of giving the patient the opportunity to tell the story.

As researchers and clinicians of today, we are equipped with a great variety of PROs. However, the development and use of these PROs means little if the results are not interpreted in a clinically meaningful manner. The use of numeric scores poses a risk that researchers focus myopically at numbers and statistically significant findings, without reflecting over whether such findings really are impactful from the patient's perspective. For many such PROs, the same score can be achieved despite that patients respond differently to the items that comprise the

PRO measure. The question of whether the patient perceives an acceptable symptom state is a priority for all clinicians and the use of the patient acceptable symptom state (PASS) in PRO assessment is important. The PASS considers a single-item question and aims to determine a threshold beyond which the patients consider themselves 'well'.¹⁰² Thresholds for the PASS have been established for the KOOS and the IKDC-SKF by asking the question: "Taking account of all the activity you have during your daily life, your level of pain and also your activity limitations and participations restrictions, do you consider the current state of your knee satisfactory?" alongside the administered PRO.¹⁰² Several studies have since then applied the PASS values for the KOOS and IKDC-SKF when reporting on outcome after ACL treatment.^{103–106}

A single-item outcome like the PASS summarises the patient's perception and allows the patient to make an overall statement through a binary answer, 'yes' or 'no'. A numeric scale might have its advantages; however, it is associated with difficulties of interpretation for both patients and researchers. That is, what is considered as a good and poor outcome, respectively? The PASS reference value at which a majority of the patients feel well is valuable for determining this important question, and its use is warranted in order to overcome limitations with numeric PROs such as ceiling effects and poor responsiveness.^{29 107}

In addition, the evidence to support the interpretation and use of a PROs should include the minimum detectable change (MDC) score and the minimal clinically important difference (MCID) score. These scores collectively describe the responsiveness of the PRO, which is the ability to detect a clinically important change in outcome for the metric. The MDC is the amount of change that is needed to confidently state that the change is beyond measurement error.¹⁰⁸ Thus, if a study finds a difference that is smaller than the MDC for the chosen PRO, one should be careful to draw any conclusions since the observed difference is within the range of measurement error for the PRO. On the other hand, if the change in outcome is larger than the MDC, it still remains unknown whether this change is clinically relevant. This is where the MCID becomes valuable. If a change in outcome exceeds the value of the MCID for the PRO, the difference is likely to be perceived as important by most patients.¹⁰⁹

CONCLUSION: The PASS is a valuable complement to numeric PROs and should be used to facilitate interpretation of PROs. Researchers should also consider the MDC and MCID for the PRO when reporting and discussing their study findings.

FUTURE DIRECTIONS

Reaching consensus for clinical outcome assessment after ACL treatment is an important step towards refining and improving the quality of ACL research. Further efforts should be made to develop methods for outcome assessment that provide the most relevant and valid data for patients receiving ACL treatment. A focus is to improve the PRO assessment. The collection of PROs has become increasingly important among healthcare professions. It is a valuable asset for a clinician to understand a patient's perception of health and results of treatment, and it has also gained importance for policy-makers in determining healthcare quality and developing a value-based healthcare.²⁹ Commonly used PROs in ACL research are limited by a format of fixed-length surveys that many times include items of questionable relevance for the young and active population sustaining ACL injuries, leading to ceiling effects and potentially survey fatigue.

Therefore, a current priority is to decrease the responder burden for patients in PRO assessment.

Improved PRO data collection may be achieved through the use of the item response theory (IRT),^{110 111} which has enabled the introduction of computer adaptive testing (CAT). The underlying premise of IRT is that the way an individual responds to an item (question) is based on the difficulty of the question and the ability of the individual. When administered as a CAT, a mathematical algorithm is used to select items that are matched to the ability of the patient. For example, if an individual responds to an item that he/she is unable to walk a mile, the computer algorithm will bypass 'harder' items such as running a mile and select an easier item such as ability to walk a block. This means that only items that are relevant about the individual's ability level are administered, which substantially reduces the time and burden associated with administration of PROs. Efforts are under way to convert the IKDC-SKF to a CAT format that is based on IRT.

Although computer-aided PRO assessment likely is the future, further research for optimisation of currently used PROs is needed. Research should focus on determining the most responsive items of current PROs in order to condense the surveys to include only the most responsive questions. This is important when considering the already collected PRO data for tens of thousands of patients in large registries and national databases. Such data might need to be re-analysed using the condensed PROs and thereby provide results with a greater precision on clinically relevant outcomes.

Other important aspects for further research is outcome measures on activity and RTS after ACL treatment. Optimally, a tool that is able to quantify sports participation in terms of level, volume and intensity should be developed and implemented as a standardised tool used across studies. With the rapid evolution of technology, the future will likely also hold easily accessible use of quantitative instruments for quantitatively measuring patient activity, for example, the use of Global Positioning System and motion detectors during sports participation, measurements of joint function and measurements of heart rate and speed to estimate intensity.

CONCLUSION

Clinical outcome assessment after ACL injury can be divided in four robust categories—early adverse events, PROs, ACL failure/recurrent ligament disruption and clinical measures of knee function and structure. A minimum of 2-year follow-up is necessary for a comprehensive and reliable determination of outcome, which should include outcomes provided by clinical examination, PROs and verified re-injuries. The PRO assessment is a cornerstone in evaluating outcome after ACL injury, where validated knee-specific PRO assessment, HRQoL and measure of type and level of sport/activity should be collected. The IKDC-SKF is the recommended knee-related PRO measure for ACL treatment and the use of PASS is encouraged to facilitate interpretation of PROs.

Author affiliations

¹Department of Orthopedics, Institute of Clinical Sciences, Sahlgrenska Academy, University of Gothenburg, Gothenburg, Sweden

²Gothenburg Sports and Trauma Research Center, Gothenburg, Sweden

³Department of Rehabilitation and Health, Institute of Neuroscience and Physiology, Sahlgrenska Academy, University of Gothenburg, Gothenburg, Sweden

⁴School of Allied Health, Human Services and Sport, La Trobe University, Melbourne, Victoria, Australia

⁵Department of Orthopaedics, Sahlgrenska University Hospital, Gothenburg, Sweden

⁶Department of Sports Orthopedic, Technical University of Munich, Klinikum Rechts der Isar, Munich, Germany

⁷UPMC Freddie Fu Sports Medicine Center, Department of Orthopaedic Surgery, University of Pittsburgh, Pittsburgh, Pennsylvania, USA

⁸Department of Orthopaedics, University of Maryland School of Medicine, Baltimore, Maryland, USA

⁹Department of Trauma Surgery, University Hospital Zurich, Zurich, Switzerland

¹⁰Department of Orthopaedic Surgery, University of Pittsburgh Medical Center, Pittsburgh, Pennsylvania, USA

¹¹Department of Physical Therapy, University of Pittsburgh, Pittsburgh, Pennsylvania, USA

¹²Sports Health Center, Cleveland Clinic, Garfield Heights, Ohio, USA

¹³Department of Orthopaedic Surgery, University of California, San Francisco, California, USA

Twitter Eric Hamrin Senorski @senorski and Benjamin B Rothrauff @BenRothrauff

Collaborators Freddie H Fu, Olufemi R Ayeni, Francesco Della Villa, Stefano Della Villa, Scott Dye, Mario Ferretti, Alan Getgood, Timo Järvelä, Christopher C Kaeding, Ryosuke Kuroda, Bryson Lesniak, Robert G Marx, Gregory B Maletis, Leo Pinczewski, Anil Ranawat, Bruce Reider, Romain Seil, Carola van Eck, Brian R Wolf, Patrick Yung, Stefano Zaffagnini, Ming Hao Zheng.

Contributors Each named author has substantially contributed to the design of the work, to the drafting of the manuscript and to critically revising the manuscript for important intellectual content. Each author in the Panther Symposium ACL Injury Clinical Outcomes Consensus Group has contributed according to the group authorship guidelines. All authors approve publication of the final manuscript and are accountable for all aspects of the work.

Funding We would like to acknowledge that the ACL Consensus Meeting Panther Symposium at the UPMC, Pittsburgh, was sponsored by Smith&Nephew, the UPMC, Elizkr, Arthrex, Conmed, DJO global, Mid-Atlantic surgical systems, RTI Surgical and BlackRhino Medical.

Competing interests JK is the Editor-in-Chief of KSSTA. JJI reports grants from American Orthopaedic Society for Sports Medicine, outside the submitted work. KPS reports grants from NIH/NIAMS R01 AR053684, grants from NIH/NIAMS R01 AR074131, grants from NIH/NIAMS R01 AR075422-01, other from NFL, other from Service Excellence, other from Mitek, other from Flexion Therapeutics, other from Samumed, other from NovoPedics, other from nPhase, outside the submitted work. VM reports educational grants, consulting fees, and speaking fees from Smith & Nephew and educational grants from Arthrex. Dr Ayeni reports Speakers Bureau from Conmed, honoraria from DJO, outside the submitted work. Dr Dye reports personal fees from Zimmer Biomet, outside the submitted work. Dr Fu reports educational support and hospitality payments from Smith & Nephew, outside the submitted work. Dr Getgood reports grants and personal fees from Smith & Nephew, grants and personal fees from Ossur, personal fees from Graymont, personal fees from Olympus, outside the submitted work. Dr Kuroda reports grants and personal fees from Smith & Nephew KK, grants and personal fees from Jimmer Biomet, grants from Stryker Japan KK, grants and personal fees from Johnson & Johnson KK, personal fees from Medacta International, personal fees from Arthrex, Inc, personal fees from Japan Tissue Engineering Co., Ltd, personal fees from Hirosaki Life Science Innovation, Inc, personal fees from Arthrex Japan G.K., outside the submitted work. Dr Lesniak reports personal fees and other from Wolters Kluwer Health—Lippincott Williams & Wilkins, outside the submitted work. Dr Marx reports personal fees from *Journal of Bone and Joint Surgery*, personal fees from *Journal of Bone and Joint Surgery Evidence Based Orthopedics*, personal fees from MEND Nutrition Inc., personal fees from Springer & Demos Health, outside the submitted work. Dr Pinczewski reports personal fees from Australian Biotechnologies, grants from Australian Orthopaedic Association, grants from Friends of the Mater Foundation, personal fees from Signature Orthopaedics, grants and personal fees from Smith and Nephew, outside the submitted work. In addition, Dr Pinczewski has a patent Surgical screw pending to Hip Developments Pty Ltd., a patent Process and article for knee reconstruction pending to Smith & Nephew, Inc., a patent Method of arthroplasty on a knee joint and apparatus for use in same pending to Smith & Nephew, Inc., and a patent Manually operated medical pump pending to SURGICAL APPS Pty Ltd. Dr Ranawat reports other from Enhatch, other from Conformis, other from Stryker, other from Smith and Nephew, other from Arthrex, Inc., from Anika, from Bodycad, outside the submitted work. Dr Reider reports other from Smith and Nephew, personal fees from Elsevier, other from Merck, other from Johnson and Johnson, outside the submitted work. Dr Wolf reports personal fees from ConMed, from null, outside the submitted work. Dr Zheng is the founder of Orthocell Ltd and holds share of Orthocell that is not directly related to the work.

Patient consent for publication Not required.

Provenance and peer review Not commissioned; internally peer reviewed.

Data availability statement Data sharing not applicable since no data sets were generated or analysed for this consensus statement.

Open access This is an open access article distributed in accordance with the Creative Commons Attribution Non Commercial (CC BY-NC 4.0) license, which

permits others to distribute, remix, adapt, build upon this work non-commercially, and license their derivative works on different terms, provided the original work is properly cited, an indication of whether changes were made, and the use is non-commercial. See: <http://creativecommons.org/licenses/by-nc/4.0/>.

ORCIDo iDs

Eleonor Svantesson <http://orcid.org/0000-0002-6669-5277>
Eric Hamrin Senorski <http://orcid.org/0000-0002-9340-0147>
Benjamin B Rothrauff <http://orcid.org/0000-0002-8301-025X>
Sean J Meredith <http://orcid.org/0000-0003-3725-5309>

REFERENCES

- Djullbegovic B, Guyatt GH. Progress in evidence-based medicine: a quarter century on. *Lancet* 2017;390:415–23.
- Svantesson E, Hamrin Senorski E, Spindler KP, et al. While modern medicine evolves continuously, evidence-based research methodology remains: how register studies should be interpreted and appreciated. *Knee Surg Sports Traumatol Arthrosc* 2017;25:2305–8.
- Webster KE, Feller JA. Exploring the high reinjury rate in younger patients undergoing anterior cruciate ligament reconstruction. *Am J Sports Med* 2016;44:2827–32.
- Wiggins AJ, Grandhi RK, Schneider DK, et al. Risk of secondary injury in younger athletes after anterior cruciate ligament reconstruction: a systematic review and meta-analysis. *Am J Sports Med* 2016;44:1861–76.
- Ajuied A, Wong F, Smith C, et al. Anterior cruciate ligament injury and radiologic progression of knee osteoarthritis: a systematic review and meta-analysis. *Am J Sports Med* 2014;42:2242–52.
- Poulsen E, Goncalves GH, Bricca A, et al. Knee osteoarthritis risk is increased 4–6 fold after knee injury—a systematic review and meta-analysis. *Br J Sports Med* 2019;53:1454–63.
- Claes S, Hermie L, Verdonk R, et al. Is osteoarthritis an inevitable consequence of anterior cruciate ligament reconstruction? A meta-analysis. *Knee Surg Sports Traumatol Arthrosc* 2013;21:1967–76.
- Øiestad BE, Engebretsen L, Storheim K, et al. Knee osteoarthritis after anterior cruciate ligament injury: a systematic review. *Am J Sports Med* 2009;37:1434–43.
- Musahl V, Karlsson J. Anterior cruciate ligament tear. *N Engl J Med* 2019;380:2341–8.
- Andersson D, Samuelsson K, Karlsson J. Treatment of anterior cruciate ligament injuries with special reference to surgical technique and rehabilitation: an assessment of randomized controlled trials. *Arthroscopy* 2009;25:653–85.
- Samuelsson K, Andersson D, Karlsson J. Treatment of anterior cruciate ligament injuries with special reference to graft type and surgical technique: an assessment of randomized controlled trials. *Arthroscopy* 2009;25:1139–74.
- Kay J, Memon M, Sa Dde, et al. A historical analysis of randomized controlled trials in anterior cruciate ligament surgery. *J Bone Joint Surg Am* 2017;99:2062–8.
- Gelman A. Don't calculate post-hoc power using observed estimate of effect size. *Ann Surg* 2019;269:e9–10.
- Wasserstein RL, Lazar NA. The ASA statement on *p*-values: context, process, and purpose. *Am Stat* 2016;70:129–33.
- Bourke HE, Salmon LJ, Waller A, et al. Survival of the anterior cruciate ligament graft and the contralateral ACL at a minimum of 15 years. *Am J Sports Med* 2012;40:1985–92.
- Webster KE, Feller JA, Leigh WB, et al. Younger patients are at increased risk for graft rupture and contralateral injury after anterior cruciate ligament reconstruction. *Am J Sports Med* 2014;42:641–7.
- Marx RG, Stump TJ, Jones EC, et al. Development and evaluation of an activity rating scale for disorders of the knee. *Am J Sports Med* 2001;29:213–8.
- Tegner Y, Lysholm J. Rating systems in the evaluation of knee ligament injuries. *Clin Orthop Relat Res* 1985;19:43–9.
- Irrgang JJ, Anderson AF, Boland AL, et al. Development and validation of the International Knee Documentation Committee Subjective Knee Form. *Am J Sports Med* 2001;29:600–13.
- Hefti F, Müller W, Jakob RP, et al. Evaluation of knee ligament injuries with the IKDC form. *Knee Surg Sports Traumatol Arthrosc* 1993;1:226–34.
- Grindem H, Eitzen I, Moksnes H, et al. A pair-matched comparison of return to pivoting sports at 1 year in anterior cruciate ligament-injured patients after a nonoperative versus an operative treatment course. *Am J Sports Med* 2012;40:2509–16.
- Moksnes H, Snyder-Mackler L, Risberg MA. Individuals with an anterior cruciate ligament-deficient knee classified as noncopers may be candidates for nonsurgical rehabilitation. *J Orthop Sports Phys Ther* 2008;38:586–95.
- Eitzen I, Moksnes H, Snyder-Mackler L, et al. A progressive 5-week exercise therapy program leads to significant improvement in knee function early after anterior cruciate ligament injury. *J Orthop Sports Phys Ther* 2010;40:705–21.
- Barber-Westin SD, Noyes FR, McCloskey JW. Rigorous statistical reliability, validity, and responsiveness testing of the Cincinnati knee rating system in 350 subjects with uninjured, injured, or anterior cruciate ligament-reconstructed knees. *Am J Sports Med* 1999;27:402–16.

- 25 Prentice HA, Lind M, Mouton C, *et al.* Patient demographic and surgical characteristics in anterior cruciate ligament reconstruction: a description of registries from six countries. *Br J Sports Med* 2018;52:716–22.
- 26 Ferguson D, Palmer A, Khan S, *et al.* Early or delayed anterior cruciate ligament reconstruction: is one superior? A systematic review and meta-analysis. *Eur J Orthop Surg Traumatol* 2019;29:1277–89.
- 27 Smith TO, Davies L, Hing CB. Early versus delayed surgery for anterior cruciate ligament reconstruction: a systematic review and meta-analysis. *Knee Surg Sports Traumatol Arthrosc* 2010;18:304–11.
- 28 Andernord D, Karlsson J, Musahl V, *et al.* Timing of surgery of the anterior cruciate ligament. *Arthroscopy* 2013;29:1863–71.
- 29 Christensen DL, Dickens JF, Freedman B, *et al.* Patient-reported outcomes in orthopaedics. *J Bone Joint Surg* 2018;100:436–42.
- 30 Poolman RW, Swiontkowski MF, Fairbank JCT, *et al.* Outcome instruments: rationale for their use. *J Bone Joint Surg Am* 2009;91 Suppl 3:41–9.
- 31 Filbay SR, Culvenor AG, Ackerman IN, *et al.* Quality of life in anterior cruciate ligament-deficient individuals: a systematic review and meta-analysis. *Br J Sports Med* 2015;49:1033–41.
- 32 Grindem H, Snyder-Mackler L, Moksnes H, *et al.* Simple decision rules can reduce reinjury risk by 84% after ACL reconstruction: the Delaware-Oslo ACL cohort study. *Br J Sports Med* 2016;50:804–8.
- 33 Kyriltis P, Bahr R, Landreau P, *et al.* Likelihood of ACL graft rupture: not meeting six clinical discharge criteria before return to sport is associated with a four times greater risk of rupture. *Br J Sports Med* 2016;50:946–51.
- 34 Paterno MV, Rauh MJ, Schmitt LC, *et al.* Incidence of contralateral and ipsilateral anterior cruciate ligament (ACL) injury after primary ACL reconstruction and return to sport. *Clin J Sport Med* 2012;22:116–21.
- 35 Fältström A, Häggglund M, Magnusson H, *et al.* Predictors for additional anterior cruciate ligament reconstruction: data from the Swedish national ACL register. *Knee Surg Sports Traumatol Arthrosc* 2016;24:885–94.
- 36 Schuster P, Schulz M, Immoendorfer M, *et al.* Septic arthritis after arthroscopic anterior cruciate ligament reconstruction: evaluation of an arthroscopic graft-retaining treatment protocol. *Am J Sports Med* 2015;43:3005–12.
- 37 Wang C, Lee YHD, Siebold R. Recommendations for the management of septic arthritis after ACL reconstruction. *Knee Surg Sports Traumatol Arthrosc* 2014;22:2136–44.
- 38 Bhandari M, Guyatt GH, Swiontkowski MF. User's guide to the orthopaedic literature: how to use an article about a surgical therapy. *J Bone Joint Surg Am* 2001;83:916–26.
- 39 Somerson JS, Bartush KC, Shroff JB, *et al.* Loss to follow-up in orthopaedic clinical trials: a systematic review. *Int Orthop* 2016;40:2213–9.
- 40 Bhandari M, Giannoudis PV. Evidence-based medicine: what it is and what it is not. *Injury* 2006;37:302–6.
- 41 Schulz KF, Altman DG, Moher D, *et al.* Consort 2010 statement: updated guidelines for reporting parallel group randomised trials. *BMJ* 2010;340:c332.
- 42 von Elm E, Altman DG, Egger M, *et al.* The strengthening of reporting of observational studies in epidemiology (STROBE) statement: guidelines for reporting observational studies. *Lancet* 2007;370:1453–7.
- 43 Hamrin Senorski E, Svantesson E, Baldari A, *et al.* Factors that affect patient reported outcome after anterior cruciate ligament reconstruction—a systematic review of the Scandinavian knee ligament registers. *Br J Sports Med* 2019;53:410–7.
- 44 Svantesson E, Hamrin Senorski E, Baldari A, *et al.* Factors associated with additional anterior cruciate ligament reconstruction and register comparison: a systematic review on the Scandinavian knee ligament registers. *Br J Sports Med* 2019;53:418–25.
- 45 Pauzenberger L, Syré S, Schurz M. "Ligamentization" in hamstring tendon grafts after anterior cruciate ligament reconstruction: a systematic review of the literature and a glimpse into the future. *Arthroscopy* 2013;29:1712–21.
- 46 Vogl TJ, Schmitt J, Lubrich J, *et al.* Reconstructed anterior cruciate ligaments using patellar tendon ligament grafts: diagnostic value of contrast-enhanced MRI in a 2-year follow-up regimen. *Eur Radiol* 2001;11:1450–6.
- 47 Zaffagnini S, De Pasquale V, Marchesini Reggiani L, *et al.* Neoligamentization process of BTPB used for ACL graft: histological evaluation from 6 months to 10 years. *Knee* 2007;14:87–93.
- 48 Hofbauer M, Soldati F, Szomolanyi P, *et al.* Hamstring tendon autografts do not show complete graft maturity 6 months postoperatively after anterior cruciate ligament reconstruction. *Knee Surg Sports Traumatol Arthrosc* 2019;27:130–6.
- 49 Ardern CL, Taylor NF, Feller JA, *et al.* Sports participation 2 years after anterior cruciate ligament reconstruction in athletes who had not returned to sport at 1 year: a prospective follow-up of physical function and psychological factors in 122 athletes. *Am J Sports Med* 2015;43:848–56.
- 50 Meredith SJ, Rauer T, Chmielewski TL, *et al.* Return to sport after anterior cruciate ligament injury: panther symposium ACL injury return to sport consensus group. *Knee Surg Sports Traumatol Arthrosc* 2020;2.
- 51 Wellsandt E, Failla MJ, Snyder-Mackler L. Limb symmetry indexes can overestimate knee function after anterior cruciate ligament injury. *J Orthop Sports Phys Ther* 2017;47:334–8.
- 52 Mirkov DM, Knezevic OM, Maffiuletti NA, *et al.* Contralateral limb deficit after ACL reconstruction: an analysis of early and late phase of rate of force development. *J Sports Sci* 2017;35:435–40.
- 53 Kaur M, Ribeiro DC, Theis J-C, *et al.* Movement patterns of the knee during gait following ACL reconstruction: a systematic review and meta-analysis. *Sports Med* 2016;46:1869–95.
- 54 Trojani C, Sbihi A, Djian P, *et al.* Causes for failure of ACL reconstruction and influence of meniscectomies after revision. *Knee Surg Sports Traumatol Arthrosc* 2011;19:196–201.
- 55 Morgan JA, Dahm D, Levy B, *et al.* Femoral tunnel malposition in ACL revision reconstruction. *J Knee Surg* 2012;25:361–8.
- 56 Wright RW, Huston LJ, *et al.* MARS Group. Predictors of patient-reported outcomes at 2 years after revision anterior cruciate ligament reconstruction. *Am J Sports Med* 2019;47:2394–401.
- 57 van Eck CF, Gravare-Silbernagel K, Samuelsson K, *et al.* Evidence to support the interpretation and use of the anatomic anterior cruciate ligament reconstruction checklist. *J Bone Joint Surg Am* 2013;95:e153.
- 58 Schiphof D, van Middelkoop M, de Klerk BM, *et al.* Crepitus is a first indication of patellofemoral osteoarthritis (and not of tibiofemoral osteoarthritis). *Osteoarthritis Cartilage* 2014;22:631–8.
- 59 Maricar N, Callaghan MJ, Parkes MJ, *et al.* Interobserver and intraobserver reliability of clinical assessments in knee osteoarthritis. *J Rheumatol* 2016;43:2171–8.
- 60 Bellamy N, Buchanan WW, Goldsmith CH, *et al.* Validation study of WOMAC: a health status instrument for measuring clinically important patient relevant outcomes to antirheumatic drug therapy in patients with osteoarthritis of the hip or knee. *J Rheumatol* 1988;15:1833–40.
- 61 Roos EM, Roos HP, Lohmander LS, *et al.* Knee Injury and Osteoarthritis Outcome Score (KOOS)—development of a self-administered outcome measure. *J Orthop Sports Phys Ther* 1998;28:88–96.
- 62 Roos EM, Toksvig-Larsen S. Knee injury and Osteoarthritis Outcome Score (KOOS)—validation and comparison to the WOMAC in total knee replacement. *Health Qual Life Outcomes* 2003;1:17.
- 63 Petty CA, Lubowitz JH. Does arthroscopic partial meniscectomy result in knee osteoarthritis? A systematic review with a minimum of 8 years' follow-up. *Arthroscopy* 2011;27:419–24.
- 64 Andersson-Molina H, Karlsson H, Rockborn P. Arthroscopic partial and total meniscectomy: a long-term follow-up study with matched controls. *Arthroscopy* 2002;18:183–9.
- 65 Kellgren JH, Lawrence JS. Radiological assessment of osteo-arthrosis. *Ann Rheum Dis* 1957;16:494–502.
- 66 Madry H, Kon E, Condello V, *et al.* Early osteoarthritis of the knee. *Knee Surg Sports Traumatol Arthrosc* 2016;24:1753–62.
- 67 Wirth W, Duryea J, Hedio Le Graverand M-P, *et al.* Direct comparison of fixed flexion, radiography and MRI in knee osteoarthritis: responsiveness data from the osteoarthritis initiative. *Osteoarthritis Cartilage* 2013;21:117–25.
- 68 Guermazi A, Niu J, Hayashi D, *et al.* Prevalence of abnormalities in knees detected by MRI in adults without knee osteoarthritis: population based observational study (Framingham osteoarthritis study). *BMJ* 2012;345:e5339.
- 69 Van Ginckel A, Verdonk P, Witvrouw E. Cartilage adaptation after anterior cruciate ligament injury and reconstruction: implications for clinical management and research? A systematic review of longitudinal MRI studies. *Osteoarthritis Cartilage* 2013;21:1009–24.
- 70 Bowes MA, Lohmander LS, Wolstenholme CBH, *et al.* Marked and rapid change of bone shape in acutely ACL injured knees—an exploratory analysis of the Kanon trial. *Osteoarthritis Cartilage* 2019;27:638–45.
- 71 Magnusson K, Kumm J, Turkiewicz A, *et al.* A naturally aging knee, or development of early knee osteoarthritis? *Osteoarthritis Cartilage* 2018;26:1447–52.
- 72 Hirschmann MT, Müller W. Complex function of the knee joint: the current understanding of the knee. *Knee Surg Sports Traumatol Arthrosc* 2015;23:2780–8.
- 73 Musahl V, Hoshino Y, Becker R, *et al.* Rotatory knee laxity and the pivot shift. *Knee Surg Sports Traumatol Arthrosc* 2012;20:601–2.
- 74 Daniel DM, Malcom LL, Losse G, *et al.* Instrumented measurement of anterior laxity of the knee. *J Bone Joint Surg Am* 1985;67:720–6.
- 75 Balasch H, Schiller M, Friebe H, *et al.* Evaluation of anterior knee joint instability with the Rolimeter. A test in comparison with manual assessment and measuring with the KT-1000 arthrometer. *Knee Surg Sports Traumatol Arthrosc* 1999;7:204–8.
- 76 Pugh L, Mascarenhas R, Arneja S, *et al.* Current concepts in instrumented knee-laxity testing. *Am J Sports Med* 2009;37:199–210.
- 77 Robert H, Nouveau S, Gageot S, *et al.* A new knee arthrometer, the GNRB: experience in ACL complete and partial tears. *Orthop Traumatol Surg Res* 2009;95:171–6.
- 78 Ayeni OR, Chahal M, Tran MN, *et al.* Pivot shift as an outcome measure for ACL reconstruction: a systematic review. *Knee Surg Sports Traumatol Arthrosc* 2012;20:767–77.
- 79 Kocher MS, Steadman JR, Briggs K, *et al.* Determinants of patient satisfaction with outcome after anterior cruciate ligament reconstruction. *J Bone Joint Surg Am* 2002;84:1560–72.

- 80 Kocher MS, Steadman JR, Briggs KK, *et al.* Relationships between objective assessment of ligament stability and subjective assessment of symptoms and function after anterior cruciate ligament reconstruction. *Am J Sports Med* 2004;32:629–34.
- 81 Hoshino Y, Kuroda R, Nagamune K, *et al.* In vivo measurement of the pivot-shift test in the anterior cruciate ligament-deficient knee using an electromagnetic device. *Am J Sports Med* 2007;35:1098–104.
- 82 Benjaminse A, Gokeler A, van der Schans CP. Clinical diagnosis of an anterior cruciate ligament rupture: a meta-analysis. *J Orthop Sports Phys Ther* 2006;36:267–88.
- 83 Kuroda R, Hoshino Y, Kubo S, *et al.* Similarities and differences of diagnostic manual tests for anterior cruciate ligament insufficiency: a global survey and kinematics assessment. *Am J Sports Med* 2012;40:91–9.
- 84 Musahl V, Hoshino Y, Ahlden M, *et al.* The pivot shift: a global user guide. *Knee Surg Sports Traumatol Arthrosc* 2012;20:724–31.
- 85 Musahl V, Griffith C, Irrgang JJ, *et al.* Validation of quantitative measures of rotatory knee laxity. *Am J Sports Med* 2016;44:2393–8.
- 86 Zaffagnini S, Lopomo N, Signorelli C, *et al.* Innovative technology for knee laxity evaluation: clinical applicability and reliability of inertial sensors for quantitative analysis of the pivot-shift test. *Clin Sports Med* 2013;32:61–70.
- 87 Zaffagnini S, Signorelli C, Grassi A, *et al.* Assessment of the pivot shift using inertial sensors. *Curr Rev Musculoskelet Med* 2016;9:160–3.
- 88 Muller B, Hofbauer M, Rahneima-Azar AA, *et al.* Development of computer tablet software for clinical quantification of lateral knee compartment translation during the pivot shift test. *Comput Methods Biomech Biomed Engin* 2016;19:217–28.
- 89 Comins J, Brodersen J, Krogsgaard M, *et al.* Rasch analysis of the knee injury and osteoarthritis outcome score (KOOS): a statistical re-evaluation. *Scand J Med Sci Sports* 2008;18:336–45.
- 90 Bellamy N, Buchanan WW. A preliminary evaluation of the dimensionality and clinical importance of pain and disability in osteoarthritis of the hip and knee. *Clin Rheumatol* 1986;5:231–41.
- 91 Krogsgaard MR, Brodersen J, Comins J. A scientific approach to optimal treatment of cruciate ligament injuries. *Acta Orthop* 2011;82:389–90. discussion 90–2.
- 92 Frobell RB, Roos EM, Roos HP, *et al.* A randomized trial of treatment for acute anterior cruciate ligament tears. *N Engl J Med* 2010;363:331–42.
- 93 Comins J, Brodersen J, Krogsgaard M. Treatment for acute anterior cruciate ligament tear. *N Engl J Med* 2010;363:1871. author reply 2–3.
- 94 Samuelsson K, Magnusson RA, Alentorn-Geli E, *et al.* Equivalent knee injury and osteoarthritis outcome scores 12 and 24 months after anterior cruciate ligament reconstruction: results from the Swedish national knee ligament register. *Am J Sports Med* 2017;45:2085–91.
- 95 , Spindler KP, Huston LJ, *et al.* MOON Knee Group. Ten-year outcomes and risk factors after anterior cruciate ligament reconstruction: a moon longitudinal prospective cohort study. *Am J Sports Med* 2018;46:815–25.
- 96 van Meer BL, Meuffels DE, Vissers MM, *et al.* Knee injury and osteoarthritis outcome score or International Knee Documentation Committee Subjective Knee Form: which questionnaire is most useful to monitor patients with an anterior cruciate ligament rupture in the short term? *Arthroscopy* 2013;29:701–15.
- 97 Ebrahimzadeh MH, Makhmalbaf H, Golhasani-Keshtan F, *et al.* The International Knee Documentation Committee (IKDC) subjective short form: a validity and reliability study. *Knee Surg Sports Traumatol Arthrosc* 2015;23:3163–7.
- 98 Kanakamedala AC, Anderson AF, Irrgang JJ. IKDC subjective knee form and Marx activity rating scale are suitable to evaluate all orthopaedic sports medicine knee conditions: a systematic review. *J Isakos* 2016;1:25–31.
- 99 Mohtadi N. Development and validation of the quality of life outcome measure (questionnaire) for chronic anterior cruciate ligament deficiency. *Am J Sports Med* 1998;26:350–9.
- 100 Comins JD, Krogsgaard MR, Brodersen J. Development of the Knee Numeric-Entity Evaluation Score (KNEES-ACL): a condition-specific questionnaire. *Scand J Med Sci Sports* 2013;23:e293–301.
- 101 Comins JD, Krogsgaard MR, Kreiner S, *et al.* Dimensionality of the Knee Numeric-Entity evaluation score (KNEES-ACL): a condition-specific questionnaire. *Scand J Med Sci Sports* 2013;23:e302–12.
- 102 Muller B, Yabroudi MA, Lynch A, *et al.* Defining thresholds for the patient acceptable symptom state for the IKDC subjective knee form and KOOS for patients who underwent ACL reconstruction. *Am J Sports Med* 2016;44:2820–6.
- 103 Cristiani R, Mikkelsen C, Edman G, *et al.* Age, gender, quadriceps strength and hop test performance are the most important factors affecting the achievement of a patient-acceptable symptom state after ACL reconstruction. *Knee Surg Sports Traumatol Arthrosc* 2020;28:369–80.
- 104 Hamrin Senorski E, Sundemo D, Svantesson E, *et al.* Preoperative and intraoperative predictors of long-term acceptable knee function and osteoarthritis after anterior cruciate ligament reconstruction: an analysis based on 2 randomized controlled trials. *Arthroscopy* 2019;35:489–99.
- 105 Hamrin Senorski E, Svantesson E, Beischer S, *et al.* Factors affecting the achievement of a patient-acceptable symptom state 1 year after anterior cruciate ligament reconstruction: a cohort study of 343 patients from 2 registries. *Orthop J Sports Med* 2018;6:232596711876431.
- 106 Vega JF, Jacobs CA, Strnad GJ, *et al.* Prospective evaluation of the patient acceptable symptom state to identify clinically successful anterior cruciate ligament reconstruction. *Am J Sports Med* 2019;47:1159–67.
- 107 Ingelsrud LH, Terwee CB, Terluin B, *et al.* Meaningful change scores in the knee injury and osteoarthritis outcome score in patients undergoing anterior cruciate ligament reconstruction. *Am J Sports Med* 2018;46:1120–8.
- 108 Beaton D, Bombardier C, Katz JN. A taxonomy for responsiveness. *J Clin Epidemiol* 2001;54:1204–17.
- 109 Jaeschke R, Singer J, Guyatt GH. Measurement of health status: ascertaining the minimal clinically important difference. *Control Clin Trials* 1989;10:407–15.
- 110 Brodke DJ, Hung M, Bozic KJ. Item response theory and computerized adaptive testing for orthopaedic outcomes measures. *J Am Acad Orthop Surg* 2016;24:750–4.
- 111 Fries JF, Bruce B, Cella D. The promise of PROMIS: using item response theory to improve assessment of patient-reported outcomes. *Clin Exp Rheumatol* 2005;23:S53–7.
- 112 Bost JE, Williams BA, Bottegall MT, *et al.* The 8-item short-form health survey and the physical comfort composite score of the quality of recovery 40-item scale provide the most responsive assessments of pain, physical function, and mental function during the first 4 days after ambulatory knee surgery with regional anesthesia. *Anesth Analg* 2007;105:1693–700.
- 113 EuroQol Group. EuroQol—a new facility for the measurement of health-related quality of life. *Health Policy* 1990;16:199–208.
- 114 Ware JE, Sherbourne CD. The mos 36-item short-form health survey (SF-36). I. Conceptual framework and item selection. *Med Care* 1992;30:473–83.
- 115 Bergner M, Bobbitt RA, Carter WB, *et al.* The sickness impact profile: development and final revision of a health status measure. *Med Care* 1981;19:787–805.
- 116 Anderson JP, Kaplan RM, Berry CC, *et al.* Interday reliability of function assessment for a health status measure. the quality of well-being scale. *Med Care* 1989;27:1076–83.
- 117 Nguyen J, Rodeo SA. No clinically relevant change between 1 and 2 year outcomes following ACL reconstruction. *Orthop J Sports Med* 2017;5:2325967117S0025.
- 118 Sernert N, Helmers J, Kartus C, *et al.* Knee-laxity measurements examined by a left-hand- and a right-hand-dominant physiotherapist, in patients with anterior cruciate ligament injuries and healthy controls. *Knee Surg Sports Traumatol Arthrosc* 2007;15:1181–6.
- 119 Muellner T, Bugge W, Johansen S, *et al.* Inter- and intratester comparison of the Rolimeter knee tester: effect of tester's experience and the examination technique. *Knee Surg Sports Traumatol Arthrosc* 2001;9:302–6.
- 120 Schuster AJ, McNicholas MJ, Wachtl SW, *et al.* A new mechanical testing device for measuring anteroposterior knee laxity. *Am J Sports Med* 2004;32:1731–5.
- 121 Beldame J, Mouchel S, Bertiaux S, *et al.* Anterior knee laxity measurement: comparison of passive stress radiographs Telos® and "Lerat", and GNRB® arthrometer. *Orthop Traumatol Surg Res* 2012;98:744–50.
- 122 Klouche S, Lefevre N, Cascua S, *et al.* Diagnostic value of the GNRB® in relation to pressure load for complete ACL tears: a prospective case–control study of 118 subjects. *Orthop Traumatol Surg Res* 2015;101:297–300.
- 123 Vauhnik R, Morrissey MC, Perme MP, *et al.* Inter-Rater reliability of the GNRB® knee arthrometer. *Knee* 2014;21:541–3.
- 124 Rohman EM, Macalena JA. Anterior cruciate ligament assessment using arthrometry and stress imaging. *Curr Rev Musculoskelet Med* 2016;9:130–8.
- 125 Lopomo N, Zaffagnini S, Signorelli C, *et al.* An original clinical methodology for non-invasive assessment of pivot-shift test. *Comput Methods Biomech Biomed Engin* 2012;15:1323–8.
- 126 Gagnier JJ, Shen Y, Huang H. Psychometric properties of patient-reported outcome measures for use in patients with anterior cruciate ligament injuries. *JBJS Reviews* 2018;6:e5.