



Review

Oxidative-Antioxidant Imbalance and Impaired Glucose Metabolism in Schizophrenia

Amira Bryll ¹, Justyna Skrzypek ², Wirginia Krzyściak ^{2,*} , Maja Szelałowska ²,
Natalia Śmierciak ³, Tamas Kozicz ⁴ and Tadeusz Popiela ¹

¹ Department of Radiology, Jagiellonian University Medical College, Kopernika 19, 31-501 Krakow, Poland; amira.bryll@uj.edu.pl (A.B.); msjpopie@cyf-kr.edu.pl (T.P.)

² Department of Medical Diagnostics, Jagiellonian University, Medical College, Medyczna 9, 30-688 Krakow, Poland; justynaskrzypek96@gmail.com (J.S.); maja.sz@op.pl (M.S.)

³ Department of Child and Adolescent Psychiatry, Faculty of Medicine, Jagiellonian University, Medical College, Kopernika 21a, 31-501 Krakow, Poland; natalia.smierciak@uj.edu.pl

⁴ Department of Clinical Genomics, Center for Individualized Medicine, Mayo Clinic, Rochester, MN 55905, USA; kozicz.tamas@mayo.edu

* Correspondence: wirginiakrzyściak@cm-uj.krakow.pl

Received: 29 January 2020; Accepted: 26 February 2020; Published: 2 March 2020



Abstract: Schizophrenia is a neurodevelopmental disorder featuring chronic, complex neuropsychiatric features. The etiology and pathogenesis of schizophrenia are not fully understood. Oxidative-antioxidant imbalance is a potential determinant of schizophrenia. Oxidative, nitrosative, or sulfuric damage to enzymes of glycolysis and tricarboxylic acid cycle, as well as calcium transport and ATP biosynthesis might cause impaired bioenergetics function in the brain. This could explain the initial symptoms, such as the first psychotic episode and mild cognitive impairment. Another concept of the etiopathogenesis of schizophrenia is associated with impaired glucose metabolism and insulin resistance with the activation of the mTOR mitochondrial pathway, which may contribute to impaired neuronal development. Consequently, cognitive processes requiring ATP are compromised and dysfunctions in synaptic transmission lead to neuronal death, preceding changes in key brain areas. This review summarizes the role and mutual interactions of oxidative damage and impaired glucose metabolism as key factors affecting metabolic complications in schizophrenia. These observations may be a premise for novel potential therapeutic targets that will delay not only the onset of first symptoms but also the progression of schizophrenia and its complications.

Keywords: schizophrenia; reactive oxygen species; glucose metabolism; mitochondrial dysfunction

1. Oxidative Stress, Impaired Glucose Metabolism, Schizophrenia

Schizophrenia is characterized by a significant reduction of both white and gray matter volume of the brain [1], different levels of anatomical impairment, dysfunction of mitochondrial metabolism, and specific topological patterns [2–4], especially in the second decade of individual life. This is confirmed by the computed tomography (CT) and magnetic resonance (MRI) imaging, including the functional magnetic resonance (fMRI) method [5–7]. Although the trajectory of the indicated changes remains unexplained, there are reports suggesting their association with early reduction of the volume of the prefrontal cortex, superior temporal gyrus, and hippocampal gyrus volume reduction [8,9]. The probable mechanism of the observed changes in psychosis may be associated with inflammatory disorders, dysregulation of the immune system [3,10], neurodevelopmental disorders, including genetic abnormalities, i.e., 22q11.2 (22q11DS) deletion [11,12], or neutrophil functioning in the severe forms of mental disorders [10]. Their higher levels strongly correlate with positive clinical symptoms,

constituting a promising marker of disease progression [13]. In turn, the mentioned genetic disorders (22q11DS) are the cause of the limited growth of axons and dendrites, which impair the integrity of mitochondria and functioning of synapses in productive neurons [11]. This is an important factor linking these changes with trauma, stress, and an increased risk of psychosis among adolescents [12].

The course of schizophrenic disorders can be continuous or episodic, with progressive or permanent cognitive deficits [14]. The first phase (although different in both genders in terms of anatomical differences in the white matter of the brain) is similar in most patients and is characterized by prodromal symptoms: Anxiety, irritability, social withdrawal, and depressed mood [15,16]. Recent evidence-based data also indicate a strong association between schizophrenia and bipolar disorder (BD) through a clear relationship between mitochondrial genes in both diseases [17]. Patients may also experience positive symptoms, i.e., hallucinations and delusions [18]. A late period characterized by stabilization is a chronic disease with numerous relapses and significant functional disorders [19].

The first psychotic episode (FEP) is the earliest stage of the disease, in which patients exhibit motivation deficits and impaired decision making related to cognitive impairment. The decreased desire to put more effort into cognitive functions is caused by the inability to appreciate the reward or overestimating the amount of effort that should be put into a given activity [20]. Patients with FEP also have reduced adaptability due to the brain defects in the hippocampus [21]. The difference between them, and diagnosed schizophrenics, is a shorter history of the disease and/or lack of previous pharmacotherapy. During the postmortem examination, the brains of people with FEP show evidence of significant neuropathology involving the enlargement of lateral ventricles, third ventricle, and brain sulci and fissures. Magnetic resonance imaging (MRI and fMRI) of people with the developing disease in the prodromal phase shows an enlargement of the right inferior frontal gyrus [8,22], that directly correlates with reduced neuronal activity in that region. Changes in brain activity are also observed in regions that include cerebellum, temporal and frontal gyri [23], as well as Heschl's gyrus, which is also reduced in people with schizophrenia [24,25]. There are also functional changes in the region of the insula and amygdala. Those deficits, disturbing neural communication, are clinically manifested through speech and the disorders of information interpretation, auditory hallucinations, mood disorders, personality turmoil, and depression [26,27]. A decrease in brain bioelectrical activity in the inferior left crescent lobe of cerebellum may be associated with negative symptoms [28] in those patients. In addition, loss of synapses plasticity and impaired electrical conductivity can be observed, which causes elongation of the nerve impulse path and ultimately the death of neurons [29]. These factors attribute to the clinical phenotype of the disease, in which, apart from mental and behavioral problems, cognitive disorders occur, including distortions of thinking and perception, inability to adapt behavior to the situation, or dementia [30], which successively affect executive functions [31]. Depending on the time of diagnosis, early introduction of appropriate pharmacotherapy or psychotherapy of patients and their families guarantees complete recovery after the onset of the first psychotic episode, while its lack becomes the cause of FEP progression into a chronic and full-blown schizophrenia [32] with a worse treatment prediction [33] and is associated with a reduction in the chances of patient's full recovery [34,35].

Pharmacotherapy of schizophrenia faces some problems including polypragmasia resulting from the lack of standards for the use of polypharmacotherapy [36]. According to the new recommendations of the American Psychiatric Association of 2020, schizophrenia therapy, especially in younger people experiencing the first psychotic episode, should be started with atypical drugs, initially at a low dose, with observation of the response to treatment and side effects [37]. Olanzapine is one of the often chosen drugs with minor side effects from the extrapyramidal system (in contrast to classical neuroleptics). Despite initial hopes, it has not become an "ideal" antipsychotic due to the fact that its long-term use is fraught with a number of cardiometabolic complications, i.e., obesity [38], dyslipidemia, hyperglycemia, insulin resistance, and diabetes [39]. Its mechanism of action is based, among others, on increasing the amount of fatty acid binding protein (FABP4) and reducing the amount of apolipoprotein A-IV [40], which appears to be crucial in the intercellular transport of lipids. This results in a decrease in

insulin-dependent translocation of membrane glucose transporters (GLUT4) leading to a decrease in blood glucose uptake [41]. In addition, it is important that the complication of the assessment of risk related to cardiometabolic syndrome is due to some FEP patients showing impaired glucose metabolism preceding the use of antipsychotic treatment [42]. This should be taken into account at the stage of qualifying patients for treatment and during atypical antipsychotics pharmacotherapy based on recommended dose reduction (“doses must be reduced gradually at a rate of approximately 20% every 6 months”) [43] as a risk-benefit strategy prior to treatment [37].

One of the key processes that becomes impaired in schizophrenia and its first symptoms is glucose metabolism. Studies confirm the occurrence of disorders of glucose homeostasis at the early stages of the disease, such as elevated fasting glucose and insulin, and reduced glucose tolerance [44]. This dysfunction may be associated with neuronal insulin resistance [45]. Glucose is the primary source of energy for the brain and is metabolized to ATP during glycolysis, the electron transport chain (ETC), and included in the tricarboxylic acid cycle (TCA) as presented in Figure 1. Glucose enters the brain from the vascular system through highly efficient GLUT1 and GLUT4 glucose transporters (Figure 2) [46].

Blocking glucose transporting proteins (GLUT) both centrally and peripherally is the problem of currently used pharmacotherapy of schizophrenia. An important consequence of this is hyperglycemia and the development of metabolic syndrome. Out of the well-known antipsychotic drugs, clozapine blocks GLUT proteins most strongly. Hence, GLUT1 and GLUT3 in the brain are impaired, causing glucose-malnutrition of neurons. This also prunes neurons, therefore negative symptoms prevail in patients with schizophrenia, or relapses, associated with positive symptoms and ineffective neuronal pruning, may occur. Blocking GLUT protein receptors may seem promising and may target the side effects of antipsychotic drugs while inhibiting neuronal pruning due to disabling already damaged neurons and their conduction pathways [47].

Glucose transporters such as GLUT1 and GLUT3, are important because they participate in glucose uptake into both glial cells and neurons. They are not regulated with insulin, but are activated by systemic hypoglycemia, which stimulates glucose receptors located mainly in hypothalamus (including GLUT1 and GLUT3) [48]. The situation is different in the case of GLUT1 and GLUT4 transporters, which are located mainly on the perimeter. In the state of hunger, the GLUT1/GLUT4 ratio increases and glucose is transported to the brain, whose glucose demand is higher than in the periphery [49]. The brain gets glucose using GLUT1 and GLUT3 transporters, which work so fast that they reduce the subsequent steps involved in glucose metabolism in the brain. GLUT1 and GLUT3 are immediately attached to cell membranes. In contrast to these transporters, GLUT4 located in intracellular vesicles on the periphery through hypoglycemia trigger the hunger mechanism coupled with food acquisition by stimulating insulin release, so that energy and body mass remain in balance [50]. Transporters such as GLUT1 and GLUT3 occurring mainly in the frontal lobes are therefore decisive in the brain glucose metabolism in humans.

Modern theories slightly differ from the classical explanations, and assume that in schizophrenic patients, absorption of glucose into brain cells is impaired. That can be associated, (among others), with the wrong concentration of glucose transporters, i.e., GLUT1 and GLUT3, or neuronal insulin resistance [45]. Our preliminary studies on a group of 40 patients with the first episode of psychosis (manuscript in preparation) with the use of magnetic resonance spectroscopy (MRS) showed, that the strongest relationship between the metabolites, i.e., GLU + GLN + GSH 3.7 with positive symptom P scale was observed in a cingulate cortex. We observed that the higher the value of this ratio, the higher the *p* scale score (0.38; *p* = 0.04, Spearman correlation). This suggests that in the group of patients with first episode of psychosis, the symptoms of disease get worse, when the brain has insufficient glucose, in occurrence of intracellular hypoglycemia. That increases with insulin resistance of brain tissues and inefficient glucose transport, which causes an increase of acute disease symptoms, such as confusion, misinterpretation of reality, anxiety, and irritability, i.e., characteristics of the prodrome and the first episode of psychosis [51]. These results, as well as the presented review, indicate the direction

of further studies on neuronal insulin resistance in young patients with FEP. The observed changes in insulin signaling associated with impaired glucose metabolism in the brain of patients may be of clinical significance, as suggested by their strong association with higher P scale results according to the PANSS clinical evaluation.

Interestingly, in the period of rapid neuronal growth in fetal life and late childhood, intracellular hypoglycemia causes the transition of symptoms into chronic deficits, which are manifested by a lack of motivation and a desire to learn, as well as withdrawal of social functions or weakening of interpersonal communication, which ultimately exacerbates the symptoms and causes the disease to turn into a chronic form [5,7].

The consequences of this condition affect astrocytes and neurons in the brain, also impairing the functioning of the glutamine pathway, thereby reducing the availability of glutamate to NMDA receptors. Results of our imaging studies support the hypotheses mentioned above, because patients with FEP presented a significantly lower mean value of glutamate GLN 2.45 compared to the control group ($p = 0.001$), and compared to a group of patients with multiform behavioral and personality disorders ($p = 0.003$). This condition corresponds to the action of NMDA receptor inhibitors, which intensify the appearance of psychosis, including increased positive and negative symptoms similar to those observed in schizophrenia.

Insulin resistance is associated with the inability of target tissues to increase glucose uptake in response to insulin [52]. Insulin resistance of brain tissues can reduce glucose levels in the brain by glucose-transporter-dependent pathways (among others, GLUT4), which together cause disturbed neurotransmission and disease progression [53]. Obese patients treated with atypical neuroleptics, in addition to insulin resistance, develop an additional phenomenon of lipotoxicity, leading to an increase in the level of free fatty acids (FFA) in the plasma, which is explained by their competition with glucose as oxidative substrates [54]. It can therefore be concluded that increased fat oxidation causes insulin resistance in obese people with schizophrenia. Elevated levels of cortisol, an insulin-dependent hormone associated with inhibition of lipolysis in adipose tissue, are also observed in those patients. As a result of secondary insulin resistance of target tissues (including adipose tissue), metabolic or hormonal changes occur, most commonly in visceral obesity through the pathway of multifactorial inhibition of insulin binding to the GLUT4 receptor located in adipocyte cell membranes [55]. This, in turn, induces further changes associated with the development of metabolic syndrome and type 2 diabetes observed during treatment of psychiatric patients with second-generation neuroleptics (e.g., olanzapine, clozapine, risperidone) [56,57]. In the absence of insulin or in case of insulin resistance of target tissues, as a result of triggering the mTOR pathway, the maturation and the development of dendritic branches is also impaired together with the proper functioning of neurons. Mammalian target of rapamycin (mTOR) is an integrated multi-protein serine-threonine kinase complex, existing in two functional forms of mTORC1 and mTORC2, which can be activated, among others by growth factors (insulin, insulin-like growth factor IGF-1), stress (DNA damage, decrease in blood glucose, and oxygen), amino acids such as leucine (Leu) and arginine (Arg), as well as high ATP levels [58–61]. Activation of each form of the complex is closely related to stimulation of the PI3K/PTEN/AKT/mTOR tyrosine kinase pathway, which hence linked to synthesis, autophagy, lipogenesis, ketogenesis, mitochondrial function, glucose uptake, as well as insulin signaling via the transmembrane receptor tyrosine kinase (RTK) [62,63]. The mTOR pathway controlling neurogenesis, synaptogenesis, cell proliferation, autophagy, and apoptosis, becomes a very important signaling pathway, whose disorder leads to serious consequences and is considered an important etiological factor of schizophrenia. Studies on autophagy-related gene mutations (ATG) in animals are largely associated with inability to survive [64]. This means that the observed changes in the mTOR pathway could be the single cause of nerve cell death, which means that their lifetime strictly depends on the above processes, such as autophagy. The essence of mTOR action is associated with the control of autophagy, which under physiological conditions prevents the accumulation of misfolded proteins (e.g., pentosidine) and removes abnormal organelles, including mitochondria, endoplasmic reticulum,

ribosomes, and even synaptic vesicles (e.g., NR2A), which play a key role in the conduction of nerve impulses [65]. The mTOR-dependent autophagy disorder seen in schizophrenic patients leads to the formation of protein aggregates, which consequently promotes toxicity and cell death [66], as well as to altered synaptic conductivity and mitochondrial dysfunction (e.g., 22q11.2 deletion syndrome). mTOR may also cause neuronal insulin resistance, glucose deficiency (because insulin and amino acids directly affecting mTOR are the main regulators of ATG), and consequently reduced glucose metabolism, abnormal ATP production, as well as dysfunction and/or death of the cells. This pathway is involved in the translocation of GLUT1 receptors, which are then involved in glucose uptake, whose lowered levels indicate a disturbance in the mTOR pathway [67]. Adipose tissue taking part in the regulation of energy metabolism, glucose homeostasis, and insulin sensitivity, becomes insulin resistant if it contains an impaired mTOR pathway [68,69]. Signal pathways of 3-phosphatidylinositol kinase, inositol phosphatase (PI3K/PTEN/AKT/mTOR), protein kinase or mitogen activated kinases (MAPK/ERK) mediated by mTOR can be a mechanism explaining the formation of cardiometabolic complications of schizophrenia [70]. An animal model showing metabolic syndrome characteristics, where mTOR pathway inhibitors were administered, was analyzed. As a result, a reduction in oxidative stress (decrease in superoxide production and NADPH oxidase activity) and inflammatory response (reduction of macrophage influx), weight loss, reduction of adipose tissue hypertrophy, and hypertension were observed, which was beneficial to the cardiovascular system and reduced the risk of cardiometabolic complications [71]. Thus, cerebral insulin resistance in schizophrenia may induce reduced signal transduction for gamma-aminobutyric acid (GABA), *N*-methyl-*D*-aspartic acid (NMDA), dopamine-D2 receptors, and reduced levels of brain-derived neurotrophic factor (BDNF). KIF3B protein is involved in the transport of NR2A vesicles to *N*-methyl-*D*-aspartate receptors (NMDAR), which is crucial for neuronal plasticity and synapse formation. KIF3B plays an important role in the electrophysiological response of NMDAR and hence synaptic plasticity, which is one of the pathogenetic concepts of schizophrenia [72]. Although the presented studies concern the animal model, they are of great importance in patients with schizophrenia who were identified with KIF3B mutations. This confirms the abovementioned research and supports the pathogenetic concept of schizophrenia. Neurexin, a presynaptic protein responsible for the proper joining of neurons into synapses, whose abnormal expression contributes to the loss of synapses and impaired signal transduction in the brain, is also directly related to the plasticity of neurons [73]. Together, this contributes to the inflammation of the local brain tissue, which is driven by local oxidative stress and occurs in the absence of energy substrates needed by the brain (Figure 3) [74].

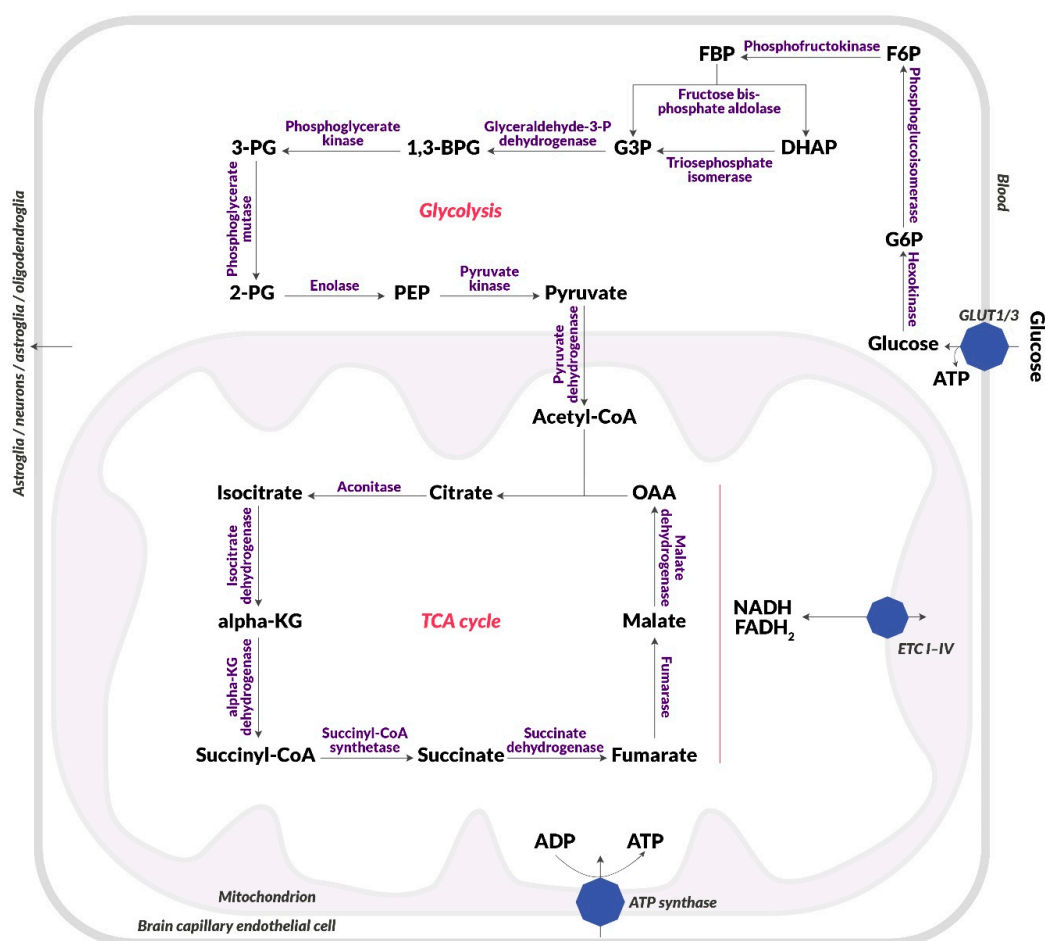


Figure 1. Diagram of glucose metabolism. Blood glucose uptake, glycolysis, citric acid cycle, electron Table 1, and an insulin-independent transporter (GLUT3). Then, it is metabolized in cytosol in glycolysis to pyruvic acid, which passes into the mitochondria. Pyruvate dehydrogenase converts it to acetyl-CoA, which is included in the citric acid cycle (TCA), which runs in the mitochondrial matrix. There, NADH and FADH₂ are produced, which end up in the electron transport chain (I-IV) (ETC I-IV), which is located on the inner membrane of the mitochondrion. NADH and FADH₂ are used to create a proton gradient, which is then used to produce ATP by ATP synthase. Abbreviations: 1,3-BPG: 1,3-bisphosphoglyceric acid; 2-PG: 2-phosphoglyceric acid; 3-PG: 3-phosphoglyceric acid; α -KG: Alpha-ketoglutarate; F6P: Fructose-6-phosphate; FBP: Fructose-1,6-bisphosphate; G3P: Glyceraldehyde-3-phosphate; G6P: Glucose-6-phosphate; GLUT1: Insulin-independent glucose transporter; GLUT4: Insulin-dependent glucose transporter; IR: Insulin receptor; OAA: Oxaloacetic acid; PEP: Phosphoenolpyruvic acid.

One of the etiological concepts of schizophrenia relates to the immune system dysfunction, which mainly involves cytokines produced by T lymphocytes [75]. As is known, cytokines circulating in peripheral blood can interact with the brain through several mechanisms: Binding to specific transporters [76], stimulating the vagus nerve, binding to the receptors in peripheral organs, or through a changes in blood-brain barrier permeability with a S100B protein marker of damage [77]. Cytokines can also be produced by microglia cells, astrocytes, endothelial cells, and neurons (Figures 2 and 3) [78]. An abnormal level of circulating cytokines is the cause of inflammation arising from the innate immune response and initiated by Toll-like receptors (TLR4) in the course of schizophrenia [79]. Changes in TLR4 levels affect the change in neuroplasticity, learning ability, and memory [80–82]. Currently conducted studies on the level of cytokines before and during the development of the disease aim to outline the therapeutic implications of the distortion of their levels and the usefulness of monitoring their concentration in schizophrenia [83].

Another pathogenic concept of schizophrenia emphasizes the role of reduced expression of mGlu2 and mGlu3 metabotropic glutamate receptors found in neuronal membranes. Their activation (by administering selective mGlu2/3 receptor agonists, e.g., LY379268, clozapine) causes antipsychotic effects manifested both in the form of reducing psychotic behavior and reversing existing molecular changes (by reducing the expression of DNMT1 and TET1). The antipsychotic effect is most likely due to DNA demethylation caused by growth-inhibiting and DNA-damaging Gadd45- β proteins [84,85].

An increase of mitochondrial function, as well as intensified cycles of citric acid and oxidative phosphorylation, are observed in patients with schizophrenia [86]. Velásquez et al. detected mitochondrial proteins that differ in their expression from normal levels. CLTC and PPIase A (proteins associated with endocytosis and protein folding) showed the reduced expression. An elevated level of eleven proteins associated with the citric acid cycle, electron transport pathway, and participating in the construction of the mitochondrial membrane has been detected [3], confirming the hypothesis of mitochondrial dysfunction in the etiopathogenesis of schizophrenia. It was discovered that neurons are deficient in generating bioenergetics substrates from glucose via the glycolytic pathways, which could result in TCA cycle abnormalities and impaired OXPHOS [87]. Increased glucose catabolism confirms the increase in plasma concentration of glycolytic enzymes, lactate, pyruvic acid, insulin, and GLUT1 [88]. The ratio of lactate and pyruvic acid concentrations is significantly reduced suggesting the predominance of pyruvate formation [88]. A different level of lactates can be observed in the cerebrospinal fluid (CSF), where its increase indicates an intensified extra-mitochondrial anaerobic glucose metabolism [89]. Imaging techniques and metabolomics assessing mitochondrial functions have allowed the determination of metabolites dependent on oxidative stress or inflammation to identify pathological changes in the brains of patients with varying degrees of schizophrenia [90–93]. Analysis of mitochondrial membrane redox potential (via phosphorous magnetic resonance spectroscopy, P-MRS) of brain tissue and peripheral metabolomics (analysis of blood or fecal metabolites) of patients with schizophrenia revealed that oxidative modifications of key glycolytic enzymes appear in the affected areas of the brain (e.g., pyruvate dehydrogenase, fructose biphosphate, 3-phosphoglyceraldehyde dehydrogenase, phosphoglycerate kinase-1, phosphoglycerate mutase) [94]. Reduced levels of pyruvate dehydrogenase results in increased lactate and cellular acidosis and is closely associated with reduced levels of ATP production in the brain [95], which then leads to reduced glucose metabolism. Lipid peroxidation observed in schizophrenic patients causes changes in neuronal membranes, which consequently interferes with their function and affects signal transduction through changes in neurotransmitters and neuronal receptors located in postsynaptic membranes [96,97]. Oxidative damage also affects mitochondrial DNA [98], hence it can also contribute to impaired energy production, which is associated with free oxygen radicals, including superoxide anion radical $O_2^{\bullet-}$ and hydrogen peroxide H_2O_2 [99]. Thus, both mitochondrial disorders and insulin resistance are closely related, because the oxidative stress produced in mitochondria interferes with the translocation of insulin-dependent GLUT4 transporters by accelerating the development of insulin resistance [100].

The metabolic syndrome developed during pharmacotherapy in patients with FEP or schizophrenia is a key reason for the insulin resistance of brain tissues, which is an important factor of cardiometabolic risk. Given the very large increase of worldwide metabolic syndrome and type 2 diabetes prevalence in connection with aging, schizophrenia is a serious and growing problem [101,102]. This review summarizes the role of oxidative damage and impaired glucose metabolism as key factors affecting metabolic complications in schizophrenia and highlights the role of a broader approach to schizophrenia by suggesting new therapeutic options.

The disease occurs long before the first clinical symptoms appear. The prodromal period lasts from several months to several years. Currently reported problems of the efficacy of schizophrenia pharmacotherapy may be associated with the late contact with medical personnel. The time between the onset of FEP and the start of pharmacotherapy varies between 22 and 150 weeks [103]. In addition, the diagnosis of neuropsychiatric disorders is largely based on subjective cognitive assessment. Due to the lack of commonly accepted central and peripheral biomarkers for the diagnosis of mental diseases, there

is a need to search for them according to the newly emerging pathogenetic concepts of schizophrenia in order to objectify the diagnosis, which will have a direct impact on more effective therapy and less social burden.

2. Glycation and Oxidative Damage in Schizophrenia

During the reaction of reduction, carbohydrates react with the lysine amino groups of protein side chains to form advanced glycation end-products (AGEs). The creation of AGEs includes not only the direct reaction of amino groups of proteins with sugars, but also oxidative damage to proteins as a result of glycooxidation [104], or the formation of diacarbonyl products of the above reactions, i.e., methylglyoxal in the brain [105,106], or pentosidine as a peripheral biomarker of increased carbonyl stress [107].

Advanced glycation end-products (AGE) are proteins or lipids with sugar residues attached as a result of exposure to sugars in the glycation process with the participation of RAGE receptors (receptor for advanced glycation end-products) [108]. RAGE receptors are associated with the cell membrane of most body cells and can combine with various ligands, including AGE, amphoterin, β -amyloid, S100/calgranulin [108–112], which results in the activation of proinflammatory pathways that play an important role in the etiopathogenesis of schizophrenia. esRAGE subtype (endogenous secretory RAGE) is an unbound form of the RAGE receptor that protects cells from the harmful effects of AGE in the mechanism of blocking RAGE activation [113]. Reduced levels of esRAGE are observed in schizophrenic patients, which consequently causes increased exposure to carbonyl stress [114].

Glycooxidation is one of the key reactions of increased carbonyl stress both in the local brain tissue and in the peripheral blood of schizophrenic patients [114], partly because the reactive compounds of carbonyl stress form irreversible dysfunctional carbonylated multimer CRMP2 (collapsing response mediator protein 2) [115], which has a typical AGE structure and binds to RAGE in both neurons and endothelial cells. The binding of AGE and CRMP2 to RAGE generates further oxidative stress, which is a direct cause of inhibition of neurite growth, neuronal polarity, and transport of vesicles dependent on motor proteins, including kinesin superfamily proteins (KIF), regulating structural processes that affect synaptic transmission, and controlling the dynamics of microtubules in cells and developing brain [116–118].

Pentosidine classified as AGE has become an important peripheral marker indicating accumulation of glycation products in the body due to ease its determination [119]. Patients with schizophrenia show elevated levels of pentosidine with a simultaneous decrease in pyridoxal (active form of vitamin B6), which is involved in the detoxification of reactive carbonyl compounds (RCCs) and thus counteracts carbonyl stress [120]. Another compound that counteracts biological stress is betaine, whose levels are reduced in the course of schizophrenia, resulting in an increase in the concentration of carbonylated compounds, e.g., N ϵ - carboxyethyl-lysine (CEL) in the cerebrospinal fluid [121]. In the course of schizophrenia, reduced levels of glyoxalase 1 (GLO1) are also observed. This enzyme is responsible for the detoxification of methylglyoxal (MG) by its enzymatic conversion to less harmful compounds, e.g., D-lactic acid [122]. Studies in an animal model have shown a reduced GLO1 level in schizophrenia, resulting in an accumulation of methylglyoxal and thus, modification of behavior, e.g., increased anxiety and depressive states [123].

Glycation causes a number of undesirable effects in the body. It can slow down the transformation of proteins, which occurs through conversion into the structure of β -harmonica and fibrils, keeping them longer in toxic oligomeric forms [124]. Elevated levels of peripheral immune cells, such as macrophages and monocytes, are observed in schizophrenia [125]. These cells may contribute to the disturbance of both cholesterol transport from the blood and inflammatory response in the presence of AGE glycation products, which in turn may cause deformation of blood vessels and atherosclerosis [126]. Vascular disorders associated with protein glycation and the formation of toxic oligomeric forms are the cause of cognitive decline in schizophrenia [127].

3. Oxidative, Nitrosative, and Sulfuric Stress in Schizophrenia

Oxidative and nitrosative damage affects macromolecules (i.e., proteins, lipids, or nucleic acids) during oxidative and nitrosative stress. It occurs when there is an imbalance between the production of reactive oxygen species (ROS) and reactive nitrogen species (RNS) and antioxidants. Of importance are, inter alia, endogenous (i.e., superoxide dismutase SOD, catalase, peroxidase, glutathione, thiols, uric acid, bilirubin) and exogenous antioxidants (i.e., vitamins A (retinol), C (ascorbate) and E (α -tocopherol), carotenoids, lutein, ubiquitin, glutathione, polyphenols). Oxidative (OxS) or nitrosative (NxS) stress is very often associated with the pathogenesis of many diseases, including schizophrenia [128–132]. It may determine the further course of the disease [133] with progression or remission of symptoms [134]. The term ‘reactive’ is variable, which is due to the fact that some ROS and RNS are themselves highly reactive, e.g., hydroxyl radical (OH^\bullet) or nitric oxide (NO), while others become reactive only during reactions with other radicals, e.g., hydrogen peroxide (H_2O_2), nitric oxide radical (NO^\bullet), superoxide anion radical ($\text{O}_2^{\bullet-}$) (Table 1).

The strongest and most aggressive of the reactive radicals in most biological systems is hydroxyl radical (OH^\bullet), whose standard potential value is equal to $+1.902 \pm 0.017$ V [135]. This radical reacts with most organic and inorganic compounds including DNA (all purine and pyrimidine bases and deoxyribose chain), proteins, lipids, amino acids, sugars, and metals [3,7]. The effects of the hydroxyl radical are associated with increased lipid peroxidation and accumulation of its toxic products in patients with schizophrenia, which is strongly marked in the blood of patients [136]. That can bring a better understanding of important biochemical processes locally occurring in the body of these patients. The effects of lipid peroxidation in patients with schizophrenia also concern vasculitis and fibrosis [137]. Polyunsaturated fatty acids present in myelin sheaths are particularly sensitive to lipid peroxidation, becoming a direct cause of demyelination of axons in brain tissue [3].

Another self-reactive radical is superoxide radical $\text{O}_2^{\bullet-}$, which acts as a mild oxidant in aqueous solutions, oxidizing ascorbic acid and thiols. Superoxide radical is a strong reducing agent for iron found in complexes, e.g., conjugated with cytochrome C or iron from EDTA [3,82]. Irreversible oxidation of iron-sulfur centers leads to inactivation of the abovementioned complex [7]. As a result of the reaction of $\text{O}_2^{\bullet-}$ with highly reactive nitric oxide (NO^\bullet), harmful nitrogen forms are formed, e.g., peroxynitrites (ONOO^-) [3], thanks to which the bioavailability of nitric oxide is reduced, and thus, the proper blood supply to the vessels is disturbed [1]. This is confirmed by our previous observations related to the reduced production of peripheral NO_2^- in patients with the first episode of psychosis, compared to patients with normotension. The research conducted by Śmierciak et al. confirmed the relationship between cardiovascular risk associated with inflammation (CRP), lipid profile, and NO_2^- production in patients with FEP. This proves that peripheral endothelial dysfunction is associated with reduced NO_2^- production. Therefore, modification of endothelial function by increasing NO_2^- levels appears as a new therapeutic strategy for patients with FEP [138].

Hydroperoxide HOO^\bullet , ozone (O_3) [82], and singlet oxygen ($\frac{1}{2} \text{O}_2$) [1,2] are responsible for peroxidation of lipids, proteins, and nucleic acids, and are more potent oxidant/reducing agents than superoxide radical. They also have the ability to cross cell membranes into the extracellular space [2] and to mediate cell signaling [1].

Independently reactive radicals include reactive nitrogen species (RNS) and nitric oxide (II)/(IV) (NO^\bullet), which is a gaseous signal molecule, responsible for vasodilatation and neurotransmission. Intermediate products formed with the participation of nitric oxide may lead to necrosis of liver cells, inhibition of mitochondrial function and depletion of pyrimidines, which may result in disruption of the DNA double helix [3]. Nitric oxide has an effect on ATP production by affecting the electron transport of the respiratory chain. In the brain, nitric oxide and nitrogen dioxide affect the complexes I, II, IV, and V of the respiratory chain [78]. The basic biochemical reactions involving nitric oxide are: S-nitrosylation of thiols, and nitrosylation of transition metal ions [12,79,80]. The structure of hemoglobin can be changed by direct attachment of NO to the heme in the nitrosylation or S-nitrosylation of thiols, when S-nitrosothiol is formed. Forty five S-nitrosylated proteins were identified in different

regions of the brain (hippocampus, black matter, cerebral cortex) of Alzheimer's disease patients, 15 of which were involved in metabolism (including lactate dehydrogenase) [78]. Glutathione (GSH) can also undergo S-nitrosylation. In postmortem studies, glutathione reductase levels correlated with the age of schizophrenic patients. In the absence of antipsychotic treatment, GSH levels may be reduced [79]. NO and peroxynitrite have a cytotoxic effect on oligodendrocytes [5]. Peroxynitrite (ONOO^-) is another strong oxidant to many biologically active molecules. NO and ONOO^- can react with each other. As a result of this reaction, hydrogen peroxide is formed, which inhibits mitochondrial respiration, Na^+/K^+ pump function, and phosphorylation of kinases [3]. Peroxynitrite may cause nitration (e.g., of protein tyrosine residues) and hydroxylation. In blood vessels, it reacts with carbon dioxide (CO_2). In cells, it oxidizes thiols [81]. The reaction of peroxynitrite with transition metals may form a hydroxyl radical [3]. Peroxyacid (ONOOH) is a protonated form of peroxynitrite. It is a strong oxidant produced by activated macrophages, thus showing a positive effect. It may cause oxidation of thiols, ascorbate, and lipids [81]. Peroxyacid can destroy sulfhydryl groups and cause oxidative destruction of biomolecules, acting similarly to the hydroxyl radical. It has cytotoxic effects on cells and mitochondria, causes DNA breaks, protein oxidation, nitration of aromatic amino acids, resulting in 3-nitrotyrosine [3].

Among radicals that are not reactive independently but reactive with other radicals, both ROS and RNS are distinguished. Such ROS include, among others, hydrogen peroxide H_2O_2 , which is a weak oxidant and a weak reducer [82]. As a result of reaction with metal ions (all group D metals except zinc, e.g., iron and copper), it creates highly reactive radicals including HO^\bullet in Fenton reaction [7,83], whose role in free radical damage to schizophrenic patients was mentioned above. As a result of the direct action of hydrogen peroxide, the structures of heme proteins are modified with the release of iron. Hydrogen peroxide also causes inactivation of enzymes and oxidation of DNA, lipids, -SH groups, and keto acids [3]. Hypochlorous acid (HOCl) has a high oxidative capacity. Its action may lead to oxidative halogenation of biomolecules such as lipids, proteoglycans, amino acids, as well as other membrane components and intracellular elements [3]. Organic peroxides (ROOH) are another group of independently nonreactive ROS. They are formed in the reaction of HO_2 with RO_2 , mainly in the oxidation of alkanes and alkenes [85]. Organic peroxides are produced by, among others, α - and β -pyrene, isoprene, limonene, as a result of the decomposition of organic hydroperoxides in the presence of Fe^{2+} in the Fenton reaction (OH^\bullet is also formed then).

Nitroxyl (HNO) is an example of independently reactive RNS. It can cause direct oxidation of thiols, which distinguishes it from NO. In the cardiovascular system, it activates cardiac thiol-containing proteins, e.g., sarcoplasmic ryanodine receptors (RyR_2). It causes vasorelaxation by activating soluble guanyl cyclase (sGC) and further increases in cGMP. It can activate ATP-sensitive and voltage-gated potassium channels and affect the release of calcitonin gene-related peptide. It causes reduction of vascular $\text{O}_2^{\bullet-}$ production. It also has vasoprotective and cardioprotective effects [84]. As a result of the reaction of NO with NO_2 , a nitrosyl cation (NO^+) [88] and a nitrosyl anion (NO) [81] are formed. The cation is formed through oxidation, and the anion through reduction. Nitrosyl cation is responsible for the post-translational modification of thiol-containing proteins, i.e., S-nitrosation of their thiol groups [88], which can lead to homolysis of S-N bonds. It is accompanied by the release of NO, formation of S-S bonds, and conformational changes affecting the cell. Nitrosyl cation probably can also cause the formation of S-nitrosamines. Nitrosyl cation may be present in complexes or transported, e.g., by S-nitrosoglutathione. NO^+ donors have been shown to effectively affect Swiss 3T3 fibroblast and PC12 neuronal cell apoptosis [81]. Some studies suggest that nitrosyl anion may be formed directly by nitric oxide synthase (NOS). Nitrosyl anion reacts with oxygen resulting in the formation of peroxynitrite (ONOO^-), which occurs during the oxidation of hydroxylamine in an alkaline environment. Attachment of NO to heme Fe^{2+} produces NO-nitrosyl heme, from which NO^- can be released. It is believed that nitrosyl anion may be involved in the degradation of S-nitrosothiols in the presence of thiols. Nitrosyl anion may be responsible for reactions typical of endothelial-derived relaxing factor (EDRF) and cause double-stranded DNA breaks [81].

Similar to ROS and RNS, reactive sulfur forms (RSS) perform important biological functions such as cell signaling, redox homeostasis, and metabolism regulation [106]. RSS are formed as a result of one-electron oxidation of hydrogen sulfide (H_2S). As a result of a number of reactions, sulfhydryl radical (HS^\bullet), thiyl radical (RS^\bullet), and persulfide radical anion ('supersulfide' ($\text{HS}_2^{\bullet-}$)) are formed [135,139,140]. Further oxidation of hydrogen sulfide to sulfane sulfur (S0; thiosulfoxide) produces sulfanes (including hydrogen disulfide H_2S_2 , sulfenic acids RSOH , and elemental sulfur (S)) [139]. Sulfates can then react with another sulfane sulfur to form polysulfides. Organic RSS can also arise from thiol (RSH) oxidation [141].

Hydrogen sulfide (H_2S) can be synthesized from cysteine, homocysteine, thiosulfates, and carbonyl sulfide as a result of many different reactions occurring in the cytoplasm and mitochondria [139]. It has a protective function against OxS and inflammation, as well as a signaling function. The signaling role of H_2S is associated with post-translational oxidative modification of cysteine residues resulting in cysteine persulfides. H_2S may reduce disulfide bonds causing disruption of enzymatic function. It can be released in an acidic environment (but not under physiological conditions) from the iron-sulfuric complex belonging to the respiratory chain. SOD oxidizes hydrogen sulfide to polysulphides, which can then react with subsequent sulphides to form long-chain polysulphides. SOD metabolizes sulfides to disulfan (H_2S_2). Polysulphides are also formed, among others, in neurons as a result of the transfer of sulfuric ion from 3-mercaptopyruvate to cyanides, other thiols, which catalyzed by 3-mercaptopyruvate sulfurtransferase (MPST), e.g., H_2S_2 and trisulfan (H_2S_3) soluble in the brain [142]. In addition to the sources of sulfans and polysulphides mentioned above, they are also generated in oxidation of hydrogen sulfide by unbound or heme-bound transition metals, myeloperoxidase, catalase, superoxide dismutase, and other oxidases, as well as the result of H_2S metabolism and cysteine catabolism. Polysulphides can play a protective role against thiols in conditions of oxidative stress. Disulfanes and polysulfides can be both oxidants and reducing agents, can be used as signaling molecules or as an energy source. Polysulfides can protect neurons from oxidative stress by activating Nrf2/Keap1 (nuclear factor erythroid-2-related factor-2/Kelch-like ECH-associated protein 1) pathway. Polysulfides have been shown to neutralize methyl glyoxal and inhibit its cytotoxicity [142].

Although H_2S and polysulphides are necessary for proper functioning, recent studies have shown that their elevated levels can lead to the development of pathophysiological processes and brain disorders. MPST expression was elevated in the brains of people with schizophrenia. This suggests that patients subjected to sulfuric stress have stronger psychotic symptoms. Studies show that elevated H_2S levels in schizophrenic patients already occur at an early stage of the disease development [89]. Blood and plasma tests of schizophrenic and FEP patients showed elevated homocysteine levels, which probably correlates with the severity of the symptoms. In turn, the level of hydrogen sulfide in the plasma of patients with schizophrenia was reduced and showed a negative correlation with the severity of the symptoms. Impaired hydrogen sulfide synthesis may impair the physiological effects of NO, which may worsen the symptoms of schizophrenia [142].

Intracellular cysteine hydropersulfide (CysSSH) is involved in 2-methylthio-modifications of t-RNA in mammals, and also affects insulin secretion [7].

Thiyl radicals can also react with OH^\bullet causing the formation of very reactive sulfenic acids, which can, among others, form an intramolecular disulfide bond with cysteine and react with low-molecular thiols. Sulfenic acids are irreversibly oxidized to sulfinic acid ($-\text{SO}_2\text{H}$) and sulfonic acid (SO_3H) [10,143].

These processes result in an increase in oxidative, nitrosative, and sulfuric damage, which may include impaired glucose metabolism and the associated loss of ion gradients depending on functional potential disturbances and Ca^{2+} transport [144]. During oxidative stress, there is an intracellular increase in free Ca^{2+} levels, which are known to have unfavorable consequences, including depolarization of mitochondrial membranes, oxidative phosphorylation disorders, and overproduction of free radicals. Moreover, research in schizophrenic patients suggests that changes in mitochondrial function due to ROS occur before treatment. Hence, the mechanisms of action of psychiatric drugs are both direct and indirect, suggesting that free radical damage is an etiopathological factor in schizophrenia [91,145].

As a result of these changes, vital neurons of the frontal cortex, hippocampus, and other regions, which are physiologically responsible for normal synaptic plasticity and neurotransmitter release are turned off [24–27]. These neurons affect learning and memory, focus, cognitive functions, and are responsible for the organization of neurons in the finely-tuned circuits and motor functions during puberty [27,28].

In addition, DNA oxidative damage, e.g., 8-hydroxydeoxyguanosine, can interfere with gene transcription and affect promoter function, which can lead to impaired transcription of essential genes, i.e., suppressor genes, p53 gene, ras gene, and further mutations. In turn, RNA oxidative damage can damage protein translation, which leads to reduced expression of proteins and loss of their physiological functions (Table 2) [18,36,37].

Oxidative, nitrosative, or sulfuric damage occurs when specific ROS/RNS/RSS react with macromolecules, which can be identified by measuring specific reaction products that induce the abovementioned damage referred to in the literature as ‘oxidative, nitrosative and sulfurative biomarkers’ [128,146–148]. The most frequently appearing terms for commonly used biomarkers of oxidative damage to macromolecules, i.e., lipids, proteins, and nucleic acids are summarized in Table 2.

Table 1. Selected biologically important reactive oxygen species (ROS), reactive nitrogen species (RNS), reactive sulfur forms (RSS).

	ROS	RNS	RSS
Reactive independently	Hydroxyl radical (OH•)	Nitric oxide (II)/(IV) – nitric oxide and nitrogen dioxide (NO• and NO ₂)	Sulphydryl radical (HS•) Thiyl radical (RS•)
	Perhydroxyl radical, the protonated form of superoxide radical (HOO•)	Peroxynitrite (ONOO ⁻)	Persulfide radical anion, ‘supersulfide’ (HS ₂ ^{•-})
	Superoxide radical (O ₂ ^{•-})	Protonated form of peroxynitrite (peroxyacid) (ONOOH)	Sulfenic acids (RSOH), e.g., sulfinic acid (–SO ₂ H) and sulfonic acid (–SO ₃ H)
	Ozone (O ₃)		Sulfans, np.: Hydrogen disulfide (H ₂ S ₂), trisulfan (H ₂ S ₃)
	Singlet oxygen ($\frac{1}{2}$ O ₂)		Polysulfides (H ₂ S _n)
Not reactive independently, reactive with other radicals	Hydrogen peroxide (H ₂ O ₂)	Nitroxyl (HNO)	Cysteine hydropersulfide (CysSSH)
	Hypochlorous acid (HOCl)	Nitrosyl cation (NO ⁺)	Thiols (RSH)
	Organic peroxides (ROOH)	Nitrosyl anion (NO ⁻)	Hydrogen sulfide (H ₂ S)

Table 2. Selected peripheral and brain biomarkers of oxidative damage. Biologically important damage to proteins, lipids, and nucleic acids caused by oxidative stress.

ROS Target	Directly Measured Product of Oxidative Damage	Mechanisms	Effects
Proteins	3-nitrotyrosine	Produced during radical–radical reaction between: Superoxide radical ($O_2^{\bullet-}$) with nitric oxide (NO^{\bullet}) to form peroxynitrite ($ONOO^-$), which leads to nitration of Tyr residues in proteins; between the tyrosyl radical and nitrogen dioxide ($^{\bullet}NO_2$). Moreover, occurs during reactions catalyzed by peroxidases, including myeloperoxidase (MPO) or eosinophilic peroxidase. 3-Nitrotyrosine is also formed in a mechanism catalyzed by modified superoxide dismutase (Cu, Zn-SOD), which has a greater ability to catalyze the nitration reaction of tyrosine residues caused by $ONOO^-$. This occurs in motor neurons [149].	Affects the structure and function of proteins in vitro and in vivo; present in inflammation associated with vascular endothelial dysfunction and cardiovascular complications in schizophrenia [150]. Correlates with the severity of atherosclerotic lesions; serves as an independent indicator of the risk of coronary artery disease in patients with FEP or schizophrenia. Biomarker, whose level depends on the pharmacotherapy, e.g., clozapine induces oxidative and nitrosative stress (in the caspase-3, NF- κ B p65 or Nrf2 mechanism) depending on the dose in the cardiovascular system [151–153].
	Protein carbonyls	Carbonylated proteins are formed in the course of the following mechanisms: 1. The formation of aldehydes due to the cleavage of the peptide chain resulting in the formation of free radicals that convert into aldehydes; 2. Formation of oxidized amino acid side chains (oxo-histidine); 3. Combining proteins with lipid peroxidation products; 4. Creating advanced glycation end-products (AGEs).	Protein carbonyls increase: Carbonyl stress; production of conformationally altered polypeptide chains, which contributes to cellular dysfunction; excessive aggregation of proteins by promoting unfolding and formation of noncovalent, as well as covalent bonds between proteins; increased toxicity; may lead to apoptotic cell death [154,155].
	Dityrosine	Can be formed as a result of metal-catalyzed bond formation between two tyrosine residues. The reaction proceeds to form a tyrosine radical that isomerizes the entire aromatic ring. As a result of the combination of two radicals in the ortho–ortho position, an unsaturated bis-ketone is formed, which leads to the formation of dityrosine [156]. The change is irreversible [157].	Affects the redox state disorder; elevates the level of inflammatory factors, causing oxidative damage to the hippocampus; contributes to the deterioration of learning and memory skills [158]. It may contribute to the amino acid metabolism disorder and inhibit energy production [159].
	Methionine sulfoxide	Hydrogen peroxide reacts with methionine residues at pH = 5 to form methionine sulfoxide. Under these conditions, cysteine residues are resistant to methylation. Cysteine thiol group must first be ionized in order to be oxidized. At acidic pH, methionine is oxidized by dimethyl sulfoxide to methionine sulfoxide. At neutral or alkaline pH it is oxidized under the influence of hypochlorous acid, oxygen, ozone, peroxynitrite, superoxide radical [160]. Under the influence of further oxidation, methionine sulfoxide can be converted to methionine sulfone [157].	Methionine sulfoxide reductase is present in many organs, including the brain. It has a protective function against the effects of oxidative stress. Disturbances in the functioning of methionine sulfoxide reductase may have a significant impact on the development of many diseases, including schizophrenia. Various genetic variations of methionine sulfoxide reductase have been demonstrated in schizophrenic patients. They may be associated with dopamine disorders and affect the effects of treatment. These genetic variations affect various traits related to brain function. Chronic stress is associated with overexpression of methionine sulfoxide reductase in the hippocampus [161].
	S-carboxymethyl-cysteine S-2-succinyl-cysteine	Under the influence of glyoxal or glucose on cysteine residues, protective amino acids, peptides containing thiol groups, and proteins form S-carboxymethyl-cysteine, which has been recognized as AGE. Studies show that thiohemiacetal that was initially formed undergoes an intramolecular Cannizzaro reaction [162]. S-succinyl-cysteine is formed as a result of a nonenzymatic Michael reaction under the influence of fumaric acid on the free thiol groups of cysteine residues [157,163].	Fumarate, leading to the formation of S-(2-succinyl)-cysteine, causes irreversible inhibition of many sulfhydryl enzymes. One of them is 3-phosphoglyceroldehyde dehydrogenase, which belongs to the glycolytic pathway, which is impaired in the course of schizophrenia [164].

Table 2. Cont.

ROS Target	Directly Measured Product of Oxidative Damage	Mechanisms	Effects
	Carboxymethyllysine	Formed as a result of various reaction mechanisms, i.e., oxidation of fructosyl-lysine (reaction chain leading to AGE), direct reaction of glyoxal with the ϵ -amino group of lysine (reaction chain leading to ALE) [162,165], oxidation of lysine, proline residues, arginine and threonine [130].	Important AGE-epitope and RAGE ligand. It causes systemic glycooxidant load and increased body's susceptibility to stress [165].
	Cysteine/cystine Homocysteine/homocystine	Homocysteine and cysteine are reduced forms, homocystine and cystine are oxidized forms [166]. Homocysteine is a product of metabolism (demethylation) of methionine. It is sensitive to autooxidation and can be converted into cysteine [167].	The accumulation of homocysteine and the lack of further metabolism of this compound causes a disorder of thymidine synthesis, DNA replication and neurogenesis, as well as the synthesis of neurotransmitters leading to a disorder of brain conductance [168]. Cysteine, which is a precursor of antioxidative glutathione, exhibits elevated levels in schizophrenia, compensating for the increase in oxidative stress [169].
Lipids	Lipid peroxides	Formed during oxidation of polyunsaturated long-chain fatty acids, e.g., linoleic, arachidonic, and docosahexaenoic acids. Hydrogen from the methyl group is removed first, resulting in the formation of two double bonds. Then, the fat is isomerized, a diene is formed, which reacts with molecular oxygen, leading to the formation of lipid peroxide. The second mechanism is based on oxidation catalyzed by metals (iron, copper). As a result of the Fenton reaction, radicals are formed that remove hydrogen from the methyl group, further reaction proceeds as described above [170].	Inhibits glycolysis and synthesis of proteins and nucleic acids. Leads to the disorders in the transport of glucose and glutathione, damaging cholinergic neurons and accelerating apoptosis of neurons. Binds to thiol groups of proteins or to glutathione, reducing their level in the cell; binds to amino groups of proteins or DNA nitrogen bases, initiating mutagenesis and carcinogenesis processes. The concentration in schizophrenic patients is higher in both the brain and the periphery [171,172]. They probably inhibit Na, K-ATPase activity by lipid peroxidation, which leads to disruption of the phospholipid moiety [173].
	Malondialdehyde	MDA is formed during conversion of methyl linoleate to prostaglandin-like endoperoxide, which is considered a precursor of MDA under stress. Another mechanism is the production of hydrogen peroxide and β -cleavage of the fatty acid chain. Hydroperoxyaldehyde is then formed, from which MDA is generated as a result of β -scission or due to the reaction of the acrolein radical with a hydroxyl radical. MDA can also be formed during the enzymatic biosynthesis of thromboxane A ₂ [130,134,174].	Inhibits glycolysis and synthesis of proteins and nucleic acids. Leads to the disorders in the transport of glucose and glutathione, damaging cholinergic neurons and accelerating apoptosis of neurons. Binds to thiol groups of proteins or to glutathione, reducing their level in the cell; binds to amino groups of proteins or DNA nitrogen bases, initiating mutagenesis and carcinogenesis processes. The concentration in schizophrenic patients is higher in both the brain and the periphery [171,172].
	4-hydroxynonenal	Oxidation of polyunsaturated fatty acids, i.e., linoleic, linolenic, arachidonic, and docosahexaenoic acids, by lipid peroxides [175]. Generally formed from omega-6 acids via β -fragmentation of 15-hydroperoxyarachidonic acid and 13-hydroperoxylolenic acid [130,134].	HNE induces the formation of protein adducts, which then become the cause of a toxic neuronal disorder. Increases permeability of BBB and endothelium of blood vessels [175,176].
	F2-isoprostanes	Eicosanoids result from the peroxidation of long-chain polyunsaturated fatty acids (mainly omega-3 and omega-6), e.g., arachidonic acid by OH \cdot [130,134,177].	Highly reactive products formed by the metabolism of isoprostanes (isoketals and their protein adducts). Inhibits the activity of simpleosomes, contributing to neurodegeneration [178,179].

Table 2. Cont.

ROS Target	Directly Measured Product of Oxidative Damage	Mechanisms	Effects
DNA	8-hydroxydeoxyguanosine	Formed during oxidation (hydroxylation of the C-8 position) of nucleotide guanine by OH [•] .	Leads to the destruction of DNA, which causes an increase in mutagenicity, cancer risk, and neurodegenerative diseases [177,180].
	Uracil, xanthine, oxanine	Exposure of DNA to RNS (N ₂ O ₃ —product of NO, auto-oxidation) causes deamination of bases and conversion of cytosine to uracil (2'-deoxyuridine), guanine to xanthine (2'-deoxyxanthosine), oxanine (2'-deoxyoxanine) (in the presence of HNO ₂ at acidic pH), and 8-nitroguanine [181,182].	The correct level of uracil incision, abasic site cleavage, and dNTP incorporation activities in mitochondria originating from brains of patients with AD was examined [183]. Reduced activity of xanthine oxidase in the thalamus and occipital cortex of patients with chronic schizophrenia was observed. Studies show that elevated levels of xanthine oxidase also occur in the blood of schizophrenic patients [184].
	8-nitroguanine	NO ₂ and NOO ⁻ react with guanine contained in DNA bases, nucleosides, and nucleotides, resulting in the formation of 8-nitroguanine [185,186].	The presence of 8-nitroguanine has been shown in hepatocytes, Kupffer's cells, and inflammatory cells of patients with chronic hepatitis C [187]. 8-Nitroguanine can lead to the formation of tumors and is detected in cancer cells [188,189].
	5-chlorocytosine	Formed under the direct influence of HClO on cytosine contained in DNA [190].	5-Chlorocytosine may serve as a biomarker for chronic inflammation. The presence of 5-chlorothymosine predisposes to mutagenesis [191].
	5-chlorouracil	Formed due to the enzymatic deamination of 5-chlorocytosine [190].	Exhibits genotoxic and antimetabolic effects [192].
	5-hydroxymethyluracil 5-hydroxyuracil	Formed under the influence of ROO [•] [191]. Oxidation of cytosine to unstable cytosine glycol which undergoes deamination leads to the formation of 5-hydroxyuracil [193]. 5-hydroxymethyluracil can be formed in two mechanisms: <ul style="list-style-type: none"> • Oxidation of thymine and a formation of the base with adenine; • Formation under the influence of ROS, for example H₂O₂ with 5-methylcytosine. Then, 5-hydroxymethylcytosine is formed, which undergoes deamination to 5-hydroxymethyluracil, forming a base pair with cytosine [194]. 	Elevated levels of 5-hydroxyuracil have been observed in vulnerable regions of the brains of patients in the late stages of Alzheimer's disease [195]. Elevated levels of 5-hydroxyuracil have also been observed in other brain regions (such as temporal, parietal, and frontal lobes) with AD. Elevated levels of 5-hydroxyuracil in mtDNA were examined in the parietal and temporal lobes of AD brains, while neocortex showed an increased content of 5-hydroxyuracil in nuclear DNA [196]. A reduced level of incision and 5-hydroxyuracil ligase activity in mitochondria from brain postmortem investigations was demonstrated in patients with AD [183]. 5-Hydroxymethyluracil plays an important role in DNA demethylation. It can serve as a cancer biomarker [197].
Ethno-DNA-adducts	Reactive compounds formed in ROS-induced modification reactions, e.g., modified lipids, react with DNA either directly or through bi-functional intermediates, creating mutagenic etheno-DNA adducts, e.g., γ -linolenic acid peroxidation products as 4-hydroxynonenal react with adenine, cytosine, and guanine. This results in the formation of 1,N ⁶ -etheno-2'-deoxyadenosine (ϵ dA), 3,N ⁴ -etheno-2'-deoxycytidine (ϵ dC), 1,N ² -etheno-2'-deoxyguanosine (1,N ² ϵ dG), and N ² ,3-etheno-2'-deoxyguanosine (N ² ,3 ϵ dG) [198].	Can be used as cancer markers [199]. They are carcinogenic and play an important role in initiating the process of hepatocarcinogenesis [200]. They are detected in the livers of patients with nonalcoholic steatohepatitis (NASH) [201] and alcoholic liver disease (ALD) [200].	
RNA	8-hydroxyguanosine	Hydroxylation of nucleotide guanine by OH [•] , H ₂ O ₂ , O ₂ ^{•-} [202].	Increased serum 8-hydroxyguanosine levels have been demonstrated in patients with traumatic brain injury, which correlated with mortality [201]. Its occurrence is associated with many chronic diseases in old age, including Alzheimer's disease [200], dementia and Parkinson's disease [201].

Oxidative, nitrosative, sulfur (SxS) stress, and inflammation disturb brain development [203]. The stress can affect neuronal plasticity, signal transduction, and induce apoptosis [129,204]. It is believed that OxS markers and inflammation may be important indicators of the course of schizophrenia and provide information on the disease progression and the effectiveness of treatment [128]. The brain of schizophrenic patients contains increased levels of oxidative/nitrosative/sulfuric damage products, i.e., 4-hydroxy-2-nonenal (HNE), 3-nitrotyrosine or homocysteine, associated with the trans-sulfur pathway [143]. Interestingly, the increase in HNE was associated with the accumulation of iron in the black matter, a region of the brain heavily affected by pathology [175], while an increase in 3-nitrotyrosine levels was seen in the prefrontal cortex of patients with psychosis [205]. In the case of antioxidative system indicators, there was a decrease in the activity of key antioxidative enzymes, i.e., glutathione peroxidase (GPx) or superoxide dismutase (SOD). The aforementioned intensification of lipid peroxidation expressed by increased levels of malondialdehyde (MDA) was identified in the blood of people with psychosis [206], although these changes did not correlate with executive functions (EF) in patients with chronic schizophrenia [206].

In relation to carbonyl stress in the course of schizophrenia, hyper-carbonylation of a collapsin response mediator protein (CRMP2) [115] was observed in the brain and cerebrospinal fluid of patients. Increased levels of carbonylated proteins in the cerebrospinal fluid of the studied patients support the theory of carbonyl stress [157]. Interestingly, increased levels of AGEs, which are also significantly associated with carbonyl stress in schizophrenia, were characteristic of people with treatment-resistant disease [207]. In contrast, esRAGE, which is one of the soluble forms of RAGE, is considered to be a key carbonyl stress suppressant by binding to AGEs. As indicated, lower levels of both esRAGE and sRAGE in the serum can be associated with the functional haplotype of people with schizophrenia in whom AGEs are the main cause of carbonyl stress [114].

The consequences of OxS/NxS/SxS in the brain may include disorders of glucose metabolism and thus disturb the ion gradient with impaired conductivity in the area of action potential and Ca^{2+} imbalance [157]. Oxidative stress increases intracellular levels of free Ca^{2+} which can lead to impaired energy supply. Energy in the form of ATP necessary for the proper functioning of neurons originating from oxidative phosphorylation from the inner mitochondrial membrane can be regulated, inter alia, by intracellular Ca^{2+} level [207,208]. Ca^{2+} stored in the endoplasmic reticulum (ER) is quickly and effectively transported to the mitochondria through mitochondria-associated ER membranes (MAM). MAM has a DISC1 (disrupted-in-schizophrenia 1) on its surface—a scaffold protein that is credited with affecting the function of intracellular organelles, i.e., mitochondria, centrosomes, endosomes, lysosomes, and affecting receptor degradation, as well as regulating intracellular transport [209] associated with cognitive and personality disorders [210]. DISC1 reacts with the type 1 inositol 1,4,5-triphosphate receptor (IP3R1) and inhibits its binding to the inositol triphosphate (IP3) ligand, affecting Ca^{2+} transfer through MAM between ER and mitochondria. DISC1 mutations cause oxidative/carbonyl stress during which hydrogen peroxide, superoxide anion, and C_2 -ceramide impair the transport of Ca^{2+} in mitochondria, leading to its penetration from ER through IP3Rs. The presented mechanism becomes the cause of depolarization of mitochondrial membranes, oxidative phosphorylation disorders, and overproduction of free radicals, resulting in the exclusion of vital neurons of the frontal cortex, hippocampus, etc., which are physiologically responsible for the normal synaptic plasticity and the release of neurotransmitters [211–214]. Thus, they affect learning and memory, focus, cognitive functions, and are responsible for the organization of neurons in the finely-tuned circuits and motor functions during puberty [214,215].

Studies show that there are other mechanisms of Ca^{2+} transport that affect mitochondrial function. Thus, mitochondrial ryanodine type 1 receptor (mRyR1) found in cardiac cells and neurons is better suited for Ca^{2+} transport between endoplasmic reticulum and mitochondrion and plays the key role in mitochondrial uptake of Ca^{2+} [216]. Increased levels of Ca^{2+} in the cytoplasm causes Ca^{2+} to accumulate in the mitochondrial matrix and consume the mitochondrial membrane potential that affects the mitochondrial ability to produce ATP [217] and regulate dehydrogenase activity in the citric acid

Table 3. Cont.

Oxidative Potential Found in Literature	Key Reaction	References
TAR (total antioxidant response)	Based on the method proposed by Miller et al. ABTS - 2,2'-azinobis-(3-ethylbenzothiazoline)-6-sulphonic acid $ABTS \xrightarrow[\text{peroxidase (e.g. metmyoglobin), H}_2\text{O}_2]{\text{ }} ABTS^+$	[228,240]
TAA (total antioxidant activity)	$Fe - EDTA + H_2O_2 \rightarrow OH \cdot \xrightarrow[\text{TBARS suppression}]{\text{sodium benzoate}} TBARS \xrightarrow[\text{antioxidants}]{\text{ }}$	[240,244]
TAS (total antioxidant status)	ABTS - 2,2'-azinobis-(3-ethylbenzothiazoline)-6-sulphonic acid $ABTS \xrightarrow[\text{peroxidase (e.g. metmyoglobin), H}_2\text{O}_2]{\text{ }} ABTS^+$	[228,245,246]
TPAC (total plasma antioxidant capacity/capability)	$AN = NA \rightarrow [A \cdot N_2 \cdot A] \xrightarrow{-N_2} 2A \cdot$ $A \cdot + O_2 \rightarrow AO_2 \cdot \xrightarrow[\text{stable product}]{R-PE}$ $AO_2 \cdot + AO_2 \cdot \rightarrow \text{stable product}$ R-PE: R-phycoerythrin	[237,238,247]
NEAC (nonenzymatic antioxidant capacity)	$AN = NA \rightarrow [A \cdot N_2 \cdot A] \xrightarrow{-N_2} 2A \cdot$ $A \cdot + O_2 \rightarrow AO_2 \cdot \xrightarrow[\text{stable product}]{R-PE}$ $AO_2 \cdot + AO_2 \cdot \rightarrow \text{stable product}$ R-PE: R-phycoerythrin	[134,238]
Ir-reducing capacity (iridium-reducing capacity)	$Ir(IV) + e^- \rightarrow Ir(III)$ $Ir^{OX} + e^- \rightarrow Ir^{RED}$ $K_2IrCl_6(IV) + e^- \rightarrow Ir(III)$	[128,248]

The estimation of the total antioxidant capacity as a clinical exponent of OxS is associated with a different approach consisting in the determination of:

- Concentrations of single or all low molecular weight antioxidants in plasma, serum, saliva, and other biological materials [92,134];
- Activity of selected enzymes [92,249];
- OxS markers, e.g., 8-hydroxyguanosine or MDA as exponents of lipid peroxidation [92,249,250].

Total antioxidant capacity of plasma is the result of the action of low molecular weight antioxidants (e.g., α -tocopherol, ascorbic acid, β -carotene, glutathione, uric acid, bilirubin), proteins (e.g., ceruloplasmin, ferritin, albumin, transferrin), and enzyme systems [130–132]. OxS-induced decrease in TAC is eliminated by the increase of antioxidant enzyme activity and activation of nonenzymatic mechanisms. In the latter phase of OxS, a decrease in TAC is observed, which is caused by the exhaustion of antioxidant defense mechanisms [251].

The clinical significance of antioxidative potential determination is associated with the assessment of the increased risk of certain diseases and their complications (including schizophrenia) or the impact of treatment on compensatory elements associated with the antioxidant defense of the organism [92,129,240,252]. Another approach proposes to use a single general OxS marker, which is a moderately strong oxidant $K_2IrCl_6(VI) - Ir^{OX}$, to obtain chemical data on OxS. This approach does not focus on the determination of a specific chemical compound, but detection of environmental characteristics that indicate disturbances between oxidative and reducing activity [128].

Interestingly, serum OxS determinations correlate with the occurrence and course of schizophrenia, which suggests that OxS in CSN occurs earlier which may be identified already in the early stages of the ongoing pathology. In addition, OxS data correlate with indicators of damaged BBB in schizophrenic patients, which combines the concept of oxidative stress and neuritis [128] with the pathogenesis of schizophrenia [253,254]. Morphological changes in the structure of capillaries and cells of the neurovascular unit (NVU) occur in the prefrontal and visual cortex of schizophrenic patients, along with vacuole destruction of endothelial cells, astrocyte-foot processes, and the reduction of baseline membrane thickness [254] (Figures 2 and 3). Changes in tight junctions are observed in the brains of schizophrenic patients [253,255], which are reflected in the reduction of expression of 12 out of 21 genes associated with their formation compared to the control group [254]. It has been shown that

tight junctions can be broken [253], which has been associated with the presence of large areas lacking claudin-5, whose expression is reduced in the prefrontal cortex of patients with schizophrenia [253–255]. Claudin-5 proteins are absent along the blood vessels of the brain of schizophrenic patients, which may be associated with the penetration of low-molecular blood elements, e.g., S100 β , resulting in impaired brain homeostasis [253]. The calcium-binding S100 β protein is mainly produced by astrocytes [253,256,257]. An increase in plasma S100 β levels shows a positive correlation with the occurrence of negative symptoms of schizophrenia and cognitive disorders [254].

The relationship between neuroinflammation, oxidative stress, endothelial damage, and impaired mitochondrial metabolism due to the dysfunction of the blood-brain barrier in patients with schizophrenia is presented in Figure 3. Vascular disorders associated with hyper-permeability of the blood-brain barrier can impair many functions simultaneously: They can affect cognitive and behavioral functions associated with neuroinflammation in the microglial area, which leads to a deepening process of neurodegeneration in the CNS [258]. According to the conception of de la Monte [259], neurodegeneration may be called type III diabetes or CNS metabolic disease, where it comes to an increase in oxygen, nitrogen, and sulfuric free radicals (ROS, RNS, RSS) [260] due to activation of inflammatory pathways (and increased release of proinflammatory cytokines, e.g., IL-6, IL-1 β , TNF- α , by glial cells and astrocytes) [261]. It causes mitochondrial damage and activation of a number of kinase pathways, e.g., MAP, JNK, and p38MAPK, which may also result in inhibition of insulin signaling [262]. Disorders of glucose metabolism in the CNS increase the production of ketone bodies and the activation of additional pathways mediated by free radicals, including NF- κ B [7]. According to the literature data, insulin axis impairment and hypometabolism in the CNS cause loss of neurons, astrogliosis, and microgliosis mainly within amygdala and septum [263], axonal damage and demyelination of the hippocampus and fornix [264]. McNay et al. indicate that insulin signaling and abnormal glucose transport significantly affect cognitive processes and memory functions regulated by the hippocampus [265]. This is due to the incorrect activation of the insulin-sensitive GLUT4 transporter on the periphery and GLUT1–3 in the brain tissue [10]. Abnormal glucose metabolism can also affect the integrity of white and gray matter due to the effect of hyperglycemia on the dynamics and function of mitochondria, which leads to the accumulation of ROS and impaired axonal transport [266], mainly within the thalamus, parietal lobe, and hippocampus [267].

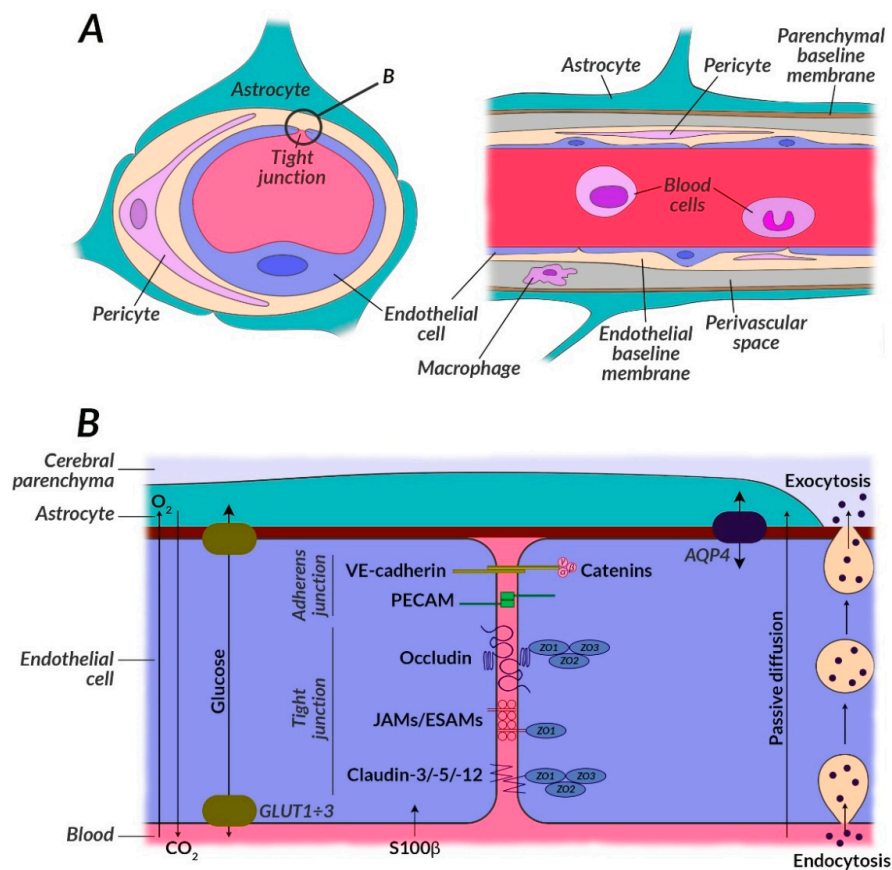


Figure 2. Structure of the neurovascular unit (NVU) with particular attention to the glucose metabolism impairment. (A) NVU contains the blood-brain barrier (BBB) which consists of many different cells including astrocytes, pericytes, neurons, microglia, and endothelial cells. The brain cells can work with each other when metabolic demand on glucose and other substrates is enough. BBB provides crossing of important substrates for mitochondrial metabolism, e.g., glucose, removal of toxic superoxides, e.g., carbon dioxide, and reduce access to the brain of potentially damaging molecules in the bloodstream, e.g., some drugs. BBB constitutes a protection against harmful factors due to the mechanisms of active intercellular transport or control by proteins transporting energy substrates located in the vascular endothelial cell membrane (e.g., GLUT1). (B) Intracellular transport is regulated by protein complexes located between endothelial cells, i.e., ESAM, AQP4, GLUT1, PECAM, JAMs, VE-cadherin, peripheral proteins of tight junctions (ZO1±3), claudine (3, 5, 12), and occludin. GLUT3 is seen in neurons, and GLUT1 in endothelial cells; GLUT2 is a glucose sensor present in the hypothalamus in the brain. In the course of schizophrenia, the GLUT1 translocation process, and thus glucose transport, is impaired, among others due to the effect of harmful oxidative stress, inappropriate mitochondrial metabolism, and impaired mTOR pathway. BBB also regulates the exchange of other components, e.g., calcium, elements of the immune system, or indicators of neurobiochemical focal lesions, i.e., S100β protein. Tight connections in the brains of schizophrenic patients can be broken due to the presence of claudin-5-deficient areas. Their expression is reduced in the prefrontal cortex and they are absent along the blood vessels, which may be associated with the penetration of S100β through BBB and, consequently, with a disorder of brain homeostasis. Abbreviations: AQP4: Aquaporin 4; BBB: Blood-brain barrier; ESAM: Endothelial cell-selective adhesion molecule; GLUT1: Insulin-independent glucose transporter; JAM: Junctional adhesion molecule; NVU: Neurovascular unit; PECAM: Platelet-endothelial cell adhesion molecule; VE-cadherin: Vascular endothelial cadherin; ZO1±3: (B) Peripheral proteins of tight junctions (zonula occludens).

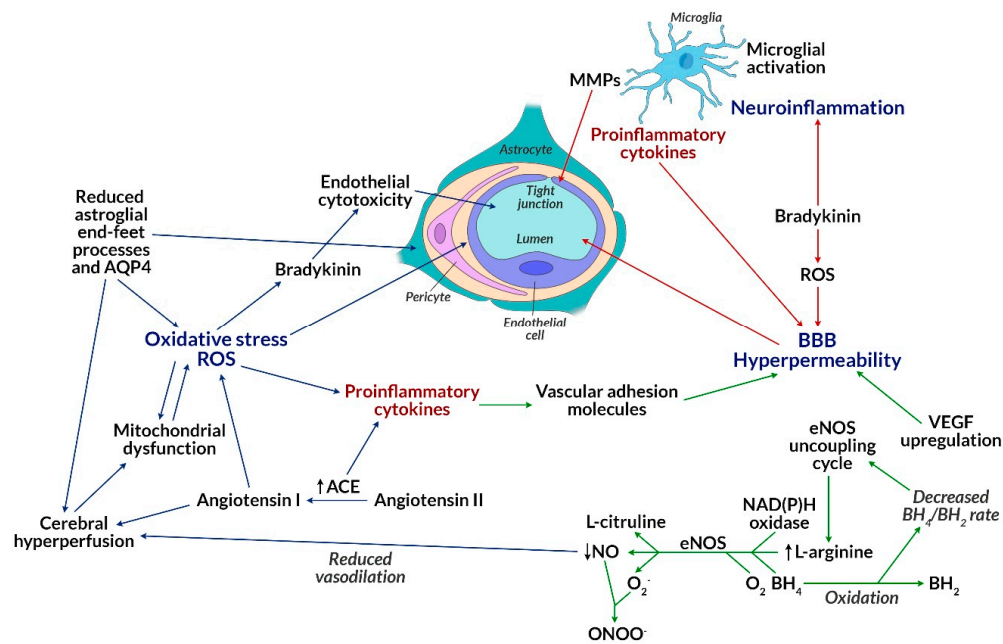


Figure 3. Impact of oxidative stress on blood-brain barrier (BBB) permeability. Excessive ROS, produced among others by mitochondria, may lead to oxidative stress, which may disrupt mitochondrial functions, as well as induce an increase in the level of proinflammatory cytokines. This consequently leads to an increase in the level of VCAM-1 and BBB permeability. Proinflammatory cytokines (formed after the activation of microglial cells) and ROS can also directly affect BBB permeability. The reduced BH_4/BH_2 ratio activates the eNOS uncoupling cycle, which increases L-arginine levels. Its increased level, as well as participation of NAD(P)H oxidase, BH_4 , O_2 , and eNOS leads to the formation of L-citrulline, NO, and superoxide radical ($O_2^{\bullet-}$). NO reacts with $O_2^{\bullet-}$, resulting in highly reactive, harmful peroxynitrite ($ONOO^-$) forms, whereas the NO levels decrease. NO is responsible for vasodilatation of vessels. A decrease in its level causes a reduction in vasodilatation and, as a consequence, cerebral hyperperfusion. Cerebral hyperperfusion may be the result of reduced astrocyte-foot process and AQP4 levels. Their reduction can also directly lead to oxidative stress. The formation of angiotensin-I from angiotensin-II is catalyzed by ACE, which contributes to cerebral hyperperfusion, as well. Elevated ACE levels may promote the production of proinflammatory cytokines. Bradykinin can be both produced due to reactive oxygen species and lead to their formation. It exhibits a cytotoxic effect on endothelial cells and leads to inflammation of the nervous tissue. Stimulation of VEGF is also associated with an increased BBB permeability. Abbreviations: ACE: Angiotensin-converting enzyme; AQP4: Aquaporin 4; BBB: Blood-brain barrier; BH_4/BH_2 : Tetrahydrobiopterin/dihydrobiopterin; eNOS: Nitric oxide synthase; MMP: Matrix metalloproteinase; NO: Nitric oxide; NAD(P)H: Nicotinamide adenine dinucleotide; $O_2^{\bullet-}$: Superoxide radical; $ONOO^-$: Peroxynitrite; ROS: Reactive oxygen species; VCAM-1: Vascular adhesion molecule; VEGF: Vascular endothelial growth factor.

Progression of schizophrenia is increasingly associated with the treatment-resistant (TRS) form of the disease. The severity of symptoms is the result of sulfuric stress and is positively correlated with high levels of homocysteine and the failure of transsulfuration process, which metabolizes homocysteine in the L-cysteine pathway [143,268]. L-cysteine deficiency and lack of response from the transsulfuration pathway (low activity of cystathionine β -synthase and cystathionine γ -lyase) become the cause of the recorded low levels of glutathione and glutathione pathway enzymes (i.e., GPx) in the brain and blood of patients with schizophrenia [269]. As a consequence, the level of hydrogen sulfide (H_2S) decreases and the oxidative phosphorylation (OXPHOS) pathway containing a number of proteins that have iron and sulfur in their structure is impaired. During sulfuric stress, the synthesis of these iron and sulfur-containing proteins is deregulated, which directly strikes OXPHOS, which becomes inefficient in schizophrenia. Consequently, the molybdenum cofactor (MoCo), which

requires sulfur (from L-cysteine), affects the dependent sulfite oxidase (SUOX), which detoxifies sulfites from sulfur-containing amino acids. If the SUOX is low, sulphite toxicity, which is a component of oxidative-nitrosative-sulfuric stress, may occur, which may result in a decrease in the synthesis of selenoproteins, i.e., GPx, observed in schizophrenia and its first symptoms [270]. Sulfuric stress increases damage to macromolecules, i.e., DNA or proteins (in the carbonylation process), leading to methylation of genes and histones, affecting epigenetic changes in TRS.

Although H₂S and polysulfides are necessary for proper functioning, recent studies have shown that their elevated levels can lead to the development of pathophysiological processes and brain disorders. MPST expression was elevated in the brains of people with schizophrenia. This suggests that patients with this disease subjected to sulfuric stress have stronger psychotic symptoms. Studies show that increased levels of H₂S in schizophrenic patients occur at an early stage of the disease development [89].

The presented pathogenetic mechanisms related to oxidative, nitrosative, or sulfuric stress, impaired glucose metabolism, and mitochondrial dysfunction may constitute a therapeutic target for existing antipsychotic drugs and alternative therapies for TRS. It could be directed at the disorders of oxidative-antioxidative regulation, mitochondrial metabolism, as well as regulation of other pathways, resulting from glucose metabolism dysregulation.

4. Conclusions

Observations in this manuscript, as well as our own research (papers are being prepared), is strengthening the theory of impaired glucose metabolism at an early stage of schizophrenia. Our paper attempts to bring the recipients closer to a multidisciplinary approach to schizophrenia, as a disease involving the complexity of the brain pathology process, in correlation with peripheral changes.

This article aims to draw attention of the public, mainly physicians dealing with the younger generation, to expand the panel of diagnostic tests to facilitate the assessment of impaired glucose metabolism as a factor determining the state of the brain and the progression of mental illness over time. Research in this area can be helpful in reduction of stigma associated with the disease, and can be useful in the process of monitoring the treatment of affected individuals.

The presented manuscript points out scientific evidence to the role of oxidative, nitrosative, sulfuric antioxidative damage, which is a key element of pathomechanism and progression of schizophrenia and its symptoms. Glucose metabolism, which is the main source of energy for the brain, is impaired in schizophrenia and the first symptoms of psychosis. These changes are largely due to impaired oxidation of key glycolytic proteins or energy production in the form of ATP. Smaller energy supplies to the 'necessitous' brain cause a number of changes including the exclusion of vital functions, such as impaired functional potential or increased levels of intracellular Ca²⁺, altering the basic functions of neurons.

Reactive forms of oxygen, nitrogen, or sulfur are the cause of oxidative, nitrosative, and sulfuric damage inducing lipid peroxidation, protein carbonylation, or glycation. This creates reactive molecules that critically affect the proteins of the mitochondrial metabolism in the brain, changing its functions and promoting the symptoms of schizophrenia.

Presynaptic membranes are particularly sensitive to oxidative stress, leading to impairment of cognitive functions and motivation, and ultimately to impairment of perception of reality. Affected neurons die, leading to the clinical manifestation of schizophrenia. As a neuropathology, it may be preceded by a prodrome or may be resistant to treatment, hence understanding the pathomechanism of the disease and increased efforts to better understand the biochemical, genetic background, or imaging techniques assessing anatomical or functional changes in the brain, seems necessary.

Given the increasing percentage of people with diabetes or cardiovascular disease in the group of people with schizophrenia along with an aging population, impaired glucose metabolism or insulin resistance seem to be more common in the general population. They require targeted therapies aimed

at impaired glucose metabolism and reducing oxidative, nitrosative, and sulfuric stress, and thus protecting the brain from threatening neuropathological changes disabling its basic functioning.

In this work, an attempt was made to present the main pathogenic pathways of schizophrenia caused by an oxidative-antioxidant imbalance that impairs glucose metabolism, leading to the weakened neural conduction and neuronal death.

Considering the role of individual brain cells, i.e., glial cells associated with bioenergetics of brain processes, glucose metabolism dysfunctions, and accelerated aging of neurons in schizophrenia, current research should focus on the mechanisms highlighted in this paper. That can significantly contribute to understanding the consequences of this disease already at the stage of its early symptoms. This in turn can lead to the development of effective therapeutic strategies for those struggling with this severe disease.

In our further research, we will present the results of events regarding the sequence of changes described in this manuscript, which should also be taken into account trying to determine the pathomechanism of the disease and understand the development of treatment-resistant forms, as well as a strategy for more effective therapy directed at oxidative stress, impaired glucose metabolism, and neuronal death.

Available imaging techniques in combination with effective biomarkers of disease progression stand open to new possibilities of testing schizophrenic patients and open potential new ways of treatment, which hopefully will arise for a new generation of patients suffering from schizophrenia.

Author Contributions: Conceptualization, A.B., W.K., and T.P.; writing—original draft preparation, A.B., W.K., J.S., M.S., and N.Ś.; writing—review and editing, A.B. and W.K.; visualization, W.K., T.P., and T.K.; revised the manuscript, A.B., W.K., and T.K.; project administration, A.B.; funding acquisition, A.B. and T.P. All authors have contributed equally to this work. All authors have read and agreed to the published version of the manuscript.

Funding: This work was supported by grant number N41/DBS/000292 from the Jagiellonian University Medical College, Poland.

Conflicts of Interest: The authors declare no conflict of interest.

References

1. Vita, A.; De Peri, L.; Deste, G.; Sacchetti, E. Progressive loss of cortical gray matter in schizophrenia: A meta-analysis and meta-regression of longitudinal MRI studies. *Transl. Psychiatry* **2012**, *2*, e190. [[CrossRef](#)]
2. Qin, J.; Sui, J.; Ni, H.; Wang, S.; Zhang, F.; Zhou, Z.; Tian, L. The shared and distinct white matter networks between drug-naïve patients with obsessive-compulsive disorder and schizophrenia. *Front. Neurosci.* **2019**, *13*, 96. [[CrossRef](#)] [[PubMed](#)]
3. Velásquez, E.; Martins-de-Souza, D.; Velásquez, I.; Carneiro, G.R.; Schmitt, A.; Falkai, P.; Domont, G.B.; Nogueira, F.C.S. Quantitative subcellular proteomics of the orbitofrontal cortex of schizophrenia patients. *J. Proteome Res.* **2019**, *18*, 4240–4253. [[CrossRef](#)] [[PubMed](#)]
4. Wu, Y.; Chen, M.; Jiang, J. Mitochondrial dysfunction in neurodegenerative diseases and drug targets via apoptotic signaling. *Mitochondrion* **2019**, *49*, 35–45. [[CrossRef](#)] [[PubMed](#)]
5. Cropley, V.L.; Klauser, P.; Lenroot, R.K.; Bruggemann, J.; Sundram, S.; Bousman, C.; Pereira, A.; Di Biase, M.A.; Weickert, T.W.; Weickert, C.S.; et al. Accelerated gray and white matter deterioration with age in schizophrenia. *Am. J. Psychiatry* **2017**, *174*, 286–295. [[CrossRef](#)] [[PubMed](#)]
6. O'Hanlon, E.; Howley, S.; Prasad, S.; McGrath, J.; Leemans, A.; McDonald, C.; Garavan, H.; Murphy, K.C. Multimodal MRI reveals structural connectivity differences in 22q11 deletion syndrome related to impaired spatial working memory. *Hum. Brain Mapp.* **2016**, *37*, 4689–4705. [[CrossRef](#)] [[PubMed](#)]
7. Altamura, A.C.; Delvecchio, G.; Marotta, G.; Oldani, L.; Pigoni, A.; Ciappolino, V.; Caletti, E.; Rovera, C.; Dobra, C.; Arici, C.; et al. Structural and metabolic differentiation between bipolar disorder with psychosis and substance-induced psychosis: An integrated MRI/PET study. *Eur. Psychiatry* **2017**, *41*, 85–94. [[CrossRef](#)]
8. Shan, X.X.; Ou, Y.P.; Pan, P.; Ding, Y.D.; Zhao, J.; Liu, F.; Chen, J.D.; Guo, W.B.; Zhao, J.P. Increased frontal gray matter volume in individuals with prodromal psychosis. *CNS Neurosci.* **2019**, *25*, 987–994. [[CrossRef](#)]

9. Mechelli, A.; Riecher-Rössler, A.; Meisenzahl, E.M. Neuroanatomical abnormalities that predate the onset of psychosis: A multicenter study. *Arch. Gen. Psychiatry* **2011**, *68*, 489–495. [[CrossRef](#)]
10. Pollak, T.A.; Lennox, B.R.; Müller, S.; Benros, M.E.; Prüss, H.; van Elst, L.T.; Klein, H.; Steiner, J.; Frodl, T.; Bogerts, B.; et al. Autoimmune psychosis: An international consensus on an approach to the diagnosis and management of psychosis of suspected autoimmune origin. *Lancet Psychiatry* **2019**, *7*, 93–108. [[CrossRef](#)]
11. Fernandez, A.; Meehan, D.W.; Karpinski, B.A.; Paronett, E.M.; Bryan, C.A.; Rutz, H.L.; Radin, E.A.; Lubin, N.; Bonner, E.R.; Popratiloff, A.; et al. Mitochondrial dysfunction leads to cortical under-connectivity and cognitive impairment. *Neuron* **2019**, *102*, 1127–1142. [[CrossRef](#)] [[PubMed](#)]
12. Mayo, D.; Bolden, K.A.; Simon, T.J.; Niendam, T.A. Bullying and psychosis: The impact of chronic traumatic stress on psychosis risk in 22q11.2 deletion syndrome - a uniquely vulnerable population. *J. Psychiatr. Res.* **2019**, *114*, 99–104. [[CrossRef](#)] [[PubMed](#)]
13. Núñez, C.; Stephan-Otto, C.; Usall, J.; Bioque, M.; Lobo, A.; González-Pinto, A.; Pina-Camacho, L.; Vieta, E.; Castro-Fornieles, J.; Rodríguez-Jimenez, R.; et al. Neutrophil count is associated with reduced gray matter and enlarged ventricles in first-episode psychosis. *Schizophr. Bull.* **2019**, *45*, 846–858. [[CrossRef](#)] [[PubMed](#)]
14. Smucny, J.; Lesh, T.A.; Zarubin, V.C.; Niendam, T.A.; Ragland, J.D.; Tully, L.M.; Carter, C.S. One-year stability of frontoparietal cognitive control network connectivity in recent onset schizophrenia: A task-related 3T fMRI study. *Schizophr. Bull.* **2020**. [[CrossRef](#)] [[PubMed](#)]
15. Chen, Y.; Farooq, S.; Edwards, J.; Chew-Graham, C.A.; Shiers, D.; Frisher, M.; Hayward, R.; Sumathipala, A.; Jordan, K.P. Patterns of symptoms before a diagnosis of first episode psychosis: A latent class analysis of UK primary care electronic health records. *BMC Med.* **2019**, *17*, 227. [[CrossRef](#)] [[PubMed](#)]
16. Anda, L.; Brønnick, K.K.; Johannessen, J.O.; Joa, I.; Kroken, R.A.; Johnsen, E.; Rettenbacher, M.; Fathian, F.; Løberg, E.M. Cognitive profile in ultra high risk for psychosis and schizophrenia: A comparison using coordinated norms. *Front. Psychiatry* **2019**, *10*, 695. [[CrossRef](#)]
17. Schulmann, A.; Ryu, E.; Goncalves, V.; Rollins, B.; Christiansen, M.; Frye, M.A.; Biernacka, J.; Vawter, M.P. Novel complex interactions between mitochondrial and nuclear DNA in schizophrenia and bipolar disorder. *Mol. Neuropsychiatry* **2019**, *5*, 13–27. [[CrossRef](#)]
18. Llorca, P.M.; Pereira, B.; Jardri, R.; Chereau-Boudet, I.; Brousse, G.; Misdrahi, D.; de Chazeron, I. Hallucinations in schizophrenia and Parkinson's disease: An analysis of sensory modalities involved and the repercussion on patients. *Sci. Rep.* **2016**, *6*, 38152. [[CrossRef](#)]
19. Häfner, H. From onset and prodromal stage to a life-long course of schizophrenia and its symptom dimensions: How sex, age, and other risk factors influence incidence and course of illness. *Psychiatry J.* **2019**, *2019*, 9804836. [[CrossRef](#)]
20. Chang, W.C.; Westbrook, A.; Strauss, G.P.; Chu, A.O.K.; Chong, C.S.Y.; Siu, C.M.W.; Chan, S.K.W.; Lee, E.H.M.; Hui, C.L.M.; Suen, Y.M.; et al. Abnormal cognitive effort allocation and its association with amotivation in first-episode psychosis. *Psychol. Med.* **2019**. [[CrossRef](#)]
21. Avery, S.N.; McHugo, M.; Armstrong, K.; Blackford, J.U.; Woodward, N.D.; Heckers, S. Disrupted habituation in the early stage of psychosis. *Biol. Psychiatry Cogn. Neurosci. Neuroimaging* **2019**, *4*, 1004–1012. [[CrossRef](#)] [[PubMed](#)]
22. Fusar-Poli, P.; Broome, M.R.; Woolley, J.B. Altered brain function directly related to structural abnormalities in people at ultra high risk of psychosis: Longitudinal VBM-fMRI study. *J. Psychiatr. Res.* **2011**, *45*, 190–198. [[CrossRef](#)] [[PubMed](#)]
23. Chatterjee, I.; Kumar, V.; Sharma, S.; Dhingra, D.; Rana, B.; Agarwal, M.; Kumar, N. Identification of brain regions associated with working memory deficit in schizophrenia. *F1000Research* **2019**, *8*, 124. [[CrossRef](#)] [[PubMed](#)]
24. Chen, X.; Liang, S.; Pu, W.; Song, Y.; Mwansisya, T.E.; Yang, Q.; Liu, H.; Liu, Z.; Shan, B.; Xue, Z. Reduced cortical thickness in right Heschl's gyrus associated with auditory verbal hallucinations severity in first-episode schizophrenia. *BMC Psychiatry* **2015**, *15*, 152. [[CrossRef](#)]
25. Kasai, K.; Shenton, M.E.; Salisbury, D.F. Progressive decrease of left Heschl gyrus and planum temporale gray matter volume in first-episode schizophrenia: A longitudinal magnetic resonance imaging study. *Arch. Gen. Psychiatry* **2003**, *60*, 766–775. [[CrossRef](#)]
26. Li, J.; Wu, C.; Zheng, Y.; Li, R.; Li, X.; She, S.; Wu, H.; Peng, H.; Ning, Y.; Li, L. Schizophrenia affects speech-induced functional connectivity of the superior temporal gyrus under cocktail-party listening conditions. *Neuroscience* **2017**, *17*, 248–257. [[CrossRef](#)]

27. Bandeira, I.D.; Barouh, J.L.; Bandeira, I.D.; Quarantini, L. Analysis of the superior temporal gyrus as a possible biomarker in schizophrenia using voxel-based morphometry of the brain magnetic resonance imaging: A comprehensive review. *CNS Spectr.* **2020**, *10*, 1–7. [[CrossRef](#)]
28. Gao, J.; Tang, X.; Wang, C.; Yu, M.; Sha, W.; Wang, X.; Zhang, H.; Zhang, X.; Zhang, X. Aberrant cerebellar neural activity and cerebro-cerebellar functional connectivity involving executive dysfunction in schizophrenia with primary negative symptoms. *Brain Imaging Behav.* **2019**. [[CrossRef](#)]
29. Zhang, R.; Wei, Q.; Kang, Z.; Zalesky, A.; Li, M.; Xu, Y.; Li, L.; Wang, J.; Zheng, L.; Wang, B.; et al. Disrupted brain anatomical connectivity in medication-naïve patients with first-episode schizophrenia brain. *Struct. Funct.* **2015**, *220*, 1145–1159. [[CrossRef](#)]
30. Gil-Berrozpe, G.J.; Sánchez-Torres, A.; García de Jalón, E.; Moreno-Izco, L.; Fañanás, L.; Peralta, V.; Cuesta, M.J.; SEGPEPs group. Utility of the MoCA for cognitive impairment screening in long-term psychosis patients. *Schizophr. Res.* **2019**. [[CrossRef](#)]
31. Zanelli, J.; Mollon, J.; Sandin, S.; Morgan, C.; Dazzan, P.; Pilecka, I.; Reis Marques, T.; David, A.S.; Morgan, K.; Fearon, P.; et al. Cognitive change in schizophrenia and other psychoses in the decade following the first episode. *Am. J. Psychiatry* **2019**, *176*, 811–819. [[CrossRef](#)] [[PubMed](#)]
32. Goulding, S.M.; Holtzman, C.W.; Trotman, H.D.; Ryan, T.; MacDonald, A.N.; Shapiro, D.I.; Brasfield, J.L.; Walker, E.F. The prodrome and clinical risk for psychotic disorders. *Child Adolesc. Psychiatr. Clin. N. Am.* **2013**, *22*, 557–567. [[CrossRef](#)] [[PubMed](#)]
33. Oliver, D.; Davies, C.; Crossland, G.; Lim, S.; Gifford, G.; McGuire, P.; Fusar-Poli, P. Can we reduce the duration of untreated psychosis? A systematic review and meta-analysis of controlled interventional studies. *Schizophr. Bull.* **2018**, *44*, 1362–1372. [[CrossRef](#)] [[PubMed](#)]
34. Romanov, D.V.; Lepping, P.; Bewley, A.; Huber, M.; Freudenmann, R.W.; Lvov, A.; Squire, S.B.; Noorthoorn, E.O. Longer duration of untreated psychosis is associated with poorer outcomes for patients with delusional infestation. *Acta Derm. Venereol.* **2018**, *10*, 848–854. [[CrossRef](#)]
35. Penttilä, M.; Jääskeläinen, E.; Hirvonen, N.; Isohanni, M.; Miettunen, J. Duration of untreated psychosis as predictor of long-term outcome in schizophrenia: Systematic review and meta-analysis. *Br. J. Psychiatry* **2014**, *205*, 88–94. [[CrossRef](#)] [[PubMed](#)]
36. Ordak, M.; Nasierowski, T.; Muszyńska, E. The pharmacological basis of drug interactions: An aspect overlooked in psychiatry. *Lancet Psychiatry* **2019**, *6*, 984. [[CrossRef](#)]
37. Shimomura, Y.; Kikuchi, Y.; Suzuki, T.; Uchida, H.; Mimura, M.; Takeuchi, H. Antipsychotic treatment in the maintenance phase of schizophrenia: An updated systematic review of the guidelines and algorithms. *Schizophr. Res.* **2019**. [[CrossRef](#)]
38. Correll, C.U.; Lencz, T.; Malhotra, A.K. Antipsychotic drugs and obesity. *Trends Mol. Med.* **2011**, *17*, 97–107. [[CrossRef](#)]
39. Correll, C.U.; Robinson, D.G.; Schooler, N.R.; Brunette, M.F.; Mueser, K.T.; Rosenheck, R.A.; Marcy, P.; Addington, J.; Estroff, S.E.; Robinson, J.; et al. Cardiometabolic risk in patients with first-episode schizophrenia spectrum disorders baseline results from the RAISE-ETP study. *JAMA Psychiatry* **2014**, *71*, 1350–1363. [[CrossRef](#)]
40. Yang, N.; Yu, L.; Deng, Y.; Han, Q.; Wang, J.; Yu, L.; Zhai, Z.; Li, W. Identification and characterization of proteins that are differentially expressed in adipose tissue of olanzapine-induced insulin resistance rat by iTRAQ quantitative proteomics. *J. Proteom.* **2019**, *212*, 103570. [[CrossRef](#)]
41. Xu, P.T.; Song, Z.; Zhang, W.C.; Jiao, B.; Yu, Z.B. Impaired translocation of GLUT4 results in insulin resistance of atrophic soleus muscle. *BioMed Res. Int.* **2015**, *2015*, 291987. [[CrossRef](#)]
42. Greenhalgh, A.M.; Gonzalez-Blanco, L.; Garcia-Rizo, C.; Fernandez-Egea, E.; Miller, B.; Arroyo, M.B.; Kirkpatrick, B. Meta-analysis of glucose tolerance, insulin, and insulin resistance in antipsychotic-naïve patients with nonaffective psychosis. *Schizophr. Res.* **2017**, *179*, 57–63. [[CrossRef](#)] [[PubMed](#)]
43. Grover, S.; Chakrabarti, S.; Kulhara, P.; Avasthi, A. Clinical practice guidelines for management of schizophrenia. *Indian J. Psychiatr.* **2017**, *59*, 19. [[CrossRef](#)]
44. Pillinger, T.; Beck, K.; Gobjila, C.; Donocik, J.G.; Jauhar, S.; Howes, O.D. Impaired glucose homeostasis in first-episode schizophrenia. *JAMA Psychiatry* **2017**, *74*, 261–269. [[CrossRef](#)] [[PubMed](#)]

45. Kapogiannis, D.; Dobrowolny, H.; Tran, J.; Mustapic, M.; Frodl, T.; Meyer-Lotz, G.; Schiltz, K.; Schanze, D.; Rietschel, M.; Bernstein, H.G.; et al. Insulin-signaling abnormalities in drug-naïve first-episode schizophrenia: Transduction protein analyses in extracellular vesicles of putative neuronal origin. *Eur. Psychiatry* **2019**, *62*, 124–129. [[CrossRef](#)]
46. Jurcovicova, J. Glucose transport in brain—Effect of inflammation. *Endocr. Regul.* **2014**, *48*, 35–48. [[CrossRef](#)] [[PubMed](#)]
47. De Silva, P.N. Does the association with diabetes say more about schizophrenia and its treatment?—The GLUT hypothesis. *Med. Hypotheses* **2011**, *77*, 529–531. [[CrossRef](#)] [[PubMed](#)]
48. Agarwal, S.M.; Caravaggio, F.; Costa-Dookhan, K.A.; Castellani, L.; Kowalchuk, C.; Asgariroozbehani, R.; Graff-Guerrero, A.; Hahn, M. Brain insulin action in schizophrenia: Something borrowed and something new. *Neuropharmacology* **2020**, *163*, 107633. [[CrossRef](#)] [[PubMed](#)]
49. Zhang, X.; Yang, M.; Du, X.; Liao, W.; Chen, D.; Fan, F.; Xiu, M.; Jia, Q.; Ning, Y.; Huang, X.; et al. Glucose disturbances, cognitive deficits and white matter abnormalities in first-episode drug-naïve schizophrenia. *Mol. Psychiatry* **2019**. [[CrossRef](#)]
50. Fernandez-Egea, E.; Walker, R.; Ziauddeen, H.; Cardinal, R.N.; Bullmore, E.T. Birth weight, family history of diabetes and diabetes onset in schizophrenia. *BMJ Open Diabetes Res. Care* **2020**, *8*, e001036. [[CrossRef](#)]
51. Laurens, K.R.; Luo, L.; Matheson, S.L.; Carr, V.J.; Raudino, A.; Harris, F.; Green, M.J. Common or distinct pathways to psychosis? A systematic review of evidence from prospective studies for developmental risk factors and antecedents of the schizophrenia spectrum disorders and affective psychoses. *BMC Psychiatry* **2015**, *15*, 205. [[CrossRef](#)] [[PubMed](#)]
52. Sesti, G. Pathophysiology of insulin resistance. *Best Pract. Res. Clin. Endocrinol. Metab.* **2006**, *20*, 665–679. [[CrossRef](#)] [[PubMed](#)]
53. Wijtenburg, S.A.; Kapogiannis, D.; Korenic, S.A.; Mullins, R.J.; Tran, J.; Gaston, F.E.; Chen, S.; Mustapic, M.; Hong, L.E.; Rowland, L.M. Brain insulin resistance and altered brain glucose are related to memory impairments in schizophrenia. *Schizophr. Res.* **2019**, *208*, 324–330. [[CrossRef](#)] [[PubMed](#)]
54. Carpentier, A.C.; Bourbonnais, A.; Frisch, F.; Giacca, A.; Lewis, G.F. Plasma nonesterified fatty acid intolerance and hyperglycemia are associated with intravenous lipid-induced impairment of insulin sensitivity and disposition index. *J. Clin. Endocrinol. Metab.* **2010**, *95*, 1256–1264. [[CrossRef](#)] [[PubMed](#)]
55. Norris, D.M.; Geddes, T.A.; James, D.E.; Fazakerley, D.J.; Burchfield, J.G. Glucose transport: Methods for interrogating GLUT4 trafficking in adipocytes. *Methods Mol. Biol.* **2018**, *1713*, 193–215. [[CrossRef](#)] [[PubMed](#)]
56. Mokáň, M.; Galajda, P. Primary and secondary insulin resistance. *Vnitr. Lek.* **2019**, *65*, 264–272.
57. Rojo, L.E.; Gaspar, P.A.; Silva, H.; Risco, L.; Arena, P.; Cubillos-Robles, K.; Jara, B. Metabolic syndrome and obesity among users of second generation antipsychotics: A global challenge for modern psychopharmacology. *Pharm. Res.* **2015**, *101*, 74–85. [[CrossRef](#)]
58. Groenewoud, M.J.; Zwartkruis, F.J. Rheb and rags come together at the lysosome to activate mTORC1. *Biochem. Soc. Trans.* **2013**, *41*, 951–955. [[CrossRef](#)]
59. Zhu, M.; Wang, X.Q. Regulation of mTORC1 by Small GTPases in response to nutrients. *J. Nutr.* **2020**, *21*. [[CrossRef](#)]
60. Noda, T. Regulation of autophagy through TORC1 and mTORC1. *Biomolecules* **2017**, *7*, 52. [[CrossRef](#)]
61. Sengupta, S.; Peterson, T.R.; Sabatini, D.M. Regulation of the mTOR complex 1 pathway by nutrients, growth factors, and stress. *Mol. Cell* **2010**, *40*, 310–322. [[CrossRef](#)] [[PubMed](#)]
62. Ryskalin, L.; Limanaqi, F.; Frati, A.; Busceti, C.L.; Fornai, F. mTOR-related brain dysfunctions in neuropsychiatric disorders. *Int. J. Mol. Sci.* **2018**, *19*, 2226. [[CrossRef](#)] [[PubMed](#)]
63. Lamming, D.W.; Sabatini, D.M. A central role for mTOR in lipid homeostasis. *Cell Metab.* **2013**, *18*, 465–469. [[CrossRef](#)] [[PubMed](#)]
64. Kuma, A.; Komatsu, M.; Mizushima, N. Autophagy-monitoring and autophagy-deficient mice. *Autophagy* **2017**, *13*, 1619–1628. [[CrossRef](#)] [[PubMed](#)]
65. Kim, Y.C.; Guan, K.L. mTOR: A pharmacologic target for autophagy regulation. *J. Clin. Investig.* **2015**, *125*, 25–32. [[CrossRef](#)] [[PubMed](#)]
66. Heras-Sandoval, D.; Pérez-Rojas, J.M.; Hernández-Damián, J.; Pedraza-Chaverri, J. The role of PI3K/AKT/mTOR pathway in the modulation of autophagy and the clearance of protein aggregates in neurodegeneration. *Cell Signal.* **2014**, *26*, 2694–2701. [[CrossRef](#)]

67. Olsen, J.M.; Sato, M.; Dallner, O.S. Glucose uptake in brown fat cells is dependent on mTOR complex 2-promoted GLUT1 translocation. *J. Cell Biol.* **2014**, *207*, 365–374. [[CrossRef](#)]
68. Kumar, A.; Lawrence, J.C., Jr.; Jung, D.Y.; Ko, H.J.; Keller, S.R.; Kim, J.K.; Magnuson, M.A.; Harris, T.E. Fat cell-specific ablation of rictor in mice impairs insulin-regulated fat cell and whole-body glucose and lipid metabolism. *Diabetes* **2010**, *59*, 1397–1406. [[CrossRef](#)]
69. Jensen, K.G.; Correll, C.U.; Rudå, D.; Klauber, D.G.; Decara, M.S.; Fagerlund, B.; Jepsen, J.R.M.; Eriksson, F.; Fink-Jensen, A.; Pagsberg, A.K. Cardiometabolic adverse effects and its predictors in children and adolescents with first-episode psychosis during treatment with quetiapine-extended release versus aripiprazole: 12-week results from the tolerance and effect of antipsychotics in children and adolescents with psychosis (TEA) trial. *J. Am. Acad. Child Adolesc. Psychiatry* **2019**, *58*, 1062–1078. [[CrossRef](#)]
70. Das, A.; Reis, F.; Mishra, P.K. mTOR signaling in cardiometabolic disease, cancer, and aging 2018. *Oxid. Med. Cell. Longev.* **2019**, *2019*, 9692528. [[CrossRef](#)]
71. Uchinaka, A.; Yoneda, M.; Yamada, Y.; Murohara, T.; Nagata, K. Effects of mTOR inhibition on cardiac and adipose tissue pathology and glucose metabolism in rats with metabolic syndrome. *Pharmacol. Res. Perspect.* **2017**, *5*, e00331. [[CrossRef](#)] [[PubMed](#)]
72. Alsabban, A.H.; Morikawa, M.; Tanaka, Y.; Takei, Y.; Hirokawa, N. Kinesin Kif3b mutation reduces NMDAR subunit NR2A trafficking and causes schizophrenia-like phenotypes in mice. *EMBO J.* **2020**, *39*, e101090. [[CrossRef](#)] [[PubMed](#)]
73. Karki, S.; Maksimainen, M.M.; Lehtiö, L.; Kajander, T. Inhibitor screening assay for neurexin-LRRTM adhesion protein interaction involved in synaptic maintenance and neurological disorders. *Anal. Biochem.* **2019**, *587*, 113463. [[CrossRef](#)] [[PubMed](#)]
74. Steiner, J.; Bernstein, H.G.; Schiltz, K.; Müller, U.J.; Westphal, S.; Drexhage, H.A.; Bogerts, B. Immune system and glucose metabolism interaction in schizophrenia: A chicken-egg dilemma. *Prog Neuro-psychopharmacol. Biol. Psychiatry* **2014**, *48*, 287–294. [[CrossRef](#)]
75. Wedervang-Resell, K.; Friis, S.; Lonning, V.; Smelror, R.E.; Johannessen, C.; Reponen, E.J.; Lyngstad, S.H.; Lekva, T.; Aukrust, P.; Ueland, T.; et al. Increased interleukin 18 activity in adolescents with early-onset psychosis is associated with cortisol and depressive symptoms. *Psychoneuroendocrinology* **2020**, *112*, 104513. [[CrossRef](#)]
76. Pedersen, C.B.; Mors, O.; Bertelsen, A.; Waltoft, B.L.; Agerbo, E.; McGrath, J.J.; Mortensen, P.B.; Eaton, W.W. A comprehensive nationwide study of the incidence rate and lifetime risk for treated mental disorders. *JAMA Psychiatry* **2014**, *71*, 573–581. [[CrossRef](#)]
77. Gerasimou, C.; Tsoporis, J.N.; Siafakas, N.; Hatziazgelaki, E.; Kallergi, M.; Chatziioannou, S.N.; Parker, T.G.; Parissis, J.; Salpeas, V.; Papageorgiou, C.; et al. A longitudinal study of alterations of S100B, sRAGE and fas ligand in association to olanzapine medication in a sample of first episode patients with schizophrenia. *CNS Neurol. Disord. Drug Targets* **2018**, *17*, 383–388. [[CrossRef](#)]
78. Ramírez-Jirano, L.J.; Velasco-Ramírez, S.F.; Pérez-Carranza, G.A.; Domínguez-Díaz, C.; Bitzer-Quintero, O.K. Cytokines and nervous system: Relationship with schizophrenia. *Rev. Med. Inst. Mex. Seguro Soc.* **2019**, *57*, 107–112.
79. Balaji, R.; Subbanna, M.; Shivakumar, V.; Abdul, F.; Venkatasubramanian, G.; Debnath, M. Pattern of expression of toll like receptor (TLR)-3 and -4 genes in drug-naïve and antipsychotic treated patients diagnosed with schizophrenia. *Psychiatry Res.* **2019**. [[CrossRef](#)]
80. Okun, E.; Barak, B.; Saada-Madar, R.; Rothman, S.M.; Griffioen, K.J.; Roberts, N.; Castro, K.; Mughal, M.R.; Pita, M.A.; Stranahan, A.M.; et al. Evidence for a developmental role for TLR4 in learning and memory. *PLoS ONE* **2012**, *7*, e47522. [[CrossRef](#)]
81. Okun, E.; Griffioen, K.; Barak, B.; Roberts, N.J.; Castro, K.; Pita, M.A.; Cheng, A.; Mughal, M.R.; Wan, R.; Ashery, U.; et al. Toll-like receptor 3 inhibits memory retention and constrains adult hippocampal neurogenesis. *Proc. Natl. Acad. Sci. USA* **2010**, *107*, 15625–15630. [[CrossRef](#)] [[PubMed](#)]
82. Okun, E.; Griffioen, K.J.; Mattson, M.P. Toll-like receptor signaling in neural plasticity and disease. *Trends Neurosci.* **2011**, *34*, 269–281. [[CrossRef](#)] [[PubMed](#)]
83. Momtazmanesh, S.; Zare-Shahabadi, A.; Rezaei, N. Cytokine alterations in schizophrenia: An updated review. *Front. Psychiatry* **2019**, *10*, 892. [[CrossRef](#)] [[PubMed](#)]
84. McOmish, C.E.; Demireva, E.Y.; Gingrich, J.A. Developmental expression of mGlu2 and mGlu3 in the mouse brain. *Gene. Expr. Patterns* **2016**, *22*, 46–53. [[CrossRef](#)] [[PubMed](#)]

85. Matrisciano, F.; Dong, E.; Nicoletti, F.; Guidotti, A. Epigenetic alterations in prenatal stress mice as an endophenotype model for schizophrenia: Role of metabotropic glutamate 2/3 receptors. *Front. Mol. Neurosci.* **2018**, *11*, 423. [[CrossRef](#)] [[PubMed](#)]
86. Rajasekaran, A.; Venkatasubramanian, G.; Berk, M.; Debnath, M. Mitochondrial dysfunction in schizophrenia: Pathways, mechanisms and implications. *Neurosci. Biobehav. Rev.* **2015**, *48*, 10–21. [[CrossRef](#)]
87. Sullivan, C.R.; Koene, R.H.; Hasselfeld, K.; O'Donovan, S.M.; Ramsey, A.; McCullumsmith, R.E. Neuron-specific deficits of bioenergetic processes in the dorsolateral prefrontal cortex in schizophrenia. *Mol. Psychiatry* **2019**, *24*, 1319–1328. [[CrossRef](#)]
88. Jiang, J.; Peng, C.; Sun, L.; Li, J.; Qing, Y.; Hu, X.; Yang, X.; Li, Y.; Xu, C.; Zhang, J.; et al. Leukocyte proteomic profiling in first-episode schizophrenia patients: Does oxidative stress play central roles in the pathophysiology network of schizophrenia? *Antioxid. Redox Signal.* **2019**, *31*, 579–588. [[CrossRef](#)]
89. Ide, M.; Ohnishi, T.; Toyoshima, M.; Balan, S.; Maekawa, M.; Shimamoto-Mitsuyama, C.; Iwayama, Y.; Ohba, H.; Watanabe, A.; Ishii, T.; et al. Excess hydrogen sulfide and polysulfides production underlies a schizophrenia pathophysiology. *EMBO Mol. Med.* **2019**, *11*, e10695. [[CrossRef](#)]
90. Rowland, L.M.; Pradhan, S.; Korenic, S.; Wijtenburg, S.A.; Hong, L.E.; Edden, R.A.; Barker, P.B. Elevated brain lactate in schizophrenia: A 7 T magnetic resonance spectroscopy study. *Transl. Psychiatry* **2016**, *6*, e967. [[CrossRef](#)]
91. Roberts, R.C. Postmortem studies on mitochondria in schizophrenia. *Schizophr. Res.* **2017**, *187*, 17–25. [[CrossRef](#)] [[PubMed](#)]
92. Bai, Z.L.; Li, X.S.; Chen, G.Y.; Du, Y.; Wei, Z.X.; Chen, X.; Zheng, G.E.; Deng, W.; Cheng, Y. Serum oxidative stress marker levels in unmedicated and medicated patients with schizophrenia. *J. Mol. Neurosci.* **2018**, *66*, 428–436. [[CrossRef](#)] [[PubMed](#)]
93. Tsugawa, S.; Noda, Y.; Tarumi, R.; Mimura, Y.; Yoshida, K.; Iwata, Y.; Elsalhy, M.; Kuromiya, M.; Kurose, S.; Masuda, F.; et al. Glutathione levels and activities of glutathione metabolism enzymes in patients with schizophrenia: A systematic review and meta-analysis. *J. Psychopharmacol.* **2019**, *33*, 1199–1214. [[CrossRef](#)] [[PubMed](#)]
94. Herberth, M.; Koethe, D.; Cheng, T.M.K. Impaired glycolytic response in peripheral blood mononuclear cells of first-onset antipsychotic-naïve schizophrenia patients. *Mol. Psychiatry* **2011**, *16*, 848–859. [[CrossRef](#)] [[PubMed](#)]
95. Ebertowska, A.; Ludkiewicz, B.; Klejbor, I.; Melka, N.; Moryś, J. Pyruvate dehydrogenase deficiency—Morphological and metabolic effects, creation of animal model to study and research for treatment therapy. *Folia Morphol. (Warsz)* **2020**, *19*. [[CrossRef](#)] [[PubMed](#)]
96. Dietrich, M.A.; Kontek, B. Lipid peroxidation in patients with schizophrenia. *Psychiatry Clin. Neurosci.* **2010**, *64*, 469–475. [[CrossRef](#)]
97. Joshi, Y.B.; Praticò, D. Lipid peroxidation in psychiatric illness: Overview of clinical evidence. Oxidative medicine and cellular longevity. *Oxid. Med. Cell. Longev.* **2014**, *2014*, 828702. [[CrossRef](#)]
98. Sharma, P.; Sampath, H. Mitochondrial DNA Integrity: Role in health and disease. *Cells* **2019**, *8*, 100. [[CrossRef](#)]
99. Paglialunga, S.; Ludzki, A.; Root-McCaig, J.; Holloway, G.P. In adipose tissue, increased mitochondrial emission of reactive oxygen species is important for short-term high-fat diet-induced insulin resistance in mice. *Diabetologia* **2015**, *58*, 1071–1080. [[CrossRef](#)]
100. Fazakerley, D.J.; Minard, A.Y.; Krycer, J.R.; Thomas, K.C.; Stöckli, J.; Harney, D.J.; Burchfield, J.G.; Maghazal, G.J.; Caldwell, S.T.; Hartley, R.C.; et al. Mitochondrial oxidative stress causes insulin resistance without disrupting oxidative phosphorylation. *J. Biol. Chem.* **2018**, *293*, 7315–7328. [[CrossRef](#)]
101. Ijaz, S.; Bolea, B.; Davies, S.; Savović, J.; Richards, A.; Sullivan, S.; Moran, P. Antipsychotic polypharmacy and metabolic syndrome in schizophrenia: A review of systematic reviews. *BMC Psychiatry* **2018**, *18*, 275. [[CrossRef](#)] [[PubMed](#)]
102. Jeon, S.W.; Kim, Y.K. Unresolved issues for utilization of atypical antipsychotics in schizophrenia: Antipsychotic polypharmacy and metabolic syndrome. *Int. J. Mol. Sci.* **2017**, *18*, 2174. [[CrossRef](#)] [[PubMed](#)]
103. Mueser, K.T.; DeTore, N.R.; Kredlow, M.A.; Bourgeois, M.L.; Penn, D.L.; Hintz, K. Clinical and demographic correlates of stigma in first-episode psychosis: The impact of duration of untreated psychosis. *Acta Psychiatr. Scand.* **2020**, *141*, 157–166. [[CrossRef](#)] [[PubMed](#)]

104. Hamsch, B. Altered glyoxalase 1 expression in psychiatric disorders: Cause or consequence? *Semin. Cell Dev. Biol.* **2011**, *22*, 302–308. [[CrossRef](#)]
105. Koike, S.; Kayama, T.; Arai, M.; Horiuchi, Y.; Kobori, A.; Miyashita, M.; Itokawa, M.; Ogasawara, Y. Characterization of modified proteins in plasma from a subtype of schizophrenia based on carbonyl stress: Protein carbonyl is a possible biomarker of psychiatric disorders. *Biochem. Biophys. Res. Commun.* **2015**, *67*, 361–366. [[CrossRef](#)]
106. Koike, S.; Nishimoto, S.; Ogasawara, Y. Cysteine persulfides and polysulfides produced by exchange reactions with H2S protect SH-SY5Y cells from methylglyoxal-induced toxicity through Nrf2 activation. *Redox Biol.* **2017**, *12*, 530–539. [[CrossRef](#)]
107. Itokawa, M.; Miyashita, M.; Arai, M.; Dan, T.; Takahashi, K.; Tokunaga, T.; Ishimoto, K.; Toriumi, K.; Ichikawa, T.; Horiuchi, Y.; et al. Pyridoxamine: A novel treatment for schizophrenia with enhanced carbonyl stress. *Psychiatry Clin. Neurosci.* **2018**, *72*, 35–44. [[CrossRef](#)]
108. Kouidrat, Y.; Amad, A.; Arai, M.; Miyashita, M.; Lalau, J.D.; Loas, G.; Itokawa, M. Advanced glycation end products and schizophrenia: A systematic review. *J. Psychiatr. Res.* **2015**, *66–67*, 112–117. [[CrossRef](#)]
109. Takeda, M.; Ohnuma, T.; Takeuchi, M.; Katsuta, N.; Maeshima, H.; Takebayashi, Y.; Arai, H. Altered serum glyceraldehyde-derived advanced glycation end product (AGE) and soluble AGE receptor levels indicate carbonyl stress in patients with schizophrenia. *Neuroscience Letters.* **2015**, *593*, 51–55. [[CrossRef](#)]
110. Du Yan, S.; Zhu, H.; Fu, J.; Yan, S.F.; Roher, A.; Tourtellotte, W.W.; Rajavashisth, T.; Chen, X.; Godman, G.C.; Stern, D.; et al. Amyloid-beta peptide-receptor for advanced glycation end product interaction elicits neuronal expression of macrophage-colony stimulating factor: A proinflammatory pathway in Alzheimer disease. *Proc. Natl. Acad. Sci. USA* **1997**, *94*, 5296–5301. [[CrossRef](#)]
111. Hofmann, M.A.; Drury, S.; Fu, C.; Qu, W.; Taguchi, A.; Lu, Y.; Avila, C.; Kambham, N.; Bierhaus, A.; Nawroth, P.; et al. RAGE mediates a novel proinflammatory axis: A central cell surface receptor for S100/calgranulin polypeptides. *Cell* **1999**, *97*, 889–901. [[CrossRef](#)]
112. Hori, O.; Brett, J.; Slaterry, T.; Cao, R.; Zhang, J.; Chen, J.X.; Nagashima, M.; Lundh, E.R.; Vijay, S.; Nitecki, D. The receptor for advanced glycation end products (RAGE) is a cellular binding site for amphoterin. Mediation of neurite outgrowth and co-expression of rage and amphoterin in the developing nervous system. *J. Biol. Chem.* **1995**, *270*, 25752–25761. [[CrossRef](#)] [[PubMed](#)]
113. Yang, G.; Huang, Y.; Wu, X.; Lin, X.; Xu, J.; Chen, X.; Bai, X.; Li, Q. Endogenous secretory receptor for advanced glycation end products protects endothelial cells from AGEs induced apoptosis. *BioMed Res. Int.* **2018**, *2018*, 8216578. [[CrossRef](#)] [[PubMed](#)]
114. Miyashita, M.; Watanabe, T.; Ichikawa, T.; Toriumi, K.; Horiuchi, Y.; Kobori, A.; Kushima, I.; Hashimoto, R.; Fukumoto, M.; Koike, S.; et al. The regulation of soluble receptor for AGEs contributes to carbonyl stress in schizophrenia. *BioMed Res. Int.* **2018**, *2018*, 8216578. [[CrossRef](#)] [[PubMed](#)]
115. Toyoshima, M.; Jiang, X.; Ogawa, T.; Ohnishi, T.; Yoshihara, S.; Balan, S.; Yoshikawa, T.; Hirokawa, N. Enhanced carbonyl stress induces irreversible multimerization of CRMP2 in schizophrenia pathogenesis. *Life Sci. Alliance* **2019**, *2*, e201900478. [[CrossRef](#)] [[PubMed](#)]
116. Brekk, O.R.; Makridakis, M.; Mavroei, P.; Vlahou, A.; Xilouri, M.; Stefanis, L. Impairment of chaperone-mediated autophagy affects neuronal homeostasis through altered expression of DJ-1 and CRMP-2 proteins. *Mol. Cell. Neurosci.* **2019**, *95*, 1–12. [[CrossRef](#)]
117. Fang, W.; Gao, G.; Zhao, H.; Xia, Y.; Guo, X.; Li, N.; Li, Y.; Yang, Y.; Chen, L.; Wang, Q.; et al. Role of the Akt/GSK-3 β /CRMP-2 pathway in axon degeneration of dopaminergic neurons resulting from MPP+ toxicity. *Brain Res.* **2015**, *30*, 9–19. [[CrossRef](#)]
118. Hensley, K.; Venkova, K.; Christov, A.; Gunning, W.; Park, J. Collapsin response mediator protein-2: An emerging pathologic feature and therapeutic target for neurodegeneration. *Mol. Neurobiol.* **2011**, *43*, 180–191. [[CrossRef](#)]
119. Scheijen, J.L.; van de Waarenburg, M.P.; Stehouwer, C.D.; Schalkwijk, C.G. Measurement of pentosidine in human plasma protein by a single-column high-performance liquid chromatography method with fluorescence detection. *J. Chromatogr. B Anal. Technol. Biomed. Life Sci.* **2009**, *877*, 610–614. [[CrossRef](#)]
120. Ohnuma, T.; Nishimori, S.; Takeda, M.; Sannohe, T.; Katsuta, N.; Arai, H. Carbonyl stress and microinflammation-related molecules as potential biomarkers in schizophrenia. *Front. Psychiatry* **2018**, *9*, 82. [[CrossRef](#)]

121. Ohnishi, T.; Balan, S.; Toyoshima, M.; Maekawa, M.; Ohba, H.; Watanabe, A.; Iwayama, Y.; Fujita, Y.; Tan, Y.; Hisano, Y.; et al. Investigation of betaine as a novel psychotherapeutic for schizophrenia. *EBioMedicine* **2019**, *45*, 432–446. [[CrossRef](#)]
122. Park, S.Y.; Hwang, I.S.; Lee, H.J.; Song, C.E. Biomimetic catalytic transformation of toxic α -oxoaldehydes to high-value chiral α -hydroxythioesters using artificial glyoxalase I. *Nat. Commun.* **2017**, *4*, 14877. [[CrossRef](#)]
123. Distler, M.G.; Palmer, A.A. Role of Glyoxalase 1 (Glo1) and methylglyoxal (MG) in behavior: Recent advances and mechanistic insights. *Front. Genet.* **2012**, *3*, 250. [[CrossRef](#)]
124. Emendato, A.; Milordini, G.; Zacco, E.; Sicorello, A.; Dal Piaz, F.; Guerrini, R.; Thorogate, R.; Picone, D.; Pastore, A. Glycation affects fibril formation of A β peptides. *J. Biol. Chem.* **2018**, *293*, 13100–13111. [[CrossRef](#)]
125. Cai, H.Q.; Catts, V.S.; Webster, M.J.; Galletly, C.; Liu, D.; O'Donnell, M.; Weickert, T.W.; Weickert, C.S. Increased macrophages and changed brain endothelial cell gene expression in the frontal cortex of people with schizophrenia displaying inflammation. *Mol. Psychiatry* **2018**. [[CrossRef](#)]
126. López-Díez, R.; Shekhtman, A.; Ramasamy, R.; Schmidt, A.M. Cellular mechanisms and consequences of glycation in atherosclerosis and obesity. *Biochim. Biophys. Acta* **2016**, *1862*, 2244–2252. [[CrossRef](#)]
127. van der Flier, W.M.; Skoog, I.; Schneider, J.A.; Pantoni, L.; Mok, V.; Chen, C.L.H.; Scheltens, P. Vascular cognitive impairment. *Nat. Rev. Dis. Primers* **2018**, *4*, 18003. [[CrossRef](#)]
128. Kim, E.; Keskey, Z.; Kang, M.; Kitchen, C.; Bentley, W.E.; Chen, S.; Kelly, D.L.; Payne, G.F. Validation of oxidative stress assay for schizophrenia. *Schizophr. Res.* **2019**, *212*, 126–133. [[CrossRef](#)]
129. Boll, K.M.; Noto, C.; Bonifácio, K.L.; Bortolasci, C.C.; Gadelha, A.; Bressan, R.A.; Barbosa, D.S.; Maes, M.; Moreira, E.G. Oxidative and nitrosative stress biomarkers in chronic schizophrenia. *Psychiatry Res.* **2017**, *253*, 43–48. [[CrossRef](#)]
130. Pisoschi, A.M.; Pop, A. The role of antioxidants in the chemistry of oxidative stress: A review. *Eur. J. Med. Chem.* **2015**, *97*, 55–74. [[CrossRef](#)]
131. Solberg, D.K.; Refsum, H.; Andreassen, O.A.; Bentsen, H. A five-year follow-up study of antioxidants, oxidative stress and polyunsaturated fatty acids in schizophrenia. *Acta Neuropsychiatr.* **2019**, *31*, 202–212. [[CrossRef](#)]
132. Byron, K.; Bitanirwe, M.; Tsung-Ung, W.; Woo, M. Oxidative stress in schizophrenia: An integrated approach. *Neurosci. Biobehav. Rev.* **2011**, *35*, 878–893. [[CrossRef](#)]
133. Wass, C.; Klamer, D.; Fejgin, K.; Pålsson, E. The importance of nitric oxide in social dysfunction. *Behav. Brain Res.* **2009**, *200*, 113–116. [[CrossRef](#)]
134. Marrocco, I.; Altieri, F.; Peluso, I. Measurement and clinical significance of biomarkers of oxidative stress in humans. *Oxid. Med. Cell. Longev.* **2017**. [[CrossRef](#)]
135. Brieger, K.; Schiavone, S.; Miller, F.J.; Krause, K.H. Reactive oxygen species: From health to disease. *Swiss Med. Wkly.* **2012**, *142*, 1–14. [[CrossRef](#)]
136. Korotkova, E.I.; Misini, B.; Dorozhko, E.V.; Bukkel, M.V.; Plotnikov, E.V.; Linert, W. Study of OH radicals in human serum blood of healthy individuals and those with pathological schizophrenia. *Int. J. Mol. Sci.* **2011**, *12*, 401–410. [[CrossRef](#)]
137. Adibhatla, R.M.; Hatcher, J.F. Altered lipid metabolism in brain injury and disorders. *Subcell. Biochem.* **2008**, *49*, 241–268. [[CrossRef](#)]
138. Śmierciak, N.; Krzyściak, W.; Szwajca, M.; Szczesny-Małysiak, E.; Kij, A.; Gawęda, P.; Chłopicki, S.; Pilecki, M. Short-term improvement in clinical symptoms of first episode psychosis is associated with a fall in plasma nitrite concentration, worsening lipid profile and systemic inflammation—A pilot study. *Psychiatr. Q.* Manuscript PSAQ-D-20-00033 status; added to the editors on 12 Feb 2020.
139. Olson, K.R. Hydrogen sulfide, reactive sulfur species and coping with reactive oxygen species. *Free Radic. Biol. Med.* **2019**, *140*, 74–83. [[CrossRef](#)]
140. Koike, S.; Kayama, T.; Yamamoto, S.; Komine, D.; Tanaka, R.; Nishimoto, S.; Suzuki, T.; Kishida, A.; Ogasawara, Y. Polysulfides protect SH-SY5Y cells from methylglyoxal-induced toxicity by suppressing protein carbonylation: A possible physiological scavenger for carbonyl stress in the brain. *NeuroToxicology* **2016**, *55*, 13–19. [[CrossRef](#)]
141. Giles, G.I.; Nasim, M.J.; Ali, W.; Jacob, C. The reactive sulfur species concept: 15 years on. *Antioxidants* **2017**, *6*, 38. [[CrossRef](#)] [[PubMed](#)]

142. Takahashi, N.; Wei, F.Y.; Watanabe, S.; Hirayama, M.; Ohuchi, Y.; Fujimura, A.; Kaitsuka, T.; Ishii, I.; Sawa, T.; Nakayama, H.; et al. Reactive sulfur species regulate tRNA methylthiolation and contribute to insulin secretion. *Nucleic Acids Res.* **2017**, *45*, 435–445. [[CrossRef](#)]
143. Berry, T.; Abohamza, E.; Moustafa, A.A. Treatment-resistant schizophrenia: Focus on the transsulfuration pathway. *Rev. Neurosci.* **2019**, *31*, 219–232. [[CrossRef](#)]
144. Pontes-Neto, J.G.; Fontes, D.A.F.; de Lyra, M.A.M.; Brito, M.D.R.M.; Chaves, L.L.; Rolim-Neto, P.J.; De La Roca Soares, M.F.; Quintans Júnior, L.J.; de Freitas, R.M.; Soares-Sobrinho, J.L. Evaluation of antioxidant potential of novel CaAl and NiAl layered double hydroxides loaded with olanzapine. *Life Sci.* **2018**, *207*, 246–252. [[CrossRef](#)]
145. Chan, S.T.; McCarthy, M.J.; Vawter, M.P. Psychiatric drugs impact mitochondrial function in brain and other tissues. *Schizophr. Res.* **2019**. [[CrossRef](#)]
146. Leza, J.C.; Bueno, B.; Bioque, M.; Arango, C.; Parellada, M.; Do, K.; O'Donnell, P.; Bernardo, M. Inflammation in schizophrenia: A question of balance. *Neurosci. Biobehav. Rev.* **2015**, *55*, 612–626. [[CrossRef](#)]
147. Frustaci, A.; Neri, M.; Cesario, A.; Adams, J.B.; Domenici, E.; Dalla Bernardina, B.; Bonassi, S. Oxidative stress-related biomarkers in autism: Systematic review and meta-analyses. *Free Radic. Biol. Med.* **2012**, *52*, 2128–2141. [[CrossRef](#)]
148. Flatow, J.; Buckley, P.; Miller, B.J. Meta-analysis of oxidative stress in schizophrenia. *Biol. Psychiatry* **2013**, *74*, 400–409. [[CrossRef](#)]
149. Liochev, S.I. Reactive oxygen species and the free radical theory of aging. *Free Radic. Biol. Med.* **2013**, *60*, 1–4. [[CrossRef](#)]
150. Campolo, N.; Issoglio, F.M.; Estrin, D.A.; Bartesaghi, S.R.R. 3-Nitrotyrosine and related derivatives in proteins: Precursors, radical intermediates and impact in function. *Essays Biochem.* **2020**, *64*, 111–133. [[CrossRef](#)]
151. Hashimoto, K. Recent advances in the early intervention in schizophrenia: Future direction from preclinical findings. *Curr. Psychiatry Rep.* **2019**, *21*. [[CrossRef](#)] [[PubMed](#)]
152. McDonald, C.; Cotter, D.R. Special issue: Psychosis from early intervention to treatment resistance. *Ir. J. Psychol. Med.* **2019**, *36*, 239–241. [[CrossRef](#)] [[PubMed](#)]
153. Potkin, S.G.; Kane, J.M.; Correll, C.; Lindenmayer, J.-P.; Agid, O.; Marder, S.R.; Olfson, M.; Howes, O.D. The neurobiology of treatment-resistant schizophrenia: Paths to antipsychotic resistance and a roadmap for future research. *npj Schizophr.* **2020**, *6*. [[CrossRef](#)] [[PubMed](#)]
154. Dainin, K.; Ide, R.; Maeda, A.; Suyama, K.; Akagawa, M. Pyridoxamine scavenges protein carbonyls and inhibits protein aggregation in oxidative stress-induced human HepG2 hepatocytes. *Biochem. Biophys. Res. Commun.* **2017**, *486*, 845–851. [[CrossRef](#)]
155. Fedorova, M.; Bollineni, R.C.; Hoffmann, R. Protein carbonylation as a major hallmark of oxidative damage: Update of analytical strategies. *Mass Spectrom. Rev.* **2014**, *33*, 79–97. [[CrossRef](#)]
156. Vázquez, G.; Caballero, A.B.; Kokinda, J.; Hijano, A.; Sabaté, R.; Gamez, P. Copper, dityrosine cross-links and amyloid- β aggregation. *J. Biol. Inorg. Chem.* **2019**, *24*, 1217–1229. [[CrossRef](#)]
157. Butterfield, D.A.; Halliwell, B. Oxidative stress, dysfunctional glucose metabolism and Alzheimer disease. *Nat. Rev. Neurosci.* **2019**, *20*, 148–160. [[CrossRef](#)]
158. Li, B.; Ge, Y.; Xu, Y.; Lu, Y.; Yang, Y.; Han, L.; Jiang, Y.; Shi, Y.; Le, G. Spatial learning and memory impairment in growing mice induced by major oxidized tyrosine product dityrosine. *J. Agric. Food Chem.* **2019**, *67*, 9039–9049. [[CrossRef](#)]
159. Yang, Y.; Zhang, H.; Yan, B.; Zhang, T.; Gao, Y.; Shi, Y.; Le, G. Health effects of dietary oxidized tyrosine and dityrosine administration in mice with nutrimental strategies. *J. Agric. Food Chem.* **2017**, *65*, 6957–6971. [[CrossRef](#)]
160. Levine, R.L.; Moskovitz, J.; Stadtman, E.R. Oxidation of methionine in proteins: Roles in antioxidant defense and cellular regulation. *IUBMB Life* **2000**, *50*, 301–307. [[CrossRef](#)]
161. Reiterer, M.; Schmidt-Kastner, R.; Milton, S.L. Methionine sulfoxide reductase (Msr) dysfunction in human brain disease. *Free Radic. Res.* **2019**, *53*, 1144–1154. [[CrossRef](#)] [[PubMed](#)]
162. Zeng, J.; Davies, M.J. Evidence for the formation of adducts and S-(carboxymethyl)cysteine on reaction of α -dicarbonyl compounds with thiol groups on amino acids, peptides, and proteins. *Chem. Res. Toxicol.* **2005**, *18*, 1232–1241. [[CrossRef](#)] [[PubMed](#)]

163. Miglio, G.; Sabatino, A.D.; Veglia, E.; Giraud, M.T.; Beccuti, M.; Cordero, F. A computational analysis of S-(2-succino)cysteine sites in proteins. *Biochim. Biophys. Acta Proteins Proteom.* **2016**, *1864*, 211–218. [[CrossRef](#)] [[PubMed](#)]
164. Blatnik, M.; Frizzell, N.; Thorpe, S.R.; Bayes, J.W. Inactivation of glyceraldehyde-3-phosphate dehydrogenase by fumarate in diabetes: Formation of S-(2-succinyl)cysteine, a novel chemical modification of protein and possible biomarker of mitochondrial stress. *Diabetes* **2008**, *57*, 41–49. [[CrossRef](#)] [[PubMed](#)]
165. Delgado-Andrade, C. Carboxymethyl-lysine: Thirty years of investigation in the field of AGE formation. *Food Funct.* **2016**, *7*, 46–57. [[CrossRef](#)] [[PubMed](#)]
166. Jacobsen, D.W. Homocysteine and vitamins in cardiovascular disease. *Clin. Chem.* **1998**, *44*, 1833–1843. [[PubMed](#)]
167. Sung, C.C.; Hsu, Y.C.; Chen, C.C.; Lin, Y.F.; Wu, C.C. Oxidative stress and nucleic acid oxidation in patients with chronic kidney disease. *Oxid. Med. Cell. Longev.* **2013**, *2013*, 301982. [[CrossRef](#)]
168. de Jager, C.A. Critical levels of brain atrophy associated with homocysteine and cognitive decline. *Neurobiol. Aging* **2014**, *35*, S35–S39. [[CrossRef](#)]
169. Wang, L.J.; Lin, P.Y.; Lee, Y.; Huang, Y.C.; Wu, C.C.; Hsu, S.T.; Chen, C.C.; Chong, M.Y.; Lin, C.H.; Hung, C.F. Increased serum levels of cysteine in patients with schizophrenia: A potential marker of cognitive function preservation. *Schizophr. Res.* **2018**, *192*, 391–397. [[CrossRef](#)]
170. Gaschler, M.; Stockwell, B. Lipid peroxidation in cell death. *Biochem. Biophys. Res. Commun.* **2017**, *482*, 419–425. [[CrossRef](#)]
171. Yao, J.K.; Keshavan, M.S. Antioxidants, redox signaling, and pathophysiology in Schizophrenia: An integrative view. *Antioxid. Redox Signal.* **2011**, *15*, 2011–2035. [[CrossRef](#)] [[PubMed](#)]
172. Chien, Y.L.; Hwu, H.G.; Hwang, T.J.; Hsieh, M.H.; Liu, C.C.; Lin-Shiau, S.Y.; Liu, C.M. Clinical implications of oxidative stress in schizophrenia: Acute relapse and chronic stable phase. *Prog. Neuro-Psychopharmacol. Biol. Psychiatry* **2020**, *99*, 109868. [[CrossRef](#)] [[PubMed](#)]
173. Petronijević, N.D.; Mičić, D.; Duričić, B.; Marinković, D.; Paunović, V.R. Substrate kinetics of erythrocyte membrane Na,K-ATPase and lipid peroxides in schizophrenia. *Prog. Neuro-Psychopharmacol. Biol. Psychiatry* **2003**, *27*, 431–440. [[CrossRef](#)]
174. del Rio, D.; Stewart, A.J.; Pellegrini, N. A review of recent studies on malondialdehyde as toxic molecule and biological marker of oxidative stress. *Nutr. Metab. Cardiovasc. Dis.* **2005**, *15*, 316–328. [[CrossRef](#)]
175. Romano, A.; Serviddio, G.; Calcagnini, S.; Villani, R.; Giudetti, A.; Cassano, T.; Gaetani, S. Linking lipid peroxidation and neuropsychiatric disorders: Focus on 4-hydroxy-2-nonenal. *Free Radic. Biol. Med.* **2017**, *111*, 281–293. [[CrossRef](#)]
176. Mertsch, K.; Blasig, I.; Grune, T. 4-Hydroxynonenal impairs the permeability of an in vitro rat blood-brain barrier. *Neurosci. Lett.* **2001**, *314*, 135–138. [[CrossRef](#)]
177. Proudfoot, J.; Barden, A.; Mori, T.A.; Burke, V.; Croft, K.D.; Beilin, L.J.; Puddey, I.B. Measurement of urinary F2-isoprostanes as markers of in vivo lipid peroxidation—A comparison of enzyme immunoassay with gas chromatography/mass spectrometry. *Anal. Biochem.* **1999**, *272*, 209–215. [[CrossRef](#)]
178. Montuschi, P.; Barnes, P.J.; Roberts, L.J. Isoprostanes: Markers and mediators of oxidative stress. *FASEB J.* **2004**, *18*, 1791–1800. [[CrossRef](#)]
179. Davies, S.S.; Amarnath, V.; Montine, K.S.; Bernoud-Hubac, N.; Boutaud, O.; Montine, T.J.; Roberts, L.J., II. Effects of reactive gamma-ketoaldehydes formed by the isoprostane pathway (isoketals) and cyclooxygenase pathway (levuglandins) on proteasome function. *FASEB J.* **2002**, *16*, 715–717. [[CrossRef](#)]
180. Kohen, R.; Nyska, A. Oxidation of biological systems. *Toxicol. Pathol.* **2002**, *30*, 620–650. [[CrossRef](#)]
181. Fenga, C.; Gangemi, S.; Teodoro, M.; Rapisarda, V.; Golokhvast, K.; Docea, A.; Tsatsakis, A.M.; Costa, C. 8-hydroxydeoxyguanosine as a biomarker of oxidative DNA damage in workers exposed to low-dose benzene. *Toxicol. Rep.* **2017**, *4*, 291–295. [[CrossRef](#)] [[PubMed](#)]
182. Dedon, P.C.; Tannenbaum, S.R. Reactive nitrogen species in the chemical biology of inflammation. *Arch. Biochem. Biophys.* **2004**, *423*, 12–22. [[CrossRef](#)] [[PubMed](#)]
183. Canugovi, C.; Shamanna, R.A.; Croteau, D.L.; Bohr, V.A. Base excision DNA repair levels in mitochondrial lysates of Alzheimer's disease. *Neurobiol. Aging* **2014**, *35*, 1293–1300. [[CrossRef](#)] [[PubMed](#)]
184. Michel, T.M.; Sheldrick, A.J.; Camara, S.; Grnblatt, E.; Schneider, F.; Riederer, P. Alteration of the pro-oxidant xanthine oxidase (XO) in the thalamus and occipital cortex of patients with schizophrenia. *World J. Biol. Psychiatry* **2011**, *12*, 588–597. [[CrossRef](#)] [[PubMed](#)]

185. Nakano, T.; Asagoshi, K.; Terato, H.; Suzuki, T.; Ide, H. Assessment of the genotoxic potential of nitric oxide-induced guanine lesions by in vitro reactions with Escherichia coli DNA polymerase I. *Mutagenesis* **2005**, *20*, 209–216. [[CrossRef](#)]
186. Lin, C.Y.; Lee, H.L.; Hwang, Y.T.; Su, T.C. The association between total serum isomers of per- and polyfluoroalkyl substances, lipid profiles, and the DNA oxidative/nitrative stress biomarkers in middle-aged Taiwanese adults. *Environ. Res.* **2020**, *182*, 109064. [[CrossRef](#)]
187. Horiike, S.; Kawanishi, S.; Kaito, M.; Ma, N.; Tanaka, H.; Fujita, N.; Iwasa, M.; Kobayashi, Y.; Hiraku, Y.; Oikawa, S.; et al. Accumulation of 8-nitroguanine in the liver of patients with chronic hepatitis C. *J. Hepatol.* **2005**, *43*, 403–410. [[CrossRef](#)]
188. Murata, M. Inflammation and cancer. *Environ. Health Prev. Med.* **2018**, *23*, 1–8. [[CrossRef](#)]
189. Hoki, Y.; Murata, M.; Hiraku, Y.; Ma, N.; Matsumine, A.; Uchida, A.; Kawanishi, S. 8-nitroguanine as a potential biomarker for progression of malignant fibrous histiocytoma, a model of inflammation-related cancer. *Oncol. Rep.* **2007**, *18*, 1165–1169. [[CrossRef](#)]
190. Sawa, T.; Tatemichi, M.; Akaike, T.; Barbin, A.; Ohshima, H. Analysis of urinary 8-nitroguanine, a marker of nitrative nucleic acid damage, by high-performance liquid chromatography-electrochemical detection coupled with immunoaffinity purification: Association with cigarette smoking. *Free Radic. Biol. Med.* **2006**, *40*, 711–720. [[CrossRef](#)]
191. Fedeles, B.I.; Freudenthal, B.D.; Yau, E.; Singh, V.; Chang, S.; Li, D.; Delaney, J.C.; Wilson, S.H.; Essigmann, J. Intrinsic mutagenic properties of 5-chlorocytosine: A mechanistic connection between chronic inflammation and cancer. *Proc. Natl. Acad. Sci. USA* **2015**, *112*, E4571–E4580. [[CrossRef](#)]
192. McGregor, D. The genetic toxicology of N-nitrosodiphenylamine. *Mutat. Res. Rev. Genet. Toxicol.* **1994**, *317*, 195–211. [[CrossRef](#)]
193. Knaapen, A.M.; Güngör, N.; Schins, R.P.F.; Borm, P.J.A.; van Schooten, F.J. Neutrophils and respiratory tract DNA damage and mutagenesis: A review. *Mutagenesis* **2006**, *21*, 225–236. [[CrossRef](#)] [[PubMed](#)]
194. Parsons, J.L.; Kavli, B.; Slupphaug, G.; Dianov, G.L. NEIL1 is the major DNA glycosylase that processes 5-hydroxyuracil in the proximity of a DNA single-strand break. *Biochemistry* **2007**, *46*, 4158–4163. [[CrossRef](#)] [[PubMed](#)]
195. Lovell, M.A.; Markesbery, W.R. Oxidative DNA damage in mild cognitive impairment and late-stage Alzheimer's disease. *Nucleic Acids Res.* **2007**, *35*, 7497–7504. [[CrossRef](#)]
196. Liebert, M.A.; Markesbery, W.R.; Lovell, M.A. DNA oxidation in Alzheimer's disease clinical manifestations of Alzheimer's disease. *Antioxid. Redox Signal.* **2006**, *8*, 2039–2045. [[CrossRef](#)]
197. Rozalski, R.; Gackowski, D.; Siomek-Gorecka, A.; Starczak, M.; Modrzejewska, M.; Banaszkiwicz, Z.; Olinski, R. Urinary 5-hydroxymethyluracil and 8-oxo-7,8-dihydroguanine as potential biomarkers in patients with colorectal cancer. *Biomarkers* **2015**, *5804*, 287–291. [[CrossRef](#)]
198. Olinski, R.; Starczak, M.; Gackowski, D. Enigmatic 5-hydroxymethyluracil: Oxidatively modified base, epigenetic mark or both? *Mutat. Res. Rev. Mutat. Res.* **2016**, *767*, 59–66. [[CrossRef](#)]
199. Mueller, S.; Peccerella, T.; Qin, H.; Glassen, K.; Waldherr, R.; Flechtenmacher, C.; Straub, B.K.; Millonig, G.; Stickel, F.; Bruckner, T.; et al. Carcinogenic etheno DNA adducts in alcoholic liver disease: Correlation with cytochrome P-4502E1 and fibrosis. *Alcohol. Clin. Exp. Res.* **2018**, *42*, 252–259. [[CrossRef](#)]
200. Liu, T.; Cai, J.P.; Zhang, L.Q.; Sun, N.; Cui, J.; Wang, H.; Yang, J.F. The mechanism of RNA oxidation involved in the development of heart failure. *Free Radic. Res.* **2019**, *53*, 910–921. [[CrossRef](#)]
201. Guo, C.; Chen, Q.; Chen, J.; Yu, J.; Hu, Y.; Zhang, S.; Zheng, S. 8-hydroxyguanosine as a possible RNA oxidative modification marker in urine from colorectal cancer patients: Evaluation by ultra performance liquid chromatography-tandem mass spectrometry. *J. Chromatogr. B Anal. Technol. Biomed. Life Sci.* **2020**, *1136*, 121931. [[CrossRef](#)]
202. Linhart, K.B.; Glassen, K.; Peccerella, T.; Waldherr, R.; Linhart, H.; Bartsch, H.; Seitz, H. The generation of carcinogenic etheno-DNA adducts in the liver of patients with nonalcoholic fatty liver disease. *Hepatobiliary Surg. Nutr.* **2015**, *4*, 117–123. [[CrossRef](#)] [[PubMed](#)]
203. Paul, B.D.; Snyder, S.H. Therapeutic applications of cysteamine and cystamine in neurodegenerative and neuropsychiatric diseases. *Front. Neurol.* **2019**, *10*, 1–9. [[CrossRef](#)] [[PubMed](#)]

204. Maes, M.; Vojdani, A.; Geffard, M.; Moreira, E.G.; Barbosa, D.S.; Michelin, A.P.; Semeão, L.O.; Sirivichayakul, S.; Kanchanatawan, B. Schizophrenia phenomenology comprises a bifactorial general severity and a single-group factor, which are differently associated with neurotoxic immune and immune-regulatory pathways. *Biomol. Concepts* **2019**, *10*, 209–225. [[CrossRef](#)]
205. Andreatza, A.C.; Wang, J.F.; Salmasi, F.; Shao, L.; Young, L.T. Specific subcellular changes in oxidative stress in prefrontal cortex from patients with bipolar disorder. *J. Neurochem.* **2013**, *127*, 552–561. [[CrossRef](#)] [[PubMed](#)]
206. Wei, C.W.; Sun, Y.; Chen, N.; Chen, S.; Xiu, M.H.; Zhang, X.Y. Interaction of oxidative stress and BDNF on executive dysfunction in patients with chronic schizophrenia. *Psychoneuroendocrinology* **2020**, *111*, 104473. [[CrossRef](#)] [[PubMed](#)]
207. Miyashita, M.; Arai, M.; Kobori, A.; Ichikawa, T.; Toriumi, K.; Niizato, K.; Oshima, K.; Okazaki, Y.; Yoshikawa, T.; Amano, N.; et al. Clinical features of schizophrenia with enhanced carbonyl stress. *Schizophr. Bull.* **2014**, *40*, 1040–1046. [[CrossRef](#)] [[PubMed](#)]
208. Kamat, P.; Kalani, A.; Rai, S.; Swarnkar, S.; Tota, S.; Nath, C.; Tyagi, N. Mechanism of oxidative stress and synapse dysfunction in the pathogenesis of Alzheimer's disease: Understanding the therapeutics strategies. *Mol. Neurobiol.* **2016**, *53*, 648–661. [[CrossRef](#)]
209. Ogawa, F.; Malavasi, E.L.V.; Crummie, D.K.; Eykelenboom, J.E.; Soares, D.C.; Shaun, M.; Porteous, D.J.; Millar, J.K. DISC1 complexes with TRAK1 and Miro1 to modulate anterograde axonal mitochondrial trafficking. *Hum. Mol. Genet.* **2014**, *23*, 906–919. [[CrossRef](#)]
210. Xu, Y.; Ren, J.; Ye, H. Association between variations in the disrupted in schizophrenia 1 gene and schizophrenia: A meta-analysis. *Gene* **2018**, *651*, 94–99. [[CrossRef](#)]
211. Mattson, M.P.; LaFerla, F.M.; Chan, S.L.; Leissring, M.A.; Shepel, P.N.; Geiger, J.D. Calcium signaling in the ER: Its role in neuronal plasticity and neurodegenerative disorders. *Trends Neurosci.* **2000**, *23*, 222–229. [[CrossRef](#)]
212. Johnson, A.W.; Jaaro-Peled, H.; Shahani, N.; Sedlak, T.W.; Zoubovsky, S.; Burruss, D.; Emiliani, F.; Sawa, A.; Gallagher, M. Cognitive and motivational deficits together with prefrontal oxidative stress in a mouse model for neuropsychiatric illness. *Proc. Natl. Acad. Sci. USA* **2013**, *110*, 12462–12467. [[CrossRef](#)] [[PubMed](#)]
213. Carless, M.A.; Glahn, D.C.; Winkler, A.M.; Blangero, J. Dissecting the functions of DISC1. *Mol. Psychiatry* **2011**, *16*, 1063. [[CrossRef](#)]
214. Forsyth, J.K.; Lewis, D.A. Mapping the consequences of impaired synaptic plasticity in schizophrenia through development: An integrative model for diverse clinical features. *Trends Cogn. Sci.* **2017**, *21*, 760–778. [[CrossRef](#)] [[PubMed](#)]
215. Abboud, R.; Noronha, C.; Diwadkar, V.A. Motor system dysfunction in the schizophrenia diathesis: Neural systems to neurotransmitters. *Eur. Psychiatry* **2017**, *44*, 125–133. [[CrossRef](#)] [[PubMed](#)]
216. Elustondo, P.A.; Nichols, M.; Robertson, G.S.; Pavlov, E.V. Mitochondrial Ca²⁺ uptake pathways. *J. Bioenerg. Biomembr.* **2017**, *49*, 113–119. [[CrossRef](#)] [[PubMed](#)]
217. Hroudová, J.; Fišar, Z. Control mechanisms in mitochondrial oxidative phosphorylation. *Neural Regen. Res.* **2013**, *8*, 363–375. [[CrossRef](#)]
218. Li, J.; Ryan, S.K.; Deboer, E.; Cook, K.; Fitzgerald, S.; Lachman, H.; Wallace, D.C.; Goldberg, E.; Anderson, S. Mitochondrial deficits in human iPSC-derived neurons from patients with 22q11.2 deletion syndrome and schizophrenia. *Transl. Psychiatry* **2019**, *9*. [[CrossRef](#)]
219. Xia, J.; Wang, H.; Zhang, Q.; Han, Z. Modulation of P2X purinoceptor 3 (P2x3) in pentylentetrazole-induced kindling epilepsy in rats. *Med. Sci. Monit.* **2018**, *24*, 6165–6177. [[CrossRef](#)]
220. Papa, S.; Sardanelli, A.M.; Scacco, S.; Technikova-Dobrova, Z. cAMP-dependent protein kinase and phosphoproteins in mammalian mitochondria. An extension of the cAMP-mediated intracellular signal transduction. *FEBS Lett.* **1999**, *444*, 245–249. [[CrossRef](#)]
221. Signorile, A.; Sardanelli, A.M.; Nuzzi, R.; Papa, S. Serine (threonine) phosphatase(s) acting on cAMP-dependent phosphoproteins in mammalian mitochondria. *FEBS Lett.* **2002**, *512*, 91–94. [[CrossRef](#)]
222. Lee, I.; Bender, E.; Kadenbach, B. Control of mitochondrial membrane potential and ROS formation by reversible phosphorylation of cytochrome c oxidase. *Mol. Cell. Biochem.* **2002**, *234–235*, 63–70. [[CrossRef](#)]
223. Klaunig, J.E. Oxidative stress and cancer. *Curr. Pharm. Des.* **2019**, *24*, 4771–4778. [[CrossRef](#)] [[PubMed](#)]
224. Shan, X.; Lin, C.I.G. Quantification of oxidized RNAs in Alzheimer's disease. *Neurobiol. Aging* **2006**, *27*, 657–662. [[CrossRef](#)] [[PubMed](#)]

225. Katerji, M.; Filippova, M.; Duerksen-Hughes, P. Approaches and methods to measure oxidative stress in clinical samples: Research applications in the cancer field. *Oxid. Med. Cell. Longev.* **2019**, *2019*, 1279250. [[CrossRef](#)] [[PubMed](#)]
226. Cao, G.; Alessio, H.M.; Cutler, R.G. Oxygen-radical absorbance capacity assay for antioxidants. *Free Radic. Biol. Med.* **1993**, *14*, 303–311. [[CrossRef](#)]
227. Miller, N.J.; Rice-Evans, C.; Davies, M.J.; Gopinathan, V.; Milner, A. A novel method for measuring antioxidant capacity and its application to monitoring the antioxidant status in premature neonates. *Clin. Sci.* **1993**, *84*, 407–412. [[CrossRef](#)]
228. Ialongo, C. Preanalytic of total antioxidant capacity assays performed in serum, plasma, urine and saliva. *Clin. Biochem.* **2017**, *50*, 356–363. [[CrossRef](#)]
229. Lissi, E.; Salim-Hanna, M.; Pascual, C.; del Castillo, M.D. Evaluation of total antioxidant potential (TRAP) and total antioxidant reactivity from luminol-enhanced chemiluminescence measurements. *Free Radic. Biol. Med.* **1995**, *18*, 153–158. [[CrossRef](#)]
230. Benzie, I.F.F.; Strain, J.J. The ferric reducing ability of plasma (FRAP) as a measure of “antioxidant power”: The FRAP assay. *Anal. Biochem.* **1996**, *239*, 70–76. [[CrossRef](#)]
231. Erel, O. A novel automated direct measurement method for total antioxidant capacity using a new generation, more stable ABTS radical cation. *Clin. Biochem.* **2004**, *37*, 277–285. [[CrossRef](#)]
232. Lissi, E.; Pascual, C.; del Castillo, M.D. Luminol luminescence induced by 2,2'-Azo-Bis(2-Amidinopropane) thermolysis. *Free Radic. Res. Commun.* **1992**, *17*, 299–311. [[CrossRef](#)] [[PubMed](#)]
233. Güçlü, K.; Kibrishoğlu, G.; Özyürek, M.; Apak, R. Development of a fluorescent probe for measurement of peroxy radical scavenging activity in biological samples. *J. Agric. Food Chem.* **2014**, *26*, 1839–1845. [[CrossRef](#)] [[PubMed](#)]
234. Chapple, I.L.C.; Mason, G.I.; Garner, I.; Matthews, J.B.; Thorpe, G.H.; Maxwell, S.R.J.; Whitehead, T.P. Enhanced chemiluminescent assay for measuring the total antioxidant capacity of serum, saliva and crevicular fluid. *Ann. Clin. Biochem.* **1997**, *34*, 412–421. [[CrossRef](#)] [[PubMed](#)]
235. Ellman, G.L. Tissue sulfhydryl groups. *Arch. Biochem. Biophys.* **1959**, *82*, 70–77. [[CrossRef](#)]
236. Wayner, D.D.M.; Burton, G.W.; Ingold, K.U.; Locke, S. Quantitative measurement of the total, peroxy radical-trapping antioxidant capability of human blood plasma by controlled peroxidation. The important contribution made by plasma proteins. *FEBS Lett.* **1985**, *187*, 33–37. [[CrossRef](#)]
237. Lorente, L.; Martín, M.M.; Pérez-Cejas, A.; González-Rivero, A.F.; Abreu-González, P.; Ramos, L.; Argueso, M.; Solé-Violán, J.; Cáceres, J.J.; Jiménez, A.; et al. Traumatic brain injury patients mortality and serum total antioxidant capacity. *Brain Sci.* **2020**, *18*, 110. [[CrossRef](#)]
238. Chen, B.; Shen, Z.; Wu, D.; Xie, X.; Xu, X.; Lv, L.; Dai, H.; Chen, J.; Gan, X. Glutathione peroxidase 1 promotes NSCLC resistance to cisplatin via ROS-induced activation of PI3K/AKT pathway. *BioMed Res. Int.* **2019**, *27*, 7640547. [[CrossRef](#)]
239. Sinan, K.I.; Chiavaroli, A.; Orlando, G.; Bene, K.; Zengin, G.; Cziáky, Z.; Jekő, J.; Mahomoodally, M.F.; Picot-Allain, M.C.N.; Menghini, L.; et al. Biopotential of *Bersama abyssinica* fresen stem bark extracts: UHPLC profiles, antioxidant, enzyme inhibitory, and antiproliferative propensities. *Antioxidant* **2020**, *17*, 163. [[CrossRef](#)]
240. Morera-Fumero, A.L.; Díaz-Mesa, E.; Abreu-Gonzalez, P.; Fernandez-Lopez, L.; Cejas-Mendez, M. Low levels of serum total antioxidant capacity and presence at admission and absence at discharge of a day/night change as a marker of acute paranoid schizophrenia relapse. *Psychiatry Res.* **2017**, *249*, 200–205. [[CrossRef](#)]
241. Benzie, I.F.F.; Strain, J.J. Ferric reducing/antioxidant power assay: Direct measure of total antioxidant activity of biological fluids and modified version for simultaneous measurement of total antioxidant power and ascorbic acid concentration. *Methods Enzymol.* **1999**, *299*, 15–27. [[CrossRef](#)]
242. Pedrini, M.; Massuda, R.; Fries, G.R.; de Bittencourt Pasquali, M.A.; Schnorr, C.E.; Moreira, J.C.F.; Gama, C.S. Similarities in serum oxidative stress markers and inflammatory cytokines in patients with overt schizophrenia at early and late stages of chronicity. *J. Psychiatr. Res.* **2012**, *46*, 819–824. [[CrossRef](#)] [[PubMed](#)]
243. Dresch, M.T.K.; Rossato, S.B.; Kappel, V.D.; Biegelmeyer, R.; Hoff, M.L.M.; Mayorga, P.; Zuanazzi, J.A.S.; Henriques, A.T.; Moreira, J.C.F. Optimization and validation of an alternative method to evaluate total reactive antioxidant potential. *Anal. Biochem.* **2009**, *385*, 107–114. [[CrossRef](#)] [[PubMed](#)]
244. Koracevic, D.; Koracevic, G.; Djordjevic, V.; Andrejevic, S.; Cosic, V. Method for the measurement of antioxidant activity in human fluids. *J. Clin. Pathol.* **2001**, *54*, 356–361. [[CrossRef](#)] [[PubMed](#)]

245. Krawczuk-Rybak, M.; Panasiuk, A.; Czygier, M.; Muszynska-Roslan, K.; Wysocka, J.; Szmitkowski, M. Total antioxidant status (TAS) in childhood cancer survivors. *Folia Histochem. Cytobiol.* **2012**, *50*, 468–472. [[CrossRef](#)]
246. Pinchuk, I.; Shoval, H.; Dotan, Y.; Lichtenberg, D. Evaluation of antioxidants: Scope, limitations and relevance of assays. *Chem. Phys. Lipids* **2012**, *165*, 638–647. [[CrossRef](#)]
247. Ghiselli, A.; Serafini, M.; Maiani, G.; Azzini, E.; Ferro-Luzzi, A. A fluorescence-based method for measuring total plasma antioxidant capability. *Free Radic. Biol. Med.* **1995**, *18*, 29–36. [[CrossRef](#)]
248. Kim, E.; Winkler, T.E.; Kitchen, C.; Mijeong, K.; Banis, G.; Bentley, W.E.; Kelly, D.L.; Ghodssi, R.; Payne, G.F. Redox probing for chemical information of oxidative stress. *Anal. Chem.* **2017**, *89*, 1583–1592. [[CrossRef](#)]
249. Zhang, X.Y.; Tan, Y.L.; Cao, L.Y.; Wu, G.Y.; Xu, Q.; Shen, Y.; Zhou, D.F. Antioxidant enzymes and lipid peroxidation in different forms of schizophrenia treated with typical and atypical antipsychotics. *Schizophr. Res.* **2006**, *81*, 291–300. [[CrossRef](#)]
250. Czerska, M.; Mikołajewska, K.; Zieliński, M.; Gromadzińska, J.; Wąsowicz, W. Today's oxidative stress markers. *Med. Pract.* **2015**, *66*, 393–405. [[CrossRef](#)]
251. Peluso, I.; Raguzzini, A. Salivary and urinary total antioxidant capacity as biomarkers of oxidative stress in humans. *Pathol. Res. Int.* **2016**, *2016*, 5480267. [[CrossRef](#)]
252. Avval, F.Z.; Mahmoudi, N.; Tirkani, A.N.; Jarahi, L.; Alamdari, D.H.; Sadjadi, S.A. Determining pro-oxidant antioxidant balance (PAB) and total antioxidant capacity (TAC) in patients with schizophrenia. *Iran. J. Psychiatry* **2018**, *13*, 223–227.
253. Farrell, M.; Aherne, S.; O'Riordan, S.; O'Keeffe, E.; Greene, C.; Campbell, M. Blood-brain barrier dysfunction in a boxer with chronic traumatic encephalopathy and schizophrenia. *Clin. Neuropathol.* **2019**, *38*, 51–58. [[CrossRef](#)] [[PubMed](#)]
254. Kealy, J.; Greene, C.; Campbell, M. Blood-brain barrier regulation in psychiatric disorders. *Neurosci. Lett.* **2018**. [[CrossRef](#)] [[PubMed](#)]
255. Costea, L.; Mészáros, Á.; Bauer, H.; Bauer, H.; Traweger, A.; Wilhelm, I.; Farkas, A.E.; Krizbai, I. The blood-brain barrier and its intercellular junctions in age-related brain disorders. *Int. J. Mol. Sci.* **2019**, *20*, 5472. [[CrossRef](#)]
256. Deng, H.; Kahlon, R.S.; Mohite, S.; Amin, P.; Zunta-Soares, G.; Colpo, G.; Stertz, L.; Fries, G.R.; Walss-Boss, C.; Soures, J.C.; et al. Elevated plasma S100B, psychotic symptoms, and cognition in schizophrenia. *Psychiatr. Q.* **2018**, *89*, 53–60. [[CrossRef](#)]
257. Lara, D.R.; Gama, C.S.; Belmonte-De-Abreu, P.; Portela, L.; Gonçalves, C.; Fonseca, M.; Hauck, S.; Souza, D. Increased serum S100B protein in schizophrenia: A study in medication-free patients. *J. Psychiatr. Res.* **2001**, *35*, 11–14. [[CrossRef](#)]
258. Agosta, J.B.; Mari, Y.M.; Rodriguez, N.R.; Herrera, D.G.d.B.; Ojalvo, A.G.; Mayola, M.F.; Niello, G.G.; Sosa, P.V. Burn injury insulin resistance and central nervous system complications: A review. *Burn. Open* **2020**. [[CrossRef](#)]
259. de la Monte, S.M.; Wands, J.R. Alzheimer's disease is type 3 diabetes—Evidence reviewed. *J. Diabetes Sci. Technol.* **2008**, *2*, 1101–1113. [[CrossRef](#)]
260. Fung, A.; Vizcaychipi, M.; Lloyd, D.; Wan, Y.; Ma, D. Central nervous system inflammation in disease related conditions: Mechanistic prospects. *Brain Res.* **2012**, *1446*, 144–155. [[CrossRef](#)]
261. De Felice, F.G.; Lourenco, M.V.; Ferreira, S.T. How does brain insulin resistance develop in Alzheimer's disease? *Alzheimer's Dement.* **2014**, *10*, S26–S32. [[CrossRef](#)]
262. Yang, H.; Shan, W.; Zhu, F.; Wu, J.; Wang, Q. Ketone bodies in neurological diseases: Focus on neuroprotection and underlying mechanisms. *Front. Neurol.* **2019**, *10*, 585. [[CrossRef](#)] [[PubMed](#)]
263. Knezovic, A.; Osmanovic-Barilar, J.; Curlin, M.; Hof, P.R.; Simic, G.; Riederer, P.; Salkovic-Petrisic, M. Staging of cognitive deficits and neuropathological and ultrastructural changes in streptozotocin-induced rat model of Alzheimer's disease. *J. Neural Transm.* **2015**, *122*, 577–592. [[CrossRef](#)] [[PubMed](#)]
264. Xu, Z.; Adilijiang, A.; Wang, W.; You, P.; Lin, D.; Li, X.; He, J. Arecoline attenuates memory impairment and demyelination in a cuprizone-induced mouse model of schizophrenia. *Neuroreport* **2019**, *16*, 134–138. [[CrossRef](#)] [[PubMed](#)]
265. McNay, E.C.; Pearson-Leary, J. GluT4: A central player in hippocampal memory and brain insulin resistance. *Exp. Neurol.* **2020**, *323*, 113076. [[CrossRef](#)] [[PubMed](#)]

266. Wu, T.; Qiao, S.; Shi, C.; Wang, S.; Ji, G. Metabolomics window into diabetic complications. *J. Diabetes Investig.* **2018**, *9*, 244–255. [[CrossRef](#)] [[PubMed](#)]
267. Antenor-Dorsey, J.A.; Meyer, E.; Rutlin, J.; Perantie, D.C.; White, N.H.; Arbelaez, A.M.; Shimony, J.S.; Hershey, T. White matter microstructural integrity in youth with type 1 diabetes. *Diabetes* **2013**, *62*, 581–589. [[CrossRef](#)]
268. Ooi, S.L.; Green, R.; Pak, S.C. N-acetylcysteine for the treatment of psychiatric disorders: A review of current evidence. *BioMed Res. Int.* **2018**, *2018*, 2469486. [[CrossRef](#)]
269. Górny, M.; Wnuk, A.; Kamińska, A.; Kamińska, K.; Chwatko, G.; Bilska-Wilkosz, A.; Iciek, M.; Kajta, M.; Rogóż, Z.; Lorenc-Koci, E. Glutathione deficiency and alterations in the sulfur amino acid homeostasis during early postnatal development as potential triggering factors for schizophrenia-like behavior in adult rats. *Molecules* **2019**, *24*, 4253. [[CrossRef](#)]
270. Mullier, E.; Roine, T.; Griffa, A.; Xin, L.; Baumann, P.S.; Klauser, P.; Cleusix, M.; Jenni, R.; Alemán-Gómez, Y.; Gruetter, R.; et al. N-acetyl-cysteine supplementation improves functional connectivity within the cingulate cortex in early psychosis: A pilot study. *Int. J. Neuropsychopharmacol.* **2019**, *22*, 478–487. [[CrossRef](#)]



© 2020 by the authors. Licensee MDPI, Basel, Switzerland. This article is an open access article distributed under the terms and conditions of the Creative Commons Attribution (CC BY) license (<http://creativecommons.org/licenses/by/4.0/>).