

## One Minute Ophthalmology

Fairooz P. Manjandavida, Bangalore, India  
Carol L. Shields, Philadelphia, USA

### Photopsia and visual loss in a patient with lung cancer

#### Case

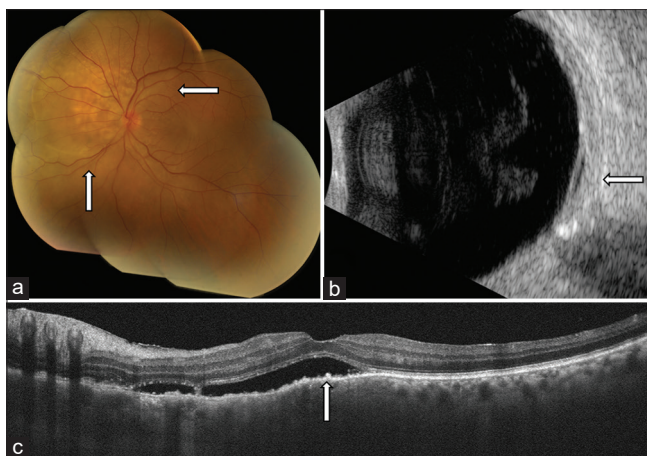
A 68-year-old Caucasian male with a history of lung carcinoma with metastasis to bone and lymph nodes, treated with 1.5 months of checkpoint inhibitor (CPI) pembrolizumab (antiprogrammed cell death protein-1 antibody), noted photopsia and decreased visual acuity in the left eye (OS) over 2 months. On examination, visual acuity was 20/25 in the right eye (OD) and 20/80 OS. Fundus evaluation revealed juxtapapillary subtle yellow choroidal discoloration with associated subretinal fluid (SRF) OS. The right eye was unremarkable.

#### What is your next step?

- A. Apply plaque radiotherapy
- B. Perform fine needle aspiration biopsy
- C. Apply photodynamic therapy
- D. Continue pembrolizumab

#### Findings

Fundoscopy examination OS revealed an ill-defined, juxtapapillary, amelanotic choroidal mass with surrounding SRF involving the macula [Fig. 1a]. The lesion demonstrated indistinct margins, measuring approximately 10 mm in diameter and 2.2 mm in ultrasonographic thickness [Fig. 1b]. By optical coherence tomography, the choroid was thickened and demonstrated a "lumpy, bumpy" surface configuration, suggestive of choroidal metastasis [Fig. 1c]. These features were suggestive of a partial response to pembrolizumab. The right eye was normal.



**Figure 1:** A 68-year-old Caucasian male presented with flashes and decreased vision in the left eye and was found to have (a) an ill-defined choroidal mass on funduscopy of the left eye. (b) B scan ultrasonography of the left eye revealed a small amount of subretinal fluid inferiorly. (c) Optical coherence tomography revealed thickening of the choroid and subretinal fluid beneath the fovea

**Diagnosis:** Choroidal metastasis OS

**Correct answer:** D

#### Discussion

Choroidal metastasis is a serious finding, associated with only 24% survival at 5 years.<sup>[1]</sup> The most common primary tumor sites include cancers of the breast (37%), lung (27%), kidney (4%), gastrointestinal tract (4%), and cutaneous melanoma (2%).<sup>[1]</sup> Metastases with best 1-year survival originate from lung carcinoid (92%), cutaneous melanoma (70%), and breast cancer (66%), while those with the poorest 1-year survival exhibit thyroid (35%), gastrointestinal (33%), and pancreatic (25% 6-month survival) origin.<sup>[1]</sup> Immunoinhibitory ligands are targeted by CPIs, upregulating the immune system to attack tumor. Ocular side effects include uveitis in 1% of patients; systemic side effects include lymphocytopenia and hepatitis.<sup>[2,3]</sup> Patients with systemic cancer and new ocular symptoms should have detailed ocular evaluation to determine the cause, such as medication-related, paraneoplastic syndrome, or metastatic disease.<sup>[2]</sup>

#### Declaration of patient consent

The authors certify that they have obtained all appropriate patient consent forms. In the form the patient(s) has/have given his/her/their consent for his/her/their images and other clinical information to be reported in the journal. The patients understand that their names and initials will not be published and due efforts will be made to conceal their identity, but anonymity cannot be guaranteed.

#### Financial support and sponsorship

Nil.

#### Conflicts of interest

There are no conflicts of interest.

#### References

1. Shields CL, Welch RJ, Malik K, Acaba-Berrocá LA, Selzer EB, Newman JH, *et al*. Uveal metastasis: Clinical features and survival outcome of 2214 tumors in 1111 patients based on primary tumor origin. *Middle East Afr J Ophthalmol* 2018;25:81-90.
2. Dalvin LA, Shields CL, Orloff M, Sato T, Shields JA. Checkpoint inhibitor immune therapy: Systemic indications and ophthalmic side effects. *Retina* 2018;38:1063-78.
3. Davies M, Duffield EA. Safety of checkpoint inhibitors for cancer treatment: Strategies for patient monitoring and management of immune-mediated adverse events. *Immunotargets Ther* 2017;6:51-71.

*Eric Shiuey, Sara E Lally, Carol L Shields*

Oncology Service, Wills Eye Hospital, Thomas Jefferson University, Philadelphia, PA, United States

Correspondence to: Dr. Carol L Shields,  
840 Walnut Street, Suite 1440, Philadelphia, PA 19107-5109, USA.  
E-mail: carolshields@gmail.com

#### Access this article online

##### Quick Response Code:



##### Website:

[www.ijo.in](http://www.ijo.in)

##### DOI:

10.4103/ijo.IJO\_58\_20

This is an open access journal, and articles are distributed under the terms of the Creative Commons Attribution-NonCommercial-ShareAlike 4.0 License, which allows others to remix, tweak, and build upon the work non-commercially, as long as appropriate credit is given and the new creations are licensed under the identical terms.

**For reprints contact:** [WKHLRPMedknow\\_reprints@wolterskluwer.com](mailto:WKHLRPMedknow_reprints@wolterskluwer.com)

**Cite this article as:** Shiuey E, Lally SE, Shields CL. Photopsia and visual loss in a patient with lung cancer. *Indian J Ophthalmol* 2020;68:2348.

# TIME IS OF THE ESSENCE

Keeler's MIO – a revolution in Fundus Imaging Technology for adult and paediatric patients, helping Ophthalmologists worldwide conduct fast and affordable retinal examination!



Non-contact & portable digital retinal exams



Saves time with KineXis Imager for fundus auto-capture



Share documentation securely for patient engagement, education and analysis

“In a busy out-patient environment, the visit led to quick diagnosis, clear explanation of the required treatment to the patient and urgent treatment. The diagnosis would have been difficult to explain to the patient without images of the eye, prolonging the appointment and potentially delaying treatment.”

Dr. N.R. Rangaraj  
Premiere Eye Care, Chennai



Today patients across the world are avoiding essential eye treatment for fear of the on-going pandemic. Innovative telemedicine technology in the ophthalmic field, like MIO, helps ensure safety for both doctor and patient. Retinal treatment is important. #EyeCareCannotWait

Available in India

[www.keelermio.com](http://www.keelermio.com)



A Halma Company

**Keeler**  
– A world without vision loss –