

# The ALHAMBRA photometric system

T. Aparicio Villegas<sup>1</sup>, E. J. Alfaro<sup>1</sup>, J. Cabrera-Caño<sup>2,1</sup>, M. Moles<sup>1,3</sup>, N. Benítez<sup>1</sup>, J. Perea<sup>1</sup>, A. del Olmo<sup>1</sup>, A. Fernández-Soto<sup>4</sup>, D. Cristóbal-Hornillos<sup>1,3</sup>, C. Husillos<sup>1</sup>, J. A. L. Aguerri<sup>5</sup>, T. Broadhurst<sup>6</sup>, F. J. Castander<sup>7</sup>, J. Cepa<sup>5,8</sup>, M. Cerviño<sup>1</sup>, R. M. González Delgado<sup>1</sup>, L. Infante<sup>9</sup>, I. Márquez<sup>1</sup>, J. Masegosa<sup>1</sup>, V. J. Martínez<sup>10,11</sup>, F. Prada<sup>1</sup>, J. M. Quintana<sup>1</sup>, S. F. Sánchez<sup>3,12</sup>

<sup>1</sup> *Instituto de Astrofísica de Andalucía (CSIC) , E-18080, Granada, Spain; terenz@iaa.es, emilio@iaa.es, benitez@iaa.es, jaime@iaa.es, chony@iaa.es, cesar@iaa.es, mcs@iaa.es, rosa@iaa.es, isabel@iaa.es, pepa@iaa.es, fprada@iaa.es, quintana@iaa.es*

<sup>2</sup> *Facultad de Física. Departamento de Física Atómica, Molecular y Nuclear. Universidad de Sevilla, Sevilla, Spain; jcc-famn@us.es*

<sup>3</sup> *Centro de Estudios de Física del Cosmos de Aragón (CEFCA), C/ General Pizarro, 1, 44001 Teruel, Spain; moles@cefca.es, dch@cefca.es, sanchez@cefca.es*

<sup>4</sup> *Instituto de Física de Cantabria (CSIC-UC), 39005, Santander, Spain; fsoto@ifca.unican.es*

<sup>5</sup> *Instituto de Astrofísica de Canarias, La Laguna, Tenerife, Spain; jalfonso@iac.es*

<sup>6</sup> *School of Physics and Astronomy, Tel Aviv University, Israel; tjb@wise.tau.ac.il*

<sup>7</sup> *Institut de Ciències de l'Espai, IEEC-CSIC, Barcelona, Spain; fjc@ieec.fc.es*

<sup>8</sup> *Departamento de Astrofísica, Facultad de Física, Universidad de la Laguna, Spain; jcn@iac.es*

<sup>9</sup> *Departamento de Astronomía, Pontificia Universidad Católica, Santiago, Chile; linfante@astro.puc.cl*

<sup>10</sup> *Departament d'Astronomia i Astrofísica, Universitat de València, Valencia, Spain; vicent.martinez@uv.es*

<sup>11</sup> *Observatori Astronòmic de la Universitat de València, Valencia, Spain*

<sup>12</sup> *Centro Astronómico Hispano-Alemán, Almería, Spain*

## ABSTRACT

This paper presents the characterization of the optical range of the ALHAMBRA photometric system, a 20 contiguous, equal-width, medium-band CCD system with wavelength coverage from 3500Å to 9700Å. The photometric description of the system is done by presenting the full response curve as a product of the filters, CCD and atmospheric transmission curves, and using some first and second order moments of this response function. We also introduce the set of standard stars that defines the system, formed by 31 classic spectrophotometric standard stars which have been used in the calibration of other known photometric systems, and 288 stars, flux calibrated homogeneously, from the Next Generation Spectral Library (NGSL). Based on the NGSL, we determine the transformation equations between Sloan Digital Sky Survey (SDSS) *ugriz* photometry and the ALHAMBRA photometric system, in order to establish some relations between both systems. Finally we develop and discuss a strategy to calculate the photometric zero points of the different pointings in the ALHAMBRA project.

*Subject headings:* instrumentation: photometers; techniques: photometric; standards; cosmology: observations; galaxies: distances and redshifts; stars: fundamental parameters.

## 1. Introduction

The ALHAMBRA (Advanced Large, Homogeneous Area Medium Band Redshift Astronomical) survey is a project aimed at getting a photometric data super-cube, which samples a cosmological fraction of the universe with enough precision to draw an evolutionary track of its content and properties (see Moles et al. 2008, for a more detailed description of the scientific objectives of the project). The global strategy to achieve this aim is to identify a large number of objects, families or structures at different redshifts ( $z$ ), and compare their properties as a function of  $z$ , once the physical dispersion of those properties at every  $z$ -value has been taken into account. Thus, it is possible to identify epochs (measured by  $z$ ) of development of some families of objects or structures, or their disappearance, or even the progressive change in the proportion of a family of objects and the degree of structuring of the universe. Such a survey requires a combination of large area, depth, photometric accuracy and spectral coverage. The number, width and position of the filters composing an optimal filter set to accomplish these objectives have been discussed and evaluated by Benítez et al. (2009), yielding a filter set formed by a uniform system of 20 constant-width, non-overlapping, medium-band filters in the optical range plus the three standard  $JHK_s$  near infrared (NIR) bands.

The ALHAMBRA project aims at covering a minimum of 4 square degrees in 8 discontinuous regions of the sky. This implies the need for a wide-field instrument, associated to a 3-4m telescope that allows to cover the selected area with the required signal-to-noise ratio, within a reasonable observing time period. The ALHAMBRA optical system was then incorporated to the wide-field camera LAICA<sup>1</sup> (Large Area Imager for Calar Alto) placed at the prime focus of the 3.5m telescope at Calar Alto Observatory, while the NIR range was observed with the camera OMEGA-2000<sup>2</sup> attached to the same telescope.

The main purpose of this paper is to present the characterization of the 20 ALHAMBRA filters in the optical range, that covers from 3500Å to 9700Å at intervals of approximately 310Å, to select the best set of standard stars that determine the observational system, to establish the first transformation equations between ALHAMBRA and other photometric systems already defined, and to check the strategies for the determination of the zero points in the automatic reduction of the ALHAMBRA data set. Some of these issues have been briefly presented in a previous paper introducing the ALHAMBRA project (Moles et al. 2008).

In section 2 we present the definition of the photometric system. The set of ALHAMBRA photometric standard stars is analyzed in detail in section 3. In section 4.1, transformation equations between Sloan Digital Sky Survey (SDSS) and ALHAMBRA photometric system are established from the comparison between the synthetic magnitudes of 288 stars from the Next Generation Spectral Library (NGSL) in both systems. We present color data for three galaxy templates as a function of redshift using the ALHAMBRA photometric system in section 4.2, and, in section 4.3, we discuss the validity of the transformation equations for galaxies.

Finally, in section 5 we develop a strategy to determine the photometric zero points of the system with uncertainties below a few hundredths of magnitude, to be applied in the calibration of the eight ALHAMBRA fields.

## 2. Characterization of the ALHAMBRA photometric system

The ALHAMBRA photometric system has been defined according to what is specified in Benítez et al. (2009), as a system of 20 constant-width, non-overlapping, medium-band filters in the optical range (with wavelength coverage from 3500Å to 9700Å). The definition of the

---

<sup>1</sup><http://www.caha.es/CAHA/Instruments/LAICA/index.html>

<sup>2</sup><http://www.caha.es/CAHA/Instruments/O2000/index.html>

system is given by the response curve defined by the product of three different transmission curves: the filter set, detector and atmospheric extinction at 1.2 airmasses, based on the CAHA monochromatic extinction tables (Sánchez et al. 2007). The graphic representation of the optical ALHAMBRA photometric system is shown in Fig.1. Numerical values of these response curves can be found at the web page <http://alhambra.iaa.es:8080>.

First and second order moments of the transmission functions of the different 20 filters are also of interest. We will characterize the system filters using their isophotal wavelengths, full width half maxima, and other derived quantities as follows.

Let  $E_\lambda$  be the spectral energy distribution (SED) of an astronomical source and  $S_\lambda$  the response curve of a filter in the photometric system defined as:

$$S_\lambda = T_t(\lambda)T_f(\lambda)T_a(\lambda), \quad (1)$$

where  $T_t$  is the product of the throughput of the telescope, instrument and quantum efficiency of the detector,  $T_f$  is the filter transmission and  $T_a$  is the atmospheric transmission. Following the definition in Golay (1974), assuming that the function  $E_\lambda$  is continuous and that  $S_\lambda$  does not change sign in a wavelength interval  $\lambda_a - \lambda_b$ , the mean value theorem states that there is at least one  $\lambda_i$  inside the interval  $\lambda_a - \lambda_b$  such that:

$$E_{\lambda_i} \int_{\lambda_a}^{\lambda_b} S_\lambda d\lambda = \int_{\lambda_a}^{\lambda_b} E_\lambda S_\lambda d\lambda \quad (2)$$

implying,

$$E_{\lambda_i} = \langle E_\lambda \rangle = \frac{\int_{\lambda_a}^{\lambda_b} E_\lambda S_\lambda d\lambda}{\int_{\lambda_a}^{\lambda_b} S_\lambda d\lambda}, \quad (3)$$

where  $\lambda_i$  is the *isophotal wavelength* and  $\langle E_\lambda \rangle$  denotes the mean value of the intrinsic flux above the atmosphere over the wavelength interval (see also Tokunaga & Vacca 2005). Table 1 shows the isophotal wavelengths of the ALHAMBRA filters using the spectrum of *Vega* as reference. The absolute calibrated spectrum has been taken from the STScI Observatory Support Group webpage<sup>3</sup>, as the file *alpha\_lyr\_stis\_004.fits*. This spectrum is a combination of modeled and observed fluxes consisting of STIS CCD fluxes from 3500Å-5300Å, and a Kurucz model with  $T_{eff} = 9400K$  (Kurucz 2005) from 5300Å to the end of the spectral range. The isophotal wavelengths were calculated using formula 3.

The determination of the isophotal wavelengths of a star in a photometric system can be complex, specially for the filters that contain conspicuous stellar absorption lines (see

---

<sup>3</sup><http://www.stsci.edu/hst/observatory/cdbs/calspec.html>

Figure 1.a). For example, filter A394M is extremely sensitive to the Balmer jump and filter A425M encompasses the two prominent  $H_\gamma$  and  $H_\delta$  lines, at 4340Å and 4101Å respectively. At 4861Å,  $H_\beta$  is in filter A491M, and at 6563Å  $H_\alpha$  falls on filter A646M. The Paschen series, from 8208Å at filter A829M, appears associated to the four reddest ALHAMBRA filters (A861M, A892M, A921M, A948M).

However, this quantity depends on the spectral energy distribution of the emitter, thus, for the same filter it will be different for each kind of source. The isophotal wavelength can be approximated by other central parameters that only depend on the photometric system, such as the wavelength-weighted average or the frequency-weighted average (written as  $c\nu^{-1}$ ):

$$\lambda_{med} = \frac{\int \lambda S_\lambda d\lambda}{\int S_\lambda d\lambda} \quad (4)$$

$$\nu_{med} = \frac{\int \nu S_\nu d(\ln \nu)}{\int S_\nu d(\ln \nu)}, \quad (5)$$

or by the effective wavelength as defined by Schneider et al.(1983):

$$\lambda_{eff} = \exp\left[\frac{\int d(\ln \nu) S_\nu \ln \lambda}{\int d(\ln \nu) S_\nu}\right] \quad (6)$$

which is halfway between the wavelength-weighted average and the frequency-weighted average (Fukugita et al. 1996). The differences between the isophotal wavelength concept and these three central approaches can be seen in Golay (1974).

The root mean square (rms) fractional widths of the filters,  $\sigma$ , defined as:

$$\sigma = \sqrt{\frac{\int d(\ln \nu) S_\nu [\ln(\frac{\lambda}{\lambda_{eff}})]^2}{\int d(\ln \nu) S_\nu}} \quad (7)$$

is useful in calculating the sensitivity of the effective wavelength to spectral slope changes:

$$\delta \lambda_{eff} = \lambda_{eff} \sigma^2 \delta n, \quad (8)$$

where  $n$  is the local power-law index of the SED ( $f_\nu \propto \nu^n$ ), and the effective band width,  $\delta$ , is given by:

$$\delta = 2(2 \ln 2)^{1/2} \sigma \lambda_{eff}. \quad (9)$$

We also calculate the flux sensitivity quantity  $Q$ , defined as

$$Q = \int d(\ln \nu) S_\nu, \quad (10)$$

which allows a quick approximation to the response of the system to a source of known flux in the following way:

$$N_e = AtQf_{\nu_{eff}}h^{-1}, \quad (11)$$

where  $N_e$  is the number of photoelectrons collected with a system of effective area  $A$  integrating for a time  $t$  on a source of flux  $f_\nu$ , and  $h$  is the Planck constant. As an example, the number of photoelectrons collected using the ALHAMBRA photometric system, in 1  $arcsec^2$ , integrating for a time of 5000 seconds on a source of AB=23 mag $\cdot arcsec^{-2}$  in filter A491M is  $1.54 \times 10^4$  photoelectrons.

Table 1 shows the values of these parameters calculated for each of the filters in the ALHAMBRA photometric system.

### 3. Standard stars system

To calibrate the ALHAMBRA photometric system we have chosen two different sets of primary standard stars. The first one is a set of 31 classic spectrophotometric standard stars from several libraries such as Oke & Gunn (1983), Oke (1990), Massey & Gronwall (1990) and Stone (1996), together with the main standard stars adopted by the Hubble Space Telescope (Bohlin, 2007), and the SDSS standard  $BD + 174708$  (Tucker et al. 2001). This set was chosen in order to anchor the ALHAMBRA photometric system with some standards that have been used on important photometric systems such as the SDSS, with which we have established some transformation equations, as explained in the following sections. These objects are stars with no detected variability within a few millimagnitudes scale, available high-resolution spectra ( $\leq 5 \text{ \AA}$ ), and flux calibrated with errors lower than 5%. These standard stars are spread out all over the sky and are bright, but they do not cover all the spectral types, being mostly white dwarfs and main sequence A-type stars.

The second set of primary standard stars is formed by 288 stars from a new spectral library, with good spectral resolution, all of them obtained and flux calibrated homogeneously, and covering a wide range of spectral types, gravities and metallicities ( $3440K \leq T_{eff} \leq 44500K$ ,  $0.45 \leq \lg g \leq 4.87$  and  $-2 \leq [Fe/H] \leq 0.5$ ). This spectral library has been developed at the Space Telescope Science Institute; it consists of 378 high signal-to-noise stellar spectra, and is known as HST/STIS Next Generation Spectral Library (NGSL), (Gregg et al. 2004<sup>4</sup>). The wavelength range of these spectra covers from 2000Å to 10.200Å. These stars represent a potential set of spectrophotometric standards, being valuable in the study of

---

<sup>4</sup><http://lifshitz.ucdavis.edu/~mgregg/gregg/ngsl/ngsl.html>

atmosphere parameters using model atmosphere fluxes. Coordinates and physical properties of these stars can be found at <http://archive.stsci.edu/prepds/stisngsl/>.

These 288 stars together with the 31 classic spectrophotometric standards define the set of primary standards of the ALHAMBRA photometric system. AB magnitudes in the ALHAMBRA system of these stars are presented in two electronic tables, Table 2 and Table 3. Nine stars (AGK81D266, BD17D4708, BD28D4211, BD75D325, FEIGE 110, FEIGE 34, G191B2B, HZ 44, P041C) are common to both sets. Magnitudes in the ALHAMBRA photometric system for these nine stars derived from the two different sources show differences lower than a few millimagnitudes over the whole filter set, indicating that both groups of standard stars are anchored to the same physical system. However, once we have established the similitude and stability of the photometric zero points for both set of standards we will base the further analysis on the NGSL catalogue, which shows a higher degree of internal homogeneity, both in wavelength and flux calibrations.

Magnitudes in the ALHAMBRA photometric system are set on the AB magnitude system (Oke & Gunn 1983),

$$AB_\nu = -2,5 \lg f_\nu - 48.60, \quad (12)$$

where the constant comes from the expression

$$48.6 = -2.5 \lg F_0, \quad (13)$$

and  $F_0 = 3.63 \times 10^{-20} \text{erg/cm}^2/\text{s}/\text{Hz}$  is the flux of *Vega* at  $\lambda = 5500\text{\AA}$  used by those authors. The parameter  $f_\nu$  is the flux per unit frequency of an object in  $\text{erg/cm}^2/\text{s}/\text{Hz}$ .

The AB magnitudes will be estimated as follows:

$$AB_\nu = -2.5 \lg \frac{\int f_\nu S_\nu d(\lg \nu)}{\int S_\nu d(\lg \nu)} - 48.6 \quad (14)$$

where  $S_\nu$  is the response function of the system corresponding to the atmosphere-telescope-filter-detector combination.

Regarding the observational part of the ALHAMBRA project, the adequate definition of the photometric system must fit both the LAICA camera and its geometry. LAICA's focal plane is made up of four CCDs that partly cover a total field of  $44.36' \times 44.36'$ , and it needs four filter sets, each one univocally associated to each of the CCDs. The standard ALHAMBRA photometric system is chosen as the one at position number 3 of the LAICA camera, and three replicas have been built to complete the observational setting. Comparison of the three instrumental replicas and the ALHAMBRA photometric system, has been

performed using the *Vega* spectrum above. We calculated the absolute differences between the AB magnitudes of the star in each one of the three replicas and the standard ALHAMBRA value, detecting that filter A366M shows the maximum absolute difference (up to 0.05 magnitudes). In the case of filter A394M there is a maximum of 0.02 magnitudes offset, filter A425M has a 0.01 magnitudes offset, and the rest of the filters have smaller differences.

Filter	CCD1	CCD2	CCD3	CCD4	$\Delta_{\max}$
A366M	0.97	0.97	0.96	0.92	0.05
A394M	0.03	0.02	0.02	0.01	0.02
A425M	-0.14	-0.13	-0.13	-0.13	0.01

We have developed a statistical analysis on the distribution of differences, using synthetic AB magnitudes of the 288 standard stars from the NGSL. Table 4 shows the result of this analysis. Once again filter A366M presents the largest difference in magnitude, reaching up to 0.0689 magnitudes for some stars in the sample. For the whole sample, the median of the differences in absolute value between filter A366M AB magnitudes in the ALHAMBRA photometric system and those determined from the three replicas, is 0.0174 magnitudes, with a rms (calculated through MAD, median absolute deviation) of 0.0088. In the other filters the median of the absolute differences is less than 0.01 magnitudes, becoming smaller as we move to redder wavelengths.

## 4. ALHAMBRA-SDSS transformation equations

### 4.1. Based on the Standard Stars

The Sloan Digital Sky Survey is a well-known astronomical project which has obtained deep multi-color images covering more than a quarter of the sky. Its photometric system is formed by five non-overlapping color bands (*ugriz*) that cover the complete optical range from 3000Å to 11.000Å (Fukugita et al. 1996; Smith et al. 2002). Given that the SDSS and the ALHAMBRA photometric systems lay on the same reference standard stars, a set of transformation equations can be determined between both systems based on the NGSL stars.

Based on the proximity of their effective wavelengths (Table 1) , we select the ALHAMBRA filters which better correspond to the 5 SDSS bands as:



u	354.0 nm	A366M	366.1 nm
g	477.0 nm	A491M	491.3 nm
r	622.2 nm	A613M	613.4 nm
i	763.2 nm	A770M	769.9 nm
z	904.9 nm	A921M	920.7 nm

In this way, a zero-order approximation to the SDSS photometric system could be given by the ALHAMBRA colors A366M-A491M (corresponding to the u-g SDSS color), A491M-A613M (g-r color), A613M-A770M, (r-i color) and A770M-A921M (i-z color).

However, one has to take into account the different widths of the filters in the two systems (see Figure 1.b for a graphic comparison). The ALHAMBRA photometric system uses medium-band filters ( $\approx 31$  nm wide), so they are more sensitive to discontinuities in the spectral energy distribution. On the contrary, the SDSS wide-band filters transmit more energy, permitting the detection of fainter objects, but showing more difficulties in the interpretation and analysis of the information derived from their photometric measurements.

The transformation equations from SDSS magnitudes to the ALHAMBRA photometric system (and vice versa) have been calculated using synthetic AB magnitudes for the NGSL subset of the ALHAMBRA primary standards. The *ugriz* synthetic magnitudes were obtained from the filters and detector set, following the SDSS standard system given by Smith et al. (2002, USNO), located in the US Naval Observatory 1m telescope.

The elaboration of the lineal model used to obtain the magnitudes in the ALHAMBRA photometric system from SDSS photometry has been developed using the statistical software **R**<sup>5</sup>, in particular the statistical task called “Backward Stepwise Regression” that uses the Bayesian Information Criterion (BIC), a tool for model selection defined as:

$$BIC = -2 \ln L + k \ln(n) \quad (15)$$

where  $L$  is the maximized value of the likelihood function for the estimated model,  $k$  the number of free parameters to be estimated, and  $n$  is the sample size (number of observations).

The transformation equations are, in general, valid for the range of stellar parameters covered by the selected 288 NGSL stars. Table 5 shows the coefficients of the transformation from SDSS magnitudes to ALHAMBRA photometry. First column are the dependent variables of the linear regression which are composed of a color formed with an ALHAMBRA band minus a SDSS band; the independent variables are correlative SDSS colors. We

---

<sup>5</sup><http://www.r-project.org>

calculate this type of transformations, instead of using as dependent variables the AB ALHAMBRA magnitudes and as the independent variables the SDSS magnitudes directly, in order to force the sum of the linear model coefficients to be 1, a necessary condition when we are comparing magnitudes and not colors. From a model such as,

$$Alh_i = \sum_j a_{ij} \cdot Sloan_j + b_i \quad (16)$$

follows that the same star observed (using any photometric system) at different distances would have the same magnitudes plus a single constant equal for all filters,  $\mu$ , so the equations should verify

$$\begin{aligned} Alh_i + \mu &= \sum_j a_{ij} \cdot (Sloan_j + \mu) + b_i = \\ &= \sum_j a_{ij} \cdot Sloan_j + b_i + (\sum_j a_{ij}) \cdot \mu \end{aligned} \quad (17)$$

which implies that the coefficients in the transformation equations should satisfy that the sum of all the coefficients is equal to 1. With this in mind, the equations can be posed as:

$$Alh_i - Sloan_k = \sum_{j=1}^4 c_{ij} \cdot (Sloan_j - Sloan_{j+1}) + d_i \quad (18)$$

where  $Sloan_k$  is any of the five SDSS bands.

Table 6 shows the coefficients of the inverse transformation equations, from ALHAMBRA photometry to SDSS magnitudes, obtained with the same procedure.

## 4.2. Redshift Galaxy templates

Color transformations for stars, in general, would not offer accurate results for galaxies, especially when the effects of redshift and intergalactic absorption are taken into account. It is therefore desirable to describe the colors of observed galaxies at different redshifts in the system, as accurately as possible. To do so, we use the empirically calibrated library of Benítez et al. (2004). We generate estimated colors for the galaxies in the library in redshift intervals of 0.05, using the SDSS filter  $r$  as reference for all the ALHAMBRA medium-band filters. All colors correspond to the AB system, and were calculated using the functions included in the module `bpz_tools` from the BPZ package (Benítez 2000) which offers an accuracy similar to that of SYNPHOT (Baggett et al. 1997). We present here the tables for the E/S0, Sbc, Im, SB2, SB3 and Scd templates for the ALHAMBRA photometric system (Tables 7 to 12). These values allow us to determine in an easy way the  $k$ -correction which arises from estimating spectral indices at observing frequencies other than the rest frequency. As an example, Figure 2 and Figure 3 present the variation of the  $k$ -correction for two ALHAMBRA

colors, A491M-A613M and A770M-A921M respectively, versus different values of  $z$  for these three galaxy templates.

These tables must be used with caution, since it is obvious that a few templates cannot represent all the possible variations of real galaxy spectra. Nevertheless, they also serve as a guide to transform galaxy colors between different photometric systems for a given spectral type and redshift. To this end, we need to find the closest possible match in redshift and spectral type in the electronic tables, using as many colors as possible. Then we look up the corresponding color in the table corresponding to the spectral type and filter of interest, using interpolation between spectral types and redshifts if needed.

### 4.3. Validity of the transformation equations on galaxies

Although the transformation equations presented in section 4.1 are calculated to be applied to stellar objects, we have carried out a quick test to see how they work for galaxy templates at  $z=0$ . Using tables 7, 8 and 9, we have obtained ALHAMBRA colors of the three galaxy templates: E/S0, Sbc and Im. Applying the transformation equations to their ALHAMBRA colors, we obtained SDSS colors, and these were compared with two different results presented by Fukugita et al.(1995), where they obtained synthetic colors from the convolution of Kennicutt’s (1992) spectrophotometric atlas with the response functions of the SDSS photometric system, and Shimasaku et al.(2001), where SDSS colors of a sample of observed galaxies are presented. As Fig. 4 shows, the values obtained by the ALHAMBRA-SDSS transformation equations are within the observed range of SDSS galaxy colors, taking into account the typical uncertainty in the colors that define a class of morphological type.

The validity of these transformation equations for galaxies depends on the proximity of their spectral energy distributions to the SED of the stars used in the elaboration of the equations, in our case, the 288 stars from the NGSL. Thus, in a color-color diagram, the smaller the distance of the galaxy to the distribution of the stars, the higher the confidence level will be when applying the transformation equations to this galaxy. Figure 5 shows two ALHAMBRA color-color diagrams where the same previous three galaxy templates are presented at different redshift values. E/S0 and Sbc galaxies at  $z=0$  are quite close to the stellar distribution, while Im galaxies at  $z=0$  are too blue, and slightly offset from the distribution of the stellar colors.

## 5. Zero point determination

The zero point calibration of the observed fields in the ALHAMBRA survey has been carefully considered until we found a strategy which is robust and general enough to be applied to the whole survey and to all kind of astronomical objects. We tackled the issue in different ways, reaching a strategy with which zero points of ALHAMBRA fields are determined to an error below a few hundredths of a magnitude for the whole range of spectral types in the sample. This method entails the following steps:

1. The first task is to perform an exhaustive selection of field stars found in the ALHAMBRA source catalogue for each field, selecting stellar objects with low photometric error (less than 0.15 magnitudes), morphologically classified by SExtractor (Bertin & Arnouts 1996) as stellar object at the three reddest filters, A892M, A921M, and A948M. It is possible that the pipeline may recognize the nucleus of a distant galaxy as a star in the bluest filters, so we focus primarily on classification in the reddest filters. As we show in Fig. 6, the great majority of these stars are main sequence stars of late spectral types.
2. Using this set of stars we look for the ones that have SDSS photometry. For this task, the SDSS DR7 was used. We utilize the SkyServer Tools from its web page<sup>6</sup>. Amongst the different types of search requests we choose the more complete SQL Search, where one can search for the needed objects directly from the DR7 database.
3. Then, for each stellar object, we find the star (within the 288 NGSL objects) that best fits its SDSS photometry. To do it we select the NGSL star that minimizes the variance of the differences between the SDSS (model) magnitudes of the NGSL star and the SDSS (observed) magnitudes of the field star. We only allow for a constant term, equal for every magnitude, related to the distance module of both stars ( $\delta v = 5 \log(\frac{r_2}{r_1})$ ). Once we have the NGSL objects that best fit with each field star, we assign to it the expected ALHAMBRA AB magnitudes that correspond, using the already known system responses. In Fig. 7 we show, as an example, the spectrum of the star HD160346 in AB magnitudes, together with the instrumental magnitudes plus the zero points of a field star fitted with this NGSL star in the algorithm, and also its SDSS photometry.
4. Finally, the data are refined from outliers with a Chebyshev filter:

$$|x_i - \bar{x}| < k * \sigma \tag{19}$$

---

<sup>6</sup><http://cas.sdss.org/dr7/en/tools/search/radial.asp>

where  $\bar{x}$  is the central value of the differences,  $k$  is a constant, in particular we take  $k = 3$ , and  $\sigma$  is the MAD of the data. The zero point is determined as the central value of the distribution of differences between instrumental magnitudes and synthetic AB magnitudes.

Table 13 shows the main characteristics of the photometric zero points of the ALHAMBRA field 8, pointing 1, as an example of the results obtained when applying this strategy.

In principle, the transformation equations between SDSS and ALHAMBRA photometry and the subsequent comparison between the instrumental values and the ALHAMBRA standard values for the stars with photometry in both systems, should yield the same results. However, we noticed some systematic structure in the distribution of differences (in the sense of instrumental minus transformed AB magnitude), which depends on the magnitude of the stars. The differences of the brighter stars are higher than the weaker ones, up to one magnitude ahead in some filters. In Fig. 8 we plot the magnitude differences for filter A394M versus the SDSS magnitude  $u$ , for the same sample of field stars (ALHAMBRA field 8, pointing 1) used with the method presented above. We can see that the zero point estimated with the comparison of spectra and SEDs (see Table 13) is a good fit to the point distribution in general, although also some of the stars with brighter  $u$  magnitude move systematically away from the central value. This anomalous result appears also when other photometric systems (e.g. UBVRI) are compared to the SDSS system, and these transformations are then used to determine the zero point in the UBVRI system from data of the SDSS survey (as shown in Chonis & Gaskell 2008). Those authors proposed some possible explanations to account for the observed systematic difference. We consider that a detailed discussion on the precision and accuracy of the brighter star photometry in the SDSS catalogue is out of the scope of this paper. Hence we only notice that our chosen methodology overcomes the troubles derived from a direct comparison between instrumental and standard ALHAMBRA values, obtained from SDSS-to-ALHAMBRA transformations.

## 6. Conclusions and Summary

The ALHAMBRA survey is a new extragalactic survey developed with a clear scientific objective: looking for the optimization of some variables to perform a kind of *cosmic tomography* of a portion of the universe. It is based on a new photometric system, consisting of 20 filters covering all the optical spectral range, and the three classical  $JHK_s$  near infrared bands. The survey camera for the optical range is LAICA, installed on the prime focus of the 3.5m telescope of the Calar Alto Astronomical Observatory. The geometry of this instrument, with four different CCDs, is important to understand the ALHAMBRA observational

strategy.

We present the characterization of the ALHAMBRA photometric system as defined by the product of three different response functions: detector, filters and atmosphere.

The set of primary standard stars which defines the ALHAMBRA photometric system is formed by 31 classic spectrophotometric standard stars from several libraries together with 288 stars from the Next Generation Spectral Library, which cover a wide range of spectral types and metallicities. Since the ALHAMBRA photometric system observes with four sets of filter+detector combinations (associated to each of the LAICA detectors), we have chosen one of the sets as the definition of the system, and developed a statistical analysis of the differences between the AB magnitudes in each one of the others. This analysis shows that the maximum difference between magnitudes, takes place in the bluest filter, A366M, with a median difference of 0.0174 magnitudes, being much smaller in the others 19 filters.

Transformation equations from SDSS photometry to the ALHAMBRA photometric system (and vice versa) have been elaborated using synthetic magnitudes of the 288 standard stars from the NGSL, making use of “Backward Stepwise Regression”, and the “Bayesian Information Criterion” as tool for model selection. We have also shown some examples of galaxy colors and their redshift evolution in our system. In particular, we show the ALHAMBRA colors for three galaxy templates (E/S0, Sbc and Im) at different redshifts, from  $z=0.00$  to  $z=2.50$ , with a step of 0.05 in  $z$ .

The strategy of the observational determination of the photometric zero point has been worked out in detail, with special attention to the problems that appear when these zero points are calculated based on the SDSS transformation equations. These problems are also present on other photometric systems different to our own (e.g. UBVRI). The method shown in this paper overcomes these trouble, allowing us to determine the zero point of any ALHAMBRA field with an error below few hundredths of magnitude.

We thank Jesús Maíz Apellaniz for providing data and advice.

This publication makes use of data from the SDSS. Funding for the SDSS and SDSS-II has been provided by the Alfred P. Sloan Foundation, the Participating Institutions, the National Science Foundation, the U.S. Department of Energy, the National Aeronautics and Space Administration, the Japanese Monbukagakusho, the Max Planck Society, and the Higher Education Funding Council for England. The SDSS Web Site is <http://www.sdss.org/>. The SDSS is managed by the Astrophysical Research Consortium for the Participating Institutions. The Participating Institutions are the American Museum of Natural History, Astrophysical Institute Potsdam, University of Basel, University of Cambridge, Case Western

Reserve University, University of Chicago, Drexel University, Fermilab, the Institute for Advanced Study, the Japan Participation Group, Johns Hopkins University, the Joint Institute for Nuclear Astrophysics, the Kavli Institute for Particle Astrophysics and Cosmology, the Korean Scientist Group, the Chinese Academy of Sciences (LAMOST), Los Alamos National Laboratory, the Max-Planck-Institute for Astronomy (MPIA), the Max-Planck-Institute for Astrophysics (MPA), New Mexico State University, Ohio State University, University of Pittsburgh, University of Portsmouth, Princeton University, the United States Naval Observatory, and the University of Washington.

Some/all of the data presented in this paper were obtained from the Multimission Archive at the Space Telescope Science Institute (MAST). STScI is operated by the Association of Universities for Research in Astronomy, Inc., under NASA contract NAS5-26555. Support for MAST for non-HST data is provided by the NASA Office of Space Science via grant NAG5-7584 and by other grants and contracts.

We acknowledge support from the Spanish Ministerio de Educación y Ciencia through grant AYA2006-14056 BES-2007-14764. E. J. Alfaro acknowledges the financial support from the Spanish MICINN under the Consolider-Ingenio 2010 Program grant CSD2006-00070: First Science with the GTC.

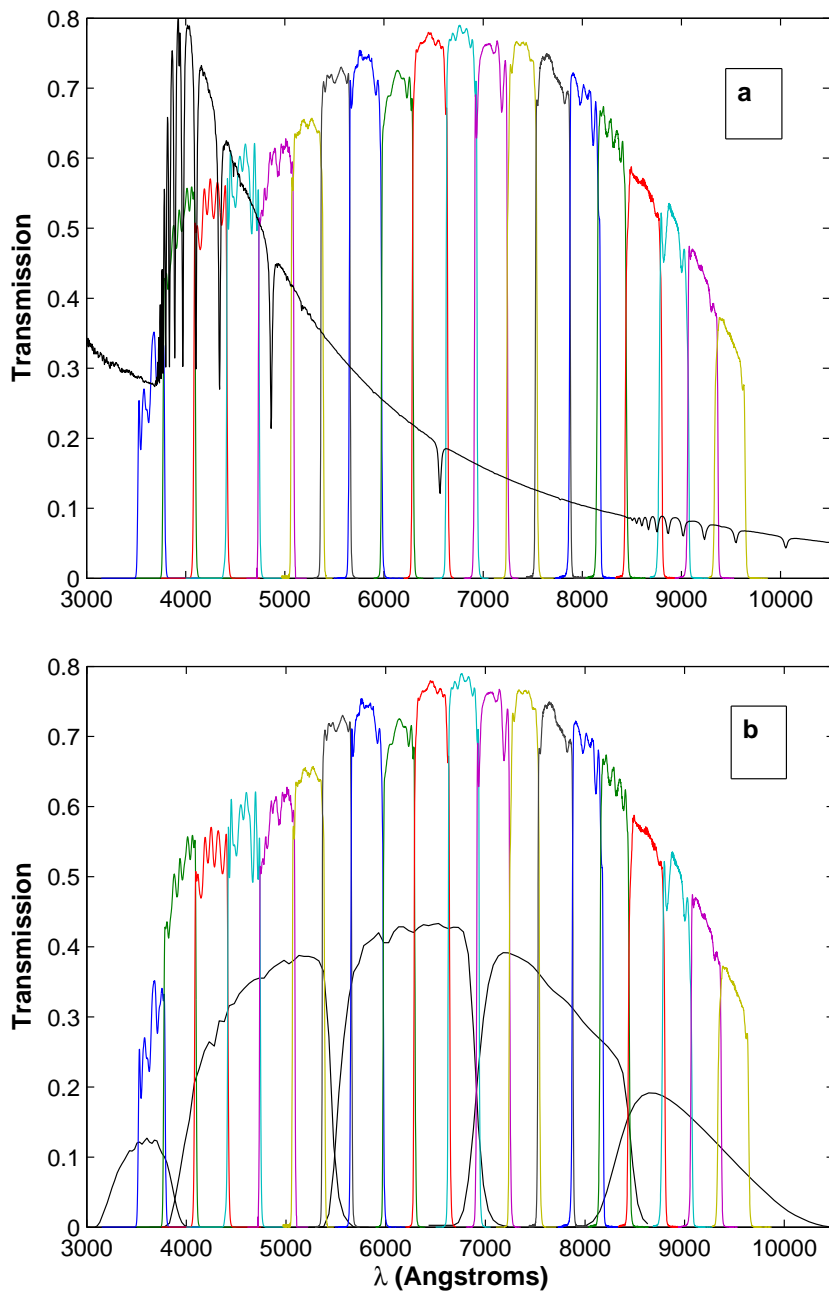


Fig. 1.— Response functions of the ALHAMBRA photometric system filters including atmospheric transmission at 1.2 airmasses at the altitude of Calar Alto Observatory. Figure 1.a also represents the spectrum of *Vega* superimposed on the transmission curves. The flux of *Vega* has been normalized and scaled properly to make the graphic possible. Figure 1.b shows the response curves of the SDSS standard system (USNO) and the ALHAMBRA photometric system.



Table 1

Representative parameters of the ALHAMBRA photometric system filters

Filter	$\lambda_{iso}$ <sup>1</sup> (nm)	$F_\lambda$ ( <i>erg/s/cm<sup>2</sup>/Å</i> )	<i>Vega</i> AB Magnitude	$\lambda_m$ <sup>2</sup> (nm)	$c\nu_m^{-1}$ <sup>3</sup> (nm)	$\lambda_{eff}$ <sup>4</sup> (nm)	$\sigma$	Q	FWHM (nm)	$\delta$
A366M	373.8	3.354e-09	0.96	366.4	366.0	366.1	0.0216	0.0211	27.9	186.2
A394M	398.5	6.851e-09	0.02	394.4	393.9	394.1	0.0239	0.0414	33.0	222.2
A425M	430.9	6.782e-09	-0.13	425.3	424.9	424.9	0.0229	0.0419	34.2	229.8
A457M	456.8	6.117e-09	-0.18	457.8	457.4	457.5	0.0209	0.0412	33.2	224.9
A491M	500.8	4.726e-09	-0.05	491.7	491.2	491.3	0.0208	0.0426	35.6	241.2
A522M	522.4	4.145e-09	-0.04	522.6	522.3	522.4	0.0178	0.0395	32.6	218.9
A551M	551.0	3.547e-09	0.01	551.2	550.9	551.0	0.0156	0.0385	29.7	202.1
A581M	581.1	3.031e-09	0.07	581.2	580.9	580.9	0.0161	0.0407	32.4	221.1
A613M	613.4	2.573e-09	0.13	613.6	613.4	613.4	0.0149	0.0364	32.0	216.2
A646M	650.8	2.119e-09	0.23	646.4	646.0	646.1	0.0159	0.0419	35.7	241.5
A678M	678.1	1.896e-09	0.24	678.2	678.0	678.1	0.0133	0.0355	31.4	211.9
A708M	707.9	1.661e-09	0.29	707.9	707.7	707.8	0.0135	0.0347	33.2	225.3
A739M	739.1	1.453e-09	0.34	739.3	739.1	739.2	0.0117	0.0302	30.4	203.3
A770M	770.1	1.277e-09	0.39	770.2	769.9	769.9	0.0132	0.0329	35.4	239.2
A802M	802.4	1.123e-09	0.44	802.2	801.9	802.0	0.0111	0.0263	31.2	210.5
A829M	830.2	1.012e-09	0.48	829.5	829.3	829.4	0.0103	0.0226	29.6	202.1
A861M	861.5	8.943e-10	0.54	861.6	861.3	861.4	0.0121	0.0233	36.9	246.4
A892M	884.3	8.703e-10	0.50	891.9	891.7	891.8	0.0095	0.0162	30.3	200.2
A921M	936.2	8.197e-10	0.48	920.9	920.7	920.8	0.0096	0.0143	30.8	207.8
A948M	950.4	7.502e-10	0.52	948.3	948.2	948.2	0.0093	0.0109	31.9	208.1

1. Isophotal wavelength defined in equation (3)
2. Wavelength-weighted average
3. Inverse of frequency-weighted average
4. Effective wavelength defined in equation (6)

Note. — Columns 2 to 4 represent the isophotal wavelengths, flux densities and AB magnitudes of *Vega* in the ALHAMBRA photometric system.

Table 2. ALHAMBRA AB magnitudes of the 31 spectrophotometric primary standard stars

Star	A366M	A491M	A613M	A770M	A921M
g191b2b_mod_004	11.04	11.57	11.99	12.45	12.82
bd_75d325_stis_001	8.77	9.32	9.75	10.21	10.58
feige34_stis_001	10.40	10.97	11.38	11.80	12.11
p041c_stis_001	13.40	12.13	11.84	11.73	11.72
alpha_lyr_stis_004	0.96	-0.05	0.13	0.39	0.48

Note. — Table 2 is published in its entirety in the electronic edition of the *Astronomical Journal*. A small portion of columns and rows are shown here for guidance regarding its form and content.

Table 3. ALHAMBRA AB magnitudes of the 288 primary standard stars from the NGSL

Star	A366M	A491M	A613M	A770M	A921M
BD17d4708	10.45	9.57	9.34	9.25	9.24
Feige110	11.15	11.62	12.05	12.47	12.82
G188-22	11.11	10.24	9.98	9.83	9.87
HD086986	9.13	7.94	8.02	8.14	8.16
HD204543	10.23	8.56	7.99	7.63	7.52

Note. — Table 3 is published in its entirety in the electronic edition of the *Astronomical Journal*. A small portion of columns and rows are shown here for guidance regarding its form and content.

Table 4

Analysis of the four instances of the ALHAMBRA system used with the LAICA camera

Filter	$\Delta\text{Max}$	Median	RMS
A366M	0.0689	0.0174	0.0088
A394M	0.0236	0.0064	0.0053
A425M	0.0592	0.0058	0.0073
A457M	0.0148	0.0028	0.0025
A491M	0.0133	0.0011	0.0013
A522M	0.0325	0.0022	0.0021
A551M	0.0092	0.0008	0.0009
A581M	0.0110	0.0024	0.0019
A613M	0.0052	0.0003	0.0003
A646M	0.0085	0.0012	0.0007
A678M	0.0247	0.0009	0.0007
A708M	0.0031	0.0002	0.0001
A739M	0.0228	0.0009	0.0006
A770M	0.0042	0.0003	0.0003
A802M	0.0134	0.0006	0.0006
A829M	0.0016	0.0003	0.0003
A861M	0.0133	0.0009	0.0007
A892M	0.0034	0.0002	0.0003
A921M	0.0013	0.0003	0.0001
A948M	0.0028	0.0005	0.0003

---

Note. — First column is the list of ALHAMBRA filters; second is the maximum absolute difference between ALHAMBRA AB magnitudes and the magnitudes obtained from the three filter-detector replicas at each ALHAMBRA filter; third represents the median of the former absolute differences; fourth is the median absolute deviation of the distribution.

Table 5

Coefficients of the transformation equations from SDSS to ALHAMBRA photometry

Synthetic						
	$\emptyset$	u-g	g-r	r-i	i-z	Error
A366M - i	-0.0209	0.9813	0.7946	1.0889		0.038
A394M - i	-0.1997	0.4183	1.9673	0.8166	-0.8552	0.097
A425M - i	-0.0639	0.1475	1.4885	0.8921		0.058
A457M - i	-0.0094		1.0195	1.0358	0.1799	0.037
A491M - i	0.0240		0.6274	1.2114	0.1969	0.024
A522M - i	-0.0239		0.6204	1.0030		0.028
A551M - g	-0.0093	-0.0108	-0.6518	0.1231	-0.0975	0.010
A581M - g	-0.0029	-0.0018	-0.9166	0.2327	-0.0547	0.007
A613M - g	-0.0009	0.0129	-1.0759	0.1896		0.009
A646M - g	-0.0023	0.0159	-1.0349	-0.2544		0.011
A678M - g	0.0131	0.0077	-1.2133	-0.1184	0.1035	0.022
A708M - g	-0.0155	0.0218	-1.1169	-0.4915		0.014
A739M - g	-0.0096	-0.0104	-0.9076	-1.1087	0.0677	0.006
A770M - g	0.0165	-0.0068	-1.0636	-0.9769		0.007
A802M - g	-0.0005	0.0139	-1.0063	-1.2263	-0.1022	0.006
A829M - g	0.0036	0.0199	-1.0274	-1.2496	-0.2488	0.006
A861M - g	0.0159	0.0211	-1.0723	-1.0679	-0.6102	0.011
A892M - g	0.0171	-0.0192	-1.0259	-1.0268	-0.8638	0.015
A921M - g	0.0055	-0.0163	-0.9414	-1.0725	-1.1318	0.019
A948M - g	0.0221		-0.9802	-0.9667	-1.4006	0.021

Note. — Last column represents the residual standard error of each fit.

Table 6

Coefficients of the transformation equations from ALHAMBRA to SDSS photometry

	Synthetic				
	u - A522M	g - A613M	r - A522M	i - A522M	z - A613M
$\emptyset$	-0.0247	0.0197	-0.0006	-0.0002	-0.0116
A366M - A394M	1.0741				
A394M - A425M	1.2574	0.0467		-0.0142	-0.0337
A425M - A457M	0.9768	0.2250		0.0177	
A457M - A491M	1.4529	0.2282	-0.0535	-0.0336	
A491M - A522M	0.8850	0.4580			
A522M - A551M		0.6206	-1.0334	-1.0117	
A551M - A581M		1.4129	-0.8928	-0.9767	
A581M - A613M		1.3538	-0.5793	-0.9498	
A613M - A646M			-0.3299	-0.9424	-0.9459
A646M - A678M	-0.2832		-0.1895	-0.9525	-0.9399
A678M - A708M	1.9317			-1.0060	-1.0696
A708M - A739M	-1.6333	-0.4194	-0.2017	-0.8624	-1.0935
A739M - A770M	-1.7633		-0.1224	-0.5364	-0.7336
A770M - A802M		0.6199		-0.2679	-1.0201
A802M - A829M	2.5577	1.2026	0.3267		-0.5209
A829M - A861M		-0.2826			-1.0507
A861M - A892M					-0.5793
A892M - A921M	-1.2739	-0.2896	-0.0429		
A921M - A948M					-0.7648
Error	0.0253	0.0121	0.0035	0.0024	0.0102

Note. — For each SDSS filter minus one of the ALHAMBRA filters, the column below shows the coefficients of each one of the 19 ALHAMBRA colors, plus the independent term. Last row gives the residual standard error of each fit.

Table 7. Multi-instrument colors of the E/S0 galaxy template from Benitez et al. (2004) in the ALHAMBRA system (AB mag) and SDSS r (AB mag)

$z$	A366M-r	A491M-r	A613M-r	A770M-r	A921M-r
0.00	2.26	0.55	-0.01	-0.41	-0.66
0.25	3.00	1.32	-0.01	-0.58	-0.94
1.00	3.47	2.26	0.12	-0.88	-2.38
1.50	1.69	1.06	0.21	-1.98	-3.01
2.25	1.17	0.47	0.09	-0.83	-2.48

Note. — Table 7 is published in its entirety in the electronic edition of the *Astronomical Journal*. A small portion of columns and rows are shown here for guidance regarding its form and content.

Table 8. Multi-instrument colors of the Sbc galaxy template from Benitez et al. (2004) in the ALHAMBRA system (AB mag) and SDSS r (AB mag)

$z$	A366M-r	A491M-r	A613M-r	A770M-r	A921M-r
0.00	1.64	0.45	0.01	-0.33	-0.55
0.25	2.28	0.76	0.00	-0.44	-0.73
1.00	1.03	0.56	0.07	-1.17	-1.94
1.50	1.22	0.34	0.01	-0.49	-1.46
2.25	1.92	0.69	-0.01	-0.34	-0.67

Note. — Table 8 is published in its entirety in the electronic edition of the *Astronomical Journal*. A small portion of columns and rows are shown here for guidance regarding its form and content.

Table 9. Multi-instrument colors of the Im galaxy template from Benitez et al. (2004) in the ALHAMBRA system (AB mag) and SDSS r (AB mag)

z	A366M-r	A491M-r	A613M-r	A770M-r	A921M-r
0.00	0.75	-0.00	-0.00	-0.19	-0.30
0.25	1.20	0.43	-0.17	-0.13	-0.28
1.00	0.27	0.15	0.02	-0.63	-1.00
1.50	0.42	0.07	0.00	-0.13	-0.76
2.25	0.95	0.27	-0.01	-0.09	-0.16

Note. — Table 9 is published in its entirety in the electronic edition of the *Astronomical Journal*. A small portion of columns and rows are shown here for guidance regarding its form and content.

Table 10. Multi-instrument colors of the SB2 galaxy template from Benitez et al. (2004) in the ALHAMBRA system (AB mag) and SDSS r (AB mag)

z	A366M-r	A491M-r	A613M-r	A770M-r	A921M-r
0.00	0.54	-0.34	0.24	-0.02	-0.25
0.25	1.00	0.44	-0.51	0.21	0.01
1.00	0.13	0.08	0.08	-0.45	-0.62
1.50	0.06	0.12	-0.06	-0.02	-0.71
2.25	0.56	0.01	-0.00	-0.03	-0.06

Note. — Table 10 is published in its entirety in the electronic edition of the *Astronomical Journal*. A small portion of columns and rows are shown here for guidance regarding its form and content.

Table 11. Multi-instrument colors of the SB3 galaxy template from Benitez et al. (2004) in the ALHAMBRA system (AB mag) and SDSS r (AB mag)

$z$	A366M-r	A491M-r	A613M-r	A770M-r	A921M-r
0.00	1.15	0.32	0.09	-0.11	-0.45
0.25	1.05	0.49	-0.04	-0.27	-0.40
1.00	0.36	0.21	-0.02	-0.42	-0.96
1.50	0.31	0.20	-0.02	-0.24	-0.50
2.25	0.74	0.22	-0.00	-0.11	-0.26

Note. — Table 11 is published in its entirety in the electronic edition of the *Astronomical Journal*. A small portion of columns and rows are shown here for guidance regarding its form and content.

Table 12. Multi-instrument colors of the Scd galaxy template from Benitez et al. (2004) in the ALHAMBRA system (AB mag) and SDSS r (AB mag)

$z$	A366M-r	A491M-r	A613M-r	A770M-r	A921M-r
0.00	1.31	0.30	0.00	-0.22	-0.27
0.25	1.60	0.62	-0.05	-0.34	-0.53
1.00	0.61	0.40	0.01	-0.73	-1.35
1.50	0.74	0.13	0.01	-0.39	-0.94
2.25	1.41	0.48	-0.01	-0.15	-0.38

Note. — Table 12 is published in its entirety in the electronic edition of the *Astronomical Journal*. A small portion of columns and rows are shown here for guidance regarding its form and content.





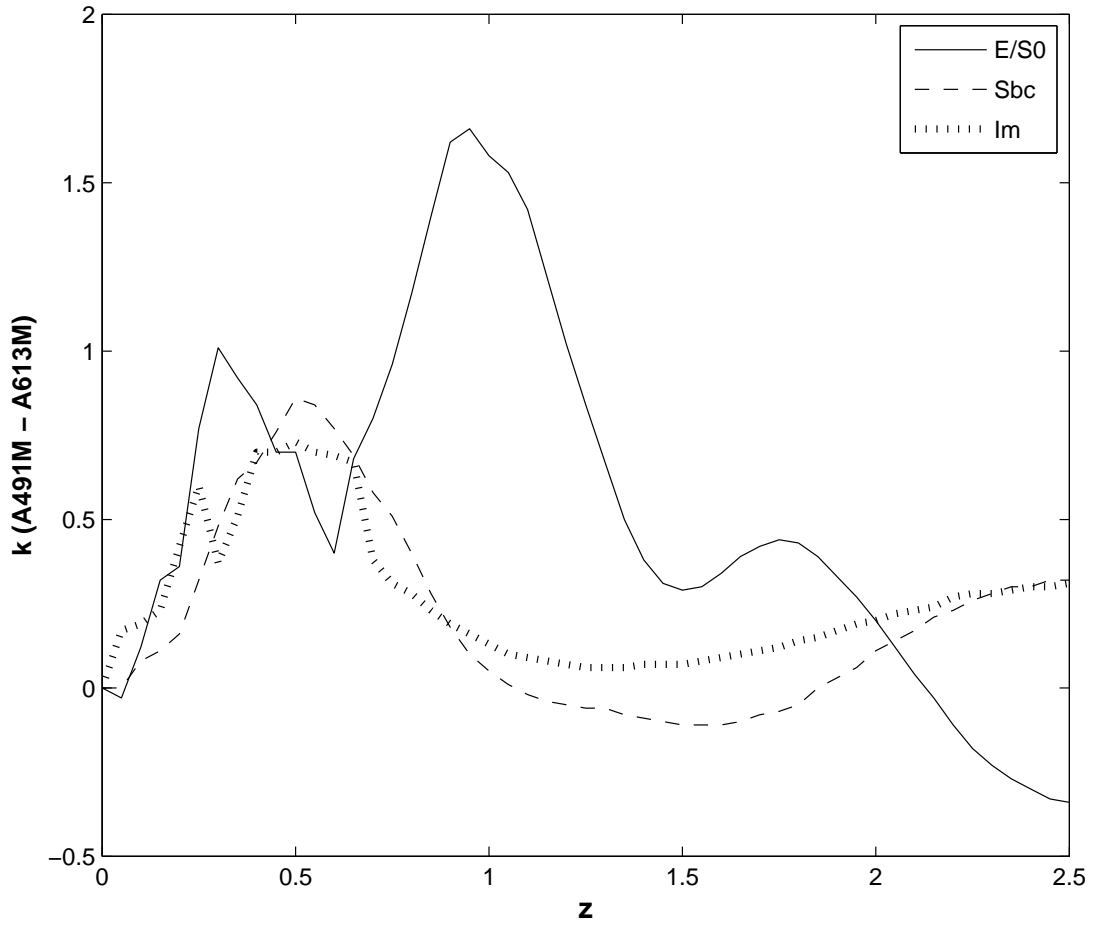


Fig. 2.— k-correction for different values of redshift ( $z$ ) for ALHAMBRA color A491M-A613M and three galaxy templates.

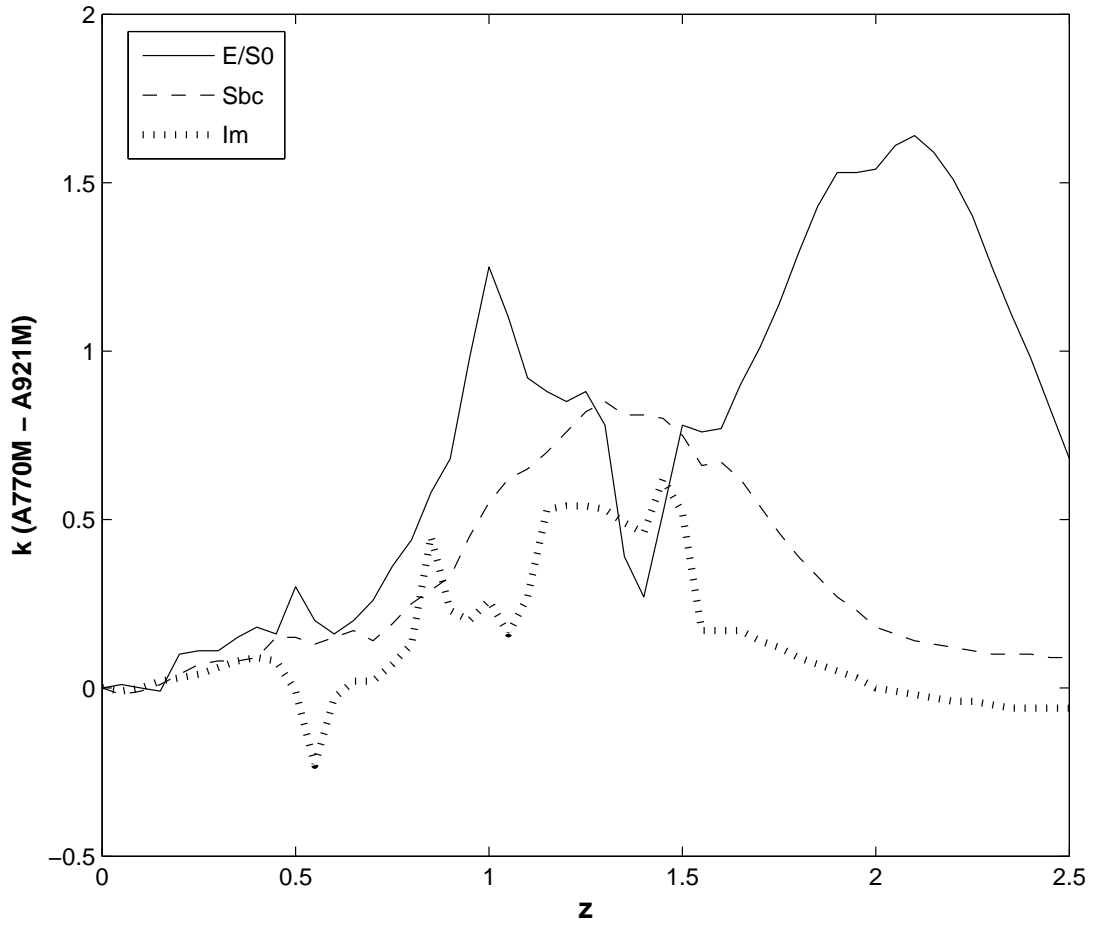


Fig. 3.— k-correction for different values of redshift ( $z$ ) for ALHAMBRA color A770M-A921M and three galaxy templates.

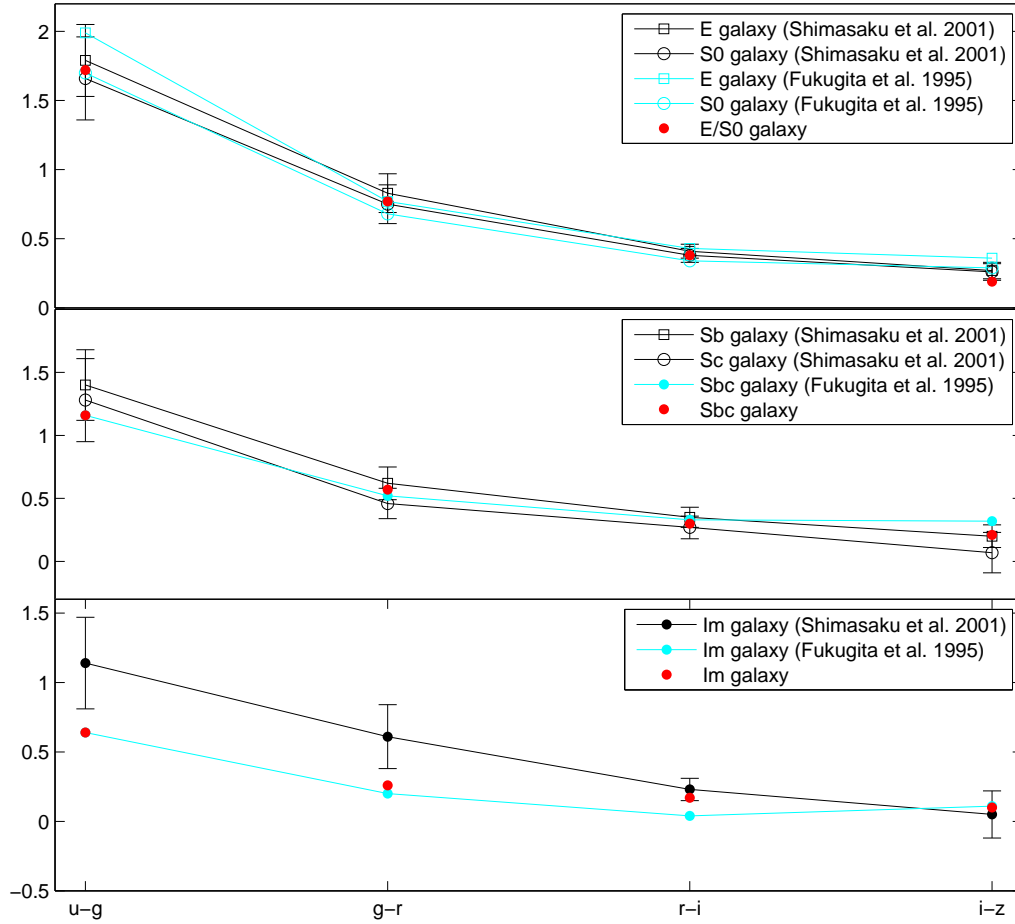


Fig. 4.— SDSS colors for three galaxies of different spectromorphological types. Black symbols are colors obtained from Shimasaku et al. (2001) with a rms error bar, blue ones are obtained from Fukugita et al. (1995), and red points are the colors obtained by applying the transformation equations of section 4.1 to the ALHAMBRA photometry of these three galaxy templates (Benítez et al. 2004).

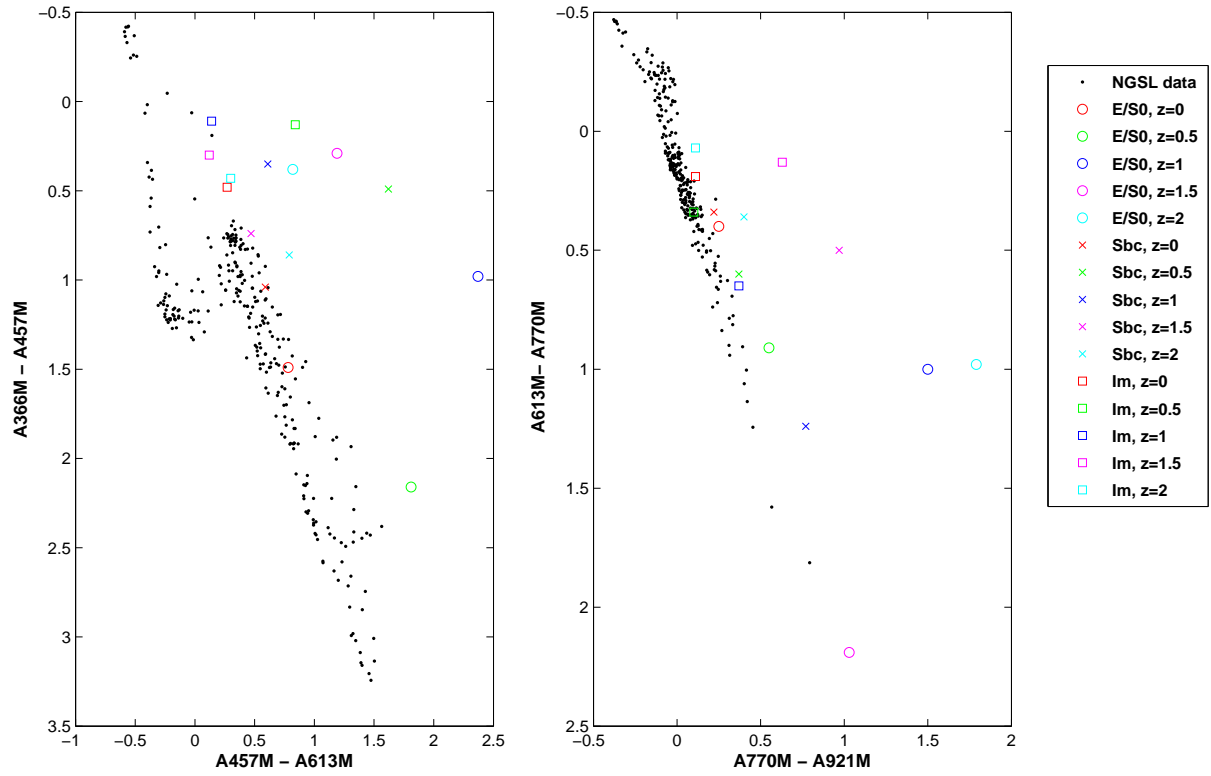


Fig. 5.— ALHAMBRA color-color diagrams. Black points are the set of primary standard stars from the NGSL. Circles represent E/S0 galaxy templates, crosses are Sbc galaxy templates and squares represent Im galaxy templates, all of them from Benítez et al. (2004). Different colors show different values of  $z$ .

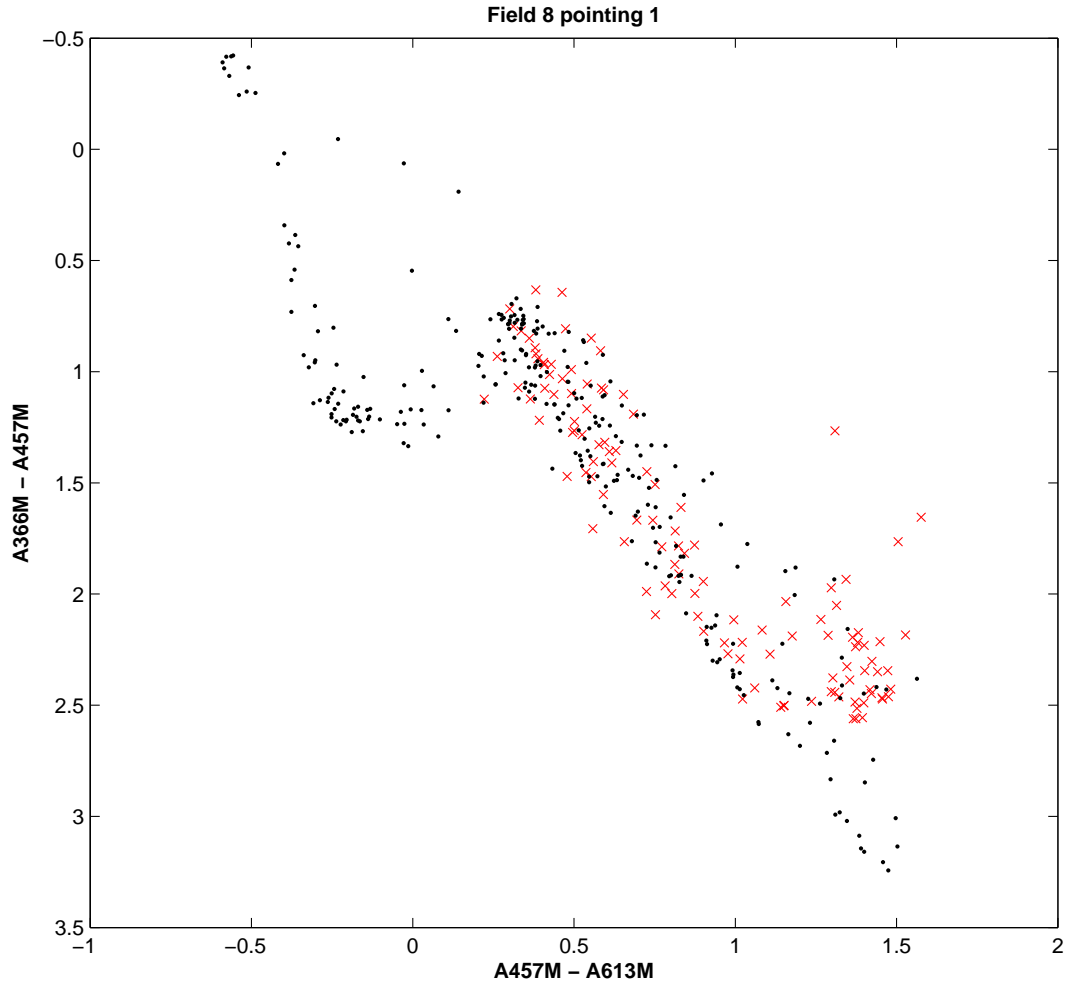


Fig. 6.— ALHAMBRA color-color diagram. Black points represent the 288 stars from the Next Generation Spectral Library, and red crosses represent the field stars in field 8 pointing 1 of the ALHAMBRA survey.

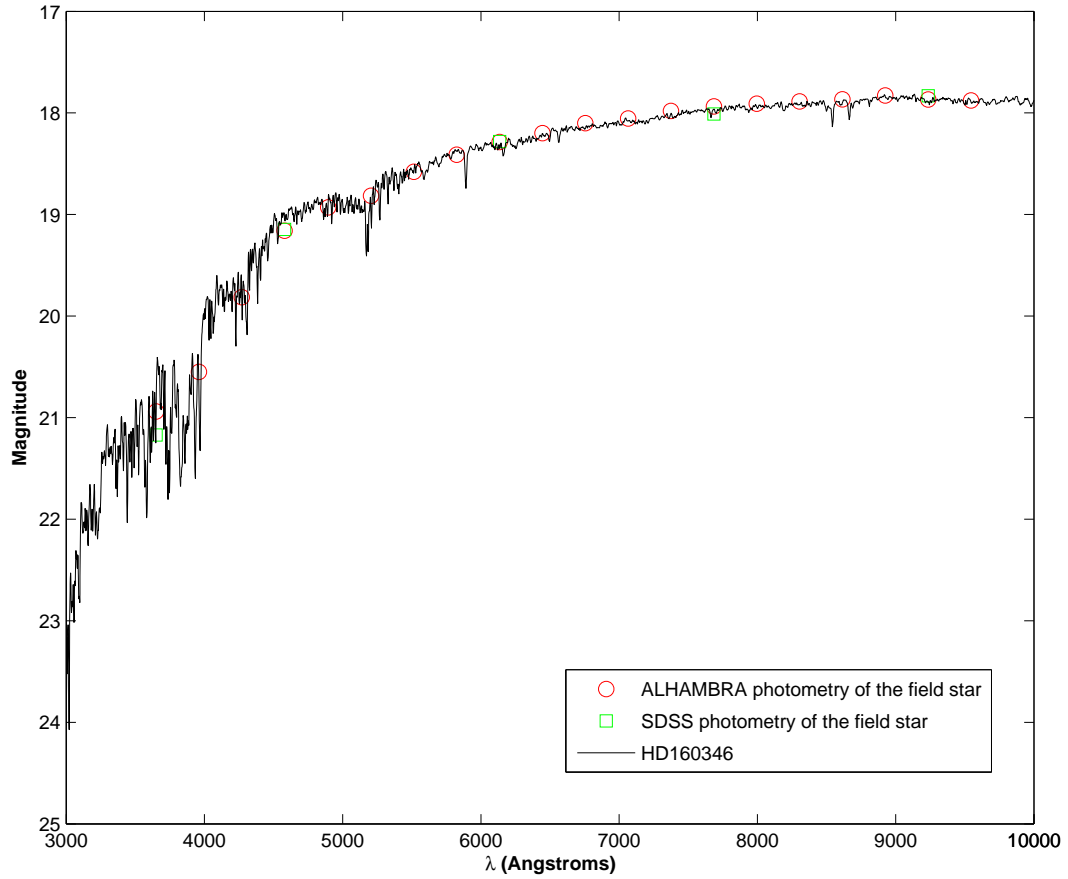


Fig. 7.— Spectrum in AB magnitudes of the star HD160346, belonging to the set of NGSL standard stars. The spectrum is scaled so that this object is the best fit for the zero point determination to the star at RA = 356.3323 and DEC = 15.5486. Red circles are the instrumental magnitudes of the field star plus the zero points determined with our final strategy, and green squares are its SDSS photometry.

Table 13

Photometric zero points for ALHAMBRA field 8 pointing 1

Filter	Zero point	Error
A366M	7.4229	0.0011
A394M	8.3063	0.0008
A425M	8.4857	0.0007
A457M	8.6686	0.0009
A491M	8.7333	0.0004
A522M	8.5281	0.0005
A551M	8.5879	0.0004
A581M	8.6698	0.0006
A613M	8.4729	0.0004
A646M	8.5864	0.0004
A678M	8.5385	0.0005
A708M	8.3790	0.0004
A739M	8.8394	0.0004
A770M	7.9635	0.0003
A802M	8.4134	0.0004
A829M	8.4139	0.0005
A861M	8.1149	0.0004
A892M	7.2116	0.0004
A921M	6.5880	0.0006
A948M	5.9750	0.0006



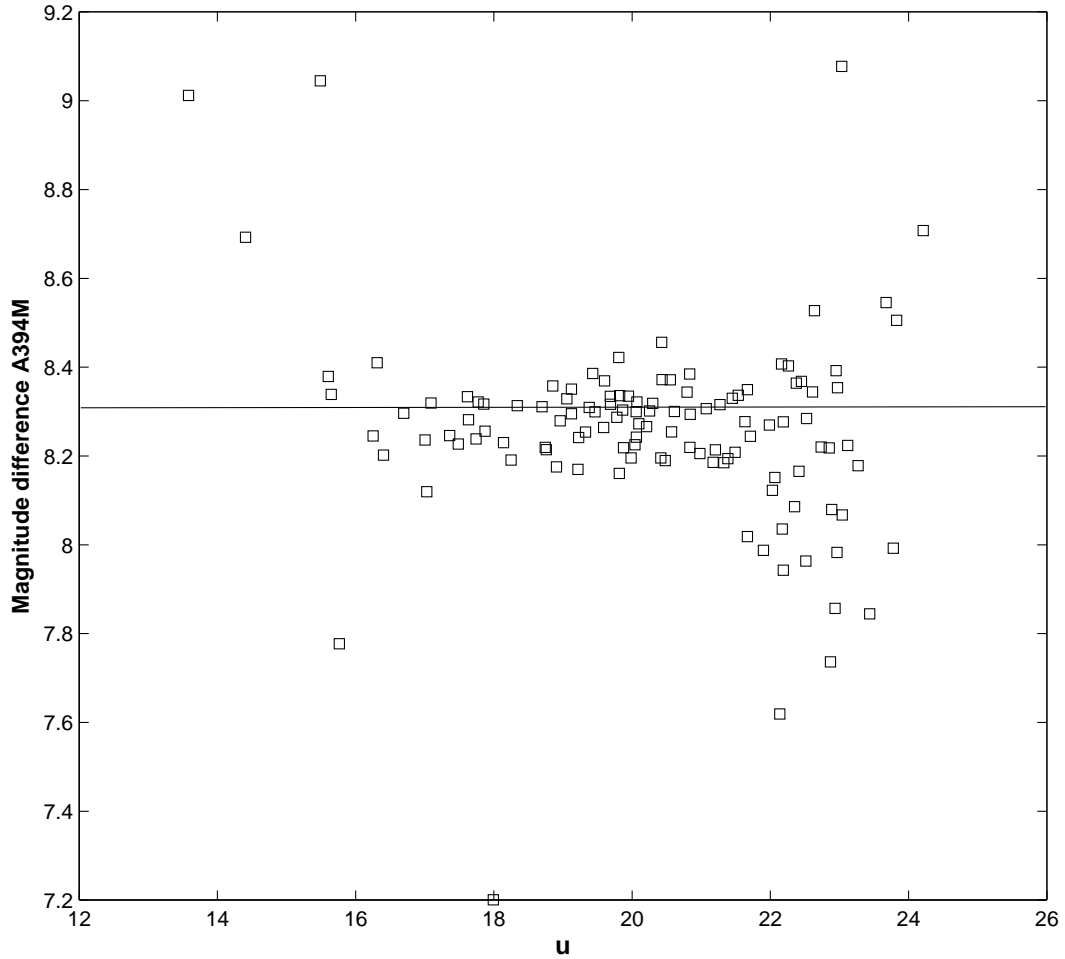


Fig. 8.— Magnitude differences in filter A394M versus SDSS magnitude  $u$ , for the field stars in the ALHAMBRA field 8 pointing 1. They show the difference between the instrumental magnitude of the stars and the magnitude obtained from the ALHAMBRA-SDSS transformation equations. The horizontal line represents the zero-point solution determined with our chosen methodology.

## REFERENCES

- Baggett, S., Casertano, S., Gonzaga, S., & Ritchie, C. 1997, Instrument Science Report (WFCP2 97-10; Baltimore: STScI)
- Benítez, N. 2000, *ApJ*, 536, 571
- Benítez, N., et al. 2004, *ApJS*, 150, 1
- Benítez, N., et al. 2009, *ApJ*, 692, L5
- Bertin, E., & Arnouts, S. 1996, *A&AS*, 117, 393
- Bohlin, R. C., Harris, A. W., Holm, A. V., & Gry, C. 1990, *ApJS*, 73, 413
- Bohlin, R. C. 2007, The Future of Photometric, Spectrophotometric and Polarimetric Standardization, 364, 315
- Chonis, T. S., & Gaskell, C. M. 2008, *AJ*, 135, 264
- Fukugita, M., Shimasaku, K., & Ichikawa, T. 1995, *PASP*, 107, 945
- Fukugita, M., Ichikawa, T., Gunn, J. E., Doi, M., Shimasaku, K., & Schneider, D. P. 1996, *AJ*, 111, 1748
- Golay, M. 1974, *Astrophysics and Space Science Library*, 41,
- Gregg, M. D., et al. 2004, *Bulletin of the American Astronomical Society*, 36, 1496
- Gunn, J. E., et al. 1998, *AJ*, 116, 3040
- Kennicutt, R. C., Jr. 1992, *ApJS*, 79, 255
- Kurucz, R. L. 2003, *Modelling of Stellar Atmospheres*, 210, 45
- Kurucz, R. L. 2005, *Memorie della Societa Astronomica Italiana Supplement*, 8, 14
- Maíz-Apellániz, J. 2005, *PASP*, 117, 615
- Maíz Apellániz, J. 2006, *AJ*, 131, 1184
- Massey, P., & Gronwall, C. 1990, *ApJ*, 358, 344
- Moles, M., et al. 2008, *AJ*, 136, 1325
- Oke, J. B. 1990, *AJ*, 99, 1621

Oke, J. B., & Gunn, J. E. 1983, ApJ, 266, 713

Sánchez, S. F., Aceituno, J., Thiele, U., Pérez-Ramírez, D., & Alves, J. 2007, PASP, 119, 1186

Schneider, D. P., Gunn, J. E., & Hoessel, J. G. 1983, ApJ, 264, 337

Shimasaku, K., et al. 2001, AJ, 122, 1238

Smith, J. A., et al. 2002, AJ, 123, 2121

Stone, R. P. S. 1996, ApJS, 107, 423

Tucker, D. L., Smith, J. A., & Brinkmann, J. 2001, The New Era of Wide Field Astronomy, 232, 13

Tokunaga, A. T., & Vacca, W. D. 2005, PASP, 117, 1459