



TITLE:

# Antipsychotic olanzapine-induced misfolding of proinsulin in the endoplasmic reticulum accounts for atypical development of diabetes

AUTHOR(S):

Ninagawa, Satoshi; Tada, Seiichiro; Okumura, Masaki; Inoguchi, Kenta; Kinoshita, Misaki; Kanemura, Shingo; Imami, Koshi; ... Anazawa, Takayuki; Nagamine, Takahiko; Mori, Kazutoshi

---

CITATION:

Ninagawa, Satoshi ...[et al]. Antipsychotic olanzapine-induced misfolding of proinsulin in the endoplasmic reticulum accounts for atypical development of diabetes. *eLife* 2020, 9: e60970.

ISSUE DATE:

2020-11-17

URL:

<http://hdl.handle.net/2433/259234>

RIGHT:

Copyright Ninagawa et al. This article is distributed under the terms of the Creative Commons Attribution License, which permits unrestricted use and redistribution provided that the original author and source are credited.

# Antipsychotic olanzapine-induced misfolding of proinsulin in the endoplasmic reticulum accounts for atypical development of diabetes

Satoshi Ninagawa<sup>1\*</sup>, Seiichiro Tada<sup>2†</sup>, Masaki Okumura<sup>3†</sup>, Kenta Inoguchi<sup>2†</sup>, Misaki Kinoshita<sup>3</sup>, Shingo Kanemura<sup>3,4</sup>, Koshi Imami<sup>5</sup>, Hajime Umezawa<sup>1</sup>, Tokiro Ishikawa<sup>1</sup>, Robert B Mackin<sup>6</sup>, Seiji Torii<sup>7</sup>, Yasushi Ishihama<sup>5</sup>, Kenji Inaba<sup>8</sup>, Takayuki Anazawa<sup>2</sup>, Takahiko Nagamine<sup>9</sup>, Kazutoshi Mori<sup>1\*</sup>

<sup>1</sup>Department of Biophysics, Graduate School of Science, Kyoto University, Kyoto, Japan; <sup>2</sup>Department of Surgery, Graduate School of Medicine, Kyoto University, Kyoto, Japan; <sup>3</sup>Frontier Research Institute for Interdisciplinary Sciences, Tohoku University, Sendai, Japan; <sup>4</sup>School of Science and Technology, Kwansai Gakuin University, Sanda, Japan; <sup>5</sup>Department of Molecular and Cellular BioAnalysis, Graduate School of Pharmaceutical Sciences, Kyoto University, Kyoto, Japan; <sup>6</sup>Department of Biomedical Sciences, Creighton University School of Medicine, Omaha, United States; <sup>7</sup>Laboratory of Secretion Biology, Institute for Molecular and Cellular Regulation, Gunma University, Maebashi, Japan; <sup>8</sup>Institute of Multidisciplinary Research for Advanced Materials, Tohoku University, Sendai, Japan; <sup>9</sup>Sunlight Brain Research Center, Yamaguchi, Japan

**\*For correspondence:**

sninagawa@upr.biophys.kyoto-u.ac.jp (SN);  
mori@upr.biophys.kyoto-u.ac.jp (KM)

†These authors contributed equally to this work

**Competing interests:** The authors declare that no competing interests exist.

**Funding:** See page 22

**Received:** 14 July 2020

**Accepted:** 22 October 2020

**Published:** 17 November 2020

**Reviewing editor:** Elizabeth A Miller, MRC Laboratory of Molecular Biology, United Kingdom

© Copyright Ninagawa et al. This article is distributed under the terms of the [Creative Commons Attribution License](https://creativecommons.org/licenses/by-nc-nd/4.0/), which permits unrestricted use and redistribution provided that the original author and source are credited.

**Abstract** Second-generation antipsychotics are widely used to medicate patients with schizophrenia, but may cause metabolic side effects such as diabetes, which has been considered to result from obesity-associated insulin resistance. Olanzapine is particularly well known for this effect. However, clinical studies have suggested that olanzapine-induced hyperglycemia in certain patients cannot be explained by such a generalized mechanism. Here, we focused on the effects of olanzapine on insulin biosynthesis and secretion by mouse insulinoma MIN6 cells. Olanzapine reduced maturation of proinsulin, and thereby inhibited secretion of insulin; and specifically shifted the primary localization of proinsulin from insulin granules to the endoplasmic reticulum. This was due to olanzapine's impairment of proper disulfide bond formation in proinsulin, although direct targets of olanzapine remain undetermined. Olanzapine-induced proinsulin misfolding and subsequent decrease also occurred at the mouse level. This mechanism of olanzapine-induced  $\beta$ -cell dysfunction should be considered, together with weight gain, when patients are administered olanzapine.

## Introduction

Patients with schizophrenia are typically prescribed first- or second-generation antipsychotics (FGAs or SGAs, respectively). FGAs block dopamine signaling in the brain by inhibiting the function of its receptors, resulting in recovery from conditions such as acute mania and agitation (*Divac et al., 2014*). However, because of excessive inhibition of the dopamine pathway, FGAs can cause extrapyramidal symptoms, including dystonia, akathisia, and Parkinsonism, and are now widely replaced by SGAs due to their reduced risk of causing adverse extrapyramidal effects (*Højberg and Nielsen,*

2006) and greater effectiveness in alleviating symptoms (Lee et al., 2002; Sirota et al., 2006). These effects of SGAs are caused by their inhibition of signaling through the dopamine D<sub>2</sub> receptor and 5-HT<sub>2A</sub> serotonin receptor (Divac et al., 2014; Kasper et al., 1999). Of note, SGAs have higher risks of causing metabolically adverse side effects such as obesity (Gothelf et al., 2002), dyslipidemia (Gothelf et al., 2002) and diabetes mellitus (Citrome and Volavka, 2005; Koller and Doraiswamy, 2002).

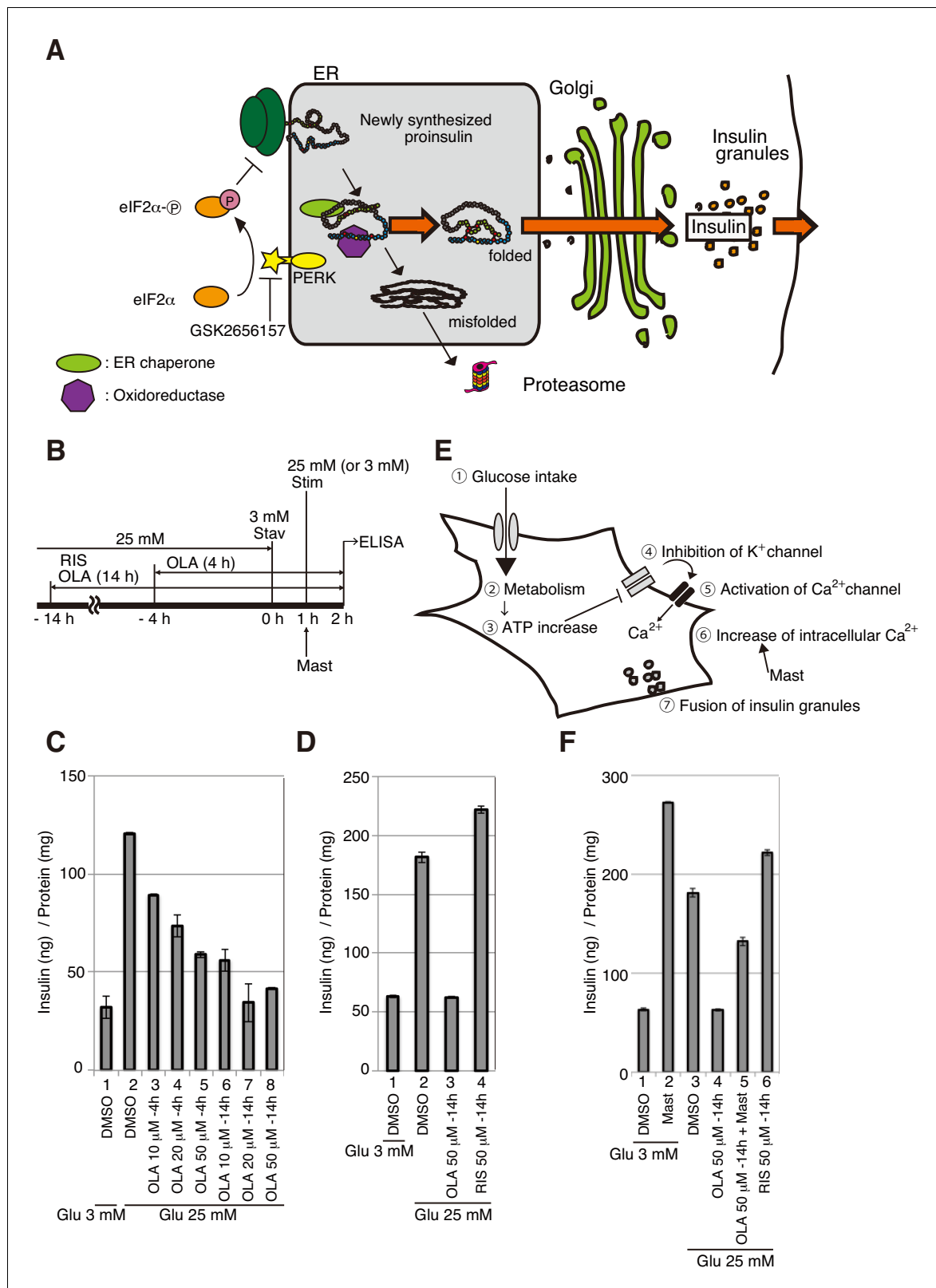
The SGA olanzapine affects neurotransmitter receptors (called multi-acting receptor-targeted antipsychotics) and thereby exhibits significantly greater effectiveness in alleviating various symptoms than other SGAs (Sirota et al., 2006; van Bruggen et al., 2003). However, it carries a higher risk of diabetes than other SGAs such as risperidone, and its frequent use therefore represents a clinical problem (Deng, 2013; Newcomer, 2005; Rummel-Kluge et al., 2010). Generally, olanzapine-induced diabetes is attributed to weight gain caused by increased appetite through the effect on the feeding center via blocking of 5-HT<sub>2C</sub> receptor, leading to insulin resistance-mediated development of diabetes.

Nonetheless, olanzapine-induced diabetes includes atypical cases, as follows. First, while it usually takes years to develop diabetes via insulin resistance, olanzapine-induced diabetes occurs within 6 months after commencing treatment (Kinoshita et al., 2014; Nakamura et al., 2014; Nakamura and Nagamine, 2010). Second, discontinuing olanzapine treatment cures diabetes even after the level of HbA<sub>1c</sub> (a marker for blood glucose level) reaches >10%, a ratio which normally representing an irreversible level in patients with type I or type II diabetes (Nakamura et al., 2014; Nakamura and Nagamine, 2010; Nathan et al., 2009; Young et al., 2012). Moreover, diabetic ketoacidosis, which is caused by insulin hyposecretion, often occurs in patients with type I diabetes, but also rapidly (within 6 months after treatment with olanzapine) affects patients with no diabetic symptoms before medication (Kinoshita et al., 2014; Tsuchiyama et al., 2004). Indeed, epidemiological data show that patients receiving olanzapine incur an approximately 10-times higher risk of diabetic ketoacidosis than the general population (Polcwiartek et al., 2016), suggesting the possibility that olanzapine directly impairs the function of pancreatic  $\beta$  cells, the exclusive source of insulin, in a speculated few percent of medicated patients (Nagamine, 2014; Nagamine, 2018).

We are interested in the mechanism of the development of olanzapine-induced atypical diabetes from the viewpoint of the protein quality control system operating in the endoplasmic reticulum (ER). Secretory and membrane proteins gain their tertiary and quaternary structures in the ER, which is assisted by ER-localized molecular chaperones, glycosyltransferases and oxidoreductases (collectively referred to here as ER chaperones). Only correctly folded molecules are transported from the ER to the Golgi apparatus and then to their destination. However, proteins that fail to fold correctly, even with the assistance of ER chaperones, are retrotranslocated into the cytosol and degraded by the ubiquitin-proteasome system (Qi et al., 2017). This disposal system is called ER-associated degradation (ERAD).

Although eukaryotic cells perform quality control of proteins through ER chaperone-assisted productive folding and ERAD, the requirements for protein synthesis may exceed the protein folding capacity of the ER under physiological and pathological conditions. To counteract such ER stress, namely the accumulation of unfolded or misfolded proteins in the ER, the unfolded protein response (UPR) is triggered, leading to the activation of three ER transmembrane sensor proteins PERK, ATF6, and IRE1. Interestingly, their activation effects come out sequentially. First, phosphorylation of the  $\alpha$  subunit of eukaryotic translation initiation factor 2 (eIF2 $\alpha$ ) by activated PERK transiently suppresses translation (see Figure 1A) so that the burden of the ER is mitigated because of reduced translocation of newly synthesized proteins into the ER. Next, activated ATF6 upregulates the transcription of ER chaperone genes to increase the folding capacity of the ER. Subsequently, activated IRE1 together with activated ATF6 upregulates the transcription of ERAD component genes, which increases degradation capacity. If ER stress is prolonged, apoptotic signaling is activated (Mori, 2000; Tabas and Ron, 2011; Yamamoto et al., 2007; Yoshida et al., 2003).

Pancreatic  $\beta$  cells synthesize proinsulin, fold proinsulin in the ER, and store large quantities of insulin in insulin granules (see Figure 1A). In these roles, they are frequently subject to ER stress, and the UPR accordingly plays a critical role in maintaining homeostasis. Immediate translational control mediated by the PERK pathway, rather than time-consuming transcriptional control of ER chaperones etc. (Yoshida et al., 2003), is particularly important for the folding of proinsulin, a very small molecule compared with ER chaperones; when translation is generally attenuated by the



**Figure 1.** Effect of olanzapine on secretion of insulin from MIN6 cells. (A) Schematic representation of protein quality control in the ER, PERK-mediated translational attenuation, and storage and secretion of insulin (see Introduction). GSK2656157 inhibits protein kinase activity of PERK. (B) Scheme for measuring the level of insulin secreted into medium in response to glucose stimulation. After culture in a medium containing 25 mM glucose, MIN6 cells were starved for 1 hr in medium containing 3 mM glucose (Stav), and then cultured in medium containing 25 mM glucose (Stim or 3 mM glucose). *Figure 1 continued on next page*



Figure 1 continued

as control). The amount of insulin secreted into the medium during the 1 hr incubation was determined using an ELISA. The data are normalized to the amounts of total cellular proteins and presented as the mean  $\pm$  SD ( $n = 2$ ). (C) MIN6 cells were pretreated with the indicated concentrations of olanzapine (OLA) for 4 hr or 14 hr in medium containing 25 mM glucose before glucose starvation as shown in (B). (D) MIN6 cells were pretreated with 50  $\mu$ M olanzapine or risperidone (RIS) for 14 hr before glucose starvation as shown in (B). (E) Schematic representation of the signaling cascade for insulin secretion in response to glucose stimulation. Cells intake glucose (①). Glucose metabolism (②) triggers an increase in cellular ATP/ADP ratio (③), which inhibits  $K^+$  channels and induces depolarization (④). This leads to opening of  $Ca^{2+}$  channels (⑤) and increased influx of  $Ca^{2+}$  (⑥), inducing the fusion of insulin granules to the plasma membrane for secretion (⑦). Mastoparan (Mast) enhances insulin secretion by increasing the intracellular concentration of  $Ca^{2+}$  independently of glucose intake. (F) MIN6 cells were pretreated with 50  $\mu$ M olanzapine or risperidone for 14 hr before glucose starvation as shown in (B). Mastoparan (Mast, 20  $\mu$ M) was added at the time of glucose stimulation to aliquots of cells not pretreated or pretreated with 50  $\mu$ M olanzapine for 14 hr.

activation of PERK, stochastically unfolded or misfolded proinsulin can be efficiently refolded by the action of preexisting ER chaperones. If PERK is not active, synthesis of misfolded proinsulin continues, leading to proteotoxicity-mediated apoptosis of  $\beta$  cells. Accordingly, PERK knockout mice develop diabetes after birth (Harding *et al.*, 2001). Further, PERK mutation causes human Wolcott-Rallison syndrome, which induces diabetes in infancy (Delépine *et al.*, 2000). We previously found that olanzapine induces mild ER stress in hamster pancreatic  $\beta$ -cell line HIT-T15, which secretes insulin. However, phosphorylation of eIF2 $\alpha$  is not elevated despite mild activation of PERK in olanzapine-treated HIT-T15 cells, leading to sustained protein synthesis followed by induction of apoptosis, although we used olanzapine at the concentration of 100  $\mu$ M (Ozasa *et al.*, 2013).

We also previously found that olanzapine markedly inhibits insulin secretion by HIT-T15 cells (Ozasa *et al.*, 2013). In the present study, we confirmed that 10–50  $\mu$ M olanzapine inhibits insulin secretion by the mouse pancreatic  $\beta$ -cell line MIN6, which is frequently used to study  $\beta$  cells. We then investigated the stage of protein quality control at which insulin secretion is blocked in olanzapine-treated MIN6 cells, and then whether the identified stage is indeed compromised in islets of mice after daily oral administration of olanzapine.

## Results

### Inhibition of insulin secretion in olanzapine-treated MIN6 cells

MIN6 cells exhibit an approximately 7-fold increase in insulin secretion in 2 hr when the extracellular glucose concentration is increased from 5 to 25 mM (Ishihara *et al.*, 1993). Here, we detected an approximately 4-fold increase in insulin secretion in 1 hr when the extracellular glucose concentration was increased from 3 to 25 mM (stimulation after starvation for 1 hr, Figure 1B) compared with continuous incubation in 3 mM glucose (Figure 1C, compare bar 2 with bar 1). Glucose-stimulated insulin secretion was inhibited in a concentration-dependent manner when MIN6 cells were first treated with 25 mM glucose in the presence of 10, 20, or 50  $\mu$ M olanzapine for 4 hr (Figure 1C, bars 3–5) and was markedly inhibited by pretreatment for 14 hr with these same concentrations of olanzapine (Figure 1C, bars 6–8), but not by pretreatment for 14 hr with 50  $\mu$ M risperidone (Figure 1D, compare bar 4 with bar 2). Pretreatment was essential for this effect, because the addition of 50  $\mu$ M olanzapine from the beginning of the 1 hr starvation did not detectably inhibit glucose-stimulated insulin secretion (data not shown), suggesting that it takes time for olanzapine to exert its inhibitory effect on insulin secretion.

Glycolysis causes ATP-mediated closure of the potassium ( $K^+$ ) channels, leading to opened calcium ( $Ca^{2+}$ ) channel-mediated influx of extracellular  $Ca^{2+}$ . The increase in cytosolic  $Ca^{2+}$  concentrations culminates in fusion of insulin granules with the plasma membrane and subsequent secretion of insulin (Figure 1E; Rorsman and Braun, 2013). Therefore, insulin secretion can be induced by mastoparan, which increases intracellular  $Ca^{2+}$  concentrations by activating phospholipase C to produce inositol 1, 4, 5-triphosphate (Perianin and Snyderman, 1989). Indeed, treatment of MIN6 cells with mastoparan for 1 hr after glucose starvation rapidly stimulated insulin secretion (Figure 1F, compare bar 2 with bar 1). Pretreatment of MIN6 cells with 50  $\mu$ M olanzapine for 14 hr partially inhibited mastoparan-induced insulin secretion (Figure 1F, compare bar 5 with bar 2). These results suggest that olanzapine may not block  $Ca^{2+}$ -induced fusion of insulin granules with plasma membrane, but may decrease the amount of insulin stored in insulin granules.

## Retention of proinsulin in the ER in olanzapine-treated MIN6 cells

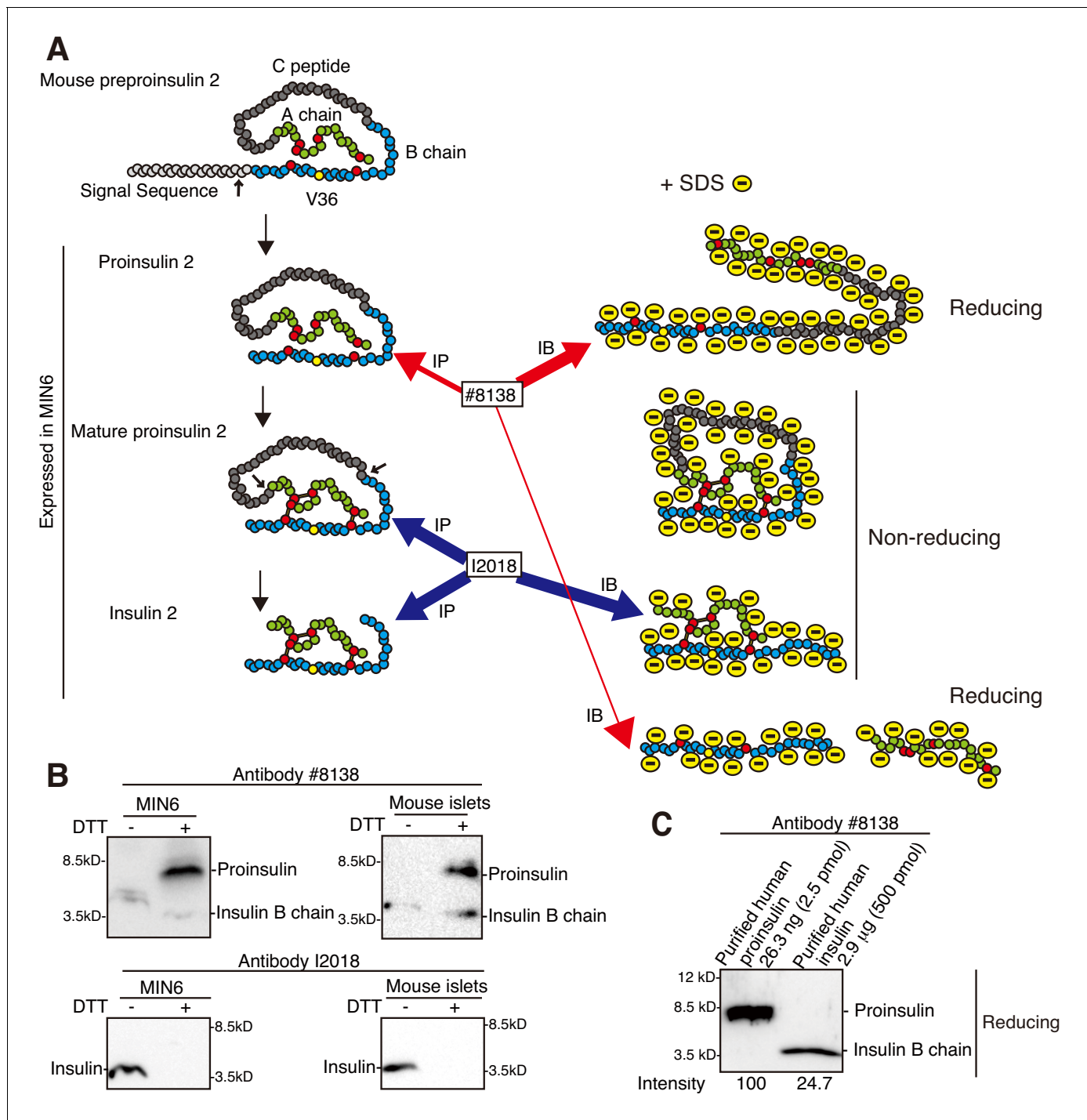
Proinsulin produced from preproinsulin by the action of signal peptidase becomes mature proinsulin via formation of three intramolecular disulfide bonds in the ER, and is then processed to insulin (**Figure 2A**). To analyze MIN6 cells which secrete both proinsulin and insulin (**Lee et al., 2011; Tsuchiya et al., 2018**), as is seen when isolated mouse and human islets were analyzed by pulse-chase experiments (**Dufurrena et al., 2019**), we employed two types of mouse monoclonal antibodies with different characteristics, namely #8138 raised against a synthetic peptide corresponding to the residues surrounding Val36 of human insulin, which are conserved in mouse insulin (yellow circle denotes Val36 in **Figure 2A**), and I2018 raised against human insulin. Under reducing conditions, #8138 detected mainly proinsulin in lysates of MIN6 cells, and both proinsulin and insulin B chain in lysates of mouse islets, probably reflecting their relative contents (**Figure 2B**). It should be noted that #8138 was 800-fold more reactive with purified recombinant human proinsulin than purified recombinant human insulin (insulin B chain) under reducing conditions (**Figure 2C**), and that #8138 reacted with neither proinsulin nor insulin under non-reducing conditions (**Figure 2B**).

A pulse (20 min)-chase (80 min) experiment showed that the immunoprecipitates obtained from MIN6 cells using #8138 were detected as doublet bands which migrated slightly faster than the 8.5 kDa marker and were secreted into medium within the 80 min chase (**Figure 3A and B**). On comparison of the migration positions of in vitro translational products, the upper band was considered to be proinsulin 2 (**Figure 3B**), consistent with the abundant expression of insulin 2 mRNA in MIN6 cells (**Roderigo-Milne et al., 2002**). The lower band was considered to be processed proinsulin 2, such as the B chain connected to the C peptide but not to the A chain as observed in isolated rat islets (**Harding et al., 2012**), or somewhat cleaved proinsulin, because only proinsulin 2 was detected after a shorter pulse (3 min) and processed proinsulin 2 appeared after the 30 min chase (**Figure 3C**). Processed proinsulin 2 is likely to be produced after moving out from the ER, because its level was markedly decreased by treatment with brefeldin A, an inhibitor of anterograde transport from the ER to the Golgi apparatus (**Figure 3D**). #8138 immunoprecipitated proinsulin 2 and processed proinsulin 2 but not insulin 2 from MIN6 cells after pulse (20 min)-chase (reducing conditions, **Figure 3E**).

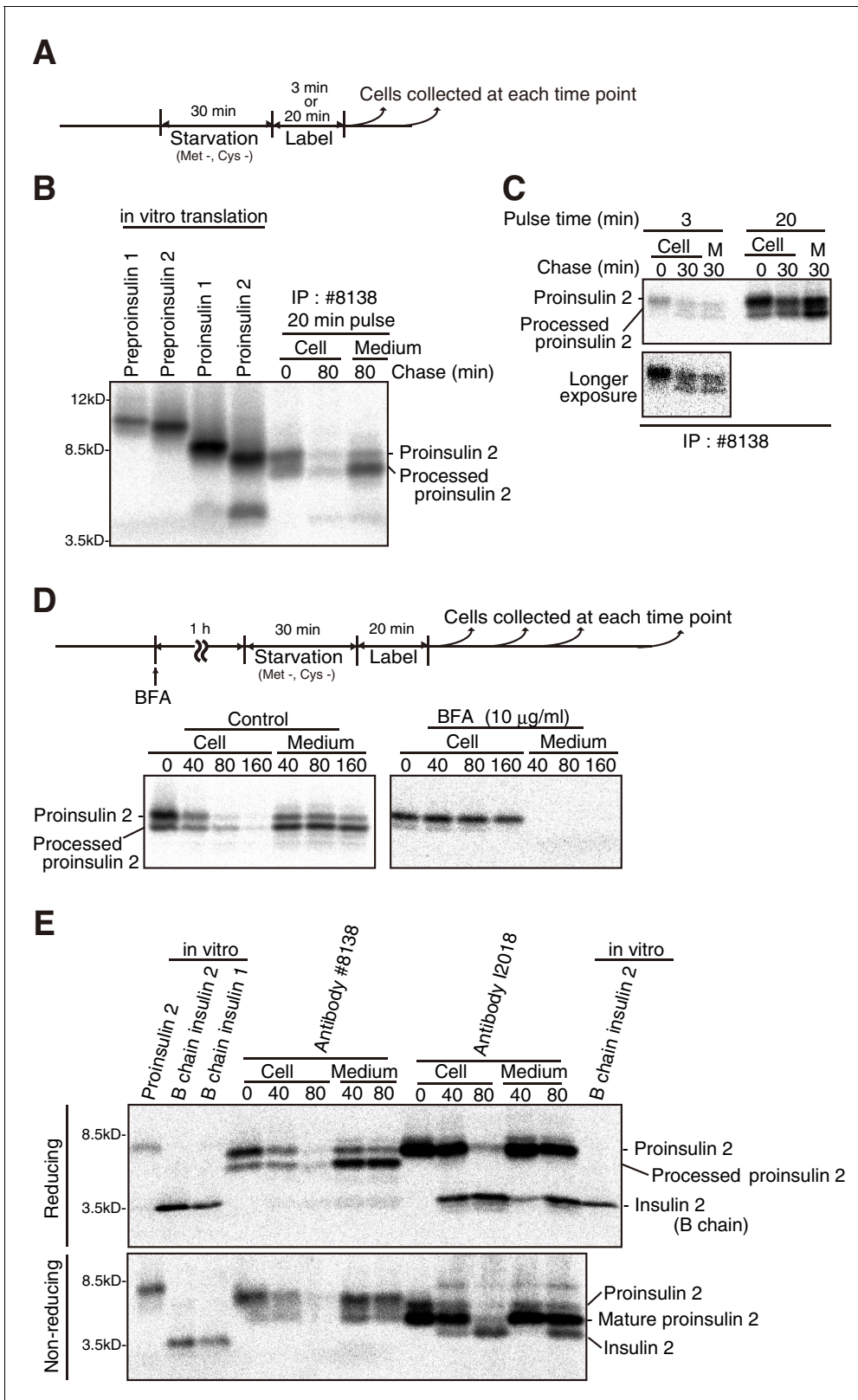
In contrast, I2018 detected insulin in lysates of MIN6 cells and mouse islets only under non-reducing conditions (**Figure 2B**). A pulse (20 min)-chase experiment showed that I2018 immunoprecipitated both proinsulin 2 and insulin 2 from MIN6 cells (reducing conditions, **Figure 3E**). This also demonstrated the precursor-product relationship for proinsulin 2 and insulin 2 in MIN6 cells. Importantly, I2018 immunoprecipitated mature proinsulin 2, which folded into a compact structure and thereby migrated slightly faster than proinsulin 2 immunoprecipitated using #8138, in addition to insulin 2 (non-reducing conditions, **Figure 3E**). Hereafter, #8138 and I2018 were appropriately used in accordance with experimental purposes.

We examined the effect of olanzapine and risperidone on the synthesis and secretion of proinsulin and insulin in MIN6 cells by pulse-chase experiments (**Figure 4A**). Analysis under reducing conditions of immunoprecipitates obtained with #8138 showed that production of intracellular processed proinsulin (P') as well as secretion of both proinsulin (P) and processed proinsulin (P') were markedly decreased by treatment of MIN6 cells with 50  $\mu$ M olanzapine (**Figure 4B**, lanes 8–14) but not with 50  $\mu$ M risperidone (lanes 29–35) compared with control cells (lanes 1–7), and that proinsulin (P) was instead accumulated intracellularly in olanzapine-treated MIN6 cells [see quantified **Figure 4B** (a)]. These phenomena were observed when MIN6 cells were similarly treated with 10  $\mu$ M olanzapine but not with 10  $\mu$ M risperidone (**Figure 5A and B**). Analysis under non-reducing conditions of immunoprecipitates obtained with I2018 showed that the levels of both intracellular mature proinsulin (mP) and insulin (I) were markedly decreased and that secretion of both mature proinsulin (mP) and insulin (I) was markedly inhibited by treatment of MIN6 cells with 50  $\mu$ M olanzapine (**Figure 4B**, lanes 22–28) but not with 50  $\mu$ M risperidone (lanes 36–42) compared with control cells (lanes 15–21) [see quantified **Figure 4B** (b)], consistent with the ELISA data (**Figure 1**). Thus, olanzapine blocked maturation of proinsulin and accordingly inhibited secretion of insulin.

Phogrin, a transmembrane protein-tyrosine phosphatase-like protein, transits the secretory pathway (**Torii et al., 2005**), and furin-like convertases convert proinsulin and phogrin to their mature forms by cleaving them at a dibasic consensus site (**Hermel et al., 1999; Nakayama, 1997**). Pulse-chase experiments showed that olanzapine did not detectably affect the processing of transfected phogrin-GFP (**Figure 6A**) or secretion of transfected  $\alpha$ 1-proteinase inhibitor (A1PI) (**Figure 6B**). The



**Figure 2.** Characterization of two anti-insulin monoclonal antibodies utilized. (A) Schematic representation of maturation of insulin 2. Each circle denotes an amino acid residue. Preproinsulin 2 comprises a signal sequence (light gray), B chain (blue), C peptide (gray), and A chain (green). Preproinsulin 2 is converted to proinsulin 2 after cleavage of the signal sequence, and proinsulin 2 becomes mature proinsulin 2 via formation of three intramolecular disulfide bonds. Mature proinsulin 2 is converted to insulin 2 after proteolysis at the residues indicated by the two arrows. The red circles represent cysteine residues that form the disulfide bonds (bars), and which are required for insulin folding and activity. The region encompassing V36, indicated by the yellow circle, is recognized by the anti-insulin monoclonal antibody #8138, which immunoprecipitates (immature) proinsulin 2 and detects proinsulin 2 and insulin 2 (B chain) after reducing SDS-PAGE. In contrast, the anti-insulin monoclonal antibody I2018 immunoprecipitates mature proinsulin 2 and insulin 2, and detects insulin 2 after non-reducing SDS-PAGE. (B) Lysates of MIN6 cells and mouse islets were analyzed by immunoblotting using #8138 and I2018 after reducing (DTT +) and non-reducing (DTT -) SDS-PAGE. (C) The indicated amounts of recombinant and purified proinsulin and insulin were subjected to reducing SDS-PAGE followed by immunoblotting using #8138.



**Figure 3.** Secretion of proinsulin 2, processed proinsulin 2 and insulin 2 from MIN6 cells. (A) Schemes of the experiments shown in (B) and (C). (B) cDNAs encoding mouse preproinsulin 1, preproinsulin 2, proinsulin 1, and proinsulin 2 were subjected to in vitro transcription and translation in the presence of <sup>35</sup>S-Met and <sup>35</sup>S-Cys, and then to immunoprecipitation using #8138. A pulse (20 min)-chase (80 min) experiment was performed in MIN6 cells, and cell lysates and media were collected and subjected to immunoprecipitation using #8138. The immunoprecipitates were analyzed by

Figure 3 continued on next page

Figure 3 continued

reducing SDS-PAGE and autoradiography. (C) A pulse (3 or 20 min)-chase (30 min) experiment was performed in MIN6 cells, and cell lysates and media (M) were analyzed as in (B). (D) MIN6 cells untreated or treated with brefeldin A (BFA, 10  $\mu$ g/ml) were subjected to pulse-chase experiment to determine changes in the levels of intracellular and extracellular proinsulin as well as processed proinsulin, as shown in the schema (top). (E) cDNAs encoding mouse proinsulin 2, B chain of mouse insulin 1, and B chain of mouse insulin 2 were treated as in (B). A pulse (20 min)-chase (40 min and 80 min) experiment was performed in MIN6 cells, and cell lysates and media were collected and subjected to immunoprecipitation using #8138 or I2018. The immunoprecipitates were analyzed by reducing and non-reducing SDS-PAGE followed by autoradiography.

anti-KDEL antibody stained the ER by recognizing the major ER chaperones BiP/GRP78 and GRP94, and A1PI was widely distributed from the ER to the Golgi apparatus before and after olanzapine treatment (Figure 6C and D). Olanzapine also did not significantly affect the maturation of hemagglutinin from high-mannose type to complex type (Figure 6E), which requires correct disulfide bond formation for folding (Segal et al., 1992). These results confirmed the specificity of olanzapine's effect to proinsulin.

Immunofluorescence analysis using #8138 revealed that proinsulin mainly localized to perinuclear compartments, which were distinct from the ER reacted with the anti-calnexin antibody (Figure 7A) but overlapped with the localization of phogrin-GFP (Figure 7B), suggesting that they were included in immature or mature secretory granules.

We were surprised to find that proinsulin colocalized with calnexin in MIN6 cells treated with 50  $\mu$ M olanzapine (Figure 7C) and that this shift in localization was detected in MIN6 cells treated with 10  $\mu$ M olanzapine (Figure 7D) but not in MIN6 cells treated with 50  $\mu$ M or 10  $\mu$ M risperidone (Figure 7E and F). In contrast, the localization of phogrin-GFP (Figure 7G and H) or insulin (Figure 8A and B) was not altered by treatment with 50  $\mu$ M olanzapine. These results suggest that olanzapine specifically affects the quality of proinsulin during its localization in the ER.

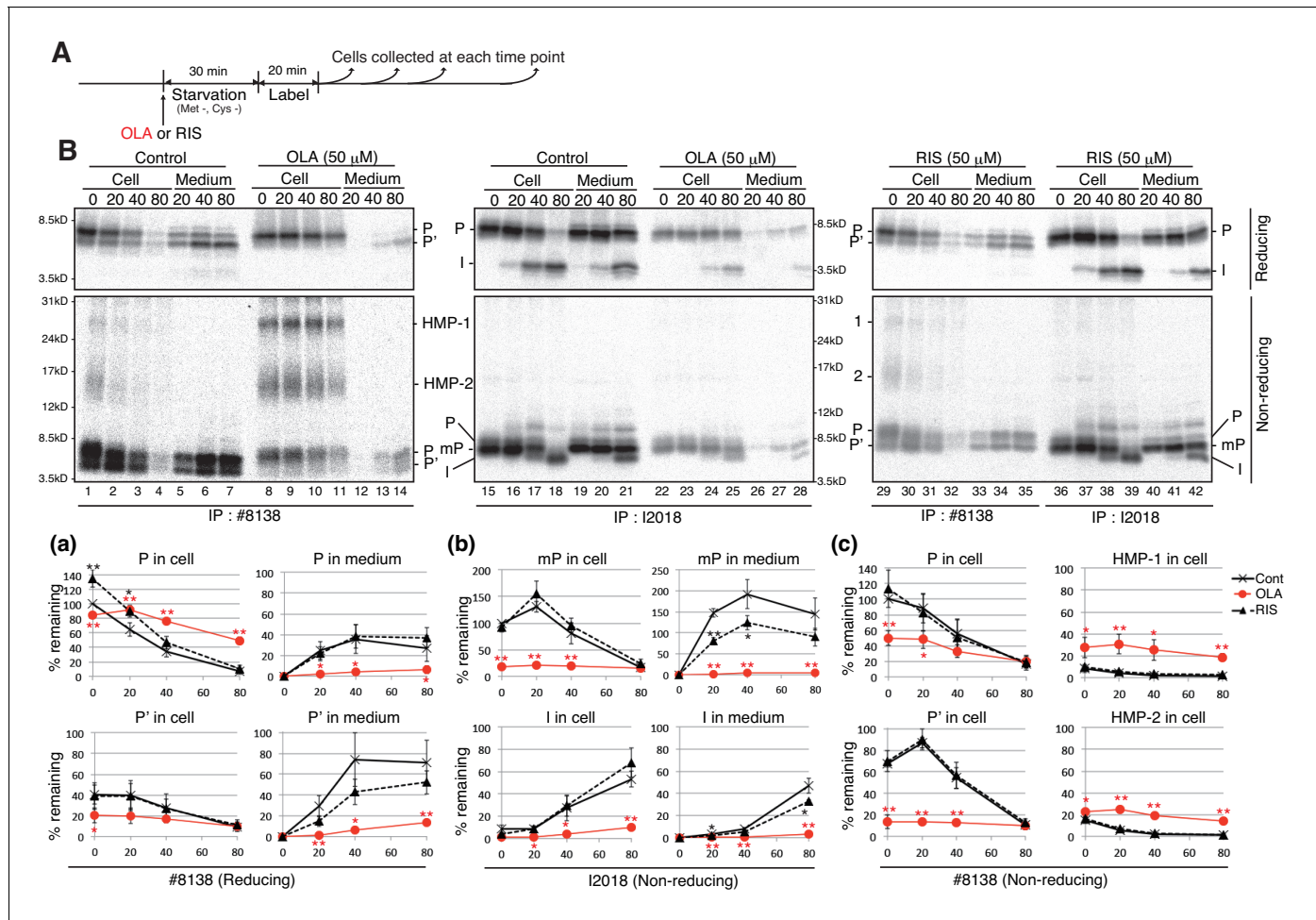
### Induction of proinsulin misfolding in olanzapine-treated MIN6 cells

Treatment of MIN6 cells with the proteasome inhibitor MG132 alone increased the levels of intracellular and extracellular proinsulin (Figure 5C and D, left panels), indicating that a part of newly synthesized proinsulin is constitutively subjected to ERAD in MIN6 cells. Importantly, simultaneous treatment of MIN6 cells with olanzapine and MG132 markedly increased the level of intracellular proinsulin (Figure 5D, right top panel), indicating that proinsulin forced to be remain in the ER of olanzapine-treated cells was subjected to ERAD. Nonetheless, ERAD of retained proinsulin alone cannot explain olanzapine-induced blockage of proinsulin secretion, because proinsulin secretion was still blocked in MIN6 cells treated with both olanzapine and MG132 (Figure 5D, right bottom panel), in contrary to the case with control cells (Figure 5D, left bottom panel).

As ERAD deals with misfolded proteins, we examined the effect of olanzapine on the solubility of proinsulin by lysing MIN6 cells with 1% NP40 followed by centrifugation, and found that a small amount of proinsulin became insoluble in MIN6 cells after treatment with 10  $\mu$ M and 50  $\mu$ M olanzapine but not with 50  $\mu$ M risperidone (Figure 8C). We next checked whether olanzapine affects the disulfide-bonded status of proinsulin using #8138, which unlike I2018 does not recognize mature proinsulin (see Figure 3E). By analyzing under non-reducing conditions of immunoprecipitates obtained with #8138 after pulse chase (Figure 4A), we found that an approximately 27 kDa form of proinsulin, designated as a high molecular weight form of proinsulin (HMP-1), and an approximately 15 kDa form of proinsulin, designated as HMP-2, were produced in cells treated with olanzapine (Figure 4B, lanes 8–14) but not with risperidone (lanes 29–35) compared with control cells (lanes 1–7) [see quantified Figure 4B (c)]. HMP-1 and HMP-2 detected with #8138 but not with I2018 were not secreted at all, suggesting that they were severely misfolded.

To identify the components of HMP-1 and HMP-2, we conducted mass spectrometric analysis. To this end, olanzapine-untreated or -treated cells were lysed in buffer containing 10 mM N-ethylmaleimide (NEM) to maintain existing disulfide bonds. Subsequent non-reducing SDS-PAGE and immunoblotting revealed that proinsulin and HMP-2 somehow became undetected with #8138 (Figure 8D). Therefore, we were able to purify only HMP-1 by immunoprecipitation (Figure 8E). Mass

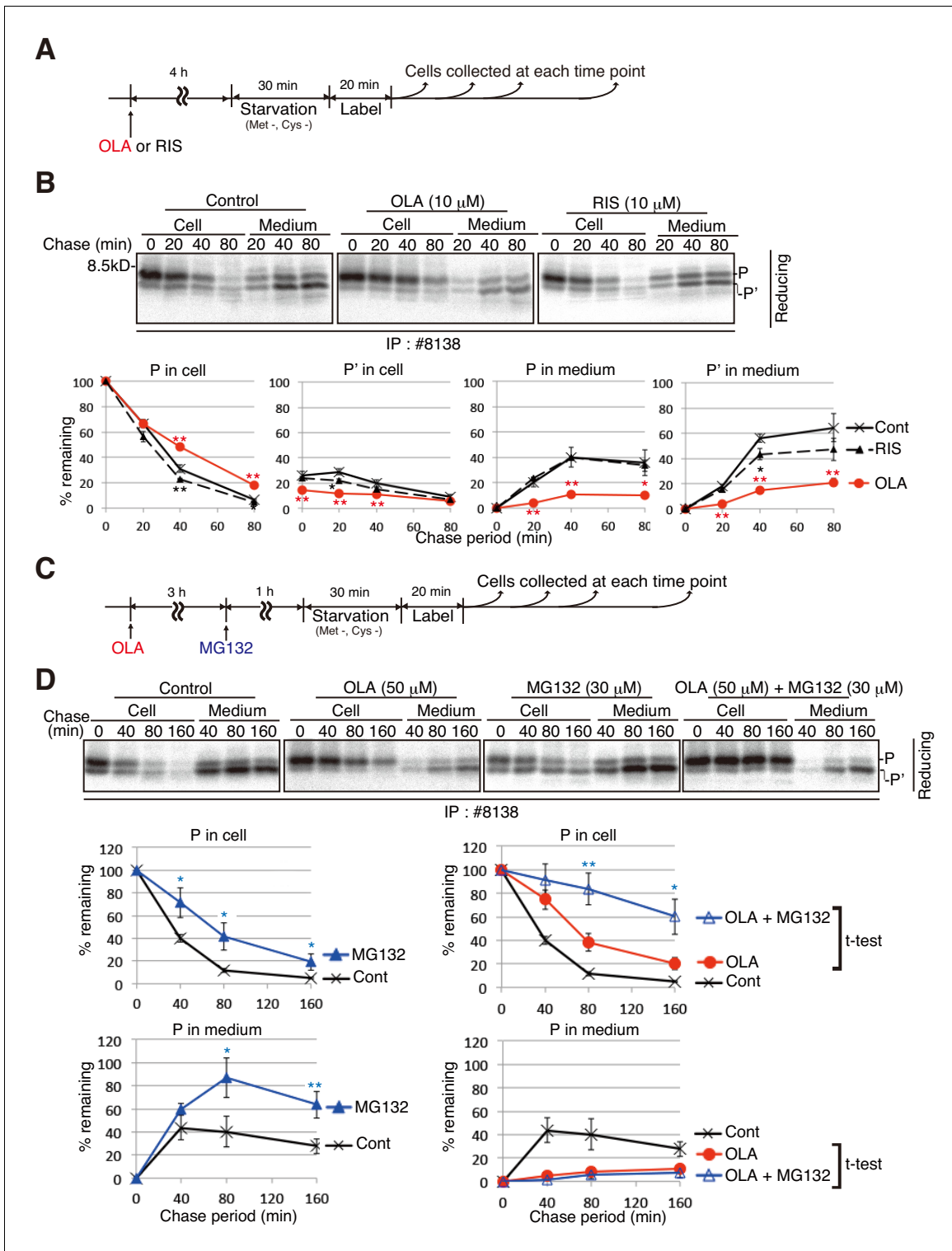




**Figure 4.** Effect of olanzapine and risperidone on maturation and secretion of proinsulin and insulin in MIN6 cells. (A) Schemes of the experiments shown in (B). (B) MIN6 cells untreated with or treated with olanzapine (50  $\mu\text{M}$ ) or risperidone (50  $\mu\text{M}$ ) from the start of starvation were subjected to pulse-chase experiment to determine changes in the levels of proinsulin (P), processed proinsulin (P'), mature proinsulin (mP), insulin (I), HMP-1 (1) and HMP-2 (2) in cells and medium. Cell lysates and media were collected and immunoprecipitated with #8138 or I2018. The immunoprecipitates were analyzed by reducing and non-reducing SDS-PAGE followed by autoradiography. The intensity of each band was determined, and the intensity of intracellular proinsulin or mature proinsulin at time 0 in control cells was defined as 100% (n = 3) [categorized in a, b and c].

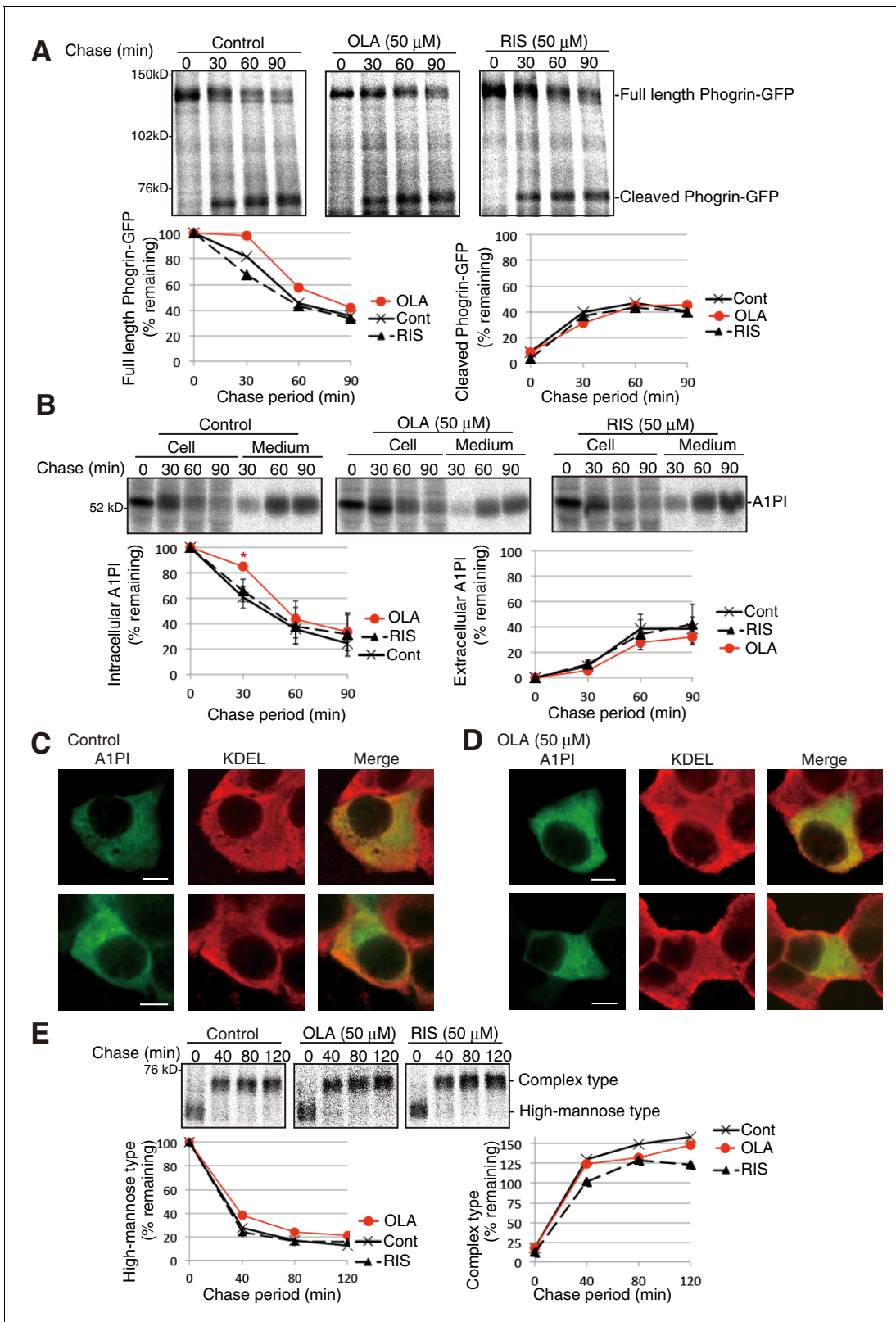
spectrometric analysis of HMP-1 revealed that only insulin 2-derived fragments were enriched upon olanzapine treatment (Figure 8F and G, and Supplementary file 1), suggesting that HMP-2 and HMP-1 represent a proinsulin dimer and trimer, respectively, with aberrant intermolecular disulfide bonds.

To clarify how olanzapine induces the formation of aberrant proinsulin oligomers, we considered the possibility that olanzapine acts on certain oxidoreductases in the ER to inhibit their activities (Jang et al., 2019; Okumura et al., 2014), and therefore tested whether olanzapine directly binds to the purified enzymes using isothermal titration calorimetry (ITC), which sensitively detects heat generation or absorption upon ligand-substrate binding. However, results were negative for PDI, ERp46, ERp57, ERp72, and P5 (Figure 8—figure supplement 1A). We were also unable to precisely analyze direct interactions between olanzapine and proinsulin by ITC, because reduced proinsulin (Figure 8—figure supplement 1B) was rapidly and severely aggregated, producing significant heat exchange. Thus, direct targets of olanzapine remain to be determined.



**Figure 5.** Effect of the proteasome inhibitor MG132 on the level of proinsulin accumulated intracellularly in olanzapine-treated MIN6 cells. (A) Schemes of the experiments shown in (B). (B) MIN6 cells untreated or treated with olanzapine (10 μM) or risperidone (10 μM) for 4 hr were analyzed as in **Figure 4B** to determine changes in the levels of proinsulin (P) and processed proinsulin (P') in cells and medium using #8138 and reducing SDS-PAGE. The intensity of intracellular proinsulin at time 0 was defined as 100% (n = 3). (C) Schemes of the experiments shown in (D). (D) MIN6 cells untreated or treated with olanzapine (50 μM), MG132 (30 μM) or olanzapine (50 μM) and MG132 (30 μM) were analyzed as in **Figure 4B** to determine changes in the level of proinsulin (P) in cells and medium using #8138 and reducing SDS-PAGE. The intensity of intracellular proinsulin at time 0 was defined as 100% (n = 3).





**Figure 6.** Effect of olanzapine on processing of phogrin-GFP, secretion of A1PI, and maturation of hemagglutinin in MIN6 cells. (A) MIN6 cells transfected with a phogrin-GFP expression vector were untreated or treated with olanzapine (50  $\mu$ M) or risperidone (50  $\mu$ M) for 4 hr and then subjected to pulse-chase experiment in the presence of olanzapine (50  $\mu$ M) or risperidone (50  $\mu$ M) to determine the rate of processing of phogrin-GFP. The amounts of full-length and cleaved phogrin-GFP were determined and are shown below with the amount of full-length phogrin-GFP at time 0 defined as 100%. (B) MIN6 cells transfected with a A1PI expression vector were untreated or treated with olanzapine (50  $\mu$ M) or risperidone (50  $\mu$ M) for 4 hr and then subjected to pulse-chase experiment in the presence of olanzapine (50  $\mu$ M) or risperidone (50  $\mu$ M) to determine the rate of secretion of A1PI. The amounts of intracellular and extracellular A1PI were determined and are shown below with the amount of intracellular A1PI at time 0 defined as 100%. (C) MIN6 cells transfected with a A1PI expression vector were untreated or treated with olanzapine (50  $\mu$ M) for 4 hr and then subjected to immunofluorescence analysis. (D) MIN6 cells transfected with a A1PI expression vector were treated with olanzapine (50  $\mu$ M) for 4 hr and then subjected to immunofluorescence analysis. (E) MIN6 cells transfected with a hemagglutinin expression vector were untreated or treated with olanzapine (50  $\mu$ M) or risperidone (50  $\mu$ M) for 4 hr and then subjected to pulse-chase experiment in the presence of olanzapine (50  $\mu$ M) or risperidone (50  $\mu$ M) to determine the rate of maturation of hemagglutinin. The amounts of high-mannose type and complex type hemagglutinin were determined and are shown below with the amount of high-mannose type hemagglutinin at time 0 defined as 100%. Figure 6 continued on next page

Figure 6 continued

as 100% ( $n = 1$ ). (B) MIN6 cells transfected with an A1PI expression vector were untreated or treated with olanzapine (50  $\mu\text{M}$ ) or risperidone (50  $\mu\text{M}$ ) for 4 hr and then subjected to pulse-chase experiment in the presence of olanzapine (50  $\mu\text{M}$ ) or risperidone (50  $\mu\text{M}$ ) to determine the rate of secretion of A1PI. The amounts of intracellular and extracellular A1PI were determined and are shown below with the amount of intracellular A1AP at time 0, defined as 100% ( $n = 3$ ). (C) (D) MIN6 cells transfected with an A1PI expression vector were untreated (C) or treated with olanzapine (50  $\mu\text{M}$ ) for 14 hr (D). Fixed and permeabilized cells were analyzed by immunofluorescence using anti-A1PI and anti-KDEL antibodies. Bars: 5  $\mu\text{m}$ . (E) MIN6 cells transfected with a hemagglutinin expression vector were untreated or treated with olanzapine (50  $\mu\text{M}$ ) or risperidone (50  $\mu\text{M}$ ) for 4 hr and then subjected to pulse-chase experiment to determine the rate of maturation of hemagglutinin. The immunoprecipitates were digested with endoglycosidase H and then analyzed by reducing SDS-PAGE and autoradiography. The amounts of high-mannose type and complex type hemagglutinin were determined and are shown below, with the amounts of high-mannose type hemagglutinin at time 0 defined as 100% ( $n = 1$ ).

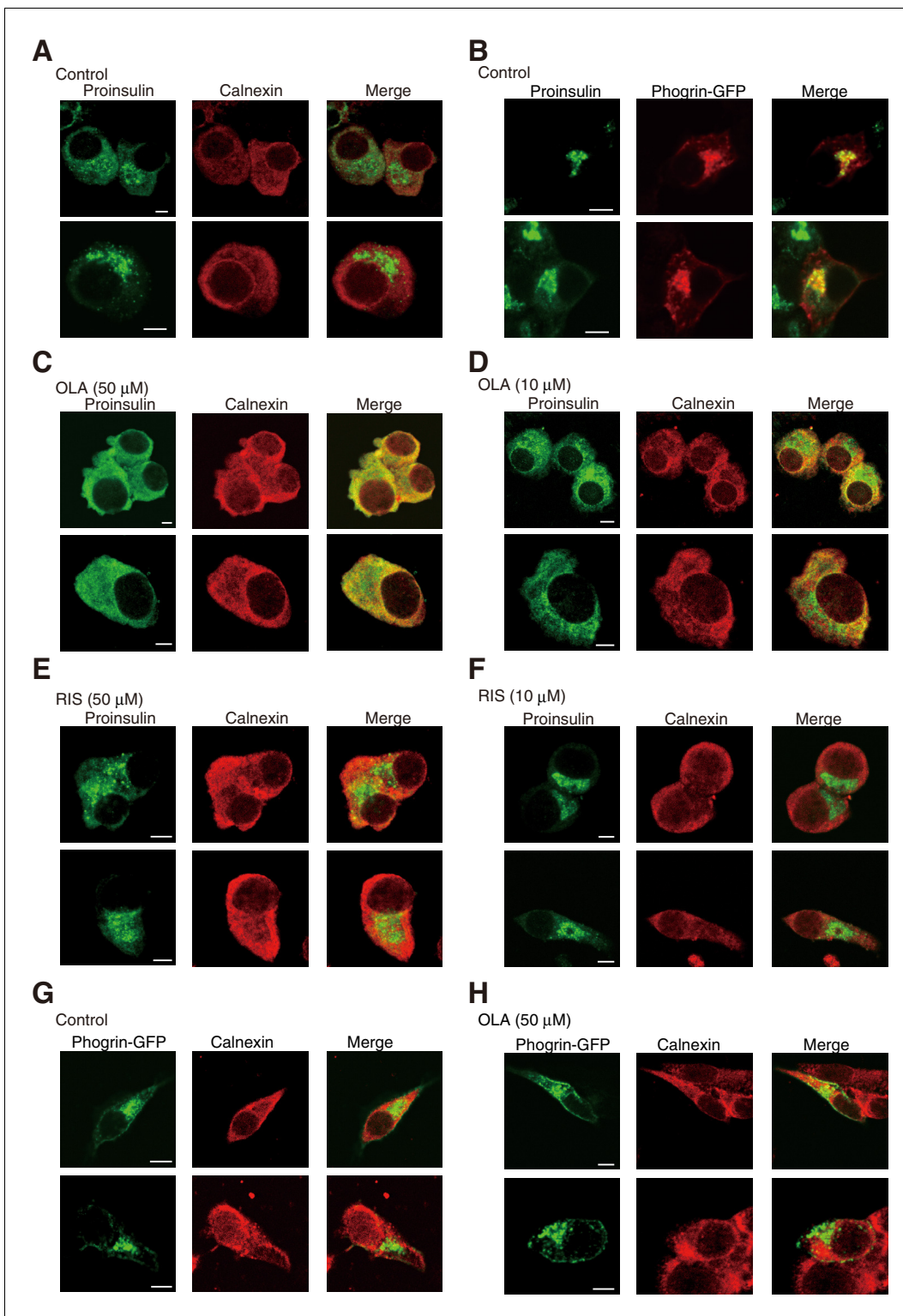
## ERAD of misfolded proinsulin in olanzapine-treated MIN6 cells and mouse islets

To determine whether olanzapine treatment indeed induces the production of aberrant high molecular weight forms of proinsulin and how quickly it does so, MIN6 cells pulse-labeled for 20 min were chased with the addition of olanzapine (Figure 9A). Analysis under non-reducing conditions of immunoprecipitates obtained with #8138 showed that most radioactivity was recovered as proinsulin in untreated cells (0 min), and secretion of proinsulin was inhibited in cells treated with olanzapine, as expected (Figure 9B). Importantly, the levels of HMP-1 and HMP-2 rapidly and markedly increased after treatment with olanzapine (Figure 9B).

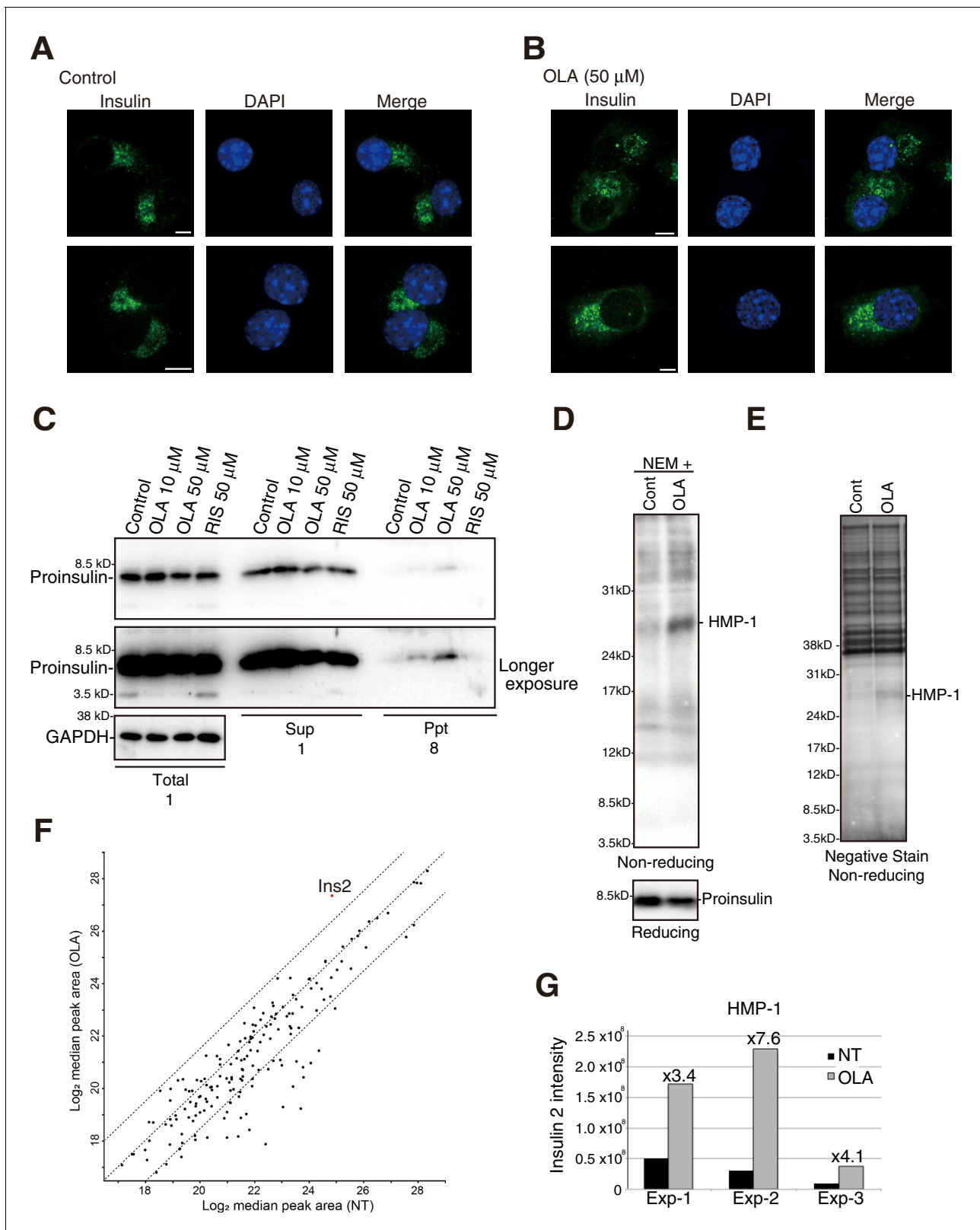
To correlate the production of HMP-1 and HMP-2 with the ERAD of proinsulin, we added olanzapine together with or without MG132 at the start of starvation and then conducted pulse-chase experiments (Figure 9C), because we found that treatment with olanzapine produced maximal amounts of HMP-1 and HMP-2 within 40 min (Figure 9B). Analysis under reducing conditions of immunoprecipitates obtained with #8138 showed that the results obtained in Figure 9D (upper part) were consistent with those shown in Figure 5D for the level of intracellular and extracellular proinsulin. Critically, analysis under non-reducing conditions of immunoprecipitates obtained with #8138 revealed that MG132 stabilized proinsulin monomer, HMP-1, and HMP-2 in olanzapine-treated MIN6 cells (Figure 9D, lower part). These results strongly suggest that proinsulin monomer, HMP-1, and HMP-2 with aberrant disulfide bonds underwent ERAD (see Figure 10G).

We finally examined whether olanzapine induces misfolding of proinsulin at the mouse level. Non-reducing SDS-PAGE analysis followed by immunoblotting showed that HMP-1 and even higher molecular weight forms of proinsulin were produced when isolated mouse islets were incubated for 4 h with 50  $\mu\text{M}$  olanzapine (Figure 10A), for 20 h with 5  $\mu\text{M}$  and 10  $\mu\text{M}$  olanzapine (Figure 10B) but not with 10  $\mu\text{M}$  risperidone (Figure 10C) without affecting the molecular mass of PDI, an abundant ER-resident oxidoreductase (Figure 10B). Reducing SDS-PAGE analysis followed by immunoblotting showed that the level of proinsulin was decreased 4 h after incubation with 50  $\mu\text{M}$  olanzapine (Figure 10A) and that this decrease was blocked by the addition of 30  $\mu\text{M}$  MG132 from 1 h earlier (total 5 h) (Figure 10D). Of note, the level of proinsulin was markedly decreased 20 h after incubation with 5  $\mu\text{M}$  and 10  $\mu\text{M}$  olanzapine (Figure 10B).

Furthermore, non-reducing SDS-PAGE analysis followed by immunoblotting showed that HMP-1 and even higher molecular weight forms of proinsulin started to be detected in mouse islets isolated 1 week after daily oral administration of 3 mg/kg/day and 10 mg/kg/day olanzapine (Figure 10E), and were clearly detected in mouse islets isolated 2 weeks after daily oral administration of 10 mg/kg/day olanzapine (Figure 10E), and 5 weeks (Figure 10F) and 6 weeks (data not shown) after daily oral administration of 3 mg/kg/day olanzapine. Reducing SDS-PAGE analysis followed by immunoblotting showed that the level of proinsulin was decreased in mouse islets 5 weeks after daily oral administration of 3 mg/kg/day olanzapine (Figure 10F), although there was no significant change in the levels of blood glucose or plasma insulin at this stage (data not shown). These phenomena were not due to obesity because we observed no significant difference in body weight between control mice and mice after daily oral administration of 3 mg/kg/day olanzapine for 5 or 6 weeks (data not shown), but rather due to olanzapine-induced misfolding of proinsulin in pancreatic  $\beta$  cells.



**Figure 7.** Effect of olanzapine on localization of proinsulin and phogrin-GFP in MIN6 cells (Bars: 5 μm). (A) MIN6 cells were analyzed by immunofluorescence using anti-insulin #8138 and anti-calnexin antibodies. (B) MIN6 cells transfected with a phogrin-GFP expression vector were analyzed by immunofluorescence using anti-insulin #8138 and anti-GFP antibodies. (C) – (F) MIN6 cells treated with (C) olanzapine (50 μM), (D) olanzapine (10 μM), (E) risperidone (50 μM), or (F) risperidone (10 μM) for 14 hr were analyzed by immunofluorescence using anti-insulin #8138 and anti-calnexin antibodies. (G) (H) MIN6 cells transfected with a phogrin-GFP expression vector were (G) untreated or (H) treated with olanzapine (50 μM) for 14 hr, and then analyzed by immunofluorescence using anti-GFP and anti-calnexin antibodies.



**Figure 8.** Effect of olanzapine on localization of insulin as well as solubility and oligomerization of proinsulin in MIN6 cells. MIN6 cells untreated (A) or treated with olanzapine (50  $\mu$ M) (B) for 14 hr were analyzed by immunofluorescence using anti-insulin I2018 antibody. Bars: 5  $\mu$ m. (C) MIN6 cells treated with DMSO (control), olanzapine (10 or 50  $\mu$ M) or risperidone (50  $\mu$ M) for 14 hr were lysed in 1% NP40. After centrifugation at 14,000 rpm for 10 min, supernatant and precipitate were analyzed by immunoblotting using anti-insulin #8138 and anti-GAPDH antibodies. Eight times greater amounts were Figure 8 continued on next page

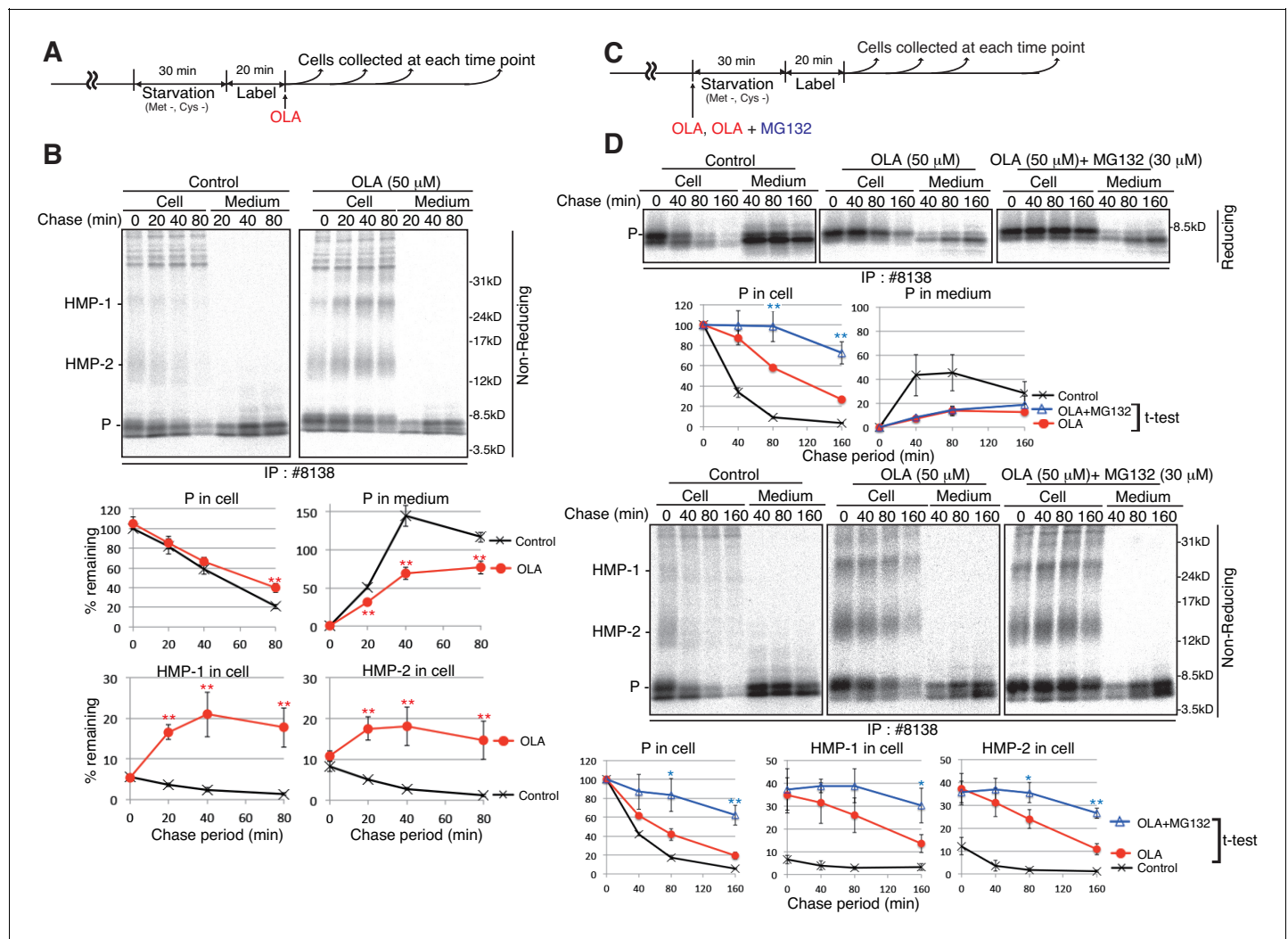


Figure 8 continued

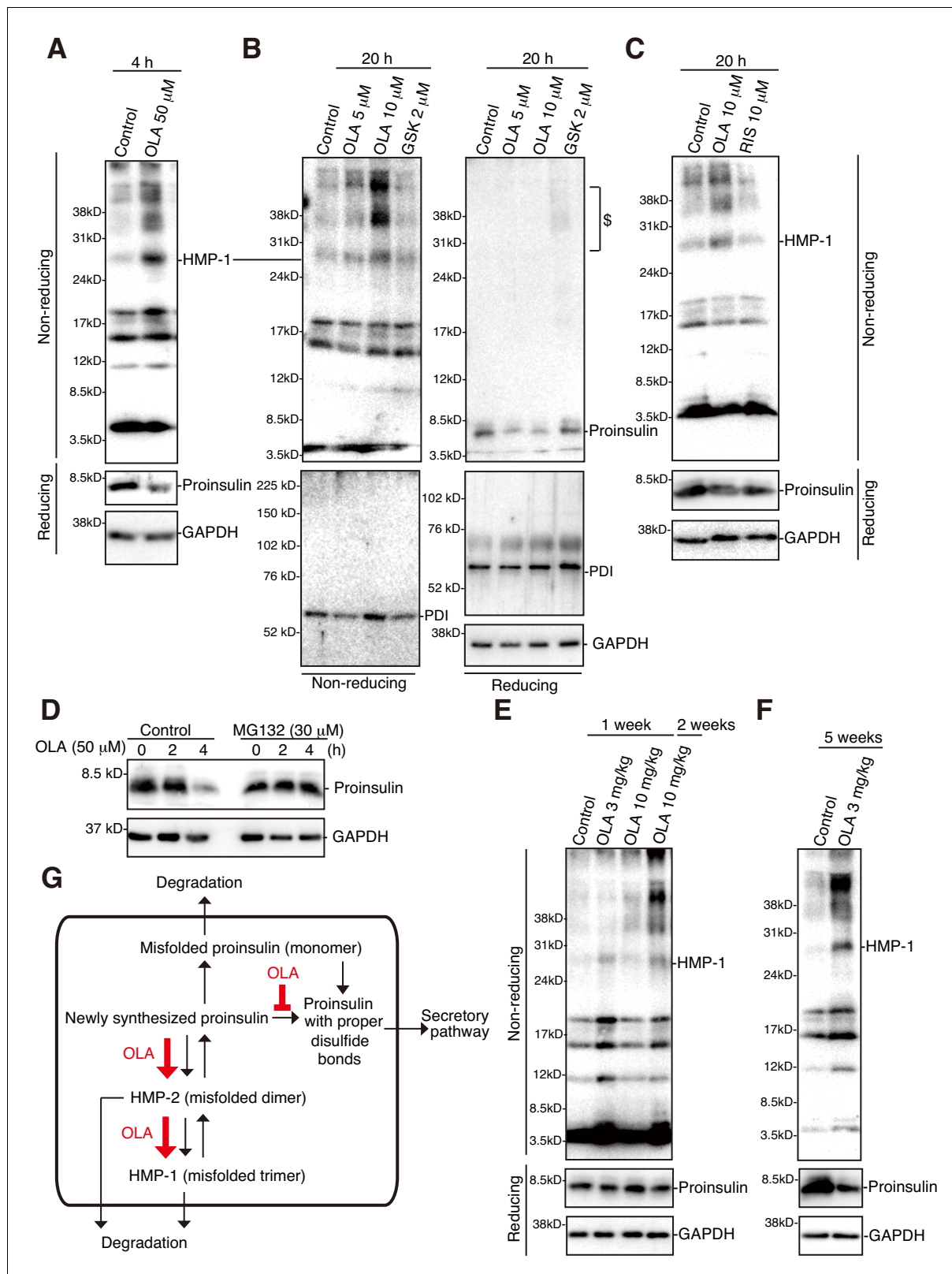
used to analyze precipitate than total and supernatant. (D)-(G) MIN6 cells untreated or treated with olanzapine (50  $\mu$ M) for 4 hr were lysed with 1% NP40 buffer containing 10 mM NEM. (D) Cell lysates were analyzed by reducing and non-reducing SDS-PAGE followed by immunoblotting using #8138. (E) Cell lysates were subjected to immunoprecipitation using #8138, and then to negative staining after non-reducing SDS-PAGE. (F) Gels at the position of HMP-1 were excised and analyzed by mass spectrometry. The results are shown by the scatter plot of log<sub>2</sub> of the median peak area from three independent experiments between untreated cells (X axis) and olanzapine-treated cells (Y axis). A 5.7-fold increase by olanzapine treatment was observed for Ins2 as shown in the red circle. (G) Intensities of Ins2-derived fragments in untreated and olanzapine-treated cells in each experiment are shown along with the fold-induction.

The online version of this article includes the following figure supplement(s) for figure 8:

**Figure supplement 1.** Interaction of olanzapine with various oxidoreductases.



**Figure 9.** Effect of the proteasome inhibitor MG132 on the levels of proinsulin, HMP-1, and HMP-2 in olanzapine-treated MIN6 cells. (A) Schemes of the experiments shown in (B). (B) MIN6 cells pulse-labeled for 20 min were chased for the indicated periods with or without 50  $\mu$ M olanzapine to determine changes in the levels of proinsulin (P), HMP-1 (1), and HMP-2 (2) in cells and medium as in **Figure 4B** using #8138 and non-reducing SDS-PAGE. The intensity of intracellular proinsulin at time 0 was defined as 100% (n = 3). (C) Schemes of the experiments shown in (D). (D) MIN6 cells untreated, treated with olanzapine (50  $\mu$ M), or olanzapine (50  $\mu$ M) and MG132 (30  $\mu$ M) were analyzed as in **Figure 4B** to determine changes in the levels of proinsulin (P), HMP-1 (1), and HMP-2 (2) in cells and medium using #8138 and reducing and non-reducing SDS-PAGE. The intensity of intracellular proinsulin at time 0 was defined as 100% (n = 3).



**Figure 10.** Effect of olanzapine on proinsulin oligomerization in mouse islets. (A)-(C) Isolated mouse islets were untreated or treated with the indicated concentration of olanzapine, GSK2656157 (GSK, 2  $\mu$ M) or risperidone (10  $\mu$ M) for the indicated period and analyzed by immunoblotting using anti-insulin #8138, anti-PDI and anti-GAPDH antibodies after reducing and non-reducing SDS-PAGE. \$ denotes aggregated proinsulin. (D) Isolated mouse islets were treated or untreated with MG132 (30  $\mu$ M) for 1 hr, then treated with olanzapine (50  $\mu$ M) for the indicated period, and analyzed by  
Figure 10 continued on next page

Figure 10 continued

immunoblotting using anti-insulin #8138 and anti-GAPDH antibodies after reducing SDS-PAGE. (E) (F) Islets were isolated from mice the indicated week after daily oral administration of the indicated dose of olanzapine, and analyzed by immunoblotting using anti-insulin #8138 and anti-GAPDH antibodies after reducing and non-reducing SDS-PAGE. (G) Model for olanzapine-induced  $\beta$ -cell dysfunction (see text).

## Discussion

Here we identified a novel mechanism that accounts for olanzapine-induced atypical development of diabetes. For this purpose, we used the mouse pancreatic  $\beta$ -cell line MIN6 to show that olanzapine produced aberrantly disulfide-bonded proinsulin (Figure 4) and caused retention of misfolded proinsulin in the ER (Figure 7) which then underwent ERAD (Figure 9). Inhibition of insulin secretion as well as proinsulin secretion (Figures 1C and 5B) and retention of misfolded proinsulin in the ER (Figure 7D) was observed in MIN6 cells treated with 10  $\mu$ M olanzapine, which is comparable with concentrations of olanzapine in patients sera (0.016–0.24  $\mu$ M) and in postmortem serum (0.032–16  $\mu$ M) (Robertson and McMullin, 2000), as well as with the observation that olanzapine concentrations in tissues are 4- to 46-fold higher than those in the plasma of rats (Aravagiri et al., 1999). It should be noted that olanzapine-induced apoptosis was not previously observed in MIN6 cells or in the hamster pancreatic  $\beta$ -cell line HIT-T15 treated with 10  $\mu$ M olanzapine (Ozasa et al., 2013), indicating that olanzapine-induced misfolding of proinsulin is an early event which evokes ER stress in pancreatic  $\beta$  cells.

Importantly, olanzapine-induced misfolding of proinsulin, which is targeted to ERAD, also occurred when mouse islets were treated with olanzapine (Figure 10A–D). Furthermore, misfolding of proinsulin was induced in mouse islets after daily oral administration of 3 mg/kg/day olanzapine (Figure 10E and F). Patients usually take 10–20 mg olanzapine a day (0.17–0.33 mg/kg assuming 60 kg as body weight), which may correspond to 2.0–4.0 mg/kg in mice, if the difference in body surface areas is considered (multiply by 12.3) (Nair and Jacob, 2016). This mechanism can explain why certain patients rapidly develop diabetes as well as diabetic ketoacidosis after receiving olanzapine, without gaining weight, and why such patients recover when olanzapine is discontinued.

In this connection, Peter Arvan and colleagues recently showed that aberrantly disulfide-bonded proinsulin dimers and higher ladder complexes (trimer, tetramer, pentamer, —) exist in rat pancreatic  $\beta$ -cell-derived INS1E cells as well as in mouse and human islets, and that the levels of these misfolded forms of proinsulin were markedly increased and instead the level of insulin was markedly decreased in islets of leptin receptor mutant *LepR<sup>db/db</sup>* mice, a mouse model of diabetes, compared with islets of wild-type mice, before the onset of diabetes. They therefore proposed that proinsulin misfolding is an early event in the progression to type 2 diabetes (Arunagiri et al., 2019). The levels of these misfolded forms of proinsulin were dramatically increased after treatment of INS1E cells and islets of mouse and human with 2  $\mu$ M GSK2656157, a potent PERK inhibitor (Atkins et al., 2013), for 20 hr and overnight, respectively, but not for 5 hr (Arunagiri et al., 2019), supporting the importance of the PERK branch of the UPR for maintenance of homeostasis of  $\beta$  cells, as described in the Introduction.

We confirmed the much more profound misfolding of proinsulin after treatment of mouse islets for 20 hr with 2  $\mu$ M GSK2656157 than with 10  $\mu$ M olanzapine, which was observed even under reducing conditions (Figure 10B; depicted by \$, and data not shown). Interestingly, however, production of HMPs was observed after treatment of mouse islets for 20 hr with 10  $\mu$ M olanzapine but not with 2  $\mu$ M GSK2656157 (Figure 10B), and a ladder of HMPs bigger than HMP-1 was observed more clearly in mouse islets (Figure 10) than in MIN6 cells (Figure 9). This rapidity and broad extensiveness of olanzapine's action on the folding status of proinsulin in mouse islets suggests that  $\beta$ -cell dysfunction may infrequently dominate and diabetes might develop without weight gain or insulin resistance in the minority of patients with potentially lower catabolism of olanzapine or by other unidentified factors. For example, it is known that olanzapine is catabolized by the action of cytochrome p450 (CYP) 1A2 and polymorphic CYP2D6 in the liver and that the induction of CYP1A2 by smoking significantly diminishes the concentration of olanzapine in plasma (Carrillo et al., 2003); as hospitalized patients cannot smoke, the concentration of olanzapine may be elevated in plasma and possibly in  $\beta$  cells of ex-smokers. The clearance of olanzapine also appears to vary by race, sex and age (Meibohm et al., 2002).



Correct formation of three intramolecular disulfide bonds is essential for insulin folding and activity (Haataja et al., 2016; Chang et al., 2003), which may be difficult even in unstressed cells. A part of newly synthesized proinsulin is therefore constitutively degraded by the proteasome (Figure 5D). We show that treatment with olanzapine markedly inhibited maturation and secretion of proinsulin, and instead induced aberrant disulfide bond-formation during the folding of proinsulin, leading to the formation of HMP-1 and HMP-2 (Figure 4), although we could not detect direct interaction between olanzapine and oxidoreductases in the ER by ITC (Figure 8—figure supplement 1).

Proinsulin in Akita mice with the *Ins2* C96Y mutation fails to form the correct disulfide bonds, and is degraded by ERAD (He et al., 2015; Ron, 2002). To avoid unnecessary degradation of correctly folded proinsulin, the ER nucleotide exchange factor Grp170 distinguishes misfolded proinsulin from correctly structured proinsulin for disposal (Cunningham et al., 2017). Similarly, olanzapine-induced HMP-1 and HMP-2 may be recognized by Grp170 for targeting to ERAD as well. Proinsulin is not a glycoprotein and is degraded via the non-glycoprotein ERAD pathway, which can process severely misfolded glycoproteins as well (Ninagawa et al., 2015).

In conclusion, the mechanism identified here that mediates olanzapine-induced  $\beta$ -cell dysfunction should be considered, along with weight gain, in mitigating adverse side effects when patients with schizophrenia are prescribed olanzapine.

## Materials and methods

### Key resources table

Reagent type (species) or resource	Designation	Source or reference	Identifiers	Additional information
Cell line ( <i>Mus musculus</i> )	Insulinoma	Miyazaki et al., 1990	MIN6	The cell line has been authenticated and tested negative for mycoplasma.
Recombinant DNA reagent	p3xFlag-CMV-14	Sigma-Aldrich		
Recombinant DNA reagent	pcDNA3.1(+)	ThermoFisher		
Recombinant DNA reagent	Phogrin-GFP	Saito et al., 2011		
Recombinant DNA reagent	A1PI	Ninagawa et al., 2015		
Recombinant DNA reagent	HA	Gething and Sambrook, 1982		
Antibody	Anti-insulin (Mouse monoclonal)	Cell signaling	Cat#: #8138	WB (1:1000), IP (1:400), IF (1:100)
Antibody	Anti-insulin (Mouse monoclonal)	Sigma-Aldrich	Cat#: I2018	WB (1:1000), IP (1:400)
Antibody	Anti-GFP (Mouse monoclonal)	Roche	Cat#: 11814460001	IP (1:400), IF (1:100)
Antibody	Anti-calnexin (Rabbit polyclonal)	Enzo Life Sciences	Cat#: ADI-SPA-865	WB (1:1000), IF (1:100)
Antibody	Anti-PDI (Rabbit polyclonal)	Enzo Life Sciences	Cat#: ADI-SPA-890	WB (1:1000)
Antibody	Anti-A1AT (Rabbit polyclonal)	Dako	Cat#: A0012	IP (1:400), IF (1:100)

Continued on next page

Continued

Reagent type (species) or resource	Designation	Source or reference	Identifiers	Additional information
Antibody	Anti-GAPDH (Rabbit polyclonal)	Trevigen	Cat#: 2275-PC-100	WB (1:1000)
Antibody	Anti-HA (Rabbit polyclonal)	Recenttec	Cat#: R4-TP1411100	IP (1:400)
Antibody	Anti-KDEL (Mouse monoclonal)	MBL	Cat#: M181-3	IF (1:1000)

## Statistics

Statistical analysis was conducted using Student's t-test, with probability expressed as \* $p < 0.05$  and \*\* $p < 0.01$  for all figures.

## Cell culture and transfection

MIN6 cells (Miyazaki *et al.*, 1990) were cultured in Dulbecco's modified Eagle's medium (DMEM containing 4.5 g/liter glucose) supplemented with 2 mM L-glutamine, 10% fetal bovine serum, and antibiotics (50 U/ml penicillin and 50  $\mu$ g/ml streptomycin) at 37°C in a humidified atmosphere containing 5% CO<sub>2</sub>/95% air. Transfection was performed as described previously (Ninagawa *et al.*, 2015) using Polyethyleneimine max (Polysciences) to replace Lipofectamine 2000 (Invitrogen). MIN6 cells were transfected 1 day after seeding, and 2 days later, pulse-chase experiments or immunofluorescence analysis were conducted.

## Reagents and antibodies

MG132 from the Peptide Institute; mastoparan from Wako; Z-VAD-fmk from Promega; and DMEM with or without 4.5 g/l (25 mM) glucose and protease inhibitor cocktail from Nacalai Tesque. Olanzapine and risperidone were purchased from Toronto Research Chemicals. Various antibodies were obtained as described in Key Resource Table.

## Construction of plasmids

Recombinant DNA techniques were performed according to standard procedures (Sambrook *et al.*, 1989) and the integrity of all constructed plasmids was confirmed by extensive sequencing analyses. Mouse insulin cDNA was amplified from total RNA isolated from MIN6 cells using the primer pairs described in **Supplementary file 2**. These amplified fragments were inserted between the EcoRV and XhoI sites of pcDNA3.1 (Invitrogen). The plasmid to express mPhogrin-GFP (Saito *et al.*, 2011), A1AT (Ninagawa *et al.*, 2015) or hemagglutinin (Gething and Sambrook, 1982) was previously described.

## ELISA

Approximately  $3 \times 10^5$  of MIN6 cells were plated in 24-well plates and cultured in DMEM containing 25 mM glucose for 3 days before pretreatment for 14 hr with olanzapine or risperidone, or for 4 days before pretreatment for 4 hr with olanzapine or risperidone. Cells were washed twice with Krebs-Ringer Bicarbonate (KRB) buffer (10 mM HEPES, approximately pH 7.0, containing 120 mM NaCl, 4.7 mM KCl, 2.5 mM CaCl<sub>2</sub>, 1.2 mM MgCl<sub>2</sub>, 1.2 mM KH<sub>2</sub>PO<sub>4</sub>, 25 mM NaHCO<sub>3</sub>, and 0.1% BSA) with 3 mM glucose (Minami *et al.*, 2000). Cells were starved for glucose for 1 hr in KRB buffer with 3 mM glucose containing olanzapine or risperidone, washed twice with KRB buffer with 3 mM glucose, and stimulated for glucose for 1 hr in KRB buffer with 25 mM glucose containing olanzapine or risperidone, with or without mastoparan. The buffer was collected, and the cells were lysed with buffer A (50 mM Tris/HCl, pH 8.0, containing 1% NP-40, 150 mM NaCl, protease inhibitor cocktail, 20  $\mu$ M MG132, and 2  $\mu$ M Z-VAD-fmk). After brief centrifugation, the protein concentrations of the lysates were determined using the BCA protein assay reagent kit (Pierce). Insulin content was

determined using an ELISA kit (Shibayagi) according to the manufacturer's protocol. The amount of secreted insulin was normalized to the cellular protein content.

## Immunoblotting

Immunoblotting analysis was performed according to a standard procedure as previously described (*Ninagawa et al., 2011*). Chemiluminescence was generated using Western Blotting Luminol Reagent (Santa Cruz Biotechnology) and detected using an LAS-3000mini LuminolImage analyzer (Fuji Film). For detection of proinsulin and insulin, the pore size of PVDF membrane was changed from 0.45 to 0.2  $\mu\text{m}$  (Amersham), and blocking and reaction with the anti-insulin monoclonal antibody was carried out in 5% BSA (Sigma-Aldrich) in PBS-0.1% Tween 20 buffer.

## Pulse-chase experiment and in vitro translation

Pulse-chase experiments using 9.8 Mbq per dish of EASY-TAG EXPRESS Protein labeling mix [ $^{35}\text{S}$ ] (PerkinElmer) and subsequent immunoprecipitation using the anti-insulin monoclonal antibody and protein G-coupled Sepharose beads (GE Healthcare) were performed according to a published procedure (*Ninagawa et al., 2014*).

In vitro translation was performed using the TNT Quick Coupled Transcription/Translation Systems (Promega) and the EASY-TAG EXPRESS Protein labeling mix [ $^{35}\text{S}$ ] (PerkinElmer) according to the manufacturer's instructions. Translated proteins were subjected to immunoprecipitation using the anti-insulin monoclonal antibody to separate them from  $^{35}\text{S}$ -methionine and  $^{35}\text{S}$ -cysteine. The immunoprecipitates were analyzed using SDS-PAGE (15 or 16% gel). Radiolabeled proteins were visualized using an FLA-3000G FluorolImage analyzer (Fuji Film).

## Immunofluorescence assay

For immunofluorescence analysis, untransfected MIN6 cells or cells transfected using Polyethyleneimine max were washed with PBS and fixed with 4% paraformaldehyde phosphate buffer (Nacalai Tesque) on ice for 4.5 min. Fixed cells were washed with PBS and permeabilized by incubation on ice for 4.5 min in PBS containing 0.2% Triton X-100. After incubation in PBS containing 3% fetal bovine serum and the primary antibody for 2 hr at room temperature, cells were incubated with secondary antibodies labeled with Alexa Fluors 488, 568, or 633 (Thermo Fisher Scientific) for 1 hr at room temperature. Images were acquired at room temperature at 100  $\times$  magnification using a DM IRE2 and confocal software (both from Leica).

## Mass spectrometric analysis

Nano-scale reversed-phase liquid chromatography coupled with tandem mass spectrometry (nanoLC/MS/MS) was performed with an Orbitrap Fusion Lumos mass spectrometer (Thermo Fisher Scientific), connected to a Thermo Ultimate 3000 RSLCnano pump and an HTC-PAL autosampler (CTC Analytics) equipped with a self-pulled analytical column (150 mm length  $\times$  100  $\mu\text{m}$  i.d.) (*Ishihama et al., 2002*) packed with ReproSil-Pur C18-AQ materials (3  $\mu\text{m}$ , Dr. Maisch GMBH). The mobile phases consisted of (A) 0.5% acetic acid and (B) 0.5% acetic acid and 80% acetonitrile. Peptides were eluted from the analytical column at a flow rate of 500 nl/min by altering the gradient: 5–10% B in 5 min, 10–40% B in 15 min, 40–100% B in 1 min and 100% for 4 min. The Orbitrap Fusion Lumos instrument was operated in the data-dependent mode with a full scan in the Orbitrap followed by MS/MS scans for 1.5 s using higher-energy collision dissociation (HCD). The applied voltage for ionization was 2.4 kV. The full scans were performed with a resolution of 120,000, a target value of  $4 \times 10^5$  ions and a maximum injection time of 50 ms. The MS scan range was  $m/z$  300–1500. The MS/MS scans were performed with a 15,000 resolution, a  $5 \times 10^4$  target value and a 200 ms maximum injection time. Isolation window was set to 1.6 and normalized HCD collision energy was 30. Dynamic exclusion was applied for 20 s.

All raw datasets were analyzed and processed by MaxQuant (v1.6.2.3) (*Cox and Mann, 2008*). Default settings were employed. Search parameters included two missed cleavage sites and variable modifications such as methionine oxidation, protein N-terminal acetylation, cysteine carbamidomethyl and cysteine N-ethylmaleimide. The peptide mass tolerance was six ppm and the MS/MS tolerance was 20 ppm. Database search was performed with Andromeda (*Cox et al., 2011*) against the UniProt mouse database (downloaded on 2019–4) with common contaminants and enzyme

sequences. False discovery rate (FDR) was set to 1% at peptide spectrum match (PSM) level and at protein level. For protein quantification, total peak area of the peptides was used, and median peak area was calculated for each protein from three independent experiments. To compare protein abundance between the non-treated and the olanzapine-treated cells (see **Figure 8D**), we considered proteins that were quantified in all samples and replicates.

### ITC experiments

ITC measurements for the interaction between olanzapine and each PDI family protein were performed in buffer containing 50 mM HEPES-NaOH, pH 7.5, at 298 K and 750 r.p.m. For the preparation of olanzapine, 10 mg of olanzapine (32.0 mmol) was diluted in 500  $\mu$ l of 50 mM HCl solution and freeze-dried using evaporator. 2.0  $\mu$ l of the olanzapine solution (1.0 mM) was titrated into PDI family solutions (50  $\mu$ M) at 180 s intervals after an initial 120 s delay. To minimize the effect of bubbles and imperfect solution filling of the syringe, the first titration was performed using 0.6  $\mu$ l of solution in the syringe. The data were analyzed using MicroCal analysis (Malvern). The heats of dilution were subtracted from the raw binding data before analysis.

### Expression and purification of human proinsulin

Recombinant human proinsulin was expressed as inclusion bodies in *Escherichia coli* cells. Purification of proinsulin was carried out as previously described (*Okumura et al., 2011*). Briefly, inclusion bodies were treated with 100 mM Tris/HCl buffer, pH 8.0, containing 8 M urea and 10 mM DTT, and the solution was stood for 3 hr at 50°C. Reduced and denatured proinsulin was purified by RP-HPLC using Cosmosil 5C<sub>18</sub>-AR-II (4.6 mm I.D.  $\times$  250 mm, Nacalai Tesque) monitored at 220 nm. Molecular mass of purified proinsulin was calculated using ProteinProspectors (<http://prospector.ucsf.edu/prospector/mshome.htm>) and its identity was confirmed by MALDI-TOF/MS. Purified proinsulin was lyophilized at  $-80^{\circ}\text{C}$  until used.

### Animals

Male BALB/c mice (8 weeks old) were purchased from Shimizu Laboratory Supplies. All mouse experiments were conducted under pathogen-free conditions and in line with Institutional Animal Care protocols approved by Kyoto University (Q 19–68). Administration of vehicle or olanzapine was conducted using a reusable oral gavage needle once a day. Olanzapine was dissolved in 1% acetic acid in saline buffered with 1M NaOH to a pH >5.5 (*McCormick et al., 2010*).

### Isolation of mouse pancreatic islets

To isolate islets from BALB/c mice, pancreas was inflated by injection of Hank's Balanced Salt Solution (HBSS) containing 0.15 mg/ml collagenase P (Roche Diagnostics) via the common bile duct. Distended pancreas was then excised and incubated at 37°C for 18 min. After digested pancreas had dissociated, the tissue was washed with HBSS twice. The islets in the dissociated pancreatic tissue were purified on discontinuous gradients (1.110, 1.103, 1.096, and 1.070 g/ml) of OptiPrep (Axis-Shield) and ET Kyoto (ETK) solution (Otsuka Pharmaceutical). Isolated islets were cultured (37°C/5% CO<sub>2</sub>/95% air humidified atmosphere) in RPMI1640 medium supplemented with 10% fetal bovine serum (FBS), 100 U/ml penicillin, and 100  $\mu$ g/ml streptomycin.

### Acknowledgements

The authors declare no competing financial interests. We thank Kaoru Miyagawa for her technical and secretarial assistance, Dr. Akira Hattori (Kyoto University) and Ms. Masako Hirose (Malvern) for their help in the use of MicroCal Auto-iTC200, Dr. Jun-ichi Miyazaki for providing us MIN6 cells, Dr. Yuichi Tsuchiya (NAIST) and Dr. Masataka Kunii (Osaka University) for useful antibody information, and Ms. Nanae Fujimoto for her help in islet isolation. This work was financially supported in part by grants from the Ministry of Education, Culture, Sports, Science and Technology of Japan (18K06216 to S N, 19K06658 to T I, 17H01432 and 17H06419 to K M), the Joint Research Program of the Institute for Molecular and Cellular Regulation, Gunma University (#18021 to S N and S T), the Takeda Science Foundation (to MO) and Mochida Memorial Foundation for Medical and Pharmaceutical Research (to MO).

## Additional information

### Funding

Funder	Grant reference number	Author
Ministry of Education, Culture, Sports, Science and Technology	18K06216	Satoshi Ninagawa
Ministry of Education, Culture, Sports, Science and Technology	19K06658	Tokiro Ishikawa
Ministry of Education, Culture, Sports, Science and Technology	17H01432	Kazutoshi Mori
Ministry of Education, Culture, Sports, Science and Technology	17H06419	Kazutoshi Mori
Gunma University	#18021 Joint Research Program of the Institute for Molecular and Cellular Regulation	Satoshi Ninagawa Seiji Torii
Takeda Science Foundation		Masaki Okumura
Mochida Memorial Foundation for Medical and Pharmaceutical Research		Masaki Okumura

The funders had no role in study design, data collection and interpretation, or the decision to submit the work for publication.

### Author contributions

Satoshi Ninagawa, Investigation, Writing - original draft; Seiichiro Tada, Masaki Okumura, Kenta Inoguchi, Misaki Kinoshita, Shingo Kanemura, Koshi Imami, Hajime Umezawa, Tokiro Ishikawa, Yasushi Ishihama, Kenji Inaba, Takayuki Anazawa, Investigation; Robert B Mackin, Seiji Torii, Methodology; Takahiko Nagamine, Conceptualization; Kazutoshi Mori, Supervision, Funding acquisition, Writing - review and editing

### Author ORCIDs

Satoshi Ninagawa  <https://orcid.org/0000-0002-8005-4716>  
 Seiichiro Tada  <https://orcid.org/0000-0001-8734-2270>  
 Masaki Okumura  <https://orcid.org/0000-0001-8130-2470>  
 Kenta Inoguchi  <https://orcid.org/0000-0003-0470-4251>  
 Misaki Kinoshita  <https://orcid.org/0000-0001-5099-7572>  
 Shingo Kanemura  <https://orcid.org/0000-0002-7012-8179>  
 Koshi Imami  <http://orcid.org/0000-0002-7451-4982>  
 Tokiro Ishikawa  <http://orcid.org/0000-0003-1718-6764>  
 Robert B Mackin  <https://orcid.org/0000-0003-3297-9893>  
 Seiji Torii  <https://orcid.org/0000-0002-7388-0331>  
 Yasushi Ishihama  <http://orcid.org/0000-0001-7714-203X>  
 Kenji Inaba  <http://orcid.org/0000-0001-8229-0467>  
 Takayuki Anazawa  <https://orcid.org/0000-0002-7625-5750>  
 Takahiko Nagamine  <http://orcid.org/0000-0002-0690-6271>  
 Kazutoshi Mori  <https://orcid.org/0000-0001-7378-4019>

### Ethics

Animal experimentation: All mouse experiments were conducted under pathogen-free conditions and in line with Institutional Animal Care protocols approved by Kyoto University (Q 19-68).

## Decision letter and Author response

Decision letter <https://doi.org/10.7554/eLife.60970.sa1>

Author response <https://doi.org/10.7554/eLife.60970.sa2>

## Additional files

### Supplementary files

- Supplementary file 1. Data of mass spectrometric analysis Proteins quantified in all samples (see **Figure 8F**) are summarized.
- Supplementary file 2. Information of resources Nucleotide sequences of primers used are shown.
- Transparent reporting form

### Data availability

All data generated or analyzed during this study are included in the manuscript.

## References

- Aravagiri M**, Teper Y, Marder SR. 1999. Pharmacokinetics and tissue distribution of olanzapine in rats. *Biopharmaceutics & Drug Disposition* **20**:369–377. DOI: [https://doi.org/10.1002/1099-081X\(199911\)20:8<369::AID-BDD200>3.0.CO;2-6](https://doi.org/10.1002/1099-081X(199911)20:8<369::AID-BDD200>3.0.CO;2-6), PMID: 10870093
- Arunagiri A**, Haataja L, Pottekat A, Pamenan F, Kim S, Zeltser LM, Paton AW, Paton JC, Tsai B, Itkin-Ansari P, Kaufman RJ, Liu M, Arvan P. 2019. Proinsulin misfolding is an early event in the progression to type 2 diabetes. *eLife* **8**:e44532. DOI: <https://doi.org/10.7554/eLife.44532>, PMID: 31184302
- Atkins C**, Liu Q, Minthorn E, Zhang SY, Figueroa DJ, Moss K, Stanley TB, Sanders B, Goetz A, Gaul N, Choudhry AE, Alsaïd H, Jucker BM, Axten JM, Kumar R. 2013. Characterization of a novel PERK kinase inhibitor with antitumor and antiangiogenic activity. *Cancer Research* **73**:1993–2002. DOI: <https://doi.org/10.1158/0008-5472.CAN-12-3109>, PMID: 23333938
- Carrillo JA**, Herráiz AG, Ramos SI, Gervasini G, Vizcaino S, Benítez J. 2003. Role of the Smoking-Induced cytochrome P450 (CYP)1A2 and polymorphic CYP2D6 in Steady-State concentration of olanzapine. *Journal of Clinical Psychopharmacology* **23**:119–127. DOI: <https://doi.org/10.1097/00004714-200304000-00003>
- Chang SG**, Choi KD, Jang SH, Shin HC. 2003. Role of disulfide bonds in the structure and activity of human insulin. *Molecules and Cells* **16**:323–330. PMID: 14744022
- Citrome L**, Volavka J. 2005. Consensus development conference on antipsychotic drugs and obesity and diabetes: response to consensus statement. *The Journal of Clinical Psychiatry* **66**:1073–1074. DOI: <https://doi.org/10.4088/jcp.v66n0818c>, PMID: 16086627
- Cox J**, Neuhauser N, Michalski A, Scheltema RA, Olsen JV, Mann M. 2011. Andromeda: a peptide search engine integrated into the MaxQuant environment. *Journal of Proteome Research* **10**:1794–1805. DOI: <https://doi.org/10.1021/pr101065j>, PMID: 21254760
- Cox J**, Mann M. 2008. MaxQuant enables high peptide identification rates, individualized p.p.b.-range mass accuracies and proteome-wide protein quantification. *Nature Biotechnology* **26**:1367–1372. DOI: <https://doi.org/10.1038/nbt.1511>, PMID: 19029910
- Cunningham CN**, He K, Arunagiri A, Paton AW, Paton JC, Arvan P, Tsai B. 2017. Chaperone-Driven degradation of a misfolded proinsulin mutant in parallel with restoration of Wild-Type insulin secretion. *Diabetes* **66**:741–753. DOI: <https://doi.org/10.2337/db16-1338>, PMID: 28028074
- Delépine M**, Nicolino M, Barrett T, Golamaully M, Lathrop GM, Julier C. 2000. EIF2AK3, encoding translation initiation factor 2-alpha kinase 3, is mutated in patients with Wolcott-Rallison syndrome. *Nature Genetics* **25**:406–409. DOI: <https://doi.org/10.1038/78085>, PMID: 10932183
- Deng C**. 2013. Effects of antipsychotic medications on appetite, weight, and insulin resistance. *Endocrinology and Metabolism Clinics of North America* **42**:545–563. DOI: <https://doi.org/10.1016/j.ecl.2013.05.006>, PMID: 24011886
- Divac N**, Prostran M, Jakovcevski I, Cerovac N. 2014. Second-Generation antipsychotics and extrapyramidal adverse effects. *BioMed Research International* **2014**:1–6. DOI: <https://doi.org/10.1155/2014/656370>
- Dufurrena Q**, Bäck N, Mains R, Hodgson L, Tanowitz H, Mandela P, Eipper B, Kuliawat R. 2019. Kalirin/Trio rho GDP/GTP exchange factors regulate proinsulin and insulin secretion. *Journal of Molecular Endocrinology* **62**:47–65. DOI: <https://doi.org/10.1530/JME-18-0048>
- Gething MJ**, Sambrook J. 1982. Construction of influenza haemagglutinin genes that code for intracellular and secreted forms of the protein. *Nature* **300**:598–603. DOI: <https://doi.org/10.1038/300598a0>, PMID: 7144911
- Gothelf D**, Falk B, Singer P, Kairi M, Phillip M, Zigel L, Poraz I, Frishman S, Constantini N, Zalsman G, Weizman A, Apter A. 2002. Weight gain associated with increased food intake and low habitual activity levels in male adolescent schizophrenic inpatients treated with olanzapine. *American Journal of Psychiatry* **159**:1055–1057. DOI: <https://doi.org/10.1176/appi.ajp.159.6.1055>, PMID: 12042200



- Haataja L**, Manickam N, Soliman A, Tsai B, Liu M, Arvan P. 2016. Disulfide mispairing during proinsulin folding in the endoplasmic reticulum. *Diabetes* **65**:1050–1060. DOI: <https://doi.org/10.2337/db15-1345>, PMID: 26822090
- Harding HP**, Zeng H, Zhang Y, Jungries R, Chung P, Plesken H, Sabatini DD, Ron D. 2001. Diabetes mellitus and exocrine pancreatic dysfunction in perk<sup>-/-</sup> mice reveals a role for translational control in secretory cell survival. *Molecular Cell* **7**:1153–1163. DOI: [https://doi.org/10.1016/S1097-2765\(01\)00264-7](https://doi.org/10.1016/S1097-2765(01)00264-7), PMID: 11430819
- Harding HP**, Zyryanova AF, Ron D. 2012. Uncoupling proteostasis and development in vitro with a small molecule inhibitor of the pancreatic endoplasmic reticulum kinase, PERK. *Journal of Biological Chemistry* **287**:44338–44344. DOI: <https://doi.org/10.1074/jbc.M112.428987>, PMID: 23148209
- He K**, Cunningham CN, Manickam N, Liu M, Arvan P, Tsai B. 2015. PDI reductase acts on akita mutant proinsulin to initiate retrotranslocation along the Hrd1/Sel1L-p97 axis. *Molecular Biology of the Cell* **26**:3413–3423. DOI: <https://doi.org/10.1091/mbc.E15-01-0034>, PMID: 26269577
- Hermel JM**, Dirx R, Solimena M. 1999. Post-translational modifications of ICA512, a receptor tyrosine phosphatase-like protein of secretory granules. *European Journal of Neuroscience* **11**:2609–2620. DOI: <https://doi.org/10.1046/j.1460-9568.1999.00677.x>, PMID: 10457160
- Høiberg MP**, Nielsen B. 2006. Antipsychotic treatment and extrapyramidal symptoms amongst schizophrenic inpatients. *Nordic Journal of Psychiatry* **60**:207–212. DOI: <https://doi.org/10.1080/08039480600636296>, PMID: 16720511
- Ishihama Y**, Rappsilber J, Andersen JS, Mann M. 2002. Microcolumns with self-assembled particle frits for proteomics. *Journal of Chromatography A* **979**:233–239. DOI: [https://doi.org/10.1016/S0021-9673\(02\)01402-4](https://doi.org/10.1016/S0021-9673(02)01402-4), PMID: 12498253
- Ishihara H**, Asano T, Tsukuda K, Katagiri H, Inukai K, Anai M, Kikuchi M, Yazaki Y, Miyazaki JI, Oka Y. 1993. Pancreatic beta cell line MIN6 exhibits characteristics of glucose metabolism and glucose-stimulated insulin secretion similar to those of normal islets. *Diabetologia* **36**:1139–1145. DOI: <https://doi.org/10.1007/BF00401058>, PMID: 8270128
- Jang I**, Pottekat A, Poothong J, Yong J, Lagunas-Acosta J, Charbono A, Chen Z, Scheuner DL, Liu M, Itkin-Ansari P, Arvan P, Kaufman RJ. 2019. PDIA1/P4HB is required for efficient proinsulin maturation and  $\beta$  cell health in response to diet induced obesity. *eLife* **8**:e44528. DOI: <https://doi.org/10.7554/eLife.44528>, PMID: 31184304
- Kasper S**, Tauscher J, Küfferle B, Barnas C, Pezawas L, Quiner S. 1999. Dopamine- and serotonin-receptors in schizophrenia: results of imaging-studies and implications for pharmacotherapy in schizophrenia. *European Archives of Psychiatry and Clinical Neurosciences* **249**:S83–S89. DOI: <https://doi.org/10.1007/PL00014189>
- Kinoshita H**, Miyagatani Y, Murao M, Kamimura Y. 2014. Regular Follow-up of olanzapine blood levels and impaired glucose tolerance in Olanzapine-induced diabetic ketoacidosis: a case report. *Clinical Neuropsychopharmacology and Therapeutics* **5**:1–4. DOI: <https://doi.org/10.5234/cnpt.5.1>
- Koller EA**, Doraiswamy PM. 2002. Olanzapine-associated diabetes mellitus. *Pharmacotherapy* **22**:841–852. DOI: <https://doi.org/10.1592/phco.22.11.841.33629>, PMID: 12126218
- Lee CT**, Conde BJ, Mazlan M, Visanuyothin T, Wang A, Wong MM, Walker DJ, Roychowdhury SM, Wang H, Tran PV. 2002. Switching to olanzapine from previous antipsychotics: a regional collaborative multicenter trial assessing 2 switching techniques in asia pacific. *The Journal of Clinical Psychiatry* **63**:569–576. DOI: <https://doi.org/10.4088/jcp.v63n0706>, PMID: 12143912
- Lee AH**, Heidtman K, Hotamisligil GS, Glimcher LH. 2011. Dual and opposing roles of the unfolded protein response regulated by IRE1 $\alpha$  and XBP1 in proinsulin processing and insulin secretion. *PNAS* **108**:8885–8890. DOI: <https://doi.org/10.1073/pnas.1105564108>, PMID: 21555585
- McCormick PN**, Kapur S, Graff-Guerrero A, Raymond R, Nobrega JN, Wilson AA. 2010. The antipsychotics olanzapine, risperidone, clozapine, and haloperidol are D2-selective ex vivo but not in vitro. *Neuropsychopharmacology* **35**:1826–1835. DOI: <https://doi.org/10.1038/npp.2010.50>, PMID: 20410873
- Meibohm B**, Beierle I, Derendorf H. 2002. How important are gender differences in pharmacokinetics? *Clinical Pharmacokinetics* **41**:329–342. DOI: <https://doi.org/10.2165/00003088-200241050-00002>, PMID: 12036391
- Minami K**, Yano H, Miki T, Nagashima K, Wang CZ, Tanaka H, Miyazaki JI, Seino S. 2000. Insulin secretion and differential gene expression in glucose-responsive and -unresponsive MIN6 sublines. *American Journal of Physiology-Endocrinology and Metabolism* **279**:E773–E781. DOI: <https://doi.org/10.1152/ajpendo.2000.279.4.E773>, PMID: 11001758
- Miyazaki J**, Araki K, Yamato E, Ikegami H, Asano T, Shibasaki Y, Oka Y, Yamamura K. 1990. Establishment of a pancreatic beta cell line that retains glucose-inducible insulin secretion: special reference to expression of glucose transporter isoforms. *Endocrinology* **127**:126–132. DOI: <https://doi.org/10.1210/endo-127-1-126>, PMID: 2163307
- Mori K**. 2000. Tripartite management of unfolded proteins in the endoplasmic reticulum. *Cell* **101**:451–454. DOI: [https://doi.org/10.1016/S0092-8674\(00\)80855-7](https://doi.org/10.1016/S0092-8674(00)80855-7), PMID: 10850487
- Nagamine T**. 2014. Does olanzapine impair pancreatic beta-cell function directly? *Clinical Neuropsychopharmacology and Therapeutics* **5**:23–25. DOI: <https://doi.org/10.5234/cnpt.5.23>
- Nagamine T**. 2018. Olanzapine and diabetic ketoacidosis: what is the underlying mechanism? *Innovations in Clinical Neuroscience* **15**:11. PMID: 29707419
- Nair AB**, Jacob S. 2016. A simple practice guide for dose conversion between animals and human. *Journal of Basic and Clinical Pharmacy* **7**:27–31. DOI: <https://doi.org/10.4103/0976-0105.177703>, PMID: 27057123
- Nakamura M**, Masaoka Y, Nagamine T. 2014. Olanzapine-induced severe hyperglycemia was completely reversed by the restoration of insulin secretion after switching to aripiprazole and initiating insulin therapy. *Clinical Neuropsychopharmacology and Therapeutics* **5**:29–33. DOI: <https://doi.org/10.5234/cnpt.5.29>



- Nakamura M**, Nagamine T. 2010. Severe hyperglycemia induced by olanzapine was improved with a recovery of insulin secretion after switching to risperidone and introducing insulin therapy. *Internal Medicine* **49**:2635–2637. DOI: <https://doi.org/10.2169/internalmedicine.49.4397>, PMID: 21139307
- Nakayama K**. 1997. Furin: a mammalian subtilisin/Kex2p-like endoprotease involved in processing of a wide variety of precursor proteins. *Biochemical Journal* **327**:625–635. DOI: <https://doi.org/10.1042/bj3270625>, PMID: 9599222
- Nathan DM**, Buse JB, Davidson MB, Ferrannini E, Holman RR, Sherwin R, Zinman B, American Diabetes Association, European Association for Study of Diabetes. 2009. Medical management of hyperglycemia in type 2 diabetes: a consensus algorithm for the initiation and adjustment of therapy: a consensus statement of the american diabetes association and the european association for the study of diabetes. *Diabetes Care* **32**:193–203. DOI: <https://doi.org/10.2337/dc08-9025>, PMID: 18945920
- Newcomer JW**. 2005. Second-generation (atypical) antipsychotics and metabolic effects: a comprehensive literature review. *CNS Drugs* **19**:1–93. DOI: <https://doi.org/10.2165/00023210-200519001-00001>, PMID: 15998156
- Ninagawa S**, Okada T, Takeda S, Mori K. 2011. SEL1L is required for endoplasmic reticulum-associated degradation of misfolded luminal proteins but not transmembrane proteins in chicken DT40 cell line. *Cell Structure and Function* **36**:187–195. DOI: <https://doi.org/10.1247/csf.11018>, PMID: 21857145
- Ninagawa S**, Okada T, Sumitomo Y, Kamiya Y, Kato K, Horimoto S, Ishikawa T, Takeda S, Sakuma T, Yamamoto T, Mori K. 2014. EDEM2 initiates mammalian glycoprotein ERAD by catalyzing the first mannose trimming step. *Journal of Cell Biology* **206**:347–356. DOI: <https://doi.org/10.1083/jcb.201404075>, PMID: 25092655
- Ninagawa S**, Okada T, Sumitomo Y, Horimoto S, Sugimoto T, Ishikawa T, Takeda S, Yamamoto T, Suzuki T, Kamiya Y, Kato K, Mori K. 2015. Forcible destruction of severely misfolded mammalian glycoproteins by the non-glycoprotein ERAD pathway. *Journal of Cell Biology* **211**:775–784. DOI: <https://doi.org/10.1083/jcb.201504109>, PMID: 26572623
- Okumura M**, Saiki M, Yamaguchi H, Hidaka Y. 2011. Acceleration of disulfide-coupled protein folding using glutathione derivatives. *FEBS Journal* **278**:1137–1144. DOI: <https://doi.org/10.1111/j.1742-4658.2011.08039.x>, PMID: 21284805
- Okumura M**, Kadokura H, Hashimoto S, Yutani K, Kanemura S, Hikima T, Hidaka Y, Ito L, Shiba K, Masui S, Imai D, Imaoka S, Yamaguchi H, Inaba K. 2014. Inhibition of the functional interplay between endoplasmic reticulum (ER) oxidoreductin-1 $\alpha$  (Ero1 $\alpha$ ) and protein-disulfide isomerase (PDI) by the endocrine disruptor bisphenol A. *Journal of Biological Chemistry* **289**:27004–27018. DOI: <https://doi.org/10.1074/jbc.M114.564104>, PMID: 25122773
- Ozasa R**, Okada T, Nadanaka S, Nagamine T, Zyryanova A, Harding H, Ron D, Mori K. 2013. The antipsychotic olanzapine induces apoptosis in insulin-secreting pancreatic  $\beta$  cells by blocking PERK-mediated translational attenuation. *Cell Structure and Function* **38**:183–195. DOI: <https://doi.org/10.1247/csf.13012>, PMID: 23812432
- Perianin A**, Snyderman R. 1989. Mastoparan, a wasp venom peptide, identifies two discrete mechanisms for elevating cytosolic calcium and inositol trisphosphates in human polymorphonuclear leukocytes. *Journal of Immunology* **143**:1669–1673. PMID: 2760463
- Polcwiartek C**, Vang T, Bruhn CH, Hashemi N, Rosenzweig M, Nielsen J. 2016. Diabetic ketoacidosis in patients exposed to antipsychotics: a systematic literature review and analysis of danish adverse drug event reports. *Psychopharmacology* **233**:3663–3672. DOI: <https://doi.org/10.1007/s00213-016-4411-x>, PMID: 27592232
- Qi L**, Tsai B, Arvan P. 2017. New insights into the physiological role of endoplasmic Reticulum-Associated degradation. *Trends in Cell Biology* **27**:430–440. DOI: <https://doi.org/10.1016/j.tcb.2016.12.002>, PMID: 28131647
- Robertson MD**, McMullin MM. 2000. Olanzapine concentrations in clinical serum and postmortem blood Specimens—When Does Therapeutic Become Toxic? *Journal of Forensic Sciences* **45**:418–421. DOI: <https://doi.org/10.1520/JFS14697J>
- Roderigo-Milne H**, Hauge-Evans AC, Persaud SJ, Jones PM. 2002. Differential expression of insulin genes 1 and 2 in MIN6 cells and pseudoislets. *Biochemical and Biophysical Research Communications* **296**:589–595. DOI: [https://doi.org/10.1016/S0006-291X\(02\)00913-0](https://doi.org/10.1016/S0006-291X(02)00913-0), PMID: 12176022
- Ron D**. 2002. Proteotoxicity in the endoplasmic reticulum: lessons from the akita diabetic mouse. *Journal of Clinical Investigation* **109**:443–445. DOI: <https://doi.org/10.1172/JCI0215020>, PMID: 11854314
- Rorsman P**, Braun M. 2013. Regulation of insulin secretion in human pancreatic islets. *Annual Review of Physiology* **75**:155–179. DOI: <https://doi.org/10.1146/annurev-physiol-030212-183754>, PMID: 22974438
- Rummel-Kluge C**, Komossa K, Schwarz S, Hunger H, Schmid F, Lobos CA, Kissling W, Davis JM, Leucht S. 2010. Head-to-head comparisons of metabolic side effects of second generation antipsychotics in the treatment of schizophrenia: a systematic review and meta-analysis. *Schizophrenia Research* **123**:225–233. DOI: <https://doi.org/10.1016/j.schres.2010.07.012>, PMID: 20692814
- Saito N**, Takeuchi T, Kawano A, Hosaka M, Hou N, Torii S. 2011. Luminal interaction of phogrin with carboxypeptidase E for effective targeting to secretory granules. *Traffic* **12**:499–506. DOI: <https://doi.org/10.1111/j.1600-0854.2011.01159.x>, PMID: 21210912
- Sambrook J**, Fritsch EF, Maniatis T. 1989. *Molecular Cloning: A Laboratory Manual*. New York: Cold Spring Harbor Laboratory Press.
- Segal MS**, Bye JM, Sambrook JF, Gething MJ. 1992. Disulfide bond formation during the folding of influenza virus hemagglutinin. *Journal of Cell Biology* **118**:227–244. DOI: <https://doi.org/10.1083/jcb.118.2.227>

- Sirota P**, Pannet I, Koren A, Tchernichovsky E. 2006. Quetiapine versus olanzapine for the treatment of negative symptoms in patients with schizophrenia. *Human Psychopharmacology: Clinical and Experimental* **21**:227–234. DOI: <https://doi.org/10.1002/hup.763>, PMID: 16783811
- Tabas I**, Ron D. 2011. Integrating the mechanisms of apoptosis induced by endoplasmic reticulum stress. *Nature Cell Biology* **13**:184–190. DOI: <https://doi.org/10.1038/ncb0311-184>, PMID: 21364565
- Torii S**, Saito N, Kawano A, Zhao S, Izumi T, Takeuchi T. 2005. Cytoplasmic transport signal is involved in phogrin targeting and localization to secretory granules. *Traffic* **6**:1213–1224. DOI: <https://doi.org/10.1111/j.1600-0854.2005.00353.x>, PMID: 16262730
- Tsuchiya Y**, Saito M, Kadokura H, Miyazaki JI, Tashiro F, Imagawa Y, Iwawaki T, Kohno K. 2018. IRE1-XBP1 pathway regulates oxidative proinsulin folding in pancreatic  $\beta$  cells. *Journal of Cell Biology* **217**:1287–1301. DOI: <https://doi.org/10.1083/jcb.201707143>, PMID: 29507125
- Tsuchiyama N**, Ando H, Ota T, Sakurai M, Takamura T. 2004. Modulating effects of olanzapine on the development of diabetic ketoacidosis. *Diabetic Medicine* **21**:300–301. DOI: <https://doi.org/10.1111/j.1464-5491.2004.01113.x>
- van Bruggen J**, Tijssen J, Dingemans P, Gersons B, Linszen D. 2003. Symptom response and side-effects of olanzapine and risperidone in young adults with recent onset schizophrenia. *International Clinical Psychopharmacology* **18**:341–346. DOI: <https://doi.org/10.1097/00004850-200311000-00005>, PMID: 14571154
- Yamamoto K**, Sato T, Matsui T, Sato M, Okada T, Yoshida H, Harada A, Mori K. 2007. Transcriptional induction of mammalian ER quality control proteins is mediated by single or combined action of ATF6 $\alpha$  and XBP1. *Developmental Cell* **13**:365–376. DOI: <https://doi.org/10.1016/j.devcel.2007.07.018>, PMID: 17765680
- Yoshida H**, Matsui T, Hosokawa N, Kaufman RJ, Nagata K, Mori K. 2003. A time-dependent phase shift in the mammalian unfolded protein response. *Developmental Cell* **4**:265–271. DOI: [https://doi.org/10.1016/S1534-5807\(03\)00022-4](https://doi.org/10.1016/S1534-5807(03)00022-4), PMID: 12586069
- Young EE**, Chinenye S, Unachukwu CN. 2012. Beta cell response to a mixed meal in nigerian patients with type 2 diabetes. *BMC Endocrine Disorders* **12**:11. DOI: <https://doi.org/10.1186/1472-6823-12-11>, PMID: 22738260

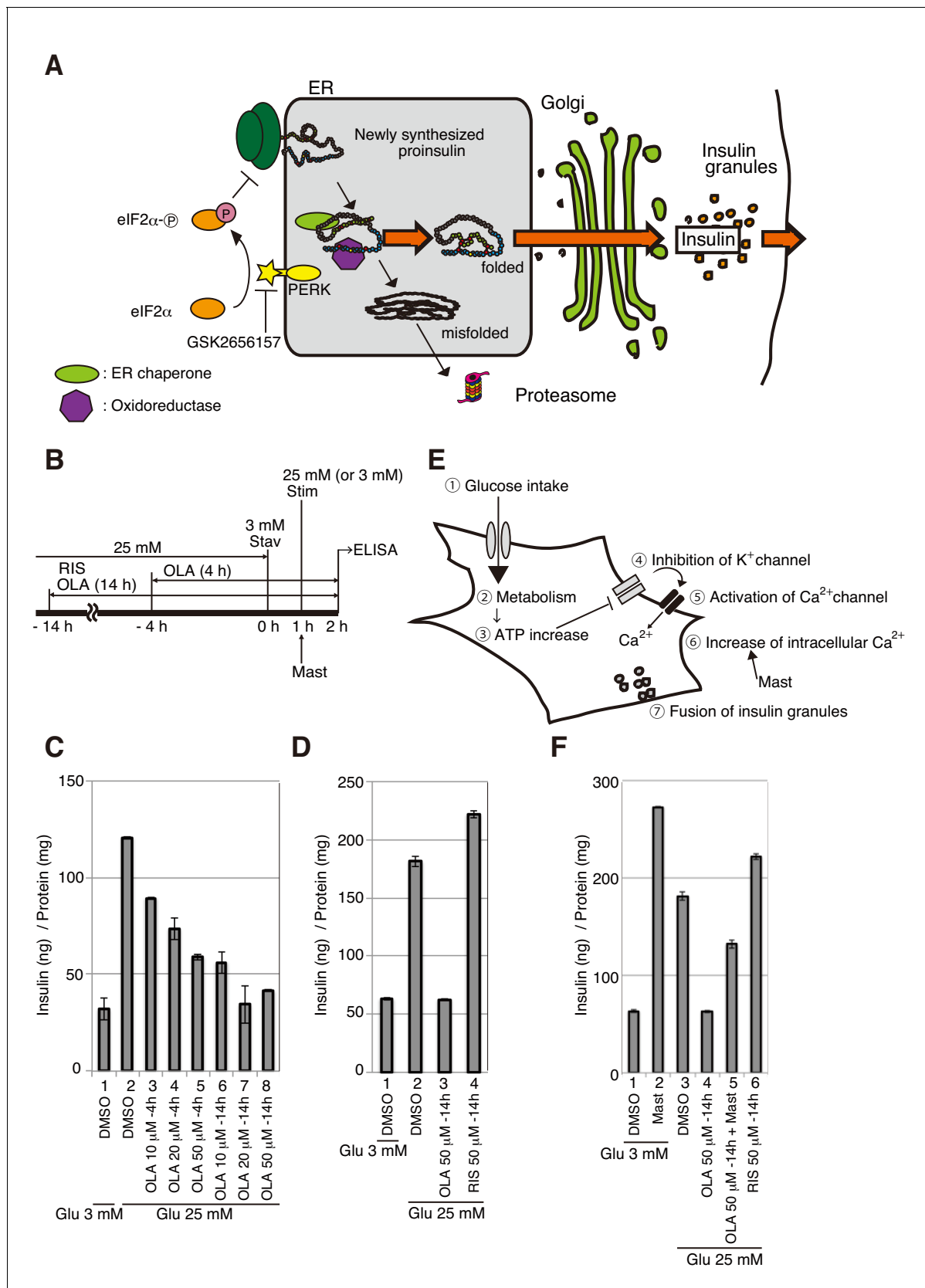


---

## Figures and figure supplements

Antipsychotic olanzapine-induced misfolding of proinsulin in the endoplasmic reticulum accounts for atypical development of diabetes

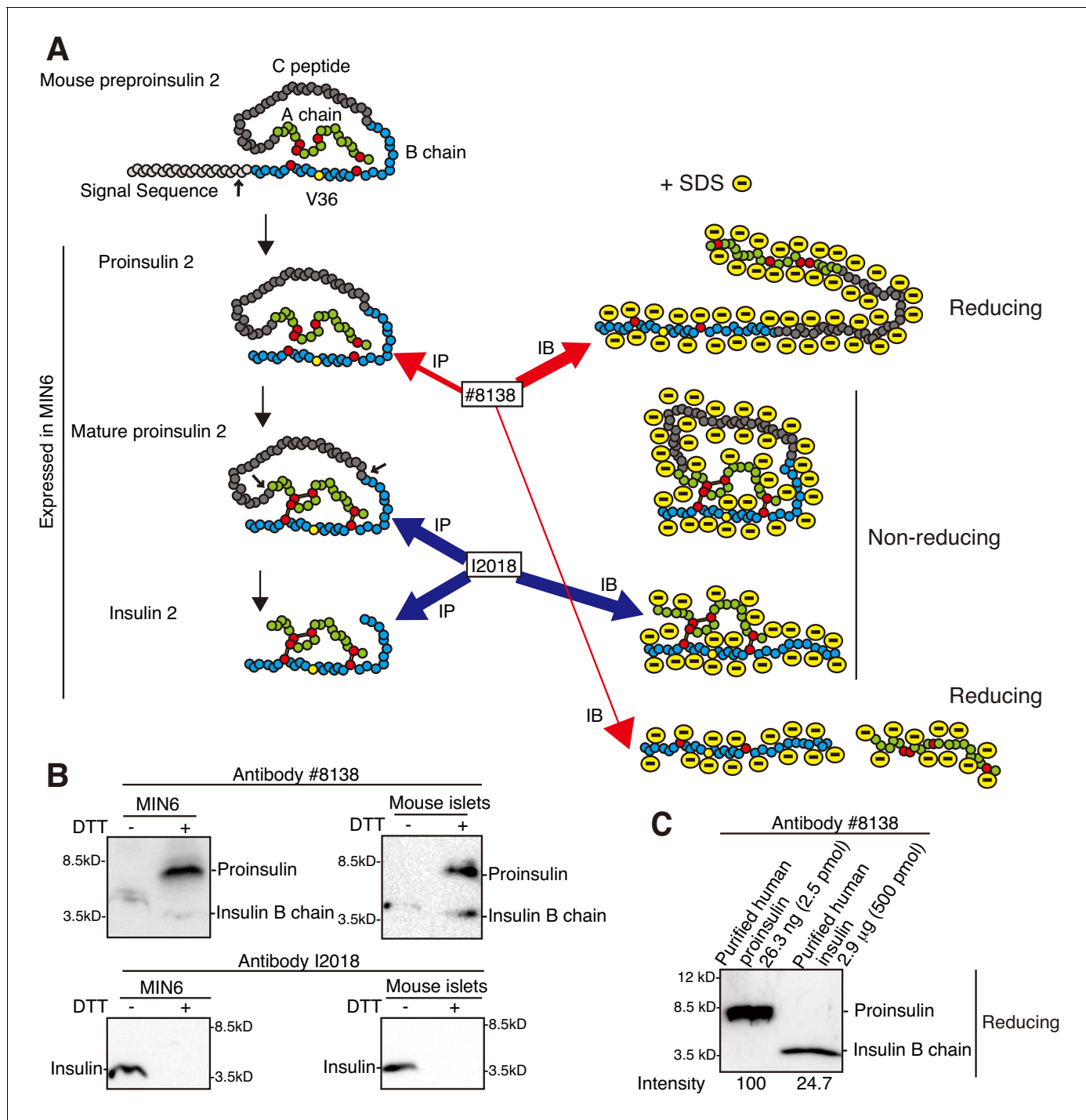
**Satoshi Ninagawa *et al***



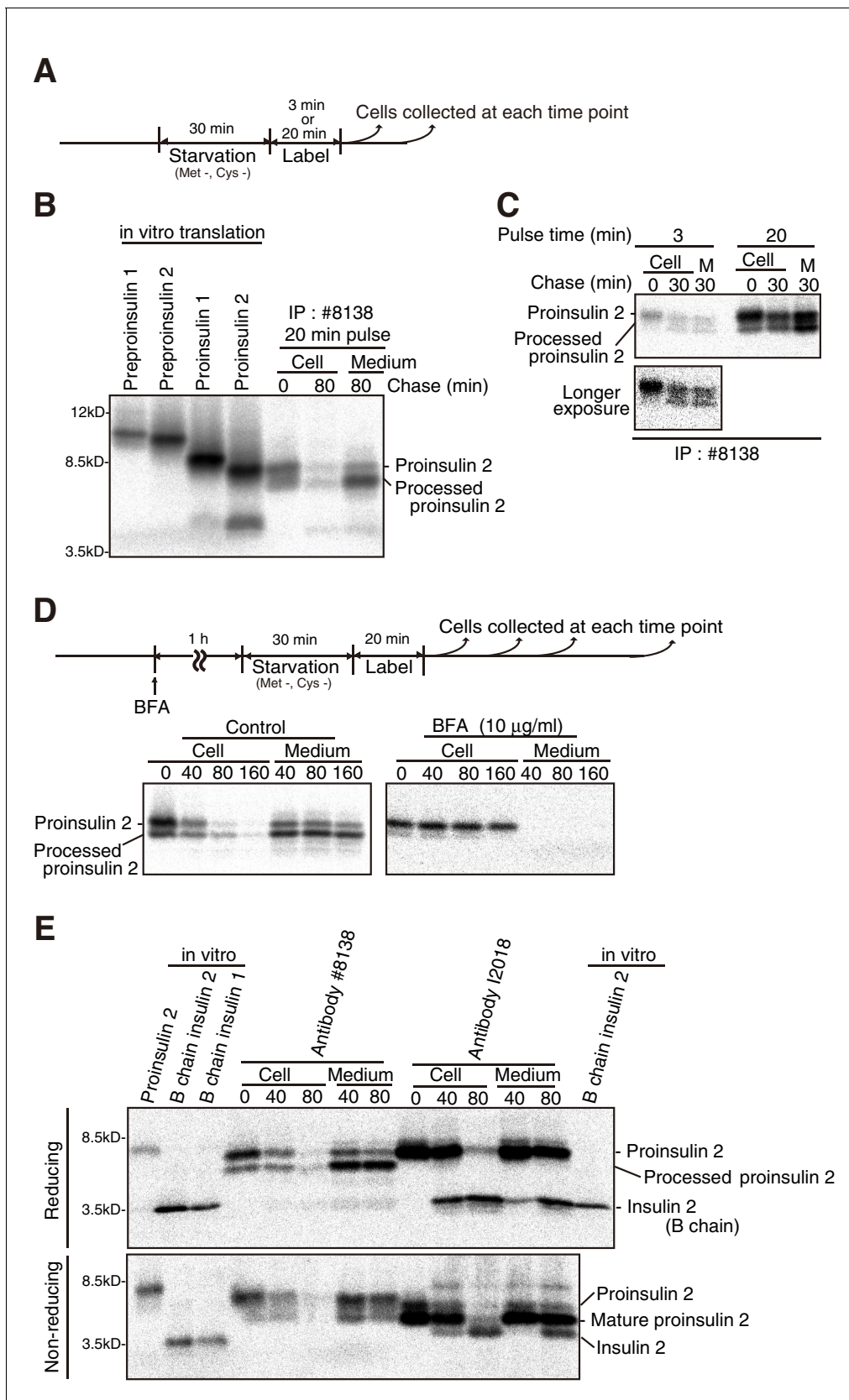
**Figure 1.** Effect of olanzapine on secretion of insulin from MIN6 cells. (A) Schematic representation of protein quality control in the ER, PERK-mediated translational attenuation, and storage and secretion of insulin (see Introduction). GSK2656157 inhibits protein kinase activity of PERK. (B) Scheme for Figure 1 continued on next page

*Figure 1 continued*

measuring the level of insulin secreted into medium in response to glucose stimulation. After culture in a medium containing 25 mM glucose, MIN6 cells were starved for 1 hr in medium containing 3 mM glucose (Stav), and then cultured in medium containing 25 mM glucose (Stim or 3 mM glucose as control). The amount of insulin secreted into the medium during the 1 hr incubation was determined using an ELISA. The data are normalized to the amounts of total cellular proteins and presented as the mean  $\pm$  SD ( $n = 2$ ). (C) MIN6 cells were pretreated with the indicated concentrations of olanzapine (OLA) for 4 hr or 14 hr in medium containing 25 mM glucose before glucose starvation as shown in (B). (D) MIN6 cells were pretreated with 50  $\mu$ M olanzapine or risperidone (RIS) for 14 hr before glucose starvation as shown in (B). (E) Schematic representation of the signaling cascade for insulin secretion in response to glucose stimulation. Cells intake glucose (①). Glucose metabolism (②) triggers an increase in cellular ATP/ADP ratio (③), which inhibits  $K^+$  channels and induces depolarization (④). This leads to opening of  $Ca^{2+}$  channels (⑤) and increased influx of  $Ca^{2+}$  (⑥), inducing the fusion of insulin granules to the plasma membrane for secretion (⑦). Mastoparan (Mast) enhances insulin secretion by increasing the intracellular concentration of  $Ca^{2+}$  independently of glucose intake. (F) MIN6 cells were pretreated with 50  $\mu$ M olanzapine or risperidone for 14 hr before glucose starvation as shown in (B). Mastoparan (Mast, 20  $\mu$ M) was added at the time of glucose stimulation to aliquots of cells not pretreated or pretreated with 50  $\mu$ M olanzapine for 14 hr.



**Figure 2.** Characterization of two anti-insulin monoclonal antibodies utilized. (A) Schematic representation of maturation of insulin 2. Each circle denotes an amino acid residue. Preproinsulin 2 comprises a signal sequence (light gray), B chain (blue), C peptide (gray), and A chain (green). Preproinsulin 2 is converted to proinsulin 2 after cleavage of the signal sequence, and proinsulin 2 becomes mature proinsulin 2 via formation of three intramolecular disulfide bonds. Mature proinsulin 2 is converted to insulin 2 after proteolysis at the residues indicated by the two arrows. The red circles represent cysteine residues that form the disulfide bonds (bars), and which are required for insulin folding and activity. The region encompassing V36, indicated by the yellow circle, is recognized by the anti-insulin monoclonal antibody #8138, which immunoprecipitates (immature) proinsulin 2 and detects proinsulin 2 and insulin 2 (B chain) after reducing SDS-PAGE. In contrast, the anti-insulin monoclonal antibody I2018 immunoprecipitates mature proinsulin 2 and insulin 2, and detects insulin 2 after non-reducing SDS-PAGE. (B) Lysates of MIN6 cells and mouse islets were analyzed by immunoblotting using #8138 and I2018 after reducing (DTT +) and non-reducing (DTT -) SDS-PAGE. (C) The indicated amounts of recombinant and purified proinsulin and insulin were subjected to reducing SDS-PAGE followed by immunoblotting using #8138.



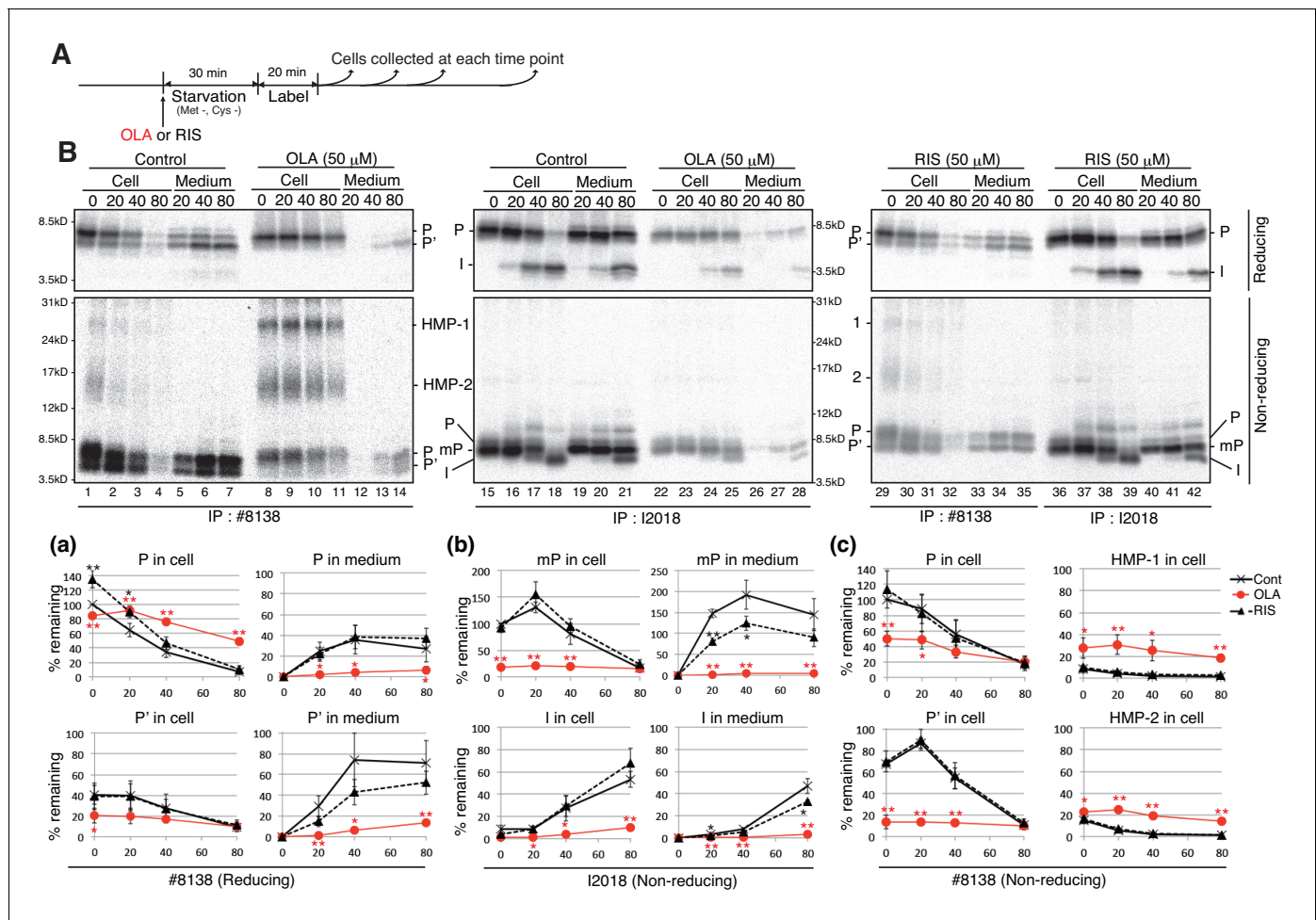
**Figure 3.** Secretion of proinsulin 2, processed proinsulin 2 and insulin 2 from MIN6 cells. (A) Schemes of the experiments shown in (B) and (C). (B) cDNAs encoding mouse preproinsulin 1, preproinsulin 2, proinsulin 1, and proinsulin 2 were subjected to in vitro transcription and translation in the

Figure 3 continued on next page

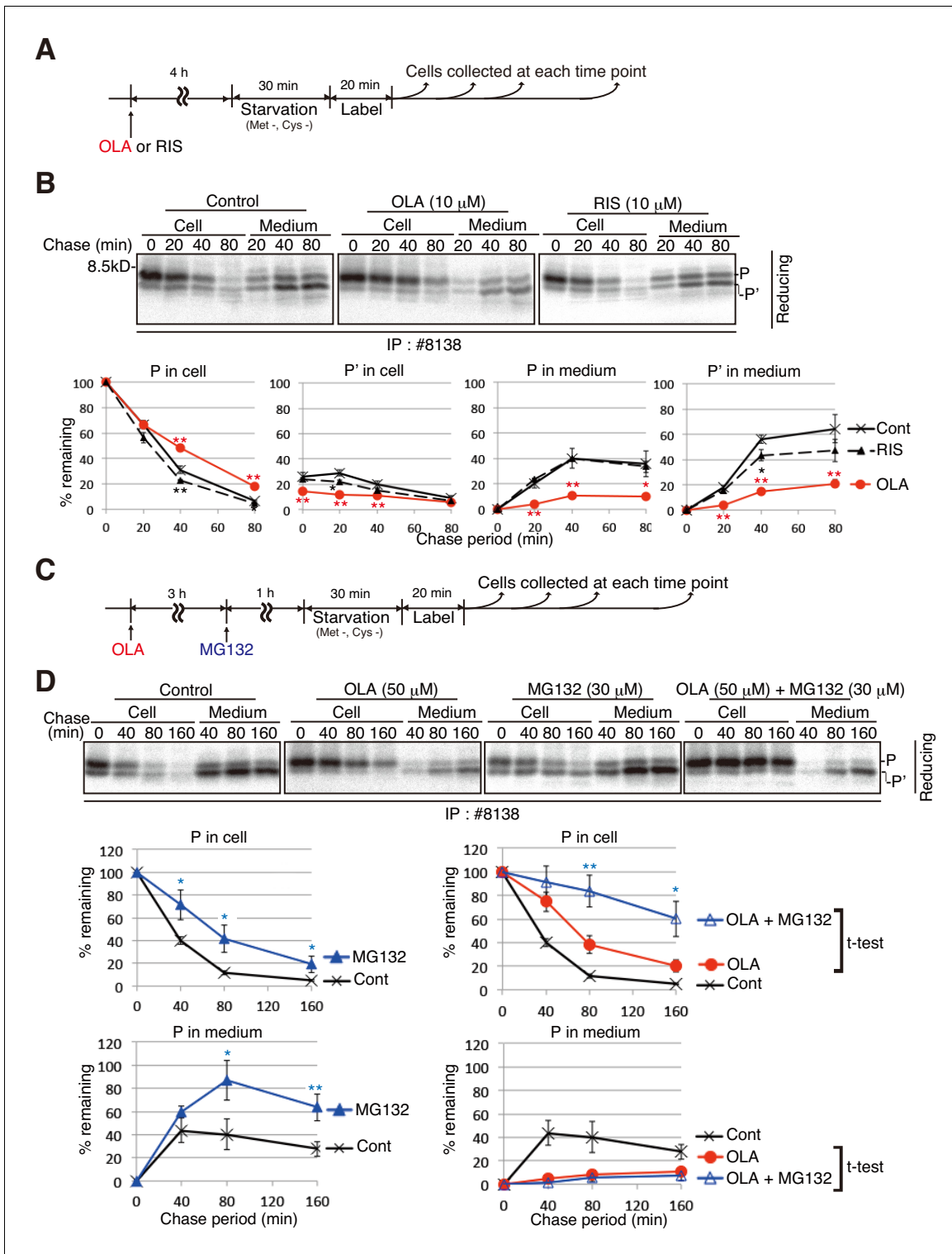


*Figure 3 continued*

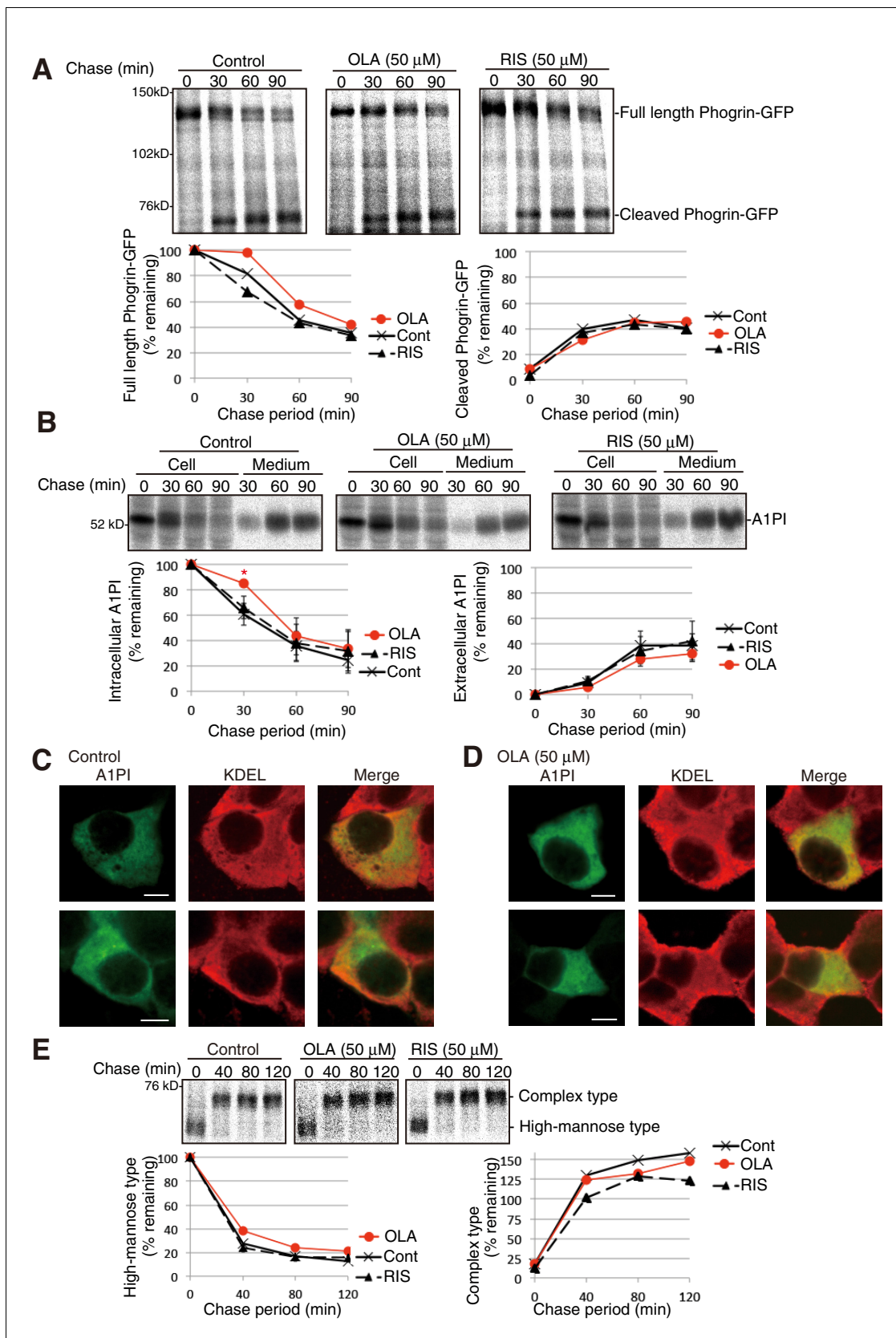
presence of  $^{35}\text{S}$ -Met and  $^{35}\text{S}$ -Cys, and then to immunoprecipitation using #8138. A pulse (20 min)-chase (80 min) experiment was performed in MIN6 cells, and cell lysates and media were collected and subjected to immunoprecipitation using #8138. The immunoprecipitates were analyzed by reducing SDS-PAGE and autoradiography. (C) A pulse (3 or 20 min)-chase (30 min) experiment was performed in MIN6 cells, and cell lysates and media (M) were analyzed as in (B). (D) MIN6 cells untreated or treated with brefeldin A (BFA, 10  $\mu\text{g}/\text{ml}$ ) were subjected to pulse-chase experiment to determine changes in the levels of intracellular and extracellular proinsulin as well as processed proinsulin, as shown in the schema (top). (E) cDNAs encoding mouse proinsulin 2, B chain of mouse insulin 1, and B chain of mouse insulin 2 were treated as in (B). A pulse (20 min)-chase (40 min and 80 min) experiment was performed in MIN6 cells, and cell lysates and media were collected and subjected to immunoprecipitation using #8138 or I2018. The immunoprecipitates were analyzed by reducing and non-reducing SDS-PAGE followed by autoradiography.



**Figure 4.** Effect of olanzapine and risperidone on maturation and secretion of proinsulin and insulin in MIN6 cells. (A) Schemes of the experiments shown in (B). (B) MIN6 cells untreated or treated with olanzapine (50  $\mu$ M) or risperidone (50  $\mu$ M) from the start of starvation were subjected to pulse-chase experiment to determine changes in the levels of proinsulin (P), processed proinsulin (P'), mature proinsulin (mP), insulin (I), HMP-1 (1) and HMP-2 (2) in cells and medium. Cell lysates and media were collected and immunoprecipitated with #8138 or I2018. The immunoprecipitates were analyzed by reducing and non-reducing SDS-PAGE followed by autoradiography. The intensity of each band was determined, and the intensity of intracellular proinsulin or mature proinsulin at time 0 in control cells was defined as 100% (n = 3) [categorized in a, b and c].



**Figure 5.** Effect of the proteasome inhibitor MG132 on the level of proinsulin accumulated intracellularly in olanzapine-treated MIN6 cells. (A) Schemes of the experiments shown in (B). (B) MIN6 cells untreated or treated with olanzapine (10 μM) or risperidone (10 μM) for 4 hr were analyzed as in **Figure 4B** to determine changes in the levels of proinsulin (P) and processed proinsulin (P') in cells and medium using #8138 and reducing SDS-PAGE. The intensity of intracellular proinsulin at time 0 was defined as 100% (n = 3). (C) Schemes of the experiments shown in (D). (D) MIN6 cells untreated or treated with olanzapine (50 μM), MG132 (30 μM) or olanzapine (50 μM) and MG132 (30 μM) were analyzed as in **Figure 4B** to determine changes in the level of proinsulin (P) in cells and medium using #8138 and reducing SDS-PAGE. The intensity of intracellular proinsulin at time 0 was defined as 100% (n = 3).

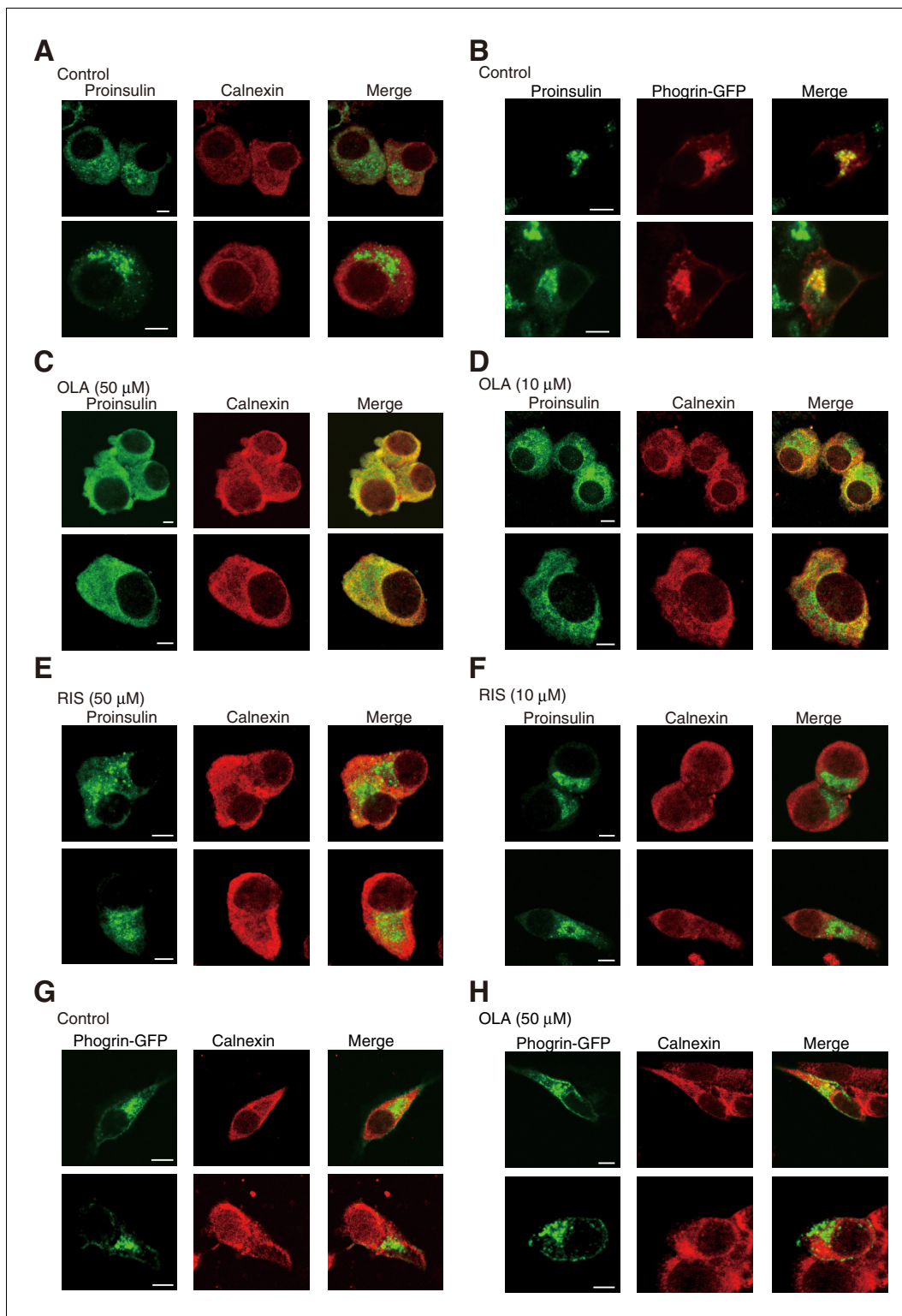


**Figure 6.** Effect of olanzapine on processing of phogrin-GFP, secretion of A1PI, and maturation of hemagglutinin in MIN6 cells. (A) MIN6 cells transfected with a phogrin-GFP expression vector were untreated or treated with olanzapine (50  $\mu$ M) or risperidone (50  $\mu$ M) for 4 hr and then subjected to immunoblotting. (B) MIN6 cells transfected with an A1PI expression vector were untreated or treated with olanzapine (50  $\mu$ M) or risperidone (50  $\mu$ M) for 4 hr and then subjected to immunoblotting. (C) MIN6 cells transfected with an A1PI expression vector were untreated. (D) MIN6 cells transfected with an A1PI expression vector were treated with olanzapine (50  $\mu$ M) for 4 hr. (E) MIN6 cells transfected with a hemagglutinin expression vector were untreated or treated with olanzapine (50  $\mu$ M) or risperidone (50  $\mu$ M) for 4 hr and then subjected to immunoblotting. Figure 6 continued on next page

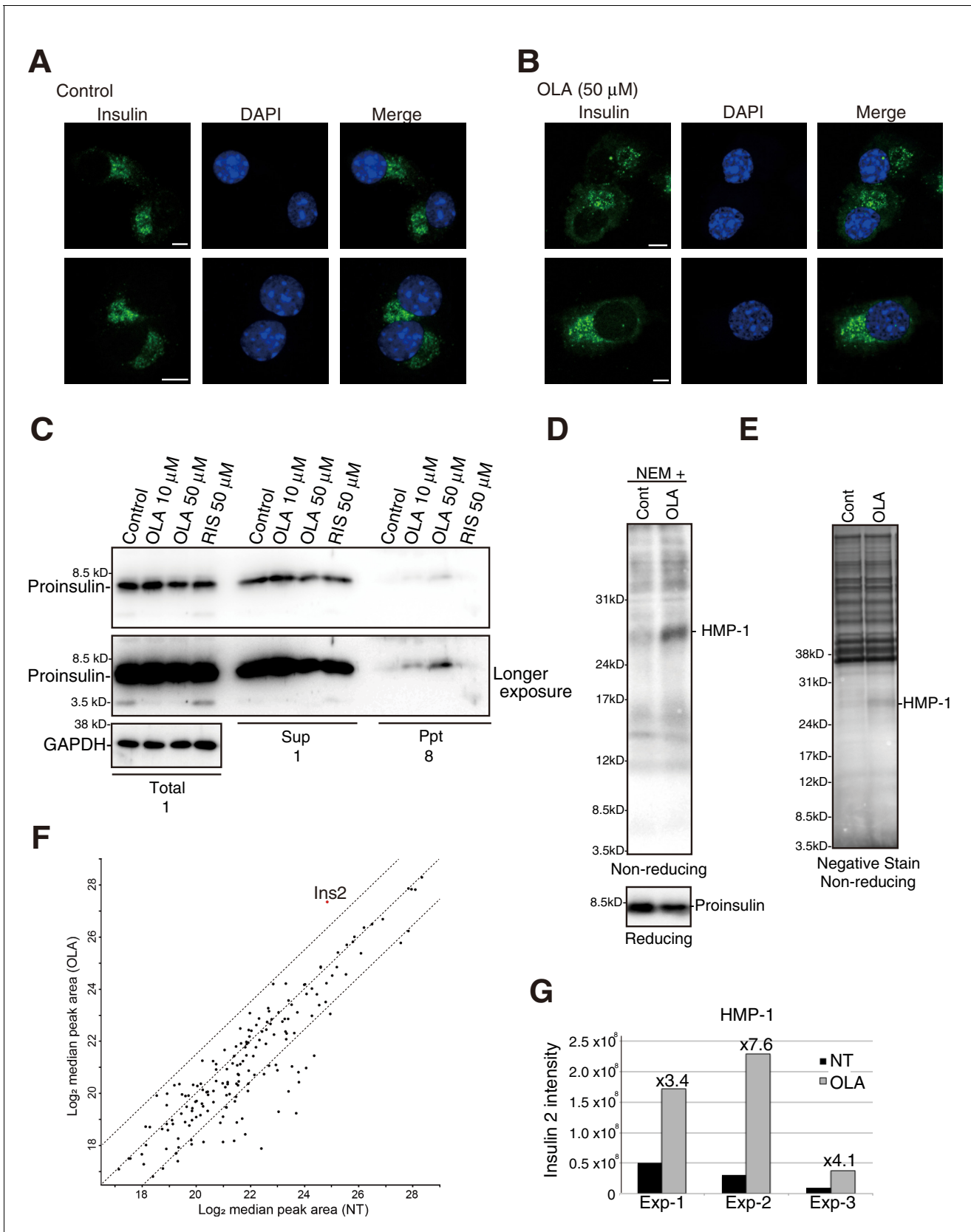
*Figure 6 continued*

to pulse-chase experiment in the presence of olanzapine (50  $\mu\text{M}$ ) or risperidone (50  $\mu\text{M}$ ) to determine the rate of processing of phogrin-GFP. The amounts of full-length and cleaved phogrin-GFP were determined and are shown below with the amount of full-length phogrin-GFP at time 0 defined as 100% ( $n = 1$ ). **(B)** MIN6 cells transfected with an A1PI expression vector were untreated or treated with olanzapine (50  $\mu\text{M}$ ) or risperidone (50  $\mu\text{M}$ ) for 4 hr and then subjected to pulse-chase experiment in the presence of olanzapine (50  $\mu\text{M}$ ) or risperidone (50  $\mu\text{M}$ ) to determine the rate of secretion of A1PI. The amounts of intracellular and extracellular A1PI were determined and are shown below with the amount of intracellular A1AP at time 0, defined as 100% ( $n = 3$ ). **(C)** **(D)** MIN6 cells transfected with an A1PI expression vector were untreated **(C)** or treated with olanzapine (50  $\mu\text{M}$ ) for 14 hr **(D)**. Fixed and permeabilized cells were analyzed by immunofluorescence using anti-A1PI and anti-KDEL antibodies. Bars: 5  $\mu\text{m}$ . **(E)** MIN6 cells transfected with a hemagglutinin expression vector were untreated or treated with olanzapine (50  $\mu\text{M}$ ) or risperidone (50  $\mu\text{M}$ ) for 4 hr and then subjected to pulse-chase experiment to determine the rate of maturation of hemagglutinin. The immunoprecipitates were digested with endoglycosidase H and then analyzed by reducing SDS-PAGE and autoradiography. The amounts of high-mannose type and complex type hemagglutinin were determined and are shown below, with the amounts of high-mannose type hemagglutinin at time 0 defined as 100% ( $n = 1$ ).





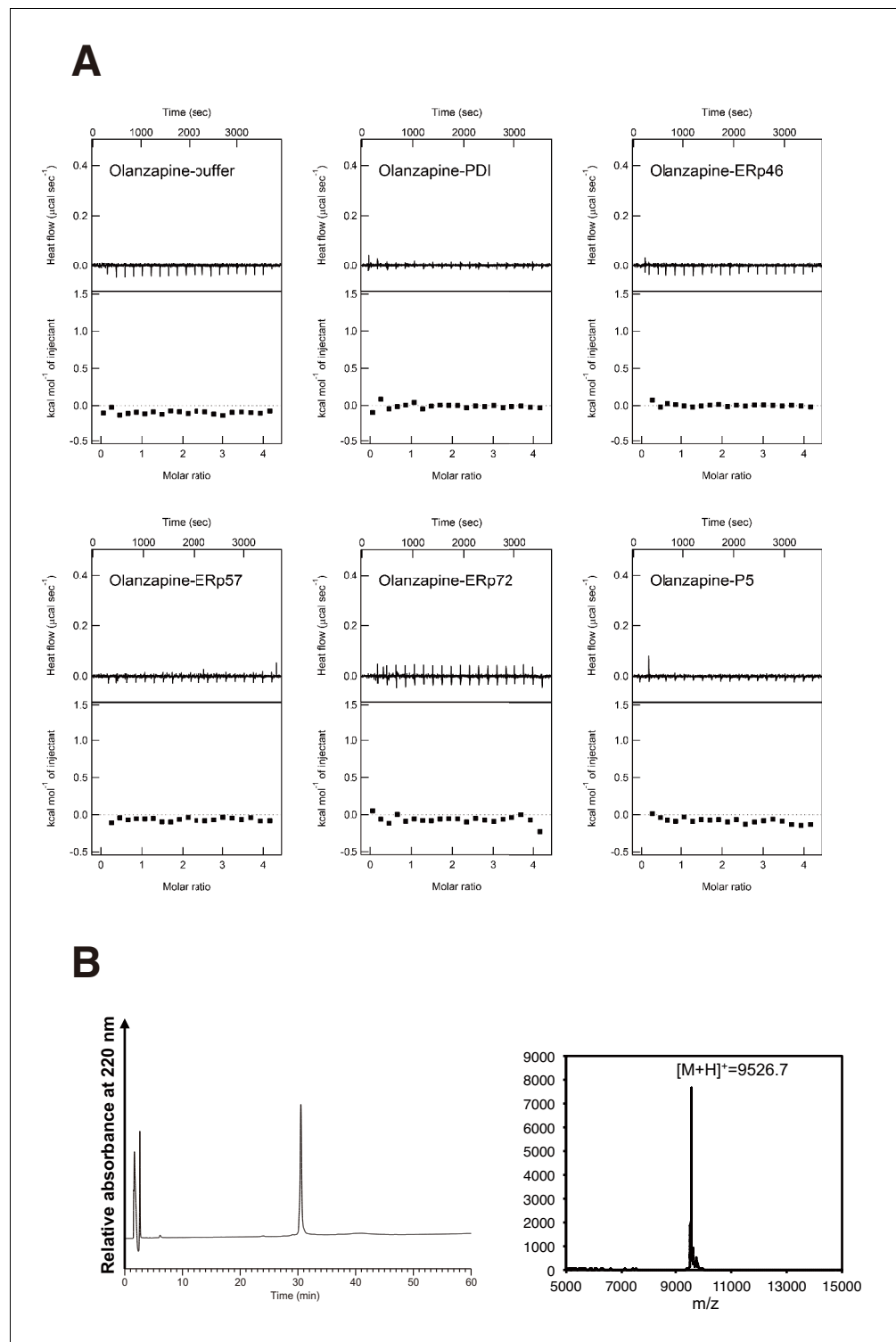
**Figure 7.** Effect of olanzapine on localization of proinsulin and phogrin-GFP in MIN6 cells (Bars: 5  $\mu$ m). (A) MIN6 cells were analyzed by immunofluorescence using anti-insulin #8138 and anti-calnexin antibodies. (B) MIN6 cells transfected with a phogrin-GFP expression vector were analyzed by immunofluorescence using anti-insulin #8138 and anti-GFP antibodies. (C) – (F) MIN6 cells treated with (C) olanzapine (50  $\mu$ M), (D) olanzapine (10  $\mu$ M), (E) risperidone (50  $\mu$ M), or (F) risperidone (10  $\mu$ M) for 14 hr were analyzed by immunofluorescence using anti-insulin #8138 and anti-calnexin antibodies. (G) (H) MIN6 cells transfected with a phogrin-GFP expression vector were (G) untreated or (H) treated with olanzapine (50  $\mu$ M) for 14 hr, and then analyzed by immunofluorescence using anti-GFP and anti-calnexin antibodies.



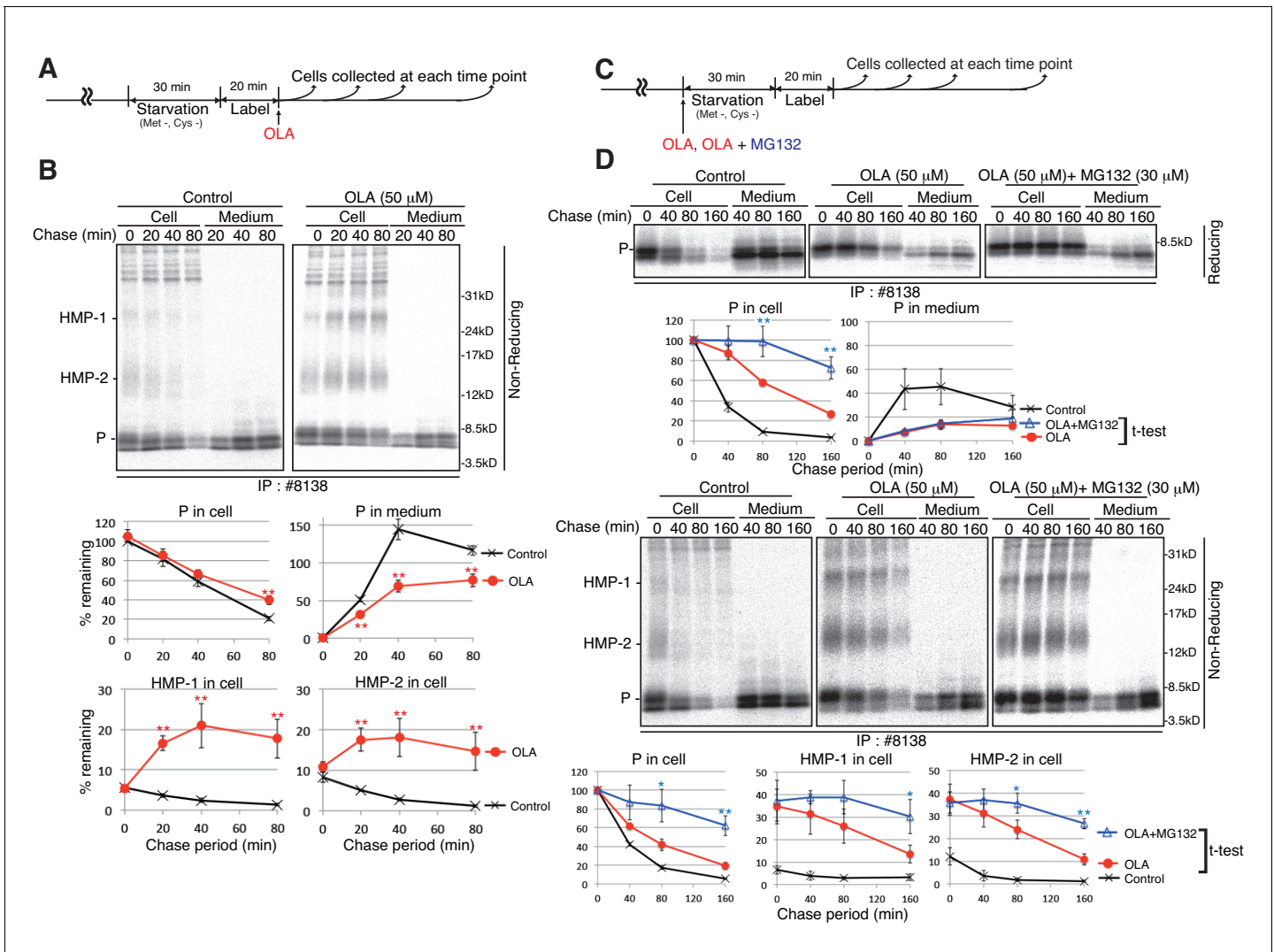
**Figure 8.** Effect of olanzapine on localization of insulin as well as solubility and oligomerization of proinsulin in MIN6 cells. MIN6 cells untreated (A) or treated with olanzapine (50  $\mu$ M) (B) for 14 hr were analyzed by immunofluorescence using anti-insulin I2018 antibody. Bars: 5  $\mu$ m. (C) MIN6 cells treated  
Figure 8 continued on next page

*Figure 8 continued*

with DMSO (control), olanzapine (10 or 50  $\mu\text{M}$ ) or risperidone (50  $\mu\text{M}$ ) for 14 hr were lysed in 1% NP40. After centrifugation at 14,000 rpm for 10 min, supernatant and precipitate were analyzed by immunoblotting using anti-insulin #8138 and anti-GAPDH antibodies. Eight times greater amounts were used to analyze precipitate than total and supernatant. (D)-(G) MIN6 cells untreated or treated with olanzapine (50  $\mu\text{M}$ ) for 4 hr were lysed with 1% NP40 buffer containing 10 mM NEM. (D) Cell lysates were analyzed by reducing and non-reducing SDS-PAGE followed by immunoblotting using #8138. (E) Cell lysates were subjected to immunoprecipitation using #8138, and then to negative staining after non-reducing SDS-PAGE. (F) Gels at the position of HMP-1 were excised and analyzed by mass spectrometry. The results are shown by the scatter plot of  $\log_2$  of the median peak area from three independent experiments between untreated cells (X axis) and olanzapine-treated cells (Y axis). A 5.7-fold increase by olanzapine treatment was observed for Ins2 as shown in the red circle. (G) Intensities of Ins2-derived fragments in untreated and olanzapine-treated cells in each experiment are shown along with the fold-induction.

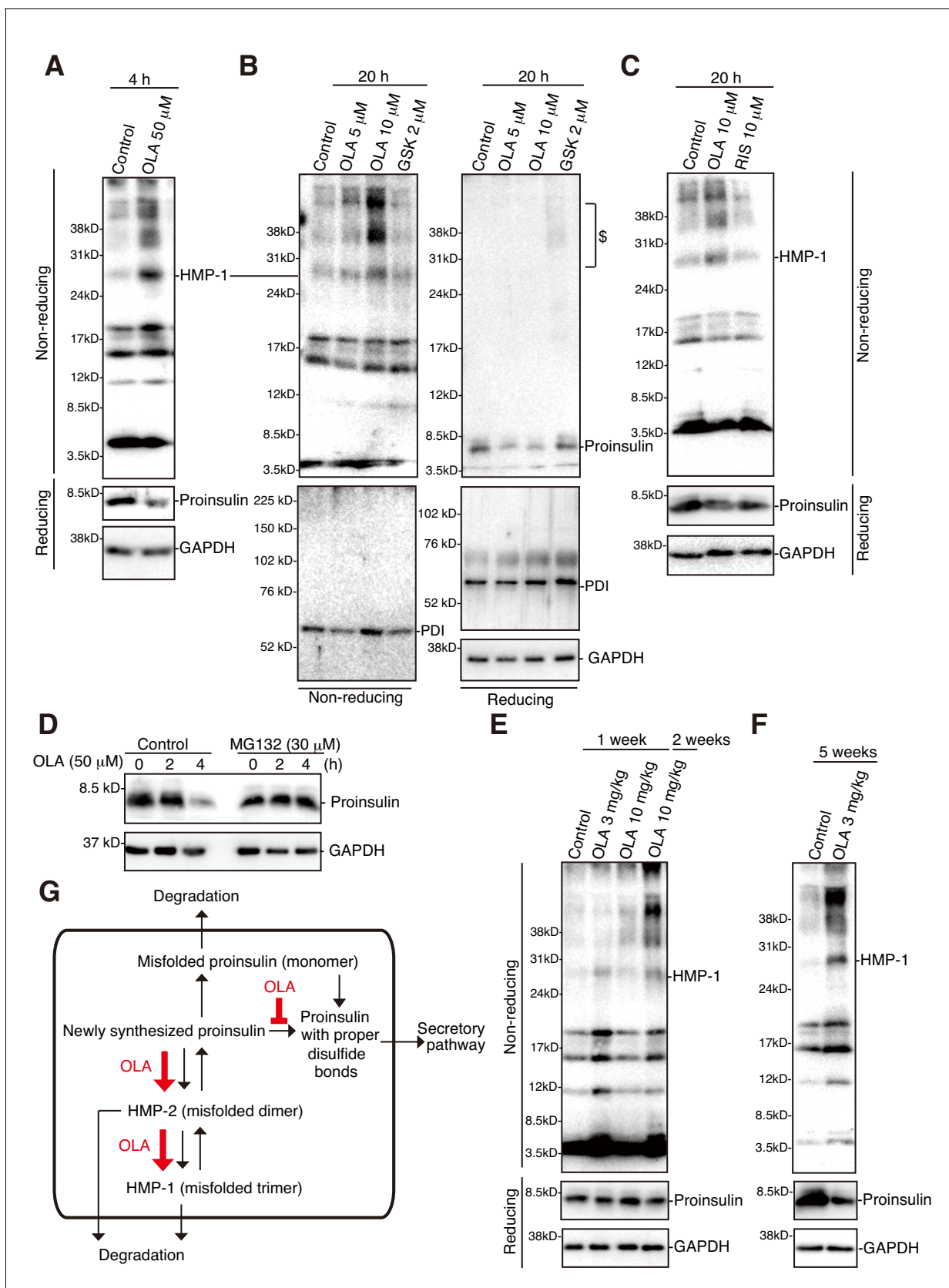


**Figure 8—figure supplement 1.** Interaction of olanzapine with various oxidoreductases. (A) ITC measurements of the interaction between olanzapine and PDI, ERp46, ERp57, ERp72, or P5. (B) (left) HPLC profile of reduced and denatured purified proinsulin. Proteins were eluted using a 20–60% linear gradient of  $\text{CH}_3\text{CN}$  in 0.05% trifluoroacetic acid at an increasing rate of 1 %/min and at a flow rate of 1.0 ml/min, and elution was monitored at 220 nm. (right) MALDI-TOF/MS spectra derived from the peak around 30 min. The observed  $[\text{M}+\text{H}]^+$  is 9526.7, corresponding to the calculated  $[\text{M}+\text{H}]^+$  (9526.9).



**Figure 9.** Effect of the proteasome inhibitor MG132 on the levels of proinsulin, HMP-1, and HMP-2 in olanzapine-treated MIN6 cells. (A) Schemes of the experiments shown in (B). (B) MIN6 cells pulse-labeled for 20 min were chased for the indicated periods with or without 50 μM olanzapine to determine changes in the levels of proinsulin (P), HMP-1 (1), and HMP-2 (2) in cells and medium as in *Figure 4B* using #8138 and non-reducing SDS-PAGE. The intensity of intracellular proinsulin at time 0 was defined as 100% (n = 3). (C) Schemes of the experiments shown in (D). (D) MIN6 cells untreated, treated with olanzapine (50 μM), or olanzapine (50 μM) and MG132 (30 μM) were analyzed as in *Figure 4B* to determine changes in the levels of proinsulin (P), HMP-1 (1), and HMP-2 (2) in cells and medium using #8138 and reducing and non-reducing SDS-PAGE. The intensity of intracellular proinsulin at time 0 was defined as 100% (n = 3).





**Figure 10.** Effect of olanzapine on proinsulin oligomerization in mouse islets. (A)-(C) Isolated mouse islets were untreated or treated with the indicated concentration of olanzapine, GSK2656157 (GSK, 2  $\mu$ M) or risperidone (10  $\mu$ M) for the indicated period and analyzed by immunoblotting using anti-  
Figure 10 continued on next page

*Figure 10 continued*

insulin #8138, anti-PDI and anti-GAPDH antibodies after reducing and non-reducing SDS-PAGE. \$ denotes aggregated proinsulin. (D) Isolated mouse islets were treated or untreated with MG132 (30  $\mu$ M) for 1 hr, then treated with olanzapine (50  $\mu$ M) for the indicated period, and analyzed by immunoblotting using anti-insulin #8138 and anti-GAPDH antibodies after reducing SDS-PAGE. (E) (F) Islets were isolated from mice the indicated week after daily oral administration of the indicated dose of olanzapine, and analyzed by immunoblotting using anti-insulin #8138 and anti-GAPDH antibodies after reducing and non-reducing SDS-PAGE. (G) Model for olanzapine-induced  $\beta$ -cell dysfunction (see text).