

Scientific Foundation SPIROSKI, Skopje, Republic of Macedonia
 Open Access Macedonian Journal of Medical Sciences. 2020 Oct 29; 8(D):218-223.
<https://doi.org/10.3889/oamjms.2020.5168>
 eISSN: 1857-9655
 Category: D - Dental Sciences
 Section: Dental Pathology and Endodontics



Confocal Laser Scanning Microscopic Evaluation of Sealer Penetration in Root Canals of Teeth with the butterfly and Non-butterfly Effect: An *In vitro* Study

Abraham Sathish¹, Karad Rohini Ramesh^{2*}, N. Jain Ruchika², D. Vaswani Sneha², B. Najan Harshal², R. Lalwani Rashi²

¹Department of Conservative Dentistry and Endodontics, S.M.B.T. Dental College and Hospital and Post Graduate Research Centre, Sangamner, Maharashtra, India; ²Department of Conservative Dentistry and Endodontics, S.M.B.T. Dental College and Hospital and Post Graduate Research Centre, Sangamner, Maharashtra, India

Abstract

AIM: The study aimed to investigate the penetration depth of calcium hydroxide-based root canal sealer into buccolingual and mesiodistal aspects of roots with and without the butterfly effect at coronal and middle root sections.

METHODS AND MATERIALS: Twenty single-rooted maxillary premolars were decoronated at the cemento-enamel junction and viewed under a light microscope and grouped as Group 1 – butterfly (B) and Group 2 – non-butterfly according to the presence or absence of the effect. Canals were prepared till working length followed with copious irrigation. Canals were finally rinsed with 5 ml of 17% ethylenediaminetetraacetic acid solution and activated using EndoActivator followed by obturation using gutta-percha (warm vertical compaction technique) with Sealapex sealer. To provide fluorescence for confocal laser scanning microscopy (CLSM), the Sealapex was mixed with rhodamine B dye. Root sectioning yielded coronal and middle sections. CLSM was used to assess the penetration of the sealer.

STATISTICAL ANALYSIS: Shapiro–Wilk test, unpaired “t-test.”

RESULTS: Teeth with the butterfly effect had greater mean penetration buccolingually (905.2 μm) than mesiodistally (182.1 μm ; $p < 0.001$). Coronal sections had greater penetration (517.4 μm) compared with the middle (354.6 μm).

CONCLUSION: Sealapex sealer exhibited maximum tubular penetration in teeth with butterfly effect in buccolingual direction at the coronal third level.

Edited by: Katerina Spiroska
Citation: Sathish A, Ramesh KR, Ruchika NJ, Sneha DV, Harshal BN, Rashi RL. Confocal Laser Scanning Microscopic Evaluation of Sealer Penetration in Root Canals of Teeth with the butterfly and Non-butterfly Effect: An *In vitro* Study. Open Access Maced J Med Sci. 2020 Oct 29; 8(D):1-6. <https://doi.org/10.3889/oamjms.2020.5168>
Keywords: Butterfly effect; Confocal laser scanning microscopy; Sealapex; Sealer penetration
***Correspondence:** Dr. Karad Rohini Ramesh, Department of Conservative Dentistry and Endodontics, S.M.B.T. Dental College and Hospital and Post Graduate Research Centre, Ghulewadi, Amrutnagar, Sangamner - 422 608, Maharashtra, India. E-mail: rohinikarad05@gmail.com
Received: 07-Jul-2020
Revised: 14-Oct-2020
Accepted: 19-Oct-2020
Funding: This research did not receive any financial support
Competing Interests: The authors have declared that no competing interest exists
Open Access: This is an open-access article distributed under the terms of the Creative Commons Attribution-NonCommercial 4.0 International License (CC BY-NC 4.0)

Introduction

Three-dimensional obturation of the root canal system is the final objective of non-surgical root canal therapy [1]. The currently accepted method of obturation employs a solid or semisolid core such as gutta-percha and a root canal sealer. Gutta-percha has no adhesive properties to dentin irrespective of the obturation techniques employed [2]. A root canal sealer is essential to enhance the seal during compaction and to penetrate small, normally inaccessible areas, that is, the dentinal tubules [3]. According to Orstavik, sealers play an important role in sealing the root canal system with entombment of remaining microorganisms and filling of inaccessible areas of prepared canals [4].

The effectiveness of a root canal sealer is improved by reducing the volume of sealer used, ensuring successful adaptation, and penetration of the sealer through root dentin [5]. Penetration and adaptation depend on many factors including the patency and density of the dentinal tubules. Some teeth exhibit an optical phenomenon

known as the “Butterfly Effect” [6]. According to Vasiliadis *et al.*, in 1983, dentinal tubular sclerosis differs within the mesiodistal and buccolingual directions, noting a typical butterfly shape in transverse sections of the roots [7]. Root sections with the consequence are reported to possess a lower density of dentinal tubules mesiodistally, like the wings of the butterfly. This effect has been observed in teeth from all age groups and at all levels of the roots [8]. Roots with the effect have greater penetration of sealers and mineral trioxide aggregate (MTA) buccolingually [9]. This is thought to enhance entombment of bacteria, which could lead to improved treatment outcomes [9], [10].

Calcium hydroxide-containing sealers have been in use for two main reasons – first, for stimulation of the periapical tissues to maintain health or promote healing and second for its antimicrobial effects [11]. Confocal laser scanning microscopy (CLSM) provides information on sealer penetration and distribution within the dentinal tubules using fluorescent rhodamine dye markers mixed with sealers [12].

The purpose of this *in vitro* study was to evaluate the penetration depth of calcium hydroxide based root

canal sealer into buccolingual and mesiodistal aspects of roots with and without the butterfly effect at coronal and middle root sections. The null hypothesis was that there was no significant difference in sealer penetration in teeth with and without the butterfly effect.

Materials and Methods

Sample Selection

Twenty single-rooted human maxillary premolars extracted for orthodontic and periodontal reasons were included. Samples exhibiting any visible root caries, fractures, cracks, and signs of defects were excluded from the study. Selected teeth were cleansed of extraneous debris and calculus using an ultrasonic scaler. After cleansing, the specimen was rinsed under running tap water and stored in 2% thymol solution until use at 37°C.

The sample size was calculated using G power 3.1.9.2 software; with confidence interval set at 95%, the probability of alpha error set at 5%, power of the study set at 80%. The sample size was calculated to be a total of 20; divided into two groups of 10 samples each.

Sample preparation

Teeth were decoronated at the cemento-enamel junction with a diamond disc (Taboom DD001 4AHP, China) under constant water irrigation. Roots were viewed under a light microscope (Olympus CH20i) at $\times 10$ and coded "B" butterfly or "NB" non-butterfly according to the presence or absence of the effect.

The working length was determined by subtracting 1 mm from the length of a size 10 K-file (Dentsply Maillefer, Switzerland) until it reached the apical foramen. Canal orifices were flared with X-Gates files (Dentsply Tulsa Dental, Tulsa, OK, USA) and instrumentation was performed using the crown-down technique with ProTaper Next (Dentsply Maillefer, Ballaigues, Switzerland) rotary nickel-titanium instruments. The canals were prepared following sequence from X1 (size 17, 0.04 taper), X2 (size 25, 0.06 taper) to apical size X3 (size 30, 0.07 taper), till the working length. Between each instrument, the canals were irrigated with 2 mL of 3% sodium hypochlorite (NaOCl) (Prime Dental Products Private Limited, Thane, India) solution. Apical patency was maintained bypassing #15 K-file through the apical foramen between files. Then, 3% NaOCl at 37°C was activated/delivered with Endoactivator (Dentsply Tulsa Dental Specialties, Tulsa, OK). A flush of 2 mL 17% ethylenediaminetetraacetic acid (EDTA) (MAARC ENDO-L, Palghar, Mumbai, Maharashtra, India) was

applied for 3 min to eliminate the smear layer. A final rinse was performed using 5 mL of 0.9% saline to remove any remaining irrigating solution and the canals were dried with paper points.

All specimens were obturated with gutta-percha coated with Sealapex (Sybron Endo, Orange, CA) sealer. The sealer was mixed as per the manufacturer's recommendation. To allow analysis under the CLSM, the sealer was fluorescently labeled by adding rhodamine B (Sigma-Aldrich, St. Louis, MO, USA) at a 1:100 ratio by weight. All root canals were smeared with the rhodamine B labeled sealer using a single ProTaper Next X3 GP cone placed to the entire working length as the master cone. The canals were obturated with a warm vertical compaction technique using Denjoy iFill (DENJOY DENTAL CO., LTD F4, CHANGSHA, CHINA). The coronal opening was sealed with a temporary filling material and the specimens were stored at 37°C, 100% relative humidity for 2 weeks to allow complete setting of the sealers.

Sectioning and image analysis

Roots were sectioned using a water-cooled slow speed diamond disc at distances 8 and 11 mm from the apex to yield coronal and middle sections of the roots. The maximum absorption of the rhodamine B dye is 540 nm and the maximum emission is 625 nm. All specimens were mounted onto glass slides and root sections were first viewed using confocal laser scanning microscope (Zeiss LSM 510, Axioplan 200, Carl Zeiss Ltd., Jena, Germany) and bird's eye view images ($\times 10$) were taken. A total of 200 images were captured corresponding to 100 apical and 100 middle root sections.

A superimposed grid was used to standardize direction records (Figure 1a and b).

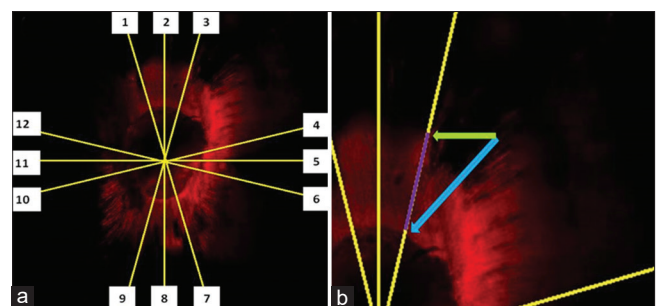


Figure 1: (a) Confocal image ($\times 10$) of a root section showing assessment grid. Numbers correspond to: 1–3 (buccal), 4–6 (mesial), 7–9 (lingual), and 10–12 (distal). (b) Measuring tool used to draw a line between the dentine-sealer interface (blue arrow) and the outermost intense red point along the gridline (green arrow) representing sealer penetration

The depth of penetration (μm) was measured at 12 points using the measuring tool in ImageJ (National Institute of Health, Bethesda, MD, USA). Mean sealer penetration scores were calculated for each direction (buccolingual and mesiodistal) at two root levels (coronal and middle).

All CLSM images were assessed by an examiner and were further assessed by two qualified endodontists. Observers viewed the images on a computer after receiving written instructions and familiarization. All three assessors were unaware which root section type was under consideration.

Statistical analysis was performed using Statistical Package for the Social Sciences version 21 for Windows (Armonk, NY: IBM Corp). Descriptive statistics including mean and standard deviation and inferential statistics were calculated. Shapiro–Wilk test showed a normal distribution of data. Unpaired “t-test” was used to compare between the butterfly and non- butterfly effect group at the coronal and middle third, respectively. For all statistical tests, $p < 0.05$ has been considered statistically significant.

Results

Representative confocal images ($\times 10$) of sealer penetration are shown in Figures 2 and 3 and the findings are presented in Tables 1 and 2. The quantitative results are depicted in Figures 4 and 5.

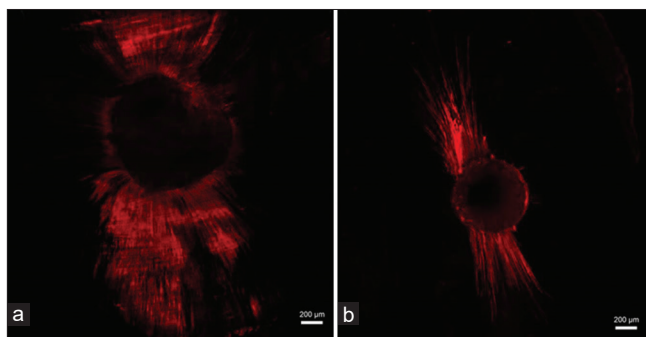


Figure 2: (a and b) Representative confocal laser scanning microscopy images ($\times 10$) showing side-by-side comparison of coronal (a) and middle (b) penetration of Sealapex sealer in root with the butterfly effect

Greater buccolingual penetration (905.2 μm) relative to mesiodistal (182.1 μm) was seen in teeth with the butterfly effect ($p < 0.001$; unpaired “t-test”) (Figure 2a and b and Table 1).

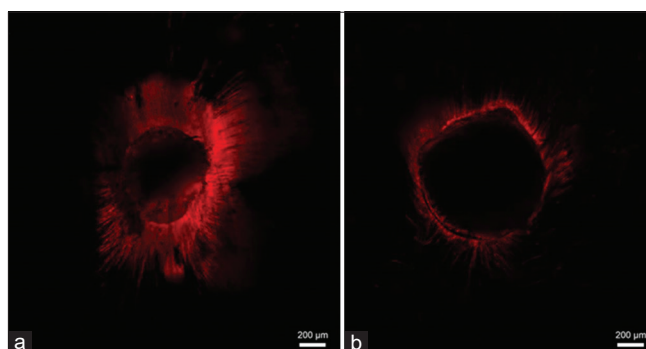


Figure 3: (a and b) Representative confocal laser scanning microscopy images ($\times 10$) showing side-by-side comparison of coronal (a) and middle (b) penetration of Sealapex sealer in root without the butterfly effect

Table 1: Descriptive statistics of Confocal Laser Scanning Microscopic evaluation of depth of sealer penetration (in μm) in root canals of teeth with the butterfly (Group 1) and Non-butterfly effect (Group 2) at coronal third and middle third respectively

Group 1 (butterfly effect)				
Coronal third	Mean	SD	Minimum	Maximum
Buccolingual	905.2	115.94	731.0	1097.0
Mesiodistal	182.1	28.28	115.0	219.0
Middle third	Mean	SD	Minimum	Maximum
Buccolingual	823.2	40.31	736.0	868.0
Mesiodistal	55.2	7.11	47.0	68.0
Group 2 (non-butterfly effect)				
Coronal third	Mean	SD	Minimum	Maximum
Buccolingual	492.3	21.93	454.0	532.0
Mesiodistal	490.1	22.29	454.0	523.0
Middle third	Mean	SD	Minimum	Maximum
Buccolingual	272.6	10.64	259.0	293.0
Mesiodistal	267.4	15.47	243.0	291.0

Conversely, teeth without the butterfly effect had no critical distinction between buccolingual (492.3 μm) and mesiodistal (490.1 μm) penetrations (Figure 3a and b and Table 1).

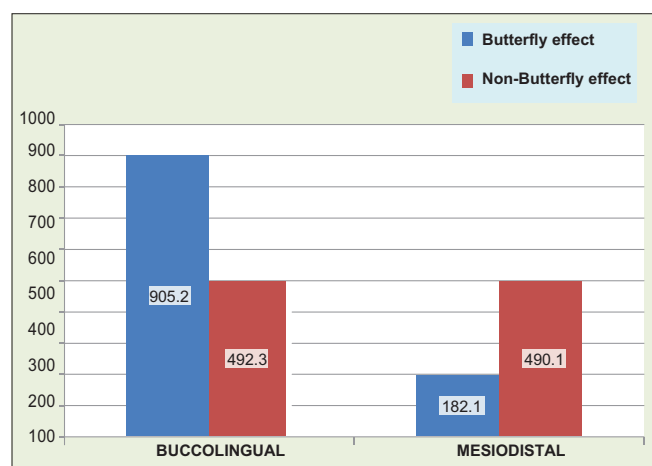


Figure 4: Graphical representation of depth of sealer penetration (in μm) in root canals of teeth with the butterfly and non-butterfly effect group at the coronal third in buccolingual and mesiodistal direction

Teeth with the butterfly effect had altogether more prominent penetration buccolingually (905.2 μm) contrasted with teeth without the impact (492.3 μm ; $p < 0.001$). On the other side, teeth with the butterfly

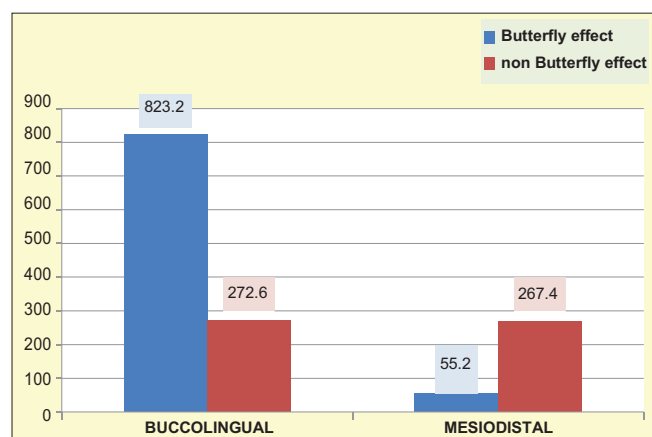


Figure 5: Graphical representation of depth of sealer penetration (in μm) in root canals of teeth with the butterfly and non-butterfly effect group at the middle third in buccolingual and mesiodistal direction

Table 2: Comparative statistics of Confocal Laser Scanning Microscopic evaluation of depth of sealer penetration (in μm) in root canals of teeth with the butterfly (Group 1) and Non-butterfly effect (Group 2) at coronal third and middle third respectively

Coronal third	Butterfly effect (n = 10) mean (SD)	Non-butterfly effect (n = 10) Mean (SD)	Unpaired t-test	p-value, significance
Buccolingual	905.2 (115.94)	492.3 (21.93)	t = 11.065	p < 0.001**
Mesiodistal	182.1 (28.28)	490.1 (22.29)	t = -27.04	p < 0.001**
Middle third	Butterfly effect (n=10) Mean (SD)	Non-butterfly effect (n=10) Mean (SD)	Unpaired t-test	p-value, significance
Buccolingual	823.2 (40.31)	272.6 (10.64)	t = 41.754	p < 0.001**
Mesiodistal	55.2 (7.11)	267.4 (15.47)	t = -39.38	P < 0.001**

*p < 0.05 – significant, **p < 0.001 – highly significant difference

effect had considerably lower mesiodistal penetration (182.1 μm) relative to teeth without the effect (490.1 μm ; p < 0.001) (Table 2).

An average value of 517.4 μm of sealer penetration was derived from coronal sections, whereas an average value of 354.6 μm of sealer penetration was derived from mid-root sections. Coronal sections had the highest mean penetration relative to the middle sections, and this was a substantial difference (p < 0.001) (Figures 4 and 5).

Discussion

It is generally agreed that the key goal of root canal filling is intended to avoid any interchange between the oral cavity, the root canal system, and the periradicular tissues, to establish a barrier to the infection and reinfection of canals. Sealers are used to create an impermeable seal between the core material and root canal walls. The therapeutic effect of greater penetration of sealers is that it can destroy the bacteria residing in the dentinal tubules and may have an effect on the treatment efficiency. Sealer containing antibacterial active ingredients could be more effective through closer contact with isolated bacteria by infiltration into the dentinal tubules [1]. There are many factors influencing the percentage and maximum depth of sealer penetration. These factors include the effectiveness of the removal of the smear layer, the physical and chemical properties of the sealer, the obturation technique, and the anatomy of the root canal system [13]. The flow of a sealer determines how effectively it obturates accessory canals, irregularities on the dentinal wall, and spaces between the core filling materials [14].

The “butterfly” effect was photographed by Beust in 1931 as an optical phenomenon in some cross-sections of tooth roots [8]. Russell *et al.* showed that the density of dentinal tubules was significantly higher in the root sections cut mesiodistally and lowest buccolingually that showed significantly deeper penetration in a buccolingual direction compared with teeth without the effect [9]. This study shows that the presence of the butterfly effect has an influence on sealer penetration into dentinal tubules. In a buccolingual direction, teeth with the effect showed consistently significant deeper penetration compared to teeth without the effect. Many species seen within

the infected root canal have the propensity to penetrate deeply into the dentinal tubules, such as facultative and anaerobic specie [15]. According to Orstavik, sealers play a key role in sealing the root canal system with entombment of residual microorganisms and filling of inaccessible areas of the prepared canal [4].

In a study conducted by Dalmia *et al.* [16], Sealapex showed the highest antimicrobial activity against *Enterococcus faecalis*. Cobankara *et al.* (2006) and Ishimura *et al.* (2007) proved that a calcium hydroxide sealer has not only adequate biological but also physical and chemical properties, such as sealability [17], [18]. Estrela *et al.* proposed that the speed of dissociation into calcium ions and hydroxyl ions affects the antimicrobial mechanism in calcium hydroxide-based sealers. These dissociated hydroxyl ions produce a high pH environment inhibiting enzymatic activity that is necessary for microbial growth, metabolism, and cell division. Inferior mesiodistal penetration of sealers can have a detrimental effect on the outcome of root canal treatment in teeth with the butterfly effect. Likewise, the presence of the butterfly effect can affect the penetration of intracanal medications such as calcium hydroxide and luting agents used during post-cementation. However, additional studies are needed to assess this.

VonArx *et al.* analyzed the varied characteristics of root sections and identified the presence of “frosted dentine,” which was more common in premolars and molars than in anterior teeth [19]. The clinical significance of the butterfly effect may be greater in posterior teeth. An investigation shows that the hardness scores were lower buccolingually than mesiodistally in teeth exhibiting the butterfly effect. This could help explain vertical root fractures occurring more frequently in the buccolingual direction [20]. With increasing age, the number of dentinal tubules is recorded to decrease significantly and this may affect sealer penetration [21]. The depth of sealer penetration can be compromised by calcium hydroxide dressings in the root canal because it is not always possible to extract this material completely before obturation [22]. The penetration depths reported in this *in vitro* study may be higher than clinically expected when treatment with multiple visits is done.

The root canal filling techniques may influence the power of dentinal tubule penetration of the endodontic sealer. Consistent with De-Deus *et al.* [23] vertical condensation of warm gutta-percha showed a deeper tubule penetration than cold techniques. Some studies with warm vertical compaction techniques have shown consistent gutta-percha and sealer penetration

into the dentinal tubules [24]. This study records superior penetration of Sealapex in coronal root sections relative to the middle sections. This result is in line with previous researches that have studied several sealers and obturation techniques and has recorded greater coronal mean penetration. While apical root sections have not been included in this analysis, regional differences may be explained by the increasing complexity of the root canal anatomy and the reduced number and patency of dentinal tubules toward the apical portion of the root canal [21]. EDTA is effective in smear layer removal from both coronal and middle thirds. Machine-assisted irrigation equipment and irrigation activation result in improved irrigation in both quantity and efficiency at the apical third stage, thereby allowing the smear layer removal to be more effective. It has been documented that the EndoActivator system allows greater penetration of an irrigant into all areas of endodontic space and effectively cleanses debris from lateral canals, eliminates the smear layer, and dislodges artificial biofilm clumps (Caron, 2007) [25].

The CLSM was used to test the Sealapex penetration ability, as it could provide a thorough description of the nature and distribution of sealer in dentinal tubules while applying fluorescent rhodamine B to it. Another benefit of using CLSM is that the samples can be visualized in different depths. It does not encourage sample dehydration and as compared to SEM, it creates fewer items. Complete obturation of the dentinal tubules was revealed with higher fluorescence while lower fluorescence indicated partial or incomplete obturation [26].

Conclusion

Within the confinements of this study, it can be inferred that root sections with the butterfly effect have a lower density of tubules mesiodistally, relating to the wings of the butterfly. The presence of the butterfly effect impacts sealer penetration into the dentinal tubules. Roots with the impact show more prominent penetration buccolingually. This may upgrade the burial of microscopic organisms, which could prompt improved treatment results. Coronal sections of roots have unrivaled infiltration in contrast with the middle sections. The sealer penetration in the middle segments was altogether progressively greater in teeth without the butterfly effect.

References

- Nikhil V, Singh R. Confocal laser scanning microscopic investigation of ultrasonic, sonic, and rotary sealer placement techniques. *J Conserv Dent.* 2013;16(4):294-9. <https://doi.org/10.4103/0972-0707.114348> PMID:23956528
- Khandelwal D, Ballal NV. Recent advances in root canal sealers. *Int J Clin Dent.* 2016;9(3):183-94.
- Hoehn MM, LaBounty GL, Keller DL. Ultrasonic endodontic sealer placement. *J Endod.* 1988;14(4):169-74. [https://doi.org/10.1016/s0099-2399\(88\)80257-7](https://doi.org/10.1016/s0099-2399(88)80257-7) PMID:3268635
- Orstavik D. Materials used for root canal obturation: Technical, biological and clinical testing. *Endod Topics.* 2005;12:25-38. <https://doi.org/10.1111/j.1601-1546.2005.00197.x>
- Vitti RP, Prati C, Silva EJ, Sinhoreti MA, Zanchi CH, de Souza e Silva MG, *et al.* Physical properties of MTA fillapex sealer. *J Endod.* 2013;39(7):915-18. <https://doi.org/10.1016/j.joen.2013.04.015> PMID:23791263
- Beust TB. Reactions of the dentinal fibril to external irritation. *J Am Dent Assoc.* 1931;18(6):1060-73.
- Vasiliadis L, Darling AI, Levers BG. The amount and distribution of sclerotic human root dentine. *Arch Oral Biol.* 1983;28(7):645-9. [https://doi.org/10.1016/0003-9969\(83\)90013-4](https://doi.org/10.1016/0003-9969(83)90013-4)
- Russell AA, Chandler NP, Hauman C, Siddiqui AY, Tompkins GR. The butterfly effect: An investigation of sectioned roots. *J Endod.* 2013;39(2):208-10. <https://doi.org/10.1016/j.joen.2012.09.016> PMID:23321232
- Russell A, Friedlander L, Chandler N. Sealer penetration and adaptation in root canals with the butterfly effect. *Aust Endod J.* 2018;44(3):225-34. <https://doi.org/10.1111/aej.12238> PMID:29034531
- Russell A. The Butterfly Effect: An Investigation of Sealer Penetration, Adaptation and Apical Crack Formation in Filled Root Canals, Doctoral Dissertation. New Zealand: University of Otago.
- Desai S, Chandler N. Calcium hydroxide-based root canal sealers: A review. *J Endod.* 2009;35(4):475-80. <https://doi.org/10.1016/j.joen.2008.11.026> PMID:19345790
- Arikatla SK, Chalasani U, Mandava J, Yelisela RK. Interfacial adaptation and penetration depth of bioceramic endodontic sealers. *J Conserv Dent.* 2018;21(4):373-7. https://doi.org/10.4103/jcd.jcd_64_18 PMID:30122816
- Nielsen BA, Craig Baumgartner J. Comparison of the EndoVac system to needle irrigation of root canals. *J Endod.* 2007;33(5):611-5. <https://doi.org/10.1016/j.joen.2007.01.020> PMID:17437884
- Kuci A, Alacam T, Yavas O, Ergul-Ulger Z, Kayaoglu G. Sealer penetration into dentinal tubules in the presence or absence of smear layer: A confocal laser scanning microscopic study. *J Endod.* 2014;40(10):1627-31. <https://doi.org/10.1016/j.joen.2014.03.019> PMID:25260735
- Love RM, Jenkinson HF. Invasion of dentinal tubules by oral *Bacteria*. *Crit Rev Oral Biol Med.* 2002;13:171-83. PMID:12097359
- Dalmia S, Gaikwad A, Samuel R, Aher G, Gulve M, Kolhe S. Antimicrobial efficacy of different endodontic sealers against *Enterococcus faecalis*: An *in vitro* study. *J Int Soc Prev Community Dent.* 2018;8(2):104-9. https://doi.org/10.4103/jispcd.jispcd_29_18 PMID:29780734
- Cobankara FK, Orucoglu H, Sengun A, Belli S. The quantitative evaluation of apical sealing of four endodontic sealers. *J Endod.* 2006;32:66-8. <https://doi.org/10.1016/j.joen.2005.10.019> PMID:16410073
- Ishimura H, Yoshioka T, Suda H. Sealing ability of new adhesive root canal filling materials measured by new dye penetration method. *Dent Mater J.* 2007;26(2):290-5. <https://doi.org/10.4012/dmj.26.290> PMID:17621947

19. Von Arx T, Steiner RG, Tay FR. Apical surgery: Endoscopic findings at the resection level of 168 consecutively treated roots. *Int Endod J.* 2011;44(4):290-302. <https://doi.org/10.1111/j.1365-2591.2010.01811.x> PMID:21226737
20. Sahu Y, Deshmukh P, Jain A, Sahu A. The butterfly effect: An investigation of hardness and density of sectioned roots. *J Oral Dent Health.* 2017;1(3):1-4.
21. Carrigan PJ, Morse DR, Furst ML, Sinai IH. A scanning electron microscopic evaluation of human dentinal tubules according to age and location. *J Endod.* 1984;10(8):359-63. [https://doi.org/10.1016/s0099-2399\(84\)80155-7](https://doi.org/10.1016/s0099-2399(84)80155-7) PMID:6590745
22. Ma J, Shen Y, Yang Y, Gao Y, Wan P, Gan Y, et al. *In vitro* study of calcium hydroxide removal from mandibular molar root canals. *J Endod.* 2015;41(4):553-8. <https://doi.org/10.1016/j.joen.2014.11.023> PMID:25596727
23. De-Deus G, Gurgel-Filho ED, Maniglia-Ferreira C, Coutinho-Filho T. Influence of the filling technique on depth of tubular penetration of root canal sealer: A scanning electron microscopy study. *Braz J Oral Sci.* 2016;12:433-8. <https://doi.org/10.1111/j.1747-4477.2004.tb00164.x>
24. Gutmann JL. Adaptation of injected thermoplasticized gutta-percha in the absence of the dentinal smear layer. *Int Endod J.* 1993;26(2):87-92. <https://doi.org/10.1111/j.1365-2591.1993.tb00548.x> PMID:8330939
25. Kumar VR, Bahuguna N, Manan R. Comparison of efficacy of various root canal irrigation systems in removal of smear layer generated at apical third: An SEM study. *J Conserv Dent.* 2015;18(3):252-6. <https://doi.org/10.4103/0972-0707.157267> PMID:26069415
26. Montero-Miralles P, Castillo-Oyague R, de la Fuente IS, Lynch CD, Castillo-Dali G, Torres-Lagares D. Effect of the Nd:YAG laser on sealer penetration into root canal surfaces: A confocal microscope analysis. *J Dent.* 2014;42(6):753-9. <https://doi.org/10.1016/j.jdent.2014.03.017> PMID:24721523