

Association of Adverse Outcomes With Emotion Processing and Its Neural Substrate in Individuals at Clinical High Risk for Psychosis

Gemma Modinos, PhD; Matthew J. Kempton, PhD; Stefania Tognin, PhD; Maria Calem, PhD; Lilla Porffy, MSc; Mathilde Antoniadou, PhD; Ava Mason, MSc; Matilda Azis, PhD; Paul Allen, PhD; Barnaby Nelson, PhD; Patrick McGorry, MD, PhD; Christos Pantelis, MD; Anita Riecher-Rössler, MD; Stefan Borgwardt, MD; Rodrigo Bressan, MD, PhD; Neus Barrantes-Vidal, PhD; Marie-Odile Krebs, MD, PhD; Merete Nordentoft, MD, PhD; Birte Glenthøj, MD, DMSc; Stephan Ruhrmann, MD; Gabriele Sachs, MD; Bart Rutten, MD, PhD; Jim van Os, MD, PhD; Lieuwe de Haan, MD, PhD; Eva Velthorst, PhD; Mark van der Gaag, PhD; Lucia R. Valmaggia, PhD; Philip McGuire, MD, PhD; for the EU-GEI High Risk Study Group

+ Supplemental content

IMPORTANCE The development of adverse clinical outcomes in patients with psychosis has been associated with behavioral and neuroanatomical deficits related to emotion processing. However, the association between alterations in brain regions subserving emotion processing and clinical outcomes remains unclear.

OBJECTIVE To examine the association between alterations in emotion processing and regional gray matter volumes in individuals at clinical high risk (CHR) for psychosis, and the association with subsequent clinical outcomes.

DESIGN, SETTING, AND PARTICIPANTS This naturalistic case-control study with clinical follow-up at 12 months was conducted from July 1, 2010, to August 31, 2016, and collected data from 9 psychosis early detection centers (Amsterdam, Basel, Cologne, Copenhagen, London, Melbourne, Paris, The Hague, and Vienna). Participants (213 individuals at CHR and 52 healthy controls) were enrolled in the European Network of National Schizophrenia Networks Studying Gene-Environment Interactions (EU-GEI) project. Data were analyzed from October 1, 2018, to April 24, 2019.

MAIN MEASURES AND OUTCOMES Emotion recognition was assessed with the Degraded Facial Affect Recognition Task. Three-Tesla magnetic resonance imaging scans were acquired from all participants, and gray matter volume was measured in regions of interest (medial prefrontal cortex, amygdala, hippocampus, and insula). Clinical outcomes at 12 months were evaluated for transition to psychosis using the Comprehensive Assessment of At-Risk Mental States criteria, and the level of overall functioning was measured through the Global Assessment of Functioning [GAF] scale.

RESULTS A total of 213 individuals at CHR (105 women [49.3%]; mean [SD] age, 22.9 [4.7] years) and 52 healthy controls (25 women [48.1%]; mean [SD] age, 23.3 [4.0] years) were included in the study at baseline. At the follow-up within 2 years of baseline, 44 individuals at CHR (20.7%) had developed psychosis and 169 (79.3%) had not. Of the individuals at CHR reinterviewed with the GAF, 39 (30.0%) showed good overall functioning (GAF score, ≥ 65), whereas 91 (70.0%) had poor overall functioning (GAF score, < 65). Within the CHR sample, better anger recognition at baseline was associated with worse functional outcome (odds ratio [OR], 0.88; 95% CI, 0.78-0.99; $P = .03$). In individuals at CHR with a good functional outcome, positive associations were found between anger recognition and hippocampal volume ($z = 3.91$; familywise error [FWE] $P = .02$) and between fear recognition and medial prefrontal cortex volume ($z = 3.60$; FWE $P = .02$), compared with participants with a poor outcome. The onset of psychosis was not associated with baseline emotion recognition performance (neutral OR, 0.93; 95% CI, 0.79-1.09; $P = .37$; happy OR, 1.03; 95% CI, 0.84-1.25; $P = .81$; fear OR, 0.98; 95% CI, 0.85-1.13; $P = .77$; anger OR, 1.00; 95% CI, 0.89-1.12; $P = .96$). No difference was observed in the association between performance and regional gray matter volumes in individuals at CHR who developed or did not develop psychosis (FWE $P < .05$).

CONCLUSIONS AND RELEVANCE In this study, poor functional outcome in individuals at CHR was found to be associated with baseline abnormalities in recognizing negative emotion. This finding has potential implications for the stratification of individuals at CHR and suggests that interventions that target socioemotional processing may improve functional outcomes.

JAMA Psychiatry. 2020;77(2):190-200. doi:10.1001/jamapsychiatry.2019.3501
Published online November 13, 2019.

Author Affiliations: Author affiliations are listed at the end of this article.

Group Information: The members of the EU-GEI High Risk Study Group appear at the end of the article.

Corresponding Author: Gemma Modinos, PhD, Institute of Psychiatry, Psychology & Neuroscience, King's College London, SE5 8AF London, United Kingdom (gemma.modinos@kcl.ac.uk).

Psychotic disorders are associated with socioemotional dysfunction, which manifests as emotion perception and expression deficits and heightened emotional responsivity¹ and represents a relatively poor prognosis.²⁻⁴ Neuroimaging studies in established schizophrenia indicate that socioemotional dysfunction is associated with functional⁵⁻¹³ and structural¹⁴⁻¹⁶ alterations within a corticolimbic circuit that includes the medial prefrontal cortex (MPFC), amygdala, hippocampus, and insula, consistent with postmortem evidence implicating these regions in the disorder.¹⁷ Preclinical studies in animal models of psychosis suggest that targeting corticolimbic dysregulation during the premorbid phase may prevent the emergence of schizophrenia-like features in adulthood.^{18,19} Human participants at clinical high risk (CHR) for psychosis also show deficits in emotion processing²⁰⁻²² and hyperactivation within corticolimbic regions during emotional tasks²³⁻²⁵ that are qualitatively similar to those seen in patients with schizophrenia. However, the association between alterations in brain regions subserving emotion processing and clinical outcomes in individuals at CHR for psychosis remains unclear.

The primary aim of the present study was to examine the association between emotion processing, gray matter volume (GMV) in brain areas implicated in emotion processing, and clinical and functional outcomes in individuals at CHR for psychosis. We assessed emotion recognition and regional GMVs in individuals at CHR and healthy controls, and we evaluated clinical and functional outcomes in the CHR sample after 12 months of follow-up. We tested the hypothesis that in individuals at CHR, adverse clinical outcomes (the subsequent onset of psychosis or a poor level of functioning) would be associated with abnormalities in emotion recognition (happy, angry, fearful, and neutral faces) and decreased GMV in corticolimbic areas (MPFC, amygdala, hippocampus, and insula) at baseline.^{15,26}

Methods

Participants

In this case-control study, baseline neuroimaging and emotion processing data and clinical and functional outcomes were collected from 9 psychosis early detection centers (Amsterdam, the Netherlands; Basel, Switzerland; Cologne, Germany; Copenhagen, Denmark; London, United Kingdom; Melbourne, Australia; Paris, France; The Hague, the Netherlands; and Vienna, Austria) from July 1, 2010, to August 31, 2016, as part of the European Network of National Schizophrenia Networks Studying Gene-Environment Interactions (EU-GEI) project.²⁷ The present study included the subset of individuals from the total EU-GEI sample (345 help-seeking individuals at CHR and 66 healthy controls) for whom both neuroimaging and emotional processing data were available; eTable 1 in the [Supplement](#) shows basic characteristics of individuals in and out of the study). Ethical approval for this study was obtained from the local research ethics committees at each of the 9 sites. All participants provided written informed consent.

Key Points

Question Is altered emotion recognition associated with adverse clinical and functional outcomes in people at clinical high risk for psychosis?

Findings In this case-control study of 213 individuals at clinical high risk for psychosis and 52 healthy participants, abnormalities in the recognition of negative emotion at baseline were associated with neuroanatomical alterations in the medial prefrontal cortex and hippocampus and with a low level of functioning at a 12-month follow-up.

Meaning This study found that, in people with high risk for developing psychosis, functional outcomes are associated with the degree to which their emotion processing is altered.

Inclusion and Exclusion Criteria and Baseline Measures

Whether participants met CHR criteria was assessed with the Comprehensive Assessment of At-Risk Mental States (CAARMS).²⁸ Exclusion criteria were past or present diagnosis of psychotic disorders, past or present neurological disorder, substance abuse or dependence according to *DSM-IV* criteria, contraindication to scanning, or estimated IQ lower than 60. Healthy controls could not meet the criteria for CHR or have a reported personal or (first-degree) family history of a psychiatric or neurological disorder. Individuals who met CHR criteria and were being treated with antipsychotic medication were not excluded as long as this medication had not been prescribed for a psychotic episode. Data on age, sex, race/ethnicity, and years of education were obtained from the Medical Research Council Sociodemographic Schedule.²⁹ At baseline, trained raters assessed participants using the CAARMS²⁸ and the Global Assessment of Functioning (GAF) scale (score range: 0-100, with the highest score indicating superior functioning and no symptoms).³⁰ Interrater reliability was assessed with mandatory rating of online CAARMS and GAF training videos (eMethods and eTable 2 in the [Supplement](#)). Estimated IQ was identified using the shortened Wechsler Adult Intelligence Scale,³¹ cannabis use (yes or no) was assessed with the modified Cannabis Experiences Questionnaire,³² and tobacco (cigarettes per day) and alcohol (drinks per week) use were recorded with the Composite International Diagnostic Interview.³³

Emotion Recognition Assessment, MRI, and Clinical Follow-up

A computerized version of the Degraded Facial Affect Recognition (DFAR) Task³⁴ was used to assess emotion recognition performance. The task included photographs of 4 different actors (2 men and 2 women) portraying 4 different emotions: angry, happy, fearful, and neutral. The task comprised 64 trials, with 16 presentations of each of the 4 emotion categories, shown at 100% and 75% intensity to increase task difficulty.^{35,36} When a face was displayed on the computer screen, a participant indicated its emotional expression by pressing a button. A participant's DFAR task accuracy was computed on the basis of the total number of neutral, happy, fearful, and angry emotions correctly recognized; higher DFAR scores indicated

better performance. The Benton Facial Recognition Test (BFRT)³⁷ was used to control for the possibility that impaired facial affect recognition was secondary to a deficit in general facial recognition.^{35,36} Details on BFRT performance are shown in the eResults, eTable 3, and eFigure 1 in the [Supplement](#).

At baseline, 3-T magnetic resonance imaging (MRI) scans were collected from all participants and preprocessed using voxel-based morphometry³⁸ implemented on statistical parametric mapping software (SPM12; GNU General Public License). The eMethods and eFigure 2 in the [Supplement](#) provide details on MRI acquisition, quality assessment, and preprocessing. At 12 months, the level of overall functioning was assessed with the GAF scale.³⁰ Changes in GAF scores over time were also analyzed (eResults and eFigure 3 in the [Supplement](#)). Transition or nontransition to psychosis within a 2-year period after baseline was identified using the CAARMS psychosis threshold criteria (eTable 4 in the [Supplement](#)), with diagnosis confirmed by the *Structured Clinical Interview for DSM-IV Axis I Disorders*,³⁹ administered by a researcher trained in its use.

Statistical Analysis

Demographic and Clinical Data

Analyses of demographic and clinical data were performed in SPSS, version 25 (IBM Corp). The association of group with these measures was examined using 2-sample, unpaired, 2-tailed *t* tests or χ^2 tests. Effect sizes are expressed as odds ratios (OR) and considered statistically significant at 2-sided $P < .05$. Data were analyzed from October 1, 2018, to April 24, 2019.

DFAR Data and Data Integration

Binary logistic regression examined the associations between DFAR task performance and case-control status at baseline, adjusted for age, sex, IQ, site, and BFRT score.³⁶ To find the associations between DFAR performance and clinical outcomes, we dichotomized the CHR sample according to transition vs nontransition to psychosis⁴⁰ and in terms of good (GAF score ≥ 65) vs poor (GAF score < 65) overall functioning at follow-up.³⁰ A GAF score of 65 was chosen for consistency with the score in previous neuroimaging studies in CHR.^{41,42} Binary logistic regression analyses were performed (transition vs nontransition; good vs poor functioning) with the same covariates. After preprocessing, segmented, normalized, and smoothed GMV images were analyzed in a group using SPM12 to find the associations with DFAR task performance. Individual DFAR task accuracy values were entered as regressors in separate voxelwise analyses of variance to examine the interactions between group status (healthy controls vs CHR; transition vs nontransition; good vs poor functioning) and DFAR task performance on each emotion category, covarying for age, sex, IQ, scanner, and BFRT score. For the imaging analysis, the variable scanner instead of site was used. Although the DFAR task was administered at each site, participants from Amsterdam and The Hague were scanned in Amsterdam, a site that changed scanners during the EU-GEI project (eTable 5 in the [Supplement](#)). The analyses of variance also used proportional scaling of the total intracranial volume to adjust for global effects. An initial height threshold of uncorrected $P < .001$ was used to then apply small volume correction for region-of-interest analyses at a voxelwise height threshold

of familywise error (FWE) $P < .05$,⁴³ using a prespecified bilateral mask. The mask was derived from the WFU_Pitkatas toolbox in SPM12 and comprised a network implicated in emotion (MPFC, amygdala, hippocampus, and insula). The MPFC and amygdala were chosen because of their central roles in emotion processing⁴⁴⁻⁴⁶ and because emotion-processing abnormalities in schizophrenia have been associated with volumetric alterations in these regions.^{10,12,15,24,47} The hippocampus was selected because of its key role in the onset of psychosis in preclinical models⁴⁸ and volumetric decreases in this region in individuals at CHR who transition to psychosis.⁴⁹ The insula was chosen because of its involvement in emotion processing^{50,51} and its role in facial emotion recognition in individuals at CHR.²¹

Potential confounding effects of antipsychotic or antidepressant medication (yes or no), substance use (tobacco, cannabis, or alcohol), or baseline levels of CAARMS anxiety or depression symptom severity on regions showing statistically significant DFAR-GMV interactions were assessed in SPSS (antidepressants, substances, and CAARMS anxiety or depression) or SPM (antipsychotic drugs) (eResults in the [Supplement](#)). Because our hypotheses involved the association between DFAR-GMV interactions with clinical outcomes, only participants for whom these data were available were included in the present study. Group differences in GMV are currently under analysis (M. J. Kempton, PhD, unpublished data, 2019). Analysis of DFAR task performance and GMV by site or scanner is shown in eTable 6 in the [Supplement](#). Sensitivity analyses data are reported in the eResults, eTables 7 and 8, and eFigures 4 and 5 in the [Supplement](#).

Results

Demographic and Clinical Data

At baseline, the participants who had MRI and DFAR data and therefore were included in the study were 213 help-seeking individuals at CHR for psychosis (105 women [49.3%]; mean [SD] age, 22.9 [4.7] years) and 52 healthy controls (25 women [48.1%]; mean [SD] age, 23.3 [4.0] years) (Table 1). Of the 213 individuals at CHR, 193 (90.6%) were naive to antipsychotic medication, and the remaining 20 (9.4%) were receiving low doses of antipsychotics (< 1.5 mg haloperidol chlorpromazine equivalents per day). The CHR and healthy control groups did not differ statistically significantly in age ($t = 0.596$; $P = .55$), sex ($\chi^2 = 0.025$; $P = .88$), race/ethnicity ($\chi^2 = 9.023$; $P = .11$), BFRT score ($t = -0.005$; $P = .99$), cigarettes ($t = -1.913$; $P = .06$), alcohol ($t = -0.304$; $P = .76$), or cannabis ($\chi^2 = 0.403$; $P = .53$) use. However, individuals at CHR had fewer years of education ($t = 3.639$; $P < .001$) and lower IQ ($t = 5.051$; $P < .001$).

Clinical Outcomes and Facial Emotional Processing

After 12 months, 39 of the 130 individuals (30.0%) at CHR reinterviewed with the GAF at follow-up had good overall functioning (CHR-GO), whereas 91 (70.0%) had poor overall functioning (CHR-PO). No significant differences at baseline were observed in any clinical or demographic measures between these subgroups (Table 1). Within the 2 years after baseline, 44 individuals at CHR (20.7%) had developed a first episode of

Table 1. Baseline Demographic, Clinical, and Medication Characteristics of Participants

Measure	HC Group (n = 52)	CHR Group (n = 213)	P Value	CHR-NT Group (n = 169)	CHR-T Group (n = 44)	P Value	CHR-GO Group (n = 39)	CHR-PO Group (n = 91)	P Value
Age, mean (SD), y	23.3 (4.0)	22.9 (4.7)	.55	23.0 (4.7)	22.6 (4.7)	.59	23.5 (4.7)	23.1 (5.0)	.66
Sex, No.									
Male	27	108		83	25		20	50	
Female	25	105	.88	86	19	.36	19	41	.70
Years of education, mean (SD)	16.3 (2.9)	14.6 (3.1)	<.001	14.7 (3.1)	14.3 (3.0)	.53	15.5 (2.8)	15.0 (3.2)	.42
Race/ethnicity (% white), %	65.4	72.8	.11	72.8	72.7	.98	71.8	76.9	.41
CAARMS score, mean (SD)									
Positive	0.7 (1.6)	9.9 (4.2)	<.001	9.8 (4.4)	10.6 (3.6)	.24	9.7 (4.5)	10.3 (4.1)	.46
Negative	0.8 (1.7)	7.2 (3.4)	<.001	7.1 (3.5)	7.3 (3.4)	.72	7.3 (3.5)	7.6 (3.2)	.70
Anxiety	0.6 (1.1)	3.1 (1.6)	<.001	3.1 (1.6)	3.2 (1.6)	.84	3.1 (1.6)	3.2 (1.5)	.86
Depression	0.4 (0.9)	3.4 (1.3)	<.001	3.4 (1.3)	3.5 (1.4)	.62	3.3 (1.1)	3.5 (1.2)	.41
Baseline GAF score, mean (SD)	87.2 (9.1)	54.0 (10.0)	<.001	53.7 (9.6)	55.3 (11.6)	.41	53.8 (8.7)	54.2 (11.1)	.86
Antipsychotic drugs, No.									
Total	52	167		131	36		31	72	
No	52	147	NA	122	25	<.001	30	62	.12
Yes	0	20		9	11		1	10	
Antidepressants, No.									
Total	52	167		131	36		31	72	
No	52	102	NA	79	23	.70	22	42	.23
Yes	0	65		52	13		9	30	
Psychological treatment, No. ^a									
Total	51	193		153	40		33	85	
No	47	117	<.001	87	30	.04	20	49	.77
Yes	4	76		66	10		13	36	
Total intracranial volume, mean (SD), mm ³	1 493 654.5 (178 968.1)	1 493 871.5 (180 458.9)	.99	1 498 994.0 (178 703.8)	1 474 196.6 (187 846.8)	.42	1 543 165.2 (169 397.6)	1 492 014.2 (192 273.4)	.15
BFRT score, mean (SD)	22.3 (2.3)	22.3 (2.2)	.99	22.2 (2.2)	23.1 (1.8)	.01	22.3 (2.1)	22.3 (2.3)	.99

Abbreviations: BFRT, Benton Facial Recognition Test; CAARMS, Comprehensive Assessment of At-Risk Mental States; CHR, clinical high risk; CHR-GO, clinical high risk with good overall functioning (GAF \geq 65); CHR-NT, clinical high risk–nontransitioned; CHR-PO, clinical high risk with poor overall functioning (GAF <65); CHR-T, clinical high risk–transitioned; DFAR, Degraded Facial Affect Recognition; GAF, Global Assessment of Functioning scale (score range:

0–100, with the highest score indicating superior functioning and no symptoms); HC, healthy controls; MRI, magnetic resonance imaging; NA, not applicable.

^a Psychological treatment included counseling sessions, cognitive behavioral therapy, family therapy, psychoeducation, or other form of therapy.

Table 2. Group Differences in Facial Emotion Recognition^a

DFAR Task	HC Group (n = 52) vs CHR Group (n = 213)		CHR-GO Group (n = 39) vs CHR-PO Group (n = 91)		CHR-NT Group (n = 169) vs CHR-T Group (n = 44)	
	OR (95% CI)	P Value	OR (95% CI)	P Value	OR (95% CI)	P Value
Neutral	1.02 (0.86–1.21)	.82	1.03 (0.85–1.24)	.77	0.93 (0.79–1.09)	.37
Happy	1.01 (0.83–1.23)	.91	0.96 (0.76–1.21)	.70	1.03 (0.84–1.25)	.81
Fear	0.89 (0.77–1.02)	.10	1.13 (0.96–1.32)	.13	0.98 (0.85–1.13)	.77
Anger	1.08 (0.96–1.22)	.22	0.88 (0.78–0.99)	.03	1.00 (0.89–1.12)	.96

Abbreviations: CHR, clinical high risk; CHR-GO, clinical high risk with good overall functioning (GAF \geq 65); CHR-NT, clinical high risk–nontransitioned; CHR-PO, clinical high risk with poor overall functioning (GAF <65); CHR-T, clinical high risk–transitioned; DFAR, Degraded Facial Affect Recognition;

GAF, Global Assessment of Functioning scale; HC, healthy controls; OR, odds ratio.

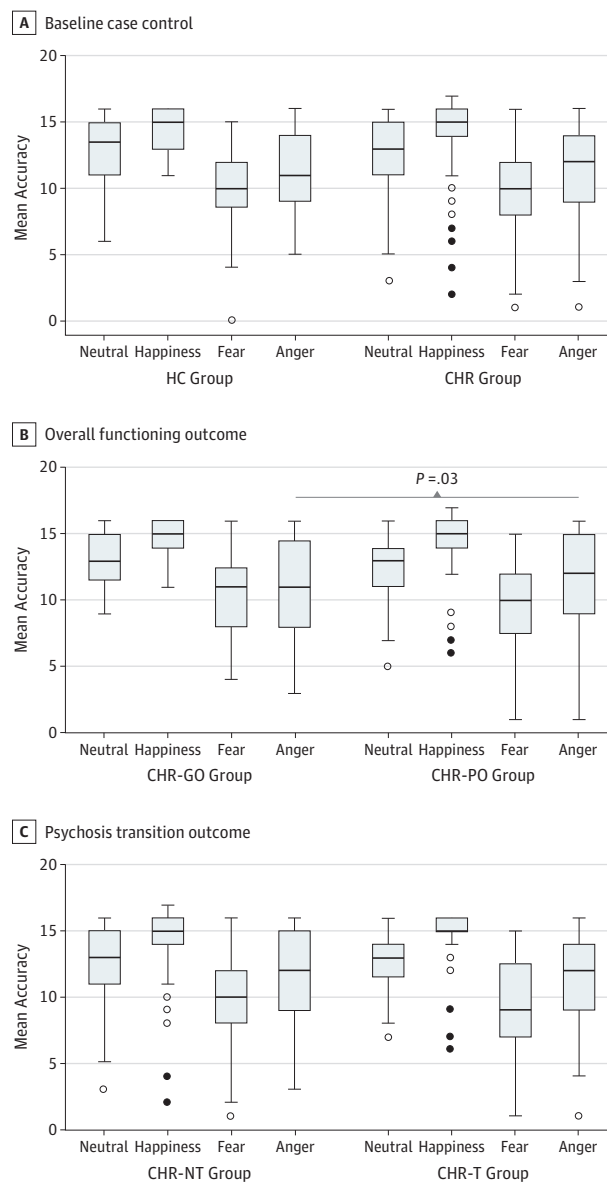
^a Adjusted for age, sex, IQ, site, and general facial recognition.

psychosis or transitioned (CHR-T). The mean (SD) time to transition in the CHR-T group was 296.3 (257.6) days. Among individuals at CHR, 169 (79.3%) did not develop psychosis within this period, or nontransitioned (CHR-NT). At baseline, the only significant difference in clinical or demographic measures between the CHR-NT and the CHR-T subgroups was that the CHR-T group had a higher BFRT score ($t = -2.470$; $P = .01$) and included more individuals receiving low doses of antipsychotic medications ($\chi^2 = 15.028$; $P < .001$) (Table 1). The dis-

tribution of individuals in the CHR-NT or CHR-T groups among the CHR-GO and CHR-PO follow-up groups is shown in eFigure 6 in the Supplement.

At baseline, DFAR task accuracy did not differ for any emotion between the healthy control and the total CHR groups independent of outcomes (Table 2 and Figure 1A). However, within the CHR sample, anger recognition at baseline was significantly associated with the level of functioning at 12-month follow-up; anger recognition was abnormal in the

Figure 1. Group Differences in Emotion Recognition



A, The healthy control (HC) group comprised 52 participants, and the clinical high risk (CHR) group comprised 213 participants. B, The CHR with good overall functioning (CHR-GO) group comprised 39 participants, and the CHR with poor overall functioning (CHR-PO) group comprised 91 participants. C, The CHR-nontransitioned (CHR-NT) group comprised 169 outcomes, and the CHR-transitioned (CHR-T) group comprised 44 outcomes. The group differences were adjusted for age, sex, IQ, site, and general facial recognition. The horizontal line in each box represents the median; top and bottom box borders, 75th and 25th percentiles, respectively; whiskers, 90th and 10th percentiles; white circles, out values; and black circles, far out values.

CHR-PO group compared with the CHR-GO group (OR, 0.88; 95% CI, 0.78-0.99; $P = .03$; Table 2 and Figure 1B). No significant associations were observed with CHR-NT and CHR-T outcomes (Table 2 and Figure 1C). See eTable 9 in the Supplement for analysis of potential confounders.

DFAR and GMV Data Integration

At baseline, a significant group \times DFAR happy \times GMV interaction was observed in the left MPFC ($x, y, z = -12, 54, 0$; $z = 4.01$; FWE $P = .03$). In healthy controls, a negative correlation between the recognition of happiness and MPFC volume was found, which was absent in the CHR sample (Figure 2A). Similarly, a significant group \times GMV interaction in the MPFC for DFAR anger was observed ($x, y, z = 0, 60, 18$; $z = 3.83$; FWE $P = .049$), reflecting a positive correlation between the recognition of anger and GMV in the MPFC among healthy controls that was absent in individuals at CHR (Figure 2B). No other significant interactions with neutral or fearful emotion were found.

Functional Outcome and Transition to Psychosis

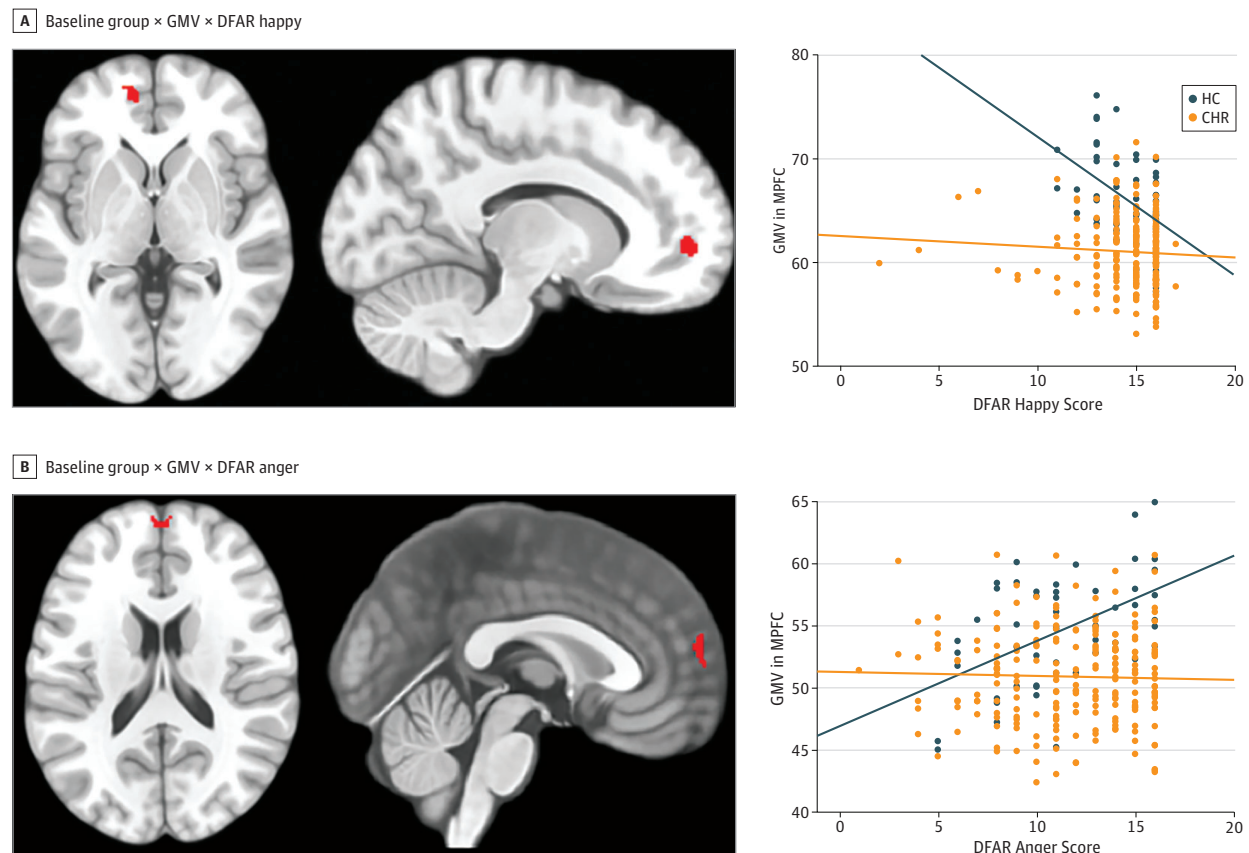
Subdivision of the CHR sample according to level of functioning at follow-up revealed that participants in the CHR-GO group showed a positive association between anger recognition and left hippocampal volume ($x, y, z = -32, -40, -3$; $z = 3.91$; FWE $P = .02$) and between fear recognition and left MPFC volume ($x, y, z = -12, 38, -9$; $z = 3.60$; FWE $P = .02$), compared with participants in the CHR-PO group (Figure 3). No other significant group interactions with neutral or happy emotion were observed. No significant group \times DFAR \times GMV interactions based on transition vs nontransition outcomes were found. Analysis of the potential confounders on all DFAR \times GMV interaction data (at baseline and follow-up) rendered the results largely unchanged (eResults; eTable 10; and eFigures 7, 8, and 9 in the Supplement).

The onset of psychosis was not associated with baseline emotion recognition performance (neutral OR, 0.93; 95% CI, 0.79-1.09; $P = .37$; happy OR, 1.03; 95% CI, 0.84-1.25; $P = .81$; fear OR, 0.98; 95% CI, 0.85-1.13; $P = .77$; anger OR, 1.00; 95% CI, 0.89-1.12; $P = .96$). No difference was observed in the association between performance and regional GMVs in individuals at CHR who developed or did not develop psychosis (FWE $P < .05$).

Discussion

To our knowledge, this case-control study is the first to assess the association between alterations in emotion processing and clinical and functional outcomes in individuals at CHR for psychosis. We studied a large sample of participants at CHR, most of whom were not taking antipsychotic drugs. The main finding was that, in individuals at CHR, a poor functional outcome was associated with baseline abnormalities in both the recognition of angry emotion and in GMV in brain regions implicated in the processing of anger and fear. More specifically, compared with individuals at CHR with poor overall functioning, individuals at CHR with a good functional outcome showed a statistically significant positive association between anger recognition and hippocampal volume as well as between fear recognition and MPFC volume. No associations were found between alterations in emotional processing or in brain regions implicated in emotional processing and the subsequent onset of psychosis in individuals at CHR. However, in healthy controls at baseline, emotion recognition (eg, happy

Figure 2. Baseline Associations Between Emotion Recognition (DFAR), Gray Matter Volume (GMV), and Group Status



The healthy control (HC; blue) group comprised 52 participants, and the clinical high risk (CHR; orange) group comprised 213 participants. Baseline associations were adjusted for age, sex, IQ, scanner, and general facial recognition (familywise error $P < .05$). MPFC indicates medial prefrontal cortex;

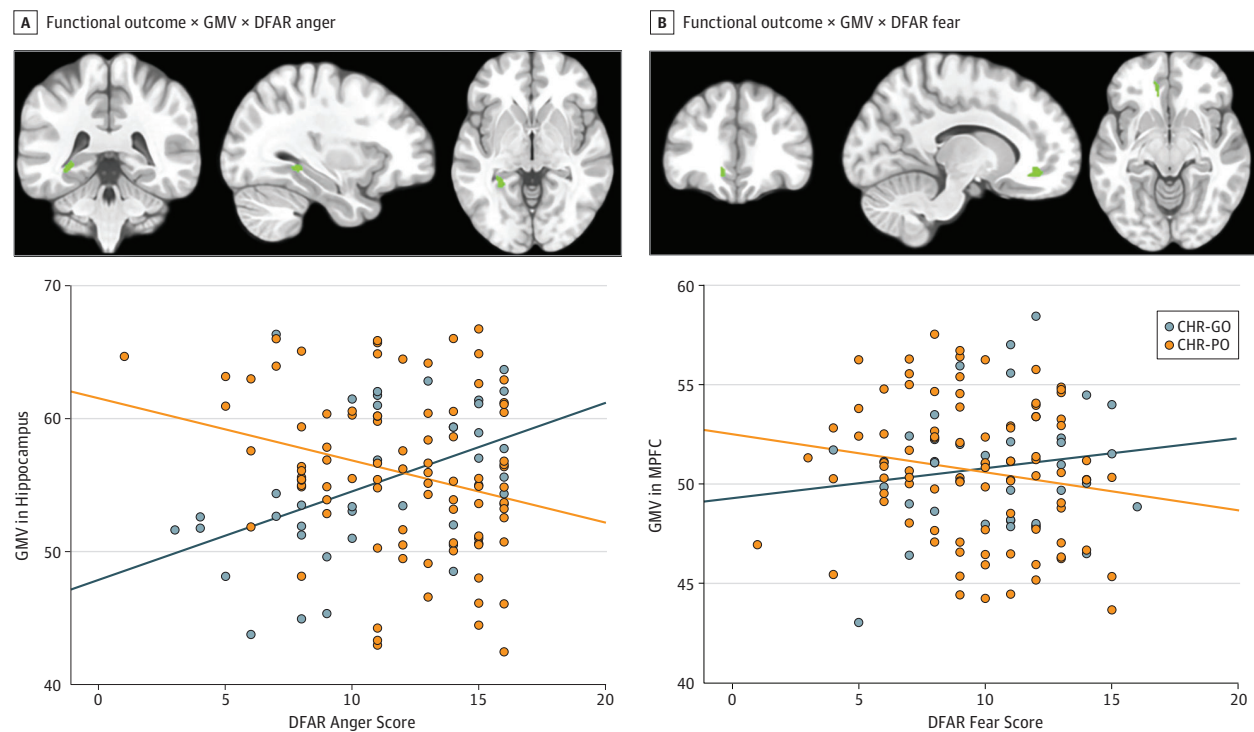
DFAR, degraded facial affect recognition. Orange marks are the statistical parametric maps of the interactions between GMV, DFAR performance, and group overlaid on a standard T1 template in MRICron software (NITRC).

or angry) was significantly associated with MPFC volume, and these associations were absent in the CHR sample. These findings were observed after adjusting for age, sex, scanner, IQ, and BFRT score and remained largely unchanged after removing participants at CHR taking low doses of antipsychotic medications, as well as when examining potential effects of antidepressants or substance use. Overall, these findings suggest that emotional dysfunction and related brain regions may play a role in the development of adverse functional outcomes in individuals at increased risk for psychosis.

Consistent with the main hypothesis is the finding that, in individuals at CHR, a low level of overall functioning at follow-up was associated with baseline alterations in the recognition of angry emotion and decreased anger- and fear-related hippocampal and MPFC volume. Aberrant emotion recognition is a robust factor in poor social⁵² and functional⁵³ outcomes in patients with schizophrenia. The hippocampus plays a key role in the pathophysiological process of schizophrenia,⁵⁴ but the clinical and functional importance of changes in this region is still unclear.⁵⁵ Abnormal hippocampal volume has been associated with lower global functioning in both schizophrenia^{56,57} and first-

episode psychosis.⁵⁸ In CHR samples, poor functional outcomes have been associated with increased hippocampal glutamate levels,⁴² increased resting hippocampal perfusion,⁵⁹ and altered hippocampal activation.⁴¹ Decreased MPFC volume has been associated with altered emotional processing in patients with schizophrenia compared with healthy controls.^{15,16,26} In terms of specific emotions, smaller prefrontal volumes have been associated with worse recognition of angry emotion in a large sample of patients with schizophrenia, a finding consistent with ours in the CHR-PO group, which found anger as the only DFAR task impairment in patients after adjusting for age, sex, estimated IQ, and BFRT score.²⁶ Furthermore, a recent study using machine learning in individuals at CHR found that baseline MPFC and temporo-parieto-occipital volume reductions were factors in socio-occupational impairments at follow-up.⁶⁰ By linking abnormalities in emotion recognition and emotion-related brain regions to adverse functional outcomes in individuals at CHR, the present study provides further support for the notion that the pathophysiological process of CHR states for psychosis involves emotion-related regions.¹⁴ These findings may inform the development of

Figure 3. Associations Between 12-Month Functional Outcomes, Gray Matter Volume (GMV), and Degraded Facial Affect Recognition (DFAR)



The clinical high risk with good overall functioning (CHR-GO; blue) group comprised 39 participants, and the clinical high risk with poor overall functioning (CHR-PO; orange) group comprised 91 participants. Associations adjusted for age, sex, IQ, scanner, and general facial recognition (familywise

error $P < .05$). Blue marks are the statistical parametric maps of the interactions between GMV, DFAR performance, and group overlaid on a standard T1 template in MRICron software (NITRC).

new treatments for individuals at CHR, most of whom have deficits in social and role functioning that persist after first presentation.^{61,62}

The subsequent onset of psychosis was not associated with abnormalities in either emotion recognition or emotion-related brain regions. This finding was unexpected given that impaired facial emotion recognition has been reported in patients with established schizophrenia^{63,64} and first-episode psychosis,^{35,65,66} and a previous study in at-risk youths reported that lower baseline emotion recognition was associated with psychosis transition.⁶⁷ Nevertheless, these findings are in line with those from another large study of individuals at CHR, which found no association between baseline emotion recognition and the subsequent onset of psychosis,⁶⁸ and with recent meta-analytic evidence that social cognitive deficits are not associated with the subsequent transition to psychosis.⁶⁹ Divergent results may reflect differences in the mean age of the participants and in sample size of the respective studies (23 years in the present study [$n = 213$], 16 years in Allott et al⁶⁷ [$n = 37$], and 20 years in Addington et al⁶⁸ [$n = 172$]). Another potential factor is limited statistical power. Even with relatively large CHR samples, the size of the CHR-T subgroup may be small because only some participants will develop psychosis. This small size may be less of a problem when outcome is defined by level of functioning, as the numbers of participants in subgroups with good and poor functional out-

comes may be more similar. Results of the present study suggest that altered emotion processing may predispose individuals at CHR to poor functional outcomes through interactions with prefronto-hippocampal anatomy.

Another finding was that the DFAR-GMV analysis revealed significant differences between the healthy control group and the total CHR group at baseline independent of outcomes. Within healthy controls, MPFC volume was negatively associated with happy emotion recognition, whereas anger recognition was positively associated with MPFC volume (and insula volume after removing participants taking antipsychotic medications); these associations were absent in the CHR sample. Broadly, these findings align with reports that GMV in a topographically similar MPFC region was associated with deficits in social cognitive and emotional tasks in patients with established schizophrenia.^{15,16,26} This ventral portion of the MPFC is involved in monitoring internal affective states and regulates the influence of those states on behavior.⁴⁴ The divergent directionality of the observed DFAR-GMV correlations in healthy controls (negative for happiness, and positive for anger) is interesting and merits further investigation. It may relate to different requirements for prefrontal involvement as a function of emotional valence and its associated emotion regulation requirement or goal.⁷⁰ Because no further significant associations were observed with this a priori region-of-interest analysis or in the complementary

whole-brain analysis, these results indicate that the prominent role of the MPFC in emotion recognition may be compromised in the CHR state.

Contrary to our expectations, we found no significant associations between amygdala volumes and DFAR performance between the baseline groups or in association with clinical or functional outcomes. The amygdala plays a key role in emotional processing,⁴⁶ and evidence for abnormal amygdala reactivity has been provided by several functional MRI studies that used emotion processing tasks in patients with schizophrenia.^{10,11} However, because the altered amygdala response in schizophrenia is primarily evident during implicit emotion paradigms,¹² the lack of association in this study may be attributed to the use of an explicit test (DFAR task) and may align with previous negative findings with the DFAR task by being associated with amygdala volumes in a large sample of patients with schizophrenia.²⁶ Future studies examining implicit and explicit emotion processing in CHR samples are needed to expand on this possibility.

Limitations

The present study has limitations. It assessed functional outcomes in the CHR sample at 12 months and transition or nontransition outcomes within 2 years from baseline. Although most transitions to psychosis seem to occur in this period,⁷¹ a median duration of the prodromal phase of 64 months has been reported⁷²; during a longer follow-up period, additional transitions may have been detected, which could have altered the results. Although a 20% transition rate provides reasonable power, and transition or nontransition outcomes were recorded for all participants at CHR at follow-up, the sample size may still be limited to detect an effect associated with transition. The GAF scale was used to index global functioning, which takes

into account current symptom severity and level of functioning.⁷³ Nevertheless, complementary analyses of functional outcomes adjusted for psychosis transition outcomes left the results of DFAR task performance and DFAR-GMV associations unchanged, suggesting that GAF scores captured a unique component of outcome beyond psychosis alone. Although combining multicenter data sets increases sensitivity, the application of voxel-based morphometry to large-scale investigations pooling neuroimaging data across sites has some potential limitations. We used the scanner as a covariate to mitigate against the introduction of between-center sources of variability to the data related to, for example, imaging hardware, because of evidence that this approach can suppress scanner effects even when the ratio of cases to controls was unbalanced across sites.⁷⁴ However, recently developed methods such as ComBat (a popular method in genomics for combatting batch effects when combining batches of gene expression microarray data) appear to be successful at harmonizing cortical thickness measurements obtained from multiple sites⁷⁵ and should be considered in future large-scale collaborative imaging studies.

Conclusions

This case-control study found that poor functional outcome in individuals at CHR of psychosis was associated with baseline abnormalities in the recognition of angry emotion and with abnormal associations between anger and fear emotion recognition and between hippocampal and MPFC volumes. These findings have potential implications for the stratification of individuals at CHR according to subsequent outcomes and suggest that functional outcomes might be improved by interventions that target socioemotional processing.

ARTICLE INFORMATION

Accepted for Publication: September 1, 2019.

Published Online: November 13, 2019.

doi:10.1001/jamapsychiatry.2019.3501

Open Access: This is an open access article distributed under the terms of the [CC-BY License](#).

© 2019 Modinos G et al. *JAMA Psychiatry*.

Author Affiliations: Department of Psychosis Studies, Institute of Psychiatry, Psychology & Neuroscience, King's College London, London, United Kingdom (Modinos, Kempton, Tognin, Calem, Porffy, Antoniadis, Mason, Azis, Allen, van Os, McGuire); Department of Neuroimaging, Institute of Psychiatry, Psychology & Neuroscience, King's College London, London, United Kingdom (Modinos); National Institute for Health Research, Biomedical Research Centre, London, United Kingdom (Kempton, McGuire); Department of Psychology, University of Roehampton, London, United Kingdom (Allen); Orygen, The National Centre of Excellence in Youth Mental Health, University of Melbourne, Melbourne, Victoria, Australia (Nelson, McGorry); Centre for Youth Mental Health, University of Melbourne, Melbourne, Victoria, Australia (Nelson, McGorry); Centre for Neuropsychiatric Schizophrenia Research, University of Copenhagen, Mental Health

Centre Glostrup, Copenhagen, Denmark (Pantelis, Glenthøj); Center for Clinical Intervention and Neuropsychiatric Schizophrenia Research, University of Copenhagen, Mental Health Centre Glostrup, Copenhagen, Denmark (Pantelis, Glenthøj); Department of Clinical Medicine, Faculty of Health and Medical Sciences, University of Copenhagen, Copenhagen, Denmark (Pantelis); University of Basel Psychiatric Hospital, Basel, Switzerland (Riecher-Rössler, Borgwardt); LiNC—Lab Interdisciplinar Neurociências Clínicas, Depto Psiquiatria, Escola Paulista de Medicina, Universidade Federal de São Paulo—UNIFESP, São Paulo, Brazil (Bressan); Departament de Psicologia Clínica i de la Salut (Universitat Autònoma de Barcelona), Fundació Sanitària Sant Pere Claver (Spain), Spanish Mental Health Research Network (CIBERSAM), Barcelona, Spain (Barrantes-Vidal); University of Paris, GHU-Paris, Sainte-Anne, C/JAAD, Hôpitalo-Universitaire Department SHU, Inserm U1266, Institut de Psychiatrie (CNRS 3557), Paris, France (Krebs); Mental Health Center Copenhagen, Center for Clinical Intervention and Neuropsychiatric Schizophrenia Research, Mental Health Center Glostrup, Mental Health Services in the Capital Region of Copenhagen, University of Copenhagen, Copenhagen, Denmark (Nordentoft); Center for

Clinical Intervention and Neuropsychiatric Schizophrenia Research, Mental Health Center Glostrup, Mental Health Services in the Capital Region of Copenhagen, University of Copenhagen, Copenhagen, Denmark (Nordentoft); Department of Psychiatry and Psychotherapy, University of Cologne, Cologne, Germany (Ruhmann); Department of Psychiatry and Psychotherapy, Medical University of Vienna, Vienna, Austria (Sachs); School for Mental Health and Neuroscience, Department of Psychiatry and Neuropsychology, Faculty of Health, Medicine and Life Sciences, Maastricht University, Maastricht, the Netherlands (Rutten); University Medical Centre Utrecht Brain Center, Department of Psychiatry, Utrecht University Medical Centre, Utrecht, the Netherlands (van Os); Early Psychosis Department, Amsterdam UMC, Amsterdam, the Netherlands (de Haan, Velthorst); Department of Psychiatry, Icahn School of Medicine at Mount Sinai, New York, New York (Velthorst); Amsterdam Public Mental Health Research Institute, Department of Clinical Psychology, Faculty of Behavioural and Movement Sciences, Vrije Universiteit Amsterdam, Amsterdam, the Netherlands (van der Gaag); Parnassia Psychiatric Institute, Department of Psychosis Research, The Hague, the Netherlands (van der Gaag); Institute of Psychiatry, Psychology

& Neuroscience, Department of Psychology, King's College London, London, United Kingdom (Valmaggia); South London and Maudsley National Health Service Foundation Trust, London, United Kingdom (McGuire).

Author Contributions: Dr Modinos had full access to all of the data in the study and takes responsibility for the integrity of the data and the accuracy of the data analysis.

Concept and design: Modinos, Kempton, Mason, McGorry, Krebs, Rutten, van Os, de Haan, Valmaggia, McGuire.

Acquisition, analysis, or interpretation of data:

Modinos, Kempton, Tognin, Calem, Porffy, Antoniadis, Azis, Allen, Nelson, Pantelis, Riecher-Rössler, Borgwardt, Bressan, Barrantes-Vidal, Nordentoft, Glenthøj, Ruhrmann, Sachs, Rutten, van Os, de Haan, Velthorst, van der Gaag, Valmaggia, McGuire.

Drafting of the manuscript: Modinos, Tognin, Mason, Allen.

Critical revision of the manuscript for important intellectual content: Modinos, Kempton, Tognin,

Calem, Porffy, Antoniadis, Azis, Nelson, McGorry, Pantelis, Riecher-Rössler, Borgwardt, Bressan, Barrantes-Vidal, Krebs, Nordentoft, Glenthøj, Ruhrmann, Sachs, Rutten, van Os, de Haan, Velthorst, van der Gaag, Valmaggia, McGuire.

Statistical analysis: Modinos, Kempton.

Obtained funding: McGorry, Pantelis, Riecher-Rössler, Borgwardt, Glenthøj, Ruhrmann, Rutten, van Os, van der Gaag, Valmaggia, McGuire.

Administrative, technical, or material support: Modinos, Kempton, Tognin, Calem, Porffy, Mason, Azis, Pantelis, Glenthøj, Sachs, van Os, van der Gaag, McGuire.

Supervision: Modinos, Allen, Nelson, Pantelis, Borgwardt, Bressan, Barrantes-Vidal, Krebs, Nordentoft, de Haan, Velthorst, Valmaggia, McGuire.

Other—coordination data collection Amsterdam site/IRR training: Velthorst.

Conflict of Interest Disclosures: Dr McGorry reported holding 2 patents issued (AU 2015203289; 9884034) and 2 pending (CA2773031; 15/844444). Dr Pantelis reported receiving grants from Australian National Health & Medical Research Council during the conduct of the study; grants from Lundbeck Foundation, personal fees from Lundbeck and Australia Pty Ltd; and personal fees from Lundbeck and Australia Pty Ltd outside the submitted work. Dr Riecher-Rössler reported receiving personal fees from Lundbeck and personal fees from Angelini Pharma outside the submitted work. Dr Bressan reported receiving grants from Fundação de Amparo à Pesquisa do Estado de São Paulo, The Brazilian National Council for Scientific and Technological Development, European Research Council, and Medical Research Council UK during the conduct of the study; personal fees and nonfinancial support from Janssen; personal fees from Pfizer; and personal fees from Sanofi-Aventis outside the submitted work. Dr Krebs reported receiving grants PHRC 07-118 (ICAAR study) from the French Health Ministry during the conduct of the study; participating on the boards of Roche and Janssen; and receiving financial support from Janssen, Otsuka Lundbeck Alliance, and Elsay for conference or dissemination initiatives. Dr Glenthøj reported being the leader of Lundbeck Foundation Centre of Excellence for Clinical Intervention and Neuropsychiatric Schizophrenia Research; receiving

grants from Medical Research Council and the Lundbeck Foundation during the conduct of the study; and receiving grants from The Lundbeck Foundation and H. Lundbeck A/S outside the submitted work. Dr Ruhrmann reported receiving grants from the European Community during the conduct of the study and personal fees from Boehringer Ingelheim outside the submitted work. Dr Sachs reported receiving grants from European Community Seventh Framework Program during the conduct of the study and personal fees from Lundbeck and Janssen-Cilag outside the submitted work. Dr Rutten reported receiving grants from European Union during the conduct of the study. No other disclosures were reported.

Funding/Support: The European Network of National Schizophrenia Networks Studying Gene-Environment Interactions (EU-GEI) Project is funded by grant agreement HEALTH-F2-2010-241909 (Project EU-GEI) from the European Community Seventh Framework Programme. Additional financial support was obtained from the Institut National de la Santé et de la Recherche Médicale (recurrent funding and fellowships) and by Fondation Pierre Deniker. The study received grant O8-MNP-007 from the French government Agence Nationale de la Recherche and grant AOM-07-118 (Influence of Cannabis Psychopathological Outcome in At-risk Mental State [ICAAR study]) from the French Health Ministry Programme Hospitalier de Recherche Clinique. The Sainte-Anne Hospital Center promoted the study. Dr Kempton was supported by a Medical Research Council Fellowship grant MR/J008915/1. Dr Pantelis was supported by Australia's National Health and Medical Research Council Senior Principal Research Fellowship (ID: 628386 & 1105825) and by grant R246-2016-3237 from the Lundbeck Foundation. Dr Barrantes-Vidal was supported by the Ministerio de Ciencia, Innovación e Universidades (PSI2017-87512-C2-1-R), and the Generalitat de Catalunya (2017SGR1612 and ICREA Academia Award). Dr Modinos was supported by a Sir Henry Dale Fellowship #202397/Z/16/Z, jointly funded by The Wellcome Trust and the Royal Society.

Role of the Funder/Sponsor: The funders had no role in the design and conduct of the study; collection, management, analysis, and interpretation of the data; preparation, review, or approval of the manuscript; and decision to submit the manuscript for publication.

EU-GEI High Risk Study Group: Philip McGuire, Department of Psychosis Studies, Institute of Psychiatry, Psychology & Neuroscience, King's College London; Lucia R. Valmaggia, Department of Psychology, Institute of Psychiatry, Psychology & Neuroscience, King's College London; Matthew J. Kempton, Department of Psychosis Studies, Institute of Psychiatry, Psychology & Neuroscience, King's College London; Maria Calem, Department of Psychosis Studies, Institute of Psychiatry, Psychology & Neuroscience, King's College London; Stefania Tognin, Department of Psychosis Studies, Institute of Psychiatry, Psychology & Neuroscience, King's College London; Gemma Modinos, Department of Psychosis Studies, Institute of Psychiatry, Psychology & Neuroscience, King's College London; Lieuwe de Haan, AMC, Academic Psychiatric Centre, Department Early Psychosis; Mark van der Gaag, VU University, Faculty of Behavioural and Movement Sciences, Department

of Clinical Psychology and EMGO+ Institute for Health and Care Research, and Parnassia Psychiatric Institute, Department of Psychosis Research; Eva Velthorst, AMC, Academic Psychiatric Centre, Department Early Psychosis, and Icahn School of Medicine at Mount Sinai, Department of Psychiatry; Tamar C. Kraan, AMC, Academic Psychiatric Centre, Department Early Psychosis; Daniella S. van Dam, AMC, Academic Psychiatric Centre, Department Early Psychosis; Nadine Burger, Parnassia Psychiatric Institute, Department of Psychosis Research; Barnaby Nelson, Centre for Youth Mental Health, University of Melbourne; Patrick McGorry, Centre for Youth Mental Health, University of Melbourne; G Paul Amminger, Centre for Youth Mental Health, University of Melbourne; Christos Pantelis, Center for Neuropsychiatric Schizophrenia Research (CNSR) and Center for Clinical Intervention and Neuropsychiatric Schizophrenia Research (CINS), University of Copenhagen, and University of Copenhagen, Faculty of Health and Medical Sciences, Department of Clinical Medicine; Athena Politis, Centre for Youth Mental Health, University of Melbourne; Joanne Goodall, Centre for Youth Mental Health, University of Melbourne; Anita Riecher-Rössler, University of Basel Psychiatric Hospital; Stefan Borgwardt, University of Basel Psychiatric Hospital; Charlotte Rapp, University of Basel Psychiatric Hospital; Sarah Ittig, University of Basel Psychiatric Hospital; Erich Studerus, University of Basel Psychiatric Hospital; Renata Smieskova, University of Basel Psychiatric Hospital; Rodrigo Bressan, LiNC—Lab Interdisciplinar Neurociências Clínicas, Depto Psiquiatria, Escola Paulista de Medicina, Universidade Federal de São Paulo—UNIFESP; Ary Gadelha, LiNC, Depto Psiquiatria, Escola Paulista de Medicina, UNIFESP; Elisa Brietzke, Depto Psiquiatria, Escola Paulista de Medicina, UNIFESP; Graciele Asevedo, LiNC, Depto Psiquiatria, Escola Paulista de Medicina, UNIFESP; Elson Asevedo, LiNC, Depto Psiquiatria, Escola Paulista de Medicina, UNIFESP; Andre Zugman, LiNC, Depto Psiquiatria, Escola Paulista de Medicina, UNIFESP; Neus Barrantes-Vidal, Departament de Psicologia Clínica i de la Salut (Universitat Autònoma de Barcelona), Fundació Sanitària Sant Pere Claver, Spanish Mental Health Research Network (CIBERSAM); Tecelli Domínguez-Martínez, CONACYT-Dirección de Investigaciones Epidemiológicas y Psicosociales, Instituto Nacional de Psiquiatría Ramón de la Fuente Muñiz; Manel Monsonet, Departament de Psicologia Clínica i de la Salut (Universitat Autònoma de Barcelona); Lúdia Hinojosa, Departament de Psicologia Clínica i de la Salut (Universitat Autònoma de Barcelona); Anna Racioppi, Departament de Psicologia Clínica i de la Salut (Universitat Autònoma de Barcelona); Thomas R. Kwapil, Department of Psychology, University of Illinois at Urbana-Champaign; Mathilde Kazes, University of Paris, GHU-Paris, Sainte-Anne, CJAAD, Hospitalo-Universitaire department SHU; Claire Daban, University of Paris, GHU-Paris, Sainte-Anne, CJAAD, Hospitalo-Universitaire department SHU; Julie Bourgin, University of Paris, GHU-Paris, Sainte-Anne, CJAAD, Hospitalo-Universitaire department SHU; Olivier Gay, University of Paris, GHU-Paris, Sainte-Anne, CJAAD, Hospitalo-Universitaire department SHU; Céline Mam-Lam-Fook, University of Paris, GHU-Paris, Sainte-Anne, CJAAD, Hospitalo-Universitaire

department SHU; Marie-Odile Krebs, University of Paris, GHU-Paris, Sainte-Anne, CJAAD, Hospitalo-Universitaire department SHU; Dorte Nordholm, Mental Health Center Copenhagen and CINS, Mental Health Center Glostrup, Mental Health Services in the Capital Region of Copenhagen, University of Copenhagen; Lasse Randers, Mental Health Center Copenhagen and CINS, Mental Health Center Glostrup, Mental Health Services in the Capital Region of Copenhagen, University of Copenhagen; Kristine Krakauer, Mental Health Center Copenhagen and CINS, Mental Health Center Glostrup, Mental Health Services in the Capital Region of Copenhagen, University of Copenhagen; Louise Birkedal Glenthøj, Department of Psychosis Studies, Institute of Psychiatry, Psychology & Neuroscience, King's College London, and CNSR and CINS, University of Copenhagen; Birte Glenthøj, CNSR and CINS, University of Copenhagen; Merete Nordentoft, Mental Health Center Copenhagen and CINS, Mental Health Center Glostrup, Mental Health Services in the Capital Region of Copenhagen, University of Copenhagen; Stephan Ruhrmann, Department of Psychiatry and Psychotherapy, University of Cologne; Dominika Gebhard, Department of Psychiatry and Psychotherapy, University of Cologne; Julia Arnhold, Psyberlin; Joachim Klosterkötter, Department of Psychiatry and Psychotherapy, University of Cologne; Gabriele Sachs, Department of Psychiatry and Psychotherapy, Medical University of Vienna; Iris Lasser, Department of Psychiatry and Psychotherapy, Medical University of Vienna; Bernadette Winklbaur, Department of Psychiatry and Psychotherapy, Medical University of Vienna; Philippe A Delespaul, Department of Psychiatry and Neuropsychology, School for Mental Health and Neuroscience, and Mondriaan Mental Health Trust; Bart Rutten, Department of Psychiatry and Neuropsychology, School for Mental Health and Neuroscience; Jim van Os, Department of Psychosis Studies, Institute of Psychiatry, Psychology & Neuroscience, King's College London, and Department of Psychiatry, UMC Utrecht Brain Center, Utrecht University Medical Centre.

REFERENCES

- Kring AM, Caponigro JM. Emotion in schizophrenia: where feeling meets thinking. *Curr Dir Psychol Sci*. 2010;19(4):255-259. doi:10.1177/0963721410377599
- Häfner H, Maurer K, Löffler W, an der Heiden W, Hambrecht M, Schultze-Lutter F. Modeling the early course of schizophrenia. *Schizophr Bull*. 2003;29(2):325-340. doi:10.1093/oxfordjournals.schbul.a007008
- Tso IF, Grove TB, Taylor SF. Emotional experience predicts social adjustment independent of neurocognition and social cognition in schizophrenia. *Schizophr Res*. 2010;122(1-3):156-163. doi:10.1016/j.schres.2009.12.007
- Nikolaides A, Miess S, Auvera I, Müller R, Klosterkötter J, Ruhrmann S. Restricted attention to social cues in schizophrenia patients. *Eur Arch Psychiatry Clin Neurosci*. 2016;266(7):649-661. doi:10.1007/s00406-016-0705-6
- Holt DJ, Weiss AP, Rauch SL, et al. Sustained activation of the hippocampus in response to fearful faces in schizophrenia. *Biol Psychiatry*. 2005;57(9):1011-1019. doi:10.1016/j.biopsych.2005.01.033
- Holt DJ, Kunkel L, Weiss AP, et al. Increased medial temporal lobe activation during the passive viewing of emotional and neutral facial expressions in schizophrenia. *Schizophr Res*. 2006;82(2-3):153-162. doi:10.1016/j.schres.2005.09.021
- Hall J, Whalley HC, McKirdy JW, et al. Overactivation of fear systems to neutral faces in schizophrenia. *Biol Psychiatry*. 2008;64(1):70-73. doi:10.1016/j.biopsych.2007.12.014
- Surguladze S, Russell T, Kucharska-Pietura K, et al. A reversal of the normal pattern of parahippocampal response to neutral and fearful faces is associated with reality distortion in schizophrenia. *Biol Psychiatry*. 2006;60(5):423-431. doi:10.1016/j.biopsych.2005.11.021
- Taylor SF, Phan KL, Britton JC, Liberzon I. Neural response to emotional salience in schizophrenia. *Neuropsychopharmacology*. 2005;30(5):984-995. doi:10.1038/sj.npp.1300679
- Anticevic A, Van Snellenberg JX, Cohen RE, Repovs G, Dowd EC, Barch DM. Amygdala recruitment in schizophrenia in response to aversive emotional material: a meta-analysis of neuroimaging studies. *Schizophr Bull*. 2012;38(3):608-621. doi:10.1093/schbul/sbq131
- Li HJ, Chan RC, Gong QY, et al. Facial emotion processing in patients with schizophrenia and their non-psychotic siblings: a functional magnetic resonance imaging study. *Schizophr Res*. 2012;134(2-3):143-150. doi:10.1016/j.schres.2011.10.019
- Taylor SF, Kang J, Brege IS, Tso IF, Hosanagar A, Johnson TD. Meta-analysis of functional neuroimaging studies of emotion perception and experience in schizophrenia. *Biol Psychiatry*. 2012;71(2):136-145. doi:10.1016/j.biopsych.2011.09.007
- Seiferth NY, Pauly K, Kellermann T, et al. Neuronal correlates of facial emotion discrimination in early onset schizophrenia. *Neuropsychopharmacology*. 2009;34(2):477-487. doi:10.1038/npp.2008.93
- Aleman A, Kahn RS. Strange feelings: do amygdala abnormalities dysregulate the emotional brain in schizophrenia? *Prog Neurobiol*. 2005;77(5):283-298. doi:10.1016/j.pneurobio.2005.11.005
- Hooker CI, Bruce L, Lincoln SH, Fisher M, Vinogradov S. Theory of mind skills are related to gray matter volume in the ventromedial prefrontal cortex in schizophrenia. *Biol Psychiatry*. 2011;70(12):1169-1178. doi:10.1016/j.biopsych.2011.07.027
- Yamada M, Hirao K, Namiki C, et al. Social cognition and frontal lobe pathology in schizophrenia: a voxel-based morphometric study. *Neuroimage*. 2007;35(1):292-298. doi:10.1016/j.neuroimage.2006.10.046
- Benes FM. Amygdalocortical circuitry in schizophrenia: from circuits to molecules. *Neuropsychopharmacology*. 2010;35(1):239-257. doi:10.1038/npp.2009.116
- Du Y, Grace AA. Peripubertal diazepam administration prevents the emergence of dopamine system hyperresponsivity in the MAM developmental disruption model of schizophrenia. *Neuropsychopharmacology*. 2013;38(10):1881-1888. doi:10.1038/npp.2013.101
- Du Y, Grace AA. Amygdala hyperactivity in MAM model of schizophrenia is normalized by peripubertal diazepam administration. *Neuropsychopharmacology*. 2016;41(10):2455-2462. doi:10.1038/npp.2016.42
- Phillips LK, Seidman LJ. Emotion processing in persons at risk for schizophrenia. *Schizophr Bull*. 2008;34(5):888-903. doi:10.1093/schbul/sbn085
- Kohler CG, Richard JA, Brensinger CM, et al. Facial emotion perception differs in young persons at genetic and clinical high-risk for psychosis. *Psychiatry Res*. 2014;216(2):206-212. doi:10.1016/j.psychres.2014.01.023
- Barbato M, Liu L, Cadenhead KS, et al. Theory of mind, emotion recognition and social perception in individuals at clinical high risk for psychosis: findings from the NAPLS-2 cohort. *Schizophr Res Cogn*. 2015;2(3):133-139. doi:10.1016/j.scog.2015.04.004
- Seiferth NY, Pauly K, Habel U, et al. Increased neural response related to neutral faces in individuals at risk for psychosis. *Neuroimage*. 2008;40(1):289-297. doi:10.1016/j.neuroimage.2007.11.020
- Modinos G, Tseng HH, Falkenberg I, Samson C, McGuire P, Allen P. Neural correlates of aberrant emotional salience predict psychotic symptoms and global functioning in high-risk and first-episode psychosis. *Soc Cogn Affect Neurosci*. 2015;10(10):1429-1436. doi:10.1093/scan/nsv035
- Lee SY, Bang M, Kim KR, et al. Impaired facial emotion recognition in individuals at ultra-high risk for psychosis and with first-episode schizophrenia, and their associations with neurocognitive deficits and self-reported schizotypy. *Schizophr Res*. 2015;165(1):60-65. doi:10.1016/j.schres.2015.03.026
- Maat A, van Haren NEM, Bartholomeusz CF, Kahn RS, Cahn W. Emotion recognition and theory of mind are related to gray matter volume of the prefrontal cortex in schizophrenia. *Eur Neuropsychopharmacol*. 2016;26(2):255-264. doi:10.1016/j.euroneuro.2015.12.013
- van Os J, Rutten BP, Myin-Germeyns I, et al; European Network of National Networks studying Gene-Environment Interactions in Schizophrenia (EU-GEI). Identifying gene-environment interactions in schizophrenia: contemporary challenges for integrated, large-scale investigations. *Schizophr Bull*. 2014;40(4):729-736. doi:10.1093/schbul/sbu069
- Yung AR, Yuen HP, McGorry PD, et al. Mapping the onset of psychosis: the Comprehensive Assessment of At-Risk Mental States. *Aust N Z J Psychiatry*. 2005;39(11-12):964-971. doi:10.1080/j.1440-1614.2005.01714.x
- Mallett R. *Sociodemographic Schedule*. London, UK: Section of Social Psychiatry, Institute of Psychiatry; 1997.
- Hall RC. Global assessment of functioning: a modified scale. *Psychosomatics*. 1995;36(3):267-275. doi:10.1016/S0033-3182(95)71666-8
- Velthorst E, Levine SZ, Henquet C, et al. To cut a short test even shorter: reliability and validity of a brief assessment of intellectual ability in schizophrenia—a control-case family study. *Cogn Neuropsychiatry*. 2013;18(6):574-593. doi:10.1080/13546805.2012.731390
- Barkus E, Lewis S. Schizotypy and psychosis-like experiences from recreational cannabis in a non-clinical sample. *Psychol Med*. 2008;38(9):1267-1276. doi:10.1017/S0033291707002619
- Robins LN, Wing J, Wittchen HU, et al. The composite international diagnostic interview: an epidemiologic instrument suitable for use in conjunction with different diagnostic systems and in different cultures. *Arch Gen Psychiatry*. 1988;45(12):1069-1077. doi:10.1001/archpsyc.1988.0180036017003
- van 't Wout M, Aleman A, Kessels RP, Larøi F, Kahn RS. Emotional processing in a non-clinical

- psychosis-prone sample. *Schizophr Res*. 2004;68(2-3):271-281. doi:10.1016/j.schres.2003.09.006
35. Catalan A, Gonzalez de Artaza M, Bustamante S, et al. Differences in facial emotion recognition between first episode psychosis, borderline personality disorder and healthy controls. *PLoS One*. 2016;11(7):e0160056. doi:10.1371/journal.pone.0160056
36. Fett AK, Maat A; GROUP Investigators. Social cognitive impairments and psychotic symptoms: what is the nature of their association? *Schizophr Bull*. 2013;39(1):77-85. doi:10.1093/schbul/sbr058
37. Levin HS, Hamsher KdS, Benton AL. A short form of the test of facial recognition for clinical use. *J Psychol*. 1975;91(2):223-228. doi:10.1080/00223980.1975.9923946
38. Ashburner J. VBM tutorial. <https://www.fil.ion.ucl.ac.uk/~john/misc/VBMclass15.pdf>. Published March 12, 2015. Accessed May 8, 2017.
39. First M, Spitzer R, Gibbon M, Williams JBW. *Structured Clinical Interview for DSM-IV Axis I Disorders (SCID)*. New York, NY: New York State Psychiatric Institute Biometrics Research; 1995.
40. Yung AR, Phillips LJ, McGorry PD, et al. Prediction of psychosis: a step towards indicated prevention of schizophrenia. *Br J Psychiatry Suppl*. 1998;172(33):14-20. doi:10.1192/S0007125000297602
41. Allen P, Chaddock CA, Egerton A, et al. Functional outcome in people at high risk for psychosis predicted by thalamic glutamate levels and prefronto-striatal activation. *Schizophr Bull*. 2015;41(2):429-439. doi:10.1093/schbul/sbu115
42. Bossong MG, Antoniadis M, Azis M, et al. Association of hippocampal glutamate levels with adverse outcomes in individuals at clinical high risk for psychosis. *JAMA Psychiatry*. 2019;76(2):199-207. doi:10.1001/jamapsychiatry.2018.3252
43. Eklund A, Nichols TE, Knutsson H. Cluster failure: why fMRI inferences for spatial extent have inflated false-positive rates. *Proc Natl Acad Sci U S A*. 2016;113(28):7900-7905. doi:10.1073/pnas.1602413113
44. Amodio DM, Frith CD. Meeting of minds: the medial frontal cortex and social cognition. *Nat Rev Neurosci*. 2006;7(4):268-277. doi:10.1038/nrn1884
45. Kober H, Barrett LF, Joseph J, Bliss-Moreau E, Lindquist K, Wager TD. Functional grouping and cortical-subcortical interactions in emotion: a meta-analysis of neuroimaging studies. *Neuroimage*. 2008;42(2):998-1031. doi:10.1016/j.neuroimage.2008.03.059
46. Phelps EA, LeDoux JE. Contributions of the amygdala to emotion processing: from animal models to human behavior. *Neuron*. 2005;48(2):175-187. doi:10.1016/j.neuron.2005.09.025
47. Phillips ML, Drevets WC, Rauch SL, Lane R. Neurobiology of emotion perception II: implications for major psychiatric disorders. *Biol Psychiatry*. 2003;54(5):515-528. doi:10.1016/S0006-3223(03)00171-9
48. Lieberman JA, Girgis RR, Brucato G, et al. Hippocampal dysfunction in the pathophysiology of schizophrenia: a selective review and hypothesis for early detection and intervention. *Mol Psychiatry*. 2018;23(8):1764-1772. doi:10.1038/mp.2017.249
49. Mechelli A, Riecher-Rössler A, Meisenzahl EM, et al. Neuroanatomical abnormalities that predate the onset of psychosis: a multicenter study. *Arch Gen Psychiatry*. 2011;68(5):489-495. doi:10.1001/archgenpsychiatry.2011.42
50. Singer T, Critchley HD, Preusschoff K. A common role of insula in feelings, empathy and uncertainty. *Trends Cogn Sci*. 2009;13(8):334-340. doi:10.1016/j.tics.2009.05.001
51. Fusar-Poli P, Placentino A, Carletti F, et al. Functional atlas of emotional faces processing: a voxel-based meta-analysis of 105 functional magnetic resonance imaging studies. *J Psychiatry Neurosci*. 2009;34(6):418-432.
52. Hooker C, Park S. Emotion processing and its relationship to social functioning in schizophrenia patients. *Psychiatry Res*. 2002;112(1):41-50. doi:10.1016/S0165-1781(02)00177-4
53. Fett AK, Viechtbauer W, Dominguez MD, Penn DL, van Os J, Krabbendam L. The relationship between neurocognition and social cognition with functional outcomes in schizophrenia: a meta-analysis. *Neurosci Biobehav Rev*. 2011;35(3):573-588. doi:10.1016/j.neubiorev.2010.07.001
54. Tamminga CA, Stan AD, Wagner AD. The hippocampal formation in schizophrenia. *Am J Psychiatry*. 2010;167(10):1178-1193. doi:10.1176/appi.ajp.2010.09081187
55. Heckers S, Konradi C. Hippocampal pathology in schizophrenia. *Curr Top Behav Neurosci*. 2010;4:529-553. doi:10.1007/7854_2010_43
56. Anvari AA, Friedman LA, Greenstein D, Gochman P, Gogtay N, Rapoport JL. Hippocampal volume change relates to clinical outcome in childhood-onset schizophrenia. *Psychol Med*. 2015;45(12):2667-2674. doi:10.1017/S0033291715000677
57. Andreasen NC, Nopoulos P, Magnotta V, Pierson R, Ziebell S, Ho BC. Progressive brain change in schizophrenia: a prospective longitudinal study of first-episode schizophrenia. *Biol Psychiatry*. 2011;70(7):672-679. doi:10.1016/j.biopsych.2011.05.017
58. Lappin JM, Morgan C, Chalavi S, et al. Bilateral hippocampal increase following first-episode psychosis is associated with good clinical, functional and cognitive outcomes. *Psychol Med*. 2014;44(6):1279-1291. doi:10.1017/S0033291713001712
59. Allen P, Chaddock CA, Egerton A, et al. Resting hyperperfusion of the hippocampus, midbrain, and basal ganglia in people at high risk for psychosis. *Am J Psychiatry*. 2016;173(4):392-399. doi:10.1176/appi.ajp.2015.15040485
60. Koutsouleris N, Kambaitz-Illankovic L, Ruhrmann S, et al; PRONIA Consortium. Prediction models of functional outcomes for individuals in the clinical high-risk state for psychosis or with recent-onset depression: a multimodal, multisite machine learning analysis. *JAMA Psychiatry*. 2018;75(11):1156-1172. doi:10.1001/jamapsychiatry.2018.2165
61. Lin A, Wood SJ, Nelson B, et al. Neurocognitive predictors of functional outcome two to 13 years after identification as ultra-high risk for psychosis. *Schizophr Res*. 2011;132(1):1-7. doi:10.1016/j.schres.2011.06.014
62. Addington J, Cornblatt BA, Cadenhead KS, et al. At clinical high risk for psychosis: outcome for nonconverters. *Am J Psychiatry*. 2011;168(8):800-805. doi:10.1176/appi.ajp.2011.10081191
63. Comparelli A, Corigliano V, De Carolis A, et al. Emotion recognition impairment is present early and is stable throughout the course of schizophrenia. *Schizophr Res*. 2013;143(1):65-69. doi:10.1016/j.schres.2012.11.005
64. Chan RC, Li H, Cheung EF, Gong QY. Impaired facial emotion perception in schizophrenia: a meta-analysis. *Psychiatry Res*. 2010;178(2):381-390. doi:10.1016/j.psychres.2009.03.035
65. Thompson A, Papas A, Bartholomeusz C, et al. Social cognition in clinical "at risk" for psychosis and first episode psychosis populations. *Schizophr Res*. 2012;141(2-3):204-209. doi:10.1016/j.schres.2012.08.007
66. Edwards J, Pattison PE, Jackson HJ, Wales RJ. Facial affect and affective prosody recognition in first-episode schizophrenia. *Schizophr Res*. 2001;48(2-3):235-253. doi:10.1016/S0920-9964(00)00099-2
67. Allott KA, Schäfer MR, Thompson A, et al. Emotion recognition as a predictor of transition to a psychotic disorder in ultra-high risk participants. *Schizophr Res*. 2014;153(1-3):25-31. doi:10.1016/j.schres.2014.01.037
68. Addington J, Piskulic D, Perkins D, Woods SW, Liu L, Penn DL. Affect recognition in people at clinical high risk of psychosis. *Schizophr Res*. 2012;140(1-3):87-92. doi:10.1016/j.schres.2012.06.012
69. van Donkersgoed RJ, Wunderink L, Nieboer R, Aleman A, Pijnenborg GH. Social cognition in individuals at ultra-high risk for psychosis: a meta-analysis. *PLoS One*. 2015;10(10):e0141075. doi:10.1371/journal.pone.0141075
70. Kim SH, Hamann S. Neural correlates of positive and negative emotion regulation. *J Cogn Neurosci*. 2007;19(5):776-798. doi:10.1162/jocn.2007.19.5.776
71. Fusar-Poli P, Bonoldi I, Yung AR, et al. Predicting psychosis: meta-analysis of transition outcomes in individuals at high clinical risk. *Arch Gen Psychiatry*. 2012;69(3):220-229. doi:10.1001/archgenpsychiatry.2011.1472
72. Schultze-Lutter F, Rahman J, Ruhrmann S, et al. Duration of unspecified prodromal and clinical high risk states, and early help-seeking in first-admission psychosis patients. *Soc Psychiatry Psychiatr Epidemiol*. 2015;50(12):1831-1841. doi:10.1007/s00127-015-1093-3
73. Nelson B, Yuen HP, Wood SJ, et al. Long-term follow-up of a group at ultra high risk ("prodromal") for psychosis: the PACE 400 study. *JAMA Psychiatry*. 2013;70(8):793-802. doi:10.1001/jamapsychiatry.2013.1270
74. Takao H, Hayashi N, Ohtomo K. Effects of study design in multi-scanner voxel-based morphometry studies. *Neuroimage*. 2014;84:133-140. doi:10.1016/j.neuroimage.2013.08.046
75. Fortin JP, Cullen N, Sheline YI, et al. Harmonization of cortical thickness measurements across scanners and sites. *Neuroimage*. 2018;167:104-120. doi:10.1016/j.neuroimage.2017.11.024



Minerva Access is the Institutional Repository of The University of Melbourne

Author/s:

Modinos, G; Kempton, MJ; Tognin, S; Calem, M; Porffy, L; Antoniades, M; Mason, A; Azis, M; Allen, P; Nelson, B; McGorry, P; Pantelis, C; Riecher-Rossler, A; Borgwardt, S; Bressan, R; Barrantes-Vidal, N; Krebs, M-O; Nordentoft, M; Glenthøj, B; Ruhrmann, S; Sachs, G; Rutten, B; van Os, J; de Haan, L; Velthorst, E; van der Gaag, M; Valmaggia, LR; McGuire, P; McGuire, P; Valmaggia, LR; Kempton, MJ; Calem, M; Tognin, S; Modinos, G; de Haan, L; Velthorst, E; Kraan, TC; van Dam, DS; Burger, N; Nelson, B; Riecher-Rossler, A; Amminger, GP; Politis, A; Goodall, J; Rapp, C; Borgwardt, S; Ittig, S; Studerus, E; Smieskova, R; Gadelha, A; Bressan, R; Brietzke, E; Asevedo, G; Asevedo, E; Zugman, A; Dominguez-Martinez, T; Barrantes-Vidal, N; Monsonet, M; Hinojosa, L; Racioppi, A; Kwapil, TR; Kazes, M; Daban, C; Bourgin, J; Gay, O; Mam-Lam-Fook, C; Nordholm, D; Krebs, M-O; Randers, L; Krakauer, K; Glenthøj, LB; Gebhard, D; Glenthøj, B; Nordentoft, M; Ruhrmann, S; Arnhold, J; Klosterkötter, J; Lasser, I; Sachs, G; Winklbaur, B; Delespaul, PA; Rutten, B; van Os, J

Title:

Association of Adverse Outcomes With Emotion Processing and Its Neural Substrate in Individuals at Clinical High Risk for Psychosis

Date:

2020-02-01

Citation:

Modinos, G., Kempton, M. J., Tognin, S., Calem, M., Porffy, L., Antoniades, M., Mason, A., Azis, M., Allen, P., Nelson, B., McGorry, P., Pantelis, C., Riecher-Rossler, A., Borgwardt, S., Bressan, R., Barrantes-Vidal, N., Krebs, M. -O., Nordentoft, M., Glenthøj, B. ,... van Os, J. (2020). Association of Adverse Outcomes With Emotion Processing and Its Neural Substrate in Individuals at Clinical High Risk for Psychosis. *JAMA PSYCHIATRY*, 77 (2), pp.190-200. <https://doi.org/10.1001/jamapsychiatry.2019.3501>.

Persistent Link:

<http://hdl.handle.net/11343/252291>