

Toward Implementing HH the Amir Declaration of 2% Electricity Generation by Solar Energy in 2020

Mohamed Darwish, Ashraf Hassan, Rabi Mohtar

Qatar Environment and Energy Research Institute, Doha, Qatar

Email: madarwish@qe.org.qa

Received January 10, 2013; revised February 10, 2013; accepted February 26, 2013

Copyright © 2013 Mohamed Darwish *et al.* This is an open access article distributed under the Creative Commons Attribution License, which permits unrestricted use, distribution, and reproduction in any medium, provided the original work is properly cited.

ABSTRACT

The utility solar power plants were reviewed and classified by two basic groups: direct thermal concentrating solar power (CSP) and photovoltaic (PV). CSP as Parabolic Trough Collector (PTC) of 100 MW solar power plants (SPP) is suggested and suitable to provide solar thermal power for Qatar. Although, LFC had enough experience for small projects, it is still need to work in large scale plant such as 100 MW and couple with multi effect distillation (MED) to confirm costs.

Keywords: Concentrated Solar Power; Linear Fresnel Collector; Desalination

1. Introduction

HH the Amir of Qatar declared at the end of COP 18 in Dec. 2012 that: *By 2020, solar energy should generate at least 2% of Electric Power (EP) produced in the country.*

Qatar's Power Plants (PPs) capacity in 2010 was around 8000 MW, and this is expected to be doubled in 2020, or becomes 16,000 MW. The PPs capacity was doubled in only six years in the last decade, as shown in **Figure 1**, [1]. The main operating PPs types in Qatar are Gas Turbine (GT), and GT Combined Cycle (CC). These plants have much higher Capacity Factor (CF) than Solar Power Plants, see **Figure 2**, [2]. The annual CF of the Qatar's PPs was more than 40% in 2010, because of the winter EP low load. The CF of the Solar Power Plants (SPPs) is in the range of 20%. This means that, by 2020, the total capacity of the Solar Power plants (SPPs) should have at least 640 MW in order to generate 2% of the EP. The range of CF shown in **Figure 2** is when the plants are operating as base load plants.

Solar Energy (SE) is as an attractive, available, clean, and free primary energy source. Application of SE to generate EP helps in growing new technologies and enhances energy security. Although the SPPs' are more expensive than the presently used GTCC, it is logic that Qatar supports solar energy development as this is likely to be one of the main EP generation methods in the future. Concentrated Solar Power (CSP) plants offer dispatchable power when integrated with Thermal Energy Storage (TES). The EP outputs of the SPPs match very

well with the peak load demand due to air conditioning loads during summer, as this depends on solar insolation along the day. The SPPs are increasingly moving into the range which has traditionally been the domain of classic large-scale PPs. The existing trend of falling SPPs costs would accelerate adoption of SE and reduce the need for incentives. Other advantage of using SPPs is the deep cut in the greenhouse gases emission, mainly caused by fossil fuel combustions in conventional PP. Solar collector manufacturing is conventional technology, can be manufactured locally with dropping cost as the need increases, and creates new business and jobs.

Domination of NG as primary fuel in Qatar can solve the main SE problem of intermittent nature, by using hybrid solar-NG plants. Compared to PPs using NG, the

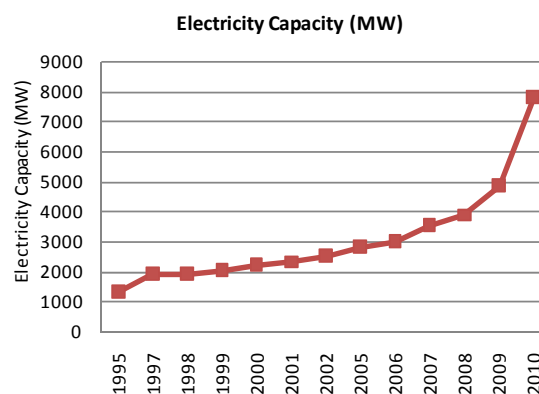


Figure 1. History of the EP installed capacity, [1].

SPPs are in their infancy, and are expected to become less expensive as technologies mature and become mass produced.

The major barrier for the technology at present is the cost of generated electricity by SE. Meanwhile, continuous increase of the NG cost, **Figure 3**, [3], is another reason for looking forward to diversify the primary energy for EP generation, and use of SE.

2. Utility Solar Power Plants (SPP) Broad Classifications

The utility-scale SPPs are generally classified by two basic groups: thermal concentrating solar power (CSP) and photovoltaic (PV). These are the types to be considered for the new SPPs in Qatar. Since the new required capacity is in the range of 640 MW, it is logic to choose plants of 50 MW - 100 MW to avoid the use too many small units.

2.1. Thermal Concentrated Solar Power (CSP) Plants

In thermal Concentrated Solar Power (CSP), solar receivers (mirrors) reflect their incident direct solar rays as concentrated rays on receivers, where Heat Transfer Fluids (HTF) is flowing. The HTF is heated to become heat source for driving heat engines, such as steam turbines, gas turbines or Stirling engines, producing EP, **Figure 4**. So, in CSP plants, only direct radiation is utilized, while diffuse type is not. The most developed and used type of concentrated solar collectors is the *Parabolic Trough*

(PTC), followed by *power tower*. Other types are the *Linear Fresnel (LFC)*, and parabolic dish operating *Stirling engine* are under development to reach commercial status at large capacities.

Another mode of SPPs' operation is the use of thermal storage. Solar heat collected during the daytime can be stored in liquid or solid media such as molten salts, ceramics, concrete or phase-change media. The stored heat can then be extracted at night for running the power block; and thus the plant becomes dispatchable. The PP's dispatchability is very crucial in PPs as the plant can respond by generating the required power as the load demand. It can be turned on or off, or can adjust their power output on demand.

The capacity of individual CSP plants is now typically between 50 and 280 MW, but could still be larger.

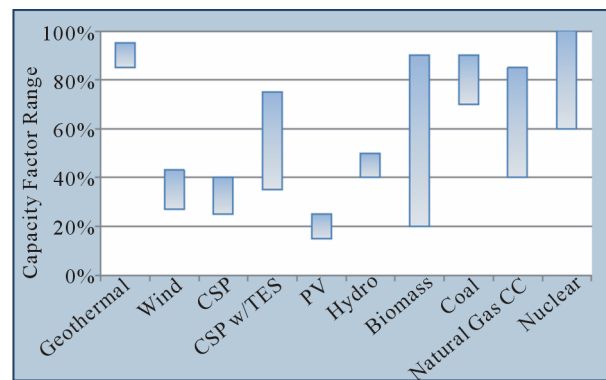


Figure 2. Comparison of capacity factor by technologies, [2].

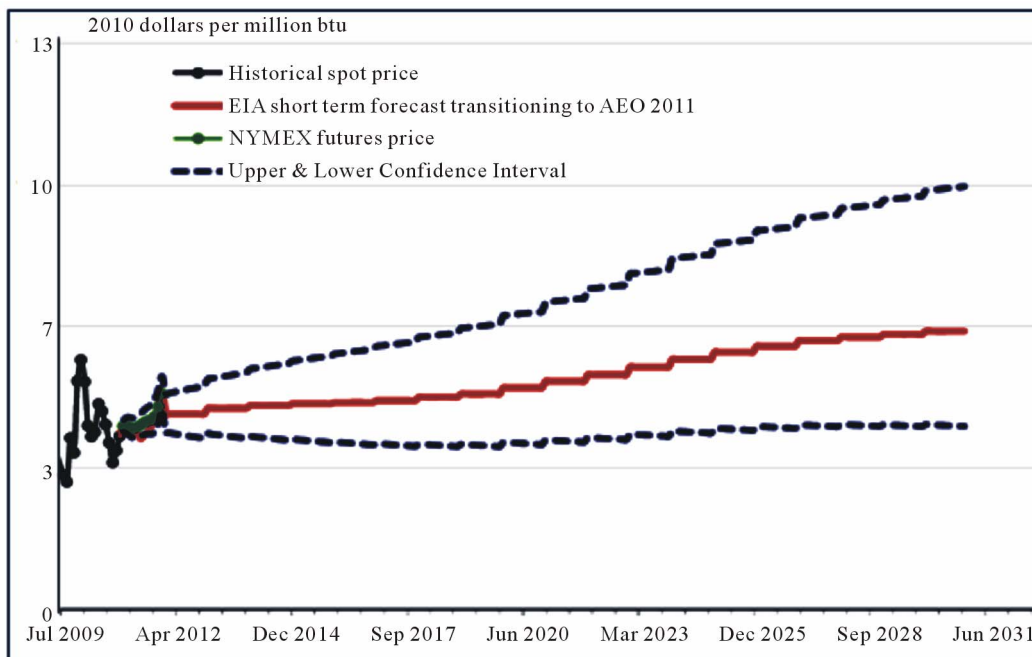


Figure 3. Henry hub wholesale natural gas price history, [3].

2.1.1. Concentrated Solar Power (CSP) Using Parabolic Trough Collectors (PTC)

The PTCs are the most used type of collectors in SPPs. The PTCs have mirrors of linear parabolic shape, reflect concentrated rays onto tube-shape receiver positioned along the reflector's focal line, and carrying the HTF, **Figure 5**, [5]. More on the PTC plants are given later. The components of the SPP using PTC and molten salt thermal energy storage are shown in **Figure 6**, [6].

2.1.2. Concentrated Solar Power (CSP) Using Linear Fresnel Collectors (LFC)

The LFC concept uses sets of long mirror facets that reflect light to a linear receiver where it can be directly absorbed to generate steam. The LFCs are much cheaper and need much lighter carrying structure to mount compared to the PTCs. The optical performance of the LFC

system is limited by the angle at which the sunlight strikes the reflectors, and because the mirrors must be oriented to reflect the irradiation to the receiver, they most often do not directly face the sun. This non-normal orientation towards the incoming sunlight is the primary optical loss for LFC, and the loss is incurred both with respect to the transversal plane (perpendicular to the axis of the collector) and longitudinal plane (parallel with the axis of the collector). This concept is illustrated in **Figures 7(a) and (b)**, [7]. **Figure 7(c)** shows the arrangement of LFC in SPP. There is growing interest in Linear Fresnel Collectors (LFC) technology as candidate for combined-cycle integration with solar energy through direct steam generation (DSG).

The first large utility-scale basis of 30 MW using Linear Fresnel Collectors (LFC) to generate steam operating power cycle was Puerto Errado 2 (PE2), [8]. The plant

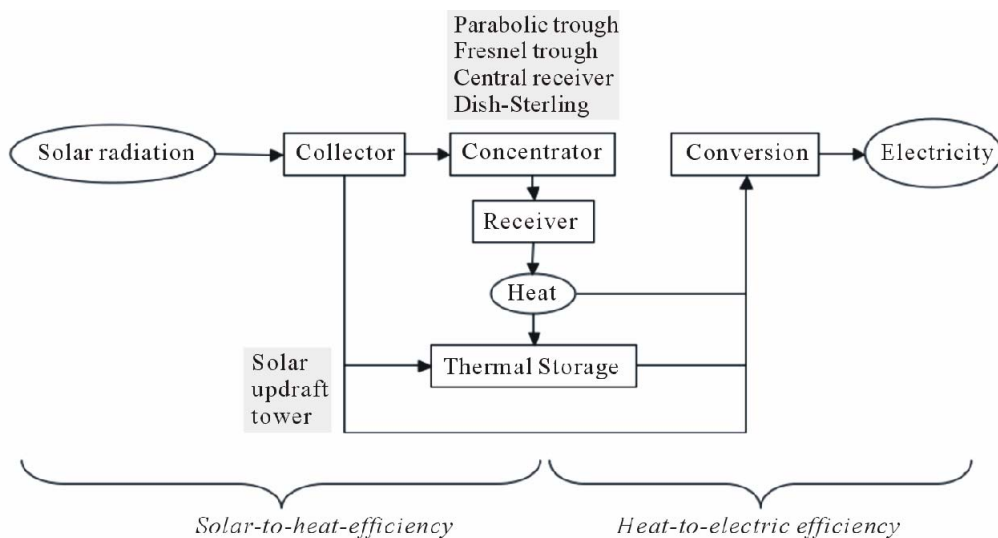


Figure 4. Schematic illustration of thermal CSP plants, [4].

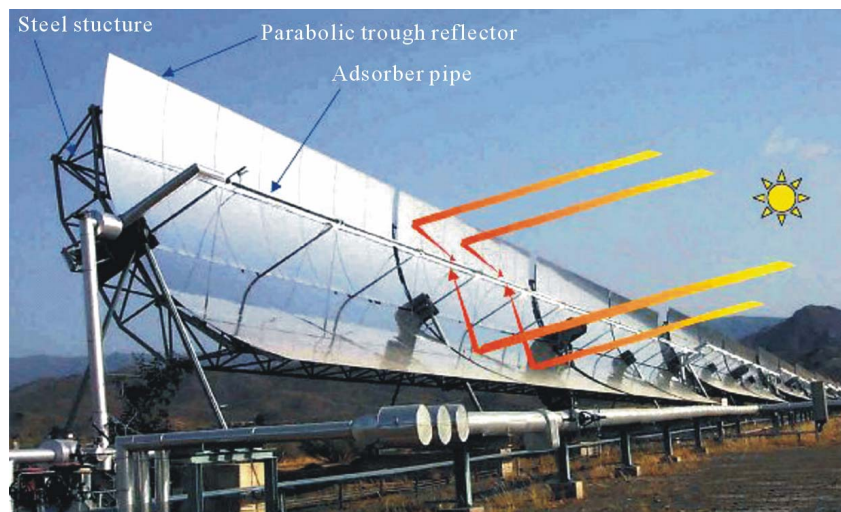


Figure 5. Photo of parabolic trough system (source: NREL), [5].

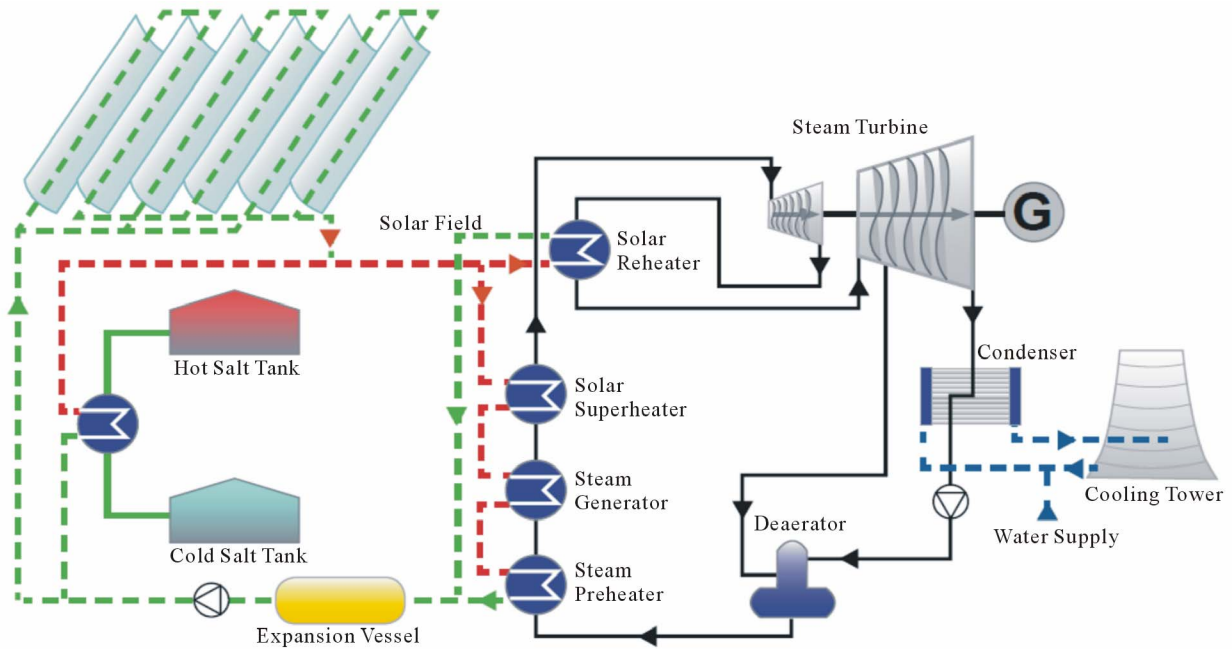
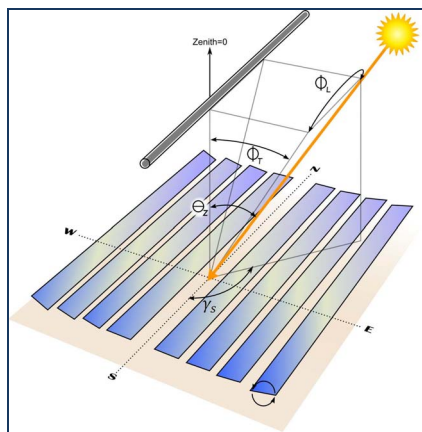
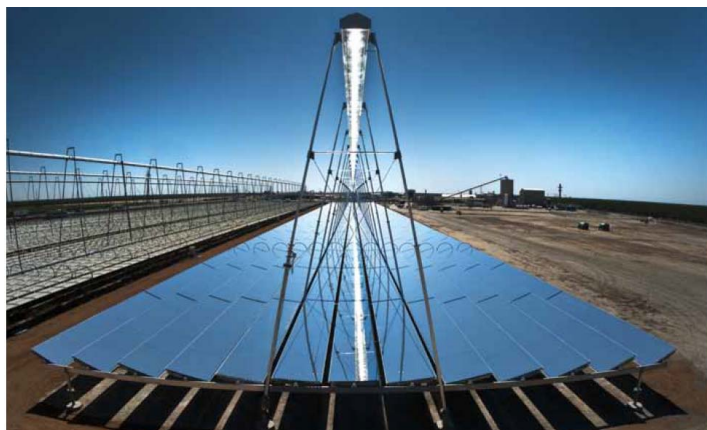


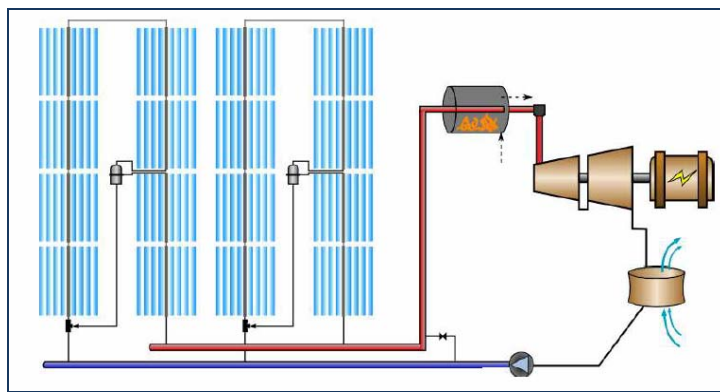
Figure 6. SPP arrangement using rankine steam cycle with thermal energy storage, [6].



(a)



(b)



(c)

Figure 7. (a) Angles associated with the optical performance of the LFR technology, including transversal incidence ϕ_T , longitudinal incidence ϕ_L , solar zenith θ_z , and solar azimuth γ_s , [7]. (b) The linear fresnel collector type of direct steam generator, [6]. (c) SPP Arrangement using FLC and rankine steam cycle without thermal energy storage, [7].

covers an area of 700,000 m² land with 28 rows of mirrors, and has aperture area of 302,000 m², almost 10,000 m²/MW. The ratio of land to solar collector area is 2.33. This land to apertures' area of 2.33 is low when compared with 4 for PTC plants. This plant, operated by Novatec Solar España, is a linear Fresnel reflector system, **Figure 8**, [8].

2.1.3. Concentrated Solar Power (CSP) Using Power Tower

A solar power tower consists of an array of distributed dual-axis tracking flat mirrors (called heliostats) that concentrate solar rays on a central receiver atop a tower; and containing the HTF, see **Figure 9**, [9].

The HTF heated up to 500°C - 1000°C and then is used as a heat source for a power heat engine or energy storage system. Power tower with molten-salt thermal storage was developed specifically to generate EP. It can be the most efficient and lowest cost solar power systems but it is not commercially established yet.

The molten-salt provides efficient, low-cost thermal energy storage (TES) system, and allows solar plants to be designed with high annual Capacity Factor (CP) or being dispatch-able to meet summer load.

The PS20 is the world's most powerful solar power tower of 20 MW. The PS20 was designed by Abengoa Solar in Seville, Spain. Its operation began in April 2009. It has 162 m solar tower height and 1255 heliostats. The PS20 is adjacent to the world's first commercial CSP tower, the PS10, also designed by Abengoa Solar, [10], see **Figure 10**.

2.1.4. Concentrated Solar Power (CSP) Using Parabolic Dish

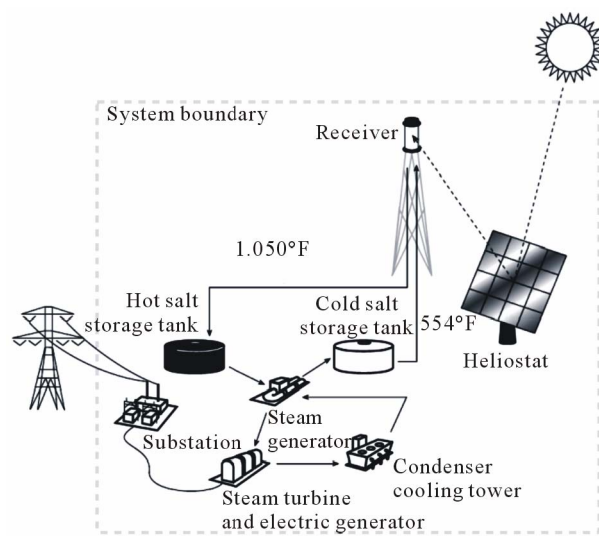
Parabolic dish systems use mirrors forming dish-shaped reflector to focus solar rays onto receiver at the dish focal point, **Figure 11**, [11]. A working fluid, heated in the receiver, such as hydrogen drives a turbine or Stirling heat engine. Most current dish applications use Stirling engine technology because it has high solar-to-electric efficiency ($\cong 30\%$). Its modular nature (25 kWe units) implies that plants of virtually any size could be built or



Figure 8. An overview of the errado 2 plant, [8].



(a)



(b)

Figure 9. (a) Figure of solar power tower with heliostat, [9]. (b) Schematic diagram of solar tower power cycle, [9].



Figure 10. Solar power towers for PS10 and PS20, [10].

expanded. These systems do not require water for cooling; another benefit compared to PTC and LFC systems. Current systems have not demonstrated the level of reliability considered necessary for large commercial system.

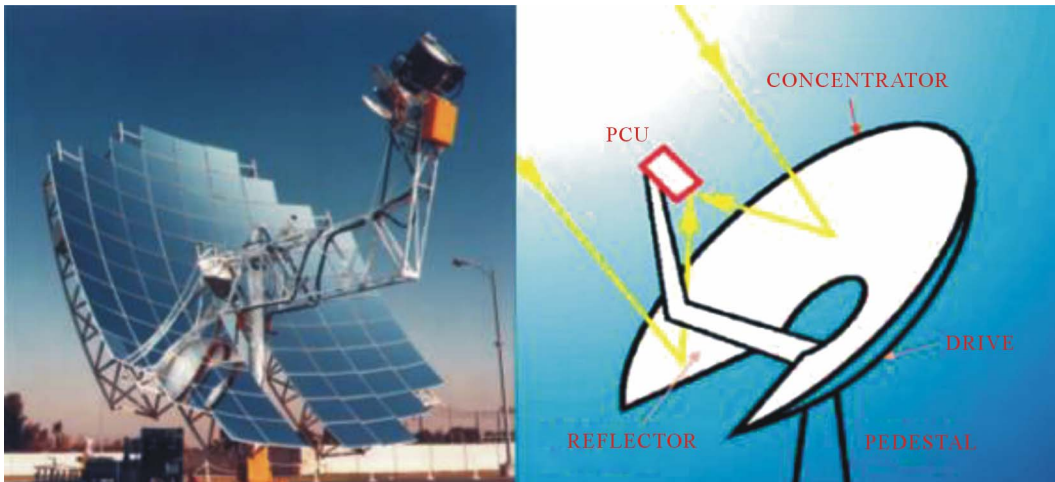


Figure 11. Stirling dish systems at sandia national labs, [11].

At present, there are no operating utility large scale parabolic dish plants.

Currently, there is one dish/stirling plant containing 60 dishes in operation in Arizona, US. Each dish has 250 kW capacities. So, the total capacity of the plant is 1.5 MW. This plant started production on January 2010. There are no operating (or in development) commercial dish systems of large utility scale capacity. The NREL gave the following data on Maricopa Solar Project (Maricopa) plant in the US, [12].

2.2. Photovoltaic (PV) Power Station

A PV panel generates electricity when light energy (photon) hits the semiconductor surface of the panel and releases electrons that would generate voltage differences. Large numbers of PV panels are needed to generate electricity on a large scale. The PV systems efficiency has increased during the last decade and reached a maximum of 20 per cent in some commercial panels. The system uses solar panels consisting of number of solar cells manufactured from semiconductors materials. The semiconductors materials exhibit the PV effect. Materials presently used for PV include crystalline silicon (c-Si) such as mono-crystalline silicon, polycrystalline silicon, and amorphous silicon; and cadmium telluride, and copper indium gallium selenide/sulfide. Masdar (in UAE), has already connected a PV power station 10 MW PV to the grid. Masdar is planning to install the first large solar PV plant of 100 MW (called NOOR 1).

Concentrating photovoltaic (CPV) systems are currently developed by different companies. Similar to dish/Stirling systems, these systems are modular in nature (25 - 50 kWe units) and have potential for high solar-to-electric efficiency (>30%). These systems also do not require water for cooling. Manufacturers are currently providing CPV systems but only with a few MW per

year; they still have limited operational experience.

A photovoltaic (PV) power station is large-scale PV system that generates EP to be supplied to the electric grid at the utility level, and not to local users, see **Figure 12**, [13]. PV systems usually include either crystalline silicon (c-Si) or thin-film technologies. Thin film includes an array of advanced materials, but only one—cadmium telluride (CdTe) has had significant success in utility-scale solar development.

2.3. Integrated Solar Combined Cycle Plants (ISCC)

An Integrated Solar Combined Cycle (ISCC) plant consists of conventional Gas Turbine Combined Cycle (GTCC), or simply (CC), plant integrated with solar field, **Figure 13**. The components of the ISCC are Gas Turbine (GT), Heat Recovery Steam Generator (HRSG) driven by the hot gases exhausted from the GT, steam turbine, and concentrated solar collector field (usually PTC but it can be FLC) producing steam. The steam generated in



Figure 12. PV power system of 24 MW: SinAn, South Korea of 600,000 m² area, [13].

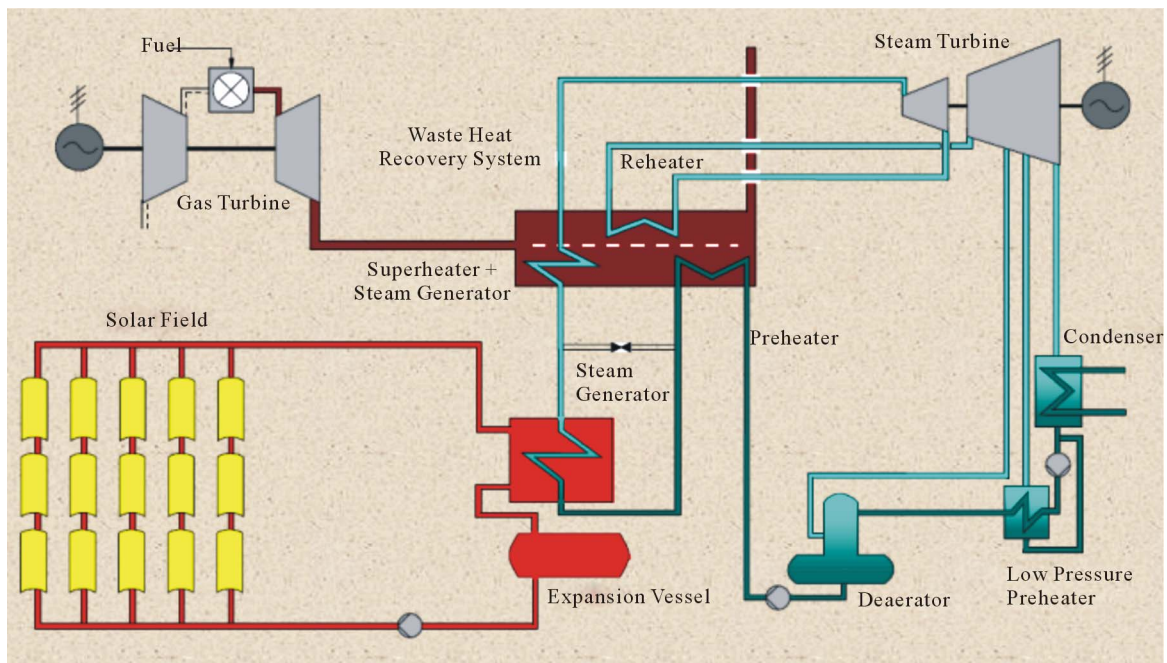


Figure 13. Integrated solar combined cycle ISCC, [14].

the solar field augments the steam generated from the HRSG, and thus increasing the size and power output of the steam turbine. The ISCC system gives the benefits of solar energy and the highly efficient GTCC operated by Natural Gas (NG), which is abundant in Qatar. In Integrated Solar Gas Turbine Combined Cycle (ISCC), the energy generated by solar energy represents 10 - 20 percent of the total plant output. Kuwait has completed a technical feasibility study for the construction of ISCC plant having the capacity of 280 MW, including 60 MW solar components.

Choice of SPP for Qatar from the Available SPP Alternatives

The required additional capacity of the PP in Qatar is more than 8 GW from 2010 to 2020, and 640 MW of this capacity should be SPPs to satisfy HH the Amir decision to generate at least 2% of EP by solar energy. A logical capacity choice for each SPP should be in the range of 50 - 100 MW. The already existing PPs capacities in Qatar are: 497 MW for Ras Abu Fontas A, 2273 for total Ras Abu Fontas B, 3550 MW for total Ras Laffan A, B, and C, and 2007 MW for Mesaieed Power station, a total capacity of 7830 MW, [1]. Moreover the typical demand for base-load cheap electricity is usually supplied by large units. Thus, the estimated capacity of any suggested PP is in the range of 50 MW or higher. It is noticed that PV power stations (PVPS) the status of commercial well proven type PP for the range of 50 MW - 100 MW suitable for Qatar, and should be considered. However, all PVPS are not dispatchable and have low capacity factor.

This means that stand by station of the same PVPS capacity should be built to count on the PVPS.

Concerning the CSP systems, both the power tower, and the FLC reached the commercial status for capacity of 20 MW, and 30 MW respectively. However the number of these types of plants are so little to give reliable records for their operation and maintenance. These two types are hardly to be considered for capacity of 100 MW for the time being.

2.4. Solar Power Plants (SPP) Using Parabolic Trough Collectors (PTC)

Reviewing the LFC, power tower, and parabolic dish with Stirling engine power stations indicates that none of them reach the commercial status of well proven type with reliable record to build new SPP having capacity of 50 MW or more here in Qatar for the time being. **Table 1**, [6], presents a comparison between the four types of the thermal CSP plants. This table shows that the technical risk of adopting the PTC type is low, while for the risk for power tower and the LFC and power tower is medium, and for the parabolic dish and Stirling engine the risk is high, [6]. The Solar Power Plants (SPP) using Parabolic Trough Collectors (PTC) is the only option left among the CSP type of SPPs. This is the reason to consider only the PTC plants here in details. **Figure 14** shows the installed capacity of the different thermal CSP plants, with clear indication that the SPPs using PTC are the most used and planned type.

The operational large CSP using PTC includes: 354

Table 1. Comparison of solar thermal concentrating technologies, [6].

	Parabolic Trough	Tower	Dish Engine	Linear Fresnel
Commercial experience	➤ 20 years	<4 years	-	-
Technology risk	Low	Medium	High	Medium
Optimal scale/modularity	50 MW to >100 MW	50 MW to >100 MW	100 MW to >100 MW	50 MW to >100 MW
Construction requirement	Demanding	Demanding	Moderate	Simple to moderate
Operating temperature	300°C - 550°C	260°C - 570°C	750°C	270°C
Efficiency	14% - 16%	15% - 22%	24% - 31%	9% - 11%
Storage	Yes	Yes	No	No
Levelized cost of energy (\$/kWh)	Current: 0.30 - 0.75 Future: 0.06 - 0.08	Current: 0.20 - 0.90 Future: 0.06 - 0.08	Future: 0.05 - 0.08	Future: 0.06 - 0.08
Water usage	High	High	Low	Medium
Land requirement	High	high	Variable/flexible	Variable
Leading developers	Acciona Solar, Abengoa Solar/Abener, Solar Mellenium, Solel/Siemens	Abengoa Solar/Abener, Bright Source Energy, Torresol, eSolar	Tessera Solar/Stirling Energy Systems (SES)	Ausra/Area (small scale projects), Novatec Solar

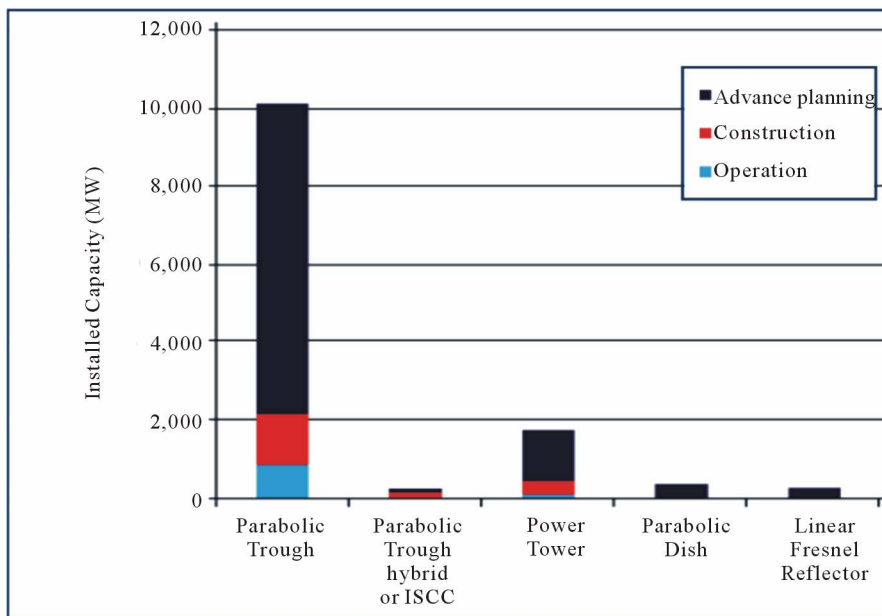


Figure 14. Implementation of CSP technologies, [6].

MW Solar Energy Generating Systems power installation in the USA, Solnova Solar Power Station (Spain, 150 MW) and Andasol solar power station (Spain, 150 MW).

There is the 370 MW Ivanpah Solar Power Facility, located in California’s Mojave Desert, is the world’s largest solar thermal power plant project currently under construction. The Solana Generating Station is also under construction and has capacity of 280 MW, and is located 110 km southwest of Phoenix, Arizona.

The SPPs using PTC technology are using steam

Rankine cycle as power block. The average capacity is 50 MW or more, which is considered suitable for Qatar. This is the most used SPPs with enough operating experience. Nine SPPs, with a total generation capacity of 354 MW, called SEGS (Solar Electric Generating Systems) were the first large CSP to be built and operated in the California Mojave desert from 1984 - 1990. The SEGS systems are co-fired with natural gas to provide continuous operation when the sun does not shine. These were followed by several SPPs in many part of the world.

Examples of the several built SPP with PTCs are: 64 MW power plants near Boulder City, US, and several 50 MWe power plants in Spain shown in **Table 2**, [15].

3. Suggested SPP Using PTC

A solar CSP parabolic trough PP of 100 MW net power output is suggested in this study with 6 hours (h) Thermal Energy Storage (TES) system to assure the plant capability to cover the peak load period and to raise the CF to 38%. Tracking the sun from east to west, while rotating on a north-south axis, the trough focuses the sun's energy on a pipe located along its focal line. Troughs can also rotate on an east-west axis only but yield less annual energy. The HTF, typically oil, is heated up to 400°C

temperatures while it is circulated through the receiver pipes and then pumped to a central power block area, where it passes through a heat exchanger. In this heat exchanger, called Steam Generator (SG), the oil's heat is then passed to water to generate steam. The steam is used in turn to drive a conventional turbine generator. Since the parasitic power loss of this type of PP is about 10%, the gross power would be 110 MW. The System Advisor Model (SAM) computer program developed by NREL is used here to figure the solar field, the power cycle, the TES, required budget of the project, and finally leveled Energy Cost (LEC), [16]. Because no boundary conditions data are available for Qatar, the environmental data for Cairo, Egypt is used in running the program. This environmental data are given as follows:

Location Information					
City	Cairo Intl Airport	Timezone	GMT 2	Latitude	30.13 deg
State	Al Qahirah	Elevation	74 m	Longitude	31.4 deg
Weather Data Information (Annual)					
Direct Normal	1840.6 kWh/m ²	Dry-bulb Temp	22.3 °C	View hourly data...	
Global Horizontal	1911.7 kWh/m ²	Wind Speed	3.5 m/s		

The SPP data are: gross power output of 111 MW, net output to gross output efficiency is 90%, and then the estimated output design is 100 MW. The HTF has temperature to the power block at 391°C, returns at 293°C. The steam throttling condition is 100 bar pressure and 370°C. The rated Rankine cycle efficiency is 0.3774, and and the parasite losses is about 85%, and thus the net

efficiency is 0.82. The steam blow-down fraction is 0.02. NG backup boiler has 0.9 efficiency based on Low Heating Value (LHV). The steam cycle can be operated at maximum to rated ratio of 1.05, or maximum output of 105 MW, and the minimum operation output is 25 MW; and the minimum start up temperature of the steam is 300°C.

Table 2. Examples of SPP using PTC, and their basic characteristics, [15].

Name	Capacity MW	Storage hours	DNI kWh/m ² /y	Solar field area As/MW	Plant, 1000 m ² /MW	ε/kWh	Temperature		Efficiency
							Solar field in/out		
Alvarado1	50		2174		27	27	293/393		
Andasol 1	50	7.5	2136	10202.4	40	27	293/393		16
Andasol 2	50	7.5	2136	10202.4	40	27	293/393		16
La Florida	50	7.5		11055	40	27	298/393		14
Extresol-2	50	7.5	2168	10202.4	40	27	293/393		16
Extresol-1	49.9	7.5	2168	10222.85	40	27	293/393		16
Ibersol Ciudad Real	50	0	2061	5755.2	30		304/391		
La Dehesa	49.9	7.5		11077.15	40		29/393		14
Majadas	50		2142			27			
Manchasol-1	49.9		2208		40		293/393		16

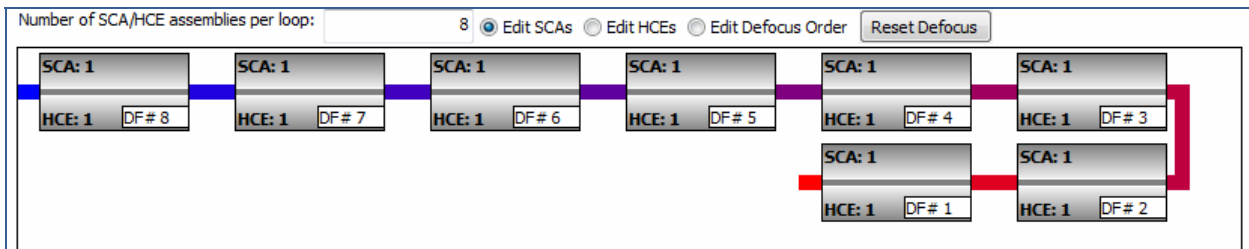
The solar field data from the SAM output is given as follows.

Solar Field Parameters	Heat Transfer Fluid
<input checked="" type="radio"/> Option 1: Solar multiple <input type="text" value="2"/> <input type="radio"/> Option 2: Field aperture <input type="text" value="861590"/> m ²	Field HTF fluid <input type="text" value="Therminol VP-1"/>
Row spacing <input type="text" value="15"/> m	User-defined HTF fluid <input type="button" value="Edit..."/>
Stow angle <input type="text" value="170"/> deg	Field HTF min operating temp <input type="text" value="12"/> °C
Deploy angle <input type="text" value="10"/> deg	Field HTF max operating temp <input type="text" value="400"/> °C
Number of field subsections <input type="text" value="2"/>	Design loop inlet temp <input type="text" value="293"/> °C
Header pipe roughness <input type="text" value="4.57e-005"/> m	Design loop outlet temp <input type="text" value="391"/> °C
HTF pump efficiency <input type="text" value="0.85"/>	Min single loop flow rate <input type="text" value="1"/> kg/s
Freeze protection temp <input type="text" value="150"/> °C	Max single loop flow rate <input type="text" value="12"/> kg/s
Irradiation at design <input type="text" value="950"/> W/m ²	Min field flow velocity <input type="text" value="0.356106"/> m/s
Allow partial defocusing <input checked="" type="checkbox"/> <input type="text" value="Simultaneous"/>	Max field flow velocity <input type="text" value="4.9655"/> m/s
	Header design min flow velocity <input type="text" value="2"/> m/s
	Header design max flow velocity <input type="text" value="3"/> m/s

Design Point	
Single loop aperture <input type="text" value="3762.4"/> m ²	Actual number of loops <input type="text" value="230"/>
Loop optical efficiency <input type="text" value="0.744601"/>	Actual aperture <input type="text" value="865352"/> m ²
Total loop conversion efficiency <input type="text" value="0.716894"/>	Actual solar multiple <input type="text" value="2"/>
Total required aperture, SM=1 <input type="text" value="431859"/> m ²	Field thermal output <input type="text" value="588.235"/> MWt
Required number of loops, SM=1 <input type="text" value="114.783"/>	

Mirror Washing	Plant Heat Capacity
Water usage per wash <input type="text" value="0.7"/> L/m ² ,aper.	Hot piping thermal inertia <input type="text" value="0.2"/> kWh/K-MWt
Washes per year <input type="text" value="63"/>	Cold piping thermal inertia <input type="text" value="0.2"/> kWh/K-MWt
	Field loop piping thermal inertia <input type="text" value="4.5"/> Wh/K-m

Land Area		
Solar Field Area <input type="text" value="641"/> acres	Non-Solar Field Land Area Multiplier <input type="text" value="1.4"/>	Total Land Area <input type="text" value="898"/> acres



As shown in the result, the Solar Multiple is 2, for 6 hours TES. The term solar multiple (SM) is useful metric to evaluate the performance and solar field sizes. The SM is the ratio of the solar energy collected at the design point to the amount of solar energy required to generate the rated turbine gross power. An SM of 1.0 means that the solar field delivers exactly the amount of energy required to run the plant at its design output, at the design point solar conditions. A larger SM indicates larger solar

system. The design point is the reference set of conditions selected for designing the system. For PTC, the design conditions are: $\cos\theta = 0$, ambient temperature = 25°C, DNI = 1000 W/m², and wind speed = 5 m/s. The $\cos\theta = 0$ means that the incidence angle is zero degrees or the sun is normal to the collector aperture. Based on the design point conditions in the sections above, solar fields with SM range from 1 to 3.5 have solar field areas as given in the **Table 3**, [15].

Table 3. Solar multiple field areas.

Solar multiple (SM)	1	1.2	1.5	1.8	2.1	2.5	3	3.5
Area m ² /MW	4552	5493	6847	8202	9594	11,399	13,657	15,952

Thus, the aperture area per MW is 8616 m²/MW. The DNI solar in Cairo is given as 1840 kWh/m². This may be lower than that of Doha, Qatar (which is about 2100 kWh/m²), but the dusty weather in Doha may give DNI less than that of Cairo. The irradiation design is taken as 950 W/m².

The solar field thermal output is 588 MW thermal (MWt). This is achieved by using 86,5252 m² total aperture area by using 230 number of loops of 3762.4 m² area per loop, and loops total optical efficiency equal to 0.716.

The land area for the solar field is 641 acres (2,589,640 m²), and the land total area is 898 acres (3627, 920 m² or 4.63 square kilometer), by assuming that the total land area is 1.4 the solar field area.

The HTF operating condition are: the minimum operating temperature is 12°C, maximum operating temperature is 400°C, design inlet loop is 293°C, and outlet loop minimum temperature is 391°C. The minimum and maximum HTF flow rates in a single loop is 12 kg/ and 1 kg/s respectively. Data on solar SCA are given as:

Collector (SCA) Type 1

Configuration name: SAM/CSP Physical Trough SCAs/Solargenix SGX-1 Choose collector from library...

Collector Geometry

Reflective aperture area	470.3 m ²	Number of modules per assembly	12
Aperture width, total structure	5 m	Average surface-to-focus path length	1.8 m
Length of collector assembly	100 m	Piping distance between assemblies	1 m

Optical Parameters

Incidence angle modifier coef. F0	1	Geometry effects	0.98
Incidence angle modifier coef. F1	0.0506	Mirror reflectance	0.935
Incidence angle modifier coef. F2	-0.1763	Dirt on mirror	0.95
Tracking error	0.994	General optical error	0.99

Optical Calculations

Length of single module	8.33333 m	End loss at design	0.997658
Incidence angle modifier	1.0024	Optical efficiency at design	0.856609

4. Concerning the Used Receivers

The net efficiency of the power block plant (net EP out/heat rate output of the SG) is 0.32. Thus, heat is to be generated at rate 312.5 MW in the SG. The ratio of the

SG heat output to the solar heat is in the range of 65% - 70%, and thus the required solar heat input is (312.5/0.65=) 481 MWt when no TES is considered.

The storage system data are given as follows:

Storage System

Full load hours of TES	6 hr	Tank heater capacity	25 MWt
Storage volume	26268.7 m ³	Tank heater efficiency	0.98
TES Thermal capacity	1764.71 MWt	Hot side HX approach temp	5 °C
Parallel tank pairs	1	Cold side HX approach temp	7 °C
Tank height	20 m	Heat exchanger derate	0.877551
Tank fluid min height	1 m	Initial TES fluid temp	300 °C
Tank diameter	40.894 m	Storage HTF fluid	Hitec Solar Salt
Min fluid volume	1313.43 m ³	User-defined HTF fluid	Edit...
Tank loss coeff	0.4 W/m ² -K	Storage HTF min operating temp	238 °C
Estimated heat loss	0.500115 MWt	Storage HTF max operating temp	593 °C
Cold tank heater set point	250 °C	Fluid Temperature	342 °C
Hot tank heater set point	365 °C	TES fluid density	1872.49 kg/m ³
		TES specific heat	1.50182 kJ/kg-K

The capital costs include: land side improvement, solar field cost (about \$270/ m²), HTF cost, TES cost of 1765 MWt (\$80/kWh), the power block (\$830/kW), and the

balance of the plant (\$110/kW). The capital costs are given by SAM program as:

Direct Capital Costs				
Site Improvements	865352	m2	30.00 \$/m2	\$ 25,960,560.00
Solar Field	865352	m2	270.00 \$/m2	\$ 233,645,040.00
HTF System	865352	m2	80.00 \$/m2	\$ 69,228,160.00
Storage	1764.71	MWht	80 \$/kWht	\$ 141,176,470.59
Fossil Backup	111	MWe, Gross	0 \$/kWe	\$ 0.00
Power Plant	111	MWe, Gross	830 \$/kWe	\$ 92,130,000.00
Balance of Plant	111	MWe, Gross	110 \$/kWe	\$ 12,210,000.00
			Contingency	7 %
				\$ 40,204,516.14
Total Direct Cost				\$ 614,554,746.73

Indirect Capital Costs					
Total Land Area	898	acres	Nameplate	100	MWe
	Cost per acre	% of Direct Cost	Cost per Wac	Fixed Cost	Total
EPC and Owner Cost	\$ 0.00	11 %	\$ 0.00	\$ 0.00	\$ 67,601,022.14
Total Land Cost	\$ 10,000.00	0 %	\$ 0.00	\$ 0.00	\$ 8,980,796.13
Sales Tax of	5 %	applies to	80 %	of Direct Cost	\$ 24,582,189.87
Total Indirect Cost					\$ 101,164,008.14

Total Installed Costs	
Total Installed Cost excludes financing costs (if any, see Financing Page)	Total Installed Cost \$ 715,718,754.87
Estimated Total Installed Cost per Net Capacity (\$/kW)	\$ 7,164.35

The operation costs are given as:

Operation and Maintenance Costs				
	First Year Cost		Escalation Rate (above inflation)	
Fixed Annual Cost	Value: 0.00 \$/yr		0 %	Escalation rates apply only to single values, not to values in annual schedules.
Fixed Cost by Capacity	Value: 65.00 \$/kW-yr		0 %	
Variable Cost by Generation	Value: 4.00 \$/MWh		0 %	
Fossil Fuel Cost	Value: 0.00 \$/MMBTU		0 %	

The above data were used to calculate the LEC, based on 25 years for the plant life, 2.5% inflation rate, 8.2% real discount rate, and 10.9% nominal discount rate. The itemized LEC is shown in **Figure 15**. The plant electric output is given in **Figure 15**.

The annual energy output is 247.345 GWh, the real LEC is 21.93 cent/kWh, capacity factor is 28.3%, and annual water usage is about 1 million cubic meters (Mm³/y) by using evaporative cooling condenser. **Figure 16** shows the monthly electric power output of the plant.

5. Conclusions

The utility solar power plants were reviewed. The installed capital cost per MW of SPP is much higher than that of conventional plants. Thus, substantial economic support will be required for CSP project economic viability. For the utility scale power production, parabolic trough is only technology that can have operational track record, which gives it a moderate technology risk (low relative to other CSP technologies).

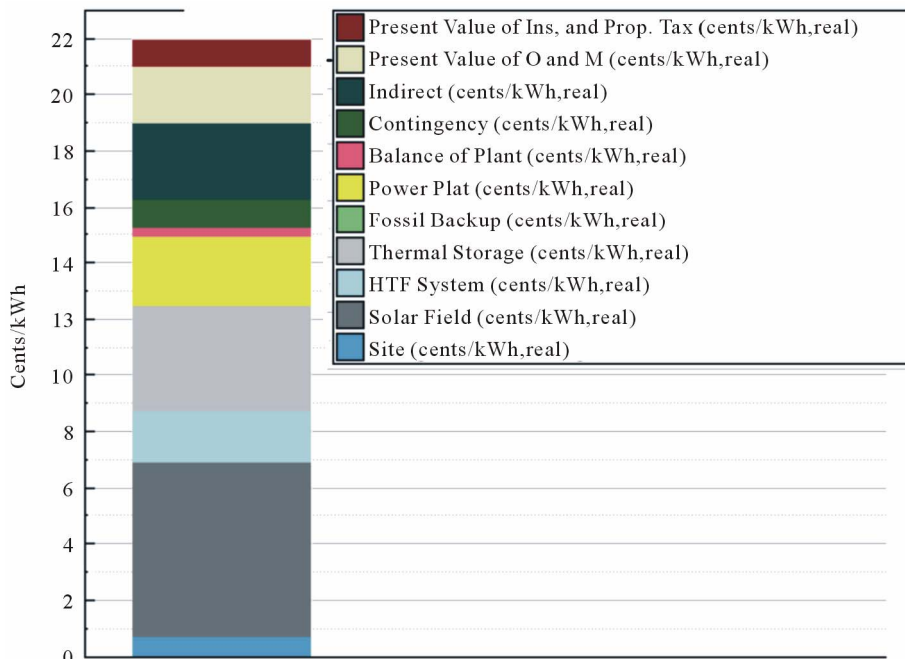


Figure 15. Itemized LEC cost.

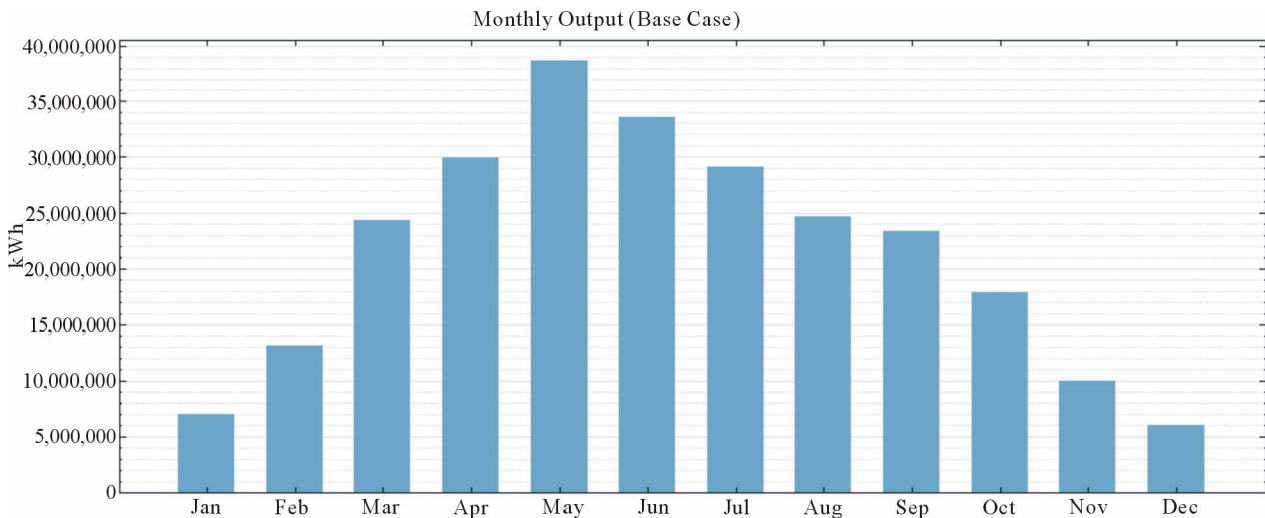


Figure 16. Plant monthly electric power output.

A 100 MW SPP using PTC was considered suitable for Qatar. The result shows that the total capital cost is \$7.16 Million (M) per MW, and the LEC is \$0.22/kWh.

Linear Fresnel technology can be more competitive with parabolic trough for utility-scale generation, but more projects are needed to build reliability record for large SPP. There is insufficient actual construction experience to confirm costs of utility scale projects at this stage. There are enough experience with LFC for small projects such as solar cooling and desalination. There is insufficient actual construction experience to confirm costs of utility scale projects at this stage.

REFERENCES

- [1] M. Darwish and R. Mohtar, "Qatar Energy Footprint," Submitted for Publication to the Journal of Energy Strategy.
- [2] M. Mendelsohn, T. Lowder and B. Canavan, "Utility-Scale Concentrating Solar Power and Photovoltaic Projects: A Technology and Market Overview," Prepared under Task No. SM10.2442 Technical Report, NREL/TP-6A20-51137, 2012.
- [3] Appendix A, "Key Assumptions for Levelized Cost of Electricity Ranges". http://www.ucsusa.org/assets/documents/clean_energy/Appendix-Key-Assumptions-Levelized-Costs.pdf

- [4] "Final Report on Technical Data, Costs, and Life Cycle Inventories of Solar Thermal Power Plants," Project No: 502687, NEEDS New Energy Externalities Developments for Sustainability Integrated Project.
<http://www.needs-project.org/RS1a/RS1a%20D12.2%20Final%20report%20concentrating%20solar%20thermal%20power%20plants.pdf>
- [5] Concentrated Thermal Power Now.
<http://www.greenpeace.org/raw/content/international/pres/s/reports/Concentrated-Solar-Thermal-Power.pdf>
- [6] Utility Scale Solar Power Plants; Guide for Developers and Investors, International Finance Corporation (IFC), World Bank Group, 2012.
- [7] M. J. Wagner, "Results and Comparison from the SAM Linear Fresnel Technology Performance Model Preprint," 2012 *World Renewable Energy Forum*, Denver, 13-17 May 2012, p. 2.
- [8] "Puerto Errado 2 Thermosolar Power Plant (PE2)," Concentrating Solar Projects, National Renewable Energy Laboratory, 2012.
http://www.nrel.gov/csp/solarpaces/project_detail.cfm/projectID=159
- [9] "Planta Solar 20," Concentrating Solar Projects, National Renewable Energy Laboratory, 2012.
http://www.nrel.gov/csp/solarpaces/project_detail.cfm/projectID=39
- [10] NREL Concentrating Solar Project, Maricopa Solar Project (Maricopa) Plant.
http://www.nrel.gov/csp/solarpaces/project_detail.cfm/projectID=58
- [11] P. R. Fraser, "Stirling Dish System Performance Prediction Model," M.Sc. Thesis, Mechanical Engineering Department, University of Wisconsin, Madison, 2008.
- [12] NREL Concentrating Solar Project, Maricopa Solar Project (Maricopa) Plant.
http://www.nrel.gov/csp/solarpaces/project_detail.cfm/projectID=58
- [13] 24 MW, SinAn, South Korea.
http://www.conergy.com.au/PortalData/1/Resources/master/images/references/freefield/Solar_farm_SinAn.pdf
- [14] AM0100, "Integrated Solar Combined Cycle (ISCC) Projects— Version 1.0.0".
<https://cdm.unfccc.int/methodologies/DB/BES7OQGMZYOMCP9JPTVJHP93BVK4UO>
- [15] M. Darwish, H. K. Abdulrahim and R. Mohtar, "Solar Power Desalting Plant in Qatar: Design and Analysis," LAP LAMBERT Academic Publishing, Saarbrücken, 2012.
- [16] P. Gilman and A. Dobos, "System Advisor Model, SAM 2011.12.2: General Description," Technical Report, NREL/TP-6A20-53437, 2012.
<http://www.nrel.gov/docs/fy12osti/53437.pdf>