

# Modeling and Simulation for Steady State and Transient Pipe Flow of Condensate Gas

Li Changjun, Jia Wenlong and Wu Xia  
*School of Petroleum Engineering, Southwest Petroleum University  
China*

## 1. Introduction

Condensate gas is mainly demonstrated by methane. However, it also contains a lot of heavier contents like  $C_5$  or  $C_5+$  and some non-hydrocarbon mixture as well (Mokhatab *et al*, 2006). After recovering from gas wells, condensate gas needs liquid separation, gas purification and condensate stabilization treatment in the processing plant to meet the quality requirements. Processing plants far away from the gas well with long distances of two-phase flow in one condensate gas pipeline will take less investment than adjacent process plant with two single phase pipelines which are dry gas pipeline and liquid phase pipeline (Li, 2008).

If the operation temperature somewhere in the condensate gas pipeline is lower than the gas dew point, liquid condensation would occur, subjecting the pipeline to two phase flow (Potocnik, 2010). While gas and its condensate flow simultaneously, mass transfer takes place continuously due to the change in pressure and temperature conditions. This leads to compositional changes and associated fluid property changes and also makes the hydraulic and thermal calculations of condensate gas more complex than normal gas. The condensate gas pipeline model which is established and solved based on the principle of fluid mechanics can simulate hydraulic and thermal parameters under various operation conditions. By means of technical support, this model is of great importance in the pipeline design and safety operation aspects (Mokhatab, 2009).

## 2. Thermodynamic model

The purpose of the thermodynamic model is three-fold. First, it defines the transition between single phase/two phase conditions (point of condensate inception in the pipeline or gas dew point). Second, it is used for the prediction of properties for the flowing fluids (gas and its condensate). And lastly, it derives the mass exchange between the flowing phases (Adewumi *et al*, 1990 ; Estela-Urbe *et al*, 2003). This work uses the BWRS equation of state (EOS) to implement the thermodynamic model as it has proven reliable for gas condensate system (McCain *et al*, 1990). Most property predictions are derived from the equation of state (i.e., densities values, densities values and their derivatives with respect to pressure and temperature, departure enthalpies, heat capacities, and Joule-Thompson coefficients). Additionally, phase equilibria are calculated on the basis of flash calculation method. Expressions for such parameters as fugacity are elaborated in

standard textbooks, where the theory and relevant procedures for flash calculation are well documented (API, 2005).

### 3. General model of condensate gas pipeline

#### 3.1 Basic assumptions

One of the most fundamental approaches used to model two phase flow is the two-fluid model (Ayala *et al*, 2003). It consists of separate mass, momentum and energy conservation equations written for each of the phases. This results in up to six differential equations. Furthermore, the model is more complicate as relating parameters in the equations vary with the fluid flowing. Thus, simple and reasonable assumptions could help to reduce the unknowns in the model (Hasan *et al*, 1992). The hydrodynamic model has three major inherent assumptions:

1. Gas and liquid average flow velocities are calculated according to the section area occupied by each phase respectively.
2. Mass transfer takes place between gas and liquid phase. However, two phases are assumed to be at thermodynamic equilibrium at every point within the pipe.
3. In the transient process, the pipeline assumed to be isothermal. The liquid hold up within pipeline, the wall friction force of each phase, the drag force between two phases are assumed to be the same as steady state.

#### 3.2 Description of general model

The general model for two phase flow is built on the basis of mass, momentum and energy conservation equations of each phase (Li *et al*, 2009; Ayala *et al*, 2003).

Gas phase continuity equation:

$$\frac{\partial}{\partial t}(\rho_g \phi A) + \frac{\partial}{\partial x}(\rho_g \phi A w_g) = \Delta \dot{m}_{gl} \quad (1)$$

Liquid phase continuity equation:

$$\frac{\partial}{\partial t}(\rho_l H_L A) + \frac{\partial}{\partial x}(\rho_l H_L A w_l) = \Delta \dot{m}_{lg} \quad (2)$$

Where,  $\Delta \dot{m}_{gl}$  is mass rate of phase change from gas to liquid, (kg/s.m);  $\Delta \dot{m}_{lg}$  is mass rate of phase change from liquid to gas, (kg/s.m).  $H_L$  is liquid hold up;  $\phi$  is gas hold up;  $\rho_g$  is density of the gas phase, kg/m<sup>3</sup>;  $\rho_l$  is density of the liquid phase, kg/m<sup>3</sup>;  $A$  is pipe cross sectional area, m<sup>2</sup>;  $t$  is time, s;  $x$  is length along the pipe length, m;  $w_g$  is velocity of the gas phase, m/s;  $w_l$  is velocity of the liquid phase, m/s.

$\Delta \dot{m}_{gl}$  is defined as (3).

$$\Delta \dot{m}_{gl} = \left[ \left( \frac{\partial Y_s}{\partial P} \right)_T \frac{\partial P}{\partial x} + \left( \frac{\partial Y_s}{\partial P} \right)_T \frac{\partial P}{\partial t} \frac{\partial t}{\partial x} \right] \cdot (m_g + m_l) + \left[ \left( \frac{\partial Y_s}{\partial T} \right)_P \frac{\partial T}{\partial x} + \left( \frac{\partial Y_s}{\partial T} \right)_P \frac{\partial T}{\partial t} \frac{\partial t}{\partial x} \right] \cdot (m_g + m_l) \quad (3)$$

$$Y_s = \frac{m_g}{m_g + m_l} \quad (4)$$

$$m_g = \rho_g w_g \varphi A \quad (5)$$

$$m_l = \rho_l w_l H_L A \quad (6)$$

Where,  $P$  is pressure, Pa;  $T$  is temperature, K;  $m_g$  is gas mass fraction in two-phase fluid system;  $m_l$  is liquid mass fraction in two-phase fluid system;  $Y_s$  is mass fraction of gas.

Gas phase momentum equation.

$$\frac{\partial}{\partial t}(\rho_g \varphi w_g A) + \frac{\partial}{\partial x}(\rho_g \varphi w_g^2 A) + A_g \frac{\partial P}{\partial x} = \Delta \dot{m}_{gi} w_a - F_{gw} - F_{gi} - \rho_g g \varphi A \sin \theta \quad (7)$$

Where,  $A_g$  is pipe cross sectional area occupied by gas phase,  $m^2$ ;  $F_{gw}$  is wall shear force of gas phase,  $N/m^3$ ;  $F_{gi}$  is interfacial drag force on gas phase,  $N/m^3$ ;  $g$  is acceleration of gravity,  $m/s^2$ ;  $\theta$  is pipeline slope, rad.

Liquid phase momentum equation.

$$\frac{\partial}{\partial t}(\rho_l H_L w_l A) + \frac{\partial}{\partial x}(\rho_l H_L w_l^2 A) + A_l \frac{\partial P}{\partial x} = \Delta \dot{m}_{li} w_a - F_{lw} - F_{li} - \rho_l g H_L A \sin \theta \quad (8)$$

Where,  $A_l$  is pipe cross sectional area occupied by liquid phase,  $m^2$ ;  $F_{lw}$  is wall shear force of liquid phase,  $N/m^3$ ;  $F_{li}$  is interfacial drag force on liquid phase,  $N/m^3$ ;  $w_a$  is transition velocity between the gas phase and liquid phase,  $m/s$ .

Gas-liquid phase mixture energy equation

$$\begin{aligned} & \frac{\partial}{\partial t} \left[ A \rho_g \varphi \left( h_g + \frac{w_g^2}{2} + gz \right) + A \rho_l H_L \left( h_l + \frac{w_l^2}{2} + gz \right) \right] \\ & + \frac{\partial}{\partial x} \left[ A \rho_g \varphi w_g \left( h_g + \frac{w_g^2}{2} + gz \right) + A \rho_l H_L w_l \left( h_l + \frac{w_l^2}{2} + gz \right) \right] + K \pi D (T - T_0) = 0 \end{aligned} \quad (9)$$

Where,  $K$  is overall heat transfer co-efficiency,  $W/(m^2 \cdot K)$ ;  $D$  is external diameter,  $m$ ;  $T_0$  is environmental temperature,  $K$ ;  $h_l$  is enthalpy of liquid phase in pipeline,  $kJ/kg$ ;  $h_g$  is enthalpy of the gas phase in pipeline,  $kJ/kg$ ;  $z$  is pipeline elevation,  $m$ .

Add (7) and (8), obtain:

$$\begin{aligned} & \frac{\partial}{\partial t}(\rho_g \varphi w_g A) + \frac{\partial}{\partial t}(\rho_l H_L w_l A) + \frac{\partial}{\partial x}(\rho_g \varphi w_g^2 A) + \frac{\partial}{\partial x}(\rho_l H_L w_l^2 A) + A \frac{\partial P}{\partial x} \\ & = -F_{gw} - F_{lw} - (\rho_g \varphi + \rho_l H_L) g A \sin \theta \end{aligned} \quad (10)$$

Equation (10) is transformed into (11) through eliminating the pressure terms.

$$\begin{aligned} & \frac{\partial}{\partial t}(\rho_g w_g) - \frac{\partial}{\partial t}(\rho_l w_l) + \frac{\partial}{\partial x}(\rho_g w_g^2) - \frac{\partial}{\partial x}(\rho_l w_l^2) = \\ & \Delta \dot{m}_{gi} w_a \left( \frac{1}{A_g} + \frac{1}{A_l} \right) - \frac{F_{gw}}{A_g} - \frac{F_{gi}}{A_g} + \frac{F_{lw}}{A_l} + \frac{F_{li}}{A_l} - (\rho_l H_L - \rho_g \varphi) g \sin \theta \end{aligned} \quad (11)$$

In view of the slow transient behaviour in condensate gas pipeline, we can obtain equation (12) by ignoring velocity variation terms in equation (11)(Li *et al*, 1998):

$$-\frac{F_{gw}}{A_g} - F_{gi} \left( \frac{1}{A_g} + \frac{1}{A_l} \right) + \frac{F_{lw}}{A_l} - (\rho_l H_L - \rho_g \varphi) g \sin \theta = 0 \quad (12)$$

Equations (1), (2), (9), (10), (12) construct the basic model for condensate gas pipe flow simulation.

#### 4. Constitutive equations

The condensate gas flow model is one dimensional two-fluid multiphase hydrodynamic model which adapts to different flow patterns in pipeline. According to Cindric and Shoham, the flow patterns in horizontal pipeline are stratified flow, intermittent flow, annular flow, dispersed flow and these in vertical pipeline are bubble flow, slug flow, churn flow, annular flow (Mokhatab *et al*, 2006). Because of the constitutive equations is dependent on the flow pattern, one of the greatest difficulties in the analysis of two-phase flow in pipeline is defining appropriate constitutive equations for relating relevant forces-such as the steady drag force and interfacial force.

Considering low liquid hold up, the flow pattern in the condensate gas pipeline is stratified flow which has explicit interface between the liquid and gas phase, as depicted in Fig.1. Then, we can obtain the calculation methods of unknowns which dependent on the constitutive equations (Taitel *et al*, 1995 ; Chen *et al*, 1997 ).

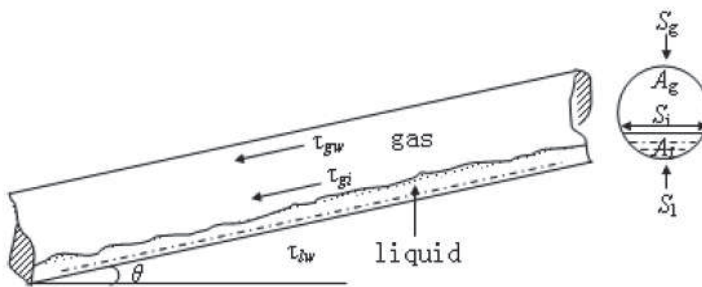


Fig. 1. Stratified flow in condensate gas pipeline

Wall shear force of each phase is expressed as follow.

$$F_{kw} = -\tau_{kw} S_k \quad (13)$$

Where,  $k=g$  when the equation is applied for the gas phase;  $k=l$  when the equation is applied for the liquid phase;  $S_k$  is defined as follow:

$$S_k = \frac{\text{total wall area wetted by phase } k}{\text{Total volume}} \quad (14)$$

$\tau_{kw}$  is defined as:

$$\tau_{kw} = \frac{1}{2} \lambda_k \rho_k |w_k| w_k \quad (15)$$

In which,  $\lambda$  is Fanning factor which is calculated by Colebrook & White empirical correlation.

If Reynolds Number  $Re \leq 2000$

$$\lambda = \frac{16}{Re} \quad (16)$$

If  $Re \geq 2000$

$$\frac{1}{\sqrt{\lambda}} = 3.48 - 4 \lg \left( \frac{2\varepsilon}{D} + \frac{9.35}{Re\sqrt{\lambda}} \right) \quad (17)$$

Where,  $\varepsilon$  is absolute roughness of pipeline wall, m.

Interfacial force between phases is defined as follow:

$$F_{gi} = -F_{li} = -\tau_i S_i \quad (18)$$

Where

$$S_i = \frac{\text{Total surface area of contact between phases}}{\text{Total volume}} \quad (19)$$

$$\tau_i = \frac{1}{2} \lambda_i \rho_g |w_g - w_l| (w_g - w_l) \quad (20)$$

The interfacial friction factor  $\lambda_i$  is calculated with Hanrity correlation.

If  $w_{sg} \leq w_{sg.t}$

$$\lambda_i = \lambda_g \quad (21)$$

If  $w_{sg} \geq w_{sg.t}$

$$\lambda_i = \lambda_g \left[ 1 + 15 \sqrt{\frac{h_l}{D}} \left( \frac{w_{sg}}{w_{sg.t}} - 1 \right) \right] \quad (22)$$

Where,

$$w_{sg} = \frac{Q_G}{A} \quad (23)$$

$$w_{sg.t} = 5 \sqrt{\frac{101325}{P}} \quad (24)$$

Where,  $w_{sg}$  is reduced velocity of the gas phase, m/s;  $w_{sg.t}$  is reduced velocity for indentifying the transition from stratified flow pattern to smooth stratified flow pattern, m/s;  $Q_G$  is flow rate of the gas phase, m<sup>3</sup>/s.

## 5. Steady state analysis of condensate gas pipeline

### 5.1 Basic equations

While steady operation, the variation of each parameter in equations (1), (2), (9), (10) with time can be ignored. Expand the equations above and the following equations used for steady state simulation can be obtained (Li *et al*, 2009):

Gas phase continuity equation:

$$Aw_g\phi\left(\frac{\partial\rho_g}{\partial P}\right)_T\frac{dP}{dx} + Aw_g\phi\left(\frac{\partial\rho_g}{\partial T}\right)_P\frac{dT}{dx} + A\rho_g\phi\frac{dw_g}{dx} + A\rho_gw_g\frac{d\phi}{dx} = \Delta\dot{m}_{gl} \quad (25)$$

Liquid phase continuity equation:

$$Aw_lH_L\left(\frac{\partial\rho_l}{\partial P}\right)_T\frac{dP}{dx} + Aw_lH_L\left(\frac{\partial\rho_l}{\partial T}\right)_P\frac{dT}{dx} + A\rho_lH_L\frac{dw_l}{dx} + A\rho_lw_l\frac{dH_L}{dx} = \Delta\dot{m}_{lg} \quad (26)$$

Gas-liquid phase mixture momentum equation:

$$A\frac{dP}{dx} + \rho_gw_g\phi A\frac{dw_g}{dx} + \rho_lw_lH_LA\frac{dw_l}{dx} = -F_{gw} - F_{lw} - (\rho_g\phi + \rho_lH_L)gA\sin\theta \quad (27)$$

Gas-liquid phase mixture energy equation:

$$\begin{aligned} & \left[ \rho_gw_g\phi A\left(\frac{\partial h_g}{\partial P}\right)_T + \rho_lw_lH_LA\left(\frac{\partial h_l}{\partial P}\right)_T \right] \frac{dP}{dx} \\ & + \left[ \rho_gw_g\phi A\left(\frac{\partial h_g}{\partial T}\right)_P + \rho_lw_lH_LA\left(\frac{\partial h_l}{\partial T}\right)_P \right] \frac{dT}{dx} + \rho_gw_g^2\phi A\frac{dw_g}{dx} + \rho_lw_l^2H_LA\frac{dw_l}{dx} \\ & = -(\rho_g\phi w_g + \rho_lw_lH_L)A\frac{dz}{dx} - K\pi D(T - T_0) - \Delta\dot{m}_{gl}\left(h_g - h_l + \frac{w_g^2 - w_l^2}{2}\right) \end{aligned} \quad (28)$$

The system of simultaneous differential equations composed of (25)-(28) can be written in their non-conservative form.

$$A\frac{dU}{dx} = D \quad (29)$$

Where

$$A = \begin{bmatrix} a_{11} & a_{12} & a_{13} & a_{14} \\ a_{21} & a_{22} & a_{23} & a_{24} \\ a_{31} & a_{32} & a_{33} & a_{34} \\ a_{41} & a_{42} & a_{43} & a_{44} \end{bmatrix}, D = \begin{bmatrix} D_1 \\ D_2 \\ D_3 \\ D_4 \end{bmatrix}, U = \begin{bmatrix} P \\ T \\ w_g \\ w_l \end{bmatrix},$$

$$a_{11} = Aw_g\phi\left(\frac{\partial\rho_g}{\partial P}\right)_T, a_{12} = Aw_g\phi\left(\frac{\partial\rho_g}{\partial T}\right)_P, a_{13} = A\rho_g\phi, a_{14} = 0, a_{21} = Aw_lH_L\left(\frac{\partial\rho_l}{\partial P}\right)_T,$$

$$\begin{aligned}
 a_{22} &= Aw_l H_L \left( \frac{\partial \rho_l}{\partial T} \right)_P, a_{23} = 0, a_{24} = A \rho_l H_L, a_{31} = A, a_{32} = 0, a_{33} = \rho_g w_g \phi A, a_{34} = \rho_l w_l H_L A, \\
 a_{41} &= \rho_g w_g \phi A \left( \frac{\partial h_g}{\partial P} \right)_T + \rho_l w_l H_L A \left( \frac{\partial h_l}{\partial P} \right)_T, a_{42} = \rho_g w_g \phi A \left( \frac{\partial h_g}{\partial T} \right)_P + \rho_l w_l H_L A \left( \frac{\partial h_l}{\partial T} \right)_P, a_{43} = \rho_g w_g^2 \phi A, \\
 a_{44} &= \rho_l w_l^2 H_L A
 \end{aligned}$$

$$D_1 = \Delta \dot{m}_{gl} - A \rho_g w_g \frac{d\phi}{dx}, D_2 = \Delta \dot{m}_{lg} - A \rho_l w_l \frac{dH_L}{dx}, D_3 = -F_{gw} - F_{lw} - (\rho_g \phi + \rho_l H_L) g A \sin \theta$$

$$D_4 = -(\rho_g g w_g \phi A + \rho_l g w_l H_L A) \frac{dz}{dx} - K \pi D (T - T_0) - \Delta \dot{m}_{gl} (h_g - h_l + \frac{w_g^2 - w_l^2}{2})$$

**5.2 Model solving**

Steady state condensate gas model is formed by 5 equations which are (29) and (12). There are five unknowns, liquid holdup ( $H_L$ ), pressure ( $P$ ), temperature ( $T$ ), gas and liquid velocity ( $w_g$  and  $w_l$ ), in the model. Thus, the closure of the model is satisfied.

To solve the model, the liquid hold up is obtained by solving (12) firstly. And then, pressure ( $P$ ), temperature ( $T$ ), velocity of the gas phase ( $w_g$ ), and the velocity of the liquid phase ( $w_l$ ) are obtained by solving (29). The procedures for solving (29) are presented in details as follow:

Step 1. Suppose the pipeline is composed of a lot of pipes with different slope. Divide each pipe into small blocks with the step length of  $\Delta x$  and input the start point data.

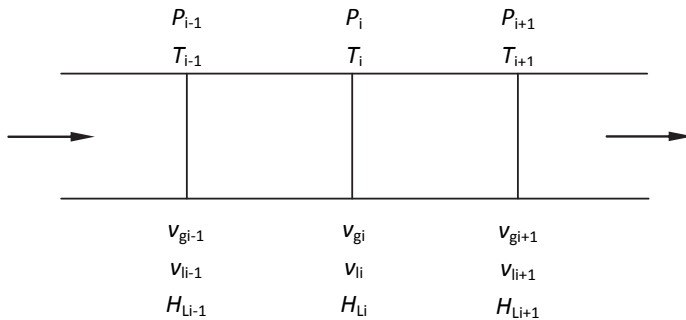


Fig. 2. Pipeline blocks for steady-state simulation

- Step 2. Establish steady equation (29) on each block section. Input the boundary conditions at the initial point of pipeline (pressure, temperature, gas velocity, and liquid velocity). According to the thermodynamic model, calculate the thermophysical parameters such as density of the gas and liquid phase, gas fraction. Because there is no slip between the two phases at initial point, the liquid hold up can be gained by its relationship with mass flow rate of the gas phase and liquid phase.
- Step 3. Set  $dU/dx$  as unknowns, and simplify (29) with Gaussian elimination method, then we can obtain more explicit form of (29).

$$\left\{ \begin{array}{l} \frac{dP}{dx} = f_1(P, T, v_g, v_l) \\ \frac{dT}{dx} = f_2(P, T, v_g, v_l) \\ \frac{dv_g}{dx} = f_3(P, T, v_g, v_l) \\ \frac{dv_l}{dx} = f_4(P, T, v_g, v_l) \end{array} \right. \quad (30)$$

- Step 4. Work out pressure ( $P_i$ ), temperature ( $T_i$ ), gas and liquid velocity ( $w_{gi}$  and  $w_{li}$ ) by four-order Runge - Kutta Method.
- Step 5. Figure out liquid holdup ( $H_{li}$ ) by equation (12).
- Step 6. Resolve equations (29) by Adams predictor-corrector formula until the reasonable unknowns of this grid section are all gotten.
- Step 7. Repeat the second step to the sixth step until reach the last block section which is also the end of this pipeline.

In order to make the numerical calculation converges more quickly, the Adams predictor-corrector and Runge - Kutta Method should be applied simultaneous. As the two methods have four-order accuracy, the desired accuracy also can be improved. The flow chart of the whole solving procedures is depicted in Fig.2.

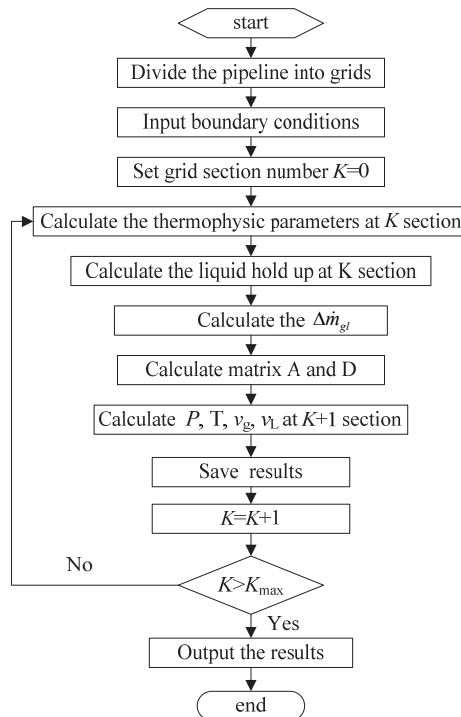


Fig. 2. Solving procedures of steady state model



## 6. Transient analysis of condensate gas pipeline

### 6.1 Basic equations of transient analysis

Opposite to the steady state simulation, the parameters in the general model are dependent on time. Expand (1), (2) and (10), and the following equations can be obtained (Masella et al, 1998).

Gas phase continuity equation:

$$A\phi\left(\frac{\partial\rho_g}{\partial P}\right)_T \frac{\partial P}{\partial t} + A\rho_g \frac{\partial\phi}{\partial t} + Aw_g\phi\left(\frac{\partial\rho_g}{\partial P}\right)_T \frac{\partial P}{\partial x} + A\rho_g\phi\frac{\partial w_g}{\partial x} + A\rho_g w_g \frac{\partial\phi}{\partial x} = \Delta\dot{m}_{gl} \quad (31)$$

Liquid phase continuity equation:

$$AH_L\left(\frac{\partial\rho_l}{\partial P}\right)_T \frac{\partial P}{\partial t} + A\rho_l \frac{\partial H_L}{\partial t} + Aw_l H_L\left(\frac{\partial\rho_l}{\partial P}\right)_T \frac{\partial P}{\partial x} + A\rho_l H_L \frac{\partial w_l}{\partial x} + A\rho_l w_l \frac{\partial H_L}{\partial x} = \Delta\dot{m}_{lg} \quad (32)$$

Momentum equation

$$\begin{aligned} &\rho_g\phi A \frac{\partial w_g}{\partial t} + \rho_l H_L A \frac{\partial w_l}{\partial t} + A \frac{\partial P}{\partial x} + \rho_g w_g \phi A \frac{\partial w_g}{\partial x} + \rho_l w_l H_L A \frac{\partial w_l}{\partial x} \\ &= -F_{gw} - F_{lw} - (\rho_g\phi + \rho_l H_L)gA \sin\theta \end{aligned} \quad (33)$$

The transient flow model can be represented by (31) ~ (33) and (12). The unknowns are the pressure  $P$ , flow velocity of the gas phase  $w_g$ , flow velocity of the liquid phase  $w_l$  and liquid holdup  $H_L$ . Notice that (31) ~ (33) are a set of partial differential equations so that they can be recast to the following matrix form.

$$B \frac{\partial U}{\partial t} + A \frac{\partial U}{\partial x} = D \quad (34)$$

Where,

$$A = \begin{bmatrix} a_{11} & a_{12} & a_{13} \\ a_{21} & a_{22} & a_{23} \\ a_{31} & a_{32} & a_{33} \end{bmatrix}, B = \begin{bmatrix} b_{11} & b_{12} & b_{13} \\ b_{21} & b_{22} & b_{23} \\ b_{31} & b_{32} & b_{33} \end{bmatrix}, D = \begin{bmatrix} D_1 \\ D_2 \\ D_3 \end{bmatrix}, U = \begin{bmatrix} P \\ w_g \\ w_l \end{bmatrix}$$

$$\begin{aligned} a_{11} &= Aw_g\phi\left(\frac{\partial\rho_g}{\partial P}\right)_T, a_{12} = A\rho_g\phi, a_{13} = 0, a_{14} = A\rho_g w_g, a_{21} = Aw_l H_L\left(\frac{\partial\rho_l}{\partial P}\right)_T, a_{22} = 0, \\ a_{23} &= A\rho_l H_L, a_{24} = A\rho_l w_l, a_{31} = A, a_{32} = \rho_g w_g \phi A, a_{33} = \rho_l w_l H_L A, a_{34} = 0, b_{11} = A\phi\left(\frac{\partial\rho_g}{\partial P}\right)_T, \\ b_{12} &= 0, b_{13} = 0, b_{14} = A\rho_g, b_{21} = AH_L\left(\frac{\partial\rho_l}{\partial P}\right)_T, b_{22} = 0, b_{23} = 0, b_{24} = A\rho_l, b_{31} = 0, b_{32} = \rho_g\phi A, \\ b_{33} &= \rho_l H_L A, b_{34} = 0, D_1 = \Delta\dot{m}_{gl} - b_{14} \frac{\partial\phi}{\partial t} - a_{14} \frac{\partial\phi}{\partial x}, D_2 = \Delta\dot{m}_{lg} - b_{24} \frac{\partial\phi}{\partial t} - a_{24} \frac{\partial H_L}{\partial x}, \\ D_3 &= -F_{gw} - F_{lw} - (\rho_g\phi + \rho_l H_L)gA \sin\theta \end{aligned}$$

The characteristic determinant of (34) is as follow:

$$\begin{vmatrix} \lambda_0 w_g \varphi \left( \frac{\partial \rho_g}{\partial P} \right)_T + \lambda_1 \varphi \left( \frac{\partial \rho_g}{\partial P} \right)_T & \lambda_0 & 0 \\ \lambda_0 w_l H_L \left( \frac{\partial \rho_l}{\partial P} \right)_T + \lambda_1 H_L \left( \frac{\partial \rho_l}{\partial P} \right)_T & 0 & \lambda_0 \\ \lambda_0 & \lambda_0 w_g + \lambda_1 & \lambda_0 w_l + \lambda_1 \end{vmatrix} = 0 \quad (35)$$

Where,  $\lambda_0$  and  $\lambda_1$  are the eigenvalues of A and B. If  $\lambda = \lambda_0 / \lambda_1$  established, one solution of  $\lambda$  is 0 and the other two non-zero solutions should be expressed as follow:

$$\begin{aligned} & \left[ \varphi \left( \frac{\partial \rho_g}{\partial P} \right)_T + H_L \left( \frac{\partial \rho_l}{\partial P} \right)_T \right] \lambda^2 + 2 \left[ \varphi w_g \left( \frac{\partial \rho_g}{\partial P} \right)_T + H_L w_l \left( \frac{\partial \rho_l}{\partial P} \right)_T \right] \lambda \\ & + w_l^2 H_L \left( \frac{\partial \rho_l}{\partial P} \right)_T + w_g^2 \varphi \left( \frac{\partial \rho_g}{\partial P} \right)_T - 1 = 0 \end{aligned} \quad (36)$$

The condition for having real solutions of (36) is:

$$|w_g - w_l| < \sqrt{\frac{1}{H_L} \left( \frac{\partial P}{\partial \rho_l} \right)_T + \frac{1}{\varphi} \left( \frac{\partial P}{\partial \rho_g} \right)_T} \quad (37)$$

In (37),  $\left( \frac{\partial P}{\partial \rho_l} \right)_T$  and  $\left( \frac{\partial P}{\partial \rho_g} \right)_T$  represent square of liquid and gas isothermal wave velocities

separately. Thus the right side of (37) is greater than the wave velocity, which means (37) can be established for raw gas pipelines.

According to the analysis above, it can be concluded that under the giving range of operation conditions, all the eigenvalue of (35) are real different number. Therefore, (34) is strictly hyperbolic and this type will not change as its well posedness.

## 6.2 Boundary conditions

The boundary conditions include the input and output conditions as well as conditions, such as valves shut off, compressors shut down and etc., which will lead to operating changes. For this transient model, the boundary conditions are considered as: the starting pressure and flow rate over time, ending pressure and flow rate over time.

$$P|_{x=0} = f_{p1}(t) \quad (38)$$

$$Q|_{x=0} = f_{q1}(t) \quad (39)$$

$$P|_{x=L} = f_{p2}(t) \quad (40)$$

$$Q|_{x=L} = f_{q2}(t) \tag{41}$$

**6.3 Solutions of the transient model**

Equation (34) is a set of non-linear partial differential equations and the method of characteristic (MOC) and implicit difference method are always adopted to gain numerical solutions. By both methods have advantages and disadvantages. There is strict restriction with the time length of each step (Fig.4), thus the stability of the implicit difference method is better. But at each time layer, differential equations of all the grids should be solved simultaneously, which causes the computing time is large. Different with the implicit difference method, for MOC, the time length of each step is restricted in a relatively short range by its stability conditions. The advantage of MOC is the unknowns of each grid at each time layer can be solved dependently, and the amount of equations solved simultaneously is reduced. Considering the transient feature of low-liquid loading multiphase flow in pipeline is slow transient behaviour which means the transient process lasts long time, the former method is adopted.

Mesh length variable  $x$  and time variable  $t$  into grids as shown in Fig. 4. In each block, the differential equations of (31) ~ (33) can be obtained by the implicit different method (Li *et al*, 2011).

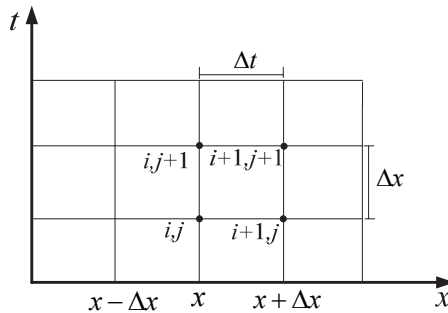


Fig. 4. Differential blocks of pipelines

Gas phase continuity equation:

$$\begin{aligned}
 & b_{11}^n \frac{P_i^{n+1} + P_{i-1}^{n+1} - P_i^n - P_{i-1}^n}{2\Delta t} - b_{14}^n \frac{H_{Li}^{n+1} + H_{Li-1}^{n+1} - H_{Li}^n - H_{Li-1}^n}{2\Delta t} + \\
 & + a_{11}^n \frac{\xi(P_i^{n+1} - P_{i-1}^{n+1}) + (1-\xi)(P_i^n - P_{i-1}^n)}{\Delta x} \\
 & + a_{12}^n \frac{\xi(w_{gi}^{n+1} - w_{gi-1}^{n+1}) + (1-\xi)(w_{gi}^n - w_{gi-1}^n)}{\Delta x} - \\
 & - a_{14}^n \frac{\xi(H_{Li}^{n+1} - H_{Li-1}^{n+1}) + (1-\xi)(H_{Li}^n - H_{Li-1}^n)}{\Delta x} = \Delta \dot{m}_{gl}
 \end{aligned} \tag{42}$$

In which  $\xi$  is the weight coefficient. Set  $\lambda = \frac{2\Delta t}{\Delta x}$ , then above equation reduces to:

$$\begin{aligned}
& (b_{11}^n - a_{11}^n \lambda \xi) P_{i-1}^{n+1} - a_{12}^n \lambda \xi w_{gi-1}^{n+1} - (b_{14}^n - a_{14}^n \lambda \xi) H_{Li-1}^{n+1} + (b_{11}^n + a_{11}^n \lambda \xi) P_i^{n+1} + a_{12}^n \lambda \xi w_{gi}^{n+1} \\
& - (b_{14}^n + a_{14}^n \lambda \xi) H_{Li}^{n+1} = 2\Delta t \Delta \dot{m}_{gl} + b_{11}^n (P_i^n + P_{i-1}^n) - b_{14}^n (H_{Li}^n + H_{Li-1}^n) - a_{11}^n \lambda (1 - \xi) (P_i^n - P_{i-1}^n) \quad (43) \\
& - a_{12}^n \lambda (1 - \xi) (w_{gi}^n - w_{gi-1}^n) + a_{14}^n \lambda (1 - \xi) (H_{Li}^n - H_{Li-1}^n)
\end{aligned}$$

Similarly, liquid phase continuity equation is as follow:

$$\begin{aligned}
& (b_{21}^n - a_{21}^n \lambda \xi) P_{i-1}^{n+1} - a_{23}^n \lambda \xi w_{li-1}^{n+1} + (b_{24}^n - a_{24}^n \lambda \xi) H_{Li-1}^{n+1} + (b_{21}^n + a_{21}^n \lambda \xi) P_i^{n+1} + a_{23}^n \lambda \xi w_{li}^{n+1} \\
& + (b_{24}^n + a_{24}^n \lambda \xi) H_{Li}^{n+1} = 2\Delta t \Delta \dot{m}_{lg} + b_{21}^n (P_i^n + P_{i-1}^n) + b_{24}^n (H_{Li}^n + H_{Li-1}^n) \quad (44) \\
& - a_{21}^n \lambda (1 - \xi) (P_i^n - P_{i-1}^n) - a_{23}^n \lambda (1 - \xi) (w_{li}^n - w_{li-1}^n) - a_{24}^n \lambda (1 - \xi) (H_{Li}^n - H_{Li-1}^n)
\end{aligned}$$

Momentum equation:

$$\begin{aligned}
& (b_{32}^n - a_{32}^n \lambda \xi) w_{gi-1}^{n+1} + (b_{33}^n - a_{33}^n \lambda \xi) w_{li-1}^{n+1} - a_{31}^n \lambda \xi P_{i-1}^{n+1} + (b_{32}^n + a_{32}^n \lambda \xi) w_{gi}^{n+1} + (b_{33}^n + a_{33}^n \lambda \xi) w_{li}^{n+1} \\
& + a_{31}^n \lambda \xi P_i^{n+1} = 2\Delta t D_3^2 + b_{32}^n (w_{gi}^n + w_{gi-1}^n) + b_{33}^n (w_{li}^n + w_{li-1}^n) - \lambda a_{32}^n (1 - \xi) (w_{gi}^n - w_{gi-1}^n) \quad (45) \\
& - a_{33}^n \lambda (1 - \xi) (w_{li}^n - w_{li-1}^n) - \lambda a_{31}^n (1 - \xi) (P_i^n - P_{i-1}^n)
\end{aligned}$$

Based on the above three differential equations, the pressure, flow velocity of the gas phase as well as that of the liquid phase can be obtained. The solution procedures are as follow:

- Step 1. Divide pipeline system into series of pipeline segments with different angles. Mesh each segment into blocks with the step length of  $\Delta x$ ;
  - Step 2. Get the operation parameters on each grid node by steady state solutions;
  - Step 3. Put the parameters on 0 time layer into (43) ~ (45) and get the solutions of operation parameters (the pressure  $P$ , gas flow rate  $w_g$  and liquid flow rate  $w_l$ ) at 1 time layer;
  - Step 4. Get the solution of liquid holdup  $H_L$  at 1 time layer by (12);
  - Step 5. Repeat step 3 ~ step 4 until reach the giving time layer;
- The flow chart of the solution procedures is shown in Fig. 5.

## 7. Application

### 7.1 Steady state simulation

Table 1 is the basic data of a condensate gas pipeline. The pressure at starting point is 11.0MPa and the temperature is 330K. The mass of gas flow rate is 29.0kg/s and liquid flow is 0kg/s. The components of the condensate gas are shown in Table 2. Calculate the operation parameters of the pipeline by steady state model and determine the location where phase change occurs.

Segments	Length (km)	Diameter (mm)	Absolute roughness (mm)	Total diathermanous factor (W/m2.K)	Ambient temperature (K)	Step length (m)
30	40.0	355.6	0.0457	6.05	330	1333.33

Table 1. Basic data of the condensate gas pipeline

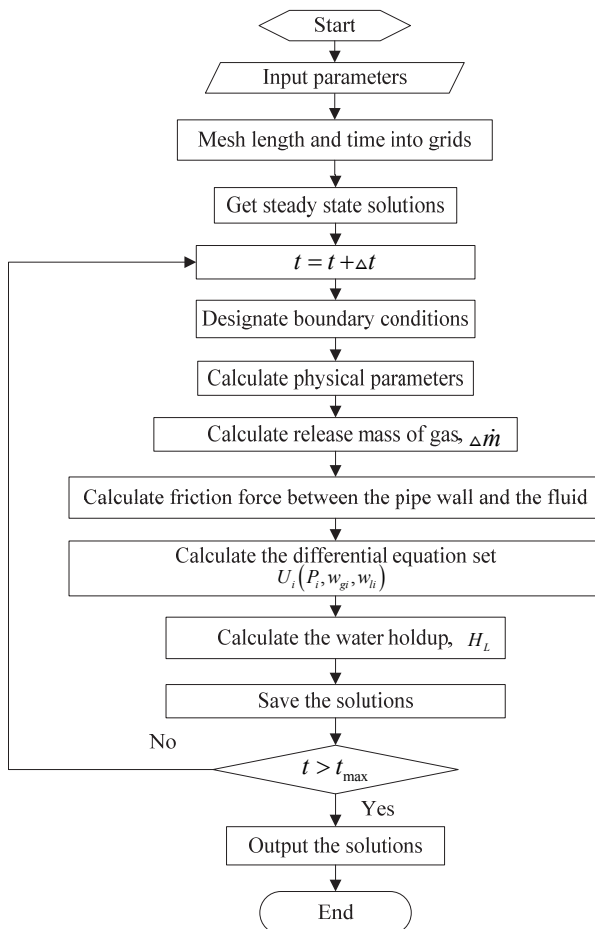


Fig. 5. Solving procedures of transient model

Component	Fraction	Component	Fraction
C1	0.841454	C6	0.002818
C2	0.075518	C7	0.001535
C3	0.039954	C8	0.001442
C4	0.009476	CO <sub>2</sub>	0.012166
C5	0.007121	N <sub>2</sub>	0.008517

Table 2. Basic data of the condensate gas pipeline

The solutions can be illustrated as Fig. 6. According to the solutions above, the liquid begins to condensate from the section of 12.3km because the hydrocarbons enter the anti-condensate region.

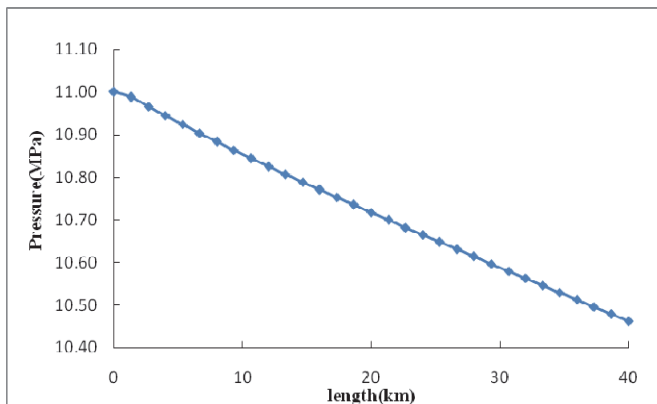


Fig. 6. The steady state pressure variations of the condensate gas pipeline

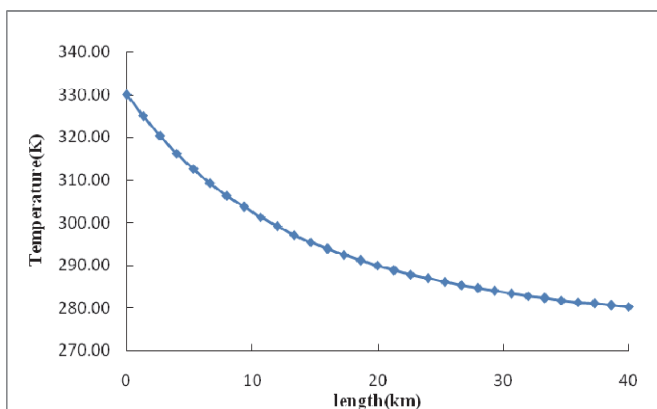


Fig. 7. The steady state temperature variations of the condensate gas pipeline

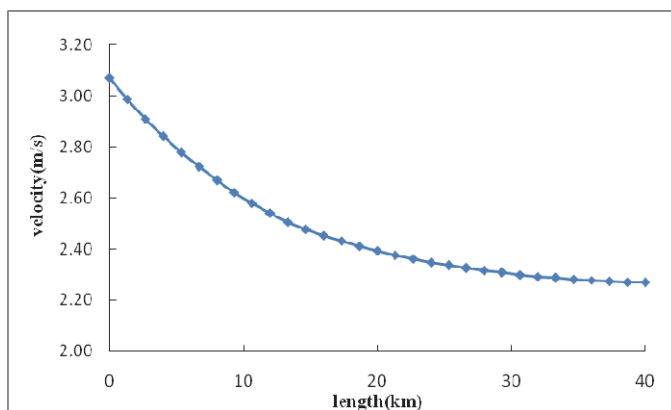


Fig. 8. The steady state gas velocity variations of the condensate gas pipeline

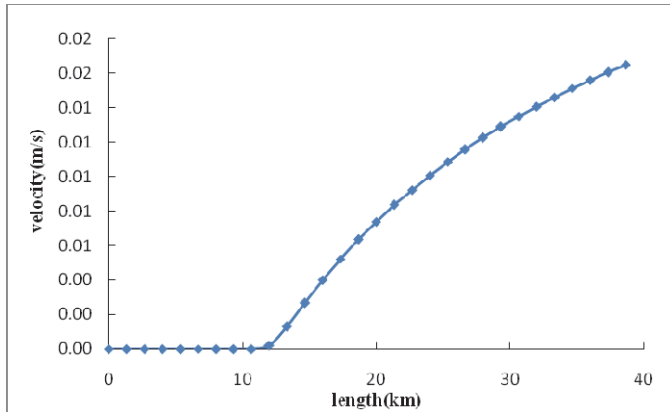


Fig. 9. The steady state liquid velocity variations of the condensate gas pipeline

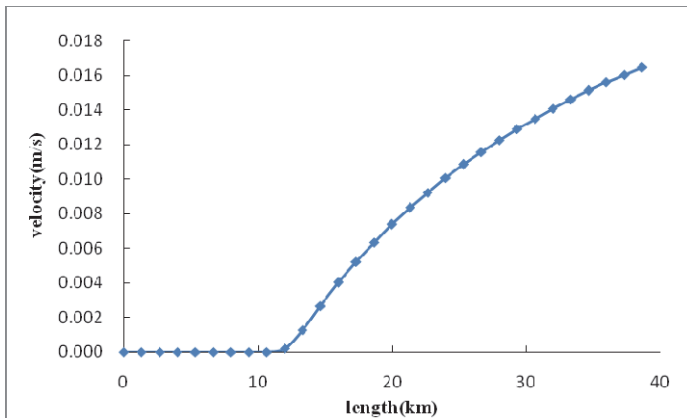


Fig. 10. The steady state liquid holdup variations of the condensate gas pipeline

The feature of condensate gas pipelines is phase change may occur during operating. This leads to a lot of new phenomena as follow:

1. It can be seen from Fig.6 that the pressure drop curve of two phase flow is significantly different from of gas flow even the liquid holdup is quite low. The pressure drop of gas flow is non-linear while the appearance of liquid causes a nearly linear curve of the pressure drop. This phenomenon is expressed that the relatively low pressure in the pipeline tends to increase of the gas volume flow; the appearance of condensate liquid and the temperature drop reduce the gas volume flow.
2. It can be seen from Fig. 7 that the temperature drop curve of two phase flow is similar to single phase flow. The temperature drop gradient of the first half is greater than the last half because of larger temperature difference between the fluid and ambient.

3. It can be seen from Fig. 8 and Fig.9 that the appearance of two phase flow lead to a reduction of gas flow velocity as well as an increase of liquid flow velocity. The phenomenon also contributes to the nearly linear drop of pressure along the pipeline.
4. The sharp change of liquid flow velocity as shown in Fig. 9 is caused by phase change. The initial flow velocity of liquid is obtained by flash calculation which makes no consideration of drag force between the phases. Therefore, an abrupt change of the flow rate before and after the phase change occurs as the error made by the flash calculation cannot be ignored. The two-fluid model which has fully considerate of the effect of time is adopted to solve the flow velocity after phase change and the solutions are closer to realistic. It is still a difficulty to improve the accuracy of the initial liquid flow rate at present. The multiple boundaries method is adapted to solve the steady state model. But the astringency and steady state need more improve while this method is applied to non-linear equations.
5. As shown in Fig.10, the liquid hold up increases behind the phase transition point (two-phase region). Due to the increasing of the liquid hold up is mainly constraint by the phase envelope of the fluid, increasing amount is limited.

The steady state model can simulate the variation of parameters at steady state operation. Actually, there is not absolute steady state condition of the pipeline. If more details of the parameters should be analyzed, following transient simulation method is adopted.

## 7.2 Transient simulation

Take the previous pipeline as an example, and take the steady state steady parameters as the initial condition of the transient simulation. The boundary condition is set as the pressure at the inlet of pipeline drops to 10.5MPa abruptly at the time of 300s after steady state. The simulation results are shown in Fig11-Fig.15.

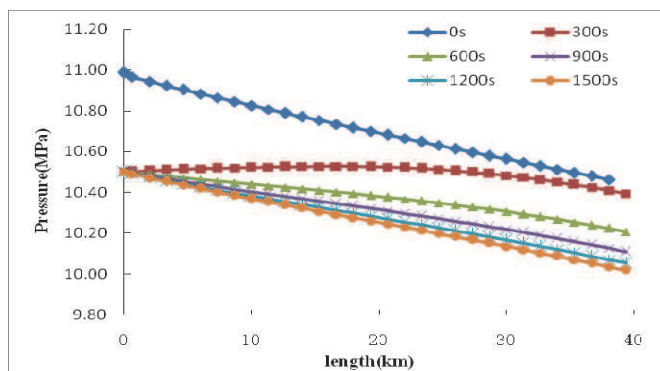


Fig. 11. Pressure variation along the pipeline



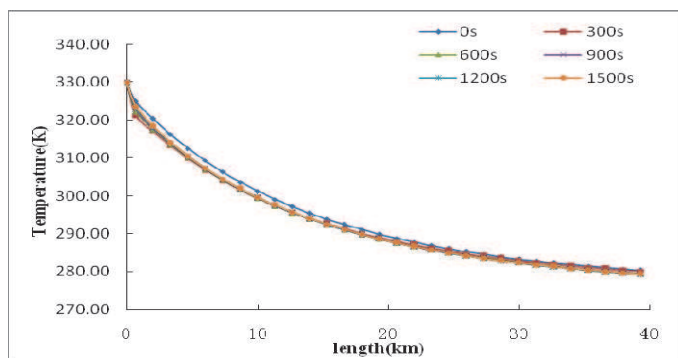


Fig. 12. Temperature variation along the pipeline

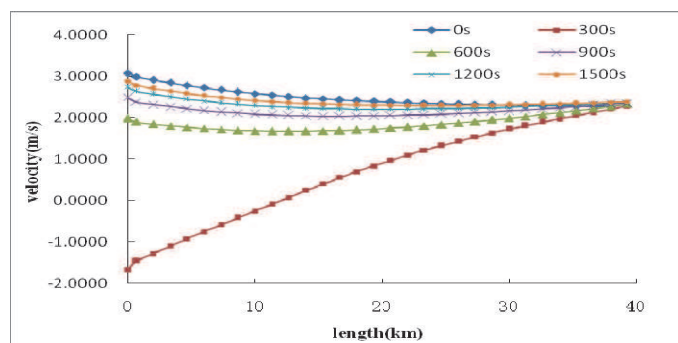


Fig. 13. Velocity of the gas phase variation along the pipeline

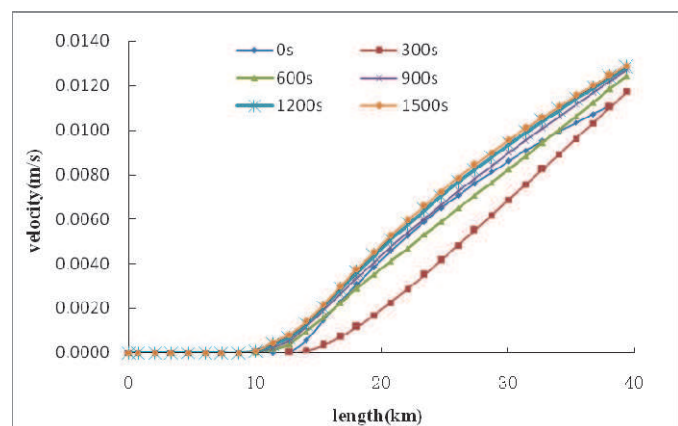


Fig. 14. Velocity of the liquid phase variation along the pipeline

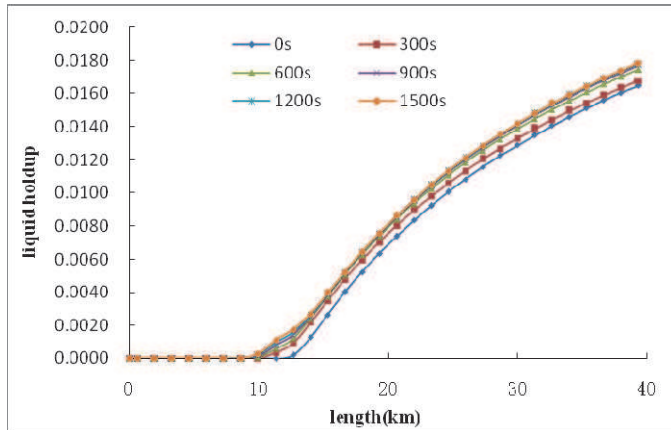


Fig. 15. Liquid hold up variation along the pipeline

Compared with steady state, the following features present.

1. Fig.11 depicts the pressure along the pipeline drops continuously with time elapsing after the inlet pressure drops to 10.5MPa at the time of 300s as the changing of boundary condition.
2. Fig.12 shows the temperature variation tendency is nearly the same as steady state. The phenomenon can be explained by the reason that the energy equation is ignored in order to simplify the transient model. The approximate method is reasonable because the temperature responses slower than the other parameters.
3. As depicted in Fig.13, there are abrupt changes of the gas phase velocity at the time of 300s. The opposite direction flow occurs because the pressure at the inlet is lower than the other sections in the pipeline. However, with the rebuilding of the new steady state, the velocity tends to reach a new steady state.
4. Fig.14 shows the velocity variation along the pipeline. Due to the loss of pressure energy at the inlet, the liquid velocity also drops simultaneously at the time of 300s. Similar to gas velocity, after 300s, the liquid velocity increases gradually and tends to reach new steady state with time elapsing.
5. Due to the same liquid hold up equation is adopted in the steady state and transient model, the liquid hold up simulated by the transient model and steady state mode has almost the same tendency (Fig.15). However, the liquid hold up increases because of the temperature along the pipeline after 300s is lower than that of initial condition.

Sum up, the more details of the results and transient process can be simulated by transient model. There are still some deficiencies in the model, which should be improved in further work.

## 8. Conclusions

In this work, a general model for condensate gas pipeline simulation is built on the basis of BWR EOS, continuity equation, momentum equation, energy equation of the gas and liquid phase. The stratified flow pattern and corresponding constitutive equation are adopted to simplify the model.

By ignoring the parameters variation with time, the steady state simulation model is obtained. To solve the model, the four-order Runge - Kutta method and Gaussian

elimination method are used simultaneously. Opposite to steady state model, the transient model is built with consideration of the parameters variation with time, and the model is solved by finite difference method. Solving procedures of steady-state and transient models are presented in detail.

Finally, this work simulated the steady-state and transient operation of a condensate gas pipeline. The pressures, temperatures, velocity of the gas and liquid phase, liquid hold up are calculated. The differences between the steady-state and transient state are discussed. The results show the model and solving method proposed in this work are feasible to simulate the steady state and transient flow in condensate gas pipeline. Nevertheless, in order to expand the adaptive range the models, more improvements should be implemented in future work (Pecenko *et al*, 2011).

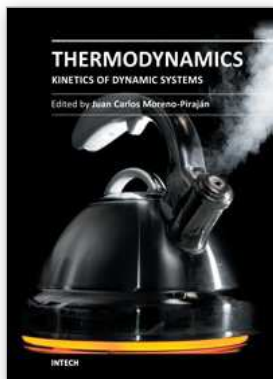
## 9. Acknowledgment

This paper is a project supported by sub-project of National science and technology major project of China (No.2008ZX05054) and China National Petroleum Corporation (CNPC) tackling key subject: Research and Application of Ground Key Technical for CO<sub>2</sub> flooding, JW10-W18-J2-11-20.

## 10. References

- S. Mokhatab; William A. Poe & James G. Speight. (2006). *Handbook of Natural Gas Transmission and Processing*, Gulf Professional Publishing, ISBN 978-0750677769
- Li, C. J. (2008). *Natural Gas Transmission by Pipeline*, Petroleum Industry Press, ISBN 978-7502166700, Beijing, China
- S. Mokahatab.(2009). Explicit Method Predicts Temperature and Pressure Profiles of Gas-condensate Pipelines . *Energy Sources, Part A*. 2009(29): 781-789.
- P. Potocnik. (2010). *Natural Gas*, Sciyo, ISBN 978-953-307-112-1, Rijeka, Croatia.
- M. A. Adewumi. & Leksono Mucharam. (1990). Compositional Multiphase Hydrodynamic Modeling of Gas/Gas-condensate Dispersed Flow. *SPE Production Engineering*, Vol.5, No.(2), pp.85-90 ISSN 0885-9221
- McCain, W.D. (1990). *The Properties of Petroleum Fluids(2<sup>nd</sup> Edition)*. Pennwell Publishing Company, ISBN978-0878143351,Tulsa, OK., USA
- Estela-Uribe J.F.; Jaramillo J., Salazar M.A. & Trusler J.P.M. (2003). Viriel equation of state for natural gas systems. *Fluid Phase Equilibria*, Vol. 204, No. 2, pp. 169--182.ISSN 0378-3812
- API. (2005). *API Technical Databook (7<sup>th</sup> edition)*, EPCON International and The American Petroleum Institute, TX,USA
- Luis F. Ayala; M. A. Adewumi.(2003). Low liquid loading Multiphase Flow in Nature Gas Pipelines.*Journal of Energy Resources and Technology*, Vol.125, No.4, pp. 284-293, ISSN 1528-8994
- Li, Y. X., Feng, S. C.(1998). Studying on transient flow model and value simulation technology for wet natural gas in pipeline transmission. *OGST*, vol.17, no.5, pp.11-17, ISSN1000-8241

- Hasan, A.R. & Kabir, C.S.(1992). Gas void fraction in two-phase up-flow in vertical and inclined annuli. *International Journal of Multiphase Flow*, Vol.18, No.2, pp.279 - 293. ISSN0301-9322
- Li, C. J., Liu E.B. (2009) .The Simulation of Steady Flow in Condensate Gas Pipeline · *Proceedings of 2009 ASCE International Pipelines and Trenchless Technology Conference*, pp.733-743, ISBN 978-0-7844-1073-8, Shanghai, China, October 19-21,2009.
- Taitel, Y. & Barnea (1995). Stratified three-phase flow in pipes. *International Journal of Multiphase flow*, Vol.21, No.2, pp.53-60. ISSN0301-9322
- Chen, X. T., Cai, X. D. & Brill, J. P. (1997). Gas-liquid Stratified Wavy Flow in Horizontal Pipelines, *Journal of Energy Resources and Technology*, Vol.119, No.4, pp.209-216 ISSN 1528-8994.
- Masella, J.M., Tran, Q.H., Ferre, D., and Pauchon, C.(1998). Transient simulation of two-phase flows in pipes. *Oil Gas Science Technology*. Vol. 53, No.6, pp.801 - 811 ISSN 1294-4475.
- Li, C. J., Jia, W. L., Wu, X.(2010). Water Hammer Analysis for Heated Liquid Transmission Pipeline with Entrapped Gas Based on Homogeneous Flow Model and Fractional Flow Model, *Proceedings of 2010 IEEE Asia-Pacific Power and Energy Engineering Conference*, ISBN978-1-4244-4813-5, Chengdu, China, March28-21.2010.
- A. Pecenko,; L.G.M. van Deurzen. (2011). Non-isothermal two-phase flow with a diffuse-interface model. *International Journal of Multiphase Flow* ,Vol.37,No.2,PP.149-165. ISSN0301-9322



## **Thermodynamics - Kinetics of Dynamic Systems**

Edited by Dr. Juan Carlos Moreno Piraján

ISBN 978-953-307-627-0

Hard cover, 402 pages

**Publisher** InTech

**Published online** 22, September, 2011

**Published in print edition** September, 2011

Thermodynamics is one of the most exciting branches of physical chemistry which has greatly contributed to the modern science. Being concentrated on a wide range of applications of thermodynamics, this book gathers a series of contributions by the finest scientists in the world, gathered in an orderly manner. It can be used in post-graduate courses for students and as a reference book, as it is written in a language pleasing to the reader. It can also serve as a reference material for researchers to whom the thermodynamics is one of the area of interest.

### **How to reference**

In order to correctly reference this scholarly work, feel free to copy and paste the following:

Li Changjun, Jia Wenlong and Wu Xia (2011). Modeling and Simulation for Steady State and Transient Pipe Flow of Condensate Gas, Thermodynamics - Kinetics of Dynamic Systems, Dr. Juan Carlos Moreno Piraján (Ed.), ISBN: 978-953-307-627-0, InTech, Available from: <http://www.intechopen.com/books/thermodynamics-kinetics-of-dynamic-systems/modeling-and-simulation-for-steady-state-and-transient-pipe-flow-of-condensate-gas>

# **INTECH**

open science | open minds

### **InTech Europe**

University Campus STeP Ri  
Slavka Krautzeka 83/A  
51000 Rijeka, Croatia  
Phone: +385 (51) 770 447  
Fax: +385 (51) 686 166  
[www.intechopen.com](http://www.intechopen.com)

### **InTech China**

Unit 405, Office Block, Hotel Equatorial Shanghai  
No.65, Yan An Road (West), Shanghai, 200040, China  
中国上海市延安西路65号上海国际贵都大饭店办公楼405单元  
Phone: +86-21-62489820  
Fax: +86-21-62489821

© 2011 The Author(s). Licensee IntechOpen. This chapter is distributed under the terms of the [Creative Commons Attribution-NonCommercial-ShareAlike-3.0 License](#), which permits use, distribution and reproduction for non-commercial purposes, provided the original is properly cited and derivative works building on this content are distributed under the same license.