

Microreview

Cell signalling and *Trypanosoma cruzi* invasion

Barbara A. Burleigh* and Aaron M. Woolsey

Department of Immunology and Infectious Diseases,
Harvard School of Public Health, 665 Huntington Ave,
Bldg I Rm 713, Boston, MA 02115, USA.

Summary

Mammalian cell invasion by the protozoan pathogen *Trypanosoma cruzi* is critical to its survival in the host. To promote its entry into a wide variety of non-professional phagocytic cells, infective trypomastigotes exploit an arsenal of heterogeneous surface glycoproteins, secreted proteases and signalling agonists to actively manipulate multiple host cell signalling pathways. Signals initiated in the parasite upon contact with mammalian cells also function as critical regulators of the invasion process. Whereas the full spectrum of cellular responses modulated by *T. cruzi* is not yet known, mounting evidence suggests that these pathways impinge on a number of cellular processes, in particular the ubiquitous wound-repair mechanism exploited for lysosome-mediated parasite entry. Furthermore, differential engagement of host cell signalling pathways in a cell type-specific manner and modulation of host cell gene expression by *T. cruzi* are becoming recognized as essential determinants of infectivity and intracellular survival by this pathogen.

Introduction

The intracellular protozoan pathogen *Trypanosoma cruzi* causes Chagas' disease in humans, a chronic inflammatory condition characterized by cardiomyopathy and digestive disorders (for recent reviews: Chimelli and Scaravilli, 1997; Zhang and Tarleton, 1999; Engman and Leon, 2002). Naturally acquired *T. cruzi* infections are initiated in the dermal layers or conjunctival mucosa by infective metacyclic trypomastigotes transmitted by an infected haematophagous triatomine vector such as *Triatoma infestans*. Completion of the intracellular replicative

cycle takes 3–5 days, after which infective trypomastigotes, released into the bloodstream of the host, are disseminated throughout the body and infect tissues at distal sites. Thus, the ability to infect and replicate within a variety of cell types is an essential feature of the *T. cruzi* life cycle in the mammalian host. Whereas parasites are eventually cleared from most tissues and parasitaemia is no longer detectable in the post-acute stages of infection, low-level persistence, particularly in the myocardium and smooth muscle, contributes to the pathology associated with chronic Chagas' disease. Presently, several determinants of host cell invasion have been uncovered, but the molecular requirements for intracellular growth and parasite persistence remain poorly understood. The resulting complex interplay between *T. cruzi*-dependent modulation of the host cell environment and immune avoidance strategies is likely to influence the outcome of infection.

Elucidation of the molecular components regulating establishment of *T. cruzi* infection is critical to understanding the pathogenesis of Chagas' disease. Predictably, communication between pathogen and host cell directs the complex *T. cruzi* infection process at multiple stages. *In vitro* models of infection (invasion and intracellular replication) have been very useful for studying the molecular and cellular basis of these interactions. Whereas early studies concentrated primarily on the role of *T. cruzi* trypomastigote surface antigens in mediating attachment of parasites to non-professional phagocytic cells (reviewed by Frasch, 1994; 2000; Burleigh and Andrews, 1995a), a more recent focus has been the role of signal transduction pathways in co-ordinating *T. cruzi* invasion (Burleigh and Andrews, 1998) and modulating host cell gene expression (Chuenkova *et al.*, 2001; Vaena de Avalos *et al.*, 2002). A variety of cell surface receptors, secondary messengers and transcription factors from different pathways appear to have been exploited by the parasite to mediate and affect parasite invasion and survival. The best characterized of such signalling events related to host cell invasion is exemplified by Ca²⁺-signalling elicited in mammalian host cells by infective trypomastigotes. In particular, Ca²⁺-dependent fusion of lysosomes with the host cell plasma membrane has emerged as an important route for parasite entry. These pathways will be discussed in detail below. Recent studies also suggest that interaction with mammalian host cells triggers contact-dependent sig-

Received 25 June, 2002; revised 13 August, 2002; accepted 14 August, 2002. *For Correspondence. E-mail: bburleig@hsph.harvard.edu; Tel. (+1) 617 432 2495; Fax (+1) 617 432 4766.

nalling in protozoan parasites as well, a phenomenon that appears to be universal among invasive eukaryotic pathogens (Moreno *et al.*, 1994; Shaw, 1995; Lu *et al.*, 1997; Pezzella *et al.*, 1997; Carruthers and Sibley, 1999; Carruthers *et al.*, 1999; Vieira and Moreno, 2000).

Trypanosoma cruzi exploits the mammalian cellular wound-repair pathway for invasion

Trypomastigotes, the mammalian infective forms of *T. cruzi*, are relatively large (~20 µm in length), motile organisms that have the capacity to infect most nucleated cell types. Non-dividing trypomastigotes must establish residence within the host cell cytoplasm and differentiate into amastigotes before undergoing the first division in a process that takes ~24 h to complete (illustrated in Fig. 1A). Following attachment to the host cell membrane, signals triggered by the parasite initiate the gradual entry process into a host cell membrane-derived vacuole which is accomplished within 10 min (Rodríguez *et al.*, 1996). Unlike many intracellular pathogens that adeptly avoid fusion with host cell lysosomes (reviewed by Sinai and Joiner, 1997; Amer and Swanson, 2002), transient residence within an acidic lysosomal compartment is a prerequisite for *T. cruzi* survival (Ley *et al.*, 1990). Exposure of trypomastigotes to the acidic environment of the lyso-

somal vacuole is required for the activity of the secreted pore-forming *T. cruzi* molecule, TcTox, which aids in the disruption of the vacuole (Andrews and Whitlow, 1989; Andrews *et al.*, 1990). Moreover, low pH is thought to be an important trigger for trypomastigote to amastigote differentiation (Tomlinson *et al.*, 1995), a process that is initiated in the vacuole and completed in the cytoplasm (Fig. 1A). Additional environmental cues required for completion of the intracellular life cycle of this parasite may also be provided by the lysosome-derived vacuole.

Trypanosoma cruzi trypomastigotes have evolved the unique capacity to harness the cellular wound-repair mechanism, involving Ca²⁺-regulated lysosome exocytosis (Rodríguez *et al.*, 1997; Reddy *et al.*, 2001), as the basis for entry into the host cell and for the formation of the short-lived parasitophorous vacuole (Tardieux *et al.*, 1992) (Fig. 1A and B). Initiated by *T. cruzi*-induced signals, host cell lysosomes are recruited to the plasma membrane along microtubules in a kinesin-dependent manner (Tardieux *et al.*, 1992; Rodríguez *et al.*, 1996), where targeted fusion at the parasite attachment site is regulated by the lysosome-associated Ca²⁺-sensor synaptotagmin VII (Martinez *et al.*, 2000; Reddy *et al.*, 2001). In marked contrast to actin-dependent processes such as phagocytosis or membrane-ruffling utilized by many invasive microorganisms for internalization (Reed *et al.*, 1996;

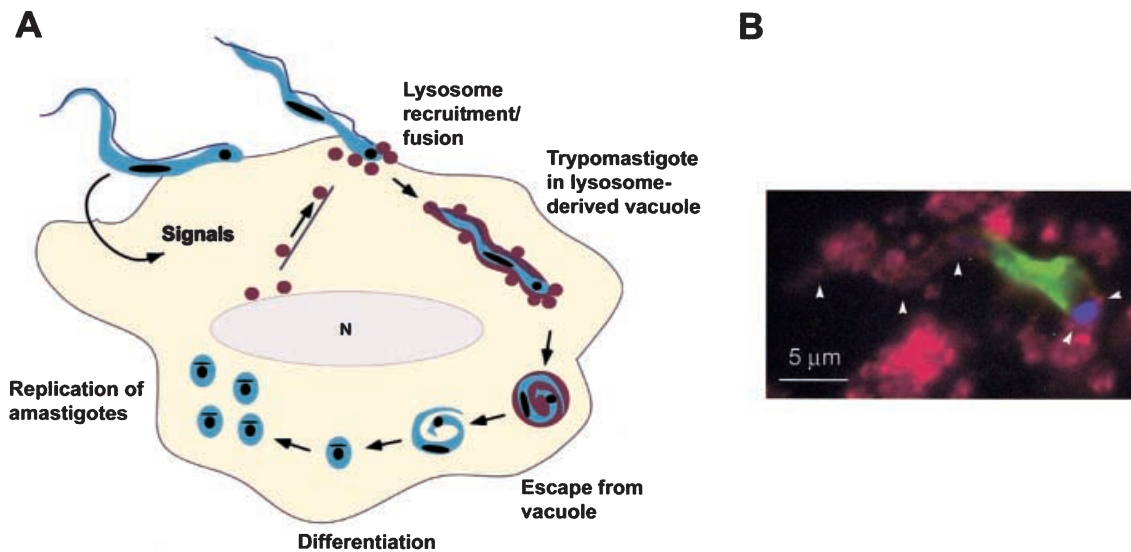


Fig. 1. Invasion by *T. cruzi* involves early recruitment of host cell lysosomes.

A. Schematic representation of the *T. cruzi* intracellular infection cycle: trypomastigotes associate with the surface of mammalian cells, trigger signalling pathways that lead to the localized recruitment and fusion of host cell lysosomes with the plasma membrane and generation of a lysosome-derived parasitophorous vacuole. Parasites are released into the cytoplasm following disruption of the vacuole, differentiate to replicative amastigote forms and begin to divide at ~24 h post infection.

B. Immunofluorescence staining demonstrating co-localization of host cell lamp-1 (red), a lysosomal marker, with partially internalized *T. cruzi* trypomastigote (extracellular portion stained green) in a primary rat cardiomyocyte.

Sansonetti *et al.*, 1999; Zhou *et al.*, 1999; Edwards *et al.*, 2000), depolymerization of host cell actin microfilaments enhances the Ca²⁺-regulated lysosome-mediated *T. cruzi* entry pathway (Rodríguez *et al.*, 1997).

Mechanisms of *T. cruzi*-induced Ca²⁺-signalling

Prior to entry, invasive *T. cruzi* trypomastigotes elicit asynchronous and repetitive intracellular [Ca²⁺]_i-transients in mammalian cells (Moreno *et al.*, 1994; Tardieux *et al.*, 1994; Caler *et al.*, 2000; Scharfstein *et al.*, 2000). Such changes in intracellular calcium levels regulate parasite invasion by promoting transient actin rearrangements (Rodríguez *et al.*, 1995) and lysosome-plasma membrane fusion (Rodríguez *et al.*, 1997). The [Ca²⁺]_i-transients are initiated relatively slowly (1–2 min post addition) in response to live trypomastigotes (Moreno *et al.*, 1994; Tardieux *et al.*, 1994; Caler *et al.*, 2000), suggesting that proximity to the host cell is a prerequisite for induction of Ca²⁺-signalling by this pathogen (Caler *et al.*, 2000; Scharfstein *et al.*, 2000). In support of this, constitutively released/secreted trypomastigote components fail to generate an appreciable Ca²⁺-response in mammalian cells (Burleigh and Andrews, 1995b). Following an initial increase in [Ca²⁺]_i in infected and neighbouring uninfected cells in culture, [Ca²⁺]_i levels decline at later times of infection (3–5 days) (Low *et al.*, 1992) indicating that cellular Ca²⁺ homeostasis is disrupted in *T. cruzi*-infected mammalian cells for the duration of the intracellular infection cycle. Presently, our understanding of the mechanism(s) by which infective *T. cruzi* trypomastigotes induce Ca²⁺-signalling in mammalian cells is far from complete. Highlighted below are three distinct models for parasite-dependent Ca²⁺-signalling that have been proposed by different groups. Although the data to support each model ostensibly excludes the other two, these controversial reports may be indicative of a more complex set of interactions involving redundant mechanisms for activation of this important signalling pathway.

A tale of two peptidases

Two peptidase-dependent mechanisms for *T. cruzi*-induced Ca²⁺-signalling in mammalian cells have been described. One involves the serine endopeptidase, oligopeptidase B (Burleigh and Andrews, 1995b; Burleigh *et al.*, 1997; Caler *et al.*, 1998) and the other requires the participation of the secreted/lysosomal cysteine protease, cruzipain (Scharfstein *et al.*, 2000). Whereas current evidence suggests that these are discrete mechanisms, the following similarities emerge when comparing the two models: peptidase-dependent cleavage of inactive precursors yield active Ca²⁺ agonists that bind to G-protein-coupled receptors and trigger mobilization of intracellular

Ca²⁺ stores in an IP₃-mediated manner (Fig. 2, pathways 2 and 3). In the case of oligopeptidase B-dependent signalling, peptide processing is postulated to occur at an intracellular location (oligopeptidase B is cytosolic) before release of the active parasite-derived agonist (Burleigh *et al.*, 1997; Caler *et al.*, 1998). Cruzipain, on the other hand, is secreted and its substrate is of host origin (Scharfstein *et al.*, 2000). In addition to oligopeptidase B and cruzipain-dependent models of host cell Ca²⁺ signalling, peptidase-dependent extracellular matrix remodelling and localized signalling events are emerging as key regulators of *T. cruzi* pathogenesis. For example, recent studies have demonstrated that a parasite-derived 80 kDa prolyl endopeptidase with collagen I degrading activity facilitates invasion of mammalian cells (Santana *et al.*, 1997; Grellier *et al.*, 2001), an activity that is likely to be highly relevant *in vivo* during the navigation of interstitial tissue spaces by trypomastigotes.

I. Oligopeptidase B-dependent Ca²⁺-signalling

Trypanosoma cruzi trypomastigotes express a soluble Ca²⁺-signalling activity (Tardieux *et al.*, 1994; Burleigh and Andrews, 1995b) that activates host cell phospholipase C (PLC) to promote the generation of inositol triphosphate (IP₃) and mobilization of Ca²⁺ from thapsigargin-sensitive intracellular stores (Rodríguez *et al.*, 1995). This activity was shown to be coupled to the activity of an 80 kDa cytosolic serine peptidase denominated oligopeptidase B (Opb) (Burleigh *et al.*, 1997). However, neither isolated native nor recombinant peptidase were capable of triggering [Ca²⁺]_i-transients in mammalian cells. Given its homology to prohormone processing enzymes (Fuller *et al.*, 1988; Kreil, 1990), it was proposed that Opb might function to generate a [Ca²⁺]_i-agonist from an inactive precursor peptide (Burleigh *et al.*, 1997) (Fig. 2, pathway 2). Several pieces of evidence support the hypothesis that *T. cruzi* Opb functions indirectly to induce [Ca²⁺]_i-transients during *T. cruzi* invasion. First, specific Opb-blocking antibodies inhibited the soluble Ca²⁺-signalling activity (Burleigh *et al.*, 1997). Second, oligopeptidase B null mutants (*opb*^{-/-}) generated by targeted gene disruption were significantly impaired with respect to their ability to infect mammalian cells *in vitro* and to establish infections in mice (Caler *et al.*, 1998). Furthermore, residual host cell invasion by *opb*^{-/-} mutants is insensitive to thapsigargin or pertussis-toxin pretreatment of mammalian cells, thereby implicating oligopeptidase B in the IP₃-mediated Ca²⁺-dependent entry pathway (Caler *et al.*, 1998; 2000). Further evidence was provided by biochemical reconstitution experiments in which purified recombinant Opb restored Ca²⁺-signalling activity in soluble extracts prepared from *opb*^{-/-} trypomastigotes (Caler *et al.*, 1998). Whereas biochemical studies and gene knockout experi-

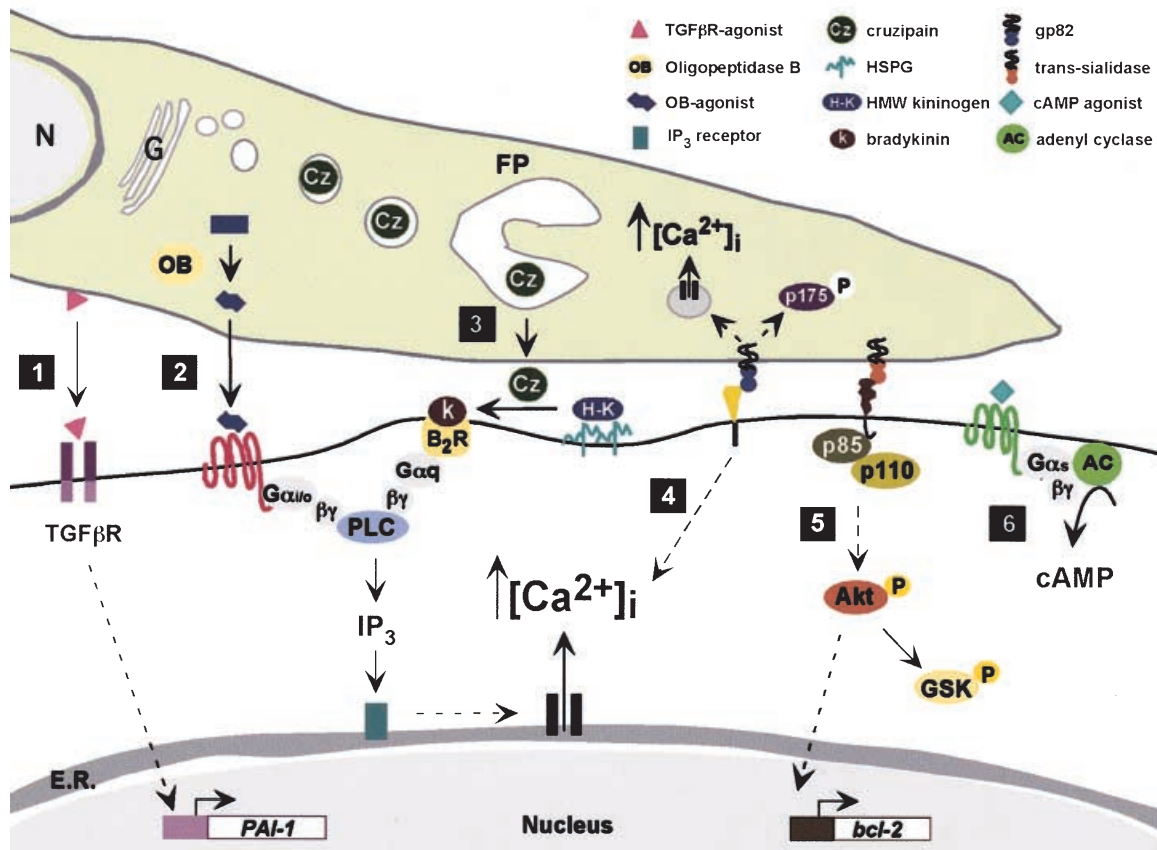


Fig. 2. Schematic diagram summarizing molecular components of signalling pathways triggered in non-professional phagocytic cells by infective *T. cruzi* trypomastigotes. (1) Secreted/released trypomastigote molecule(s) stimulate TGF- β receptors in epithelial cells and activate transcription of TGF- β -responsive genes such as plasminogen activator inhibitor-1 (PAI-1). (2) Cytosolic *T. cruzi* oligopeptidase B cleaves an inactive precursor to generate an active Ca^{2+} -agonist that is released from the parasite and binds a pertussis-toxin sensitive G-protein-coupled receptor. This stimulates phospholipase C (PLC) activity to generate inositol, 3,4,5 triphosphate (IP_3) which binds its receptor and promotes release of Ca^{2+} from intracellular stores such as the endoplasmic reticulum (ER). (3) Cruzipain (Cz) secreted from the flagellar pocket (FP) of *T. cruzi* cleaves host high molecular weight kininogen (H-K) to generate short-lived kinins (k) which bind to the bradykinin receptor (B_2R) to stimulate IP_3 -mediated Ca^{2+} release. (4) Bi-directional Ca^{2+} -signalling mediated by metacyclic surface glycoprotein, gp82 binding to unknown host cell receptor. (5) *Trans*-sialidase (TS)-mediated stimulation of host cell PI-3-kinase (p85/p110) signalling, activation of downstream serine/threonine kinase Akt, phosphorylation of glycogen synthase kinase (GSK) and activation of *bcl-2* transcription. (6) Stimulation of host cell adenylyl cyclase (AC) by a *T. cruzi* cAMP agonist leads to cAMP elevation in the host cell.

ments highlight the role for oligopeptidase B in *T. cruzi* invasion, a critical test of this phenotype, reintroduction of functional oligopeptidase B gene in the *opb*^{-/-} mutants has not been reported (Caler *et al.*, 1998). Nevertheless, these studies demonstrate, importantly, that residual Ca^{2+} -signalling activity is associated with live *opb*^{-/-} trypomastigotes (Caler *et al.*, 2000) and is present in soluble extracts prepared from *opb*^{-/-} parasites (Caler *et al.*, 1998), indicating redundant pathways for generation of $[\text{Ca}^{2+}]_i$ -transients in mammalian cells.

II. Cruzipain-dependent Ca^{2+} -signalling

Recently, Scharfstein and colleagues reported that *T. cruzi* invasion of a subset of mammalian cells is facilitated by $[\text{Ca}^{2+}]_i$ -transients initiated through host cell bradykinin

(B_2R) receptors by short-lived kinins (Scharfstein *et al.*, 2000) (Fig. 2, pathway 3). Previous work from this group had demonstrated that active kinins, such as bradykinin, could be liberated from host kininogen by a constitutively secreted parasite cysteine protease, cruzipain (Del Nery *et al.*, 1997). Incubation with purified exogenous cruzipain promoted $[\text{Ca}^{2+}]_i$ -transients in CHO cells expressing heterologous B_2R receptors but not in wild-type CHO cells (Scharfstein *et al.*, 2000). Furthermore, pretreatment of cells with cruzipain or bradykinin resulted in enhanced host cell invasion by *T. cruzi* and B_2R -dependent entry could be effectively blocked with membrane-permeable cysteine protease inhibitors but not with hydrophilic compounds. Together, these results suggest that protease-dependent kinin generation follows localized secretion of cruzipain at the site of intimate contact between *T.*

cruzi trypomastigotes and host cell (Scharfstein *et al.*, 2000). Interestingly, cruzipain-dependent liberation of kinins from host kininogen was greatly enhanced in the presence of heparan sulphate (Lima *et al.*, 2002), a molecule with recognized importance in facilitating *T. cruzi* invasion of non-professional phagocytic cells (Herrera *et al.*, 1994).

Bi-directional Ca²⁺-signalling mediated by T. cruzi metacyclic surface glycoprotein (gp82)

Metacyclic trypomastigotes express several stage-specific surface glycoconjugates, encoded by multigene families (Araya *et al.*, 1994; Frasch, 2000), that have been implicated in host cell recognition and invasion (Teixeira and Yoshida, 1986; Araguth *et al.*, 1988; Yoshida *et al.*, 1989). These include gp82, gp90 and gp35/50. Induction of Ca²⁺-transients in HeLa or Vero cells in response to metacyclic extracts was attributed predominantly to gp82 (Dorta *et al.*, 1995; Ruiz *et al.*, 1998). In contrast, levels of endogenous gp90 and gp35/50 expression inversely correlated with the ability of different *T. cruzi* strains to invade non-professional phagocytic cells (Yoshida *et al.*, 1997; Ruiz *et al.*, 1998; Malaga and Yoshida, 2001). Thus, interaction of these ligands with their putative receptors appears to interfere, directly or indirectly, with the ability of gp2 to engage its receptor(s) and trigger Ca²⁺-signalling. Whereas the significance of such competition is not yet understood, the relative expression of these parasite surface molecules may be an important determinant of tissue tropism.

Induction of [Ca²⁺]_i-transients during early parasite–host cell interactions is not limited to the host cell. Single cell measurements of [Ca²⁺]_i carried out in Fura2-AM-loaded *T. cruzi* trypomastigotes revealed that host cell attachment coincides with increased levels of [Ca²⁺]_i in the parasite (Moreno *et al.*, 1994). Similar to host cell Ca²⁺-signalling, elevation of parasite intracellular [Ca²⁺]_i was found to be required for efficient invasion (Moreno *et al.*, 1994; Yakubu *et al.*, 1994). Cross-linking gp82 on the surface of metacyclic trypomastigotes with specific mAbs was shown to be sufficient to produce elevated [Ca²⁺]_i levels in these parasites, an effect that was mimicked with mammalian cell extracts (Ruiz *et al.*, 1998). Evidence suggests that the gp82-mediated increase in parasite intracellular [Ca²⁺]_i is dependent upon activation of phospholipase C (Yoshida *et al.*, 2000) downstream of protein tyrosine kinase activation, which results in the phosphorylation of a 175 kDa *T. cruzi* protein (Favoreto *et al.*, 1998). Thus the model for gp82-dependent signalling assigns a pivotal role to this parasite surface glycoprotein in mediating cross-talk between infective metacyclic trypomastigotes and mammalian host cells (Fig. 2, pathway 4). The observation that intratrypomastigote [Ca²⁺]_i is sustained at an elevated

level for several hours after host cell entry (Moreno *et al.*, 1994) also suggests that Ca²⁺-signalling contributes to events in the intracellular parasite life cycle.

Redundancy or discrepancy?

In summary, three non-overlapping mechanisms have been presented which account for initiation of host cell Ca²⁺-transients by infective *T. cruzi* trypomastigotes. Presently, the inter-relationship between and relative contribution of the proposed mechanisms of *T. cruzi*-induced Ca²⁺-signalling toward the host cell invasion process is unclear. Apparent contradictions between these models remain an unresolved issue in the field. For example, studies describing oligopeptidase B-dependent Ca²⁺-signalling exclude the participation of cruzipain because the signalling activity was insensitive to cysteine proteases despite the presence of measurable cysteine protease activity in these parasite extracts (Burleigh and Andrews, 1995b; Caler *et al.*, 1998). Similarly, inhibitors of oligopeptidase B (e.g. leupeptin) failed to block the soluble activity attributed to gp82 in other studies (Dorta *et al.*, 1995). Whereas certain inconsistencies might be explained by differences in host cell type, *T. cruzi* strain, or life cycle stage, others are likely to reflect differences in methodology. For example, in some experiments (Dorta *et al.*, 1995) measurement of intracellular [Ca²⁺]_i was conducted using normally adherent cell types (HeLa and Vero) in suspension. Because adherence-dependent Ca²⁺-signalling has been clearly demonstrated in mammalian cells (Arora *et al.*, 1995; Bernardo *et al.*, 1997), it is possible that the context in which these experiments were carried out (Dorta *et al.*, 1995) precluded detection of the peptidase-dependent activities observed in the studies that employed adherent cells (Caler *et al.*, 1998; Scharfstein *et al.*, 2000). Thus, while these seemingly disparate models warrant further examination, it is certainly reasonable to expect redundancy at the level of host cell Ca²⁺-signalling especially given the importance of this pathway in cell invasion by this pathogen.

Other host cell signalling pathways

Significant experimental evidence has accumulated that point to the involvement of various host cell signalling pathways in *T. cruzi* invasion of host cells and for intracellular survival. In addition to facilitating lysosome-mediated entry, some of these pathways appear to additionally induce anti-apoptotic mechanisms and effect immune modulations. Cross-talk between these pathways is likely to exist and selective utilization of these pathways is expected depending on the type of host cell involved.

Cyclic AMP

Cyclic AMP agonists that promote the movement of lysosomes toward the cell periphery and facilitate Ca²⁺-regulated lysosome exocytosis enhance *T. cruzi* invasion of fibroblasts (Rodríguez *et al.*, 1999). Infective *T. cruzi* trypomastigotes activate adenyl cyclase in mammalian cells to generate increased levels of cAMP (Rodríguez *et al.*, 1999) (Fig. 2, pathway 6) and pharmacologic blockers of this pathway inhibit parasite entry. Notably, the residual capacity for host cell invasion by the *T. cruzi* *opb*^{-/-} mutants could be restored to near wild-type levels by stimulating cells with isopreterenol or 8-bromo-cAMP (Caler *et al.*, 2000), suggesting that, while both Ca²⁺- and cAMP-signalling pathways participate in lysosome-mediated entry, these pathways are triggered by distinct parasite-dependent mechanisms (Caler *et al.*, 2000). The parasite molecules responsible for activating host cell adenyl cyclase remain to be identified.

Phosphatidylinositol (PI)-3 kinases

Phosphatidylinositol-3 kinases are activated by a wide variety of extracellular stimuli and regulate distinct cellular processes through the generation of specific lipid products (Toker and Cantley, 1997). Modulation of host cell PI-3 kinase-dependent signalling by microbial pathogens is an important strategy for establishment of infection. Actin-dependent entry of non-professional phagocytic cells by bacterial pathogens such as *Yersinia* (Schulte *et al.*, 1998) and *Listeria monocytogenes* (Ireton *et al.*, 1996) is regulated by host cell PI-3 kinases, while subversion of PI-3 kinase signalling allows the extracellular pathogen enteropathogenic *E. coli* to avoid cellular uptake by phagocytosis (Celli *et al.*, 2001). It was recently demonstrated that host cell PI-3 kinase and Akt (a serine/threonine kinase) are important regulators of *T. cruzi* invasion of non-professional phagocytes (Wilkowsky *et al.*, 2001) as well as macrophages (Todorov *et al.*, 2000). Because PI-3 kinases regulate actin-dependent processes (Rodríguez-Viciano *et al.*, 1997; Conejo and Lorenzo, 2001) as well as regulated exocytosis (Yang *et al.*, 1996), this signalling pathway may function as a modulator of lysosome-mediated invasion or potentially regulate an actin-associated entry process (Procopio *et al.*, 1999).

In addition to facilitating invasion, activation of host cell PI-3 kinase/Akt signalling was recently shown to stimulate pro-survival pathways in *T. cruzi*-infected neuronal cells (Chuenkova *et al.*, 2001). This effect was shown to be mediated by the abundant trypomastigote surface glycoprotein, *trans*-sialidase (TS) (Chuenkova *et al.*, 2001). Together with the related gp85 proteins, TS family members form a population of heterogeneous glycosylphos-

phatidylinositol (GPI)-anchored trypomastigote surface glycoproteins that play an important role in initial host cell recognition and attachment (described in more detail below). TS activity has also been implicated in facilitating disruption of the *T. cruzi* vacuole by liberating sialic acids from the heavily glycosylated lysosome-associated membrane proteins (Hall *et al.*, 1992). Collectively, this diverse group of related *T. cruzi* surface glycoproteins mediate intimate association of infective trypomastigotes with a wide variety of mammalian cell types, activate PI-3 kinase-dependent signalling, to promote parasite invasion and host cell survival.

Tyrosine phosphorylation

Protein tyrosine phosphorylation is an important feature in the regulation of a variety of different eukaryotic signalling pathways including PI-3-kinase activation (Porter and Vaillancourt, 1998; Cary *et al.*, 1999; Storz and Toker, 2002). In professional phagocytes, *T. cruzi* stimulates tyrosine phosphorylation of a number of proteins (Ruta *et al.*, 1996) and macrophage entry is inhibited by the tyrosine kinase inhibitor genestein (Vieira *et al.*, 1994). In contrast, dephosphorylation of tyrosine has been correlated with infectivity of rat myoblasts, where inhibitors of tyrosine phosphate hydrolysis significantly reduce efficiency of host cell invasion (Zhong *et al.*, 1998). In addition, genestein pretreatment of NRK fibroblasts failed to inhibit parasite entry (Rodríguez *et al.*, 1995). These data suggest differential roles for protein tyrosine kinase and phosphatase activities in promoting *T. cruzi* entry of professional and non-professional phagocytic cells respectively. In this regard, it is intriguing to note that infective trypomastigotes as well as intracellular amastigotes express an ecto-tyrosine phosphatase activity (Furuya *et al.*, 1998). Whereas the role of this enzymatic activity during trypomastigote invasion has not been elucidated, access to tyrosine phosphorylated substrates by intracellular amastigotes in the host cell cytoplasm may profoundly influence the phosphorylation state of many cellular proteins during the course of infection.

Inhibitory effects of NF-κB activation on *T. cruzi* invasion

Early signalling events elicited in the host cell by *T. cruzi* are predicted to evoke changes in host cell gene expression. A frequent consequence of mammalian cell invasion by intracellular pathogens is the activation of host cell NF-κB signalling pathways (Philpott *et al.*, 2000; Heussler *et al.*, 2001; Wahl *et al.*, 2001). The NF-κB family of transcription factors regulate the expression of a large number of genes that participate in the management of host inflammatory and immune responses (Ghosh *et al.*,

1998; Karin and Delhase, 2000). *Trypanosoma cruzi*-mediated NF- κ B activation and induction of pro-inflammatory cytokine synthesis has been extensively studied in macrophages (reviewed by Ropert *et al.*, 2002), where signalling through Toll-like receptor 2 by GPI-anchored mucin-like glycoproteins derived from infective trypomastigotes initiates the response (Campos *et al.*, 2001). In non-professional phagocytic cells, an inverse correlation between transcription factor NF- κ B activation in mammalian cells and susceptibility to *T. cruzi* infection has been reported (Hall *et al.*, 2000). Parasite-dependent NF- κ B activation was not observed in myocytes for which *T. cruzi* exhibits tropism *in vitro* and *in vivo*, whereas nuclear translocation and DNA binding of the p65 subunit of NF- κ B and expression of an NF- κ B-dependent reporter construct was observed in epithelial cells, endothelial cells, and fibroblasts (Hall *et al.*, 2000). In this study, inhibition of NF- κ B signalling was shown to significantly enhance *T. cruzi* invasion of epithelial cells suggesting that differential activation of this pathway in different cell types may determine tissue tropism in the host, a process that is poorly understood. The universality of these findings is challenged by studies in which NF- κ B activation in isolated cardiomyocytes was implicated by the induction of pro-inflammatory cytokine gene expression following *T. cruzi* infection (Machado *et al.*, 2000). Furthermore, a recent DNA microarray analysis that examined global transcriptional responses in primary fibroblasts to *T. cruzi* revealed no induction of pro-inflammatory cytokines at 24 h post infection (Vaena de Avalos *et al.*, 2002), suggesting that NF- κ B was not activated by the parasite in this cell type. Although the role of NF- κ B was not directly tested in these studies (Machado *et al.*, 2000; Vaena de Avalos *et al.*, 2002), the results suggest that cell type-specific activation of this transcription factor may not be a reliable predictor of tissue tropism. Nevertheless, differential activation of host cell NF- κ B in response to *T. cruzi* may profoundly influence the local cytokine environment in the host during infection.

Host cell receptors

Receptors for the T. cruzi trans-sialidase/gp85 family

Initiation of communication between *T. cruzi* trypomastigotes and mammalian cells requires contact of parasite ligands (soluble or surface membrane bound) with host cell receptors. Although the role for host cell surface sialic acid containing molecules and heparan sulphate proteoglycans has long been recognized (Ming *et al.*, 1993; Schenkman *et al.*, 1993; Herrera *et al.*, 1994), definitive receptors that mediate *T. cruzi* attachment and/or signalling have been elusive. Recent evidence suggests that host cell recognition is mediated by diverse families of

parasite surface glycoproteins which permit interaction with distinct host cell receptors and extracellular matrix molecules (Alves *et al.*, 1986; Abuin *et al.*, 1989; Ming *et al.*, 1993; Giordano *et al.*, 1994). The TS/gp85 family contains fibronectin-like sequences (Pereira *et al.*, 1991) and a laminin-binding domain (Giordano *et al.*, 1994) implicating cellular integrins in the invasion process. In addition, a conserved sequence found in the C-terminal part of the protein that binds specifically to cytokeratin 18 has recently been identified (Magdesian *et al.*, 2001). Integrins that function as cellular laminin or fibronectin receptors activate PI-3 kinase signalling pathways (Shaw, 2001) and promote cell survival through activation of *bcl-2* transcription. Because a similar activity has already been ascribed to *T. cruzi* trans-sialidase (Chuenkova *et al.*, 2001), it is possible that these signalling events are transduced through integrins. As a substrate for protein kinase C (PKC δ) (Omary *et al.*, 1992; Busso *et al.*, 1994) cytokeratin 18 could also function to transduce signals from the cell surface following binding of gp85. Neither of these hypotheses has been directly tested.

Role of host TGF- β receptors

Signal transduction through TGF- β receptors facilitates *T. cruzi* entry of epithelial cells (Ming *et al.*, 1995; Hall and Pereira, 2000). Infective trypomastigotes and parasite-conditioned medium can induce expression of a TGF- β -responsive plasminogen activator inhibitor-1 reporter gene construct (Fig. 2, pathway 1) whereas cell lines deficient in receptor types I or II (RI, RII) were refractory to *T. cruzi* infection (Ming *et al.*, 1995). These observations led to the proposal that infective stages of *T. cruzi* secrete a TGF- β -like molecule or a factor capable of activating latent host TGF- β (Ming *et al.*, 1995). However such a molecule has not been identified.

In support of a role for functional TGF- β receptors for *T. cruzi* infection, exogenous addition of TGF- β to cells or overexpression of constitutively active Smad2 dramatically enhanced trypomastigote invasion of epithelial cells (Hall and Pereira, 2000). Cellular Smad proteins are the only TGF- β receptor kinase substrates with a demonstrated ability to transduce signals from the activated receptors (Massague, 1998). Interestingly, expression of inhibitory Smads such as Smad 7 or a dominant-interfering Smad2 mutant failed to inhibit basal level *T. cruzi* invasion, although these reagents effectively abolished TGF- β -mediated enhancement of parasite entry (Hall and Pereira, 2000). Thus, while kinase-active TGF- β R1 appears to be required for parasite invasion of epithelial cells, downstream signalling events do not appear to be Smad-dependent. Whereas it is possible that some of the other receptor-Smads not examined in this study (Hall and Pereira, 2000) may be involved in *T. cruzi* entry,

the authors concluded that functional TGF- β receptors play a limited role during establishment of infection by mediating the invasion step, but their signalling function is not required for parasite attachment or for intracellular growth and survival (Hall and Pereira, 2000). As TGF- β exerts an important immunomodulatory role in acute and chronic Chagas' disease where relatively high levels of this cytokine have been observed in *T. cruzi*-infected hearts (Zhang and Tarleton, 1996), the ability of TGF- β to positively regulate parasite invasion may have important consequences for disease pathogenesis. These aspects require further investigation.

Receptor for the oligopeptidase B-dependent Ca^{2+} -agonist

The participation of a $G_{\alpha i}$ or $G_{\alpha o}$ heterotrimeric G-protein coupled receptor for the putative Opb-generated Ca^{2+} -agonist has been postulated due to the sensitivity of this signalling pathway to pertussis toxin (PTx) (Tardieux *et al.*, 1994) and to mild trypsinization of the host cell surface (Leite *et al.*, 1998). A wide variety of mammalian cell types are sensitive to the soluble Opb-dependent Ca^{2+} -signalling activity (Burleigh and Andrews, 1995b), suggesting that receptors for the putative Opb-dependent agonist are commonly expressed. Heterologous expression of rat fibroblast mRNA in *Xenopus* oocytes, which do not display an endogenous Ca^{2+} -response to *T. cruzi* extracts, was shown to confer sensitivity of the oocytes to the trypomastigote peptidase-dependent Ca^{2+} -signalling activity (Leite *et al.*, 1998). The characteristics of the oocyte response were similar to that demonstrated for mammalian cells, i.e. sensitive to inhibitors of Opb as well as PTx or thapsigargin pretreatment (Leite *et al.*, 1998), demonstrating the potential of this heterologous expression system for cloning of the mammalian receptor for the Opb-generated Ca^{2+} -agonist.

Aside from the roles of host cell bradykinin (B_2K) receptors in transducing Ca^{2+} -signals from cruzipain-processed kinins (Scharfstein *et al.*, 2000), and the involvement of TGF- β receptors in epithelial cell invasion (Ming *et al.*, 1995), no definitive host cell receptors for *T. cruzi*-induced signalling have been identified. With the expression of such diverse surface glycoprotein ligands, secreted proteases and putative signalling agonists, the range of potential host cell receptors is predicted to be very broad and may confound efforts to definitively identify functional receptors due to the potential for redundant signalling mechanisms.

Concluding remarks

Major concepts emerging from recent studies on *T. cruzi* invasion highlight the enormous complexity inherent in the

mechanisms required for establishment of infection by this pathogen. Infective trypomastigotes exploit important cellular processes including wound-repair mechanisms and anti-apoptotic functions for invasion and intracellular survival. Active manipulation of multiple mammalian cell signalling pathways is mediated by direct parasite–host interactions and soluble secreted factors. Expression of abundant heterogeneous glycoproteins on the surface of *T. cruzi* trypomastigotes with affinities for mammalian extracellular matrix proteins ensures access to a broad spectrum of mammalian cell types during the acute stages of infection. Despite recent progress in the field, it is not yet clear how *T. cruzi*-induced signalling pathways are integrated to co-ordinate invasion, support intracellular replication or influence tissue tropism. Studies outlined above provide the foundation for future mechanistic studies that are essential to our understanding of the molecular basis for *T. cruzi* infection and pathogenesis of Chagas' disease.

Acknowledgements

We thank Drs A. Sinai, M. Unnikrishnan, C. Chow and M. J. M. Alves for critical reading of the manuscript and for helpful discussions. B.A.B. is supported by NIH R01 AI47960 and A.M.W. is supported by a fellowship from the Ford Foundation Doctoral Fellowship Program for Minorities.

References

- Abuin, G., Colli, W., de Souza, W., and Alves, M.J.M. (1989) A surface antigen of *Trypanosoma cruzi* involved in cell invasion (Tc-85) is heterogeneous in expression and molecular constitution. *Mol Biochem Parasitol* **35**: 229–238.
- Alves, M.J.M., Abuin, G.Y., K.V., and Colli, W. (1986) Partial inhibition of trypomastigote entry into cultured mammalian cells by monoclonal antibodies against a surface glycoprotein of *Trypanosoma cruzi*. *Mol Biochem Parasitol* **21**: 75–82.
- Amer, A.O., and Swanson, M.S. (2002) A phagosome of one's own: a microbial guide to life in the macrophage. *Curr Opin Microbiol* **5**: 56–61.
- Andrews, N.W., and Whitlow, M.B. (1989) Secretion by *Trypanosoma cruzi* of a hemolysin active at low pH. *Mol Biochem Parasitol* **33**: 249–256.
- Andrews, N.W., Abrams, C.K., Slatin, S.L., and Griffiths, G. (1990) A *T. cruzi*-secreted protein immunologically related to the complement component C9: evidence for membrane pore-forming activity at low pH. *Cell* **61**: 1277–1287.
- Araguth, M.F., Rodrigues, M.M., and Yoshida, N. (1988) *Trypanosoma cruzi* metacyclic trypanosomes: neutralization by the stage-specific monoclonal antibody 1G7 and immunogenicity of 90 kDa surface antigen. *Parasit Immunol* **10**: 707–717.
- Araya, J.E., Cano, M.I., Yoshida, N., and da Silveira, J.F. (1994) Cloning and characterization of a gene for the stage-specific 82-kDa surface antigen of metacyclic trypomastigotes of *Trypanosoma cruzi*. *Mol Biochem Parasitol* **65**: 161–169.
- Arora, P.D., Ma, J., Min, W., Cruz, T., and McCulloch, C.A.

- (1995) Interleukin-1-induced calcium flux in human fibroblasts is mediated through focal adhesions. *J Biol Chem* **270**: 6042–6049.
- Bernardo, J., Billingslea, A.M., Ortiz, M.F., Seetoo, K.F., Macauley, J., and Simons, E.R. (1997) Adherence-dependent calcium signalling in monocytes: induction of a CD14-high phenotype, stimulus-responsive subpopulation. *J Immunol Methods* **209**: 165–175.
- Burleigh, B.A., and Andrews, N.W. (1995a) The mechanisms of *Trypanosoma cruzi* invasion of mammalian cells. *Annu Rev Microbiol* **49**: 175–200.
- Burleigh, B., and Andrews, N.W. (1995b) A 120 kDa alkaline peptidase from *Trypanosoma cruzi* is involved in the generation of a novel Ca²⁺ signaling factor for mammalian cells. *J Biol Chem* **270**: 5172–5180.
- Burleigh, B.A., and Andrews, N.W. (1998) Signaling and host cell invasion by *Trypanosoma cruzi*. *Curr Opin Microbiol* **1**: 461–465.
- Burleigh, B.A., Caler, E.V., Webster, P., and Andrews, N.W. (1997) A cytosolic serine endopeptidase from *Trypanosoma cruzi* is required for the generation of Ca²⁺ signaling in mammalian cells. *J Cell Biol* **136**: 609–620.
- Busso, N., Masur, S.K., Lazega, D., Waxman, S., and Ossowski, L. (1994) Induction of cell migration by pro-urokinase binding to its receptor: possible mechanism for signal transduction in human epithelial cells. *J Cell Biol* **126**: 259–270.
- Caler, E.V., Vaena, S., Haynes, P.A., Andrews, N.W., and Burleigh, B.A. (1998) Oligopeptidase B-dependent signaling mediates host cell invasion by *Trypanosoma cruzi* invasion. *EMBO J* **17**: 4975–4986.
- Caler, E.V., Morty, R.E., Burleigh, B.A., and Andrews, N.W. (2000) Dual role of signaling pathways leading to Ca (2+) and cyclic AMP elevation in host cell invasion by *Trypanosoma cruzi*. *Infect Immun* **68**: 6602–6610.
- Campos, M.A., Almeida, I.C., Takeuchi, O., Akira, S., Valente, E.P., Procopio, D.O. *et al.* (2001) Activation of Toll-like receptor-2 by glycosylphosphatidylinositol anchors from a protozoan parasite. *J Immunol* **167**: 416–423.
- Carruthers, V.B., and Sibley, L.D. (1999) Mobilization of intracellular calcium stimulates microneme discharge in *Toxoplasma gondii*. *Mol Microbiol* **31**: 421–428.
- Carruthers, V.B., Giddings, O.K., and Sibley, L.D. (1999) Secretion of micronemal proteins is associated with toxoplasma invasion of host cells. *Cell Microbiol* **1**: 225–235.
- Cary, L.A., Han, D.C., and Guan, J.L. (1999) Integrin-mediated signal transduction pathways. *Histol Histopathol* **14**: 1001–1009.
- Celli, J., Olivier, M., and Finlay, B.B. (2001) Enteropathogenic *Escherichia coli* mediates antiphagocytosis through the inhibition of PI 3-kinase-dependent pathways. *EMBO J* **20**: 1245–1258.
- Chimelli, L., and Scaravilli, F. (1997) Trypanosomiasis. *Brain Pathol* **7**: 599–611.
- Chuenkova, M.V., Furnari, F.B., Cavenee, W.K., and Pereira, M.A. (2001) *Trypanosoma cruzi* trans-sialidase: a potent and specific survival factor for human Schwann cells by means of phosphatidylinositol 3-kinase/Akt signaling. *Proc Natl Acad Sci USA* **98**: 9936–9941.
- Conejo, R., and Lorenzo, M. (2001) Insulin signaling leading to proliferation, survival, and membrane ruffling in C2C12 myoblasts. *J Cell Physiol* **187**: 96–108.
- Del Nery, E., Juliano, M.A., Lima, A.P., Scharfstein, J., and Juliano, L. (1997) Kininogenase activity by the major cysteinyl proteinase (cruzipain) from *Trypanosoma cruzi*. *J Biol Chem* **272**: 25713–25718.
- Dorta, M.L., Ferreira, A.T., Oshiro, M.E.M., and Yoshida, N. (1995) Ca²⁺ signal induced by *Trypanosoma cruzi* metacyclic trypomastigote surface molecules implicated in mammalian cell invasion. *Mol Biochem Parasitol* **73**: 285–289.
- Edwards, J.L., Shao, J.Q., Ault, K.A., and Apicella, M.A. (2000) *Neisseria gonorrhoeae* elicits membrane ruffling and cytoskeletal rearrangements upon infection of primary human endocervical and ectocervical cells. *Infect Immun* **68**: 5354–5363.
- Engman, D.M., and Leon, J.S. (2002) Pathogenesis of Chagas heart disease: role of autoimmunity. *Acta Trop* **81**: 123–132.
- Favoreto, S.J., Dorta, M.L., and Yoshida, N. (1998) *Trypanosoma cruzi* 175-kDa protein tyrosine phosphorylation is associated with host cell invasion. *Exp Parasitol* **89**: 188–194.
- Frasch, A.C. (1994) Trans-sialidase, SAPA amino acid repeats and the relationship between *Trypanosoma cruzi* and the mammalian host. *Parasitology* **108** (Suppl.): S37–S44.
- Frasch, A.C. (2000) Functional diversity in the trans-sialidase and mucin families in *Trypanosoma cruzi*. *Parasitol Today* **16**: 282–286.
- Fuller, R.S., Sterne, R.E., and Thorner, J. (1988) Enzymes required for yeast prohormone processing. *Ann Rev Physiol* **50**: 345–362.
- Furuya, T., Zhong, L., Meyer-Fernandes, J.R., Lu, H.G., Moreno, S.N., and Docampo, R. (1998) Ecto-protein tyrosine phosphatase activity in *Trypanosoma cruzi* infective stages. *Mol Biochem Parasitol* **92**: 339–348.
- Ghosh, S., May, M.J., and Kopp, E.B. (1998) NF-kappa B and Rel proteins: evolutionarily conserved mediators of immune responses. *Annu Rev Immunol* **16**: 225–260.
- Giordano, R., Chammass, R., Veiga, S.S., Colli, W., and Alves, M.J.M. (1994) An acidic component of the heterogeneous Tc-85 protein family from the surface of *Trypanosoma cruzi* is a laminin binding glycoprotein. *Mol Biochem Parasitol* **65**: 85–94.
- Grellier, P., Vendeville, S., Joyeau, R., Bastos, I.M., Drobecq, H., Frappier, F. *et al.* (2001) *Trypanosoma cruzi* prolyl oligopeptidase Tc80 is involved in nonphagocytic mammalian cell invasion by trypomastigotes. *J Biol Chem* **276**: 47078–47086.
- Hall, B.S., and Pereira, M.A. (2000) Dual role for transforming growth factor beta-dependent signaling in *Trypanosoma cruzi* infection of mammalian cells. *Infect Immun* **68**: 2077–2081.
- Hall, B.F., Webster, P., Ma, A.K., Joiner, K.A., and Andrews, N.W. (1992) Desialylation of lysosomal membrane glycoproteins by *Trypanosoma cruzi*: a role for the surface neuraminidase in facilitating parasite entry into the host cell cytoplasm. *J Exp Med* **176**: 313–325.
- Hall, B.S., Tam, W., Sen, R., and Pereira, M.E. (2000) Cell-specific activation of nuclear factor-kappaB by the parasite *Trypanosoma cruzi* promotes resistance to intracellular infection. *Mol Biol Cell* **11**: 153–160.
- Herrera, E.M., Ming, M., Ortega-Barria, E., and Pereira, M.E.A. (1994) Mediation of *Trypanosoma cruzi* invasion by heparan sulphate on host cells and penetrin counter-receptors on the trypanosomes. *Mol Biochem Parasitol* **65**: 73–83.

- Heussler, V.T., Kuenzi, P., and Rottenberg, S. (2001) Inhibition of apoptosis by intracellular protozoan parasites. *Int J Parasitol* **31**: 1166–1176.
- Ireton, K., Payrastra, B., Chap, H., Ogawa, W., Sakaue, H., Kasuga, M., and Cossart, P. (1996) A role for phosphoinositide 3-kinase in bacterial invasion. *Science* **274**: 780–782.
- Karin, M., and Delhase, M. (2000) The I kappa B kinase (IKK) and NF-kappa B: key elements of proinflammatory signaling. *Semin Immunol* **12**: 85–98.
- Kreil, G. (1990) Processing of precursors by dipeptidylaminopeptidases: a case of molecular ticketing. *Trends Biochem Sci* **15**: 23–26.
- Leite, M.F., Moyer, M.S., Nathanson, M.H., and Andrews, N.W. (1998) Expression of the mammalian calcium signaling response to *Trypanosoma cruzi*. *Xenopus laevis* oocytes. *Mol Biochem Parasitol* **92**: 1–13.
- Ley, V., Robbins, E.S., Nessenzweig, V., and Andrews, N.W. (1990) The exit of *Trypanosoma cruzi* from the phagosome is inhibited by raising the pH of acidic compartments. *J Exp Med* **171**: 401–413.
- Lima, A.P., Almeida, P.C., Tersariol, I.L., Schmitz, V., Schmaier, A.H., Juliano, L. *et al.* (2002) Heparan sulfate modulates kinin release by *Trypanosoma cruzi* through the activity of cruzipain. *J Biol Chem* **277**: 5875–5881.
- Low, H.P., Paulin, J.J., and Keith, C.H. (1992) *Trypanosoma cruzi* infection of BSC-1 fibroblast cells causes cytoskeletal disruption and changes in intracellular calcium levels. *J Protozool* **39**: 463–470.
- Lu, H.G., Zhong, L., Chang, K.P., and Docampo, R. (1997) Intracellular Ca²⁺ pool content and signaling and expression of a calcium pump are linked to virulence in *Leishmania mexicana* amazonensis amastigotes. *J Biol Chem* **272**: 9464–9473.
- Machado, F.S., Martins, G.A., Aliberti, J.C., Mestriner, F.L., Cunha, F.Q., and Silva, J.S. (2000) *Trypanosoma cruzi*-infected cardiomyocytes produce chemokines and cytokines that trigger potent nitric oxide-dependent trypanocidal activity. *Circulation* **102**: 3003–3008.
- Magdesian, M.H., Giordano, R., Ulrich, H., Juliano, M.A., Juliano, L., Schumacher, R.I. *et al.* (2001) Infection by *Trypanosoma cruzi*. Identification of a parasite ligand and its host cell receptor. *J Biol Chem* **276**: 19382–19389.
- Malaga, S., and Yoshida, N. (2001) Targeted reduction in expression of *Trypanosoma cruzi* surface glycoprotein gp90 increases parasite infectivity. *Infect Immun* **69**: 353–359.
- Martinez, I., Chakrabarti, S., Hellevik, T., Morehead, J., Fowler, K., and Andrews, N.W. (2000) Synaptotagmin VII regulates Ca²⁺-dependent exocytosis of lysosomes in fibroblasts. *J Cell Biol* **148**: 1141–1149.
- Massague, J. (1998) TGF-beta signal transduction. *Annu Rev Biochem* **67**: 753–791.
- Ming, M., Chuenkova, M., Ortega-Barria, E., and Pereira, M.E.A. (1993) Mediation of *Trypanosoma cruzi* invasion by sialic acid on the host cell and trans-sialidase on the trypanosome. *Mol Biochem Parasitol* **59**: 243–252.
- Ming, M., Ewen, M.E., and Pereira, M.E.A. (1995) Trypanosome invasion of mammalian cells requires activation of the TGFβ signaling pathway. *Cell* **82**: 287–296.
- Moreno, S.N.J., Silva, J., Vercesi, A.E., and Docampo, R. (1994) Cytosolic free calcium elevation in *Trypanosoma cruzi* is required for cell invasion. *J Exp Med* **180**: 1535–1540.
- Omary, M.B., Baxter, G.T., Chou, C.F., Riopel, C.L., Lin, W.Y., and Strulovici, B. (1992) PKC epsilon-related kinase associates with and phosphorylates cytokeratin 8 and 18. *J Cell Biol* **117**: 583–593.
- Pereira, M.E., Mejia, J.S., Ortega, B.E., Matzilevich, D., and Prioli, R.P. (1991) The *Trypanosoma cruzi* neuraminidase contains sequences similar to bacterial neuraminidases, YWTD repeats of the low density lipoprotein receptor, and type III modules of fibronectin. *J Exp Med* **174**: 179–191.
- Pereira, M.E., Zhang, K., Gong, Y., Herrera, E.M., and Ming, M. (1996) Invasive phenotype of *Trypanosoma cruzi* restricted to a population expressing trans-sialidase. *Infect Immun* **64**: 3884–3892.
- Pezzella, N., Bouchot, A., Bonhomme, A., Pingret, L., Klein, C., Burlet, H. *et al.* (1997) Involvement of calcium and calmodulin in *Toxoplasma gondii* tachyzoite invasion. *Eur J Cell Biol* **74**: 92–101.
- Philpott, D.J., Yamaoka, S., Israel, A., and Sansonetti, P.J. (2000) Invasive *Shigella flexneri* activates NF-kappa B through a lipopolysaccharide-dependent innate intracellular response and leads to IL-8 expression in epithelial cells. *J Immunol* **165**: 903–914.
- Porter, A.C., and Vaillancourt, R.R. (1998) Tyrosine kinase receptor-activated signal transduction pathways which lead to oncogenesis. *Oncogene* **17**: 1343–1352.
- Procopio, D.O., Barros, H.C., and Mortara, R.A. (1999) Actin-rich structures formed during the invasion of cultured cells by infective forms of *Trypanosoma cruzi*. *Eur J Cell Biol* **78**: 911–924.
- Reddy, A., Caler, E.V., and Andrews, N.W. (2001) Plasma membrane repair is mediated by Ca²⁺-regulated exocytosis of lysosomes. *Cell* **106**: 157–169.
- Reed, K.A., Booth, T.A., Hirst, B.H., and Jepson, M.A. (1996) Promotion of *Salmonella typhimurium* adherence and membrane ruffling in MDCK epithelia by staurosporine. *FEMS Microbiol Lett* **145**: 233–238.
- Rodríguez, A., Rioult, M.G., Ora, A., and Andrews, N.W. (1995) A trypanosome-soluble factor induces IP₃ formation, intracellular Ca²⁺ mobilization and microfilament rearrangement in host cells. *J Cell Biol* **129**: 1263–1273.
- Rodríguez, A., Samoff, E., Rioult, M.G., Chung, A., and Andrews, N.W. (1996) Host cell invasion by trypanosomes requires lysosomes and microtubule/kinesin-mediated transport. *J Cell Biol* **134**: 349–362.
- Rodríguez, A., Webster, P., Ortego, J., and Andrews, N.W. (1997) Lysosomes behave as Ca²⁺-regulated exocytic vesicles in fibroblasts and epithelial cells. *J Cell Biol* in press.
- Rodríguez, A., Martinez, I., Chung, A., Berlot, C.H., and Andrews, N.W. (1999) cAMP regulates Ca²⁺-dependent exocytosis of lysosomes and lysosome-mediated cell invasion by trypanosomes. *J Biol Chem* **274**: 16754–16759.
- Rodríguez-Viciano, P., Warne, P.H., Khwaja, A., Marte, B.M., Pappin, D., Das, P. *et al.* (1997) Role of phosphoinositide 3-OH kinase in cell transformation and control of the actin cytoskeleton by Ras. *Cell* **89**: 457–467.
- Ropert, C., Ferreira, L.R., Campos, M.A., Procopio, D.O., Travassos, L.R., Ferguson, M.A. *et al.* (2002) Macrophage signaling by glycosylphosphatidylinositol-anchored mucin-like glycoproteins derived from *Trypanosoma cruzi* trypomastigotes. *Microbes Infect* **4**: 1015–1025.
- Ruiz, R.C., Favoreto, S., Dorta, M.L., Oshiro, M.E.M., Ferreira, A.T., and Manque, P.M. (1998) Infectivity of *Trypanosoma cruzi* strains is associated with differential

- expression of surface glycoproteins with differential Ca²⁺ signaling activity. *Biochem J* **330**: 505–511.
- Ruta, S., Plasman, N., Zaffran, Y., Capo, C., Mege, J.-L., and Vray, B. (1996) *Trypanosoma cruzi*-induced tyrosine phosphorylation in murine peritoneal macrophages. *Parasitol Res* **82**: 481–484.
- Sansonetti, P.J., Tran Van Nhieu, G., and Egile, C. (1999) Rupture of the intestinal epithelial barrier and mucosal invasion by *Shigella flexneri*. *Clin Infect Dis* **28**: 466–475.
- Santana, J.M., Grellier, P., Schrevel, J., and Teixeira, A.R. (1997) A *Trypanosoma cruzi*-secreted 80 kDa proteinase with specificity for human collagen types I and IV. *Biochem J* **325** (1): 129–137.
- Scharfstein, J., Schmitz, V., Morandi, V., Capella, M.M., Lima, A.P., Morrot, A. *et al.* (2000) Host cell invasion by *Trypanosoma cruzi* is potentiated by activation of bradykinin B (2) receptors. *J Exp Med* **192**: 1289–1300.
- Schenkman, R.P.S., Vandekerckhove, F., and Schenkman, S. (1993) Mammalian cell sialic acid enhances *Trypanosoma cruzi* invasion. *Infect Immun* **61**: 898–902.
- Schulte, R., Zumbihl, R., Kampik, D., Fauconnier, A., and Autenrieth, I.B. (1998) Wortmannin blocks Yersinia invasion-triggered internalization, but not interleukin-8 production by epithelial cells. *Med Microbiol Immunol (Berl)* **187**: 53–60.
- Shaw, L.M. (2001) Identification of insulin receptor substrate 1 (IRS-1) and IRS-2 as signaling intermediates in the alpha6beta4 integrin-dependent activation of phosphoinositide 3-OH kinase and promotion of invasion. *Mol Cell Biol* **21**: 5082–5093.
- Shaw, M.K. (1995) Mobilization of intrasporozoite Ca²⁺ is essential for *Theileria parva* sporozoite invasion of bovine lymphocytes. *Eur J Cell Biol* **68**: 78–87.
- Sinai, A.P., and Joiner, K.A. (1997) Safe haven: the cell biology of nonfusogenic pathogen vacuoles. *Annu Rev Microbiol* **51**: 415–462.
- Storz, P., and Toker, A. (2002) 3'-phosphoinositide-dependent kinase-1 (PDK-1) in PI 3-kinase signaling. *Front Biosci.* **7**: d886–902.
- Tardieux, I., Webster, P., Ravesloot, J., Boron, W., Lunn, J.A., Henser, J.E., and Andrews, N.W. (1992) Lysosome recruitment and fusion are early events required for trypanosome invasion of mammalian cells. *Cell* **71**: 1117–1130.
- Tardieux, I., Nathanson, M.H., and Andrews, N.W. (1994) Role in host cell invasion of *Trypanosoma cruzi*-induced cytosolic free Ca²⁺ transients. *J Exp Med* **179**: 1017–1022.
- Teixeira, M.M.G., and Yoshida, N. (1986) Stage-specific surface antigens of metacyclic trypomastigotes of *Trypanosoma cruzi* identified by monoclonal antibodies. *Mol Biochem Parasitol* **18**: 271–282.
- Todorov, A.G., Einicker-Lamas, M., de Castro, S.L., Oliveira, M.M., and Guilherme, A. (2000) Activation of host cell phosphatidylinositol 3-kinases by *Trypanosoma cruzi* infection. *J Biol Chem* **275**: 32182–32186.
- Toker, A., and Cantley, L.C. (1997) Signalling through the lipid products of phosphoinositide-3-OH kinase. *Nature* **387**: 673–676.
- Tomlinson, S., Vandekerckhove, F., Frevert, U., and Nussenzweig, V. (1995) The induction of *Trypanosoma cruzi* trypomastigote to amastigote transformation by low pH. *Parasitology* **110**: 547–554.
- Vaena de Avalos, S.G., Blader, I.J., Fisher, M., Boothroyd, J.C., and Burleigh, B.A. (2002) Immediate/early response to *Trypanosoma cruzi* infection involves minimal modulation of host cell transcription. *J Biol Chem* **277**: 639–644.
- Vieira, M.C., and Moreno, S.N. (2000) Mobilization of intracellular calcium upon attachment of *Toxoplasma gondii* tachyzoites to human fibroblasts is required for invasion. *Mol Biochem Parasitol* **106**: 157–162.
- Vieira, M.C., de Carvalho, T.U., and de Souza, W. (1994) Effect of protein kinase inhibitors on the invasion process of macrophages by *Trypanosoma cruzi*. *Biochem Biophys Res Comm* **203**: 967–971.
- Wahl, C., Oswald, F., Simnacher, U., Weiss, S., Marre, R., and Essig, A. (2001) Survival of Chlamydia pneumoniae-infected Mono Mac 6 cells is dependent on NF-kappaB binding activity. *Infect Immun* **69**: 7039–7045.
- Wilkowsky, S.E., Barbieri, M.A., Stahl, P., and Isola, E.L. (2001) *Trypanosoma cruzi*: phosphatidylinositol 3-kinase and protein kinase B activation is associated with parasite invasion. *Exp Cell Res* **264**: 211–218.
- Yakubu, M., Majumder, S., and Kierzembaum, F. (1994) Changes in *Trypanosoma cruzi* infectivity by treatments that affect calcium ion levels. *Mol Biochem Parasitol* **66**: 119–125.
- Yang, J., Clarke, J.F., Ester, C.J., Young, P.W., Kasuga, M., and Holman, G.D. (1996) Phosphatidylinositol 3-kinase acts at an intracellular membrane site to enhance GLUT4 exocytosis in 3T3-L1 cells. *Biochem J* **313**: 125–131.
- Yoshida, N., Dorta, M.L., Ferreira, A.T., Oshiro, M.E., Mortara, R.A., Acosta-Serrano, A., and Favoreto, S., Jr. (1997) Removal of sialic acid from mucin-like surface molecules of *Trypanosoma cruzi* metacyclic trypomastigotes enhances parasite–host cell interaction. *Mol Biochem Parasitol* **84**: 57–67.
- Yoshida, N., Mortara, R.N., Araguth, M.F., Gonzalez, J.C., and Russo, M. (1989) Metacyclic neutralizing effect of monoclonal antibody 10D8 directed to the 35- and 50-kilodalton surface glycoconjugates of *Trypanosoma cruzi*. *Infect Immun* **57**: 1663–1667.
- Yoshida, N., Favoreto, S. Jr, Ferreira, A.T., and Manque, P.M. (2000) Signal transduction induced in *Trypanosoma cruzi* metacyclic trypomastigotes during the invasion of mammalian cells. *Braz J Med Biol Res* **33**: 269–278.
- Zhang, L., and Tarleton, R.L. (1996) Characterization of cytokine production in murine *Trypanosoma cruzi* infection by in situ immunocytochemistry: lack of association between susceptibility and type 2 cytokine production. *Eur J Immunol* **26**: 102–109.
- Zhang, L., and Tarleton, R.L. (1999) Parasite persistence correlates with disease severity and localization in chronic Chagas' disease. *J Infect Dis* **180**: 480–486.
- Zhong, L., Lu, H.G., Moreno, S.N., and Docampo, R. (1998) Tyrosine phosphate hydrolysis of host proteins by *Trypanosoma cruzi* is linked to cell invasion. *FEMS Microbiol Lett* **161**: 15–20.
- Zhou, D., Mooseker, M.S., and Galan, J.E. (1999) An invasion-associated Salmonella protein modulates the actin-bundling activity of plactin. *Proc Natl Acad Sci USA* **96**: 10176–10181.