

DEVELOPMENT AND VALIDATION OF HIGH PERFORMANCE LIQUID CHROMATOGRAPHIC METHOD FOR THE DETERMINATION OF ESOMEPRAZOLE IN HUMAN PLASMA

Satyadev TNVSS¹, KVR Sudhir¹, Tata Santosh¹ and B. Syam Sundar^{2*}

¹Pharmaceutical Research & Development Laboratory, Corpuscle Research Solutions, Visakhapatnam – 530017, Andhra Pradesh, India.

²Department of Chemistry, Acharya Nagarjuna University, Guntur, Andhra Pradesh, India.

ABSTRACT

A rapid, specific and accurate high performance liquid chromatographic method for the determination of esomeprazole in human plasma using metronidazole as internal standard was developed and validated by UV detection. The extraction process involved a liquid-liquid extraction using a 70:30 % v/v mixture of t-butyl methyl ether and Dichloromethane. Both esomeprazole and the internal standard were eluted under isocratic mode using a 150 X 4.6 mm i.d, 5 µm Phenomenex ODS 2 C18 column. The mobile phase composed a mixture of 40:60 % v/v Methanol and 0.1% ortho phosphoric acid at a flow rate of 0.8 mL/minute. The wavelength of detection is 285 nm. The injection volume is 20 µL. The runtime of the method is 9 minutes. The method showed good linearity in the range of 50.57 – 3057.60 ng/mL. The recovery of Esomeprazole is 64.00 % with a standard deviation of 2.54 % and recovery of internal standard was 45.69 % with a standard deviation of 3.65 %. The LOD of Esomeprazole is 50.57 ng/mL. Matrix effects were not observed.

Keywords: Esomeprazole, Proton-pump inhibitor, Peptic ulcer, HPLC.

INTRODUCTION

Esomeprazole magnesium dihydrate¹ (ESO), bis(5-methoxy-2-[(S)-[(4-methoxy-3,5-dimethyl-2-pyridinyl)methyl] sulfinyl]-1-H-benzimidazole-1-yl)magnesium dihydrate [Figure 1] a, is a compound that inhibits gastric acid secretion. ESO is cost-effective in the treatment of gastric oesophageal reflux diseases. ESO is the S-isomer of omeprazole, the first single optical isomer proton pump inhibitor, generally provides better acid control than current racemic proton pump inhibitors and has a favorable pharmacokinetic profile relative to omeprazole.² Several methods have been employed for the estimation of ESO alone and combination with other drugs such as UV and RP-HPLC methods.³⁻¹¹ Specific and sensitive methods based on mass spectrometry methods were reported earlier. Earlier reports on HPLC based bioanalytical estimation of esomeprazole resulted in lesser

sensitivity, and high noise in the base line indicating a need to develop a more efficient, sensitive, simple and rapid method in human plasma. We therefore focused on to achieve the optimum chromatographic conditions for the determination of ESO using Metronidazole (MTZ) as internal standard. To access the reproducibility and wide applicability of the developed method, it was validated as per FDA guidelines¹²

MATERIALS AND METHODS

Solvents and Chemicals

Esomeprazole magnesium dihydrate (purity 98.00 % w/w) was used as received from Lupin Laboratories Ltd. Metronidazole (MTZ) (used as Internal Standard, Purity 99.0 % w/w) is purchased Sigma Aldrich Inc. HPLC grade Methanol, Ortho phosphoric acid was purchased from Merck Ltd (Mumbai, India). Deionized water was processed through a

Milli-Q water purification system (Millipore, USA). All other chemicals and reagents were of analytical grade.

Chromatographic System

The Chromatographic system consisted of a Shimadzu Class VP Binary pump LC-10ATvp, SIL-10ADvp Auto sampler, CTO-10Avp Column Temperature Oven, SPD-10Avp UV-Visible Detector. All the components of the system are controlled using SCL-10Avp System Controller. Data acquisition was done using LC Solutions software. The detector is set at a wavelength of 285 nm. Chromatographic separations were accomplished using a Phenomenex C₁₈, 5 µm, 150 mm×4.6 mm column. The mobile phase consists of a mixture of 40 parts of Methanol and 60 parts of 0.1 % ortho phosphoric acid. The mixture was filtered through 0.22 µm membrane (Millipore, Bedford, MA, USA) under vacuum, and then degassed by flushing with nitrogen for 5 min. The mobile phase was pumped isocratically at a flow rate of 0.8 ml/min during analysis, at ambient temperature. The rinsing solution consists of a mixture of 50: 50 % v/v of methanol: HPLC Grade Water.

Preparation of Standard Solutions

A stock solution of Esomeprazole is prepared in methanol such that the final concentration is approximately 1.0 mg/mL. Stock solution of Metronidazole (approx 5 mg/mL) is prepared in HPLC Grade methanol. The solutions were stored at 4°C and they were stable for at least two weeks. Aqueous stock dilution of Esomeprazole is prepared in diluent solution (mixture of 50: 50 % v/v of methanol: HPLC Grade water).

Sample Preparation

Aqueous stock dilutions were prepared initially. 0.5 ml of each aqueous stock dilution is transferred into a 10 mL volumetric flask. The final volume is made up with screened drug-free K₂EDTA human plasma and mixed gently for 15 minutes to achieve the desired concentration of calibration curve standards. The final calibration standard concentrations are 0.0 (Blank; no Esomeprazole added), 50.57, 101.14, 470.40, 940.80, 1176.00, 1881.60, 2352.00 and 3057.60 ng/ml. Each of these standard solutions was distributed in disposable polypropylene micro centrifuge tubes (2.0 ml, eppendorf) in volume of 0.7 ml and stored at -70°C until analysis. Similarly quality control samples were prepared in plasma such that the final concentrations were 50.80, 150.53, 1505.28 and 2587.20 ng/ml

respectively and labeled as Lower limit of quantification (LLOQ), Low quality control (LQC), median quality control (MQC) and high quality control (HQC) respectively.

The extraction of the plasma samples involved Liquid-Liquid Extraction process. For processing, the stored spiked samples were withdrawn from the freezer and allowed to thaw at room temperature. An aliquot of 500 µL is then transferred to pre-labeled 2.0 mL polypropylene centrifuge tubes. 25 µL of internal standard dilution (200 µg/mL) is then added and mixed. 1.2 mL of extraction solvent is then added to extract the drug and internal standard. The samples are then kept on a reciprocating shaker and allowed to mix for 20 minutes. Samples are then centrifuged at 5000 rpm for 5 minutes at 4 °C. 1 mL of the supernatant is then transferred into prelabelled polypropylene tubes and allowed to evaporate to dryness under nitrogen at constant temperature of 40 °C. The dried residue is then dissolved in 200 µL of mobile phase and transferred into shell vials and containing vial inserts for analysis. 20 µL of the samples is then injected into the system for analysis. The autosampler temperature is maintained at 4 °C throughout the analysis. The column temperature oven is maintained at ambient temperature.

Validation of quantitative HPLC method

The quantitative HPLC-UV method was validated to determine selectivity, calibration range, accuracy and precision, limit of detection (LOD), limit of quantitation, % recovery, freeze-thaw, and auto sampler stability. The initial assay was fully validated for esomeprazole analysis in human plasma according to FDA guidelines.

Selectivity

The selectivity of the method was evaluated by analyzing six independent drug-free K₂EDTA human plasma samples with reference to potential interferences from endogenous and environmental constituents.

Calibration curve

Calibration curves were generated to confirm the relationship between the peak area ratios and the concentration of ESO in the standard samples. Fresh calibration standards were extracted and assayed as described above on three different days and in duplicate. Calibration curves for ESO were represented by the plots of the peak-area ratio (ESO/MTZ) versus the nominal concentration of the ESO in calibration standards. The regression line was generated using 1/concentration² factor

as the mathematical model of best fit. ESO concentrations in QC samples, recovery, and stability samples were calculated from the resulting area ratio and the regression equation of the calibration curve.

Accuracy and precision

Intra-day accuracy and precision were evaluated by analysis of QCs at four levels (LLOQ, LQC, MQC and HQC; $n = 6$ at each level) on the same day. Inter-day precision and the accuracy were determined by analyzing four QC levels on 3 separate days ($n = 6$ at each level) along with three separate standard curves done in duplicates.

The accuracy of an analytical method describes how close the mean test results obtained by the method are to the nominal concentration of the analyte. Accuracy was calculated by the following equation, expressed as a percentage:

$$\text{Accuracy (\%)} = \frac{\text{mean observed concentration}}{\text{nominal concentration}} \times 100$$

The precision was expressed by co-efficient of variation (CV). The CV % indicates the variability around the mean in relation to the size of the mean, and is defined as:

$$\text{CV (\%)} = \frac{\text{standard deviation}}{\text{mean observed concentration}} \times 100$$

Stability Studies

Autosampler, and freeze–thaw stability of ESO was determined at low, medium and high QC concentrations. To determine the impact of freeze–thaw cycles on ESO concentration, samples were allowed to undergo 3 freeze ($-70\text{ }^{\circ}\text{C}$) thaw (room temperature) cycles. Following sample treatment/storage conditions, the ESO concentrations were analyzed in triplicates and compared to the control sample that had been stored at $-70\text{ }^{\circ}\text{C}$. Autosampler stability of extracted samples was determined by comparing ESO concentration in freshly prepared samples and samples kept in autosampler at $4\text{ }^{\circ}\text{C}$ for 24 h.

Recovery

Recovery was determined by comparing the area under the curve (AUC) of extracted QC samples (LQC, MQC and HQC) with direct injection of extracted blank plasma spiked with the same nominal concentration of ESO as in the QC samples. This should highlight any loss in signal due to the extraction process. IS recovery was determined for a single concentration of $200\text{ }\mu\text{g/mL}$.

Data analysis

HPLC data acquisition and processing was performed by Shimadzu LC Solutions Ver 1.23 SP 1 software. Standard curves for quantitation of ESO were constructed using a $1/\text{concentration}^2$ weighted linear regression of the peak area ratio versus ESO concentration. Unknown and QC sample concentrations were back-calculated from the standard curves.

RESULTS AND DISCUSSION

Method Development

The HPLC procedure was optimized with a view to develop a sensitive and reproducible method for the determination of ESO in Human Plasma. Since both esomeprazole and internal standard are highly non-polar¹³⁻¹⁵ we employed the usage of liquid-liquid extraction process with a mixture of 70 parts of t-butyl methyl ether and 30 parts of dichloromethane. To get a better response the pH of the mobile phase is set to the acidic side. During our observation, a pH value around 7.4 resulted in better peak shape for the internal standard while that of the drug is not acceptable. Also, alkaline mobile phase characteristics causes deterioration of the bonded phase in the column due to alkaline hydrolysis of end-capped silica^{16, 17}. Compared to acid catalyzed hydrolysis, the hydrolysis of end-capped silica in alkaline conditions is usually very rapid. Therefore experiments were performed using Potassium Dihydrogen phosphate in a limited pH range of 3.0 to pH 5.5. The response was checked at the detector using a connector (without the column). A pH value of 3.0 ± 0.1 gave maximum response for the analyte at 285 nm. A similar response was observed with the usage of 0.1 % orthophosphoric acid. Therefore the final mobile phase consisted of 40: 60 % v/v methanol and 0.1 % orthophosphoric acid. The run time of analysis is higher when a longer reverse phase column (250 X 4.6 mm id) is used. The resolution between the peaks was decreased and peaks were not acceptable peak shape when the experiment is performed using a shorter column (50 X 4.6 mm id). However better resolution, less tailing and high theoretical plates are obtained with a Phenomenex column C18 150 X 4.6 cm 5 μm column.

The flow rate of the method is 0.8 ml/min. The column temperature is maintained at ambient. At the reported flow rate, peak shape was acceptable, however increasing or decreasing the flow rate increased the tailing factor and resulting in poor peak shape and decreased resolution between the drug and internal standard. There was no interference in the drug and internal standard, from the extracted

blank. The peak symmetry were found to be good when the mobile phase composition of 40:60 v/v methanol and 0.1 % ortho phosphoric acid leading to better resolution of the drug and internal standard. Increasing the organic portion of the mobile phase caused MTZ to elute early. A mobile phase containing aqueous portion greater than 60 % led to very late elution and very poor peak shape for ESO. The peaks were also broad with unacceptable asymmetry factor.

Extraction methods were initially attempted using Protein precipitation technique. The use of organic solvents as reagents for protein precipitation was described in (25), Precipitation technique was adopted using Acetonitrile and or Methanol. Initial experiments of protein precipitation were done using 1: 3 ratio of plasma : Organic solvents. The recovery of the ESO is poor while that of the internal standard is relatively unchanged as compared with liquid-liquid extraction.

Since the noise effects in solid phase extraction (SPE) method are similar to that of liquid-liquid extraction, we have done the final analysis using liquid-liquid extraction (LLE). SPE methods although render a neat sample for final analysis, polar interferences do enter into the final sample during reconstitution. SPE is further expensive as compared to LLE technique.

Various solvents such as Ethyl acetate, Diethyl Ether, 100 % t-butyl methyl ether and combinations of t-butyl methyl ether and Dichloromethane were used for extraction. The recovery of ESO and internal standard was poor when Ethyl acetate or Diethyl ether was used individually. The highest recovery from the plasma samples is obtained with a 70: 30 % v/v of t-butyl methyl ether: Dichloromethane.

Detection and chromatography

Fig. 3 shows the typical chromatograms of a blank human plasma sample (A), a zero blank sample with MTZ (B), LLOQ sample extracted using MTZ as internal standard and (D) with a sample containing ULOQ sample extracted using MTZ as internal standard indicating the specificity of the method. The retention times for ESO and IS were 7.20 and 2.99 min, respectively.

Method validation

Selectivity

The method was found to have high selectivity for the analytes; since no interfering peaks from endogenous compounds were observed at the retention time for ESO in any of the six independent blank plasma extracts evaluated (Fig. 3A).

Calibration curves

A system suitability exercise is performed before the initiation of the validation. A system is assumed to be suitable for analysis if and only if the % CV for the retention times of ESO and internal standards is less than 2 %. The results are tabulated in Table 1. Calibration curves for ESO in human plasma were fitted by weighted $1/\text{concentration}^2$ quadratic regression, with the r^2 values of >0.99 for all curves generated during the validation. The calibration curve accuracy for plasma is presented in Table 2 demonstrating that measured concentration is within $\pm 15\%$ of the actual concentration point (20% for the lowest point on the standard curve, the LLOQ). Results were calculated using peak area ratios. A representative calibration curve showing the regression equation and r^2 value is depicted in Figure – 2.

Accuracy and precision

A detailed summary of the intra-day and inter-day precision and accuracy data generated for the assay validation is presented in Table 3. Inter-assay variability was expressed as the accuracy and precision of the mean QC concentrations (LLOQ, LQC, MQC, and HQC) of three separate assays. Intra-assay variability was determined as the accuracy and precision of the six individual QC concentrations within one assay. The inter- and intra-assay accuracy and precision was $<5\%$ for all QC concentrations, which was within the general assay acceptability criteria for QC samples according to FDA guidelines¹².

Limit of detection and limit of quantification

LOD is defined as the lowest concentration that produced a peak distinguishable from background noise (minimum ratio of 3:1). The approximate LOD was 25 ng/mL. The LLOQ has been accepted as the lowest points on the standard curve with a relative standard deviation of less than 20% and signal to noise ratio of 5:1. Results at lowest concentration studies (50 ng/mL) met the criteria for the LLOQ (Table 3). The method was found to be sensitive for the determination of RIF in human plasma samples. The ULOQ has been accepted as the highest points on the standard curve with a relative standard deviation of less than 15% .

Carryover test

A critical issue with the analysis of many drugs is their tendency to get absorbed by reversed phase octa-decyl-based chromatographic packing materials, resulting in the carryover effect. However in this analysis no quantifiable

carryover effect was obtained when a series of blank (plasma) solutions were injected immediately following the highest calibration standard.

Stability studies

The results of short-term, long term and freeze–thaw stability are presented in Table 4. Determination of ESO stability following three freeze–thaw cycles showed that for all QC samples there was a minor change in the ESO concentration.

Recovery

Percentage recovery of ESO was measured by dividing the peak area values of extracted QC samples with direct injection of solution containing the same nominal concentration of compounds as the QC samples in extracted blank plasma. The mean recovery of ESO from plasma spiked samples of ESO at LQC, MQC and HQC levels was 61.25 %, 63.00 % and 67.85 % respectively. The overall recovery is 64.00 % with a % Coefficient of variation of 5.34 %, respectively. IS recovery at 200 µg/mL of MTZ was 45.69 % with a % Coefficient of variation of 3.65%.

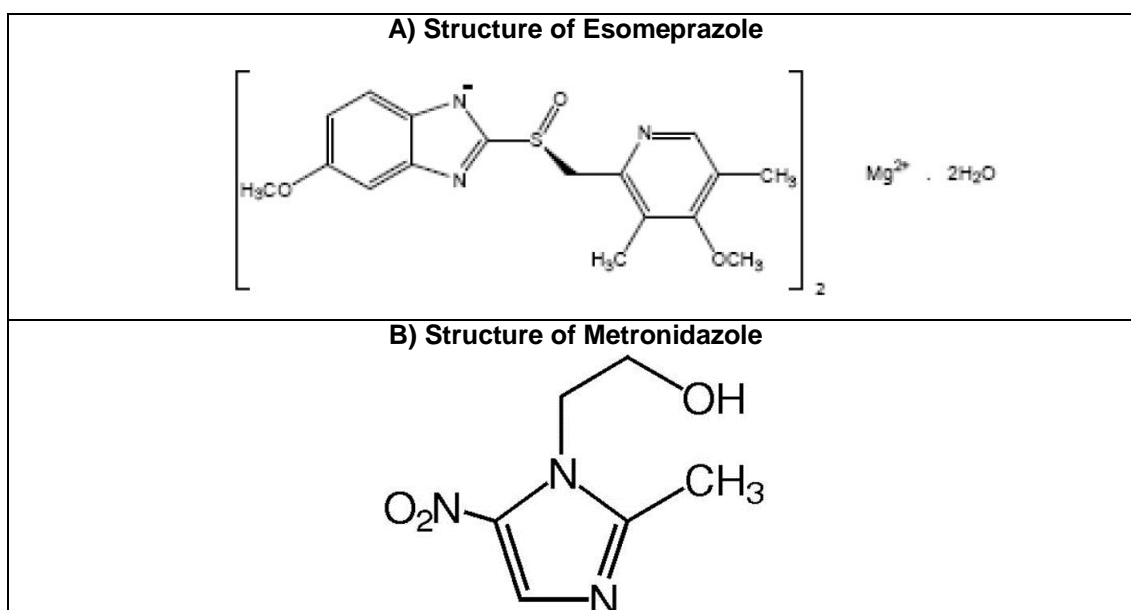


Fig. 1: Structure of Esomeprazole and Metronidazole

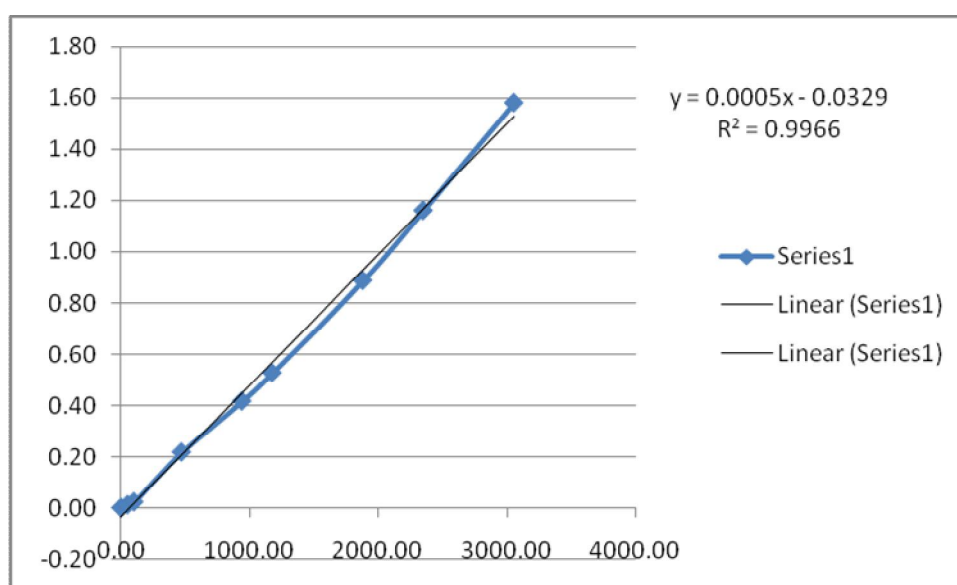


Fig. 2: Calibration Curve of Esomeprazole (Curve – 1)

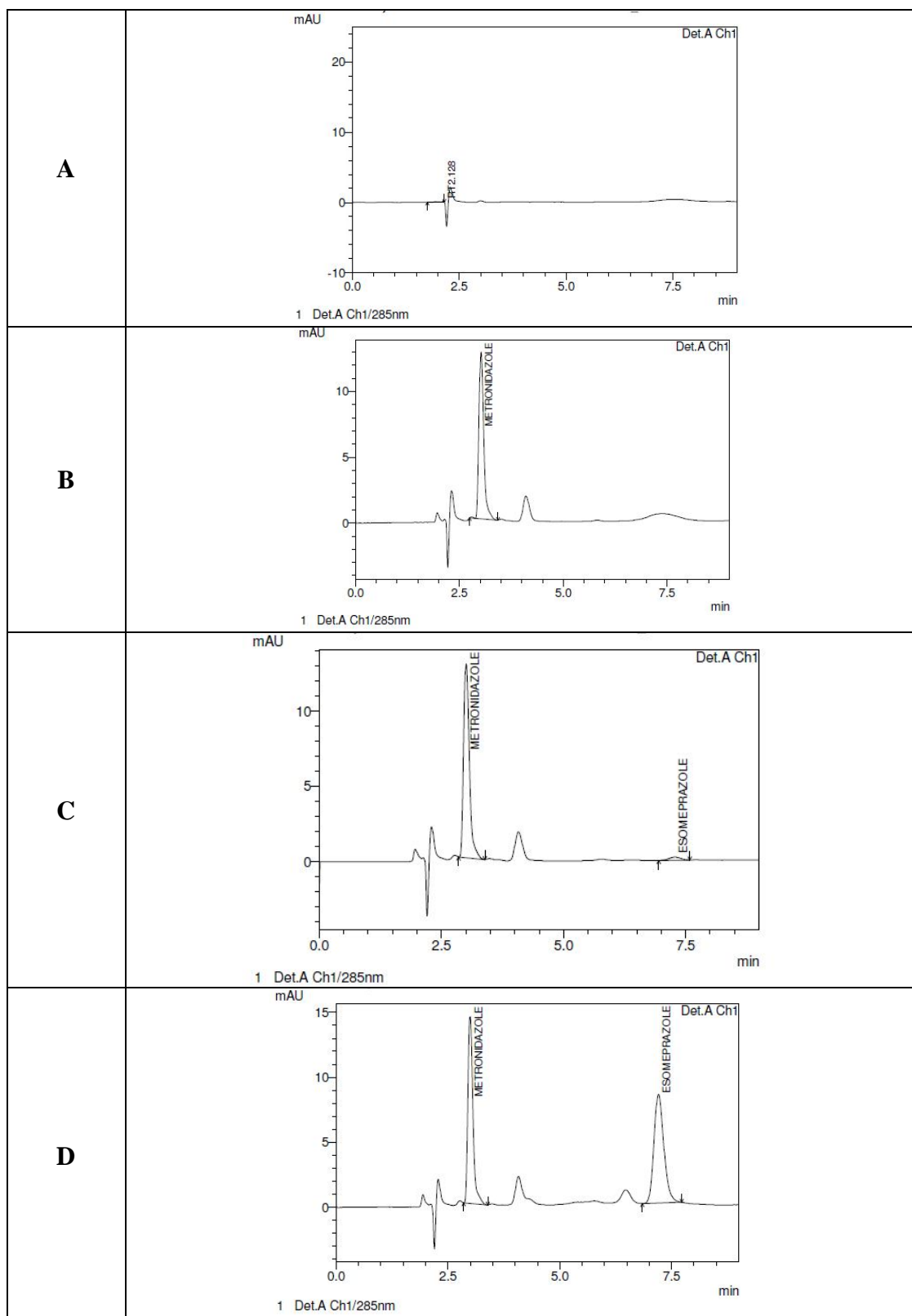


Fig. 3: Chromatograms of (A) Extracted Blank Sample (B) Zero Blank Containing Metronidazole as Internal Standard (C) Esomeprazole containing Metronidazole as Internal Standard at LLOQ level. D) Esomeprazole containing Metronidazole as Internal Standard at ULOQ level.

Table 1: System Suitability Study

	Metronidazole Internal Standard (200 µg/mL)		Esomeprazole (2500.00 ng/mL)	
	Retention Time (min)	Peak Area	Retention Time (min)	Peak Area
Mean (n = 6)	2.987	225608.0	7.260	131646.5
S. D.	0.01	12761.84	0.02	8185.00
% CV	0.46	5.66	0.26	6.22

Table 2: Results of regression analysis of the linearity data

Linearity parameters	Mean ± SD (n = 6)
Slope	0.0005
Intercept	0.0323
Correlation coefficient (r ²)	0.9991

Table 3: Intra and Inter day accuracy and precision of HPLC assay

	Nominal Concentration (ng/mL)			
	50.80	150.53	1505.28	2587.20
DAY 1				
Mean	51.25	155.89	1607.23	2348.69
S.D.	1.23	1.89	3.56	2.54
% CV	2.40	1.21	0.22	0.11
DAY 2				
Mean	49.89	149.63	1578.62	2499.31
S.D.	1.11	2.21	1.79	1.65
% CV	2.22	1.48	0.11	0.07
DAY 3				
Mean	51.87	153.24	1532.21	2448.98
S.D.	1.18	2.13	1.62	1.37
% CV	2.27	1.39	1.06	0.06

Each mean value is the result of triplicate analysis

Table 4: Short Term, long term and Freeze Thaw stability of ESO

	Nominal Concentration (ng/mL)	
	150.53 (LQC)	2587.20 (HQC)
Short-term stability (4 Days)		
Mean Accuracy (%)	0.0745	1.1485
S.D.	0.001589	0.026621
% CV	2.133	2.318
Long-term stability (12 Days)		
Mean Accuracy (%)	2.2847	2.2491
S.D.	0.25679885	0.114543574
% CV	11.240	5.09
Freeze – Thaw stability (3 Cycles)		
Mean Accuracy (%)	105.63	98.76
S.D.	15.42	1.72
% CV	14.6	1.74

Each mean value is the result of triplicate analysis

CONCLUSION

A HPLC method was developed and validated for the determination of ESO in human plasma. The extraction process was a single-step liquid-liquid extraction procedure employing the use of 70:30 % v/v of t-butyl methyl ether and dichloromethane. LLE method is usually devoid of polar interferences thus rendering the sample clean for final analysis. The noise is usually absent or at

minimum as compared to precipitation or SPE techniques. This assay requires only a small volume of plasma (500 µL). There is no carryover effect. Due to the LLE method of extraction, baseline noise is minimal. Matrix effects are not observed. In conclusion, method validation following FDA guideline indicated that the developed method had high sensitivity with an LLOQ of 50 ng/mL, acceptable recovery, reliability, specificity and

excellent efficiency with a total running time of 9.0 min per sample, which is important for large batches of samples. Thus this method can be suitable for pharmacokinetic, bioavailability or bioequivalence studies of ESO in human subjects. This method has been successfully applied to analyze ESO concentrations in human plasma.

ACKNOWLEDGEMENTS

The authors also wish express their gratitude to M/s Lupin Pharma Pvt Ltd for supplying the gift sample of Esomeprazole.

REFERENCES

1. Andersson T, Hassan-Alin M, Hasselgren G, Rohss K, Weidolf L. Pharmacokinetic studies with esomeprazole, the (S)-isomer of omeprazole. *Clin Pharmacol* 2001;40:411-26.
2. Scott LJ, Dunn CJ, Mallarkey G, Sharpe M. Esomeprazole- a review of its use in the management of acid-related disorders. *Drugs* 2002;62:1503-38.
3. Hultman I, Stenhoff H, Liljeblad M. Determination of esomeprazole and its two main metabolites in human, rat and dog plasma by liquid chromatography with tandem mass spectrometry. *J Chromatogr B* 2007;848:317-22.
4. Johnson DA, Roach AC, Carlsson AS, Karlsson AA, Behr DE. Stability of esomeprazole capsule contents after *in vitro* suspension in common soft foods and beverages. *Pharmacotherapy* 2003;23:731-4.
5. Li XQ, Anderson TB, Ahlstrom M, Weidolf L. Comparison of inhibitory effects of the proton pump-inhibiting drugs omeprazole, esomeprazole, lansoprazole, pantoprazole and rabeprazole on human cytochrome P450 activities. *Drug Metab Dispos* 2004;32:821-7.
6. Shetty R, Subramanian G, Kumar RA, Pandey S, Udupa N. Estimation of esomeprazole in human plasma by reverse phase high performance liquid chromatography. *Indian Drugs* 2005;42:158-61.
7. Magesh AR, Vijayalakshmi R, Satyavati D, Sravanthi Devi G, Dhanaraju MD. Validated spectrophotometric estimation of esomeprazole using hydrotrophic solubilisation technique. *Orie J Chem* 2010;26:1191-3.
8. Onal A, Oztunc A. Development and validation of high performance liquid chromatographic method for the determination of esomeprazole in tablets. *J Food Drug Anal* 2006;14:12-8.
9. Prabu SL, Shirwaikar A, Shirwaikar A, Kumar CD, Joseph A, Kumar R. Simultaneous estimation of esomeprazole and domperidone by UV spectrophotometric method. *Indian J Pharm Sci* 2008;70:128-31.
10. Patel BH, Suhagia BN, Patel MM, Patel JR. Determination of pantoprazole, rabeprazole, esomeprazole, domperidone and itopride in pharmaceutical products by reverse phase liquid chromatography using single mobile phase. *Chromatographia* 2007;65:743-8.
11. Zanitti L, Ferretti R, Gallinella B, Torre FL, Sanna ML, Mosca A, et al. Direct HPLC enantio-separation of omeprazole and its chiral impurities: Application to the determination of enantiomeric purity of esomeprazole magnesium trihydrate. *J Pharm Biomed Anal* 2010;52:665-71.
12. Guidance for Industry, Bioanalytical Method Validation, U.S. Department of Health and Human Services, Food and Drug Administration Center for Drug Evaluation and Research, 2001.
13. The Merck Index. 2006. 14th Ed. New Jersey:Merck Research Laboratories, p, 1061.
14. Mahfouz NM, Hassan MA. 2001. Synthesis, chemical and enzymatic hydrolysis, and bioavailability evaluation in rabbits of metronidazole amino acid ester prodrugs with enhanced water solubility. *J Pharm Pharmacol* 53:841-8.
15. Putta Rajesh Kumar*, Somashekar Shyale, Mallikarjuna Gouda M and S. M. Shanta Kumar. Physico-chemical characterization, UV spectrophotometric method development and validation studies of Esomeprazole Magnesium Trihydrate. *J. Chem. Pharm. Res., 2010, 2(3):484-490*
16. H. A. Claesson et al.; *J. Chromatogr. A*; 728 (1996) 259-270
17. http://www.hplc.hu/PDFs/Kromasil_RP_highPH.pdf