

---

# Calcium Cycling in Synthetic and Contractile Phasic or Tonic Vascular Smooth Muscle Cells

---

Larissa Lipskaia, Isabelle Limon, Regis Bobe and Roger Hajjar

Additional information is available at the end of the chapter

<http://dx.doi.org/10.5772/48240>

---

## 1. Introduction

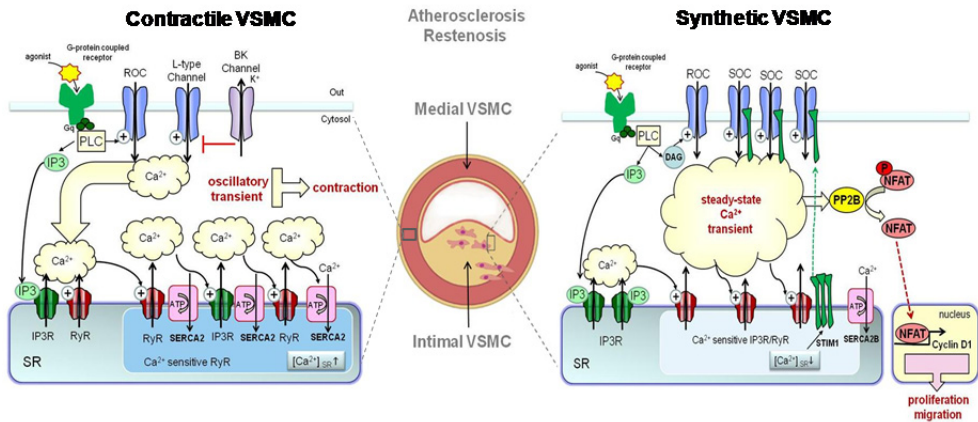
Calcium ions ( $\text{Ca}^{2+}$ ) are present in low concentrations in the cytosol (~100 nM) and in high concentrations (in mM range) in both the extracellular medium and intracellular stores (mainly sarco/endo/plasmic reticulum, SR). This differential allows the calcium ion to be a ubiquitous 2<sup>nd</sup> messenger that carries information essential for cellular functions as diverse as contraction, metabolism, apoptosis, proliferation and/or hypertrophic growth. The mechanisms responsible for generating a  $\text{Ca}^{2+}$  signal greatly differ from one cell type to another. In the different types of vascular smooth muscle cells (VSMC), enormous variations do exist with regard to the mechanisms responsible for generating  $\text{Ca}^{2+}$  signal. In each VSMC phenotype (synthetic/proliferating<sup>1</sup> and contractile<sup>2</sup> [1], tonic or phasic), the  $\text{Ca}^{2+}$  signaling system is adapted to its particular function and is due to the specific patterns of expression and regulation of  $\text{Ca}^{2+}$  handling molecules (**Figure 1**). For instance, in contractile VSMCs, the initiation of contractile events is driven by membrane depolarization; and the principal entry-point for extracellular  $\text{Ca}^{2+}$  is the voltage-operated L-type calcium channel (LTCC). In contrast, in synthetic/proliferating VSMCs, the principal way-in for extracellular  $\text{Ca}^{2+}$  is the store-operated calcium (SOC) channel. Whatever the cell type, the calcium signal consists of limited elevations of cytosolic free calcium ions in time and space. The calcium pump, sarco/endoplasmic reticulum  $\text{Ca}^{2+}$  ATPase (SERCA), has a critical role in determining the frequency of SR  $\text{Ca}^{2+}$  release by controlling the velocity of  $\text{Ca}^{2+}$  upload into the sarcoplasmic reticulum (SR) and the  $\text{Ca}^{2+}$  sensitivity of SR calcium channels, Ryanodin Receptor, RyR and Inositol tri-Phosphate

---

<sup>1</sup>Synthetic VSMCs have a fibroblast appearance, proliferate readily, and synthesize increased levels of various extracellular matrix components, particularly fibronectin, collagen types I and III, and tropoelastin [1].

<sup>2</sup>Contractile VSMCs have a muscle-like or spindle-shaped appearance and well-developed contractile apparatus resulting from the expression and intracellular accumulation of thick and thin muscle filaments [1].

Receptor, IP<sub>3</sub>R. Therefore, it is a major player in determining the spacio-temporal patterns of intracellular calcium signaling. This chapter focuses on the changes in Ca<sup>2+</sup> signaling associated with different VSMC phenotypes. We will discuss the physiological implications of altered expressions of Ca<sup>2+</sup> channels and pumps (referred to as Ca<sup>2+</sup> handling proteins) and how they contribute to VSMC dysfunction in vascular disease.



**Figure 1.** Schematic representation of Calcium Cycling in Contractile and Proliferating VSMCs. Left panel: schematic representation of calcium cycling in quiescent /contractile VSMCs. Contractile response is initiated by extracellular Ca<sup>2+</sup> influx due to activation of Receptor Operated Ca<sup>2+</sup> channels (through phosphoinositol-coupled receptor) or to activation of L-Type Calcium channels (through an increase in luminal pressure). Small increase of cytosolic due IP<sub>3</sub> binding to IP<sub>3</sub>R (puff) or RyR activation by LTCC or ROC-dependent Ca<sup>2+</sup> influx leads to large SR Ca<sup>2+</sup> release due to the activation of IP<sub>3</sub>R or RyR clusters (“Ca<sup>2+</sup>-induced Ca<sup>2+</sup>release” phenomenon). Cytosolic Ca<sup>2+</sup> is rapidly reduced by SR calcium pumps (both SERCA2a and SERCA2b are expressed in quiescent VSMCs), maintaining high concentration of cytosolic Ca<sup>2+</sup> and setting the sensitivity of RyR or IP<sub>3</sub>R for the next spike. Contraction of VSMCs occurs during oscillatory Ca<sup>2+</sup> transient. Middle panel: schematic representation of atherosclerotic vessel wall. Contractile VSMC are located in the media layer, synthetic VSMC are located in sub-endothelial intima. Right panel: schematic representation of calcium cycling in quiescent /contractile VSMCs. Agonist binding to phosphoinositol-coupled receptor leads to the activation of IP<sub>3</sub>R resulting in large increase in cytosolic Ca<sup>2+</sup>. Calcium is weakly reduced by SR calcium pumps (only SERCA2b, having low turnover and low affinity to Ca<sup>2+</sup> is expressed). Store depletion leads to translocation of SR Ca<sup>2+</sup> sensor STIM1 towards PM, resulting in extracellular Ca<sup>2+</sup> influx though opening of Store Operated Channel (CRAC). Resulted steady state Ca<sup>2+</sup> transient is critical for activation of proliferation-related transcription factors ‘NFAT). Abbreviations: PLC - phospholipase C; PM - plasma membrane; PP2B - Ca<sup>2+</sup>/calmodulin-activated protein phosphatase 2B (calcineurin); ROC- receptor activated channel; IP<sub>3</sub> - inositol-1,4,5-trisphosphate, IP<sub>3</sub>R - inositol-1,4,5-trisphosphate receptor; RyR - ryanodine receptor; NFAT - nuclear factor of activated T-lymphocytes; VSMC - vascular smooth muscle cells; SERCA - sarco(endo)plasmic reticulum Ca<sup>2+</sup> ATPase; SR - sarcoplasmic reticulum.

## 2. General aspects of calcium cycling and signaling in vascular smooth muscle cells

Besides maintaining vascular tone in mature vessels, VSMCs also preserve blood vessel integrity [2]. In other words, VSMCs are also instrumental for vascular remodeling and repair associated with VSMCs proliferation and migration. Interestingly,  $\text{Ca}^{2+}$  plays a central role in both physiological processes. In VSMCs, calcium signaling involves a cross-regulation of  $\text{Ca}^{2+}$  influx, sarcolemmal membrane signaling molecules and  $\text{Ca}^{2+}$  release and uptake from the sarco/endo/plasmic reticulum and mitochondria, which plays a central role in both vascular tone and integrity.

### 2.1. Calcium handling by the plasma membrane's calcium channels and pumps

Membrane depolarization is believed to be a key process for the activation of calcium events in mature VSMCs. Thus, much attention has been given to uncovering the various mechanisms responsible for triggering this depolarization. Increased intra-vascular pressure of resistance arteries stimulates gradual membrane depolarization in VSMCs, increasing the probability of opening L-type high voltage-gated  $\text{Ca}^{2+}$  channels (Cav1.2) (LTCC) [3, 4]. Alternatively, the calcium-dependent contractile response can be induced through the activation of specific membrane receptors coupled to phospholipase C (PLC) isoforms<sup>3</sup>. The various isoforms of transient receptor potential (TRP) ion channel family, particularly TRPC3, TRPC6 and TRPC7 possibly activated directly by diacyl glycerol (DAG), can also contribute to initial plasma membrane  $\text{Ca}^{2+}$  influx and subsequent membrane depolarization [5-8]. Non-selective receptor-activated canonical TRPC6 channel, that conduct large sodium ( $\text{Na}^{2+}$ ) currents was also suggested to contribute to membrane depolarization and subsequent L-type channel activation [9, 10]. Membrane depolarization can spread to neighboring cells by current flow through gap junctions providing a synchronization mechanism for VSMC membrane depolarization within the vessel wall [11, 12].

Among voltage-insensitive calcium influx pathways, the store-operated  $\text{Ca}^{2+}$  channels (SOC), maintain a long-term cellular  $\text{Ca}^{2+}$  signal. They are activated upon a decrease of internal store  $\text{Ca}^{2+}$  concentration resulting from a  $\text{Ca}^{2+}$  release via the opening of SR  $\text{Ca}^{2+}$  release channels. SOC was first hypothesized in 1986 [13], a paradigm that was confirmed by the identification of its two essential regulatory components, the SR/ER located  $\text{Ca}^{2+}$  sensor STIM1 (stromal interaction molecule) and the  $\text{Ca}^{2+}$  channels Orai1 [14-17]. Upon decrease of  $[\text{Ca}^{2+}]$  in the reticulum ( $<500\mu\text{M}$ ),  $\text{Ca}^{2+}$  dissociates from STIM1; then STIM1 molecules oligomerize and translocate to specialized cortical reticulum compartments adjacent to the plasma membrane [18, 19]. There, the STIM1 cytosolic activating domains bind to and cluster the Orai proteins into an opened archaic  $\text{Ca}^{2+}$  channel known as Ca<sup>2+</sup>-release activated Ca<sup>2+</sup> channel (CRAC)<sup>4</sup>. Furthermore, transient receptor potential ion

<sup>3</sup>All isoforms of PLC, catalyze the hydrolysis of phosphatidylinositol4,5-biphosphate ( $\text{PIP}_2$ ) to produce the intracellular messengers  $\text{IP}_3$  increase and diacylglycerol (DAG); both of which promote cytosolic  $\text{Ca}^{2+}$  rise through activation of plasma membrane or sarcoplasmic reticulum calcium channels.

<sup>4</sup>The CRAC is responsible for the "2h cytosolic  $\text{Ca}^{2+}$  increase" required to induce VSMCs proliferation [57].

channel (TRPC) family members have also been demonstrated to participate in SOC channels functioning via interactions with STIM1 and Orai proteins [20-22].

The calcium signal is terminated by membrane hyper-polarization and cytosolic  $\text{Ca}^{2+}$  removal. First, calcium sparks resulting from the opening of sub-plasmalemmal clusters of RyR activate large-conductance  $\text{Ca}^{2+}$  sensitive  $\text{K}^+$  (BK) channels. Then, the resulting spontaneous transient outward currents (STOC) hyperpolarize the membrane and decrease the open probability of L-type  $\text{Ca}^{2+}$  channels [23]. Cytosolic calcium is extruded at the level of plasma membrane by plasma membrane  $\text{Ca}^{2+}$  ATPase (PMCA) and the  $\text{Na}^+/\text{Ca}^{2+}$  exchanger (NCX) [24, 25]. The principal amount of cytosolic  $\text{Ca}^{2+}$  (>70%) is re-uploaded to the internal store.

## 2.2. Calcium handling by the sarco/endoplasmic reticulum's calcium channels and pumps

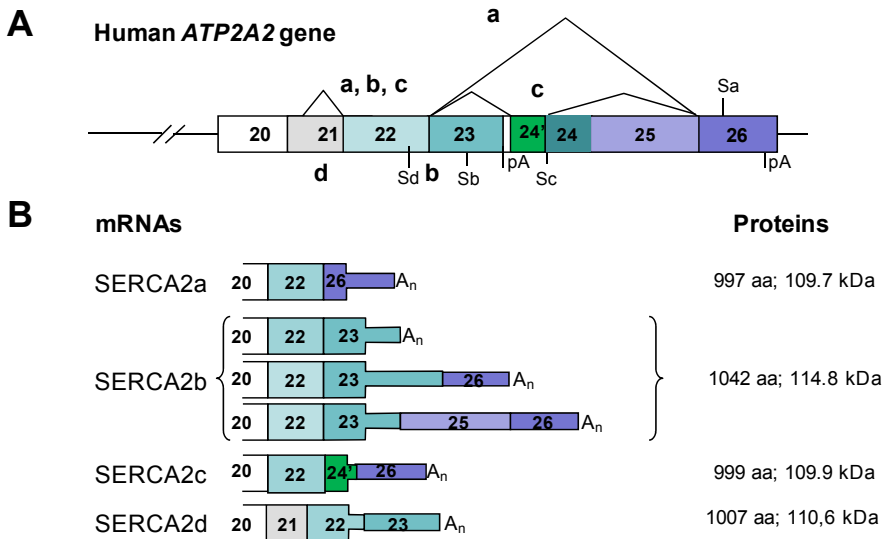
The initial entry of  $\text{Ca}^{2+}$  through plasma membrane channels triggers large  $\text{Ca}^{2+}$  release from the internal store via the process of  $\text{Ca}^{2+}$ -induced  $\text{Ca}^{2+}$ -release (CICR). The mechanism responsible for initiating  $\text{Ca}^{2+}$  release depends on  $\text{Ca}^{2+}$  sensitive SR calcium channels, the ryanodin receptor (RyR)<sup>5</sup> or the  $\text{IP}_3$  receptor ( $\text{IP}_3\text{R}$ ). Indeed,  $\text{IP}_3\text{R}$  and RyR are highly sensitive to cytosolic  $\text{Ca}^{2+}$  concentrations and when cytosolic  $\text{Ca}^{2+}$  concentration ranges from nM to  $\mu\text{M}$ , they open up. On the contrary, a higher cytosolic  $\text{Ca}^{2+}$  concentration (from  $\mu\text{M}$  to mM) closes them [26]. In other words, cytosolic  $\text{Ca}^{2+}$  increase first exerts a positive feedback and facilitates SR channels opening whereas a further increase has an opposite effect and actually inhibits the SR channels opening [27-29]. Importantly enough to be mentioned, RyR phosphorylation by the second messenger cyclic ADP ribose (cADPR) and protein kinase A (PKA) enhances  $\text{Ca}^{2+}$  sensitivity, the phosphorylation induced by the protein kinase C (PKC) decreases RyR sensitivity to  $\text{Ca}^{2+}$  [29, 30]. The initial release occurs in the vicinity of the plasma membrane. It spreads into the cell through the regenerative release of  $\text{Ca}^{2+}$  by the RyR and /or the  $\text{IP}_3\text{R}$  in the form of an intracellular  $\text{Ca}^{2+}$  wave travelling down the length of the cell [31-33]. When  $[\text{Ca}^{2+}]_i$  is integrated over an entire cell with time, these  $\text{Ca}^{2+}$  waves appear as rhythmical oscillations [34].

Sarco/Endoplasmic  $\text{Ca}^{2+}$ ATPases (SERCA), the only calcium transporters expressed within sarco/endoplasmic reticulum (SR), serve to actively return calcium into this organelle. In mammals, three SERCA genes ATP2A1, ATP2A2 and ATP2A3 coding for SERCA1, SERCA2 and SERCA3 isoforms respectively have been identified [35]. Each gene gives rise to a different SERCA isoform through alternative splicing (**Figure 2**); they all have discrete tissue distributions and unique regulatory properties, providing a potential focal point within the cell for the integration of diverse stimuli to adjust and fine-tune calcium homeostasis in the SR/ER [36]. In VSMCs, SERCA2a and the ubiquitous SERCA2b isoforms are expressed; besides vascular smooth muscle, SERCA2a is preferentially expressed in cardiac and skeletal muscles. SERCA2b differs from SERCA2a by an extension of 46 amino acids that forms an

---

<sup>5</sup> RyR are structurally and functionally analogous to  $\text{IP}_3\text{R}$ , although they are approximately twice as large and have twice the conductance of  $\text{IP}_3\text{R}$  [27]; RyR channels are sensitive to store loading and  $\text{IP}_3\text{R}$  channels are sensitized by the agonist-dependent formation of  $\text{IP}_3$ .

additional trans-membrane domain setting the SERCA2b C terminus in the SR lumen [37]. Functional characterization of SERCA2 isoforms performed in transfected HEK-298 cells clearly indicated that the SERCA2a isoform displays a lower affinity for  $\text{Ca}^{2+}$  ( $K_{0.5} = 0.985 \mu\text{M}$ ) but has a higher turnover rate (ATP hydrolysis  $70 \text{ s}^{-1}$ ) compared to SERCA2b ( $K_{0.5} = 0.508 \mu\text{M}$ ;  $35 \text{ s}^{-1}$ ) [38]. Diversity of SERCA isoforms in the same cell suggests that each of them could be responsible for controlling unique cell functions.



**Figure 2.** Alternative splicing of the human ATP2A2 genes, protein sizes of the SERCA2 isoforms. A. Representation of the 3'-end of the human ATP2A2 gene. Broken lines with letters represent alternative splicings. The position of stop codons for the corresponding isoforms and polyadenylation site are indicated by Sa-Sd & pA, respectively. B. Representation of the 3'-end of SERCA2a, SERCA2b, SERCA2c and SERCA2d mRNAs expressed in human cells and the sizes of the corresponding proteins. Wide boxes represent translated segments; the less wide boxes represent untranslated segments.

SERCA2's activity depends on its interaction with phospholamban and is inhibitory in its de-phosphorylated form. PKA phosphorylation of phospholamban results in its dissociation from SERCA2, thus activating the  $\text{Ca}^{2+}$  pumps [39]. Cyclic ADP-ribose was also reported to stimulate SERCA pump activity [40].

As previously mentioned, SR  $\text{Ca}^{2+}$  content controls the sensitivity of SR  $\text{Ca}^{2+}$  channels, RyR and IP<sub>3</sub>R, as well as functioning of SOC-mediated  $\text{Ca}^{2+}$  entry, thereby determining the type of intracellular calcium transient. Since SOCs opening depends on  $\text{Ca}^{2+}$  content of the store, one may suggest that SERCA participates to its regulation. Consistent with this, SOCs open up when the leak of  $\text{Ca}^{2+}$  from intracellular stores is not compensated with SERCA activity; SERCA inhibitors such as thapsigargin which prevent  $\text{Ca}^{2+}$  uptake are commonly used to chemically induce SOC currents; several works have established that SERCA can cluster with STIM1 and Orai1 in various cellular types [41, 42].

### 2.3. Mechanisms of cytosolic Ca<sup>2+</sup> oscillations in VSMC

Ca<sup>2+</sup> oscillations are one of the ways that VSMCs respond to agonists [43-47]. These Ca<sup>2+</sup> oscillations are maintained during receptor occupancy and are driven by an endogenous pacemaker mechanism, called the cellular Ca<sup>2+</sup> oscillator [12, 33, 34]. Ca<sup>2+</sup> oscillators were classified into two main types, the membrane oscillators and the cytosolic oscillators [48].

Membrane oscillators are those which generate oscillations at the cell membrane by successive membrane depolarization. In most small resistance arteries, inhibitors of plasma membrane voltage-dependent channels reduce or even abolish the membrane potential oscillations which precede rhythmical contractions. This suggests that rhythmic extracellular Ca<sup>2+</sup> influx can be required for calcium oscillatory transient [34]. Besides, membrane oscillators greatly depend on Ca<sup>2+</sup> entry in order to provide enough Ca<sup>2+</sup> to charge up the intracellular stores for each oscillatory cycle. Some of the entry mechanisms characterized include the Na<sup>+</sup>/Ca<sup>2+</sup> exchanger (NCX) operating in its reverse mode [32, 44, 49], the ATP-sensitive P2X receptor responsible for generating junctional Ca<sup>2+</sup> transients (jCaTs) [50] or the L-type Cav1.2 channels operating as clusters in a "high open probability mode" to produce persistent Ca<sup>2+</sup> sparklets [51]. In the case of the latter, entry of Ca<sup>2+</sup> through these L-type channel clusters does not directly activate RyR to produce sparks, but provides the necessary amount of Ca<sup>2+</sup> to charge up the ER and sensitize the RyR [52]. Another way of internal store reloading is achieved by the various isoforms of the transient receptor potential (TRP) ion channel family, activated directly by DAG [5, 6].

Cytosolic oscillators do not depend on the cell membrane to generate oscillations. Instead, they arise from intracellular store membrane instability. The pacemaker mechanism of cytosolic Ca<sup>2+</sup> oscillator is based on the velocity of luminal Ca<sup>2+</sup> loading and luminal Ca<sup>2+</sup> content [53, 54]. The mechanism responsible for initiating Ca<sup>2+</sup> release depends either on RyRs or IP<sub>3</sub>R activation. As soon as stores are sufficiently charged with Ca<sup>2+</sup>, the SR Ca<sup>2+</sup> channels become sensitive to cytosolic Ca<sup>2+</sup> and can participate to the process of Ca<sup>2+</sup>-induced Ca<sup>2+</sup>-release, which is responsible for orchestrating the regenerative release of Ca<sup>2+</sup> from the SR/ER. Importantly, extracellular Ca<sup>2+</sup> influx is not required for cytosolic oscillator function. Indeed, the Ca<sup>2+</sup> oscillations can be observed in the absence of extracellular Ca<sup>2+</sup> [43, 45, 55, 56].

Finally, it should be mentioned that SERCA proteins play a major role in the establishment of oscillatory Ca<sup>2+</sup> transient required for phasic contractile response<sup>6</sup>, independently from the type of oscillator. Indeed, the frequency of Ca<sup>2+</sup> oscillations depends solely on the velocity with which Ca<sup>2+</sup> is re-loaded to the SR. This allows the sensitization of SR release channels, which determine the timing of the next Ca<sup>2+</sup> spike [54, 57]. Thus, as long as the IP<sub>3</sub> membrane receptor/Ca<sup>2+</sup> channel is activated, the next spike is initiated as soon as the sensitivity of IP<sub>3</sub>Rs (RyRs) is restored, resulting in oscillatory mode of calcium cycling.

---

<sup>6</sup>Phasic contractions are apparent as rapid peaks, whereas tonic contractions cause gradual changes in force that can be maintained for prolonged periods.

### 3. Calcium cycling and signalling in vascular smooth muscle cells

#### 3.1. Vascular smooth muscle cell phenotype diversity

VSMCs maintain a considerable plasticity throughout life, exhibiting a diverse range of phenotypes in response to local environmental changes [58, 59]. Because studies of smooth muscle phenotype have principally focused on mechanisms which control VSMC proliferation and differentiation [58], VSMC phenotypes are classified into two main categories: the synthetic/proliferating/migratory/inflammatory and the contractile/quiescent/differentiated phenotype. In mature vessels, most VSMCs exhibit a quiescent/contractile phenotype and control the vascular tone [58, 59]. Transition of contractile VSMCs towards a proliferating/migratory/inflammatory phenotype is one of the initial mechanisms leading to pathological vascular remodeling<sup>7</sup> [58, 60]. Culturing VSMCs *in vitro* mimics this progression, as primary cultures rapidly lose differentiation markers and exhibit a synthetic phenotype [60].

Another possibility for classifying VSMCs is to categorize them based on their contractile properties which determine whether the smooth muscle is considered phasic or tonic. Phasic vascular smooth muscle refers to blood vessels displaying rhythmic contractile activity whereas tonic vascular smooth muscle refers to blood vessels displaying continuous contractions [61]. Phasic contraction is the characteristic of small resistance arteries (SRA, 20-50  $\mu\text{m}$  diameters) which predominantly regulates vascular functions such as pressure and flow. *In vivo* small arteries exhibit a mixture of tonic and phasic contractions (RW: [34, 45, 62, 63]) and/or conducted vasomotor response termed vasomotion<sup>8</sup> [64].

The contractile capacities of various VSMC phenotypes are determined by expression of different isoforms of contractile proteins. For instance, phasic contractions displayed by small arteries of the heart and lung, muscular femoral artery, small mesenteric arteries and renal afferent arteriole result from the VSMC expression of the fast isoform of smooth muscle myosin heavy chain (MHC) which determines the velocity of shortening during vasomotion (rev. [61]). Of note, lent isoform of smooth muscle myosin, so called "non muscular myosin, (NM-B)" is expressed in all types of VSMCs including synthetic/proliferating VSMC; it plays a significant role in force maintenance during tonic contraction [58, 61].

Contractile response is initiated by the rise in cytosolic  $[\text{Ca}^{2+}]_i$  leading to the activation of  $\text{Ca}^{2+}$ /calmodulin-dependent myosin light chain kinase (MLCK) [65]. However the mode of contraction, phasic or tonic, is determined by the type of cytosolic  $\text{Ca}^{2+}$  cycling. Different types of calcium cycling were observed in synthetic and contractile tonic or phasic VSMCs, in accordance with differential expression of calcium handling proteins [59, 60, 66].

---

<sup>7</sup>Vascular remodeling was initially defined as the process of arterial enlargement to accommodate the plaque and maintain constant flow despite increases in atherosclerotic lesion mass. Experimental and clinical observations indicate that blood flow properties influence remodeling after angioplasty, hypertension, and flow diversion as well as atherosclerotic plaque progression [60].

<sup>8</sup>Vasomotion or pulsative flow is suggested to enhance blood flow or tissue oxygenation (rev.[61])

### 3.2. Calcium cycling in synthetic/proliferating VSMC

The hallmark of synthetic status of VSMCs is a lack of functional proteins entity associated with the contractile response [60]; we refer to voltage activated L-type calcium channels (LTCC), SR calcium release channel RyR and “fast” isoform of SR calcium pump SERCA2a (**Figure 3**). In line with this, large conductance K<sup>+</sup> channels (BK<sub>Ca</sub>), which are involved in negative feedback regulation of LTCC activity through plasma membrane hyperpolarization, are also down-regulated in synthetic VSMC [67, 68]. On the other hand, the expression of the molecular entities modulating the plasma membrane Ca<sup>2+</sup>-release activated Ca<sup>2+</sup> channel (CRAC) functioning [57, 69] are highly up-regulated; we refer to the proteins forming the CRAC complex or regulating the *I*<sub>CRAC</sub> (such as ORAI1-3 and STIM1) and to the IP<sub>3</sub>R [70, 71]. Besides, the expression of TRPCs family members, particularly TRPC1 and TRPC6, dramatically increases in synthetic cells leading to the increase of whole cell Ca<sup>2+</sup> current [72, 73].

In synthetic VSMC, agonist binding to PLC-coupled membrane receptors activates IP<sub>3</sub>R, resulting in a drastic increase of cytosolic Ca<sup>2+</sup> which is weakly pumped by the “slow” calcium pump SERCA2b (the only isoform of SERCA expressed in synthetic VSMCs). The depleted store triggers the translocation of STIM1 towards the plasma membrane, which, through the opening of CRAC, induces an extracellular Ca<sup>2+</sup> influx. This translates into a long lasting increase of cytosolic calcium critical for the activation of Ca<sup>2+</sup>-sensitive transcription factor NFAT (nuclear factor of activated T lymphocytes), required for proliferation and migration of VSMCs [56, 74]. Since these cells express contractile proteins, such as NM-B [58, 61], one may suggest that long lasting increase of cytosolic calcium can also produces tonic contraction.

Importantly enough to be mentioned, the restoration of SERCA2a expression by gene transfer in synthetic VSMCs blocks their proliferation and migration via inhibition of transcription factor NFAT [56, 75]. Molecular mechanisms of this effect are related to the prevention of functional association between STIM1 and Orai1 (CRAC protein entity) which lead to the suppression of store-operated calcium influx [56]. It is worth mentioning that SOC influx following agonist stimulation is not observed in contractile VSMCs, naturally expressing SERCA2a (Bobe & Lipskaia, unpublished data), highlighting again the importance of the SERCA isoform(s) expressed in VSMCs.

### 3.3. Calcium cycling in contractile tonic and phasic VSMC

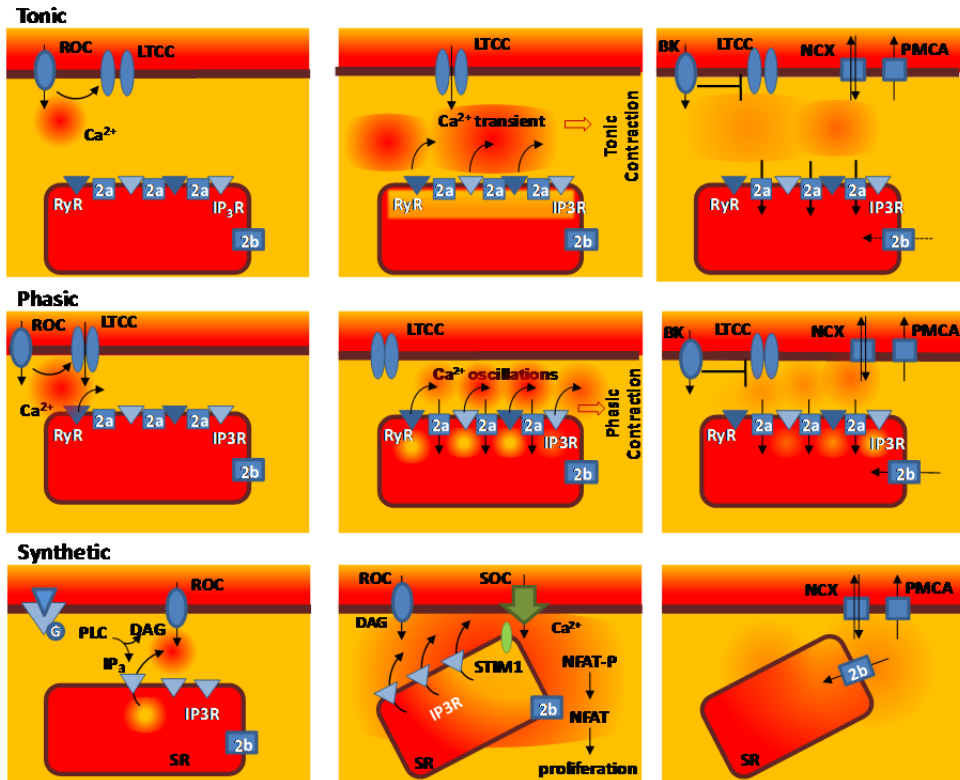
In mature vessels, VSMCs mainly exhibit a tonic or phasic contractile phenotype. In contractile VSMCs extracellular calcium influx predominantly takes place through the voltage-dependent L-type calcium channel, LTCC<sup>9</sup> (**Figure 3**). Extracellular Ca<sup>2+</sup> influx causes a small increase of cytosolic Ca<sup>2+</sup> generated by the opening of IP<sub>3</sub>R clusters, called puff and/or RyR2 clusters, called spark [28, 57]. These local rises of cytosolic Ca<sup>2+</sup> generate a larger SR Ca<sup>2+</sup> release through the Ca<sup>2+</sup>-induced Ca<sup>2+</sup> release phenomenon. Elevation of free cytosolic calcium triggers VSMC contraction. The mode of intracellular calcium transient determines the type of contraction,

---

<sup>9</sup> In contractile VSMCs, NFAT can be activated by sustained Ca<sup>2+</sup> influx (persistent Ca<sup>2+</sup> sparklets) mediated by clusters of L-type Ca<sup>2+</sup> channels operating in a high open probability mode [76, 77].



tonic or phasic. Steady state increase in cytosolic  $\text{Ca}^{2+}$  triggers tonic contraction; oscillatory type of  $\text{Ca}^{2+}$  transient triggers phasic contraction. [34, 76]. It is worth mentioning that accumulating evidence indicate that SR  $\text{Ca}^{2+}$ ATPase functioning/location within the cell (which greatly influences the velocity of calcium upload) determines the mode of  $\text{Ca}^{2+}$  transient in VSMCs. Consistent with this, i) “phasic” VSMCs display a greater number of peripherally located SR than “tonic” VSMCs; indeed “tonic” VSMCs exhibit centrally located SR; (rev in [61, 77]); ii) drugs which interfere with the  $\text{IP}_3$  pathway or intracellular stores abolish spontaneous vasomotion [11, 78]; iii) blocking SERCA strongly inhibits the  $\text{Ca}^{2+}$  oscillations, demonstrating that they are induced by SR  $\text{Ca}^{2+}$  release; this latter argument is further supported by the fact that oscillations are present even in the absence of extracellular  $\text{Ca}^{2+}$  [43, 45, 55, 56].



**Figure 3.** Dynamic schematic representation of calcium cycling in contractile phasic or tonic and synthetic VSMCs. Left panel: initiation of calcium event. Middle panel: resulting calcium transient and related physiological function. Right panel: termination of calcium event. The color intensity reflects  $\text{Ca}^{2+}$  concentrations. Abbreviations: BK - potassium channel; DAG - diacylglycerol; IP<sub>3</sub> - inositol-1,4,5-trisphosphate; IP<sub>3</sub>R - inositol-1,4,5-trisphosphate receptor; LTCC - voltage-gated L-Type Calcium channel; NCX - Na<sup>+</sup>/Ca<sup>2+</sup> exchanger; NFAT - nuclear factor of activated T-lymphocytes; PLC - phospholipase C; PMCA - plasma membrane Ca<sup>2+</sup> ATPase; ROC - receptor activated channel; RyR - ryanodine receptor; SERCA2a and SERCA2b - sarco(endo)plasmic reticulum Ca<sup>2+</sup> ATPase type 2a and 2b; SOC - store operated Ca<sup>2+</sup> channel; SR - sarcoplasmic reticulum, STIM1 - stromal interaction molecule 1.

The “fast” calcium pump SERCA2a, specifically expressed in contractile VSMCs can be responsible for the establishment of the “cytosolic oscillator”. Several arguments are in agreement with this proposal: i) SERCA2a has a higher catalytic turnover when compared to SERCA2b due to a higher rate of de-phosphorylation and a lower affinity for  $\text{Ca}^{2+}$ ; ii) SERCA2a is absent in synthetic VSMCs, which only exhibit tonic contraction, iii) transferring the SERCA2a gene to synthetic cultured VSMCs modifies the agonist-induced calcium transient from steady-state to oscillatory mode [56]. Therefore, one might suggest that the physiological role of SERCA2a in VSMCs consists of controlling the “cytosolic oscillator”, thereby determining phasic vs tonic type of smooth muscle contraction.

Despite the fact that agonist-induced  $\text{Ca}^{2+}$  oscillations are a characteristic feature of the activation mechanisms of VSMCs [43-47], oscillatory type of  $\text{Ca}^{2+}$  transient is poorly associated with phasic contractile response. In some vessels, asynchronous oscillations of individual VSMC maintain a particular vascular tonus. However, in small resistance vessels the oscillations of groups of cells are synchronized through gap-junctions resulting in the pulsative contractile response [34, 45, 79, 80]. This oscillatory activity can be regulated by variations of neurotransmitters following sympathetic activation and can affect contractile tone through the increase of frequency, thereby increasing blood flow or tissue oxygenation [43, 45, 46, 81]. This frequency modulation could result from PKA phosphorylation of RyR, PLB and contractile proteins, as it has been established for cardiomyocytes [82-84]. Micro-vascular dysfunction, defined as the intrinsic changes in VSMCs contractility (such as reduction of frequency and shortening velocity of phasic contractions), observed in the context of cardiovascular [85, 86], may be related to reduced PKA phosphorylation of  $\text{Ca}^{2+}$  handling and contractile proteins, as observed in failing cardiomyocytes [82].

#### **4. SERCA2a as a potential target for treating vascular proliferative diseases**

Abundant proliferation of VSMCs is an important component of the chronic inflammatory response associated to atherosclerosis and related vascular occlusive diseases (intra-stent restenosis, transplant vasculopathy, and vessel bypass graft failure). Great efforts have been made to prevent/reduce trans-differentiation and proliferation of synthetic VSMCs. Anti-proliferative therapies including the use of pharmacological agents and gene therapy approaches are, until now, considered as a suitable approach in the treatment of these disorders [87]. Indeed, coronary stenting is the only procedure that has been proven to reduce the incidence of late restenosis after percutaneous transluminal coronary angioplasty ([88]). Nevertheless, post-interventional intra-stent restenosis, characterized by the re-narrowing of the arteries caused by VSMC proliferation, occurs in 10 to 20 % of patients. These disorders remain the major limitation of revascularization by percutaneous transluminal angioplasty and artery bypass surgery. The use of drug-eluting stents (stent eluting anti-proliferative drug) significantly reduces restenosis but impairs the re-endothelialization process and subsequently often induces late thrombosis [89, 90]. In human, trans-differentiation of contractile VSMCs towards a synthetic/proliferating inflammatory/migratory phenotype after percutaneous transluminal angioplasty appears to be a fundamental process of vascular

proliferative disease [91]. In contrast, phenotypic re-differentiation of neo-intimal VSMCs after bare metal stent implantation was reported to be associated with a decline in platelet activation and inflammatory cell infiltration, and the regeneration of the endothelial cell layer [92]. Thus, defining novel molecular target(s) of DESs, that can simultaneously prevents VSMC proliferation and adverse vascular remodeling while facilitating re-endothelialization, is crucial. SERCA2a gene transfer prevents neo-intimal proliferation and intimal thickening in the rat carotid injury model by normalizing calcium cycling and inhibiting NFAT activity [75]. Furthermore, SERCA2a gene transfer prevents VSMC trans-differentiation in injured segments while allowing re-endothelialization [75]. Thus, SERCA2a can be considered as a potential and powerful target for treating vascular proliferative disease.

## 5. Concluding remarks

Over the last decade, great progress has been made in the understanding of the various intracellular molecular mechanisms in VSMCs which control calcium cycling and excitation/contraction or excitation/transcription coupling. VSMCs employ a great variety of  $\text{Ca}^{2+}$  signaling systems that are adapted to control their different contractile functions. Alterations in the expressions of  $\text{Ca}^{2+}$  handling molecules are closely associated with VSMC phenotype modulation. Furthermore, these changes in expression are inter-connected and each acquired or lost  $\text{Ca}^{2+}$  signaling molecule represents a component of signaling module functioning as a single unit.

In non-excitabile synthetic VSMCs, calcium cycling results from the protein module ROC/IP<sub>3</sub>R/STIM1/ORAI1 which controls SOC influx. Agonist stimulation of synthetic VSMCs translates into a sustained increase in cytosolic  $\text{Ca}^{2+}$ . This increase is required for the activation of NFAT downstream cellular signaling pathways inducing proliferation, migration and possibly an inflammatory response. Calcium cycling in excitable contractile VSMCs is governed by the protein module composed of ROC/LTCC/RyR2/SERCA2a and controls the contractile response. The location of particular ion channels within the smooth muscle cell with regards to internal stores, other membrane ion channels, gap junctions as well as the expression of fast isoforms of contractile proteins have a significant impact on the resulting phasic or tonic contractile response. Future studies unraveling the correlation between the dynamic changes in  $\text{Ca}^{2+}$  signaling protein expression and specific subcellular localization are needed to delineate the mechanisms by which  $\text{Ca}^{2+}$  signaling molecules produce a phasic or tonic contractile response.

## Author details

Larissa Lipskaia

*Mount Sinai School of Medicine, Department of Cardiology, New York, NY, USA*

Isabelle Limon

*Univ Paris 6, UR4 stress inflammation and aging, Paris, France*

Regis Bobe

*INSERM U770, CHU Bicêtre, Le Kremlin-Bicêtre, France*

Roger Hajjar

*Mount Sinai School of Medicine, Department of Cardiology, New York, NY, USA*

## Acknowledgments

LL is supported by AHA SDG 0930116N (USA), IL is supported by Pierre and Marie Curie University (Univ Paris 6, France) and ANR grant 11BSV103401; RB is supported by Association Française Contre les Myopathies (AFM, France); RJH is supported by NIH grants (USA) HL088434, HL080498, HL100396 and NIH/NHLBI Contract HHSN268201000045C. We thank Zela Keuylian for editing.

## Abbreviations

BK – large-conductance  $\text{Ca}^{2+}$  sensitive  $\text{K}^+$  channel

cADPR – cyclic Adenosine Diphosphate Ribose

CICR - C $\text{a}^{2+}$ - Induced C $\text{a}^{2+}$  Release

CRAC - C $\text{a}^{2+}$ - Release Activated C $\text{a}^{2+}$  Channels

DAG - Diacyl Glycerol

IP<sub>3</sub>R - sarco/endoplasmic reticulum  $\text{Ca}^{2+}$  channel Inositol tri-Phosphate Receptor

LTCC - voltage-dependent L-type C $\text{a}^{2+}$  channels

NCX – N $\text{a}^+$ /C $\text{a}^{2+}$  exchanger

PKA – Protein Kinase A (activated by cAMP, cyclic adenosine monophosphate)

PLC – Phospholipase C

PMCA – Plasmic Membrane C $\text{a}^{2+}$  ATPase

RyR - sarco/endoplasmic reticulum  $\text{Ca}^{2+}$  channel Ryanodin Receptor

SOC - StoRe-Operated  $\text{Ca}^{2+}$  Channels

SERCA - Sarco/Endoplasmic Reticulum C $\text{a}^{2+}$  ATPase

SRA - Small Resistance Arteries

SR/ER – Sarco/Endoplasmic Reticulum

STIM1 – Stromal Interaction Molecule 1, SR  $\text{Ca}^{2+}$  sensor

TRPC - Transient Receptor Potential ion Channel

VSMCs - Vascular Smooth Muscle Cells

## 6. References

- [1] Pauly RR, Bilato C, Cheng L, Monticone R, Crow MT. Vascular smooth muscle cell cultures. *Methods Cell Biol.* 1997;52:133-54.
- [2] Yoshida T, Owens GK. Molecular determinants of vascular smooth muscle cell diversity. *Circulation research.* 2005 Feb 18;96(3):280-91.
- [3] Harder DR, Gilbert R, Lombard JH. Vascular muscle cell depolarization and activation in renal arteries on elevation of transmural pressure. *The American journal of physiology.* 1987 Oct;253(4 Pt 2):F778-81.
- [4] Fleischmann BK, Murray RK, Kotlikoff MI. Voltage window for sustained elevation of cytosolic calcium in smooth muscle cells. *Proceedings of the National Academy of Sciences of the United States of America.* 1994 Dec 6;91(25):11914-8.
- [5] Saleh SN, Albert AP, Peppiatt-Wildman CM, Large WA. Diverse properties of store-operated TRPC channels activated by protein kinase C in vascular myocytes. *The Journal of physiology.* 2008 May 15;586(10):2463-76.
- [6] Peppiatt-Wildman CM, Albert AP, Saleh SN, Large WA. Endothelin-1 activates a Ca<sup>2+</sup>-permeable cation channel with TRPC3 and TRPC7 properties in rabbit coronary artery myocytes. *The Journal of physiology.* 2007 May 1;580(Pt.3):755-64.
- [7] Hofmann T, Obukhov AG, Schaefer M, Harteneck C, Gudermann T, Schultz G. Direct activation of human TRPC6 and TRPC3 channels by diacylglycerol. *Nature.* 1999 Jan 21;397(6716):259-63.
- [8] Okada T, Inoue R, Yamazaki K, Maeda A, Kurosaki T, Yamakuni T, et al. Molecular and functional characterization of a novel mouse transient receptor potential protein homologue TRP7. Ca<sup>2+</sup>-permeable cation channel that is constitutively activated and enhanced by stimulation of G protein-coupled receptor. *The Journal of biological chemistry.* 1999 Sep 24;274(39):27359-70.
- [9] Soboloff J, Spassova M, Xu W, He LP, Cuesta N, Gill DL. Role of endogenous TRPC6 channels in Ca<sup>2+</sup> signal generation in A7r5 smooth muscle cells. *The Journal of biological chemistry.* 2005 Dec 2;280(48):39786-94.
- [10] Welsh DG, Morielli AD, Nelson MT, Brayden JE. Transient receptor potential channels regulate myogenic tone of resistance arteries. *Circulation research.* 2002 Feb 22;90(3):248-50.
- [11] Haddock RE, Hill CE. Differential activation of ion channels by inositol 1,4,5-trisphosphate (IP<sub>3</sub>)- and ryanodine-sensitive calcium stores in rat basilar artery vasomotion. *The Journal of physiology.* 2002 Dec 1;545(Pt 2):615-27.
- [12] Imtiaz MS, Zhao J, Hosaka K, von der Weid PY, Crowe M, van Helden DF. Pacemaking through Ca<sup>2+</sup> stores interacting as coupled oscillators via membrane depolarization. *Biophysical journal.* 2007 Jun 1;92(11):3843-61.
- [13] Putney JW. A model for receptor-regulated calcium entry. *Cell Calcium.* 1986;7:1-12.
- [14] Liou J, Kim ML, Heo WD, Jones JT, Myers JW, Ferrell JE, Jr., et al. STIM is a Ca<sup>2+</sup> sensor essential for Ca<sup>2+</sup>-store-depletion-triggered Ca<sup>2+</sup> influx. *Curr Biol.* 2005 Jul 12;15(13):1235-41.

- [15] Roos J, DiGregorio PJ, Yeromin AV, Ohlsen K, Lioudyno M, Zhang S, et al. STIM1, an essential and conserved component of store-operated Ca<sup>2+</sup> channel function. *J Cell Biol.* 2005 May 9;169(3):435-45.
- [16] Peinelt C, Vig M, Koomoa DL, Beck A, Nadler MJ, Koblan-Huberson M, et al. Amplification of CRAC current by STIM1 and CRACM1 (Orai1). *Nat Cell Biol.* 2006 Jul;8(7):771-3.
- [17] Soboloff J, Spassova MA, Tang XD, Hewavitharana T, Xu W, Gill DL. Orai1 and STIM1 reconstitute store-operated calcium channel function. *J Biol Chem.* 2006 Jul 28;281(30):20661-5.
- [18] Wu MM, Buchanan J, Luik RM, Lewis RS. Ca<sup>2+</sup> store depletion causes STIM1 to accumulate in ER regions closely associated with the plasma membrane. *The Journal of cell biology.* 2006 Sep 11;174(6):803-13.
- [19] Shen WW, Demaurex N. Morphological and functional aspects of STIM1-dependent assembly and disassembly of store-operated calcium entry complexes. *Biochemical Society transactions.* 2012 Feb 1;40(1):112-8.
- [20] Yuan JP, Lee KP, Hong JH, Muallem S. The closing and opening of TRPC channels by Homer1 and STIM1. *Acta Physiol (Oxf).* 2012 Feb;204(2):238-47.
- [21] Ong HL, Cheng KT, Liu X, Bandyopadhyay BC, Paria BC, Soboloff J, et al. Dynamic assembly of TRPC1-STIM1-Orai1 ternary complex is involved in store-operated calcium influx. Evidence for similarities in store-operated and calcium release-activated calcium channel components. *J Biol Chem.* 2007 Mar 23;282(12):9105-16.
- [22] Liao Y, Erxleben C, Yildirim E, Abramowitz J, Armstrong DL, Birnbaumer L. Orai proteins interact with TRPC channels and confer responsiveness to store depletion. *Proceedings of the National Academy of Sciences of the United States of America.* 2007 Mar 13;104(11):4682-7.
- [23] Nelson MT, Cheng H, Rubart M, Santana LF, Bonev AD, Knot HJ, et al. Relaxation of arterial smooth muscle by calcium sparks. *Science.* 1995;270:633-7.
- [24] Abramowitz J, Aydemir-Koksoy A, Helgason T, Jemelka S, Odebunmi T, Seidel CL, et al. Expression of plasma membrane calcium ATPases in phenotypically distinct canine vascular smooth muscle cells. *Journal of molecular and cellular cardiology.* 2000 May;32(5):777-89.
- [25] Strehler EE, Caride AJ, Filoteo AG, Xiong Y, Penniston JT, Enyedi A. Plasma membrane Ca<sup>2+</sup> ATPases as dynamic regulators of cellular calcium handling. *Annals of the New York Academy of Sciences.* 2007 Mar;1099:226-36.
- [26] Bootman MD, Collins TJ, Peppiatt CM, Prothero LS, MacKenzie L, De Smet P, et al. Calcium signalling--an overview. *Semin Cell Dev Biol.* 2001;12(1):3-10.
- [27] Bootman MD, Lipp P, Berridge MJ. The organisation and functions of local Ca<sup>2+</sup> signals. *J Cell Sci.* 2001;114(Pt 12):2213-22.
- [28] Berridge MJ, Bootman MD, Roderick HL. Calcium signalling: dynamics, homeostasis and remodelling. *Nat Rev Mol Cell Biol.* 2003 Jul;4(7):517-29.
- [29] Lipskaia L, Lompre AM. Alteration in temporal kinetics of Ca<sup>2+</sup> signaling and control of growth and proliferation. *Biol Cell.* 2004 Feb;96(1):55-68.
- [30] Jaggar JH, Porter VA, Lederer WJ, Nelson MT. Calcium sparks in smooth muscle. *Am J Physiol Cell Physiol.* 2000 Feb;278(2):C235-56.

- [31] Brain KL, Cuprian AM, Williams DJ, Cunnane TC. The sources and sequestration of Ca(2+) contributing to neuroeffector Ca(2+) transients in the mouse vas deferens. *The Journal of physiology*. 2003 Dec 1;553(Pt 2):627-35.
- [32] Dai JM, Kuo KH, Leo JM, van Breemen C, Lee CH. Mechanism of ACh-induced asynchronous calcium waves and tonic contraction in porcine tracheal muscle bundle. *Am J Physiol Lung Cell Mol Physiol*. 2006 Mar;290(3):L459-69.
- [33] Sanderson MJ, Delmotte P, Bai Y, Perez-Zogbi JF. Regulation of airway smooth muscle cell contractility by Ca<sup>2+</sup> signaling and sensitivity. *Proc Am Thorac Soc*. 2008 Jan 1;5(1):23-31.
- [34] Haddock RE, Hill CE. Rhythmicity in arterial smooth muscle. *The Journal of physiology*. 2005 Aug 1;566(Pt 3):645-56.
- [35] Burk SE, Lytton J, MacLennan DH, Shull GE. cDNA cloning, functional expression, and mRNA tissue distribution of a third organellar Ca<sup>2+</sup> pump. *J Biol Chem*. 1989;264(31):18561-8.
- [36] Bobe R, Bredoux R, Corvazier E, Lacabaratz-Porret C, Martin V, Kovacs T, et al. How many Ca<sup>2+</sup>ATPase isoforms are expressed in a cell type? A growing family of membrane proteins illustrated by studies in platelets. *Platelets*. 2005 May-Jun;16(3-4):133-50.
- [37] Campbell AM, Kessler PD, Fambrough DM. The alternative carboxyl termini of avian cardiac and brain sarcoplasmic reticulum/endoplasmic reticulum Ca(2+)-ATPases are on opposite sides of the membrane. *J Biol Chem*. 1992;267(13):9321-5.
- [38] Dally S, Bredoux R, Corvazier E, Andersen JP, Clausen JD, Dode L, et al. Ca<sup>2+</sup>ATPases in non-failing and failing heart: evidence for a novel cardiac sarco/endoplasmic reticulum Ca<sup>2+</sup>ATPase 2 isoform (SERCA2c). *Biochem J*. 2006 Apr 15;395(2):249-58.
- [39] MacLennan DH, Asahi M, Tupling AR. The regulation of SERCA-type pumps by phospholamban and sarcolipin. *Annals of the New York Academy of Sciences*. 2003 Apr;986:472-80.
- [40] Bradley KN, Currie S, MacMillan D, Muir TC, McCarron JG. Cyclic ADP-ribose increases Ca<sup>2+</sup> removal in smooth muscle. *Journal of cell science*. 2003 Nov 1;116(Pt 21):4291-306.
- [41] Sampieri A, Zepeda A, Asanov A, Vaca L. Visualizing the store-operated channel complex assembly in real time: Identification of SERCA2 as a new member. *Cell Calcium*. 2009 Mar 25.
- [42] Manjarres IM, Rodriguez-Garcia A, Alonso MT, Garcia-Sancho J. The sarco/endoplasmic reticulum Ca(2+) ATPase (SERCA) is the third element in capacitative calcium entry. *Cell Calcium* Mar 25.
- [43] Iino M, Kasai H, Yamazawa T. Visualization of neural control in intracellular Ca<sup>2+</sup> concentration in single vascular smooth muscle cells in situ. *cl*. 1994;13:5026-31.
- [44] Lee CH, Poburko D, Sahota P, Sandhu J, Ruehlmann DO, van Breemen C. The mechanism of phenylephrine-mediated [Ca(2+)]<sub>i</sub> oscillations underlying tonic contraction in the rabbit inferior vena cava. *J Physiol*. 2001 Aug 1;534(Pt 3):641-50.
- [45] Peng H, Matchkov V, Ivarsen A, Aalkjaer C, Nilsson H. Hypothesis for the initiation of vasomotion. *Circulation research*. 2001 Apr 27;88(8):810-5.

- [46] Perez JF, Sanderson MJ. The contraction of smooth muscle cells of intrapulmonary arterioles is determined by the frequency of Ca<sup>2+</sup> oscillations induced by 5-HT and KCl. *J Gen Physiol.* 2005 Jun;125(6):555-67.
- [47] Shaw FZ, Liao YF. Relation between activities of the cortex and vibrissae muscles during high-voltage rhythmic spike discharges in rats. *J Neurophysiol.* 2005 May;93(5):2435-48.
- [48] Berridge MJ, Rapp PE. A comparative survey of the function, mechanism and control of cellular oscillators. *J Exp Biol.* 1979;81:217-79.
- [49] Rebolledo A, Speroni F, Raingo J, Salemme SV, Tanzi F, Munin V, et al. The Na<sup>+</sup>/Ca<sup>2+</sup> exchanger is active and working in the reverse mode in human umbilical artery smooth muscle cells. *Biochemical and biophysical research communications.* 2006 Jan 20;339(3):840-5.
- [50] Lamont C, Wier WG. Evoked and spontaneous purinergic junctional Ca<sup>2+</sup> transients (jCaTs) in rat small arteries. *Circulation research.* 2002 Sep 20;91(6):454-6.
- [51] Amberg GC, Navedo MF, Nieves-Cintrón M, Molkentin JD, Santana LF. Calcium sparklets regulate local and global calcium in murine arterial smooth muscle. *The Journal of physiology.* 2007 Feb 15;579(Pt 1):187-201.
- [52] Essin K, Welling A, Hofmann F, Luft FC, Gollasch M, Moosmang S. Indirect coupling between Cav1.2 channels and ryanodine receptors to generate Ca<sup>2+</sup> sparks in murine arterial smooth muscle cells. *The Journal of physiology.* 2007 Oct 1;584(Pt 1):205-19.
- [53] Berridge MJ. Calcium microdomains: organization and function. *Cell Calcium.* 2006 Nov-Dec;40(5-6):405-12.
- [54] Berridge MJ. Smooth muscle cell calcium activation mechanisms. *The Journal of physiology.* 2008 Nov 1;586(Pt 21):5047-61.
- [55] Ruehlmann DO, Lee CH, Poburko D, van Breemen C. Asynchronous Ca(2+) waves in intact venous smooth muscle. *Circulation research.* 2000 Mar 3;86(4):E72-9.
- [56] Bobe R, Hadri L, Lopez JJ, Sassi Y, Atassi F, Karakikes I, et al. SERCA2a controls the mode of agonist-induced intracellular Ca<sup>2+</sup> signal, transcription factor NFAT and proliferation in human vascular smooth muscle cells. *Journal of molecular and cellular cardiology.* 2011 Apr;50(4):621-33.
- [57] Berridge MJ. Inositol trisphosphate and calcium signalling mechanisms. *Biochimica et biophysica acta.* 2009 Jun;1793(6):933-40.
- [58] Owens GK, Kumar MS, Wamhoff BR. Molecular regulation of vascular smooth muscle cell differentiation in development and disease. *Physiological reviews.* 2004 Jul;84(3):767-801.
- [59] Wamhoff BR, Bowles DK, Owens GK. Excitation-transcription coupling in arterial smooth muscle. *Circulation research.* 2006 Apr 14;98(7):868-78.
- [60] House SJ, Potier M, Bisailon J, Singer HA, Trebak M. The non-excitabile smooth muscle: calcium signaling and phenotypic switching during vascular disease. *Pflugers Archiv : European journal of physiology.* 2008 Aug;456(5):769-85.
- [61] Fisher SA. Vascular smooth muscle phenotypic diversity and function. *Physiol Genomics.* 2010 Nov 15;42A(3):169-87.
- [62] Nilsson H, Aalkjaer C. Vasomotion: mechanisms and physiological importance. *Mol Interv.* 2003 Mar;3(2):79-89, 51.



- [63] Parthimos D, Haddock RE, Hill CE, Griffith TM. Dynamics of a three-variable nonlinear model of vasomotion: comparison of theory and experiment. *Biophysical journal*. 2007 Sep 1;93(5):1534-56.
- [64] Figueroa XF, Isakson BE, Duling BR. Connexins: gaps in our knowledge of vascular function. *Physiology (Bethesda)*. 2004 Oct;19:277-84.
- [65] Wray S, Burdyga T, Noble K. Calcium signalling in smooth muscle. *Cell Calcium*. 2005 Sep-Oct;38(3-4):397-407.
- [66] Thorneloe KS, Nelson MT. Ion channels in smooth muscle: regulators of intracellular calcium and contractility. *Can J Physiol Pharmacol*. 2005 Mar;83(3):215-42.
- [67] Neylon CB, Lang RJ, Fu Y, Bobik A, Reinhart PH. Molecular cloning and characterization of the intermediate-conductance Ca(2+)-activated K(+) channel in vascular smooth muscle: relationship between K(Ca) channel diversity and smooth muscle cell function. *Circulation research*. 1999 Oct 29;85(9):e33-43.
- [68] Kohler R, Wulff H, Eichler I, Kneifel M, Neumann D, Knorr A, et al. Blockade of the intermediate-conductance calcium-activated potassium channel as a new therapeutic strategy for restenosis. *Circulation*. 2003 Sep 2;108(9):1119-25.
- [69] Lewis RS. The molecular choreography of a store-operated calcium channel. *Nature*. 2007 Mar 15;446(7133):284-7.
- [70] Berra-Romani R, Mazzocco-Spezia A, Pulina MV, Golovina VA. Ca<sup>2+</sup> handling is altered when arterial myocytes progress from a contractile to a proliferative phenotype in culture. *Am J Physiol Cell Physiol*. 2008 Sep;295(3):C779-90.
- [71] Potier M, Gonzalez JC, Motiani RK, Abdullaev IF, Bisailon JM, Singer HA, et al. Evidence for STIM1- and Orai1-dependent store-operated calcium influx through ICRAC in vascular smooth muscle cells: role in proliferation and migration. *The FASEB journal : official publication of the Federation of American Societies for Experimental Biology*. 2009 Aug;23(8):2425-37.
- [72] Bergdahl A, Gomez MF, Wihlborg AK, Erlinge D, Eyjolfson A, Xu SZ, et al. Plasticity of TRPC expression in arterial smooth muscle: correlation with store-operated Ca<sup>2+</sup> entry. *American journal of physiology Cell physiology*. 2005 Apr;288(4):C872-80.
- [73] Kumar B, Dreja K, Shah SS, Cheong A, Xu SZ, Sukumar P, et al. Upregulated TRPC1 channel in vascular injury in vivo and its role in human neointimal hyperplasia. *Circulation research*. 2006 Mar 3;98(4):557-63.
- [74] Dolmetsch RE, Lewis RS, Goodnow CC, Healy JI. Differential activation of transcription factors induced by Ca<sup>2+</sup> response amplitude and duration. *Nature*. 1997;386(6627):855-8.
- [75] Lipskaia L, del Monte F, Capiod T, Yacoubi S, Hadri L, Hours M, et al. Sarco/endoplasmic reticulum Ca<sup>2+</sup>-ATPase gene transfer reduces vascular smooth muscle cell proliferation and neointima formation in the rat. *Circ Res*. 2005 Sep 2;97(5):488-95.
- [76] Aalkjaer C, Nilsson H. Vasomotion: cellular background for the oscillator and for the synchronization of smooth muscle cells. *Br J Pharmacol*. 2005 Mar;144(5):605-16.
- [77] Wray S, Burdyga T. Sarcoplasmic reticulum function in smooth muscle. *Physiological reviews*. 2010 Jan;90(1):113-78.
- [78] Bartlett IS, Crane GJ, Neild TO, Segal SS. Electrophysiological basis of arteriolar vasomotion in vivo. *Journal of vascular research*. 2000 Nov-Dec;37(6):568-75.

- [79] Mauban JR, Lamont C, Balke CW, Wier WG. Adrenergic stimulation of rat resistance arteries affects Ca(2+) sparks, Ca(2+) waves, and Ca(2+) oscillations. *American journal of physiology Heart and circulatory physiology*. 2001 May;280(5):H2399-405.
- [80] Lamboley M, Schuster A, Beny JL, Meister JJ. Recruitment of smooth muscle cells and arterial vasomotion. *American journal of physiology Heart and circulatory physiology*. 2003 Aug;285(2):H562-9.
- [81] Kuo KH, Dai J, Seow CY, Lee CH, van Breemen C. Relationship between asynchronous Ca<sup>2+</sup> waves and force development in intact smooth muscle bundles of the porcine trachea. *Am J Physiol Lung Cell Mol Physiol*. 2003 Dec;285(6):L1345-53.
- [82] Lipskaia L, Chemaly ER, Hadri L, Lompre AM, Hajjar RJ. Sarcoplasmic reticulum Ca(2+) ATPase as a therapeutic target for heart failure. *Expert Opin Biol Ther*. 2010 Jan;10(1):29-41.
- [83] Choudhury N, Khromov AS, Somlyo AP, Somlyo AV. Telokin mediates Ca<sup>2+</sup>-desensitization through activation of myosin phosphatase in phasic and tonic smooth muscle. *J Muscle Res Cell Motil*. 2004;25(8):657-65.
- [84] Schubert R, Lehmann G, Serebryakov VN, Mewes H, Hopp HH. cAMP-dependent protein kinase is in an active state in rat small arteries possessing a myogenic tone. *The American journal of physiology*. 1999 Sep;277(3 Pt 2):H1145-55.
- [85] Zhang H, Fisher SA. Conditioning effect of blood flow on resistance artery smooth muscle myosin phosphatase. *Circulation research*. 2007 Mar 16;100(5):730-7.
- [86] Payne MC, Zhang HY, Shirasawa Y, Koga Y, Ikebe M, Benoit JN, et al. Dynamic changes in expression of myosin phosphatase in a model of portal hypertension. *American journal of physiology Heart and circulatory physiology*. 2004 May;286(5):H1801-10.
- [87] Andres V, Castro C. Antiproliferative strategies for the treatment of vascular proliferative disease. *Curr Vasc Pharmacol*. 2003 Mar;1(1):85-98.
- [88] Foley DP, Melkert R, Umans VA, de Jaegere PP, Strikwerda S, de Feyter PJ, et al. Differences in restenosis propensity of devices for transluminal coronary intervention. A quantitative angiographic comparison of balloon angioplasty, directional atherectomy, stent implantation and excimer laser angioplasty. CARPORT, MERCATOR, MARCATOR, PARK, and BENESTENT Trial Groups. *European heart journal*. 1995 Oct;16(10):1331-46.
- [89] Luscher TF, Steffel J, Eberli FR, Joner M, Nakazawa G, Tanner FC, et al. Drug-eluting stent and coronary thrombosis: biological mechanisms and clinical implications. *Circulation*. 2007 Feb 27;115(8):1051-8.
- [90] Fukuta Y, Joshizumi M, Kitagawa T, Hori T, Katoh I, Houchi H, et al. Effect of angiotensin II on Ca<sup>2+</sup> efflux from freshly isolated adult rat cardiomyocytes. Possible involvement of Na<sup>+</sup>/Ca<sup>2+</sup> exchanger. *Biochem Pharmacol*. 1998;55:481-7.
- [91] Ueda M, Becker AE, Naruko T, Kojima A. Smooth muscle cell de-differentiation is a fundamental change preceding wound healing after percutaneous transluminal coronary angioplasty in humans. *Coron Artery Dis*. 1995 Jan;6(1):71-81.
- [92] Nakagawa M, Naruko T, Ikura Y, Komatsu R, Iwasa Y, Kitabayashi C, et al. A decline in platelet activation and inflammatory cell infiltration is associated with the phenotypic redifferentiation of neointimal smooth muscle cells after bare-metal stent implantation in acute coronary syndrome. *J Atheroscler Thromb*. 2010 Jul 30;17(7):675-87.