

Pharmacophore modeling and 3D-QSAR studies on substituted benzothiazole / benzimidazole analogues as DHFR inhibitors with antimycobacterial activity

R. Priyadarsini*^a, Dr. C.B. Tharani^b, Sathya Suganya^a, S.Kavitha^a

^aDepartment of Pharmacy, Madras Medical College, Chennai, India

^bDepartment of Pharmacology, Saveetha Medical college, Chennai - 600077

Email: rpdharsinimpharm@yahoo.co.in.

ABSTRACT

The resurgence of tuberculosis and the emergence of multidrug-resistant strains of Mycobacteria drugs has propelled the development of new structural classes of antitubercular agents. The present study was undertaken to investigate the opportunities which the enzyme dihydrofolate reductase, a promising drug target for treatment of Mycobacterial infections offers for the development of new TB drugs. Pharmacophore models were established by using the HipHop and HypoGen algorithms implemented in the Catalyst software package. The best quantitative pharmacophore model, consisted of two hydrogen bond acceptor, a hydrophobic aliphatic, and a ring aromatic feature which has the highest correlation coefficient (0.93), as well as enrichment factor of 1.75 and Goodness of hit score of 0.73. Based on the pharmacophore model some leads were optimized and some of its derivatives were synthesized and analysed by following QSAR studies. About 25 compounds of substituted benzothiazole/ benzimidazole derivatives were synthesized as potent DHFR inhibitors and screened for antimycobacterial activity. To further explore the structure-activity relationships of all newly synthesized compounds, 3D-QSAR analyses were developed. MFA studies were performed with the QSAR module of Cerius2 using genetic partial least squares (G/PLS) algorithm. The predictive ability of the developed model was assessed using a training set of 25 and a test set of 5 compounds ($r_{2pred} = 0.924$). The analyzed MFA model demonstrated a good fit, having r^2 value of 0.868 and cross validated coefficient r^2_{cv} value of 0.771.

KEYWORDS: Pharmacophore, 3D-QSAR-MFA, DHFR, Benzothiazole/Benzimidazole derivatives, Antitubercular agents

INTRODUCTION

Tuberculosis (TB) is the most common cause of disease-related mortality worldwide. Tuberculosis continues to be a major health problem worldwide[1]. The general symptoms of infection includes loss of weight, loss of energy, poor appetite, fever, a productive cough, and night sweats. The World Health Organization estimates that 2 billion people have latent TB, while another 3 million people worldwide die of TB each year[2]. In addition, the prevalence of drug-resistant TB is also increasing worldwide. TB infection with HIV has been an important factor in the emergence and spread of resistance[3]. Thus, there is an urgent need for new antitubercular drugs inhibiting the complete growth of causative Mycobacterium species exhibiting favorable resistance profiles and well tolerated by the patients.

QSAR studies currently being applied in many disciplines pertaining to drug design. The primary aim of 3D-QSAR methods is to establish a correlation of biological activities of a series of structurally and biologically characterized compounds with the spatial fingerprints of numerous field properties of each molecule, such as steric demand, lipophilicity, and electrostatic interactions[4]. 3D-QSAR analysis using MFA technique calculates hydrogen probe interaction energies on a rectangular grid around a bundle of active molecules. The best model is selected based on statistical measures such as data points (n), correlation coefficient (r), square correlation coefficient (r^2), cross-validated correlation coefficient(r^2_{cv}), predicted correlation coefficient (r^2_{pred}), predicted sum of squares (PRESS), bootstrap correlation coefficient (r^2_{BS}) and least-square error of fit (LSE)

The goal of the present study was to generate potential lead compounds by analog based design studies done using Pharmacophore models[5-6] and to obtain a highly predictive 3D-QSAR model[7-8] by exploring the substitutional requirements of newly synthesized substituted benzothiazole/benzimidazole[9-10] derivatives as antitubercular agents. We have identified and proposed some novel potential lead molecules as DHFR inhibitors using analog and structure based studies and the activities of those molecules are predicted using the QSAR and Pharmacophore models

EXPERIMENTAL

Pharmacophore studies using Catalyst

Pharmacophore modeling correlates the biological activity with the spatial arrangement of various chemical features in a set of active analogues. It is based on common chemical features of molecules with inhibitory activity towards DHFR using Hip Hop and HypoGen/Hypo Refine modules implemented in the Accelrys Catalyst 4.11[11] software package.

Database Mining and Training Set:

A set of 228 Dihydrofolate reductase inhibitors was then divided into 2 sets as training and test sets. The training set of 24 molecules was designed to be structurally diverse with a wide activity range. The test set of remaining 204 molecules are designed to evaluate predictive ability of the resultant pharmacophore.

HypoGen generation and validation studies:

Several quantitative models were generated utilizing the training set (1-24) along with DHFR inhibitory activities. To confirm essential features prevailing among DHFR inhibitors, 10 common feature hypotheses were generated using the most active molecules. The top ten hypotheses were composed of HBA, HYA, and RA features. The quality of HypoGen models are best described in Catalyst user guide in terms of Fixed Cost, Null Cost and total Cost and other statistical parameters. The values of ten hypotheses such as cost, correlation (r), and root-mean-square deviations (rmsd) are statistically significant. The derived pharmacophore models were validated using a set of parameters including cost analysis, test set prediction, enrichment factor, goodness of hit and results are tabulated in Table 1. Based on the pharmacophore model some leads were optimized and some of its derivatives were synthesized and analysed by following QSAR studies.

MFA method:

MFA is a method implemented in the Cerius2 program.[12] The surface was generated from a "Shape Field". The atomic coordinates of the contributing models were used to compute field values on each point of a 3D grid. Grid size was adjusted to default 2.00 Å. The MFA evaluates the energy between a probe (H⁺, CH₃ and HO⁻) and a molecular model at a series of points defined by a rectangular grid. Fields of molecules were represented using grids in MFA and each energy associated with an MFA grid point serves as input for the calculation of a QSAR.

The antitubercular activities of the synthesized compounds were assessed on the basis of the Alamar Blue assay method and MIC method. The minimum inhibitory concentration of test samples required to inhibit the growth of mycobacterium tuberculosis H37RV were obtained and converted into corresponding log MIC values.

Molecular structure generation: The molecular structures of all the synthesized substituted benzothiazole/benzimidazole derivatives were modeled with SYBYL 7.0 molecular modeling program.

Structural alignments: The field fit alignment method was used for MFA. All molecules were submitted to the CONFORMER SEARCH module within Cerius2 to generate 150 conformers of each molecule using Boltzman jump method. The lowest energy conformer of each molecule was selected. All the selected conformers were aligned using field fit alignment method in the QSAR module.

The MFA model of 25 substituted benzothiazole/benzimidazole derivatives (20 compounds in a training set; 5 compounds in a test set) was developed using field fit alignment. The most active compound, BIM1 was used as a template model for superimposing the rest of the molecules. The steric (CH₃) and electrostatic (H⁺) descriptors in the MFA-QSAR equations specify the regions where variations in the structural features (steric or electrostatic) of different compounds in the training set, leading to either an increase or a decrease in activities. The steric descriptor with positive or negative coefficients shows a region where bulky substituent is favored or disfavored, respectively. The electrostatic descriptor with a positive coefficient indicates a region favorable for electropositive group, while a negative coefficient indicates that an electronegative (electron-withdrawing) group is required at the position.

The r value is a relative measure of the quality of fit of the model. Its value depends on the overall variance of the data. An r²_{cv}, a squared correlation coefficient generated during a cross-validation procedure, is used as a diagnostic tool to evaluate the predictive power of an equation. Cross-validation is often used to determine how large a model (number of terms) can be used for a given data set. The predictive power of the model was calculated by using the following equation

$$r_{\text{pred}}^2 = \frac{\text{SD-PRESS}}{\text{SD}}$$

where SD is the sum of the squared deviations between the biological activities of each molecules and the mean activity of the training set of molecules and PRESS is the sum of squared deviations between the predicted and actual activity values for every molecule in the test set.

RESULTS AND DISSCUSSIONS:**Pharmacophore model:**

While generating the quantitative model, a minimum of 0 to a maximum of 3 features involving HBA(Hydrogen bond acceptor), HYA(Hydrophobic aliphatic)and RA(Ring aromatic) features were selected and used to build a series of hypotheses using a default uncertainty value of 3. Hypo1 HBA(Hydrogen bond acceptor), HYA(Hydrophobic aliphatic)and RA(Ring aromatic) features was used to search the test set of known DHFR inhibitors. Database mining was performed using the BEST flexible searching technique. HypoGen features with its distance constraints are given in FIGURE 1.Hypo 1 succeeded in the retrieval of 85% of the active compounds from the test set. In addition, the Pharmacophore also retrieved 18 inactive compounds (false positives) and predicted 9 active compounds as inactive (false negatives). An enrichment factor of 1.75 and a GH score of 0.73 indicate the quality of the model. Overall, a strong correlation was observed between Hypo1 predicted activity and the experimental DHFR inhibitory activity (pIC50) of the training and test set compounds

MFA STUDIES

A QSAR equation is generally acceptable if the correlation coefficient (r) is approximately 0.9 or higher . MFA-QSAR studies[13-20] were performed on a series of newly synthesised substituted benzothiazole /benzimidazole derivatives using field fit alignment with high predictive ability, high cross-validated, conventional and predictive r².The MFA-QSAR equation is expressed as follow:

Equation:**GFA activity:**

$$2.61898 - 0.03492 * "H+/860" - 0.062619 * "CH3/870" - 0.04755 * "CH3/955" + 0.027067 * "CH3/482"$$

0.830988 23.354449 0.710583 0.832677 0.009168 24.000000 5.000000 0.000000 3.000000 5.464927
18.882538 1.455375 0.299192 0.795406 0.132974 0.911585 -13.796613 1.000000

Mean Activity: 1.455; Sum of squared deviations from the mean (SD): 18.88; LOF: 0.299; r²: 0.831; r²adj: 0.795; F-test: 23.354; LSE: 0.133; r: 0.921; C (p): -13.797; XV r²: 0.711; Boot strap (BS) r²: 0.833; BS r²err: 0.009; N obs: 24.000; N vas: 5.000; Press: 5.469; Dep SD: 18.883; Dep mean: 1.455

The presence of two steric descriptors (CH3/870) and (CH3/955) with negative coefficients, indicates that bulky substituents are disfavored. The presence of electrostatic descriptor (H+/860)is also with a negative coefficient indicates that electron withdrawing groups will decrease the activity of the molecule.The positive coefficient of (CH3/482)descriptor indicates that bulky groups are favored in this region

Equation 1 explains 95% variance in the activity with respect to the steric and electrostatic fields and molecular volume while leave-one-out cross-validation power of prediction was found to be 75.5%. An r²BS value of 0.833 is an average squared correlation coefficient calculated during the validation procedure

G/PLS activity

$$2.12851 - 0.05683 * "CH3/548" - 0.065269 * "CH3/877" + 0.129623 * "CH3/965" - 0.046214 * "H+/860"$$

0.892088 0.000000 0.376900 0.614521 2.128118 24.000000 5.000000 0.000000 3.000000 11.765706
18.882538 1.455375 0.000000 0.000000 0.084902 0.944504 0.000000 1.000000

Mean Activity: 1.455; Sum of squared deviations from the mean (SD): 18.882; r²: 0.892; F-test: 23.354; LSE: 0.085; r: 0.945; XV r²: 0.377; Boot strap (BS) r²: 0.615; BS r²err: 2.128; N obs: 24.000; N vas: 5.000; Press: 11.766; Dep SD: 18.883; Dep mean: 1.455

The presence of two steric descriptors (CH3/548) and (CH3/877) with negative coefficients, indicates that bulky substituents are disfavored. The presence of electrostatic descriptor (H+/860)is also with a negative coefficient indicates that electron withdrawing groups will decrease the activity of the molecule. The positive coefficient of (CH3/965)descriptor indicates that bulky groups are favored in this region

Randomization test results:

Test results from 19 trails, r from non-random: 0.8537, Confidence level: 95%, Mean value of r from random trails: 0.787, Standard deviation of random trails: 0.0461, Standard deviation from non-random r to mean: 1.445; r²: 0.630, r: 0.794, LSE: 0.274

Cross-validation: Leave-one out cross-validation test results -PRESS: 7.557, Sum of Squared deviation: 22.201, Trails: 1, r²CV: 0.660, r²: 0.715

CONCLUSION

3D-QSAR and Pharmacophore models for designing novel and potent DHFR inhibitors have been discussed. The pharmacophore model has been well validated to be of high predictability for estimating the activities over a variety of compounds and evaluating the mapping of diverse active compounds onto the pharmacophore. .The best quantitative pharmacophore model Hypo1 consists of 1) two hydrogen bond acceptors (HBA) 2) one hydrophobic aliphatic (H) and 3) one hydrophobic aromatic (R) features was characterized by lowest total cost

value (125.16), the highest cost difference (59.24), the lowest RMSD (1.264), and the best correlation coefficient (0.93). The fixed cost and null cost are 107.99 and 184.4 bits respectively. The MFA model was generated based on the feature-shape query of the biologically active conformation of the most active compound. The MFA model was statistically validated and its predictive ability was evaluated. Most of the molecules showed residual values less than 0.25. The obtained MFA model shows good statistical results with $r^2_{cv} = 0.660$, conventional $r^2 = 0.715$ and $r^2_{pred} = 0.630$. The new hits generated were cross validated with both QSAR and Pharmacophore based techniques and the results suggested that both these approaches yield almost same results.

REFERENCES

- [1] V. Kumar, A.K. Abbas, *et.al.* Robbins Basic Pathology. Saunders Elsevier.,2007. 8:516–22.
- [2] N.P. Thompson, M.E. Caplin, *et.al.* Anti-tuberculosis medication and the liver: dangers and recommendations in management. Eur Respir J., 1995, 8:1384–88.
- [3] S.D.Lawn, A.L. Zumla, Tuberculosis. Lancet. , 2011,378:57–72.
- [4] Madsen Ulf, Krogsgaard-Larsen Povl, *et.al.*Textbook of Drug Design and Discovery. Washington, DC: Taylor & Francis., 2002.
- [5] F. Manetti, F. Corell. *et.al.* Building a pharmacophore model for a novel class of antitubercular compounds. Farmaco Societa chimica italiana.,2000, 55: 484-91.
- [6] Y. Kurogi, O.F.Güner, Pharmacophore modeling and three-dimensional database searching for drug design using catalyst. Curr. Med. Chem. ,2001, 8: 1035–55.
- [7] S. Hawser, S. Lociuero. Dihydrofolate reductase inhibitors as antitubercular agent.2006.
- [8] Kerly Fernanda Mesquita Pasqualoto, Marcia Miguel Castro Ferreira,Molecular Modeling and Receptor-Dependent (RD) 3D-QSAR approach to a Set of Antituberculosis Derivatives. QSAR Comb. Sci., 2009, 28: 1455 – 64.
- [9] M.C.Sharma, Smita Sharma.3D- Quantitative Structure-Activity Relationship Analysis of Some 2-Substituted Halogenbenzimidazoles Analogues with Antimycobacterial activity .Int.J. ChemTech Res. ,2010, 2(1):606-614.
- [10] Oldrich pyleta, Vera Klimesova, Effect of substitution on the antimycobacterial activity of 2-(substituted benzyl) sulfanyl benzimidazoles, benzoxazoles, benzothiazoles-a QSAR study. Chemical Pharmaceutical bulletin., 2011, 59(2):179-184.
- [11] Catalyst User Guide, Version 4.11. Accelrys Inc, San Diego, CA 92121, USA, (2010).
- [12] Cerius2, version 4.11; Accelrys Inc: San Diego, California, USA, (2010).
- [13] Weerasak Samee, Patcharawee Nunthanavanit, *et.al.* 3D-QSAR Investigation of Synthetic Antioxidant Chromone Derivatives by Molecular Field Analysis .Int. J. Mol Sci., 2008, 9(3): 235–246.
- [14] Atanu Bhattacharjee, Baphilinia Jones Mylliemngap ,3D-QSAR studies on fluoroquinolones derivatives as inhibitors for tuberculosis .Bioinformation.,2012 8(8): 381-387 .
- [15] Suresh B .Vepuri, S. Anbazhagan, *et.al.* Pharmacophore Modeling and Docking Based QSAR Studies of Aryl Amidino Isoxazoline Derivatives to Design Potential FXa Inhibitors .American Journal of Bioinformatics Research. ,2012, 2(3):11-20.
- [16] Patil Swaraj, Prajapati Amit,3D QSAR Analysis on Triazepane Derivatives as DPP-IV Inhibitors. IJRPS. , 2011,1(3) .
- [17] Sharma M.C.; Smita Sharma.3D- Quantitative Structure-Activity Relationship Analysis of Some 2-Substituted Halogenbenzimidazoles Analogues with Antimycobacterial activity .Int.J. ChemTech Res.2010,2(1),
- [18] Neha Kansal, Muttineni Ravikumar. Three–Dimensional Molecular Field Analysis of Dihydroindazolocarbazole Analogues of KDR and Tie–2 Receptor Tyrosine Kinase Inhibitors. Internet Electronic Journal of Molecular Design . 2008, 7: 142–151.
- [19] S.K. Jain, S.Vishwakarma, *et.al.* 3D QSAR Analysis on Pyrrolidine Derivatives as DPP IV Inhibitors., International Journal of Research in Pharmaceutical and Biomedical Sciences., 2011: 2 (3) .
- [20] Prafulla B. Choudhari, Manish S. Bhatia, Pharmacophore Identification and QSAR Studies on Substituted Benzoxazinone as Antiplatelet Agents: kNN-MFA Approach . Sci Pharm. ,2012, 80:283–294.
- [21] Kamalakaran Anand Solomon, Srinivasan Sundarajan, QSAR Studies on N-aryl Derivative Activity Towards Alzheimer’s Disease .Molecules., 2009, 14:1448-1455.

TABLE 1:
10 Pharmacophore models generated by the HypoGen for DHFR inhibitors

Hypo No.	Total cost	Cost difference ^{\$}	RMS deviation	Training set (r)	Features [#]
1	125.16	59.24	1.264	0.93	AAHR
2	127.91	58.49	1.754	0.858	AAHR
3	129.24	57.16	1.748	0.861	AAHR
4	130.11	56.29	1.791	0.852	AAHR
5	130.7	55.7	1.812	0.848	AHRR
6	130.8	55.6	1.857	0.839	AAHR
7	133.48	52.92	1.938	0.822	AAHR
8	133.72	52.68	1.888	0.834	AAHR
9	133.83	52.57	1.811	0.851	AAHR
10	134.7	51.7	1.877	0.837	AAAH

^{\$}(null cost-total cost), null cost = 184.4, fixed cost = 107.99, for the hypo-1 weight = 1.124, configuration = 15.14. all cost units are in bits. #A- hydrogen bond acceptor, H – hydrophobic aliphatic and R – Ring aromatic
The calculated activity obtained from equation 1 &2 and actual activity of the training set and test set molecules are summarized in Table 2.

TABLE 2:Activity Table:

S.NO	COMPOUND ID CODE	R	MIC $\mu\text{g/ml}$	$-\log$ MIC	GFA Predicted	Residue	GPLS Predicted	Residue
1	BTZ1	H	0.0451	1.34582	1.696	-351	1.512	-0.167
2 T	BTZ2	2-Cl	0.485	0.31426	3.053	-2.739	-0.398	0.712
3	BTZ3	4-Cl	0.485	0.31426	0.577	-0.263	0.11	0.204
4	BTZ4	2-OH	0.0046	2.33724	2.235	0.102	2.358	-0.021
5	BTZ5	2-CH ₃	0.0046	2.33724	2.126	0.211	2.19	0.147
6	BTZ6	4-CH ₃	0.0047	2.3279	2.149	0.178	2.363	-0.036
7	BTZ7	3,4-(CH ₃) ₂	0.049	1.3098	1.858	-0.549	1.5	-0.191
8 T	BTZ8	4-NO ₂	0.0046	2.33724	1.256	1.081	1.021	1.316
9	BTZ9	4-NH ₂	0.0049	2.3098	2.358	-0.049	2.434	-0.125
10	BTZ10	4-N-(CH ₃) ₂	0.0048	2.31876	2.075	0.243	2.223	0.095
11	BTZ11	OCH ₃	0.467	0.33068	0.126	0.204	0.088	0.242
12	BTZ12	OCH ₃ (OH)	0.499	0.3019	0.161	0.14	0.194	0.107
13	BTZ13	4-NH(CH ₃)	0.482	0.31695	0.991	-0.675	1.002	-0.686
14	BIM1	H	0.0043	2.36653	2.413	-0.047	2.246	0.12
15	BIM2	2-Cl	0.0046	2.33724	1.764	0.573	2.08	0.257
16	BIM3	4-Cl	0.0046	2.33724	2.247	0.09	2.324	0.013
17 T	BIM4	2-OH	0.044	1.35655	2.25	-0.894	2.277	-0.921
18	BIM5	2-CH ₃	0.0448	1.34872	1.446	-0.098	0.968	0.38
19	BIM6	4-CH ₃	0.0462	1.33536	1.48	-0.145	0.968	0.367
20 T	BIM7	3,4-CH ₃	0.0479	1.31966	2.103	-0.789	2.135	-0.821
21	BIM8	4-NO ₂	0.0044	2.35655	2.13	0.226	2.109	0.247
22	BIM9	4-NH ₂	0.0047	2.3279	2.269	0.058	2.355	-0.028
23	BIM10	4-N-(CH ₃) ₂	0.0046	2.33724	2.297	0.04	2.375	-0.038
24	BIM11	OCH ₃	0.45	0.34679	0.984	-0.638	0.784	-0.438
25	BIM12	OCH ₃ (OH)	0.484	0.31515	0.548	-0.233	0.699	-0.384

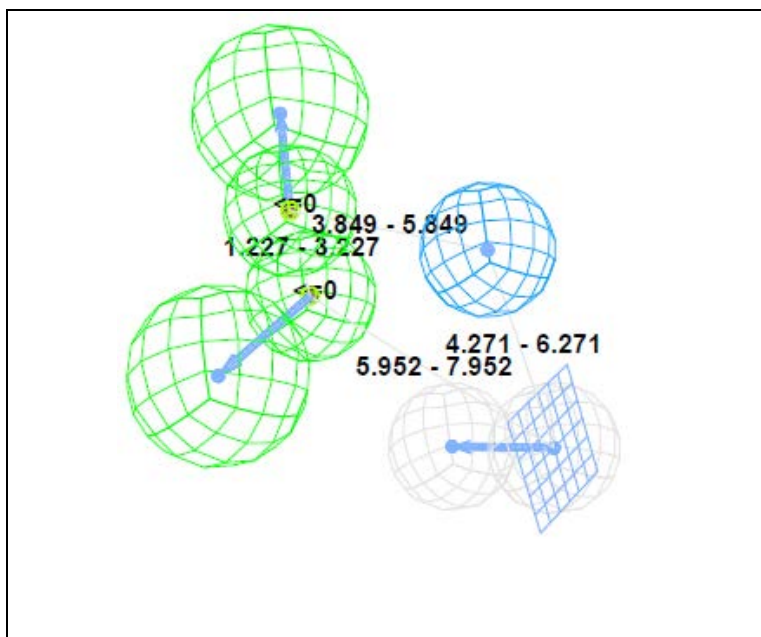


FIGURE 1. Pharmacophore models for DHFR inhibitors. HypoGen features with its distance constraints. Features are color coded with green: one hydrogen bond acceptor, light blue: hydrophobic aliphatic and grey: Ring aromatic

FIGURE 2:BTZ1

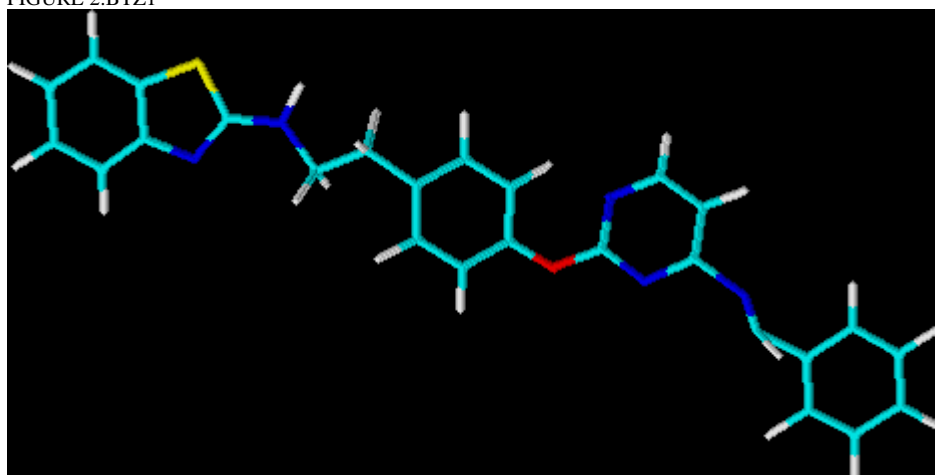


FIGURE 3: BIM1

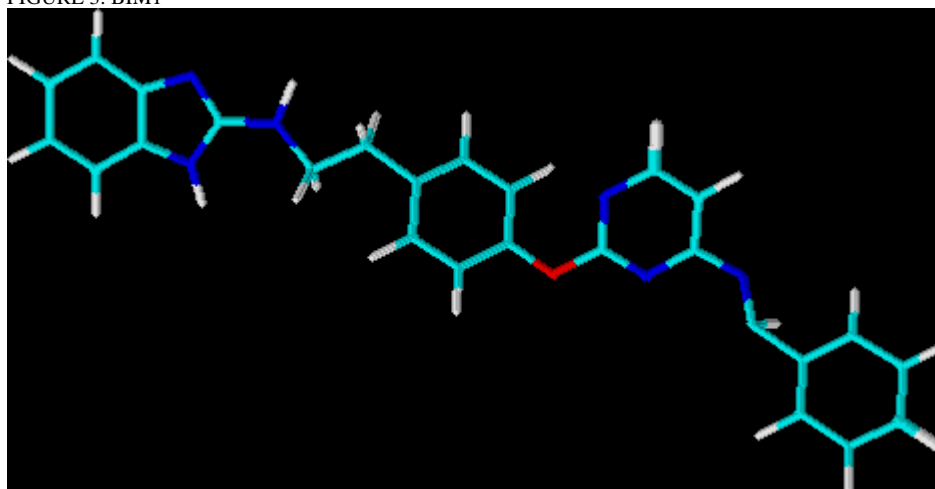


FIGURE 4: Superimposition of aligned fit molecules

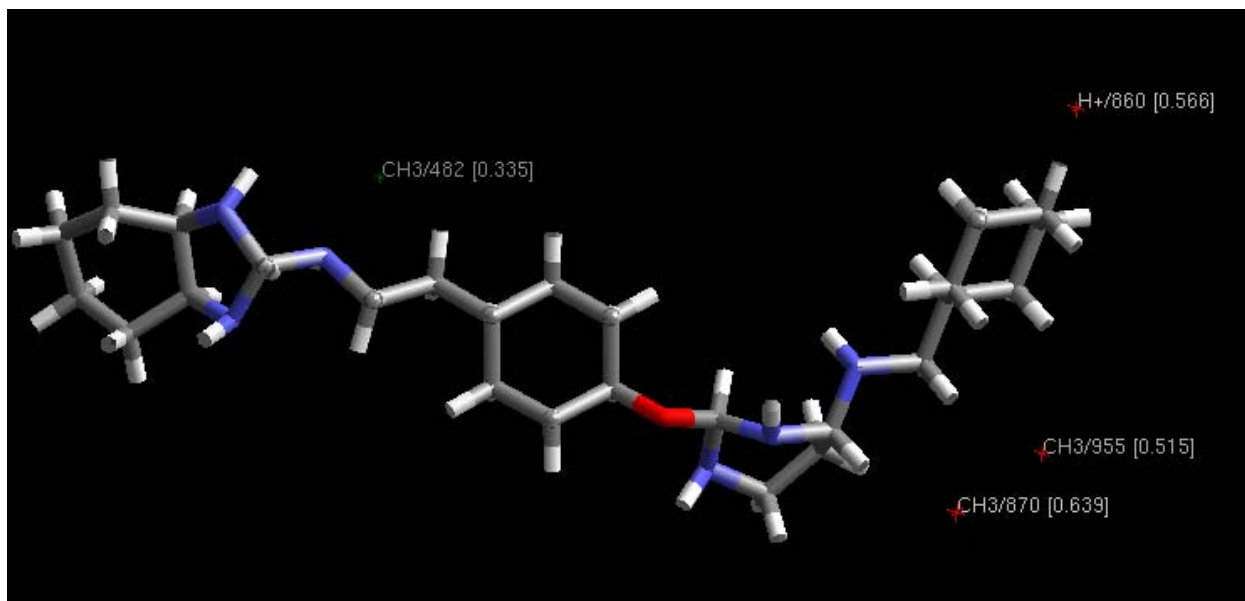
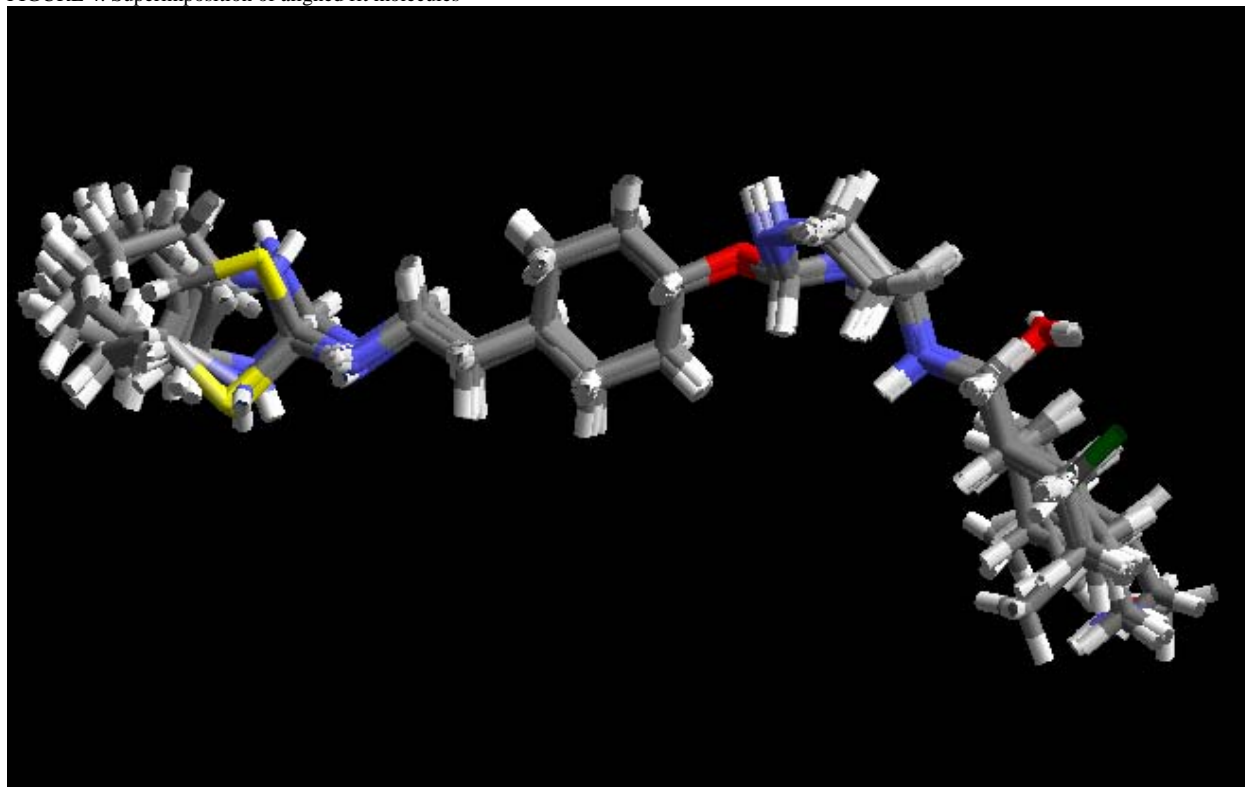


FIGURE 5: Mapping of the best 3D-GFA model and the interaction points. The most active compound BIM1, is displayed in background as reference

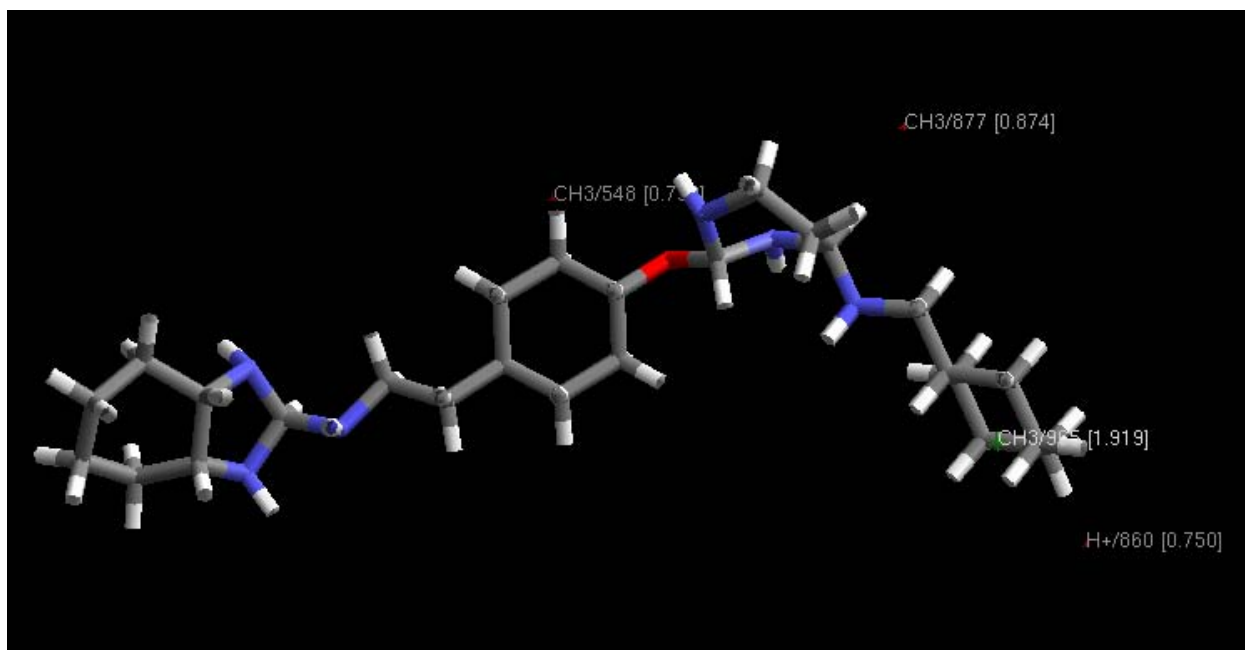


FIGURE 6

Mapping of the best 3D-GPLS model and the interaction points. The most active compound, BIM1, is displayed in background as reference.

Scattered plots of calculated and actual activities and the plot of residuals for the training set and the test set molecules are shown in following graphs

FIGURE 7:GFA GRAPH

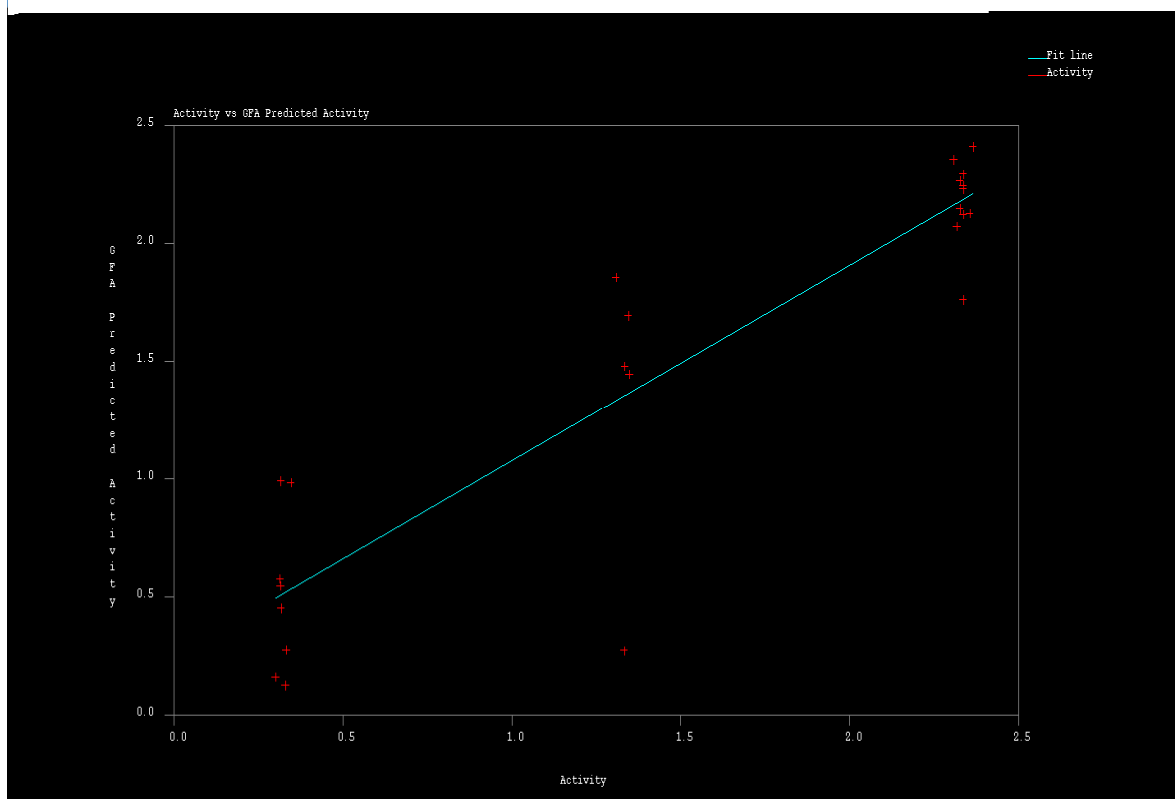


FIGURE 8:GPLS GRAPH

