

NEW LEAF-BEETLE SPECIES, *CRYPTOCEPHALUS SOLIVAGUS* LEONARDI & SASSI, 2001 (COLEOPTERA: CHRYSOMELIDAE) IN THE LITHUANIAN FAUNA

Andris BUKEJS, Arvīds BARŠEVSKIS

Institute of Systematic Biology, Daugavpils University, Vienības 13, LV-5401 Daugavpils, Latvia.
E-mail: andris.bukejs@biology.lv

Abstract. The first record of the leaf-beetle, *Cryptocephalus solivagus* Leonardi & Sassi, 2001 in the Lithuanian fauna is presented. Two specimens of this species were found in the Šiauliai district, Girkausiai (northwestern Lithuania). This species is new to the Baltic and Fennoscandian fauna. General information on its distribution and ecology is given. The figures of the habitus and the sclerites of the endophallus of *Cryptocephalus solivagus* Leonardi & Sassi, 2001 are presented.

Key words: Coleoptera, Chrysomelidae, *Cryptocephalus solivagus*, fauna, Lithuania

INTRODUCTION

The genus *Cryptocephalus* Geoffroy, 1762 is a cosmopolitan taxon with more than 1,000 species. There are 398 species known in the Palaearctic region (Lopatin & Dovgailo 2002). At present, 83 species are reported in eastern Europe (Bieńkowski 2004).

There are 40 species of the genus *Cryptocephalus* known in the eastern Baltic region (Silfverberg 2004). The Lithuanian fauna of leaf-beetles of this genus comprises 34 species (Pileckis & Monsevičius 1997; Silfverberg 2004). A total of 42 species of *Cryptocephalus* have been reported from Belarus (Lopatin & Nesterova 2005), 28 species from Estonia (Silfverberg 2004), 36 species from Latvia (Bukejs *et al.* 2007) and 30 species from St. Petersburg and the Leningrad province (Russia) (Romantsov 2007).

Externally, *Cryptocephalus solivagus* Leonardi & Sassi, 2001 is very similar to *C. hypochaeridis* (Linnaeus, 1758), and differs from it only by the shape of the aedeagus and the sclerite of the endophallus.

The species *Cryptocephalus solivagus* Leon. & Sassi is distributed in central, southeastern and eastern Europe (Bosnia and Hercegovina, Bulgaria, Croatia, Greece, Hungary, Macedonia, Poland, Romania, European part of Russia, Serbia and Montenegro, Turkey, Ukraine), Asia Minor, Kazakhstan, Uzbekistan, W Siberia, Altai, Urals (Bieńkowski 2004; Borowiec 2004; Leonardi & Sassi 2001; Lopatin & Nesterova 2005; Romantsov 2007). In the Baltic States and Fennoscandia the species is not known (Silfverberg 2004).

It is necessary to note that *C. hypochaeridis* (L.) is distributed in western, central and southern Europe

(Albania, Austria, Bosnia and Hercegovina, Croatia, Czech Republic, England, Finland, France, Germany, Greece, Hungary, NW Italy, Latvia, Macedonia, Poland, NW part of European Russia (Karelia), Serbia and Montenegro, Slovenia, Slovakia, Sweden, Switzerland) (Bieńkowski 2004; Borowiec 2008; Bukejs *et al.* 2007; Leonardi & Sassi 2001; Lopatin & Nesterova 2005). The limits of the distribution range of these two species require specification.

The imagoes of *Cryptocephalus solivagus* Leon. & Sassi, as well as of *C. hypochaeridis* (L.), occur on the flowers of Compositae. The specimens are found from May to July (Lopatin & Nesterova 2005).

MATERIAL AND METHODS

An entomological net was used to collect the material. The examined material is stored in the collection of Daugavpils University, Institute of Systematic Biology (DUBC).

The pictures were made with a stereomicroscope Zeiss SteREO Discovery V12 and a digital camera Axio-Cam.

RESULTS AND DISCUSSION

During the study of the Baltic leaf-beetle fauna, the species *Cryptocephalus solivagus* Leonardi & Sassi, 2001 in Lithuania was recorded for the first time. Locality and material: Lithuania, Šiauliai district, Girkausiai, 55°59'10"N 22°38'50"E, 28 July 2008 (2 specimens,

♂♀, in copula) leg. A. Barševskis. Thus, the record of the species in Lithuania extends its distribution range. The upper side of *Cryptocephalus solivagus* Leon. & Sassi (Fig. 1) in typical forms is green, bronze-green or bluish-green, always with metallic reflection. Lateral border of pronotum straight or almost so in lateral view. In male, 5-th abdominal (anal) sternite with shallow mid-impression and without denticles. Body length is 4.0–5.6 mm (Bieńkowski 2004; Warchałowski 2003). Aedeagus with apex sinuous in lateral view, ventral surface convex, without sharp ridge; usually distinctly narrowed at sides of apical opening (Fig. 2).



Figure 1. *Cryptocephalus solivagus* Leon. & Sassi: habitus.



Figure 2. *Cryptocephalus solivagus* Leon. & Sassi: apex of aedeagus in ventral aspect.

Externally, *Cryptocephalus solivagus* Leon. & Sassi is very similar to *C. hypochaeridis* (L.). Probably, they are sibling species. These two species authentically differ

only by the shape of the aedeagus and the sclerite of the endophallus (Figs 3, 4).



Figure 4. *Cryptocephalus hypochaeridis* (L.): sclerite of endophallus in lateral aspect (after Bukejs *et al.* 2007).

Cryptocephalus solivagus Leonardi & Sassi, 2001 is a new species for Lithuania, as well as for the Baltic and Fennoscandian fauna. After this record, the Lithuanian fauna of leaf-beetles of the genus *Cryptocephalus* Geoffr. comprises a total of 35 species.

ACKNOWLEDGEMENTS

The authors are grateful to Andrzej Warchałowski (Wrocław, Poland) for helpful comments.

REFERENCES

- Bieńkowski, A. O. 2004. *Leaf-beetles (Coleoptera: Chrysomelidae) of the Eastern Europe. New key to sub-families, genera and species.* Moscow: Mikron-print.
- Borowiec, L. 2004. The Leaf Beetles (Chrysomelidae) of Europe and the Mediterranean Subregion (Checklist and Iconography). <http://www.biol.uni.wroc.pl/cas-sidae/European%20Chrysomelidae/index.htm>. Last modification: 18 September 2008.
- Bukejs, A., Barševskis, A. and Valainis, U. 2007. Review of the leaf-beetles subfamily Cryptocephalinae Gyl-

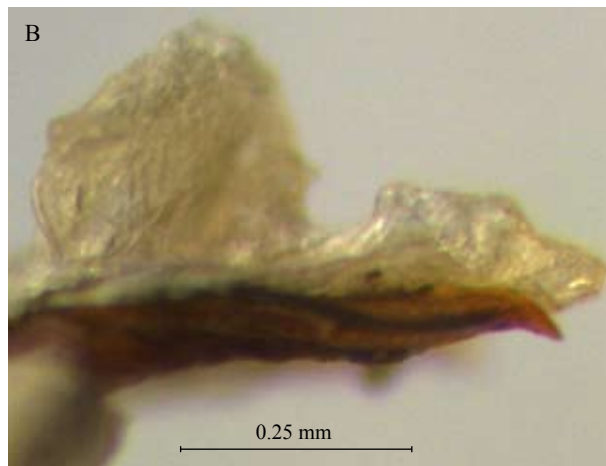


Figure 3. *Cryptocephalus solivagus* Leon. & Sassi: sclerites of endophallus in ventral aspect (A); sclerite of endophallus in lateral aspect (B).

- lenhal, 1813 (Coleoptera: Chrysomelidae) of the fauna of Latvia. In: A. Barševskis and I. Šaulienė (eds) *Cross-Border Cooperation in Researches of Biological Diversity (Acta Biologica Universitatis Daugavpilisensis, Supplement 1)*: 81–106.
- Leonardi, C. and Sassi, D. 2001. Studio critico sulle specie di *Cryptocephalus* del gruppo *hypochaeridis* (Linne, 1758) e sulle forme ad esse attribuite (Coleoptera Chrysomelidae). *Atti della Società Italiana di Scienze Naturali e del Museo Civico di Storia Naturale di Milano* 142 (1): 3–96.
- Lopatin, I. K. and Dovgailo, K. E. 2002. The genus *Cryptocephalus* (Chrysomelidae) of Palearctic region. *CD key and database on the basis of software*. Minsk: Lysandra.
- Lopatin, I. K. and Nesterova, O. L. 2005. *Insecta of Byelarus: Leaf-Beetles (Coleoptera, Chrysomelidae)*. Minsk: Tehnoprint [in Russian, English abstract].
- Pileckis, S. and Monsevičius, V. 1997. *Fauna of Lithuania: Beetles*. Vilnius: Publishing House of Encyclopaedias and Scientific Literature. [Pileckis, S., Monsevičius, V. 1997. *Lietuvos Fauna. Vabalai*. Vilnius: Mokslo ir enciklopedijų leidybos institutas.]
- Romantsov, P. V. 2007. A review of leaf beetles (Coleoptera, Chrysomelidae) of St. Petersburg and Leningrad province. *Entomological Reviews* LXXXVI (2): 306–336. [Романцов, П. В. 2007. Обзор жуков-листоедов (Coleoptera, Chrysomelidae) Санкт-Петербурга и Ленинградской области. *Энтомологическое Обозрение* LXXXVI (2): 306–336.]
- Silfverberg, H. 2004. Enumeratio nova Coleopterorum Fennoscandiae, Daniae et Baltiae. *Sahlbergia* 9: 1–111.
- Warchałowski, A. 2003. *The leaf-beetles (Chrysomelidae) of Europe and the Mediterranean region*. Warszawa: Natura optima dux Foundation.

CRYPTOCEPHALUS SOLIVAGUS LEONARDI & SASSI, 2001 (COLEOPTERA: CHRYSOMELIDAE) – NAUJA LAPGRAUŽIŲ RŪŠIS LIETUVOJE

A. Bukejs, A. Barševskis

SANTRAUKA

Straipsnyje pateikti pirmieji duomenys apie naują Lietuvai lapgraužių rūšį *Cryptocephalus solivagus* Leonardi & Sassi, 2001. Du šios rūšies individai aptikti Šiaulių rajone, Girkautų kaime (šiaurės vakarinėje Lietuvos dalyje). Baltijos ir Fennoscandijos faunoje ši rūšis užregistruota pirmą kartą. Kartu su bendra informacija apie rūšies paplitimą ir ekologiją, pateiktos *Cryptocephalus solivagus* ir jos endofalų sklėrų nuotraukos.

Received: 4 November 2008

Accepted: 3 December 2008