



Rayleigh wind retrieval for the ALADIN airborne demonstrator of the Aeolus mission using simulated response calibration

Xiaochun Zhai^{1,2}, Uwe Marksteiner¹, Fabian Weiler¹, Christian Lemmerz¹, Oliver Lux¹, Benjamin Witschas¹, and Oliver Reitebuch¹

¹Deutsches Zentrum für Luft- und Raumfahrt e.V. (DLR), Institut für Physik der Atmosphäre, Oberpfaffenhofen 82234, Germany

²Ocean University of China, College of Information Science and Engineering, Ocean Remote Sensing Institute, Qingdao 266100, China

Correspondence: Oliver Reitebuch (oliver.reitebuch@dlr.de)

Received: 12 July 2019 – Discussion started: 19 July 2019

Revised: 20 December 2019 – Accepted: 9 January 2020 – Published: 5 February 2020

Abstract. Aeolus, launched on 22 August in 2018, is the first ever satellite to directly observe wind information from the surface up to 30 km on a global scale. An airborne prototype instrument called ALADIN airborne demonstrator (A2D) was developed at the German Aerospace Center (DLR) for validating the Aeolus measurement principle based on realistic atmospheric signals. To obtain accurate wind retrievals, the A2D uses a measured Rayleigh response calibration (MRRC) to calibrate its Rayleigh channel signals. However, differences exist between the respective atmospheric temperature profiles that are present during the conduction of the MRRC and the actual wind measurements. These differences are an important source of wind bias since the atmospheric temperature has a direct effect on the instrument response calibration. Furthermore, some experimental limitations and requirements need to be considered carefully to achieve a reliable MRRC. The atmospheric and instrumental variability thus currently limit the reliability and repeatability of a MRRC. In this paper, a procedure for a simulated Rayleigh response calibration (SRRC) is developed and presented in order to resolve these limitations of the A2D MRRC. At first the transmission functions of the A2D Rayleigh channel double-edge Fabry–Pérot interferometers (FPIs) in the internal reference path and the atmospheric path are characterized and optimized based on measurements performed during different airborne and ground-based campaigns. The optimized FPI transmission functions are then combined with the laser reference spectrum and the temperature-dependent molecular Rayleigh backscatter spectrum to derive an accu-

rate A2D SRRC which can finally be implemented into the wind retrieval. Using dropsonde data as a reference, a statistical analysis based on a dataset from a flight campaign in 2016 reveals a bias and a standard deviation of line-of-sight (LOS) wind speeds derived from a SRRC of only 0.05 and 2.52 m s⁻¹, respectively. Compared to the result derived from a MRRC with a bias of 0.23 m s⁻¹ and a standard deviation of 2.20 m s⁻¹, the accuracy improved and the precision is considered to be at the same level. Furthermore, it is shown that the SRRC allows for the simulation of receiver responses over the whole altitude range from the aircraft down to sea level, thus overcoming limitations due to high ground elevation during the acquisition of an airborne instrument response calibration.

1 Introduction

Continuous global wind observations are of highest priority for improving the accuracy of numerical weather prediction as well as for advancing our knowledge of atmospheric dynamics (Stoffelen et al., 2005; Weissmann et al., 2007; Žagar et al., 2008; Baker et al., 2014). Among various techniques such as radiosonde, radar wind profiler, and geostationary satellite imagery, a spaceborne Doppler wind lidar is considered the most promising one to meet the need of near-real-time observations of global wind information. Based on the principle of the Doppler effect, two different wind lidar detection techniques, namely coherent and direct detec-

tion, have been developed and studied over the last decades (Reitebuch, 2012a). The coherent Doppler lidar (CDL), typically used in the particle-rich boundary layer, can directly determine the Doppler frequency shift via the beat signal between the emitted laser signal and the particulate backscattered light, and the frequency shift introduced by an acoustic-optical modulator enables the measurement of positive and negative winds. In contrast, for a direct-detection wind lidar, the measured signal cannot directly be related to the frequency shift. Thus, a so-called response calibration describing the relationship between the measured instrument response and the actual Doppler frequency shift constitutes a prerequisite for an accurate wind retrieval. A direct-detection wind lidar can measure atmospheric wind by means of either particulate or molecular backscatter signals, typically offering much higher data coverage of the wind field from ground up to the lower mesosphere. Different spectral discriminators such as Fabry–Pérot interferometers (Chanin et al., 1989; Korb et al., 1992), Fizeau interferometers (McKay, 1998, 2002), iodine vapor filters (Liu et al., 2002; She et al., 2007; Baumgarten, 2010; Wang et al., 2010; Hildebrand et al., 2012), Michelson interferometers (Thuillier and Hersé, 1991; Herbst and Vrancken, 2016) and Mach–Zehnder interferometers (Bruneau, 2001; Bruneau and Pelon, 2003; Tucker et al., 2018) can be used for direct-detection wind lidars.

Aeolus, launched on 22 August 2018, is the first ever satellite to directly observe line-of-sight (LOS) wind profiles on a global scale. Its unique payload, the Atmospheric LAsER Doppler INstrument (ALADIN), is a direct-detection wind lidar operating at 355 nm from a 320 km orbit (Stoffelen et al., 2005; ESA, 2008; Reitebuch, 2012b). The particulate and molecular backscatter signals are received by two different spectrometers, which are a Fizeau interferometer in the Mie channel, measuring particulate backscatter, and a double-edge filter with two Fabry–Pérot interferometers (FPIs) in the Rayleigh channel, measuring molecular backscatter. The novel combination of these two techniques, integrated for the first time into a single wind lidar, expands the observable altitude range from ground to the lowermost 30 km of the atmosphere. ALADIN provides one component of the wind vector along the instrument LOS with a vertical resolution of 0.25 to 2 km and with a requirement on the wind speed precision of 1 to 2.5 m s⁻¹ for the horizontally projected LOS (HLOS), depending on altitude. Furthermore, as the first high spectral resolution lidar in space (Ansmann et al., 2007; Flamant et al., 2008), ALADIN has the potential to globally monitor cloud and aerosol optical properties to contribute to climate impact studies.

In the frame of the Aeolus program, a prototype instrument called ALADIN airborne demonstrator (A2D) was developed at the German Aerospace Center (DLR). Due to its representative design and operating principle, the A2D has provided valuable information on the validation of the measurement principle from real atmospheric signals before the

satellite launch. In addition, the A2D is expected to contribute to the optimization of the wind measurement strategies for the satellite instrument as well as to the improvement of wind retrieval and quality control algorithms during satellite operation (Durand et al., 2006; Reitebuch et al., 2009; Paffrath et al., 2009). As the first ever airborne direct-detection wind lidar, A2D has been deployed in several ground and airborne campaigns over the last 12 years (Li et al., 2010; Marksteiner, 2013; Weiler, 2017; Lux et al., 2018; Marksteiner et al., 2018).

Different instrument response calibration approaches have been studied using both measured and simulated response calibration to characterize and calibrate the ALADIN Rayleigh channel (Tan et al., 2008; Dabas et al., 2008; Rennie et al., 2017). Currently, only measured Rayleigh response calibrations (MRRC) are used for the A2D (Marksteiner, 2013; Lux et al., 2018; Marksteiner et al., 2018). However, the atmospheric temperature affects the Rayleigh–Brillouin line shape and has a direct effect on the instrument response calibration (Dabas et al., 2008). Differences exist between the respective atmospheric temperature profiles that are present during the conduction of the MRRC and the actual wind measurements. These differences are an important source of wind bias, which grows with increasing temperature differences. This is also the reason why it is mandatory to consider the atmospheric temperature in the Aeolus level 2B procedure to retrieve reliable winds (Dabas et al., 2008; Rennie et al., 2017). Furthermore, some experimental limitations, which will be introduced specifically in Sect. 2.1, need to be considered carefully to achieve a reliable MRRC. Overall, the atmospheric and instrumental variability coming along with MRRC limits the reliability and repeatability of the A2D instrument response calibrations. Inspired by the calibration method used in the ALADIN level 2B processor (Dabas and Huber, 2017), the simulated Rayleigh response calibration (SRRC) was developed to resolve these limitations of A2D. It is based on an accurate theoretical model of the FPI transmission function and the molecular Rayleigh backscatter spectrum. In this paper, the SRRC is introduced and its impact on the A2D wind retrieval is discussed and compared to results obtained with a measured response calibration.

In Sect. 2, different calibration approaches of double-edge FPIs are discussed firstly. Afterwards, the principle of an A2D SRRC is presented in Sect. 3. Section 4 gives an overview of the campaign and the dataset analyzed in this paper, whereas Sect. 5 introduces the A2D SRRC, which is applied to the campaign measurements, and discusses the corresponding wind results. Section 6 provides a statistical comparison of LOS wind velocities from A2D Rayleigh channel measurements, using the MRRC and SRRC, and winds from simultaneous CDL and dropsonde datasets. A comparison of A2D MRRCs and SRRCs is also evaluated in Sect. 6. Section 7 provides a summary and conclusion.

Table 1. Comparison of different FPI-based direct-detection wind lidars.

Lidar	Wavelength and system	Calibration approach	Instrument drift via correction	References
OHP ^a Rayleigh lidar	532 nm, double FPIs	Simulation, FPI scan	quick wind acquisition cycle strategy	Chanin et al. (1989); Garnier and Chanin (1992); Souprayen et al. (1999a, b)
NASA ^b Rayleigh/Mie lidar	355 nm, three FPIs	Simulation, FPI or laser frequency scan	locking etalon and servo-control system	Korb et al. (1992, 1998); Flesia and Korb (1999); Flesia et al. (2000); Gentry et al. (2000)
USTC ^c Rayleigh lidar	355 nm, three FPIs	measurement and simulation, FPI scan	locking etalon and servo-control system	Xia et al. (2012); Dou et al. (2014)
ESA ALADIN	355 nm, double FPIs for Rayleigh channel	level 1B: scanning measurement, laser level 2B: simulation, laser frequency scan	internal reference path	Reitebuch et al. (2018); Rennie et al. (2017)
DLR A2D	355 nm, double FPIs for Rayleigh channel	Measurement, laser frequency scan	internal reference path	Marksteiner (2013); Lux et al. (2018); Marksteiner et al. (2018)

^a Observatory of Haute Provence, France. ^b National Aeronautics and Space Administration, USA. ^c University of Science and Technology of China, China. This lidar is mobile.

2 Calibration approaches for double-edge FPIs

Chanin et al. (1989) demonstrated for the first time that FPIs can be used to measure wind in the middle atmosphere relying on molecular Rayleigh scattering and a laser with a wavelength of 532 nm. The so-called response can be defined as the contrast (Chanin et al., 1989) or the ratio (Korb et al., 1992) of the signal intensities obtained after transmission through the FPIs. A response calibration is a prerequisite for wind retrieval since it represents the relationship between the measured quantity (e.g., intensity of the backscattered light) and the frequency shift which is induced by the Doppler effect. Generally, there are two approaches to determine the relationship between response and Doppler frequency shift, i.e., to obtain a response calibration function. Table 1 lists several FPI-based direct-detection wind lidar systems that are capable of measuring wind information based on a measurement approach or a simulation approach.

For each direct-detection wind lidar system, the emitted laser frequency should be known in order to allow for an accurate derivation of the Doppler frequency shift. A zero Doppler shift reference determined by pointing to the zenith direction has been used to correct the short-term frequency drift in previous studies (Souprayen et al., 1999b; Korb et al., 1992; Dou et al., 2014). But for the A2D, the internal reference path is particularly dedicated to the derivation of information about the emitted laser frequency. As shown in Lux et al. (2018, Fig. 1), a small portion of the laser beam radiation is collected by an integrating sphere and coupled

into a multimode fiber, then it is injected into the receiver via the front optics. This path is called the internal reference path. The atmospheric backscattered signal is collected by a Cassegrain telescope and guided via free optical path propagation to the front optics and receiver successively. This path is called the atmospheric path. An electro-optical modulator is used to temporally separate the atmospheric signal from the internal reference signal, thereby avoiding disturbances to the internal reference signal by atmospheric signal and saturation of the detectors at short ranges (Reitebuch et al., 2009). Because of the different optical illumination of the internal and atmospheric path resulting in different divergence and incidence angles on the FPIs, the response calibration curves for these two paths are different. It is noted that the internal reference path of ALADIN is different from A2D's path, where ALADIN uses free path propagation rather than a fiber coupling unit.

2.1 Approach using measured response calibrations

The first approach to obtain a response calibration function is based on measurements during which the laser beam is pointed into zenith direction while assuming that the vertical velocity of the probed atmospheric volume is negligible, i.e., no Doppler frequency shift is induced. Then, either the frequency of the laser transmitter is scanned with a constant FPI cavity length (Reitebuch et al., 2018; Lux et al., 2018; Marksteiner et al., 2018) or the cavity length of the FPIs is

scanned while keeping the laser frequency locked (Dou et al., 2014).

Since the shape of the actual molecular Rayleigh backscatter spectrum is determined by the atmospheric temperature and pressure profiles (Tenti et al., 1974; Pan et al., 2004), the measured response calibration function in the atmospheric path is only valid for a specific combination of temperature and pressure profiles. Regarding ground-based lidar systems, the calibration procedure can be carried out frequently. Based on stable atmospheric conditions (Dou et al., 2014; Liu et al., 2002) it is reasonable to assume that only small temperature and pressure variations occur with a negligible effect on the retrieved wind within a specific analysis period. However, for spaceborne or airborne lidar systems like ALADIN or the A2D, the variability in temperature and pressure can be one of the main sources of systematic errors for the Rayleigh channel wind retrieval as it modifies the instrument response calibration (Dabas et al., 2008; Marksteiner, 2013).

For ALADIN, the Rayleigh winds produced by the level 1B processor (Reitebuch et al., 2018) are based on a MRRC, while the level 2B processor uses a SRRC. A MRRC includes three response calibration curves, one each derived from the internal reference, the atmospheric response, and the ground return. A so-called instrument response calibration mode is usually performed once per week. During about 16 min the frequency of the laser transmitter is scanned over 1000 MHz in steps of 25 MHz, and the satellite is rolled by 35° in order to point nadir, thereby avoiding frequency shifts induced by horizontal wind velocities. In order to increase the signal-to-noise ratio (SNR), the signals generally from the altitude range between 6 and 20 km are accumulated to derive a single response calibration curve for the atmosphere (Reitebuch et al., 2018). Compared to ALADIN, the MRRC of the A2D can be derived and used per range gate because of the larger SNR prevailing for airborne measurements, which are performed closer to their target. The instrument response calibration of the A2D can be carried out several times during a flight by tuning the laser frequency in steps of 25 MHz over a frequency interval of 1.7 GHz.

Apart from the atmospheric temperature and pressure effects on the MRRC, several specific experimental constraints are critical for achieving a reliable instrument response calibration for both ALADIN and A2D. Firstly, the particulate Mie scattering, which is not fully filtered out by the Fizeau interferometer, will enter the FPIs and can be considered Mie contamination of the Rayleigh signal. Because of the different spectral widths of the particle and molecular backscatter signals, the sensitivities of the FPIs on them are different. If not taken into account, the Mie contamination on the Rayleigh channel is one of the sources of systematic errors because it modifies the MRRC curve. In order to avoid such modifications, the A2D tries to conduct instrument response calibrations in a preferably pure Rayleigh atmosphere. Furthermore, the characteristics of the ground, such as high albedo and preferably flat terrain, and low ground elevation,

should be considered to improve the SNR, to facilitate the deduction of a ground return response curve and to maximize the vertical coverage of the atmosphere (Marksteiner, 2013; Weiler, 2017; Lux et al., 2018; Marksteiner et al., 2018). In some cases, A2D calibrations were performed over terrain with high elevation (e.g., Greenland). Obviously, no response calibration curve can be obtained from below the surface, which would, however, be necessary for accurate wind retrieval at other geographical locations with lower ground elevation. In addition, the LOS velocity needs to be zero during the instrument response calibration. This is accomplished by flying curves with a roll angle of 20°, which corresponds to the installation angle of the A2D telescope in the DLR Falcon 20 aircraft. Regions showing gravity wave activity or strong convection are avoided as they cross the assumption of negligible vertical wind velocity (Lux et al., 2018; Marksteiner et al., 2018). Overall, the reliability and repeatability of A2D MRRCs is a main limitation for accurate wind retrieval.

2.2 Approach using simulated response calibrations

The second approach is based on SRRC curves and the fact that the transmitted signals through each FPI are proportional to the convolution of the respective filter transmission function with the atmospheric backscatter spectrum. Therefore, this approach relies on accurate models for both FPI transmission functions and atmospheric backscatter spectrum. In practice, the transmission function of FPIs can be obtained by scanning the laser frequency and keeping the FPI's etalon length fixed (Rennie et al., 2017) or by scanning the spacing between the plates of FPIs with a fixed laser frequency (Souprayen et al., 1999b; Xia et al., 2012).

For ALADIN and A2D, the seed laser is frequency tunable to cover a spectral range of 11 GHz in the UV to calibrate the spectral characteristics of FPIs for the internal reference path. This procedure is called instrument spectral registration (Reitebuch et al., 2018). However, the transmission functions of FPIs for the atmospheric path are different from the transmission curves registered on the internal reference path during the instrument spectral registration. This is because of the difference in the illumination of the FPIs by the beams in the atmospheric and the internal reference paths, i.e., due to different divergence and incidence angles (Reitebuch et al., 2009). For ALADIN, this is taken into account by correcting the FPI transmission curves of the atmospheric path (Dabas and Huber, 2017). Regarding the A2D, a SRRC based on such a simulation approach promises an improvement in terms of wind speed errors. A SRRC includes two response calibration curves derived from internal reference path and atmospheric path. The transmission function of the A2D FPIs in the internal reference path can be obtained during an instrument spectral registration. The determination of the transmission functions of the FPIs in the atmospheric path of the A2D is the most sophisticated part needed to accurately retrieve wind information by using a SRRC. Fur-

thermore, FPI transmission functions should be a function of incidence angles, field of view, temperature, pressure, thickness, fitness, etc. Regardless of measurement or simulation method, any angular alignment drift will change the incidence angles on the FPIs, resulting in a different transmission value. Referring to the Observatory of Haute Provence (OHP) Rayleigh lidar, the bias induced by instrument drifts can be eliminated by a specific wind acquisition cycle strategy using the differences between vertical and titled position measurement (Souprayen et al., 1999a). For ALADIN or the A2D, the instrument drift is compensated by regularly performing instrument response calibrations and instrument spectral registrations on a weekly basis.

3 The principle of A2D SRRC

The Doppler frequency shift in LOS direction is derived from the difference between the frequency of the received atmospheric return f_a and the emitted laser frequency f_i :

$$\Delta f = f_a - f_i. \quad (1)$$

The corresponding LOS velocity is derived from the Doppler shift equation using a laser wavelength of λ_0 :

$$V_{\text{LOS}} = \frac{\lambda_0}{2} \Delta f. \quad (2)$$

In order to derive f_i and f_a from the A2D Rayleigh channel, the transmitted intensities $I_{A,B,\text{INT}}(f)$ and $I_{A,B,\text{ATM}}(f)$ through the FPI filters A and B are used for the internal reference path (INT) and the atmospheric path (ATM), respectively:

$$I_{A,B,\text{INT}}(f_i) = \int_{-\infty}^{+\infty} T_{A,B,\text{INT}}(f) S_i(f_i - f) df, \quad (3)$$

$$I_{A,B,\text{ATM}}(f_a) = \int_{-\infty}^{+\infty} T_{A,B,\text{ATM}}(f) S_a(f_a - f) df, \quad (4)$$

$$S_a(f) = S_{\text{RB}}(f) + (\rho - 1) S_{\text{Mie}}(f). \quad (5)$$

Taking the transmitted intensity through filter A for instance, $I_{A,\text{INT}}(f_i)$ is the convolution of the filter A transmission function on the internal reference path ($T_{A,\text{INT}}(f)$) and the normalized laser reference spectrum $S_i(f)$ with the transmitted laser frequency f_i . Accordingly, $I_{A,\text{ATM}}(f_a)$ is the convolution of the filter A transmission function on the atmospheric path ($T_{A,\text{ATM}}(f)$) and the normalized atmospheric backscatter signal spectrum $S_a(f)$ with the center frequency f_a ; $S_a(f)$ consists of the broad molecular Rayleigh backscatter spectrum $S_{\text{RB}}(f)$ (the subscript RB stands for Rayleigh–Brillouin) and the narrow particulate Mie backscatter spectrum $S_{\text{Mie}}(f)$, as shown in Eq. (5). Here $\rho = 1 + \beta_{\text{aer}}/\beta_{\text{mol}}$ is the scattering ratio, where β_{aer} and β_{mol} are the particle and molecular backscatter coefficients, respectively.

As described by Garnier and Chanin (1992), the Rayleigh response is defined as

$$R_x(f) = \frac{I_{A,x}(f) - I_{B,x}(f)}{I_{A,x}(f) + I_{B,x}(f)}, \quad x = \text{INT or ATM}, \quad (6)$$

where x represents the case of the INT or ATM path.

In order to determine the $R_x(f)$ by means of Eqs. (3)–(6), accurate knowledge about $T_{A,B,\text{INT}}(f)$, $T_{A,B,\text{ATM}}(f)$, $S_i(f)$ and $S_a(f)$ is needed. Generally, the transmission function $T(f)$ of an ideal FPI can be expressed by the Airy function. However, small defects on the FPI mirror surfaces or imperfect illumination of the FPI could result in small deviations that have to be considered (McGill and Spinhirne, 1998). It is shown that all these defects can be represented by a Gaussian defect term that modifies the model of the FPI transmission function $T(f)$ to the following (Witschas et al., 2012):

$$T(f) = \frac{1}{\text{FSR}} \left[1 + 2 \sum_{k=1}^{\infty} R^k \cos\left(\frac{2\pi k f}{\text{FSR}}\right) \exp\left(-\frac{2\pi^2 k^2 \sigma_g^2}{\text{FSR}^2}\right) \right], \quad (7)$$

where FSR is the free spectral range of the corresponding FPI (A or B) on the respective measurement path (INT or ATM), R is the mean reflectivity of the mirror surfaces, and σ_g is a defect parameter taking mirror defects into consideration.

The laser pulse line shape $S_i(f)$, with its laser linewidth and emitted laser frequency (Lux et al., 2018; Marksteiner et al., 2018), can be approximated by a Gaussian function. The spectral distribution of $S_{\text{Mie}}(f)$ is similar to $S_i(f)$ as particles can be considered to cause no significant spectral broadening due to random motion. $S_{\text{RB}}(f)$ can be computed by using the Tenti S6 line shape model (Tenti et al., 1974; Pan et al., 2004), which has been widely applied in atmospheric applications. An easily calculated analytical expression of the Tenti S6 line shape model for atmospherically relevant temperatures and pressures is used herein (Witschas, 2011a, b; Witschas et al., 2014).

The measurement principle of the A2D Rayleigh channel signal is shown in Fig. 1 as an example for one frequency step during the instrument spectral calibration with no Doppler shift on the LOS. It is assumed that there is no Mie contamination on the Rayleigh channel in this case; that is, $\rho = 1$ or $S_a(f) = S_{\text{RB}}(f)$; $S_i(f)$ is depicted using a Gaussian function with a full width at half maximum (FWHM) of 50 MHz. $S_{\text{RB}}(f)$ is calculated for $T = 270$ K and $P = 700$ hPa. The transmitted integrated intensities of $S_a(f)$ through FPIs A and B, i.e., $I_{A,\text{ATM}}$ and $I_{B,\text{ATM}}$, are indicated by light-blue and light-magenta filled areas, respectively.

The LOS wind velocity error ΔV_{MC} induced by Mie contamination is defined as the difference in the LOS wind velocities measured under purely atmospheric molecular conditions and conditions with a scattering ratio of ρ . Figure 2 shows a simulation of ΔV_{MC} at $T = 223$ K and $P = 301$ hPa,

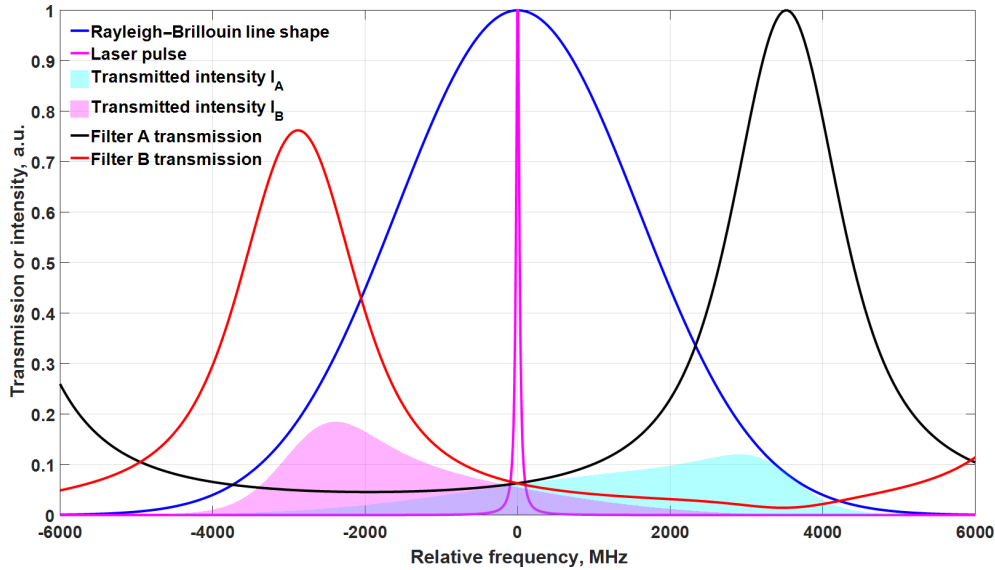


Figure 1. Modeled spectral distribution of the transmitted laser pulse (pink line) and pure molecular backscatter (blue line) for $T = 270$ K and $P = 700$ hPa (normalized to one). The Rayleigh channel transmission spectra of two FPIs are shown by black ($T_A(f)$) and red ($T_B(f)$) lines. The transmitted, integrated intensities through FPI A and B are marked with light-blue and magenta filled areas, respectively.

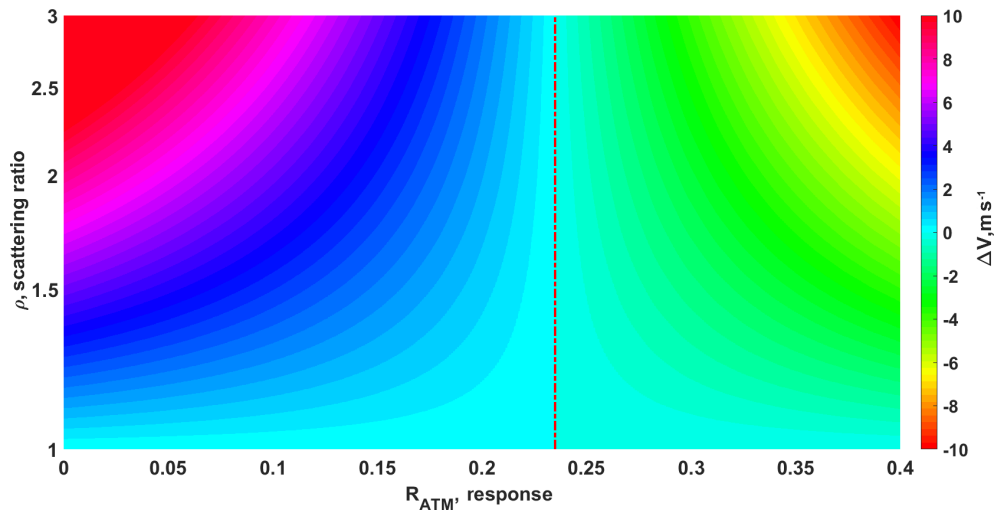


Figure 2. Simulation of LOS wind velocity errors ΔV_{MC} induced by Mie contamination and a molecular line shape at $T = 223$ K and $P = 301$ hPa. The x axis and y axis represent the response value R_{ATM} and scattering ratio ρ , respectively. The dashed red line corresponds to the response value with minimum ΔV_{MC} at each scattering ratio.

where the x axis and y axis represent different response values and scattering ratios, respectively. Positive and negative ΔV_{MC} represent the overestimation and underestimation of the LOS velocity, respectively. An overestimation of LOS velocities occurs at response values less than 0.235 in this case. Larger scattering ratios result in larger overestimation, and the difference can get up to 13 m s^{-1} in the case of $\rho = 3$. According to previous studies (Dabas et al., 2008), the Mie contamination correction could improve the quality of Rayleigh winds in the cases of intermediate ρ , e.g., below 1.5. In this region the Mie signal is not high enough to guarantee an

accurate Mie wind measurement but instead becomes rather significant for the Rayleigh channel (Sun et al., 2014; Lux et al., 2018). The value of ρ , which is needed for the Mie contamination correction in the Rayleigh channel, is obtained by analyzing the Mie channel signal. The detailed algorithm can be seen in Flamant et al. (2017).

Following the procedure of the A2D instrument response calibration mode, the intensities transmitted through the FPIs and corresponding response values at each frequency step are calculated, eventually forming the SRRC of the internal reference path ($R_{INT}(f)$, blue line) and the atmospheric path

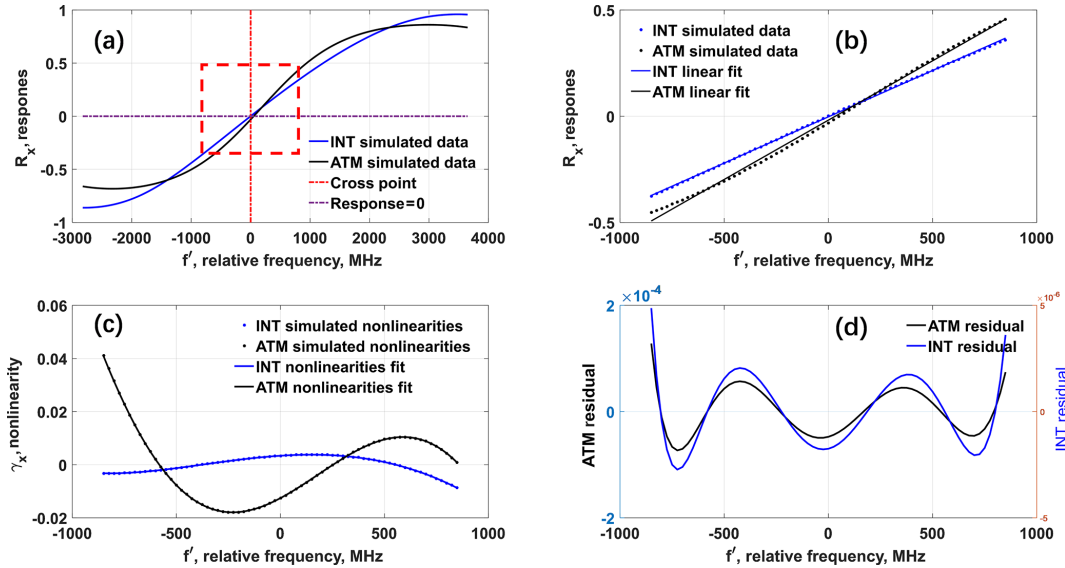


Figure 3. (a) Simulated Rayleigh response calibration (SRRC) for internal reference (INT, blue line) and atmospheric return (ATM, black line); the cross point frequency is marked by the dotted red line; (b) INT (blue dots) and ATM (black dots) response functions and corresponding linear least squares fits (blue line for INT, black line for ATM) over a frequency interval of ± 850 MHz, where relative frequency is used instead of absolute frequency; (c) simulated nonlinearities (dots) and fifth-order polynomial fits for INT (blue line) and ATM (black line). (d) Response function residuals from INT (blue line) and ATM (black line).

($R_{\text{ATM}}(f)$, black line) shown in Fig. 3a. It is noted that the procedure is done assuming no Mie contamination in this case. The cross point frequency f_c (red dotted line) in Fig. 3a is derived from $R_{\text{INT}}(f)$, where $I_{A,i}(f) - I_{B,i}(f)$ is closest to zero (Marksteiner et al., 2018). The relative frequency f' is defined as the difference between absolute frequency f and f_c . Figure 3b shows the simulated response functions $R_{\text{INT}}(f')$ and $R_{\text{ATM}}(f')$ within a relative frequency interval of ± 850 MHz, where the interval corresponds to the area marked by the dashed red square in Fig. 3a. A linear least-squares fit, $R_{\text{linearfit}_x}(f')$, is applied to the SRRC of the internal reference and atmospheric path, shown by the solid blue and black lines in Fig. 3b. The linear fitting parameters sensitivity, β_x , and intercept, α_x , are defined as

$$\beta_x = \frac{\partial R_{\text{linearfit}_x}(f')}{\partial f'}, x = \text{INT or ATM}; \quad (8)$$

$$\alpha_x = R_{\text{linearfit}_x}(f' = 0) = R_{\text{linearfit}_x}(f = f_c). \quad (9)$$

The nonlinearity $\gamma_x(f')$ is defined as the difference between $R_x(f')$ and linear least-squares fit $R_{\text{linearfit}_x}(f')$; that is, $\gamma_x(f') = R_x(f') - (\beta_x f' + \alpha_x)$. The different $\gamma_x(f')$ functions of the internal reference path and the atmospheric path are shown in Fig. 3c. For a wavelength of $\lambda_0 = 354.89$ nm, a LOS velocity of 1 m s^{-1} translates into a frequency shift of 5.63 MHz. Taking a sensitivity $\beta_{\text{ATM}} = 5 \times 10^{-4} \text{ MHz}^{-1}$, the atmospheric nonlinearity at -200 MHz almost reaches -0.02 , which is equivalent to about -40 MHz, which in turn corresponds to -7.1 m s^{-1} . Consequently, large errors in the derived LOS velocity would occur if $\gamma_x(f')$ is not taken into

account. Therefore, a fifth-order polynomial fit (Marksteiner, 2013; Lux et al., 2018; Marksteiner et al., 2018) is selected to model $\gamma_x(f')$, as shown in Fig. 3c for $R_{\text{INT}}(f')$ ($R_{\text{ATM}}(f')$) as solid blue (black) line. A fit of the SRRC for the internal reference and atmospheric paths can be expressed as a sum of a linear fit and a fifth-order polynomial fit:

$$\begin{aligned} R_{\text{fit},x}(f') &= \beta_x f' + \alpha_x + \gamma_{x,x}(f') = \beta_x f' + \alpha_x \\ &+ \sum_{i=0}^5 m_{i,x} f'^i = (a_x + m_{0,x}) + (\beta_x + m_{1,x}) f' \\ &+ m_{2,x} f'^2 + m_{3,x} f'^3 + m_{4,x} f'^4 + m_{5,x} f'^5. \end{aligned} \quad (10)$$

The difference between $R_x(f')$ and $R_{\text{fit},x}(f')$ is defined as residual and shown in Fig. 3d for the internal reference path (blue line) and the atmospheric path (black line), respectively. A periodic fluctuation can be seen, but the maximum residual of the atmospheric path is less than 1.5×10^{-4} , corresponding to 0.053 m s^{-1} for $\beta_{\text{ATM}} = 5 \times 10^{-4} \text{ MHz}^{-1}$. The absolute difference between the two residuals (INT minus ATM) is even smaller.

4 Campaign and dataset

As part of the North Atlantic Waveguide and Downstream Experiment (NAWDEX) campaign carried out in 2016 in Iceland, four aircraft equipped with diverse payloads were employed to investigate the influence of diabatic processes for midlatitude weather (Schäfler et al., 2018). The DLR Falcon 20 was deployed with the A2D and a well-established

Table 2. Overview of analyzed datasets from A2D, 2 μm CDL, and dropsondes in the frame of the North Atlantic Waveguide and Downstream Experiment (NAWDEX) campaign.

Date	A2D measurement period (UTC) and mode	Data availability of CDL	Matched dropsonde time (UTC)
17.09.2016	10:30–11:35 Wind measurement	available	11:09:15
			11:33:47
	11:42–12:24 Wind measurement	no data	11:56:00
			12:05:20
			12:15:02
			12:24:23
21.09.2016	15:34–15:57 Wind measurement	available	15:40:49
			15:45:07
			15:48:34
			15:52:51
23.09.2016	07:51–08:53 Wind measurement	available	08:19:01
			08:27:07
			08:33:06
			08:39:05
			08:45:05
			08:51:16
28.09.2016	12:53–13:17 Calibration	available	no data
18.10.2016	09:20–09:57 Wind measurement	not available	09:22:48
			09:27:15
			09:31:53
			09:36:29
			09:52:30

2 μm CDL, offering an ideal platform to demonstrate the capabilities of the A2D under complex dynamic conditions. A total of 14 research flights were performed with the Falcon aircraft during the NAWDEX campaign. The A2D was operated in wind measurement mode in most of the flight periods, while the instrument spectral registration mode was carried out on the ground and during airborne measurements. Furthermore, two flights on 28 September and 15 October 2016 were carried out to obtain A2D instrument response calibrations. Six MRRCs have been performed in these two calibration flight periods. After comparison and evaluation given by Lux et al. (2018), the third calibration, which was carried out over an Iceland glacier on 28 September 2016 at 12:53 UTC, is chosen as the baseline of the A2D Rayleigh wind retrieval, as it shows low Rayleigh residual errors and was not affected by clouds, instrument temperature drifts, or outliers (Lux et al., 2018). The other three aircraft – i.e., the German High Altitude and Long Range Research Aircraft (HALO) (Gulfstream G 550), the French Service des Avions Français Instrumentés pour la Recherche en Environnement (SAFIRE) (Falcon 20), and the British Facility for Airborne Atmospheric Measurements (FAAM) (BAe-146) – were equipped with dropsonde dispensers to provide temperature, pressure, wind, and humidity profiles (Schäfler et al.,

2018). Time-space matching datasets between dropsonde and A2D can be used as both references to validate A2D wind measurements and to provide essential atmospheric temperature and pressure profiles for SRRC in this study. Table 2 provides an overview of datasets that are available from the 2016 flight campaign and are used for this study. It is noted that all matched dropsondes listed in Table 2 were dispensed from the HALO aircraft.

The transmission functions of the FPIs are reproducible, and the transmission characteristics are different for the internal reference and atmospheric paths. The underlying difference in illumination includes both a difference in the spatial distribution and in the angular distribution of the light. In particular, the use of a multimode fiber in the internal reference path gives rise to speckles, resulting in an intensity distribution which is markedly different from that of the atmospheric path. As for the A2D instrument spectral registration during the NAWDEX campaign, the sampled transmission functions of the FPIs are obtained from the internal reference only since the atmospheric return is convolved with a temperature-dependent Rayleigh backscatter spectrum, and the hard target ground return would be too variable due to albedo variation. The only sampled transmission functions of the FPIs from the A2D atmospheric path are available from the BRillouin

scattering Atmospheric INvestigation on Schneefernerhaus (BRAINS) field campaign (Witschas, 2011c; Witschas et al., 2012), which was performed during January–February 2009 to demonstrate the effect of Brillouin scattering in real atmosphere. Unique to BRAINS was a horizontal pointing of the outgoing laser beam in order to get a hard target return of a mountain with constant albedo in about 10 km distance. This allowed measurements of narrowband backscatter signal through the atmospheric path. The transmission functions of the FPIs were sampled by changing the laser frequency with steps of 50 MHz over a frequency range of 12 GHz with fixed FPIs. Here, different transmission curves of FPIs from the BRAINS field campaign in 2009 and NAWDEX airborne campaign in 2016 will be used as candidate FPI transmission curves for SRRC analysis.

5 Determination of the A2D response function and Rayleigh wind retrieval

A flowchart of the LOS wind velocity retrieval based on SRRC and MRRC is presented in Fig. 4. Firstly, the atmospheric temperature and pressure profiles are taken from dropsonde, radiosonde, or model data to derive the atmospheric molecular backscattered spectrum using the analytical representation of the Tenti S6 line shape model (Witschas, 2011a, b; Witschas et al., 2014). Then the transmission functions of FPIs are obtained by fitting the measured FPI transmission characteristics based on Eq. (7). Afterwards the frequency scan of the laser transmitter during A2D instrument response calibration is simulated to derive the SRRCs for the internal reference and the atmospheric path. The measured response values, R_{ATM} and R_{INT} , obtained from the A2D wind velocity measurement mode are combined with the SRRC $R_{\text{fit,ATM}}(f')$ and $R_{\text{fit,INT}}(f')$. The Doppler frequency shift, Δf_{SRRC} , due to LOS velocity is then derived from the difference of $f_{\text{a,SRRC}}'$ and $f_{\text{i,SRRC}}'$ (Reitebuch et al., 2018):

$$\begin{aligned} \Delta f_{\text{SRRC}} &= f_{\text{a,SRRC}}' - f_{\text{i,SRRC}}' \\ &= \frac{R_{\text{ATM}} - \alpha_{\text{ATM}} - \gamma_{\text{fit,ATM}}(f_{\text{a,SRRC}}')}{\beta_{\text{ATM}}} \\ &\quad - \frac{R_{\text{INT}} - \alpha_{\text{INT}} - \gamma_{\text{fit,INT}}(f_{\text{i,SRRC}}')}{\beta_{\text{INT}}}. \end{aligned} \quad (11)$$

The LOS velocity $V_{\text{LOS,SRRC}}$ is derived according to Eq. (2):

$$V_{\text{LOS,SRRC}} = \frac{\lambda_0}{2} \Delta f_{\text{SRRC}}. \quad (12)$$

It is noted that LOS velocity herein includes not only the horizontal and a possible vertical wind component but also the contribution from the aircraft flight velocity. The correction of the flight-induced velocity, $V_{\text{LOS,aircraft}}$, is calculated using the inertial navigation system and GPS on board the aircraft within an attitude correction algorithm (Marksteiner, 2013).

Finally, the corrected LOS wind velocity, $V_{\text{cor,SRRC}}$, is obtained as follows:

$$V_{\text{cor,SRRC}} = V_{\text{LOS,SRRC}} - V_{\text{LOS,aircraft}}. \quad (13)$$

5.1 Transmission characteristics of FPIs from different campaigns

A least-squares nonlinear procedure is applied to each sampled transmission function obtained from the BRAINS field campaign in 2009 and NAWDEX airborne campaign in 2016. Figure 5 illustrates the fits of the transmission functions where the intensities are normalized to the maximum of filter A. The black curves are derived from ground-based atmospheric path (ATMG) measurements during the BRAINS field campaign in 2009. The red and blue curves represent the ground-based (INTG) and airborne internal reference path (INTA) measurements obtained from the NAWDEX campaign in 2016, respectively. The specific parameters of FPIs are listed in Table 3. The difference between ATMG and INTG is due to the different illumination of the FPI via the atmospheric and internal reference paths. Obviously the FWHM of INTA is broader than that of INTG, which is most likely due to small contamination by atmospheric signal not completely blocked within the A2D optical receiver. Specifically, the atmospheric contamination of the internal reference signal of INTA is caused by the limited suppression efficiency of the electro-optical modulator incorporated in the A2D front optics. This leads to a leakage of atmospheric backscatter being incident on the Rayleigh accumulated charge coupled device (ACCD), during the acquisition time of the internal reference signal. Please note that the internal path signal is recorded with the same ACCD detector as the atmospheric path signal using an integration time of 4.2 μs . For the internal calibration INTG that was performed on the ground, the atmospheric path was blocked manually in front of the receiver, which completely avoided atmospheric contamination.

5.2 Determination of FPI transmission functions for SRRC

The most critical part both for ALADIN and for the A2D Rayleigh response calibration is the determination of transmission curves of the FPIs for the internal reference and atmospheric paths, respectively. The modeling of FPIs performance has been discussed in previous studies (McGill and Spinhirne, 1998; McKay and Rees, 2000a, 2000b). As for ALADIN, the FPI transmission curve in the atmospheric path is modeled by a convolution of an Airy function, which describes the transmission of a perfect FPI, and a tilted top-hat function (Dabas and Huber, 2017). The core idea of this approach using Airy and top-hat functions is based on the comparison of predicted and the measured Rayleigh response calibration. The FPI transmission characteristics cannot represent the actual sensitivity of the Rayleigh receiver at the

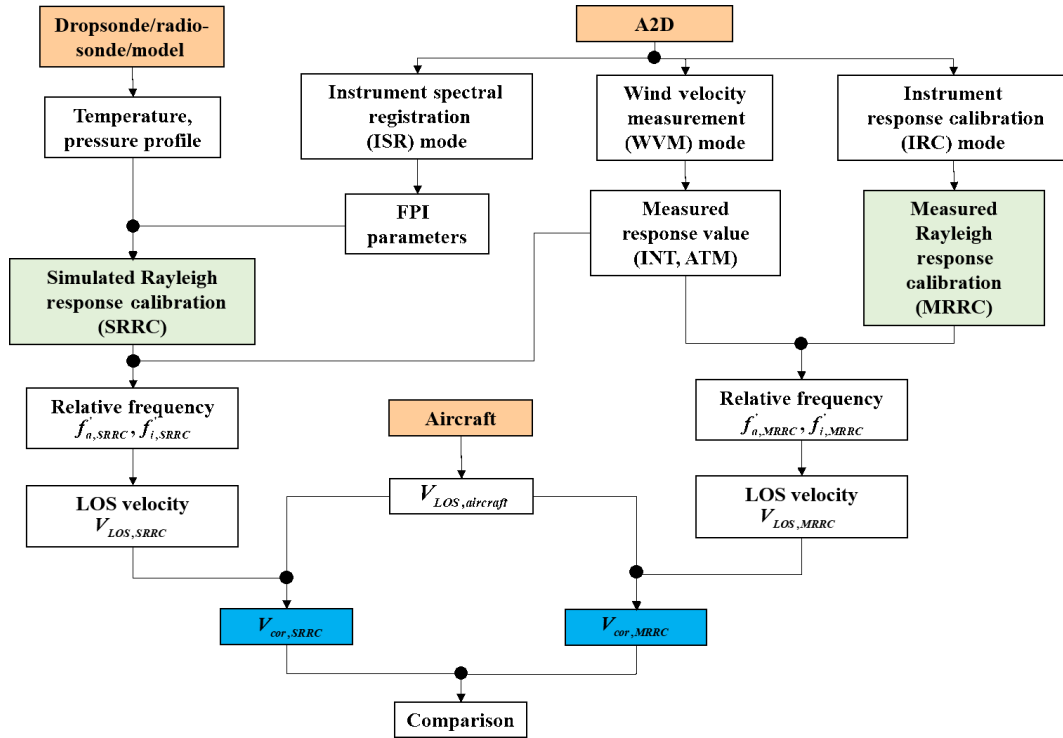


Figure 4. Flowchart of LOS velocity retrieval and comparison between A2D SRRC and MRRC.

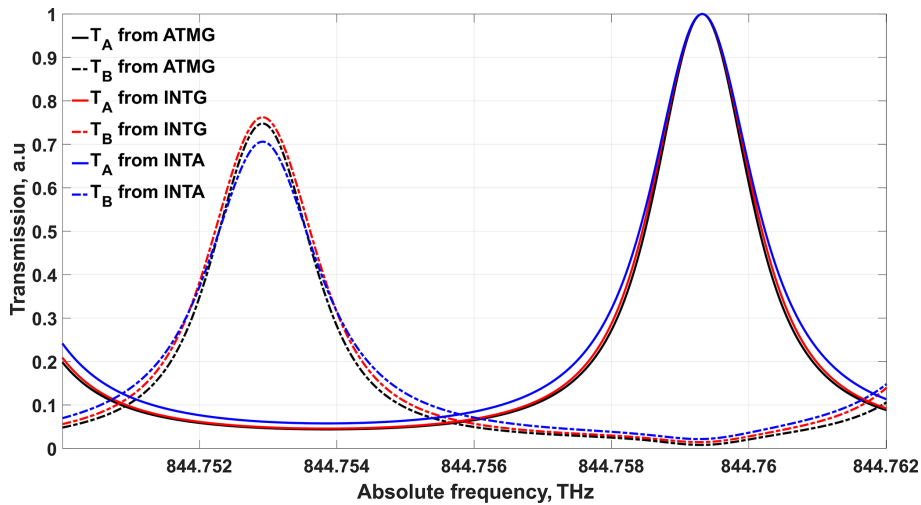


Figure 5. The transmission function of fitted FPIs from different campaigns and detection channels. The black, red, and blue groups are obtained from ATM path measurement during the BRAINS ground campaign (ATMG) in 2009, INT path measurement during NAWDEX from ground (INTG) in 2016, and INT path measurement during NAWDEX airborne measurement (INTA) in 2016, respectively.

atmospheric path until the difference of predicted and measured responses coincide within a threshold limit.

Unlike ALADIN, where only the transmission curve in the internal reference path can be measured during instrument spectral registration, the A2D FPI transmission curves both in the internal reference path and in the atmospheric path were measured in previous campaigns. As listed in Table 4,

five combinations of FPI transmission functions derived from different campaigns are used to derive different SRRCs. Since there is no simultaneous dropsonde measurement to provide atmospheric temperature and pressure information for modeling the atmospheric molecular backscattered spectrum during the third calibration, the radiosonde dataset at a distance of about 229 km to the calibration region (avail-

Table 3. Specific parameters of FPIs during different ground and airborne campaigns illustrated in Fig. 5.

Parameters	ATM ground ATMG		INT ground INTG		INT airborne INTA	
	filter A	filter B	filter A	filter B	filter A	filter B
FSR (GHz)	10.934	10.998	10.934	10.851	10.934	10.934
FWHM (GHz)	1.671	1.733	1.743	1.847	1.833	1.943
R	0.670	0.696	0.668	0.679	0.622	0.610
σ_g (MHz)	266	363	303	391	210	247

Table 4. Combinations for internal reference and atmospheric response simulation with ε_{R_slope} and $\varepsilon_{R_intercept}$ based on Eqs. (18a)–(18b) (Dabas and Huber, 2017).

Combination	Internal reference response	Atmospheric response	ε_{R_slope}	$\varepsilon_{R_intercept}$
1	INTG	INTG	-1.48×10^{-5}	-0.0057
2	INTG	ATMG	-1.42×10^{-7}	0.0206
3	ATMG	ATMG	-1.39×10^{-5}	-0.0356
4	INTA	INTA	-7.74×10^{-5}	0.0181
5	INTA	ATMG	-9.02×10^{-7}	0.0059

able at <http://weather.uwyo.edu/upperair/sounding.html>, last access: 12 July 2019) is used. The sensitivity β_x and intercept α_x from fitting SRRCs can give a qualitative comparison with the A2D MRRC. According to Eq. (11), the partial derivative of α_x and β_x can be obtained as follows:

$$\frac{\partial \Delta f}{\partial \alpha_{ATM}} = -\frac{1}{\beta_{ATM}}, \quad (14)$$

$$\frac{\partial \Delta f}{\partial \alpha_{INT}} = \frac{1}{\beta_{INT}}, \quad (15)$$

$$\frac{\partial \Delta f}{\partial \beta_{ATM}} = \frac{\alpha_{ATM} - M}{\beta_{ATM}^2}, \quad M \equiv R_{ATM} - \gamma_{ATM}, \quad (16)$$

$$\frac{\partial \Delta f}{\partial \beta_{INT}} = \frac{N - \alpha_{INT}}{\beta_{INT}^2}, \quad N \equiv R_{INT} - \gamma_{INT}. \quad (17)$$

Using the typical values in the previous studies (Lux et al., 2018) – i.e., $\beta_{ATM} = 5.8 \times 10^{-4} \text{ MHz}^{-1}$, $\beta_{INT} = 4.5 \times 10^{-4} \text{ MHz}^{-1}$, $\alpha_{ATM} = -0.06$, and $\alpha_{INT} = -0.001$ – and assuming realistic values of $\Delta\beta_{ATM} = 10^{-5} \text{ MHz}^{-1}$, $\Delta\beta_{INT} = 10^{-5} \text{ MHz}^{-1}$, $\Delta\alpha_{ATM} = 0.01$, and $\Delta\alpha_{INT} = 0.01$, it can be seen that the change in intercept, $\Delta\alpha_{ATM}$ or $\Delta\alpha_{INT}$, results in frequency differences of about -17 or 22 MHz , equivalent to velocity differences of -2.99 or 3.91 m s^{-1} , respectively. The effect of sensitivity, $\Delta\beta_{ATM}$ or $\Delta\beta_{INT}$, on velocity is related to the value of M or N . In the case of $M = 0$ or $N = 0$, the change in sensitivity, $\Delta\beta_{ATM}$ or $\Delta\beta_{INT}$, results in a frequency difference of about -1.8 or 0.05 MHz , equivalent to velocity differences of -0.31 or 0.009 m s^{-1} . Therefore, the retrieval of LOS wind velocity is more susceptible to intercept than sensitivity. The measured responses and simulated SRRCs, including fits of internal reference (red) and the eighth atmospheric altitude bin (blue dashed

line, the corresponding height is around 5.7 km), are chosen as an example and shown in Fig. 6. Comparing the intercepts of measured and simulated ATM response curves, the first and third combinations shown in Fig. 6a and c are underestimated (-0.068 , -0.102 , respectively), while the second and fourth combinations shown in Fig. 6b and d are overestimated (-0.040 , -0.042 , respectively). Only the fifth combination, shown in Fig. 6e and where the FPI parameters obtained from INTA and ATMG are used for internal reference and atmospheric response determination, shows similar intercept values (-0.055).

In order to further determine which combination matches best to the actual MRRC, the procedure adopted from ALADIN (Dabas and Huber, 2017) is used. Herein, ε_R is defined as the difference between response from the respective SRRCs and the MRRC. Then, the linear fit of ε_R as a function of f' is made, returning a slope ε_{R_slope} and intercept $\varepsilon_{R_intercept}$ based on Eqs. (18a)–(18b) in (Dabas and Huber, 2017). Ideally, if the results from the SRRC and MRRC match, ε_R should be randomly fluctuating about 0 with zero $\varepsilon_{R_intercept}$ and ε_{R_slope} . Table 4 also lists the fitting results using five different combinations, and it is shown that the fifth combination has second smallest absolute ε_{R_slope} and $\varepsilon_{R_intercept}$, offering the overall consistence with the measured case. Therefore, the fifth combination will be used for initial SRRC determination.

5.3 Optimization of FPI transmission characterization

The comparison of sensitivity and intercept of response calibration, as well as the LOS wind velocity derived from SRRC and A2D measurements, can intuitively assess the feasibility

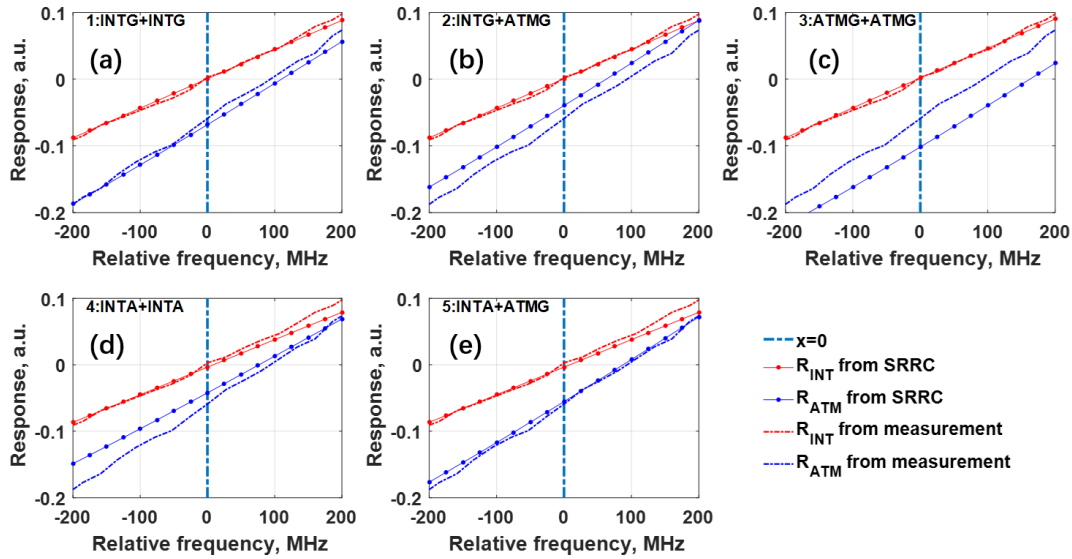


Figure 6. The response functions of internal reference and eighth atmospheric altitude bin from MRRC (red and blue dashed lines, respectively, same on every plot) and different SRRCs using different combinations of FPI transmission parameters (red and blue dotted lines, respectively) a listed in Table 4.

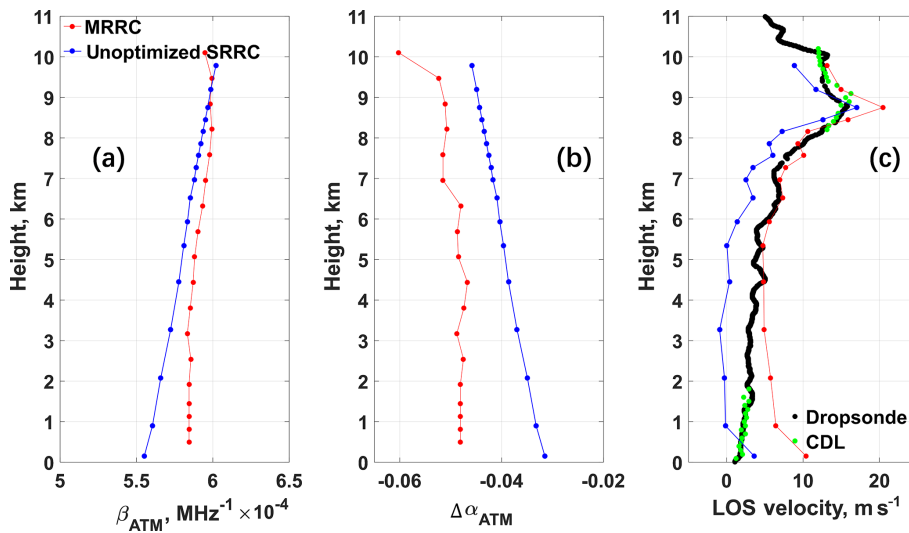


Figure 7. Case study using dropsonde data on 08:27:07 UTC, 23 September 2016: comparison of (a) sensitivity β_{ATM} (MHz^{-1}), (b) $\Delta\alpha_{ATM}$, and (c) LOS velocity between results from A2D Rayleigh channel MRRC (red) and not optimized SRRC (blue). The LOS velocity data from dropsonde (black) and CDL (green) are also presented in Fig. 7c.

of SRRC on A2D Rayleigh wind retrieval. Figure 7a and b show the comparison of β_{ATM} and $\Delta\alpha_{ATM} = \alpha_{ATM} + m_{0,ATM}$ between results from SRRC and A2D Rayleigh channel measurement at 08:33:06 UTC on 23 September 2016, respectively. The LOS wind velocity results from SRRC, MRRC, simultaneous dropsonde measurements, and CDL measurements are presented in Fig. 7c. It can be seen that β_{ATM} and $\Delta\alpha_{ATM}$ derived from SRRC have similar altitude dependence as the one derived from MRRC, indicating that the atmospheric temperature and pressure effect on the re-

sponse calibration is described correctly using the SRRC. However, the discrepancy of $\Delta\alpha_{ATM}$ between results from SRRC and MRRC shown in Fig. 7b is obvious, resulting in a large discrepancy on LOS wind velocity between SRRC and A2D Rayleigh channel datasets shown in Fig. 7c. Taking data from a dropsonde which was released from HALO aircraft at the same location as reference, the LOS results from SRRC are underestimated at a height of 1–8 km where it can be regarded as “clear” Rayleigh wind without Mie contamination, assuming that no aerosols are present in this altitude range.

Thus, a further optimization of FPI parameters needs to be implemented as the stability of the optical alignment of the instrument can remarkably influence the performance of the A2D (Reitebuch et al., 2009; Lemmerz et al., 2017; Lux et al., 2018).

Considering the optical path of the A2D Rayleigh channel, the FPI center frequency is sensitive to the incidence angle of the light. It is a reasonable way to optimize FPI transmission function by fine adjusting the center frequency of filter A or B for the atmospheric path. The Rayleigh spectrometer is composed of double-edge FPIs which are sequentially coupled. Thus, the reflection of the directly illuminated first FPI is directed to the second FPI. Any incidence angle change before the Rayleigh spectrometer will act similarly on both FPIs. Considering that the initial condition was perpendicular incidence, both FPIs are affected similarly regarding a shift in the center frequency. Furthermore, as angular shifts of only a few μrad are expected to occur, large angles do not have to be considered. Therefore, it is justified to consider the same offset for both center frequencies induced by small incidence angle changes. Assuming the center frequencies of filter A and B have the same offset Δf_0 compared to the values obtained from ATM, i.e., $\Delta f_0 = \Delta f_{0,A} = \Delta f_{0,B}$, and the FPI parameters at the internal reference path are regarded as ideal, Fig. 8a and b present the effect of Δf_0 on the sensitivity and intercept of fitting SRRC at each altitude bin, respectively. A cost function $F(\Delta f_0)$ is defined to determine the optimized center frequency as follows:

$$F(\Delta f_0) = \sum_{i=1}^N |V_{\text{LOS,SRRC}}(i) - V_{\text{LOS,reference}}(i)|, \quad (18)$$

where $V_{\text{LOS,SRRC}}(i)$ is the LOS wind velocity derived from SRRC with center frequency offset of Δf_0 at altitude bin i , $V_{\text{LOS,reference}}(i)$ is the LOS wind velocity from simultaneous dropsonde datasets interpolated to the height of A2D Rayleigh channel altitude bin i . Herein, all available altitude bins of SRRC from $i = 1$ to $i = N$ ($N = 17$) are used to calculate the cost function $F(\Delta f_0)$ for different Δf_0 . It is noted that altitude bins affected by aerosol or cloud layer are hard to be flagged, unless there are auxiliary information such as CDL measurements. Therefore, these bins affected by Mie contamination are also taken into consideration in the calculation of $F(\Delta f_0)$ calculation.

It can be seen from Fig. 8c that $F(\Delta f_0)$ has its minimum when the center frequencies of both filter A and B for the atmospheric path increase by 20 MHz, corresponding to the optimization case for LOS wind velocity retrieval using SRRC. The profiles for β_{ATM} and $\Delta\alpha_{\text{ATM}}$ derived from SRRC with FPIs optimization are shown in Fig. 9a and b, respectively. Compared to Fig. 8a and b, the increase in center frequencies of filter A and B ($\Delta f_0 > 0$) results in a decrease in β_{ATM} and $\Delta\alpha_{\text{ATM}}$. As shown in Fig. 9c, the LOS wind velocity derived from SRRC with optimized FPI parameters now fits better to the dropsonde results except for heights be-

low 1 km and at around 9 km where Mie contamination may negatively influence the results.

The derived frequency shift of 20 MHz can basically depend on the alignment of the atmospheric optical path. From experience from the last 10 years, it is known that this alignment is not randomly varying from flight to flight but changes from campaign to campaign. As the telescope and optical receiver are coupled via free optical path (and not via a fiber), the mechanical integration of the A2D into the aircraft prior to each campaign leads to small variation in position and incidence angle on the spectrometers for each deployment. Thus, a valid response calibration can be used for the entire campaign period. This is true for both measured or rather simulated response calibrations. In order to monitor the atmospheric path alignment, the position of the spots generated on the ACCD detector behind each FPI is analyzed and serves as information on the alignment during the flight itself and among the flights during the campaign period. It should be noted that the applied frequency shift is only 20 MHz, which is even less than the frequency separation of successive measurement points during a response calibration (25 MHz) and which corresponds to 1.8×10^{-3} of the FSR of the FPIs.

6 Statistical comparison and assessment

A statistical comparison of LOS wind velocities derived from SRRC with other instrument measurements is required to assess the feasibility and robustness of SRRC under various atmospheric conditions. Firstly, the quality control based on an SNR mask derived from the A2D Mie channel is applied (Marksteiner, 2013) to identify invalid winds retrieved from the Rayleigh channel, which retains a significant amount of valid Rayleigh winds via a cloud and ground mask (Lux et al., 2018). Then, based on the matched dates listed in Table 2, the comparisons of LOS wind velocity from dropsonde measurements, A2D Rayleigh channel measurements, and results derived from SRRC with and without FPI optimization are illustrated in Fig. 10. A linear fit to the data points is presented to provide the slope and intercept. The correlation coefficient r , bias, and standard deviation are also calculated and listed in Table 5. Figure 10a illustrates the comparison of LOS wind velocity between dropsonde and A2D Rayleigh channel measurement, showing that the fit parameters slightly deviate from the ideal case. The correlation coefficient r , bias, and standard deviation of the A2D Rayleigh winds are 0.95, 0.23, and 2.20 m s^{-1} , respectively, which is comparable to results in previous studies (Lux et al., 2018). The comparison of LOS wind velocity between dropsonde measurements and the results derived from SRRC without FPI optimization is illustrated in Fig. 10b. The corresponding correlation coefficient r , bias, and standard deviation are determined to be 0.93, -3.32 , and 2.61 m s^{-1} , respectively. It can be seen that underestimation of the LOS wind velocity from SRRC

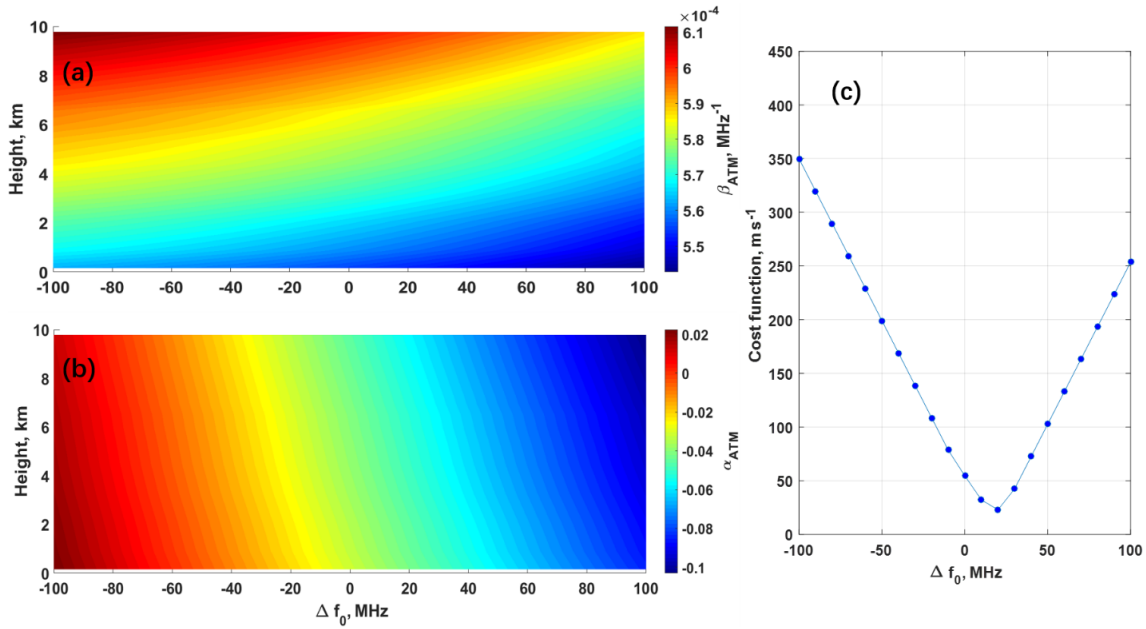


Figure 8. The effect of the center frequency offset, Δf_0 , of filter A and B for atmospheric path on atmospheric response (a) β_{ATM} (b) α_{ATM} , and (c) corresponding cost function $F(\Delta f_0)$.

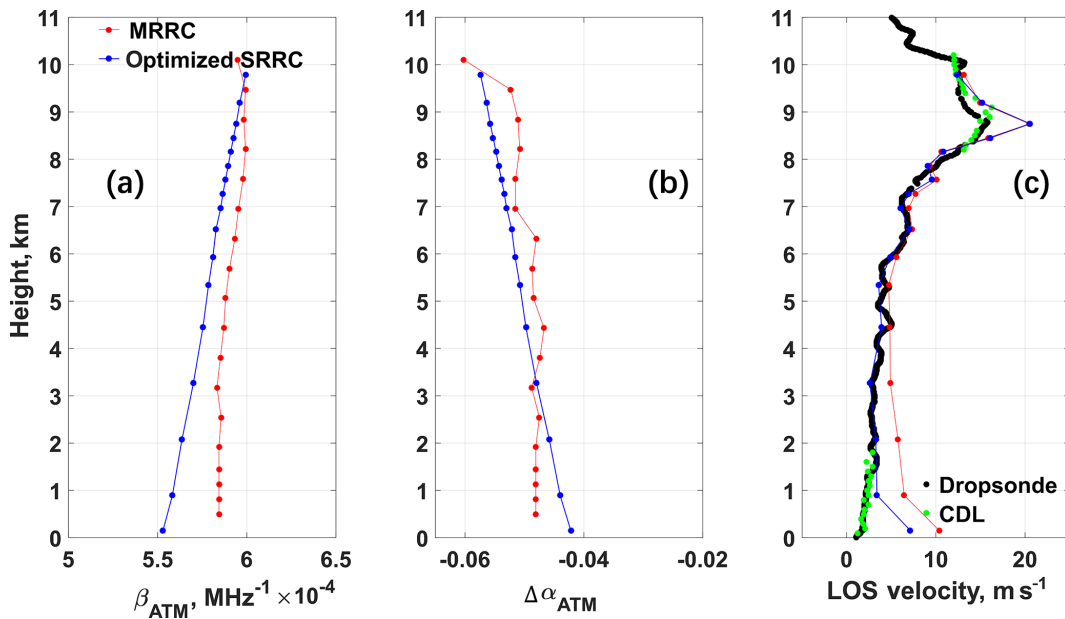


Figure 9. Case study using dropsonde data on 08:27:07 UTC, 23 September 2016: comparison of (a) sensitivity β_{ATM} (MHz^{-1}), (b) $\Delta\alpha_{ATM}$, and (c) retrieved LOS velocity between results from A2D Rayleigh channel MRRC (red) and optimized SRRC (blue). The LOS velocity data from dropsonde (black) and CDL (green) are also presented in Fig. 9c.

without the FPI optimization is significant, demonstrating the necessity of the FPI optimization before wind retrieval when using the SRRC procedure. Figure 10c shows the comparison of LOS wind velocity between dropsonde measurements and results derived from SRRC with FPI optimization. The bias is 0.05 m s^{-1} , which is better than the results from A2D wind

with MRRC, and the correlation coefficient r and standard deviation are 0.94 and 2.52 m s^{-1} , respectively. This is comparable to the results from A2D Rayleigh channel measurements and implies the feasibility and robustness of SRRC with FPI optimization on A2D Rayleigh wind retrieval. From

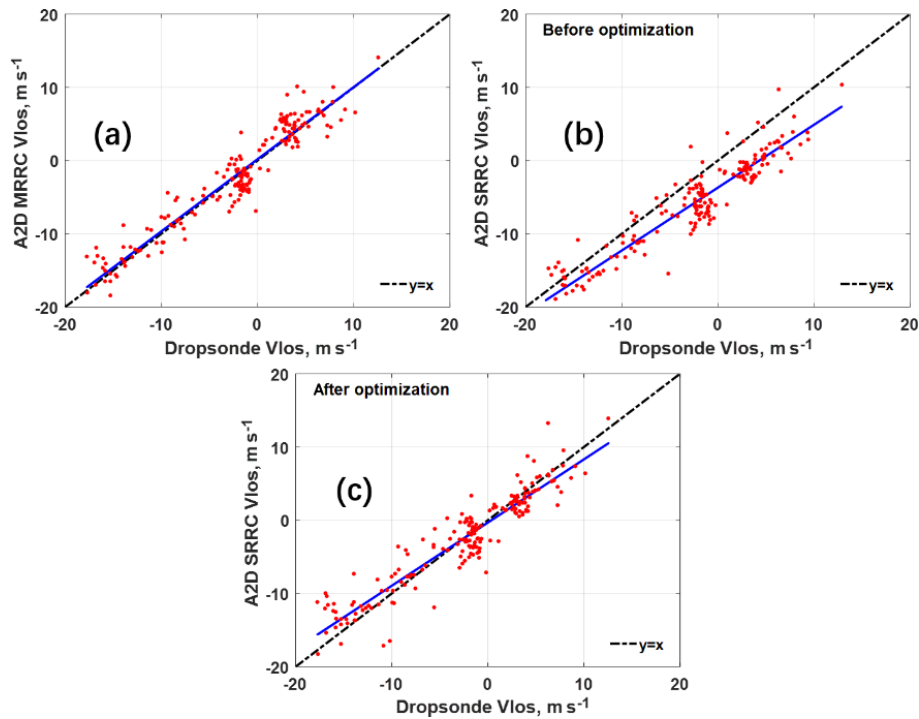


Figure 10. LOS velocity (Vlos) comparison obtained from (a) dropsonde and A2D Rayleigh channel measurement with MRRC (b) dropsonde and SRRC before FPI optimization, and (c) dropsonde and SRRC after FPI optimization.

Table 5. Statistical comparison between results from dropsonde, A2D Rayleigh channel measurement, and SRRC before and after FPI optimization during 2016 campaign.

Statistical parameters	Dropsonde to A2D MRRC	Dropsonde to A2D SRRC before FPI optimization	Dropsonde to A2D SRRC after FPI optimization
Number of compared data pairs	185	190	190
Correlation coefficient, r	0.95	0.93	0.94
Slope	0.99	0.86	0.86
Intercept, m s^{-1}	0.19	-3.70	-0.32
Mean bias, m s^{-1}	0.23	-3.32	0.05
Standard deviation, m s^{-1}	2.20	2.61	2.52

now on, only SRRC results with optimized FPI parameters will be discussed.

In order to evaluate the atmospheric temperature effect on response calibration procedure and wind retrieval, Fig. 11a shows the atmospheric temperature difference between SRRC and MRRC, where the red square and blue bar represent the mean bias and standard deviation at each height, respectively. The differences in sensitivity and intercept of response calibration between SRRC and MRRC are illustrated in Fig. 11b and c. It can be seen from Fig. 11a that larger discrepancies of atmospheric temperature can be found at about 7 to 8 km with mean differences of less than 5 K. But for the corresponding differences in sensitivity and intercept, shown in Fig. 11b and c, larger discrepancies appear at lower heights, especially at heights lower than 3 km.

On the one hand, it is implied that the atmospheric temperature effect is less significant in the statistical analysis of the 2016 flight campaign. On the other hand, due to the ground elevation during A2D instrument response calibration, the measured response calibration below 2 km in this case cannot be obtained, and thus the measured response calibration at a height of 2 km is used for LOS velocity retrieval below 2 km, causing larger discrepancies shown in Fig. 11b and c.

The height-dependent comparisons of LOS wind velocity from different datasets after quality control are illustrated in Fig. 12. The mean differences in LOS wind velocity between SRRC and A2D Rayleigh channel measurements shown in Fig. 12a have opposite trends at lower and higher heights, which is related to the intercept difference shown in Fig. 9b. Similar LOS wind velocity difference tendencies can be seen

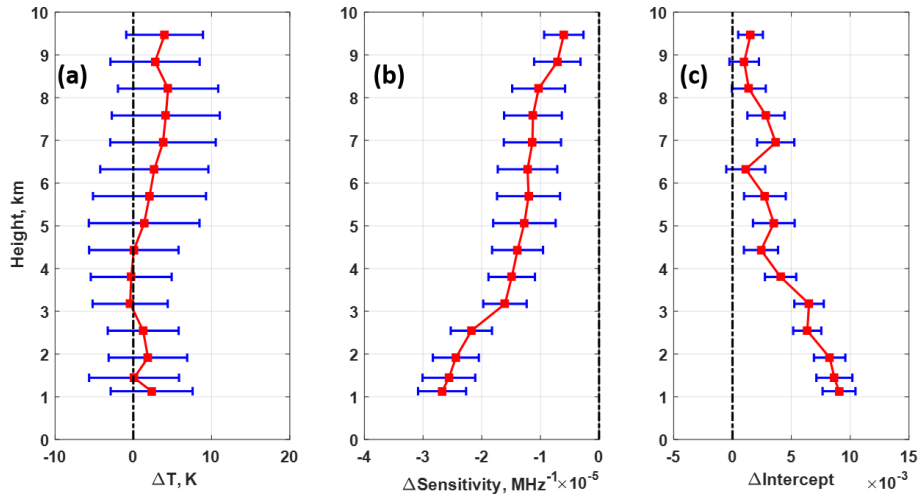


Figure 11. (a) Difference in temperature between dropsondes used in SRRC and the one during A2D instrument response calibration, and the difference in (b) sensitivity and (c) intercept derived from A2D SRRC and MRRC. The red square and the blue bar represent the mean bias and standard deviation at each height, respectively.

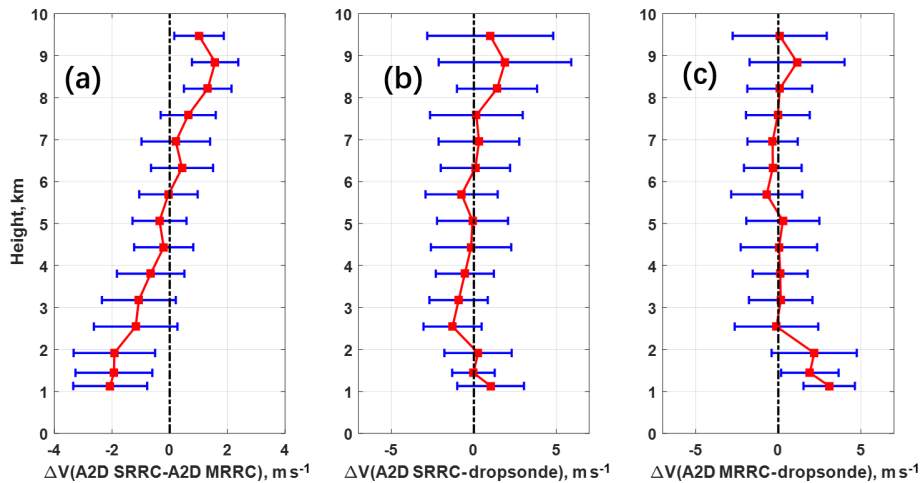


Figure 12. Comparison of profiles for LOS velocity (a) between A2D SRRC and MRRC, (b) SRRC and dropsonde, and (c) MRRC and dropsonde.

in Fig. 12b and c for the case between SRRC and dropsonde and between A2D Rayleigh channel measurement and dropsonde. The error bars of LOS velocity derived from MRRC and SRRC can also be seen in Fig. 12b and c, respectively. Generally, larger discrepancies occur at heights of lower than 2 km and higher than 8 km. The LOS wind velocities derived from A2D Rayleigh channel measurements have more obvious discrepancies at heights lower than 2 km compared to the results derived from SRRC. This is consistent with the fact that inappropriate values of A2D calibration parameters at lower height result in additional LOS velocity bias, and this is one of the limitations of the A2D MRRC approach, which can be overcome using the SRRC approach. In order to analyze the height-dependent deviations more comprehensively, Fig. 13 shows the examples of LOS wind velocity from A2D

Rayleigh channel measurement, dropsonde measurements, SRRC, and CDL on 23 September 2016, where dropsonde and CDL are interpolated to the A2D height. The CDL provides high performance with accuracy of $<0.3 \text{ m s}^{-1}$ and precision of $<1 \text{ m s}^{-1}$ (Chouza et al., 2016), and thus we prefer to plot no error bars to the CDL measurements. Larger discrepancies can be obviously seen at heights greater than 8 km due to the occurrence of a cloud layer in these cases.

All matched CDL observations listed in Table 2 are used to assess the probability of Mie contamination on Rayleigh wind results. Figure 14a shows the CDL measurement behavior where valid (or invalid) signal is represented as 1 (or 0). The Mie contamination fraction F_{Mie} , shown in Fig. 14b, is defined as the ratio of the number of valid signals to all CDL observation number N (here $N = 12$) at each height.

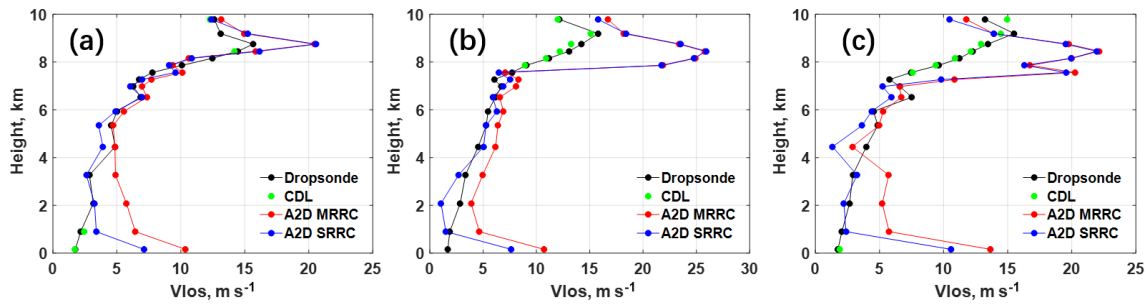


Figure 13. LOS velocity from dropsonde (black), CDL (green), A2D MRRC (red), and A2D SRRC (blue) on (a) 08:27:07, (b) 08:33:06, and (c) 08:39:05 UTC, 23 September 2016.

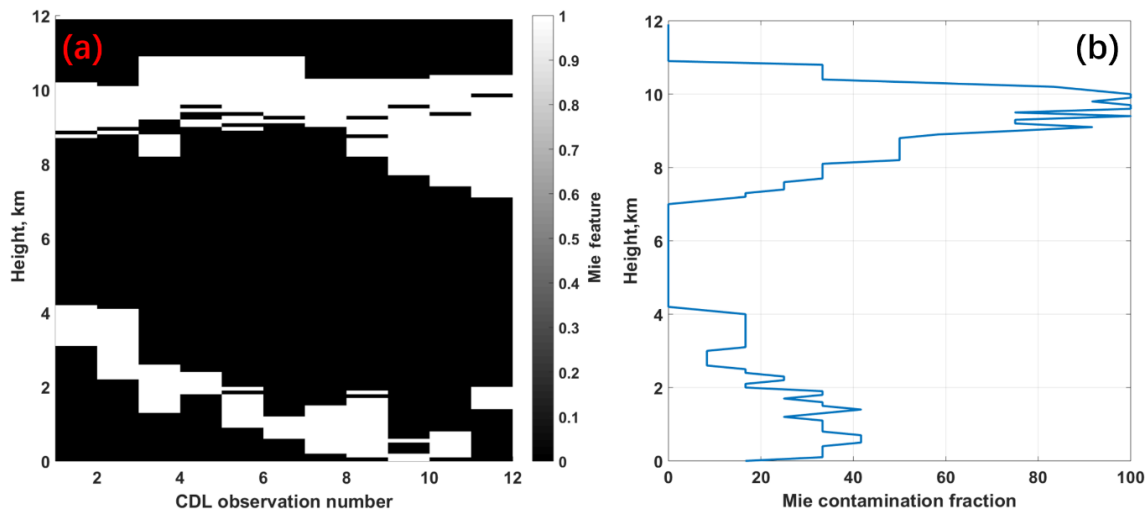


Figure 14. (a) Matched CDL measurement where valid (or invalid) signal is represented as 1 (or 0). (b) Mie contamination fraction, F_{Mie} , of selected datasets from Table 2 used for comparison.

Obviously, F_{Mie} at heights of lower than 2 km and between 7 and 11 km has high values, giving the important cause for the larger discrepancies observed in Figs. 12 and 13. It is also implied that even though quality control mentioned above is used, the applied SNR threshold approach cannot guarantee the accurate removal of Rayleigh wind affected by Mie contamination.

7 Summary and conclusion

As the first airborne direct-detection wind lidar, the A2D has been deployed in several ground and airborne campaigns over the last 12 years for validating the measurement principle of Aeolus and further improving the algorithm and measurement strategy. The A2D instrument calibration is used to obtain the response calibration function, indicating the relationship between the measured signal intensities and the Doppler frequency shift, which is proportional to the wind speed. However, the atmospheric and instrumental variability currently limit the reliability and repeatability of the A2D instrument response calibration. For instance, there are some

factors affecting the accuracy of response calibration directly during instrument response calibration such as Mie contamination, nonzero vertical velocity, and unavailable response functions for lower altitudes due to high ground elevation. The SRRC is thus presented in this paper to overcome these limitations of MRRC.

The most critical part of SRRC is the determination of the transmission characteristics of FPIs for the internal reference and atmospheric paths. Unlike the method used for the determination of ALADIN FPI transmission curve in the atmospheric path where a tilted top-hat function is used, the A2D candidate SRRCs using different combinations of FPI transmission characteristics obtained from different campaigns were calculated and compared to the MRRC firstly. It is found that the combination of FPI parameters obtained from airborne internal reference path measurement and the ground-based atmospheric path measurement are the best to be used for the internal reference and atmospheric response determination by SRRC. Since the stability of the optical properties of the FPIs and the optical alignment of the instrument can remarkably influence the performance of the

A2D, a fine-tuning of FPI center frequencies for the atmospheric path is performed to optimize the SRRC parameters. It is concluded that when the center frequencies of both filter A and B for the atmospheric path increase by 20 MHz, the LOS wind velocity derived from SRRC provides the best consistency with the simultaneous dropsonde measurements. The dropsonde profile of the wind velocity was used as reference in this study to obtain an optimized SRRC. However, it would also be possible to use other references such as the ECMWF model or 2 μm CDL measurements.

What's more, dropsonde data were used as a reference for statistical comparison of LOS wind velocity since it has the generally best spatiotemporal matching and coverage with the results derived from SRRC. Firstly, the biases of LOS wind velocity derived from SRRC without and with FPI optimization are -3.32 and 0.05 m s^{-1} , respectively, showing the necessity of FPI optimization for SRRC wind retrieval. The LOS wind velocity from SRRC with FPI optimization also provides a standard deviation of 2.52 m s^{-1} , showing better accuracy and comparable precision with respect to the results obtained from a conventional (measured) Rayleigh response calibration, which yields a bias of 0.23 m s^{-1} and standard deviation of 2.20 m s^{-1} . This demonstrates the feasibility and robustness of SRRC on A2D Rayleigh wind retrieval. Furthermore, the height-dependent statistical comparison shows that the biases caused by inappropriate calibration parameters below 2 km due to the limiting ground elevation during A2D instrument response calibrations can be overcome by using SRRC, where the response values over the whole altitude range from the aircraft down to mean sea level can be simulated. The larger biases at heights below 2 km and above 8 km are related to residual Mie contamination on the Rayleigh channel. It is also shown that even though quality control based on SNR is used, the accurate removal of points affected by Mie contamination cannot be guaranteed. This shows the necessity of the combination of Mie and Rayleigh channel wind analysis.

It should be noted that the A2D SRRC procedure mentioned in this paper is not a pure "copy" from what is done for ALADIN. There are some significant differences, especially in the generation and update of the transmission characteristics of the FPIs of the Rayleigh receiver for the atmospheric channel. Firstly, as opposed to ALADIN where only the transmission curve in the internal reference path can be measured during instrument spectral registration, the A2D FPI transmission curves both in the internal reference path and in the atmospheric path were measured in previous campaigns, demonstrating slight deviations between both transmission paths due to the aforementioned reasons. Therefore, different combinations of FPI transmission functions derived from different campaigns can be used to derive different candidate SRRCs. After the comparison of candidate SRRCs with simultaneous MRRC, the most satisfactory combination is used for initial SRRC determination. Secondly, as for ALADIN, the core idea of the updated spectral registration

using the Airy and top-hat functions is based on the comparison of the predicted one and a MRRC. The FPI transmission characteristics cannot represent the actual sensitivity of the Rayleigh receiver at the atmospheric path until the difference in predicted and the measured responses coincides within a threshold limit. But for A2D, the optical path characteristic of the A2D Rayleigh channel is considered carefully. The optimization of FPI transmission characteristics was made by fine-tuning the center frequency of filter A or B for the atmospheric path, thus obtaining optimized SRRC.

Overall, the SRRC allows for correction of variability in atmospheric temperature and pressure profiles, giving accurate wind retrieval especially in the cases of large atmospheric temperature differences between the acquisition time and location of the MRRC and the actual wind measurements. It can also overcome the possible ground elevation limitations, improving the accuracy of A2D wind measurements at lower altitudes. Therefore, it can improve the reliability and repeatability caused by atmospheric and instrumental variability during the A2D MRRC process. Further studies based on A2D SRRC will be performed regarding the atmospheric temperature and pressure effect, Mie contamination correction, and the particulate optical properties retrieval.

Data availability. Data used in this paper can be provided upon request by email to Oliver Reitebuch (oliver.reitebuch@dlr.de).

Author contributions. XZ prepared the article, developed the method, and performed the analysis of the A2D data. OR supported the development of the method and analysis of the data. BW provided the 2 μm DWL data and provided the A2D FPI parameters. FW analyzed the dropsonde data and supported the A2D analysis. UM and OL provided tools for the analysis of the A2D observations. BW performed the 2 μm DWL observations. OL, CL, and OR performed the A2D measurements. All co-authors provided input to the article and its revision.

Competing interests. The authors declare that they have no conflict of interest.

Acknowledgements. The development of the ALADIN airborne demonstrator and the airborne campaigns were supported by the German Aerospace Center (Deutsches Zentrum für Luft- und Raumfahrt e.V., DLR) and the European Space Agency (ESA), providing funds related to the preparation of Aeolus (WindVal II, contract no. 4000114053/15/NL/FF/gp). The first author was funded by the Chinese Scholarship Council (CSC number: 201706330031).

Financial support. This research has been supported by the German Aerospace Center Deutsches Zentrum für Luft- und

Raumfahrt e.V., DLR), the European Space Agency (ESA) (grant no. WindVal II, contract no. 4000114053/15/NL/FF/gp), and the Chinese Scholarship Council (CSC) (grant no. 201706330031).

The article processing charges for this open-access publication were covered by a Research Centre of the Helmholtz Association.

Review statement. This paper was edited by Ulla Wandinger and reviewed by two anonymous referees.

References

- Ansmann, A., Wandinger, U., Le Rille, O., Lajas, D., and Straume, A. G.: Particulate backscatter and extinction profiling with the spaceborne high-spectral-resolution Doppler lidar ALADIN: methodology and simulations, *Appl. Optics*, 46, 6606–6622, <https://doi.org/10.1364/AO.46.006606>, 2007.
- Baker, W. E., Atlas, R., Cardinali, C., Clement, A., Emmitt, G. D., Gentry, B. M., Hardesty, R. M., Källén, E., Kavaya, M. J., Langland, R., Ma, Z., Masutani, M., Mccarty, W., Pierce, R. B., Pu, Z., Riishojgaard, L. P., Ryan, J., Tucker, S., Weissmann, M., and Yoe, J. G.: Lidar-measured wind profiles: The missing link in the global observing system, *B. Am. Meteorol. Soc.*, 95, 543–564, 2014.
- Baumgarten, G.: Doppler Rayleigh/Mie/Raman lidar for wind and temperature measurements in the middle atmosphere up to 80 km, *Atmos. Meas. Tech.*, 3, 1509–1518, <https://doi.org/10.5194/amt-3-1509-2010>, 2010.
- Bruneau, D.: Mach–Zehnder interferometer as a spectral analyzer for molecular Doppler wind lidar, *Appl. Optics*, 40, 391–399, <https://doi.org/10.1364/AO.40.000391>, 2001.
- Bruneau, D. and Pelon, J.: Simultaneous measurements of particle backscattering and extinction coefficients and wind velocity by lidar with a Mach–Zehnder interferometer: principle of operation and performance assessment, *Appl. Optics*, 42, 1101–1114, <https://doi.org/10.1364/AO.42.001101>, 2003.
- Chanin, M. L., Garnier, A., Hauchecorne, A., and Porteneuve, J.: A Doppler lidar for measuring winds in the middle atmosphere, *Geophys. Res. Lett.*, 16, 1273–1276, <https://doi.org/10.1029/GL016i01p01273>, 1989.
- Chouza, F., Reitebuch, O., Jähn, M., Rahm, S., and Weinzierl, B.: Vertical wind retrieved by airborne lidar and analysis of island induced gravity waves in combination with numerical models and in situ particle measurements, *Atmos. Chem. Phys.*, 16, 4675–4692, <https://doi.org/10.5194/acp-16-4675-2016>, 2016.
- Dabas, A. and Huber, D.: Generation and update of AUX_CSR, AE-TN-MFG-L2P-CAL-003, Météo-France/CNRM, 4.0, 43 pp., 2017.
- Dabas, A., Denneulin, M. L., Flamant, P., Loth, C., Garnier, A., and Dolfi-Bouteyre, A.: Correcting winds measured with a Rayleigh Doppler lidar from pressure and temperature effects, *Tellus A*, 60, 206–215, <https://doi.org/10.1111/j.1600-0870.2007.00284.x>, 2008.
- Dou, X., Han, Y., Sun, D., Xia, H., Shu, Z., Zhao, R., Shanguan, M., and Guo, J.: Mobile Rayleigh Doppler lidar for wind and temperature measurements in the stratosphere and lower mesosphere, *Opt. Express*, 22, A1203–A1221, <https://doi.org/10.1364/OE.22.0A1203>, 2014.
- Durand, Y., Chinal, E., Endemann, M., Meynard, R., Reitebuch, O., and Treichel, R.: ALADIN airborne demonstrator: a Doppler Wind lidar to prepare ESA’s ADM-Aeolus Explorer mission, in: *Proceedings of Earth Observing Systems XI. International Society for Optics and Photonics*, San Diego, California, United States, September 2006.
- ESA: ADM-Aeolus: Science Report, ESA Communication Production Office, 2008.
- Flamant, P., Cuesta, J., Denneulin, M. L., Dabas, A., and Huber, D.: ADM-Aeolus retrieval algorithms for aerosol and cloud products, *Tellus A*, 60, 273–286, <https://doi.org/10.1111/j.1600-0870.2007.00287.x>, 2008.
- Flamant, P., Lever, V., Martinet, P., Flament, T., Cuesta, J., Dabas, A., Olivier, M., and Huber, D.: ADM-Aeolus L2A Algorithm Theoretical Baseline Document, AE-TN-IPSL-GS-001, 5.5, 89 pp., 2017.
- Flesia, C. and Korb, C. L.: Theory of the double-edge molecular technique for Doppler lidar wind measurement, *Appl. Optics*, 38, <https://doi.org/10.1364/AO.38.000432>, 432–440, 1999.
- Flesia, C., Korb, C. L., and Hirt, C.: Double-edge molecular measurement of lidar wind profiles at 355 nm, *Opt. Lett.*, 25, 1466–1468, <https://doi.org/10.1364/OL.25.001466>, 2000.
- Garnier, A. and Chanin, M. L.: Description of a Doppler Rayleigh lidar for measuring winds in the middle atmosphere, *Appl. Phys. B*, 55, 35–40, <https://doi.org/10.1007/BF00348610>, 1992.
- Gentry, B. M., Chen, H., and Li, S. X.: Wind measurements with 355-nm molecular Doppler lidar, *Opt. Lett.*, 25, 1231–1233, 2000.
- Herbst, J. and Vrancken, P.: Design of a monolithic Michelson interferometer for fringe imaging in a near-field, UV, direct-detection Doppler wind lidar, *Appl. Optics*, 55, 6910–6929, <https://doi.org/10.1364/AO.55.006910>, 2016.
- Hildebrand, J., Baumgarten, G., Fiedler, J., Hoppe, U.-P., Kailer, B., Lübken, F.-J., and Williams, B. P.: Combined wind measurements by two different lidar instruments in the Arctic middle atmosphere, *Atmos. Meas. Tech.*, 5, 2433–2445, <https://doi.org/10.5194/amt-5-2433-2012>, 2012.
- Korb, C. L., Gentry, B. M., and Weng, C. Y.: Edge technique: theory and application to the lidar measurement of atmospheric wind, *Appl. Optics*, 31, 4202–4213, <https://doi.org/10.1364/AO.31.004202>, 1992.
- Korb, C. L., Gentry, B. M., Li, S. X., and Flesia, C.: Theory of the double-edge technique for Doppler lidar wind measurement, *Appl. Optics*, 37, 3097–3104, <https://doi.org/10.1364/AO.37.003097>, 1998.
- Lemmerz, C., Lux, O., Reitebuch, O., Witschas, B., and Wührer, C.: Frequency and timing stability of an airborne injection-seeded Nd: YAG laser system for direct-detection wind lidar, *Appl. Optics*, 56, 9057–9068, <https://doi.org/10.1364/AO.56.009057>, 2017.
- Li, Z., Lemmerz, C., Paffrath, U., Reitebuch, O., and Witschas, B.: Airborne Doppler lidar investigation of sea surface reflectance at a 355-nm ultraviolet wavelength, *J. Atmos. Ocean. Tech.*, 27, 693–704, <https://doi.org/10.1175/2009JTECHA1302.1>, 2010.
- Liu, Z. S., Wu, D., Liu, J. T., Zhang, K. L., Chen, W. B., Song, X. Q., Hair, J. W., and She, C. Y.: Low-altitude atmospheric wind measurement from the combined Mie and Rayleigh backscattering by

- Doppler lidar with an iodine filter, *Appl. Optics*, 41, 7079–7086, <https://doi.org/10.1364/AO.41.007079>, 2002.
- Lux, O., Lemmerz, C., Weiler, F., Marksteiner, U., Witschas, B., Rahm, S., Schäfler, A., and Reitebuch, O.: Airborne wind lidar observations over the North Atlantic in 2016 for the pre-launch validation of the satellite mission Aeolus, *Atmos. Meas. Tech.*, 11, 3297–3322, <https://doi.org/10.5194/amt-11-3297-2018>, 2018.
- Marksteiner, U.: Airborne wind lidar observations for the validation of the ADM-Aeolus instrument, PhD thesis, Technische Universität München, 176 pp., 2013.
- Marksteiner, U., Lemmerz, C., Lux, O., Rahm, S., Schäfler, A., Witschas, B., and Reitebuch, O.: Calibrations and Wind Observations of an Airborne Direct-Detection Wind LiDAR Supporting ESA's Aeolus Mission, *Remote Sens.*, 10, 2056, <https://doi.org/10.3390/rs10122056>, 2018.
- McGill, M. J. and Spinhirne, J. D.: Comparison of two direct-detection Doppler lidar techniques, *Opt. Eng.*, 37, 2675–2686, <https://doi.org/10.1117/1.601804>, 1998.
- McKay, J. A.: Modeling of direct detection Doppler wind lidar. II. The fringe imaging technique, *Appl. Optics*, 37, 6487–6493, <https://doi.org/10.1364/AO.37.006487>, 1998.
- McKay, J. A.: Assessment of a multibeam Fizeau wedge interferometer for Doppler wind lidar, *Appl. Optics*, 41, 1760–1767, <https://doi.org/10.1364/AO.41.001760>, 2002.
- McKay, J. A. and Rees, D. J.: High-performance Fabry-Perot etalon mount for spaceflight, *Opt. Eng.*, 39, 315–319, <https://doi.org/10.1117/1.602361>, 2000a.
- McKay, J. A. and Rees, D.: Space-based Doppler wind lidar: modeling of edge detection and fringe imaging Doppler analyzers, *Adv. Space. Res.*, 26, 883–891, [https://doi.org/10.1016/S0273-1177\(00\)00026-0](https://doi.org/10.1016/S0273-1177(00)00026-0), 2000b.
- Pan, X., Shneider, M. N., and Miles, R. B.: Coherent Rayleigh-Brillouin scattering in molecular gases, *Phys. Rev. A*, 69, 033814, <https://doi.org/10.1103/PhysRevA.69.033814>, 2004.
- Paffrath, U., Lemmerz, C., Reitebuch, O., Witschas, B., Nikolaus, I., and Freudenthaler, V.: The airborne demonstrator for the direct-detection Doppler wind lidar ALADIN on ADM-Aeolus. Part II: Simulations and Rayleigh Receiver Radiometric performance, *J. Atmos. Ocean. Tech.*, 26, 2516–2530, <https://doi.org/10.1175/2009JTECHA1314.1>, 2009.
- Reitebuch, O.: Wind Lidar for Atmospheric Research, in: *Atmospheric physics: Background, Methods, Trends*, edited by: Schumann, U., Research Topics in Aerospace, Springer, Berlin, London, 487–507, 2012a.
- Reitebuch, O.: The space-borne wind lidar mission ADM-Aeolus, in: *Atmospheric Physics – Background, Methods, Trends*, edited by: Schumann, U., Research Topics in Aerospace, Springer, Berlin, London, 815–827, 2012b.
- Reitebuch, O., Lemmerz, C., Nagel, E., Paffrath, U., Durand, Y., Endemann, M., Fabre, F., and Chaloupy, M.: The airborne demonstrator for the direct-detection Doppler wind lidar ALADIN on ADM-Aeolus. Part I: Instrument design and comparison to satellite instrument, *J. Atmos. Ocean. Tech.*, 26, 2501–2515, <https://doi.org/10.1175/2009JTECHA1309.1>, 2009.
- Reitebuch, O., Huber, D., and Nikolaus, I.: ADM-Aeolus Algorithm Theoretical Basis Document (ATBD) Level1B Products, AE-RPDLR-L1B-001, DLR, 4.4, 117 pp., 2018.
- Rennie, M., Tan, D., Andersson, E., Poli, P., Dabas, A., Kloe, J. D., Marseille, G. J., and Stoffelen, A.: Aeolus Level-2B Algorithm Theoretical Basis Document, AE-TN-ECMWF-L2BP-0023, ECMWF, 3.0, 109 pp., 2017.
- Schäfler, A., Craig, G., Wernli, H., Arbogast, P., Doyle, J. D., McTaggart-Cowan, R., Methven, J., Rivière, G., Ament, F., Boettcher, M., Bramberger, M., Cazenave, Q., Cotton, R., Crewell, S., Delanoë, J., Dörnbrack, A., Ewald, F., Fix, A., Gray, S. L., Grob, H., Groß, S., Hagen, M., Harvey, B., Hirsch, L., Jacob, M., Kölling, T., Konow, H., Lemmerz, C., Lux, O., Magnusson, L., Mayer, B., Mech, M., Moore, R., Pelon, J., Quinting, J., Rahm, S., Rapp, M., Rautenhaus, M., Reitebuch, O., Reynolds, C. A., Sodemann, H., Spengler, T., Vaughan, G., Wendisch, M., Wirth, M., Witschas, B., Wolf, K., and Zinner, T.: The North Atlantic Waveguide and Downstream Impact Experiment, *B. Am. Meteorol. Soc.*, 99, 1607–1637, 2018.
- She, C. Y., Yue, J., Yan, Z. A., Hair, J. W., Guo, J. J., Wu, S. H., and Liu, Z. S.: Direct-detection Doppler wind measurements with a Cabannes–Mie lidar: A. Comparison between iodine vapor filter and Fabry–Perot interferometer methods, *Appl. Optics*, 46, 4434–4443, <https://doi.org/10.1364/AO.46.004434>, 2007.
- Souprayen, C., Garnier, A., Hertzog, A., Hauchecorne, A., and Porteneuve, J.: Rayleigh–Mie Doppler wind lidar for atmospheric measurements. I. Instrumental setup, validation, and first climatological results, *Appl. Optics*, 38, 2410–2421, <https://doi.org/10.1364/AO.38.002410>, 1999a.
- Souprayen, C., Garnier, A., and Hertzog, A.: Rayleigh–Mie Doppler wind lidar for atmospheric measurements. II. Mie scattering effect, theory, and calibration, *Appl. Optics*, 38, 2422–2431, <https://doi.org/10.1364/AO.38.002422>, 1999b.
- Stoffelen, A., Pailleux, J., Källén, E., Vaughan, J. M., Isaksen, I., Flamant, P., Wergen, W., Andersson, E., Schyberg, H., Culoma, A., Meynard, R., and Ingmann, P.: The atmospheric dynamics mission for global wind field measurement, *B. Am. Meteorol. Soc.*, 86, 73–88, <https://doi.org/10.1175/BAMS-86-1-73>, 2005.
- Sun, X. J., Zhang, R. W., Marseille, G. J., Stoffelen, A., Donovan, D., Liu, L., and Zhao, J.: The performance of Aeolus in heterogeneous atmospheric conditions using high-resolution radiosonde data, *Atmos. Meas. Tech.*, 7, 2695–2717, <https://doi.org/10.5194/amt-7-2695-2014>, 2014.
- Tan, D. G., Andersson, E., Kloe, J. D., Marseille, G. J., Stoffelen, A., Poli, P., Denneulin, M. L., Dabas, A., Huber, D., Reitebuch, O., Flamant, P., Le Rille, O., and Nett, H.: The ADM-Aeolus wind retrieval algorithms, *Tellus A*, 60, 191–205, <https://doi.org/10.1111/j.1600-0870.2007.00285.x>, 2008.
- Tenti, G., Boley, C. D., and Desai, R. C.: On the kinetic model description of Rayleigh–Brillouin scattering from molecular gases, *Can. J. Phys.*, 52, 285–290, <https://doi.org/10.1139/p74-041>, 1974.
- Thuillier, G. and Hersé, M.: Thermally stable field compensated Michelson interferometer for measurement of temperature and wind of the planetary atmospheres, *Appl. Optics*, 30, 1210–1220, <https://doi.org/10.1364/AO.30.001210>, 1991.
- Tucker, S. C., Weimer, C. S., Baidar, S., and Hardesty, R. M.: The Optical Autocovariance Wind Lidar. Part I: OAWL Instrument Development and Demonstration, *J. Atmos. Ocean. Tech.*, 35, 2079–2097, <https://doi.org/10.1175/JTECH-D-18-0024.1>, 2018.
- Wang, Z., Liu, Z., Liu, L., Wu, S., Liu, B., Li, Z., and Chu, X.: Iodine-filter-based mobile Doppler lidar to make continuous and

- full-azimuth-scanned wind measurements: data acquisition and analysis system, data retrieval methods, and error analysis, *Appl. Optics*, 49, 6960–6978, <https://doi.org/10.1364/AO.49.006960>, 2010.
- Weiler, F.: Bias correction using ground echoes for the airborne demonstrator of the wind lidar on the ADM-Aeolus mission, Master's thesis, University of Innsbruck, 96 pp., available at: <https://resolver.obvsg.at/urn:nbn:at:at-ubi:1-7104>, last access: 11 October 2017.
- Weissmann, M. and Cardinali, C.: Impact of airborne Doppler lidar observations on ECMWF forecasts, *Q. J. Roy. Meteor. Soc.*, 133, 107–116, <https://doi.org/10.1002/qj.16>, 2007.
- Witschas, B.: Analytical model for Rayleigh–Brillouin line shapes in air, *Appl. Optics*, 50, 267–270, <https://doi.org/10.1364/AO.50.000267>, 2011a.
- Witschas, B.: Analytical model for Rayleigh–Brillouin line shapes in air: errata, *Appl. Optics*, 50, 5758–5758, <https://doi.org/10.1364/AO.50.005758>, 2011b.
- Witschas, B.: Experiments on spontaneous Rayleigh–Brillouin scattering in air, PhD thesis, Friedrich-Schiller-Universität, Jena, 112 pp., available at: <http://elib.dlr.de/98547/> (last access: 8 March 2017), 2011c.
- Witschas, B., Lemmerz, C., and Reitebuch, O.: Horizontal lidar measurements for the proof of spontaneous Rayleigh–Brillouin scattering in the atmosphere, *Appl. Optics*, 51, 6207–6219, <https://doi.org/10.1364/AO.51.006207>, 2012.
- Witschas, B., Lemmerz, C., and Reitebuch, O.: Daytime measurements of atmospheric temperature profiles (2–15 km) by lidar utilizing Rayleigh–Brillouin scattering, *Opt. Lett.*, 39, 1972–1975, <https://doi.org/10.1364/OL.39.001972>, 2014.
- Xia, H., Dou, X., Sun, D., Shu, Z., Xue, X., Han, Y., Hu, D., Han, Y., and Cheng, T.: Mid-altitude wind measurements with mobile Rayleigh Doppler lidar incorporating system-level optical frequency control method, *Opt. Express*, 20, 15286–15300, <https://doi.org/10.1364/OE.20.015286>, 2012.
- Žagar, N., Stoffelen, A., Marseille, G. J., Accadia, C., and Schlüssel, P.: Impact assessment of simulated Doppler wind lidars with a multivariate variational assimilation in the tropics, *Mon. Weather Rev.*, 136, 2443–2460, <https://doi.org/10.1175/2007MWR2335.1>, 2008.