



UNIVERSIDADE ESTADUAL DE CAMPINAS
SISTEMA DE BIBLIOTECAS DA UNICAMP
REPOSITÓRIO DA PRODUÇÃO CIENTÍFICA E INTELLECTUAL DA UNICAMP

Versão do arquivo anexado / Version of attached file:

Versão do Editor / Published Version

Mais informações no site da editora / Further information on publisher's website:

https://www.scielo.br/scielo.php?pid=S1415-47572015000100055&script=sci_arttext

DOI: 10.1590/S1415-475738138120140275

Direitos autorais / Publisher's copyright statement:

©2015 by Sociedade Brasileira de Genética. All rights reserved.

DIRETORIA DE TRATAMENTO DA INFORMAÇÃO

Cidade Universitária Zeferino Vaz Barão Geraldo

CEP 13083-970 – Campinas SP

Fone: (19) 3521-6493

<http://www.repositorio.unicamp.br>



Chromosomal localization of microsatellite loci in *Drosophila mediopunctata*

Renato Cavasini, Marcos Roberto Dias Batista and Louis Bernard Klaczko

Departamento de Genética, Evolução e Bioagentes, Instituto de Biologia, Universidade Estadual de Campinas, Campinas, SP, Brazil.

Abstract

Drosophila mediopunctata has been used as a model organism for genetics and evolutionary studies in the last three decades. A linkage map with 48 microsatellite loci recently published for this species showed five syntenic groups, which had their homology determined to *Drosophila melanogaster* chromosomes. Then, by inference, each of the groups was associated with one of the five major chromosomes of *D. mediopunctata*. Our objective was to carry out a genetic (chromosomal) analysis to increase the number of available loci with known chromosomal location. We made a simultaneous analysis of visible mutant phenotypes and microsatellite genotypes in a backcross of a standard strain and a mutant strain, which had each major autosome marked. Hence, we could establish the chromosomal location of seventeen loci; including one from each of the five major linkage groups previously published, and twelve new loci. Our results were congruent with the previous location and they open new possibilities to future work integrating microsatellites, chromosomal inversions, and genetic determinants of physiological and morphological variation.

Keywords: *tripunctata*, SSR, genetic chromosomal analysis, BLAST search, Muller's elements.

Received: September 21, 2014; Accepted: November 23, 2014.

Chromosomal localization of genetic markers is an essential tool for the identification of factors associated to biological traits (Carvalho and Klaczko, 1993; Cazemajor *et al.*, 1997; Noor *et al.*, 2000; Hatadani *et al.*, 2004). Several traits are mapped using microsatellite loci, for example: growth rates (Laine *et al.*, 2013; Ori *et al.*, 2014), behaviour (Oxley *et al.*, 2010; Laine *et al.*, 2014), courtship song (Schäfer *et al.*, 2010; Lagisz *et al.*, 2012), viability (Plough, 2012), male sterility (Moriguchi *et al.*, 2014), pathogen resistance (Stephens *et al.*, 2014), among others. Furthermore, physical and linkage maps may allow insights about evolutionary events that occurred in natural populations and genomic rearrangement within a specific line (Barker *et al.*, 2009; Santos *et al.*, 2010; Simões *et al.*, 2012).

Drosophila mediopunctata is a forest dwelling Neotropical species that has the typical "primitive" *Drosophila* karyotype with five pairs of rods and a pair of dot chromosomes (Kastritsis, 1966). In the last three decades, this species has been used as a model organism for genetics and evolutionary studies (Klaczko, 2006) that characterized chromosomal inversion polymorphism (Peixoto and Klaczko, 1991; Ananina *et al.*, 2004; Batista *et al.*, 2012), morphological variation (Klaczko and Bitner-Mathé, 1990;

Andrade *et al.*, 2005) and their association (Bitner-Mathé *et al.*, 1995; Hatadani *et al.*, 2004; Andrade *et al.*, 2009).

A total of 134 microsatellite loci markers were described for *D. mediopunctata* (Laborda *et al.*, 2009). A linkage map with five syntenic groups for 48 loci was published (Laborda *et al.*, 2012). Each of these groups was associated to one of the five major *D. mediopunctata* chromosomes by cross-reference to BLAST searches on the *D. melanogaster* genome (a 49th locus was assigned to the dot chromosome). The synteny between *D. mediopunctata* and *D. melanogaster* chromosomes was established using fluorescence *in situ* hybridization (FISH) in polytene chromosomes of highly conserved genes (Brianti *et al.*, 2013). An analysis of the *Drosophila* 12 Genomes Consortium (2007) data showed that the chromosomes in this genus are highly conserved (Bhutkar *et al.*, 2008); 95% of about 13,000 *D. melanogaster* genes are located on the same Muller element across the twelve species. Thus, the use of BLAST searches to locate a marker is reliable, but a small fraction of markers remains without a completely certain location. Usually, a threshold value for the BLAST e-value in the range of 10^{-3} to 10^{-5} is frequently used to assign homology; thus 10^{-5} represents a conservative approach for multiple comparisons (Domazet-Lošo and Tautz, 2003). Therefore, our main objective is to increase the number of available loci assigned to chromosomes.

We performed a chromosomal localization of *D. mediopunctata* microsatellite loci using a genetic (chro-

mosomal) analysis. Three inbred strains were used. Strain CR27A carries mutations with visible effects marking each of the major autosomes: it is heterozygous for the dominant visible and recessive lethal mutation *Delta-5* ($\Delta-5$), located on chromosome II; and it is homozygous for recessive mutations *cabernet* (*cb*), *coral* (*cr*) and *alfinete* (*al*), located on chromosomes III, IV and V, respectively. CR27B shares with CR27A the same genetic background, except for chromosome II, where it is homozygous for the wild type chromosome of CR27A. The other strain (ITA24P) has no marker mutations (wild type alleles for the mutations mentioned above). A description of the strains and the crossing outline are shown in detail by Carvalho and Klaczko (1993) and Hatadani *et al.* (2004).

Briefly, we crossed a CR27A male with an ITA24P virgin female in vials with trimeveledon culture medium (Rocha *et al.*, 2009) at 18 °C. Every other day, the couple was transferred to a new vial for up to six transfers. The analysis of the first generation flies (three F1 males and three F1 females) allowed the identification of sex-linked microsatellite loci by the inheritance pattern (heterozygous females and hemizygous males for X-linked loci). Autosomal microsatellite loci were located analyzing the backcross offspring of an F1 male with a CR27B virgin female. Since there is no recombination in males of *D. mediopunctata* (Cavasini *et al.*, 2010), the microsatellite alleles of CR27A strain always segregate with their syntenic visible mutation (microsatellite locus and visible mutation on the same chromosome). A sample of 48 backcross offspring was used for this analysis, three individuals from each of the 16 possible phenotypes - permutations of four (mutation or wild) phenotypes. Figure 1 shows an example of this procedure.

The genomic DNA extraction followed the protocol described by Aljanabi and Martinez (1997) with modifications. Amplification of microsatellite loci followed the parameters described in Cavasini *et al.* (2013). Polymerase Chain Reaction (PCR) products were all firstly visualized in 1% agarose gels stained with SYBR® Safe DNA gel staining (Invitrogen); thereafter, if necessary, they were also revealed in 6% polyacrylamide gels stained with AgNO₃. Silver staining procedures followed the method described by Creste *et al.* (2001) with modifications.

A total of 36 loci were tested, 17 of which were located (Table 1). It was not possible to locate the other loci due to the presence of shared alleles by the strains used in the crosses. Five loci were used as controls since they were already listed in the linkage map previously published by Laborda *et al.* (2012). Each one is located in one of the five corresponding syntenic groups established by the linkage map, and respectively on the five major *D. mediopunctata* chromosomes. Therefore, our results were congruent with the previous localization established by homology, thus, confirming the location of 49 loci tested by Laborda *et al.* (2012). In addition, 12 loci were added, totaling 61

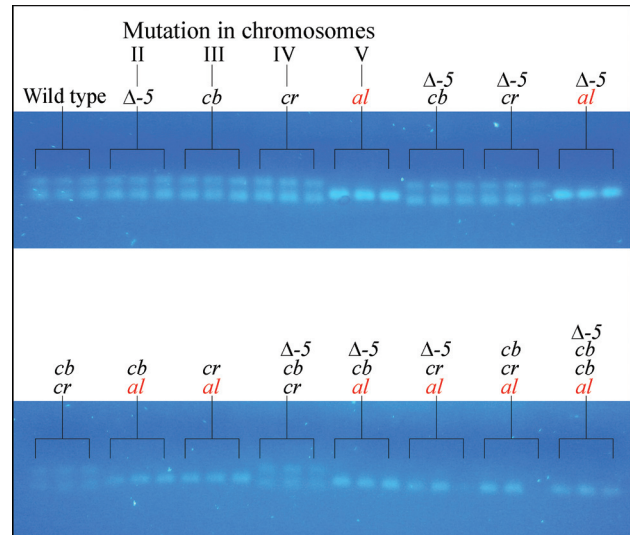


Figure 1 - Sample of 48 backcross offspring genotyped for *Dmed*^{UNICAMP}_{ssr011} locus (three individuals per phenotype). Mutations *Delta-5* ($\Delta-5$), *cabernet* (*cb*), *coral* (*cr*) and *alfinete* (*al*), are located on chromosomes II, III, IV and V, respectively. All the backcross offspring that express the recessive mutation *alfinete* (in red) are homozygous for all loci in chromosome V, such as the *Dmed*^{UNICAMP}_{ssr011} locus. On the other hand, all the backcross offspring that do not express *alfinete* are heterozygous for all loci in chromosome V, with different alleles in the parental strains.

microsatellite loci with their chromosomal location confirmed. Since CR27A carries no visible marker on the dot chromosome (VI), there is a very low probability (3.6×10^{-15}) of mapping any of 15 autosomal loci on dot chromosome (for a similar procedure see Noor *et al.*, 2000).

Table 1 shows BLAST results (E-values) of *D. mediopunctata* sequences matched to the *D. melanogaster* genome. The first BLAST column shows E-values matched to the respective *D. melanogaster* homologous chromosome. The second BLAST column shows the smallest E-value matched to a non-homologous *D. melanogaster* chromosome. Thirteen loci showed E-values consistent to their actual chromosomal location. Nevertheless, the loci *Dmed*^{UNICAMP}_{ssr084} and *Dmed*^{UNICAMP}_{ssr011} (abbreviated *Dmed084* and *Dmed011*, respectively, and similarly henceforward) showed inconclusive BLAST results, with the same E-value for different chromosomes. Nonetheless, our analysis located them unambiguously on chromosomes III and V, respectively. For the *Dmed094* and *Dmed131* loci, the BLAST results (0.177 and 6.7×10^{-5}) point out, respectively, non-significantly to chromosome V and misleadingly to the X chromosome; yet, in fact, both loci are on chromosome IV. Thus, although the gene content in Muller's elements is highly conserved in *Drosophila*, some small sequences may not be easily assigned to homologous chromosomes in other species. In these cases, the genetic (chromosomal) analysis is a powerful tool to elucidate their locations.

Table 1 - Chromosomal localization of 17 microsatellites loci of *D. mediopunctata* by synteny with visible phenotype of mutations (autosomes) or by sex-linked inheritance pattern (sex chromosome).

CHR	Mutation	Locus	BLAST ^b	BLAST ^c
X		Dmed021	9.4×10^{-23}	0.073
		Dmed113 ^a	6.1×10^{-10}	2.142
II	<i>Delta-5</i> (Δ -5)	Dmed018	0.005	0.019
		Dmed060	1.0×10^{-13}	0.342
		Dmed118 ^a	1.2×10^{-18}	0.059
III	<i>cabernet</i> (<i>cb</i>)	Dmed067	2.5×10^{-30}	0.427
		Dmed084	1.151	1.151
		Dmed085	4.9×10^{-22}	1.487
		Dmed095	2.2×10^{-16}	0.011
		Dmed106 ^a	0.008	0.129
IV	<i>coral</i> (<i>cr</i>)	Dmed094	2.761	0.177
		Dmed102 ^a	1.5×10^{-21}	0.071
		Dmed103	2.3×10^{-17}	0.005
		Dmed131	0.064	6.7×10^{-5}
V	<i>alfinete</i> (<i>al</i>)	Dmed011 ^a	0.210	0.210
		Dmed025	7.1×10^{-20}	0.001
		Dmed072	1.7×10^{-11}	0.059

CHR stands for chromosome.

Loci names are abbreviated, such as Dmed021 for Dmed^{UNICAMP}_{ssr021}.

^aLoci present in the linkage map published by Laborda *et al.* (2012).

^bBLAST results (E-values) of *D. mediopunctata* sequences matched to *D. melanogaster* homologous chromosome.

^cBLAST results (smallest E-value) of *D. mediopunctata* sequences matched to *D. melanogaster* non-homologous chromosome.

Acknowledgments

We are grateful to Claudete do Couto, Klélia A. Carvalho and Mitsue T. Brianti for technical assistance. Funds were provided by: Fundação de Amparo à Pesquisa do Estado de São Paulo (FAPESP); Conselho Nacional de Desenvolvimento Científico e Tecnológico (CNPq); Coordenação de Aperfeiçoamento de Pessoal de Ensino Superior (CAPES); and Fundo de Apoio ao Ensino e à Pesquisa (FAPEX-UNICAMP).

References

Aljanabi SM and Martinez I (1997) Universal and rapid salt-extraction of high quality genomic DNA for PCR-based techniques. *Nucleic Acids Res* 25:4692-4693.

Ananina G, Peixoto AA, Bitner-Mathé BC, Souza WN, Silva LB, Valente VLS and Klaczko LB (2004) Chromosomal inversion polymorphism in *Drosophila mediopunctata*: Seasonal, altitudinal, and latitudinal variation. *Genet Mol Biol* 27:61-69.

Andrade CAC, Hatadani LM and Klaczko LB (2005) Phenotypic plasticity of the aedeagus of *Drosophila mediopunctata*: Effect of the temperature. *J Therm Biol* 30:518-523.

Andrade CAC, Vieira RD, Ananina G and Klaczko LB (2009) Evolution of the male genitalia: Morphological variation of the aedeagi in a natural population of *Drosophila mediopunctata*. *Genetica* 135:13-23.

Barker JSF, Frydenberg J, González J, Davies HI, Ruiz A, Sorensen JG and Loeschcke V (2009) Bottlenecks, population differentiation and apparent selection at microsatellite loci in Australian *Drosophila buzzatii*. *Heredity* 102:389-401.

Batista MRD, Ananina G and Klaczko LB (2012) Unexpected long-term changes in chromosome inversion frequencies in a Neotropical *Drosophila* species. *Clim Res* 53:131-140.

Bhutkar A, Schaeffer SW, Russo SM, Xu M, Smith TF and Gelbart WM (2008) Chromosomal rearrangement inferred from comparisons of 12 *Drosophila* genomes. *Genetics* 179:1657-1680.

Bitner-Mathé BC, Peixoto AA and Klaczko LB (1995) Morphological variation in a natural population of *Drosophila mediopunctata*: Altitudinal cline, temporal changes and influence of chromosome inversions. *Heredity* 75:54-61.

Brianti MT, Ananina G and Klaczko LB (2013) Differential occurrence of chromosome inversion polymorphisms among Muller's elements in three species of the *tripunctata* group of *Drosophila*, including a species with fast chromosomal evolution. *Genome* 56:17-26.

Carvalho AB and Klaczko LB (1993) Autosomal suppressors of sex-ratio in *Drosophila mediopunctata*. *Heredity* 71:546-551.

Cavasini R, Carvalho KA and Klaczko LB (2010) Absence of recombination in males of *Drosophila mediopunctata*. *Dros Inf Serv* 93:122-124.

Cavasini R, Batista MRD, Carvalho KA and Klaczko LB (2013) Optimization of 64 microsatellite loci primer pair annealing temperatures of *Drosophila mediopunctata*. *Dros Inf Serv* 96:218-219.

Cazemajor M, Landré C and Montchamp-Moreau C (1997) The *Sex-Ratio* trait in *Drosophila simulans*: Genetic analysis of distortion and suppression. *Genetics* 147:635-642.

Creste S, Neto AT and Figueira A (2001) Detection of single sequence repeat polymorphisms in denaturing polyacrylamide sequencing gels by silver staining. *Plant Mol Biol Rep* 19:299-306.

Domazet-Loso T and Tautz D (2003) An evolutionary analysis of orphan genes in *Drosophila*. *Genome Res* 13:2213-2219.

Drosophila 12 Genomes Consortium (2007) Evolution of genes and genomes on the *Drosophila* phylogeny. *Nature* 450:203-218.

Hatadani LM, Baptista JCR, Souza WN and Klaczko LB (2004) Colour polymorphism in *Drosophila mediopunctata*: Genetic (chromosomal) analysis and nonrandom association with chromosome inversions. *Heredity* 93:525-534.

Kastritsis CD (1966) Cytological studies of some species of the *tripunctata* group of *Drosophila*. *Univ Texas Publ Stud Genet* 6615:413-474.

Klaczko LB (2006) Evolutionary genetics of *Drosophila mediopunctata*. *Genetica* 126:43-55.

Klaczko LB and Bitner-Mathé BC (1990) On the edge of a wing. *Nature* 346:321.

Laborda PR, Mori GM and Souza AP (2009) *Drosophila mediopunctata* microsatellites I: More than a hundred polymorphic loci available for genetic studies. *Conserv Genet Resour* 1:297-307.

- Laborda PR, Gazaffi R, Garcia AAF and Souza AP (2012) A molecular linkage map for *Drosophila mediopunctata* confirms synteny with *Drosophila melanogaster* and suggests a region that controls the variation in the number of abdominal spots. *Insect Mol Biol* 21:89-95.
- Lagisz M, Wen S-Y, Routtu J, Klappert K, Mazzi D, Morales-Hojas R, Schäfer MA, Vieira J, Hoikkala A, Ritchie MG and Butlin RK (2012) Two distinct genomic regions, harbouring the *period* and *fruitless* genes, affect male courtship song in *Drosophila montana*. *Heredity* 108:602-608.
- Laine VN, Shikano T, Herczeg G, Vilkki J and Merilä J (2013) Quantitative trait loci for growth and body size in the nine-spined stickleback *Pungitius pungitius* L. *Mol Ecol* 22:5861-5876.
- Laine VN, Herczeg G, Shikano T, Vilkki J and Merilä J (2014) QTL analysis of behavior in nine-spined sticklebacks (*Pungitius pungitius*). *Behav Genet* 44:77-88.
- Moriguchi Y, Ueno S, Higuchi Y, Miyajima D, Ito S, Futamura N, Shinohara K and Tsumura Y (2014) Establishment of a microsatellite panel covering the sugi (*Cryptomeria japonica*) genome, and its application for localization of a male-sterile gene (*ms-2*). *Mol Breed* 33:315-325.
- Noor MAF, Schug MD and Aquadro CF (2000) Microsatellite variation in populations of *Drosophila pseudoobscura* and *Drosophila persimilis*. *Genet Res* 75:25-35.
- Ori RJ, Esmailzadeh AK, Charati H, Mohammadabadi MR and Sohrabi SS (2014) Identification of QTL for live weight and growth rate using DNA markers on chromosome 3 in an F₂ population of Japanese quail. *Mol Biol Rep* 41:1049-1057.
- Oxley PR, Spivak M and Oldroyd BP (2010) Six quantitative trait loci influence task thresholds for hygienic behaviour in honeybees (*Apis mellifera*). *Mol Ecol* 19:1452-1461.
- Peixoto AA and Klaczko LB (1991) Linkage disequilibrium analysis of chromosomal inversion polymorphisms of *Drosophila*. *Genetics* 129:773-777.
- Plough LV (2012) Environmental stress increases selection against and dominance of deleterious mutations in inbred families of the Pacific oyster *Crassostrea gigas*. *Mol Ecol* 21:3974-3987.
- Rocha F, Medeiros HF and Klaczko LB (2009) The reaction norm for abdominal pigmentation and its curve in *Drosophila mediopunctata* depend on the mean phenotypic value. *Evolution* 63:280-287.
- Santos J, Serra L, Solé E and Pascual M (2010) FISH mapping of microsatellite loci from *Drosophila subobscura* and its comparison to related species. *Chromosome Res* 18:213-226.
- Schäfer MA, Mazzi D, Klappert K, Kauranen H, Vieira J, Hoikkala A, Ritchie MG and Schlötterer C (2010) A microsatellite linkage map for *Drosophila montana* shows large variation in recombination rates, and a courtship song trait maps to an area of low recombination. *J Evol Biol* 23:518-527.
- Simões P, Calabria G, Picão-Osório J, Balanyà J and Pascual M (2012) The genetic content of chromosomal inversions across a wide latitudinal gradient. *PLoS One* 7:e51625.
- Stephens A, Lombardi M, Cogan NOI, Forster JW, Hobson K, Materne M and Kaur S (2014) Genetic marker discovery, intraspecific linkage map construction and quantitative trait locus analysis of ascochyta blight resistance in chickpea (*Cicer arietinum* L.). *Mol Breed* 33:297-313.

Associate Editor: Klaus Hartfelder

License information: This is an open-access article distributed under the terms of the Creative Commons Attribution License, which permits unrestricted use, distribution, and reproduction in any medium, provided the original work is properly cited.