

Reproducibility of Pop-Ins in Laboratory Testing of Welded Joints

C. Berejnoi^{*a}, J.E. Perez Ipiña^b, C.L. Llorente^c

^aFacultad de Ingeniería, Universidad Nacional de Salta,
Avda. Bolivia 5150, Salta (4400), Argentina

^bGrupo Mecánica de Fractura, Facultad de Ingeniería, Universidad Nacional del
Comahue/ CONICET, Buenos Aires st. 1400, Neuquén (8300), Argentina

^cComisión de Investigaciones Científicas, Facultad de Ingeniería - Universidad
Nacional de La Plata, Calle 48 y 116, La Plata (1900), Argentina

Received: August 7, 2000; Revised: November 13, 2000

The pop-in phenomenon, quite common in fracture mechanics tests of welded joints, corresponds to a brittle crack initiation grown from a local brittle zone (**LBZ**) that is arrested in reaching the higher toughness material that surrounds this **LBZ**.

A methodology to obtain a high percentage of pop-in occurrence in laboratory testing is necessary to study the pop-in significance. Such a method is introduced in this work and includes the consumable combination and welding procedures for the SMAW welding process to generate artificial **LBZ**.

In order to find out the influence of the loading state upon the pop-in phenomenon, laboratory **CTOD** tests were performed using two specimen configurations: some single edge-notched specimens were loaded on a three-point bending (**SE(B)**) fixture while others were tested in tensile load (**SE(T)**). A higher frequency of pop-in occurrence was observed in the **SE(B)** geometry.

Keywords: *pop-in, local brittle zone, fracture toughness*

1. Introduction

The material intrinsic heterogeneous (mechanical and metallurgical) properties resulting from any welding procedure bring about some difficulties when fracture mechanics tests of welded joints are performed following the procedures issued in ordinary standards (ASTM E399, E1290, E1820, BS 7448: Part 1). Critical **CTOD** values are very sensitive to the microstructures surrounding the crack tip and, as it may sample different zones, the test results show large scatter¹. A very low value of toughness is measured if a local brittle zone (**LBZ**) is met by the crack tip.

In fracture mechanics tests of welded joints, small occurrences of brittle crack initiation and arrest are very usual and they appear as discontinuities in the load versus clip gage displacement record (generally a drop in load and an increment in displacement followed by both increment of displacement and load) (Fig. 1). This phenomenon is called *pop-in* and results from a small brittle crack growth triggered from a **LBZ** that is subsequently arrested by a material that is supposed of higher toughness that surrounds this

LBZ. It is important to know the significance of any pop-in because too conservative values of fracture toughness may be obtained when it is regarded as a critical event².

Pop-ins are normally triggered from **LBZ** located in the heat affected zone (**HAZ**), but when different aspects of pop-in are to be studied, performing these tests in **HAZ** turns both difficult and time and money consuming because

a) This zone is small and very heterogeneous.

b) Many times the whole or part of the fatigue precrack tip is placed outside the coarse grain sector of the **HAZ**.

As described above, a high percentage of tests lack pop-ins. It would be very convenient to achieve a methodology which should make a high rate of pop-ins available. It is desirable that this methodology should also allow a high percentage of pop-in production at near room temperature.

Laboratory tests are generally performed under displacement control conditions while actual structures are many times subject to conditions closer to load control than to displacement control. The stress intensity factor may diminish as a consequence of an increment in crack length under constant displacement conditions, and this decrement

^aemail: berejnoi@unsa.edu.ar

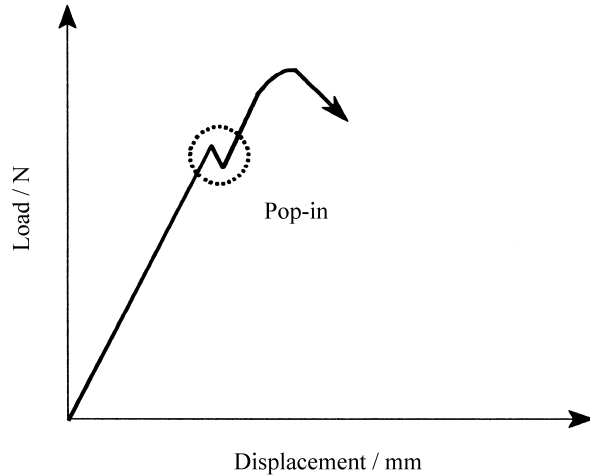


Figure 1. Typical pop-in manifestation in a P vs. CMOD record.

in load severity is likely to be the cause of the crack arrest. The crack arrest would also be produced by a stress waves reflection in the specimen boundaries close to the crack tip. If a crack is arrested in a specimen due to any of these causes, the same crack would not be arrested in a structural component and consequently a brittle failure would result²⁻⁵.

It is important to note that the load state acting over an actual structure may be different from the corresponding load acting over a specimen in a standard test (**SE(B)** or **CT** specimens), *i.e.*, mainly tension loads instead of bending loads.

A methodology for the generation of pop-ins in laboratory testing is introduced in this work. It includes the search for consumable combination (welding procedure) for the **SMAW** welding process to generate artificial **LBZ**, and the choice of the most convenient orientation of the crack regarding the weld direction in order to improve the occurrence of pop-ins at relatively high temperatures (between $-18\text{ }^{\circ}\text{C}$ and room temperature).

Once the most favorable conditions for the occurrence of pop-ins were selected, the influence of the loading state over the pop-in was studied. In order to do this, tests were performed with some specimens subject to bending loads (**SE(B)**) and some others subject to tensile loads (**SE(T)**). The specimens always belonged to the single edge-notched type.

Table 1. Chemical and mechanical characteristics of the electrodes used.

Electrode	Chemical composition (%)					σ_U (MPa)	σ_Y (MPa)	Hardness HRC
	C	Mn	Mo	Si	Cr			
AWS E6013	0.10	0.35	-	0.25	-	500-600	400-500	-
AWS E7010-A1	0.11	0.35	0.50	0.18	-	540-640	440-540	-
AWS E7018-A1	0.06	0.70	0.50	-	-	530-630	450-550	-
DIN E6-55 (60w)r	0.75	-	-	-	7.00	-	-	55

A scanning electronic microscope was used to watch the fracture surfaces of the broken specimens, while an optical microscope was employed to determine the different zones reached by the crack.

2. Reproducibility of Pop-Ins

2.1. Consumable and specimen geometry selection

Specimens were obtained from A516 grade 70 steel plates (25 mm thickness), and welded using the **SMAW** process.

In order to produce artificial **LBZ**, two different electrodes were employed (Fig. 2). Arimochi *et al.* also used this technique, except that they performed the tests at very low temperatures².

The **AWS E6013** electrode was selected for filler beads, while the three electrodes used in the central bead to produce **LBZ** were:

- **DIN E6-55 (60w) r**,
- **AWS E7018-A1**, and
- **AWS E7010-A1**.

Table 1 shows chemical and mechanical characteristics of the above mentioned electrodes.

Single edge-notched bending (**SE(B)**) specimens with square section (**BxB**) were machined in order to test them within two types of notch orientation (Fig. 3) (In accordance with nomenclature in Ref. 6):

Type 1 specimens 6 **TS-W**

Type 2 specimens 6 **TW-W**

The first letter indicates the normal direction to the notch plane, the second letter indicates the expected fatigue

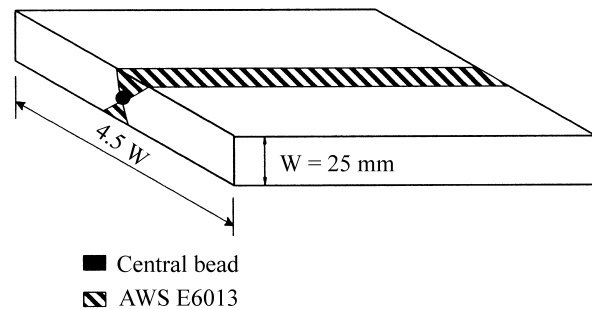


Figure 2. Joint configuration and position of the two electrode types used.

crack growing direction, and the third letter refers to the zone where the crack tip is located (W corresponding to Weld Metal).

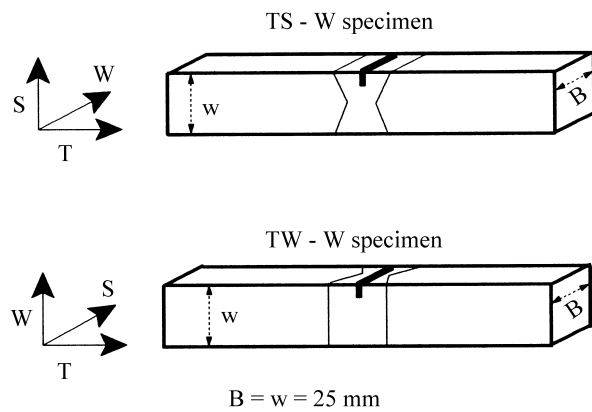


Figure 3. TS and TW geometries.

Sumpter used both **TS** and **TW** geometries^{7,8}. Arimochi *et al.* used special designed specimens to produce artificial **LBZ**: they used consumables with no Ni for the central bead, while a high Ni content electrode was used as tough filler.² They tested the specimens using a **TW** geometry at very low temperatures ($-120\text{ }^{\circ}\text{C} < T < -60\text{ }^{\circ}\text{C}$). Koçak *et al.* tested compact specimens at room temperature with the crack tip located at the heat affected zone (**HAZ**)³. They used both transverse and longitudinal crack tip orientation.

Specimen fatigue precracking was performed in accordance with BS 7448: Part 1⁹. Previous to fatigue precracking, a mechanical stress relief technique (*reverse bending*) was performed⁶.

Table 2 shows the specimen dimensions, notch directions, notch types and the electrodes used as central bead.

Table 2. Specimen dimensions, notch characteristics and type of electrode used as central bead.

Specimen	B(mm)	a_0/W	W(mm)	Notch direction	Notch type	Central bead
1	23,05	0.506	23,56	TW	Standard	DIN E6-55 (60w) r
2	23,05	0.333	22,85	TW	Chevron	DIN E6-55 (60w) r
3	23,14	0.301	23,08	TW	Chevron	DIN E6-55 (60w) r
4	23,16	0.314	22,73	TW	Chevron	DIN E6-55 (60w) r
5	22,6	0.311	22,65	TW	Chevron	DIN E6-55 (60w) r
6	21,13	0.303	20,12	TW	Chevron	AWS E7018-A1
7	21,36	0.368	19,35	TW	Chevron	AWS E7018-A1
8	19,6	0.376	19,5	TW	Chevron	AWS E7018-A1
9	21,85	0.249	22	TW	Chevron	AWS E7018-A1
10	21,31	0.31	19,5	TW	Chevron	DIN E6-55 (60w) r
11	22,3	0.322	22,3	TW	Chevron	DIN E6-55 (60w) r
12	21,95	0.408	22	TW	Chevron	AWS E7018-A1
13	19,9	0.379	20,4	TS	Standard	AWS E7018-A1
14	18,2	0.289	18,4	TS	Standard	AWS E7018-A1
15	19,8	0.316	20,2	TS	Standard	AWS E7018-A1
16	22,71	0.222	22,72	TS	Standard	DIN E6-55 (60w) r
17	19,73	0.299	19,63	TS	Standard	DIN E6-55 (60w) r
18	22,37	0.198	22,5	TS	Standard	DIN E6-55 (60w) r
19	19,62	0.264	19,49	TS	Standard	DIN E6-55 (60w) r
20	18,05	0.292	18,48	TS	Standard	DIN E6-55 (60w) r
21	22,6	0.253	22,62	TS	Standard	DIN E6-55 (60w) r
22	19,66	0.309	19,64	TS	Standard	DIN E6-55 (60w) r
23	21	0.504	21,10	TS	Standard	AWS E7010-A1
24	21,61	0.446	21,56	TS	Standard	AWS E7010-A1
25	21,31	0.411	21,35	TS	Standard	AWS E7010-A1

Note: For all the specimens the filler beads were welded with AWS E6013.

2.2. Results

Table 3 and Table 4 show the **CTOD** (δ^*) values at maximum load and at pop-in initiation. All tests were performed at room temperature. **CTOD** values were calculated using the procedure issued in BS 7448: Part 1.

2.3. Analysis

1) The “Reverse Bending” technique was effective. Precrack fronts were generally acceptable according to the requirements set forth by BS 7448: Part 1. When DIN

E6-55 [60w] electrode was used as central bead, a chevron notch had to be machined as a consequence of its great hardness. In these cases, the fatigue precrack grew sometimes in two different planes.

2) The welding procedure was effective in producing **LBZ** for all three electrodes used as central bead, combined with **AWS E-6013** electrode as filler bead.

DIN E6-55 (60w) r electrode presented a poor weldability and it was also too brittle. In some specimens small cracks were observed prior to fatigue precracking. Of

Table 3. CTOD values at maximum load and at pop-in initiation. TW specimens

Specimen	δ_m (mm)	δ_{p-i} (mm)	Notch direction	Pop-in occurrence with respect to maximum load plateau
1	0.16	-	TW	-
2	0.15	-	TW	-
3	0.14	-	TW	-
4	0.29	-	TW	-
5	0.23	-	TW	-
6	0.063	-	TW	-
7	0.24	-	TW	-
8	0.058	0.058	TW	coincident
9	0.39	1.4	TW	after
10	0.11	0.033	TW	before
11	0.10	-	TW	-
12	0.31	1.8	TW	after

Table 4. CTOD values at maximum load and at pop-in initiation. TS specimens.

Specimen	δ_m (mm)	δ_{p-i} (mm)	Notch direction	Pop-in occurrence with respect to maximum load plateau
13	0.76	0.94	TS	after
14	0.52	-	TS	-
15	0.53	0.17	TS	before
16	0.077	0.18	TS	after
17	0.072	0.026	TS	before
18	-	0.21	TS	near
19	0.053	0.053	TS	coincident
20	0.063	-	TS	-
21	0.068	0.12	TS	after
22	0.06	0.031	TS	before
23 [§]	0.30	-	TS	-
24	0.30	0.30	TS	coincident
25	0.33	-	TS	-

§: The fracture surfaces of the broken specimen show a small area corresponding to a pop-in. However, load vs. displacement record showed no traces of such pop-in.

course, such specimens were not tested. This electrode is also very hard, making it difficult to machine the resulting welding bead.

The electrode combinations producing artificial **LBZ** that proved convenient were:

AWS E6013 - AWS E7010-A1 (central bead), or

AWS E6013 - AWS E7018-A1 (central bead).

3) **TS** notch orientation proved the most convenient because 76.9 % of the tests (10 over a total of 13) presented pop-ins, whilst only 33.3% (4 over a total of 12) of the tests with the **TW** notch direction gave pop-ins (Fig. 4 and Fig. 5). It must be noted that in the latter specimens, multiple audible pop-ins were listened to in the linear elastic region, although they were not recorded in the Load vs. Displacement graph because of their small size.

A similar analysis based only on equal consumables showed that the most convenient direction to produce pop-in was that referred as **TS**.

4) For AWS E6013 / AWS E7018-A1 and AWS E6013 / AWS E7010-A1 combinations and TS-W orientation, the presence of coarse grains at the brittle initiation point was verified in each specimen that showed pop-in by means of scanning electronic and optical microscopic examinations. Figures 6-a and 6-b are examples of such examinations. The first one corresponds to the optical microscopic examination of the specimen **SE(T) - 7**, and shows that the pop-in was initiated at a coarse grain zone. Figure 6-b is the observation taken by a scanning electronic microscope of the same specimen, and reveals the existence of cleavage zones where the pop-in was supposed to initiate at.

5) Pop-ins are considered more important when they occur before the maximum load plateau and most research on this subject has been focused on this situation, but in testing welded joints of parent materials working in the upper shelf zone this phenomenon is sometimes present at or after the maximum load plateau. As not much work has been performed in the latter situation, we consider that a further study is desirable.

6) It is important to note that this methodology can be used for pop-in occurrence before maximum load plateau simply by lowering the test temperature.

3. Influence of the Loading State

3.1. Experimental procedure

In order to find out the influence of the loading state over the pop-in phenomenon, twenty-one laboratory **CTOD** tests were performed using two specimen configurations: 10 single edge-notched specimens were loaded in a three-point bending fixture (**SE(B)**), while the remaining 11 specimens were loaded in tensile mode (**SE(T)**). In order to improve the probability of pop-in occurrence the test temperature was -18 °C. The specimens had a square section ($B = W = 20$ mm) (Fig. 3) with shallow cracks, *i.e.*

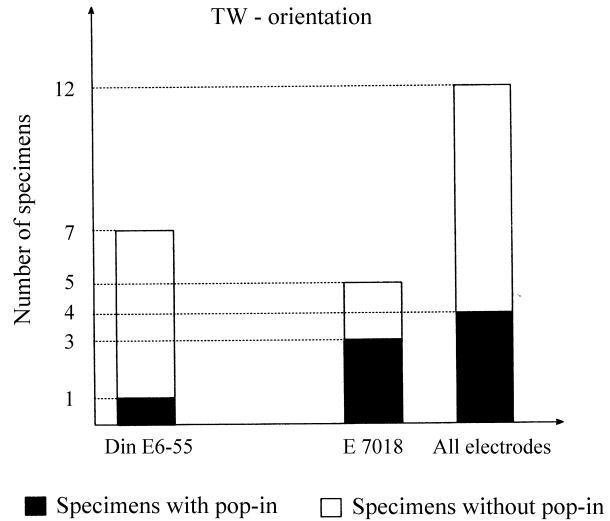


Figure 4. Frequency of pop-in in TW orientation.

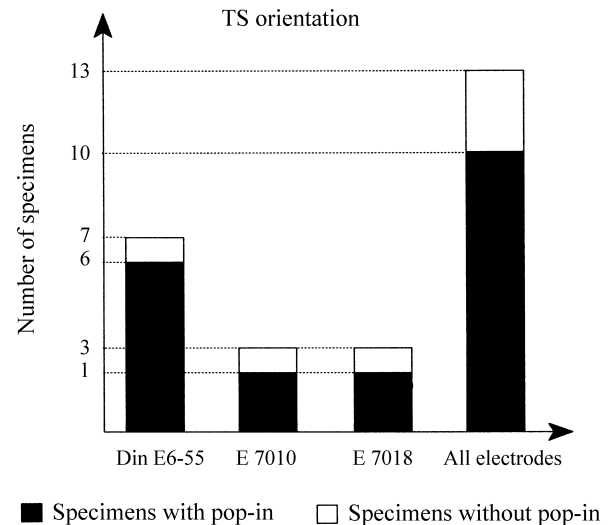


Figure 5. Frequency of pop-in in TS orientation.

TS-W specimens. Prior to fatigue precracking a *reverse bending* treatment was applied to each specimen.

The consumables combination chosen was: **AWS E6013 / AWS E7018-A1**.

The **CTOD** values in **SE(B)** tests were calculated measuring the crack mouth opening displacement (**CMOD**) (Fig. 7) in accordance with BS 7448: Part 1⁹. Instead, $*_5^{10}$ was considered as **CTOD** value for **SE(T)** tests and was then directly measured with a clip gage at the specimen surface as shown in Fig. 8.

3.2. Results

Tables 5 and 6 show specimen dimensions and **CTOD** values for **SE(B)** and **SE(T)** tests respectively.

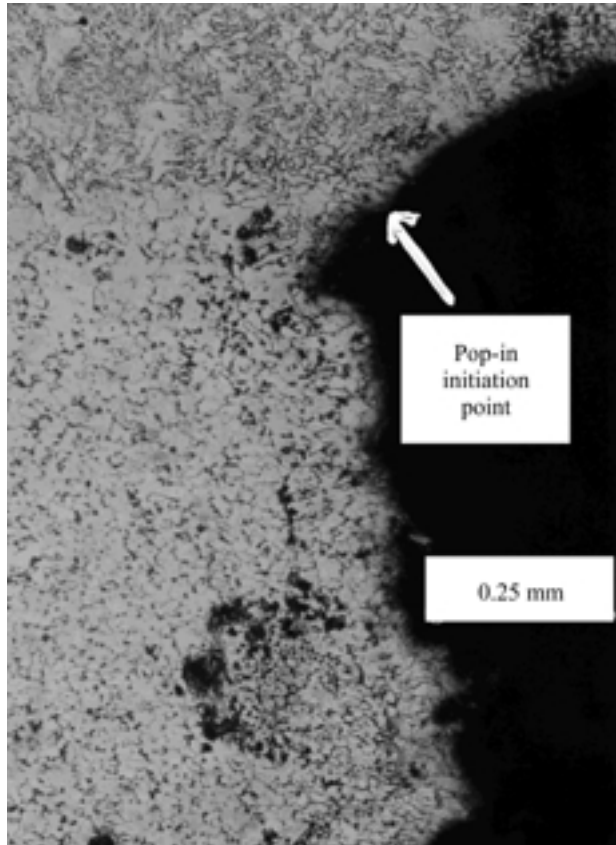


Figure 6a. Micrograph of specimen SE(T) 7.

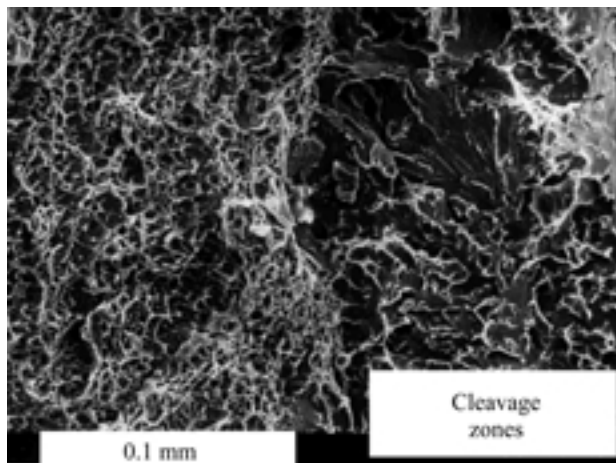


Figure 6b. Pop-in initiation point observed using a scanning microscope (specimen SE(T) 7).

3.3. Analysis

In Table 5 and Table 6 it can be seen that 6 out of 10 SE(B) specimens presented pop-ins, whilst only 4 specimens (out of a total of 11) failed due to pop-in in tensile tests. The frequency of pop-in occurrence is greater in the first tests than in the second ones. This is in accordance with the results of Arimochi *et al.*², who observed pop-ins at

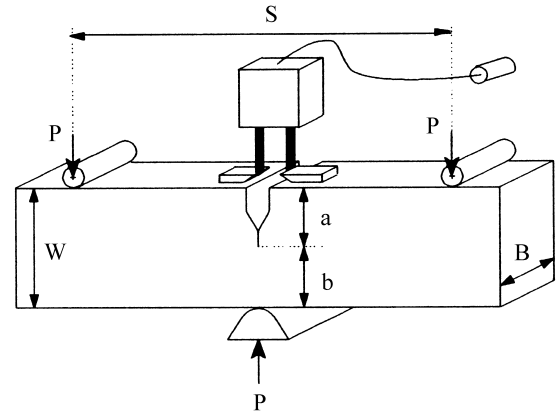


Figure 7. SE(B) specimen.

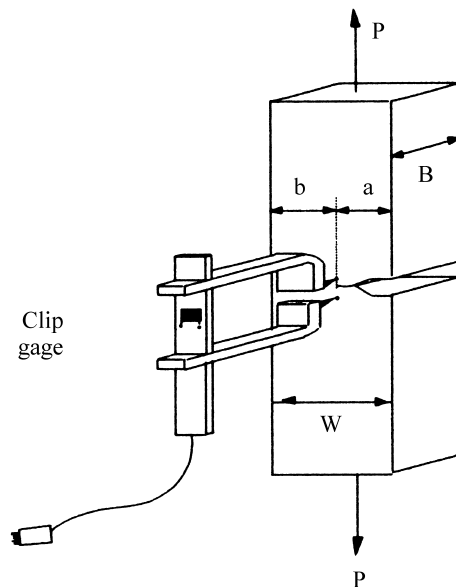


Figure 8. SE(T) specimen.

different temperature ranges, depending on the loading type. For SE(B) tests the pop-in phenomenon was present at temperatures between $-70\text{ }^{\circ}\text{C}$ and $-100\text{ }^{\circ}\text{C}$, while with wide plates under tensile loads, temperatures between $-100\text{ }^{\circ}\text{C}$ and $-120\text{ }^{\circ}\text{C}$ were necessary to observe this phenomenon. This would indicate that the occurrence of a pop-in in a laboratory bend test does not mean that the same behavior should be expected in an actual structure under tensile loading. However, this is not a conclusive observation, and a further study on this subject is necessary.

With Arimochi *et al.*² results in mind, it is possible to think that the test temperature ($-18\text{ }^{\circ}\text{C}$) corresponds to one in which the pop-in phenomenon might be observed in both SE(B) and SE(T) tests, being of a higher frequency in the first ones.

Pop-in occurrence depends upon the distance between the crack tip and the LBZ^{2,3}. If this distance is large, the

Table 5. CTOD values, three point bending specimens (**SE(B)**).

Specimen	a	B (mm)	W (mm)	a/W (mm)	δ_m (mm)	δ_{pop-in} (mm)	Pop-in occurrence with respect to maximum load plateau
SE(B)-1	10.94	19.92	19.64	0.557	0.232	-	-
SE(B)-2	9.07	19.58	19.72	0.46	0.131	0.131	coincident
SE(B)-3	11.36	19.82	19.64	0.578	0.082	-	-
SE(B)-4	9.93	19.55	19.56	0.508	0.295	-	-
SE(B)-5	11.02	20	19.93	0.553	0.685	1.142	after
SE(B)-6	10.00	19.95	19.95	0.501	0.727	-	-
SE(B)-7	10.05	19.97	19.96	0.504	0.382	1.502	after
SE(B)-8	9.53	18.97	18.95	0.503	0.211	0.438	after
SE(B)-9	10.6	20.04	19.75	0.537	0.464	0.718	after
SE(B)-10	10.14	20.07	20.06	0.505	0.623	1.041	after

Table 6. CTOD values, tensile specimens (**SE(T)**).

Specimen	a	B (mm)	W (mm)	a/W (mm)	δ_m (mm)	δ_{pop-in} (mm)	Pop-in occurrence with respect to maximum load plateau
SE(T)-1	9.01	19.89	19.62	0.459	0.443	-	-
SE(T)-2	9.18	19.7	19.67	0.466	0.421	-	-
SE(T)-3	9.28	19.93	19.62	0.473	&	0.095	before
SE(T)-4	11.07	19.99	19.87	0.557	0.722	-	-
SE(T)-5	10.4	19.83	19.76	0.526	1.248	-	-
SE(T)-6	8.84	19.63	19.59	0.451	1.659	-	-
SE(T)-7	9.58	19.50	20.00	0.479	1.444	1.444	coincident
SE(T)-8	10.28	19.85	19.70	0.522	-	1.045	before
SE(T)-9	7.9	19.00	19.00	0.416	1.068	-	-
SE(T)-10	9.77	20.01	20.00	0.489	1.383	-	-
SE(T)-11	10.65	19.20	19.26	0.553	0.922	1.145	after

&: It could not be possible to evaluate **CTOD_m**.

crack would grow reaching the maximum load value before sampling a **LBZ**. It would also be possible that the loss of constraint due to ductile crack growth causes a lower peak stress value at maximum load plateau, not producing brittle crack growth even when potential LBZ were sampled previously on the crack front.

Referring to loss of constraint, **SE(B)** and **SE(T)** specimens present very different behaviors when cracks grow in a stable way, being considerably larger in the latter specimens¹⁰. This would explain the difference in pop-in occurrence between the analyzed specimen types.

Brittle fracture initiation, when manifested, was always arrested (pop-in phenomenon). The amount of load drop was different in **SE(B)** and **SE(T)** tests. In the first ones, the average load drop was 9120 N (64% of the load at pop-in

initiation) whilst in the latter the average load drop was only 3259 N (3.3% of the load at pop-in initiation). As it can be seen, there is a great difference in the average load drop between **SE(B)** and **SE(T)** specimens. This would be in accordance with the conclusions of Arimochi *et al.*²: they found that *a pop-in crack is easier to be arrested in an infinite body subjected to tensile load than in SE(B) tests if the unstable crack extension is shorter than certain critical crack length*. In this way the load drop would be lower in **SE(T)** configuration than in **SE(B)** one.

The median value for **CTOD_m** in **SE(T)** tests is greater than the one corresponding in **SE(B)** tests. As **CTOD** values at maximum load depend on specimen geometry and specimen size, it would not be correct to compare **CTOD_m**

values between **SE(T)** and **SE(B)** tests. Some other factors would also have influence on this discrepancy:

- different methods for the measurement of displacement were used: in **SE(T)** tests **CTOD** was directly measured on the specimen surface (s_5), while **CTOD** in **SE(B)** tests was calculated, according to BS 7448: Part 1, using the geometric relation between **CMOD** and **CTOD**;

- as ductile crack growth produces more constraint relaxation in **SE(T)** specimens than in **SE(B)** ones, maximum load toughness will be larger in **SE(T)** tests.

4. Conclusions

1) A method for the reproducibility of pop-ins in laboratory testing consisting in the combination of welding procedure and crack orientation was introduced.

2) **TS** specimens showed a significantly greater percentage of pop-in occurrence than **TW** specimens. This would be a consequence of a difference in either the amount or in the disposition of **LBZ** near the crack front in both specimen configurations.

3) By using SEM and optical microscopes it was observed that the pop-in initiation point was located in coarse grain regions in all cases.

4) Brittle fracture initiation, when manifested, was always arrested (pop-in phenomenon) in both loading states.

5) Occurrence of pop-in was more frequent under bending loading than in tensile loading, in accordance with other authors observations.

6) Although further work must be led in order to explain the pop-in occurrence frequency difference between **SE(T)** and **SE(B)** tests, the different constraint relaxation in each geometry due to ductile crack growth would play an important role.

7) Most pop-ins occurred after the maximum load plateau was reached. The absence of **LBZ** near the crack front and/or the loss of constraint due to ductile crack growth would explain this. Simply by lowering the test tempera-

ture, the methodology introduced here could lead to pop-in occurrence before maximum load plateau is attained.

Acknowledgments

The authors wish to thank Mr. Carlos G. Rodríguez Anido and R.A. Servicios Especiales company for the specimens welding, and Pablo Bilmes for his collaboration in the microscopic examinations.

References

1. Machida, S.; Miyata, T.; Toyoda, M.; Hagiwara, Y. *Fatigue and Fracture Testing of Weldments*, ASTM STP 1058, p. 142-156, 1990.
2. Arimochi, K.; Isaka, K. *International Institute of Welding*, IIW Doc.X-1118-86, 1986.
3. Koçak, M.; Terlinde, G.; Schwalbe, K.-H.; Gnirss, G. *The Fracture Mechanics of Welds*, EGF Pub. 2, p.77-95, 1987.
4. Satoh, K.; Toyoda, M. *International Institute of Welding*, IIW Doc.X-1063-84, 1984.
5. Willoughby, A.A. *International Journal of Fracture*, 30, R3-R6, 1986.
6. *Draft ASTM Test Method for Fracture Toughness Testing of Welds*, ASTM E24.06.05.
7. Sumpter, J.D.G. *International Journal of Offshore and Polar Engineering*, v. 1, n. 3, p. 208, 1991.
8. Sumpter, J.D.G. *Fatigue Fract. Engng Mater. Struct.*, v. 14, n. 5, p. 565, 1991.
9. BS 7448: Part 1. Fracture Mechanics Toughness Tests. Part 1. *Method for Determination of K_{IC} , Critical CTOD and Critical J Values of Metallic Materials*, 1991.
10. Schwalbe, K.-H.; Hellmann, D. *CKSS Forschungszentrum, Geesthacht GmbH, GKSS/E/37*, 1984.