

# We are IntechOpen, the world's leading publisher of Open Access books Built by scientists, for scientists

5,300

Open access books available

130,000

International authors and editors

155M

Downloads

Our authors are among the

154

Countries delivered to

TOP 1%

most cited scientists

12.2%

Contributors from top 500 universities



WEB OF SCIENCE™

Selection of our books indexed in the Book Citation Index  
in Web of Science™ Core Collection (BKCI)

Interested in publishing with us?  
Contact [book.department@intechopen.com](mailto:book.department@intechopen.com)

Numbers displayed above are based on latest data collected.  
For more information visit [www.intechopen.com](http://www.intechopen.com)



# Hazardous Waste Management

*Krishnaswamy Kanagamani, P. Geethamani  
and M. Narmatha*

## Abstract

Waste management is one of the vital environmental issues since last few decades. It has been noted that the generation of waste increases with increasing population, industrialization and urbanization etc. The waste management strategy includes both non-hazardous and hazardous waste management. Non-hazardous waste does not cause potential threat to environment but instead hazardous waste is the waste that poses substantial or potential threats to public health and the environment. Rapidly growing industrial sector has contributed to the generation of large quantity of hazardous waste material. Therefore, to reduce environmental hazard, proper attention is required during storage, segregation, transportation and disposal of hazardous waste, because it cannot be disposed as off in the environment. This study explains about hazardous wastes, types and management.

**Keywords:** hazardous waste, types and management

## 1. Introduction

Industries play a vital role in the economic aspect of modern society and hazardous waste production is an inevitable outcome of developmental activities and industrialization. A material becomes waste when it is discarded without expecting to be compensated for its inherent value [1]. Hazardous wastes that are disposed off causes potential hazard to human health or the environment (soil, air, and water) when it is not properly managed. They are non-biodegradable, persistent in the environment and are deleterious to human health or natural resources. The management of hazardous waste is a process which includes the collection, recycling, treatment, transportation, disposal, and monitoring of wastes disposal sites. In the current scenario of developing countries, hazardous wastes are often disposed directly into the environment posing health and environmental risk. On the other hand, governments and international agencies are taking steps for controlling the growing problem of hazardous substances in the environment which appears to be a difficult process because the wastes are from many sources. Toxic and hazardous substances from these sources contaminate the land, air, and water [2]. The potential health risk associated with these substances vary from minor, short term discomforts, such as headaches and nausea to serious health problems, such as cancers and birth defects, to major accidents that cause immediate injury or death [3]. It is therefore important to take necessary steps in managing the waste. In view of this, management of hazardous wastes including their disposal in an environment friendly and economically viable way is very important and therefore suggestions

are made considering the waste types and states [4–6]. Hence in this chapter we will discuss about hazardous waste, types and management.

## 2. Classification of solid wastes

Solid waste are classified into different types based on their source as shown in **Figure 1**

### 2.1 Non-hazardous waste

Non-hazardous waste is any waste that does not cause harm to people or the environment, and regulations for safe disposal of non-hazardous waste.

### 2.2 Hazardous waste

Hazardous waste is waste that is dangerous or potentially harmful to our health or the environment. Hazardous wastes can be liquids, solids, gases, sludge's, discarded commercial products (e.g., cleaning fluids or pesticides), or the by-products of manufacturing processes.

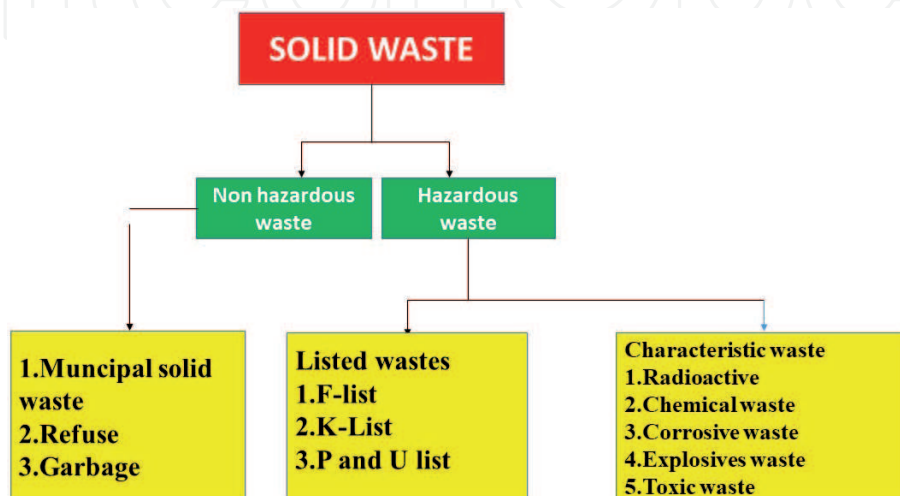
#### 2.2.1 Classification of hazardous wastes

According to EPA more than 450 listed wastes which are known to be hazardous are grouped as F-List, K-List, P-List and U-List

##### 2.2.1.1 F-list

The F-list contains hazardous wastes originated from a nonspecific source that includes various industrial processes leading to generation of these wastes. The list mainly includes the solvent used in degreasing, metal treatment baths and sludge's, wastewaters from metal plating operations and dioxin containing chemicals or their precursors. The F-list are categorized depending upon industrial operations generating the wastes.

They can be divided into seven groups depending on the type of manufacturing or industrial operation generating the waste.



**Figure 1.**  
*Classification of solid waste.*

- Solvent wastes
- Metal finishing wastes
- Dioxin-contaminated wastes
- Chlorinated aliphatic hydrocarbons production
- Wood preserving wastes
- Waste from petroleum refinery
- Multisource leachate.

#### 2.2.1.2 K-list

The K-list contains hazardous wastes generated as a result of specific industrial processes and are considered as source-specific wastes. The classification of K-listed hazardous waste must fit into one of the 13 categories mentioned below

- Wood preservation
- Organic chemicals manufacturing
- Pesticides manufacturing
- Petroleum refining
- Veterinary pharmaceuticals manufacturing
- Inorganic pigment manufacturing
- Inorganic chemicals manufacturing
- Explosives manufacturing
- Iron and steel production
- Primary aluminum production
- Secondary lead processing
- Ink formulation
- Coking (processing of coal to produce coke)

#### 2.2.1.3 P and U lists

The unused chemicals of pure and commercial formulations that are being disposed come under P and U lists. For a P- or U-listed waste it requires the following three criteria:

- The waste must contain one of the chemicals listed on the P or U list
- The chemical in the waste must be unused
- The chemical in the waste must be in the form of a commercial chemical product.

### **3. Characteristics of hazardous waste**

#### **3.1 Ignitability**

A waste is considered to be an ignitable hazardous waste if its flash point is less than 60°C, readily catches fire and burns vigorously as a hazard; or is an ignitable compressed gas or an oxidizer. Ex: Naphtha, lacquer thinner, epoxy resins, adhesives, and oil based paints etc.

#### **3.2 Corrosivity**

Any type of liquid waste whose pH is less than or equal to 2 or greater than or equal to 12.5 is considered to be corrosive hazardous waste. Sodium hydroxide (High pH) and hydrochloric acid (Low pH) is often used in many industries to clean or degrease metal parts. Prior to painting disposed solvents without any treatment contributes to corrosive hazardous waste.

#### **3.3 Reactivity**

A material is considered as reactive hazardous waste, if it is unstable, reacts violently with water, and generates toxic gases when exposed to water or corrosive materials, or explodes when exposed to heat or a flame.

Examples of reactive wastes would be waste gunpowder, sodium metal or wastes containing cyanides or sulphides.

#### **3.4 Toxicity**

Toxicity of a hazardous waste can be determined by taking a representative sample of the material and subjected to a test conducted in a certified laboratory and toxic characteristics can be determined.

### **4. Categories of hazardous wastes**

#### **4.1 Radioactive substance**

Radioactive waste is the type of hazardous waste that contains radioactive material. Radioactive waste is a by-product of various nuclear technology processes, industries based on nuclear medicine, nuclear research, nuclear power, manufacturing, construction, coal and rare-earth mining and nuclear weapons reprocessing. Any substances capable of emitting ionizing radiation are said to be radioactive and are hazardous because prolonged exposure often results in damage to living organisms. Radioactive substances attract special concern because they persist for a long period and disposal depends upon half-life period of the radioactive substance.

For example, uranium compounds have half-lives that range from 72 years for U232 to 23,420,000 years for U236.

## 4.2 Chemicals

The hazardous chemical wastes can be categorized into five groups namely synthetic organics, inorganic metals, salts, acids and bases, and flammables and explosives. Some of the chemicals are hazardous because they threaten human lives.

## 4.3 Bio-medical wastes

The main sources of hazardous biological wastes are from hospitals and biological research facilities. The biological waste has the capability of infecting other living organisms and has the ability to produce toxins. Biomedical waste mainly includes malignant tissues discarded during surgical procedures and contaminated materials, such as hypodermic needles, bandages and outdated drugs.

## 4.4 Flammable wastes

The hazardous waste category also includes flammable wastes. This grouping is necessary because of risk involved in storage, collection and disposal of flammable wastes. The flammable wastes may be of solid, liquid or gaseous form. Examples of flammable waste include organic solvents, oils, plasticizers and organic sludge's.

## 4.5 Explosives

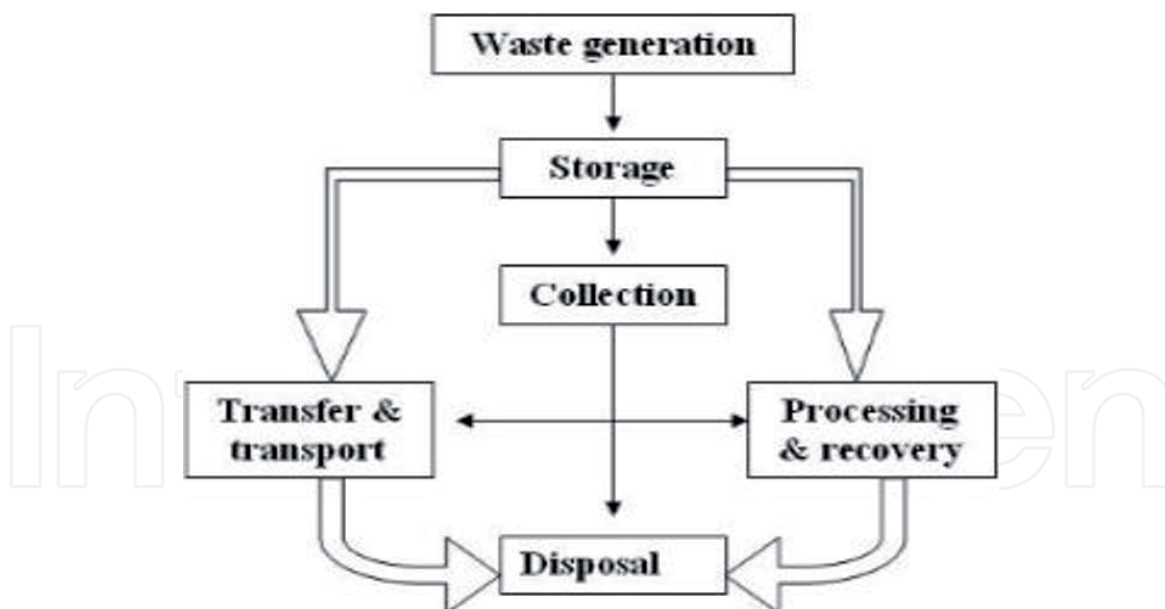
Explosive hazardous wastes are mainly ordnance (artillery) materials. Explosives also involve high potential for hazard in case of storage, collection and disposal. These types of wastes may exist in solid, liquid or gaseous form.

# 5. Principles and methods of hazardous waste management

## 5.1 Principles

Hazardous waste management is the general term associated with procedures and policies of hazardous waste management that it does not cause any potential threat to man and the environment. Traditionally, hazardous wastes are disposed by dumping in open space and burning. Open dumping results in soil and water pollution and open burning and incineration contribute to air pollution in the form of particulates, nitrogen oxides, noxious odors, and other constituents. After solid waste residues disposed leads to water pollution. Municipal incineration with sophisticated energy recovery systems were popular in large European and American cities at the turn of the century, but became extinct due to high operating costs. In recent years, for hazardous solid waste management incineration has become less popular because of risk associated with increased air pollution control requirements. Because of rapid industrialization the concern of hazardous waste management is increasing [7]. The waste generated from various industrial and domestic activities can result in severe health hazards and also leads to negative impact on the environment. The following procedure illustrates the standard waste management strategy in a developed society. Various steps involved in hazardous waste management was shown in **Figure 2**.





**Figure 2.**  
*Steps involved in hazardous waste disposal.*

## 5.2 Handling of hazardous wastes

Persons handling hazardous wastes are advised to have protective precautions to protect themselves from health effects. Exposure of hazardous waste leads to dermatitis in the skin, asthma on long exposure, eye irritation and also tightening of the chest.

## 5.3 Transport of hazardous waste

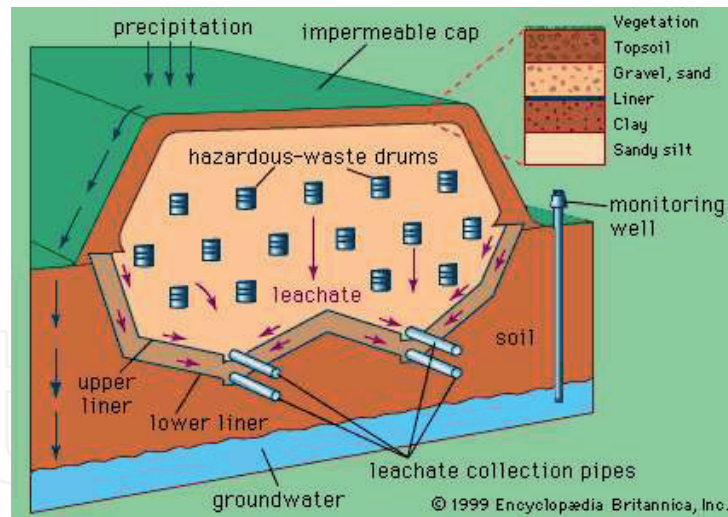
Hazardous waste generated often requires transport to a particular site for an approved treatment, storage, or disposal facility (TSDF). Because of potential threats to public safety and the environment, transport is given special attention by governmental agencies to avoid any occasional accidental spill [8].

## 5.4 Disposal

Disposal of hazardous waste is the final stage of a hazardous waste management system. The different waste disposal methods includes secure landfill, deep well and bedrock disposal [9].

### 5.4.1 Secure landfill

Disposal of some hazardous wastes in regular landfills resulted in unfavorable amounts of hazardous materials seeping into the ground. These chemicals eventually enter natural hydrologic systems. So to prevent the chemicals entering the soil, landfill requires a barrier for collecting hazardous substances that may remain in the disposed waste. Now, hazardous wastes are stabilized and made into solid and placed in landfill and this process depends upon the type of hazardous waste. A landfill is a disposal facility where hazardous wastes are placed into and stored in the soil [10]. An example of a recommended design is shown in **Figure 3**. The wastes are dumped in sealed drums before disposal. The hazardous-waste landfill setup consists of two impermeable liners and also includes leachate collection



**Figure 3.**  
*Secure land fill method.*

systems. Double leachate collection system is made up of network of pipes placed above each liner. The upper layer reduces the accumulation of leachate trapped in the fill, and the lower layer acts as a backup. The leachate collected is transferred to treatment plant for further process. An impermeable cap or cover is placed over a finished landfill to reduce the amount of leachate in the fill and minimize the potential for environmental degradation.

The main components in the leachate from landfill sites are grouped as follows

- Major elements and ions such as calcium, magnesium, iron, sodium, ammonia, carbonate, sulphate and chloride.
- Trace metals such as manganese, chromium, nickel, lead and calcium
- Wide variety of organic compounds
- Biological agents

Hazardous waste mainly from industries will give rise to leachate. Heavy metals concentration in the leachate is of greater concern compared to other components of leachate.

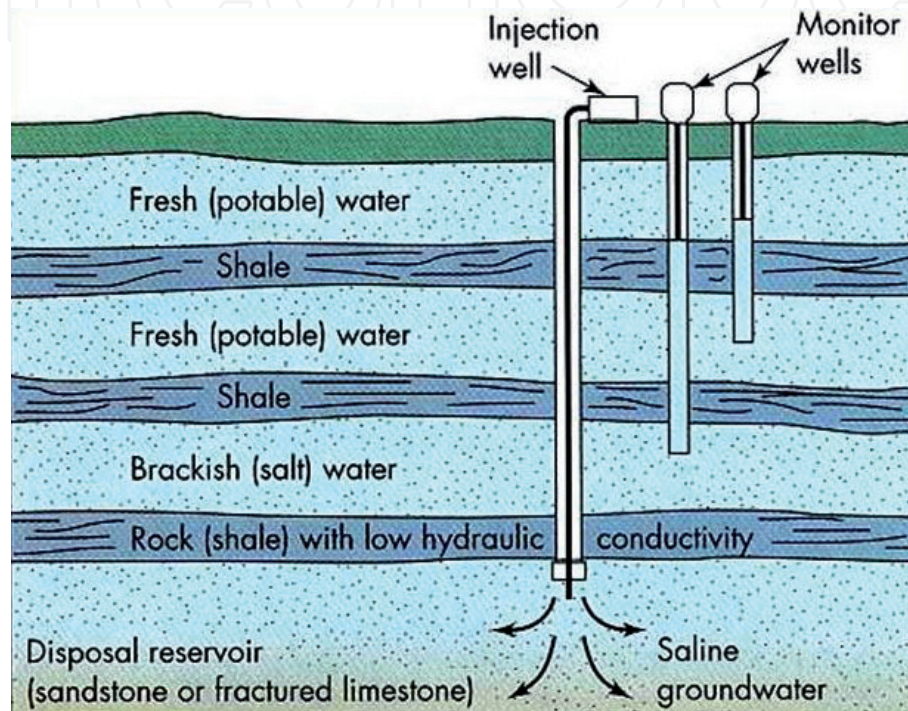
#### 5.4.2 Deep well disposal

Another alternative disposal of liquid industrial waste is injection into deep well as shown in the **Figure 4**. Deep well injection is a liquid waste disposal technology. This alternative uses injection wells to place treated or untreated liquid waste into geologic formations that have no potential to allow migration of contaminants into potential potable water aquifers. In order to force the liquid into the pores and fissures of the rock, high pressures are applied. The rock unit selected are of porous and permeable (commonly, sandstone or fractured limestone), and must be separated by low permeability layers (for example, shale) above and below. Deep-well injection is a cost effective and requires little or no pretreatment of the waste, but it poses a danger of leaking hazardous waste and eventually polluting underground water resources.

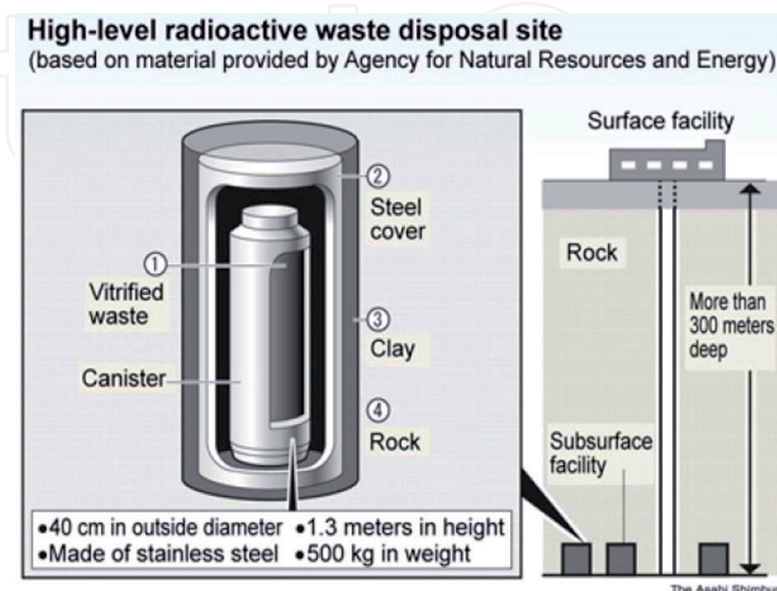


### 5.4.3 Bedrock disposal

Bedrock disposal is mainly meant for solid hazardous waste and a variety of bed rock types are being investigated as host rocks. The design of a bedrock disposal site or repository for hazardous wastes is shown in **Figure 5**. It is based on the multiple barrier (or multi barrier) concept: surrounding solid hazardous waste sealed with several different types of materials to prevent waste leakage or invasion by ground water. A major concern is the nature of the host rock as well as some potential drawbacks. The method is widely used for high-level radioactive wastes. Sealed into stainless steel canisters, or spent fuel rods encapsulated in corrosion resistant metals



**Figure 4.**  
*Deep well disposal method.*



**Figure 5.**  
*Bedrock disposal method.*

such as copper or stainless steel and buried in stable rock structures deep underground. Many geological formations such as granite, volcanic tuff, salt, thick basalts such as the Columbia River plateau basalt or shale will be suitable [11].

## **6. Waste management: Indian scenario**

Hazardous waste is any substance in solid, liquid or gaseous form, because of physical, chemical, reactive, toxic, flammable, explosive, corrosive, radioactive or infectious characteristics causes threat to human health and environment.

The amount of hazardous waste generated per annum is found to be 4.4 million tonnes as per organization of economic cooperation and development (OECD). This estimate of about 4.4 million is based on the 18 categories of wastes which appeared in the Hazardous waste management (HWM) rules first published in 1989. Among this 38.3% is recyclable, 4.3% is incinerable and the remaining 57.4% is disposable in secured landfills. Nearly about 13 States of the country (Maharashtra, Gujarat, Tamil Nadu, Orissa, Madhya Pradesh, Assam, Uttar Pradesh, West Bengal, Kerala, Andhra Pradesh, Telangana, Karnataka and Rajasthan) contributes for about 97% of total hazardous waste generation. The top five states include Maharashtra, Gujarat, Andhra Pradesh, Telangana and Tamil Nadu. If the hazardous waste is not properly maintained, severe pollution of land, surface and ground water will occur [12–13]. As per industrial requirement category in India, every industry should have enough land available within its premises for the treatment and disposal and or reuse/recycling of the wastes generated from it [14]. There is a major concern all over the world for the safe disposal of hazardous waste. Hazardous Wastes (HWs) can be disposed off at Treatment, Storage and Disposal Facility (TSDF) as it is one of the centralized location for treatment of wastes. The TSDF helps small and medium scale industries generating hazardous waste [15–16].

### **6.1 Characterization of hazardous waste**

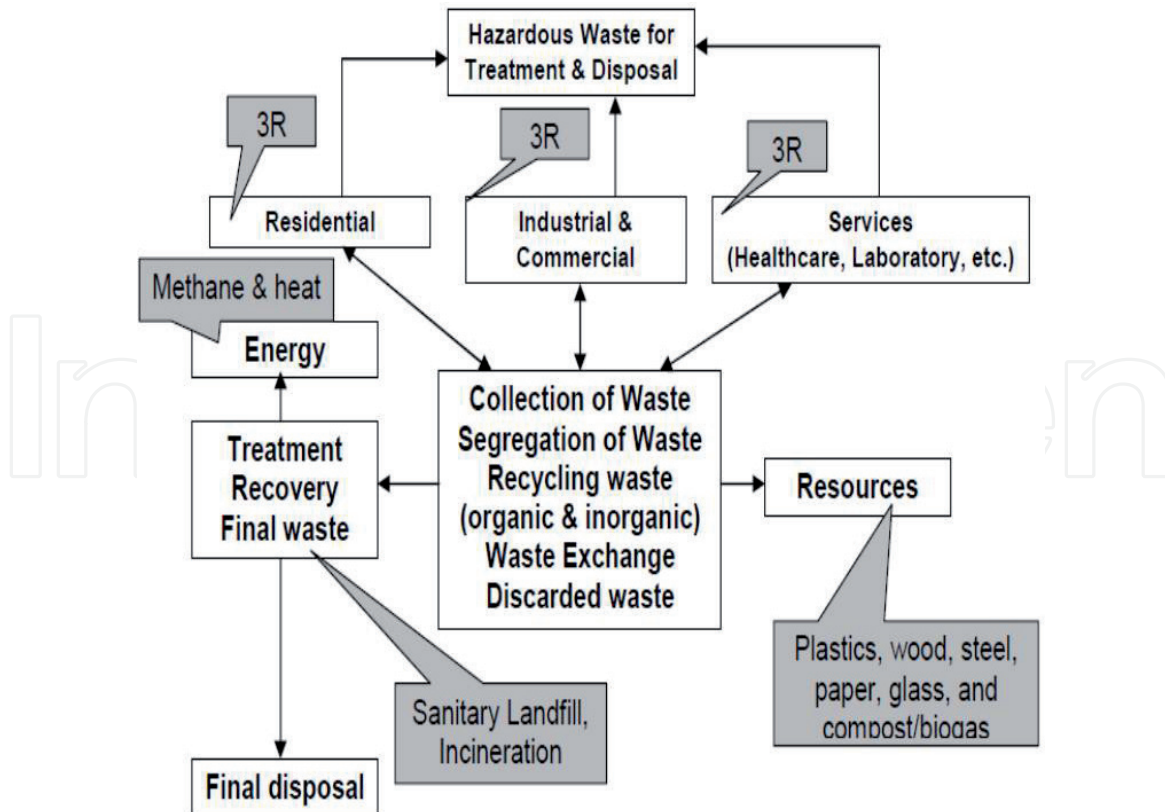
The Hazardous Wastes are categorized into three groups namely Recyclable, Incinerable, and Disposable. The disposable Hazardous Wastes category (inorganic in nature to be disposed off in landfill) is high compared to the other two categories [17].

### **6.2 Quantification**

In India the amount of hazardous waste generated is 4,415,954 TPA covering 373 districts out of 525 districts. With reference to the cited literature [18] the land required to dispose 5.3 million tons of hazardous wastes in an engineered landfill with the density of waste (1.2 tonnes/m<sup>3</sup>) with the depth of the landfill 4 m is 1.08 km<sup>2</sup> every year.

### **6.3 Integrated sustainable waste management**

Integrated sustainable waste management is defined as selection and application of suitable techniques, technologies and management approaches to achieve specific objectives and goals. This system ensures the integrity of all the systems to work with compatibility and allows rational planning and execution [19]. It consists of four basic principles and three components.



**Figure 6.**  
*Integrated sustainable waste management.*

### 6.3.1 Principles of integrated sustainable waste management

#### 6.3.1.1 Equity

All citizens should be exposed to appropriate waste management system for environmental health reasons.

#### 6.3.1.2 Effectiveness

The waste management model should ensure safe removal of waste.

#### 6.3.1.3 Efficiency

The major concern of waste management is to maximize the benefits, lower the costs and optimize the use of resources, taking into account, equity, effectiveness and sustainability.

#### 6.3.1.4 Sustainability

The waste management system is appropriate to the local conditions and feasible from a technical, environmental, social, economic, financial, institutional and political perspective. It can maintain itself overtime without exhausting the resources upon which it depends.

### 6.3.2 Components of integrated sustainable waste management

1. The stakeholders
2. The (practical and technical) elements of the waste system

### 3. The aspects of the local context for assessing and planning waste management system.

ISWM includes elements such as collection, transportation and disposal or treatment, and also gives equal importance to waste minimization, reuse, recycling and composting. The concept of integrated sustainable waste management was shown in **Figure 6**.

Sustainable hazardous waste management is of prime importance for proper health, protection of environment and resource management towards sustainability. Prevention of the generation of hazardous wastes and the rehabilitation of contaminated sites are the key elements, and both require knowledge, experienced people, facilities, financial resources and technical and scientific capacities.

## 7. Conclusion


The main prospective of hazardous waste management program is to change the way of managing hazardous waste so that they can be stored, transported and disposed in an environmentally safe manner. The focus of managing hazardous waste comes in an effort to address potential threats to public health and environment. Hazardous waste management must have an initiative beyond disposing directly into the land surface. Industries are encouraged to generate less amount of hazardous waste as a part of manufacturing process. Because the toxic wastes cannot be completely eliminated and only possible way is to minimizing, recycling, and treating wastes. So steps should be taken to use the modern technology without causing any threat to environment. Minimizing, recycling, and treating wastes.

### Author details

Krishnaswamy Kanagamani\*, P. Geethamani and M. Narmatha  
Department of Chemistry, SNS College of Technology, Coimbatore, India

\*Address all correspondence to: [kanagamanichem@gmail.com](mailto:kanagamanichem@gmail.com)

### IntechOpen

© 2020 The Author(s). Licensee IntechOpen. This chapter is distributed under the terms of the Creative Commons Attribution License (<http://creativecommons.org/licenses/by/3.0>), which permits unrestricted use, distribution, and reproduction in any medium, provided the original work is properly cited. 



## References

- [1] V. Misra, S.D. Pandey, Hazardous waste, impact on health and environment for development of better waste management strategies in future in India. *Environment International*. 2005,31(3), 417-435. <https://doi.org/10.1016/j.envint.2004.08.005>
- [2] E.D.Enger, B.F.Smith, A study of interrelationships. *Environmental Science*. Edward E. Bartell. California, USA, 2004.
- [3] B. Roger, E.S.James, & D.David The safe disposal of Hazardous wastes: The special needs and problems of developing countries, *A world Bank Technical paper* 1989,1 (93),154
- [4] C.C. Amadi, O.C. Okeke & D.C. Amadi, Hazardous waste management: A review of principles and methods, *International Journal of Advanced Academic Research Sciences, Technology & Engineering*, 2017, 3 (8), 1-20.
- [5] L. Fazzo, F. Minichilli, M. Santoro, A. Ceccarini, M. Della Seta, F. Bianchi, P. Comba & M. Martuzzi, Hazardous waste and health impact: a systematic review of the scientific literature, *Environmental Health*, 2017, 16 DOI 10.1186/s12940-017-0311-8.
- [6] Vandana bharati, Jaspal singh, A.P.Singh, A Review on Solid Waste Management Methods and Practices in India, 2017, 4065-4067.
- [7] V.M. Iyyanki & M.Vali, *Science and Engineering for industry, Environmental Management 1st Edition*, Elsevier. Inc, 2017.
- [8] A.N.Jerry, *Encyclopedia Britannica, Hazardous Waste management*,2015
- [9] C.Visvanathan , Hazardous waste disposal, *Resources, Conservation and Recycling*.1996,16, 201-212. [https://doi.org/10.1016/0921-3449\(95\)00057-7](https://doi.org/10.1016/0921-3449(95)00057-7)
- [10] *Encyclopedia Britannica, Hazardous Waste Disposal*,2016, Retrieved from <https://www.britannica.com/technology/hazardous-waste-management>
- [11] Rajkumar Joshi, Sirajuddin Ahmed, Status and challenges of municipal solid waste management in India: A review, *Cogent Environmental Science* 2016, 2, 1139434.
- [12] V.Ramakrishna and B.V. Babu, “Fresh water depletion – a crisis: Causes & remedies”, *Environment & People*.1999a, 6(1), 33-39.
- [13] J. Parsa., H.M. Stuart and R. Steiner, Stabilization /solidification of hazardous wastes using fly as, *J. Environ. Engg, ASCE*, 1996,122 (10), 935-940.
- [14] Leelavathy Karthikeyan , Venkatesan Madha Suresh , Vignesh Krishnan , Terry Tudor and Vedha Varshini, The Management of Hazardous Solid Waste in India: An Overview, *Environments*, 2018, 5, 103.
- [15] B.V. Babu and V. Ramakrishna, Mathematical modeling of Site sensitivity indices in the site selection criteria for hazardous waste treatment, storage and disposal facility, *Journal of the Institution of Public Health Engineers India*, 2000, 2000 (1), 54-70.
- [16] R. Lakshmi, Remote Sensing application in siting of waste disposal facilities with special reference to hazardous wastes”, in *Remote Sensing Applications in Applied Sciences*, edited by Saumitra Mukherjee, Manak Publications Pvt. Ltd., New Delhi, 1999, 141-179.

[17] A. Agarwal., M. Agarwal, A. Mehta, and M. Bajpai. A review on current status of municipal solid waste management in India, MSSRGIJCE3, 2016, (5):122-125.

[18] SDNP. Hazardous waste: special reference to municipal solid waste management, 2003.

[19] A.V. Shedkar, Sustainable solid waste management: An integrated approach for asian countries, Waste Manage., 2009, 29(4), 1438-1448.

IntechOpen