

University of Mississippi

eGrove

Lecture Series

3-4-2020

New Fieldwork from Classical Olynthus, Greece: Towards an Archaeology of Identity

Lisa Nevett

University of Michigan, Ann Arbor

University of Mississippi. Department of Classics

Archaeological Institute of America

Follow this and additional works at: https://egrove.olemiss.edu/classics_lectures



Part of the [Classics Commons](#)

Recommended Citation

Nevett, Lisa; University of Mississippi. Department of Classics; and Archaeological Institute of America, "New Fieldwork from Classical Olynthus, Greece: Towards an Archaeology of Identity" (2020). *Lecture Series*. 4.

https://egrove.olemiss.edu/classics_lectures/4

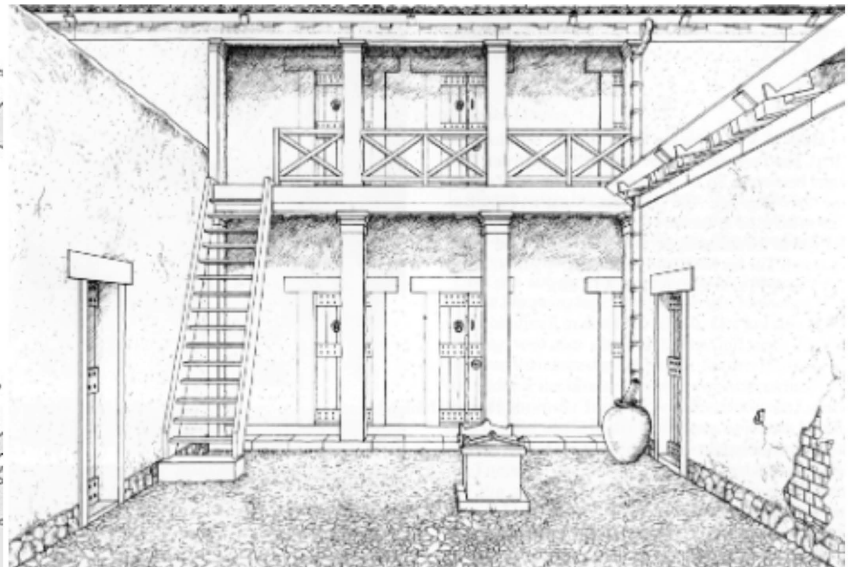
This Book is brought to you for free and open access by eGrove. It has been accepted for inclusion in Lecture Series by an authorized administrator of eGrove. For more information, please contact egrove@olemiss.edu.



***The Department of Classics and
The Archaeological Institute of America
Present a Lecture***

**Professor Lisa Nevett,
Director, Interdisciplinary Program,
Classical Art and Archaeology
The University of Michigan, Ann Arbor**

***“NEW FIELDWORK
FROM CLASSICAL OLYNTHUS, GREECE:
TOWARDS AN ARCHAEOLOGY OF IDENTITY”***



**Wednesday, March 4th
7:30 PM The University Museums Meeting Room
The University of Mississippi, Oxford, MS**

For more information or assistance with a disability call 662-915-7020 OR 662-915-1152