



Alanine tRNAs Translate Environment Into Behavior in *Caenorhabditis elegans*

Diana Andrea Fernandes De Abreu¹, Thalia Salinas-Giegé², Laurence Drouard² and Jean-Jacques Remy^{1*}

¹ Genes, Environment, Plasticity, Institut Sophia Agrobiotech ISA UMR CNRS 7254, INRAE 1355, Université Nice Côte d'Azur, Sophia-Antipolis, France, ² Institut de Biologie Moléculaire des Plantes-CNRS, Université de Strasbourg, Strasbourg, France

OPEN ACCESS

Edited by:

Anthony Isles,
Cardiff University, United Kingdom

Reviewed by:

Fernando Calahorra,
University of Southampton,
United Kingdom
Shohei Mitani,
Tokyo Women's Medical University,
Japan

*Correspondence:

Jean-Jacques Remy
jean-jacques.remy@inrae.fr

Specialty section:

This article was submitted to
Developmental Epigenetics,
a section of the journal
Frontiers in Cell and Developmental
Biology

Received: 10 June 2020

Accepted: 12 October 2020

Published: 30 October 2020

Citation:

Fernandes De Abreu DA,
Salinas-Giegé T, Drouard L and
Remy J-J (2020) Alanine tRNAs
Translate Environment Into Behavior
in *Caenorhabditis elegans*.
Front. Cell Dev. Biol. 8:571359.
doi: 10.3389/fcell.2020.571359

Caenorhabditis elegans nematodes produce and maintain imprints of attractive chemosensory cues to which they are exposed early in life. Early odor-exposure increases adult chemo-attraction to the same cues. Imprinting is transiently or stably inherited, depending on the number of exposed generations. We show here that the Alanine tRNA (UGC) plays a central role in regulating *C. elegans* chemo-attraction. Naive worms fed on tRNA^{Ala} (UGC) purified from odor-experienced worms, acquire odor-specific imprints. Chemo-attractive responses require the tRNA-modifying Elongator complex sub-units 1 (*elpc-1*) and 3 (*elpc-3*) genes. *elpc-3* deletions impair chemo-attraction, which is fully restored by wild-type tRNA^{Ala} (UGC) feeding. A stably inherited decrease of odor-specific responses ensues from early odor-exposition of *elpc-1* deletion mutants. tRNA^{Ala} (UGC) may adopt various chemical forms to mediate the cross-talk between innately-programmed and environment-directed chemo-attractive behavior.

Keywords: epitranscriptome, tRNA, behavior, plasticity, chemoattraction

INTRODUCTION

Although parental adaptation to different environmental challenges can be transmitted to future generations, the mechanisms by which external signals are translated into heritable information are largely unknown (Lieberman et al., 2019).

Caenorhabditis elegans worms keep a life-term memory of attractive olfactory cues to which they were exposed during the first larval stage (Remy and Hobert, 2005). Early odor-exposure results in a significant enhancement of odor-specific chemo-attraction at the adult stage. Such olfactory imprinting can be inherited either transiently by a single generation or stably over generations after at least five consecutive generations were exposed to the same cue (Remy, 2010).

Non-coding RNAs have previously been implicated in the memory and transgenerational transmission of different environmental information in the *C. elegans* nematode (Juang et al., 2013; Hall et al., 2013; Rechavi et al., 2014; Posner et al., 2019) and in the mouse (Gapp et al., 2014; Grandjean et al., 2015; Benito et al., 2018).

In this work, we found that a single Alanine tRNA molecule plays an essential role in regulating both the innately expressed and the environment modulated chemo-attractive responses in *C. elegans*. We first observed that naive unexposed worms acquire an odor-specific imprinting after

being fed on RNA extracted from odor-exposed animals. Biochemical fractionation of RNAs led to identify transfer RNAs (tRNAs) containing fractions as the imprinting transmission medium. Using tRNA-specific probes, we found that among all *C. elegans* tRNA molecules, only the Alanine tRNA with the UGC anticodon, tRNA^{Ala} (UGC), transfers odor-specific imprints to naive worms via feeding. The highly purified tRNA^{Ala} (UGC) from worms exposed to three different attractive odors - benzaldehyde (BA), citronellol (CI) and isoamyl alcohol (IA) - transfers the same odor-specific heritable behavioral changes as early odor stimulations do. This single tRNA molecule could thus carry different odor-specific codes, according to the odors worms were exposed.

The nucleotides of all forms of coding and non-coding RNAs can be chemically modified. To date, more than 160 different chemical modifications of RNA bases have been described. Each modification involves specific reactions catalyzed by enzymes called « writers » (Sarin and Leidel, 2014; Schaefer et al., 2017; Jonkhout et al., 2017; Boccaletto P. et al., 2018).

It is largely admitted that, compared to all other forms of RNAs, tRNAs are the most extensively modified. The combination of modified bases would potentially produce a significant number of chemical variants for a single tRNA molecule.

We hypothesized that specific base modification patterns shape the odor-codes written on tRNA^{Ala} (UGC) molecules upon odor-stimulation. We, therefore, analyzed the behavioral effects of mutations inactivating the Elongator complex, ELPC, the only known tRNA bases modifier in *C. elegans*. Inactivation of the elongator complex sub-units 3 (*elpc-3*) or 1 (*elpc-1*) impairs differently the chemo-attractive behavior.

elpc-3 deleted worms are no longer attracted to CI, BA or IA. Chemo-attraction is, however, fully rescued to wild-type levels after feeding *elpc-3* mutants on naive wild-type tRNA^{Ala} (UGC). This suggests *elpc-3* is required for the synthesis of the chemical form of tRNA^{Ala} (UGC) which supports the development of chemo-attractive responses.

Furthermore, the absence of a functional ELPC-1 in the *elpc-1* deleted mutants reverses the outcome of odor-exposure: as opposed to wild-type, early exposure stably decreases adult odor-specific responses of *elpc-1* mutants and their progeny. We observed that such negative odor-specific imprinting can be impaired upon addition of odor-specific amounts of the modified base 5-carbamoylmethyl Uridine (ncm5U) in worm food. Epitranscriptomic regulation of tRNA^{Ala} (UGC) appears to be an essential molecular mechanism linking environmental inputs and stably inherited changes of the *C. elegans* chemo-attractive behavior.

RESULTS

Olfactory imprinting is a long-term inherited behavioral change induced by the early olfactory environment. We hypothesized RNAs could convey the olfactory imprints. First, olfactory imprinting was induced, as previously described (Remy and Hobert, 2005), by exposing animals to two different olfactory cues, citronellol (CI) or benzaldehyde (BA) (**Figure 1A**,

odor-exposure). The induction efficiency was tested using the chemotaxis assay described in section “MATERIALS AND METHODS” and in **Supplementary Figure Method 1**.

Second, total RNA was extracted from CI-exposed, BA-exposed or water-exposed control worms. Third, these RNAs were fed to naive larvae (**Figure 1A**, RNA-feeding). Fourth, once RNA-fed larvae reached adulthood, they were subjected to the chemotaxis assays. Naive worms fed on RNA from CI or BA-exposed worms migrate significantly faster toward CI or BA, as if they had been themselves odor-exposed (**Figure 1B**).

This observation shows that worms exposed to odors during the L1 larval stage produce RNA populations able to alter chemosensory responses of naive animals via ingestion.

To identify which RNA molecules do transfer odor imprints, we separated the large from the small RNAs. We fed naive worms on either the “large RNAs fraction” or the “small RNAs fraction” and observed that only RNAs smaller than 200 nucleotides (nt) can trigger the imprinting (**Supplementary Figure 1a**). Migration on a 3.5% agarose gel separates small RNAs into five fractions (A to E bands, insert on **Supplementary Figure 1b**). After RNA-feeding, we observed that olfactory imprints were exclusively transmitted by the “D” small RNA fraction. Based on co-migration with a double-stranded RNA ladder (L), the “D” RNA population migrates with an apparent mean size of 45 nt on this non-denaturing electrophoresis condition.

Further fractionation of the naive (NA) and of the imprinting (CI) fractions on denaturing 7 M urea-15% polyacrylamide gel (**Figure 2A**) revealed they are composed of several RNA species we named fractions 1 to 8. We noticed that fractions 2 to 7 represent a typical profile of tRNAs (**Figure 2A, left panel**). Performing northern-blot analyses using two *C. elegans* specific probes for tRNA^{Leu} (AGG) and tRNA^{Gly} (UCC), we confirmed that fractions 2 to 7 indeed contain the *C. elegans* tRNA population (**Figure 2A, right panel**).

We next wanted to know if the imprinting activity is spread over the whole tRNA co-purified population or linked to specific fractions. We cut and eluted each of the indicated 1 to 8 fractions from the polyacrylamide gels. We reconstituted the whole imprinting fraction by mixing fractions 1 to 8, and the whole tRNA co-migrating RNA populations by combining fractions 2 to 7. Both 1 to 8 (CI Mix 1-8) and 2 to 7 (CI Mix 2-7) mixes extracted from CI-exposed worms, transferred a CI-specific imprint to naive worms, while the corresponding NA mixes (NA Mix 1-8 and NA Mix 2-7) did not (**Figure 2B**).

After a detailed fraction by fraction analysis, we found that feeding naive with fractions 5 and 6 significantly enhance CI chemo-attraction (**Figure 2C**).

The *C. elegans* genome is predicted to encode 596 functional tRNA genes (Duret, 2000; Robertson and Thomas, 2006; Chan and Lowe, 2009).

The tRNAs need to be heavily modified post-transcriptionally to be fully active (Agris, 2015; Duechler et al., 2016). Indeed, the high abundance of tRNA post-transcriptional modifications blocks the progression of reverse-transcriptases, thus cDNA synthesis, making quantitative tRNA sequencing very challenging. Alternative methods have been proposed in the recent literature to obviate these limitations (Pang et al., 2014; Zheng et al., 2015; Cozen et al., 2015; Shigematsu et al., 2017),

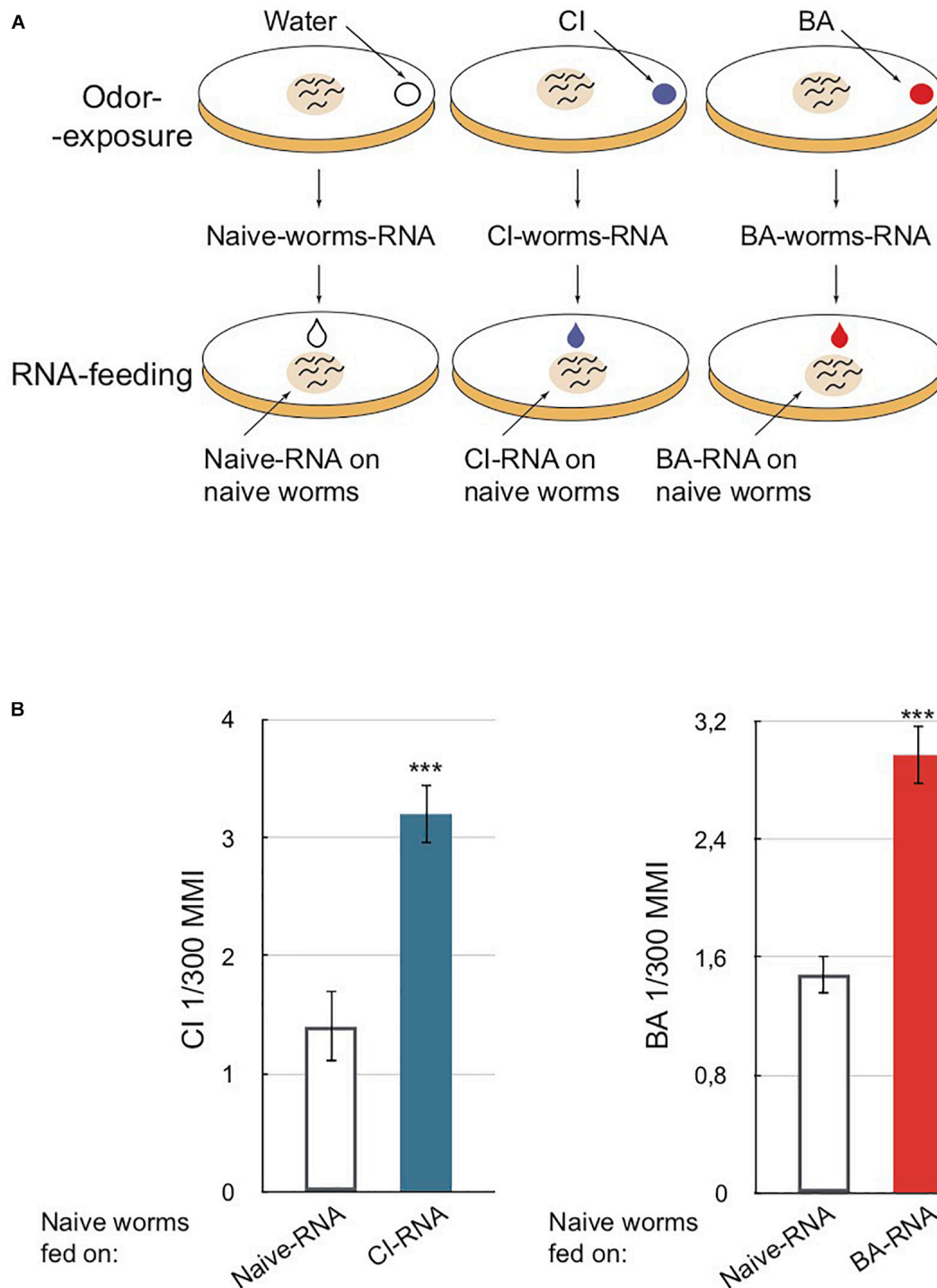
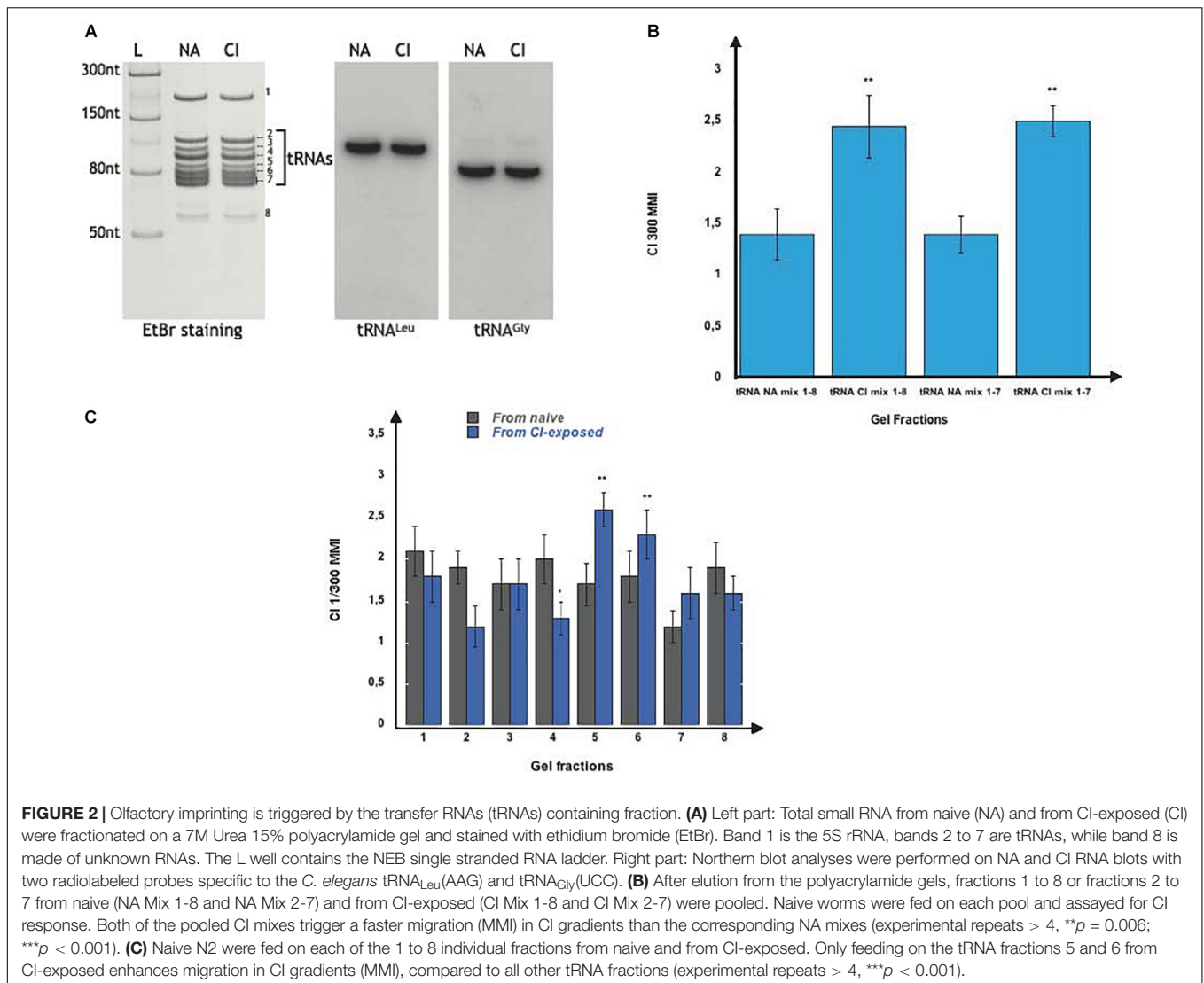


FIGURE 1 | RNA extracted from odor-exposed worms transfer olfactory imprinting to naive unexposed worms via feeding. **(A)** Schematic depiction of worms odor-exposure and RNA-feeding. Upper part: a drop of 4 μ l of citronellol (CI) or benzaldehyde (BA) or water (for control unexposed) is placed on the lid of each culture plate. Worms produce long-lasting odor-specific imprints when exposed to odors for 12 h post-hatch at 20°C, the critical period for olfactory imprinting (Remy and Hobert, 2005). Worms exposed to odors during this period are collected at the adult stage. RNA is extracted from each collected population. Bottom part: a 10 μ l drop of purified RNA is placed on worm food (*E. coli* OP50) to be ingested by naive larvae. **(B)** Chemotaxis assays performed on naive adults fed on different RNA populations. Worms fed on RNA from CI-exposed (CI-RNA, blue column) and worms fed on RNA from BA-exposed (BA-RNA, red column) migrate faster toward a CI source and a BA source, respectively, compared to worms fed on RNA from naive animals (Naive-RNA, white columns). Mean Migration Index (MMI) was determined as described in **Supplementary Material** (experimental repeats > 4, ****p*-value < 0.001).



however none of them is readily available. For this reason, instead of a sequencing strategy, we used biochemical methods to identify which RNAs molecules are able to transfer olfactory imprinting among these tRNA co-purified fractions.

To assess if tRNAs are responsible for imprinting, we combined streptavidin microbeads purification with northern blot analysis. According to the genomic tRNA database (GtRNAdb) predictions, *C. elegans* uses 46 different anticodons to decode the 20 amino acids. Five anticodons are used for Ser, Arg and Leu, three for Ala, Gly, Pro, Thr and Val, two for Lys, Glu, Gln and Ile, and one for Phe, Asp, His, Met, Tyr, Cys and Trp.

As mentioned above, imprinting is transferred only by fractions 5 and 6.

tRNAs bearing different anticodons decoding the same amino acid, named tRNA isoacceptors, display a high degree of sequence homology. Since the denaturing gel shown in **Figure 2A** separates tRNA molecules based not only of their length but also of their nucleotide sequences, we hypothesized that each fraction, including the imprinting fractions 5 and 6, may contain a limited number of isoacceptor tRNAs.

We used a set of 37 nt long oligonucleotides specific to each tRNA isoacceptors family and complementary to their respective tRNAs 3' halves, for purifications on microbeads, as described in Methods. Most anticodon-specific tRNAs used by *C. elegans* are represented in our set of tDNA probes, except two out of the five decoding Ser and Arg and one out of the five decoding Leu. For northern blots analysis, we used short aminoacid-specific isodecoder tRNA probes (see section "MATERIALS AND METHODS").

We reasoned that if a mixture of tRNAs eluted from a pool of tDNA oligonucleotides bound to microbeads transfers imprinting, this population should contain the imprinting RNAs.

tRNAs were purified from odor-exposed (CI or BA) worms using 14 different pools made of oligonucleotides specific to 7 to 11 different tRNAs (**A to N**, **Table 1**). The pools were designed such as each isotype (amino-acid decoding) tRNA is present in three different pools. Out of the 14 pools, only tRNAs purified from the A, J and N pools could transfer the imprinting (**Table 1**).

Pool A is made of oligonucleotides specific to Ala, Arg, Asn, Asp and Cys tRNAs.

Arg, Asn, Asp and Cys oligonucleotides did not allow the purification of the imprinting tRNAs, as they are also part of the imprinting negative pools F and K. Pool J is made of the Tyr, Val, Ala and Arg probes, but Tyr and Val probes are part of the imprinting negative pool E.

TABLE 1 | Alanine tRNAs from odor-exposed worms transfer imprinting to naive.

Pooled tDNA Probes		RNA from odor-exposed worms	Behavior after feeding eluates	tRNA isotypes
Ala 1 + 2 + 3 Arg 1 + 2 + 3 Asn, Asp, Cys	A	Small RNAs or Gel-eluted fractions 5 and 6	Imprinting	Ala, Arg, Asn, Asp, Cys
Gln 1 + 2, Glu 1 + 2 Gly 1 + 2, His Ile 1 + 2	B	Small RNAs or Gel-eluted fractions 5 and 6	Naive	Gln, Glu, Gly, His, Ile
Leu 1 + 2 + 3 + 4 Lys 1 + 2, Met 1 + 2	C	Small RNAs or Gel-eluted fractions 5 and 6	Naive	Leu, Lys, Met
Phe, Pro 1 + 2 + 3 Ser 1 + 2 + 3	D	Small RNAs or Gel-eluted fractions 5 and 6	Naive	Phe, Pro, Ser
Thr 1 + 2 + 3, Trp Tyr, Val 1 + 2 + 3	E	Small RNAs or Gel-eluted fractions 5 and 6	Naive	Thr, Trp, Tyr Val
Arg 1 + 2 + 3 Asn, Asp, Cys Gln 1 + 2, Glu 1 + 2	F	Small RNAs or Gel-eluted fractions 5 and 6	Naive	Arg, Asn, Asp Cys, Gln, Glu
Gly 1 + 2, His Ile 1 + 2 Leu 1 + 2 + 3 + 4	G	Small RNAs or Gel-eluted fractions 5 and 6	Naive	Gly, His, Ile Leu
Lys 1 + 2 Met 1 + 2 Phe, Pro 1 + 2 + 3	H	Small RNAs or Gel-eluted fractions 5 and 6	Naive	Lys, Met, Phe Pro
Ser 1 + 2 + 3 Thr 1 + 2 + 3, Trp	I	Small RNAs or Gel-eluted fractions 5 and 6	Naive	Ser, Thr, Trp
Tyr, Val 1 + 2 + 3 Ala 1 + 2 + 3 Arg 1 + 2 + 3	J	Small RNAs or Gel-eluted fractions 5 and 6	Imprinting	Tyr, Val, Ala Arg
Asn, Asp, Cys Gln 1 + 2, Glu 1 + 2 Gly 1 + 2, His	K	Small RNAs or Gel-eluted fractions 5 and 6	Naive	Asn, Asp, Cys Gln, Glu, Gly, His
Ile 1 + 2 Leu 1 + 2 + 3 + 4 Lys 1 + 2	L	Small RNAs or Gel-eluted fractions 5 and 6	Naive	Ile, Leu, Lys
Met 1 + 2 Phe, Pro 1 + 2 + 3 Ser 1 + 2 + 3	M	Small RNAs or Gel-eluted fractions 5 and 6	Naive	Met, Phe, Pro Ser
Thr 1 + 2 + 3, Trp Tyr, Val 1 + 2 + 3 Ala 1 + 2 + 3	N	Small RNAs or Gel-eluted fractions 5 and 6	Imprinting	Thr, Trp, Tyr Val, Ala

Pool N is made of the Thr, Trp, Tyr, Val and Ala probes, but Thr, Trp, Tyr and Val probes are part of the imprinting negative pools E and I.

Altogether, we concluded that only the Ala oligonucleotides are present in the three imprinting positive pools A, J and N.

We further proceeded with tRNA purification by isotope-specific probes and confirmed that only the tRNAs eluted from Alanine tDNA probes imprint naive worms, as shown in **Figure 3A**. It remains possible that other RNA species that co-elute from the Alanine tDNA probes are active species.

Northern blot analyses were performed to identify which tRNAs are present in the imprinting positive fractions (**Figure 3B**). We show here the analysis of naive (N3 to N6), CI-exposed (C3 to C6) and BA-exposed (B4 to B7) fractions using probes specific to most tRNA isotypes used in **Figure 3A**. While tRNA^{Leu} co-migrate with fractions 3, tRNA^{Glu} co-migrate with tRNA^{Gln} mostly in fractions 7, but are also present in fractions 6, tRNA^{Lys} migrate mostly in fractions 6 but are also present in fractions 5. Northern blots support the results obtained using microbeads purification: Alanine tRNAs are primarily present in the imprinting fractions 5 and 6.

Oligonucleotides 1 to 4, described in Methods, allow the purification of the three different tRNA^{Ala} isoacceptors used by *C. elegans*, i.e., tRNA^{Ala} (AGC), tRNA^{Ala} (CGC) and tRNA^{Ala} (UGC). To further discriminate between these Alanine tRNA isoacceptors, each purified tRNA was assayed for its imprinting ability.

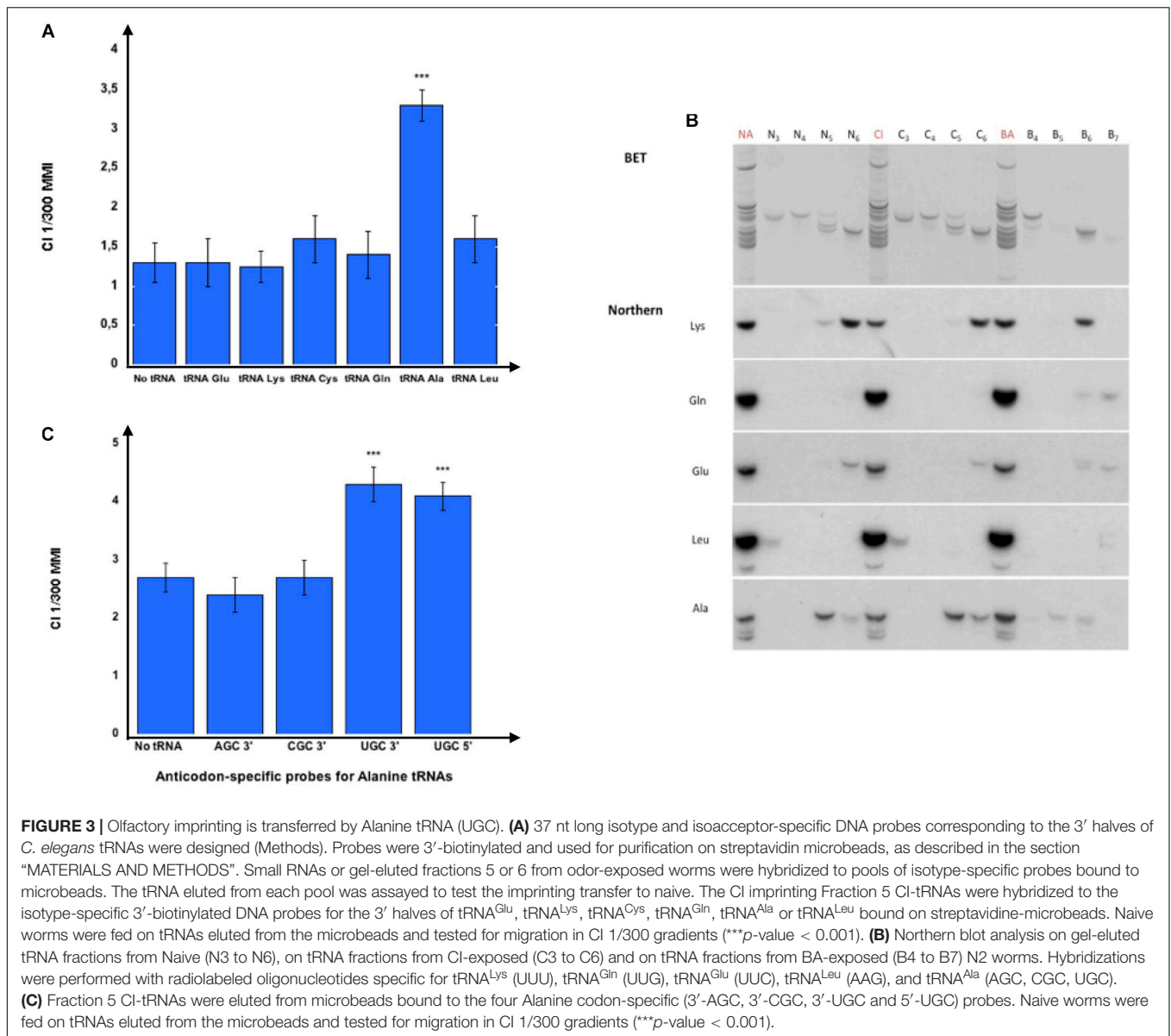
RNA species eluted from the microbeads bearing the tRNA^{Ala} (AGC) or the tRNA^{Ala} (CGC) probes do not transfer imprinting. By contrast, the RNA species bound to the two probes corresponding to, respectively, the 5' and the 3' halves of the tRNA^{Ala} (UGC) transfer imprinting to naive worms (**Figure 3C**).

Our findings suggest that the tRNA^{Ala} (UGC) isodecoder is the only tRNA able to transfer odor-specific imprinting to naive. To further prove this single tRNA molecule is indeed able to carry and transfer several different odor-specific information, we also exposed, besides to BA and to CI, worms to isoamyl alcohol (IA), a third attractive odorant (Bargmann et al., 1993), for which imprinting after early exposure has been demonstrated (Remy and Hobert, 2005).

The use of the microMACS Streptavidin MicroBeads protocol allowed a fast screening of tRNAs activity. We followed the recommended protocol using stringent hybridization conditions and a high salt washing buffer. However, to obtain highly purified tRNA^{Ala} (UGC) molecules, visualize the purified tRNA, estimate the purification yields and assess the efficiency of imprinting transfer, we scaled up our purification by using chromatography on Streptavidin Sepharose beads coupled to the 3'-biotinylated Ala (TGC)-3' oligonucleotide, as described in section "MATERIALS AND METHODS."

The amount of eluted tRNA was too low to be visible by ethidium bromide staining after gel migration when starting with 1.10⁴ worms. Therefore, we used Cy3 labeling, as described in the section "MATERIALS AND METHODS," to detect the tRNAs after gel fractionation.

As shown in **Figure 4A**, a major band of tRNA^{Ala} (UGC) from naive, CI, IA or BA-exposed worms was eluted from the beads.



To eliminate any other RNA molecule that may have been co-purified, we cut the bands containing the tRNAs out of the gel, and eluted them. The estimated yields were approximately 1 ng of pure tRNA^{Ala} (UGC) obtained from 1.10^4 adult worms. Naive wild-type worms were fed on 1/10 μ l of each gel-eluted tRNAs and assayed for CI, IA or BA chemotaxis. Feeding naive worms on gel-eluted tRNA^{Ala} (UGC) from CI-exposed (CI) worms increases chemo-attraction to CI, compared to feeding tRNA^{Ala} (UGC) from naive unexposed (NA) worms. Feeding on tRNA^{Ala} (UGC) from IA or BA-exposed (IA, BA) worms, respectively increases IA or BA responses specifically, compared to feeding tRNA^{Ala} (UGC) from naive (NA) animals (Figure 4B).

These results strongly suggest that odor-stimulated worms produce odor-specific forms of a unique tRNA^{Ala} (UGC) molecule, each carrying and transferring odor-specific information, according to a specific early olfactory experience.

Furthermore, imprinting is efficiently transferred by very low amounts of tRNA; we found that dilutions containing 0.001 μ l of each gel-eluted tRNAs bands (shown on the Figure 4A gel), with less than 1 pg of tRNA^{Ala} (UGC), transfer imprinting to a population of 20 worms.

The F1 unexposed worm generation inherited the parental enhanced response after odor-exposure, while the F2 generation lost it. However, olfactory imprinting is stably fixed and stably inherited in worm populations after five worm generations were odor-exposed (Remy, 2010).

Imprinting via tRNA^{Ala} (UGC) feeding might be able to recapitulate the inheritance pattern of imprinting after odor-exposure. As schematically outlined (Figure 5), we compared CI responses of the seven CI-tRNA fed generations and their naive progeny grown without tRNA addition until the fourth generation. We found that a CI imprint is passed to the

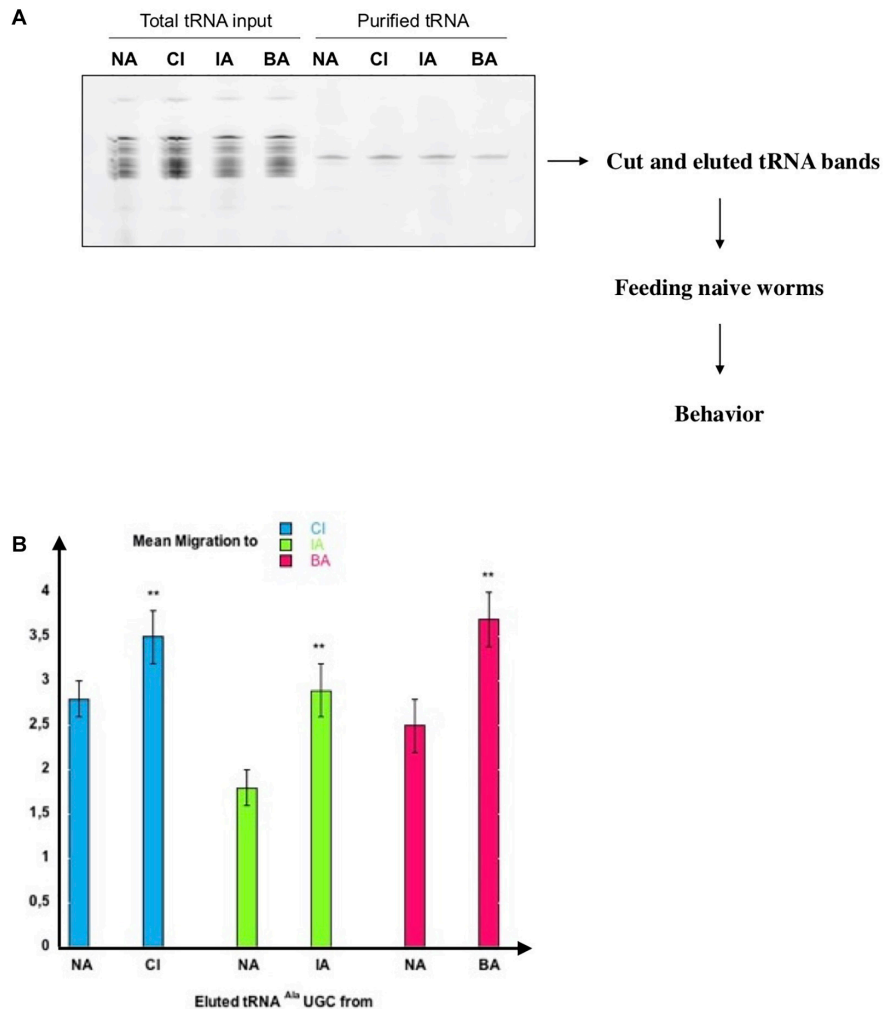


FIGURE 4 | Highly purified tRNA eluted from the tDNA Alanine TGC probe transfers odor-specific imprinting to naive. **(A)** Analysis on 15% denaturing acrylamide gel of pCp-Cy3 labeled total tRNA and tRNA eluted from 3'-biotinylated tDNA Alanine TGC probe. tRNAs are from naive unexposed (NA), CI-exposed (CI), IA-exposed (IA) or BA-exposed (BA) N2 worms. tRNA bands indicated by the arrow were cut out, eluted, and resuspended in 4 μ l H₂O to feed naive worms. **(B)** One tenth of each gel-eluted tRNA was added to the food of naive worms. tRNA fed worms were assayed at the adult stage for odor-specific chemotaxis responses (** p -value < 0.01).

first but not to the second naive generation issued from one to five generations of CI-tRNA fed animals. However, CI imprinting is stably maintained in naive generations issued from worms fed on CI-tRNA at least for six successive generations (Figure 5). To assess the stability of inheritance after the 6th CI-tRNA fed generation, we grew more generations without adding tRNAs. We observed that multi-generationally tRNA-triggered imprinting, as odor-triggered imprinting, is stably maintained in worm progeny. Although it takes six instead of five generations, odor-tRNAs feeding elicit the same long-term stably inherited behavioral change as early odor-exposure.

To alter odor responses and imprint next generations, odor-specific tRNAs added to worm food must enter worm tissues through the intestinal cells. The cloverleaf-like tRNA secondary structure is made of loops joined by double-stranded stretches.

Uptake and diffusion of double-stranded RNA (dsRNA) support systemic silencing by RNA interference in *C. elegans*. We hypothesized tRNAs could take the paths used by dsRNA.

We studied imprinting and its inheritance in mutant worms bearing amino-acid substitutions in one of the two *C. elegans* dsRNA selective transporters SID-1 or SID-2 (Jose et al., 2009; McEwan et al., 2012). The dsRNA selective transporter SID-2 is exclusively localized to the apical membrane of intestinal cells, where it is responsible for the initial binding and internalization of dsRNA from the intestinal lumen (Marré et al., 2016). Due to its high expression in germ-line cells, the dsRNA selective importer SID-1 has been involved in transgenerational diffusion of neuronally expressed mobile dsRNAs (Devanapally et al., 2015).

Worms with *sid-1 (qt2)*, *sid-1 (pk3321)* and *sid-2 (qt13)* mutations show a wild-type imprinting behavior after an early

TABLE 2 | tRNAs use the SID-1 and SID-2 dsRNA-specific transporters to, respectively, support imprinting inheritance and imprinting transmission via feeding.

Behavior Genotypes	Chemotaxis of naive unexposed	Imprinting after odor-exposure	Imprinting Inheritance	Imprinting after CI-RNA feeding
N2 wt	1.6 ± 0.2	2.8 ± 0.3 <i>p</i> < 0.001	2.8 ± 0.3 <i>p</i> < 0.001	2.9 ± 0.3 <i>p</i> < 0.001
<i>sid-1 (qt2)</i>	1.8 ± 0.3	3.2 ± 0.2 <i>p</i> < 0.001	1.7 ± 0.3 (= naive)	3.0 ± 0.2 <i>p</i> < 0.001
<i>sid-1 (pk3321)</i>	1.8 ± 0.3	2.9 ± 0.2 <i>p</i> < 0.001	1.8 ± 0.3 (= naive)	2.8 ± 0.3 <i>p</i> < 0.001
<i>sid-2 (qt13)</i>	0.4 ± 0.2	1.5 ± 0.2 <i>p</i> < 0.001	1.6 ± 0.2 <i>p</i> < 0.001	0.5 ± 0.2 (= naive)
	(A) Naive CI MMI	(B) CI-exposed CI MMI	(C) Unexposed F1 generation CI MMI	(D) CI-RNA fed CI MMI

Wild-type N2 larvae and larvae with the *sid-1 (qt2)*, *sid-1 (pk3321)* and *sid-2 (qt13)* mutations were either CI 1/300 exposed, fed on 100 ng of RNA from CI 1/300 exposed N2 (CI-RNA), or unexposed as control naive. Mean Migration Indices (MMI) to CI 1/300 of naive worms (A), of CI-exposed worms (B), of unexposed F1 worms from CI-exposed (C), and of CI-RNA fed worms (D), were determined as described (experimental repeats > 4).

tRNA^{Ala} (UGC) indeed carries uridine at position 34, by contrast to the two other Alanine tRNA (AGC) and tRNA (GCG). Several U34 modifications require the activity of the tRNA modifying Elongator complex (Karlsborn et al., 2014).

The yeast and mammalian Elongator complexes are composed of two copies of two sub-complexes associating the three ELP-1-2-3 and the three ELP-4-5-6 subunits (Glatt et al., 2012; Dauden et al., 2017). However, the *C. elegans* elongator complex, ELPC, may function as a 1-2-3 sub-complex, since the elongator subunits 5 and 6 genes are absent from the worm genome.

Recent structural and functional analysis of tRNAs processing by the yeast elongator complex indicates that the carboxymethylation (cm5) of 11 tRNAs carrying U34, including the tRNA^{Ala} (UGC), requires the activity of the catalytic 1-2-3 sub-complex (Dauden et al., 2019). The cm5 modification will further lead to the formation of 5-methoxycarbonylmethylated (mcm5), 5-methoxycarbonylmethyl-2-thiolated (mcm5S2) and 5-carbamoylmethylated (ncm5) modified uridines. In the yeast, ELP-1 and ELP-3 sub-units both interact with tRNAs. The *Methanocaldococcus infernus* archeon, which expresses none but the ELP-3 sub-unit, does perform the U34 carboxymethylation reaction. It has been shown that the *C. elegans* elongator complex also controls the synthesis of the mcm5, mcm5S2 and ncm5 modifications of tRNA uridines (Chen et al., 2009).

Elongator has been implicated in a great variety of nuclear and cytoplasmic cellular functions, including transcription elongation, chromatin remodeling, exocytosis, zygotic paternal DNA demethylation, and neuronal development (Creppe et al., 2009; Okada et al., 2010; Solinger et al., 2010; Tielens et al., 2016; Dalwadi and Yip, 2018). The multifunctionality of Elongator could be partly explained by structural analysis (Dauden et al., 2017, 2019). ELP3 contains a C-terminal Lysine Acetyl Transferase (KAT) domain and a domain with sequence homology with the S-adenosylmethionine (SAM) domain. ELP-3

KAT could acetylate several targets, including histones and the neuronal alpha-tubulin (Creppe et al., 2009; Solinger et al., 2010). In the mouse, the radical SAM domain but not the KAT domain has been involved in paternal genome demethylation, suggesting the two ELP3 functional domains could play different roles (Okada et al., 2010). Based on over 80% primary sequence identity, ELPC-3, the worm Elongator sub-unit 3, may carry the same functional domains described for yeast and mammals.

Recent studies reported the effects of mutations inactivating the *C. elegans* Elongator sub-units. It is important to notice that worms harboring mutations in either *elpc-1*, *elpc-2* or *elpc-3* genes display neuronal and behavioral phenotypes (Chen et al., 2009; Solinger et al., 2010; Kawamura and Maruyama, 2019). This suggests remarkable evolutionary conservation of the elongator functions in neurodevelopment (Creppe et al., 2009; Kojic and Wainwright, 2016).

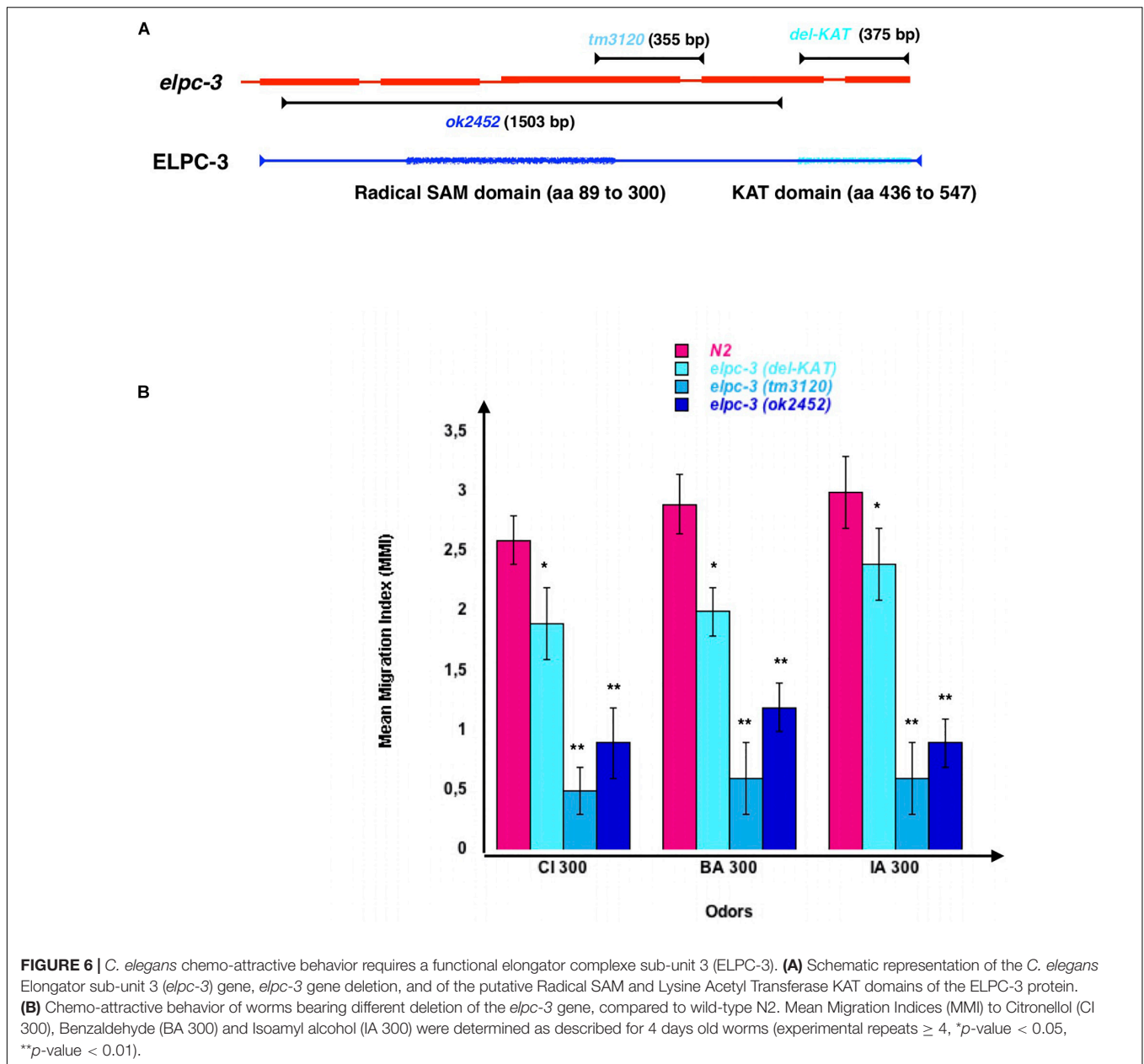
To see if ELPC-3 could be involved in chemo-attraction regulation, we used worms carrying different chromosomal deletions of the *elpc-3* gene (Figure 6). The 1503 bp *ok2452* deletion span the whole putative ELPC-3 Radical SAM domain, mapped by homology between amino acids 89 and 300, while the 355 bp *tm3120* deletion may leave it intact. We mapped the putative C-terminal ELPC-3 KAT domain between amino acids 436 and 547, based on sequence homology with the yeast and mammalian ELP-3 KAT domains. Using the CRISP-Cas9 technology, we produced worms with a 375 bp deletion, called here *del-KAT*, which eliminates the KAT domain from ELPC-3 (Figure 6A). We found that, though to variable extents, all tested *elpc-3* deletion mutants display significantly reduced chemo-attractive responses to CI, BA and IA, compared to wild-type N2 worms (Figure 6B).

We next tested the behavioral effects of the three different *elpc-1* gene deletions described in Figure 7A. Worms bearing the *ng10* 2050 bp deletion could not produce ELPC-1, while worms with the *tm2149* 275 bp and the *tm11684* 95 bp *elpc-1* deletions could produce C-terminal truncated forms of ELPC-1. By contrast to the *elpc-3* mutants, chemo-attraction is not significantly affected by the *elpc-1* gene deletions, compared to wt N2 (Figure 7B).

We reasoned that if the chemotaxis defects of *elpc-3* worms are due to impaired modifications of the tRNA bases, then providing wild-type tRNA through feeding might rescue the behavioral phenotype. We cut and eluted the naive wild-type (NA) tRNAs co-migrating fractions 2 to 7 from the gel shown in Figure 2A.

After feeding *elpc-3 (tm3120)* worms on the pooled 2 to 7 fractions or on each fraction, separately, we found that the whole population of naive tRNAs (2-7) and the Alanine tRNAs containing fractions 5 and 6 (N5 and N6 on Figure 3) indeed restore CI chemotaxis (Figure 8A). We next asked if feeding the microbead-purified wild-type naive tRNA^{Ala} (UGC) is enough to restore the chemo-attractive defects of *elpc-3* mutants. As shown in Figure 8B, *elpc-3 (tm3120)* and *elpc-3 (2452)* worms indeed recover a wild-type behavior after being fed wild-type tRNA^{Ala} (UGC).

We next demonstrated that none of the other Alanine tRNAs rescue the *elpc-3* behavioral defects. As shown in Figure 8C, the tRNA^{Ala} (UGC), but neither the tRNA^{Ala} (AGC) nor the tRNA^{Ala}



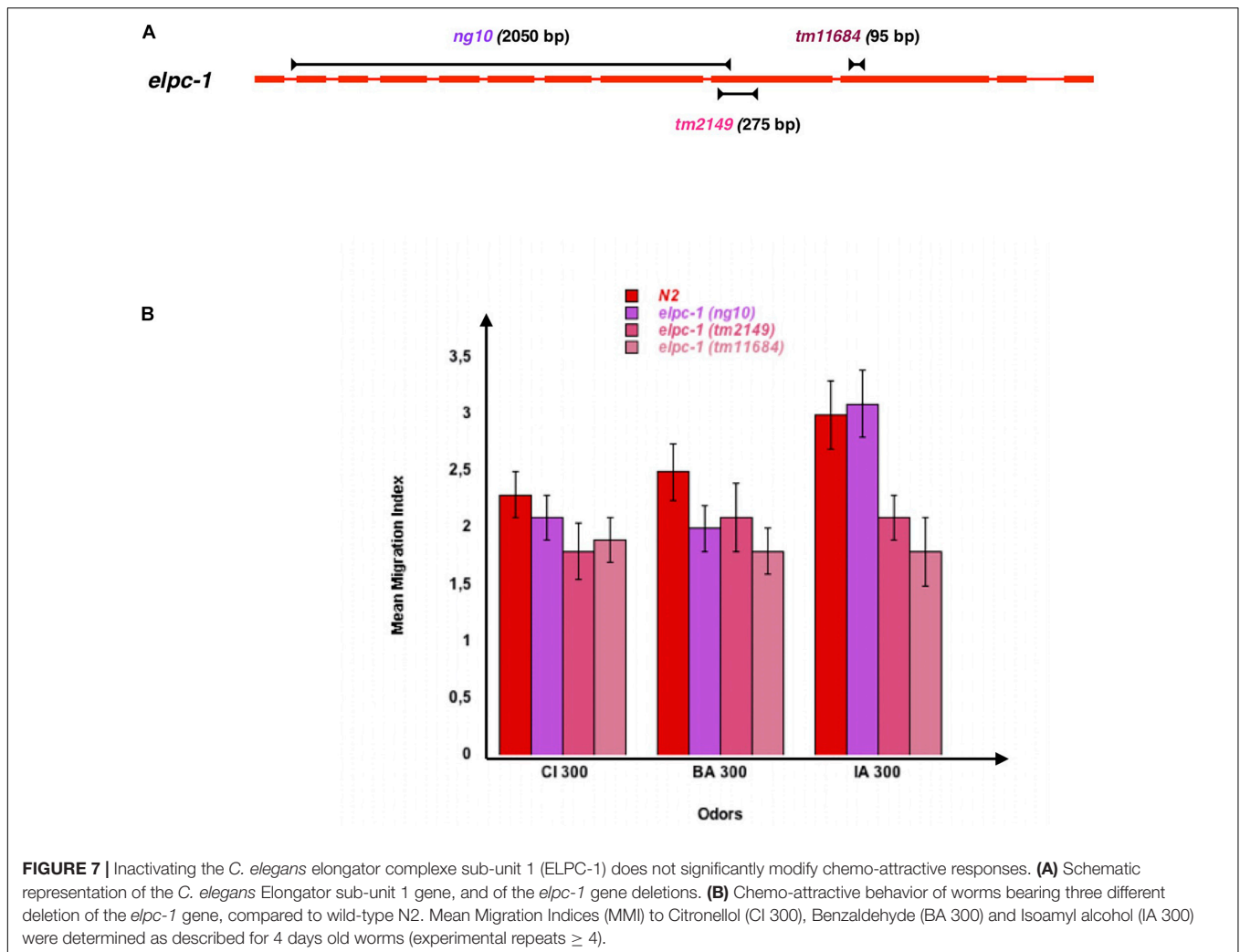
(CGC) fully rescues the defective behavior of *elpc-3 (tm3120)* mutants (Figure 8C).

We did not observe significant effects of *elpc-1* deletions on chemo-attraction (Figure 7B). Moreover, feeding wild-type naive tRNA^{Ala} (UGC) modifies neither the behavior of *elpc-1 (tm2149)* nor the behavior of *elpc-1 (tm11684)* mutants (Supplementary Figure 2).

elpc-3 mutants provide with the wild-type tRNA^{Ala} (UGC) via feeding acquire a wild-type behavior. The rescue of *elpc-3* phenotype by wt tRNA^{Ala} (UGC) suggests *elpc-3* worms may produce a « defective » form of tRNA^{Ala} (UGC), presumably with an altered chemical composition, unable to support the development of a wild-type chemo-attractive behavior.

We then hypothesized that if the development of a wild-type behavior requires the wild-type tRNA^{Ala} (UGC) chemical composition, then the « defective » tRNA^{Ala} (UGC) produced by *elpc-3*, could transfer a « defective » *elpc-3* behavioral phenotype to wild-type via feeding. Furthermore, the *elpc-1* mutants, displaying a wild-type chemo-attraction, would produce the « permissive » wild-type chemical form of tRNA^{Ala} (UGC), able to rescue the *elpc-3* phenotype.

Therefore, we purified tRNA^{Ala} (UGC) from *elpc-3* and from *elpc-1* worms to assess their behavioral effects. As shown on Figure 9A, feeding wild-type N2 worms on, respectively, tRNA^{Ala} (UGC) purified from either *elpc-3 (tm3120)*, *elpc-3 (ok2452)* or *elpc-3 (del-KAT)* worms, indeed significantly impairs CI 300 and IA 300 attraction.



Furthermore, feeding tRNA^{Ala} (UGC) purified from either *elpc-1 (tm2149)* or *elpc-1 (tm11684)* worms fully rescues the CI 300 chemo-attractive defect of *elpc-3 (ok2452)* worms, while feeding its own tRNA^{Ala} (UGC) or the *elpc-3 (tm3120)* tRNA^{Ala} (UGC) has no rescuing effect (Figure 9B).

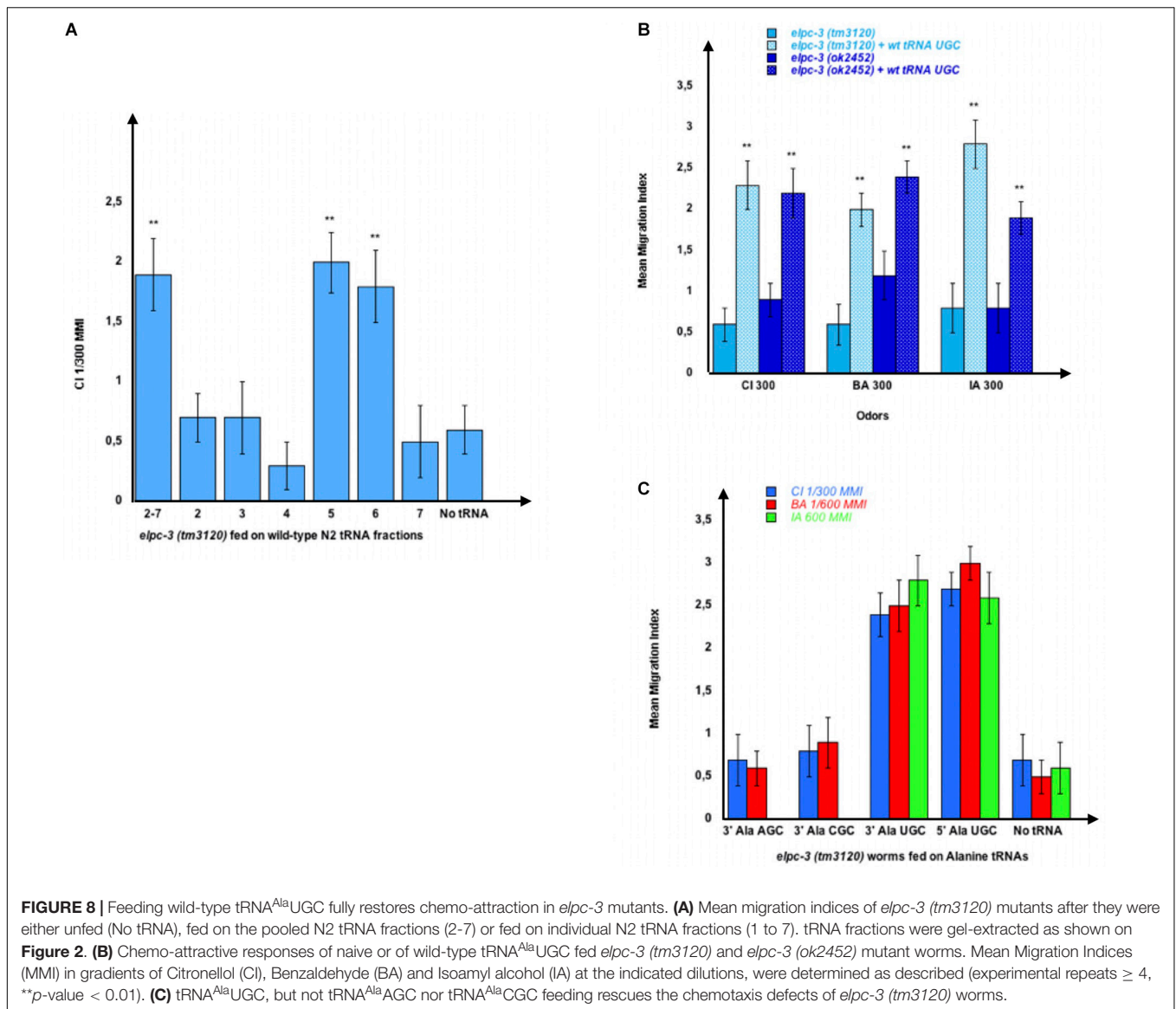
Importantly, the *elpc-3* rescuing effects of wt or *elpc-1* tRNA^{Ala} (UGC) (Figure 8A), or the transfer of an *elpc-3* mutant phenotype to wt worms by *elpc-3* tRNA^{Ala} (UGC) (Figures 9A,B) do not last beyond the tRNA fed worm generation.

The *elpc-1* deletions do not affect chemo-attraction (Figure 7B). We assessed olfactory imprinting in these mutants. In contrast with wild-type, early odor-exposure or odor-specific tRNA^{Ala} (UGC) feeding, do not increase but stably decrease odor responses in *elpc-1* mutants. CI or BA-exposed *elpc-1 (ng10)*, *elpc-1 (tm2149)* or *elpc-1 (tm11684)* worms display a significant reduction of CI or BA chemo-attractive responses, compared to naive unexposed (Figure 10A).

Attraction to BA, IA, or CI, significantly decreased after *elpc-1 (ng10)* and *elpc-1 (tm2149)* mutants were fed on, respectively, highly purified by gel elution (as shown on Figure 4), wild-type BA, IA or CI-tRNA^{Ala} (UGC) (Figure 10B).

Thus, in the absence of a functional ELPC-1, olfactory imprints have a negative impact on future adult chemoattraction, as opposed to wild-type.

We furthermore demonstrated that worms could be negatively imprinted by one or several odors, as negative imprinting is stably inherited over further generations. As shown in Figure 11, we submitted all three *elpc-1* deletion mutants to sequential odor-exposures. One generation was exposed to a single odorant, the next generation was (or not) exposed to a second odorant, and the third generation exposed (or not) to a third odorant. IA-exposed worms remain attracted to BA as naive, while sequentially exposed worms to CI then to BA (CI BA) or to CI then to BA then to IA (CI BA IA), lost BA attraction (left part of Figure 11). In the same manner, IA response was lost by IA-exposed and by CI BA IA-exposed *elpc-1* worms, while it remained unaffected in CI BA exposed, compared to naive (right part of Figure 11). The inheritance of odor-specific lowered attraction to either a single, two, or three different odorants was assessed up to the tenth generation. Altogether, our data clearly indicate that the elongator complex is essential for the development and the regulation of *C. elegans* chemo-attractive behavior.



It has been reported that the total tRNA populations extracted from *elpc-3 (tm3120)* and *elpc-1 (2149)* lack the mcm5S2U and the ncm5U modifications, and instead contain S2U, as opposed to wild-type tRNAs which carry both mcm5S2U and ncm5U but does not contain S2U (Chen et al., 2009). It is believed that these modifications would mainly affect codon-anticodon pairing for the three tRNAs with U at positions 34 and 35, namely Lys (UUU), Glu (UUC) and Gln (UUG).

Even if proven true, this simple picture appears far too simple to account for our observations for several reasons:

- There is no specific information regarding if and how U34 is modified in the eleven U34 containing tRNAs, that includes Ala (UGC);
- These uridine modifications could be derived from others and can originate other chemical forms of uridine. For instance, mcm5S2U results from the addition of S2U to

mcm5U, and ncm5U leads to the formation of at least the three modified uridines mcm5Um, ncm5U or ncm5S2U (Boccaletto P. et al., 2018);

- We showed that *elpc-3* and *elpc-1* mutants display different behavioral phenotypes, producing tRNA^{Ala} (UGC) with different activities;

To see if any of the three U modifications could be involved in chemo-attraction or in the positive or negative imprinting, we used synthetic S2U, mcm5S2U and ncm5U. We first analyzed the behavior of the *tut-1 (tm1297)* mutants, which lack the tRNA sulfurtransferase activity of the TUT-1 enzyme, thus do not synthesize S2U nor mcm5S2U. Chemo-attraction is impaired by the *tut-1 (tm1297)* mutation, as shown for CI 300 chemotaxis (**Figure 12A**). We observed a concentration-dependent restoration of CI 300 response after adding increasing amounts of S2U dilutions (10 μ l of 2 to 400 μ M dilutions)

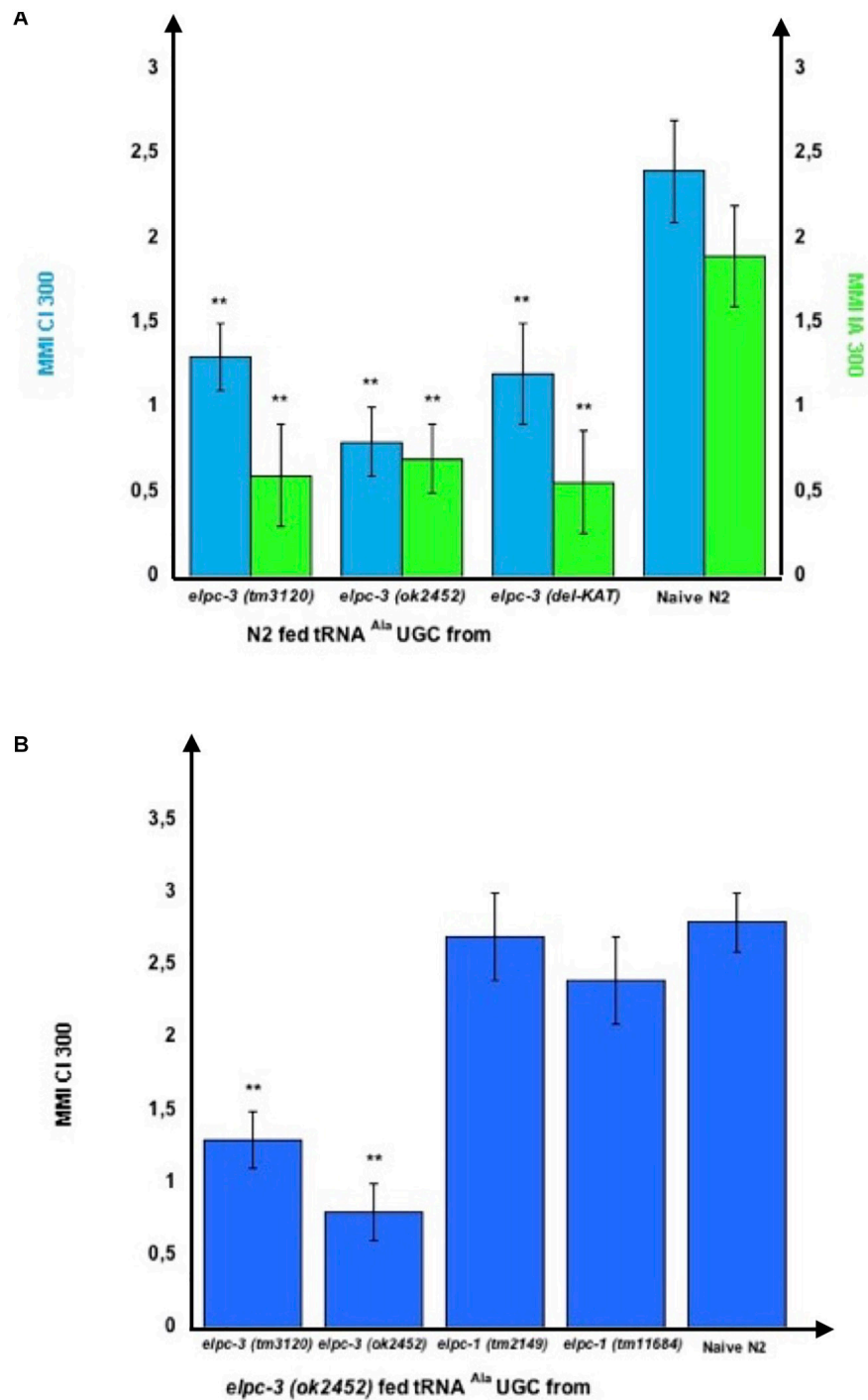


FIGURE 9 | tRNA^{Ala}UGC produced by *elpc* mutants transfers mutant phenotypes to wild-type via feeding. **(A)** tRNA^{Ala}UGC from the *elpc-3 (tm3120)*, from the *elpc-3 (ok2452)* and from the KAT domain deleted *elpc-3 (del-KAT)* mutant worms were microbead-purified as described. Wild-type N2 worms were grown during their whole development in the presence of the indicated *elpc-3* mutants tRNA^{Ala}UGC or without tRNA for Naive N2. Mean Migration Indices (MMI) in gradients of Citronellol (CI 300) or Isoamyl alcohol (IA 300) were determined at the adult stage as described (experimental repeats ≥ 4 , ***p*-value < 0.01). **(B)** Feeding tRNA^{Ala}UGC from *elpc-1* mutants fully rescues the chemo-attractive defects of *elpc-3* mutants. tRNA^{Ala}UGC from *elpc-3 (tm3120)*, *elpc-3 (ok2452)*, *elpc-1 (tm2149)*, and from *elpc-1 (tm11684)* mutant worms were microbead-purified as described. *elpc-3 (ok2452)* worms were grown during their whole development in the presence of the indicated *elpc-3* or *elpc-1* mutants tRNA^{Ala}UGC. Mean Migration Indices (MMI) of tRNA fed *elpc-3 (ok2452)* and of Naive N2 wild-type in Citronellol (CI 300) gradients were determined at the adult stage as described (experimental repeats ≥ 4 , ***p*-value < 0.01).

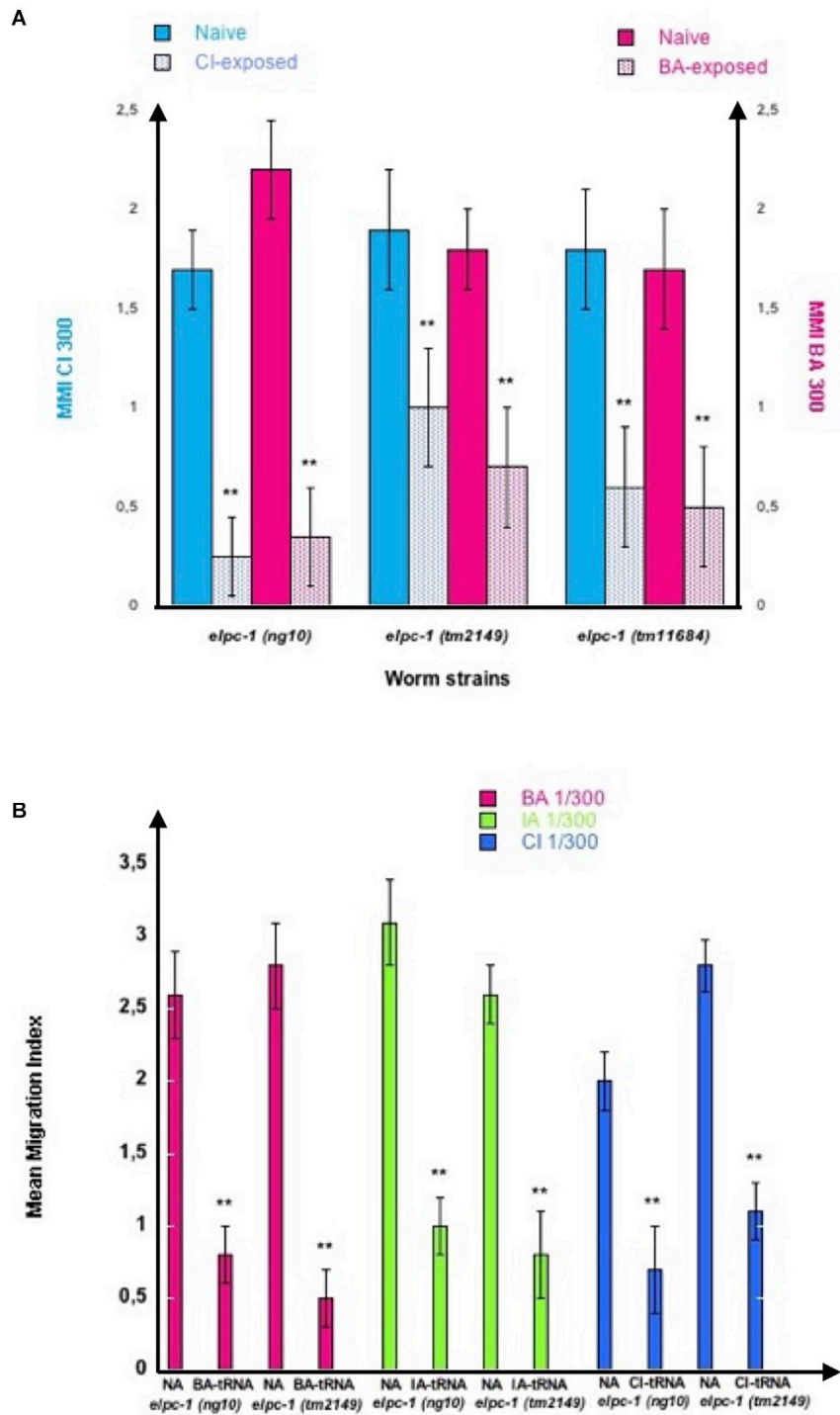
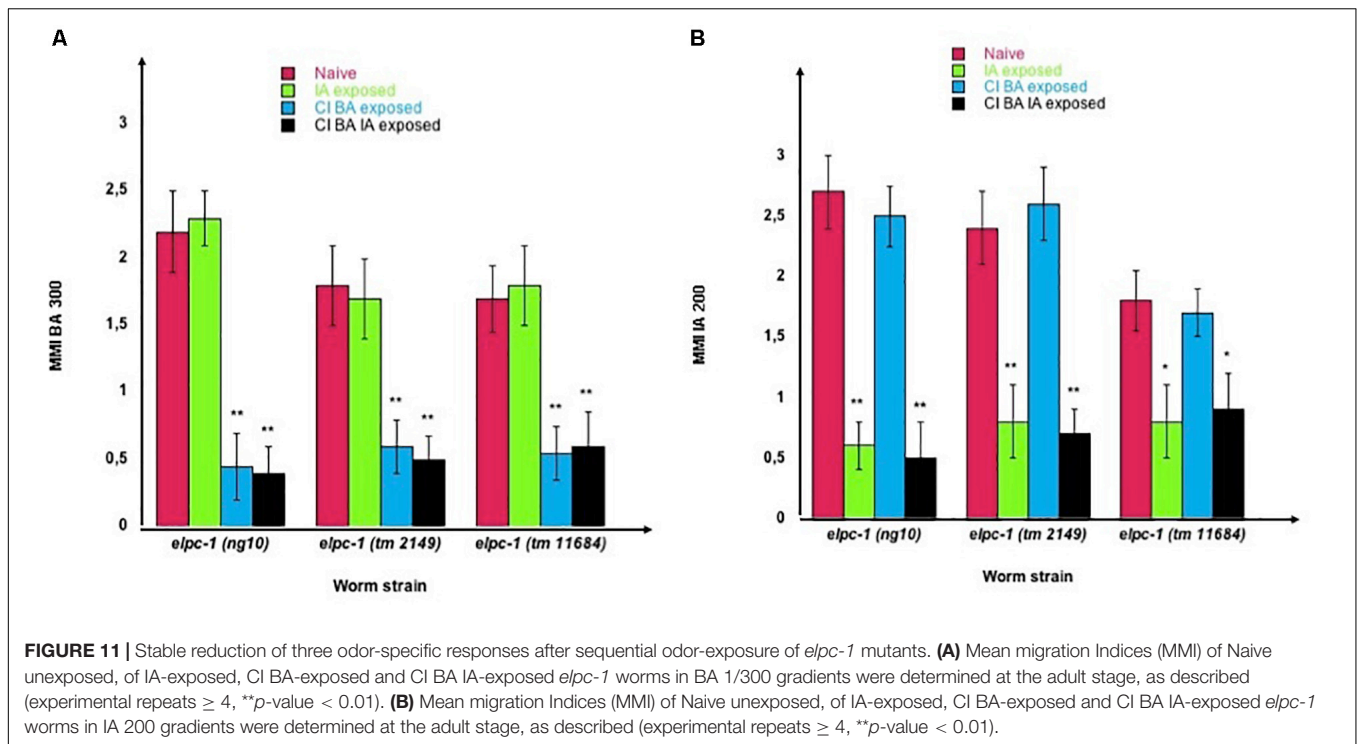


FIGURE 10 | Odor-exposure or feeding odor-tRNA^{Ala}UGC strongly reduce odor-specific chemo-attraction in *elpc-1* mutants. **(A)** *elpc-1 (ng10)*, *elpc-1 (tm2149)* or *elpc-1 (tm11684)* mutant worms were either exposed to CI 1/300, to BA 1/300, or unexposed for control Naive. Mean Migration Indices (MMI) of Naive unexposed, of CI-exposed and of BA-exposed *elpc-1* worms in, respectively, CI 1/300 and BA1/300 gradients were determined at the adult stage as described (experimental repeats ≥ 4 , ***p*-value < 0.01). **(B)** *elpc-1 (ng10)* or *elpc-1 (tm2149)* worms were fed (or unfed for control naive NA) on BA-tRNA^{Ala}UGC (BA-tRNA), IA-tRNA^{Ala}UGC (IA-tRNA) or CI-tRNA^{Ala}UGC (CI-tRNA) obtained respectively from BA, IA or CI-exposed wild-type worms. BA, IA or CI-tRNA^{Ala}UGC were obtained after microbead purification, gel-separation and gel-elution as described in **Figure 4**. Mean Migration Indices of Naive unfed (NA) worms were compared to Mean Migration Indices of odor-tRNA fed worms in the respective odor gradients (experimental repeats ≥ 4 , ***p*-value < 0.01).



to worm food. By contrast, the chemo-attractive defect of the *elpc-3* (*tm3120*) mutants was not restored after feeding the same amounts of S2U, as shown in **Figure 12A**. Adding S2U does not alter chemo-attraction in wild-type worms (results not shown).

We next assessed imprinting in the *tut-1* (*tm1297*) mutants, and found that, despite a lack of S2U and mcm5S2U, and low chemotaxis responses, these worms positively imprint CI 300, CI200, BA300 and BA 200 (**Figure 12B**).

These results indicate that a behavioral phenotype linked to the absence of a single identified modified nucleotide (here S2U), can be fully rescued via the addition of the missing nucleotide in worm's environment.

Wild-type tRNAs are believed to have both mcm5S2U and ncm5U, while *elpc* mutants do not. Since imprinting occurs without S2U nor mcm5S2U, as suggested by the behavior of the *tut-1* mutants, then imprinting could, at least partially, involve ncm5U. To test this hypothesis, we fed wt, *elpc-3* and *elpc-1* mutants on increasing amounts (10 μ l of 2 to 400 μ M dilutions) of mcm5S2U, ncm5U or both together. Adding a single or the two modified Uridines to worm food had no effect on wt or *elpc* mutants chemo-attraction (not shown). To test if they could influence positive or negative imprinting, we odor-exposed wt and *elpc-1* worms in the presence of increasing amounts (10 μ l of 1 to 400 μ M dilutions) of mcm5S2U, ncm5U, or both.

Wild-type imprinting was unchanged in the presence of any amount of one or both modified uridines (not shown). By contrast, we observed clear odor-specific effects of ncm5U in inhibiting the odor-triggered negative imprinting in *elpc-1* mutants (**Figure 13**). As already shown (**Figure 10**), odor-exposed *elpc-1* mutants acquire a stably inherited odor-specific inhibition of odor responses. The range of ncm5U required

to inhibit *elpc-1* negative imprinting varies according to the odors. Adding 10 μ l of as low as 1 μ M ncm5U impairs IA 300 imprinting, between 3 and 10 μ M impairs BA 300 imprinting, while between 30 and 100 μ M are needed to impair CI 300 imprinting. Upper or lower ncm5U concentrations, outside the respective odor-specific ranges, do not hinder negative imprinting. **Figure 13** data suggest that at least variations of the ncm5 uridine modification in tRNA^{Ala} (UGC) could participate in forming the odor-specific codes.

In *C. elegans*, only two pairs of chemosensory neurons, AWA and AWC, are required for chemotaxis to volatile attractants (Bargmann et al., 1993). The *C. elegans* genome encodes around 1300 functional seven transmembrane receptors, presumably coupled to G-proteins, called Serpentine Receptors (SR). When expressed in chemosensory neurons, these receptors are thought to interact with odorant molecules and support odor specificity of the chemoattractive responses (Hart and Chao, 2010). The AWC olfactory neurons are responsive to a high number of chemically different molecules that include the three chemoattractants BA, CI and IA used in this study (Bargmann et al., 1993). Only the developing first larval stage L1 can be imprinted by attractive (this study), aversive (Jin et al., 2016), or toxic stress (Gecse et al., 2019) signals present in worm's environment. Environment-responsive mechanisms must be present at this stage to adapt future worm's behaviors through up or down-regulation of genes expressed in chemosensory neurons. A single chemo-attractive odor signal specifically increases, in wt, or decreases, in *elpc-1* mutants, adult attraction to a single odorant molecule, while all other AWC-mediated responses remain unchanged. Odor-specificity supports the existence of olfactory signaling insulation within olfactory neurons, as already hypothesized for other forms

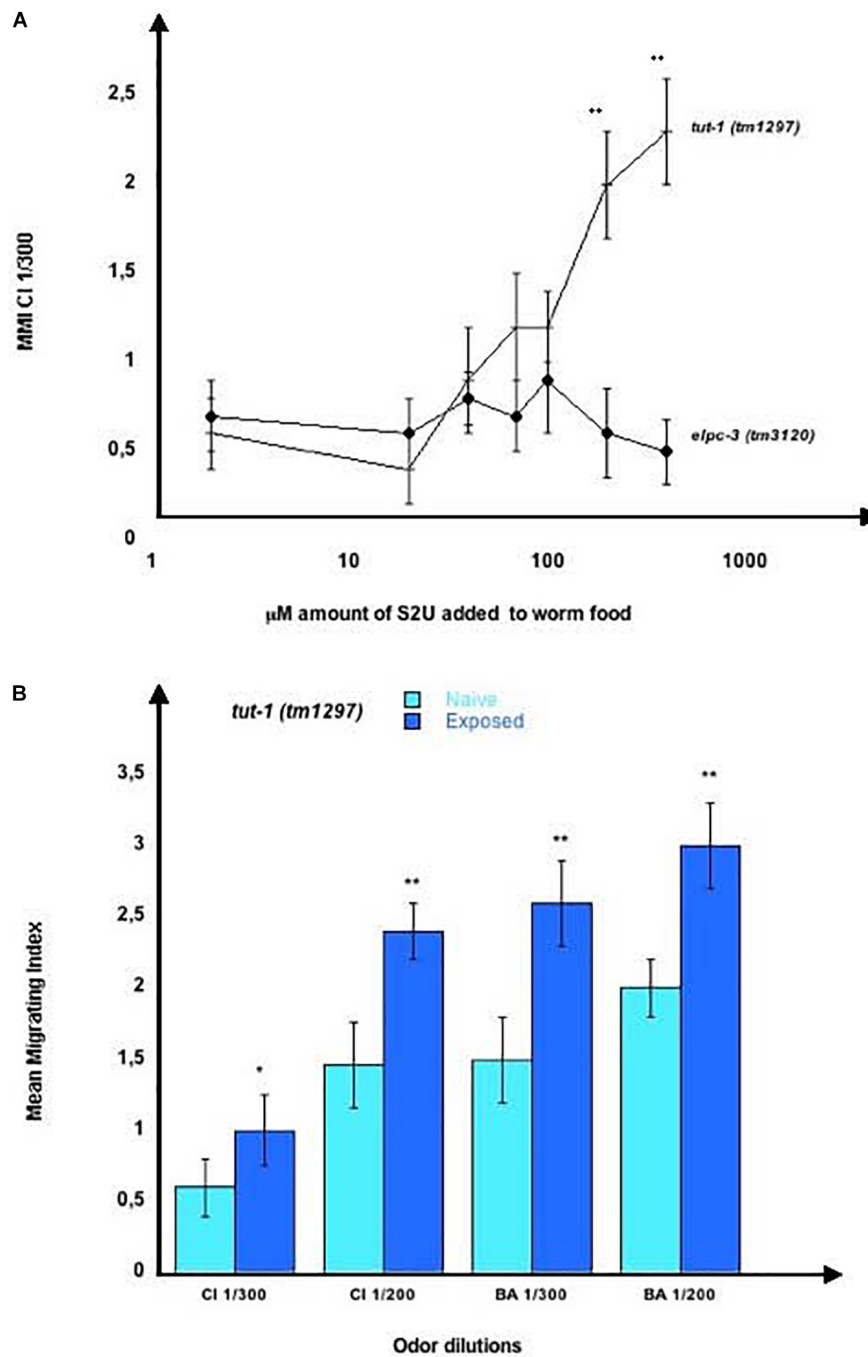


FIGURE 12 | Chemo-attractive behavior of the *tut-1 (tm1297)* mutant worms. **(A)** Mean migration indices of *tut-1 (tm1297)* and *elpc-3 (tm3120)* mutant worms in a CI 1/300 gradient in the presence of increasing concentrations of 2-thiouridine (S2U). The 20 mM stock of S2U in H₂O was diluted to obtain the indicated concentrations, of 2 to 400 μM. 10 μl of each dilution were added to the bacterial spot (worm food) before the addition of worm eggs. MMI were determined at the adult stage, as described (experimental repeats ≥ 4, ***p*-value < 0.01). **(B)** *tut-1 (tm1297)* worms were unexposed for Naive or Exposed to, respectively, CI 1/300, CI 1/200, BA 1/300 or to BA 1/200. Mean Migration Indices in the respective odor-dilutions gradients were determined at the adult stage, as described (experimental repeats ≥ 4, **p*-value < 0.05, ***p*-value < 0.01).

of odor-induced adaptation in *C. elegans* (O'Halloran et al., 2009; Juang et al., 2013).

Naive unexposed *elpc-1* worms are odor-responsive, suggesting they express functional chemo-receptors. Although

the outcome of single odor-exposure is to decrease chemo-attraction irreversibly, naive *elpc-1* mutants might still produce odor-specific tRNA^{Ala} (UGC) upon odor-stimulation. We hypothesized that the lowered odor-responses displayed by

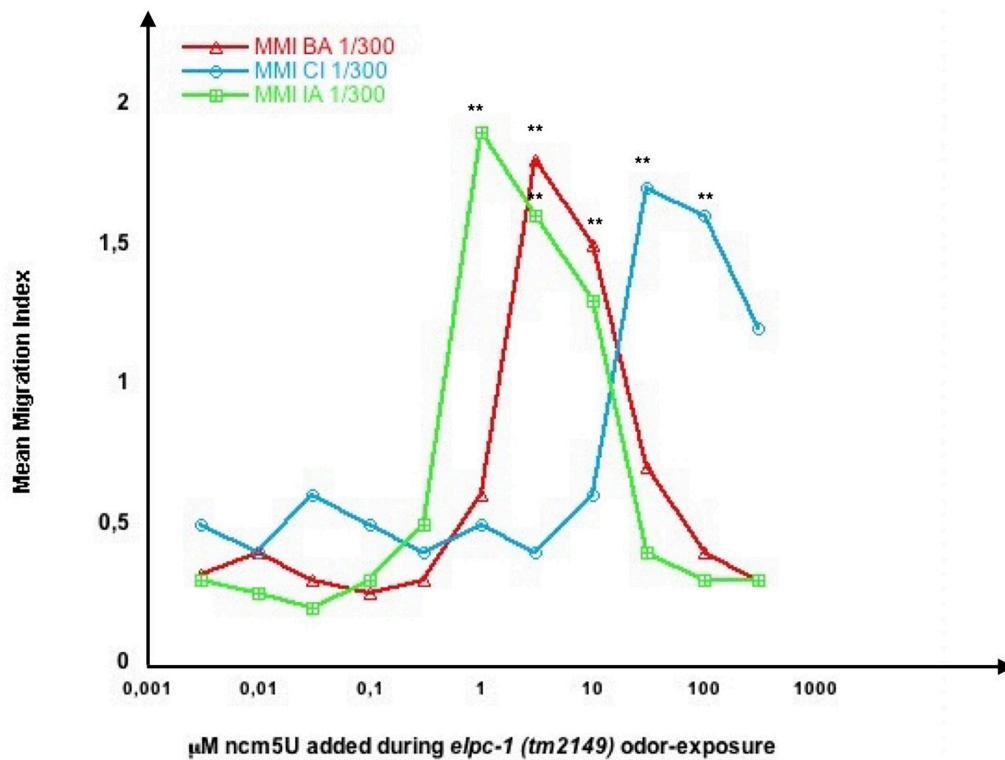


FIGURE 13 | Odor-specific ranges of ncm5 modified Uridine impair odor-specific negative imprinting in *elpc-1* mutants. *elpc-1 (tm2149)* mutant worms were odor-exposed to either BA 1/300, CI 1/300 or IA 1/300 in the presence of increasing amounts of 5-carbamoylmethyluridine (ncm5U). The indicated concentrations of ncm5U, from 0.004 to 400 μ M, were obtained by dilution of the 20 mM stock solutions in Tris 0.3 M pH 8. 10 μ l of each dilution were added to the bacterial spot (worm food) before the addition of worm eggs. Mean migration Indices (MMI) in the respective BA, CI or IA odor gradients were determined at the adult stage, as described (experimental repeats \geq 4, ***p*-value < 0.01).

negatively imprinted *elpc-1* worms (Figures 10, 11) could be due to lowered or null expression of the respective olfactory receptors. Without receptors, odors would not lead to the production of odor-modified tRNA^{Ala} (UGC). Naive *elpc-1 (ng10)* mutants are called CI + or BA +, while *elpc-1 (ng10)* that carry negative imprints of CI, BA or for CI and BA are respectively called CI-, BA-, or CI-BA-. We fed N2 wt on tRNA^{Ala} (UGC) purified from naive, CI +, CI-, BA +, BA-, and CI-/BA- *elpc-1 (ng10)* worms, as indicated in Figure 14.

As shown in Figure 14, tRNA^{Ala} (UGC) from odor-exposed enhances chemo-attraction of wt worms, compared to tRNA^{Ala} (UGC) from naive unexposed. By contrast, tRNA^{Ala} (UGC) from worms bearing a CI- negative imprint or a BA- negative imprint, do not, respectively, enhance CI or BA chemo-attractive responses of wt worms. As expected, *elpc-1 (ng10)* with a double CI-/BA- negative imprint do not enhance wt attraction to CI nor BA.

Our data suggest *elpc-1* worms produce a wt form of tRNA^{Ala} (UGC), able to rescue the *elpc-3* chemotaxis phenotype.

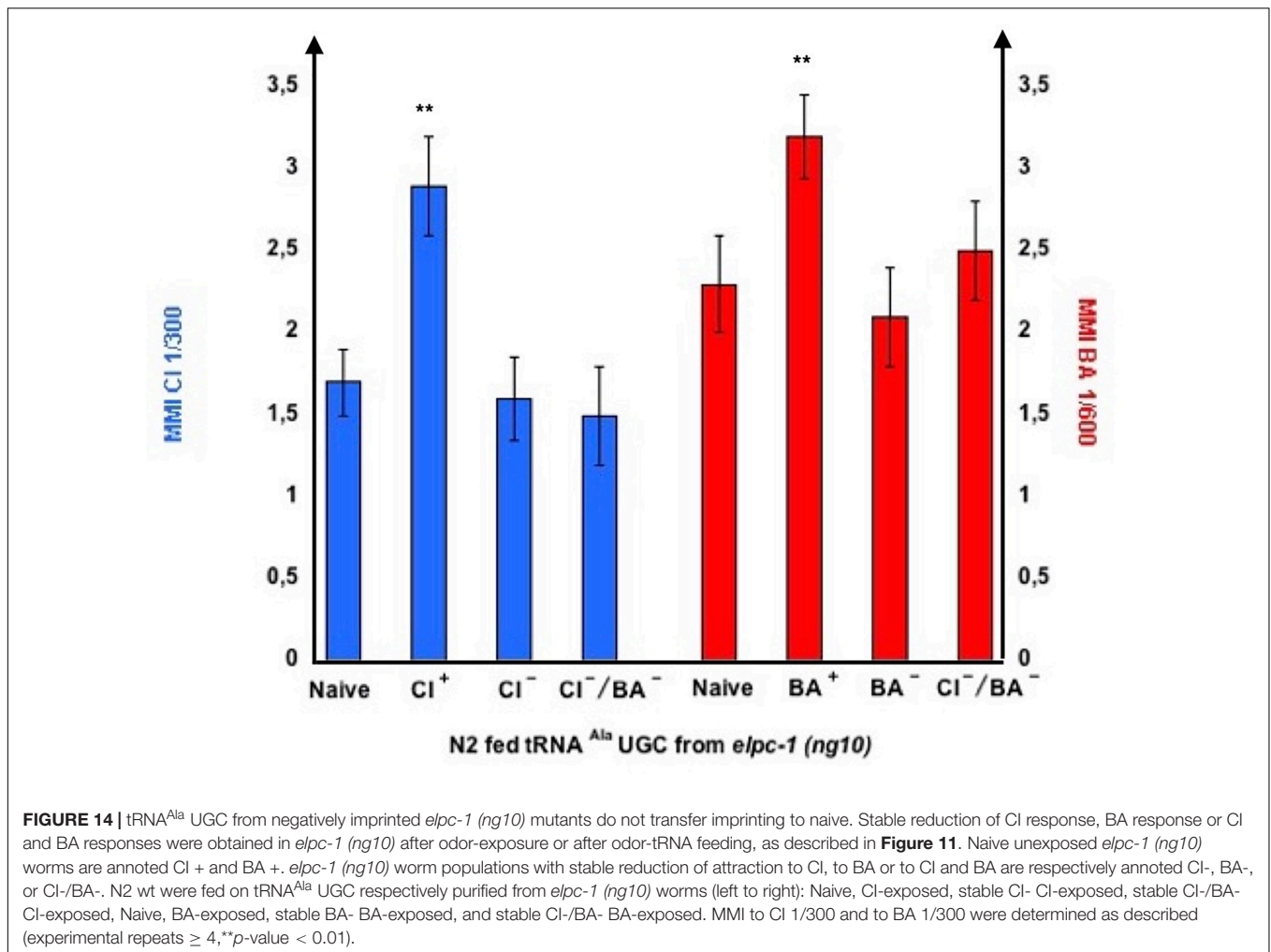
From the results shown in Figure 14, we can conclude that naive never-exposed *elpc-1* mutants produce the odor-specific tRNA^{Ala} (UGC) after odor-exposure, able to transfer positive imprinting to wild-type. However, odor-stimuli no longer trigger the production of odor-specific tRNA^{Ala} (UGC) in negatively

imprinted *elpc-1* worms. Whether or not negative imprinting is due to a down-regulation of chemo-receptor expression remains to be demonstrated.

Attractive odor stimuli activate an AWC-specific olfactory transduction pathway made of several G proteins, the DAF-11/ODR-1 guanylyl cyclase, and the TAX-2/TAX-4 cGMP-gated channel. Worms with mutations inactivating members of this pathway are defective for all AWC-mediated chemosensory responses, including the responses to the three attractive odorants used in this study (Bargmann, 2006).

We asked whether a functional AWC olfactory transduction pathway is required for the synthesis of odor-tRNAs. We purified tRNA^{Ala} (UGC) from CI-exposed worms harboring the *odr-1 (n1936)*, the *tax-2 (p671)* or the *tax-4 (p678)* mutations, respectively, inactivating the ODR-1 guanylyl cyclase, the TAX-2 or the TAX-4 subunits of the cGMP-gated channel. Wild-type and *elpc-1 (ng10)* mutants were then fed on these tRNAs, to compare their imprinting activities (Figure 15).

As already shown, feeding on tRNA^{Ala} (UGC) from CI-exposed wt increase CI MMI in wt (positive imprinting), and decrease CI MMI in *elpc-1 (ng10)* (negative imprinting). By contrast, none of the three CI-exposed olfactory transduction mutants produce a tRNA^{Ala} (UGC) able to transfer a positive



CI-imprint to naive wt or a negative imprint to *elpc-1 (ng10)* (CI-exposed *odr-1*, *tax-2*, and *tax-4*).

Taken together, the results indicate that imprinting requires chemo-receptors to be expressed and coupled to a functional odor-transduction pathway, as early as the imprinting L1 critical stage (**Figures 14, 15**). They also support the idea that the odor-specific production of tRNA^{Ala} (UGC) occurs downstream of odor-signaling.

DISCUSSION

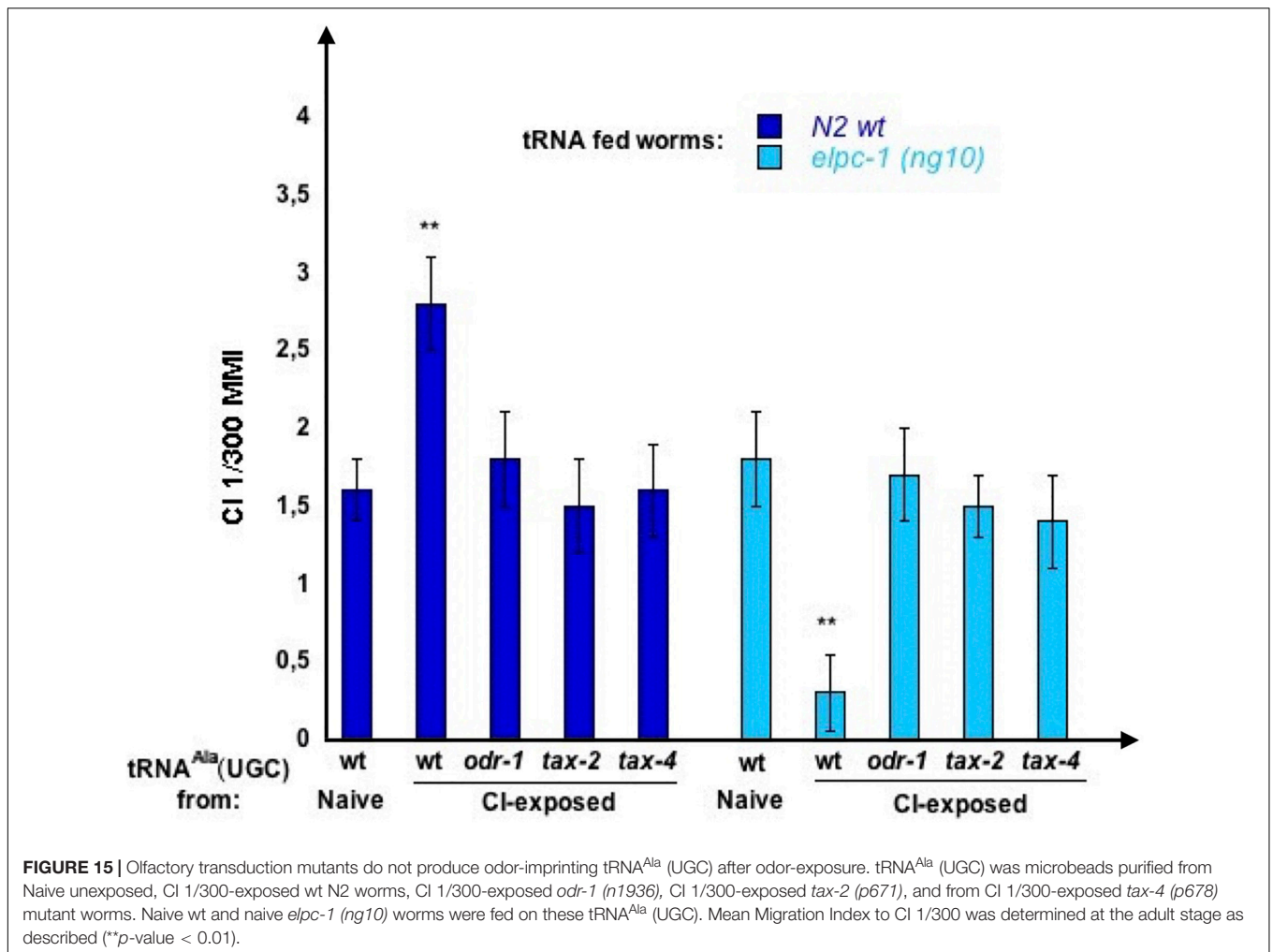
Our data indicate that both the innate and the experience-modulated chemo-attractive behaviors would be under the control of a single tRNA molecule. To our knowledge, this is the first report demonstrating a behavior is under the control of a tRNA.

The tRNA_{Ala} (UGC) would carry specific chemical codes required to acquire chemo-attractive responses, and transmit odor-specific information. As other RNAs, tRNAs can adopt many chemical forms by combining more than 160 chemically modified bases (Boccaletto P. et al., 2018). The combinatorial

calculation indicates that even if just a fraction of the nucleotides is chemically modified, the number of possible combinations remains very high. Theoretically, choosing 10 base modifications (m) out of 100 (n) already creates more than 10¹³ possible combinations, according to the $(n + m - 1)! / ((n - 1)! * m!$ equation. To understand how such a huge potential of chemical diversity is translated into functional diversity represents a considerable challenge.

Although mature tRNAs mainly control protein translation, tRNAs can be fragmented into smaller RNA molecules. tRNA fragments, tRFs, are an emerging class of non-coding RNAs that may, besides translation, control several other important biological functions (Megel et al., 2015; Pliatsika et al., 2018).

The 3D structure and base modifications contribute to the high stability of mature tRNAs (Engelke and Hopper, 2006). It would be interesting to analyze if and how mature tRNAs could be processed after contact with the bacterial lawn (worm food) and after ingestion and diffusion from intestinal cells to other tissues, including germ-line cells. It has been already shown that endogenous RNAi in the chemosensory neuron AWC promotes odor-specific adaptation in adult *C. elegans* (Juang et al., 2013). If Dicer-independent mechanisms can generate tRFs, the tRNA



double-stranded stretches could be processed via the well described Dicer-dependent small non-coding RNA pathways. If it is the case, genetic inactivation of these pathways would impair the tRNA_{Ala} (UGC) triggered biological activities described in this paper. Moreover, comparative RNA sequencing after tRNA_{Ala} (UGC) feeding may help to identify which small RNAs eventually originated from tRNA processing could trigger the epigenetic changes.

Each nucleotide chemical modification requires the activity of specific enzymes, called writers. So far, no *C. elegans* tRNA writers are known, except TUT-1 and the Elongator complex, both modifying Uridines, respectively, into S2U, mcm5S2U and ncm5U. Through the addition of different amounts of these three modified Uridines to worm food during odor-exposure, we identified ncm5U as being part of the odor-specific codes carried by tRNA_{Ala} (UGC) (Figure 13). Providing worms with different amounts of ncm5U however only impairs, thus odor-specifically, the negative olfactory imprinting in *elpc-1* mutants but does not affect the positive imprinting in wild-type.

We hypothesized that specific patterns of base modifications would stand for specific biological activities. Transfer and inheritance may rely on yet unknown reading mechanisms,

able to recognize the modification patterns, and on copying mechanisms, able to precisely reproduce those.

We showed that adding the wild-type tRNA_{Ala} (UGC) to the food of *elpc-3* mutants rescues their chemo-attractive defects (Figure 8). The rescue could rely on the compensation of the lacking modified U by those carried by the wt tRNA.

However, adding the « defective » *elpc-3* tRNA_{Ala} (UGC) to wt worms phenocopy the *elpc-3* behavioral phenotype (Figure 9). In this case, compensation for lacking modifications cannot account for the transferred phenotype, suggesting phenocopy could be rather based on recognition and reproduction of the « defective » modification pattern in the mutants. The mechanisms by which epitranscriptomic codes are written, read, copied or erased, remain elusive. Analyzing the activity of a tRNA_{Ala} (UGC) made by wild-type worms fed on tRNA_{Ala} (UGC) made by known modification mutants, as *tuc-1*, and inversely, could provide some further insights.

We report that deletions in the *elpc-3* gene do not have the same behavioral effects as the *elpc-1* gene deletions. Our observations suggest that the catalytic sub-unit ELPC-3 modifies tRNAs in the absence of a functional ELPC-1, while ELPC-1 is required for imprinting. They challenge previous reports in

which the inactivation of any elongator sub-unit produced the same phenotypes. However, the structural organization and the respective biochemical functions of the *C. elegans* Elongator sub-units are unknown. Whether the multiple elongator functions only rely on its tRNA modifying activity, or other biochemical activities of its sub-units, is still debated. As indicated in WormBase¹, the comprehensive resource for nematode research, *elpc-1* genetically interacts with *chaf-2* and *dhc-1*. CHAF-2 is an ortholog of the human chromatin assembly factor CHAF1B, involved in nucleosome assembly, linking newly synthesized histones deposition to DNA replication (Sauer et al., 2018). DHC-1, the unique *C. elegans* cytoplasmic dynein 1 HC, controls microtubule dynamics and is involved in many essential biological processes, including neuron development and meiotic spindle orientation (O'Rourke et al., 2007). These two interactions could be particularly relevant to the *elpc-1* mutant phenotype described here, which associates tRNA metabolism, epigenetic reprogramming and neuro-development.

Nematodes respond to many volatile odorants but have only three pairs of olfactory neurons, AWA, AWB and AWC, suggesting each neuron would express a large number of odor-sensitive chemo-receptors. It has been shown that the type of behavioral response elicited by an odorant is not specified by the chemo-sensory receptors, but by the olfactory neuron in which they are expressed and activated (Troemel et al., 1997). Our results suggest chemo-receptors for attractive cues are expressed and already functional, i.e., coupled to the olfactory transduction pathway, at the first stage of larval development. The way each worm's chemo-responsive neuron expresses specific sets of receptors and represses the expression of all others is still unknown. In mammalian species, each olfactory neuron expresses only one allele of a member of the olfactory receptor genes family; the precise mechanisms by which such monogenic monoallelic receptor choice are achieved are however not fully understood. These mechanisms include nuclear compartmentalization, repression/derepression through epigenetic marks as those made by the chromatin-modifying enzyme Lysine demethylase 1 (LSD-1) and stabilization of functionally expressed receptors by the odor-signaling pathway (reviewed in Degl'Innocenti and D'Errico, 2017).

tRNAs and tRNAs genes control translational (Avihu et al., 2013; Kirchner and Ignatova, 2015) and transcriptional fine-tuning (Pratt-Hyatt et al., 2013; Woolnough et al., 2015; 13Kirkland and Kamakaka, 2015). Importantly for epigenetic inheritance, tRNAs also control the plasticity of genome architecture via the dynamic positioning of nucleosomes and the modulation of chromatin domain boundaries (McFarlane and Whitehall, 2009; Talbert and Henikoff, 2009; Raab et al., 2012).

In this work, we produced worm strains with stably inherited non-genetic alterations of odor-specific responses, compared to wild-type. Increased or decreased odor-specific attraction may rely on the differential expression of odor-specific receptors. Through combinatorial epigenetic modifications, the nuclear localization of their genes may evolve, moving from either active

or repressed chromatin domains (Armelin-Correa et al., 2014; Evans et al., 2016).

The chemo-receptors expression pattern in *C. elegans* sensory neurons is unstable as it can be altered by life history and external conditions (Vidal et al., 2018). Worms are innately attracted by many volatil molecules, however only within a specific range of dilutions. The mechanisms that specifically direct attraction to each odor-specific dilution might result from the sensory neuron distribution and the differential expression levels of specific sets of chemo-receptors.

Identifying the putative chemo-receptor genes involved in an odor-specific response is a prerequisite to delineate further the epigenetic mechanisms that would regulate expression patterns and levels. The stably odor-specifically imprinted worms described here, displaying permanent higher or lower responses to single or to multiple odorants, compared to wild-type naive, might significantly facilitate the identification of these genes.

This work highlights that a specific tRNA and the multifunctional Elongator complex have a key role in translating environmental inputs into behavioral changes.

It sets the stage to elucidate how environmental information, here olfactory cues, could regulate secondary and tertiary tRNA structures, which would, in turn, influence worm behavior.

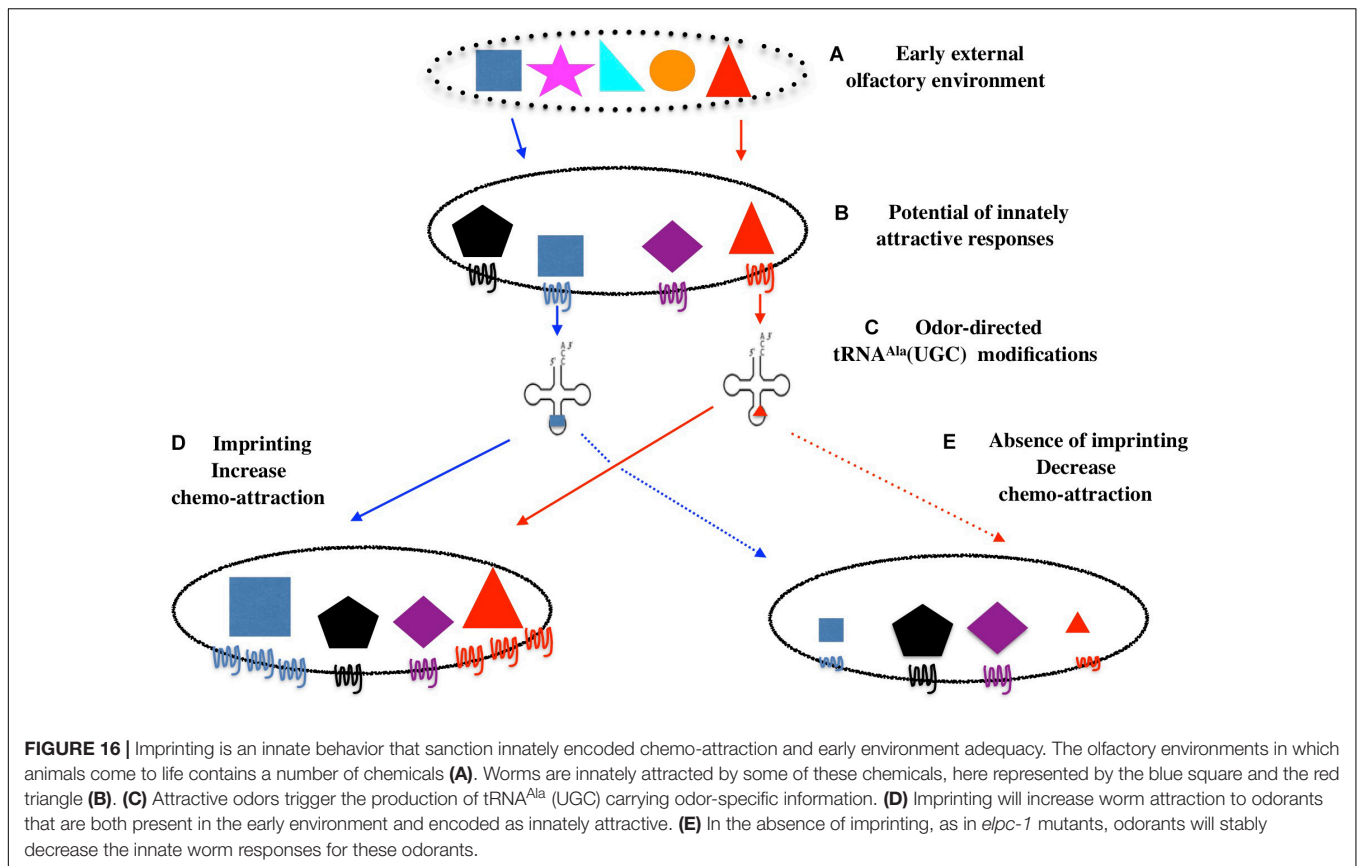
Due to the growing number of human diseases linked to RNA modification defects (Sarin and Leidel, 2014), understanding the biological significance of the epitranscriptome is a major issue. Recent findings strongly indicate that RNA modifications play dynamic regulatory roles analogous to the epigenetic changes of DNA and histone proteins. Understanding the function and mechanisms of the dynamic RNA modifications, or epitranscriptomic, represents a new challenge at the frontier between different disciplines. Reversible RNA modifications add a new dimension to the developing picture of post-transcriptional regulation of gene expression. This new dimension awaits integration with transcriptional regulation to decipher the multi-layered information that controls a plethora of biological functions. Understanding how non-coding transcriptomes are modified in response to environmental changes and how these modifications impact germ-line cells and translate into inherited phenotypes thus represents an important challenge (Schimmel, 2018).

Olfactory imprinting serves hatchling attachment and adult homing to the native chemo-sensory environment in many animal species (Grassman et al., 1984; Dittman and Quinn, 1996; Horn, 2004; Gerlach et al., 2007, 2019).

As we describe here for the nematode, multigenerational imprinting of the same olfactory cues would lead to stable inheritance. Through a process of (epi)genetic assimilation, different animal populations of the same species may have acquired specific patterns of chemo-attractive responses, only depending on their local living environments. This kind of « cultural » differentiation, through the stable assimilation of responses to external challenges, may be instrumental to the evolution of innately expressed behaviors (Jablonka and Lamb, 2015).

Our working hypothesis is modeled in **Figure 16**. In *C. elegans*, the first post-hatching hours are highly receptive to

¹wormbase.org



environmental conditions (Hall et al., 2010; Jin et al., 2016; Hong et al., 2017; Gecse et al., 2019). Imprinting chemo-attractive cues is an innate behavior taking place during this period of development. Its biological function would be to confirm that olfactory cues present in the early environment are indeed encoded as innately attractive and will be potentially rewarding for the future worm life and for its progeny.

An innate frame would encode and program the potential of *C. elegans* chemo-attractive responses. Qualitative (to which chemicals) and quantitative (attractive strength) responses are stably inherited over generations in stable environments. As environment changes, it may or not contain cues encoded as innately attractive. If it does not, the spectrum of behavioral responses will not change as it relies on the innate program.

If it does, external olfactory cues will interact with the chemo-receptive elements set up to transduce chemo-attraction. Such interactions would trigger odor-specific labeling of tRNA^{Ala}(UGC), using the combinatorial potential of tRNA bases modifications. In this diffusible form, odor-specific information can move internally, from neuronal to, eventually, germ-line cells, and, as we show here, transfer olfactory imprints from experienced to naive animal. Such diffusible mnemonics would be a way to encode, transfer and communicate experience without modifying the neuronal synaptic network. Moreover, they could support the transfer of experience in biological organisms with a low number or without neurons (Boussard et al., 2019). The reading mechanism able to translate epitranscriptomic codes

into unstable or stably inherited epigenetic codes remains to be discovered. By enhancing their attractiveness, the role of imprinting would be to confirm that the newly encountered cues are well assessed as attractive by the innately encoded program.

In the case environmental signals and innate program coincide, attraction can not be confirmed in imprinting defective animals, as we showed here for *elpc-1* deleted mutants. Without confirmation by the imprinting process, worms would be definitely desensitized and lose innate attraction to the specific cues they have been exposed to. Imprinting is thus an innate behavior that supports the plasticity of the innate directory of behaviors.

MATERIALS AND METHODS

Modified Uridines

S2 Uridine (S2U) was obtained from Jena Bioscience (Germany) and diluted in water. 5-methoxycarbonylmethyl 2-thiouridine (mcm5S2U) and 5-carbamoylmethyluridine (ncm5U) were custom-synthesized by Jena Bioscience and diluted from 20 mM stocks in Tris 0.3 M pH 8.

Strains and Culture Conditions

We used the wild-type *C. elegans* reference strain N2, unless otherwise stated.

The *sid-2* (*qt13*) mutant was obtained from Dr. C. Hunter. The 375bp deletion in the *elpc-3* gene called here delKAT was produced by Nemametrix, Inc. (Eugene, OR, United States) using the CRISP-sdm transgenic method. The deletion was confirmed by PCR/RE and sequencing. The elongator mutants *elpc-1* (*ng10*) [or *ikap-1* (*ng10*)] were from Dr. J. A. Solinger. The *elpc-3* (*tm3120*), *elpc-1* (*tm2149*), *elpc-1* (*tm11684*) and *tut-1* (*tm1297*) knockouts were generated by the National Bioresource Project, Tokyo, Japan, which is part of the International *C. elegans* Gene Knockout Consortium. Other strains used in this study were provided by the Caenorhabditis Genetics Center (CGC) funded by the National Institutes of Health (NIH) Office of Research Infrastructure Programs (P40 OD010440). Worms were cultured on *E. coli* OP50 at 20°C using standard protocols.

Odor-Exposure for Olfactory Imprinting

Benzaldehyde, [®]-citronellol or Isoamyl alcohol (Sigma-Aldrich) were diluted as described in water. Odor-exposures were done by suspending a 4 μ l drop of these dilutions on the lids of worm culture dishes at least during 24 h from the egg stage at 20°C, covering the critical plasticity period corresponding to the first 12 h of post-hatch development (Remy and Hobert, 2005).

Chemotaxis Assay

The chemotaxis assay used in this study is schematically outlined in the **Supplementary Figure Method 1**. It is based on the population chemotaxis assay initially described by C. I. Bargmann (2006). Several modifications were made in the procedure and the chemotaxis index calculation. Changes aimed at more accurately compare the chemo-attraction of worm populations to moderately attractive odorants (as the dilutions of attractive odorants used in this study), using 20 adult worms per condition.

40 ml of low-salt (1 mM Ca⁺⁺, 1 mM Mg⁺⁺, 5 mM KP04) agar (20 g/l) were poured in 12 \times 12 cm square plates. Assay plates were allowed to dry at room temperature for at least three days before use. Worms were individually transferred from culture dishes to the middle of the square assay plates. To establish a homogeneous odor gradient, so that all worms were submitted to the same olfactory stimulus, 3 drops of odor-dilution (4 μ l each) were suspended on the lids at one side, each placed at a distance of 3 cm from the others. On the opposite side of the lids were placed 3 \times 4 μ l of water. 6 drops of 4 μ l of 1M NaN₃ were added at both sides of the agar plate to immobilize animals that reached the edges.

At time 0, 20 worms were placed on the middle line of the squared plate, every worm being at a distance of 6 cm from odor sources. Assays performed on squared plates allowed the indexation of all worm positions between the starting line (time 0, position 0 cm) and the odor source (position + 6 cm), usually four times at 10, 20, 30 and 40 min from time 0. The mean value of all indexed positions (in cm from the starting line) of each of the 20 worms represented the Mean Migration Index (MMI). Each experiment shown in the paper was performed at least 4 times. MMI (Means \pm S.E.) values were compared using unpaired data with unequal variance Student *t*-tests performed with the

KaleidaGraph program. Assays were always performed so as to compare synchronized worm populations.

RNAs Fractionation and tRNA Purification

The large and small RNAs (< 200 nt) were separated using the NORGEN RNA Purification Kit (Norgen Biotek Corp). Small RNAs were further size-fractionated on 3.5% low-melting agarose (Nusieve GTG) gels. RNA was quantified with the Nanodrop 2000 (ThermoScientific). To purify *C. elegans* transfer RNAs, small RNA fractions (under 150 nt in size) were prepared as described (Maréchal-Drouard et al., 1995). In brief, RNA was incubated in a 2 M lithium chloride solution over-night at 4°C. After centrifugation at 16000 g for 30 min at 4°C, the supernatants containing the tRNAs were recovered. Transfer RNAs were thereafter precipitated with 0.1 volume of 1 M sodium acetate pH 4.5 solution and 2.5 volumes of ethanol over-night at -20°C. Pelleted tRNAs were dissolved in water and loaded on 15% polyacrylamide with 7 M Urea and 1 X TBE gels. After Ethidium bromide staining, gel slices were cut from the gels. The tRNAs were eluted over-night at room temperature in a solution composed of 0.5 M ammonium acetate, 10 mM magnesium acetate, 0.1 mM EDTA and 0.1% SDS. After phenol extraction, tRNAs were ethanol precipitated and finally recovered in 10 μ l water.

Microbeads-Coupled tDNA Probes for tRNA Isolation

To purify tRNA molecules, we used the microMACS Streptavidin MicroBeads Kit (Miltenyi Biotec). We synthesized 37 nt long 3'-biotinylated DNA probes complementary to the 3' half of the *C. elegans* tRNAs. Oligonucleotide sequences of the tDNA probes were deduced from the *C. elegans* tRNA genes predictions (GtRNAdb, Lowe lab, Biomolecular Engineering, University of California Santa Cruz). The sources of RNA from which specific tRNAs were isolated were either the whole small RNA populations or the gel-eluted tRNA fractions showed in **Figure 3**. The procedure was as recommended by the microMACS Kit, except the annealing buffer was made of 10 mM Tris HCl pH 7.5, 5 mM MgCl₂. Binding/Wash buffer 5 X was 50 mM Tris HCl pH 7.5, 5 mM EDTA pH 8, and 2.5 M NaCl, as indicated. Elutions from microbeads were in 200 μ l TE. For each feeding and behavioral assay, we used 10 μ l eluate per worm culture dish, as described in the section "RNA-Feeding" below.

High Purification of tRNA Molecules After Affinity Chromatography and 3' pCp-Cy3 Labeling

To obtain highly purified Alanine tRNA (UGC) molecules, we used the Streptavidin Sepharose™ High Performance beads (GE Healthcare, 17-5113-01) coupled to the 3'-biotinylated tDNA Ala (TGC)-3' probe (probe Ala TGC N° 3, as described).

We first mixed 10–20 μ g of total tRNA with 1 nmole of tDNA probe and 40 U of RNaseOUT in 500 μ l of annealing buffer [5X SSC (saline-sodium citrate); 0.05% SDS (sodium dodecyl sulfate)]. The mix was then incubated sequentially, 5 min at

70°C, 30 s at 4°C and 2.5 h at 42°C. Twenty µl of Streptavidin Sepharose beads were deposited in a 20 µm receiver column (Macherey-Nagel, 740522) and equilibrated with 3 × 500 µl of annealing buffer. Columns were incubated 15 min at room temperature in gentle shaking and 15 min at 42°C. They were centrifuged 15 s at 11000 g and then washed as follows: 2 × 500 µl of 5x SSC (5 min at 42°C), 1 × 500 µl 2x SSC (5 min at 42°C), 1 × 500 µl 2x SSC (15 min at 47°C), 1 × 500 µl 2x SSC (15 min at 52°C). After each washing step, the column was centrifuged 15 sec at 11000 g. tRNA elution was by adding 2 × 300 µl of elution buffer (10 mM Tris-HCl pH 7.5; 1 mM EDTA; 5 M Urea). Total elution was ethanol precipitated and resuspended in 2.96 µl of water for 3' pCp-Cy3 (Jena Bioscience NU-1706-CY3) labeling.

Before labeling, we added 26% (v/v) DMSO (1,04 µl) to the purified tRNA (2,96 µl) and incubated 10 s at 100°C and immediately cooled on ice. The labeling reaction was performed using the Biolabs T4 RNA ligase (M0204). Ligase buffer and ATP were added to the tRNA-DMSO mix and ligation was performed with 20 µM of pCp-Cy3 and 5 units of T4 RNA ligase in 10 µl at 16°C overnight. The labeling was done in the same way for total tRNAs fraction, using 2.5 µg total tRNAs.

The different fractions were analyzed by electrophoresis on 7 M Urea-15% acrylamide gel and scanned on a GE Healthcare Ettan DIGE imager system. The bands corresponding to the purified tRNA were cut from the gel and eluted overnight at room temperature in 0.5 M ammonium acetate, 10 mM magnesium acetate, 0.1 mM EDTA and 0.1% SDS. After phenol extraction, tRNAs were ethanol precipitated and finally recovered in 8 µl of water.

Northern Blots Analyses

Northern blots were performed as described in Cognat et al. (2017).

Roughly, RNAs fractionated on a denaturing 7 M Urea/15% polyacrylamide gel were transferred onto Hybond-N + membrane (Amersham Pharmacia Biotech). Membranes were then hybridized with ³²P labeled probes specific to *C. elegans* tRNAs:

tRNA^{Ala}(AGC): 5'- CTACCACTGAGTTATACCCCC - 3'
 tRNA^{Ala}(CGC): 5' - TACCCCTGAGCTATACCCCC - 3'
 tRNA^{Ala}(UGC): 5' - TATGGGGAATCGAACCCCA - 3'
 tRNA^{Leu}(AAG): 5' - TGGTGAAGAGAGTGGGATTG AAC - 3'
 tRNA^{Gly}(UCC): 5' - TGGTGC GTTCGGGGGAATC GAAC - 3'
 tRNA^{Lys}(UUU): 5' - ACCAACTGAGCTAAGGAGGC - 3'
 tRNA^{Glu}(UUC): 5' - AACCCTAGACCACATGGGA - 3'
 tRNA^{Gln}(UUG): 5' - AACCGCTACACCATGGAACC - 3'

RNA-Feeding

NGM agar plates were loaded with 40 µl of OP50 culture, which, after drying, formed approximately a 100 mm² spot. Volumes of 10 µl RNA to be assayed were deposited per *E. coli* spot and shortly dried. Synchronized naive embryos were spawned on the RNA-loaded plates, and worms were grown at 20°C until

adulthood. For imprinting inheritance after multi-generational tRNA feeding (Figure 5), N2 worms were grown from the spawn embryo to the adult laying stage on 1 ng CI-tRNA-loaded culture plates (F1). Part of the next generation was grown on new CI-tRNA-loaded culture plates - the second tRNA-fed generation F2 -, another on a regular plate without CI-tRNA - the first naive generation F1 + 1. F3 is the progeny of F2 grown on tRNA while F2 + 1 is the progeny of F2 grown without tRNA. The CI chemo-response of the naive generations from the seven successive tRNA fed generations (F1 to F7) was determined as described.

tDNA Oligonucleotides Probes Used for Microbeads tRNAs Purification

- (1) Ala AGC: 5' TGGAGGTTGGGGAATTGAACCCAGC CCTCTCCCAT 3'
- (2) Ala CGC: 5' TGGAGGCACGGGGGATTGAACCCGGA CTTCCCGCAT 3'
- (3) Ala TGC: 5' TGGAGGTATGGGGAATCGAACCCAG ACTTCTCGCAT 3'
- (4) Ala TGC: 5' ATGCAAAGCCAGCGCTCTACCCCTGAG CTATACCCCC 3'
- (5) Arg ACG: 5' CGACCACGGCAGGATTCGAACCTACAA TCTTCTGC 3'
- (6) Arg CCG: 5' AGCTCGCGGAGGGACTTGAACCCCA TTCCCGTTCC 3'
- (7) Arg CCT: 5' CGACCGAGGCAGGACTCGAACCTGCTG TCTTCGGTTT 3'
- (8) Asn GTT: 5' CGCTCCCGTGGGCTCGAATCACCTT TCGGTTAA 3'
- (9) Asp GTC: 5' CTCCCCGGCCGGGAATTGAACCCGGT CTGCATGTG 3'
- (10) Cys GCA: 5' CTAGCTCTCCAGGGACCAAGTTGAGGC CCACGGGGGA 3'
- (11) Gln CTG: 5' CTTAGGACGCTGGGCTCAAGTTTAGA GCCACCTGGA 3'
- (12) Gln TTG: 5' CTTAGGACGCTGGGCTCAAGTTTAGAG CCACCTTGA 3'
- (13) Glu CTC: 5' GTGGGTATTCCGGCCCCAAGCTAAGGG GCGTTGCTTT 3'
- (14) Glu TTC: 5' GTGGGTGCGCCGGGCCCAAGCTAAGGG CCGTACCCTT 3'
- (15) Gly CCC: 5' ACCATTGTCTCGCGCCCAAGCTTAGGG CAGGTGGCGT 3'
- (16) Gly TCC: 5' GTTCGTAAGCTGCCCAAGCTAAGGG GAGCTTGCCT 3'
- (17) His GTG: 5' CCGGCACCGCTGCGACCAAGCTAAGGT CGTCGTCCGT 3'
- (18) Ile AAT: 5' TTCGGTTCCAGCGTCCAAGCTGGGGAC GACCGCCGT 3'
- (19) Ile TAT: 5' CAATTTGGTTCAGCGCCCAAGCTTAGGGC GGGCCCCGT 3'
- (20) Leu AAG: 5' GGGAAGCCCCGCACCAAGCTTAGG GAGAGAGAAGT 3'
- (21) Leu CAA: 5' AGCATACCCACGCACCAAGCTTAGGGT GAAGCACGT 3'

- (22) Leu CAG: 5' AGAGGCCTCCGCGTCCAAGCTTAGGAC GCCTGCCGT 3'
- (23) Leu TAA: 5' GGGAGGCCCGCCACCCAAGCTTAGGG TGAGAGTAGT 3'
- (24) Lys CTT: 5' ATTAGACCAACAGCGCCAAAGCTCGGGG CGTAACCCA 3'
- (25) Lys TTT: 5' TTAGAATTCCAGTCCCCAAGCTCAGGGG ATCCACCGA 3'
- (26) Met CAT: 5' TTGGGTCTCCAGCCACCTAGCTTTGGTG AGCGACGAT 3'
- (27) Met CAT: 5' TTAGACTTCCAGCACTCAAGCTCGGAGT GGCCCTCGT 3'
- (28) Phe GAA: 5' TTTAGCAATCCAGTGGTCAAGCTAGG ACCAAGCCCGT 3'
- (29) Pro AGG: 5' CACGTCTCTAGGGCCCAAGCTAGGGG CCAAGCTGGG 3'
- (30) Pro CGG: 5' CACGCTCTCCAGGGCCCAAGCTAAGGG CCAAGCCGGG 3'
- (31) Pro TGG: 5' CACGCTCTCCAGGGACCAAGTTAGGG GCCAAGCCGGG 3'
- (32) Ser AGA: 5' CCGAGACGGGCGCATCCAAGCTTAGG ACGACTGACGC 3'
- (33) Ser CGA: 5' CCGAGACGGGCGCATCCAAGCTTAGG ACGACTGACGC 3'
- (34) Ser GCT: 5' CCCAAAGGGGCGCACTCAAGCTTAGAG TAGAACTAGC 3'
- (35) Thr AGT: 5' TTTGTCTTCCAGCGACCAAGCTAAGGT CGTACTCCGT 3'
- (36) Thr CGT: 5' TTTGTCTTCCAGCTGCCAAGTTAGGGC AGACCCCGT 3'
- (37) Thr TGT: 5' TAGTTATCCAGGCCCAAGCTGGGGAG CATTCCCACT 3'
- (38) Trp CCA: 5' CTAGCTTTCCATCCCAGCAAGCTAGGCG AGTCACCAGT 3'
- (39) Tyr GTA: 5' TAGGAATCCAGTGACCAAGCTTAGGCC AAGCTGCCT 3'
- (40) Val AAC: 5' TGTGTCTTCCAGCCACCAAGCTCGGGC GGGCTCTAGT 3'
- (41) Val CAC: 5' TGCCTTCCAGCGGCCAAGCTTGGGC CGGTCTGGA 3'
- (42) Val TAC: 5' TGCCTTCTAGCGGCCAAGCTTGGGCC GATCCTGGA 3'

DATA AVAILABILITY STATEMENT

The original contributions presented in the study are included in the article/**Supplementary Material**, further inquiries can be directed to the corresponding author/s.

AUTHOR CONTRIBUTIONS

LD and J-JR initiated the project and designed the experimental strategy. DF and J-JR designed and performed the *C. elegans* experiments: tRNA feeding, chemotaxis tests, statistics. TS-G and LD performed the biochemical fractionation of RNA and Northern analysis. LD, TS-G, DF, and J-JR analyzed the data

and wrote the manuscript. DF designed the figures. All authors contributed to the article and approved the submitted version.

FUNDING

This work was supported by a grant of the “Agence Nationale de la Recherche” ANR-12-Bioadapt-0022, and by the LABEX ANR-11-LABX-0057_MITOCROSS program. This manuscript has been released as a pre-print at bioRxiv: Fernandes De Abreu et al. (2020).

ACKNOWLEDGMENTS

We thank Craig Hunter for the *sid-2 (qt13)* mutant. The elongator mutants *elpc-1 (ng10)* or *ikap-1 (ng10)* and *elpc-3 (tm3120)* were obtained thanks to Jachen A. Solinger via Grazia Malabarba. We also thank Sebastian Leidel for providing the *tut-1 (tm1297)* worms, and Shohei Mitani for the *elpc-1 (tm2149)* and *elpc-1 (tm11684)* deletion mutants. We also thank Wormbase for providing valuable databases. Thanks to V. Grandjean and G. Raad for stimulating discussions and incentive suggestions.

SUPPLEMENTARY MATERIAL

The Supplementary Material for this article can be found online at: <https://www.frontiersin.org/articles/10.3389/fcell.2020.571359/full#supplementary-material>

Supplementary Figure 1 | A specific population of small RNA transfers olfactory imprinting. **(a)** RNA from BA-exposed and unexposed naive was fractionated into two populations: the larger than 200 nucleotides fraction (Large-RNA) and the smaller than 200 nucleotides fraction (Small-RNA). Worms fed on 10 ng of Large BA-RNA migrate in a BA gradient as worms fed on 10 ng of Large Naive-RNA. By contrast, worms fed on 10 ng of Small BA-RNA display enhanced BA responses, compared to worms fed on 10 ng of Small Naive-RNA or to worms fed on 10 ng of Large BA-RNA (experimental repeats > 4, ****p*-value < 0.001). **(b)** 3.5% low-melting agarose gels fractionate BA-RNA and Naive-RNA into five A to E discrete bands (left side of insert). Naive worms were fed on each of the five gel-purified NA-RNA and BA-RNA populations. Compared BA 1/300 MMI shows that only the BA-RNA band D is able to transfer a BA-imprint to naive (experimental repeats > 4, ****p*-value < 0.001). (L), NEB double stranded RNA ladder.

Supplementary Figure 2 | Wild-type tRNA^{Ala}UGC has no effect on *elpc-1* mutant worms chemo-attraction. Compared chemo-attractive responses of naive or of wild-type tRNA^{Ala}UGC fed *elpc-1 (tm2149)* and *elpc-1 (tm11684)* mutant worms. Mean Migration Indices (MMI) in gradients of Citronellol (Ci), Benzaldehyde (BA) at the indicated dilutions, were determined as described (experimental repeats ≥ 4, ***p*-value < 0.01).

Supplementary Figure Method 1 | Schematic outline of the chemotaxis assay. Chemotaxis assays were performed on square plates in order to index the worms' positions between the starting line (time 0, position 0 cm) and the odor source (position + 6 cm) or water source (position -6 cm). 3 ml of odor solution or water are added to the lids of the plates. 20 synchronized worms are placed at the starting line at time 0. Worms start their migration and their position is carefully noted, usually at four time-points, at 10, 20, 30 and 40 min past time 0. Worms that migrate up the odor gradients are positively indexed (from 0 to 6). Worms that migrate down the odor gradients toward water are negatively indexed (from 0 to -6). The mean value of all indexed positions at all noted times (in cm from the starting line) of each of the 20 worms involved in the assay is the Mean Migration Index (MMI).

REFERENCES

- Agris, P. (2015). The importance of being modified: an unrealized code to RNA structure and function. *RNA* 21, 552–554. doi: 10.1261/rna.050575.115
- Armelin-Correa, L. M., Gutiyama, L. M., Brandt, D. Y., and Malnic, B. (2014). Nuclear compartmentalization of odorant receptor genes. *Proc. Natl. Acad. Sci. U.S.A.* 111, 2782–2787. doi: 10.1073/pnas.1317036111
- Avihu, H. Z., Bloom-Ackermann, Z., Frumkin, I., Hanson-Smith, V., Charpak-Amikam, Y., Feng, Q. H., et al. (2013). tRNA genes rapidly change in evolution to meet novel translational demands. *eLife* 2:e01339.
- Bargmann, C. I. (2006). Chemosensation in *C. elegans*. *WormBook* 25, 1–29. doi: 10.1895/wormbook.1.123.1
- Bargmann, C. I., Hartwieg, E., and Horvitz, H. R. (1993). Odorant-selective genes and neurons mediate olfaction in *C. elegans*. *Cell* 74, 515–527. doi: 10.1016/0092-8674(93)80053-h
- Benito, E., Kerimoglu, C., Ramachandran, B., Pena-Centeno, T., Jain, G., Stilling, R. M., et al. (2018). RNA-dependent intergenerational inheritance of enhanced synaptic plasticity after environmental enrichment. *Cell Rep.* 23, 546–554. doi: 10.1016/j.celrep.2018.03.059
- Boccaletto, P., Machnicka, M. A., Purta, E., Piątkowski, P., Bagiński, B., Wirecki, T. K., et al. (2018). MODOMICS: a database of RNA modification pathways. 2017 update. *Nucleic Acids Res.* 46, D303–D307.
- Boussard, A., Delescluze, J., Perez-Escudero, A., and Dussoutour, A. (2019). Memory inception and preservation in slime moulds: the quest for a common mechanism. *Philos. Trans. R. Soc. B Biol. Sci.* 374:20180368. doi: 10.1098/rstb.2018.0368
- Chan, P. P., and Lowe, T. M. (2009). GtRNADB: a database of transfer RNA genes detected in genomic sequence. *Nucleic Acids Res.* 37, D93–D97.
- Chen, C. C., Tuck, S., and Byström, A. S. (2009). Defects in tRNA modification associated with neurological and developmental dysfunctions in *Caenorhabditis elegans* elongator mutants. *PLoS Genet.* 5:e1000561. doi: 10.1371/journal.pgen.1000561
- Cognat, V., Morelle, G., Megel, C., Lalande, S., Molinier, J., Vincent, T., et al. (2017). The nuclear and organellar tRNA-derived RNA fragment population in *Arabidopsis thaliana* is highly dynamic. *Nucleic Acids Res.* 45, 3460–3472. doi: 10.1093/nar/gkw1122
- Cozen, A. E., Quartley, E., Holmes, A. D., Hrabeta-Robinson, E., Phizicky, E. M., and Lowe, T. M. (2015). ARM-seq: AlkB-facilitated RNA methylation sequencing reveals a complex landscape of modified tRNA fragments. *Nat. Methods* 12, 879–884. doi: 10.1038/nmeth.3508
- Creppe, C., Malinouskaya, L., Volvert, M. L., Gillard, M., Close, P., Malaise, O., et al. (2009). Elongator controls the migration and differentiation of cortical neurons through acetylation of alpha-tubulin. *Cell* 136, 551–564. doi: 10.1016/j.cell.2008.11.043
- Dalwadi, U., and Yip, C. K. (2018). Structural insights into the function of Elongator. *Cell. Mol. Life Sci.* 75, 1613–1622. doi: 10.1007/s00018-018-2747-6
- Dauden, M. I., Jaciuk, M., Weis, F., Lin, T. Y., Kleindienst, C., Abbassi, N. E. H., et al. (2019). Molecular basis of tRNA recognition by the Elongator complex. *Sci. Adv.* 5:eaaw2326. doi: 10.1126/sciadv.aaw2326
- Dauden, M. I., Kosinski, J., Kolaj-Robin, O., Desfosses, A., Ori, A., Faux, C., et al. (2017). Architecture of the yeast Elongator complex. *EMBO Rep.* 18, 264–279. doi: 10.15252/embr.201643353
- Degl'Innocenti, A., and D'Errico, A. (2017). Regulatory features for odorant receptor genes in the mouse genome. *Front. Genet.* 8:19. doi: 10.3389/fgene.2017.00019
- Deng, W., Babu, R., Su, D., Yin, S., Begley, T. J., and Dedon, P. C. (2015). Trm9-catalyzed tRNA modifications regulate global protein expression by codon-biased translation. *PLoS Genet.* 11:e1005706. doi: 10.1371/journal.pgen.1005706
- Devanapally, S., Ravikumar, S., and Jose, A. M. (2015). Double-stranded RNA made in *C. elegans* neurons can enter the germline and cause transgenerational gene silencing. *Proc. Natl. Acad. Sci. U.S.A.* 112, 2133–2138. doi: 10.1073/pnas.1423333112
- Dittman, A. H., and Quinn, T. P. (1996). Homing in pacific salmon mechanisms and ecological basis. *J. Exp. Biol.* 199, 83–91.
- Duechler, M., Leszczyńska, G., Sochacka, E., and Nawrot, B. (2016). Nucleoside modifications in the regulation of gene expression: focus on tRNA. *Cell. Mol. Life Sci.* 73, 3075–3095. doi: 10.1007/s00018-016-2217-y
- Duret, L. (2000). tRNA gene number and codon usage in the *C. elegans* genome are co-adapted for optimal translation of highly expressed genes. *Trends Genet.* 16, 287–289. doi: 10.1016/s0168-9525(00)02041-2
- Engelke, D. R., and Hopper, A. K. (2006). Modified view of tRNA: stability amid sequence diversity. *Mol. Cell* 21, 144–145. doi: 10.1016/j.molcel.2006.01.002
- Evans, K. J., Huang, N., Stempor, P., Chesney, M. A., Down, T. A., and Ahringer, J. (2016). Stable *Caenorhabditis elegans* chromatin domains separate broadly expressed and developmentally regulated genes. *Proc. Natl. Acad. Sci. U.S.A.* 113, E7020–E7029. doi: 10.1073/pnas.1608162113
- Fernandes De Abreu, D. A., Salinas-Giegé, T., Drouard, L., and Remy, J. J. (2020). Alanine tRNA translate environment into behavior in *Caenorhabditis elegans*. *bioRxiv [Preprint]* doi: 10.1101/289629
- Gapp, K., Jawaid, A., Sarkies, P., Bohacek, J., Pelczar, P., Prados, J., et al. (2014). Implication of sperm RNAs in transgenerational inheritance of the effects of early trauma in mice. *Nat. Neurosci.* 17, 667–669. doi: 10.1038/nn.3695
- Gecse, E., Gilányi, B., Csaba, M., Hadju, G., and Soti, C. (2019). A cellular defense memory imprinted by early life toxic stress. *Sci. Rep.* 9:18935. doi: 10.1038/s41598-019-55198-4
- Gerlach, G., Atema, J., Kingsford, M. J., Black, K. P., and Miller-Sims, V. (2007). Smelling home can prevent dispersal of reef fish larvae. *Proc. Natl. Acad. Sci. U.S.A.* 104, 858–863. doi: 10.1073/pnas.0606777104
- Gerlach, G., Tietje, K., Biechl, D., Namekawa, I., Schalm, G., and Sulmann, A. (2019). Behavioural and neuronal basis of olfactory imprinting and kin recognition in larval fish. *J. Exp. Biol.* 222:jeb189746. doi: 10.1242/jeb.189746
- Glatt, S., Letoquart, J., Faux, C., Taylor, N. M., Seraphin, B., and Muller, C. W. (2012). The Elongator subcomplex Elp456 is a hexameric RecA-like ATPase. *Nat. Struct. Mol. Biol.* 19, 314–320. doi: 10.1038/nsmb.2234
- Grandjean, V., Fourré, S., De Abreu, D. A. F., Derieppe, M. A., Remy, J. J., and Rassoulzadegan, M. (2015). RNA-mediated paternal heredity of diet-induced obesity and metabolic disorders. *Sci. Rep.* 5:18193. doi: 10.1038/srep18193
- Grassman, M. A., Owens, D. W., Mcvey, J. P., and Marquez, M. (1984). Olfactory-based orientation in artificially imprinted sea turtles. *Science* 224, 83–84. doi: 10.1126/science.224.4644.83
- Hall, S. E., Beverly, M., Russ, C., Nusbaum, C., and Sengupta, P. (2010). A cellular memory of developmental history generates phenotypic diversity in *C. elegans*. *Curr. Biol.* 20, 149–155. doi: 10.1016/j.cub.2009.11.035
- Hall, S. E., Chirn, G.-W., Lau, N. C., and Sengupta, P. (2013). RNAi pathways contribute to developmental history-dependent phenotypic plasticity in *C. elegans*. *RNA* 19, 306–319. doi: 10.1261/rna.036418.112
- Hart, A. C., and Chao, M. Y. (2010). "From odors to behaviors in *Caenorhabditis elegans*," in *The Neurobiology of Olfaction*, ed. A. Menini (Boca Raton, FL: CRC Press).
- Hong, M., Ryu, L., Ow, M. C., Kim, J., Je, A. R., Chinta, S., et al. (2017). Early pheromone experience modifies a synaptic activity to influence adult pheromone responses of *C. elegans*. *Curr. Biol.* 27, 3168–3177. doi: 10.1016/j.cub.2017.08.068
- Horn, G. (2004). Pathways of the past: the imprint of memory. *Nat. Rev. Neurosci.* 5, 108–120. doi: 10.1038/nrn1324
- Jablonka, E., and Lamb, M. J. (2015). The inheritance of acquired epigenetic variations. *Int. J. Epidemiol.* 44, 1094–1103. doi: 10.1093/ije/dyv020
- Jin, X., Pokala, N., and Bargmann, C. I. (2016). Distinct circuits for the formation and retrieval of an imprinted olfactory memory. *Cell* 164, 632–643. doi: 10.1016/j.cell.2016.01.007
- Jonkhout, N., Tran, J., Smith, M. A., Schonrock, N., Mattick, J. S., and Novoa, E. M. (2017). The RNA modification landscape in human disease. *RNA* 23, 1754–1769. doi: 10.1261/rna.063503.117
- Jose, A. M., Smith, J. J., and Hunter, C. P. (2009). Export of RNA silencing from *C. elegans* tissues does not require the RNA channel SID-1. *Proc. Natl. Acad. Sci. U.S.A.* 106, 2283–2288. doi: 10.1073/pnas.0809760106
- Juang, B. T., Gu, C., Starnes, L., Palladino, F., Goga, A., Kennedy, S., et al. (2013). Endogenous nuclear RNAi mediates behavioral adaptation to odor. *Cell* 154, 1010–1022. doi: 10.1016/j.cell.2013.08.006
- Karlsborn, T., Tükenmez, H., Mahmud, A. K., Xu, F., Xu, H., and Byström, A. S. (2014). Elongator, a conserved complex required for wobble uridine

- modifications in eukaryotes. *RNA Biol.* 11, 1519–1528. doi: 10.4161/15476286.2014.992276
- Kawamura, K., and Maruyama, I. N. (2019). Forward genetic screen for *Caenorhabditis elegans* mutants with a shortened locomotor healthspan. *G3* 9, 2415–2423. doi: 10.1534/g3.119.400241
- Kirchner, S., and Ignatova, Z. (2015). Emerging roles of tRNA in adaptive translation, signaling dynamics and disease. *Nat. Rev. Genet.* 16, 641–652.
- Kirkland, J. G., and Kamakaka, R. T. (2015). tRNA insulator function: insight into inheritance of transcriptional states? *Epigenetics* 5, 96–99. doi: 10.4161/epi.5.10775
- Kojic, M., and Wainwright, B. (2016). The many faces of elongator in neurodevelopment and disease. *Front. Mol. Neurosci.* 9:115. doi: 10.3389/fnmol.2016.00115
- Larsen, A. T., Fahrenbach, A. C., Sheng, J., Pian, J., and Szostak, J. W. (2015). Thermodynamic insights into 2-thiouridine-enhanced RNA hybridization. *Nucleic Acids Res.* 43, 7675–7687. doi: 10.1093/nar/gkv761
- Liberman, L., Wang, S. Y., and Greer, E. L. (2019). Transgenerational epigenetic inheritance: from phenomenon to molecular mechanisms. *Curr. Opin. Neurobiol.* 59, 189–206. doi: 10.1016/j.conb.2019.09.012
- Maréchal-Drouard, L., Small, I., Weil, J. H., and Dietrich, A. (1995). Transfer RNA import into plant mitochondria. *Methods Enzymol.* 260, 310–327. doi: 10.1016/0076-6879(95)60148-1
- Marré, J., Traver, E. C., and Jose, A. M. (2016). Extracellular RNA is transported from one generation to the next in *Caenorhabditis elegans*. *Proc. Natl. Acad. Sci. U.S.A.* 113, 12496–12501. doi: 10.1073/pnas.1608959113
- McEwan, D. L., Weisman, A. S., and Hunter, C. P. (2012). Uptake of extracellular double-stranded RNA by SID-2. *Mol. Cell* 47, 746–754. doi: 10.1016/j.molcel.2012.07.014
- McFarlane, R. J., and Whitehall, S. K. (2009). tRNA genes in eukaryotic genome organization and reorganization. *Cell Cycle* 19, 3102–3106. doi: 10.4161/cc.8.19.9625
- Megel, C., Morelle, G., Lalande, S., Duchêne, A. M., Small, I., and Marechal-Drouard, L. (2015). Surveillance and cleavage of eukaryotic tRNAs. *Int. J. Mol. Sci.* 16, 1873–1893. doi: 10.3390/ijms16011873
- Motorin, Y., and Helm, M. (2019). Methods for RNA modification mapping using deep sequencing: established and new emerging technologies. *Genes* 10:35. doi: 10.3390/genes10010035
- Nedialkova, D. D., and Leidel, S. A. (2015). Optimization of codon translation rates via tRNA modifications maintains proteome integrity. *Cell* 161, 1606–1618. doi: 10.1016/j.cell.2015.05.022
- O'Halloran, D. M., Altshuler-Keylin, S., Lee, J. I., and L'Etoile, N. D. (2009). Regulators of AWC-mediated olfactory plasticity in *Caenorhabditis elegans*. *PLoS Genet.* 5:e1000761. doi: 10.1371/journal.pgen.1000761
- Okada, Y., Yamagata, K., Hong, K., Wakayama, T., and Zhang, Y. (2010). A role for the elongator complex in zygotic paternal genome demethylation. *Nature* 463, 554–558. doi: 10.1038/nature08732
- O'Rourke, S. M., Dorfman, M. D., Carter, J. C., and Bowerman, B. (2007). Dynein modifiers in *C. elegans*: light chains suppress conditional heavy chain mutants. *PLoS Genet.* 3:e128. doi: 10.1371/journal.pgen.0030128
- Pang, J. Y. L., Abo, R., Levine, S. S., and Dedon, P. (2014). Diverse cell stresses induce unique patterns of tRNA up- and down-regulation: tRNA-seq for quantifying changes in tRNA copy number. *Nucleic Acids Res.* 42:e170. doi: 10.1093/nar/gku945
- Pliatsika, V., Loher, P., Magee, R., Telonis, A. G., Londin, E., Shigematsu, M., et al. (2018). MINTbase v2.0: a comprehensive database for tRNA-derived fragments that includes nuclear and mitochondrial fragments from all The Cancer Genome Atlas projects. *Nucleic Acids Res.* 46, D152–D159. doi: 10.1093/nar/gkx1075
- Posner, R., Tokar, I. A., Antonova, O., Star, E., Anava, S., Azmon, E., et al. (2019). Neuronal small RNAs control behavior transgenerationally. *Cell* 177, 1814–1826.e15. doi: 10.1016/j.cell.2019.04.029
- Pratt-Hyatt, M., Pai, D. A., Haeusler, R. A., Wozniak, G. G., Good, P. D., Miller, E. L., et al. (2013). Mod5 protein binds to tRNA gene complexes and affects local transcriptional silencing. *Proc. Natl. Acad. Sci. U.S.A.* 110, E3081–E3089. doi: 10.1073/pnas.1219946110
- Raab, J. R., Chiu, J., Zhu, J. C., Katzman, S., Kurukuti, S., Wade, A. A., et al. (2012). Human tRNA genes function as chromatin insulators. *EMBO J.* 31, 330–350. doi: 10.1038/emboj.2011.406
- Rechavi, O., Hourri-Ze'evi, L., Anava, S., Goh, W. S., Kerk, S. Y., and Hobert, O. (2014). Starvation-induced transgenerational inheritance of small RNAs in *C. elegans*. *Cell* 158, 277–287. doi: 10.1016/j.cell.2014.06.020
- Remy, J. J. (2010). Stable inheritance of an acquired behavior in *C. elegans*. *Curr. Biol.* 20, 877–878. doi: 10.1016/j.cub.2010.08.013
- Remy, J. J., and Hobert, O. (2005). An interneuronal chemoreceptor required for olfactory imprinting in *C. elegans*. *Science* 309, 787–790. doi: 10.1126/science.1114209
- Robertson, H. M., and Thomas, J. H. (2006). The putative chemoreceptor families of *C. elegans*. *Wormbook* 6, 1–12. doi: 10.1895/wormbook.1.66.1
- Sarin, L. P., and Leidel, S. A. (2014). Modify or die? - RNA modification defects in metazoans. *RNA Biol.* 11, 1555–1567. doi: 10.4161/15476286.2014.992279
- Sauer, P. V., Gu, Y., Liu, W. H., Mattioli, F., Panne, D., Luger, K., et al. (2018). Mechanistic insights into histone deposition and nucleosome assembly by the chromatin assembly factor-1. *Nucleic Acids Res.* 46, 9907–9917. doi: 10.1093/nar/gky823
- Schaefer, M., Kapoor, U., and Jantsch, M. F. (2017). Understanding RNA modifications: the promises and technological bottlenecks of the “epitranscriptome.” *Open Biol.* 7:170077. doi: 10.1098/rsob.170077
- Schimmel, P. (2018). The emerging complexity of the tRNA world: mammalian tRNAs beyond protein synthesis. *Nat. Rev. Mol. Cell Biol.* 19, 45–58. doi: 10.1038/nrm.2017.77
- Shigematsu, M., Honda, S., Loher, P., Telonis, A. G., Rigoutsos, I., and Kirino, Y. (2017). YAMAT-seq: an efficient method for high-throughput sequencing of mature transfer RNAs. *Nucleic Acids Res.* 45:e70.
- Solinger, J. A., Paolinelli, R., Klöss, H., Scorza, F. B., Marchesi, S., Sauder, U., et al. (2010). The *Caenorhabditis elegans* Elongator complex regulates neuronal alpha-tubulin acetylation. *PLoS Genet.* 6:e1000820. doi: 10.1371/journal.pgen.1000820
- Talbert, P. B., and Henikoff, S. (2009). Chromatin-based transcriptional punctuation. *Gen. Dev.* 23, 1037–1041. doi: 10.1101/gad.1806409
- Tielens, S., Huysseune, S., Godin, J. D., Chariot, A., Malgrange, B., and Nguyen, L. (2016). Elongator controls cortical interneuron migration by regulating actomyosin dynamics. *Cell Res.* 26, 1131–1148. doi: 10.1038/cr.2016.112
- Troemel, E. R., Kimmel, B. E., and Bargmann, C. I. (1997). Reprogramming chemotaxis responses: sensory neurons define olfactory preferences in *C. elegans*. *Cell* 91, 161–169. doi: 10.1016/s0092-8674(00)80399-2
- Vidal, B., Aghayeva, U., Sun, H., Wang, C., Glenwinkel, L., Bayer, E. A., et al. (2018). An atlas of *Caenorhabditis elegans* chemoreceptor expression. *PLoS Biol.* 16:e2004218. doi: 10.1371/journal.pbio.2004218
- Woolnough, J. L., Atwood, B. L., and Giles, K. E. (2015). Argonaute 2 binds directly to tRNA genes and promotes gene repression in *cis*. *Mol. Cell Biol.* 35, 2278–2294. doi: 10.1128/mcb.00076-15
- Zheng, G., Qin, Y., Clark, W. C., Dai, Q., Yi, C., He, C., et al. (2015). Efficient and quantitative high-throughput tRNA sequencing. 2015. *Nat. Methods* 12, 835–837. doi: 10.1038/nmeth.3478

Conflict of Interest: The authors declare that the research was conducted in the absence of any commercial or financial relationships that could be construed as a potential conflict of interest.

Copyright © 2020 Fernandes De Abreu, Salinas-Giegé, Drouard and Remy. This is an open-access article distributed under the terms of the Creative Commons Attribution License (CC BY). The use, distribution or reproduction in other forums is permitted, provided the original author(s) and the copyright owner(s) are credited and that the original publication in this journal is cited, in accordance with accepted academic practice. No use, distribution or reproduction is permitted which does not comply with these terms.