



Christchurch: Creating a World-Class Cycling Network in a Transition City

Dr Glen Koorey

Senior Lecturer in Transportation
Dept of Civil & Natural Resources Engineering

Prof Simon Kingham

Head of Department
Dept of Geography

University of Canterbury, Christchurch, New Zealand

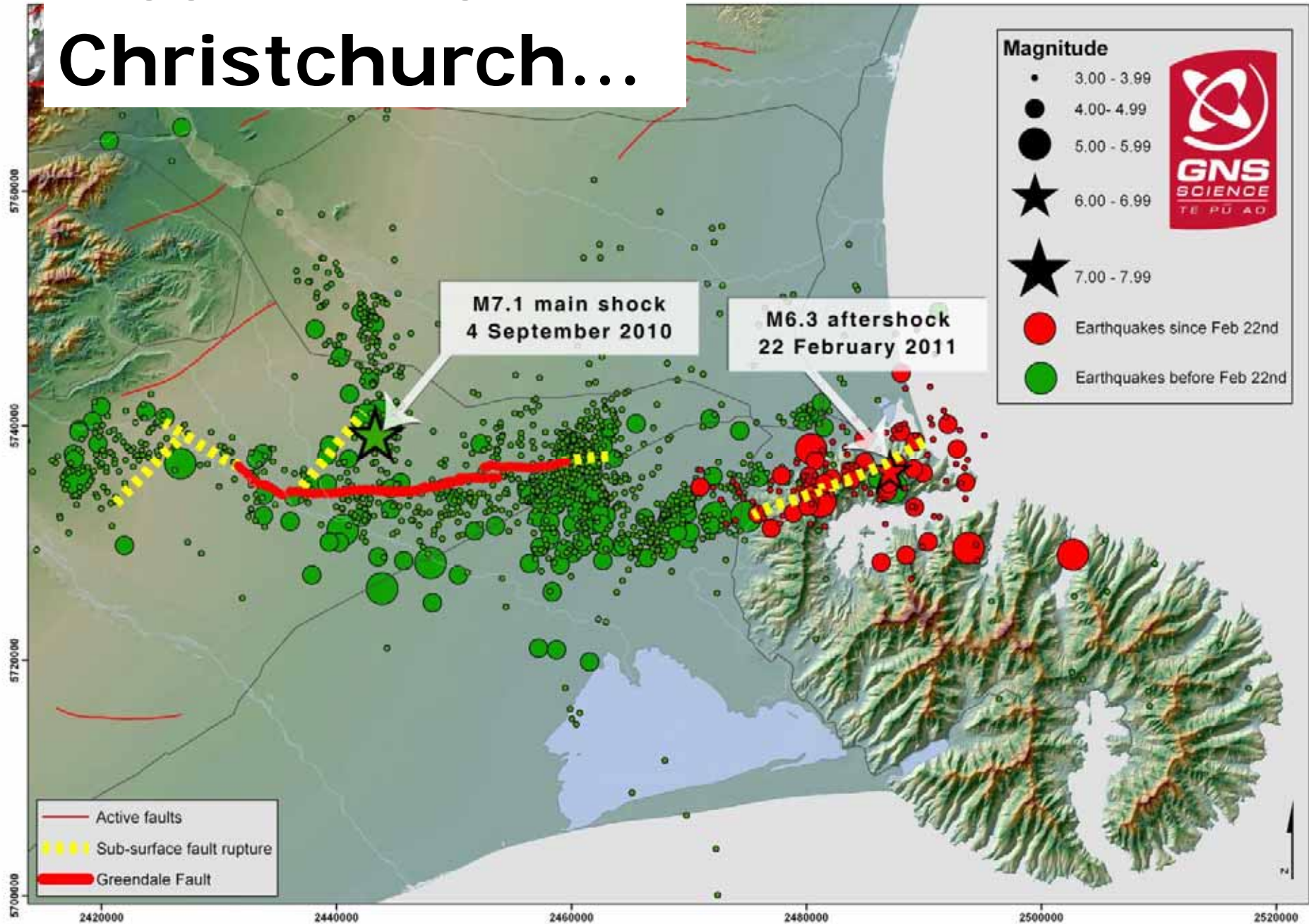
New Zealand



- 4.5 million people
 - Low population density
 - Very urbanised
- Typical Anglophone Development
 - Motor Vehicles
- ~1.4% of Trips by Bike
 - ~3% commuting



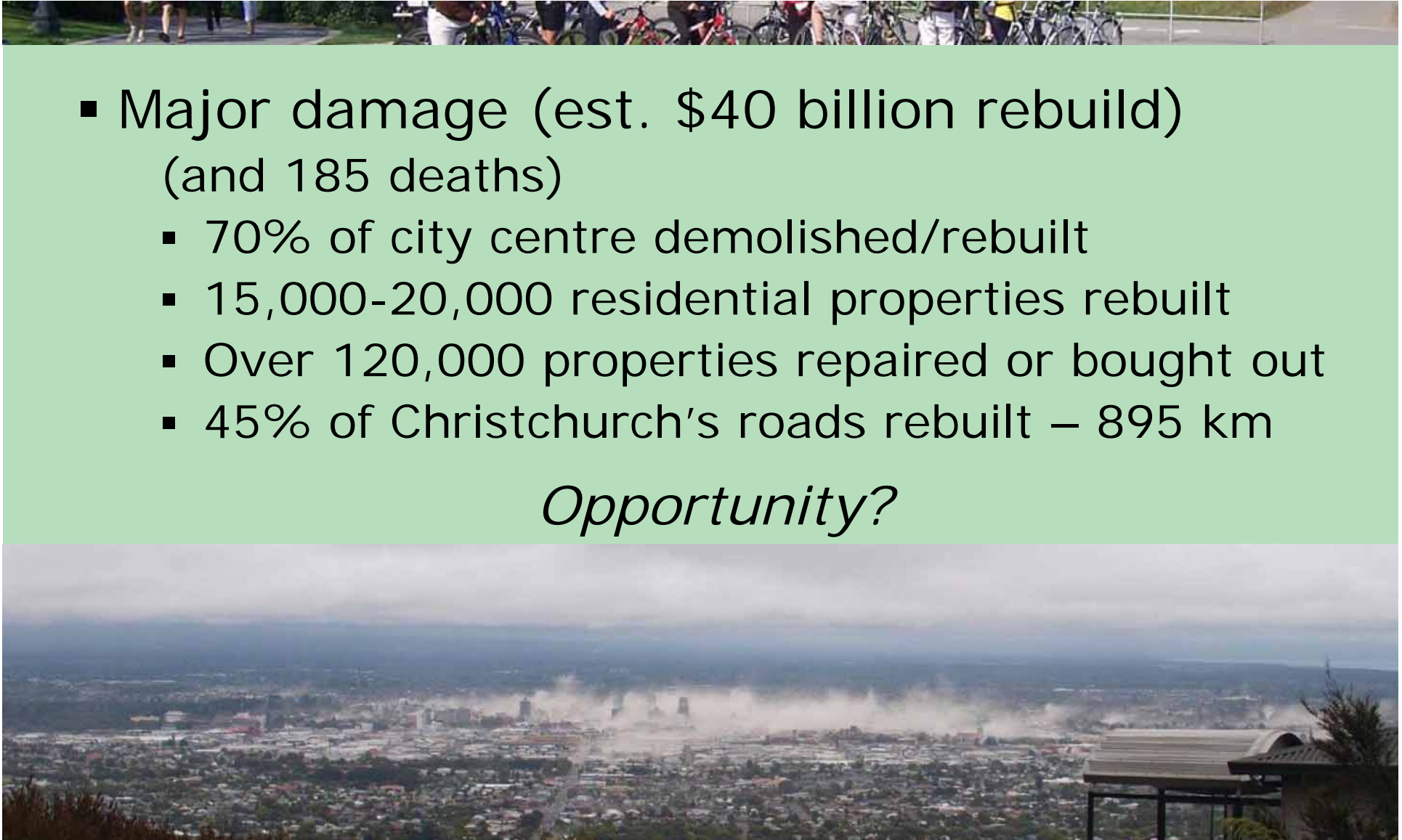
Meanwhile in Christchurch...



Christchurch Earthquakes Aftermath

- Major damage (est. \$40 billion rebuild)
(and 185 deaths)
 - 70% of city centre demolished/rebuilt
 - 15,000-20,000 residential properties rebuilt
 - Over 120,000 properties repaired or bought out
 - 45% of Christchurch's roads rebuilt – 895 km

Opportunity?



"Share An Idea"



share
an idea

Make cycling much safer with dedicated bike paths separated from cars on most routes. Only

exper
ride at

Graham

Everything about our city can be geared to making it seen as the best city in the world for cycling (other great things follow)

gareth *ilam*

Bicycle highways - just for bikes - into the city. Make cycling in to work, or out to the beach on the weekend, and fun.

summer

shareanidea.org.nz

Separate the cycle ways from the cars so cyclists are safer, which would encourage cycling as a greener way of getting about.

Elizabeth *Lower Hutt*

Separate cycleways (like Copenhagen) linking suburbs and city and making cycling pleasant!

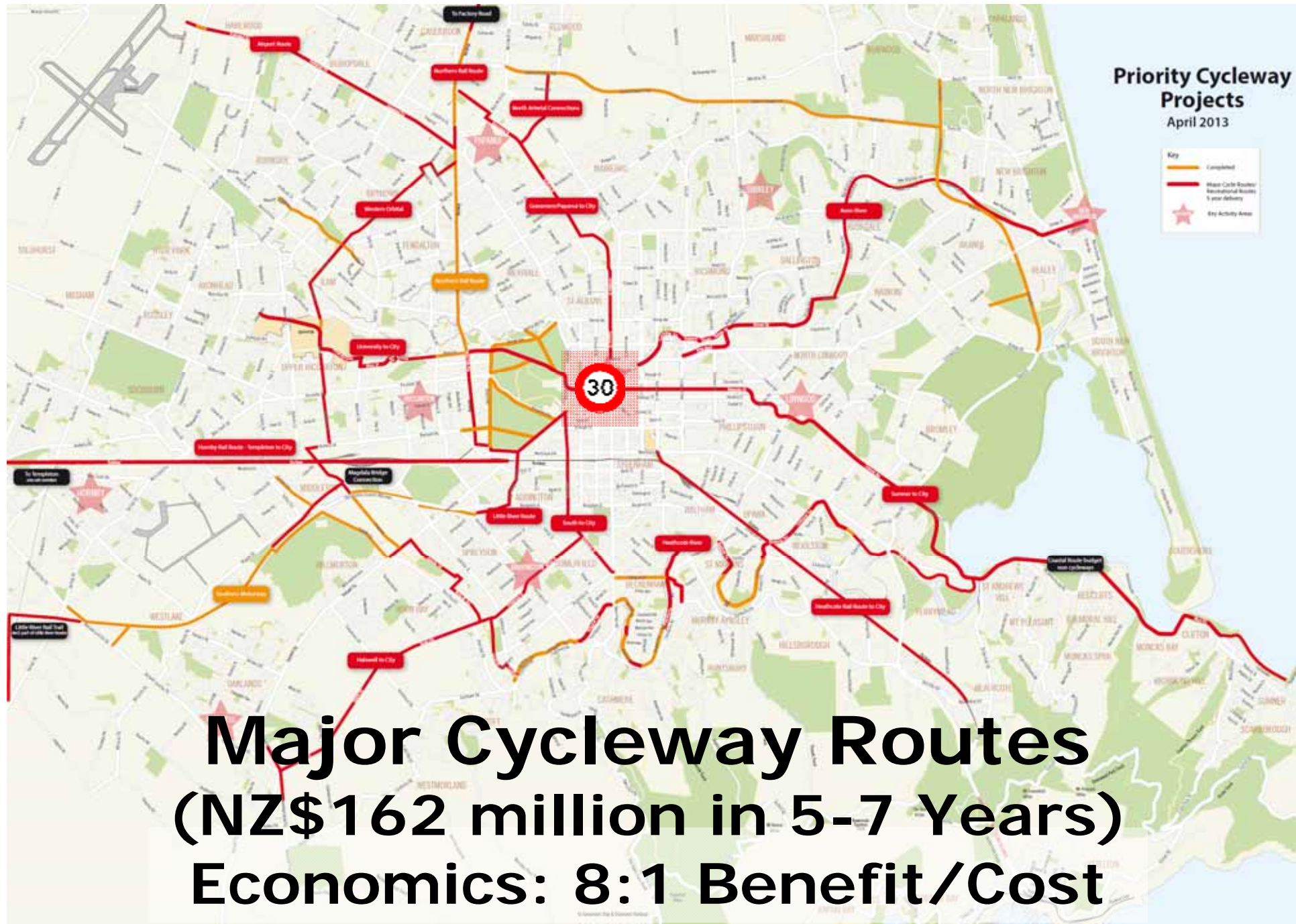
Hilary *Cashmere*

Build widened cycling tracks to encourage more people to bike instead of drive. This will also persuade people to not cycle the footpath.

Ruijia *Merivale*

More walking or cycling-only areas in a compact area with good parking around it. Separate cycle ways where possible.

Simon



Separated Cycleways



Neighbourhood Greenways



A Variety of Treatments...

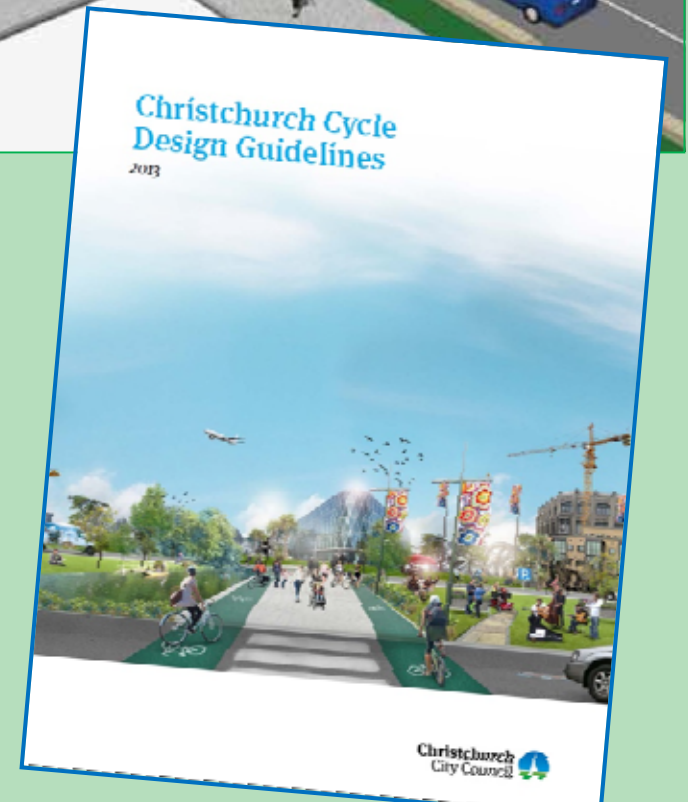
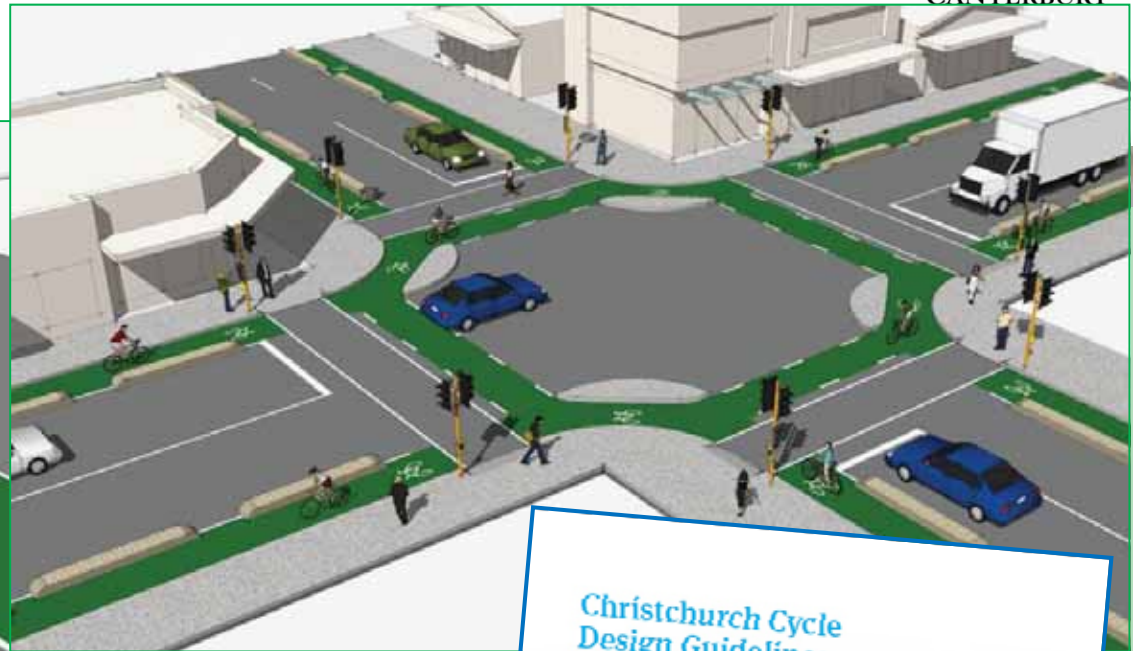
Shared Pathways



Roadway Crossings



Chch Cycle Design Guidelines



Getting Dutch Advice...



Other Initiatives



- Public Bike Share Scheme (from July '15)
- Local Cycling Activities/Events
 - Ciclovía: CBD "Open Streets" (Sep 2013)
 - Rides: Lazy Sunday, Cycle Chch, Winter Solstice
 - Bike repair workshops: ICEcycles, RAD Bikes
 - Blogging: "Cycling in Christchurch"
- New NZ\$25m Mountain-Bike Adventure Park
- University Research Opportunities
 - Cycle Facility Preferences, Routes vs Demand
 - Design Aspects (Path widths, Greenways)
 - Effect of Facilities on Cycling Growth

Ongoing Issues and Things to Consider

- Translating International Best-Practice
 - Consider different laws, road users, road widths
 - Detailed design of new concepts takes time!
- Maintain public and political enthusiasm
 - Ongoing promotions ahead of construction
 - Remind councillors of economics, public support
 - Pre-empt expected battles over parking, priority
 - “Quick win” projects
e.g. cycle lane separators



Thank You!



▪ Glen.Koorey@canterbury.ac.nz [@CyclingChch](https://twitter.com/CyclingChch)