

## Hybridly pumped collisional soft X-ray laser in Ne-like sulphur

P.V. Nickles, K.A. Janulewicz, J.J. Rocca<sup>1</sup>, F. Bortolotto, A. Lucianetti  
and W. Wandner

*Max Born Institute, Max-Born-Str. 2 A, 12489 Berlin, Germany*

<sup>1</sup>*Department of Electrical and Computer Engineering, Colorado State University, Fort Collins,  
CO 80523, U.S.A.*

**Abstract:** We describe an experiment demonstrating XUV amplification following collisional excitation in a discharge-created plasma waveguide irradiated by a picosecond optical laser pulse. A capillary discharge was used to generate a plasma radiation pipe with a radially concave electron density profile. Temporally resolved transmission characteristics and guiding effect have been measured. An intense short laser pulse rapidly heated the electrons, producing amplification in the  $3p^1S_0-3s^1P_1$  transition of Ne-like S at 60.84 nm. The integrated gain-length product obtained within a 3 cm active medium with a laser energy of 0.46 J was  $\sim 6.8$ . The pump energy depletion has been analysed as well. This new, hybridly pumped soft X-ray laser with the transient gain offers a new way towards efficient tabletop coherent XUV sources.

### 1. INTRODUCTION

A collisionally pumped X-ray laser (XRL) with a transient inversion [1] showed enormous advantages of the double-pulse (long/short) pumping scheme. Its involvement in experimental practice resulted in reduction in the pump energy up to two orders of magnitude and similar scale of reduction in the output pulse length if compared to the quasi-steady-state regime (QSS). Using this pumping method the germanium ( $\lambda=19.6$  nm) and titanium ( $\lambda=32.6$  nm) XRLs have been saturated and the gain coefficients of 30 and 35  $\text{cm}^{-1}$ , respectively, have been achieved with a moderate pump energy of 10–20 J [2,3]. The total laser pump energy as high as 7 J caused saturation in Ni-like Pd laser ( $\lambda=14.7$  nm) and gave maximal ever registered gain coefficient of 63  $\text{cm}^{-1}$  [4]. However, this robust scheme cannot take the full advantage of its unique properties due to the refraction effect. Additionally, the short duration time of the gain, caused by heating on the picosecond time scale, supports a short pulse emission in the XUV spectral range but at the same time it requires complicated optical arrangement to ensure efficient extraction of the energy deposited in the active medium by the travelling wave pump regime.

On the other hand there exists an alternative, very simple and relatively cheap XRL-pumping scheme based on a very fast electrical discharge through a capillary. A capacitor bank stores an energy of several tens of joules which is rapidly discharged through a capillary filled with gas. The peak current achieves a few tens of kiloamps within 30–50 ns [5]. Relatively low gain coefficient about 1  $\text{cm}^{-1}$  is compensated by a very long (up to 25–30 cm) active medium and saturation of the output has been demonstrated [6]. The major disadvantage of the system working in a quasi-steady-state regime (QSS) is scaling this scheme to shorter wavelengths (at the moment 46.9 nm in Ne-like Ar), which is a serious technological challenge. The long output pulse ( $\sim 1$  ns) is not favourable in some applications requiring high temporal resolution. However, this system is able to work with an increased (up to 7 Hz) repetition rate and delivers average energy of 0.88 mJ ( $P\sim 3$  mW) with the repetition rate of 4 Hz [7].

It is easily seen from the above that both schemes discussed are complementary to some extent. Meaning the advantages of one fit very well the disadvantages of the second. Capillary discharge is a very simple, compact and cheap source of plasma with an abundance of the Ne-like ions. Hence, this is

potentially an excellent source of preformed plasma for the transient inversion pumping method and it could replace the whole optical laser system generating the nanosecond pulse. The short, guided, picosecond pulse would heat rapidly the plasma created by the discharge. Moreover, quasi-travelling wave pumping is inherent for this scheme. Additionally, the high intensity short laser pulse could easily improve the plasma ionization stage by the field ionization. Guiding in a symmetric plasma pipe reduces the problems present in the conventional scheme due to refraction. Recently, a proposal to combine both schemes in one hybrid laser system appeared and was accompanied by the initial numerical simulations [8].

## 2. EXPERIMENTAL SETUP

Here we present the results of an experiment on a capillary if irradiated by the short CPA laser pulse. Sulphur capillaries with lengths between 10 and 30 mm and channel diameter of 0.5 mm and 1 mm have been used in the measurements. The capillary with broader channel gave no gain and will not be discussed further. The laser pulse, used in the experiment described, had length of 2 ps and delivered energy between 0.1 and 1.0 J from the MBI glass laser system (max. 10 J, 1.05  $\mu\text{m}$ ). The laser beam was focused to a diameter of 170  $\mu\text{m}$  (FWHM). The plasma was created by ablation of the wall material during the discharge. The peak discharge current, measured with a Rogowski coil, was kept about 3 kA, while the FWHM of the current first half-cycle was  $\sim 150$  ns. Sulphur was used in this proof-of-principle experiment as a lasant because its level structure is especially suitable for transient pumping, and a gain coefficient of  $0.45 \text{ cm}^{-1}$  was recently reported on the 3p-3s transition in Ne-like sulfur at 60.8 nm when a pure capillary discharge was used as a pump [9]. The transmitted energy and beam shape of the short pumping pulse were measured using the experimental set-up shown in Fig.1. An 8-bit CCD camera and a pyroelectric calorimeter were used to monitor the beam shape a few millimeter after the capillary exit and measure the output energy, respectively. Glass wedges and a set of the neutral density filters (NG) were used to attenuate the incident beam. The beam shape was modified slightly by three diaphragms installed behind the capillary exit to reduce the debris and make possible a differential vacuum pumping scheme.

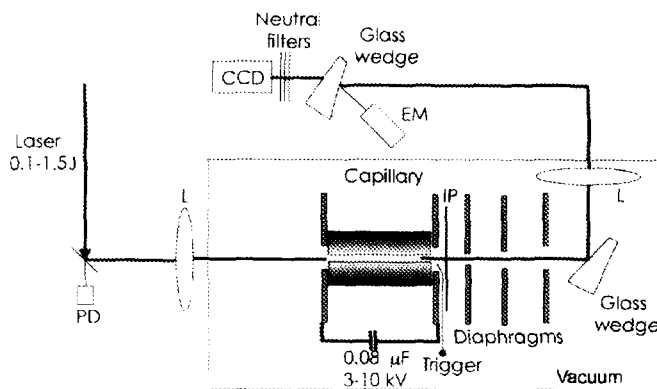


Figure 1. Experimental setup for transmission measurement and beam monitoring.

## 3. RESULTS

The main aim of the laser transmission experiment was to determine the time gap in which the short pumping pulse heats the plasma due to the IB absorption but still shows a finite transmission to avoid a cold plasma at the capillary end. The guiding effect caused by the concave radial density profile of the plasma with a minimum on the axis should facilitate efficient heating along the active medium.

### 3.1 Laser beam transmission

The transmission curve for 10 mm capillary discharge current waveform in Fig.2. The moment of the laser pulse arrival. The transmission is always calculated in respect to this moment and the lengths used.

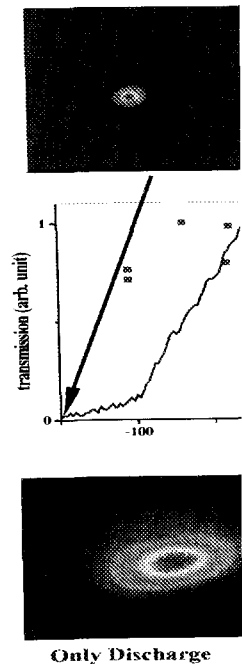
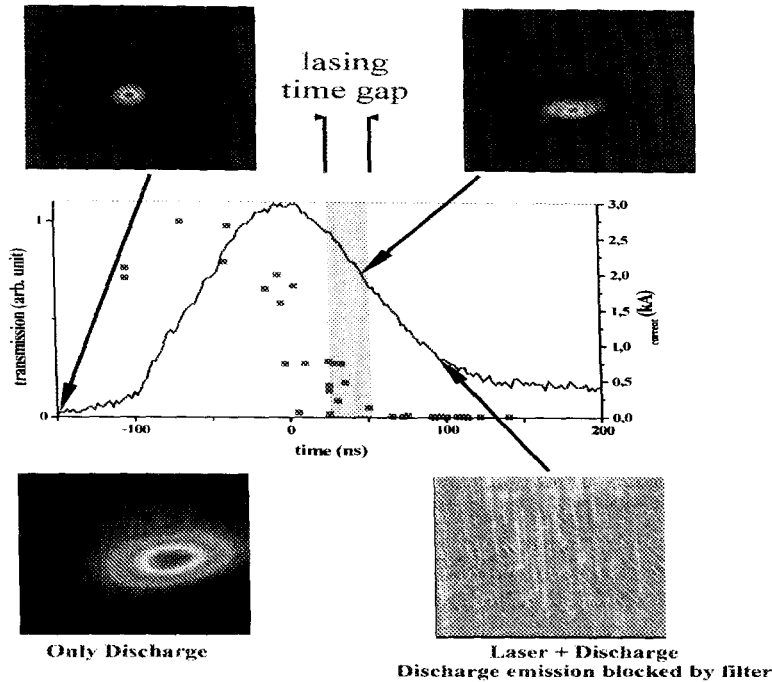


Figure 2. Transmission of the capillary discharge. The moment of the laser pulse arrival. The transmission is always calculated in respect to this moment and the lengths used.

This is a consequence of the constant ablation process and the plasma dynamics during the time of the current maximum and the transparency phase (which no laser is transmitted through the capillary). The beam shape after the discharge parameters. The beam shape is determined from the beam image when the capillary is in its full opacity phase after the current peak. The plasma density is high along the capillary axis, allowing for the propagation of the transmission phase. It is worth noting that the plasma density does not significantly affect the regular and smooth transmission character. The guiding pulse length is 35 ns. The plasma emission maximum

### 3.1 Laser beam transmission

The transmission curve for 10 mm capillary is presented together with the beam shape images and the discharge current waveform in Fig.2. The beam images are related to the instantaneous current value at the moment of the laser pulse arrival. The peak current position is a reference and the laser pulse delay is always calculated in respect to this moment. The transmission behaviour was similar for all capillary lengths used.



**Figure 2.** Transmission of the capillary discharge plasma irradiated by a picosecond laser pulse, current waveform and intensity distributions in the transmitted laser beam. Capillary length 10 mm. Intensity distributions:

This is a consequence of the constant current value used in the experiment, as the current determines the ablation process and the plasma dynamics. There is an abrupt fall in the transmission which begins near the time of the current maximum and lasts 80–90 ns. The duration of the following opacity period (in which no laser is transmitted through the plasma column and the image is determined by the plasma emission) has been estimated to last between 6 and 13  $\mu$ s depending on the capillary dimensions and discharge parameters. The beam shapes registered cover the whole history of the transmission phase from the beam image when the capillary is irradiated by the laser before the discharge triggering to the full opacity phase after the current peak. The beam shape is highly symmetric during nearly the whole transparency phase. The plasma density distribution becomes symmetric and with minimum density on the capillary axis, allowing for the propagation of the symmetric laser beam profile observed at the end of the transmission phase. It is worth noting that the plasma ablated from the capillary wall does not significantly affect the regular and symmetric shape of the laser beam but significantly changes the transmission character. The guiding phase was observed for delays between 25 and 60 ns with optimum at 35 ns. The plasma emission maximum in VIS spectral range, registered with a fast photodiode, was

delayed about 68 ns relative to the current waveform peak. The temporal history of this emission was measured using Hadland IMACON 500 streak camera and the result is shown in Fig.3a. We have traced two cross sections of the registered streak which were positioned 29 and 44 ns after the current peak (Fig.3b). Having assumed proportionality between the emitted light intensity and density of the emitting ions we have found that a distinctly concave and symmetric density profile exists 29 ns after the current peak and this becomes much more weakly pronounced 15 ns later. The depth of the plasma channel corresponds to the density reduction about 27%. These values correspond reasonably to our observation that the best lasing results were obtained about 35 ns after the current maximum and the channel depth expected is between 40 and 60%.

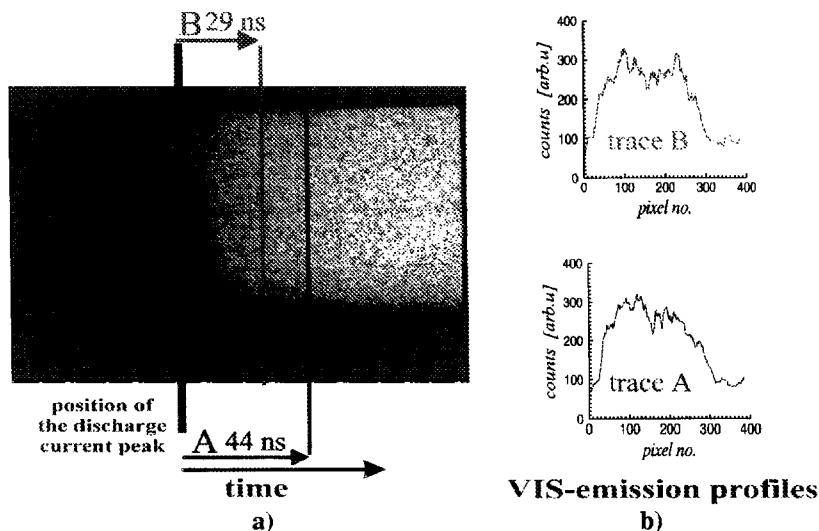


Figure 3. Temporal dependence of the plasma emission in the visible range of the spectrum relative to the current waveform; a) streak camera image with the marked current peak position; b) streak cross sections showing radial distribution of the plasma VIS-emission, which is proportional to the ion density.

3.2 Spectral measurements

The spectral diagnostic consisted of a flat-field spectrograph (FFS) provided with a 1200 lines/mm Al-coated, Harada-type concave diffraction grating. The radiation dispersed by the grating was recorded by a sensor consisting of a double-stage MCP, phosphor screen and a 16-bit CCD detector. The MCP was gated with a temporal window of 40 ns at the flat-top. The input slit of the spectrograph had a width of 100 μm. This setup allowed for relatively poor spectral resolution at the wavelength of interest, as the optimal wavelength range for such a grating is far from 600 Å (5.0–30.0 nm). No filters were installed due to the limited amount of radiation available. It is seen from the spectrum in Fig.4 that the pump laser radiation, at the energy level used, strongly affects the spectrum at 60.8 nm. The 60.84 nm line of Ne-like sulfur (S VII) is intensified significantly by the irradiation while the other lines are hardly changed. This influence changes nonlinearly with the capillary length (Fig.5) and there is no doubt that the intensity increase of the 60.84 nm line is caused by the laser plasma heating. We estimated the gain coefficient from the data presented in Fig.6. These data is influenced by non-uniform heating in the axial direction. Given a realistic value of  $2 \times 10^{19} \text{ cm}^{-3}$  for the electron density reported earlier in other experiments on the capillary discharge plasma [10–12] and an initial electron temperature of 10 eV we estimated the contribution of the inverse bremsstrahlung absorption using analytic formulae derived by Pert [13]. These estimates correspond to the plasma temperature on the capillary axis and do not take the pump laser beam

profile into account. The results well as a subsequent non-uniform

Figure 4. The spectra of the sulphur p line) and discharge irradiated

Under these circumstances the t no more valid. We divided the determined the gain coefficient been obtained for the 10 mm cap 1.2 cm<sup>-1</sup>, respectively. The effec confirmed we observed lasing. estimate roughly the pump sche the collisionally pumped XRLs. pump energy taken to this estima no direct proof yet, that we obse significantly stronger than that scheme with a long laser pulse character of the gain.

Figure 5. Maximum output signal vs.

intensity [arb.u.]

intensity [arb.u.]

tion was  
ve traced  
ent peak  
f the the  
after the  
e plasma  
y to our  
and the

profile into account. The results showed strong pump energy depletion along the capillary axis (30%) as well as a subsequent non-uniform electron energy distribution with 10% reduction in the axial direction.

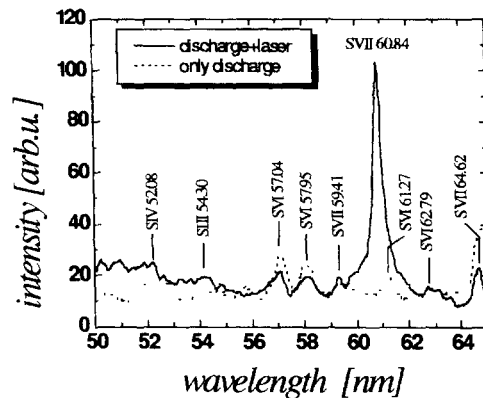


Figure 4. The spectra of the sulphur plasma measured at ~35 ns delay relative to the current peak for pure discharge (dotted line) and discharge irradiated by a picosecond laser pulse. The capillary length was 30 mm.

Under these circumstances the traditional methods of gain estimation, for example Linford formula, are no more valid. We divided the capillary into three separate sections, each with a 1 cm length and determined the gain coefficient for each section separately. The maximum gain, equal to  $4.6 \text{ cm}^{-1}$ , has been obtained for the 10 mm capillary. The second and third section had the gain coefficients of  $1.0$  and  $1.2 \text{ cm}^{-1}$ , respectively. The effective gain-length product estimated for all sections was equal to  $6.8$  and confirmed we observed lasing. The ratio (gain-length product  $gl$ )/(pump energy  $E_p$ ) commonly used to estimate roughly the pump scheme efficiency is equal to  $3.1 \text{ J}^{-1}$  and belongs to the highest obtained for the collisionally pumped XRLs. Typical values spread between  $1$  and  $2 \text{ J}^{-1}$ . It is worth noting that the pump energy taken to this estimate includes the total electric energy dissipated in the discharge. There is no direct proof yet, that we observed transient gain. However, one can argue that the signal measured is significantly stronger than that obtained in the pure electric discharge plasma and within the prepulse scheme with a long laser pulse with energy of  $20 \text{ J}$  [14]. The reason for this could be the transient character of the gain.

current  
g radial

m Al-  
ded by  
CP was  
idth of  
as the  
stalled  
p laser  
of Ne-  
ranged.  
intensity  
fficient  
ection.  
on the  
ted the  
. These  
or beam

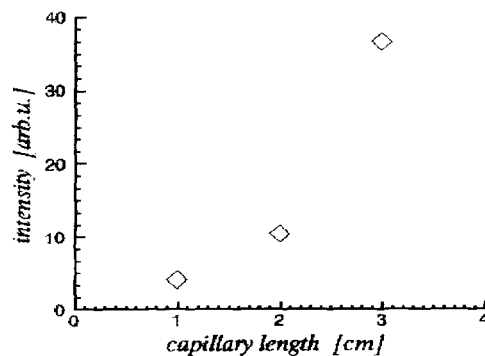


Figure 5. Maximum output signal vs. the capillary length.

#### 4. CONCLUSIONS

We have irradiated a capillary discharge with a picosecond laser pulse of relatively low energy (320–460 mJ) and estimated the temporal dependence of the transmission as well as monitored the shape of the beam transmitted through the capillary channel during the discharge. The transmission decreases very quickly immediately after the current peak during the next 80–90 ns and the beam shape is evidently symmetrised with clear indication of the guiding effect. The corresponding spectra show significant signal increase with the medium length at 60.84 nm. We ascribe this increase to fast plasma heating by the picosecond pulse followed by lasing on the 3p–3s transition in Ne-like sulphur. The results presented are encouraging and promise a new efficient tabletop hybrid X-ray laser scheme. Other materials containing elements with higher atomic number  $Z$ , which are required to shorten the emitted wavelength, are under investigation.

#### Acknowledgments

This work was supported by DFG (Deutsche Forschungs Gemeinschaft) and European X-Ray Laser Network and U.S. National Science Foundation.

#### References

- [1] Nickles P.V., Shlyaptsev V.N., Kalachnikov M., Schnürer M., Will I. and Sandner W., *Phys. Rev. Lett.* **78** (1997) 2748
- [2] P.J. Warwick et al., *J. Opt. Soc. Am. B* **15** (1998) 1808–1814
- [3] M.P. Kalachnikov et al., *Phys. Rev. A* **57** (1998) 4778
- [4] J. Dunn et al., "Tabletop transient collisional excitation x-ray lasers", Soft X-Ray Lasers and Applications III, Denver 19–20 July 1999, J.J. Rocca and L.B. Da Silva Eds. (Proceedings of SPIE **3776**) pp. 2–8
- [5] Rocca J.J., Shlyaptsev V.N., Tomasel F.G., Cortazar O.D., Hartshorn D., Chilla J.L.A., *Phys. Rev. Lett.* **73** (1994) 2192
- [6] Rocca J.J., Clark D.P., Chilla J.L.A. and Shlyaptsev V.N., *Phys. Rev. Lett.* **77** (1996) 1476
- [7] Benware B.R., Machietto C.D., Moreno C.H. and Rocca J.J., *Phys. Rev. Lett.* **81** (1998) 5804
- [8] Osterheld A.L. et al., "Modelling of Laser Produced Plasma and Z-Pinch X-Ray Lasers", 6th International Conference on X-Ray Lasers and Applications, Kyoto 31<sup>st</sup> Aug – 4<sup>th</sup> Sept 1998, Y. Kato, H. Takuma and H. Daido Eds. (IOP Conf. Ser. 159, IOP Publishing) pp. 353–362
- [9] Tomasel F.G., Rocca J.J., Shlyaptsev V.N. and Macchietto C.D., *Phys. Rev. A* **55** (1997) 1437
- [10] Rocca J.J. et al., "New Results in the Development of Table-Top Capillary Discharge Soft X-Ray Lasers: Demonstration of High Average Power and Realization of the First Demonstration", 6th International Conference on X-Ray Lasers and Applications, Kyoto 31<sup>st</sup> Aug – 4<sup>th</sup> Sept 1998, Y. Kato, H. Takuma and H. Daido Eds. (IOP Conf. Ser. 159, IOP Publishing Bristol) pp. 9–16
- [11] Rocca J.J., Marconi M.C., and Tomasel F.G., *IEEE J. of Quant. Electronics* **29** (1993) 182
- [12] Tomasel F.G., Rocca J.J., Cortazar O.D., Szapiro B.T., and Lee R.W., *Phys. Rev. E* **47** (1993) 3590
- [13] Pert G.J., *Phys. Rev. E* **51** (1995) 4778
- [14] Li Y., Pretzler G., Lu P., Nilsen J. and Fill E., "Ne- and Ni-like x-ray lasers using the prepulse technique", 5th International Conference on X-Ray Lasers and Applications, Lund 10–14 June 1996, S. Svanberg and C.-G. Wahlström Eds. (IOP Conf. Ser. 151, IOP Publishing Bristol) pp. 255–259

## Investigating the dynamic evolution of a plasma column leads to soft X-ray laser

A. Ben-Kish, M. Shuker, R.A. Schobert and J.L. Schwob<sup>1</sup>

Physics Department, Technion – Israel Institute of Technology, Haifa 3200, Israel  
<sup>1</sup> Racah Institute of Physics, The Hebrew University, Jerusalem 91904, Israel

**Abstract.** The dynamic evolution of a plasma column produced by an "off-axis" imaging apparatus could be obtained. Column compression is clearly seen and was used for electron temperature measurements. Appropriate conditions for soft x-ray laser operation were found. Indeed, strong soft x-ray amplification was observed. The measured amplified line is  $\sim 0.9$  nm.

### 1. INTRODUCTION

In recent studies conducted by Rocca et al. [1] and Schobert et al. [2], a soft X-ray laser at 46.9 nm was obtained by means of a fast Z-pinch device, stable and uniform column. Furthermore, specific plasma conditions were found. This includes, for example in the Ne-like sulphur, a high temperature ( $T_e=50-80$  eV) and dense plasma, achieving beam guiding and low opacity.

In this paper we present: First, the dynamic evolution of the collapsing column in a capillary discharge; Second, the plasma conditions for the soft x-ray spectrum emitted by the column; Third, the plasma conditions for the soft x-ray laser scheme allowed us to control the plasma column where strong amplification at 46.9 nm is observed.

### 2. INVESTIGATING THE COLUMN

Our fast capillary discharge setup [3] consists of a capillary tube (80 mm long) containing a plasma column. Subsequent to a pre-ionizing pulse in the capillary, a main current pulse ( $I_{main}$ ) is generated by the main current pulse ( $I_{main}$ ).

The appropriate initial conditions for the plasma column dynamics [4] were previously investigated. In this scheme, a new detection system was developed. In this detection system, the plasma column is imaged by a camera 50 mm from the capillary. Shallow imaging of the entire, 80 mm long, plasma column is achieved. The recording medium, located 370 mm from the capillary, is a ray Image Plate [6] or a gated (2-5 ns) detector.