

CEP Discussion Paper No 1371

September 2015

**Intrafirm Trade and Vertical Fragmentation in U.S.
Multinational Corporations**

**Natalia Ramondo
Veronica Rappoport
Kim J. Ruhl**

Abstract

Using firm-level data, we document two new facts regarding intrafirm trade and the activities of the foreign affiliates of U.S. multinational corporations. First, intrafirm trade is concentrated among a small number of large affiliates within large multinational corporations; the median affiliate ships nothing to the rest of the corporation. Second, we find that the input-output coefficient linking the parent's and affiliate's industries of operation—a characteristic commonly associated with production fragmentation—is not related to a corresponding intrafirm flow of goods.

Keywords: Intrafirm trade, multinational corporations, international value chains
JEL codes: F12; F14; L11; L25

This paper was produced as part of the Centre's Globalisation Programme. The Centre for Economic Performance is financed by the Economic and Social Research Council.

A previous version of this paper was circulated under the title "Horizontal versus Vertical Foreign Direct Investment: New Evidence from U.S. Multinationals." We are thankful for helpful comments from Daniel Trefler, two anonymous referees, Laura Alfaro, David Atkin, Pablo Fajgelbaum, Fritz Foley, Nicholas Sly, and Stephen Yeaple. We would also like to thank William Zeile for help with the multinational affiliate data and comments on an early draft. Ruhl thanks the National Science Foundation for support under grant SES-0536970. The statistical analysis of firm-level data on U.S. multinational companies was conducted at the Bureau of Economic Analysis, U.S. Department of Commerce, under arrangements that maintain legal confidentiality requirements. The views expressed are those of the authors and do not reflect official positions of the U.S. Department of Commerce.

Natalia Ramondo, University College San Diego and NBER. Veronica Rappoport, London School of Economics, Centre for Economic Performance, London School of Economics and NBER. Kim J. Ruhl, New York University, Stern.

Published by
Centre for Economic Performance
London School of Economics and Political Science
Houghton Street
London WC2A 2AE

All rights reserved. No part of this publication may be reproduced, stored in a retrieval system or transmitted in any form or by any means without the prior permission in writing of the publisher nor be issued to the public or circulated in any form other than that in which it is published.

Requests for permission to reproduce any article or part of the Working Paper should be sent to the editor at the above address.

1 Introduction

Over the last 30 years, the global fragmentation of production grew dramatically, as did the trade in final and intermediate goods that it entails.¹ Multinational corporations (MNC) are at the center of this phenomenon, as they account for the vast majority of trade across countries. An extensive literature has developed that studies the international trade that takes place within the multinational corporation as a means to better understand the underlying patterns of production fragmentation.² We add to this literature by documenting two new sets of facts on the intra-corporation trade of U.S. multinational corporations.

First, we show that, although intra-MNC trade represents an important fraction of aggregate U.S. exports and imports, the median manufacturing foreign affiliate ships nothing to — and receives nothing from — its parent in the United States. Intra-MNC trade is concentrated in a small group of large affiliates and large corporations: The largest five percent of affiliates accounts for around half of the total trade to and from the parent, while the largest five percent of corporations accounts for almost two thirds of total intra-MNC trade. This skewness is also observed within the corporation: Intra-MNC trade tends to be concentrated in a small number of an MNC’s largest foreign affiliates.

The lack of intra-MNC cross-border trade that we find for foreign affiliates of U.S. multinationals is more surprising than the similar finding in Atalay et al. (2014) for intrafirm trade within the United States. Factor price differences — the theoretical motivation for vertical fragmentation and the intrafirm trade that accompanies it — are much larger across countries than across U.S. cities. In this regard, Brainard (1993) first documented the weak relationship between factor endowments and intra-MNC trade across borders.

The skewness of intra-MNC trade towards large affiliates and corporations in our first finding is reminiscent of the skewness in the distributions of other international activi-

¹See Baldwin and Lopez-Gonzalez (2013) for a recent survey.

²Working at the affiliate level, for example, Borge and Zeile (2004), Hanson et al. (2005), Feinberg and Keane (2006), and Bilir et al. (2013) analyze the country- and industry-level determinants of intra-MNC trade. Carr et al. (2001), Antras (2003), Yeaple (2006), Nunn and Trefler (2008), Bernard et al. (2009), and Costinot et al. (2011) analyze intra-MNC trade using data aggregated to the country-industry level.

ties. Manufacturing exports are concentrated in large firms (Bernard and Jensen, 1995), and even larger firms own foreign affiliates (Helpman et al., 2004). These patterns are consistent with theories of the firm that are based on economies of scale in production. In Grossman et al. (2006), for example, the production of inputs for the entire multinational corporation is concentrated into a few large affiliates, which exploit the strong economies of scale in production. Affiliates created to supply a foreign market — as an alternative to exporting, in order to avoid transportation costs — are relatively small. The model predicts that a small number of large affiliates ship goods within the corporation, while numerous smaller affiliates serve local markets. The concentration of intra-MNC trade in the largest firms is also consistent with the contract theory of the multinational firm proposed by Antras and Helpman (2004): In their framework with heterogeneous firms, only the largest firms choose to integrate offshore activities.

Our second set of facts relates intra-MNC trade to the upstream and downstream links between the industries of the parent and affiliate, as defined by the U.S. input-output table. As previously shown in Alfaro and Charlton (2009), we find that multinational corporations own affiliates in industries that are vertically linked to the parent's industry. The input-output coefficient between the affiliate's and the parent's industries of operation, however, is not related to the existence and the magnitude of the trade in goods between the two. These findings are similar to those in Atalay et al. (2014), who study multi-establishment firms within the United States: The ownership of vertically linked affiliates is *not* related to the transfer of goods within the boundaries of the firm.

Our analysis is made possible by U.S. Bureau of Economic Analysis (BEA) data, in which each affiliate's sales are broken down by destination (the United States, the host country, or a third country) and by transaction type (the parent, another affiliate, or an unaffiliated party). The richness of the data allows us to identify production chains inside the boundaries of the MNC, but the data are unable to capture a vertical production chain once the intermediate goods leave the multinational corporation. We cannot capture, for example, MNC configurations that involve unrelated parties in some stages of production interacting with different affiliates of the same firm, possibly in different countries and industries. While the data have limitations, the BEA benchmark surveys offer the most

complete description of multinational activity available, allowing us to characterize, in depth, several aspects of these global production chains.

The remainder of the paper is organized as follows. Sections 2 and 3 describe the data and broad patterns of intra-MNC trade, and section 4 analyzes the relationship between input-output links and intra-MNC trade. Section 5 concludes.

2 Data

Our firm-level data are collected by the U.S. Bureau of Economic Analysis for the purpose of producing aggregate statistics on the operations of multinational companies.³ These data cover the universe of U.S. parents and their foreign affiliates in the benchmark year 2004.

Our sample consists of the majority-owned foreign affiliates (MOFAs: affiliates with parents that own more than 50 percent of the affiliate’s voting stock or equivalent), that have sales, assets, or net income (loss) of more than \$25 million, and that operate — and are owned by a parent that operates — in a manufacturing industry. The 4,901 affiliates in our MOFA25 sample account for almost 80 percent of total reported affiliate sales, 90 percent of total reported affiliate sales to the parent, and almost 80 percent of total reported parent exports to affiliates.

Two features of the BEA data, only available for the MOFA25 sample of affiliates, make our analysis possible. The first is a classification of affiliate sales broken down by transaction type. In the data, an affiliate’s sales can be directed to: (i) the parent; (ii) unaffiliated U.S. parties; (iii) local affiliates; (iv) local unaffiliated parties; (v) affiliated parties in neither the U.S. nor the host country (what we call *third countries*); and (vi) unaffiliated parties in third countries. These affiliates also report shipments received from their parents.⁴ The second feature of the data is a breakdown of parents’ and affiliates’ sales

³The other source of U.S. affiliated-party trade data is the U.S. Census Bureau’s related-party trade database, which is based on transaction-level data at the country-industry level. Ruhl (2015) shows that the two datasets are broadly consistent at the aggregate level.

⁴Both shipments from and to the parent refer to all goods. The sub-sample of affiliates with sales, assets, or net income (loss) of more than \$150 millions (MOFA150) has to report shipments from the parent broken down by goods for resale and goods for further processing or assembly. As table ?? in the appendix shows, goods for processing accounts for more than 85 percent of the total goods shipped to the affiliate by the parent. A similar break-down by type of good is not available for shipments from the affiliate to the parent.

in each of their seven largest industries, as classified by the International Surveys Industry (ISI) classification, which is roughly equivalent to the 2002 North American Industry Classification System (NAICS). We focus our baseline analysis on the affiliate's and parent's primary industries of operation, which are typically the industries with the largest shares of total sales.⁵ There are 77 four-digit manufacturing industries in the the ISI classification. In our sample, affiliates are present in all 77 industries and parent firms are present in 74 industries.

Further details regarding the data and the sample construction are in online appendix ??.

3 Patterns of Intra-MNC Trade

In our data, intra-MNC trade makes up the majority of affiliate exports: 70 percent of total affiliate sales made outside of the host country were directed to other affiliates within the corporation. This aggregate statistic, however, masks substantial heterogeneity across affiliates.

3.1 The Skewness of Intra-MNC Trade

Panel 1 in table 1 shows that while, on average, 27 percent of an affiliate's sales are to other parties within the corporation and seven percent are to the parent (column 1), the median affiliate reports only nine percent of its sales to be intra-MNC and reports no trade with its parent (column 3).⁶ The corollary is that the majority of affiliates sell their output to unaffiliated parties: The median affiliate's shipments to unaffiliated parties accounts for 91 percent of its sales and consists mainly of sales in its country of operation (column 3). These statistics point to a very skewed distribution of the share of intra-MNC trade across affiliates: As column 5 shows, a small group of affiliates in the 95th percentile are devoted exclusively to shipping within the corporation, and an even smaller group engages in trade only with their parents.

⁵The median foreign affiliate operates in only one four-digit manufacturing industry, and the employment-weighted average share of its total sales accounted for by the primary industry is 0.92. The median parent operates in two industries, and the employment-weighted average share of its total sales accounted for by the primary industry is 0.74.

⁶Note that the median affiliate changes as we change the sorting variable. From now on, we refer to "the median affiliate" with the understanding that it is the median affiliate with respect to the variable being studied.

In panel 2, we report shipments of goods from the parent to the foreign affiliate, as a share of the affiliate’s total cost of goods sold (cogs). The median affiliate receives nothing from its parent (column 3), while affiliates in the 95th percentile receive 38 percent of their inputs from their parents (column 5), indicating that only a handful of affiliates receive most of their inputs from their parents.⁷

In panel 3, rather than focusing on the affiliate as the unit of analysis, we aggregate the data to the corporation level to see — in an admittedly simple way — how intra-MNC trade varies across MNCs. For each MNC, we construct *MNC-wide sales* and *intra-MNC sales* by aggregating total sales and total shipments to related parties, respectively, of each foreign affiliate and the parent. The patterns found for individual affiliates in panel 1 are also present at the corporation level: For the median corporation, intra-MNC sales account for six percent of total sales (column 3).

Figure 1 further describes the distribution of the share of intra-MNC trade in affiliate sales across affiliates. Figure 1a shows the distribution of affiliates by their shares of sales to the parent and their shares of cogs received from their parents. Almost 80 percent of affiliates direct less than five percent of their sales to the parent — and receive a similar share of goods from it. Figure 1b shows the distribution of intra-MNC trade shares: About 55 percent of affiliates — and almost 70 percent of MNCs — sell less than ten percent of their output to affiliated parties, while about 10 percent of affiliates are almost exclusively dedicated to supplying other parties in the corporation.

The skewness of intra-MNC trade toward a few affiliates and a few corporations is clearly shown in figure 2: Five percent of affiliates account for 88 percent of affiliate-to-parent trade, 82 percent of parent-to-affiliate trade, and 75 percent of affiliate trade to other affiliates. In the opposite tail of the distribution, 50 percent of affiliates ship nothing to — and receive nothing from — their parents, while almost 25 percent ship nothing to any related party. The concentration is markedly less dramatic when we look at the

⁷The group of affiliates located in the North American motor vehicles sector is often held up as an example of the importance of intrafirm trade. Indeed, the median shares of intra-MNC sales for this group are the highest across all industry and country groups (30, 18, and 2 percent for trade to all affiliated parties, to the parent, and from the parent, respectively — not shown). Even so, more than 50 percent of affiliates in this group sell more than 95 percent of their output to unaffiliated parties, while almost 10 percent of them direct more than 95 percent of their sales to affiliated parties (not shown).

corporation level. The five percent of corporations with the largest intra-MNC trade flows account for 23 percent of total intra-MNC trade, while the bottom 50 percent account for 9 percent of total intra-MNC trade.

Tables ?? and ?? in online appendix ?? report statistics by sector and geographic region.

3.2 The Role of Firm Size

We have documented that intra-MNC trade is concentrated in a small group of affiliates and corporations. Here, we explore the characteristics of those firms. In particular, we focus on the relationship between affiliate and corporation size and the presence and magnitude of intra-MNC sales. Columns 6–8 in table 1 report the average share of affiliate sales by destination for firms that are above the 50th, 75th, and 95th percentile of the employment size distribution. The average share of affiliate output sold within the corporation increases from 27 percent for the full sample to 36 percent for the firms above the 95th size percentile (columns 1 and 8 in panel 1). This largest five percent of affiliates accounts for 40 percent of all trade to affiliated parties and for about half of all shipments made to and from parents (not shown). A similar pattern, though with smaller quantitative differences, describes the importance of intra-MNC trade when aggregating to the MNC-wide level (columns 1 and 8 in panel 3). The largest five percent of corporations accounts for almost two thirds of total intra-MNC trade (not shown).

Next, we explore the relationship between firm size and intra-MNC trade more formally by analyzing the presence and magnitude of intra-MNC trade across affiliates and MNCs, while controlling for affiliate-industry and destination-country fixed effects, as well as MNC characteristics. We estimate, by Ordinary Least Squares (OLS),

$$D(X_{ij}) = \beta \log emp_a + Z_c + F_d + F_x + \varepsilon_{ij}, \quad (1)$$

$$\log(X_{ij}) = \gamma \log emp_a + Z_c + F_d + F_x + \varepsilon_{ij}. \quad (2)$$

In (1), the dependent variable, $D(X_{ij})$, equals one if the corresponding intra-MNC trade flow is positive and zero otherwise. The specification in (2) considers only those affiliates with positive intrafirm trade. We analyze four types of intra-MNC trade: (i) for $ij = ap$, shipments from the affiliate to the parent as a share of the affiliate's total sales (X_{ap}); (ii)

for $ij = ac$, shipments from the affiliate to any affiliated party as a share of the affiliate's total sales (X_{ac}); (iii) for $ij = pa$, shipments from the parent to the affiliate as a share of the affiliate's cogs (X_{pa}); and (iv) for $ij = cc$, intra-MNC trade as a share of the MNC's total sales (X_{cc}).

The key regressor in both specifications is affiliate size, as measured by employment (emp_a). The variable Z_c is a vector of MNC characteristics (size of the parent, $\log emp_p$; size of the corporation, $\log emp_c$; and the number of foreign affiliates in the corporation, $\log N_c$). We also include affiliate industry and affiliate destination country fixed effects, F_x and F_d , respectively. In some specifications, we replace the vector Z_c with an MNC fixed effect.

Table 2 reports the results. Larger affiliates are substantially more likely to ship goods to — and from — the parent and to related parties (columns 1, 5, and 9). This result holds when we include corporation fixed effects: The largest affiliates in the corporation are more likely to trade within it (columns 2, 6, and 10). The intensive margin also increases with the affiliate's size when we consider flows from the affiliate to the parent: For larger affiliates, shipments to the parent represent a larger fraction of their sales. When shipments from the parent to the affiliate are considered (column 11), their share in the cost of goods sold by the affiliate decreases with the affiliate size and increases with the parent's size. Within the same MNC, smaller affiliates are also the ones for which goods shipped from the parent represent a larger share of the costs of goods sold (column 12). Finally, larger MNCs, in terms of number of foreign affiliates, have a higher likelihood (column 13) and higher share (column 14) of intra-MNC trade in total sales, and larger MNCs, in terms of employment, also have larger intra-MNC shares of sales. Even though larger corporations are typically headed by a larger parent firm, once we account for the size of the corporation, in terms of both the number of affiliates and aggregate employment, the size of the parent firm, in terms of employment, decreases the share of intra-MNC trade in total corporation sales.

4 Input-Output Links and Intra-MNC Trade

In the existing literature, country and industry characteristics have been used to explain the observed patterns of intra-MNC trade. Our focus, in contrast, is on variables that characterize the parent-affiliate pair and determine the potential for trade between the two, after controlling for country- and industry-level characteristics. Specifically, we are interested in what the input-output relationship between the parent’s industry and the affiliate’s industry can tell us about the presence and magnitude of intra-MNC trade.

We begin by characterizing the input-output relationship between the affiliate’s and parent’s industries using the direct requirements coefficients from the 2002 U.S. input-output (I-O) table, which reflects the observed inter-industry trade pattern in the United States.^{8,9} An observation in the I-O table is a commodity-industry pair, and the direct requirements coefficient, dr_{ij} , is the value of inputs from industry i needed to produce one dollar of output in industry j . We map the commodity and industry classification used in the I-O table into the NAICS-based ISI classification used by the BEA, yielding 77 manufacturing industries.

The classical theory on the boundaries of the firm would predict that our measure — by indicating the existence of an affiliate (parent) in an industry that produces goods used as inputs by the parent’s (affiliate’s) industry — should signal the existence of shipments of goods between the affiliate to the parent.¹⁰ Here, having data on both the affiliate’s and parent’s industries and on intra-MNC trade, we can test whether the purpose of owning I-O linked affiliates is the transfer of goods within the firm. Our data allow us to observe only firm characteristics for trade between parents and affiliates, so we restrict our analysis to these transactions.

In figure 3a, we summarize the characteristics of the direct requirements table, and in

⁸Papers that use the I-O table to construct a proxy for vertical production fragmentation between two firms in different countries are, among others, Acemoglu et al. (2009), Alfaro and Charlton (2009), and Fajgelbaum et al. (2014).

⁹While Antras et al. (2012) construct a measure of “upstreamness” that characterizes an industry’s position along the entire production chain, our goal is to characterize the amount of trade we would expect to see between two industries — a task for which the direct requirements coefficient is the relevant measure.

¹⁰This is the assumption underlying the findings in Alfaro and Charlton (2009), who use the presence of I-O links to infer vertical FDI (defined as “subsidiaries which provide inputs to their parent firms”), and Fajgelbaum et al. (2014), who use these links to distinguish between vertical and horizontal affiliates.

figure 3b, we plot the distribution of industry pairs for the parent-affiliate pairs in our data. The x-axis in figure 3a is the ISI code of the using (downstream) industry, and the y-axis is the ISI code of the producing (upstream) industry. In figure 3a, the bubble's size is proportional to the size of the direct requirements coefficient of the industry pair. In figure 3b, the bubble's size is proportional to the number of parent-affiliate observations in that industry pair. It is clear from figure 3a that most industries require inputs from similar industries: The entries in the direct requirements table tend to be largest on or near the diagonal.

Combining figures 3a and 3b suggests that parents own affiliates in similar industries, and these industries are important producers of intermediate inputs for each other. In fact, more than 90 percent of the manufacturing affiliates operate in an industry with a positive direct requirement coefficient with the parent's industry — what we call an Input-Output (I-O) link.¹¹ We further explore this relationship by estimating (OLS)

$$D(N_{xzd}) = \beta_U dr_{xz} + \beta_D dr_{zx} + F_{xd} + \varepsilon_{xzd} \quad (3)$$

$$\log(N_{xzd}) = \alpha_U \log dr_{xz} + \alpha_D \log dr_{zx} + F_{xd} + \varepsilon_{xzd}. \quad (4)$$

Let x be the primary industry of the affiliate, z be the primary industry of the parent, and d be the affiliate host country. We aggregate the firm-level data so that the unit of observation is a triplet, xzd , that refers to the affiliate's primary industry, the parent's primary industry, and the affiliate's country of operation. N_{xzd} is the number of affiliates in the triplet, and $D(N_{xzd})$ is equal to one if we observe at least one affiliate in the triplet xzd and zero otherwise. F_{xd} are affiliate industry-destination country fixed effects. We report the estimates of (3) and (4) in columns 1 and 2 of table 3. Consistent with Alfaro and Charlton (2009), the direct requirements coefficients are significant predictors of multinational investment. For example, a 10-percent increase in both the upstream and downstream average direct requirements coefficients implies a 90-percent increase in the

¹¹The average direct requirements coefficient in the I-O table is 0.005, and 49 percent of the industry pairs have a direct requirements coefficient equal to zero. In the parent-affiliate data, however, the average direct requirements coefficient jumps to 0.072 when we consider the parent to be upstream, and 0.069 when we consider the affiliate to be upstream. The share of parent-affiliate industry pairs whose direct requirements coefficient is zero is less than ten percent.

probability of observing FDI activity in an xzd triplet. The impact of the direct requirements coefficients on the number of affiliates in xzd triplets with positive observations can also be observed in the *adjusted variable plots* in figures 4a and 4b. The affiliate industry-destination fixed effects explain most of the variation in the number of observations, but there is still a clear positive relationship between (the residuals of) the number of affiliates and the direct requirements coefficients between a parent's and its affiliate's primary industries.

Even though multinational corporations own affiliates that operate in industries with strong I-O links to their parents' industries, we are left with the question: Are input-output links associated with trade in goods between the parent and affiliate? We explore this question formally by estimating (OLS)

$$D(X_{ap}) = \beta dr_{xz} + F_d + F_x + \varepsilon_{xz}, \quad (5)$$

$$\log(X_{ap}) = \alpha \log dr_{xz} + F_d + F_x + \varepsilon_{xz}. \quad (6)$$

The variable X_{ap} is shipments from affiliate a to parent p , as a share of total affiliate sales, and $D(X_{ap})$ equals one if $X_{ap} > 0$ and zero otherwise. Note that the direct requirements coefficient has the affiliate's industry in the upstream position. F_d and F_x are affiliate-industry and destination-country fixed effects, and in some specifications, we also include MNC fixed effects. We estimate an analogous set of equations for shipments from the parent to the affiliate, as a share of the affiliate's cogs, X_{pa} , using the direct requirement coefficient with the affiliate's industry in the downstream position, dr_{zx} . Note that the linear probability model provides a check that transfer pricing is not driving our results. Any measure of intra-MNC trade may be contaminated by the non-market prices used to value within-firm transactions. The concern is that if transfer prices are biased downward, this could bias our estimates of the intensive margin towards zero. The linear probability model avoids this issue since it is unlikely that a firm with positive intra-MNC trade could report zero trade.

We report the estimates from (5) and (6) in columns 3–10 in table 3. The coefficients on dr_{xz} and dr_{zx} are insignificant: The I-O link between the parent's and the affiliate's indus-

tries are not informative about the existence and the magnitude of shipments between the affiliate and the parent.

Figures 4c and 4d report the adjusted variable plots for parent-affiliate trade and the corresponding direct requirements coefficient. Compared to the plots in figures 4a and 4b, the fixed effects explain less of the parent-affiliate trade variation, and there is no relationship between the magnitude of the trade flow between the affiliate and the parent and the corresponding I-O link between the two firms' industries of operation.

To summarize, we find that multinational corporations tend to own affiliates that operate in industries downstream or upstream of the parent firm's industry; however, I-O links between parents' and affiliates' industries do not predict the existence and magnitude of trade between the two. These results lead to the obvious question: Why do multinationals own affiliates in industries downstream or upstream of those of the parent, if not for the shipment of goods along the vertical production chain? Atalay et al. (2014), who find similar results when studying the flow of goods between related establishments in the United States, suggest that the firm's boundaries are determined by the transfer of capabilities and not by the transfer of goods. Strong input-output links between two industries may signal the use of a common set of intangible inputs, knowledge, and expertise; this may be the case internationally, as well. Sharing these intangibles can be an advantage in the production of I-O linked goods, even in the absence of physical shipments between affiliates. In the international trade and multinational firm literature, this commonly required knowledge has been formalized as the capacity to solve related problems, as in Garicano and Rossi-Hansberg (2006); the stock of technology capital — specific to goods of similar characteristics — as in McGrattan and Prescott (2010); managerial ability, as in Bloom and Van Reenen (2007); core capabilities, as in Bernard et al. (2011); and the stock of knowledge capital that is a public good within the corporation, as in the seminal work of Markusen (1984). If this is the case, the multinational corporation may have comparative advantages in producing goods that are linked by I-O relationships without any trade in goods within its boundaries.

4.1 Robustness

We now present two robustness tests of our results in table 3 — that I-O links between a parent’s and an affiliate’s industries do not predict the existence and the importance of trade between the two.¹²

Off-Diagonal Industry Pairs. Industries are very heterogeneous in the direct requirements coefficient with itself, possibly reflecting I-O links between sub-industries. Affiliates and parents operating in the same ISI code could be producing an input for a downstream sub-industry that we do not observe due to the coarseness of the industry classification.

To confirm that our results are not driven by same-industry pairs, we estimate (5) and (6) including the interaction between the direct requirements coefficient and a dummy variable that equals one for observations in which the affiliate and the parent operate in the same (primary) industry, and equals zero otherwise. The robustness specification also tests whether trade between a parent and an affiliate operating in the same industry is larger for an industry with a larger direct requirements coefficient with itself. The coefficient on the interaction term represents this possibility.

Columns 1, 3, 5, and 7 in table 4 report the estimates of the augmented regression. The probability of observing intra-MNC trade increases for parent and affiliate pairs operating in the same industry (columns 1 and 5). Again, we find that the I-O link between the parent and the affiliate is not a significant predictor of trade between the affiliate and the parent, neither on nor off the diagonal of the I-O table.

Alternative Measures of I-O Links. Our baseline I-O link measure is the direct requirements coefficient between the primary industries of the parent and the affiliate. As an alternative, we construct a measure of the I-O link between the parent and the affiliate that includes each party’s seven most important industries of operation. We restrict the analysis to all four-digit industries in the manufacturing sector to compute a sales-weighted

¹²We have also checked the robustness of our results to the coarseness of the industry classification, a discrete classification of I-O links as in Alfaro and Charlton (2009), and the sub-sample of large majority-owned affiliates with sales, assets, or net income (loss) of more than \$150 million (available upon request). The lack of a positive, significant relationship between I-O links and shipments between the parent and the affiliate survives.

average of the direct requirements coefficients of all the possible combinations of parent and affiliate industries. Let P be the set of industries in which the parent operates, and let A be the set of industries in which the affiliate operates. Our new measure of the I-O link between the industries of the affiliate and of the parent, v_{ap} and v_{pa} , are:

$$v_{ap} \equiv \frac{\sum_{x \in A, z \in P} dr_{xz} \times sales_p^z}{total\ sales_a} \quad v_{pa} \equiv \frac{\sum_{x \in A, z \in P} dr_{zx} \times sales_a^z}{total\ sales_p}, \quad (7)$$

where $sales_a^z$ ($sales_p^z$) is the affiliate's (parent's) sales in industry z . Columns 2, 4, 6, and 8 in table 4 report the estimates of (5) and (6) using these alternative measures of I-O links. The patterns found using this more comprehensive measure are the same as the ones observed in table 3.

5 Concluding Remarks

We have presented two sets of facts related to the cross-country fragmentation of production within the boundaries of the corporation. First, we find that intra-MNC trade in goods is not the typical activity of the median affiliate of U.S. multinationals; rather, within-firm trade is concentrated in the largest affiliates of MNCs. Second, the input-output relationship between the parent's and the affiliate's operating industries, a commonly used measure for vertical fragmentation, is not associated with the presence and magnitude of intra-MNC trade.

Our finding that there is little cross-country fragmentation of the production chain *within* the boundaries of the corporation raises a new set of questions to be explored in future research. For example, how do multinational corporations use third-party suppliers? To what extent do these third-party suppliers interact with different parts of the same corporation? The challenge in answering these new questions is the need for even more detailed data on the activities of the multinational corporation.

References

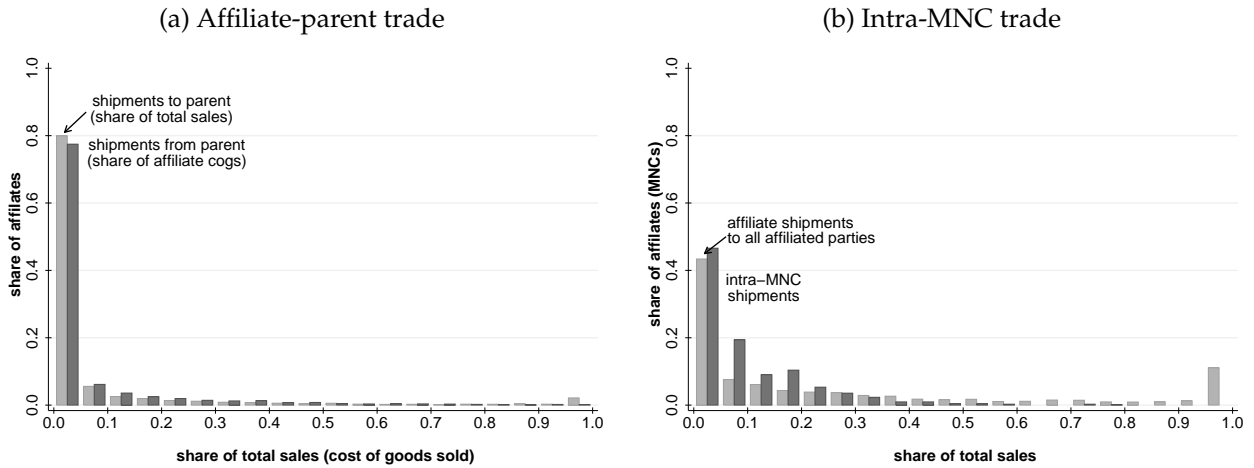
Acemoglu, D., Johnson, S. and Mitton, T. (2009), 'Determinants of Vertical Integration: Financial Development and Contracting Costs', *Journal of Finance* 64(3), 1251–1290.

- Alfaro, L. and Charlton, A. (2009), 'Intra-Industry Foreign Direct Investment', *The American Economic Review* **99**(5), 2096–2119.
- Antras, P. (2003), 'Firms, Contracts, and Trade Structure', *The Quarterly Journal of Economics* **118**(4), 1375–1418.
- Antras, P., Chor, D., Fally, T. and Hillberry, R. (2012), 'Measuring Upstreamness of Production and Trade', *American Economic Review Papers and Proceedings* **112**(3), 552–580.
- Antras, P. and Helpman, E. (2004), 'Global Sourcing', *Journal of Political Economy* **112**(3), 552–580.
- Atalay, E., Hortacsu, A. and Syverson, C. (2014), 'Vertical Integration and Input Flows', *American Economic Review*. Forthcoming.
- Baldwin, R. and Lopez-Gonzalez, J. (2013), 'Supply-chain Trade: A Portrait of Global Patterns and Several Testable Hypotheses', *NBER Working Paper 18957*.
- Bernard, A. B. and Jensen, J. B. (1995), 'Exporters, Jobs, and Wages in U.S. Manufacturing: 1976-1987', *Brookings Papers on Economic Activity. Microeconomics* pp. 67–119.
- Bernard, A. B., Jensen, J. B. and Schott, P. K. (2009), Importers, Exporters, and Multinationals: A Portrait of Firms in the U.S. that Trade Goods, in T. Dunne, J. B. Jensen and M. J. Roberts, eds, 'Producer Dynamics: New Evidence from Micro Data', University of Chicago Press, pp. 513–552.
- Bernard, A. B., Redding, S. J. and Schott, P. K. (2011), 'Multi-Product Firms and Trade Liberalization', *The Quarterly Journal of Economics* **126**(3), 1271–1318.
- Bilir, K., Chor, D. and Manova, K. (2013), Host Country Financial Development and MNC Activity. Unpublished Manuscript.
- Bloom, N. and Van Reenen, J. (2007), 'Measuring and Explaining Management Practices Across Firms and Countries', *Quarterly Journal of Economics* **122**(4), 1351–1408.
- Borga, M. and Zeile, W. J. (2004), 'International Fragmentation of Production and the Intrafirm Trade of U.S. Multinational Companies', *BEA Working Paper 2004-02*.
- Brainard, S. L. (1993), 'An Empirical Assessment of the Factor Proportions Explanation of Multi-National Sales', *NBER Working Paper 4583*.
- Carr, D. L., Markusen, J. R. and Maskus, K. E. (2001), 'Estimating the Knowledge-Capital Model of the Multinational Enterprise', *American Economic Review* **91**(3), 693–708.
- Costinot, A., Oldensky, L. and Rauch, J. (2011), 'Adaptation and the Boundary of Multinational Firms', *Review of Economics and Statistics* **93**(1), 298–308.
- Fajgelbaum, P., Grossman, G. and Helpman, E. (2014), 'A Linder Hypothesis for Foreign Direct Investment', *Review of Economic Studies*, forthcoming.
- Feinberg, S. E. and Keane, M. P. (2006), 'Accounting for the Growth of MNC-Based Trade Using a Structural Model of U.S. MNCs', *American Economic Review* **96**(5), 1515–1558.

- Garicano, L. and Rossi-Hansberg, E. (2006), 'Organization and Inequality in a Knowledge Economy', *The Quarterly Journal of Economics* **121**(4), 1383–1435.
- Grossman, G. M., Helpman, E. and Szeidl, A. (2006), 'Optimal Integration Strategies for the Multinational Firm', *Journal of International Economics* **70**(1), 216–238.
- Hanson, G. H., Mataloni, Jr., R. J. and Slaughter, M. J. (2005), 'Vertical Production Networks in Multinational Firms', *Review of Economics and Statistics* **87**(4), 664–678.
- Helpman, E., Melitz, M. J. and Yeaple, S. R. (2004), 'Export versus FDI with Heterogeneous Firms', *American Economic Review* **94**(1), 300–316.
- Markusen, J. R. (1984), 'Multinationals, Multi-plant Economies, and the Gains from Trade', *Journal of International Economics* **16**(3–4), 205–226.
- McGrattan, E. and Prescott, E. C. (2010), 'Technology Capital and the U.S. Current Account', *American Economic Review* **100**(4), 1493–1522.
- Nunn, N. and Trefler, D. (2008), The Boundaries of the Multinational Firm: An Empirical Analysis, in E. Helpman, D. Marin and T. Verdier, eds, 'The Organization of Firms in a Global Economy', Harvard University Press, pp. 55–83.
- Ruhl, K. J. (2015), 'How Well is U.S. Intrafirm Trade Measured?', *American Economic Review* **105**(5), 524–529.
- Yeaple, S. R. (2006), 'Offshoring, Foreign Direct Investment, and the Structure of U.S. Trade', *Journal of European Economic Association* **4**(2-3), 602–611.

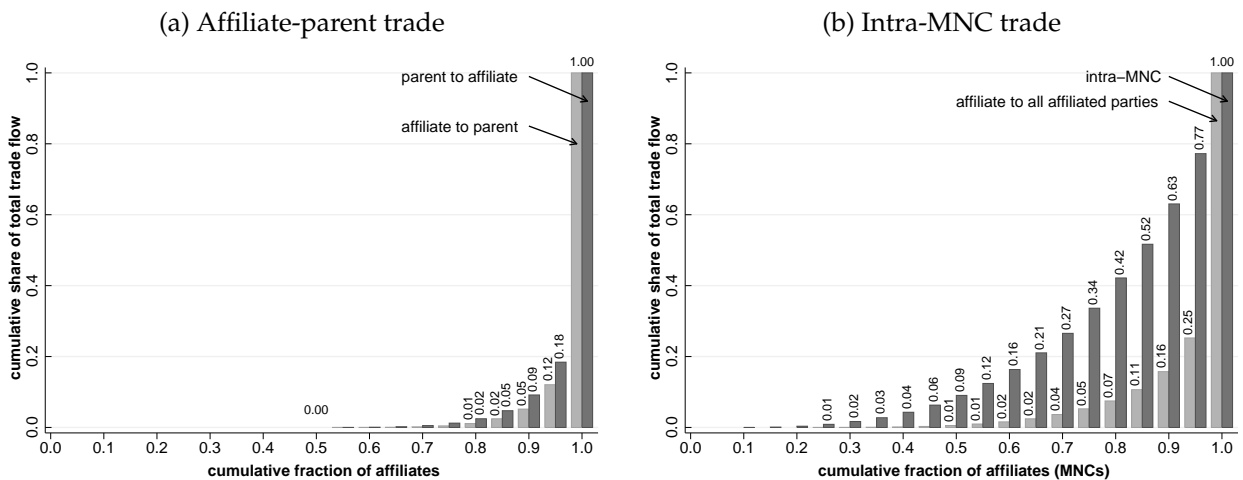
Tables and Figures

Figure 1: Distribution of affiliates and MNCs by share of sales to affiliated parties.



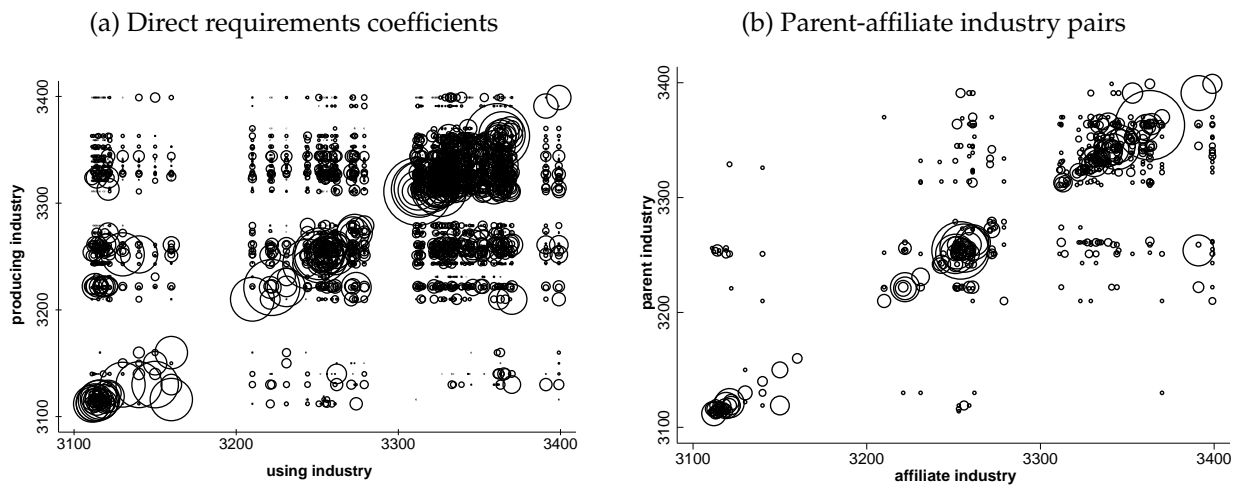
Notes: In panel a, observations are at the affiliate level. In panel b, intra-MNC shipments is the sum over all of the foreign affiliates and the parent of the MNC, and shipments to all affiliated parties is total shipments from an affiliate to other parties in the MNC.

Figure 2: Distribution of intra-MNC trade across affiliates and MNCs.



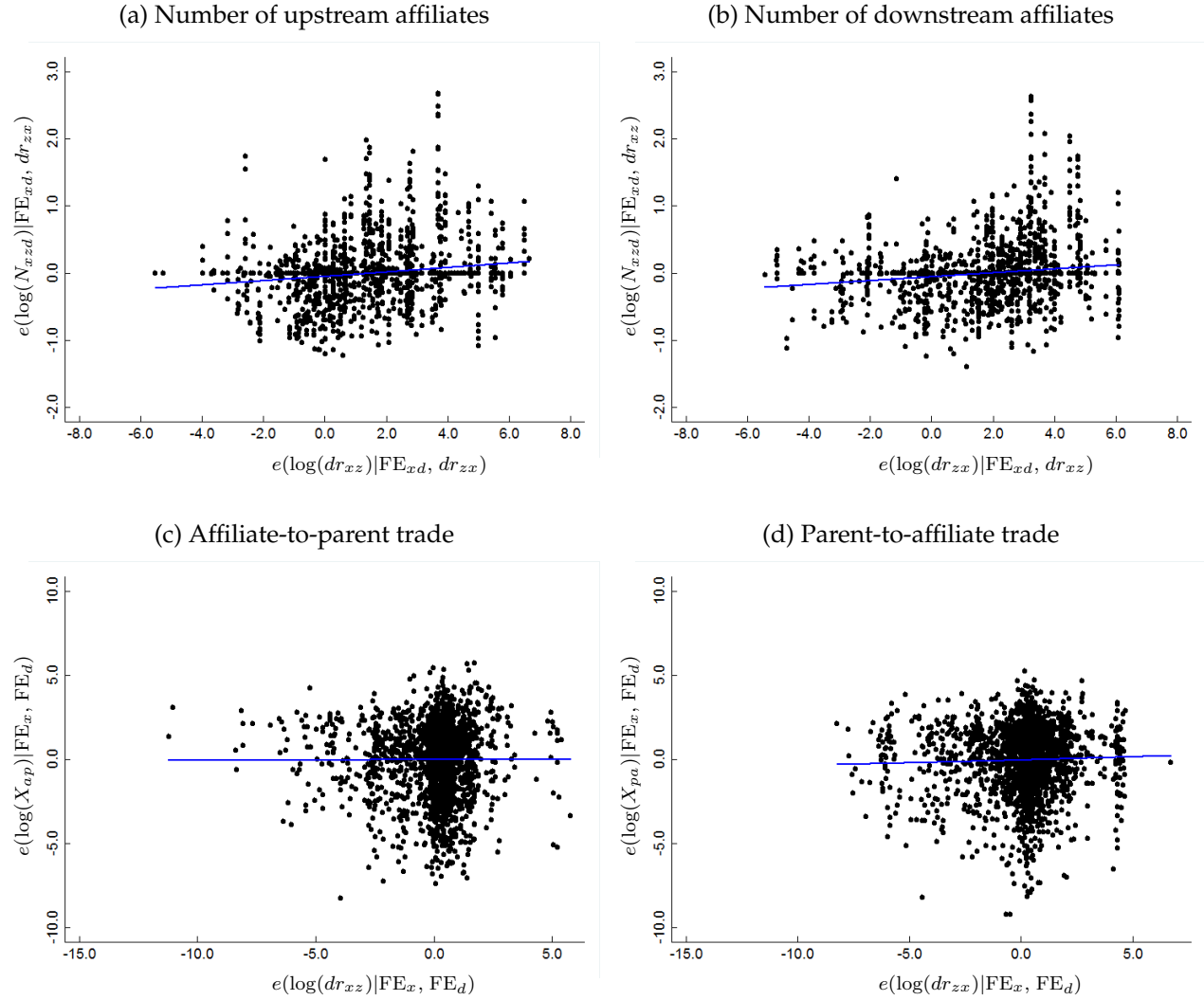
Notes: In panel a, observations are at the affiliate level. In panel b, intra-MNC shipments is the sum over all of the foreign affiliates and the parent of the MNC, and shipments to all affiliated parties is total shipments from an affiliate to other parties in the MNC. In panel (a), the 55th percentile is the first non-zero entry for both parent-to-affiliate and affiliate-to-parent trade. In panel (b), the 25th (10th) percentile is the first non-zero entry for affiliate-affiliated-party (intra-MNC) trade.

Figure 3: Direct requirements coefficients and parent-affiliate activity.



Left Panel: Direct requirements coefficients for industry pairs in 2002; bubbles are proportional to the size of the direct requirements coefficient. The direct requirements coefficient is the value of goods needed from the producing (upstream) industry in order to produce one dollar of output in the using (downstream) industry. Manufacturing industries only (ISI codes 3111–3399). Right Panel: Frequency of the (primary) industries of parent-affiliate pairs; bubbles are proportional to the number of parent-affiliate pairs in a given industry pair.

Figure 4: Adjusted variable plots for I-O links, multinational activity, and intra-MNC trade.



Notes: Panel a plots the residuals of $\log(N_{xzd})$ and dr_{xz} , after projecting them onto the affiliate industry-destination fixed effects and dr_{zx} . Panel b plots the residuals of $\log(N_{xzd})$ and dr_{zx} , after projecting them onto the affiliate industry-destination fixed effects and dr_{xz} . Panel c plots the residuals of $\log(X_{ap})$ and dr_{xz} , after projecting them onto the affiliate industry-destination fixed effects. Finally, panel d plots the residuals of $\log(X_{pa})$ and dr_{zx} , after projecting them onto the affiliate industry-destination fixed effects. N_{xzd} is the number of foreign affiliates in the triplet given by affiliate's industry x , parent's industry z , and destination country d . X_{ap} is affiliate-to-parent trade as a share of affiliate's sales, and X_{pa} is parent-to-affiliate trade as a share of affiliate's cogs. dr_{xz} (resp. dr_{zx}) is the direct requirements coefficient from the affiliate's (resp. parent's) primary industry into the production of the parent's (resp. affiliate's) primary industry.

Table 1: Intra-MNC trade, summary.

	mean (1)	std (2)	p50 (3)	p75 (4)	p95 (5)	emp>p50 (6)	emp>p75 (7)	emp>p95 (8)
Panel 1: Share of affiliate sales								
to any unaffiliated parties	0.73	0.34	0.91	1.00	1.00	0.70	0.68	0.64
to local unaffiliated parties	0.57	0.39	0.66	0.97	1.00	0.55	0.54	0.51
to non-local unaffiliated	0.17	0.27	0.00	0.24	0.84	0.15	0.13	0.12
to any affiliated party	0.27	0.34	0.09	0.41	1.00	0.30	0.32	0.36
to parent	0.07	0.19	0.00	0.02	0.49	0.09	0.11	0.14
Panel 2: Share of affiliate cogs								
from parent	0.06	0.15	0.00	0.04	0.38	0.05	0.05	0.06
Panel 3: Share of total MNC sales								
to any unaffiliated party	0.89	0.13	0.93	0.98	1.00	0.89	0.88	0.86
to any affiliated party	0.10	0.11	0.06	0.15	0.31	0.11	0.12	0.16

Notes: Columns 3–5 report the average of the 11 firms around the indicated percentile. Columns 6–8 report the average values for the firms (or MNCs) with employment greater than the indicated percentile employment. In panel 3, statistics correspond to the aggregate at the corporate level, which includes the parent and its reporting foreign affiliates.

Table 2: Intra-MNC trade and firm size.

	$D(X_{ap})$		$\log(X_{ap})$		$D(X_{ac})$		$\log(X_{ac})$		$D(X_{pa})$		$\log(X_{pa})$		$D(X_{cc})$	$\log(X_{cc})$
	(1)	(2)	(3)	(4)	(5)	(6)	(7)	(8)	(9)	(10)	(11)	(12)	(13)	(14)
$\log emp_a$	0.085*** (0.007)	0.090*** (0.007)	0.113* (0.062)	0.222*** (0.078)	0.068*** (0.007)	0.073*** (0.007)	0.103*** (0.037)	0.150*** (0.043)	0.051*** (0.008)	0.053*** (0.008)	-0.261*** (0.045)	-0.168*** (0.058)		
$\log emp_p$	-0.017 (0.040)		-0.033 (0.179)		-0.026 (0.039)		-0.106 (0.169)		0.007 (0.048)		0.505*** (0.172)		-0.003 (0.023)	-0.919*** (0.183)
$\log N_c$	0.011 (0.020)		-0.217* (0.112)		0.064*** (0.020)		-0.091 (0.106)		0.007 (0.026)		-0.120 (0.093)		0.069*** (0.013)	0.726*** (0.095)
$\log emp_c$	-0.027 (0.051)		0.088 (0.234)		-0.027 (0.051)		0.242 (0.214)		-0.068 (0.060)		-0.442* (0.215)		-0.018 (0.027)	0.560** (0.223)
Aff industry FE	Yes	Yes	Yes	Yes	Yes	Yes	Yes	Yes	Yes	Yes	Yes	Yes	No	No
Aff country FE	Yes	Yes	Yes	Yes	Yes	Yes	Yes	Yes	Yes	Yes	Yes	Yes	No	No
MNC FE	No	Yes	No	Yes	No	Yes	No	Yes	No	Yes	No	Yes	No	No
Observations	4,731	4,738	2,176	2,177	4,731	4,738	3,673	3,674	4,731	4,738	2,380	2,381	728	668
R-squared	0.223	0.480	0.241	0.507	0.160	0.475	0.134	0.392	0.178	0.495	0.281	0.528	0.051	0.233

Notes: The variable X_{ap} is the share of affiliate a 's total sales shipped to the parent; X_{ac} is the share of affiliate a 's total sales shipped to all affiliated parties; X_{pa} is the share of shipments from the parent in affiliate a 's input cost; and X_{cc} is the share of corporation c 's total sales shipped within its boundaries. The operator $D(X)$ is equal to 1 if $X > 0$ and 0 otherwise. emp_a , emp_p , and emp_c are the employment in the affiliate, parent, and the aggregate employment of the multinational corporation, respectively. N_c is the number of foreign affiliates of the corporation. Robust standard errors, clustered by MNC, are in parentheses. Levels of significance are denoted *** $p < 0.01$, ** $p < 0.05$, and * $p < 0.1$.

Table 3: I-O links, FDI activity, and intra-MNC trade.

	$D(N_{xzd})$	$\log(N_{xzd})$	$D(X_{ap})$		$\log(X_{ap})$		$D(X_{pa})$		$\log(X_{pa})$	
	(1)	(2)	(3)	(4)	(5)	(6)	(7)	(8)	(9)	(10)
dr_{xz}	0.338*** (0.015)		0.008 (0.215)	-0.135 (0.227)						
dr_{zx}	0.296*** (0.015)						0.313 (0.197)	-0.170 (0.212)		
$\log(dr_{xz})$		0.093*** (0.023)			0.004 (0.042)	-0.059 (0.075)				
$\log(dr_{zx})$		0.136*** (0.030)							0.039 (0.030)	-0.019 (0.059)
Aff ind-ctry FE	Yes	Yes	No	No	No	No	No	No	No	No
Aff industry FE	No	No	Yes	Yes	Yes	Yes	Yes	Yes	Yes	Yes
Aff country FE	No	No	Yes	Yes	Yes	Yes	Yes	Yes	Yes	Yes
MNC FE	No	No	No	Yes	No	Yes	No	Yes	No	Yes
Observations	616,616	1,922	4,901	4,901	2,072	2,072	4,901	4,901	2,201	2,201
R-squared	0.055	0.716	0.177	0.442	0.238	0.506	0.153	0.480	0.253	0.528

Notes: The operator $D(X)$ is equal to 1 if $X > 0$ and 0 otherwise. N_{xzc} refers to the number of affiliates operating in industry x in country d owned by parents in industry z . X_{ap} is the share of affiliate a 's total sales shipped to the parent p . X_{pa} is the share of affiliate a 's total input costs shipped from the parent p . dr_{xz} is the direct requirements coefficient from the affiliate's primary industry into the production of the parent's primary industry. dr_{zx} is the direct requirements coefficient from the parent's industry into the production of the affiliate's industry. Our sample contains 104 host countries and 77×77 possible industry pairs, for a total of 616,616 possible combinations, of which only 2,523 display any multinational activity, measured as the existence of at least one affiliate. For columns 3–10, robust standard errors, clustered by MNC, are in parentheses. In columns 1–2, standard errors are clustered by affiliate industry-country. Levels of significance are denoted *** $p < 0.01$, ** $p < 0.05$, and * $p < 0.1$.

Table 4: Robustness.

	$D(X_{ap})$		$\log(X_{ap})$		$D(X_{pa})$		$\log(X_{pa})$	
	(1)	(2)	(3)	(4)	(5)	(6)	(7)	(8)
dr_{xz}	-0.306							
	(0.190)							
$I(x = z)$	0.089**		0.856		0.107**		0.167	
	(0.037)		(0.589)		(0.048)		(0.512)	
$dr_{xz} \times I(x = z)$	-0.249							
	(0.339)							
v_{ap}		$-6.3e-07^{***}$						
		($2.14e-07$)						
$\log(dr_{xz})$			-0.070					
			(0.058)					
$\log(dr_{xz}) \times I(x = z)$			0.171					
			(0.187)					
$\log(v_{ap})$				0.051				
				(0.059)				
dr_{zx}					0.389			
					(0.297)			
$dr_{zx} \times I(x = z)$					-0.733			
					(0.526)			
v_{pa}						-0.019		
						(0.035)		
$\log(dr_{zx})$							0.0632	
							(0.039)	
$\log(dr_{zx}) \times I(x = z)$							0.152	
							(0.141)	
$\log(v_{pa})$								0.025
								(0.028)
Aff industry FE	Yes	Yes	Yes	Yes	Yes	Yes	Yes	Yes
Aff country FE	Yes	Yes	Yes	Yes	Yes	Yes	Yes	Yes
Observations	4,901	2,951	2,072	1,257	4,901	2,951	2,201	1,395
R-squared	0.180	0.187	0.240	0.252	0.156	0.165	0.255	0.303

Notes: The operator $D(X)$ is equal to 1 if $X > 0$ and 0 otherwise. The dependent variable X_{ap} is the share of affiliate a 's total sales shipped to the parent, and X_{pa} is shipments from the parent as a share of affiliate a 's cost of goods sold. dr_{xz} is the direct requirements coefficient from the affiliate's primary industry into the production of the parent's primary industry. dr_{zx} is the direct requirements coefficient from the parent's primary industry into the production of the affiliate's primary industry. $I(x = z)$ is a dummy equal to one if the parent and the affiliate operate in the same primary industry. v_{ap} and v_{pa} are defined in (7). Robust standard errors, clustered by MNC, are in parentheses. Levels of significance are denoted $***p < 0.01$, $**p < 0.05$, and $*p < 0.1$.

Appendix to:
Intrafirm Trade and Vertical Fragmentation in U.S. Multinational Corporations
N. Ramondo, V Rappoport, and K. Ruhl

A Data Appendix

A multinational firm's data typically span forms BE-10A, BE-10B (Long Form, LF), BE-10B (Short Form, SF), and BE-10B Mini.¹ Form BE-10A records data on the consolidated parent, and the various BE-10B forms are filed for each reporting affiliate. The long form is filed for non-bank majority-owned affiliates with sales, assets, or net income (loss) of more than \$150 million, while the short form is filed for non-bank majority-owned affiliates with sales, assets, or net income (loss) between \$25 million and \$150 million. Both minority-owned non-bank affiliates with sales, assets, or net income (loss) larger than \$25 million filing form BE-10(SF) and all non-bank affiliates with sales, assets, or net income (loss) between \$10 million and \$25 million filling the mini form are not required to report a detailed breakdown of their sales. For affiliates below the \$10 million threshold, the parent reports a few data items, including affiliate sales and employment.

The reporting threshold is low: Reporting affiliates account for 99 percent of total affiliate assets and sales. Columns 1 and 2 in table A1 report sales and employment for the universe of affiliates and the subset of affiliates that report.²

Given our data requirement, we construct a sample of non-bank majority-owned affiliates with sales, assets, or net income (loss) of more than \$25 million (MOFA25), using forms BE-10B(LF) and BE-10B(SF). We further restrict our attention to parent-affiliate pairs in the manufacturing sector.

Variables related to shipments of goods within the corporation are collected in several parts of the BEA surveys. We use the variable "affiliate's sales" broken down by transactor and destination, which is found in the response to question 100 of survey form BE-10B(SF) and question 54 of survey form BE-10B(LF). From these data, we construct the statistics related to shipments from affiliate to parent, to all affiliated parties, and to unaffiliated parties (local and non-local). For shipments from parent to affiliate, we use the variable "U.S. exports of goods to the affiliate" broken down by transactor, which is found in the response to question 97 of survey form BE-10B(SF) and question 173 of survey form BE-10B(LF). For the sub-sample of large affiliates answering the

¹The survey forms can be found at <http://www.bea.gov/surveys/diasurv.htm>.

²We do not consider the 2,606 affiliates with "carry" data (i.e., affiliates whose data were extrapolated from a previous survey); they represent eight percent of total reporting affiliate sales. None of the data used in our analysis are imputed data.

survey form BE-10B(LF), MOFA150, information on the types of goods shipped from the parent is also provided. We do not use this information in the paper — to keep consistency of the sample in all our variables— but we report this data in table A1 to show the importance of “goods for further processing” in total goods shipped from the parent to the affiliate. Notice that in column 6 in table A1, total exports from U.S. manufacturing parents to affiliates in manufacturing are imputed by BEA. This is because the parent reports exports to affiliates in form BE-10A consolidated across all its affiliates, not only in manufacturing.

Intra-MNC trade, as a share of total MNC sales, is constructed by summing the shipments from affiliates to all affiliated parties, including the parent, and shipments from the parent to its affiliates. Total MNC sales are constructed by summing sales of affiliates and parent sales, in our MOFA25 sample.³

Parents report sales in their ten largest industries of operation, and affiliates report sales in their seven largest industries. From these data, the BEA assigns each affiliate and parent a primary industry. This procedure is described in Bureau of Economic Analysis (2008, p. M–12). Briefly, the procedure begins with an affiliate’s sales at the two-digit industry level. Within the two-digit industry with the greatest sales, the three-digit industry with the greatest sales is chosen. Finally, within the three-digit industry with the greatest sales, the four-digit industry with the greatest sales is chosen as the primary industry of the affiliate. This procedure ensures that a firm does not jump across major classifications when its data are considered in a more aggregate classification.

Parent and affiliate data are reported at different levels of aggregation. Parent data consolidate all U.S.-located company operations that are part of the fully consolidated firm.⁴ Affiliates do not typically consolidate. Some exceptions are made for affiliates of the same parent — these affiliates may report in a consolidated manner if they are located in the same country and in the same four-digit industry. Affiliates never consolidate across countries.

A few remarks are in order. First, affiliate shipment data do not contain an industry identifier for the good being shipped. The lack of shipment-level industry classification, however, should

³Notice that ideally, we would like a measure that includes shipments to and from the parent, as well as to other affiliated parties, for all reporting affiliates in manufacturing. Unfortunately, form BE-10A, which is filed for the parent consolidating the information for *all* its affiliates, does not provide information on shipments from affiliates to affiliated parties other than the parent, and by consolidating across affiliates, the ability to distinguish affiliates in the manufacturing sector is lost.

⁴Since the parent is the consolidation of all domestic operations, while affiliates are generally not consolidated, there may be an overstatement of the extent of affiliate specialization relative to the parent. Consolidating the affiliates of a parent within a country creates a strictly comparable country-level affiliate. Doing so does not change our results much: The median country-level affiliate still operates in one industry, and the share of sales in the primary industry falls to 0.84.

not limit our analysis since the overwhelming majority of affiliates produce in a single industry and, hence, have only one four-digit product available to ship to related and unrelated parties. Second, within the “third countries” category, we know neither the identity of the individual affiliate in that country nor the identity of the countries to which the affiliate is shipping. In some cases, the data differentiate among Europe, Latin America, Africa, Middle East, Asia, the Pacific, and Canada; only affiliates in MOFA150 are required to report in this way. Third, sales are reported on a “shipped” basis: The data reported represent the physical flow of goods and services and not an accounting convention. The shipments data reflect the buyer and seller in the transaction and are not affected by the use of a third-party shipping company. Finally, while the affiliate sales data contain sales of both goods and services, the export data used for shipments from the parent to the affiliate contains only goods. It is reassuring, however, that for the subset of large affiliates in MOFA150 which are required to report sales of goods and services separately, shipments are almost exclusively in goods.

References

Bureau of Economic Analysis (2008), *U.S. Direct Investment Abroad, 2004 Final Benchmark Data*, U.S. Government Printing Office, Washington, D.C.

Table A1: Sample construction.

	Parent-affiliate in all non-bank sectors				Parent-affiliate in manufacturing			
	All (1)	Reporting (2)	MOFA25 (3)	MOFA150 (4)	All (5)	Reporting (6)	MOFA25 (7)	MOFA150 (8)
Number of affiliates	42,547	25,464	14,351	5,676	13,163	8,174	4,901	1,624
Number of parents	3,444	2,412	1,655	796	1,458	1,049	732	350
Total parent sales	7,517,056	7,207,894	6,480,819	5,296,402	3,089,663	3,032,798	2,781,424	2,437,787
Total parent employment	22,421	21,092	17,997	13,804	7,316	7,112	6,323	5,031
Total affiliate employment	10,445	10,149	7,230	5,100	4,645	4,529	3,276	2,280
Affiliate sales	3,976,341	3,939,894	3,045,381	2,584,692	1,705,472	1,691,359	1,303,610	1,111,641
to parent	—	298,611	270,225	246,318	—	152,726	137,050	123,719
to U.S. unaffiliated	—	—	55,989	46,260	—	—	25,943	21,425
to local unaffiliated	—	—	1,718,548	1,401,974	—	—	657,115	544,027
to local affiliated	—	—	169,559	149,973	—	—	91,463	80,717
to 3rd-country affiliated	—	—	462,697	420,991	—	—	253,059	230,379
to 3rd-country unaffiliated	—	—	368,361	319,175	—	—	138,980	111,374
Exports from parent to affiliate	—	169,448	136,515	109,779	—	102,738*	79,906	68,354
for further processing	—	—	—	63,791	—	—	—	58,431
for resale	—	—	—	40,948	—	—	—	6,944
Number of parent industries	197	192	181	160	76	76	74	66
Number of affiliate industries	202	200	194	182	77	77	77	74
Number of countries	200	173	159	118	150	124	104	76

Notes: Columns 1–4 include all non-bank parent-affiliate pairs, while columns 5–8 include only the parent-affiliate pairs in which the primary industry of both the parent and affiliate is in manufacturing. Columns 2 and 5 describe affiliates whose sales, assets, or net income (loss) is greater than \$10 million. Columns 3 and 7 describe majority-owned foreign affiliates (MOFA) whose sales, assets, or net income (loss) is greater than \$25 million. Columns 4 and 8 describe majority-owned foreign affiliates whose sales, assets, or net income (loss) is greater than \$150 million. *Value imputed by BEA for manufacturing affiliates of all non-bank parents. All other values are tabulated directly from the surveys. Sales are expressed in millions of dollars. Employment is expressed in thousands of employees.

B Additional Tables: Summary Statistics.

Table B1: Affiliate activities, summary by region.

	Number	Mean	Sd	p25	p50	p75
Share of affiliate sales to all affiliated parties						
All	4901	0.27	0.34	0.00	0.09	0.41
OECD	3084	0.26	0.34	0.00	0.10	0.41
non-OECD	1817	0.27	0.36	0.00	0.08	0.43
North America	634	0.29	0.36	0.00	0.12	0.48
Latin American not Mexico	400	0.19	0.29	0.00	0.04	0.25
Europe	2667	0.28	0.34	0.00	0.12	0.44
Africa	93	0.22	0.37	0.00	0.01	0.26
Middle East	45	0.33	0.40	0.00	0.13	0.66
Asia	1062	0.25	0.35	0.00	0.05	0.39
Share of affiliate sales to parent						
All	4901	0.07	0.19	0.00	0.00	0.02
OECD	3084	0.07	0.19	0.00	0.00	0.03
non-OECD	1817	0.07	0.20	0.00	0.00	0.02
North America	634	0.21	0.31	0.00	0.03	0.30
Latin American not Mexico	400	0.06	0.18	0.00	0.00	0.01
Europe	2667	0.04	0.13	0.00	0.00	0.01
Africa	93	0.05	0.18	0.00	0.00	0.00
Middle East	45	0.15	0.32	0.00	0.00	0.13
Asia	1062	0.07	0.21	0.00	0.00	0.01
Share of affiliate cogs from parent						
All	4901	0.06	0.15	0.00	0.00	0.04
OECD	3084	0.06	0.15	0.00	0.00	0.04
non-OECD	1817	0.06	0.15	0.00	0.00	0.04
North America	634	0.14	0.21	0.00	0.04	0.21
Latin American not Mexico	400	0.06	0.14	0.00	0.00	0.04
Europe	2667	0.04	0.12	0.00	0.00	0.01
Africa	93	0.03	0.09	0.00	0.00	0.01
Middle East	45	0.05	0.11	0.00	0.00	0.02
Asia	1062	0.09	0.18	0.00	0.00	0.07

Notes: The percentiles (p25, p50, and p75) are the averages of the eleven affiliates surrounding the percentile affiliate.

Table B2: Affiliate activities, summary by industry.

	Number	Mean	Sd	p25	p50	p75
Share of affiliate sales to affiliated parties [†]						
All	4901	0.27	0.34	0.00	0.09	0.41
Food, beverage, tobacco	481	0.20	0.32	0.00	0.02	0.25
Textile and apparel	89	0.24	0.34	0.00	0.04	0.40
Chemicals	1203	0.24	0.34	0.00	0.06	0.34
Glass and Stone	84	0.17	0.25	0.00	0.06	0.23
Metal	104	0.23	0.33	0.00	0.05	0.31
Metal products	201	0.25	0.30	0.01	0.12	0.39
Machinery	485	0.36	0.36	0.03	0.21	0.67
Electronics	570	0.31	0.38	0.00	0.10	0.57
Electrical equip.	208	0.37	0.38	0.03	0.22	0.76
Transportation equip.	630	0.25	0.31	0.00	0.11	0.38
Other	846	0.26	0.34	0.00	0.09	0.41
Share of affiliate sales to parent						
All	4901	0.07	0.19	0.00	0.00	0.02
Food, beverage, tobacco	481	0.03	0.12	0.00	0.00	0.00
Textile and apparel	89	0.07	0.23	0.00	0.00	0.00
Chemicals	1203	0.04	0.15	0.00	0.00	0.01
Glass and Stone	84	0.04	0.10	0.00	0.00	0.01
Metal	104	0.08	0.23	0.00	0.00	0.01
Metal products	201	0.08	0.17	0.00	0.01	0.05
Machinery	485	0.11	0.22	0.00	0.01	0.10
Electronics	570	0.14	0.28	0.00	0.00	0.09
Electrical equip.	208	0.11	0.24	0.00	0.00	0.07
Transportation equip.	630	0.08	0.21	0.00	0.00	0.03
Other	846	0.05	0.16	0.00	0.00	0.01
Share of affiliate cogs from parent						
All	4901	0.06	0.15	0.00	0.00	0.04
Food, beverage, tobacco	481	0.01	0.05	0.00	0.00	0.00
Textile and apparel	89	0.05	0.16	0.00	0.00	0.01
Chemicals	1203	0.06	0.14	0.00	0.00	0.04
Glass and Stone	84	0.06	0.14	0.00	0.00	0.03
Metal	104	0.06	0.15	0.00	0.00	0.03
Metal products	201	0.07	0.15	0.00	0.01	0.07
Machinery	485	0.07	0.16	0.00	0.00	0.07
Electronics	570	0.10	0.22	0.00	0.00	0.08
Electrical equip.	208	0.10	0.21	0.00	0.00	0.06
Transportation equip.	630	0.04	0.13	0.00	0.00	0.02
Other	846	0.07	0.14	0.00	0.00	0.06

Notes: The percentiles (p25, p50, and p75) are the averages of the eleven affiliates surrounding the percentile affiliate.

CENTRE FOR ECONOMIC PERFORMANCE
Recent Discussion Papers

1370	Andrew Eyles Stephen Machin Olmo Silva	Academies 2: The New Batch
1369	Yonas Alem Jonathan Colmer	Consumption Smoothing and the Welfare Cost of Uncertainty
1368	Andrew Eyles Stephen Machin	The Introduction of Academy Schools to England's Education
1367	Jeremiah Dittmar Skipper Seabold	Media, Markets and Institutional Change: Evidence from the Protestant Reformation
1366	Matthew D. Adler Paul Dolan Georgios Kavetsos	Would you Choose to be Happy? Tradeoffs Between Happiness and the Other Dimensions of Life in a Large Population Survey
1365	Jeremiah Dittmar	New Media, Competition, and Growth: European Cities After Gutenberg
1364	Jenifer Ruiz-Valenzuela	Job Loss at Home: Children's School Performance during the Great Depression in Spain
1363	Alex Bryson John Forth Lucy Stokes	Does Worker Wellbeing Affect Workplace Performance?
1362	Joan Costa-Font Frank Cowell	European Identity and Redistributive Preferences
1361	Jonas Kolsrud Camille Landais Peter Nilsson Johannes Spinnewijn	The Optimal Timing of UI Benefits: Theory and Evidence from Sweden
1360	Joan Costa Font Martin Karlsson Henning Øien	Informal Care and the Great Recession

- | | | |
|------|--|---|
| 1359 | Benjamin Faber
Rosa Sanchis-Guarner
Felix Weinhardt | ICT and Education: Evidence from Student Home Addresses |
| 1358 | Esther Ann Bøler
Beata Javorcik
Karen Helene Ulltveit-Moe | Globalisation: A Woman's Best Friend?
Exporters and the Gender Wage Gap |
| 1357 | Michael Amior
Alan Manning | The Persistence of Local Joblessness |
| 1356 | Sarah Flèche
Richard Layard | Do More of Those in Misery Suffer From Poverty, Unemployment or Mental Illness? |
| 1355 | Mirko Draca
Theodore Koutmeridis
Stephen Machin | The Changing Returns to Crime: Do Criminals Respond to Prices? |
| 1354 | Jae Song
David J. Price
Fatih Guvenen
Nicholas Bloom | Firming Up Inequality |
| 1353 | Gianmarco I. P. Ottaviano
Giovanni Peri
Greg C. Wright | Immigration, Trade and Productivity in Services: Evidence from UK Firms |
| 1352 | Joanne Blanden
Emelia Del Bono
Sandra McNally
Brigitta Rabe | Universal Pre-School Education: The Case of Public Funding With Private Provision |
| 1351 | David Atkin
Benjamin Faber
Marco Gonzalez-Navarro | Retail Globalization and Household Welfare: Evidence from Mexico |
| 1350 | Louis-Philippe Beland
Richard Murphy | Ill Communication: Technology, Distraction & Student Performance |

The Centre for Economic Performance Publications Unit
Tel 020 7955 7673 Fax 020 7404 0612
Email info@cep.lse.ac.uk Web site <http://cep.lse.ac.uk>