



**Wallowa Resources**

---

*Promoting healthy lands and communities*

# **Collaborative conservation in local landscapes**

**Nils Christoffersen, Wallowa Resources**

**Bridging the Gap Conference**

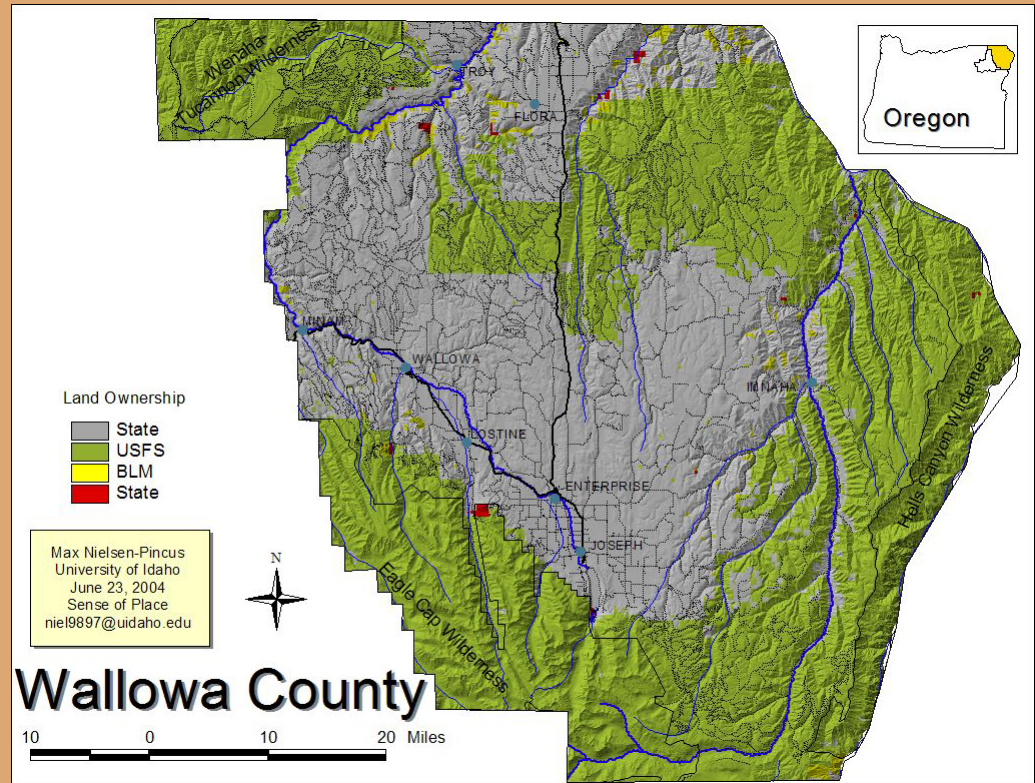
**Ft. Collins, CO 2009**



# Wallowa Resources

*Promoting healthy lands and communities*

**Since 1996, Community Based Non-Profit Organization,  
Providing Leadership in Rural Sustainability**





## Community – Collaboration – Conservation

- County Natural Resources Advisory Committee
- Salmon Habitat Recovery Plan
- Creation of Wallowa Resources
- MOU's with USFS
- National Stewardship Pilot Projects
- National Fire Plan Projects
- Collaborative Watershed Restoration





# Wallowa Resources

*Promoting healthy lands and communities*

Meeting the challenge, seeing results

## 2009 Program of Work

Watershed  
Stewardship

Research &  
Education

Business  
Development

Federal Policy  
& Investment



**Wallowa Resources' programs support 50  
full-time, family-wage jobs in Wallowa County**

**Direct: 8    Contracts: 24    For-Profits: 18**

**2% of the non-farm workforce**



# Community Based Natural Resource Management

- Stewardship of (and investment in) local landscapes
- Ownership, access/user rights, or influence over natural capital
- Community members receive value and benefits support land and community priorities
- Inclusive civic decision-making and policy frameworks



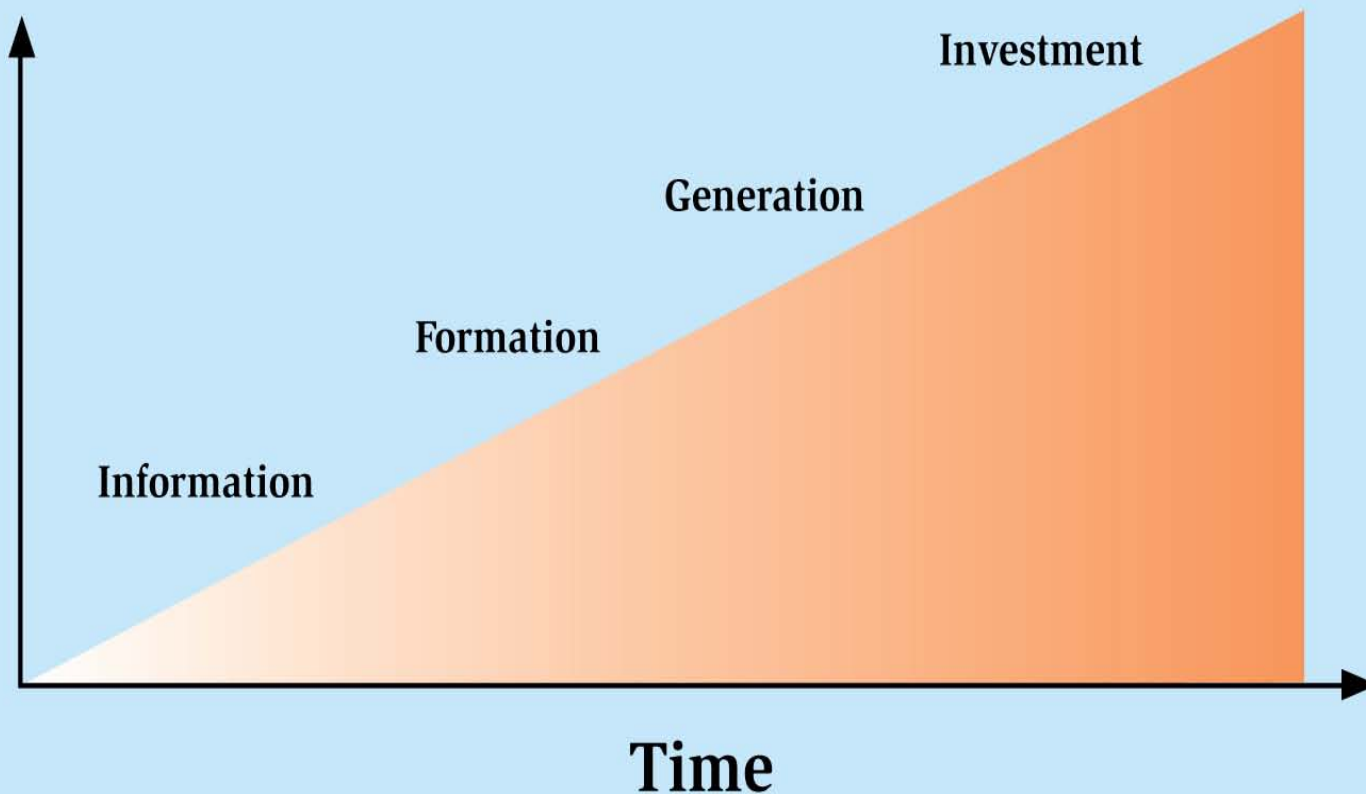
# Wallowa Resources

*Promoting healthy lands and communities*

## Evolution of Wallowa Resources

### Results

- Income
- Diversification
- Distribution
- Stewardship





## Biggest Challenges...

- Building and maintaining relationships and trust.
  - Managing the costs of collaboration
  - Changing personnel
  - External political pressure – different goals and objectives, new top-down initiatives, different timeframe for results.





# Wallowa Resources

*Promoting healthy lands and communities*



## Biggest challenges...

- Leveraging resources during difficult financial times
- Continual “monitoring” of our collaborative for desired changes and opportunities
- Institutionalizing commitment; the “next generation”
- Building broader alliances – scaling up to address state, regional and national concerns.





# Wallowa Resources

*Promoting healthy lands and communities*



## What we've learned...

- Collaboration is Difficult but Works!
  - Integration of goals is possible
  - Encourages collective learning and innovation.
  - Generates group commitment, investment and ownership
- Land stewardship can generate meaningful social and economic benefits...but it takes a lot of effort.



# Wallowa Resources

*Promoting healthy lands and communities*

## Keys to Success

- County leadership
- Transparency and inclusiveness
- Short-term benefits meaningful to all involved.
- Shared risk, responsibility and accountability
- Communicate and reinforce the changes (in attitudes and conditions) taking place.

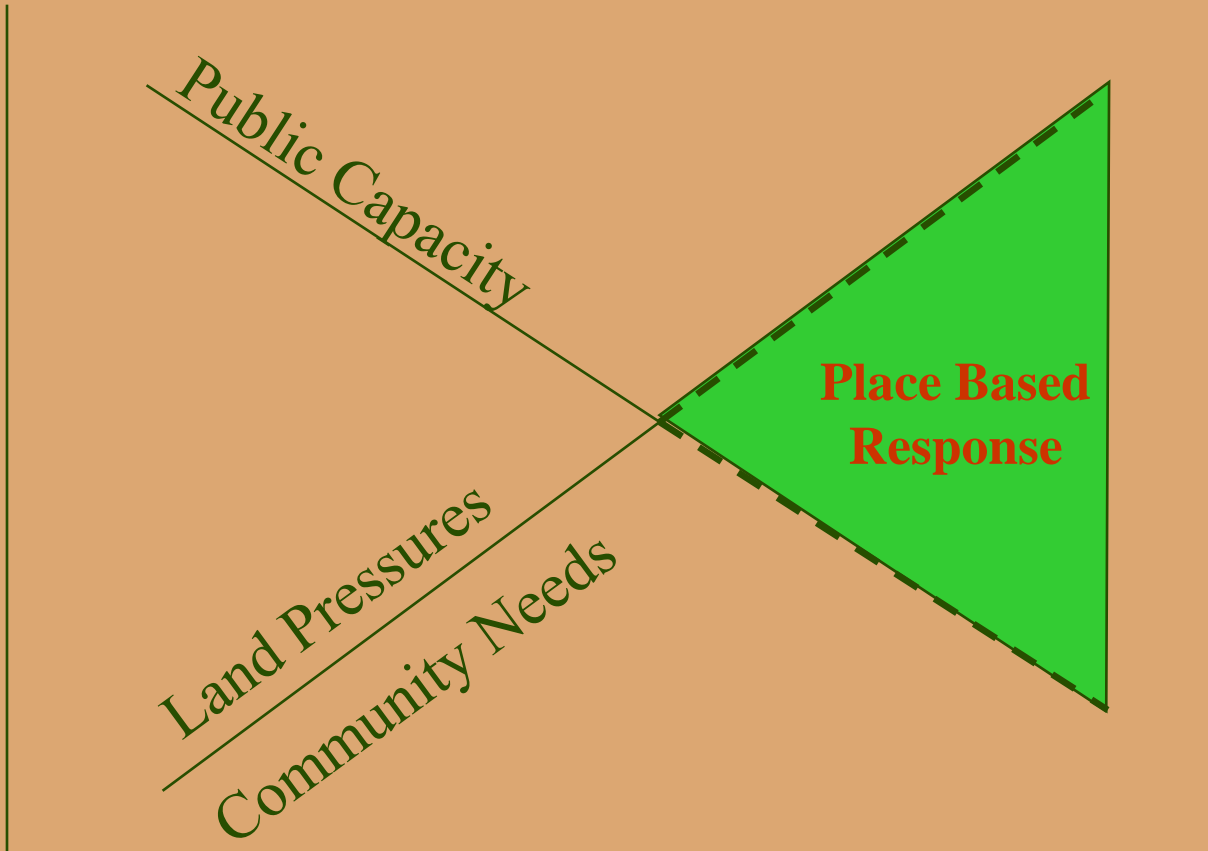




# Wallowa Resources

*Promoting healthy lands and communities*

## Community – Collaboration – Conservation



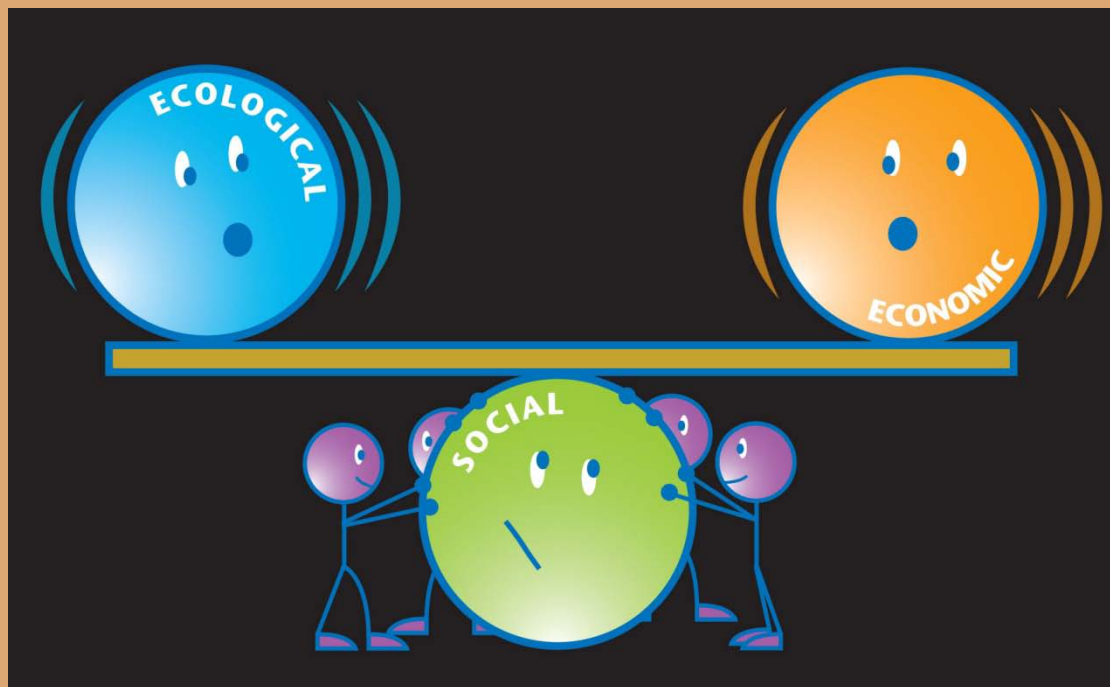
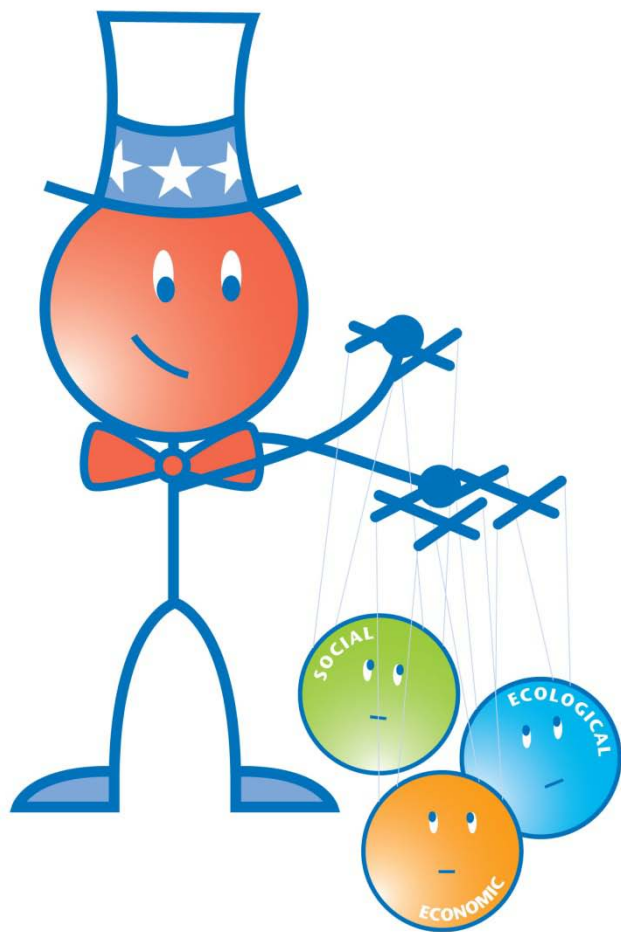


# Wallowa Resources

*Promoting healthy lands and communities*

## Responding to “Wicked Problems”

Top down or bottom up?





# Wallowa Resources

*Promoting healthy lands and communities*



Thank You!