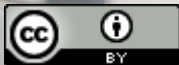


Setting up a Research Data Management support service at LSE

Laurence Horton, LSE

NEREUS Workshop: Open Data, Restricted
Data and the Library Role – Practical Cases in
Economics and Social Sciences

LIBER 2015, 23 June 2015



@laurencedata



Library Services
British Library of Political
and Economic Science



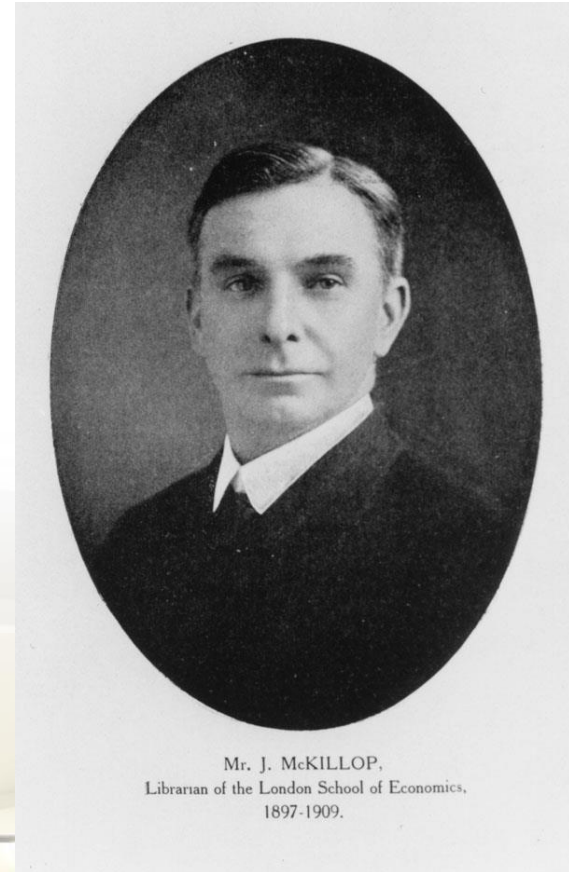
About the LSE library and me.



Library Services
British Library of Political
and Economic Science

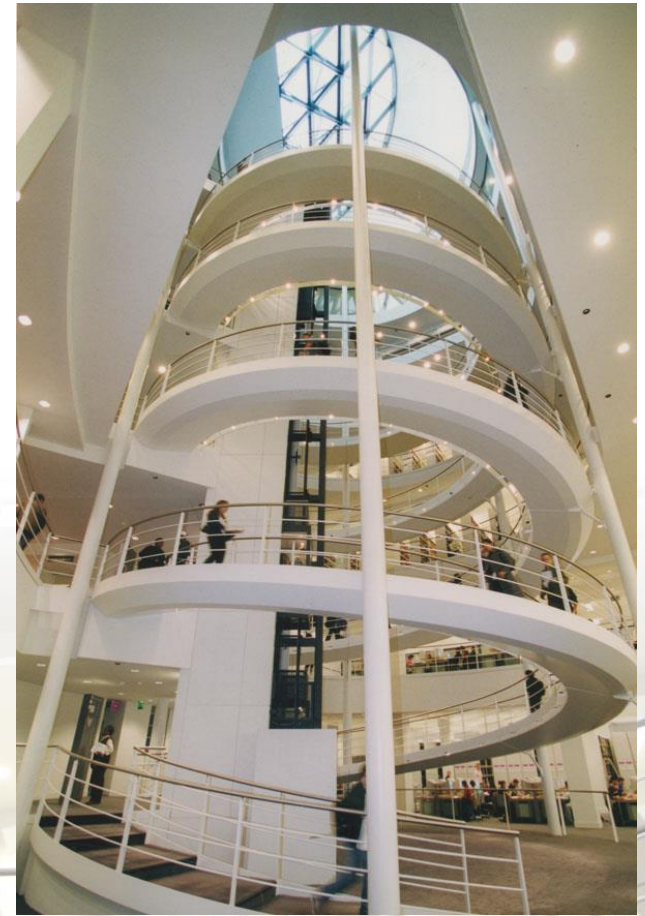
LSE Library

- 1896: British Library of Political and Economic Science
- Library for LSE and researchers in the social sciences
 - Economics
 - Statistics
 - Political science
 - Public administration



LSE Data Library

- Est. 1997: North American model of institutional support.
- Data advice service
 - “Where can I find/How can I access...”?
- Manage data resources
 - Company
 - Country
 - Commodity
 - Survey
 - GIS



The treachery of images



Ceci n'est pas une librarian.



My CV

- Political science degrees



2003-2011 UK Data Archive



2011-2014 GESIS – Leibniz Institute for the Social Sciences



2014- London School of Economics and Political Science

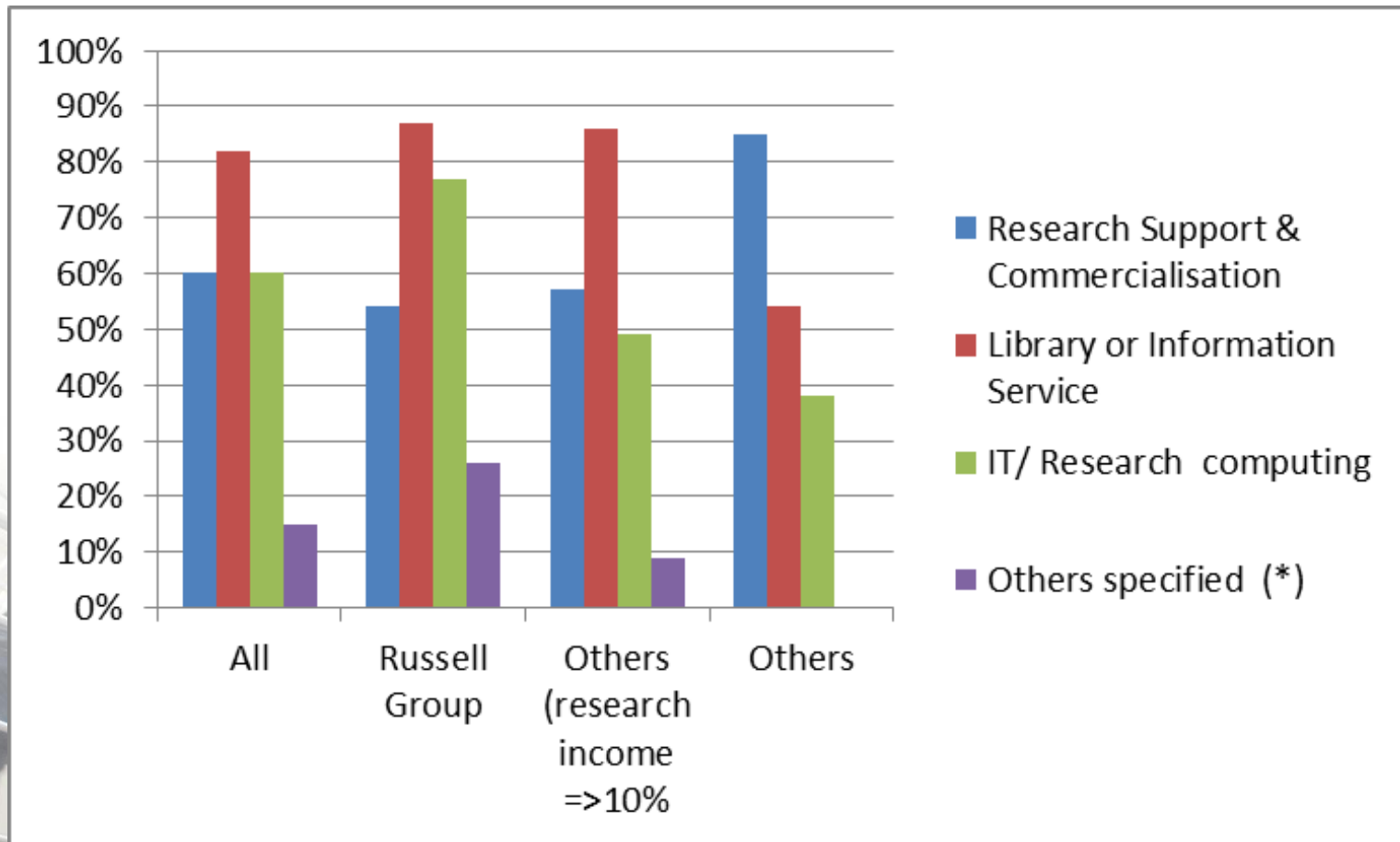
The (brief) story of Research Data Management at LSE



Library Services
British Library of Political
and Economic Science

Who is taking the lead in delivering RDM?

Question: In your institution which units are taking the lead in delivering improved services for Research Data Management (RDM)?



April 2011

EPSRC Research Data Expectations released.



Library Services
British Library of Political
and Economic Science

April 2011

LSE sets up a working group

- Drafts a research data policy
- Recommends a 12 month pilot RDM service.



Summer 2013

Appointed a project manager



Library Services
British Library of Political
and Economic Science

Winter 2013

Project manager left



Library Services
British Library of Political
and Economic Science

Spring 2014

Project revived



Library Services
British Library of Political
and Economic Science

September 2014

Project produces recommendations for service and draft RDM policy.



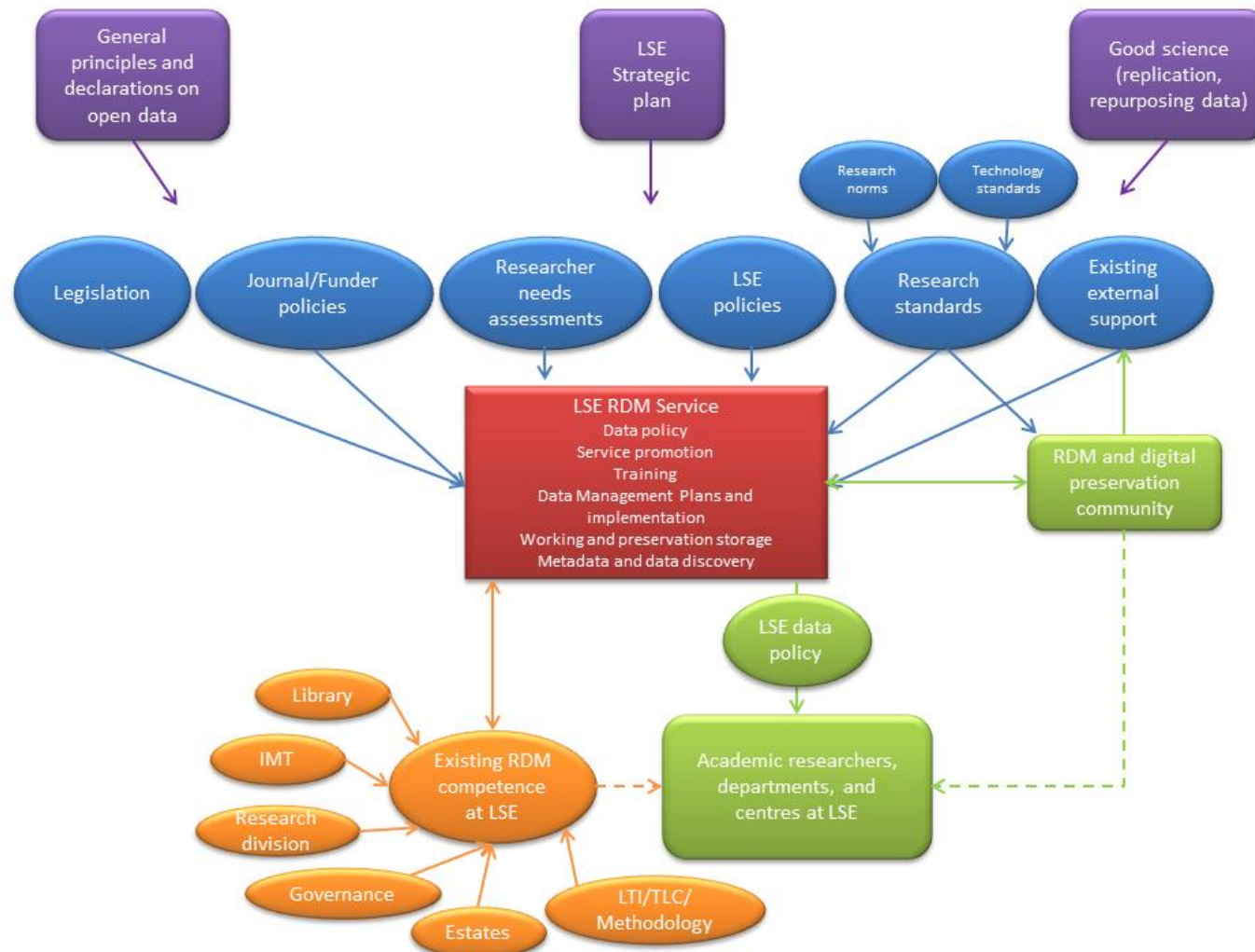
Library Services
British Library of Political
and Economic Science

Research Data Management at the LSE

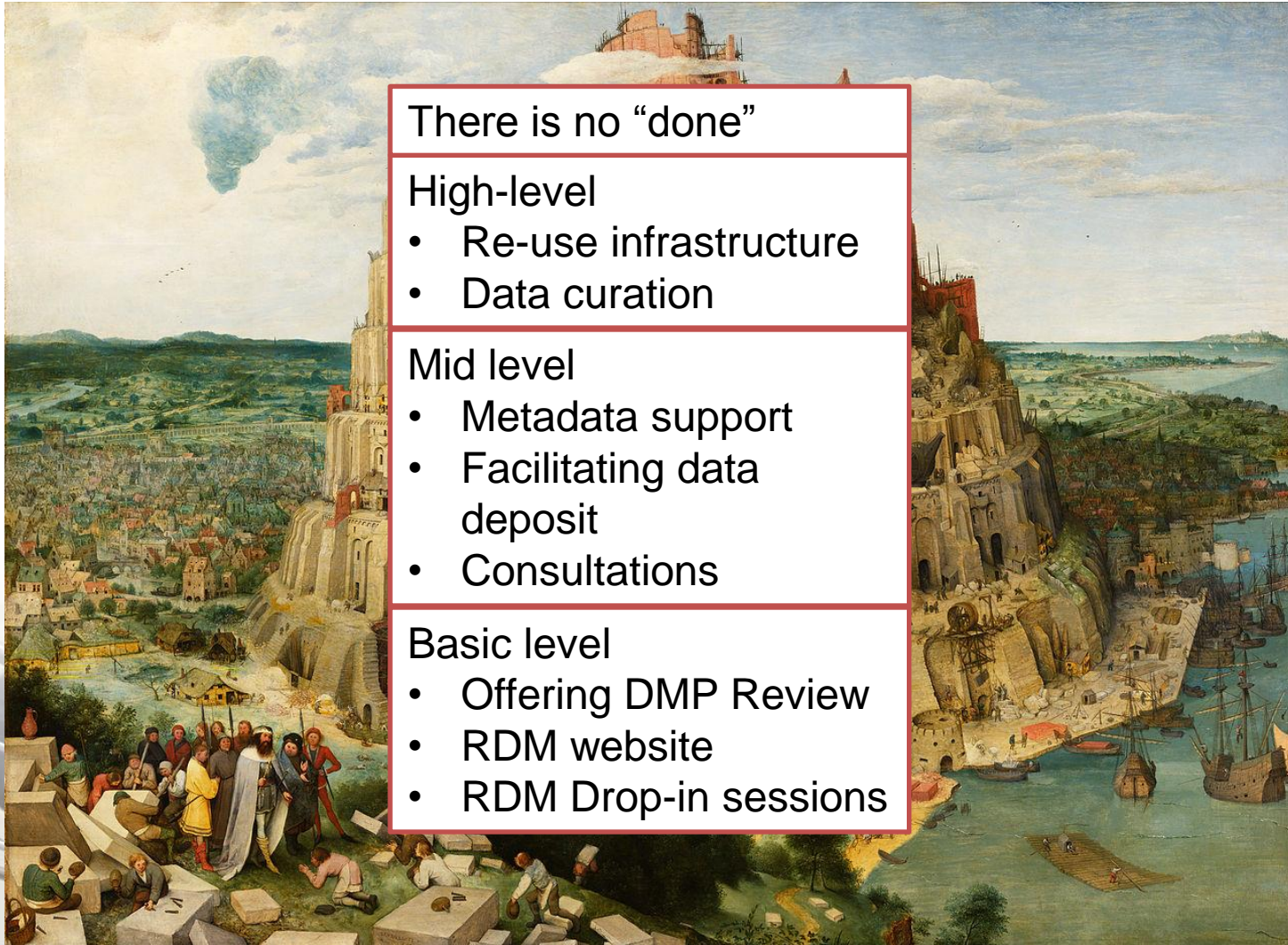


Library Services
British Library of Political
and Economic Science

LSE RDM Service



Levels of RDM support at LSE

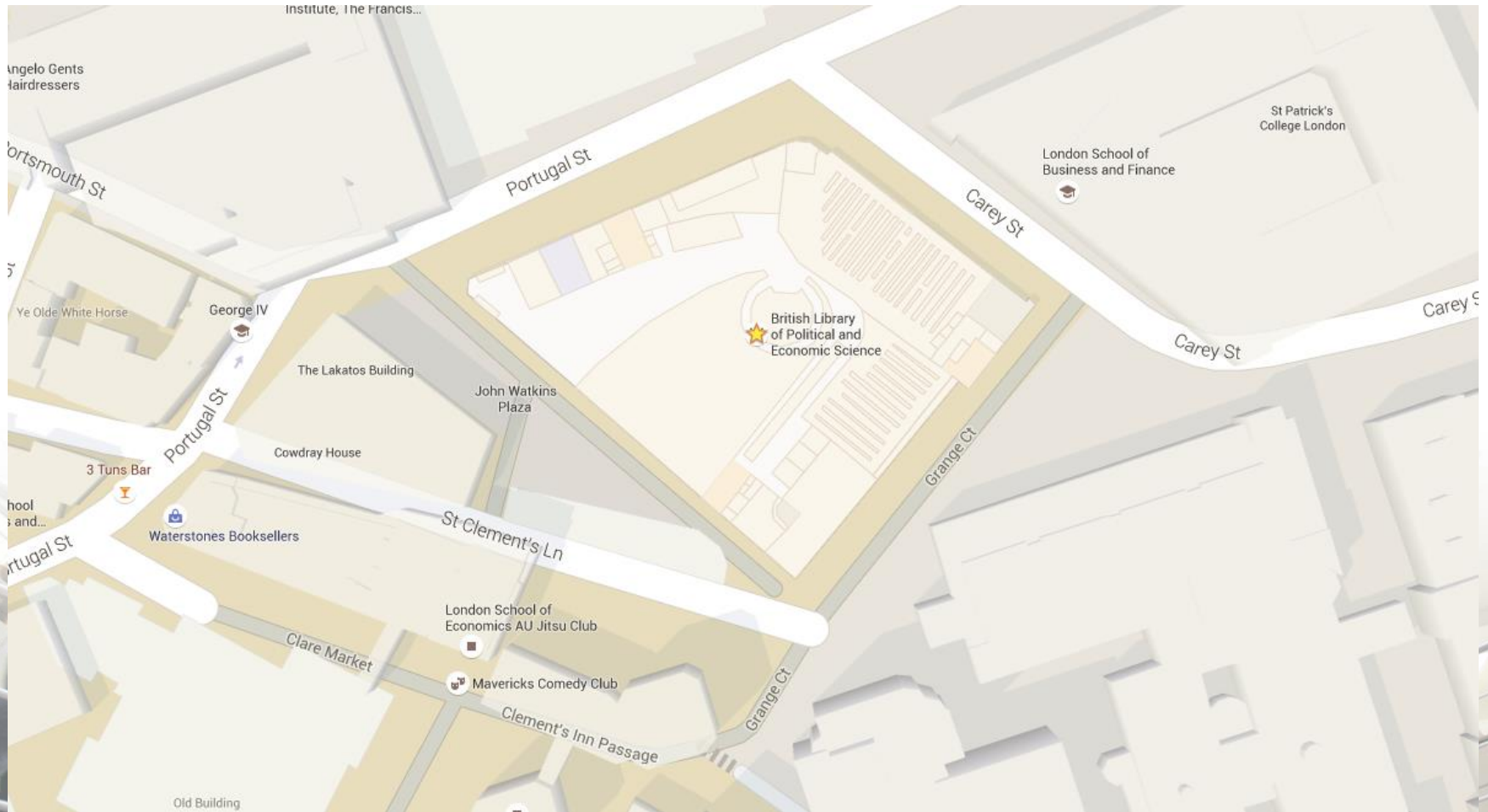


What does it take to build an RDM service?

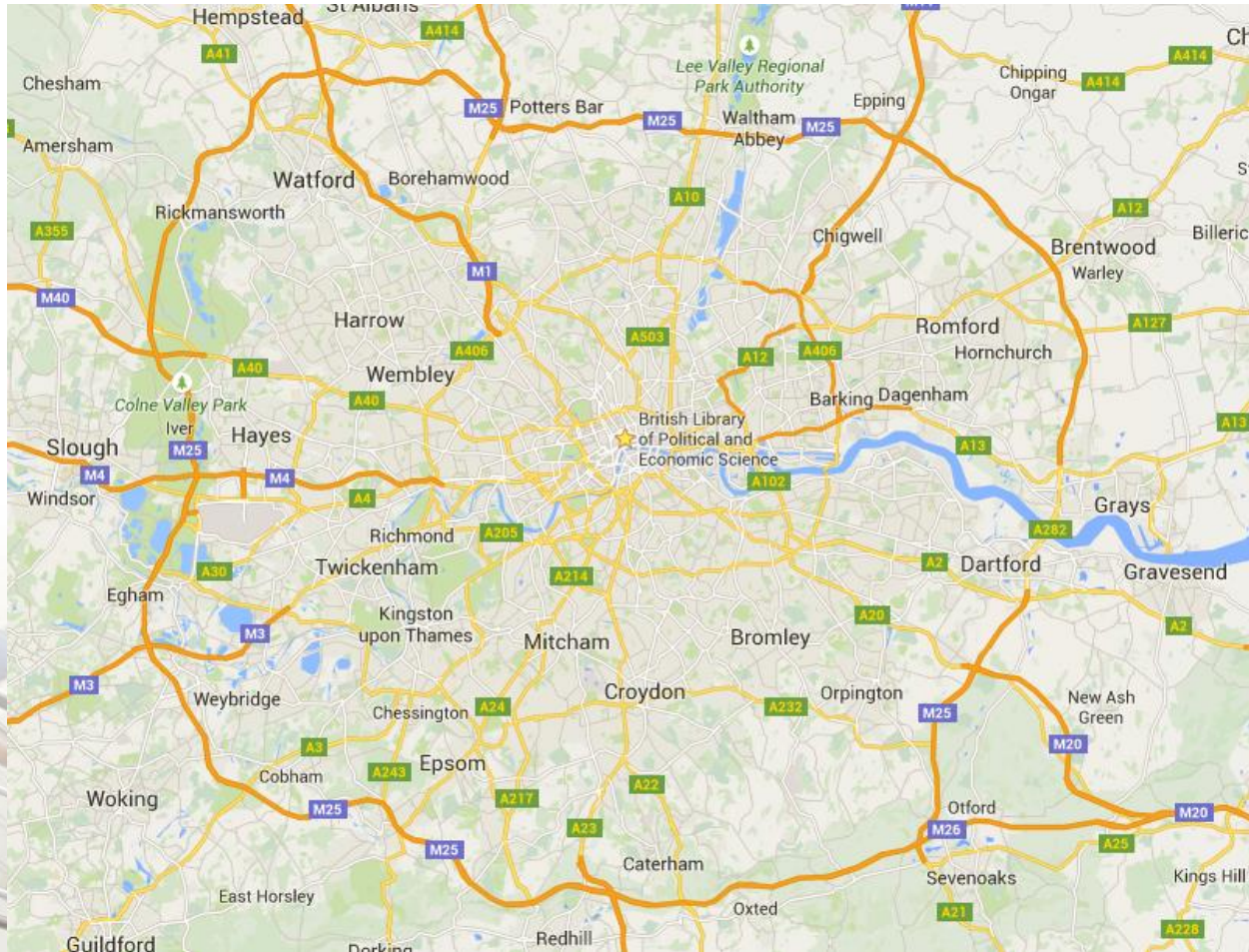


Library Services
British Library of Political
and Economic Science

An RDM service takes a...



An RDM service takes a...

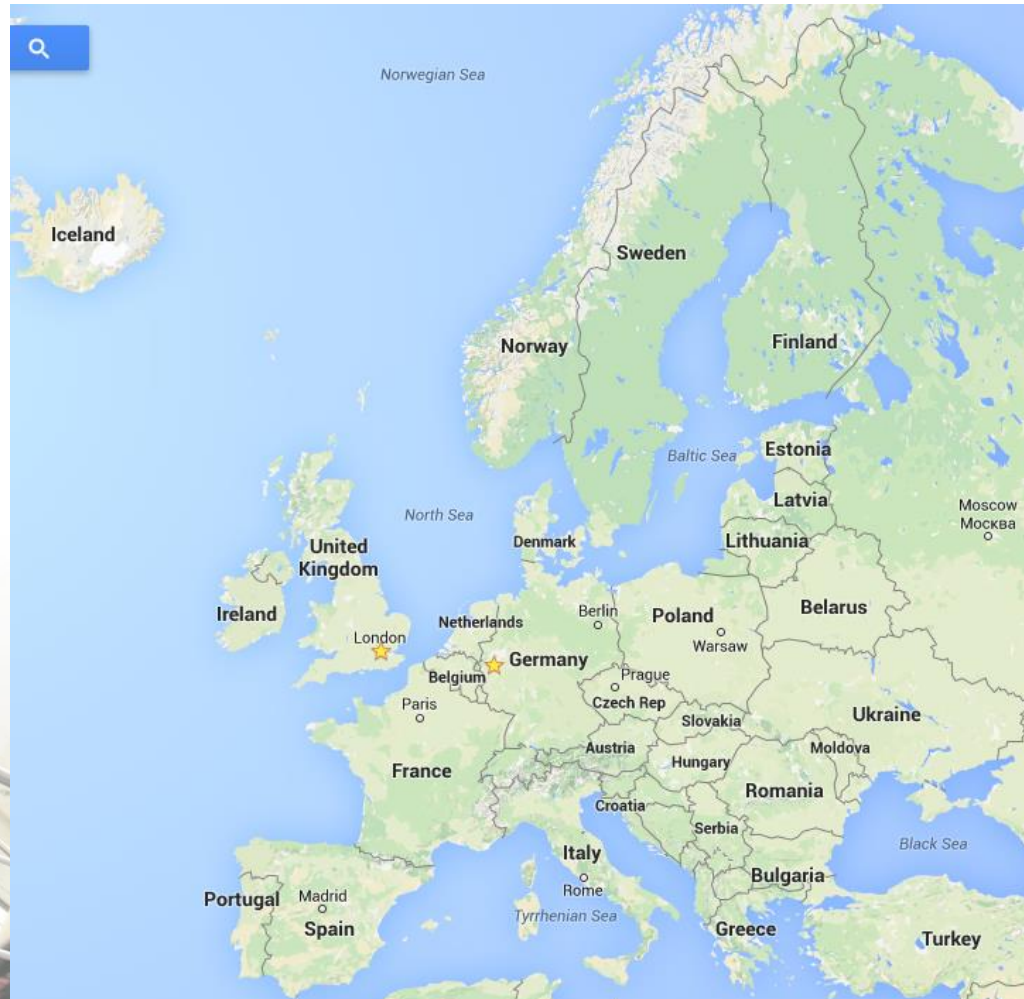


An RDM service takes a...



Library Services
British Library of Political
and Economic Science

An RDM service takes a...



An RDM service takes a...



What are the barriers for access to data ?



Cost



Licences



Security



Anonymisation



Size



Context

**METADATA IS A
LOVE NOTE
TO THE FUTURE**



Library Services
British Library of Political
and Economic Science

Culture

CHANGE

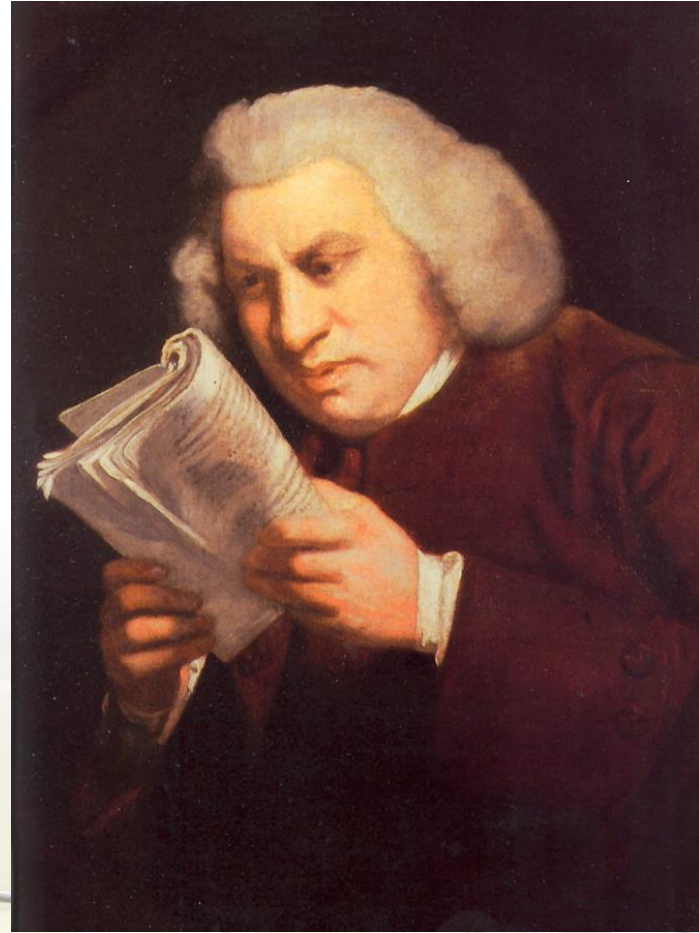
WE CAN BELIEVE IN



Library Services
British Library of Political
and Economic Science

Terminology

- “Open data”
- “Data sharing”
- “Open access”



Next steps in RDM at LSE



Library Services
British Library of Political
and Economic Science

Work with DCC on repository options



Training



Administrative data



Thank you

Laurence Horton

Data Librarian

The London School of Economics and Political
Science

L.Horton@lse.ac.uk



@laurencedata

ORCID orcid.org/0000-0003-2742-6434



Library Services
British Library of Political
and Economic Science

Image credits

Slide 03: "Mr J. McKillop, c1909" by LSE Library – Flickr. No known copyright restrictions via Flickr The Commons - [http://archives.lse.ac.uk/dserve.exe?dsqServer=lib-4.lse.ac.uk&dsqIni=Dserve.ini&dsqApp=Archive&dsqCmd=Show.tcl&dsqDb=Catalog&dsqPos=0&dsqSearch=\(RefNo=%27IMAGELIBRARY/72%27\)](http://archives.lse.ac.uk/dserve.exe?dsqServer=lib-4.lse.ac.uk&dsqIni=Dserve.ini&dsqApp=Archive&dsqCmd=Show.tcl&dsqDb=Catalog&dsqPos=0&dsqSearch=(RefNo=%27IMAGELIBRARY/72%27))

Slide 04: "Michael Peacock Atrium, 2001" by LSE Library – Flickr. No known copyright restrictions via Flickr The Commons - <http://archives.lse.ac.uk/record.aspx?src=CalmView.Catalog&id=IMAGELIBRARY%2f1088>

Slide 09: "Tahrir Square on February11" by Jonathan Rashad - Flickr. Licensed under CC BY 2.0 via Wikimedia Commons - https://commons.wikimedia.org/wiki/File:Tahrir_Square_on_February11.png#/media/File:Tahrir_Square_on_February11.png

Slide 10: "T-37 solo student pilot" by derivative work: JoJanJoJan (talk)T-37_solo_student_pilot.JPG: Dual FreqINFORMATION - T-37_solo_student_pilot.JPG. Licensed under CC BY 3.0 via Wikimedia Commons - https://commons.wikimedia.org/wiki/File:T-37_solo_student_pilot.jpg#/media/File:T-37_solo_student_pilot.jpg

Slide 11: "Welcome mat" by alborzshawn - Welcome. Licensed under CC BY 2.0 via Wikimedia Commons - http://commons.wikimedia.org/wiki/File:Welcome_mat.jpg#/media/File:Welcome_mat.jpg

Slide 12: U.S. Navy photo by Mass Communication Specialist Seaman Dominique Pineiro [Public domain], via Wikimedia Commons

Slide 13: "CPR training on a simulation dummy at TMCC." by Truckee Meadows Community College - Flickr. Licensed under CC BY 2.0 <https://www.flickr.com/photos/tmccnevada/13252657184>

Slide 14 "Declaration independence" by John Trumbull - US Capitol. Licensed under Public Domain via Wikimedia Commons -

https://commons.wikimedia.org/wiki/File:Declaration_independence.jpg#/media/File:Declaration_independence.jpg

Image credits

Slide 17: "Pieter Bruegel the Elder - The Tower of Babel (Vienna) - Google Art Project - edited" by Pieter Brueghel the Elder (1526/1530–1569) - Levels adjusted from File:Pieter_Bruegel_the_Elder_-_The_Tower_of_Babel_(Vienna)_-_Google_Art_Project.jpg, originally from Google Art Project.. Licensed under Public Domain via Wikimedia Commons - [https://commons.wikimedia.org/wiki/File:Pieter_Bruegel_the_Elder_-_The_Tower_of_Babel_\(Vienna\)_-_Google_Art_Project_-_edited.jpg#/media/File:Pieter_Bruegel_the_Elder_-_The_Tower_of_Babel_\(Vienna\)_-_Google_Art_Project_-_edited.jpg](https://commons.wikimedia.org/wiki/File:Pieter_Bruegel_the_Elder_-_The_Tower_of_Babel_(Vienna)_-_Google_Art_Project_-_edited.jpg#/media/File:Pieter_Bruegel_the_Elder_-_The_Tower_of_Babel_(Vienna)_-_Google_Art_Project_-_edited.jpg)

Slide 19: Map data ©2015 Google

Slide 20: Map data ©2015 Google

Slide 21: Map data GeoBasis-DE/BKG (©2009), Google, Inst. Geogr. Nacitonal

Slide 22: Map data ©2015 Basarsoft, Google, ORION-ME

Slide 23: Map data ©2015 Google, INEGI

Slide 24: "Canary wharf ticket barrier" by User:KennethJ/Image - Own work. Licensed under CC BY-SA 3.0 via Wikimedia Commons -

https://commons.wikimedia.org/wiki/File:Canary_wharf_ticket_barrier.jpg#/media/File:Canary_wharf_ticket_barrier.jpg

Slide 25: "shut-up-and-take-my-money" by [liliana von k](#) - Flickr. Licensed under CC BY 2.0

<https://www.flickr.com/photos/30564364@N02/8830100398>

Slide 26: "WishYouWereHere-300" by Source. Licensed under Fair use via Wikipedia -

<https://en.wikipedia.org/wiki/File:WishYouWereHere-300.jpg#/media/File:WishYouWereHere-300.jpg>

Slide 27: "8th Ward Villere Street New Orleans Safe House C" by Infrogmation of New Orleans - originally posted to Flickr as 7WardVillereSafeHouseC. Licensed under CC BY 2.0 via Wikimedia Commons -

https://commons.wikimedia.org/wiki/File:8th_Ward_Villere_Street_New_Orleans_Safe_House_C.jpg#/media/File:8th_Ward_Villere_Street_New_Orleans_Safe_House_C.jpg



Image credits

Slide 28: Whale, James (Director) (1933). The Invisible Man (Motion picture). United States: Universal Pictures
<http://i.giphy.com/11MqCIMjNliLkc.gif>

Slide 29: "Jules Pulp Fiction" Meme Generator. <https://shar.es/12BNA7>

Slide 30: "Metadata is a love note to the future" by Playing Futures: Applied Nomadology - Flickr. Licensed under CC BY 2.0 <https://www.flickr.com/photos/centralasian/8071729256>

Slide 31: "Change We Can Believe In" by Original uploader was Blubberboy92 at en.wikipedia - Transferred from en.wikipedia. Licensed under Public Domain via Wikimedia Commons - https://commons.wikimedia.org/wiki/File:Change_We_Can_Believe_In.svg#/media/File:Change_We_Can_Believe_In.svg

Slide 32: "Samuel Johnson by Joshua Reynolds 2" by Joshua Reynolds - Originally in English Wikipedia, uploaded 21:07, 2005 June 14 by w:User:GeogreScanned from: Rogers, Pat (2001). The Oxford Illustrated History of English Literature. Oxford University Press, p. 241. ISBN 1435295811. Licensed under Public Domain via Wikimedia Commons https://commons.wikimedia.org/wiki/File:Samuel_Johnson_by_Joshua_Reynolds_2.png#/media/File:Samuel_Johnson_by_Joshua_Reynolds_2.png

Slide 34: "Nixon-Presley Meeting" by Oliver F. Atkins - National Archives and Records Administration. Licensed under Public Domain via Wikimedia Commons - http://commons.wikimedia.org/wiki/File:Nixon-Presley_Meeting.gif#/media/File:Nixon-Presley_Meeting.gif

Slide 35: By Marcello Casal Jr/ABr (ABr) [CC BY 3.0 br (<http://creativecommons.org/licenses/by/3.0/br/deed.en>)], via Wikimedia Commons https://upload.wikimedia.org/wikipedia/commons/b/b2/Brazil_national_football_team_training_at_Dobsonville_Stadium_2010-06-03_2.jpg

Slide 36: Reiner, Rob (Director) (1982). This is Spinal Tap (Motion picture). United States: Embassy Pictures.

