



CEP Discussion Paper No 1302

September 2014

**Assessing the Effect of School Days and Absences
on Test Score Performance**

Esteban M. Aucejo and Teresa Foy Romano

Abstract

While instructional time is viewed as crucial to learning, little is known about the effectiveness of reducing absences relative to increasing the number of school days. In this regard, this paper jointly estimates the effect of absences and length of the school calendar on test score performance. Using administrative data from North Carolina public schools, we exploit a state policy that provides variation in the number of days prior to standardized testing and find substantial differences between these effects. Extending the school calendar by ten days increases math and reading test scores by only 0.8% and 0.2% of a standard deviation, respectively; a similar reduction in absences would lead to gains of 5.8% and 3% in math and reading. We perform a number of robustness checks including utilizing u data to instrument for absences, family-year fixed effects, separating excused and unexcused absences, and controlling for a contemporaneous measure of student disengagement. Our results are robust to these alternative specifications. In addition, our findings indicate considerable heterogeneity across student ability, suggesting that targeting absenteeism among low performing students could aid in narrowing current gaps in performance.

Keywords: Absences, days, schools, teachers
JEL codes: I20

This paper was produced as part of the Centre's Education and Skills Programme. The Centre for Economic Performance is financed by the Economic and Social Research Council.

We thank Peter Arcidiacono, Marta De Philippis, Marc Gurgand, Joseph Hotz, Hugh Macartney, Alan Manning, Marjorie McElroy, Guy Michaels, Steve Pischke, Seth Sanders, Douglas Staiger, and participants at the CEP and Tibergen Institute labor seminars, Duke Labor Lunch Group, and the applied micro seminar at University of Bristol. We are grateful to the Center for Child and Family Policy for access to the NCDPI dataset and to North Carolina Division of Public Health for the NC DETECT data. The NC DETECT Data Oversight Committee does not take responsibility for the scientific validity or accuracy of methodology, results, statistical analysis, or conclusions presented. All errors and omissions are our own.

Esteban Aucejo, Department of Economics, London School of Economics, and Associate of Centre for Economic Performance, London School of Economics. Teresa Romano, Department of Economics, Goucher College, Baltimore, Maryland.

Published by
Centre for Economic Performance
London School of Economics and Political Science
Houghton Street
London WC2A 2AE

All rights reserved. No part of this publication may be reproduced, stored in a retrieval system or transmitted in any form or by any means without the prior permission in writing of the publisher nor be issued to the public or circulated in any form other than that in which it is published.

Requests for permission to reproduce any article or part of the Working Paper should be sent to the editor at the above address.

1 Introduction

During the last decade, the U.S. federal government and many states have taken a series of steps to improve educational outcomes in elementary, middle, and high school. In this regard, many programs have been implemented¹ whose primary aim is to hold schools accountable for the performance of their children. More recently, policy makers have (once again)² focused on the actual number of days that students spend at school. For example, while the federal government is aiming for an extension of the school calendar,³ many states and cities have already increased the number of school days.⁴ Despite these initiatives, little is known about the effectiveness of these type of interventions relative to other competing policies. For instance, reducing absenteeism may constitute a more effective and less expensive intervention from a fiscal point of view, as it would target specific students who would benefit the most from being in the classroom. Recent examples of this type of initiative are “NYC Success Mentor Corps,”⁵ and “WakeUp! NYC”⁶ which were launched in New York City with the goal to reduce chronic absenteeism.^{7,8}

The goal of this paper is to quantify the relative effectiveness of reducing absences with respect to extending the school calendar on test score performance. While most studies have analyzed the importance of absences or days of class separately,⁹ this analysis provides an approach that allows for both effects to be examined simultaneously. We believe that, from a policy perspective this is key, given that extending the school year or reducing absences are likely to affect students at different margins. For example, missing a day of school (due to absence) may be more detrimental to a student’s performance since they will need to (later) make up missed

¹For example, while the program No Child Left Behind has been implemented by the federal government since 2001, North Carolina introduced Accountability for Basic skills and for local Control (ABCs) in 1997.

²In 1983, the report “A Nation at Risk” issued by the National Commission on Education Excellence, compared the U.S. school year of 180 days to the longer school calendars in Europe (190 to 210 days) as justification for an increase in school time.

³In 2009, President Obama said that the “challenges of a new century demand more time in the classroom” (The New York Times, August 22, 2011). In a similar vein the U.S. Secretary of Education, Arne Duncan has claimed that “the school day is too short, the school week is too short, and the school year is too short” (Time Magazine, April 15, 2009).

⁴North Carolina recently added 5 days to the public school calendar.

⁵The NYC Success Mentor Corps is a research-based, data-driven mentoring model that seeks to improve attendance, behavior, and educational outcomes for at-risk students in low-income communities citywide.

⁶Students receive phone calls with pre-recorded wake up messages from Magic Johnson, Jose Reyes, and Mark Teixeira, among others.

⁷Chronic absenteeism is typically defined as missing more than 10 percent of school days in an academic year.

⁸According to Balfanz and Byrnes (2013), these programs do constitute cost-efficient strategies. In this regard, they found that students in poverty at schools that were targeted by these initiatives were 15% less likely to be chronically absent than similar students at comparison schools. Moreover, they show that those who exited chronic absenteeism experienced significant improvements in their academic performance, leading to important reductions in dropout rates.

⁹See Section 2 for a discussion of the related literature.

work. Moreover, catching up is likely to be more difficult for low performing students, resulting in larger gaps in academic performance within the classroom. To this end, we examine possible heterogeneous effects of absences and days of class. Specifically, we analyze whether children from (relatively) low income families, or those who perform poorly, benefit comparatively more from spending more time at school. Similarly, we try to identify whether the loss of a school day has differential effects depending on the school grade. For example, a fifth grade class is likely to cover more material than a third grade one; making it more difficult for students in higher grades to catch up. We believe that providing a detailed analysis of heterogeneous effects will inform the policy discussion in terms of identifying specific groups of the population that may benefit the most from particular interventions. Finally, we also investigate the effect of teacher and school quality on absences. We study to what extent attending (having) a better school (teacher) could lead to a decrease in the number of days absent at school.

Contrary to most of the literature that has considered countries, states, counties, or schools as the unit of analysis,¹⁰ we make use of detailed longitudinal data at the individual level from North Carolina public schools. This allows us to control for students', teachers', and schools' observable and unobservable characteristics. Therefore, this paper is able to analyze the importance of time spent at school from several perspectives (i.e. absences and days of class), as well as to implement a rigorous econometric strategy to address problems of endogeneity in a number of ways. In order to deal with the various threats to identification, such as health shocks, disengagement effects, and omitted variable bias, we employ different identification strategies. First, we use previous year test score/student, teacher and school fixed effects to control for heterogeneity. Second, we control for contemporaneous measure of student disengagement. Third, we utilize flu data to instrument for absences. Fourth, we employ family-year fixed effects to account for any time-varying family specific shocks. Finally, we examine unexcused absences to take into account any illnesses or other excused events that may affect both absences and grades. Reassuringly, our results are consistent across specifications.

Estimating models with triple fixed effects when the sample size is large is not a trivial matter. In our case, it requires us to estimate more than 413,342 parameters¹¹ (i.e. 382,835 students; 29,202 teachers; and 1,305 schools), therefore an iterative algorithm is implemented in order to overcome computational issues.

Results show substantial differences between the effect of absences and days of class on test

¹⁰For example, Lee and Barro (2001), Pischke (2007), and Marcotte and Hemelt (2008), among others.

¹¹Given that part of our empirical strategy makes use of all fixed effects in a later analysis, we need to recover all the fixed effect parameters (i.e. demeaning the sample is not a feasible alternative in this case).

score performance. Our preferred specification indicates that extending school calendar by ten days would increase math and reading test scores by around 0.8% and an insignificant 0.2% of a standard deviation, respectively;¹² while a similar reduction in absences would lead to increases of 5.8% and 3% in math and reading.¹³ Moreover, estimation results show that absences have even larger negative effects among low performing kids, suggesting that catching up is costly especially among those who show greater difficulties at school. In addition, we analyze whether spending more time at school (i.e. fewer absences or a longer academic calendar) have larger effects on later grades. While being 10 days absent in grade 3 leads to a decrease of 2.5% of a standard deviation in math test scores, in grade 5 the effect is 8.8%. This finding is consistent with more material being covered each day in the later grades; potentially making it harder to catch up. Finally, we show that attending (having) a school (teacher) in the 75th percentile of the fixed effect distribution decreases absences by 0.14 (0.13) days relative to the 25th percentile; a relatively large result given that the average number of days absent is 6.13.¹⁴

Overall, the results point towards the presence of an important asymmetry between the effects of expanding total time spent at school through a reduction of absences or through an extension of the school calendar. Therefore, a successful strategy that decreases absences may have substantially larger effects than that of extending the school year. Moreover, the fact that this type of intervention may disproportionately benefit low achieving students, suggests that it may also help to narrow current gaps in academic performance.

The financial resources needed to extend the school calendar are undeniably high. Most calculations suggest that a 10 percent increase in time would require a 6 to 7 percent increase in cost [Chalkboard Project (2008), Silva (2007)]. Therefore, the fact that a competing policy, like targeting absenteeism, could lead to large improvements in academic performance at a lower cost suggests an alternative avenue for policy.¹⁵

The remainder of this paper is organized as follows. Section 2 places our work in context with the related literatures on student absences and school length. Section 3 details the data used in the empirical analysis. Section 4 outlines the econometric strategy and Section 5 describes the

¹²Sims (2008) also finds no significant effect on reading scores.

¹³These are equal in magnitude to approximately one-third of the effect of a one standard deviation increase in teacher effectiveness (Hanushek and Rivkin, 2010).

¹⁴These calculations are based on the fixed effects from the math test score regression.

¹⁵For example, the Education Act of 1996 in the United Kingdom empowers head teachers to issue Penalty Notices for unauthorized absences from school. This means that when a pupil has unauthorized absence of 5 days or more, in any term (where no acceptable reason has been given for the absence) or if their child persistently arrives late for school after the close of registration, their parents or guardians may receive a Penalty Notice of £60 if paid within 21 days rising to £120 if paid within 28 days. In this regard, a report on the effectiveness of fines [Crowther and Kendall (2010)], found that 79% of local authorities said penalty notices were “very successful” or “fairly successful” in improving school attendance.

results. Section 6 presents a series of robustness checks. Section 7 examines the heterogeneous effects of absences and days of class by several student characteristics. Section 8 concludes.

2 Background

The length of the school year and absences combine to determine the total amount of instructional time for a student in a given year. Despite this, their effects on student performance have largely been examined independently; likely due to the lack of available data on absences and the limited variability on school year length.

2.1 Absences

A common finding in the literature is that students with greater attendance than their classmates perform better on standardized achievement tests, and that schools with higher rates of daily attendance tend to have students who perform better on achievement tests than do schools with lower daily attendance rates [Roby (2004); Sheldon (2007); Caldas (1993)]. These correlations present a challenge in estimating the effects of absences on student performance; more able and motivated students are both more likely to attend school and to score highly in their courses and on standardized tests. Therefore, without adequate controls for personal characteristics, part of any estimated effects of absences will reflect a downward ability bias due to endogenous selection.

The literature has addressed this in a variety of ways. Devadoss and Foltz (1996) used survey responses to obtain information on student effort and motivation. Dobkins, Gil, and Marion (2010) exploited data generated from a mandatory attendance policy for low-scoring college students. Stanca (2006) and Martins and Walker (2006) also examined college student attendance utilizing panel data to try to control for unobserved characteristics correlated with absence, finding that attendance does matter for academic achievement. Both panel studies utilized student fixed effects to control for unobservable heterogeneity.

Fewer studies have exploited panel data to examine the effects of absences at the elementary school level. Notable exceptions include Gershenson, Jacknowitz, and Brannegan (2014), Goodman (2014), and Gottfried (2009; 2011).¹⁶ However, relative to these papers, we additionally control for teacher and school fixed effects.¹⁷ School fixed effects enable us to control

¹⁶Gershenson, Jacknowitz, and Brannegan (2014) and Gottfried (2009; 2011) find results similar to ours.

¹⁷Goodman (2014) includes school-grade-year fixed effects in his preferred specification, but does also examine a specification with student fixed effects.

for the common influences of a school by capturing systematic differences across institutions.¹⁸ This includes curriculum, hiring practices, school neighborhood, and the quality of leadership. Teacher fixed effects control for the common influences of a given teacher. Given that we are also able to identify siblings, we control for family-year fixed effects combined with previous year test-score.¹⁹ This controls for family-specific shocks such as a death in the family or divorce when estimating the effects of absences. Additionally, we utilize North Carolina flu data to instrument for absences and we also include controls for a contemporaneous measure of student disengagement. Finally, Goodman (2014) uses snowfall amounts in Massachusetts to identify the effect of time spent at school in test score performance. However, his findings in math are substantially larger than the ones shown in this paper. For example, in his preferred specification, he finds that ten days of absences induced by bad weather reduces math achievement by 50% of a standard deviation, while our findings range between 6% and 20% of a standard deviation depending on the specification.²⁰ Differences in the results may due to several factors. In addition to controlling for a larger set of fixed effects, we use flu data to instrument for absences, while he uses snowfall, leading to possible different local average treatment effects. Moreover, his sample includes students in grades 3 to 8; while we focus on grades 3 to 5. Finally, certain features of the North Carolina data make this database more suitable for this type of analysis than the Massachusetts data. Namely, administrative records in Massachusetts provide data on days absent and number of school days for the whole school year, rather than until the day of the exam, as is the case for our sample; and schools in Massachusetts can endogenously reschedule test dates in reaction to winter conditions, while North Carolina does not reschedule EOG testing.

2.2 Length of the School Year

A number of previous studies have examined the effects of length of the school year on student achievement. Several studies on school quality in the United States include term length as one of the regressors [for example, Grogger (1996) and Eide and Showalter (1998)] but typically found insignificant effects. The biggest stumbling block to uncovering the impact of school days on student performance is the lack of variation in the total number of school days in an academic year. We overcome this problem thanks to a specific North Carolina policy that

¹⁸17.47% of students that are in the sample for more than one year are observed at multiple schools.

¹⁹Gottfried (2011) also employs a family-year fixed effect approach in analyzing student performance in the School District of Philadelphia.

²⁰His results without instrumenting for absences and incorporating a student fixed effect are smaller, although still larger than our results (approximately 25% larger than our preferred specification).

provides variation in the number of instructional days across schools before the day of the exam.²¹

Most studies examining the length of the school year use state or country level data [for example, Card and Krueger (1992); Betts and Johnson (1998); Lee and Barro (2001)]. Card and Krueger (1992) and Betts and Johnson (1998) found positive and significant effects of length on earnings for birth cohorts in the first half of the 20th century, which had more variability in the number of school days.²² Lee and Barro (2001) utilized cross-country data and examined the correlation of student performance and measures of school resources, including the number of class days. They found that more time in school increased mathematics and science scores, but lowered scores in reading, which is largely consistent with our findings for math; however we find a positive effect on reading. Differently from other papers, we are able to use within school variation in days of class. Moreover, we use microlevel data at the student level which allows us to explore policy relevant heterogeneous effects of increasing school days.

Other studies have exploited quasi-experimental variation to identify the effect of additional days of class. Marcotte and Hemelt (2008) examined the effect of fewer days of class resulting from snow related school closures on test score performance and found that the pass rate for 3rd grade math and reading assessments falls by more than a half percent for each school day lost to an unscheduled closure. Hansen (2011) examined both school closures due to weather in Colorado and Maryland as well as state-mandated changes in test-date administration in Minnesota and found that in both cases more instructional time prior to test administration increases student performance. Pischke (2007) utilized variation introduced by the West-German short school years in 1966-67, which exposed some students to a total of about two-thirds of a year less of schooling while enrolled. He found that the short school years increased grade repetition in primary school and led to fewer students attending higher secondary school tracks.²³ Relative to Pischke, we examine a smaller change in the number of days of class; however, it is of the approximate size considered by policy makers.²⁴

Our paper is most similar to Sims (2008), who studied the effect of days of class, using the implementation of a Wisconsin state law that restricted districts to start dates after September 1st to identify the effects of this extra time on student achievement. He found that an additional

²¹More specifically, North Carolina allows for flexibility in the setting of the testing date, which is when academic achievement is measured. See Section 3 for more information.

²²Card and Krueger (1992) presented additional results including a state fixed effect; the positive effect of term length vanished within states and conditional on other school quality variables.

²³Pischke (2007) found no effect on earnings.

²⁴In North Carolina, the school year was recently extended by 5 days. In contrast, Pischke's findings are due to a change in about 100 days of schooling.

week of class was associated with an increase of 0.03 standard deviations in math scores for fourth graders, but he found no effect on average reading and language scores. We find smaller effects of additional days on scores, likely due to our different econometric strategy and individual level data.

3 Data and Descriptive Statistics

3.1 Data

The North Carolina education data is a rich, longitudinal, administrative data set that links information on students, teachers, and public schools over time. This data is maintained by the North Carolina Education Research Data Center (NCERDC), which is housed at Duke University. This longitudinal database contains mathematics and reading test scores for each student in elementary,²⁵ middle, and high school. Since the availability of some of the data varies over time, the analysis is restricted to the years 2006 to 2010²⁶ and grades 3 to 5.²⁷ Encrypted identifiers make it possible to track the progress of individual student over their educational careers and link students to their teachers²⁸ and school in each year, provided they stay within the universe of North Carolina public schools.

NCERDC records also include extensive information on student, teacher, and school characteristics. Data on students include ethnicity, gender, whether or not they participated in the federal free and reduced price lunch subsidy program, geocoded address, number of days suspended from school, days in membership and absences. Days in membership is used to calculate the number of days of class prior to the exam.²⁹ It is defined as the number of days the student was on the roster in a particular school; a student is in membership even when absent. Absences data includes both the total number of days, as well as disaggregated data by excused and unexcused absences. All absences and days in membership data are collected at the time of end of grade (EOG) testing.

²⁵More specifically, for grades 3 and above. Students in lower grades do not take end of grade (EOG) tests. Pupils in grades 4 to 5 are tested only at the end of the academic year (i.e. May or June). However, students in grade 3 take the “previous year/baseline” test at the beginning of the academic year, and the EOG test in May or June of that same academic year.

²⁶School years are referred to by the year the school year ended. For example, the 2005/06 school year is year 2006.

²⁷Younger students are less likely to skip school without parental knowledge, limiting issues of endogeneity. In addition, students in upper grades can take courses with multiple teachers, making the estimation of teacher fixed effects problematic.

²⁸The data does not identify student’s teachers directly, but rather identify the individual who administered the end of grade exams. In elementary school, classrooms are largely self-contained with the classroom teacher proctoring the exam.

²⁹In practice, days of class is the modal days in membership at the school level.

Only counts of absence are provided for each student and each academic year; it is not possible to specifically discern when a student was absent. The NCERDC data categorizes absences as either excused or unexcused; excused absences are defined as the ones due to illness or injury; quarantine; medical appointment; death in the immediate family; called to court under subpoena or court order; religious observance; educational opportunity (prior approval is needed); local school board policy; absence related to deployment activities. All other absences are categorized as unexcused.³⁰ Aside from the distinction between excused and unexcused absences, no other details are provided as to the reasons for the absence.

In addition to the main sample, a subsample of students who are siblings is also employed. Following Caetano and Macartney (2013), the geocoded address data is used to identify students living in the same household to create a family identifier. Students residing at the same address were identified through the geocoded data. Two or more children who share the same home address in a given academic year are considered to be part of the same household. Even if the address changed between years, as long as the students remain together at the new address, they are considered to be members of the same household. As a result, the ability to observe children's addresses as they progressed through elementary school makes it possible to identify family-year fixed effects.

Teachers that are matched with less than 5 students are not included in an effort to avoid special education (or other specialty) classes as well as minimize measurement error when estimating fixed effects. Moreover, teachers with more than 30 students in a school year were excluded due to possible data miscoding. The total number of student-year observations for 2006-2010 is more than 1,008,000 while the total number of teachers included is more than 29,000.

3.2 Descriptive Statistics

Table 1 presents descriptive information on the sample of students in grades 3 to 5. Students are absent on average 6.13 days of school prior to the exam. Figure 1 depicts the distribution of absences in the data. While the distribution is centered around 5 days of class, a sizable proportion of students are absent for much longer; 25% percent of students miss nine days (just under two weeks) of class and 10% miss 13 days or more prior to the day of the exam in each year. Interpretation of results typically focuses on the effect of the average number of absences on performance. However, it is important to recognize that for a sizable share of the sample,

³⁰More information on North Carolina's attendance policies can be found at: <http://www.ncpublicschools.org/docs/fbs/accounting/manuals/sasa.pdf>.

reducing absences would have a much larger impact.

North Carolina has an ethnically diverse student body with 25.3% black and over 10% Hispanic. Relative to the United States in the 2010 Census, North Carolina has a greater share of black school-age children and a slightly smaller Hispanic population. Males and females are equally represented in the data. Just under half of elementary school students are eligible for the free or reduced price lunch subsidy program, a measure of low-income status. In addition, 13.98% of students are categorized as special education students and 6.4% are English language learners. Finally the proportion of students that has ever been suspended is 6.64%, where the average number of days suspended is 3.05. Note that North Carolina ranks third nationally in the rate of school suspensions behind South Carolina and Delaware.

Table 1: Descriptive Statistics for North Carolina Public School Students

	Mean	s.d.
Days Absent	6.13	5.53
Days of Class	166.30	3.48
Suspensions:		
Ever Suspended (%)	6.64	24.89
Days Suspended*	3.05	4.22
Race (%):		
White	56.90	49.52
Black	25.32	43.49
Hispanic	10.33	30.44
Asian	2.32	15.04
Other	5.13	22.07
Gender (%):		
Male	49.94	50.00
Female	50.06	50.00
Other characteristics (%):		
Free/reduced lunch eligible	46.65	49.89
Special education	13.98	34.68
English language learner	6.40	24.48
N	1,001,032	

Source: NCERDC, 2006-2010. End of grade test scores are standardized by year and grade level. Samples are based on students having two or more observations with required test scores and total absences information, linked to a teacher with at least 5 and no more than 30 students. Final analytical samples also require non-missing information for all included variables.

*Conditional on suspension.

As younger students are less likely to skip school without parental knowledge, by limiting the sample of analysis to grades 3 to 5 we are able to minimize issues of endogeneity.³¹ In addition,

³¹In the NCERDC data, middle school students do in fact exhibit slightly more absences, driven largely by a greater number of the unexcused type.

students in these grades are more likely to enjoy self-contained classrooms and therefore the link between teachers and students is more reliable as compared to those in higher grades.

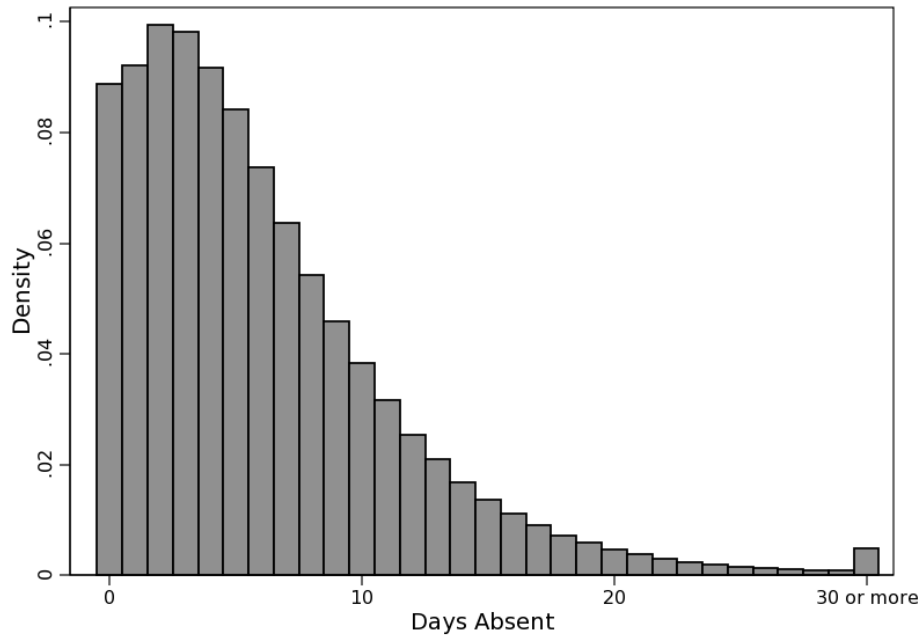


Figure 1: Distribution of Absences

Researchers have demonstrated that students with greater attendance than their classmates perform better on standardized achievement tests and that schools with higher rates of daily attendance tend to generate students who perform better on achievement tests than do schools with lower daily attendance rates [Roby (2004); Sheldon (2007)]. Table 2 examines absences by student characteristics, including quintile of last year’s prior math score.³² Students with lower prior year test scores generally have a greater number of absences. This result is largely driven by unexcused absences which exhibits a stronger negative relationship with math test scores.³³ This suggests that students who are less capable are also more likely to miss school. Simple ordinary least squares (OLS) will therefore result in biased coefficient estimates; without adequate controls, part of any estimated effects of absences will reflect a downward ability bias due to endogenous selection.

Table 2 also highlights racial and gender differences in total number of absences as well as their distribution between excused and unexcused types. White students have a greater number

³²Scores are comparable across time and grades through the use of a developmental scale. The developmental scale is created from the number of correctly answered questions on the standardized test. Each point of the developmental scale measures the same amount of learning. For example, a student who shows identical growth on this scale in two consecutive grades is interpreted as having learned equal amounts in each year.

³³This pattern holds when examining absences relative to prior reading score.

Table 2: Average Number of Absences

	Total Absences		Excused Absences		Unexcused Absences	
	Mean	s.d.	Mean	s.d.	Mean	s.d.
Grades 3-5						
Average:	6.13	5.38	3.51	4.24	2.30	3.26
Prior Math Score:						
Lowest Quintile	6.76	6.16	3.54	4.42	2.97	3.88
Second Quintile	6.32	5.71	3.56	4.30	2.58	3.47
Third Quintile	6.13	5.47	3.61	4.25	2.32	3.18
Fourth Quintile	5.90	5.20	3.59	4.16	2.04	2.87
Highest Quintile	5.45	4.87	3.38	3.99	1.69	2.51
Sex:						
Male	6.19	5.60	3.51	4.26	2.35	3.30
Female	6.07	5.47	3.51	4.21	2.25	3.22
Race:						
Asian	3.96	4.27	2.10	3.20	1.40	2.45
Black	5.52	5.51	2.52	3.66	2.67	3.69
Hispanic	5.27	4.95	2.55	3.49	2.50	3.35
White	6.59	5.58	4.17	4.49	2.11	3.02
Year:						
2006	6.07	5.50	3.55	4.25	2.25	3.23
2007	6.53	5.74	3.50	4.45	2.11	3.22
2008	6.09	5.57	3.66	4.18	2.41	3.33
2009	5.75	5.29	2.90	3.57	2.61	3.29
2010	6.25	5.53	3.16	3.76	2.54	3.14

Source: NCERDC, 2006-2010. Samples are based on students having two or more observations with required test scores and total absences information, linked to a teacher with at least 5 and no more than 30 students. The sum of excused and unexcused absences do not sum to total absences as absence counts by type are only available for about two-thirds of the student-year observations. When missing, absences by type are generally missing at the school, rather than student, level.

of absences than other racial groups with an average of 6.59 days a year. Blacks and Hispanics are absent 5.52 and 5.27 days respectively. However, a greater share of absences are excused for white students relative to both the other two racial groups. Males have slightly more absences than do females due to a greater number of unexcused absences. There does not appear to be any time trend in absences.

Although students may have varying quantities of instructional time prior to end of grade tests resulting from absences, schools also differ in the number of actual class days prior to exam administration. During the sample period, the Department of Education mandated 180 days of class.³⁴ However, the North Carolina Department of Public Instruction dictates a window of time for exam administration with the specific testing date chosen by the local education

³⁴Only two districts, Forsyth and Guilford Counties, had additional days of class.

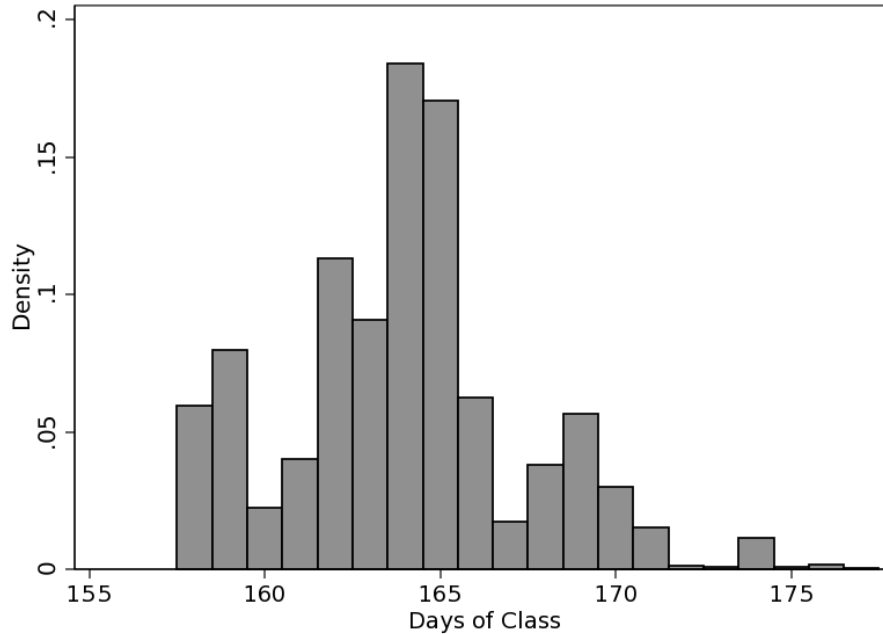


Figure 2: Distribution of Days of Class, 2009-2010

agency (LEA).³⁵ As a result, students at different schools may have had differing number of instructional days at the time academic performance was measured, as can be seen in Figure 2. While schools are not actually extending the school year, the number of instructional days prior to the test are adjusted when the LEA sets the school’s EOG testing date. This variation in instructional days,³⁶ coupled with data on absences allows for the separate identification of the effect of absences from additional days of schooling.³⁷ Since schools with more days prior to the exam are those that are more interested in making use of the additional class time as North Carolina schools face pressure from both state and federal accountability policies [Aucejo and Romano (2014)], the estimated effects on school days are likely an upper bound once we control for student and school characteristics.^{38,39}

³⁵<http://www.ncpublicschools.org/accountability/calendars/archive> lists the testing windows for all tests administered in North Carolina since 2001. A LEA in North Carolina is typically a county.

³⁶The number of days of class prior to the EOG exam varies between 158 and 180 days.

³⁷The exam date is set at the beginning of the school year. Therefore, schools cannot extend the number of days of class until the day of the exam based on shocks that occur during the academic year.

³⁸All schools should not be expected to set the same testing date as administering the test later in the year is more costly due to administrative reasons.

³⁹The fact that the North Carolina Department of Public Instruction dictates a window of time for exam administration leads to some concerns regarding cheating (i.e. schools that take the exam earlier may provide information about the test to schools that take it later). While NC public school system has adopted many measures to avoid this type of behavior, it is difficult to completely rule out this possibility. However, if cheating were driving our results we would expect large effects on days of class (i.e. taking the exam later), but this is not the case.

4 Methodology

The data enable us to observe the EOG test score, the number of class days, and the absence of students in each year for grades 3 through 5 until the day of the test. Our primary aim is twofold; to estimate the causal effect of both absence and an additional day of instruction on performance. The number of instructional days prior to the exam varies across schools and years and therefore enables the identification of the effect of absences separately from additional instructional time.

In analyzing the effect of absences on performance, there are potential problems of endogeneity bias. As shown in Table 2, more able and motivated students appear more likely to both attend school and score highly in their courses and on standardized tests. Therefore, without adequate controls part of any estimated effects of absences will reflect a downward bias due to endogenous selection. This bias could be minimized with good proxies for ability, engagement/motivation, or other individual characteristics.⁴⁰

Our first strategy to deal with the potential problem of ability bias is to use the panel properties of the data. Student fixed effects are employed to control for all observed and unobserved student characteristics that are constant over time. This potentially includes student effort, motivation and ability, as well as familial factors such as parental willingness for their child to miss school or their efforts to help with school work at home.

School fixed effects are also included in the model to control for the common influences of a school by capturing systematic differences across institutions. This includes curriculum, hiring practices, school neighborhood, and the quality of leadership. These effects are identified by students who switch schools during grades 3 through 5. Teacher fixed effects are included to control for the common influences of a teacher. Finally, fixed effects for grade and year will parse out the effect of schools and teachers from other common influences that occur across the population in a given year and for a given cohort.

The main estimating equation is:

$$y_{igkst} = \beta_0 + \beta_1 a_{it} + \beta_2 d_{ist} + \beta_3 X_{it} + \beta_4 G_{ig} + \beta_5 T_t + \alpha_i + \theta_k + \delta_s + \epsilon_{igkst} \quad (1)$$

where y_{igkst} denotes the test score of student i , in grade g , teacher k , school s , and year t where the test score is standardized by grade, year and subject. The main explanatory variables of interest are a_{it} and d_{ist} ; a_{it} is the number of absences over the course of the school year up to

⁴⁰The data contains information on the students' prior year test score which is also included in several specifications of the model.

the day of the exam; d_{ist} is the number of days of instruction prior to the examination day. X is a vector of student covariates, G are grade fixed effects, and T are time fixed effects. α_i , θ_k , and δ_s denote student, teacher, and school fixed effects respectively.

A value-added model of student achievement is also implemented. The feature of including a lagged achievement score at the individual level means that under the assumptions of the model, it is no longer necessary to incorporate additional measures of ability or a full historical panel of information on any particular student.

Estimating Equation 1 by ordinary least squares solves:

$$\min_{\beta, \alpha, \theta, \delta} \sum_{i=1}^N \sum_{k=1}^K \sum_{s=1}^S (y_{igkst} - \beta_0 - \beta_1 a_{it} - \beta_2 d_{ist} - \beta_3 X_{it} - \beta_4 G_{ig} - \beta_5 T_t - \alpha_i - \theta_k - \delta_s)^2 \quad (2)$$

Given the large number of students (382,835), teachers (29,202) and schools (1,305) in our data, after using student fixed effects to control for individual heterogeneity, incorporating a dummy variable for each teacher and for each school would be infeasible. We employ an iterative fixed-effects estimator introduced by Arcidiacono, Foster, Goodpaster, and Kinsler (2012) to reduce the computational cost of estimating the multi-level fixed effects model of student achievement. This method yields OLS estimates of the parameters of interest while circumventing the dimensionality problem. The algorithm begins with an initial guess of the parameters $\alpha_i^{(0)}, \theta_k^{(0)}, \delta_s^{(0)}$. It then iterates on the following steps with the m^{th} iteration:

- **Step 1:** Using the initial guesses of the student, teacher, and school fixed effects, calculate

$$Z_{igkst}^{(m)} = y_{igkst} - \alpha_i^{(m)} - \theta_k^{(m)} - \delta_s^{(m)} \text{ and solve the least squares problem:}$$

$$\left\{ \beta_0^{(m)}, \beta_1^{(m)}, \beta_2^{(m)}, \beta_3^{(m)}, \beta_4^{(m)}, \beta_5^{(m)} \right\} =$$

$$\arg \min_{\beta} \sum_{i=1}^N \sum_{k=1}^K \sum_{s=1}^S (Z_{igkst}^{(m)} - \beta_0 - \beta_1 a_{it} - \beta_2 d_{ist} - \beta_3 X_{it} - \beta_4 G_{ig} - \beta_5 T_t)^2$$

- **Step 2:** Using $\left\{ \beta_0^{(m)}, \beta_1^{(m)}, \beta_2^{(m)}, \beta_3^{(m)}, \beta_4^{(m)}, \beta_5^{(m)}, \theta_k^{(m)}, \delta_s^{(m)} \right\}$ calculate $\alpha_i^{(m+1)}$ based on the following expression ($k \in i$ denotes teachers of student i)

$$\alpha_i^{(m+1)} = \frac{\sum_{k \in i} (y_{igkst} - \beta_0^{(m)} - \beta_1^{(m)} a_{it} - \beta_2^{(m)} d_{ist} - \beta_3^{(m)} X_{it} - \beta_4^{(m)} G_{ig} - \beta_5^{(m)} T_t - \theta_k^{(m)} - \delta_s^{(m)})}{\sum_k I(k \in i)}$$

where the previous expression avoids the minimization over all the α_i 's. Notice that this ex-

pression is obtained from the first order condition of the least squares problem with respect to α_i

- **Step 3:** Using $\{\beta_0^{(m)}, \beta_1^{(m)}, \beta_2^{(m)}, \beta_3^{(m)}, \beta_4^{(m)}, \beta_5^{(m)}, \alpha_i^{(m+1)}, \delta_s^{(m)}\}$ calculate $\theta_k^{(m+1)}$ in an analogous way to step 2.
- **Step 4:** Using $\{\beta_0^{(m)}, \beta_1^{(m)}, \beta_2^{(m)}, \beta_3^{(m)}, \beta_4^{(m)}, \beta_5^{(m)}, \alpha_i^{(m+1)}, \theta_k^{(m+1)}\}$ calculate $\delta_s^{(m+1)}$ in an analogous way to step 2.
- **Step 5:** Repeat steps 1 to 4 until convergence of the parameters.

5 Baseline Results

Table 3 presents the regression results for math and reading, based on Equation 1. Specification (1) is a simple OLS regression of standardized test scores without any fixed effects or controls for student ability.⁴¹ The coefficients on absences for both math and reading are negative, significant and large in magnitude. However, since there are no controls for unobserved individual characteristics which is likely to be negatively correlated with absences, the coefficient is biased downward; we expect that once adequate controls are included, the coefficient on absences will increase. Similarly, the coefficient on days of class is the opposite sign from what was hypothesized and likely also suffers from omitted variable bias.

Specification (2) includes student fixed effects, thereby controlling for observed and unobserved student characteristics that are constant over time. An additional absence results in math (reading) scores declining by 0.66% (0.35%) of a standard deviation. Therefore, a student with the average number of absences⁴² would see their math (reading) score decline by 4.05% (2.15%) of a standard deviation. Additional days of class has a positive, but insignificant effect on both math and reading performance. The addition of school fixed effects (specification (3)) has little effect to the magnitude of the coefficient of interest for either subject.⁴³

Specification (4), our preferred specification, includes triple fixed effects and finds significant, although slightly smaller coefficients on days absent relative to the previous specifications. Reducing absences by the average (6.13 days) results in scores declining 3.56% and 1.84% of a standard deviation respectively for math and reading. Additionally, the effect of days of class on math test scores is now significant, although smaller in magnitude relative to absences, with test

⁴¹In addition to the regressors specified in Equation 1, controls for gender and ethnicity are also included.

⁴²The average student in grades 3-5 is absent 6.13 days of school.

⁴³Table 13 (in the appendix) provides an alternative specification where number of days absent is divided by days of class. Results remain very similar.

Table 3: Baseline Regression

	Math Test Score					Reading Test Score				
	(1)	(2)	(3)	(4)	(5)	(1)	(2)	(3)	(4)	(5)
Days Absent	-0.0192*** (0.0002)	-0.0066*** (0.0002)	-0.0065*** (0.0002)	-0.0058*** (0.0002)	-0.0076*** (0.0001)	-0.0104*** (0.0002)	-0.0035*** (0.0002)	-0.0034*** (0.0002)	-0.0030*** (0.0002)	-0.0039*** (0.0001)
Days of Class	-0.0075*** (0.0003)	0.0002 (0.0003)	0.0000 (0.0002)	0.0008*** (0.0004)	0.0011** (0.0004)	-0.0056*** (0.0003)	0.0003 (0.0003)	0.0001 (0.0003)	0.0002 (0.0004)	0.0016*** (0.0004)
Student FE	No	Yes	Yes	Yes	No	No	Yes	Yes	Yes	No
School FE	No	No	Yes	Yes	Yes	No	No	Yes	Yes	Yes
Teacher FE	No	No	No	Yes	Yes	No	No	No	Yes	Yes
Lagged Student Score	No	No	No	No	Yes	No	No	No	No	Yes
N	1,001,032	1,001,032	1,001,032	1,000,904	872,860	1,001,032	1,001,032	1,001,032	1,000,904	872,860

Source: NCERDC, 2006-2010, grades 3-5. Dependent variable is standardized by grade and year. All specifications include dummy variables for grade, year, and free/reduced price lunch status. Specifications without student fixed effects also include dummy variables for race and gender. Bootstrapped standard errors are reported in parenthesis. Significance levels: * * * denotes 1%; ** denotes 5%; * denotes 10%.

scores increasing 0.49% of a standard deviation for an equivalent increase in school days. Specifications (5) examines a model with lagged achievement, and teacher and school fixed effects.⁴⁴ The results are slightly larger in magnitude relative to the preferred specification; reducing absences by the average results in scores declining by 4.66% and 2.39% of a standard deviation for math and reading respectively. The equivalent increase in school days would increase math scores by 0.67% and reading scores by 0.98% of a standard deviation.

In summary, the absolute value of the effect of each additional absence on test scores appears to be larger relative to extra days of class. Additional days of class seem to have a positive effect on math scores, although on reading the effects appear smaller according to specifications 3 and 4. Similarly, Lee and Barro (2001) and Sims (2008) find small or no effect on reading scores. That both absences and additional days of class seem to have a greater effect on math achievement than on reading achievement is consistent with the general finding that educational inputs and policy have relatively larger impact on math achievement [Hanushek and Rivkin (2010); Jacob (2005); Rivkin, Hanushek, and Kain (2005)], perhaps because children are more likely to be exposed to reading and literacy outside of school, particularly at home where parents may be more apt to help their children learn and develop reading skills [Currie and Thomas (2001)].

6 Robustness Checks

Despite the set of controls that have been included in Table 3 (i.e. student, teacher, and school fixed effects, previous year test score and free-reduce price lunch status), our results on absences may still be driven by confounding effects. For example, student engagement may not be fixed over time or family/health shocks could affect absences and test score performance in a way that may not be captured by our extensive set of controls. In this regard, this section provides a series of robustness checks.

6.1 Student Disengagement

The fact that students may lose interest in classroom activities during their schooling career, suggests that the dynamic component of this type of behavior cannot be captured by the addition of student fixed effects. This may cause concern that our results on absences are in fact driven by a correlation between “lack of interest in school” and the decision to not attend class. To this

⁴⁴The sample size is smaller in this specification because for a given year we do not have data on previous year test scores for students (except in grade 3). Running a specification with triple fixed effects on this sample provides similar results as the ones currently reported in specification 4 (i.e. the change in the sample size is not driving the difference in results).

end, we present several pieces of evidence that assess the importance of this potential threat to our identification strategy.

First, recall that our sample corresponds to students from grades 3 to 5. Therefore, the decision to be absent from school needs to be (at least tacitly) supported by their parents. This suggests that endogeneity issues should be of a less concern relative to a sample of high school students.

Second, if student disengagement is the main driver of our results, then it is likely to have a nonlinear effect on absences. For example, the effect of being absent 10 days at school during the academic year due to (for instance) disengagement is expected to be disproportionately larger than the effect of being absent just 2 days at school. To explore this, we saturated the variable absences with dummies for each day absent from 1 to 30 and another for 31 or more. The coefficients on each of the days absent dummies are plotted in Figure 3.⁴⁵ The pattern of the coefficients indicates that the effect on test scores is in fact roughly linear through 30 absences. The lack of nonlinear effects suggests that disengagement effects are not likely to be driving our results on absences.

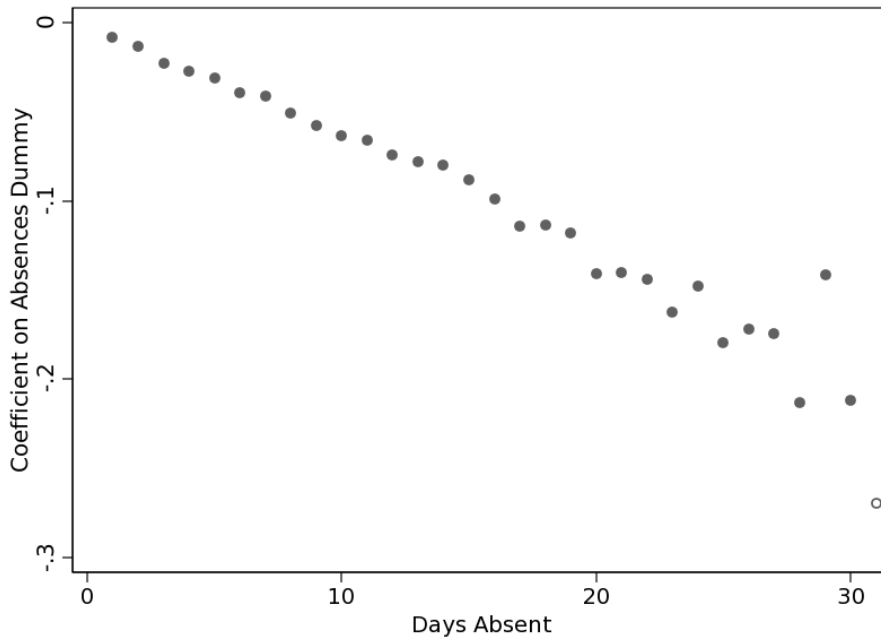


Figure 3: Coefficients on Days Absent Dummy Variables⁴⁶

⁴⁵These coefficients are obtained after controlling for student heterogeneity with standardized math scores as the dependent variable. Results are similar for reading scores.

⁴⁶The last coefficient is for 31 or more days absent.

Table 4: Student Disengagement Regression

	Math Test Score		Reading Test Score	
Days Absent	-0.0051*** (0.0003)	-0.0049*** (0.0003)	-0.0027*** (0.0004)	-0.0025*** (0.0004)
Suspensions		-0.0058*** (0.0014)		-0.0048*** (0.0015)
Student FE	Yes	Yes	Yes	Yes
Teacher FE	Yes	Yes	Yes	Yes
School FE	Yes	Yes	Yes	Yes
N	386,776	386,776	386,776	386,776

Source: NCERDC, 2006-20008, grades 3-5. Dependent variable is standardized by grade and year. All specifications include days of class and dummy variables for grade, year, and free/reduced lunch participation. Bootstrapped standard errors are reported in parenthesis. The sample is smaller than our main estimating sample as suspensions are only available until year 2008 and for approximately two-thirds of the student-year observations. Suspensions are generally missing at the school level. Significance levels: *** denotes 1%; ** denotes 5%; * denotes 10%.

Third, we include a proxy for student disengagement to our baseline specifications. More specifically, a measure of misbehavior, total days suspended, is added. The total days suspended is the sum of in-school and out-of-school suspensions.⁴⁷ If student disengagement is affecting our results, we should expect a large decline in the effect of absences once controlling for suspensions. Table 4 shows that the coefficient on absences are in fact fairly constant across specifications. The first column for both math and reading corresponds to the baseline specification in Table 3.⁴⁸ For math (reading), the effect on absences only changes from -0.0051 (-0.0027) in our baseline specification to -0.0049 (-0.0025) after controlling for suspensions (see columns 2 and 4).

Finally, we follow an instrumental variables approach, where we instrument number of absences with data on flu outbreaks at the county level in North Carolina. The flu is a contagious respiratory illness that affects all ages; however, school-aged children are the group with the highest rates of flu illness.⁴⁹ In this regard, we make use of data from the North Carolina Disease Event Tracking and Epidemiologic Collection Tool (NC DETECT) provided by the North Carolina Division of Public Health⁵⁰ which has been collecting the number of influenza-like

⁴⁷In-school suspensions are usually served in an in-school suspension classroom. When a school does not have an in-school suspension program or when offenses are more serious or chronic, they may be dealt with through short-term, out-of-school suspensions. Long-term suspensions are more than ten days in length may be used for more serious offenses and are served out-of-school. Approximately 6.6% of our sample has been suspended at some point in time.

⁴⁸The sample size is smaller as not all schools report suspensions (around one third of the sample), and data on suspensions is only reported for approximately 1% of the sample after 2008; as a result, we exclude those years.

⁴⁹Center for Disease Control, <http://www.cdc.gov/flu/school/guidance.htm>

⁵⁰NC DETECT is an advanced, statewide public health surveillance system. NC DETECT is funded with federal funds by North Carolina Division of Public Health (NC DPH), Public Health Emergency Preparedness Grant (PHEP), and managed through a collaboration between NC DPH and the University of North Carolina at Chapel Hill Department of Emergency Medicine's Carolina Center for Health Informatics (UNC CCHI).

illnesses (ILI) affecting kids between the age of 5 and 12 years since January of 2008.^{51,52}

In order for a measure of flu activity to be an appropriate instrument for absences, it must be correlated with absences and only impact test score performance through missing days of schooling. While one may be concerned that the flu has a direct impact on EOG scores, the flu season commonly peaks in January, February, or March⁵³ well before the EOG tests are administered.⁵⁴ Moreover, our data shows low flu activity during the months exams take place.⁵⁵ Therefore, this is not likely to be an important threat to our identification strategy. However, even though our data corresponds to flu cases in children between the ages of 5 and 12, a possible concern is that flu outbreaks may also affect teacher attendance, and therefore may confound the effects of student and teacher absences. Unfortunately, we only have data on teacher absences due to sickness through the 2008 school year, while our data on flu outbreaks starts in January of 2008. However, as we show in the appendix (Table 15), adding teacher sick days to our baseline specification does not affect our coefficient on either days absent or school days.⁵⁶ Furthermore, it does not have a substantial effect on students performance. This result is consistent with the fact that the availability of substitute teachers in North Carolina is likely to lessen the potential harm from teacher absences.

We define the instrument as:

$$IV_{flu,c,yr} = \left(\frac{\sum_m ILI_{c,m}}{\frac{N_{c,yr}}{10,000}} \right)$$

where $ILI_{c,m}$ is the number of influenza-like illness cases in county c in month m (the analysis only uses data from August to June, which corresponds to the academic year) and $N_{c,yr}$ is

⁵¹ILI cases are reported by N.C. hospital emergency departments.

⁵²More specifically, NC DETECT has provided the total number of ILI cases per month in each N.C. county affecting kids between the age 5 to 12 (the total number of counties in N.C. is 100). If the number of cases in a given county-month data cell is greater than 0 but less than 10, then the information is censored. We use multiple imputation techniques [Royston (2007)] in order to deal with those values that we do not observe but we know are in the range between 1 and 9 visits. Table 14 (in the appendix) shows that results are similar if instead of using multiple imputation techniques, we just replace the censored values with specific numbers (i.e. 1, 5, or 9). Finally, we aggregate the data at the academic year level (i.e. August to June); the resulting proportion of ILI cases that are imputed is small (i.e. 7.9% across both the 2008/09 and 2009/10 seasons).

⁵³According to CDC, in the last thirty years flu activity most often peaked in February (45% of the time), followed by December, January and March (which each peaked 16% of the time). It has never peaked after March. Source: <http://www.cdc.gov/flu/about/season/flu-season.htm>

⁵⁴EOG tests are generally administered at the end of May or later. The inclusion of controls for ILI activity in May and June in our baseline regressions do not alter the results.

⁵⁵6.3% of yearly flu visits occurred in May and 5.8% in June.

⁵⁶The results do not change across specifications (with or without teacher sick days) but the coefficient on school days becomes insignificant due to the fewer number of years that we can use in this regression (i.e. only years 2006-2008), therefore leading to less variability over time.

number of students in elementary school in county c during the academic year yr .⁵⁷ The IV then is the number of ILI cases per 10,000 school-aged children.⁵⁸

Table 5 shows the results of OLS (benchmark case) and IV regression specifications for math and reading.⁵⁹ Columns (2) and (4) indicate that the effect of absences after instrumenting with flu outbreaks is larger than days of class.^{60,61} However, the IV specifications indicate that a one day reduction in excused absences would lead to increases of 2.0% and 3.1% of a standard deviation in math and reading respectively. This is approximately twice our benchmark OLS specification results for math, and a five-fold increase for reading.⁶²

To sum up, the linearity in the effect of absences, in addition to the fact that including suspensions and instrumenting absences with flu data are not affecting our main results (i.e. larger effect of absences than days of class) suggest that disengagement effects are not likely to be driving our results.

Table 5: IV Regression

	Math	Math	Reading	Reading
	(1)	(2)	(3)	(4)
Days Absent	-0.0094*** (0.0003)	-0.0204 (0.0157)	-0.0057*** (0.0004)	-0.0306* (0.0168)
Days of Class	0.0005 (0.0010)	0.0008 (0.0011)	0.0007 (0.0009)	0.0013 (0.0010)
Specification	OLS	IV	OLS	IV
N	308,333	308,333	308,333	308,333

Source: NCERDC, 2009-2010, grades 3-5. Dependent variable is standardized by grade and year. All specifications include lagged test score and dummy variables for grade, year, gender, race, and free/reduced-price lunch status. Notice that the sample size is smaller because we only have flu data for the years 2009-2010. Columns (1) and (3) show OLS results (serving as a benchmark case), while columns (2) and (4) show the IV regression results. Bootstrapped standard errors clustered at the school level are reported in parenthesis. Significance levels: *** denotes 1%; ** denotes 5%; * denotes 10%.

⁵⁷The number of students in elementary school in a county is the sum of all students in grades K through 8, which generally corresponds to ages 5-12.

⁵⁸The IV variable is defined per 10,000 school-aged children to be consistent with the rest of the literature which typically defines ILI rates per 10,000 or 100,000 population.

⁵⁹All 2SLS specifications in this paper have very strong first stages (see Table 16 in the appendix). The coefficient on the instrument has a p-value of 0.000 in all specifications. Figure 4 (in the appendix) shows the presence of substantial variability in the number of flu cases across counties.

⁶⁰Though, the math coefficient is (marginally) not statistically significant.

⁶¹The exam date is set at the beginning of the school year. Therefore, schools cannot extend the number of instructional days prior to the exam in response to a severe flu season.

⁶²Given that IV recovers LATE effects, it is not surprising that the magnitude of the coefficients is larger than in the OLS specifications.

Table 6: Siblings Fixed Effects Regression

	Math Score	Reading Score
Days Absent	-0.0072*** (0.0008)	-0.0024*** (0.0008)
Sibling Year FE	Yes	Yes
Lagged Student Score	Yes	Yes
N	86,660	86,660

Source: NCERDC, 2006-2010, grades 3-5. Dependent variable is standardized by grade and year. All specifications include dummy variables for grade. Standard errors are reported in parenthesis. The sample is smaller than our main estimating sample as identification relies on observing at least two children from the same family in a given year. Significance levels: *** denotes 1%; ** denotes 5%; * denotes 10%.

6.2 Family Shocks

Our baseline specifications thus far have been assuming that family shocks/inputs that are correlated with absences and affect performance are constant across time and therefore taken care of with the inclusion of student fixed effects. However, these estimates may still be biased if there are potentially time varying unobserved family factors that may be influencing both student absences and testing performance. As mentioned previously, we follow Caetano and Macartney (2013) in utilizing the geocoded address data to construct a family ID variable. Table 6 incorporates a family-year fixed effect, which captures all observed and unobserved characteristics that are common to a family-year and is identified off of different incidence of absences within that year for a family.⁶³ Lagged test score is incorporated in the specification as a proxy for ability as that is likely to be different even across siblings. The family-year fixed effects specification controls for any family shock, such as parental divorce or a death in the family, that impacted both absences and test scores. Since siblings attend the same school, the coefficient on days of class cannot be well identified. The coefficient on absences in Table 6 indicates that an additional absence decreases scores by 0.72% and 0.24% for math and reading respectively, which is similar to our previous findings. This suggests that family specific shocks are not driving the results.

⁶³The information in the data does not provide the biological relationship between children living in the same household. Regardless, since the students are residing in the same household and are therefore exposed to shared family characteristics, children living at the same address will be considered family. There are 31,856 sibling groups that are observed in grades 3-5 in the same year. For those sibling groups of size two (over 95% of the siblings sample) observed in the same year, the mean absolute value of the difference in days absent is 2.88 days, with a standard deviation of 3.35 days.

6.3 Health Shocks

Even after all of the controls to guard against endogeneity concerns, fixed effects do not guard against absences that are, for example, the result of a major/chronic illness; which is an excused absence and might be expected to have a direct effect on test scores. If this was driving our results, then after disaggregating absences into the two types, excused absences would be expected to be more negative relative to unexcused absences.⁶⁴ Specification (1) of Table 7 is our preferred specification from Table 3.⁶⁵ Specifications (2) and (3) examine the effect of absences and days of class independently of the other; there is little difference in the magnitude of the effects when comparing to specification (1). The final two columns utilize the sample for which absences disaggregated by types are available.⁶⁶ For comparison purposes, specification (4) is the same as specification (1) but with the sample of students for which there are data on absences disaggregated by type. The results are similar for both absences and days of class. Specification (5) presents results disaggregating absences by type. An additional excused absence lowers math (reading) scores by 0.43% (0.22%) of a standard deviation, while unexcused absences have an effect of 0.74% (0.46%) of a standard deviation. Therefore, these results indicate that health problems do not seem to bias our results.

The evidence presented in this section indicates that our baseline findings on the effect of students' absences on test scores performance are robust to several specifications, suggesting that possible expected threats to our identification strategy are not driving the results.

7 Heterogeneous Effects

On average, absences have a negative effect on test scores, while the positive impact of an additional day of class within the observed range is much smaller. However, these effects may differ based on student characteristics. As noted earlier, catching up after an absence is likely to be more difficult for a low performing student. Understanding the heterogeneous effects of an absence will help to inform the policy discussion by identifying groups of the population that are likely to disproportionately benefit from particular interventions.

To examine how the effect of attending school differs by student ability, students are grouped based on their test score from the prior year. Table 8 shows the regression results with absences

⁶⁴Gottfried (2009) also examines disaggregated absences and finds that students with a higher proportion of unexcused absences places them at academic risk, particularly in math achievement.

⁶⁵Specifications (1)-(3) only use years 2006-2008 as those are the years in which we have absences by type information.

⁶⁶As mentioned previously, absences by type are not available for the full sample. They are generally missing at the school level. The inclusion of triple fixed effects should address any possible missing data bias.

Table 7: Absences by Type Regression

	Math Test Score			Reading Test Score			
	(1)	(2)	(3)	(4)	(5)	(6)	
Days of Class	-0.0005 (0.0009)	-0.0008 (0.0009)	-0.0005 (0.0009)	-0.0006 (0.0009)	0.0005 (0.0008)	0.0003 (0.0008)	0.0004 (0.0009)
Days Absent	-0.0055*** (0.0002)	-0.0055*** (0.0002)	-0.0056*** (0.0002)	-0.0056*** (0.0002)	-0.0031*** (0.0002)	-0.0031*** (0.0002)	-0.0031*** (0.0002)
Excused Absences				-0.0043*** (0.0003)			-0.0022*** (0.0002)
Unexcused Absences				-0.0074*** (0.0004)			-0.0046*** (0.0004)
Student FE	Yes	Yes	Yes	Yes	Yes	Yes	Yes
School FE	Yes	Yes	Yes	Yes	Yes	Yes	Yes
Teacher FE	Yes	Yes	Yes	Yes	Yes	Yes	Yes
N	509,890	509,890	509,890	486,694	509,890	509,890	486,694

Source: NCERDC, 2006-2008, grades 3-5. Dependent variable is standardized by grade and year. All specifications include dummy variables for grade, year, and free/reduced price lunch status. Bootstrapped standard errors are reported in parenthesis. Significance levels: * * * denotes 1%; ** denotes 5%; * denotes 10%.

and days of class interacted with a dummy for the quartile of the prior year’s score. Score 1 denotes the lowest quartile and score 4 the highest. These results indicate that students in the lowest quartile are most adversely affected by an additional absence in both math⁶⁷ and reading; consistent with the hypothesis that lower ability students have a harder time making up missed work. A similar pattern can be found when considering days of class, i.e. low achieving students benefit the most from spending more time at school. Results also show the same pattern as before when comparing the effect of an absence relative to an extra day of class within achievement level. Namely, absences have larger effects than days of class. In order to provide a robustness check, given that just controlling for quartiles of previous year achievement may not be enough to account for student heterogeneity, Table 9 estimates Equation 1 with absences and days of class interacted with student fixed effects. The estimation outcomes show that the effects of both absences and additional days of class are muted for higher ability students which is consistent with our earlier results. For example, the effect of an absence in math (reading) performance for a student in the 25th percentile of the student fixed effect distribution⁶⁸ is 18.6% (69.4%) larger than for a student in the 75th percentile. To sum up, the findings in Tables 8 and 9 suggest that policies aiming to extend time spent at school (either through reducing absences or extending the school calendar) are likely to have larger impact on low achieving students, helping to close current gaps in performance.

Table 10 further explores the relationship between absences and the quality of students, teachers, and schools by regressing days absent on the three fixed effects from our preferred specification of the baseline regression (specification (4) in Table 3).⁶⁹ As expected from our previous results, lower ability students have more absences than their higher ability peers. However, we also find that worse schools (teachers) have a positive relationship with absences. More specifically, an increase in school (teacher) quality from the 25th percentile to the 75th percentile is associated with 0.14 (0.13) fewer days absent.⁷⁰ This is a relatively large effect given the sample average of 6.13 absences. In this regard, improving the quality of schools and teachers could not only benefit students by providing them with a better educational environment, but

⁶⁷The lowest quartile interacted with absences is significantly different from the middle two quartiles. The top of the distribution has similarly negative effects on math scores. The highest quartile is not significantly different from the lowest quartile, but is from the others. Notice that this specification is controlling for quartile of previous year test score performance, instead of using a continuous measure of performance as in Table 3.

⁶⁸The 25th and 75th percentile of the math (reading) student fixed effect distribution are -0.937 (-0.997) and 0.996 (1.108), respectively.

⁶⁹Given that the fixed effects from the math and reading regressions are different, we present two set of results (i.e. the first column includes fixed effects from the math specification while the second column includes the fixed effects from the reading specification).

⁷⁰This result corresponds to the specification that includes the fixed effects obtained from the regressions that use as dependent variable math test score.

Table 8: Differences by Ability

	Math Test Score	Reading Test Score
Days Absent x Score 1	-0.0096*** (0.0002)	-0.0068*** (0.0002)
Days Absent x Score 2	-0.0085*** (0.00042)	-0.0041*** (0.0002)
Days Absent x Score 3	-0.0080*** (0.0003)	-0.0039*** (0.0002)
Days Absent x Score 4	-0.0096*** (0.0003)	-0.0042*** (0.0003)
Days of Class x Score 1	0.0069*** (0.0006)	0.0055*** (0.0005)
Days of Class x Score 2	0.0016*** (0.0005)	0.0028*** (0.0005)
Days of Class x Score 3	-0.0029*** (0.0005)	0.0004 (0.0004)
Days of Class x Score 4	-0.0013*** (0.0005)	-0.0045*** (0.0006)
School FE	Yes	Yes
Teacher FE	Yes	Yes
N	872,817	872,817

Source: NCERDC, 2006-2010, grades 3-5. Dependent variable is standardized by grade and year. All specifications include dummy variables for each tercile of prior year test score, gender, grade, year, free/reduced price lunch status, and race. Bootstrapped standard errors are reported in parenthesis. Significance levels: *** denotes 1%; ** denotes 5%; * denotes 10%.

Table 9: Differences by Ability: Student Fixed Effect

	Math Test Score	Reading Test Score
Days of Class	0.0008** (0.0004)	-0.0000 (0.0004)
Days of Class x Student FE	-0.0005** (0.0002)	-0.0011*** (0.0002)
Days Absent	-0.0057*** (0.0002)	-0.0029*** (0.0002)
Days Absent x Student FE	0.0005*** (0.0001)	0.0007*** (0.0001)
N	1,000,904	1,000,904

Source: NCERDC, 2006-2010, grades 3-5. Dependent variable is standardized by grade and year. All specifications include dummy variables for grade, year, and free/reduced price lunch status. Bootstrapped standard errors are reported in parenthesis. Significance levels: *** denotes 1%; ** denotes 5%; * denotes 10%.

may also reduce the detrimental effects from absences.

As a student advances in their educational career, it is likely that an increasing amount of material is covered in a given school day. For example, one might expect that more subject matter is taught in grade 5 than in grade 3. As a result, catching up could be more difficult in

Table 10: Days Absent

	Math Test Score	Reading Test Score
Student FE	-0.1865*** (0.0083)	-0.0893*** (0.0075)
School FE	-0.5017*** (0.1025)	-0.5674*** (0.2172)
Teacher FE	-0.3825*** (0.0671)	-0.4136*** (0.1501)
N	1,000,904	1,000,904

Source: NCERDC, 2006-2010, grades 3-5. Dependent variable is days absent. Bootstrapped standard errors are reported in parenthesis. Significance levels: *** denotes 1%; ** denotes 5%; * denotes 10%.

higher grades. Table 11 examines heterogeneous effects by grade. Indeed, absences appear to have a larger negative effect on both math and reading test scores at higher grades. While each additional absence decreases math (reading) scores by 0.25% (0.15%) of a standard deviation in grade 3, by grade 5 each absences has about three times the impact. This indicates that spending more time at school in later years may have larger effects on test score performance (at least in the short run).

Table 11: Differences by Grade

	Math Test Score	Reading Test Score
Absences x Grade 3	-0.0025*** (0.0002)	-0.0015*** (0.0003)
Absences x Grade 4	-0.0054*** (0.0002)	-0.0030*** (0.0002)
Absences x Grade 5	-0.0088*** (0.0002)	-0.0042*** (0.0002)
Days of Class x Grade 3	-0.0008 (0.0007)	-0.0015** (0.0007)
Days of Class x Grade 4	0.0010** (0.0005)	0.0004 (0.0005)
Days of Class x Grade 5	0.0019*** (0.0005)	0.0012 (0.0007)
Student FE	Yes	Yes
School FE	Yes	Yes
Teacher FE	Yes	Yes
N	1,000,903	1,000,903

Source: NCERDC, 2006-2010, grades 3-5. Dependent variable is standardized by grade and year. All specifications include dummy variables for grade, year, and free/reduced price lunch status. Bootstrapped standard errors are reported in parenthesis. Significance levels: *** denotes 1%; ** denotes 5%; * denotes 10%.

Lower income students may also experience different effects relative to their wealthier classmates. This may be due to parents not having the same amount of time/resources to help

their child with homework. Examining the effects by free/reduced price lunch subsidy program status in Table 12, we find that missing school days have larger deleterious effects on test scores for low income students. For example, the effect of an absence on a relatively poor student has an additional negative effect of 0.13% (0.11%) of a standard deviation in math (reading). Additional days of class also have a bigger impact on math (reading) achievement of low income students, with an extra day of class additionally increasing scores by 0.18% (0.29%).⁷¹

Overall, the results from this section show the presence of important heterogeneous effects of time spent at school. Low achieving students or those coming from less wealthy families would benefit the most from having fewer absences or attending school for a greater number of days during the year. Therefore, these findings indicate that increasing instructional time (mainly by decreasing absences) most likely will contribute to close gaps in performance.

Table 12: Differences by Free/Reduced Price Lunch Status

	Math Test Score	Reading Test Score
Absences	-0.0051*** (0.0002)	-0.0024*** (0.0002)
Absences x FRL	-0.0013*** (0.0003)	-0.0011*** (0.0003)
Days of Class	-0.0001 (0.0004)	-0.0013*** (0.0005)
Days of Class x FRL	0.0018*** (0.0004)	0.0029*** (0.0004)
Student FE	Yes	Yes
School FE	Yes	Yes
Teacher FE	Yes	Yes
N	1,000,904	1,000,904

Source: NCERDC, 2006-2010, grades 3-5. Dependent variable is standardized by grade and year. All specifications include dummy variables for grade, year, and free/reduced price lunch status. Bootstrapped standard errors are reported in parenthesis. Significance levels: *** denotes 1%; ** denotes 5%; * denotes 10%.

8 Conclusions

This paper jointly estimates the relative effectiveness of reducing absences to extending the school calendar on test score performance. Despite the fact that many policy makers have focused their attention on extending the school calendar, the evidence presented in this manuscript indicates that targeting absenteeism could constitute a more effective intervention. First, our empirical strategy shows that the effect of reducing absences relative to extending the number of

⁷¹We also studied heterogeneous effects across race and gender, but did not find statistically significant results.

school days is substantial. Our preferred specification indicates that extending school calendar by ten days would increase math and reading test scores by only 0.8% and 0.2% of a standard deviation, respectively; while a similar reduction in absences would lead to increases of 5.8% and 3% in math and reading. Second, results point to the presence of important heterogeneous effects. Missing a school day due to absence in grade 5 is three times more detrimental than in grade 3, and more importantly, low performing kids benefit the most from additional instructional time. The fact that reducing absenteeism can target specific students who would benefit the most from being in the classroom, not only suggests this type of initiative could be more effective than just extending the school calendar, but also could contribute to narrowing current achievement gaps.

Estimation results also suggest that improving both school and teacher quality from the 25th percentile to the 75th percentile would decrease the average number of absences by about 4.4%. Therefore, policies aiming to improve the quality of schools and teachers could not only benefit students by providing them with a better educational environment, but also by reducing the detrimental effects from absences.

The financial resources needed to extend the school calendar are undeniably high. Most calculations suggest that a 10 percent increase in time would require a 6 to 7 percent increase in cost [Chalkboard Project (2008), Silva (2007)]. This type of policy is even more difficult to implement in the context of decreasing per student public education spending.⁷² Therefore, the fact that a competing policy, like targeting absenteeism on specific groups of students, could lead to large improvements in academic performance at a lower cost from a fiscal point of view,⁷³ points towards an avenue of policy that requires far greater attention.

⁷²Public Education Finances: 2011, U.S. Census Bureau, <http://www.census.gov/govs/school/>

⁷³For example, the program “WakeUp! NYC” has been implemented using media tools (i.e. SchoolMessenger) that has already been incorporated in large number of schools for other purposes.

References

- ARCIDIACONO, P., G. FOSTER, N. GOODPASTER, AND J. KINSLER (2012): “Estimating Spillovers using Panel Data, with an Application to the Classroom,” *Quantitative Economics*, 3(3), 421–470.
- AUCEJO, E., AND T. ROMANO (2014): “Gaming The System? Incentives and Setting High Stakes Testing Dates,” mimeo, Duke University.
- BALFANZ, R., AND V. BYRNES (2013): “Meeting the Challenge of Combating Chronic Absenteeism: Impact of the NYC Mayor’s Interagency Task Force on Chronic Absenteeism and School Attendance and its Implications for Other Cities,” *Baltimore, MD: Johns Hopkins School of Education*. Posted: December.
- BETTS, J., AND E. JOHNSON (1998): “A Test of Diminishing Returns to School Spending,” mimeo, University of California San Diego.
- CAETANO, G., AND H. MACARTNEY (2013): “Quasi-Experimental Evidence of School Choice through Residential Sorting,” mimeo, Duke University.
- CALDAS, S. J. (1993): “Reexamination of Input and Process Factor Effects on Public School Achievement,” *The Journal of Education Research*, 86(4), 206–214.
- CARD, D., AND A. KRUEGER (1992): “Does School Quality Matter? Returns to Education and the Characteristics of Public Schools in the United States,” *Journal of Political Economy*, 100(1), 1–40.
- CARLSSON, M., G. DAHL, AND D. ROTH (2012): “The Effect of Schooling on Cognitive Skills,” NBER Working Paper 18484, NBER.
- CHALKBOARD PROJECT (2008): “A Review of Research on Extended Learning Time in K-12 Schools,” Online.
- CROWTHER, K., AND S. KENDALL (2010): “Investigating the use of Parental Responsibility Measures for School Attendance and Behaviour: Final Report,” Research Report DFE-RR041, Department of Education United Kingdom.
- CURRIE, J., AND D. THOMAS (2001): “Early Test Scores, School Quality and Socioeconomic Status: Long Run Effects on Wage and Employment Outcomes,” in *Research in Labor Economics: Worker Wellbeing in a Changing Labor Market*, vol. 20, pp. 103–132.
- DEVADOSS, S., AND J. FOLTZ (1996): “Evaluation of Factors Influencing Student Class Attendance and Performance,” *American Journal of Agricultural Economics*, 78, 499–507.
- DOBKINS, C., R. GIL, AND J. MARION (2010): “Skipping Class in College and Exam Performance: Evidence from a Regression Discontinuity Classroom Experiment,” *Economics of Education Review*, 29, 566–575.
- EIDE, E., AND M. SHOWALTER (1998): “The Effect of School Quality on Student Performance: A Quantile Regression Approach,” *Economic Letters*, 58, 345–350.
- GERSHENSON, S., A. JACKNOWITZ, AND A. BRANNEGAN (2014): “Are Student Absences Worth the Worry in U.S. Primary Schools?,” mimeo, American University.
- GOODMAN, J. (2014): “Flaking Out: Snowfall, Disruptions of Instructional Time, and Student Achievement,” mimeo.

- GOTTFRIED, M. (2009): “Excused Versus Unexcused: How Student Absences in Elementary School Affect Academic Achievement,” *Educational Evaluation and Policy Analysis*, 31, 392–415.
- (2011): “The Detrimental Effects of Missing School: Evidence from Urban Siblings,” *American Journal of Education*, 117(4), 147–182.
- GROGGER, J. (1996): “Does School Quality Explain the Recent Black/White Wage Trend?,” *Journal of Labor Economics*, 13(2), 231–253.
- HANSEN, B. (2011): “School Year Length and Student Performance: Quasi-Experimental Evidence,” Discussion paper, University of Oregon.
- HANUSHEK, E., AND S. RIVKIN (2010): “Generalizations about using Value-Added Measures of Teacher Quality,” *American Economic Review*, 100, 267–271.
- JACOB, B. (2005): “Accountability, Incentives and Behavior: The Impact of High-Stakes Testing in the Chicago Public Schools,” *Journal of Public Economics*, 89, 761–796.
- LEE, J., AND R. BARRO (2001): “School Quality in a Cross-Section of Countries,” *Economica*, 68(272), 465–488.
- MARCOTTE, D., AND S. HEMELT (2008): “Unscheduled School Closings and Student Performance,” *Education Finance and Policy*, 3(3), 316–338.
- MARTINS, P., AND I. WALKER (2006): “Student Achievement and Education Production: A Case Study of the Effects of Class Attendance,” IZA Discussion Paper 2490, IZA.
- PISCHKE, J. (2007): “The Impact of Length of the School Year on Student Performance and Earnings: Evidence from the German Short School Years,” *The Economic Journal*, 117, 1216–1242.
- RIVKIN, S., E. HANUSHEK, AND J. KAIN (2005): “Teachers, Schools, and Academic Achievement,” *Econometrica*, 73(2), 417–458.
- ROBY, D. (2004): “Research on School Attendance and Student Achievement: A Study of Ohio Schools,” *Educational Research Quarterly*, 28, 3–14.
- ROYSTON, P. (2007): “Multiple Imputation of Missing Values: Further Update of ice, with an Emphasis on Internal Censoring,” *The Stata Journal*, 7(4), 445–464.
- SHELDON, S. (2007): “Improving Student Attendance with School, Family, and Community Partnerships,” *The Journal of Education Research*, 100, 267–275.
- SILVA, E. (2007): “On the Clock: Rethinking the Way Schools Use Time,” Discussion paper, Education Sector.
- SIMS, D. (2008): “Strategic Responses to School Accountability Measures: It’s all in the Timing,” *Economics of Education Review*, 27, 58–68.
- STANCA, L. (2006): “The Effects of Attendance on Academic Performance: Panel Data Evidence for Introductory Microeconomics,” *Journal of Economic Education*, 37, 251–266.

9 Appendix

Table 13: Baseline Regression: Alternative Specification

	Math Test Score	Reading Test Score
Days Absent/Days of Class	-0.9649*** (0.0265)	-0.4970*** (0.0305)
Days of Class	0.0006 (0.0004)	0.0001 (0.0004)
Student FE	Yes	Yes
School FE	Yes	Yes
Teacher FE	Yes	Yes
Lagged Student Score	No	No
N	1,000,904	1,000,904

Source: NCERDC, 2006-2010, grades 3-5. Dependent variable is standardized by grade and year. All specifications include dummy variables for grade, year, and free/reduced price lunch status. Bootstrapped standard errors are reported in parenthesis. Significance levels: *** denotes 1%; ** denotes 5%; * denotes 10%.

Table 14: IV Regression: Alternate Imputations

Censored Visits =	Math Test Score			Reading Test Score		
	1	5	9	1	5	9
Days Absent	-0.0125 (0.0177)	-0.0216 (0.0156)	-0.0297* (0.0163)	-0.0174 (0.0185)	-0.0253 (0.0184)	-0.0321 (0.0266)
Days of Class	0.0006 (0.0011)	0.0008 (0.0011)	0.0010 (0.0011)	0.0010 (0.0011)	0.0012 (0.0010)	0.0013 (0.0011)
Lagged Student Score	Yes	Yes	Yes	Yes	Yes	Yes
N	308,333	308,333	308,333	308,333	3308,333	308,333

Source: NCERDC, 2009-2010, grades 3-5. Dependent variable is standardized by grade and year. All specifications include dummy variables for gender, race, grade, year, and free/reduced price lunch status. Bootstrapped standard errors clustered at the school level are reported in parenthesis. Significance levels: *** denotes 1%; ** denotes 5%; * denotes 10%.

Table 15: Baseline Regression: Teacher Absences

	Math Test Score		Reading Test Score	
Days Absent	-0.0047*** (0.0003)	-0.0047*** (0.0003)	-0.0027*** (0.0004)	-0.0027*** (0.0004)
Days of Class	0.0002 (0.0009)	0.0002 (0.0009)	-0.0016 (0.0013)	-0.0016 (0.0013)
Teacher Sick Days		-0.0011*** (0.0003)		-0.0007* (0.0004)
School FE	Yes	Yes	Yes	Yes
Teacher FE	Yes	Yes	Yes	Yes
Lagged Student Score	Yes	Yes	Yes	Yes
N	370,449	370,449	370,449	370,449

Source: NCERDC, 2006-2008, grades 3-5. Dependent variable is standardized by grade and year. All specifications include dummy variables for grade, year, gender, race, and free/reduced price lunch status. Bootstrapped standard errors are reported in parenthesis. Significance levels: *** denotes 1%; ** denotes 5%; * denotes 10%. Notice that this specification only uses data from years 2006-2008, therefore there is less variability in the number of school days over time, explaining the lack of significance in “days of class.”

Table 16: IV: First Stage

	Days Absent	
County ILI	0.0014*** (0.0002)	0.0015*** (0.0002)
Lagged Math Score	X	
Lagged Reading Score		X
N	308,333	308,333

Source: NCERDC, 2009-2010, grades 3-5. Include lagged test score, days of class, and dummy variables for grade, year, gender, race, and free/reduced price lunch status. Bootstrapped standard errors are reported in parenthesis. Significance levels: *** denotes 1%; ** denotes 5%; * denotes 10%.

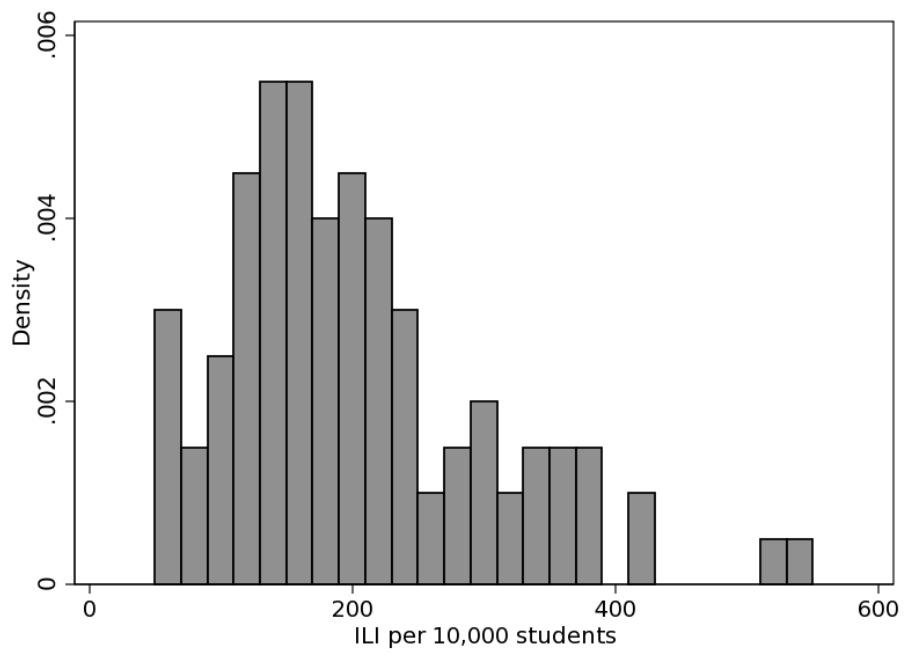


Figure 4: Distribution of County ILI per 10,000 Students, 2010

CENTRE FOR ECONOMIC PERFORMANCE
Recent Discussion Papers

1301	Gianmarco I.P. Ottaviano	European Integration and the Gains from Trade
1300	Antoine Dechezleprêtre Ralf Martin Myra Mohnen	Knowledge Spillovers from Clean and Dirty Technologies
1299	Stephen Machin Richard Murphy	Paying Out and Crowding Out? The Globalisation of Higher Education
1298	Iain Cockburn Jean O. Lanjouw Mark Schankerman	Patents and the Global Diffusion of New Drugs
1297	David W. Johnston Grace Lordan Michael A. Shields Agne Suziedelyte	Education and Health Knowledge: Evidence from UK Compulsory Schooling Reforms
1296	Fabio Pinna Stephan Seiler	Consumer Search: Evidence from Path-tracking Data
1295	Matt Dickson Paul Gregg Harriet Robinson	Early, Late or Never? When Does Parental Education Impact Child Outcomes?
1294	Colin Hottman Stephen J. Redding David E. Weinstein	What is 'Firm Heterogeneity' in Trade Models? The Role of Quality, Scope, Markups and Cost
1293	Warn N. Lekfuangfu Francesca Cornaglia Nattavudh Powdthavee Nele Warrinnier	Locus of Control and Its Intergenerational Implications for Early Childhood Skill Formation
1292	Gianmarco Ottaviano	Immigration, Diversity and the Labour Market Outcomes of Native Workers: Some Recent Developments
1291	John Morrow	Benford's Law, Families of Distributions and a Test Basis

1290	Andreas Georgiadis Alan Manning	The Volatility of Earnings: Evidence from High-Frequency Firm-Level Data
1289	Francesco Caselli	The Latin American Efficiency Gap
1288	Thomas Sampson	Dynamic Selection: An Idea Flows Theory of Entry, Trade and Growth
1287	Fabrice Defever Alejandro Riaño	Gone for Good? Subsidies with Export Share Requirements in China: 2002-2013
1286	Paul Dolan Matteo M. Galizzi	Because I'm Worth It: A Lab-Field Experiment on the Spillover Effects of Incentives in Health
1285	Swati Dhingra	Reconciling Observed Tariffs and the Median Voter Model
1284	Brian Bell Anna Bindler Stephen Machin	Crime Scars: Recessions and the Making of Career Criminals
1283	Alex Bryson Arnaud Chevalier	What Happens When Employers are Free to Discriminate? Evidence from the English Barclays Premier Fantasy Football League
1282	Christos Genakos Tommaso Valletti	Evaluating a Decade of Mobile Termination Rate Regulation
1281	Hannes Schwandt	Wealth Shocks and Health Outcomes: Evidence from Stock Market Fluctuations
1280	Stephan E. Maurer Andrei V. Potlogea	Fueling the Gender Gap? Oil and Women's Labor and Marriage Market Outcomes

The Centre for Economic Performance Publications Unit
Tel 020 7955 7673 Fax 020 7404 0612
Email info@cep.lse.ac.uk Web site <http://cep.lse.ac.uk>