

Reports

2008

Chesapeake Bay Multispecies Monitoring and Assessment Program (ChesMMAP) Prey Species 2002-2008

Chesapeake Bay Multispecies Monitoring and Assessment Program

Follow this and additional works at: <https://scholarworks.wm.edu/reports>



Part of the [Aquaculture and Fisheries Commons](#)

Recommended Citation

Chesapeake Bay Multispecies Monitoring and Assessment Program. (2008) Chesapeake Bay Multispecies Monitoring and Assessment Program (ChesMMAP) Prey Species 2002-2008. Virginia Institute of Marine Science, William & Mary. <https://doi.org/10.25773/p9mx-wx77>

This Report is brought to you for free and open access by W&M ScholarWorks. It has been accepted for inclusion in Reports by an authorized administrator of W&M ScholarWorks. For more information, please contact scholarworks@wm.edu.

ChesMMAP

Chesapeake Bay
Multispecies Monitoring and Assessment Program

Prey Species 2002-2008



TABLE OF CONTENTS

Species Code	Common Name	Latin Name	Page number
0001	scup	<i>Stenotomus chrysops</i>	3
0002	black seabass	<i>Centropristis striata</i>	5
0003	summer flounder	<i>Paralichthys dentatus</i>	7
0004	butterfish	<i>Peprilus triacanthus</i>	10
0005	Atlantic croaker	<i>Micropogonias undulatus</i>	11
0007	weakfish	<i>Cynoscion regalis</i>	14
0009	bluefish	<i>Pomatomus saltatrix</i>	17
0011	harvestfish	<i>Peprilus alepidotus</i>	19
0013	kingfish (Menticirrhus spp.)	<i>Menticirrhus spp.</i>	20
0015	red hake	<i>Urophycis chuss</i>	22
0026	alewife	<i>Alosa pseudoharengus</i>	23
0027	blueback herring	<i>Alosa aestivalis</i>	24
0028	hickory shad	<i>Alosa mediocris</i>	25
0030	American shad	<i>Alosa sapidissima</i>	26
0031	striped bass	<i>Morone saxatilis</i>	27
0032	white perch	<i>Morone americana</i>	30
0033	spot	<i>Leiostomus xanthurus</i>	32
0034	black drum	<i>Pogonius cromis</i>	34
0035	red drum	<i>Sciaenops ocellatus</i>	36
0036	cobia	<i>Rachycentron canadum</i>	37
0038	Atlantic thread herring	<i>Opisthonema oglinum</i>	37
0039	white catfish	<i>Ictalurus catus</i>	38
0040	channel catfish	<i>Ictalurus punctatus</i>	39
0042	Spanish mackerel	<i>Scomberomorus maculatus</i>	40
0044	winter flounder	<i>Pseudopleuronectes americanus</i>	40
0050	northern puffer	<i>Sphoeroides maculatus</i>	41
0054	sheepshead	<i>Archosargus probatocephalus</i>	43
0055	tautog	<i>Tautoga onitis</i>	45
0058	spotted seatrout	<i>Cynoscion nebulosus</i>	47
0059	pigfish	<i>Orthopristis chrysoptera</i>	48
0061	Florida pompano	<i>Trachinotus carolinus</i>	49
0063	windowpane	<i>Scophthalmus aquosus</i>	50
0064	Atlantic spadefish	<i>Chaetodipterus faber</i>	51
0070	spotted hake	<i>Urophycis regia</i>	53
0071	northern searobin	<i>Prionotus carolinus</i>	55
0072	striped searobin	<i>Prionotus evolans</i>	57
0116	brown bullhead	<i>Ameiurus nebulosus</i>	59
0142	yellow perch	<i>Perca flavescens</i>	60
0151	hogchoker	<i>Trinectes maculatus</i>	61
0152	blackcheek tonguefish	<i>Symphurus plagiusa</i>	62
0153	skiltefish	<i>Gobiesox strumosus</i>	62
0154	oyster toadfish	<i>Opsanus tau</i>	63
0162	sandbar shark	<i>Carcharhinus plumbeus</i>	65
0163	smooth dogfish	<i>Mustelus canis</i>	66
0167	spiny dogfish	<i>Squalus acanthias</i>	68
0168	Atlantic angel shark	<i>Squatina dumerili</i>	70
0170	clearnose skate	<i>Raja eglanteria</i>	71
0171	little skate	<i>Raja erinacea</i>	73
0173	winter skate	<i>Raja ocellata</i>	74
0174	southern stingray	<i>Dasyatis americana</i>	75
0175	rougthead stingray	<i>Dasyatis centroura</i>	77
0176	Atlantic stingray	<i>Dasyatis sabina</i>	78
0177	bluntnose stingray	<i>Dasyatis sayi</i>	79
0179	spiny butterfly ray	<i>Gymnura altavela</i>	81
0180	smooth butterfly ray	<i>Gymnura micrura</i>	82
0185	cownose ray	<i>Rhinoptera bonasus</i>	83
0186	bullnose ray	<i>Myliobatis freminvillei</i>	85
0189	inshore lizardfish	<i>Synodus foetens</i>	86
0203	blue runner	<i>Caranx crysos</i>	87
0204	crevalle jack	<i>Caranx hippos</i>	87
0207	lookdown	<i>Selene vomer</i>	88
0211	Atlantic moonfish	<i>Selene setapinnis</i>	89
0213	silver perch	<i>Bairdiella chrysoura</i>	90
0214	banded drum	<i>Larimus fasciatus</i>	91
0216	pinfish	<i>Lagodon rhomboides</i>	92
0219	Atlantic cutlassfish	<i>Trichiurus lepturus</i>	93
0225	northern stargazer	<i>Astroscopus guttatus</i>	94
0236	smallmouth flounder	<i>Etropus microstomus</i>	95
0241	striped burrfish	<i>Chilomycterus schoepfi</i>	96

Stenotomus chrysops

VIMSCODE: 0001

Common Name: Scup

Number Sampled (2002-2008): 2,009 Full or Partial Workup

Minimum Length: 65 mm

Maximum Length: 230 mm

Mean Length: 126 mm

Stomachs Processed (Full Workup Samples): 648

% Empty Stomachs: 15%

MOST FREQUENTLY FOUND PREY

Prey Species	COMMON	LATIN	COUNT	% FREQUENCY
0708	unidentified material	unidentified material	183	17
0574	unidentified mysid	Mysidae	130	12
0667	trumpet worm	<i>Pectinaria gouldi</i>	96	9
5032	animal tubes	animal tubes	65	6
0775	unidentified polychaete	Polychaeta	40	4
0510	clam worm (Nereis spp.)	<i>Nereis spp.</i>	38	4
0629	unidentified worm	worm	38	4
0673	unidentified crustacean	Crustacea	35	3
0658	skeleton shrimp (Caprellidae)	Caprellidae spp	31	3
0920	brittle star	<i>Amphioplus abdita</i>	30	3
0671	amphipod (Corophium spp.)	<i>Corophium spp.</i>	28	3
5006	vegetation	Plantae	17	2



Pectinaria gouldi



Nereis spp.



Caprella spp.



Amphioplus abdita



Corophium spp.

OTHER PREY FOUND

GROUP	Prey Species	COMMON	LATIN
Amphipods	0841	unidentified amphipod	Amphipoda spp.
	0738	red-eyed amphipod	Monoculodes edwardsi
	0507	common burrower amphipod	Leptocheirus plumulosus
	0636	four-eyed amphipods (Ampelisca spp.)	Ampelisca spp.
	1009	skeleton shrimp (Caprella spp.)	Caprella spp.
	0579	Erichthonius brasiliensis amphipod (Gammarus spp.)	Erichthonius brasiliensis
	0694	Gammarus spp.	Gammarus spp.
	0921	skeleton shrimp	Caprella penantis
	5021	slender tube builder	Corophium lacustre

Bivalves	5039	unidentified clam	Bivalvia
	0790	jackknife clams (razor clams)	Solenoida
	0498	unidentified bivalve	Bivalvia
	0709	unidentified mollusc meat	Mollusca
	0820	clam (Macoma spp.)	Macoma spp.
	0826	blood ark	Anadara ovalis
	5003	unidentified clam siphon	Bivalvia
	0832	mud clams	Laevicardium spp.
	5036	unidentified mollusc	Mollusca

Bony Fishes	5000	unidentified fish	Actinopterygii
	0103	bay anchovy	Anchoa mitchilli
	0529	fish scales	fish scales

Crabs	5012	crab parts	crab parts
	0758	unidentified right-hand hermit crab	Pagurus spp.
	5035	unidentified crab	Decapoda
	0594	unidentified mud crab	Panopeidae
	0973	unidentified crab zoea	Decapoda
	7582	flat-clawed hermit crab	Pagurus pollicaris
	0545	blue crab megalopa	Callinectes spp.
	0835	lesser blue crab	Callinectes similis
	0601	eastern tube crab	Polyonyx gibbesi
	0833	unidentified pea crab	Pinnixa spp.
	0864	Atlantic sand crab	Emerita talpoida

GROUP	Prey Species	COMMON	LATIN
Isopods	0918	isopods (Edotia)	Edotia spp.
	0657	unidentified isopod	Isopoda spp.
	0513	slender isopod	Cyathura polita
	0559	isopod (Sphaeroma quadridentatum)	Sphaeroma quadridentatum
	0925	Erichsonella attenuata	Erichsonella attenuata
	1031	isopods (Asellidae)	Asellidae

Miscellaneous	0705	shell	shell
	5037	sand	sand
	0892	worm tubes	worm tubes

Mysids	0699	mysid	Neomysis americana
--------	------	-------	--------------------

Other Animals	0703	unidentified hydroid	Cnidaria
	0824	sea squirts (Molgula spp.)	Molgula spp.
	0755	unidentified brittle stars	Ophiuroidea
	0495	lancelets	Branchiostoma spp.
	5007	sea squirt (Molgula manhattensis)	Molgula manhattensis
	0689	bryozoans	Ectoprocta
	0643	sea anemones	Actiniaria
	1047	unidentified corals or anemones	Anthozoa
	0518	calanoid copepod	calanoid copepod
	0621	mantis shrimp	Squilla empusa
	0674	unidentified cumacean	Cumacea
	1089	burrow worm	Echiura

Polychaetes	0697	unidentified bloodworm	Glycera spp.
	0798	polychaete (Terebellidae)	Terebellidae

Shrimp	0604	sand shrimp	Crangon septempinosus
	5001	unidentified shrimp	Decapoda
	5011	unidentified shrimp zoea	Decapoda

Snails	0884	unidentified drill or snail	Gastropoda
	5028	barrel bubble	Acteocina canaliculata
	0800	moon snail	Polinices heros
	0881	slippersnails	Crepidula spp.

Centropristis striata

VIMSCODE: 0002

Common Name: Black Seabass

Number Sampled (2002-2008): 206 Full or Partial Workup

Minimum Length: 48 mm

Maximum Length: 270 mm

Mean Length: 163 mm

Stomachs Processed (Full Workup Samples): 177

% Empty Stomachs: 10%

MOST FREQUENTLY FOUND PREY

Prey Species	COMMON	LATIN	COUNT	% FREQUENCY
0574	unidentified mysid	Mysidae	48	10
0594	unidentified mud crab	Panopeidae	36	8
0699	mysid	<i>Neomysis americana</i>	28	6
0708	unidentified material	unidentified material	25	5
0601	eastern tube crab	<i>Polyonyx gibbesi</i>	24	5
0604	sand shrimp	<i>Crangon septemspinosa</i>	16	3
5018	pea crab (<i>Pinnixa retinens</i>)	<i>Pinnixa retinens</i>	15	3
0103	bay anchovy	<i>Anchoa mitchilli</i>	14	3
5000	unidentified fish	Actinopterygii	12	3
0673	unidentified crustacean	Crustacea	11	2
0694	amphipod (<i>Gammarus</i> spp.)	<i>Gammarus</i> spp.	11	2
5006	vegetation	Plantae	11	2
5943	estuarine mud crab	<i>Rhithropanopeus harrisi</i>	11	2
0841	unidentified amphipod	Amphipoda spp.	9	2
0579	<i>Erichthonius brasiliensis</i>	<i>Erichthonius brasiliensis</i>	8	2



Neomysis americana



Crangon septemspinosa



Anchoa mitchilli



Gammarus spp.



Rhithropanopeus harrisi



Erichthonius brasiliensis

GROUP	Prey Species	COMMON	LATIN
Amphipods	0671	amphipod (Corophium spp.)	Corophium spp.
	0658	skeleton shrimp (Caprellidae)	Caprellidae spp
	5020	mound back isopod	Edotia triloba
	0507	common burrower amphipod	Leptocheirus plumulosus
	0738	red-eyed amphipod	Monoculodes edwardsi
	0543	amphipod (Jassa falcata)	Jassa falcata
	0921	skeleton shrimp	Caprella penantis
	5021	slender tube builder	Corophium lacustre
	Bivalves	0498	unidentified bivalve
0709		unidentified mollusc meat	Mollusca
0826		blood ark	Anadara ovalis
0842		bent mussel	Ischadium recurvum
0886		transverse ark	Anadara transversa
1053		unidentified mussel	Mytilidae
5039		unidentified clam	Bivalvia
Bony Fishes	0281	unidentified gobies	Gobiidae
	0156	unidentified pipefishes	Syngnathus spp.
	0529	fish scales	fish scales
	0129	lined seahorse	Hippocampus erectus
	0005	Atlantic croaker	Micropogonias undulatus
	0013	kingfish (Menticirrhus spp.)	Menticirrhus spp.
	0070	spotted hake	Urophycis regia
	0153	skilletfish	Gobiesox strumosus
Cephalopods	0017	Loligo squid	Loligo spp.
	0725	Atlantic brief squid	Lolliguncula brevis
Crabs	5012	crab parts	crab parts
	0614	blue crab, sex unknown	Callinectes sapidus
	5035	unidentified crab	Decapoda
	0758	unidentified right-hand hermit crab	Pagurus spp.
	5942	Atlantic mud crab	Panopeus herbstii
	6141	blue crab, male	Callinectes sapidus, male
	0656	Atlantic rock crab	Cancer irroratus
	5016	unidentified rock crab	Cancer spp.
	5026	unidentified spider crab	Libinia spp.
	5944	Say mud crab	Dyspanopeus sayi
	7581	long-clawed hermit crab	Pagurus longicarpus
	7582	flat-clawed hermit crab	Pagurus pollicaris
	0547	tube pea crab	Pinnixa chaetoptera
	0624	olivepit porcelain crab	Euceramus praelongus
	0833	unidentified pea crab	Pinnixa spp.
	0861	crabs - Callinectes spp.	Callinectes spp.
	6142	blue crab, juvenile female	Callinectes sapidus, juv fem

GROUP	Prey Species	COMMON	LATIN
Echinoderms	5014	burrowing brittle star	Microphipolis atra
	0755	unidentified brittle stars	Ophiuroidea
	0828	unidentified sea cucumbers	Holothuroidea
	0920	brittle star	Amphiplus abdita
Isopods	0657	unidentified isopod	Isopoda spp.
	0508	isopod	Ancinus depressus
	0912	isopod (Idotea spp.)	Idotea spp.
	0918	isopods (Edotia)	Edotia spp.
	0942	isopod (Cymothoa)	Cymothoa
	0981	isopod (Synidotea laevidorsalis)	Synidotea laevidorsalis
Miscellaneous	5032	animal tubes	animal tubes
	0892	worm tubes	worm tubes
	5033	unidentified meat	unidentified meat
	5030	corn	Zea spp.
Other Animals	0703	unidentified hydroid	Cnidaria
	0648	sessile tunicates	Asciacea
	5007	sea squirt (Molgula manhattensis)	Molgula manhattensis
	5028	barrel bubble	Acteocina canaliculata
	0621	mantis shrimp	Squilla empusa
	0824	sea squirts (Molgula spp.)	Molgula spp.
	0548	unidentified sponge	Porifera
	0825	bryozoans/dead man fingers	Alcyonium spp.
	0674	unidentified cumacean	Cumacea
	0884	unidentified drill or snail	Gastropoda
0629	unidentified worm	worm	
Polychaetes	0667	trumpet worm	Pectinaria gouldi
	0510	clam worm (Nereis spp.)	Nereis spp.
	0775	unidentified polychaete	Polychaeta
	0697	unidentified bloodworm	Glycera spp.
Shrimp	0620	grass shrimp	Palaemonetes spp.
	5001	unidentified shrimp	Decapoda
	0595	roughneck shrimp	Rimapenaeus constrictus
	0500	short-browed mud shrimp	Gilvossius setimanus

Paralichthys dentatus

VIMSCODE: 0003

Common Name: Summer Flounder

Number Sampled (2002-2008): 5,153 Full or Partial Workup

Minimum Length: 35 mm

Maximum Length: 750 mm

Mean Length: 328 mm

Stomachs Processed (Full Workup Samples): 2,697

% Empty Stomachs: 9%

MOST FREQUENTLY FOUND PREY

Prey Species	COMMON	LATIN	COUNT	% FREQUENCY
0103	bay anchovy	<i>Anchoa mitchilli</i>	930	18
0699	mysid	<i>Neomysis americana</i>	782	15
0604	sand shrimp	<i>Crangon septemspinosa</i>	649	13
0005	Atlantic croaker	<i>Micropogonias undulatus</i>	329	6
5000	unidentified fish	Actinopterygii	264	5
0007	weakfish	<i>Cynoscion regalis</i>	250	5
0574	unidentified mysid	Mysidae	213	4
0621	mantis shrimp	<i>Squilla empusa</i>	199	4
0033	spot	<i>Leiostomus xanthurus</i>	177	3
0708	unidentified material	unidentified material	104	2



Anchoa mitchilli



Neomysis americana



Crangon septemspinosa



Micropogonias undulatus



Cynoscion regalis



Squilla empusa



Leiostomus xanthurus

OTHER PREY FOUND

GROUP	Prey Species	COMMON	LATIN
Amphipods	0738	red-eyed amphipod	Monoculodes edwardsi
	0841	unidentified amphipod	Amphipoda spp.
	0636	four-eyed amphipods (Ampelisca spp.)	Ampelisca spp.
	0694	amphipod (Gammarus spp.)	Gammarus spp.
	0671	amphipod (Corophium spp.)	Corophium spp.
	0634	four-eyed amphipods (Ampelisca abdita)	Ampelisca abdita

Bivalves	5039	unidentified clam	Bivalvia
	5003	unidentified clam siphon	Bivalvia
	0790	jackknife clams (razor clams)	Solenioidea
	0802	blue mussel	Mytilus edulis
	0882	dwarf surf clam	Mulinia lateralis
	5013	amethyst gemclam	Gemma gemma
	0816	Atlantic jackknife clam	Ensis directus
	0498	unidentified bivalve	Bivalvia
	0536	two-groove odostome	Boonea bisuturalis
	0583	baltic macoma clam	Macoma balthica
	0762	Pelecypoda=Bivalvia (invalid, use 0498)	Pelecypoda
	0804	glassy lyonsia	Lyonsia hyalina
	0820	clam (Macoma spp.)	Macoma spp.
	0888	stout tagelus	Tagelus plebeius
	0984	grass cerith	Bittium varium

Bony Fishes	0070	spotted hake	Urophycis regia
	0213	silver perch	Bairdiella chrysoura
	0152	blackcheek tonguefish	Symphurus plagiusa
	0281	unidentified gobies	Gobiidae
	0102	striped anchovy	Anchoa hepsetus
	0037	Atlantic menhaden	Brevoortia tyrannus
	0056	northern kingfish	Menticirrhus saxatilis
	0529	fish scales	fish scales
	0053	codlings	Urophycis spp.
	0139	green goby	Microgobius thalassinus
	0013	kingfish (Menticirrhus spp.)	Menticirrhus spp.
	0001	scup	Stenotomus chrysops
	0023	searobins (Prionotus spp.)	Prionotus spp.
	0071	northern searobin	Prionotus carolinus
	0004	butterfish	Peprilus triacanthus
	0011	harvestfish	Peprilus alepidotus
	1092	larval fish	Actinopterygii (larval)
	0009	bluefish	Pomatomus saltatrix
	0057	southern kingfish	Menticirrhus americanus
	0003	summer flounder	Paralichthys dentatus
	0156	unidentified pipefishes	Syngnathus spp.
	0229	striped cusk-eel	Ophidion marginatum
	0399	common anchovies	Anchoa spp.
	0796	bony fishes	Teleostei
	0916	unidentified herring	Clupeidae
	5002	unidentified flatfish	Pleuronectiformes
	0059	pigfish	Orthopristis chrysoptera
	0064	Atlantic spadefish	Chaetodipterus faber
	0072	striped searobin	Prionotus evolans
	0131	northern pipefish	Syngnathus fuscus
	0189	inshore lizardfish	Synodus foetens
	0236	smallmouth flounder	Etropus microstomus
	0256	unidentified river herrings	Alosa spp.
	0285	spotfin mojarra	Eucinostomus argenteus
	0581	naked gobies	Gobiosoma spp.
	0963	unidentified croaker/drum	Sciaenidae
	1023	left-eye flounders (Etropus)	Etropus spp.

Cephalopods	0725	Atlantic brief squid	Lolliguncula brevis
	0017	Loligo squid	Loligo spp.

GROUP	Prey Species	COMMON	LATIN
Crabs	0601	eastern tube crab	Polyonyx gibbesi
	0612	lady crab	Ovalipes ocellatus
	0547	tube pea crab	Pinnixa chaetoptera
	5943	estuarine mud crab	Rhithropanopeus harrisi
	0594	unidentified mud crab	Panopeidae
	0833	unidentified pea crab	Pinnixa spp.
	0656	Atlantic rock crab	Cancer irroratus
	0614	blue crab, sex unknown	Callinectes sapidus
	5035	unidentified crab	Decapoda
	0758	unidentified right-hand hermit crab	Pagurus spp.
	6141	blue crab, male	Callinectes sapidus, male
	0545	blue crab megalopa	Callinectes spp.
	5018	pea crab (Pinnixa retinens)	Pinnixa retinens
	5023	pea crab (Pinnixa cylindrica)	Pinnixa cylindrica
	7581	long-clawed hermit crab	Pagurus longicarpus
	0861	crabs - Callinectes spp.	Callinectes spp.
	0552	smooth mud crab	Hexapanopeus angustifrons
	0600	jonah crab	Cancer borealis
	6142	blue crab, juvenile female	Callinectes sapidus, juv fem
	5012	crab parts	crab parts
0578	swimming crab (Portunus spp.)	Portunus spp.	
0605	common spider crab	Libinia emarginata	
0839	swimming crabs	Portunids	
5016	unidentified rock crab	Cancer spp.	
5026	unidentified spider crab	Libinia spp.	
7582	flat-clawed hermit crab	Pagurus pollicaris	

Echinoderms	0755	unidentified brittle stars	Ophiuroidea
	0840	purple sea urchin	Arbacia punctulata
	0920	brittle star	Amphioplus abdita
	5014	burrowing brittle star	Microphiopholis atra

Gastropods	5028	barrel bubble	Acteocina canaliculata
	0884	unidentified drill or snail	Gastropoda
	5015	interrupted turbonilla	Turbonilla interrupta
	0806	solitary bubble	Haminoea solitaria
	1021	snail (Turbonilla spp.)	Turbonilla spp.
	5027	dove snails (Anachis spp.)	Anachis spp.
	0538	eastern melampus	Melampus bidentatus
	0704	shark eye moon snail	Polinices duplicatus
	0800	moon snail	Polinices heros
	0818	periwinkles	Littorina spp.

Isopods	0683	isopod (Livoneca redmanii)	Livoneca redmanii
	0508	isopod	Ancinus depressus
	0657	unidentified isopod	Isopoda spp.
	0925	Erichsonella attenuata	Erichsonella attenuata
	1022	isopod (Nerocila acuminata)	Nerocila acuminata
	0929	isopod (Cymothoidae)	Cymothoidae

OTHER PREY FOUND (Continued)

GROUP	Prey Species	COMMON	LATIN
Miscellaneous	5006	vegetation	Plantae
	5032	animal tubes	animal tubes
	0705	shell	shell
	0504	wood	Plantae
	5005	detritus	detritus
	5004	gravel	gravel
	5031	rock	rock
	5037	sand	sand
	0892	worm tubes	worm tubes
	5033	unidentified meat	unidentified meat
	0585	mud	Miscellaneous
	0706	sand tubes	sand tubes
	0478	macro algae	macro algae
	0503	red algae	Rhodophyceae
Other Animals	0703	unidentified hydroid	Cnidaria
	0673	unidentified crustacean	Crustacea
	0740	mysid (Americamysis bigelowi)	Mysidopsis bigelowi
	0495	lancelets	Branchiostoma spp.
	0676	cumacean (Diastylidae)	Diastylidae
	0901	nematode	Nematoda
	5038	unidentified copepod (Copepoda)	Copepoda
	0648	sessile tunicates	Ascidacea
	0548	unidentified sponge	Porifera
	0629	unidentified worm	worm
0883	unidentified leech	Hirudinea	
Polychaetes	0510	clam worm (Nereis spp.)	Nereis spp.
	0775	unidentified polychaete	Polychaeta
	0669	polychaete (Clymenella zonalis)	Clymenella zonalis
	0926	polychaete (Chaetopterus variopedatus)	Chaetopterus variopedatus
Shrimp	5001	unidentified shrimp	Decapoda
	0595	roughneck shrimp	Rimapenaeus constrictus
	0623	shrimp (Acetes spp.)	Acetes spp.
	0620	grass shrimp	Palaemonetes spp.
	1003	common grass shrimp	Palaemonetes vulgaris
	0500	short-browed mud shrimp	Gilvossius setimanus
	0546	unidentified Lucifer shrimp	Lucifer spp.
	0577	night shrimp	Processa spp.
	0844	rock shrimp	Sicyonia brevirostris

Peprilus triacanthus

VIMSCODE: 0004

Common Name: Butterfish

Number Sampled (2002-2008): 4,231 Full or Partial Workup

Minimum Length: 32 mm

Maximum Length: 255 mm

Mean Length: 140 mm

Stomachs Processed (Full Workup Samples): 176

% Empty Stomachs: 48%

MOST FREQUENTLY FOUND PREY

Prey Species	COMMON	LATIN	COUNT	% FREQUENCY
0900	unidentified jellyfish	Cnidaria	73	39
0708	unidentified material	unidentified material	15	8
0005	Atlantic croaker	<i>Micropogonias undulatus</i>	9	5
0529	fish scales	fish scales	3	2
0775	unidentified polychaete	Polychaeta	1	1
0901	nematode	Nematoda	1	1



Micropogonias undulatus



Nematodes

Micropogonias undulatus

VIMSCODE: 0005

Common Name: Atlantic Croaker

Number Sampled (2002-2008): 47,511 Full or Partial Workup

Minimum Length: 14 mm

Maximum Length: 499 mm

Mean Length: 246 mm

Stomachs Processed (Full Workup Samples): 4,904

% Empty Stomachs: 3%

MOST FREQUENTLY FOUND PREY

Prey Species	COMMON	LATIN	COUNT	% FREQUENCY
0775	unidentified polychaete	Polychaeta	497	11
0708	unidentified material	unidentified material	429	10
0697	unidentified bloodworm	<i>Glycera spp.</i>	234	5
0699	mysid	<i>Neomysis americana</i>	232	5
0510	clam worm (Nereis spp.)	<i>Nereis spp.</i>	211	5
5006	vegetation	Plantae	197	4
0667	trumpet worm	<i>Pectinaria gouldi</i>	141	3
0798	polychaete (Terebellidae)	Terebellidae	137	3
5039	unidentified clam	Bivalvia	113	3
0820	clam (Macoma spp.)	<i>Macoma spp.</i>	112	3
5037	sand	sand	108	2
0703	unidentified hydroid	Cnidaria	98	2
0920	brittle star	<i>Amphiplus abdita</i>	90	2
0824	sea squirts (Molgula spp.)	<i>Molgula spp.</i>	89	2
0574	unidentified mysid	Mysidae	77	2
0802	blue mussel	<i>Mytilus edulis</i>	71	2
5007	sea squirt (Molgula manhattensis)	<i>Molgula manhattensis</i>	71	2
0636	four-eyed amphipods	<i>Ampelisca spp.</i>	70	2



Glycera spp.



Neomysis americana



Nereis spp.



Pectinaria gouldi



Terebellidae



Macoma spp.



Amphiplus abdita



Ampelisca spp.

OTHER PREY FOUND

GROUP	Prey Species	COMMON	LATIN
Amphipods	0671	amphipod (Corophium spp.)	Corophium spp.
			Monoculodes
	0738	red-eyed amphipod	edwardsi
	0841	unidentified amphipod	Amphipoda spp.
	0694	amphipod (Gammarus spp.)	Gammarus spp.
			Leptocheirus
	0507	common burrower amphipod	plumulosus
	0921	skeleton shrimp	Caprella penantis
	5021	slender tube builder	Corophium lacustre
		skeleton shrimp (Caprella spp.)	Caprella spp.
		four-eyed amphipods (Ampelisca abdita)	Ampelisca abdita
	0543	amphipod (Jassa falcata)	Jassa falcata
	0658	skeleton shrimp (Caprellidae)	Caprellidae spp
		amphipod (Microprotopus raneyi)	Microprotopus raneyi
		amphipod (Corophium crassicornae)	Corophium crassicornae
			Gammarus mucronatus
	5019	spined back scud	Erichthonius brasiliensis
	0579	Erichthonius brasiliensis	brasiliensis
	amphipod (Listriella clymenellae)	Listriella clymenellae	
0919			
	amphipod (Ampithoe longimana)	Ampithoe longimana	
0922			
	amphipod (Parametopella cypris)	Parametopella cypris	
1011			

GROUP	Prey Species	COMMON	LATIN
Bivalves	0790	jackknife clams (razor clams)	Solenoidaea
	5003	unidentified clam siphon	Bivalvia
	0498	unidentified bivalve	Bivalvia
	0888	stout tagelus	Tagelus plebeius
	0816	Atlantic jackknife clam	Ensis directus
	0882	dwarf surf clam	Mulinia lateralis
	0709	unidentified mollusc meat	Mollusca
	0584	narrowed macoma clam	Macoma tenta
	0801	soft shell clam	Mya arenaria
	0836	clam (Yoldia spp.)	Yoldia spp.
	0583	baltic macoma clam	Macoma balthica
	0908	suborbicular kellyclam	Kellia suborbicularis
	0964	Mitchell's macoma	Macoma mitchelli
	0809	common jingle	Anomia simplex
	0823	ribbed mussel	Modiolus demissus
	0886	transverse ark	Anadara transversa
	0947	green jackknife clam	Solen viridis
	1038	variable coquina	Donax variabilis
	5013	amethyst gemclam	Gemma gemma
	5036	unidentified mollusc	Mollusca

GROUP	Prey Species	COMMON	LATIN
Bony Fishes	0103	bay anchovy	Anchoa mitchilli
	5000	unidentified fish	Actinopterygii
	0529	fish scales	fish scales
	0037	Atlantic menhaden	Brevoortia tyrannus
			Microgogonias
	0005	Atlantic croaker	undulatus
	0281	unidentified gobies	Gobiidae
	0145	seaboard goby	Gobiosoma ginsburgi
			Leiostomus xanthurus
	0033	spot	Haemulon
			bonariense
	0408	black grunt	bonariense
	5002	unidentified flatfish	Pleuronectiformes
	0007	weakfish	Cynoscion regalis
	0031	striped bass	Morone saxatilis
	0329	green sunfish	Lepomis cyanellus
	0581	naked gobies	Gobiosoma spp.
	0916	unidentified herring	Clupeidae

GROUP	Prey Species	COMMON	LATIN
Crabs	5012	crab parts	crab parts
	5035	unidentified crab	Decapoda
	0833	unidentified pea crab	Pinnixa spp.
			Pinnixa chaetoptera
	0547	tube pea crab	chaetoptera
	0594	unidentified mud crab	Panopeidae
	0601	eastern tube crab	Polyonyx gibbesi
	0656	Atlantic rock crab	Cancer irroratus
	7581	long-clawed hermit crab	Pagurus longicarpus
	0614	blue crab, sex unknown	Callinectes sapidus
	7582	flat-clawed hermit crab	Pagurus pollicaris
			Hexapanopeus angustifrons
			Euceramus praelongus
	0552	smooth mud crab	
0624	olivepit porcelain crab		
0757	hairy hermit crab	Pagurus arcuatus	
5018	pea crab (Pinnixa retinens)	Pinnixa retinens	
5026	unidentified spider crab	Libinia spp.	

GROUP	Prey Species	COMMON	LATIN
Echinoderms	0755	unidentified brittle stars	Ophiuroidea
	5014	burrowing brittle star	Microphiopholis atra
	0553	sea cucumber	Thyone briareus
	0652	brittle star (Axiognatus squamata)	Axiognatus squamata

GROUP	Prey Species	COMMON	LATIN
Gastropods	5028	barrel bubble	Acteocina canaliculata
	0884	unidentified drill or snail	Gastropoda
	0704	shark eye moon snail	Polinices duplicatus
	0506	mottled dog whelk	Nassarius vibex
	0800	moon snail	Polinices heros
	5015	interrupted turbonilla	Turbonilla interrupta

GROUP	Prey Species	COMMON	LATIN
Insects	0505	unidentified insect	Insecta
	0521	brine flies, shore flies	Ephydrid
	1014	mayflies	Ephemeroptera
	1017	deer flies, horseflies	Tabanidae
	0942	isopod (Cymothoa)	Cymothoa
	0526	isopod (Chiridotea spp.)	Chiridotea spp.
	0513	slender isopod	Cyathura polita
	0657	unidentified isopod	Isopoda spp.
		isopod (Sphaeroma quadridentatum)	Sphaeroma quadridentatum
	0559		
	0570	sand isopod	Chiridotea almyra
	0655	sea slater	Idotea balthica
	0929	isopod (Cymothoidae)	Cymothoidae

GROUP	Prey Species	COMMON	LATIN
Miscellaneous	0585	mud	Miscellaneous
	5032	animal tubes	animal tubes
	0705	shell	shell
	5005	detritus	detritus
	0892	worm tubes	worm tubes
	0504	wood	Plantae
	5031	rock	rock
	0995	unidentified animal	unidentified animal
	0994	no sample taken	no sample taken
	0478	macro algae	macro algae

OTHER PREY FOUND (Continued)

GROUP	Prey Species	COMMON	LATIN
Other Animals	0629	unidentified worm	worm
	0495	lancelets	Branchiostoma spp.
	1089	burrow worms	Echiura
	0989	Loosanoff's Haliclona	Haliclona loosanoffi
	0643	sea anemones	Actiniaria
	1024	hydroids (Diphasia spp.)	Diphasia spp.
	0572	unidentified nemertean	Nemertea
	0825	bryozoans/dead man fingers	Alcyonidium spp.
	0900	unidentified jellyfish	Cnidaria
	0648	sessile tunicates	Asciacea
	0548	unidentified sponge	Porifera
	0988	ambiguous bryozoan	Anguinella palmata
	0725	Atlantic brief squid	Lolliguncula brevis
Other Crustaceans	0621	mantis shrimp	Squilla empusa
	0674	unidentified cumacean	Cumacea
	0673	unidentified crustacean	Crustacea
	0808	sessile barnacles	Sessilia
	0518	calanoid copepod	calanoid copepod
	0556	ivory barnacle	Balanus eburneus
	0677	cumacean (Diastylis bispinosa)	Diastylis bispinosa
	1015	water fleas (Bosmina spp.)	Bosmina spp.
	1016	water fleas (Leptodora spp.)	Leptodora spp.
Polychaetes	5010	clam worm (Neanthes succinea)	Neanthes succinea
	0926	polychaete (Chaetopterus variopedatus)	Chaetopterus variopedatus
	0668	bamboo worm	Clymenella torquata
	0695	bloodworm (Glycera dibranchiata)	Glycera dibranchiata
	0682	polychaete (Drilonereis spp.)	Drilonereis spp.
	1036	polychaete (Asychis elongata)	Asychis elongata
	0638	worms (Ampharete arctica)	Ampharete arctica
	0640	spaghetti worm	Amphitrite ornata
	0669	polychaete (Clymenella zonalis)	Clymenella zonalis
	0692	hard tube worm	Filograna implexa
	0731	polychaete (Maldanidae)	Maldanidae
	0764	polychaete (Pherusa affinis)	Pherusa affinis
	0932	worm (Capitella spp.)	Capitella spp.
	1037	unidentified scale worm	Polynoidae
	1071	opal worm	Arabella iricolor
5008	sand builder worm	Sabellaria vulgaris	
Shrimp	0604	sand shrimp	Crangon septemspinosa
	0573	estuarine long-eyed shrimp	Ogyrides alphaerostris
	5001	unidentified shrimp	Decapoda
	0595	roughneck shrimp	Rimapenaeus constrictus
	0620	grass shrimp	Palaemonetes spp.
	0500	short-browed mud shrimp	Gilvossius setimanus
	1018	chameleon shrimp	Praunus flexuosus
	0590	flat-browed mud shrimp	Upogebia affinis
	0591	big-clawed snapping shrimp	Alpheus heterochaelis
	0623	shrimp (Acetes spp.)	Acetes spp.
	1034	rose shrimp	Parapenaeus politus
	1035	biform ghost shrimp	Biffarius biformis
	6220	unidentified penaeid shrimp	Penaeidae

Cynoscion regalis

VIMSCODE: 0007

Common Name: Weakfish

Number Sampled (2002-2008): 13,544 Full or Partial Workup

Minimum Length: 23 mm

Maximum Length: 616 mm

Mean Length: 223 mm

Stomachs Processed (Full Workup Samples): 4,413

% Empty Stomachs: 7%

MOST FREQUENTLY FOUND PREY

Prey Species	COMMON	LATIN	COUNT	% FREQUENCY
0103	bay anchovy	<i>Anchoa mitchilli</i>	2975	33
0699	mysid	<i>Neomysis americana</i>	1502	17
0604	sand shrimp	<i>Crangon septemspinosa</i>	970	11
5000	unidentified fish	Actinopterygii	795	9
0574	unidentified mysid	Mysidae	514	6
0708	unidentified material	unidentified material	352	4
0007	weakfish	<i>Cynoscion regalis</i>	179	2
0037	Atlantic menhaden	<i>Brevoortia tyrannus</i>	137	2
0005	Atlantic croaker	<i>Micropogonias undulatus</i>	104	1
0738	red-eyed amphipod	<i>Monoculodes edwardsi</i>	82	1
0545	blue crab megalopa	<i>Callinectes spp.</i>	71	1
0033	spot	<i>Leiostomus xanthurus</i>	64	1
0841	unidentified amphipod	Amphipoda spp.	64	1
0510	clam worm (Nereis spp.)	<i>Nereis spp.</i>	59	1
0621	mantis shrimp	<i>Squilla empusa</i>	53	1
5001	unidentified shrimp	Decapoda	53	1



Anchoa mitchilli



Neomysis americana



Crangon septemspinosa



Brevoortia tyrannus



Cynoscion regalis



Micropogonias undulatus



Monoculodes edwardsi



Leiostomus xanthurus



Nereis spp.



Squilla empusa

OTHER PREY FOUND

GROUP	Prey Species	COMMON	LATIN
Amphipods	0636	four-eyed amphipods (Ampelisca spp.)	Ampelisca spp.
	0671	amphipod (Corophium spp.)	Corophium spp.
	0535	amphipod (Cerapus tubularis)	Cerapus tubularis
	0507	common burrower amphipod	Leptocheirus plumulosus
	0694	amphipod (Gammarus spp.)	Gammarus spp.
	0534	amphipod (Microprotopus raneyi)	Microprotopus raneyi
	0579	Erichthonius brasiliensis	Erichthonius brasiliensis
	0630	skeleton shrimp (Aeginina longicornis)	Aeginina longicornis
	0658	skeleton shrimp (Caprellidae)	Caprellidae spp
	0721	amphipod (Hippomedon serratus)	Hippomedon serratus
	0919	amphipod (Listriella clymenellae)	Listriella clymenellae
	0921	skeleton shrimp	Caprella penantis
Bivalves	0790	jackknife clams (razor clams)	Solenioidea
	5039	unidentified clam	Bivalvia
	0816	Atlantic jackknife clam	Ensis directus
	0498	unidentified bivalve	Bivalvia
	0583	baltic macoma clam	Macoma balthica
	0802	blue mussel	Mytilus edulis
	0826	blood ark	Anadara ovalis
	0910	naked sea butterfly	Clione limacina
Bony Fishes	0102	striped anchovy	Anchoa hepsetus
	0399	common anchovies	Anchoa spp.
	0070	spotted hake	Urophycis regia
	0213	silver perch	Bairdiella chrysoura
	0529	fish scales	fish scales
	0796	bony fishes	Teleostei
	0013	kingfish (Menticirrhus spp.)	Menticirrhus spp.
	0023	searobins (Prionotus spp.)	Prionotus spp.
	0154	oyster toadfish	Opsanus tau
	0916	unidentified herring	Clupeidae
	0004	butterfish	Pepilius triacanthus
	0032	white perch	Morone americana
	0053	codlings	Urophycis spp.
	0057	southern kingfish	Menticirrhus americanus
	5002	unidentified flatfish	Pleuronectiformes
	0031	striped bass	Morone saxatilis
	0044	winter flounder	Pseudopleuronectes americanus
	0098	mimic shiner	Notropis volucellus
	0152	blackcheek tonguefish	Symphurus plagiusa
	0236	smallmouth flounder	Etropus microstomus
0963	unidentified croaker/drum	Sciaenidae	
Cephalopods	0725	Atlantic brief squid	Lolliguncula brevis
	0017	Loligo squid	Loligo spp.
	0661	unidentified cephalopoda	Cephalopoda

GROUP	Prey Species	COMMON	LATIN
Crabs	0601	eastern tube crab	Polyonyx gibbesi
	5035	unidentified crab	Decapoda
	6141	blue crab, male	Callinectes sapidus, male
	0614	blue crab, sex unknown	Callinectes sapidus
	0833	unidentified pea crab	Pinnixa spp.
	0839	swimming crabs	Portunids
	5012	crab parts	crab parts
	0875	sargassum swimming crab	Portunus sayi
	1054	crab megalopa	Decapoda (megalope)
	0861	crabs - Callinectes spp.	Callinectes spp.
	0594	unidentified mud crab	Panopeidae
	0608	blotched swimming crab	Portunus spinimanus
	0609	porcelain crab	Porcellana sigsbeiana
	0973	unidentified crab zoea	Decapoda
	5023	pea crab (Pinnixa cylindrica)	Pinnixa cylindrica
6142	blue crab, juvenile female	Callinectes sapidus, juv fem	
Gastropods	5028	barrel bubble	Acteocina canaliculata
	0704	shark eye moon snail	Polinices duplicatus
	0884	unidentified drill or snail	Gastropoda
	1021	snail (Turbonilla spp.)	Turbonilla spp.
	5025	lunar dove snail	Mitrella lunata
Isopods	0683	isopod (Livoneca redmanii)	Livoneca redmanii
	0929	isopod (Cymothoidae)	Cymothoidae
	0657	unidentified isopod	Isopoda spp.
	0918	isopods (Edotia)	Edotia spp.
	0925	Erichsonella attenuata	Erichsonella attenuata
	1025	isopod (Politolana concharum)	Politolana concharum
	0508	isopod	Ancinus depressus
	0559	isopod (Sphaeroma quadridentatum)	Sphaeroma quadridentatum
0982	Olcenira praegustator	Olcenira praegustator	
Miscellaneous	5006	vegetation	Plantae
	5032	animal tubes	animal tubes
	5005	detritus	detritus
	0705	shell	shell
	5031	rock	rock
	5029	eelgrass	Zostera marina
	5037	sand	sand
	0892	worm tubes	worm tubes
	0554	cigarette butt	Artificial
	0504	wood	Plantae
	0706	sand tubes	sand tubes
	5004	gravel	gravel
	0478	macro algae	macro algae
	Other Animals	0703	unidentified hydroid
0629		unidentified worm	worm
0495		lancelets	Branchiostoma spp.
0824		sea squirts (Molgula spp.)	Molgula spp.
0901		nematode	Nematoda
0603		horseshoe crab	Limulus polyphemus
0689		bryozoans	Ectoprocta
0571		wasps, bees, ants	Hymenoptera
0900		unidentified jellyfish	Cnidaria
0548		unidentified sponge	Porifera
0883	unidentified leech	Hirudinea	

OTHER PREY FOUND (Continued)

GROUP	Prey Species	COMMON	LATIN
Other Crustaceans	0518	calanoid copepod	calanoid copepod
	0673	unidentified crustacean	Crustacea
	5038	unidentified copepod (Copepoda)	Copepoda
	0740	mysid (<i>Americamysis bigelowi</i>)	<i>Mysidopsis bigelowi</i>
	0675	unidentified decapod (crabs, shrimp, lobsters)	Decapoda
	0674	unidentified cumacean	Cumacea
	0952	berg-salmon gill worm	<i>Lernaeenicus radiatus</i>
	0516	copepod (Labidocera)	Labidocera spp.
	0525	unidentified tanaid	Tanaidacea
	0541	copepod (Labidocera aestiva)	Labidocera aestiva
	0555	unidentified copepod	Copepoda
	0676	cumacean (<i>Diastylidae</i>)	Diastylidae
	0763	copepod (<i>Phaennidae</i>)	Phaennidae
	1019	copepod (<i>Lernaeenicus</i> spp.)	<i>Lernaeenicus</i> spp.
	1052	stomatopod larva	Stomatopoda (larva)
Polychaetes	5010	clam worm (<i>Neanthes succinea</i>)	<i>Neanthes succinea</i>
	0697	unidentified bloodworm	<i>Glycera</i> spp.
	0775	unidentified polychaete	Polychaeta
	0667	trumpet worm	<i>Pectinaria gouldi</i>
	0669	polychaete (<i>Clymenella zonalis</i>)	<i>Clymenella zonalis</i>
	0576	bloodworm	<i>Glycera americana</i>
	0926	polychaete (<i>Chaetopterus variopedatus</i>)	<i>Chaetopterus variopedatus</i>
Shrimp	0595	roughneck shrimp	<i>Rimapenaeus constrictus</i>
	1003	common grass shrimp	<i>Palaemonetes vulgaris</i>
	0596	pink shrimp	<i>Farfantepenaeus duorarum</i>
	0620	grass shrimp	<i>Palaemonetes</i> spp.
	5011	unidentified shrimp zoea	Decapoda
	0500	short-browed mud shrimp	<i>Gilvossius setimanus</i>
	0569	daggerblade grass shrimp	<i>Palaemonetes pugio</i>
	0573	estuarine long-eyed shrimp	<i>Ogyrides alphaerostris</i>
	0590	flat-browed mud shrimp	<i>Upogebia affinis</i>

Pomatomus saltatrix

VIMSCODE: 0009

Common Name: Bluefish

Number Sampled (2002-2008): 417 Full or Partial Workup

Minimum Length: 119 mm

Maximum Length: 537 mm

Mean Length: 247 mm

Stomachs Processed (Full Workup Samples): 244

% Empty Stomachs: 7%

MOST FREQUENTLY FOUND PREY

Prey Species	COMMON	LATIN	COUNT	% FREQUENCY
0103	bay anchovy	<i>Anchoa mitchilli</i>	382	66
5000	unidentified fish	Actinopterygii	44	8
0037	Atlantic menhaden	<i>Brevoortia tyrannus</i>	32	5
0007	weakfish	<i>Cynoscion regalis</i>	14	2
0213	silver perch	<i>Bairdiella chrysoura</i>	11	2
0604	sand shrimp	<i>Crangon septemspinosa</i>	11	2



Anchoa mitchilli



Brevoortia tyrannus



Cynoscion regalis



Bairdiella chrysoura



Crangon septemspinosa

OTHER PREY FOUND

GROUP	Prey Species	COMMON	LATIN
Bony Fishes	0033	spot	Leiostomus xanthurus
	0005	Atlantic croaker	Micropogonias undulatus
	0001	scup	Stenotomus chrysops
	0031	striped bass	Morone saxatilis
	0057	southern kingfish	Menticirrhus americanus
	0102	striped anchovy	Anchoa hepsetus
	0011	harvestfish	Peprilus alepidotus
	0070	spotted hake	Urophycis regia
	0004	butterfish	Peprilus triacanthus
	0013	kingfish (Menticirrhus spp.)	Menticirrhus spp.
	0050	northern puffer	Sphoeroides maculatus
	0056	northern kingfish	Menticirrhus saxatilis
	0148	rough silverside	Membras martinica
	0399	common anchovies	Anchoa spp.
	Cephalopods	0725	Atlantic brief squid
0017		Loligo squid	Loligo spp.
Crustaceans	0699	mysid	Neomysis americana
	0683	isopod (Livoneca redmanii)	Livoneca redmanii
	5035	unidentified crab	Decapoda
	0597	white shrimp	Litopenaeus setiferus
	0620	grass shrimp	Palaemonetes spp.
	5001	unidentified shrimp	Decapoda
Miscellaneous	0708	unidentified material	unidentified material
	5006	vegetation	Plantae
	0478	macro algae	macro algae
Other Animals	0697	unidentified bloodworm	Glycera spp.
	0738	red-eyed amphipod	Monoculodes edwardsi
	0884	unidentified drill or snail	Gastropoda

Peprilus alepidotus

VIMSCODE: 0011

Common Name: Harvestfish

Number Sampled (2002-2008): 3,489 Full or Partial Workup

Minimum Length: 26 mm

Maximum Length: 206 mm

Mean Length: 104 mm

Stomachs Processed (Full Workup Samples): 262

% Empty Stomachs: 53%

MOST FREQUENTLY FOUND PREY

Prey Species	COMMON	LATIN	COUNT	% FREQUENCY
0900	unidentified jellyfish	Cnidaria	89	33
0708	unidentified material	unidentified material	29	11
0699	mysid	<i>Neomysis americana</i>	4	1
0529	fish scales	fish scales	3	1
0629	unidentified worm	worm	2	1
0778	Priapulid worm	<i>Priapulid caudatus</i>	1	0
5000	unidentified fish	Actinopterygii	1	0



Menticirrhus spp.

VIMSCODE: 0013

Common Name: Kingfish

Number Sampled (2002-2008): 908 Full or Partial Workup

Minimum Length: 41 mm

Maximum Length: 383 mm

Mean Length: 239 mm

Stomachs Processed (Full Workup Samples): 189

% Empty Stomachs: 22%

MOST FREQUENTLY FOUND PREY

Prey Species	COMMON	LATIN	COUNT	% FREQUENCY
0604	sand shrimp	<i>Crangon septemspinosa</i>	212	19
0708	unidentified material	unidentified material	72	7
0621	mantis shrimp	<i>Squilla empusa</i>	56	5
0790	jackknife clams (razor clams)	Solenioidea	53	5
0699	mysid	<i>Neomysis americana</i>	35	3
5000	unidentified fish	Actinopterygii	35	3
0775	unidentified polychaete	Polychaeta	33	3
0574	unidentified mysid	Mysidae	29	3
0738	red-eyed amphipod	<i>Monoculodes edwardsi</i>	28	3
0612	lady crab	<i>Ovalipes ocellatus</i>	23	2
0697	unidentified bloodworm	<i>Glycera spp.</i>	21	2
5001	unidentified shrimp	Decapoda	20	2
5006	vegetation	Plantae	19	2
0595	roughneck shrimp	<i>Rimapenaeus constrictus</i>	17	2
0758	unidentified right-hand hermit crab	<i>Pagurus spp.</i>	17	2



Crangon septemspinosa



Squilla empusa



Neomysis americana



Monoculodes edwardsi



Ovalipes ocellatus



Glycera spp.



Rimapenaeus constrictus



Pagurus spp.

OTHER PREY FOUND

GROUP	Prey Species	COMMON	LATIN
Amphipods	0636	four-eyed amphipods (Ampelisca spp.)	Ampelisca spp.
	0841	unidentified amphipod	Amphipoda spp.
	0644	four-eyed amphipods (Aoridae)	Aoridae
	0812	gammarid amphipod (Rhepoxynius epistomus)	Rhepoxynius epistomus
	0543	amphipod (Jassa falcata)	Jassa falcata
	0671	amphipod (Corophium spp.)	Corophium spp.
	0694	amphipod (Gammarus spp.)	Gammarus spp.

Bivalves	0816	Atlantic jackknife clam	Ensis directus
	0498	unidentified bivalve	Bivalvia
	0888	stout tagelus	Tagelus plebeius
	0709	unidentified mollusc meat	Mollusca
	5039	unidentified clam	Bivalvia
	5003	unidentified clam siphon	Bivalvia
	0820	clam (Macoma spp.)	Macoma spp.
	0984	grass cerith	Bittium varium
	1020	tagelus clams	Tagelus spp.

Bony Fishes	0236	smallmouth flounder	Etropus microstomus
	0103	bay anchovy	Anchoa mitchilli
	0156	unidentified pipefishes	Syngnathus spp.
	0151	hogchoker	Trinectes maculatus
	0007	weakfish	Cynoscion regalis
	0529	fish scales	fish scales
	0023	searobins (Prionotus spp.)	Prionotus spp.
	0129	lined seahorse	Hippocampus erectus
	0005	Atlantic croaker	Micropogonias undulatus
	0281	unidentified gobies	Gobiidae
	1055	pipefishes and seahorse	Syngnathidae
	5002	unidentified flatfish	Pleuronectiformes

Crabs	7582	flat-clawed hermit crab	Pagurus pollicaris
	0624	olivepit porcelain crab	Euceramus praelongus
	5035	unidentified crab	Decapoda
	5012	crab parts	crab parts
	0594	unidentified mud crab	Panopeidae
	0601	eastern tube crab	Polyonyx gibbesi
	0547	tube pea crab	Pinnixa chaetoptera
	0625	square-eyed mole crab	Lepidopa websteri
	0656	Atlantic rock crab	Cancer irroratus
	0545	blue crab megalopa	Callinectes spp.
	0833	unidentified pea crab	Pinnixa spp.
	5018	pea crab (Pinnixa retinens)	Pinnixa retinens
	7581	long-clawed hermit crab	Pagurus longicarpus
	0552	smooth mud crab	Hexapanopeus angustifrons
	0578	swimming crab (Portunus spp.)	Portunus spp.
	6142	blue crab, juvenile female	Callinectes sapidus, juv fem
	0593	six spine spider crab	Libinia dubia
	0605	common spider crab	Libinia emarginata
	0614	blue crab, sex unknown	Callinectes sapidus
	5026	unidentified spider crab	Libinia spp.
	5943	estuarine mud crab	Rhithropanopeus harrisi
	5944	Say mud crab	Dyspanopeus sayi
	6141	blue crab, male	Callinectes sapidus, male

GROUP	Prey Species	COMMON	LATIN
Miscellaneous	0705	shell	shell
	5032	animal tubes	animal tubes
	5033	unidentified meat	unidentified meat
	5037	sand	sand
	0706	sand tubes	sand tubes
	0995	unidentified animal	unidentified animal
	0478	macro algae	macro algae
	0504	wood	Plantae

Other Animals	0495	lancelets	Branchiostoma spp.
	0629	unidentified worm	worm
	0572	unidentified nemertean	Nemertea
	0673	unidentified crustacean	Crustacea
	0703	unidentified hydroid	Cnidaria
	0575	sharp-headed nemertean	Zygeupolia rubens
	0884	unidentified drill or snail	Gastropoda
	0643	sea anemones	Actiniaria
	0800	moon snail	Polinices heros
	0674	unidentified cumacean	Cumacea
	0740	mysid (Americamysis bigelowi)	Mysidopsis bigelowi
	0795	tanaisidacean (Tanaissus lilljeborgi)	Tanaissus lilljeborgi
	0755	unidentified brittle stars	Ophiuroidea

Polychaetes	0667	trumpet worm	Pectinaria gouldi
	0510	clam worm (Nereis spp.)	Nereis spp.
	0576	bloodworm	Glycera americana

Shrimp	0620	grass shrimp	Palaemonetes spp.
	0597	white shrimp	Litopenaeus setiferus
	6220	unidentified penaeid shrimp	Penaeidae
	0573	estuarine long-eyed shrimp	Ogyrides alphaerostris
	0577	night shrimp	Processa spp.

Urophycis chuss

VIMSCODE: 0015

Common Name: Red Hake

Number Sampled (2002-2008): 10 Full or Partial Workup
Minimum Length: 94 mm
Maximum Length: 228 mm
Mean Length: 172 mm
Stomachs Processed (Full Workup Samples): 9
% Empty Stomachs: 11%

MOST FREQUENTLY FOUND PREY

Prey Species	COMMON	LATIN	COUNT	% FREQUENCY
0699	mysid	<i>Neomysis americana</i>	5	33
0574	unidentified mysid	Mysidae	2	13
0604	sand shrimp	<i>Crangon septemspinosa</i>	2	13
0579	<i>Erichthonius brasiliensis</i>	<i>Erichthonius brasiliensis</i>	1	7
0738	red-eyed amphipod	<i>Monoculodes edwardsi</i>	1	7
0790	jackknife clams (razor clams)	Solenioidea	1	7
1021	snail (<i>Turbonilla</i> spp.)	<i>Turbonilla</i> spp.	1	7
5001	unidentified shrimp	Decapoda	1	7



Neomysis americana



Crangon septemspinosa



Erichthonius brasiliensis



Monoculodes edwardsi



Turbonilla spp.

Alosa pseudoharengus

VIMSCODE: 0026

Common Name: Alewife

Number Sampled (2002-2008): 604 Full or Partial Workup

Minimum Length: 59 mm

Maximum Length: 292 mm

Mean Length: 186 mm

Stomachs Processed (Full Workup Samples): 385

% Empty Stomachs: 12%

MOST FREQUENTLY FOUND PREY

Prey Species	COMMON	LATIN	COUNT	% FREQUENCY
0518	calanoid copepod	calanoid copepod	147	32
0708	unidentified material	unidentified material	79	17
0574	unidentified mysid	Mysidae	47	10
0699	mysid	<i>Neomysis americana</i>	37	8
5006	vegetation	Plantae	16	4
0841	unidentified amphipod	<i>Amphipoda spp.</i>	12	3
0507	common burrower amphipod	<i>Leptocheirus plumulosus</i>	10	2
0673	unidentified crustacean	Crustacea	10	2



Calanoid copepod



Neomysis americana



Leptocheirus plumulosus

OTHER PREY FOUND

GROUP	Prey Species	COMMON	LATIN
Amphipods	0636	four-eyed amphipods (<i>Ampelisca spp.</i>)	<i>Ampelisca spp.</i>
	0694	amphipod (<i>Gammarus spp.</i>)	<i>Gammarus spp.</i>
	0671	amphipod (<i>Corophium spp.</i>)	<i>Corophium spp.</i>
	5020	mound back isopod	<i>Edotia triloba</i>
Bony Fishes	5000	unidentified fish	Actinopterygii
	0002	black seabass	<i>Centropristis striata</i>
	0529	fish scales	fish scales
Miscellaneous	0542	trash, plastic	plastic trash
	0504	wood	Plantae
	5032	animal tubes	animal tubes

GROUP	Prey Species	COMMON	LATIN
Other Animals	0571	wasps, bees, ants	Hymenoptera
	0703	unidentified hydroid	Cnidaria
	0657	unidentified isopod	Isopoda spp.
	0629	unidentified worm	worm
Polychaetes	0510	clam worm (<i>Nereis spp.</i>)	<i>Nereis spp.</i>
	0775	unidentified polychaete	Polychaeta
Shrimp	0604	sand shrimp	<i>Crangon septemspinosa</i>
	5001	unidentified shrimp	Decapoda
	5011	unidentified shrimp zoea	Decapoda
	0620	grass shrimp	<i>Palaemonetes spp.</i>

Alosa aestivalis

VIMSCODE: 0027

Common Name: Blueback Herring

Number Sampled (2002-2008): 132 Full or Partial Workup

Minimum Length: 22 mm

Maximum Length: 274 mm

Mean Length: 192 mm

Stomachs Processed (Full Workup Samples): 191

% Empty Stomachs: 10%

MOST FREQUENTLY FOUND PREY

Prey Species	COMMON	LATIN	COUNT	% FREQUENCY
0518	calanoid copepod	calanoid copepod	54	57
0708	unidentified material	unidentified material	14	15
0699	mysid	<i>Neomysis americana</i>	2	2
5006	vegetation	Plantae	2	2
0574	unidentified mysid	Mysidae	1	1
0673	unidentified crustacean	Crustacea	1	1
5020	mound back isopod	<i>Edotia triloba</i>	1	1



Calanoid copepod



Neomysis americana



Edotia triloba

Alosa mediocris

VIMSCODE: 0028

Common Name: Hickory Shad

Number Sampled (2002-2008): 40 Full or Partial Workup

Minimum Length: 73 mm

Maximum Length: 377 mm

Mean Length: 246 mm

Stomachs Processed (Full Workup Samples): 34

% Empty Stomachs: 18%

MOST FREQUENTLY FOUND PREY

Prey Species	COMMON	LATIN	COUNT	% FREQUENCY
0103	bay anchovy	<i>Anchoa mitchilli</i>	12	32
5000	unidentified fish	Actinopterygii	6	16
0504	wood	Plantae	2	5
0510	clam worm (Nereis spp.)	<i>Nereis spp.</i>	2	5
0574	unidentified mysid	Mysidae	2	5
0699	mysid	<i>Neomysis americana</i>	2	5
5006	vegetation	Plantae	2	5
0518	calanoid copepod	calanoid copepod	1	3
0683	isopod (<i>Livoneca redmanii</i>)	<i>Livoneca redmanii</i>	1	3
0697	unidentified bloodworm	<i>Glycera spp.</i>	1	3
0708	unidentified material	unidentified material	1	3



Anchoa mitchilli



Nereis spp.



Neomysis americana



Calanoid copepod



Glycera spp.

Alosa sapidissima

VIMSCODE: 0030

Common Name: American Shad

Number Sampled (2002-2008): 61 Full or Partial Workup

Minimum Length: 107 mm

Maximum Length: 493 mm

Mean Length: 188 mm

Stomachs Processed (Full Workup Samples): 47

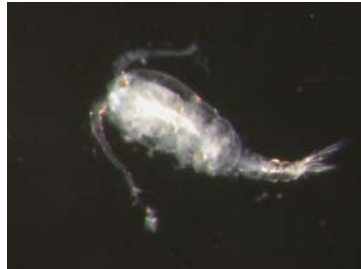
% Empty Stomachs: 6%

MOST FREQUENTLY FOUND PREY

Prey Species	COMMON	LATIN	COUNT	% FREQUENCY
0574	unidentified mysid	Mysidae	12	21
0708	unidentified material	unidentified material	11	19
0699	mysid	<i>Neomysis americana</i>	10	18
0518	calanoid copepod	calanoid copepod	8	14
5028	barrel bubble	<i>Acteocina canaliculata</i>	3	5
0604	sand shrimp	<i>Crangon septemspinosa</i>	2	4
0505	unidentified insect	Insecta	1	2
0510	clam worm (Nereis spp.)	<i>Nereis spp.</i>	1	2
0673	unidentified crustacean	Crustacea	1	2
0841	unidentified amphipod	Amphipoda spp.	1	2
0884	unidentified drill or snail	Gastropoda	1	2
5000	unidentified fish	Actinopterygii	1	2
5006	vegetation	Plantae	1	2
5039	unidentified clam	Bivalvia	1	2



Neomysis americana



Calanoid copepod



Acteocina canaliculata



Crangon septemspinosa



Nereis spp.

Morone saxatilis

VIMSCODE: 0031

Common Name: Striped Bass

Number Sampled (2002-2008): 6224 Full or Partial Workup

Minimum Length: 89 mm

Maximum Length: 1,051 mm

Mean Length: 344 mm

Stomachs Processed (Full Workup Samples): 2,674

% Empty Stomachs: 10%

MOST FREQUENTLY FOUND PREY

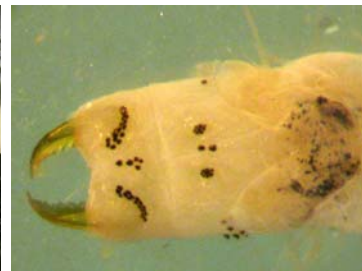
Prey Species	COMMON	LATIN	COUNT	% FREQUENCY
0103	bay anchovy	<i>Anchoa mitchilli</i>	2156	29
0699	mysid	<i>Neomysis americana</i>	474	6
5000	unidentified fish	Actinopterygii	364	5
0510	clam worm (Nereis spp.)	<i>Nereis spp.</i>	329	4
0775	unidentified polychaete	Polychaeta	314	4
0037	Atlantic menhaden	<i>Brevoortia tyrannus</i>	306	4
0604	sand shrimp	<i>Crangon septemspinosa</i>	291	4
0507	common burrower amphipod	<i>Leptocheirus plumulosus</i>	261	3
0708	unidentified material	unidentified material	210	3
0683	isopod (Livoneca redmanii)	<i>Livoneca redmanii</i>	160	2
0621	mantis shrimp	<i>Squilla empusa</i>	154	2
0738	red-eyed amphipod	<i>Monoculodes edwardsi</i>	140	2



Anchoa mitchilli



Neomysis americana



Nereis spp.



Brevoortia tyrannus



Crangon septemspinosa



Leptocheirus plumulosus



Squilla empusa



Monoculodes edwardsi

OTHER PREY FOUND

GROUP	Prey Species	COMMON	LATIN
Amphipods	0694	amphipod (Gammarus spp.)	Gammarus spp.
	0841	unidentified amphipod	Amphipoda spp.
	5019	spined back scud	Gammarus mucronatus
	5020	mound back isopod	Edotia triloba
	0636	four-eyed amphipods (Ampelisca spp.)	Ampelisca spp.
	0658	skeleton shrimp (Caprellidae)	Caprellidae spp
	0534	amphipod (Microprotopus raneyi)	Microprotopus raneyi
	0671	amphipod (Corophium spp.)	Corophium spp.
Bivalves	0820	clam (Macoma spp.)	Macoma spp.
	5039	unidentified clam	Bivalvia
	0882	dwarf surf clam	Mulinia lateralis
	5003	unidentified clam siphon	Bivalvia
	0709	unidentified mollusc meat	Mollusca
	0498	unidentified bivalve	Bivalvia
	0583	baltic macoma clam	Macoma balthica
	0801	soft shell clam	Mya arenaria
	5013	amethyst gemclam	Gemma gemma
	0790	jackknife clams (razor clams)	Solenioidea
	0802	blue mussel	Mytilus edulis
	0816	Atlantic jackknife clam	Ensis directus
	0842	bent mussel	Ischadium recurvum
	0888	stout tagelus	Tagelus plebeius
	0821	quahog clam	Mercenaria mercenaria
	0826	blood ark	Anadara ovalis
	5024	Atlantic ribbed mussel	Geukensia demissa
	5036	unidentified mollusc	Mollusca

GROUP	Prey Species	COMMON	LATIN	
Bony Fishes	0005	Atlantic croaker	Micropogonias undulatus	
	0070	spotted hake	Urophycis regia	
	0033	spot	Leiostomus xanthurus	
	0007	weakfish	Cynoscion regalis	
	0032	white perch	Morone americana	
	0529	fish scales	fish scales	
	0057	southern kingfish	Menticirrhus americanus	
	0152	blackcheek tonguefish	Symphurus plagiusa	
	0281	unidentified gobies	Gobiidae	
	0151	hogchoker	Trinectes maculatus	
	5002	unidentified flatfish	Pleuronectiformes	
	0023	searobins (Prionotus spp.)	Prionotus spp.	
	0071	northern searobin	Prionotus carolinus	
	0122	mummichog	Fundulus heteroclitus	
	0102	striped anchovy	Anchoa hepsetus	
	0213	silver perch	Bairdiella chrysoura	
	0150	Atlantic silverside	Menidia menidia	
	0399	common anchovies	Anchoa spp.	
	0026	alewife	Alosa pseudoharengus	
	0053	codlings	Urophycis spp.	
	0156	unidentified pipefishes	Syngnathus spp.	
	0256	unidentified river herrings	Alosa spp.	
	0236	smallmouth flounder	Etropus microstomus	
	0916	unidentified herring	Clupeidae	
	0004	butterfish	Pepilius triacanthus	
	0009	bluefish	Pomatomus saltatrix	
	0013	kingfish (Menticirrhus spp.)	Menticirrhus spp.	
	0056	northern kingfish	Menticirrhus saxatilis	
	0060	American eel	Anguilla rostrata	
	0027	blueback herring	Alosa aestivalis	
	0031	striped bass	Morone saxatilis	
	0051	gizzard shad	Dorosoma cepedianum	
	0148	rough silverside	Membras martinica	
	0154	oyster toadfish	Opsanus tau	
	0155	unidentified silversides	Menidia spp.	
	0001	scup	Stenotomus chrysops	
	0063	windowpane	Scophthalmus aquosus	
	0121	banded killifish	Fundulus diaphanus	
	0131	northern pipefish	Syngnathus fuscus	
	0144	naked goby	Gobiosoma bosci	
	0145	seaboard goby	Gobiosoma ginsburgi	
	0147	feather blenny	Hypsoblennius hentzi	
	Cephalopods	0017	Loligo squid	Loligo spp.
		0725	Atlantic brief squid	Lolliguncula brevis

OTHER PREY FOUND (Continued)

GROUP	Prey Species	COMMON	LATIN
Crabs	6141	blue crab, male	Callinectes sapidus, male
	0614	blue crab, sex unknown	Callinectes sapidus
	6142	blue crab, juvenile female	Callinectes sapidus, juv fem
	5012	crab parts	crab parts
	5035	unidentified crab	Decapoda
	0835	lesser blue crab	Callinectes similis
	0594	unidentified mud crab	Xanthidae
	0833	unidentified pea crab	Pinnixa spp.
	5942	Atlantic mud crab	Panopeus herbstii
	0578	swimming crab (Portunus spp.)	Portunus spp.
	5943	estuarine mud crab	Rhithropanopeus harrisi
	0656	Atlantic rock crab	Cancer irroratus
	0499	cryptic teardrop crab	Pelia mutica
	0552	smooth mud crab	Hexapanopeus angustifrons
	0758	unidentified right-hand hermit crab	Pagurus spp.
	0839	swimming crabs	Portunids
	0861	crabs - Callinectes spp.	Callinectes spp.
5026	unidentified spider crab	Libinia spp.	
5941	flatback mud crab	Eurypanopeus depressus	

Gastropods	5028	barrel bubble	Acteocina canaliculata
	0884	unidentified drill or snail	Gastropoda
	0506	mottled dog whelk	Nassarius vibex
	0800	moon snail	Polinices heros
	5015	interrupted turbonilla	Turbonilla interrupta
	5027	dove snails (Anachis spp.)	Anachis spp.
	0704	shark eye moon snail	Polinices duplicatus
	0806	solitary bubble	Haminoea solitaria
	0838	Atlantic oyster drill	Urosalpinx cinerea
	1021	snail (Turbonilla spp.)	Turbonilla spp.
	5025	lunar dove snail	Mitrella lunata

Isopods	0929	isopod (Cymothoidae)	Cymothoidae
	0582	Chiridotea coeca	Chiridotea coeca
	0918	isopods (Edotia)	Edotia spp.
	0570	sand isopod	Chiridotea almyra
	0925	Erichsonella attenuata	Erichsonella attenuata
	0657	unidentified isopod	Isopoda spp.
	0513	slender isopod	Cyathura polita
	0508	isopod	Ancinus depressus
	0655	sea slater	Idotea balthica
	0942	isopod (Cymothoa)	Cymothoa
	0959	lazy fish lice	Argulus spp.

Other Crustaceans	0574	unidentified mysid	Mysidae
	0673	unidentified crustacean	Crustacea
	0674	unidentified cumacean	Cumacea
	0740	mysid (Americamysis bigelowi)	Mysidopsis bigelowi
	0518	calanoid copepod	calanoid copepod
	0537	duck barnacle	Lepas anatifera
	0539	cumacean (Oxyurostylis smithi)	Oxyurostylis smithi
	5038	unidentified copepod (Copepoda)	Copepoda
	0676	cumacean (Diastylidae)	Diastylidae
0808	sessile barnacles	Sessilia	

GROUP	Prey Species	COMMON	LATIN
Miscellaneous	5006	vegetation	Plantae
	0705	shell	shell
	5005	detritus	detritus
	5032	animal tubes	animal tubes
	5031	rock	rock
	0892	worm tubes	worm tubes
	1002	unidentified seagrasses	Zostera/Ruppia spp.
	0504	wood	Plantae
	0585	mud	Miscellaneous
	5033	unidentified meat	unidentified meat
	0706	sand tubes	sand tubes
	5004	gravel	gravel
	5029	eelgrass	Zostera marina
	0542	trash, plastic	plastic trash
	1046	feather	Aves
	5037	sand	sand
	0957	plant seed	plant seed
	0895	trash	trash
	0930	fishing lure	fishing lure
	0503	red algae	Rhodophyceae
0580	leaf	Plantae	
5030	corn	Zea spp.	

Other Animals	0495	lancelets	Branchiostoma spp.
	0703	unidentified hydroid	Cnidaria
	0629	unidentified worm	worm
	1089	burrow worms	Echiura
	0824	sea squirts (Molgula spp.)	Molgula spp.
	0643	sea anemones	Actiniaria
	0883	unidentified leech	Hirudinea
	0548	unidentified sponge	Porifera
	0755	unidentified brittle stars	Ophiuroidea
	0505	unidentified insect	Insecta
	0648	sessile tunicates	Ascidiacea
	0572	unidentified nemertean	Nemertea

Polychaetes	0697	unidentified bloodworm	Glycera spp.
	5010	clam worm (Neanthes succinea)	Neanthes succinea
	0667	trumpet worm	Pectinaria gouldi
	0798	polychaete (Terebellidae)	Terebellidae
	1045	polychaete (Phyllodocidae)	Phyllodocidae
	0926	polychaete (Chaetopterus variopedatus)	Chaetopterus variopedatus
	0576	bloodworm	Glycera americana
	0645	sea mouse	Aphrodita hastata
	0750	polychaete (Nicolea spp.)	Nicolea spp.
	0760	paddle worm	Paranaitis speciosa

Shrimp	0590	flat-browed mud shrimp	Upogebia affinis
	5001	unidentified shrimp	Decapoda
	0620	grass shrimp	Palaemonetes spp.
	0595	roughneck shrimp	Rimapanaeus constrictus
	0569	daggerblade grass shrimp	Palaemonetes pugio
	0622	brown shrimp	Farfantepenaeus aztecus
	0933	unidentified ghost shrimps	Callinassidae

Morone americana

VIMSCODE: 0032

Common Name: White Perch

Number Sampled (2002-2008): 30,268 Full or Partial Workup

Minimum Length: 29 mm

Maximum Length: 387 mm

Mean Length: 187 mm

Stomachs Processed (Full Workup Samples): 1,988

% Empty Stomachs: 18%

MOST FREQUENTLY FOUND PREY

Prey Species	COMMON	LATIN	COUNT	% FREQUENCY
0507	common burrower amphipod	<i>Leptocheirus plumulosus</i>	493	17
0510	clam worm (Nereis spp.)	<i>Nereis spp.</i>	377	13
0708	unidentified material	unidentified material	322	11
0594	unidentified mud crab	Panopeidae	133	4
0820	clam (Macoma spp.)	<i>Macoma spp.</i>	116	4
0518	calanoid copepod	calanoid copepod	93	3
0574	unidentified mysid	Mysidae	88	3
0699	mysid	<i>Neomysis americana</i>	84	3
0775	unidentified polychaete	Polychaeta	84	3
0513	slender isopod	<i>Cyathura polita</i>	75	3
0656	Atlantic rock crab	<i>Cancer irroratus</i>	70	2
0705	shell	shell	53	2
0103	bay anchovy	<i>Anchoa mitchilli</i>	49	2
0738	red-eyed amphipod	<i>Monoculodes edwardsi</i>	45	2
0841	unidentified amphipod	Amphipoda spp.	45	2



Leptocheirus plumulosus



Nereis spp.



Macoma spp.



Calanoid copepod



Neomysis americana



Cyathura polita



Cancer irroratus



Anchoa mitchilli



Monoculodes edwardsi

OTHER PREY FOUND

GROUP	Prey Species	COMMON	LATIN
Amphipods	0694	amphipod (<i>Gammarus</i> spp.)	<i>Gammarus</i> spp.
	0671	amphipod (<i>Corophium</i> spp.)	<i>Corophium</i> spp.
	0658	skeleton shrimp (Caprellidae)	Caprellidae spp
	0579	<i>Erichthonius brasiliensis</i>	<i>Erichthonius brasiliensis</i>
	0543	amphipod (<i>Jassa falcata</i>)	<i>Jassa falcata</i>
	0636	four-eyed amphipods (<i>Ampelisca</i> spp.)	<i>Ampelisca</i> spp.
	0670	amphipod (<i>Corophium crassicorne</i>)	<i>Corophium crassicorne</i>
	5019	spined back scud	<i>Gammarus mucronatus</i>
	5020	mound back isopod	<i>Edotia triloba</i>

Bivalves	5039	unidentified clam	<i>Bivalvia</i>
	0498	unidentified bivalve	<i>Bivalvia</i>
	0790	jackknife clams (razor clams)	Solenioidea
	0709	unidentified mollusc meat	Mollusca
	5003	unidentified clam siphon	<i>Bivalvia</i>
	0823	ribbed mussel	<i>Modiolus demissus</i>
	1053	unidentified mussel	Mytilidae
	0802	blue mussel	<i>Mytilus edulis</i>
	0819	oyster, common	<i>Crassostrea virginica</i>
	0826	blood ark	<i>Anadara ovalis</i>
	0842	bent mussel	<i>Ischadium recurvum</i>
	5013	amethyst gemclam	<i>Gemma gemma</i>
	5017	Carolina marshclam	<i>Polymesoda caroliniana</i>
	5036	unidentified mollusc	Mollusca

Bony Fishes	5000	unidentified fish	Actinopterygii
	0529	fish scales	fish scales
	0281	unidentified gobies	Gobiidae
	0032	white perch	<i>Morone americana</i>
	0005	Atlantic croaker	<i>Micropogonias undulatus</i>
	0144	naked goby	<i>Gobiosoma boscii</i>
	0027	blueback herring	<i>Alosa aestivalis</i>
	0037	Atlantic menhaden	<i>Brevoortia tyrannus</i>
	0004	butterfish	<i>Peprilus triacanthus</i>
	0146	striped blenny	<i>Chasmodes bosquianus</i>
	0213	silver perch	<i>Bairdiella chrysoura</i>
	0916	unidentified herring	Clupeidae

Crabs	5035	unidentified crab	Decapoda
	6141	blue crab, male	<i>Callinectes sapidus</i> , male
	5012	crab parts	crab parts
	5943	estuarine mud crab	<i>Rhithropanopeus harrisi</i>
	6142	blue crab, juvenile female	<i>Callinectes sapidus</i> , juv fem
	0614	blue crab, sex unknown	<i>Callinectes sapidus</i>
	0578	swimming crab (<i>Portunus</i> spp.)	<i>Portunus</i> spp.
	0606	swimming crab (<i>Bathynectes superba</i>)	<i>Bathynectes superba</i>
	0626	green crab	<i>Carcinus maenas</i>
	0839	swimming crabs	Portunids
	0861	crabs - <i>Callinectes</i> spp.	<i>Callinectes</i> spp.
	5016	unidentified rock crab	<i>Cancer</i> spp.

GROUP	Prey Species	COMMON	LATIN
Isopods	0918	isopods (<i>Edotia</i>)	<i>Edotia</i> spp.
	0570	sand isopod	<i>Chiridotea almyra</i>
	0526	isopod (<i>Chiridotea</i> spp.)	<i>Chiridotea</i> spp.
	0657	unidentified isopod	Isopoda spp.
	0683	isopod (<i>Livoneca redmanii</i>)	<i>Livoneca redmanii</i>
	0684	isopod (<i>Edotia acuta</i>)	<i>Edotia acuta</i>

Miscellaneous	5006	vegetation	Plantae
	5037	sand	sand
	0585	mud	Miscellaneous
	5031	rock	rock
	5005	detritus	detritus
	5032	animal tubes	animal tubes
	0504	wood	Plantae
	1046	feather	Aves
	0580	leaf	Plantae
	1002	unidentified seagrasses	<i>Zostera/Ruppia</i> spp.
	5029	eelgrass	<i>Zostera marina</i>

Other Animals	0629	unidentified worm	worm
	0703	unidentified hydroid	Cnidaria
	0824	sea squirts (<i>Molgula</i> spp.)	<i>Molgula</i> spp.
	0883	unidentified leech	Hirudinea
	0512	midge flies	Chironomidae
	0532	unidentified oligochaete	Oligochaeta
	5007	sea squirt (<i>Molgula manhattensis</i>)	<i>Molgula manhattensis</i>
	0505	unidentified insect	Insecta
	0884	unidentified drill or snail	Gastropoda
	0495	lancelets	<i>Branchiostoma</i> spp.
	0643	sea anemones	Actiniaria

Other Crustaceans	0673	unidentified crustacean	Crustacea
	0808	sessile barnacles	Sessilia
	0740	mysid (<i>Americamysis bigelowi</i>)	<i>Mysidopsis bigelowi</i>
	0509	copepod (Harpacticoid)	Harpacticoid copepod
	0674	unidentified cumacean	Cumacea

Polychaetes	0667	trumpet worm	<i>Pectinaria gouldi</i>
	0697	unidentified bloodworm	<i>Glycera</i> spp.
	1091	<i>Malacobdella grossa</i>	<i>Malacobdella grossa</i>
	0576	bloodworm	<i>Glycera americana</i>
	0810	fringe worm (<i>Tharyx acutus</i>)	<i>Tharyx acutus</i>

Shrimp	0620	grass shrimp	<i>Palaemonetes</i> spp.
	0604	sand shrimp	<i>Crangon septemspinosa</i>
	5001	unidentified shrimp	Decapoda

Leiostomus xanthurus

VIMSCODE: 0033

Common Name: Spot

Number Sampled (2002-2008): 37,926 Full or Partial Workup

Minimum Length: 53 mm

Maximum Length: 3311 mm

Mean Length: 167 mm

Stomachs Processed (Full Workup Samples): 4,586

% Empty Stomachs: 4%

MOST FREQUENTLY FOUND PREY

Prey Species	COMMON	LATIN	COUNT	% FREQUENCY
0708	unidentified material	unidentified material	263	22
0775	unidentified polychaete	Polychaeta	134	11
5039	unidentified clam	Bivalvia	53	5
5032	animal tubes	animal tubes	34	3
0636	four-eyed amphipods (<i>Ampelisca</i> spp.)	<i>Ampelisca</i> spp.	32	3
0841	unidentified amphipod	Amphipoda spp.	30	3
0820	clam (<i>Macoma</i> spp.)	<i>Macoma</i> spp.	29	2
0510	clam worm (<i>Nereis</i> spp.)	<i>Nereis</i> spp.	28	2
5037	sand	sand	26	2
0699	mysid	<i>Neomysis americana</i>	23	2



Monoculodes edwardsi



Macoma spp.



Nereis spp.



Neomysis americana

OTHER PREY FOUND

GROUP	Prey Species	COMMON	LATIN
Amphipods	0507	common burrower amphipod	Leptocheirus plumulosus
	0671	amphipod (Corophium spp.)	Corophium spp.
	0738	red-eyed amphipod	Monoculodes edwardsi
	0694	amphipod (Gammarus spp.)	Gammarus spp.
	0579	Erichthonius brasiliensis	Erichthonius brasiliensis
	1009	skeleton shrimp (Caprella spp.)	Caprella spp.
	0534	amphipod (Microprotopus raneyi)	Microprotopus raneyi
	0543	amphipod (Jassa falcata)	Jassa falcata
	0634	four-eyed amphipods (Ampelisca abdita)	Ampelisca abdita
	0658	skeleton shrimp (Caprellidae)	Caprellidae spp
	1012	amphipod (Amphiporeia virginiana)	Amphiporeia virginiana
	5021	slender tube builder	Corophium lacustre

Bivalves	0790	jackknife clams (razor clams)	Solenioidea
	0498	unidentified bivalve	Bivalvia
	0809	common jingle	Anomia simplex
	0501	eastern beaded chiton	Chaetopleura apiculata
	0583	baltic macoma clam	Macoma balthica
	0709	unidentified mollusc meat	Mollusca
	0826	blood ark	Anadara ovalis
	0888	stout tagelus	Tagelus plebeius
	1020	tagelus clams	Tagelus spp.
	5003	unidentified clam siphon	Bivalvia
5013	amethyst gemclam	Gemma gemma	

Bony Fishes	5000	unidentified fish	Actinopterygii
	0529	fish scales	fish scales
	0103	bay anchovy	Anchoa mitchilli
	0098	mimic shiner	Notropis volucellus
	0487	lightfishes	Gonostomatidae

Crabs	0601	eastern tube crab	Polyonyx gibbesi
	5035	unidentified crab	Decapoda
	1054	crab megalopa	Decapoda (megalope)
	5012	crab parts	crab parts
	0594	unidentified mud crab	Panopeidae
	0624	olivepit porcelain crab	Euceramus praelongus
	0656	Atlantic rock crab	Cancer irroratus
	0848	speckled crab	Arenaeus cribrarius

Echinoderms	5014	burrowing brittle star	Microphipholis atra
	0847	keyhole urchin	Mellita quinquiesperforata
	0920	brittle star	Amphioplus abdita

Isopods	0526	isopod (Chiridotea spp.)	Chiridotea spp.
	0513	slender isopod	Cyathura poita

GROUP	Prey Species	COMMON	LATIN
Miscellaneous	5006	vegetation	Plantae
	0994	no sample taken	no sample taken
	5005	detritus	detritus
	0705	shell	shell
	0585	mud	Miscellaneous
	0892	worm tubes	worm tubes
	1090	forams	Foraminiferida
	0995	unidentified animal	unidentified animal
	0965	diatoms	Bacillariophyta

Mysids	0574	unidentified mysid	Mysidae
	0740	mysid (Americamysis bigelowi)	Mysidopsis bigelowi

Other Animals	0629	unidentified worm	worm
	0901	nematode	Nematoda
	0495	lancelets	Branchiostoma spp.
	5007	sea squirt (Molgula manhattensis)	Molgula manhattensis
	5028	barrel bubble	Acteocina canaliculata
	1089	burrow worms	Echiura
	1013	phantom midges	Chaoborus spp.
	0824	sea squirts (Molgula spp.)	Molgula spp.

Other Crustaceans	0509	copepod (Harpacticoid)	Harpacticoid copepod
	0673	unidentified crustacean	Crustacea
	0674	unidentified cumacean	Cumacea
	1016	water fleas (Leptodora spp.)	Leptodora spp.
	0518	calanoid copepod	calanoid copepod
	0539	cumacean (Oxyurostylis smithi)	Oxyurostylis smithi
	0537	duck barnacle	Lepas anatifera
	0555	unidentified copepod	Copepoda
	0621	mantis shrimp	Squilla empusa

Polychaetes	0667	trumpet worm	Pectinaria gouldi
	0668	bamboo worm	Clymenella torquata
	0697	unidentified bloodworm	Glycera spp.
	0798	polychaete (Terebellidae)	Terebellidae
	0932	worm (Capitella spp.)	Capitella spp.
	5010	clam worm (Neanthes succinea)	Neanthes succinea
	0511	polychaete (Eteone spp.)	Eteone spp.
0647	polychaete (Aricidea neosuecica)	Aricidea neosuecica	

Shrimp	0604	sand shrimp	Crangon septemspinosa
	5001	unidentified shrimp	Decapoda
	0595	roughneck shrimp	Rimapenaeus constrictus
	0623	shrimp (Acetes spp.)	Acetes spp.

Pogonias cromis

VIMSCODE: 0034

Common Name: Black Drum

Number Sampled (2002-2008): 109 Full or Partial Workup

Minimum Length: 138 mm

Maximum Length: 1,300 mm

Mean Length: 342 mm

Stomachs Processed (Full Workup Samples): 71

% Empty Stomachs: 8%

MOST FREQUENTLY FOUND PREY

Prey Species	COMMON	LATIN	COUNT	% FREQUENCY
0708	unidentified material	unidentified material	21	17
0604	sand shrimp	<i>Crangon septemspinosa</i>	7	6
5039	unidentified clam	Bivalvia	7	6
0673	unidentified crustacean	Crustacea	5	4
7582	flat-clawed hermit crab	<i>Pagurus pollicaris</i>	5	4
0824	sea squirts (Molgula spp.)	<i>Molgula</i> spp.	4	3
5006	vegetation	Plantae	4	3
0498	unidentified bivalve	Bivalvia	3	2
0514	pitted baby-bubble	<i>Rictaxis punctostriatus</i>	3	2
0699	mysid	<i>Neomysis americana</i>	3	2
0705	shell	shell	3	2
0801	soft shell clam	<i>Mya arenaria</i>	3	2
0821	quahog clam	<i>Mercenaria mercenaria</i>	3	2
0504	wood	Plantae	2	2
0629	unidentified worm	worm	2	2
0703	unidentified hydroid	Cnidaria	2	2
0738	red-eyed amphipod	<i>Monoculodes edwardsi</i>	2	2
0775	unidentified polychaete	Polychaeta	2	2
0816	Atlantic jackknife clam	<i>Ensis directus</i>	2	2
0884	unidentified drill or snail	Gastropoda	2	2
5000	unidentified fish	Actinopterygii	2	2
5005	detritus	detritus	2	2
5036	unidentified mollusc	Mollusca	2	2



Crangon septemspinosa



Pagurus pollicaris



Neomysis americana



Mya arenaria



Monoculodes edwardsi



Ensis directus

OTHER PREY FOUND

GROUP	Prey Species	COMMON	LATIN
Bivalves	0558	arks	Anadara spp.
	0709	unidentified mollusc meat	Mollusca
	0819	oyster, common	Crassostrea virginica
	0826	blood ark	Anadara ovalis
	0882	dwarf surf clam	Mulinia lateralis
	1020	tagelus clams	Tagelus spp.
	5024	Atlantic ribbed mussel	Geukensia demissa
Bony Fishes	0103	bay anchovy	Anchoa mitchilli
	0529	fish scales	fish scales
Crabs	5035	unidentified crab	Decapoda
	0601	eastern tube crab	Polyonyx gibbesi
	0758	unidentified right-hand hermit crab	Pagurus spp.
Echinoderms	0496	unidentified echinoderm	Echinodermata
Gastropods	0704	shark eye moon snail	Polinices duplicatus
	0800	moon snail	Polinices heros
	5015	interrupted turbonilla	Turbonilla interrupta
	5025	lunar dove snail	Mitrella lunata
	5028	barrel bubble	Acteocina canaliculata
Miscellaneous	5034	shark tooth	shark tooth
	0706	sand tubes	sand tubes
	5031	rock	rock
Mysids	0574	unidentified mysid	Mysidae
Shrimp	0621	mantis shrimp	Squilla empusa
	5001	unidentified shrimp	Decapoda

Sciaenops ocellatus

VIMSCODE: 0035

Common Name: Red Drum

Number Sampled (2002-2008): 10 Full or Partial Workup

Minimum Length: 478 mm

Maximum Length: 1,240 mm

Mean Length: 882 mm

Stomachs Processed (Full Workup Samples): 5

% Empty Stomachs: 20%

PREY ITEMS FOUND

Prey Species	COMMON	LATIN	COUNT	% FREQUENCY
0151	hogchoker	<i>Trinectes maculatus</i>	5	31
0033	spot	<i>Leiostomus xanthurus</i>	3	19
0621	mantis shrimp	<i>Squilla empusa</i>	3	19
0070	spotted hake	<i>Urophycis regia</i>	1	6
0705	shell	shell	1	6
5026	unidentified spider crab	<i>Libinia spp.</i>	1	6
6143	blue crab, adult female	<i>Callinectes sapidus</i> , adult female	1	6



Trinectes maculatus



Leiostomus xanthurus



Squilla empusa



Urophycis regia



Libinia spp. (Photo by VIMS Trawl Survey)



Callinectes sapidus

Rachycentron canadum

VIMSCODE: 0036

Common Name: Cobia

Number Sampled (2002-2008): 1 Full or Partial Workup

Minimum Length: 860 mm

Maximum Length: 860 mm

Mean Length: 860 mm

Stomachs Processed (Full Workup Samples): 1

% Empty Stomachs: 0%

PREY ITEMS FOUND

Prey Species	COMMON	LATIN	COUNT	% FREQUENCY
0621	mantis shrimp	<i>Squilla empusa</i>	4	67
0037	Atlantic menhaden	<i>Brevoortia tyrannus</i>	1	17
0612	lady crab	<i>Ovalipes ocellatus</i>	1	17



Squilla empusa



Brevoortia tyrannus



Ovalipes ocellatus

Opisthonema oglinum

VIMSCODE: 0038

Common Name: Atlantic Thread Herring

Number Sampled (2002-2008): 35 Full or Partial Workup

Minimum Length: 59 mm

Maximum Length: 174 mm

Mean Length: 93 mm

Stomachs Processed (Full Workup Samples): 18

% Empty Stomachs: 17%

PREY ITEMS FOUND

Prey Species	COMMON	LATIN	COUNT	% FREQUENCY
0518	calanoid copepod	calanoid copepod	7	37
0708	unidentified material	unidentified material	6	32
0673	unidentified crustacean	Crustacea	1	5
5011	unidentified shrimp zoea	Decapoda	1	5
5037	sand	sand	1	5



Calanoid copepod

Ictalurus catus

VIMSCODE: 0039

Common Name: White Catfish

Number Sampled (2002-2008): 29 Full or Partial Workup

Minimum Length: 182 mm

Maximum Length: 603 mm

Mean Length: 313 mm

Stomachs Processed (Full Workup Samples): 24

% Empty Stomachs: 4%

PREY ITEMS FOUND

Prey Species	COMMON	LATIN	COUNT	% FREQUENCY
0594	unidentified mud crab	Panopeidae	13	24
0153	skilletfish	<i>Gobiesox strumosus</i>	7	13
0708	unidentified material	unidentified material	5	9
0507	common burrower amphipod	<i>Leptocheirus plumulosus</i>	4	7
0513	slender isopod	<i>Cyathura polita</i>	4	7
0032	white perch	<i>Morone americana</i>	3	5
5012	crab parts	crab parts	3	5
0703	unidentified hydroid	Cnidaria	2	4
5000	unidentified fish	Actinopterygii	2	4
0037	Atlantic menhaden	<i>Brevoortia tyrannus</i>	1	2
0103	bay anchovy	<i>Anchoa mitchilli</i>	1	2
0281	unidentified gobies	Gobiidae	1	2
0510	clam worm (Nereis spp.)	<i>Nereis spp.</i>	1	2
0526	isopod (Chiridotea spp.)	<i>Chiridotea spp.</i>	1	2
0529	fish scales	fish scales	1	2
0738	red-eyed amphipod	<i>Monoculodes edwardsi</i>	1	2
0916	unidentified herring	Clupeidae	1	2
0918	isopods (Edotia)	<i>Edotia spp.</i>	1	2
5006	vegetation	Plantae	1	2
5039	unidentified clam	Bivalvia	1	2



Mud crabs

Gobiesox strumosus

Leptocheirus plumulosus

Cyathura polita



Brevoortia tyrannus



Anchoa mitchilli



Nereis spp.



Chiridotea almyra



Monoculodes edwardsi



Edotia triloba

Ictalurus punctatus

VIMSCODE: 0040

Common Name: Channel Catfish

Number Sampled (2002-2008): 106 Full or Partial Workup

Minimum Length: 201 mm

Maximum Length: 579 mm

Mean Length: 366 mm

Stomachs Processed (Full Workup Samples): 81

% Empty Stomachs: 5%

MOST FREQUENTLY FOUND PREY ITEMS

Prey Species	COMMON	LATIN	COUNT	% FREQUENCY
0594	unidentified mud crab	Panopeidae	111	43
0708	unidentified material	unidentified material	18	7
5000	unidentified fish	Actinopterygii	18	7
0507	common burrower amphipod	<i>Leptocheirus plumulosus</i>	11	4
0498	unidentified bivalve	Bivalvia	10	4
0505	unidentified insect	Insecta	10	4
0513	slender isopod	<i>Cyathura polita</i>	10	4
0898	beetle adult	Coleoptera	7	3
5012	crab parts	crab parts	7	3
0037	Atlantic menhaden	<i>Brevoortia tyrannus</i>	6	2
5006	vegetation	Plantae	4	2



Mud crabs



Leptocheirus plumulosus



Cyathura polita



Brevoortia tyrannus

OTHER PREY FOUND

GROUP	Prey Species	COMMON	LATIN
Amphipods	0671	amphipod (Corophium spp.)	Corophium spp.
Bivalves	0709	unidentified mollusc meat	Mollusca
	5039	unidentified clam	Bivalvia
	0820	clam (Macoma spp.)	Macoma spp.
Bony Fishes	0032	white perch	Morone americana
	0529	fish scales	fish scales
	0053	codlings	Urophycis spp.
	0150	Atlantic silverside	Menidia menidia
	0281	unidentified gobies	Gobiidae
	0567	fish eggs	Fish eggs
Crabs	5035	unidentified crab	Decapoda
	5016	unidentified rock crab	Cancer spp.
	0614	blue crab, sex unknown	Callinectes sapidus

GROUP	Prey Species	COMMON	LATIN
Insects	0512	midge flies	Chironomidae
	0913	leafhopper	Cicadellidae
	1048	stink bugs	Pentatomidae
Miscellaneous	0705	shell	shell
	0478	macro algae	macro algae
Other Animals	0673	unidentified crustacean	Crustacea
	0603	horseshoe crab	Limulus polyphemus
	0643	sea anemones	Actiniaria
	0699	mysid	Neomysis americana
	0918	isopods (Edotia)	Edotia spp.
	0800	moon snail	Polinices heros
	0510	clam worm (Nereis spp.)	Nereis spp.

Scomberomorus maculatus

VIMSCODE: 0042

Common Name: Spanish Mackerel

Number Sampled (2002-2008): 4 Full or Partial Workup

Minimum Length: 175 mm

Maximum Length: 412 mm

Mean Length: 283 mm

Stomachs Processed (Full Workup Samples): 3

% Empty Stomachs: 0%

PREY ITEMS FOUND

Prey Species	COMMON	LATIN	COUNT	% FREQUENCY
0103	bay anchovy	<i>Anchoa mitchilli</i>	3	75
0399	common anchovies	<i>Anchoa spp.</i>	1	25



Anchoa mitchilli

Pleuronectes americanus

VIMSCODE: 0044

Common Name: Winter Flounder

Number Sampled (2002-2008): 1 Full or Partial Workup

Minimum Length: 311 mm

Maximum Length: 311 mm

Mean Length: 311 mm

Stomachs Processed (Full Workup Samples): 1

% Empty Stomachs: 0%

PREY ITEMS FOUND

Prey Species	COMMON	LATIN	COUNT	% FREQUENCY
0775	unidentified polychaete	Polychaeta	2	25
0495	lancelets	<i>Branchiostoma spp.</i>	1	13
0583	baltic macoma clam	<i>Macoma balthica</i>	1	13
0703	unidentified hydroid	Cnidaria	1	13
0708	unidentified material	unidentified material	1	13
0738	red-eyed amphipod	<i>Monoculodes edwardsi</i>	1	13
5003	unidentified clam siphon	Bivalvia	1	13



Branchiostoma spp.



Macoma spp.



Monoculodes edwardsi

Sphoeroides maculatus

VIMSCODE: 0050

Common Name: Northern Puffer

Number Sampled (2002-2008): 925 Full or Partial Workup

Minimum Length: 59 mm

Maximum Length: 272 mm

Mean Length: 155 mm

Stomachs Processed (Full Workup Samples): 623

% Empty Stomachs: 8%

MOST FREQUENTLY FOUND PREY ITEMS

Prey Species	COMMON	LATIN	COUNT	% FREQUENCY
5012	crab parts	crab parts	135	10
0708	unidentified material	unidentified material	134	10
0667	trumpet worm	<i>Pectinaria gouldi</i>	93	7
5006	vegetation	Plantae	81	6
0601	eastern tube crab	<i>Polyonyx gibbesi</i>	67	5
0884	unidentified drill or snail	Gastropoda	54	4
0825	bryozoans/dead man fingers	<i>Alcyonidium spp.</i>	47	4
0758	unidentified right-hand hermit crab	<i>Pagurus spp.</i>	44	3
5032	animal tubes	animal tubes	44	3
0705	shell	shell	41	3
0673	unidentified crustacean	Crustacea	39	3
0594	unidentified mud crab	Panopeidae	30	2
0790	jackknife clams (razor clams)	Solenioidea	29	2
0689	bryozoans	Ectoprocta	28	2
0498	unidentified bivalve	Bivalvia	23	2
0510	clam worm (<i>Nereis spp.</i>)	<i>Nereis spp.</i>	23	2
0826	blood ark	<i>Anadara ovalis</i>	23	2
0548	unidentified sponge	Porifera	22	2
0802	blue mussel	<i>Mytilus edulis</i>	20	2
5035	unidentified crab	Decapoda	20	2



Pectinaria gouldi



Pagurus spp.



Mud crabs



Nereis spp.

OTHER PREY FOUND

GROUP	Prey Species	COMMON	LATIN
Amphipods	0841	unidentified amphipod	Amphipoda spp.
			Monoculodes edwardsi
	0738	red-eyed amphipod	
	0658	skeleton shrimp (Caprellidae)	Caprellidae spp
	0507	common burrower amphipod	Leptocheirus plumulosus
			Erichthonius brasiliensis
	0579	Erichthonius brasiliensis	
		four-eyed amphipods (Ampelisca spp.)	Ampelisca spp.
	0671	amphipod (Corophium spp.)	Corophium spp.
	0723	amphipod (Leptocheirus pinguis)	Leptocheirus pinguis
		Gammarus mucronatus	
5019	spined back scud		

Bivalves	0709	unidentified mollusc meat	Mollusca
	5039	unidentified clam	Bivalvia
	0816	Atlantic jackknife clam	Ensis directus
	1020	tagelus clams	Tagelus spp.
	0820	clam (Macoma spp.)	Macoma spp.
	0888	stout tagelus	Tagelus plebeius
			Petricolaria pholadiformes
	0885	false angel wing	
	0801	soft shell clam	Mya arenaria
	0882	dwarf surf clam	Mulinia lateralis
	0886	transverse ark	Anadara transversa
	1063	Atlantic nutclam	Nucula proxima
	5036	unidentified mollusc	Mollusca

Bony Fishes	0129	lined seahorse	Hippocampus erectus
	0156	unidentified pipefishes	Syngnathus spp.
	5000	unidentified fish	Actinopterygii
	0007	weakfish	Cynoscion regalis
	0103	bay anchovy	Anchoa mitchilli
	0155	unidentified silversides	Menidia spp.
	1055	pipefishes and seahorse	Syngnathidae

Crabs	7581	long-clawed hermit crab	Pagurus longicarpus
	5026	unidentified spider crab	Libinia spp.
	7582	flat-clawed hermit crab	Pagurus pollicaris
	0612	lady crab	Ovalipes ocellatus
	0833	unidentified pea crab	Pinnixa spp.
	0864	Atlantic sand crab	Emerita talpoida
	0545	blue crab megalopa	Callinectes spp.
	0578	swimming crab (Portunus spp.)	Portunus spp.
	0614	blue crab, sex unknown	Callinectes sapidus
	0617	acadian hermit crab	Pagurus acadianus
			Euceramus praelongus
	0624	olivepit porcelain crab	
	0625	square-eyed mole crab	Lepidopa websteri
	0656	Atlantic rock crab	Cancer irroratus
	0839	swimming crabs	Portunids
	5016	unidentified rock crab	Cancer spp.
			Rhithropanopeus harrisi
	5943	estuarine mud crab	

GROUP	Prey Species	COMMON	LATIN
Echinoderms	0755	unidentified brittle stars	Ophiuroidea
	0702	sand dollar	Echinarachnius parma
	0840	purple sea urchin	Arbacia punctulata
	0847	keyhole urchin	Mellita quinquesperforata

Gastropods	0800	moon snail	Polinices heros
	5028	barrel bubble	Acteocina canaliculata
	0881	slippersnails	Crepidula spp.
	1049	common Atlantic slippersnail	Crepidula fornicata
	0818	periwinkles	Littorina spp.
	1021	snail (Turbonilla spp.)	Turbonilla spp.

Insects	0991	ants	Formicidae
	0505	unidentified insect	Insecta
	0512	midge flies	Chironomidae
	0898	beetle adult	Coleoptera

Isopods	0513	slender isopod	Cyathura polita
	0657	unidentified isopod	Isopoda spp.
	0559	isopod (Sphaeroma quadridentatum)	Sphaeroma quadridentatum
	0925	Erichsonella attenuata	Erichsonella attenuata
	0981	isopod (Synidotea laevidorsalis)	Synidotea laevidorsalis

Miscellaneous	5031	rock	rock
	5037	sand	sand

Other Animals	0643	sea anemones	Actiniaria
	0703	unidentified hydroid	Cnidaria
	0824	sea squirts (Molgula spp.)	Molgula spp.
	0495	lancelets	Branchiostoma spp.
	1047	unidentified corals or anemones	Anthozoa
	0629	unidentified worm	worm
	1089	burrow worms	Echiura

Other Crustaceans	0808	sessile barnacles	Sessilia
	0621	mantis shrimp	Squilla empusa
	0699	mysid	Neomysis americana

Polychaetes	0775	unidentified polychaete	Polychaeta
	0697	unidentified bloodworm	Glycera spp.

Shrimp	5001	unidentified shrimp	Decapoda
	0604	sand shrimp	Crangon septemspinosa
	0597	white shrimp	Litopenaeus setiferus
	0500	short-browed mud shrimp	Gilvossius setimanus
	1058	unidentified snapping shrimps	Alpheidae

Archosargus probatocephalus

VIMSCODE: 0054

Common Name: Sheepshead

Number Sampled (2002-2008): 58 Full or Partial Workup

Minimum Length: 107 mm

Maximum Length: 589 mm

Mean Length: 456 mm

Stomachs Processed (Full Workup Samples): 236

% Empty Stomachs: 1%

MOST FREQUENTLY FOUND PREY ITEMS

Prey Species	COMMON	LATIN	COUNT	% FREQUENCY
0708	unidentified material	unidentified material	13	8
7582	flat-clawed hermit crab	<i>Pagurus pollicaris</i>	13	8
5006	vegetation	Plantae	11	7
0802	blue mussel	<i>Mytilus edulis</i>	9	6
0705	shell	shell	7	4
0824	sea squirts (Molgula spp.)	<i>Molgula spp.</i>	7	4
0816	Atlantic jackknife clam	<i>Ensis directus</i>	6	4
0884	unidentified drill or snail	Gastropoda	6	4
0758	unidentified right-hand hermit crab	<i>Pagurus spp.</i>	5	3
0790	jackknife clams (razor clams)	Solenioidea	5	3
0825	bryozoans/dead man fingers	<i>Alcyonidium spp.</i>	5	3
0826	blood ark	<i>Anadara ovalis</i>	5	3
5012	crab parts	crab parts	5	3
5026	unidentified spider crab	<i>Libinia spp.</i>	5	3
0703	unidentified hydroid	Cnidaria	3	2
0709	unidentified mollusc meat	Mollusca	3	2



Pagurus pollicaris



Ensis directus



Libinia spp.

OTHER PREY FOUND

GROUP	Prey Species	COMMON	LATIN
Amphipods	0543	amphipod (<i>Jassa falcata</i>)	<i>Jassa falcata</i>
	0579	<i>Erichthonius brasiliensis</i> skeleton shrimp	<i>Erichthonius brasiliensis</i>
	0658	(<i>Caprellidae</i>) amphipod (<i>Corophium</i> spp.)	<i>Caprellidae</i> spp. <i>Corophium</i> spp.
	0671	unidentified amphipod	<i>Amphipoda</i> spp.
	0841	skeleton shrimp	<i>Caprella penantis</i>
	0921		
Bivalves	0498	unidentified bivalve	<i>Bivalvia</i>
	0558	arks	<i>Anadara</i> spp.
	0584	narrowed macoma clam	<i>Macoma tenta</i>
	0801	soft shell clam	<i>Mya arenaria</i>
	1020	tagelus clams	<i>Tagelus</i> spp.
	5003	unidentified clam siphon	<i>Bivalvia</i>
	5039	unidentified clam	<i>Bivalvia</i>
Crabs	5035	unidentified crab	Decapoda
	0656	Atlantic rock crab	<i>Cancer irroratus</i>
	7581	long-clawed hermit crab	<i>Pagurus longicarpus</i>
	0552	smooth mud crab swimming crab	<i>Hexapanopeus angustifrons</i>
	0578	(<i>Portunus</i> spp.)	<i>Portunus</i> spp.
	0594	unidentified mud crab	<i>Panopeidae</i>
	0870	mottled purse crab	<i>Persephona mediterranea</i>
Echinoderms	0702	sand dollar	<i>Echinarachnius parma</i>
	0847	keyhole urchin	<i>Mellita quinquesperforata</i>
	0920	brittle star	<i>Amphiplus abdita</i>
Gastropods	0704	shark eye moon snail	<i>Polinices duplicatus</i>
	0800	moon snail	<i>Polinices heros</i>
	0881	slippersnails	<i>Crepidula</i> spp.
	5025	lunar dove snail	<i>Mitrella lunata</i>
	5027	dove snails (<i>Anachis</i> spp.)	<i>Anachis</i> spp.
Miscellaneous	0542	trash, plastic	plastic trash
	0529	fish scales	fish scales
	5031	rock	rock
	5032	animal tubes	animal tubes
	0478	macro algae	macro algae
Other Animals	5000	unidentified fish	Actinopterygii
	0643	sea anemones	Actiniaria
	0510	clam worm (<i>Nereis</i> spp.)	<i>Nereis</i> spp.
	0629	unidentified worm	worm
Other Crustaceans	0720	mysid (<i>Heteromysis</i> formosa)	<i>Heteromysis formosa</i>
	0556	ivory barnacle	<i>Balanus eburneus</i>
	0673	unidentified crustacean	Crustacea
	0808	sessile barnacles	Sessilia

Tautoga onitis

VIMSCODE: 0055

Common Name: Tautog

Number Sampled (2002-2008): 45 Full or Partial Workup

Minimum Length: 299 mm

Maximum Length: 512 mm

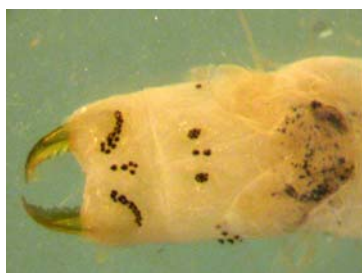
Mean Length: 422 mm

Stomachs Processed (Full Workup Samples): 41

% Empty Stomachs: 5%

MOST FREQUENTLY FOUND PREY

Prey Species	COMMON	LATIN	COUNT	% FREQUENCY
0824	sea squirts (Molgula spp.)	<i>Molgula spp.</i>	12	10
0708	unidentified material	unidentified material	11	9
0802	blue mussel	<i>Mytilus edulis</i>	11	9
5012	crab parts	crab parts	10	9
5006	vegetation	Plantae	8	7
0510	clam worm (Nereis spp.)	<i>Nereis spp.</i>	6	5
0594	unidentified mud crab	Panopeidae	5	4
0826	blood ark	<i>Anadara ovalis</i>	5	4
5031	rock	rock	5	4
0705	shell	shell	4	3
0825	bryozoans/dead man fingers	<i>Alcyonidium spp.</i>	4	3
5026	unidentified spider crab	<i>Libinia spp.</i>	4	3
0671	amphipod (Corophium spp.)	<i>Corophium spp.</i>	3	3
0498	unidentified bivalve	Bivalvia	2	2
0703	unidentified hydroid	Cnidaria	2	2
0758	unidentified right-hand hermit crab	<i>Pagurus spp.</i>	2	2
0808	sessile barnacles	Sessilia	2	2
5035	unidentified crab	Decapoda	2	2



Nereis spp.



Mud crabs



Libinia spp.



Corophium spp.



Pagurus spp.

OTHER PREY FOUND

GROUP	Prey Species	COMMON	LATIN
Amphipods	0658	skeleton shrimp (Caprellidae)	Caprellidae spp
	0841	unidentified amphipod	Amphipoda spp.
Bivalves	0821	quahog clam	Mercenaria mercenaria
	0888	stout tagelus	Tagelus plebeius
	5039	unidentified clam	Bivalvia
Crabs	0614	blue crab, sex unknown	Callinectes sapidus
	0861	crabs - Callinectes spp.	Callinectes spp.
	5016	unidentified rock crab	Cancer spp.
Gastropods	0737	dovesnail (Mitrella spp.)	Mitrella spp.
	0800	moon snail	Polinices heros
	0818	periwinkles	Littorina spp.
	0838	Atlantic oyster drill	Urosalpinx cinerea
	0884	unidentified drill or snail	Gastropoda
Miscellaneous	0585	mud	Miscellaneous
	5032	animal tubes	animal tubes
Other Animals	0590	flat-browed mud shrimp	Upogebia affinis
	0629	unidentified worm	worm

Cynoscion nebulosus

VIMSCODE: 0058

Common Name: Spotted Seatrout

Number Sampled (2002-2008): 13 Full or Partial Workup

Minimum Length: 138 mm

Maximum Length: 299 mm

Mean Length: 212 mm

Stomachs Processed (Full Workup Samples): 10

% Empty Stomachs: 10%

PREY ITEMS FOUND

Prey Species	COMMON	LATIN	COUNT	% FREQUENCY
0103	bay anchovy	<i>Anchoa mitchilli</i>	14	67
5000	unidentified fish	Actinopterygii	2	10
0058	spotted seatrout	<i>Cynoscion nebulosus</i>	1	5
0574	unidentified mysid	Mysidae	1	5
0601	eastern tube crab	<i>Polyonyx gibbesi</i>	1	5
0708	unidentified material	unidentified material	1	5



Orthopristis chrysoptera

VIMSCODE: 0059

Common Name: Pigfish

Number Sampled (2002-2008): 71 Full or Partial Workup

Minimum Length: 102 mm

Maximum Length: 207 mm

Mean Length: 149 mm

Stomachs Processed (Full Workup Samples): 60

% Empty Stomachs: 5%

MOST FREQUENTLY FOUND PREY

Prey Species	COMMON	LATIN	COUNT	% FREQUENCY
0667	trumpet worm	<i>Pectinaria gouldi</i>	31	45
0574	unidentified mysid	Mysidae	5	7
0798	polychaete (Terebellidae)	Terebellidae	4	6
0920	brittle star	<i>Amphioplus abdita</i>	4	6
0498	unidentified bivalve	Bivalvia	3	4
5035	unidentified crab	Decapoda	3	4
0775	unidentified polychaete	Polychaeta	2	3
5012	crab parts	crab parts	2	3
5032	animal tubes	animal tubes	2	3



Pectinaria gouldi



Terebellidae



Amphioplus abdita

OTHER PREY FOUND

GROUP	Prey Species	COMMON	LATIN
Amphipods	0658	skeleton shrimp (Caprellidae)	<i>Caprellidae spp</i>
Bivalves	0790	jackknife clams (razor clams)	Solenioidea
Crustaceans	0621	mantis shrimp	<i>Squilla empusa</i>
	5001	unidentified shrimp	Decapoda
Miscellaneous	0708	unidentified material	unidentified material
	5037	sand	sand
	5006	vegetation	Plantae
Protochordates	0824	sea squirts (Molgula spp.)	<i>Molgula spp.</i>
Gastropods	1059	unidentified moon snail	Naticidae
Worms	0629	unidentified worm	worm

Trachinotus carolinus

VIMSCODE: 0061

Common Name: Florida Pompano

Number Sampled (2002-2008): 22 Full or Partial Workup

Minimum Length: 160 mm

Maximum Length: 292 mm

Mean Length: 189 mm

Stomachs Processed (Full Workup Samples): 17

% Empty Stomachs: 0%

PREY ITEMS FOUND

Prey Species	COMMON	LATIN	COUNT	% FREQUENCY
0758	unidentified right-hand hermit crab	<i>Pagurus spp.</i>	4	19
0790	jackknife clams (razor clams)	Solenioidea	4	19
0884	unidentified drill or snail	Gastropoda	3	14
0498	unidentified bivalve	Bivalvia	2	10
0705	shell	shell	2	10
0574	unidentified mysid	Mysidae	1	5
0629	unidentified worm	worm	1	5
0708	unidentified material	unidentified material	1	5
0826	blood ark	<i>Anadara ovalis</i>	1	5
5000	unidentified fish	Actinopterygii	1	5
7581	long-clawed hermit crab	<i>Pagurus longicarpus</i>	1	5



Pagurus longicarpus
(photo by VIMS Trawl Survey)



Pagurus pollicaris



Pagurus spp.

Scophthalmus aquosus

VIMSCODE: 0063

Common Name: Windowpane

Number Sampled (2002-2008): 308 Full or Partial Workup

Minimum Length: 67 mm

Maximum Length: 339 mm

Mean Length: 201 mm

Stomachs Processed (Full Workup Samples): 266

% Empty Stomachs: 11%

PREY ITEMS FOUND

Prey Species	COMMON	LATIN	COUNT	% FREQUENCY
0699	mysid	<i>Neomysis americana</i>	133	38
0574	unidentified mysid	Mysidae	83	24
0604	sand shrimp	<i>Crangon septemspinosa</i>	27	8
0005	Atlantic croaker	<i>Micropogonias undulatus</i>	22	6
0103	bay anchovy	<i>Anchoa mitchilli</i>	20	6
5000	unidentified fish	Actinopterygii	7	2
0545	blue crab megalopa	<i>Callinectes spp.</i>	4	1
0708	unidentified material	unidentified material	4	1
0841	unidentified amphipod	Amphipoda spp.	4	1
0673	unidentified crustacean	Crustacea	2	1
0738	red-eyed amphipod	<i>Monoculodes edwardsi</i>	2	1
5001	unidentified shrimp	Decapoda	2	1
0070	spotted hake	<i>Urophycis regia</i>	1	0
0657	unidentified isopod	Isopoda spp.	1	0
0658	skeleton shrimp (Caprellidae)	Caprellidae spp	1	0
0671	amphipod (Corophium spp.)	<i>Corophium spp.</i>	1	0
0705	shell	shell	1	0
0775	unidentified polychaete	Polychaeta	1	0
5028	barrel bubble	<i>Acteocina canaliculata</i>	1	0
5031	rock	rock	1	0



Crangon septemspinosa



Micropogonias undulatus



Anchoa mitchilli



Callinectes sapidus



Monoculodes edwardsi



Urophycis regia



Corophium spp.



Caprella penantis



Acteocina canaliculata

Chaetodipterus faber

VIMSCODE: 0064

Common Name: Atlantic Spadefish

Number Sampled (2002-2008): 361 Full or Partial Workup

Minimum Length: 44 mm

Maximum Length: 588 mm

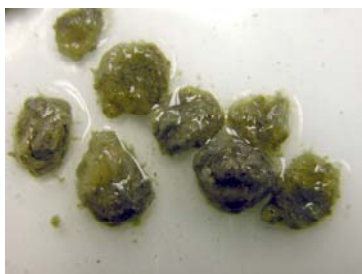
Mean Length: 128 mm

Stomachs Processed (Full Workup Samples): 300

% Empty Stomachs: 23%

MOST FREQUENTLY FOUND PREY

Prey Species	COMMON	LATIN	COUNT	% FREQUENCY
0708	unidentified material	unidentified material	144	35
0703	unidentified hydroid	Cnidaria	44	11
5006	vegetation	Plantae	32	8
5007	sea squirt (Molgula manhattensis)	<i>Molgula manhattensis</i>	21	5
0841	unidentified amphipod	Amphipoda spp.	11	3
0658	skeleton shrimp (Caprellidae)	Caprellidae spp	9	2
5003	unidentified clam siphon	Bivalvia	8	2
0709	unidentified mollusc meat	Mollusca	6	1
0156	unidentified pipefishes	<i>Syngnathus spp.</i>	5	1
5005	detritus	detritus	5	1
0629	unidentified worm	worm	4	1
0643	sea anemones	Actinaria	4	1
0579	<i>Erichthonius brasiliensis</i>	<i>Erichthonius brasiliensis</i>	3	1
0738	red-eyed amphipod	<i>Monoculodes edwardsi</i>	3	1
0892	worm tubes	worm tubes	3	1



Molgula manhattensis



Syngnathus spp.



Sea anemone



Erichthonius brasiliensis



Monoculodes edwardsi

OTHER PREY FOUND

GROUP	Prey Species	COMMON	LATIN
Amphipods	0535	amphipod (Cerapus tubularis)	Cerapus tubularis
	0549	amphipod (Cymadusa compta)	Cymadusa compta
Bivalves	0801	soft shell clam	Mya arenaria
	0816	Atlantic jackknife clam	Ensis directus
	0832	mud clams	Laevicardium spp.
	1053	unidentified mussel	Mytilidae
	5013	amethyst gemclam	Gemma gemma
Crustaceans	0699	mysid	Neomysis americana
	0518	calanoid copepod	calanoid copepod
	0574	unidentified mysid	Mysidae
	0673	unidentified crustacean	Crustacea
	0674	unidentified cumacean	Cumacea
	0808	sessile barnacles	Sessilia
	0550	shrimp (Lucifer faxoni)	Lucifer faxoni
	0594	unidentified mud crab	Panopeidae
	5026	unidentified spider crab	Libinia spp.
0657	unidentified isopod	Isopoda spp.	
Gastropods	0884	unidentified drill or snail	Gastropoda
	5015	interrupted turbonilla	Turbonilla interrupta
	0838	Atlantic oyster drill	Urosalpinx cinerea
	5025	lunar dove snail	Mitrella lunata
Miscellaneous	0705	shell	shell
	0706	sand tubes	sand tubes
	5032	animal tubes	animal tubes
	5037	sand	sand
Other Animals	5000	unidentified fish	Actinopterygii
	0900	unidentified jellyfish	Cnidaria
	0824	sea squirts (Molgula spp.)	Molgula spp.
	0551	hydroid (Sertularia spp.)	Sertularia spp.
	0648	sessile tunicates	Ascidiacea
	0548	unidentified sponge	Porifera
Polychaetes	0775	unidentified polychaete	Polychaeta
	0510	clam worm (Nereis spp.)	Nereis spp.

Urophycis regia

VIMSCODE: 0070

Common Name: Spotted Hake

Number Sampled (2002-2008): 903 Full or Partial Workup

Minimum Length: 50 mm

Maximum Length: 318 mm

Mean Length: 139 mm

Stomachs Processed (Full Workup Samples): 454

% Empty Stomachs: 15%

MOST FREQUENTLY FOUND PREY

Prey Species	COMMON	LATIN	COUNT	% FREQUENCY
0604	sand shrimp	<i>Crangon septemspinosa</i>	216	24
0574	unidentified mysid	Mysidae	130	14
0699	mysid	<i>Neomysis americana</i>	130	14
0708	unidentified material	unidentified material	37	4
0738	red-eyed amphipod	<i>Monoculodes edwardsi</i>	32	3
0510	clam worm (Nereis spp.)	<i>Nereis spp.</i>	29	3
0841	unidentified amphipod	Amphipoda spp.	25	3
0103	bay anchovy	<i>Anchoa mitchilli</i>	19	2
0658	skeleton shrimp (Caprellidae)	Caprellidae spp	17	2
0674	unidentified cumacean	Cumacea	15	2
0694	amphipod (Gammarus spp.)	<i>Gammarus spp.</i>	14	2



Crangon septemspinosa



Neomysis americana



Monoculodes edwardsi



Nereis spp.



Anchoa mitchilli



Gammarus spp.

OTHER PREY FOUND

GROUP	Prey Species	COMMON	LATIN
Amphipods	0636	four-eyed amphipods (Ampelisca spp.)	Ampelisca spp.
	0507	common burrower amphipod	Leptocheirus plumulosus
	0671	amphipod (Corophium spp.)	Corophium spp.
	0921	skeleton shrimp	Caprella penantis
	5019	spined back scud	Gammarus mucronatus
	0579	Erichthonius brasiliensis	Erichthonius brasiliensis
	5020	mound back isopod amphipod (Ampithoe longimana)	Edotia triloba
	0922	skeleton shrimp (Paracaprella tenuis)	Ampithoe longimana
	0923		Paracaprella tenuis
Bivalves	0790	jackknife clams (razor clams)	Solenioidea
	1053	unidentified mussel	Mytilidae
	0498	unidentified bivalve	Bivalvia
	0802	blue mussel	Mytilus edulis
	5039	unidentified clam	Bivalvia
Bony Fishes	5000	unidentified fish	Actinopterygii
	0005	Atlantic croaker	Micropogonias undulatus
	0070	spotted hake	Urophycis regia
	0154	oyster toadfish	Opsanus tau
	0007	weakfish	Cynoscion regalis
Crabs	5035	unidentified crab	Decapoda
	7581	long-clawed hermit crab	Pagurus longicarpus
	5012	crab parts	crab parts
	0594	unidentified mud crab	Panopeidae
	0601	eastern tube crab	Polyonyx gibbesi
	0612	lady crab	Ovalipes ocellatus
	0758	unidentified right-hand hermit crab	Pagurus spp.

GROUP	Prey Species	COMMON	LATIN
Gastropods	5028	barrel bubble	Acteocina canaliculata
	0884	unidentified drill or snail	Gastropoda
	5015	interrupted turbonilla	Turbonilla interrupta
Isopods	0513	slender isopod	Cyathura polita
	0559	isopod (Sphaeroma quadridentatum)	Sphaeroma quadridentatum
	0657	unidentified isopod	Isopoda spp.
	0918	isopods (Edotia)	Edotia spp.
	0929	isopod (Cymothoidae)	Cymothoidae
Miscellaneous	5032	animal tubes	animal tubes
	5006	vegetation	Plantae
	0504	wood	Plantae
	5031	rock	rock
	5033	unidentified meat	unidentified meat
	1002	unidentified seagrasses	Zostera/Ruppia spp.
	0892	worm tubes	worm tubes
Other Animals	0673	unidentified crustacean	Crustacea
	0703	unidentified hydroid	Cnidaria
	0518	calanoid copepod	calanoid copepod
	0555	unidentified copepod	Copepoda
	0495	lancelets	Branchiostoma spp.
	0572	unidentified nemertean	Nemertea
	0883	unidentified leech	Hirudinea
Polychaetes	0775	unidentified polychaete	Polychaeta
	0667	trumpet worm	Pectinaria gouldi
Shrimp	0595	roughneck shrimp	Rimapenaeus constrictus
	5001	unidentified shrimp	Decapoda
	0620	grass shrimp	Palaemonetes spp.
	0623	shrimp (Acetes spp.)	Acetes spp.

Prionotus carolinus

VIMSCODE: 0071

Common Name: Northern Searobin

Number Sampled (2002-2008): 1,356 Full or Partial Workup

Minimum Length: 40 mm

Maximum Length: 223 mm

Mean Length: 125 mm

Stomachs Processed (Full Workup Samples): 615

% Empty Stomachs: 13%

MOST FREQUENTLY FOUND PREY

Prey Species	COMMON	LATIN	COUNT	% FREQUENCY
0574	unidentified mysid	Mysidae	200	16
0708	unidentified material	unidentified material	98	8
0604	sand shrimp	<i>Crangon septemspinosa</i>	93	8
0699	mysid	<i>Neomysis americana</i>	72	6
5031	rock	rock	59	5
0738	red-eyed amphipod	<i>Monoculodes edwardsi</i>	53	4
5032	animal tubes	animal tubes	38	3
0601	eastern tube crab	<i>Polyonyx gibbesi</i>	35	3
0841	unidentified amphipod	Amphipoda spp.	32	3
0918	isopods (Edotia)	<i>Edotia</i> spp.	32	3
5020	mound back isopod	<i>Edotia triloba</i>	21	2
0658	skeleton shrimp (Caprellidae)	Caprellidae spp	19	2



Crangon septemspinosa



Neomysis americana



Monoculodes edwardsi



Edotia triloba

OTHER PREY FOUND

GROUP	Prey Species	COMMON	LATIN
Amphipods	0636	four-eyed amphipods (Ampelisca spp.)	Ampelisca spp.
	0671	amphipod (Corophium spp.)	Corophium spp.
	0694	amphipod (Gammarus spp.)	Gammarus spp.
	0579	Erichthonius brasiliensis	Erichthonius brasiliensis
	0507	common burrower amphipod	Leptocheirus plumulosus
	0921	skeleton shrimp	Caprella penantis
	5021	slender tube builder	Corophium lacustre
	0534	amphipod (Microprotopus raneyi)	Microprotopus raneyi
	0535	amphipod (Cerapus tubularis)	Cerapus tubularis
	0635	four-eyed amphipods (Ampelisca agassizi)	Ampelisca agassizi
	0637	four-eyed amphipods (Ampelisca vadorum)	Ampelisca vadorum
	0812	gammarid amphipod (Rhepoxynius epistomus)	Rhepoxynius epistomus
	0919	amphipod (Listriella clymenellae)	Listriella clymenellae
1009	skeleton shrimp (Caprella spp.)	Caprella spp.	
Bivalves	0790	jackknife clams (razor clams)	Solenioidea
	5039	unidentified clam	Bivalvia
	0709	unidentified mollusc meat	Mollusca
	0816	Atlantic jackknife clam	Ensis directus
	0498	unidentified bivalve	Bivalvia
	0802	blue mussel	Mytilus edulis
	0820	clam (Macoma spp.)	Macoma spp.
	0882	dwarf surf clam	Mulinia lateralis
	5036	unidentified mollusc	Mollusca
Bony Fishes	0529	fish scales	fish scales
	5000	unidentified fish	Actinopterygii
	0007	weakfish	Cynoscion regalis
	0103	bay anchovy	Anchoa mitchilli
	0071	northern searobin	Prionotus carolinus
Copepods	0518	calanoid copepod	calanoid copepod
	0555	unidentified copepod	Copepoda
	0565	unidentified cyclopoid copepod	Cyclopoid copepod
Crabs	0594	unidentified mud crab	Panopeidae
	5012	crab parts	crab parts
	0833	unidentified pea crab	Pinnixa spp.
	6141	blue crab, male	Callinectes sapidus, male
	5035	unidentified crab	Decapoda
	0614	blue crab, sex unknown	Callinectes sapidus
	0545	blue crab megalopa	Callinectes spp.
	6143	blue crab, adult female	Callinectes sapidus, adult fem
	1054	crab megalopa	Decapoda (megalope)
	0547	tube pea crab	Pinnixa chaetoptera
	0612	lady crab	Ovalipes ocellatus
	0758	unidentified right-hand hermit crab	Pagurus spp.
	0864	Atlantic sand crab	Emerita talpoida
	5023	pea crab (Pinnixa cylindrica)	Pinnixa cylindrica
	0917	unidentified hermit crab	Paguroidea
	0927	pea crab (Pinnixa sayana)	Pinnixa sayana
	0973	unidentified crab zoea	Decapoda
	1043	unidentified mole crabs	Albuneidae
	5018	pea crab (Pinnixa retinens)	Pinnixa retinens
	7581	long-clawed hermit crab	Pagurus longicarpus
7582	flat-clawed hermit crab	Pagurus pollicaris	

GROUP	Prey Species	COMMON	LATIN
Echinoderms	0496	unidentified echinoderm	Echinodermata
	0755	unidentified brittle stars	Ophiuroidea
	0920	brittle star	Amphiplus abdita
Gastropods	0884	unidentified drill or snail	Gastropoda
	5028	barrel bubble	Acteocina canaliculata
	0800	moon snail	Polinices heros
Isopods	0559	isopod (Sphaeroma quadridentatum)	Sphaeroma quadridentatum
	0513	slender isopod	Cyathura polita
	0526	isopod (Chiridotea spp.)	Chiridotea spp.
	0683	isopod (Livoneca redmanii)	Livoneca redmanii
	0570	sand isopod	Chiridotea almyra
	0912	isopod (Idotea spp.)	Idotea spp.
	0981	isopod (Synidotea laevidorsalis)	Synidotea laevidorsalis
	0508	isopod	Ancinus depressus
	0655	sea slater	Idotea balthica
	0657	unidentified isopod	Isopoda spp.
	0928	isopod (Paracerceis caudata)	Paracerceis caudata
Miscellaneous	5006	vegetation	Plantae
	0892	worm tubes	worm tubes
	5004	gravel	gravel
	0705	shell	shell
	5037	sand	sand
	0504	wood	Plantae
	0894	coal	coal
	5005	detritus	detritus
	0505	detritus	detritus
Mysids	0720	mysid (Heteromysis formosa)	Heteromysis formosa
	0740	mysid (Americamysis bigelowi)	Mysidopsis bigelowi
Other Animals	0674	unidentified cumacean	Cumacea
	0673	unidentified crustacean	Crustacea
	0629	unidentified worm	worm
	0935	flatworms	Turbellaria
	0703	unidentified hydroid	Cnidaria
	0495	lancelets	Branchiostoma spp.
	0621	mantis shrimp	Squilla empusa
	0991	ants	Formicidae
0883	unidentified leech	Hirudinea	
Polychaetes	0775	unidentified polychaete	Polychaeta
	0510	clam worm (Nereis spp.)	Nereis spp.
	0667	trumpet worm	Pectinaria gouldi
	0668	bamboo worm	Clymenella torquata
	0697	unidentified bloodworm	Glycera spp.
	5010	clam worm (Neanthes succinea)	Neanthes succinea
Shrimp	5001	unidentified shrimp	Decapoda
	0595	roughneck shrimp	Rimapenaeus constrictus
	0620	grass shrimp	Palaeomonetes spp.
	0500	short-browed mud shrimp	Gilvossius setimanus
	0590	flat-browed mud shrimp	Upogebia affinis

Prionotus evolans

VIMSCODE: 0072

Common Name: Striped Searobin

Number Sampled (2002-2008): 162 Full or Partial Workup

Minimum Length: 41 mm

Maximum Length: 257 mm

Mean Length: 137 mm

Stomachs Processed (Full Workup Samples): 148

% Empty Stomachs: 9%

MOST FREQUENTLY FOUND PREY

Prey Species	COMMON	LATIN	COUNT	% FREQUENCY
0574	unidentified mysid	Mysidae	55	22
0699	mysid	<i>Neomysis americana</i>	39	16
0604	sand shrimp	<i>Crangon septemspinosa</i>	32	13
0595	roughneck shrimp	<i>Rimapenaeus constrictus</i>	22	9
5000	unidentified fish	Actinopterygii	14	6
5001	unidentified shrimp	Decapoda	11	4
0005	Atlantic croaker	<i>Micropogonias undulatus</i>	6	2
0103	bay anchovy	<i>Anchoa mitchilli</i>	5	2
0708	unidentified material	unidentified material	5	2
0594	unidentified mud crab	Panopeidae	4	2
0620	grass shrimp	<i>Palaemonetes spp.</i>	4	2
5031	rock	rock	4	2



Neomysis americana



Crangon septemspinosa



Rimapenaeus constrictus



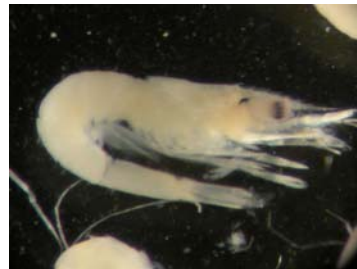
Micropogonias undulatus



Anchoa mitchilli



Mud crab



Palaemonetes spp.

OTHER PREY FOUND

GROUP	Prey Species	COMMON	LATIN
Amphipods	0579	Erichthonius brasiliensis	Erichthonius brasiliensis
	0841	unidentified amphipod	Amphipoda spp.
	0658	skeleton shrimp (Caprellidae)	Caprellidae spp
	0738	red-eyed amphipod	Monoculodes edwardsi
Bony Fishes	0007	weakfish	Cynoscion regalis
	0281	unidentified gobies	Gobiidae
Crabs	0601	eastern tube crab	Polyonyx gibbesi
	0614	blue crab, sex unknown	Callinectes sapidus
	5012	crab parts	crab parts
	5035	unidentified crab	Decapoda
	0545	blue crab megalopa	Callinectes spp.
	0547	tube pea crab	Pinnixa chaetoptera
	0833	unidentified pea crab	Pinnixa spp.
	0839	swimming crabs	Portunids
	0973	unidentified crab zoea	Decapoda
Miscellaneous	0504	wood	Plantae
	0705	shell	shell
	5005	detritus	detritus
	5006	vegetation	Plantae
Other Animals	0690	cumacean (Eudorella hispida)	Eudorella hispida
	0740	mysid (Americamysis bigelowi)	Mysidopsis bigelowi
	0573	estuarine long-eyed shrimp	Ogyrides alphaerostris
	5028	barrel bubble	Acteocina canaliculata
	0775	unidentified polychaete	Polychaeta

Ameiurus nebulosus

VIMSCODE: 00116

Common Name: Brown Bullhead

Number Sampled (2002-2008): 27 Full or Partial Workup

Minimum Length: 215 mm

Maximum Length: 280 mm

Mean Length: 243 mm

Stomachs Processed (Full Workup Samples): 15

% Empty Stomachs: 0%

PREY ITEMS FOUND

Prey Species	COMMON	LATIN	COUNT	% FREQUENCY
0513	slender isopod	<i>Cyathura polita</i>	11	37
0708	unidentified material	unidentified material	6	20
0507	common burrower amphipod	<i>Leptocheirus plumulosus</i>	2	7
0594	unidentified mud crab	Panopeidae	2	7
0705	shell	shell	2	7
0820	clam (<i>Macoma</i> spp.)	<i>Macoma</i> spp.	2	7
0671	amphipod (<i>Corophium</i> spp.)	<i>Corophium</i> spp.	1	3
0841	unidentified amphipod	Amphipoda spp.	1	3
0913	leafhopper	Cicadellidae	1	3
5012	crab parts	crab parts	1	3
5039	unidentified clam	Bivalvia	1	3



Cyathura polita



Leptocheirus plumulosus



Mud crabs



Macoma spp.



Corophium spp.

Perca flavescens

VIMSCODE: 0142

Common Name: Yellow Perch

Number Sampled (2002-2008): 3 Full or Partial Workup

Minimum Length: 98 mm

Maximum Length: 220 mm

Mean Length: 166 mm

Stomachs Processed (Full Workup Samples): 3

% Empty Stomachs: 0%

PREY ITEMS FOUND

Prey Species	COMMON	LATIN	COUNT	% FREQUENCY
0594	unidentified mud crab	Panopeidae	3	30
0281	unidentified gobies	Gobiidae	1	10
0507	common burrower amphipod	<i>Leptocheirus plumulosus</i>	1	10
0513	slender isopod	<i>Cyathura polita</i>	1	10
0620	grass shrimp	<i>Palaemonetes spp.</i>	1	10
0673	unidentified crustacean	Crustacea	1	10
0708	unidentified material	unidentified material	1	10
5020	mound back isopod	<i>Edotia triloba</i>	1	10



Mud crab



Gobiidae



Leptocheirus plumulosus



Cyathura polita



Palaemonetes spp.



Edotia triloba

Trinectes maculatus

VIMSCODE: 0151

Common Name: Hogchoker

Number Sampled (2002-2008): 584 Full or Partial Workup

Minimum Length: 76 mm

Maximum Length: 200 mm

Mean Length: 130 mm

Stomachs Processed (Full Workup Samples): 240

% Empty Stomachs: 43%

PREY ITEMS FOUND

Prey Species	COMMON	LATIN	COUNT	% FREQUENCY
0708	unidentified material	unidentified material	43	18
0667	trumpet worm	<i>Pectinaria gouldi</i>	24	10
0510	clam worm (Nereis spp.)	<i>Nereis spp.</i>	12	5
0775	unidentified polychaete	Polychaeta	12	5
0697	unidentified bloodworm	<i>Glycera spp.</i>	11	5
0629	unidentified worm	worm	10	4
5032	animal tubes	animal tubes	4	2
5037	sand	sand	3	1
0507	common burrower amphipod	<i>Leptocheirus plumulosus</i>	2	1
0513	slender isopod	<i>Cyathura polita</i>	2	1
0574	unidentified mysid	Mysidae	2	1
5006	vegetation	Plantae	2	1
0658	skeleton shrimp (Caprellidae)	Caprellidae spp	1	0
0824	sea squirts (Molgula spp.)	<i>Molgula spp.</i>	1	0
0841	unidentified amphipod	Amphipoda spp.	1	0
0892	worm tubes	worm tubes	1	0
1089	burrow worms	Echiura	1	0
5001	unidentified shrimp	Decapoda	1	0



Pectinaria gouldi



Nereis spp.



Glycera spp.



Leptocheirus plumulosus



Cyathura polita



Molgula manhattensis



Echiura

Symphurus plagiusa

VIMSCODE: 0152

Common Name: Blackcheek Tonguefish

Number Sampled (2002-2008): 27 Full or Partial Workup

Minimum Length: 56 mm

Maximum Length: 180 mm

Mean Length: 111 mm

Stomachs Processed (Full Workup Samples): 19

% Empty Stomachs: 63%

PREY ITEMS FOUND

Prey Species	COMMON	LATIN	COUNT	% FREQUENCY
0574	unidentified mysid	Mysidae	2	14

Gobiesox strumosus

VIMSCODE: 0153

Common Name: Skilletfish

Number Sampled (2002-2008): 7 Full or Partial Workup

Minimum Length: 33 mm

Maximum Length: 48 mm

Mean Length: 40 mm

Stomachs Processed (Full Workup Samples): 5

% Empty Stomachs: 40%

PREY ITEMS FOUND

Prey Species	COMMON	LATIN	COUNT	% FREQUENCY
0708	unidentified material	unidentified material	1	50
0841	unidentified amphipods	Amphipoda	1	50

Opsanus tau

VIMSCODE: 0154

Common Name: Oyster Toadfish

Number Sampled (2002-2008): 109 Full or Partial Workup

Minimum Length: 39 mm

Maximum Length: 405 mm

Mean Length: 230 mm

Stomachs Processed (Full Workup Samples): 74

% Empty Stomachs: 1%

MOST FREQUENTLY FOUND PREY

Prey Species	COMMON	LATIN	COUNT	% FREQUENCY
0758	unidentified right-hand hermit crab	<i>Pagurus spp.</i>	22	14
0594	unidentified mud crab	Panopeidae	19	12
0708	unidentified material	unidentified material	11	7
5943	estuarine mud crab	<i>Rhithropanopeus harrisi</i>	11	7
7581	long-clawed hermit crab	<i>Pagurus longicarpus</i>	7	4
7582	flat-clawed hermit crab	<i>Pagurus pollicaris</i>	6	4
0656	Atlantic rock crab	<i>Cancer irroratus</i>	5	3
5000	unidentified fish	Actinopterygii	5	3
5012	crab parts	crab parts	5	3
5026	unidentified spider crab	<i>Libinia spp.</i>	5	3
0621	mantis shrimp	<i>Squilla empusa</i>	4	3
0884	unidentified drill or snail	Gastropoda	4	3
0901	nematode	Nematoda	4	3
0007	weakfish	<i>Cynoscion regalis</i>	3	2
0673	unidentified crustacean	Crustacea	3	2
5035	unidentified crab	Decapoda	3	2



Rhithropanopeus harrisi



Pagurus longicarpus



Pagurus pollicaris



Cancer irroratus



Libinia spp.



Squilla empusa



Nematoda



Cynoscion regalis

OTHER PREY FOUND

GROUP	Prey Species	COMMON	LATIN
Amphipods	5019	spined back scud	<i>Gammarus mucronatus</i>
	0507	common burrower amphipod	<i>Leptocheirus plumulosus</i>
	0841	unidentified amphipod	Amphipoda spp.
Bivalves	0820	clam (Macoma spp.)	Macoma spp.
	0826	blood ark	<i>Anadara ovalis</i>
	0888	stout tagelus	<i>Tagelus plebeius</i>
	1053	unidentified mussel	Mytilidae
Bony Fishes	0129	lined seahorse	<i>Hippocampus erectus</i>
	0004	butterfish	<i>Pepilus triacanthus</i>
	0033	spot	<i>Leiostomus xanthurus</i>
	0151	hogchoker	<i>Trinectes maculatus</i>
Crabs	0614	blue crab, sex unknown	<i>Callinectes sapidus</i>
	5942	Atlantic mud crab	<i>Panopeus herbstii</i>
Gastropods	0829	channeled whelk	<i>Busycotypus canaliculatus</i>
	0830	knobbed whelk	<i>Busycon carica</i>
	0838	Atlantic oyster drill	<i>Urosalpinx cinerea</i>
	0881	slippersnails	<i>Crepidula</i> spp.
Miscellaneous	5031	rock	rock
	5006	vegetation	Plantae
	0705	shell	shell
Other Animals	0510	clam worm (Nereis spp.)	<i>Nereis</i> spp.
	0981	isopod (Synidotea laevidorsalis)	<i>Synidotea laevidorsalis</i>
Shrimp	0604	sand shrimp	<i>Crangon septemspinosa</i>
	0620	grass shrimp	<i>Palaemonetes</i> spp.
	0590	flat-browed mud shrimp	<i>Upogebia affinis</i>
	0595	roughneck shrimp	<i>Rimapenaeus constrictus</i>

Carcharhinus plumbeus

VIMSCODE: 0162

Common Name: Sandbar Shark

Number Sampled (2002-2008): 30 Full or Partial Workup

Minimum Length: 414 mm

Maximum Length: 860 mm

Mean Length: 608 mm

Stomachs Processed (Full Workup Samples): 27

% Empty Stomachs: 7%

PREY ITEMS FOUND

Prey Species	COMMON	LATIN	COUNT	% FREQUENCY
0037	Atlantic menhaden	<i>Brevoortia tyrannus</i>	12	29
5000	unidentified fish	Actinopterygii	9	22
0621	mantis shrimp	<i>Squilla empusa</i>	8	20
0005	Atlantic croaker	<i>Micropogonias undulatus</i>	1	2
0007	weakfish	<i>Cynoscion regalis</i>	1	2
0009	bluefish	<i>Pomatomus saltatrix</i>	1	2
0056	northern kingfish	<i>Menticirrhus saxatilis</i>	1	2
0103	bay anchovy	<i>Anchoa mitchilli</i>	1	2
0155	unidentified silversides	<i>Menidia spp.</i>	1	2
0604	sand shrimp	<i>Crangon septemspinosa</i>	1	2
0612	lady crab	<i>Ovalipes ocellatus</i>	1	2
0839	swimming crabs	Portunids	1	2
5006	vegetation	Plantae	1	2



Brevoortia tyrannus



Squilla empusa



Micropogonias undulatus



Cynoscion regalis



Pomatomus saltatrix



Menticirrhus spp.



Anchoa mitchilli



Menidia spp.



Crangon septemspinosa



Ovalipes ocellatus

Mustelus canis

VIMSCODE: 0163

Common Name: Smooth Dogfish

Number Sampled (2002-2008): 256 Full or Partial Workup

Minimum Length: 309 mm

Maximum Length: 1,200 mm

Mean Length: 610 mm

Stomachs Processed (Full Workup Samples): 213

% Empty Stomachs: 0%

MOST FREQUENTLY FOUND PREY

Prey Species	COMMON	LATIN	COUNT	% FREQUENCY
0621	mantis shrimp	<i>Squilla empusa</i>	143	15
7582	flat-clawed hermit crab	<i>Pagurus pollicaris</i>	84	9
0656	Atlantic rock crab	<i>Cancer irroratus</i>	63	7
0612	lady crab	<i>Ovalipes ocellatus</i>	54	6
5000	unidentified fish	Actinopterygii	54	6
0758	unidentified right-hand hermit crab	<i>Pagurus spp.</i>	51	5
0775	unidentified polychaete	Polychaeta	47	5
0604	sand shrimp	<i>Crangon septemspinosa</i>	44	5
0697	unidentified bloodworm	<i>Glycera spp.</i>	40	4
5012	crab parts	crab parts	39	4
0708	unidentified material	unidentified material	33	4
0703	unidentified hydroid	Cnidaria	24	3
5006	vegetation	Plantae	22	2
0816	Atlantic jackknife clam	<i>Ensis directus</i>	18	2
5016	unidentified rock crab	<i>Cancer spp.</i>	16	2
5035	unidentified crab	Decapoda	16	2



Squilla empusa



Pagurus spp.



Cancer irroratus



Ovalipes ocellatus



Crangon septemspinosa



Glycera spp.



Ensis directus

OTHER PREY FOUND

GROUP	Prey Species	COMMON	LATIN
Amphipods	0738	red-eyed amphipod	Monoculodes edwardsi
	0841	unidentified amphipod	Amphipoda spp.

Bivalves	0790	jackknife clams (razor clams)	Solenioidea
	0888	stout tagelus	Tagelus plebeius
	0802	blue mussel	Mytilus edulis
	0709	unidentified mollusc meat	Mollusca
	5036	unidentified mollusc	Mollusca
	5039	unidentified clam	Bivalvia
	0498	unidentified bivalve	Bivalvia
	0820	clam (Macoma spp.)	Macoma spp.
	1020	tagelus clams	Tagelus spp.
	5003	unidentified clam siphon	Bivalvia

Bony Fishes	0103	bay anchovy	Anchoa mitchilli
	0037	Atlantic menhaden	Brevoortia tyrannus
	0007	weakfish	Cynoscion regalis
	0005	Atlantic croaker	Micropogonias undulatus
	0529	fish scales	fish scales
	0004	butterfish	Pepilus triacanthus
	0009	bluefish	Pomatomus saltatrix
	0011	harvestfish	Pepilus alepidotus
	0013	kingfish (Menticirrhus spp.)	Menticirrhus spp.
	0023	searobins (Prionotus spp.)	Prionotus spp.
	0057	southern kingfish	Menticirrhus americanus
	0213	silver perch	Bairdiella chrysoura

Crabs	5026	unidentified spider crab	Libinia spp.
	0614	blue crab, sex unknown	Callinectes sapidus
	0839	swimming crabs	Portunids
	7581	long-clawed hermit crab	Pagurus longicarpus
	0578	swimming crab (Portunus spp.)	Portunus spp.
	0594	unidentified mud crab	Panopeidae
	0601	eastern tube crab	Polyonyx gibbesi
	0624	olivepit porcelain crab	Euceramus praelongus
	0861	crabs - Callinectes spp.	Callinectes spp.
	0600	jonah crab	Cancer borealis
	6141	blue crab, male	Callinectes sapidus, male
	6142	blue crab, juvenile female	Callinectes sapidus, juv fem
	6143	blue crab, adult female	Callinectes sapidus, adult fem

GROUP	Prey Species	COMMON	LATIN
Gastropods	0884	unidentified drill or snail	Gastropoda
	0704	shark eye moon snail	Polinices duplicatus
	0800	moon snail	Polinices heros
	0742	New England dog whelk	Nassarius trivittatus

Miscellaneous	0504	wood	Plantae
	0705	shell	shell
	5031	rock	rock
	0016	bait (scrap)	bait (scrap)
	0478	macro algae	macro algae

Other Animals	0673	unidentified crustacean	Crustacea
	0683	isopod (Livoneca redmanii)	Livoneca redmanii
	0517	water fleas (Family unk.)	Cladocera
	0565	unidentified cyclopoid copepod	Cyclopoid copepod
	0017	Loligo squid	Loligo spp.
	1024	hydroids (Diphasia spp.)	Diphasia spp.
	0495	lancelets	Branchiostoma spp.
	0929	isopod (Cymothoidae)	Cymothoidae

Polychaetes	0510	clam worm (Nereis spp.)	Nereis spp.
	0576	bloodworm	Glycera americana
	0926	polychaete (Chaetopterus variopedatus)	Chaetopterus variopedatus
	5010	clam worm (Neanthes succinea)	Neanthes succinea

Shrimp	5001	unidentified shrimp	Decapoda
	0595	roughneck shrimp	Rimapenaeus constrictus
	0500	short-browed mud shrimp	Gilvossius setimanus
	0590	flat-browed mud shrimp	Upogebia affinis
	0596	pink shrimp	Farfantepenaeus duorarum
	0620	grass shrimp	Paiaemonetes spp.

Squalus acanthias

VIMSCODE: 0167

Common Name: Spiny Dogfish

Number Sampled (2002-2008): 143 Full or Partial Workup

Minimum Length: 235 mm

Maximum Length: 1937 mm

Mean Length: 727 mm

Stomachs Processed (Full Workup Samples): 80

% Empty Stomachs: 1%

MOST FREQUENTLY FOUND PREY

Prey Species	COMMON	LATIN	COUNT	% FREQUENCY
0070	spotted hake	<i>Urophycis regia</i>	74	30
0152	blackcheek tonguefish	<i>Symphurus plagiusa</i>	22	9
5000	unidentified fish	Actinopterygii	18	7
0604	sand shrimp	<i>Crangon septemspinosa</i>	17	7
0037	Atlantic menhaden	<i>Brevoortia tyrannus</i>	9	4
0790	jackknife clams (razor clams)	Solenioidea	9	4
0697	unidentified bloodworm	<i>Glycera spp.</i>	8	3
0708	unidentified material	unidentified material	7	3
0709	unidentified mollusc meat	Mollusca	7	3
0103	bay anchovy	<i>Anchoa mitchilli</i>	6	2
0775	unidentified polychaete	Polychaeta	5	2
0151	hogchoker	<i>Trinectes maculatus</i>	4	2
0590	flat-browed mud shrimp	<i>Upogebia affinis</i>	4	2
0656	Atlantic rock crab	<i>Cancer irroratus</i>	4	2



Urophycis regia



Symphurus plagiusa (Photo by VIMS Trawl Survey)



Crangon septemspinosa



Brevoortia tyrannus



Glycera spp.



Anchoa mitchilli



Trinectes maculatus



Cancer irroratus

OTHER PREY FOUND

GROUP	Prey Species	COMMON	LATIN
Bivalves	0816	Atlantic jackknife clam	Ensis directus
	0498	unidentified bivalve	Bivalvia
	0820	clam (Macoma spp.)	Macoma spp.
Bony Fishes	0003	summer flounder	Paralichthys dentatus
	0229	striped cusk-eel	Ophidion marginatum
	0004	butterfish	Peprius triacanthus
	0005	Atlantic croaker	Micropogonias undulatus
	0071	northern searobin	Prionotus carolinus
	0131	northern pipefish	Syngnathus fuscus
	0260	rock seabass	Centropristis philadelphica
	0581	naked gobies	Gobiosoma spp.
	0916	unidentified herring	Clupeidae
	5002	unidentified flatfish	Pleuronectiformes
Cartilaginous Fishes	0181	unidentified ocellate skates	Raja spp.
Cephalopods	0017	Loligo squid	Loligo spp.
	0725	Atlantic brief squid	Lolliguncula brevis
Crabs	5035	unidentified crab	Decapoda
	0758	unidentified right-hand hermit crab	Pagurus spp.
	0839	swimming crabs	Portunids
	5016	unidentified rock crab	Cancer spp.
	5026	unidentified spider crab	Libinia spp.
	7582	flat-clawed hermit crab	Pagurus pollicaris
Gastropods	0800	moon snail	Polinices heros
	0884	unidentified drill or snail	Gastropoda
Miscellaneous	5006	vegetation	Plantae
	0585	mud	Miscellaneous
Mysids	0699	mysid	Neomysis americana
	0574	unidentified mysid	Mysidae
Other Animals	0738	red-eyed amphipod	Monoculodes edwardsi
	0629	unidentified worm	worm
Shrimp	0500	short-browed mud shrimp	Gilvossius setimanus
	0595	roughneck shrimp	Rimapenaeus constrictus

Squatina dumerili

VIMSCODE: 0168

Common Name: Atlantic Angel Shark

Number Sampled (2002-2008): 2 Full or Partial Workup

Minimum Length: 520 mm

Maximum Length: 623 mm

Mean Length: 572 mm

Stomachs Processed (Full Workup Samples): 2

% Empty Stomachs: 0%

PREY ITEMS FOUND

Prey Species	COMMON	LATIN	GROUP	COUNT	% FREQUENCY
0152	blackcheek tonguefish	<i>Symphurus plagiusa</i>	bony fishes	1	50
0621	mantis shrimp	<i>Squilla empusa</i>	crustaceans	1	50



Symphurus plagiusa (Photo by VIMS Trawl Survey)



Squilla empusa

Raja eglanteria

VIMSCODE: 0170

Common Name: Clearnose Skate

Number Sampled (2002-2008): 1,116 Full or Partial Workup

Minimum Length: 84 mm

Maximum Length: 519 mm

Mean Length: 398 mm

Stomachs Processed (Full Workup Samples): 625

% Empty Stomachs: 4%

MOST FREQUENTLY FOUND PREY

Prey Species	COMMON	LATIN	COUNT	% FREQUENCY
0604	sand shrimp	<i>Crangon septemspinosa</i>	230	14
0612	lady crab	<i>Ovalipes ocellatus</i>	199	12
5000	unidentified fish	Actinopterygii	121	7
0621	mantis shrimp	<i>Squilla empusa</i>	103	6
0656	Atlantic rock crab	<i>Cancer irroratus</i>	87	5
7582	flat-clawed hermit crab	<i>Pagurus pollicaris</i>	58	4
0790	jackknife clams (razor clams)	Solenioidea	52	3
0595	roughneck shrimp	<i>Rimapenaeus constrictus</i>	45	3
0758	unidentified right-hand hermit crab	<i>Pagurus spp.</i>	43	3
5001	unidentified shrimp	Decapoda	36	2
5012	crab parts	crab parts	36	2
0007	weakfish	<i>Cynoscion regalis</i>	31	2
0708	unidentified material	unidentified material	28	2
0151	hogchoker	<i>Trinectes maculatus</i>	27	2
0816	Atlantic jackknife clam	<i>Ensis directus</i>	26	2



Crangon septemspinosa



Ovalipes ocellatus



Squilla empusa



Cancer irroratus



Pagurus pollicaris



Rimapenaeus constrictus



Cynoscion regalis



Trinectes maculatus



Ensis directus

OTHER PREY FOUND

GROUP	Prey Species	COMMON	LATIN
Amphipods	0841	unidentified amphipod	Amphipoda spp.
	0738	red-eyed amphipod	Monoculodes edwardsi
	0636	four-eyed amphipods (Ampelisca spp.)	Ampelisca spp.
	0812	gammarid amphipod (Rhepoxynius epistomus)	Rhepoxynius epistomus
Bivalves	1020	tagelus clams	Tagelus spp.
	0888	stout tagelus	Tagelus plebeius
	0709	unidentified mollusc meat	Mollusca
	0498	unidentified bivalve	Bivalvia
	0091	Atlantic surfclam	Spisula solidissima
	0802	blue mussel	Mytilus edulis
5039	unidentified clam	Bivalvia	
Bony Fishes	0005	Atlantic croaker	Micropogonias undulatus
	5002	unidentified flatfish	Pleuronectiformes
	0152	blackcheek tonguefish	Symphurus plagiosa
	0103	bay anchovy	Anchoa mitchilli
	0023	searobins (Prionotus spp.)	Prionotus spp.
	0033	spot	Leiostomus xanthurus
	0037	Atlantic menhaden	Brevoortia tyrannus
	0070	spotted hake	Urophycis regia
	0003	summer flounder	Paralichthys dentatus
	0001	scup	Stenotomus chrysops
	0213	silver perch	Bairdiella chrysoura
	0236	smallmouth flounder	Etropus microstomus
	0281	unidentified gobies	Gobiidae
	0013	kingfish (Menticirrhus spp.)	Menticirrhus spp.
	0129	lined seahorse	Hippocampus erectus
	0229	striped cusk-eel	Ophidion marginatum
	0031	striped bass	Morone saxatilis
	0053	codlings	Urophycis spp.
	0063	windowpane	Scophthalmus aquosus
	0153	skilletfish	Gobiosox strumosus
	0156	unidentified pipefishes	Syngnathus spp.
	0002	black seabass	Centropristis striata
	0004	butterfish	Peprilus triacanthus
	0009	bluefish	Pomatomus saltatrix
	0050	northern puffer	Spherooides maculatus
	0054	sheepshead	Archosargus probatocephalus
	0056	northern kingfish	Menticirrhus saxatilis
	0060	American eel	Anguilla rostrata
	0102	striped anchovy	Anchoa hepsetus
	0131	northern pipefish	Syngnathus fuscus
	0145	seaboard goby	Gobiosoma ginsburgi
	0189	inshore lizardfish	Synodus foetens
	0230	northern sennet	Sphyræna borealis
0285	spotfin mojarra	Eucinostomus argenteus	
0924	Belonidae	Belonidae	
1023	left-eye flounders (Etropus)	Etropus spp.	
1055	pipefishes and seahorse	Syngnathidae	
Cartilaginous Fishes	0163	smooth dogfish	Mustelus canis
Cephalopods	0017	Loligo squid	Loligo spp.
	0725	Atlantic brief squid	Lolliguncula brevis

GROUP	Prey Species	COMMON	LATIN
Crabs	5035	unidentified crab	Decapoda
	5026	unidentified spider crab	Libinia spp.
	0835	lesser blue crab	Callinectes similis
	0594	unidentified mud crab	Panopeidae
	7581	long-clawed hermit crab	Pagurus longicarpus
	0833	unidentified pea crab	Pinnixa spp.
	0578	swimming crab (Portunus spp.)	Portunus spp.
	0614	blue crab, sex unknown	Callinectes sapidus
	0607	irresdescent swimming crab	Portunus gibbesii
	0839	swimming crabs	Portunids
	6141	blue crab, male	Callinectes sapidus, male
	5016	unidentified rock crab	Cancer spp.
	0605	common spider crab	Libinia emarginata
	0624	olivepit porcelain crab	Euceramus praelongus
	0625	square-eyed mole crab	Lepidopa websteri
	0875	sargassum swimming crab	Portunus sayi
	5942	Atlantic mud crab	Panopeus herbstii
	0601	eastern tube crab	Polyonyx gibbesi
	6142	blue crab, juvenile female	Callinectes sapidus, juv fem
0547	tube pea crab	Pinnixa chaetoptera	
5023	pea crab (Pinnixa cylindrica)	Pinnixa cylindrica	
5941	flatback mud crab	Eurypanopeus depressus	
5943	estuarine mud crab	Rhithropanopeus harrisi	
5944	Say mud crab	Dyspanopeus sayi	
Gastropods	0704	shark eye moon snail	Polinices duplicatus
	0800	moon snail	Polinices heros
	0838	Atlantic oyster drill	Urosalpinx cinerea
	0884	unidentified drill or snail	Gastropoda
	5028	barrel bubble	Acteocina canaliculata
Miscellaneous	5006	vegetation	Plantae
	0705	shell	shell
	5004	gravel	gravel
	0504	wood	Plantae
	5031	rock	rock
	5032	animal tubes	animal tubes
	5005	detritus	detritus
	0892	worm tubes	worm tubes
Other Animals	0699	mysid	Neomysis americana
	0673	unidentified crustacean	Crustacea
	0574	unidentified mysid	Mysidae
	0703	unidentified hydroid	Cnidaria
	0825	bryozoans/dead man fingers	Alcyonidium spp.
	0675	unidentified decapod (crabs, shrimp, lobsters)	Decapoda
	0629	unidentified worm	worm
	0775	unidentified polychaete	Polychaeta
	0508	isopod	Ancinus depressus
	0900	unidentified jellyfish	Cnidaria
0901	nematode	Nematoda	
Shrimp	0620	grass shrimp	Palaemonetes spp.
	0596	pink shrimp	Farfantepenaeus duorarum
	0597	white shrimp	Litopenaeus setiferus
	6220	unidentified penaeid shrimp	Penaeidae
	1003	common grass shrimp	Palaemonetes vulgaris

Raja erinacea

VIMSCODE: 0171

Common Name: Little Skate

Number Sampled (2002-2008): 25 Full or Partial Workup

Minimum Length: 252 mm

Maximum Length: 413 mm

Mean Length: 288 mm

Stomachs Processed (Full Workup Samples): 24

% Empty Stomachs: 0%

PREY ITEMS FOUND

Prey Species	COMMON	LATIN	COUNT	% FREQUENCY
0604	sand shrimp	<i>Crangon septemspinosa</i>	20	40
5000	unidentified fish	Actinopterygii	5	10
0697	unidentified bloodworm	<i>Glycera spp.</i>	3	6
0708	unidentified material	unidentified material	3	6
0626	green crab	<i>Carcinus maenas</i>	2	4
0790	jackknife clams (razor clams)	Solenioidea	2	4
0103	bay anchovy	<i>Anchoa mitchilli</i>	1	2
0153	skilletfish	<i>Gobiesox strumosus</i>	1	2
0506	mottled dog whelk	<i>Nassarius vibex</i>	1	2
0595	roughneck shrimp	<i>Rimapenaeus constrictus</i>	1	2
0656	Atlantic rock crab	<i>Cancer irroratus</i>	1	2
0699	mysid	<i>Neomysis americana</i>	1	2
0705	shell	shell	1	2
0775	unidentified polychaete	Polychaeta	1	2
0884	unidentified drill or snail	Gastropoda	1	2
5001	unidentified shrimp	Decapoda	1	2
5002	unidentified flatfish	Pleuronectiformes	1	2
5006	vegetation	Plantae	1	2
5012	crab parts	crab parts	1	2
5035	unidentified crab	Decapoda	1	2
7582	flat-clawed hermit crab	<i>Pagurus pollicaris</i>	1	2



Crangon septemspinosa



Glycera spp.



Gobiesox strumosus



Anchoa mitchilli



Rimapenaeus constrictus



Cancer irroratus



Neomysis americana

Raja ocellata

VIMSCODE: 0172

Common Name: Winter Skate

Number Sampled (2002-2008): 1 Full or Partial Workup

Minimum Length: 537 mm

Maximum Length: 537 mm

Mean Length: 537 mm

Stomachs Processed (Full Workup Samples): 1

% Empty Stomachs: 0%

PREY ITEMS FOUND

Prey Species	COMMON	LATIN	COUNT	% FREQUENCY
0053	codlings	<i>Urophycis spp.</i>	7	70
0152	blackcheek tonguefish	<i>Symphurus plagiusa</i>	1	10
0604	sand shrimp	<i>Crangon septemspinosa</i>	1	10
6220	unidentified penaeid shrimp	Penaeidae	1	10



Urophycis regia



Symphurus plagiusa (Photo by VIMS Trawl Survey)



Crangon septemspinosa

Dasyatis americana

VIMSCODE: 0174

Common Name: Southern Stingray

Number Sampled (2002-2008): 127 Full or Partial Workup

Minimum Length: 195 mm

Maximum Length: 830 mm

Mean Length: 404 mm

Stomachs Processed (Full Workup Samples): 106

% Empty Stomachs: 12%

MOST FREQUENTLY FOUND PREY

Prey Species	COMMON	LATIN	COUNT	% FREQUENCY
0500	short-browed mud shrimp	<i>Gilvossius setimanus</i>	77	25
0621	mantis shrimp	<i>Squilla empusa</i>	34	11
0495	lancelets	<i>Branchiostoma spp.</i>	20	7
0697	unidentified bloodworm	<i>Glycera spp.</i>	19	6
0775	unidentified polychaete	Polychaeta	18	6
0738	red-eyed amphipod	<i>Monoculodes edwardsi</i>	13	4
0604	sand shrimp	<i>Crangon septemspinosa</i>	11	4
0708	unidentified material	unidentified material	11	4
0636	four-eyed amphipods (<i>Ampelisca spp.</i>)	<i>Ampelisca spp.</i>	7	2
0731	polychaete (Maldanidae)	Maldanidae	6	2
5000	unidentified fish	Actinopterygii	5	2
5001	unidentified shrimp	Decapoda	5	2



Gilvossius setimanus



Branchiostoma spp.



Squilla empusa



Glycera spp.



Monoculodes edwardsi



Crangon septemspinosa



Ampelisca spp.

OTHER PREY FOUND

GROUP	Prey Species	COMMON	LATIN
Amphipods	1012	amphipod (<i>Amphiporeia virginiana</i>)	<i>Amphiporeia virginiana</i>
	0841	unidentified amphipod	<i>Amphipoda</i> spp.
Bivalves	0816	Atlantic jackknife clam	<i>Ensis directus</i>
	1020	tagelus clams	<i>Tagelus</i> spp.
	5039	unidentified clam	<i>Bivalvia</i>
	0709	unidentified mollusc meat	<i>Mollusca</i>
	0802	blue mussel	<i>Mytilus edulis</i>
	0888	stout tagelus	<i>Tagelus plebeius</i>
	5036	unidentified mollusc	<i>Mollusca</i>
Bony Fishes	0151	hogchoker	<i>Trinectes maculatus</i>
	0033	spot	<i>Leiostomus xanthurus</i>
	0102	striped anchovy	<i>Anchoa hepsetus</i>
	0152	blackcheek tonguefish	<i>Symphurus plagiusa</i>
	0154	oyster toadfish	<i>Opsanus tau</i>
	5002	unidentified flatfish	<i>Pleuronectiformes</i>
Crabs	5026	unidentified spider crab	<i>Libinia</i> spp.
	5012	crab parts	crab parts
	0612	lady crab	<i>Ovalipes ocellatus</i>
	5035	unidentified crab	<i>Decapoda</i>
	0614	blue crab, sex unknown	<i>Callinectes sapidus</i>
	0833	unidentified pea crab	<i>Pinnixa</i> spp.
	5018	pea crab (<i>Pinnixa retinens</i>)	<i>Pinnixa retinens</i>
	6142	blue crab, juvenile female	<i>Callinectes sapidus</i> , juv fem
Gastropods	0884	unidentified drill or snail	<i>Gastropoda</i>
	0649	unidentified snail (do not use - see 0884)	Do not use
	0506	mottled dog whelk	<i>Nassarius vibex</i>
	0800	moon snail	<i>Polinices heros</i>
	5028	barrel bubble	<i>Acteocina canaliculata</i>
Miscellaneous	0705	shell	shell
	5032	animal tubes	animal tubes
	5037	sand	sand
	5005	detritus	detritus
	5006	vegetation	<i>Plantae</i>
Other Animals	0987	capitellid worm	<i>Heteromastus filiformis</i>
	0673	unidentified crustacean	<i>Crustacea</i>
	0703	unidentified hydroid	<i>Cnidaria</i>
	0510	clam worm (<i>Nereis</i> spp.)	<i>Nereis</i> spp.
	0575	sharp-headed nemertean	<i>Zygeupolia rubens</i>
Shrimp	0590	flat-browed mud shrimp	<i>Upogebia affinis</i>
	0620	grass shrimp	<i>Palaemonetes</i> spp.
	0573	estuarine long-eyed shrimp	<i>Ogyrides alphaerostris</i>
	0595	roughneck shrimp	<i>Rimapenaeus constrictus</i>

Dasyatis centroura

VIMSCODE: 0175

Common Name: Roughtail Stingray

Number Sampled (2002-2008): 16 Full or Partial Workup

Minimum Length: 346 mm

Maximum Length: 514 mm

Mean Length: 440 mm

Stomachs Processed (Full Workup Samples): 15

% Empty Stomachs: 7%

PREY ITEMS FOUND

Prey Species	COMMON	LATIN	COUNT	% FREQUENCY
0624	olivepit porcelain crab	<i>Euceramus praelongus</i>	21	51
0697	unidentified bloodworm	<i>Glycera spp.</i>	12	29
0604	sand shrimp	<i>Crangon septemspinosa</i>	3	7
0500	short-browed mud shrimp	<i>Gilvossius setimanus</i>	1	2
0594	unidentified mud crab	Panopeidae	1	2
0667	trumpet worm	<i>Pectinaria gouldi</i>	1	2
5035	unidentified crab	Decapoda	1	2



Euceramus praelongus



Glycera spp.



Crangon septemspinosa



Gilvossius setimanus



Mud crab



Pectinaria gouldi

Dasyatis sabina

VIMSCODE: 0176

Common Name: Atlantic Stingray

Number Sampled (2002-2008): 39 Full or Partial Workup

Minimum Length: 178 mm

Maximum Length: 579 mm

Mean Length: 324 mm

Stomachs Processed (Full Workup Samples): 34

% Empty Stomachs: 18%

PREY ITEMS FOUND

Prey Species	COMMON	LATIN	COUNT	% FREQUENCY
0604	sand shrimp	<i>Crangon septemspinosa</i>	52	47
0621	mantis shrimp	<i>Squilla empusa</i>	11	10
0699	mysid	<i>Neomysis americana</i>	11	10
0574	unidentified mysid	Mysidae	5	5
0703	unidentified hydroid	Cnidaria	3	3
5001	unidentified shrimp	Decapoda	3	3
0007	weakfish	<i>Cynoscion regalis</i>	2	2
0708	unidentified material	unidentified material	2	2
0017	Loligo squid	<i>Loligo spp.</i>	1	1
0103	bay anchovy	<i>Anchoa mitchilli</i>	1	1
0151	hogchoker	<i>Trinectes maculatus</i>	1	1
0156	unidentified pipefishes	<i>Syngnathus spp.</i>	1	1
0498	unidentified bivalve	Bivalvia	1	1
0504	wood	Plantae	1	1
0595	roughneck shrimp	<i>Rimapenaeus constrictus</i>	1	1
0601	eastern tube crab	<i>Polyonyx gibbesi</i>	1	1
0673	unidentified crustacean	Crustacea	1	1
0775	unidentified polychaete	Polychaeta	1	1
0841	unidentified amphipod	Amphipoda spp.	1	1
5000	unidentified fish	Actinopterygii	1	1
5006	vegetation	Plantae	1	1
5012	crab parts	crab parts	1	1
5032	animal tubes	animal tubes	1	1



Crangon septemspinosa



Squilla empusa



Neomysis americana



Cynoscion regalis



Anchoa mitchilli



Trinectes maculatus



Syngnathus spp.



Rimapenaeus constrictus

Dasyatis sayi

VIMSCODE: 0177

Common Name: Bluntnose Stingray

Number Sampled (2002-2008): 279 Full or Partial Workup

Minimum Length: 192 mm

Maximum Length: 804 mm

Mean Length: 385 mm

Stomachs Processed (Full Workup Samples): 200

% Empty Stomachs: 13%

MOST FREQUENTLY FOUND PREY

Prey Species	COMMON	LATIN	COUNT	% FREQUENCY
0697	unidentified bloodworm	<i>Glycera spp.</i>	53	15
0495	lancelets	<i>Branchiostoma spp.</i>	39	11
0636	four-eyed amphipods (<i>Ampelisca spp.</i>)	<i>Ampelisca spp.</i>	32	9
0738	red-eyed amphipod	<i>Monoculodes edwardsi</i>	25	7
0775	unidentified polychaete	Polychaeta	21	6
0790	jackknife clams (razor clams)	Solenioidea	20	6
0888	stout tagelus	<i>Tagelus plebeius</i>	19	6
0708	unidentified material	unidentified material	15	4
0604	sand shrimp	<i>Crangon septemspinosa</i>	9	3
0621	mantis shrimp	<i>Squilla empusa</i>	8	2
0629	unidentified worm	worm	7	2
0841	unidentified amphipod	Amphipoda spp.	6	2



Glycera spp.



Branchiostoma spp.



Ampelisca spp.



Monoculodes edwardsi



Tagelus plebeius



Crangon septemspinosa



Squilla empusa

OTHER PREY FOUND

GROUP	Prey Species	COMMON	LATIN
Amphipods	0534	amphipod (<i>Microprotopus raneyi</i>)	<i>Microprotopus raneyi</i>
	0812	gammarid amphipod (<i>Rhepoxynius epistomus</i>)	<i>Rhepoxynius epistomus</i>
Bivalves	0498	unidentified bivalve	<i>Bivalvia</i>
	0820	clam (<i>Macoma</i> spp.)	<i>Macoma</i> spp.
	0709	unidentified mollusc meat	Mollusca
	0816	Atlantic jackknife clam	<i>Ensis directus</i>
	0885	false angel wing	<i>Petricolaria pholadiformes</i>
	1020	tagelus clams	<i>Tagelus</i> spp.
	1068	Atlantic awningclam	<i>Solemya velum</i>
	5039	unidentified clam	<i>Bivalvia</i>
Bony Fishes	0103	bay anchovy	<i>Anchoa mitchilli</i>
	5000	unidentified fish	<i>Actinopterygii</i>
Crabs	5012	crab parts	crab parts
	0601	eastern tube crab	<i>Polyonyx gibbesi</i>
	0612	lady crab	<i>Ovalipes ocellatus</i>
Miscellaneous	0504	wood	Plantae
	5006	vegetation	Plantae
	5032	animal tubes	animal tubes
	5037	sand	sand
Other Animals	0673	unidentified crustacean	Crustacea
	0513	slender isopod	<i>Cyathura polita</i>
	0643	sea anemones	Actiniaria
	0574	unidentified mysid	Mysidae
	0699	mysid	<i>Neomysis americana</i>
	0505	unidentified insect	Insecta
	5007	sea squirt (<i>Molgula manhattensis</i>)	<i>Molgula manhattensis</i>
	5028	barrel bubble	<i>Acteocina canaliculata</i>
0892	worm tubes	worm tubes	
Polychaetes	0731	polychaete (<i>Maldanidae</i>)	Maldanidae
	0510	clam worm (<i>Nereis</i> spp.)	<i>Nereis</i> spp.
	0667	trumpet worm	<i>Pectinaria gouldi</i>
	0668	bamboo worm	<i>Clymenella torquata</i>
Shrimp	5001	unidentified shrimp	Decapoda
	0500	short-browed mud shrimp	<i>Gilvossius setimanus</i>
	0595	roughneck shrimp	<i>Rimapenaeus constrictus</i>

Gymnura altavela

VIMSCODE: 0179

Common Name: Spiny Butterfly Ray

Number Sampled (2002-2008): 149 Full or Partial Workup

Minimum Length: 374 mm

Maximum Length: 2,210 mm

Mean Length: 606 mm

Stomachs Processed (Full Workup Samples): 67

% Empty Stomachs: 31%

PREY ITEMS FOUND

Prey Species	COMMON	LATIN	COUNT	% FREQUENCY
0005	Atlantic croaker	<i>Micropogonias undulatus</i>	14	18
5000	unidentified fish	Actinopterygii	11	14
0033	spot	<i>Leiostomus xanthurus</i>	7	9
0103	bay anchovy	<i>Anchoa mitchilli</i>	3	4
0683	isopod (<i>Livoneca redmanii</i>)	<i>Livoneca redmanii</i>	3	4
0708	unidentified material	unidentified material	3	4
0037	Atlantic menhaden	<i>Brevoortia tyrannus</i>	2	3
0102	striped anchovy	<i>Anchoa hepsetus</i>	2	3
0529	fish scales	fish scales	2	3
0001	scup	<i>Stenotomus chrysops</i>	1	1
0007	weakfish	<i>Cynoscion regalis</i>	1	1
0009	bluefish	<i>Pomatomus saltatrix</i>	1	1
0236	smallmouth flounder	<i>Etropus microstomus</i>	1	1
0399	common anchovies	<i>Anchoa spp.</i>	1	1
0699	mysid	<i>Neomysis americana</i>	1	1
0790	jackknife clams (razor clams)	Solenioidea	1	1
0982	<i>Olencira praegustator</i>	<i>Olencira praegustator</i>	1	1
5002	unidentified flatfish	Pleuronectiformes	1	1



Micropogonias undulatus



Leiostomus xanthurus



Anchoa mitchilli



Brevoortia tyrannus



Anchoa hepsetus



Stenotomus chrysops



Neomysis americana



Cynoscion regalis



Pomatomus saltatrix (Photo by VIMS Trawl Survey)



Etropus microstomus

Gymnura micrura

VIMSCODE: 0180

Common Name: Smooth Butterfly Ray

Number Sampled (2002-2008): 148 Full or Partial Workup

Minimum Length: 252 mm

Maximum Length: 1,000 mm

Mean Length: 506 mm

Stomachs Processed (Full Workup Samples): 5

% Empty Stomachs: 49%

PREY ITEMS FOUND

Prey Species	COMMON	LATIN	COUNT	% FREQUENCY
0033	spot	<i>Leiostomus xanthurus</i>	12	20
5000	unidentified fish	Actinopterygii	6	10
0005	Atlantic croaker	<i>Micropogonias undulatus</i>	4	7
0007	weakfish	<i>Cynoscion regalis</i>	4	7
0103	bay anchovy	<i>Anchoa mitchilli</i>	3	5
0001	scup	<i>Stenotomus chrysops</i>	1	2
0213	silver perch	<i>Bairdiella chrysoura</i>	1	2
0683	isopod (Livoneca redmanii)	<i>Livoneca redmanii</i>	1	2
0708	unidentified material	unidentified material	1	2
5032	animal tubes	animal tubes	1	2



Leiostomus xanthurus



Micropogonias undulatus



Cynoscion regalis



Anchoa mitchilli



Stenotomus chrysops



Bairdiella chrysoura

Rhinoptera bonasus

VIMSCODE: 0185

Common Name: Cownose Ray

Number Sampled (2002-2008): 133 Full or Partial Workup

Minimum Length: 240 mm

Maximum Length: 1,118 mm

Mean Length: 601 mm

Stomachs Processed (Full Workup Samples): 80

% Empty Stomachs: 20%

MOST FREQUENTLY FOUND PREY

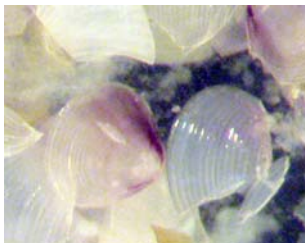
Prey Species	COMMON	LATIN	COUNT	% FREQUENCY
0498	unidentified bivalve	Bivalvia	12	11
0708	unidentified material	unidentified material	7	6
0604	sand shrimp	<i>Crangon septemspinosa</i>	6	6
0705	shell	shell	6	6
5028	barrel bubble	<i>Acteocina canaliculata</i>	6	6
0790	jackknife clams (razor clams)	Solenoida	5	5
5013	amethyst gemclam	<i>Gemma gemma</i>	5	5
5039	unidentified clam	Bivalvia	5	5
0583	baltic macoma clam	<i>Macoma balthica</i>	3	3
0703	unidentified hydroid	Cnidaria	3	3
0513	slender isopod	<i>Cyathura polita</i>	2	2
0667	trumpet worm	<i>Pectinaria gouldi</i>	2	2
0699	mysid	<i>Neomysis americana</i>	2	2
0802	blue mussel	<i>Mytilus edulis</i>	2	2
0816	Atlantic jackknife clam	<i>Ensis directus</i>	2	2
0888	stout tagelus	<i>Tagelus plebeius</i>	2	2
5003	unidentified clam siphon	Bivalvia	2	2
5014	burrowing brittle star	<i>Microphiopholis atra</i>	2	2



Crangon septemspinosa



Acteocina canaliculata



Gemma gemma



Macoma balthica



Cyathura polita



Pectinaria gouldi



Neomysis americana



Tagelus plebeius



Ensis directus

OTHER PREY FOUND

GROUP	Prey Species	COMMON	LATIN
Bivalves	0709	unidentified mollusc meat	Mollusca
	0820	clam (<i>Macoma</i> spp.)	<i>Macoma</i> spp.
	0821	quahog clam	<i>Mercenaria mercenaria</i>
	1020	tagelus clams	<i>Tagelus</i> spp.
	5036	unidentified mollusc	Mollusca
Bony Fishes	0007	weakfish	<i>Cynoscion regalis</i>
	5000	unidentified fish	Actinopterygii
Crabs	5035	unidentified crab	Decapoda
	0545	blue crab megalopa	<i>Callinectes</i> spp.
	7582	flat-clawed hermit crab	<i>Pagurus pollicaris</i>
Gastropods	0514	pitted baby-bubble	<i>Rictaxis punctostriatus</i>
	0884	unidentified drill or snail	Gastropoda
Miscellaneous	5031	rock	rock
	5032	animal tubes	animal tubes
	5037	sand	sand
	0478	macro algae	macro algae
Other Animals	0841	unidentified amphipod	Amphipoda spp.
	0621	mantis shrimp	<i>Squilla empusa</i>
	0629	unidentified worm	worm

Myliobatis freminvillei

VIMSCODE: 0186

Common Name: Bullnose Ray

Number Sampled (2002-2008): 149 Full or Partial Workup

Minimum Length: 247 mm

Maximum Length: 1,330 mm

Mean Length: 522 mm

Stomachs Processed (Full Workup Samples): 123

% Empty Stomachs: 12%

PREY ITEMS FOUND

Prey Species	COMMON	LATIN	COUNT	% FREQUENCY
0800	moon snail	<i>Polinices heros</i>	46	27
0704	shark eye moon snail	<i>Polinices duplicatus</i>	24	14
0758	unidentified right-hand hermit crab	<i>Pagurus spp.</i>	18	10
7581	long-clawed hermit crab	<i>Pagurus longicarpus</i>	16	9
0884	unidentified drill or snail	Gastropoda	11	6
0708	unidentified material	unidentified material	9	5
7582	flat-clawed hermit crab	<i>Pagurus pollicaris</i>	8	5
5039	unidentified clam	Bivalvia	4	2
0595	roughneck shrimp	<i>Rimapenaeus constrictus</i>	2	1
0705	shell	shell	2	1
0709	unidentified mollusc meat	Mollusca	2	1
0790	jackknife clams (razor clams)	Solenioidea	2	1
5001	unidentified shrimp	Decapoda	2	1
5003	unidentified clam siphon	Bivalvia	2	1
0612	lady crab	<i>Ovalipes ocellatus</i>	1	1
0620	grass shrimp	<i>Palaemonetes spp.</i>	1	1
0621	mantis shrimp	<i>Squilla empusa</i>	1	1
0699	mysid	<i>Neomysis americana</i>	1	1
0816	Atlantic jackknife clam	<i>Ensis directus</i>	1	1
0836	clam (<i>Yoldia spp.</i>)	<i>Yoldia spp.</i>	1	1
5006	vegetation	Plantae	1	1
5012	crab parts	crab parts	1	1
5036	unidentified mollusc	Mollusca	1	1



Polinices spp. operculum



Pagurus longicarpus



Pagurus pollicaris



Rimapenaeus constrictus



Palaemonetes spp.



Squilla empusa



Neomysis americana



Ensis directus

Synodus foetens

VIMSCODE: 0189

Common Name: Inshore Lizardfish

Number Sampled (2002-2008): 32 Full or Partial Workup

Minimum Length: 119 mm

Maximum Length: 311 mm

Mean Length: 225 mm

Stomachs Processed (Full Workup Samples): 26

% Empty Stomachs: 4%

PREY ITEMS FOUND

Prey Species	COMMON	LATIN	COUNT	% FREQUENCY
0103	bay anchovy	<i>Anchoa mitchilli</i>	23	43
0007	weakfish	<i>Cynoscion regalis</i>	9	17
5000	unidentified fish	Actinopterygii	5	9
0604	sand shrimp	<i>Crangon septemspinosa</i>	3	6
0017	Loligo squid	<i>Loligo spp.</i>	2	4
0595	roughneck shrimp	<i>Rimapenaeus constrictus</i>	2	4
0725	Atlantic brief squid	<i>Lolliguncula brevis</i>	2	4
0211	Atlantic moonfish	<i>Selene setapinnis</i>	1	2
0399	common anchovies	<i>Anchoa spp.</i>	1	2
0547	tube pea crab	<i>Pinnixa chaetoptera</i>	1	2
0699	mysid	<i>Neomysis americana</i>	1	2
0708	unidentified material	unidentified material	1	2
0841	unidentified amphipod	Amphipoda spp.	1	2



Anchoa mitchilli



Cynoscion regalis



Crangon septemspinosa



Rimapenaeus constrictus



Pinnixa chaetoptera



Neomysis americana

Caranx crysos

VIMSCODE: 0203

Common Name: Blue Runner

Number Sampled (2002-2008): 2 Full or Partial Workup

Minimum Length: 156 mm

Maximum Length: 163 mm

Mean Length: 160 mm

Stomachs Processed (Full Workup Samples): 2

% Empty Stomachs: 0%

PREY ITEMS FOUND

Prey Species	COMMON	LATIN	COUNT	% FREQUENCY
0673	unidentified crustacean	Crustacea	1	50
1028	longfin inshore squid	<i>Loligo pealeii</i>	1	50



Caranx hippos

VIMSCODE: 0204

Common Name: Crevalle Jack

Number Sampled (2002-2008): 21 Full or Partial Workup

Minimum Length: 121 mm

Maximum Length: 206 mm

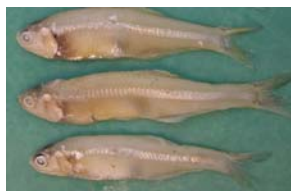
Mean Length: 154 mm

Stomachs Processed (Full Workup Samples): 19

% Empty Stomachs: 0%

PREY ITEMS FOUND

Prey Species	COMMON	LATIN	COUNT	% FREQUENCY
0574	unidentified mysid	Mysidae	10	27
0708	unidentified material	unidentified material	5	14
0103	bay anchovy	<i>Anchoa mitchilli</i>	4	11
0604	sand shrimp	<i>Crangon septemspinosa</i>	4	11
5000	unidentified fish	Actinopterygii	4	11
0699	mysid	<i>Neomysis americana</i>	3	8
0281	unidentified gobies	Gobiidae	2	5
5028	barrel bubble	<i>Acteocina canaliculata</i>	2	5
0673	unidentified crustacean	Crustacea	1	3
5001	unidentified shrimp	Decapoda	1	3
5031	rock	rock	1	3



Anchoa mitchilli



Crangon septemspinosa



Neomysis americana



Gobiidae



Acteocina canaliculata

Selene vomer

VIMSCODE: 0207

Common Name: Lookdown

Number Sampled (2002-2008): 57 Full or Partial Workup

Minimum Length: 58 mm

Maximum Length: 138 mm

Mean Length: 112 mm

Stomachs Processed (Full Workup Samples): 27

% Empty Stomachs: 4%

PREY ITEMS FOUND

Prey Species	COMMON	LATIN	COUNT	% FREQUENCY
0574	unidentified mysid	Mysidae	14	42
0699	mysid	<i>Neomysis americana</i>	5	15
5001	unidentified shrimp	Decapoda	4	12
0604	sand shrimp	<i>Crangon septemspinosa</i>	3	9
0103	bay anchovy	<i>Anchoa mitchilli</i>	2	6
5000	unidentified fish	Actinopterygii	2	6
0281	unidentified gobies	Gobiidae	1	3
0673	unidentified crustacean	Crustacea	1	3



Neomysis americana



Crangon septemspinosa



Anchoa mitchilli



Gobiidae

Selene setapinnis

VIMSCODE: 0211

Common Name: Atlantic Moonfish

Number Sampled (2002-2008): 60 Full or Partial Workup

Minimum Length: 39 mm

Maximum Length: 159 mm

Mean Length: 85 mm

Stomachs Processed (Full Workup Samples): 52

% Empty Stomachs: 17%

PREY ITEMS FOUND

Prey Species	COMMON	LATIN	COUNT	% FREQUENCY
0574	unidentified mysid	Mysidae	17	45
0708	unidentified material	unidentified material	4	11
0103	bay anchovy	<i>Anchoa mitchilli</i>	2	5
0017	Loligo squid	<i>Loligo spp.</i>	1	3
0518	calanoid copepod	calanoid copepod	1	3
0604	sand shrimp	<i>Crangon septemspinosa</i>	1	3
0673	unidentified crustacean	Crustacea	1	3
0699	mysid	<i>Neomysis americana</i>	1	3
5000	unidentified fish	Actinopterygii	1	3



Neomysis americana



Crangon septemspinosa



Anchoa mitchilli

Bairdiella chrysoura

VIMSCODE: 0213

Common Name: Silver Perch

Number Sampled (2002-2008): 289 Full or Partial Workup

Minimum Length: 81 mm

Maximum Length: 213 mm

Mean Length: 145 mm

Stomachs Processed (Full Workup Samples): 182

% Empty Stomachs: 9%

PREY ITEMS FOUND

Prey Species	COMMON	LATIN	COUNT	% FREQUENCY
0574	unidentified mysid	Mysidae	66	27
0699	mysid	<i>Neomysis americana</i>	54	22
0604	sand shrimp	<i>Crangon septemspinosa</i>	40	16
5000	unidentified fish	Actinopterygii	19	8
0103	bay anchovy	<i>Anchoa mitchilli</i>	17	7
0708	unidentified material	unidentified material	7	3
0740	mysid (<i>Americamysis bigelowi</i>)	<i>Mysidopsis bigelowi</i>	4	2
5001	unidentified shrimp	Decapoda	3	1
0510	clam worm (<i>Nereis</i> spp.)	<i>Nereis</i> spp.	2	1
0673	unidentified crustacean	Crustacea	2	1
0841	unidentified amphipod	Amphipoda spp.	2	1
0495	lancelets	<i>Branchiostoma</i> spp.	1	0
0529	fish scales	fish scales	1	0
0697	unidentified bloodworm	<i>Glycera</i> spp.	1	0
0738	red-eyed amphipod	<i>Monoculodes edwardsi</i>	1	0
0775	unidentified polychaete	Polychaeta	1	0
0884	unidentified drill or snail	Gastropoda	1	0
0929	isopod (<i>Cymothoidae</i>)	<i>Cymothoidae</i>	1	0
5006	vegetation	Plantae	1	0
5010	clam worm (<i>Neanthes succinea</i>)	<i>Neanthes succinea</i>	1	0
5028	barrel bubble	<i>Acteocina canaliculata</i>	1	0



Neomysis americana



Crangon septemspinosa



Anchoa mitchilli



Mysidopsis bigelowi



Nereis spp.



Branchiostoma spp.



Glycera spp.



Monoculodes edwardsi



Acteocina canaliculata

Larimus fasciatus

VIMSCODE: 0214

Common Name: Banded Drum

Number Sampled (2002-2008): 40 Full or Partial Workup

Minimum Length: 27 mm

Maximum Length: 224 mm

Mean Length: 128 mm

Stomachs Processed (Full Workup Samples): 31

% Empty Stomachs: 0%

PREY ITEMS FOUND

Prey Species	COMMON	LATIN	COUNT	% FREQUENCY
0574	unidentified mysid	Mysidae	16	47
0699	mysid	<i>Neomysis americana</i>	14	41
0518	calanoid copepod	calanoid copepod	1	3
0671	amphipod (<i>Corophium</i> spp.)	<i>Corophium</i> spp.	1	3
0708	unidentified material	unidentified material	1	3
5020	mound back isopod	<i>Edotia triloba</i>	1	3



Neomysis americana



Corophium spp.



Edotia triloba

Lagodon rhomboides

VIMSCODE: 0216

Common Name: Pinfish

Number Sampled (2002-2008): 37 Full or Partial Workup

Minimum Length: 112 mm

Maximum Length: 200 mm

Mean Length: 139 mm

Stomachs Processed (Full Workup Samples): 7

% Empty Stomachs: 29%

PREY ITEMS FOUND

Prey Species	COMMON	LATIN	COUNT	% FREQUENCY
0510	clam worm (Nereis spp.)	<i>Nereis spp.</i>	1	13
0574	unidentified mysid	Mysidae	1	13
0658	skeleton shrimp (Caprellidae)	Caprellidae spp	1	13
0667	trumpet worm	<i>Pectinaria gouldi</i>	1	13
0673	unidentified crustacean	Crustacea	1	13
0703	unidentified hydroid	Cnidaria	1	13



Nereis spp.



Pectinaria gouldi

Trichiurus lepturus

VIMSCODE: 0219

Common Name: Atlantic Cutlassfish

Number Sampled (2002-2008): 20 Full or Partial Workup

Minimum Length: 217 mm

Maximum Length: 422 mm

Mean Length: 227 mm

Stomachs Processed (Full Workup Samples): 11

% Empty Stomachs: 27%

PREY ITEMS FOUND

Prey Species	COMMON	LATIN	COUNT	% FREQUENCY
0574	unidentified mysid	Mysidae	3	21
0103	bay anchovy	<i>Anchoa mitchilli</i>	2	14
0699	mysid	<i>Neomysis americana</i>	2	14
5000	unidentified fish	Actinopterygii	2	14
0518	calanoid copepod	calanoid copepod	1	7
0708	unidentified material	unidentified material	1	7



Anchoa mitchilli



Neomysis americana



Calanoid copepod

Astroscopus guttatus

VIMSCODE: 0225

Common Name: Northern Stargazer

Number Sampled (2002-2008): 16 Full or Partial Workup

Minimum Length: 121 mm

Maximum Length: 401 mm

Mean Length: 221 mm

Stomachs Processed (Full Workup Samples): 15

% Empty Stomachs: 0%

PREY ITEMS FOUND

Prey Species	COMMON	LATIN	COUNT	% FREQUENCY
5000	unidentified fish	Actinopterygii	7	18
0103	bay anchovy	<i>Anchoa mitchilli</i>	6	16
0604	sand shrimp	<i>Crangon septemspinosa</i>	3	8
0708	unidentified material	unidentified material	2	5
5006	vegetation	Plantae	2	5
5031	rock	rock	2	5
0033	spot	<i>Leiostomus xanthurus</i>	1	3
0129	lined seahorse	<i>Hippocampus erectus</i>	1	3
0509	copepod (Harpacticoid)	Harpacticoid copepod	1	3
0539	cumacean (<i>Oxyurostylis smithi</i>)	<i>Oxyurostylis smithi</i>	1	3
0574	unidentified mysid	Mysidae	1	3
0595	roughneck shrimp	<i>Rimapenaeus constrictus</i>	1	3
0621	mantis shrimp	<i>Squilla empusa</i>	1	3
0697	unidentified bloodworm	<i>Glycera spp.</i>	1	3
0775	unidentified polychaete	Polychaeta	1	3
0841	unidentified amphipod	Amphipoda spp.	1	3
5001	unidentified shrimp	Decapoda	1	3
5002	unidentified flatfish	Pleuronectiformes	1	3
5004	gravel	gravel	1	3
5005	detritus	detritus	1	3
5021	slender tube builder	<i>Corophium lacustre</i>	1	3
5037	sand	sand	1	3



Anchoa mitchilli



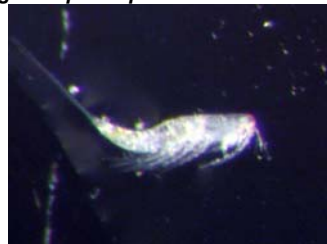
Crangon septemspinosa



Leiostomus xanthurus



Hippocampus erectus



Harpacticoid copepod



Rimapenaeus constrictus



Squilla empusa



Glycera spp.

Etropus microstomus

VIMSCODE: 0236

Common Name: Smallmouth Flounder

Number Sampled (2002-2008): 7 Full or Partial Workup

Minimum Length: 61 mm

Maximum Length: 116 mm

Mean Length: 93 mm

Stomachs Processed (Full Workup Samples): 7

% Empty Stomachs: 14%

PREY ITEMS FOUND

Prey Species	COMMON	LATIN	COUNT	% FREQUENCY
0708	unidentified material	unidentified material	2	20
0543	amphipod (<i>Jassa falcata</i>)	<i>Jassa falcata</i>	1	10
0574	unidentified mysid	Mysidae	1	10
0601	eastern tube crab	<i>Polyonyx gibbesi</i>	1	10
0657	unidentified isopod	Isopoda spp.	1	10
0673	unidentified crustacean	Crustacea	1	10
0694	amphipod (<i>Gammarus</i> spp.)	<i>Gammarus</i> spp.	1	10
0738	red-eyed amphipod	<i>Monoculodes edwardsi</i>	1	10



Gammarus spp.



Monoculodes edwardsi

Chilomycterus schoepfi

VIMSCODE: 0241

Common Name: Striped Burrfish

Number Sampled (2002-2008): 100 Full or Partial Workup

Minimum Length: 79 mm

Maximum Length: 294 mm

Mean Length: 194 mm

Stomachs Processed (Full Workup Samples): 91

% Empty Stomachs: 3%

MOST FREQUENTLY FOUND PREY

Prey Species	COMMON	LATIN	COUNT	% FREQUENCY
0758	unidentified right-hand hermit crab	<i>Pagurus spp.</i>	44	21
0705	shell	shell	27	13
7581	long-clawed hermit crab	<i>Pagurus longicarpus</i>	21	10
0884	unidentified drill or snail	Gastropoda	16	8
0826	blood ark	<i>Anadara ovalis</i>	14	7
0800	moon snail	<i>Polinices heros</i>	11	5
0708	unidentified material	unidentified material	8	4
5012	crab parts	crab parts	8	4
5026	unidentified spider crab	<i>Libinia spp.</i>	6	3
0498	unidentified bivalve	Bivalvia	5	2
5039	unidentified clam	Bivalvia	5	2
0802	blue mussel	<i>Mytilus edulis</i>	4	2
0901	nematode	Nematoda	4	2
5006	vegetation	Plantae	4	2
5028	barrel bubble	<i>Acteocina canaliculata</i>	4	2



Pagurus longicarpus



Pagurus spp.



Polinices spp. operculum



Libinia spp.



Nematodes



Acteocina canaliculata

OTHER PREY FOUND

GROUP	Prey Species	COMMON	LATIN
Bivalves	0790	jackknife clams (razor clams)	Solenioidea
	0820	clam (Macoma spp.)	Macoma spp.
	0888	stout tagelus	Tagelus plebeius
	0816	Atlantic jackknife clam	Ensis directus
	0882	dwarf surf clam	Mulinia lateralis
Crabs	0601	eastern tube crab	Polyonyx gibbesi
	5035	unidentified crab	Decapoda
	0594	unidentified mud crab	Panopeidae
	0612	lady crab	Ovalipes ocellatus
	0624	olivepit porcelain crab	Euceramus praelongus
	0656	Atlantic rock crab	Cancer irroratus
	0839	swimming crabs	Portunids
	7582	flat-clawed hermit crab	Pagurus pollicaris
Echinoderms	0702	sand dollar	Echinarachnius parma
	0920	brittle star	Amphioplus abdita
Miscellaneous	5031	rock	rock
	5032	animal tubes	animal tubes
	5037	sand	sand
Other Animals	0574	unidentified mysid	Mysidae
	0703	unidentified hydroid	Cnidaria
	0824	sea squirts (Molgula spp.)	Molgula spp.