

University of Minnesota Morris Digital Well

## University of Minnesota Morris Digital Well

---

Institutional Effectiveness and Research  
Reports

Disciplines and Departments

---

8-1-2010

### **Institutional Data Book 2009-2010**

University of Minnesota, Morris Office of Institutional Research

Follow this and additional works at: <https://digitalcommons.morris.umn.edu/institutionaldata>

---



UNIVERSITY OF MINNESOTA MORRIS

*2010 Celebration*

---

**2009–10**

**INSTITUTIONAL**

**DATA BOOK**

---

**August 2010**



INSTITUTIONAL DATA BOOK  
UNIVERSITY OF MINNESOTA, MORRIS  
2009-2010

Prepared by the  
UMM Office of Institutional Research

August 2010

*URL: <http://www.morris.umn.edu/academic/instres.html>*

The University of Minnesota shall provide equal access to and opportunity in its programs, facilities, and employment without regard to race, color, creed, religion, national origin, gender, age, marital status, disability, public assistance status, veteran status, sexual orientation, gender identity, or gender expression.

**TABLE OF CONTENTS**

**ORGANIZATIONAL STRUCTURE**

UMM Organizational Chart as of August 2010. . . . . 1

**FINANCIAL AND STAFFING INFORMATION**

Most Recent Expenditures of General Operations and Maintenance Funds. . . . . 3

Proportion of Expenditures of General Operations and Maintenance Funds Devoted to the Academic  
Divisions, Academic Support Services, and Administrative Services (Graphic). . . . . 4

Five-Year Summary of Total Expenditures of General Operations and Maintenance (O&M) Funds. . . . . 5

Five-Year Summary of Expenditures for Compensation from the General O&M Funds. . . . . 6

Five-Year Summary of Supplies, Expense, and Equipment Expenditures from the General O&M Funds. . . . . 7

Trends in Total Expenditures of General Operations and Maintenance Funds (Graphic). . . . . 8

Revenues and Expenditures from IPEDS Reports Supplied by Central Administration . . . . . 9

Five-Year Summary of Financial Aid Distributed. . . . . 10

Tuition, Fees, Room and Board Rates. . . . . 11

Trends in Fund Raising and Endowment Growth. . . . . 12

Trends in Level of Funded Research. . . . . 13

Most Recent Academic, Civil Service, and Bargaining Unit Staffing. . . . . 14

Distribution of Faculty and Staff for 2009-2010 (Graphic). . . . . 15

Five-Year Summary of Academic, Civil Service, and Bargaining Unit Staffing by Occupational Classification. . . . . 16

Five-Year Summary of Academic, Civil Service, and Bargaining Unit Staffing by Functional Unit. . . . . 17

Ten-Year Staffing Trends (Part 1) (Graphic). . . . . 18

Ten-Year Staffing Trends (Part 2) (Graphic) . . . . . 19

**STUDENT INFORMATION**

Forty-Year Summary of Enrollment, Aptitude, and Demographic Information for the UMM Student Body. . . . . 21

Comparison of the High School Ranks of '09 Entering Freshmen to the Five-Year Average (Graphic). . . . . 22

Comparison of '09 Freshman ACT Composite Scores to Five-Year Average (Graphic) . . . . . 23

Origin of the Fall 2009 Student Body (Graphic). . . . . 24

Five-Year Summary of Headcount Enrollment for the University of Minnesota System. . . . . 25

Fall Headcount Enrollments from 1960 to 2009 (Graphic). . . . . 26

**STUDENT INFORMATION (Continued)**

Five-Year Summary of Full-Year Equivalent Enrollment for the University of Minnesota System. . . . . 27  
Consistency in Full-Year Equivalent and Headcount Enrollments (Graphic) . . . . . 28  
Five-Year Summary of Fall Headcount of Students of Color for the University of Minnesota System. . . . . 29  
UMM Fall Headcount Trend by Ethnic Background for Degree-seeking Undergraduates and Entire Student Body. . . . . 30  
UMM Fall Headcount Trend by Ethnic Background for New High School Students and Transfer Students. . . . . 31  
Enrollment Projections for UMM. . . . . 32  
Out-of-State and Foreign Student Enrollments. . . . . 33  
UMM Student Study Abroad Enrollments. . . . . 34  
Study Abroad as Percentage of Degrees Granted and Total Enrollment (Graphic). . . . . 35  
Cohort Retention/Graduation Rates for UMM Entering Freshmen. . . . . 36  
Cohort Retention and Graduation Rates (Graphic). . . . . 37  
Type of Postbaccalaureate Training of UMM Graduates. . . . . 38  
Occupational Level of UMM Graduates. . . . . 39

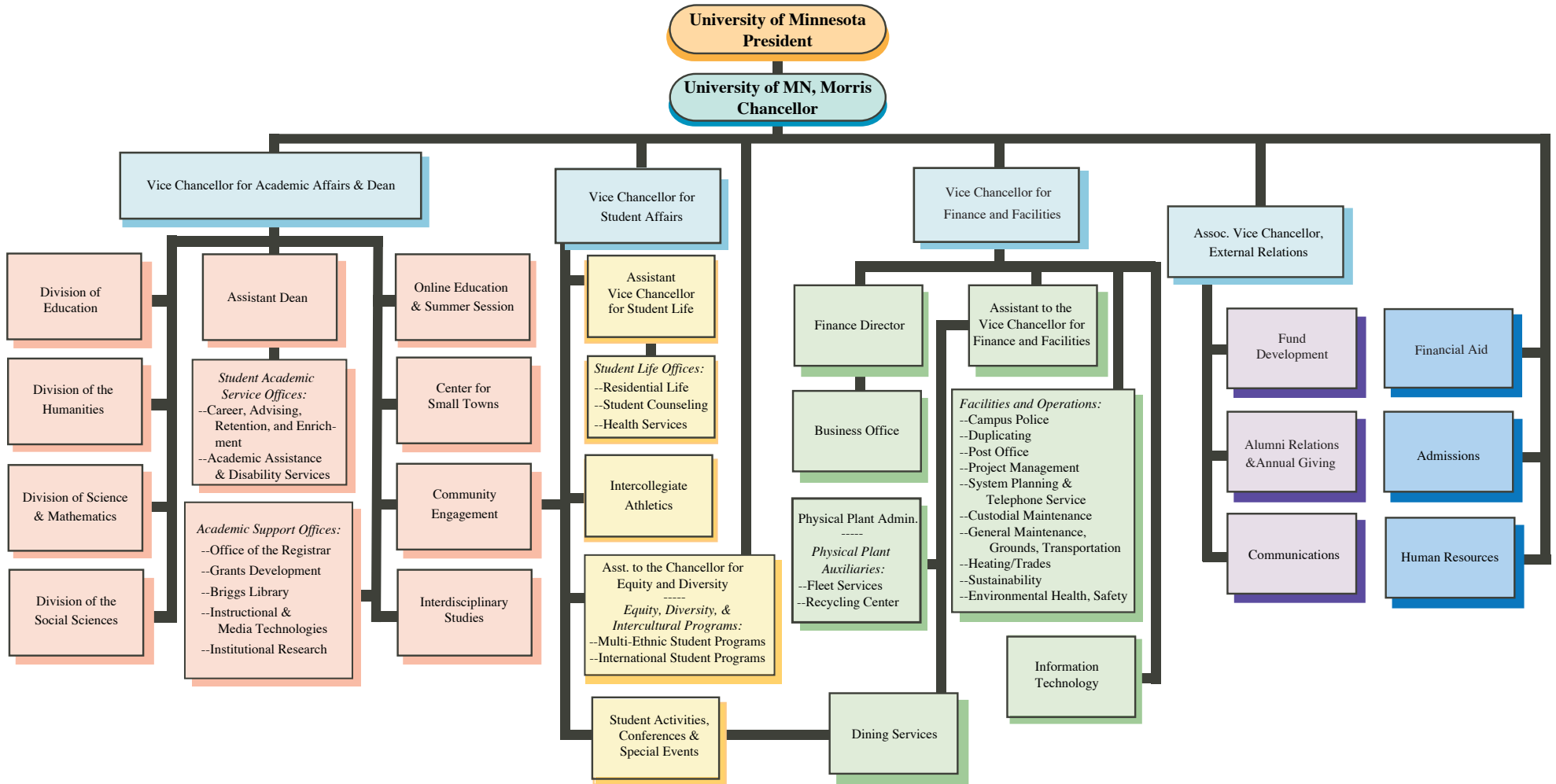
**ACADEMIC PROGRAM INFORMATION**

Five-Year Summary of Declared Majors of the UMM Student Body. . . . . 41-42  
Distribution of Declared Majors, 2005 and 2009 (Graphic). . . . . 43  
Five-Year Summary of Degrees Granted by Major. . . . . 44-45  
Most Recent Student:Faculty Ratios by Division and Discipline. . . . . 46-47  
Ten-Year Trend in Student Enrollments in Courses Offered by Each Academic Division (Graphic) . . . . . 48  
Ten-Year Trend in FTE Faculty at UMM by Division (Graphic). . . . . 49  
Most Recent Statistics by Discipline on Enrollment, Classes, and Faculty. . . . . 50-51  
Faculty Full-Time Equivalent (FTE) Teaching Positions, 2005 to 2010. . . . . 52-53  
FTE Faculty Positions by Appointment Type from 2005 to 2010 (Graphic). . . . . 54  
FTE Faculty Positions by Appointment Type and Division from 2005 to 2010 (Graphic). . . . . 55  
Five-Year Summary of Average Salary for Full-Time Teaching Faculty by Rank and Sex. . . . . 56  
Percentage of Faculty Who are Female, Minority, or Tenured. . . . . 57  
Percentage of Faculty Who are Tenured, Women, or Minority (Graphic). . . . . 58

INDEX. . . . . 59

(August 2010)

# Administrative Organization University of Minnesota, Morris



## **FINANCIAL AND STAFFING INFORMATION**

Information is provided on the expenditure of the general operations and maintenance fund and any legislative special appropriations for that particular year. The table shows actual expenditures, a more accurate financial indicator than the printed budget. Five-year summaries of that same information are also provided showing the total amount and separate summaries for compensation and supplies, expense, and equipment expenditures. It should be noted that the financial information may show only a rough correspondence to that provided by the central administration for the University as a whole because of differences in methods of collection and aggregation of the data. Revenue and expenditure data from the most recent IPEDS reports prepared by the central administration is also included. The financial charts show that while, over the past five years, total college expenditures have risen by 33%, salaries and fringe benefits have risen by 17%, and supplies, expense, and equipment (SE&E) expenditures have risen by 30%. The proportion of total expenditures allotted to SE&E expenditures has gone up from 23% in 2004-05 to 27% in 2008-09. The pie diagram indicates the proportion of expenditures most directly related to the academic program as against those for administrative support.

Financial aid information for the past five years shows the actual distribution of aid including the number of eligible recipients and the average award per student. The information comes from the annual report from the Financial Aid Office. A table showing trends in tuition, fees, room and board is included.

A financial table is provided showing fund raising and endowment growth from 1995 to 2009. Endowment values have increased 70% over the past ten years with commitments averaging \$1,349,475 per year for the past five years. Another financial table shows trends in the level of funded research at UMM. Over the past five years, funded research has averaged 10 awards annually for a total of \$854,169 per year.

Staffing counts include part-time, temporary staff, but do not include student employment. Teaching faculty are shown under the category of "Instruction and Research," with additional administrative faculty appearing under the categories of "Academic Affairs," "Executive Management," and "Support Professionals." Due to institutional reorganization, it was determined that Continuing Education staff and instructional effort needed to be counted as part of overall institutional activity. Beginning in 2003-04, Continuing Education staff and day school instructors were counted; beginning in 2004-05, all Continuing Education staff and instructional efforts were counted. The reader is encouraged to study the definitions on the tables in order to understand which units are included under each of the categories shown. The information in the five-year summaries is broken down, first, by occupational classification and, secondly, by the principal function performed by the employees.

University of Minnesota, Morris  
2008-2009 Expenditures from the General Operations and Maintenance Fund  
and State Legislative Special Appropriations

<b>1002 Expenditures 2008-09</b>
--

Item	Salaries	Fringe Benefits	SE&E**	Total
<b>SUPPORT SERVICES</b>				
Administration	\$1,494,681	\$485,973	\$709,796	\$2,690,450
Student Services	\$1,696,805	\$455,687	\$3,313,172	\$5,465,664
Intercollegiate Athletics	\$580,737	\$141,482	\$442,338	\$1,164,557
Plant Services	<u>\$2,576,293</u>	<u>\$770,168</u>	<u>\$1,985,073</u>	<u>\$5,331,534</u>
	\$6,348,516	\$1,853,310	\$6,450,379	\$14,652,205
<b>ACADEMIC SERVICES</b>				
Administration	\$989,933	\$293,064	\$108,369	\$1,391,366
Computing Services	\$503,255	\$163,945	\$120,976	\$788,176
Continuing Education-Morris	\$860,254	\$128,635	\$369,657	\$1,358,546
Library/Media Services	<u>\$646,896</u>	<u>\$196,108</u>	<u>\$423,054</u>	<u>\$1,266,058</u>
	\$3,000,338	\$781,752	\$1,022,056	\$4,804,146
<b>ACADEMIC DIVISIONS</b>				
Interdisciplinary & General	\$142,764	\$43,134	\$176,771	\$362,669
Education	\$760,355	\$212,278	\$49,795	\$1,022,428
Humanities	\$2,641,985	\$715,992	\$152,659	\$3,510,636
Science & Math	\$2,499,373	\$785,045	\$218,101	\$3,502,519
Social Sciences	<u>\$1,964,881</u>	<u>\$555,298</u>	<u>\$54,135</u>	<u>\$2,574,314</u>
	\$8,009,358	\$2,311,747	\$651,461	\$10,972,566
Cost Pools and Enterprise Taxes*			\$3,421,975	<u>\$3,421,975</u>
<b>GRAND TOTALS</b>	<b>\$17,358,212</b>	<b>\$4,946,809</b>	<b>\$11,545,871</b>	<b>\$33,850,892</b>

--Support Services Administration includes Chancellor's Office, University Relations, Business Office, VC Finance, and Post Office.

--Academic Services Administration includes Vice Chancellor for Academic Affairs Office.

--Continuing Education items are now part of the UMM budget base.

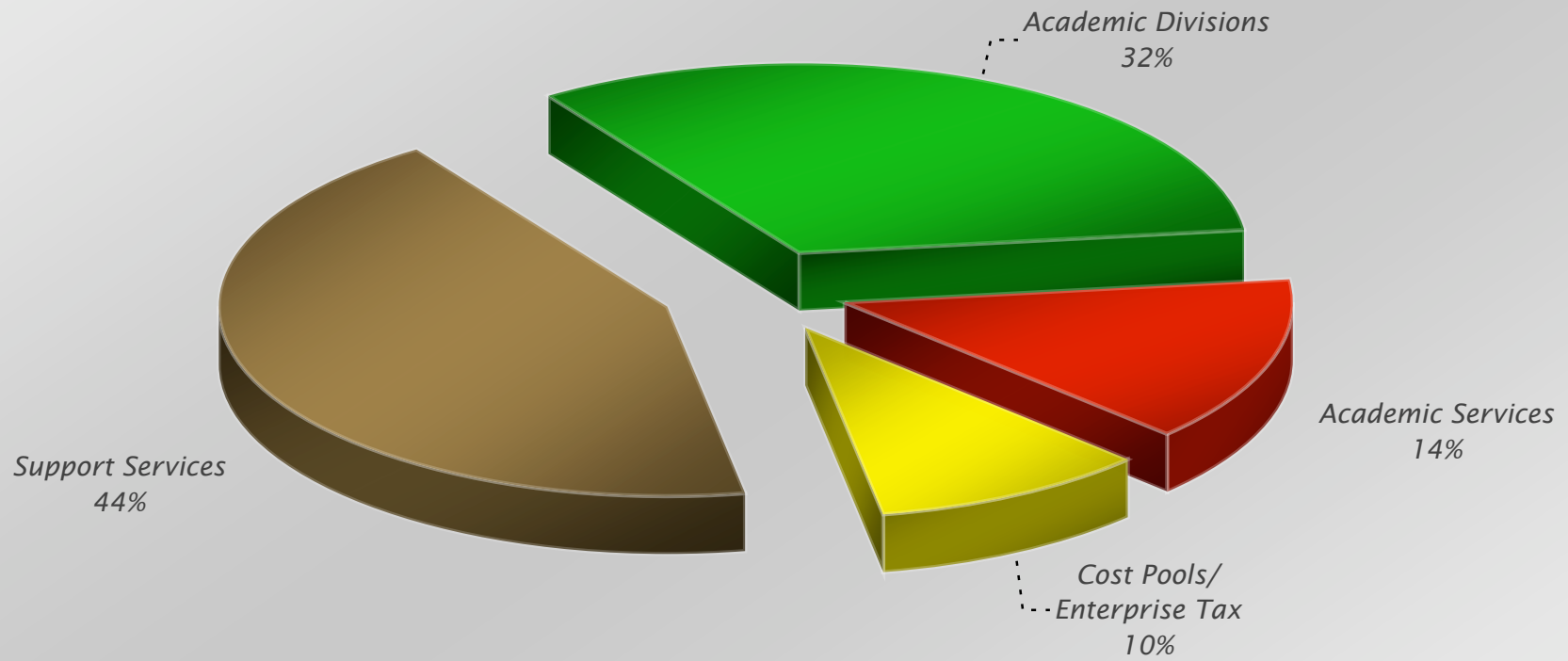
--Academic Divisions/Interdisciplinary and General item includes unassigned instruction from all four divisions, Educational Development Program, interdisciplinary courses, faculty recruiting and travel support.

\*Cost Pools and Enterprise Taxes category was added to this report beginning 2007-08.

\*\*Depreciation Expense is included in SE & E expenses starting in FY09.



## Total Expenditures from the O&M Fund for 2008-09



University of Minnesota, Morris  
A Five-Year Summary of Total Expenditures from the  
General Operations and Maintenance Fund and  
State Legislative Special Appropriations

<b>Total Expenditures 2004-09</b>
---

	2004-2005	2005-2006	2006-2007	2007-2008	2008-2009
<b>SUPPORT SERVICES</b>					
Administration	\$1,672,990	\$1,920,714	\$2,316,471	\$2,415,832	\$2,690,450
Student Services	\$4,372,950	\$4,691,944	\$5,067,825	\$5,206,202	\$5,465,664
Inter. Athletics	\$790,179	\$926,246	\$1,000,507	\$1,089,557	\$1,164,557
Plant Services	\$3,960,705	\$4,914,558	\$4,787,315	\$5,360,688	\$5,331,534
	<u>\$10,796,824</u>	<u>\$12,453,462</u>	<u>\$13,172,118</u>	<u>\$14,072,279</u>	<u>\$14,652,205</u>
<b>ACADEMIC SERVICES</b>					
Administration	\$1,185,317	\$1,170,549	\$1,153,916	\$1,306,444	\$1,391,366
Computing Services	\$694,437	\$841,973	\$843,954	\$858,381	\$788,176
Continuing Ed-Morris	\$1,452,287	\$1,315,119	\$1,719,420	\$1,651,607	\$1,358,546
Library/Media Services	\$1,193,492	\$1,155,212	\$1,245,060	\$1,281,696	\$1,266,058
	<u>\$4,525,533</u>	<u>\$4,482,853</u>	<u>\$4,962,350</u>	<u>\$5,098,128</u>	<u>\$4,804,146</u>
<b>ACADEMIC DIVISIONS</b>					
Interdisc. & General	\$302,872	\$341,624	\$295,086	\$312,431	\$362,669
Education	\$891,255	\$975,315	\$1,025,554	\$1,070,616	\$1,022,428
Humanities	\$3,293,491	\$3,400,669	\$3,303,810	\$3,453,418	\$3,510,636
Science & Math	\$3,052,887	\$3,290,028	\$3,418,400	\$3,531,652	\$3,502,519
Social Sciences	\$2,531,224	\$2,694,991	\$2,906,844	\$2,694,099	\$2,574,314
	<u>\$10,071,729</u>	<u>\$10,702,627</u>	<u>\$10,949,694</u>	<u>\$11,062,216</u>	<u>\$10,972,566</u>
Cost Pools and Enterprise Taxes*	NA	NA	NA	\$3,542,696	\$3,421,975
<b>GRAND TOTALS</b>	<b>\$25,394,086</b>	<b>\$27,638,942</b>	<b>\$29,084,162</b>	<b>\$33,775,319</b>	<b>\$33,850,892</b>

--Support Services Administration includes Chancellor's Office, University Relations, Business Office, VC Finance, and Post Office.

--Academic Services Administration includes Vice Chancellor for Academic Affairs Office.

--Beginning 2003-04, Continuing Education items are part of the UMM budget base.

--Academic Divisions/Interdisciplinary and General item includes unassigned instruction from all four divisions, Educational Development Program, interdisciplinary courses, faculty recruiting and travel support.

\*Cost Pools and Enterprise Taxes category was added to this report for 2007-08.

\*\*Depreciation Expense is included in SE & E expenses starting in FY09.

University of Minnesota, Morris  
A Five-Year Summary of Expenditures for Compensation from the  
General Operations and Maintenance Fund and State Legislative Special Appropriations

<b>Compensation</b>
---------------------

	2004-05	2005-06	2006-07	2007-08	2008-09
<b>SUPPORT SERVICES</b>					
Administration	\$1,258,086	\$1,503,478	\$1,778,301	\$1,791,984	\$1,980,654
Student Services	\$1,979,193	\$2,181,420	\$2,114,367	\$2,183,210	\$2,152,492
Inter. Athletics	\$447,595	\$547,481	\$570,682	\$658,216	\$722,219
Plant Services	<u>\$2,666,036</u>	<u>\$2,845,569</u>	<u>\$3,115,756</u>	<u>\$3,268,846</u>	<u>\$3,346,461</u>
	\$6,350,910	\$7,077,948	\$7,579,106	\$7,902,256	\$8,201,826
<b>ACADEMIC SERVICES</b>					
Administration*	\$1,053,298	\$1,025,440	\$1,059,235	\$1,176,792	\$1,282,997
Computing Services	\$611,397	\$736,893	\$725,975	\$724,104	\$667,200
Continuing Ed-Morris**	\$1,031,955	\$982,800	\$886,454	\$960,264	\$988,889
Library/Media Services	<u>\$643,182</u>	<u>\$783,791</u>	<u>\$794,182</u>	<u>\$819,918</u>	<u>\$843,004</u>
	\$3,339,832	\$3,528,924	\$3,465,846	\$3,681,078	\$3,782,090
<b>ACADEMIC DIVISIONS</b>					
Interdisc. & General	\$148,457	\$223,571	\$172,051	\$158,252	\$185,898
Education	\$853,688	\$936,721	\$980,385	\$1,027,717	\$972,633
Humanities	\$3,132,038	\$3,236,333	\$3,140,842	\$3,301,108	\$3,357,977
Science & Math	\$2,819,135	\$3,078,351	\$3,219,317	\$3,327,454	\$3,284,418
Social Sciences	<u>\$2,478,668</u>	<u>\$2,639,046</u>	<u>\$2,828,859</u>	<u>\$2,648,531</u>	<u>\$2,520,179</u>
	\$9,431,986	\$10,114,022	\$10,341,454	\$10,463,062	\$10,321,105
<b>GRAND TOTALS</b>	<b>\$19,122,728</b>	<b>\$20,720,894</b>	<b>\$21,386,406</b>	<b>\$22,046,396</b>	<b>\$22,305,021</b>

--Support Services Administration includes Chancellor's Office, University Relations, Business Office, VC Finance, and Post Office.

--Academic Services Administration includes Vice Chancellor for Academic Affairs Office.

--Beginning 2003-04, Continuing Education items are part of the UMM budget base.

--Academic Divisions/Interdisciplinary and General item includes unassigned instruction from all four divisions, Educational Development Program, interdisciplinary courses, faculty recruiting and travel support.

\*Includes Center for Small Towns budget. \*\*Includes Summer Session salaries.

University of Minnesota, Morris  
A Five-Year Summary of Supplies, Expense, and Equipment Expenditures from the  
General Operations and Maintenance Fund and State Legislative Special Appropriations

<b>SE&amp;E</b>
-----------------

	2004-05	2005-06	2006-07	2007-08	2008-09
<b>SUPPORT SERVICES</b>					
Administration	\$414,904	\$417,236	\$538,170	\$623,848	\$709,796
Student Services	\$2,393,757	\$2,510,524	\$2,953,458	\$3,022,992	\$3,313,172
Inter. Athletics	\$342,584	\$378,765	\$429,825	\$431,341	\$442,338
Plant Services	<u>\$1,294,669</u>	<u>\$2,068,989</u>	<u>\$1,671,559</u>	<u>\$2,091,842</u>	<u>\$1,985,073</u>
	\$4,445,914	\$5,375,514	\$5,593,012	\$6,170,023	\$6,450,379
<b>ACADEMIC SERVICES</b>					
Administration*	\$132,019	\$145,109	\$94,681	\$129,652	\$108,369
Computing Services	\$83,040	\$105,080	\$117,979	\$134,277	\$120,976
Continuing Ed-Morris	\$420,332	\$332,319	\$832,966	\$691,343	\$369,657
Library/Media Services	<u>\$550,310</u>	<u>\$371,421</u>	<u>\$450,878</u>	<u>\$461,778</u>	<u>\$423,054</u>
	\$1,185,701	\$953,929	\$1,496,504	\$1,417,050	\$1,022,056
<b>ACADEMIC DIVISIONS</b>					
Interdisc. & General	\$154,415	\$118,053	\$123,035	\$154,179	\$176,771
Education	\$37,567	\$38,594	\$45,169	\$42,899	\$49,795
Humanities	\$161,453	\$164,336	\$162,968	\$152,310	\$152,659
Science & Math	\$233,752	\$211,677	\$199,083	\$204,198	\$218,101
Social Sciences	<u>\$52,556</u>	<u>\$55,945</u>	<u>\$77,985</u>	<u>\$45,568</u>	<u>\$54,135</u>
	\$639,743	\$588,605	\$608,240	\$599,154	\$651,461
<b>GRAND TOTALS</b>	<b>\$6,271,358</b>	<b>\$6,918,048</b>	<b>\$7,697,756</b>	<b>\$8,186,227</b>	<b>\$8,123,896</b>

--Support Services Administration includes Chancellor's Office, University Relations, Business Office, VC Finance, and Post Office.

--Academic Services Administration includes Vice Chancellor for Academic Affairs Office.

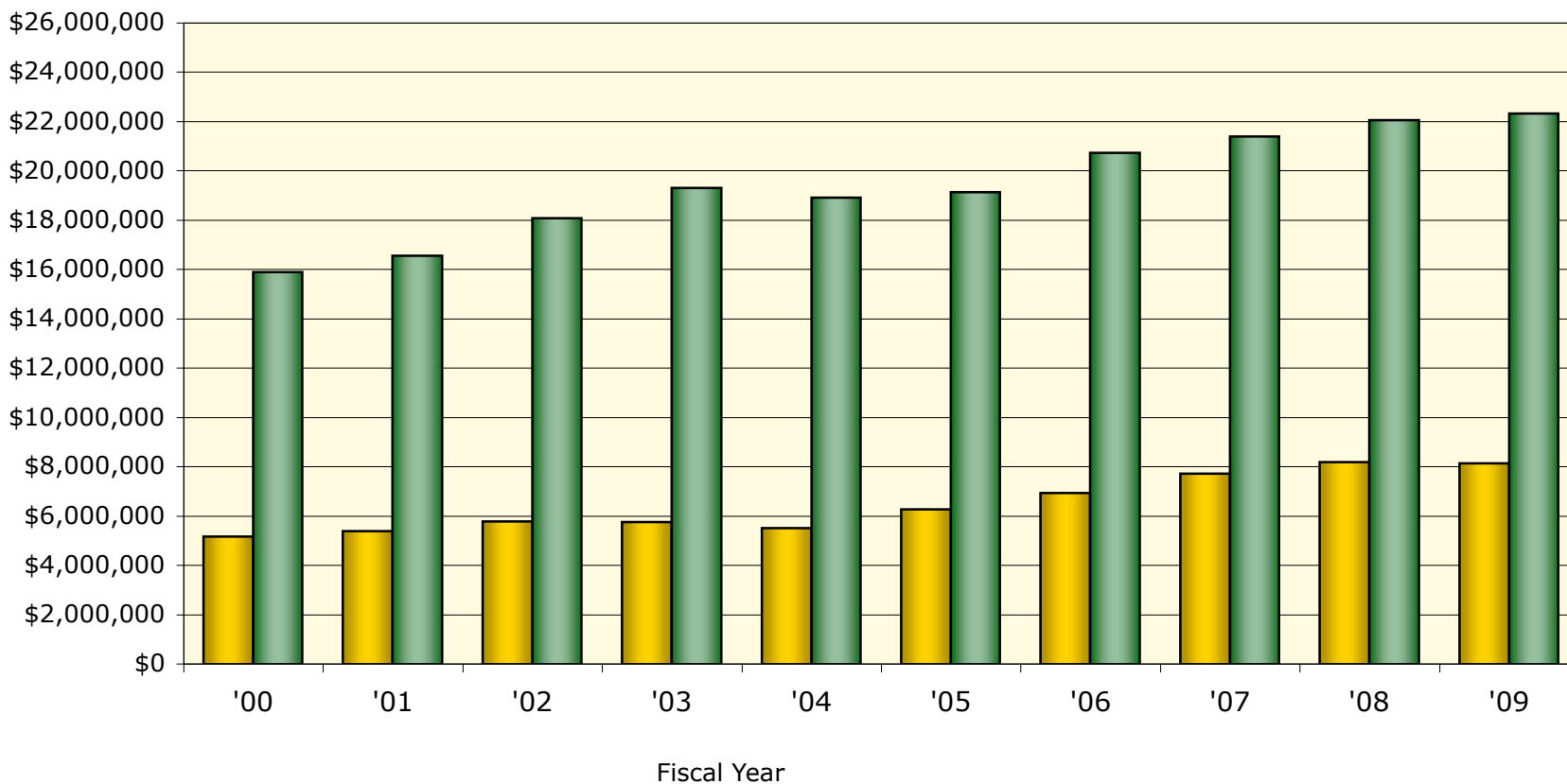
--Beginning 2003-04, Continuing Education items are part of the UMM budget base.

--Academic Divisions/Interdisciplinary and General item includes unassigned instruction from all four divisions, Educational Development Program, interdisciplinary courses, faculty recruiting and travel support.

\*Includes Center for Small Towns budget.

### UMM Expenditures, O&M Fund

■ SE&E Expenditures      ■ Salaries & Fringe



University of Minnesota, Morris Revenues and Expenditures  
From IPEDS Reports Supplied by Central Administration

<b>IPEDS Financial Data</b>
---------------------------------

		Fourth FY Prior 2004-2005	Third FY Prior 2005-2006	Second FY Prior 2006-2007	First FY Prior 2007-2008	Last Completed FY 2008-2009
<b>REVENUES</b>						
	Tuition and fees	\$13,125,825	\$13,048,146	\$14,056,979	\$12,490,454	\$12,872,790
	Federal appropriations	\$0	\$0	\$0	\$0	\$39,813
	State appropriations	\$13,957,333	\$14,899,966	\$17,385,687	\$20,023,670	\$20,547,020
	Local appropriations	\$0	\$0	\$0	\$0	\$0
	Grants and contracts	\$4,392,597	\$4,237,242	\$4,752,448	\$4,478,504	\$4,833,028
	Endowment income	\$754,944	\$589,536	\$551,006	\$746,065	\$705,820
	Sales & services of educational activities	\$236,311	\$181,690	\$0	\$0	\$0
	Auxiliary enterprises	\$4,967,957	\$4,805,943	\$5,257,424	\$4,883,619	\$6,901,908
	Other	\$1,057,366	\$574,305	\$1,001,675	\$71,388	\$63,275
	<b>Total Revenues</b>	\$38,492,333	\$38,336,828	\$43,005,219	\$42,693,700	\$45,963,654
<b>EDUCATIONAL &amp; GENERAL EXPENDITURES AND TRANSFERS</b>						
Educational and General	Instruction	\$10,949,956	\$12,105,188	\$12,372,732	\$12,263,638	\$11,503,756
	Research	\$245,416	\$288,928	\$324,016	\$428,187	\$360,559
	Public services	\$653,602	\$567,323	\$614,581	\$531,303	\$540,038
	Academic support	\$3,960,498	\$4,548,084	\$4,636,820	\$4,627,827	\$5,200,991
	includes library expenditures:	NA	NA	NA	NA	NA
	Student services	\$3,231,309	\$3,565,028	\$3,466,412	\$3,551,889	\$3,045,695
	Institutional support	\$2,102,856	\$2,098,297	\$2,348,907	\$2,815,090	\$2,695,094
	Operation & maintenance of plant	\$3,985,350	\$5,059,425	\$5,236,894	\$6,854,381	\$3,755,268
	Scholarships and fellowships	\$5,991,480	\$5,607,119	\$6,625,825	\$6,574,082	\$7,119,727
	Nonmandatory transfers	\$0	\$0	\$0	\$0	\$0
	Mandatory transfers	\$0	\$0	\$0	\$0	\$0
	<b>Total Educational and General</b>	\$31,120,467	\$33,839,392	\$35,626,187	\$37,646,397	\$34,221,128
<b>AUXILIARY ENTERPRISES</b>						
Auxiliary Enterprises	Expenditures	\$4,359,900	\$4,751,655	\$4,887,943	\$5,427,011	\$6,337,139
	Mandatory transfer	\$0	\$0	\$0	\$0	\$0
	Nonmandatory transfer	\$0	\$0	\$0	\$0	\$0
	<b>Total Auxiliary Enterprises</b>	\$4,359,900	\$4,751,655	\$4,887,943	\$5,427,011	\$6,337,139
<b>HOSPITALS</b>		\$0	\$0	\$0	\$0	\$0
<b>INDEPENDENT OPERATIONS</b>		\$0	\$0	\$0	\$0	\$0
<b>TOTAL CURRENT FUNDS EXPENDITURES AND TRANSFERS</b>		\$35,480,367	\$38,591,047	\$40,514,130	\$43,073,408	\$40,558,267

University of Minnesota, Morris  
A Five-Year Summary of Financial Aid Distributed

<b>Financial Aid</b>
--------------------------

	Amount Distributed				
	2004-05	2005-06	2006-07	2007-08	2008-09
Minnesota State Scholarships/Grants	\$1,882,017	\$1,722,143	\$1,920,803	\$1,683,294	\$1,780,705
U of M Scholarships/Grants	\$2,505,875	\$2,421,330	\$3,132,443	\$1,653,577	\$1,757,295
Outside Scholarships/Grants	\$1,437,238	\$1,493,894	\$1,938,624	\$3,057,755	\$3,433,212
PELL Grants	\$1,116,340	\$968,807	\$1,086,389	\$1,239,397	\$1,413,185
SEOG Grants	\$656,052	\$656,052	\$656,052	\$637,152	\$656,052
ACG and Smart Grants			\$134,595	\$145,368	\$151,951
Veterans'	\$107,843	\$121,521	\$106,197	\$94,187	\$49,358
Morris Acad. Partners/Admin. Internships	\$93,100	\$99,093	\$102,800	\$108,575	\$115,275
Minority Mentorship Program	\$11,500	\$12,000	\$11,000	\$12,000	\$10,500
TOTAL GRANTS	\$7,809,965	\$7,494,840	\$9,088,903	\$8,631,305	\$9,367,533
FED/DIR Subsidized/Unsub Loans	\$5,063,842	\$4,493,881	\$4,501,581	\$4,431,141	\$5,116,057
SELF Loans	\$1,194,307	\$721,693	\$542,689	\$280,614	\$213,477
Perkins Loans	\$380,885	\$502,071	\$575,161	\$219,700	\$6,000
PLUS Loans	\$259,806	\$298,909	\$371,877	\$353,207	\$288,197
Other Loans	\$2,010,740	\$2,379,378	\$2,360,834	\$1,894,130	\$1,266,890
TOTAL LOANS	\$8,909,580	\$8,395,932	\$8,352,142	\$7,178,792	\$6,890,621
Federal Work-Study	\$395,617	\$401,442	\$401,387	\$409,063	\$395,776
State Work-Study	\$194,830	\$173,180	\$194,914	\$121,789	\$116,025
Other University Employment	\$250,936	\$229,878	\$186,586	\$252,235	\$289,996
TOTAL EMPLOYMENT	\$841,383	\$804,500	\$782,887	\$783,087	\$801,797
GRAND TOTALS	\$17,560,928	\$16,695,272	\$18,223,932	\$16,593,184	\$17,059,951
Unduplicated Recipients	1,677	1,539	1,560	1,519	1,479
Percentage of Student Body Receiving Aid	91%	91%	89%	90%	92%
Average Aid Per Student	\$10,472	\$10,848	\$11,682	\$10,923	\$11,535
Cost of Resident Tuition/Fees/Rm/Bd	\$14,306	\$15,471	\$16,462	\$15,702	\$16,706

University of Minnesota, Morris  
A Summary of Tuition, Fees, Room and Board Rates

<b>Tuition Costs</b>
----------------------

	2000-01	2001-02	2002-03	2003-04	2004-05	2005-06	2006-07	2007-08	2008-09	2009-10
<b>RATES PER TERM</b>										
<i>Resident per credit tuition</i>	\$167.75	\$184.95	\$212.70	\$230.35	\$255.60	\$273.47	\$290.67	\$296.15	\$316.54	\$339.61
<i>Mandatory fees</i>										
Technology	\$52.50	\$52.50	\$52.50	\$52.50	\$52.50	\$52.50	\$52.50	\$52.50	\$52.50	\$52.50
Health Service	\$52.50	\$52.50	\$52.50	\$52.50	\$52.50	\$60.00	\$60.00	\$60.00	\$70.00	\$75.00
Activities	\$78.00	\$85.00	\$85.00	\$90.00	\$90.00	\$92.00	\$92.00	\$89.00	\$89.00	\$93.50
Student Center	\$39.00	\$39.00	\$39.00	\$39.00	\$39.00	\$39.00	\$39.00	\$39.00	\$39.00	\$39.00
Intercollegiate Athletics	\$15.00	\$15.00	\$15.00	\$15.00	\$15.00	\$15.00	\$15.00	\$25.00	\$25.00	\$25.00
University		\$75.00	\$150.00	\$300.00	\$400.00	\$450.00	\$487.50	\$500.00	\$550.00	\$600.00
Regional Fitness Center	<u>\$30.00</u>	<u>\$30.00</u>	<u>\$45.00</u>	<u>\$45.00</u>	<u>\$45.00</u>	<u>\$50.00</u>	<u>\$50.00</u>	<u>\$50.00</u>	<u>\$57.50</u>	<u>\$57.50</u>
Total	\$267.00	\$349.00	\$439.00	\$594.00	\$694.00	\$758.50	\$796.00	\$815.50	\$883.00	\$942.50
<i>Room charges:</i>										
Dorm--double room	\$956.00	\$1,040.00	\$1,100.00	\$1,130.00	\$1,255.00	\$1,365.00	\$1,435.00	\$1,490.00	\$1,565.00	\$1,645.00
Apartments--double room	\$1,100.00	\$1,190.00	\$1,250.00	\$1,285.00	\$1,420.00	\$1,545.00	\$1,625.00	\$1,690.00	\$1,775.00	\$1,865.00
<i>19-meal plan</i>	\$1,095.00	\$1,170.00	\$1,190.00	\$1,270.00	\$1,370.00	\$1,510.00	\$1,640.00	\$1,695.00	\$1,790.00	\$1,880.00
<b>ANNUAL RATES</b>										
Resident tuition*	\$5,032.50	\$5,548.50	\$6,381.00	\$6,907.50	\$7,668.00	\$8,204.00	\$8,720.00	\$7,700.00	\$8,230.00	\$8,830.00
Mandatory fees	\$534.00	\$698.00	\$878.00	\$1,188.00	\$1,388.00	\$1,517.00	\$1,592.00	\$1,631.00	\$1,766.00	\$1,885.00
<u>Room and board**</u>	<u>\$4,102.00</u>	<u>\$4,470.00</u>	<u>\$4,580.00</u>	<u>\$4,800.00</u>	<u>\$5,250.00</u>	<u>\$5,750.00</u>	<u>\$6,150.00</u>	<u>\$6,370.00</u>	<u>\$6,710.00</u>	<u>\$7,050.00</u>
<i>Comprehensive cost</i>	\$9,668.50	\$10,716.50	\$11,839.00	\$12,895.50	\$14,306.00	\$15,471.00	\$16,462.00	\$15,701.00	\$16,706.00	\$17,765.00
Percentage Increase:	<u>'99 to '00</u>	<u>'00 to '01</u>	<u>'01 to '02</u>	<u>'02 to '03</u>	<u>'03 to '04</u>	<u>'04 to '05</u>	<u>'05 to '06</u>	<u>'06 to '07</u>	<u>'07 to '08</u>	<u>'08 to '09</u>
in annual tuition	5.3%	10.3%	15.0%	8.3%	11.0%	7.0%	6.3%	-11.7%	6.9%	7.3%
in comprehensive cost	4.8%	10.8%	10.5%	8.9%	10.9%	8.1%	6.4%	-4.6%	6.4%	6.3%

\*Based on tuition band of 13 or more credits per term for 2007-08 to present; prior to fall 2007, 15-20 credits per term was the tuition band.

\*\*Based on rates for double room in a dorm plus 19-meal plan.

#First year on semesters (2 terms/year) rather than quarters (3 terms/year).



University of Minnesota, Morris  
Trends in Fund Raising and Endowment Growth  
from 1995 to 2009

**Fund  
Raising**

Fiscal Year	Commitments	Gifts	Endowment Values
1995	\$166,352	\$182,671	\$2,416,948
1996	\$245,298	\$253,986	\$2,899,405
1997	\$538,093	\$192,675	\$3,467,165
1998	\$1,259,705	\$258,278	\$4,100,316
1999	\$723,602	\$823,271	\$4,804,642
2000	\$2,112,306	\$639,059	\$6,044,254
2001	\$1,023,515	\$498,523	\$5,561,333
2002	\$1,642,570	\$571,600	\$5,495,890
2003	\$1,212,462	\$511,647	\$5,554,352
2004	\$255,865	\$485,824	\$6,621,750
2005	\$1,099,993	\$687,772	\$7,792,072
2006	\$1,104,893	\$634,118	\$8,821,696
2007	\$1,201,081	\$668,232	\$10,619,831
2008	\$1,487,703	\$782,984	\$10,382,079
2009	\$1,853,707	\$657,933	\$8,173,097

*Source: FY02-FY05 from University of Minnesota Foundation Donor Management System (DMS) Executive Reports.*  
Previous data from query of DMS production and receipted tables. Commitments are outright gifts, pledge obligations, deferred obligations and are dollars to be matched. Gifts are outright gifts, pledge payments, deferred payments, and matching gifts. Endowment values are the 6/30 market values of both true and quasi endowments held by both UMM and by the University of Minnesota Foundation. A true endowment is a fund in which the principal balance cannot be spent; only the available balance can be spent, which is approximately 5% (this figure subject to change) of a trailing average of the fund's total market value. A quasi endowment is a fund that earns market return like a true endowment but its principal balance can be spent.

University of Minnesota, Morris  
Trends in Level of Sponsored Support

<b>Awards Received</b>
----------------------------

	2004-05		2005-06		2006-07		2007-08		2008-09	
	No.	Amount	No.	Amount	No.	Amount	No.	Amount	No.	Amount
Proposals Submitted	27	\$3,444,201	20	\$2,653,643	16	\$2,240,167	14	\$9,959,734	22	\$4,917,003
Awards Received	13	\$646,616	11	\$2,344,481	11	\$503,382	9	\$425,596	7	\$350,768
Sponsored Expenditures	--	\$499,000	--	\$570,247	--	\$549,699	--	\$618,000	--	\$584,503

Source: Electronic Grants Management System (EGMS) Database, produced by the Office of Oversight, Analysis and Reporting

University of Minnesota, Morris  
Academic, Civil Service, and Bargaining Unit Staffing  
for 2009-10

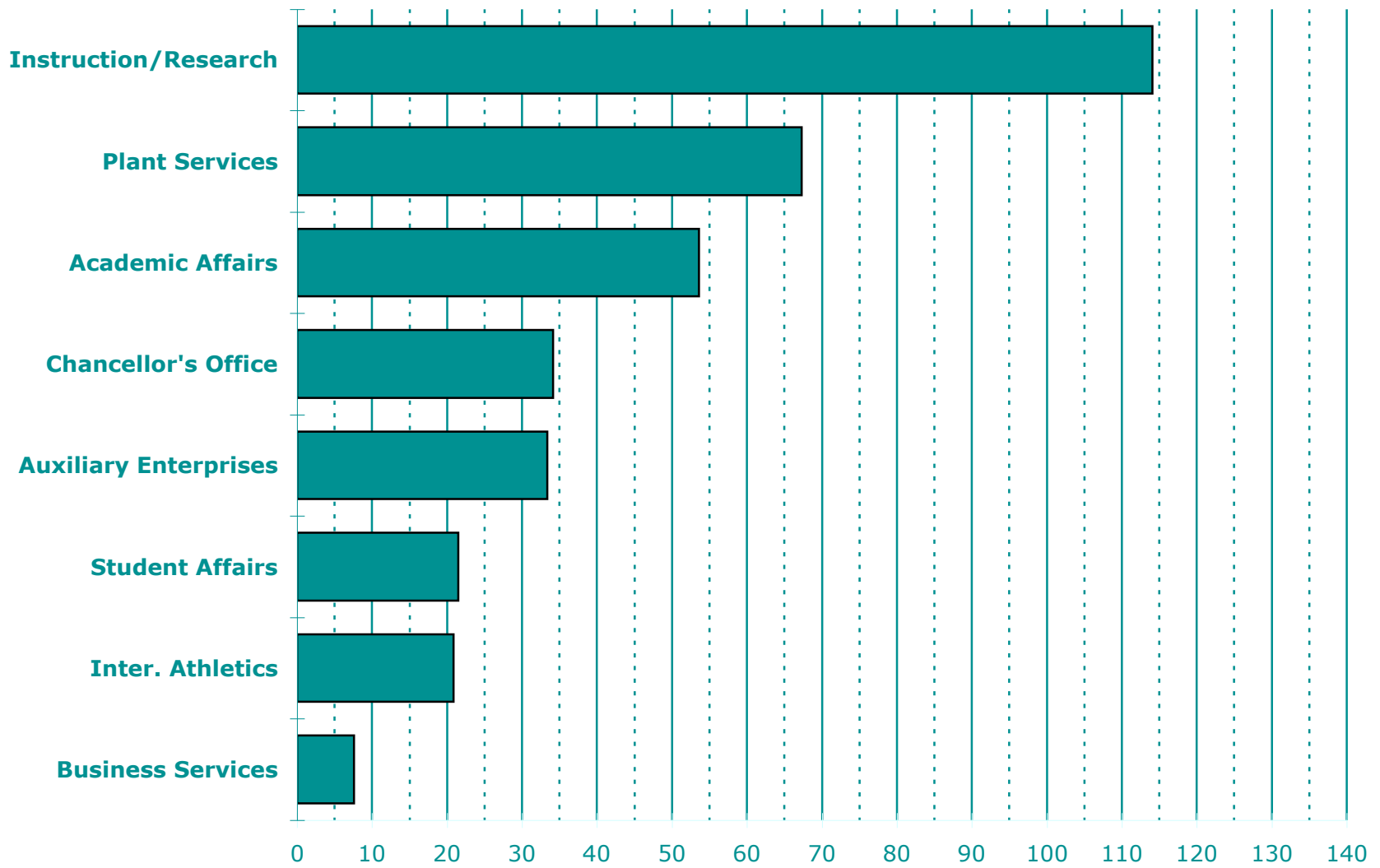
<b>Staffing by Dept. 2009-10</b>
--------------------------------------

	Instruction and Research	Academic Affairs	Chancellor's Office	Intercol. Athletics	Student Affairs	Business Services	Plant Services	Auxiliary Enterprises	Total
Teaching Faculty	114.0	3.0	-	4.5	-	-	-	-	121.5
Executive Management	-	1.0	2.0	-	1.0	-	1.0	-	5.0
Support Professionals	-	17.7	15.5	14.3	14.6	2.0	9.0	1.0	74.1
Technical Employees	-	8.5	-	-	-	-	6.0	2.0	16.5
Office/Clerical	-	23.4	16.6	2.0	5.8	5.5	7.0	6.4	66.6
Crafts/Trades	-	-	-	-	-	-	21.3	-	21.3
Service Employees	-	-	-	-	-	-	22.9	23.9	46.8
<b>Total</b>	<b>114.0</b>	<b>53.5</b>	<b>34.1</b>	<b>20.8</b>	<b>21.4</b>	<b>7.5</b>	<b>67.2</b>	<b>33.3</b>	<b>351.7</b>

Definitions:

- Instruction and Research includes the academic divisions and, beginning with 2004-05, includes all Continuing Education instructors. The division chairs are counted as 0.5 under Instruction and Research and 0.5 under Academic Affairs. Faculty with athletic responsibilities are counted as 0.5 under Instruction and Research and 0.5 under Intercollegiate Athletics.
- Academic Affairs includes the Vice Chancellor's Office, Library, Instructional and Media Technologies, Advising, Academic Assistance, Registrar's Office, Continuing Education (beginning with 2003-04), Career Center, Grants Development, and divisional offices. Center for Small Towns staff are shown under Auxiliary Enterprises.
- Chancellor's Office includes University Relations, Alumni Relations, Fund Development, and Human Resources. Admissions and Financial Aid were added this year.
- Student Affairs includes the Vice Chancellor's Office, Counseling, Health Service, Residential Life office staff, Student Activities, and Diversity, Equity, and Multi-cultural Program. Residential Life custodial staff are shown under Auxiliary Enterprises.
- Enrollment unit no longer exists, but did include Admissions and Financial Aid. Employees are now in the Chancellor's Office unit.
- Business Services includes the Finance director and Business Office. Food Services and the Bookstore are shown under Auxiliary Enterprises.
- Plant Services includes Computing Services, Post Office, Campus Police, Planning, Telephone, General and Custodial Maintenance, Building Trades, Grounds, and Transportation. Duplicating and Vending are shown under Auxiliary Enterprises.
- Auxiliary Enterprises includes Food Service, Vending, Duplicating, Bookstore, Residential Life custodial staff, and Center for Small Towns.
- Does not include faculty leave replacements, student employment, part-time faculty or staff employed less than 25% time.

**Distribution of Faculty/Staff for 2009-2010**



University of Minnesota, Morris  
 A Five-Year Summary of the Academic, Civil Service, and Bargaining Unit Staffing  
 by Occupational Classification  
 for 2005-2010

<b>Staffing by Class. 2005-10</b>
---

Classification	2005-06	2006-07	2007-08	2008-09	2009-10
Teaching Faculty	149.5	151.6	140.0	128.6	121.5
Executive Management	7.0	7.0	7.0	6.0	5.0
Support Professionals	66.4	65.2	72.8	75.0	74.1
Technical Employees	19.4	18.0	18.1	18.1	16.5
Office/Clerical	81.3	78.4	77.8	74.4	66.6
Crafts/Trades	17.7	18.6	18.8	19.3	21.3
Service Employees	53.2	52.0	51.0	52.2	46.8
<b>Total</b>	<b>394.5</b>	<b>390.8</b>	<b>385.5</b>	<b>373.6</b>	<b>351.7</b>

Most temporary and continuing part-time employees are counted on a percentage basis (faculty on leave are counted but not their replacements). Beginning with 2003-04, Continuing Education employees are counted in the UMM staff total. \*Beginning in 2004-05, all Continuing Education instructional effort is counted under "Teaching Faculty."

Definitions:

- Teaching Faculty includes instructional faculty and division chairs.
- Executive Management includes the chancellor and vice chancellors.
- Support Professionals include Academic and Student Affairs directors, librarians, police, nurse, trainer, etc.
- Technical includes junior engineer, landscape supervisor, computer specialists, electronic technicians, etc.
- Office and Clerical includes clerical and office supervisory staff and assistant administrators.
- Crafts and Trades includes bargaining unit staff in skilled trades such as carpenters, electricians, plumbers, etc.
- Service includes primarily bargaining unit staff in custodial and food service positions.

University of Minnesota, Morris  
 A Five-Year Summary of the Academic, Civil Service, and Bargaining Unit Staffing  
 by Functional Unit  
 for 2005-2010

**Staffing by  
 Unit  
 2005-10**

Unit	2005-06	2006-07	2007-08	2008-09	2009-10
Instruction/Research*	143.2	146.3	134.5	121.8	114.0
Academic Affairs	69.5	65.9	69.2	66.6	53.5
Chancellor's Office	11.7	11.7	15.2	15.2	34.1
Inter. Athletics	16.9	16.7	18.6	20.3	20.8
Student Affairs**	24.3	23.9	24.6	24.1	21.4
Enrollment**	21.9	20.2	19.8	18.8	NA
Business Services	9.5	9.5	8.6	9.2	7.5
Plant Services	53.8	56.2	57.0	58.2	67.2
Auxiliary Enterprises	<u>43.7</u>	<u>40.5</u>	<u>38.2</u>	<u>39.5</u>	<u>33.3</u>
Total	394.5	390.8	385.6	373.6	351.7

Note: Beginning 2005-06, Admissions and Financial Aid were counted in a new unit called "Enrollment" rather than in Student Affairs; as of 2009-10, these areas are counted under the Chancellor's Office. Beginning 2003-04, Continuing Education staff are counted in the UMM total and the following year, all Continuing Education instructional effort is counted. Beginning 2002-03, the Office of the Registrar is shown under Academic Affairs rather than Student Affairs. Also, Post Office, Campus Security, and Transportation are shown under Plant Services rather than Business Services.

--\*Instruction and Research includes the academic Divisions and as of 2004-05 includes all Continuing Education faculty.

Faculty with athletic responsibilities are split between Instruction and Intercollegiate Athletics; Division Chairs are split between Instruction and Academic Affairs.

--Academic Affairs includes the Vice Chancellor's Office, Divisional Offices, Library, Instructional and Media Technologies, Advising, Academic Assistance, Registrar's Office, Career Center, Grants Development Offices, and (beginning 2003-04) Continuing Education.

--Chancellor's Office also includes University Relations, Alumni Relations, Fund Development, Admissions, and Financial Aid.

--Student Affairs includes the Vice Chancellor's Office, Counseling, Health Service, Residential Life office staff, Student Activities, and Diversity, Equity, and Multicultural Program. Residential Life custodial staff are shown under Auxiliary Services.

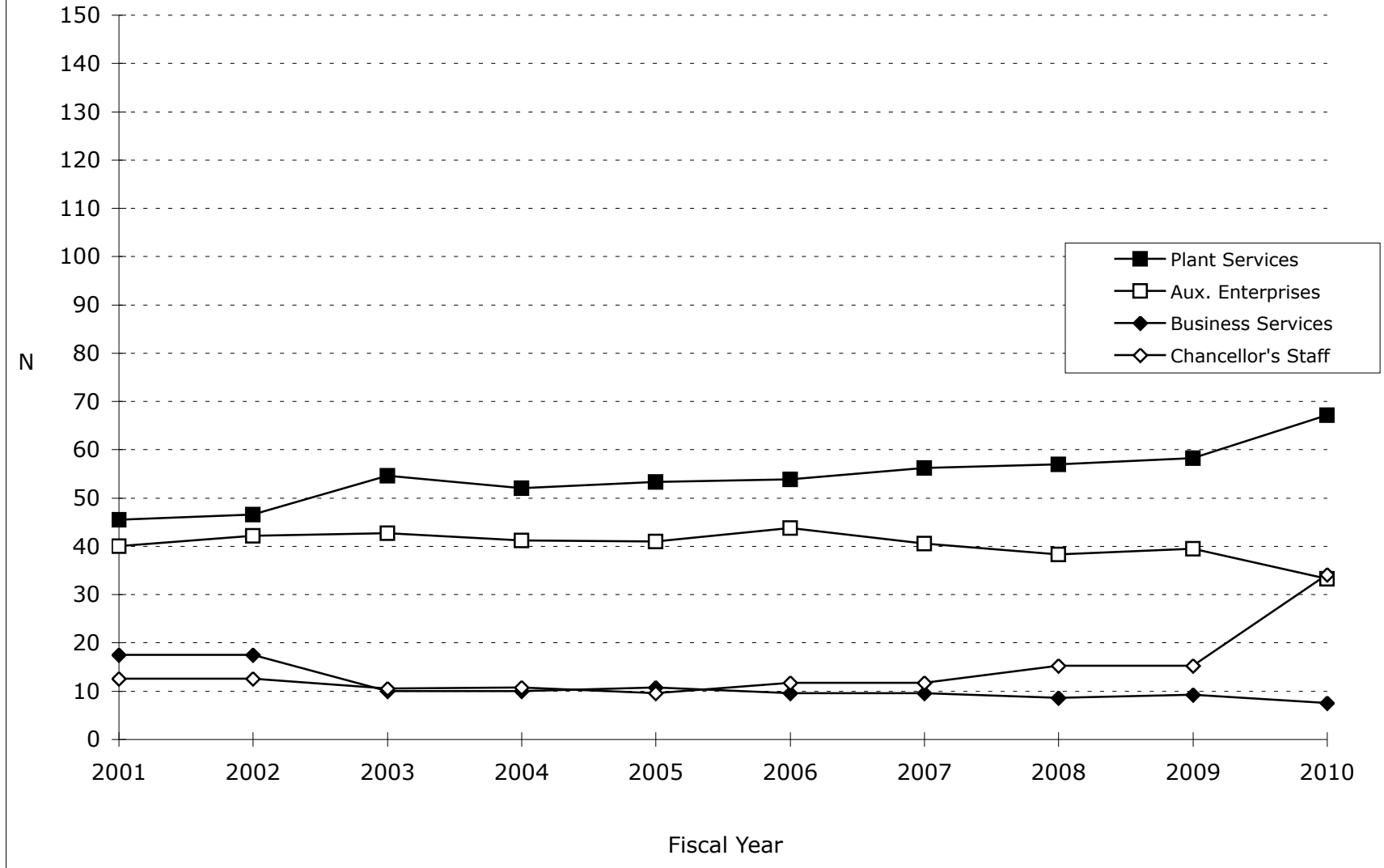
\*\*From 2005-06 to 2008-09, Enrollment, including Admissions and Financial Aid, is counted separately rather than within Student Affairs. Beginning 2009-10, Admissions and Financial Aid are counted under the Chancellor's Office.

--Business Services includes the Finance Dir. and Business Office. Food Services and Bookstore are shown under Auxiliary Enterprises.

--Plant Services includes Computing Services, Post Office, Campus Police, Planning, Telephone, General and Custodial Maintenance, Building Trades, Grounds, and Transportation. Duplicating and Vending are shown under Auxiliary Enterprises.

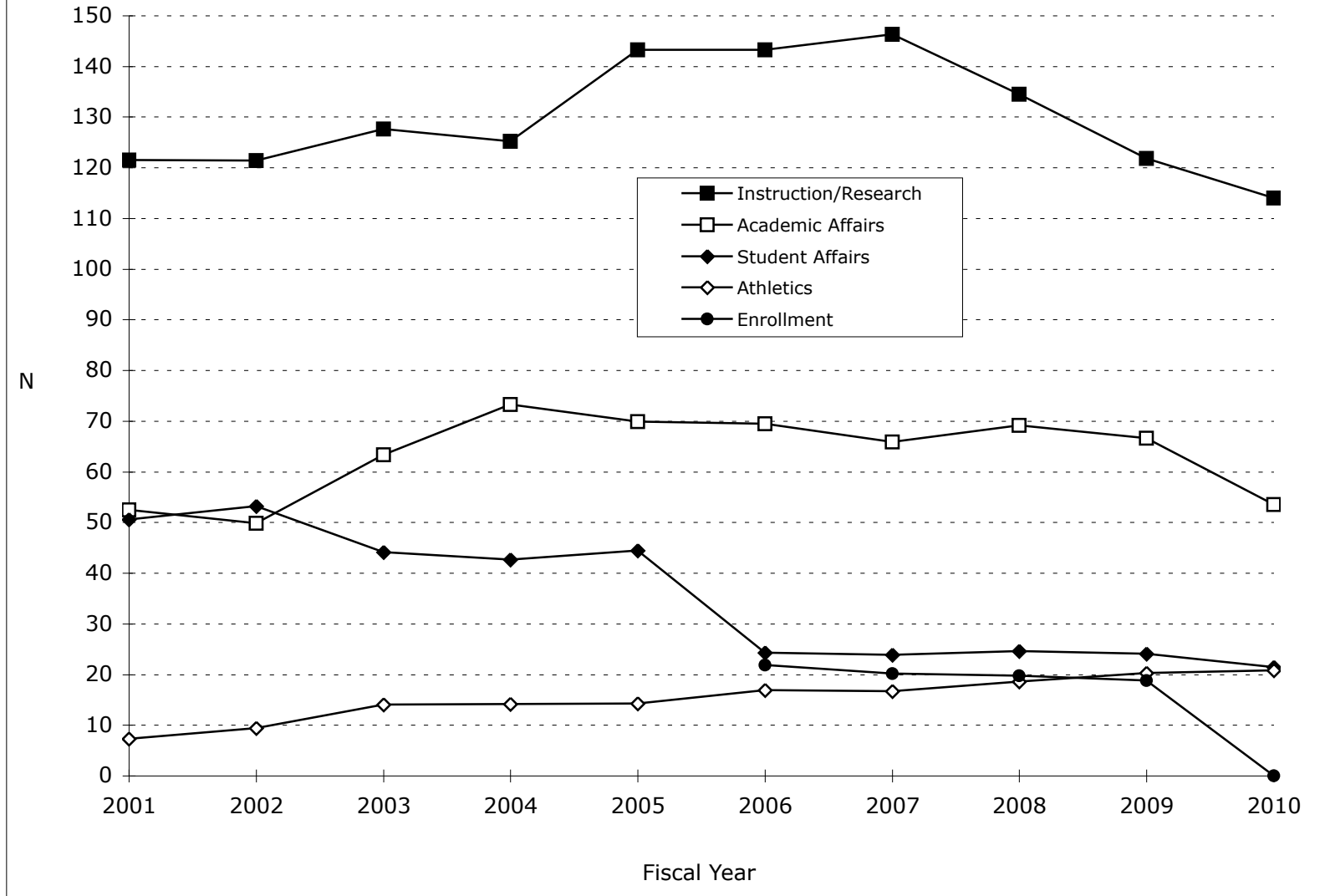
--Auxiliary Enterprises includes Food Services, Vending, Duplicating, Bookstore, Residential Life custodial staff, and Center for Small Towns.

### UMM Staffing Trends During the Decade (Part 1)



Beginning in FY03, Post Office, Campus Security, and Transportation are shown under Plant Services rather than Business Services.  
 Beginning in FY10, Admissions and Financial Aid are shown under Chancellor's Staff rather than Enrollment. Computing Services was moved from Academic Affairs to Plant Services.

### UMM Staffing Trends During the Decade (Part 2)



From FY06-09, Admissions and Financial Aid is counted under a new unit called "Enrollment" rather than in Student Affairs. Beginning FY10, these areas are counted under the Chancellor's Office. All Continuing Ed staff (beginning in FY04) and faculty (beginning in FY05) are now counted (see "Instruction/Research" and "Academic Affairs"). Beginning in FY03, Registrar's Office is shown under Academic Affairs rather than Student Affairs. Beginning FY10, Computing Services was moved from Academic Affairs to Plant Services.



## **STUDENT INFORMATION**

Information provided in this section has been selected primarily because it relates to enrollment and retention. The summary sheet "Student Body Information" provides a brief profile of each successive freshman class as well as certain demographic information regarding the student body as a whole. The map of Minnesota shows the distribution of Minnesota students within the student body. Changes in high school ranks and ACT scores over the past five years are shown. Included are a table and charts showing study abroad activity of UMM students.

The five-year summaries of headcount, full-year equivalent enrollment, and student-of-color enrollment show not only data for UMM but for the University system as a whole and are the official figures provided by the central administration. Fall term headcount enrollment uses the standard definition: students registered for one or more credits at the end of the second week of the fall term. Full-year equivalent (FYE) enrollments are determined by dividing the total student credit hours by the full-time credit enrollment for one year and are compiled at the end of the academic year. The charts related to enrollment show fall term headcounts at UMM since it opened in 1960 and the close relationship between headcount and FYE enrollment. The data showing the numbers of students from other states is based on the home location of students at the time of application.

A locally developed enrollment projection is shown for fall 2010 through 2012. It is based on the current enrollment management model being used at UMM which depends primarily on target numbers of entering freshmen and recent retention patterns. A chart shows cohort retention and graduation rates for UMM freshmen who remained at UMM and, in addition, those who transferred to any other college within the University of Minnesota system.

Data on post baccalaureate training and entry-level occupations of the graduates is reported from a 1999 follow-up study of all graduating classes from 1964 through 1998. Graduates of select years from 1999 through 2007 were followed up only one year after graduation.

The tables provided show only a small amount of the profile, enrollment, demographic, aptitude, student demand, grade, and follow-up information available on the UMM student body. In many instances, considerable data is available with University-wide, state, and national comparisons as well. Contact the UMM Institutional Research Office for more information.

University of Minnesota, Morris  
Student Body Information

Item	1965-6	1970-1	1975-6	1980-1	1985-6	1990-1	1995-6	2000-1	2005-6	2006-7	2007-8	2008-9	2009-10
<b>ENROLLMENT</b>													
Fall New Freshmen*	418	548	504	477	468	493	534	474	358	380	363	374	405
Fall Total Headcount	984	1716	1593	1624	1682	2021	1952	1842	1684	1747	1686	1607	1705
FYE Students		1714	1667	1588	1601	1947	1910	1854	1673	1681	1681	1611	1686 **
Male:Female Ratio	62:38	58:42	58:42	50:50	48:52	44:56	44:56	42:58	40:60	42:58	42:58	42:58	43:57
<b>FRESHMAN APTITUDE</b>													
Median HSR	84	82	79	78	82	92	88	86	81	78	79	80	79
Upper 20% HSR	63%	58%	49%	48%	55%	85%	71%	65%	54%	48%	49%	50%	49%
Upper 10% HSR				27%	32%	62%	46%	41%	32%	28%	25%	28%	30%
Upper 5% HSR				14%	21%	39%	28%	27%	19%	16%	15%	18%	18%
Median ACT English	22	22	21	21	20	23	24	24	25	24	25	25	25
Median ACT Mathematics	25	28	25	22	22	25	25	25	24	24	25	25	24
Median ACT Composite	25	26	23	22	22	25	25	25	25	24	25	25	25
<b>FRESHMAN APPLICATIONS#</b>													
Number of Applicants				775	825	1,642	1,285	1,104	1,099	1,232	1,145	1,506	1,467
% Offered Admission				95%	87%	61%	85%	87%	82%	80%	76%	71%	73%
% Accepted Who Enrolled				65%	65%	49%	49%	49%	40%	39%	42%	35%	38%
<b>STUDENT ORIGIN</b>													
Minnesota Students	98%	97%	95%	88%	80%	88%	83%	82%	86%	85%	85%	85%	84%
Out of State Students	2%	3%	5%	12%	20%	12%	16%	17%	13%	13%	12%	12%	11%
International Students					1%	1%	1%	1%	1%	2%	3%	4%	4%
Surrounding Counties							9%	12%	10%	10%	10%	11%	11%
7 County Metro Area	10%	18%	19%	20%	13%	30%	30%	28%	38%	38%	37%	38%	36%
Live On Campus	42%	41%	56%	59%	55%	49%	49%	49%	45%	43%	44%	46%	47%
<b>STUDENT:FACULTY</b>													
FTE Faculty			87.8	88.7	96.7	123.6	118.9	129.3	134.8	128.0	126.4	122.9	114.8 ***
Student:Faculty Ratio	15.6:1	19.5:1	17.5:1	17.8:1	16.9:1	15.7:1	16.2:1	13.6:1	11.7:1	12.8:1	12.6:1	12.3:1	14.2:1 **

Note: Beginning in 2003-04, Continuing Education is no longer counted separately from regular day school courses, faculty, etc.

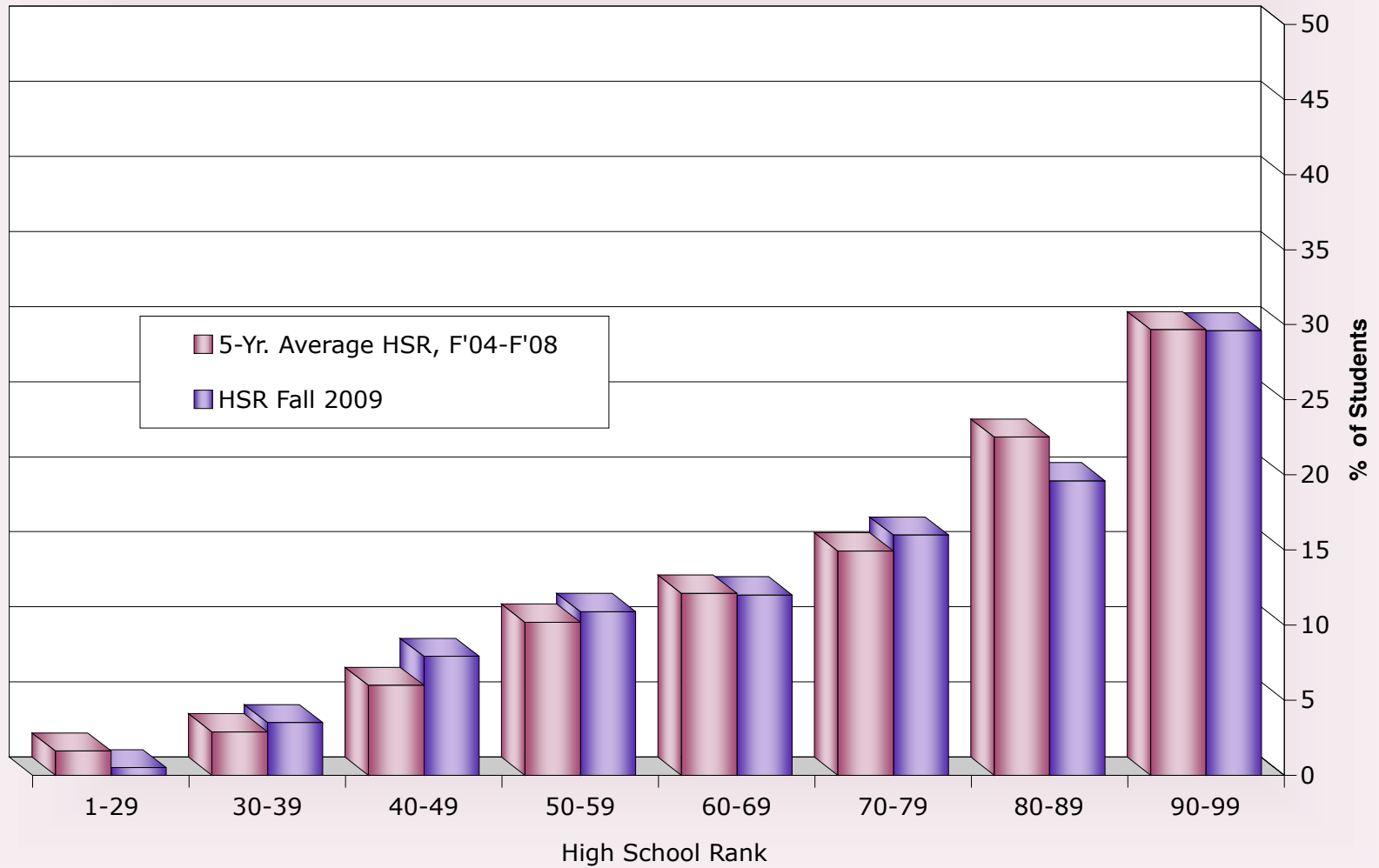
\*Beginning 1999-2000, the "Fall New Freshmen" figure does not include PSEO enrolled students. In fall 2006, there were 43 on-campus and 53 GenEdWeb online PSEO students enrolled at UMM.

\*\*FYE student count is for entire fiscal year; current year may be estimate if figures for the entire year were not available at time of printing.

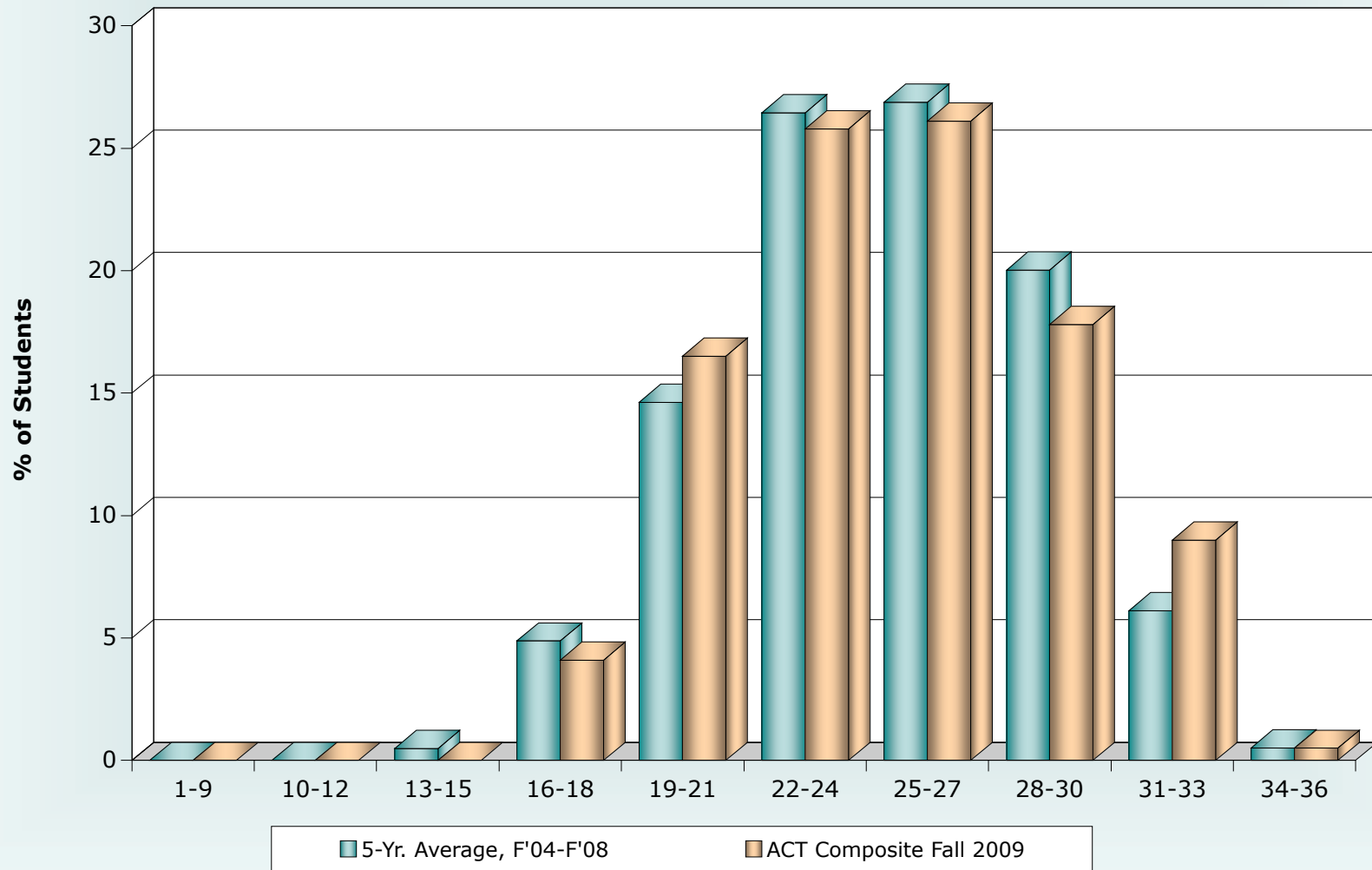
\*\*\*Beginning 2004-05, all Continuing Education instructional effort is counted in the FTE Faculty figure.

#Beginning fall 1990, data for freshman applications was substantially revised to more accurately reflect all-University definitions.

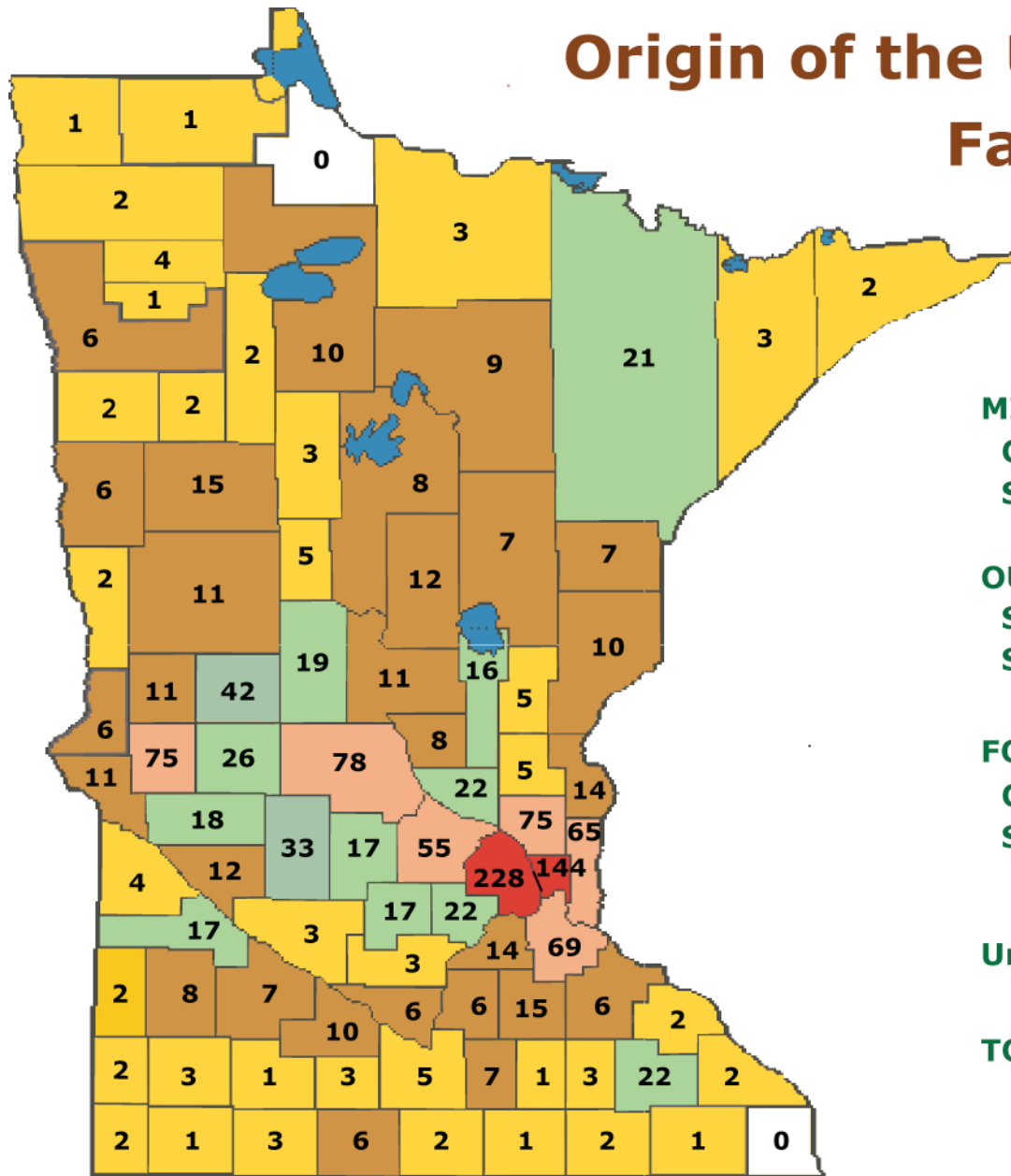
### High School Rank Comparison for UMM Entering Students 5-Year Average (F'04 to F'08) vs. Fall 2009



### ACT Composite Scores of UMM Entering Students 5-Year Average (F'04 to F'08) vs. Fall 2009



# Origin of the UMM Student Body Fall 2009



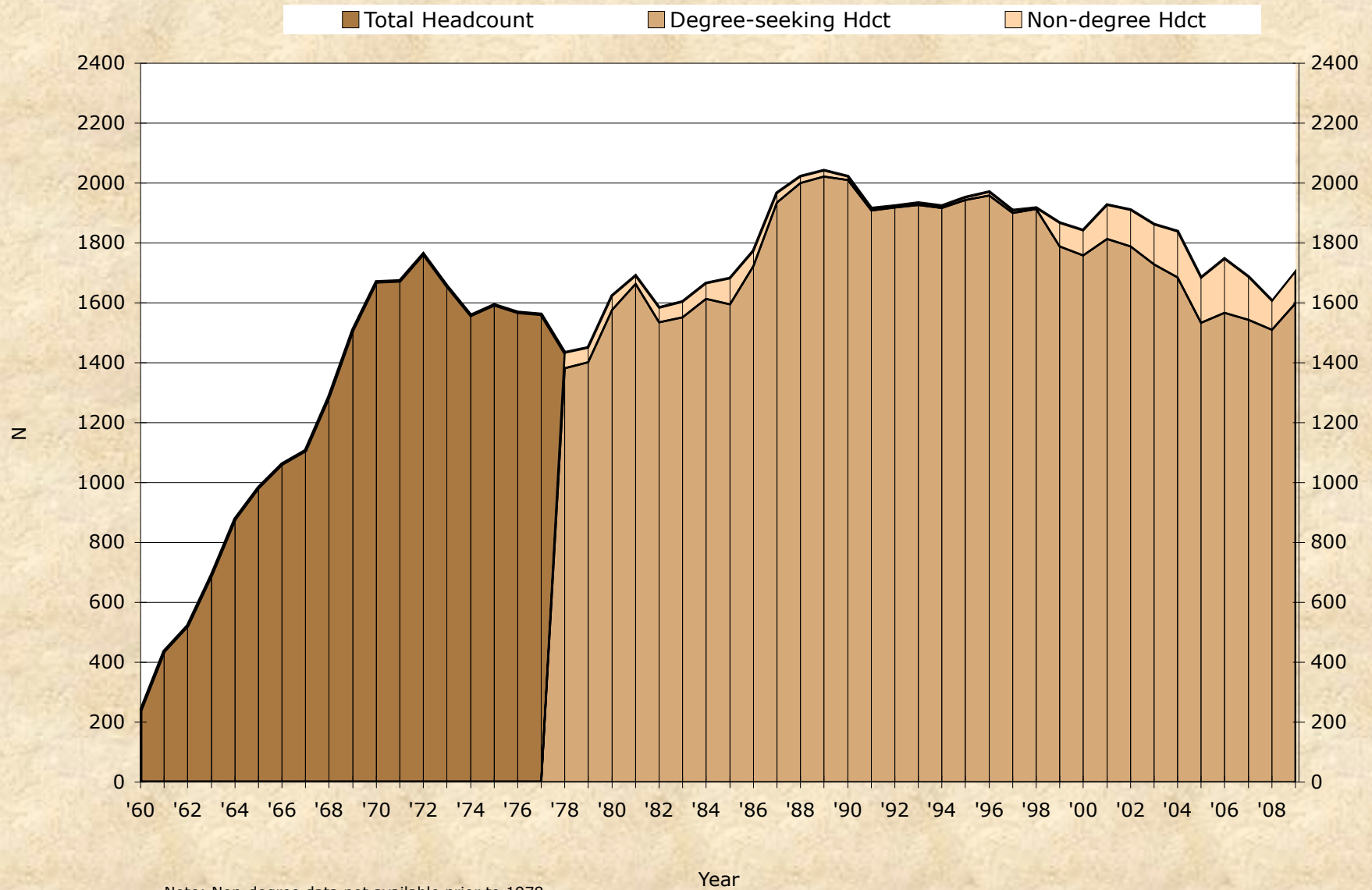
<b>MINNESOTA</b>			
Counties	<b>85</b>		
Students	<b>1,434</b>		<b>(84%)</b>
<b>OUT-OF-STATE</b>			
States	<b>32</b>		
Students	<b>187</b>		<b>(11%)</b>
<b>FOREIGN</b>			
Countries	<b>16</b>		
Students	<b>74</b>		<b>(4%)</b>
<b>Unknowns</b>		<b>10</b>	
<b>TOTAL STUDENTS</b>		<b>1,705</b>	

<b>Headcount Enrollment</b>
---------------------------------

University of Minnesota, Morris  
A Five-Year Summary of Fall Headcount Enrollment  
for the University of Minnesota System

Campus	Academic Year					Percent of Change	
	2005-06	2006-07	2007-08	2008-09	2009-10	'08 to '09	'05 to '09
Crookston	2,134	2,414	2,346	2,199	2,279	3.6%	6.8%
Duluth	10,496	11,190	11,184	11,366	11,664	2.6%	11.1%
Morris	1,684	1,747	1,686	1,607	1,705	6.1%	1.2%
Rochester					57	NA	NA
Twin Cities	51,175	50,402	50,883	51,140	51,659	1.0%	0.9%
TOTAL	65,489	65,753	66,099	66,312	67,364	1.6%	2.9%

### UMM Headcount Enrollment Fall 1960 to 2009



Note: Non-degree data not available prior to 1978.

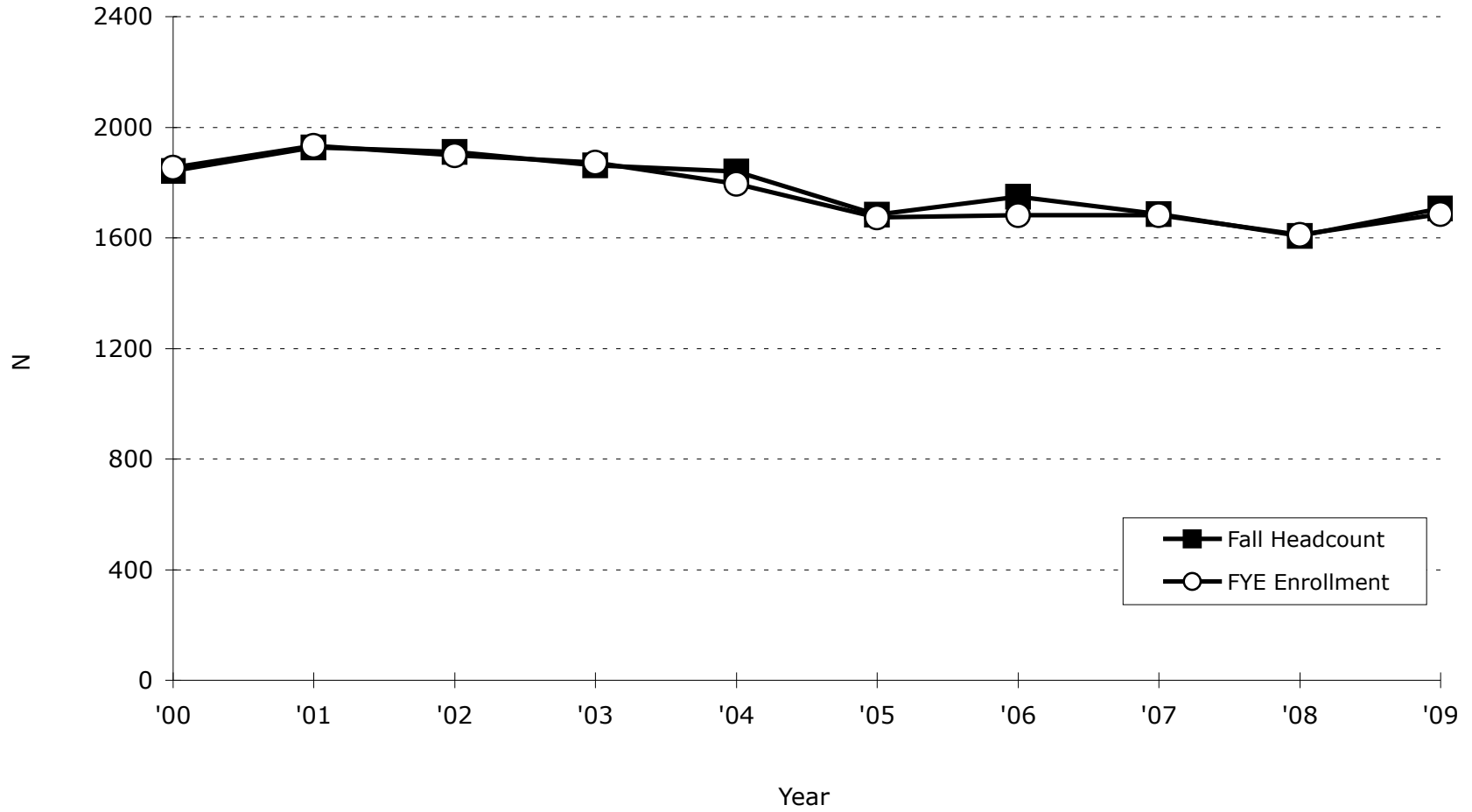
<b>FYE Enrollment</b>
---------------------------

University of Minnesota, Morris  
 A Five-Year Summary of Full-Year Equivalent Enrollment  
 in Regular Instruction for the University of Minnesota System

Campus	Academic Year					Percent of Change	
	2004-05	2005-06	2006-07	2007-08	2008-09	FY08 to '09	FY05 to '09
Crookston	1,231	1,208	1,330	1,431	1,479	3.4%	20.2%
Duluth	9,713	9,711	10,155	10,472	10,732	2.5%	10.5%
Morris	1,794	1,673	1,681	1,681	1,611	-4.2%	-10.2%
Twin Cities	48,546	48,160	48,491	49,123	49,731	1.2%	2.4%
TOTAL	61,284	60,751	61,656	62,707	63,553	1.3%	3.7%



### Consistency of Student Full-Year Equivalent (FYE) and Headcount Enrollments at UMM



<b>Students of Color</b>
------------------------------

University of Minnesota, Morris  
 A Five-Year Summary of Fall Headcount of Students of Color  
 for Undergraduates within the University of Minnesota System

Campus	Academic Year					2009-10 as % of Total Campus Undergraduates
	2005-06	2006-07	2007-08	2008-09	2009-10	
STUDENTS OF COLOR						
Crookston	85	92	112	98	149	11.4%
Duluth	530	520	547	583	636	6.8%
Morris	242	295	286	279	313	19.6%
Rochester					3	5.3%
Twin Cities	4,866	4,967	5,058	5,113	5,420	18.1%
TOTAL	5,723	5,874	6,003	6,073	6,521	15.4%

Each year, there were students for whom ethnicity information was not available. In Fall 2009, there were 838 undergraduate students systemwide with no ethnic group information and 28 of those students were on the Morris campus.

**UMM Fall Headcount by Ethnic Background**  
**Degree-seeking Undergraduate Headcount and Entire Student Body Headcount**

<b>Ethnic Background</b>
------------------------------

<b>Degree-seeking Undergraduates</b>	Fall 1995		Fall 2000		Fall 2005		Fall 2006		Fall 2007		Fall 2008		Fall 2009	
	American Indian	77	4.0%	108	6.1%	142	9.3%	177	11.3%	176	11.4%	165	10.9%	197
Asian	74	3.8%	48	2.7%	46	3.0%	55	3.5%	50	3.2%	50	3.3%	49	3.1%
African American	83	4.3%	103	5.9%	32	2.1%	36	2.3%	31	2.0%	39	2.6%	41	2.6%
Hispanic	<u>30</u>	1.5%	<u>25</u>	1.4%	<u>22</u>	1.4%	<u>27</u>	1.7%	<u>29</u>	1.9%	<u>25</u>	1.7%	<u>26</u>	1.6%
Subtotal Students of Color	264	13.6%	284	16.2%	242	15.8%	295	18.8%	286	18.5%	279	18.5%	313	19.6%
White	1651	84.9%	1439	81.9%	1241	81.0%	1209	77.2%	1171	75.9%	1130	74.8%	1198	74.9%
International	18	0.9%	6	0.3%	17	1.1%	29	1.9%	46	3.0%	57	3.8%	60	3.8%
Unknown	11	0.6%	29	1.6%	33	2.2%	34	2.2%	40	2.6%	44	2.9%	28	1.8%
<b>Total Headcount</b>	1944	100%	1758	100%	1533	100%	1567	100%	1543	100%	1510	100%	1599	100%

<b>Entire Student Body</b>	Fall 1995		Fall 2000		Fall 2005		Fall 2006		Fall 2007		Fall 2008		Fall 2009	
	American Indian	77	3.9%	109	5.9%	148	8.8%	178	10.2%	181	10.7%	171	10.6%	203
Asian	74	3.8%	48	2.6%	46	2.7%	61	3.5%	52	3.1%	51	3.2%	51	3.0%
African American	83	4.3%	103	5.6%	32	1.9%	36	2.1%	31	1.8%	41	2.6%	42	2.5%
Hispanic	<u>30</u>	1.5%	<u>25</u>	1.4%	<u>23</u>	1.4%	<u>27</u>	1.5%	<u>29</u>	1.7%	<u>27</u>	1.7%	<u>27</u>	1.6%
Subtotal Students of Color	264	13.5%	285	15.5%	249	14.8%	302	17.3%	293	17.4%	290	18.0%	323	18.9%
White	1659	85.0%	1501	81.5%	1313	78.0%	1302	74.5%	1244	73.8%	1193	74.2%	1269	74.4%
International	18	0.9%	6	0.3%	19	1.1%	30	1.7%	46	2.7%	58	3.6%	72	4.2%
Unknown	11	0.6%	50	2.7%	103	6.1%	113	6.5%	103	6.1%	66	4.1%	41	2.4%
<b>Total Headcount</b>	1952	100%	1842	100%	1684	100%	1747	100%	1686	100%	1607	100%	1705	100%

*Source: UMM Institutional Research extract of OIR-TC official fall stix file*

**UMM Fall Headcount by Ethnic Background**  
**New High School Student Headcounts and Transfer Student Headcounts**

<b>Ethnic Background</b>
------------------------------

<b>New High School (NHS) Students</b>	Fall 1995		Fall 2000		Fall 2005		Fall 2006		Fall 2007		Fall 2008		Fall 2009	
	American Indian	17	3.2%	22	4.6%	41	11.5%	43	11.3%	29	8.0%	38	10.2%	58
Asian	18	3.4%	16	3.4%	14	3.9%	17	4.5%	15	4.1%	14	3.7%	10	2.5%
African American	33	6.2%	20	4.2%	7	2.0%	14	3.7%	6	1.7%	11	2.9%	5	1.2%
Hispanic	<u>5</u>	0.9%	<u>6</u>	1.3%	<u>6</u>	1.7%	<u>6</u>	1.6%	<u>9</u>	2.5%	<u>4</u>	1.1%	<u>7</u>	1.7%
Subtotal Students of Color	73	13.7%	64	13.5%	68	19.0%	80	21.1%	59	16.3%	67	17.9%	80	19.8%
White	453	84.8%	393	82.9%	278	77.7%	285	75.0%	285	78.5%	287	76.7%	316	78.0%
International	1	0.2%	2	0.4%	3	0.8%	7	1.8%	8	2.2%	11	2.9%	6	1.5%
Unknown	7	1.3%	15	3.2%	9	2.5%	8	2.1%	11	3.0%	9	2.4%	3	0.7%
Total Headcount	534	100%	474	100%	358	100%	380	100%	363	100%	374	100%	405	100%

<b>New Advanced Standing* (NAS) Students</b>	Fall 1995		Fall 2000		Fall 2005		Fall 2006		Fall 2007		Fall 2008		Fall 2009	
	American Indian	4	5.5%	11	11.7%	10	17.9%	19	17.9%	13	12.9%	10	12.7%	19
Asian	3	4.1%	3	3.2%	0	0.0%	3	2.8%	3	3.0%	0	0.0%	1	1.0%
African American	6	8.2%	11	11.7%	0	0.0%	2	1.9%	2	2.0%	3	3.8%	2	1.9%
Hispanic	<u>2</u>	2.7%	<u>3</u>	3.2%	<u>0</u>	0.0%	<u>2</u>	1.9%	<u>1</u>	1.0%	<u>1</u>	1.3%	<u>0</u>	0.0%
Subtotal Students of Color	15	20.5%	28	29.8%	10	17.9%	26	24.5%	19	18.8%	14	17.7%	22	21.4%
White	51	69.9%	59	62.8%	38	67.9%	60	56.6%	62	61.4%	52	65.8%	66	64.1%
International	6	8.2%	0	0.0%	3	5.4%	14	13.2%	17	16.8%	6	7.6%	11	10.7%
Unknown	1	1.4%	7	7.4%	5	8.9%	6	5.7%	3	3.0%	7	8.9%	4	3.9%
Total Headcount	73	100%	94	100%	56	100%	106	100%	101	100%	79	100%	103	100%

\*Transfer students

Source: UMM Institutional Research extract of OIR-TC official fall stix file

University of Minnesota, Morris  
 Official Student Enrollment Statistics for Fall 2000-2009  
 and Enrollment Projections for Fall 2010-2012

**Enrollment  
Projection**

Year	Degree-Seeking (DS) Students						Non-Degree (ND) Students			%age DS / ND	Not Avail.	Total Headcount	Total FYE
	New Freshmen	New Advanced	Readmit & ICT	Total New	Cont.	Total	New	Cont.	Total				
<b>Actual Enrollment</b>													
2000-01	474	94	17	585	1171	1756	69	15	84	95.3% / 4.6%	2	1842	1854
2001-02	480	82	17	579	1233	1812	97	17	114	94.0% / 5.9%	1	1927	1932
2002-03	477	67	8	552	1235	1787	95	26	121	93.6% / 6.3%	2	1910	1898
2003-04	412	74	9	495	1231	1726	112	21	133	92.7% / 7.1%	2	1861	1872
2004-05	387	63	14	464	1216	1680	132	22	154	91.4% / 8.4%	5	1839	1794
2005-06	358	56	9	423	1109	1532	128	23	151	91.0% / 9.0%	1	1684	1673
2006-07	380	106	12	498	1065	1563	161	19	180	89.5% / 10.3%	4	1747	1681
2007-08	363	101	17	481	1062	1543	120	23	143	91.5% / 8.5%	0	1686	1681
2008-09	374	79	18	471	1019	1490	73	24	97	92.7% / 6.0%	20	1607	1535
2009-10	405	103	19	527	1071	1598	80	26	106	93.7% / 6.2%	1	1705	1628
<b>Projected Enrollment</b>													
2010-11	405	120	21	546	1057	1603	105	22	127	92.7% / 7.3%	0	1730	1702
2011-12	410	120	20	550	1073	1623	115	22	137	92.2% / 7.8%	0	1760	1731
2012-13	410	120	20	550	1093	1643	119	22	141	92.1% / 7.9%	0	1784	1755

\*FYE from official University of Minnesota Institutional Research report or query.

Notes: "ICT" refers to Inter-Campus Transfers; "Cont." refers to continuing students; "FYE" to Full-Year Equivalent. Continuing students who were enrolled at UMM the previous year are labeled as "Same Unit" in official reports. New non-degree counts include non-degree ICT and readmits. Before 1999-00, New Freshmen totals included PSEO students. For 1999-00, PSEO students are shown in a separate "Not Available" category, counted in the total enrollment, but not in new or continuing totals. For 2000-01 and beyond, PSEO students are counted in "New Non-Degree" counts and the projected enrollment figures reflect that fact.

University of Minnesota, Morris  
Out-of-State and Foreign Student Enrollments\*

<b>Out-of-State Students</b>
----------------------------------

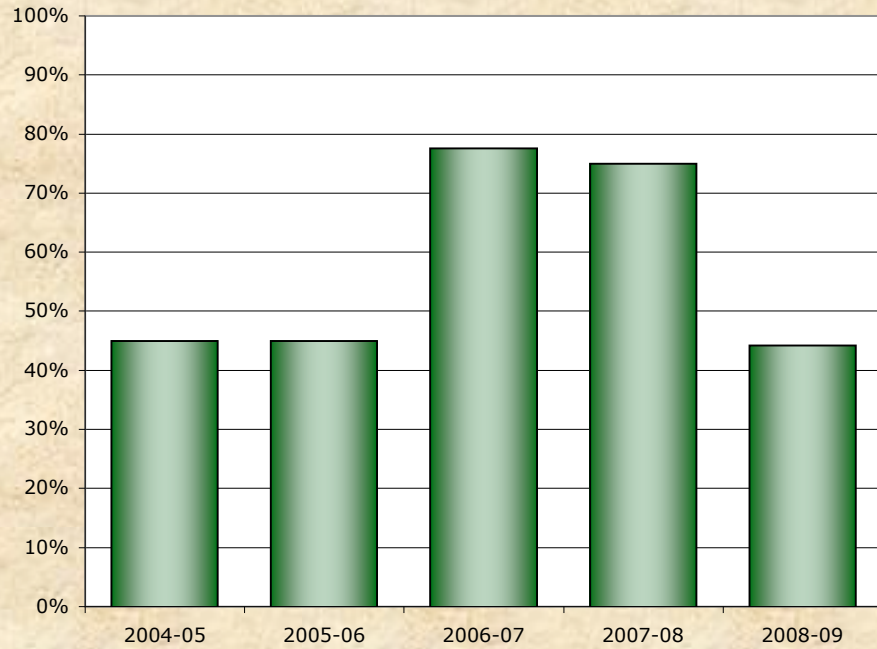
Home State	Fall 2005		Fall 2006		Fall 2007		Fall 2008		Fall 2009	
	No.	%-age	No.	%-age	No.	%-age	No.	%-age	No.	%-age
North Dakota	24	1.4%	24	1.4%	26	1.5%	18	1.1%	18	1.1%
South Dakota	68	4.0%	65	3.7%	50	3.0%	47	2.9%	52	3.0%
Wisconsin	52	3.1%	47	2.7%	58	3.4%	39	2.4%	39	2.3%
Illinois	13	0.8%	11	0.6%	11	0.7%	11	0.7%	8	0.5%
Other States (Not Minn.)	<u>46</u>	2.7%	<u>63</u>	3.6%	<u>54</u>	3.2%	<u>67</u>	4.2%	<u>70</u>	4.1%
Total Out-of-State	203	12.1%	210	12.0%	199	11.8%	182	11.3%	187	11.0%
Foreign	19	1.1%	30	1.7%	46	2.7%	58	3.6%	74	4.3%
Not reported	98	5.8%	117	6.7%	90	5.3%	55	3.4%	10	0.6%
Total UMM Headcount	1,684		1,747		1,686		1,607		1,705	

\*Prior to fall 2003, data was based on location of high schools from which students graduated. For this reason, the numbers in any given year do not correspond to the official resident/non-resident and international student registration statistics. Beginning fall 2003, data is based on the home county, state, or country that students indicated when first applying to UMM.

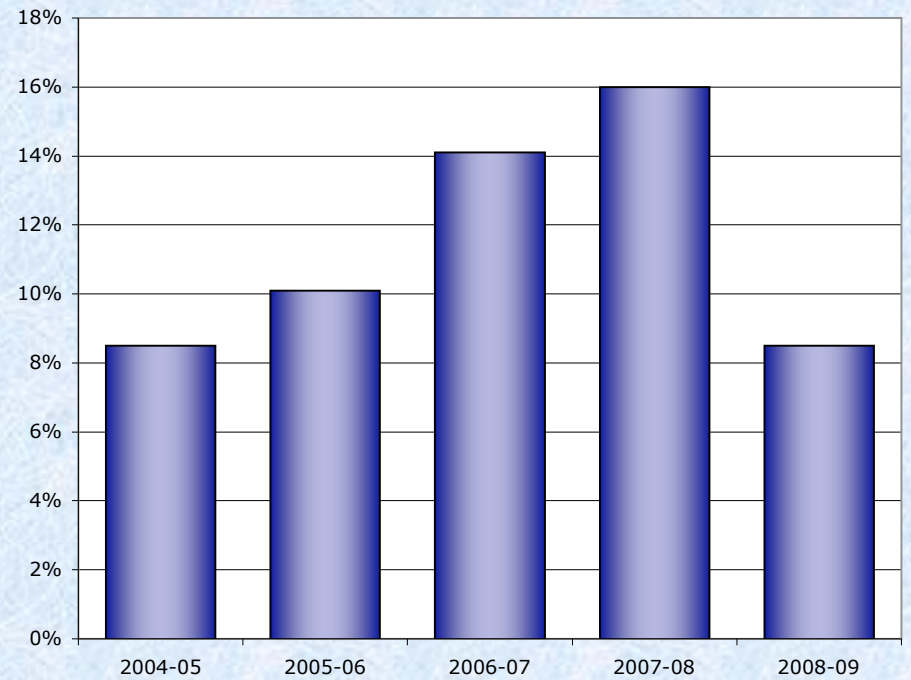
University of Minnesota, Morris  
Student Study Abroad Enrollments

	2003-04	2004-05	2005-06	2006-07	2007-08	2008-09
<i>Destination/Region</i>						
Europe	62	100	96	156	158	72
Latin America/Caribbean	12	16	10	51	40	38
Asia, Pacific, Africa	10	10	49	24	40	16
Australia, New Zealand, Canada	35	27	14	15	32	9
Multiple Regions	3	3	1	0	0	1
Total	122	156	170	246	270	136
<i>Duration</i>						
Academic or Calendar Year	7	7	7	6	5	4
Quarter or Semester (10-15 wks)	61	72	66	44	140	36
Summer (4-10 weeks)	8	34	15	23	27	59
Short-term (3 weeks)	46	43	82	173	98	37
Unknown	0	0	0	0	0	0
Total	122	156	170	246	270	136
<i>Academic Level</i>						
Freshman	7	5	6	16	12	13
Sophomore	20	21	30	41	37	23
Junior	39	53	55	83	58	36
Senior	55	72	79	96	160	64
Other	1	5	0	10	3	0
Total	122	156	170	246	270	136
<i>Gender</i>						
Female	90	116	118	145	194	85
Male	32	40	52	101	76	51
Unknown	0	0	0	0	0	0
Total	122	156	170	246	270	136
<i>UMM Students</i>						
Total Studying Abroad-UMM	122	156	170	246	270	136
As % of Total Enrollment	6.6%	8.5%	10.1%	14.1%	16.0%	8.5%
As % of Degrees Granted	36.9%	45.0%	45.0%	77.6%	75.0%	44.2%

**UMM Students Studying Abroad  
as % of Degrees Granted**



**UMM Students Studying Abroad  
as % of Total Enrollment**





University of Minnesota, Morris  
Cohort Retention/Graduation Rates for UMM Freshmen

<b>Student Retention</b>
------------------------------

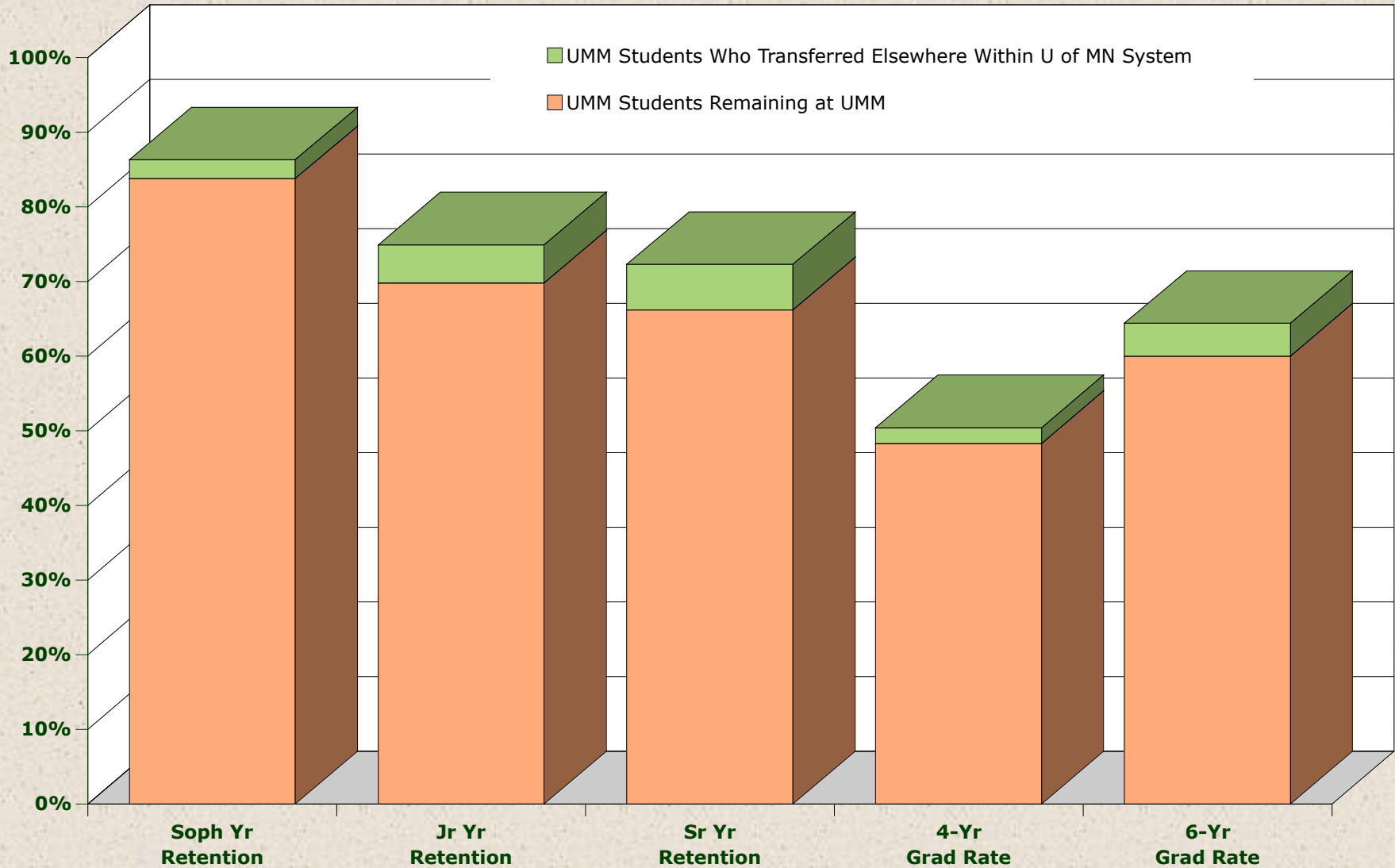
Entered		Returned for Subsequent Year			Graduated			
		Soph Year	Jr Year	Sr Year	In 4 Yrs	In 5 Yrs	In 6 Yrs	To Date
Fall 1993	<b>UMM Only</b>	<b>81.5%</b>	<b>60.8%</b>	<b>54.7%</b>	<b>40.2%</b>	<b>51.1%</b>	<b>51.9%</b>	<b>52.9%</b>
N=595	UMM in All-UM	86.4%	73.9%	70.1%	43.5%	60.8%	64.0%	65.4%
Fall 1994	<b>UMM Only</b>	<b>79.8%</b>	<b>62.5%</b>	<b>59.5%</b>	<b>42.0%</b>	<b>53.5%</b>	<b>55.9%</b>	<b>56.5%</b>
N=531	UMM in All-UM	84.7%	73.4%	72.5%	46.1%	62.5%	68.0%	68.7%
Fall 1995	<b>UMM Only</b>	<b>75.1%</b>	<b>58.1%</b>	<b>53.9%</b>	<b>40.2%</b>	<b>48.5%</b>	<b>49.7%</b>	<b>50.5%</b>
N=503	UMM in All-UM	81.1%	71.0%	68.6%	45.3%	59.0%	61.4%	63.6%
Fall 1996	<b>UMM Only</b>	<b>82.6%</b>	<b>65.9%</b>	<b>61.3%</b>	<b>42.7%</b>	<b>54.6%</b>	<b>55.6%</b>	<b>56.9%</b>
N=522	UMM in All-UM	86.0%	74.9%	72.6%	45.4%	61.7%	63.2%	65.5%
Fall 1997	<b>UMM Only</b>	<b>78.5%</b>	<b>61.8%</b>	<b>57.7%</b>	<b>35.1%</b>	<b>47.7%</b>	<b>51.6%</b>	<b>52.9%</b>
N=461	UMM in All-UM	83.1%	71.6%	67.7%	38.2%	55.7%	60.3%	61.8%
Fall 1998	<b>UMM Only</b>	<b>78.6%</b>	<b>60.2%</b>	<b>54.2%</b>	<b>37.9%</b>	<b>48.7%</b>	<b>51.7%</b>	<b>53.4%</b>
N=522	UMM in All-UM	81.6%	66.7%	61.3%	39.7%	53.6%	57.1%	59.0%
Fall 1999	<b>UMM Only</b>	<b>76.2%</b>	<b>64.7%</b>	<b>59.4%</b>	<b>38.4%</b>	<b>52.3%</b>	<b>54.7%</b>	<b>56.3%</b>
N=453	UMM in All-UM	80.4%	69.3%	66.0%	40.2%	55.8%	58.9%	60.5%
Fall 2000	<b>UMM Only</b>	<b>82.4%</b>	<b>66.3%</b>	<b>61.7%</b>	<b>39.8%</b>	<b>53.1%</b>	<b>57.2%</b>	<b>58.0%</b>
N=467	UMM in All-UM	85.0%	71.7%	68.3%	40.9%	56.7%	61.9%	63.0%
Fall 2001	<b>UMM Only</b>	<b>78.7%</b>	<b>65.6%</b>	<b>63.3%</b>	<b>43.7%</b>	<b>55.3%</b>	<b>57.8%</b>	<b>58.4%</b>
N=474	UMM in All-UM	82.5%	70.0%	68.6%	44.3%	57.6%	61.0%	61.8%
Fall 2002	<b>UMM Only</b>	<b>77.3%</b>	<b>71.8%</b>	<b>64.2%</b>	<b>46.1%</b>	<b>60.0%</b>	<b>62.7%</b>	<b>63.2%</b>
N=475	UMM in All-UM	79.6%	74.3%	68.0%	47.4%	62.5%	65.9%	66.7%
Fall 2003	<b>UMM Only</b>	<b>83.7%</b>	<b>70.4%</b>	<b>65.8%</b>	<b>43.4%</b>	<b>58.0%</b>	<b>59.5%</b>	
N=412	UMM in All-UM	86.7%	76.7%	72.8%	44.9%	62.9%	66.3%	
Fall 2004	<b>UMM Only</b>	<b>81.2%</b>	<b>74.9%</b>	<b>70.5%</b>	<b>53.5%</b>	<b>64.2%</b>		
N=383	UMM in All-UM	85.6%	80.7%	77.3%	56.1%	68.7%		
Fall 2005	<b>UMM Only</b>	<b>79.5%</b>	<b>66.8%</b>	<b>63.5%</b>	<b>48.0%</b>			
N=356	UMM in All-UM	82.6%	73.3%	71.1%	50.3%			
Fall 2006	<b>UMM Only</b>	<b>81.2%</b>	<b>68.3%</b>	<b>64.6%</b>				
N=378	UMM in All-UM	84.1%	72.3%	68.5%				
Fall 2007	<b>UMM Only</b>	<b>84.7%</b>	<b>74.4%</b>					
N=359	UMM in All-UM	87.5%	79.2%					
Fall 2008	<b>UMM Only</b>	<b>85.5%</b>						
N=373	UMM in All-UM	87.4%						
3-Year	<b>UMM Only</b>	<b>83.8%</b>	<b>69.8%</b>	<b>66.2%</b>	<b>48.3%</b>	<b>60.7%</b>	<b>60.0%</b>	<b>59.9%</b>
Average	UMM in All-UM	86.3%	74.9%	72.3%	50.4%	64.7%	64.4%	63.8%

Note: Beginning fall 2000, retention statistics are based on revised cohort definitions.

Rates are shown first for freshmen who entered UMM and remained on the Morris campus, and second, for freshmen who entered UMM and remained or graduated from any campus within the University of Minnesota system.

Cohort retention shows the percentage of the entering freshmen returning for their sophomore year and so on for each subsequent year. Includes students retained or who graduated in less than 4 years. Data from the University of Minnesota Undergraduate Retention Report.

**Cohort Retention and Graduation Rates for UMM Students Remaining at UMM  
and Those Transferring Elsewhere Within the University System:  
Average Rate for the Most Recent Three Cohorts**



University of Minnesota, Morris  
 Postbaccalaureate Educational Experience of UMM Graduates  
 By Year of Graduation

---

Type of Training	1964-73*	1974-83*	1984-93*	1994-98*	1999-07**
Vocational/Technical School	38.6%	30.5%	21.9%	10.3%	6.3%
Employer Training Program	71.2%	65.9%	56.7%	41.2%	35.9%
Undergrad College Classes	64.8%	53.9%	33.9%	23.3%	14.6%
Graduate/Professional Degree Program	52.5%	55.1%	45.5%	36.9%	31.0%

---

*Since 1963, 47% of all UMM alumni have taken some graduate or professional school education.  
 In the last fifteen years, approximately 25% of UMM's new graduates went directly into graduate or professional school.*

\*Data from 3,873 respondents to a 1999 follow-up survey of all UMM graduates from 1964 through 1998.

\*\*Data from 1,049 respondents from classes of 1999, 2000, 2001, 2004, 2005, and 2007 to follow-up surveys mailed 9-12 months after graduation.

University of Minnesota, Morris  
Occupational Level of UMM Graduates  
By Year of Graduation

---

Occupational Level	1964-73*	1974-83*	1984-93*	1994-98*	1999-07**
Professional/Technical	53.3%	57.1%	59.3%	59.5%	60.1%
Managerial	30.2%	27.1%	26.5%	21.5%	16.5%
Farm Owners & Managers	1.3%	1.2%	0.2%	0.3%	0.1%
Marketing and Sales	7.9%	7.4%	5.6%	8.3%	9.7%
Administrative Support	3.9%	3.2%	5.0%	5.8%	8.2%
Service Workers	1.5%	0.6%	1.7%	3.0%	3.3%
Precision Production/ Operatives	1.4%	3.3%	1.4%	1.3%	1.7%
Laborers	0.3%	0.1%	0.2%	0.3%	0.4%

---

\*Data from 3,873 respondents to a 1999 follow-up survey of all UMM graduates from 1964 through 1998.

\*\*Data from 1,049 respondents from classes of 1999, 2000, 2001, 2004, 2005, and 2007 to follow-up surveys mailed 9-12 months after graduation.

## **ACADEMIC PROGRAM INFORMATION**

Five-year summaries of the declared majors for the entire student body as well as degrees granted are provided as an indication of student interest and demand for programs offered at UMM. Pie diagrams show the change in the pattern of declared majors of the student body between the spring of '05 and the spring of '09. The table showing student:faculty ratios also contains a column "FYE Students" which represents a student demand for the courses of that discipline. This statistic is determined by dividing the academic year total student credit hours taught in a given discipline by the normal full-time credit load for a single student.

The student:faculty ratio table also indicates "FTE" faculty which is based upon the actual teaching loads of both the full- and part-time faculty in that discipline for the given year. The current student:faculty ratios are shown as well as the five-year average. Two related charts show the distribution of course enrollments expressed as "FYE" students among the four divisions and the distribution of instructional resources expressed as FTE faculty among those same divisions. The charts illustrate both student demand and the allocation of faculty resources. An additional table is provided showing the annual total of student credit hours taught, total enrollment in all courses offered, number of upper and lower division classes (including multiple sections), and FTE faculty for each discipline. The data represent some of the more conventional indices of discipline teaching load.

One of the tables shows full-time equivalent (FTE) teaching positions for the most recent five years. During the past several years, UMM has shifted some civil service and faculty positions into the Academic Professional and Administrative (P&A) staff category; these instructional staff positions are included in the FTE teaching count. The FTE calculation prorates the equivalent of full-time teaching positions committed to instruction in that discipline. Temporary and part-time positions are added in proportion to the number of credits taught. Teaching faculty with administrative responsibilities have a portion of their position deducted in like fashion (division chairs and physical education staff with coaching responsibilities are examples).

The table showing faculty salaries includes nine- and ten-month faculty with full-time teaching responsibilities. Division chairs and faculty members with primarily administrative responsibilities have been excluded. Ten-month salaries have been converted to show their nine-month equivalent. Finally, the percentage of the total faculty who are tenured, who are women, or who are minority members is shown. The final chart shows the change in the percentages of tenured faculty, women faculty, and minority faculty over the years.

Elaborate academic profile and planning data covering nearly every facet of faculty characteristics, salaries, student demand, work load, cost and productivity statistics are maintained. Most have been collected annually in a consistent fashion for more than a decade. In addition, University-wide information is available on many of these same characteristics provided by the central administration. The UMM Institutional Research Office is the best single source for this data.

University of Minnesota, Morris  
Declared Majors of the Student Body  
as of Spring Term

Majors

Declared Major	2005	2006	2007	2008	2009
<b>EDUCATION DIVISION</b>					
Elementary Education	131	103	103	100	106
Secondary Education*	<u>58</u>	<u>52</u>	<u>56</u>	<u>55</u>	<u>80</u>
Subtotal:	189	155	159	155	186
<b>HUMANITIES DIVISION</b>					
Art History	19	17	21	24	24
Art Studio	48	46	47	45	34
Communication, Media, and Rhetoric	44	36	30	31	31
English	140	130	130	136	116
French	30	34	39	37	25
German	9	13	7	13	11
Music	62	59	54	50	51
Philosophy	23	17	27	23	22
Spanish	64	70	58	67	57
Theatre Arts	<u>35</u>	<u>35</u>	<u>39</u>	<u>37</u>	<u>41</u>
Subtotal:	474	457	452	463	412
<b>SCIENCE &amp; MATH DIVISION</b>					
Biology	215	184	151	153	182
Chemistry	81	71	77	82	89
Computer Science	70	58	58	59	68
Geology	13	17	15	21	17
Mathematics	61	48	64	55	61
Physics	29	21	17	21	27
Statistics	<u>18</u>	<u>16</u>	<u>15</u>	<u>16</u>	<u>24</u>
Subtotal:	487	415	397	407	468
<b>SOCIAL SCIENCE DIVISION</b>					
Anthropology	43	37	37	31	31
Economics	32	40	41	55	56
History	93	84	80	79	54
Lib. Arts Human Serv.	71	72	64	76	66
Management@	108	102	118	126	122
Political Science	105	90	79	87	75
Psychology	149	151	145	164	163
Social Science	54	58	63	49	38
Sociology	42	56	57	34	28
Women's Studies	<u>11</u>	<u>11</u>	<u>7</u>	<u>5</u>	<u>5</u>
Subtotal:	708	701	691	706	638

(Continued next page)

University of Minnesota, Morris  
Declared Majors of the Student Body  
as of Spring Term

Declared Major	2005	2006	2007	2008	2009
<b>INTERDISCIPLINARY</b>					
American Indian Studies	NA	NA	NA	7	10
Environmental Studies	NA	NA	NA	NA	41
European Studies	7	2	2	2	1
Latin Amer. Studies	13	10	6	9	9
Misc./Area/Option	56	69	81	83	72
Subtotal:	76	81	89	101	133
<b>PREPROFESSIONAL PROGRAMS</b>					
Pre-Dentistry#	12	9	8	6	5
Pre-Engineering	19	13	19	16	18
Pre-Law#	8	10	12	12	13
Pre-Medicine#	58	51	68	42	59
Pre-Nursing	5	10	9	6	5
Pre-Pharmacy	12	12	19	17	12
Pre-Physical Therapy	15	12	15	11	8
Pre-Vet Medicine#	13	11	18	12	15
Other Pre-Professional	0	0	0	0	0
Subtotal:	142	128	168	122	135
TOTAL DECLARED MAJORS	2,018	1,885	1,900	1,899	1,892
UNDECIDED	87	72	116	63	50
HONORS PROGRAM	70	60	70	74	30
HIGH SCHOOL (PSEO)	32	39	39	28	32
NON-DEGREE STUDENT HEADCOUNT	152	157	89	66	27
OFFICIAL SPRING ENROLLMENT	1,735	1,621	1,651	1,590	1,550

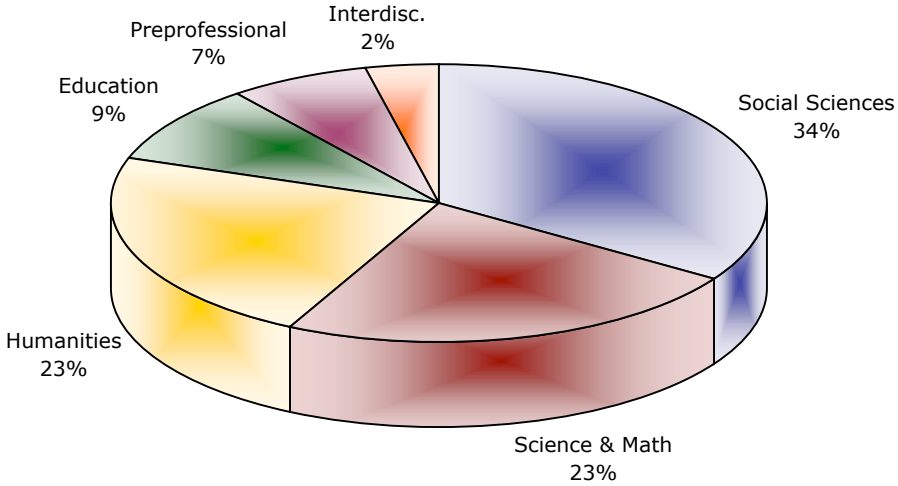
\*Secondary education is a licensure program, not a major. Note: Numbers in the SeEd program declined with the conversion to semesters because SeEd now involves only seniors, not juniors and seniors.

@Mgmt includes students admitted to the Mgmt program and any other students who declare Mgmt as their major.

#Four-year bachelor of arts programs.

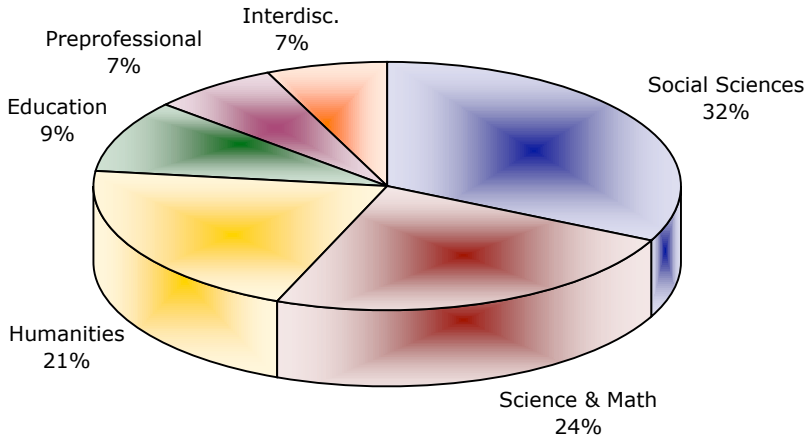
Information from UM Management Reporting Student Roster Detail Report.

**Change in Declared Majors  
of the UMM Student Body  
Between Spring '05 and Spring '09**



**2005 UMM Declared Majors (above)**

**2009 UMM Declared Majors (below)**





University of Minnesota, Morris  
 Number of Bachelor of Arts Degrees  
 Granted by Major

**B.A. Degrees**

Major	2004-05	2005-06	2006-07	2007-08	2008-09	5 Yr. Average
<b>EDUCATION DIVISION</b>						
Elementary Education	34	29	29	18	15	25.0
Secondary Education*	<u>28</u>	<u>23</u>	<u>20</u>	<u>39</u>	<u>19</u>	<u>25.8</u>
Subtotal	62	52	49	57	34	50.8
<b>HUMANITIES DIVISION</b>						
Art History	5	1	8	6	2	4.4
Art Studio	6	10	10	16	4	9.2
Communication, Media, & Rhetoric	7	17	8	5	9	9.2
English	38	39	23	35	32	33.4
French	3	10	5	12	5	7.0
German	3	2	5	5	0	3.0
Music	9	10	7	13	8	9.4
Philosophy	5	3	6	5	4	4.6
Spanish	11	23	15	13	19	16.2
<u>Theatre Arts</u>	<u>6</u>	<u>6</u>	<u>6</u>	<u>7</u>	<u>13</u>	<u>7.6</u>
Subtotal	93	121	93	117	96	104.0
<b>SCIENCE &amp; MATH DIVISION</b>						
Biology	34	43	39	34	22	34.4
Chemistry	12	15	20	11	17	15.0
Computer Science	19	18	10	13	15	15.0
Geology	8	5	2	0	5	4.0
Mathematics	11	9	10	8	9	9.4
Physics	2	6	5	4	2	3.8
<u>Statistics</u>	<u>10</u>	<u>9</u>	<u>8</u>	<u>1</u>	<u>6</u>	<u>6.8</u>
Subtotal	96	105	94	71	76	88.4

(Continued next page)

University of Minnesota, Morris  
 Number of Bachelor of Arts Degrees  
 Granted by Major

Major	2004-05	2005-06	2006-07	2007-08	2008-09	5 Yr. Average
<b>SOCIAL SCIENCE DIVISION</b>						
Anthropology	7	15	10	6	10	9.6
Economics	13	12	9	22	9	13.0
History	28	24	19	22	21	22.8
Lib. Arts Hum. Serv.	28	25	20	23	23	23.8
Management	31	20	23	34	31	27.8
Political Science	25	31	22	21	25	24.8
Psychology	20	48	34	42	32	35.2
Social Science	14	17	13	17	13	14.8
Sociology	13	17	15	16	10	14.2
<u>Women's Studies</u>	<u>4</u>	<u>1</u>	<u>4</u>	<u>4</u>	<u>1</u>	<u>2.8</u>
Subtotal	183	210	169	207	175	188.8
<b>INTERDISCIPLINARY</b>						
American Indian Studies	NA	NA	NA	1	2	1.5
Environmental Studies	NA	NA	NA	NA	2	2.0
European Studies	1	1	1	3	0	1.2
Latin Amer. Studies	3	4	2	3	3	3.0
<u>Area of Concentration</u>	<u>16</u>	<u>19</u>	<u>20</u>	<u>37</u>	<u>22</u>	<u>22.8</u>
Subtotal	20	24	23	44	29	28.0
<b>TOTAL GRADUATES</b>	<b>342</b>	<b>378</b>	<b>317</b>	<b>360</b>	<b>308</b>	<b>341.0</b>
<b>TOTAL MAJORS OF GRADS</b>	<b>426</b>	<b>489</b>	<b>408</b>	<b>457</b>	<b>391</b>	<b>445.0</b>

Note: Graduates with multiple majors counted more than once.

\*Licensure program--secondary education is not a major.

University of Minnesota, Morris  
2008-2009 Student/Faculty Ratios by Discipline

**S/F Ratios**

Discipline	FYE	FTE	Student/Faculty Ratio	
	Students	Faculty	Current	5 Yr. Average
<b>EDUCATION DIVISION</b>				
Education	3.7	0.3	14.8	7.5
Elementary Education	24.4	3.4	7.2	11.9
Secondary Education	16.4	3.0	5.5	7.4
Wellness & Sport Sci.	<u>37.3</u>	<u>3.9</u>	<u>9.6</u>	<u>9.3</u>
	81.8	10.5	7.8	9.3
<b>HUMANITIES DIVISION</b>				
Art History	36.1	3.0	12.0	16.1
Art Studio	27.7	4.9	5.7	6.2
Communication,Media,&Rhet.	36.6	3.1	12.0	9.6
Dance	3.4	0.4	8.5	7.9
English	114.5	9.9	11.5	11.6
French	18.5	2.4	7.7	9.3
German	12.7	1.0	12.7	8.1
Humanities	1.1	0.0	NA	20.2
Music	65.5	7.9	8.3	8.8
Philosophy	31.5	2.5	12.6	11.8
Spanish	44.2	3.8	11.6	11.4
Theatre Arts	<u>27.4</u>	<u>2.8</u>	<u>9.8</u>	<u>9.7</u>
	419.2	41.7	10.1	10.2
<b>SCIENCE &amp; MATH DIVISION</b>				
Biology	83.7	6.5	12.8	13.2
Chemistry	73.6	5.9	12.5	12.7
Computer Science	34.0	2.9	11.9	8.6
Geology	42.8	3.4	12.6	13.4
Mathematics	86.6	6.3	13.7	11.8
Natural Science	5.1	0.2	25.5	24.7
Physics	39.7	3.3	12.0	11.3
Statistics	<u>57.5</u>	<u>3.0</u>	<u>19.2</u>	<u>19.6</u>
	423.0	31.5	13.4	12.6

(Continued next page)

University of Minnesota, Morris  
2008-2009 Student/Faculty Ratios by Discipline

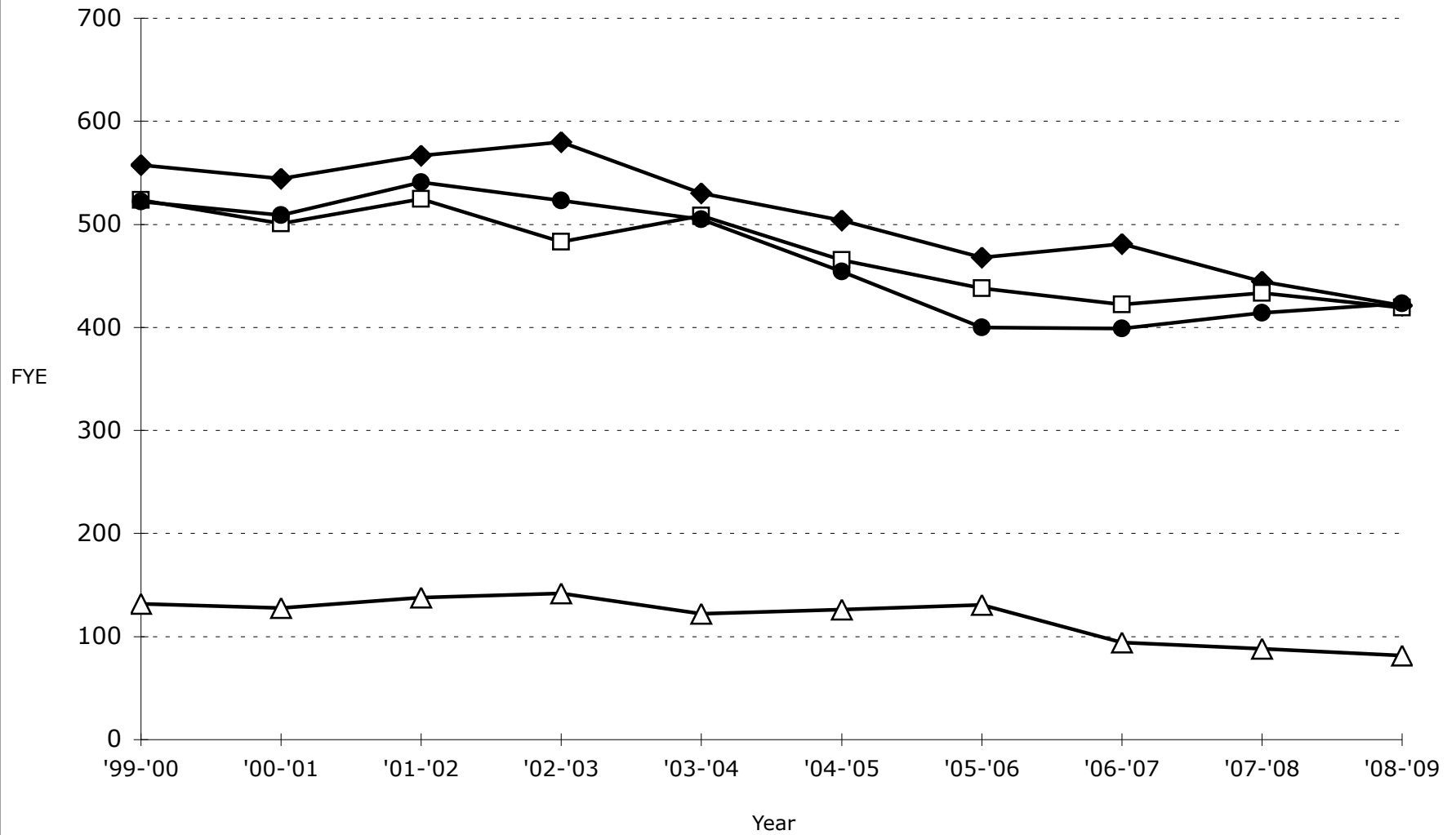
**S/F Ratios**

Discipline	FYE	FTE	Student/Faculty Ratio	
	Students	Faculty	Current	5 Yr. Average
<b>SOCIAL SCIENCE DIVISION</b>				
Anthropology	32.9	2.5	13.3	15.3
Economics	57.1	3.5	16.3	14.2
Geography	2.9	0.2	14.5	19.4
History	78.8	5.4	14.7	16.2
Management	44.8	1.9	23.2	18.7
Political Science	39.8	3.0	13.3	13.9
Psychology	120.3	6.5	18.5	17.8
Sociology	41.1	2.6	15.9	16.2
Women's Studies	3.5	0.3	14.0	13.1
	<u>421.2</u>	<u>25.8</u>	<u>16.3</u>	<u>16.1</u>
<b>INTERDISCIPLINARY STUDIES</b>				
American Indian Studies	3.2	0.2	16.0	17.3
Environmental Studies	17.7	1.1	16.1	16.1
Interdisciplinary Studies	53.5	4.9	11.0	11.0
Latin American Area Studies	1.4	0.3	4.7	3.3
	<u>75.8</u>	<u>6.5</u>	<u>11.8</u>	<u>11.3</u>
<b>ACADEMIC DIVISIONS/INTERDISC</b>	<b>1421.0</b>	<b>116.0</b>	<b>12.3</b>	<b>12.2</b>
<b>CONTINUING EDUCATION</b>	<b>114.0</b>	<b>7.0</b>	<b>16.4</b>	<b>19.3</b>
<b>GRAND TOTALS</b>	<b>1535.0</b>	<b>122.9</b>	<b>12.5</b>	<b>12.7</b>

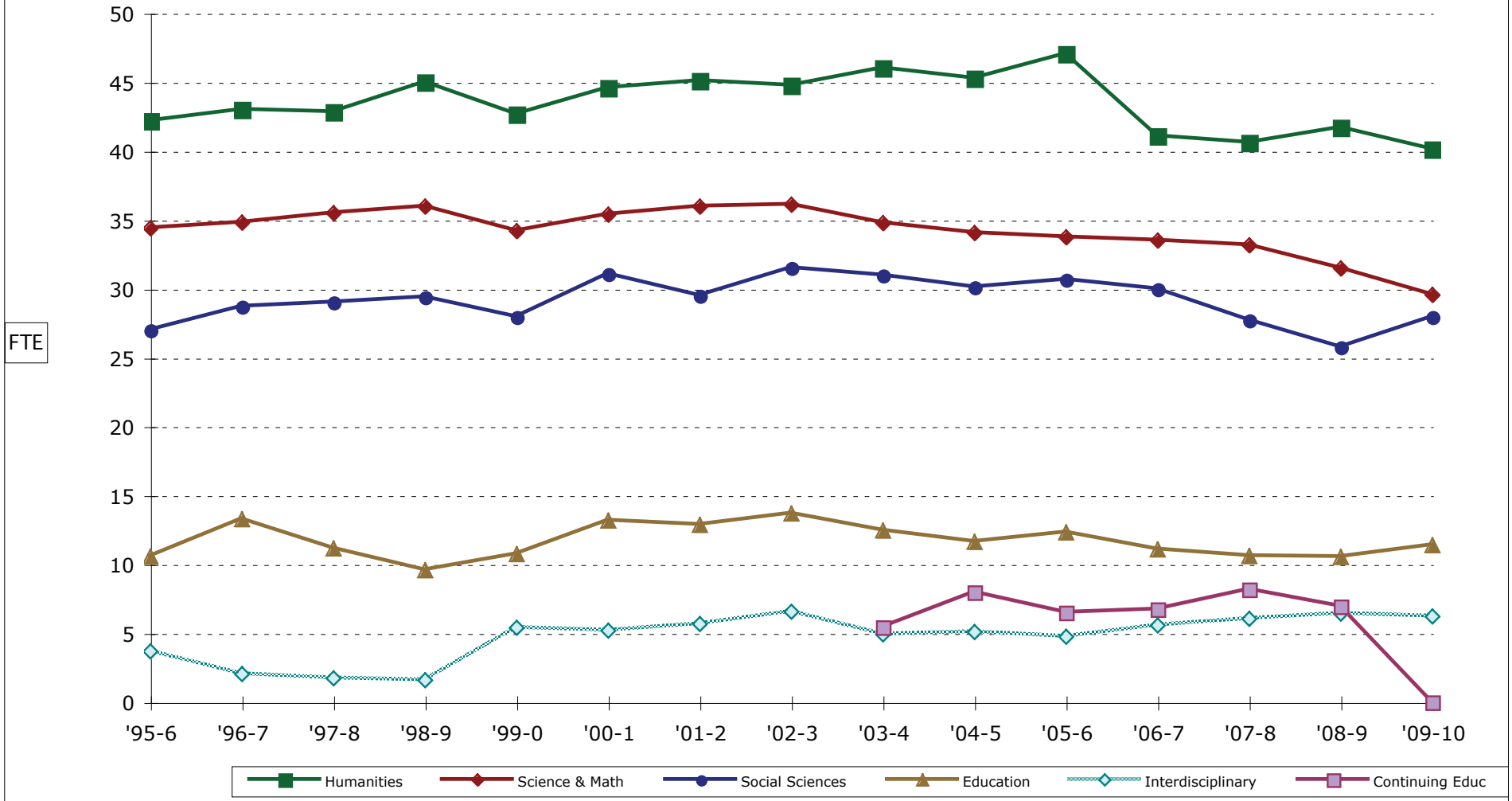
FYE Student = SCH/30; FTE Faculty based on actual teaching load of full- and part-time faculty. FYE and FTE do not include summer counts.

### FYE Student Course Enrollment by Division

◆ SSci    □ Hum    ● S&M    ▲ Educ



### UMM FTE Faculty by Division



FTE is the Full-time-Equivalent Faculty count. Note: Beginning in 2003-04, Continuing Education faculty teaching in the day school were counted. Beginning in 2004-05, all Continuing Education faculty efforts for fall and spring semester are counted.

University of Minnesota, Morris  
2008-2009 Statistics on  
Enrollment, Classes, and Faculty

Discipline	SCH	Enrollment	No. of Classes		Aver. Class Size			FTE Faculty	ICH/FTE
			LD	UD	LD	UD	All		
<b>EDUCATION DIVISION</b>									
Education	110	108	0	0	NA	NA	NA	0.3	28.0
Elementary Education	732	338	0	13	NA	16.3	16.3	3.4	13.5
Secondary Education	496	168	0	14	NA	10.1	10.1	3.0	19.4
Wellness & Sport Science	1,119	691	21	4	23.7	6.8	21.0	3.9	20.3
	2,457	1,305	21	31	23.7	12.3	16.9	10.5	18.1
<b>HUMANITIES DIVISION</b>									
Art History	1,082	269	3	11	46.3	10.8	18.4	3.0	19.0
Art Studio	832	363	24	10	9.8	4.5	8.2	4.9	19.8
Communication, Media, Rhetoric	1,098	360	10	10	21.6	12.7	17.2	3.1	21.0
Dance	101	98	1	0	7.0	NA	7.0	0.4	27.5
English	3,434	832	36	13	18.0	12.8	16.6	9.9	19.7
French	554	129	5	7	13.4	8.7	10.7	2.4	20.0
German	380	86	5	3	15.2	8.3	12.6	1.0	32.0
Humanities	36	9	0	0	NA	NA	NA	0.0	NA
Music	1,870	1,291	6	8	26.3	7.6	15.6	7.9	29.6
Philosophy	946	232	8	5	21.1	11.4	17.4	2.5	21.6
Spanish	1,327	320	9	10	21.0	12.9	16.7	3.8	20.0
Theatre Arts	822	198	8	7	15.9	8.7	12.5	2.8	22.1
	12,482	4,187	115	84	17.7	10.1	14.5	41.7	22.3
<b>SCIENCE &amp; MATH DIVISION</b>									
Biology	2,507	702	14	22	24.4	11.5	16.5	6.5	19.0
Chemistry	2,209	662	28	9	14.6	10.0	13.5	5.9	21.6
Computer Science	1,021	280	8	6	16.0	17.2	16.5	2.9	20.5
Geology	1,286	335	11	5	24.9	7.4	19.4	3.4	21.4
Mathematics	2,503	584	22	8	21.9	6.3	17.7	6.3	20.2
Natural Science	152	35	1	0	35.0	NA	35.0	0.2	20.0
Physics	1,187	253	14	4	14.9	5.5	12.8	3.3	20.6
Statistics	1,727	423	11	4	38.6	10.8	31.2	3.0	20.3
	12,592	3,274	109	58	21.1	10.3	17.4	31.5	20.4

(Continued next page)

Discipline	SCH	Enrollment	No. of Classes		Aver. Class Size			FTE Faculty	ICH/FTE
			LD	UD	LD	UD	All		
<b>SOCIAL SCIENCES DIVISION</b>									
Anthropology	985	238	6	9	25.7	11.4	17.1	2.5	23.4
Economics	1,712	492	6	18	39.7	12.9	19.6	3.5	20.0
Geography	88	31	1	0	22.0	NA	22.0	0.2	20.0
History	2,366	599	7	27	38.1	10.5	16.2	5.4	20.9
Management	1,346	433	3	12	36.0	23.7	26.1	1.9	20.7
Political Science	1,197	284	3	13	39.0	12.5	17.5	3.0	20.0
Psychology	3,609	1,013	10	31	45.2	17.6	24.3	6.5	20.2
Sociology	1,233	303	3	9	48.3	13.0	21.8	2.6	18.6
Women's Studies	105	27	1	0	25.0	NA	25.0	0.3	16.0
	<u>12,641</u>	<u>3,420</u>	<u>40</u>	<u>119</u>	<u>38.2</u>	<u>14.5</u>	<u>20.5</u>	<u>25.8</u>	<u>20.4</u>
<b>INTERDISC. STUDIES</b>									
American Indian Studies	96	22	1	0	22.0	NA	22.0	0.2	20.0
Environmental Studies	531	129	6	2	20.2	4.0	16.1	1.1	25.3
Interdisciplinary Studies	1,814	689	32	43	15.2	4.4	9.0	4.9	25.5
Latin American Area Studies	43	31	0	2	NA	3.0	3.0	0.3	30.0
	<u>2,484</u>	<u>871</u>	<u>39</u>	<u>47</u>	<u>16.1</u>	<u>4.3</u>	<u>9.7</u>	<u>6.5</u>	<u>25.5</u>
<b>CONTINUING EDUCATION</b>									
	5,502	849	42	14	14.2	6.6	12.3	7.0	38.4
<b>GRAND TOTALS</b>									
	48,157	13,906	366	353	20.7	10.9	15.9	122.9	22.2

Notes: SCH shows official stats for the fiscal year, including summer. SCH is the end-of-second-week class enrollment multiplied by the number of credits; enrollment is the end-of-term enrollment in all courses offered by the discipline; no. of classes incl. multiple sections (excl. 0-1 cr. courses, music lessons, WSS skills courses); average class size is the average enrollment in the discipline's upper and lower division classes, including multiple sections, but excluding one-credit, noncredit, and directed studies offerings; instructor credit hours (ICH)/FTE is the number of credits taught by faculty in the discipline divided by the number of FTE faculty (e.g., 1 faculty member teaches 5 courses at 4 credits each for a total of 20 ICH).



University of Minnesota, Morris  
Full-Time Equivalent (FTE) Faculty Counts  
by Discipline and Division

FTE Faculty

Division/Discipline	2005-06	2006-07	2007-08	2008-09	2009-10	5 Yr. Average
<b>EDUCATION DIVISION</b>						
Education	0.48	0.57	0.41	0.25	1.25	0.59
Elementary Education	3.64	2.95	2.59	3.40	2.68	3.05
Secondary Education	4.06	3.91	4.03	2.99	3.35	3.67
Wellness & Sport Science	<u>4.17</u>	<u>3.63</u>	<u>3.61</u>	<u>3.90</u>	<u>4.14</u>	<u>3.89</u>
Subtotal	12.35	11.06	10.64	10.54	11.42	11.20
<b>HUMANITIES DIVISION</b>						
Art History	3.00	2.00	2.80	3.00	2.80	2.72
Art, Studio	4.50	4.83	4.17	4.90	5.20	4.72
Chinese	NA	NA	NA	NA	0.40	0.40
Comm, Media, Rhetoric	4.00	2.60	3.00	3.05	2.55	3.04
Dance	NA	0.50	0.40	0.40	0.50	0.45
English	10.80	9.05	8.77	9.93	8.23	9.36
French	2.50	2.60	2.30	2.40	2.50	2.46
German	1.80	1.20	1.00	1.00	1.00	1.20
Humanities	0.80	0.20	0.20	0.00	0.00	0.24
Italian	NA	NA	NA	NA	0.60	0.60
Music	8.36	7.51	7.46	7.92	7.49	7.75
Philosophy	2.50	3.20	2.95	2.50	2.50	2.73
Spanish	5.30	4.60	4.60	3.80	4.55	4.57
Theatre Arts	<u>3.13</u>	<u>2.80</u>	<u>2.95</u>	<u>2.80</u>	<u>1.80</u>	<u>2.70</u>
Subtotal	46.69	41.09	40.60	41.70	40.12	42.04
<b>SCIENCE &amp; MATH DIVISION</b>						
Biology	6.71	6.90	6.50	6.53	6.85	6.70
Chemistry	5.88	5.12	5.55	5.90	5.60	5.61
Computer Science	4.05	4.50	3.90	2.85	2.90	3.64
Environmental Science	NA	NA	NA	NA	0.25	0.25
Geology	2.80	3.40	3.30	3.40	2.65	3.11
Mathematics	7.40	7.30	7.00	6.30	5.50	6.70
Natural Science	0.00	0.00	0.20	0.20	0.00	0.08
Physics	3.93	3.73	3.93	3.30	3.13	3.60
Statistics	<u>3.00</u>	<u>2.50</u>	<u>2.80</u>	<u>3.00</u>	<u>2.70</u>	<u>2.80</u>
Subtotal	33.77	33.45	33.18	31.48	29.58	32.29

(Continued next page)

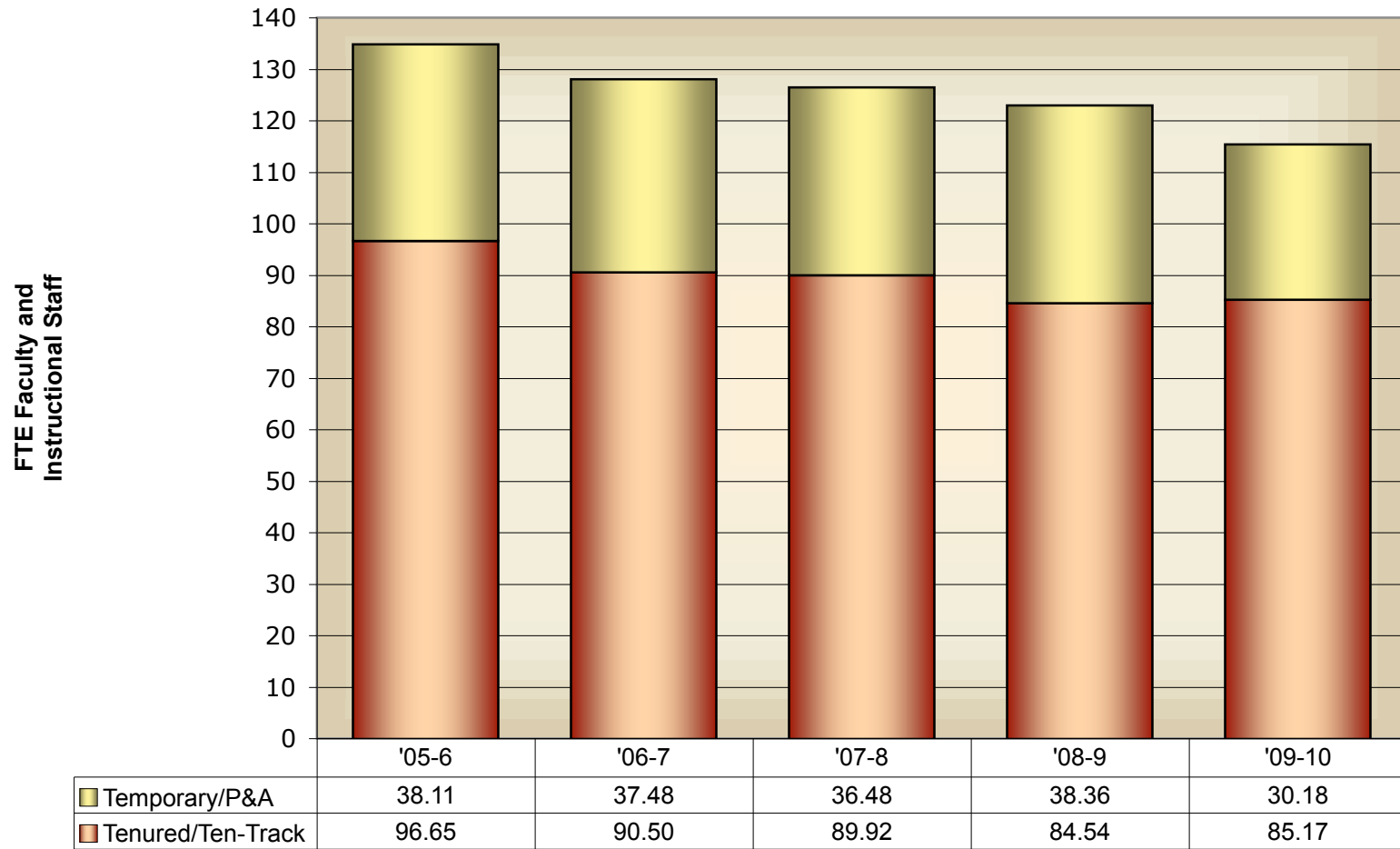
University of Minnesota, Morris  
Full-Time Equivalent (FTE) Faculty Counts  
by Discipline and Division

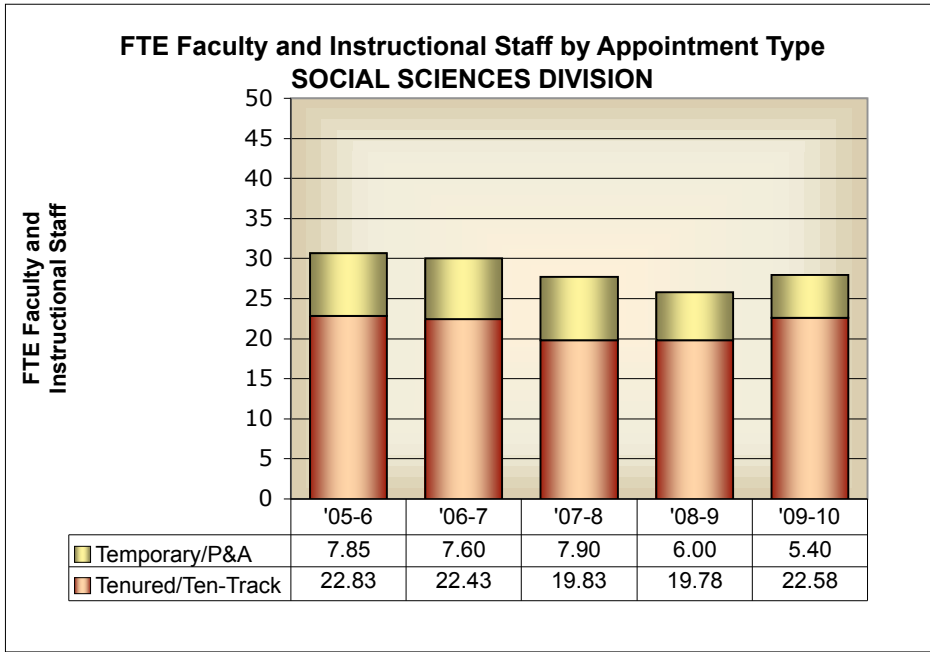
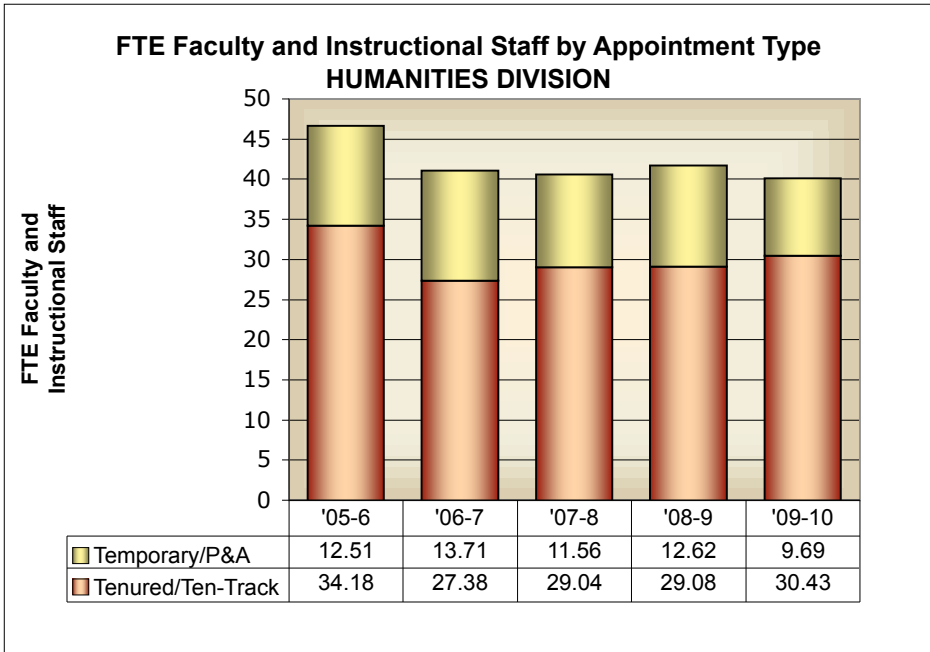
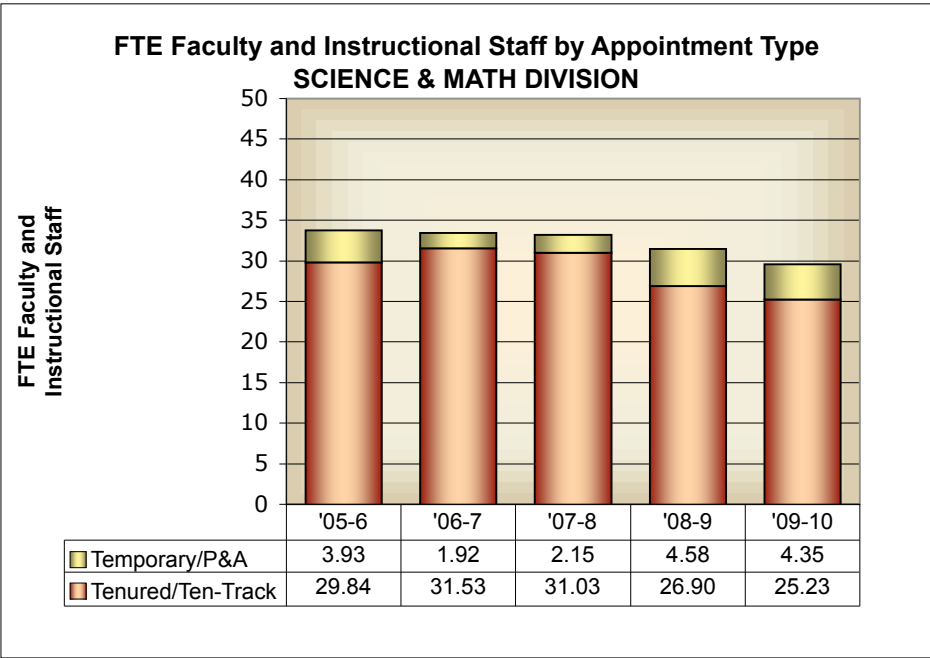
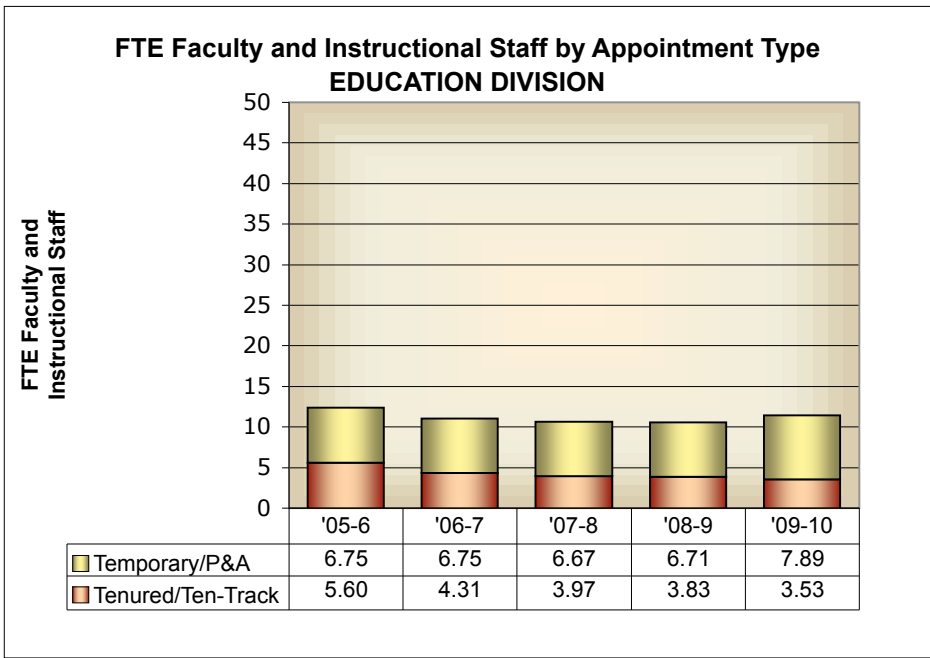
Division/Discipline	2005-06	2006-07	2007-08	2008-09	2009-10	5 Yr. Average
<b>SOCIAL SCIENCE DIVISION</b>						
Anthropology	2.70	2.17	2.22	2.47	2.52	2.42
Economics	3.70	4.10	3.93	3.50	4.23	3.89
Gender, Women, Sexuality Studies	0.45	0.55	0.25	0.25	0.25	0.35
Geography	0.40	0.20	0.00	0.20	0.20	0.20
History	6.05	6.10	4.85	5.35	4.80	5.43
Management	2.60	2.50	2.50	1.93	2.30	2.37
Political Science	4.48	4.53	4.50	3.00	3.80	4.06
Psychology	7.30	6.75	6.70	6.50	6.60	6.77
Sociology	3.00	3.13	2.78	2.58	3.28	2.95
Subtotal	30.68	30.03	27.73	25.78	27.98	28.44
<b>INTERDISCIPLINARY</b>						
First-Year Seminar	2.60	2.50	2.40	2.40	2.00	2.38
American Indian Studies	--	--	0.20	0.20	0.60	0.33
Environmental Studies	--	--	--	1.10	1.00	1.05
Latin American Area Studies	0.15	0.30	0.30	0.30	0.10	0.23
Interdisc. (IS) Honors	0.60	1.50	1.40	1.20	1.40	1.22
Misc. IS	1.41	1.30	1.75	1.25	1.15	1.37
Subtotal	4.76	5.60	6.05	6.45	6.25	5.82
CONTINUING EDUCATION*	6.51	6.75	8.20	6.95	0.00	5.68
CAMPUS FTE FACULTY	134.76	127.98	126.40	122.90	115.35	125.48
FULL-YEAR EQUIVALENT (FYE) STUDENTS	1581	1634	1592	1515	1630	1590
FYE STUDENTS/FTE FACULTY RATIO	11.73	12.77	12.59	12.33	14.13	12.71

\*Fall and spring semesters.

The FTE faculty count includes all instructional staff--ranked faculty along with P&A lecturers and teaching specialists. For this table, FYE students are calculated by adding full-time student headcount to 1/3 of part-time student headcount.

**FTE Faculty and Instructional Staff by Appointment Type  
University of Minnesota, Morris**





University of Minnesota, Morris  
Average Salary for Full-time Teaching Faculty  
by Rank & Sex

<b>Faculty Salaries</b>
-----------------------------

	2005-06	2006-07	2007-08	2008-09	2009-10
<b>MEN:</b>					
Professors	\$74,165 (19)	\$75,295 (19)	\$76,747 (23)	\$77,272 (22)	\$76,568 (20)
Associates	\$58,324 (25)	\$60,259 (28)	\$60,508 (22)	\$61,222 (22)	\$59,831 (23)
Assistants	\$46,392 (27)	\$47,653 (20)	\$48,562 (19)	\$48,054 (12)	\$47,257 (13)
Instructors	\$39,420 (2)	\$40,000 (1)	\$40,000 (1)	(0)	(0)
All Ranks	\$57,516 (73)	\$60,455 (68)	\$62,447 (65)	\$64,706 (56)	\$62,889 (56)
<b>WOMEN:</b>					
Professors	\$70,758 (3)	\$69,326 (6)	\$72,676 (8)	\$73,564 (9)	\$71,368 (9)
Associates	\$57,057 (20)	\$58,623 (20)	\$60,765 (18)	\$60,926 (20)	\$60,270 (22)
Assistants	\$47,281 (22)	\$48,932 (19)	\$51,326 (23)	\$52,921 (20)	\$50,619 (14)
Instructors	\$43,003 (8)	\$46,511 (5)	\$41,377 (1)	\$43,849 (2)	(0)
All Ranks	\$51,653 (53)	\$55,014 (50)	\$57,941 (50)	\$59,347 (51)	\$59,487 (45)
<b>TOTAL:</b>					
Professors	\$73,700 (22)	\$73,862 (25)	\$75,697 (31)	\$76,196 (31)	\$74,954 (29)
Associates	\$57,761 (45)	\$59,577 (48)	\$60,623 (40)	\$61,081 (42)	\$60,046 (45)
Assistants	\$46,791 (49)	\$48,276 (39)	\$50,075 (42)	\$51,096 (32)	\$49,000 (27)
Instructors	\$42,286 (10)	\$45,426 (6)	\$40,689 (2)	\$43,849 (2)	(0)
All Ranks	\$55,050 (126)	\$58,149 (118)	\$60,488 (115)	\$62,152 (107)	\$61,374 (101)

--Figure in parenthesis indicates the number of individuals in each category  
--'9-month' and '10-month converted to 9-month' salaries only.  
--Chancellor/vice chancellor salaries are excluded.

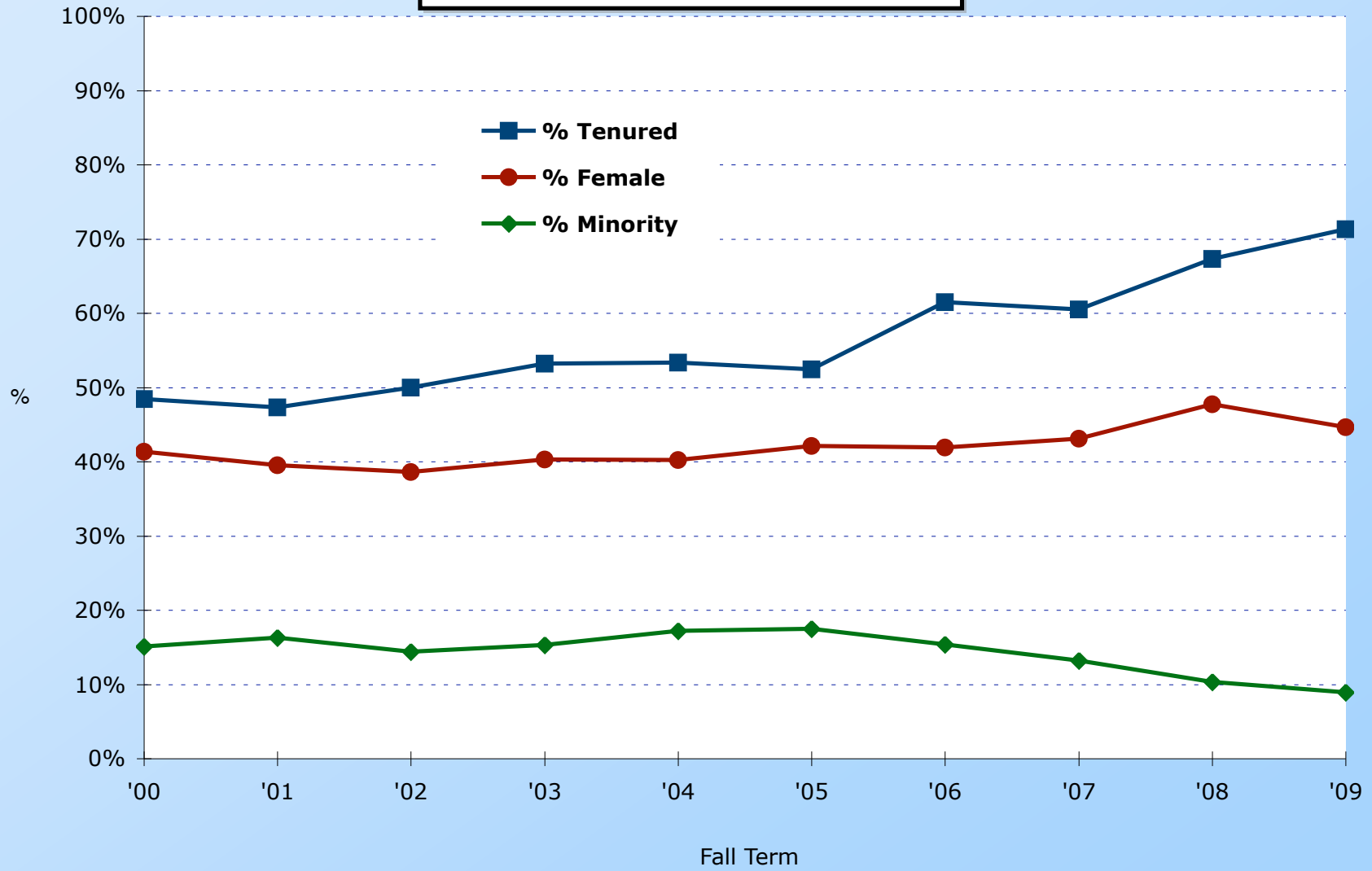
University of Minnesota, Morris  
The Percent of Full-time Faculty Who Are  
Female, Minority, Tenured, or Temporary

<b>Female/Minority Faculty</b>
------------------------------------

Fiscal Year	Faculty Count	Percent of Faculty			
		Female	Minority	Tenured	Temporary
1971-72	85	NA	9.4%	48.2%	9.4%
1975-76	93	17.2%	12.9%	62.4%	14.0%
1980-81	96	19.8%	10.4%	60.9%	16.7%
1985-86	106	27.5%	13.3%	55.5%	21.8%
1990-91	118	25.4%	16.1%	55.1%	26.3%
1995-96	123	36.6%	20.3%	49.6%	31.7%
2000-01	126	41.3%	15.1%	48.4%	18.3%
2005-06	126	42.1%	17.5%	52.4%	11.1%
2006-07	117	41.9%	15.4%	61.5%	9.4%
2007-08	114	43.1%	13.2%	60.5%	6.1%
2008-09	107	47.7%	10.3%	67.3%	5.6%
2009-10	101	44.6%	8.9%	71.3%	5.9%

Faculty count includes full-time faculty only at the ranks of professor, associate professor, assistant professor, and instructor; does not include administrative faculty. It does include faculty on leave or sabbatical and their replacements. Temporary refers to appointments which are full-time and non-tenure-track.

**UMM Full-time Faculty Characteristics:  
Percentage Tenured, Female, or Minority**



## Index

- A**  
Academic Divisions (3,4,5,6,7)  
Academic Services (3,4,5,6,7)  
Academic Support (9,14,15,17,19)  
ACT Scores (21,23)  
Administration (3,5,6,7,52)  
Advanced Standing Students (32)  
Anthropology (41,45,47,51,52)  
Area of Concentration (42,45)  
Art History Discipline (41,44,46,50,52)  
Art, Studio Discipline (41,44,46,50,52)  
Athletics, see *Intercollegiate Athletics*  
Auxiliary Enterprises (9,14,15,17,18)
- B**  
Biology Discipline (41,44,46,50,52)  
Business Services (14,15,17,18)
- C**  
Chancellor's Office (14,15,17,18)  
Charts (1,4,8,15,18,19,22,23,24, 26,28,35,37,43,48,49,54,55,58)  
Chemistry Discipline (41,44,46,50,52)  
Classes (50,51)  
Class Size (50,51)  
Collections (3)  
Commitments (12)  
Compensation (6)  
Computer Sci. Discipline (41,44,46, 50,52)  
Computing Services (3,5,6,7)  
Continuing Education (3,5,6,7,24)  
County Enrollment (24)  
Crafts/Trades Employees (14,16)  
Crookston Campus (25,27,29)
- D**  
Declared Majors (41,42,43)  
Degrees Granted (44,45)  
Duluth Campus (25,27,29)
- E**  
Economics (41,45,47,51,53)  
Education Division (3,5,6,7,41,43,44, 46,48,49,50,52,55)  
Elementary Education Discipline (41,44,46,50,52)  
Endowment Income (9)  
Endowment Values (12)  
English Discipline (41,44,46,50,52)  
Enrollment (21,25,26,27,28,29,32,33,50,51)  
Enrollment Projections (32)  
Ethnic Background of Students (30, 31)  
European Studies Major (42,45)  
Executive Management (14,16)  
Expenditures (3,4,5,6,7)  
Expenditures, 5-Year (5,9)  
Expenditures, Compensation (3,6)  
Expenditures, SE&E (7)  
Expenditures, Sponsored (13)
- F**  
Faculty, FTE (21,46,47,49,50,51,52,53,54,55)  
Faculty, Tenured (54,55,57,58)  
Faculty, Temporary (54,55,57,58)  
Faculty Salaries (56)  
Fees (11)  
Financial Aid Distributed (10)  
Financial Data, IPEDS (9)  
Foreign Students (24,33)  
French Discipline (41,44,46,50,52)  
Freshman Applicants (21)  
Freshman Aptitude (21)  
Freshmen, New (21,32)  
Fringe Benefits (3,8)  
FTE Faculty (21,46,47,49,50,51,52,53,54,55)  
Fund Raising Trends (12)  
Funded Research, Level of (13)  
FYE Students (21,27,28,32,46,47,48)
- G**  
General Operations Fund (3,5,6,7)  
Gifts (12)  
Geography Discipline (47,51)  
Geology Discipline (41,44,46,50,52)  
German Discipline (41,44,46,50,52)  
Graduates (44,45)  
Graduation Rates (36,37)  
Grants and Contracts (9,10)
- H**  
Headcount Enrollment (21,24,25,26,28,29, 32)  
High School Rank (21,22)  
High Schools (24)  
History Discipline (41,45,47,51,52)  
Humanities Division (3,5,6,7,41,43,44, 46,48,49,50,52,55)
- I**  
Illinois Students (33)  
Intercollegiate Athletics (3,5,6,7,14, 15,17,19)  
Interdisciplinary Studies (3,5,6,7,42, 43,45,47,49,51,53)  
IPEDS Financial Data (9)  
Institutional Support Expenditures (9)  
Instruction and Research (14,15,17)  
Instruction Expenditures (9)  
Instructor Credit Hours (50,51)
- J**
- K**
- L**  
Latin American Area Studies Major (42,45)  
Liberal Arts for the Human Services Major (41,45)  
Library (3,5,6,7)  
Loans (10)



## Index

- M**  
Majors of the Student Body (41,42,43)  
Management Discipline (41,45,47,51,53)  
Mathematics Discipline (41,44,46,50,52)  
Media Services (3,5,6,7)  
Minnesota Students (21,24)  
Minority Faculty (57,58)  
Minority Student Enrollment (29,30,31)  
Music Discipline (41,44,46,50,52)
- N**  
Natural Science Discipline (46,50)  
Non-degree Students (32,42)  
North Dakota Students (33)
- O**  
Occupational Level of Graduates (39)  
Office/Clerical Employees (14,16)  
On-campus Students (21)  
Organizational chart (1)  
Out-of-State Students (21,24,33)
- P**  
P&A Staff (54,55)  
Philosophy Discipline (41,44,46,50,52)  
Physics Discipline (41,44,46,50,52)  
Plant Services (3,5,6,7,9,14,15,17,18)  
Political Science Discipline (42,45,47,51,53)  
Postgraduate Training (38)  
Preprofessional Programs (42)  
Proposals Submitted (13)  
PSEO Students (42)  
Psychology Discipline (42,45,47,51,53)  
Public Services Expenditures (9)
- Q**
- R**  
Ratio, Male/Female (21)  
Ratio, Student/Faculty (21,46,47)  
Research Expenditures (9)  
Research, Level of Funded (13)  
Retention Rates (36,37)  
Revenues (9)  
Room and Board (11)
- S**  
Salaries (3,6,54)  
Sales and Services (9)  
Scholarships and Fellowships (9,10)  
Science & Math Division (3,5,6,7,41,43,44,46,48,49,50,52,55)  
SE&E (3,7,8)  
Secondary Education (41,44,46,50,52)  
Service Employees (14,16)  
Social Science Major (41,45)  
Social Sciences Division (3,5,6,7,41,43,45,47,48,49,51,52,53,55)  
Sociology Discipline (42,45,47,51,53)  
South Dakota Students (33)  
Spanish Discipline (41,44,46,50,52)  
Speech Communication Discipline (41,44,46,50,52)  
Staffing (14,15,16,17,18,19)  
State Legislative Appropriations (3,5,6,7,9)  
Statistics Discipline (41,44,46,50,52)  
Student Body Information (21)  
Student Credit Hours (50,51)  
Student/Faculty Ratio (21,46,47)  
Student Origin (21,24)  
Student Retention (36,37)  
Student Services (3,5,6,7,9,14,15,17,19)  
Students of Color (29,30,31)  
Study Abroad (34,35)
- Support Professionals (14,16)**  
**Support Services (3,4,5,6,7)**
- T**  
Tax Funds (3)  
Teaching Faculty (14,16,19)  
Technical Employees (14,16)  
Temporary Faculty (54,55,57,58)  
Tenured Faculty (54,55,57,58)  
Theatre Arts Discipline (41,44,46,50,52)  
Tuition and Fees (3,9,10)  
Tuition Costs (11)  
Tuition Grants (3)  
Twin Cities Campus (25,27,29)
- U**  
Undecided Students (42)  
University of Minnesota System (25,27,29)  
URL (title page)
- V**
- W**  
Web Address (title page)  
Wellness & Sport Science Discipline (46,50,52)  
Wisconsin Students (33)  
Women Faculty (57,58)  
Women's Studies Major (42,45,47,51,53)  
Work Study (10)
- X**
- Y**
- Z**



UNIVERSITY OF MINNESOTA  
**MORRIS**

Nancy Helsper  
309c Behmler Hall  
University of Minnesota, Morris  
600 East Fourth Street  
Morris, Minnesota 56267  
320-589-6012 • [helsper@morris.umn.edu](mailto:helsper@morris.umn.edu)