

# The interstellar medium in Andromeda's dwarf spheroidal galaxies: I. Content and origin of the interstellar dust

Ilse De Looze<sup>1,2,3\*</sup>, Maarten Baes<sup>2</sup>, George J. Bendo<sup>4</sup>, Jacopo Fritz<sup>2,5</sup>, Médéric Boquien<sup>3,6</sup>,  
Diane Cormier<sup>7</sup>, Gianfranco Gentile<sup>2,8</sup>, Robert C. Kennicutt<sup>3</sup>, Suzanne C. Madden<sup>9</sup>,  
Matthew W. L. Smith<sup>10</sup>, Lisa Young<sup>11,12</sup>

<sup>1</sup> Department of Physics and Astronomy, University College London, Gower Street, London WC1E 6BT, UK

<sup>2</sup> Sterrenkundig Observatorium, Universiteit Gent, Krijgslaan 281 S9, B-9000 Gent, Belgium

<sup>3</sup> Institute of Astronomy, University of Cambridge, Madingley Road, Cambridge, CB3 0HA, UK

<sup>4</sup> UK ALMA Regional Centre Node, Jodrell Bank Centre for Astrophysics, School of Physics and Astronomy, University of Manchester, Oxford Road, Manchester M13 9PL, United Kingdom

<sup>5</sup> Instituto de Radioastronomía y Astrofísica, IRyA, UNAM, Campus Morelia, A.P. 3-72, C.P. 58089 Michoacán, Mexico

<sup>6</sup> Unidad de Astronomía, Fac. Cs. Básicas, Universidad de Antofagasta, Avda. U. de Antofagasta 02800, Antofagasta, Chile

<sup>7</sup> Zentrum für Astronomie der Universität Heidelberg, Institut für Theoretische Astrophysik, Albert-Ueberle Str. 2, D-69120 Heidelberg, Germany

<sup>8</sup> Astrophysical Institute, Vrije Universiteit Brussel, Pleinlaan 2, 1050 Brussels, Belgium

<sup>9</sup> Laboratoire AIM, CEA, Université Paris VII, IRFU/Service d'Astrophysique, Bat. 709, 91191 Gif-sur-Yvette, France

<sup>10</sup> School of Physics and Astronomy, Cardiff University, Queens Buildings, The Parade, Cardiff CF24 3A A

<sup>11</sup> Physics Department, New Mexico Institute of Mining and Technology, Socorro, NM 87801, USA

<sup>12</sup> Academia Sinica Institute of Astronomy & Astrophysics, PO Box 23-141, Taipei 10617, Taiwan, R.O.C.

Accepted ; Received ; in original form

## ABSTRACT

Dwarf spheroidal galaxies are among the most numerous galaxy population in the Universe, but their main formation and evolution channels are still not well understood. The three dwarf spheroidal satellites (NGC 147, NGC 185, and NGC 205) of the Andromeda galaxy are characterised by very different interstellar medium (ISM) properties, which might suggest them being at different galaxy evolutionary stages. While the dust content of NGC 205 has been studied in detail by De Looze et al. (2012), we present new *Herschel* dust continuum observations of NGC 147 and NGC 185.

The non-detection of NGC 147 in *Herschel* SPIRE maps puts a strong constraint on its dust mass ( $\leq 128^{+124}_{-68} M_{\odot}$ ). For NGC 185, we derive a total dust mass  $M_d = 5.1 \pm 1.0 \times 10^3 M_{\odot}$ , which is a factor of  $\sim 2$ -3 higher than that derived from *ISO* and *Spitzer* observations and confirms the need for longer wavelength observations to trace more massive cold dust reservoirs.

We, furthermore, estimate the dust production by asymptotic giant branch (AGB) stars and supernovae (SNe). For NGC 147, the upper limit on the dust mass is consistent with expectations of the material injected by the evolved stellar population. In NGC 185 and NGC 205, the observed dust content is one order of magnitude higher compared to the estimated dust production by AGBs and SNe. Efficient grain growth, and potentially longer dust survival times (3-6 Gyr) are required to account for their current dust content. Our study confirms the importance of grain growth in the gas phase to account for the current dust reservoir in galaxies.

**Key words:** ISM: dust – galaxies: dwarf – galaxies: individual: NGC 147 – galaxies: individual: NGC 185 – galaxies: individual: NGC 205 – Local Group – infrared: ISM

## 1 INTRODUCTION

Dwarf spheroidal galaxies (dSph) belong to the most numerous galaxy population in the Universe, but their low surface bright-

ness hampers their detection. The Local Group offers the nearest laboratory to analyse the formation and evolution processes of the low-luminosity dSph galaxy population. The historical picture of dSphs containing relatively little interstellar material has changed during the past few years owing to the improved spatial resolution and sensitivity of infrared, (sub-)millimeter and radio observ-

\* E-mail: idelooze@star.ucl.ac.uk, ilse.delooze@ugent.be

ing facilities (e.g., *Herschel*, EVLA, BIMA, IRAM). The detection of gas (e.g., Welch et al. 1996; Young & Lo 1996, 1997; Young 2001; di Serego Alighieri et al. 2007; Grossi et al. 2009) and dust (e.g., De Looze et al. 2010; di Serego Alighieri et al. 2013; De Looze et al. 2013) shows that a subpopulation of dSphs does contain a significant reservoir of interstellar material. The presence of a young stellar population, within galaxies otherwise dominated by old stars, also demonstrates that some dSphs have experienced a recent episode of star formation (e.g., Peletier 1993; Boselli et al. 2005).

In this paper, we focus on the study of the dust reservoir in the dSph companions of the Andromeda galaxy (M31). The dust content of the dSph galaxy NGC 205 was analysed in De Looze et al. (2012). This paper focuses on the two remaining spheroidal dwarfs, NGC 147 and NGC 185. The dust reservoir in these two galaxies has been observed and analysed in the past by IRAS (Rice et al. 1988), ISO (Temi et al. 2004) and *Spitzer* (Marleau et al. 2010). Overall, the dSph galaxies NGC 147 and NGC 185 appear very similar in terms of their galaxy mass (Geha et al. 2010), stellar kinematics (Geha et al. 2010) and C star fraction (Davidge 2005)<sup>1</sup>. From a detailed analysis of their star formation history, Geha et al. (2015), however, concluded that the bulk of stellar mass was formed around 12.5 Gyr ago in NGC 185, while most of the stars in NGC 147 only formed about 5 to 7 Gyr ago. The latter result is interpreted as an earlier infall time for NGC 185 compared to NGC 147 into the M31 group. Other than the age variations for the bulk of stars in the two dwarf spheroidals, NGC 185 is characterised by a more recent star formation episode limited to its central regions, that started a few 100 Myr ago. A similar central concentration of young stars is also found in the other Local Group dSph NGC 205, suggesting that the build-up of mass from evolved stars and planetary nebulae has initiated a recent cycle of star formation in their central regions. The ongoing star formation in NGC 185 contrasts with the lack of any sign of recent star formation activity during the last 1 Gyr in NGC 147 (Han et al. 1997) and the absence of any detected ISM material in NGC 147 (Welch et al. 1998).

The variation in star formation history and ISM content observed in the three dwarf spheroidal companion galaxies of M31 seems to imply that the dwarfs are at a different stage of evolution and/or might have experienced different levels of interaction with the group environment. In a companion paper (De Looze et al. 2016b), we revise the gas content in the three dSphs and discuss their gas content, ISM properties and gas-to-dust ratio in view of galaxy evolution processes. In this work, we compare the dust mass content derived from *Herschel* observations in the three dwarf spheroidal galaxies with predictions of the mass return by AGB stars and supernova remnants. Based on such comparison, we aim to put constraints on the dust production and survival in the ISM of dwarf spheroidal galaxies.

Due to the proximity ( $D < 1$  Mpc) of the dwarf spheroidal satellite galaxies, it is possible to identify individual AGB stars from near-infrared observations (e.g., Battinelli & Demers 2004a,b; Davidge 2005; Kang et al. 2005; Sohn et al. 2006) and to derive realistic star formation histories based on color-magnitude diagrams (e.g., Martínez-Delgado et al. 1999; Monaco et al. 2009; Geha et al. 2015). In our Galaxy, AGB stars have long been thought to be the

main dust producers (e.g., Tielens et al. 2005). In the Large Magellanic Clouds, supernovae are considered equally important as dust source compared to AGB stars (Matsuura et al. 2009). Recent observations of core-collapse supernovae (CCSNe) at sub-millimeter (sub-mm) wavelengths (e.g., Barlow et al. 2010; Matsuura et al. 2011; Gomez et al. 2012b; Indebetouw et al. 2014; Matsuura et al. 2015) and optical wavebands (e.g., Andrews et al. 2016; Bevan & Barlow 2016) have predicted increased dust yields in CCSNe, which might also significantly contribute to the large dusty reservoirs observed in galaxies at an early stage of their evolution at high-redshift (e.g., Michałowski 2015). On global galaxy scales, the total dust reservoir can, often, not be accounted for by AGB stars and SNe alone, and requires an efficient growth of dust grains in the interstellar medium (e.g., Matsuura et al. 2009; Mattsson et al. 2012; Asano et al. 2013; Zhukovska & Henning 2013; Mattsson et al. 2014; Rémy-Ruyer et al. 2014).

The comparison of the observed dust content in the three dwarf spheroidal companions of M31 with predictions of dust mass produced by AGB stars and supernova remnants allows us to put constraints on the importance of various dust production mechanisms in low-metallicity environments.

In Section 2, we present our *Herschel* observations and the ancillary dataset used in this analysis. Section 3 discusses the detection and morphology of dust reservoirs in NGC 147 and NGC 185. Section 4 models the multi-wavelength dust spectral energy distribution (SED) in NGC 185 with modified black-body (MBB) and full dust models, and discusses the possible presence of a sub-millimeter excess. The origin of the dust in the dwarf spheroidal satellites of M31 is discussed in Section 5. Section 6 finally sums up.

Throughout this paper, we adopt distances of  $675 \pm 27$  kpc,  $616 \pm 26$  kpc, and  $824 \pm 27$  kpc to NGC 147, NGC 185, and NGC 205 (McConnachie et al. 2005), respectively. We determine the metal abundance in the ISM of NGC 147 ( $0.23 Z_{\odot}$ ), NGC 185 ( $0.36 Z_{\odot}$ ), and NGC 205 ( $0.25 Z_{\odot}$ ) by averaging over the oxygen abundances derived from planetary nebulae (PNe) in the centers of those galaxies (see De Looze et al. 2016b for more details).

## 2 DATA

### 2.1 *Herschel* dust continuum data

*Herschel* observations of NGC 147 and NGC 185 were obtained as part of the OT2 program “*Herschel* study of the ISM in Local Group dwarf ellipticals” (PI: De Looze). The dust continuum has been mapped with the SPIRE photometer out to 2 effective radii in NGC 147 and NGC 185, corresponding to  $6' \times 6'$  and  $12' \times 12'$  maps, respectively. Each of the two areas were observed in nominal and orthogonal scan directions each with three repetitions at the medium scan speed of  $20'' s^{-1}$ . The SPIRE photometry observations for NGC 185 (ObsID 1342249109) and NGC 147 (ObsID 1342258361) were performed on August 6th 2012 and January 3rd 2013, respectively. All raw SPIRE data have been reduced up to level 1 in the *Herschel* Interactive Processing Environment (HIPE v12.0. Ott 2010) with calibration files v48, following the standard pipeline procedures. The level 1 data have been processed using the BRiGht Galaxy ADaptive Element method (BRIGADE, Smith 2012; Auld et al. 2013, Smith et al. in prep.). The latter uses a custom method to remove the temperature drift and bring all bolometers to the same level (instead of the default *temperatureDriftCorrection* and the residual, median baseline subtraction). Relative gain

<sup>1</sup> Deep imaging from the Pan-Andromeda Archaeological Survey (PANdAS) recently revealed that the effective radius in NGC 147 is about three times larger compared to NGC 147 and that NGC 185 is about one magnitude brighter compared to NGC 185 (Crnojević et al. 2014).

corrections were, furthermore, applied to correct for the bolometer's responsivity to extended sources. The data were then mapped using the naive mapmaking algorithm in HIPE. Final SPIRE maps have been obtained with pixel sizes of 6", 8" and 12" at 250, 350 and 500  $\mu\text{m}$ , respectively. The FWHM of the SPIRE beam corresponds to 18.2", 24.9" and 36.3" at 250, 350 and 500  $\mu\text{m}$ , respectively (see SPIRE Observers' Manual). The SPIRE maps are multiplied with  $K_{\text{PlOIE}}$  correction factors for conversion from point source to extended source photometric calibration. The appropriate correction factors (i.e., 91.289, 51.799, 24.039 MJy/sr ( $\text{Jy beam}^{-1}$ )<sup>-1</sup> at 250, 350 and 500  $\mu\text{m}$ , respectively; see SPIRE Observers' manual) for a constant  $\nu S_\nu$  spectrum convert the maps from  $\text{Jy beam}^{-1}$  to  $\text{MJy sr}^{-1}$  units, and account for the most up-to-date measured SPIRE beam areas of 465, 823, 1769  $\text{arcsec}^2$  at 250, 350 and 500  $\mu\text{m}$ , respectively.

For NGC 185, SPIRE observations were complemented with PACS photometry mapping in the green (100  $\mu\text{m}$ ) and red (160  $\mu\text{m}$ ) photometric bands across a 8'  $\times$  8' area, with 4 repetitions in both nominal and orthogonal directions. The PACS observations of NGC 185 (ObsID 1342247328, 1342247329) took place on June 24th 2012. PACS data have been processed from level 0 to level 1 in HIPE v12.0, using the calibration file v56. The level 1 data are processed with the map making IDL algorithm *Scanamorphos* (v23, Roussel 2013), which is optimised to benefit from the redundancy of all coverages in every sky pixel. Final PACS maps are created with pixel sizes of 1.7" and 2.85" at 100  $\mu\text{m}$  and 160  $\mu\text{m}$ , respectively. The full width at half-maximum (FWHM) of the PACS beam has sizes of 6.9" and 12.1" at 100 and 160  $\mu\text{m}$ , respectively.

## 2.2 Ancillary data

The Infrared Array Camera (IRAC, Fazio et al. 2004) and Multi-band Imaging Photometer (MIPS, Rieke et al. 2004) on board the *Spitzer* Space Telescope observed NGC 147 and NGC 185 as part of the program Detailed Study of the Dust in M31's Four Elliptical Companions (PI: F. Marleau). The observing strategy and reduced IRAC and MIPS maps are presented and analysed in Marleau et al. (2010). We retrieved IRAC data at 3.6, 4.5, 5.8 and 8.0  $\mu\text{m}$ , and MIPS 24, 70 and 160  $\mu\text{m}$  maps from the *Spitzer* Heritage Archive<sup>2</sup>. The MIPS data have been reprocessed following the methods described by Bendo et al. (2012b).

## 2.3 Data processing

All images are background subtracted with the background value derived as the median from a set of 50 random apertures with radius  $R = 4 \times \text{FWHM}$  in the field around the galaxy.

For the dust SED fitting procedure presented in Section 4, all infrared images are convolved to match the SPIRE 500  $\mu\text{m}$  resolution (36.3") using the appropriate kernels from Aniano et al. (2011). All convolved images are rebinned to match the pixel grid of the SPIRE 500  $\mu\text{m}$  frame with pixel size of 12" which corresponds to a physical scale of 35.8 pc at the distance of NGC 185. With the SPIRE 500  $\mu\text{m}$  waveband providing the limiting resolution scale, we consider *Spitzer* MIPS 24 and 70  $\mu\text{m}$  and *Herschel* PACS 100, 160  $\mu\text{m}$  and SPIRE 250, 350, 500  $\mu\text{m}$  data to constrain the dust spectral energy distribution in NGC 185. The MIPS 160  $\mu\text{m}$  waveband is not considered with a resolution of 38" (Engelbracht et al. 2007).

## 3 THE MORPHOLOGY OF DUST, GAS AND STARS IN NGC 147 AND NGC 185

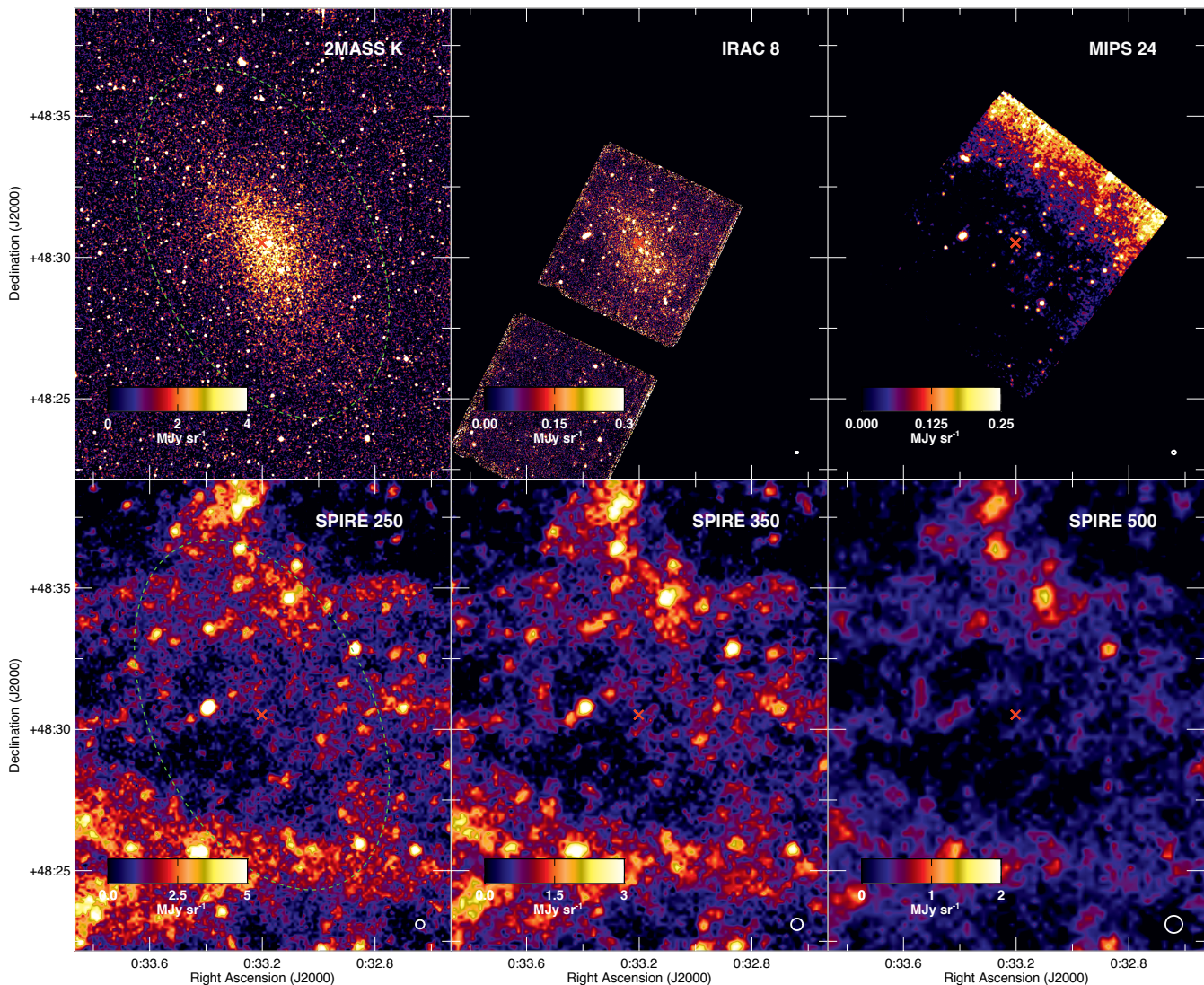
### 3.1 NGC 147

Figure 1 shows the 2MASS *K* band, IRAC 8  $\mu\text{m}$ , MIPS 24  $\mu\text{m}$ , and *Herschel* SPIRE photometry maps for NGC 147. No significant sub-millimeter emission is detected within the B band 25 mag  $\text{arcsec}^{-2}$  isophotal contours, but prominent Galactic cirrus emission is observed in the field around NGC 147 (mainly towards the South-East of the galaxy). The background noise in the SPIRE images is determined as the standard deviation around the mean background value for 100 apertures with  $R=\text{FWHM}$ , positioned in background regions avoiding the strong cirrus emission towards the south-east of NGC 147. We find  $1\sigma$  noise levels of 13.67, 12.40, 10.79 mJy  $\text{beam}^{-1}$  in the SPIRE 250, 350, and 500  $\mu\text{m}$  maps, respectively. We determine a  $3\sigma$  upper mass limit from the SPIRE 250  $\mu\text{m}$  image through  $M_d \lesssim \frac{S_{250} D^2}{\kappa_{250} B_{250}(T_d)}$  with a dust mass absorption coefficient  $\kappa_{250} = 0.40 \text{ m}^2 \text{ kg}^{-1}$  (consistent with the Draine & Li 2007 dust model), distance  $D$  and Planck function  $B_{250}(T_d)$  for a dust temperature  $T_d$ . Assuming an average dust temperature  $T_d \sim 21$  K similar to the global fitted dust temperature for NGC 185 for a PAH+graphite+amorphous silicate dust mixture (see Section 4.4), we derive a  $3\sigma$  upper dust mass limit  $M_d \lesssim 128^{+124}_{-68} M_\odot$  (see Figure 2). This upper dust mass limit assumes that a possible dust reservoir has a point source geometry distributed within a single SPIRE 250  $\mu\text{m}$  beam. The uncertainties on the upper dust mass limit are derived by varying the assumed dust temperature within the limits of uncertainties for the dust masses derived for NGC 185 ( $T_d \sim 17\text{-}28$  K, see Table 3). Our *Herschel* observations are able to put stringent constraints on the dust reservoir in NGC 147, improving by more than a factor of 3 in sensitivity compared to previous upper mass limits derived from MIPS 160  $\mu\text{m}$  ( $M_d \lesssim 4.5 \times 10^2 M_\odot$ , Marleau et al. 2010) and ISO 170  $\mu\text{m}$  ( $M_d \lesssim 4.1 \times 10^2 M_\odot$ , Temi et al. 2004) observations for an assumed dust temperature  $T_d = 20$  K. The latter upper dust mass limit translates into a dust-to-stellar mass ratio  $\log M_d/M_\star \lesssim -5.6$ , based on a stellar mass estimate ( $M_\star \sim 4.8 \times 10^7 M_\odot$ ) derived from IRAC 3.6 and 4.5  $\mu\text{m}$  flux densities following Eskew et al. (2012). The upper limit for the dust-to-stellar mass fraction in NGC 147 is similar to the strongest upper limits observed for nearby galaxy samples (Cortese et al. 2012; De Looze et al. 2013; Rémy-Ruyer et al. 2015).

### 3.2 NGC 185

Figure 3 shows the 2MASS *K* band, *Spitzer* (IRAC 8  $\mu\text{m}$ , MIPS 24  $\mu\text{m}$ , MIPS 70  $\mu\text{m}$ ) and *Herschel* (PACS 100, 160  $\mu\text{m}$ , and SPIRE 250, 350, 500  $\mu\text{m}$ ) photometry maps for NGC 185. We achieve  $1\sigma$  noise levels of 7.7 and 9 mJy  $\text{beam}^{-1}$  (equivalent to 3.7 and 2.6 MJy  $\text{sr}^{-1}$ ) on average in the PACS 100 and 160  $\mu\text{m}$  maps, while  $1\sigma$  rms sensitivities of 10, 11.1 and 9 mJy  $\text{beam}^{-1}$  (equivalent to 0.91, 0.57 and 0.21 MJy  $\text{sr}^{-1}$ ) are obtained in the SPIRE 250, 350, and 500  $\mu\text{m}$  maps. Similar to the observed morphologies at shorter (mid-)infrared wavelengths, we observe a peak in the infrared/submm emission near the centre of NGC 185 (indicated with a red cross) in the *Herschel* maps. In the PACS maps, there is an additional emission peak in the south-eastern part of the galaxy, which coincides with a shell-like morphology observed in the IRAC 8  $\mu\text{m}$  and MIPS 24  $\mu\text{m}$  maps (Marleau et al. 2010). Moving to the sub-millimeter wavebands covered by SPIRE, the two peaks can still be distinguished in SPIRE 250 and 350  $\mu\text{m}$  wavebands, but blend into one central peak at the resolution of the SPIRE 500  $\mu\text{m}$  waveband.

<sup>2</sup> <http://sha.ipac.caltech.edu/applications/Spitzer/SHA/>



**Figure 1.** Overview of the *Spitzer* and *Herschel* maps for NGC 147. The top left panel shows a near-infrared 2MASS *K* band image of NGC 147 for comparison, with the ellipse indicating the extent of one-third of *B* band 25 mag arcsec<sup>-2</sup> isophotal contours. The other panels, from left to right and top to bottom, show the dust emission in the IRAC 8  $\mu$ m, MIPS 24  $\mu$ m, and SPIRE 250, 350 and 500  $\mu$ m wavebands, respectively. The extent of one-third of the *B* band 25 mag arcsec<sup>-2</sup> isophotes is also overlaid on the SPIRE 250  $\mu$ m image. The centre of the galaxy is indicated with a red cross. The FWHM of the PSF is indicated as a white circle in the lower right corner of each panel.

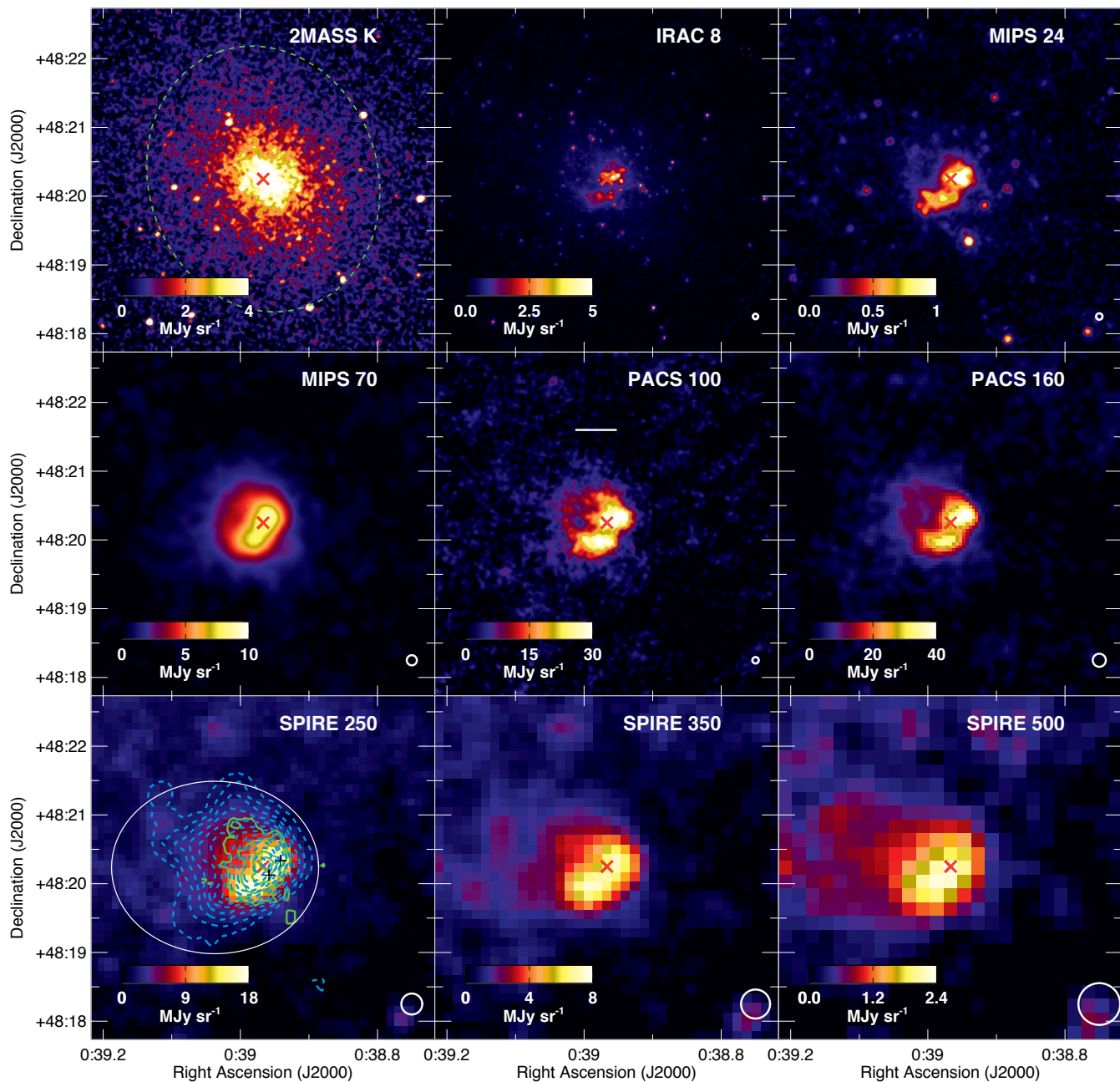
We, furthermore, observe an extended tail of diffuse dust emission on the east side of the galaxy at longer wavelengths, which is detected at a signal-to-noise (S/N) level higher than 3 (see Figure 3). The extent of the diffuse dust emission partially overlaps with the broader H I component observed towards the East of the galaxy (see bottom left panel in Figure 3 and right panel in Figure 4), which might be an indication for a close association between the diffuse dust and gas components in NGC 185. The more diffuse dust emission regions towards the east detected from the *Herschel* SPIRE observations were not identified from optical data. Given that the young stars are located near the centre of the galaxy and blue light is more easily susceptible to extinction processes, the reddening caused by dust clouds can more easily be identified from the central regions. Alternatively, the diffuse dust patch might correspond to foreground Galactic cirrus emission given the low galactic latitude ( $-14.5^\circ$ ) of NGC 185.

The large scale morphology of the dust component in

NGC 185 is very asymmetric, which is in a sense similar to the disturbed distribution of the more extended H I gas (Young & Lo 1997). The origin of this peculiar morphology of the dust component is likely related to the recent star formation activity in NGC 185. The dust indeed coincides with the location of bright blue stars<sup>3</sup> first identified by Baade (1951) and overlaid as green crosses on the PACS 160  $\mu$ m map in Figure 4 (left panel). The shell structure in the south is suggested to result from a shock wave following a supernova explosion near the centre of NGC 185 (Gonçalves et al. 2012). The remnant is thought to originate from a supernova type Ia event about  $10^5$  yr ago (Martínez-Delgado et al. 1999). The position of SNR-1 is shown as a red diamond in Figure 4 (left panel).

Figure 4 (right panel) shows the PACS 160  $\mu$ m map with the

<sup>3</sup> Due to their fuzzy appearance, Martínez-Delgado et al. (1999) suggested these objects are rather young star clusters or associations with a minimum age of 100 Myr.

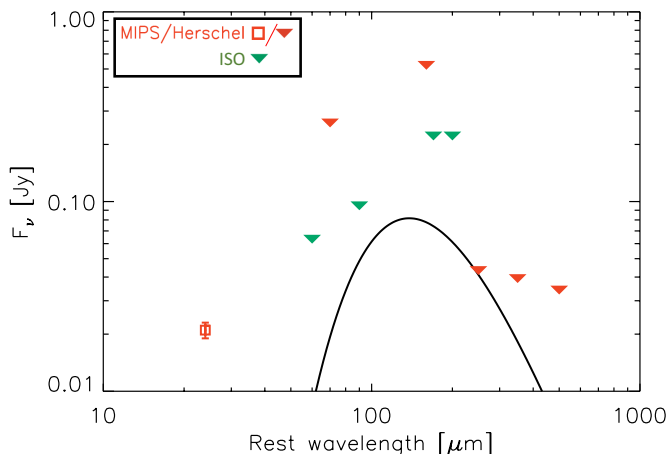


**Figure 3.** Overview of the *Spitzer* and *Herschel* maps for NGC 185. The top left panel shows a near-infrared 2MASS *K* band image of NGC 185 for comparison, with the ellipse indicating the extent of one-third of *B* band 25 mag arcsec<sup>-2</sup> isophotal contours (i.e.,  $R_{25}/3$ ). The other panels, from left to right and top to bottom, show the dust emission in the IRAC 8  $\mu\text{m}$ , MIPS 24  $\mu\text{m}$ , MIPS 70  $\mu\text{m}$ , PACS 100  $\mu\text{m}$ , PACS 160  $\mu\text{m}$  and SPIRE 250, 350 and 500  $\mu\text{m}$  wavebands, respectively. The centre of the galaxy is indicated with a red cross. The FWHM of the *Spitzer* and *Herschel* PSFs is indicated as a white circle in the lower right corner of each panel. The white line in the PACS 100  $\mu\text{m}$  image indicates a physical scale of 108 pc, i.e., the resolution in the SPIRE 500  $\mu\text{m}$  map. On the SPIRE 250  $\mu\text{m}$  map, the contours of H I (FWHM  $\sim 28''$ ) and [C II] (FWHM  $\sim 11.5''$ ) observations are overlaid at their original resolution as blue dashed and green solid lines, respectively.

contours of H I, CO(1-0) and [C II] 158  $\mu\text{m}$ <sup>4</sup> observations at their native resolution overlaid as blue dashed, black solid and green solid lines, respectively. The central dust cloud in NGC 185 is shown to partially coincide with the molecular gas phase as traced by CO, and lies adjacent to the bulk of atomic gas mass. The southern dust shell, however, does not seem to coincide with any major peaks

in the emission of the probed gas tracers (H I, CO, [C II]) at first sight. From the H I data cube, a clumpy concentration of H I gas was found near the position of the southern dust shell (see Figure 4, left panel). Single-dish IRAM observations, furthermore, detected CO emission from that region (Young & Lo 1997), but the interferometric BIMA data only found significant CO-emitting gas near the north-west of the galaxy centre (Young 2001). The molecular gas in NGC 185, thus, appears to be mostly confined to a single cloud structure of relatively small size (34 pc  $\times$  20 pc), and does not co-

<sup>4</sup> De Looze et al. (2016b) describes the [C II] dataset.



**Figure 2.** The SED with the MIPS 24  $\mu\text{m}$  data point (red diamond) and  $3\sigma$  upper limits (downward arrows) from *Spitzer* (Marleau et al. 2010), *Herschel* (this paper) and ISO (Temi et al. 2004) observations for NGC 147. The modified blackbody model with emissivity index  $\beta=2$  and dust temperature  $T_d = 21$  K (black solid line) is scaled to the  $3\sigma$  upper limit at 250  $\mu\text{m}$ .

incide with regions where most of recent star formation activity took place. Assuming that the inclination of NGC 185 is not edge-on ( $i \sim 50^\circ$ , De Rijcke et al. 2006), this offset between the young star clusters and molecular clouds confirms the break down of the Kennicutt-Schmidt (K-S) law (Kennicutt 1998) on spatial scales  $< 100$ -200 pc (e.g., Schrubba et al. 2010). The breakdown of the K-S law at small scales has been argued to be due to a poor sampling of the stellar initial mass function (IMF) and gas mass function, or due to a limited duration of the molecular cloud lifetime (e.g., Momose et al. 2010; Onodera et al. 2010; Schrubba et al. 2010). In NGC 185, the supernova explosion in the centre about  $10^5$  years ago might have cleared the molecular gaseous material associated with the young star clusters, with the swept up molecular gas being transported by the supernova shock wave to its current location. The large line width ( $18.3 \text{ km s}^{-1}$ ) of the molecular cloud (as traced by the  $^{12}\text{CO}(1-0)$  rotational transition), furthermore, suggests that the cloud structure is not dynamically stable, but might endure tidal disruption processes due to its central location (Young 2001). The lack of any star formation activity during the last  $\sim 100$  Myr in NGC 185 (Martínez-Delgado et al. 1999) might, thus, result from turbulence which prevents the molecular gas cloud from collapsing and forming stars.

## 4 DUST SED MODELLING IN NGC 185

### 4.1 Global fluxes

Marleau et al. (2010) determined global flux densities for NGC 185 within an aperture with radius  $R = 75''$  centred on the optical position of the galaxy. Since this region does not include the diffuse dust emission detected in the SPIRE images towards the east of the galaxy, we choose to use an elliptical aperture (with semi-major and -minor axes of  $95''$  and  $70''$ ) that does capture the total dust emission originating from NGC 185 as observed from the SPIRE 250  $\mu\text{m}$  image (see Figure 3, bottom left panel). We, furthermore, make sure that the aperture does not include any infrared-bright sources unrelated to the galaxy. We perform aperture photometry with the FITS library and utility package FUNTOOLS

**Table 1.** Total flux densities of NGC 185 as determined from aperture photometry within an elliptical aperture  $95'' \times 70''$  with position angle  $\text{PA}=0^\circ$ , centred on the position (RA, DEC) = ( $0^{\text{h}}:39^{\text{m}}:02.21^{\text{s}}$ ,  $+48^\circ:20':14.17''$ ).

Waveband	FWHM ["]	$\sigma_{\text{cal}}$ [%]	$F_{\nu}$ [Jy]
IRAC 3.6 $\mu\text{m}$	1.7	10	$0.306 \pm 0.041$
IRAC 4.5 $\mu\text{m}$	1.7	10	$0.199 \pm 0.029$
IRAC 5.8 $\mu\text{m}$	1.9	10	$0.271 \pm 0.041$
IRAC 8.0 $\mu\text{m}$	2.0	10	$0.171 \pm 0.045$
MIPS 24 $\mu\text{m}$	6	4	$0.040 \pm 0.016$
MIPS 70 $\mu\text{m}$	18	10	$0.697 \pm 0.159$
PACS 100 $\mu\text{m}$	6.9	5	$1.936 \pm 0.156$
PACS 160 $\mu\text{m}$	12.1	5	$2.358 \pm 0.151$
SPIRE 250 $\mu\text{m}$	18.2	4	$1.980 \pm 0.322$
SPIRE 350 $\mu\text{m}$	24.9	4	$1.011 \pm 0.174$
SPIRE 500 $\mu\text{m}$	36.3	4	$0.404 \pm 0.089$

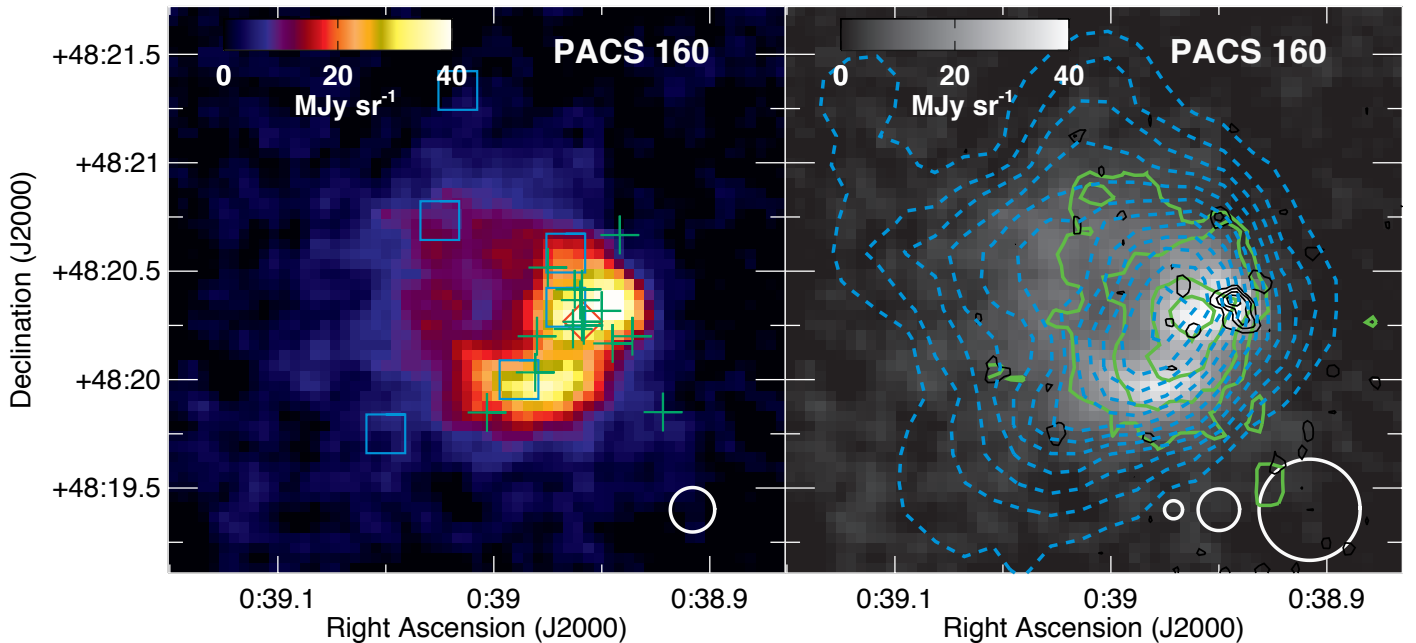
(Mandel et al. 2011). Table 1 summarises the global flux densities for NGC 185 in several wavebands.

To determine the uncertainty on the photometry data, we take different independent noise measurements into account. The first uncertainty factor arises from the calibration, which is assumed to be uncertain by 5% in both PACS 100 and PACS 160 wavebands (Balog et al. 2013). Calibration uncertainties for the *Herschel* SPIRE instrument are assumed to be around 4% in each band, adding in quadrature the 4% absolute calibration error from the assumed models used for Neptune (SPIRE Observers' manual) and a random uncertainty of 1.5% accounting for the repetitive measurements of Neptune (Bendo et al. 2013). The calibration in the MIPS 24 and MIPS 70  $\mu\text{m}$  wavebands is assumed to be uncertain by 4% (Engelbracht et al. 2007) and 10% (Gordon et al. 2007), respectively. For extended sources, the IRAC Instrument Handbook<sup>5</sup> recommends to assume an uncertainty factor of 10% on the calibration. Additional uncertainty factors arise from the random background noise, instrumental noise and the confusion noise in SPIRE wavebands. The instrumental uncertainties, related to the number of scans crossing a pixel, are derived from the output error map provided as output from the data reduction. The background noise is determined as the standard deviation around the median from a set of 50 random apertures with radius  $R = 4 \times \text{FWHM}$  in the field around the galaxy. The confusion noise due to unresolved background sources in SPIRE images is derived following Eq. 3 in Ciesla et al. (2012) and using the confusion noise estimates from Nguyen et al. (2010). The total uncertainty is obtained as the square root of the sum of all squared independent noise contributions. In the PACS images, the total uncertainties are dominated by the random background noise (5%) and calibration uncertainty (5%), followed by instrumental noise (2-3%). The noise in the SPIRE images is dominated by uncertainties in the map making algorithm (15-20%), with smaller contributions from confusion noise (6-9%), background (3-4%) and calibration uncertainties (4%).

### 4.2 Flux comparison

To verify whether the reprocessed *Spitzer* maps are in agreement with the dataset presented by Marleau et al. (2010), we determine the flux densities within the northern, southern, and total apertures specified in Table 4 from Marleau et al. (2010). Table 2 presents the flux measurements reported by Marleau et al. (2010) (first columns) and the fluxes obtained from our reprocessed MIPS data (second

<sup>5</sup> <http://irsa.ipac.caltech.edu/data/SPITZER/docs/irac/iracinstrumenthandbook/>



**Figure 4.** *Herschel* PACS 160  $\mu\text{m}$  map of NGC 185 with the size of the PACS 160  $\mu\text{m}$  beam (FWHM  $\sim 12.1''$ ) indicated in the lower right corner of the left panel. The right panel shows, from left to right, the beam sizes of the CO (FWHM  $\sim 5''$ ), [CII] (FWHM  $\sim 11.5''$ ) and H I (FWHM  $\sim 28''$ ) observations. On the left, the position of SNR-1 is indicated with a red diamond. The cyan squares represent the location of clumps in the H I distribution, while the green crosses indicate the bright blue stars or star clusters first identified by Baade (1951). In the right panel, the contours of H I, CO and [CII] observations are overlaid as blue dashed, black and green solid lines, respectively, at their original resolution. All images have the same field of view (FOV).

columns). We find an excellent agreement between the literature fluxes and aperture photometry results determined from the reprocessed MIPS data within the error bars.

We, furthermore, compare the global photometry obtained from *Herschel* observations with ancillary data at similar wavelengths. The PACS 100  $\mu\text{m}$  flux density ( $1.936 \pm 0.156$  Jy) corresponds well with the IRAS 100  $\mu\text{m}$  flux measurement ( $1.93 \pm 0.193$  Jy) reported by Rice et al. (1988), but is significantly higher compared to the ISO 90  $\mu\text{m}$  flux density ( $0.92 \pm 0.03$  Jy) given by Temi et al. (2004). Part of the discrepancy might be due to resolution issues and the smaller flux extraction region within the  $75''$  ISO beam. The flux inconsistency might, furthermore, be attributed to the different shapes of the bandpass filters for PACS, MIPS, IRAS and ISO. Given that accounting for the real shape of the spectrum through appropriate colour corrections would only change the fluxes by at most 10%, we argue that the flux discrepancies are not driven by bandpass variations. The PACS 160  $\mu\text{m}$  flux density is also higher with respect to the MIPS 160  $\mu\text{m}$  measurements ( $1.846 \pm 0.369$  Jy, Marleau et al. 2010), which can be attributed to the larger aperture used for flux extraction in the *Herschel* maps. Within the same area, the emission from the 160  $\mu\text{m}$  filters of MIPS and PACS is in excellent agreement (see Table 2). The ISO fluxes at 170  $\mu\text{m}$  ( $1.61 \pm 0.21$  Jy) and 200  $\mu\text{m}$  ( $1.01 \pm 0.12$  Jy) from Temi et al. (2004) are again lower with respect to the PACS 160  $\mu\text{m}$  and SPIRE 250  $\mu\text{m}$  fluxes. The limited beam size for ISO ( $\sim 75''$ ) and a possible lack of sensitivity for extended infrared emission in ISO observations are considered the main cause for these differences.

### 4.3 Dust models

Since the characterisation of the dust mass depends critically on the model assumptions, we apply four different dust SED models

to fit the infrared/sub-millimeter SED of NGC 185. First of all, we perform a single MBB fit with (fixed)  $\beta = 2.0$  and dust mass absorption coefficient  $\kappa_{350} = 0.192 \text{ m}^2 \text{ kg}^{-1}$  (Draine 2003). We, furthermore, perform a single MBB fit with variable  $\beta$ . The best fitting parameters ( $M_d$ ,  $T_d$ ,  $\beta$ )<sup>6</sup> are determined through a  $\chi^2$  minimisation using a simple gradient search method. To account for the spectral shape of the emitted spectrum after convolution with the *Herschel* filters, we apply colour corrections<sup>7</sup> to the PACS 100  $\mu\text{m}$  (1.036) and 160  $\mu\text{m}$  (0.963), and SPIRE 250  $\mu\text{m}$  (1.0064), 350  $\mu\text{m}$  (0.9933) and 500  $\mu\text{m}$  (1.0070) fluxes, assuming an extended source and a modified blackbody spectrum with temperature 20K and spectral index  $\beta = 1.5$  (which is closest to the best fitting  $\beta$  value of 1.2 derived for the observed SED for NGC 185, see Table 3).

Other than the single MBB fits, we compare the observed flux densities to the emission from a full dust model composed of a mixture of grains with a specific size distribution, optical properties and grain emissivities. More specifically, we apply the DustEm software (Compiègne et al. 2011) to predict the emission of dust grains exposed to a certain interstellar radiation field (ISRF).

DustEm calculates the local dust emissivity assuming non-local thermal equilibrium (NLTE) conditions and, thus, explicitly computes the temperature distribution for every grain type of particular size and composition. The shape of the ISRF is parametrised through the ISRF observed in the solar neighbourhood (Mathis et

<sup>6</sup> The dust mass is not strictly a free parameter, since it can be computed analytically by scaling the spectrum for the best fitting temperature and spectrum to fit the observations.

<sup>7</sup> PACS and SPIRE colour corrections were taken from the documents [http://herschel.esac.esa.int/twiki/pub/Public/PacsCalibrationWeb/cc\\_report\\_v1.pdf](http://herschel.esac.esa.int/twiki/pub/Public/PacsCalibrationWeb/cc_report_v1.pdf) and [http://herschel.esac.esa.int/Docs/SPIRE/html/spire\\_om.html](http://herschel.esac.esa.int/Docs/SPIRE/html/spire_om.html), respectively.

**Table 2.** Comparison between the aperture photometry results for MIPS 24, 70 and 160  $\mu\text{m}$  wavebands, reported by [Marleau et al. \(2010\)](#) (M2010) and determined from the reprocessed MIPS data in this paper (DL2016). The last column provides the PACS 160  $\mu\text{m}$  flux densities within the same regions.

Region	$F_{24}$ [mJy]	$F_{24}$ [mJy]	$F_{70}$ [mJy]	$F_{70}$ [mJy]	$F_{160}$ [mJy]	$F_{160}$ [mJy]	$F_{160}$ [mJy]
	MIPS (M2010)	MIPS (DL2016)	MIPS (M2010)	MIPS (DL2016)	MIPS (M2010)	MIPS (DL2016)	PACS (DL2016)
North (0.17 arcmin <sup>2</sup> )	9 $\pm$ 1	10 $\pm$ 1	101 $\pm$ 20	108 $\pm$ 11	194 $\pm$ 39	187 $\pm$ 24	222 $\pm$ 35
South (0.17 arcmin <sup>2</sup> )	6 $\pm$ 1	7 $\pm$ 1	84 $\pm$ 17	85 $\pm$ 9	134 $\pm$ 27	134 $\pm$ 18	178 $\pm$ 34
Total (4.91 arcmin <sup>2</sup> )	46 $\pm$ 5	46 $\pm$ 6	614 $\pm$ 123	677 $\pm$ 86	1846 $\pm$ 369	1981 $\pm$ 285	2102 $\pm$ 140

al. 1983). We consider two different grain compositions in this paper. The first dust mixture corresponds to the [Draine & Li \(2007\)](#) dust model composed of polycyclic aromatic hydrocarbons (PAHs), amorphous silicates and graphites. The second dust mixture is described in [Compiègne et al. \(2011\)](#) and consists of PAHs, amorphous silicates and aliphatic-rich amorphous hydrocarbons (a-C:H). Both models are consistent with the observed dust SED and extinction in the diffuse interstellar medium at high-galactic latitude ([Compiègne et al. 2011](#)). The main difference between the two dust compositions is the emissivity of the carbonaceous grains in the submillimeter domain. The graphite grains in the [Draine & Li \(2007\)](#) model have a dust emissivity index  $\beta \sim 1.8$  in submillimeter wavebands while the amorphous grains are characterised by a lower index of  $\beta \sim 1.55$ . Therefore, the same observed SED can usually be reproduced with a lower dust mass for grain mixtures including amorphous carbons compared to graphite grains ([Zubko et al. 2004](#); [Galliano et al. 2011](#); [Rémy-Ruyer et al. 2015](#)). Fixing the shape of the ISRF and the dust grain composition, the SED fitting procedure has two free parameters: the dust mass,  $M_d$ , and the scaling factor of the ISRF,  $G_0$  (in units of the [Habing 1968](#) ISRF integrated between  $6 < h\nu < 13.6$  eV or  $1.6 \times 10^{-3}$  erg s<sup>-1</sup> cm<sup>-2</sup>). We explore a parameter grid in  $G_0 \in [0.5, 10]$  with stepsize of 0.1 and  $M_d \in [1, 10] \times 10^3 M_\odot$  increased stepwise by a factor of 1.05. We construct a pre-calculated library of dust SEDs with DustEm exploring the range of parameter values. Based on this library, we determine the best fitting dust SED model through a least-square fitting routine. For the  $\chi^2$  minimisation, the model SED flux densities have been convolved with the response curves of the appropriate bandpass filters.

The main difference between the MBB fit and the full [Draine & Li \(2007\)](#) dust model is the fixed dust mass absorption coefficient in the former method, whereas the full dust model accounts for the variation in dust emissivity index and dust mass absorption coefficient at every wavelength depending on the mixture of grains with a given size distribution. For all models, the uncertainty on the best-fitting parameters is determined from a Monte Carlo method. More specifically, the same fitting routine is applied to another 1000 datasets with flux densities randomly drawn from a Gaussian distribution with the observed flux density and uncertainty as the peak and width of the Gaussian function. The  $1\sigma$  model uncertainties correspond to the 16% and 84% percentiles of the distribution of resulting parameter values. The latter parameter uncertainties rely on the assumption that the distribution of output parameters for 1000 runs with random variation in the constraining flux densities is well represented by a Gaussian function.

#### 4.4 Total dust emission

Before focusing on spatial variations in the strength of the ISRF and the concentration of dust mass, we model the total dust emission in NGC 185 with global flux densities summarized in Table 1. Because our main goal is quantifying the total dust content in NGC 185 (rather than measuring variations in the individual dust

grain types), we restrict the SED fitting procedure with the full dust model to a wavelength range  $24 \mu\text{m} \leq \lambda \leq 500 \mu\text{m}$ , which includes seven observational constraints (MIPS 24 and 70  $\mu\text{m}$ , PACS 100 and 160  $\mu\text{m}$  and SPIRE 250, 350 and 500  $\mu\text{m}$ ). We do not include the IRAC 8  $\mu\text{m}$  data point in our fitting procedure, to avoid the need for an additional free parameter (PAH fraction) in our fitting procedure. We do perform a quality check between the observed IRAC 8  $\mu\text{m}$  flux and the model emission at 8  $\mu\text{m}$ , for a model with Galactic PAH abundance. For the modified black-body SED fitting, the wavelength range is restricted from 100 to 500  $\mu\text{m}$  to avoid the contribution of an additional warmer dust component and/or transiently heated grains at wavelengths  $\leq 70 \mu\text{m}$ .

Figure 5 shows the best fitting MBB models with fixed  $\beta=2$  (black solid line) and variable  $\beta$  (green dashed line). Figure 6 shows the best fitting SED model derived for dust models with a PAH+amorphous carbon+silicate (black solid line) and PAH+graphite+silicate (red dashed line) composition. The total flux densities measured from different observations for NGC 185 are overlaid with different symbols, and explained in the legends of Figures 5 and 6. The best fitting parameters for the different SED fits are summarized in Table 3. For the full SED models, the dust temperature estimate is obtained from the ISRF scaling factor  $G_0$  through  $T_d = 19.7 \text{ K} \times G_0^{1/4+\beta}$  with  $\beta = 2$  and the average dust temperature in the Milky Way galaxy (19.7 K, [Planck Collaboration et al. 2014](#)).

The output dust mass and temperature from the full SED dust models and the modified blackbody fit with variable  $\beta$  are consistent within the error bars. The modified blackbody SED fit with fixed  $\beta$  is an exception with a higher dust mass content and a lower dust mass temperature. The over- and under-prediction of the PACS 160  $\mu\text{m}$  and 100  $\mu\text{m}$  emission by 25% and 19%, respectively, in the fixed  $\beta$  MBB model implies that the higher dust mass and lower dust temperature are not realistic for the dust population in NGC 185. The low emissivity index  $\beta=1.2$  that seems favourable to fit the width and Rayleigh-Jeans slope of the dust SED in NGC 185 is consistent with the value  $\beta$  of 1.2 derived from ISO observations for NGC 185 by [Temi et al. \(2004\)](#). The low  $\beta$  value fitted to the SED of NGC 185 is also consistent with the tendency for lower  $\beta$  values observed in low metallicity objects (e.g., [Boselli et al. 2012](#); [Rémy-Ruyer et al. 2013](#)). [Rémy-Ruyer et al. \(2015\)](#) also finds a trend of broader dust SED towards low metallicity in a local galaxy sample, which they attribute to a wider range of dust equilibrium temperatures due to a clumpy ISM structure. The PACS 70  $\mu\text{m}$  flux density is also consistent with the MBB model with  $\beta = 1.2$  and  $T_d \sim 23.5 \text{ K}$ , which suggests that the SED model captures the distribution of different dust temperatures better than for the MBB model with  $\beta = 2$  (see Figure 5). The dust mass derived from the MBB fit with variable  $\beta$  ( $5.0^{+1.7}_{-1.3} \times 10^3 M_\odot$ ) is also consistent with the dust mass derived from the full SED models ( $5.0 \pm 1.0 \times 10^3 M_\odot$ ). We, however, need to compare these dust mass derivations with caution since the spectral index of the best fitting SED model ( $\beta = 1.2$ ) and the dust model (with  $\beta = 1.8$ ) used to characterise the normalisa-



tion factor of the SED fit ( $\kappa_{350} = 0.192 \text{ m}^2 \text{ kg}^{-1}$ ) are not compatible, what might affect the dust mass determination (Bianchi 2013).

Comparing the full SED models with a Draine & Li (2007) or Compiègne et al. (2011) dust composition, the scaling of the radiation field is higher by 40% for the Draine & Li (2007) dust model compared to the Compiègne et al. (2011) dust composition. The warmer radiation field derived for the Draine & Li (2007) is thought to result from the lower dust emissivity in the mid-infrared wavelength domain for the same hydrogen column compared to the emissivity of grains in the Compiègne et al. (2011) model. With the MIPS  $24 \mu\text{m}$  data point being the single constraining data point in the mid-infrared wavelength regime<sup>8</sup>, it will have a strong influence on the scaling factor of the radiation field. Since a whole range of dust temperatures can be expected along a single sight line, we do not interpret this difference in radiation field (or thus dust temperature) as a significant difference between the two models.

The dust mass derived from the global SED fitting procedures combining *Spitzer* and *Herschel* data is more than a factor of 2-3 higher compared to previous dust mass estimates based on ISO ( $1.5 \times 10^3 M_{\odot}$  for a dust temperature  $T_d = 22 \text{ K}$ , Temi et al. 2004) and *Spitzer* data ( $1.9_{-0.9}^{+1.9} \times 10^3 M_{\odot}$  for a dust temperature  $T_d = 17 \text{ K}$ , Marleau et al. 2010), which confirms the need for dust emission constraints longward of  $200 \mu\text{m}$  to recover the cold dust component in galaxies (Bendo et al. 2010, 2012a; Gordon et al. 2010; Galametz et al. 2011; De Looze et al. 2012; Rémy-Ruyer et al. 2015). The detection of extended dust emission in the SPIRE wavebands indeed suggests that a more diffuse, low temperature dust component is present in NGC 185, which was not identified by previous far-infrared observations. The longer wavelength coverage is, however, not the only reason for the difference in dust mass. Also the different model assumptions and fitting procedure play a role. The dust mass estimates of Temi et al. (2004) were derived from a single modified black-body fit (MBB), while Marleau et al. (2010) fitted the SED with the BARE-GR-S model of Zubko et al. (2004) (including bare graphite grains, bare silicate grains, and PAHs) with the dust mass and the intensity of the radiation field as free parameters. The dust temperature (21.4 K) derived from the MBB fit to ISO data points is higher than the dust temperatures derived from the *Spitzer+Herschel* data points, which explains the lower dust masses reported by Temi et al. (2004) and confirms the need for longer wavelength data to trace the colder dust. To compare our model results with Marleau et al. (2010), who do not have submillimeter constraints, we use the Compiègne et al. (2011) dust mixture to model the MIPS (24, 70, 160)  $\mu\text{m}$  global flux measurements reported by Marleau et al. (2010). We derive a total dust mass of  $M_d = 2.5_{-0.3}^{+1.2} \times 10^3 M_{\odot}$ , which is compatible with the dust mass ( $1.9_{-0.9}^{+1.9} \times 10^3 M_{\odot}$ ) derived by Marleau et al. (2010), and confirms that longer wavelength sub-millimeter data are necessary to accurately trace the cold dust component in galaxies.

The average dust temperature in NGC 185 ( $T_d \sim 21\text{-}22 \text{ K}$ ) is in agreement with the range of dust temperatures derived for nearby late-type galaxies (e.g., Dale et al. 2012; Cortese et al. 2014; Ciesla et al. 2014). The dust temperature is, however, significantly lower than average grain temperatures ( $T_d \sim 32 \text{ K}$ ) derived for a sample of low-metallicity star-forming dwarf galaxies (e.g., Rémy-Ruyer

**Table 3.** Overview of the output parameters ( $\beta$ ,  $T_d$ ,  $M_d$ ) and ( $G_0$ ,  $T_d$ ,  $M_d$ ) corresponding to the best-fitting MBB fit (top) and SED model for PAH+graphite+silicate and PAH+amorphous carbon+silicate dust compositions (bottom), respectively. The last column presents the reduced  $\chi^2$  value that corresponds to the SED fit.

MBB models	$\beta$	$T_d$ [K]	$M_d$ [ $M_{\odot}$ ]	$\chi^2$
Fixed $\beta$	(2.0)	$18.2_{-0.6}^{+0.6}$	$9.0_{-1.4}^{+1.6} \times 10^3$	0.17
Variable $\beta$	$1.2_{-0.4}^{+0.4}$	$23.5_{-3.4}^{+3.4}$	$5.0_{-1.3}^{+1.7} \times 10^3$	0.11
Full dust models	$G_0$	$T_d$ [K]	$M_d$ [ $M_{\odot}$ ]	$\chi^2$
PAH+graphite+silicate	$2.1_{-0.3}^{+0.3}$	$22.3_{-0.6}^{+0.5}$	$5.0_{-0.7}^{+0.8} \times 10^3$	0.85
PAH+am. carbon+silicate	$1.5_{-0.3}^{+0.3}$	$21.1_{-0.8}^{+0.6}$	$5.2_{-0.7}^{+0.8} \times 10^3$	0.77

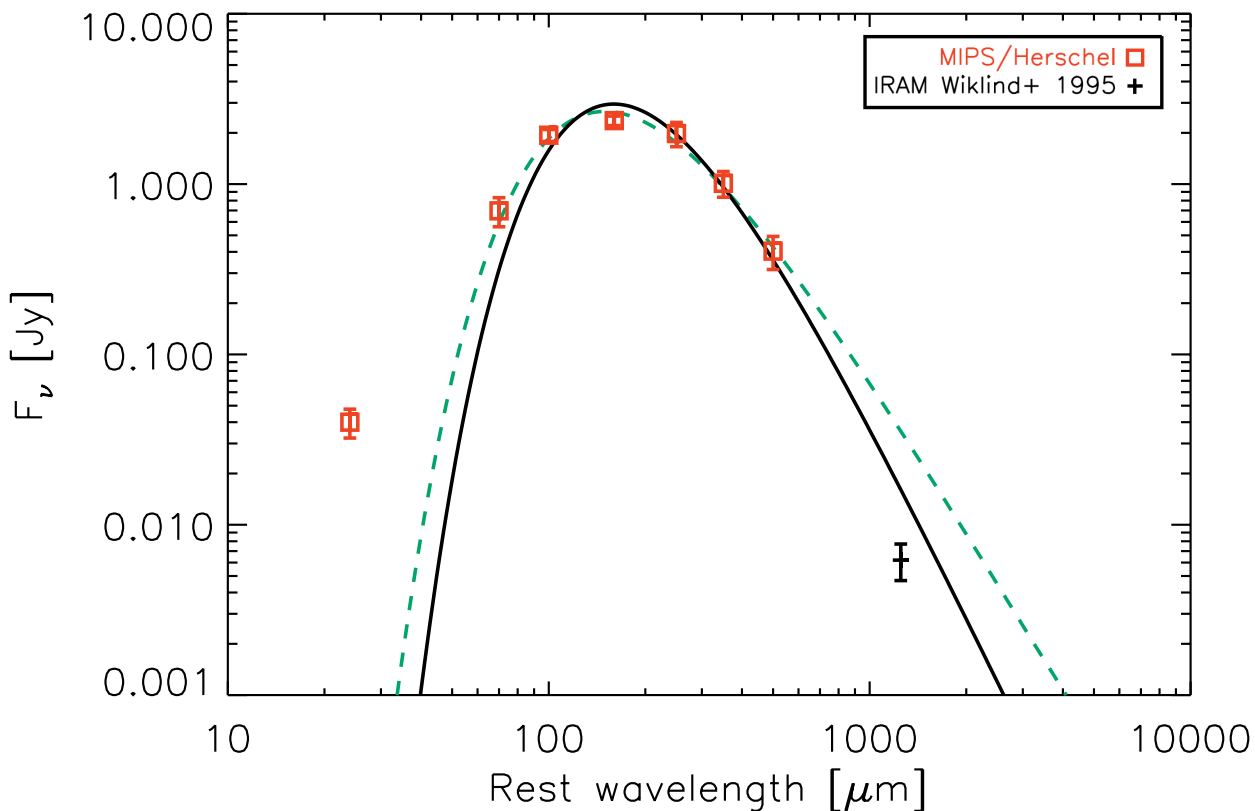
et al. 2013) and also on the low edge of the range of dust temperatures derived for a sample of more massive early-type galaxies from the *Herschel* Reference Survey ( $23.9 \pm 0.8 \text{ K}$ , Smith et al. 2012). Given the low level of star formation activity in NGC 185 (Martínez-Delgado et al. 1999), these dust temperatures are a natural consequence of the low energy input from young stars.

Although the PAH abundance was fixed to the Galactic value in the full SED models, we can check how the fraction of polycyclic aromatic hydrocarbons in NGC 185 compares with the Galactic average ( $f_{\text{PAH}} \sim 4.5\%$ ). Comparing the IRAC  $8 \mu\text{m}$  emission from observations ( $0.13 \pm 0.05 \text{ Jy}$ ) with the dust SED model ( $0.10 \text{ Jy}$ ), we do not find any evidence for a reduced PAH abundance in NGC 185, which has often been observed in low-metallicity galaxies (e.g., Boselli et al. 2004; Engelbracht et al. 2005; Jackson et al. 2006; Madden et al. 2006; Draine et al. 2007; Engelbracht et al. 2008; Galliano et al. 2008). The critical metallicity for the drop in PAH abundance has, however, been suggested to be around  $12+\log(\text{O}/\text{H}) \sim 8.1\text{-}8.2$ , which might explain why we do not see a similar effect in NGC 185 with  $12+\log(\text{O}/\text{H}) \sim 8.25$ . The weak radiation field compared to metal-poor star-forming dwarfs might, furthermore, not be sufficient to destroy PAHs in NGC 185. Also the high supernova activity (based on the high  $[\text{Fe II}]/[\text{Ne II}] \sim 1\text{-}2$ , Marleau et al. 2010) and the delayed injection of dust from AGB stars compared to supernova (Gonçalves et al. 2012) does not seem to cause PAH destruction by supernova shocks (e.g., O’Halloran et al. 2006) or a delayed injection of carbon rich-dust (e.g., Galliano et al. 2008). The detection of several PAH features in the IRS spectra (Marleau et al. 2010) supports the presence of PAH molecules in NGC 185. The latter result confirms previous statements that the PAH abundance is more sensitive to the ionisation parameter rather than the metal abundance in galaxies (Gordon et al. 2008).

#### 4.5 Sub-millimeter excess

An excess emission with respect to dust models has been identified at sub-millimeter wavelengths (sometimes even in millimeter wavebands) in several low-metallicity star-forming dwarfs (e.g., Galliano et al. 2003, 2005; Galametz et al. 2009, 2011; Grossi et al. 2010; Paradis et al. 2012; Kirkpatrick et al. 2013; Rémy-Ruyer et al. 2013; Gordon et al. 2014; Grossi et al. 2015) and spiral galaxies (e.g., Bendo et al. 2006; Zhu et al. 2009). The submm excess seems to preferentially occur in low-metallicity environments, but a correlation between the strength of the excess and metal abundance could not yet be identified (Kirkpatrick et al. 2013; Rémy-Ruyer et al. 2013, 2015). Also on the origin of the excess emission, several studies have not yet been able to converge to a conclusion. The excess emission has been attributed to the presence of a cold dust reservoir (Galliano et al. 2003, 2005; Galametz et al. 2009), non-thermal emission of spinning dust particles in ionised media (Bot

<sup>8</sup> We refrain from using WISE data since an unidentified source has been detected in the WISE  $22 \mu\text{m}$  frame at a distance of  $65''$  (or  $200 \text{ pc}$ ) from the optical centre of NGC 185, which was not earlier identified in MIPS  $24 \mu\text{m}$  maps. Blending issues prevent an accurate measurement of the WISE  $22 \mu\text{m}$  flux density for NGC 185 after convolution of the maps.



**Figure 5.** The SED for the best-fitting modified blackbody models with fixed  $\beta=2$  (black solid line) and variable  $\beta$  (green dashed line). The *Spitzer* MIPS and *Herschel* PACS+SPIRE flux densities derived in this paper (see Table 1), and IRAM 1.2 mm flux retrieved from the literature have been overlaid on the plot.

et al. 2010), magnetic nano-particles composed of metallic Fe or Fe oxides (Draine & Hensley 2012), variations in the spectral index with temperature (Paradis et al. 2009), an increase of the total emissivity of grains in colder, denser media due to grain coagulation (Stepnik et al. 2003; Paradis et al. 2009; Planck Collaboration et al. 2011), or an enhanced population of small hot dust grains (Lisenfeld et al. 2002; Zhu et al. 2009).

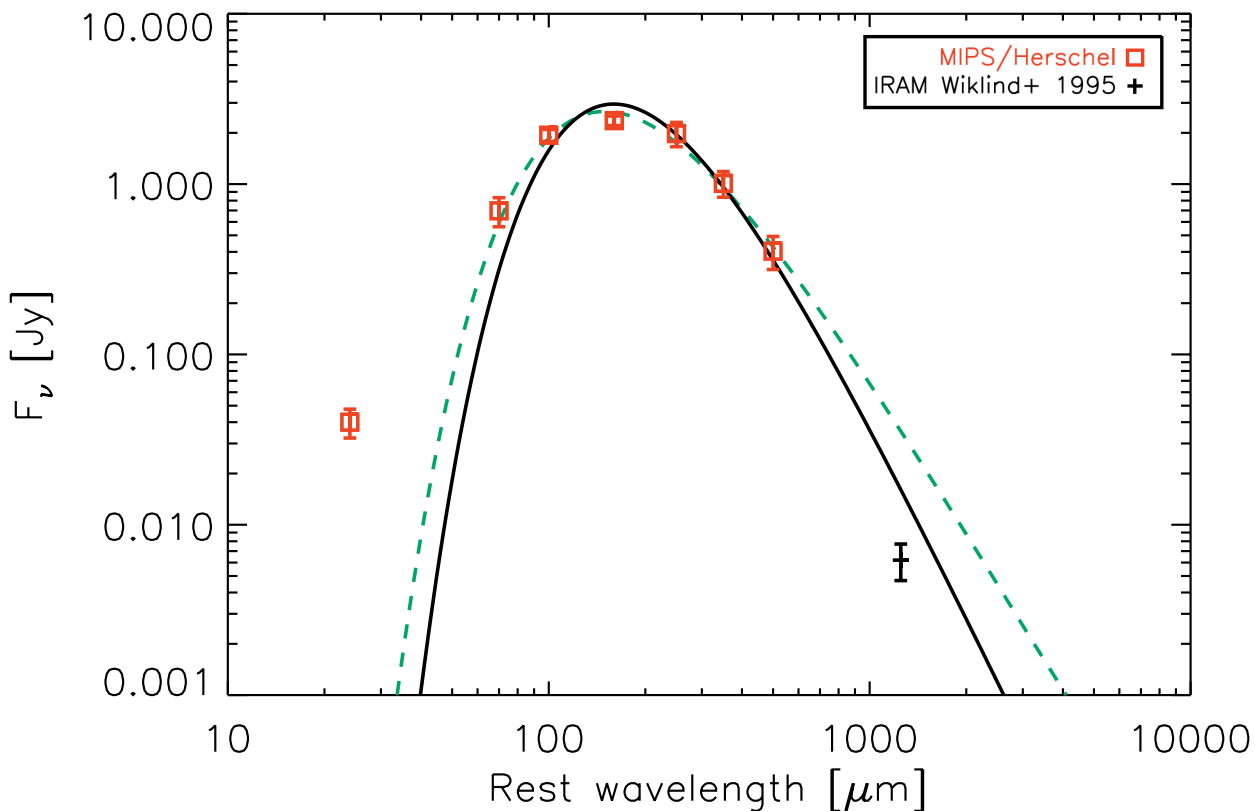
For the different modelling techniques applied to the dust SED of NGC 185 (see Section 4.4), the excess emission is defined as  $E_\lambda = \frac{F_\lambda^{\text{obs}} - F_\lambda^{\text{model}}}{F_\lambda^{\text{model}}}$ . The excess is considered significant if  $F_\lambda^{\text{obs}} - F_\lambda^{\text{model}} > \sigma_\lambda^{\text{obs}}$  where  $F_\lambda^{\text{obs}}$  and  $F_\lambda^{\text{model}}$  are the observed and modelled flux density with  $\sigma_\lambda^{\text{obs}}$  the uncertainty on the observed flux density at the wavelength  $\lambda$ . At the longest *Herschel* SPIRE waveband of  $500 \mu\text{m}$ , we do not detect any excess emission based on the best fitting single modified blackbody SEDs or the full dust model with a PAH+amorphous carbon+silicate dust composition. For the full dust model with a PAH+graphite+silicate dust composition, we find a marginally significant excess emission of  $E_{500} = 34\%$ . Given that the excess in the SPIRE  $500 \mu\text{m}$  waveband appears to be model dependent, we do not consider the excess emission as significant. The absence of a submm excess in NGC 185 is consistent with the lack of any submm/mm excess emission in NGC 205 (De Looze et al. 2012).

The total flux density ( $6.2 \pm 1.5 \text{ mJy}$ ) at millimeter wavebands ( $1250 \mu\text{m}$ ) reported by Wiklind & Henkel (1995) is about a factor of 2.5 lower than the extrapolation of our best fitting models to millimeter wavelengths. With the millimeter observations of Wiklind & Henkel (1995) covering only the inner  $\sim 1'$  region of NGC 185, the observations might possibly miss millimeter emission residing

from the diffuse dust clouds in the east of the galaxy detected in the SPIRE maps. Since about 62% of the total SPIRE  $500 \mu\text{m}$  emission is emitted from the central  $\sim 1'$  of NGC 185 (at a resolution of  $\sim 36.3''$ ), we argue that a smaller coverage can not be the only reason for the discrepant millimeter data point. With a beam throw of  $55''$  in azimuth direction to recover the sky background, the sky subtraction might have been biased by more extended millimeter radiation from NGC 185. Alternatively, the flux determination might have been affected by calibration uncertainties and/or inaccuracies in the image reconstruction.

#### 4.6 Spatially resolved modelling

Based on resolved SED modelling, we investigate possible variations in the strength of the radiation field and locate the most massive infrared dust clouds. We perform a pixel-by-pixel SED fit at the resolution of the SPIRE  $500 \mu\text{m}$  waveband (FWHM  $\sim 36.3''$  or  $108 \text{ pc}$ ) with pixel size  $12''$  (or  $36 \text{ pc}$ ). The SED fitting procedure is again constrained by the emission from MIPS  $24 \mu\text{m}$  and  $70 \mu\text{m}$ , PACS  $100 \mu\text{m}$  and  $160 \mu\text{m}$ , and SPIRE  $250 \mu\text{m}$ ,  $350 \mu\text{m}$ , and  $500 \mu\text{m}$  wavebands. Only pixels with  $> 2\sigma$  detections in at least five of those bands (i.e., sufficient to cover the peak of the SED) are used in the fitting procedure. Figure 7 (bottom row) shows the parameter maps for the ISRF scaling factor,  $G_0$ , and dust mass,  $M_d$ , for the dust model composed of PAH+amorphous carbon+silicate grains. The reduced  $\chi^2$  value for the fit in every pixel is shown in the bottom right panel. The output maps derived for the PAH+graphite+silicate dust model (Draine & Li 2007) show similar patterns in parameter variation throughout the galaxy and are,



**Figure 6.** The SED for the best-fitting DustEm model with a PAH+amorphous carbon+silicate (black, solid line) and PAH+graphite+silicate (red, dashed line) dust composition, fitted to measured total flux densities for NGC 185 in the MIPS 24, 70  $\mu\text{m}$ , PACS 100, 160  $\mu\text{m}$  and SPIRE 250, 350, 500  $\mu\text{m}$  wavebands. The legend explains the symbols used for data points from different instruments, including also the references to the relevant literature works. Individual grain species for the former dust model are indicated: neutral/ionised PAHs, small and large amorphous carbon grains, and silicate grains are represented as dotted-dashed, dotted lines, and dashed lines, respectively. A stellar component for NGC 185 (blue, dotted curve), parametrised as a [Maraston \(1998, 2005\)](#) single stellar population with an age of 10 Gyr and a metallicity of  $Z = 0.005$  was included in the global SED, to allow a comparison of our SED model to observations at NIR/MIR wavelengths.

therefore, not shown here. As a comparison, the PACS 160  $\mu\text{m}$  is shown in the top left panel of Figure 7.

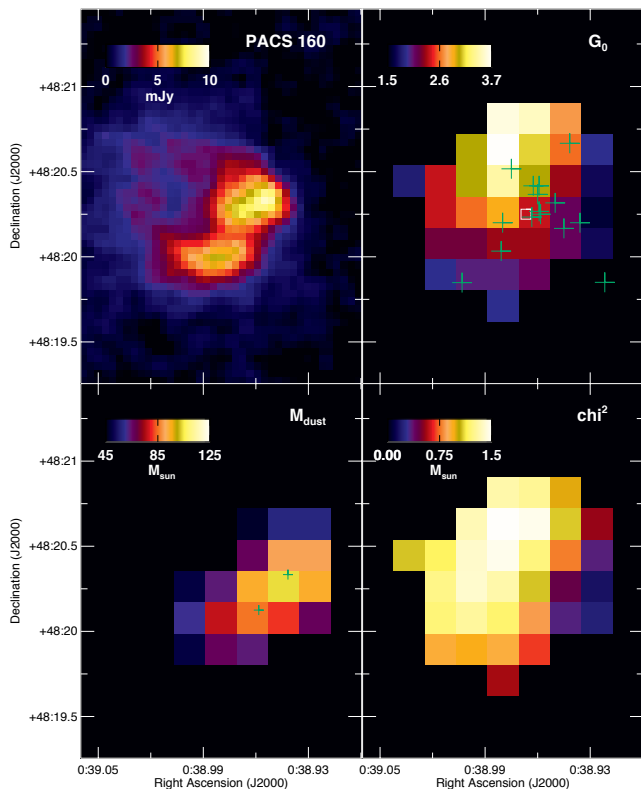
The highest concentration of dust mass in NGC 185 is found north-west and south-east of the centre, coinciding with the position of the emission peaks in the PACS 160  $\mu\text{m}$  image and the two dust clouds identified from optical observations ([Hodge 1963](#); [Gallagher & Hunter 1981](#); [Kim & Lee 1998](#)). It is difficult to compare the total dust mass ( $M_d = 1.8 \times 10^3 M_\odot$ ) obtained from summing individual pixels with the global dust mass ( $M_d = 5.1 \times 10^3 M_\odot$ ) due to the significantly smaller area covered in the spatially resolved SED fitting procedure. With the total dust mass derived from the global fitting almost three times larger compared to the dust mass obtained from the resolved fit, most of the cold dust in NGC 185 is thought to be co-spatial with the extended emission observed at sub-millimeter wavebands. If the spatial variation in dust temperatures in NGC 185 is not well represented by the global dust SED fit, this might result in somewhat too high dust mass estimates. We, however, believe that the extended emission in the SPIRE wavebands is detected at sufficient signal-to-noise level and belongs to NGC 185 due to its association with the H I component in the galaxy rather than it being Galactic cirrus emission. We will, therefore, use the global dust mass estimate derived from the total emission in NGC 185 in the remainder of this paper.

The ISRF appears to be stronger North of the centre of NGC 185. The  $G_0$  range covered in NGC 185 ( $1.5 \lesssim G_0 \lesssim 3.7$ ) cor-

responds approximately to a variation in dust temperatures between 21 K and 24.5 K, and is very similar to the radiation field strengths observed in NGC 205 ( $0.4 \lesssim G_0 \lesssim 3$ , [De Looze et al. 2012](#)). Since the emission of both old and young stellar populations dominates near the centre of the galaxy, and the uncertainties on the SED fits are larger in the North, we argue that the observed trend in  $G_0$  does not have a physical interpretation but rather is driven by larger uncertainties on the SED modelling results towards the North.

## 5 DUST PRODUCTION AND DESTRUCTION

We make an inventory of the different sources responsible for dust injection into the ISM of NGC 147 and NGC 185 (see Section 5.2). Both supernovae and asymptotic giant branch stars are considered to dominate the injection of heavy elements into the ISM. We, furthermore, repeat the same exercise for the dwarf spheroidal galaxy, NGC 205 with a dust mass  $M_d \sim 1.1\text{-}1.8 \times 10^4 M_\odot$  and dust temperature  $T_d \sim 18\text{-}22$  K, as measured by [De Looze et al. \(2012\)](#). We also calculate the dust lifetime for each of the galaxies based on their ISM mass and supernova rate (see Section 5.1). Section 5.4 discusses the uncertainties on the calculations of dust mass production and dust survival times. Comparing the current dust content with the dust production over a time period shorter than the typical dust survival time allows us to draw important conclusions about



**Figure 7.** The parameter maps for the radiation field strength  $G_0$  (top right), dust mass  $M_d$  (bottom left) and reduced  $\chi^2$  (bottom right) corresponding to the best fit from a pixel-by-pixel SED fitting (with  $36''$  or  $108$  pc sized pixels) procedure with DustEm for a PAH+amorphous carbon+silicate dust composition. The PACS  $160\ \mu\text{m}$  map of NGC 185 is presented on the same scale for comparison in the top left panel. The optical centre and the position of young blue stars in NGC 185 are indicated as a white rectangle and green crosses, respectively, in the top right panel, whereas the green crosses in the bottom left panel show the location of two dust clouds identified from optical observations.

dust evolution processes in dwarf spheroidal galaxies (see Section 5.3).

### 5.1 Dust lifetime

We calculate the dust lifetime for NGC 185 and NGC 205 based on the prescriptions from Jones & Nuth (2011), who have re-evaluated the dust survival lifetimes based on the original recipes from McKee (1989) and Jones et al. (1994, 1996). Relying on the total ISM mass,  $M_{\text{ISM}} (= M_d + M_g)$ , and the effective interval between consecutive supernova explosions,  $\tau_{\text{SN}}$ , the dust lifetime is calculated through (see Eq. 7 in Jones & Nuth 2011):

$$t[\text{yr}] = \frac{(M_{\text{ISM}}[M_{\odot}] * \tau_{\text{SN}}[\text{yr}])}{2 * 2194 * (1.1/n)} \quad (1)$$

where  $n = 6$  for silicate/oxygen-rich dust and  $n = 3$  for carbonaceous dust. The ISM masses are calculated based on the dust masses derived from *Herschel* observations for NGC 185 ( $M_d = 5.1 \times 10^3 M_{\odot}$ , see this paper) and NGC 205 ( $M_d = 1.1\text{--}1.8 \times 10^4 M_{\odot}$ , De Looze et al. 2012), and the updated gas mass measurements for NGC 185 ( $M_g = 2\text{--}5 \times 10^5 M_{\odot}$ ) and NGC 205 ( $M_g = 9\text{--}29 \times 10^5 M_{\odot}$ ) from De Looze et al. (2016b).

For NGC 185, we rely on the SN rates  $N_{\text{SN II+Ib}} \sim 2.3 \times 10^{-6}$

$\text{yr}^{-1}$  derived by Martínez-Delgado et al. (1999). By assuming a similar rate of core-collapse and type Ia supernovae, Martínez-Delgado et al. (1999) find a total SN rate of  $N_{\text{SN}} \sim 4.6 \times 10^{-6} \text{ yr}^{-1}$  in NGC 185<sup>9</sup>, which results in a time interval of  $2.2 \times 10^5$  yr between supernova explosions. For NGC 205, we estimate the SNe II+Ib supernova rate ( $N_{\text{SN II+Ib}} \sim 2.4 \times 10^{-6} \text{ yr}^{-1}$ ) from the SFR  $\sim 7.0 \times 10^{-4} M_{\odot} \text{ yr}^{-1}$  calculated based on color-magnitude diagrams by Monaco et al. (2009). For a similar fraction of core-collapse and type Ia explosions, we derive a total SN rate  $N_{\text{SN}} \sim 4.8 \times 10^{-6} \text{ yr}^{-1}$  and typical time interval of  $2.1 \times 10^5$  yr between supernova explosions.

Based on those ISM masses and SN rates, we derive typical dust lifetimes of 21–52 Myr and 42–104 Myr for carbonaceous and silicate grains in NGC 185, respectively. The typical dust survival time for carbonaceous grains and silicates in NGC 205 is estimated to be around 90–286 Myr and 179–572 Myr, respectively. In our Galaxy, dust lifetimes are estimated to be around 200 Myr and 400 Myr for carbonaceous and silicate grains, respectively (Jones et al. 1994, 1996; Serra Díaz-Cano & Jones 2008; Jones & Nuth 2011). A re-evaluation of the dust processing by supernova shocks by Bocchio et al. (2014) resulted in shorter dust lifetimes for carbon grains (62 Myr) and silicate grains (310 Myr). Recent simulations by Slavin et al. (2015) for evolving, radiative supernova remnants (as opposed to the plane parallel steady shock models used in the past), however, find much longer destruction timescales of 3.2 Gyr and 2.0 Gyr for grains made of carbon and silicate material. The increase in dust destruction time scale by about one order of magnitude compared to previous work can be attributed to the local ISM conditions (i.e., Slavin et al. 2015 assumes that the supernova shocks evolve in a medium dominated by a warm ISM phase), revised estimates of supernova rates and ISM mass and the inclusion of the effects of the hydrodynamical shock evolution.

The dust lifetimes for carbon grains (21–285 Myr) and silicates (42–569 Myr) derived for the dwarf spheroidal galaxies in the Local Group<sup>10</sup> are on average lower compared to those latter values (although the upper limits on the dust lifetime for carbon and silicate grains in NGC 205 could be consistent with the MW values), indicating that the dust destruction timescales might be shorter in low-mass objects with low metal abundance.

### 5.2 Dust production

Based on the total dust mass injection rates derived for the Large Magellanic Clouds (Riebel et al. 2012, see their Table 9), we estimate dust mass injection rates (see Table 4) for C-rich AGBs, O-rich AGBs and red supergiants (RSG) scaled to the fraction of the observed AGB populations (Davidge 2005) in the three dwarf spheroidal satellites of M 31<sup>11</sup>. We scale the dust mass injection

<sup>9</sup> The latter estimate for the total SNe rate is four times higher compared to the results of the chemical evolution models of Martins et al. (2012). We prefer to rely on the higher SN rate estimate from Martínez-Delgado et al. (1999) to derive an upper limit on the contribution of SNe to the dust mass production in NGC 185. The dust lifetime in NGC 185 could, thus, be a factor of 4 higher based on the lower SN rate from Martins et al. (2012).

<sup>10</sup> Due to the absence of any star formation activity during the last  $\sim 1$  Gyr (Han et al. 1997), we assume that (core-collapse) supernova explosions had a negligible effect on the dust destruction in NGC 147 during the last few hundred million years and we, therefore, can not make any predictions for the lifetime of dust residing in NGC 147 based on Equation 1.

<sup>11</sup> Due to the lack of constraints on the O-rich AGB and RSG population, we assume a similar O-rich-to-total AGB and RGB-to-total AGB ratio as observed in the LMC.

rates derived for the LMC with the number of C-rich AGB stars identified in the dwarfs (see Table 5 in [Davidge 2005](#), adding up the C stars identified in the inner and outer galaxy regions) relative to the C-rich AGB population in the LMC identified based on the GRAMS model grid (i.e., 7281 objects, see [Riebel et al. 2012](#)). Based on the 103, 387, and 65 C stars identified in NGC 185, NGC 205 and NGC 147, we derive dust mass injection rates of 1.93, 7.25,  $1.22 \times 10^{-7} M_{\odot} \text{ yr}^{-1}$  for C-rich AGB stars, respectively. The dust mass loss rates for O-rich AGB and RGB stars are estimated by scaling the fractional dust mass injection rates of C-rich stars (64.6%) to the fraction of dust mass injected by O-rich AGB (26%) and RSG (9.4%) stars in the LMC. Table 4 (top part) gives an overview of the estimated dust mass loss rates of C-rich and O-rich AGB stars, and RSG stars. The second part of Table 4 gives an overview of the dust mass that was lost by AGB stars during a period equal to the estimated dust lifetimes (see Section 5.1). We assume here that C-rich AGB stars mostly produce carbon dust while O-rich AGB stars and RSGs mainly condense silicate grain material. For NGC 147, we assume a dust lifetime of 1 Gyr, which represents the timescale since the last star formation activity in this galaxy.

To calculate the injection of elements from core-collapse supernovae (type SNe II + SN Ib), we rely on the observed dust mass of  $\sim 0.23 M_{\odot}$  near the centre of the remnant SN 1987A and, thus, unaffected by shock destruction ([Indebetouw et al. 2014](#)). The latter estimate for the produced dust mass in core-collapse supernovae is compatible with the dust masses (0.1–0.3  $M_{\odot}$ ) derived based on theoretical models ([Todini & Ferrara 2001](#)) and observed in another SNe type II, the Crab Nebula ([Gomez et al. 2012b](#)). Because the dust mass produced in supernovae depends on the mass of the progenitor, and the density of the surrounding ISM will determine the efficiency of grain destruction in the reverse shock, the dust mass produced in core-collapse supernova remains very uncertain. Theoretical models suggest that only a small fraction ( $\leq 0.1 M_{\odot}$ ) of the original dust mass produced in core-collapse supernovae is able to survive the passage of the reverse shock ([Biscaro & Cherchneff 2015](#); [Bocchio et al. 2016](#); [Micelotta et al. 2016](#)).

Similar calculations for the formation of dust grains in the ejecta of supernovae type Ia rely on the predictions from [Nozawa et al. \(2011\)](#) based on theoretical models with values ranging from  $3 \times 10^{-4}$  to  $0.2 M_{\odot}$  depending on the formation of molecules such as CO and SiO. For this study, we rely on the upper ejected mass estimate ( $0.2 M_{\odot}$ ) and assume a SN Ia fraction of  $\sim 25\%$  ([Rodney et al. 2014](#)). Given that the presence of a cool (25–50 K) dust reservoir of mass  $\geq 0.07 M_{\odot}$  has not been observed in the ejecta of SNe Ia to date (e.g., [Gomez et al. 2012a](#)), the true dust yields will likely be lower for supernova type Ia. The SN rates for different supernova types in NGC 185 and NGC 205 were already discussed in Section 5.1. Due to the production of both carbonaceous and silicate grains in supernova remnants, we calculate their dust production within the time interval that is determined by the shortest and longest dust survival time for both grain types. We, furthermore, assume that the contribution from SNe to the dust mass budget in NGC 147 is negligible due to the absence of any star formation activity during the last  $\sim 1$  Gyr ([Han et al. 1997](#)).

Another important source of dust production in the interstellar medium of galaxies might be attributed to luminous blue variables (LBVs) with an average dust mass-loss rate of  $2.5 \times 10^{-6} M_{\odot} \text{ yr}^{-1}$  ([Guha Niyogi et al. 2014](#)). The identification of LBVs is, however, difficult due to the variability of the star's luminosity. With only six confirmed classifications of LBVs in the LMC ([Humphreys & Davidson 1994](#)) and the lack of any LBV identified in any of the

three dwarf spheroidals, we do not consider the contribution of dust mass lost by LBVs.

To compute the total dust mass injected in the ISM, we sum the lower and upper mass estimates for the dust mass contributions from AGB stars and supernovae over a period similar to the dust survival time scale (see last part of Table 4). For NGC 147, the dust mass injected by AGB stars ( $\sim 189 M_{\odot}$ ) is consistent within the error bars with the upper dust mass limit derived from *Herschel* observations in this paper ( $\leq 128_{-68}^{+124} M_{\odot}$ ). The highest values for the total injected dust mass in NGC 185 ( $124 M_{\odot}$ ) and NGC 205 ( $1026 M_{\odot}$ ) are, however, more than one order of magnitude lower compared to the observed dust content in NGC 185 ( $5.1 \times 10^3 M_{\odot}$ ) and NGC 205 ( $1.1\text{--}1.8 \times 10^4 M_{\odot}$ ). The incompatibility between the predicted and observed dust content is thought to be even more extreme considering that mass returned by AGB stars will be distributed across the entire stellar disk while the current dust reservoir appears restricted to the central few 100 pc regions in NGC 185 and NGC 205.

While AGBs are the most important dust resources in our own Galaxy ([Dwek 1998](#); [Zhukovska et al. 2008](#)), AGB stars and SNe seem to be equally important dust producers in the Large Magellanic Clouds ([Matsuura et al. 2009](#)). Based on our above predictions, we infer that the dust mass produced in supernovae might have a higher contribution to the current dust reservoir in NGC 185 than the dust mass returned by evolved stars<sup>12</sup>, while AGB stars and supernova have a similar contribution to the dust mass budget in NGC 205. The latter inference is, however, strongly dependant on our assumptions of the dust production rate in SNe and AGB stars and the dust survival times of carbonaceous and silicate grains. Especially, the production and destruction of dust by SNe requires more observational studies to confirm the efficiency of dust production in SNe that was predicted from theoretical models.

### 5.3 Implications for dust evolution models

The inconsistency between the dust mass predictions and observations suggests that the dust mass production rate has been underestimated and/or the dust survival time is longer compared to the estimated values. The interstellar medium in those dwarf spheroidal galaxies might provide an environment less hostile and retain dust grains for a longer time before being destroyed in grain shattering or sputtering processes. To produce the observed dust content in the dwarf spheroidals NGC 185 and NGC 205, we would require a continuous ejection of dusty material at a pace of  $1.65 \times 10^{-6} M_{\odot} \text{ yr}^{-1}$  and  $2.93 \times 10^{-6} M_{\odot} \text{ yr}^{-1}$ , respectively, for 3 and 4–6 Gyr without any dust destruction<sup>13</sup>. While a lifetime of 3 Gyr for the dust in NGC 185 could be compatible with the latest predictions for the dust survival time of 2–3 Gyr by [Slavin et al. \(2015\)](#), a dust lifetime of  $\sim 4\text{--}6$  Gyr for NGC 205 is significantly higher compared to the values predicted by current dust evolution models.

The dust reservoirs in NGC 185 and NGC 205 could, alternatively, be of external origin. We, however, argue that the dust reservoir is produced within the galaxy, given that the dusty clouds are

<sup>12</sup> Note that the supernova rate in NGC 185 might be 4 times lower ([Martins et al. 2012](#)), which would make AGB stars and supernovae equally efficient dust producers.

<sup>13</sup> The dust mass injection rates are determined based on the upper limit of the total dust mass returned by AGB stars and SNe in NGC 185 ( $124 M_{\odot}$ ) and NGC 205 ( $1026 M_{\odot}$ ) over an average dust survival time for carbon and silicate grains of 75 Myr and 350 Myr, respectively.

located in the very central regions of NGC 185 and NGC 205 and spatially correlate with the gaseous material returned by evolved stars. A similar inconsistency between the dust mass returned by stellar sources and the observed dust-to-stellar mass ratio is observed in more massive elliptical galaxies with hardly any ongoing star formation activity (Dariush et al. 2016). For more massive ellipticals, a scenario where the dusty material has been accreted through galaxy interaction seems more plausible (e.g., Smith et al. 2012; di Serego Alighieri et al. 2013).

Since AGBs and SNe can not account for the production of the current dust reservoir in NGC 185 and NGC 205 (during the estimated dust survival times for these galaxies) and the origin of grain species is considered to be internal, we argue that a significant fraction of the dust mass in dwarf spheroidal galaxies results from grain growth by accretion or coagulation. The importance of grain growth has been invoked for many different types of galaxies (e.g., Ossenkopf 1993; Stepnik et al. 2003; Paradis et al. 2009; Dunne et al. 2011; Köhler et al. 2012; Mattsson et al. 2012; Asano et al. 2013; Mattsson et al. 2014; Rémy-Ruyer et al. 2014, and suggest that our current dust evolution models should be updated to include the contribution from material accreting onto pre-existing grains in the densest phases of the ISM.

With the dust mass surface density peaking in regions with the highest gas densities (De Looze et al. 2012, and see Figure 4, right panel, in this paper), our scenario appears at least consistent with efficient metal accretion processes on to the surface of pre-existing grains in the cold neutral medium. Based on semi-analytic chemical evolution models, Schneider et al. (2016) show that the ISM density is the dominant factor in setting the efficiency of grain growth. In SBS 0335-052, they attribute 85% of the current dust mass to grain growth in the dense phase with molecular gas densities of  $n_{\text{mol}} \sim 1500 \text{ cm}^{-3}$ , while grain growth can account for only 20% of the dust mass observed in IZW 18 with molecular gas densities of only  $n_{\text{mol}} \sim 100 \text{ cm}^{-3}$ . Based on the high gas densities derived for NGC 185 based on PDR models ( $n_{\text{H}} = 10^4 \text{ cm}^{-3}$ , De Looze et al. 2016b), we believe that grain growth in the densest regions of the ISM provides a plausible explanation for the observed dust content in NGC 185 (and NGC 205).

#### 5.4 Possible caveats

We acknowledge that the latter predictions for dust mass production are uncertain, and depend on the dust lifetimes and dust injection rates. The dust mass-loss rates for oxygen-rich AGBs stars might alter with metallicity (e.g., Wood et al. 1998; Marshall et al. 2004), while the dust mass-loss rates for carbon-rich stars seem to depend less on metallicity (e.g., Groenewegen et al. 2007; Matsuura et al. 2007). Boyer et al. (2015), however, do not find any dependence of dust mass production rate on metallicity in their sample of nearby dwarf galaxies (including NGC 147 and NGC 185). The predictions of mass-loss rates also critically depend on the condensation temperature of dust with a typical value of 1000 K (Groenewegen 2006; Gruendl et al. 2008; Matsuura et al. 2009). For higher carbon-to-oxygen ratios, we might find higher condensation temperatures for graphite grains, resulting in mass-loss rates higher by a factor of  $\sim 2.4$  (Matsuura et al. 2009).

Predictions of the dust mass production rates might, furthermore, be affected by variations in the initial mass function. More specifically, Vincenzo et al. (2016) show that the stellar yields are a factor of two higher for a Kroupa (2001) and Chabrier (2003) IMF compared to a Salpeter (1955) IMF (mostly due to differences in the oxygen yields), while the stellar yields for a Kroupa et al.

(1993) IMF are even lower compared to the latter IMF by a factor of roughly two<sup>14</sup>. Variations in the assumed upper mass limit ( $100 M_{\odot}$  instead of  $40 M_{\odot}$ ) can, furthermore, result in higher stellar mass yields by factors of two and four for a Salpeter (1955) and Chabrier (2003) IMF, respectively.

Geha et al. (2013) showed that the low mass IMF slopes in metal-poor dwarf galaxies become shallower in their studied stellar mass range of  $0.52\text{--}0.77 M_{\odot}$ , resulting in a more bottom-light initial mass function and, thus, higher stellar yields. For NGC 185, we estimate an IMF slope of  $\alpha = 2.0$  in the stellar mass range  $0.52\text{--}0.77 M_{\odot}$  (compared to  $\alpha = 2.35$  for a Salpeter 1955, Kroupa 2001 and Kroupa & Weidner 2003 IMF) based on the observed velocity dispersion ( $\sim 24 \text{ km s}^{-1}$ , Geha et al. 2010) and metallicity ( $[\text{Fe}/\text{H}] \sim -1.0$ , Geha et al. 2015). Similarly, the velocity dispersion ( $\sigma \sim 20\text{--}30 \text{ km s}^{-1}$ , De Rijcke et al. 2006) and metallicity ( $[\text{Fe}/\text{H}] \sim -0.9$ , McConnachie et al. 2005) in NGC 205 would imply an IMF slope close to  $\alpha = 2.0$  following the scaling relations for the IMF slope reported by Geha et al. (2013).

More studies on the IMF shape in dwarf spheroidal galaxies over larger stellar mass ranges are required to make accurate predictions about the effect of the IMF slope on stellar yields in these galaxies. For the dust mass injection rates adopted from Riebel et al. (2012), no particular assumptions about the IMF were applied since the mass loss rates are derived from a direct fit of a set of radiative transfer models to the optical to mid-infrared photometry of  $\sim 30,000$  AGB and RSG stars in the LMC. Other than the shape of the IMF, the small physical size of the central star-forming region (a few 100 pc) is likely not fully sampling the stellar mass function which might affect the estimation of the star formation rate and/or supernova rate.

By scaling the dust mass production rates derived for the LMC by Riebel et al. (2012) to the observed population of AGB stars in the dSphs from the Local Group, we assume that the stellar mass distribution of evolved stars in those dwarfs is similar to the LMC evolved stellar population. Butler & Martínez-Delgado (2005), however, showed that the RGB and faint-AGB is skewed to redder colours for NGC 205 (while this is not the case for NGC 185 or NGC 147), which might indicate a narrower range in stellar abundances or age for the AGB stars in NGC 205. The near-infrared observations used by Davidge (2005) might, furthermore, miss detecting some of the fainter AGB stars, which would imply that we, currently, underestimate the stellar yields in these Local Group dSphs. It is, however, unlikely that a change in the slope of the IMF, or an incomplete AGB catalogue could make up for the order of magnitude difference between the dust mass produced by evolved stars and the observed dust content.

<sup>14</sup> The Salpeter (1955) IMF has a power law index  $\alpha=2.35$  across the entire stellar mass range, while the Kroupa (2001) and Chabrier (2003) IMFs assume broken power laws with index  $\alpha=2.35$  above stellar masses of  $0.5 M_{\odot}$  and  $1 M_{\odot}$ , respectively. In the low stellar mass regime, the Kroupa (2001) IMF assumes a power law index of 0.3 and 1.3 for the stellar mass ranges  $<0.08 M_{\odot}$  and  $0.08 M_{\odot} < M < 0.5 M_{\odot}$ , respectively. The Chabrier (2003) IMF for individual stars closely follows the Kroupa (2001) at these low stellar masses, and is described by an analytic function dependent on stellar mass. The Kroupa et al. (1993) IMF has a steeper power law ( $\alpha=2.7$ ) for stellar masses  $M > 1 M_{\odot}$ , while  $\alpha=2.2$  and  $0.70 < \alpha < 1.85$  in the mass ranges  $0.5 < M < 1 M_{\odot}$  and  $0.08 < M < 0.5 M_{\odot}$ .

**Table 4.** Overview of the dust mass loss rates for evolved stars obtained by scaling the dust mass injection rates for C-rich AGB, O-rich AGB and RGB populations in the LMC to the observed AGB population in NGC 147, NGC 185 and NGC 205 (top part). The estimated dust mass lost by AGB stars and different types of supernova remnants for the three dSphs of Andromeda during typical dust survival times are presented in the second part of the Table.

Population	Dust mass loss rate $\dot{M}_d$ [ $10^{-8} M_\odot \text{ yr}^{-1}$ ]		
	NGC 147	NGC 185	NGC 205
C-rich stars	12.2	19.3	72.5
O-rich stars	4.9	7.8	29.2
RSGs	1.8	2.8	10.6
Total AGB population	18.9	29.9	112.3
Population	Dust mass loss [ $M_\odot$ ]		
	NGC 147	NGC 185	NGC 205
C-rich AGB stars	122	4-10	65-207
O-rich AGB stars + RSGs	67	4-11	71-228
SNe II+Ib	/	11-55	49-316
SNe Ia	/	10-48	43-275
Total	189	29-124	228-1026

## 6 CONCLUSIONS

In this paper, we analyse the dust reservoir in the dwarf spheroidal galaxies NGC 147 and NGC 185 based on *Herschel* PACS and SPIRE observations. In a companion paper (De Looze et al. 2016b), we revise the gas content of the dSphs in the Local Group and discuss their gas content, ISM properties and gas-to-dust ratio in view of galaxy evolution scenarios for the dwarf spheroidal galaxy population.

- Similar to the non-detections of any gas in the ISM of NGC 147, no dust emission is detected from NGC 147 in the SPIRE maps, which puts a strong upper limit on its dust content ( $M_d \leq 128_{-68}^{+124} M_\odot$ ). The SPIRE dust maps of NGC 185 show an extended cold dust component in the East of the galaxy, co-spatial with the HI distribution, that was not yet detected in far-infrared wavebands. From a full dust model SED fitting method, we derive an average scaling factor of the radiation field  $G_0 \sim 1.5$ -2.1 and a total dust mass  $M_d = 5.1 \times 10^3 M_\odot$ , which is factors of 2-3 higher compared to the dust reservoirs inferred from *ISO* and *Spitzer* observations. This confirms that observational constraints at wavelengths longward of  $160$ - $200 \mu\text{m}$  are a prerequisite to derive reliable dust masses.

- The best fitting dust SED model for NGC 185 that is optimised to reproduce the *Herschel* observations, overestimates the observed flux at millimetre wavelengths reported in the literature, which can, most likely, be attributed to the small beam throw used for the IRAM 1.2 mm observations. We, furthermore, conclude that the observed IRAC  $8 \mu\text{m}$  emission is consistent with a dust model with Galactic PAH abundance, and that NGC 185 does not show any evidence for excess emission in the submillimeter wavelength domain, despite its low metal fraction ( $0.36 Z_\odot$ ).

- We compare the dust mass content observed in all three dSph companions of the Andromeda galaxy to predictions of the mass returned by AGB stars and supernova remnants. Making reasonable assumptions about the dust mass-loss rates from asymptotic giant branch stars and supernova of different types, we compute the expected dust mass returned to the ISM over a time period comparable to the dust survival time in NGC 147 ( $189 M_\odot$ ), NGC 185 ( $29$ - $124 M_\odot$ ), and NGC 205 ( $228$ - $1026 M_\odot$ ). The dust mass injected by evolved stars is consistent with the upper dust mass limit ( $< 128_{-68}^{+124} M_\odot$ ) in NGC 147. For the other two dSph companions, the

latter predictions are more than one order of magnitude lower than the observed dust content in NGC 185 ( $M_d = 5.1 \times 10^3 M_\odot$ ) and NGC 205 ( $M_d = 1.1$ - $1.8 \times 10^4 M_\odot$ ). We, therefore, argue that other dust resources (e.g., grain growth through accretion of elements from the gas phase) have an important contribution to the interstellar dust production. Longer dust survival times ( $\sim 3$ - $6$  Gyr) could also aid to bridge the gap between model predictions and observations, but are unlikely to account for the current interstellar dust content.

- In the future, we need high-spatial resolution near- and mid-infrared observations to constrain the dominant dust production sources in a larger sample of galaxies to assess the importance of dust destruction and grain growth in the ISM. In a first step, the infrared observations for 50 local dwarf galaxies from DUSTINGS (DUST in Nearby Galaxies with Spitzer, Boyer et al. 2015) will provide additional constraints on the dust mass production rate for evolved stars in NGC 147 and NGC 185, and other nearby dwarf galaxies. The advent of the James Webb Space telescope will, in the future, open up the pathway for spatially resolved stellar population studies in a large sample of galaxies.

## ACKNOWLEDGMENTS

The authors would like to thank Anthony Jones and Marla Geha for interesting discussions that have helped to improve this paper. IDL gratefully acknowledge the support of the Science and Technology Facilities Council (STFC) and the Flemish Fund for Scientific Research (FWO-Vlaanderen). PACS has been developed by a consortium of institutes led by MPE (Germany) and including UVIE (Austria); KU Leuven, CSL, IMEC (Belgium); CEA, LAM (France); MPIA (Germany); INAF/IFSI/OAA/OAP/OAT, LENS, SISSA (Italy); IAC (Spain). This development has been supported by the funding agencies BMVIT (Austria), ESA-PRODEX (Belgium), CEA/CNES (France), DLR (Germany), ASI/INAF (Italy), and CICYT/MCYT (Spain). SPIRE has been developed by a consortium of institutes led by Cardiff University (UK) and including Univ. Lethbridge (Canada); NAOC (China); CEA, LAM (France); IFSI, Univ. Padua (Italy); IAC (Spain); Stockholm Observatory (Sweden); Imperial College London, RAL, UCL-MSSL, UKATC, Univ. Sussex (UK); and Caltech, JPL, NHSC, Univ. Colorado (USA). This development has been supported by national funding agencies: CSA (Canada); NAOC (China); CEA, CNES, CNRS (France); ASI (Italy); MCINN (Spain); SNSB (Sweden); STFC and UKSA (UK); and NASA (USA). This research has made use of the NASA/IPAC Extragalactic Database (NED) which is operated by the Jet Propulsion Laboratory, California Institute of Technology, under contract with the National Aeronautics and Space Administration.

## REFERENCES

- Andrews, J. E., Krafton, K. M., Clayton, G. C., et al. 2016, submitted to MNRAS (arXiv:1509.06379)
- Aniano, G., Draine, B. T., Gordon, K. D., & Sandstrom, K. 2011, PASP, 123, 1218
- Asano, R. S., Takeuchi, T. T., Hirashita, H., & Inoue, A. K. 2013, Earth, Planets, and Space, 65, 213
- Auld, R., Bianchi, S., Smith, M. W. L., et al. 2013, MNRAS, 428, 1880
- Baade, W. 1951, Publications of Michigan Observatory, 10, 7

- Balog, Z., Müller, T., Nielbock, M., et al. 2013, *Experimental Astronomy*, 38
- Barlow, M. J., Krause, O., Swinyard, B. M., et al. 2010, *A&A*, 518, LL138
- Battinelli, P., & Demers, S. 2004, *A&A*, 417, 479
- Battinelli, P., & Demers, S. 2004, *A&A*, 418, 33
- Bendo, G. J., Dale, D. A., Draine, B. T., et al. 2006, *ApJ*, 652, 283
- Bendo, G. J., Wilson, C. D., Pohlen, M., et al. 2010, *A&A*, 518, LL65
- Bendo, G. J., Boselli, A., Dariush, A., et al. 2012, *MNRAS*, 419, 1833
- Bendo, G. J., Galliano, F., & Madden, S. C. 2012, *MNRAS*, 423, 197
- Bendo, G. J., Griffin, M. J., Bock, J. J., et al. 2013, *MNRAS*, 433, 3062
- Bevan, A., & Barlow, M. J. 2016, *MNRAS*, 456, 1269
- Bianchi, S. 2013, *A&A*, 552, A89
- Biscaro, C., & Cherchneff, I. 2015, submitted to *A&A* (arXiv:1511.05487)
- Bocchio, M., Jones, A. P., & Slavín, J. D. 2014, *A&A*, 570, A32
- Bocchio, M., Marassi, S., Schneider, R., et al. 2016, *A&A* in press (arXiv:1601.06770)
- Boselli, A., Lequeux, J., & Gavazzi, G. 2004, *A&A*, 428, 409
- Boselli, A., Cortese, L., Deharveng, J. M., et al. 2005, *ApJL*, 629, L29
- Boselli, A., Ciesla, L., Cortese, L., et al. 2012, *A&A*, 540, AA54
- Bot, C., Ysard, N., Paradis, D., et al. 2010, *A&A*, 523, A20
- Boyer, M. L., McQuinn, K. B. W., Barmby, P., et al. 2015, *ApJS*, 216, 10
- Boyer, M. L., McQuinn, K. B. W., Barmby, P., et al. 2015, *ApJ*, 800, 51
- Butler, D. J., & Martínez-Delgado, D. 2005, *AJ*, 129, 2217
- Chabrier, G. 2003, *PASP*, 115, 763
- Ciesla, L., Boselli, A., Smith, M. W. L., et al. 2012, *A&A*, 543, A161
- Ciesla, L., Boquien, M., Boselli, A., et al. 2014, *A&A*, 565, A128
- Compiègne, M., Verstraete, L., Jones, A., et al. 2011, *A&A*, 525, A103
- Cortese, L., Ciesla, L., Boselli, A., et al. 2012, *A&A*, 540, AA52
- Cortese, L., Fritz, J., Bianchi, S., et al. 2014, *MNRAS*, 440, 942
- Crnojević, D., Ferguson, A. M. N., Irwin, M. J., et al. 2014, *MNRAS*, 445, 3862
- Dale, D. A., Aniano, G., Engelbracht, C. W., et al. 2012, *ApJ*, 745, 95
- Dariush, A., Dib, S., Hony, S., et al. 2016, *MNRAS*, 456, 2221
- Davidge, T. J. 2005, *AJ*, 130, 2087
- De Looze, I., Baes, M., Zibetti, S., et al. 2010, *A&A*, 518, L54
- De Looze, I., Baes, M., Parkin, T. J., et al. 2012, *MNRAS*, 423, 2359
- De Looze, I., Baes, M., Boselli, A., et al. 2013, *MNRAS*, 436, 1057
- De Looze, I., Baes, M., Bendo, G. J., et al. 2016b, in prep.
- De Rijcke, S., Prugniel, P., Simien, F., & Dejonghe, H. 2006, *MNRAS*, 369, 1321
- di Serego Alighieri, S., Gavazzi, G., Giovanardi, C., et al. 2007, *A&A*, 474, 851
- di Serego Alighieri, S., Bianchi, S., Pappalardo, C., et al. 2013, *A&A*, 552, A8
- Draine, B. T. 2003, *ARA&A*, 41, 241
- Draine, B. T., Dale, D. A., Bendo, G., et al. 2007, *ApJ*, 663, 866
- Draine, B. T., & Li, A. 2007, *ApJ*, 657, 810
- Draine, B. T., & Hensley, B. 2012, *ApJ*, 757, 103
- Dunne, L., Gomez, H. L., da Cunha, E., et al. 2011, *MNRAS*, 417, 1510
- Dwek, E. 1998, *ApJ*, 501, 643
- Engelbracht, C. W., Gordon, K. D., Rieke, G. H., et al. 2005, *ApJL*, 628, L29
- Engelbracht, C. W., Blaylock, M., Su, K. Y. L., et al. 2007, *PASP*, 119, 994
- Engelbracht, C. W., Rieke, G. H., Gordon, K. D., et al. 2008, *ApJ*, 678, 804
- Eskew, M., Zaritsky, D., & Meidt, S. 2012, *AJ*, 143, 139
- Fazio, G. G., Hora, J. L., Allen, L. E., et al. 2004, *ApJS*, 154, 10
- Galametz, M., Madden, S., Galliano, F., et al. 2009, *A&A*, 508, 645
- Galametz, M., Madden, S. C., Galliano, F., et al. 2011, *A&A*, 532, A56
- Gallagher, J. S., & Hunter, D. A. 1981, *AJ*, 86, 1312
- Galliano, F., Madden, S. C., Jones, A. P., et al. 2003, *A&A*, 407, 159
- Galliano, F., Madden, S. C., Jones, A. P., Wilson, C. D., & Bernard, J.-P. 2005, *A&A*, 434, 867
- Galliano, F., Dwek, E., & Chianal, P. 2008, *ApJ*, 672, 214
- Galliano, F., Hony, S., Bernard, J.-P., et al. 2011, *A&A*, 536, A88
- Geha, M., van der Marel, R. P., Guhathakurta, P., et al. 2010, *ApJ*, 711, 361
- Geha, M., Brown, T. M., Tumlinson, J., et al. 2013, *ApJ*, 771, 29
- Geha, M., Weisz, D., Grocholski, A., et al. 2015, *ApJ*, 811, 114
- Gomez, H. L., Clark, C. J. R., Nozawa, T., et al. 2012, *MNRAS*, 420, 3557
- Gomez, H. L., Krause, O., Barlow, M. J., et al. 2012, *ApJ*, 760, 96
- Gonçalves, D. R., Magrini, L., Martins, L. P., Teodorescu, A. M., & Quireza, C. 2012, *MNRAS*, 419, 854
- Gordon, K. D., Engelbracht, C. W., Fadda, D., et al. 2007, *PASP*, 119, 1019
- Gordon, K. D., Engelbracht, C. W., Rieke, G. H., et al. 2008, *ApJ*, 682, 336
- Gordon, K. D., Galliano, F., Hony, S., et al. 2010, *A&A*, 518, L89
- Gordon, K. D., Roman-Duval, J., Bot, C., et al. 2014, *ApJ*, 797, 85
- Groenewegen, M. A. T. 2006, *A&A*, 448, 181
- Groenewegen, M. A. T., Wood, P. R., Sloan, G. C., et al. 2007, *MNRAS*, 376, 313
- Grossi, M., di Serego Alighieri, S., Giovanardi, C., et al. 2009, *A&A*, 498, 407
- Grossi, M., Hunt, L. K., Madden, S., et al. 2010, *A&A*, 518, L52
- Grossi, M., Hunt, L. K., Madden, S. C., et al. 2015, *A&A*, 574, A126
- Gruendl, R. A., Chu, Y.-H., Seale, J. P., et al. 2008, *ApJL*, 688, L9
- Guha Niyogi, S., Min, M., Meixner, M., et al. 2014, *A&A*, 569, A80
- Habing, H. J. 1968, *Bull. Astron. Inst. Netherlands*, 19, 421
- Han, M., Hoessel, J. G., Gallagher, J. S., III, et al. 1997, *AJ*, 113, 1001
- Hodge, P. W. 1963, *AJ*, 68, 691
- Humphreys, R. M., & Davidson, K. 1994, *PASP*, 106, 1025
- Indebetouw, R., Matsuura, M., Dwek, E., et al. 2014, *ApJL*, 782, L2
- Jackson, D. C., Cannon, J. M., Skillman, E. D., et al. 2006, *ApJ*, 646, 192
- Jones, A. P., Tielens, A. G. G. M., Hollenbach, D. J., & McKee, C. F. 1994, *ApJ*, 433, 797
- Jones, A. P., Tielens, A. G. G. M., & Hollenbach, D. J. 1996, *ApJ*, 469, 740



- Jones, A. P., & Nuth, J. A. 2011, *A&A*, 530, A44
- Kang, A., Sohn, Y.-J., Rhee, J., et al. 2005, *A&A*, 437, 61
- Kennicutt, R. C., Jr. 1998, *ApJ*, 498, 541
- Kim, S. C., & Lee, M. G. 1998, *Journal of Korean Astronomical Society*, 31, 51
- Kirkpatrick, A., Calzetti, D., Galametz, M., et al. 2013, *ApJ*, 778, 51
- Köhler, M., Stepnik, B., Jones, A. P., et al. 2012, *A&A*, 548, AA61
- Kroupa, P., Tout, C. A., & Gilmore, G. 1993, *MNRAS*, 262, 545
- Kroupa, P. 2001, *MNRAS*, 322, 231
- Kroupa, P., & Weidner, C. 2003, *ApJ*, 598, 1076
- Lisenfeld, U., Israel, F. P., Stil, J. M., & Sievers, A. 2002, *A&A*, 382, 860
- Madden, S. C., Galliano, F., Jones, A. P., & Sauvage, M. 2006, *A&A*, 446, 877
- Mandel, E., Murray, S. S., & Roll, J. 2011, *Astrophysics Source Code Library*, 1112.002
- Maraston, C. 1998, *MNRAS*, 300, 872
- Maraston, C. 2005, *MNRAS*, 362, 799
- Marleau, F. R., Noriega-Crespo, A., & Misselt, K. A. 2010, *ApJ*, 713, 992
- Marshall, J. R., van Loon, J. T., Matsuura, M., et al. 2004, *MNRAS*, 355, 1348
- Martínez-Delgado, D., Aparicio, A., & Gallart, C. 1999, *AJ*, 118, 2229
- Martins, L. P., Lanfranchi, G., Gonçalves, D. R., et al. 2012, *MNRAS*, 419, 3159
- Mathis, J. S., Mezger, P. G., & Panagia, N. 1983, *A&A*, 128, 212
- Matsuura, M., Zijlstra, A. A., Bernard-Salas, J., et al. 2007, *MNRAS*, 382, 1889
- Matsuura, M., Barlow, M. J., Zijlstra, A. A., et al. 2009, *MNRAS*, 396, 918
- Matsuura, M., Dwek, E., Meixner, M., et al. 2011, *Science*, 333, 1258
- Matsuura, M., Dwek, E., Barlow, M. J., et al. 2015, *ApJ*, 800, 50
- Mattsson, L., Andersen, A. C., & Munkhammar, J. D. 2012, *MNRAS*, 423, 26
- Mattsson, L., Gomez, H. L., Andersen, A. C., et al. 2014, *MNRAS*, 444, 797
- McConnachie, A. W., Irwin, M. J., Ferguson, A. M. N., et al. 2005, *MNRAS*, 356, 979
- McKee, C. 1989, *Interstellar Dust*, 135, 431
- Micelotta, E. R., Dwek, E., & Slavin, J. D. 2016, *arXiv:1602.02754*
- Michałowski, M. J. 2015, *A&A*, 577, A80
- Momose, R., Okumura, S. K., Koda, J., & Sawada, T. 2010, *ApJ*, 721, 383
- Monaco, L., Saviane, I., Perina, S., et al. 2009, *A&A*, 502, L9
- Monet, D. G., Levine, S. E., Canzian, B., et al. 2003, *AJ*, 125, 984
- Nguyen, H. T., Schulz, B., Levenson, L., et al. 2010, *A&A*, 518, L5
- Nozawa, T., Maeda, K., Kozasa, T., et al. 2011, *ApJ*, 736, 45
- Ochsenbein, F., Bauer, P., & Marcout, J. 2000, *A&AS*, 143, 23
- O'Halloran, B., Satyapal, S., & Dudik, R. P. 2006, *ApJ*, 641, 795
- Onodera, S., Kuno, N., Tosaki, T., et al. 2010, *ApJL*, 722, L127
- Ossenkopf, V. 1993, *A&A*, 280, 617
- Ott, S. 2010, *Astronomical Data Analysis Software and Systems XIX*, 434, 139
- Paradis, D., Bernard, J.-P., & Mény, C. 2009, *A&A*, 506, 745
- Paradis, D., Paladini, R., Noriega-Crespo, A., et al. 2012, *A&A*, 537, A113
- Peletier, R. F. 1993, *A&A*, 271, 51
- Planck Collaboration, Abergel, A., Ade, P. A. R., et al. 2011, *A&A*, 536, A25
- Planck Collaboration, Abergel, A., Ade, P. A. R., et al. 2014, *A&A*, 571, A11
- Rémy-Ruyer, A., Madden, S. C., Galliano, F., et al. 2013, *A&A*, 557, A95
- Rémy-Ruyer, A., Madden, S. C., Galliano, F., et al. 2014, *A&A*, 563, A31
- Rémy-Ruyer, A., Madden, S. C., Galliano, F., et al. 2015, *A&A*, 582, A121
- Rice, W., Lonsdale, C. J., Soifer, B. T., et al. 1988, *ApJS*, 68, 91
- Riebel, D., Srinivasan, S., Sargent, B., & Meixner, M. 2012, *ApJ*, 753, 71
- Rieke, G. H., Young, E. T., Engelbracht, C. W., et al. 2004, *ApJS*, 154, 25
- Rodney, S. A., Riess, A. G., Strolger, L.-G., et al. 2014, *AJ*, 148, 13
- Roussel, H. 2013, *PASP*, 125, 1126
- Salpeter, E. E. 1955, *ApJ*, 121, 161
- Schneider, R., Hunt, L., & Valiante, R. 2016, *MNRAS*, 457, 1842
- Schruba, A., Leroy, A. K., Walter, F., Sandstrom, K., & Rosolowsky, E. 2010, *ApJ*, 722, 1699
- Serra Díaz-Cano, L., & Jones, A. P. 2008, *A&A*, 492, 127
- Slavin, J. D., Dwek, E., & Jones, A. P. 2015, *ApJ*, 803, 7
- Smith, M. W. L., Gomez, H. L., Eales, S. A., et al. 2012, *ApJ*, 748, 123
- Smith, M. W. L., 2012, PhD thesis, Cardiff University
- Sohn, Y.-J., Kang, A., Rhee, J., et al. 2006, *A&A*, 445, 69
- Stepnik, B., Abergel, A., Bernard, J.-P., et al. 2003, *A&A*, 398, 551
- Temi, P., Brighenti, F., Mathews, W. G., & Bregman, J. D. 2004, *ApJS*, 151, 237
- Tielens, A. G. G. M., Waters, L. B. F. M., & Bernatowicz, T. J. 2005, *Chondrites and the Protoplanetary Disk*, 341, 605
- Todini, P., & Ferrara, A. 2001, *MNRAS*, 325, 726
- Vincenzo, F., Matteucci, F., Belfiore, F., & Maiolino, R. 2016, *MNRAS*, 455, 4183
- Welch, G. A., Mitchell, G. F., & Yi, S. 1996, *ApJ*, 470, 781
- Welch, G. A., Sage, L. J., & Mitchell, G. F. 1998, *ApJ*, 499, 209
- Wiklind, T., & Henkel, C. 1995, *A&A*, 297, L71
- Wood, P. R., Habing, H. J., & McGregor, P. J. 1998, *A&A*, 336, 925
- Young, L. M., & Lo, K. Y. 1996, *ApJL*, 464, L59
- Young, L. M., & Lo, K. Y. 1997, *ApJ*, 476, 127
- Young, L. M. 2001, *AJ*, 122, 1747
- Zhu, M., Papadopoulos, P. P., Xilouris, E. M., Kuno, N., & Lisenfeld, U. 2009, *ApJ*, 706, 941
- Zhukovska, S., Gail, H.-P., & Trieloff, M. 2008, *A&A*, 479, 453
- Zhukovska, S., & Henning, T. 2013, *A&A*, 555, AA99
- Zubko, V., Dwek, E., & Arendt, R. G. 2004, *ApJS*, 152, 211