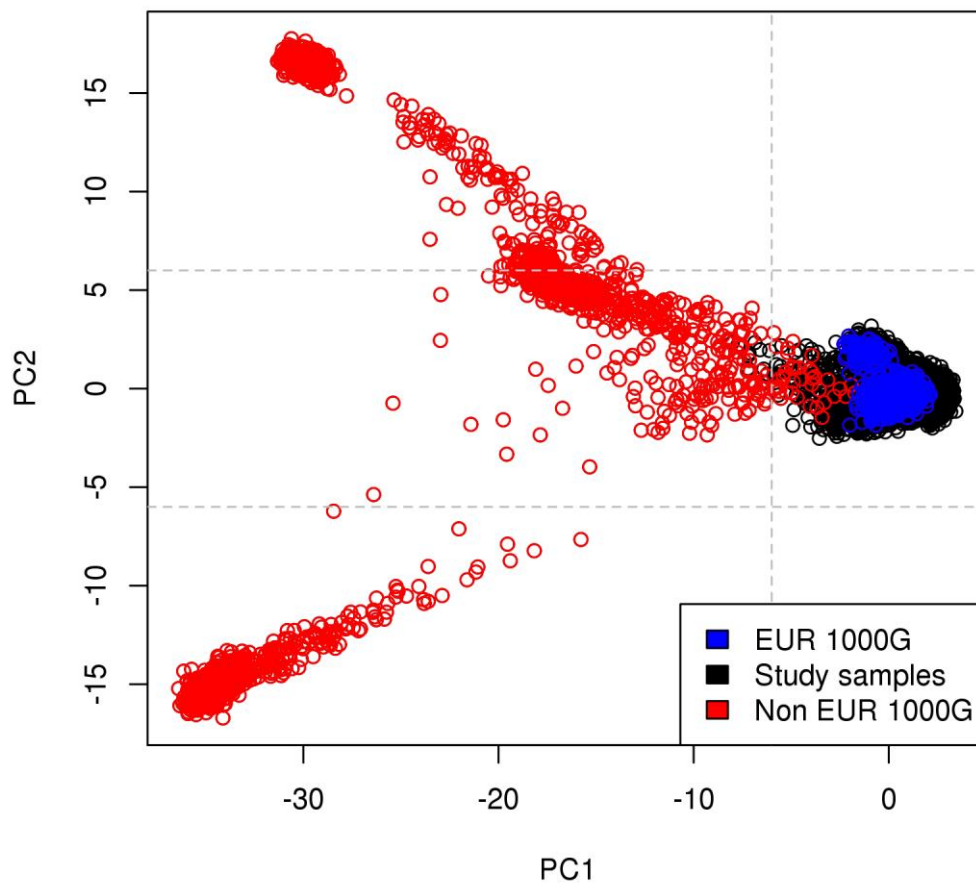


Supplementary Material: Assessing the Genetic Architecture of Epithelial Ovarian Cancer Histological Subtypes.

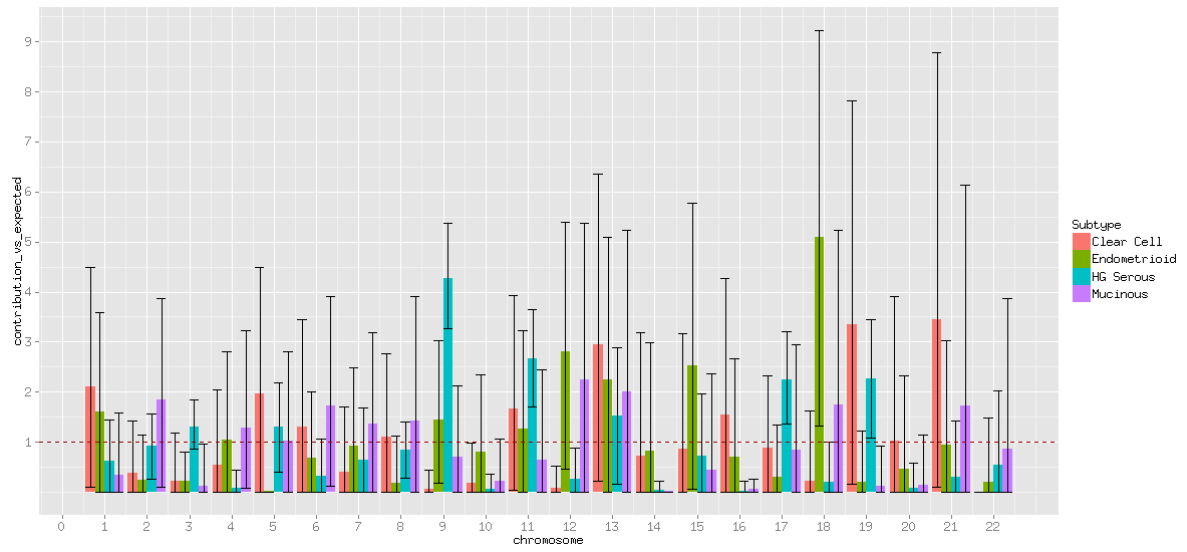


Supplementary Figure 1. Genotype principal component analysis of OCAC samples and 1000 Genomes. X and Y axes display the number of standard deviations from 1000 Genomes EUR populations. Dotted lines enclose the samples used in this study.

Study Name	Country	Code	Controls	Serous	Mucinous	Endometrioid	Clear Cell	HG Serous	Other	All invasive
Australian Cancer Study	Australia	ACS	175	104	7	22	9	89	32	166
Australian Ovarian Cancer Study	Australia	AOC	802	448	35	84	43	409	118	714
Bavarian Ovarian Cancer Cases and Controls	Germany	BAV	142	56	8	13	6	42	10	93
Belgium Ovarian Cancer Study	Belgium	BEL	1348	194	23	22	23	182	17	274
Diseases of the Ovary and their Evaluation	USA	DOV	1119	293	18	84	29	235	136	515
Diseases of the Ovary and their Evaluation	USA	DVE	368	233	8	64	36	200	78	389
Germany Ovarian Cancer Study	Germany	GER	413	95	21	21	6	68	59	189
Hawaii Ovarian Cancer Study	USA	HAW	156	38	3	12	5	36	2	60
Hannover-Jena Ovarian Cancer Study	Germany	HJO	273	140	9	26	4	107	116	266
Hannover-Minsk Ovarian Cancer Study	Germany	HMO	138	50	7	12	1	1	121	142
Helsinki Ovarian Cancer Study	Finland	HOC	447	113	45	28	13	0	135	221
Hormones and Ovarian Cancer Prediction	USA	HOP	1464	377	30	84	42	333	145	654
Danish Malignant Ovarian Tumor Study	Denmark	MAL	828	272	42	54	33	183	53	440
Mayo Clinic Ovarian Cancer Case Control Study	USA	MAY	10	9	0	1	0	9	0	10
Melbourne Collaborative Cohort Study	Australia	MCC	65	34	7	7	6	19	21	63
MD Anderson Ovarian Cancer Study	USA	MDA	384	190	27	28	4	135	179	373
Memorial Sloan Kettering Cancer Center	USA	MSK	593	382	0	20	18	343	73	467
North Carolina Ovarian Cancer Study	USA	NCO	172	147	18	35	24	132	50	269
New England Case-Control Study	USA	NEC	979	371	41	140	33	331	60	634
Nurses' Health Study I and II	USA	NHS	425	68	7	14	6	0	100	127
New Jersey Ovarian Cancer Study	USA	NJO	180	100	7	27	20	80	27	169
University of Bergen, Haukeland University Hospital, Norway	Norway	NOR	370	135	15	27	11	85	87	237
Nijmegen Ovarian Cancer Study	Netherlands	NTH	323	116	33	64	20	64	52	255
Ovarian Cancer in Alberta and British Columbia	Canada	OVA	748	344	26	103	57	0	445	631
Polish Ovarian Cancer Study	Poland	POC	417	199	33	39	9	0	341	422
Polish Ovarian cancer Case Control Study (NCI)	Poland	POL	186	21	4	10	2	15	11	42
UK Studies of Epidemiology and Risk Factors in Cancer Heredity (SEARCH) Ovarian Cancer Study	UK	SEA	1196	162	38	24	28	104	71	271
UK Studies of Epidemiology and Risk Factors in Cancer Heredity (SEARCH) Ovarian Cancer Study	UK	SEB	4826	11	5	5	0	4	15	29
Southampton Ovarian Cancer Study	UK	SOC	0	102	33	62	11	72	79	267
Family Registry for Ovarian Cancer AND Genetic Epidemiology of Ovarian Cancer	USA	STA	313	154	16	32	20	135	35	251
Familial Ovarian Tumor Study	Canada	TOR	74	8	1	7	2	0	11	21

UC Irvine Ovarian Cancer Study	USA	UCI	367	166	19	48	23	143	32	277
UK Ovarian Cancer Population Study	UK	UKO	1103	117	24	32	25	93	51	236
Los Angeles County Case-Control Studies of Ovarian Cancer	USA	USC	1047	447	44	79	35	341	161	689
Warsaw Ovarian Cancer Study	Poland	WOC	203	132	8	20	17	131	25	202
Total*			21654	5828	662	1350	621	4121	2948	10065

Supplementary Table 1. Description of individual OCAC studies and case-control sample size. *Numbers differ from Table 1 in main manuscript, as these ones reflect the total number before Identity by descent (IBD) <0.10 filtering.



Supplementary Figure 2. Contribution to the heritability by chromosome versus expected. Confidence intervals [0.05,0.95] were approximated through jackknifing up to 1000 times