

Georgia Southern University

Digital Commons@Georgia Southern

The Geechee Yearbook

Special Collections at Lane Library (Armstrong)

1960

Geechee 1960

Armstrong College

Follow this and additional works at: <https://digitalcommons.georgiasouthern.edu/armstrong-geechee-yearbook>

Recommended Citation

Armstrong College, "Geechee 1960" (1960). *The Geechee Yearbook*. 24.
<https://digitalcommons.georgiasouthern.edu/armstrong-geechee-yearbook/24>

This book is brought to you for free and open access by the Special Collections at Lane Library (Armstrong) at Digital Commons@Georgia Southern. It has been accepted for inclusion in The Geechee Yearbook by an authorized administrator of Digital Commons@Georgia Southern. For more information, please contact digitalcommons@georgiasouthern.edu.

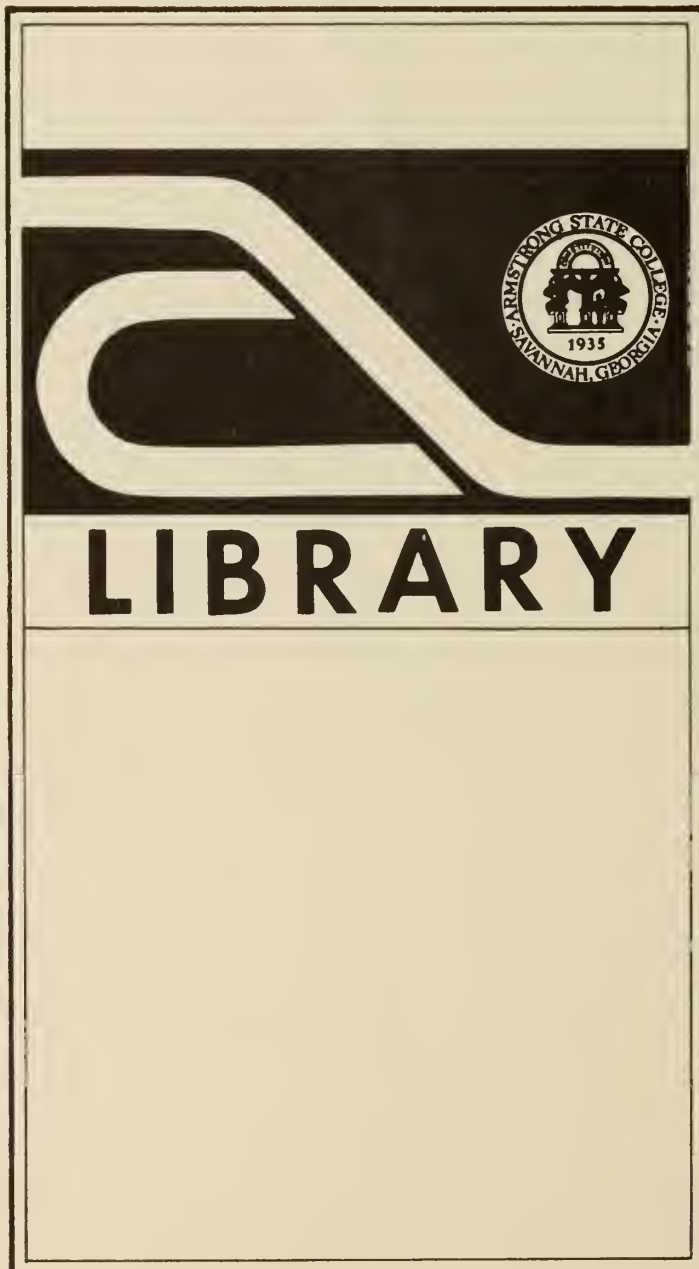
1960


Geechee

ARMSTRONG COLLEGE OF SAVANNAH

25TH Anniversary

FOR REFERENCE
Do Not Take From this Room





Digitized by the Internet Archive
in 2012 with funding from
LYRASIS Members and Sloan Foundation

<http://archive.org/details/geechee1960arms>



The 'Geechee 1960

TABLE OF CONTENTS

Administration . . .	8
Features . . .	20
Beauties . . .	32
Organizations . . .	42
Sports . . .	70
Classes . . .	80
Advertisers . . .	107

Foreword

The year 1960 marks the 25th anniversary of the founding of Armstrong College. To pay special tribute to this fact the 1960 'Geechee is dedicated not to an individual but to all who have contributed in any way to Armstrong's development; especially to the City of Savannah which has fostered its growth, and to those individuals who through extraordinary zeal and interest in the college have contributed immeasurably to its quality as an educational institution.

The 1960 'Geechee Staff

A red decorative fence pattern with vertical bars and ornate scrollwork at the top and bottom, spanning the entire width of the page.

The 1960 'Geechee

PUBLISHED BY THE STUDENTS OF ARMSTRONG COLLEGE OF SAVANNAH





THE
GREAT
GARDENS
OF
THE
GARDENS
OF
THE
GARDENS

36662

25th Anniversary Edition



Historical Highlights "Two hundred and two years after the day of its origin, Savannah, Georgia acquired an institution of higher learning, the Armstrong Junior College." Thus states the inaugural issue of the Armstrong College *Inkwell*, November 15, 1935. It was then in the brief span of a few months that a college was born, an important and far-reaching event for Savannah.

No mention of such a fact would be complete without paying tribute to those whose energy and initiative made such an event possible: Mayor Thomas Gamble, the prime mover in the establishment of the college; the Honorable A. Pratt Adams, first chairman of the college commission; Ernest A. Lowe, first president of Armstrong; and Mrs. Emily M. C. Motts, widow of George Armstrong, who provided impetus for a college by donating the present Armstrong building to the city for the purpose of establishing an educational institution.

Development of a College The work of President Lowe and Armstrong's first faculty found fruition in those early years of operation and development as the college established for itself a permanent niche in the community. Curricula were developed to serve the needs of students with varied pursuits and an equally varied program of student activities grew from the natural energies of an exuberant student body.

The early years saw the construction of the auditorium, the present Jenkins Hall, the donation of the Lane Building by Mills B. Lane for the establishment of a school of finance and commerce; in 1941 Gamble Hall, the science building, was begun, and the first summer sessions were introduced at Armstrong. A continual stream of innovations and improvements came during these years of maturation. Activities such as aviation classes, basketball, football and even fencing came into existence. The usual questions concerning existing "school spirit" were raised and no more successfully resolved then than at present. In spite of the omnipresent threat and effect of war on the student body and faculty the college carried on.

The ensuing years have proved that momen-

tum of growth and improvement to be vital to the essence of Armstrong.

Armstrong's Presidents Three men have served Armstrong as president during her twenty-five-year history. Ernest A. Lowe, a native of Houston County, Georgia and a graduate of the University of Georgia, became the first dean of the college in June of 1935, and was shortly thereafter elevated to president of the institution. Mr. Lowe showed intense interest in the college, and nurtured it through its birth and formative years. He supervised the conversion of the Armstrong mansion into a college building, aided in selecting a faculty, witnessed the construction of Jenkins Hall, the initiation of the program of student activities and generally promoted the idea of the place Armstrong should hold in the community life of the city. In 1935, Mr. Lowe was selected to receive the coveted Lucas trophy for his outstanding achievements in building and developing Armstrong to a position recognized throughout the country. On graduation day of 1941, after six years of leadership, Mr. Lowe resigned.

The Second President Armstrong's beginning year beheld a promising faculty member in J. Thomas Askew, instructor of Political Science, who held a Ph.B. degree from Piedmont College and an M.A. from the University of Georgia. Mr. Askew, who had been instructor of political science at the University for six years prior to coming to Armstrong, became Dean at the college in 1937, and after the resignation of Mr. Lowe was named president. He served his period during the crucial early years of the war when the college saw a twenty percent drop in enrollment. But in spite of this deterrent, Mr. Askew continued to give guidance and initiative to the school enabling it to maintain a meritorious level of activity during this period. He left Armstrong in 1943 to serve his country at war.

President F. M. Hawes But the inaugural year of 1935 showed more than one promising faculty member. In December of that year the college commission announced the acquisition of new chemistry instructor, Mr. Foreman M. Hawes, with a B.S. degree from Mercer and



ERNEST A. LOWE



J. THOMAS ASKEW



FOREMAN M. HAWES



an M.S. from Emory University. Mr. Hawes had been head of the science department of the old Locust Grove Institute and had served as an instructor of chemistry at Georgia Tech. Upon his arrival at Armstrong to teach chemistry and physical science, he was, in the words of the *Inkwell*, "thirty-five and single."

By 1942, Mr. Hawes had become advisor for student activities and Dean of Students, and in 1943, was chosen to fill the vacant office of president. Since then his achievements have been

numerous and varied. He created the student center, "the Dump," obtained the use of the Georgia Historical Society's Hodgson Hall as the school library, supervised the valuable addition to Gamble Hall and presided over the transfer of the college to the University System of Georgia.

Mr. Hawes' achievements, his dignity and integrity have made him symbolic of all that marks Armstrong as an outstanding educational institution throughout its history.



1935—

Armstrong Today From the 160-member student body of city-operated Armstrong Junior College, 1935, has developed Armstrong College of Savannah, 1960, a member of the University System of Georgia and an educational institution with more than eleven hundred students.

Twenty-five years have elapsed since the vision of a college became a reality, twenty-five years of astounding growth, maturity and influence in the field of education. With an expanded program of day and evening classes the college has adapted itself to the demands of an expanding community and an ever-growing Savannah becomes increasingly aware of the important role Armstrong has played in its progress. Alumni of Armstrong have moved on to become outstanding citizens of the community and numerous others have contributed to progress by taking advantage of the range of educational opportunity the college offers.

Diversified Plans of Study Today the college curriculum provides fully rounded and diversified plans of study ranging from liberal



arts to electronics in terminal and senior college preparatory programs. The Technical Institute program offers technical training to students in cooperation with local industry. Evening classes permit anyone with the energy and ambition to work for an associate degree in the field of his choice or simply to improve himself or his job-standing by study in appropriate areas.

—1960

Student Activity An elaborate program of student activity is part of day school campus life as may be seen from the pages of this annual report. Dramatics, music, home economics, bridge, publications, and many others fill the bill of



offerings . . . the choice rests with the student.

The present Armstrong scene is one of constant activity keeping pace with the world yet maintaining its own speed and direction as well. Activities, social life, academic endeavor, new faces and old ones, meetings, partings, classes, exams, . . . always an echo of the past and occasionally an overtone or two of the future.

This is Armstrong College today.

ADMINISTRATION





ADMINISTRATION

THE 'GEECHEE, 1940



THE ARMSTRONG COLLEGE COMMISSION

Seated: Dr. Irving Victor, Chairman; Mayor W. Lee Mingledorf, Jr., Dr. H. Y. Chorbonnier, Judge Victor B. Jenkins, Edward J. Bortlett. *Standing:* Jule C. Rossiter, Secretary; Foremon M. Howes, Grody L. Dickey, Lowton Colhoun, D. Leon McCormac.

OTHER MEMBERS—Herschel V. Jenkins, Honorary Chairman; Joseph H. Horrison, H. Lee Fulton, Jr., Arthur I. Jeffords.



FOREMAN M. HAWES
President

JACK H. PADGETT
Registrar



MARY H. STRONG
Director of the Evening College



JULE C. ROSSITER
Comptroller

FACULTY



BIOLOGY: Leslie P. Davenport, Head; Frank P. Sivik



CHEMISTRY: Aleen Williams, Francis G. Metra, Head



BUSINESS ADMINISTRATION: Essie D. Jenkins, Caral D. Tapp, Lamar W. Devis, Head



HUMANITIES: Seated: Anthony M. Warren, Margaret Lubs, Head. Standing: J. Harry Perse, Rossiter C. Durfee, Ransom Bradford, Albert Gordon, Jack B. Fowler.



MATHEMATICS: Lutrecia Hunter, Acting Heod; Willjom S. Winn, Hortley Eckerson, Doniel J. Hook



HOME ECONOMICS: Josephine S. Denmork, Heod



PHYSICAL EDUCATION: Roy J. Sims, Head; Kote Dean, Lawrence M. Tapp



PHYSICS: John L. M. Des Islets, Head; Robert Rockwell



SOCIAL SCIENCES: Roy Remley, Dorothy Thompson, Ted L. Hunter, Orson W. Beecher, Head; John H. McTeer, William E. Coyle



LIBRARY: Ella Clancy, Assistant; Ruth Smith, Librarian



ASSISTANT DIRECTOR OF ADMISSIONS: Nellie Schmidt



TECHNICAL INSTITUTE: Stratos 'G. Dukakis, William G. Travis, Head



MARJORIE MOSLEY, *Secretary to the President*



HELEN MEIGHEN, *Evening College Secretary*



STAFF

ELIZABETH HOWARD
Clerical Assistant

ELIZABETH HITT
Assistant to the Registrar



BERTIS JONES, *Secretary to the Registrar*



MINNIE CAMPBELL, *Veterans Affairs Officer*



ELIZABETH POUND, *Manager of the Bookstore*



NORMA CALLAWAY, *Clerical Assistant, Business Office*

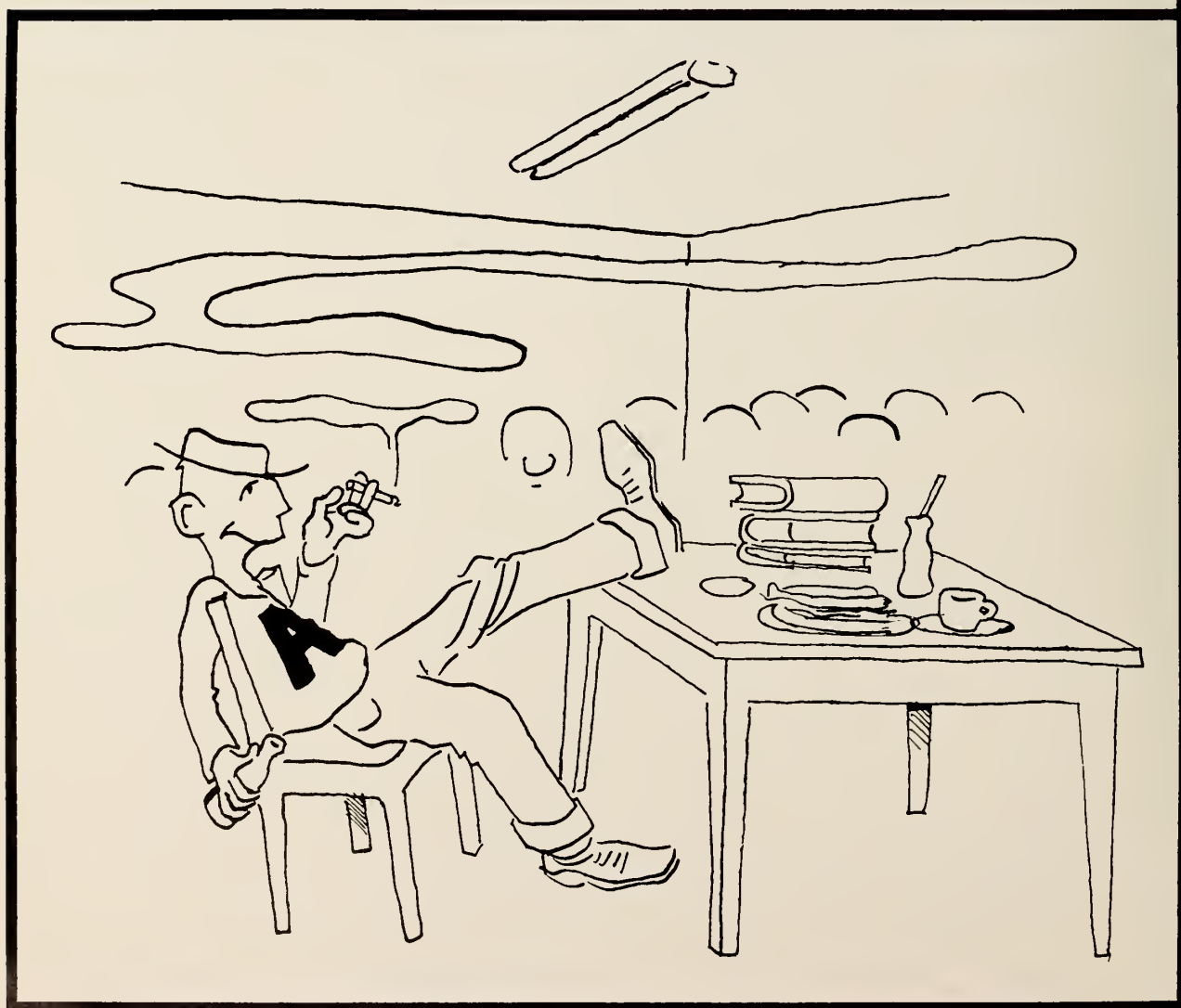


HENRIETTA ALL
Secretary to Student Personnel Services



ANGELA McBRIDE, SARA BETH TUTEN, *Switchboard Operators*

FEATURES



Homecoming.



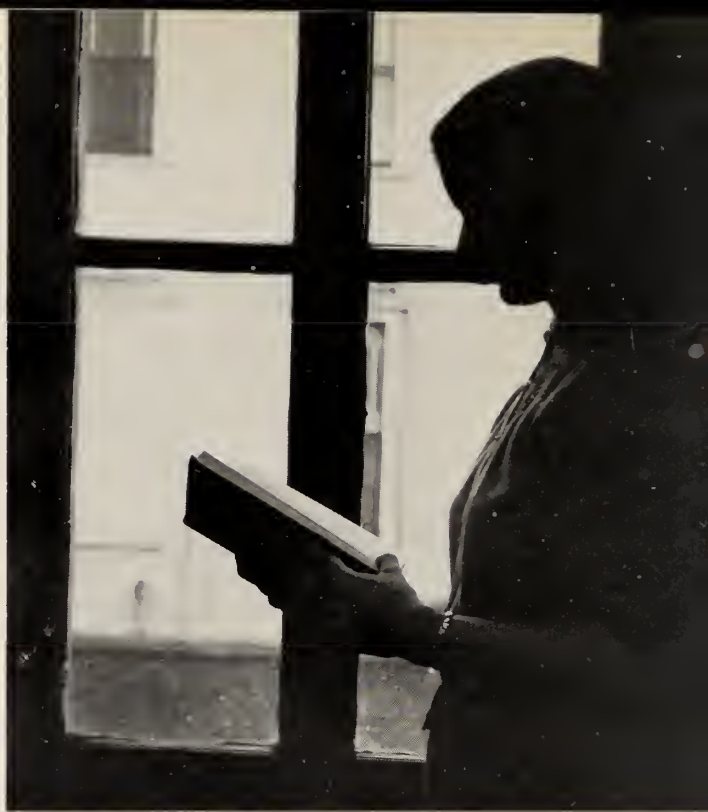
F. STOKES

THE 'GEECHEE, 1954

College life is a simple yet complicated thing. A student is eternally confronted with multiple choices of time consuming enterprises.



He can also write term papers, copy someone's notes or do whatever he thinks necessary to con the instructor into the grade he believes he deserves.



In his saner moments, or spare time, he can always find time to attend classes or even study.





Some students prefer to minor in studies and major in activities, bridge in particular, or the Masquers.



It is a rare day that the "Dump" is not over-populated with enthusiastic students (of bridge of course) buried in their honor counts with little thought for their honor points.





A few of the less enthusiastic bridge maniacs take new positions on surrounding park benches (in mixed pairs, of course) . . .

The year wends its way along. Harbingers of spring appear.



. . . and the athletically inclined take to that local olympic sport, half-rubber, in the lane.



In the spring some students return to classes.



A young man's fancy may even return him to books for a last fling at speculative inquiry.



Some even arrive at that moment of truth when they begin to burn their bridge behind them.



Alpha Tau Beta float

HOMECOMING



FRESHMAN SPONSORS FOR HOMECOMING—Glenda Perry, Carolyn Jenkins, Linda Kaminsky, Sylvia Leonard, Kay Stafford, Gail Anderson, Catherine Embry, Janice Bacan, Naarah Van Puffelen, Jude Phillips.



Phi Delta Gamma's prize-winning float

PARADE



HOMECOMING



DANCE 1959



Nonie Ringwald and Jimmy Collins crown Glenda Perry and Nelson Padgett, Freshman King and Queen of Homecoming.



HOMECOMING COURT: Jahn Winders, Naarah Van Puffelen, Jahn Hester, Linda Kaminsky, Nelson Padgett, King; Glenda Perry, Queen; Dan Hartley, Catherine Embry, Charles Phillips, Gail Anderson.

THE 'GEECHEE



Backstage wait



Caralyn Martin and escort



Last minute check

BEAUTY REVIEW



Sponsors for the
Beauty Review

VALENTINE DANCE



1960 'GEECHEE QUEEN AND COURT

Sharon Thigpen, Kay Stafford, Catherine Embry, Dale Sutton, Dotti Porter, Queen



Geechee Queen Dotti Porter

BEAUTIES



THE 'GEECHEE, 1953

Beauty



THE 'GEECHIE, 1954



'Geechee Queen
MISS DOTTI PORTER





Miss Dale Sutton

SPONSOR FOR
FRATERNITY "X"

Miss Sharon Thigpen

SPONSOR FOR
THE SOPHOMORE CLASS





Miss Kay Stafford

SPONSOR FOR
DELTA CHI SORORITY

Miss Catherine Embry

SPONSOR FOR
THE CANTERBURY CLUB





Beauty Sponsors

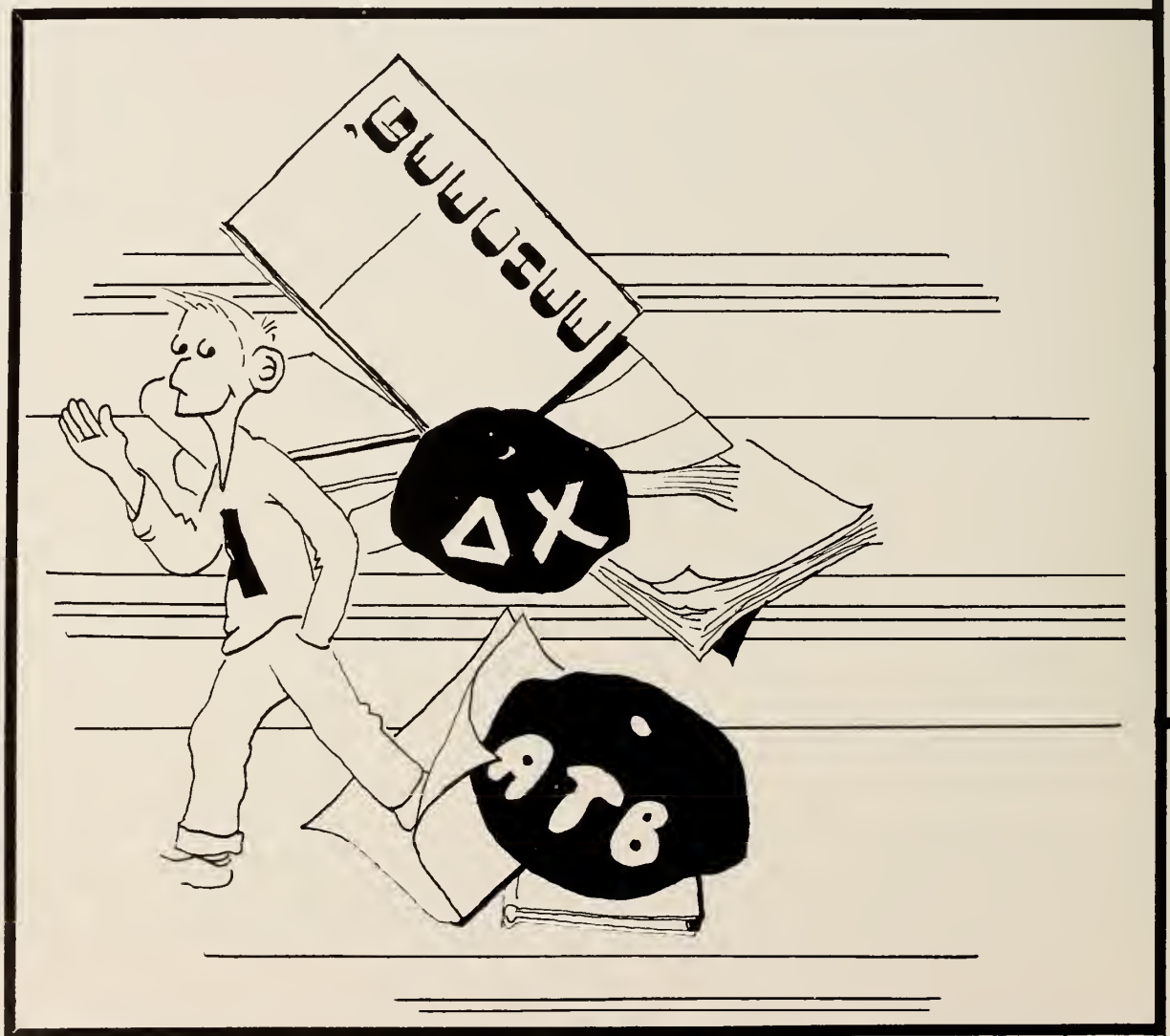
Janice Bacon, Mary Ann Feus, Angela McDonough, Carolyn Martin,
Esterine Dawson, Beth Mock



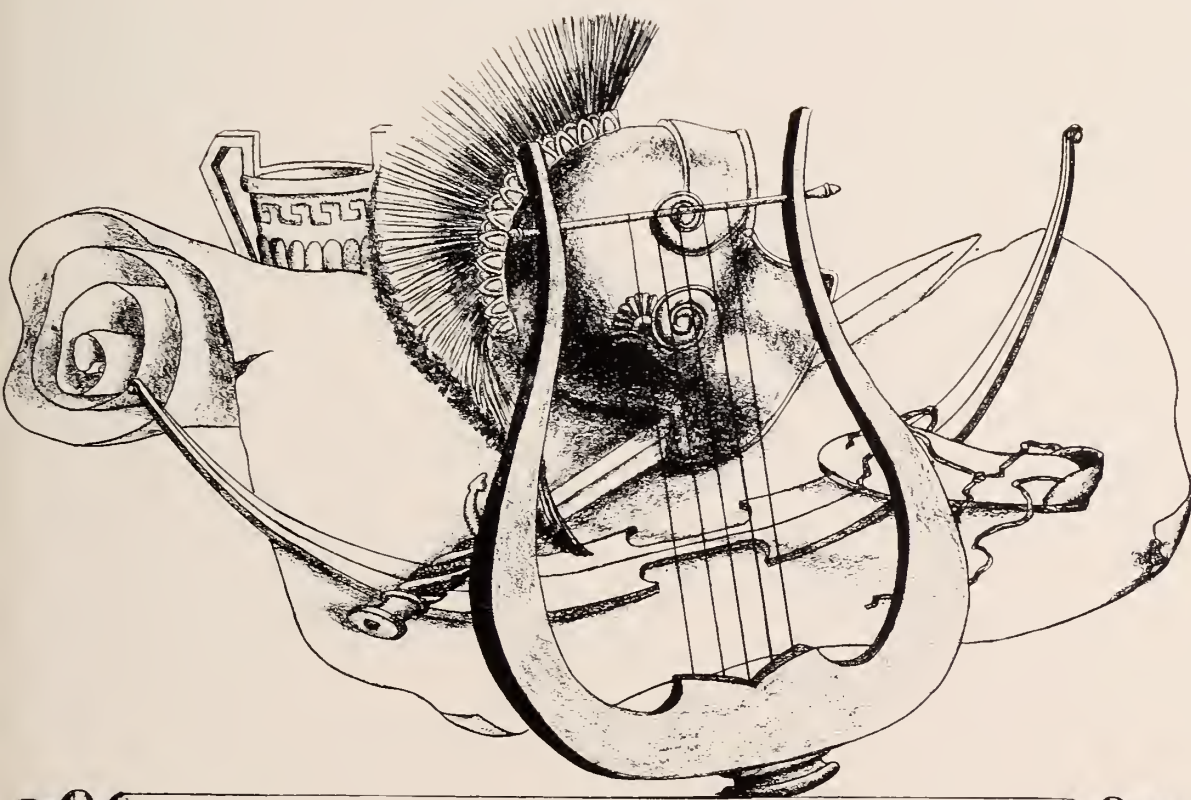
Barbara Preston, Nonie Ringwald, Martha Faye Webb, Cherrie Currie, Naarah Van Puffelen, Pat Crumpler

Beauty Sponsors

ORGANIZATIONS



THE 'GEECHEE, 1956



ACTIVITIES

THE 'GEECHEE, 1940

THE STUDENT SENATE



First row: Dole Sutton, Billy Deal, Morgie Lynn, Jimmy Collins, Charles Roy, Borboro Preston. Second row: Penn Myrick, Margaret Schumon, Carolyn Martin, Mortin Fleischaker, Ann Spencer. Third row: Goyle Poy ne, Jon Monson, Joe Morcus, John Winders.

Armstrong's Student Senate is an assembly of representatives from the various campus organizations and seeks therefore to reflect student opinion through those active in extra-curricular pursuits as well as their studies.

Highlights of the actions of the 1960 Student Senate was the undertaking of a complete revision of the Senate constitution.



Judge Jenkins congratulates President Jimmy Collins after swearing-in of student officers.



SENATE OFFICERS—Charles Ray, Vice President; Jimmy Collins, President; Margie Lynn, Secretary; Jay Caak, Treasurer

'THE GEECHEE



DALE SUTTON, *Editor-in-Chief*



KATHERINE WELLBROCK
Business Manager



JUDY ZIPPERER
Beauties Editor

SALLY ANDERSON
Class Editor



GERTRUDE JOHNSON and KIPPY ELKINS, *Staff Members*



DONALD DAVIS, *Sports Editor*
PENN MYRICK, *Associate Editor*



CORNELIA VAN DIVIERE, *Features Editor*
CATHERINE VAN DIVIERE, *Organizations Editor*

THE INKWELL



BILLY DEAL, *Editor*



JUDY GRAVES, *Associate Editor*



NONIE RINGWALD and MARGIE LYNN, *Reporters*





JERRY TUTTLE, *Sports Editor*



JAN GIDDINGS, *Reporter*



Editor DEAL and Staff Members DONALD DAVIS, NONIE RINGWALD, PENN MYRICK and BETTY JOHNSON



Jane Botoyias, Senator; Ann Spencer, Senator; Borbora Preston, 2nd Vice President; Dotti Porter, Secretary; Naorah Von Puffelen, Treasurer; Benton Freedmon, 1st Vice President; Donold Dovis, President.

THE MASQUERS



First row: Angelo Whittington, Emory Wells, David Kirschner, Gordy Warmock, Charles White, Billy Deal, Angelo McDonough, Nonie Ringwald, Ethel Kelly. Second row: Roy Bonks, Carnelia Van Diviere, Catherine Van Diviere, Gertrude Johnson, Sandro Smith, Jonice Bocon, Hannah Reid. Third row: Alan Atkinson, Walter Strickland, Don Hartley, Solly Anderson, Penn Myrick, Lindo Crawford, Carol Carson.



BEHIND THE

SCENES





Bentan Freedman as the averbearing chairman of the board and Judy McDowell as his effusive wife.



"Reporter" Alan Atkinson makes playful advances on spinster faculty member, Harriett Owens, as Nonie Ringwald and Marsha Tarrance look on.

FALL QUARTER PRODUCTION

"Good-by My Fancy"



Marsha Torrance as the cynical secretary, confrants distressed Tony Warren, overburdened by his new inexperience with the appasite sex.



Center of attraction, Agatha Reid, played by Liz Hitt, looks on as "President" Ranny Bradford comforts his daughter, Angela Whittington.

Ethel Kelly in her pathetic portrayal of "Willie" in Tennessee Williams' "This Property Is Condemned." Hardy Warmack as "Tom," looks on.



Nanie Ringwald, Tany Warren and Alan Atkinson in the hilarious production of Chekov's "The Marriage Proposal."

WINTER QUARTER PRODUCTION



Linda Boyd, Alan Atkinson and Marian Cheney in Tennessee Williams' somber miniature of the real and unreal, "The Lady of Larkspur Lotion."

BAPTIST STUDENT UNION



Rev. Bray, Ann Farren, Program Chairman; Harriett Owens, Senator; Esterine Dawson, President; Sharon Thigpen, Secretary; Virginia Morgan, Vice President.



First row: Harriett Owens, Dana Hurst, Karen Alexander, Sharon Thigpen, Kay Banks, Judy Graves, Betty Johnson, Elizabeth Hitt. Second row: Sharon Clark, Jimmy Collins, Carol Carson, Margie Lynn, Rev. Bray. Third row: Cherrie Currie, Ernest Lawden, Jenine Smith, Martha Faye Webb, Ann Farren, Gwen Waters, Esterine Dawson. Fourth row: Billy Deal, Tany Masters, David Hadges, Sue Walker, James Abernathy, Virginia Morgan.

CANTERBURY CLUB



Mr. Tony Worren, Advisor; Kenny Medernoch, President; Jack Osteen, Vice President; Catherine Embry, Treasurer; Jon Monson, Senator; Gail Anderson, Secretary.



First row: Jack Osteen, Catherine Embry, Catherine Van Diviere, Gail Anderson, Cornelia Van Diviere, Kenny Medernoch, Anthony Worren, Advisor. Second row: Jimmy Cargill, Strotton Ingram, Lucy Ann Holt, Jon Monson. Third row: Alan Atkinson, Kurt Anderson, Howard Arata.



NEWMAN CLUB

First row: Frank Rassiter, President; Beth Mack, Treasurer; Penn Myrick, Social Chairman. Second row: Joe Berger, Vice-President; Angela McDonaugh, Secretary; Father Teoli, Moderator.



First row: Father Teolil, Maderatar; Mary Ann Feus, Patty Demas, Saundra Burke, Eileen Ehmann. Second row: Beth Mack, Maurice McFarland, Michel Kavanaugh, Judy Habas, Jude Phillips, Marie Green. Third row: Frank Rassiter, Angela McDanaugh, Gwen Garwes, Mary Sue Sweeny, Narma Gan-nam, Hannah Reid. Fourth row: Joe Berger, Bab Fennell, Danny NeSmith, Penn Myrick, Sally Andersan, Joe Mahany.

WESLEY FOUNDATION



Pot Crumpler, Secretary; Angela Whittington, Treasurer; Hazel Key, President; Jerry Tuttle, Program Chairman; Jeonine Girord, Publicity.



First row: Jerry Tuttle, Angela Whittington, Hazel Key, Pot Crumpler. Second row: Joe Johnson, Hugh Allen, Barbara Corroll, Goyle Bonnell. Third row: Jeonine Girord.

B E T A L A M B D A



First row: Ann Stelljes, Carolyn Jenkins, Goyle Poyne, Dotty Porter, Koy Stafford, Grey Embry. Second row: Gail Bonnell, Barboro Preston, Dorothy Clark, Sue Dodge, Glendo Littlefield, Gail Barton.



DANCE

COMMITTEE

Seated: Nonie Ringwold, Jon Monson, Chairman; Kippy Elkins. Standing: Penn Myrick, Sally Anderson, Carolyn Mortin, Jimmy Collins, Dole Sutton, Jude Phillips, Herbie Davis, Angelo McDonough.

DEBATE FORUM



Cornelia Van Diviere, Cotherine Van Diviere, Jay Cook, Albert Rabin, Mr. Orson Beecher, Advisor; Arthur Goldstein, John Winders.



Scene from the Christmas Concert

THE GLEE CLUB

First row: Laura Kelly, Pat Crumpler, Harriet Owens, Judy Graves, Karen Alexander. Second row: Katherine Wellbrack, Sharan Clark, Betty Johnson, Margie Lynn, Glenda Perry, Angela Whittington. Third row: Norma Gannam, Esterine Dawsan, Carol Carson, Ethel Kelly, Gwen Waters, Brigitte Pukies. Fourth row: Jerame Rauntree, James Rhaden, Joe Berger.



MATH AND SCIENCE CLUB



First row: John Godfrey, Andrew Fountoin, Mortin Fleischoker. Second row: Howord Aroto, Les Eorgle, Jon Monson, Clifford Johnson, Trovis Strohon.



SECRETARY —ETTES

Seated: Angela McDanaugh, President; Mrs. Jenkins, Co-Advisar. Standing: Mrs. Carol Tapp, Advisar; Joyce Buffington, Secretary; Esterine Dawsan, Histarian; Mary Sue Sweeny, Vice President; Miriam Rushing, Treasurer.



Seated: Linda Bayd, Bernice Warr, Virginia Stanley, Stephanie Bawers, Daphne Lee. First row: Brenda Newsame, Eileen Ehmann, Joyce Buffington, Mary Sue Sweeny, Miriam Rushing, Linda Harville, Mary Ann Feus. Second row: Angela McDanaugh, Caralyn Martin, Kay Banks, Janice Bacan, Faye New, Esterine Dawsan.

YOUNG DEMOCRATS



Jon Monson, Ben Freeman, Jimmy Collins, President; Donald Crafts, Ann Spencer, Secretary; Joe Johnston, Joe Marcus, Vice President; Dickie Knight.



RADIO WORKSHOP

Charles White, Dave Kirschner, Emory Wells, Tommy Klinger, Barbara Preston, Penn Myrick, and Donald Davis, Director.



Vice President
GWEN GARWES



President
ESTERINE DAWSON



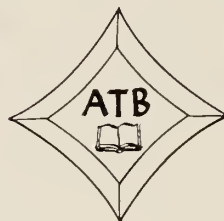
Secretary
SANDRA SMITH



Advisor
KATE DEAN



Advisor
ALEEN WILLIAMS



Treasurer
LANE BIGGS



Chaplain
BETTY JOHNSON

Alpha Tau Beta



Pledgemaster
NONIE RINGWALD



Rush Chairman
SHARON THIGPEN



BARBARA CARROLL



CAROL CARSON



JUDY GRAVES



PATTY HAGAR



DANA HURST



SYLVIA LEONARD



DAPHNE LEE



MARGIE LYNN



VIRGINIA MORGAN



GLEND A PERRY



JENINE SMITH



MARY SUE SWEENY



BERNICE WARR



MARTHA FAYE WEBB



ANGELA WHITTINGTON



Vice President
BETH MOCK



President
SUE DODGE



Secretary
MICHEL KAVANAUGH



Treasurer
MARGARET
SCHUMAN



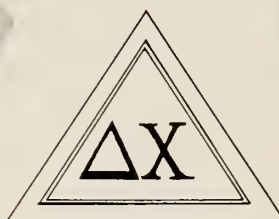
SALLY ANDERSON



BETH BASS



JANICE BACON



Delta Chi



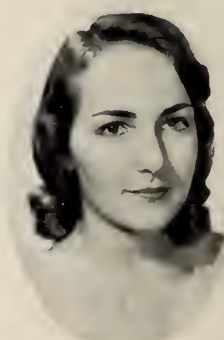
CAROL COTTEN



KATE EHLERS



KIPPY ELKINS



KATHERINE EMBRY



MARY ANN FEUS



META GIGNILLIAT



JUDY HABAS



LUCY ANN HOLT



BECKY KILEY



ANGELA McDONOUGH



CAROLYN MARTIN



SANDRA MOCK



GAYLE PAYNE



JUDE PHILLIPS



DOTTI PORTER



NINA RAVENSCROFT



FAYE SMITH



ROSEMARY SMITH



KAY STAFFORD



MARCIA SUMMERLIN



DALE SUTTON

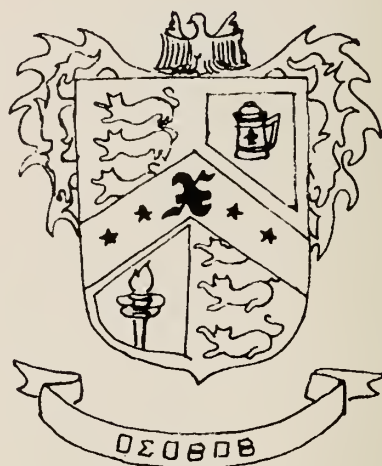


NAARAH VAN PUFFELEN



JUDY ZIPPERER

FRATERNITY "X"

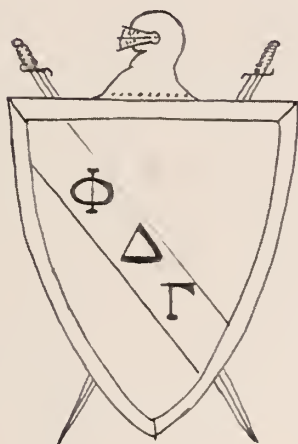


First row: George Lean, President; Bobby Miley, Vice President; Charles Exley, Sergeant-at-Arms. Second row: Jan Mansan, Secand Vice President; Jimmy Collins, Treasurer; Randy Sims, Treasurer; Marvin Everette, Rush Chairman. Third row: Bill Ottinger, Secretary.



Kneeling: Franklin Hudgins, Robert Fishback, Marvin Everette, Robert Daniels. First row: Bill Ottinger, Danny NeSmith, Jimmy Collins, Randoll Sims, Dale Suttan, Sponar; George Leon, Jan Monsan, Nelson Padgett, Charles Exley. Secand row: Bobby Gunter, Joe Smith, Donald Crafts, Skip Hartnett, Billy Saunders, Sanny Calley, Steve Strickland.

PHI DELTA GAMMA



Joy Cook, Outgoing President; Tom Reagon, President



Kneeling: Charles Roy, Jim Griffin, George Outlow, Cleo Jenkins, John Hester, Gerald Missroon. First row: Frank P. Sivik, Advisor; John Winders, Tim Cox, Glendo Perry, Sponsor; Tom Reagon, Richard Lonsburg, Joy Cook, Joe Johnson, Ben Friedman. Second row: Richard Beiser, Arnold Bozmore, Bob Seedlock, Bill McVeigh, Arnie Seyden.

SPORTS





ATHLETICS

THE 'GEECHEE, 1940



COACH ROY SIMS

1960 'GEECHEES



Kneeling: Danny Stewart, Jim Padgett, Joe Kaminsky, Robin Christy, Dave Thomas. Standing: Coach Sims, Robert Boga, Keevil Helmly, Jimmy George, Jahn Dalzell, Buddy Mallard, Arnold Bazemare, Coach Tapp.

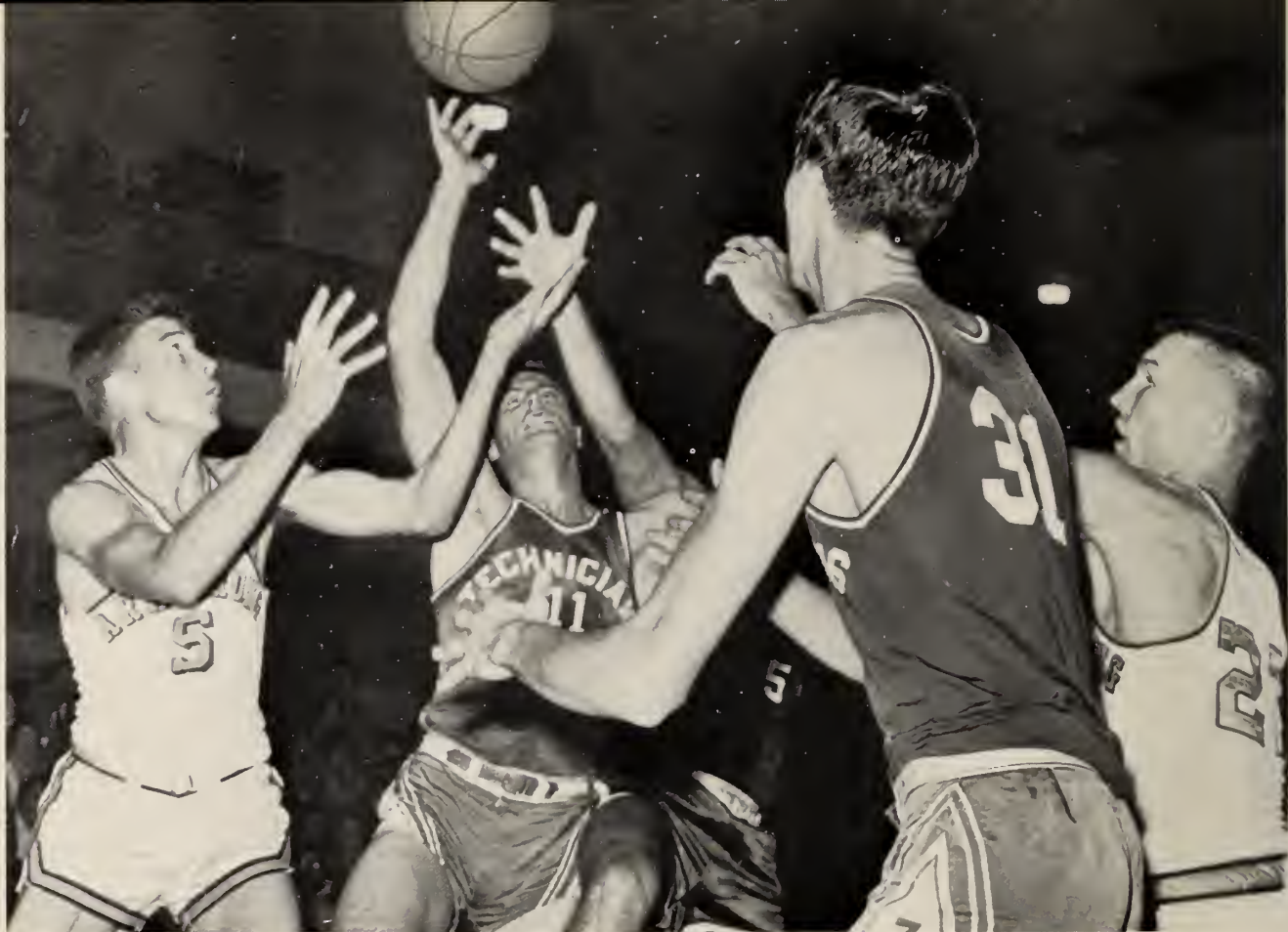


MALLARD SPARKS GEECHEES TO WINNING SEASON

The 1960 Geechees proved to be the best edition of an Armstrong team in recent years. Early in the season, without the services of injured Buddy Mallard, the Geechees managed an average record but maintained an undefeated status on the home court. With the return of Mallard and the addition of Jimmy George, Harry Shore, and Keevil Helmly to the lineup after Christmas, the team took on new life and sparked by Mallard's leadership, ran up a string of six consecutive victories.

Highlights of the season were the team's upset of the Brewton Parker Blue Barons before an overflow crowd at the Hellenic Center and the 101 to 69 romp over G.M.C.

At Statesboro, in the State Junior College Tourney, the Geechees rolled past Norman College in the first round but stumbled in the second in spite of outstanding effort against Brewton Parker.



Donny Stewart and Jimmy George outflank their Southern Tech opponents as Geechees roll to an 81-45 victory.

Jimmy George snags rebound against Abraham Baldwin.



Geechees rise to meet the offensive threat in tense moment.





Possession is nine-tenths of the law.



Geechees huddle during a time-out.



Elusive ball says farewell to arms.



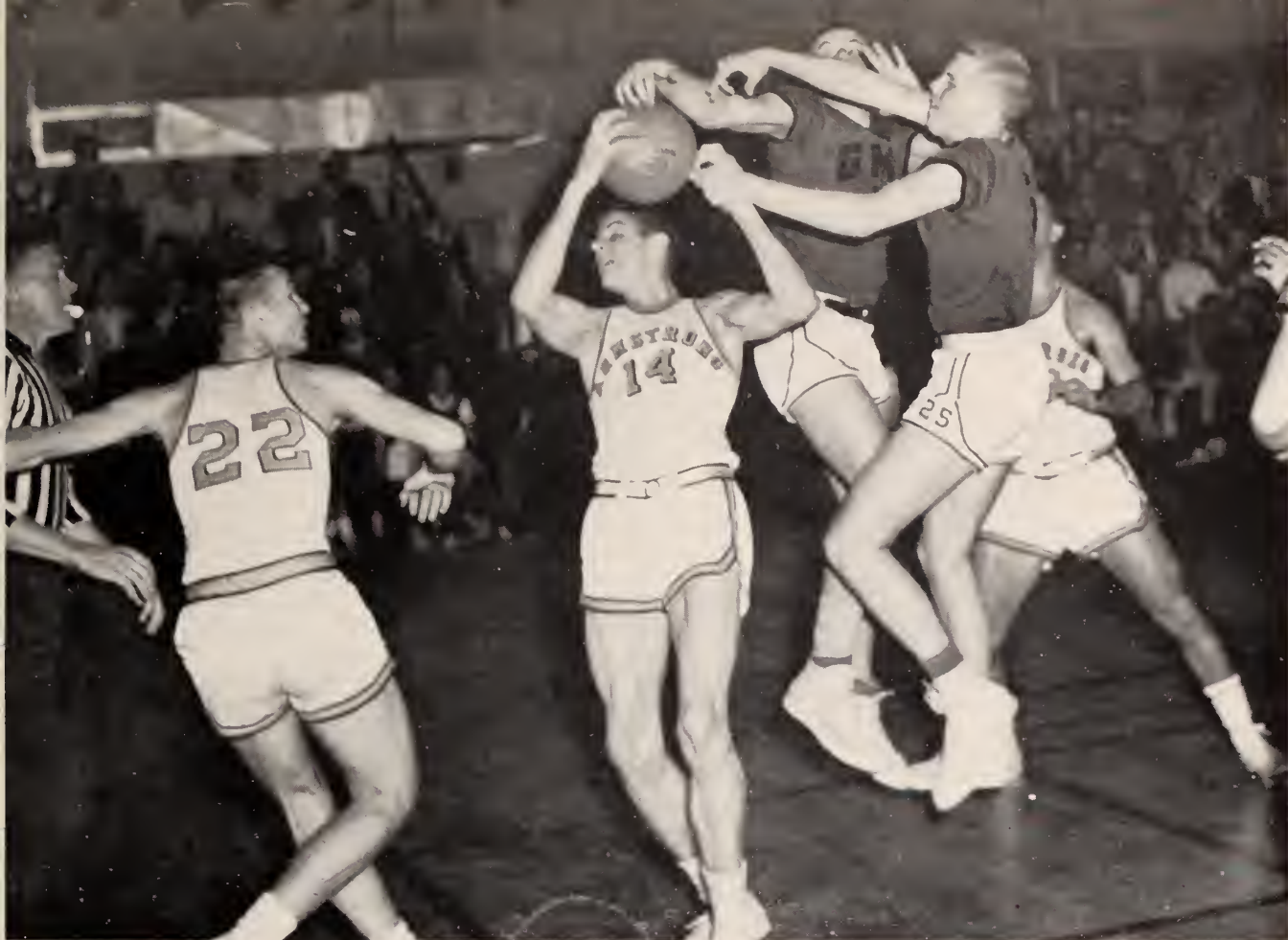
Kaminsky soars, scores two.



SEASON SCOREBOARD

<i>Armstrong</i>	<i>Opponent</i>	
64	Georgia Southwestern	56
75	Georgia Southwestern	94
71	Georgia Trade School	86
53	Brewton Parker	94
48	G T C Freshmen	68
73	College of Charleston	62
50	College of Charleston	51
81	Southern Tech	45
85	Norman College	82
83	Abraham Baldwin	91
62	South Georgia	60
75	G T C Freshmen	84
68	G M C	58
86	Brewton Parker	67
91	Abraham Baldwin	70
87	Norman College	65
87	South Georgia	66
101	G M C	69
<i>State Junior College</i>		
<i>Tournament</i>		
79	Truett McConnell	64
70	Brewton Parker	84
<i>National Junior College Athletic</i>		
<i>Association Tournament</i>		
68	Central Florida	77

Keevil Helmly drives in for two against Brewton Parker.



Mallard and company prove too much for Georgia Military College

Buddy Mallard, Most Valuable Player at State Tournament, and winner of the Sears' trophy for Savannah's best amateur athlete.



Dave Thomas, recipient of the Ashley K. Deering Trophy for best percentage of free-throws.





Catherine Embry, Gayle Payne, Morgoret Schuman, Dale Sutton, Coptoin; Angelo McDonough, Dotti Porter, Jude Phillips



THE CHEERLEADERS

School spirit is an integral part of the college, and the students responsible for maintaining and stimulating this spirit at Armstrong are the cheerleaders.

Sparking all the basketball games with their yells, the cheerleaders' contagious enthusiasm echoes throughout the stands and provides spark for the players' morale during the season.



THE BOWLING TEAM

First row: Ted Owens, Pot Borry, Bobby Miley. Second row: Freddy McPipkin, Donald Davis, Steve Krissmon.



Courtney Brooks and Don Davis in action.

CLASSES





FRESHMEN



SOPHOMORES

THE 'GEECHEE, 1940



SOPHOMORE CLASS OFFICERS

James T. Collins, President; Barbara Preston, Treasurer; Jay Cook, Vice President; Margaret Schuman, Secretary.

OUTSTANDING SOPHOMORES



Most Outstanding: JAMES T. COLLINS



SHARON THIGPEN, MARGIE LYNN, BILLY DEAL



NONIE RINGWALD and ANGELA McDONOUGH



ESTERINE DAWSON

OUTSTANDING SOPHOMORES



DOTTI PORTER



JAY COOK



EMILE G. ABBOTT



MARJORIE BARNES

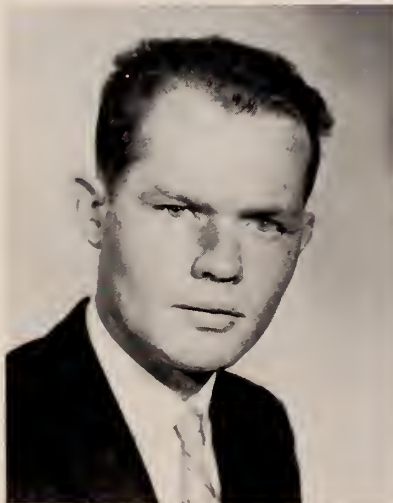


LAURA GAIL BARTON

CLASS OF 1960



BETH BASS



CARL J. BERGER



GAIL BONNELL



ROBIN J. CHRISTY



JAMES T. COLLINS



JAY COOK



SIDNEY T. COX



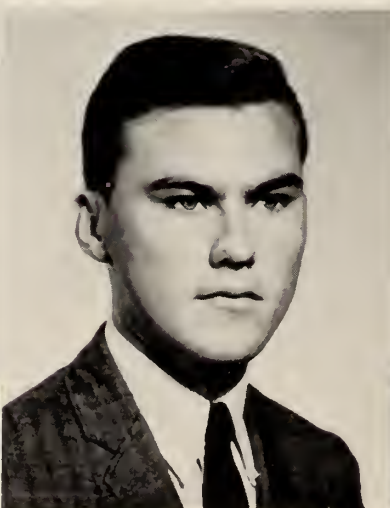
PATRICIA CRUMPLER



CHERRIE CURRY



ESTERINE DAWSON



JOHNNY DALZELL



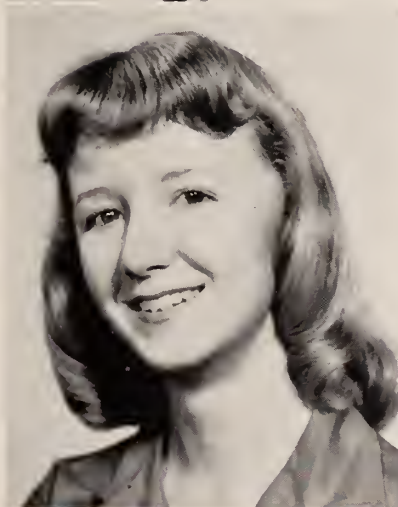
BILLY DEAL



SUE DODGE



CHARLES EXLEY



MARY K. ELKINS



FAYE FETZER



GWEN GARWES



HELEN GARFIELD



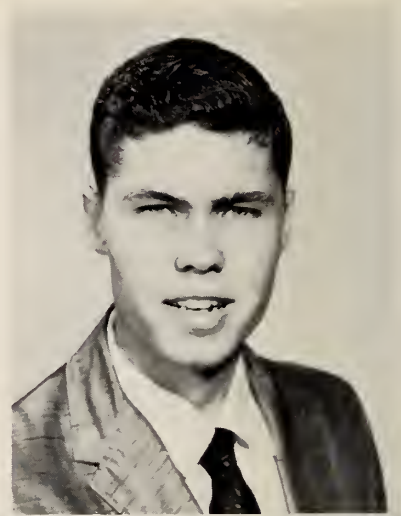
BARRY S. GOODMAN



ARTHUR GOLDSTEIN



PATTY HAGAR



DAVID HODGES



JOE L. JOHNSON



LAURA KELLY



DAVID T. KIRSCHNER



HAZEL KEY



DAPHNE LEE



MARGIE LYNN



GLEND A LITTLEFIELD



CAROLYN MARTIN



JOSEPH A. MASTERS



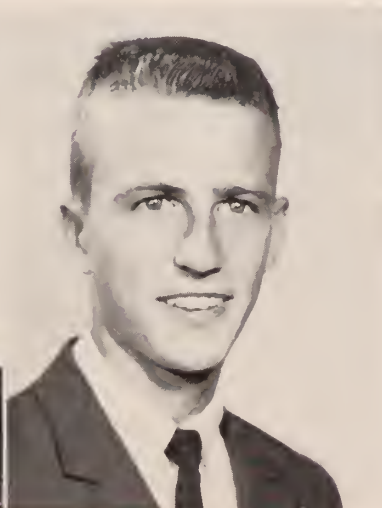
JAMES T. MCCANE



ANGELA MCDONOUGH



BILL McVEIGH



ROBERT MILEY

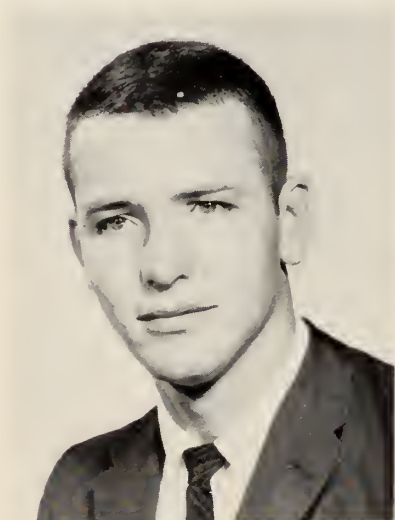


BARBARA PRESTON



CHARLES MILLER

ELIZABETH MOCK



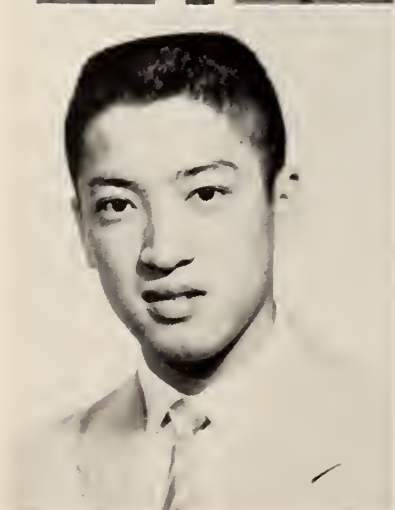
PENN E. MYRICK



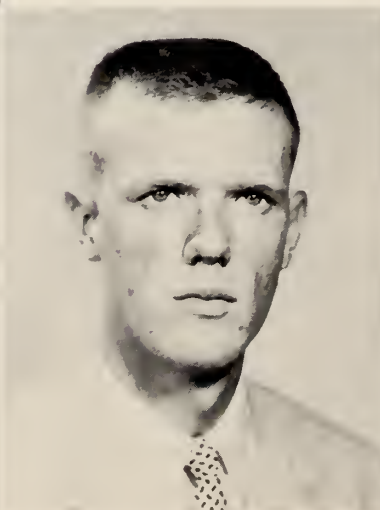
JON MONSON



VIRGINIA MORGAN



GIM SHEK NG



PAUL POPPELL



DOROTHY PORTER



THOMAS J. REAGAN



MARGARET RINGWALD



FRANK P. ROSSITER



MIRIAM RUSHING



BILLY C. SANDERS



WAYNE SEAY



WAYNE R. SIMPSON



JOE B. SMITH

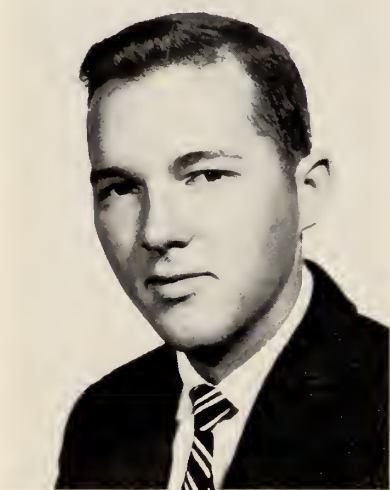


SANDRA SMITH

ANN SPENCER



VIRGINIA STANLEY



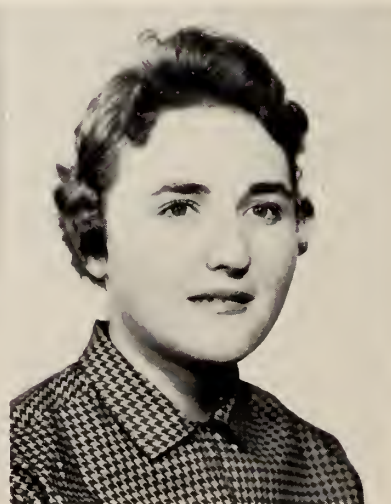
WILLIAM C. STROZIER



JOHN H. SULLIVAN



DALE SUTTON



MARY SUE SWEENEY



EUGENE H. TAYLOR



SHARON THIGPEN



JERRY L. TUTTLE



WILLIAM J. WALSH



BERNICE WARR



HAL WILLET

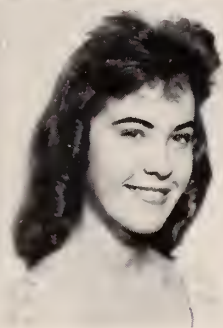
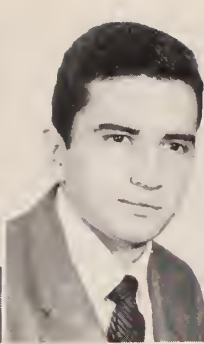


CHARLES S. WILLYARD



FRESHMAN CLASS OFFICERS

John W. Hester, Vice President; Catherine Embry, Secretary; Robert Seedlock, Treasurer; Charles G. Ray, President.

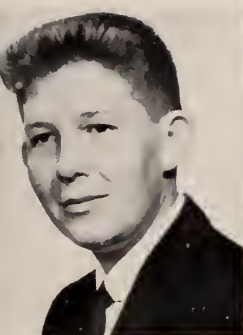


James Abernathy
Diane Adams

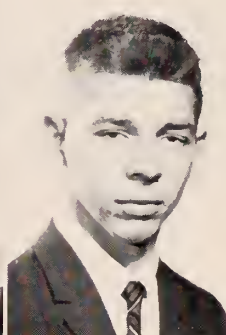
Henry Alban
Karen Alexander

Gail Anderson
Kirk Anderson

Sally Anderson
Howard Arata



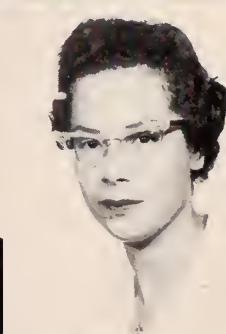
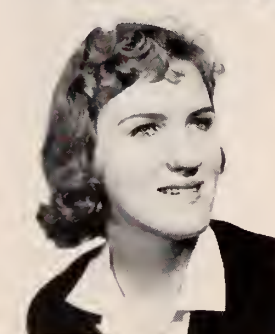
George Askew
Alan Atkinsan



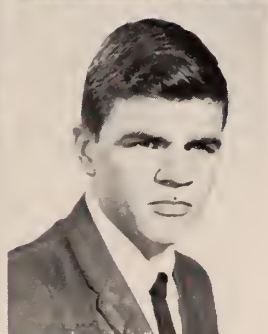
Jane Batayias
Arnold Bazemare



Janice Bacan
Kay Banks



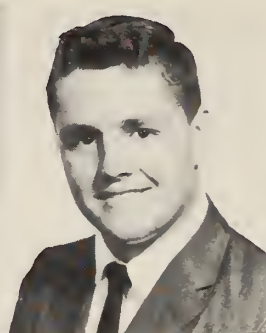
Lynda Beach
Jaan Beasley



Barbara Barlaw
Glenn Barnard



Richard Beiser
Calvin Bennett

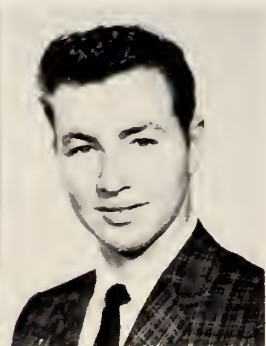
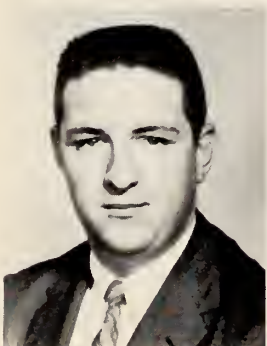


Willis Blackburn
Robert Bogo, Jr.

Tammy Baane
Stephanie Bawers

Ralph Bawyer
Linda Bayd

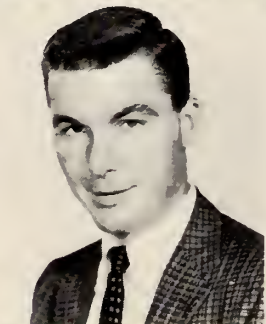
Ernie Boykin
Charles Brinson



John Brinson
John Browning



Suzanne Carter
Betty Chapman



Sandra Burke
James Cargill



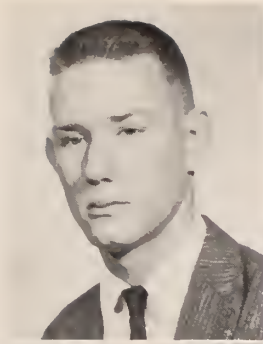
Sharon Clark
Darothy Clarke



Barbera Carrall
Caral Carson



Gerald Claxtan
Jahn Cliftan



Dick Cope
Henry Cottle

Caral Cottan
Arthur Caward

Donald Crafts
Marcus Craslyn

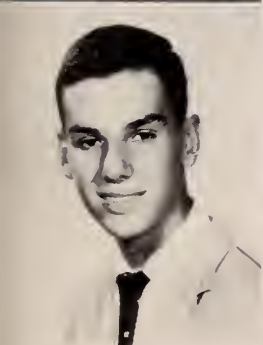
Sara Cubbedge
Robert Daniels



Judy Davis
Robert DeLoach



Martha Jean Daraugh
Rachel Dauglas



Steve DeLoach
Patty Demas



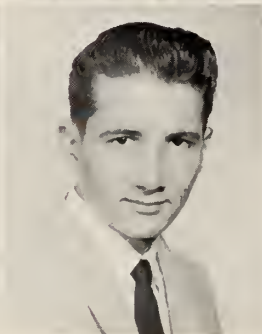
David Druggan
C. Les Eargle



Billy DeZaort
Tracy Dixan



Jimmy Edenfield
Kate Ehlers



Eileen Ehmann
Fred Elmgren

Catherine Embry
Jae Essary

John Exley
Robert Falligant

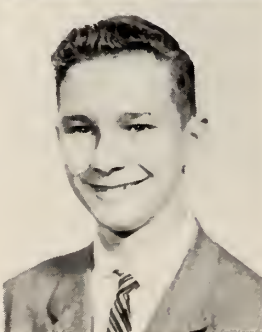
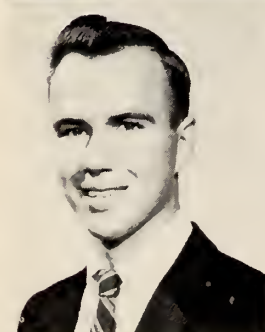
Ann Farren
Mary Ann Feus



Carl Fleischaker
Martin Fleischaker



Narma Gannom
Harry Garven



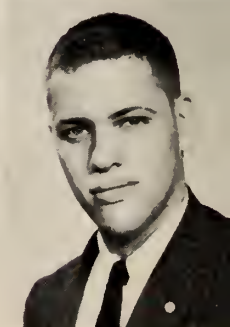
Raymond Floyd
Andrew Fauntain



Willye Getsinger
Meta Gignilliat



Camilla Ann Franklin
Donald Gale



Jeannine Girard
Howard Glassman



Mary Ellen Gleason
George Gadfrey

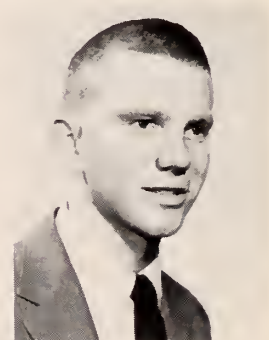
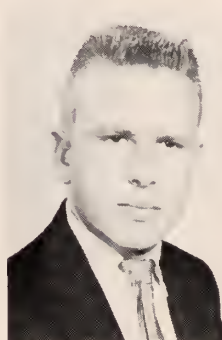
John Gadfrey
Roselle Gan

Judy Graves
Marie Green

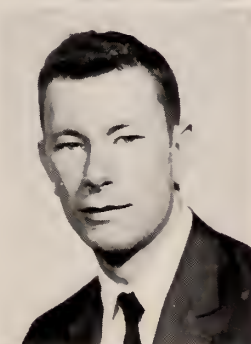
James Griffin
Judy Habas



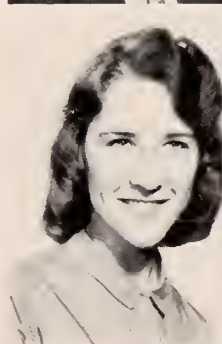
Jerald Hadaway
Janell Hadsack



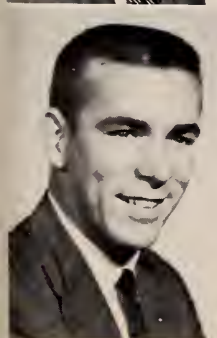
Lee Hatcher
Tammy Hatrick



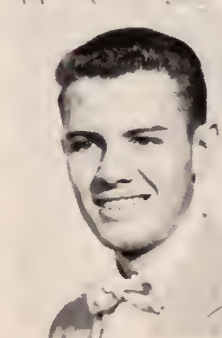
John Hall
Richard Harms



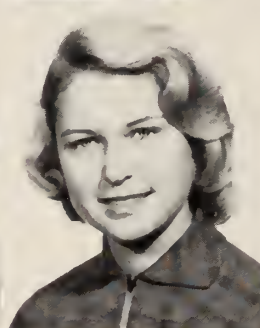
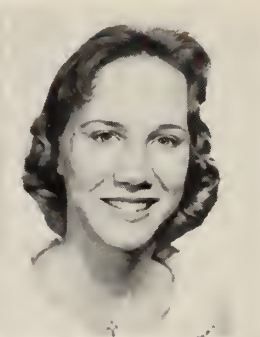
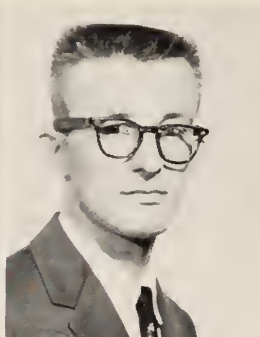
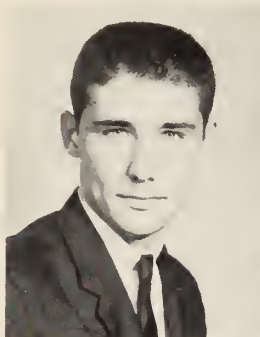
Gail Haupt
Hayden Gibsan



Donald Hartley
Linda Harville



Emary Heidt
Missy Heriat

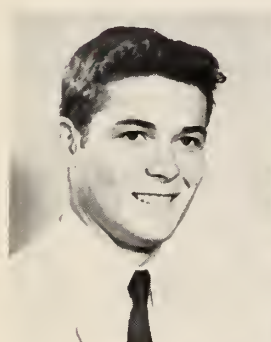


John Hester
Leona Hinely

Herbert Hodges
Judy Hodges

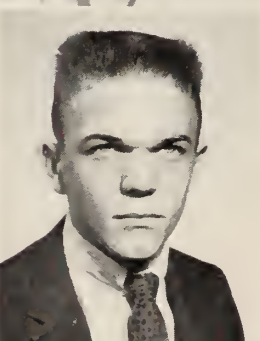
Anna Holmes
Lucy Ann Holt

Sandra Hosti
Linda Hubert



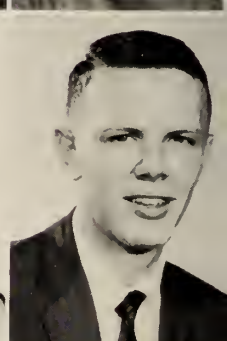
Johnny Humphreys
Dana Hurst

Cleo Jenkins
Betty Johnson



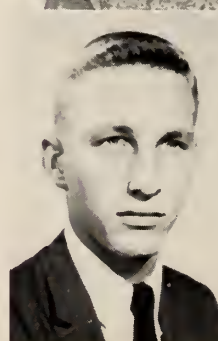
Stratton Ingram
George Jackson

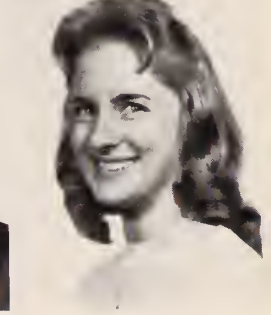
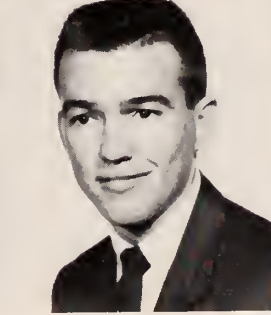
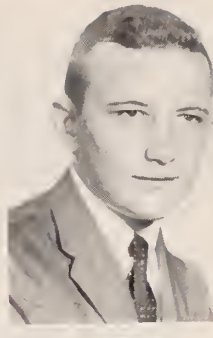
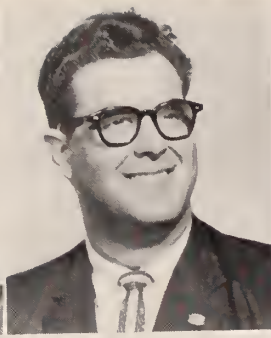
Bobbie Kay Johnson
Clifford Johnson



Diane Jarriel
Carolyn Jenkins

Paul Johnson
Monty Jones



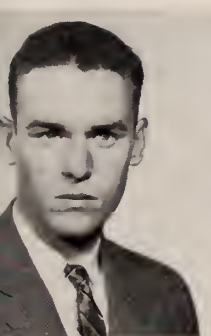


Linda Kaminsky
Simone Kondel

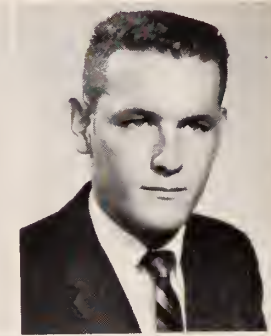
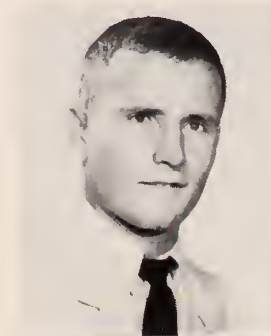
Louis Karacastas
Michel Kavanaugh

Lynn Kendrick
Marian Kennickell

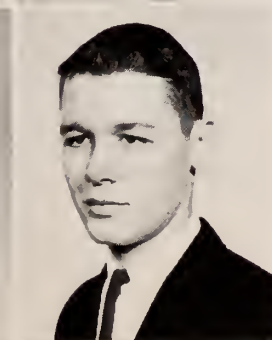
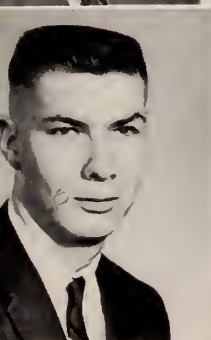
Jahn Kerr
Mary Kicklighter



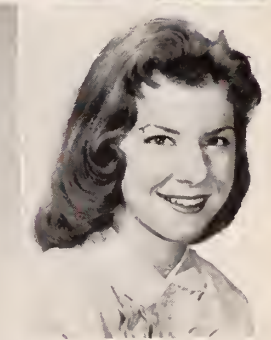
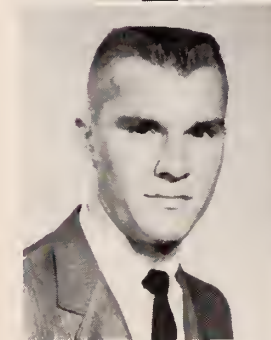
Wendell Kicklighter
Becky Kiley



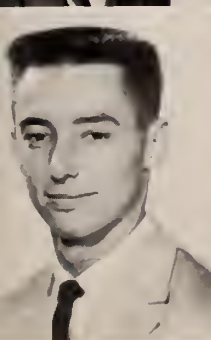
Mills B. Lane
Ronald Lanier



Charles Kleinpeter
Richard Knight



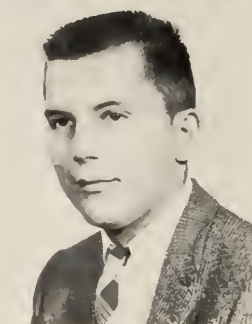
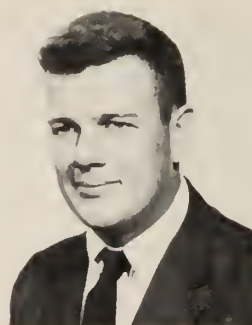
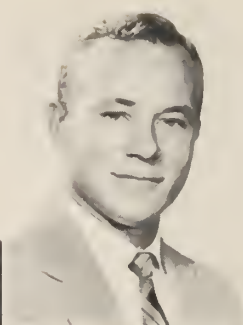
Carl Lettaw
Sylvia Leonard



William Knight
Judy Lane



Deanne Levine
Gerald Lang

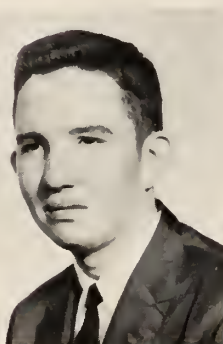


Ernest Lowden
Bonnie Lubmon

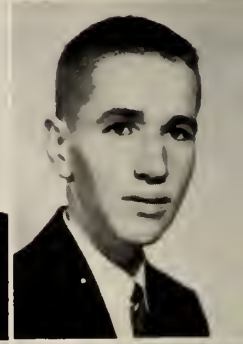
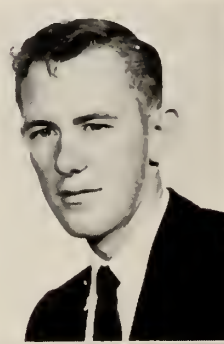
William Mallord
Joe Morcus

Mourice McForland
Peggy McLeod

Kenny Medernoch
Edward Melroy



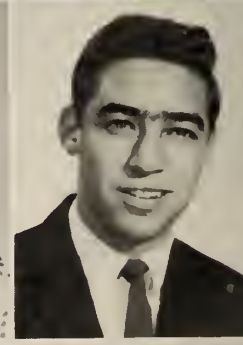
Nelson Messinger
Rondoll Miller



Lomor Morris
John Muller



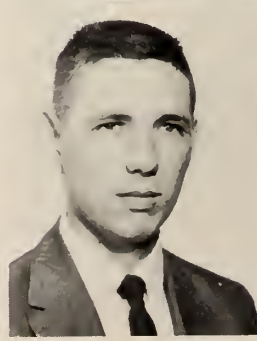
Gerold Missroom
Linda Gail Mock



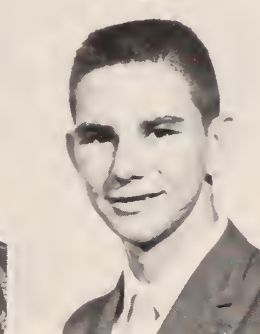
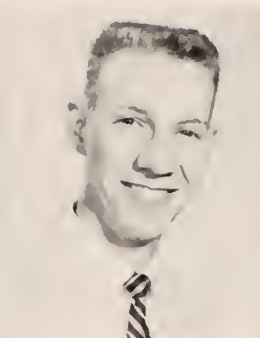
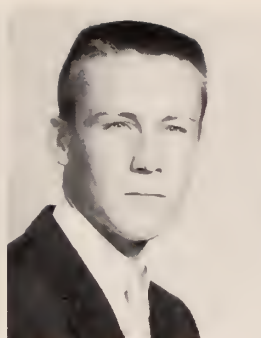
Margaret Neose
Howard Neimon



Sandro Mock
Jenne Moody



Donny NeSmith
Brenda Newsome

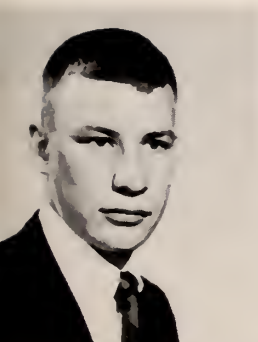


Nancy Newton
Thomas Nolan

George Narrell
Beatrice Narris

William O'Leary
George Outlaw

Harriet Owens
Marian Pacetti



James Padgett
Nelsan Padgett

Susan Paole
Richard Pawell



Gayle Payne
Glenda Perry

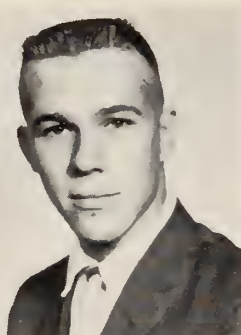
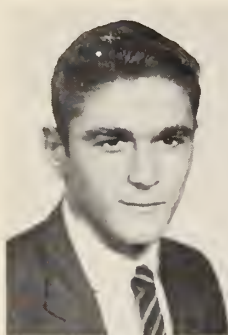
Anne Quarles
Alex Quarterman



Jude Phillips
Charles Phillips

Alfred Quinn
Steve Reeves



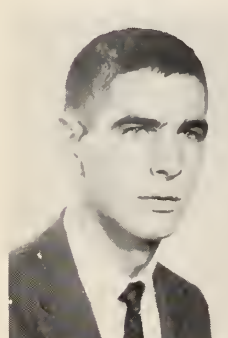


Joyce Rommoge
Nino Ravenscroft

Charles Roy
Honnoh Reid

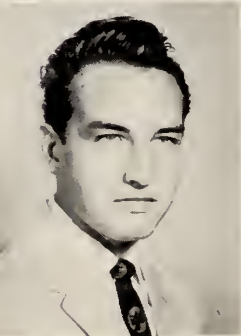
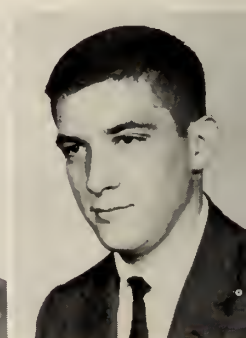
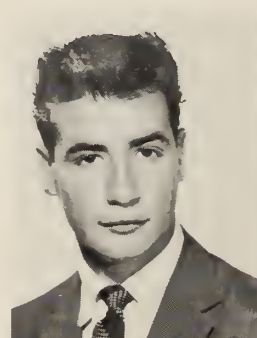
Mory Ann Riner
James Rhoden

Jerome Rountree
James Royol



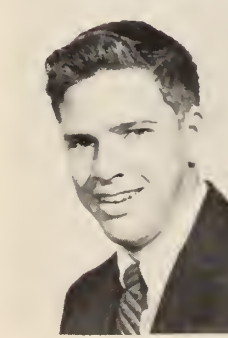
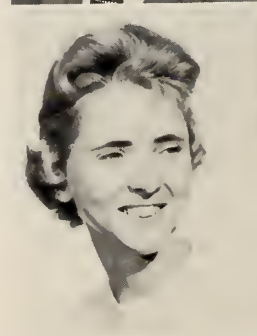
John Salter
Mory Sontos

Bobby Seedlock
John Seyle



Jerry Schoelkopf
Williom Schneider

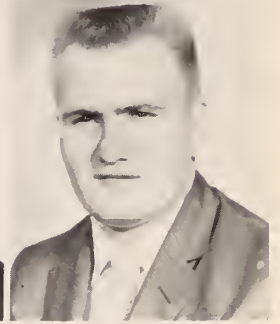
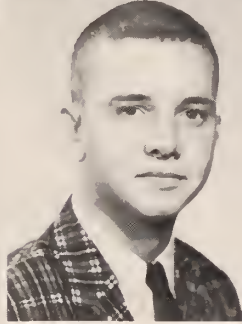
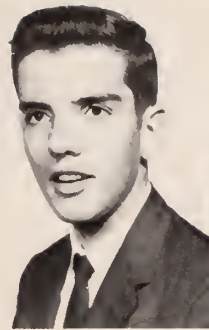
Betty Shorpe
Thomos Sheffield



John Schwonebeck
Joyce Scott

Moreen Silver
Rondoll Sims





Jahn Reckling
Jenine Smith

Joseph Smith
Harold Smith

Barrie Snyder
Margie Sutherland

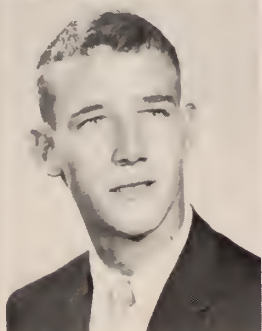
Kay Stafford
Gary Stallcup



Ann Stelljes
Carl Stephens



Thomas Tatum
Babby Tawsan



Danny Stewart
Travis Strahan



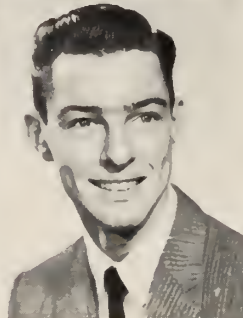
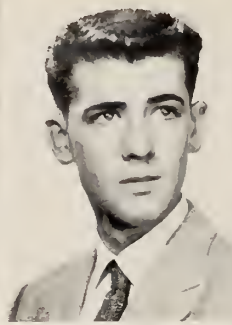
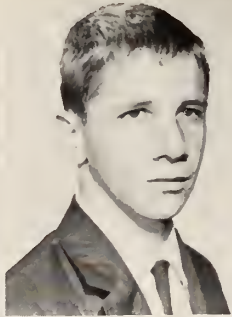
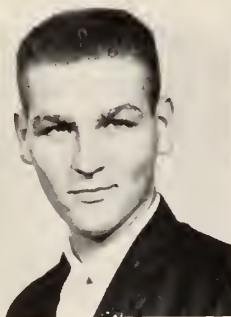
Tommy Tucker
Catherine Van Diviere



Marcia Summerlin
Martha Ja Sweat



Carnellia Van Diviere
Naarah Van Puffelen

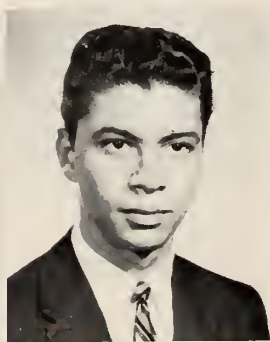


Harvey Wages
Brenda Wainwright

Waddy Waldhaur
Stephen Walsh

Mark Ward
Hardy Warmack

Billy Warren
Gwenn Waters



Martha Faye Webb
Larry Weiner



Angela Whittington



Katherine Wellbrock
Emory Wells



Judy Williams



Dorothy White
Jerome White



Karl Wiselogel



THE 'GEECHEE, 1956

ADVERTISERS

YOUR FUTURE DEPENDS ON YOU!

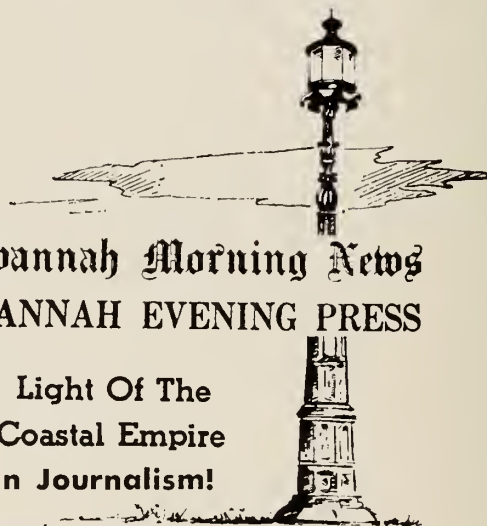
Your future depends on you now—and every day of your life. It is a challenge that every man and woman must meet—in some way. But there is no set formula, no certain way to meet that dynamic challenge called life. And that is why the future is always exciting—because it is as different as the events that fill and characterize our each succeeding day. So meet your life's challenge today—by looking forward to tomorrow.

Savannah Morning News SAVANNAH EVENING PRESS

Light Of The
Coastal Empire

Newspapering . . . A Dynamic Career In Journalism!

SAVANNAH'S OLD HARBOR LIGHT - ERECTED 1858



SAVANNAH'S FOUR-MOST RESTAURANTS...



- **OUR HOUSE**
VICTORY DR. AT SKIDAWAY RD.
- **Triple XXX**
VICTORY DR. AT GRAYSON STAD.
- **Harvest House**
2 MILES SOUTH ON U. S. 17
- **The Pirates' House**
20 EAST BROAD STREET



We LOVE Children!



Compliments

of

WEIS & SAVANNAH THEATRES

WHERE

*movies are always
at their best*

GLOBE SHOE CO.

FINEST FAMILY SHOE STORE
IN THE SOUTHEAST



17 Broughton Street East



To find a solution to a perplexing problem whether it be geometry or English Lit., is sometimes difficult and Reddy agrees. But, when it comes to the convenience of Electricity, Reddy knows all the answers. So, whenever you need Reddy to go to work for you, day or night, he's ready at a flip of a switch.



MASON, INC.

OFFICE SUPPLIES — PRINTING

DITTO AGENT

18 Bryan St., West

AD 2-4192

Fine's

Where Fashions Make Their Debut in

Savannah

Your Headquarters for:

Teens
and *Junior*

116 East Broughton Street

Compliments of

THE DeSOTO HOTEL

"A Savannah Tradition"



A. B. C. Furniture Company
Buck Furniture Company
Chatham Furniture Company
Deese Furniture Company
Dream House Furniture Company
Dubose & Davis
Gilbert Furniture Company
Green Company
Haverty Furniture Company
I. C. Helmly Furniture Company

Home Furnishing Company
Klug's
Liberty Furniture Company
Lindsay & Morgan Company
Lovett Furniture Company
Maxwell Brothers
B. J. Sheppard Furniture Company
Shoob Furniture Company
Solomon Furniture Company
Taylor Furniture Company

JOE GARDNER

DRESS FABRICS — MATERIALS
PATTERNS — SEWING NEEDS

17 West Congress
and
Cross Roads Shopping Center

COIFFURES BY IRENE

FASHIONS IN HAIRSTYLING

IRENE WILLIAMS, *Owner*

Phone EL 5-8501
Medical Arts Shopping Center
Waters Road

JOE PRICE, INC.

"The Luggage Shop"

luggage by

AMERICAN TOURISTER — SAMSONITE
LADY BALTIMORE—ATLANTIC PRODUCTS
SKYWAY — WHEARY

14 West Broughton St.
(next to Anton's Restaurant)

Asher's

for feminine fashions

that *Joseph's* look

JOSEPH'S

25 West Broughton

PATRONIZE

OUR

ADVERTISERS

THE GEECHEE STAFF



WOVEN WOOD
PRODUCTS

Unitron

CUSTOM MADE WOVEN WOODS AND MATCH STICK —
DRAPERIES — CAFE CURTAINS — ROLL-UP SHADES — FOLDING
DOORS — WOOD AND METAL VENETIAN BLINDS —
CORNICES AND ALL TYPES OF DRAPERY HARDWARE

PHONE ADams 6-9070

SKIDAWAY ROAD AT VICTORY DRIVE

• SAVANNAH, GEORGIA

CONGRATULATIONS!

We invite you to bank with us.

THE CITIZENS & SOUTHERN NATIONAL BANK

"No account too small, none too large."

See C & S for a convenient Charge Card

MEMBER FDIC



AD. 2-5149

WEST CONGRESS STREET
20 EAST DERENNE AVE.

Compliments of

HOME FEDERAL SAVINGS and LOAN ASSOCIATION

3 1/2% on Insured Savings

Current Rate

37 Bull Street

SAVANNAH LARGEST FABRIC CENTER



dress fabrics—drapery and slip cover materials—
traverse rods and drapery hardware—
upholstery fabrics

BARNARD and CONGRESS STREETS

Smith Brothers

"Savannah's Finest Foods"



41st and Habersham Sts.
SAVANNAH, GEORGIA



Where 5,300

employees



earn



\$27,000,000 yearly

converting pulpwood



into paper bags



and

boxes



for the nation.



UNION BAG - CAMP

Paper Corporation

SAVANNAH, GEORGIA



INE PRINTING SINCE 1887—

That's the story of Foote & Davies, Inc.

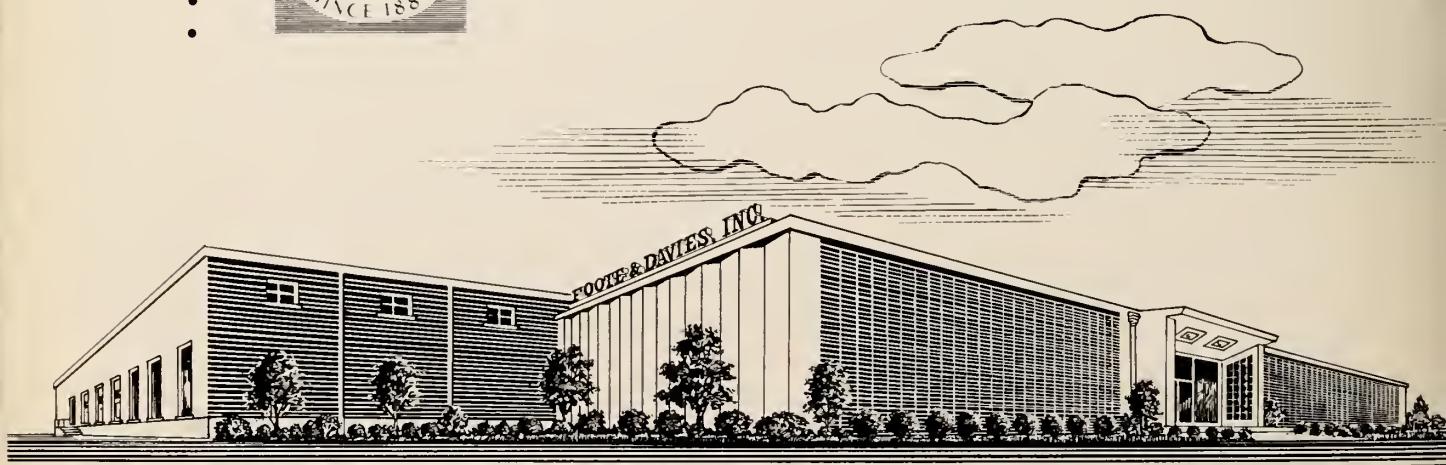
Today we have one of the most modern and best equipped plants in the country. And fine Yearbooks have always been an important part of our business. Our craftsmen believe in quality and strive to produce the "best in the Industry." Our excellent printing doesn't just happen—it's a combination of production research, craftsmanship, and painstaking supervision.

FOOTE & DAVIES, INC.

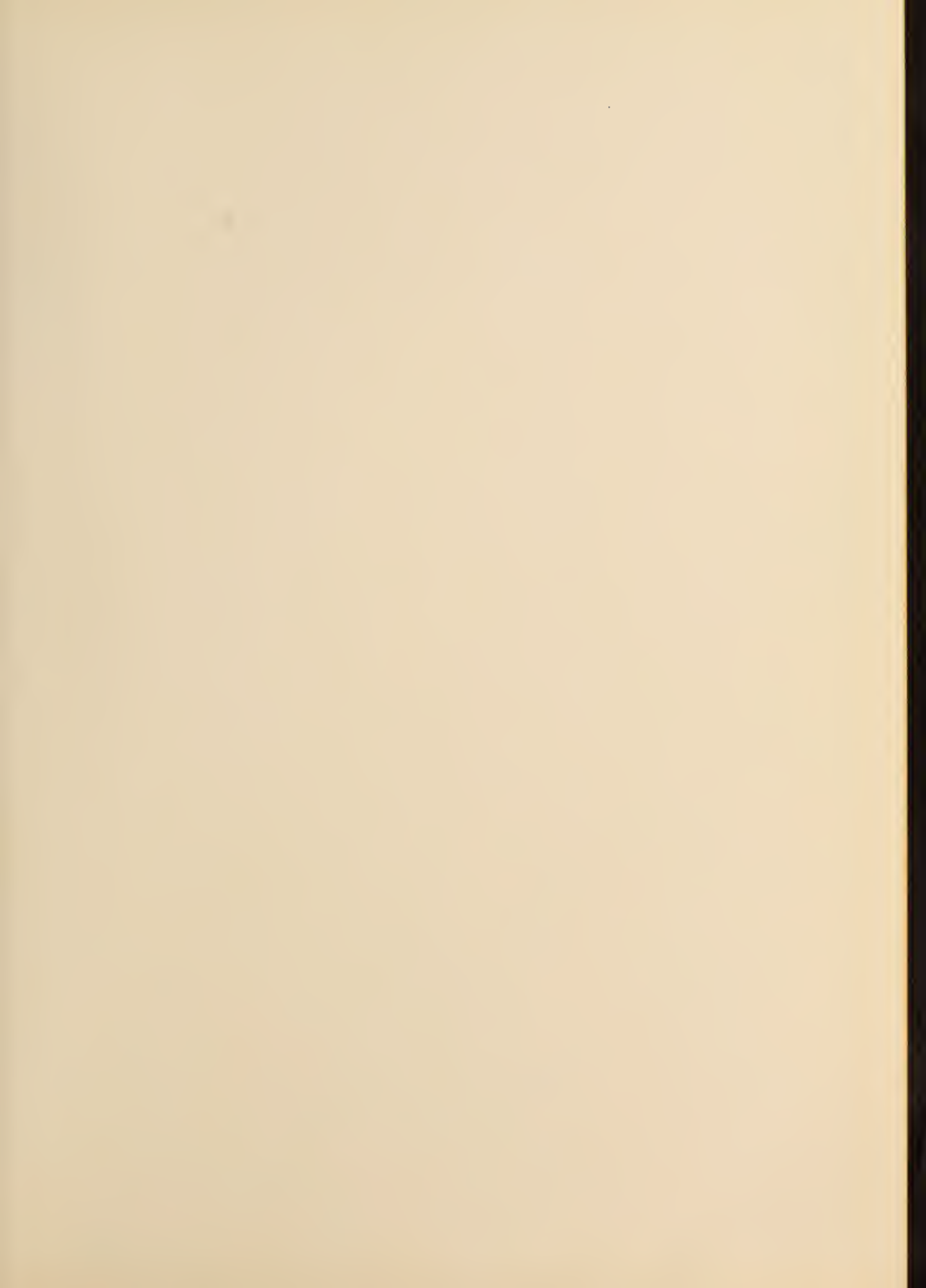
764 MIAMI CIRCLE, N. E.

Printers • Lithographers • Book Manufacturers

ATLANTA 24, GEORGIA







FOR REFERENCE
Do Not Take From This Room

