

Duquesne University

Duquesne Scholarship Collection

Policy

Limpopo Resilience Lab

3-2015

Network Inventory Map Book 1: Limpopo

South Africa

Follow this and additional works at: <https://dsc.duq.edu/limpopo-policy>



Part of the [Agriculture Law Commons](#), [Environmental Law Commons](#), and the [Water Law Commons](#)



water & sanitation

Department:
Water and Sanitation
REPUBLIC OF SOUTH AFRICA



REVIEW, EVALUATION AND OPTIMISATION OF THE SOUTH AFRICAN WATER RESOURCES MONITORING NETWORK

Network Inventory

VOLUME 2: MAP BOOK

DRAFT

MARCH 2015



Obtainable from

Chief Directorate: Water Information Management

Department: Water and Sanitation

Private Bag X313

PRETORIA

0001

PREFACE

The Department of Water and Sanitation (DWS) is the custodian of ten national monitoring programmes. The overall aim of this project is to undertake an evaluation of each monitoring network, in its present condition, and to redesign and realign the network based on scientific analysis and the strategic and management objectives of DWS and of the country as a whole. The water resources monitoring network will be optimised to ensure sustainable, relevant and up-to-date data of an acceptable quality

This Network Inventory Task focussed on the production of maps to illustrate the spatial distribution of the existing monitoring stations for these ten monitoring programmes. The deliverable from this Network Inventory task, together the User Requirements Task will be used to identify shortcomings in the current networks.

The metadata from each of the ten monitoring networks was analysed and descriptive labels were developed for each station to describe the temporal information (record period), open/closed, completeness, etc.

This task was undertaken by a team of specialists, one for each of the following categories of data:

- Surface water quantity.*
- Surface water quality.*
- Groundwater levels and quality.*
- Biophysical Data*
- Hydro-meteorology*

This was followed by the development of five thematic maps with information on the spatial distribution of these ten monitoring points per new Water Management Area (WMA) have been compiled. Even though other institutions in South Africa are also collecting surface water, groundwater, Hydro-meteorological, water quality, eco-health, mostly for their own interests and applications, only the Hydro-meteorological networks of ARC and SAWS data were included on these maps since these data are used daily by DWS. Due to an abundance of groundwater stations in a number of WMA's, station numbers, rather than the detailed developed labels, were adopted for labelling the groundwater maps. The detailed groundwater labels are included as Appendix A.

The thematic Maps produced per nine WMA's are as follows:

A2-size maps were developed for the nine new WMAs per data category, as follows:

- 1) Limpopo WMA*
- 2) Olifants WMA*
- 3) Inkomati-Usuthu WMA*
- 4) Pongola-Mtamvuna WMA*
- 5) Vaal WMA*
- 6) Orange WMA*
- 7) Mzimvubu-Tsitskamma WMA*
- 8) Breede-Gouritz WMA*
- 9) Berg-Olifants WMA.*

Other products developed as part of this Task are data catalogues and Google Earth KMZ-coverages which are very useful to the DWS, external users and to the project team during the new network design.

Subsequent to the completion of the Network Inventory and User Requirements tasks, the Data integrity assessment task will continue to determine the quality of the available data.

Table of Contents

WMA 1 Limpopo

Figure 1.1: WMA 1 - Limpopo: Surface Water Quantity Monitoring Stations

Figure 1.2: WMA 1 - Limpopo: Surface Water Quality Monitoring Stations

Figure 1.3: WMA 1 - Limpopo: Groundwater Level and Quality Monitoring Stations

Figure 1.4: WMA 1 - Limpopo: Biophysical Monitoring Stations

Figure 1.5: WMA 1 - Limpopo: Hydro-meteorological Monitoring Stations

WMA 2 Olifants

Figure 2.1: WMA 2 - Olifants: Surface Water Quantity Monitoring Stations

Figure 2.2: WMA 2 - Olifants: Surface Water Quality Monitoring Stations

Figure 2.3: WMA 2 - Olifants: Groundwater Level and Quality Monitoring Stations

Figure 2.4: WMA 2 - Olifants: Biophysical Monitoring Stations

Figure 2.5: WMA 2 - Olifants: Hydro-meteorological Monitoring Stations

WMA 3 Inkomati-Usuthu

Figure 3.1: WMA 3 - Inkomati-Usuthu: Surface Water Quantity Monitoring Stations

Figure 3.2: WMA 3 - Inkomati-Usuthu: Surface Water Quality Monitoring Stations

Figure 3.3: WMA 3 - Inkomati-Usuthu: Groundwater Level and Quality Monitoring Stations

Figure 3.4: WMA 3 - Inkomati-Usuthu: Biophysical Monitoring Stations

Figure 3.5: WMA 3 - Inkomati-Usuthu: Hydro-meteorological Monitoring Stations

WMA 4 Pongola-Mtamvuna

Figure 4.1: WMA 4 - Pongola-Mtamvuna: Surface Water Quantity Monitoring Stations

Figure 4.2: WMA 4 - Pongola-Mtamvuna: Surface Water Quality Monitoring Stations

Figure 4.3: WMA 4 - Pongola-Mtamvuna: Groundwater Level and Quality Monitoring Stations

Figure 4.4: WMA 4 - Pongola-Mtamvuna: Biophysical Monitoring Stations

Figure 4.5: WMA 4 - Pongola-Mtamvuna: Hydro-meteorological Monitoring Stations

WMA 5 Vaal

Figure 5.1: WMA 5 - Vaal: Surface Water Quantity Monitoring Stations

Figure 5.2: WMA 5 - Vaal: Surface Water Quality Monitoring Stations

Figure 5.3a: WMA 5 - Vaal: Groundwater Level and Quality Monitoring Stations

Figure 5.3b: WMA 5 - Vaal: Groundwater Level and Quality Monitoring Stations

Figure 5.4: WMA 5 - Vaal: Biophysical Monitoring Stations

Figure 5.5: WMA 5 - Vaal: Hydro-meteorological Monitoring Stations

WMA 6 Orange

Figure 6.1: WMA 6 - Orange: Surface Water Quantity Monitoring Stations

Figure 6.2: WMA 6 - Orange: Surface Water Quality Monitoring Stations

Figure 6.3a: WMA 6 - Orange: Groundwater Level and Quality Monitoring Stations

Figure 6.3b: WMA 6 - Orange: Groundwater Level and Quality Monitoring Stations

Figure 6.4: WMA 6 - Orange: Biophysical Monitoring Stations

Figure 6.5: WMA 6 - Orange: Hydro-meteorological Monitoring Stations

WMA 7 Mzimvubu-Tsitsikamma

Figure 7.1: WMA 7 - Mzimvubu-Tsitsikamma: Surface Water Quantity Monitoring Stations

Figure 7.2: WMA 7 - Mzimvubu-Tsitsikamma: Surface Water Quality Monitoring Stations

Figure 7.3: WMA 7 - Mzimvubu-Tsitsikamma: Groundwater Level and Quality Monitoring Stations

Figure 7.4: WMA 7 - Mzimvubu-Tsitsikamma: Biophysical Monitoring Stations

Figure 7.5: WMA 7 - Mzimvubu-Tsitsikamma: Hydro-meteorological Monitoring Stations

WMA 8 Breede-Gouritz

Figure 8.1: WMA 8 - Breede-Gouritz: Surface Water Quantity Monitoring Stations

Figure 8.2: WMA 8 - Breede-Gouritz: Surface Water Quality Monitoring Stations

Figure 8.3: WMA 8 - Breede-Gouritz: Groundwater Level and Quality Monitoring Stations

Figure 8.4: WMA 8 - Breede-Gouritz: Biophysical Monitoring Stations

Figure 8.5: WMA 8 - Breede-Gouritz: Hydro-meteorological Monitoring Stations

WMA 9 Berg-Olifants

Figure 9.1: WMA 9 - Berg-Olifants: Surface Water Quantity Monitoring Stations

Figure 9.2: WMA 9 - Berg-Olifants: Surface Water Quality Monitoring Stations

Figure 9.3: WMA 9 - Berg-Olifants: Groundwater Level and Quality Monitoring Stations

Figure 9.4: WMA 9 - Berg-Olifants: Biophysical Monitoring Stations

Figure 9.5: WMA 9 - Berg-Olifants: Hydro-meteorological Monitoring Stations

Appendix A

Detailed Groundwater Level and Quality Monitoring Station Labels

WMA 1:
Limpopo



Legend

Surface Water Quantity Stations

- River Flow
- Dam Volume
- Canal Flows
- Groundwater Eyes
- Tidal
- Closed

Rivers
Dams
Primary Catchment Boundaries
Secondary Catchment Boundaries
Quaternary Catchment Boundaries
Water Management Area

Mean Annual Runoff

- 0 - 2.5 mm
- 2.5 - 5 mm
- 5 - 10 mm
- 10 - 20 mm
- 20 - 50 mm
- 50 - 100 mm
- 100 - 200 mm
- 200 - 500 mm
- > 500 mm

LABEL KEY

Station Number: A2H083-Rf-O-34yr-0%-1945

Parameter measured: Rf (River flow), O (Open), 34yr (34 years data), 0% (0% gap), 1945 (Latest DT date)

Status: O = Open, C996 = Closed (since 1996)

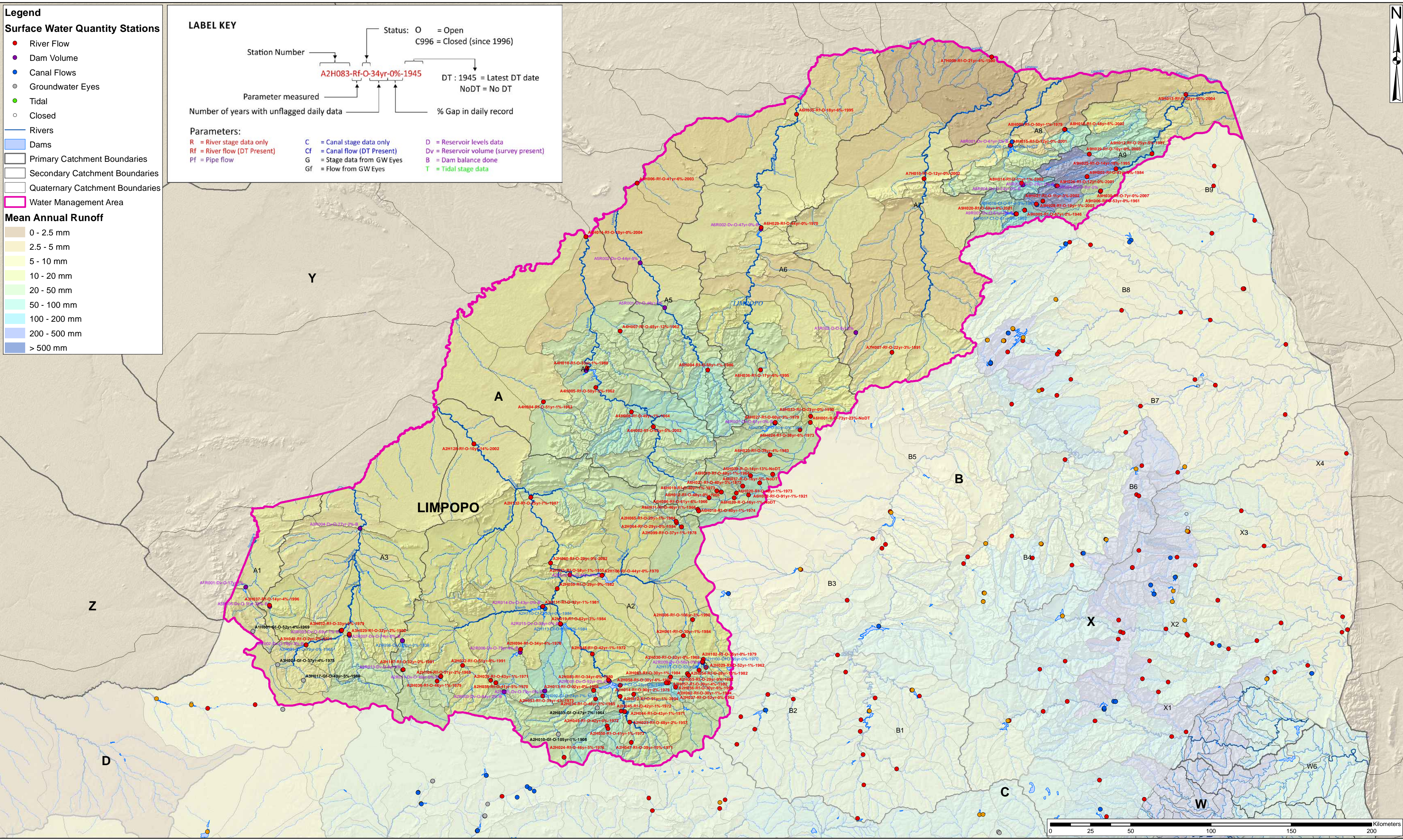
DT: 1945 = Latest DT date, NoDT = No DT

Number of years with unflagged daily data: 34

% Gap in daily record: 0%

Parameters:

- R = River stage data only
- Rf = River flow (DT Present)
- Pf = Pipe flow
- C = Canal stage data only
- Cf = Canal flow (DT Present)
- G = Stage data from GW Eyes
- Gf = Flow from GW Eyes
- D = Reservoir levels data
- Dv = Reservoir volume (survey present)
- B = Dam balance done
- T = Tidal stage data



Project Title: Review, Evaluation and Optimisation of the South African Water Resources Monitoring Network		Scale 1:1 500 000 (When page size is: A2 landscape)	Figure 1.1
Map Title: WMA 1 - Limpopo: Surface Water Quantity Monitoring Stations		Projection: Geographic Datum: Hartbeesthoek 1994	Sources: DWS: Water Information Management Water Resources of South Africa 2005 (WRC)
Whilst every care has been taken in compiling the information on this map, AECOM cannot accept responsibility for any inaccuracies.		Compiled By: LC Gallagher GIS QC By: M Storie - PGP 0124 Approved By: E van Niekerk Date Saved: 2015/03/16 Project Number: 60326707 Map Ref: SW_Quantity_Limpopo_A2L.mxd Revision: 01	© Copyright





Legend

Surface Water Quality Stations

- River Flow
- Dam Volume
- Canal Flows
- Groundwater Eyes
- Tidal
- Closed
- Rivers
- Dams
- Secondary Rivers_limpopo
- Primary Catchment Boundaries
- Secondary Catchment Boundaries
- Quaternary Catchment Boundaries
- Water Management Area

Mean Annual Runoff

- 0 - 2.5 mm
- 2.5 - 5 mm
- 5 - 10 mm
- 10 - 20 mm
- 20 - 50 mm
- 50 - 100 mm
- 100 - 200 mm
- 200 - 500 mm
- > 500 mm

LABEL KEY

Station Number (HYDSTRA or WMS) | CPO-V15-F4W|EuC|MO-V4-FW

Maximum number of samples

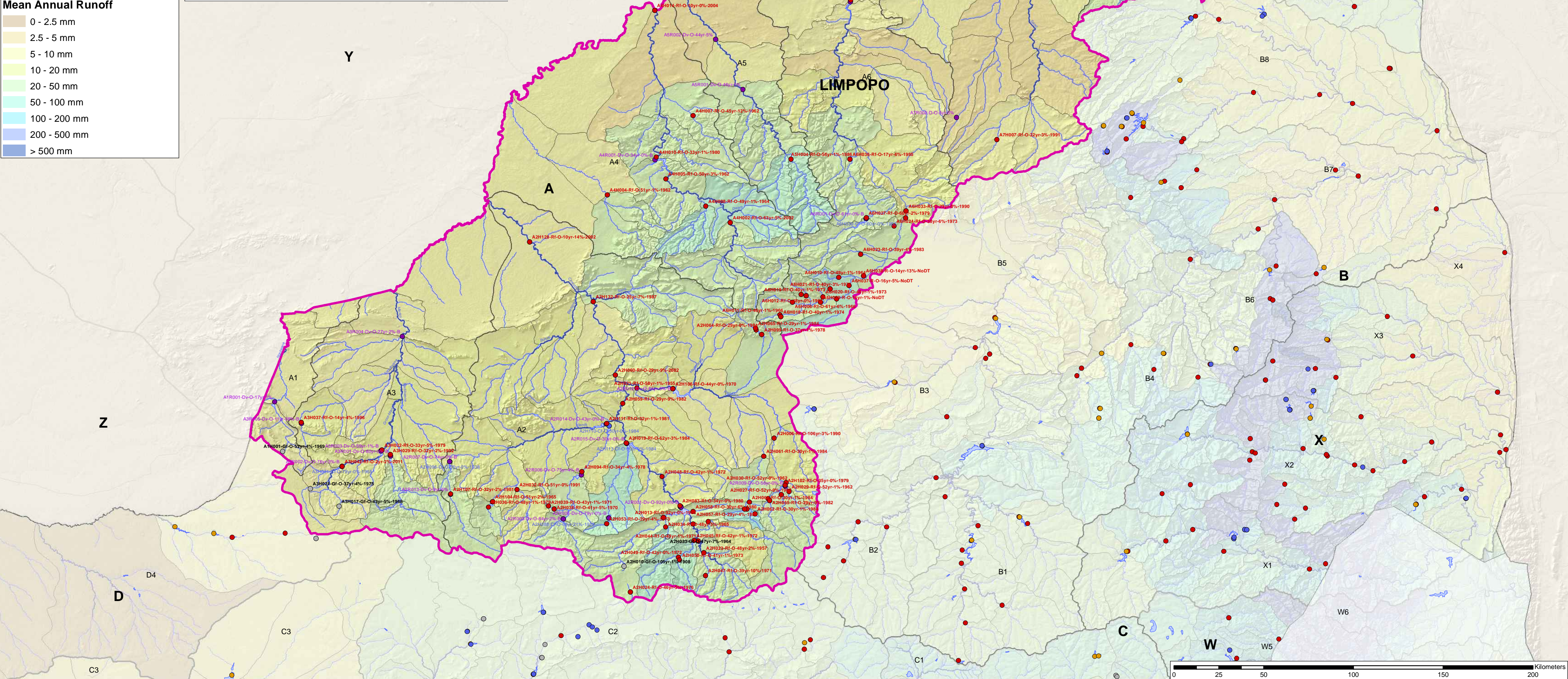
T = Monitoring Network Types:

CO = Open Chemical	MO = Open Microbial	TO = Open Toxicity
CPO = Open Priority Chemical	MC = Closed Microbial	TC = Closed Toxicity
CC = Closed Chemical	RO = Open Radioactivity	WO = Open Wetlands
EuO = Open Eutrophication	RC = Closed Radioactivity	WC = Closed Wetlands
EuC = Closed Eutrophication		
EsO = Open Estuarine		
EsC = Closed Estuarine		

V = Number of Variables Monitored for Network

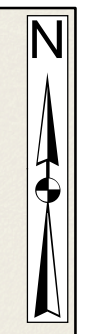
F = Recommended Frequency of Sampling

FW: Weekly Action Frequency	F8W: 8 Weekly Action Frequency
F2W: 2 Weekly Action Frequency	F12W: 12 Weekly Action Frequency
F4W: 4 Weekly Action Frequency	F24W: 12 Weekly Action Frequency
F6W: 6 Weekly Action Frequency	



Project Title:	Review, Evaluation and Optimisation of the South African Water Resources Monitoring Network	Scale 1:1 500 000 (When page size is: A2 landscape)	Figure 1.2
Map Title:	WMA 1 - Limpopo: Surface Water Quality Monitoring Stations	Projection: Geographic Datum: Hartbeesthoek 1994	Sources: DWS: Water Information Management Water Resources of South Africa 2005 (WRC)
Compiled By: LC Gallagher GIS QC By: M Storie - PGP 0124 Approved By: E Van Niekerk Date Saved: 2015/03/16 Project Number: 60326707 Map Ref: SW_Quality_Limpopo_A2L.mxd Revision: 01		Whilst every care has been taken in compiling the information on this map, AECOM cannot accept responsibility for any inaccuracies. © Copyright	





Legend

Quality Stations

- Rainfall Open
- Rainfall Closed
- Groundwater

Groundwater Levels Stations

- Open
- Closed

Rivers

Primary Catchment Boundaries

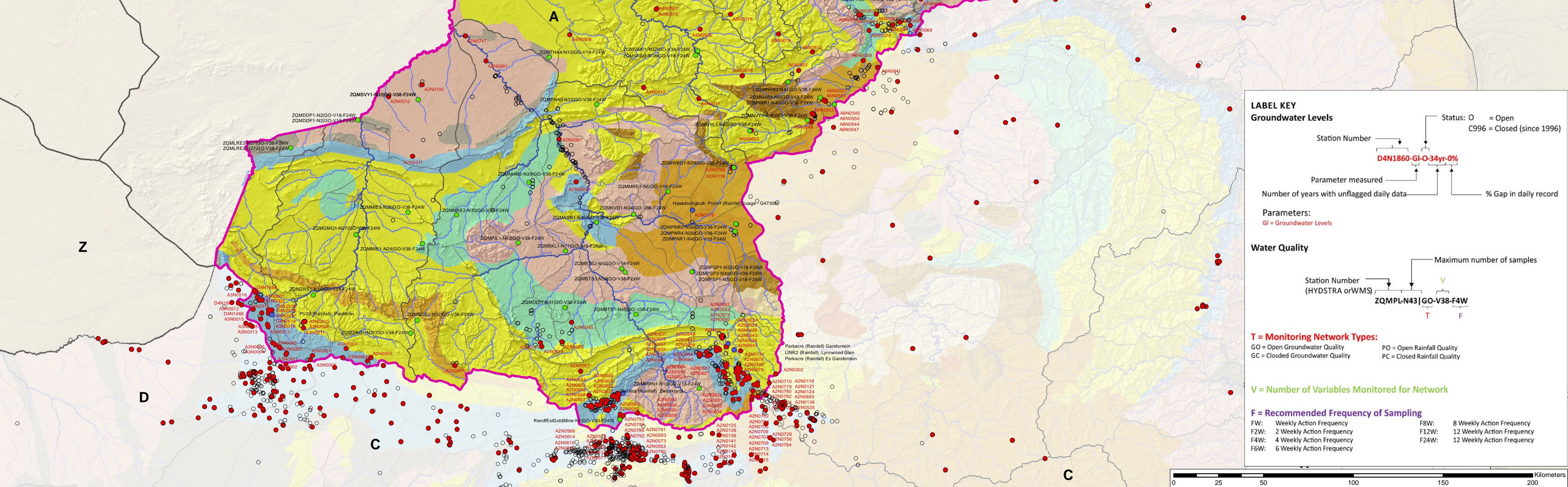
Secondary Catchment Boundaries

Quaternary Catchment Boundaries

Water Management Area

Simplified Geology (WR90)

- Undifferentiated assemblage of compact sedimentary extrusive and intrusive rocks
- Intercalated assemblage of compact sedimentary and extrusive rocks
- Compact sedimentary strata
- Porous unconsolidated and consolidated sedimentary strata
- Tillite
- Assemblage of tillite and shale
- Assemblage of tillite, shale and sandstone
- Principally arenaceous strata
- Principally argillaceous strata
- Intercalated arenaceous and argillaceous strata
- Dolomite and limestone
- Acid and intermediate lavas
- Basic / Mafic lavas
- Acid and intermediate extrusives
- Basic / Mafic and ultramafic intrusives



LABEL KEY

Groundwater Levels

Station Number: **D4N1860-GI-O-34yr-0%**

- Status: O = Open, C996 = Closed (since 1996)
- Parameter measured: GI = Groundwater Levels
- Number of years with unflagged daily data: 34
- % Gap in daily record: 0%

Water Quality

Station Number (HYDSTRA or WMS): **ZQMPL-N43|GO-V38-F4W**

- T = Maximum number of samples
- F = Recommended Frequency of Sampling

T = Monitoring Network Types:

- GO = Open Groundwater Quality
- GC = Closed Groundwater Quality
- PO = Open Rainfall Quality
- PC = Closed Rainfall Quality

V = Number of Variables Monitored for Network

F = Recommended Frequency of Sampling

FW: Weekly Action Frequency	F8W: 8 Weekly Action Frequency
F2W: 2 Weekly Action Frequency	F12W: 12 Weekly Action Frequency
F4W: 4 Weekly Action Frequency	F24W: 12 Weekly Action Frequency
F6W: 6 Weekly Action Frequency	

Project Title: Review, Evaluation and Optimisation of the South African Water Resources Monitoring Network

Map Title: WMA 1 - Limpopo: Groundwater Quality and Water Level Monitoring Stations

Whilst every care has been taken in compiling the information on this map, AECOM cannot accept responsibility for any inaccuracies.

Scale 1:1 500 000
(When page size is: A2 landscape)

Figure 1.3

Projection: Geographic
Datum: Hartebeesthoek 1994

Sources:
DWS: Water Information Management
Water Resources of South Africa 2005 (WRC)

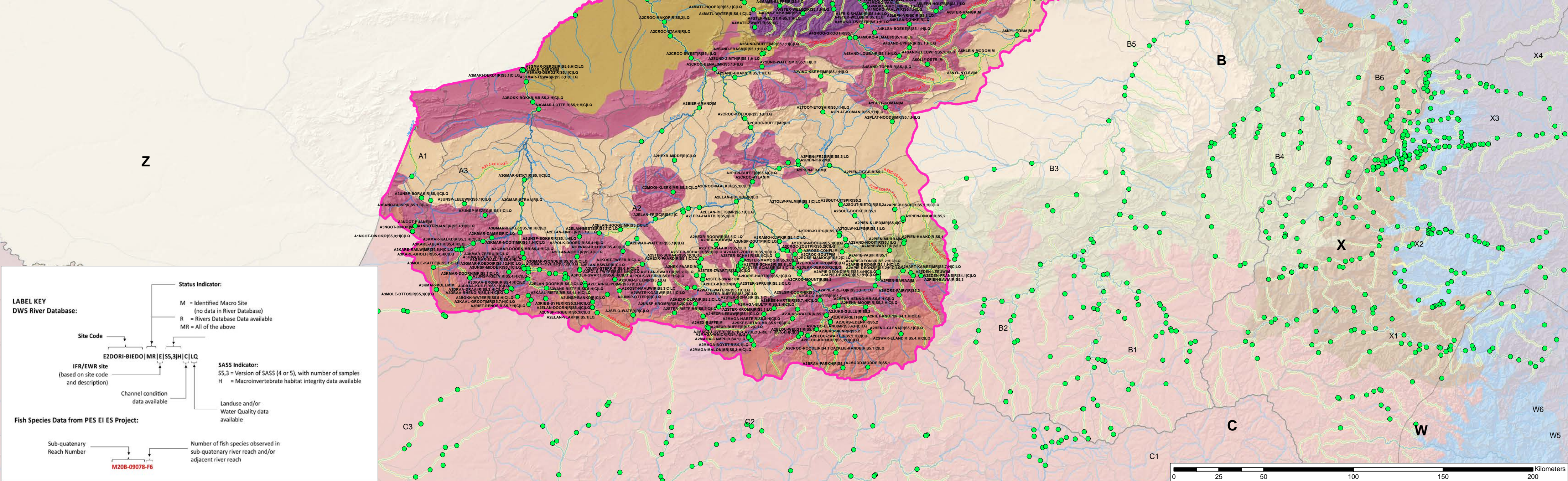
Compiled By: LC Gallagher
GIS QC By: M Storie - PGP 0124
Approved By: E Van Niekerk
Date Saved: 2015/03/16
Project Number: 60326707
Map Ref: GWQuality_Limpopo_A2L.mxd
Revision: 01



© Copyright



- Legend**
- DWS Rivers Database Sites with Data
 - River reaches with indicated number of observed fish species
 - Rivers
 - Primary Catchment Boundaries
 - Secondary Catchment Boundaries
 - Quaternary Catchment Boundaries
 - Water Management Area
- Ecoregions Level**
- LIMPOPO PLAIN
 - SOUTPANSBERG
 - LOWVELD
 - NORTH EASTERN HIGHLANDS
 - NORTHERN PLATEAU
 - WATERBERG
 - WESTERN BANKENVELD
 - BUSHVELD BASIN
 - EASTERN BANKENVELD
 - NORTHERN ESCARPMENT MOUNTAINS
 - HIGHVELD
 - LEBOMBO UPLANDS
 - NATAL COASTAL PLAIN
 - NORTH EASTERN UPLANDS
 - EASTERN ESCARPMENT MOUNTAINS
 - SOUTH EASTERN UPLANDS
 - NORTH EASTERN COASTAL BELT
 - DROUGHT CORRIDOR
 - SOUTHERN FOLDED MOUNTAINS
 - SOUTH EASTERN COASTAL BELT
 - GREAT KAROO
 - SOUTHERN COASTAL BELT
 - WESTERN FOLDED MOUNTAINS
 - SOUTH WESTERN COASTAL BELT
 - WESTERN COASTAL BELT
 - NAMA KAROO
 - NAMAQUA HIGHLANDS
 - ORANGE RIVER GORGE
 - SOUTHERN KALAHARI
 - GHAAP PLATEAU
 - EASTERN COASTAL BELT



Label Key

DWS River Database:

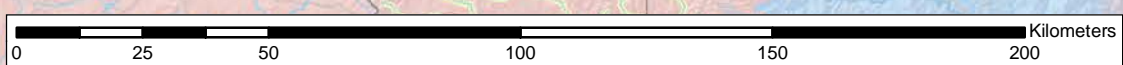
- M = Identified Macro Site (no data in River Database)
- R = Rivers Database Data available
- MR = All of the above

Site Code: E2DORI-BIEDO|MR|E|S5,3|H|C|LQ

- IFR/EWR site (based on site code and description)
- Channel condition data available
- SASS Indicator: S5,3 = Version of SASS (4 or 5), with number of samples; H = Macroinvertebrate habitat integrity data available
- Landuse and/or Water Quality data available

Fish Species Data from PES EI ES Project:

- Sub-quaternary Reach Number: M208-09078-F6
- Number of fish species observed in sub-quaternary river reach and/or adjacent river reach



Project Title:	Review, Evaluation and Optimisation of the South African Water Resources Monitoring Network	Scale 1:1 500 000 (When page size is: A2 landscape)	Figure 1.4
Map Title:	WMA 1 - Limpopo: Biophysical Monitoring Stations	Projection: Geographic Datum: Hartebeesthoek 1994	Sources: DWS: Water Information Management Water Resources of South Africa 2005 (WRC) Desktop PES, EI + ES (DWS, 2014)
Whilst every care has been taken in compiling the information on this map, AECOM cannot accept responsibility for any inaccuracies.		Compiled By: LC Gallagher GIS QC By: M Storie - PGP 0124 Approved By: E van Niekerk Date Saved: 2015/03/17 Project Number: 60326707 Map Ref: Biophysical_Limpopo_A2L.mxd Revision: 01	© Copyright





Legend

DWS Climate Stations

- Open
- Closed

ARC Meteorological Stations

- ▲ Open (Data Post - 2010)
- △ Closed

SAWS Rainfall Stations

- Open
- Closed

Rivers

Dams

SAWS Sector

Primary Catchment Boundaries

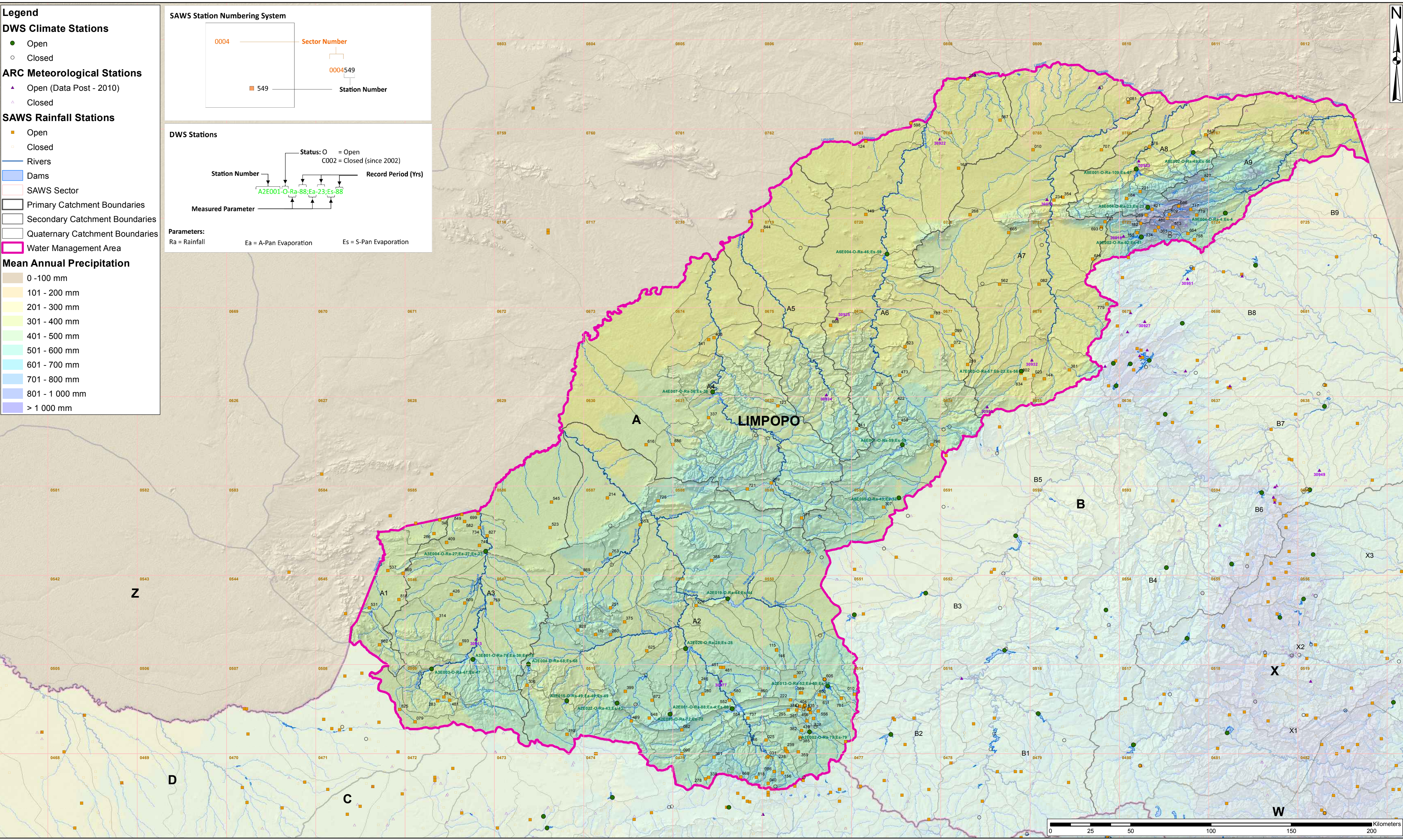
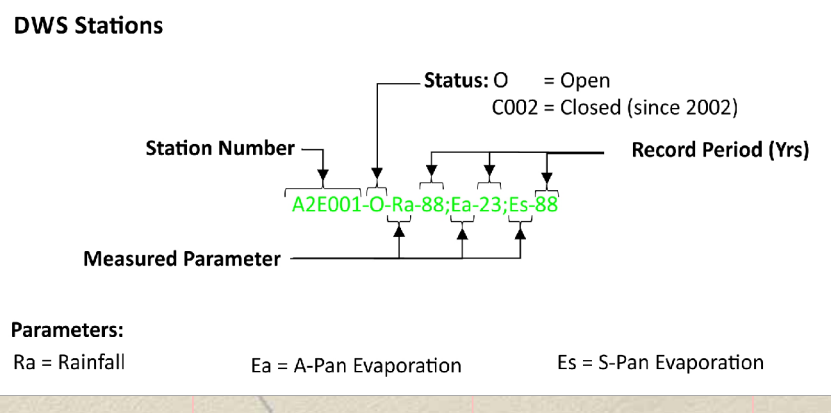
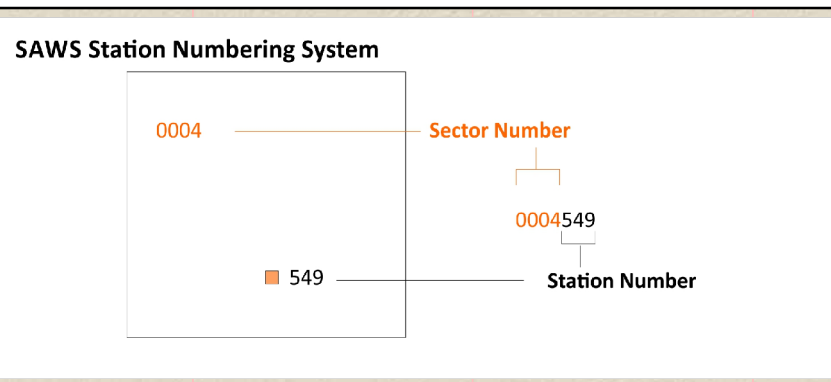
Secondary Catchment Boundaries

Quaternary Catchment Boundaries

Water Management Area

Mean Annual Precipitation

- 0 - 100 mm
- 101 - 200 mm
- 201 - 300 mm
- 301 - 400 mm
- 401 - 500 mm
- 501 - 600 mm
- 601 - 700 mm
- 701 - 800 mm
- 801 - 1 000 mm
- > 1 000 mm



Project Title: Review, Evaluation and Optimisation of the South African Water Resources Monitoring Network		Scale 1:1 500 000 (When page size is: A2 landscape)	Figure 1.5
Map Title: WMA 1 - Limpopo: Hydro-meteorological Monitoring Stations		Projection: Geographic Datum: Hartbeesthoek 1994	Sources: DWS: Water Information Management Water Resources of South Africa 2005 (WRC) Agricultural Research Council (ARC)
© Copyright		Compiled By: LC Gallagher GIS QC By: M Storie - PGP 0124 Approved By: E Van Niekerk Date Saved: 2015/03/16 Project Number: 60326707 Map Ref: CMN_Limpopo_A2L.mxd Revision: 01	
Whilst every care has been taken in compiling the information on this map, AECOM cannot accept responsibility for any inaccuracies.			



APPENDIX A:
Detailed Groundwater Level and Quality
Monitoring Station Labels

WMA 1: Limpopo

WMA 1 - Limpopo: Groundwater Level and Quality Monitoring Stations

Station	Name	Catchment	Province	Label
A7N0630	Greefswald Ptn. Mapungubwe Nature Reserve	A71L	LP	A7N0630-GI-O-8yrs-0%
A7N0649	Elberfeld	A71L	LP	A7N0649-GI-O-7yrs-4%
A7N0650	Villa Nova	A71L	LP	A7N0650-GI-O-7yrs-8%
A6N0591	Hackthorne	A63E	LP	A6N0591-GI-O-6yrs-14%
A6N0593	Bridgewater	A63E	LP	A6N0593-GI-O-7yrs-6%
A7N0628	Antonvlla Ptn. Antonvilla	A71K	LP	A7N0628-GI-O-8yrs-29%
A7N0645	Jan Van Rensburg	A71K	LP	A7N0645-GI-O-7yrs-4%
A9N0002	Mavambes Location ptn. Bileni	A92D	LP	A9N0002-GI-O-9yrs-3%
A9N0003	Mavambes Location ptn. Tshikuyu	A92D	LP	A9N0003-GI-O-9yrs-18%
A9N0004	Mavambes Location ptn. Tshikuyu	A92D	LP	A9N0004-GI-O-9yrs-5%
A9N0005	Thoyandou ptn. Tshilamusi	A92D	LP	A9N0005-GI-O-9yrs-11%
A9N0006	Thoyandou ptn. Tshilamusi	A92D	LP	A9N0006-GI-O-9yrs-15%
A9N0016	Thoyandou Ptn. Makavhini	A92D	LP	A9N0016-GI-O-9yrs-0%
A9N0017	Mavambes Location Ptn. Tshikondeni Mine	A92D	LP	A9N0017-GI-O-7yrs-0%
A9N0020	Mavambes Location	A92D	LP	A9N0020-GI-O-2yrs-14%
A8N0505	Honnet Natuurreservaat-Tshipise	A80G	LP	A8N0505-GI-O-9yrs-17%
A8N0510	Scrutton	A80G	LP	A8N0510-GI-O-7yrs-30%
A8N0504	Vrouwenbrom	A80J	LP	A8N0504-GI-O-8yrs-44%
A8N0506	Hetty Ptn. Mabvete	A80J	LP	A8N0506-GI-O-8yrs-6%
A6N0589	Koperfontein	A63C	LP	A6N0589-GI-O-6yrs-14%
A6N0594	Selous	A63C	LP	A6N0594-GI-O-6yrs-13%
A6N0579	Kromhoek	A63D	LP	A6N0579-GI-O-9yrs-5%
A6N0583	Kopbeenpan	A63C	LP	A6N0583-GI-O-7yrs-11%
A6N0592	Monmouth Ptn. Alldays	A63D	LP	A6N0592-GI-O-6yrs-0%
A6N0608	DE VREDE PTN. GA-MABELEBELE	A63D	LP	A6N0608-GI-O-3yrs-29%
A9N0001	Thoyandou ptn. Tshirunzini	A92C	LP	A9N0001-GI-O-9yrs-13%
A9N0012	Thoyandou Ptn. Tshvongweni	A92C	LP	A9N0012-GI-O-9yrs-3%
A7N0651	Ramsgate	A72B	LP	A7N0651-GI-O-7yrs-16%
A7N0660	Langjan Nature reserve ptn. Vogelfontein	A72B	LP	A7N0660-GI-O-4yrs-15%
A9N0010	Thoyandou ptn. Guyuni West	A92B	LP	A9N0010-GI-O-8yrs-17%
A9N0013	Thoyandou ptn. Tswera	A92B	LP	A9N0013-GI-O-7yrs-4%
A6N0595	Cantebury	A63B	LP	A6N0595-GI-O-6yrs-4%
A6N0606	Norfolk	A63B	LP	A6N0606-GI-O-2yrs-0%
A7N0652	Kortgedacht	A71J	LP	A7N0652-GI-O-7yrs-8%
A8N0514	Thoyohandou Ptn. Mavhode	A80H	LP	A8N0514-GI-O-6yrs-4%
A9N0011	Thiyandou ptn. Vhurivhuri	A91H	LP	A9N0011-GI-O-7yrs-10%
A9N0015	Mhingas Ptn. Mhinga	A91H	LP	A9N0015-GI-O-9yrs-15%
A8N0513	Fripp Ptn. Mudimeli	A80F	LP	A8N0513-GI-O-7yrs-0%
A5N0017	Wynberg	A50J	LP	A5N0017-GI-O-1yrs-0%
A5N0018	KILDARE	A50J	LP	A5N0018-GI-O-1yrs-0%
A8N0515	Njelelepoort Ptn. Maangani	A80B	LP	A8N0515-GI-O-8yrs-3%
A8N0508	Tonondwe Ptn. Mandala	A80A	LP	A8N0508-GI-O-9yrs-11%
A8N0509	Thoyandou Ptn. Fondwe	A80A	LP	A8N0509-GI-O-9yrs-12%
A9N0008	Molenjes Ptn. Phaphazela	A91F	LP	A9N0008-GI-O-9yrs-3%
A9N0014	vredenburgh ptn. Gonden	A91F	LP	A9N0014-GI-O-8yrs-0%
A8N0507	Aintree Ptn. Ballaballa Nature Conservancy	A80D	LP	A8N0507-GI-O-8yrs-27%
A7N0593	Ledig	A71H	LP	A7N0593-GI-O-20yrs-3%
A7N0634	Beauley	A72A	LP	A7N0634-GI-O-9yrs-14%
A7N0648	UDNEY PTN. SEKIDING	A72A	LP	A7N0648-GI-O-9yrs-24%
A7N0659	Dikgomong ptn. Innes	A72A	LP	A7N0659-GI-O-4yrs-14%
A6N0580	Bonteberg	A63A	LP	A6N0580-GI-O-6yrs-5%
A6N0582	Les Fontains Ptn. Sekhung	A63A	LP	A6N0582-GI-O-7yrs-0%
A6N0590	Zwartwater Ptn. Tolwe	A63A	LP	A6N0590-GI-O-7yrs-4%
A5N0009	Haakdoornkuil Ptn. Kitty	A50H	LP	A5N0009-GI-O-7yrs-0%
A5N0011	Ongerep	A50H	LP	A5N0011-GI-O-7yrs-8%
A5N0012	Van Wyksfontein Ptn. Tom Burke	A50H	LP	A5N0012-GI-O-5yrs-16%
A9N0018	Levubu Ptn. Levubu	A91D	LP	A9N0018-GI-O-7yrs-14%
A7N0524	Boorzien Dendron	A71G	LP	A7N0524-GI-O-48yrs-3%
A7N0644	Kaalbult	A71G	LP	A7N0644-GI-O-6yrs-11%
A9N0007	Doornspuit Ptn. Mpheni	A91B	LP	A9N0007-GI-O-8yrs-5%
A9N0019	Beschuitkuil	A91B	LP	A9N0019-GI-O-3yrs-10%
A7N0019	Lorgensy Ptn. Mara Navorsing Station	A71D	LP	A7N0019-GI-O-31yrs-4%
A7N0041	Roodewal	A71C	LP	A7N0041-GI-O-25yrs-3%
A7N0643	Legkraal	A71D	LP	A7N0643-GI-O-7yrs-11%
A7N0657	Banerlierkop	A71D	LP	A7N0657-GI-O-3yrs-0%
A6N0578	Duren	A62J	LP	A6N0578-GI-O-7yrs-13%
A6N0598	Goedgelegen	A62J	LP	A6N0598-GI-O-6yrs-0%
A4N0505	Alfred	A42J	LP	A4N0505-GI-O-2yrs-13%
A4N0503	Zoetfontein	A41E	LP	A4N0503-GI-O-6yrs-4%
A4N0510	RETREAT	A41E	LP	A4N0510-GI-O-5yrs-0%
A6N0586	Graafreinet Ptn. Rapsits	A62H	LP	A6N0586-GI-O-8yrs-12%
A6N0605	Ga-Manhodi ptn. Burgwal	A62H	LP	A6N0605-GI-O-4yrs-0%
A7N0638	Ramagoept Ptn. Eistleben	A71C	LP	A7N0638-GI-O-8yrs-4%

WMA 1 - Limpopo: Groundwater Level and Quality Monitoring Stations

Station	Name	Catchment	Province	Label
A7N0656	Ga-Phasha ptn. The Grange	A71C	LP	A7N0656-GI-O-4yrs-19%
A7N0635	Vaalkop Ptn. Doornspuit	A71E	LP	A7N0635-GI-O-8yrs-12%
A7N0641	Springforbi	A71F	LP	A7N0641-GI-O-7yrs-21%
A7N0661	MAKIBELO-MALLETZIES PTN. MAKIBELO	A71F	LP	A7N0661-GI-O-2yrs-12%
A5N0016	Pic Van teneriffe ptn. Setateng	A50G	LP	A5N0016-GI-O-1yrs-0%
A6N0599	GLEN ROY PTN. GLEN ROY	A62E	LP	A6N0599-GI-O-7yrs-4%
A6N0584	Gilead	A62F	LP	A6N0584-GI-O-6yrs-0%
A4N0504	George	A42H	LP	A4N0504-GI-O-6yrs-0%
A4N0514	TOUWFFONTEIN PTN. ELLISRAS	A42H	LP	A4N0514-GI-O-3yrs-0%
A5N0013	Wettedreden	A50E	LP	A5N0013-GI-O-5yrs-19%
A7N0029	Doornkraal	A71A	LP	A7N0029-GI-O-29yrs-4%
A7N0525	Tweefontein	A71A	LP	A7N0525-GI-O-39yrs-2%
A7N0538	Sterkloop	A71A	LP	A7N0538-GI-O-41yrs-1%
A7N0539	Sterkloop	A71A	LP	A7N0539-GI-O-41yrs-3%
A7N0549	Sterkloop	A71A	LP	A7N0549-GI-O-43yrs-1%
A7N0561	Sterkloop	A71A	LP	A7N0561-GI-O-41yrs-3%
A7N0629	Zandrivierspoort Ptn. Zandriviersport	A71C	LP	A7N0629-GI-O-7yrs-2%
A7N0636	Sterkloop	A71A	LP	A7N0636-GI-O-9yrs-3%
A7N0637	Vaalwater Ptn. Seshego	A71A	LP	A7N0637-GI-O-9yrs-6%
A7N0639	Rietvlei Ptn. Geyser Station	A71A	LP	A7N0639-GI-O-8yrs-26%
A7N0642	Pilgrimshoop	A71A	LP	A7N0642-GI-O-7yrs-13%
A7N0646	Doornbult	A71A	LP	A7N0646-GI-O-8yrs-28%
A7N0647	Sterkloop	A71A	LP	A7N0647-GI-O-8yrs-6%
A7N0654	Papkuil	A71A	LP	A7N0654-GI-O-6yrs-5%
A7N0655	Pilgrimshoop Ptn. Palmietgat Kleinhoewes	A71A	LP	A7N0655-GI-O-6yrs-10%
A7N0631	Matjeskraal	A71B	LP	A7N0631-GI-O-9yrs-5%
A7N0632	Matjeskraal	A71B	LP	A7N0632-GI-O-9yrs-7%
A7N0633	Kalkfontein Ptn. Sebaying	A71B	LP	A7N0633-GI-O-8yrs-4%
A7N0653	ZANDRIVERSPOORT	A71B	LP	A7N0653-GI-O-4yrs-8%
A4N0509	CUMBERLAND	A41D	LP	A4N0509-GI-O-6yrs-9%
A6N0597	VLAKFONTEIN	A62B	LP	A6N0597-GI-O-5yrs-0%
A6N0604	Nelly ptn. Ga-Malope	A62C	LP	A6N0604-GI-O-2yrs-0%
A6N0083	Turfspruit	A61G	LP	A6N0083-GI-O-29yrs-15%
A6N0534	Blinkwater	A61G	LP	A6N0534-GI-O-37yrs-3%
A4N0513	Zandfontein	A41C	LP	A4N0513-GI-O-5yrs-15%
A6N0588	Klipfontein Ptn. Mmotlana	A62A	LP	A6N0588-GI-O-7yrs-7%
A6N0044	Potgietersrus	A61F	LP	A6N0044-GI-O-34yrs-2%
A6N0069	De Hoop	A61F	LP	A6N0069-GI-O-37yrs-3%
A6N0079	Potgietersrus	A61F	LP	A6N0079-GI-O-34yrs-2%
A6N0560	Weenen	A61F	LP	A6N0560-GI-O-21yrs-3%
A6N0581	Planknek	A61F	LP	A6N0581-GI-O-8yrs-10%
A6N0587	Mahwelereng	A61F	LP	A6N0587-GI-O-9yrs-3%
A5N0015	Matjesgoedfontein	A50C	LP	A5N0015-GI-O-4yrs-17%
A4N0507	HANOVER	A42F	LP	A4N0507-GI-O-5yrs-32%
A4N0515	Hanover	A42F	LP	A4N0515-GI-O-2yrs-0%
A4N0506	WATERVAL	A42E	LP	A4N0506-GI-O-6yrs-21%
A2N0001	Faure	A24J	GP	A2N0001-GI-O-54yrs-0%
A2N0747	Rooibokkraal	A24J	GP	A2N0747-GI-O-25yrs-0%
A5N0014	Antjesloop	A50A	LP	A5N0014-GI-O-6yrs-0%
A4N0508	MATSULAAAN	A41A	LP	A4N0508-GI-O-6yrs-18%
A2N0010	Welgemoed	A32E	GP	A2N0010-GI-O-54yrs-0%
A2N0011	Parys	A32E	GP	A2N0011-GI-O-54yrs-0%
A2N0100	Frankfort	A32E	GP	A2N0100-GI-O-38yrs-0%
A6N0059	Voispruit	A61E	LP	A6N0059-GI-O-39yrs-1%
A6N0611	Doelen	A61E	LP	A6N0611-GI-O-8yrs-8%
A6N0602	ROODEPOORT	A61H	LP	A6N0602-GI-O-5yrs-5%
A6N0610	RYKDOM	A61H	LP	A6N0610-GI-O-2yrs-0%
A4N0516	Donkerhoek	A42C	LP	A4N0516-GI-O-3yrs-0%
A6N0023	Du Toitskraal	A61D	LP	A6N0023-GI-O-42yrs-0%
A6N0585	Grootvalley Ptn. Naboomspruit	A61D	LP	A6N0585-GI-O-7yrs-3%
A4N0512	RHENOSTERPOORT	A42B	LP	A4N0512-GI-O-5yrs-36%
A4N0511	HARTEBEEESPOORT	A42A	LP	A4N0511-GI-O-5yrs-20%
A6N0544	Nylsvley Potgietersrus	A60	LP	A6N0544-GI-O-25yrs-5%
A6N0545	Nylsvley	A600	LP	A6N0545-GI-O-24yrs-15%
A6N0546	Nylsvley Potgietersrus	A60	LP	A6N0546-GI-O-25yrs-5%
A6N0547	Nylsvley Potgietersrus	A60	LP	A6N0547-GI-O-24yrs-10%
A6N0550	Nylsvley Potgietersrus	A61C	LP	A6N0550-GI-O-25yrs-0%
A6N0553	Nylsvley	A61C	LP	A6N0553-GI-O-20yrs-0%
A6N0603	Nylstroom	A61A	LP	A6N0603-GI-O-3yrs-11%
A2N0005	Wachteenbeetje	A24C	GP	A2N0005-GI-O-47yrs-0%
A2N0091	Elandskuil	A24C	GP	A2N0091-GI-O-37yrs-0%
A2N0116	Het Bad (Warmbad)	A23G	LP	A2N0116-GI-O-30yrs-2%
A2N0786	Het Bad Ptn. Warmbad	A23G	LP	A2N0786-GI-O-6yrs-13%

WMA 1 - Limpopo: Groundwater Level and Quality Monitoring Stations

Station	Name	Catchment	Province	Label
A2N0029	Modderfontein	A22H	GP	A2N0029-GI-O-47yrs-0%
A2N0045	Swartkoppies	A21K	GP	A2N0045-GI-O-28yrs-0%
A2N0034	Rietondale	A23E	GP	A2N0034-GI-O-48yrs-0%
A2N0524	Rietondale	A23E	GP	A2N0524-GI-O-31yrs-0%
A2N0534	Rietondale	A23E	GP	A2N0534-GI-O-58yrs-0%
A2N0201	Kleinfontein	A22A	GP	A2N0201-GI-O-27yrs-0%
A2N0014	Modderfontein	A22H	GP	A2N0014-GI-O-47yrs-0%
A2N0017	Spruitfontein	A21K	GP	A2N0017-GI-O-47yrs-0%
A2N0131	Rietvallei	A21A	GP	A2N0131-GI-O-28yrs-0%
A2N0202	Klipdal	A23A	GP	A2N0202-GI-O-28yrs-0%
A2N0526	Unionbuilding	A23A	GP	A2N0526-GI-O-44yrs-0%
A2N0535	Waterkloof Buiteklub	A23A	GP	A2N0535-GI-O-17yrs-0%
A2N0543	Waterkloof Buiteklub	A23A	GP	A2N0543-GI-O-38yrs-0%
A3N0501	Grootfontein	A31	GP	A3N0501-GI-O-24yrs-0%
A3N0503	Bokkraal	A31	GP	A3N0503-GI-O-24yrs-0%
A3N0504	Rhenosterhoek	A31	GP	A3N0504-GI-O-24yrs-0%
A2N0637	Pretoria Ged. Groenkloof	A23	GP	A2N0637-GI-O-30yrs-0%
A2N0638	Pretoria Ged. Groenkloof	A23	GP	A2N0638-GI-O-30yrs-0%
A2N0640	Pretoria Ged. Groenkloof	A23	GP	A2N0640-GI-O-30yrs-0%
A2N0641	Pretoria Ged. Groenkloof	A23	GP	A2N0641-GI-O-30yrs-0%
A2N0642	Pretoria Ged. Groenkloof	A23	GP	A2N0642-GI-O-30yrs-0%
A2N0087	Liverpool	A21F	GP	A2N0087-GI-O-19yrs-0%
A2N0558	Malony's Eye ptn Maloney's Eye Trout (Pty) Ltd	A21F	GP	A2N0558-GI-O-29yrs-0%
A2N0559	Malony's Eye ptn Maloney's Eye Trout (Pty) Ltd	A21F	GP	A2N0559-GI-O-29yrs-0%
A2N0566	Wolvekrans Ged. Wolvekrans Farm Enterprises	A21F	GP	A2N0566-GI-O-24yrs-0%
A2N0567	Wolvekrans Ged. Wolvekrans Farm Enterprises	A21F	GP	A2N0567-GI-O-29yrs-0%
A2N0571	Vlakplaats	A21F	GP	A2N0571-GI-O-28yrs-0%
A2N0572	Delarey	A21F	GP	A2N0572-GI-O-29yrs-0%
A2N0573	Vlakplaats	A21F	GP	A2N0573-GI-O-29yrs-0%
A2N0610	Wolvekrans	A21F	GP	A2N0610-GI-O-27yrs-0%
A2N0612	Wolvekrans	A21F	GP	A2N0612-GI-O-25yrs-0%
A2N0614	Wolvekrans	A21F	GP	A2N0614-GI-O-27yrs-0%
A2N0615	Wolvekrans	A21F	GP	A2N0615-GI-O-27yrs-0%
A2N0616	Wolvekrans	A21F	GP	A2N0616-GI-O-27yrs-0%
A2N0528	Valhalla	A21B	GP	A2N0528-GI-O-60yrs-0%
A2N0552	Clubview	A21B	GP	A2N0552-GI-O-29yrs-0%
A2N0624	Sterkfontein	A21B	GP	A2N0624-GI-O-20yrs-0%
A2N0627	Hartebeestfontein	A21B	GP	A2N0627-GI-O-27yrs-0%
A2N0647	Valhalla	A21B	GP	A2N0647-GI-O-30yrs-0%
A2N0656	Zwartkop	A21B	GP	A2N0656-GI-O-30yrs-0%
A2N0657	Zwartkop	A21B	GP	A2N0657-GI-O-30yrs-0%
A2N0658	Voortrekkerhoogte	A21B	GP	A2N0658-GI-O-28yrs-0%
A2N0659	Voortrekkerhoogte	A21B	GP	A2N0659-GI-O-24yrs-0%
A2N0660	Voortrekkerhoogte	A21B	GP	A2N0660-GI-O-30yrs-0%
A2N0676	Doringkloof Ptn 106	A21B	GP	A2N0676-GI-O-27yrs-0%
A2N0678	Doringkloof Ptn 5	A21B	GP	A2N0678-GI-O-27yrs-0%
A2N0679	Doringkloof Ptn 5	A21B	GP	A2N0679-GI-O-28yrs-0%
A2N0680	Doringkloof	A21B	GP	A2N0680-GI-O-27yrs-0%
A2N0687	Doringkloof Ptn 2	A21B	GP	A2N0687-GI-O-26yrs-0%
A2N0692	Doringkloof Ptn 41	A21B	GP	A2N0692-GI-O-28yrs-0%
A2N0693	Doringkloof Ptn 15	A21B	GP	A2N0693-GI-O-28yrs-0%
A2N0694	Doringkloof Ptn 113	A21B	GP	A2N0694-GI-O-25yrs-0%
A2N0699	Doringkloof Ptn 113	A21B	GP	A2N0699-GI-O-28yrs-0%
A2N0757	Zwartkop Nature Reserve	A21B	GP	A2N0757-GI-O-25yrs-0%
A2N0119	Rietvallei	A21A	GP	A2N0119-GI-O-29yrs-0%
A2N0121	Rietvallei	A21A	GP	A2N0121-GI-O-29yrs-0%
A2N0124	Rietvallei	A21A	GP	A2N0124-GI-O-29yrs-0%
A2N0125	Rietvallei	A21A	GP	A2N0125-GI-O-29yrs-0%
A2N0136	Rietvallei	A21A	GP	A2N0136-GI-O-29yrs-0%
A2N0138	Rietvallei	A21A	GP	A2N0138-GI-O-29yrs-0%
A2N0139	Rietvallei	A21A	GP	A2N0139-GI-O-29yrs-0%
A2N0141	Rietvallei	A21A	GP	A2N0141-GI-O-29yrs-0%
A2N0142	Rietvallei	A21A	GP	A2N0142-GI-O-29yrs-0%
A2N0143	Rietvallei	A21A	GP	A2N0143-GI-O-29yrs-0%
A2N0145	Rietvallei	A21A	GP	A2N0145-GI-O-29yrs-0%
A2N0146	Rietvallei	A21A	GP	A2N0146-GI-O-29yrs-0%
A2N0628	Witfontein	A21A	GP	A2N0628-GI-O-27yrs-0%
A2N0631	Hartebeesfontein	A21A	GP	A2N0631-GI-O-27yrs-0%
A2N0632	Hartebeesfontein	A21A	GP	A2N0632-GI-O-18yrs-0%
A2N0634	Hartebeesfontein	A21A	GP	A2N0634-GI-O-26yrs-0%
A2N0702	Grootfontein	A21A	GP	A2N0702-GI-O-27yrs-0%
A2N0703	Grootfontein	A21A	GP	A2N0703-GI-O-27yrs-0%
A2N0704	Grootfontein	A21A	GP	A2N0704-GI-O-27yrs-0%

WMA 1 - Limpopo: Groundwater Level and Quality Monitoring Stations

Station	Name	Catchment	Province	Label
A2N0705	Grootfontein	A21A	GP	A2N0705-GI-O-27yrs-0%
A2N0706	Grootfontein	A21A	GP	A2N0706-GI-O-26yrs-0%
A2N0707	Grootfontein	A21A	GP	A2N0707-GI-O-28yrs-0%
A2N0709	Witkoppies	A21A	GP	A2N0709-GI-O-29yrs-0%
A2N0710	Bronkhorstfontein	A21A	GP	A2N0710-GI-O-27yrs-0%
A2N0713	Witkoppies	A21A	GP	A2N0713-GI-O-29yrs-0%
A2N0714	Grootfontein	A21A	GP	A2N0714-GI-O-28yrs-0%
A2N0715	Elandsfontein	A21A	GP	A2N0715-GI-O-28yrs-0%
A2N0729	Rietvallei	A21A	GP	A2N0729-GI-O-28yrs-0%
A2N0756	Onbekend ptn. Welbekend	A21A	GP	A2N0756-GI-O-20yrs-0%
A2N0778	Plot 38	C23E	GP	A2N0778-GI-O-9yrs-0%
A2N0779	Tweefontein	A21A	GP	A2N0779-GI-O-9yrs-0%
A2N0780	Elandsfontein	A21A	GP	A2N0780-GI-O-9yrs-0%
A2N0782	Tweefontein	A21A	GP	A2N0782-GI-O-9yrs-0%
A2N0784	Elandsfontein	A21A	GP	A2N0784-GI-O-9yrs-0%
A2N0553	Vlakplaats	A21D	GP	A2N0553-GI-O-29yrs-0%
A2N0554	Delarey	A21D	GP	A2N0554-GI-O-29yrs-0%
A2N0556	Reydal	A21D	GP	A2N0556-GI-O-28yrs-0%
A2N0576	Vlakplaats	A21D	GP	A2N0576-GI-O-29yrs-0%
A2N0579	Vlakplaats Ged. Eldorado	A21D	GP	A2N0579-GI-O-29yrs-0%
A2N0580	Vlakplaas ptn Eldorado Agricultural Holdings	A21D	GP	A2N0580-GI-O-29yrs-0%
A2N0583	Sterkfontein Ged. Beekedan Agricultural Holdings	A21D	GP	A2N0583-GI-O-29yrs-0%
A2N0586	Sterkfontein	A21D	GP	A2N0586-GI-O-29yrs-0%
A2N0590	Sterkfontein	A21D	GP	A2N0590-GI-O-29yrs-0%
A2N0592	Sterkfontein	A21D	GP	A2N0592-GI-O-29yrs-0%
A2N0600	Zwartkrans	A21D	GP	A2N0600-GI-O-25yrs-0%
A2N0602	Sterkfontein	A21D	GP	A2N0602-GI-O-27yrs-0%
A2N0605	Sterkfontein	A21D	GP	A2N0605-GI-O-25yrs-0%
A2N0606	Sterkfontein	A21D	GP	A2N0606-GI-O-25yrs-0%
A2N0607	Sterkfontein	A21D	GP	A2N0607-GI-O-21yrs-0%
A2N0788	Sterkfontein	A21D	AMD	A2N0788-GI-O-7yrs-0%
A2N0789	Randfontein	A21D	AMD	A2N0789-GI-O-1yrs-0%
A2N0790	Randfontein Estates Gold Mine	A21D	AMD	A2N0790-GI-O-0yrs-0%
A2N0791	Randfontein	A21D	AMD	A2N0791-GI-O-1yrs-0%
A2N0792	Randfontein Estates Gold Mine	A21D	AMD	A2N0792-GI-O-0yrs-0%
A2N0793	Randfontein Estates Gold Mine	A21D	AMD	A2N0793-GI-O-0yrs-0%
A2N0775	Haakdoring Bult (Pienaarsrivier Wetlands)	A23	NW	A2N0775-GI-O-4yrs-9%
A3N0506	Doornhoek	A30	DW	A3N0506-GI-O-10yrs-0%
A3N0510	Doornhoek	A30	NW	A3N0510-GI-O-10yrs-10%
A3N0511	Doornhoek	A30	NW	A3N0511-GI-O-7yrs-14%
D4N2516	uITVAL gROND	D41A	NW	D4N2516-GI-O-3yrs-0%
D4N2517	uITVAL gROND	D41A	NW	D4N2517-GI-O-3yrs-0%
D4N2518	UITVAL GROND	D41A	NW	D4N2518-GI-O-3yrs-0%
A1N0001	Tweefontein	A310	NW	A1N0001-GI-O-35yrs-0%
A1N0002	Tweefontein	A310	NW	A1N0002-GI-O-35yrs-0%
A3N0001	Oog Van Malmanie ptn. Malmanie Oog	A31C	NW	A3N0001-GI-O-37yrs-0%
A3N0002	Oog Van Malmanie ptn. Malmanie Oog	A31C	NW	A3N0002-GI-O-37yrs-0%
A3N0003	Kaalplaats ptn. Kaalplaas	A31C	NW	A3N0003-GI-O-37yrs-0%
A3N0004	Kaalplaats ptn. Kaalplaas	A31C	NW	A3N0004-GI-O-37yrs-0%
A3N0005	Doornplaas ptn. Doornplaas	A31C	NW	A3N0005-GI-O-37yrs-0%
A3N0006	Doornplaas	D41	NW	A3N0006-GI-O-37yrs-0%
A3N0009	Wonderfonteinptn. Wonderfontein	A31C	NW	A3N0009-GI-O-39yrs-0%
A3N0010	Wonderfontein ptn. Wonderfontein	A31C	NW	A3N0010-GI-O-38yrs-0%
A3N0012	Rietpoort	A310	NW	A3N0012-GI-O-36yrs-0%
A3N0013	Rietpoort	A310	NW	A3N0013-GI-O-36yrs-0%
A3N0015	Doornfontein	A310	NW	A3N0015-GI-O-28yrs-0%
A3N0016	Paardenvallei	A310	NW	A3N0016-GI-O-35yrs-0%
A3N0505	Doornfontein	A31	NW	A3N0505-GI-O-17yrs-0%
A3N0512	Moilos Suid ptn. Khunotswane	A31C	NW	A3N0512-GI-O-12yrs-49%
A3N0516	Stinkhoutboom	A31	NW	A3N0516-GI-O-13yrs-0%
D4N1468	Olyfenbult	D41	NW	D4N1468-GI-O-17yrs-0%
D4N1658	Moilos Ged Dinokana	D41	NW	D4N1658-GI-O-6yrs-0%
D4N1660	Moilwa	D41	NW	D4N1660-GI-O-16yrs-0%
D4N2514	Vergenoegd	D41A	NW	D4N2514-GI-O-3yrs-0%
D4N2515	Uitval Grond	D41A	NW	D4N2515-GI-O-3yrs-0%